

# Danish Lutheran Church – Indianapolis, Indiana

- **April 17, 1868** – Trinity Danish Evangelical Lutheran Church of Indianapolis was organized. Services were held in homes and in the school hall of St. Paul’s Lutheran Church. Rev. Wiese was the first pastor. At some point, the church members had some disagreements and the congregation split off. The 2<sup>nd</sup> church was formed with Rev. Thomsen heading that congregation. The original congregation seems to be called “The Danish Evangelical Lutheran Church” and the 2<sup>nd</sup> congregation seems to be referenced as just “Danish Lutheran Church” in the newspaper.
- **January 29, 1870** – First mention that I can find in the Indianapolis News about the city having a Danish Church. No real details were supplied.
- **September 22, 1871** – Building Permit mentioned in newspaper for New Jersey Street location (2<sup>nd</sup> congregation).
- **December 28, 1871** – Mention in the Indianapolis News about the Danish Church (2<sup>nd</sup> Congregation) erecting a small building on South New Jersey Street, Indianapolis, IN.
- **Summer 1872** – The building for First Trinity (the original Danish congregation) was erected on the corner of McCarty and Noble Streets, Indianapolis, IN.
- **April 17, 1873** – Mention in newspaper thanking donors for helping erect the Danish Church (2<sup>nd</sup> Congregation) on South New Jersey Street, Indianapolis, IN.
- **July & August 1877** – The 2<sup>nd</sup> congregation/church is still listed as having services on South New Jersey Street in the newspaper.
- **August 29, 1881** – Mention of the Danish Church (2<sup>nd</sup> Congregation) opening a little frame chapel on South Missouri Street, Indianapolis, IN.
- **November 6, 1882** – Mention about dangerous flooding at the Danish Church (2<sup>nd</sup> Congregation) on South Missouri Street , Indianapolis, IN.
- **July 4, 1883** – Mention about the Danish Church (2<sup>nd</sup> Congregation) on Missouri Street, Indianapolis, Indiana being in danger due to flooding and being converted into a residence.
- **February 20, 1884** – Mention about the Danish Church (2<sup>nd</sup> Congregation) forced to move to the opposite side of Missouri Street, Indianapolis, Indiana because of the Catherine Street “wash”.

# Danish Lutheran Church — Indianapolis, Indiana

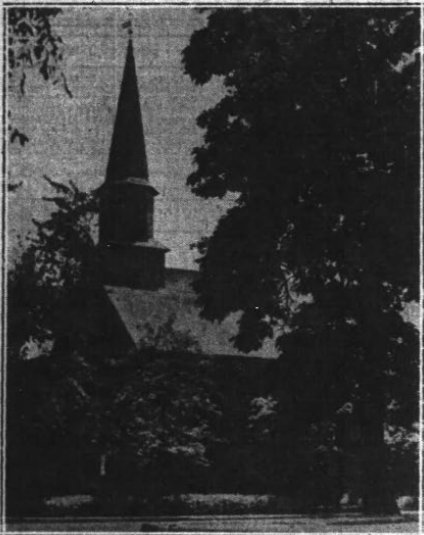
April 17, 1868 — Trinity Danish Evangelical Lutheran Church (First Trinity) of Indianapolis was organized. Services were held in homes and in the school hall of St. Paul's Lutheran Church. Rev. Wiese was the first pastor. At some point, the church members had some disagreements and the congregation split off. The 2<sup>nd</sup> church was formed with Rev. Thomsen heading that congregation. The original congregation seems to be called "The Danish Evangelical Lutheran Church" and the 2<sup>nd</sup> congregation seems to be referenced as just "Danish Lutheran Church" in newspaper articles.

## DANISH EVANGELICAL LUTHERAN CHURCH BELIEVED FIRST IN THE UNITED STATES

This is the photograph of a series of letters prepared by Miss A. Wiese, dealing with the history of the church at St. Paul's.

The first arrival of Danes in Indianapolis was in the spring of 1841 at the time of the building of the St. Paul's German Lutheran church when Hans Peter Wiese and Peter Wiese, two men who were formerly from Menominee, came from Cleveland. From 1841 to 1849 there were other arrivals from Denmark to Indianapolis, all of whom settled on the south side.

When in 1850 West and Denmark, he brought back with him about forty young persons from the cities of Men and Valster. These sturdy young people became the strong and healthy stock on which the Trinity Danish church was founded. They put away their native costumes, adopted the wearing apparel and learned the language of America.



TRINITY DANISH EVANGELICAL LUTHERAN CHURCH

The first outing of the Danish colony, a Fourth of July picnic in 1857, became important because on this occasion the thought of a church was first presented. Julius Swahn, a former member of Emmanuel Scandinavian Evangelical Lutheran church Racine, Wis., queried: "Why can not we Danes have a church as well as other nations?" The idea was enthusiastically received and a committee was formed with Mr. Wiese as chairman.

The committee went to the Rev. Mr. Pricke, of St. Paul's Lutheran church, who took the matter to the Rev. J. A. Ottosen, the Norwegian synod. However, no action was taken. In January, 1868, when the Danes appealed to the Rev. Mr. Pricke once more, and again he went to the Rev. Mr. Ottosen. Information was obtained by the committee that the Danish congregation in the Concordia Seminary at St. Louis, who had been a member of Emmanuel Racine, Wis., had decided that they felt that this young man would make a suitable pastor for the new church.

A letter was sent inviting him to come to the city for Easter and his answer to the affirmative was received with much joy. Easter Sunday, April, 1868, became a date of importance as the occasion of the first Danish service held in Indianapolis. Numerous meetings followed and on April 19, 1868, the Trinity Danish Evangelical Lutheran church in Indianapolis was organized formally with twenty-eight voting members.

This is believed to be the first Danish church in the United States. The Danish state religion is Lutheran.

Services and services subsequently were held in homes and in the school hall of St. Paul's Lutheran church, when one of the lay members would have charge of what was known as a "reading service." In the fall of 1868 the Rev. Mr. Wiese was called to St. Paul's in January he was installed.

Of the persons who had come from Denmark many had been united in marriage and had founded homes, and also Danes settling in the city established in the vicinity of the school hall in the Danish church. However, the Lutheran doctrine is somewhat rigid doctrine, the enforcement of which caused dissension, and a division took place in the congregation. A second Danish society was organized with the Rev. N. Thomsen as pastor, and although a church was built by them before the erection of Trinity church, the congregation dissolved after two years.

The pastorate of the Rev. Mr. Wiese, of two years' duration, was memorable only because it was the first in the history of the church, but also because it bore the impress of the kind and generous personality of the preacher. With a youthful pastor leading a young and sturdy congrega-

tion, high ambition infused every undertaking, and although somewhat weakened by the loss of almost half of the membership, the congregation laid plans for the immediate erection of a house of worship.

In 1870 the Rev. Mr. Wiese received another call and the Rev. E. P. Jensen was obtained as pastor of the Trinity congregation. He, too, brought the vigor of youth to the little group and with his assistance and encouragement, a lot was bought at McCarty and Noble streets. In the summer of 1872 a church was erected, and was dedicated September 23 by the Rev. E. A. Frensen, president of the Norwegian synod, assisted by the Rev. E. W. Olsen and the former pastor, the Rev. Mr. Wiese.

From 1875 to 1878 the pulpit was vacant but services were held regularly. In 1878 the congregation was served from Chicago by the Rev. A. M. Jensen, who remained in Indianapolis until 1881. The congregation was then reorganized in coming to Indianapolis.

In November, 1881, the Rev. Carl J. Moen was called, and during his ministry a parsonage was built on an adjoining lot. This parsonage, although remodeled several times, still serves as the home of the pastor of the congregation.

**Doctrinal Controversy.**  
The Rev. N. M. Milne accepted the doctrine in 1887, and in the period that he served the church controversy arose over a doctrinal belief, including the doctrine of the great amount of strife in the entire synod. It became impossible to settle the dispute, and a second schism took place, when more than half the congregation withdrew. A serious dis-

sension regarding ownership of the church building arose, but finally court decision was made in favor of those who remained faithful to the constitution adopted at the time the building was erected.

Until 1892 the congregation was again served from Chicago by the Rev. Mr. Jensen. In July, 1892, during the pastorate of the Rev. G. A. Christensen, the congregation celebrated its twenty-fifth anniversary. The first pastor, the Rev. Mr. Jensen, returned, as did the Rev. Mr. Jensen.

In describing incidents of the early days in the history of the little church, one member mentioned the two occasions which were observed on the anniversary of the church. At the Fourth of July picnic. Particular mention is made of the ingenious plan devised by Jacob Hansen and Peter Hansen to place the huge Christmas tree so that it mysteriously revolved. As soon as the music began this enormous tree, elaborately trimmed with colored balls and numerous candles began to turn slowly and for many years few except the builders knew just how the tree was controlled. Those who found out for themselves carefully guarded the secret. The fame of this revolving tree spread and in the Christmas season crowds from over the city gathered nightly in the little church to see the wonder.

The mystery of the tree was enjoyed particularly by the children and this revolving Christmas tree has become a tradition among the members of the congregation. A story is told yearly to the little church. For the pleasure of the children these same two men devised a "Flying Dutchman" swing which, with a great amount of time and labor, was transported every year to the grove

for the Fourth of July picnic. When the great joy was set up there by the children's surveillance and supervision and during all the years this swing was used never an accident occurred. Great hampers of food were opened and spread on one long table and the congregation was invited to the church a new communion service came the annual parade when the entire congregation carried the Danish and American flags and singing the songs of both countries. Then the group formed in a huge circle for the folk dances which were executed to the accompaniment of an accordion and a violin playing the lively airs of the Danish folk.

### Difficulties Lessened.

The difficulties of the little society became lessened as more members were added regularly and the church debt decreased. Strict payment of the subscriptions by every individual was maintained, and during the years there was no pastor Miss Hulda Hansen, a member of the congregation, left the lamps and made the fires at the parsonage for the monthly meetings on Monday nights.

In 1914 the Trinity congregation joined the United Danish Evangelical Church of America, a newly-formed organization which was convening in Greenville, Mich.

In the years of 1915 to 1916 the pulpit was vacant, but June 18, 1916, the present pastor, the Rev. C. Jeppesen accepted the call. He was born in Denmark, was ordained at Harlan, Ia., and installed in charge of Trinity July 2, 1916, by the Rev. L. Petersen, Chicago, and the Rev. J. S. Simonsen, also of Chicago.

The Danish language was used exclusively by all services until 1917, when English services were held on alternate Sundays. The Sunday school and all the other church work has been given in English since 1917.

On June 14, 1928, the congregation celebrated its sixtieth anniversary. Visiting pastors were the Rev. E. R. Andersen, pastor of the Trinity church at Racine, and the Rev. L. Sierbeck, a son of one of the members of the congregation, had just been ordained at Atlantic, Ia. Members of honor at the only living charter member: Mrs. H. Christensen, Mrs. H. P. Newmann, Mrs. P. Petersen, Mrs. S. Hansen, Mr. and Mrs. Ole Rasmussen, Mr. and Mrs. Edw. Olsen, Mrs. Mary George, Mrs. Ellen M. Rasmussen, P. C. Moller, A. Robinson, Mr. and Mrs. C. Carlsen and Mrs. C. Hansen.

School in religious instruction. The Lutheran church remains today as erected. The building is of red brick masonry and was built by the years, constructed in the Gothic style and finished in 1872. The church is a simple structure with a high steeple. A plaque on each side of the entrance bears in the Danish the date of organization of the congregation and the date the church was erected. The steeple is surmounted by a cross above the entrance, are partly covered by the green ivy which creep over the wall up the steeple. The main entrance porch is a high, vaulted structure with a high peaked ceiling, tinted walls and a quaint painted floor. It is pervaded by the atmosphere of sanctity and peace. The windows, attractively placed with three on a side, have painted arches and back of the painted pews, placed with a central aisle, is a high balcony. On this balcony the organ is placed. More than fifty years in the services of the church, which accompanies the vestments of the choir.

At the front of the church the pulpit is mounted on the "charcoal" on the right and on the left is the baptismal font.

Both were made by hand by one of the members, L. B. Hansen, who was

a cabinet maker. Within the chancel the organ stands on a raised platform. For a number of years in the service of communion the drink was poured from the chalice into a common cup and there dedicated and passed to the kneeling communicants. In memory of her husband, Mrs. S. Hansen gave to the church a new communion service which maintained the common cup in which the communion is celebrated but provided individual cups for distribution.

Before the altar is the communion table bearing the communion vessels, the two candles symbolizing the law and the gospel and silver flower vases. Upon the credos an exquisite oil

painting depicts Christ crucified, and above this is an oval painting of the thorned head of Christ. The entire altar, pulpit and baptismal font are white, trimmed with gold leaf. Two brothers in the church, the Olsen brothers, piped and placed gas jets, the entire altar, the three crosses and four pillars, representing the four evangelists, may be illuminated on the occasions during the year, Christmas, Easter and Pentecost.

The trustees of the church include P. C. Moller, A. Robinson, S. Sorenson, C. M. Nielsen, N. E. Christensen, John Sorenson, John Robinson and J. C. Jensen. The pastor is C. Jeppesen and the organist is Miss Edna Olsen.

Central Avenue M. E.—The Rev. Frank Lee Roberts, pastor. Morning sermon, "Religious Procrastination."

Fifty-First Street M. E.—The Rev. Wilbur D. Grose, pastor. Morning sermon by the Rev. Almon J. Coble.

Wallace Street Presbyterian—The Rev. Peter McEwen, pastor. Morning sermon by the Rev. Almon J. Coble. "The Good Shepherd."

Carrollton Avenue Reformed—The Rev. C. M. Nielsen, pastor. Morning sermon, "The Task of the Church of Our Age."

St. Matthew Lutheran—The Rev. L. C. Fackler, pastor. Morning theme, "Evidence of Faith in Christ." Holy Communion at 10:30 a. m.

## LOCAL CHURCH NOTES

Central Avenue M. E.—The Rev. Frank Lee Roberts, pastor. Morning sermon, "Religious Procrastination."

Fifty-First Street M. E.—The Rev. Wilbur D. Grose, pastor. Morning sermon by the Rev. Almon J. Coble.

Wallace Street Presbyterian—The Rev. Peter McEwen, pastor. Morning sermon by the Rev. Almon J. Coble. "The Good Shepherd."

Carrollton Avenue Reformed—The Rev. C. M. Nielsen, pastor. Morning sermon, "The Task of the Church of Our Age."

St. Matthew Lutheran—The Rev. L. C. Fackler, pastor. Morning theme, "Evidence of Faith in Christ." Holy Communion at 10:30 a. m.

school building. Sermon at 10 a. m. by the Rev. J. B. Parson, conference superintendent. Evening open air service at 7:30 p. m. in college campus. Sermon by Dr. C. E. Ashcraft, Dayton, O.

University Park Christian—The Rev. Leo Sadler, pastor. Morning theme, "Heralds of the Morning."

Robbalee M. E.—The Rev. E. F. Frevo, pastor. Evening theme, "As I Have Loved You."

East 10th Street M. E.—The Rev. M. O. Robbins, pastor. Morning theme, "God's Will and Prayer." Evening theme, "The Royal Kindness of Service." "The Faithful's Philosophy of Life and Religion." Evening theme, "Jesus and Treatment of Enemies."

Gettsame Lutheran—The Rev. C. M. Wachter will conduct the morning service and preach the sermon.

Robbalee M. E.—The Rev. E. F. Frevo, pastor. Evening theme, "As I Have Loved You."

East 10th Street M. E.—The Rev. M. O. Robbins, pastor. Morning theme, "God's Will and Prayer." Evening theme, "The Royal Kindness of Service." "The Faithful's Philosophy of Life and Religion." Evening theme, "Jesus and Treatment of Enemies."

First U. P.—The Rev. Joseph A. Ewing, pastor. Morning theme, "Hail Every One That Thirsteth."

Bellaire M. E.—The Rev. Walter B. Grimes, pastor. Morning theme, "The Wilderness of This World," evening, to be presented by the Rev. Charles M. Fillmore, of Indianapolis.

Seventh Lutheran—Aubrey H. Moore, pastor. Morning theme, "What We Are and What We Shall Be." Evening theme, "The Church of St. Paul's church with sermon by the Rev. H. B. Hostetter.

St. Paul's Lutheran—The Rev. Howard M. Pattison, pastor. Morning sermon, "Stewardship—the Money Trust." Evening, "Pioneers of Faith."

Bethlehem Lutheran—The Rev. Alen K. Trent, pastor. Morning sermon, "The Great Treasure."

Downey Avenue Christian—The Rev. Bert R. Johnson, pastor. Morning services at charge of the Rev. J. H. Booth. Union services on the church lawn at 7:30 p. m.

Seventh Evangelical—The Rev. Edmond Kerlin, pastor. Morning subject, "Living Through These Days." Evening services, "Intermediate Failures."

Broadway M. E.—The Rev. William C. Baker, pastor. Morning theme, "The Mastery of Our Thoughts." There will be no evening services.

Washington M. E.—The Rev. Lloyd E. Smith, pastor. Morning theme, "The Judgment of the Apostles' Creed." No evening services.

Morris Street M. E.—The Rev. M. E. Baker, pastor. Morning theme, "The Way of Salvation." Evening theme, "The Way of Salvation."

Grace M. E.—The Rev. B. Brooks Shake, pastor. Morning theme, "Flowers and the Fragrance of Life." Evening theme, "Every Man His Own Paradise."

Washington M. E.—The Rev. Guy O. Carpenter, pastor. Morning theme, "What Does 'Thou Here?'" Evening theme, "Lassen From the Christian church lawn. Sermon by the Rev. John B. Ferguson.

West Michigan Street M. E.—The Rev. William G. Morgan, pastor. Morning theme, "Secret of Strength." Evening theme, "My Word is Light."

Second Reformed—The Rev. George P. Kehl, pastor. Morning theme, "Gates to the City of Blessedness." Indiana Central College U. B.—The Rev. George L. Sime, pastor. Morning sermon taking place on New Sunday

at 10 a. m. by the Rev. J. B. Parson, conference superintendent. Evening open air service at 7:30 p. m. in college campus. Sermon by Dr. C. E. Ashcraft, Dayton, O.

University Park Christian—The Rev. Leo Sadler, pastor. Morning theme, "Heralds of the Morning."

Robbalee M. E.—The Rev. E. F. Frevo, pastor. Evening theme, "As I Have Loved You."

East 10th Street M. E.—The Rev. M. O. Robbins, pastor. Morning theme, "God's Will and Prayer." Evening theme, "The Royal Kindness of Service." "The Faithful's Philosophy of Life and Religion." Evening theme, "Jesus and Treatment of Enemies."

Gettsame Lutheran—The Rev. C. M. Wachter will conduct the morning service and preach the sermon.

Robbalee M. E.—The Rev. E. F. Frevo, pastor. Evening theme, "As I Have Loved You."

East 10th Street M. E.—The Rev. M. O. Robbins, pastor. Morning theme, "God's Will and Prayer." Evening theme, "The Royal Kindness of Service." "The Faithful's Philosophy of Life and Religion." Evening theme, "Jesus and Treatment of Enemies."

Gettsame Lutheran—The Rev. C. M. Wachter will conduct the morning service and preach the sermon.

Robbalee M. E.—The Rev. E. F. Frevo, pastor. Evening theme, "As I Have Loved You."

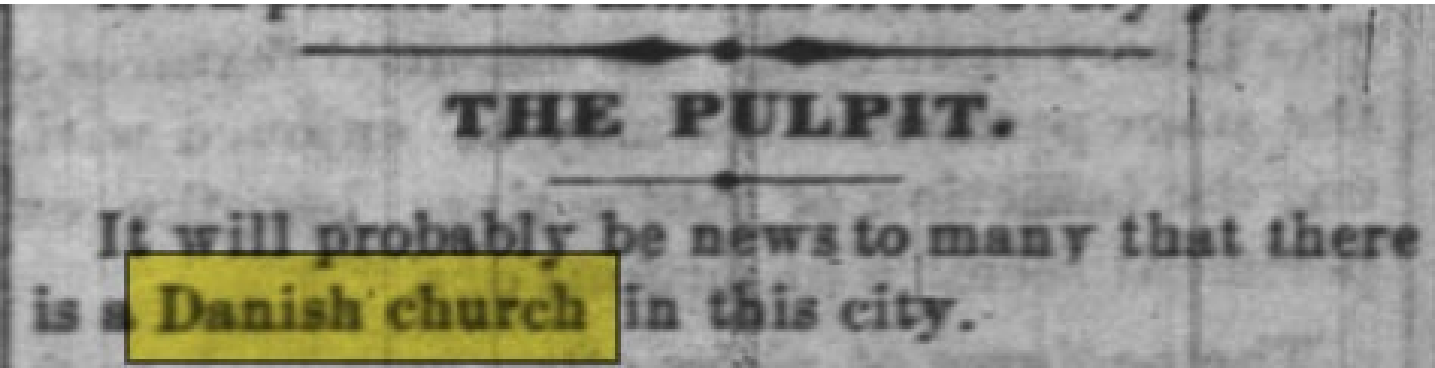
East 10th Street M. E.—The Rev. M. O. Robbins, pastor. Morning theme, "God's Will and Prayer." Evening theme, "The Royal Kindness of Service." "The Faithful's Philosophy of Life and Religion." Evening theme, "Jesus and Treatment of Enemies."

Gettsame Lutheran—The Rev. C. M. Wachter will conduct the morning service and preach the sermon.

Robbalee M. E.—The Rev. E. F. Frevo, pastor. Evening theme, "As I Have Loved You."

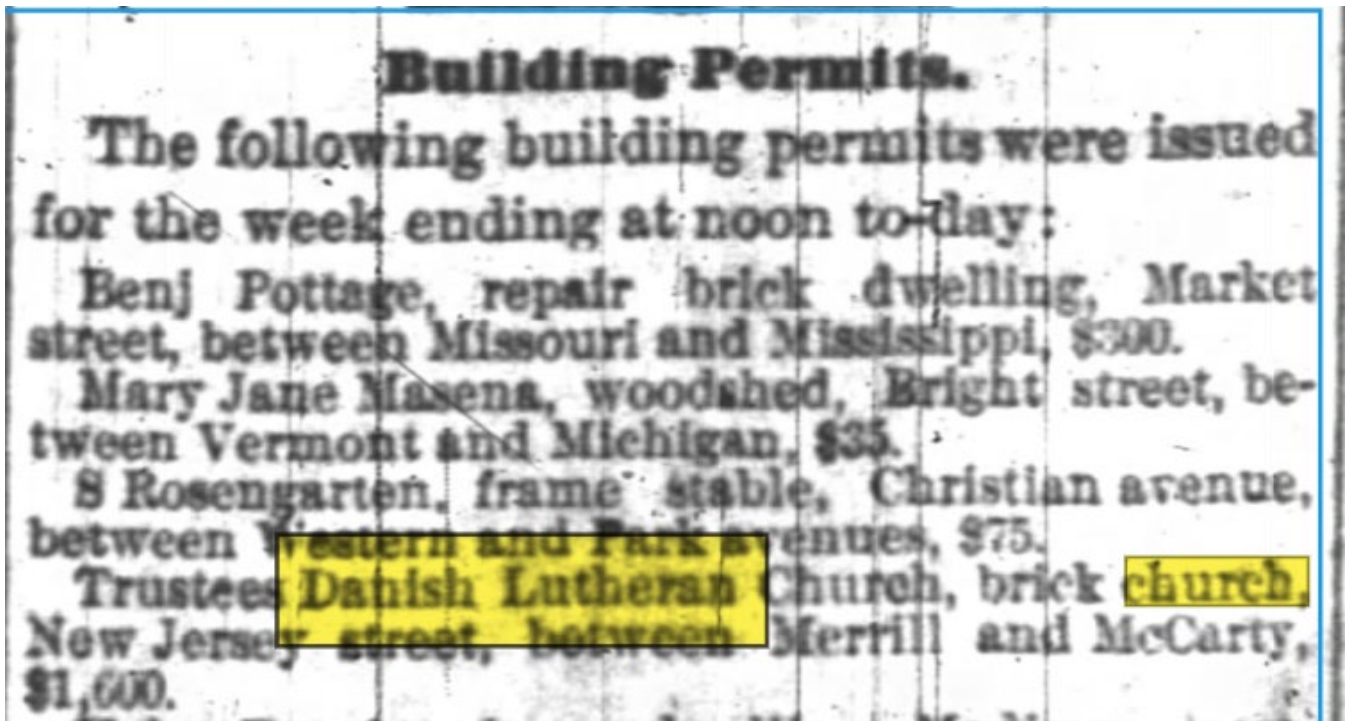
# Danish Lutheran Church – Indianapolis, Indiana

- **January 29, 1870** – First mention that I can find in the Indianapolis News about the city having a Danish Church. No real details were supplied.



*The Indianapolis News - January 29, 1870*

- **September 22, 1871** – Building Permit mentioned in newspaper for New Jersey Street location (2<sup>nd</sup> congregation).



*The Indianapolis News - September 22, 1871*

## Danish Lutheran Church – Indianapolis, Indiana

- **December 28, 1871** – Mention in the Indianapolis News about the 2<sup>nd</sup> Danish Church erecting a small building on South New Jersey Street, Indianapolis, IN.

---

### Danish Church.

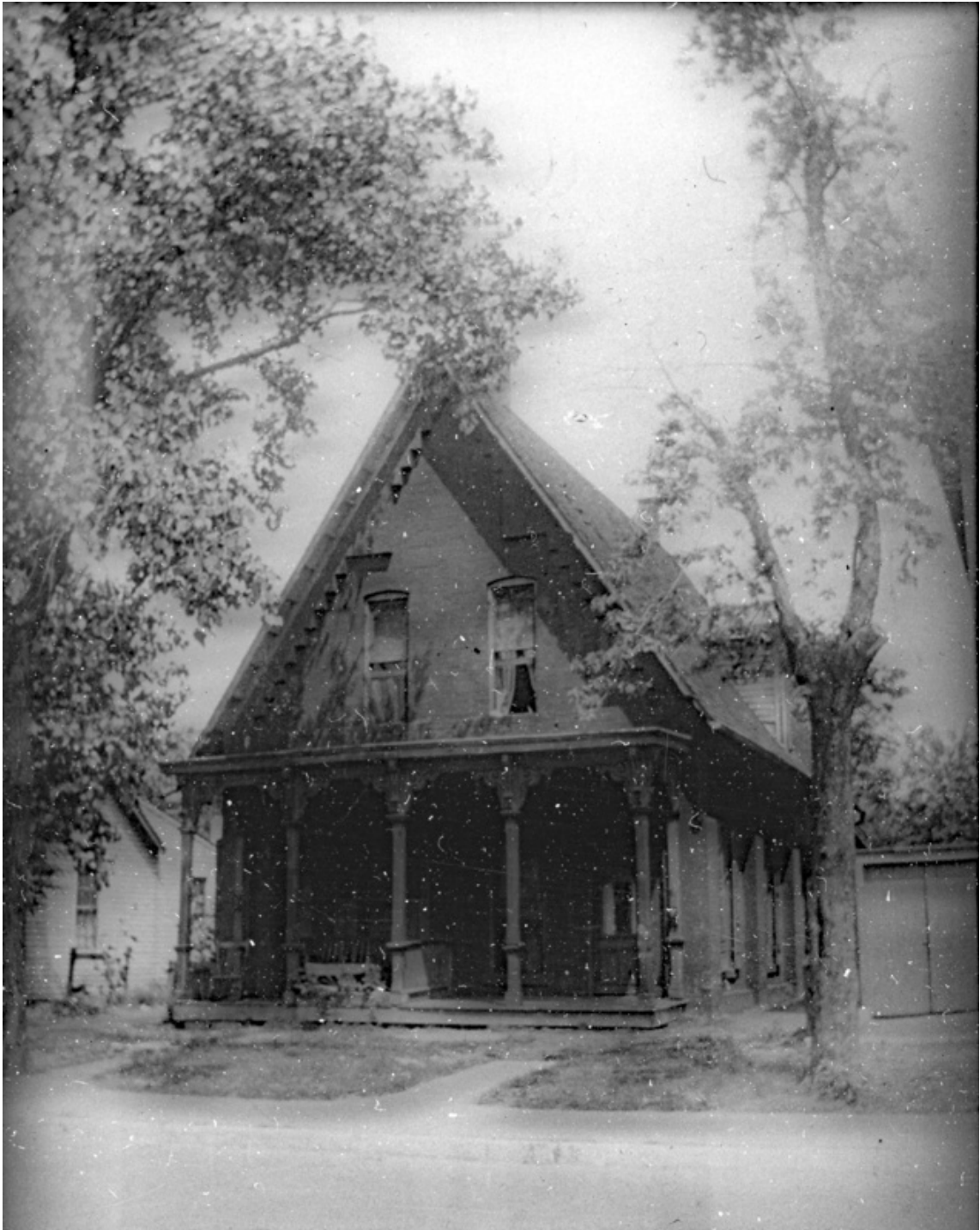
The Danish Evangelical Lutheran Congregation in this place has erected a small church on South New Jersey street. On the 24th instant it was dedicated by the Danish Pastor, **Rev. N. Thomsen**. The English Lutheran Pastor, Rev. Crilly, was present, and spoke a few encouraging and edifying words.

---

*The Indianapolis News - December 28, 1871*

## Danish Lutheran Church – Indianapolis, Indiana

- **December 28, 1871** – Mention in the Indianapolis News about the 2<sup>nd</sup> Danish Church erecting a small building on South New Jersey Street, Indianapolis, IN.



## Danish Lutheran Church – Indianapolis, Indiana

- **December 28, 1871** – Mention in the Indianapolis News about the 2<sup>nd</sup> Danish Church erecting a small building on South New Jersey Street, Indianapolis, IN. Rev. Niels Thomsen pictured below.



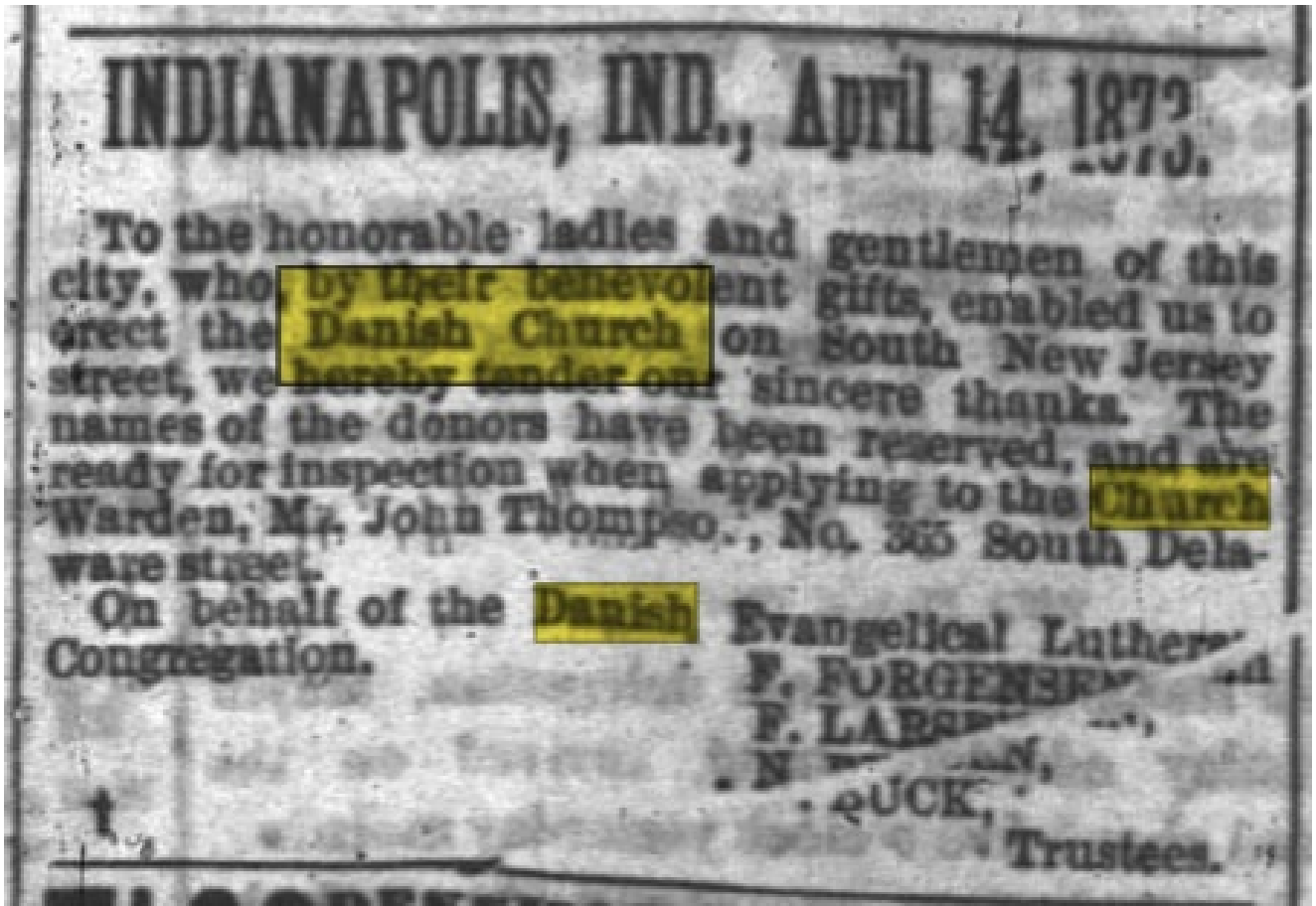
# Danish Lutheran Church – Indianapolis, Indiana

- **Summer 1872** – The building for First Trinity (the original Danish congregation) was erected on the corner of McCarty and Noble (formerly called Beaty) Streets, Indianapolis, IN.



# Danish Lutheran Church – Indianapolis, Indiana

- **April 17, 1873** – Mention in newspaper thanking donors for helping erect the Danish Church (2<sup>nd</sup> Congregation) on South New Jersey Street, Indianapolis, IN.



## Danish Lutheran Church – Indianapolis, Indiana

- **July & August 1877** – The 2<sup>nd</sup> congregation/church is still listed as having services on South New Jersey Street.

**ENGLISH LUTHERAN CHURCH** -COR-  
ner of North Pennsylvania and Wal-  
nut streets. The Rev. G. F. Behringer, pastor.  
Morning service in the chapel at 10:30. Even-  
ing service at the Danish Lutheran church,  
on South New Jersey street near Merrill, at  
7:45. Subject of sermons: "The preaching of  
St. Paul." and "The ransom of the soul."  
Sunday school and Bible class at 2:30 P. M.

*The Indianapolis News - July 21, 1877*

TO ATTEND THESE SERVICES.

**ENGLISH LUTHERAN CHURCH** -COR-  
ner of North Pennsylvania and Wal-  
nut streets. The Rev. G. F. Behringer, pastor.  
Morning service with sermon at 10:30. Sunday  
school and Bible class at 2 P. M. Evening  
service at the Danish Lutheran church (South  
New Jersey near Merrill) at 8 P. M. Literary  
meeting of the brotherhood on Wednesday  
evening at the chapel.

*The Indianapolis News - August 11, 1877*

## Danish Lutheran Church – Indianapolis, Indiana

- **August 29, 1881** – Mention of the Danish Church (2<sup>nd</sup> Congregation) opening a little frame chapel on South Missouri Street, Indianapolis, IN.

### **Church-Going** in McKernansville.

A little frame chapel for the **Danish** citizens of the southside in and around McKernansville, has recently been opened on South Missouri street, a little below Merrill. A congregation of thirty or forty was gathered there yesterday morning listening to an intelligent young **divine, probably** appointed by the large **Danish church** in the southeast part of the city, near New Jersey and McCarty streets. If so, this makes the third missionary chapel of larger congregations in a small area of the vicinity of the creek bottom. A half square south or a little more, is a Methodist chapel on McCarty street, corner of Chadwick, and four squares southeast is the Episcopal chapel, corner of **Church** and Morris streets. The Catholics, who are two-thirds of the population, all go to St. John's, and they make a perfect procession up Kentucky avenue to 10 o'clock mass. This is the largest **church** in the city, and it is crowded to the walls every Sunday, as no Protestant **church** of half the size is.

## Danish Lutheran Church – Indianapolis, Indiana

- **November 6, 1882** – Mention about dangerous flooding at the Danish Church (2<sup>nd</sup> Congregation) on South Missouri Street , Indianapolis, IN.

The "wash" in the creek, below Merrill street, has cut its way so close to the rear door of the little Danish church, on South Missouri street, that it is dangerous for a child to go out there at any time, or for anybody at night. And so on, without end, apparently.

*The Indianapolis News - November 6, 1882*

## Danish Lutheran Church – Indianapolis, Indiana

- **July 4, 1883** – Mention about the Danish Church (2<sup>nd</sup> Congregation) on Missouri Street, Indianapolis, Indiana being in danger due to flooding and being converted into a residence.

The little Danish church, on Missouri street, which is in such imminent danger from the Catherine street wash, has been converted, or perverted, into a residence, with a little grocery in a front addition. The reminiscient reporter can recall at the moment, no other church in the city, late or early, that has been converted to other use without reconstruction, changing them beyond recognition, like the old Christian church, on Kentucky avenue, changed into a tenement house, Wesley Chapel into a printing office and business block, Roberts chapel, Fourth Presbyterian church, Beecher's church, and possibly others.

## Danish Lutheran Church – Indianapolis, Indiana

- **February 20, 1884** – Mention about the Danish Church (2<sup>nd</sup> Congregation) forced to move to the opposite side of Missouri Street, Indianapolis, Indiana because of the Catherine Street “wash”.

The Catherine street “wash” has forced the little Danish church, to which The News has referred before, to move to the opposite side of Missouri street. The recent high water has enlarged the “wash” a good deal and changed the creek channel back to the old bed, so that a protecting wall might easily be built now. Somebody is tearing down the useless, costly and abandoned Catherine street culvert, but nobody is using the material to build that wall to resist the “wash.”

# Danish Lutheran Church – Indianapolis, Indiana

## Indianapolis City Directory Listings:

1868

**Lutheran.**

FIRST ENGLISH LUTHERAN.

South-west corner Alabama and New York.  
Pastor, Rev. J. Stuckenberg.

ST. PAUL'S GERMAN LUTHERAN.

North-east corner East and Georgia; erected in 1861. Pastor, Rev. — — —, residence — — —.

1869

**Lutheran.**

DANISH CHURCH—northeast corner East and Georgia. M. F. Wisler, pastor, residence, 66 Huron.

FIRST ENGLISH CHURCH—southwest corner Alabama and New York.

ST. PAUL'S CHURCH.—(German) northeast cor. East and Georgia. Erected in 1861. Rev. Christian Hochstetter, pastor, residence, Ohio, corner East.

1870

**LUTHERAN.**

St. Paul's cor. East and Georgia.  
First English, cor. Alabama and New York. Rev. W. W. Criley, pastor.

1871

**LUTHERAN.**

*First English Lutheran Church*—Southwest cor Alabama and New York; Rev. W. W. Criley, pastor. Services 10:30 a m, 7:30 p m. Sunday School 2 p m.

*St. Paul's Church, (German Evangelical)*—Northeast cor Georgia and East; Rev. Christian Hochstaeter, pastor. Services 10 a m. Sunday School 2:30 p m.

1872

**LUTHERAN.**

*First English Lutheran Church*—Southwest corner New York and Alabama, Rev. S. L. Harkey, Pastor. Services 10:30 a. m., 7:30 p. m., Sunday School 2 p. m.

*Danish Lutheran Church*.—East side New Jersey north McCarty, Rev. N Thomsen, Pastor. Services 10 a. m.

*Evangelical Lutheran Church*.—North side Ohio east Illinois, Rev. Herman Quinius, Pastor. Services 10:50 a. m., 7:50 p. m., Sunday School 9 a. m.

*St. Paul's Evangelical Lutheran Church*.—Northeast corner East and Georgia, Rev. C. Hockstetter, Pastor. Services 10 a. m., 7:30 p. m., Sunday School 2:30 p. m.

# Danish Lutheran Church – Indianapolis, Indiana

## Indianapolis City Directory Listings:

1873 NONE

1874

**LUTHERAN.**

*Danish Lutheran Church*—Corner Beaty and McCarty, Rev E. P. Jenson Pastor. Services 10 a. m.

*Evangelical Danish Lutheran Church*—East side of New Jersey, north of McCarty, Rev. Niels Thompsen, pastor. Services 10 a. m., and 7 p. m.

1875

**570**

*Danish Evangelical Lutheran Trinity Church*—Corner Beaty and McCarty, Rev. E. P. Jensen, Pastor. Services 10 a. m.

*Evangelical Danish Lutheran Church*—East side New Jersey north McCarty, Rev. Olav Kirkeberg, Pastor. Services 10:00 a. m. and 7:30 p. m.

1876

**616**

*Danish Lutheran Church*—South-east corner McCarty and Beaty. Rev N N Aas, Pastor, services 10 a m.

*German Evangelical Lutheran Zion's Church*—32 W Ohio. Rev Herman Quinius, Pastor. Services 10:30 a m and 7:30 p m. Sunday School 9 a m.

*Evangelical Danish Lutheran Church*—East side New Jersey north McCarty. Rev Olav Kirkeberg, Pastor. Services 10 a m and 7 p m.

*First English Lutheran Church*—North

1877

**567**

Jacob)—Northwest corner of Pennsylvania and South. Isaac Silverman, Rabbi. Services from 7 to 10 a. m. Saturdays, and 4 to 7 p. m. Fridays.

**LUTHERAN.**

*First English Lutheran Church*—North-east corner of Walnut and Pennsylvania.

*Second German Evangelical Lutheran Church*—Northeast corner of East and Ohio. Peter Seuel, Pastor. Services, 10 a. m., 2 p. m., 7:30 p. m.

*Danish Evangelical Lutheran Church*—East side of New Jersey south of Sinkers.

*Danish Evangelical Lutheran Trinity Church*—Southeast corner of McCarty and Beaty.

# Danish Lutheran Church – Indianapolis, Indiana

## Indianapolis City Directory Listings:

1878

LUTHERAN.  
First English Lutheran Church—North-east corner Walnut and Pennsylvania. G. F. Behringer, Pastor. Services 10:30 a. m., 7:30 p. m., Sunday School 2 p. m.  
Second German Evangelical Lutheran Church—Northeast corner East and Ohio. Peter Seuel, Pastor. Services 10 a. m., 2 p. m., 7:30 p. m.  
Danish Evangelical Lutheran Trinity Church—Southeast corner McCarty and Beaty. Stener F. Sevnninghausen, Pastor. Services 10 a. m., 8 p. m., Sunday School 2 p. m.  
Danish Evangelical Lutheran Church—East side New Jersey, south of Merrill.

1879

2:30 p. m.  
LUTHERAN.  
First English Lutheran Church—North-east corner Walnut and Pennsylvania. No Pastor. Services 10:30 a. m., 7:30 p. m., Sunday School 2 p. m.  
Second German Evangelical Lutheran Church—Northeast corner East and Ohio. Peter Seuel, Pastor. Services 10 a. m., 2 p. m., 7:30 p. m.  
Danish Evangelical Lutheran Trinity Church—Southeast corner McCarty and Beaty. Stener F. Sevnninghausen, Pastor. Services 10 a. m., 8 p. m., Sunday School 2 p. m.  
Danish Evangelical Lutheran Church—East side New Jersey, south of Merrill.

1880

LUTHERAN.  
First English Lutheran Church—Northeast corner Walnut and Pennsylvania. Rev. Jacob B. Baltzly, pastor. Services 10:30 a. m., 7:30 p. m.; Sunday School 2 p. m.  
Second German Evangelical Lutheran Church—Northeast corner East and Ohio. Rev. Peter Seuel, pastor. Services 10 a. m., 2 p. m., 7:30 p. m.  
Danish Evangelical Lutheran Trinity Church—Southeast corner McCarty and Beaty. Services 10 a. m., 8 p. m.; Sunday School 2 p. m.  
Danish Evangelical Lutheran Church—East side New Jersey, south of Merrill.

1881

10:30 a. m., Sunday School 9 a. m.  
LUTHERAN.  
First English Lutheran Church—Northeast corner Walnut and Pennsylvania, Rev. Jacob B. Baltzly, pastor. Services 10:30 a. m., 7:30 p. m.; Sunday School 2 p. m.  
Second German Evangelical Lutheran Church—Northeast corner East and Ohio, Rev. Peter Seuel, pastor. Services 10 a. m., 2 p. m., 7:30 p. m.  
Danish Evangelical Lutheran Trinity Church—Southeast corner McCarty and Beaty. Services 10 a. m., one Sunday in each month.  
Danish Evangelical Lutheran Church—East side New Jersey, south of Merrill.  
St. Paul Evangelical Lutheran Church

# Danish Lutheran Church – Indianapolis, Indiana

## Indianapolis City Directory Listings:

1882

m., 2 p. m., 7:30 p. m.  
Danish Evangelical Lutheran Trinity Church—Southeast corner McCarty and Beatty. Services 10 a. m., one Sunday in each month.  
Danish Evangelical Lutheran Church—East side New Jersey, south of Merrill.  
St. Paul Evangelical Lutheran Church—

1883

LUTHERAN.  
First English Lutheran Church—North east corner Walnut and Pennsylvania, Rev. Jacob B. Baltzly, pastor. Services 10:30 a. m., 7:30 p. m.; Sunday School 2:15 p. m.  
Second German Evangelical Lutheran Church—Northeast corner East and Ohio, Rev. Peter Seuel, pastor. Services 10 a. m., 2 p. m., 7:30 p. m.  
Danish Evangelical Lutheran Trinity Church—Southeast corner McCarty and Beatty. Services 10 a. m., one Sunday in each month.  
Danish Evangelical Lutheran Church—East side New Jersey, south of Merrill.

1884

LUTHERAN.  
First English Lutheran Church—Northeast corner Walnut and Pennsylvania, Rev. Jacob B. Baltzly, pastor. Services 10:30 a. m., 7:30 p. m.; Sunday School 2:15 p. m.  
Second German Evangelical Lutheran Church—Northeast corner East and Ohio, Rev. Peter Seuel, pastor. Services 10 a. m., 2 p. m., 7:30 p. m.  
Danish Evangelical Lutheran Trinity Church—Southeast corner McCarty and Beatty. Services 10 a. m., one Sunday in each month.  
Danish Evangelical Lutheran Church—East side New Jersey, south of Merrill, Rev. C. J. Moen, pastor, services 10:30 a. m., and 7:30 p. m.

1885

Saturdays, and 4 to 9 a. m. Fridays.  
LUTHERAN.  
First English Lutheran Church—Northeast corner Walnut and Pennsylvania, Rev. John Baltzly, pastor. Services 10:30 a. m., 7:30 p. m.; Sunday School 2:15 p. m.  
Second German Evangelical Lutheran Church—Northeast corner East and Ohio, Rev. Peter Seuel, pastor. Services 10 a. m., 2 p. m., 7:30 p. m.  
Danish Evangelical Lutheran Trinity Church—Southeast corner McCarty and Beatty. Rev. Charles J. Moore, pastor. Services 10 a. m., 7:30 p. m.; Sunday School 2 p. m.  
St. Paul German Evangelical Lutheran Church—Northeast corner New Jersey and McCarty, Rev. Charles C. Schmidt, pastor. Services 10 a. m., 7:30 p. m.; Sunday School 2 p. m.