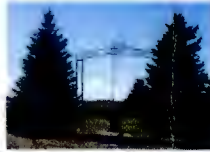


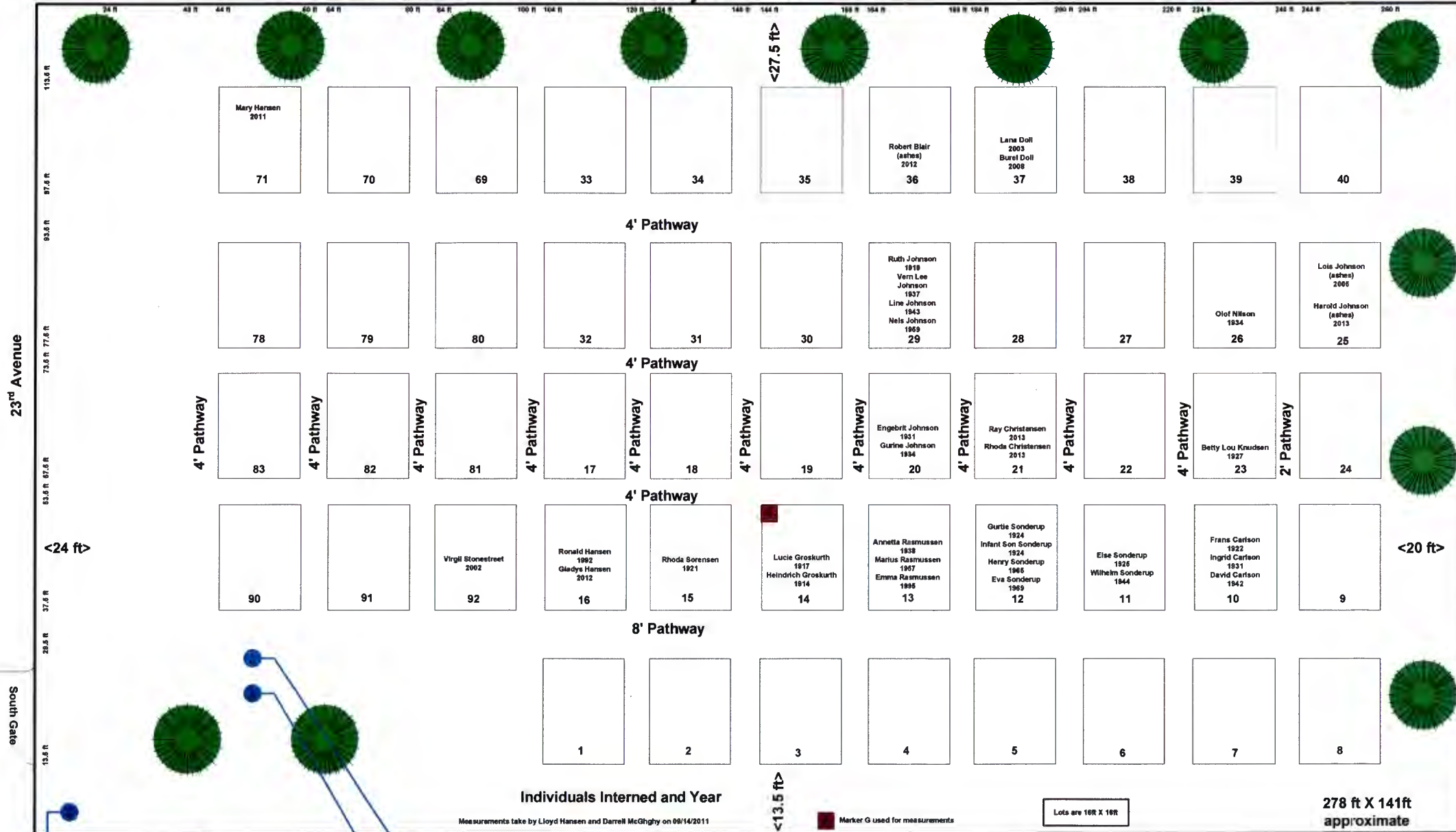
SE ¼ SW¼ of S10-T16N-R10W  
Approximately 1 Acre



**North Logan Cemetery**  
Established 1910  
Highway 281 and 23<sup>rd</sup> Avenue  
Howard County Nebraska



Owned and Maintained  
North Logan Cemetery Association



STATE OF NEBRASKA  
HOWARD COUNTY  
FILED FOR RECORD  
SS. 1630  
AT 4:11 O'CLOCK P. M. RECORDED  
MO Dec DAY 11 20 13  
IN BOOK 13 OF RECORD PAGE 5812  
Bel Sack COUNTY CLERK  
Fee Paid 10 - BY 88

23<sup>rd</sup> Avenue

South Gate

U. S. Coast &  
Geodetic Survey  
Bench Marker  
A118/1935

East Gate

Church  
Marker

Flag Pole

Date of Diagram  
12/11/2013  
Not to Scale

Highway 281

Measurements take by Lloyd Hansen and Darrell McElghy on 08/14/2011

<13.5 ft>

Marker G used for measurements

lots are 16R X 16R

278 ft X 141ft  
approximate

On September 6, 1910 the original 2 acres were deeded in the records of Howard County Nebraska in Book 7 Page 115 and conveyed to the St. Peter Danish Evangelical Lutheran Congregation of Logan Precinct. A church was erected and a pioneer cemetery established. In 1950 the former members of said church held a meeting to dissolve said church. In 1951 the former members of said church formed the North Logan Cemetery Association and retained 1 acre of land and deeded the other 1 acre to Henry Sonderup. Said church was moved to Ord, Nebraska. The Sonderup family originally deeded the 2 acres to said church in 1910.