

**Summary**

Unclassified.....	19	
English.....	24	
Commercial.....	25	
Academic.....	21	
Normal.....	8	
Pro Seminary.....	32	
Trinity Theological Seminary.....	6	
Music.....	42	
	<hr/>	177
Counted twice.....		34
	<hr/>	
Enrollment.....		143

CATALOGUE

OF

**DANA COLLEGE**

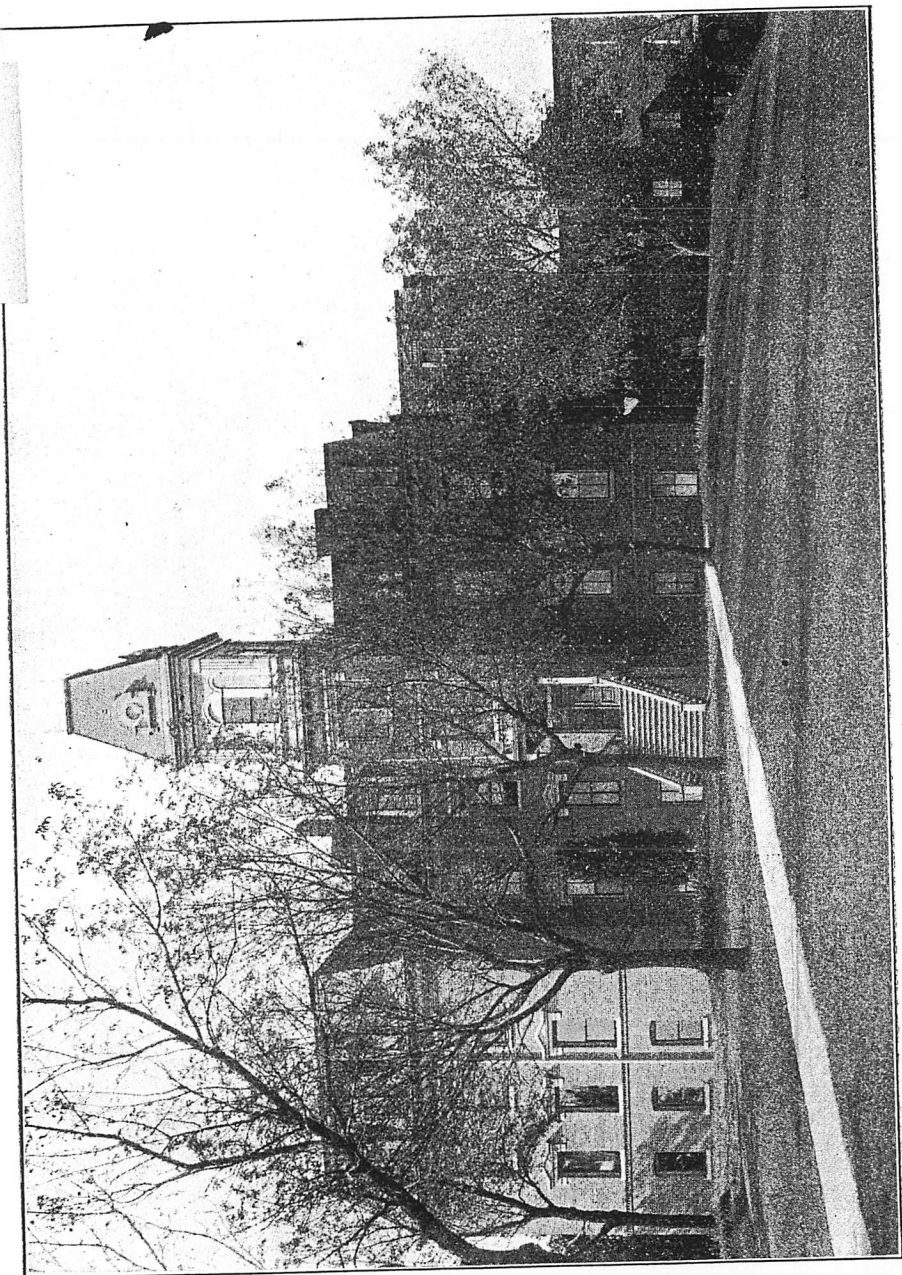
AND

TRINITY THEOLOGICAL SEMINARY

BLAIR — NEBRASKA

WITH ANNOUNCEMENTS FOR 1910—1911

BLAIR, NEBRASKA  
 DANISH LUTHERAN PUBLISHING HOUSE  
 1910



#### BOARD OF TRUSTEES.

Rev. G. B. CHRISTIANSEN, President,  
Rev. A. L. J SØHOLM, Vice President,  
Rev. A. S. NIELSEN, Secretary,  
Mr. L. VEDSTED,  
Mr. C. D. SKOW,

Audubon, Ia.  
Royal, Ia.  
Kenosha, Wis.  
Staplehurst, Nebr.  
Racine, Wis.

#### BOARD OF DIRECTORS.

Rev. H. P. JENSEN, Chairman,  
Rev. HARALD JENSEN,  
Rev. TH. N. JERSILD,  
Mr. S. C. PETERSEN,  
Mr. OTTO HANSEN,

Minden Nebr.  
Salt Lake City, Utah.  
Elk Horn, Iowa.  
Elk Horn, Ia.  
Blair, Nebr.

#### BOARD OF EXAMINERS.

Rev. H. P. JENSEN.      Rev. HARALD JENSEN.  
Rev. TH. N. JERSILD.

#### BOARD OF VISITORS.

Rev. H. P. JENSEN.      Rev. TH. N. JERSILD.

## SCHOOL CALENDAR.

### FALL TERM (9 Weeks).

1910—Sept. 27.	Registration of Students.
Sept. 27	Opening Exercises 2 P. M.
Oct. 31.	Reformation Day.
Nov. 24.	Thanksgiving Day.
Nov. 26.	Fall Term Examinations.

### WINTER TERM (16 Weeks)

Nov. 28.	Term Begins.
Dec. 25.	Christmas Day.
1911—Jan. 20.	Close of First Semester.
Febr. 22.	Washington's Birthday.
Mar. 17.	Winter Term Examinations.

### SPRING TERM (10 Weeks).

March 20.	Term Begins
April 12.	Easter Recess.
May 23-26.	Graduation Exercises.

## FACULTY OF DANA COLLEGE.

C. X. HANSEN, A. B., President.  
Mathematics.

Rev. P. S. VIG.  
Danish Literature.

Rev. N. P. LANG.  
Greek.

N. T. LUND, A. B.  
English Literature and History.

CAROLINE JOHNSON, A. B.  
Latin, German and Pedagogy.

(To be supplied.)  
Stenography and Accounting.

ANDREW SINNAMARK.  
Natural Sciences.

J. H. SWIHART.  
Violin and Voice.

PETRA JENSEN.  
Danish Language, Art, and Needlework.

AMANDA HANSEN.  
Piano and Organ.

## FACULTY OF TRINITY SEMINARY.

Rev. P. S. VIG, President.  
Dogmatics, Old Testament Exegesis and Church History.

Rev. N. P. LANG.  
New Testament Exegesis and Pastoral Theology.

## GENERAL STATEMENT

Dana College and Trinity Seminary is owned and supported by The United Danish Evangelical Lutheran Church in America. It is a denominational institution and as such aims to serve, primarily, the interests of the Lutheran Church, but its doors are open to all who desire a liberal education based upon the Christian spirit. Its original scope was that of a school for the education of ministers of the gospel.

But at the third annual convention of the United Danish Evangelical Lutheran Church in America, held at Hutchinson, Minn., in 1899, it was decided to unite the two official Schools of the church, the College at Elk Horn, Ia., and Trinity Seminary at Blair, Nebr., thus making the aim of this school not only to prepare young men for the ministry, but also directly or indirectly to train young men and women for other professions and occupations.

Its courses of instruction are according to approved models, and qualitatively the institution aims to be in the front rank. The English language is used as a medium of instruction, except in Danish language, history, and literature and most of the theological branches, nevertheless Danish naturally occupies a prominent position in the curriculum of Dana College and Trinity Seminary.

The location leaves little to be desired in accessibility, healthfulness, and beauty of surroundings.

It is the object of those in charge to throw about the student all forces that favor a healthy and harmonious physical, mental, and moral development.

## COURSES.

Dana College and Trinity Seminary comprise the following departments of study;

I. The Academic School	Four Year Course
II. The College	Four Year Course
III. Pro-Seminary	Four Year Course
IV. The Normal School, one Year and Four Year Courses	
V. Commercial Department	Eight to Twelve Months
VI. The Music Department	— — —
VII. „Højskolen”	— — —
VIII. Trinity Seminary	Three Year Course
IX. Art and Needlework	— — —

## THE ACADEMIC DEPARTMENT.

This course is outlined in accordance with the requirements for admission to the Freshman class of the State University of Nebraska.

Besides preparing the student for admission to the University and other Colleges, its aims to give the students who cannot pursue their studies further a good elementary education.

Credit points are issued on the basis of five recitations a week of not less than forty minutes for one semester of eighteen weeks for one credit. Some allowance is made as to the amount of work a student may do, depending on the ability of the student.

### PREPARATORY YEAR.

	I	II
English Grammar and Composition.....	5	5
U. S. History .....	5	5
Political Geography .....	5	5
Arithmetic .. . . . . .	5	5
Penmanship .. . . . . .	4	4
Reading and Orthography .....	5	5

### FIRST YEAR.

Bookkeeping .....	5	5
Danish Reading and Composition.....	5	5
Latin, Beginning .....	5	5
Physical Geography .....	5	5
Algebra .. . . . . .	5	5
Physiology .. . . . . .	5	5
Catechetics and Bible History.....	2	2

### SECOND YEAR.

Danish Grammar and Composition.....	5	5
General History .....	5	5
Church History .. . . . . .	3	3
Latin .. . . . . .	5	5
Geometry, Plane .. . . . . .	5	5
Botany .. . . . . .	5	5

### THIRD YEAR.

Rhetoric and Literature .....	I	II
Latin or German .....	5	5
Algebra .. . . . . .	5	5
Geometry, Solid .....	5	5
English History .....	5	5
Agriculture .. . . . . .	5	5
Political Economy .....	5	5
Drawing .. . . . . .	5	5

### FOURTH YEAR.

English Literature .....	5	5
Latin or German .....	5	5
Trigonometry and Surveying .....	5	5
Review of American History and Civics.....	5	5
Physics .. . . . . .	5	5
Chemistry .. . . . . .	5	5

**COLLEGE**

Two years of regular college work has been outlined for students who wish to continue their studies.

Two courses are offered in the following outlines of studies.

**FRESHMAN CLASS.**

Classical		I	II	Scientific		1	II
Danish Literature and				Danish Literature and			
Composition . . . . .	3	3		Composition . . . . .	3	3	
Physics . . . . .	5	5		Physics . . . . .	5	5	
Latin . . . . .	5	5		Zoology . . . . .	5		
Greek . . . . .	4	4		Chemistry . . . . .	5		
English . . . . .	3	3		Latin . . . . .	5	5	
Sacred History . . . . .	2	2		Sacred History . . . . .	2	2	

**SOPHOMORE CLASS.**

Classical				Scientific			
German . . . . .	5	5		German . . . . .	5	5	
Greek . . . . .	4	4		Chemistry . . . . .	4	4	
Geology . . . . .		5		Geology . . . . .		5	
Economics . . . . .	3			Economics . . . . .	3		
Psychology . . . . .	5			Psychology . . . . .	5		
Logic . . . . .		5		Logic . . . . .		5	
Church History . . . . .	3	3		Church History . . . . .	3	3	
Danish or Latin* . . . . .	4	4		Danish or Greek* . . . . .	4	4	

The studies marked with an asterisk are elective.

It is strongly advised that those who wish to train themselves for teaching in the parochial schools of the United Danish Evangelical Lutheran Church in America take the following Two Year Danish Course.

**TWO YEAR DANISH COURSE.**

**FIRST YEAR.**

	I	II
Danish Grammar and Composition . . . . .	5	5
Catechetics and Bible History . . . . .	3	3

	I	II
Danish History . . . . .	3	3
Geography of Scandinavia . . . . .	1	
Drawing . . . . .	5	5
Elective . . . . .	5	5

**SECOND YEAR.**

Danish Grammar and Composition . . . . .	5	5
Danish Literature . . . . .	4	4
General History . . . . .	5	5
Church History . . . . .	3	3
Methods . . . . .	5	5
Bible Study . . . . .	2	2

**NORMAL DEPARTMENT.**

Dana College has recently been added to the list of schools authorized by the State to issue state certificates.

The one-year and two-year courses lead to the Elementary and First Grade certificates respectively.

The holder of either of these certificates may teach anywhere in the State of Nebraska without further examination.

The Elementary certificate is good for a term of not less than one year and not to exceed three years from date of issuance, at the discretion of the county superintendent of the county in which the holder of such certificate shall teach.

The First Grade State certificate is good for a term of three years from date of issuance. After three years of successful teaching the holder of such certificate is entitled to a professional certificate good for life.

**THE ELEMENTARY CERTIFICATE COURSE**

In order to gain admission to this course the applicant must have completed the first three years of the academic course or its equivalent.

	I	II
Observation . . . . .	5	5
U. S. History . . . . .	5	
Arithmetic . . . . .		5
Grammar . . . . .	5	
Geography . . . . .		5
Physics . . . . .	5	
Review . . . . .		5

**THE FIRST GRADE CERTIFICATE COURSE.**

Admission to this course is granted to those who have completed the Academic course or equivalent.

**FIRST YEAR.**

Observation and Methods . . . . .	5	5
Psychology . . . . .	5	5
Zoology . . . . .		5
Review . . . . .	10	5

**SECOND YEAR.**

	I	II
History of Education . . . . .	5	
Practice Teaching . . . . .	5	5
Theory of Education . . . . .		5
Geology . . . . .	5	
Review . . . . .	5	10

**PRO-SEMINARY COURSE.**

This course is intended primarily to fit young men for the Seminary.

Young men wishing admittance to the first year in this course, are required to take examination or submit satisfactory grades in the following subjects: English grammar, political geography, penmanship, United States history, physiology, and arithmetic. For admission to the succeeding years examination will be required in the subjects of the preceding year.

**FIRST YEAR.**

Bible History . . . . .	2	
Catechetics . . . . .		2
Danish Grammar and Composition . . . . .	5	5
English Grammar and Composition . . . . .	5	5
Algebra . . . . .	5	5
Physical Geography . . . . .		5
Arithmetic . . . . .	5	5

**SECOND YEAR.**

Church History . . . . .	3	3
Danish Grammar and Composition . . . . .	5	5
Beginning Latin . . . . .	5	5
General History . . . . .	5	5
Danish History . . . . .	3	
Algebra . . . . .	5	5
Botany . . . . .		5

## THIRD YEAR.

	I	II
Danish Literature and Composition . . . . .	4	4
English Literature . . . . .	3	3
Latin-Cæsar . . . . .	5	5
German . . . . .	5	5
Geometry . . . . .		5
English History . . . . .	5	
Greek . . . . .	4	4
Physics . . . . .	5	5

## FOURTH YEAR.

History of Danish Literature . . . . .	4	4
American Literature . . . . .	3	3
Greek . . . . .	4	4
German . . . . .	5	5
Zoology or Solid Geometry . . . . .		5
Psychology . . . . .	5	
Psychology and Logic . . . . .		5
Political Economy . . . . .	3	

## DEN TEOLOGISKE AFDELING.

Trinitatis Seminarium er den ældste teologiske Skole blandt Danske i Amerika. Dets Kursus er treaarigt i den Hensigt at give saadanne unge Mænd, som af Hjertet bekender sig til den lutherske Kirke og har tilegnet sig tilstrækkelig Foruddannelse, en saa grundig og omfattende teologisk Uddannelse, at de med Forstand og Velsignelse kan beklæde Lære- og Prædikeembedet i den lutherske Kirke i Amerika. Undervisningen gives dels paa Dansk, dels paa Engelsk og tilstræber at sætte Studenterne i Stand til at forkynde Evangeliet paa begge de nævnte Sprog, fordi disse Sprog tales og bruges i det Land og paa den Missionsmark, hvor de skal arbejde.

## PLAN OVER DET TREARIGE KURSUS.

## FØRSTE AAR.

	Timer ugentlig
Gamle Testament . . . . .	5
Ny Testament . . . . .	5
Dogmatik: Prolegomena, Teologien og Antropologien . . . . .	4
Kirkehistorie: Oldtiden . . . . .	4
Etik: I. Personligheden; II. Loven . . . . .	3
Øvelse i Ny Testament . . . . .	2

## ANDET AAR.

Gamle Testament . . . . .	5
Ny Testament . . . . .	5
Dogmatik: Kristologi og første Del af Pneumatologien . . . . .	4
Kirkehistorie: Middelalderen og Danmarks Kirkehistorie . . . . .	4
Etik: Livsgoderne . . . . .	3
Dogmehistorie . . . . .	2
Symbolik . . . . .	1

## TREDIE AAR.

Gamle Testament . . . . .	5
Ny Testament . . . . .	5
Dogmatik: Pneumatologien og Eschatologien . . . . .	4



Kirkehistorie: Nutiden og Amerikas Kirkehistorie . . . . .	4
Hermeneutik . . . . .	
Liturgik . . . . .	
Missionshistorie . . . . .	
Pastoralteologi . . . . .	

Desuden øves Studenterne i Udarbejdelsen af Afhandlinger i de forskellige Fag.

Skolen forbeholder sig Ret til at ændre og forøge dette Kursus, efter som Nødvendigheden maatte kræve.

Som Lærebøger benyttes:

Den hellige Skrift paa Dansk, og Engelsk; det ny Testamente paa Græsk (Gebhards Udgave af Tischendorfs Tekst eller Westcott & Hort); Kommentarer: til det gamle Testament: Keil & Delitzsch, Lange og Lutherstiftelsens; til det ny Testament: Schat Petersen, Rørdam, Godt og Cambridge Bible.

Som Haandbøger i Dogmatik bruges Lindbergs Enoheiridion og H. Schmidts's Doctrinal Theology of the Ev. Luth. Church, samt Konkordiebogen.

Som Lærebøger i Kirkehistorie bruges Fr. Nielsens Kirkehistorie; og J. L. Neve: A Brief History of the Lutheran Church in America.

Endvidere benyttes H. Scharlings Etik, Gisle Johnsons Dogmehistorie, H. Ussings Missionshistorie, Grauls og Gunthers Symbolik, Vinets og Gerberdings Pastoralteologi.

Om nærmere Oplysninger skriv til Prof. P. S. Vig, Forstander ved Trinitatis Seminarium.

## COMMERCIAL DEPARTMENT.

Students may enter this department at any time, but the best results will be obtained by entering at the beginning of the school year or at the opening of a term. Individual instruction is given to all students as they may require.

Upon the satisfactory completion of this course of study the student is granted a diploma.

### BOOK-KEEPING AND ACTUAL BUSINESS.

<i>Book-keeping</i>	<i>Commercial Arithmetic</i>
<i>Actual Business</i>	<i>Civics</i>
<i>Commercial Law</i>	<i>Spelling</i>
<i>Penmanship</i>	<i>English Grammar</i>
<i>Letter Writing</i>	<i>Debating</i>

Business is begun with a cash capital of \$5.00 (College Currency). The student progresses step by step from simple transactions to complicated ones, and is taught business forms and customs, such as commercial paper, invoice, billing, lading, vouchers, discounts, securities, collections, filing devices, etc. A thorough knowledge is gained in both single and double entry book-keeping. The student learns to do by doing.

*Commercial Law.* Every up-to-date business man needs a knowledge of commercial law. Special study of the subject is made under the following heads: Contract, negotiable paper, principal and agent, common carriers, bailment, partnership, corporations, wills and testaments, guaranty and warranty.

*Penmanship.* A legible, rapid, and elegant handwriting is very desirable to any one starting out on a business career. This end is attained by persistent daily practice under competent instructors.

*Letter-writing.* The student is taught business letters and forms. He is given exercises in correcting arrangements and style, and in writing letters relating to special subjects.

*Commercial Arithmetic.* The purpose of this subject is to train the student in the arithmetical principles and processes underlying ordinary business transactions.

*Rapid Calculation.* There are a thousand and one byways and shortcuts in arithmetic of inestimable value to all. We have daily

drills in shortcut processes in rapid column addition, short methods in multiplication, division, fractions, percentage etc.

*Civics.* A knowledge of this subject is invaluable to every American citizen. The Constitution of the United States, principles of government etc. are taught.

*Spelling.* Every business man should know how to spell correctly. We have daily drills in spelling, word study, pronunciation, and diacritical markings.

*Grammar.* Thorough work is given in composition, grammatical and rhetorical principles, punctuation, structure of paragraph, etc.

*Debating.* Regular class work is given in debating, and the literary societies furnish excellent opportunities for developing the power to think and to speak on the living questions of the day.

## SHORTHAND AND TYPEWRITING COURSE.

*Shorthand*  
*Mimeographing*  
*Grammar and Composition*

*Spelling*  
*Typewriting*

*Pronunciation*

The student may take either the Amanuensis or the Reporting Course. The Amanuensis Course may be completed in from five to six months. The pupil must then be able to write business letters from dictation, and also to make a neat and correct transcription of his notes upon a typewriter.

The Reporting Course requires twelve months for its completion. The pupil will then have acquired sufficient speed to enable him to report verbatim ordinary discourse. He will have practice in writing all kinds of difficult matter, and becomes a rapid manipulator of the typewriter.

Typewriting is taught by the touch system. Practice is given in writing wills, indentures, judgements, leases, contracts, correspondence in manufacturing, insurance, wholesale and retail; also instruction in carbon manifolding, tabulating, oiling and cleaning the machine etc.

A prominent business educator said recently: "If young men could understand what it means to take their dictation, to write their thoughts, to think as they think, to work, to invent, to plan, to execute, in complete accord with that which is brightest and best

in business life, they would not hesitate to prepare for stenographic positions.

The school aids the student completing either of the above courses in securing positions.

### PHYSICAL TRAINING.

A commodious gymnasium furnishes excellent accommodations for physical training. It contains good modern accommodations.

The courses offered should produce the following results: better health, a stronger and a more symmetrically developed body. A frail body is a poor servant of the mind. A normal physical basis for the mental faculties is necessary for the best mental growth.

All students are required to take gymnastics, except when excused for special reasons. Before entering the classes each student must take a physical examination. Those who are physically defective are given exercise adapted to their needs.

The College has good tennis courts and base ball grounds. In pleasant weather they afford good opportunities for outdoor recreation. Athletic contests are held every spring.

### PENMANSHIP.

The system used gives movements leading to easy and graceful execution and form. Legibility, rapidity, and beauty are the ends sought.

### DRAWING.

Is taught in several departments of the school. The course includes plain constructive and geometrical drawing — from objects and memory; perspective, both linear and aerial; and art drawing — with and without models.

### ART AND NEEDLE WORK.

Courses in these subjects have been provided this year.

## THE MUSIC DEPARTMENT.

This department offers comprehensive courses in vocal, instrumental, and theoretic music. The arrangement of courses secures a complete mastery of the branches undertaken, and cultivates in the student a high standard of musical taste.

The aim is to make a real musical education. The methods are the same used in the famous conservatories of the East, while the expenses are not more than one third as great. The department trains teachers, organists, choirleaders and music lovers in general.

### COURSE OF INSTRUCTION.

1. *Piano*
2. *Organ*
3. *Violin*
4. *Voice Culture*
5. *Musical Composition*
6. *History of Music.*

*Piano.* 1. Finger exercises, scales and rudiments of music. Easy sonatas and thorough practice in major and minor scales. 2. Studies in position, tension, motion and touch. Chords and arpeggios. Sheet Music. 3. Study of musical terms. Accent and Expression. Sight reading. Memorizing and phrasing. Transposition. Music from the best composers.

*Organ.* Explanation of pitches, of stops, choir and accompaniments. Marches, voluntaries and studies of the best composers.

*Voice Culture.* 1. Lessons in breathing. Voice and tone production. Intervals. Drills and Diatonic Scale in slow movement. Easy songs. Sight reading. 2. Lessons in major and minor intervals, Arpeggios. Chromatic Scale. Ballad. Classic writers, and Sacred music.

*Elementary Singing.* A class for instruction in general singing will be organized at the beginning of the Winter Term, open without charge to all students.

*The College Chorus.* Students who are well advanced in the rudiments of music are admitted to the College Chorus without charge. Drills in chorus work, glees, and oratorios will be given.

The Chorus will render public recitals from time to time. *Dana College Glee Club.* Is an organization comprising eight of the best male voices in the school. The singers are selected from the advanced class only.

*Elocution* is considered now-a-days an absolute requisite for a

finished education. For this reason the school has made arrangements for a very thorough course in this accomplishment.

The following subjects are taught:

Vocal culture, articulation, inflection, quality of tone, pitch, force, time, volume, power, pronunciation, study of recitative gestures, oratory, etc.

## HØJSKOLEN.

*Religion.*.. Det er Skolens Formaal at øve en kristelig Indflydelse paa de unge der samles her. Derfor ledes hele Undervisningen i en kriselig Aand, og det er vort Haab, at mange unge maa faa aandelig Velsignelse under deres Ophold her.

Da det er en Kendsgerning, at den dansk-amerikanske Ungdoms kristelige Undervisning og Oplysning er meget mangelfuld, vil Skolen gerne raade Bod herpaa ved at give saa megen Undervisning i Bibekundskab og kristelig Lære som mulig for de Elever, som maatte føle Lyst og Trang dertil.

*Dansk Sprog.* Blandt de Kundskabsfag, som Højskolen arbejder med, indtager det danske Sprog den fornemste Plads. Vi anser det for at være af største Betydning at Ungdommen bliver i Stand til at behandle Modersmaalet med Færdighed, og at Lysten vækkes hos dem til at faa Del i den Skat, som den danske Litteratur har i Eje.

Og skal vi beholde Ungdommen i vor danske Kirke, maa den i større Maal end hidtil sættes i Stand til at modtage aandelig Paa-virkning paa Modersmaalet. Thi det er en Erfaring, man meget ofte gør, at ligesom de allerfleste, der indvander hertil, kun naar til at bruge det engelske Sprog i meget ringe Udstrækning, saaledes lærer deres Børn kun meget ufuldkomment Faders og Moders Sprog at kende. Her har Højskolen en vigtig Opgave.

*Engelsk Sprog.* Næst efter Dansk anses det engelske Sprog for det vigtigste for Højskoleleven. Der undervises paa det grundigste i engelsk Læsning, Stavning og Grammatik. Disse Fag er absolut nødvendige for en fuldstændig Forstaelse af Sproget. Forsuden disse Fag arbejdes der med engelsk Stil for at indøve Eleverne i Sprogbrugen og Retskrivningen. Saadanne, som nylig er kommen til Landet, vil her kunne lære det engelske Sprog. Undervisningen ledes af Lærere, der har mange Aars Erfaring i at lære Begyndere at tale, læse og skrive det engelske Sprog.

*Historie og Litteratur.* Da vi anser det for et værdifuldt Led i Menneskets Udvikling at have Forstaelse af Historie og Litteratur, betragter vi Arbejdet hermed som Højskolens fjerde Hovedopgave. Særlig lægger vi Vægt paa at føre de unge ind i Danmarks og Amerikas Historie og Litteratur.

*Bibelklasser* vil altid forefindes for saadanne, der har Lyst og Tid til at deltage.

## GENERAL INFORMATION.

## ACCOMMODATIONS.

*The Residences.* The gentlemen's and ladies' dormitories are conveniently located. The rooms are heated by steam and lighted by electricity. Each is furnished with bed and mattress, table, and chairs, Comforters and other bedclothing must be furnished by the students. Those desiring to room alone will be charged extra for heat and light.

*The Boarding Hall* is conducted by the school for the purpose of meeting the requirements of the students in the best manner. The board is wholesome and abundant. The teachers residing in the school eat from the same table with the students.

*The Library.* During the year the library has been enlarged by the addition of quite a number of reference works in the department of literature, theology, history, economics, and the sciences.

Connected with the library is a reading room. In it the leading publications in the English, Danish, and German languages are found, as well as many local papers.

Contributions to the library are earnestly solicited. They should be sent to the Librarian of Dana College and Trinity Seminary.

*The Laboratory* is equipped with the apparatus necessary for class experiments and the individual work of the students.

## EXPENSES.

The school year comprises 35 weeks. The total expenses of a student for tuition, board, room, and heat is graduated as follows: for the fall and the spring terms \$18.00 per month of four weeks. The total expense for the whole year will be \$157.50. From this sum a reduction of \$12.00 will be made to students paying full rates and attending the whole year, provided payment is made in advance.

To the expense should be added the cost of student's laundry,

books, stationery etc. Students paying for tuition only are charged \$40.00 for the year.

#### REBATE ON TRANSPORTATION.

Students living more than 200 miles from Blair, and who shall stay at least 16 consecutive weeks, will be entitled to a rebate of one half the distance over and above 200 miles, coming to school. Take receipt from station agent, stating distance and amount paid.

	BOARD	ROOM	TUTION	TOTAL
For one month—4 weeks.....	\$10.00	\$ 3.00	\$ 5.00	\$18.00
Fall term—9 weeks .....	22.50	6.75	11.25	40.50
Winter term—16 weeks .....	40.00	12.00	20.00	72.00
Spring term—10 weeks .....	25.00	7.50	12.50	45.00
For the year—35 weeks....	87.50	26.25	43.75	157.50

#### MATRICULATION FEE.

A matriculation fee of one dollar shall be paid by each student when he enters the school for the first time.

An indemnity fee of one dollar is required of each student. This is held as security to insure prompt payment of damage, which may have been done to room, furniture, etc. This money, or what may be left of it after deducting damages, is returned to the depositor upon leaving school.

#### GRADUATION FEE AND DIPLOMA.

The cost of diplomas in all departments is one dollar.

#### MUSIC DEPARTMENT.

Piano, 24 Lessons per term.....	\$10.00
Organ, 24 Lessons per term.....	10.00
Voice Culture, 24 Lessons per term.....	10.00
Private Lessons in Elocution.....	4.50

#### RENT OF INSTRUMENTS.

Piano rent, one period daily per term.....	\$2.00
Reed Organ rent, same time as above.....	1.00

#### GRADUATION AND DEGREES.

Diplomas are granted in all departments upon having passed satisfactory examinations.

#### MORAL TRAINING, IN THE SCHOOL.

As this is a Christian school, every effort is made to care for the moral and spiritual welfare of all the students. A high moral culture is secured by a thoroughly Christian management. A pleasing unanimity of action pervades the entire atmosphere, and Christian love and obedience do for the school what severe rules never accomplish.

#### PUBLIC WORSHIP.

Chapel service, which all students are expected to attend, are held each school day morning.

#### CHURCH AND RELIGIOUS SOCIETIES.

As this is a Lutheran school, all students are expected to attend regularly the local church of the United Danish Evangelical Lutheran Church, provided no other preference is stated to the president.

#### COLLEGE SOCIETIES.

There are several regularly chartered literary and religious societies in the school. These are all in flourishing condition, and in their way do much towards making college life pleasant and profitable.

#### THE DANA COLLEGE HESPERIAN

is exclusively English. Its bi-weekly programs comprise music, debate, and literary exercises. Special programs are rendered from time to time.

#### DANNEBROG

as indicated by the name, is a Danish society. Its aim is to cultivate a taste for Danish literature and song. Like its sister society, "Dannebrog" gives bi-weekly programs comprising song, literary work, and debate.

#### STUDENTERFORENINGEN

is a religious society. It holds weekly devotional meetings to which all students are cordially invited

#### TRIN. SEM. HEDNINGEMISSIONSFORENING

is a society, organized with a view of furthering the foreign missions of our church. During the past year it gave \$160 to these missions.

#### THE ATHLETIC ASSOCIATION.

The Dana College Athletic Association has been chartered by the Faculty to play tennis, base ball, hoop ball, basket ball, and such

other games as shall prove of benefit to the members of the association.

#### ENDOWMENTS AND BEQUESTS.

The school authorities cannot but rejoice in the progress of the school during the ten years of existence as Dana College and Trinity Seminary.

Good work has been done in every line, and friends of the school are beginning to look forward to a time when a grateful people and church will appreciate more fully the work their school is doing for them, and more liberally than now lend encouragement and aid.

The following is the form of bequest which may be used by persons desiring to leave property or money to the College:

I give, devise, and bequeath to the Board of Trustees of Dana College and Trinity Seminary, an institution of learning established by The United Danish Evang. Luth. Church in America, and located at Blair, Washington County, Nebraska, the sum of ..... Dollars, (or if real estate, give description of the property) for the general uses of said college.

All funds for the institution should be sent to the President.

#### TO PROSPECTIVE STUDENTS

and particularly to our Danish youth in America are the following words addressed:

It is in your interest to attend the institution that can do you most good, that is best able to aid countrymen in overcoming the perplexities so often handicapping young foreigners in this country, that fits them for the highest success in life, and does all in its power to attain the same.

We believe Dana College and Trinity Seminary is that institution. Those in charge of the school are devoting their entire life to the culture of the Danish people in America, and will leave nothing undone to have this school retain its reputation as the leading Danish School in America.

#### GENERAL HINTS.

The school year begins September 27th, and is divided into three terms: a Fall term of 9 weeks, a Winter term of 16 weeks, and a Spring term of 10 weeks.

If you should wish information not given in this catalogue, ad-

dress the President, and he will cheerfully advise you on any point of mutual interest.

While the faculty urges the importance and advantage of students entering the school at the beginning of the school year or at the opening of a new term, yet admission may be had, at any time, to such classes as will meet their personal needs.

#### CATALOGUES

will be sent free on application to the President, C. X. Hansen, Dana College, Blair, Nebr.

#### ALUMNI.

1900.

J. P. Jensen, deceased.  
C. Hansen, deceased.  
J. Andersen, Farmer, Blair, Nebr.  
Caroline Bjerre, Neenah, Wis.  
J. T. Hanson, Business, Neenah, Wis.  
L. Hansen, Farmer, Greenfield, S. Dak.  
P. F. Mortensen, Merchant, Albert Lea, Minn.

1901.

J. Scott, Minister, Portland, Ore.  
H. P. Petersen, Lumber Business, Dannebrog, Nebr.  
P. E. Smith, Real Estate Business, Viborg, S. Dak.  
C. M. Christiansen, Farmer, Latimer, Ia.  
H. C. Petersen, Physician, Wolback, Nebr.  
Johannes Anker, Teacher, Lincoln Business College.

1902.

A. H. Cronberg, Nor. Stock Raiser, Potter, Nebr.  
Page Newton, Deceased.  
E. O'Hanlan, Com. Kansas City, Mo.  
T. Thompson, Com. Farmer, Oakland, Nebr.  
F. Nelson, Commission Merchant, Omaha, Nebr.  
C.E. Gaydou, Com. President Gaydou's Com. College, Blair, Neb.  
Myrtle Dixon, Com. Mrs. Andrew Lund, Oakland, Nebr.

1903.

H. W. Bondo, T. S., Minister, Sleepy Eve, Minn.  
Th. Beck, T. S. Minister, Brooklyn, New York.  
J. A. Larsen, T. S., Minister Sioux City, Ia.

1904.

H. M. Hanson, T. S., Minister, Omaha, Nebr.  
J. G. V. Magnussen, T. S., Minister Dickson, Alta, Cannada.

N. P. J. Nielsen, T. S., Minister, Oskosh, Wis.  
 J. P. Nielsen, T. S., Missionary, Kurume, Japan.  
 H. Iversen, S. T., Business, Whiting, Ind.  
 Grace Ballard, Com. Stenographer, Lincoln, Nebr.  
 J. S. Miller, Com., Deceased.  
 F. A. Felson, Com., Business, Omaha, Nebr.  
 G. L. Tracy, Com., Salesman, Omaha, Nebr.  
 A. K. Peitersen, Nor., Student, University, Nebr.  
 N. C. Petersen, T. S., Minister, Cordova, Nebr.

## 1905.

William McCandlish, Com., Salesman, Kansas City, Mo.  
 A. Cameron, Com., Stock Raiser, Blair, Nebr.  
 Eva Smith, S. & T., Teacher, Blair, Nebr.  
 A. Laurice Hansen, S. & T., Stenographer, Omaha, Nebr.  
 Julia E. Hultberg, S. & T., Stenographer, Omaha, Nebr.

## 1906.

E. R. Andersen, T. S., Minister, Fremont, Nebr.  
 J. P. Christiansen, T. S., Minister, Audubon, Ia.  
 M. L. Kirkegaard, S. & T., Stenographer, Sioux City, Ia.  
 Agnes Johnson, S. & T., Nurse, San Francisco, Cal.

## 1907.

J. C. Christensen, T. S., Minister, Shennington, Wis.  
 P. C. Paulsen, P. S., Stud. Trip. Sem., Blair, Nebr.  
 Andrew Juhl, Nor. Student, State University, Nebr.  
 M. P. Jensen, Com., Lumber Business, Marquette, Nebr.  
 A. J. Hansen, P. S., Stud. T. S., Blair, Nebr.  
 N. H. Debel, P. S. & Com., Stud. Nebr. Univ., Lincoln,

## 1908.

A. Hofgaard, T. S., Minister, West Branch, Ia.  
 Willie Bondo, T. S., Minister, Davenport, Ia.  
 A. O. Sjøholm, P. S., Student Trin. Sem., Blair Nebr.

## 1909.

Herman L. Jensen, T. S., Minister, Kimbalton, Ia.  
 D. G. M. Bach, P. S. Student, Trin. Sem.  
 Jens C. Carlsen, P. S. Student, Trin. Sem.  
 Theo. M. Hansen, P. S., Student, Nebr. University.  
 Walter Kamp, P. S., Teacher, Brorson High school, Kenmare,  
 N. Dak.  
 A. Valdemar Neve, P. S., Ringsted, Ia.  
 James C. Petersen, Student, Mt. Airy Sem.  
 Peter Rømer, P. S., Kenmare, N. Dak., Student, Neb. Uni.  
 James D. Danielsen, C. D., Waupaca, Wis.  
 Nora M. Hanson, C. D., Omaha, Nebr.  
 Anders C. Debel, C., Australia.

H. T. Jensen, C. D., Council Bluffs, Ia.  
 Jørgen Jensen, C. Akron, Ia.  
 Hans A. B. Nielsen, C. D., Bookkeeper, Minden, Nebr.  
 A. S. Nielsen, C. D., Teacher, Luther College, Racine, Wis.  
 Carl M. Paulsen, C. D., Ruskin, Nebr.  
 Niels C. Paulsen, C., Heron Lake, Minn.  
 A. Marius Sørensen, C., Newcastle, Nebr.

## 1910.

Nels C. Carlsen, T. S., Minister, Superior, Wis.  
 H. P. K. Hansen, T. S., Minister Culbertson, Mont.  
 Jens Knudsen, T. S., Minister, Beresford, S. Dak.  
 I. M. Andersen, P. S., Ruskin, Nebr.  
 F. C. M. Hansen, P. S., Kenmare, N. Dak.  
 H. N. Hansen, P. S., Kenmare, N. Dak.  
 N. P. Nielsen, P. S., Weston, Ia.  
 I. M. Andersen, Ac., Ruskin, Nebr.  
 Anders Kjeldgaard, Ac., Brush, Colo.  
 J. Markussen, Ac., Staplehurst, Nebr.  
 Morris Nelson, Ac., Denver, Colo.  
 Nora Moore, Nor., Blair, Nebr.  
 Neva Moore, Nor., Blair, Nebr.  
 Kristine Nielsen, Nor., Blair, Nebr.  
 Hans Christensen, S. & T., St. Edwards, Nebr.  
 Walter Hansen, S. & T., Morgan, Minn.  
 Minnie Jensen, S. & T., Blair, Nebr.  
 Jorgen Bille, C., Luck, Wis.  
 Marie Christensen, Com., Blair, Nebr.  
 A. V. Hjortsvang, Com., Kenmare, N. Dak.  
 Caroline Johnson, Com., S. Dak.  
 J. P. Jensen, Com., Plainview, Nebr.  
 Ruth McCracken, S. & T., Com., Blair, Nebr.  
 Andrew Meyer, Com., Dannebrog, Nebr.  
 P. H. Paulsen, Com., Audubon, Ia.  
 Anfelt S. Petersen, Com., Omaha, Nebr.  
 Amelia Thompson, Minden, Nebr.  
 Arthur Robinson, Com., Ringsted, Ia.

## REGISTER OF STUDENTS---1909 1910.

Aagaard, Otto	Eng	Heiena, Mont.
Andersen, Anthon	P. S.	Chicago, Ill.
Andersen, Emma	Unc.	Blair, Nebr.
Andersen, Fred	Com.	Blair, Nebr.
Andersen, H. P.	P. S.	Owatonna, Minn.
Andersen, I. M.	P. S. & M.	Ruskin, Nebr.
Andersen, John	Eng.	N. Powder, Ore.
Andersen, Ove	M.	Blair, Nebr.
Andersen, Silas	Ac.	Blair, Nebr.
Andersen, Torvel	Com.	Blair, Nebr.
Aurup, Peder	Eng.	Hardy, Nebr.
Bach, D. G. M.	T. S.	Worcester, Mass.
Beck, Andrew	Com.	Herman, Nebr.
Beck, Laura	M.	Blair, Nebr.
Bertelsen, Ella	Nor.	Blair, Nebr.
Bille, Jorgen	Com.	Luck, Wis.
Carlsen, Jens	T. S.	Racine, Wis.
Carlsen Nels	T. S.	Racine, Wis.
Clausen, Charley	Unc.	Co. Bluffs, Ia.
Clemmensen, Fritz	Ac.	Luck, Wis.
Christensen, Arthur	Unc.	Ruskin, Nebr.
Christensen, Carl	Eng.	Underwood, Ia.
Christensen, Hans	Com.	St. Edwards, Nebr.
Christensen, Holger	Unc.	Blair, Nebr.
Christensen, J. Timus	Ac.	Blair, Nebr.
Christensen, Jens	Eng.	Neola, Ia.
Christensen, Lauritz	Unc.	Waupaca, Wis.
Christensen, Mary	Com. & M.	Blair, Nebr.
Christiansen, Anna	Nor. & M.	Audubon, Ia.
Cross, Evaline	Nor.	Blair, Nebr.
Dahl, Chr. P.	Unc.	Wakefield, Nebr.
Danielsen, Clara	Unc.	Coulter, Ia.
Danielsen, Dagmar	Unc.	Coulter, Ia.
Dixon, Lois	Nor.	Blair, Nebr.
Dorfler, Lydia	Unc.	Waupaca, Wis.
Fredericksen, Olga	Eng.	Omaha, Nebr.
Frydenlund, J. A.	Eng.	Wakefield, Nebr.
Hansen, A. J.	T. S.	Callendar, Ia.
Hansen, Anders	P. S. & M.	Kenmare, N. D.
Hansen, Edward	P. S.	Atchinson, Kan.
Hansen, Esther	Nor.	Orum, Nebr.
Hansen, Fred C.	P. S. & M.	Kenmare, N. D.
Hansen, H. J.	Eng.	Owaneco, Ill.
Hansen, H. N.	P. S.	Kenmare, N. D.
Hansen, H. P. K.	T. S.	Callendar, Ia.
Hansen, Lars	Eng.	Valley, Nebr.
Hansen, Martha	Eng. & M.	Ringsted, Ia.
Hansen, Walter	Com.	Morgan, Minn.
Hedegaard, M.	Eng.	Onawa, Ia.
Hjortsvang, A. V.	P. S.	Kenmare, N. D.
Hjortsvang, Phoebe	Nor. & M.	Kenmare, N. D.
Hemmingsen, Carl	Eng.	Audubon, Ia.
Paulsen, Peder	Com.	Audubon, Ia.
Paulsen, P. C.	T. S.	Audubon, Ia.
Petersen, Anfelt	Com.	Omaha, Nebr.
Petersen, Berenhard	P. S.	Moorehead, Ia.
Petersen, Jørgen C.	Com.	Ruskin, Nebr.

Henriksen, Fred	P. S.	Soldier, Ia.
Hooper, Roxie	Nor.	Oaks, Okla.
Jacobsen, Mabel	Unc.	Hubbard, Nebr.
Jensen, Amy	M.	Blair, Nebr.
Jensen, Carl	Eng.	Brush, Colo.
Jensen, Chr. A.	Eng.	Upiand, Nebr.
Jensén, Chr. H.	Eng.	Audubon, Ia.
Jensen, Gertrude	Eng.	Petersen, Ia.
Jensen, Jorgen	Nor.	Akron, Ia.
Jensen, Leona	Com. & M.	Blair, Nebr.
Jeusen, Minnie	M.	Blair, Nebr.
Jensen, J. P.	Com.	Blair, Nebr.
Jensen, Peder U.	Eng.	Nehawka, Nebr.
Jensen, Willie	P. S.	Audubon, Ia.
Johnson, Andrew	P. S.	Minden, Nebr.
Johnson, Caroline	Eng.	Moorehead, Ia.
Johnson, Jens	Com. & M.	Plainview, Nebr.
Johnson, Joseph	Eng.	Moorehead, Ia.
Jørgensen, Magnus	Eng.	Moorehead, Ia.
Kjeldgaard, Andreas	Eng.	Havelock, Nebr.
Kjøller, L. P.	Ac.	Brush, Colo.
Knudsen, J.	F. S. & M.	Daneville, N. D.
Knudsen, Sigrid	T. S.	Blair, Nebr.
Larsen, Alvin	Eng.	Blair, Nebr.
Larsen, Christine	Ac.	Hampton, Nebr.
Larsen, Harold	Eng.	Omaha, Nebr.
Larsen, Peder	Unc.	Woodstock, Ill.
Larson, Marie	P. S.	Chicago, Ill.
Lund, Theodore	Eng. & M.	Omaha, Nebr.
Magnussen, Johannes	Ac.	Brush, Colo.
Markussen, Johannes	P. S. & M.	Plainview, Nebr.
Marthiesen, Karl	Ac.	Staplehurst, Nebr.
McCracken, Ruth	P. S.	Plainview, Nebr.
Meyer, Andrew	Com.	Blair, Nebr.
Miller, Mary	Com.	Dannebrog, Nebr.
Mortensen, Rose	Ac.	Dannebrog, Nebr.
Moore, Neva	Nor.	Blair, Nebr.
Moore, Nora	Nor.	Blair, Nebr.
Nedergaard, Nels	Nor.	Blair, Nebr.
Nelson, Emma	Ac.	Blair, Nebr.
Nelson, Morris	M.	Blair, Nebr.
Nelsen, John	Ac.	Dannebrog, Nebr.
Neve, George	Eng.	Herman, Nebr.
Nielsen, Andrews	Unc.	Ringsted, Ia.
Nielsen, A. J.	P. S.	Co. Bluffs, Ia.
Nielsen, Carl	Com.	Luck, Wis.
Nielsen, C. E.	Eng.	Orum, Nebr.
Nielsen, Elisa	P. S.	Custer, Nebr.
Neilsen, Frank	Com. & M.	Albert Lea, Minn.
Nielsen, Gladys	P. S.	Westbrook, Me.
Nielsen, C. H.	Nor. & M.	Potter, Nebr.
Nielsen, Louis	Ac.	Co. Bluffs, Ia.
Nielsen, Christina	Unc.	Woodstock, Ill.
Nielsen, Jacob	Nor. & M.	Harlan, Ia.
Nielsen, H. Chr.	Eng.	Devils Lake, N. Dak.
Nielsen, Katie	Unc.	Underwood, Ia.
Nielsen, Lena	Unc. & M.	Underwood, Ia.
Nielsen, Hans	M.	Hampton, Nebr.
Nielsen, N. P.	P. S. & M.	Westbrook, Me.
Niss, Martina	P. S. & M.	Co. Bluffs, Ia.
	Eng.	Blair, Nebr.