

CATALOGUE

OF

DANA COLLEGE

AND

TRINITY THEOLOGICAL SEMINARY

BLAIR, NEBRASKA

---

WITH ANNOUNCEMENTS FOR  
1912—1913.

---

BLAIR, NEBR  
Danish Luth. Publ. House.  
1912.

Made by Cass. C. S.

GREETING

We wish to thank our friends and patrons for their encouragement and support and we are particularly grateful for the uniform words of kindness and appreciation spoken of us by the great body of pupils that have passed out from our classes to their various vocations.

Yours sincerely,

Dana College and Trinity Theological Seminary.

BOARD OF TRUSTEES.

Rev. G. B. CHRISTIANSEN, President,	Audubon, Ia.
Rev. A. L. J. SØHOLM, Vice President,	Royal, Ia.
Rev. A. S. NIELSEN, Secretary,	Kenosha, Wis.
Mr. L. VEDSTED,	Staplehurst, Nebr.
Mr. OLUF BONDO,	Council Bluffs, Na.

BOARD OF DIRECTORS.

Rev. H. P. JENSEN, Chairman,	Minden, Nebr.
Rev. HARALD JENSEN,	Salt Lake City, Utah.
Rev. TH. N. JERSILD,	Elk Horn, Iowa.
Mr. S. C. PETERSEN,	Elk Horn, Iowa.
Mr. OTTO HANSEN,	Blair, Nebr.

BOARD OF EXAMINERS.

Rev. H. P. JENSEN.	Rev. HARALD JENSEN.
	Rev. TH. N. JERSILD.

BOARD OF VISITORS.

Rev. H. P. JENSEN.	Rev. TH. N. JERSILD.
--------------------	----------------------

### SCHOOL CALENDAR.

#### FALL TERM (9 weeks).

1912—Oct. 1. Registration of Students.  
Oct. 1. Opening Exercises 2:30 P. M.  
Oct. 31. Reformation Day Address.  
Nov. 28. Thanksgiving Day.

#### WINTER TERM (16 weeks).

Dec. 2. Term Begins.  
Dec. 25. Christmas Day.  
1913—Jan. 25. First Semester Examinations.  
Febr. 22. Washington Memorial Address.  
March 22. Winter Term Examinations.

#### SPRING TERM (10 weeks).

March 24. Term Begins.  
March 28. Easter Recess.  
May 26—30. Graduation Exercises.

### FACULTY OF DANA COLLEGE

C. X. HANSEN, President.  
Mathematics.

Rev. P. S. VIG.  
Danish Literature.

Rev. N. P. LANG.  
Greek.

N. T. LUND, A. B.  
English Literature and History.

CARRIE S. NIELSEN, A. B.  
Latin and German.

NELLIE F. FALK, A. B.  
Pedagogy and Mathematics

PETRA JENSEN.\*  
Danish Language, Art and Needlework.

E. V. NELSON, B. E.  
Natural Sciences.

CHAS. E. GAYDOU.  
Stenography and Accounting.

J. W. SWIHART.  
Violin and Voice.

AMANDA HANSEN.  
Piano and Organ.

### FACULTY OF TRINITY THEOLOGICAL SEMINARY.

Rev. P. S. VIG, President.  
Dogmatics, Old Testament Exegesis.

Rev. N. P. LANG.  
New Testament Exegesis and Pastoral Theology.

\* Resigned.

### GENERAL STATEMENT.

Dana College and Trinity Theological Seminary is owned and supported by The United Danish Evangelical Lutheran Church in America. It is a denominational institution and as such aims to serve, primarily, the interests of the Lutheran Church, but its doors are open to all who desire a liberal education based upon the Christian spirit. Its original scope was that of a school for the education of ministers of the gospel.

But at the third annual convention of the United Danish Evangelical Lutheran Church in America, held at Hutchinson, Minn., in 1899, it was decided to unite the two official Schools of the church, the College at Elk Horn, Ia., and Trinity Seminary at Blair, Nebr., thus making the aim of this school not only to prepare young men for the ministry, but also directly or indirectly to train young men and women for other professions and occupations.

Its courses of instruction are according to approved models, and qualitatively the instruction aims to be in the front rank. The English language is used as a medium of instruction, except in Danish language, history, and literature and most of the theological branches, nevertheless Danish naturally occupies a prominent position in the curriculum of Dana College and Trinity Theological Seminary.

The location leaves little to be desired in accessibility, healthfulness, and beauty of surroundings.

It is the object of those in charge to throw about the student all forces that favor a healthy and harmonious physical, mental, and moral development.

### COURSES.

Dana College comprises the following departments of study:

I. The Academic School	Four Year Course
II. The College	Four Year Course
III. Pro-Seminary	Four Year Course
IV. The Normal School, Four Year and Five Year Courses	Eight to Twelve Months
V. Commercial Department	— — — —
VI. The Music Department	— — — —
VII. „Højskolen”	— — — —
VIII. Art and Needlework	— — — —

### THE ACADEMIC DEPARTMENT.

This course is outlined in accordance with the requirements for admission to the Freshman class of the State University of Nebraska.

Besides preparing the student for admission to the University and other Colleges, it aims to give the students who cannot pursue their studies further a good elementary education.

Credit points are issued on the basis of five recitations a week of not less than 40 minutes for one semester of eighteen weeks for one credit. Some allowance is made as to the amount of work a student may do, depending on the ability of the student.

#### PREPARATORY YEAR

	I	II
English Grammar and Composition.....	5	5
U. S. History .....		5
Political Geography.....		5
Arithmetic .....	5	5
Penmanship .....	5	5
Reading and Orthography .....	5	5

#### FIRST YEAR.

English .....	5	5
Bookkeeping .....		5
Danish Reading and Composition .....	5	
Latin, Beginning .....	5	5
Physical Geography .....		5
Algebra .....	5	5
Physiology .....	5	
Catechetics and Bible History .....	2	2

#### SECOND YEAR.

English .....	5	5
Danish Grammar and Composition .....	5	5
General History .....	5	5
Latin .....	5	5
Geometry, Plane .....	5	5
Botany .....		5

#### THIRD YEAR.

	I	II
Rhetoric and Literature .....	5	5
Latin or German .....	5	5
Algebra .....	5	
Geometry, Solid .....		5
Agriculture .....	5	
Drawing .....	5	5

#### FOURTH YEAR.

English Literature .....	5	5
Latin or German .....	5	5
Review of American History and Civics.....		5
Physics .....	5	5
Chemistry .....	5	5

Drawing required for mechanical courses in college work.

#### College.

Two years of regular college work has been outlined for students who wish to continue their studies.

Two courses are offered in the following outlines of studies.

#### FRESHMAN CLASS.

Classical.		Scientific.			
	I	II	I	II	
Danish Literature and Composition.....	3	3	Danish Literature and Composition .....	3	3
Physics .....	5	5	German .....	5	5
English History .....	5	5	Physics .....	5	5
Pol. Economy .....		5	English History .....	5	
English .....	5	5	Chemistry .....	5	5
Sacred History .....	2	2	Zoology .....		5
Greek, .....	5	5	Sacred History .....	2	2
Latin or German.....	5	5	Trigonometry .....	5	5
			Greek or Latin .....	5	5

SOPHOMORE CLASS.

	I	II	I	II
Greek . . . . .	5	5	German . . . . .	5 5
Latin . . . . .	5	5	Chemistry . . . . .	5 5
Geology . . . . .	5	5	Geometry Anal . . . . .	5 5
Psychology & Logic . . . . .	5	5	Psychology & Logic . . . . .	5 5
Astronomy or Eng.Liter. . . . .	5	5	Calculus or Astronomy . . . . .	5 5

TWO YEAR DANISH COURSE.

It is strongly advised that those who wish to train themselves for teaching in the parochial schools of the United Danish Evangelical Lutheran Church in America take the following Two Year Danish Course.

FIRST YEAR.

	I	II
Danish Grammar and Composition . . . . .	5	5
Catechetics and Bible History . . . . .	3	3
Danish History . . . . .	3	3
Geography of Scandinavia . . . . .	1	
Drawing . . . . .	5	5
Elective . . . . .	5	5

SECOND YEAR.

Danish Grammar and Composition . . . . .	5	5
Danish Literature . . . . .	4	4
General History . . . . .	5	5
Church History . . . . .	3	3
Methods . . . . .	5	5
Bible Study . . . . .	2	2

NORMAL DEPARTMENT.

Dana College Grants State Teacher's Certificates.

The one-year and two-year courses lead to the Elementary and First Grade certificates respectively.

The holder of either of these certificates may teach anywhere in the State of Nebraska without further examination.

The Elementary certificate is good for a term of not less than one year and not to exceed three years from date of issuance, at the discretion of such certificate shall teach. issuance, at the discretion of the county superintendent of the county in which the holder of such certificate shall teach.

The First Grade State certificate is good for a term of three years from date of issuance. After three years of successful teaching the holder of such certificate is entitled to a professional certificate good for life.

THE ELEMENTARY CERTIFICATE COURSE.

In order to gain admission to this course the applicant must have completed the first three years of the academic course or its equivalent.

	I	II
Observation and Methods . . . . .	5	5
U. S. History . . . . .	5	
Arithmetic . . . . .		5
Grammar . . . . .	5	
Geography . . . . .		5
Physics . . . . .	5	
Review . . . . .		5

THE FIRST GRADE CERTIFICATE COURSE.

Admission to this course is granted to those who have completed the Academic course or its equivalent.

FIRST YEAR.

	I	II
Observation and Methods . . . . .	5	5
Psychology . . . . .	5	5
Zoology . . . . .		5
Review . . . . .	10	5

SECOND YEAR.

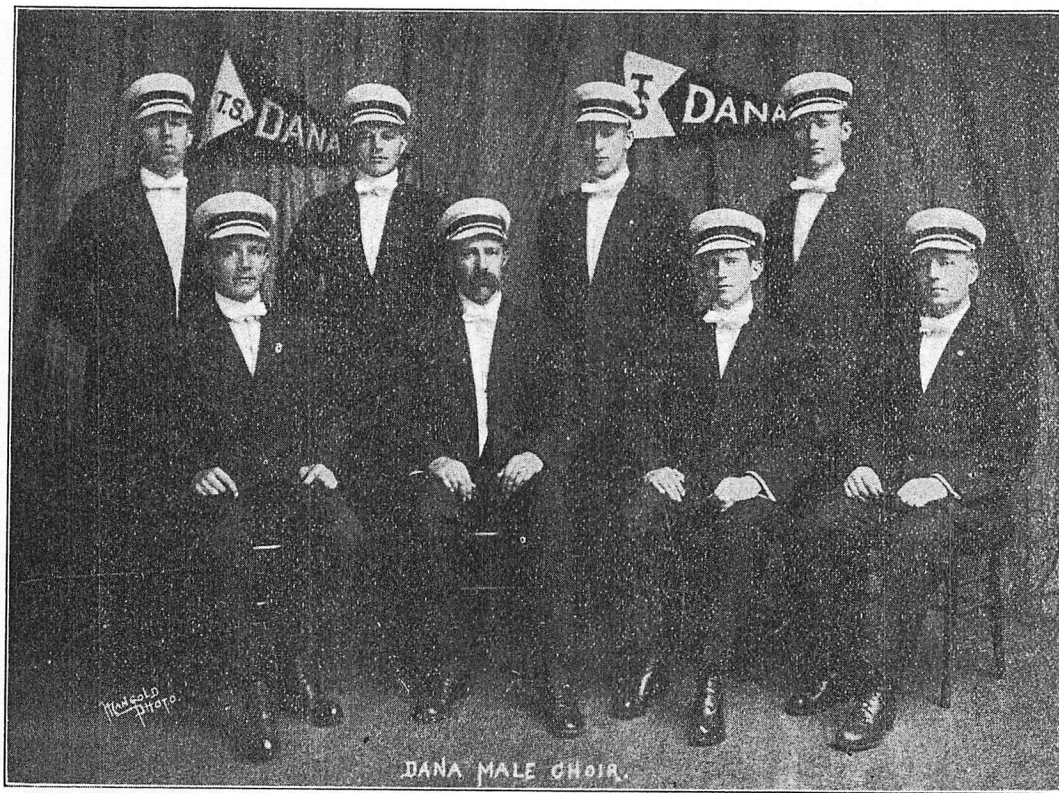
History of Education . . . . .	5
Practice Teaching . . . . .	5 5
Theory of Education . . . . .	5
Geology . . . . .	5 5
Review . . . . .	5 10

**PRO-SEMINARY COURSE.**

This course is intended primarily to fit young men for Trinity Theological Seminary.

Young men wishing admittance to the first year in this course, are required to take examination or submit satisfactory grades in the following subjects: English grammar, political geography, penmanship, United States history, physiology, and arithmetic. For admission to the succeeding years, examination will be required in the subjects of the preceding year.

	I	II
<b>FIRST YEAR.</b>		
Bible History .....	3	
Catechetics .....	3	
Danish Grammar and Composition .....	5	5
English Grammar and Composition .....	5	5
Algebra .....	5	5
Physical Geography .....	5	
Danish History .....	5	
<b>SECOND YEAR.</b>		
English .....	5	5
Church History .....	3	3
Danish Grammar and Composition .....	5	5
Beginning Latin .....	5	5
General History .....	5	5
Beginning Greek .....	5	5
<b>THIRD YEAR.</b>		
Rhetoric .....	5	
American Literature .....	5	5
Danish Literature .....	5	5
Latin, Cæsar .....	5	5
German .....	5	5
Greek .....	5	5
<b>FOURTH YEAR.</b>		
History of Danish Literature .....	5	5
English Literature .....	5	5
Greek .....	4	4
German .....	5	5
Psychology and Logic .....	5	5



## DEN TEOLOGISKE AFDELING.

Trinitatis Seminarium er den ældste teologiske Skole blandt Danske i Amerika. Dets Kursus er treaarigt i den Hensigt at give saadanne unge Mænd, som af Hjertet beken- der sig til den lutherske Kirke og har tilegnet sig tilstræk- kelig Foruddannelse, en saa grundig og omfattende teologisk Uddannelse, at de med Forstand og Velsignelse kan beklæde Lære- og Prædikeembedet i den lutherske Kirke i Amerika. Undervisningen gives dels paa Dansk, dels paa Engelsk og tilstræber at sætte Studenterne i Stand til at forkynde Evan- geliet paa begge de nævnte Sprog, fordi disse Sprog tales og bruges i det Land og paa den Missionsmark, hvor de skal arbejde.

## PLAN OVER DET TREAAARIGE KURSUS.

FØRSTE AAR	Timer ugentlig
Gamle Testament . . . . .	5
Ny Testament . . . . .	5
Dogmatik: Prolegomena, Teologien og Antropologien . . . . .	4
Kirkehistorie: Oldtiden . . . . .	4
Etik: I. Personligheden; II. Loven . . . . .	3
Øvelse i Ny Testament . . . . .	2

## ANDET AAR.

Gamle Testament . . . . .	5
Ny Testament . . . . .	5
Dogmatik: Kristologi og første Del af Pneumatologien . . . . .	4
Kirkehistorie: Middelalderen og Danmarks Kirkehistorie . . . . .	4
Etik: Livsgoderne . . . . .	3
Dogmehistorie . . . . .	2
Symbolik . . . . .	1

## TREDIE AAR.

Gamle Testament . . . . .	5
Ny Testament . . . . .	5
Dogmatik: Pneumatologien og Eschatologien . . . . .	4

Kirkehistorie: Nutiden og Amerikas Kirkehistorie . . . . .	4
Hermeneutik . . . . .	
Liturgik . . . . .	
Missionshistorie . . . . .	
Pastoralteologi . . . . .	

Desuden øves Studenterne i Udarbejdelsen af Afhand- linge i det forskellige Fag.

Skolen forbeholder sig Ret til at ændre og forøge dette Kursus, efter som Nødvendigheden maatte kræve.

Som Lærebøger benyttes:

Den hellige Skrift paa Dansk og Engelsk; det ny Testa- mente paa Græsk (Gebhards Udgave af Tischendorfs Tekst eller Westcott & Hort): Kommentarer til det gamle Testa- mente: Kiel og Delitsch, Lange og Lutherstiftelsen: til det ny Testamente; Schat-Petersen, Rørdam, Godet, „Lutheran Com- mentary” og „Cambridge Bible”.

Som Haandbøger i Dogmatik bruges „H. E. Jacobs’: A Summary of the Christian Faith”, „H. Schmidt’s Doctrinal Theology of the Evangelical Lutheran Church”, H. Scharlings Dogmatik, C. E. Lindbergs Dogmatik, samt Konkordiebogen.

Som Lærebog i Kirkehistorie bruges Fr. Nielsens Kirkehistorie; som Haandbøger J. L. Neves „A Brief History of the Lutheran Church in America” og Koch og Rørdams Fortællinger af Danmarks Kirkehistorie. Endvidere benyt- tes H. Scharlings Etik, Gisle Johnsons Dogmehistorie, H. Ussings Missionshistorie, Grauls og Gunthers Symbolik, Ger- berdings Pastoralteologi, samt hans Kateketik, „Horn’s Litur- gics” og „Fry’s Homiletics”.

Om nærmere Oplysninger skriv til Prof. P.S.Vig, Forstan- der for Trinitatis Seminarium.

## COMMERCIAL DEPARTMENT.

Students may enter this department at any time, but the best results will be obtained by entering at the beginning of the school year or at the opening of a term. Individual instruction is given to all students as they may require.

Upon the satisfactory completion of this course of study the student is granted a diploma.



**BOOK-KEEPING AND ACTUAL BUSINESS.**

<b>Book-keeping</b>	<b>Commercial Arithmetic</b>
<b>Actual Business</b>	<b>Civics</b>
<b>Commercial Law</b>	<b>Spelling</b>
<b>Penmanship</b>	<b>English Grammar</b>
<b>Letter Writing</b>	<b>Debating</b>

Business is begun with a cash capital of \$5,000 (College Currency). The student progresses step by step from simple transactions to complicated ones, and is taught business forms and customs, such as commercial paper, invoice, billing, lading, vouchers, discounts, securities, collections, filing devices, etc. A thorough knowledge is gained in both single and double entry book-keeping. The student learns to do by doing.

**Commercial Law.** Every up-to-date business man needs a knowledge of commercial law. Special study of the subject is made under the following heads: Contract, negotiable paper, principal and agent, common carriers, bailment, partnership, corporations, wills and testaments, guaranty and warranty.

**Penmanship.** A legible, rapid, and elegant handwriting is very desirable to any one starting out on a business career. This end is attained by persistent daily practice under competent instructors. The system used gives movements leading to easy and graceful execution and form. Legibility, rapidity, and beauty are the ends sought.

**Letter-writing.** The student is taught business letters and forms. He is given exercises in correcting arrangements and style, and in writing letters relating to special subjects.

**Commercial Arithmetic.** The purpose of this subject is to train the student in the arithmetical principles and processes underlying ordinary business transactions.

**Rapid Calculation.** There are a thousand and one by-ways and shortcuts in arithmetic of inestimable value to all. We have daily drills in shortcut processes in rapid column addition, short methods in multiplication, division, fractions, percentage etc.

**Civics.** A knowledge of this subject is invaluable to every American citizen. The Constitution of the United States, principles of government etc. are taught.

**Spelling.** Every business man should know how to spell correctly. We have daily drills in spelling, word study, pronunciation, and diacritical markings.

**Grammar.** Thorough work is given in composition, grammatical and rhetorical principles, punctuation, and structure of paragraphs.

**Debating.** Regular class work is given in debating, and the literary societies furnish excellent opportunities for developing the power to think and to speak on the living questions of the day.

**SHORTHAND AND TYPEWRITING COURSE.**

<b>Shorthand</b>	<b>Spelling</b>
<b>Pronunciation</b>	<b>Mimeographing</b>
<b>Grammar and Composition</b>	<b>Typewriting</b>

The student may take either the Amanuensis or the Reporting Course. The Amanuensis Course may be completed in from five to six months. The pupil must then be able to write business letters from dictation, and also to make a neat and correct transcription of his notes upon a typewriter.

The Reporting Course requires twelve months for its completion. The pupil will then have acquired sufficient speed to enable him to report verbatim ordinary discourse. He will have practice in writing all kinds of difficult matter, and becomes a rapid manipulator of the typewriter.

Typewriting is taught by the touch system. Practice is given in writing wills, indentures, judgements, leases, contracts, correspondence in manufacturing, insurance, and wholesale and retail trade. Also instruction in tabulating, oiling and cleaning the machine etc.

The school aids the student completing either of the above courses in securing positions.

### PHYSICAL TRAINING.

The gymnasium furnishes excellent opportunities for physical training. It contains good modern accommodations. The courses offered should produce the following results: better health, a stronger and a more symmetrically developed body. A frail body is a poor servant of the mind. A normal physical basis for the mental faculties is necessary for the best mental growth.

All students are required to take gymnastics, except when excused for special reasons. Before entering the classes each student must take a physical examination. Those who are physically defective are given exercise adapted to their needs.

The College has good tennis courts which in pleasant weather afford good opportunities for outdoor recreation. Athletic contests are held every spring.

### DRAWING

is taught in several departments of the school. The course includes plain constructive and geometrical drawing—from objects and memory; perspective, both linear and aerial; and art drawing—with and without models.

### ART AND NEEDLE WORK.

Fancy work, oil and water colors.

Charges are made corresponding to the nature of the work.

### THE MUSIC DEPARTMENT.

This department offers comprehensive courses in vocal, instrumental, and theoretic music. The arrangement of courses secures a complete mastery of the branches undertaken, and cultivates in the student a high standard of musical taste.

The aim is to make a real musical education. The methods are the same used in the famous conservatories of the East, while the expenses are not more than one third as great. The department trains teachers, organists, choir leaders and music lovers in general.

### COURSES OF INSTRUCTION.

1. Piano
2. Organ
3. Violin
4. Voice Culture
5. Musical Composition
6. History of Music.

**Piano.** 1. Finger exercises, scales and rudiments of music. Easy sonatas and thorough practice in major and minor scales. 2. Studies in position, tension, motion and touch. Chords and arpeggios. Sheet Music. 3. Study of musical terms. Accent and expression. Sight reading. Memorizing and phrasing. Transposition. Music from the best composers.

**Organ.** Explanation of pitches, of stops, choir and accompaniments. Marches, voluntaries and studies of the best composers.

**Voice Culture.** 1. Lessons in breathing. Voice and tone production. Intervals. Drills and Diatonic Scale in slow movement. Easy songs. Sight reading. 2. Lessons in major and minor intervals, Arpeggios. Chromatic Scale. Ballad. Classic writers, and Sacred music.

**Elementary Singing.** A class for instruction in general singing will be organized at the beginning of the Winter Term, open without charge to all students.

**The College Chorus.** Students who are well advanced in the rudiments of music are admitted to the College Chorus without charge. Drills in chorus work, glees, and oratories will be given. The Chorus will render public recitals from time to time.

**Dana Male Choir** is an organization comprising eight of the best male voices in the school. The singers are selected from the advanced class only.

**Elocution** is considered now-a-days an absolute requisite for a finished education. For this reason the school has made arrangements for a very thorough course in this accomplishment.

The following subjects are taught:

Vocal culture, articulation, inflection, quality of tone, pitch, force, time, volume, power, pronunciation, study of recitations, gestures, oratory, etc.

**HØJSKOLEN.**

**Religion.** Det er Skolens Formaal at øve en kristelig Indflydelse paa de unge, der samles her. Derfor ledes hele Undervisningen i en kristelig Aand, og det er vort Haab, at mange unge maa faa aandelig Velsignelse under deres Ophold her.

Da det er en Kendsgerning, at den dansk-amerikanske Ungdoms kristelige Undervisning er meget mangelfuld, vil Skolen gerne raade Bod herpaa ved at give saa megen Undervisning i Bibelkundskab og kristelig Lære som mulig for de Elever, som maatte føle Lyst og Trang dertil.

**Dansk Sprog.** Blandt de Kundskabsfag, som Højskolen arbejder med, indtager det danske Sprog den fornemste Plads. Vi anser det for at være af største Betydning, at Ungdommen bliver i Stand til at behandle Modersmaalet med Færdighed, og at Lysten vækkes hos dem til at faa Del i den Skat, som den danske Litteratur har i Eje.

Og skal vi beholde Ungdommen i vor danske Kirke, maa den i større Maal end hidtil sættes i Stand til at modtage aandelig Paavirkning paa Modersmaalet. Thi det er en Erfaring, man meget ofte gør, at ligesom de allerfleste, der indvandrer hertil, kun naar til at bruge det engelske Sprog i meget ringe Udstrækning, saaledes lærer deres Børn kun meget ufuldkomment Faders og Moders Sprog at kende. Her har Højskolen en vigtig Opgave.

**Engelsk Sprog.** Næst efter Dansk anses det engelske Sprog for det vigtigste for Højskoleeleven. Der undervises paa det grundigste i engelsk Læsning, Stavning og Grammatik. Disse Fag er absolut nødvendige for en fuldstændig Forstaaelse af Sproget. Foruden disse Fag arbejdes der med engelsk Stil for at indøve Eleverne i Sprogbrugen og Ret-skrivningen. Saadanne, som nylig er kommen til Landet, vil her kunne lære det engelske Sprog. Undervisningen ledes af Lærere, der har mange Aars Erfaring i at lære Begyndere at tale, læse og skrive det engelske Sprog.

**Historie og Litteratur.** Da vi anser det for et værdifuldt Led i Menneskets Udvikling at have Forstaaelse af Historie og Litteratur, betragter vi Arbejdet hermed som Højskolens fjerde Hovedopgave. Særlig lægger vi Vægt paa at

føre de unge ind i Danmarks og Amerikas Historie og Litteratur.

**Bibelklasser** vil altid forefindes for saadanne, der har Lyst og Tid til at deltage.

**GENERAL INFORMATION.****ACCOMMODATIONS.**

**The Residences.** The gentlemen's and ladies' dormitories are conveniently located. The rooms are heated by steam and lighted by electricity. Each is furnished with bed and mattress, table, and chairs. Comforters and other bedclothing must be furnished by the students. Those desiring to room alone will be charged extra for heat and light.

**The Boarding Hall** is conducted by the school for the purpose of meeting the requirements of the students in the best manner. The board is wholesome and abundant. The teachers residing in the school eat from the same table with the students.

**The Library.** During the year the library has been enlarged by the addition of quite a number of reference works in the departments of literature, theology, history, economics, and the sciences.

Connected with the library is a reading room. In it the leading publications in the English, Danish, and German languages are found, as well as many local papers.

Contributions to the library are earnestly solicited. They should be sent to the Librarian of Dana College and Trinity Seminary.

**The Laboratory** is equipped with the apparatus necessary for class experiments and the individual work of the student.

**EXPENSES.**

The school year comprises 35 weeks. The total expenses of a student for tuition, board, room, and heat is \$18 per month of four weeks. The total expense for the whole year will be \$157.50. From this sum a reduction of \$12.00 will be made to students paying full rates and attending the whole year, provided payment is made in advance.

To the expenses should be added the cost of student's laundry, books, stationery etc. Students paying for tuition only are charged \$40.00 for the year.

	BOARD	ROOM	TUITION	TOTAL
For one month—4 weeks .....	\$10.00	\$ 3.00	\$ 5.00	\$18.00
Fall term—9 weeks .....	22.50	6.75	11.25	40.50
Winter term—16 weeks .....	40.00	12.00	20.00	72.00
Spring term—10 weeks .....	25.00	7.50	12.50	45.00
For the year—35 weeks .....	87.50	26.25	43.75	157.50

#### REBATE ON TRANSPORTATION.

Students living more than 200 miles from Blair, and who shall stay at least 2 consecutive Terms, will be entitled to a rebate of one half the distance over and above 200 miles, coming to school. Take receipt from station agent, stating distance and amount paid.

#### FEES.

A matriculation fee of \$1.00 shall be paid by each student when he enters school for the first time.

An indemnity fee of \$1.00 is required of each student. This is held as security to insure prompt payment of damage which may have been done to room, furniture, etc. This money or what is left, after deducting damage, is returned to the depositor upon leaving school.

Laboratory fees are paid as follows: Zoology, Physics, General Chemistry at the rate of \$1.50 pr. semester. For the qualitative or quantitative, \$2.50 per semester.

For typewriters a charge of 75 Cents per month will be made.

#### MUSIC DEPARTMENT.

Piano, 24 Lessons per term.....	\$10.00
Organ, 24 Lessons per term.....	10.00
Voice Culture, 24 Lessons per term.....	10.00
Private Lessons in Elocution.....	.50

#### RENT OF INSTRUMENTS.

Piano, one period daily per term.....	\$2.00
Reed Organ rent, same time as above.....	1.00

#### GRADUATION AND DEGREES.

Diplomas are granted in all departments upon having passed satisfactory examinations.

#### MORAL TRAINING IN THE SCHOOL.

As this is a Christian school, every effort is made to care for the moral and spiritual welfare of all the students. A high moral culture is secured by a thoroughly Christian management. A pleasing unanimity of action pervades the entire atmosphere, and Christian love and obedience do for the school what severe rules never accomplish.

#### PUBLIC WORSHIP.

Chapel services, which all students are expected to attend, are held each school day morning.

#### CHURCH AND RELIGIOUS SOCIETIES.

As this is a Lutheran school, all students are expected to attend regularly the local church of the United Danish Evangelical Lutheran Church, provided no other preference is stated to the president.

#### COLLEGE SOCIETIES.

There are several regularly chartered literary and religious societies in the school. These are all in flourishing condition, and in their way do much towards making college life pleasant and profitable.

#### THE DANA COLLEGE HESPERIAN,

is exclusively English. Its bi-weekly programs comprise music, debate, and literary exercises. Special programs are rendered from time to time.

#### DANNEBROG

as indicated by the name, is a Danish society. Its aim is to cultivate a taste for Danish literature and song. Like its sister society, "Dannebrog" gives bi-weekly Programs comprising song, literary work, and debate.

#### STUDENTERFORENINGEN

is a religious society. It holds weekly devotional meetings to which all students are cordially invited.

#### TRIN. SEM. HEDNINGEMISSIONSFÖRENING

is a society, organized with a view to furthering the foreign missions of our church.

#### THE ATHLETIC ASSOCIATION.

The Dana College Athletic Association has been chartered by the Faculty to play tennis, base ball, hoop ball, basket ball, and such other games as shall prove of benefit to the members of the association.

## ENDOWMENTS AND BEQUESTS.

The school authorities cannot but rejoice in the progress of the school during the 13 years of existence as Dana College and Trinity Seminary.

Good work has been done in every line, and friends of the school are beginning to look forward to a time when a grateful people and church will appreciate more fully the work their school is doing for them, and more liberally lend encouragement and aid.

The following is the form of bequest which may be used by persons desiring to leave property or money to the College.

I give, devise, and bequeath to the Board of Trustees of Dana College and Trinity Seminary, an institution of learning established by The United Danish Evang. Luth. Church in America, and located at Blair, Washington County, Nebraska, the sum of.....Dollars, (or if real estate, give description of the property) for the general uses of said college.

All funds for the institution should be sent to the President.

## TO PROSPECTIVE STUDENTS

and particularly to our Danish youth in America are the following words addressed:

It is in your interest to attend the institution that can do you most good, that is best able to aid countrymen in overcoming the perplexities so often handicapping young foreigners in this country, that fits them for the highest success in life, and does all in its power to attain same.

We believe Dana College and Trinity Theological Seminary is that institution. Those in charge of the school are devoting their entire life to the culture of the Danish people in America, and will leave nothing undone to have this school retain its reputation as the leading Danish School in America.

## GENERAL HINTS.

The school year begins Oct. 1st, and is divided into three terms: a Fall term of 9 weeks, a Winter term of 16 weeks, and a Spring term of 10 weeks.

If you should wish information not given in this catalogue, address the President, and he will cheerfully advise you on any point of mutual interest.

While the faculty urges the importance and advantage of students entering the school at the beginning of the school year or at the opening of a new term, yet admission may be had at any time to such classes as will meet their personal needs.

## CATALOGUES

will be sent free on application to the President, C. X. Hansen, Dana College, Blair, Nebr.

## ALUMNI.

1900.

- J. P. Jensen, T. S., deceased.
- C. Hansen, T. S. deceased.
- J. Andersen, Farmer, Blair, Nebr.
- Caroline Bjerre, Neenah, Wis.
- J. T. Hansen, Business, Neenah, Wis.
- L. Hansen, Farmer, Greenfield, S. Dak.
- P. F. Mortensen, Merchant, Albert Lea, Minn.

1901.

- J. Scott, Minister, T. S. Portland Ore.
- H. P. Petersen, Lumber Business, Dannebrog, Nebr.
- P. E. Smith, C., Real Estate Business, Viborg, S. Dak.
- C. M. Christiansen, Ac., Farmer, Latimer, Ia.
- H. C. Petersen, Ac., Physician, Wolback, Nebr.
- Johannes Anker, C., Lincoln Business College.

1902.

- A. H. Cronberg, Nor. Stock Raiser, Potter, Nebr.
- Page Newton, C., deceased.
- E. O'Hanlan, C., Kansas City, Mo.
- T. Thompson, C., Farmer, Oakland, Nebr.
- F. Nelson, C., Commission Merchant, Omaha, Nebr.
- C. E. Gaydou, C., Dana College, Blair, Nebr.
- Myrtle Dixon, C., Mrs. Andrew Lund, Oakland, Nebr.

1903.

- H. W. Bondo, T. S., Minister, Luck, Wis.
- Th. Beck, T. S., Minister, Hutchinson Minn.
- J. A. Larsen, T. S., Minister, Sioux City, Ia.

## 1904.

H. M. Hansen, T. S., Minister, Sleepy Eye, Minn.  
 G. V. Magnussen, T. S., Minister, Dickson, Alta, Can.  
 N. P. J. Nielsen, T. S., Minister, Ferndale, Cal.  
 J. P. Nielsen, T. S., Missionary, Kurume, Japan.  
 H. Iversen, S., T., Business, Whiting, Ind.  
 Grace Ballard, C., Stenographer, Lincoln, Nebr.  
 J. S. Miller, C., deceased.  
 F. A. Nelson, C., Business, Omaha, Nebr.  
 G. L. Tracy, C., Salesman, Omaha, Nebr.  
 A. K. Peitersen, Nor., Teacher, Lincoln, Nebr.  
 N. C. Petersen, T. S., Minister, Trufant, Mich.

## 1905.

William McCandlish, C., Salesman, Kansas City, Mo.  
 A. Cameron, C., Stock Raiser, Blair, Nebr.  
 Eva Smith, S. & T., Blair, Nebr.  
 A. Laurice Hansen, S. & T., Stenographer, Omaha, Nebr.  
 Julia E. Hultberg, S. & T., Stenographer, Omaha, Nebr.

## 1906.

E. R. Andersen, T. S., Minister, Kenmare, N. Dak.  
 J. P. Christiansen, T. S., Minister, Audubon, Ia.  
 M. L. Kirkegaard, S. & T., Business, Sioux City, Ia.  
 Agnes Johnson, S. & T., Nurse, San Francisco, Cal.

## 1907.

J. C. Christensen, T. S., Minister, Shennington, Wis.  
 P. C. Paulsen, P. S., Minister, Nelson, Minn.  
 Andrew Juhl, Nor., Teacher, Elk Horn, Ia.  
 M. P. Jensen, C., Lumber Business, Marquette, Nebr.  
 A. J. Hansen, P. S., Stud. T. S., Blair, Nebr.  
 N. H. Debel, P. S. & C., Stud. Nebr. Univ., Lincoln, Neb.

## 1908.

A. Hofgaard, T. S., Minister, Owatonna, Minn.  
 Willie Bondo, T. S., Minister, Davenport, Ia.  
 A. O. S holm, P. S., Cushing, Nebr.

## 1909.

Herman L. Jensen, T. S., Minister, Kimbalton, Ia.  
 D. G. M. Bach, P. S. Student, Trin. Sem.  
 Jens C. Carlsen, P. S., Student, Trin. Sem.  
 Theo. M. Hansen, P. S., Student, Trin. Sem.

Walter Kamp, P. S., Teacher, Brorson High school, Kenmare, N. Dak.  
 Walter Neve, P. S., Student T. S., Blair, Nebr.  
 James C. Petersen, P. S. Student, Trin. Sem.  
 Peter R mer, P. S., Student, Nebr. Uni.  
 James D. Danielsen, C., Waupaca, Wis.  
 Nora M. Hansen, C., Omaha, Nebr.  
 Anders C. Debel, C. Student, Dana College.  
 H. T. Jensen, C., Bookkeeper, Council Bluffs, Ia.  
 J rgen Jensen, C., Farmer, Akron, Ia.  
 Hans A. B. Nielsen, C., Bookkeeper, Minden, Nebr.  
 A. S. Nielsen, C., Teacher, Luther College, Racine, Wis.  
 Carl M. Paulsen, C., Stud. Ac., Dana.  
 Niels C. Paulsen, C., Heron Lake, Minn.  
 A. Marius S rensen, C. Newcastle, Nebr.

## 1910.

Nels C. Carlsen, T. S., Minister, Superior, Wis.  
 H. P. K. Hansen, T. S., Minister, Culbertson, Mont.  
 Jens Knudsen, T. S., Minister, Beresford, S. Dak.  
 I. M. Andersen, P. S., Student, Trin. Sem.  
 F. C. M. Hansen, P. S., Kenmare, N. Dak.  
 H. N. Hansen, P. S., Student, Trin. Sem.  
 N. P. Nielsen, P. S., Trin. Sem.  
 I. M. Andersen, Ac., Stud. St. Uni., Nebr.  
 Anders Kjeldgaard, Ac., Brush, Colo.  
 J. Markussen, Ac., Staplehurst, Nebr.  
 Morris Nelson, Ac., Denver, Colo.  
 Nora Moore, Nor., Teacher, Blair, Nebr.  
 Neva Moore, Nor., Teacher, Blair, Nebr.  
 Kristine Nielsen, Nor., Stud. St. Uni. Lincoln, Nebr.  
 Hans Christensen; S. & T., Cavalier, N. Dak.  
 Walter Hansen, S. & T., Morgan, Minn.  
 Minnie Jensen, S. & T., Blair, Nebr.  
 Jorgen Bille, C., Luck, Wis.  
 Mary Christensen, Com., Blair, Nebr.  
 A. V. Hjortsvang, Com., Kenmare, N. Dak.  
 Caroline Johnson, Com., C. Dak.  
 J. P. Jensen, C., Plainview, Nebr.  
 Ruth McCracken, S. & T., Com., Blair, Nebr.  
 Andrew Meyer, C., Dannebrog, Nebr.  
 P. H. Poulsen, C., Audubon, Ia.

Anfelt S. Petersen, Com., Omaha, Nebr.  
 Amelia Thompson, C., Minden Nebr.  
 Arthur Robinson, C., Ringstead, Ia.  
 1911.

P. C. Paulsen, T. S., Minister, Nelson, Min.  
 A. O. Søholm, T. S., Cushing, Nebr.  
 Anders Hansen, Pro-Sem., Student, Trin. Sem.  
 Ruth McCracken, Nor., Blair, Nebr.  
 Vivian M. Johnson, C., S., Blair, Nebr.  
 Harriet Turner, C., S. & T., Stu. St. Uni., Nebr.  
 Alberta Cheely, C., S. & T., Blair, Nebr.  
 Marie Dorffler, C., S. & T., Waupaca, Wis.  
 Edwin Davies, S. & T., Blair, Nebr.  
 Oscar Hopkins, S. & T., Blair, Nebr.  
 Viola Phelps, S. & T., Omaha, Nebr.  
 Albert Richter, S. & T., Blair, Nebr.  
 Rose Slocum, S. & T., Blair, Nebr.  
 Lola Stewart, S. & T., Blair, Nebr.  
 Clarence Simpson, S. & T., Blair, Nebr.  
 Julia Sargensen, S. & T., Blair, Nebr.  
 Fanny Compton, S. & T., Blair, Nebr.  
 Bessie DuLanny, S. & T., Omaha, Nebr.  
 Amanda Furst, S. & T., Blair, Nebr.

### CANDIDATES FOR GRADUATION.

— 1912 —

#### TRINITY THEOLOGICAL SEMINARY.

D. G. M. Bach                      Atlef Johannes Hansen  
 Jens C. Carlsen                  James C. Peterson  
 Emil Sorensen Rosenberg

#### PRO-SEMINARY.

Chr. Jeppesen AAaen              K. M. Matthiesen  
 Paul Holmstrup                  Hans Nielsen  
 J. P. M. Magnussen              H. A. Swanson

#### ACADEMIC.

Fritz Clemmensen              Theodore Lund  
 Anders C. Debel                  N. Nedergaard  
 Willie F. Jensen                  Anton P. Rasmussen

### NORMAL.

Minnie H. Jensen,                  Ethel F. Stewart,  
 First Grade State.                  Second Grade State.

### COMMERCIAL AND SHORTHAND.

Freda Blomberg                  Glenn T. Kennedy  
 Christian W. Christiansen        Herman H. Kolterman  
 Anna Hedelund                  Olga Larsen  
 Christian A. Jensen              John Milton Nearhood  
 Roy Allison Nearhood

### REGISTER OF STUDENTS — 1911—1912.

Aaen Chr. Jeppesen	P. S.	Elk Horn, Ia.
Andersen Andrew	Unc.	Blair, Nebr.
Andersen Anton	Ac.	Blair, Nebr.
Andersen H. P. A.	P. S.	Blair, Nebr.
Andersen H. P.	P. S.	Ellendale, Minn.
Andersen K. O.	Eng.	Wakonda, S. D.
Andersen Lula	Unc. & M.	Panama, Nebr.
Andersen Margaret	M.	Blair, Neb.
Andersen Mary	M.	Blair, Neb.
Andersen Robert	Unc.	Blair, Nebr.
Andersen Silas	Ac.	Blair, Nebr.
Andersen S. Chr.	P. S.	Denmark, Europe
Arp Oscar	Ac.	Mason City, Neb.
Bach D. G. M.	T. S.	Worcester, Mass.
Bach John A.	P. S.	Worcester, Mass.
Bigford Nettie	Nor.	Blair, Nebr.
Bisgaard Jakob	Eng.	Blair, Nebr.
Bondegaard Jens	Eng.	Tekamah, Nebr.
Bondo Sherman	P. S.	Blair, Nebr.
Blomberg Freda	Com.	Blair, Nebr.
Brown Irving L.	Ac.	Logan, Ia.
Bruner Elmer	Unc.	Arlington, Nebr.
Carlsen Jens	T. S.	Racine, Wis.
Christensen Carl	Eng.	Carson, Iowa.
Christensen Chris	Eng.	Herman, Nebr.
Christensen James	Com.	Neola, Ia.
Christensen James	Eng.	Bellwood, Nebr.
Christensen Mary	M. & Art.	Blair, Nebr.
Christensen Linnet	Eng.	Gayville, S. D.
Clemmensen Fritz	Ac.	Luck, Wis.
Clemmensen Peter	Ac.	Luck, Wis.
Coulter Earl	Com.	Arlington, Nebr.
Davies Edwin	Com.	Blair, Nebr.
Debel A. C.	Ac.	Blair, Nebr.
Dixon Kate	Ac.	Blair, Nebr.
Drevsen George	Ac.	Kennard, Nebr.
Elnegaard George	Eng.	Sargents Bluffs, Ia.
Erlander Eddie	P. S.	Mohall, N. D.
Feer, Alfred M.	Com.	Blair, Nebr.
Fink Alfred	Ac.	Ringsted, Ia.
Frydenlund Jørgen	Eng.	Wayne, Nebr.
Futtrup Hans	Eng.	Irene, S. D.
Grau Hans	Eng.	Kearney, Nebr.
Gregersen Chr.	Eng.	Hardy, Nebr.

Hansen A. J.	T. S.	Callendar, Iowa.
Hansen Anders	T. S.	Blair, Nebr.
Hansen Eva	Nor. & M.	Ringsted, Iowa.
Hansen Fred C. M.	T. S.	Norma, N. D.
Hansen George	Ac.	Callendar, Ia.
Hansen H. P.	Eng.	Council Bluffs, Ia.
Hansen Harold	M.	Blair, Nebr.
Hansen H. M.	Ac.	Hampton, Nebr.
Hansen Henry N.	T. S.	Elk Horn, Ia.
Hansen T. M.	T. S.	Oleander, Cal.
Hansen Matbie	Nor. & Art.	Callendar, Ia.
Hansen L. C.	P. S.	Weston, Ia.
Hansen Louis M.	Com.	Albion, Nebr.
Hansen Lillian	M.	Blair, Nebr.
Hansen Samuel	P. S. & M.	Kenmare, N.D.
Hansen Carrie	Art.	Blair, Nebr.
Hann Stanley	Com.	Blair, Nebr.
Harris Anna	Nor.	Blair, Nebr.
Harris Edna	Nor.	Blair, Nebr.
Harrison Jessie	Ac. & M. & Art.	Kennard, Neb.
Hedlund Anna	Com.	Blair, Nebr.
Hemmingsen Alfred	Eng.	Audubon, Ia.
Henricksen N. H.	Com.	Ringsted, Iowa.
Holmstrup Poyl	P. S.	San Francisco, Calif.
Hontved Harry	Unc.	Ruskin, Nebr.
Inadomi Hajuu	P. S.	Kurume, Japan
Jensen Chris A.	Com. & M.	Upland, Nebr.
Jensen Elmer	Com.	Blair, Nebr.
Jensen Harlan	M.	Blair, Nebr.
Jensen Knud	Eng.	Northfield, Minn.
Jensen Leona	M.	Blair, Nebr.
Jensen Minnie	Nor. & M.	Steepy Eye, Minn.
Jensen P. C.	P. S.	Audubon, Iowa.
Jensen Thorvald	Ac. & M.	Minden, Nebr.
Jensen Willie	Ac. & M.	Herman, Nebr.
Johnson Lloyd	Com.	Blair, Nebr.
Jones Josiah	Com.	Blair, Nebr.
Jørgensen J. C.	P. S.	Ruskin, Nebr.
Kennedy Glenn	Com.	St. Edwards, Nebr.
Keller Linie	Com.	Brush, Colo.
Kjøller L. P.	Nor. Art.	Minneapolis, Minn.
Kine Wesley	P. S.	Coultter, Iowa.
Klinthy Valdemar	Com.	Jackson, Nebr.
Knutsen Samuel	Eng.	Blair, Nebr.
Kolterman Herman	Eng.	Coultter, Iowa.
Krogh Chr. Larsen	Com.	Blair, Nebr.
Larsen Andrew C.	P. S.	Racine, Wis.
Larsen Alfred	P. S.	Hardy, Nebr.
Larsen Edna	Ac.	Hornick, Ia.
Larson Carl	Ac. & M.	Hornick, Iowa.
Larsen Marius	Eng.	Sargents Bluffs, Ia.
Larsen Oleg	Eng.	Oyens, Iowa.
Larsen Pedef	Com.	Kennard, Neb.
Leach Arthur	P. S.	Chicago, Ill.
Lillethorup Larsine	Com.	Blair, Nebr.
Lund James N.	Eng.	Blair, Nebr.
Lund Theodore	P. S.	Denver, Colo.
Madsen Hatold	Ac.	Brush, Colo.
Madsen Herman	Com.	Kennard, Nebr.
Magnussen Johannes	Com.	Kennard, Nebr.
Matthiesen Karl	P. S.	Plainview, Neb.
	P. S. & M.	Penn Yan, N. Y.

Martinsen Lauritz	Eng.	David City, Neb.
Meyer Andrew	Ac.	Dannebrog, Nebr.
Miller Cathrine	Com.	Ringsted, Iowa.
Miller Hans	Eng.	Marcus, Iowa.
Miller Roy	Com. & M.	Lyons, Neb.
Møller Carl	Ac.	Indianapolis, Ind.
Nearhood J. M.	Com.	Blair, Nebr.
Nearhood R. A.	Com.	Blair, Nebr.
Nedergaard Nels	Ac.	Blair, Nebr.
Nekolajsen N.	Eng.	Ruskin, Nebr.
Nelson Dave	Ac.	Fremont, Nebr.
Nelson Lena	Nor.	Underwood, Ia.
Nelson Louis	Ac.	Clinton Jct., Wis.
Neve George	P. S.	Ringsted, Ia.
Neve Tomina	Unc. & M.	Ringsted, Ia.
Neve Walter	T. S.	Ringsted, Iowa.
Nielsen Carl	T. S.	Sioux City, Iowa.
Nielsen Chris	T. S.	Moorhead, Ia.
Nielsen Andrew	P. S. & M.	Council Bluffs, Ia.
Nielsen Jens Chr.	Eng.	Council Bluffs, Ia.
Nielsen Hans	P. S. & M.	Blair, Nebr.
Nielsen Hans Chr.	Eng.	Racine, Wis.
Nielsen Hans P.	Eng.	Gayville, S. D.
Nielsen Ingefred	Nor. & M. & Art.	Fresno, Cal.
Nielsen Frank	P. S. & M.	Westbrook, Me.
Nielsen N. P.	T. S. & M.	Weston, Ia.
Nohrenberg C. G.	Com.	Blair, Nebr.
Pagh Hans	Eng. & M.	Omaha, Nebr.
Paulsen C. M.	Ac.	Elk Horn, Ia.
Paulsen Anina	Unc. & M.	Council Bluffs, Ia.
Paulsen Julia	Ac.	Lyons, Nebr.
Petersen Aafin	Ac.	Hampton, Nebr.
Petersen Alfred H.	Unc.	Ruskin, Nebr.
Petersen Alfred	Ac.	Elk Horn, Ia.
Petersen Anna M.	Nor. & M.	Ringsted, Ia.
Petersen Berenhard	P. S. & M.	Moorhead, Ia.
Petersen Ezra	P. S.	Moorehead, Ia.
Petersen Fritz	Unc.	Moorehead, Ia.
Petersen Hannah	Nor.	Herman, Nebr.
Petersen Hans	Eng.	Mason City, Nebr.
Petersen Helen	Ac. & M.	Hartington, Neb.
Petersen James	Ac. & M.	Hampton, Nebr.
Petersen Martin	T. S.	Ruskin, Nebr.
Petersen Mathilda M.	Com.	Ringsted, Ia.
Petersen Sigurd	Unc. & M.	Ruskin, Nebr.
Petersen Nancy	Ac.	Coultter, Ia.
Rasmussen Anna K.	Ac. & M.	Eugene, Ore.
Rasmussen Anton	Ac.	Herman, Nebr.
Rasmussen Franklin	P. S.	Brush, Colo.
Rasmussen Joseph	P. S. & M.	Plainview, Nebr.
Rasmussen Nellie	P. S. & M.	Plainview, Nebr.
Rasmussen R. J.	Nor.	Orum, Nebr.
Rasmussen Victor	Eng.	Calhoun, Nebr.
Richardson Margauwite	P. S.	Brush, Colo.
Robinson Harry	Com.	Tekamah, Nebr.
Romer John	Ac.	Davey, Nebr.
Rosenberg E. S.	P. S.	Albert Lea Minn.
Short Grover	T. S.	Blair, Nebr.
Sinemark George	Com.	Blair, Nebr.
Schmidt Regnar	Unc.	Fremont, Nebr.
Smith Peter	Eng.	Uhling, Nebr.
	Unc.	Staplehurst, Nebr.



Stacy Myrta	Nor.	Ringsted, Ia.
Stewart Ethel	Nor.	Blair, Nebr.
Svensen Marius	Eng.	Hampton, Nebr.
Swanson Andrew	P. S. & M.	Blair, Nebr.
121 Swanson Edith	Unc. & M.	Staplehurst, Nebr.
Søndergaard Søren	Eng.	Hampton, Nebr.
Sørensen Chr.	T. S.	Blair, Nebr.
Sørensen Johannes	Eng.	Ruskin, Nebr.
Sørensen Julia	Unc.	Salix, Ia.
Sørensen P. C.	P. S.	Blair, Nebr.
Sørensen Samuel	Eng.	Akron, Ia.
Sørensen Vilhelm	Com.	Blair, Nebr.
Thryso Marius	Eng.	Blair, Nebr.
Vammen Adolph	P. S.	Audubon, Ia.
Vammen Jens	P. S.	Boston, Mass.
121 Vested Hans	Unc.	Staplehurst, Nebr.
Vested Johanna	Ac. & M.	Staplehurst, Nebr.
Voetman Axel	Eng.	Downey, Ia.
Voetman Holger	Eng.	Downey, Ia.
Vig Peter	Nor.	Blair, Nebr.
West Olga	Nor.	Ruskin, Nebr.
Williamsen Arthur	Eng.	Modale, Ia.
122 Winther Chr.	Eng.	Pisgah, Ia.
Winther James	Eng.	Pisgah, Ia.
Winther Jens	Eng.	Cedar Falls, Ia.
Young Bessie	Com.	Chalk Butte, S. D.
Østergaard H. C.	P. S.	Plair, Nebr.

SUMMARY.

Trinity Seminary	13
English	35
Normal	14
Commercial	29
Pro Seminary	34
Unclassified	15
Academic	30
Music	36
Art	7
	<hr/>
	213
Counted twice	20
	<hr/>
Total enrollment	193

