

FACULTY 1912—1913

CATALOGUE

OF

DANA COLLEGE

AND

TRINITY THEOLOGICAL SEMINARY

BLAIR, NEBRASKA

---

WITH ANNOUNCEMENTS FOR  
1913—1914

---

BLAIR, NEBR.  
Danish Luth. Publ. House.  
1913.

Nebr., U. S. A.

GREETING.

We wish to thank our friends and patrons for their encouragement and support and we are particularly grateful for the uniform words of kindness and appreciation spoken of us by the great body of pupils that have passed out from our classes to their various vocations.

Yours sincerely,

Dana College and Trinity Theological Seminary.

**BOARD OF TRUSTEES.**

Rev. G. B. CHRISTIANSEN, President,	Audubon, Ia.
Rev. I. Gertsen, Vice President,	Council Bluffs, Ia.
Rev. A. S. NIELSEN, Secretary,	Kenosha, Wis.
Mr. L. VEDSTED,	Staplehurst, Nebr.
Mr. PETER CLAUSEN,	Albert Lea, Minn.

**BOARD OF DIRECTORS.**

Rev. H. P. JENSEN, Chairman,	Minden, Nebr.
Rev. TH. N. JERSILD,	Elk Horn, Iowa.
Rev. H. W. BONDO,	Luck, Wis.
Mr. S. C. PETERSEN,	Elk Horn, Iowa.
Mr. H. SKOV NIELSEN,	Blair, Nebr.

**BOARD OF EXAMINERS.**

Rev. H. P. JENSEN.	
Rev. TH. N. JERSILD.	
	Rev. H. W. BONDO.

**BOARD OF VISITORS.**

Rev. H. P. JENSEN.	Rev. TH. N. JERSILD.
Mr. H. SKOV NIELSEN.	

## GENERAL STATEMENT.

Dana College and Trinity Theological Seminary is owned and supported by The United Danish Evangelical Lutheran Church in America. It is a denominational institution and as such aims to serve, primarily, the interests of the Lutheran Church, but its doors are open to all who desire a liberal education based upon the Christian spirit. Its original scope was that of a school for the education of ministers of the gospel.

But at the third annual convention of the United Danish Evangelical Lutheran Church in America, held at Hutchinson, Minn., in 1899, it was decided to unite the two official Schools of the church, the College at Elk Horn, Ia., and Trinity Seminary at Blair, Nebr., thus making the aim of this school not only to prepare young men for the ministry, but also directly or indirectly to train young men and women for other professions and occupations.

Its courses of instruction are according to approved models, and qualitatively the instruction aims to be in the front rank. The English language is used as a medium of instruction, except in Danish language, history, and literature and most of the theological branches, nevertheless Danish naturally occupies a prominent position in the curriculum of Dana College and Trinity Theological Seminary.

The location leaves little to be desired in accessibility, healthfulness, and beauty of surroundings.

It is the object of those in charge to throw about the student all forces that favor a healthy and harmonious physical, mental and moral development.

## COURSES.

Dana College comprises the following departments of study:

I. The Academic School	Four Year Course
II. The College	Four Year Course
III. Pro-Seminary	Four Year Course
IV. The Normal School, Four Year and Five Year Course	
V. Commercial Department	Eight to Twelve Months
VI. The Music Department	— — —
VII. „Højskolen”	— — —
VIII. Art Department	— — —

### THE ACADEMIC DEPARTMENT.

This course is outlined in accordance with the requirements for admission to the Freshman class of the State University of Nebraska.

Besides preparing the student for admission to the University and other Colleges, it aims to give the students who cannot pursue their studies further a good elementary education.

Credit points are issued on the basis of five recitations a week of not less than 40 minutes for one semester of eighteen weeks for one credit. Some allowance is made as to amount of work a student may do, depending on the ability of the student.

#### PREPARATORY YEAR.

	I	II
English Grammar and Composition .....	5	5
U. S. History .....		5
Political Geography .....		5
Arithmetic .....	5	5
Penmanship .....	5	5
Reading and Orthography .....	5	5
Physiology .....	5	

#### FIRST YEAR.

English .....	5	5
Ancient History .....	5	5
* Danish Reading and Composition .....	5	5
Latin, Beginning .....	5	5
Physical Geography .....		5
Algebra .....	5	5
Bible Study .....	2	2

#### SECOND YEAR.

* Danish Grammar and Composition .....	5	5
Modern History .....	5	5
Latin .....	5	5
Geometry, Plane .....	5	5
Botany .....		5
Botany .....	5	

#### THIRD YEAR.

	I	II
Rhetoric and Literature .....	5	5
Latin or German .....	5	5
Geometry, Solid .....		5
Agriculture .....	5	
Drawing, Mechanical .....	3	2
Drawing, Freehand .....	2	3
Physics .....	5	5

#### FOURTH YEAR.

Agriculture .....	5	
English Literature .....	5	5
Latin or German .....	5	5
Review of American History and Civics .....		5
Chemistry .....	5	5

Drawing required for mechanical courses in college work.

\* Elective.

#### College.

Two years of regular college work has been outlined for students who wish to continue their studies.

Two courses are offered in the following outlines of studies.

#### FRESHMAN CLASS.

Classical.		Scientific.	
I	II	I	II
* Danish Literature and Composition .....	3 3	* Danish Literature and Composition .....	3 3
* Physics .....	5 5	* German .....	5 5
* English History .....	5 5	Physics .....	5 5
* Pol. Economy .....	5 5	* English History .....	5 5
English .....	5 5	Chemistry .....	5 5
Sacred History .....	2 2	* Zoology .....	5 5
Greek .....	5 5	Sacred History .....	2 2
Latin or German .....	5 5	Trigonometry .....	5 5
		* Greek or Latin .....	5 5

SOPHOMORE CLASS.

	I	II		I	II
Greek . . . . .	5	5	*German . . . . .	5	5
Latin . . . . .	5	5	Chemistry . . . . .	5	5
Geology . . . . .	5	5	Geometry Anal. . . . .	5	5
*Psychology & Logic	5	5	*Psychology & Logic	5	5
*Astronomy or Eng.Lit.	5	5	Calculus or Astronomy	5	5

TWO YEAR DANISH COURSE.

It is strongly advised that those who wish to train themselves for teaching in the parochial schools of the United Danish Evangelical Lutheran Church in America take the following Two Year Danish Course.

FIRST YEAR.

	I	II
Danish Grammar and Composition . . . . .	5	5
Bible History & Catechetics . . . . .	3	3
Danish History . . . . .	5	
Geography of Scandinavia . . . . .	1	
Drawing . . . . .	5	5
Elective . . . . .	5	5
English . . . . .		5

SECOND YEAR.

	I	II
Danish Grammar and Composition . . . . .	5	5
Danish Literature . . . . .	4	4
General History . . . . .	5	5
Church History . . . . .	3	3
Methods . . . . .	5	5
Bible Study . . . . .	2	2

NORMAL DEPARTMENT.

Dana College Grants State Teacher's Certificates.

The one-year and two-year courses lead to the Elementary and First Grade certificates respectively.

The holder of either of these certificates may teach anywhere in the State of Nebraska without further examination.

The Elementary certificate is good for a term of not less than one year and not to exceed three years from date of issuance, at the discretion of the county superintendent of the county in which the holder of such certificate shall teach.

The First Grade State Certificate is good for a term of three years from date of issuance. After three years of successful teaching the holder of such certificate is entitled to a professional certificate good for life.

THE ELEMENTARY CERTIFICATE COURSE.

In order to gain admission to this course the applicant must have completed the first three years of the academic course or its equivalent.

	I	II
Observation and Methods . . . . .	5	5
U. S. History . . . . .	5	
Arithmetic . . . . .		5
Grammar . . . . .	5	
Geography . . . . .		5
Physics . . . . .	5	
Review . . . . .		5
Bible Study . . . . .	2	2

THE FIRST GRADE CERTIFICATE COURSE.

Admission to this course is granted to those who have completed the Academic course or its equivalent.

FIRST YEAR.

	I	II
Observation and Methods . . . . .	5	5
Psychology . . . . .	5	5
Zoology . . . . .		5
Review . . . . .	10	5
Bible Study . . . . .	2	2

SECOND YEAR.

History of Education . . . . .	5
Practice Teaching . . . . .	5 5
Theory of Education . . . . .	5
Geology . . . . .	5 5
Review . . . . .	5 10

**PRO-SEMINARY COURSE.**

This course is intended primarily to fit young men for Trinity Theological Seminary.

Young men wishing admittance to the first year in this course, are required to take examination or submit satisfactory grades in the following subjects: English grammar, political geography, penmanship, United States history, physiology, and arithmetic. For admission to the succeeding years, examination will be required in the subjects of the preceding year.

**FIRST YEAR.**

	I	II
Bible History . . . . .	3	
Catechetics . . . . .		3
Danish Grammar and Composition . . . . .	5	5
Ancient History . . . . .	5	5
Algebra . . . . .	5	5
Physical Geography . . . . .		5
Danish History . . . . .	5	

**SECOND YEAR.**

English . . . . .	5	5
Church History . . . . .	3	3
Danish Grammar and Composition . . . . .	5	5
Beginning Latin . . . . .	5	5
Modern History . . . . .	5	5
Beginning Greek . . . . .	5	5

**THIRD YEAR.**

Rhetoric . . . . .	5	
American Literature . . . . .		5
Danish Literature . . . . .	5	5
Latin, Cæsar . . . . .	5	5
German . . . . .	5	5
Greek . . . . .	5	5

**FOURTH YEAR.**

History of Danish Literature . . . . .	5	5
English Literature . . . . .	5	5
Greek . . . . .	4	4
German . . . . .	5	5
Psychology and Logic . . . . .	5	5

**DEN TEOLOGISKE AFDELING.**

Trinitatis Seminarium er den ældste teologiske Skole blandt Danske i Amerika. Dets Kursus er treaarigt i den Hensigt at give saadanne unge Mænd, som af Hjertet beken- der sig til den lutherske Kirke og har tilegnet sig tilstræk- kelig Foruddannelse, en saa grundig og omfattende teologisk Uddannelse, at de mød Forstand og Velsignelse kan beklæde Lære- og Prædikeembedet i den lutherske Kirke i Amerika. Undervisningen gives dels paa Dansk, dels paa Engelsk og tilstræber at sætte Studenterne i Stand til at forkynde Evan- geliet paa begge de nævnte Sprog, fordi disse Sprog tales og bruges i det Land og paa den Missionsmark, hvor de skal arbejde.

**PLAN OVER DET TREAAARIGE KURSUS.****FØRSTE AAR**Timer  
ugentlig

Gamle Testament . . . . .	5
Ny Testament . . . . .	5
Dogmatik: Prolegomena, Teologien og Antropologien . . . . .	4
Kirkehistorie: Oldtiden . . . . .	4
Etik: I. Personligheden; II. Loven . . . . .	3
Øvelse i Ny Testament . . . . .	2

**ANDET AAR.**

Gamle Testament . . . . .	5
Ny Testament . . . . .	5
Dogmatik: Kristologi og første Del af Pneumatologien . . . . .	4
Kirkehistorie: Middelalderen og Danmarks Kirkehistorie . . . . .	4
Etik: Livsgoderne . . . . .	3
Dogmehistorie . . . . .	2
Symbolik . . . . .	1

**TREDIE AAR.**

Gamle Testament . . . . .	5
Ny Testament . . . . .	5
Dogmatik: Pneumatologien og Eschatologien . . . . .	4

Kirkehistorie: Nutiden og Amerikas Kirkehistorie .....	4
Hermeneutik .....	
Liturgik .....	
Missionshistorie .....	
Pastoralteologi .....	

Desuden øves Studenterne i Udarbejdelsen af Afhandlinger i de forskellige Fag.

Skolen forbeholder sig Ret til at ændre og forøge dette Kursus, efter som Nødvendigheden maatte kræve.

Som Lærebøger benyttes:

Den hellige Skrift paa Dansk og Engelsk; det ny Testamente paa Græsk (Gebhards Udgave af Tischendorfs Tekst eller Westcott & Hort). Kommentarer til det gamle Testamente: Keil og Delitsch, Lange og Lutherstiftelsen; til det ny Testamente: Schat-Petersen, Rørdam, Godet, „Lutheran Commentary” og „Cambridge Bible”.

Som Haandbøger i Dogmatik bruges „H. E. Jacob's: A Summary of the Christian Faith”, „H. Schmidt's Doctrinal Theology of the Evangelical Lutheran Church”, H. Scharlings Dogmatik, C. E. Lindbergs Dogmatik, samt Konkordiebogen.

Som Lærebog i Kirkehistorie bruges Fr. Niensens Kirkehistorie; som Haandbøger J. L. Neves „A Brief History of the Lutheran Church in America”, Koch og Rørdams Fortællinger af Danmarks Kirkehistorie. Endvidere benyttes H. Scharlings Etik, Gisle Johnsons Dogmehistorie, H. Ussings Missionshistorie, Grauls og Guenthers Symbolik, Gerherdings „The Lutheran Pastor”, samt hans „Catechetics”, Horn's „Liturgies” og Frys „Homiletics”.

Om nærmere Oplysninger skriv til Prof. P. S. Vig, Forstander for Trinitatis Seminarium.

### COMMERCIAL DEPARTMENT.

Students may enter this department at any time, but the best results will be obtained by entering at the beginning of the school year or at the opening of a term. Individual instruction is given to all students as they may require.

Upon the satisfactory completion of this course of study the student is granted a diploma.

### BOOK-KEEPING AND ACTUAL BUSINESS.

Book-keeping	Commercial Arithmetic
Actual Business	Civics
Commercial Law	Spelling
Penmanship	English Grammar
Letter Writing	Debating

Business is begun with a cash capital of \$5,000 (College Currency). The student progresses step by step from simple transactions to complicated ones, and is taught business forms and customs, such as commercial paper, invoice, billing, lading, vouchers, discounts, securities, collections, filing devices, etc. A thorough knowledge is gained in both single and double entry book-keeping. The student learns to do by doing.

**Commercial Law.** Every up-to-date business man needs a knowledge of commercial law. Special study of the subject is made under the following heads: Contracts negotiable paper, principal and agent, common carriers, bailment, partnership; corporations, wills and testaments, guaranty and warranty.

**Penmanship.** A legible, rapid, and elegant handwriting is very desirable to any one starting out on a business career. This end is attained by persistent daily practice under competent instructors. The system used gives movements leading to easy and graceful execution and form. Legibility, rapidity, and beauty are the ends sought.

**Letter-writing.** The student is taught business letters and forms. He is given exercises in correcting arrangements and style, and in writing letters relating to special subjects.

**Commercial Arithmetic.** The purpose of this subject is to train the student in the arithmetical principles and processes underlying ordinary business transactions.

**Rapid Calculation.** There are a thousand and one by-ways and shortcuts in arithmetic of inestimable value to all. We have daily drills in shortcut processes in rapid column addition, short methods in multiplication, division, fractions, percentage etc.

**Civics.** A knowledge of this subject is invaluable to every American citizen. The Constitution of the United States, principles of government etc. are taught.

**Spelling.** Every business man should know how to spell correctly. We have daily drills in spelling, word study, pronunciation, and diacritical markings.

**Grammar.** Thorough work is given in composition, grammatical and rhetorical principles, punctuation, and structure of paragraphs.

**Debating.** Regular class work is given in debating, and the literary societies furnish excellent opportunities for developing the power to think and to speak on the living questions of the day.

### SHORTHAND AND TYPEWRITING COURSE.

Shorthand  
Pronunciation  
Grammar and Composition  
Spelling  
Mimeographing  
Typewriting  
Arithmetic

The student may take either the Amanuensis or the Reporting Course. The Amanuensis Course may be completed in from five to six months. The pupil must then be able to write business letters from dictation, and also to make a neat and correct transcription of his notes upon a typewriter.

The Reporting Course requires twelve months for its completion. The pupil will then have acquired sufficient speed to enable him to report verbatim ordinary discourse. He will have practice in writing all kinds of difficult matter, and becomes a rapid manipulator of the typewriter.

Typewriting is taught by the touch system. Practice is given in writing wills, indentures, judgements, leases, contracts; correspondence in manufacturing, insurance, and wholesale and retail trade. Also instruction in tabulating, oiling and cleaning the machine etc.

The school aids the student completing either of the above courses in securing positions.

### PHYSICAL TRAINING.

The gymnasium furnishes excellent opportunities for physical training. It contains good modern accommodations.

The courses offered should produce the following results:—better health, a stronger and a more symmetrically developed body. A frail body is a poor servant of the mind. A normal physical basis for the mental faculties is necessary for the best mental growth.

All students are required to take gymnastics, except when excused for special reasons. Before entering the classes each student must take a physical examination. Those who are physically defective are given exercise adapted to their needs.

The College has good tennis courts which in pleasant weather afford good opportunities for outdoor recreation. Athletic contests are held every spring.

### DRAWING

is taught in several departments of the school. The course includes plain constructive and geometrical drawing—from objects and memory; perspective, both linear and aerial; and art drawing—with and without models.

### ART

Oil and water colors.

Charges are made corresponding to the nature of the work.

### THE MUSIC DEPARTMENT.

This department offers comprehensive courses in vocal, instrumental, and theoretic music. The arrangement of courses secures a complete mastery of the branches undertaken, and cultivates in the student a high standard of musical taste.

The aim is to give a real musical education. The methods are the same used in the famous conservatories of the East, while the expenses are not more than one third as great. The department trains teachers, organists, choir leaders and music lovers in general.



## COURSES OF INSTRUCTION.

- |           |                        |
|-----------|------------------------|
| 1. Piano  | 4. Voice Culture       |
| 2. Organ  | 5. Musical Composition |
| 3. Violin | 6. History of Music.   |

**Piano.** 1. Finger exercises, scales and rudiments of music. Easy sonatinas and thorough practice in major and minor scales. 2. Studies in position, tension, motion and touch. Chords and arpeggios. 3. Study of musical terms. Accent and expression. Sight reading. Memorizing and phrasing. Transposition. Music from the best composers.

**Organ.** Explanation of pitches, of stops, choir and accompaniments. Marches, voluntaries and studies of the best composers.

**Voice Culture.** 1. Lessons in breathing. Voice and tone production. Intervals. Drills and Diatonic Scale in slow movement. Singing. Sight reading. 2. Lessons in major and minor intervals, Arpeggios. Chromatic Scale. Classic writers, and Sacred music.

**Elementary Singing.** A class for instruction in general singing will be organized at the beginning of the Winter Term, open without charge to all students.

**The College Chorus.** Students who are well advanced in the rudiments of music are admitted to the College Chorus without charge. Drills in chorus work, glees, and oratorios will be given. The Chorus will render public recitals from time to time.

**Dana Male Choir** is an organization comprising eight of the best male voices in the school. The singers are selected from the advanced class only.

## ELOCUTION

is considered now-a-days an absolute requisite for a finished education. For this reason the school has made arrangements for a course in this accomplishment.

The following subjects are taught:

Vocal culture, articulation, inflection, quality of tone, pitch, force, time, volume, power, pronunciation, study of recitations, gestures, oratory etc.

## HØJSKOLEN.

**Religion.** Det er Skolens Formaal at øve en kristelig Indflydelse paa de unge, der samles her. Derfor ledes hele Undervisningen i en kristelig Aand, og det er vort Haab, at mange unge maa faa aandelig Velsignelse under deres Ophold her.

Da det er en Kendsgerning, at den dansk-amerikanske Ungdoms kristelige Undervisning er meget mangelfuld, vil Skolen gerne raade Bod herpaa ved at give saa megen Undervisning i Bibelkundskab og kristelig Lære som mulig for de Elever, som maatte føle Lyst og Trang dertil.

**Dansk Sprog.** Blandt de Kundskabsfag, som Højskolen arbejder med, indtager det danske Sprog den fornemste Plads. Vi anser det for at være af største Betydning, at Ungdommen bliv i Stand til at behandle Modersmaalet med Færdighed, og at Lysten vækkes hos dem til at faa Del i den Skat, som den danske Litteratur har i Eje.

Og skal vi beholde Ungdommen i vor danske Kirke, maa den i større Maal end hidtil sættes i Stand til at modtage aandelig Paavirkning paa Modersmaalet. Thi det er en Erfaring, man meget ofte gør, at ligesom de allerfleste, der indvandrer hertil, kun naar til at bruge det engelske Sprog i meget ringe Udstrækning, saaledes lærer deres Børn kun meget ufuldkomment Faders og Moders Sprog at kende. Her har Højskolen en vigtig Opgave.

**Engelsk Sprog.** Næst efter Dansk anses det engelske Sprog for det vigtigste for Højskoleeleven. Der undervises paa det grundigste i engelsk Læsning, Stavning og Grammatik. Disse Fag er absolut nødvendige for en fuldstændig Forstaaelse af Sproget. Foruden disse Fag arbejdes der med engelsk Stil for at indøve Eleverne i Sprogbrugen og Ret-skrivningen. Saadanne, som nylig er kommen til Landet, vil her kunne lære det engelske Sprog. Undervisningen ledes af Lærere, der har mange Aars Erfaring i at lære Begyndere at tale, læse og skrive det engelske Sprog.

**Historie og Litteratur.** Da vi anser det for et værdifuldt Led i Menneskets Udvikling at have Forstaaelse af Historie og Litteratur, betragter vi Arbejdet hermed som Højskolens fjerde Hovedopgave. Særlig lægger vi Vægt paa at føre de unge ind i Danmarks og Amerikas Historie og Litteratur.

**Bibelklasser** vil altid forefindes for saadanne, der har Lyst og Tid til at deltage.

### GENERAL INFORMATION.

#### ACCOMMODATIONS.

**The Residences.** The gentlemen's and ladies' dormitories are conveniently located. The rooms are heated by steam and lighted by electricity. Each is furnished with bed and mattress, table, and chairs. Comforters and other bedclothing must be furnished by the students. Those desiring to room alone will be charged extra for heat and light.

**The Boarding Hall** is conducted by the school for the purpose of meeting the requirements of the students in the best manner. The board is wholesome and abundant. The teachers residing in the school eat from the same table with the students.

**The Library.** During the year the library has been enlarged by the edition of quite a number of reference works in the departments of literature, theology, history, economics, and the sciences.

Connected with the library is a reading room. In it the leading publications in the English, Danish, and German languages are found, as well as many local papers.

Contributions to the library are earnestly solicited. They should be sent to the Librarian of Dana College and Trinity Seminary.

**The Laboratory** is equipped with the apparatus necessary for class experiments and the individual work of the student.

#### EXPENSES.

The school year comprises 35 weeks. The total expenses of a student for tuition, board, room, and heat is \$18 per month of four weeks payable per term in advance.

#### RATES TO STUDENTS ATTENDING AND PAYING FOR LESS THAN A FULL SCHOOL YEAR.

Students attending less than the full school year will be charged \$2.00 extra per month of four weeks during the four months or 16 weeks of the winter term. The remaining part of the year they will be charged the regular rate of \$18.00 per month of four weeks.

To the expenses should be added the cost of student's laundry, books, stationery etc. Students paying for tuition only are charged \$40.00 for the year.

	Board	Room	Tuition	Total
For one month—4 weeks.....	\$10.00	\$ 3.00	\$ 5.00	\$18.00
Fall term—9 weeks.....	22.50	6.75	11.25	40.50
Winter term—16 weeks.....	40.00	12.00	20.00	72.00
Spring term—10 weeks.....	25.00	7.50	12.50	45.00
For the year—35 weeks.....	87.50	26.00	43.75	157.50

#### REBATE ON TRANSPORTATION.

Students living more than 200 miles from Blair, and who shall stay at least 2 consecutive Terms, will be entitled to a rebate of one half the distance over and above 200 miles, coming to school. Take receipt from station agent, stating distance and amount paid.

#### FEES.

A matriculation fee of \$1.00 shall be paid by each student when he enters school for the first time.

An indemnity fee of \$1.00 is required of each student. This is held as security to insure prompt payment of damage which may have been done to room, furniture, etc. This money or what is left, after deducting damage, is returned to the depositor upon leaving school.

A deposit of two dollars is required of all students of Chemistry and Physics to guarantee payment of breakage.

Laboratory fees are paid as follows: Zoology, Physics, General Chemistry at the rate of \$1.00 pr. semester. For the qualitative or quantitative, \$2.50 per semester.

For typewriters a charge of 75 Cents per month will be made.

#### MUSIC DEPARTMENT.

Piano, 24 Lessons per term .....	\$10.00
Organ, 24 Lessons per term .....	10.00
Voice Culture, 24 Lessons per term .....	10.00

#### RENT OF INSTRUMENTS.

Piano, one period daily per term .....	\$2.00
Reed Organ rent, same time as above .....	1.00

#### GRADUATION AND DEGREES.

Diplomas are granted in all departments upon having passed satisfactory examinations.

### MORAL TRAINING IN THE SCHOOL.

As this is a Christian school, every effort is made to care for the moral and spiritual welfare of all the students. A high moral culture is secured by a thoroughly Christian management. A pleasing unanimity of action pervades the entire atmosphere, and Christian love and obedience do for the school what severe rules never accomplish.

### PUBLIC WORSHIP.

Chapel services, which all students are expected to attend, are held each school day morning.

### CHURCH AND RELIGIOUS SOCIETIES.

As this is a Lutheran school, all students are expected to attend regularly the local church of the United Danish Evangelical Lutheran Church, provided no other preference is stated to the president.

### COLLEGE SOCIETIES.

There are several regularly chartered literary and religious societies in the school. These are all in flourishing condition, and in their way do much towards making college life pleasant and profitable.

### THE DANA COLLEGE HESPERIAN,

is exclusively English. Its bi-weekly programs comprise music, debate, and literary exercises. Special programs are rendered from time to time.

### DANNEBROG

as indicated by the name, is a Danish society. Its aim is to cultivate a taste for Danish Literature and song. Like its sister society, "Dannebrog" gives bi-weekly Programs comprising song, literary work, and debate.

### STUDENTERFORENINGEN

is a religious society. It holds weekly devotional meetings to which all students are cordially invited.

### TRIN. SEM. HEDNINGEMISSIONSFÖRENING

is a society, organized with a view to furthering the foreign missions of our church.

### THE ATHLETIC ASSOCIATION.

The Dana College Athletic Association has been chartered by the Faculty to play tennis, base ball, hoop ball, basket ball, and such other games as shall prove of benefit to the members of the association.

### ENDOWMENTS AND BEQUESTS.

The school authorities cannot but rejoice in the progress of the school during the 14 years of existence as Dana College and Trinity Seminary.

Good work has been done in every line, and friends of the school are beginning to look forward to a time when a grateful people and church will appreciate more fully the work their school is doing for them, and more liberally lend encouragement and aid.

The following is the form of bequest which may be used by persons desiring to leave property or money to the College.

I give, devise, and bequeath to the Board of Trustees of Dana College and Trinity Seminary, an institution of learning established by The United Danish Evang. Luth. Church in America, and located at Blair, Washington County Nebraska, the sum of .....Dollars, (or if real estate, give description of the property) for the general uses of said college.

All funds for the institution should be sent to the President.

### TO PROSPECTIVE STUDENTS

and particularly to our Danish youth in America are the following words addressed:

It is in your interest to attend the institution that can do you most good, that is best able to aid countrymen in overcoming the perplexities so often handicapping young foreigners in this country, that fits them for the highest success in life, and does all in its power to attain same.

We believe Dana College and Trinity Theological Seminary is that institution. Those in charge of the school are devoting their life to the culture of the Danish people in America, and will leave nothing undone to have this school retain its reputation as the leading Danish School in America.

### GENERAL HINTS.

The school year begins Sept. 30th., and is divided into three terms: a Fall term of 9 weeks, a Winter term of 16 weeks, and a Spring term of 10 weeks.

If you should wish information not given in this cata-

logue, address the President, and he will cheerfully advise you on any point of mutual interest.

While the faculty urges the importance and advantage of students entering the school at the beginning of the school year or at the opening of a new term, yet admission may be had at any time to such classes as will meet their personal needs.

### CATALOGUES

will be sent free on application to the President, C. X. Hansen, Dana College, Blair, Nebr.

### ALUMNI.

1900.

- J. P. Jensen, T. S., deceased. 1908.
- C. Hansen, T. S., deceased. 1909.
- J. Andersen, Farmer, Blair, Nebr.
- Caroline Bjerre, Neenah, Wis.
- J. T. Hansen, Business, Neenah, Wis.
- L. Hansen, Farmer, Greer field, S. Dak.
- P. F. Mortensen, Merchant, Albert Lea, Minn.

1901.

- J. Scott, Minister, T. S. Shennington, Wis.
- H. P. Petersen, Lumber Business, Dannebrog, Nebr.
- P. E. Smith, C., Real Estate Business, Viborg, S. Dak.
- C. M. Christiansen, Ac., Farmer, Latimer, Ia.
- H. C. Petersen, Ac., Physician, Wolbach, Nebr.
- Johannes Anker, C., Lincoln Business College.

1902.

- A. H. Cronberg, Nor. Stock Raiser, Potter, Nebr.
- Page Newton, C., deceased.
- E. O'Hanlon, deceased.
- T. Thompson, C., Farmer, Oakkland, Nebr.
- F. Nelson, C., Commission Merchant, Omaha, Nebr.
- C. E. Gaydou, C., Dana College, Blair, Nebr.
- Myrtie Dixon, C., Mrs. Andrew Lund, Oakland, Nebr.

1903.

- H. W. Bondo, T. S. Minister, Luck, Wis.
- Th. Beck, T. S., Minister, Hutchinson, Minn.
- J. A. Larsen, T. S. Minister, Sioux City, Ia.

1904.

- H. M. Hansen, T. S., Minister, Sleepy Eye, Minn.
- J. G. V. Magnussen, T. S., Minister, Dickson, Alta., Can.
- N. P. J. Nielsen, T. S. Minister, Ferndale, Cal.
- J. P. Nielsen, T. S., Missionary, Kurume, Japan.
- H. Iversen, S., T., Minister, Falmouth, Me.
- Grace Ballard, C., Stenographer, Lincoln, Nebr.
- J. S. Miller, C. deceased. 1910.
- F. A. Nelson, C., Business, Omaha, Nebr.
- G. L. Tracy, C., Salesman, Omaha, Nebr.
- A. K. Peitersen, Nr., Teacher Bot. Dept., Univ., Vermont.
- N. C. Petersen, T. S., Minister, Trufant, Mich.

1905

- William McCandlish, C., Salesman, Kansas City, Mo.
- A. Cameron, C., Stock Raiser, Blair, Nebr.
- Eva Smith, S. & T., Blair, Nebr.
- A. Laurice Hansen, S. & T., Stenographer, Omaha, Nebr.
- Julia E. Hultberg, S. & T., Stenographer, Omaha, Nebr.

1906.

- E. R. Andersen, T. S., Minister Kenmare, N. Dak.
- J. P. Christiansen, T. S., Minister, Audubon, Ia.
- M. L. Kirkegaard, S. & T., Student at Dana College.
- Agnes Johnson, S. & T., Nurse, San Francisco, Cal.

1907

- J. C. Christensen, T. S., Minister, Brush, Colo.
- P. C. Paulsen, P. S., Minister, Nelson, Minn.
- Andrew Juhl, Nor., Teacher, Elk Horn, Ia.
- M. P. Jensen, C., Lumber Business, Marquette, Nebr.
- A. J. Hansen, P. S., Minister, Salmonhurst, Can.
- N. H. Debel, P. S. & C., Stud. Nebr. Univ., Lincoln, Neb.

1908.

- A. Hofgaard, T. S., Minister, Owatonna, Minn.
- Willie Bondo, T. S. Minister, Davenport, Ia.
- A. O. Söholm, P. S., Cushing, Nebr.

1909.

- Herman L. Jensen, T. S., Minister, Kimballton, Ia.
- D. G. M. Bach, P. S., Minister, Mauriceville, New Zealand.
- Jens C. Carlsen, P. S., Minister, Plainview, Nebr.
- Theo. M. Hansen, P. S., Student, Trin. Sem.
- Walter Kamp, P. S., Teacher, Brorson High school, Kenmare, N. Da.

Walter Neve, P. S., Cand. Theol.  
 James C. Petersen, P. S., Minister, Harlan, Ia.  
 Peter Rømer, P. S., Student, Nebr. Uni.  
 James D. Danielsen, C., Waupaca, Wis.  
 Nora M. Hansen, C., Omaha, Nebr.  
 Anders C. Debel, C. Student, State Uni., Lincoln, Nebr.  
 H. T. Jensen, C., Bookkeeper, Council Bluffs, Ia.  
 Jørgen Jensen, C., Farmer, Akron, Ia.  
 Hans A. B. Nielsen, C., Bookkeeper, Minden, Nebr.  
 A. S. Nielsen, C., Teacher, Luther College, Racine, Wis.  
 Carl M. Paulsen, C., Stud. Ac., Dana College.  
 Niels C. Paulsen, C., Heron Lake, Minn.  
 A. Marius Sørensen, C. Newcastle, Nebr.

1910.

Nels C. Carlsen, T. S., Minister, Superior, Wis.  
 H. P. K. Hansen, T. S., Minister, Culbertson, Mont.  
 Jens Knudsen, T. S., Minister, Beresford, S. Dak.  
 I. M. Andersen, P. S., Student, Trin. Sem.  
 F. C. M. Hansen, P. S., Stud. Trin. Sem.  
 H. N. Hansen, P. S., San Diego, Cal.  
 N. P. Nielsen, P. S., Minister, Clinton Wis.  
 I. M. Andersen, P. S. and Ac., Stud. Trin. Sem.  
 Anders Kjeldgaard, Ac., Brush, Colo.  
 J. Markussen, Ac., Wisner, Nebr.  
 Morris Nelson, Ac., Denver, Colo.  
 Nora Moore, Nor., Teacher, Blair, Nebr. Mrs. Stanley Bracken  
 Kristine Nielsen, Nor., Stud. St. Uni., Lincoln, Nebr.  
 Hans Christensen, S. & T., Hubbard, Minn.  
 Walter Hansen, S. & T., Morgan, Minn.  
 Minnie Jensen, S. & T., Blair, Nebr.  
 Jorgen Bille, C., Luck, Wis.,  
 Mary Christensen, Com., Blair, Nebr. Deputy County Clerk.  
 A. V. Hjortsvang, Com., Kenmare, N. Dak.  
 Caroline Johnson, Com., S. Dak.  
 Ruth McCracken, S. & T., Com., Mrs. H. Christensen, Hub-  
 bard, Minn.  
 Andrew Meyer, C., Dannebrog, Nebr.  
 P. H. Poulsen, C., deceased. 1913.  
 Neve Moore, Mrs. Thos. F. Miller, Neligh, Nebr.  
 Amelia Thompson, C., Teacher, Minden, Nebr.

Amelia Thompson, C., Minden, Nebr. Teacher.  
 Arthur Robinson, C., Bookkeeper, Ringstead Ia.

1911.

P. C. Paulsen, T. S., Minister, Nelson, Minn.  
 A. O. Sørholm, T. S. Cushing, Nebr.  
 Anders Hansen, Pro-Sem. Student, Trin. Sem.  
 Ruth Bracken, Nor., Teacher, Blair, Nebr.  
 Vivian M. Johnson, C., S., T. Lincoln, Nebr.  
 Harriet Turner, C., S. & T., Stud. St. Uni., Nebr.  
 Alberta Cheeley, C., S. & T., Fremont, Nebr.  
 Marie Dorffler, C., S. & T., Waupaca, Wis.  
 Edwin Davies, S. & T., Blair, Nebr.  
 Oscar Hopkins, S. & T., Blair, Nebr.  
 Viola Phelps, S. & T., Omaha, Nebr.  
 Albert Richter, S. & T., Blair, Nebr.  
 Rose Slocum, S. & T., Los Angeles, Cal.  
 Lola Stewart, S. & T., Bookkeeper, Missouri Valley, Ia.  
 Clarence Simpson, S. & T., Bookkeeper, Omaha, Nebr.  
 Julia Sargensen, S. & T., Bookkeeper, Blair, Nebr.  
 Fanny Compton, S. & T., Blair, Nebr.  
 Bessie DuLanney, S. & T., Omaha, Nebr.  
 Amanda Furst, S. & T., Blair, Nebr.

1912.

D.G.M. Bach, T.S., Minister, Mauriceville, New Zealand.  
 Freda Blomberg, Com., Book-keeping, Blair, Nebr.  
 Fritz Clemmensen, Ac., Graettinger, Ia.  
 Jens C. Carlsen, T. S. Minister, Plainview, Nebr.  
 Christian W. Christiansen, C., Blair, Nebr.  
 Anders C. Debel, Ac., Blair, Nebr.  
 Atlef J. Hansen, T. S., Minister, Salmonhurst, Canada.  
 Anna Hedelund, S. & T., Stenographer, Omaha, Nebr.  
 Paul Holmstrup, P. S., Student, Augustana, Rock Island, Ill.  
 Minnie H. Jensen, Nor., Teacher, Blair, Nebr.  
 Willie F. Jensen, Ac., Student, State Uni., Lincoln, Nebr.  
 Christian A. Jensen, C., Upland, Nebr.  
 Glenn T. Kennedy, S. & T., Stud. Grand Island College,  
 Grand Island, Nebr.  
 Herman H. Kolterman, deceased. 1913.  
 Theodore Lund, Ac., Uni. Utah.  
 Olga Larsen, C., Kennard, Nebr.

K. M. Matthiesen, P. S. Student, T. S., Blair, Nebr.  
 J. P. M. Magnussen, P. S., Student, T. S., Blair, Nebr.  
 Hans Nielsen, P. S., Student, T. S., Blair, Nebr.  
 Roy Allison Nearhood, S. & T., Blair, Nebr.  
 John Milton Nearhood, C. & T., Stenographer, Omaha, Nebr.  
 N. Nedergaard, Ac., Student, State Uni., Lincoln, Nebr.  
 James C. Peterson, T. S., Minister, Harlan, Ia.  
 Anton P. Rasmussen, Ac., Student, State Uni., Lincoln, Nebr.  
 Emil Sorensen Rosenberg, Minister, Cordova, Nebr.  
 H. A. Swanson, P. S., Student, T. S., Blair, Nebr.  
 Ethel F. Stewart, Nor., Teacher, Blair, Nebr.  
 Chris Jeppesen Aaen, P. S., Student, T. S., Blair, Nebr.

### CANDIDATES FOR GRADUATION. 1913.

#### TRINITY THEOLOGICAL SEMINARY.

N. P. NIELSEN VALDEMAR NEVE  
 C. E. NIELSEN CHR. SØRENSEN

#### PRO-SEMINARY.

H. P. ANDERSEN FRANK NIELSEN  
 SHERMAN C. F. BONDO ANDREAS NIELSEN  
 PEDER CHR. JENSEN JENS H. VAMMEN  
 CHRIS NELSON JOHN ROMER  
 FRANKLIN G. RASMUSSEN.

#### NORMAL.

GEORGE T. HEDELUND DORA STRUVE  
 WINIFRED UNRUH

#### ACADEMIC.

SILAS C. ANDERSEN ANDREW MEYER  
 PETER C. CLEMMENSEN CARL M. PAULSEN  
 HARRY ROBERTSON

#### COMMERCIAL AND SHORTHAND.

ERWIN CALDWELL CLARA JENSEN  
 EARL COULTER HAROLD MADSEN  
 GEO. DREVSSEN FRANCES M. SMITH  
 HANNAH DRAEGER GRACE SMITH  
 ABIGAIL B. HANSEN EDWIN SORENSEN  
 GEORGE T. HEDELUND WILLIAM SORENSEN  
 ANTON H. JENSEN

### REGISTER OF STUDENTS—1912 1913.

Name	Course	Address
Aaen, Chr. Jeppesen	T. S.	Blair, Nebr.
Aagesen, Ellen	Nor. & M.	Orum, Nebr.
Andersen, Alfred	Com.	Herman, Nebr.
Andersen, Dagmar	Unc. & M.	Audubon, Ia.
Andersen, Elisie	Unc. & M.	Co. Bluffs, Ia.
Andersen, Gertrude	Unc. & M.	Co. Bluffs, Ia.
Andersen, H. P. A.	T. S.	Blair, Nebr.
Andersen, H. P.	P. S.	Ellendale, Minn.
Andersen, H. P.	Eng.	Omaha, Nebr.
Andersen, Ingvard M.	T. S.	Ruskin, Nebr.
Andersen, Lillian	Ac. & M.	Co. Bluffs, Ia.
Andersen, Mary	M.	Blair, Nebr.
Andersen, Marie Dahl	Ac. & M.	Webster Grove, Mo.
Andersen, Peter	Eng.	Superior, Nebr.
Andersen, S. Chr.	P. S.	Denmark, Europa.
Andersen, Silas	Ac.	Blair, Nebr.
Andersen, Thønning	P. S.	Boelus, Minn.
Beck Andrew	Com.	He-man, Nebr.
Bisgaard, Jacob	Eng.	Minneapolis, Minn.
Bollesøn Martinus	Eng.	Omaha, Nebr.
Bondo Sherman	P. S.	Weston, Ia.
Bonnixsen Clifford	Com.	Ferndale, Calif.
Bossen Emma	Com.	Vienna, S. D.
Brix Harry	Unc.	Lyons, Nebr.
Caldwell Erwin	Com.	Blair, Nebr.
Christensen A. H.	T. S.	Brooklyn, N. Y.
Christensen, August	Eng.	Valley Springs, S. D.
Christensen, Andreas	Eng.	Rockfield, Nebr.
Christensen, Anton	Eng.	Calhoun, Nebr.
Christensen, Earnest	Eng.	Hardy, Nebr.
Christensen, Edward	Eng.	Viborg, S. D.
Christensen, Carl	Ac.	Carson, Ia.
Christensen, James	Ac.	Neola, Ia.
Christensen, Mack	Com.	Moorhead, Ia.
Christensen, Oluf M.	Eng.	Ruskin, Nebr.
Christensen, Tinus	Com. & M.	Moorehead, Ia.
Christensen, S. P.	P. S.	Denver, Colo.
Christophersen, Jens	Eng.	Oberon, N. D.
Christophersen, Otto	Ac.	Weston, Ia.
Clemmensen, Peter	Ac.	West Branch, Ia.
Coulter, Earl	Com.	Arlington, Nebr.
Donsted, Emilie	Com.	West Branch, Ia.
Draeger, Hannah	Com.	Blair, Nebr.
Drevsen, George	Com.	Kennard, Nebr.
Erlander, Eddie	P. S.	Mohall, N. D.
Eskildsen, Karl	P. S.	Omaha, Nebr.
Fries, George	Com.	Bronson, Ia.
Frydenlund, Jørgen	Eng.	Wayne, Nebr.
Gran, Hans	Eng.	Blair, Nebr.
Gutchow, Walter	Com.	Blair, Nebr.
Hansen, Abigail	Com.	Blair, Nebr.
Hansen, Agnete	M.	Blair, Nebr.
Hansen, Andrea	Com.	Verona, Nebr.
Hansen, Anders	T. S.	Bowbells, N. D.
Hansen, Anthon	P. S.	Superior, Nebr.
Hansen, Axel M.	P. S.	Norma, N. D.
Hansen, Carrie	Ac. & M.	Blair, Nebr.
Hansen, Christina	Ac. & M.	Hampton, Nebr.

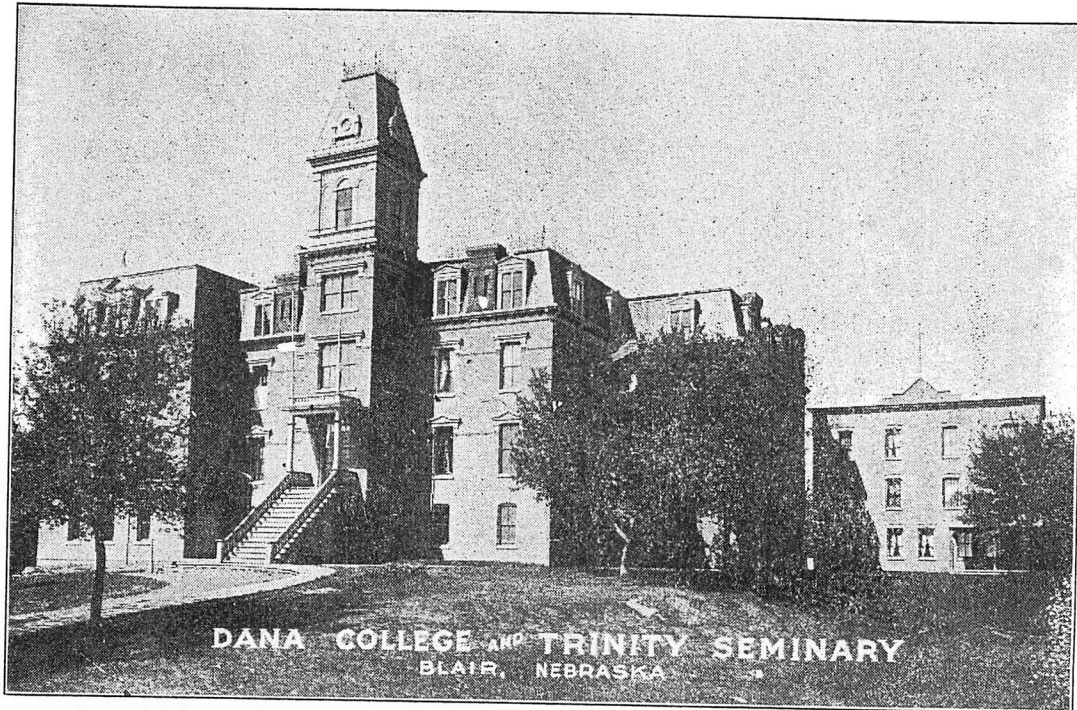
Hansen, Clara	Ac.	Hampton, Nebr.
Hansen, Edward	Ac.	Blair, Nebr.
Hansen, Fred C. M.	T. S.	Norma, N. D.
Hansen, Hans	Unc.	Audubon, Ia.
Hansen, Hans	Eng.	Omaha, Nebr.
Hansen, Harold	M.	Blair, Nebr.
Hansen, L. C.	P. S.	Weston, Ia.
Hansen, Lillian	M.	Blair, Nebr.
Hansen, Louis	Com.	Albion, Nebr.
Hansen, Paul	M.	Blair, Nebr.
Hansen, Raymo	Unc.	Denmark, Nebr.
Hansen, T. M.	T. S.	Oleander, Calif.
Harris, Alice	M.	Blair, Nebr.
Harris, John	Unc.	Blair, Nebr.
Hedelund, George	Com. & Nor.	Blair, Nebr.
Henricksen, Fred	Eng.	Ringsted, Ia.
Hautwed, Harry	Ac.	Ruskin, Nebr.
Inadomi, Hajimi	P. S.	Kurume, Japan
Jacobsen, Carl	Eng.	Omaha, Nebr.
Jacobsen, Knud	Eng.	Oakland, Nebr.
Jacobsen, Paul	Eng.	Winside, Nebr.
Jensen, A. C.	Eng.	Merna, Nebr.
Jensen, Alfred	Com.	West Branch, Ia.
Jensen, Anna	Nor.	Creighton
Jensen, Anton	Com.	Blair, Nebr.
Jensen, Anton M.	Eng.	Blair, Nebr.
Jensen, Carl	Com.	Lyons, Nebr.
Jensen, Chris	Eng.	Merna, Nebr.
Jensen, Clara	Com.	West Branch, Ia.
Jensen, Harold	Eng.	Gayville, S. D.
Jensen, Jørgen	Eng.	Lyons, Nebr.
Jensen, Leona	M.	Blair, Nebr.
Jensen, Lydia	M.	Blair, Nebr.
Jensen, Olga	Ac. & M.	Minden, Nebr.
Jensen, P. C.	P. S.	Audubon, Ia.
Jensen, Richard	Com.	Tyler, Minn.
Jensen, Thorvald	Com.	Minden, Nebr.
Jespersen, Otto	Unc.	Blair, Nebr.
Jepsen, Petrea	Nor.	Curtis, Nebr.
Johns, Margaret	Nor.	Blair, Nebr.
Jørgensen, J. C.	P. S.	Ruskin, Nebr.
Kirkegaard, Martin L.	P. S. & M.	Sioux City, Ia.
Kjøller, L. P.	T. S.	Minneapolis, Minn.
Larsen, Alfred	Unc.	Hornick, Ia.
Larsen, Andrew O.	P. S.	Ruskin, Nebr.
Larsen, Chris B.	P. S.	Racine, Wis.
Larsen, Chris	Com.	Lyons, Nebr.
Larsen, Edna	Unc.	Hornick, Ia.
Larsen, Jens	P. S.	Omaha, Nebr.
Larsen, Oline	T. S.	Minden, Nebr.
Lauridsen, Peter	Eng.	Lynch, Nebr.
Laursen, Jens	Eng.	Kennard, Nebr.
Ligaard, P. C.	T. S.	Omaha, Nebr.
Lillethorup, Larsine	Eng.	Blair, Nebr.
Lund, Johannes	Eng.	Vermilion, S. D.
Lund, Mrs. Johannes	Eng.	Vermilion, S. D.
Luse, Harry	Com.	Blair, Nebr.
Madsen, Harold	Com.	Kennard, Nebr.
Magnussen, J.	T. S.	Plainview, Nebr.
Mathiessen, Karl	T. S.	Plainview, Nebr.
McCracken, Vera	Com.	Blair, Nebr.

Meizler, Julia	Nor. & M.	Viborg, S. D.
Meyer, Andrew	Ac.	Dannebrog, Nebr.
Miller, Clement	Com.	Ferndale, Calif.
Miller, Hans	Eng.	Marcus, Ia.
Miller, Nels	P. S.	Eugene, Ore.
Miller, Ruth	Nor. & M.	Ringsted, Ia.
Mogensen, Edwin	Com.	Evan, Minn.
Mortensen, Marion	Eng. & M.	Blair, Nebr.
Møller, Anton	Eng.	Kennard, Nebr.
Møller, Marius	Eng.	Gayville, S. D.
Nearhood, John	Com.	Blair, Nebr.
Nelson, Christ	P. S.	Moorhead, Ia.
Nelson, Louie	Ac.	Clinton, Wis.
Nelson, Søren	Eng.	Hardy, Nebr.
Neve, Walter	T. S.	Ringsted, Ia.
Nielsen, Amelia	Com.	Blair, Nebr.
Nielsen, Andreas	P. S.	Co. Bluffs, Ia.
Nielsen, Anton	P. S.	Westbrook, Me.
Nielsen, Carl	Eng.	Merna, Nebr.
Nielsen, C. E.	T. S.	Curtis, Nebr.
Nielsen, Frank	P. S.	Westbrook, Me.
Nielsen, Hans	Eng.	Cedar Falls, Ia.
Nielsen, Hans	T. S.	Westbrook, Me.
Nielsen, Ingefred	Nor. & M.	Fresno, Calif.
Nielsen, Mads	Eng.	Lynch, Nebr.
Nielsen, Minnie	M.	Blair, Nebr.
Nielsen, N. P.	T. S.	Weston, Ia.
Nygaard, Andrew	Unc.	Bazile Mills, Nebr.
Olsen, Anna	P. S.	Minneapolis, Minn.
Olsen, Chr. Peter	Unc.	Ruthton, Minn.
Olsen, Ole	Com. & M.	Ruthton, Minn.
Olsen, Oluf, Christ	Eng.	Waterbury, Nebr.
Paulsen, C. M.	Ac.	Audubon, Ia.
Paulsen, Jens	Eng.	Omaha, Nebr.
Petersen, Alfred	Ac.	Elk Horn, Ia.
Petersen, Alfred	Com.	Mason City, Nebr.
Petersen, Alfred	Eng.	Winside, Nebr.
Petersen, Chris B.	Eng.	Hampton, Nebr.
Petersen, Clara	Nor. & M.	Verona, Nebr.
Petersen, Fritz	Com.	Herman, Nebr.
Petersen, Jens P.	Eng.	Audubon, Ia.
Petersen, Louie C.	Unc.	Genoa, Nebr.
Petersen, Nels	Eng.	Ruskin, Nebr.
Petersen, Nels B.	Eng.	Hampton, Nebr.
Petersen, Nikolaj	Eng.	Moorhead, Ia.
Petersen, Ole	Eng.	Hubbard, Nebr.
Petersen, Peter S.	P. S.	Weston, Ia.
Petersen, W. R.	Com.	Blair, Nebr.
Phillips, Edward	Eng.	Ladysmith, Wis.
Pipher, Ethel	M.	Blair, Nebr.
Pipher, May	Nor.	Blair, Nebr.
Rasmussen, F. G.	P. S.	Plainview, Nebr.
Rasmussen, Henry	Com.	Herman, Nebr.
Rasmussen, Joseph	P. S.	Plainview, Nebr.
Rasmussen, Lauritz	Eng.	Orum, Nebr.
Rasmussen, Victor	P. S.	Brush, Colo.
Robertson, Harry	Ac.	Davy, Nebr.
Robinson, Louie	Com.	Ringsted, Ia.
Romer, John	P. S.	Albert Lea, Minn.
Schmidt, Hans	Unc.	Audubon, Ia.
Smith, Francis	Com.	Blair, Nebr.

Smith, Grace	Com.	Blair, Nebr.
Stjernholm, Esper	Eng.	Fowler, Colo.
Struve, Dora	Nor.	Blair, Nebr.
Swanson, Elmer	Unc.	Staplehurst, Nebr.
Swansen, H. A.	T. S.	Blair, Nebr.
Sørensen, Chris	T. S.	Blair, Nebr.
Sørensen, Edwin	Com.	Dannebrog, Nebr.
Sørensen, Hans	Unc.	Staplehurst, Nebr.
Sørensen, John C.	Eng.	Ringsted, Ia.
Sørensen, Lauritz	Eng.	Hardy, Nebr.
Sørensen, William	Com.	Blair, Nebr.
Thomsen, Andy	Unc.	Jamesstown, N. D.
Tversted, Alfred	P. S.	Audubon, Ia.
Unruh, Winifred	Nor.	Blair, Nebr.
Vammen, Adolph	P. S. & M.	Blair, Nebr.
Vammen, Jens	P. S. & M.	Boston, Mass.
Vested, Hans	Unc.	Staplehurst, Nebr.
Wesse, Jens	Eng.	Viborg, S. D.

## SUMMARY.

Trinity Seminary	17
Normal	11
English	51
Commercial	41
Pro. Seminary	32
Unclassified	18
Academic	18
Music	28
<hr/>	
Counted twice	18
Total Enrollment	198



DANA COLLEGE AND TRINITY SEMINARY  
BLAIR, NEBRASKA