

Published quarterly by the Alumni Association of Dana College and Trinity Seminary

## 4 Nominees for 2 Jobs

Two Alumni Association offices are to be filled this spring by mail elections.

Ballots for choosing a treasurer and one member of the Alumni Council are bound in this issue of the Alumnus.

Treasurer candidates are Miss Barbara J. Hansen and Earl Pace. Nominated for the Council post are Harold Qualsett and Dr Clifford T. Hanson.

Pictures of three of the nominees appear elsewhere in this edition. The Alumnus was unable to obtain a photograph of Mr. Qualsett in time for March publication.

### Iowa Teacher

Miss Hansen, 2102 Avenue C, Council Bluffs, Ia., attended Dana from 1932 to 1935, receiving her bachelor's degree at St. Olaf College, Northfield, Minn. She did graduate work at Colorado and Creighton Universities.

Miss Hansen is an instructor in American history at Thomas Jefferson High School in the Bluffs and active in Our Savior's Lutheran Church there. She taught summer school at Dana for several sessions in the field of social science and is president of the Council Bluffs Council for the Social Studies.

The second nominee for treasurer, Earl Pace, has been principal of Blair High School eight years. He attended Dana in 1947-50, where he was president of the junior class, an all-conference choice in football, May Fest king and a magna cum laude graduate.

### In Two Wars

Mr. Pace is a Marine Corps veteran of World War II and the Korean War. He is married and has two children,

(See Page 8)

## Inside . . .

There are some new wrinkles in your Alumnus.

Inside, you'll find:

—A couple of new waves on Destiny's Deep Sea.

—Some reminiscences of the Old Main.

—A hope-you-haven't forgotten department for alumni of all eras.

It's all designed to give you a more interesting and readable Alumnus. Hope you like it.

## Fund Drive Third Done

Cash and pledges given to Dana's million-dollar Development Drive now total nearly 360 thousand dollars, according to Development Director Boas Weismann.

This does not include the recent Borup bequest.

When the latest total was run about six weeks ago, the amount of pledges and money received was \$359,257.50—more than one-third of the goal.

As of February 16 actual collections totaled \$285,667.28.

Mr. Weismann said there are some potential large gifts.

"Certainly the law of averages will favor us in that regard," he said. "Alumni can aid us materially in helping to seek out such large donors, even to the extent of cultivating them," he noted.

### Church Support

A big factor in the drive in months to come will be support in the "Forward Phase" from the United Evangelical Lutheran Church.

The church has indicated it would give the college 202 thousand dollars over a three-

(See Page 8)

## Development Drive Nets Building Gift of \$172,489 In S. D. Woman's Estate

Dr. William Larsen, president of the United Evangelical Lutheran Church, announced the receipt of a \$172,489.59 bequest from the estate of the late Mrs. Maren Borup, Beresford, S. D.



## English Teacher Gets Study Aid

Norman C. Bansen, associate professor of English and Danish at Dana, has been awarded a one-thousand-dollar Martin Luther Fellowship by the National Lutheran Education Conference, Washington, D. C.

Mr. Bansen is to use the grant during the 1960-61 school year for advanced study and research in Scandinavian literature at the University of California at Berkeley.

Mr. Bansen has been a member of the faculty since 1952. He was a 1947 graduate of Dana and took graduate work at the Universities of Copenhagen, California, and Minnesota.

The UELC Church Council presented the gift to Dana with the stipulation that it be used for a building in the current Development Drive.

The building will bear the family name of the donor.

President C. C. Madsen said:

"This is unquestionably the largest single gift ever given to our college.

"The action of the leaders of our church in allocating this grant to us is, I believe, an expression of their tribute to the high quality and character of our faculty and students and their enthusiastic confidence in the future of Dana College."

## Concerts Slated in Minneapolis

The Dana choir will open its 1960 tour April 20 with a last salute to the United Evangelical Lutheran Church.

A few days later, the collegiate singers under the direction of Paul Neve will help launch a new Lutheran synod—The American Lutheran Church.

The opening concert of the tour will be given in Minneapolis, Minn., at the closing convention of the UELC.

### Mass Concert

With eight other choirs from colleges of the merging churches, the Dana singers will later present a mass concert featuring a cantata specially composed for the constituting convention of The ALC.

Other stops on the 13-day tour will be in Wisconsin, Illinois, Michigan and Iowa.

Home concert was scheduled for April 3 at the Blair High School Auditorium.

## Editorials

# It's Our Turn

In this *Alumnus* there are several articles dealing with financial gifts, both to colleges in general and to Dana in particular.

Two of them, we think, are of great interest.

One notes that in a recent study of more than one thousand American colleges, alumni were found to be the heaviest contributors.

The other story points out that a small percentage of Dana alumni have given annually to their college.

What's wrong with us?

Basically, nothing.

No one could say Dana alumni are not loyal. Traditionally, we have proven to be fiery advocates of our alma mater and what she stands for.

Our problem may be that we fail to walk the extra mile, or ask the extra question, or make the final telephone call in our efforts to help our college.

We can and should accept some responsibility on a personal basis for soliciting gifts to Dana on our own. If we have an acquaintance or a business associate who lights his cigars with hundred-dollar bills, we should tactfully put the touch on him.

A professional fund-raising consultant said that at one college where he served a substantial gift was made strictly through the efforts of one alumnus. This young man, unable to contribute much himself, made it a point to cultivate people he knew who were in a position to give sizeable amounts.

One potential donor, invited to the college by this eager alumnus, was so impressed by the young man's devotion and by what he saw at the school that he made a heavy contribution.

If only half of the alumni who owe allegiance to Dana College would actively seek funds for her growth, more than 1,350 persons would be engaged.

Let's check our record. Let's see how much we personally have given. And let's consider how much we could accomplish as financial missionaries.

Then let's hitch up our breeches and go to it.

## Were You Here When

A lecture called "George Washington as a Dane" was given on the campus?

The Red-and-White appeared on the athletic scene as uniform color for a gymnastic team?

There was sentiment to move Dana College from Blair to Omaha?

The old gymnasium was sold to a neighboring resident for use as a farm building?

Crown Prince Frederik and Crown Princess Ingrid of Denmark visited the campus?

Students pledged more than four thousand dollars in one year to help build Pioneer Memorial?

# Lead the Crowd

Before long the Dana College a capella choir will be on the road again.

For alumni and other friends of the college, this should be welcome news. The choir, one of Dana's oldest and noblest institutions, has established for itself over the years a national reputation as one of the most outstanding singing groups of its kind.

Director Paul Neve is to be commended for his many years of consistently successful efforts to produce choral groups which were and are a vivid illustration of the Christian mission of our college.

Once again the citizens of the Midwest will have an opportunity to hear the choir and learn more of the nature of that mission.

And alumni once again will have the opportunity and responsibility to lead in welcoming the visits of the Dana choir.

## From the President . . .

Scanning the pages of any daily newspaper is often a discouraging experience. The headlines tell of weapons of destruction, of the tense relations between nations, of the upheavals in underdeveloped areas—in general, they tell of a world of turmoil.

Perhaps all of us at times experience a sense of frustration or even hopelessness as we read these newspaper lines. Yet without a doubt times such as these provide a challenge—a challenge to leadership and a challenge to Christian witness.

Certainly, Dana as a Christian liberal arts college must rise to the task of providing leaders for our world. In every area of life we need thinking, responsible individuals, but even more we need men and women who have a commitment to a higher calling, that of Christian service.

Students must be led to see the challenge. Many perhaps would rather withdraw to a world of their own private concerns, but they must see that this is a luxury which cannot be afforded.

To alumni the challenge is twofold. One is to use our lives in leadership and witness as we have opportunity. And, secondly, we have the challenge to help support and expand the work and influence of Dana in terms of an ever-growing number of "committed" students that it provides.

**Bob Hemmingson**

---

How generous are alumni?

According to the Council for Financial Aid to Education, Inc., they are the biggest contributors to American colleges.

A nationwide survey by the council showed that alumni associations topped all other sources in giving.

A study of 1,071 colleges disclosed that during the 1958-59 academic year the schools received \$751,405,590 in gifts, an increase of almost 21 per cent compared with 1956-57.

Alumni associations accounted for \$152,582,763 of the total. Other sources:

Non-alumni organizations and families, \$139,349,375; governments, \$124,822,028; business corporations, \$98,456,255.

However, the council report said, the corporation statistics did not include "large amounts" given directly to students as scholarships, fellowships and other forms of aid.

John A. Pollard, council vice-president, estimated the total business-world contributions at 150 million dollars.

That is still about two million dollars short of the total set by alumni.

In the next decade, Mr. Pollard said, colleges will need an estimated nine billion dollars yearly.

## Alumni Job Filled; Clubs Emphasized

Calvin O. Jorgensen has been appointed Director of Alumni Affairs.

Mr. Jorgensen will continue his present duties as Admissions Counselor until June 1.

President C. C. Madsen said Mr. Jorgensen's chief responsibility will be in organizing Dana alumni clubs in areas where large numbers of Dana graduates are living.

This assignment will be in addition to Mr. Jorgensen's work in the admissions field.

## Scholarships To Be Split

Dana and Nebraska's other church-related colleges have abandoned their joint program of awarding scholarships to high school seniors.

Hereafter, each college will operate its own scholarship program.

"The individual colleges just didn't have any say as to who got the scholarships," said Dr. Vance Rogers, president of Nebraska Wesleyan University, in a newspaper interview.

About four hundred scholarships were awarded each year under the joint program.

The other denominational schools involved are Hastings, Concordia Teachers, St. Mary's, Duchesne, Midland, Doane, Union and York Colleges, Luther Junior College and Creighton University.

## Alumnus

Dana College and Trinity Seminary

Vol. XVI March, 1960 No. 1

A quarterly bulletin published by the Alumni Association of Dana College and Trinity Seminary at the Lutheran Publishing House, 138 No. 17th Street, Blair, Nebraska. All matters pertaining to business should be addressed to the Alumni Office, Dana College, Blair, Nebraska. Second class postage is paid at Blair, Nebraska.

Alumni Association of  
DANA COLLEGE and  
TRINITY SEMINARY

Pres. Bob Hemmingson  
Sec. Luella Nielsen  
V. P. Forrest Leighton  
Treas. Hughie Hughes

## Help Wanted

Part of the job of making the goal of the Annual Giving Program will fall on the shoulders of Alumni Association members who are acting as class representatives.

Most of these persons already have begun working among members of their graduating classes. However, there are some classes still unrepresented.

They are the classes of 1908, 1909, 1910, 1914 through 1917, 1919, 1920, 1922, 1924, 1928, 1929, 1930, 1932, 1945 and 1946.

Persons willing to be agents for those classes should notify the Development Office at Dana.

Other class representatives:

1958—Pete Smith, Forest Park, Portland, Me.

1957—Mrs. Marilyn Nichols, Apt. 203 I, Eagle Heights, Madison 5, Wis.

1956—Harold Laursen, Blair House, Wartburg, Dubuque, Ia.

1955—Orvan Petersen, Box 965, Hall D.S. Rec. Hall, Columbia, Mo.

1954—Mrs. Robert Coffey, 114 S. Elsworth, Naperville, Ill.

1953—The Rev. Fred Reinke, 1304 4th Ave., Great Falls, Mont.

1952—Bruce Jensen, 5324 Adams, Lincoln, Nebr.

1951—Warren Rasmussen, 620 N. Pleasant, Colorado Springs, Colo.

1950—The Rev. Robert N. Hansen, 1519 East Ave., Selma, Calif.

1949—Dean R. Madsen, La-Moille, Ill.

1948—The Rev. Ried Neve, 1610 W. 5th, Storm Lake, Ia.

1947—The Rev. Raymond Paulsen, 628 E. Fulton, Waupaca, Wis.

1944—The Rev. Oscar Johnson, 19711 Hubbell, Detroit 35, Mich.

1943—Mrs. Paul Neve, Dana.

1942—Mrs. Edna Nance, 2871 Kameraia, Denver 5, Colo.

1941—Mrs. Richard Boe, 6944 Florence Blvd., Omaha, Nebr.

1940—The Rev. Fred Jacobsen, 905 Frank Ave., Albert Lea, Minn.

1939—The Rev. Adolph Kloth, 7410 Tujunga Ave., North Hollywood, Calif.

1938—The Rev. Stanley Larsen, 418 Main, Sidney, Mont.

1937—Harold Quailsett, Clarkson, Nebr.

1936—The Rev. Andrew Staby, 523 Custer, Brush, Colo.

1935—The Rev. Ben J. Engskow, Ruskin, Nebr.

1934—The Rev. R. E. Morton, 546 W. Tokay, Lodi, Calif.

1933—The Rev. Wesley M. Anderson, Evan, Minn.

1931—Mrs. Harold Danielson, 312 E. 5th, Albert Lea, Minn.

1927—Orville Nielsen, Aurora, Nebr.

1926—The Rev. Edwin Petruson, 10220 3d Ave., Inglewood, Calif.

1925—Arthur F. Nelson, 233 5th Ave. S., St. Cloud, Minn.

1923—The Rev. Aaron E. Christiansen, 21719 Military, Dearborn, Mich.

1921—The Rev. Joseph M. Girtz, 11419 Casimir Ave., Inglewood, Calif.

1918—Agnes M. Nielsen, 217 Front, Adrian, Mich.

1913—The Revs. P. C. Jensen and Frank Nielsen, Blair, Nebr.

1912—The Rev. Chr. Jeppesen, Ord, Nebr.

1911—Mrs. R. R. Barber, 3494 Larimore Ave., Omaha, Nebr.

## Goal Set at \$17,500 by Fund Officials; Association Numbers Asked to Share

The annual giving program worked out in 1959 now is ready to be implemented.

Under this plan, Alumni Association dues were eliminated and a combination of Association and Dana Foundation giving was decided upon.

The annual gift program, not to be confused with the current Development Drive, is aimed at raising a specific sum

each year by appealing to alumni to participate financially in Dana's continuous program of progress.

Goal this year is \$17,500.

### Few Annual Gifts

Records show only a small proportion of alumni have made annual contributions to the college.

Development Director Bo Weismann said he would guess "it is not because Dana alumni are less able to give or less loyal or less generous than the alumni of other institutions."

Mr. Weismann said the reason for the poor record may be that alumni are unaware of how much Dana depends upon unrestricted annual giving to meet annual operating expenses.

### Many Categories

Funds from this annual drive will be used for many purposes—student scholarships, building maintenance, faculty salaries, heat, light, power, library books, the Alumni Association office, the Alumnus and so on.

Letters outlining the annual gift program and urging alumni support will be in the mail soon. Mr. Weismann had this message for alumni:

"We hope that you will receive these letters thoughtfully. We hope you will find it in your heart and in your head to give. Whether your gift be large or small, decide now to participate."

## Margaret Hansen Fund Is Started

A memorial fund has been established for Miss Margaret Hansen, former college dietician who died in January.

Persons wishing to contribute should notify Building Superintendent David Bidstrup at Dana.

Miss Hansen, 57, is survived by two brothers and three sisters. Services were held in Blair with burial in Missouri Valley, Ia.

## Royalty Probably Won't See Dana

The King and Queen of Denmark probably will not be in the United States long enough next fall to renew their acquaintance with Dana.

King Frederick IX and Queen Ingrid would like to visit the college if possible, however, The Omaha World-Herald reported in a recent story.

While the itinerary for the October trip is far from complete, Danish sources say the royal couple will probably spend only 10 or 12 days in this country.

Visits to New York and Washington, D. C., will take at least a week.

At the Danish Embassy, officials said they were certain that if the King and Queen had the time, they would like to include the college in their itinerary.

The couple visited the campus in 1939, when Frederick was Crown Prince.

It is believed Val Peterson, U. S. Ambassador to Denmark, will be brought back home for the visit. Mr. Peterson, former Governor of Nebraska, spoke at the 1959 Dana Homecoming.

Miss Elja McCullough, head of Dana's elementary education department, will conduct another in a series of educational summer tours this year. Itinerary includes Florida, New Orleans, Mexico City, Guatemala, Yucatan and the Great Smoky Mountain area.

On Destiny's Deep Sea . . .

# Alumnus in Samaritan Role

A former Danian is playing a leading role in a unique adventure in social planning for the elderly.

At Hastings, Neb., in an 80-acre tract which once was a Government housing development, the Rev. William Goldbeck is directing an operation which in time may open whole new vistas for America's so-called "senior citizens."

This is the Good Samaritan Village, a retirement colony started in 1958 as part of the Good Samaritan Society of Fargo, N. D., a Lutheran Church-related organization.

## Growth Expected

The society operates 63 homes in 12 states.

Eventually, the population of the spacious, well-planned village may reach eight hundred. Planned additions to the present physical plant include a shopping center, chapel, recreation center, park, greenhouse, library and hobby shop.

What is the Good Samaritan Village?

Here is a description given by the Journal of the American Medical Association:

## Quarters for 850

"The Good Samaritan Village was established with the

purchase of about half of the project's 850 apartments.

"Streets and sidewalks are paved and all apartments are equipped with gas radiant heating units and water heaters.

"Hospital care is available to Good Samaritan Village residents at the 138-bed hospital in Hastings. Laboratory work is currently done through outside facilities, but an enlarged infirmary now in the planning stage will include a laboratory as well as facilities for oxygen, basal metabolism rate equipment, electrocardiogram, X-ray and sterilization.

## Non-Profit Operation

"The Village is designed to operate on a non-profit, self-sustaining basis offering 'security, Christian care and companionship' for those of normal retiring age or who for other reasons must limit their activities.

"Five levels of care are available:

—One to three-bedroom apartments for couples or individuals who are capable of caring for themselves and who seek only the companionship of their own age group.

—Similar apartments for

those who can maintain their own households with assistance from a 'house visitor' who will come each day to help with household duties and meal planning.

—The same living arrangements as above, but with provision for one or more meals in a central dining room.

—A rest home providing personal care under medical supervision for those who need help with feeding, dressing, walking and similar activities.

—An infirmary section of the rest home for those in need of nursing care and medical supervision."

Answers to the problem of caring for the elderly are eagerly sought today and, according to the AMA Journal, the Good Samaritan Village is convinced it has one of the better solutions.

Alumnus Goldbeck is a former chaplain at the Hastings State Hospital. He is aided in his work at the Village by an advisory committee of Hastings business and professional leaders.

Other volunteer groups help out with recreational ventures.

They have three children, Pamela, three, and twins Kathryn and Candace, two. PETER THORSLEV, JR., 1009 Davis Street, Evanston, Ill., received his Ph.D. from the University of Minnesota December 17.

## 1939

CARLYLE C. HANSEN (36-39) has taught 13 years at San Diego, Cal. He and Mrs. Hansen have four children, live at 6863 Glenroy in San Diego.

## 1938

Ranching, flight instruction and aerial spraying are occupations of LEONARD E. NELSON (36-38) on the Bar J Lazy V Ranch, Potter, Neb. The Nelsons have five children.

## 1936

Mr. and Mrs. Robert Martin (MARGERY NELSON 35-36) are operating a studio

and camera shop at Red Oak, Ia. Last November Margery was elected to the City Park Commission. The Martins have two children, Sara Elizabeth, seven, and Nelson Peter, two.

Mr. and Mrs. Ray Montz (IRENE GLASSNAPP 35-36) are living at Estherville, Ia., where Irene teaches second grade. They have four children.

## 1932

The Rev. ERHARDT NIELSEN, pastor of Our Savior's Lutheran Church at Audubon, Ia., recently was named "Man of the Year" by the Audubon Chamber of Commerce.

## 1930

Mr. and Mrs. D. A. Thomsen (ELENORA BANG 07-08) are managing the Okoboji Lutheran Camp at Milford, Ia. Their address: Route 3, Spencer, Ia.

# Engagements

## 1959

ROGER KLOPP (58-59) and MARY JACOBSEN (52-54) plan a summer wedding. Mary is teaching at Storm Lake, Ia., Roger at LeMars, Ia.

MARY LAMBRECHT (58-59) and Lyle Christensen. Mary is teaching at a Washington County, Neb., school and Lyle is employed by Northwest Grain and Feed, Irvington, Neb.

## 1952

CALVIN JORGENSEN, Dana admissions counselor, and Alice Erikson, Denver, Colo. A June wedding is planned.

# Weddings

## 1959

MARY ADAMS (57-59) and Reinhold (Tom) Teten, Jr., February 20. Mary teaches second grade at Cook, Neb. Their address is Talmage, Neb., where Tom farms.

## 1958

Dr. Leland Rosenau and D'ARLENE MORTON, December 20 at Lodi, Cal. Their address in Lodi is 537 Connie.

## 1955

THOMAS EHLERS (54-55) and Carolyn Lindberg, December 2 at O'Neill, Neb. Their address: 1640 South

## 1956

Mr. and Mrs. JAMES A. CLEMON have moved to 2729 Mary Street, Omaha, Neb.

## 1955

BETTE MILLER, 105 Dolores Apartments, Ames, Ia., is teaching junior high school mathematics in the Ames school system.

## 1954

Pastor and Mrs. ARNE JESSEN now live at Atwater, Minn., where Arne serves the Bethlehem Lutheran Church.

## 1953

Mr. and Mrs. FRANCIS A. MORROW and Stephen, two, are living at Hartington, Neb., where Fran is head basketball coach and principal of the Hartington Public Schools. He is to receive a master's degree in administration this August from

Wayne State Teacher's College.

## 1952

Mr. and Mrs. Arlo Moss (DOLORES RHODES S.S. 52) are at Flagstaff, Ariz., where Arlo is attending Arizona State College. They have two children, Mark Allen, six, and Amy, two.

## 1950

Mr. and Mrs. HAROLD KRAYBILL (48-50) moved to Blair April 1. Harold, who has been in welfare work in Nebraska 15 years, retired March 31 after three years as Madison County Welfare Director.

Mr. and Mrs. PAUL EUGENE Mengers (ARDIS GRAMPS 47-49) now are living at 231 Hillcrest Road, Ithaca, N. Y., where Gene is an engineering physicist for the General Electric Advanced Electronics Center.

Thirty-eighth Street, Lincoln, Neb.  
RAYNOR HEMMINGSEN (53-55) and Ingrid Schwarz, Schwetzingen, Germany, December 6 at Elk Horn, Ia. They now live at 801 Linn Street, Atlantic, Ia., where Raynor is employed by the Challenge Feed Company.

BETH KRUSE (53-56) and Edward Cecil, December 28. Beth is with the Department of Mental Hygiene of the state of California. Her husband, a Colorado State University graduate, is a civil engineer with the California Department of Water Resources. The Cecils live at 3405 Evergreen Circle, Apartment 13, West Sacramento, Cal.

1952

Pastor and Mrs. MELIUS BOLLESEN were married in December. Their address is 904 Bluff Street, Cedar Falls, Ia.

1951

ELLEN JENSEN and Ed Davis, December 5. They live at 516 Mississippi Street, Alliance, Neb.

Mr. and Mrs. Roger Peterson (BETTY PETERSON 49-51), December 2 at Albert Lea, Minn. Their address: Route 1, Aurora, Minn.

## Births

### Sons

Bradley Robert, born last August 22 to Mr. and Mrs. ROBERT MADISON (59), Poy Sippi, Wis. Bob works at Madison Hardware and Implement, is secretary of Poy Sippi's First Lutheran Church.

To Mr. and Mrs. JAMES VAMMEN (58), on January 29. The Vammens moved recently from Thurston, Neb., to Blair. They have two other children, a son, four, and a daughter, two.

Bradley Clarence, born January 4 to Mr. and Mrs. HARLEY PETERSEN (55-57), 264 South Street, Blair. They have another son, Russell Kent, 22 months old.

Martin L., Jr., born last July 23 to Mr. and Mrs. MARTIN L. ANDERSON (55) (HELEN VIDEBECK 54-55), 4133 Virginia Avenue, Lynwood, Cal.

Paul Leslie, born October 15 to Mr. and Mrs. ERLING SCHULTZ (55) (DOROTHY WILLMERT 58), 2329 College Drive, Blair. They also have a daughter, Debbie, two.

Linwood, Martin, born January 23 to Pastor and Mrs. LINWOOD FREDERICKSEN (53) JOANN HAVICK 50-51), 835 Ninth Avenue, N.W., Minot, N. D. They also have a daughter, Barbara Lynn, five.

Bruce Alan born February 16 to Mr. and Mrs. ROBERT COFFEY (49-52) (JOAN NELSON 54), 114 South Ellsworth, Naperville, Ill. Bob is an engineer with the Carrier Corporation of Chicago. The Coffeys have one other son, Timothy James, two.

Glenn Allen, born December 31 to Mr. and Mrs. Glen Jackson (MAY SKOBO 52), 2408 South Gayland, Denver, Colo.

### Daughters

Lori Renae, born last October 21 to Mr. and Mrs. ROGER MADSEN (59) (SHIRLEY ALME 55-56), Sargent, Neb.

Karen Elizabeth, born February 20 to Mr. and Mrs. DAVID BIDSTRUP (58) (BETTY CHRISTENSEN 55-57), 1565 South Street, Blair.

Linda Marie, born in December to Mr. and Mrs. PETER SMITH (58) (JANET LANGENFELD 56-58), Forest Park, Portland, Me. Pete is public relations chief for the Greater Portland Chamber of Commerce.

Kristin Kay, born October 10 to Mr. and Mrs. FRANK GABBY (56) (NANCY BELLOWS 53-54), 1963 Nebraska Street, Blair. The Gabbys have another daughter, Pam, five.

Karen Elizabeth, born December 1 to Mr. and Mrs. FRITZ YOURA (56) (JANICE MOEN 54-56), Wartburg Seminary, Dubuque, Ia. They have another daughter, Catherine Jean, two.

Kathleen Odette, born December 29 to Mr. and Mrs. BILL INGLE (53-54), Princeton, N. J. Bill, a senior at the Westminster Choir College, directs six church choirs and gives private lessons in voice, trumpet and clarinet.

Lisa Joy, born February 21 to Pastor and Mrs. WILLIAM KING (54) (JOYCE HAYFK 53), Moorhead, Ia.

Tammie Sue, born January 28, 1959, to Mr. and Mrs. HARVEY SORENSEN (53-54), Creighton, Neb.

Kristyn Jeanette, born February 14 to Mr. and Mrs. RICHARD ANDERSEN (53) (LOIS PETERSEN 52), Wartburg Seminary, Dubuque, Ia.

Sandra Kay, born last September 3 to Pastor and Mrs. MARK THOMSEN (53), who are on a one-year furlough in the United States from missionary duty in Nigeria. The Thomsens have two sons.

Andrea Gwen, born January 10 to Pastor and Mrs. EDWIN HANSEN (52) (ELEANOR ANDERSEN 42-43, 48-49), Swan River, Manitoba, Canada. The Hansens have one other daughter.

## New Jobs, Promotions

1959

PATRICIA ANDERSEN, 2044 South Street, Blair, is employed at the home office of the Woodmen of the World Life Insurance Company in Omaha.

CARMEN CRAIG is buyer and manager of the boys' department of the Nebraska Clothing Company, Omaha. His address is 1908 South Thirty-eighth Street, Apartment 105, Omaha.

WENDELL HENDRICKSEN, 3345 Meredith Avenue, Omaha, is now employed by Immanuel Hospital as a storekeeper.

JACK LINAHAN is a forest ranger in Estes Park, Colo. His address is Box 1332, Estes Park.

1958

Mr. and Mrs. ROBERT OSTERGAARD (MARLENE PEDERSEN 57-59) have moved from Omaha to St. Paul, Minn., where Bob will continue his work with Lutheran Brotherhood Insurance. Their address: 2438 Century Avenue, North St. Paul 9, Minn.

1957

Mr. and Mrs. CHARLES JOR-

GENSEN (51-52, 56-57) (JELAYNE CARPENTER 57-58) have moved from St. Paul, Minn., to Apartment 37A, 1800 Watrous Avenue, Wakonda Village, Des Moines 15, Ia. Charles is employed by the Kimberley-Clark Corporation.

1956

Mr. and Mrs. PHILLIP E. PETERSEN have moved from Topeka, Kans., to 11621 West Sixty-eighth Place, Shawnee, Kans. Phil is now employed by Dunn & Bradstreet in Kansas City. They have one son, Kirk Steven, 19 months.

1954

Pastor and Mrs. PETER MATIASSEN (ELNA NIELSEN 52-54), missionaries to Brazil, have been placed in the frontier city of Loanda. They have one son, Paul, three. Their address: Caixa Postal #3, Loanda, Parana, Brazil.

1953

JAMES P. McCORMICK (52-53), 2524 South Thirty-first Street, Omaha, has been promoted to Airman First Class.

1948

Mr. and Mrs. RUSSELL MEGRUE (46-48) now live at 2574 Rice Street, Columbus, Ga., where Russell is a special agent of the Federal Bureau of Investigation. He serves on the Board of Governors of the Denver University Law School. The Megrues have two children, Jeffrey Michael, four, and Stephen Mark, one.

1947

JOYCE McLEOD, 1203 Oread, Lawrence, Kans., has been appointed head of the reference department of the University of Kansas library.

1928

ALTA MARIE NELSON (27-28), 1732 North Maxwell, Fremont, Neb., now is employed as an office nurse for Dr. H. H. Morrow of Fremont.

1926

Pastor and Mrs. HAROLD C. JORGENSEN (EMMA PETERSEN 25-26) and family have moved to Ashland, Neb., where the Rev. Mr. Jorgensen now serves a congregation of the American Lutheran Church.

## Choir Schedule

April 20—UELC Closing Convention, Minneapolis, Minn.

April 21—Northfield, Minn.

April 22—Hutchinson, Minn.

April 23-24—The ALC Constituting Convention, Minneapolis.

April 25—Kenosha, Wis.

April 26—Kankakee, Ill.

April 27—Chicago, Ill.

April 28—Detroit, Mich.

April 29—Saginaw, Mich.

April 30—Greenville, Mich.

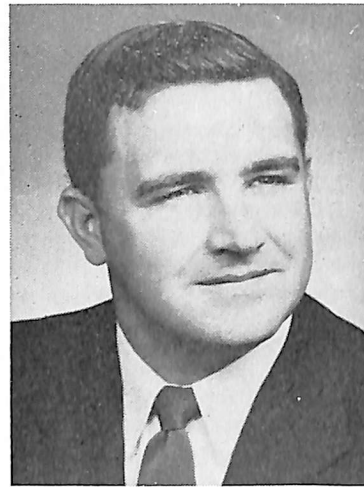
May 1—Dubuque, La.

May 2—Cedar Falls, Ia.

## The Nominees



Barbara Hansen



Earl Pace



Dr. Clifford Hanson

## LOST LIST

From time to time the Alumnus becomes a bureau of missing persons. Months ago we printed a list of hundreds of persons with unknown addresses. Here are some additions to that list.

Please send a card to the Alumni office at Dana if you know the whereabouts of:

- Alvin Andersen '21-'23
- Marilyn M. Andersen '52-'54
- George Andreasen '46-'47
- Esther M. Bentsen (Mrs. Russel Koepke) '22-'24
- Norman Clark '56
- Antonio Cruz '50
- Vern Dirgo '54-'55
- Jacqueline Garrett '54-'55
- Maxine Gilbert (Mrs. William Cooper) '45-'46
- Robert Hannon '57-'58
- Marcia Hansen (Mrs. Roger Larsen) '48-'50
- Philip Hasen
- Winnie Hatfield
- Mary Esther Howe (Mrs. Donald Gattie) '45-'46
- Marion Hudson '56
- Elsie Hughes (Mrs. Chester Charles) '36-'37
- Betty M. Jensen
- Duane A. Jensen '49-'50
- Marie K. Jensen '55-'57
- Richard K. Jensen
- William B. Jensen '55 (2)
- Franklin D. Jespersen '50-'52
- Mr. and Mrs. Willis Johansen '46-'48 (Beverly Clausen)

(See Page 8)

## \$101,350 To Dana, Others

The Nebraska Independent College Foundation in 1959 scored the second biggest growth record in the country among similar organizations affiliated with the Association of American Colleges.

The NICF includes six other colleges besides Dana, organized to raise funds from business and industry.

Executive Director Howard B. Dooley said the foundation received \$101,350 last year from 132 corporations.

This represented a 69 per cent increase from 1958 when \$60,101 was contributed.

The seven schools share 60 per cent of the funds equally. The remaining 40 per cent is apportioned according to enrollment.

A state association in Florida was the only organization of its kind to realize a bigger percentage increase in fund raising than the NICF.

## You Might Call This Bipartisan

Love blossomed amid the legislation at the Illinois General Assembly, so two lawmakers—one a Dana alumnus—have decided to make their frequent huddles at committee meetings a lifetime conference.

It all started two sessions ago when Jeanne Hurley of Wilmette ran for the assembly and ran.

She and Representative Paul Simon of Troy, who attended Dana in 1946-48, found themselves seated side by side on the Democratic side of the aisle.

Their paths crossed often during the lawmaking and recently Representative Hurley, 37, announced she will quit the legislature to marry Mr. Simon, 31.

The wedding is to be held this spring.

But Jeanne will have to give up her seat. Her fiancé's district in Madison County in southern Illinois is some three hundred miles from Wilmette, a Chicago suburb.

## Alumnus To Ivy Session

Dr. Lyle E. Jacobsen, Class of 1951, has been selected to participate in a two-month faculty seminar to be held at Harvard University this summer.

Sponsor of the session is the Ford Foundation. Purpose is fostering new developments in teaching methods and materials and in research.

Dr. Jacobsen is an accounting professor at the Graduate School of Business, Stanford University, Stanford, Cal.

He is chairman of the Committee on Educational Standards of the California Society of Certified Public Accountants, San Francisco Chapter.

Dr. Jacobsen has recently been appointed to the Committee on Research of the American Accounting Association. He received his master's degree from the University of Nebraska in 1955 and his Ph.D. from the University of Illinois in 1957.

## Sorensen Seeks Iowa Board Seat

Anchor (Buck) Sorensen, 47, a Dana alumnus who now farms near Avoca, Ia., is a candidate for the Pottawattamie County (Iowa) Board of Supervisors.

Mr. Sorensen, a Republican, also attended the University of Nebraska and served with the Marine Corps in World War II.

## Bartley Retiring From Wesleyan

A former head of the Dana business department is one of three Nebraska Wesleyan University staff members whose impending retirement has been announced.

He is James Earl Bartley, member since 1935 of the Wesleyan staff, where he is treasurer of the college and associate professor of economics and business administration.

Previously Mr. Bartley headed the Dana business department for five years. Wesleyan President Vance D. Rogers said Mr. Bartley will be retired with emeritus status.



## Vikingettes Gain Top Four Status

If the Dana men's basketball team had been as successful as the women's team, it would have qualified for the national championships.

The Vikingettes did just that.

By ranking among the four top teams in the Midwest they earned a spot in the National Women's AAU Tournament at St. Joseph, Mo.

Their first-round opponent: the Flying Queens of Wayland College, Plainview, Tex.—the top-ranked women's team in the country, who had little trouble defeating the Dana team.

This was equivalent to pitting the Dana men against Cincinnati, Ohio State or California Universities, the top men's teams.

During the regular season the Dana girls finished second in the Omaha-area Women's AAU League.

Then in the Midwest AAU Tournament held at Dana, the Vikingettes reached the semifinals before losing to Omaha's Commercial Extension, fourth-ranked nationally, 48-26. The Omaha team went on to take the title.

Vikingette scoring leaders were Donna Layton, Shirley Thompson and Dixie Hagedorn.

Miss Layton, who finished second in league scoring, Miss Thompson and Miriam Petersen, a defensive specialist, were selected to play on an all-star team in a benefit for an injured Omaha policeman March 19.

Miss Layton led the all-star scoring with eight points.

Although the Vikingettes got more headlines than the Vikings this winter, the co-eds owe much of their success to two Dana men.

The Vikingettes were coached by Athletic Director Paul Peterson and Everett Johnson, a senior from Ute, Ia.

## TV Guest

Dr. C. C. Madsen was a guest recently on a WOW-TV news conference in Omaha. Topic: the needs of Nebraska's independent colleges.

## Best Games Late; Vikes Finish Last

Dana's basketball team failed to win a game during the second semester and finished last in the Nebraska College Conference standings.

The Viking record: one win, 17 losses.

The lone victory was an upset over Chadron State in December. Chadron finished in fifth place.

Dana's best late season games surprisingly were against two of the league's top teams, Wayne State and Midland. Wayne tied Nebraska Wesleyan for the championship; Midland finished fourth.

Larry (Bud) West, a 6-1 sophomore, ranked eleventh among conference scorers with 253 points, an average of about 14 a game.

He received honorable mention in the all-conference listing.

Here's an indication of the caliber of play in the NCC this winter:

Doane College, which boasted the nation's leading small college scorer in Gene Velloff, could finish no better than eighth place.

Velloff, a 6-4 guard, averaged a little more than 36 points a game. Doane won four, lost 14.

## NCC Standings

	W	L
Wesleyan .....	15	3
Wayne .....	15	3
Peru .....	14	4
Midland .....	13	5
Chadron .....	9	9
Kearney .....	9	9
Hastings .....	7	11
Doane .....	4	11
Concordia .....	3	15
Dana .....	1	17

## Danish Cousins Reunite at Dana

The campus was scene of a reunion between two Danish students recently.

Miss Inger Hansen and Miss Ulla Korshoj, both nieces of Mr. and Mrs. Simon Korshoj and Chris Korshoj of Herman, Neb., had not seen each other for nearly three years before their enrollment at Dana.

Miss Korshoj is studying art, Miss Hansen mathematics and chemistry.

## Thanks

The editors are grateful to Mr. William E. Christensen for providing most of the material making up one of the new features of this issue of the Alumnus. The reminiscent matter in our "Remember When" department was adapted in large part from his Diamond Jubilee history, "Saga of the Tower."

## Dorm Will Have Distinctive Front

A distinctive gray-and-red stone facing is planned for the women's dormitory under construction at Dana.

At last report the building south of Old Main was completely enclosed and all the structural steel had been put in.

An interesting construction feature is the placement of pre-cast concrete slabs. These are trucked to Blair from Des Moines, Ia., for quick installation.

The Korshoj Construction Company of Blair is building the dormitory.

## Jenkins Chosen For World Tour

Isaac Jenkins, son of the Rev. and Mrs. R. F. Jenkins, of Omaha, a senior music student, has been named to the 1960 All America Chorus.

He also received a four-hundred-dollar scholarship, the largest awarded.

The chorus includes students selected from various colleges. It will tour eight European countries this summer. Concerts have been scheduled in Monte Carlo, Milan, Lucerne, Munich and Paris.

## Development Drive

(From Page 1)

year period.

That amount would put the drive well over the half-way mark.

Mr. Weismann noted there are many congregations which have not given to the "Forward Phase," and said he hoped alumni could stimulate more interest in their congregations.

### Progress Report

What has actually been accomplished in the long-range program of development?

Quite a lot, the record shows, in two categories—physical and academic.

One of the most dramatic indications of academic progress is in current salary schedules for faculty members.

In three years, the ceiling scale for full professors has jumped from five thousand to seven thousand dollars a year.

Proportionate increases have been made in other faculty ranges.

### What Shows?

It is clear to any campus visitor that physical growth has been speedy.

Accomplishments so far in the development push include:

—Purchase of an additional one hundred acres of land for expansion, making the Dana campus one of the largest in the state.

—Grading and seeding of new campus areas.

—Surfacing and curbing of new roads through the campus.

—Installation of parking facilities and additional sidewalks.

—Building of an impressive track and football field overlooking Blair and the valley of the Missouri River.

—Installation of an eight-inch water line for protection and sinking of an irrigation line and well.

### What's Going On?

All of the above are completed tasks. They provide a sort of anchor for what is now in process:

—Construction of a new residence hall for women.

—Rejuvenation and modernization of Old Main.

—Payment on balance on purchase of additional campus

land.

—Continuing efforts to enlarge faculty and staff, increase salaries, improve laboratory and classroom facilities and library and research facilities.

### What Next?

Future plans include:

—Construction and furnishing of a student activities-physical education building.

—Remodeling and renovation of the present gymnasium for other academic uses.

—Construction and furnishing of a science hall.

—Furnishing additional housing for men.

—Continuing improvement in the academic program.

## Election

(From Page 1)

lives at 520 North Nineteenth Street, Blair. Mrs. Pace is the former Miss Charlotte Hunsche, Herman, Neb.

Alumni Council candidate Harold Qualsett is a member of the Class of 1937. He was senior class president, played basket ball and was a member of the Dana choir which toured Europe in 1935. He was listed in the publication "Who's Who in American Universities and Colleges."

Mr. Qualsett is executive vice-president of the Clarkson Bank, Clarkson, Neb.

Dr. Hansen, pastor and educator, attended Dana from 1937 to 1939 and Trinity Seminary from 1941 to 1944. He holds a Bachelor of Arts degree from the University of Minnesota, Bachelor of Divinity from Trinity, Master of Arts from Minnesota and Doctor of Philosophy from the University of Nebraska.

### Dana Professor

For five years Dr. Hansen was pastor of Underwood Evangelical Lutheran Church, Underwood, Ia., before joining the Dana faculty in 1949. He was a professor of philosophy and Greek until 1956, when he went to Willamette University, Salem, Ore., for two years at professor of philosophy.

Dr. Hansen now is on the staff at Wartburg College, Waverly, Ia.

Private liberal arts colleges have an extremely important role in higher education in America, for theirs is a distinctive type of education that publicly supported institutions do not duplicate. But the private college has an uphill road, in a time of rising costs. In many instances, the very survival of these colleges may depend on the loyal support of their own alumni.

—Cincinnati Enquirer.

## Lost List

(From Page 6)

sen '46-'48)

Mrs. Bud Johnson

Helen E. Jorgensen (Mrs.

Dan Zelinger) '50-'51

Ruth C. Kastrup '47-'48

Ruth Kirkegaard (Mrs. Ruth

Svinth) '50-'52, '54-'55

Leo Lang '19-'21

Dorothy M. Lange (Mrs.

Robert Shewanick)

Otto H. Larsen '40-'42

Mildren L. Olsen (Mrs. Rus-

sell Cheney) '33-'34

Anna Pedersen (Mrs. Anna

Dottar) '35

Marvin Petersen '37-'39

Donald Phillips SS '50

Kathryn Sas (Mrs. Wilford

Petersen) '34-'37

Marlene Schaff (Mrs. James

Bruning) '56-'57

Thomas Septetrup

Mr. and Mrs. James Snow

(Helen Snow '57-'58) '57-

'58

Martha Sorensen '47-48

Joe Svitavsky '48-'49

Gary Uehling

Dr. Adolph Vammen '36-'38

Mr. and Mrs. Duane Wert

'45-'46 (Joy Larsen '44-'46)

## Al Bonde Dead

Albert Bonde, Class of 1952, died January 13 at Los Angeles, Cal., of a heart attack. He was living with a sister who is his only survivor.

## Bixler Files in Nebraska House Race

Former Danian J. Monroe Bixler will seek nomination in the May primary as the Republican candidate for Nebraska's Fourth District seat in the House of Representatives.

David T. Martin, 52, Kearney, Neb., lumberman and former Nebraska Republican Chairman, also has filed for the nomination.

Mr. Bixler, 42, a Harrison, Neb., rancher, business man and former state senator, was a central figure in the vote-recount controversy following Nebraska's last gubernatorial and state election.

### Dropped Out

His apparent defeat by O-mahan Richard Larsen in the race for state treasurer was one of the GOP losses being contested in the recount. Mr. Bixler drew state-wide attention when he announced he would not go through with the recount.

The Fourth District seat in Congress is held by Representative Donald F. McGinley.

Mr. Bixler served three Nebraska legislative terms in 1953-58. He was Revenue Committee chairman in the 1957 Legislature.

### "Proven Stature"

Everett Dennis, Fourth District Republican chairman, said, "I am glad to have a part in securing the consent of Mr. Bixler to file and it is important to good government to have a man of the proven stature of Mr. Bixler campaign for Congress on the Republican ticket."

## Dana College and Trinity Seminary Alumni Association Blair, Nebraska