

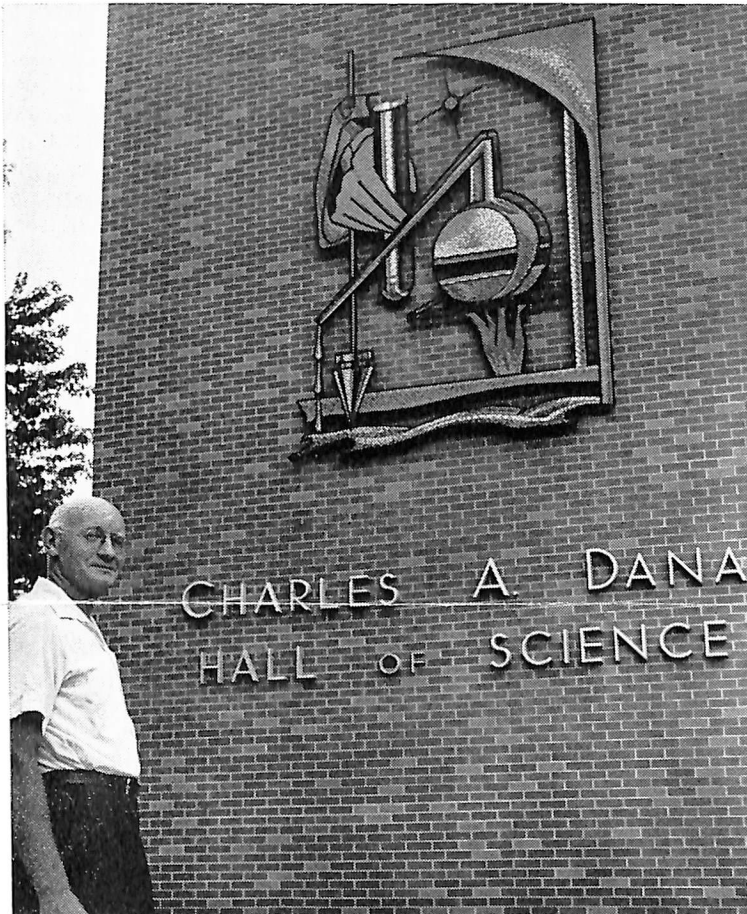


The Dana REVIEW

Dana College, Blair, Nebraska

October, 1963

Published Monthly Except July and August



THOMSEN AND MURAL
Art and Science

Record Freshman Turnout Boosts Enrollment Total

The largest freshman class in Dana's history—215—pushed enrollment to a record total this fall.

At the close of registration week enrollment had

reached 537, the registrar's office reported. Last year's opening enrollment was 528.

The freshman class is larger than Dana's total enrollment 10 years ago. In 1953 the college opened the school year with 209 students.

This year there are 88 seniors, 103 juniors, 118 sophomores and 13 special students. Campus housing is filled, officials said.

The convocation officially opening Dana's seventy-ninth academic year was September 8 at First Lutheran Church.

The speaker was the Rev. Dr. Theodore Fritschel, pastor of Westwood Lutheran Church, Kansas City, Mo.

Classes began September 6.

Death Takes J. P. Nielsen

Dr. J. P. Nielsen, professor emeritus and former president of Trinity Seminary, died July 31 after a brief illness.

Dr. Nielsen's association with Dana College dated to 1897 when he enrolled as a freshman. A missionary and scholar, he joined the staff of Trinity in 1927 and was president from 1932 to 1946.

He served in the Japan missions from 1909 to 1927.

Artist Needs Derrick to Finish Science Mural

Tom Allan, reporter for *The Omaha World-Herald*, told this story in a recent edition of the newspaper:

It took the muscles of Dana College's president, the helping hands of six faculty members, the skill of a Grand Island iron craftsman, the engineering know-how of a contractor and a derrick to make an artist's dream a half-ton reality here.

The 8-by-12-foot wrought-iron-and-mosaic tile mural was created by Dana's preacher-painter, the Rev. F. William Thomsen. It

now hangs on the west wall of the college's new Charles A. Dana Hall of Science.

The work is symbolic of the truth in science and the integrity of a Christian college.

"It was something I wanted to do for the new building," the Rev. Mr. Thomsen said.

The work was completed during a leave of absence to complete graduate work in art at Drake University in Des Moines, Ia.

The Rev. Mr. Thomsen, head of Dana's art depart-

ment, received a surprise bonus.

"I'm getting credit for it in my graduate studies," he said.

It was created while he was commuting between Blair and Des Moines.

The Rev. Mr. Thomsen has gained fame with his wrought-iron-and-mosaic work.

Lutheran churches at Audubon and Missouri Valley, Ia., Luck, Wis., and Beatrice, Neb., treasure his giant masterpieces.

"This work is based in

part on the early basic elements of science—earth, air, fire and water—in keeping with the purpose of the new building," the artist said. "It shows a cycle."

Water and earth form the base. Flames lick up from the earth to support cloud-like beakers creating steam, its condensation in the air returning to the earth and water. A plumb line, the symbol of honesty and truth in science, passes through a giant hand holding a test

Turn to Page 4

Success Story—

Construction Magazine Features Dana Builder

"When Simon Korshoj decided to start his own construction company in 1937, he went to two different banks hoping to borrow money. He was beginning business with a car, a few thousand dollars and a contract with the Sinclair Oil Company to build four service stations. Korshoj felt that he needed additional money to finance these projects.

"The banks were not interested in making a loan to a man with such limited assets. Consequently, Simon Korshoj was forced to stretch his savings in order to complete the work.

"The incident helped me to shape a method of doing business which Korshoj followed throughout his business career. Since starting his business, Simon Korshoj has not borrowed one single cent and has even paid cash for all of the equipment which he has purchased through the years."

Those are the opening paragraphs of a recent story in a major construction magazine about the man who built most of Dana's buildings.

Pictures of three Dana buildings—Mickelsen Hall, Borup Coliseum and Charles A. Dana Hall of Science—were used to illustrate the article in the

Board Meeting Set Nov. 4-5

The fall meeting of the Board of Regents will be November 4-5 on the campus.

The agenda includes discussion of long range development plans and review of the revised Faculty Handbook, President Madson said.

Mid-West Contractor.

The story continues: "During 26 successful years in the construction business, he has probably tackled a greater variety of jobs than any contractor in the mid-west.

"Operating on the assumption that 'If someone else can build it, we can too,' his projects have ranged from waterworks to warehouses and from bridges to bomber ranges. They have been located in areas as far south as Arizona and as far north as Oregon."

The article, "Simon Korshoj—An American Success Story," traces the contractor's career from the time he came to this country from Denmark in 1921.

During World War II the Korshoj Construction Company completed 50 prime war contracts, and the ar-

Dana Gets Kodak Grant

Dana has received an unrestricted grant of 24 hundred dollars from Eastman Kodak under the company's aid-to-education program for 1963.

Dana is one of 53 privately supported colleges and universities to receive direct grants from the company this year. The grants are based on the number of graduates from these institutions who joined Kodak five years ago and are currently employed by the company.

This year's grant is based on the employment of Howard C. R. Jensen, a 1954 Dana graduate, who is with the company's administrative headquarters in Rochester, N.Y.

ticle relates that:

"His reputation for handling anything soon became well established, so much so that the Corps of Engineers invariably contacted Korshoj whenever they had a project which did not fit in the regular contractor classifications."

Current jobs include three schools, projects at Offutt Air Force Base, a three-million-dollar relocation of the Floyd River at Sioux City for the Corps of Engineers and a new dormitory for Dana.

The magazine, which used Mr. Korshoj's picture on its cover, tells of his continuing ties with Denmark.

"He has purchased in Denmark a lordly manor house complete with a massive tower, chapel, moat and surrounding farm land. The chapel is used regularly by people in the community. Simon and his wife, Virginia, have remodeled some of the rooms in one wing of the manor house into an apartment where they stay while visiting that country."

Mrs. Korshoj is a member of the Dana Alumni Council.

Heart Attack Claims Pastor

The Rev. Cornelius Hansen, Mukwanago, Wis., died August 19 of a heart attack. He was 62.

Pastor Hansen, who served churches in Racine, Wis., Minneapolis, Minn., Neola, Ia., and Mukwanago, had been president of the Wisconsin District and of the Minnesota District of the UELC.

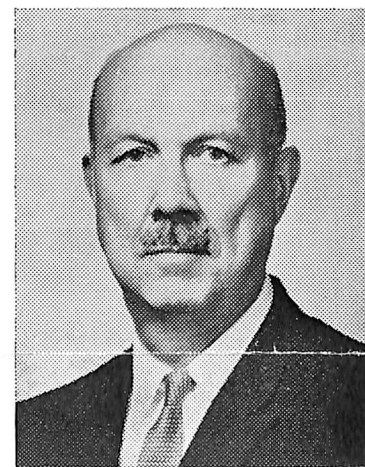
He was a member of the Joint Union Committee that arranged for the merger forming the ALC.

Danforth Lecturer To Speak

A Danforth Visiting Lecturer will be on the campus October 21-22.

He is Dr. Rushton Coulborn, an author and a teacher of historical anthropology.

Dr. Coulborn, who received his Ph.D. from the University of London, has been professor of history



DR. COULBORN
Lecturer

and pre-history in the Graduate School of Atlanta University since 1939. He was visiting professor of anthropology at Stanford University in 1962.

Dr. Coulborn will give a public lecture on "Balance of Power: Conquest or Union of the Nations."

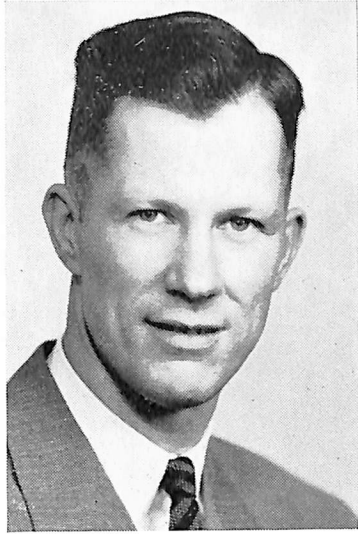
At a convocation his topic will be "Civilized Man and His Physical Environment."

In two informal meetings with students and faculty he will discuss "Style and Pattern in the Development of Culture" and "The Origin of Culture."

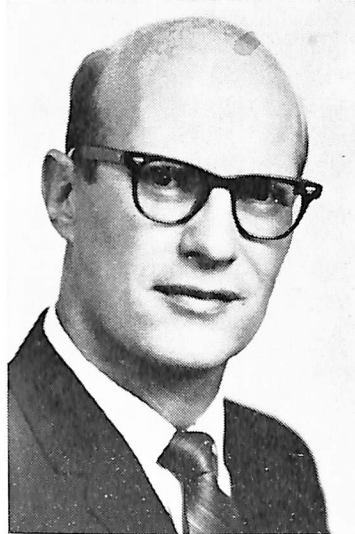
Statement of Ownership Required by Postal Law.

The Dana Review is owned by Dana College, 2848 College Drive, Blair, Neb. Business and editorial offices are at Dana College. Business manager is A. J. Snowbeck. Editors are Thomas E. Langenfeld, 3426 Forest Lawn Avenue, Omaha, Neb.; James A. Clemon, 3714 Forest Lawn Avenue, Omaha, Neb., and Phillip A. Pagel, Dana College. There are no bondholders. Circulation is 22 thousand.

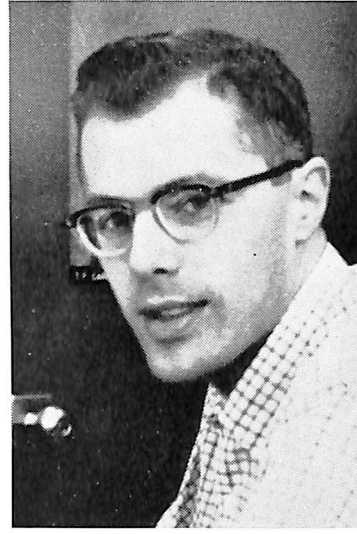
College Adds Seven to Faculty



Dr. Hanson



Pastor Johnsen



Lindblad

Seven new faculty members joined the staff this fall.

Dr. Clifford Hanson, a former Dana faculty member, returned to the philosophy department after several years at Wartburg College. B. A. and M. A. from the University of Minnesota, Ph.D. from the University of Nebraska. Married, two children.

The Rev. Paul Johnsen is visiting lecturer in the religion department while on a year's leave from the mission field in Japan. He is a graduate of Dana and Trinity Seminary. Married, three children.

Miss Gudrun Hansen, who is from Lyngby near Copenhagen, is teaching women's physical education. A graduate of the Danish Physical Education Training Institute, she is taking several undergraduate courses at Dana.

Dale Lemmon is the new basketball coach. He is assistant football coach and physical education instructor. He formerly coached at State Teachers College, Valley City, N. D. B.A. from Nebraska Wesleyan University, M.A. from the University of Nebraska. Married, two children.

Eugene Lindblad was doing research for the Union Carbide Company before joining the Dana chemistry department. He is a graduate of Gustavus Adolphus College and received his Master's Degree from the University of Kentucky. Married, three children.

N. Gene Savage, a graduate of the University of Alabama and the University of Colorado, is teaching in the music department. Married, two children.

Rodney Whitaker, instructor of speech and drama, formerly taught in the U. S. Navy. B. A. and M. A. from the University of Washington. Married, two children.

College Sponsors Kierkegaard Talks

Dana sponsored a series of lectures by Dr. and Mrs. Howard Hong of St. Olaf College September 22-24 in observance of the Kierkegaard Sesquicentennial.

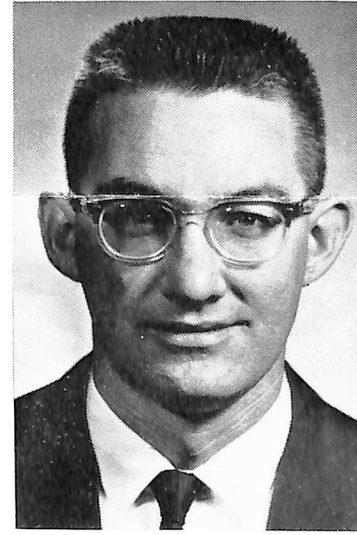
The lectures, open to the public, dealt with the life and work of the great Danish thinker.

Dr. Hong is chairman of the St. Olaf philosophy department. He has carried out research in Denmark on the work of Kierkegaard and is considered an authority on the subject.

Some of the topics discussed by the Hong's: "The Nature of Truth," "Significant Aspects of Kierkegaard's Life," "Kierkegaard's Stages," "The Ethical Consciousness in Kierkegaard's Devotional Writing."



Miss Hansen



Lemmon



Whitaker



Savage

Piano Concert Is Scheduled

Concert pianist Theodore Lettvin will perform at Dana November 18.

The concert, scheduled for 8 p.m. at Alumni Memorial Auditorium, is sponsored by the Blair Friends of the Performing Arts.



BEANIE TIME

A record number of freshman beanies were needed for initiation week this year. Even Myrtle, a freshman mascot, wore one for a time. Janie Botos, a sophomore from Missouri Valley, Ia., supervises.

Artist Needs Derrick

From Page 1

tube. A satellite orbits in Dana's colors.

The Rev. Mr. Thomsen first put his creation on heavy paper. It was sent to Jo Baasch of Grand Island, a former student who is a wrought-iron craftsman.

Jo forged the mural in four parts and returned it.

The Rev. Mr. Thomsen called in the help of six faculty colleagues.

"They worked as two and three-man teams helping me place some 20 thousand pieces of multi-colored imported Italian mosaic tile," he said. "It was tough, exacting work and we did it in 12 days—but they were 16-hour days."

The muscles of President C. C. Madsen?

"Dr. Madsen helped move or lift the parts when we needed him."

The half-ton work needed an engineer's touch to hang high on the outside wall.

"It had to be exact and the Korshoj Construction Company of Blair provided the know-how," the Rev. Mr. Thomsen said.

A scaffold and a derrick completed the job.

Inauguration

President Madsen represented Dana at the inauguration of Dr. Sidney Rand as President of St. Olaf College September 16.

Vikings Win 26 to 0 After Two Losses

Quarterback Roger Beck scored two touchdowns and passed for a third to lead Dana to a 26-to-0 football win over Sioux Falls College September 28.

It was the Vikings' first win in three starts. They fell to Tarkio, 20 to 9, and to Midland, 13 to 0.

Against Sioux Falls the Vikes were unable to score until Beck, a rangy senior from Exira, Ia., came up with a 12-yard touchdown sprint with three minutes left in the third quarter.

In the final period tackle Jay Rydell recovered a Sioux Falls fumble to set up a touchdown pass from Beck to end Lynn Barnes.

Then Beck grabbed a pass from halfback Bryce Olson on a scoring play that covered 19 yards.

With 18 seconds left, sophomore quarterback Ron Anderson passed 21 yards to Gerry Quirk for the final touchdown.

A week earlier Midland scored on passes of six and 11 yards during the first half.

Midland's quarterback completed 12 of 17 passes during the Tri-State Conference game.

Dana's football team opened the season with the loss at Tarkio (Mo.) College September 14.

Tarkio took a 14-0 half-time lead, but Dana came back with a touchdown and a safety in the second half. Tenacious Tarkio defense stopped Viking drives on the one-foot line and on the one-yard line.

Although the football squad is one of the smallest in recent years—both in weight and number—it is experienced.

The squad numbers only 37, but 21 are lettermen.

One of the veterans is fullback Les Pederson who won all-conference honors back in 1957 when Dana copped the Central Church College Conference championship.

Pederson, 6-2 and 220 pounds, was a sophomore then. He returned this fall as a junior and won a start-in spot with the Vikings.

The starting backfield averaged 186 pounds, the starting line 198 pounds.

Professor Speaks At Iowa School

Dr. Clifford Hanson of the philosophy department spoke to the philosophy club of Central College, Pella, Ia., September 26. His topic: "An Analysis of Basic Ethical Questions."

Dr. Hanson is secretary-treasurer of the Iowa Philosophical Society.

The Dana REVIEW

Vol. XX Oct., 1963 No. 2

A newspaper for alumni and friends of Dana College and Trinity Seminary, published every month except July and August. Printed at the Nebraska Farmer Company, Omaha, Neb., with editorial and business offices at 2848 College Drive, Dana College, Blair, Neb. Second class postage paid at Blair.

Editorial Board
Thomas E. Langenfeld
James A. Clemon
Phillip A. Pagel

**The Dana Review, Dana College
Blair, Nebraska**

STEFFAN

LARSON JOHN T
RTE 1 BOX 30
NORTHFIELD MINN