



The Dana REVIEW

Dana College, Blair, Nebraska

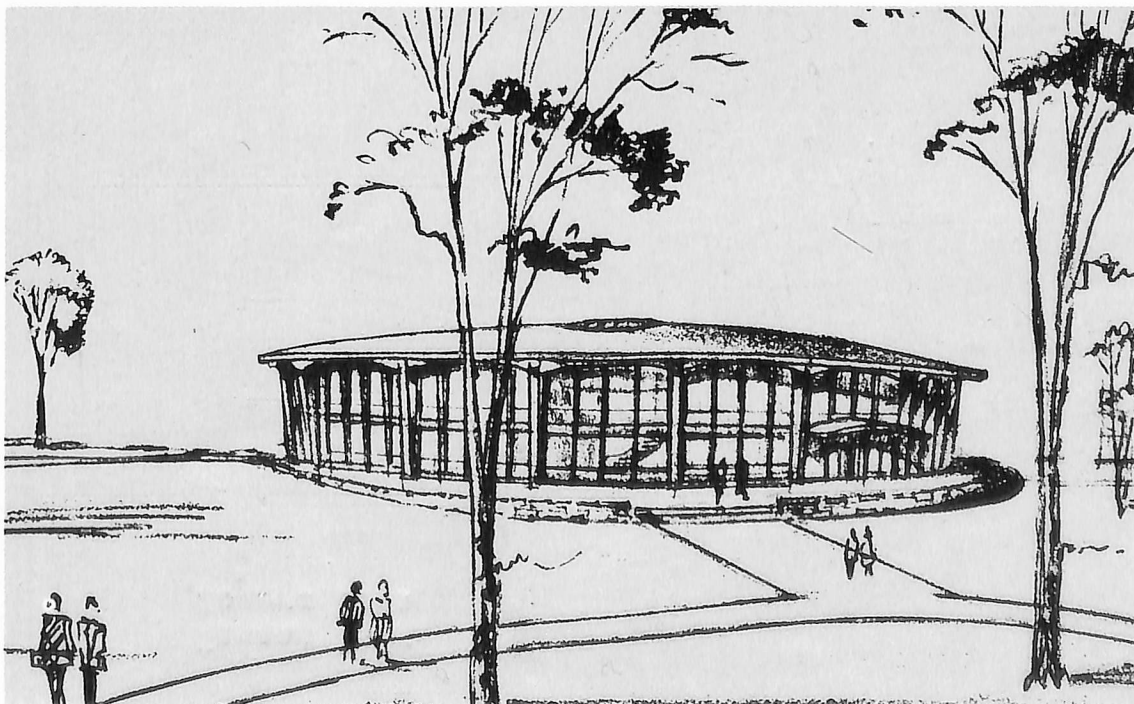
January, 1965

Published Monthly Except July and August



The executive committee of the Board of Regents has approved these architect's plans for two new major campus buildings. Shown at the top is the campus center, an oval building to be constructed in the area now used for parking between Argo Hall (the old south dormitory) and Borup Coliseum. At bottom is the proposed new men's dormitory. It will be similar in de-

sign to Mickelsen and Holling Halls, the other two new dorms. The building will be south of Holling Hall on the hillside overlooking the new football field. Construction of both buildings is tentatively scheduled to begin in early spring. Both structures are to be finished in time for the 1966-67 school year. Estimated total cost is \$1,250,000. Architects are Helleberg and Helleberg.



Melchior In Dana Reunion

Picture on Page 4

Lauritz Melchior, the world's best known Wagnerian tenor, was a special soloist with the Dana College Choir January 25 at Inglewood, Cal.

In the afternoon before the concert the choir visited The Viking, Mr. Melchior's home in Beverly Hills, for coffee.

Mr. Melchior first appeared with the Dana choir in 1950, when he opened his season's concert tour.

Then, as in the Inglewood appearance last month, he was soloist for the choir's presentation of the traditional "Den Store Hvide Flok."

The Inglewood concert was at the Olivet Lutheran Church.

The choir made a special appearance at Disneyland.

The invitation came from Walt Disney, who became acquainted with the choir at Rebild Park during the singers' tour of Denmark four years ago.

The annual home concert will cap the tour.

It's at 8 p.m. Sunday, February 14, in Alumni Memorial Auditorium.

Admission is one dollar for adults, 50 cents for students.

The choir was scheduled to return from its 12-appearance tour of California and the Northwest February 7.

A picture story of tour highlights will appear in the February Review.

Deductions For Tuition?

Income tax deductions to help meet college expenses have been recommended in a study financed by the Ford Foundation.

A report by Richard Goode, senior economist at the Brookings Institution, recommends allowing students to deduct educational costs from their future income over 10 to 20 years.

The plan for easing the cost burden of higher education differs greatly from numerous bills which have been offered unsuccessfully in Congress in recent years.

Only tuition charges, books and other direct educational costs would be deductible. But the deduction would be available to students even if parents or other persons paid the bills.

Faculty Group Taps Hanson

Dr. Clifford Hanson of the philosophy department has been elected vice-president of the Lutheran Faculty Conference, an organization of all Lutheran-related colleges in the United States.

An Alumnus Abroad —

Peace Corps Training Projects Vary

By **Therm Kaldahl**

It has been nearly a year since I stood in the mail room at Dana and discovered in my mail box an invitation to a Peace Corps training project in Putney, Vt.

And now I sit in my new home half-way around the world to share with you some of the highlights of the past few months.

There are a lot of reasons for sending an application to the Peace Corps, for taking the entrance tests, for subjecting oneself to the rigors of training and for waving goodbye from the

door of a plane to one's friends and family.

Mostly, at first, the reasons are romantic ones. They are ideals, that dissolve during the two years of service into solid particles of one's own philosophy.

Ours has been an experimental group in several respects. Most important to the Peace Corps, we have been the first group to train in our host country for an appreciable length of time.

Our training project at home was in the green hills of Vermont, where we spent four weeks.

During that time we re-

ceived a series of immunizations, began a language training program that usually took from four to six hours every day, and began studies on the countries we would serve and on our own country.

When one receives an invitation to a Peace Corps project he is at first not a volunteer but a trainee. The first notice of acceptance confers no security as an actual member.

During training, each prospect is subjected to a series of medical exams, psychological tests and interviews with psychologists and psychiatrists. He also

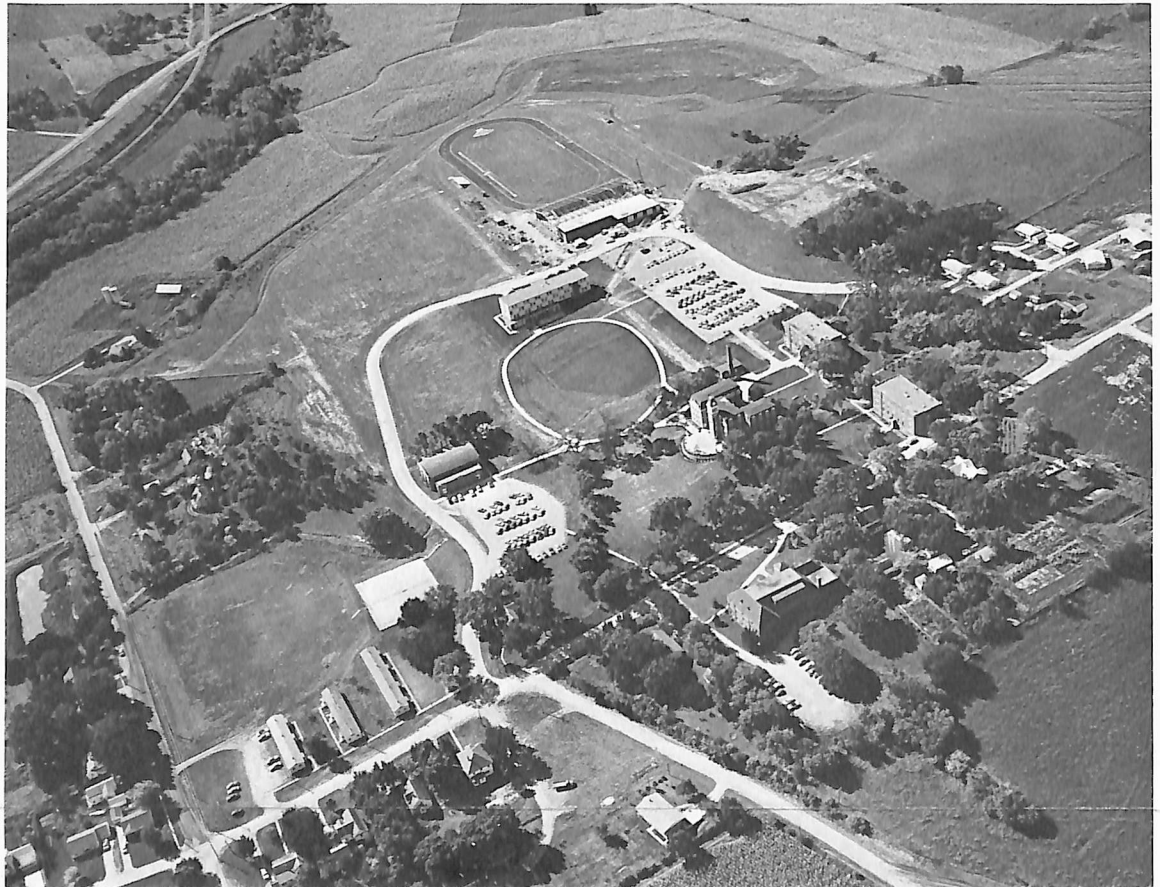
is under constant observation by the training staff.

Some project trainings are strict and rigid. Others, like the one in which I participated, are loosely structured and quite informal.

Each provides a kind of strain to which one must adapt. The temptation in the rigorous program is to give up, to quit trying to meet the stern demands. In our situation, the temptation was to not take the program seriously—to treat it as a vacation.

Reactions to these temptations are noted carefully

The Dana Campus . . .

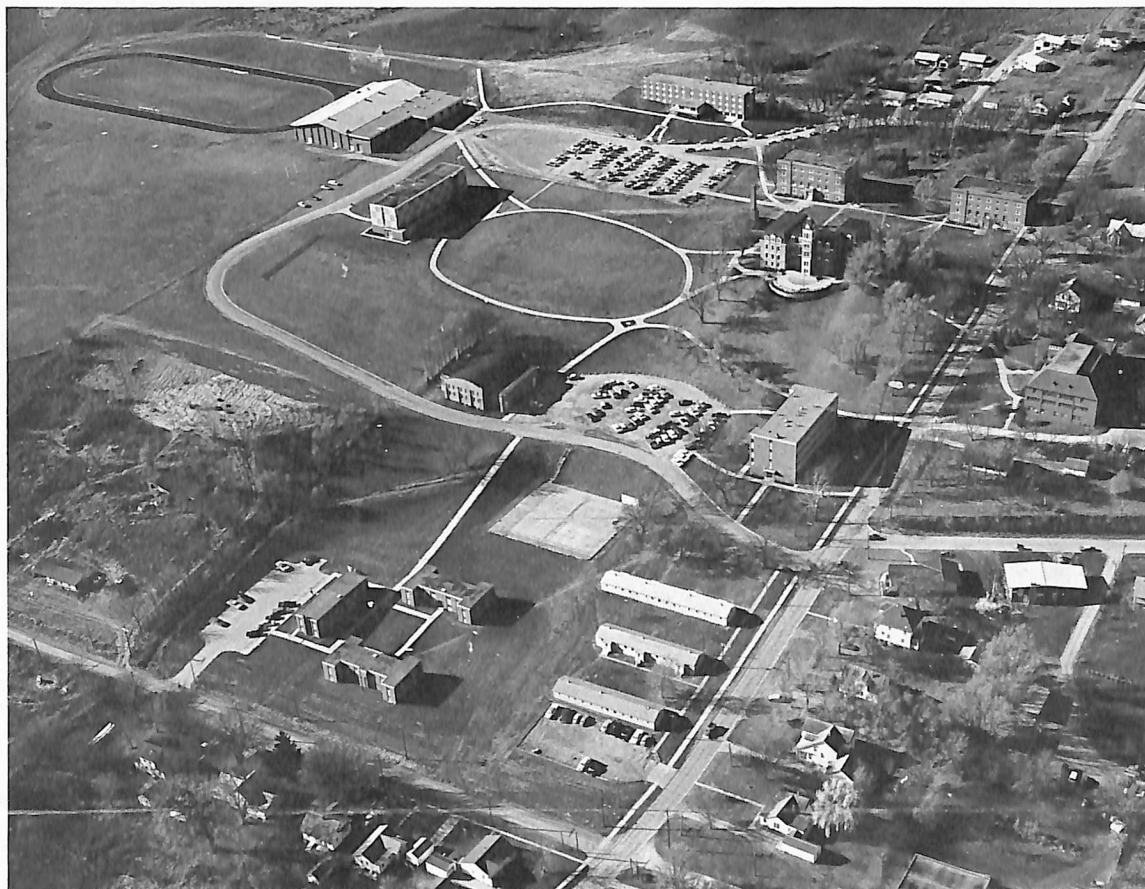


These aerial photos, made by Kriss & McCallum of Omaha, demonstrate graphically how the Dana physical plant has been expanding. The picture at the right,

which appeared in the December Review, shows the campus as it is now. A new dormitory for men will be built south of Holling Hall (top center) and a student center

See Page Four

... and How It Grew



is planned for the parking area (also top center). This picture is repeated this month because of an expanded January mailing list. The "before" aerial photo at left was

made before Borup Coliseum was completed and before the Charles A. Dana Hall of Science, new student apartments and Holling Hall were started.

Alumni and Campus Briefs

Kenneth D. Anderson, a 1963 Dana graduate and former admissions counselor at the school, has been awarded the New York Herald-Tribune Fresh Air Fund Residency in New York for 1965.

He is a graduate student in the public relations division of Boston University's School of Public Communication.

Ken was selected to serve as assistant to the director of public information for the Herald-Tribune's summer camp for needy children.

The award is given annually to a student at the school to provide practical experience in public rela-

tions and an opportunity to prepare for future employment.

Ken was one of three students nominated by the faculty.

Book Gifts

Mr. and Mrs. Frank Hengeveld, 6400 Mardon Drive, Painesville, O., have given Dana 100 dollars for books to "update basic reference works in the library of natural sciences."

This gift will be matched by his employer, The Diamond Alkali Company of Painesville.

Mr. Hengeveld is a former faculty member, and a daughter, Susanne, is a senior at Dana majoring

in biology. She plans to go into research.

Nominator

Nebraska Governor Frank Morrison has named President Madsen to the Supreme Court Nominating Commission for Nebraska, District 2.

The group met recently to propose candidates to fill a current vacancy.

Chamber Group

The Chicago Chamber Orchestra of 25 instrumentalists conducted by Dieter Kober will appear at Dana February 24.

Their concert will be at 8 p.m. in Alumni Memorial Auditorium.

4 Colleges Ask Grants

Midland College of Fremont, Neb., is one of four Nebraska schools to apply for Federal grants under the so-called "brick and mortar" aid program.

The others are Kearney and Chadron State Colleges and the College of St. Mary at Omaha.

The four applications total \$1,234,566 and would use all but \$254,106 of Nebraska's assistance allocation for this fiscal year.

Midland's request is the largest of the four—\$339,566 for a science building expected to cost \$1,018,698.

Chadron is asking for 315 thousand dollars toward a library, Kearney 250 thousand dollars toward a science building and St. Mary's 330 thousand dollars toward a science building.

The Nebraska commission administering the aid program will establish priorities among the competing applications.

Dana Wins 3 of 11 Tilts

Coach Dale Lemon's Viking basketball team has dropped eight if its first 11 games.

Wins were over Concordia, Tarkio and Peru. Dana lost to Wayne, Friends, Nebraska Wesleyan, Doane, St. Mary's of Minnesota, Kearney, Sioux Falls and Midland.

Top scorer so far in the season is Ken Kemmish, with a 216-point total and 19.6 average. He has hit a little over 40 per cent of his field goal attempts and 70 per cent from the free-throw line.

Paul Refsell is second in scoring with 201 points, a 47.6 per cent field goal average and 48.7 per cent on free throws. He also leads the team in rebounds with 111, an average of 12.3 a game.

Alumnus Abroad: Some Stay Home

From Page Two

by the staff or doctors, psychologists and directors.

The whole program is geared to prepare a would-be volunteer to adapt to a new environment, both physically and mentally.

One thought was in our minds constantly—the selection board.

This board is the final hurdle in the training program. It is here that those who have been watching and interviewing decide whether a trainee has given sufficient evidence that he can adapt successfully.

Tension Mounts

It is also here that the greatest strain is upon the trainee.

We used to sit together after the day's training and talk. Inevitably the conversation would turn to the selection board. We tried, as the staff members tried, to decide the ones from our group who would be rejected.

None of us could offer any names; we had become close friends and each thought the rest were qualified.

As the days passed, the

tension increased. I remember seeing girls break into tears for no apparent reason. Trainees began to laugh nervously and loudly at good jokes, bad jokes, no jokes at all.

Some began going on long walks in the Vermont woods . . . some began bicycle riding . . . some dove into books . . . others played chess, or cards.

Time began to drag.

Finally selection time came.

For two days none of us saw any of the staff. When they returned from their seclusion, all 57 of us trainees gathered for our last meeting in the conference room.

We were split into small groups. Each of us had a separate interview with an instructor.

Losers Weepers

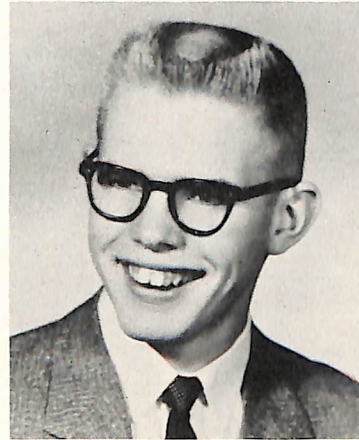
They told us why we had been selected or turned down.

It wasn't a good day.

Those of us who made it wanted to shout for joy. In our hands were plane tickets for home, plane tickets to Turkey and 250 dollars each with which to equip ourselves.

But on the front lawn there were 12 members of the group whom we had grown to love as friends. They were the losers.

On the lawn sat my roommate and my best friend in the training program—crying.



Thern Kaldahl

Selection is not something one easily forgets. It is a hard thing.

One of my friends who was rejected wrote to me later. He said he would hear people talking in other rooms, asking each other "Why?" as though he were some kind of failure.

At first he was bitter toward the Peace Corps, until he resolved within himself his disappointment.

On the day we were approved as volunteers, we were taken to the airport and sent home. For a week, we equipped ourselves for a two-week period. For me, it was preparing for a stay in Turkey.

Goodbye Shots

We said goodbye to our families and friends and flew back to New York.

In a little room at the air terminal those of us who

had made it through raised our hands, took the oath and became Peace Corps volunteers.

Our training doctor gave us a bon voyage gift—a hepatitis inoculation.

Eight hours later: Istanbul.

Once in Turkey, none of us had any more doubts about being in the Peace Corps.

We even forgot the shots.

Next month: A harsh land.

Annual Meet Set at Dana

February 12 has been set as the second annual Churchmen's Day at Dana. The event is co-sponsored by the college and the American Lutheran Church Men of the Central District.

The one-day session is designed to give men of the Central District a first-hand opportunity to see Christian higher education in action.

In sending items to the Review for Destiny's Deep Sea, please remember to include the class in which you graduated or the years you attended Dana.

The Dana REVIEW

Vol. XXI January, 1965 No. 5

A newspaper for alumni and friends of Dana College and Trinity Seminary, published every month except July and August. Printed at the Nebraska Farmer Company, Omaha, Neb., with editorial and business offices at 2848 College Drive, Dana College, Blair, Neb. Second class postage paid at Blair.

Editorial Board

Thomas E. Langenfeld
James A. Clemon
Phillip A. Pagel

The Dana Review, Dana College
Blair, Nebraska

Choir Sings With Melchior



A familiar sight at Dana—choir members packing the big chartered bus for their annual tour. This year the choir left late in January for a tour including a Disneyland stop and an appearance with Lauritz Melchior.

Somers Iowa
Hanson Judy