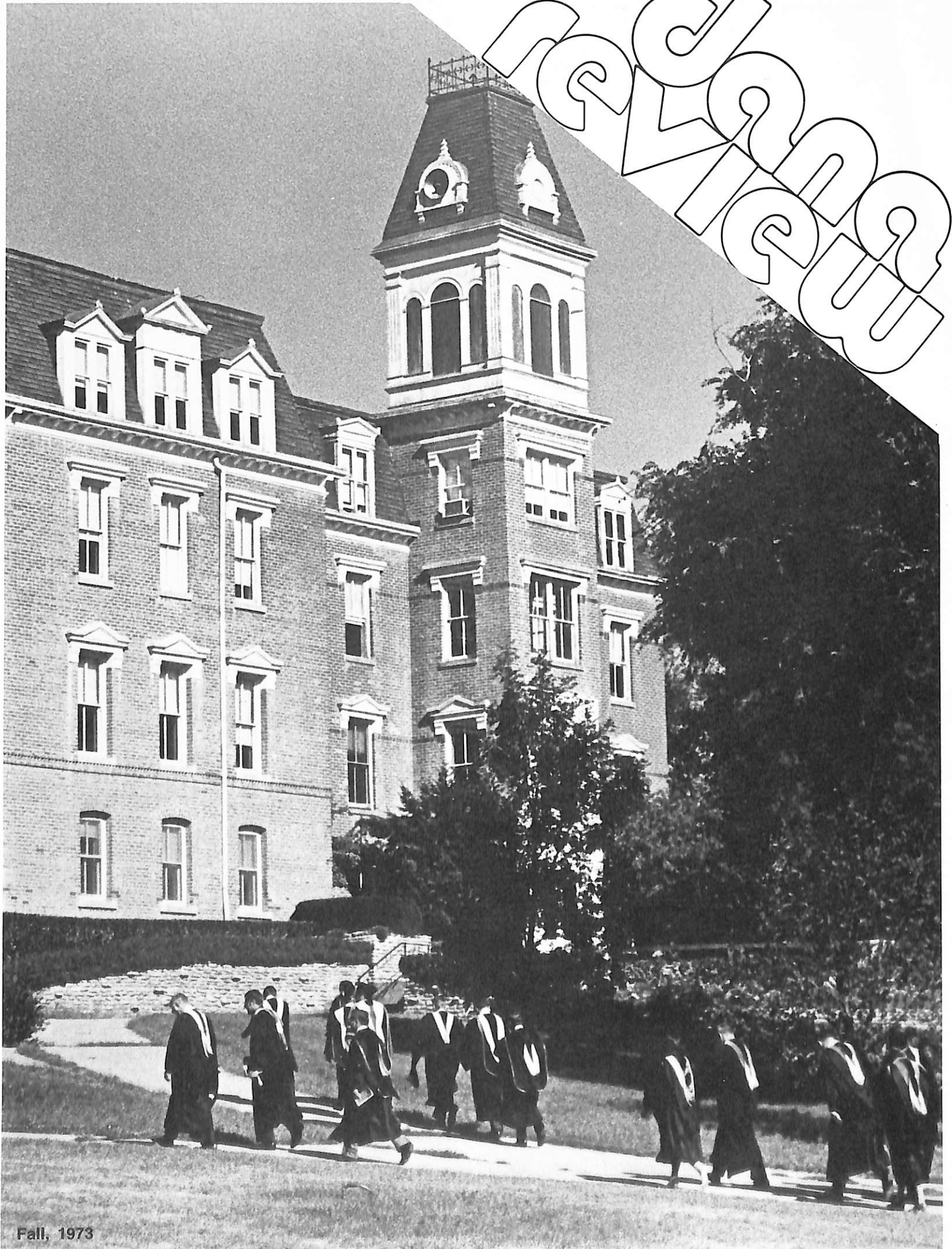


# REVERA



Fall, 1973

# dana review

Volume 30

Fall, 1973

Number 1

This is it! Your first issue of the new Dana Review.

Our new publication will be issued four times a year with copies scheduled to reach you in September, December, March and June. We invite your comments, suggestions and criticisms – please address all information to the Editor, The Dana Review, Blair, Nebraska.

In future issues this space will be devoted to brief editorial comments about issues of concern to Dana alumni and other friends of the College. Through the expanded format of the Review we also hope to present a wider variety of information and features. Articles of interest are solicited and should be sent directly to the Editor. Your comments and contributions will help make the Review a more effective and interesting publication.

---

## TABLE OF CONTENTS

*Academic Year Begins/3*

*Interview with the President/4*

*Entertainment at Dana/6*

*Homecoming/8*

*Sports/10*

*Admissions/11*

*Destiny's Deep Sea/12*

*Calendar of Events/15*

---

## ADDRESS CORRECTION REQUESTED

A magazine for alumni and other friends of Dana College and Trinity Seminary, published four times annually. Printed by Stamats Publishing Co., Cedar Rapids, Iowa, with editorial and business offices located at Dana College, 2848 College Drive, Blair, Nebraska. Second class postage paid at Blair, Nebraska 68008.

---

# Academic Year Begins: College Reinforces Aims

*A colorful and impressive procession made up of faculty and staff members in academic robes moved across the campus toward Alumni Auditorium on Thursday morning, September 6. Suddenly the summer was over and the 1973-74 academic year had begun.*

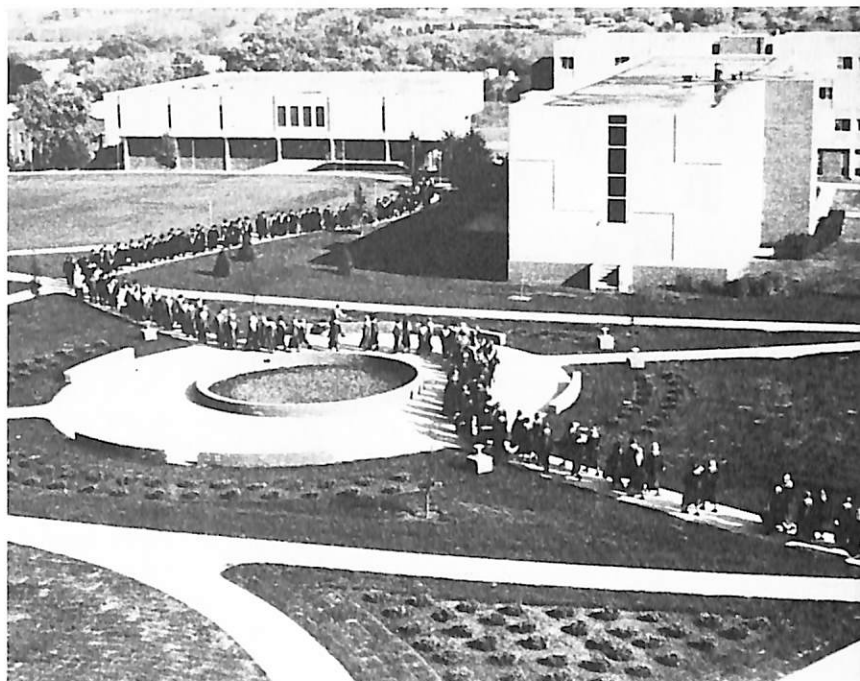
Earlier in the week members of the faculty and staff gathered for their annual two days of orientation and business sessions. Highlight of the meetings was an address entitled "The Future is With Us" by Dr. Edward Lindell, Dean of the College of Arts and Sciences at the University of Denver. Dr. Lindell is an active and highly respected Lutheran layman and a strong proponent of the Church related liberal arts college.

In his remarks he urged the faculty and staff to capitalize on the "privateness" and "church-relatedness" of Dana and pointed out these factors are the keys to the future success of the small liberal arts college. He also urged the staff to reacquaint themselves with the aims and objectives of the College and to reenforce them in their everyday life. He concluded by saying that the future of the church college depends on how clearly defined its mission is and how actively and sincerely each member of the staff seeks to accomplish that mission. Following Dr. Lindell's address the staff divided into small discussion groups to further consider the main topic and then came together again for a final report session and a question-answer period.

For most people attending the opening sessions it was their first opportunity to become acquainted with Dana's new Academic Dean, Dr. Robert Glass. Dr. Glass arrived on campus in mid-July coming from Cottey College in Nevada, Missouri where he served as Dean of the College for the past three years. Prior to that he was Assistant Dean at Ohio Northern University. Dr. Glass is a graduate of Yale University, George Washington University and the University of Maryland. He is married, the father of three daughters, extremely interested in community affairs and an active churchman.

Other newcomers to the Dana family on hand for the opening sessions were: Mr. Lawrence Lewis, Instructor in Business Administration; Mrs. Beverly Krueger, Part-time Instructor in French; Mrs. Genevieve Munson, Part-time Instructor in French and Mrs. Judy Pittack, Part-time Instructor in Art.

Two present members of the staff were introduced in their new positions at Dana. Mr. Kieth Hansen, former Assistant Business Manager, recently assumed the post of Business Manager replacing Mr. A. J. Snowbeck who retired on September 1. The Reverend John Northwall, Associate Professor of Speech and Director of Audio Visual Services, was introduced as Dana's new Director of Church Relations and Continuing Education. Dr. Northwall will



Dr. Robert J. Glass



Dr. Edward Lindell

also continue as a member of the teaching faculty.

Midway between the orientation and business sessions, all members of the staff and their spouses were invited to attend the annual President's Dinner. Although primarily a social occasion, the dinner gave staff members an opportunity to express appreciation and good wishes to three departing colleagues.

One of Dana's most faithful and devoted staff members, Mr. A. J. Snowbeck, retired from active service on September 1. Snowbeck, who came to Dana as a member of the Business Administration faculty in 1946, has served as Business Manager of the College for the past 20 years. In recognition of his 27 years of service, President Mezoff presented him with a gold watch engraved with a personal message of appreciation. We take this opportunity to wish him well and to express the thanks and appreciation of all of Dana's thousands of alumni and other friends for his dedicated service to the College.

Two other staff members, Mr. Calvin Jorgensen, Associate Director of Admissions and Director of Financial Aid and Mrs. Joyann Cochran, Secretary to the President, received expressions of appreciation and good wishes as they leave Dana for other positions.

**As you begin your second full year as president of Dana College, what are your personal feelings concerning the mission and future of the college?**

At this point I am more convinced than ever that my original appraisal of Dana College was correct. Dana is a *good* college but has the promise and basic ingredients of becoming a *great* college. I firmly believe that our mission and future are closely linked to The American Lutheran Church and that we, as a strong liberal arts college of that Church, must sharpen our focus and identify our mission so there is absolutely no doubt about where we stand. To my way of thinking, we will stand and succeed only if we continue to offer a quality education within the context of a Christian commitment.

**Do you feel the basic objectives of Dana have changed?**

I most certainly do not! We proudly proclaim that Dana is a liberal arts college of The American Lutheran Church, one with a rich Danish heritage and one which strives to provide its students with an educational experience which is intellectually stimulating and spiritually and culturally enriching. Our emphasis has been, and will continue to be, one of service — service to the Church and to the world. By assisting each person in developing his own unique talents, we will continue to prepare leaders of tomorrow for a life of that kind of service. These objectives were true when the College was founded and they are even more applicable today.

**What in your estimation has caused the recent decline in enrollment at Dana and how is the college involved in reversing that trend?**

There are no simple answers to this question and I would be misleading our alumni and friends if I said otherwise. Most colleges experiencing enrollment drops report they have been caused by external factors such as the general economy of the nation, the spiralling cost of higher education, the loss of credibility about higher education, the elimination of the draft, the development of the community and junior college system, the declining birth rates and on and on and on. But, equally important, are internal factors — Dana as many other small colleges, has attempted to be all things to all people and in some cases we have attempted to become “miniversities.”

In our continuing efforts to correct or reverse the enrollment decrease we are first identifying our role and mission so that faculty, students and other constituencies will be able to relate to our uniqueness as a College of the Church. We have also expanded our recruiting staff and revised and improved our recruiting techniques; we have revamped the curriculum in such a fashion as to make it more relevant and we are attempting to carry the Dana story to a broader spectrum of people throughout the State, the area and among all constituencies.

We have done much in this area but much more is required.

**How has the decline in enrollment affected the financial picture at Dana?**

This decline cannot be considered to have positive effects on the financial picture at Dana. However, we have just completed our 20th consecutive year of balanced budgets — a record which many colleges cannot claim. The negative effect of declining enrollments has been offset by sound fiscal management, increased giving by our various publics and, unfortunately, by increased costs to students.

**Can Dana continue to operate on a sound financial basis if this enrollment trend is not reversed?**

Increased enrollment is certainly necessary but it is not in itself the total answer. We must look for increased support from those who know and love Dana most. A *vital* Dana needs more students and increased financial support.

# QA

## President's Message: Dana True to Her Commitment



**What internal changes have been made as a result of the enrollment drop?**

The drop in enrollment should not be viewed strictly in a negative context. It has had some positive effects also because it has given us the impetus to take a long and careful look at our entire program. Furthermore, it has required us to establish priorities, and this is good.

For example, we are adjusting the size of our staff to the enrollment but at the same time we are preserving the academic quality of all of our curricular offerings. Tighter fiscal control on expenditures have been put into effect but again, without eliminating essential services or quality. This year we are requiring all single students not living at home to reside in campus housing in order to deal realistically with our amortization payments on these buildings. We have eliminated free linen service which has become a costly item in our budget.

These are examples of some of the revisions and changes brought about by the enrollment decline.

**Do you feel Dana is remaining true to her commitment as a Christian college and how are the spiritual needs of students being met today?**

Yes, I do!

Certainly our major function is as an educational institution but Dana is further committed to a concern for the development of the spiritual life of all her students. We attempt to meet those needs through the work of our Campus Pastor, other clergymen and laymen on campus, our chapel programs, the student congregation, the academic program, the religion-in-life lectures, Sunday worship services, and by encouraging all members of the Dana family to relate with and participate in the work and life of local congregations.

**What about drugs, alcohol and the effects of the "new morality" — are these issues being dealt with at Dana and how?**

Drugs, alcohol and the effects of the "new morality" have always been a part of the college scene — to deny they existed fifty years ago would be as unrealistic as to say they are not present today. One of the major differences is that students are much more open about their involvements today than they were in my generation.

Dana definitely maintains and upholds standards which prohibit the use or possession of alcohol or drugs on campus. This is not to say that there is no abuse of same. However, we make it abundantly clear that any Dana student who abridges these rules places himself in jeopardy of disciplinary action.

**How do you feel about co-ed living and do you foresee coeducational living units being introduced at Dana in the near future?**

All of the evidence I have seen on the academic merits of co-education living units seems to be overshadowed by the problems which that same system creates in the areas of human relationships. With the close proximity of our dormitories on campus and the opportunity for free social interchange, I see no need for co-educational living units on the Dana campus.

**What is inter-visitation at Dana?**

There is, perhaps, no term more grossly misunderstood than this one called "inter-visitation." The easiest way to explain it is to say it is a modern version of an old tradition at Dana known as "open house." Inter-visitation at Dana was expanded several years ago to permit regularly scheduled open hours in the dormitories on Friday and Saturday evenings. There are standards of conduct involved and the entire program is supervised by the head residents and resident assistants on each floor of each dormitory. In reality it means that campus residents may visit in one another's dormitory rooms on a regularly scheduled basis — no more, no less.

**What caused the change in policy concerning off-campus living on the part of single, upper-class students?**

During the decade of the 60's, the expanded enrollment at Dana was taxing our residence halls' capacity and, as a result, single junior and senior male students were given the option of petitioning to live off campus. However, in

recent years, the capacity of the residence halls has been sufficient to meet the housing needs of our students. Furthermore, those residence halls were financed through federal loans with an amortization schedule of forty years. In keeping with the College's policy of sound financial management, it was decided to require all students, except those living at home or those who are married, to live in existing residence halls.

**What plans are being considered for additional physical expansion of the campus?**

The need for a Fine Arts building continues to grow and during the coming year we plan to devote considerable time to long-range planning which will include among other things, the future physical expansion of the campus. Part of that plan will detail the timetable for construction of that facility. But, there are also other pressing physical needs for such things as a maintenance building with provision for central storage, expansion of the Campus Center, a permanent chapel facility and expanded outdoor recreational facilities.

**How does the yearly cost at Dana compare to those at other Nebraska colleges and sister colleges of the American Lutheran Church?**

Dana's total charges in dollars for tuition, fees, room and board are the second lowest of all the private colleges in Nebraska as well as the second lowest of our ten sister colleges of The American Lutheran Church.

**In your estimation, does Dana have a future?**

As I indicated earlier, Dana not only has a future but in my judgment, that future is bright. The world needs our kind of college — one that is of the Church . . . interested in the individual . . . unafraid to uphold basic standards . . . dedicated to a Christian value system . . . and one committed to excellence rather than mediocrity. Most certainly Dana has a future!

**How can alumni, parents and other friends of the college help?**

There are, of course, many ways in which you can help but because of limited space I will mention only a few.

First of all, be proud of Dana and speak honestly but confidently about her to others. We have much about which to be proud (and we also have problems) but I urge you to be honest in your evaluations because from where I sit, the good far outweighs the bad.

Second, you can become actively involved in our admissions program by referring prospective students to the office or, better yet, by bringing them to the campus yourself.

Third, support Dana with your personal finances. We depend on at least 25% of our annual operating budget to come from gifts and grants. If you are now giving, please keep on. If you haven't as yet given, why not consider it this year and remember, it is not only the size of your gift that counts — the fact that you give is in itself your endorsement of Dana.

Third, interest others in supporting Dana — with students, finances and good will.

Fourth, and most important, remember Dana and the dedicated people who serve here in your prayers. Dana exists today because others cared and now is our golden opportunity to respond in our time as they did in theirs.

# Three Danish Performing Groups to Visit Dana This Fall

Three outstanding performing groups from Denmark, the Copenhagen Bethesda's Music Choir, the Copenhagen Boy's Choir and the Ollerup Academy Gym Team, are scheduled to make appearances on campus later this fall.

The Bethesda's Music Choir, a group of eighty musicians, will present a public concert on Sunday evening, October 14, beginning at 8 p.m. in Alumni Auditorium. The concert is free although an offering will be received and given to the visiting group.

The Choir was founded in 1951 and has presented more than 600 concerts in Scandinavia and Europe. Their appearance at Dana has been arranged in connection with their first U.S. tour. Members of the Choir are mostly young people who have taken up residence in Copenhagen for educational reasons. They perform a wide variety of music but emphasize the classics and familiar hymns.

One of the most popular groups ever to visit Dana, the Copenhagen Boy's Choir, is scheduled to make a return appearance on Sunday afternoon, October 28. (This is Sunday afternoon of Homecoming weekend and it is hoped many alumni and guests will remain on campus for this outstanding event.) The concert is set for 3 p.m. in Alumni Auditorium and is open to the public. Tickets will be available in advance from the Public Relations Office at Dana and at the door.

The Boy's Choir consists of 20-30 boys ranging in age from 7 to 10 years old. Their program includes folk music of Scandinavia and Amer-



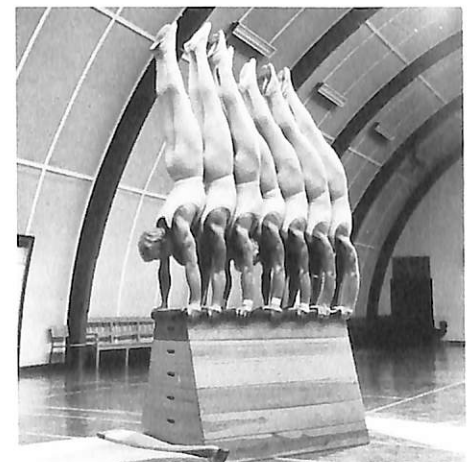
A section of the 80-member Copenhagen Music Choir. The group's appearance at Dana October 14 will be a part of their first U.S. tour.



The Copenhagen Boy's Choir — set for a return appearance at Dana October 18.

ica, selections from Broadway musicals and a variety of novelty numbers sung in English and Danish.

Making their first appearance at Dana and their first appearance in the United States since 1963 will be the internationally famous Ollerup Academy Gym Team. The team of 30 young men and women, each a graduate in physical fitness from the Ollerup Academy, will present an exhibition of Danish Gymnastics on Saturday evening, November 10, beginning at 8 p.m. in Borup Coliseum. The exhibition is open to the public and tickets will be available in advance through the College Public Relations Office and at the door on the performance evening.



These seven gymnasts are members of the Ollerup Academy Gym Team. The group's 30 members will present an exhibition at Dana November 10.



## Dana Dancers at Denvers "Salute to the Dane"

Early in September eighteen members of the Dana Folk Dancers participated in a major "Salute to the Danes" program sponsored by The Denver, one of Colorado's leading department stores. The dancers participated in the opening ceremonies of the "Salute" and were guests at

several major social events including a gala benefit performance by the Denver Symphony and a formal dinner honoring some of America's and Denver's Great Danes. President and Mrs. Mezoff and former President and Mrs. Madsen were also guests at these affairs.

### Northwall appointed to Church Relations Post

Dr. John Northwall, Associate Professor of Speech, has been appointed to the newly created post of Director of Church Relations and Continuing Education at Dana. He will continue to serve as a member of the teaching faculty although his teaching load will be reduced in order to allow him to devote time in the Church Relations area. The appointment became effective on August 1.

Dr. Northwall is an ordained pastor of The American Lutheran Church and before coming to Dana served several parishes in the Central District. In addition to being active in the Central District, Dr. Northwall also serves as a member of the Board of Publications of The ALC.

In his new position he will be responsible for developing programs of expanded service to the pastors and congregations of the District and will work closely with existing agencies in the field of Continuing Education.

### Oct. 9 to be "Dana Day" in Washington County

Residents of Blair and Washington County will be involved in the 1973 Washington County Appeal for Dana College which this year is set for Tuesday, October 9.

According to plan, all business and professional people in the County will be visited on that day and asked to contribute to the Washington County Appeal. Funds received will be used in the 1973-74 operating budget of the College. Plans now call for the Appeal to be broadened to include all residents of the County and special letters of appeal are being prepared for mailing to each household in the County.

The Appeal has become one of Dana's most important sources of support and last year produced a total of \$25,480.00 for the operating budget. No goals have been set for the 1974 Appeal but with the broadened base of solicitation College officials and Appeal workers are hoping to exceed the 1973 total.

### "Christmas on Campus" set for December 9

The second Sunday in December has become the traditional date for the Christmas Open House on campus and the 1973 program will be presented on Sunday, December 9.

Although the definite schedule of

events for the Open House is not available at this time, plans are being made to feature performances by the Choir, Band, Folk Dancers and Santa Lucia girls. Campus decorations will also be featured, including the traditional tree decorated with imported Danish ornaments, as well as special art exhibits, caroling and food appropriate to the season.

All events of the Christmas Open House are open to the public and a detailed schedule for the day will be available from the Public Relations Office any time after November 1.

We invite you to reserve the date, Sunday, December 9, and plan to spend the afternoon and evening at Dana enjoying the sights, sounds and flavors of Christmas.

# 12 GOOD REASONS TO BE ON CAMPUS FOR HOMECOMING '73

A quick glance at these two pages will give you at least 12 good reasons why you should plan to be on campus for the 1973 Homecoming weekend, October 26, 27 and 28.

Built around the general idea of a "Return to the River", the events of the weekend will reflect some of the flavor of the old river days as well as a preview of what's ahead in the way of riverfront development and how it affects residents of the area from Blair to Bellevue. The Riverfront project has already attracted national attention and, through several displays and exhibits at Dana during Homecoming, alums and other visitors will be given a preview of what's to come.

The 1973 weekend will have special significance for members of the classes of 1948, 1963 and 1968 as they will be observing their 25th, 10th and 5th anniversaries of graduation. We've been in touch with most of the alumni in these classes and it appears many of them will be on hand for the weekend.

Several new events are being incorporated into the 1973 Homecoming schedule. First, members of the reunion classes will be honored at an informal reception hosted by the faculty, staff and alumni council on Saturday morning between 9 and 11 a.m. This gathering will give alums an opportunity to visit with faculty and staff members who were here during their years at Dana and also give them occasion to meet new members of the staff. The reception will be held in Parnassus (the former Library Reading Room on second floor of Pioneer Memorial). Although this Saturday morning reception is primarily for members of the reunion classes, other alums and campus visitors are also welcome to attend.

The reunion classes will be honored again at the Alumni Luncheon at 11:30 a.m. at the Fiesta Grande Restaurant in downtown Blair. On Satur-

day evening the reunion groups will have dinner together by classes in the Campus Center.

This year's Homecoming entertainment is being produced by the Dana Drama Department under the direction of Mr. Dennis Henneman. In keeping with the general tone of the "Riverfront" theme, the Dana Players will present an authentic American melodrama. Performances are scheduled at 8 p.m. on Friday, Saturday and Sunday evenings.

The Players will present the outstanding 19th century melodrama, "The Streets of New York" by Dion Bouciault. This rip-snorting classic deals with an evil banker and a very pure and deprived heroine. It has all the earmarks of melodramas of this period including the heartless foreclosure by the villainous banker, the nostalgic Christmas scene, and the reversal of fortunes and the triumph of virtue. The play is highly theatrical and full of sudden turns and highly surprising coincidences. And don't be surprised if some familiar faces appear on stage as plans call for adding faculty and alumni to the cast.

To further emphasize the "Riverfront" theme, periodic excursions on the Missouri river aboard the "River Belle" are planned at various times throughout the weekend. Details as to cost and departure times will be available in Homecoming Headquarters.

For a number of years alumni have indicated an interest in some type of late gathering on Saturday evening to which only alumni and their spouses or dates would be invited. The Fiesta Grande restaurant in Blair will be reserved for that purpose beginning at 10:00 p.m. on Saturday evening and continuing as long as people wish to stay. This will be the central gathering point for alums and you are invited to drop in anytime throughout the evening. There will be a modest charge to cover light re-

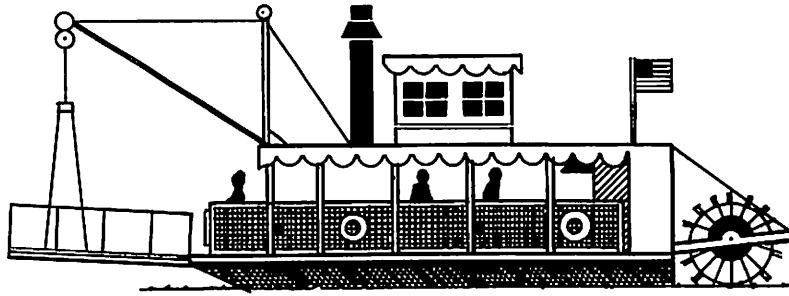
freshments with additional food and refreshments available on an individual cash basis.

A bonus attraction at Homecoming this year is a Sunday afternoon concert by the Copenhagen Park Boy's Choir. The Boy's Choir, a genuine audience-pleaser, will appear at 3 p.m. on Sunday afternoon in Alumni Auditorium. The group visited the campus last year and was so enthusiastically received that when the opportunity arose for them to make a return visit this year it was decided to include it as a Homecoming bonus. This attraction cannot be too highly recommended — ask anyone on campus who heard them last year.

The Homecoming dinner in the Campus Center on Saturday evening will be of particular interest to campus guests as it will be the first major opportunity to sample the wares of Dana's new food service. All food is now being prepared and served under the direction of Saga, a national Food Service corporation. Advance reservations for the dinner are necessary.

Dana will meet Hastings College for the traditional Homecoming football game beginning at 2 p.m. on Saturday afternoon at Viking Field. Parents of players will be guests at the game and at a brief reception following in the Presidents' Room of the Campus Center.

Alumni, parents and other friends of the College planning to attend the events of Homecoming are reminded that advance reservations are requested. Please use the reservation form in this issue of the REVIEW making certain it is returned to the Public Relations Office at Dana before October 22. A limited number of tickets to the various events of the weekend will be available to those who are unable to make advance reservation — such tickets will be available on Friday afternoon and Saturday morning in Homecoming Headquarters.



# 1973 HOMECOMING SCHEDULE

## Friday, October 26

Afternoon

Alumni-Homecoming headquarters opens in the Campus Center, registration and informal coffee hour all afternoon and evening. River excursions on the "River Belle", times and departure points to be announced.

8:00 p.m.

Drama department production of "The Streets of New York", an authentic 19th century American melodrama. (With student, faculty and alumni participation)

Coronation of the 1973 Homecoming Queen will take place immediately following the melodrama in Alumni Memorial Auditorium.

10:30 p.m.

Bon-fire and pep rally, location to be announced.

## Saturday, October 27

River excursions on the "River Belle", times and departure points to be announced.

9:00 a.m. - Noon

Alumni-Homecoming headquarters open in Campus Center, registration and informal coffee hour until noon.

9:00 - 11:00 a.m.

Reunion Coffee Hour Reception for members and graduates of the classes of 1948, 1963, and 1968. Members of the faculty and staff will host this informal gathering in Parnassus, second floor of Pioneer Memorial.

11:30 a.m.

Alumni Luncheon, Fiesta Grande Restaurant in downtown Blair.

2:00 p.m.

Dana vs. Hastings, Viking Field

Following the football game parents of football players will attend an informal reception hosted by President and Mrs. Mezoff and members of the Alumni Council, President's Room, Campus Center. Players, coaches and cheerleaders will also be present.

5:30 p.m.

Homecoming Buffet Dinner, served continuously until 7:30 p.m. in the main dining room

of the Campus Center. Advance Reservations are REQUIRED.

Reunion Class Dinners

Members and graduates of the classes of 1948, 1963 and 1968 will have reserved times and places for reunion dinners in the Campus Center.

8:00 p.m.

Drama department production of "The Streets of New York", Alumni Auditorium.

10:00 p.m.

Homecoming Dance, Borup Coliseum. Open to students and alumni.

10:00 p.m.

SOMETHING NEW FOR ALUMNI — a late evening 'drop-in' spot exclusively for alums and their spouses or dates. We guarantee plenty of conversation, your choice of refreshments, hopefully some spontaneous entertainment by alums and who knows what all. The facilities of Fiesta Grande in downtown Blair will be reserved from 10:30 p.m. until as late as you want to stay.

## Sunday, October 28

10:30 a.m.

Homecoming Worship Service, Alumni Memorial Auditorium.

River excursions on the "River Belle", times and departure points to be announced.

3:00 p.m.

Concert by the Copenhagen Boy's Choir, a group of 25-30 Danish boys ranging in age from seven to ten years. They'll present a variety of Danish and American folk songs, selections from Broadway musicals and entertaining novelty numbers. This outstanding group toured the U.S. for the first time last year and the response to them was so enthusiastic they've scheduled a return visit this October. The concert will be held in Alumni Auditorium and tickets will be available at the door.

8:00 p.m.

Final performance of the Drama department's production of "The Streets of New York."

# '73 Season to be rebuilding year for Dana Vikings

There's not a doubt in the minds of the 43 members of the 1973 Dana Viking football squad that August in Nebraska can be hot. Practice sessions got underway on August 27 and, before the week was out, the mercury had climbed to 104 degrees — the hottest day of the summer.

According to head coach Bob Simpson, fourteen returning lettermen are included on the '73 Viking roster along with some promising freshmen. Lack of size and experience seems to be one of the coaching staff's major areas of concern and they have indicated their major emphasis throughout the season will be on "rebuilding."

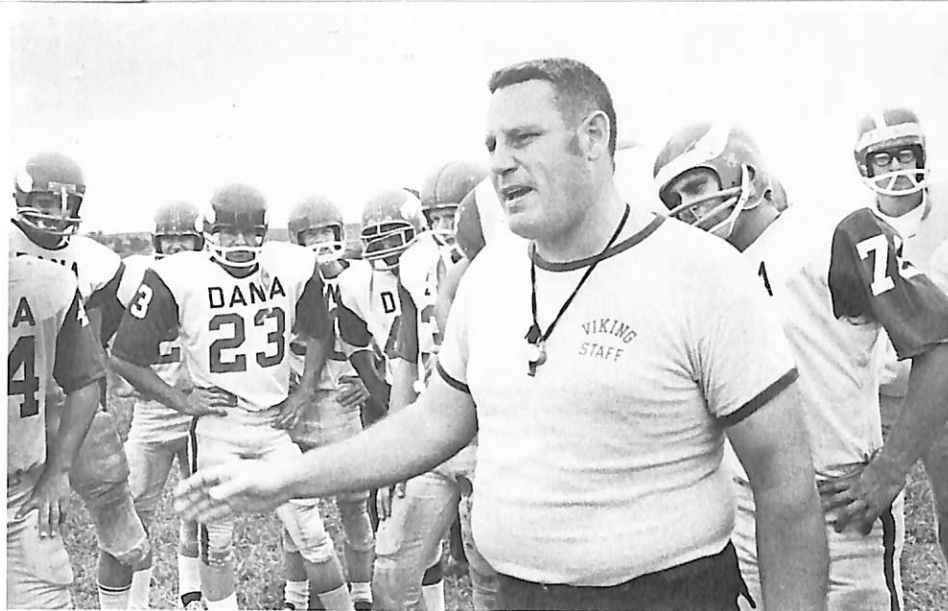
On the stronger side, Simpson pointed out that the Vikings have considerable strength in the offensive and defensive backfield thanks to the return of key lettermen. The squad also boasts unusual depth at the quarterback slot. But, with only one defensive lineman returning, Simpson expects freshman will fill those positions. Included in the list of top freshman prospects are:

**Linebackers:** Mike Herbert, freshman from North Wales, Pennsylvania; and Mike Todd, freshman from Murdock, Nebraska.

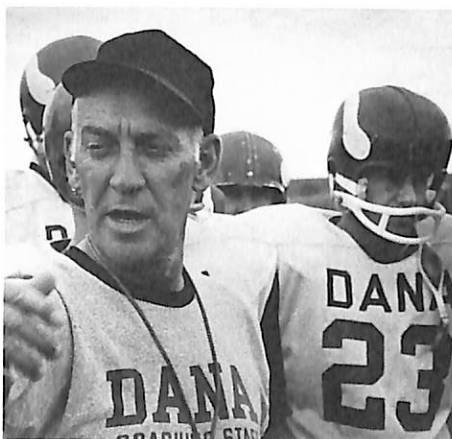
**Linemen:** Kevin Wennig, freshman from Parlin, New Jersey; Darien Haeffner, freshman from Lyons, Nebraska; Eddie Greer, freshman from Oxford, Pennsylvania; Bart Near, freshman from Ettrick, Wisconsin; Fred McBath, freshman from Missouri Valley, Iowa; Jeff Thompson, freshman from Dunlap, Iowa; and Lowell Petersen, freshman from Denison, Iowa.

**Backs:** Marshall Baker, freshman from Denver, Colorado; Ed Spicer, freshman from Lambertville, New Jersey; Curt Maschman, freshman from Daykin, Nebraska; John Ruffcorn, freshman from Council Bluffs; Mike Phipps, freshman from Ute, Iowa and Tim Talmadge, freshman from Omaha Northwest.

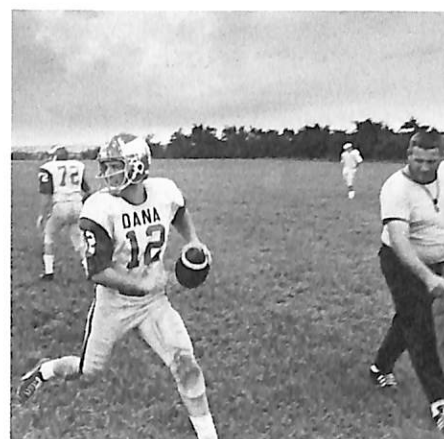
Several promising freshmen quarterbacks expected to see action as the



Head football coach Bob Simpson implements his plans for "rebuilding".



Paul Peterson, Athletic Director and assistant football coach.



Members of the Dana football squad began this season's practice August 27.

season progresses include: Bill Cunnard of Missouri Valley, Iowa; Mark Kershaw, a graduate of Omaha Westside and George Bryant of Omaha North.

Simpson, now in his seventh year

as head coach of the Vikings, will be assisted this year by Paul "Pete" Peterson, Dale Lemon and Brad Larson. The Vikings open their 8-game season on September 15 against Sioux Falls College.

## FOOTBALL

Sept. 15	Sioux Falls	Here
Sept. 22	Westmar	There
Sept. 29	Martin Luther	There
Oct. 6	Nebraska Wesleyan*	Here
Oct. 13	Midland*	Here
Oct. 20	Doane*	There
Oct. 27	Hastings*	
	(Homecoming)	Here
Nov. 3	Concordia*	There

All home games played at 2:00 p.m., Viking Field

\*Conference Matches

## WRESTLING

Dec. 1	Doane Invitational	There
Dec. 6	Peru	There
Dec. 10	Westmar	Here
Jan. 9	Midland Triangular	There
Jan. 11	Briar Cliff	Here
Jan. 19	Doane Triangular	There
Jan. 22	Norfolk Invitational	There
Jan. 29	Concordia*	Here
Feb. 1	Nebraska Wesleyan*	Here
Feb. 20	N.I.A.C. Conference at Midland	

## BASKETBALL

Nov. 26	Bellevue	Here
Nov. 30	Dordt	Here
Dec. 6, 7, 8	N.I.A.C. Tournament	There
Dec. 12	Dordt	There
Jan. 3	Northwestern	There
Jan. 5	Bellevue	There
Jan. 8	Buena Vista	Here
Jan. 10	Westmar	Here
Jan. 19	Concordia*	There
Jan. 22	Buena Vista	There
Jan. 26	Hastings*	Here
Jan. 29	Nebraska Wesleyan*	There
Feb. 2	Midland*	Here
Feb. 5	Doane*	Here
Feb. 9	Concordia*	Here
Feb. 12	Hastings*	There
Feb. 16	Nebraska Wesleyan*	Here
Feb. 21	Northwestern College*	Here
Feb. 23	Midland*	There
Feb. 27	Doane*	There

\*Conference Games

All home games begin at 7:30 p.m. in Borup Coliseum.

---

# Finding Positive, Productive ways to Help

---

By Richard V. Showers  
Director of Admissions

"Admissions?"

"You mean that office over in Pioneer Memorial where students walk in and register?"

"Well, yes, but you know there's a lot more to it than sitting around and waiting for applicants. You know, there are 100,000 miles of travel, visits with parents and students in homes, schools, churches, motels, and hotels in 21 different states, \$3,000 worth of telephone calls; just a lot of plain, hard work involved in getting together a freshman class."

"I didn't know that. When I went to Dana. . . . etc., etc."

That short conversation could well take place; in fact, it does in various ways and degrees. Alumni, and other friends of the College, are probably not aware of the trials and tribulations of a college admissions office.

Today, 1973, is not a seller's market. There are more openings in many of our colleges than there are young people to fill them. Many reasons play roles in this situation, not the least of which is a changing attitude on the part of our youth. No longer do they feel any great necessity, nor even any advantage, in attending college. We could argue the pros and cons of that attitude but we won't. There are many good reasons young people should attend college. You who have attended Dana (or other colleges) can attest to the need for the academic, social, spiritual, and physical development which takes place during the college years.

What can alumni and friends do to assist in the admissions area? Perhaps the simplest way to come to the point is to reproduce a recent letter which responded to an alumnus' request for ideas on what he could do for Dana. Printed in its entirety, the letter touches upon ways we feel all alumni and other friends can participate.

July 26, 1973

Mr. Gary Frederick  
600 8th Street, NE  
Waseca, Minnesota 56093

Dear Gary,

Dr. Mezoff has passed along a copy of his letter to you in which he commented on ways you could be of help in recruiting students.

His suggestion — that you single out students both in your school and in the community at large and at least point them our way — is the most direct and productive way of assisting.

There are other possibilities, of course. If we have a dozen or so potential students from within an area of 15-20 miles from you, you might want to have the group to your home some evening for a very informal get-together. Should we be in the area we could join you in that kind of venture. In fact, our presence could be the appropriate reason for having such an event.

Another avenue of help could be your bringing prospective students to Blair. Most likely this would be in conjunction with a visit you make but it could be the main or sole reason for your coming. We have a number of alumni who do this.

I suppose we could go on and mention other projects for you. For example, we could use your name as the "key" Dana representative for your area, informing applicants to get in touch with you for a one-to-one discussion about the College. Other possibilities abound.

Gary, I am personally glad that you do want to give of your time and energy in this fashion. I would venture a guess that we have a dozen or two alumni who really do some recruiting for us. We could profitably use dozens more. I am sure that more of our graduates do recruit on a one-to-one basis; I am referring to those who stay with it year in and year out, keeping their eyes open for likely Dana students.

Incidentally, Larry Knudsen is our staff member who does most of the work in Minnesota. I'm sure you will hear from him at some point this fall. His home is in Northfield, not too distant from you.

A package of materials is en route to you. They will bring you up to date on Dana and you can use them as you see fit with students. More can be sent if you wish or need them.

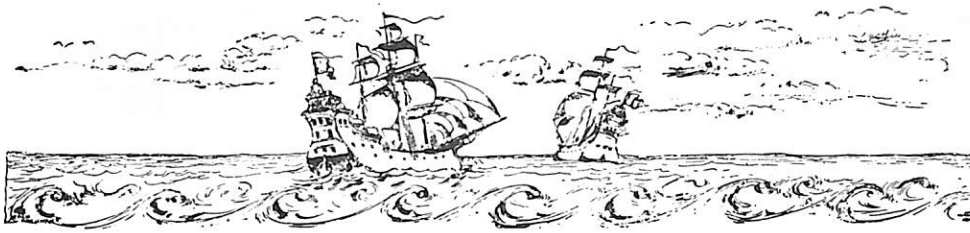
We'll look forward to hearing from you from time to time. Don't hesitate to call me collect if an urgent occasion arises.

Sincerely,

Richard V. Showers  
Director of Admissions

RVS/tt  
Enc.

Take a minute or two to complete the return card on the back cover.  
Let us hear from you; Dana does indeed need YOUR help!



# Destiny's Deep Sea

## New Jobs and Promotions

1973

**Class Agent — Miss Barbara Wolf**  
1712 Lafayette, Blair, Neb. 68008

JOEL BOHLING has been accepted as a freshman in the University of Nebraska College of Medicine.

KAJ NEVE has been accepted as a freshman in the University of Nebraska College of Medicine.

1971

**Class Agent — Miss Karen Bansen**  
4119 Florida Drive, Rockford, Ill. 61108

JEROME GODSON has begun one year of internship at the Lutheran Church of the Good Shepherd, Cleveland, Ohio.

DENNIS SCHMIDT has begun one year of internship at St. John's Lutheran Church, Romeo, Michigan.

1970

**Class Agent — Sharon Boone**  
9806 U Plaza 1B, Omaha, Neb. 68134

RAMONA ALWILL is the Grant Accountant at the University of Nebraska at Omaha. She received her C.P.A. in February of 1973. Her address is 4723 Erskine, Apartment 10, Omaha, Nebraska 68104.

DAVID R. MUSICK, has been promoted to sergeant in the U.S. Air Force. He is serving with a unit of the U.S. Air Force Security Service which provides security for Air Force Global communications systems. He is stationed at Ft. George G. Meade, Maryland.

DAVID SHIERY received a Masters Degree in Social Work. He is employed in the children's division of the Lutheran Home at Germantown, Pennsylvania. The Shierys live at 23 Chatham Road, Ardmore, Pennsylvania 19003.

1969

**Class Agent — Mrs. Joel Kolterman**  
1928 Colfax St., Blair, Neb. 68008

CAPTAIN RICHARD V. RASMUSSEN

recently helped launch a U.S. Air Force Minuteman III intercontinental ballistic missile from Vandenberg AFB, California. He serves as a missile maintenance officer with the 321st Strategic Missile Wing from Grand Forks AFB, North Dakota.

1968

**Class Agent — Mrs. William Sorensen**  
Rt. 1, Crescent, Iowa 51526

CAPTAIN LARRY P. CORNWELL has received the U.S. Air Force Commendation Medal at Takhli Royal Thai AFB, Thailand. He was decorated for his meritorious service as chief of the administration and reports branch of the 443rd Security Police Squadron at Altus AFB, Oklahoma. He is now at Takhli with a unit of the Pacific Air Forces.

REVEREND ROBERT D. HANSEN has accepted a call to serve First Lutheran Church in Sioux City. The Hansens and their two children are living at 3312 Douglas, Sioux City, Iowa 51104.

## STARLA SORENSEN SWEDA, Occupational Therapist

Attended Dana from 1964-1966 . . . received degree in Occupational Therapy from University of Puget Sound in 1968 . . . served as Staff Occupational Therapist, Brooke Army Hospital Medical Center from 1969-1971 . . . currently serving as Director of the Occupational Therapy Assistant Program at St. Philip's College where she has established the College's first occupational therapy program . . . serves as Consultant to the Northeast Indiana School District for the multiple handicapped program . . . serves as Vice-Chairman of the South Central District Texas Occupational Therapy Association and is an active member of other professional organizations . . . in commenting on her years at Dana she said; "In occupational therapy one has to have a diversified education and life-experience background. During my practice, I have found my exposure to various cultures, the Chris-

SUSAN SHADLE OWEN received the Master of Science degree in Business Education at the University of Wyoming in May.

1967

**Class Agent — Mrs. Twila Stender**  
9626 Ohern Plaza, Omaha, Neb. 68127

CAPTAIN STEVEN P. LARSEN has received the U.S. Air Force Commendation Medal for meritorious service at Kirtland AFB, New Mexico. He was cited for his outstanding performance of duty as chief of the weapons maintenance with the 3098th Aviation Depot Squadron.

1966

**Class Agent — Mrs. Brian Kolterman**  
2619 College Dr., Blair, Neb. 68008

DANIEL C. ATEN has been appointed Executive Director of the Health Planning Council of Central Iowa. The Aten's and their two sons live at 707 33rd, Des Moines, Iowa 50312.

1964

**Class Agent — Mrs. Erwin Dobson**  
109 4th St. SE, Sidney, Montana 59270

NED KITOMARI is serving as Director of Research & Planning for the East African Community as a Principal Economist in the Common Market & Economic Affairs Secretariat. His address is PO Box 1003, Arusha, Tanzania.

1963

**Class Agent — Mrs. Robert Harder**  
Route 2, Albion, Neb. 68620

KENNETH D. ANDERSON has been named agency manager of the Omaha Agency of The Bankers Life Insur-



tian atmosphere and the outstanding liberal arts department at Dana very beneficial. I have always appreciated the opportunity I had to participate in the first Heritage of Man Class, the Liberal Arts Reading Program and the freedom allowed science students in the laboratory at Dana."

Mrs. Sweda and her husband live at 7305 Leading Oaks, San Antonio, Texas 78233.



**GARY L. BIESECKER**, Physician and Surgeon

Received B.A. degree from Dana in 1963 . . . Graduate School, University of Nebraska . . . received M.D. degree from University of Nebraska College of Medicine in 1968 . . . completed internship and surgery residency at U.S. Naval Hospital, Portsmouth, Virginia . . . presently serving as a Lieutenant Commander in the Navy stationed at the Naval Hospital in Portsmouth . . . now completing requirements as a Candidate for the American College of Surgeons . . . member of Alpha Omega Alpha, national medical society honorary . . . in his appraisal of Dana Dr. Biesecker said, "Realistically speaking, basic facts which must be learned are the same at most centers of higher education. It is after all, the individual's responsibility to learn. Dana, however, excels in its ability to recognize each person as an individual and give them a foundation on which to build a place in society — intellectually, socially and spiritually. Everyone can be a part of the family at Dana and we all need to belong."

Dr. Biesecker is married to another former Dana student, Vivian Christensen, and they are the parents of two children. The Biesecker's live at 5401 Greenbrook Drive, Portsmouth, Virginia 23703.

ance Company. His address is 8990 W. Dodge Road, Omaha, Nebraska 68102.

#### 1959

**Class Agent — Mrs. Richard Larson**  
6524 Newland St., Arvada, Colo. 80003  
MR. and MRS. RICHARD I. (KAREN L. PETERSEN) JENSEN and five children live at 617 N High Street, Monmouth, Oregon 97361. Richard received a doctors degree in Guidance and Counselor Education from the University of Wyoming and at present is assistant professor in the Education Department at the Oregon College of Education.

#### 1958

**Class Agent — Mrs. Richard Jorgensen**  
1352 Illinois, Racine, Wis. 53405  
MR. and MRS. DON (ARNETTE THIM) HANSEN live at 5041 S 93

Circle, Omaha, Nebraska 68127. Arnette is a fourth grade teacher in the Ralston, Nebraska Schools and Don will be teaching mentally handicapped children in the Omaha schools.

#### 1952

**Class Agent — Mr. Bruce Jensen**  
1711 Kilkeny, Lake Oswego, Ore. 97034

REVEREND ARTHUR SIMON and MR. PAUL SIMON ('50) have co-authored a book entitled "The Politics of World Hunger." It has been published by Harper's Magazine Press.

### Marriages

#### 1973

**Class Agent — Miss Barbara Wolf**  
1712 Lafayette St., Blair, Neb. 68008  
JEAN JENSEN and DEAN NESS were married June 2, 1973.

#### 1971

**Class Agent — Miss Karen Bansen**  
4119 Florida Drive, Rockford, Ill. 61108  
BARBARA KRAUSE and Donald Haag were married May 4, 1973. Their address is 602 South 20th Street, Leavenworth, Kansas 66048.

TRUDY A. MEYER and Stephen V. Witt were married March 30, 1973. They are living at 6439 W Myrtle, Lot 160, Glendale, Arizona 85301.

#### 1965

**Class Agent — Mrs. Jim Jorgensen**  
2035 Wright Street, Blair, Neb. 68008  
Edith Tatum and ROGER ROBERT were married June 16, 1973. Their address is 6527 Grand Avenue, Apt. 168, Omaha, Nebraska 68102. Roger is an investment broker with Van Horne Investments in Omaha.

### Births

#### Sons

#### 1970

**Class Agent — Miss Sharon Boone**  
9806 U Plaza 1B, Omaha, Neb. 68134  
David Charles Born May 24, 1973 to Mr. & MRS. Dennis (MARY LOU) Henneman. Their address is 832 North 14th Street, Blair, Nebraska 68008.  
Kirk Matthew born April 19, 1973 to MR. and MRS. JIM (KATHIE REISNER) SCOPAC. Their address is 8552 Plaza Boulevard, Omaha, Nebraska 68128. Jim is employed by the Brown & Bigelow Advertising Company.

#### 1968

**Class Agent — Mrs. William Sorensen**  
Route 1, Crescent, Iowa 51526  
Alexander Nathan born July 3, 1973 to MR. and MRS. ROGER (MELANIE BORKHUS) KNOELL. They also



**RONALD L. RASCHKE**, Aquatic Biologist

Graduated from Dana in 1960 with B.A. degree in Biology . . . received M.S. degree from University of Nebraska and Ph.D. degree from Iowa State University . . . now serving as an Aquatic Biologist at the Environmental Protection Agency's Water Laboratory in Athens, Georgia . . . previously served with the U.S. Public Health Service's Water Pollution Surveillance System, Cincinnati, Ohio . . . awarded a Fulbright-Hays post doctoral fellowship at the University of Adelaide, Australia, 1968-69 . . . also served as Assistant Professor of Botany, Rutgers University . . . has authored numerous articles for government and scholarly publications . . . in reflecting on his years at Dana Dr. Raschke said; "When I entered Dana it was a small, non-accredited, Lutheran College with approximately 300 students. During my career we received academic accreditation and embarked on an extensive building program. It appears Dana is still striving toward excellence via their building program, library and faculty expansion. I hope Dana maintains its small college atmosphere and the valuable close personal relationships between students, faculty and administration. I am grateful for the support and encouragement given me by many members of the faculty and administration."

Dr. Raschke is married and lives with his wife and three children at 4265 Old Lexington Road, Athens, Georgia 30601.

have a son Lyndsay, age three. Their address is 435 Cherry Hill Drive, Racine, Wisconsin 53406. Roger is presently enrolled at Marquette University in the School of Dentistry.

Erik Thomas, born June 10, 1973 to MR. and Mrs. EARL J. KNUDSEN. They have a son Karl age three and are living at 903 57th Street, Brooklyn, New York 11219.

#### 1966

**Class Agent — Mrs. Brian Kolterman**  
2619 College Drive, Blair, Neb. 68008  
Abraham Wayne, born July 22, 1973 to MR. and Mrs. STEPHEN SIT. Their address is 815 W Belle Plaine Avenue, Chicago, Illinois 60613.

1964

Class Agent — Mrs. Erwin Dobson  
109 4th St. SE, Sidney, Montana 59270

Terrance James, born April 17, 1973 to Mr. and MRS. Jim (MARALEE FRANKE) Taylor. The Taylors own and operate the Wahoo Bakery, Wahoo, Nebraska.

### Daughters

1967

Class Agent — Mrs. Twila Stender  
9626 Ohern Plaza, Omaha, Neb. 68127

Tonya Lynn and Tasha Courtney born October 18, 1972 to MR. and Mrs. GAREY KNUDSEN. They are living at 1105 Randall Road, Hutchinson, Minnesota 55350 where Garey is financial aid counselor at the Hutchinson area vocational, technical institute.

1965

Class Agent — Mrs. Jim Jorgensen  
2035 Wright St., Blair, Neb. 68008

Erika Kristine born June 15, 1973 to MR. and Mrs. JOHN CEDARBERG. John is a manager in the Washington Office of Arthur Andersen & Co., and their address is 627 Northcliffe Drive, Rockville, Maryland 20850.

1964

Class Agent — Mrs. Erwin Dobson  
109 4th Street SE, Sidney, Mont. 59270

Bryn Michelle born May 26, 1973 to MR. and MRS. LYNN (JOAN RATHE) BARNES.

## Deaths

1969

Class Agent — Mrs. Joel Kolterman  
1928 Colfax St., Blair, Neb. 68008

Kevin Ryan and Scott Allen, born July 24 to Mr. and MRS. Keith (LYNN MARBACH) Hightree, died July 25. The Hightree's live at 1553 Colfax Street, Blair, Nebraska.

## NEW FEATURE COMING

Depending on the response received from alumni and other friends, an "Ombudsman" column will be introduced in the Winter issue of the Review. We invite you to submit questions on any subject relating to the affairs of the College — students, faculty, staff, program, etc. Each question will be given an authoritative answer and, in this way, questions and situations can be clarified before misunderstandings arise.

All questions for the "Ombudsman" column should be sent to the Editor of the Review, to be included in the winter issue. Questions must be in our hands prior to November 1, 1973. Names and addresses of persons making inquiries will be withheld upon request but each inquiry must bear the signature and address of the writer.

This is your chance to find out the facts so let's hear from you!



PAUL JERSILD, Educator

Graduated from Dana in 1953 with B.A. degree in Philosophy . . . received M.A. degree from the University of Nebraska in 1955 . . . attended Trinity Seminary, 1955-56, and graduated from Wartburg Seminary in 1959 . . . received Th.D. degree from the University of Munster, West Germany in 1962 . . . has served as a member of the Religion faculty at Dana, Pastor of St. Matthew Lutheran Church, Palmyra, Wisconsin and as a member of the Religion faculty at Luther College . . . since 1969 has been Associate Professor of Theology in the Graduate Theology Program at St. Xavier College in Chicago . . . has authored several articles and reviews for publication in theological journals . . . is co-editor of "Moral Issues and Christian Response", an anthology of essays in Christian social ethics designed primarily for the college classroom . . . Dr. Jersild had this to say about Dana; "The dedication of the faculty and the personal attention given to the individual student is certainly a plus in the educational experience offered at Dana. Our Church colleges have a distinctive contribution to make — it dare not be minimized."

Dr. Jersild is married to the former Marilyn Steffensen who also graduated from Dana in 1953. The Jersilds and their four children live at 10550 South Prospect, Chicago, Illinois.

## 1973 HOMECOMING RESERVATION

NAME \_\_\_\_\_

STREET ADDRESS \_\_\_\_\_

CITY \_\_\_\_\_ STATE \_\_\_\_\_ ZIP \_\_\_\_\_

ARE YOU AN ALUMNUS \_\_\_ PARENT \_\_\_ STUDENT \_\_\_ OTHER FRIEND OF THE COLLEGE

IF AN ALUMNUS, MEMBER OF WHAT GRADUATING CLASS 19 \_\_\_\_\_ ?

INDICATE THE NUMBER OF RESERVATIONS YOU REQUIRE FOR EACH OF THE FOLLOWING:

\_\_\_ "River Belle" Excursion

\_\_\_ Performance of "The Streets of New York"

\_\_\_ Friday, \_\_\_ Saturday, \_\_\_ Sunday

\_\_\_ Alumni Luncheon

\_\_\_ Football Game

\_\_\_ Homecoming Dinner

NOTE: Reservations for all reunion classes will be for 6:30 p.m. on Saturday evening.

\_\_\_ Homecoming Dance

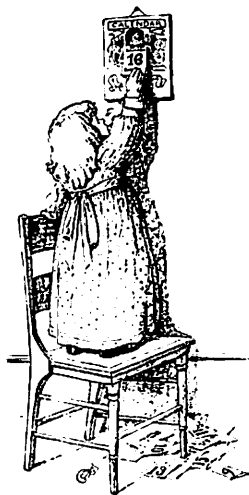
\_\_\_ Copenhagen Boy's Choir Concert

All reservations will be available in advance at the Public Relations Office or on Friday afternoon and evening and Saturday morning in Homecoming Headquarters, Campus Center.

Please return this reservation to the Public Relations Office, Dana College, Blair, Nebraska 68008, before October 22, 1973

In the course of changing printers and the format of the REVIEW some news items from alumni have been lost, misplaced or otherwise unintentionally not used. The "Destiny" items which appear in this issue include all of the news currently on hand. If you have news about a new job, promotion, engagement, marriage, birth or death which has not appeared in the REVIEW, please send it to us for inclusion in the December issue. (Deadline for receipt of copy is November 1, 1973.) Or, if you prefer, send the item to your class agent.

# Calendar of Events



## September 23 - October 6

Graphics Exhibit by Marion Christensen, Davenport, Iowa, Parnassus

## Monday, September 24

Humanities Movie, "The Grand Concert", 7:30 p.m., D.H.A.

## Monday, October 1

Student Recital

## October 7 - 19

Exhibit of Paintings by Tom Marker, Detroit Artist, Parnassus

## October 7 - November 2

Exhibit of Sculpture by Paul Granlund, Gustavus Adolphus College, Parnassus

## Monday, October 8

Student Recital  
Humanities Movie, "Bus Stop", 7:30 p.m., D.H.A.

## Friday, October 12

Lecture Seminar by Mr. Arne Sorensen, President, Society for Futures Research, Aarhus, Denmark

## Sunday, October 14

Special Events Concert by the Bethesda's Music Choir of Denmark  
8:00 p.m., A.M.A., Freewill Offering

## October 21 - November 2

Photography Exhibit by Dr. James Coffey, Fargo, N.D., Parnassus

## Monday, October 22

Humanities Movie, "The

Beggar's Opera", 7:30 p.m., D.H.A.

## Friday, October 26

Homecoming Weekend (See pages 8 and 9 of this issue for detailed schedule)

## Monday, October 29

Student Recital

## November 4, - November 20

Ceramics and Weavings Exhibit by Jerry and Mary Jo Horning, Creighton University Art Professor and his wife, Parnassus

## Monday, November 5

Humanities Movie, "Great Catherine", 7:30 p.m., D.H.A.

## Tuesday, Wednesday and Thursday, November 6, 7, 8

Spiritual Emphasis Days with Dr. Alvin Rogness, former President of Luther Seminary as guest speaker. Schedule available on request.

## Saturday, November 10

Special Events Exhibition of Danish Gymnastics by the Ollerup Academy Gym Team, Ollerup, Denmark, 8:00 p.m., Borup Coliseum.  
Tickets available in advance and at the door.

## Monday, November 19

Humanities Movie, "Private Life of Henry VIII", 7:30 p.m., D.H.A.

## November 26 - December 7

Exhibit of Serigraphs by Sister Mary Corita, North Hollywood, California Artist, Parnassus

## Thursday, Friday, November 29, 30, Saturday, December 1

"Amahl and the Night Visitors"  
Thursday and Friday afternoon performances for Washington County Elementary school children.  
Friday and Saturday Evening, open to the public, 8:00 p.m., A.M.A. Tickets at the door.

## Monday, December 3

Student Recital

## Sunday, December 9

Christmas Open House featuring performances by the Dana Choir, Band and other Campus groups.

## December 9 - December 20

Exhibit of Christmas Art featuring originals and reproductions, Parnassus

## Monday, December 10

Student Recital

## Sunday, December 16

Mid-year Commencement

## Thursday, December 20

Christmas Holiday Begins  
A.M.A. — Alumni Memorial Auditorium  
D.H.A. — Doctors Hall, Dana Hall of Science

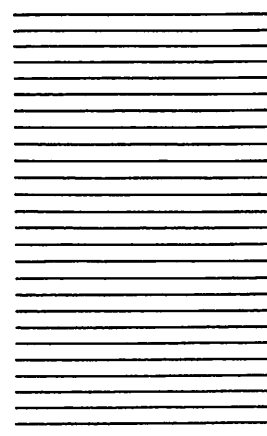
All events listed are open to the public, unless otherwise mentioned, these events are free.

Parnassus is located on the second floor of Pioneer Memorial and is open to the public at no admission charge from 8 a.m. to 5 p.m. Monday thru Friday and from 3 to 4:30 p.m. on Sundays.

First Class Postage  
Permit No. 22  
Blair, Nebraska 68008

BUSINESS REPLY CARD No Postage Stamp Necessary if mailed in the United States

POSTAGE WILL BE PAID BY  
**THE DANA "ADMISSIONS GANG"**  
Dana College  
Blair, Nebraska 68008



# WANTED

by the admissions gang at Dana



Mike Jones



Larry Knudsen



Richard Showers



Greg Witte

BE ON THE ALERT for these four men, collectively known as the "Admissions Gang", who will soon be roaming the countryside in search of prospective Dana students. They will be armed with literature and information of special interest to college-bound students and must be considered intensely sincere in their desire to meet prospective Danians.

IF YOU HAVE INFORMATION concerning a possible prospect for an interview with a member of the "Admissions Gang", do not hesitate to pass on that information to the College. A postage-paid return card is provided for your convenience.

ACTION AND INVOLVEMENT are the keys to this operation and if you will take the initial action the "Admissions Gang" will provide the involvement. With your help we can build a bigger and a better Dana!

**I suggest you contact the following prospective students;**

NAME \_\_\_\_\_

STREET ADDRESS \_\_\_\_\_

CITY \_\_\_\_\_ STATE \_\_\_\_\_ ZIP \_\_\_\_\_

PRESENT YEAR IN HIGH SCHOOL \_\_\_\_\_

PHONE NUMBER (IF KNOWN) \_\_\_\_\_

NAME \_\_\_\_\_

STREET ADDRESS \_\_\_\_\_

CITY \_\_\_\_\_ STATE \_\_\_\_\_ ZIP \_\_\_\_\_

PRESENT YEAR IN HIGH SCHOOL \_\_\_\_\_

PHONE NUMBER (IF KNOWN) \_\_\_\_\_

YES, I am willing to sponsor an "Admissions Party" in my home, please send further details.

Name \_\_\_\_\_

Address \_\_\_\_\_

## REWARD

Here's an idea for a genuinely rewarding experience — sponsor an "Admissions Party" in your home and invite a group of prospective students to meet with you and a member of the Dana "Admissions Gang". We'll help you plan and promote the party, all we need is an indication from you of your willingness to help. Just mark the attached card and return it today.