



donna review

Winter 1976

Dana review

Volume 32

Winter 1976

Number 2

A magazine for alumni and other friends of Dana College and Trinity Seminary, published four times annually. Printed by Acme Mail Advertising Co., Omaha, Nebraska, with editorial and business offices located at Dana College, 2848 College Drive, Blair, Nebraska. Second class postage paid at Blair, Nebraska 68008.

FROM THE PRESIDENT . . .



Is the independent church college worth preserving? It seems to me that from a historical, sociological, economic and religious perspective the only answer to that question is an emphatic yes.

Higher education in this country is almost 340 years old, having its founding in Harvard College, a church institution, in 1636. Over the next 225 years, with rare exceptions, the church gave birth to another 500 colleges whose purpose was not simply to educate the clergy but also to educate laymen for leadership in civic and secular life. It was not until the War between the States that the state universities had their impetus through the Morrill Acts of 1862 and 1891, which established the second element, the public sector, of a dual system of higher education. Over a century of vigorous expansion of publicly financed higher education has resulted in the preponderance of students being enrolled in the public sector.

Despite this shift, it seems to me that the independent, church-related college has democratized and decentralized higher education, has enhanced equalization of educational opportunity, and continues to realize its ideal of service to God and man. It has played a decisive role in the advancement of American democracy, has furnished the professional training needed by a growing nation, and has contributed to the advancement of man's knowledge of himself and his universe. All the while, it has

contributed also to the health, power and wealth of this nation. Further, being free of governmental control, it has made it easier to maintain freedom in general, and academic freedom in particular; it has also afforded the opportunity for original and fruitful experimentation and for a healthful competition which could not exist under a monolithic or monopolistic system.

Historically, Americans have avoided dangerous concentration of power or monopoly in every segment of our national lives. Just as we have reason to fear domination by one political party, one church or one political leader, I believe that we also have good reason to fear a monolithic structure or control of education by one university or one system of higher educational institutions.

If we look at the positive contributions made by the church-related colleges and universities to the training of the church's and the nation's leadership, to the maintenance of democratic opportunity for equal access to and popular utilization of knowledge, to spiritual, moral and ethical value systems, and to the unquestionable freedom for innovation and experimentation, our answer can be nothing less than an imperative to preserve and enhance the church-related college.

Freedom, balance of power, healthy competition, non-monopolistic enterprises, quality and equality are at the heart of the success of the American system. Yet there is a price tag!

It is not too late to assure this nation, our people and our churches the benefits from a strong independent church-related sector in higher education. It is not a question of whether this nation, this people and this church can afford to pay that price. Rather, when the alternatives are considered, we cannot afford not to pay that price.

Earl R. Mezzoff
President

Elk Horn Hall Becomes Conference-Retreat Center

The metamorphosis of Elk Horn Hall, formerly a men's dormitory, into a Conference-Retreat Center was completed in December. Interior remodeling of the building familiar to several generations of students has introduced many changes which reflect its new purpose. New features include:

1. A large central meeting room on the first floor for use as a general assembly area. The room accommodates up to 100 and is equipped with audiovisual facilities, chalkboards, chairs and tables; it can be easily divided with folding partitions into three separate meeting areas.

2. A combination chapel-meeting room on the first floor.

3. A living suite on the first floor for the resident hostess, Mrs. Alice Laaker.

4. A self-service snack area, reception center, public rest-rooms, and general storage area, all on the first floor.

5. All meeting and sleeping rooms redecorated, carpeted, and air-conditioned.

6. Guest rooms designed for double occupancy on the second, third, and fourth floors. (Total capacity is approximately 80.)

7. Direct access to a semi-private bath from each guest room.

8. A relaxation lounge with television and game tables on the second floor.

9. A library-reading room for research and special projects on the third floor.

10. Facilities for serving informal coffees and receptions.

Doors of the Center opened to a group for the first time on January 5, when a seminar on "Motivation Theory and Values Clarification," sponsored by the Lutheran School of Theology in Chicago, met on the campus for four days. Other activities scheduled for the Center in January include a meeting of the District Council of the Central District of The American Lutheran Church, a retreat by the Dana Board of Regents, a session retreat by Omaha's West Hills Presbyterian Church, and a retreat by the Treynor, Iowa, Luther League.

The building will be rededicated at a brief ceremony on January 19 at the opening of the District Council meeting.

Total cost of the remodeling is \$160,000, exclusive of furnishings; many Dana supporters have contributed to the creation of the long-needed facility.

Groups interested in using the Conference-Retreat Center are invited to write to Dr. John Northwall, Dana's Director of Church Relations.

Margaret Chase Smith

Living By Instant Desire Threatens Future

Editor's note: Woodrow Wilson Visiting Fellows Margaret Chase Smith, who represented Maine in Congress for 32½ years, and Major General William Lewis, her associate, were in residence at Dana from November 10-14. They met with classes and faculty members and participated in several public events, including a lecture on leadership and a discussion on women in politics. One of the activities was a meeting with faculty and staff to discuss education in the liberal arts. The following summarizes this discussion.

"I have always regretted that I did not have a college education, especially because of my lack of background in history," Margaret Chase Smith said in her opening remarks about a liberal arts education to Dana's faculty and staff. "Because of this lack, I have had to work very hard in my career."

The former U.S. Senator said that she has always considered the liberal arts college and its concept an important part of the American system, but believed that such an education "should be restricted to those qualified for it." Some high school graduates should be directed into vocational training, but such training, she said, "should be worked out with care."

General William Lewis, an attorney and a liberal arts graduate, said that a skill acquired through popular short-term vocational training that emphasizes quick money "might be

worthless a few years from now" as technology changes.

"Living by instant desire is a serious threat to our future," Mrs. Smith said.

Both agreed that a liberal arts education gives people breadth and flexibility, the capacity to adapt and to acquire new skills. However, recent emphasis on vocational training and trade schools, Lewis said, has resulted in liberal arts colleges now "having a tough row to hoe."

Lewis said that many graduates of liberal arts colleges "will not fully appreciate the value of a liberal arts course until 10 years or so later." He has found that such an education is essential as "pre-training for the professions" and as a means of "teaching people to get along with their fellow man."

Lewis recommended that a liberal arts school seek a balance in education between generalization and specialization, develop an interdisciplinary approach, pay somewhat more attention to the applied sciences, and place more emphasis on required courses.

In response to this last recommendation, several faculty members commented on the emphasis today in many high schools on elective courses, mini-courses, and fads, with the consequence that their graduates are unprepared for college. They do not have the common background of knowledge required as a basis for college-level work and for understanding their cultural heritage. Most do not know their cultural heritage because their high schools have not taught them history and mythology and because their churches have not taught them stories from the Old and New Testaments.

Lewis said that unfortunately the "now" syndrome can be found throughout society.

In the course of the discussion Mrs. Smith had good things to say about the Dana students she had met. She described them as "thoughtful, courteous, and serious, with their questions well thought out."



Townpeople, students, and faculty members meeting informally with Woodrow Wilson Visiting Fellow Margaret Chase Smith found her articulate, witty, and charming.

Margaret Fischer Becomes First Woman Regents Vice-Chairman

Attorney Margaret Fischer of Omaha, a member of Dana's Board of Regents since 1964, was elected Vice Chairman of the Board at the fall Regents meeting. She is the first woman to serve in that position.

Dana President Earl R. Mezoff states that he "is delighted with Miss Fischer's election. She has pursued her responsibilities as a member of the Board very actively and has shown leadership and candidness in deliberations on all matters. She meets her responsibilities toward the college with enthusiasm, interest, and dedication — in short, she possesses all of the characteristics of leadership needed for the position."

A member of the law firm Fischer and Welsh, Miss Fischer received her B.A. from the University of Omaha in 1928, attending its night law school at the same time. After admission



Margaret Fischer

to the Nebraska bar in 1929, she joined her father's law firm and has actively practiced law ever since.

She has been a community leader, serving as president of the Women's Division of the Omaha Chamber of Commerce and of the Omaha Urban League. She was a member of the last board of the municipal University of Omaha before its merger with the state system. In 1961 she was named Outstanding Woman of the Year by the Omaha Business and Professional Women's Club.

She is a member of Kountze Memorial Lutheran Church, where she has taught an adult Sunday School class for many years.

Her love for travel has taken her to Russia, the East European countries, most of Europe, Africa, and the Orient. Other hobbies include reading, ballet, and the theater.

The new Chairman of the Board is Dr. Erwin H. Goldenstein, Coordinator of Doctoral Studies in Education at the University of Nebraska-Lincoln. He rejoined the Board this year, having served on it earlier from 1961-1972. From 1968-1972 he was Board Vice Chairman.

Interim Offers Variety

"Getting Acquainted with History Through Fiction," taught by Miss Luella Nielsen, and "The Grand Old Opera from Naples to Nashville: Opera Appreciation and Performance," taught by Dr. Alan Brandes and Dr. Dennis Henne-man, are only two of more than 30 interim courses students are attending this month. Members of the opera interim are surveying seven representative operas from the 17th century to the present and will give public performances of one of those studied — Purcell's *Dido and Aeneas* — on February 6 and 8.

Students enrolled in these two classes and in others such as "Computers in Education," taught by Dr. Paul Emmerich, and an "Income Tax Practitioner's Course," taught by Mr. Gilbert Ragan, are remaining on campus.

Other groups of students and faculty members are spending all or most of the interim off campus. Farthest away are those traveling in Europe studying "The Medieval World: Politics and Business from Charlemagne to the Hanseatic League." Faculty guides are Mr. John Nielsen and Dr. Sarah Penick. Travelers in this country include those in Colorado learning beginning skiing and ice skating under Miss Carol Haussermann; in California studying that state's life and literature with Mr. Norman Bansen; and in Texas involved with "The Farm Worker in the Rio Grande Valley" and "Ministry to Winter Texans." These last two are co-sponsored by Texas Lutheran College and Dana and are team taught by Dr. John Northwall and two Texas Lutheran faculty members.

Other students spending the month in business or science internships are also off campus, as are several student teachers.

Many classes meet on campus but take frequent field trips. These classes include "Social Gerontology," taught by Mr. Joel Snell, and "Field Experience in Recreation," taught by Mr. Paul Peterson. Students taking "Great Contemporary Drama" under Dr. Herta Engleman are attending plays in nearby cities. A class in parliamentary law called "Mr. Chairman: I Move . . ." taught by Mr. Darrell Dibben, will visit the Iowa and Nebraska legislatures at the end of the month.

Phonorama '76 Sets \$50,000 Goal



Sharon Mardesen Nelson heads this year's Phonorama.

Over 3,100 alumni will receive telephone calls in February from more than 250 alumni, students, and members of the faculty and staff during this year's Phonorama.

Chairperson SHARON (MARDESEN) NELSON ('61) reports that the goal for this year's drive is \$50,000. (Last year \$41,212 was raised.) Calls will be made from Omaha, Lincoln, Council Bluffs, and Blair.

Because the callers will be asking not only for contributions to the drive but also for the names of prospective students, each alumnus is encouraged to have at least one name and address of a high school junior or senior to give to the caller. Representatives from Dana's Admissions Office will then get in touch with these students.

The callers will also ask for news for the *Dana Review*.

Faculty Members Snell and Dean Study Area Development, See No End To Urban Sprawl For Next Half Century

What social and economic factors in the next fifty years will affect Omaha and its neighboring Nebraska and Iowa counties? How will these factors influence development of the region (which includes Washington County and Blair)?

These were the questions posed by the Omaha District Office of the U.S. Army Corps of Engineers to Dana faculty members Dr. Gary Dean, Associate Professor of Business Administration, and Mr. Joel Snell, Instructor in Sociology. Their study, the first comprehensive regional plan in the United States (titled *Socio-Economic Impact on Changing Life Styles in the Year 2020*), is being used by the Corps of Engineers as a model for other regional studies.

In considering these questions Dean and Snell had to ask still others. What conditions might occur within the next five decades that would encourage area growth? What would discourage it? (They agreed to rule out catastrophes, which don't require planning.) What changes might occur within the single family unit, in transportation, housing, education, recreation, entertainment, the economy, the political structure, religion? In the availability of natural resources?

In attempting to find possible answers to these questions, both tried to be realistic, not visionary, viewing things the way they are, and not as they — or others — might like them to be.

Their conclusions? "Changes will occur," said Snell in an interview about the team's work, "but they won't be as volatile and dramatic as people think. There will be some content changes in society, but not in its form. People's attitudes and values in man-to-land relationships don't change easily or rapidly, and economic factors that began long ago will primarily determine the course of future development."

Both men concluded that the Omaha area could develop in any one of three directions, with the most likely being continued urban sprawl. Agreeing with this conclusion after studying material and maps was consultant John McHale of the Institute of Future Studies at the University of New York at Binghamton.

The other two less likely possibilities are either a "green revolution," a return-to-the-earth society with planned land-use policies, or a "restoration" society, a less-affluent society with many social and economic institutions restored to the way they were in an earlier period. In such a society people would find it necessary to double up on housing and transportation.

These last two would share several features — increased use of public transportation and a revitalized downtown Omaha, for example — but in each case these features would come about for different reasons.

The World Future Society has expressed interest in issuing the book.

BROADCASTING PROGRAM ALUMNI WORK IN RADIO AND TV

Four years ago KDCV-FM, Dana's radio station, went on the air for the first time. A year later Dana initiated a course of study in radio broadcasting under the direction of Darrell Dibben, Assistant Professor of Speech. Enrollment in this course of study and work with the station have led to interesting jobs in radio and television for several alumni, Dibben reports.

One of the first students to take the program in broadcasting, 1972 graduate DENNIS WEIDLER is now chief announcer for WQLR-FM in Kalamazoo, Michigan. Another, 1973 graduate JACKIE WARD, is at KETV in Omaha as assistant to the producer.

MAL ADAMS, who came to Dana two years ago with a background in radio and television work in Omaha, attended the radio announcing and broadcast journalism classes here. He is now with the Nebraska ETV Network in Lincoln, where he is coordinator for minority affairs and host of the weekly ETV interview program "Rap About It."

Two 1974 graduates are working in radio. JOHN BROOKS is the morning newsman for Omaha's KOWH, and KATIE (PIEPER) ELLING recently became the morning disk jockey for WLDY in Ladysmith, Wisconsin. Her story is an interesting one. She was in charge of program continuity for Dana's station, but did not take the broadcasting course. Involved with community theater in Ladysmith, she was in a radio play on one of the two local stations. The producer of the other station heard the play, liked her voice, and asked her to become the morning disk jockey on his station.

One of last year's graduates is continuing his studies in broadcasting. TOM VERTES is enrolled in a graduate program in radio and television at Mankato State College in Minnesota.



KDCV-FM goes on the air with disk jockey Becky Masoner, a sophomore. Continuity director Julie Ellison, a junior, stands by.



Joseph Langland talked to students about writing when he visited Dana a year ago last fall. Two of the students were Mary Staby and Alan Hanson.

Dry Grass

by Joseph Langland

Editor's note: Poet Joseph Langland, now at the University of Massachusetts in Amherst, taught English at Dana in 1941-42. His books include Poet's Choice (with Paul Engle), The Short Story (with James B. Hall), The Green Town, The Wheel of Summer, Poems From The Russian Underground (translated with Tamas Aczel and Laszlo Tikos), and Interview and 14 Poems. At Dana Langland liked to take midnight walks up the hill behind the campus. "Dry Grass," from The Wheel of Summer, is about those walks.

The hayfield whispers as I walk
 Each midnight hour up this hill
 To tell the autumn wind such talk
 And nonsense as I will.
 I mark the sumac by the moon
 And tear the withered grass to show
 How crisp stems crackle, and how soon
 The searching fingers know
 Beyond old callouses and tough
 Thin tentacles of nerve that this
 Is death again.

I like that rough
 Sharp certainty that is
 Portion of hand and part of mind.
 For if, sometimes, I run in fear,
 Bewildered, questioning and blind,
 At least I have death here,
 Real in my human hand. It
 Is reassuring, being clean
 And common to my autumn wit
 And in my memory, green.

"Dry Grass" from *The Wheel of Summer* by Joseph Langland (The Dial Press, 1963). Reprinted by permission of the author.

Commencement Activities Rescheduled

Three end-of-the-year activities have been rescheduled, with the morning baccalaureate service and afternoon commencement now set for Thursday, May 20, and the alumni recognition dinner for the evening of Wednesday, May 19. More detailed information will be given in the Spring Review.

Lutheran Hour Speaker Talks About Lutheran Higher Education Today

Dr. Oswald Hoffmann, speaker of the Lutheran Hour since 1955, was on the campus October 29-31 as this year's Staley Foundation lecturer.

While at Dana Dr. Hoffmann spoke to the faculty informally on Lutheran higher education today. His remarks included several observations that seem worth sharing with friends and alumni:

On student recruitment—A Lutheran college should "meet the challenge of producing the kind of student and graduate that will sell the school to others."

On reliance on government funding—"With acceptance of government funding comes a certain amount of control." Furthermore, "the constituency of a Lutheran college should not be led to think that someone else is going to take care of things for them."

On what should make a Lutheran college distinctive—"One thing a Lutheran college must recognizably be is that it is Christian. On a Lutheran campus there should be fellowship between students and students, students and faculty, faculty and faculty."

During his three-day visit Dr. Hoffmann also conducted a seminar for local pastors and gave three evening sermons on "Christ is for Real." The last sermon was at a Reformation Rally October 31.

ATTENTION, ALL BUSINESS ALUMNI: On Friday, April 2, 1976, the sixth annual S.A.M. Seminar will be held. This seminar is produced by the award-winning Dana College chapter of the Society for the Advancement of Management. This year the seminar will be special.

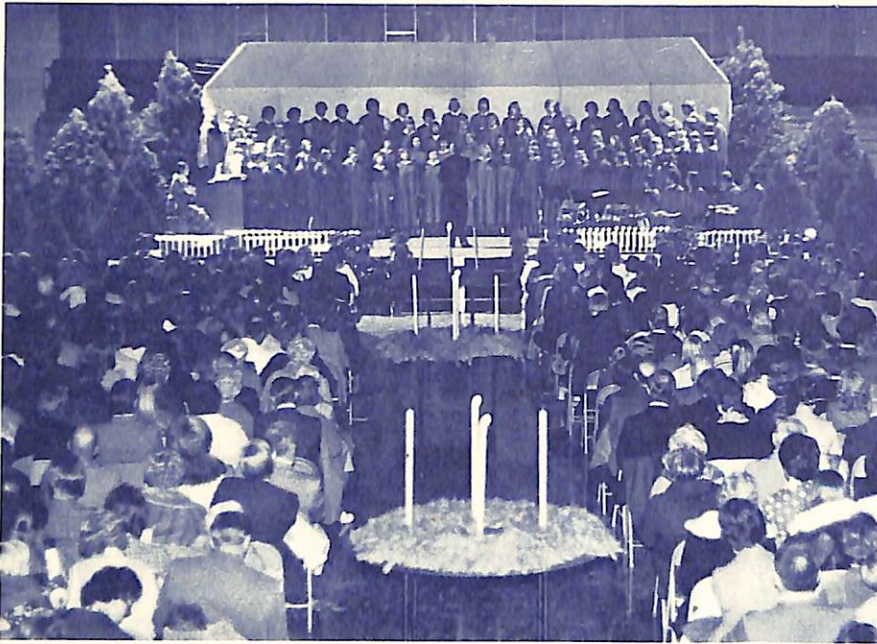
In conjunction with the Bicentennial, the theme this year will be "American Business: How It Was and How It Will Be." The seminar will be an all-day affair with business history the topic for the morning and the future the topic for the afternoon. The afternoon session will feature Wayne I. Boucher, vice-president and senior project manager for The Futures Group. Mr. Boucher was mentioned in a *Wall Street Journal* article (3/31/75) which dealt with the use of Futurists to discern what is lying ahead for business. We will also have a speaker from a midwest business concern talking about the future of business. The day will end with a panel discussion featuring several businessmen and faculty members.

The morning session features two historians. Dr. Niel Johnson will speak on "A History of the Local Economy, Some Landmarks and Trends," and Dr. Charles J. Kennedy of the Economics and Business History Department of the University of Nebraska-Lincoln will talk on the "History of Business, Especially in Nebraska." Mr. W. A. Henry, President of Skinner Macaroni, will address the group on "Success as a Journey," a topic dealing with youth and business.

The seminar will be special in another way. We plan to have a luncheon for business alumni and for former and present members of the business faculty; we hope that you will be able to attend. You will be hearing from us later.

Richard O. Holquist
 Assistant Professor of Business Administration
 S.A.M. Sponsor

CHRISTMAS OPEN HOUSE AT DANA



Christmas Open House on December 7 drew the largest crowd ever attending the traditional event, with total attendance estimated at 2000. More than 1500 attended the "Hour of Christmas" concert presented by the music department. The Danish smorgasbord also proved to be a popular feature, with 775 meals served.



A German Christkindlmarkt was a new feature this year.



All of the sights and sounds of Christmas — the Danish kaffebord, Christkindlmarkt, Santa Lucia ceremony, the Dana Folk Dancers, the storytime (shown here with Professor John Nielsen reading to a rapt audience) — attracted capacity crowds.

A Bard's-Eye View of Blair

by Luella K. Nielsen

Editor's note: At a recent Parnassus event Miss LUELLA NIELSEN (42), Associate Professor of English, spoke on "Blair and Dana in Literature." This is a condensation of her survey.

I know that the pun is considered the world's lowest form of humor, but I've just finished teaching Oliver Wendell Holmes, punster *extraordinaire*, and a predilection for punning seems to have rubbed off. Besides, that bit of alliteration is simply irresistible.

I also know that a bard should be a poet, preferably a medieval Celtic one who celebrated heroic deeds and historical or traditional facts, but the title A BARD'S-EYE VIEW has now stuck tight in my mind and I can't unstick it; I'll have to make it fit. Perhaps the novelist has replaced the poetic bard in contemporary society? I go to the Oxford English Dictionary for assistance, and all I find is the fact that in eighteenth century Scotland the adjective *bardy* (from the noun *bard*) was used to mean *audacious* or sometimes *pert*. But that does help, because those adjectives do describe some of the statements made by writers who have referred to Blair in their works.

Innocent in Alaska is the true life story of Margaret Knudsen Burke, who was born in Blair in the 1880's but escaped from a town she "had begun to despise at an early age," as told to John Springer, a journalist. Mrs. Burke's description of her birthplace leaves no doubt about her sentiments:

"The town itself was a kitchen midden and hodgepodge of rambling, barn-painted houses, barns, and storm-cellars, a community hall, four churches, a blacksmith shop, two general stores and a livery stable, all ingeniously interlaced by a network of narrow, rutted, sun-baked roads that led off to the outlying farms or to the only Danish college in the United States

"When a girl outgrew the pigtail-and-marble-shooting set, she could choose, for entertainment, between square dances, pie suppers, husking bees, prayer meetings, or skull ramming. If she chose to work for money, her opportunities were likewise electrifying. She could become serf to a general store or pick up after a pastor."

Making her way to Alaska, the eighteen-year-old Margaret got a job as the Territory's first woman telephone operator and eventually married Will Burke, one of its wealthiest and most influential citizens. Her parents insisted that she return home, but one thing was clear to her: she would not go back to Blair; she "would live in a cave and eat rocks first."

Blair and Dana, as they appeared at the turn of the century, are also portrayed in fiction. When *Skinny Angel*, by Thelma Jones, was published in 1946, it was read with interest by H. Skov Nielsen, a former teacher of Danish at the college. Some incidents in the book seemed strangely familiar, so he wrote to the author and asked whether she were by any chance the daughter of Professor H. W. Foght, who had taught history at Dana and had gone on to become president of the University



Luella K. Nielsen

of Wichita and an authority on rural education. She was. The heroine of Mrs. Jones's novel is her mother, whose delightful sense of humor enabled her to bear up under the narrowness of campus life at a small parochial college in the early 1900's and her own secret tragedy, her weight; she hoped some day to become a "skinny angel."

Names and places have been changed, but Aalborg, Minnesota, is Blair; and the college is Dana. When Thorvald and Alice arrived at Aalborg College, they found that, until their household goods arrived, they were to take their meals in the school dining-hall, "in the basement of the girls' dormitory, which, together with another brick building and a small wooden gymnasium, made up the school. They arrived just in time for the noon dinner. The dining-hall smelled of fresh baking and coffee with chicory, musty potatoes, and unchanged tablecloths." The table manners of the students left much to be desired. Several used their toothpicks alternately on their ears and teeth.

For nine dollars a month the new professor and his wife rented "a dim old house upon the same hilltop the school crowned. The house leaked, but it had dignity. . . . Father unpacked and hung the pictures Said Father from the stepladder, 'What these Aalborg people need is a mingling of the teachings of the great Danish bishop, Grundtvig, with the best of our own.' But Mother had her own ideas. 'What these Aalborg people need is a mingling of manners and nonsense. All Scandinavians need nonsense.'"

Alice, or Mother, attempted to humanize the new head of the seminary and further his romance with Christine, the daughter of a Danish restaurant owner whose place of business was the building at present just west of the Ben Franklin Store. The theological professor was delighted with the Danish food and the Royal Copenhagen china until he made the shocking discovery that he was eating dumplings and gravy off the face of "the Great Reformer" Martin Luther, which made up the design in the center of the plate. Other incidents, credited to Danish colleges in Elk Horn, Iowa, and Hutchinson, Minnesota, could just as easily have taken place at Dana, and perhaps did.

Sophus Keith Winther, author of the trilogy of immigrant novels — *Take All to Nebraska*, *Mortgage Your Heart*, and *This Passion Never Dies* — makes only one reference to Blair, in his book *Beyond the Garden Gate* — a reference in much the same caustic vein. The Reverend Jörn Thorvild had just heard of the pregnancy of an unmarried member of his Flock and had wrung from her mother the identity of the guilty person. "He knew Forrest and all the Baileys. They had never been to church to his knowledge, and no wonder. Mr. Bailey was a university graduate, and his sons went to the university. Jörn Thorvild fought the university and all forms of higher education except that represented by the Lutheran college of Blair, Nebraska. The pattern of evil was quite clear to him in this case."

Innocent in Alaska: The Story of Margaret Knudsen Burke by John Springer. Copyright 1963. Reprinted by permission of The New American Library, Inc.

Skinny Angel by Thelma Jones (McGraw Hill Book Company, 1946). Reprinted by permission of the author.

Beyond the Garden Gate by Sophus Keith Winther. Copyright 1946, renewed 1974 by the author. Reprinted by permission of Macmillan Publishing Company, Inc.

Melchior Memorial Room Dedicated

by Ib Melchior

Editor's note: Ib Melchior, son of the late heroic tenor Lauritz Melchior, reported on Dana's October 11-12 dedication of the Lauritz Melchior Memorial Room in the October 23 issue of BIEN, a Danish weekly published in California. BIEN and Melchior, whose latest novel is the best-selling SLEEPER AGENT, have given Dana permission to reprint the article.

In his brilliant address at the dedication ceremonies of the Lauritz Melchior Memorial Room at Dana College, Mr. Paul Hume, distinguished music editor and critic of the Washington Post said of my father: "Lauritz Melchior was not just the greatest Heldentenor in the world — he was the **only** one!" It was a sentiment I was to hear repeated often during the eventful weekend of the memorial dedication, a sentiment with which I agree. His voice was unique, incomparable — and is likely to remain so.

The dedication was a festive occasion at the beautiful campus at Dana College, the only four-year college in America founded by Danish pioneers. My father had many ties to Dana. He had visited there several times, singing with the magnificent Dana Choir; the entire choir had visited him at the Viking — and he had received an honorary degree of Doctor of Music from the college. It seemed to me the perfect place for a permanent memorial to my father, which is why I selected it, and Dana College — under the expert guidance of Dr. Signe Betsinger of the University of Vermont, has indeed created a strikingly handsome memorial room, part of the Dana Library, which with time will be expanded to house a complete collection of my father's records, tapes, photographs, scrap books, hunting trophies, letters and papers, paintings and a variety of personal items from his life and his home — a unique place where students of music can recreate the art, the life and the career of Lauritz Melchior.

At the dedication I presented the Dana College president, Dr. Earl R. Mezoff, with three special items. Perhaps my brief address at that occasion, given in the Lauritz Melchior Memorial Room itself, may serve to recreate the occasion:

"We all know that my father Lauritz Melchior, could sing," I said. "I should like you to know that he could also talk. A speech, a talk by him at any occasion would invariably become a highlight. He had a favorite phrase, an old saying, which he often would quote: "Show me your friends," he would say, "and I shall tell you who you are." As you stand here today in this room dedicated to the memory of my father, look at your neighbor. As you walk the beautiful Dana College campus, look around you — and you will see a few of my father's many friends come here to share this day. Friends with whom he worked; friends who were his hunting companions; friends who were his admirers — and fans as well; friends who knew him and loved him for what he was. And, of course, the friends here at Dana through whose unceasing efforts the Lauritz Melchior Memorial Room has become a reality. And as you thus look around you and see his friends — you may come to know my father just a little better, and you may know, as I do, that the memory of him and his art will live on. As a focal point for this memory I can think of no more fitting place than right here among some of the things he loved best — at a place which embodies much of his own credo: His love for his native country, Denmark, and for his adopted country, the United

States of America, his love for his friends — and for God, his love of life. With the continued cooperation of Dr. Mezoff and the faculty of Dana College, I pledge to you my intentions that ultimately all the memorabilia of my father's still with me shall join the collection exhibited here today, and at this time I should like to present to Dr. Mezoff and the Dana College Lauritz Melchior Memorial Room a few further items, which I believe have a special significance for the image of my father."

These items were: My father's music case with a selected collection of signed sheet music and his personal, annotated score of "Lohengrin"; a replica of the Holy Grail from the opera, "Parsifal," made for him in 1946 on the occasion of his 20th anniversary at the Metropolitan Opera in New York by the stage crew; and a set of his medals and decorations awarded him by the nations and governments of the world — medals we all have seen so often at our Guards' parties and other festive occasions. I asked Dr. Mezoff, on behalf of the family, to place these items in the Lauritz Melchior Memorial Room joining the other memorabilia of my father as a physical and visible part of that memory of him in mind which for us will never fade.

The dedication weekend featured many special events. There was a recorded concert of my father's singing with fascinating commentary by Mr. Paul Hume; there was continuous showing of his feature films, and there was an evening program, "Melchior Remembered," with Mr. Hume, Mr. Karl Laufkotter, one of my father's dearest friends and colleagues, and me, informally reminiscing about "himself"; and songs by Birgitte Grimstad, daughter of Aksel Schoitz.

Among the guests were Mr. Kenneth Holm, Royal Danish Consul of Omaha; and the former Governor of Nebraska — and, of course, the many friends from far and near.

It was a wonderful event, and it is my hope and belief that the Lauritz Melchior Memorial Room will flourish and grow to become a significant contribution to the world of music — and the memory of my father.

Recent Graduate Has Play Published

The Lonely Dollmaker, a children's play by JOHN MARK NIELSEN ('73) produced at Dana several years ago, has been published by Contemporary Drama Service (Box 457, Downers Grove, Illinois 60515).

The musical drama was performed at Dana in March 1972, with the author's wife DAWN CARPER NIELSEN ('74), as its director. The student cast gave several performances before audiences of grade school children from the area.

The publisher has written that "We have decided to try musical drama primarily because of the quality of this script."

Nielsen is a graduate student and instructor in the English department at Creighton University in Omaha; his wife is an assistant in Dana's humanities program.

campus NOTES



Thirteen seniors received their degrees at the mid-year commencement ceremony on December 14.

Assistant Professor Dennis Henneman received his Ph.D. in speech and dramatic art from the University of Nebraska at Lincoln on December 19. The subject of his dissertation is "Chancel Drama and Ultimate Reality: An Application of Paul Tillich's Theory of Esthetics to the Functional Aspects of Chancel Drama Production." A copy of the dissertation is available in the Dana library.

Senior Sherry Kuhr represented Dana at the 15th Annual National Church Music Seminar in Minneapolis in October. At the seminar she sang in a select choir of vocalists from 32 Lutheran colleges that gave a Norwegian-American Sesquicentennial commemorative concert in that city's Orchestra Hall with guest conductor Idor Karevold, assistant director of the Bergen (Norway) Music Conservatory.

Dr. Paul Emmerich, Associate Professor of English, has been invited to serve as a resource person for a workshop at the national convention of the International Reading Association in Anaheim, California, in May. The workshop will study the consortium approach to developing campus teaching-learning centers. Emmerich is at present developing such a workshop at Dana under a Title III grant.

Joel Snell, Instructor in Sociology and Director of Dana's Career Information Office, is preparing a brochure for job-hunting seniors that will be circulated to

employers within a 200-mile radius of Blair. Each senior paying a small fee to cover printing costs has been given a page on which to describe his or her qualifications to prospective employers.

Alumni and friends who are interested in hiring Dana graduates can obtain the brochure by writing to Snell.

Central District pastors-in-residence at Dana the first semester were the Rev. Robert Klein, Sr., of Our Savior Lutheran Church in Jefferson City, Missouri, and the Rev. John R. Meyer of Faith Lutheran Church in Seward, Nebraska. Mrs. Meyer accompanied her husband. The program is funded by a grant from the Division of College and University Services of The American Lutheran Church.

Associate Professor of Business Administration Gary Dean has been re-elected to the Board of Trustees of the Nebraska Council on Economic Education for the next three years.

PHIL PAGEL ('56), Director of Public Relations, has been named to the Board of Directors of the Health Planning Council of the Midlands, an 80-member board charged with planning and evaluating the health needs of Dodge, Washington, Douglas and Sarpy Counties in Nebraska and Harrison, Shelby, Pottawattamie, Mills, Montgomery, Fremont, and Page Counties in Iowa. The Council has been organized under P.L. 93-644, The Health and Planning and Resources Development Act of 1974.

Instead of going off the air during Christmas vacation, KDCV-FM, Dana's radio station, was manned by Blair high school journalism students taught by ROBERT BAIR ('72).

The tribute to Dr. Sophus Keith Winther planned for last October 23 and announced in the Fall *Review* was postponed because of the illness of Mrs. Winther.

Dana Seeks Memories

Reminiscences of Dana's early years, of Danish immigration experiences, of homesteading and city life, of the churches in the former United Evangelical Lutheran Church, are being sought by Head Librarian RONALD D. JOHNSON ('61) for Dana's oral history collection.

The importance of gathering such memories was recognized a few years ago, and since then several early Danish settlers — or the children of such settlers — and early Dana alumni and faculty members living in the Blair area have been interviewed on tapes by faculty members.

Now Johnson would like to widen his search, and by means of this issue of the *Review* is soliciting material in the areas, or related areas, described above. "Knowledge of our

past is important," Johnson says, "and it is essential to gather such material now, because primary sources are more valuable than secondary ones." (He has also found that the younger generation is becoming interested in hearing the older generation tell its story.)

Older readers, or younger ones who know of an older person willing to share his or her memories, are invited to send tapes or written material (although tapes are preferred) to Johnson for the collection. The memoirs can be in either Danish or English. Cassette tapes are acceptable. If the sender feels the need for reimbursement, Dana will pay for postage and the cost of the tapes. The material should be accompanied by a statement granting Dana the right to use it for educational purposes.

SPORTS



Football Ends With 2-6-0 Record

The Vikings closed their 75-76 football season on November 1 with a victory over NIAC foe, Hastings College, giving the Vikings a 2-6-0 record for the year.

Victory over Hastings was especially sweet as it represented Dana's first conference win since 1972.

Football honors for 75-76 were announced on November 17 as squad members, parents, area coaches, alumni and staff gathered for an end-of-season dinner and program.

Two Dana players, Mike Urdahl, a senior from Schnecksville, Pa., and Dan Dye, a senior from Cedar Rapids, Iowa, were named to the 1975-76 All-conference team. Receiving honorable mention were Vikings John Hibbing of Paullina, Iowa; Robert Jones of Mineola, Iowa; Mike Herbert of North Wales, Pa.; and Todd Roecker from Harlan, Iowa.



Mike Urdahl
Schnecksville, Pennsylvania

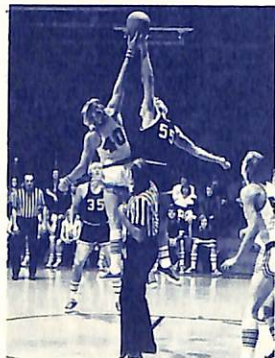


Dan Dye
Cedar Rapids, Iowa

Basketball Begins On Optimistic Note

The fact that most of the members of the 75-76 Dana basketball squad have played together for a year has given the coaching staff reason to be cautiously optimistic about the new season. During the last half of 74-75 the Vikings were developing into a highly respectable team and, with that experience as a starting point, the outlook for 75-76 is encouraging.

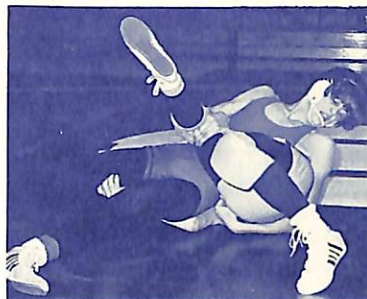
Four of last year's regulars, Barry Olson of Minnetonka, Minnesota; Steve Probst of Syracuse, Neb.; Steve Williams of Edina, Minn.; and Stan Gustafson of Omaha, will be leading the 75-76 attack. Others returning from last year include John Hibbing of Paullina, Iowa; Terry Brownfield of Humboldt, Iowa; Jerry Haas of Harlan, Ia.; and Steve Thomsen of Lyons, Neb. Curt Boeck, a sophomore from Ida Grove, Iowa, is a fine new prospect. A 6'7" freshman, Tom Rettig from Council Bluffs, is expected to provide good board work for the team. Lack of height was one of last year's major deficiencies when the tallest man on the squad was 6'4".



The season opened in late November with the Emporia (Kansas) Jaycees Classic Tournament. Dana finished eighth among the eight teams competing. Then came losses to Wayne State and Dordt College but, just before Christmas vacation, the Vikings defeated Bellevue College by 82-74.

Regular play resumes on January 9 following a mid-December invitational at Yankton, South Dakota.

Explosive Wrestlers Begin Season



Coach Ernie "Greek" Abariotes, beginning his second year as head wrestling coach for the Vikings, is predicting "better things" in '76 for his "young, but explosive" grapplers. "If we can avoid injuries and take at least 7 men to the Conference, we should be close to the top," he commented.

Although the team members are lacking in college wrestling experience, they are determined. Based on their showing in the season opener against Yankton when four Vikings placed, the possibility for "better things" seems quite probable.

Competition resumes in January as the Vikings host Westmar-Yankton on January 15, travel to Northwestern on January 17, host Midland and Northwest Missouri on January 21, and the Dana Invitational on January 24.

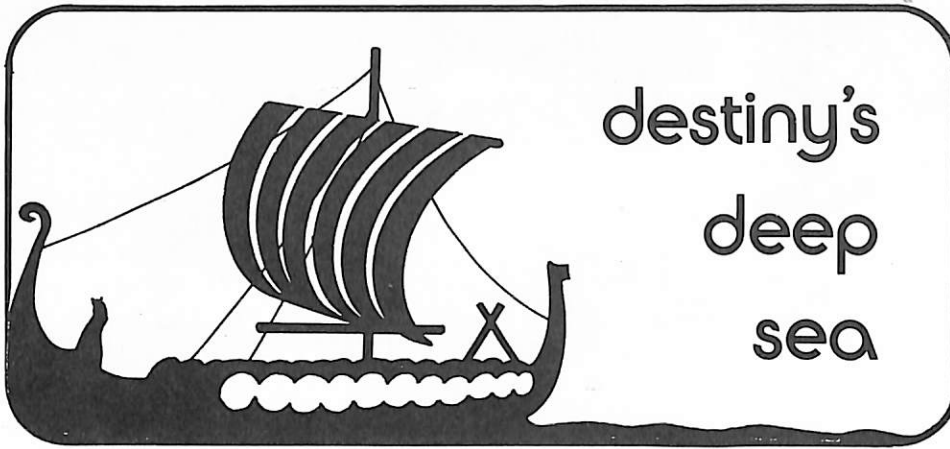
Alumnus Leads World Hunger Fight

Bread for the World: A Christian Citizens' Movement in the U.S., with the Rev. ART SIMON ('52) as its Executive Director, announced this fall that it has launched a "decade-long effort against hunger." The first action of the interdenominational movement has been a nationwide "offering of letters" campaign, with members of church congregations writing to members of Congress to demonstrate broad public support for a right-to-food resolution recently introduced in Congress. Senator Mark Hatfield, Oregon, and Representative Donald Fraser, Minnesota, are chief sponsors of the resolution.

The resolution asks that right to food "become a fundamental point of reference in the formation of legislation and administrative decisions in areas such as trade, assistance, monetary reform, military spending and all other matters that bear on hunger." For this country it calls for full employment and a floor of economic decency for every citizen. For other countries it seeks increased U.S. assistance "for self-help development among the world's poorest people . . . with particular emphasis on increasing food production among the rural poor," until such assistance reaches the level of 1 percent of this country's Gross National Product.

Bread for the World has found that in 1974 the U.S. "ranked 14th among 17 donor countries when development aid was measured as a percentage of GNP," with one-fifth of 1 percent of the GNP given for such aid that year, and with the percentage "steadily shrinking." It has also discovered that this country today is doing less than one-tenth as much as it did during the days of the Marshall Plan.

Simon is the author of a new book, also titled *Bread for the World*. He spoke about world hunger at Dana in early 1974 when he was acting director of the new organization. Those interested in learning more about its objectives and operations can write to him at 235 East 49th Street, New York, New York 10017.



JOBS AND PROMOTIONS

1975

- JAMES BERTHESEN** works as a loan counselor for Midland Federal Savings and Loan. His address is 3631 Mountain View Court, Longmont, CO 80501.
- JEAN CIELOCHA** is a caseworker for Nebraska Region IV Department of Social Services. Her address is 2002 Sunset, Norfolk, NE 68701.
- BENT COLLIN** was recently appointed Chief of Administration/Correspondence of the American Embassy in Switzerland. He still serves in the U.S. Air Force. His address is 2910 Van Buren, Bellevue, NE 68005.
- PATTI HANSEN** is tax accounting administrator for Central Telephone and Utilities in Lincoln, NE, where her address is 2831 S. 46th (68506).
- MICHAEL McCALLUM** is an internal auditor for Omaha's Metro Area Transit. He has been promoted to second lieutenant in the Iowa National Guard. His address is 3151 Avenue B, Council Bluffs, IA 51501.
- RICHARD McLAIN** is an English teacher at North High School in Omaha.
- DIANE LARSEN MADSEN** is teaching sixth grade vocal music in Papillion, NE; she is also teaching at the Parker School of Music in Omaha.
- KAREN MAHAN** is a physical education teacher in Council Bluffs, IA.
- JOHN M. PETERSON** is an accountant for Kahler Corporation; his address is 112 8th Avenue SE, Rochester, MN 55901.
- VICKIE PETERSON** is a live-in house parent at the Nebraska Children's Home in Omaha. Her address is 3549 Fontenelle Blvd. (68104).
- SANDRA PIERCE** is a teller at the Nebraska Federal Savings and Loan in Omaha, where her address is 3317 N. 103 Plaza #18 (68134).
- GARY and KATHY (PAULSEN) SOETMELK** live at 801 N. 35th Street, Apt. 6 in Council Bluffs, IA 51501. Gary is a management trainee with John Day Company, and Kathy is health and social service coordinator at the Council Bluffs Child Care for Family Service of Omaha-Council Bluffs.
- SANDRA (ROCHLITZ) WEST** is working as a medical technologist at St. Francis Hospital, West Point, NE. Her husband **DAVID** is a Dana senior. Their Blair address is Omaha Village #3 (68008).

1974

- BONNIE EHM** has been promoted to the financial department of Continental Western Insurance Company in Des Moines, IA. Her address there is 2626 Patricia Dr. #413 (50322).
- MIRIAM HILLER** was commissioned for missionary service in Bangladesh at Trinity Lutheran Church in Napoleon, ND, September 14. She will go to Bangladesh as a teacher of American missionary children, but her duties will expand as she learns the Bengali language. Mail sent to her home address, which is Box 257, Napoleon, ND 58561, will be forwarded.

1973

- STEVE and Janice ALBERS** are living at 1604 22nd St., in Columbus, NE 68601. Steve has been promoted to adult residential director for the Platte Valley Office of Mental Retardation, and Janice teaches third grade at St. Anthony's School.
- SECOND LIEUTENANT ROBERT EHMEN** has been awarded silver wings upon graduation from U.S. Air Force navigator training at Mather Air Force Base, CA. He and his wife **CANDACE (WILD)** are living in Phoenix, Arizona, where Bob has been assigned to Luke Air Force Base.
- GALE JOHNSON** is a medical technologist at Community Memorial Hospital in Missouri Valley, IA. His wife **BECKY (GRAN '75)** is a bookkeeper-secretary. Gale recently passed the National Registry tests for medical technologists after a 12-month training period at St. Joseph Mercy Hospital in Sioux City. He received his B.S. in bacteriology with a minor in chemistry at Iowa State University in 1974 after attending Dana for three years.
- ROBERT OAKESON** is a physical therapist with Wisconsin Therapy Associates in Beloit, where his address is 1219½ Bluff (53511).

1972

- GRANT ANDERSEN** is computer systems analyst for United of Omaha. He, his wife Sherri, and children Scott and Brian live at 1418 Colfax in Blair (68008).
- RUSSELL EPPENBAUGH** was promoted last May to credit manager of St. Louis Kenworth Sales and Service, Fenton, MO. His address is 4967 C Bacardi, St. Louis; MO 63129.

1971

- SHERRI BUSSE** is a staff nurse at General Rose Memorial Hospital in Aurora, CO. Her Aurora address is 35 Oakland #8 (80012).
- JAMES DEUPREE** is a financial planner with Travelers Insurance Company. He and his wife Jill live at 10921 Leavenworth in Omaha (68154).
- R. DANA HARRIS** is Omaha branch manager of Guardsmark, Inc., an industrial security company. His Omaha address is 12406 Burt Plaza (68114).
- RICK JAHNKE** has been promoted to claims supervisor for U.S. Fidelity and Guarantee Insurance Company. He and his wife Deborah live at 5317 Halifax Ave. So. in Edina, MN 55424.
- CRAIG MORAN** is in Taiwan, where his address is 3rd Floor, No. 1, Lane 2, Yung Kay St., Taipei, Taiwan 106.
- JOYCELYN (JENSEN) PETERS** and her husband Maylon live at 9400 E. Hampden, Denver, CO 80231. Her husband teaches at Arapahoe-Douglas County Area Vocational School.

1970

- GARY and CAROL (MARESH) PANKO** live at Route 1 in Lawler, IA 52154, where Gary serves Zion Lutheran Church in Alta Vista and Immanuel Lutheran Church in Lawler. He received his Master of Divinity from Wartburg Seminary in 1974.

1968

EARL KNUDSEN is production manager for Distillerie Stock, U.S.A., Ltd. He, his wife Ruth, and children Karl and Erik live at 125 Harrisburg St., Bay Shore, NY 11706.

ALAN STEEN has been appointed feeder pig representative for the Kay Omaha Livestock Market, Inc. He received a B.S. in animal science from Iowa State University, where he transferred from Dana. After service in the Marine Corps in Vietnam, he took graduate work at Iowa State and obtained his teaching certificate in vocational agriculture.

1967

LORETTA (HECKATHORN) Calabro and her husband Dan live at 830 S. 52nd in Omaha (68106). She is a data specialist with Northwestern Bell.

1966

ROBERT BOLDIG has become regional vice president of the Baltimore-based First National Bank of Maryland. Before accepting his new position he was a vice president of First Wisconsin Bank of Racine.

MARVEL CHRISTENSEN, Rt. 1-S, Box 81, Craig, NE 68019, is a kindergarten-to-sixth grade teacher in District #17 in Dodge County, NE. She received her master's degree in education in 1971 from the University of Nebraska-Lincoln.

JOAN JORGENSEN, 514 Bluff St., Hutchinson, MN 55350, is now director of nursing at Glencoe Hospital in Glencoe, MN.

1965

MRS. ANDREW J. (LOIS M. ANDERSON) ANDERSEN, 1148 S. Cornell #A, Fresno, CA 93705, has retired from teaching after 32 years.

CRAIG and PATRICIA (SITTLER) CARLIN live at 9905 Orchard St. in Omaha (68127). Craig works for National American Insurance Company as marketing vice-president for the nation.

THE REV. CLAYTON NIETFELD recently became senior pastor of Grace Lutheran Church in Englewood, CO. He, his wife Lila, and three children live in Englewood at 4780 S. Clarkson St. (80110).

RODNEY and MARILYN (HARDER '67) THOMPSON live at 6988 Robb St. in Arvada, CO 80004. He is manager/supervisor of pension trust and exempt organizations for the Internal Revenue Service.

1964

MARY (LAY) BAEHLER, her husband Robert, and children Eric, Elizabeth, and Sarah live at 2609 CTH-CC in Oconomowoc, WI 53066, where they own a dairy farm.

LELAND WALZ is manager of inventory control for Fotomat Corporation of LaJolla, CA. He, his wife Marion, and daughter Amy live at 6469 Panel Court in San Diego (92122). Leland is a member of the San Diego Friends of Dana.

ROY WILLIAMS was promoted last September to controller of Crust Buster, Inc., in Spearville, KS. He, his wife Eva, and children Mark and Briana live at 1705 Tenth Ave., in Dodge City, KS 67801.

1963

THE REV. RONALD and KATHERINE (TOFT '64) NIELSEN live at Rt. 5, Box 154A in Alexandria, MN 56308. Ron is executive director of Luther Crest Bible Camp in Alexandria, and Kathy, an S.L.B.P. instructor, is working on her master's degree at St. Cloud State University.

GARY L. RICHEY is basketball and track coach at the Woodland Park, CO, high school. He, his wife Janice, and children Jana and Tory live at Box 1828, 730 N. Walnut in Woodland Park (80863).

KATHRYN (WOLLENHAUPT) Shaw is senior citizens coordinator for Southwest Iowa, coordinating educational and recreational programs for groups, clubs, centers, meal sites, etc., for senior citizens. She and her husband live in McClelland, IA 51548.

1962

DR. PHILIP and SANDRA (JENSEN '63) LARSEN live at 926 S. Roys Ave., Columbus, OH 43204. He

Moving? Please remember to notify the Alumni Relations Office.

received his Ph.D. from the University of Arizona, and is an assistant professor in the Department of Plant Pathology at Ohio State University.

1961

DR. JAMES IHRIG has accepted an appointment as president of Cloud County Community College in Concordia, KS. He has been academic dean at Mid-Plains Community College in North Platte, NE. He has his master's and doctor's degrees from the University of Nebraska-Lincoln, and has taken additional work at the University of Nebraska-Omaha and the University of Missouri-Columbia.

1958

WESLEY SCHNACK, Atkinson, NE 68713, is a history teacher and football coach at West Holt High School.

1954

THE REV. PETER and ELNA (NIELSEN) MATHIASSEN are now living at 2473 Trondheim Crescent (Meadowdale West) in Mississauga, Ontario L5N 1P3, Canada, after 17 years of missionary work in Brazil. They are beginning a home mission congregation in the Meadowdale West development of Mississauga.

1952

THE REV. HARRY and SHIRLEY (HANSEN '53) SORENSEN are living at 704 9th St., NW in Altoona, IA 50009. He is chaplain at Lutheran Hospital.

1946

MRS. BERNARD (RUTH PETERSEN) Falksen is a part-time radio announcer, with a local news program broadcast on KRFO-AM-FM from her home three times weekly. Her address is Rt. 2, Box 209, Ellendale, MN 56026.

1943

THE REV. ARCHIE MORCK was seriously injured in a car accident in February 1974, which has forced him to retire. He has built a retirement home at Spruce View in Alberta, Canada TOM IVO.

1940

MRS. BONNIE (ANITA NIELSEN) Stephens, Box 357, Tulalake, CA 96134, has retired after 30 years of teaching. She and her husband will work part-time and travel.

1934

CORRECTION:

THE REV. AND MRS. GEORGE J. (EDNA HANSEN '33) ROBERTSON are still living at 17959 Nearbank Dr., Rowland Hts., CA 91748. A change of address was incorrectly given in the Winter 1975 Review.

ADVANCED DEGREES AND CONTINUING EDUCATION

1975

JAMES and RACHAEL (NEVE '74) BENBOW are living at 984 NW Circle Boulevard #13, Corvallis, OR 97330. Rachael is doing graduate work in human genetics at Oregon State University on a Danforth Fellowship, and Jim is a psychiatric aide at Oregon State Hospital in Salem.

1974

KAY HORTON received her M.A. in library science from the University of Denver last May. She is now a librarian in the Love Library at the University of Nebraska-Lincoln, where her address is 324 S. 47th (68510).

CONNIE SCHREIER is doing graduate work in anthropology at the University of Missouri. Her address is Route 2, Box 9, Columbia, MO 65201.

BRADLEY and PATRICIA (HEWETT '75) SCHWEER are living at 2815 S. 126 Plaza in Omaha (68144). Brad is a second-year law student at Creighton University, and Pat is resource teacher at Mount View School.

1973

WARREN and JANICE (WHALLEY '76) NIELSEN are living at 2011 Oak Avenue #2, Santa Barbara, CA 93101, where he is serving an internship at Grace Lutheran Church. He is enrolled at the Lutheran School of Theology in Chicago.

1972

LINDA (CHANDLER) Buffington is a student at Iowa State University. She and her husband Roger live in Ames at 3920 Quebec (50010).

1971

PHIL GOTSCH received his Master of Divinity degree from Luther Seminary, St. Paul, MN, last spring. He and his wife BEVERLY (WALTERS '72) live at 801 24th St. in Cloquet, MN 55720, where he serves as pastor of the two-point parish in Scanlon and Culver.

DONALD NELSON received his M.D. last May from the University of Iowa College of Medicine. He has started his three-year family practice residency in Cedar Rapids, IA, at Mercy and St. Luke's Hospitals. His address is 124 34th St. Dr. SE #17, Cedar Rapids (52403).

STEPHANIE (PETERSEN) PROUTY has received her M.S.W. from the University of Nebraska. She and her husband JOHN ('70) live at 1902 N. 56th in Omaha (68104).

1970

TWILA JUEL received her M.S. in elementary education from the University of Nebraska-Omaha last May. She lives at 12130 Anne St., Apt. 10, in Omaha (68137).

CHARLES ROHLFING received his M.S. in counseling and guidance from the University of Nebraska-Omaha last May. He is a junior high guidance counselor in the Millard schools, and his wife JULIE (THORSON) teaches intermediate grades in the same system. Their Omaha address is 15205 Jefferson (68137).

1969

ALLAN ANDERSON has begun work on his master's degree in guidance and counseling at the University of Nebraska-Omaha. He was discharged from the U.S. Air Force last August. FRAN (PEDERSEN) teaches in the Omaha school system; Alan also serves as deacon on the council at Lutheran Church of the Master. Their Omaha address is 12645 Orchard (68137).

1968

DAVE AANONSON will graduate from Luther Seminary in St. Paul, MN, next May. Last year he was an intern at Central Lutheran Church in Regina, Saskatchewan. He and his wife BARBARA (COOK '69) live at 1630 Eustis, Apt. 8, in St. Paul (55108).

STARLA (SORENSEN) SWEDA received her M.S. in allied health education from Southwest Texas State University last August. She and her husband William live at 7305 Leading Oaks, San Antonio, TX 78233.

1967

TERRY BOECK received his M.A. in educational administration from the University of Nebraska-Lincoln last July. He and his wife DIXIE (HAVICK '66) live at 1908 E. 8th in Fremont, NE 68025.

FREDRIC DONALSON received his M.B.A. from Portland University this year. He and his wife Lois have moved from Vancouver, WA, to 16 Briarcliff Rd. in Port Washington, NY 11050, where he is a supervisor for Western Electric.

FREDRIC LANGE completed his M.F.A. at the University of Southern California last spring and now works as designer and technical director at St. Olaf College in Northfield, MN. He and his wife Ruth live at RR 1 in Northfield (55057).

WAYNE and LOUISE (GRUBE '69) SITTLER are living in Gulfport, MS, where their address is Rt. 8, 103 Beverly Dr. (39501). Last year while Wayne, a U.S. Army Captain, was in Korea as commander of the 501st Signal Company, Louise attended graduate school at the University of Nebraska-Lincoln, receiving her MAT in mathematics in August. Wayne is now attending a communications and electronics school at Keesler Air Force Base in Gulfport.

1966

KAYE M. PETERSEN is working on an M.A. in theology with emphasis on youth ministry and overseas training at Fuller Theological Seminary. Her address is 135 N. Oakland, Pasadena, CA 91101.

1951

THE REV. E. CHARLES ANDERSON is enrolled in the Doctor of Ministry degree program offered by the Lutheran School of Theology in Chicago. He is pastor of St. Ansgar's Lutheran Church in Waterloo, IA, where his address is 145 Lovejoy Ave. (50701).

PUBLICATIONS, ACTIVITIES, HONORS, AND AWARDS

1973

STEVE HAHN has had a poem, "Dusk and Old Barn," published in the Fall 1975 issue of *Prairie Schooner*. He lives at Rt. 1 in Herman, NE 68029.

1972

JUDITH ANN SOLOMON was a 1975 AK-SAR-BEN princess. Since her graduation from Colorado Women's College in Denver with a major in family studies and a minor in anthropology, she has worked at Creighton University's Emergency Center, Department of Family Practice, and is now assisting with volunteer activities at Children's Memorial Hospital in Omaha.

1970

MICHAEL BEECH was recently elected president of the Western Massachusetts Rehabilitation Association. He is senior vocational rehabilitation counselor for the Massachusetts Rehabilitation Commission and is also enrolled in the master's program in rehabilitation counseling at Goddard College. His wife WINIFRED (EATON '72) is business manager of a dentist's office. Their address is Washington Mt. Rd., Becket, MA 01223.

1966

GARY HAGERMANN was awarded "L'ORDRE NATIONAL DU TRAVAIL DE LA REPUBLIQUE D'HAITI" on May Day 1975. The award is given annually to a few Haitians who work toward the progress of their country. Gary is a teacher and elementary coordinator in Port-au-Prince. He and his wife Marlene have a daughter, Gaelle, born last May. They live at Boîte Postale 1175, Port-au-Prince, Haiti.

1952

THE REV. GERHARDT MENGERS was recently elected secretary of the Ohio District of the Lutheran Church of America. He and his wife RUTH (WAGSCHAL '53) live at 537 Terrace Lane in Chilli-cothe, OH 45601.

MARRIAGES

1975

KATHERINE GROSS and Gary Mittelbach were married December 27, 1975. She graduated with honors in biology last spring from Iowa State University, where she was elected to Phi Beta Kappa, and is now a Ph.D. candidate in zoology at Michigan State University. Their address 580 Spartan Ave., East Lansing, MI 48823.

BECKY HAACK and JACK MARTIN were married August 23, 1975. Becky is a Dana senior; Jack is administrative assistant to the Dean of Students.

ANN MEISSNER and Loren Kreutz have recently married. They live at Rt. 1, in Galva, IA 51020, where they farm.

DONNA REQUE and DONALD BAACK were married November 8, 1975. Donna was a freshman at Dana last year; Don is employed by the Lincoln, NE, *Journal-Star*.

1974

JUDITH BEALL and Paul J. Baker were married May 31, 1975. Their address is 790 Rutland Dr. #706, Lincoln, NE 68512. Both work for Beall Construction Company.

LAURA HELLMER ('77) and DONALD NEVIUS were married last summer. Don teaches physical education at the Timboon High School, Timboon, Victoria, Australia 3268.

1972

H. JEAN BRYAN and Thomas Clark were married in January 1975. They live at 1323 W. Lawrence in Chicago, IL 60640. Jean, who received her B.A. in theology and religion from Elmhurst College in 1972, works as organizer of Friendship House, and Tom is a student at Loyola University.

ROSEMARY MORTENSEN ('74) and the REV. DONALD MATTHIESEN were married July 26, 1975. Their address is P.O. Box 281, Winner, SD 57580, where Don is pastor of a three-point congregation.

Linda Semple and STEPHEN LIZER were married October 5, 1974. They live at 1901 Melrose St. in Rockford, IL 61103. Steve is supervisor of the special packaging department of Pierce Chemical Company in Rockford.

1971

MARY HENNINGSEN and Arlen Ottmar were married March 29, 1975. They live at 107 E. St. Joe, Rapid City, SD 57701, where he is a high school band director and she is a substitute elementary teacher.

1970

JANETTE ANDERSON and Robert L. Brown were married in January 1975. They live at 2605 3rd Ave., Scottsbluff, NE 69361.

Jane Louise York and DAVID RENZE were married May 24, 1975. They live at 40 E. Cedar, Apt. 9B, Chicago, IL 60611.

1969

PAULA HANSEN and Reed Brinkman were married at Cambridge, MA, September 7, 1975. Both are students at the Episcopal Theological Seminary at Cambridge. Paula received her M.L.S. degree from Syracuse University in 1971. She was a librarian at Boston College before her enrollment at the seminary in 1974.

1965

Eva Christina Hjelm and the REV. HARVEY KENDALL HARRIS were married September 27, 1975, at Fort St. John, British Columbia. Their address is 4118 36th St., Red Deer, Alberta, Canada.

1963

ROBERT and Carol Ann STEFFENSEN were married July 12, 1975. They live at 833 Wellington Ave., Elk Grove Village, IL 60007. Bob is senior life and health underwriter of North American Company for Life and Health Insurance, and Carol Ann is principal of Franzen Elementary School in Itasca.

ANNIVERSARIES

Mr. and Mrs. Harold W. Holm, 3430 Stratford Avenue, Racine, WI, recently observed their golden wedding anniversary. Retired president and manager of Asdahl and Nelson, Inc., he is a former chairman of the Dana Board of Regents.

Births DAUGHTERS

1974

Nicole Dawn, born July 17, 1975, to David and LISABETH "IKK" (EBERT) Harris, 2525 SW 80th Lot 43, Des Moines, IA 50320.

Sandra Reed, born August 1, 1975, to ROBERT R. and Nancy KING, 6205 S. 140th, Omaha 68137.

1972

Kimberly Marie, born January 22, 1975, to Lyle and AMY (PESTAL) Hayek, RFD 2, Box 96, Friend, NE 68359.

1971

Dawn Michelle, born July 25, 1975, to JEFF and NANCY (SHANER) BEATTY, 8686 E. Easter Ave., Englewood, CO 80110.

Cynthia Jean, born October 11, 1975, to WILLIAM and JUDITH (RENKEN) SHAFF, 121 Carroll Ave., Apt. B-2, DeKalb, IL 60115.

1970

Sarah Jane, born February 1, 1975, to RICHARD and Jane STUEVE, 5327 S. 87th Place, Omaha 68127.

1969

Jennifer Kristine, born October 12, 1975, to Joseph and JEAN (REUTER) Stippich, 922 N. 9th, Plattsmouth, NE 68048.

1968

Kristin Marie, born November 30, 1974, to RICHARD and KAREN (NELSON '69) HANSEN, Ruskin, NE; Rich is a dairy farmer and Karen a substitute teacher for Nuckolls County Schools.

Ingrid Johanna, born June 3, 1975, to the Rev. Larry and DIANE (JOSEPHSON) Laine, 6442 Almaden Rd., San Jose, CA 95120.

Marni Kirsten, born September 28, 1975, to JEFFREY and KATHY (JENSEN) VINTON, 744 Owens St., Rockville, MD 20850. Jeff is an oral surgery resident in the U.S. Navy at the National Naval Medical Center in Bethesda.

1967

Joy Cathleen, born May 29, 1975, adopted July 29 by Ben and ENID (WILEY) Tiseo, 4054 Sudbury Dr., Warren, MI 48092.

1966

Rachel Jane, born April 23, 1975, to WAYNE and Cynthia JOSEPHSON, 48153 N. 90th St. E, Lancaster, CA 93534. She joins a sister, Sarah Ruth. Wayne is on a two-year leave from the Evangelical Lutheran Church of Canada to develop a 20-acre farm belonging to his parents.

Michele Adria, born March 6, 1975, to RICHARD and ERMA (HOUGH '68) PETERSON, 3177 Crocker Rd., Eugene, OR 97404.

Andrea Lorraine, born July 4, 1975, to WALTER and JOAN (HENDRICKSEN '67) WILLMERT, 1730 W. 28th St., Lawrence, KS 66044.

1961

Kathryn Elizabeth, born May 6, 1975, to Robert and ELLEN (ANDREWS) Fisher, Rt. 1, Box 48, Fox Lake, WI 53933.

Births SONS

1974

Ryan Christopher, born June 24, 1975, to RON and LINDA (MUNSON '73) SCHOLZ, 4717 N. 66th St. #85, Omaha 68104.

1973

Rodney Lynn, born October 1, 1975, to Wayne and LINDA (DENNY) Carlson of Neola, IA.

Travis Christian, born June 3, 1975, to TOM and RICKI (SOGGE) LAURITSEN, 11741 Roanoke Blvd., Omaha (68164). Tom is an attorney with Swarr, May, Smith, and Andersen, and Ricki is a secretary at Northern Natural Gas.

Derek James, born October 23, 1975, to ARDEN and Pamela RAKOSKY, Box 10, Blair (68008).

1972

Eric Jason, born November 6, 1974, to Rick and SHERRY (SPILKER) Jewell, 96 Byrd Dr., Apt. E, Steilacoom, WA 98388. Rick returned last October from a 13-month tour of duty as an Army medic in Korea.

Jeffrey Dean, born April 8, 1975, to Charles and CONNIE (KRULL) Johnson, Rt. 2., Box 128, Sutton, NE 68979.

1971

Wayne Stephen, born August 15, 1975, to Stephen and TRUDY (MEYER) Witt, Rt. 2, Box 109S, Chandler, AZ 85224.

1970

Bart Christopher, born September 15, 1975, to JON and Marilyn BOUSTEAD, RR 2, Woodbine, IA 51579.

Jeremy James, born March 27, 1975, to James and SANDY (GREVLOS) Fink, 1205 Pam Rd. # 2, Sioux Falls, SD 57105.

Sean David, born August 13, 1975, to Robert and CORINE (JASA) Forbes, 620 Pearl, Lyons, NE 68038.

1969

Walter Carl, born February 24, 1975, to WALTER and LINDA (SCHMIDT) DUDA, 5007 Cuming, Omaha, NE 68132.

1968

Aaron Douglas, born April 16, 1975, to the REV. STEPHEN and Nancy BOHLING, St. John's Lutheran Church, St. Donatus, IA 52071. They have a daughter, Amy Sue, born July 3, 1972.

Granger August, born August 30, 1975, to DAVID and Mary CARLSON, 307 Oak St., Detroit Lakes, MN 56501.

Chad Kee, born November 10, 1972, and adopted in March 1975 by CLARK and CLAUDETTE (BAK-KEN '67) GILBERT, 14693 E. 13th Circle, Aurora, CO 80011. Chad is from Korea. The Gilberts have another child, Cirsten, born May 7, 1971. Clark is an employment counselor.

James Ryan, born July 21, 1975, to JAMES and ANNETTE (SORENSEN '69) HOLTAM, 1267 E. First, Fremont, NE 68025.

Jeffrey Charles, born March 4, 1975, to CHARLES and MAXINE (LUBKEMAN) SCOTT, 10618 M St., Omaha 68127. Chuck received his M.S. in elementary education last August from the University of Nebraska-Omaha.

Kyle David, born May 27, 1975, to David and JEANETTE (WALLMAN) Slusher, RR 1, Martell, NE 68404.

1967

David Nathan, born July 16, 1975, to Gaylon and KAY (LEE) Kellner, 62 Alcott, Denver, CO 80219.

1966

Joel Kaj, born May 26, 1975, to TIMOTHY and SHARON (MESSER '65) JENSEN, 905 Brompton, Fredericksburg, VA 22401.

Jaron Ray, born September 8, 1975, to WAYNE and NAOMI (PETERSEN) THEYE, 1906 Cole Village, Las Cruces, NM 88003. Wayne is working on his Ed.D. at New Mexico State.

1964

James Christopher, born June 25, 1975, adopted by MILAN and ARLYCE (FUCHS '61) NORE, 8501 Arrowhead Circle, Lincoln, NE 68510. Milan is assistant director of special education with the Nebraska State Department of Education, and Arlyce is reading teacher in the Lincoln public school system.

1963

Douglas Conrad, born September 25, 1975, to Conrad and RUTH (DREYER) Bauer, Rushville, NE 69360.

1960

Brandon Thomas, born August 27, 1975, to EVERETT and JUNE (SANTAGE '62) JOHNSON, 721 Washington Ave., Sheldon, IA 51201. Everett is vocal music director and head baseball coach at Sheldon high school.

DEATHS

1972

Toby Daniel, second son of Gary and PAM (HOLDEN) Sejkora, 3566 Keymont Dr., Dubuque, IA 52001, died of Sudden Infant Death Syndrome in December 1974.

1951

MRS. Valion (JOAN M. DAMSKOV) Jordan of Franklin, TN, died of cancer October 1, 1974. She is survived by her husband and daughters Cynthia Maria and Melissa Susan.

1943

John E. Thomas, husband of DOROTHY (KUOLS) Thomas, died August 13, 1975. She lives at 4802 Colorado St. in Duluth, MN 55804.

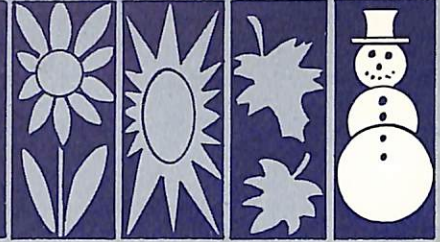
1941

THE REV. H. LEONARD ANDERSEN died October 21, 1975, in Sparta, WI, where he had served Trinity Lutheran Church since 1970. Survivors include his wife (DOROTHEA SORENSEN) and children GREG and CAROLYN (both '73).

1938

John and BURDETTE (ERICKSON) Van Dalsem of Tustin, CA, were killed in an auto accident on December 5, 1975, near Banning, CA. They are survived by four children, her father Adolph Erickson and brothers and sisters.

Calendar of Events



January 5-30
Interim.

January 19
Nebraska District High School Drama Festival, all day, Alumni Memorial Auditorium. Free.

February 2
Second semester classes begin.

February 6, 8
Dana opera production, Purcell's *Dido and Aeneas*, 8 p.m., Alumni Memorial Auditorium.

February 16
Faculty piano recital, Dr. Alan Brandes, 8 p.m., Alumni Memorial Auditorium. Free.

March 3, 4
Children's play (all-student cast), afternoon, Alumni Memorial Auditorium. Free.

March 8
Piano recital, Tim Schmidt (Waldorf College), 8 p.m., Alumni Memorial Auditorium. Free.

March 16
High school speech contest, all-day. Free.

March 19-28
Spring holiday.
Choir tour.
Drama tour.

April 2
S.A.M. Bicentennial Seminar on "American Business: How It Was and How It Will Be." (See story on page 6.)

April 2, 3
On-campus performances of touring play, evening, Alumni Memorial Auditorium.

April 4
Home concert by the Dana College Choir, 7:30 p.m., Alumni Memorial Auditorium. Freewill offering.

April 16-19
Easter holiday.

April 23, 24
Dana theater department production of one-act plays, evening, Alumni Memorial Auditorium.

Dana Contributor Dies at 94

Charles A. Dana, Sr., retired industrialist and head of the Dana Foundation, an organization which has donated funds to many hospitals and colleges, including Dana College, died in November. He was 94.

Although there was no connection between his name (pronounced Day'na) and that of the college, then-President C. C. Madsen in the 1960's interested the philanthropist in offering matching funds to Dana in the amount of \$200,000 for the construction of the science building and \$300,000 for the library.

In recognition of Dana's generosity, the college named the former building, which was dedicated in 1962, the "C. A. Dana Hall of Science," and the latter, dedicated in 1969, the "C. A. Dana-LIFE Library." ("LIFE" is an acronym for "Lutheran In-gathering for Education," a fund-raising drive of The American Lutheran Church for its schools.)

A bust of Dana by JAMES OLSEN ('62), Assistant Professor of Art, is in the library.

New Guinea Publishing House Seeks Qualified Personnel

The *Review* has been asked to announce that Kristen Pres, a Christian publishing house in Papua, New Guinea, has the following job openings for experienced people: publishing division manager; editorial training officer (to be vacant May '76); promotion distribution/literature development manager; editor/pidgin translator (to be vacant May '76); business manager (to be vacant May '76); printing division manager; and printing production manager.

Kristen Pres publishes both religious and secular material, and employees should be interested in both. The basic commitment is for three years, with salaries more than adequate for a family to maintain a western standard of living. Interested persons should send a complete résumé to Roger L. Williams, Executive Director/Kristen Pres/Box 712/Madang, Papua New Guinea.

4385 05

SENA NELSEN
108 W CLARK ST
ALBERT LEA MN 56007



1976 CHANCEL DRAMA AND CHOIR TOURS

DRAMA TOUR

Friday, March 19

7:30 p.m. Elk Horn Lutheran
Church
Elk Horn, Iowa

Saturday, March 20

7:30 p.m. Mt. Olivet Lutheran
Church
Perry, Iowa

Sunday, March 21

8:30 a.m. and 10:30 a.m. Services
Holy Trinity Lutheran
Church
Ankeny, Iowa
Evening open

Monday, March 22

Evening appearance at
Bethlehem Lutheran
Church
436 N. Ray Street
St. Paul, Minnesota

Tuesday, March 23

Evening appearance at
Hope Lutheran Church
Ladysmith, Wisconsin

Wednesday, March 24

5:15 p.m. and 7:30 p.m. Vinje
Lutheran Church
Willmar, Minnesota

Thursday, March 25

First Lutheran Church
Albert Lea, Minnesota

Friday, March 26

8:00 p.m. Zion Lutheran Church
Ruthven, Iowa

Saturday, March 27

Open

Sunday, March 28

Open

CHOIR TOUR

Saturday, March 20

7:30 p.m. Our Saviour's Lutheran
Church
Callender, Iowa

Sunday, March 21

8:15 a.m. and 10:15 a.m. Services
St. Olaf Lutheran
Church, Fort Dodge,
Iowa
Evening concert Our
Saviour's Lutheran
Church
Audubon, Iowa

Monday, March 22

8:00 p.m. St. John Lutheran
Church
Eustis, Nebraska

Tuesday, March 23

Evening concert Faith
Lutheran Church
Golden, Colorado

Wednesday, March 24

Evening concert Prince
of Peace Lutheran
Church
Denver, Colorado

Thursday, March 25

7:00 p.m. American Lutheran
Church
Denver, Colorado

Friday, March 26

Zion Lutheran Church
Albion, Nebraska

Saturday, March 27

8:00 p.m. Zion Lutheran Church
Creighton, Nebraska

Sunday, March 28

8:45 a.m. and 11:00 a.m. Services
Morningside Lutheran
Church
Sioux City, Iowa
Evening concert Exira
Lutheran Church
Exira, Iowa

Home Concert Sunday, April 4

7:30 p.m. Alumni Auditorium
Dana College, Blair,
Nebraska

Sunday, February 29

7:30 p.m. Lutheran Church of the
Master
Omaha, Nebraska