

donna review

FALL 1977



Dana review

Volume 34

Fall 1977

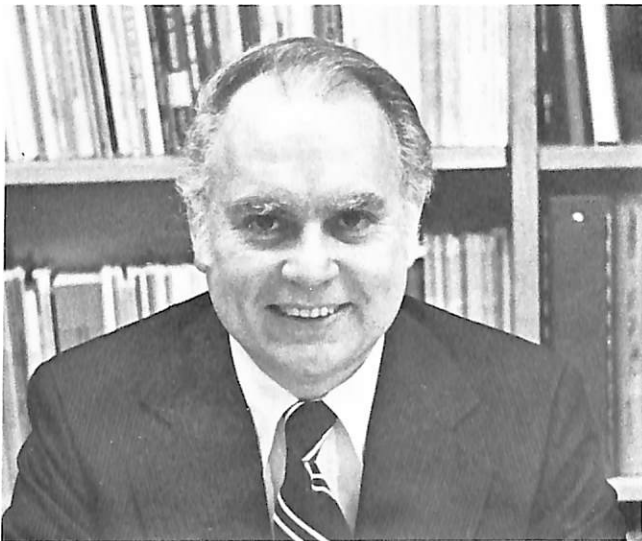
Number 1

A magazine for alumni and other friends of Dana College and Trinity Seminary, published four times annually. Printed by Acme Mail Advertising Co., Omaha, Nebraska, with editorial and business offices located at Dana College, 2848 College Drive, Blair, Nebraska. Second class postage paid at Blair, Nebraska 68008.

The cover: Three Dana leaders (l. to r.)--Gerald Wallace, student government president; Donald Swanson, chairman, board of regents; Robert Glass, acting president. Photo by Peter Bonde, Nerstrand, Minn.

Photography by John Humphrey, Council Bluffs, Iowa; Peter Bonde, Nerstrand, Minn.

VIEW FROM THE HILL



Acting President Robert J. Glass addressed alumni at the Homecoming reunion luncheon October 8. The following is a condensation of his remarks.

According to the Constitution of the Dana Alumni Association, graduates, former students, teachers, and administrators are Dana alumni. I am happy to be a Dana alumnus.

Perhaps one could say that I am a "Dana transfer," and like students who transfer to the College, I was welcomed when I came here four years ago, and I soon joined in the spirit of Dana.

I feel deeply about Dana College. Dana is a special place. It's not just buildings. Dana is a state of mind, a collection of ideas, a set of concepts.

This year I sense on this campus a spirit of rebirth, a renaissance of the Dana spirit and a renewal in the joy of being a part of Dana.

This spirit of rebirth comes from students, from members of the faculty and administration, and from alumni I've met this fall. Morale is high. Together, we're renewing Dana's spirit.

There are things, however, that must be done.

- We are reorganizing our admissions procedures and effort, and that effort is strong. It will emphasize the Church, and especially the Central District of the American Lutheran Church, for Dana is the only ALC college in that District.

- We need increased financial support, and therefore we are intensifying our fund-raising procedures.

- We have to tell the Dana story. Dana is the best-kept secret in the Midwest. We need the help of alumni in telling this story. We know ourselves well; our level of self-understanding is very, very high. But we are self-effacing, and we need to promote ourselves more strongly so that people will know about the solidness that is here on campus.

What are these solid things? They are the basics, the fundamentals, of Dana College.

First of all, Dana is a college of the American Lutheran Church, and within the American Lutheran Church, the college is considered the Church in higher education. Our role is to carry forward the thrust of the Church.

Second, our duty is to produce Christian leaders, workers, and doers for the Church and the institutions of society. If this is not our duty, why are we here?

Third, we are dedicated to the religious development of each student, and as part of this, to the development of each student's character, to his or her ethical integrity. Of course, we are interested in what a student is going to do, the job he or she will hold, but we are even more interested in the kind of person that student will become.

Fourth, we are dedicated to the intellectual development of each student, in breadth and in depth. Dana has a unique program for the general education of each person: the humanities program and the Liberal Arts Reading Program are examples of this uniqueness. We want a student to have a strong general education that emphasizes both cultural activities and the human competencies of learning how to learn, to think, to solve problems, and to develop self-confidence.

Fifth, Dana is an interrelated community composed of students, faculty, and administration, and our sense of community is very high.

Yes, we believe that Dana College is a special place.

Mezoff on Sabbatical:

Glass Named Acting President, Hanson Acting Dean of College

Dana College opened its 1977-78 school year in September with a new acting president, Dr. Robert J. Glass, who has been dean of the college for the past four years.

Glass was appointed by the board of regents after the announcement of Dr. Earl R. Mezoff, president since 1971, that he had been granted a sabbatical leave of absence, effective August 1, 1977, and that he would not return as president when that year was over.

A graduate of Yale University, George Washington University, and the University of Maryland, Glass brings to his new assignment a background and interests that combine science, mathematics, engineering, and the liberal arts. He is president of the board of directors of the Omaha-Council Bluffs Metropolitan Area Arts Council, a nonprofit organization supported by the National Endowment for the Arts, the Arts Councils of Iowa and Nebraska, and private contributions.

In a recent *Omaha World-Herald* interview, Glass emphasized the need for "colleges that have a strong sense of community, that put emphasis on ethical values and the humanities."

Glass, in describing the direction of his administration, affirms strongly the identity of the College as the Church in its educational mission. He is committed to presenting consistently this identity of the College to the Church itself, to the general public, and to all persons who are being recruited as prospective students.

One of his first acts was to appoint Dr. Clifford T. Hanson, a man who has long been associated with Dana, as acting dean of the college. A professor of philosophy and religion, Hanson attended Dana from 1937 to 1939 and received his B.A. from the University of Minnesota. A 1944 graduate of Trinity Seminary with an M.A. from the University of Minnesota and a Ph.D. from the University of Nebraska, he taught at Dana from 1949 to 1956 and returned in 1963. Last spring he was elected chairman of the Nebraska Committee for the Humanities.

Mezoff announced his decision at a meeting of the faculty and staff on July 6. In his prepared statement he said that "In reflecting on these past six years of my association with Dana College, I find many experiences which have been very rewarding, including the progress in most areas as well as the human relationships and friendships established; but at the same time I am disappointed that we were not able to make more progress in other areas of the College's life.

"I have also come to the conclusion that . . . I have made the major contributions that it was possible to achieve in that period of time . . . I believe it is in the best interests of Dana College that the Board begin to search for new leadership for the College . . ."

During Mezoff's tenure, the administration, faculty, and staff made progress in many areas, including the development of special education, recreation, commercial art, law enforcement and church staff worker programs. Arrangements for a Dana spring semester in Copenhagen were completed.

The number of faculty with earned doctorates increased from 41 to 50 percent.

Other areas of growth included significant expansion and improvement of the fringe benefit program for faculty and staff; establishment of cooperative arrangements with Midland College,



Hanson and Glass

Fremont, for mutual academic enrichment; and obtaining the Staley Distinguished Christian Scholar Lecture Series.

The Lauritz Melchior Memorial Room, dedicated in 1975, attracts many visitors to the campus.

The College's ties with the American Lutheran Church at District and national levels have become stronger through Dana's office of church relations, established in 1975; through the selection of the campus as the site for the ALC's Central District Council's semiannual meetings and District conventions in alternate years; and through the remodeling of Elk Horn Hall--formerly a men's dormitory--into a conference-retreat center which is used extensively by church as well as civic groups.

In addition, between 1971 and 1977 the ratio of alumni giving increased from approximately 10 to 25 percent, local community support grew from \$12,000 to \$40,000, the College's endowment doubled, and capital indebtedness was reduced. Facilities for baseball and softball are being constructed through a cooperative arrangement with the city of Blair and community organizations (see article on sports page).

Mezoff will spend his sabbatical year visiting friends of Dana and developing resources for the College.

SEARCH COMMITTEE FORMED

The 16 members of Dana's Presidential Search Committee represent groups associated with the College:

Alumni board: Mrs. Richard (Sharon Mardesen '61) Nelson and Mr. Homer Nielsen '41.

Faculty: Dr. Richard Jorgensen '64, Dr. Bernard Matthies, Dr. John Nielsen '47, and Mr. Roger Olson.

Student body: Miss Lanette Monasmith and Mr. Luke North-wall.

Administration: Dr. Clifford Hanson '44 and Mr. Eugene Meyer.

Board of regents: Mr. Kenneth Holm (chairman of Search Committee), Mr. Kenneth Hansen, Mr. Howard C. Hanson, Jr., Mr. Ben Krantz, Dr. Royce Ronning, and the Rev. Alton Schwandt. Regents chairman Donald Swanson is an *ex officio* committee member.

Applicants for the presidency should write to Chairman Holm at 1500 Woodmen Tower, Omaha, Nebraska 68102.

Three Join Faculty

Bergquist, Sloan, and Brockmeyer are new names on this year's roster of faculty and staff.

The Rev. Bruce Bergquist, a graduate of Wartburg College and Wartburg Seminary, a former pastor in the Central District of the American Lutheran Church, and a doctoral candidate in English at the University of Nebraska-Lincoln, is Dana's new campus pastor. He was installed at the Sunday service of the campus congregation, Ekklesia Koinonias, October 16. Bergquist is also instructor in religion and English.

Mrs. Lucinda Sloan, Omaha, part-time instructor in music, gives voice lessons at Dana two days each week. She holds a bachelor of music in voice performance from the University of Illinois, Urbana, and a master of arts in voice performance from Radford College, Radford, Virginia. Mrs. Sloan, who has performed roles with Opera/Omaha and in West Virginia and Illinois, was a semifinalist in the Metropolitan Opera Regional Auditions. She also teaches at the Omaha Junior Theater and is assistant in music at Presbyterian Church of the Cross in Omaha.

Mr. William Brockmeyer, Omaha, is assistant professor of business administration. A retired U.S. Air Force colonel, Brockmeyer recently received an M.A. in business administration from the University of Nebraska-Lincoln. He has a B.S. in mathematics from the University of Maryland's College of Education and a second B.S. and an M.S. in meteorology from Pennsylvania State University.

Two faculty members who have been in the department of



New at Dana are (from left) William Brockmeyer, business administration; Lucinda Sloan, voice; and Bruce Bergquist, campus pastor.

business administration for several years submitted their resignations during the summer. Dr. R. Gary Dean, at Dana since 1968, has accepted the position of chairman of the accounting department at Creighton University's College of Business Administration. Dr. Richard Holquist, at Dana since 1974, has joined the faculty of the College of St. Mary in Omaha. Mr. Richard Voth, Blair, who was a member of the Dana faculty several years ago, teaches part-time in the department.

Glass Makes Staff Appointments

Acting president Robert J. Glass announced on October 13 the appointment of two men from within the Dana faculty and staff to key positions at the College.

Dr. John Northwall, associate professor of speech and director of continuing education, is special assistant to the president, and Dennis Barnum, director of church relations and estate planning, is the new director of admissions. Dana resumed direct administration of its admissions program in September.

Barnum is a former high school and college teacher who was legislative director of the Missouri National Education Association for five and one-half years before coming to Dana last spring.

He is an active layman within the Central District of the American Lutheran Church, having served as a District representative on the Dana/District Task Force and as vice-president of the Executive Committee and Council of the District.



Northwall

Barnum will continue as Dana's director of church relations, a position he believes will complement his new duties in admissions, for in both he "will be working to improve our contacts and relationships with the church's constituency."

Northwall earlier served as director of church relations. Before coming to Dana in 1968, he served parishes in the Central District. In his new position he will work closely with the American Lutheran Church at District and national levels. Northwall will retain his position as director of continuing education.

President Glass, in announcing the appointments, said that "Dana College is very fortunate in having persons of this caliber on its staff who are willing to meet the needs of the College at this time. We believe that these assignments will enhance our relationship with the American Lutheran Church and also substantially strengthen our Admissions program."



Barnum

Alumni: Tell Prospective Students About Dana

"Why did you choose Dana?" In answer to that question, students this year--from freshmen to seniors--have answered that they are here because of the College's "academic excellence," "friendly atmosphere," "church orientation," "liberal arts program," and "pretty campus," and because of the "personal relationship between faculty and students," with "everyone treated as an individual."

If some of those answers sound like the ones you gave when you were a student here, that's no coincidence.

The Dana you knew is the Dana that is still here. If anything, the good feeling that generally prevails on campus is even stronger this year. Visitors notice it. Alumni commented on it at Homecoming.

But don't let this make you complacent about Dana and its future. Dana continues to need your help.

Many high school students today would choose to come to Dana because of what Dana has to offer, but someone has to tell them about it first.

Here's what you can do! If you know of high school students--freshmen, sophomores, juniors, and seniors--who could find what they need here, talk to them, and then send the Admissions Office their names.

There's a coupon on the inside back cover of this issue for that purpose, and there's an envelope addressed to Dana attached to the financial report in the centerfold.

C. B. Larsen: "A Source of Inspiration"

Editor's note: The announcement in an earlier Review of the death on December 15, 1976, of Professor Emeritus C.B. Larsen, a member of the Trinity Seminary faculty from 1926 until his retirement in 1955, noted his influence on "the theological thinking of the United Evangelical Lutheran Church."

That influence, which continued even after his retirement, was extolled in the sermon delivered at Dr. Larsen's funeral by Pastor Robert Albers of Blair's First Lutheran Church. Passages from the sermon are given below.

Dr. C. B. Larsen touched us and moved us . . . His faith and life exemplified a paradigm of paradoxes. It was that quality of life and posture toward life which was the source of our inspiration:

- He was a man gifted by God with superior intelligence, insight and wisdom, a man who believed in the full utilization of man's capacity to search for truth; yet he was humbly aware of the finite nature of our ability to comprehend the truth. He often said, "When everything is considered, we really don't know very much."

- He was a man who exerted a tremendous influence on the thoughts and lives of his students, colleagues, and friends. Yet he was never pretentious or presumptuous in his decorum; rather, he exhibited the wisdom of true humility.

- He was a man whose brilliance put him far ahead of his time, who was dedicated to the quest for truth; yet he never forgot that there is only One who is Truth and that One is God.

- He was a man who to the end of his life remained vitally interested in the world and current events, yet he never lost sight of the eternal dimension and significance of life. . . .

Death, the great equalizer, makes us deeply sensitive to the transitory nature of life. . . . In the past few months Dr. Larsen often referred to a poem by the noted Danish poet Steen Blicher, in which Blicher compares life and death to the migratory waterfowl. They take up their abode in summer quarters to build their nests and raise their young, but soon they hear the voices of winter beckoning them to yet another home. The poet, like the waterfowl, has the urge to mount up on wings of freedom to escape the prison of human frailty and suffering. His desire is to transcend human existence, but he knows that he has been placed here for a purpose until death calls the wandering pilgrim to eternal peace . . .

Dr. Larsen often spoke of the transitory nature of our culture, achievements, and perhaps especially of our theology. All of these are marks of this temporal city that has no lasting qualities . . .

How Dr. Larsen loved that characterization of God whose tremendous power and mystery is far above mortal man. . . . Those of you who knew him will remember his impatience--no, his vehemence--with those who attempted to encapsulate God in dogmatic systems and in the framework of human language. He often said that we ought not to be so presumptuous as to explain God, but rather like Isaiah to fall down and worship Him, saying, "Holy, Holy, Holy is the Lord God of hosts."

I remember discussing with Dr. Larsen one day about twelve years ago during my intern year a problem and how he made this truth about our relationship with God so real for me. I told him my concern about perpetuating error in my sermons, and his wise and loving reply freed me from many sleepless nights. He said, "Remember, you might have a bad theology but a good relationship with God, or you might have a good theology (whatever that might be) but a bad relationship with God." It was a wise reminder that our relationship with God should be of greater concern than our theology . . .



Dr. Larsen leaves a tremendous legacy . . . I know his parting benediction for us all would be the profound but simple expression of the last verse of Blicher's poem:

Before too long I must rest in peace
And all that hinders will loosen.
My last "good-bye" to you all I leave,
God bless you now and be with you.

(Trans. from the Danish by Mrs. C.B. Larsen)

Mrs. C. B. Larsen, the widow of Dr. Larsen, died October 25. Survivors include daughters Mrs. Lyle (Agnes '45) Paulsen, 2931 E. Adams, Tucson, Arizona 85716, and Mrs. Peter (Lydia '46) Beckman, 1418 40th Street, Rock Island, Illinois 61201; and sons Ezra '43, 3450 Emerson, Boulder, Colorado 80302, and Philip '49, 653 N. 21st, Blair. She visited relatives in Denmark this past summer, and attended the Homecoming reunion of Trinity alumni earlier in October. For the reunion she donated a quilt she had made that was sold for the benefit of the College.



Dr. Alan Brandes, associate professor of music, this fall gave the first recital in a series of six that will include all of Mozart's piano sonatas and fantasies. The second and third recitals in the series, which is co-sponsored by Dana and the Jewish Community Center of Omaha, are scheduled for January 9 and April 24.

A Dana Challenge

Maybe Dana Never Was Like This . . . But What If It Were?

Editor's note: Dr. John W. Nielsen (Dana '47, Trinity Seminary '53), director of the humanities program, wrote the following essay this past summer and read it at Dana's traditional dinner for faculty and staff at the beginning of the school year. Because the questions the essay asks challenge all members of the Dana community, whether they are on the campus or away, we print it here for readers of the Review.

Whenever I have spoken glowingly of the past, someone has been sure to say that I was viewing it through rose-tinted glasses, and that invariably squelched my spirit of nostalgia. One day, however, I thought, well, so what! Rose-tinted or not, it is worth looking at, and maybe nostalgia is not so much remembrance of things past as a utopian dream for the future. And maybe this merging of the best of the past and of the possible is what constitutes vision. At any rate, this time I will not be silenced by the inevitable rejoinder, "Dana never was like that." Well, maybe not, but can we be sure? And even if it was not, might it not be? So this is remembrance and dream.

I start with the faculty because I am a faculty member and because together with the students we constitute the most visible and the most continuing localized dimension of Dana, but it should be obvious from the start that this is only a convenient manner of speaking because Dana is not some strange amalgam of disjointed parts called students, faculty, administration, staff, regents, alumni, etc., etc. as we shall be labeled in this essay, but rather Dana is all of us. And in the spirit of St. Paul, no one of us has the right to say of another, "I have no need of thee."

But anyway, I am a professor, and I am highly visible (and some would add audible), and I have been around the Dana campus a long time. I know that after all our criticizing is done, or more properly while it is yet in process, for I would not want to be a part of any institution that was not constantly pruned and fertilized by criticism, we the faculty can probably do more to mold Dana at any given moment than anyone else. We cannot make it ideal. That takes all of us. But we can make it amazingly stimulating, challenging, and all those other adjectives that we are accustomed to use when we are on a euphoric binge or when we are describing what ought to be.

Probably we can't all have the academic dedication of C.B. or the quiet concern of Rass or the high standards of S. Milton Thompsen or the gentle grace of Nellie Falk. Perhaps we can't achieve the vision of DaCruz, the thoroughness of Caroline Johnson, the versatility of C.X., and the love of books of Swanie. Maybe we can't equal Tucker's sensitivity or Nyholm's enthusiasm or Menger's appreciation of life or T.I.'s seriousness or Madsen's friendliness or J.P.'s insight and the list could go on and on like the glorious army of martyrs, and maybe that is what they were. But anyway, even though we can't all equal or excel, we can draw inspiration from them.

What would happen at Dana if every faculty member were seen in the library several times a week and, run for shelter, what if he actually checked out books, not to put on reserve for his students, but for himself? And what if he actually read them? And what if he would discuss them with his colleagues and students?

What if the faculty attended chapel regularly once or twice a week? And what if every faculty member visited The Head at least once a week, and sat, at least some of the time, not at the

round table but among the ranks of outcasts and sinners? And think what would happen if faculty members again attended athletic and cultural events, and yelled enthusiastically and questioned knowledgeably. What if they attended some colleague's course on a regular basis?

What if we had more students and colleagues in our homes? What if we pushed ourselves intellectually? What if we lived our faith? What if we demanded solid performance and patiently assisted the serious to achieve it? What if we failed the goof-off instead of perpetually giving him the benefit of the doubt? What if we took students to Omaha and Lincoln events? What if we met deadlines? What if we visited the dorms? What if we picked up litter? What if we were polite? What if we didn't expect special consideration? What if??? The questions could go on interminably, as could the response, "I'm already doing all that." Well, more power to you, and I'll enshrine you with my other saints, but I could do more.

Inevitably, so much of what I have said about us as faculty applies to everyone else who resides on the Dana campus or who puts in his working hours there. Must I repeat it again and again? And I know even before I ask, that I must, though I'll be damned by some for doing so; but we have produced a mass of Galatians who prefer the letter of the law to the spirit and who constantly accuse, "You didn't tell us that," without the thought ever once entering their heads that they might ask or draw some reasonably expected deductions. No, we are more adept at searching out exceptions and finding escape in technicalities than at catching the vision and looking for complete and responsible involvement.

Now placing this where I have, it will appear that it is a special thrust at students. Well, it does apply to them, but no more so than to anyone else of the particular disposition described.

What if students would come to Dana to study? What if they listened attentively, took careful notes, and then, wonderful world of academia, talked about lecture material and course work even in their downsittings and uprisings? What if they challenged for clarification, continuation, and accuracy? What if they joined in a quest for learning, truth, and life? What if they used the library not only for study but for leisure? What if they demanded more thorough lectures, more complete bibliographies, more honest statements of what we profess?

What if the students attended chapel a couple times each week? What if they introduced dorm devotions or evening chapel or discussion groups? And what if this were done for spiritual renewal without any sense of religious superiority?

What if students attended events--lectures, games, films, plays, concerts--all those things that richly enhance a college setting and may well be absent from subsequent locales?

What if students stayed on campus weekends? What if they discovered the pleasure of the walk, the barbecue, the sing-along, the sliding party? What if they discovered that sex is not the whole of life even though life, at least on the human level, originates from it? And what if they discovered that sexual intercourse involves commitment and is most fun in that perspective? What if students who choose to drink learned to drink responsibly and what if the choice to drink or not to drink were respected and one were not "square" or "mod" or "prudish" or "with it" because of such a decision? What if students learned the danger of trying to escape a decision, an assignment, a situation, or themselves in

drugs or sleep or any other noble or ignoble course? What if they stayed on campus? And what if they got to know one another? And what if they got to know the faculty? And what if they fell in love with Dana--the place, the buildings, the hill? What if their faith were strengthened under the stars or under the cross? And what if they went away extolling Dana and their Lord?

What if the administration viewed its role as facilitating and supporting the academic venture of the students and faculty? What if it viewed itself as servant instead of employer? What if all members of the administration were regular in attending chapel and athletic events and cultural activities? What if they audited courses occasionally? Or what if they taught? What if they frequented The Head and visited the dorms? What if they and the faculty became positive models for the students? What if the administration levelled with the faculty and students and with each other?

What if the staff, everyone employed by Dana, viewed itself as being a part of Dana instead of merely working at Dana? What if the staff started attending chapel once a week? What if they availed themselves of lectures and films and concerts and sports events? What if they asked questions about what was being taught? And what if they shared their ideas about life and faith and learning with the professors and students? What if they spoke with pride about Dana, and what if they told visitors about the light on the hill and about the Copenhagen lamps and the linden trees and the events scheduled on campus and the good activities of the professors and students?

What if the members of the Board of Regents had time to live in the dorms or at least to visit a few rooms? And what if they had time to visit an occasional faculty office? What if they attended chapel *en masse* as an example to students and faculty, administration and staff? What if they asked probing questions of everyone they met? What if they attended a few more campus events?

What if every adult associated with Dana strove to do his

very best and acted in integrity and courage instead of trying to be a Good Joe? What if we dared to indicate by our personal response in the situation itself what we thought of profanity and littering and vandalism and dishonesty and drunkenness and disrespect and inconsideration and vulgarity instead of ignoring at the time but condemning in retrospect? What if our lives reflected what we find in the Christian Faith?

What if the alumni enthusiastically supported their *alma mater* with words of praise for its academic accomplishment and fond reminiscences of their years on the hill? What if they remembered Dana in their prayers? What if they reported their activities to the alumni office? What if they recommended Dana to their students and friends and their sons and daughters? What if they returned in hordes at homecoming? What if they gave even more generously?

What if the local congregations hosted the students at an occasional supper or fellowship? What if they availed themselves of the religious and cultural activities at Dana and what if they kept the college posted on congregational events that might be of value to students and faculty? What if there would be another generation of Dan Greenos and Marius Hansens and Fred Guyers and Mrs. H. P. Hansen and Grace? What if members of the community discovered that live performances and appearances offer something that even the best television program cannot give--the living person and the live audience and the opportunity to engage the performer and the audience in discussion?

What if those who have been associated with Dana would praise God in "faith and hope and love" as they remain on the hill or as they "launch their little barks" throughout the world? And what if they would remain loyally attached to a place called Dana? And what if the Dana motto, "Veritas Vincit," became a living reality? And what if truth conquered?

Impossible? Not at all. Rose-tinted? Perhaps. Viable? Absolutely! In so far as each of us will make it so.

Alumnus Performs, Directs In California Theatre

"The bass voice of Isaac Jenkins shakes the hills and will chill you. He alone, as Caiaphas, is worth the trip up the coast," a reviewer wrote of Jenkins' ('60) performance last year in *Jesus Christ Superstar*, an outdoor production of Santa Barbara's Gazebo Theatre One. (In the title role was Ted Neeley, who also portrayed Christ in the film. Carl Anderson, who played Judas Iscariot, had the same role on Broadway, in the touring play, and in the film.)

Jenkins, an instrumental and vocal music major at Dana, has also been musical director of many other Santa Barbara productions, including the Alhecama Theatre's *Mame* and *Little Mary Sunshine*, and the Gazebo Theatre One's *Godspell* and *Celebration*, which featured Clifton Davis and Ronny Graham.

Jenkins writes that "The *Godspell* production broke theatre records in Santa Barbara; it ran longer than any show up to that time--over a year (this included a tour of Canada). At the present time we are auditioning for the return of *Godspell*. The present production is planning a West Coast tour.

"I wish we could take one of our shows to the Midwest and Dana. Maybe someday."

Jenkins is also chairman of the performing arts department



and instrumental music director at the La Cumbre Junior High School. His school jazz bands have won many awards throughout California.

After graduation from Dana, Jenkins studied conducting under Robert Shaw, Paul Christiansen, and Robert Wagner, and did graduate work at the Meadowbrooke School of Music in Rochester, New York, and the Cleveland Institute of Music.

Alumni Board Has New Officers

This past summer members of the board of directors of the Dana Alumni Association, in accordance with the 1976 constitution, elected the following officers from its own membership: president, Sharon Mardesen Nelson '61; vice-president, Stanley Lassegard '74; and secretary, Judy Reuter Brehm '67. Past president is Paul E. Olson '61.

Alumni using the ballot published in the summer *Review* have elected the following new Board members: Herbert Knudsen '63, Homer Nielsen '41 (incumbent), Roger Petersen '61, David Snowbeck '63, Barbara Wolf Triplett '73 (incumbent), and Philip Wittig '56 (incumbent). Because of the death of board member Dr. Paul Nyholm, six members rather than five were selected from the balloting.

Other board members are: Paul Ahrendt '68, Jari Uecker Kolterman '69, Robert Krogh '56, John Prouty '70, Adrienne Simpson '71, and Gloria Paulsen Weinman '71.

Advisors to the board are Acting President Robert Glass; Eugene Meyer, executive director of college relations; Jerry Haas, president of the senior class; and Frank Hengeveld '41, faculty representative.

The next meeting of the Board is scheduled for January 14.

campus NOTES



Dr. James H. Burtress, professor of systematic theology and ethics at Luther Theological Seminary, St. Paul, Minnesota, was this year's Staley Foundation Distinguished Christian Scholar lecturer. He gave four lectures on November 14 and 15 under the general theme of "Ecstasy, Religion, and the Christian Faith."

Dr. Delvin Hutton, religion, participated as the Biblical scholar in the South Dakota Preaching Seminar at Augustana College in June, presenting three lectures. Hutton also taught New Testament Greek in the summer language program at Wartburg Theological Seminary, Dubuque, Iowa, from August 1 to September 2.

Kristi Becker, the daughter of Pastor and Mrs. Harold Becker of Omaha, gave a piano recital at Dana in September. Her father is a former Dana faculty member. Miss Becker has performed in the U.S., in Berlin, Cologne, and Freiburg, West Germany, and in London; she has also made numerous broadcasts for South German Radio in Stuttgart and Radio Germany in Cologne.

Books being read in the Liberal Arts Reading Program during the first semester include *Flatland* by Edwin Abbott; *The Birds* by Tarjei Vesaas; *The Good Earth*, Pearl S. Buck; and *Old Jules*, Mari Sandoz.

Dr. John Northwall, special assistant to the president and director of continuing education, attended a meeting of the Oaks, Oklahoma, Indian Mission Board, of which he is a member, in September. Pastor Elwin Bergstraesser, former Dana campus pastor, is the new director of the Oaks Indian Mission. Northwall has also recently completed a lecture series at Wartburg Seminary on "Preaching as Communication." In November he was the guest scholar in homiletics at a Preaching Seminar of the American Lutheran Church in Washington, D.C.

Dr. Clifford Hanson '44, acting dean of the college, participated in the Conference on Humanities and Public Life held in Lincoln, Nebraska, in October, where he read a commentary paper in response to one on "Law and Public Life" by a member of the School of Law at the University of Nebraska-Lincoln.

Jennifer Johnson, assistant dean of students, has been appointed by Bishop Archie Madsen '49 of the American Lutheran Church's Central District to serve on a Racism and Sexism Task Force with five other appointees from the District.

Members of the Dana science and mathematics departments, in conjunction with the Blair high school science staff and the Greater Omaha Science Teachers Association, were hosts to the annual meeting of the Nebraska State Education Association District Two Science Teachers on October 27. Professor George Grube showed his film "Handsome Prairie," which views the few remaining stands of tall grass prairie in Washington County, and then he and Professors Paul Emmerich, Frank Hengeveld '41, Arvin Hernes, Gene Lindblad, and Larrie Stone '57 conducted workshops for the teachers.

Six Dana students conducted an acting workshop for 60 Dodge, Nebraska, high school students in October at the Dodge High School. They acquainted the Dodge students, all members of a psychology class, with approaches to improvisational acting techniques in connection with role-playing exercises in their class. Emphasis was placed on the physical expression of emotion, expression of feelings, and character identification.

Librarians Ruth Rasmussen, Nancy Dodd, and Ron Johnson '61 attended the Nebraska Library Association's State Convention in Omaha October 20-21. Johnson presented the Association's awards at the Thursday night banquet.

The leading U.S. publisher of children's plays, Anchorage Press, has joined three other publishers in contributing scripts to Dana's play-lending library. Because of the high degree of use of the special collection, the other three--Bakers' Plays, Dramatists' Play Service, and Dramatic Publishing House--have increased their participation in the collection.

TEACHER PLACEMENT SETS RECORD HIGH

At a time when many large universities have been able to place only half of their prospective teachers, Dana's placement of 1977 graduates in teacher education who actively sought teaching positions stands at 94 percent.

This is the highest percentage recorded in the years such statistics have been kept at Dana.

Dr. Ray Weckmuller '52, director of teacher education, said that he was particularly pleased with this record. He praised the students, saying that "The type of students who seek a school like Dana tend to be oriented to occupations which involve serving others. Given a good educational setting, these students naturally do well in student teaching. We find Dana College student teachers a genuine pleasure to work with."



Homecoming queen Kim Shipley (center), Omaha, with her court (from left)--Carol Arnvig, Harlan, Iowa; Jeanmarie Nielsen, Creighton, Neb.; Iris Frey, Lyons, Neb.; and Lisa Damrow, Bruning, Neb.

SPORTS



Three Enter Hall Of Fame

Three men were recognized at the Homecoming luncheon October 8 for their contributions to the College's athletic programs.

Those inducted into the Dana Athletic Hall of Fame are the late Rufus Olson, who taught and coached at Dana for a decade and continued to support the athletic program after he left to join the Blair newspapers; Clifton "Bud" Robinson '50 who lettered in at least three major sports each of his years at Dana; and Paul Peterson '41, an outstanding athlete during his student years who has taught and coached at the College since 1942. "Coach Pete" was also recognized at the luncheon for his 35 years at Dana as a teacher, coach, and athletic administrator.

The Hall of Fame was established last year to recognize outstanding former Dana athletes and individuals who have made significant personal contributions to the school's athletic programs. The names of all members will be inscribed on a plaque, donated by alumni of Kappa Chi Lambda fraternity, in Borup Coliseum.



Accepting the Athletic Hall of Fame awards were (from the left), Brent and Ruth Peterson for their father and husband, Coach Pete, who was ill; Mrs. Rufus Olson for her late husband; and Bud Robinson.

Dana And City Share Sports Area

Townpeople and Dana will both soon benefit from a new athletic facility, thanks to a cooperative effort by the Blair City Council, community organizations, and the College.

Now under construction on Dana property bordered by Cauble Creek, Hansen Road, Omaha Village, and College Drive, the facility will have a baseball field, softball field, five tennis courts, and ample parking.

Dana Director of Athletics Paul Peterson '41, who conceived the idea for the arrangement, credits the new Dana Boosters' Club, a group of townpeople and Danians formed to support the College's sports programs, with initiating the actual work on the area.

The City Council and community organizations such as the Lions Club and Rotary are taking care of construction costs, while Dana provides the property. The College will own the facility; a contracted lease will give the community free use of the area during the three summer months.

Peterson expects the two fields to be ready by spring, but lack of funds will prevent construction of the tennis courts in the near future, although the land has been prepared for them.

1977-78 ATHLETIC SCHEDULES

Basketball

Nov. 19	Briar Cliff There	Jan. 24	Bellevue Here
Nov. 30	Wartburg There	Jan. 28	Hastings* Here
Dec. 1	Luther There	Jan. 31	Nebr. Wesleyan* There
Dec. 3	Mt. Marty Here	Feb. 4	Midland* Here
Dec. 6	Westmar There	Feb. 7	Doane* Here
Dec. 10	N.W. Missouri. . There	Feb. 11	Concordia* Here
Dec. 13	Peru Here	Feb. 14	Hastings* There
Dec. 15	Bellevue There	Feb. 18	Nebr. Wesleyan* Here
Dec. 29-30	Wayne	Feb. 21	Westmar Here
Jan. 7	Tournament . There	Feb. 25	Midland* There
Jan. 10	Mt. Marty There	Mar. 1	Doane* There
Jan. 18	Morningside . . . Here	*NIAC Conference Games	
Jan. 21	Northwestern . . There	Home games: 7:30 p.m.,	
	Concordia* There	Borup Coliseum	

Wrestling

Nov. 19	Norfolk Inv. . . . There	Feb. 2	Nebr. Wesleyan . There
Dec. 1-2	Takedown	Feb. 4	Luther Inv. . . . There
	Tournament,	Feb. 8	Peru & Midland . Here
	Midland There	Feb. 12-13	Yankton Reg.
Dec. 3	Yankton Inv. . . . There		Inv. There
Dec. 6	UNO There	Feb. 15	NIAC Conference
Dec. 9	Midland There		Tournament
Jan. 11	Concordia/	 Midland
	Kearney Here	Feb. 23	District
Jan. 14	Central Inv. . . . There		Tournament
Jan. 17	Westmar Here	 Wayne
Jan. 21	Viking Inv. Here		Home matches: Borup Coliseum

Vikings Have 4-4 Season

The Dana Vikings ended their 1977 football season with an over-all record of four wins and four losses, and a conference record of two wins and three losses.

The scores were: Martin Luther 3, Dana 7; Westmar 6, Dana 7; Dakota Wesleyan 12, Dana 0; Hastings 16, Dana 14; Concordia 15, Dana 24; Nebraska Wesleyan 6, Dana 16; Midland 56, Dana 7; and Doane 16, Dana 3.

Five players have been named to the 1977 NIAC all-conference team: offensive guard, Eugene Johnson, Chicago; tight end, Rich Rostan, Chicago; quarterback, Doug Meggison, Red Oak, Iowa; kicker, Bob O'Brien, Schleswig, Iowa; and defensive line, Jay Paist, Hatboro, Pennsylvania.

Paist was also named to the NAIA all-state team, with Johnson, Rostan, Meggison, and O'Brien winning all-state honorable mention.

Team honors on the offensive side went to Rostan as the most valuable player; Tom Harm, Waterloo, Nebraska, as the most improved player; and Johnson as the outstanding newcomer. On the defensive side, Paist was voted the most valuable player; Dave Schwartz, Guthrie Center, Iowa, the most improved player; and Roger Knowlton, Waterloo, Nebraska, the outstanding newcomer.



Construction is underway on the baseball field, part of the new sports area.

A Homecoming Reminiscence . . .

TRINITY SEMINARY:

Trinity Seminary was a school without a name that first year of 1884-85 when Pastor A. M. Andersen, a Danish immigrant, held classes for four students in his Blair home, a simple white frame house.

It was in the fall shortly before those classes started that the Danish Evangelical Lutheran Church Association (also known as the Blair Synod) was formed in Argo, Nebraska. The nine pastors from 19 congregations who met there had earlier been affiliated with the Norwegian-Danish Conference.

Their split with the Conference had come about partly over its refusal to hire a Danish professor to teach at Augsburg Seminary, the Conference's theological training school in Minneapolis, where Andersen

had studied for two years, and partly over the pastors' desire to establish a folk high school like those they had known in Denmark.

Their desire for their own school led to the classes that began that fall. Even though classes at first were limited to training men for the ministry, students from the beginning studied both theological and general academic subjects.

The next summer, pastors, laymen, and two of the first students met at Blair's First Lutheran Church (where Andersen was pastor) to discuss a new building for the school.

It was at this meeting that "Trinitatis Seminarium" was organized, with articles of incorporation adopted and signed. Andersen was elected president.

The new building could not be completed before October 1886, however, so the seminary, now with a dignified Latin name and five more students, was housed for one more year in Pastor Andersen's modest home. (The house, extensively remodeled, still stands at 2104 Park Street.)

Together the citizens of Blair and members of the synod raised \$7,000 for the new structure, which was dedicated October 21, 1886. Land was donated by three Blair residents.

Today that structure is the central part of Old Main. (At what point in its history did the building earn the name "Old Main?" And who first called it that?)

Old Main in 1886 was an all-purpose building. It had classrooms, offices, a library, kitchen, dining room, living quarters for President Andersen and his family, and dormitory space for 40 students.

What Old Main did not have was centralized heating, plumbing, and lighting. Stoves heated the rooms, and students supplied their own fuel and oil for lamps. A water pump was behind the building; the privies were to the south. Mrs. Andersen at first cooked for the students (there were 12 in the first student body that lived in Old Main), but soon a boarding club was formed, with students eating in the homes of local church members.

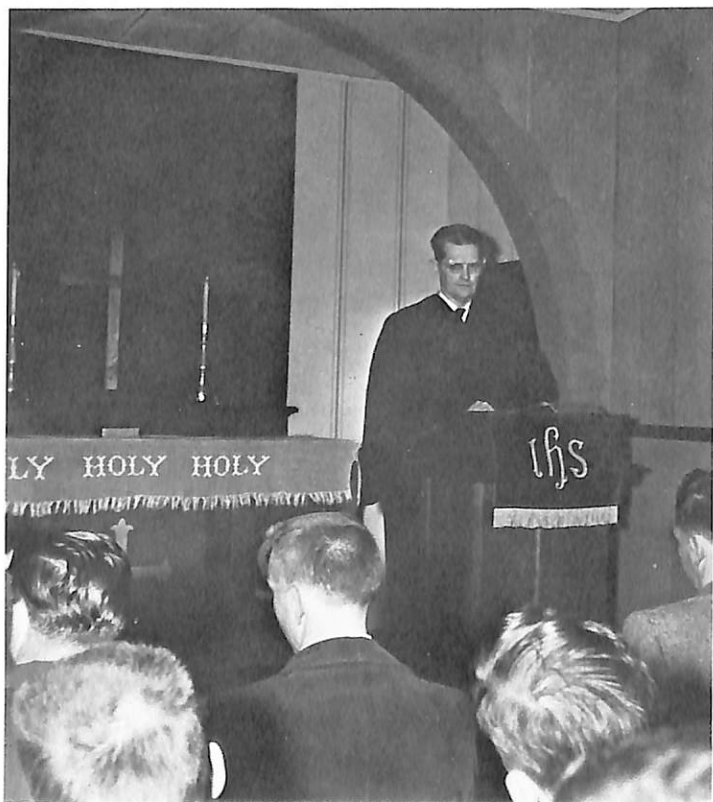
That year an academy, or high school, was also organized; it shared the facilities with Trinity Seminary.

One of the first 12 students was C. X. Hansen, who later taught at Trinity and Dana from 1894 to 1941. He also served as Dana's president during three intervals.

In 1889 Andersen accepted a call to another Nebraska congregation; he returned to Trinity as professor of theology for two years in the 1890's. In 1938 the only honorary doctorate Trinity Seminary ever



Where school work was begun



Dr. Ethan Mengers leads devotions in Trinity Seminary chapel on the fourth floor of Old Main.



Dr. C.X. Hansen, left, a member of the first student body to attend classes in Old Main, joined the Trinity faculty in 1894 as a teacher of secular subjects. This photo of him and his roommate in their room in Old Main was taken in 1895.

IT WAS HERE FIRST

awarded was bestowed on its founder. Andersen was 91; he died three years later.

Trinity continued to grow and change. In the early 1890's a summer course for women was offered. Then in 1896 the synod merged with several other Danish groups to become the United Danish Evangelical Lutheran Church. Trinity remained the theological training school for the larger body.

As a result of the merger, an important change took place on the Blair campus. Elk Horn College, a Danish folk high school founded in 1878 in Elk Horn, Iowa, by one of the merging groups, was moved to Blair.

With the move, the Blair campus became co-educational, and the school offered academy, college, teacher education, and business courses. The 1903 synodical convention report declared that "The name of the school of the synod shall be Dana College and Trinity Seminary." (The report, of course, was in Danish.)

Trinity Seminary and Dana College shared the campus for more than 50 years. Many of Dana's men graduates became Trinity students, and many of Dana's women students married Trinity students. Trinity professors taught religion classes at Dana, and they and their seminary students spoke in chapel. Seminarians participated in campus life and activities. At times both schools shared a president; at other times each had its own.

Then in the 1950's the long-discussed merger of the United Evangelical Lutheran Church with other Lutheran synods approached realization, and the 1956 UELC convention voted to merge Trinity with Wartburg Seminary, a school of the American Lutheran Church in Dubuque, Iowa. (The ALC was founded by German immigrants.)

Life on the Blair campus would never again be the same.

The Trinity faculty and some of the students moved to Dubuque. For the next four years Wartburg and Trinity students attended the same classes taught by the same professors, but they registered and received their degrees as either Trinity or Wartburg students.

In 1960 the merger of the UELC, ALC, and Evangelical Lutheran Church (which had Norwegian roots) became official. All three synods became The American Lutheran Church, and Trinity Seminary merged with Wartburg Seminary.

A final note: The Lutheran Free Church joined the new synod several years later. It was a Norwegian body, and its theological training school was Augsburg Seminary, where a few Danish pastors 80 years earlier had been unsuccessful in their attempts to have a Danish professor added to its faculty.



Members of the Trinity class of 1942 and their wives. From the left, Adolph and Lucille (Neve '40) Kloth, Eric and Elaine (Jespersen '42) Christensen, Emery and Carol Petersen, Edward and Shirley (Bondo '42) Hansen, Jerrold and Helen Elling, Leo and Charlotte (Richter '39) Andersen, and Carl and Rhoda (Krogh '41) Wildrick. The class has maintained a continuous round-robin letter since graduation.



Two former Trinity presidents--Dr. T. I. Jensen (left), and Dr. Richard Morton at 1977 Homecoming.



Dr. John Nielsen (Trinity '53), director of Dana's humanities program, talks to returning Trinity alumni and their wives in Parnassus.

TRINITY ALUMNI RETURN HOME

The Homecoming reunion of Trinity Seminary alumni on October 7-9 was the most nostalgic of occasions.

Seven alumni--the entire class of 1942--arrived with their wives earlier in the week to celebrate the 35th anniversary of their class. One evening they gathered in Elk Horn Hall with others from Dana, Blair and neighboring communities for a worship service conducted by Dr. C. C. Madsen '34, Dana president emeritus and former Trinity professor. The UELC liturgy and hymnal were used, and two features of the former Old Main chapel--the altar and the painting of the young Jesus in the Temple--were at the front of the room.

For the 40 or more Trinity alumni who were on the campus with their wives for the weekend, there were coffee hours in Parnassus (the former library reading room) amid Trinity memorabilia; one in the evening ended with singing long after midnight.

A UELC communion service at Blair's First Lutheran Church Sunday afternoon brought the Trinity reunion to a close.

(Unfortunately, the group photographs of Trinity alumni did not turn out well. Public Relations would appreciate borrowing negatives for use in the winter *Review* from those who also took pictures of the group. Thank you.)



Glass Welcomes Alumni

Among the alumni Acting President Glass (second from left) greeted at Homecoming were (from the left) Dr. C. C. Madsen '34, Blair, Dana president emeritus; Dr. Richard Morton '34, Lodi, Cal., former president of Dana and Trinity Seminary; U.S. Representative Paul Simon '50 of Carbondale, Ill., and Washington, D.C.; Dr. Archie Madsen '49, Denver, Colo., Bishop of the Central District of the American Lutheran Church; and Dr. Edward Hansen '42, Willmar, Minn., Bishop of the ALC's Southwest Minnesota District.

There's Another Dana

The news item pulled from the clipping service envelope held some surprising information for Dana's Public Relations personnel. It read: "The Dana Alumni Association invites all Dana alumni to attend a banquet Saturday, May 28, at 6:30 p.m. in the Dana school gymnasium. The dinner will be a potluck meal.

"Spokesperson for the banquet noted that this might be the final year the Dana alumni could gather in the school building before it is sold or torn down."

The item, dated May 12, 1977, was from the *Jefferson* (Iowa) *Herald*.

Herald editor Rick Morain answered PR's question: There is another Dana. Pronounced "Day'na," it is on Highway 144 near Jefferson. Morain writes that it is "the smallest incorporated city in Greene County, with a population of 118 in 1970. It was founded in the 1870's by Samuel Dana."

An October 26, 1954, centennial edition of the *Jefferson Bee* which Morain enclosed reveals that in the 1880's F. W. Fitch of Fitch Shampoo fame had lived there as a boy, and that in 1892 Dana "went all out for its first really large Fourth of July celebration," with a welcome arch across Main Street, and with speeches, fireworks, horse races, baseball games, and slow and fast mule races. The day was so successful, the article says, that "In the slang of the day . . . you could hear from all directions 'No flies on Dana!' and 'Hurrah for Dana!'"

The paper also reveals that the Dana school, built in 1921 and the center of community activities, could "claim the distinction of being the highest point between Des Moines and Ruthven."

In his letter Morain says that today "The school building in Dana has fallen into disrepair and was abandoned by the East Green District about 8 or 9 years ago, as I recall."

Loyalties remain, however, and that is why another group of Dana alumni gathered on Saturday, May 28, 1977, for a potluck dinner in their school, perhaps for the last time.

BANSEN ATTENDS SCANPRESENCE II

Norman C. Bansen '47, professor of English and Danish, participated in the international Scanpresence II Conference in Minneapolis October 6-8. At the several working sessions he assisted in the review and discussion of task force reports.

Another alumnus, Dr. Edward A. Hansen '42, bishop of the Southwest Minnesota District, the American Lutheran Church, was a member of the task force studying aspects of the influence of Scandinavian religious groups in North America. In his report he wrote that "The Danish background colleges have the best resources for helping to assert the Danish American ingredients of the American 'salad bowl'--a more aptly descriptive and contemporary metaphor than 'melting pot.' I favor strengthening their efforts, perhaps by endowing chairs of Danish literature on the faculty, establishment of archives for Danish records and artifacts, fostering exchange study programs for American and Danish students, etc."

The late Professor Paul C. Nyholm and Bansen were participants in Scanpresence I, held in 1973. Their papers presented at that conference were included in a book published last year by Harper's Press, *The Scandinavian Presence in North America*.

Bansen noted that these conferences, which are concerned with all aspects of the influence of the Scandinavian presence--cultural, scholarly, religious, fraternal, economic and journalistic--are the largest convocations of Scandinavian specialists ever held.

He added that Professor Joshua A. Fishman, an authority on ethnicity at the Graduate School of Yeshiva University, considers the organization and intellectual content of Scanpresence the most advanced and sophisticated effort among heritage groups in America.

VIG BIOGRAPHY SOUGHT

Myra (Vig) Christensen '54, a granddaughter of P. S. Vig, this institution's third president, is looking for copies of Theodore P. Beck's book *The Professor, P.S. Vig*, published by the Lutheran Publishing House, Blair, in 1946. The book is in the *Pioneers of the Church* series.

Her address is: Mrs. John Christensen, 318 Parkview Circle, Taft, California 93268.

Students In Ballet

Thanks to an invitation from the Omaha Ballet, seven Dana Folk Dancers have become enthusiasts of that art form.

The invitation, issued in September, asked male members of the Dancers to join the chorus of the Ballet for its October 29 and 30 production of *Giselle*.

The seven who accepted made frequent trips to Omaha for rehearsals, and despite aching muscles agree that the experience was "exciting" and "challenging."

Dennis Preston of Lyons, Nebraska, director of the Folk Dancers and one of the seven, says that "Studying the particulars of ballet and the forms of movement, learning mime and what its actions signify, and getting to communicate with the people in the ballet--all of these have contributed to making this a fabulous experience."

The other six Dancers were Mark Christensen, Taft, California; Tom Kendall, Omaha; Gary Beltz, Norfolk, Nebraska; Jim Borden, Rockford, Illinois; Kip Tyler, Creighton, Nebraska; and Joe Eagen, Harlan, Iowa.



JOBS AND PROMOTIONS

1977

CAROLYN CAMPBELL is assistant program director for the YMCA in Council Bluffs, Iowa. JANIS MILLER teaches Title I remedial mathematics in the Atlantic, Iowa, school system. SONDRASCHJODT teaches at Washington Elementary School in Fremont, Nebraska. TIM WAGGONER teaches drama at the Fremont, Nebraska, high school.

1976

LAURIE BARBER teaches sixth grade in Pisgah, Iowa. STEVEN FORNEY is a second lieutenant in the U.S. Marine Corps. DENNIS and MARTHA (JOHNSON '78) WEL- LER live at RFD, Odell, Nebraska 68415. He is director of secondary music at the Odell high school.

1975

RUTH SOMERAL works for the Crawford County (Ohio) Department of Welfare, where she is an income maintenance worker. Her address is 3792 Cheryl Street, #1, Bucyrus, Ohio 44820. MIKE WILLIAMS is spending his seminary internship year in Gilead, Nebraska. His address is RR 1, Hebron (68370).

1974

ANN (SAMSON) Duey lives at Route 1 in Melvern, Kansas 66510. JANE HAMMER teaches first grade in Holstein, Iowa. PHYLLIS HOEPPNER is a social worker in the O'Brien County (Iowa) Department of Social Services, Primghar, Iowa. CAROL KRUEGER works with handicapped children for Douglas County Social Services in Omaha. WILLIAM and DIANE (WILLIAMSON '76) LUX- FORD live at 10012 Grand Plaza in Omaha (68134). Bill is assistant section manager for the Woolco store at 90th and Fort. CRAIG PARKINSON is head football coach at the Akron, Iowa, community high school. He also teaches social studies and is assistant basketball and head baseball coach.

1973

Lt. ROBERT EHMEN has been assigned to a remote tour in Kunsan, Korea. His wife CANDY (WILD) is at Hill AFB in Utah, where she is continuing her RN training. STEVE HARDIMAN, 1416 M, Council Bluffs, Iowa 51501, teaches biology at Thomas Jefferson High School and is assistant coach in wrestling and football. He and his wife Pat have three daughters, Brenda, 4, and twins Christina and Carrie, 2. BILL KRUSE is associated with Merrill Lynch Pierce Fenner and Smith, Inc., as an account executive. He, his wife DEBBY (MILLER) and their two daughters live at 5420 Linden Street in Lincoln, Nebraska.

WARREN NIELSEN was ordained in June at Omaha's Shepherd of the Hills Lutheran Church, where his father is pastor. Warren is a graduate of the Lutheran School of Theology in Chicago. CARL PORTER, in addition to farming near Tekamah, Nebraska, is a loan officer for the Production Credit Association of Tekamah.

ROBERT STOVER teaches in Delphos, Ohio, where he is varsity tennis head coach. This year he and his wife Janet are "parents" to a Japanese student. Their address is 533 E. 4th Street (45833).

1970

ROBERT LOEWE is a loan officer for the Production Credit Association of Tekamah. DAVID and CYNTHIA (HOMES '73) MUSICK are living in Gillette, Wyoming, where David is head of the Gillette high school music department. Their address is 430 Prairie View Apt. F (82716).

1969

ROGER REUTLINGER teaches junior and senior high school art in Lexington, Nebraska. NEAL SHORT is an assistant technical manager with Amershan Corporation. He and his wife Linda live at 1621 Windsor Drive, Apt. 116, in Arlington Heights, Illinois 60004.

1968

WILLIAM BOHLKEN is superintendent of schools at Axtell, Nebraska. He and wife ELLEN (KLOSTER) have three sons and a daughter. FRANK JENSON is chief probation officer for the Sarpy County (Nebraska) Juvenile Court.

1967

DAVID SOLEVAD is pastor at Faith Lutheran Church in Pioneer, California.

1965

Dr. JAMES L. HANSEN has been promoted to project scientist with Union Carbide Corporation at the company's Charleston, West Virginia, plant.

1964

NANETTE EKLUND is an instructor in education at Luther College, Decorah, Iowa. THERMAN KALDAHL is head of the North Dakota Employment Security Bureau.

JIM NEMETZ, 415 Kerr, Hastings, Nebraska 68901, is head girls' basketball coach and a history teacher at St. Cecilia High School. His team won the 1977 Class C Girls' State Basketball Tourney.

JULANE (POHLMAN) Sampson (Mrs. Wayne) lives at 4827 E. Davies Place in Littleton, Colorado 80122.

1963

Major ROGER LIPPINCOTT is on duty at Scott Air Force Base in Illinois as an air traffic control analysis program manager with a unit of the Air Force Communications Service. His wife is the former NORMA JORDAN '68.

1962

FRED LAMBLEY heads the Central School boys' basketball and track programs at North Bend, Nebraska. He and his wife Lois are publishers of the *North Bend Eagle*.

1958

JIM RASMUSSEN is campus pastor to the students and faculty of Camrose Lutheran College. His address is 6314 - 42 Avenue, Camrose, Alberta, Canada T4V 2W7.

1957

RUSSELL MOSEMAN has been named loan officer of the Blair Bank in Blair.

1955

CORA (STEEN) Schieferstein and husband Arnold live at 1746 S. Chestnut in Casper, Wyoming 82601. She is a Title I reading teacher.

1954

LE VERN NIELSEN is pastor at Orfordville (Wisconsin) Lutheran Church. RALPH SPEAR is pastor at Our Saviour Lutheran Church in Grafton, North Dakota.

1952

DON OFTE is manager of the Pinellas (Florida) Area Office and serves on the board of directors of Pinellas County's United Way and Child and Family Comprehensive Mental Health Center. He is also president of the Tampa Bay Federal Executives Association.

1950

Pastor GERHARD and BETTY (JENSEN '51) NY- GAARD live at 511 E. Woodley Street in Northfield, Minnesota 55057. Betty has met all of the educational and experience qualifications of the American Lutheran Church as a parish education director and parish worker and was commissioned in May at St. Peter's Lutheran Church, where she is employed, as a church staff associate-minister of education.

1936

Pastor IRVING TANGE has retired and is living at 2311 Franklin in Cedar Falls, Iowa 50613.

1934

ALVIN CARLSON has retired as principal of the Shenandoah, Iowa, high school, a position he held for 29 years.

ADVANCED DEGREES AND CONTINUING EDUCATION

1974

PATRICK TRIPP received a juris doctor degree from Creighton University's School of Law in May. He has opened a law office in Blair.

1970

DONNA SUSS received a master of arts degree in physical education from the University of Northern Iowa, Cedar Falls, in July. She is a full-time staff member of the Riverside Bible Camp in Story City, Iowa, where her address is 733 Hillcrest Drive (50248).

1969

PAULA JOY HANSEN was awarded the master of divinity degree in June from the Episcopal Divinity School in Cambridge, Massachusetts.

1966

CORINNE (ADAMS) Robinson received a master's degree in library science from the University of Minnesota in June. She is a librarian at South High School in Minneapolis, Minnesota, where she and her husband Eugene and daughter Elizabeth live at 4291 Clinton Avenue S.

1963

Master Sergeant KENNETH C. GROSSE has graduated from the Air University's academic instructor course at Maxwell Air Force Base, Alabama. He is at Norton AFB, California, as a management and military studies instructor at the Military Airlift Command Noncommissioned Officer Academy.

PUBLICATIONS, ACTIVITIES, HONORS AND AWARDS

1965

VIVIAN (JENKINS) NELSEN, director for mission in communities for the American Lutheran Church, organized the ALC Conference on Racism and Sexism held in St. Paul, Minnesota, June 27-30.

1948

FLORENCE HANSEN has been elected president of the Altrusa Club of Omaha.

1935

BERNICE (PEDERSEN) Sagert was honored in May by the community of West Branch, Iowa, on the occasion of her retirement after 38 years of elementary school teaching.

1922

Dr. LAWRENCE SIERSBECK, former Dana president, was honored October 23 by the congregation of St. Mary's Lutheran Church, Kenosha, Wisconsin, on the occasion of the 50th anniversary of his ordination and his 25th year of service to the congregation.

Pastor PETER VAMMEN, 415 Sagebrush, Havre, Montana, was honored in June by Messiah Lutheran Church, Havre, on the occasion of the 50th anniversary of his ordination.

MARRIAGES**1977**

RUTH ANNE FEVOLD and David Hanson, June 12, in Callender, Iowa.

RHONDA OELRICHS ('78) and DAVID HALL, July 9, in Cole Camp, Missouri. Dave is studying at Pacific Lutheran Theological Seminary in Berkeley; their address is 1488 Valle Vista, Vallejo, California 94590.

1976

JULIE RASMUSSEN '79 and JOHN BECK, August 7, in Colorado Springs, Colorado. Julie entered the Colorado University School of Nursing in Denver this fall, and John is a department supervisor at J. C. Penney Company there.

Eileen Kaye Thorell and DENNIS CUTLER, August 6, in Wausa, Nebraska. He is an advertising artist at Phillips Department Store in Omaha.

1975

ROSEANNE PETERSEN '73 and BRUCE BATES, July 2, in Council Bluffs, Iowa. They live at 1825 Winding Hill #1104 in Davenport, Iowa 52807.

1974

Beverly Christensen and DANIEL HUTCHINSON, August 6. He is a Chevrolet dealer in Pisgah, Iowa.

MARTHA UTECH and Leon Leishman, May 28.

He is studying veterinary medicine at Kansas State University. They live at 1247 Prairie Glen Place in Manhattan, Kansas.

1973

CECILIA DHOOGHE and STEVE HAHN, August 13, in Wilbur, Nebraska. Steve is a graduate student in English at the University of Nebraska-Lincoln.

BONNIE KNOWLTON and Kenton Grams, June 11, in Red Wing, Minnesota.

**BIRTHS
Sons****1974**

Jon Andrew, born August 26, to STEVE and CONNIE (BOEHR '69) BULLER, 1458 Butler Street, Blair (68008).

1971

Eric Paul, adopted October 5 by PAUL and Kathy REFSELL, 3349 N. 82nd Street, Milwaukee, Wisconsin 53222.

1969

Travis Jacob, born September 17 to Robert and PATRICIA (WELANDER) Svacina, 1620 N. 56th Street, Omaha (68104).

1963

David, born December 1, 1976, to Conrad and RUTH (DREYER) Bauer, Rushville, Nebraska 69360.

**BIRTHS
Daughters****1976**

Rachel Elizabeth, born August 16 to David and KAREN (SIETSEMA) Heitmann, Victor, Iowa 52347.

1975

Courtney Rae, born August 26 to KENNETH and DAWN (QUALLY '76) SMITH.

1973

Wendy Sue, born September 1 to GERALD and CAROL (THOMPSON) SCOTT.

1969

Tessa Victoria, born August 10 to SPENCER and NANCY (SIMONS '71) WEDBERG, Route #3, Fremont, Nebraska 68025. She joins a brother, Kyle, 4.

1968

Patricia Leanne, born June 30 to Capt. and Mrs. LARRY CORNWELL, 1713A 10th Street, Langley AFB, Virginia 23665.

DEATHS**1953**

LORRAINE (CHRISTENSEN) Plank, 730 Central Avenue, Holland, Michigan, April 2 of cancer.

1925

NANA NIELSEN, a retired missionary who had served at the Oaks, Oklahoma, Indian Mission for many years, May 14 at the Good Samaritan Village in Hastings, Nebraska.

1924

Pastor EMIL NOMMESEN, London, Ontario, July 7.

Pastor ANDERS STEENSEN, Kolding, Denmark, June 19. He served parishes in Brush, Colorado, and Curtis, Nebraska, and was president of the Nebraska District of the United Evangelical Lutheran Church before returning to his boyhood home in Kolding several years ago.

Donated Trees Beautify Campus

Planting trees on the Dana campus is one of the College's oldest traditions. The institution's first president, Pastor A. M. Andersen, was a tree planter.

His example has been followed ever since.

"Each spring we plant more trees on our campus," says Clyde Johnson, superintendent of buildings and grounds. "We maintain a nursery where we plant seedlings and transplant those trees when they are ready. During the past fifteen years we have planted 700 to 800 trees."

Some of those trees have been gifts, with perhaps the best known ones the lindens from West Berlin and beeches from Odense, Denmark.

This fall, members of the maintenance crew were kept busy transplanting the most recent gift, 30 beautiful evergreens, some over ten feet, which were donated by Mrs. Hester Jipp in memory of her late husband, Louie.

Mrs. Jipp, who lives near Lyons, Nebraska, explains that "My husband and I planted those seedlings, hoed them and kept them watered. I can think of no better place for them than at Dana. There's something special about that College and its beautiful hillsides. The young people there are most fortunate indeed."

Mrs. Jipp's granddaughter, Iris Frey, is a Dana senior this year. Iris recalls "watering and hoeing the trees when my grandparents weren't feeling well enough to do it, so this is something special for me."



Mrs. Jipp and Clyde Johnson with a tree that is now growing on the Dana campus.

To recipients of Dana's 1977-78 Special Events Calendar: Please make the following corrections for February and March: February 8--Ash Wednesday (not February 22); March 19--Palm Sunday (not March 12); March 24--Good Friday (not March 17); March 26--Easter (not March 19).

TOO MANY REVIEWS?

Are you receiving more than one copy of the *Review*? If you are, we'd appreciate your listing the names under which you receive copies. Please check the name we should continue to use in our mailings, and then return this coupon to our Alumni Office. Thank you.



TO: Dennis Barnum, Director of Admissions, Dana College

Please send information about Dana to the following students:

Name _____ High school class _____

Address _____

Home phone number (____) _____ Academic interest _____

Name _____ High school class _____

Address _____

Home phone number (____) _____ Academic interest _____

(Continue on a separate sheet if necessary.)

Nomination Form: Distinguished Alumnus Award

Alumni and friends of the College are invited to submit nominations for the Distinguished Alumnus Awards to be presented at the Alumni Recognition Dinner, May 13, 1978.

To be eligible for consideration, the nominee must:

1. Be a graduate or former student of Dana College or Trinity Seminary;
2. Have distinguished himself/herself in his/her chosen profession;
3. Have rendered exceptional service to his/her community, church, and Dana College;
4. Be present to accept the award at the Alumni Recognition Dinner.

To make a nomination, complete the nomination form below, and return it by January 3, 1978, to Dana's Alumni Office. Selection of award recipients is made by the Alumni Association Board of Directors.

Your Name _____

Street _____ City _____ State _____ Zip _____

NOMINEE _____

ADDRESS _____

Nominee attended Dana () Trinity () Class Year _____

Reason for the nomination (use separate page if necessary):

Calendar of Events

December 4

Christmas Open House: The Sights and Sounds of Christmas. Schedule available from Public Relations.

December 7

Ars Medica films, "The Story of Eric" and "Becoming," 7 p.m., Dana Hall Auditorium.

December 10

All-campus Christmas dinner.

December 11

Mid-year Commencement, 2 p.m., Dana Hall Auditorium.

December 17

Christmas recess begins at end of first semester examinations.

January 3

Interim classes begin.

January 9

Mozart recital, Dr. Alan Brandes, 8 p.m., Alumni Memorial Auditorium.

January 14

Alumni Board meeting.

January 19-20

Board of Regents retreat.

January 27

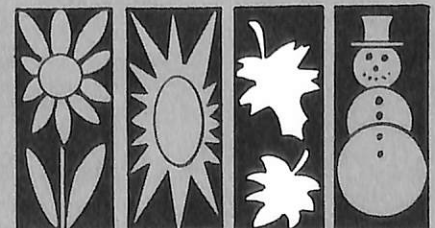
Interim classes end.

January 30

Second semester classes begin.

February 3-5

Jesus Christ Superstar, Dana Players, 8 p.m., Alumni Memorial Auditorium.



DANA COLLEGE
2848 College Drive
Blair, Nebraska 68008

Second Class Postage
Paid at Blair, Nebraska

04573

02 42

MISS LUELLE NIELSEN
2351 COLLEGE DR AP
BLAIR NE 68008

GIFTS FROM DANA

For the newest member of the Dana family –

An "Infantee" shirt, 100% cotton, red print on white
"I'm a little Viking from Dana"

Sizes 18 mo. and 24 mo. \$2.95

For the children –

A Dana "Mickey Mouse" T-shirt, 100% cotton
Powder blue or bright gold

Sizes 6-8, 10-12, 14-16 \$4.75

Also adult sizes S, M, L, XL

Beige or bright gold \$5.45

For the adult –

The "Jayzee," a long-sleeved sweatshirt, 50% creslan,
50% cotton

Small--navy, colored stripes on sleeves

Medium--navy, dark green or gold, stripes on sleeves

Large--navy, dark green or gold, stripes on sleeves

Extra-large--dark green, stripes on sleeves

Dana seal on left chest \$10.50



Send order and check to **DANA COLLEGE BOOKSTORE.**

Add 3½% sales tax. Handling and insurance: \$1.00 up to \$10.00, \$1.75 up to \$20.00; \$2.00 over \$20.00.

Orders received by December 15 will be filled; orders received later will be filled after January 1.

REPORT TO INVESTORS



Fall, 1977

THANK YOU!

Dana has much to be thankful for -- sturdy traditions, a sense of enduring values that defines our educational mission -- and people like you who care about the College and what we're doing here. So, when we thank you for your interest and support, we thank God too for his "goodness and loving kindness" to us -- through you.

Your interest and assistance have helped make wonderful things happen at Dana. On the following pages are the names of hundreds of persons just like you who deserve our thanks. And we do thank you.

While we appreciate what you have already done, finances continue to challenge us. We will need your help again. Remember, your gift is more than money. It is a tangible expression of your conviction that Dana is important and has important work to do.

Won't you help?

THANK YOU!

Dana College
Blair, Nebraska
1977

Dana College is pleased to list an increasing number of memberships in the three gift clubs: the Tower Circle, the President's Society, and the Century Club. Membership is based on a gift at the particular gift club level or more during any fiscal year (June 1 - May 31). Gifts may be in cash, securities, property or gifts in kind. They may be designated or undesignated, although undesignated gifts are strongly encouraged. Married couples contributing twice the particular gift club level or more will be accorded individual memberships, or, at their option, a joint membership. Pledges will be credited toward membership in the year in which they are actually paid. All gifts are tax deductible under current regulations of the Internal Revenue Service.

TOWER CIRCLE: (Gifts of \$1,000 or more)

Mr. Henry Andersen
 Mr. and Mrs. Arthur Antholz
 Mrs. Elizabeth Bransen
 Mr. and Mrs. Wayne Dirks
 Miss Margaret Fischer
 Mr. Donald Goos
 Mrs. Donald Goos
 Mr. John Hansen
 Mrs. John Hansen
 Mr. and Mrs. Kenneth E. Hansen
 Mr. Chris Hauge
 Mr. and Mrs. Kenneth Holm
 Mr. and Mrs. Robert Hunt
 Mr. Irving F. Jensen
 Mrs. Irving F. Jensen
 Mrs. Keith Knudsen
 Mr. and Mrs. Simon Korshoj
 Mr. Mogens Longreen *
 Dr. and Mrs. C. C. Madsen
 Mr. and Mrs. Ib Melchior
 Dr. and Mrs. E. R. Mezoff
 Mr. Harold Miller
 Dr. and Mrs. Niels Nedergaard
 Mr. and Mrs. A. C. Nielsen, Sr.
 Mr. Hans Nielsen
 Mrs. Hans Nielsen
 Consul and Mrs. Hans Nielsen
 Consul and Mrs. Alfred F. Parmelee*
 Mrs. Christine Rasmussen
 Mr. and Mrs. Arthur Welch
 Mr. and Mrs. Norman Williams

* Deceased

NON-INDIVIDUAL MEMBERS OF THE TOWER CIRCLE:

Blair Bank
 Estate of Grace Ross
 Minnie Madsen Memorials
 M.D.N.Y.-Mutual Life Ins. of New York
 Skelly Oil Company F.D.N.
 Washington County Bank

PRESIDENT'S SOCIETY: (Gifts of \$500. to 999.)

Mr. and Mrs. Daniel Berke
 Rev. A.P. and Dr. K.A. Bliese
 Mr. & Mrs. Robert Blobaum
 Mrs. & Mrs. Timothy Garrigan
 Dr. and Mrs. E. H. Goldenstein
 Dr. and Mrs. Clifford Hanson
 Mrs. Florence Hendricksen
 Mrs. Soren Høj
 Mr. and Mrs. Oscar Jacobsen
 Dr. Robert Jensen
 Mrs. Robert Jensen
 Mr. and Mrs. S. Michael Jensen
 Mr. and Mrs. R. A. Knudsen
 Mr. and Mrs. Tom Leonard
 Mr. and Mrs. Henry Lund
 Mr. and Mrs. Adelfert Meyer
 Mr. and Mrs. Eugene Meyer
 Mr. and Mrs. Elcar A. Neilsen
 Miss Luella Nielsen
 Mr. and Mrs. Roger Olson
 Mrs. Esper Petersen
 Dr. and Mrs. Elmer Rasmussen
 Mr. and Mrs. Alfred O. Sick
 Judge and Mrs. Leonard V. B. Sutton
 Mr. and Mrs. Donald D. Swanson
 Mr. C. Homer Womble
 Mr. and Mrs. Warren Youngstrom

NON-INDIVIDUAL PRESIDENT'S SOCIETY MEMBERS:

Blair Rotary Club
 Danish Brotherhood # 14
 Dana College Super Saturday
 East Asiatic Co., Inc.
 Estate of Frank Baumgart
 First Lutheran Church, Blair, Nebr.
 Hickory Grove Lutheran Church,
 Auburn, Nebr.
 Sears-Roebuck Foundation
 St. John's Lutheran Church, Eustis, Nebr.
 St. Paul's Lutheran Church, Omaha, Nebr.
 Trinity Lutheran Church, Albert Lea,
 Minn.

CENTURY CLUB: (Gifts of \$100. to \$500.)

Mr. and Mrs. Paul Ahrendt
 Mr. and Mrs. Warren Amole
 Mr. Edward Andersen, Sr.

Mr. and Mrs. Harold Andersen
 Mr. James L. Andersen
 Rev. and Mrs. Richard Andersen
 Mr. and Mrs. Ernest Anderson
 Mr. Kenneth Anderson
 Mrs. Kenneth Anderson
 Mr. Ronald E. Anderson
 Mr. and Mrs. William Anderson
 Mrs. Elmer Aus
 Mr. and Mrs. M. Gene Barnesberger
 Mr. Norman Bansen
 Mr. and Mrs. David E. Bargren
 Dr. Signe Betsinger
 Dr. and Mrs. John Bienz
 Dr. and Mrs. Gary Biesecker
 Mr. and Mrs. Richard Boe
 Dr. Paul E. Bondo
 Mrs. Paul E. Bondo
 Mr. Erik Boye
 Mrs. Erik Boye
 Dr. Alan Brandes
 Mrs. Alan Brandes
 Dr. and Mrs. J. Bryngelson
 Mr. and Mrs. L. J. Bussey
 Mr. and Mrs. George Campbell
 Mr. and Mrs. Robert Carlson
 Mr. and Mrs. Dan Carter
 Mr. Clayton Christensen
 Mrs. Clayton Christensen
 Mr. and Mrs. Dale Christensen
 Mr. and Mrs. Herbert Christensen
 Mr. and Mrs. Howard E. Christensen
 Mr. and Mrs. John Christensen
 Mr. and Mrs. John H. Christensen
 Mr. Morris Christensen
 Mrs. Morris Christensen
 Mr. and Mrs. Roy D. Christensen
 Miss Sigrid Christensen
 Mr. James A. Clemon
 Dr. & Mrs. James H. Coffey
 Mrs. Max Coffey
 Mr. and Mrs. Thomas Damrow
 Mr. and Mrs. Harold Danielsen
 Mr. and Mrs. Darrell Dibben
 Mr. Ray Dickson
 Mrs. Ray Dickson
 Mr. Lawrence Dolleck
 Mr. Fred A. Donaldson
 Mrs. Fred A. Donaldson
 Mr. and Mrs. Donald Dreyer
 Mr. Russell Eppenbaugh
 Mr. and Mrs. Eldon Erbes
 Consul Marshall Fredericks
 Mrs. Marshall Fredericks
 Dr. Carl Frost
 Mr. and Mrs. David L. Fuhrman
 Mr. Clinton Gehring
 Mrs. Clinton Gehring
 Mr. and Mrs. Brent Gilbert
 Mr. Kenneth Glover
 Mrs. Kenneth Glover
 Dr. and Mrs. Leslie Grace
 Mr. and Mrs. George Grube
 Mr. and Mrs. E. K. Guthrie
 Mr. and Mrs. Vernald Hagebak
 Mr. and Mrs. Everett Hagedorn
 Mr. and Mrs. Kenneth Hankins
 Dr. and Mrs. Edward Hansen
 Miss Florence Hansen
 Mr. and Mrs. Franklin Hansen
 Mr. and Mrs. Keith Hansen
 Mr. P. V. Hansen, Jr.
 Mr. and Mrs. Vina Hansen
 Mr. Winston Hansen
 Mr. G. Donald Hanson
 Mr. and Mrs. Ray Hanson
 Mr. Roger Hanson
 Mrs. Roger Hanson
 Dr. and Mrs. Verlan Hanson
 Rev. and Mrs. William Hanson
 Mr. and Mrs. John Haun
 Mr. and Mrs. Lonnie Hayne
 Mr. Carl Heindorff
 Mrs. Carl Heindorff
 Mr. and Mrs. George Helling
 Mr. and Mrs. Waldemar Hempler
 Mr. and Mrs. Frank Hengeveld
 Dr. and Mrs. John Henningsen
 Mr. Arvin Hernes
 Mrs. Arvin Hernes
 Mr. Henry Holling
 Mrs. Henry Holling
 Mr. and Mrs. Roger Howland
 Judge and Mrs. Walter Huber
 Mr. Emory Hunt, Jr.
 Mr. and Mrs. Richard Hunt
 Mr. Harold Hurd
 Mr. and Mrs. Harold Husby
 Dr. David Israel
 Rev. Anker Jensen
 Mrs. Anker Jensen
 Mr. and Mrs. Darrel Jensen
 Mr. and Mrs. Donald Jensen
 Mr. Erik K. Jensen

Mrs. Erik K. Jensen
 Mr. and Mrs. Esra B. Jensen
 Mr. Frederick Jensen
 Miss Janis Jensen
 Mr. and Mrs. Richard Jensen
 Rev. and Mrs. Dale Jensen
 Mr. Herbert Jeppesen
 Mrs. Herbert Jeppesen
 Mr. Paul Jeppesen
 Mrs. Paul Jeppesen
 Dr. and Mrs. Arthur Jersild
 Mr. Gerhardt Jersild
 Dr. Harold Jersild
 Mr. and Mrs. Karl Jessen
 Mr. Ivan Johansen
 Mrs. Ivan Johansen
 Mrs. Carol Johnson
 Miss Marie Johnson
 Rev. and Mrs. Oscar Johnson
 Mr. and Mrs. Michael Jones
 Mrs. Rosalee Jones
 Mr. and Mrs. Floyd W. Jorgensen
 Mr. Gerald Jorgensen
 Mrs. Gerald Jorgensen
 Mr. Palmer Jorgensen
 Mr. and Mrs. Stanley Jorgensen
 Mrs. Doris Kahl
 Mr. Larry Kaiser
 Mr. Robert R. King
 Mr. and Mrs. E. R. Kinnison
 Dr. Leo Kirchhoff
 Dr. R. T. Kirkwood
 Mrs. R. T. Kirkwood
 Mrs. Isabel Klopp
 Mr. and Mrs. Luther C. Kloth
 Mr. Herbert Knudsen
 Mrs. Herbert Knudsen
 Miss Linda Knudsen
 Mr. Arnold Knudtson
 Mrs. Arnold Knudtson
 Mr. and Mrs. Gerald Kobs
 Mr. and Mrs. Chris Korshoj
 Mr. Robert Krogh
 Mrs. Robert Krogh
 Mr. and Mrs. Olaf Kroneman, Sr.
 Mr. and Mrs. Bernard Kros
 Mr. Paul Kruger
 Mrs. Esther Kuhr
 Dr. and Mrs. Thomas Lange
 Mrs. C.B. Larsen*
 Mr. Edward Larsen
 Mrs. Edward Larsen
 Mr. and Mrs. Harold Larsen
 Mr. and Mrs. Herbert Larsen
 Mr. and Mrs. LeRoy Larsen
 Mr. Philip Larsen
 Mrs. Philip Larsen
 Miss Jean Larson
 Mr. and Mrs. Earl J. Laursen
 Rev. and Mrs. Harold Laursen
 Dr. and Mrs. Paul Laursen
 Mrs. Frank V. Lawson
 Mr. and Mrs. Forrest Leighton
 Mr. and Mrs. Dale Lemon
 Mr. and Mrs. Jerry Lincoln
 Mr. Richard Lincoln
 Mr. and Mrs. Eugene Lindblad
 Mr. and Mrs. Kenneth C. Lizer, Jr.
 Rev. and Mrs. Charles Maahs
 Mr. and Mrs. Robert Macholan
 Mr. and Mrs. Mike Mackin
 Mrs. Ellen Madison
 Mrs. Axel Madsen
 Dr. Archie Madsen
 Mrs. Archie Madsen
 Mr. Leonard K. Madsen
 Mrs. Leonard K. Madsen
 Mr. and Mrs. Lowell Madsen
 Rev. and Mrs. O. Victor Magnussen
 Mr. Larry D. Mai
 Mr. and Mrs. Robert Martin
 Mr. and Mrs. Fred Matthias
 Mr. Norris Michelson
 Mr. Robert Milek
 Mrs. Robert Milek
 Mr. Carl Morgensen
 Mrs. Laura Morgensen
 Rev. and Mrs. Ray Mortensen
 Mrs. Elsie C. Morton
 Dr. R. E. Morton
 Mrs. R. E. Morton
 Mr. and Mrs. Kenneth Muehl
 Dr. and Mrs. Allan Mund
 Mr. and Mrs. Henry Neef
 Mr. and Mrs. Boyd Nelson
 Mrs. Erland Nelson
 Mr. Alton Neve
 Dr. Paul Neve
 Mrs. Paul Neve
 Rev. Ried Neve
 Mrs. Ried Neve
 Dr. Arnold Nielsen
 Mrs. Arnold Nielsen
 Mr. Herman Nielsen

Mrs. Herman Nielsen
 Dr. John Nielsen
 Mrs. John Nielsen
 Mr. William Nielsen
 Mr. and Mrs. Melvin C. Nore
 Dr. Paul Nyholm *
 Mr. Clark O'Hanlon
 Mrs. Clark O'Hanlon
 Mr. John O'Hanlon
 Mrs. John O'Hanlon
 Mr. and Mrs. Duane Ohlsen
 Mrs. Lamont Okey
 Mr. and Mrs. Albert H. Olsen
 Mr. and Mrs. James Olsen
 Dr. and Mrs. Milton C. Olson
 Mr. and Mrs. Paul Olson
 Dr. and Mrs. D. R. Owen
 Mr. Richard Palm
 Dr. and Mrs. Paul Panum
 Mr. and Mrs. Russell Pearson
 Dr. and Mrs. Arthur M. Pedersen
 Mr. Eivind Pedersen
 Mrs. Eivind Pedersen
 Mr. and Mrs. Enoch Pedersen
 Rev. and Mrs. Laurits Pedersen
 Mr. and Mrs. Jack Petajan
 Mr. Clarence Petersen
 Rev. Emery Petersen
 Mrs. Emery Petersen
 Mr. Howard Petersen
 Mrs. Howard Petersen
 Mr. and Mrs. Jerry Petersen
 Dr. and Mrs. Peter Petersen
 Mr. Paul O. Peterson
 Mrs. Paul O. Peterson
 Rev. and Mrs. Jimmie Pierce
 Mr. Gerald Quirk
 Mrs. Gerald Quirk
 Mr. John Rand
 Mr. Paul N. Rasmussen
 Mrs. Paul N. Rasmussen
 Mr. and Mrs. Victor Rasmussen
 Mr. and Mrs. Harley Rector
 Mr. and Mrs. Frank Reyzik
 Mr. J. Hilton Rhoades
 Mrs. J. Hilton Rhoades
 Mr. Kenneth Rhoades
 Mrs. Kenneth Rhoades
 Dr. Walter W. Rodenburg
 Mrs. Walter W. Rodenburg
 Mr. and Mrs. Hans Rogind
 Mrs. George Rohwer, Jr.
 Mr. Royce Ronning
 Mrs. Royce Ronning
 Dr. Leland Rosenu
 Mr. & Mrs. Raymond Ryder
 Mr. and Mrs. Carl Schmitker
 Mr. and Mrs. Alexander Schreiber
 Mr. and Mrs. C. C. Schroeder
 Dr. and Mrs. Erling T. Schultz
 Mr. and Mrs. Holger Schultz
 Mr. and Mrs. Charles Seefus
 Rev. Lawrence Stearbeck
 Dr. and Mrs. R. F. Sievers
 Dr. Marie Simonsen
 Mr. and Mrs. Peter Smith
 Mr. H. L. Snow
 Mrs. H. L. Snow
 Mr. and Mrs. Arne Sorensen
 Dr. E. T. Sorensen
 Mrs. E. T. Sorensen
 Dr. Harold E. Sorensen
 Mr. Jimmy Sorensen
 Mrs. Jimmy Sorensen
 Mr. and Mrs. Severin Sorensen
 Rev. and Mrs. Andrew Staby
 Mr. Robert Steffensen
 Dr. and Mrs. Dale Stoffersen
 Dr. and Mrs. Larrie Stone
 Mr. and Mrs. Paul Strand
 Mr. Ingvar Svarre
 Mrs. Ingvar Svarre
 Mr. and Mrs. Richard Switzer
 Mr. James Taylor
 Mrs. James Taylor
 Miss Marianne Tegner
 Pastor J. Harold Tennessee
 Mr. and Mrs. Lewis Tesdahl
 Mr. and Mrs. Kenneth Thielen
 Mr. and Mrs. Eugene Thomas
 Mr. and Mrs. Howard Thompson
 Rev. and Mrs. Armand Thomsen
 Rev. Mark Thomsen
 Rev. and Mrs. C. Vammen
 Mr. Frank Van Steenhoven
 Mrs. Frank Van Steenhoven
 Mrs. Peter Vig
 Mr. and Mrs. Gordon Vinton
 Mr. and Mrs. Keith E. Vinton
 Mr. and Mrs. Ralph Vinton
 Mr. and Mrs. Gerald Voll
 Mrs. J. B. Wallace
 Mr. and Mrs. Walter L. Waltke

Mr. Richard Wardell
Mr. and Mrs. James T. Wardrip
Mr. Joseph Warman
Mrs. Joseph Warman
Mr. Kenneth D. Weaver
Dr. Raymond Weckmuller
Mrs. Raymond Weckmuller
Professor S. K. Winther
Mrs. S. K. Winther
Dr. Wayne Wise
Mr. Philip Wittig
Mrs. Philip Wittig
Mr. Fritz Wolff
Mrs. Fritz Wolff
Mr. and Mrs. Harold Wright
Mr. David Wulf
Dr. William Zimmerman
Mrs. William Zimmerman
Mr. and Mrs. Richard Zion

NON-INDIVIDUAL CENTURY CLUB MEMBERS:

ALCM Nebraska Southeast Conference
ALCW Central Nebr. Conference
American Lutheran Church, Minn., MN
Artex Hobby Products
Arthur Young Foundation
Banker's Life
Ben Franklin
Bethany Luth. Church, Minden, NE
Bethel Luth. Church, Aurora, CO
Bethesda Luth. Church, Eugene, OR
Blair Feed Mill
Blair Kiwanis Club
Blair Lumber & Grain
Blair Redi Mix
Blair West Pharmacy
CIT Finance Corporation
Calvary Luth. Church, Scottsbluff, NE
Central Telephone & Utilities Corp.
Champion International Foundation
Computel Inc.
Consolidated Blenders
Danish Am. Society of New York
Danish Brotherhood # 1
Danish Brotherhood # 64
Danish Brotherhood # 161
Danish Brotherhood # 206
Danish Brotherhood # 227
Dana Student Senate
Denver Dana Club
Ekklesia Kainonias
Equitable of Iowa
Equitable Savings and Loan
Faith Luth. Church, Seward, NE
Grace Luth. Church, Cook, NE
GCEL of Danish Brotherhood
Hinky Dinky
Household Finance Corp.
Immanuel Luth. Church, Glenvil, NE
INA Foundation
Interstate Harvestore
Iowa United Lodge of Danish Brotherhood
Kaiser Steel Corp.
Lost Island Luth. Church, Ruthven, IA
Luth. Church of Hope, Broomfield, CO
Lutheran Mutual Life
Miller-Rolland T. V.
Montgomery Ward Foundation
Mutual of Omaha
Nebraska Iowa Supply
Nelson Bros. Clothing
Northwestern Bell Telephone
Out Savior's Luth. Ch. Audubon, IA
Owen Foundation
P.M. Charitable Foundation
Peace Luth. Church, Plymouth, NE
Pizza Hut
South Central NE Conference
Sperry Rand Corporation
St. John's Lutheran Church, Kingsington, KS
St. Paul's Luth. Church, Clatonia, NE
St. Paul's Luth. Church, Neola, NE
Tektronix Foundation
Terra Chemicals
TV Travel
Tyson Elevators, Inc.
Union Oil Company
Union Pacific Corporation
Wisconsin Telephone

Regents

Mr. Wayne A. Dirks
Miss Margaret Fischer
Dr. Erwin Goldenstein
Mr. Kenneth Hansen
Mr. Kenneth Holm
Mr. Irving Jensen
Dr. Robert Jensen
Mr. Ben Krantz
Rev. Charles Maahs
Dr. Archie Madsen
Mr. Harold Miller
Mr. Elcar A. Nielsen
Mr. Hans Nielsen
Mr. Jens Nielsen
Dr. Royce Ronning
Mr. Leonard Sutton
Mr. Donald Swanson
Mr. Lorentz Thorngren
Mrs. Margaret Zion

Danish Americans:

Mrs. Dagmar Aasted
Miss Edith Andersen

Mrs. Elizabeth Andersen
Mr. Henry Andersen
Mrs. Lillian Andersen
Mrs. Magda Andersen
Rev. Lloyd Anderson
Mr. Peter Bansen
Mr. Hjalmar Bertelsen
Dr. Signe Betsinger
Mrs. Helga Bohn
Mrs. M. Bollesen
Mr. and Mrs. Erik Boye
Mrs. Elizabeth Bramsen
Mrs. Ellen Christensen
Mr. Harry Christensen
Mr. James A. Christensen
Mrs. Jennie Christensen
Mr. Jorgen B. Christensen
Mr. and Mrs. Morris Christensen
Mr. Carl J. Christofferson
Mr. & Mrs. Einar Danielsen
Mr. Otto Ehlers
Ms. Gertrud Faarup
Mr. Marshall Fredericks
Rev. Karl Fullgrabe
Mr. Paul Gade
Mr. Arne Garde
Mr. and Mrs. Oscar Jacobsen
Mr. Robert Jorgensen
Mr. and Mrs. George Godthaab
Mr. and Mrs. Hugh Gwin
Mr. and Mrs. Everett Hagedorn
Dr. A. Hansen
Mrs. Bessie Hansen
Mr. John Hansen
Miss Margaret Hansen
Mr. and Mrs. Mel Hansen
Mr. and Mrs. Vina Hansen
Mr. Jens Haugaard
Mr. Chris Hauge
Mr. and Mrs. Carl Heindorff
Mrs. Soren Høj
Mrs. Gunner Holnn-Moller
Mr. and Mrs. A. Jacobsen
Mr. George Jacobsen
Mr. Alvin Jensen
Ms. Christine Jensen
Mr. Erik Jensen
Mr. Frederick Jensen
Mr. and Mrs. H. E. Jensen
Mr. Jens Jensen
Mr. Orville Jensen
Mr. Hugo Jensenius
Ms. Mildred Jepsen
Mr. Karl Jessen
Ms. Minnie Johansen
Mr. and Mrs. John Johnson
Mr. Aage Johnson
Mr. and Mrs. C. Johnson
Mrs. Lillian Johnson
Mr. and Mrs. Edward Jonassen
Mrs. Rosalee Jones
Mr. and Mrs. Edwin Jorgensen
Mr. Palmer Jorgensen
Mr. George Kanne
Mr. and Mrs. Chris Korshoj
Mrs. August Krey
Mr. Olaf Kronman Sr.
Mr. and Mrs. Marius Landbo
Mr. Carl Larsen
Mr. Harald Larsen
Mr. Palle Larsen
Mrs. Sophie Larsen
Mr. Mogens Longreen*
Mrs. Ellen Madison
Ms. Anna Madsen
Mrs. Axel Madsen
Mrs. Marie Madsen
Mr. and Mrs. K. V. Markusen
Mr. Ib Melchior
Mr. and Mrs. Vaghn V. Moore
Motor Specialty Inc.
Miss Emma Nelson
Mrs. Erland Nelson
Rev. William Nelson
Mrs. N. Nesgaard
Mr. and Mrs. A. Nielsen
Mr. Aage Nielsen
Mr. Adolph Nielsen
Mrs. Edith Nielsen
Mr. and Mrs. Hans Nielsen
Mr. and Mrs. Herman Nielsen
Mr. & Mrs. Tom Nielsen
Mr. William Nielsen
Mr. Wm. Anton Nielsen
Mr. and Mrs. John Nissen
Mr. Jens Nyholm
Ms. Rignor Odgaard
Mr. and Mrs. Levi Olsen
Mr. and Mrs. Peter Orum
Mrs. Chris Paulsen
Mr. and Mrs. Enoch Pedersen
Mr. George R. Petersen
Mr. and Mrs. Howard Petersen
Mr. and Mrs. Loyd Pleahn
Mrs. John Rand
Mrs. Christine Rasmussen
Miss Lucile Rehder
Mr. Hans Rogind
Mr. M. Rolstad
Mr. Jens Simonsen
Mr. and Mrs. H. Snow
Mrs. Ellen Staack
Mr. Harvey Stokely
Mr. and Mrs. Alfred Strom
Mrs. A. R. Sumpter
Mr. and Mrs. Ingvard Svarre
Mrs. George Swan
Mr. Henrik Teilmann
Mr. and Mrs. Lewis Tiedahl

Mr. Marius Vig
Mr. and Mrs. Paul G. Wind
Mr. and Mrs. Sophus K. Winther
Mr. and Mrs. Jack F. Wood
Mr. and Mrs. A. Zackman

Danish American Organizations

Chicago Danish Club
Danish Brotherhood # 1, Omaha, Nebraska
Danish Brotherhood # 4, Franksville, Wisconsin
Danish Brotherhood # 14, Kenosha, Wisconsin
Danish Brotherhood # 35, Chicago, Illinois
Danish Brotherhood # 51, Ludington, Michigan
Danish Brotherhood # 64, Rockford, Illinois
Danish Brotherhood # 111, Austin, Minnesota 55912
Danish Brotherhood # 116, Summit, New Jersey
Danish Brotherhood # 143, Petaluma, California
Danish Brotherhood # 161, Superior, Nebraska
Danish Brotherhood # 172, Folsom, Pennsylvania
Danish Brotherhood # 206, Blair, Nebraska
Danish Brotherhood # 211, Grand Island, Nebraska
Danish Brotherhood # 227, Ypsilanti, Michigan
Danish Sisterhood # 3, Davenport, Iowa
Danish Sisterhood # 6, Omaha, Nebraska
Danish Sisterhood # 55, Rockford, Illinois
Danish Sisterhood # 84, Scotch Plains, New Jersey
Danish Sisterhood # 99, South Bend, Indiana
Danish Sisterhood # 126, Petaluma, California
Dania Society, Northbrook, Illinois
Danish American Club, Pasadena, California
Danish American Club of Omaha, Nebraska
Danish American Society Inc. of New York, New York
Danish Club of Detroit, Michigan
General Committee of Eastern Lodges of Danish Brotherhood
Iowa United Lodges of Danish Brotherhood
Supreme Lodge, Danish Sisterhood, Portland, Oregon

Churches and Church Organizations

ALCM Nebraska Southeast Conference
ALCW Central Nebraska Conference
ALCW Denver Conference
ALCW Kansas City Conference
ALCW Lincoln Conference
ALCW Southwest Nebraska Conference
American Lutheran Church, Lincoln, Nebraska
Bauersville Immanuel Lutheran Church, Cole Camp, Missouri
Bethany Lutheran Sunday School, Ruskin, Nebraska
Bethany Lutheran Church, Minden, Nebraska
Bethel Lutheran Church, Aurora, Colorado
Bethesda Lutheran Church, Eugene, Oregon
Calvary Lutheran Church, Scottsbluff, Nebraska
Ekklesia Kainonias, Dana College
Faith Lutheran Church, Seward, Nebraska
First Lutheran Church, Blair, Nebraska
Grace Lutheran Church, Cook, Nebraska
Hickory Grove Lutheran Church, Auburn, Nebraska
Immanuel Lutheran Church, Glenvil, Nebraska
Immanuel Lutheran Church, Centerville, South Dakota
Lost Island Lutheran Church, Ruthven, Iowa
Lutheran Church of Hope, Broomfield, Colorado
Our Savior Lutheran Church, Audubon, Iowa
Peace Lutheran Church, Plymouth, Nebraska
Prince of Peace Lutheran Church, Geneva, Nebraska
South Central Nebraska Conference, Byron, Nebraska
St. John's Lutheran Church, Eustis, Nebraska
St. John's ALCW, Kanawha, Iowa
St. John's ALCW, Mineola, Iowa
St. John's Lutheran Church, Kensington, Kansas
St. Paul's Lutheran Church, Byron, Nebraska
St. Paul's Lutheran Church, Clatonia, Nebraska
St. Paul's Lutheran Church, Auburn, Nebraska

St. Paul's Lutheran Church, Neola, Iowa
St. Paul's Lutheran Church, Omaha, Nebraska
The American Lutheran Church, Minneapolis, Minnesota
Trinity Lutheran Church, Albert Lea, Minnesota
Underwood Lutheran Church, Underwood, Iowa
Upper Wolf Lutheran Church, Sunday School, Robinson, Kansas
Wartburg Theological Seminary, Dubuque, Iowa
Zion Lutheran Sunday School, Johnson, Nebraska

WASHINGTON COUNTY BUSINESSES:

Agrico
AI's Alignment Service
Aluma Decor of Blair
Anderson Pharmacy
Arndt Hardware
Arnes Liquor Store
Artex Hobby Products
B & C Shop
Gary Baker Insurance
Ben Franklin Store
Bendorf Funeral Home
Bette's Gifts
Blair Pre School
Blair Bank
Blair Carpet and Drapes
Blair Clothing
Blair Dairy
Blair Feed Mill
Blair Florist
Blair Flour Mill
Blair House Motel
Blair Kiwanis Club
Blair Lumber & Grain Co.
Blair Meat Plant
Blair Redi Mix Inc.
Blair Rotary Club
Blair Supply Co.
Blair Transfer
Blair Water Treatment Co.
Blair West Pharmacy
Blue Ribbon
Bohs Conoco Service
Burkes Fashions
C & J Tire Sales
Campbell Mortuary
Carlson's Market
Chapman Plumbing
Cheryl's Beauty Salon
Computel Inc.
Concrete Equipment Co.
Consolidated Blenders Inc.
Corner Retreat
Dairy Queen
Eastern Nebraska Telephone Co.
Enterprise Publishing Co.
Equitable Savings & Loan
Fabric Village
Fairway Propane
Gamble Store
Good Earth Plants
Hansen Agency
Hinky Dinky
Hippar Repair Shop
Holmquist Grein & Lumber
Interstate Harvestore Inc.
Jensen Well Company
Julie Ann Shop
Klopps Jewelry and Gifts
Korshoj Construction Co.
Larsen & Jipp
LeRoy Larsen Realty
Mac's Food Center
Mar-Bee Salon
Medicine Chest Discount
Midland General
Midwest Service & Supply
Miller-Rolland TV
Montgomery Ward
Nebraska Iowa Supply
Nelson Bros. Clothiers
O'Hanton and O'Hanton
Phil Larsen Real Estate
Pizza Hut
Raymond V. Ryder Co.
Richards Agency
Robert Oil Propane
Rollands Farm Supply
S. E. Smith and Sons
Schmidt Monument Co.
Shuster Implement
Sixteenth St. Auto Parts
Skelly Service Station
Starlight Motel
Steinbaugh Marine
Stewart A. Smith Assoc.
Stewarts Northside Market
TV Travel
Taylor Color Photograph
Taylor Oil Co. Inc.
Taylor-Woodhouse Ford
Ted's Barber Shop
Terra Chemicals
Thew Custom Floors
Tyson Elevators Inc.
Tyson Inc.
Unitel of Nebraska
Verns Appliance Service
Vinton Motor Co.
Wanda's Blair Maple
Washington Co. Mutual Insurance Co.
Washco Feed Supply

Washington County Bank
Williby's 66 Service
Worth Market Greenhouse

FOUNDATIONS:

Abbott Foundation
Abel Foundation
Alco Standard Foundation
Allied Chemical Foundation
Allstate Foundation
Arthur Young Foundation
Asarco Foundation
Bay State Foundation
Bemis Company Foundation
Borden Foundation
Burlington Northern Foundation
Central Soya Foundation
Champion International Foundation
CNA Foundation
Continental Corporation Foundation
Deluxe Check Printers Foundation
A. B. Dick Foundation
Ute Evindrud Foundation
Honeywell Foundation
INA Foundation
Johnson Wax Fund Inc.
Kimberly Clark Foundation Inc.
Landen Foundation
Thomas J. Lipton Foundation
Lueder Construction Company Foundation
Merck Company Foundation
Meyer-Cero Foundation
Montgomery Ward Foundation
Nabisco Foundation
1907 Foundation
Omaha World-Herald Foundation
Owen Foundation
PM Charitable Foundation
Parmelee Foundation, Inc.
Paxton-Mitchell Charitable Foundation
Esper A. Petersen Foundation
Prudential Property & Casualty
Sears Roebuck Foundation
Skelly Oil Company Foundation
P. W. Skogmo Foundation
Sperry & Hutchinson Foundation
Staley Foundation
Tektronix Foundation
TRW Foundation
Union Pacific Foundation
Union Oil Company of California Found.
United Brands Foundation
Walker Foundation

CORPORATIONS:

Acme Mail Advertising Company
Aetna Life & Casualty
Aid Association for Lutherans
Aircor
Ak-Sar-Ben
Albion National Bank
Allied Mills, Inc.
American Brands, Inc.
American Gas Association
American National Bank - Creighton
American National Bank - Sidney
American Telephone & Telegraph Company
Anderson Equipment Co., Inc.
Arnold State Bank
AT & T
Atchison County Bank
Auburn State Bank
Avon Products
Alan & Marcia Baer
Bank of Bertrand
Bank of Brainard
Bank of Brule
Bank of Clarks
Bank of Dorniphan
Bank of Hartington
Bank of Madison
Bank of Norfolk
Bank of Taylor
Bank of Yutan
Bankers Life of Nebraska
Bankers Life Company
Mr. & Mrs. Clifton Batchelder
Becton - Dickinson
Bertelsen Publishing
Robert A. Braun, Sr.
Briggs Pump Company
Brinn & Jensen, Inc.
Bristol - Myers
Broken Bow State Bank
Bozell & Jacobs, Inc.
Burt County State Bank - Tekamah
Butte State Bank
Carson National Bank - Auburn
Central State Health & Life Company of Omaha
Central Telephone & Utilities
C I T Finance Corp.
Citizens Bank & Trust Co. - Columbus
Citizens National Bank - St. Paul
Citizens State Bank - Arapahoe
Clarkson Bank
City National Bank & Trust - Hastings
C.N.A. Settlement Fund
Coca-Cola Company Foods Division
Commercial Federal Savings & Loan Association
Commercial State Bank - Republican City
Commercial State Bank - Wausa
ConAgra
Connecticut Mutual Life Insurance Co.
Continental General Insurance Co.

Cook Paint & Varnish Company
Curtis State Bank
Dalton State Bank
John Day Company
DeLay First National Bank & Trust Co. - Norfolk
N.P. Dodge Company
East Asiatic Co., Inc.
Elanco Products Company
Electric Fixture & Supply Company
O. O. Emrich Enterprises
Equitable of Iowa
Farm Credit Banks of Omaha
Farmers & Merchants National Bank - Ashland
Farmers & Merchants National Bank - Axtell
Farmers & Merchants National Bank - Milligan
Farmers & Merchants National Bank - Oakland
Farmers National Company
Farmers National Bank - Madison
Farmers State Bank - Big Springs
Farmers State Bank - Eustis
Farmers State Bank - Fairmont
Farmers State Bank - Maywood
Filley Bank
First Chicago Corporation
First Federal Savings & Loan of Dawson County - Cozad
First Federal Savings & Loan Ass'n - North Platte
First National Bank - Cambridge
First National Bank - Columbus
First National Bank - Emerson
First National Bank - Exeter
First National Bank - Friend
First National Bank - Grand Island
First National Bank - Hooper
First National Bank - Lincoln
First National Bank - Marquette
First National Bank - Minden
First National Bank - Mitchell
First National Bank - O'Neill
First National Bank - Ord
First National Bank - Tekamah
First National Bank - Wahoo
First National Bank - Walworth
First National Bank & Trust Company - Aurora
First National Bank & Trust Company - Columbus
First National Bank - Trust Company - David City
First National Bank & Trust Company - North Platte
First State Bank - Fremont
First State Bank - Oakdale
First State Bank - Shelton
Fisher Controls Company
Ford Motor Co. Fund
Gate City Steel
General Foods Fund., Inc.
General Motors Corporation
General Telephone Co. of the Midwest
Geneva State Bank
Goodyear Tire & Rubber Company
Gothenburg State Bank & Trust Company
Grafton State Bank
Guaranty Mutual Life Company
Guide Rock State Bank
Hall County Livestock Improvement Association
John Hancock Mutual Life Insurance Co.
Harding Glass Industries, Inc.
Harry D. Harper
Henningson, Durham & Richardson, Inc.
Herman Bros., Inc.
Home Federal Savings & Loan Ass'n - Grand Island
Home Federal Savings & Loan - Lexington
Houghton Mifflin Company
Household Finance Corporation
Hovland - Swanson Building Company
IBM Corporation
Industrial Chemical Laboratories
Interest - ICFA
International Business Machines Corporation
International Telephone & Telegraph
Irving Jensen Company, Inc.
Journal Star Printing Company
Kaiser Steel Corporation
Kansas-Nebraska Natural Gas Company, Inc.
Mr. & Mrs. Peter Kiewit
Kinning & Reil, Inc.
Kirkham, Michael & Associates
Kraft, Inc.
S. S. Kresge Company
Langel Chevrolet-Cadillac, Inc.
George Lemon Jr. (Western Printing Co.)
Lexington State Bank & Trust Company
Liberty Mutual & Liberty Fire Insurance Co.
Lincoln Mutual Life Insurance Company
Lincoln Steel Corporation
Lisco State Bank
Lutheran Mutual Life Insurance Co.
May Broadcasting Co. (KMTV)
T. S. McShane Company
Mr. & Mrs. J. Paul McIntosh

MGIC Investment Corporation
Midwest Federal Savings & Loan Ass'n - Nebraska City
Milldale Ranch Company
Minden Exchange Bank & Trust Company
Missouri Valley Machinery Co.
Mutual Life Insurance Company of New York
Mutual of Omaha
Nash Finch Company
Nebraska State Bank & Trust Co. - Broken Bow
New York Life Insurance Co.
Norfolk First Federal Savings & Loan Association
Norfolk Livestock Market
North Platte State Bank
North Platte Television (KNOP-TV)
Northern Natural Gas Company
Northwestern Bell Telephone
Northwestern National Bank - Norfolk
O'Keefe Elevator Company, Inc.
O'Neill National Bank
Oak Creek Valley Bank - Valparaiso
Occidental Savings & Loan Association
Omaha Bankers Association
Omaha Concrete Stone Company
Overland National Bank - Grand Island
Peavey Company
J. C. Penney Company, Inc.
Pentz, Inc.
Peoples Webster County Bank - Red Cloud
Peterson Manufacturing Company, Inc.
Pfizer Inc.
Pizza Hut, Inc.
Plattsburgh State Bank
Procter & Gamble Fund
Prudential Insurance Co.
Ralston Bank
R. L. Robertson
Rogers Investment Company
Schuyler State Bank
Scottsbluff National Bank & Trust Co.
Scribner Bank
Security Mutual Life Insurance Co.
Seven Valleys State Bank - Callaway
Shickley State Bank
Sidney National Bank
Simpson's Inc. - Norfolk
Sioux National Bank - Harrison
Skinner Macaroni Company
Southwest Grease & Oil Company
R. E. Speltz, Jr.
Spencer State Bank
Sperry Rand Corporation
Sperry - Vickers
Springfield State Bank
Standard Chemical Manufacturing Company
Standard Motor Products
State Bank of Alexandria
State Bank - Benkelman
State Bank of Cairo
State Bank of DuBois
State Bank of Jansen
State Bank of Odell
State Bank of Stella
State Bank of Table Rock
State Bank of Trenton
State Bank & Trust Company - Wayne
Sterling Drug, Inc.
Stewart-Warner Alemit Sales Co., Inc.
Sutton State Bank
Taylor and Martin Co.
Tenneco, Inc.
Texas Gulf Inc.
Thayer County Bank - Hebron
Three - M Company
Frank B. Tice
Travel & Transport, Inc.
Tri - County Bank - Stuart
Union Pacific Corporation
United Guaranty Residential Insurance Co.
Vecchio Tru - Art Studio
Walliam Volker & Company
Walkers', Inc.
Washington County Bank - Blair
Western Electric Fund
Whitewater Ranch Corporation
Willis Cap & Gown Company
Wisconsin Telephone
Woodmen Accident & Life Co.
Woods Charitable Fund, Inc.
WOWT/Chronicle Broadcasting Co.
Yankee Hill Brick Manufacturing Company

Parents

Mr. and Mrs. Henry Ahrendt
Mr. Warren Amole
Mr. and Mrs. Harold Andersen
Rev. Edward Basck
Mr. and Mrs. Daniel Berke
Mr. Ray Bowman
Mr. and Mrs. Ralph Brown

Mr. and Mrs. Roy Brown
Mr. and Mrs. Clarence Busse
Mrs. Helen Chamberlin
Mr. Clifford Christensen
Mr. Alfred Clausen
Mr. and Mrs. Herbert Dalleck
Mr. Arthur Dolleck
Mr. and Mrs. Ervin Ehm
Mr. and Mrs. Emil Eisenhauer
Mrs. Fern Eitman
Mr. and Mrs. Eldon Erbes
Mr. and Mrs. Floyd Gengenbach
Mr. and Mrs. Donald Goos
Mr. and Mrs. Alan Gordon
Mr. and Mrs. Vernald Hegebak
Mr. Peter Hansen
Mr. and Mrs. Arndt Hanson
Mr. and Mrs. Ralph Hayne
Mr. and Mrs. George Helling
Mr. and Mrs. Waldemar Hempler
Mr. and Mrs. Dean Hoffart
Mr. and Mrs. Melvin Horst
Mr. and Mrs. Richard J. Jensen
Mr. and Mrs. George Kegler
Mr. Robert King
Dr. and Mrs. R. Kirkwood
Mr. and Mrs. Frank Knudsen
Mr. and Mrs. Arnold Knudtson
Mr. and Mrs. Erwin Kuhlman
Mr. and Mrs. Lloyd Kuhr
Mr. and Mrs. Edward Lorenzen
Mr. and Mrs. L. Madsen
Mr. and Mrs. Ray Martin
Mr. and Mrs. Fred Matthias
Mrs. Fredrick Miller
Mrs. Jack Moomsamm
Mr. and Mrs. Tony Moran
Mrs. Laura Morgensen
Mrs. E. Morton
Mr. and Mrs. Dan Nelson
Mr. and Mrs. Robert Neubert
Mrs. S. Nielsen
Dr. M. Olson
Rev. Roy Radloff
Mr. and Mrs. R. Rasey
Mr. and Mrs. Harvey Rasmussen
Mr. and Mrs. Victor Rasmussen
Rev. Orville Reeg
Rev. W. Schmidt
Mr. and Mrs. L. Schweer
Mr. and Mrs. Carl Schnittker
Dr. and Mrs. Walter Schur
Rev. C. Shalkhauser
Mr. and Mrs. Alfred Sick
Mr. and Mrs. William Soetmelk
Mr. and Mrs. R. Sundermann
Mr. and Mrs. Arnold Terveen
Mr. and Mrs. Armand Thomsen
Mr. and Mrs. Daniel Winters
Mr. and Mrs. Alwin M. Zwanziger

Friends

Dr. and Mrs. Lawrence Abbott
Mr. Roy Anderson
Anonymous
Mr. and Mrs. Arthur Anholz
Mrs. Cecil Bair
Mr. Francis Bittner
Mr. and Mrs. Robert Blobaum
Mr. Gerald Brenhoff
Ms. Susan A. Bronczyk
Mrs. LaVerne Brooke
Mrs. Eleanor Brown
Mr. and Mrs. Rufus Buffalo
Mrs. Eleonora Burroughs
Mr. and Mrs. L. Bussey
Mr. and Mrs. Raymond Caddock
Mr. and Mrs. Arthur Canada
Mr. C. E. Clauss
Mrs. Max Coffey
Mr. Howard Cook
Dr. Herbert Coulter
Mrs. Sara Da Cruz
Mr. and Mrs. Thomas Damrow
Dana College Super Saturday
Dana Student Senate
Mr. Bill Dean
Denver Dana Club
Mr. Robert Dippel
Mr. Frank Drbal
Mr. Gregory Drew
Mr. and Mrs. Robert Duden
Mr. and Mrs. Clyde Duff, Jr.
Mrs. Lillian Dyhrberg
Estate of Frank Baumgar
Estate of Grace Ross
Mr. J. C. Ewing
Dr. A. Ferguson
Mr. Ralph Freuck
Rev. and Mrs. John Fritzmeier
Mr. and Mrs. Arnold Fulrodt
Mr. and Mrs. Clinton Gehring
Mr. and Mrs. Ray Grabenstein
Dr. and Mrs. Leslie Grace
Mr. Darwin Halvorson
Miss LaVonne Hansen
Mrs. Frank Hansen
Mr. Richard Hansen

Mr. and Mrs. William Hare
Mr. and Mrs. Stanley Harless
Mr. and Mrs. Keith Harrier
Mr. and Mrs. John Haun
Mr. and Mrs. Kenneth Hayford
Mr. John Heald
Mrs. Lillian Hoffman
Rev. Roger Hoffman
Mr. and Mrs. George Holder
Mr. and Mrs. Henry Holling
Mr. and Mrs. Wm. Hubbard
Mr. and Mrs. Emory Hunt, Jr.
Mr. and Mrs. Richard Hunt
Mr. and Mrs. Robert Hunt
Mr. and Mrs. Harold Husby
Mr. and Mrs. Bill Jacobus
Mr. William C. Jensen
Mrs. Lillie Johansen
Howard Johnson
Nile Johnson
Mr. and Mrs. John Jones
Dr. Ivan Karpisek
Dr. Byford Klein
Mr. and Mrs. Melvin Knoell
Keith Knudsen Memorials
Mr. and Mrs. Gerald Kobs
Mr. Paul Kruger
Mr. George Kuhlman
Dr. and Mrs. G. Kuether
Mr. Herman Kuhr
Mr. Richard Kuhr
Ms. Lois Laing
Mr. and Mrs. Wayne Lambertz
Mr. and Mrs. Henry Lang, Jr.
Mrs. C. B. Larsen
Rev. Larry G. Lenning
Ms. Elenor Leseberg
Mr. Ralph E. Leslie
Mr. and Mrs. Norman Likes
Mrs. Clarence Lindblad
Mr. and Mrs. Sam Lingo
Miss Lona Lund
Mr. and Mrs. Robert Macholan
Mr. and Mrs. Robert Martin
Mr. Allen McCullough
Mr. Edward McKee
Mr. and Mrs. Monty Mead
Memorials to Betty Andersen
Mr. and Mrs. Adelbert Meyer
Mr. and Mrs. John Mezoff
Mrs. Frederic Miller
Mrs. Homer Miller
Mr. and Mrs. Leslie Milier
Minnie Madson Memorials
Mr. and Mrs. Fulton Monsees
Mr. Carl Monson
Ms. Elizabeth Moodie
Mrs. H. Morris
Rev. G. Muedeking
Dr. Allan Mund
Miss Edith Neale
Mrs. George Neal
Mr. Henry Neff
Mr. and Mrs. Stanley Nesheim
Mr. George Newstrom
Mr. and Mrs. Carl W. Nielsen
Mrs. Deanna Nielsen
Mr. and Mrs. Fred Nimitz
Dr. Pau Nyholm Memorials
Mrs. Jeannette Palazzolo
Mr. and Mrs. Bud Parker
Mrs. Vernon Paulson
Mr. Dick F. Perley
Mr. and Mrs. James Peters
Mr. and Mrs. Donald Petersen
Mr. Roger Petersen
Mr. Walter Petersen
Mrs. Arnold Pomojzl
Mr. and Mrs. F. M. Prawl
Mrs. Lillie Rasmussen
Mrs. John Rhoades
Mrs. B. O. Robinson
Mr. Roland E. Robison
Mr. H. F. Roeske
Miss Celia Rohwer
Mr. and Mrs. George Rohwer
Mrs. Vera Samp
Mr. and Mrs. Francis Schmehl
Mr. Jon Sedlack
Dr. H. Neal Sievers
Dr. and Mrs. R. Sievers
Mr. Richard Sievers
Mr. Jim Simmons
Mrs. Genevieve Slader
Mr. and Mrs. Bill M. Smith
Mr. Jesse Smith
Mr. LeRoy Snyder
Ms. Maureen Sperling
Stanley Brothers
Mr. and Mrs. Dale Stofferson
Rev. Henry Stolz
Mr. and Mrs. John Storm
Mr. and Mrs. Herbert Strenge
Sunshine Serving Club
Ms. Alma Svogerson
Mr. and Mrs. Joe Taylor
Ms. Grace Thompson
Mrs. E. S. Tripp
Mr. Steve Tucker
Mr. David Vaselaar
Mrs. Peter Vig
Mr. V. J. Vincint
Mr. Michael Wallin
Mr. and Mrs. Walter L. Walte
Mr. M. Wardell
Mr. and Mrs. W. H. Wayman
Mr. Lydon Wederquist
Mr. and Mrs. Warren Whitaker
Mr. and Mrs. Norman Williams

Mr. Bill Williby
Mr. C. Womble
Mr. and Mrs. Harold Wright
Mr. Lyman Wrightson
Ms. Darlene Yovanin
Dr. Wm. Zimmerman

Faculty and Staff

Miss Doris Andersen
Mr. Norman Bansen
Rev. & Mrs. Bruce Bergquist
Mr. and Mrs. John Bienz
Dr. and Mrs. Melvin Boehr
Dr. and Mrs. Alan Brandes
Miss Sigrid Christensen
Mr. and Mrs. Rodney Christensen
Dana Women's Club
Mrs. Esta Deets
Mr. and Mrs. Darrell Dibben
Dr. Herta Engelman
Mrs. Ray Furtak
Dr. Robert J. Glass
Mrs. Sharon Gordor
Mr. and Mrs. George Grube
Mr. and Mrs. Keith Hansen
Dr. and Mrs. Clifford Hanson
Dr. and Mrs. Verlan Hanson
Miss Carol J. Haussermann
Mr. Frank Hengeveld
Mr. Arvin Hernes
Miss Lydia Herrmann
Miss Marie A. Johnson
Mr. Paul D. Johnson
Mr. and Mrs. Ronald Johnson
Mrs. Richard Kubi
Mr. and Mrs. Dale Lemon
Mrs. Tom Leonard
Mr. and Mrs. Eugene Lindblad
Mr. Ken Lizer
Dr. and Mrs. C. C. Madsen
Dr. and Mrs. Bernard Matthies
Mrs. Joe McManigal
Mr. and Mrs. Eugene Meyer
Dr. and Mrs. Earl R. Mezoff
Mrs. Sandra Napier
Dr. and Mrs. Paul Neve
Rev. and Mrs. John Nielsen
Miss Luella Nielsen
Dr. and Mrs. John Northwall
Mr. and Mrs. James Olsen
Mr. and Mrs. Roger Olson
Mr. Phillip Pajel
Mr. Richard Palm
Mr. and Mrs. Paul O. Peterson
Miss Ebba Rasmussen
Dr. and Mrs. Larrie Stone
Mr. and Mrs. Paul Strand
Mr. and Mrs. L. W. Svendgaard
Mr. Eugene Thomas
Rev. F. W. Thomsen
Dr. and Mrs. Raymond J. Weckmuller
Dr. Wayne Wise

Alumni, Class of:

1912

Members 4
Donors 2 50%
Willie Jensen Houmark
Niels Nedergaard

1913

Members 9
Donors 1 11%
Franklin Rasmussen

1914

Members 5
Donors 4 80%
Ella Bertelsen Andersen
Nels Hansen
Olga B. West Hansen
C. A. Vammen

1915

Members 15
Donors 4 26.6%
Ingvard M. Andersen
Carrie Hansen Jensen
George M. Landrock
Tomina Neve Vammen

1916

Members 15
Donors 2 13.3%
Phoebe Gancin Hjortsvang
Alfred Pedersen

1917

Members 10
Donors 1 10%
Nathaniel Beck

1919

Members 8
Donors 3 37.5%
H. Lyle Guyer
Esther Magnussen
Rena Jensen Nielsen

1920

Members 8
Donors 3 37.5%
Aaron Jensen
Agnes Nielsen
Niels Nielsen

1921

Members 8
Donors 2 25%
Joseph Girtz
Kaj Larsen

1922

Members 12
Donors 7 58.3%
Total \$277.50
Marcus Beck, Sr.

Mary Hansen Justesen
Alma Madsen Petersen
Lawrence Siersbeck
Marie Simonsen
Rudy Nelson Townsend
Peter J. Vammen

1923

Members 9
Donors 5 55.5%
Total \$222.50
Agnes Lund Beck
W. H. Christensen
Arthur Jersild
A. Petersen
J. Tennesen

1924

Members 20
Donors 7 35%
Total \$202.50
Edward Andersen Sr.
Ingrid Beck Bondo
Emma Bondo Christensen
Einer Jensen
Dean Petersen
Lillie Andersen Petersen
Mina Jensen Vinther

1925

Members 25
Donors 7 28%
Total \$167.50
Elmer Bondo
Jens Caspersen
Marie Peterson Kaldahl
Agnes Bonnesen Kelgor
Ray Lund
Paul Nyholm*
Ernest Thompson

1926

Members 23
Donors 13 56.5%
Total \$282.50
J. S. Andersen
Leora Grill Broemser
Anna Christensen
Magnus Christensen
Agnes Bing Greenwood
Elliott Hanson
Esther Jensen Hoopingarner
Christian Justesen
Mamie Jensen Larson
Dagney Beck Lyon
Laurits H. Pedersen
Eleonora Simonsen
Margaret Clausen Vig

1927

Members 14
Donors 7 50%
Total \$245.00
Erik Christensen
Esther Vedsted Jacobson
Esra Jensen
John Lorentzen
Alfred Nelson
Arthur F. Nelson
Eli J. Vig

1928

Members 37
Donors 8 21.6%
Total \$360.00
Herbert Christensen
William Goldbeck
Ruby Stibold Larsen
Ralph Nielsen
Rose Hansen Nielsen
Jane Noble Nore
Hedvig Nyholm
Marrill Reeh

1929

Members 32
Donors 9 28%
Total \$387.50
Olga Simonsen Anderson
Vera Sorensen Head
Gerhardt Jersild
Elna Ohlsen Lorentzen
Esther Johnson Madsen
Rosa Kofold Nelsen
Eda Paulsen Panum
Ellen Bondo Pedersen
Alvina Bondo Weismann

1930

Members 23
Donors 8 34.8%
Total \$302.50
James Hansen
Harold Jorgensen
Edna Pedersen Nelson
John Nielsen
Martha M. Pedersen
Immanuel Petersen
Holger Schultz
Mary M. Caspersen Youngdahl

1931

Members 36
Donors 15 41.6%
Total \$685.00
Milton Christensen
Alfa M. Hanson Junker
Fred Kolterman
Silas Larsen
Martha Juel Leslie
C. C. Madsen
Esther Frost Magnussen
Mildred Johnson Morton
Frances Koopman Murdoch
Boyd Nelson
Millard Petersen
Lillie Peterson Rasmussen
Ray Romer

Claire Nelson Wilkinson
Lois G. Hansen Wulf

1932

Members 19
Donors 7 36.8%
Total \$394.50
Simon Korshoj*
Ray E. Mortensen
Anne Nielsen Okey
Adolf S. Petersen
Viggo J. Petersen
Lucille Hanson Vig
Tom Wilkinson

1933

Members 28
Donors 11 39.3%
Total \$608.50
Paul Bondo
Margaret J. Breese Petersen
Halley Broderson
Francis Mortensen Danielsen
Dagmar Olson Goll
Clarence Henrickson*
Alfred R. Jensen
Esther Sorensen Kuhr
Robert Larsen
Aleine Miller
Howard Thompson

1934

Members 42
Donors 12 28.6%
Total \$600.00
Anna Andersen
Theo and Edith Sorensen Jensen
Harvey Kuhr
Jean Larson
Richard E. Morton
Albert H. Olsen
Alvin Petersen
Marie Larsen Petersen
Ellen Danielsen Rendall
George Robertson
Severin Sorensen

1935

Members 30
Donors 8 26.6%
Total \$218.50
Viggo Carlsen
Alma Johnson Jensen
Ruth Louise Flynn Lippincott
Lovell E. Madsen
Marian Nelson
Lilly Jorgensen Sorensen
Dagmar L. Thomsen
Arndt Vig

1936

Members 34
Donors 22 64.7%
Total \$1840.00
Marian Peterson Anderson
Miriam Rosenblatt Bondo
Verner Carlsen
Roy Christensen
Margaret Johnson Donat
Harold Hancock
Barbara Hansen
Herbert Harboe
Harold Hurd
Anker M. Jensen
Agnes Petersen Johansen
Bernice Hansen Kaldahl
Rudolph Knudsen
Mary Jensen Langenfeld
Edward and Inga Schultz Larsen
Luther Lincoln
O. Victor Magnussen
John Sides
Andrew Staby
Irving Tange
Norma Lund Van Steenhoven

1937

Members 41
Donors 11 26.8%
Total \$672.50
Gertrude Kubiie Carlberg
Viola Hansen Carlsen
Vita Hansen Jensen
Stanley Jorgensen
Ellen Rasmussen Knudsen
Helen Pedersen Lincoln
Arthur Norgaard
Irene Andersen Olsen
Ruth Vig Olsen
Phyllis Rogert
Agnita Christensen Schreiber

1938

Members 59
Donors 21 35.6%
Total \$2191.39
Vashte Magnussen Christensen
Carl Frost
Donald Hansen
Pearl Hundahl
Ruth Pagh Jaksha
Ivan Johansen
Dagmar Nielsen Knudsen
Byron Langenfeld
Herbert Larsen
Earl Laursen
Helen Nielsen
Jules Nielsen
Raymond M. Olsen
Robert Paap
George Pallesen
Emery Petersen
David R. Simonsen
Eloise Morris Sperati
Chester Sutton
Marion Hanson Svendsen

Carl Wildrick

1939

Members 51
Donors 20 39.2%
Total \$925.00
Mildred Hansen Altekruze
L. Madsen Andersen
Clarice Jensen Aus
Evelyn Sorensen Bogan
John and Ruth Jenkins Bruse
Mildred Peterson Carlsen
Eric Christensen
Herluf Christensen
Edward A. Hansen
Rubena Jorgensen Hansen
Adolph Kloth
Herbert Kolterman
Richard Lincoln
Aster Neve
John Poucher
Elmer M. Rasmussen
Mildred Thomsen Schroeder
Martha Rasmussen Staby
Paul Tyson

1940

Members 62
Donors 26 41.9%
Total \$720.00
Florence Young Anderson
Harriet Larsen Andrews
Jean Desst
Richard Boe
Frances Kronberg Carter
Earl Christensen
Leonard Eriksen
Esther Carlsen Hansen
Ralph Hendricksen
Leona Johansen Hansen
Fred Jacobsen
Priscilla Wrich Kiefer
Lucille Neve Kloth
Howard Nielsen
Ione Christensen Nielsen
James Olsen
Clarence Paulsen
Clarence W. Petersen
Myrtle Lee Rasmussen
Victor Schmidt
Astrid Jensen Shjeflo
Edwin Svendsen
Robert Taylor
Edith Carlsen Vierk
Ferne Lantefield Wachter
Chris Young

1941

Members 56
Donors 24 42.8%
Total \$427.50
Lis Lyngboe
Raymond Carlsen
H. Lee Daggett
Earl and Ethel Jensen Glarborg
Frank Hengeveld
Esther Jensen Jenkins
Quentin Johnson
Evelyn Jensen Kelso
Thelma Hansen Kolb
Esther Rasmussen Laursen
Russell Lund
Charles Morehouse
Paul Neve
Homer Nielsen
Ann Kock Paasch
Howard Paulsen
Paul O. Peterson
Willard D. Phipps
Enoch and Gena Madsen Rasmussen
Gale Skillstad
Ethan A. Svendsen
Rhoda Krogh Wildrick

1942

Members 48
Donors 20 41.6%
Total \$991.00
Viola Hansen Aspegren
Doris Land Carlsen
Elaine Jespersen Christensen
Jerrold Eiling
Shirley Bondo Hansen
Edward Harboe
Othilia Nelson Hauge
D. O. Hogzett
Jeanette Hedelund Hunt
Genevieve Skau Jensen
David Kolb
Clarice Hagen Meader
Arnold T. Nielsen
Luella Nielsen
Grace Hansen Pearson
Mildred Peck Robeson
Alvin C. Rueter
Lorraine Peterson Schaeffer
Harold E. Sorensen
E. Irene Jensen Starrett

1943

Members 60
Donors 19 31.6%
Total \$447.50
Nelson and Phyllis Olson Boe
Rhoda Hansen Daggett
Gladys Jespersen Dirksen
Maynard Hansen
Thorvald A. Hansen
Rueben Iversen
Andrew S. Jensen
Herbert C. Jeppesen
Norman Johnson
Ernest Kersgaard
Ezra Larsen

Alton Neve

Lela Nielsen Neve
Alice Traum Nielsen
Kathleen Cornell Olson
Vernon Robeson
Irene Johnson Schmidt
Kenneth Tabberson

1944

Members 51
Donors 15 29.4%
Clifford Hanson
William J. Hanson
Gwendolyn Hopkins Hart
Bernice Benson Iversen
Stanley Jensen
Oscar Johnson
Doris L. Petersen Krohn
Ole I. Larsen
Mary Hansen Morehouse
Roma Sandvold Phillips
Eleanor Jensen Rathje
Edward H. Sorensen
Lois Carlsen Sorensen
Arthur and Marie Nielsen Welch

1945

Members 67
Donors 17 25.4%
Total \$500.00
Vera Mae Johansen Barbeau
Anne Blatter Bruner
June Madsen Bryngelson
Stanley and Mildred Romer Carlsen
Hans Carlson
Donald Ehlers
Gladys Lyngboe Hughes
Ruth Nielsen Jeppesen
Charles Lazure
Helen Mathun Neumann
Lyle and Agnes Larsen Paulsen
Mildred Madsen Paulson
Arthur M. Pedersen
Aage Schou
F. W. Thomsen

1946

Members 42
Donors 5 11.9%
Total \$145.00
Ruth Petersen Falksen
Persis Pedersen Hansen
Betty Korshoj Megreue
Mildred Staby Nelson
Mary Jensen Pedersen

1947

Members 37
Donors 15 40.5%
Total \$292.50
Norman Bansen
Deloris Hansen Bengtson
Allan W. Hansen
Ethan Hansen
Doris M. Petersen Hanson
Ernest F. Hansen
Elizabeth Hansen Hungerford
Mildred Hansen Johnson
Greta Pedersen Krag
Gene Megreue
Lois Nelson OShea
Raymond M. Paulsen
Bjarne Rasmussen
Lorraine Nelsen Schacht
Alfred Tan Creti

1948

Members 39
Donors 14 35.9%
Total \$980.00
Frederick Bregelman
Rena Thompson Cerbin
Allison Hansen
Florence Hansen
Hugh Hughes
Howard Jensen Jr.
Irene Kirkegaard Jensen
Marilyn Guyer McCormick
Lawrence Nelsen
Ried Neve
John Nielsen
Esther Sorensen
Reynold H. Tange
Joy Larsen Wert

1949

Members 67
Donors 31 46.3%
Total \$1267.50
Maynard Andersen
Virgil Bollesen
W. Eugene Flynn
Marilyn Juul Hanson
Norlan Hanson
Albert Hjortshoj
Emmeline Fredericksen Hoar
Anna Hansen Huber
Bernice Gearborg Jensen
Jack Jensen
Paul C. Johnson
Ray Johnson
Carol E. Mengers Johnson
Willard Johnson
Sidney and Eileen Fleeton Jorgensen
Phillip Larsen
Forrest Leighton
Violet DeGrave Madsen
Dean and Betty Schmidt Madsen
Norris A. Michelson
H. Elaine Neve Nielsen
Ivadell Raben
Donald Schou
Arthur Sorensen
Joan Andersen Sorensen
Myrna Olsen Tostenson

Marjorie Jorth Wahlgren
Kenneth Weaver
Eugene Wekander
1950
Members 135
Donors 30 22.2%
Total \$1445.00
Amy R. Andersen
John T. Beck
Erwin Christensen
James H. Coffey
Antony DeCruz
Clarence David
Jack C. Emmons
Andrew C. Hansen
Robert Hansen
Roger Hanson
Arnold W. Jensen
Paul Jeppesen
Harold Jersild
Joyce Nelson Johnsen
Esther Eriksen Larsen
Dorcas Vammen Leighton
Harriet Mortensen Lipe
Elisa Cruz Merkl
Lyle R. Morgensen
Allan and Marilyn Neve Nyegaard
Gerhard J. Nygaard
Earl M. Pace
Charles Petersen
Howard and Ruth Solevad Petersen
Albert E. Rasmussen
Eleanor Nielsen Schou
Paul Simon
Joan Peterson Sorensen

1951
Members 86
Donors 24 27.9%
Total \$655.00
LeRoy Andersen
Vernon L. Andersen
Virginia Lippincott Beck
Elaine Madison Brostrom
Ellen Jensen Drew
Charles Eastlund
Marilyn Siersbeck Erling
Lois Girtz Halley
Marie C. Nelson Hansen
Opal Boilleesen Hansen
Verlan Hansen
James Jorgensen
Sam Kachichian
Helen Halstead Kofoid
Eileen V. Nelsen Larsen
Paul Laursen
Robert Meyer
Betty Jensen Nygaard
Lucy Anne Poucher
Warren Rasmussen
Jimmy Sorensen
Gladys Voetmann Stavely
Joanne Merrill Varga
Norman Winther

1952
Members 86
Donors 24 27.9%
Total \$760.64
Lois Petersen Andersen
John Bradley
Martin Christensen
Neil Hansen
Robert Hansen
P. V. Hansen, Jr.
Harvey Jorgensen
Roger Klett
Phyllis Kloster Krumray
Gerhardt Mengers
Marilyn Nelson Meyer
Robert G. Nelson
Andrew C. Nielsen
Donald Ofte
Duane and Lillian Nielsen Ohlsen
Joyce Williams Peck
Mildred Siersbeck Rasmussen
Howard Romer
Arthur Simon
Harry Sorensen
Juri Taht
Lawrence Weare
Raymond Weckmuller

1953
Members 105
Donors 29 27.6%
Total \$754.50
Richard Andersen
Herbert A. Andersen
Gerald Borglum
Dale Christensen
Kenneth Christensen
Vaughn Christensen
Robert E. Coffey
Norma Nielsen Hansen
A. Robert Hemmingsen
Paul and Marilyn Steffensen Jersild
Floyd W. Jorgensen
Phyllis Johansen Jorgensen
Philip Kaldahl
Joyce Hayek King
Lyle Kohler
Wilbur and Alice Schultz Layman
Ruth Wagshal Mengers
C. M. Pedersen
Ruth Neve Petajan
Donald and Margrethe Hansen Petersen
Floyd Petersen
Alice Voetmann Romer
John Smith
Mark Thomsen
G. B. Timpa

Sue Truax Weare
1954
Members 82
Donors 23 28.5%
Total \$860.00
Margie Poh Christensen
John and Myra Vig Christensen
Marion Christensen
Joan Nelson Coffey
Edith Skobo Faye
Norman L. Freund
Esther Jorgensen Grindberg
Margaret Erickson Hafar
Daniel C. Hansen
Gary Hansen
Winston Hansen
Howard C. R. Jensen
Russell P. Jensen
Arne Jessen
William D. King
Neil Moore
Arlene Sandberg Nelson
LeVern S. Nielsen
Ralph Spear
Roma Geisler Staudenbaur
Marjorie Baxter Tuveson
Peggy Rounds Wittlinger

1955
Members 71
Donors 16 22.5%
Total \$273.00
Angela Sorensen Borglum
Clarice Frederickson Christensen
Marion Nielsen Hansen
Marilyn Jacob Huntress
James D. Iversen
Wesley Jesspersen
Roger Kruse
Margaret McQuarrie McGill
Milton Nelson
Don Nielsen
Nancy Osborn Orwig
Carroll Petersen
Nancy Brown Reissig
Erling T. Schultz
Doris Jacob Senica
Bethany Miller Simon

1956
Members 97
Donors 30 30.9%
Total \$1377.00
Robert Armentrout
Patricia Baker Bansenmer
Arlene Miller Christensen
James Clemon
Kenneth L. Fehl
Mary Speck Heinrichs
Bonnie Jacob Jacobson
Betty L. Placek Johnson
Dorothy Landbo Jorgensen
Herbert Jorgensen
Lois Johnson Kembrie
Robert and Joan Peterson Krogh
Betty Petersen Kruse
Dale Larsen
Harold Laursen
William O. Lawson
Norman R. Madsen
Rees and Edna Skobo McFarlane
James Nelson
Sigrid Nelson
Phillip Pagel
William Peterson
Eleanor Larsen Stiles
Ronald Stricklett
Bruce Sullivan
M. Ruth Kirkegaard Svinth
Barbara Peterson Ward
Philip M. Wittig

1957
Members 80
Donors 22 27.5%
Total \$499.50
LeRoy Anderson
Beth Kruse Cecil
Carole Henningsen Evert
Frank and Nancy Bellows Gabby
Norman Hagbert
Arnette Timm Hansen
Robert Jensen
Carol Nielsen Jorgensen
Charles Jorgensen
James and Eleanor Wohlers Kruse
Thomas Langenfeld
Antoinette Nelson Lawson
Carl Morgensen
Marilyn Ward Nichols
Pamela Rhoades Petersen
Marilyn Wolsmann Rasmussen
Patricia Beck Salchow
Harvey Sorensen
Larrie Stone
Dorol Valder

1958
Members 103
Donors 34 33%
Total \$1169.50
Clarice Andersen
James L. Andersen
Arliss Peterson Anderson
David Bidstrup
Mary Ann Anderson Fehl
Harlow Freund
Jean Coffey Gay
Dan Hansen
Franklin Hansen
Carlene Petersen Heiser
Bill Himmeler
Mary Ann Effken Jensen

Milton Jensen
Dale T. Jensen
Milan Johnson
Delores Peterson Jorgensen
John Klug
Harry Landbo
Betty Schwanke Larsen
David W. Larsen
Barbara Whiteside Laursen
Patricia McKee Madsen
Shirley Alme Madsen
Frieda Naujokaitis Patrick
Keith C. Peterson
Jan Phibby
Melvin Rogers
D'Arlene Morton Rosenau
Dorothy Willmert Schultz
Melvin Sick
Peter Smith
Norma Nelson Stone
Virgene Schmidt Stricklett
Bonnie Merica Williamson

1959
Members 93
Donors 27 29%
Total \$721.23
Ernest Anderson
Betty Christensen Bidstrup
Bartel Borglum
Jack Davies
Larry D. Hansen
James Heiser
Lois Benton Huseby
Richard and Karen Peterson Jensen
Gloria Hansen Johnson
Caroline Pedersen Jones
Richard Jorgensen
Sharon Kindler
Gail S. Koldenborg
Virginia Blankenbeckler Korshoj
Richard and Mary Jo Andrews Kubic
Ernest A. Larsen
Carol Madsen Larson
Walter Ludwigen
Roger L. Madsen
Marie Jensen Nielsen
Myril Schultz
David Smith
Nina Yauch Spear
Shirley Chandler Valder
Donald Wahlgren

1960
Members 104
Donors 34 31.4%
Total \$936.50
Dale Albus
Howard and Joyce Hansen Christensen
Sigrid Christensen
Vernon Flesner
Shirley Haahr
John T. Henningsen
Joanne Hess
Beverly Peterson Jensen
Raymond Jensen
Don Joern
Marie Johnson
Leo Kirchoff
George Landbo
Marie Hansen Langenfeld
David R. Larsen
Gerald Martin
Darrell Mertens
Elaine Lillethorup Olson
LeRoy Pedersen
Duane N. Petersen
Noel D. Petersen
Ronald Raschke
Donna Byriell Rector
Florence Benson Rogers
Gerald Sinclair
Janet Langenfeld Smith
James C. Sorensen
Carol Petersen Stolen
Milo Strozensky
Nancy Horton Svacha
Franklin Weber
Errol Wiges
Larry Wright

1961
Members 121
Donors 43 35.5%
Total \$1586.50
Emory and Geraldine Christensen Anderson
Sharol Craiddall Anderson
Harlen C. Barney
Roger Best
Richard V. Carr
Myrvin Christopherson
Ray Dickson
Kenneth and Rosalind Peterson Glover
Judith Rasmussen Grabill
Terry Hess
Ivan Johansen, Jr.
Ronald Johnson
JeLayne Carpenter Jorgensen
Luther and Doris Siersbeck Kloth
Anna Pohlmann Landbo
Joann Hundtoft Larsen
Richard Larson
Jerry and Shirley Nielsen Lincoln
Lois Justesen Miller
Elizabeth Solevad Nielsen
Elliott and Juane Skow Nielsen
Leonard Nielson
Arluce Fuchs Nore
James Nymann
Allan Olson
Duane Olson
Paul and Lois Lorenzen Olson

Jo Ann Larsen Otto
Margaret Nielsen Rodenburg
David Rossbach
Joyce Stitt Santero
Vera Lamb Sappenfield
Mary Vig
Richard Wardell
Alice Anderson Weaver
Duane L. Wehrbein
David Wulf

1962
Members 128
Donors 37 28.9%
Total \$1660.00
Ralph and Judith Bruce Anderson
Arthur and Kathleen Anderson Bliese
William Bracker
Dean Brockhoff
Hans C. Christensen
David N. Comstock
Carol Madsen Dickson
Lawrence Dolleck
Diane Lippincott Fischer
Frank Grasso
Janice Hiller Gronstal
Nena Wegener Hankins
Ellen Larsen Hanson
Lionie Hayne
Eldon L. Hemmingson
Kenneth A. Jensen
Dorothy McIntosh Jensen
Waldo M. Junker
Karl C. Koepfen
Philip Larson
Jerry Larson
Donna Layton Locher
James Olsen
Lois Jensen Pedersen
Carlene Benson Petersen
Peter L. Petersen
Philip Petersen
Charles Reeg
Lois Henningsen Rode
Walter W. Rodenburg
Mary Bertelsen Ruden
Samuel Stacks
Gary Trimble
Barbara Boe Vierk
Judith Christiansen Wagner
Larry West

1963
Members 145
Donors 46 31%
Total \$1184.00
Kenneth D. Anderson
Raymond Anderson
David Barber
Gary L. Biesecker
Kent C. Borchers
Larry and Lois Hansen Bornemeier
Mary Clausen Canman
Deanna Schmidt Carr
Paul Christiansen
Stan and Betty Joslin Erlandsen
Karen Flood Fulton
Gary Hanson
Maynard Hedegaard
Dean Henriksen
J. Kent Howard
Calvin Hultman
Judy Magnussen Jensen
Jean Gebhart Jensen
Alan Johanknecht
Herbert D. Knudsen
Brenda Francis Krueger
Donna Berryman Lam
Sandra Jensen Larsen
Gary Lebeck
Roger H. Lippincott
Spencer W. Martin
Joan Nielsen Mast
Vernon and Carol Krenze Mathiesen
Judith Mayland Morris
Kenneth and Ruth Meyer Muehl
Dixie Hagedorn Petersen
Marc L. Petersen
Ruby Hansen Petersen
Shirley Thompson Petersen
Ellen Knudsen Rittenhouse
David A. Snowbeck
Robert T. Steffensen
Larry Tantow
Thomas F. Vierk
Susan Ringhand Vines
Joan Vogt Wekander
Karen Hanna Waddingham

1964
Members 179
Donors 52 35.9%
Total \$1382.00
Edward Anderson
Mary Lay Baeher
Pamela Huss Barber
Mark Bondo
Gale Bosche
Linda Dalbeck
Linda Francis Daniels
Carol Westerman Dickmeyer
Harriet Putnam Dobson
Robert and Ellen Peterson Dunnell
Nanette Eklund
Walter and Faye Byriell Fox
Janet Francis
Linda J. Gehrig
Betty Platt Grasso
Robert Hansen
David G. Hanson
Gloria Pedersen Hayne
Rebecca Roesener Holst

Roger E. Howland
Byron L. Jensen
Maude Wiese Jensen
Robert J. Jensen
Janet Peterson Jorgensen
Therman Kaldahl
Bernard Kionka
Pat Stolley Koepfen
Larry L. Kron
Donald and Janine Kroeger Lacy
Thomas Lange
David S. Larsen
John E. Laughhunn
Judith Svendgard Lum
Janette Frandsen Martin
Janet Wohlers Myer
Winifred Paulsen Nelson
Milan Nore
Philip Panum
Gary and Lynne Rasmussen Ramsay
Phyllis J. Rasmussen
Maureen Bohliken Reinking
Brian and Connie Snell Rich
Janet Smull
Patricia Parrish Spurvey
Robert M. Stegmaier
Sanja Jacobsen Switzer
Leland Walz

1965
Members 220
Donors 61 27.7%
Total \$1899.00
Jess Alton
Janet K. Hansen Anderson
David Bargen
Leota Schmitker Benson
Vivian Christensen Biesecker
John Cederberg
Norman Christiansen
Paul and Norma Rummel Dirks
Donald P. Dreyer
Jean M. Eisenbauer
Dennis Eitmann
Karen T. Burns Fahn
Christina Moosmann Ferguson
Marilyn Michel Foster
Kathryn Olsen Goetz
George Hagen
Ronald Halverson
Gerald Hansen
James L. Hansen
Clarice Smith Herold
Linda Anderson Howland
David Israel
Carolyn Parde Iverson
Eldon Jensen
S. Michael Jensen
Sharon Messer Jensen
Gerald Jorgensen
Linda Money Jorgensen
Jerry Kirkegaard
Karen Nielsen Knudsen
Linda Knudsen
David Larsen
Ione Caldwell Liddicoat
Gloria Hansen Logeman
Ronald L. Mattison
George and Marjorie Matzen
Susanne Hengeveld Miller
Warren Miller
John Muehl
Sandra Andersen Mundy
Vivian Jenkins Nelsen
Clayton Nietfeld
Margie Fangmeyer Olson
Jane Olsen Owen
Gerald Paulsen
David and Nancie Brockmeyer Peterson
Allan Reinking
Roger Rogert
Judith Dose Snowbeck
Bernice Van Peursen Spark
Clifford Staben
Rodney G. Thompson
Janus Z. Thomsen
Myron & Sheila McKinstry Thorberg
Glenn Wachter
J. Jane Jensen Warman
Candyce Barnesberger Widness

1966
Members 195
Donors 51 26.1%
Total \$900.50
Ronald Anderson
Mary Anderson Bargen
Gary Bates
James Beck
Susan Slader Bennerotte
Dixie Havick Boeck
Joanne Gochenour Bracker
Ruth Buhl
Alyce Johnson Christensen
Marvel Christensen
Helen Leland Danielson
David Falksen
Carolyn Scott Fiore
Jon R. Hallquist
Gloria Hansen Halverson
Barbara Hagebak Hanson
Ilona Moosmann Hatch
Mary Larsen Held
Donald Hoffman
Timothy A. Jensen
Kristi Planck Johnson
James Jorgensen
Kenneth L. Kemmish
Harriet Larson
Jani Johnson Larson
Jerome Larson

Larry and Susan Nystuen Legore
J. Robert Lyche
Joyce Maurer
Judy Johnson Mortensen
Wayne Morton
George Nelsen
Anne Bentzen Nielsen
Lois Vaughn Olsen
Dallas Opfer
D. R. Owen
Louise Spark Parkert
Mary Hansen Paulsen
Kenneth H. Quirk
Corinne Adams Robinson
Wilma Brauer Roenfeldt
Stephen Sit
Roland Sommerer
Wayne and Naomi Petersen Theye
Doris Larson Tomlinson
Bernhard Vaaler
Clyde Carter Wallace
Raymond and Linda Hazen Ward

1967

Members 197

Donors 52 26.9%

Larry Anderson
Shirley Paus Anderson
David Barsness
Vicki Yowell Beck
Luella White Behr
Rolan Bertjen
Carol Bertelsen
Robert Blair
Terry Boeck
Leon Bracker
Ralph Breckle
Loretta Heckathorn Calabro
Robert Christensen
Thomas C. Christensen
Jim Christiansen
F. Paul Doerder
Fred Donaldson
Rex O. Fangmeyer
Barbara Holsing Feit
Larry Fox
Gail Frazier
Claudene Bakken Gilbert
James Gray

Lois J. Behrendt Grover

Cheryl Hanson Hallquist

Myron Hansen

Donald E. Hanson

Janice Miller Hinds

Patsy Fahrenkrug Hoffman

Dennis Jeppesen

Charlene Pedersen Josephsen

R. Kay Lee Kellner

David Kjeldgaard

Rodney G. Miller

Robert Morgan

Gene Nelsen

Patricia Odell Otto

Paul Panum

Don Perekovich

David Peterson

Gerald Quirk

Marlow Remmers

Wayne Sittler

Shirley Hindley Smith

Ida Schmueckler Smith

Marcia Anthony Sommerer

Marilyn Harder Thompson

James Wardrip

Linda Cleveland Welander

Wally Welander

Edith Weller

Robert Zwink

James G. Holtam
Charles Hubert
Shirley A. Iversen
Paul S. Jensen
Betty Jo Worthan Jensen
Franklin Janson
Kirk A. Johnson
Charles Grap Kemmish
Earl Knudsen
Gary Knudsen
Kenneth Koester
Carolyn Madsen Larson
Harriet R. Wilson Laughlin
Judith Swensen Lebeck
Norma Jordan Lippincott
Kenneth C. Lizer, Jr.
L. Mark McKenzie
Stuart A. Miller
Phyllis Taylor Mortensen
Phillip Myer
Cheryl Paulsen Nielsen
Stanley P. Nielsen
John Orwig
Susan M. Peck Owen
Richard G. Petersen
Edward H. Piner
Connie Andersen Quirk
Tamara Lykke Quirk
Kenneth S. Rasmussen
Paul N. Rasmussen
Barbara Siert Sandvold
Stella Schroeder
Helen Hansen Sorenson
Cathrine Madsen Stone
Judy Smith Strohbehn
Ron Strohbehn
Starla R. Sorensen Sweda
Rebecca Lyche Vaaler
Beverly Jensen Van Arsdal
Richard J. Vierk
Kathy Jensen Vinton
Jeffrey R. Vinton
Gerald Voll
Sandra Johnson Voll
Margaret Wold
Paula Zackman Wolf
Julianna Spilker Zwink

1969

Members 288

Donors 76 26.4%

Total \$1024.50

Barbara Ann Cook Aanonson

Allan W. Anderson

Fran Pedersen Anderson

Betsy Buck Anderson

William Anderson

James Bane

Cheryl Lehman Bates

Ronald Bernier

Shirley Sulin Best

Ethelynn Johnson Busse

Suzanne Holloway Chambers

Rocky S. Christopher

Gleann McClannahan Coates

Dolph Crawford

Linda Akers Dow

Helen Bay Dunham

Sherry L. Beales Forrest

Colleen Y. Wilson Geiser

Lois Geith

Kathleen Grubbe

Karen Nelson Hansen

Phyllis Lauritsen Hansen

Joyce Hanson

Judith HineLine Hardy

Miriam McLaughlin Haseltine

Mary Plambeck Herkenrath

Joel Hermann

Annette Sorensen Holtam

Carol Hansen Hubert

Jacquelyn R. Arshem Ingalls

James D. Jensen

Julianne Nielsen Jensen

Danny Josephsen

Sharon K. Juhler

Carolyn Asher Koester

Rita Sandvold Kohlscheen

John J. Korzilius

Andrew Lafata, Jr.

Craig E. Lindholm

Judith Nilsen Lindholm

James Mayberry

Barbara Wheatley McConnell

Lawrence McGinn

Scott McGowen

Lela Hansen Miller

W. James Mortensen

Nancy J. Hanson Nicholson

Gwen Rutter Opfer

Gail M. Young Peters

Richard Rasmussen

Ruth Robbins

Alfred W. Rode

Gena Rodgers

James Sams

Carolyn J. Scholl

Paul J. Seavey

Rick L. Shearer

Etaine Olsen Shelburne

Gary F. Shuck

Eileen Taake Simonson

Louise Grube Sittler

Paul A. Staby

Shirley Albert Stubbendick

Patricia M. Welander Svacina

Larry Swanson

James Tomen

Bonnie Verccruysse Vandenberg

Paula Westfall Vasby

Phillip J. Vasby
Peggy Seitz Warren
Mary Skobo Weckmuller
Spencer R. Wedberg
Jeanne Macklin Whitney
Robert W. Whitney
Sheryl L. Claussen Williams
Roger Zieg

1970

Members 347

Donors 64 18.4%

Total \$972.32

Ramona Alwill

Joseph Ball

Craig Barber

Sharon Nelson Barta

Janet F. Penke Bates

Jon A. Boustead

Ron Briggs

Gerald Bruning

Dave Busse

Eric Christensen

Rodney Christenson

Kathleen Ryan Cook

Steven Cook

Virginia Dunham

Christine Zwanziger Faust

Sandra Grevious Fink

Judith Gardalen

Alice B. Christensen Garvin

Janet Guthrie

Karen Nelson Hansen

Robert Hassard

Gail E. Hennings

Rikki Forney Hulsebus

Ronald W. Hulsebus

Lizbeth Ahrent Jensen

Margaret Jensen

Susan Davis Jensen

Wayne Jensen

Edith Johnson

Twila E. Juell

Naomi J. Kenyon

Mary Weger Knehans

Roger P. Knehans

Mary Kuhr

Ruth Jacobsen Leitell

Jack Lorsch

Nancy Blobaum Ludwig

Albert E. Maul

Carol Canoyer Miller

Karen F. Anderson Morland

Pamela Peterson Neet

Steven Neet

Janet Peck Owen

Carol Maresh Panko

Gary L. Panko

Sharon Anderson Pape

John Prouty

Wm Reilly III

David E. Renze

Karen Lausterer Riddle

Candice Peterson Rorzilius

Lynda Wacek Schmitz

Mary Stubbendick Seavey

Wilbert C. Sick

Elizabeth Hall Sitoski

Sharon Small

Margaret Stanley

Nina Strain

Janet Winkel Vetrovec

James A. Vorderstrasse

Richard Wendt

Barbara Heap Wolfe

Margaret Hassard Zion

Richard Zion

Everett Baltz
 Bruce M. Bates
 Steven Berke
 Gayleen A. Walraven Broadstone
 Gerald D. Clanton
 Robert Coffey
 Arthur Crawford
 Susan M. Zabel Dryburgh
 Gary M. Erbes
 Laurie R. Formanek
 Randy V. Furstenau
 Mark Gruner
 Paul Haack
 Karen Jensen Howard
 Marilyn Muff Kastrop
 Roger Kastrop
 Jamie Heide Kuiken
 William Lindahl
 Jack G. Martin
 Michael D. McCallum
 Jeffrey R. Meyer
 Brenda Loeschke Monfils
 Margaret Anne Walsh Nielsen
 Beth Peterson Papasadero
 John M. Peterson
 Sandra J. Pierce
 Gary Soetmelk
 Kathy Paulsen Soetmelk
 Ruth M. Soneral
 Shauna Spilde
 David Stickrod
 John Tjomsland, Jr.
 Dwain E. Wulf

1976
 Members 225
 Donors 37 16.4%
 Total \$694.50
 Steven Barntson
 Giles F. Bronson
 Lori Brown
 Kathryn Burney
 J. Duda
 Ricky Dudley
 Patricia Heuring Ferman
 Marilyn B. Hansen
 Alan Hanson
 Mary Henriksen Hanson
 Carol Rozum Harris
 John Griffith
 Mark Jones
 Patricia Knuth
 Debra Powell Lemons
 Kathleen Morgensen Lizer
 Diane Williamsen Luxford
 Margery Stout Martens
 Steven Martens
 David Menz
 Jane Nielsen
 Janice Whalley Nielsen
 Christine Parkhill
 Lance Poldberg
 Gary P. Rasmussen
 Joy Lyn Christensen Sanford
 Ann Schermerhorn
 Deborah Schou
 Lester Shaw

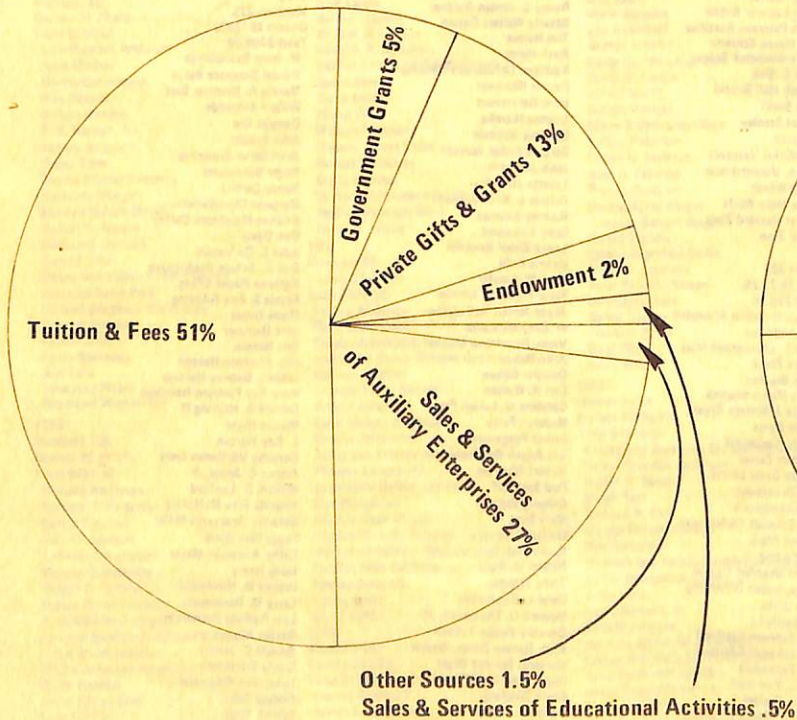
Pamela Pipher Shumake
 Diane Bradley Stewart
 Michael Stewart
 Sharon Thompson
 Edna Tierney
 Rachael Toso
 Marylu Morris Wesemann
 Lois Westfall
1977
 Members
 Donors 5
 Total \$80.00
 Cheryl Hinz Behrends
 Ruth Nilsen Campbell
 Faye Coles Jones
 Shirley Kennett McCallum
 Julene Nelson
1978
 Members
 Donors 2
 Total \$155.00
 Donna Reque Baack
 Dennis Preston
MEMORIALS
 Miss Betty Andersen
 Mr. Bradley Asper
 Mr. William Beales
 Mr. Stan Bednar
 Nora Bunjes
 Nora Edwin Byers
 Rev. J. P. Christiansen
 Jess Dyer
 Audrey Eastlund

Mrs. Hermine Engleman
 Mr. Herbert Esslinger
 L. C. Flint
 Mabel Fransen
 Mrs. Carl Guettler
 Mr. George Hagedorn
 Mr. Ernest Hansen
 Rev. Fred C. M. Hansen
 Mr. Chris Hein
 Mrs. Carl Heindorff
 Mr. Jack Hill
 Mr. and Mrs. John G. Hueftle
 Mr. and Mrs. Deppe Jensen
 Rev. and Mrs. Chester Jeppesen
 Stella Jorgensen
 Mr. and Mrs. Nels Johnson
 Mr. Alvin Kehlbeck
 Mr. Peter Keller
 Mr. Keith Knudsen
 Lillie Krause
 Bernice Kuhlmann
 Dr. C. B. Larsen
 Mr. Lloyd LaVene
 Mr. Frank Lawson
 Mother of Larry Lenning
 Mr. Albert Limberg
 Ruth Lund
 Minnie Madson
 Mr. Hans Miller
 Mr. and Mrs. W. J. S. Miller
 Mr. Wm. Miller
 Mr. Erland Nelson
 Rev. Erhardt Nielsen

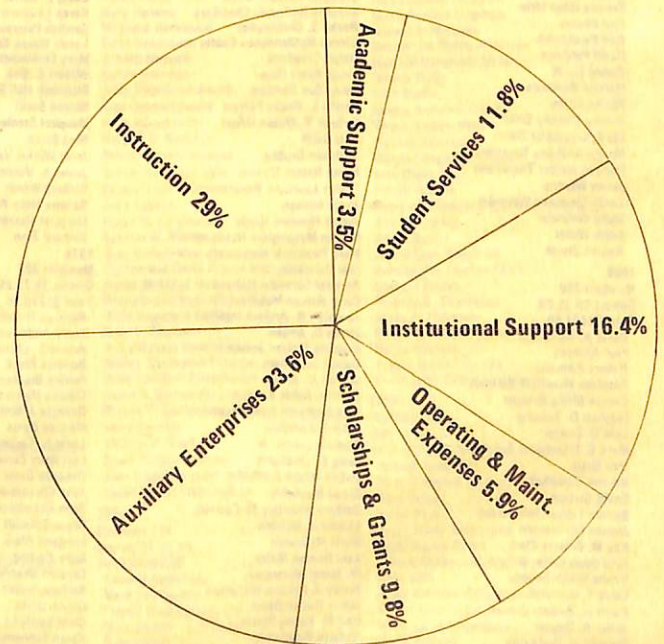
Mrs. Frank Nielsen
 Mrs. Hermann Nielsen
 Mr. Oscar Nielsen
 Rev. Shriver Nielsen
 Mr. Waldo B. Nielsen
 Mrs. Ingrid Nyholm
 Dr. Paul Nyholm
 Mrs. Emma Oestmann
 Mr. Ralph Olson
 Mr. Calvin Petersen
 Rev. James C. Petersen
 Mr. Larry Rambat
 Mr. Wm. Rambat
 Mr. Glen Reimers
 Lena Roseholm
 Mrs. Myra Sacks
 Mr. Willy Schmidt
 Mrs. Mary Schroeder
 Mr. Bill Sietz
 Mr. Anchor Sorensen
 Mrs. Janet Sorensen
 Mrs. Norwood Souders
 Verona Spilker
 Mr. Harry Strohbelt
 Rev. H. H. Svendsen
 Mr. Oscar Torneten
 Prof. P. S. Vig
 Mr. Henry Von Wihe
 Mr. John Vorthmann
 Mr. Oscar Weissert
 Emma Wilken
 Mrs. Hazel Womble
 Mr. William Wright

The Dana Dollar

Revenues:



Expenses:



First Class
Permit Number 22
Blair, Nebraska 68008

BUSINESS REPLY MAIL

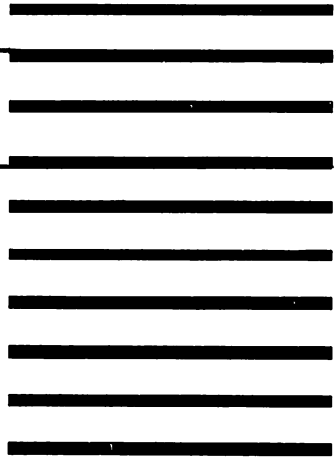
no postage stamp necessary if mailed in the United States

postage paid by



Dana College
Blair, Nebraska 68008

Annual Fund



My (Our) gift to the Dana College Annual Fund is \$ _____

Entire gift enclosed. OR, Initial payment of \$ _____ is enclosed. The balance is to be paid on _____ or Monthly Bimonthly Semi-Annually.

Name/Maiden Name _____ Class _____

Street address _____

City _____ State _____ Zip _____

CHECK ONE Alumnus Faculty-Staff Parent Regent Danish-American Friend of Dana Washington County Appeal Other

Consider a membership in a
DANA COLLEGE GIVING CLUB



Tower Circle
gifts of \$1,000 or more



President's Society
gifts of \$500 - \$999



Century Club
gifts of \$100 - \$499

CORPORATE MATCHING GIFT PROGRAM

Enclose your company's completed matching gift form to increase of the Dana Annual Fund.

PLEASE SEND ME INFORMATION ON:

Gift Annuities Life Insurance Charitable Trust
 Investment Loans Wills Memorials _____

All gifts received prior to May 31 will be credited to this year's Annual Fund.

Use this space for News for the REVIEW:

I recommend these prospective students to Dana's Admissions Office:

Name _____ Address _____ H.S. Class _____

Name _____ Address _____ H.S. Class _____

BEFORE YOU MAIL: Your first class postage on the front of this envelope will save additional mailing costs for the College!!

THANK YOU FOR YOUR SUPPORT

Thank You!

And remember, by placing your own first class postage stamp over the permit on the face of the envelope you will be increasing the size of your gift to Dana.