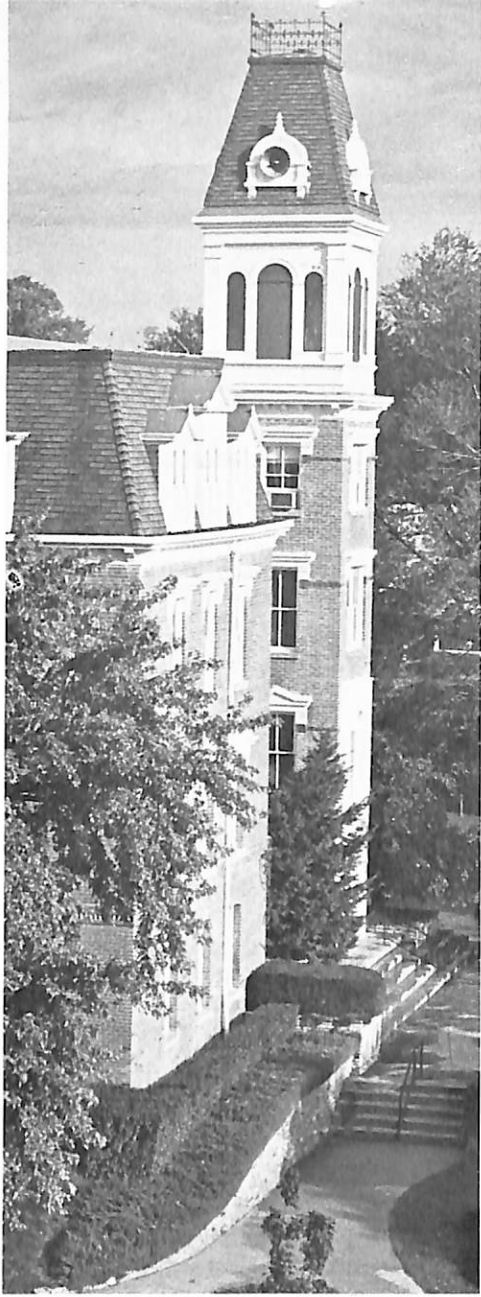


Journal Review

SPRING 1978



Dana Review

Volume 34 Spring 1978 Number 3

A magazine for alumni and other friends of Dana College and Trinity Seminary, published four times annually. Printed by Acme Mail Advertising Co., Omaha, Nebraska, with editorial and business offices located at Dana College, 2848 College Drive, Blair, Nebraska. Second class postage paid at Blair, Nebraska 68008.

Non-discrimination Policy

Dana College admits students without regard to sex, age, race, color, religion or national origin to all the rights, privileges, programs, and activities generally made available to students at the College. It does not discriminate on the basis of sex, race, color, age, religion or national origin in administration of its educational policies, admission policies, scholarship and loan programs, athletics, or other school-administered programs.

Photography by Peter Bonde, Nerstrand, Minnesota

The cover: "The world is our campus." Travel--to Europe to study the lives of saints and to New York City museums to study romanticism in art--was an option these students and others took during the Interim. At the bottom, in Florence, Italy, with Dr. John W. Nielsen '47 (center), humanities, are Mark Oltman, Pam Bramer, Susan Neve, and Carol Weckmuller (photo by Mark Latenser); at the top, in New York with Dr. John Bienz (right), English, are Dennis Lee and Sue Storey (photo by James Olsen '62, art); at the top left, Dana's Old Main.

VIEW FROM THE HILL



We feel that this has been and will continue to be a good year for Dana College. There certainly has been a renewed enthusiasm in the Dana consciousness and spirit on campus. There have been many things occurring that indicate solid support for Dana College. I would like to share some of them with you.

1. At Dana we have taken steps to increase the formal and informal interaction among our major groups, including faculty, students, staff, members of the board of regents, alumni and the Church. We have been heartened by the warm, enthusiastic response as we have met and worked together.

One of those meetings took place at the winter retreat of the board of regents, where there was an emphasis on an in-depth interaction between members of the board and students, faculty and staff about aspirations and accomplishments in specific academic programs, religious life, residence hall living and student activities.

After that meeting, the Reverend Dr. Archie Madsen, bishop of the Central District and a member of the board of regents, stated the following in a letter to pastors and leaders of his district:

"Dana College is a great liberal arts college of the American Lutheran Church and the Central District. On February 9th several of the Board of Regents were on the Dana campus. They visited classes, spent time with the faculty, and spent time with the students. Each regent was assured of the meaningful ministry being fulfilled on the Dana College campus in the lives of faculty, students, and administrative personnel."

2. There is evidence of greater nationwide interest in a college education that stresses significant basic values in addition to preparation for a career. For example, we at Dana College were pleased to read the nationally distributed article entitled "Let Values Guide College Choice" by Loren Pope, director of the College Placement Bureau. We thought it expressed ideals very

close to those of Dana College, so we reprinted the article on page 5 because we thought you would like to read it. Among other things, it states that "In good colleges, moreover, students often confront themselves and the values they decide to acquire. They also bump into a basic discipline called thinking." Further, the article advises the prospective student to "Pick the toughest college you can get into. If possible, pick one that also has a history of contributing to moral development. Don't shy away from the word moral. Most of life's crucial decisions are value judgments, not cool reason."

Many of us here feel that this suggests some of Dana's ideals. It is heartening to read more articles about the most important reasons for the choice of college by prospective students. Show a copy of Loren Pope's article to your pastor, a local high school principal or counselor, or a prospective student.

3. As I look over the articles that were prepared for this issue of the *Dana Review*, I am impressed with the vitality at Dana they exhibit. Yes, vitality of campus life is high--and not everything is covered by these articles.

4. The reorganization of the admissions program is showing results. The total number of applications for students entering in September 1978 received to date (the middle of April) is higher than any other year over the past five years for the same time. We expect this to lead to a similarly larger number of new students entering Dana next September.

5. The implementation of new procedures for gift income programs is showing results also. Dana's faculty, staff, board of regents, and local community have donated at a much higher level than before. Dana needs to increase its gift income to the level of comparable colleges. The 1977-78 drive is still in progress, and those alumni and friends who have not been approached yet will be contacted soon. While it seems that gift income will increase substantially, our needs have not yet been met.

Yes, this is a good year for Dana. We feel the Dana spirit and vitality are at a high level. We can see growing support for Dana's programs. We feel next year will be even better.

Robert J. Glass
Acting President

NEW ALUMNI DIRECTOR HAS DANA ROOTS

The Rev. John R. Beck, a 1975 Distinguished Alumnus whose family has been associated with the College and Trinity Seminary for five generations, joined the Dana administration on March 1 as associate director of development and director of alumni relations.

A Blair native who graduated from Dana in 1950 and from Trinity Seminary in 1955, Beck is married to the former Virginia Lippincott '51. They have three children--Eric, who will be a Dana freshman next year, and Dana graduates John '76 and Barbara '77.

Beck's great-grandfather, Marcus Beck, is identified as "an early supporter of the seminary" in *Saga of the Tower*, the history of Dana and Trinity Seminary by William E. Christensen. Beck's father '22, who is also named Marcus, taught commercial subjects at the College in the mid-1920's and served on the Dana board from 1933-37 and again from 1939-42.

His mother is the former Agnes Lund '23; her father, John Th. Lund, who was a pastor in the United Evangelical Lutheran Church, graduated from Trinity Seminary in 1896. He and N. T. Lund, who taught at Dana from 1905-15, were brothers.

Beck retired from the U.S. Navy in 1975 with the rank of captain after 20 years of service as a chaplain. Among his many service awards and citations is the Bronze Star with Combat "V" for service in Vietnam on the staff of the Commanding General, Third Marine Amphibious Force in Da Nang.

After his retirement from the navy, Beck became pastor of St. Mark's Lutheran Church in Chula Vista, California, where he served until accepting the call to Dana.

After graduating from Dana, and before entering Trinity Seminary, Beck taught at the Norfolk, Nebraska, high school and Norfolk Junior College. He has taken graduate work at the University of Colorado, and while in the navy spent a year in post-graduate clinical training with the Marriage Council of Philadelphia/Division of Family Study, Department of Psychiatry, School of Medicine, of the University of Pennsylvania.

At Dana, he works with the College's gift income program, including the annual fund drive, and with constituent groups, including alumni, parents of students, Danish-American friends of the College, and neighboring communities and regions.

Acting President Robert J. Glass, in announcing Beck's appointment, said that "I believe Dana College is fortunate in being able to attract a person with Pastor Beck's experience, characteristics, abilities, and quality to meet the College's needs.

"He is a Distinguished Alumnus, a parent of graduates of Dana, of Danish background, and a well-traveled Nebraskan. In addition, he is an ordained clergyman of the American Lutheran Church. Further, he is devoted to and cares deeply about Dana College. I am delighted that he is part of the Dana team."

BECK GREETES ALUMNI AND FRIENDS

A gentle, moist four inches of snow fell the other night and the campus was a picture of winter beauty. I was so recently arrived from California that the cold did not bite too hard and I was not upset by this further postponement of the coming of spring.

So the next morning I took a walk around the campus. It was, I suppose, a walk of memories for me. I saw initials carved in the brick of Old Main, which stands so proudly still after more than ninety years. The initials of friends (perhaps yours?) were there, as well as my own made years ago. I looked in vain for the grand old tree with the bench around it outside the old Girls' Dorm (now Argo Hall), but it is gone. I'm sure that there are still ghosts hanging there in the air--whispering good-night--as my wife and I did--and generations before and after us.

I looked at the old Dining Hall--where we complained about the food (for it was the thing to do!) and where so many Danians earned part of their school expenses in the hot steamy kitchen.

I looked, too, at "the garden," where we "courted," and the fish pond, and the Boys' Dorm (now Elk Horn Hall), and I was thankful for Dana. Chapel is now held in the old gym, but you can still hear the din of basketball games long past and of enthusiastic cheerleaders.

And I looked again at the splendid newer buildings, glistening in the sun, and now creating their own traditions and memories. And I saw our students--walking

with care on the slippery sidewalks across the campus as you and I did not so long ago.

I felt "at home," and I was moved to be thankful again for the many who have sacrificed during these last 93 years so that Dana could continue her mission of Christian higher education.

By the time you read this, the campus will be painted with the beauty of spring and the mantle of snow will be gone. Commencement will be near and many of you will have already responded to our annual appeal for support for the College. For that we thank you. But if you have not responded, or if you can increase your gift--please do! Our very minimum need for this year is \$300,000. It is a new time for sacrifice--by new generations of alumni and friends of Dana. It is time--for all of us who care--to respond as good stewards of the gift God has given us in our College--and to insure that this good gift will be shared by generations to come.

I'm glad to be back at Dana! All of you, both alumni and friends of the College--please stop by if you visit Blair!



GIFT INCOME: A PROGRESS REPORT

Dana's fund-raising drive, with its strong emphasis on building a continuing program to produce more gift income this year and for years to come, is gaining momentum. Groups solicited by the end of March--regents, faculty and staff, and Washington County businessmen and residents--have all given larger gifts this year.

By March 27, \$171,546 had been pledged in specified and unspecified gifts toward the goal of \$300,000, with additional contributors including four Danish organizations (see "Major Gifts Spark Programs"), foundations, religious organizations, and others.

Two other steps in the campaign that will have been completed by the time readers receive this issue should close the gap: the annual alumni Phonorama will have taken place, and the College's development office will have held "cultivation" dinners in Chicago, Detroit, Denver, Racine, Omaha, and Blair for approximately 80 alumni, parents, and friends who are potential major donors; another 80 living in other parts of the country will have been solicited by telephone.

Phonorama calls this year are being placed from six cities, with alumni chairmen in each: Chicago (Ernie Anderson '59); Lincoln, Nebraska (Phil Wittig '56); Minneapolis (Robert Hansen '64); Denver (Brian Rich '64); Los Angeles (Paul C. Johnson '49); and Omaha (Don Hansen '58).

Dana's need for increased giving is one shared by all private colleges today. In a recent report, the National Center for Education Statistics, an HEW agency, stressed the difficulties inflation has created for these schools.

Public colleges and universities, which in 1976-77 spent about \$33.5 billion, received approximately 43 percent of that amount from state funds, 37 percent from private gifts, grants, and tuition, 14 percent from the federal government, and six percent from local sources.

In contrast, private institutions, which spent about \$15.7 billion in 1976-77, depended on private gifts, grants, and tuition for 79 percent of their funding and on federal and state sources together for about 18 percent.

Dana as a private college doesn't have the buffer of increased state funding to meet the pressures of inflation, and it is urgent that those who believe in the College support its programs generously.

Dana's new approach is a step in this direction.

Superstar Weekend Was Super

A "Superstar Weekend" February 3-5 brought several hundred prospective students--from high school freshmen through seniors--to the campus.

The weekend, which was sponsored by the admissions office, gave the students an opportunity to see the campus, meet students and members of the faculty and staff, and attend the Dana Players' production of *Jesus Christ Superstar* and men's and women's basketball games. (The Dana teams won!)

Dennis Barnum, director of admissions, reports that approximately 1,000 students, parents, and sponsors participated in all or part of the weekend.

Major Gifts Spark Programs

Several areas of the College will benefit from recent major gifts:

- Four Danish organizations--Burnmeister and Wain, Den Danske Bank, the Otto Monsteds Foundation, and the King Frederik and Queen Ingrid Foundation--have given approximately \$30,000 this year and have pledged an additional \$15,000 over the next two years to the Queen Margrethe II Scholarship Fund, established on the occasion of the Danish queen's visit to the campus in May 1976. Interest from the fund will assist Dana students studying in Denmark and Danish students studying at Dana.

- The Margaret (Mrs. Therkild) Nielsen Trust provides approximately \$20,000 each year for the choir, the religion department, and the infirmary. (A feature story on this gift will appear in the summer *Review*.)

- A gift of \$5,000 from Northern Natural Gas, Omaha, will assist the program of the science department.

Also received by the end of March were 33 gifts of \$1,000 or more--most of them from individuals.

Urdahl Is New Admissions Counselor

Alumnus Michael Urdahl '76 has joined the Dana staff as an admissions counselor.

Urdahl, who has a B.S. in sociology-anthropology, worked with the College's admissions office during the 1976 Interim; since his graduation, he has had experience in marketing.

As a student, he was a resident assistant and lettered in football and baseball for four years, winning all-conference honors in both sports. He is married to the former Diane Kniep '75.

Acting President Robert J. Glass and Dennis Barnum, director of admissions, in making the announcement stated that Urdahl, with his "strong and immediate identification with Dana's goals, our academic and extracurricular programs, and our Christian community," has "a strong potential for being a highly effective counselor."

Staby Joins Staff

The Rev. Andrew Staby, who received his B.A. from Dana in 1936 and his B.D. from Trinity Seminary in 1939, has been named part-time development associate in eastern Colorado for Dana's office of college relations.

Staby, pastor at Immanuel Lutheran Church in Chadron, Nebraska, for the past eight years, retired from the ministry in December after 38 years of service.

He and his wife, Martha (Rasmussen '39), live at 915 W. Seventh Street in Loveland, Colorado 80537. Two of their four children--Paul '69 and Mary '76--are Dana graduates.

In his new position, Staby works with constituent groups, including Colorado alumni and congregations of the American Lutheran Church, and assists with fund-raising and student recruitment in that area.



"LET VALUES GUIDE COLLEGE CHOICE"

The writer is director of the College Placement Bureau. This article includes his opinions.

By Loren Pope

*Washington Post Service**

Stories about recent college graduates driving cabs, waiting tables or mowing lawns are on many tongues.

Naturally, parents and teen-agers, haunted by possible joblessness and under-employment after an investment that can exceed \$25,000, want to ensure a good life, or at least a good job.

They think the key is to pick a college with vocational programs or a major they see as being hooked into the job market. They want something practical, especially if the prospective student has no idea what he or she wants to do.

In most cases, they could not be more wrong.

What most parents don't realize is that they prove their concern is excessive.

Just as a father finds it difficult to recall his own adolescent failures, so he can't see why his 18-year-old doesn't know what he wants to do and why he doesn't start doing it.

To test whether the parents of my college-age clients were excessively concerned, I started asking their educational and job histories, as well as the usual biographical questions.

After questioning 100 fathers, I've found that more than 80 per cent aren't doing anything connected with their original college majors.

A slightly larger percentage of the working mothers has remained with their first choice. That was often teaching, one of only three areas where more than half the majors stay in the field. The others are engineering and business administration.

In all the other fields the rates of abandonment among men range up to 96 per cent by the time they are settled with family and career, according to some major studies. The women's changes are greater.

In other words, few young adults know what will engage them 10 or 20 years in the future.

The 40- and 45-year-olds seem to feel the best bet for a satisfying life is getting an education, whatever the major.

Job preparation isn't the best way to choose a college because people and the way they earn a living change.

True, the liberal arts graduate often has more trouble finding his first job than the specialist. But studies show that the liberal arts graduates are often better satisfied and better paid.

In good colleges, moreover, students often confront themselves and the values they decide to acquire. They also bump into a basic discipline called thinking.

It may be forgotten that four years of college can't make anyone a practitioner in any field that isn't routine.

Besides, no one knows what the job market will be. The manpower experts have been saying for years that today's students are likely to have three or four careers.

Studies consistently show that two-thirds of the students in college change career plans at least once in four years. Most graduates change jobs at least once in the first five years after college, even on the graduate level, researchers say.

When men and women in mid-career are asked to look back on their college experiences, most say that what they remember are the values, the standards or the stimulus to continue developing themselves. Most of the course content has been forgotten.

The message is to get help in finding out who you are and a start toward becoming it — which is the job of college.

Pick the toughest college you can get into. If possible, pick one that also has a history of contributing to moral development.

Don't shy away from the word moral. Most of life's crucial decisions are value judgments, not cool reason.

Douglas Heath, a psychology professor at Haverford who has been studying that rigorous Quaker college's effects on its students for 30 years, has found the principal influence on the development of a successful group of alumni has been their undergraduate college.

The outstanding quality of these men, as rated by their colleagues, was their ethical integrity.

More than 80 per cent of the men followed by Heath had advanced degrees. More than 20 per cent of them were teaching in the major colleges and universities. Forty-three per cent had already secured patents, published books, articles or poems and many had received post-college awards.

They said their graduate or professional schools did little to help them develop the qualities of character that contributed to their success.

Several colleges have found that federal agencies and private firms tend to put more faith in an applicant's ability to think and communicate, as revealed in resumes or interviews, than in his major or the name of his college.

Equally important are the young person's qualities as a human being. One faculty team wrote that it was "astonished to discover that the application process was more important than the applicant's academic background, the reputation of the college or university, personal connections or even grades."

How does one find the kind of college that will help develop abilities and personal qualities?

For most, the best educational experience is likely to be obtained in a good, small college—one smaller than your high school if it's much over 2,000 students. It offers better teaching and more rewarding relationships with teachers and other students.

Even at Cornell and Harvard most of the freshman and sophomore instruction is from the teaching or graduate assistant, and any contact with the faculty is often from the rear of a large lecture hall.

If you want a college that will make you grow, find one that will make you sweat and force you to confront yourself.

This does not mean picking one by geography. Quality is distributed institutionally, not geographically.

Similarly, even deserved reputations may not tell the whole story.

A young friend who spent a couple of years at Princeton and is now at a college he'd never heard of before, wrote recently, "I am finding Macalester very satisfactory. The level of teaching is as high as it was at Princeton, at least in my experience, and one must work about as hard to keep up."

There is no trick to finding out about college, only work.

After looking it up, visit the campus--by yourself--for 24 hours and ask questions.

You will find students will be candid about whether they're working to learn or for grades, how many hours a week they work or pages they read, whether faculty members are good teachers and so on.

Ask faculty members some of the same questions. Any reluctance to provide full answers is sufficient grounds for crossing that college off your list.

Remember, no matter what the name of the institution, it's your money and your life and that makes you much the more important.

**Reprinted by permission of The Washington Post.*

SUPERSTAR CAST: PRODUCTION BROUGHT GROWTH

Editor's note: During the January Interim, 33 students with Dr. Dennis Henneman, director of theatre, and Drs. Alan Brandes and Wayne Wise of the music department, rehearsed and then toured with a highly praised chancel drama production of Jesus Christ Superstar. Their four campus performances after the tour played to capacity audiences. In fact, an overflow audience of more than 900 at the last performance set a record for Alumni Memorial Auditorium. Producing the play had a strong impact on cast members; they describe some of their reactions in the following article.

"How has being in the cast of *Jesus Christ Superstar* affected your life?"

"It touched so many people and it also touched me."

The question was asked by freshman Julie McMahill, associate editor of the *Hermes*, Dana's student newspaper. The answer is by a member of the Dana Players' production of *Jesus Christ Superstar*.

That participating in the production was a moving experience is attested to by other members of the cast as well. Here are a few more reactions that Miss McMahill reported in an article, "*Superstar: A Special Memory*," in the March 11 issue of the *Hermes*:

- "It gave me a more liberal meaning and understanding of what the human side of Christ was like."

- "It was the first dramatic experience where I felt close to the majority of the cast. Most everyone was on the same wave length."

- "The sharing and patience that everyone had putting the show together was great. It gave me a visual reason for seeing what Christ did for us. Since being a part of all the historical events, I now have a clearer perception of Christ."

- "The production was a combination of everyone's thoughts and showed everybody's dedication. The result was an emotional involvement on behalf of the cast probably ten times greater than the spectators'."

- "The last show on tour was the most rewarding for me. We went to the Sunday worship service at the church we were to perform at that afternoon. While reading the Apostles' Creed, I recited 'suffered under Pontius Pilate.' That scene from the play flashed in my mind and it tied in with the spiritual aspect of the play."

- "I saw a lot of changes occur in emotional and spiritual growth."

And their audiences would have agreed with the student who said that "Coming down from the 'high' everybody received was difficult."

Theatre Magazine Recognizes Program

Dana's touring chancel drama program is mentioned in an article, "Who's Afraid of Religious Theatre?" in the March/April 1978 issue of *Dramatics: The Educational Theatre Magazine*.

Its author, Norman J. Fedder, is associate professor of theatre at Kansas State University and a leader in the field of religious theatre, which he defines as theatre of "moral consequences."



The Dana Players performed *Jesus Christ Superstar* in congregations of the American Lutheran Church in Iowa, South Dakota, Wisconsin, and Minnesota. Here they are at First Lutheran Church in Sioux Falls, South Dakota.

Search Is On For New President

The Presidential Search Advisory Committee appointed by the chairman of the board of regents has been active in seeking nominations and applications for Dana's presidency. (Committee members were listed in the fall *Review*.)

Before Christmas, letters went out to the president of the American Lutheran Church, to 37 Lutheran college and seminary presidents, to all the district presidents of the American Lutheran Church, to a number of synodical presidents of the Lutheran Church in America, to a number of campus pastors at state schools, and to others, asking for nominations for the presidency. Dana students, alumni, and members of the faculty and staff were also invited to submit nominations.

As a result, 85 were nominated, and of these, 35 have submitted their credentials and are willing to be considered as candidates.

Twenty-seven additional applications were received in response to ads in *The Lutheran Standard* and *The Chronicle of Higher Education*.

Since January, members of the committee and its executive committee have been meeting regularly to screen applications. In April several committee members made team visits to some of the campuses and organizations where applicants are now employed. The committee hopes that those selected as the most suitable for the Dana presidency will visit the campus before the close of the school year.

COMMENCEMENT WEEKEND HONORS SENIORS, ALUMNI

Two alumni who have had a continuing relationship with the College for many years--Bishop Archie L. Madsen and Professor Emeritus F. W. Thomsen--will be recognized as Distinguished Alumni at the annual Recognition Dinner in the Campus Center May 13. Senior class recipients of the Campus Service Award will also be announced at the dinner, which is sponsored by the Alumni Association. Seniors are the guests of the Association, and parents, friends, and alumni are invited. Advance reservations, which are required, should be made through Dana's development office by May 10. Tickets are \$5 each.

ARCHIE L. MADSEN

The Rev. Archie L. Madsen, who graduated from Dana in 1949 with a B.A. in English and religion, is one of 18 bishops of the American Lutheran Church. He describes his position as bishop of the Central District as one of "watching over with concern" the congregations and ministries of Nebraska, Colorado, Missouri, Kansas, and Oklahoma.



Madsen received an honorary doctor of divinity degree from the College in 1970; he is also a member of the Dana board of regents.

He and his wife, the former Lorraine Sandberg '48, have three children, Mark, Marie, and Marcia.

A 1951 graduate of Luther Theological Seminary in St. Paul, Minnesota, Madsen has served parishes in Fremont, Nebraska; Brookings, South Dakota; and Denver, Colorado.

The Madsens live in Denver, Colorado, at 621 Fairfax (80220).

The next day 91 seniors will graduate at Commencement ceremonies that begin at 2 p.m. in Borup Coliseum. The speaker will be Dr. Edward A. Lindell, president of Gustavus Adolphus College and a consultant to Dana's humanities program.

Baccalaureate services that morning are scheduled for 10 o'clock in Borup. Dr. J. Elmo Agrimson, bishop of Minnesota's Southeastern District, the American Lutheran Church, will be the speaker. By tradition, pastor fathers of graduating seniors will participate in the service.

F. W. THOMSEN

The Rev. F. W. "Bill" Thomsen received his B.A. from St. Olaf College in 1942, his B.D. from Trinity Seminary in 1945, and his M.F.A. from Drake University in 1968. He also studied at the Cleveland Institute of Art from 1928 to 1932.

Thomsen taught art at Dana from 1935 to 1937 and from 1942 to 1975. In 1976, he was named professor emeritus.

His work in mosaics, stained glass, and interior church design is well known throughout the Middle West.

Thomsen has been instrumental in the creation of the Black Elk-Neihardt Park at the top of the hill west of the campus and has designed the Tower of the Four Winds, a monument proposed for the park.

He and his wife Orpha, who live in Blair at 2966 College Drive, have two sons, Paul '65 and John '68.



Freshmen List Alumni Parents

According to information freshmen have given the public relations office, the following have alumni parents:

1940-49

Bruce Barkley, son of MARGARET BERG Barkley (Mrs. Earl) '45, RR 1, Lake Andes, S.D. 57356

Andrea Neve, daughter of ALTON V. '43 and the late REBECCA ANDERSEN NEVE '43, Rt. 5, Box 41, Albert Lea, Minn. 56007

Marie Rasmussen, daughter of MARGARET JENSEN Rasmussen (Mrs. Bjarne) '47, 315 W. 2nd St., Elmhurst, Ill. 60126

1950-59

Jerry Coffey, son of Dr. JAMES H. COFFEY '50, 2814 9½ St. N., Fargo, N.D. 58102

Leisha Hansen, daughter of DON '58 and ARNETTE THIM '57 HANSEN, 5041 S. 93rd Circle, Omaha 68127

David Jensen, son of MILTON '58 and BEVERLY PETERSON '60 JENSEN, P.O. Box 78, 206 Second Ave., Keystone, Iowa 52249

Mitchell Jensen, son of MARVIN JENSEN '50, Rt. 2, Audubon, Iowa 50025

Jeffrey Madsen, son of NORMAN '56 and PATRICIA McKEE '58 MADSEN, RR 1, Monroe, Iowa 50170

1970-

Richard Dale Andersen, son of CLARICE AXLAND Andersen (Mrs. Donald) '72, 1316 16th St., Harlan, Iowa 51537



These freshmen all have alumni parents: 1st row, from the left--Marie Rasmussen, Andrea Neve, Mitch Jensen; 2nd row--Richard Andersen, Jeff Madsen, Jerry Coffey; 3rd row--Leisha Hansen, David Jensen, Bruce Barkley. (Photo by John Humphrey)

Scandinavian Collection Ranks with the Best

Among the 98,000 books in the C. A. Dana-LIFE Library, 8,000-10,000 belong to the "Scandinavian collection," a collection that brings interlibrary loan requests to head librarian Ron Johnson's desk from all over the country.

Johnson '61 reports that many are requests from such schools as the University of California at Berkeley, the University of Minnesota, and the University of Wisconsin.

Because these schools have Scandinavian studies departments, their libraries also have Scandinavian collections, but according to those acquainted with them, Dana's is as good.

It includes works in religion, philosophy, history, travel, and literature. Most are in Danish; some are in English translation. At Dana the collection is used by faculty members and students studying the Danish language and Scandinavian literature, history, and philosophy.

The collection has developed over the years, with many of the books gifts from private libraries. According to Johnson, it began to assume its present status in the late 1960's with two generous gifts of money designated for collection: one from Mr. and Mrs. Ingvert Skobo and the other from the children of Pastor and Mrs. Eddie Erlander in memory of their parents.

Johnson would like to obtain more works by leading contemporary Danish authors, either in the original or in translation. He faces one problem, however. Unless an author is well-known in an English-speaking country, his or her work will probably not be translated into English.

One who has been translated is H. S. Branner (1903-1966), and the translator is Kristi Planck Johnson '66, a Dana graduate with a master's degree in Scandinavian studies from the University of Minnesota. Her translation of Branner's novel *The Story of Borge* was published by Twayne in 1973.

Alumna Phyllis Rasmussen '64, who as a Dana librarian worked with the collection after receiving her master's degree in library and archival science from the University of Minnesota, today works with the largest Scandinavian collection in this country--that of the Library of Congress in Washington, D.C.

Bank Expands Loan Program

At a time when most banks across the country either no longer participate in the Federally Insured Student Loan (FISL) Program, or limit their participation to their own customers, Blair's Washington County Bank has expanded its program to assist qualified Dana students, regardless of their home addresses.

According to bank vice-president Jim Peters, the Washington County Bank has participated in the FISL Program since its inception, a policy, he said, "based on our commitment to the goals of higher education." The loans were made to customers, most of whom were known personally by someone in the bank. Some of these were Dana students whose homes were in or near Blair.

The bank's expanded program came about after Peters and Craig A. Green, Dana's director of student financial aid, attended a hearing last year in Omaha--called by U.S. Representative John Cavanaugh of Nebraska's Second Congressional District--on problems caused by the growing reluctance of banks to make student loans.

This reluctance has developed because of the FISL Program's low seven percent interest rate, with the principal due only after a student graduates or leaves college, and because of some student defaults. (The federal government repays loans in these cases.)

At the hearing, Peters learned from Green that this situation was keeping qualified students from attending Dana. The bank decided to help them, and as a result this year has loaned approximately \$62,500 to 35 Dana students recommended by the College.

Says Peters: "This decision to expand our program was made as an extension of our original commitment and as an expression of our confidence in Dana College. Our experience to date with the expanded program has been excellent, as I hope it has been for Dana."

SCIENCE CONSORTIUM WINS GRANT

Next fall, Dana's chemistry faculty and students will begin using several pieces of new equipment for instruction in the regular departmental courses and for research projects.

A consortium of four Nebraska private liberal arts colleges--Dana, Doane, Hastings, and Midland Lutheran--has received a grant of \$31,700 from the Camille and Henry Dreyfus Foundation of New York City for the purchase and shared use of four pieces of equipment: an atomic absorption spectrometer, a nuclear magnetic resonance spectrometer, a mass spectrometer, and a high-performance liquid chromatograph.

Specialized equipment such as that being purchased is not available on any of the four campuses, primarily because of its cost and because there are relatively few students on each campus qualified to use it, according to Eugene Lindblad, associate professor of chemistry at Dana.

Yet, Lindblad commented, instruction in these instruments is basic to an adequate undergraduate chemistry curriculum, for graduates must be familiar with the theoretical principles underlying their use and with the basics of their operation in order to be competitive with graduates from other institutions as they enter graduate school or professional employment.

Until now, Lindblad said, "Students have had to make field trips to nearby universities to obtain even cursory exposure

to such instruments, but with the sharing of this new equipment, students in all levels of chemistry can gain hands-on experience once they have demonstrated the necessary proficiency in laboratory work and the willingness to work beyond the usual scope of their courses."

Present plans call for the use of each piece of equipment on each campus every semester.

Lindblad explained that Dr. David Smith, assistant professor of chemistry at Doane College, conceived the idea of such a consortium, developed the proposal, and is overseeing the purchase of the equipment and its scheduling among the participating colleges. Support for the proposal from the other institutions was coordinated by Dr. Steven Bunck, assistant professor of chemistry at Midland; Dr. Charles Warner, assistant professor of chemistry at Hastings; and Lindblad.

Lindblad and Professor Frank Hengeveld, also of Dana's chemistry department, recently attended workshops on the use of the mass spectrometer and high-performance liquid chromatograph at Argonne National Laboratory, Argonne, Illinois. During the summer they will also participate in workshops conducted by the equipment vendors on operation of all of the instruments.

"WE ROSE TO NEW HEIGHTS"-- IMPRESSIONS OF A EUROPEAN INTERIM

by Mary Heistand

Editor's note: Mary Heistand was one of eight students led by Dr. John W. Nielsen, director of humanities, who spent five weeks in Europe during the Dana Interim studying "An Amazing Array of Saints."

Their travels took them to six countries and many cities. Among them, in England, were London, Oxford, and Canterbury; in Germany, Trier, Cologne, Aachen, Wurzburg and Munich; in France, Paris, Rouen, Chartres, and Versailles; in Denmark, Copenhagen and Roskilde; in Italy, Milan, Venice, Padua, Florence, Siena, Assisi, Monte Cassino, and Rome; and in Spain, Madrid, Toledo, and El Escorial.

We climbed and we climbed and we climbed. Up the path the saints of old had walked, there too we placed our feet. Even though the rain beat down upon our heads and our legs began to ache, we pressed on, feeling the struggle that those devout people had felt. And when at last we reached our destination upon that mountain top, we turned around and came back down again.



In El Escorial, Spain, from left to right, are Carol Weckmuller, Blair; Diane Ressler, Stevens, Pa.; Mark Oltman, Filley, Nebr.; Professor John W. Nielsen; Mary Heistand, Woodbine, Iowa; Sue Neve, Perry, Iowa; Pam Bramer, Harlan, Iowa; and Lanette Monasmith, Burlington, Colorado. (Photo by Mark Latenser)



Two Marks--Mark Oltman (left), Filley, Nebraska, and Mark Latenser, Omaha--in front of St. Mark's Cathedral in Venice, Italy. (Photo by Dr. John W. Nielsen '47)

Silly? Not really! It is symbolic. Yes, we truly did walk up a mountain as part of our Interim experience last January when we traveled to Europe to study the lives of saints, famous and almost unknown. And yes, it really did rain heavily upon our heads. The city was Cassino, Italy, and we walked up a mountain to Mount Cassino, which is the abbey of the Benedictine order. Although the path we walked is now asphalt, it no doubt is similar to the one St. Benedict, St. Scholastica, and St. Thomas Aquinas traveled.

Not only did we feel a great sense of accomplishment in achieving this feat, but it was also symbolic of our entire five-week Interim. Each of us rose to new heights in our cultural and intellectual appreciation. Every place we visited led us to the realization that we were now gaining an insight into a wealth of beauty we had only seen through pictures before.

And packed into those five weeks were many, many humorous and interesting experiences.

In England we had the privilege of visiting Oxford University, where Dr. Nielsen received his doctorate; Canterbury, where we had a typical English tea; and Westminster Abbey, where we worshipped at Sunday evening vespers.

We were in Cologne, Germany, during the Epiphany season, an appropriate time because the cathedral there holds relics which tradition claims are those of the Magi. I can still see the sparkling eyes of the little children dressed in the garb of the Three Wise Men. Their precious voices were full and strong as they sang the Christmas hymns.

It was on a Sunday afternoon that we visited Assisi, Italy. The narrow streets of the typical Italian village made our walk pleasant, and the sun shone brightly upon us that afternoon. After we had visited St. Francis Church, many of us sat and watched the people on their Sunday afternoon stroll. It was a peaceful day.

It was the last day of our trip, however, that made the greatest impression on me. There I sat in Notre Dame Cathedral listening to the Winchester Cathedral Men's Choir. The beautiful music filled the cathedral with so much glory that tears began to stream down my face, as I began to understand the splendid opportunity I had experienced. I truly thank Dana College for making it possible for all of us to go.

But even more, Dana must be commended for the fine education it gives each student. Because I had previously been enrolled in two humanities courses, I had a foundation and an appreciation for the works and events I was getting to experience firsthand. I now realize that all students in humanities have had the opportunity of visiting the culture and beauty of Europe without ever leaving the campus.

Lehmer Honored by Colleagues

The current issue of *Plains Anthropologist* is a *Festschrift* honoring the contributions of the late Dr. Donald J. Lehmer, professor of anthropology at Dana from 1961 to 1975, to Middle Missouri prehistory.

The 185-page volume includes 16 papers devoted to this subject; the first, by Wilfred D. Logan, titled "Donald J. Lehmer: A Personal Appraisal," includes a discussion of the College's role in enabling Lehmer to conduct his research.

Copies at \$3 each can be ordered from *Plains Anthropologist*, 410 Wedgewood Drive, Lincoln, Nebraska 68510.

campus NOTES



Paul Bondo '67 has given the college library both volumes of *Guidelines for Toxicology Programs*, of which he is a co-author. Paul and his wife live in South Bend, Indiana 46637 at 19882 Alou Lane.

Dana's Center for Continuing Education has received two grants to support its continuing theological education programs for pastors and laymen. One, from the Lutheran Brotherhood, a fraternal benefit society, will provide over \$5,000 under the Brotherhood's Parish Pastor Fellowship Program. The other, from the Division for Theological Education and Ministry of the American Lutheran Church, will support the work of the Center with a \$3,000 grant.

A designated gift from Lloyd '45 and Muriel Neve, Hokkaido, Japan, has made it possible for the College to purchase a grand piano from Walter and Ann (Harms '54) George, Blair, for use in Alumni Memorial Auditorium.

More than 250 students volunteered to miss a meal on Fast Day, March 14. Saga Food Service in turn gave an amount equivalent to the cost of the meals to Ekklesia Koinonias, the campus congregation, for forwarding to the Christian Rural Overseas Program (CROP) for Lutheran World Relief. Approximately \$260 was raised through the Fast and other contributions.

Mrs. Sonja Bundgaard-Nielsen of the Danish-American Foundation in Copenhagen visited the campus in January. She discussed with college officials the admissions procedures for several young Danish undergraduate students who will attend Dana next year.

Student government officers for the 1978-79 school year were elected in March. They are: president, Stacey Goodrich, Blue Hill, Nebraska; vice-president, Bruce Bro, Exira, Iowa; secretary, Shelli Meyerholz, Blair; and treasurer, Alan Pedersen, also from Exira.

Books being read in the Liberal Arts Reading Program (LARP) this semester are *The Virginian* by Owen Wister; *Antigone*, Sophocles; *The Great Divorce*, C. S. Lewis; *Frankenstein*, Mary Shelley; and *The Old Man and the Sea*, Hemingway.

Blair chairmen John O'Hanlon and Lynn Wederquist report that \$44,533.05 has been pledged for the 1977 Washington County Appeal. An article on Dana's participation in the Appeal appeared in the winter *Review*.

SUMMER SCHOOL INCLUDES SPECIAL COURSES

Two in-service courses, "Introduction to Exceptional Children" and "Two Thousand Miles of Nebraska Literature and History," and a Professional Growth Workshop on Teaching Aids and Games are on Dana's 1978 summer school agenda.

Introduction to Exceptional Children (Education 230), taught by Dr. Bernard Matthies, professor of education and psychology, will meet in the afternoon, Mondays through Fridays, for three weeks, from June 5-23. According to Matthies, the three-credit course will "study children in all areas of exceptionality--including mental retardation, deafness, blindness, giftedness, learning disabilities, speech defects, emotional disturbances, and medical and orthopedic handicaps."

The class will place emphasis on "the identification of learning problems and on meeting the needs of exceptional children through mainstreaming and other strategies common to the public school system," Matthies says.

Those enrolled in *Two Thousand Miles of Nebraska Literature and History* (English 450), conducted by Norman Bansen, professor of English and Danish, will travel in the state from June 5-16. While traveling, members of the class will read, discuss, and visit the locales of Nebraska authors John G. Neihardt, Willa Cather, Mari Sandoz, Sophus Keith Winther, and others. The class will also visit Nebraska historic sites, with the itinerary including Omaha, Nebraska City, Weeping Water, Brownville, Beatrice, Red Cloud, North Platte, Scottsbluff, Chadron, Grand Island, Lincoln, and Bancroft. Students will write a paper that combines research with their reading and experience.

The first and last days of the three-credit class--June 5 and 16--will be spent on the Dana campus for research. The group will travel in a maxi-bus or car; *enrollment is limited to ten*. There will be an additional fee of \$170 beyond tuition to cover admissions, travel and lodging, with double occupancy in twin-bed rooms; single occupancy is an additional \$70. This fee does not include meals. All applications must be received before June 1, together with a non-refundable deposit of \$15; the balance of the tuition and additional fee is payable June 5.

Tuition reduction. A special 50 percent tuition reduction for English 450 and Education 230 is available to those who are presently teaching.

The Professional Growth Workshop on Teaching Aids and Games, taught by Dr. Dorothy Olson, assistant professor of elementary education, is a non-credit, five-day workshop on teacher-made games, flashcards, bulletin-board cutouts and action stories for any K-6 elementary or special education teacher. Dr. Olson will also suggest ways to adapt games to any grade level and to any subject area.

The workshop will be held in Old Main 110 from June 12-16, from 9 a.m. to 12 noon and from 1 to 4 p.m. *Enrollment is limited to the first 15 to register*. The registration fee is \$50, with meals, lodging, and supplies not included in the fee.

Readers who wish to inquire about any of these courses should write to the instructor.

For a complete listing of all summer school courses, write to Dr. Ray Weckmuller, Director of Summer School. Dates for the regular six-week session are June 5 to July 14; for the three-week post session, July 17 through August 4.

ALUMNI TO ELECT FOUR TO ASSOCIATION'S BOARD

A ballot on page 15 lists seven candidates for four positions to be filled on the Alumni Association's board of directors. The seven candidates are:



LOIS LYNGE BOE '41, principal of Edison Elementary School in Omaha and president of the Omaha School Administrators' Association. In 1941 she and her husband, Richard '40, were married in the seminary chapel that was in Old Main. Their daughter, Barbara '62, and her husband, Tom Vierk '63, are both Dana graduates.

TARI THERKELSEN CHOINIÈRE '76, a biology and life science teacher in the West Point, Nebraska, public school system. She was a member of the 1975 Homecoming Court and Mayfest Queen in 1976 and, at St. Mary's Episcopal Church in Blair, served as clerk of the vestry and Sunday school superintendent. She is married to Michael Choiniere, a Dana senior.



THORVALD HANSEN '40, senior pastor at Our Saviour's Lutheran Church, Audubon, Iowa. Hansen received his B.D. from Trinity Seminary in 1943. His wife Esther (Carlson) is a member of the class of 1940. All five of their daughters have attended Dana--Carolyn (Larsen) '66, Ruth (Peck) '67, Paula (Brinkman) '69, Sarah (Anderson) '71, and Lois (Borkowski) '74. Hansen was dean of the



Iowa District's Elk Horn Conference from 1972-76 and is on the board of Friendship Home in Audubon.

CALVIN JORGENSEN '52, Blair, special representative in insurance sales for Bankers Life Company of Iowa. Jorgensen was Dana's admissions officer from 1959-1973. He is a member of the Blair Chamber of Commerce and has served on the council of Blair's First Lutheran Church.



KENNETH LIZER '68, director of alumni relations and assistant director of development at Dana from 1975 to 1977, now director of development at St. Anthony Hospital Medical Center in Rockford, Illinois. He has also been an admissions counselor and director of financial aid/associate director of admissions at Dana. He is married to the former Kathleen Morgensen '76.



ADRIENNE SIMPSON '70 (an incumbent), a reading specialist with the Blair Community Schools. She holds an M.S. from the University of Nebraska at Omaha and is a member of the Metropolitan Reading Council, the Blair Education Association, the Nebraska State Education Association, and the National Education Association.

WILLADEAN STUBBENDECK '75, an elementary school teacher in Unadilla, Nebraska. She is also active in a community theater called "The Loft." As a Dana senior she received the Joseph Langland Award for poetry.



Board members elect Association officers from their ranks, work with the College's office of alumni relations, arrange for alumni activities on the campus, and assist in recruitment of students and with the alumni appeal. The board meets four times each year.

The following are eligible to vote in alumni elections, according to the Constitution of the Association: "All persons who have earned a degree from Dana College"; "All persons who have received credit for one semester's work (12 semester credit hours or the equivalent) and are no longer in attendance"; "All persons who have served Dana College as members of the faculty or administrative staff"; and "All persons who attended, graduated from, or served on the faculty or administrative staff of Trinity Seminary."

Athletic Hall of Fame Nominations Sought

Alumni are invited to nominate to the Athletic Hall of Fame outstanding former Dana athletes and others who have worked to develop the College's athletic program.

The awards will be given October 7 at the 1978 Homecoming reunion luncheon. The names of those selected will join nine others who have received the award since 1976: Marion Hudson '56, E. Merton Jensen '34, Robert Jensen (basketball scorekeeper for 25 years), Stanley M. Jensen '35, Neil Moore '54, Rufus B. Olson (former Dana coach), Paul O. Peterson '41, Clifton N. Robinson '50, and Arthur W. Sorensen '49.

To be eligible for consideration, candidates must have participated in and earned a varsity letter in one or more intercollegiate sports as a Dana student or have made exceptional contributions in time or talent toward improving the College's athletic programs. They should also have distinguished themselves in such ways as to bring great honor to themselves, their professions, or the College, and they must have been removed from varsity athletic participation for at least 15 years.

A nomination form is on page 15. Nominations must be received by June 15.

SPORTS



Track and Field

by Jerry Wallace

Coach Gary Seevers welcomed 21 athletes to the 1978 Dana men's track team, the largest number of participants in recent memory. Carol Haussermann '69 is also working with nine women to give Dana its first women's team in history.

The first two meets of both teams together will be: March 31 at Fairbury and April 4 at Concordia.

Three Dana men placed in individual events at the indoor conference meet which was held at Doane March 4. Chris Jensen, Council Bluffs, Iowa, cleared 6'4" in the high jump to place third. Greg Ilcken, Grinnell, Iowa, also captured a third place as he was clocked in 6.41 seconds in the 60-yard dash. Jensen and Ilcken are both seniors. Freshman Doug Lemon, Blair, set a school record in the triple jump with a leap of 43'6", but it was only good enough to earn him fourth place in the meet.

The three men who placed in the indoor conference meet are expected to be top-notch competitors in the outdoor season. (Story dated March 17.)

Men's Basketball

by Jerry Wallace

Members of the 1977-78 Viking basketball squad won two of their last three games to close the season with a 7-18 record. The cagers defeated Westmar College, 90-70, to give the four seniors on the team a victory in their last game in Borup Coliseum, and then went on to beat Doane College, in the final game of the season, at Crete, 66-64.

Stan Gustafson, a senior from Omaha, and Gary Cissell, a LaVista, Nebraska, sophomore, led the team in most statistical categories. Gustafson connected on 53.2% of his shots from the field and collected 452 total points for the year, or an average of 18.0 per game. He had the individual one game high in field goals, with a 13 for 25 game, against Bellevue, and also the most total points in one game with 30 against Concordia. Stan was elected to the all-conference team.

Cissell was the second leading scorer and the leading rebounder for the Vikings. His 56.2% field goal percentage led the team and helped him collect 430 total points, or a 17.2 average per game, and his 228 season rebounds also led the team. He was followed by Dick Johnson, Omaha, another sophomore, with 172 season boards. Dick was the third leading scorer, with 262 points or a 10.5 average.

Mike Spomer, a sophomore from Omaha, had the best free throw percentage for the season with a 79.4% average, and also the most free throws in a single game as he hit 11 of 13 against Midland. Cissell pulled down 15 rebounds against Midland for another individual one game season high.

Following Gustafson, Cissell, and Johnson in scoring were seniors Jo Brownfield, Humboldt, Iowa, with a 7.2 average; Jim Stewart, Treynor, Iowa, a 5.0 average; and Jerry Haas, Harlan, Iowa, a 4.7 average. The Vikings hit 46.5% of their team field goals and 68.5% of their free throws. Dana's 76.5 point offensive average placed them seventh among the ten N.A.I.A. teams in the state, and their 79.8 point defensive average ranked them sixth.

In the summer Review: Dana's baseball and tennis seasons were just getting underway as this issue went to press. Look for reports in the next issue.



Cheering on the wrestling squad are, from the left, Judy Tjaden, Loveland, Colo.; Allison Sprieck and Kelley Zenchuk, both from Omaha; Kristi Laughlin, Lancaster, Ohio; and Kathryn Jensen, Oak Lawn, Ill.

Wrestling

by Jerry Wallace

At the N.I.A.C. tournament, Dana took five first place medals. Bob Murtaugh of Harlan, Iowa; Mark Estey, Omaha; and Alan Pedersen, Exira, Iowa, won by pins, while Omahans Reginald Tullos and Virgil Watson won by decisions. Mike Winslow, Oregon, Ohio, placed second.

Heading the list, and boasting the best win-loss record in the history of the school was Virgil Watson, with a 27-3 record at 158 pounds. Virgil captured the championship in five of the seven tournaments Dana entered.

Sophomore Bob Murtaugh wrestled at 126 pounds, and Alan Pedersen, also a sophomore, was Dana's 190-pounder. Reginald Tullos, 177 pounds, and Mark Estey, 142 pounds, are both freshmen. Mike Winslow, the lone senior on the team, won his fourth consecutive conference medal.

Women's Basketball

Despite a final 3-14 record, Coach Richard Palm and the members of the Dana Vikings are optimistic about the prospects for a winning season next year. As the 1977-78 season drew to a close, the young Vikings (no seniors) were playing well together. The continued improvement was evident in a number of close games and a fine 74-63 win over Bethany College (Kansas) in the final game.

Heidi Larson, Milford, Iowa, who struggled at the beginning of the season, came back with a number of excellent scoring games, such as 24 and 34-point games, to lead the team with a 15.3 point average. Kathy Landon, Logan, Iowa; Lynae VanderWiel, Omaha; and Kathy Hansen, Moorhead, Iowa, all freshmen, played very well in the final month of the season with each having her best scoring effort in one of the last three games. Eva Riley, Carbondale, Illinois; Mary Erickson, Camrose, Alberta, Canada; Jo Roberts, Allen, Nebraska; Deb Harms, Red Oak, Iowa; Janelle Andersen, Exira, Iowa; Teresa Michelsen, Omaha; and Karen Allison, Denver, Colorado, all made major contributions to a team effort and are counted on to continue their improvement next year.

Services Conducted for Dana Junior

Memorial services were held at Dana Friday, February 24, for junior Richard Lynn Welsh of Pender, Nebraska, who suddenly collapsed while playing intramural basketball in Borup Coliseum the evening of February 22.

Despite immediate attempts to revive him, he died within a few minutes. The apparent cause of death was heart failure.

Welsh, 21, is survived by his parents, Mr. and Mrs. Joe Welsh, and his sister, Joanne Bemis of Omaha.

His major at Dana was business administration, and he had just completed a successful business internship during the January Interim at the Omaha City Planning Office. On the Monday before his death, he was elected vice-president of the Dana chapter of the Society for the Advancement of Management.

Welsh was a resident assistant in Rasmussen Hall and a member of the Student Activities Board. At Pender High School he had been active in football, basketball,



track, and golf, and at Dana he continued to participate in sports through the intramural program.

He regularly attended Blair's St. Francis Borgia Church and Dana's chapel services.

In a tribute to him at the memorial service, Dean of Students Richard Palm said that "As a resident assistant, Rich gave his all to his job looking after the members of his floor, which was evident in their reference to him as 'their dad.'"

Funeral services, which were attended by many students and members of the faculty and staff, were held on February 25 at St. John's Catholic Church in Pender. The pallbearers were students from his dormitory floor. They and several other students also participated in the service.

A memorial fund has been established; the family has asked that a scholarship from it be awarded each year to an outstanding resident assistant, because being an RA meant much to their son.

Contributions should be designated for the Richard L. Welsh Memorial Scholarship Fund and sent to the College's development office.

Written a Book? Library Would Like a Copy

A survey of "Destiny's Deep Sea" in past issues of the *Review* shows that alumni have published books on a variety of subjects, and a check of the library's card catalog indicates that some of these books are in the stacks.

But records are incomplete. Who are our alumni authors? How many alumni have published books? And on what subjects?

An alumni collection proposed for the library's Heritage Room could help answer these questions.

If you've published a book, you could help too, by sending an autographed gift copy for the collection to head librarian Ron Johnson.

Art Professor Sculpts Bust

James Olsen '62, assistant professor of art, has been commissioned to sculpt a bust of Grace Abbott for the Nebraska Hall of Fame in the State Capitol in Lincoln. Abbott was a Nebraska educator dedicated to the causes of social and child welfare.

Olsen, who will use the Dana foundry to cast the life-sized bust, plans to complete the assignment in July.



JOBS AND PROMOTIONS

1975

DONOVAN (TED) GINGER has been named head football coach at Paul VI High School in Omaha. He is also the school's head track coach.

MICHAEL and SHIRLEY (KENNETT '77) McCALLUM live in Dubuque, Iowa 52001, where their address is Apartment A-3, McCormick Street Ext. Michael is in his first year at the University of Dubuque Theological Seminary, and Shirley teaches at Dubuque Child Care, Inc.

1974

JOHN BROOKS is news reporter for KOLN/KGIN-TV (Lincoln and Grand Island). He lives in Hastings, Nebraska, at 910 North Denver (68901).

MIRIAM HILLER has assumed additional teaching responsibilities in English and Bengali for the World Mission Prayer League Lutheran mission field in Bangladesh, after passing second year language examinations. She works closely with Dana graduates ART and KATHY BLIESE '62. Miriam's address is 40 Lamb Hospital, Porbatar, Dinajpur District, Bangladesh.

STEVE and JOANNE (LARSON) JOHNSON live at 2821 South Paxton in Sioux City, Iowa 51105. Steve, who recently graduated from Iowa State University, is with the Federal Deposit Insurance Corporation as assistant examiner.

BRADLEY K. SCHWEER has become a partner in the Omaha law firm of McClennan, Fenlon, and Schweer at 10846 Old Mill Road, Suite 4. His wife, PATRICIA (HEWETT '75), is a special education teacher in the Omaha school system. She will receive her master's degree from the University of Nebraska at Omaha this summer.

1973

BRENDA HAACK is a disability determination specialist with Social Security in Denver, Colorado. Her address is 9993 East First Avenue #208J, Aurora, Colorado 80010.

1972

Captain MARK MUSICK has been awarded the U.S. Air Force Commendation Medal for meritorious service as a weapons systems officer at Lakenheath RAF Station, England. He and his wife, SUSAN (MILLER) are now at Hahn Air Force Base in West Germany.

1970

ROD and KATHY (ZWANZIGER '69) HUTTON are in Carthage, Illinois, where Rod serves Immanuel Lutheran Church.

1968

CHARLES ELVERS has been appointed controller for the Mechanical Division of Owens-Corning Fiberglas Corporation in Toledo, Ohio. He holds a master's degree in business from the University of Arkansas.

1964

LEVAN HIEMKE forecasts fashion trends for J. C. Penney in New York City. His address is 26 Spring Street, Freehold, New Jersey 07728.

Homecoming 1978: October 6-8 (reunion classes--1953, 1968, 1973)

DAN and JUDITH (JOHNSON '66) KNUDSEN live in Story City, Iowa 50248, where Dan is director of Riverside Lutheran Bible Camp.

1963

ELLEN (KNUDSEN) Rittenhouse is the coordinator of mental health services to the aging at Lakeland Mental Health Center in Minnesota. She, husband Don, and their three daughters live near Kent, Minnesota 56553 (Box 5). She holds a master of science degree in social work from the University of Missouri.

1962

The Rev. ALAN LORENTZEN is a field representative for the Lutheran Church in America, concentrating in the area of stewardship. He is based in Sioux Falls, South Dakota, and covers a region that includes Nebraska and the Dakotas.

Dr. CHARLES REEG, assistant professor of chemistry at Whittier College, Whittier, California, has been named chairman of the Whittier faculty.

1961

LEE HOREIS has been appointed assistant administrator for staff services at Nebraska Methodist Hospital in Omaha. He is also working on a master's degree in business administration at the University of Nebraska at Omaha. He, wife Janice, and their two children live at 2027 North 54th Street in Omaha.

1951

Dr. PAUL LAURSEN has been appointed provost at Nebraska Wesleyan University in Lincoln.

1936

JOHN SIDES lives at 8988 Chambersburg in Dayton, Ohio 45424.

PUBLICATIONS, ACTIVITIES, HONORS AND AWARDS

1966

STEPHEN SIT has been elected to the board of the North Shore Chinese Baptist Church in Chicago. His Chicago address is 4436 North California (60625).

1964

SALLY (COOK) Cowan, Lincoln, Nebraska, was the subject of an interview in the January 1, 1978, Entertainment Section of the *Omaha World-Herald*. She is a singer who is recording her second album—her first, "Yankee Lady," was released two years ago.

1953

FLOYD JORGENSEN, county agent on the Red Lake, Minnesota, Indian reservation, has been elected to the Bemidji Community Hospital board of directors. At Red Lake he works with youth and adults on economic, agricultural and resource development and wildlife management. He has also initiated a program on the reservation to grow wild rice commercially. He and wife DOROTHY (LANDBO '56) live on RR 1, Pinewood, Minnesota 56634.

1952

WILMA (CHRISTIANSEN) Quelle, who teaches at the Hindley, Nebraska, Elementary School, has published *The Changing Plains*, a book of classroom activities to be used in teaching Nebraska and plains history. The book is the result of an interest acquired from research done during the summer of 1977 when she was selected as a member of a special projects team by Educational Service Unit 11 to develop materials for the classroom. One of the projects developed into "Nebraska, You Were There, 1867," a survey of life as it was during the first year of statehood. Much of the material collected, but not useable for the summer project, has been incorporated into the book. Her husband, Wilbur, was listed in the *Nebraska Bicentennial Edition of Nebraskans*. Their address is Box 176, Arapahoe, Nebraska 68922.

1950-

PAUL SIMON, U.S. Representative from Illinois, was a panelist in January at a symposium held at Knox College, Galesburg, Illinois, on "Sandburg as a Lincoln Biographer." Simon is the author of *Lincoln's Preparation for Greatness: The Illinois Legislative Years*, published in 1971 by the University of Illinois Press.

1947

LOIS (NELSON) O'Shea is president of the Delaware Nurses' Association. She and her husband Donald live at 31 Minquill Drive in Newark, Delaware 19713.

1935

The Rev. JOHN CHRISTENSEN was honored recently by the Masons in Ludington, Michigan, for his many years of Christian service in the community. His Ludington address is 904 South Madison Street (49431).

BIRTHS Sons

1977

Matthew Paul, born August 29, 1977, to PAUL and Carolyn OESTMANN, Ft. Calhoun, Nebraska. Paul is employed by Professional Bookkeeping Service in Blair.

1972

Alex James, born February 5, 1978, to Dr. LAURENCE K. and VIRGENE (RIPPE '75) RASMUSSEN, 1035 North Sixth, Chariton, Iowa 50049.

Paul Stephen, born October 5, 1977, to Darwin and LOUISE (PETERSON) Classon, Route 1, Sears Road, Plano, Illinois 60545.

1971

Christopher Paul, born January 30, 1978, to Dan and LOIS (NEVE) Carter, Route 5, Box 332-A, Lot 11, Shreveport, Louisiana 71107.

1970

Brett Jonathan, born October 11, 1977, to DONALD and KAY (KINSETH '71) EHLERS, 108 Tamarack Lane, South Sioux City, Nebraska 68776. He joins a sister, Angie, 5.

1968

Max Nathan, born December 29, 1977, to Dr. ROGER and MELANIE (BORKHUS) KNOELL, 435 Cherry Hill Drive, Racine, Wisconsin 53406. Roger graduated last May from the Marquette University School of Dentistry and now practices in Racine. Their other children are sons Lyndsay and Alex and daughter Hilary.

1966

Brook Kaj, born July 1, 1977, to KEN and Cheryl JACOBSEN, 2906 West 73rd Terrace, Prairie Village, Kansas 66208. Ken is a psychologist with the Department of Labor, Region VII Training Center. He expects to complete his Ph.D. from the University of Missouri-Columbia this next year.

1965

Paul Andrew, born September 6, 1977, to Ben and ENID (WILEY) Tiseo, 5208 Provincial Drive, Bloomfield Hills, Minnesota 48013. Ben is a principal in the new civil engineering firm, Neyer, Tiseo and Hindo, in Farmington Hills, Minnesota.

BIRTHS Daughters

1973

Sarah Elaine, born April 27, 1977, to David and RUTH (RASMUSSEN) Mathews, 3328 North 54th Street, Omaha (68104).

1971

Lindsey Nicole, born October 9, 1977, to RON and ARLENE (TESELLE '72) HAACK, Bird City, Kansas 67731. Her brother, Brendon, is 3.

1970

Joyce Ellen, born February 8, 1978, to Dr. Dennis and MARY LOU HENNEMAN, Dana College.

ADVANCED DEGREES AND CONTINUING EDUCATION

1975

LAYNE JOHNSON received a master of science degree with a major in bacteriology from Iowa State University on February 25, 1978. His address is 608 Fifth Street #2, Ames, Iowa 50010.

MARRIAGES

1977

CAROLYN CAMPBELL and TERRY PRICE, February 17, 1978, in Council Bluffs, Iowa.

1975

KATHLEEN EATON ('77) and JAMES KOVALSKAS, August 27, 1977, in Plattsmouth, Nebraska. They live at 186 Murray Road, Beaver Lake, Nebraska.

DEATHS

1952

HARVEY JORGENSEN, February 16, 1978, in Wisconsin. Survivors include his wife, Evelyn, Route 3, Box 222J, Wautoma, Wisconsin 54982; daughter, SUSAN '71 (Mrs. Ron Jansen), RR 2, Wild Rose, Wisconsin 54984, and sons FRED '72 and Mark, both at home.

1933

The Rev. VICTOR E. BAGGER, 83, missionary to India for more than 20 years, November 13, 1977, in Colorado. Born and educated in Denmark, he had also served a parish in Winnipeg, Canada, and had been administrator and chaplain of Eben-Ezer Home in Brush, Colorado. Bagger was a member of the foreign mission board of the former United Evangelical Lutheran Church from 1957-60.

1916

The Rev. FRANKLIN GRANT RASMUSSEN, 94, February 5, 1978, in California. Born in Plainview, Nebraska, in 1884, he graduated from Dana in 1913 and from Trinity Seminary in 1916. Rasmussen served three parishes in Iowa (Ringsted, Neola and Coulter) and later a multiple parish at Fremont, Nebraska, and Pella Lutheran Church in Omaha. He also had a parish in Caruthers, California, before moving to Bethany Lutheran Church in Pasadena, where he served for eight years as pastor until retirement in 1958. After his retirement he was the congregation's visitation pastor. Survivors include his wife, Sophie, 2068 Primrose Avenue, South Pasadena, California 91030, and son, HILLERUP '54.

1914

ELLA (BERTELSEN) ANDERSEN, 88, November 19, 1977, in Brush, Colorado. Survivors include her husband, Pastor INGVAR M. ANDERSEN, '15, 521 Turner Street, Brush (80723), who retired in 1959.

It was with sadness that members of the College community learned of the death of Dr. Einer M. Juel, 52, on March 31 after a short illness. Juel had served the College as a member of the board of regents for 18 years, and Acting President Robert J. Glass, in notifying the faculty, staff, and students of Juel's death said that "He was an enthusiastic supporter of the College and always showed great respect for the faculty and the academic program. We will miss his encouragement and support." Survivors include his father, Einer, of Council Bluffs, Iowa, his wife, Jane Ann, 1309 Locust Street, Atlantic, Iowa 50022, daughters ROXANNE '76 (Mrs. Gary) Marsh, Lisa, and Nellie, and son Mark.

Calendar of Events

May 1-12

Student art exhibit, Parnassus

May 1

Student recital, Sarah Bryceson, Candy Hogden, Laura Moya, 7:30 p.m., Alumni Memorial Auditorium

May 2

"The Many Moods of Carl Sandburg" (A Centennial Observation), Dana music and speech students, 7:30 p.m., Dana Hall Auditorium

May 4

Honors banquet, 7 p.m., Campus Center

May 5

Faculty Follies, 7:30 p.m., Alumni Memorial Auditorium

May 8

Student recital, 8:30 p.m., Alumni Memorial Auditorium

May 13

Alumni Recognition Dinner, 7:30 p.m., Campus Center

May 14

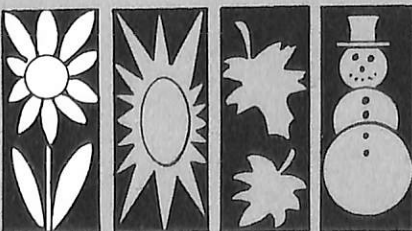
Baccalaureate Service--speaker, Dr. J. Elmo Agrimson, bishop of Minnesota's Southeastern District, the American Lutheran Church, 10 a.m., Borup Coliseum
Commencement--speaker, Dr. Edward A. Lindell, president, Gustavus Adolphus College, 2 p.m., Borup Coliseum

June 5-July 14

Summer school, six-week session

July 17-August 4

Summer school, post session



Student couples raised more than \$7,000 for muscular dystrophy through a campus dance marathon March 3 and 4, topping last year's record by more than \$2,300. Couples with the highest pledges were, in first place, Carol Harmes, Hamburg, Iowa, and Pete Gantnier, Benedicta, Maine, and in second place, Becky Nielsen, Defiance, Iowa, and Tom Harm, Waterloo, Nebraska. Marathon chairman was student Jean Irby of Casper, Wyoming.

ALUMNI ELECTIONS

The two boxes by each name are there so that both husband and wife can vote, if they meet eligibility requirements (see page 11). Please circle the number voting in your family: 1 2

VOTE FOR FOUR:

- Lois Lyngø Boe
- Tari Therkelsen Choiniere
- Thorvald Hansen
- Calvin Jorgensen
- Kenneth Lizer
- Adrienne Simpson (incumbent)
- Willadean Stubbendeck



Please return your ballot to the Alumni Office by June 15.

NOMINATION FORM:

DANA COLLEGE ATHLETIC HALL OF FAME

(See award criteria on page 11.)

Please complete and mail this form to the Alumni Office. All nominations must be received by June 15.

Your name _____

Street/Apt. _____ City _____ State _____ Zip _____

NOMINEE _____

ADDRESS (if known) _____

NOMINEE'S RELATIONSHIP TO DANA: Alumnus/Alumna (year) _____

Former coach _____ Current coach _____ Other _____

Reason for nomination (use separate sheet if necessary): _____

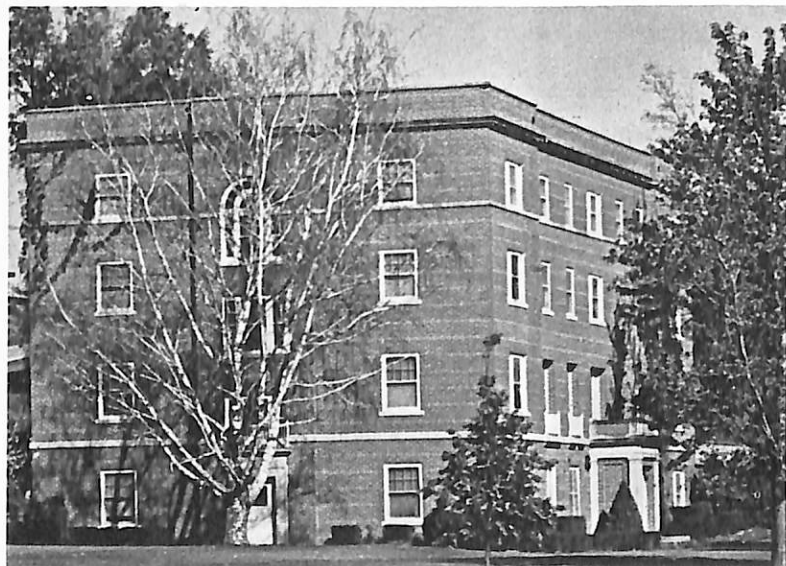
DANA COLLEGE
2848 College Drive
Blair, Nebraska 68008

Second Class Postage
Paid at Blair, Nebraska

04573

02 42

MISS LUELLE NIELSEN
2351 COLLEGE DR AP
BLAIR NE 68008



This Is the Place for:

SEMINARS

CONFERENCES

RETREATS

*GENERAL MEETINGS OF
ALL KINDS AND SIZES*

ELK HORN HALL CONFERENCE-RETREAT CENTER

Newly redecorated guest rooms with semi-private baths. . . capacity of 78 persons in double occupancy rooms. . . general meeting areas for groups of up to 100. . . chapel, lounges, and refreshment areas. . . food service for guests in Elk Horn available in the Campus Center dining room. . . recreational facilities, transportation, and a variety of special services can also be provided for groups in Elk Horn Hall.

For information and scheduling, contact:

Dana College Public Relations Office

Blair, Nebraska 68008, Telephone 402-426-4101, Ext. 127