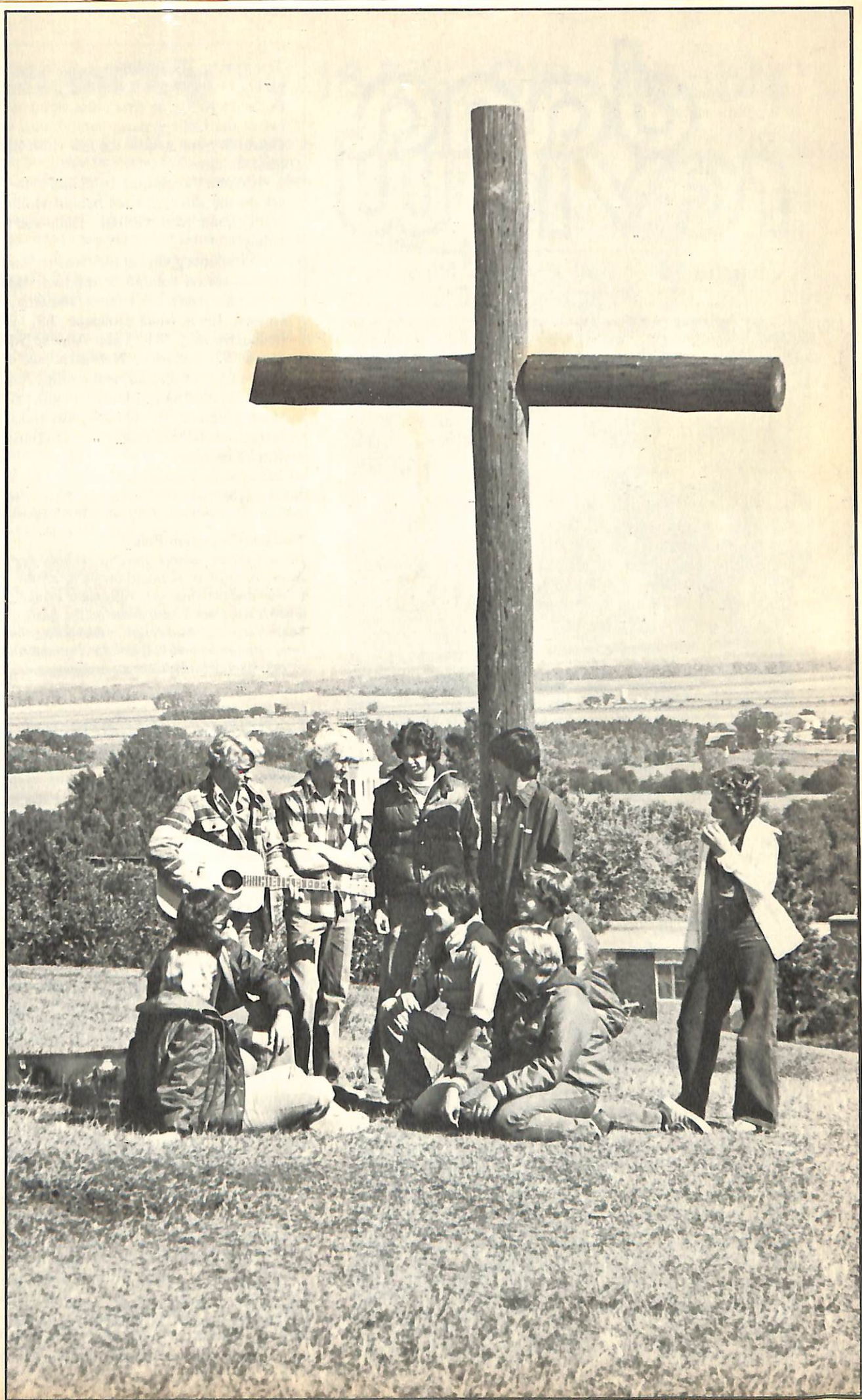


Journal Review

FALL 1979



Dana review

(USPS 147-940)

Volume 36 Fall 1979 Number 1

A magazine for alumni and other friends of Dana College and Trinity Seminary, published four times annually. Printed by Acme Mail Advertising Co., Omaha, Nebraska, with editorial and business offices located at Dana College, 2848 College Drive, Blair, Nebraska. Second class postage paid at Blair, Nebraska 68008.

Friends of Dana, Greetings and Best Wishes!

Dana College is vibrantly alive, bustling, an ebullient epicenter of excitement and academic adventure! The student body is up — way up! Over 500 students enrolled this fall, over 100 more than were here last spring! What a dramatic renewal! Dana College, a distinguished dowager with almost a century of life behind her, is acting like an effervescent adolescent, heady with optimism, enthusiastic for the future!



How grateful we are to God our Maker for this renaissance we see here on the campus! Dormitory rooms, empty for almost a decade, now being used again! Freshmen classes are swollen large and overflowing! Chapel is filled! A vibrant forward look dominates our campus as faculty, staff, and students face the future with confidence and thanksgiving!

What a difference from a year ago! Enrollment was down, deficits were up, Dana was drowning in a sea of red ink, there were even rumors running about that Dana would have to close.

Dana has passed that test of adversity! Our friends and supporters have rallied — they poured out money and support in record amounts and put us on a new road! Out of adversity has come renewal, out of that crisis new confidence!

But friends of Dana, we have entered into a new and equally grave situation! What I mean is simply this — we did pass the test of adversity. When we had our backs to the wall our alumni and friends responded magnificently! But now, compared to a year ago, we stand in a position of relative prosperity. And prosperity too, like adversity, poses a test, a trial. People often rally during difficult times and pass the test of adversity, as we did one year ago. But then, in more prosperous times, complacency, relaxation, a resting on the oars — and we fail the test of prosperity.

We cannot let that happen to Dana! There can be no lessening of effort in our attempt to restore Dana tully to health! Now that we are regaining strength, we cannot lose momentum! Friends of Dana, continue to pray for us, come and visit us, send us students, send us financial support! We believe in Dana, in its programs and purposes, and we want to see this fine school stand for another century in the service of Christ the King!

In Jesus' name . . .

Dr. James Kallas, President

The cover: The tradition of placing a cross at the highest point of the campus is one that was apparently established in the 1930's. The first cross stood at the northwest corner of the College park, behind what was then the Boys' Dormitory and is now the Elk Horn Hall Conference-Retreat Center.

When the campus expanded to the south, a cross was set on the hill that rises behind Holling and Rasmussen Halls, a site that overlooks Dana and the Missouri River valley.

Students gather at the cross for fellowship and campfires — often combining the two. Here, on a fall afternoon, are (from the left) — standing, Kim Nielsen '80, Onawa, Iowa; Mark Hohneke '83, Honey Creek, Iowa; Bruce Barkley '81, Lake Andes, South Dakota; Tony Jones '82, Beatrice, Nebraska; and Ruth Mingus '82, Dannebrog, Nebraska; and sitting, Judy Yusten '82, Dakota City, Nebraska; Jerry Schmidt '80, Audubon, Iowa; Mark Latenser '81, Omaha; Jim Hanson '80, Callender, Iowa; and Richard Andersen '81, Harlan, Iowa. *Photo by Mark Latenser.*

Photography by Peter Bonde '81, Nerstrand, Minnesota; Tom Jacobsen '81, Fairbury, Nebraska; Mark Latenser '81, Omaha.

Non-discrimination Policy

Dana College admits students without regard to sex, age, race, color, religion or national origin to all the rights, privileges, programs, and activities generally made available to students at the College. It does not discriminate on the basis of sex, race, color, age, handicap or national origin in administration of its educational policies, admission policies, scholarship and loan programs, athletics, or other school-administered programs.

Teacher Placement Is High

Dana's teacher placement service reports that of last year's seniors and post-graduate students completing the teaching block and actively seeking full-time teaching positions, 86 percent have been placed.

Of those in secondary education, 80 percent are now full-time teachers, and in elementary education, 91 percent.

Johnson Heads Admissions

Lee Johnson, a man with nine successful years in admissions work, became director of admissions at Dana on November 1. He fills the vacancy created in August when Dennis Barnum accepted the position of director of development at Missouri Valley College in Marshall, Missouri.



A 1968 graduate of St. Olaf College, Johnson became an admissions counselor there in 1970 and was promoted to assistant director of admissions in 1974. In 1977 he became admissions director at Aurora College in Aurora, Illinois.

At Aurora College the program that he developed reversed a 12-year enrollment decline and increased new student enrollment by 20-25 percent.

Of Johnson's appointment, President James Kallas said that "His record of more than nine years in the student recruitment field and his proven record of success are just exactly what we need to continue the excellent work already begun by our efficient and capable admissions office staff."

Enrollment Up by 16.5%, Gifts Double

Two announcements made by President James Kallas at the beginning of the school year helped to fulfill this year's September 28-30 Homecoming theme — Happy Days Are Here Again!

— The first announcement: an enrollment increase of 16.5 percent marks the first time in ten years that Dana has had more students on campus than it had the preceding fall. Said Kallas of this encouraging reversal, "The decline of a decade is over, the long night is ended! Dana praises God for this solid sign of renewal."

Total full-time and part-time enrollment this year stands at 517, with 502 full-time students. New freshmen and transfer students number 235, and returning students 267. The retention rate among students eligible to return is 88 percent, an improvement over last year's 84.5 percent.

— The second announcement: \$382,000 in unrestricted gifts from alumni, parents, friends, faculty and staff members, and congregations of the American Lutheran Church for the 1978-79 fiscal year more than doubled the preceding year's record of \$153,000. "Our people, our parishes, our alumni and friends have responded magnificently to our need," Kallas said.

He warned against complacency, however. Dana is still operating in the red and probably will not reach the black for about a year and half. But, "With Dana's outstanding faculty and academic program, and now, with increased enrollment and with loyal and generous alumni and friends," Kallas said, "we are marching forward with optimism and confidence."



Transferring possessions at the start of the school year from cars, trucks, and trailers into dorm rooms called for help from family and friends. Here David Rohwer '83 (left) and his sister Diann '82 from Creighton, Nebraska, and Mark Friis-Hansen '82 from Caruthers, California, join the parade carrying boxes into Holling Hall.

Final Holling Gift is \$74,500 Check

Fifteen years ago Emanuel and Marie Holling, a brother and sister from Millard, Nebraska, gave Dana \$200,000 toward construction of a men's dormitory, named "Holling Hall" in memory of their parents, Hans and Amalia Holling.

That gift was only the beginning of their generosity to Dana, for in her will Marie Holling left Dana one-fourth of her estate.

And so, 15 years later — five years after Emanuel Holling's death and two years after his sister's — a check for \$74,533.70 presented to President Kallas by Board of Regents member Margaret Fischer, Omaha, on October 11 brought the sum of gifts to Dana from the Hollings to close to half a million dollars.

In 1978 Miss Fischer, who had been the Holling's attorney, presented Dana with the first payment in the bequest, a check for \$191,000.

The most recent check, together with a gift of land worth \$40,000, represents the final distribution of the bequest.

Gene Meyer, executive director of college relations, calls the Holling bequest "a marvelous way to remember an institution."

Kallas agrees. "There are many people," he said, "who, due to the nature of their holdings — farmland, acreage — are relatively wealthy but who nonetheless are cash poor. On paper they are worth a lot of money, but that money cannot during their lifetimes be touched or used; it is tied up in physical holdings, and they are obliged to use the income off those holdings to pay daily bills.

"There are many people out of the rural heritage of our church who are in precisely that situation. As land prices have gone up they have become wealthy people. But as long as they live and work that land, they do not have a surplus of dollars available to them.

"People like the Hollings — to whom Dana College is enormously indebted and grateful — have shown a way! They do in death what they could not do in life, make their money, by means of a bequest, available to the work of the church. We are thankful unto God for dedicated donors like the Hollings. Dana College could not survive without help such as they have provided."



Regent Fischer presents check from Holling estate to President Kallas as faculty members look on.

Retiring Employees Served Nine Generations of Students



Marie Johnson and Sigrid Christensen were given watches upon their retirement. (From the left, President Kallas, Miss Johnson, Miss Christensen, and President Emeritus Madsen.)

Sigrid Christensen and Marie Johnson, two Dana employees who have known and helped nine generations of Dana students, have retired. At the College's traditional opening dinner on August 31, members of the faculty and staff gave both an affectionate farewell.

Miss Johnson has been Dana's assistant registrar, and Miss Christensen, Dana's accountant.

In paying tribute to them at the dinner, President Emeritus C. C. Madsen said that "they were not only truly at the heart of the College, they were the heart."

Both came to Dana as students in the 1940's and began to work for the College as part-time student employees. Full-time work interrupted their studies, but by taking evening school courses, they later received their degrees. Both are charter members of the Dana chapter of Alpha Chi, the national honorary society.

Madsen read the comments of those for whom the two had worked:

— *Professor Emeritus A. J. Snowbeck, former business manager* — "There are many words that describe Marie Johnson and Sigrid Christensen: compassionate, cooperative, capable, thorough, and reliable. However, if I were to select one word, it would be loyalty, loyalty to Church and to Dana College."

— *Professor Emeritus Elmer Rasmussen, former registrar* — "The honors I received should go to Marie."

— *Dr. Verlan Hanson, registrar and assistant to the dean of the college* — "Devoted, dependable, meticulous in detail, industrious, conscientious, courteous, kind, considerate, concerned, caring, compassionate. These words can only partly describe Marie Johnson and her 35 years of service to Dana College. Her duties were much more to her than just a job. They were a mission for the College and for the Church. Her services at Dana will be greatly missed."

— *Mr. Keith Hansen, business manager* — "I've never known anyone more committed to Dana. Since I've been at Dana (going into ten years), a 50-hour work week by Sigrid would certainly be minimal; 60 is more common and some 70-hour work weeks have not been uncommon. The value of Sigrid's work is beyond estimation. She won't be replaced; she cannot be replaced. Sigrid has for years done the work of several. I can honestly say I know of no one person who has given more and has more to give than Sigrid. Reaching to the bottom of my heart, I cannot thank Sigrid enough for her help and support to me in carrying out the responsibilities of the business office, and for her undying support and dedication to Dana."

Annual County-Wide Appeal Brings Excellent Response

With a kickoff date of October 8, this year's Washington County Appeal had an early and vigorous start that by the end of October was propelling the drive toward its \$60,000 goal.

Under the direction of Blair co-chairmen Brent Gilbert of the Hansen Agency and Tim Garrigan of UNITEL, the annual fund-raising drive involved participation by many Blair and Washington County businessmen and women, farmers, and other residents.

Together they made an all-out effort through personal visits, telephone calls, and letters.

An important part of the appeal this year is the Grain for Dana drive, which is under the chairmanship of Dick Wardell of the Washington County Bank. Last year's drive — the first — was a successful, one-day, one-elevator event. This year all elevators in the county are accepting grain for the College throughout the harvest season and to May 31, the close of Dana's fiscal year.

A final report will appear in a later issue.

New Faculty, Staff Have Campus Ties

Four new members of the Dana faculty and staff this year are all familiar faces on the campus.

Two are former faculty members, and two are Dana graduates.

Sieghard Krueger, instructor in speech and theater at Dana in the early 1960's, returns to the faculty as assistant professor of speech and theater and director of theater.

He has, in the meantime, taught with the Peace Corps in Nigeria, and at the University of Wisconsin in Madison, Eisenhower College in Seneca Falls, New York, and Culver-Stockton College in Canton, Missouri. In the course of his career he has directed more than 45 plays.

Krueger has a B.A. from Concordia College in Moorhead, Minnesota, an M.S. from the University of Wisconsin, Madison, and approximately 45 additional hours of graduate study.

Mrs. Ruth Rasmussen, who was assistant librarian and instructor in library science at Dana before becoming librarian at Waldorf College in Forest City, Iowa, last year, has returned to her earlier position. She holds a B.A. from the University of Northern Iowa and an M.S. from the University of Iowa.

The third new faculty member is Head Football Coach Ronald C. Johnson, a 1970 Dana graduate. Johnson's M.S. is from Northwest Missouri State University.

He has served as head football coach at the Anita, Iowa, Community Schools and as assistant football coach and recruiting coordinator of Iowa Central Community College in Fort Dodge, Iowa. That school's team won the 1978 Junior College National Championship and a berth in the Coca-Cola Bowl.

New Admissions Counselor Naomi Erickson is a 1979 Dana graduate with a major in psychology. From Camrose, Alberta, Canada, she has also attended Camrose Lutheran College, Oral Roberts University, and the University of Alberta.

Her area of responsibility in the admissions office will be Colorado and metropolitan Kansas City.

Visiting Theologians Make Dana Experience Unique



Dr. Matthew Black with President James Kallas . . .



. . . with Campus Pastor Bruce Bergquist and Professor Delvin Hut-ton . . .

A freshman said that his "mind was stretched."

A young pastor from Illinois, a Dana alumnus, wrote to President James Kallas that "there is no finer way for a pastor to invest a week in continuing education than for him to come to Dana's campus and learn from the world's greatest theologians in such a personal way."

Both were describing their reactions to an event and a man — the event, the first lecture series in Dana's new Visiting Theologians Program; the man, Dr. Matthew Black, professor emeritus of Biblical criticism at St. Andrews University, Scotland, and a leading figure in New Testament textual criticism. Accompanied by his wife, Black was at Dana September 17-21 to give the initial lectures.

Kallas announced plans for the innovative Visiting Theologians Program when he became president of Dana in September 1978. His proposal to bring four or five of the world's leading theologians to the campus each year won the enthusiastic support of the Board of Regents, and individual regents are funding the program.

"Several Lutheran colleges are known for their choirs," Kallas says. "Others are known for their athletic programs, and still others for their drama departments. Dana is also proud of its accomplishments in these and other areas.

"But no other Lutheran college is known for its chapel program. We anticipate having with us annually a continuing stream of the most distinguished scholars of the entire Christian world. The day is coming when Dana will be seen as a center of intense theological ferment, the place where the pursuit of the gospel of Jesus Christ receives prime attention."

The freshman and other students, the young pastor and his colleagues from several denominations, members of the faculty and staff, and others heard Black speak on two subjects — "modern Christological thought" in his first three lectures, and "the New Testament today" in the last two.

In the former, he discussed developments in twentieth century views of the nature of Christ — especially those influenced by Bultmann — and their effects on German, Scottish, English, and American theologians.

Mixing wit with scholarship, he said in his introductory lecture that theological concepts in this century have often been "created by the Germans, corrected by the Scots, and corrupted by the English."

In his remaining lectures, Black discussed progress in re-establishing the original text of the New Testament through recently discovered papyrus manuscripts dating from the third century A.D.

This exacting science is necessary because none of the original manuscripts of the New Testament has survived, Black said, and all the church has to date are copies of those early



. . . with students and guests.

documents. As each copy was made from an earlier copy, new errors of copying were introduced, and others were carried forward. The third century manuscripts predate other available New Testament texts.

Black is one of three or four acknowledged masters in the struggle to reconstruct the text as it originally appeared, and he has been working closely with his colleagues (most of them German) in this precise discipline.

Other visiting theologians at Dana this school year will be Dr. Nils Dahl, professor of New Testament at Yale University Divinity School, speaking on "God in the New Testament" and "early Christian editions of Biblical writings" (January 7-11); Dr. Donn Moomaw, pastor of Bel Air Presbyterian Church in Los Angeles (February 10-14); and Dr. John Macquarrie of the theology faculty at Oxford University, England, on "aspects of being human" (April 14-18).

What does the new series mean to the church? The Illinois pastor wrote that "Rarely, even in seminary, does a pastor have the opportunity to hear one of the world's greatest theologian-scholars, but you [Kallas] have planned to make such people available to us all in a regular succession, free of charge. This is truly a valuable service to the church!"

What does the series mean to those who met Black? Black's presence was felt throughout the Dana campus. He spoke in chapel several times, had coffee with the faculty, and ate with the students. In this informal setting, the young pastor took a walk one day with Dr. and Mrs. Black. "I was invited to ask him anything I wished," he wrote, "and I gladly accepted that invitation. I might not have had such an opportunity even if I had gone to Scotland, but Dana made it possible."

Most important of all, what does the series mean to Dana students? By the time he is a senior, the freshman whose mind was stretched by the first visiting theologian will have heard 16 to 20 of the world's most dynamic figures in contemporary Christian thought. That is an experience that can happen only at Dana!

Note: Brochures on the Visiting Theologians Program are available from Dana's public relations office; arrangements for campus housing can also be made through that office.

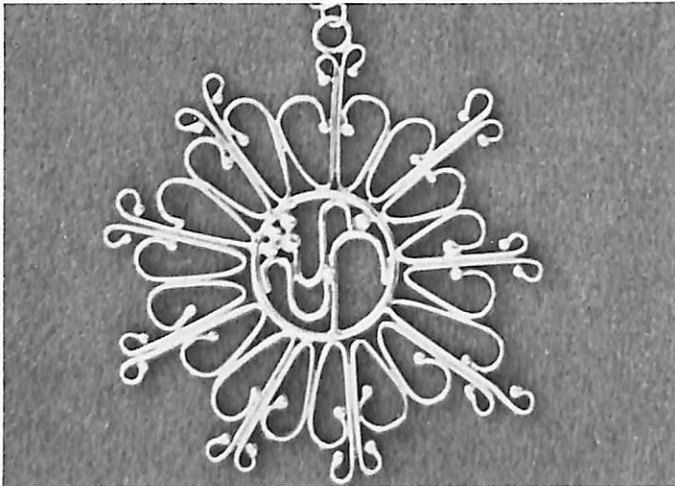
Alumni Artists Show Work in Parnassus

Five alumni artists exhibited their work in Parnassus this fall — John '54 and Marion '54 Christensen in a brother-sister show, and Larry Andrews '73, Russ Brabec '67, and Bill Bracker '62 in an invitational.

All work in different media. John Christensen is a photographer who also teaches that subject at Taft College in California, and Marion is a silversmith and printmaker who teaches art in the Davenport, Iowa, public schools. She displayed jewelry in the recent exhibit.

Andrews is a painter who teaches art in the Omaha public

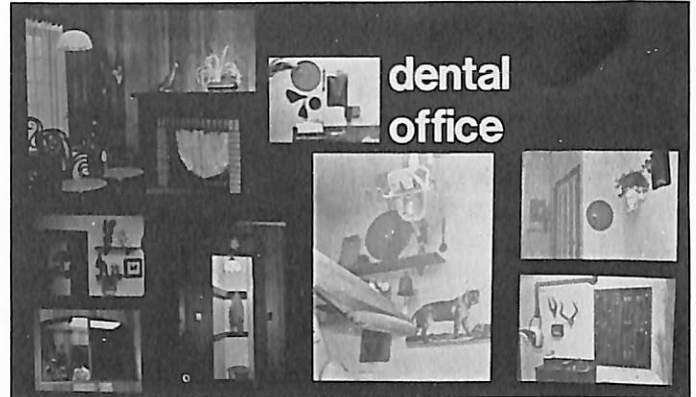
schools. Brabec works in commercial interior design and teaches art in a joint program at Augustana and Sioux Falls Colleges in South Dakota. Bracker, a sculptor and ceramicist, is a former associate professor in design and head of the ceramic design area at the University of Kansas, who now has his own studio.



Marion Christensen — "Although I consider printmaking my major form of creative expression, my interest in jewelry derives from a desire to share the feel and beauty of metals with others. I design my jewelry to be worn by those who like fine things but feel uncomfortable with either the ordinary or contemporary high fashion."



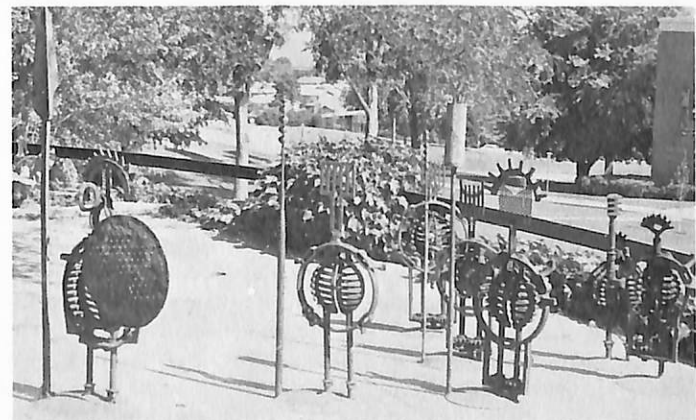
John Christensen — Photography credits include a White House exhibit during the Ford administration and covers on Sierra Club regional publications. In 1973-74 Christensen was a Fellow for the National Endowment for the Humanities in photographic studies at the University of New Mexico.



Russ Brabec — Brabec became interested in commercial interior design and the visual arts in 1975, when, he says, "I found there was a need to create conceptual themes for new places of business." His projects have included this dental office, restaurants, a medical arts complex, law firms, a church, a supermarket, a campground, and area branches of a savings and loan corporation.



Larry Andrews — A painting by Andrews placed first in the Associated Artists of Omaha All-Member Show last year, and another won an award in the AAO Spring Juried Show this April. Of his Parnassus exhibit, he says that "I've tried to combine direction with spontaneity to achieve uniqueness and freshness in this series, which I call 'Black Lines and Shadows.'"



Bill Bracker — Bracker created this whimsical company of warriors from furnace grates. In the past few years he has participated in exhibits in eight states and has held recent one-man shows at Kansas State and Colorado Mountain College. Other recent activities include organizing the first two national traveling exhibits of ceramic cones.

IMPACT Has Impact

IMPACT, the Lutheran Brotherhood's matching gift program for Lutheran higher education, has indeed had an impact at Dana.

President Kallas has high praise for both the innovative program and Dana's alumni and friends who have taken advantage of its benefits. "Many people who learned that their gifts could be matched gave more to Dana than they had originally intended," he said.

The amount received by Dana since the program was announced less than a year ago is \$26,318, according to Gene Meyer, executive director of college relations. Among all Lutheran colleges, only one leads Dana by a slight margin in the amount received to date.

Through IMPACT, Brotherhood members can apply to have their monetary gifts matched, and so the sum Dana has received matches gifts from alumni and friends who are Brotherhood members.

With the continuing support of Dana contributors who belong to the Brotherhood, Meyer said, the amount from IMPACT should be even larger by the end of the year.

Alumna Returns to Nigeria

Missionary-teacher Helen Margaret Jacobsen '40, who received a Distinguished Alumna Award from Dana last spring, has returned to Nigeria after a leave of several months in this country.

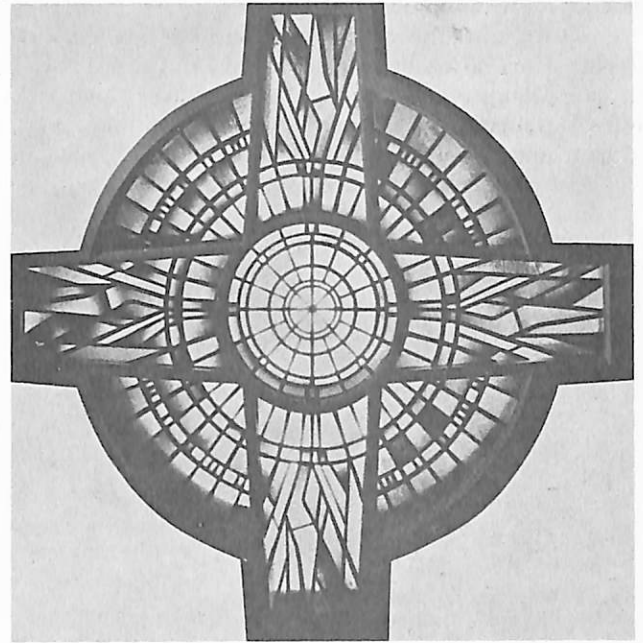
She writes that "I was happy for my visit to Dana College last spring. It had been many years since I had seen Dana, and there were many changes indeed. But the sight of the older buildings brought memories of student years to mind. It is my hope that Dana will be as useful to the church and community in the future, as it was in the past.

"I came back to Nigeria in time for their national and state government elections. After 13 years of military rule, the country will return to civilian government on October 1, 1979, the 19th anniversary of its independence from British control. When, as a student, I took American history in college, I wondered how it might have been to live during the years of the American Revolution, and the formation of the federal government. I have much the same feeling now, as I actually experience the first years of the history of independent Nigeria. I feel it is an exciting time to be here and follow developments. There is a desire in Nigeria that there should be a peaceful transition now in the government, and that seems to be the situation.

"Since my return I have started a new work for the church. I am not teaching in a secondary school. Instead I will do translation work into the Hausa language. Besides this, I will hold courses for new missionaries, as needed, to introduce them to the language. It is widely used in the church, although English is the medium of instruction in the higher levels of education. There has been a need for someone to do this work here, ever since Margaret Nissen went home to Canada a few years ago. I know the work will be interesting, although I shall miss the contact with the Nigerian high school students. Each kind of work has its own time and place.

"I pray that God will bless the efforts of Dana College in the years to come."

Thomsen Designs Hospital Chapel



This large stained glass window symbolizing Jesus as the light of the world, a large altar mosaic of the Good Shepherd of the Cross, and a mosaic panel representing the Holy Spirit — all designed and created by Pastor F. W. Thomsen, Trinity '45, professor emeritus of art — are three features of the new chapel at St. Luke's Medical Center in Sioux City, Iowa.

The dominant colors in the three pieces and in the chapel furnishings are shades of blue and rust. In the window the circle of light radiating into deep blue symbolizes the light of Christ reaching to the end of the world, and the flames in the arms of the cross symbolize the outreach of the Holy Spirit, Thomsen said. The mosaic panel repeats the flame detail of the window.

Thomsen said that the style of the large mosaic had been influenced by early Byzantine mosaics of Christ. With the face of Christ softly shaded, the "viewer must complete the picture by finding there his own interpretation of Jesus," Thomsen said. "The Cross is always in the picture, but the Good Shepherd speaks to us and we to him."

Other work by Thomsen includes a large mosaic on Sacred Heart Hospital in Yankton, South Dakota, the mosaic on the College's C. A. Dana Hall of Science, mosaics in Blair's Black Elk-Neihardt Park, and a mosaic panel in a community building complex in North Platte, Nebraska. Thomsen has also designed and created the symbol used by the Good Samaritan Society.

III. Whatever Happened to Our Student Body Presidents?

This third installment of a series that began with 1924 in the 1979 winter Review reports on seven student body presidents who served during the post-WWII years, from 1945-46 through 1951-52. Among them are two sets of brothers — Paul and Art Simon, and Jim and Bill Hansen.

1945-46: James Stone

Dr. Stone, who graduated from Dana in 1947, was a member of the history faculty at Kearney State College, Kearney, Nebraska, at the time of his death in 1962.

Both his M.A. and Ph.D. degrees were from the University of Nebraska-Lincoln, and he taught high school at Stanton and Hastings, Nebraska, before joining the Kearney faculty.

His brother, Dr. Larrie Stone '57, is a professor of biology at Dana.



1946-47: Harold Anderson

Pastor Andersen, who died in 1978, last served Immanuel Lutheran Church in Milwaukee, Wisconsin. His earlier parishes were in Indianapolis and Portland, Indiana, and Shelby, Ringsted, and Fenton, Iowa. Andersen held degrees from both Dana and Trinity Seminary and was ordained in 1950. He received his M.Div. in 1976 from Wartburg Theological Seminary.

His widow, the former Ann Lage '47, lives at 4221 South Sixth Street E-2 in Milwaukee (53221).



1947-48: Paul Simon

Once introduced at a Dana gathering by Dr. C. C. Madsen T'34, at that time president of the College, as "Dana's most distinguished dropout," U.S. Representative Simon (24th District, Illinois), transferred to Dana and spent his sophomore and junior years here before leaving in 1948 at the age of 19 to purchase a newspaper, *The Troy Tribune*, in southern Illinois.

That move led within six years to a distinguished political career, first in the Illinois House and Senate, then as that state's lieutenant governor, and, since 1974, in the U.S. House of Representatives.

He is the author of four books and co-author of two others.

In 1966 Simon received an honorary doctor of laws degree from Dana, and in 1978 became a member of the Board of Regents. In May he was named a Distinguished Alumnus; a more complete biography appears in an article on Dana's 1979 Distinguished Alumni in the spring Review.

At the Recognition Dinner on May 12, Simon reminisced about singing in the Choir and the "good times" he had had at Dana. Dana was "academically a great place," he said, and he had had excellent teachers, mentioning by name Professors Paul Nyholm, Marie Tucker, A. J. Snowbeck, and Elmer Rasmussen. The Dana community had "good people," he said. "I don't know when I have ever met as fine a group of people as in my two years here."

Simon closed his remarks by saying that "I am happy to see all of these good things continuing while Dana at the same time has developed a sensitivity to the problems of our society and country. I am proud to be a Dana alumnus and hope that over the years I can say 'thanks.'"

1948-49: Don Schou

Don Schou, whose address is Route 2, Albert Lea, Minnesota 56007, writes that "I arrived at Dana College as a freshman from Sleepy Eye, Minnesota, in 1942, with one suitcase and an overcoat. This fact is recounted frequently as my children leave for college with a truck load of belongings.

"I returned for my three final years of college after spending three years in the army air force; my final year I was stationed in Germany. I met my wife Eleanor Nielsen, at Dana and we were married during my senior year. It was during that year that I served as student body president, being elected as a write-in candidate. I played football all four years at Dana and was active in the History Club.

"After two years of teaching, I became involved in drainage engineering and farming. I was with the U.S. Conservation Service for 12 years, during which I had some additional course work through the University of Minnesota and at Michigan State. Since 1965 I have had my own drainage engineering business at Albert Lea.

"Eleanor and I have seven children, four sons and three daughters. Our continued interest in Dana is evidenced in that Greg, Steve and Deb have all graduated from Dana, and Brent and Laurie have each attended one year. Jeff operates our hog-raising enterprise and Cindy is in high school.

"I have many fond memories of faculty members, friends and experiences at Dana."



1949-50 James Hansen

Jim Hansen graduated from Dana in 1950, and in 1951 joined his father in the insurance agency known as Hansen & Hansen in Cedar Falls, Iowa. He was joined later in the business by his brother, Bill. He served on the board of the Grinnell Reinsurance Company and was chairman of the Farm Conference of the National Association of Mutual Insurance Companies. As a concerned member of the Cedar Falls community, he served in the Chamber of Commerce, on the hospital board and zoning commission, and with United Appeal. He was also a member of Rotary and of a local business-industrial corporation.

His primary interest was his church and school. He was active in Nazareth Lutheran Church in Cedar Falls and served on its various boards and committees.

At Dana, Hansen participated in many different facets of college life, ranging from student government to athletics. Upon his graduation, he devoted another year to Dana in the public relations field as a campus representative. At the time of his death in 1968 he was vice-chairman of the Dana Board of Regents.

He was married to the former Ella Erlandsen, also a Dana student. She is director of development at the Cedar Falls Lutheran Home. There are two children, Pamela (Mrs. Thomas Wenndt), of Tipton, Iowa, and Paul, of Cedar Falls.

1950-51: Art Simon

Pastor Simon is director of Bread for the World, a Christian Citizens Movement in the U.S.A., at 207 East 16th Street, New York, N.Y. 10003.

He writes that "My years at Dana were among the finest of my life. Dana gave a lot to me. Students and faculty shared a spirit that more than compensated for the handicaps of a school less than half the size of today's Dana. We really thought of ourselves as a special family en transit 'on destiny's deep sea.' And we were right.



"What I treasure most are the friendships. It is still a great joy to run into old Dana acquaintances occasionally in various parts of the country.

"Memories of class discussions, singing by the old pond after our evening meal, switching tables each week in the dining hall, roommates (the Romer twins, Lloyd Bansen, Wayne Olsen and Paul Jersild were mine over the years), bull sessions in the dorm, chapel services, hanging around in the old canteen, hiking — just right for the pocketbook on dates — and many other activities cross one's mind. But friends and a shared vision, along with the joy of developing intellectually and socially in a Christian community stand out as Dana's finest gifts to me."

Simon earlier taught at Concordia Teachers College in River Forest, Illinois, and served congregations in Denver and New York City.

He is the author of *Faces of Poverty; Stuyvesant Town, USA;* and *Breaking Bread with the Hungry*, and of articles in *Atlantic Monthly, New Republic,* and *Commonweal*. With his brother Paul he is co-author of *The Politics of World Hunger*.

1951-52: Bill Hansen

President pro tem of the Iowa Senate, Bill Hansen graduated from Dana in 1952 and then taught and coached in Nebraska high schools at Alexandria, Gretna, and Newman Grove. In 1955 he returned to his hometown, Cedar Falls, Iowa, where he became a partner in a general insurance and real estate business, known as Hansen & Hansen, Inc., with his brother Jim.



During the subsequent years he has been active in a variety of civic and elective public offices. After serving six years on the local school board, he served four years in the Iowa House of Representatives. In 1972 he was elected to the Iowa Senate and re-elected in 1976. While a member of the Senate, he has served as education chairman and assistant minority leader, and is currently president pro tem.

Bill and his wife, Maree, live at 1614 Cherry Lane in Cedar Falls. Maree is a CPA with the firm of Den Hartog & Hogan.

Hansen writes that "Dana College made an indelible impression on my life. What I experienced there was to become an indestructible foundation upon which would be built my future dimensions. I still recall that day in A. J. Snowbeck's class when he interrupted his lecture on economics to say, 'I'm trying to give you the tools for economic success, but neither you nor this nation can survive without committed people in politics.'

"I never forgot it. Nor will I ever forget the unparalleled interest and concern by administration, staff, and fellow students. We became welded together as the 'Dana Family,' and forged a memory which constantly kindles the depth of my appreciation and respect for Dana College and how it shaped my life."

The Inner Struggle

—Notes from Chapel

by Campus Pastor Bruce Bergquist

... when I want to do it right, evil lies close at hand." — Romans 7:21.

Do you ever find yourself surprised at how easily your good intentions go down the drain? Perhaps you have some weakness, some mean trait of character you are determined to overcome. So you set to work at it, you screw up your strength to resist temptation — and then when the first opportunity comes, you cave right in.



It seems as though we are somehow wrapped up in what Paul calls a "law of sin," so that even when we wish to do the right thing, we will end up doing what we feel is wrong.

Plato, in the *Republic*, has one of his characters tell an interesting story that illustrates our common propensity to wrong and injustice rather than goodness. The story is about Gyges and a magic ring that made him invisible when he put it on. As soon as he knew that he could do whatever he wanted to do without being caught (since he was invisible), Gyges became a corrupt and vicious person. Plato's point is that we may all be like that; if we could wear a ring that made us invisible, it's hard telling how much wrong we might do. Even without the "magic ring," we are too often caught up in the "law of sin."

So we should not be surprised when we find our own good intentions going down the drain. Likewise, we should not be dismayed when other people disappoint us by their weaknesses, either. Our understanding of the power of sin should help us to avoid disillusionment with others.

On the other hand, we must not be satisfied with our weaknesses either, for that would be neglecting the good news of the Gospel — the news that there is a way out of the tyranny of sin, for Christ has delivered us!

Karl Barth speaks about the Japanese soldiers who were discovered on an island in the Pacific some 14 years after World War II, still at their posts, ready to do battle, because they had never found that the war was over. Strange people, Barth says, to be fighting a war years after it has ended. Yet we are even stranger, if we are still going on the assumption that we have to fight the war against sin some 2,000 years after Christ has already won the victory!

Of course we still have to struggle against wrong; as long as we are in this world we have to be able to deal with our sinful human nature. But we do not need to deal with it helplessly, as if there is no hope. Christ's victory, and his offer of forgiveness, gives us the power to grow in love and in forgiving others. What God has done literally changes our situation so that we need not look within ourselves and despair, saying as Paul says, "Wretched man that I am! Who will deliver me from this body of death?" Christ has delivered us, and his Spirit will lift us from the inner struggle and set us on the path of life. "Thanks be to God through Jesus Christ our Lord!"

Homecoming Overseas Choir Reunions



1929: I.-r., row 1 -- Lillian Lund Healey, Lillie Petersen Rasmussen, Ruth Petersen Bradford, Ida Lou Hansen Graham, Beulah Christensen Sindt, Esther Johnson Madsen; row 2 -- Orville Nielsen, Fred Kolterman, Victor Magnussen, James Hansen, Clem Vig, Esther Frost Magnussen, Anne Nielsen Okey, Jane Noble Nore. (Not pictured, but present -- Bibi (Mrs. Waldo B.) Nielsen, Elvira Nielsen Mumm.)



1961: I.-r. -- Elliott Nielsen, Kathy Wollenhaupt Shaw, Sonja Jacobsen Switzer, Karen Jensen Capel.



1972: I.-r. -- Jeff Meyer, Cathy Meyer, Diane Gunia Zeller, Cheryl Heinz Behrends, Rosie Petersen Bates, Bruce Bates, Willard Behrends, Alan Brodbeck.



1935: I.-r., row 1 -- Eloise Morris Sperati, Dorothy Bran Malmin, Gunnar J. Malmin, Evelyn Christensen Jensen, Irene Jensen Starrett, Agnes Petersen Johansen; row 2 -- Ivan Johansen, Aleine Miller, Elna Jensen Steen, Marian Peterson Anderson, Ernestine McCain Hatcher, Emery Peterson.

TRAVEL IN '80

With Dana's President and First Lady, Jim and Darlean Kallas, and alumni and friends of Dana. A 12-day adventure to "THE LANDS OF JESUS — THE CITIES OF PAUL" — Departing July 24, 1980 . . . *A vacation with a purpose . . . a time of dedication . . . a time of celebration.*

You will sail the Aegean Sea and the eastern Mediterranean, visiting Egypt, Ephesus, Pergamum, Patmos, Athens, Corinth — and then spend six days in the Holy Land!

If you sign up for your tour through the Alumni Office, all profits go to Dana College.

Full color brochures are available. Write to:

TRAVEL '80
Alumni Office
Dana College
Blair, NE 68008

(College credit available, too!)



SPORTS



Dana Eleven Win 3, Lose 6

The Vikings under first-year coach Ron C. Johnson '70 won three and lost six this season, a one-victory improvement over last year. Johnson's concerns were a lack of recruiting time on his part and getting the squad accustomed to his systems. Perhaps — with Johnson's recruiting efforts this school year and as players become more used to his systems — there will be better and brighter things down the road for 1980.

Dana finished in the cellar of the Nebraska Intercollegiate Athletic Conference with one win and four losses. Midland, which bombed Dana in the season's finale, won the league title at 5-0. Dana's highlight was a 7-6 win over highly regarded Hastings College in the middle of the season. Non-conference wins were 7-0 over Martin Luther (Minnesota) and 20-7 over Dakota Wesleyan.

The offense had a difficult time throughout the year, averaging only 180 yards per game compared to the opponents' 344. The Vikings had virtually no passing attack, with only 62 yards per game on a completions rate of 34 percent. Sophomore Bill Harm (Waterloo, Nebraska) led ball carriers with 399 yards, and junior Mark Murray (Council Bluffs, Iowa) had 303. Punter Jay Hartong (a Paullina, Iowa, senior), averaged 35 yards per punt — a commendable job. His punt of 81 yards against Dakota Wesleyan is among the nation's leaders.

Junior transfer Scott R. Petersen had the squad's best individual moment, a feat that is described below.

Dana's top scorers had only 12 points each, an indication of the Vikings' lack of offense. The Vikings were only able to score two touchdowns in a game twice and were shut out three times. Juniors Murray and Doug Lemon (Blair) each scored the 12 points. Murray had two touchdowns, and Lemon had six of seven extra points and two field goals.

The defensive unit did a commendable job even though three or four of the opponents had high scores. Dana was outscored 238 to 60, but the fact that the "D" played well most of the season gives hope for a rise in future football fortunes.

Punt Return Nation's Longest

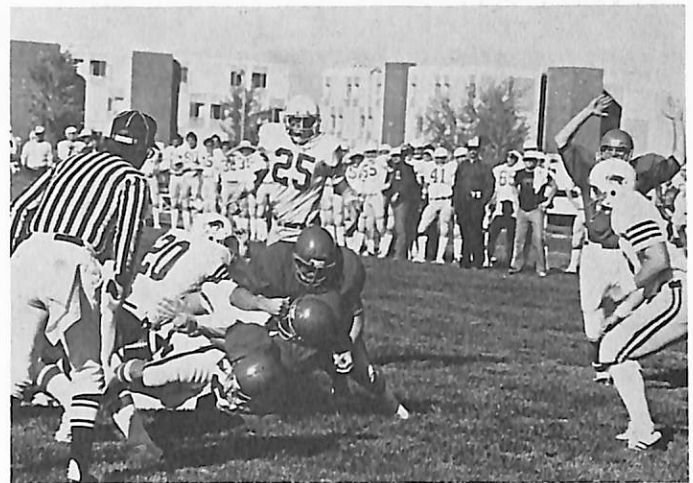
According to statistics from the Division II office of the National Association of Intercollegiate Athletics, a 98-yard punt return by Dana's Scott Petersen against Nebraska Wesleyan at Dana's September 29 Homecoming game is currently the longest in the U.S.

Petersen is a junior from Rockwell, Iowa, and a transfer from Waldorf College.

Volleyball Season Disappoints

A strong defensive effort was weakened by a poor offense to bring about a string of lost matches for the women's volleyball team this fall.

Coach Carol Haussermann '69 reports that with only two seniors leaving the team this year, next fall holds the promise of a better season.



Viking Mark Murray '81 scores a touchdown against Hastings College.

Three Added to Hall of Fame

Former Vikings Russell Moseman and Jan Philby from the 1950's and Harold Hurd from the 1930's were inducted into Dana's Athletic Hall of Fame at the September 29 Homecoming reunion luncheon.

Moseman '57 of Blair won a Little All-American honorable mention in 1956 as a football lineman and all-conference football titles in 1953, 1954, and 1956. He also participated in baseball and track. Today he is vice-president of the Blair Bank and a member of many civic organizations. As president of the Dana Boosters, he leads that group in activities that promote and assist the College's athletic program.

A football, basketball, and baseball player, Jan Philby '58 of Red Oak, Iowa, was Dana Athlete of the Year in 1956-57. During his best day in baseball he was at bat four times and hit three homeruns and a double. A quarterback, Philby was captain of the football team and an all-conference player. He was a coach and teacher until 1978, when he started his own construction company, Griswold Custom Cabinets, in Griswold, Iowa.

Retired real estate agent Harold Hurd '36 of Peoria, Arizona, was a four-year letterman in basketball and football and a 1934 Honor Athlete. In 1932 he played on Dana's undefeated football team. Halfback Hurd set a Dana record in 1934 that still stands when he ran 80 years from a pass play for a touchdown. Hurd's award was accepted for him by President Emeritus C. C. Madsen, who was a fellow student at Dana in the 1930's.



Participating in the Homecoming Athletic Hall of Fame ceremony were Coach Paul Peterson, Jan Philby, Russ Moseman, C. C. Madsen (for Harold Hurd), and President James Kallas.

campus NOTES



Dana turned out to be the winner in the Washington County Bank's grand opening giveaway this summer. Regent Richard Hunt of Blair won the first prize of \$500 and donated it to the College.

Bruce Bergquist, campus pastor and dean of students, received his Ph.D. in English from the University of Nebraska-Lincoln in August.

Art instructor Milton Heinrich has accepted an appointment to the Citizens Committee for Nebraska Studies by the Nebraska Department of Education. The committee will make recommendations on introducing Nebraska studies into the state's elementary and junior high/middle school curricula.

Hans Hansen, who works in Danish radio and television, spent October 16 at Dana studying materials in the Lauritz Melchior Memorial Room. He is gathering information on the famous tenor for a Danish television documentary.

Dr. Alan Brandes, associate professor of music, conducted a church organist clinic in September for the Atlantic Education Center of Iowa Western Community College.

A busload of students traveled to Chicago the weekend of October 20 to visit the special exhibit of paintings by Toulouse-Latrec at the Chicago Art Institute.

Small World Department . . .

There are two parts to this story, and they span 90 years:

— The Dana archives show that Lars Kjaer, a young Danish immigrant, began school here in 1889 — three years after the dedication of Old Main — and graduated from Trinity Seminary in 1896. He subsequently served several United Evangelical Lutheran congregations, including those in Albert Lea, Minnesota, and Brooklyn, New York.

— Sister Mary Reparata is a Benedictine nun of the Order of Perpetual Adoration in Clyde, Missouri. Proud of her Danish ancestry on her mother's side, she determined to learn Danish so that she could keep in touch with relatives she had met in Denmark. When she wrote to Kansas City's Scandinavian Club to ask about Danish lessons, the Club gave her letter to Elcar Nielsen, Danish vice-consul there and a member of the Dana Board of Regents. He told her about Dana, and she made arrangements to spend a week here in September, taking a crash course in Danish and doing research in the library.

When she told her mother of her plans, her mother recalled that Sister Mary Reparata's great uncle had studied here in the last century. His name was Lars Kjaer.

There is a sequel to the story. Sister Mary Reparata writes from Clyde that she "felt right at home" during her week at Dana, and she hopes to visit the campus again.

Homecoming Reunion Classes



1954: l.-r. -- LeVern Nielsen, Roma Geisler Staudenbaur, Marge Poh Christensen, Ann Harms George, Joan Nelson Coffey, Dan Hansen, Ken Ostergaard. (Also present, not pictured, Myrl Hansen Herro, Orman Nelson.)



1969: l.-r., row 1 -- Marcia Methus Young, Elizabeth Buck Anderson, Bill Anderson, Jari Uecker Kolterman, R. Spencer Wedberg; row 2 -- Bill Young, Allan Anderson, Fran Pedersen Anderson, Jane Butler Zieg, Roger Zieg, Brent A. Peterson, Paul Staby.

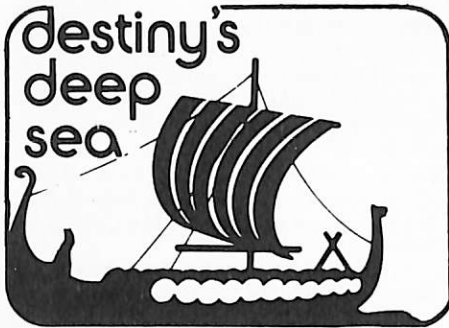


1974: l.-r. -- Laurie Byriel Nelson, Carol Krueger, Nancy Harris Beaman, Ron Beaman, Mary Kay Petersen Hennings, Dail Schole Diedrichsen, Florence Hanson.

Dana's 1979 Homecoming Queen and Her Court



Kristi Kruse '80 (center). Council Bluffs, Iowa, reigned this year as Homecoming queen. Members of her court were (from left): Kathy Appel '80, Eldora, Iowa; Sally Miller '81, Cozad, Nebraska; Mary Asmus '81, Audubon, Iowa; and Mary Heistand '80, Woodbine, Iowa.



JOBS AND PROMOTIONS

1979

ROGER ELLINGSON is an associate analyst at Northwestern Bell in Omaha.

1978

JOAN ROBERT is teaching French and English at Wood River, Nebraska, Rural Junior-Senior High School. Her address is 2222 Bellwood Drive #16, Grand Island, Nebraska 68801.

1977

DAVID and RUTH (TOSO '78) JOHNSEN are living in Barneveld, Wisconsin, where Dave is serving his year of internship at Barneveld/West Blue Mounds Lutheran Parish. Their address there is P.O. Box 13 (53507).

1976

JIM and DEB (HANSEN '73) DUDA are self-employed, making custom windows for homes and churches as the Duda Art Glass Company. Jim was also artist-in-residence this summer at the Stuhr Museum of the Prairie Pioneer in Grand Island, Nebraska. Their address is Route 3, Box 208, Wood River, Nebraska 68883.

JEFF and PATTI (HANSEN '75) LUCE live at 3641 Pawnee Street in Lincoln, Nebraska 68506. Jeff is branch manager for Wells Fargo Armored Services in Lincoln and Grand Island, and Patti is a tax accountant at Central Telephone and Utilities.

DENNIS AND MARTHA (JOHNSON '78) WEL- LER are now at 412 Rhoads Avenue in Boyer- town, Pennsylvania 19512. Dennis is assistant manager at the Burger Chef there.

1975

MARK GRORUD, a recent graduate of Luther Seminary in St. Paul, Minnesota, is associate pastor at First Lutheran Church in Fremont, Nebraska.

MICHAEL McCALLUM is an intern pastor with Third Presbyterian Church in Rockford, Illinois. He will work there through August 1980 and then return to the University of Dubuque Theological Seminary for his final year. His wife, SHIRLEY (KENNETT '77), teaches at the Christian Day Care Center in Rockford. They live at 2625 Hal- sted Road, Apartment #1 (61103).

1974

GRACIA (FOX) Gillming teaches secondary school mathematics in the Centura, Nebraska, public schools. Her husband, Mike, teaches industrial arts in Litchfield. They and their daughter, Te- nise, live in Boelus, Nebraska.

MIRIAM HILLER has served under the World Mis- sion Prayer League in Bangladesh since 1976, working with Dana graduates Art and Kathy Bliese. Miriam has been a Bengali language stu- dent, taught missionary children, supervised an adult literacy program, and worked in village evangelism, Sunday school, and with youth, and served as secretary, treasurer, and translator. She will spend a year of furlough in the U.S. and will be available for speaking beginning in January 1980. Her address contact will be c/o the Rev. Edward Hiller, Box 257, Napoleon, North Da- kota 58561.

1972

BARRETT SCHESKE, 10922 — 97th Street, Ed- monton, Alberta, Canada T5H 2M5, is the Inner City Pastoral minister in Edmonton. The ecu- menical position is funded by the United Church of Canada and the Anglican Church of Canada, and he serves them as an ordained minister of the Evangelical Lutheran Church of Canada.

1971

ADRIENNE SIMPSON is the kindergarten-third grade principal in the Blair Community Schools system.

1970

RODNEY HUTTON is pastor of St. Paul's Luth- eran Church in Franklin Grove, Illinois. He accept- ed the part-time call in order to spend more time writing his Ph.D. dissertation in conjunction with Claremont Graduate School in California.

1969

JAMES BANE, his wife, Ellen, and their three children live in Dumont, Colorado. He is an in- dustrial physician at the AMAX Corporation in Climax, Colorado. Their Dumont address is Box 164 (80436).

1956

FRITZ and JANICE (MOEN '58) YOURA live in Oshkosh, Wisconsin 54901 at 1117 Wisconsin Street. He is a marriage-family counselor with Lutheran Social Services; she teaches piano and has just completed a term as president of the Wis- consin Music Teachers' Association.

1950

ANDREW HANSEN is superintendent of schools in Litchfield, Nebraska.

1935

DAVID GUSTAFSON retired in 1974 after serving as a minister, first in the Nebraska Conference of the Methodist Church and then in the Congre- gational, United Church of Christ, Church. The last church he served was the New York Avenue Congregational Church in Hastings, Nebraska. During the last two years of his ministry he also conducted a Sunday service over KHAS-Radio. He and his wife now live in Aurora, Nebraska.

PUBLICATIONS, ACTIVITIES, HONORS AND AWARDS

1973

STEVE HAHN, Lincoln, Nebraska, has recently published poetry in the *Kansas Quarterly* and an article, "Vision and Reality in *Giants in the Earth*," in the Spring 1979 *South Dakota Re- view*.

1969

BOB RASMUSSEN, who teaches art at Storm Lake, Iowa, high school, was named by the Wit- ter Gallery Guild as its "Artist of the Month" in July.

1966

STEPHEN SIT and his family traveled in Luxem- bourg, Germany, Austria, Italy, Switzerland, France, England, the Netherlands, and Belgium this summer. They also visited relatives in Paris.

1964

JIM NEMETZ is the first girls' coach to receive the *Omaha World Herald's* High School Coach of the Year Award. He has coached the Hastings, Ne- braska, St. Cecilia girls' basketball program since it started three years ago. During that time, the team has won all of its 66 games and three Class C state championships. No other school in the state has won as many consecutive games.

1963

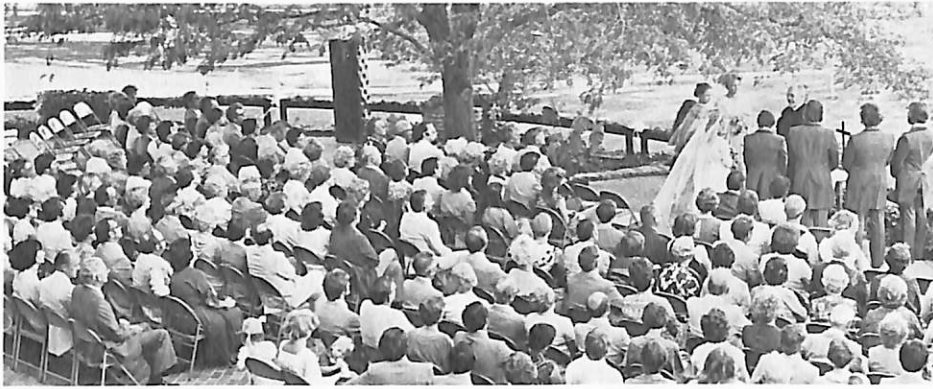
HERBERT KNUDSEN, vice-president of Dana's Alumni Association, has been elected president of the board of directors of the Lutheran Council of Greater Cleveland. The Council's programs range from institutional chaplaincy and nursing home ombudsmen programs to family and children's services, housing, and food and crisis assistance. A member of the Ohio bar, Knudsen is senior patent and license counsel at Snio's Cleveland headquarters.

1961

The Wisconsin Communication Association has given its annual award for outstanding collegiate- level teaching to Dr. MYRVIN CHRISTO- PHERSON, a professor of communication at the University of Wisconsin-Stevens Point. He was cited for the quality of his instruction, the special assistance he gives students, his service to educa- tion and society through his chairmanships of the UW-Stevens Point Senate and the legislative committee of the Governor's Health Policy Coun- cil, and his editorship of the Association's jour- nal.

1958

EUGENE JACOBY, a zone manager for the Gam- ble Stores Division of Gamble-Skogmo, Inc., has been presented the Gamble National Award for having the best increase in sales and the top per- formance in several merchandising events. In August he and his wife, Marlys, moved from Platteville to Phelps, Wisconsin.



What President Kallas called the "second annual Kallas wedding" took place on the terrace of Old Main September 16 when Jacqueline Kallas, the Kallas's younger daughter, married Stephen Hall. She is a communications major at the University of California at San Diego; he produces the 6 p.m. news for ABC's affiliate in San Diego. The Kallas's other daughter, Paris, married Kirby Lewis a year earlier in a ceremony at Black Elk-Neihardt Park, which adjoins the campus.

Calendar of Events

December 2-15

Masterpieces of Christmas Art, Parnassus

December 2

Christmas Open House, The Sights and Sounds of Christmas

December 9

Mid-year commencement, 2 p.m., Dana Hall Auditorium

December 15

Christmas recess begins at end of classes

January 7-11

Visiting Theologians Program, Dr. Nils Dahl, Yale University Divinity School, 8 p.m., Dana Hall Auditorium

January 8

Interim classes begin

January 8-31

Bogart Film Festival, Tuesday and Thursday evenings, Dana Hall Auditorium

February 1

Interim ends

February 4-8

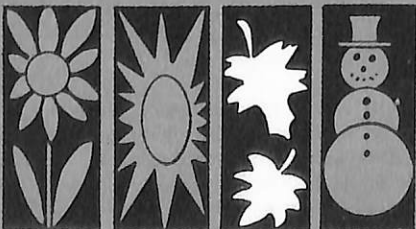
Exhibit of work by Dana students in photography interim, Parnassus

February 4

Second semester classes begin

February 10-14

Visiting Theologians Program, Dr. Donn Moomaw, pastor, Bel Air Presbyterian Church, Los Angeles, 8 p.m., Dana Hall Auditorium



MARRIAGES

1980

JACQUELINE MITSUKO and Rodney LaMoore, September 22, in Omaha.

1978

ALLISON WILLADSEN and Daniel Meyer, August 11, in Lincoln, Nebraska. They live in Lincoln at 1691 Burr Street (68502). Both work in the State Capitol: Allison for State Senator Walter George of Blair, a former Dana faculty member, and Dan for State Senator John DeCamp of Neligh.

1976

JUDI LARSEN and Laurids Pedersen, April 7. They live in Blair at 3020 College Drive. She is a social worker in Omaha.

1974

BONNIE EHM and Henry Hyda, Jr., June 2. She is a financial assistant at Continental Western Insurance Company in Urbandale, Illinois, and he is a laboratory manager and director of quality control for Kemin Industries in Des Moines. They live in Waukee, Iowa 50263, at 120 Christopher. Kathy Ann Hinehline and PATRICK TRIPP, June 22, in Blair. They live in Blair at 1815 Grant. He is a lawyer; she teaches in the Fort Calhoun, Nebraska, school system.

JEANETTE RENANDER and J. William Rhyan, August 5, 1978. She teaches physical education and coaches girls' sports at Holbrook Junior High School in Holbrook, Arizona; he teaches instrumental music at the same school.

1972

MARY ELIZABETH SIMS and Oliver Reed, June 2. She has been drama director in Farmington, New Mexico, for the past four years and now teaches in Indianapolis, Indiana; he attends Indiana University Medical School. They live in Indianapolis at 7872 Jennifer Drive (46224).

BIRTHS Sons

1978

Nathan Wesley, born May 31 to JOHN K. and Abby PETERSEN, 112 Center Street, Clay Center, Nebraska, where John is head football and girls' basketball coach and PE and drivers' education teacher. Their older son, Michael John, was born January 4, 1978.

1977

Nathan Edward, born July 26 to Kevin and RUTH (NILSEN) Campbell, 1245 S. Xavier Street, Denver, Colorado 80219.

1976

Joshua Allen, born June 25 to Mr. and Mrs. MONTY CARR. Monty teaches junior and senior high school English and is the varsity basketball, baseball, and track coach in the Exira, Iowa, public schools. Joshua joins a brother, Daniel.

1975

Kelly Joseph, born July 28 to Larry and RITA (HIEMKE) Hale, 6842 W. Kinsman Street, Wauwatosa, Wisconsin 53213.

1974

Niklus Neil, born July 1 to Norris and KAY (PROBASCIO) Vetter, 505 W. Ninth, Lexington, Nebraska 68850.

Ted Robert, born May 1 to Mr. and Mrs. BILL YATES, 2925 S. 42nd, Lincoln, Nebraska 68506.

1973

David John, born February 21, adopted by Paul and DONNA (JENSSEN) Lacy, 32 Kelley Street, S. Portland, Maine 04106.

1950

GERHARD, Trinity '53, and BETTY (JENSEN '51) NYGAARD returned on October 2 from a 15-day survey of nursing home administration and health care delivery systems in the USSR. Their itinerary included Moscow, Kiev, Tbilisi, Baku and Erevan. The tour was conducted by Professional Seminar Consultants, liaison for international professional education. The Nygaards live at 511 E. Woodley, Northfield, Minnesota 55057.

1941

ETHAN SVENDSEN, professor of industrial arts education at Indiana State University, received the Caleb Mills Distinguished Teaching Award in May. Nominations for the award are made by senior students, faculty members, and alumni. Dr. Svendsen retired at the end of the school year after 32 years on the ISU faculty. He headed his department for 11 years.

1933

THEODORE I. JENSEN, Trinity '33, was honored by Augsburg College as a Distinguished Alumnus at Homecoming ceremonies October 6. Dr. Jensen taught at Trinity Seminary, Blair, from 1944-56 and then at Wartburg Seminary in Dubuque, Iowa. He and his wife now live in Edina, Minnesota.

ADVANCED DEGREES AND CONTINUING EDUCATION

1975

DON BAACK received his MA in business administration in July at Southwest Missouri State University. He is working in Ozark, Missouri.

1974

LINDA (NILSEN) Cohn is in her third year of law school at the University of Colorado. She and her husband, Doug, live at 2527 Gaylord Street in Denver (80205).

1968

GARY and JEAN (BREHM '71) SHELSTAD live in West Germany at Taunussring 28 in Wiesbaden-Delkenheim. Gary is office manager for United of Omaha in Wiesbaden; he received his master of business administration degree from the University of Utah in June. Their son, Ryan Curtis, was born on December 2, 1977.

1962

KATHLEEN (ANDERSON) BLIESE, medical director of the LAMB Project in Parbatipur, Bangladesh, has been named a diplomate of the American Board of Family Practice after passing the ABFP certification examination. Dr. Bliese is now certified in the medical specialty of family practice.

1972

Nathan Roger, born January 3 to ROGER and CAROLYN (DUMKE) CARLSON, 2635 N. 123rd Circle, Omaha. His sister, Kelley, is three. Roger has accepted a position as resident claims adjuster for Alliance Insurance in Sioux Falls, South Dakota.

1971

Carl Christian, born February 27 to CHRIS and KAREN (EVENSEN) EASTLUND, 6444 Clinton Ave. S., Richfield, Minnesota 55423. Chris is a computer consultant at the local power company and is building a computer at home. Karen is teaching nursery school, having just completed courses for licensing in that field.

Philip Eric, born September 13, 1978, to WILLIAM and JUDITH (RENKEN) SHAFF, P.O. Box 1305, Aberdeen, South Dakota 57401. His sister, Cynthia Jean, was born October 11, 1975.

1970

Troy Samuel, born September 3, to JIM and DIANE (MORREIN '69) STARK, 1398 Pike Street, Golden, Colorado 80401. He joins a sister, Mar-in. Jim is a real estate salesman in the Denver area, and Diane is part-time director of Christian education at their church.

1967

Eric James, born June 23 to PAUL and Gail BOND, 19882 Alou Lane, South Bend, Indiana 46637.

Wade Mitchell, born July 30 to HARRY and Mary JUNKER, Route 2, Box 260, Omaha, Nebraska (68134).

**BIRTHS
Daughters**

1977

Lindsay Marie, born April 25 to LYLE and Shar-lynn JOSLIN, 640 N. 12th, Blair. Lyle teaches in the Fort Calhoun school system, and Sharlynn is a nurse.

Jillian June, born September 8 to PAUL and CAR-ROLYN (ROBINSON '78) OESTMANN, Box 394, Fort Calhoun, Nebraska 68023.

1971

Megan Jean, born April 25 to JOHN and GUNA (BUSS '74) MAGNUSON, 2251 Colfax, Blair. John is a certified public accountant who manages the Blair office of Kealy Hamilton Bland and Company.

Amber Stephanie, born October 7, 1978, to Darrell and CHRISTINE (POWELL) Mohr, 4411 N. 91st Street, Omaha (68134).

1970

Rebekah Anne, born June 2 to CHARLES and MARCIA (SMITH '72) GILMORE, 249 Wick-low Drive, South San Francisco, California 94080.

1969

Sarah Anne, born February 15, 1978, to JAMES and JULIE (NIELSEN) JENSEN, 3924 S.E. 133rd, Portland, Oregon 97236. She joins two sisters, Kristen Aline, five, and Karen Marie, three. James is an accountant for a lumber com-pany, and Julie is a part-time nurse.

DEATHS

1930

The Rev. HAROLD JORGENSEN, June 29, in Blair. As pastor of Blair's First Lutheran Church from 1939 to 1959, he also served the Dana com-munity. Jorgensen, a 1930 graduate of Trinity Seminary, was also pastor of parishes in Under-wood and Coulter, Iowa, and in Ashland, Ne-braska. In 1968 he was elected Washington Coun-ty judge, a position he held to 1972. Dana honor-ed him twice: in 1959 with a Diamond Jubilee Award and in 1973 with the College-Community Service Award. Survivors include his wife, EMMA (PETERSEN '29) of Blair; daughter Lois Galloway of Darmstadt, West Germany, and sons PHILIP '55 of Dixon, Illinois; James and John of Omaha, and Mark of Lincoln.

The Rev. CHRISTIAN SCRIVER KLOTH, August 21, in Beaverton, Oregon. A 1930 graduate of Trinity Seminary, he served parishes in Shelby and Ringsted, Iowa; Milwaukee, Wisconsin; and Portland, Oregon. After retiring in 1971, he be-came visitation pastor at St. Matthew Lutheran Church in Beaverton.

1929

ALTA NELSON, June 12, in Ogden, Utah, with burial in Blair. She was a retired registered nurse.

Amy Larsen, July 3, in Lincoln, Nebraska. She was the wife of F. H. Larsen, business manager at Dana in the early 1950's, who lives at 4940 M Street in Lincoln (68510).

Mary Lundsberg, dean of women at Dana in the late 1940's, August 14, in California.

Phonorama '80 Schedule

This year as our telephone appeal ex-pands again, more volunteer callers than ever will be needed to call — and more gen-erous donors will be needed to give to Dana.

Here's the probable schedule of events. As you can see, Phonorama '80 is already on its way! If you live where you can help one evening, send us your name! A light supper and some training on calling precede each session.

1979

- September 26
Blair, Nebraska
- October 8, 15
Blair, Nebraska
- October 18, 22, 25
Student callers
- November 1
Missouri Valley, Iowa
- November 12, 15
Lincoln, Nebraska

1980

- January 14, 15
Los Angeles, California
- January 17
San Francisco, California
- January 21, 22
Denver, Colorado
- January 28, 29
Chicago, Illinois
- January 31
Racine, Wisconsin
- February 4
Washington, D.C.
- February 4
Fremont, Nebraska
- February 5
Omaha, Nebraska
- February 7
Blair, Nebraska
- February 11, 12
Twin Cities, Minnesota
- February 21
Omaha, Nebraska
- February 25, 28
Council Bluffs, Iowa
- February 25
Outstate Iowa
- March 3, 10, 17
Omaha, Nebraska
- March 20, 31
Blair, Nebraska
- April 10
Blair, Nebraska

**Phonorama '80
Dana College
Blair, NE 68008**

Yes, I'll help with this year's Phonorama campaign in _____ on _____ Send details!

Name _____

Address _____

Home phone _____ Office phone _____

**Make your favorite
distinguished alumna/alumnus
a Distinguished Alumna/Alumnus!**

Just tell us below, in a few words, why you think your nominee should be honored. The guidelines are simple. A nominee must have distinguished himself or herself in his or her chosen profession, have given exceptional service to his or her community, church, and Dana, and be present to accept the award at the Recognition Dinner on May 17, 1980. *Nominations, to be considered, must be received by Dana by December 31.*

Nominee _____

Address _____

Reason for nomination (use separate page if necessary)

Your name _____

Address _____

Return to Alumni Office, Dana College, Blair, Nebraska 68008.

DANA COLLEGE
2848 College Drive
Blair, Nebraska 68008

Second Class Postage
Paid at Blair, Nebraska



The Sights and Sounds of Christmas

SUNDAY, DECEMBER 2, 1979

**Call or Write for Information and Reservations:
Public Relations Office, Dana College, Blair, Nebraska 68008.
Telephone 402-426-4101, Ext. 127.**



REPORT

To All Investors
1979



Dana college
Blair Nebraska

Dana College is pleased to list an increasing number of memberships in the three gift clubs: the Tower Circle, the President's Society, and the Century Club. Membership is based on a gift at the particular gift club level or more during any fiscal year (June 1 - May 31). Gifts may be in cash, securities, property or gifts in kind. They may be designated or undesignated, although undesignated gifts are strongly encouraged. Married couples contributing twice the particular gift club level or more will be accorded individual memberships, or, at their option, a joint membership. Pledges will be credited toward membership in the year in which they are actually paid. All gifts are tax deductible under current regulations of the Internal Revenue Service. *Listings include gifts received from June 1, 1978, through May 31, 1979.*

TOWER CIRCLE:
(Gifts of \$1,000 or more)

Anonymous
Mr. and Mrs. Arthur Anholz
Rev. and Mrs. John T. Beck
Mr. and Mrs. Daniel Berke
Mrs. Svend Bramsen
Mr. Herbert Carlson
Miss Margaret Fischer
Mr. and Mrs. Kenneth Hansen
Mr. and Mrs. Leonard Hansen
Dr. and Mrs. Clifford Hanson
Mr. and Mrs. Howard Hanson, Jr.
Mr. Chris Hauge
Mr. and Mrs. Don Hoglund
Mr. and Mrs. Kenneth Holm
Mr. and Mrs. Hugh Hunt
Mr. and Mrs. Richard Hunt
Mr. and Mrs. Robert Hunt
Mr. and Mrs. Irving Jensen
Dr. and Mrs. James Kallas
Mr. and Mrs. Ernest Kehbeck
Mrs. Keith Knudsen
Mr. Rudolph Knudsen
Mrs. Simon Korshoj
Mr. and Mrs. Edward Larsen
Mr. and Mrs. Johannes Linshelm
Dr. and Mrs. Archie Madsen
Dr. and Mrs. C. C. Madsen
Mr. and Mrs. L. K. Madsen
Mr. and Mrs. Aedbert Meyer
Mr. and Mrs. Richard Miller
Mr. and Mrs. Ronald Nelson
Rev. and Mrs. Lloyd Neve
Mr. and Mrs. E. A. Nielsen
Mr. Niels P. Nielsen
Mr. and Mrs. Joseph O'Neill
Mr. and Mrs. W. J. Prieve
Mrs. Christine Rasmussen
Rev. and Mrs. Harry Sorenson
Mr. and Mrs. Martin Staunt
Mr. and Mrs. Donald Swanson
Dr. and Mrs. Adolph Vammen
Mr. and Mrs. Arthur Welch
Mr. and Mrs. Harold Wright
Mrs. T. J. Wurdeman

NON-INDIVIDUAL MEMBERS OF THE TOWER CIRCLE:

American Lutheran Church, Denver, CO
Bethany Lutheran Church, Ruston, NE
Estate of Emma Ahrendt
Estate of Hans Anderson
Estate of Carrie Petersen
First Lutheran Church, Blair, NE
Getty Refining and Manufacturing
Golgotha Lutheran Church, Chicago, IL
Grace Lutheran Church,
Des Moines, WA
Huntel
Johnson and Johnson
Luther Memorial Church, Syracuse, NE
Lutheran Church of the Master,
Omaha, NE
Mutual Life Insurance Company of
New York
Northern Natural Gas
Olson Bros., Inc.
Our Saviour's Lutheran Church,
Aurora, IA
Otto Madsen's Foundation
Scandinavian Club, Kansas City, MO
St. John's Lutheran Church,
Bird City, KS
St. John's Lutheran Church, Eustis, NE
Trinity Lutheran Church, Hartington, NE
United of Blain
Washington County Bank

PRESIDENT'S SOCIETY:
(Gifts of \$500 to \$999)

Mr. Steve Allen
Mr. and Mrs. Kenneth Anderson
Mr. and Mrs. William Archibald
Dr. and Mrs. Dennis Barber
Ms. Elmer Bartschmer
Rev. and Mrs. Walter Behrens
Mr. and Mrs. Richard Boe
Mr. and Mrs. Robert Blobaum
Mrs. Doris Buning
Mr. William Chmosen
Mrs. Esther Daminger
Mr. and Mrs. Thomas H. Damrow
Miss Jane DeVasura
Capt. and Mrs. Robert Ehmeh
Dr. and Mrs. James Evensen
Mr. Earl Fries
Dr. and Mrs. Carl Frost
Mr. and Mrs. David Fulman
Mr. and Mrs. James Gerking
Mr. and Mrs. Donald Haag
Mr. and Mrs. John Helleberg, Sr.
Mr. and Mrs. Waldemar Hempler
Mr. Donald Hoggett
Mr. and Mrs. Oscar Jacobson
Mr. and Mrs. Frederick Jensen
Dr. and Mrs. Robert Jensen
Mr. and Mrs. Paul Jeppesen
Dr. and Mrs. Harold Jerstad
Mr. and Mrs. Gerald Jorgensen
Mrs. Bernhard Koven
Mr. and Mrs. Herbert Knudsen
Mr. and Mrs. Robert Krogh
Mr. and Mrs. Olaf Kroneman, Jr.
Dr. and Mrs. Thomas Lange
Mrs. Ellen Madison
Mr. Lowell Madson
Mr. Leonard Madsen
Mr. Harold Miller
Mr. Clinton Mogen
Mr. and Mrs. John Morava
Rev. and Mrs. Richard E. Morton
Rev. and Mrs. Reid Neve
Mr. and Mrs. Arthur Nielsen, Sr.
Mr. and Mrs. Hans Nielsen

Mr. and Mrs. Clark O'Hanlon
Mr. and Mrs. John O'Hanlon
Rev. and Mrs. James Olsen
Mr. Arthur Peters
Rev. and Mrs. Emory Petersen
Mrs. Esper Petersen
Dr. and Mrs. Elmer Rasmussen
Mr. and Mrs. Kenneth Rhoades
Dr. and Mrs. Walter Rodeberg
Dr. and Mrs. Royce Rowing
Dr. and Mrs. LeLand Rosenau
Mr. Martin Schroeder
Dr. and Mrs. E. T. Sorenson
Mr. and Mrs. Roy Sturm
Mr. and Mrs. Roy Wagnussen
Mr. and Mrs. Dean Wikerson
Mr. and Mrs. Norman Williams
Mr. C. Homer Womble
Mr. and Mrs. Warren Youngstrom

NON-INDIVIDUAL PRESIDENT'S SOCIETY MEMBERS:

Aeone Mail Advertising Company
Arthur Andersen, Co., Foundation
Baird, Holm, McEachen, Pedersen,
Nansen, Haggart, Atlys.
Bankers Life Co.
Brauer's Lutheran Church,
Cole Camp, MO
Calvary Lutheran Church, Omaha, NE
Equitabla Savings and Loan
Esper A. Petersen Foundation
Immanuel Lutheran Church, Omaha, NE
King Christian Fund
Northside Lutheran Church,
Sioux City, IA
Mutual of Omaha
Oliver Lutheran Church, Inglewood, CA
Omaha Cash Register
Our Saviour Lutheran Church,
Plainville, NE
Our Saviour's Lutheran Church,
Lincoln, NE
Peace Church Women, Sterling, CO
Richland Lutheran Church, Richland, WA
Sears Roebuck Foundation
Sheridan Lutheran Church, Lincoln, NE
St. Paul's Lutheran Church,
Burlington, CO
Trinity Lutheran Church, Albert Lea, MN
Zion Lutheran ALCW, Hawatha, KS

CENTURY CLUB: (Gifts of \$100 to \$500)

Dr. and Mrs. Lawrence Abbott
Mr. and Mrs. Henry Ahrendt
Mr. and Mrs. Paul Ahrendt
Miss Ramona Akoff
Mr. and Mrs. Fred Aman
Mr. and Mrs. Warren Amole
Rev. and Mrs. Arnold Andersen
Mr. and Mrs. Harold Andersen
Dr. James L. Anderson
Mr. and Mrs. James S. Andersen
Rev. and Mrs. L. Madsen Andersen
Mr. and Mrs. Lyden Andersen
Mrs. Magda Andersen
Rev. and Mrs. Richard Andersen
Mr. and Mrs. Sigfred Andersen
Ms. Sylvia E. Andersen
Mr. and Mrs. Edward Anderson, Sr.
Dr. and Mrs. Emory Anderson
Mr. and Mrs. Ernest Anderson
Mr. and Mrs. Herbert Anderson
Mr. and Mrs. L. E. Anderson
Mrs. Marion Anderson
Mrs. Olga Anderson
Mr. and Mrs. Ralph Anderson, Jr.
Mr. Ronald Anderson
Mr. and Mrs. Wayne Anderson
Mr. Ingvert Appel
Rev. and Mrs. Larry Arganbright
Mrs. Elmer Aus
Dr. and Mrs. K. C. Bagby
Mr. and Mrs. Gene Banninger
Mr. and Mrs. Peter Bansen
Mr. and Mrs. David Bergren
Mr. and Mrs. Lynn Barnes
Mr. and Mrs. David Barsness
Mrs. Ruth Bauer
Mr. and Mrs. James Beck
Mr. and Mrs. John Beck II
Mr. and Mrs. Marcus Beck, Sr.
Mr. James Benbow
Rev. and Mrs. Bruce Bergquist
Mr. and Mrs. Lyle Bergtraesser
Mr. Steven Bertson
Mr. and Mrs. Harold Berry
Mr. and Mrs. Hilgard Bertelsen
Mr. W. O. Berthelsen
Rev. and Mrs. Robert Berthelsen
Dr. Signe Betsinger
Dr. and Mrs. Roger W. Best
Mr. and Mrs. J. Fred Bienz
Dr. and Mrs. Gary Biesecker
Mrs. Elsie Bird
Dr. and Mrs. Richard Bittner
Dr. and Mrs. Melvin Boehr
Dr. and Mrs. Walter Boeszel
Dr. and Mrs. Virgil Bollensen
Dr. and Mrs. Paul Bond
Mr. and Mrs. Leol Bonnell
Mr. and Mrs. Ray Bowmaster
Mr. and Mrs. Charles Brimh
Mr. and Mrs. Douglas' Bro
Mr. Alan Brodbeck
Mr. and Mrs. Ralph Brown
Mr. and Mrs. Roy Brown
Mr. and Mrs. Gerald Brunning
Mr. and Mrs. John Bruse
Mr. and Mrs. George Buck
Mr. and Mrs. Dan Busse
Mr. and Mrs. Dan Castro
Mr. and Mrs. Robert Capel

Rev. and Mrs. Niels Carlsen
Rev. and Mrs. Stanley Carlsen
Mr. and Mrs. David Carlson
Mr. Louis Carpenter
Mr. and Mrs. Richard Carter
Mr. and Mrs. John Cederberg
Dr. and Mrs. Dale Christensen
Mrs. Hans C. Christensen
Mr. and Mrs. Harry Christensen
Mr. Herbert Christensen
Mr. and Mrs. Howard Christensen
Miss Marion Christensen
Mr. and Mrs. Morris Christensen
Mr. and Mrs. Roy Christensen
Mr. and Mrs. James Clemon
Mrs. Dora Coffey
Mr. August Collis
Mrs. F. Findley Cook
Mr. Anthony DaCruz
Mrs. Gladys Dahms
Mr. and Mrs. Gary Danielson
Mrs. H. P. Danielson
Mr. and Mrs. Lauree DeLaurant
Mr. John DeVasura
Rev. and Mrs. Ray Dickson
Mr. Henry Diehl
Dr. and Mrs. Donald Dreyer
Mr. and Mrs. Robert J. Duden
Maj. and Mrs. David Dymneson
Mrs. Lilian Dyrborg
Mr. and Mrs. Robert Eidsvoog
Mr. and Mrs. John Elling
Mr. and Mrs. Eldon Erbes
Mr. and Mrs. Keith Erickson
Mrs. Vernie Erickson
Mr. and Mrs. Donald Fahrenkrug
Mr. and Mrs. David Falsten
Mr. and Mrs. Rex Fangmeyer
Miss Solveig Farseth
Mr. and Mrs. Lawayne Feit
Mr. and Mrs. William Fisher
Consul and Mrs. Marshall Fredericks
Mr. and Mrs. Ned Fuller
Mr. and Mrs. Jack Gay
Mr. and Mrs. Clinton Gehring
Mr. and Mrs. F. J. Genz
Mr. and Mrs. William Gibbs
Mr. and Mrs. Brent Gilbert
Rev. and Mrs. Joseph Girtz
Dr. and Mrs. Robert Givens
Mr. and Mrs. Kenneth Glover
Ms. Elsie Goetz
Dr. and Mrs. Erwin Goldenstein
Mr. and Mrs. Alan Gordon
Mr. and Mrs. Fred Gordon
Mr. and Mrs. Garry Grabill
Dr. and Mrs. Leslie Grace
Ms. Carolyn Granrud
Mr. and Mrs. John Grindberg
Mr. and Mrs. Robert Gronstad
Rev. and Mrs. Arthur Gronstad
Mr. and Mrs. Ernest Gutsrud
Mr. and Mrs. Edward Guthrie
Mr. and Mrs. Hugh Gwin
Miss Brenda Haack
Mr. and Mrs. Meilyn Haack
Mrs. Shirley Haahr
Mr. and Mrs. Vernald Hagebak
Mr. and Mrs. Everett Hagedorn
Mr. and Mrs. George Hagen
Mr. and Mrs. Ronald Halverson
Mr. Deryl Hamann
Mr. and Mrs. Kenneth Hankins
Miss Augusta Hansen
Miss Barbara Hansen
Dr. and Mrs. Edward A. Hansen
Miss Florence Hansen
Mr. and Mrs. Frank Hansen
Mr. James Hansen
Dr. James L. Hansen
Mr. and Mrs. Keith Hansen
Mr. and Mrs. Marcus Hansen
Mr. and Mrs. Mel Hansen
Mr. and Mrs. Neil Hansen
Mr. P. V. Hansen, Jr.
Mr. and Mrs. Ray Hansen
Mr. and Mrs. Raymond L. Hansen
Mr. and Mrs. Robert Hansen
Rev. and Mrs. Robert Hansen
Mr. Robert D. Hansen
Rev. and Mrs. Thonveid A. Hansen
Mr. and Mrs. Vina Hansen
Mr. and Mrs. Winston Hansen
Mr. and Mrs. Alan Hansen
Mr. G. Donald Hanson
Dr. and Mrs. Roger Hanson
Dr. and Mrs. Verlan Hanson
Rev. and Mrs. William Hanson
Ms. Elsie Hass
Mr. and Mrs. John Haun
Mr. Art Haxson, Jr.
Mr. and Mrs. Corwin Hayes
Mr. and Mrs. Lonnie Hayne
Mrs. Lillian Healy
Mr. and Mrs. Carl Heindorf
Mr. and Mrs. Arnold Henstad
Mr. and Mrs. George Helting
Mr. Ralph Hendricksen
Mr. and Mrs. Frank Hengsvold
Mr. William Henning, Jr.
Mrs. Anita Henningsen
Dr. and Mrs. John Henningsen
Rev. and Mrs. David Herman
Mr. and Mrs. Arvin Hernes
Mr. and Mrs. William Hines
Mr. and Mrs. Leslie Hines
Mr. and Mrs. William Hinnler
Mrs. Emma Hobbs
Mr. and Mrs. Harvey Hodges
Mrs. Carlotta Hoj
Mrs. Jsa Hopkins
Mr. and Mrs. Harold Holm
Mr. and Mrs. Victor Hoegensen
Miss Kay Horton
Dr. and Mrs. C. D. Howard

Mr. and Mrs. J. Kent Howard
Mr. and Mrs. Roger Howland
Judge and Mrs. Walter Huber
Dr. and Mrs. Hugh Hughes
Mr. and Mrs. Emory Hunt, Jr.
Mr. and Mrs. Harold Hurd
Mr. and Mrs. Richard Hurd
Mr. and Mrs. Orthos Huseby
Dr. and Mrs. David Israel
Dr. James D. Iversen
Mrs. Herbert Iverson
Miss Shirley Iverson
Mr. and Mrs. Glen Jackson
Mrs. Esther Jacobson
Rev. and Mrs. Kenneth Jacobson
Mr. Alvin R. Jensen
Rev. and Mrs. Andrew Jensen
Mr. and Mrs. Anker Jensen
Dr. and Mrs. Arnold Jensen
Mr. and Mrs. Darrel Jensen
Mrs. Donald Jensen
Mr. and Mrs. Donald B. Jensen
Mr. and Mrs. Eber Jensen
Mr. and Mrs. Erlend Jensen
Mr. and Mrs. Esra B. Jensen
Mrs. Esther Jensen
Mr. and Mrs. Harry K. Jensen
Mr. and Mrs. Howard C. R. Jensen
Miss Janice Jensen
Mr. and Mrs. Lav Jensen
Mr. Norman E. Jensen
Mr. and Mrs. Richard Jensen
Mr. and Mrs. Robert J. Jensen
Rev. and Mrs. Russell Jensen
Mrs. Thelma Jensen
Rev. and Mrs. Dale Jensen
Mr. and Mrs. Herbert Jeppesen
Mr. Gerhardt Jensid
Mrs. Boy Jensen
Mr. and Mrs. Karl Jensen
Mr. John J. Jessen
Mr. and Mrs. Karl Jetter
Mr. and Mrs. Edwin Jipp
Mrs. Ivan Johansen
Rev. and Mrs. Paul C. Johnson
Ms. Carol Johnson
Mr. and Mrs. Joseph Johnson
Mrs. Mae Johnson
Mr. Norbert Johnson
Rev. and Mrs. Oscar Johnson
Mr. Paul D. Johnson
Mr. and Mrs. Philip Johnson
Mr. and Mrs. Don Jorgensen
Mr. and Mrs. Edvin Jorgensen
Rev. and Mrs. H. Jorgensen
Mr. and Mrs. Herbert Jorgensen
Mr. Palmer Jorgensen
Rev. and Mrs. Sidney Jorgensen
Mr. and Mrs. Stanley Jorgensen
Miss Naomi Kenyon
Mr. and Mrs. Ernest Kersgaard
Rev. and Mrs. William King
Dr. and Mrs. Bernard Klomke
Dr. Leo Kirchoff
Dr. and Mrs. R. T. Kirkwood
Mr. and Mrs. Erhard Knecht
Mr. and Mrs. Luther Kloth
Mrs. Isabel Kopper
Rev. and Mrs. Gerald Kobs
Mr. and Mrs. Karl Koepfen
Miss Dag Koldberg
Mr. and Mrs. Joel Kotterman
Mr. and Mrs. Bernard Kros
Mr. and Mrs. Chris Karstoj
Mrs. Inga Krause
Mr. and Mrs. Kenneth Krogh
Mr. and Mrs. Tim Kusken
Mr. and Mrs. Hans Landbo
Mr. and Mrs. Byron Langenfeld
Mr. and Mrs. Thomas Langenfeld
Mr. and Mrs. Chester Larson
Mr. and Mrs. Dale Larsen
Rev. and Mrs. David Larsen
Mr. and Mrs. Edward Larsen
Rev. and Mrs. Ernest Larsen
Mr. and Mrs. Harold Larsen
Mr. and Mrs. Herbert Larsen
Mr. and Mrs. Phil Larsen
Rev. and Mrs. Silas Larsen
Mr. Sven Larsen
Mr. David J. Larson
Mr. and Mrs. Elmer Larson
Mr. and Mrs. Frederick Larson
Miss Jean Larson
Rev. and Mrs. Lloyd Lorenson
Mr. Victor Launtesen
Mr. and Mrs. Earl Laurson
Rev. and Mrs. Hans Laurson
Dr. and Mrs. Paul Laurson
Mrs. Orville Lawson
Mr. and Mrs. William Lawson
Mr. and Mrs. Forrest Leighton
Mr. and Mrs. J. B. Lincoln
Rev. and Mrs. Luther Lincoln
Mr. and Mrs. Eugene C. Lindblad
Maj. and Mrs. Roger Lippincott
Mr. and Mrs. L. H. Lommen
Mr. and Mrs. J. B. Long
Mr. Oliver Lohlin
Rev. and Mrs. G. Lund
Miss Una Lund
Rev. and Mrs. Charles Maath
Mr. Lester Madsen
Mr. and Mrs. Lowell Madsen
Mrs. Margaret Madsen
Mrs. Rutie Madsen
Mr. and Mrs. Victor Madsen
Mrs. O. Victor Madsussen
Mr. Larry Mai
Dr. F. E. Marsh, Jr.
Mr. Harold Martheds
Mr. and Mrs. Robert Martin
Dr. David Massingill
Mr. Glen McDaniel

Mr. and Mrs. Norman McDowell
Mr. William McMillin
Mr. and Mrs. To Mochler
Mr. and Mrs. Eugene L. Meyer
Mr. and Mrs. Robert Meyer
Mr. Norris Michelson
Mr. and Mrs. Robert Mitek
Ms. Dorothy Miller
Miss Aletta Miller
Mr. Darrell Miller
Mr. and Mrs. Gaydyl Miller
Ms. Margaret Miller
Mr. Michael Miller
Mr. and Mrs. Scott Miller
Maj. and Mrs. Warren Miller
Mr. Robert Monka
Mr. and Mrs. Carl Mogenssen
Mrs. Laura Mogenssen
Mr. and Mrs. Philip Mortensen
Rev. and Mrs. Roy Mortensen
Mrs. Elsie Morton
Mr. and Mrs. Alfred Mosher
Rev. and Mrs. G. H. Mueckling
Mr. and Mrs. Kenneth Muehl
Dr. and Mrs. Philip Myer
Mr. and Mrs. Charles Neal
Miss Edith Neale
Mr. and Mrs. Arno Nelson
Mr. and Mrs. Dan Nelson
Mrs. Erlend Nelson
Mr. and Mrs. Harold Nelson
Miss Olga Nelson
Rev. and Mrs. Robert G. Nelson
Mr. Alton Neve
Rev. and Mrs. Astor E. Neve
Dr. and Mrs. Paul Neve
Miss Susan Neve
Mr. Andrew C. Nielsen
Dr. and Mrs. Arnold Nielsen
Mr. and Mrs. Emerald Nielsen
Rev. and Mrs. John Nielsen
Mr. Orville Nielsen
Mr. Ralph Nielsen
Rev. and Mrs. Clayton Nietfeld
Mr. and Mrs. Victor Nilsen
Mr. and Mrs. John Nilsen
Mr. and Mrs. John Nison
Mr. and Mrs. Melvin C. Nora
Mr. and Mrs. Allan Nora
Mr. and Mrs. Albin Nygaard
Rev. and Mrs. Gerhard Nygaard
Mr. and Mrs. Wayne Oakeson
Mr. and Mrs. Duane Ohtson
Mr. and Mrs. Harry Oht
Mrs. Anna Olsen
Mr. and Mrs. Albin Olson
Mr. and Mrs. Paul Olson
Mr. and Mrs. Roger Olson
Dr. and Mrs. O. R. Owen
Mr. Richard Palm
Mr. and Mrs. Clifford Paulsen
Rev. and Mrs. Raymond Paulsen
Mr. and Mrs. S. Harold Paulsen
Mr. and Mrs. Doyle Pearson
Dr. and Mrs. Arthur Pedersen
Mr. Clement Pedersen
Mrs. Ellen Pedersen
Mr. and Mrs. Enok Pedersen
Rev. and Mrs. L. G. C. Pedersen
Mr. and Mrs. LeRoy Pedersen
Rev. and Mrs. Adolf Petersen
Mr. and Mrs. Alvin Petersen
Mrs. Anna Petersen
Mr. and Mrs. Chas. Petersen
Rev. and Mrs. Emory Petersen
Mr. and Mrs. Evert Petersen
Mr. and Mrs. Howard Petersen
Mr. and Mrs. Hubert Petersen
Mr. and Mrs. Jerry Petersen
Dr. and Mrs. Mildred Petersen
Rev. and Mrs. Paul Petersen
Dr. and Mrs. Peter Petersen
Mr. Roger H. Petersen
Mrs. Viggo J. Petersen
Mr. B. E. Peterson
Mr. and Mrs. Chester Peterson
Rev. and Mrs. Immanuel Peterson
Miss Helen Pfeiffer
Rev. and Mrs. Jimmie Pierce
Mr. and Mrs. Carl Plegard
Miss Lucy Anne Poucher
Mr. and Mrs. Arthur Powell
Mr. Dennis Preston
Mr. and Mrs. Gerald Quirk
Mr. and Mrs. Harold Quirk
Mr. and Mrs. Donald Range
Mr. and Mrs. Harvey Rasmussen
Miss Lois Rasmussen
Mr. Paul N. Rasmussen
Miss Phyllis Rasmussen
Capt. and Mrs. Richard Rasmussen
Mr. and Mrs. Warren Rasmussen
Mrs. Wilma Rasmussen
Mr. and Mrs. Darrell Rath
Dr. and Mrs. Hans Rath
Mr. and Mrs. Paul Rath
Myrtle A. Rauch
Maj. and Mrs. Harley Reector
Miss Lucile Rehder
Mr. and Mrs. Frank Reisinger
Mr. and Mrs. Wayne Reith
Mr. and Mrs. Frank Roylek
Mr. J. Hilton Rhodes
Mr. and Mrs. Brian Rich
Mr. and Mrs. Ludwig Richter
Mr. and Mrs. Orval Roacker
Miss Kathryn Ringhand
Mrs. Phyllis Ringler
Miss Cecelia Rohwer
Mrs. George Rohwer, Jr.
Mr. and Mrs. Phil Rolland
Mr. and Mrs. Svend Ronlov
Mr. Aldo Rostan
Mr. and Mrs. Wayne Ruby
Rev. and Mrs. Alvin Rutter
Mr. and Mrs. Garland Runyon

Mr. and Mrs. Kelly Ryan
Mr. and Mrs. Robert Ryan
Mr. and Mrs. Raymond Ryder
Mr. Henry Sandberg
Mr. Herman Sandberg
Mr. and Mrs. Roger Sanders
Mr. and Mrs. Walter Schacht
Rev. and Mrs. Robert Schaff
Rev. and Mrs. A. G. Scharf
Mr. and Mrs. Francis Schmel
Mr. Carl Schmitzer
Mrs. Iris Scholle
Mr. and Mrs. Alexander Schreider
Mr. and Mrs. C. C. Schroeder
Mrs. Christine Schubert
Mr. D. H. Schueneman
Mr. and Mrs. Erling Schultz
Mr. and Mrs. Holger Schultz
Rev. and Mrs. Alton Schwandt
Mrs. Harold Seaman
Mr. and Mrs. Charles Seefus
Mr. and Mrs. Gary Sheistad
Mr. and Mrs. Ned Shupley
Mr. and Mrs. John Stottwell
Mr. and Mrs. Alfred Sick
Mr. John Sides
Mr. and Mrs. Anker Siersbeck
Rev. Lawrence Siersbeck
Mr. and Mrs. Ronald Siersbeck
Dr. and Mrs. Neal Sievers
Dr. and Mrs. Rudy Sievers
Dr. and Mrs. Jim Simmons
Mr. A. V. Simonsen
Mr. and Mrs. Sigvald Skaar
Mr. Gale P. Skullstad
Mr. and Mrs. Leo Skoubo
Mr. and Mrs. Clark Smith
Mr. and Mrs. Elmer Smith
Mr. and Mrs. Peter Smith
Mr. and Mrs. William Smith
Mr. Harry Snyder
Mr. and Mrs. Arnold Soe
Dr. and Mrs. Ewald Sorensen
Dr. and Mrs. Harold Sorensen
Mr. and Mrs. Jimmy Sorensen
Mr. and Mrs. Severin Sorensen
Mrs. Elsie Spiker
Mr. and Mrs. Andrew Staby
Rev. and Mrs. Paul Staby
Mr. and Mrs. George Stahnke
Miss Marilyn Stahnke
Mrs. Gladys Stavelly
Mr. and Mrs. Robert Stegmaier
Mr. and Mrs. Tom Stevens
Mr. and Mrs. Paul H. Strecker
Mrs. Laura Sumpter
Judge and Mrs. Leonard V. B. Sutton
Mr. and Mrs. Ingvard Svarre
Rev. and Mrs. Edwin Svendsen
Mr. and Mrs. Ethan Svendsen
Mrs. Mary Jane Swanson
Mr. and Mrs. John Taht
Rev. and Mrs. Irving Tange
Rev. and Mrs. Reynold Tange
Mr. and Mrs. James Taylor
Rev. J. Harold Tennessee
Mr. and Mrs. Lewis Tesdahl
Mr. and Mrs. Kenneth Theilen
Mr. and Mrs. E. T. Thompson
Mr. Ernest Thompson
Mr. Howard Thompson
Mr. and Mrs. Oscar Thompson
Mr. and Mrs. Armand Thomsen
Rev. and Mrs. F. W. Thomsen
Rev. and Mrs. Jens H. Thomsen
Rev. and Mrs. Mark Thomsen
Rev. and Mrs. Henry Thorberg
Mr. and Mrs. Myron Thorberg
Mr. and Mrs. Lorenz Thorgren
Mr. Patrick Tripp
Mr. and Mrs. Bill Trisdale
Mr. and Mrs. Ned Tyson
Mr. and Mrs. Bernard Vaaler
Mr. and Mrs. Daryl Valder
Rev. and Mrs. Peter Vammen
Mr. and Mrs. Frank VanSteenhoven
Mr. and Mrs. Thomas Vierk
Mr. and Mrs. Arndt Vig
Mr. Marius Vig
Mrs. Peter Vig
Mr. and Mrs. G. Richard Vinton
Mr. and Mrs. Gordon Vinton
Mr. and Mrs. Keith Vinton
Mr. Ralph Vinton
Mr. and Mrs. Robert Vinton
Mr. and Mrs. Howard Vogel
Rev. and Mrs. Robert Vogel
Mr. and Mrs. James Wagner
Mr. and Mrs. J. Wallace
Mr. and Mrs. John Wallman
Mr. Larry Wallman
Mr. Wayne Wallman
Mr. and Mrs. Leland Walz
Mr. and Mrs. Joseph Warman
Mr. Gary Warner
Mr. and Mrs. Kenneth Weaver
Mr. and Mrs. Fredrick Weber
Mr. and Mrs. John Whitesel
Mr. and Mrs. Louise Winter
Mr. and Mrs. Sophus K. Winther
Mr. and Mrs. Philip Wittig
Mr. and Mrs. Judson Wolf
Mr. and Mrs. Jess Wright
Mr. and Mrs. Peter Yeager
Mr. and Mrs. Allan Yowell
Miss Patricia Zabel
Rev. and Mrs. Roger Zieg
Dr. and Mrs. William Zimmerman
Mr. and Mrs. Abvin Zwanziger

NON-INDIVIDUAL CENTURY CLUB MEMBERS:

Aerospace Corp.
Agrico Chemical
Air Products & Chemicals
ALCW SW NEbr Conf., Elwood, NE
American Lutheran Church, Belleville, KS
American Lutheran Church, Lincoln, NE
American Lutheran Church, Gothenburg, NE
American Lutheran Church, Omaha, NE
American Lutheran Church, Minneapolis, MN
Amoco Foundation
Arthur Young Foundation
Ascension Lutheran Church, Colorado Springs, CO
Atonement Lutheran Church, Boulder, CO
Atonement Lutheran Church, Overland Park, KS
Bank of America Foundation

Bethany Lutheran Church, Elkhorn, NE
Bethany Lutheran Church, Minden, NE
Blair Feed Mill
Blair Glass Company
Blair Kiwanis Club
Blair Lions Club
Blair Lumber & Grain Co.
Blair Rotary Club
Blair West Pharmacy
Blue Valley Conf. of ALC, Beatrice, NE
Bluffs Trinity Lutheran Church, Fremont, NE
CNA Foundation
Calvary Lutheran, Arvada, CO
Central Telephone & Utilities
Champion International
Christ Lutheran, Omaha, NE
Christ Lutheran, Stover, MO
Christ the Servant, Norfolk, NE
Class of '78
Computel Inc.
Concrete Equipment Co.
Concrete Sectional
Dacotah Youth Congress, Mitchell, SD
Danish Brotherhood #14, Kenosha, WI
Danish Brotherhood #64, Rockford, IL
Danish Brotherhood #144, Dike, IA
Danish Brotherhood #206, Blair, NE
Danish Brotherhood #325, Bayside, NY
Denmark Cheese
Denver Conf. TALC, Denver, CO
Des Moines Conf. ALCW, Jewell, IA
Ekklesia Koinonias
Elk Horn Conf. ALCW, Irwin, IA
Equitable of Iowa
Estate of Frank Baumgart
Estate of Hans Haugen
Fairway-Propane
Faith Lutheran, Golden, CO
Faith Lutheran, Seward, NE
Freeman's Fund Amer. Foundation
Frestone Tire and Rubber Co.
First English Lutheran Church, Kimball, NE
Fraternal Order of Eagles
General Committee of Eastern Lodges of DB, Warwick, RI
Good Shepherd Lutheran Church, Hastings, NE
Grace Lutheran, Cook, NE
Hinky Dinky
Holy Shepherd Lutheran Church, Lakewood, CO
Hope Lutheran ALCW, Burr, NE
Hope Lutheran, Rush Center, KS
Honeywell Fund
Household Finance Corp.
Immanuel Lutheran, Lodgepole, NE
Immanuel Lutheran Church, Chadron, NE
Immanuel Lutheran, Rushville, NE
Immanuel Lutheran, Glenvil, NE
Immanuel Lutheran, Coleridge, NE
Inter Business Machines, Corp.
Interstate Harvestore
J. C. Penney Co.
Johnson Wax Fund, Inc.
Joy Lutheran, Parker, CO
Kealy and Hamilton
Kountz Mem. Evang. Church, Omaha, NE
Lord of Love, Belton, MO
Lost Island Lutheran Church, Ruthven, IA
Lutheran Brotherhood #8
Lutheran Church of the Master, Lakewood, CO
Lutheran Church of the Redeemer, Racine, WI
Lutheran Mutual Life Insurance Co.
Martin Lutheran, Johnson, NE
Memorials to Mel Boehr
Memorials to J. Jacobsen
Memorials to Laurits Pedersen
Merck Company Foundation
Mobil Foundation, Inc.
Montgomery Ward Foundation
Monsanto Fund
Mountain View Lutheran Church, Thornton, CO
Nebraska Iowa Supply
Nebraska State Savings
Nebraska Synod Lutheran Church in America, Omaha, NE
NE Conf. ALCW, Plainview, NE
Nemaha Valley Schools
Northern Colo. Conf., Lodgepole, NE
Northern KS Conf., Gaylord, KS
Northwestern Bell Telephone
Our Savior Lutheran ALCW, Denmark, WI
Our Savior Lutheran ALCW, Norway, KS
Our Savior's Lutheran Church, Danneberg, NE
Owen Foundation
Peace Lutheran Church, Sterling, CO
Peace Lutheran, Deshler, NE
Peace Lutheran, Plymouth, NE
Pearson & Danner
Peat Marwick Mitchell Foundation
Peoples Miz Shop
Pizza Hut
Prince of Peace, Omaha, NE
S.E. Smith & Sons
Sawley Stores, Inc.
Salem Lutheran, St. Francis, KS
Shepherd of the Hills, Ft. Collins, CO
South Central NE Conf., Byron, NE
Southwestern Bell Telephone
Southwestern Kansas Conf. ALCW, Wilson, KS
St. James Lutheran ALCW, Humboldt, NE
St. John Ev. Lutheran Church, Daykin, NE
St. John Lutheran Church, Athol, KS
St. John's Lutheran Church, Kensington, KS
St. Mark's Lutheran Church, Aurora, CO
St. Mark's Lutheran Church, Chula Vista, CA
St. Mark's Lutheran Church, Olathe, KS
St. Mark's Lutheran Church, St. Paul, NE
St. Mark's Lutheran Church, Burlington, CO
St. Paul's Lutheran Church, Cole Camp, MO
St. Paul's Lutheran Church, Hebron, NE
St. Paul's Lutheran Church, Neola, IA
St. Paul's Lutheran Church, Oklahoma City, OK
St. Paul's Lutheran Church Women, DeWitt, NE
St. Peters Lutheran Church, Bassett, NE
St. Peters Lutheran Church, Byron, NE
The American Lutheran Church, Minneapolis, MN
Trinity Evangelical Lutheran Church, Clinton, OK
Trinity Lutheran ALCW, Stover, MO
Trinity Lutheran Church, Albert Lea, MN
Trinity Lutheran Church, DeWitt, NE
Trinity Lutheran Church, Hartington, NE
Trinity Lutheran Church, Newman Grove, NE
Trinity Lutheran Church, Russellville, MO
Trinity Lutheran Church, Westbrook, ME
Underwood Lutheran Women
Underwood, IA
United Lutheran Church, Hampton, NE
United Lutheran Church, Laurel, NE
United Lutheran Church Women, Laurel, NE
Upper Wolf Lutheran Church Sunday
Westwood Lutheran Church, Shawnee Mission, KS
Zion American Lutheran Church, Loveland, CO
Zion Lutheran ALCW, Hiawatha, KS
Zion Lutheran Church, Amoret, MO
Zion Lutheran Church, Creighton, NE
Zion Lutheran Church, Everest, KS
Zion Lutheran Church, Phillipsburg, KS

Trinity Lutheran Church, Russellville, MO
Trinity Lutheran Church, Westbrook, ME
Union Pacific Corp.
United Lutheran Church, Hampton, NE
United Lutheran Church, Laurel, NE
United Lutheran Church Women, Laurel, NE
Washington Co. Mutual Ins. Co.
Western Electric
Weyerhaeuser Co. Foundation
Zion Lutheran Church, Loveland, CO
Zion Lutheran Church, Amoret, MO
Zion Lutheran Church, Creighton, NE
Zion Lutheran Church, Phillipsburg, KS

REGENTS

Rev. and Mrs. Richard Andersen
Rev. Howard Cole
Mr. and Mrs. Loyd Dykman
Dr. and Mrs. James Evensen
Miss Margaret Fischer
Mr. David Graven
Mr. and Mrs. Kenneth Hansen
Mr. and Mrs. Howard Hanson, Jr.
Mr. and Mrs. Kenneth Holm
Mr. and Mrs. Richard Hunt
Mr. and Mrs. Irving Jensen
Mr. and Mrs. Ben Krantz
Mr. and Mrs. Johannes Lindholm
Rev. and Mrs. Charles Maahs
Dr. and Mrs. Archie Madsen
Mr. Harold Miller
Mr. and Mrs. Elcar Nielsen
Mr. and Mrs. Jens Nielsen
Rev. and Mrs. James Olsen
Dr. and Mrs. Omer Reed
Dr. and Mrs. Royce Ronning
Rev. and Mrs. Alton Schwandt
Congressman and Mrs. Paul Simon
Mr. and Mrs. Lorenz Thorgren
Mr. and Mrs. Richard Zion

DANISH AMERICANS

Miss Edith Andersen
Mr. Edward Andersen
Mrs. Elizabeth Andersen
Mr. John Andersen
Mrs. Lillian Andersen
Mrs. Magda Andersen
Mr. and Mrs. Richard Anderson
Mr. Sigfred Andersen
Mr. and Mrs. James Anderson
Mr. and Mrs. Oscar Anderson
Mrs. G. Axelsen
Mrs. S. Bakken
Mr. Peter Bansen
Mrs. Emma Bertelsen
Mr. Hjalmar Bertelsen
Mr. N. Berthelsen
Mr. and Mrs. Viggo Berthelsen
Dr. Signe Betsinger
Mrs. Helga Bohn
Mrs. Rose Bolleson
Mrs. Esther Christensen
Mr. Harry Christensen
Mrs. Harry Christensen
Mrs. Jennie Christensen
Mr. and Mrs. Morris Christensen
Mr. and Mrs. Nathaniel Christensen
Mrs. Aaron Christensen
Mrs. Elmer Christensen
Mrs. Julian Christensen
Mr. Carl J. Christoffersen
Mr. Fred Christophersen
Mr. and Mrs. Einar Danielsen
Mr. Otto Ehlers
Mr. and Mrs. Esie Elgaard
Mr. and Mrs. Kurt A. Erslev
Mr. Bill Fisher
Miss Mildred Forseth
Mr. Marshall Fredericks
Rev. Karl Fullgrabe
Mr. and Mrs. Evin Grunberg
Mr. and Mrs. Hugh Gwin
Mr. and Mrs. Everett Hagedorn
Dr. A. Hansen
Mr. Arthur Hansen
Miss Augusta Hansen
Mr. and Mrs. Franklin Hansen
Mrs. Laurette Hansen
Mr. and Mrs. Mel Hansen
Mr. and Mrs. Raymond Hansen
Mr. and Mrs. Vena Hansen
Mr. Chris Hauge
Mr. Carl Heindorf
Mrs. Chris Holding
Mrs. Anna Henningsen
Ms. Elizabeth Hermann
Mrs. Caroline Hoj
Mr. and Mrs. Harold Holm
Mr. Peter Glen Holmen
Mr. Harold Ingthorpe
Mr. and Mrs. Oscar Jacobsen
Mr. Alvin Jensen
Ms. Christine Jensen
Mr. Erik Jensen
Mr. Frederick Jensen
Ms. Juliana Jensen
Mr. and Mrs. Nels Jensen
Mr. and Mrs. Hans C. Jeppesen, Jr.
Mr. James Jepsen
Ms. Mildred Jepsen
Mr. Karl Jensen
Mr. Karl Jetter
Mrs. Minnie Johnson
Mr. Charles Johnson
Mr. Joseph Johnson
Mrs. Killian Johnson
Mr. and Mrs. Edward Jonassen
Mr. and Mrs. Edvin Jorgensen
Mr. George Jorgensen
Mr. Palmer Jorgensen
Mr. and Mrs. Robert Jorgensen
Mr. and Mrs. Ernest Kehlbeck
Mr. Niels Kjeldsen
Rev. Ole Knudsen
Mr. and Mrs. Chris Korshoj
Mrs. August Kroy
Mr. and Mrs. Olaf Kroneman, Jr.
Mr. and Mrs. Marius Landbo
Mrs. Einar Larsen
Mr. Harold Larsen
Mrs. Olga Larsen
Mr. Olaf Larsen
Mr. and Mrs. Paul Larsen
Mr. Sven Larsen
Mrs. Orville Lawson
Mrs. C. H. Linquist
Mrs. Martha Loft
Mrs. Ellen Madison
Mrs. Anna Maddson
Mrs. Axel Maddson
Mr. and Mrs. Victor Madsen
Mr. and Mrs. Peter B. Marcussen

Mr. and Mrs. K. V. Markussen
Mr. Ib Melchior
Mrs. Margaret Miller
Mr. Holgar Mortensen
Mr. Frank Nelsen
Miss Emma Nelson
Mrs. Erlend Nelson
Ms. Olga Nelson
Mr. William Nelson
Mrs. N. Nessgaard
Mr. Aage E. Nielsen
Mr. Adolph Nielsen
Mr. and Mrs. Carl W. Nielsen
Mr. and Mrs. Donald N. Nielsen
Mr. and Mrs. Hans Nielsen
Mr. and Mrs. Herman Nielsen
Mr. and Mrs. Niels Nielsen
Mrs. Russell Nielsen
Mr. Vance Nielsen
Mr. Wm. Anton Nielsen
Mr. and Mrs. John Nissen
Mr. and Mrs. Elmer Norgaard
Mrs. Ella Olsen
Mr. and Mrs. Lew Olsen
Olson Bros. Inc.
Mrs. Chris Paulsen
Mr. Clement Pedersen
Mr. Emert Pedersen
Mr. and Mrs. Enck Pedersen
Mrs. Cecia Petersen
Mr. Charles Petersen
Mr. and Mrs. Chas. Petersen
Miss Donna Jean Petersen
Mr. George R. Peterson
Mr. and Mrs. Howard Peterson
Mr. and Mrs. M. Petersen
Mr. and Mrs. Chester Peterson
Mr. and Mrs. Carl Pilegard
Mr. and Mrs. Loyd Pleahn
Mr. and Mrs. Chris Rasmussen
Mrs. Christine Rasmussen
Miss Lucille Rehder
Mr. M. Rolstad
Mr. Svend Ronlov
Ms. Dawn Rosenvinge
Mr. Herman Sandberg
Lester Schaefer
Mr. A. Simonsen
Mr. Jens Simonsen
Mr. Sigvald Skaar
Mr. Myron Skeen
Mr. Mike Sorensen
Mr. and Mrs. R. Sorensen
Mrs. A. R. Sumpter
Ms. Clare Sundby
Mr. and Mrs. Ingvard Svarre
Mr. Henrik Teilmann
Mr. and Mrs. Lewis Tesdahl
Mr. Lester Thomsen
Mr. Oscar Thompson
Mr. Otto Thompson
Mr. Marius Vig
Mr. and Mrs. Roy Wilhelmson
Mr. and Mrs. Sophus K. Winther

DANISH AMERICAN ORGANIZATIONS

Dagmar Rebekah Lodge #142
Danish Brotherhood #14, Kenosha, WI
Danish Brotherhood #35, Chicago Heights, IL
Danish Brotherhood #64, Rockford, IL
Danish Brotherhood #144, Dike, IA
Danish Brotherhood #172, Wallingford, PA
Danish Brotherhood #206, Blair, NE
Danish Brotherhood #217, Gilmore City, IA
Danish Brotherhood #325, Bayside, NY
Danish Club of Detroit, Detroit, MI
Danish Sisterhood #30, Kansas City, KS
Danish Sisterhood #99, South Bend, IN
Danish Sisterhood #119, Omaha, NE
General Committee of Eastern Lodges of Danish Brotherhood, Warwick, RI
Scandinavian Club, Kansas City, MO

CHURCHES AND CHURCH ORGANIZATIONS

ALCW Smith Center, KS
ALCW SW NEbr Conf., Elwood, NE
American Lutheran Church, Belleville, KS
American Lutheran Church, Lincoln, NE
American Lutheran Church, Gothenburg, NE
American Lutheran Church, Fairbury, NE
American Lutheran Church, Denver, CO
American Lutheran Church, Omaha, NE
Ascension Lutheran Church, Colorado Springs, CO
Atonement Lutheran Church, Boulder, CO
Atonement Lutheran Church, Overland Park, KS
Bethany Lutheran Church, Elkhorn, NE
Bethany Lutheran Church, Ruskin, NE
Bethany Lutheran Church, Minden, NE
Bethlehem Lutheran Church Women, Brush, CO
Bethlehem Lutheran Church Women, Snyder, CO
Blue Valley Conf. of ALC, Beatrice, NE
Bluffs Trinity Lutheran Church, Fremont, NE
Brauerwille-Immanuel, Cole Camp, MO
Calvary Lutheran Church, Arvada, CO
Calvary Lutheran Church, Omaha, NE
Calvary Lutheran Church Women, Scottsbluff, NE
Centennial Lutheran Church, Englewood, CO
Christ Lutheran Church, Omaha, NE
Christ Lutheran Church, Stover, MO
Christ the Servant, Norfolk, NE
Dacotah Youth Congress, Mitchell, SD
Denver Conf. TALC, Denver, CO
Des Moines Conf. ALCW, Jewell, IA
Elk Horn Conf. ALCW, Irwin, IA
Emma Lutheran Church, Kennard, NE
Epiphany Lutheran Church, Dayton, OH
Faith Lutheran Church, Golden, CO
Faith Lutheran Church, Seward, NE
Faith Lutheran Church Women, Talmage, NE
First English Lutheran Church, Kimball, NE
First Lutheran Church, Blair, NE
Fulton Lutheran Church, Moorland, IA
Golgotha Lutheran Church, Chicago, IL
Good Shepherd Lutheran Church, Hastings, NE
Grace Lutheran Church, Cook, NE
Grace Lutheran Church, Des Moines, IA
Holy Shepherd Lutheran Church, Lakewood, CO
Hope Lutheran ALCW, Burr, NE
Hope Lutheran Church, Rush Center, KS
Immanuel Lutheran Church, Chadron, NE
Immanuel Lutheran Church, Coleridge, NE
Immanuel Lutheran Church, Glenvil, NE
Immanuel Lutheran Church, Omaha, NE
Immanuel Lutheran Church, Orum, NE
Immanuel Lutheran Church, Rushville, NE
Immanuel Lutheran Church Women, Coleridge, NE
Immanuel-Zion Lutheran Church, Albon, NE
Joy Lutheran Church, Parker, CO
Kountz Memorial Evangelical Lutheran Church, Omaha, NE
Lord of Love Lutheran Church, Belton, MO
Lost Island Lutheran Church, Ruthven, IA
Lutheran Church of the Cross, Evergreen, CO
Luther Memorial Church, Syracuse, NE
Lutheran Church of the Master, W. Los Angeles, CA
Lutheran Church of the Master, Lakewood, CO
Lutheran Church of the Master, Omaha, NE
Lutheran Church of the Redeemer, Ft. Morgan, CO
Lutheran Church of the Redeemer, Racine, WI
Martin Luther Church, Johnson, NE
Morningside Lutheran Church, Sioux City, IA
Mountain View Lutheran Church, Thornton, CO
Nebraska Synod Lutheran Church in America, Omaha, NE
Northeast NE Conf. ALCW, Plainview, NE
Northern Colo. Conf., Lodgepole, KS
Northern KS Conference, Gaylord, KS
Overland Lutheran Church, Inglewood, CA
Our Savior Lutheran ALCW, Denmark, WI
Our Savior Lutheran Church, McCook, NE
Our Savior Lutheran Church, Plainview, NE
Our Savior Lutheran Church, Audubon, IA
Our Savior's Lutheran Church, Danneberg, NE
Our Savior's Lutheran Church, Denver, CO
Our Saviour's Lutheran Church, Lincoln, NE
Peace Church Women, Sterling, CO
Peace Lutheran Church, Deshler, CO
Peace Lutheran Church, Plymouth, NE
Peace Lutheran Church, Sterling, CO
Prince of Peace, Omaha, NE
Prince of Peace Lutheran ALCW, Geneva, NE
Richland Lutheran Church, Richland, WA
Salem Lutheran Church, St. Francis, KS
Salem Lutheran Church Women, Lenexa, KS
Salem Lutheran Church, Paulina, IA
Shepherd of the Hills, Ft. Collins, CO
Sheridan Lutheran Church, Lincoln, NE
South Central NE Conf., Byron, NE
SW KS Conf. ALCW, Wilson, KS
St. James ALCW, Humboldt, NE
St. John's ALCW, Kanawha, IA
St. John Ev. Lutheran Church, Daykin, NE
St. John's Lutheran Church, Athol, KS
St. John's Lutheran Church, Bird City, KS
St. John's Lutheran Church, Eustis, NE
St. John's Lutheran Church, Kensington, KS
St. John's Lutheran Church, Windsor, CO
St. John's Lutheran Church Women, Eustis, NE
St. Mark's Circle, St. Paul, MN
St. Mark's Lutheran Church, Aurora, CO
St. Mark's Lutheran Church, Chula Vista, CA
St. Mark's Lutheran Church, Olathe, KS
St. Mark's Lutheran Church, St. Paul, NE
St. Paul Evang. Lutheran Church, Lohman, MO
St. Paul Lutheran Church, Byron, NE
St. Paul Lutheran Church, Palmer, KS
St. Paul Lutheran Church Women, Palmer, KS
St. Paul's Lutheran Church, Burlington, CO
St. Paul's Lutheran Church, Cole Camp, MO
St. Paul's Lutheran Church, Hebron, NE
St. Paul's Lutheran Church, Neola, IA
St. Paul's Lutheran Church, Oklahoma City, OK
St. Paul's Lutheran Church Women, DeWitt, NE
St. Peters Lutheran Church, Bassett, NE
St. Peters Lutheran Church, Byron, NE
The American Lutheran Church, Minneapolis, MN
Trinity Evangelical Lutheran Church, Clinton, OK
Trinity Lutheran ALCW, Stover, MO
Trinity Lutheran Church, Albert Lea, MN
Trinity Lutheran Church, DeWitt, NE
Trinity Lutheran Church, Hartington, NE
Trinity Lutheran Church, Newman Grove, NE
Trinity Lutheran Church, Russellville, MO
Trinity Lutheran Church, Westbrook, ME
Underwood Lutheran Women
Underwood, IA
United Lutheran Church, Hampton, NE
United Lutheran Church, Laurel, NE
United Lutheran Church Women, Laurel, NE
Upper Wolf Lutheran Church Sunday
Westwood Lutheran Church, Shawnee Mission, KS
Zion American Lutheran Church, Loveland, CO
Zion Lutheran ALCW, Hiawatha, KS
Zion Lutheran Church, Amoret, MO
Zion Lutheran Church, Creighton, NE
Zion Lutheran Church, Everest, KS
Zion Lutheran Church, Phillipsburg, KS

WASHINGTON COUNTY BUSINESSES AND ORGANIZATIONS

A. & K. Repair
A's Alignment Service
Anderson Pharmacy
Arndt Hardware
Arnes Liquor Store
B & C Shop
Gary Baker, Insurance
Bauer Truck Lines
Blair Bakery
Blair Bank
Blair Bootery
Blair Dairy
Blair Feed Mill
Blair Florist
Blair Flour Mill
Blair Glass Company
Blair Golf Club
Blair Kiwanis Club
Blair Lions Club
Blair Lumber & Grain Co.
Blair Manufacturing Co.
Blair Meat Plant
Blair Redi Mix Inc.
Blair Rotary Club
Blair Supply Co.
Blair Vision Clinic
Blair Water Treatment Company
Blair West Pharmacy
Bohs Conoco Service
Bud's Welding Repair
C. J. Tire Sales
Campbell Funeral Home
Candy's Closet
Carfree Travel
Carries Paint and Decor
Central Nebr. Telephone
Cheryl's Beauty Salon
Clifton Hotel
Coast to Coast Store
Computel, Inc.
Concrete Equipment Company
Custom T Shirt Shop
Daisy Queen
Daisy Basket
Enterprise Publishing Company
Equitable Savings & Loan
Fabric Village
Fairway Propane
Fay's Fish Heating & Plumbing
Fay's Oil Co.
Fretwell Order of Eagles
Fl. Calhoun Stone Co.
Gamble Store
Galdano Painting Const.
Good Earth Plants
Hansen Agency
Hardy Construction
Hayes Electric
Hinky Dinky
Huntel
Interstate Harvesters Inc.
Jensen Well Company
Jim's CB Radio
Julie Ann Shop
Kathy and Hamilton
Kathy's Fashions
Kirk Survey and Eng.
Klopp's Jewelry and Gifts
Krohn Construction Co.
Larsen Real Estate
Larsen and Jipp
Litco Inc.
Long's OX Tire
Lystad's Inc.
Mar-Bee Salon
Mar-Bee Chest Discount
Midland General
Midwest Service Supply
Miller-Rolland TV App.
Montgomery Ward
Nebr.-IA Bar Equip.
Nebraska Lovis Supply
Nebraska State Savings
Nebraska Telephone Co.
Nelson Bros. Clothiers
Northeastern Telephone
Northern Telephone
O'Hanlon & O'Hanlon
Osborn & Stewart Const.
Pearson & Danier
Peoples MZ Shop
Peterson Const.
Pizza Hut
Pounds Printing Co.
Production Credit Assoc.
Randy's Radio
Richards Agency
Richman Gardman
Roger's Oil Propane
Roland's Farm Supply
Ron's Radio & TV Service
Rumppig & Long
Sib's Store
S. E. Smith & Sons
Scheffler Sporting Goods
Schmidt Monument Co.
Staley Service Station
Stanley Brothers
Stewart Smith Assoc.
Stewart's Northside Market
Taylor Color Photograph
Taylor Oil Co. Inc.
The New Topper Cafe
The Silver Razor
Thee Custom Floor
Thompson Standard Oil
Thone, Holsten & Rembertson
Tivoli
Tyson Farms
Union Telephone Co.
Vinton Motor Co.
Wanda's Hair Make
Washco Feed Supply
Washington County Bank
Washington County Mutual Ins. Co.
Webb's 66 Service
Woodhouse Ford

FOUNDATIONS
Abbott Foundation
Abel Foundation - Lincoln
Alcoa Foundation
Alford Chemical Foundation
Alstata Foundation
Amoco Foundation, Inc
Arthur Andersen Company Foundation
Asarco Foundation
Bank of America Foundation
Bay State Foundation
Benz Company Foundation
Borden Foundation, Inc
Central Soya Foundation

Dampson International Foundation
DNA Foundation
A. B. Dick Foundation
Die Olivette Foundation
Fireman's Fund American Foundation
General Motors Foundation
Honeywell Fund
INA Foundation
International Harvester Foundation
Johnson Wax Fund, Inc.
King Christian Fund
Lunden Foundation
Lueder Construction Co. Foundation
Merck Company Foundation
Meyer-Gasco Foundation
Mobil Foundation, Inc.
Montgomery Ward Foundation
Nadco Foundation
Omaha World-Herald Foundation
Oto Monsteds Foundation
Owen Foundation
P.M. Charitable Foundation
Paccor Foundation - Omaha
Procter and Gamble Fund
Peat Marwick Mitchell Foundation
Esper A. Peterson Foundation
Prudential Property & Casualty
S & H Foundation, Inc.
Sears Roebuck Foundation
Security Pacific Foundation
P. W. Stogemo Foundation
Teltronix Foundation
TNY Foundation
Union Pacific Foundation
United Grains Foundation
UPS Foundation
Weyerhaeuser Company Foundation
Arthur Young Foundation

CORPORATIONS

Acme Mail Advertising Company
Aerospace Corporation
Agrico Chemical Company
Aid Association for Lutherans
Air Products and Chemicals
Alco, Inc., Montreal
Alk-Sar-Ben
Albion National Bank - Albion
Allied Mills Inc. - Chicago
American Brands Inc. - New York
American Home Products
American National Bank - Creighton
American National Bank - Kimball
American National Bank - Sidney
American Telephone - New York
Arnold State Bank
AT & T
Aust State Bank
Bancroft - Whitney Co.
Bank of Bremer
Bank of Brule
Bank of Clarks
Bank of Doniphan
Bank of Elgin
Bank of Harrison
Bank of Madison
Bank of Norfolk
Bank of Taylor
Bankers Life Company
Bentrose National Bank & Trust Co.
Benton - Dickinson
Braun, Robert E.
Briggs Pump Company - Omaha
Brun and Jensen Inc.
Bristol - Myers Fund - New York
Broken Bow State Bank
Burt County State Bank - Tekamah
Carson National Bank - Auburn
Central Telephone and Utilities
Chief Industries, Inc
Citizens Bank - Bancroft
Citizens National Bank - St. Paul
Citizens State Bank - Annapolis
Citizens State Bank - Lincoln
Clark Bros. Transfer, Inc.
Coca Cola Company
Commercial Bank - Blue Hill
Commercial Federal Savings and Loan - Omaha
Continental National Bank - Grand Island
Commercial State Bank - Cedar Bluffs
Commercial State Bank - Republican City
Commercial State Bank - Weaue
ConAgra, Inc.
Concrete Sectional
Connecticut Mutual Life - Hartford
Continental Corporation - New York
Cook Paint and Varnish Co. - Kansas City
Dahon State Bank
John Day Co. - Omaha
Dart Industries
Deluxe Check Printers - St. Paul
Denmark Cheese
Elanco Products Company
Electric Fixture & Supply - Omaha
Equitable of Iowa
Farmhand Industries, Inc. - Kansas City
Farmer's Bank (Omaha)
Farmer's and Merchant's Bank - Council Bluffs
Farmer's and Merchant's National Bank - Ashland
Farmer's and Merchant's National Bank - Axtel
Farmer's and Merchant's National Bank - Oakland
Farmer's State Bank - Big Springs
Farmer's State Bank - Douglas
Farmer's State Bank - Eustis
Farmer's State Bank - Maywood
Frestone Tire & Rubber
First Federal Savings - (Cape)
First Federal Savings & Loan - North Platte
First National Bank - Bancroft
First National Bank - Columbus
First National Bank - Emerson
First National Bank - Friend
First National Bank - Grand Island
First National Bank - Lawless
First National Bank - Lincoln
First National Bank - Marquette
First National Bank - Minden
First National Bank - Neenah
First National Bank - Nelora
First National Bank of North Platte
First National Bank - O'Neill
First National Bank - Schuyler
First National Bank - Tekamah
First National Bank - Wahoo
First National Bank - Wilcox
First National Bank and Trust Co - Aurora

First State Bank - Fremont
First State Bank - Gothenburg
First State Bank - Hickman
First State Bank - Scottsbluff
First State Bank - Shelton
Fruehauf Corporation
Fuch's Machinery & Supply, Inc. Omaha
Gate City Steel - Omaha
Gateway Bank & Trust Co. - Lincoln
General Food Fund
General Telephone Co. - Columbus
General Telephone Co. of the Midwest
Geneva State Bank - Geneva
Genuine Parts Co. - Omaha
Gering National Bank - Gering
Gooch Mining & Elevator Co.
Goodyear Tire & Rubber Co. Fund
Gould Inc.
Graybar Electric Co., Inc. - New York
Guarantee Mutual Life Co. - Omaha
Guide Rock State Bank
Hall County Livestock - Grand Island
Hampton Co-Op Elevator
John Hancock Mutual - Boston
Harding Glass Ind., Inc. - Kansas City
Herman Bros., Inc.
Holmquist Grain and Lumber
Home Federal Savings - Grand Island
Honeywell Fund
Houghton-Mifflin Co. - Boston
Household Finance Corporation
ICFA - Miscellaneous - New York
International Business - Armonk
International Business Machines Corp.
ISCO
J. C. Penney Co., Inc.
Jayhawk Boxes, Inc.
Johnson and Johnson
Johnson Hardware Co.
Journal-Star Printing Co.
Kansas-Nebraska Natural - Hastings
Kenworth Sales & Service
Peter Kiewit
K-Mart Corporation
Kraft Inc. - Glenview
Lexington State Bank & Trust Co.
Liberty Mutual Insurance - Boston
Lincoln Mutual Life - Lincoln
Lutheran Brotherhood
Lutheran Mutual Life Insurance Co.
McIntosh, Mr. and Mrs. J. Paul
Max I. Walker Cleaners
Middle Branch Co. - North Platte
Minden Exchange - Minden
Missouri Valley Machinery Co. - Omaha
Monsanto Fund
Mortgage Guaranty Insurance Corp.
Morton House Kitchens, Inc.
Mutual Life Insurance Co. of New York
Mutual of Omaha
Nash Finch Co.
National Association for the Exchange of Industrial Resources
Nebraska State Bank - Oshkosh
Norden Laboratories - Lincoln
North Platte State Bank
North Platte Television - KNOP - TV
Northern Natural Gas Co.
Northwestern Bell Telephone
O'Neil National Bank
Omaha Bankers Association
Omaha Cash Register
Omaha National Bank
Omaha Savings and Loan - Omaha
Owens Corning
Peavey Company
Pender State Bank
Pentzian, Inc. - Omaha
Peoples - Webster County Bank - Red Cloud
Peterson Manufacturing - DeWitt
Potter State Bank
Pinkerton's Inc. - New York
Pizza Hut Inc.
Prudential Insurance Co. - Newark
Rabston Bank
Railway Stores Inc.
Schuyler State Bank
Schnitzer Bank
Security Mutual Life - Lincoln
Seven Valleys State Bank - Calhoun
Sidney National Bank
Simpson's Inc.
Skinner Macaroni Co.
Southwest Grease and Oil Co. - Omaha
Southwestern Bell
Spotts, Richard E. Jr. - Grand Island
Spencer State Bank
Sponny Band Corporation
Sperry Vickers
Standard Chemical - Omaha
Standard Motor Products Inc. - New York
State Bank of Berkeley
State Bank of Benton
State Bank of Cairo
State Bank of Hadrith
State Bank of Jansen
State Bank of Stella
State Bank of Table Rock
State Bank of Trenton
State National Bank - Wayne
Stewart-Warner Almette Sales Co. Inc.
Sterling Drug, Inc. - New York
Store Kraft Manufacturing
Texas Gulf Inc.
The Tool House
Trust Company - St. Paul
Tilden Bank
Travel and Transport, Inc. - Omaha
Tri-County Bank - Stuart
Union Pacific Corporation
United Guaranty Residential - Bettendorf
United Technologies
Veechco Tri-Art Studio - Omaha
Walker, William and Company - Omaha
Walkers Concrete Block - Omaha
Western Electric
Western National Bank - Scottsbluff
Whiteaker Rice Corporation - Lincoln
Wilcox Cap and Gown Co.
Woods Charitable Fund, Inc. - Grand Island
WOW/Chronicle - Omaha
Yankel/Hill/Brick Mfg. Co. - Lincoln

PARENTS

Mr. Win Adams
Mr. and Mrs. Henry Ahrendt
Mr. and Mrs. Stanley Akland
Mr. Warren Amols
Mr. and Mrs. Harold Anderson
Mr. and Mrs. L. E. Anderson
Mr. and Mrs. Albert Anderson
Dr. and Mrs. Gemma Barber
Mr. and Mrs. Howard Bastian

Rev. and Mrs. Walter Behrens
Mr. and Mrs. Lyle Bergstrom
Mr. and Mrs. Arthur Scholz
Mr. and Mrs. Walter Bittner
Mrs. Ervin Boudo
Mr. and Mrs. Robert Borden
Mr. Ray Bowmaster
Mr. and Mrs. Day Bremer
Mr. and Mrs. Ingward Bro
Mr. and Mrs. Charles Christensen
Mr. and Mrs. Ralph Brown
Mr. and Mrs. Roy Brown
Mr. and Mrs. George Busse
Mr. and Mrs. Clarence Busse
Mr. and Mrs. Leo Butler
Mr. Carl Cederberg
Mr. Clifford Christensen
Mr. and Mrs. Dale Christensen
Mr. and Mrs. Ervin Christensen
Mr. and Mrs. Merle Christensen
Mr. and Mrs. Alfred Clausen
Mrs. Gwen Clever
Mr. and Mrs. Henry Coonce
Mr. and Mrs. Harold Crawford
Mr. and Mrs. Herbert Daltack
Mrs. Don Davis
Mr. and Mrs. L. Deltzer
Mr. Arthur Doback
Mr. and Mrs. Ervin Elm
Mr. and Mrs. Emil Eszenhauer
Mrs. Fern Eitman
Mr. and Mrs. Arlo Epperson
Mr. and Mrs. Eldon Erbes
Mrs. Shirley Eyer
Mr. and Mrs. Donald Fahrenkrug
Mrs. Wida Farms
Mr. Niels Friis-Hansen
Mr. and Mrs. Virgil Friedrichs
Mr. and Mrs. Joe Fryman, Jr.
Mr. and Mrs. Donald Goos
Mr. and Mrs. Alan Gordon
Rev. Arthur Grotel
Mr. and Mrs. Melvin Haeck
Mr. and Mrs. Vernold Hagebak
Mr. and Mrs. Gerald Hahn
Mrs. Richard Hall
Mrs. Mercedes Hanton
Mr. Clifford K. Hansen
Mr. and Mrs. Don Hansen
Mr. Peter Hansen
Dr. and Mrs. Raymond Hansen
Mr. Leonard Hansen, Sr.
Mr. and Mrs. Arndt Hanson
Mr. and Mrs. Robert Hayne
Mrs. James Heide
Mr. and Mrs. Arnold Helstrand
Mr. and Mrs. George Heiting
Rev. Lowell Hemken
Mr. and Mrs. Waldemar Hempler
Mr. and Mrs. Dabry Hennicka
Mr. Norman Henzies
Mr. and Mrs. Axel Hermansen
Rev. Edward Hiler
Mr. and Mrs. Dean Hoffart
Mr. and Mrs. A. Holdorf
Mr. and Mrs. V. Holdorf
Mr. and Mrs. Victor Hoogenesen
Mr. and Mrs. Melvin Horst
Mr. and Mrs. Earl Hull
Mr. and Mrs. Eugene Hurik
Mr. and Mrs. Charles Irbay
Rev. and Mrs. Kenneth Jacobson
Mrs. Esther Jensen
Mr. and Mrs. Richard J. Jensen
Mr. and Mrs. Ronald Jensen
Mrs. and Mrs. Stanley Jensen
Mrs. Roy Jessen
Mr. and Mrs. Kenneth Johnson
Mr. and Mrs. Martin P. Jorgensen
Mr. and Mrs. T. Jorgensen
Mr. and Mrs. George Kiegler
Mr. and Mrs. Raymond Kenne
Rev. Paul Kenyon
Mrs. Lyle Ketchum
Mr. William King
Dr. and Mrs. R. T. Kirkwood
Mr. and Mrs. Frank Knudsen
Mr. Lyle Knuth
Mrs. Margaret A. Kotovsky
Mr. and Mrs. Arnold Krub
Mr. and Mrs. James Kruse
Dr. and Mrs. W. Kuehn
Mr. and Mrs. Erwin Kuhlman
Mr. and Mrs. Lloyd Kuhl
Mr. and Mrs. Elmer Larson
Mr. and Mrs. Frederick Larson
Mrs. Oron Leo
Mr. and Mrs. Edward Lorenzen
Mr. and Mrs. Carl Loyd
Mr. and Mrs. Walter Lyche
Mr. and Mrs. L. Madson
Mr. Lester Madsen
Mr. and Mrs. Walter Mangold
Mrs. Lita Mann
Mr. and Mrs. Ray Martin
Mr. and Mrs. Robert Mayberry
Mr. Don R. McMahd
Mr. E. M. McKinley
Mr. William McMullan
Mr. and Mrs. Fred Meeker
Mr. and Mrs. Albert Metzger
Mr. and Mrs. Richard Miller
Mrs. Jack Moosmann
Mrs. Laura Morgenson
Mr. and Mrs. Francis G. Morrison
Mrs. E. Morton
Mr. and Mrs. Charles Neal
Mr. and Mrs. Dan Nelson
Mr. and Mrs. Edwin Nessgen
Mr. and Mrs. Robert Neuberger
Rev. and Mrs. Rud Nielsen
Mr. and Mrs. Carl H. Nielsen
Mrs. Edith Nielsen
Mr. and Mrs. Victor Nigen
Mr. and Mrs. Dean Rixon
Dr. and Mrs. John Northwell
Mr. and Mrs. Cecil Peck
Mr. Allan Peterson
Mr. and Mrs. William Peterson
Rev. Henry Peterson
Mr. and Mrs. E. Plonck
Mr. and Mrs. Arthur Powell
Mr. and Mrs. Harold Quirk
Mrs. Ruth Rasmussen
Mr. and Mrs. Darrell Rash
Roy Orville Reed
Mr. and Mrs. Frank Retzinger
Mr. and Mrs. Alan Remmers
Mr. and Mrs. Ove Roeker
Mr. and Mrs. Howard Roman
Mr. and Mrs. Russell Ronfeldt
Mr. and Mrs. Aldo Rossan
Mr. and Mrs. John A. Rowland
Mr. and Mrs. Roger L. Sanders

Rev. and Mrs. W. Schmidt
Mr. and Mrs. Arthur Scholz
Mr. and Mrs. Walter Schur
Rev. and Mrs. Ernest Serr.
Mr. and Mrs. Harold Shaff.
Mr. and Mrs. Ned Shopley
Mr. and Mrs. Alfred Sick
Mrs. Helen Sigmon
Mr. and Mrs. Elmer Smith
Rev. and Mrs. Harry Sorensen
Mr. and Mrs. Lawrence Sorensen
Mrs. Elsie Spitzer
Mr. and Mrs. George Stahnke
Mr. and Mrs. S. Stiffensson
Mr. and Mrs. Roger Storey
Mr. and Mrs. Alvin Ströhhel
Rev. Obed Sunde
Mr. and Mrs. R. Sundermann
Mr. and Mrs. Kenneth Thelen
Mr. and Mrs. Armand Thomsen
Mr. and Mrs. Melvin Timm
Mr. and Mrs. Everett Van Cleave
Mrs. Joyce Vandewalle
Mr. and Mrs. Johannes Vasby
Mr. and Mrs. Howard Vogel
Mr. and Mrs. James Vohs
Mr. and Mrs. Louis Waddum
Mr. and Mrs. Elmer Westerman
Mr. and Mrs. Harold Wetzel
Mr. and Mrs. Dean Wikerson
Mr. and Mrs. Louis Witter
Mr. and Mrs. Judson Wolf
Mr. and Mrs. Lawrence Wylkowitzki
Mr. and Mrs. L. T. Zell
Mr. and Mrs. Alwin M. Zwaniger

FRIENDS

Ms. Helen Asseng
Dr. and Mrs. Lawrence Abbott
Mrs. Walter Albert
Rev. Douglas Allen
Mr. Steve Allen
Mr. and Mrs. S. Allen
Rev. and Mrs. John L. Abnie
Alpha Delta Kappa
Rev. Ivan Amundt, Sr.
Mr. Henry O. Andersen
Mr. Roy Anderson
Mrs. Sylvia E. Andersen
Mrs. Alice Anderson
Fidel Anderson
Miss Denise Andreason
Anonymous
Mr. and Mrs. Arthur Antholz
Mr. and Mrs. Robert Aranz
Rev. Larry Arganborth
Mr. E. Wayne Armer
Rev. David Arstrup
Mr. and Mrs. Dexter Barbock, Jr.
Mr. Carl Backes
Dr. and Mrs. K. Bagby
Dr. Mido Bail
Mr. Terry Bailey
Mr. and Mrs. Gail Baird
Mr. and Mrs. M. E. Baerham, Pedersen, Hamann, Haggart, Allys.
Mrs. Joan Barnett
Mrs. Elinor Bartheimer
Rev. Mark Bauer
Mr. and Mrs. Roy Baysermeister
Mr. and Mrs. Max Beaman
Dr. and Mrs. Ralph Beason
Mr. and Mrs. James P. Beason III
Rev. Harold Becker
Mrs. Judith (J.) Beckman
Mr. and Mrs. Robert Biecher
Mr. and Mrs. Clarence Billfuehle
Mr. and Mrs. James Bemis
Ms. Gloria Bentley
Ms. Ingrid Benzen
Mrs. Irene Berg
Mr. and Mrs. Roy Berggren
Mr. and Mrs. Dennis Berke
Mr. and Mrs. Fred Bierz
Ms. Elsie H. Bird
Mr. and Mrs. Richard Bird
Mrs. Nyrtle Birdzell
Mr. and Mrs. Robert Blobaum
Mr. Walter Boserup
Mrs. Lorraine Basking
Mr. and Mrs. Len Bonnell
Dr. and Mrs. Frederick Bowdle
Mr. and Mrs. Harry Brahams
Ms. Dorothy Brodow
Rev. Chris Bröckle
Mr. Robert Brewer
Mr. and Mrs. Olof Bröckling
Ms. Susan Bronczyk
Mrs. Dale Bruning
Rev. Durwood Buchheim
Mr. and Mrs. Rulus Buttable
Mr. and Mrs. Allen Bullock
Mr. and Mrs. Roger Burke
Mrs. Eleanora Burroughs
Mr. and Mrs. Raymond Caddock
Mr. Grover Callaway
Mr. and Mrs. Angelo Calvetti
Mr. Jack Cameron
Mr. Henry Carlson
Mr. Norman Carlson
Mr. and Mrs. Clarence Cederberg
Vauna Cederberg
Mr. Virgil Chamberlin
Mrs. Wanda Chandler
Mr. and Mrs. Floyd Chase
Mrs. Lowell Christenson
Ms. Wanda Cline
Class of '78
Mrs. Max Coffey
Mr. August Collins
Dr. Herbert Coulter.
OTA
Mr. Clays Dahms
Rev. and Mrs. D. L. Darr
Mr. Dennis Dale
Mrs. Esther Danberg
Mr. and Mrs. Thomas Danroy
Dana Athletic Booster Club
Mrs. Wanda Dale
Dana's Women's Club
Rev. E. Danitzsch
Charlotte Decker
Ms. Viola Demaree
Ms. Mathilda Dermonson
Mr. Billy Derby
Mrs. Anna Devold
Mr. and Mrs. Woodrow Dickson
Mr. Henry Diehl
Mrs. Laurence Dillard
Rev. and Mrs. William S. Dion
Mr. and Mrs. S. D. Ditchey
Mr. Lyle Dobb
Mrs. Thelma Draba
Mr. Gregory Drey

Mr. and Mrs. Robert Duden
Mrs. Lillian Dyrberg
Rev. Stanley Emerson
Rev. Oscar Engelbrecht
Mr. and Mrs. Anthony Engelbrecht
Mr. and Mrs. Dewain L. Englund
Mr. and Mrs. Chester Engquist
Mr. and Mrs. Edward Engstrom
Rev. Ray Ensign
Mrs. Dagmar Erath
Mr. and Mrs. Leland Erdahl
Mr. and Mrs. Keith Erickson
Mr. and Mrs. Michael Escalante
Estate of Emma Ahrendt
Estate of Frank Baumgar
Estate of Hans Haugen
Estate of Carrie Petersen
Rev. Walter Evenson
Ms. Kathryn Farseth
Miss Solveig Farseth
Mr. and Mrs. Charles Ferguson
Ms. Roberts Field
William Fisher
Mr. and Mrs. Elwyn Fitzke
Dr. and Mrs. Wm F. Fluhr
Rev. Leonard Folkerts
Mr. John R. Foley
Mrs. Edith Fox
Rev. Milburn Franke
Rev. Kenneth Franzen
Rev. Richard Freseman
Mr. Ralph Freuck
Mr. Glen Frie
Rev. John Fritzmeier
Mrs. Clara Froker
Mr. and Mrs. Ned Fuller
Ms. Pearl Gagneluis
Mr. and Mrs. Roger Gardner
Mr. and Mrs. Timothy Garrigan
Rev. and Mrs. Palmer Gaddie
Mr. and Mrs. Clinton Gehring
Dr. and Mrs. Richard Gentry
Mr. and Mrs. F. J. Genz
Mr. and Mrs. William Gibbs
Dr. and Mrs. E. Goldenstein
Mr. and Mrs. Arthur Goldstein
Ms. Thelma Gonzales
Dr. and Mrs. Leslie Grace
Rev. Myron Grams
Mr. and Mrs. Henry Gran
Mrs. Lillian Granholm
Ms. Carolyn Granrud
Rev. and Mrs. Odean Grant
Mr. and Mrs. Richard R. Gray
Mrs. William Grewcock
Rev. Harold Gronstad
Rev. Stanley Grotegut
Mr. and Mrs. Floyd Groat
Mr. and Mrs. Ernest Gulsrud
Mr. and Mrs. David W. Gunderson
Rev. John Gunderson
Mr. and Mrs. Charles L. Haley
Rev. Gary L. Halverson
Mr. Dervil Hamann
Mr. Nelson Hamblin
Mr. and Mrs. Glenn Hansen
Ms. Helen Hansen
Mr. and Mrs. Manus Hansen
Mrs. Robert Hanson
Ms. Salina Hantelmann
Ms. Marian Hardester
Rev. Frederick Harms
Mr. Walter Hartweg
Mr. Fred Hasenohr
Ms. Elsie Hasti
Mr. and Mrs. Grant Hattan
Mr. and Mrs. John Haun
Mr. Art Hausen, Jr.
Ms. Hazel Hawkinson
Ms. Ruth Hawkinson
Ms. Marcell Hay
Ms. Ruth Haydeen
Rev. E. W. Haygeman
Mr. and Mrs. John Helleberg, Sr.
Mr. and Mrs. John Henderzon
Rev. and Mrs. David Herman
Mr. and Mrs. Burnett Hernes
Mr. and Mrs. Leslie Hernes
Ms. Thyra Herzog
Mr. and Mrs. Fred Hilt
Mr. and Mrs. Henry Hinrichs, Jr.
Ms. Louise Hinsvark
Mrs. Emma Hobelman
Mr. Andrew Hoefler
Mrs. Lillian Hoffman
Mr. and Mrs. Don Hoglund
Dr. and Mrs. Richard Holquist
Rev. Duane Holst
Mr. John Holstein
Ms. Caroline Hovland
Mr. and Mrs. Curtis Hovland
Dr. and Mrs. C. Howard
Mr. and Mrs. Wm Hubbard
Mr. Richard Hughes
Mr. and Mrs. Hugh Hunt
Mr. Emory Hunt, Jr.
Mr. and Mrs. Richard Hurd
Rev. Conrad Ide
Mrs. Noelyn Isom
Mr. Marvin Isvik
Mr. and Mrs. Herbert Iverson
Ms. Kimi Izumi
Mrs. Dorothy Jacobsen
Rev. and Mrs. Howard Jacobson
Rev. Erwin Janssen
Mr. Ted Jarosz
Mr. and Mrs. Leonard Jasa
Mrs. Ethel L. Jensen
Mr. John Jessen
Mrs. Lillie Johansen
Rev. Paul Johnshoy
Rev. Bruce A. Johnson
Mr. Charles Johnson
Mr. and Mrs. David Johnson
Mr. and Mrs. John Johnson
Mrs. Mae Johnson
Mr. and Mrs. Murray Johnson
Dr. and Mrs. Nial Johnson
Mr. Nile Johnson, Atty.
Ms. Olga H. Johnson
Mr. Wm Jorgensen
Mr. and Mrs. Reuben Joss
Mr. Jim Judt
Rev. William Jurgens
Ms. Sylvia P. Karcher
Dr. and Mrs. Ivan Karpisek
Mr. and Mrs. Elmer Kellner
Mr. and Mrs. John Kelly
Ms. Cheryl Kimbo
Mrs. L. E. Kimbo
Mr. Wm. King
Mr. and Mrs. Rex Kirchhoff
Dr. Byford Klein
Mr. and Mrs. Erhard Klein
Rev. Robert Klein, Sr.
Mrs. Pauline Kleven

Mr. and Mrs. Melvin Knoell
Ms. Gertrude Knutson
Mr. and Mrs. Howard Knutson
Mr. and Mrs. Joseph Knutson
Mr. and Mrs. Gerald Kobs
Mrs. Lyle Kohler
Mr. and Mrs. David Kolenda
Ms. Mary Emily Kreidt
Rev. Robert Kreier
Mr. Paul Kruger
Mr. Fred Kruse
Dr. and Mrs. G. Kuether
Mr. Herman Kuhr
Mr. J. Kühr
Mrs. Minnie Kuhr
Mrs. Everett Lamb
Dr. and Mrs. Estel Landreth
Dr. and Mrs. Joseph Landrud, Jr.
Ms. Burnette Langland
Mr. and Mrs. Fred Larens
Mr. LeRoy Larsen
Mr. William Larsen
Ms. Palma Larson
Mr. and Mrs. Vernon R. Larson
Mr. Frank Latucca
Mr. and Mrs. John Lees
Rev. James Lettlow
Mr. and Mrs. Richard Leman
Ms. Patricia Leonard
Rev. Adolph Lillich
Ms. Gertrude Lindau
Ms. Clarence Lindblad
Mr. and Mrs. Sam Linggo
Miss Ruth Lippincott
Mr. Arthur Lofstedt
Rev. and Mrs. Richard Lohman
Mr. Oliver Loken
Mr. and Mrs. L. H. Lommen
Rev. Carl Long
Mr. Phil Lorenzen
Ms. Agnes Loveland
Miss Lona Lund
Mr. Ray A. Lund
Rev. and Mrs. Arnon Lundborg
Mr. and Mrs. N. C. Lundh
Mr. and Mrs. Harry Madsen
Dr. T. H. Maeda
Ms. Alice A. Mallow
Mr. Harold Marthedal
Mr. R. A. Martin
Mr. and Mrs. Robert Martin
Mr. and Mrs. David Massingill
Mr. Leonard Maunu
Mrs. Norma May
Mr. Dennis Mayer
Elseth Mayfield
Ms. Barbara Mays
Mr. and Mrs. Paul McDewitt
Mr. and Mrs. Norman McDonell
Mr. and Mrs. Bernard McIntosh
Mr. Glen McDaniel
Mrs. Bruce McMillan
Mr. and Mrs. Monte Mead
Memorials to Sara Andersen
Memorials to Mel Boehr
Memorials to Chris Gregersen
Memorials to Harry Hansen
Memorials to J. Jacobsen
Memorials to Launts Pedersen
Rev. Wayne Mesecher, Sr.
Mr. and Mrs. Adelbert Meyer
Mr. Arthur Michel
Ms. Bernice Mickelson
Ms. Dorothy E. Miller
Mr. Arthur Miller
Mr. Darrell Miller
Mrs. Homer Miller
Ms. Josephine Miller
Mr. Michael Miller
Mr. and Mrs. Richard Millhollen
Ms. Betty Mills
Mr. and Mrs. John Mitchell
Mr. Clarence Mock
Clinton Mogen
Ms. Kathleen Moland
Rev. Eugene Moll
Mr. R. Mondro
Mr. Robert Monke
Mr. Carl Monson
Mr. and Mrs. John Morava
Mrs. Aida Morasava
Ms. H. Morris
Mr. and Mrs. Alfred Masher
Rev. G. Muedeking
Mr. and Mrs. Richard C. Mueller
Mr. and Mrs. Joe Muller
Mr. and Mrs. Arthur Mumm
Mr. Carl Munyon
Mrs. Bernice Nagatz
Ms. Jenan Nazareth
Miss Edith Neale
Mrs. George Neale
Mr. and Mrs. Maurice Nelles
Mr. Edward Nelson
Mr. and Mrs. G. Nelson
Rev. Joel Nelson
Mr. and Mrs. Ronald Nelson
Nemaha Valley Schools
Ms. Esther Nerge
Mr. and Mrs. Stanley Nesheim
Ms. Josephine Neuenburg
Mr. and Mrs. Victor Neuler
Mrs. Marie Neumeyer
Mr. and Mrs. Eugene Nicol
Mrs. DeAnna Nielsen
Mr. and Mrs. Enar Nielsen
Mr. and Mrs. Paul Nickels
Mr. and Mrs. Wallace O'Connor
Mr. and Mrs. Joseph O'Neil
Mr. and Mrs. Dwayne Oakeson
Mr. and Mrs. Harry Ohrt
Rev. Terry Oliver
Mrs. Rufus Olson
Rev. Walter A. Olson
Mr. and Mrs. Joseph O'Neill
Miss Greta Oppe
Mr. Victor Ornstrop
Mrs. Nyla L. Ostroff
Mrs. Jeannette Palazzolo
Mrs. Vernon Paulson
Mr. Arthur Paus
Rev. and Mrs. John Pedersen
Mr. and Mrs. Giles Penstone
Mr. Art Peters
Mr. and Mrs. James Peters
Ms. Adelaide Petersen
Mr. and Mrs. Donald Petersen
B. G. Peterson
Mr. Elmer L. Peterson
Mrs. Elvera Peterson
Ms. Emily H. Peterson
Ms. Lillian L. Peterson
Mr. and Mrs. R. Daniel Peterson
Mrs. Ruth Peterson
Mr. Owen Pieton
Ms. Dorothy Porter

Mr. and Mrs. W. J. Prieve
Mr. W. Bruce Pruitt
Mrs. Lois Raber
Mr. and Mrs. Heye Rademacher
Mrs. Doris Radloff
Mr. and Mrs. Donald Range
Mrs. Petra Rasmussen
Mrs. Sophie Rasmussen
Ms. Wilma Rasmussen
Dr. and Mrs. Hans Rath
Mr. and Mrs. George Rathmann
Dr. Norman Rathmann
Ms. Clara L. Rauch
Mr. W. T. Reckemyer
Mr. and Mrs. Gerard Redon
Rev. Emil Reinking
Rev. Frank Reisinger III
Mr. and Mrs. Harold Rembold
Mrs. John Rhoades
Rev. Genevieve Rice
Mr. A. C. Ridland
Mr. and Mrs. Ludwig Rieker
Rev. A. Riensche
Mr. Roland E. Robison
Miss Ceta Rohwer
Mr. George Rohwer, Jr.
Mrs. John Roland
Ms. Caroline Ronnei
Ms. Maxine Rossi
Ms. Virginia Rostvold
Dr. and Mrs. Gerald D. Rude
Ms. Ilama Rukle
Mrs. Bruce Russell
Rev. Arlyn Saathoff
Mr. Paul Salchow
Rev. Paul Sather
Mr. and Mrs. Henry Sato
Rev. Robert Schafr
Mr. and Mrs. A. G. Schardt
Rev. Arno Schelger
Mr. and Mrs. Francis Schmehl
Mr. Herman Schmidt
Rev. Donald Schoeppler
Rev. Ludwig Schroll
Mr. Martin Schroeder
Mr. C. Schubert
Mr. D. H. Schuenemann
Mr. and Mrs. Glen Schultz
Mr. and Mrs. Joe Schultz
Mrs. Thelma Schultz
Miss Carolyn Schurr
Mrs. Harold Seaman
Mr. Jon Sedlacek, Atty.
Mrs. Esther Seidel
Mrs. Amada Senn
Ms. Olga Severens
Rev. and Mrs. Martin Seybold
Mr. Robert Shoup
Mr. Tom Sick
Mr. Myron Sieckmeyer
Dr. H. Neal Sievers
Dr. and Mrs. R. Sievers
Mr. Richard Sievers
Mr. Myron D. Sieckmeyrr
Dr. and Mrs. Jim Simmons
Rev. David Sites
Mr. and Mrs. Charles Skortman
Mr. and Mrs. Leo Skoubo
Mrs. Genevieve Slader
Mr. and Mrs. Clark Smith
Mr. Cleo Smith
Dr. Frank J. Smith
Mr. and Mrs. M. Cooper Smith
Mr. and Mrs. William Smith
Mrs. Hazel Snesrud
Mr. and Mrs. Hugh Snow
Mr. Andrew Sondarsgaard
Mr. and Mrs. N. A. Sorensen
Mr. Allan Spanier
Ms. Luella E. Spiser
Mr. and Mrs. Martin Staunt
Mr. Arthur Steele
Ms. Julia B. Steien
Mr. and Mrs. M. B. Steig
Mr. and Mrs. Gordon Stenerson
Mr. and Mrs. Tom Stevens
Mrs. Ralph Steyer
Mr. and Mrs. O. M. Sites
Rev. Henry Stolz
Ms. Katherine Stone
Mr. and Mrs. Fred Stott
Verma Stundahl
Mr. and Mrs. Wyman Suits
Mr. Leonard Sutton
Ms. Alma Svogerson
Mr. and Mrs. Arthur Swanson
Mr. Donald Swanson
Mrs. Mary Jane Swanson
Mr. T. Swanson
Mr. Dan Taggart
Ms. Julie Takechi
Mr. and Mrs. Elu Tarazi
Mr. and Mrs. V. L. Taylor
Ms. Dorothy Teigen
Ms. Grace Thompson
Mr. Michael Thompson
Rev. and Mrs. Orrin D. Thompson
Mr. and Mrs. William Thute
Rev. Steven Tirk
Mr. and Mrs. Otto Tonneson
Ms. Holly Tonoli
Ms. Dora Tonkvist
Mrs. E. S. Tripp
Mr. and Mrs. Walter Trygstad
Mr. Arnold Tveden
Mr. and Mrs. James Uebale
Dr. and Mrs. George Ugstad
Mr. and Mrs. Paul Ulland
Ms. Catherine Van Ness
Rev. Stephen Vander Tuig
Mr. David Vaseelar
Mrs. Dorothy Vaughn
Rev. Eugene Vetter
Mrs. Peter Vig
Rev. Robert Vogel
Mrs. Martha Voss
Rev. Robert Voss
Ms. Ruth Voss
Mr. and Mrs. James Wagner
Mr. Michael Wallin
Mr. and Mrs. John Wallman
Mr. Larry Wallman
Mr. Wayne Wallman
Rev. and Mrs. Ronald Walter
Mr. and Mrs. Walter L. Walthe
Ms. Martha Wangberg
Mr. M. Wardell
Mr. and Mrs. Walter D. Wasser
Rev. Dale Watermeier
Mr. and Mrs. Frederick Weber
Mr. Lydon Wederquist
Mr. and Mrs. Harold Weed
Mr. and Mrs. Herbert Weishahn
Ms. Marguerite Welin
Mr. and Mrs. J. Sloat Welles
Ms. Priscilla Westberg

Mr. and Mrs. Carl Westlund
Mr. and Mrs. John Whitesell
Mr. Fred R. Wild
Mr. and Mrs. August Will
Rev. Vincent Will
Ms. Elizabeth Williams
Mr. and Mrs. Norman Williams
Ms. Priscilla Williams
Mr. Bill Williby
Mr. Gerald Wireman
Mr. Leonora Wolf
Mr. and Mrs. Malcolm Wolfe
Ms. Ruth Wolff
Mr. C. Womble
Mrs. Eleanor Woodside
Mr. and Mrs. Collis Woodward
Mr. Lyman Wrightson
Mrs. T. J. Wurdeaman
Mr. Peter Wæger
Dr. Wm. Zimmerman

FACULTY AND STAFF
Miss Doris Andersen
Mr. Norman Bansen
Rev. and Mrs. John T. Beck
Rev. and Mrs. Bruce Bergquist
Mrs. Melvin Boehr
Mrs. Esta Deets
Dr. Herta Engelman
Mrs. Ray Furtak
Mr. and Mrs. Walter George
Dr. and Mrs. Robert Glass
Mr. and Mrs. Fred Gordon
Dr. and Mrs. Clifford Hanson
Mr. and Mrs. Keith Hansen
Dr. and Mrs. Verlan Hanson
Dr. and Mrs. Frank Hengeveld
Mr. and Mrs. Arvin Hernes
Rev. and Mrs. Delvin Hutton
Mr. Paul D. Johnson
Dr. and Mrs. James Kallas
Mr. and Mrs. Richard Kubie
Mr. and Mrs. Eugene Lindblad
Mr. and Mrs. Albin Lindstrom
Dr. and Mrs. C. Madsen
Mr. and Mrs. Eugene Meyer
Dr. and Mrs. Paul Neve
Rev. and Mrs. John Nielsen
Miss Luella Nielsen
Mr. and Mrs. Roger Olson
Mr. Richard Palm
Mr. Phillip Pagel
Mrs. Viona Schlotfeld
Ms. Mabel Smith
Mr. and Mrs. Paul Strand
Mr. and Mrs. Svendgaard
Mr. and Mrs. Eugene Thomas
Rev. and Mrs. F. W. Thomsen
Mr. and Mrs. Harold Wright

ALUMNI, CLASS OF:
1914
Number in Class 5
Donors 3 Total \$185.00 60%
Nels Hansen
Olga West Hansen
C. A. Vammen
1915
Number in Class 15
Donors 7 Total \$192.50 46.6%
Frank Farr
H. Lyle Guver
Carrie Hansen Jensen
S. Knutson
George M. Landrock
Wilbur Lowe
Tomina Neve Vammen
1916
Number in Class 15
Donors 2 Total \$25.00 13.3%
Phoebe Hjortvag Gancin
Alfred Pedersen
1917
Number in Class 10
Donors 3 Total \$40.00 30%
Roy Andersen
Elmer Jensen
Anna Thomsen
1918
Number in Class 26
Donors 2 Total \$50.00 7.6%
Ruth C. Andersen
A. Petersen
1919
Number in Class 8
Donors 2 Total \$20.00 25%
Esther Magnussen
Rena Jensen Nielsen
1920
Number in Class 8
Donors 3 Total \$2,075.00 37.5%
Aaron Jensen
Agnes Nielsen
Niels Nielsen
1921
Number in Class 8
Donors 3 Total \$175.00 37.5%
Joseph Girtz
Adolph Jersild
Kaj Larsen
1922
Number in Class 12
Donors 9 Total \$443.50 75%
Marcus Beck, Sr.
Esther Bonnesen Burns
Anna Bladt Hagedorn
Mary Hansen Justesen
Alma Madsen Petersen
Lawrence Siersbeck
Marie Simonsen
Ruby Nelson Townsend
Peter J. Vammen
1923
Number in Class 9
Donors 5 Total \$202.50 55.5%
Ms. Ruth Voss
M. G. Christensen
W. H. Christensen
Esther Simonsen Sib
Harold Tennesen
1924
Number in Class 20
Donors 7 Total \$617.00 35%
Edward and Ruth Staugaard Andersen
Ingrid Beck Bondo
Emma Bondo Christensen
Einer Jensen
Dean Petersen
Mina Jensen Vanther
1925
Number in Class 25
Donors 6 Total \$177.50 24%
Elmer Bondo
Jens Caspersen

Agnes Beck Jensen
Emil L. Jensen
Agnes Bonnesen Kelgor
Ernest Thompson
1926
Number in Class 23
Donors 10 Total \$271.00 43.4%
J. S. Andersen
Leora Grill Broemser
Anna Christensen
Magnus Christensen
Agnes Bing Greenwood
Elliott Hanson
Christian Justesen
Mamie Jensen Larson
Dagny Beck Lyon
Margaret Clausen Vig
1927
Number in Class 14
Donors 6 Total \$347.50 42.8%
Esther Vedsted Jacobson
Esra Jensen
John Lorentzen
Alfred Nelsen
Arthur F. Nelson
Eli J. Vig
1928
Number in Class 37
Donors 15 Total \$1,350.00 40.5%
Herbert Christensen
William Goldbeck
Lillian Lund Healey
Jens Krogh
Ruby Stobdl Larsen
Bessie Robeson Morse
Emerald Nielsen
Ralph Nielsen
Rose Hansen Nielsen
Jane Noble Nore
Hedvig Nyholm
L. Pedersen
Einer Petersen
Anker Siersbeck
Jens H. Thomsen
1929
Number in Class 32
Donors 16 Total \$1,675.00 50%
Diga Simonsen Anderson
Lloyd Christiansen
Vera Sorensen Head
Thelma Jensen
Gerhard Jersild
Elna Ohlsen Lorentzen
Una Lund
Esther Johnson Madsen
Ovillie Nielsen
Rasa Kolofid Nielsen
Ede Paulsen Panum
Ellen Bondo Pedersen
Ruth Kaldahl Pedersen
H. Petersen
Olivia Jensen Sae
Alvina Bondo Weismann
1930
Number in Class 23
Donors 12 Total \$312.50 52.1%
Arnold Andersen
Ruth Fogdahl Christensen
Marinus Hagedorn
James Hansen
H. Jorgensen
John Nielsen
Martha M. Pedersen
Immanuel Petersen
Holger Schultz
Arnold Soe
Julia Nelson Waig
Mary Caspersen Youndahl
1931
Number in Class 36
Donors 18 Total \$1,705.00 50%
Milton Christensen
Fred Koltzman
Slas and Anna Brock Larsen
Martha Juhl Leslie
Helen Scheffer Lowe
C. Clifford Madsen
Esther Frost Magnussen
Midred Johnson Morton
Frances Kogman Murdoch
Anna Beck Olsen
Esther Jensen Pedersen
Millard Petersen
Lillie Peterson Rasmussen
J. Hilton Rhoades
Ray Romer
Lois Hansen Wolf
Claire Nelson Wilkinson
1932
Number in Class 19
Donors 5 Total \$241.00 26.3%
Ray E. Mortensen
Anne Nielsen Okey
Adolf S. Petersen
Lucille Hanson Vig
Tom Wilkinson
1933
Number in Class 28
Donors 12 Total \$825.00 42.8%
Paul Bondo
Margaret Petersen Breesa
Halley Brodersen
Frances Mortensen Danielsen
Ida Hansen Graham
Alfred R. Jensen
Robert Larsen
Aline Miller
Emil Pedersen
Elna Hofgaard Petersen
Edna Hansen Robertson
Howard Thompson
1934
Number in Class 42
Donors 11 Total \$847.50 26.1%
Anna Andersen
Theo and Edith Sorensen Jensen
Havry Kuhr
Jean Larson
Richard E. Morton
Alvin Petersen
Marie Larsen Petersen
Ellen Danielsen Rendall
George Robertson
Saverin Sorensen
1935
Number in Class 30
Donors 9 Total \$854.08 30%
Viggo Carlsen
Alma Johnson Jensen
Stanley Jensen
Chester Larsen
Ruth Louise Flynn Lippincott
Lowell E. Madsen
Lilly Jorgensen Sorensen
Dagmar L. Thomsen
Arndt Vig

1936
Number in Class 34
Donors 22 Total \$3,637.50 64.7%
Marian Peterson Anderson
Miriam Rosenblatt Bondo
Roy Christensen
Margaret Johnson Donat
Barbara Hansen
Lydia E. Hansen
Herbert Harboe
Harold Hurd
Anker M. Jensen
Agnes Petersen Johansen
Bernice Hansen Kaldahl
Rudolph Knudsen
Mary Jensen Langenfeld
Edward and Inga Schultz Larsen
Luther Lincoln
O. Victor Magnusson
John Sides
Andrew Staby
Irving Tange
Lorentz Thorngren
Norma Lund Van Steenhoven

1937
Number in Class 41
Donors 15 Total \$1,305.00 36.5%
Gertrude Kubie Carberg
Viola Hansen Carlsen
Mildred Olsen Cheney
Laurence DeLaurant
Martha Frost
Vita Hansen Jensen
Stanley Jorgensen
Eva Putnam Keyes
Ellen Rasmussen Knudsen
Helen Pedersen Lincoln
Arthur Norgaard
Irene Andersen Olsen
Phyllis Rogert
Agneta Christensen Schreiber
Shirley Larson Spicknall

1938
Number in Class 53
Donors 22 Total \$4,200.00 37.2%
Marguerite Rathmann Dixon
Earl J. Fries
Carl Frost
Ivan Johansen
Dagmar Nielsen Knudsen
Byron Langenfeld
Herbert Larsen
Stanley Larsen
Earl Laursen
Helen Nielsen
Etlar Olsen
Raymond M. Olsen
Robert Paap
George Pallesen
Dora Nelson Paulsen
Emery Petersen
George Rockwell
David R. Simonsen
Harry Sorensen
Eloise Morris Sperati
Chester Sutton
Marion Hanson Svendsen
Carl Wildrick

1939
Number in Class 51
Donors 24 Total \$1,495.00 47%
Eleanora Madsen
Mildred Hansen Atekruse
L. Madsen Andersen
Lila Jeffers Ashley
Clarence Jensen Aus
Evelyn Sorensen Bogan
John and Ruth Jenkins Bruse
Harriett Wilson Campbell
Eric Christensen
Herlauf and Vashti Magnusson
Christensen
Edward A. Hansen
Rubana Jorgensen Hansen
Agnes Simonsen Henning
Levi Jensen
Adolph Kloth
Aster Neve
Gladys Hansen Nichols
Andrew Pechacek
John Poucher
Elmer M. Rasmussen
Mildred Clemens Schroeder
Martha Rasmussen Staby

1940
Number in Class 67
Donors 25 Total \$3,035.00 40.3%
Florence Young Anderson
Richard Boe
Frances Kronberg Carter
Earl Christenson
Esther Carlsen Hansen
Leona Johansen Hansen
Robert Hemphill
Ralph Hendricksen
Fred Jacobsen
Helen Jacobsen
Lucille Neve Kloth
Inga Nielsen Kruse
Marie Mikkelson Larsen
Howard Nielsen
James Olsen
Clarence Paulsen
Myrtle Lee Rasmussen
Victor Schmid
Astrid Jensen Shjello
Edwin Svendsen
Ruth Svendsen Tange
Robert Taylor
Adolph Vammen
Edith Carlsen Vierk
Ferne Lantefield Wachtler

1941
Number in Class 56
Donors 24 Total \$1,762.50 42.8%
Lois Lyngboe
H. Daggett
Verna Henningsen Erickson
Earl and Ethel Jensen Glarborg
Frank Hengeveld
Esther Jensen Jenkins
Quentin Johnson
Evelyn Jensen Kelson
Theilma Hansen Kolb
Elizabeth Aagaard Larsen
Victor Lauritsen
Esther Rasmussen Laursen
Russell Lund
Charles Morehouse
Paul Neve
Ann Kock Paasch
Enoch and Gena Madsen Rasmussen
H. Rasmussen
Gale Skillstad
E. Svendsen
Dorothy Williams Yowell

Rhoda Krogh Wildrick
1942
Number in Class 48
Donors 21 Total \$1,848.00 43.8%
Robert and Audrey Betker Berthelsen
Elaine Jaspersen Christensen
Jerrold Eling
Shirley Bondo Hansen
Edward Harboe
Othilia Nelson Hauge
D. D. Hoggett
Genevieve Skau Jensen
Norbert T. Johnson
Donald Kolb
Edna Bondo Nance
Arnold T. Nielsen
Luella Nielsen
Grace Hansen Pearson
Eulella Schjodt Petersen
Mildred Peck Robeson
A. Ruster
Lorraine Peterson Schaeffer
Harold E. Sorensen
E. Irene Jensen Starrett

1943
Number in Class 60
Donors 22 Total \$2,712.50 36.6%
Nelson and Phyllis Olson Boe
Rhoda Hanson Daggett
Maynard Hansen
Thorvald A. Hansen
Rueben Iversen
Gilbert A. Jensen
Jack C. Jeppesen
Norman Johnson
Ernest Kersgaard
Ezra Larsen
Johannes Lindholm
Alton Neve
Lela Nielsen Neve
Alice Traam Nielsen
Francis Robinson Rahls
Vernon Robeson
Irene Johnson Schmidt
Maralee Miller Shadle
Lydia Nielsen Slave
Kenneth Taberson
Dorothy Kvols Thomas

1944
Number in Class 51
Donors 19 Total \$2,742.50 37.2%
Robert Christensen
Clifford Hansen
William J. Hanson
Gwendolyn Hopkins Hart
Bernice Benson Iversen
Robert and Virginia Pedersen Jensen
Oscar Johnson
Doris Petersen Krohn
Mary Hansen Morehouse
Helen Ninear Olsen
Roma Sandvold Phillips
Robert Plugge
Eleanor Jensen Rathje
Beulah Nielsen Rueter
Lois Carlsen Sorensen
Myron Sorensen
Arthur and Marie Nielsen Welch

1945
Number in Class 67
Donors 23 Total \$2,155.00 34.3%
Vera Mae Johansen Barbeau
Stanley and Mildred Romer Carlsen
Hans Carlson
Charlotte Olson Duerschner
Donald Ehlers
Gladys Lyngboe Hughes
Ruth Nielsen Jeppesen
Lloyd Johansen
Homer Larsen
Charles Lazure
Helen Mahlund Neumann
Lloyd Neve
Clifford Paulsen
Lyle and Agnes Larsen Paulsen
Mildred Madsen Paulson
Arthur M. Pedersen
Helen Pfeiffer
Ellenora Jensen Plugge
Harry Snyder
F. William Thomsen
Esther Seybold Westermeyer

1946
Number in Class 42
Donors 6 Total \$257.50 14.2%
Ruth Keay Edsvoog
Ruth Petersen Falken
Persis Pedersen Hanson
Jean Clausen Johansen
Mildred Staby Nelson
Mary Jensen Pedersen

1947
Number in Class 37
Donors 12 Total \$740.95 32.4%
Norman Bansen
Deloris Hansen Bengtson
Ethan Hansen
Doris Petersen Hanson
Mildred Hansen Johnson
Greta Pedersen Knag
Lois Nelson O'Shea
Raymond M. Paulsen
Margaret Jensen Rasmussen
Lorraine Nelson Schacht
Alfred Tan Creit
James Thone

1948
Number in Class 39
Donors 15 Total \$2,750.00 38.4%
Frederick Brengelman
Allison Hansen
Florence Hansen
Alvina Larsen Hortsvang
Isabel Jacobsen Hoegh
Hugh Hughes
Irene Kirkegaard Jensen
Dolores Jensen Johnson
Lorraine Sandberg Madsen
Marilyn Guyer McCormick
Lawrence Nelson
John W. Nielsen
Ewald Sorensen
Reynold H. Tange
Joy Larsen Wert

Paul C. Johnson
Ray Johnson
Carol Mengers Johnson
Willard Johnson
Sidney and Eileen Fleeton Jorgensen
Forrest Leighton
Maryann Nelson Lund
A. Violet DeGrave Madsen
Archie Madsen
Dean and Betty Schmidt Madsen
Norris A. Michelson
Janice Kruse Mussack
Anna Hansen Nelson
H. Elaine Neve Nielsen
Ivarell Raben
Grace Borlum Reed
Rhoda Iversen Schjodt
Donald Schou
Alice Sorensen
Arthur Sorensen
Myrna Olsen Tostenson
Marjorie Joseph Wahlgren
Kenneth Weaver

1950
Number in Class 135
Donors 37 Total \$3,670.00 27.4%
Amy R. Andersen
Doris Andersen
John T. Beck
Erwin Christensen
Antony R. Da Cruz
Clarence David
Bettye Duncan Dennison
Jack C. Emmons
Doris Lind
Ione Jaspersen Guyer
Andrew C. Hansen
Robert Hansen
Roger Hanson
Herbert Hjortvang
Margaret Madsen Hopkins
Arnold W. Jensen
Paul Jeppesen
Harold Jersild
Joyce Nelson Johnson
Kenneth Krogh
Roger Enksen Larsen
Dorcas Vammen Loughton
Harriet Mortensen Lipe
Elisa Cruz Merkl
Lyle R. Morigensen
Alan and Marilyn Neve Nyegaard
Gerhard J. Nygaard
Earl M. Pace
Charles Petersen
Howard Petersen
Donald and Anna Thomsen Poh
Eleanor Nielsen Schou
Joan Peterson Sorensen
Melvin Suhr
Leona Christensen Thone

1951
Number in Class 86
Donors 30 Total \$2,055.00 34.8%
LeRoy Anderson
Jernon L. Andersen
Virginia Lippincott Beck
Ellen Jensen Drew
Charles Eastlund
Marilyn Siersbeck Erling
Letha Sorensen Grutzik
Lois Guyer
Lois Gritz Halley
Opal Bollesen Hansen
Marie Nelson Hansen
Verlan and Helga Jessen Hanson
Lyle Jacobsen
Marjorie Rosvold Jacobsen
James Jorgensen
Sam Kachichian
Helen Halstead Kofoid
Eileen Nielsen Larsen
Paul Laursen
Robert Meyer
Betty Jensen Nygaard
Willis Olson
Lucy Anne Poucher
Ruth Larsen Randall
Warren Rasmussen
Betty Clausen Rhodes
Jimmy Sorensen
Gladys Voetmann Stawell
Joanne Merrill Varga

1952
Number in Class 86
Donors 28 Total \$2,100.00 32.5%
Dudley Allen
Lois Petersen Andersen
John Bradley
Natalie Petersen Carlsen
Martin Christensen
James Hansen
Neil Hansen
Robert Hansen
P. V. Hansen, Jr.
May Skobo Jackson
Norman F. Jensen
Calvin Jorgensen
Marcia Hanson Larson
Lloyd Lorenson
Gerhardt Mengers
Marilyn Nelson Meyer
Mary Kruse Munson
Robert G. Nelson
Andrew C. Nielsen
Donald Oita
Duane and Lillian Nielsen Ohlsen
Joyce Williams Peck
Lois Rasmussen
Mildred Siersbeck Rasmussen
Arthur Simon
Juri Taht
Dorene Larsen Westergard

1953
Number in Class 105
Donors 28 Total \$1,435.00 26%
Richard Anderson
Herbert A. Anderson
Dale Christensen
Kenneth Christensen
Vaughn Christensen
Robert E. Coffey
Norma Nielsen Hansen
A. Robert Hemmingsen
Leonard and Marilyn Korshoj Jackson
Dorothy Peterson Jepsen
Floyd W. Jorgensen
Phyllis Johansen Jorgensen
Philip Kaldahl
Joyce Hayek King
Dorothy Larsen
Wilbur and Alice Schultz Layman
Delores Burtneet Lorensen
C. Lund
Margaret Christiansen Madsen

Ruth Wagschal Mengers
James Nielsen
Conrad Sorensen
Mark Thomsen
G. Timpa
1954
Number in Class 82
Donors 30 Total \$1,675.98 36.5%
John and Myra Vig Christensen
Marion Christensen
Joan Nelson Coffey
Edward Eskildsen
Edith Skobo Faye
Norman L. Freund
Anna Harma Grande
Esther Jorgensen Grundberg
Margaret Erickson Hatar
Daniel C. Hansen
Gary Hansen
Winston Hansen
Howard G. R. Jensen
Russell P. Jensen
William D. King
Robert Kloth
Peter Mathiasen
Neil Moore
Arlene Sandberg Nelson
Orman Nelson
Carl C. Nelson
Levern S. Nielsen
John Planz
Arvin S. Quist
Edythe Jensen Rosenbaum
Ralph Speer
Roma Giesler Staudenbaur
Marjorie Baxter Tuveson
Peggy Rounds Wittlinger

1955
Number in Class 71
Donors 21 Total \$315.00 29%
Clarence Fredrickson Christensen
Neil W. Christensen
Stanley and Mary Heissen Hansen
Pat Lippincott Hunsche
Marilyn Jacob Huntress
James D. Iversen
Roger Kruse
Margaret McQuarrie
Gunnar N. Mengers
Harold Nelson
M. Jane Peterson Nelson
Don Nielsen
Donovan Olson
Lloyd Pedersen
Vale Peter
Nancy Brown Reissig
Phyllis Bollesen Ringler
Erling T. Schultz
James J. Seneca
Bethany Miller Simon

1956
Number in Class 97
Donors 29 Total \$2,447.50 29.8%
Patricia Bansemmer Baker
Arlene Miller Christensen
James L. Andersen
Kenneth L. Fehl
Marion Nielsen Hansen
Mary Speck Heinrichs
Richard A. Jensen
Dorothy Landbo Jorgensen
Harbert Jorgensen
Lois Johnson Kemble
Patricia Madsen Kloth
Robert and Joan Peterson Krogh
Hilmar Krueger
Betty Petersen Kruse
Dale Larsen
Harold Laursen
William O. Lawson
Rees and Edna Skobo McFarlane
James Nelson
Sigurd Nelson
Phillip Pagel
William Peterson
Bruce Sullivan
M. Ruth Kirkegaard Svith
John and Beverly Kruty Williams
Philip M. Wittig

1957
Number in Class 80
Donors 24 Total \$1,200.00 30%
LeRoy Anderson
Irene Wittig Bernhardt
Helen Jensen Carnes
Beth Kruse Cecil
John Christensen
Carole Henningsen Evert
Franklin and Nancy Bellows Gabby
Norman Hagberg
Robert Jensen
Carol Nielsen Jorgensen
James and Eleanor Wohlers Kruse
David Kutsch
Thomas Langenfeld
Antoinette Nelson Lawson
Carl Morigensen
Russell Moseman
Marilyn Ward Nichols
Elsie Jorgensen Planz
Marilyn Wolsmann Rasmussen
Harvey Sorensen
Dorol Valder
Virginia Hansen West

1958
Number in Class 103
Donors 32 Total \$2,489.00 31%
Clarence Andersen
James L. Andersen
Arliss Peterson Anderson
Helen Videbeck Anderson
Ingwert Appel
David Bidstrup
Carlie Lynn Cole Edwards
Donald Oita
Diane and Lillian Nielsen Ohlsen
Joyce Williams Peck
Lois Rasmussen
Mildred Siersbeck Rasmussen
Arthur Simon
Juri Taht
Dorene Larsen Westergard

Dorothy Willmert Schultz
Melvin Sikk
Mark Smith
1959
Number in Class 93
Donors 28 Total \$1,537.50 30.1%
Bertha Anderson
Ernest Anderson
Betty Christensen Bidstrup
John Blatter
Bartel Borglum
Thomas Ehlers
Larry D. Hansen
James Heiser
Lois Benton Huseby
Richard and Karen Peterson Jensen
Gloria Hanson Johnson
Carolyn Pedersen Jones
Richard Jorgensen
Gail S. Koldenborg
Mary Jo Andrews Kubie
Ernest A. Larsen
Walter Ludvigsen
Ruth Madsen
Patricia Andersen Miller
Marie Jensen Nielsen
Harlan L. Petersen
Myrl Schultz
Ronald Siersbeck
David Smith
Nina Yauch Spear
Shirley Chandler Valder
Donald Wahlgren

1960
Number in Class 104
Donors 35 Total \$1,992.50 33.6%
Dale Albus
Karen Jensen Capel
Howard E. Christensen
Joyce Hansen Christensen
Paul H. Christensen
Kenneth Dempster
Vernon Flesner
Jacob Grasmick
Shirley Haahr
John T. Henningsen
Joanne West Hess
Andrew Jensen
Beverly Peterson Jensen
Don and Joyce Vasby Jorgensen
Leo Kirchoff
George Landbo
Marian Hansen Langenfeld
David R. Larsen
Eunice Carlsen Larsen
Gerald Martin
Darrell Mertens
Patricia Andersen Miller
Leroy Pedersen
Duane N. Petersen
Noel D. Petersen
Ronald Raschke
Lyle E. Rasmussen
Janet Lynfield Rector
Donna Bagnell Smith
James C. Sorensen
Carol Peterson Stolen
Nancy Horton Svacha
Franklin Weber
Edward Wittig

1961
Number in Class 121
Donors 39 Total \$2,447.50 32.6%
Emory and Geraldine Christensen
Anderson
Harlen Crandall Anderson
Sharon C. Barney
Rogge Best
Kathryn Lubkeman Christensen
Myrvin Christopherson
Gary R. Danielson
Ray Dickson
Kenneth and Rosalind Peterson
Glyce
Judith Rasmussen Grabill
Ivan Johansen, Jr.
Luther and Doris Siersbeck Kloth
Anna Pohlmann Landbo
Joann Hundtoft Larsen
Jerry and Shirley Nielsen Lincoln
Joanell Madsen
Lois Justesen Miller
Elliott and Juane Skow Nielsen
Leonard Nielsen
Arlene Fuchs Noro
Allan Olson
Paul and Lois Lorenzen Olson
Jo Ann Larsen Otto
Roger Petersen
Paul D. Rasmussen
Margaret Nielsen Rodenburg
David Rossbach
Vera Lamb Sapsenfeld
Phyllis Bondo Shavlik
Mary Adams Teten
Mary Vig
Alice Anderson Weaver
Duane L. Wehrbein

1962
Number in Class 128
Donors 38 Total \$2,447.50 29.6%
Ralph and Judith Anderson
Wayne Anthony
William Archibald
Norman Beck
William Backer
Hans C. Christensen
Constance Gritz Collison
David W. Comstock
Carol Madsen Dickson
Diane Lippincott Fischer
Frank Grasso
Janice Miller Gronstal
Nena Wegener Hankins
Ellen Larsen Hanson
Lionie Hayne
E. Hemmingsen
Kenneth A. Jensen
Dorothy McIntosh Jensen
Waldo M. Junker
Karl C. Kooppen
Philip Larsen
Jerry Larson
Donna Layton Locher
Darrell Memming
Lois Jensen Pedersen
Paul I. Petersen
Peter L. Petersen
Charles Reeg
Lois Henningsen Rode
Walter W. Rodenburg
Mary Bertheisen Ruden
Samuel Stacks
Barbara Schulte Stuehrt
Gary Trimble
Barbara Boe Vierk

Judith Christensen Wagner
Larry West
1963
Number in Class 145
Donors 46 Total \$2,439.00 31.7%
Kenneth D. Anderson
Mary Folkerts Anthony
Joan Rathe Barnes
David Barber
Ruth Dreyer Bauer
Gary L. Biesecker
Dorothy Schultz Bock
Kent C. Borchers
Mary Clausen Canman
Deanna Schmidt Carr
Arden Dorn
Karen Flood Fulton
Gary Hanson
Franklin Hemminger
J. Kent Howard
Jean Gebhart Jensen
Judy Magnussen Jensen
Alan Johanknecht
Herbert D. Knudsen
Brenda Francis Krueger
Donna Berryman Lam
Beverly Larsen
Sandra Jensen Larsen
Roger H. Lippincott
Mary Sue Hansen Madsen
Spencer W. Martin
Joan Nielsen Mast
Vernon and Carol Krenze Mathiesen
Judith Mayland Morris
Kenneth and Ruth Meyer Muehl
Sterling Nelson
Dixie Hagedorn Petersen
Everitt and Theresa Johnson
Petersen
Ruby Hansen Petersen
Shirley Thompson Petersen
Burnell Pohlman
Kathryn Wollenhaupt Shaw
David A. Snowbeck
Larry Tantow
Thomas F. Vierk
Susan Ringhand Vines
Karen Hanna Waddingham
Nancy Becker Wittrock
1964
Number in Class 179
Donors 51 Total \$3,165.00 28.4%
Mary Lay Baehler
Pamela Huss Barber
Lynn D. Barnes
Linda Ocker Daniels
Mabel Wehrli Dargin
Carol Westermann Dickmeyer
Harnett Putnam Dobson
Robert and Ellen Peterson Dunnell
Walter and Faye Byrnel Fox
Janet Francis
Linda J. Gehrig
Margaret More Gilliland
Robert D. Hansen
Paul H. Hanson
Gloria Pedersen Hayne
Rebecca Rosener Holst
Roger E. Howland
Byron L. Jensen
Maude Wiese Jensen
Robert J. Jensen
Joyce Taake Johnson
Janet Peterson Jorgensen
Barbara Larsen Joy
Therman Kaldahl
Bernard Kionka
Pat Stollie Koeppe
Larry L. Kropp
Donald and Janine Kroegen Lacy
Thomas Lange
David S. Larsen
John E. Laughhunn
Judith Svendgard Lum
Janette Frandsen Martin
Janet Wohlers Myer
Myrtle Nelson
Nancy Annis Nelson
Elizabeth Solevad Nielsen
Milan Nore
Carol Bruning Petersen
Ruan Skaar Pohlman
Robert Rademacher
Phyllis J. Rasmussen
Maureen Bohiken Reinking
Brian and Connie Snell Rich
Patricia A. Parrish Spruvey
Robert M. Stegmaier
Leland Walz
1965
Number in Class 220
Donors 70 Total \$4,127.00 31.8%
Janet Hansen Archibald
David Bergren
Vivian Christensen Biesecker
Diane Gunderson Bro
John Brodersen
John Cederberg
Norman Christiansen
Donald P. Dreyer
Philip Dymneson
Jean M. Eisenhauer
Dennis Eitmann
Karen Burns Fahh
Christina Moosmann Ferguson
A. Casey Foster
Milbern and Kathryn Olsen Goetz
George Hagen
Ronald Halverson
Gerald Hansen
James L. Hansen
Charles R. Hough
Linda Anderson Howland
David Israel
Mark and Kathleen Kempe Iversen
Carolyn Parde Iverson
Bonnie Nelson Jensen
S. Michael Jensen
Sharon Messer Jensen
Charles Jorgensen
Jerry Jorgensen
Linda Money Jorgensen
Marjorie Kathmann
Maynard Kellerman
Karen Nielsen Knudsen
Linda Knudsen
David Larsen
Jill McClannahan Larsen
Sara Andersen Larsen
Ione Caldwell Liddicoat
Ronald L. Mattison
George and Margaret Matzen
Warren Miller
John Muehl
Sandra Andersen Mundy

Jennie Nelson
Clayton Niefeld
Marilee Olson
Margie Fangmeyer Olson
Jane Olsen Owen
Clifford Paulsen
David and Nancie Brockmeyer
Petersen
Allan Reinking
Roger Robert
Holger and Cheryl Donahoo Schultz
John Seburg
Carolyn Dusin Smela
Judith Dose Snowbeck
Bernice Van Peursen Spark
Linda Staben
Susan Sverkrubbe
Rodney G. Thompson
Janus Z. Thomsen
Sheila McKinstry Thorberg
J. Jane Jensen Warman
Candace Bamesberger Widness
1966
Number in Class 195
Donors 65 Total \$2,343.00 33.3%
Ronald Anderson
Mary Anderson Bargren
Dennis Barker
Cheryl Dietz Baron
Gary Bates
James Beck
Susan Slader Bennerrotte
H. O. Berry
Margaret Besbee
Diane Hawick Boeck
Joanne Cochenour Bracker
Ruth Buhl
Alyce Johnson Christensen
Marvel Christensen
Helen Leland Danielson
Marjorie Standberry Danielson
David Dymneson
Ruby Bushnell Dymneson
David Falksen
Carolyn Scott Fiore
Parma Shuey Fisher
Phyllis Fitch
Kathleen McKenna Graff
Jon R. Hallquist
Gloria Hanson Halverson
Lester L. Haussler
Donald Hoffman
Kenneth Jacobsen
Timothy Jensen
Kirsti Planck Johnson
James Jorgensen
Wayne E. Josephson
John Joslin Kellerman
Kenneth L. Kemmish
Harnett Larson
Jani Johnson Larson
Jerome Larson
Lowell D. Larson
Lynn Lauritsen
Larry and Susan Nystuen Legore
Jane Hass Lunde
J. Robert Lyche
Joyce Maurer
Virginia Gordon Miller
Judy Johnson Mortensen
Anne Bentsen Nielsen
Dallas Opler
Nancy Osborn Orwig
D. R. Owen
Carol Peetz
Kenneth H. Quirk
Connie Adams Robinson
Wilma Brauer Roenfeldt
J. Schroeder
Sharon Jones Skeen
Roberts Middleton Smith
Doris Larson Tomlinson
Suzanne Willers Totten
Bernhard Vaaler
Clyda Carter Wallace
Raymond and Linda Hazen Ward
Julie Larsen Wickens
Walter Willmert
1967
Number in Class 197
Donors 49 Total \$2,160.00 24.8%
David Barsness
Vicki Yowell Beck
Rolan Bentjen
Robert Blair
Terry Boeck
Paul Bondo
Leon Bracker
Leon Bragg
Charles and Judith Rueter Brehm
Tim and Lucille Vasby Brown
Loretta Heckathorn Calabro
John Cate
Robert Christensen
Thomas C. Christensen
Jim Christensen
Marjorie Capwell Cook
Leroy E. Deveaux
F. Paul Doerder
Rex O. Fangmeyer
Barbara Hofsing Feit
Gal Frazier
Claudette Bakken Gilbert
Gordan Grotrian
Cheryl Hanson Hallquist
Janice Miller Hinds
Patsy Fahrnkrog Hoffman
Dennis Jeppesen
Charles Johansen
David Kjeldgaard
Bradley Larson
Carl Magnusson
Rodney G. Miller
Robert Morgan
Leon Neve
Ruth Hansen Peck
Don Perekovich
Gerald Quirk
Darlene Haecker Rademacher
Marlow Remmers
Wayne Stittler
Ida Schmucker Smith
Dixie M. Soulis
Manilyn Harder Thompson
Edith Weller
Joan Hendricksen Willmert
Carol Leslie Winter
Robert Zwink
1968
Number in Class 256
Donors 70 Total \$2,455.00 27.3%
David A. Anonson
Robert Aho
Paul Ahrendt

Roger Anderson
Robert Anthony
Diane Siem Bark
Kathleen Plumhoff Barsness
Connie Elting Bentjen
Stephen D. Bohling
David and Nancie Brockmeyer
Dan Busse
David Carlson
Bonnie Libby Christensen
Kay Bowers Clark
Julia Sears Cook
Larry Cornwell
James A. Degner
Norman H. Dymneson
Mary Sue Petersen Edgecomb
Charles H. Elvers
Charles Frieden
Phoebe Schauer Fritson
Loretta Garcia-Robert
Clark Gilbert
Gary and Sherrill Molash Hansen
Richard D. Hansen
Robert D. Hansen
Timothy and Kathryn Christensen
Hansen
Marvin Harris
William Henning, Jr.
Peggy Vogel Hetrick
James G. Holtam
Charles Hubert
Shirley A. Iversen
Paul S. Jensen
Keith Johansen
Joyce Lyngard Jorgensen
Char. Les. Grap Kemmish
Richard Knake
Gary Knudsen
Joel Kolterman
Carolyn Madsen Larson
Norman Jordan Lippincott
L. Mark McKenzie
Philp Myer
Alice Petersen Neve
John Orwig
Susan Shadle Owen
Richard G. Petersen
Douglas Hale Rogers
Connie Andersen Quirk
Tamar Lykke Quirk
Paul N. Rasmussen
Kathryn Ringhand
Leroy Schafersman
Gary Sheldstad
Helen Hansen Sorenson
Cathrine Madsen Stone
Ron and Judy Smith Strrohbehn
Starla Sorensen Sweda
Alan Thomas
Shirley Lyche Vaaler
Richard J. Vierk
Conrad Warner
Gary Winter
Paula Zackman Wolf
Juliana Spilker Zwink
1969
Number in Class 288
Donors 77 Total \$2,009.20 26.7%
Barbara Cook Aanonson
Allan and Fran Pedersen Anderson
Barbara Berthelsen Anderson
Donald Anderson
James Bane
Cheryl Lehman Bates
Ronald Bernier
Shirley Sulm Best
Barbara Knowlton Brundige
Connie Boehr Buller
Lynn Johnson Busse
Suzanne Holloway Chambers
Rocky S. Christopher
Linda Akers Dow
Barbara Gerdes File
Sherry Beales Forrest
Colleen Wilson Geiser
Kathleen Grubbe
Karen Nelson Hansen
Paula Hansen
Phyllis Lauritsen Hansen
Marlyns Hansen
Miriam McLaughlin Haseltine
Jan and Ruth Nelson Haugen
Annette Sorensen Holtam
Carol Hansen Hubert
Elen Andersen Hutton
Kathleen Zwanziger Hutton
Jacquelyn Arshem Ingalls
Wesley Iversen
James and Julianne Nielsen Jensen
Sharon K. Juhler
Mabel Kastrop
John J. Korzilius
Robert Kuehner
Craig and Judith Nitsen Lindholm
Gail Bruning Lockhard
Rex R. Mahlan
Barbara Wheatley McConnell
Scott McGowen
William and Cheryl Hall Neal
Gwen Rutter Opler
David and Mary Petersen Paul
David E. Peterson
Judy Gollner Pohl
Richard Rasmussen
Robert Rasmussen
Alfred W. Rode
Lynell Marbach Ruppert
James Sams
Norma Wilkns Schafersman
Stuart and Bette Mitchell Schetter
Paul J. Seavey
Rich L. Shearer
Gary F. Shuck
Eileen Taake Simonsen
Louise Grube Sittler
Paul A. Staby
Shirley Albers Stubbendick
Patricia Welander Svacina
Vesta Kraft Thompson
Henry Thorberg
Edward Valle
Phillip and Paula Westfall Vasby
Susan Graf Warner
Peggy Seitz Warren
Spencer R. Wedberg
Roger Zieg
Margaret Haszard Zion
1970
Number in Class 347
Donors 77 Total \$2,145.70 22.1%
Ramona Alwill
Jim Anderson
Craig Barber
Richard Baron
Janet Penke Bates
Carol Lund Beatty

Arthur A. Beckman
Jon A. Boustead
Ron Briggs
Gerald Bruning
Eric Christensen
Teresa K. Detterer
Paul Dietrick
Virginia Dunham
Christine Zwanziger Faust
Joyce Freeman
Charles E. Gilmore
Janet Guthrie
Karen Bergstrom Hanson
Robert Haszard
Gail E. Hennings
Ronald and Raki Forney Hulsebus
Rodney Hutton
Ron P. Hutton
Lois Jacobsen
Bonnie Hagedorn Jensen
Luzbeth Ahrens Jensen
Edith Johnson
Twila E. Juel
Naomi J. Kenyon
Daniel Kleinpaste
Roger and Mary Wegger Knehas
Jan Uecker Kolterman
Candice Peterson Korzilius
Mary Kühr
Marsha Degner Kunz
Mark Langenfeld
Nancy Blobaum Ludwig
Albert E. Maul
Carol Canover Miller
Karyn Anderson Morland
Steven and Pamela Peterson Neet
James Nelson
Peter M. Nessen
Dale A. Oestmann
Gary and Carol Maresh Panko
Sharon Anderson Pape
James Pauley, Jr.
Sandra Pedersen
John Prouty
Jerilyn Linscott Rasmussen
David E. Renze
Karen Lausterer Riddle
Douglas Hale Rogers
Lynda Wacek Schmitz
Mary Stubbendick Seavey
James Shanahan
Wilbert C. Sick
Elizabeth Hall Sitoski
Scott L. Smith
Michael Spetman
Margaret Stanley
Robert C. Stern
Nina Strain
Shirley Nohrberg Vahe
Charles Warner, Jr.
Danny L. Watts
Nancy Simons Wedberg
Carl F. Whitman
Douglas Witte
Barbara Heag Wolfe
Jane Butler Zieg
Richard Zion
1971
Number in Class 302
Donors 69 Total \$2,644.00 22.8%
Kathryn Hulsebus Ahrendt
Everett G. Anderson, Jr.
Larry Anderson
Betty Holdorf Beckman
Arlene Christensen Blair
Diane Howland Briggs
Mary Briggs
Claudia Harris Brunick
Sherry Busse
Maurice Byers
Louis H. Carpenter
Lois Neve Carter
Deborah Cacrie
Peter Christensen
Margaret Clark
Mary Darling
Aigars Deklius
Judith Duncan Dietrick
Gloria Drake
Chris and Karen Evensen Eastlund
Susan Schaefer Edelman
Carol Bergman Fitcher
Larry L. Forristall
Ralph C. Glock
Philip P. Gotsch
John and Dorothy Paulsen Groesser
Barbara Krause Haag
Ruth Hall
G. Donald Hansen
Lawrence Henning
Dan Jackson
Joann Jacob Japp
Anita Holsten Johnson
Bruce Johnson
Robert E. King
Roger Lorsch
John: Magnusson
Karen Bansen Maguire
Larry D. Mai
Helen Martens
Brian K. Moerer
Betty Jorth Neby
Donald A. Nelson
Donna Goetz Nelson
Doris Olson
Mary Henningsen Ottmar
James Pedersen
Joyce Lynn Jensen Peters
David F. Peterson
Jimmie and Juel Neve Pierce
Stephanie Peterson Prouty
Gordon Putnam
Vicki Hoggensen Rushenberg
Eko Jensen Schammel
Dennis Schmidt
Jean Brehm Stahel
Marilyn K. Stahnke
Vicki Storm
Elaine Strand
Paul Toole
Roger D. Wheatley
Jon and Bonnie Hoehn Wicht
Marian Menking Wilkins
Jeanne Drake Winslow
Greg E. Witte
1972
Number in Class 324
Donors 64 Total \$2,021.50 19.7%
H. Louise Golding Abbott
Clance Axlund Andersen
Ellen Tilley Andersen
Robert Bar
Glenda Holsing Bro
Emily Fred Bumpous
Leona Carlson
Roger and Carolyn Dumke Carlson

Eileen Pedersen Cash
Charlotte Thomas Christensen
Louise Peterson Classon
Dianne Darrington
Kathryn Mann Duggdale
Dorothy Mohn Dunham
Twila Ertman
Linda Bergstedt Feltis
Kathy Madsen Forristall
Linda Olson Fuhrman
Marcia Smith Gilmore
Vickie Wilkerson Glock
Beverly Walters Gotsch
Tim Hamer
Carol King Hansen
Kathleen Christensen Henning
Dennis Hennings
Hans Hermansen
Barbara Fudge Jackson
Janis Jensen
Loretta Jensen
Conna Krull Johnson
Rodney Kastrop
Sally Kirkwood
Kurt Knudsen
Larry S. Knudsen
Richard Larson
John and Patty Fredricks Lentfer
Stephen Lizer
Vickie Donaldson Moerer
Kathryn Mohn
Arno Nebben
Douglas Nelsen
Ernest Poggenese
Susan Anghell Rasmussen
Robert Rhoads
Gregory Schou
Georgette Garrett Smith
Jeanne Sorensen
William Sorensen
Lynette Schmidt Spetman
Robert and Karen Link Stoll
Terry Thomas
Carol L. Thompson
Bette Wolf Triplett
Steven Triplett
Dorothy Picton Tubach
J. Dennis Wedler
Peggy Schilling Williams
David Winslow
Sandra F. Yeager
Laura Bro Zeveski
David Zion
1973
Number in Class 334
Donors 68 Total \$3,037.00 20.3%
Karen Hammock Bostwick
Alan Brodbeck
Mary Christensen Burmeister
Evelyn Clark
Vivian Dane Cook
Sharon Hansen Davis
Susan Dountas
Robert and Candy Wild Ehm
Ronald J. Eischen
John A. Eling
Rose Ellison
Joel and Joyce Spencer Eskelsen
Karl Shultz Ethier
David L. Fuhrman
Brenda Haack
Cecilia Dhogge Hahn
Leslie Hayes
Steven E. Hines
Theresa Jacoby
Arnie and Lois Edmonds Jensen
Charlotte Sorensen Jensen
Nancy Johnson
Susan Kruse Johnson
Doris Kahl
Douglas Kimm
William Kruse, Jr.
Tim Kuiken
Donna Jenssens Lacy
Gale L. Madsen
Betty Edwards Marsh
Roger L. Meints
Jolene Bundt Meyer
M. Annette Minderman
Terry Miner
John Mock
James Musick
Russell Nelsen
Kaj Neve
John Nielsen
Warren C. Nielsen II
Akira Okada
Steven C. Peck
Carl Porter
Jane Hendrick Prochaska
James Prouty
Arden Rakosky
Judith Walton Rasmussen
Karen Ruby
Jenny Nelson Rudberg
Deborah Sams
Richard J. Scheuring
Phyllis Kuhlmann Schwab
Linda Stuhr Scranton
Elsie Sebberson
Clarence Smith
Charles L. Smith III
John P. Spetman
Robert E. Stover
Barbara Wolf Triplett
Connie Andersen Wedler
Catherine Hines Wenning
Dennis Walsandt
Susan Erbes Williams
Duane Winston
Carol D. Wood
1974
Number in Class 275
Donors 56 Total \$2,277.50 20.3%
M. Gene Bamesberger
Steve Barratt
Marsha Hempler Batt
Ronald and Nancy Harris Beaman
Donald Beckman
Willard Behrends
Meta Brandes
Douglas Bro
Janet Sailer Browning
J. Steve Buller
Roger Burmeister
Kristine Mascman Coffey
Don Davis
John L. DeVasure
Dail Scholl Diedrichsen
Robert L. Dillender
Kenneth Dunham, Jr.
Kathryn Pieper Eiling
Gracia Fox Gillingim
Jane Hammer
Eric Hansen
D. Florence Hanson

Linda Denny Harnish
 Mary Kay Petersen Hennings
 L. Kay Harton
 Dorothy Vorthman Ivers
 Arthur C. Jetter, Jr.
 Carol Krueger
 William D. Luxford
 Guna Buss Magnuson
 Rhonda Frey McMurtry
 Richard Mewhiter
 Cathy Anderson Meyer
 Peggy Sass Miner
 Ruth Myers
 Dianne M. Nicolaisen
 Dawn Carper Nielsen
 Thomas Nielsen
 Martin Osterloh
 Barbara A. Petersen
 Larry M. Rasmussen
 Norlan and Lois Rathjen Rasmussen
 Lynda Salsness Renschler
 Kathleen Rongch
 Gloria Steffensen
 Lynn Dige Stegmaier
 Geneva Suhr
 Patrick Tripp
 Kay Probasco Vetter
 Rita Bardsley Ward
 Gary Warner
 Lana Janssen Wellsandt
 Roger R. Williams
 Diane Gunia Zeller

1975
 Number in Class 241
 Donors 33 Total \$950.00 13.6%
 James Bambow
 Kathryn A. Bertson
 Gayleen Walraven Broadstone
 Mercedes Ahrens Carkuff
 Robert Coffey
 Susan Zabel Dryburgh
 Gary M. Erbes
 Laune R. Fomanek
 Donovan Ginger
 Paul Haack
 Karen Jensen Howard
 Mary Hurley
 Roger and Manlyn Muff Kastrop
 Katherine King
 Ann Meissner Kreutz
 Jamie Heide Kuiken

David J. Larson
 William Lindahl
 Gary and Diane Larsen Madsen
 Jack G. Martin
 Jeffrey R. Meyer
 Brenda Loeschke Monflis
 Beth Peterson Pappasadero
 Carol Holmstedt Prouty
 Carl L. M. Rasmussen
 Walter H. Schacht
 Kathleen Sietsema
 Gary and Kathy Paulsen Soetmelk
 Kathleen Tyner Swanson
 Sandra Rochlitz West

1976
 Number in Class 225
 Donors 35 Total \$1,127.50 15.5%
 Emmanuel Achalu
 John T. Beck II
 Steven Berntson
 Steve Callaghan
 Tari Therikelsen Choiniere
 Dennis E. Culler
 Alan and Mary Henniksen Hanson
 Deborah Hotmann
 Susan Thorson Holstein
 Paul Johnson
 David Jones
 Mark Jones
 Kristine Krohn
 Sherry Kuhr
 Debra Powell Lemons
 Diane Williamsen Luxford
 Becky Haack Martin
 David Menz
 Jane Nielsen
 Patricia Meier Nielsen
 Dennis Nelson
 Lance Poldberg
 Gary P. Rasmussen
 Beth Rosenquist
 Joy Lyn Christensen Sanford
 Ann Schermerhorn
 Michael and Diane Bradley Stewart
 Thomas and Kristin Grorud Walker
 Debra Wallman
 Marylu Morris Wesemann
 David West
 Lois Westfall

1977
 Number in Class 195

Donors 16 Total \$1,222.50 8.2%
 Craig Bane
 Charly Hinz Behrends
 Jane DeVasure
 David Hall
 Ruth Fevold Hanson
 Kit Kelley
 Steven Kimm
 Curtis Maschman
 Lon Nielsen
 Terry and Carolyn Campbell Price
 Jane Radloff
 Shirley Steffens
 Barbara Beck Sturm
 Gwendy Wilson
 Arnold Young

1978
 Number in Class 271
 Donors 19 Total \$744.50 7%
 Carol Arnvig
 Michael Choiniere
 Mary Culton
 Catherine Dykman
 Manlyn Gengenbach
 Rhonda Hall
 Paul Hilgenkamp
 Howard Kulzer
 Priscilla Rossman Larsen
 Susan Neve
 Luke Northwall
 Monique Bentsinger Poldberg
 Dennis Preston
 John Romer
 Debra Petersen Schjodt
 Leslie Tripp
 Gerald Wallace
 Allison Willadsen
 Pat Zabel

1979
 Number in Class 183
 Donors 2 Total \$100.00 1%
 Julie Rasmussen Beck
 Shelli Meyerholz Northwall

1980
 Number in Class 177
 Donors 2 Total \$362.00 1%
 Lisa Hergert Foose
 Rony Sturm

1981
 Number in Class 160
 Donors 1 Total \$3.00 5%

Peter Neve

STUDENTS

Scott Grorud '82

MEMORIALS

Areh Aden
 Harold Anderson
 Mr. Henry Andersen
 Sara Andersen
 Sophie Andersen
 Mr. C. Donald Anderson
 Mr. Adolph Antholz
 Mr. and Mrs. Otto Appel
 Mr. Harold Baird
 Sena Bertelsen
 Garth Bintz
 Mr. Ernest Black
 Dr. Melvin Boehr
 Ms. Grace Brewster
 Dr. and Mrs. N. G. Carlsen
 Mrs. Dorothy Carlson
 Marie Bebensee
 Mrs. Olga Carlson
 Mr. Ray Carlson
 Mr. Art Christoffersen
 Deceased Dana Women Members
 Mr. Willard Dethlefsen
 Dr. Norman Dyhrberg
 Mr. Herman Fabnirus
 Mrs. Virgil George
 Mr. Chris Gregersen
 Mr. John Guenther
 Mr. Arnold Hansen
 C. X. Hansen
 Mr. Claus Harder
 Mr. John Hansen
 Mr. James Hansen
 Corinne Hansen Hegarty
 Mrs. Leah Henriksen
 Mr. George Holm
 Mr. Alvin Jensen
 Mr. and Mrs. Deppe Jensen
 Mr. Edwin Jensen
 Mrs. Erwin Jensen
 P. C. Jensen
 Rev. and Mrs. C. Jeppesen
 Mrs. Edwin Johnson
 Mr. and Mrs. Nels Johnson

Mrs. Martha Kruse
 Mr. and Mrs. C. B. Larsen
 Mrs. H. Larsen
 Mrs. Lillie Larsen
 Lorene Larsen
 Mrs. Ebba Larson
 Cora Mackland
 Alfred and Anna Madsen
 Rev. and Mrs. Harold S. Madsen
 Ms. Minnie Martens
 Arnold Mass
 Mr. Launitz Melchor
 Mr. Art Miller
 Mrs. Lena Nelson
 Ms. Ruth Nelson
 Mr. A. V. Neve
 Dora Nielsen
 Rev. and Mrs. Frank Nielsen
 Mrs. Gertrude Nielsen
 Mr. Merl D. Nielsen
 Dr. Paul Nyholm
 Mrs. Oscar Oakeson
 Parents of Rev. Russell Schilling
 Rev. Launitz Pedersen
 Mrs. Ruth (Neve) Petajan
 Mr. Charles Petersen
 Rev. Viggo Petersen
 Mr. Don Ringle
 Mr. Tom Rogers
 Gertrude Rogge
 Mr. Carl Schmitker
 Ms. Winnie Schultz
 Mrs. Dorothy Schupbach
 Mrs. Dora Shau
 Ms. Mildred Smith
 Mrs. Eric Soloth
 Albert Sorge
 C. Stenwell
 Dr. H. Swanson
 Mr. Henry Tiarks
 Ms. Rosa Timm
 Mr. Herman Vorthmann
 Pastor R. Wagner
 Mrs. Carrie Walstrom
 Mr. Alvin Wamhopp
 Mr. Boas Weismann
 Mr. Richard Welsh
 Mr. Carl Westland
 Mrs. Hazel Wombie
 Maxine Wyland

The Dana Dollar

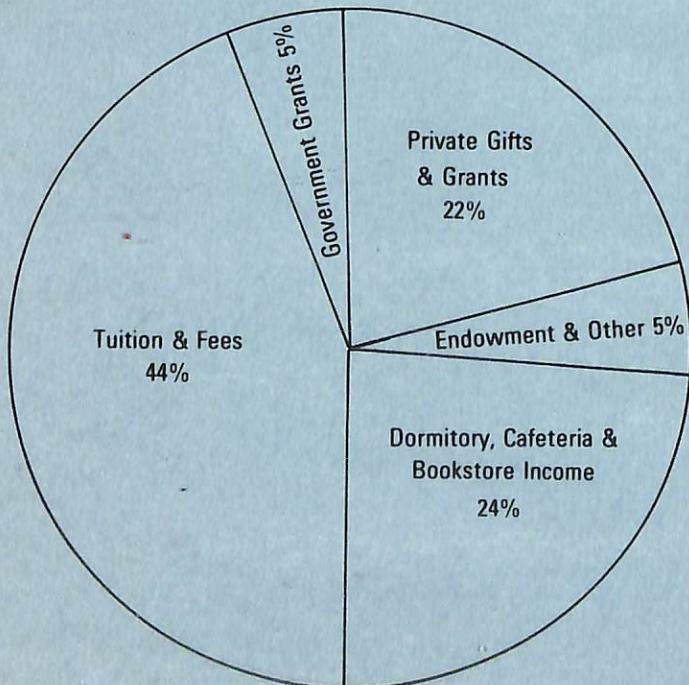
Dear Friends —

Dana's income is up! But it must be! Until enrollment tops its present figures, we continue to face the unenviable task of having to raise a higher percentage of gift support than any other college of the American Lutheran Church — over one-fourth of our expenses.

Every student who comes to Dana receives — in effect — a scholarship for more than one fourth of the cost of his education.

We need your continuing generous support so that we may continue our mission of Christian higher education.

Revenues:



Expenses:

