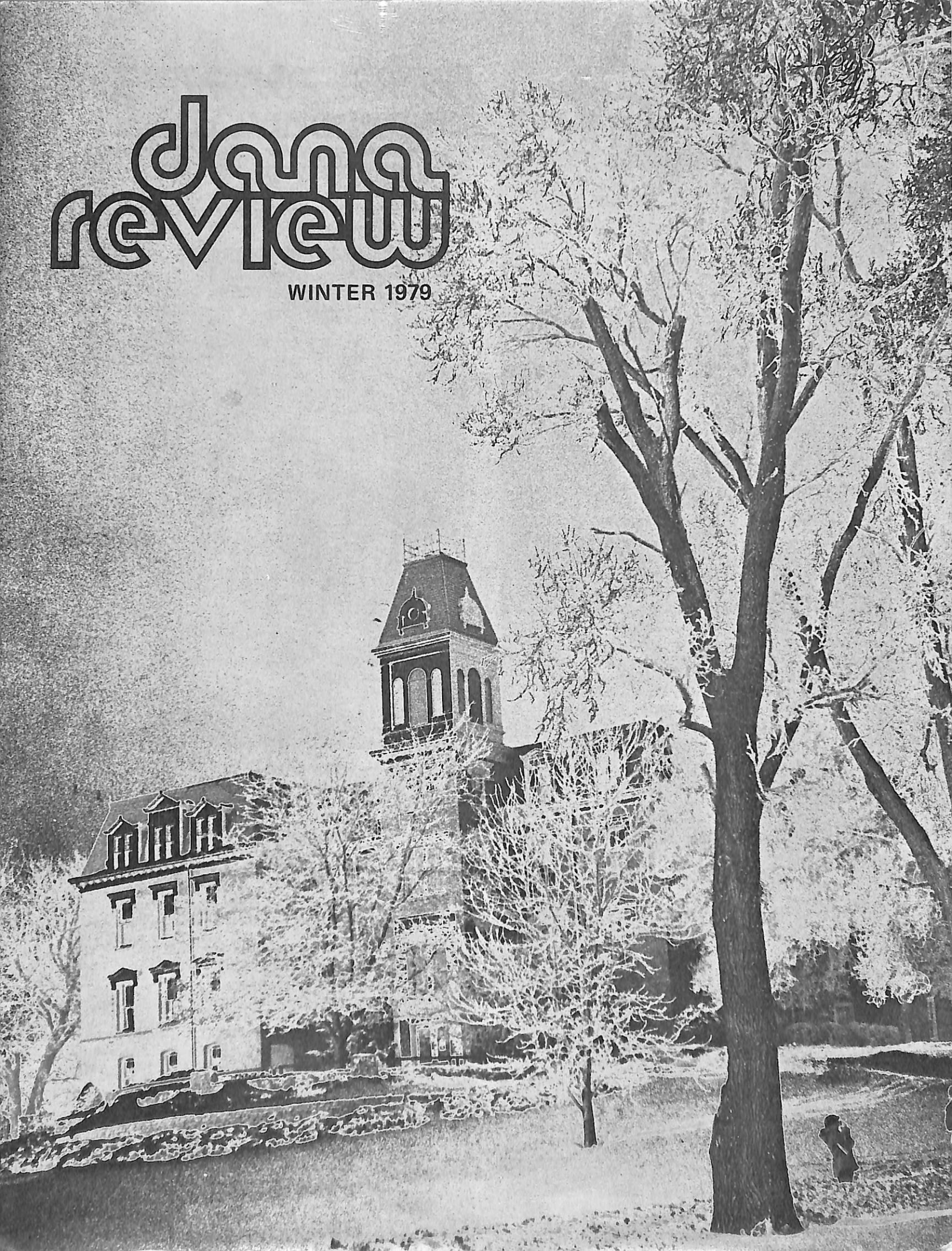


Dana Review

WINTER 1979

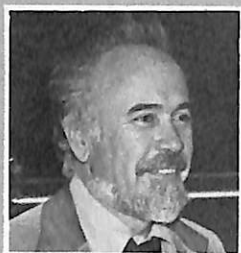


Dana review

Volume 35 Winter 1979 Number 2

A magazine for alumni and other friends of Dana College and Trinity Seminary, published four times annually. Printed by Acme Mail Advertising Co., Omaha, Nebraska, with editorial and business offices located at Dana College, 2848 College Drive, Blair, Nebraska. Second class postage paid at Blair, Nebraska 68008.

Friends in Christ, Friends of Dana, Greetings!



I am writing this in early December, in the middle of our first cold snap — biting winds, slick sidewalks and icy roads, temperature hovering around zero. It is difficult to believe — right now — that there will be a spring! As the days get shorter and the nights

colder, it is hard to imagine that later on, in a few short months, the sterile whiteness of winter will give way once more to the verdant ebullience of greenery, the explosion of new life, the dance of spring! But it will happen. It will happen because God has decreed it, laid the stars in their courses, charted the seasons, formed the foundations of our universe. And He is reliable, dependable, His promises sure.

There is a parable here, friends. Dana too shall bloom anew. The day is coming, not far distant, when Dana again shall march at the first rank of the schools of our church! We have our night of winter when all is cold and bleak. We struggle with finances, feeble figures, no warmth. Our student body is small, our gift giving smaller — we feel alone on the white plains of winter.

But we know that beneath the blanket of snow new shoots are forming, the bursting energies of life are active, gathering themselves together, about to surge to the surface! The friends of Dana shall rise up and sing her song anew. Sons and daughters shall come and fill her campus!

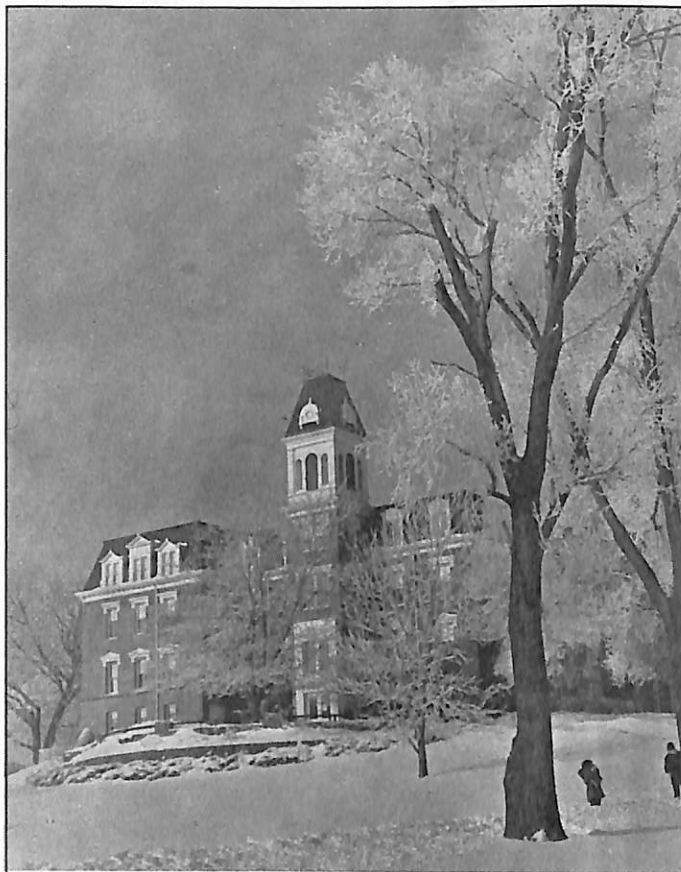
We look forward to springtime, to the renaissance of Dana, to the new birth of this beloved place, assured unto us because God Himself has laid the stars in their courses and charted the seasons and formed the foundations of our hopes. And He is reliable, and we rely on Him.

In Jesus' name . . .
Dr. James Kallas, President

Photography by Mark Amman '82, Randolph, Nebraska; Peter Bonde '81, Nerstrand, Minnesota; and Mark Latenser '81, Omaha.

Non-discrimination Policy

Dana College admits students without regard to sex, age, race, color, religion or national origin to all the rights, privileges, programs, and activities generally made available to students at the College. It does not discriminate on the basis of sex, race, color, age, religion or national origin in administration of its educational policies, admission policies, scholarship and loan programs, athletics, or other school-administered programs.



The Cover: Dr. Larrie Stone '57, professor of biology and photography hobbyist, in printing this shot of Old Main by Peter Bonde '81, used solarization — a quick exposure to white light during development — to create an unusual effect.

Campus Becomes Part Of Statewide Arboretum

By action of the executive board of the Nebraska Statewide Arboretum (NSA), Dana's 250-acre campus has been named an "affiliated arboretum site."

The NSA, unique among arboretums because it has several locations across the state rather than only one or two, carries out its objectives of "promoting knowledge, appreciation and use of Nebraska plants" and "enhancing the natural beauty of Nebraska" by introducing and distributing useful plants to its affiliated institutions for testing.

Thus, as an NSA affiliate, Dana becomes eligible for the exchange of arboretum plants. Plans are also being made to label all specimen plants on the campus.

Ceremonies marking the designation of the campus as an NSA affiliated arboretum site are scheduled for February 9 at 10 a.m. in Alumni Memorial Auditorium.

WASHINGTON COUNTY APPEAL — LOCAL GIVING INCREASES BY 70.8 PERCENT

"An absolutely magnificent response to Dana's need" is the way John Beck, associate director of development and director of alumni affairs, describes the results of Dana's Washington County Appeal this fall — results which show an increase in local giving of 70.8 percent over last year. Blair attorney John O'Hanlon and Lynn Wederquist of the Blair Bank served as co-chairmen both years.

Paul Strand, assistant director of development at Dana, says that a comparison of the amount raised — \$50,895.50 — with last year's \$44,533 doesn't reveal the whole story, because \$14,540.55 of last year's total was pledged by members of the Dana faculty and staff and professors emeriti, a group not included in this year's drive.

Instead, the "magnificent response" came solely from Blair and Washington County businesses, residents, and farmers, many of whom doubled — and even tripled — their gifts.

For countywide coverage, Appeal organizers used several approaches:

- solicitation by a major and advance gifts committee, composed of past Appeal chairmen, current co-chairmen and Dr. C. C. Madsen T'34, Dana's president emeritus. Regent Richard Hunt of Huntel Systems, Blair, was advance gifts chairman.

- solicitation of businesses by 50 Blair volunteers on 11 teams.

- a mass mailing to county residents.

- three Phonorama nights, two with Dana alumni, the other with Kiwanis Club volunteers, calling Blair and county residents.

- a Grain for Dana Day on November 16.

Grain Day, a unique event proposed by local General Motors dealer Kayo Vinton '40, offered farmers an opportunity to give Dana a load of grain rather than money. Thanks to the assistance of Rolland's Farm Supplies, Inc., Blair, which purchased the grain, the day brought Dana \$1615.50 and expressions of interest in future participation by other farmers who recommended scheduling next year's event earlier in the harvest season.

Three Named to Board

In December the executive committee of the Dana Board of Regents elected three new board members: the Rev. Howard T. Cole, Fargo, North Dakota; Mrs. Loyd Dykman, Overland Park, Kansas; and Dr. James M. Evensen, Thousand Oaks, California.

Cole is senior pastor of First Lutheran Church in Fargo and serves on the Church Council of the American Lutheran Church and the board of Oak Grove Lutheran High School in Fargo. He is a graduate of St. Olaf College and Luther Theological Seminary.

Mrs. Dykman, who attended Wartburg College, is Central District president of American Lutheran Church Women. She has also been congregation president and a church council member of Atonement Lutheran Church in Overland Park.

Dr. Evensen is professor of geology and department chairman at California Lutheran College, where he has twice been named Professor of the Year. He holds a B.A. from the University of Minnesota and M.S. and Ph.D. degrees from the University of Arizona.



President Kallas (right) and Gus Rolland (center) watch as Don Lipincott (left) delivers a load of grain for Dana.

President James G. Kallas, in commenting on the outstanding record set by this year's Appeal, said that "We are humbled by and grateful for the generous and substantial support of the people of Blair and Washington County. Caught between, on the one hand, spiraling costs due to inflation and, on the other hand, shrinking funds due to a decreased enrollment, Dana finds itself today in serious financial need.

"We are taking all steps needed to increase the student body, to contain and control costs, and are convinced beyond doubt we will weather the storm. Dana College is here to stay! One can easily see what an enormous boost in morale and in money this successful Washington County drive has given us! Our friends in the community streamed forth in open-handed, open-hearted warm support, and we are filled with thanksgiving!"



What are these students looking at? For the answer, see page 13.

INTRODUCING DANA'S FIRST LADY — DARLEAN KALLAS

Editor's note: Can one raise a family and study while living on three continents? Mrs. Darlean Kallas, the wife of Dana's new president did, and in this issue we've asked her to tell us about her interests and experiences.

It was at St. Olaf College, where I was majoring in music, that I met Jim. All my life, I have loved music, first singing publicly as young as five years old! I was offered the opportunity to sing professionally, but gave that up to get married.

In those early years of marriage, Jim and I did student work on the campus of the University of Oregon, where I continued my education, taking courses in art and philosophy. It was also during those early years that we ran across an abandoned Indian boy, 14 months old — the same age as our first born son — and raised him for the next 18 years, until he went into the Marine Corps. Our oldest son, Demetrios, was born in Michigan, went to prep school at St. Mark's School in Massachusetts, and eventually went through Stanford on a full scholarship.

When Jim finished seminary we accepted a call to the foreign mission field, West Africa. We spent several years in Europe on the way, studying and preparing. In France I earned the equivalent of a master's degree in French language and literature, studying at the Sorbonne. And from there we went on to England for a year — while there, had our second child, my first daughter. She was brought into the world by Sir Grantly Dick Read, the world pioneer in natural childbirth, author of *Childbirth Without Fear*. Then back to France and



another daughter! Jacqueline was born in France, Paris was born in England!

With two little daughters, an adopted Indian son, and a potential Stanford scholarship winner, Jim and I then sailed from southern France, on down to Africa! We put in several years out there bouncing along the thin little trails of the African bush in our British Land Rover as we established primary schools and trained teachers for them on the different mission stations of our church's field in the Cameroun. It was in the Cameroun, West Africa, that the last of our children was born, son Kingsley.

From Africa we went, in 1961, to be part of the original faculty of California Lutheran College, a new college the church was starting just outside of Los Angeles. While Jim was teaching, I was studying, finishing up the formal requirements for a master's degree in French and a secondary school teaching credential.

One of the major areas of interest and effort during the 17 years we lived on the West Coast was working on the summer educational tours that my husband and I put together. Over the years, we have taken literally thousands of people overseas, concentrating primarily on the Holy Land, the lands of Jesus and the journeys of Paul. We have found this to be one of the most effective, powerful tools we have ever been given for making the Bible come alive to those who travel with us.

And now Dana! We are grateful to God for yet another area of His kingdom in which to work! We brim with enthusiasm for the new areas of opportunity opening up in front of us!

Our prayer is that our lives might continue to be used, as we identify ourselves with the purposes and goals of this fine school!

Darlean Kallas

Danish Club Buys Books

Students in the College's Danish Club have purchased books valued at \$315 for the library's Scandinavian collection with funds they earned by preparing and serving open face sandwiches at Blair's Danish Days this fall.

The Club also purchased \$115 worth of Danish Christmas ornaments this fall for a tree featured in the *Julestuen* (Danish Christmas Room) at Dana's "Sights and Sounds of Christmas" December 3.

The ornaments were selected in Copenhagen by the mother of Mrs. Bodil Johnson. Mrs. Johnson is sponsor of the Danish Club and instructor in Danish and German.

Kallas Inauguration Planned for April 18

Dr. James G. Kallas will be inaugurated as the thirteenth president of Dana College at ceremonies on the campus now scheduled for Wednesday, April 18.

A committee is at work planning the day's events. Dr. David W. Preus, president of the American Lutheran Church, will be the featured inauguration speaker.

All alumni, parents, and other friends of the College are invited to attend.

ORAL HISTORY GIFT IS LARSEN MEMORIAL

Ninety-four cassette tapes of interviews with Danish-American immigrants from *Ribbons of Memories: American-Scandinavian Ethnic Heritage Oral History Program* have been given to the Dana library in memory of Dr. and Mrs. C. B. Larsen by their son and daughter-in-law, Philip '49 and Florence Larsen of Blair.

Dr. Larsen was a member of the Trinity Seminary faculty from 1926 to 1955, when he retired.

The interviews are conducted by Dr. and Mrs. Edward R. Sundberg, native Omahans who live in California, where Dr. Sundberg is professor of English at Cabrillo College in Aptos.

Mrs. C. B. Larsen and the late Dr. Paul Nyholm, who taught at Trinity Seminary and Dana, are among those interviewed on the tapes.

WHATEVER HAPPENED TO OUR STUDENT BODY PRESIDENTS?

The May 1924 edition of the *Hermes*, Dana's student newspaper, announces that "The student body organization has begun its work. The purpose of this organization is to facilitate the handling of the many issues that confront the students from time to time."*

The first student body president to head the new organization was Christian Justesen, now a retired pastor in Anaheim, California. He and his 55 successors are the subjects of this series, which will run in several issues.

1924: Christian Justesen

Pastor Justesen, who retired from the ministry in 1965, attended Dana from 1919 to 1921, transferred to St. Olaf College, where he received his B.A. in 1923, and then returned to Blair that same year to attend Trinity Seminary.

He prefaces his reminiscence about Dana with the comment that because "it is over a half century since I enrolled at Dana, you will find that my beginning was a little more primitive than today.

"After World War I ended and I had been discharged from the army, I made preparations to enroll at Dana College. I arrived at Blair, Nebraska, September 1919. An old man with horse and wagon offered to take my trunk to the College. I declined the offer as I had been advised not to let strangers drive away with any of my belongings. So I left the trunk on the platform and took the long walk up the Hill and finally came to Old Main.

"The front door was open. I entered, no one was around. I looked the building over, still found no one present. I heard a voice in the basement. I descended the stairs and arrived in the dining hall. Here I met the cook. She advised me to go to the president's house to meet the president. This I did, but the president was not at home.

"I went to the main floor again and here I met a theological student, William Beck. He was standing in the doorway wearing his army helmet. I greeted him, since I was sure that he, too, was an army veteran. He greeted me kindly and hearing that my trunk was still at the depot, he advised me to go to the third floor and to pick out a vacant room with a bed in it. He supplied me with sheets until I could get the trunk up the hill.

"Sunday morning, my first morning, the breakfast bell rang. At the breakfast table were Miss Brandt, Danish teacher; Mr. William Beck, theology student; Mr. Martin Kjerkegaard, teacher; Mr. Nammensen, custodian, and myself. Our menu was: oatmeal and whole milk, rye bread and slices of cheese, syrup and coffee.

"On this Sunday students began to arrive. On Monday we were asked to weed the tennis courts [behind Old Main] so that we could use them for our tennis games. As the students came, the building was soon filled with happy young people from many parts of the country, some from California and I was from Maine, others from the different states. Wonderful friendships were made. Here I met Mary C. Hansen, who became my wife. We have lived together 52 years."

Justesen was ordained in 1926. He has served congregations in Shelby and Cedar Falls, Iowa, in Minneapolis and Chicago, and in Fresno, California. He was president of the Illinois district of the United Evangelical Lutheran Church (UELCL) from 1939-43 and of the UELCL's Pacific District

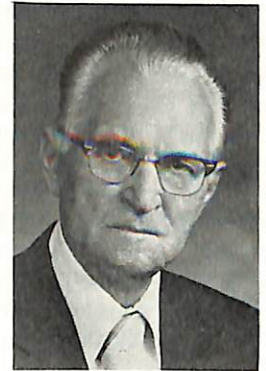


from 1950-61. He is the author of *Light at Midnight*.

Justesen served on the College's board of trustees from 1943-51 and the UELCL's board of education in 1943-44. Daughters Janet and Lois attended Dana. The Justesens live in Anaheim (92804) at 2161 Essex Circle.

1925: Magnus Christensen

Mr. Christensen, who lives at 795 South Alton Way, Apartment 10-A, in Denver, Colorado 80231, is retired from the U.S. Postal Service. He writes that "I was born on a farm near Moorhead, Iowa, and attended a country school two miles from home. During that time I began planning for more schooling. The nearest high school was seven miles distant. Those were the horse and buggy days so commuting to high school was impractical. In addition there was work to be done on the farm.



"Dana had a winter term beginning after harvest and ending at spring planting time. I attended two terms and received a diploma in bookkeeping dated May 29, 1914.

"Then a hitch in the military service including France from which I returned in February 1919.

"Soon a call from our local banker wanting help. No, I intended to attend Dana in September. No problem, he said, we will have a replacement by that time. A replacement was delayed and I arrived at Dana by mid-semester. Kind-hearted Dana gave me full credit.

"My attendance was interrupted by illness.

"I owe a great debt of gratitude to the very competent and conscientious instructors. A great surprise was the choice of my lyrics for our school song [*Hail Dana*]. My last year at Dana was 1926.

"I continued my schooling at the University of Nebraska in 1927."

(continued on page 6)

*There were, however, earlier student body organizations. William Christensen, author of *Saga of the Tower, the history of Dana and Trinity Seminary* published in 1959, writes that "there was a student body organization going back to the early nineties — and apparently in some form as far back as 1886. It adopted a constitution in 1896, but went out of existence a few years later, at which time a number of other organizations took over its functions. As originally set up, the organization elected student body officers, served as a religious group and also had some of the features of a literary society."

This series starts with 1924 because student government has continued from that year to the present without interruption and with essentially the same purpose — "to facilitate the handling of the many issues that confront the students" — although the organization's constitution has been rewritten several times.

According to the *Hermes*, the first 15 presidents were elected in February to serve during that semester and the first semester of the next school year. Students at Trinity Seminary and Dana — both schools of the former United Evangelical Lutheran Church — formed one student body until the Seminary moved to the Wartburg Seminary campus in Dubuque, Iowa, in 1956, four years before the merger of the UELCL with two other synods to form the American Lutheran Church.

1926: Ansgar Christensen

Pastor Christensen, a 1927 Trinity Seminary alumnus, served congregations in New Zealand until his death.

1927: Silas Larsen

Pastor Larsen, who retired from the ministry in 1964, writes that "Under Presidents Dr. C. X. Hansen, elite counselor of students, and T. M. Hansen, minister of the Gospel in the UELC and the ALC, also among the many fine teachers, the elite mentors Miss Caroline Johnson, Miss Warren and Miss Falk, we are happy to honor as important to any achievement in the student body.

"In the company of a select student body, I was selected to serve as student body president for the school year 1927-28. I do not remember any special event or business affair that was especially significant: May it be sufficient to say that a body of high ideals and aspirations, men and women, makes it highly worthy of recording here, a happy fellowship.

"The years spent at Dana brought to light God's plan for my life, the Gospel ministry, planned for me in the counsels of God before I was born and activated by Him through Godly parents. In the course of which I came to Dana College in the fall of 1924 at the age of 25. I was ordained June 7, 1931, in the Thompson Memorial Gymnasium on the Dana campus by the Rev. Dr. N. C. Carlsen, president of the UELC synod, on call of Ebenezer Lutheran Church at Audubon, Iowa. Thus showing forth in the course of 47 years, and what remains of my life, 'God's sure counsel: He will complete what He has appointed for me.' Job 23:14. Supporting me in this great venture, my wife Anna Brock [31] Larsen from Jewell, Iowa, now with me nearly 49 years . . . God willing and we live."

Larsen has served congregations in Audubon, Scranton, and Coon Rapids, Iowa; Cushing, Wisconsin; and Kenmare, Norma, Halliday, and Marshall, North Dakota. From 1956-59 he was president of the UELC's North Dakota-Montana District. The Larsens live at 1017 West 17th Avenue in Spokane, Washington 99203.

1928: Leo H. Andersen

Pastor Andersen, who lives at 1112 Val Kay Court in Hampton, Iowa 50441, writes that "Two of my friends and I from Racine, Wisconsin, came to Dana College in the fall of 1926. After spending three years at Dana College I transferred to the University of Minnesota and graduated in 1930.

"I entered Trinity Seminary in the fall of 1930 and was ordained at Waupaca, Wisconsin, in 1933. In June of 1933 Esther Nelson [a Dana student] of Cedar Falls, Iowa, and I were married. We have three children, a son and two daughters. We have served the Lutheran church in Wisconsin, Michigan, Minnesota, Iowa, and North Dakota. We retired at Hampton, Iowa, in 1969.

"In addition to the usual campus activities at Dana College, three things remain in my memory. One was the regular attendance at daily chapel services by the student body. Another was the adoption of a new constitution governing the student body. And the last was Dana College fielding a football team. They had only basketball up to that time. And the remarkable aspect of starting football was that some of the money required for uniforms and equipment was donated by individual students and faculty members."



1929: C. C. Madsen

Dr. Madsen, president emeritus of Dana College, attended Dana from 1927 to 1930 and then transferred to the University of Minnesota, where he received his B.A. in 1931.

He recalls that "At that time students of Trinity Seminary as well as Dana College comprised the student body. A Seminary student announced his candidacy and — for reasons I do not recall — some of his fellow-seminarians opposed him and asked me to run. They agreed to spearhead my campaign, which they apparently did quite well since I was elected.

"During the year I served, the student body numbered 125, with 111 in the College and 14 in the Seminary. College enrollment included several who registered for the traditional 'winter semester,' designed especially for young men from the farms who attended from November until April for a full semester credit. During that year, the College president, Erland Nelson, spoke over Omaha radio WOW describing Dana's winter program, 'College Education for Farmers.'

"The records indicate there were 19 students out for football and the varsity basketball squad numbered 11.

"*Hermes* issues for the year gave as much space to the forensics events as to athletics, particularly the debate teams which competed against most Nebraska colleges, including the University of Omaha. Our teams published a manual on the subjects assigned nationally for debates, and this material was used by a number of schools throughout the country. Dana also organized a debate fraternity and became the Alpha chapter of Alpha Sigma Phi, which included several colleges for a number of years. Another member of the team, R. E. "Rick" Morton, also served later as president of Dana College.

"As I perused the *Hermes* for that year for notices of my accomplishments as president, I could best sum up my administration in the words of a newspaper columnist who reviewed his career as an air raid warden in California during World War II: 'There is nothing in my record to be ashamed of — as a matter of fact, there is nothing in my record.'"

After receiving his B.A. from Minnesota, Madsen returned to Blair and entered Trinity Seminary, where he received his B.D. in 1934. He holds the Th.D. from Central Baptist Seminary in Kansas City and honorary doctorates from Midland Lutheran College and Dana. He was a member of Dana's board of trustees and the UELC's board of education from 1940-42.

Madsen served a parish in Kansas City, Kansas, until becoming a navy chaplain in World War II, and he now holds the rank of captain in the USNR Chaplain Corps (ret.).

He notes that "An interesting — and most gratifying — experience during my service as chaplain with the U.S. Marine Corps in the Pacific theater was the joy of meeting two other ex-presidents of Dana's student body: Chaplain "Bill" Larsen and I were with neighboring marine combat units on Guadalcanal for some weeks in 1944, and I had the privilege of spending a night with Chaplain Verner Carlsen on his ship, the aircraft carrier Gambier Bay, shortly before he survived her sinking in the Leyte Gulf battle. Also on Guadalcanal I had several meetings with Reynold Tange, who was with the army air force. He later was in my classes at Trinity, became one of our good parish pastors and served on our Dana board of regents for several years during my presidency."



After the war, Madsen taught at Dana and Trinity Seminary for ten years and then was named Dana's eleventh president, a position he held from 1956 to his retirement in 1971.

In 1961 Madsen was awarded the Cross of the Knight Order of Dannebrog by King Frederik IX of Denmark; in 1963 he was a delegate of the American Lutheran Church to the Fourth Assembly of the Lutheran World Federation in Helsinki, Finland. He and his wife, Esther (Johnson '34) live in Blair at 2519 College Drive. Their children, Lowell and Carol, are both Dana alumni.

1930: William Larsen

Pastor Larsen was executive director of the Division of Theological Education of the American Lutheran Church at the time of his death in 1971.

A graduate of Dana and Trinity Seminary, he was ordained in 1936, the same year he married Inga Schultz '36. While serving his first congregation in Boston, Massachusetts, he attended graduate school at Harvard and Boston Universities and received his M.A. degree.

During World War II he was a U.S. Navy chaplain and saw active duty with the Marine Corps. After the war, he served 20 years in the Navy Reserve, retiring with the rank of captain.

In 1947 he was a campus pastor at Ohio State University, and from 1948-56 was executive director of the Lutheran Student Foundation of Minnesota. During these years, from 1948-51 and 1954-55, he served on the UELC's board of education and Dana's board of trustees.

His wife, now Mrs. Edward Larsen of 1918 Merner Avenue, Cedar Falls, Iowa 50613, writes that "My husband was always intensely interested in Dana College . . . and was active in promoting financial support."

Larsen was elected president of the UELC in 1956. When that synod merged with two others in 1960 to form the American Lutheran Church, he became secretary and then vice-president of the new body.

At Dana's Homecoming in 1965 Larsen was recognized for "distinguished service to his Church in the ministry of theological education." Daughter Ellen is a Dana graduate.



1931: Ervin F. Bondo

Pastor Bondo, who died in 1961, graduated from Dana and Trinity Seminary, receiving his B.D. in 1936. He also attended Lutheran Theological Seminary at Gettysburg, Pennsylvania, for one year.

His widow writes that he "served in Wisconsin as pastor of St. John's Lutheran Church at Oregon and Brooklyn from 1936 to 1944. During this time, he received his master's degree from the University of Wisconsin at Madison and also assisted in Lutheran student work at the University.

"During World War II, he was called by the National Lutheran Council to serve a mission church for wartime workers at Willow Run, Michigan.



Heritage Society Formed

Danish Americans wishing to perpetuate their cultural heritage might consider joining the Danish American Heritage Society, founded in 1977, with headquarters in Salem, Oregon.

The objectives of the Society, which several members of the Dana faculty and staff have joined, include preserving and promoting interest in Danish American traditions, collecting records and artifacts relating to the life and culture of Danish Americans, encouraging Danish American expression in the arts, humanities, and social sciences, and serving as a clearinghouse on all phases of Danish American life.

The Society publishes a quarterly, *The Bridge*, as a means of communication and education for its members. (An article by Dana Professor Norman C. Bansen '47, English and Danish, appeared in the first issue.)

General membership (individual or family) is \$10, and a sustaining membership (individual or family), \$25. Dues can be sent to Egon Bodtker, Treasurer, Danish American Heritage Society, 1132 Newport Drive S.E., Salem, Oregon 97302.

"Following the war, he served as director of the Eastern Division of American Missions of the National Lutheran Council for two and one-half years.

"He was pastor of Highland Park Lutheran Church at Des Moines, Iowa, for 11 years. In 1959, he accepted a call to Our Savior's Lutheran Church at Racine, Wisconsin, where he served until his death on November 14, 1961.

"He was a member of the board of trustees of Dana College from 1944-58. Three of these years, he was chairman of the board. He served on the synodical board of education till the merger, and until his death was a member of the board of regents of Wartburg Theological Seminary."

Son Mark is a Dana graduate. Mrs. Bondo (Palma Nelson) lives at 3705 Ross Street in Madison, Wisconsin 53705.

1932: Harvey Kuhr

A 1934 Dana graduate, Mr. Kuhr received his law degree from the University of Michigan at Ann Arbor. Since then, he has worked for All-State Insurance in the claims department. Kuhr lives at 1801 Austin Avenue in Los Altos, California 94022. His sister, Marjorie (Mrs. Woodrow Svendgaard), manages the Dana bookstore.

1933: Verner Carlsen

Pastor Carlsen graduated from Dana in 1936 and from Trinity Seminary in 1939. He served his first parish in Graettinger, Iowa, until he became a navy chaplain in 1943. He writes that "I served until 1946. My outstanding chaplaincy experience was to serve aboard the aircraft carrier USS Gambier Bay. I survived the sinking of that ship in the Battle for Leyte Gulf.

"Following World War II, I served Nazareth Lutheran Church in Kenmare, North Dakota, until I was recalled by the navy when the Korean War broke out and was on active duty in Korea and at Whidbey Island Wn. until 1952. Upon return to the parish ministry, I served Our Savior Lutheran Church of Council Bluffs, Iowa, until 1956 when I came to Whittier, California, to organize St. Andrew Lutheran Church. In 1971 I became pastor of the American Lutheran Church in Copenhagen, Denmark.

"Upon my return to the U.S., I served for a short while as pastor of Coalinga, California, until my retirement. We now

(continued on page 8)

Student Body Presidents (continued from page 7)

live in Moorpark, California, and I serve part time Ascension Lutheran Church, Thousand Oaks. My wife, formerly Mildred Petersen from Sidney, Montana, was also a Dana student.

"Dana, although one of the smallest of our Lutheran colleges, has had far-reaching influence throughout the church here in the U.S. and abroad far out of proportion to its size. She deserves the full support of her alumni and of the church to insure that her mission will continue in the decades ahead."

Carlsen also served on Dana's board of trustees from 1955-58 and on the UELC's board of education from 1955-59. He and his wife live in Moorpark at 4213 Granadilla Drive (93021).

1934: Dolliver Thogerson

Pastor Thogerson, who graduated from Dana in 1935 and from Trinity Seminary in 1938, has served congregations in Edmore and Sidney, Michigan; Cushing, Wisconsin; Portland, Maine; Derwood, Maryland; and West Branch and West Burlington, Iowa. At Hauge and St. John Lutheran Churches near Decorah, Iowa, since 1968, he recently retired to Huxley, Iowa, where he is visitation pastor at Fjeldberg Lutheran Church.

1935: Stanley Larsen

Pastor Larsen received his B.A. from Dana in 1938 and his B.D. from Trinity Seminary in 1941. He writes that "The mid-thirties were interesting years at Dana. It was the depth of the depression. Through a low-cost plan initiated a couple of years before, the College was able to maintain her enrollment. The cost for tuition, board and room was as little as \$244. Students came from many states to attend Dana because they could afford it. Besides the low cost, there was the NYA which gave federally subsidized jobs to students. The low cost and the job program no doubt became a lifesaver for Dana.



"Interesting items of discussion for student body meetings were: 1 — Should there be dancing on campus? 2 — Should the student body police the exams at Dana because of the cheating? 3 — Should there be compulsory chapel attendance? These subjects were discussed quite enthusiastically without coming to a definite decision.

"In her 94 years as a college of the church, Dana has been through many trials. She has been able to survive these trials, and has been blest through them. Dana has been a blessing to many, and the bond of fellowship established there is a lasting one. As the years go by, we have a deeper appreciation of Dana.

"I was married to Marie Mikkelsen. She is a 1940 graduate of Dana. We have three children. They are Dave, Steve and Jan. Two of them graduated from Dana. Since graduating from Trinity Seminary, I have served congregations in Des Moines and Exira, Iowa; Sidney, Montana; and now at Richford, Wisconsin."

The Larsens live at Route 1, Box 73 in Coloma, Wisconsin 54930. Pastor Larsen is the brother of the late William Larsen, student body president in 1930. They are the first of three sets of brothers who have served in this position.

1936: Walter Rasmussen

Mr. Rasmussen, a counselor and administrator at Evans-town (Illinois) Township High School from 1950 until his retirement in 1976, attended Dana for two years and then transferred to St. Olaf College, where he received his B.A. in 1938. He holds an M.A. from Teachers College, Columbia University, and has done advanced graduate study at Northwestern University.

Rasmussen taught history and coached at the Oaks (Oklahoma) Indian Mission from 1939-41, served in the navy from 1942 to the end of 1945, and then returned to Oaks for the second semester of the 1945-46 school year. From 1946-50 he taught history and was a counselor at the Austin, Minnesota, high school and then accepted a position at Evanstown Township High School.

He writes that "To a farm boy from a small high school, Dana was a large place, an open sesame to great experiences and an important step to my future in education."

Rasmussen's address is P.O. Box 65, Clifton, Illinois 60927.

1937: Edward A. Hansen

Bishop Edward A. Hansen graduated from Dana in 1939 and stayed on campus another three years to graduate from Trinity Seminary in 1942. He later studied at Luther Theological Seminary, New York Theological Seminary, Mansfield College of Oxford University, St. Andrew's University in Scotland, and Colorado State University. In 1961 St. Olaf College awarded him an honorary doctor of divinity degree.



Ordained to the ministry in 1942, Hansen served UELC parishes in Lindsay-Genoa, Nebraska, and in Minneapolis and Hutchinson, Minnesota. At the age of 30 he was called to the faculty of the Lutheran Bible Institute in Minneapolis. A year later he went to New York City to become one of the founders of Lutheran Bible Institute of the East, which later became Luther College at Teaneck, New Jersey.

When the American Lutheran Church was formed as a merger of three church bodies in 1960, Hansen was elected president (bishop) of one of the 19 districts of the new church body. The only UELC clergyman so chosen, he presided over the Southwestern Minnesota District for the next 18 years. In 1977 he was elected chairman of the Council of Presidents of the American Lutheran Church, whose members include the president of the synod and district presidents.

Recently he was named director of development at Golden Valley Lutheran College in suburban Minneapolis.

As chairman of the Santal Mission (India) Board, Hansen has made numerous trips to Europe and in 1970 traveled around the world visiting mission fields.

During the past ten years, he has also served on the Inter-Lutheran Commission on Worship, the group which prepared materials for the new Lutheran Book of Worship introduced to congregations last fall. In 1972 Dana named Hansen a Distinguished Alumnus.

He and his wife, Shirley (Bondo), also a former Dana student, live in Willmar, Minnesota. *(to be continued)*

Dear Friends and Fellow Alumni,

If I had a billboard for you all to see, there are several signs I'd want to put up as 1979 begins.

we're
glad
he's
here!

That's what one sign would be. And the "he" is Dr. Jim Kallas, Dana's 13th president. Dr. Kallas has quickly won the loyalty and affection of Dana's students, staff and faculty, and the response of friends and alumni has been the same. Many of you will have a chance to meet him at Dana gatherings in Washington, D.C. (February 2), Chicago (February 3), Cedar Falls, Iowa (February 21), Minneapolis (February 22), Los

Angeles (March 17), and Lincoln, Nebraska (March 28). If you live in any of these areas — mark your calendars. You'll receive more specific information later. Dr. Kallas will also be seeing others of you as he travels with the choir through most of the California part of the itinerary.

coming
soon
Phonorama '79



This sign means that we'll soon be calling many of you again for your annual gifts for Dana. We're tripling our Phonorama calls this year — calling from Lincoln, Denver, Los Angeles, Minneapolis, Honolulu, Chicago, Omaha, and Blair beginning in January and continuing into April!

HELP
WANTED

So our next sign might ask you to help as we look for willing telephone volunteers to see us through at least two nights of calling in most of these cities.

GOT A MATCH?

Another of my signs would ask this question. And it follows another question — "Do you have Lutheran Brotherhood members in your family?" Because this year

LB is offering to match from a minimum of \$10 to a maximum of \$100 of your gift to Dana College for each LB member in the family! We're thankful for this — and are sure that it will spur many of us to even larger gifts this year.

HURRAH
for
Judy!

This sign just says how we all feel about Judy Rueter Brehm '67, who has agreed to be our national chairman for Phonorama '79. Her work is cut out for her after the \$50,000 Phonorama '78. We'll have to hustle to beat that. But Phono '79 is already off to a roaring start! In November Blair alumni, Dana student volunteers, and friends in the Blair community called Washington County residents and '76, '77, and '78 grads

and started Phonorama '79 off with nearly \$5000 in pledges and \$2000 in matching gifts. More than one-third of the gift dollars in this first Phonorama will be matched by Lutheran Brotherhood.

Travel
'79

The "Travel '79" sign reminds me that Ginny and I have put off that vacation a long, long time. Maybe you have, too. This year you might like to make that pilgrimage to the Holy Land and other interesting

stops in the Near East — and make it with Dr. Kallas and other Danians. Read the ad elsewhere in this *Review*, and write for more complete information. All profits from tour tickets sold through the Alumni Office will go to Dana.

Learn, grow, enjoy yourselves and help Dana at the same time!

HAVE A BLESSED AND HAPPY NEW YEAR!!

John Beck
Director, Alumni Affairs

Romeo and Juliet Actors Learn Swordplay, Footwork

Students involved in the February performance of Shakespeare's *Romeo and Juliet* have been rehearsing more than their lines.

They and others working on the production are enrolled in a January Interim class called "The Violence of Love," taught by Dr. Janet Weller, drama, Dr. John Bienz, English, and Joseph Martinez, an authority on the art of stage fighting from the Valley Studio, a mime theater in Wisconsin. Martinez, who is writing a book on stage violence, is a member of the American Fight Directors Association.

It is from him that students have been learning swordplay and nimble footwork for the duels in *Romeo and Juliet*. He recently spent two weeks on the campus as an artist-in-residence, instructing students in stage dueling and choreographing fight scenes for the production's thrust stage, which has steps on three sides for fast-moving action.

While he was on campus, Martinez and the Dana students he had tutored also conducted a workshop on stage fighting — a skill actors often need — for high school theater groups.

Students with leading roles in *Romeo and Juliet* include Barbara Faris '82, Beatrice, Nebraska, as Juliet; Bruce Bro '80, Exira, Iowa, as Romeo; Tim Nietfeld '80, Englewood, Colorado, as Mercutio; Jerry Christensen '82, Harlan, Iowa, as Benvolio; Gary Boeck '79, Ida Grove, Iowa, Tybalt; Scott Carrier '82, Council Bluffs, Iowa, Friar Laurence; Joanne Hansen '81, Blair, the Nurse; Brent Noel '81, Blair, Escalus; Kevin Barratt '79, Irwin, Iowa, Lord Capulet; and Angie Ankenbauer '80, Council Bluffs, Iowa, Lady Capulet.

Performance times are 8 p.m. February 2-4 in Alumni Memorial Auditorium.

Copenhagen Professor Seeks Information on Immigrants

What impact did the agricultural practices that nineteenth century Danish immigrants learned in Denmark have on American agriculture in the Midwest? Professor Erik Helmer Pedersen of the Institute of Economic History at the University of Copenhagen hopes that some *Review* readers might be able to help him answer this question.

During a two-month research tour of the U.S. this fall, Pedersen spent several days at Dana studying materials in the library and archives. He also visited the archives of state historical societies in the Midwest and Far West in his search for information on the agricultural history and daily life of rural nineteenth century Danish immigrants.

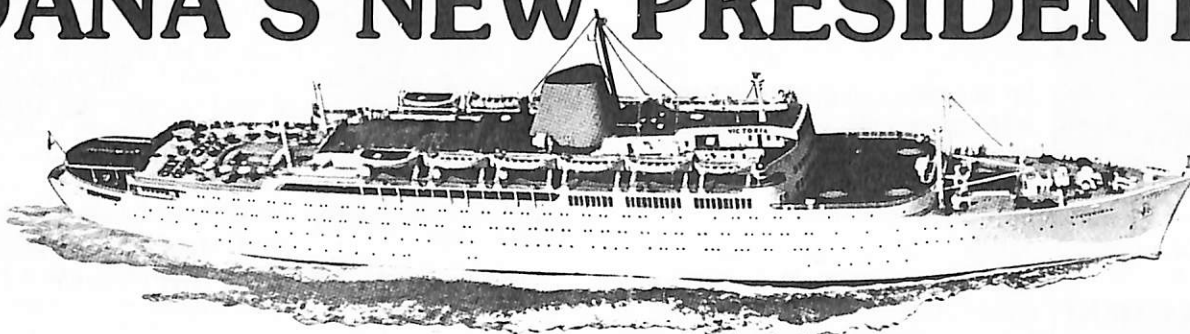
Pedersen is especially interested in reliable information about communications between immigrants and their relatives in farming areas in Denmark, and said that "Letters, diaries, and notes concerning visits in Denmark might provide the clue to a deeper understanding of the way in which Danish immigrants tried to combine Danish-learned practices with American methods."

Readers who have information that might help Professor Pedersen are asked to write to Ann George, editor, *Dana Review*, who will notify Pedersen in Denmark.



In spite of a snowstorm the day before, a large crowd again attended Dana's annual open house, "The Sights and Sounds of Christmas," on December 3. Here the Dana Players brave the cold to perform the medieval English *Second Shepherds' Play* on a traditional pageant wagon. (The second and third performances were given indoors.) Among other events were favorites from previous years — the Christmas smorgasbord, ethnic celebrations (Danish, French, German), Storytime, the Santa Lucia ceremony, "Let's Make It Danish"—Instruction in making straw and paper Christmas ornaments, performances by the Dana Folk Dancers, and band and choir concerts. (Photo by Larrie Stone)

TRAVEL WITH DANA'S NEW PRESIDENT!



Visit the Holy Land! And Egypt! And Turkey! And Greece! A two-week luxury-liner cruise on board the finest ship afloat on the eastern end of the Mediterranean Sea! A superb way to visit THE LANDS OF JESUS, THE CITIES OF PAUL!

You will see the entire Holy Land, north to south, Jerusalem and Jericho, the Dead Sea, the Sea of Galilee, Nazareth, Bethlehem, all of those scenes saturated with Biblical significance. Plus Cairo in Egypt with the Sphinx, the Pyramids. Plus western Turkey, Ephesus and Pergamum, cities of the Book of Revelation. Plus Athens and Corinth on mainland Greece and several of the exciting Greek islands as well, such as Patmos, Crete, Rhodes, and Santorini!

This is a superb vacation, an adventure in Christian learning. Every night, on board ship, Dana's new President, Dr. James Kallas, will be lecturing on the Biblical background of the places visited! Here is your opportunity to meet Dana's new leader--to enjoy a glorious vacation--and to grow in Christian knowledge.

A VACATION WITH A PURPOSE! All profits on sales made through Dana College will go directly into Dana's operating budget! Write today for a full-color brochure giving all details of this tour, departing August 9, 1979!

Travel '79
Alumni Affairs Office
Dana College
Blair, Nebraska 68008

SPORTS



Five Vikings Make All-Conference Squad

The Dana football team was well represented on the 1978 NIAC all-conference team, with five named to the squad. Three are repeaters from last year. Conference champion Hastings College had eight on the team.

The repeaters are Jay Paist (Hatboro, Pennsylvania), Doug Meggison (Red Oak, Iowa), and Rick Rostand (Chicago). Paist has been selected three times. A senior nose guard, he was the only Viking named to the defensive eleven. Rostand, a tight end, made it with some outstanding pass catching statistics. Quarterback Meggison also had some great passing marks in his four years at Dana.

Gary Boeck (Ida Grove, Iowa) and Doug Lemon (Blair) were also picked by the six conference coaches. Because center Boeck and the three repeaters are all seniors, they leave some important holes to fill in 1979. Boeck, Paist, and Rostand were unanimous all-conference picks.

Sophomore Lemon made the team on the strength of his extra point kicking accuracy. The "kicker" for the all-star team, he never missed a point after attempt and also added five field goals for the season.

Paist and Rostand also made the District #11 NAIA all-star team, where selections were dominated by the four state colleges. Boeck, Meggison and Lemon won honorable mention.

Basketball, Wrestling — Here's an Early Report

By Christmas break, when *Review* copy was due at the printer, Dana's wrestling and basketball teams were only two to three weeks into their schedules, so this is an early report on the seasons.

— Between November 28 and December 15, the men's basketball team, inexperienced but with "a strong sense of togetherness" according to Coach Paul Peterson '41, had won two and lost six games, all non-conference. Two of the defeats were by one-point margins — Bellevue 66, Dana 65; Wartburg 70, Dana 69 in a five-minute overtime play. The Vikings compete in the Kearney State Tournament December 29-30 and play three more non-conference games before challenging Concordia in Seward on January 20 in Dana's first conference match of the season.

— Two weeks of games in December brought the women's basketball team one win and three losses. Coach Dick Palm notes that the team is a young one, with five freshmen, four sophomores, one junior and one senior. At this point veteran player Heidi Larson, a junior from Milford, Iowa, leads the state with a 14.2 rebound average; she is also the team's top scorer with a 15.2 average. The Vikettes resume play in January with two more non-conference games before meeting conference foe Midland in Fremont on January 13.

— A young wrestling squad of six freshmen, one sophomore and two juniors has an early season one-one standing. The squad, coached by Ernie Abariotes '65, has also competed in two large tournaments, one at the University of Nebraska at Omaha, the other at Yankton. Freshman Dan Prusha of Omaha brought home the championship in his weight division from the latter.

Seevers Resigns Coaching Post

President James G. Kallas announced on November 14 the resignation of Gary Seevers as head football coach, effective at the end of the school year. Seevers joined the Dana coaching staff in 1974.

Kallas commented that Seever's decision to resign was prompted by the poor win/loss football record in recent years. He went on to point out that other factors also contributed to that record, such as a declining student enrollment, which forced Seevers to field a team of predominantly freshmen players with only a small pool of junior-senior leadership. A budget crunch has also hampered recruiting efforts.

"Under the circumstances," Kallas said, "Seevers has done as well as anyone could. We respect his decision to begin fresh elsewhere and we thank him for his commitment and service to Dana."

Intramural Program Grows

Recreation and having fun are the objectives of a popular intramural program sponsored by the Student Senate and directed this year by students JoAnne Roberts '80, Allen, Nebraska, and Roger Knowlton '79, Waterloo, Nebraska.

The hard-working co-directors — they take turns spending evenings in Borup Coliseum during tournaments — are assisted by a student board that changes with each sport. This year's activities include touch football, flag football, coed volleyball, men's and women's basketball, and bowling. The two are also thinking of adding softball and swimming to the spring agenda. (The Student Activities Board, another Student Senate group, sponsors table tennis and pool tournaments.)

One intramural sport will become extramural the second semester when Dana's "all-star" bowling team leaves the campus to compete with intramural teams from several other conference schools. Knowlton, a recreation major, said that this will be the third year for the event.

Both co-directors said that they and other students appreciated the entry of a faculty and staff team in a recent volleyball tournament (the team even won a few matches!), and they called President Kallas' participation in several of the games "really neat."

Although many students are already playing, co-director Roberts, an elementary education and physical education major, hopes that even more will join in. They won't earn letters, but they might win the right to wear newly designed T-shirts identifying them as "Intramural Champs" — and they'll have fun.



Women students play an intramural game of touch football.

campus NOTES



Dr. Clifford Hanson '44, philosophy and religion, spoke on "Four Approaches to Ethics" at a philosophy symposium held in November at Kearney State College, Kearney, Nebraska. The general subject of the symposium was "Right or Wrong: Is There a Choice? Perspectives on Contemporary Ethics." Other speakers were from the Universities of Chicago, Southern California, and Northern Arizona.

Ms. Nancy Dodd, assistant librarian, has been elected secretary of the Nebraska Library Association, which represents all public, college and university, school, and special libraries in Nebraska. She will also serve on the Association's board. Alumna Kay Horton '74, a librarian in Love Library at the University of Nebraska-Lincoln, is treasurer of the Association.

Pastor and Mrs. A. L. Meyer of Ord, Nebraska, have given the Dana music department two used instruments in good condition — a violin and a clarinet.

The following students were inducted into the Dana chapter of Alpha Chi, the national honorary society, on October 31: Steve Albertsen '80, Exira, Iowa; Elizabeth Falksen '80, Ellendale, Minnesota; Mary Heistand '80, Woodbine, Iowa; Kristene Kruse '80, Council Bluffs, Iowa; Genette Miller '80, Omaha; Kim Neve '79, Hokkaido, Japan; JoAnne Roberts '80, Allen, Nebraska; Jerry Schmidt '80, Audubon, Iowa; James Siverts '79, Omaha; Jane Travnicek '80, Clarkson, Nebraska; and Carol Weckmuller '80, Blair.

Dr. Dorothy Olson, education, conducted six in-service workshops in October for more than 300 Nebraska elementary teachers. The workshops, which were on motivational ideas, bulletin boards, and teaching games, were held at Auburn, Blair, and Omaha during the Nebraska State Education Association's District 2 Teachers' Convention meetings.

Pastors-in-residence at Dana during the first semester included Pastors Carole Mohr, Exira, Iowa; Joe Myers, Smith Center, Kansas; and Olin Knudsen, Hastings, Nebraska.

Professor Darrell Dibben, speech, participated in two sessions of the convention of the Nebraska Speech Communication Association and Nebraska Theatre Association in Lincoln in October. He spoke on "Rule Changes and the One-Act Play Contest" and participated in a question-and-answer session on aspects of speech contest events.

Six seniors graduated at mid-year commencement exercises December 10.

The bust sculpted by Professor James Olsen '62, art, of Nebraska social worker and educator Grace Abbott, was dedicated in the Nebraska Hall of Fame in the State Capitol building, Lincoln, on October 13.

Dr. Delvin Hutton participated in a Humanist Conference on Archaeology on November 17 in Omaha in connection with the Festival of Biblical Art and Archaeology at the Jewish Community Center. He moderated a panel discussion on archaeology and human traditions.

Members of the faculty and staff have selected these seniors for listing in the 1978-79 edition of *Who's Who Among Students in American Universities and Colleges*: Karen Barter, Fullerton, California; Karla Bergstraesser, Smithfield, Nebraska; Mark Christensen, Taft, California; Mary Erickson, Camrose, Alberta, Canada; Stacey Goodrich, Blue Hill, Nebraska; Priscilla Hall, Creston, Iowa; Sharon Hibbing, Paulina, Iowa; Jean Irby, Casper, Wyoming; Teresa Lee, Omaha; Lanette Monasmith, Burlington, Colorado; Kim Neve, Hokkaido, Japan; Sue Ronnenkamp, Bancroft, Nebraska; and Alan Winters, Milwaukee, Wisconsin.

Vivian Jenkins Nelsen '65 spoke in Parnassus December 4 on "Racism: Alive and Well in the Seventies?" and "Equal Rights: Fact or Farce?" She is chairperson for "Mission in Communities" of the American Lutheran Church's Division for Life and Mission in the Congregation. The Mission in Communities team provides resources for congregations, districts, and conferences on social justice, global consciousness, peace, world hunger, and refugee settlement.

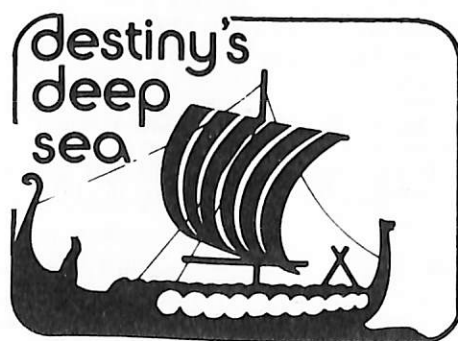
Dr. Alan Brandes was an adjudicator in November for college and high school piano auditions sponsored by the Nebraska Music Teachers' Association in Hastings and for Morning Musicale auditions in Omaha. The winner of the latter event will give a concert at Joslyn Art Museum during the next concert season.

Twelve students have organized a group they call "In His Name" or the "Dana Ministry Team." Their program includes Christian and folk music, skits, and personal testimonials. They have appeared at several Luther League rallies and churches in Nebraska, Kansas, and Iowa. Leaders are Tom Kendall '80, Omaha, and Annette Grorud '79, Centerville, South Dakota.

Marc Gengenbach '81, Eustis, Nebraska, and Kristene Kruse '80, Council Bluffs, Iowa, reigned as Winterfest king and queen at the College December 9. Members of their court were Mary Heistand '80, Woodbine, Iowa; Candy Hogden '81, Ettrick, Wisconsin; Sean Irby '79, Casper, Wyoming; Diane Timm '80, Springfield, Nebraska; Jeffrey Fahrenkrug '80, Carson, Iowa; Stacey Goodrich '79, Blue Hill, Nebraska; William Rock '79, Avoca, Iowa; and Thomas Taggart '81, Scranton, Iowa.



Students in the photo on page 3 are watching some of the approximately 250,000 migrating snow geese that stopped over this fall at the DeSoto National Wildlife Refuge three miles east of Blair. Approximately 75 students, members of the faculty and staff, and townspeople joined the November 18 early-morning caravan led by Professor George Grube of the biology department. The group also saw bald eagles, mallards, Canada geese, blue heron, and deer. The Refuge is a part of the Missouri River flyway between northern Canada and the Gulf of Mexico.



JOBS AND PROMOTIONS

1978

NANCY HANSEN teaches English and is assistant girls basketball coach in the Clarkson, Nebraska, school system.

JOHN PETERSEN is a drivers education and P.E. instructor in the Clay Center, Nebraska, public schools.

SANDRA PETERSON is an art teacher at the Pomeroy, Iowa, community school.

CINDY THOMPSON teaches English and dramatics in the Palmer, Nebraska, school system.

1977

IDAMAE BRANDENBURG is teaching in Dennison, Iowa.

1976

DENNIS HOCH is an instrumental music instructor at Johnson-Brock, Nebraska, high school. He is working on his master's degree at the University of Nebraska-Lincoln.

KRISTENE KROHN teaches fourth grade in Julesburg, Colorado, where her address is 110 East Second (80737).

STEVEN MARTENS, a student at Luther Seminary in St. Paul, Minnesota, is an intern pastor for the Greater Kenmare Lutheran Parish, Kenmare, North Dakota, this year. His wife, MARGERY (STOUT '77), is a teacher's aid in the Kenmare elementary school.

1974

FREDERICK BALTZ was ordained into the ministry of the American Lutheran Church on May 28, 1978, at Faith Lutheran Church in Onawa, Iowa, and on June 4 was installed as pastor of St. Matthew Lutheran Church in Galena, Illinois. He and his wife, CINDIA (SAND '75), live at 201 S. High Street in Galena (61036). Cindia is an English teacher at the Galena high school.

MARTIN OSTERLOH was ordained into the ministry of the American Lutheran Church on June 4, 1978 at Trinity Lutheran Church in Newman Grove, Nebraska. He is pastor at Hope-Immanuel Lutheran Parish in Elkport, Iowa, where he served as intern and student pastor for the past three years.

1973

Dr. JOEL BOHLING, a third-year resident in the Cedar Rapids, Iowa, Medical Education Program, was the physician at the Pioneer Medical Center in Mechanicsville, Iowa, for six weeks this fall. He and his wife, Vicky, live in Cedar Rapids at 357 21st Street (52403).

1972

LUTHER HELLER is a high school social studies teacher and coach in the Norfolk, Nebraska, Catholic school system.

1971

The Rev. JOHN PETERSEN has been named senior pastor at First Lutheran Church in Blair. He and his wife, ELLEN (ERICKSON '71), live in Blair at 657 North 22nd.

1970

RAMONA ALWILL, manager of grants accounting at the University of Nebraska at Omaha, is secretary of the Omaha chapter of the National Association of Accountants.

The Rev. and Mrs. GARY PANKO (CAROL MARESH) live in Grafton, Iowa, where he is pastor at Emmanuel Lutheran Church.

1969

TERRY ALTON has joined the Omaha staff of Blunt Ellis & Loewi, a regional investment firm, as a registered representative. He and his wife, CATHY (MEYER '70), live at 30 Beverly Manor in Council Bluffs, Iowa 51501.

1968

VELMA (SMITH) COOPER is a part-time special education and English teacher in the Lyons, Nebraska, public schools. She and her husband, Philip, and their four children live near Decatur, Nebraska.

1967

CHARLES JOHANSEN is manager, Logistics Planning, for Travenol Labs., Inc., in Morton Grove, Illinois. He and his wife, Judith, have spent the past two years in Waterloo, Belgium, where he was manager of Travenol's International Logistics. Their son, Derek, was born in Belgium. Their home address is 921 Hawthorne Lane, Libertyville, Illinois 60048.

Dear Mom & Dad--

Just heard that Parents' Day
this year will be on April first.
That's a Sunday and it would be
great if you can make it here for
the day.

There'll be lots of things
going on, but I know that we'll
have a chance to get together while
you're here.

Love,

Your Dana Offspring

JAMES WARD RIP, Racine, Wisconsin, the Unified School District's director of school community relations, was recently saluted in a Racine newspaper for his involvement in community activities. He, his wife, Cherry, and their two sons, Andrew and Peter, live at 3428 Indiana Street (53405).

1965

JOHN FALK has been promoted to general manager of the LongLife Dairy Products division of Beatrice Foods Company. He holds a master's degree in medical science from the University of Nebraska College of Medicine, Omaha, and has several patents in foods, biologicals and aseptic processing. He and his wife, **JONNIE (GAYLE)**, live at 5853 LeSabre Road in Jacksonville, Florida 32210.

1962

JERRY D. LARSON, his wife, Yvonne, and sons Brent, 8, and Marc, 4, live at 5077 River-view Drive in Coloma, Michigan 49038. After attending Dana for two years, he transferred to Michigan State University in 1960, where he received a B.S. in soil science in 1962. He is a soil survey party leader for the U.S.D.A. Soil Conservation Service.

1956

DALE LARSEN, who teaches biology and anatomy in Loveland, Colorado, has been named "Loveland High School Teacher of the Year." Quoting the LHS principal, a local newspaper wrote that "Larsen teaches students many things . . . He teaches them about science . . . to love human nature, to respect it, and to deal with it."

1955

STANLEY T. and MARY FAITH (HEINSSSEN) HANSEN live in George, Iowa, where he has served as pastor of Immanuel Lutheran Church since September 1976. They have three children, Ted (16), George (14), and Dolly (11).

1952

DON OFTE, manager of the Department of Energy's Pinellas, Florida, Area Office since 1973, has been appointed manager of the Department's Rocky Flats Area Office in Colorado. His son, Kirk, is a Dana freshman.

1950

The Rev. **VIRGIL ANDERSON**, his wife, **LAVAILLE (JENSEN '51)**, and family have moved to Wallingford, Iowa 51365, where he is pastor of Wallingford Lutheran Church.

ADVANCED DEGREES AND CONTINUING EDUCATION

1973

PAUL KOLB received his M.S. in social sciences, secondary education, August 19, 1978, from the University of Nebraska at Omaha. He teaches at Blair's junior-senior high school.

1968

LARRY HUBBARD is attending Estudio Internacional Sampedre in Madrid, Spain, a special course college for those interested in bilingual correspondence, translation, and interpretation. He received his M.A. from the University of Nebraska-Lincoln in 1976 and has taught Spanish at the university for the past four years.

PUBLICATIONS, ACTIVITIES, HONORS AND AWARDS

1972

ARNO and BETTY (JORTH '71) NEBEN are the editors of the 1978 *Congregational Directory* of the Central District, the American Lutheran Church. They live in Papillion at 406 Shannon Road (68046).

1966

STEPHEN SIT has been elected to membership on the school board at the Language School of the North Shore Chinese Baptist Church in Chicago. He is also in his second year on the church board of the same church.

1960

HOWARD CHRISTENSEN, national secretary-treasurer of the Danish Brotherhood, was elected president of the National Fraternal Congress of America at its annual convention in Toronto, Canada, last September. The Congress represents 94 fraternal benefit societies with more than ten million members in the U.S., Canada, and Great Britain. He and his wife, **JOYCE (HANSEN)**, live in Omaha at 13571 Crawford Drive (68144).

1954

The Rev. **ARNE JESSEN**, director of clinical chaplaincy services at St. Luke's Hospital in Duluth, Minnesota, taught two CHARIS courses this fall. **CHARIS**, the Ecumenical Center for Church and Community, with headquarters at Concordia College in Moorhead, Minnesota, offers a graduate theological education program for members of the clergy and laymen. Jessen is a doctoral candidate at New York University and a certified full supervisor of the Association of Clinical Pastoral Education.

1953

Dr. **PAUL JERSILD'S** *Invitation to Faith: Christian Belief Today* has recently been published by the Augsburg Publishing House. A reviewer in the September 5, 1978, *Lutheran Standard* writes that the book "presents a convincing case for Christian belief in our confused age and addresses alternate beliefs that attract many today." Professor of theology and chairman of the religion and theology department at St. Xavier College in Chicago, Jersild will become academic dean of Wartburg Theological Seminary, Dubuque, Iowa, in July.

MARRIAGES

1978

Sarah Kleinsmith and DAVID KUHL, July 29, 1978, in Ralston, Nebraska. They are both employed in the Papillion, Nebraska, school system. Dave is working toward his master's degree in elementary administration at the University of Nebraska at Omaha.

SHELLI MEYERHOLZ '80 and LUKE NORTHWALL, December 16, 1978, in Blair.

1977

MARSHA BOYSEN and BRADLEY LARSON, July 15, 1978, in Avoca, Iowa. Both teach in the Corwith-Wesley, Iowa, school system.

Colleen Scotton and JEFFREY GILPIN, August 19, 1978, in Northboro, Iowa.

Susan Synowicki and DAVID RYAN, August 11, 1978, in Omaha. He is operations manager at Montgomery Ward, the Westroads, Omaha.

Debbie West and STEVE WELBOURNE, October 21, 1978, in Minden, Iowa.

1975

Amy Johnson and MICHAEL WILLIAMS, July 22, 1978, in Hershey, Nebraska. He is a student at Luther Seminary in St. Paul, Minnesota.

1974

Adriana Calzada and ANDREW SORENSON, September 9, 1978, in Davenport, Iowa. They live at 30115 Indian Road in Davenport (52802).

1969

CAROLYN SCHOLL and Robert McMahon, October 24, 1978. She is the assistant administrator of the Regional Red Cross Blood Center in Omaha and will retain her name. He is a district agent for the Prudential Insurance Company in Omaha. They live at 1008 Day Drive in Bellevue, Nebraska 68005.

BIRTHS
Daughters

1978

Katie Jo, born November 23, 1978, to Mr. and Mrs. TODD ROECKER, 302 Ebaugh, Unit 2, Apartment 1, Glenwood, Iowa 51534.

1974

Jamie Ann, born March 31, 1978, to WILLARD and CHERYL (HINZ '77) BEHREND, 5621 N. 117th Court, Omaha (68164).

1970

Stephanie Jean, born August 11, 1978, to STEVEN and KATHLEEN (RYAN) COOK, 1038 James Drive, Blair. She has a brother, Steven Neal, who is three years old.

1969

Sara Kristina, born September 27, 1978, to Jens and EILEEN (TAAKE) Simonsen, 7533 Hascall, Omaha (68124).

BIRTHS
Sons

1974

Andrew Douglas, born September 2, 1978, to DOUGLAS and GLENDA (HOLSING '72) BRO, 2624 North 51st Avenue, Omaha (68104).
Robert Donald, born December 3, 1978, to the Rev. DONALD and ROSEMARY (MORTENSEN) MATTHIESSEN, 730 East 6th and Harding, Winner, South Dakota 57580.

1972

Christopher Alan, born October 2, 1978, to HANS and Robin HERMANSEN, 719 Royal Park Road, Racine, Wisconsin 53402.
Robert James, born October 6, 1978, to JAMES and Phyllis UCHTMAN, 1904 Colfax, Blair. He joins two sisters — Rebecca Marie and Amanda Leigh.

1971

Justin Valdemar, born June 18, 1978, to Mr. and Mrs. AIGARS DEKLAUS, 755 N. 10th Avenue, Blair. He has a five-year-old brother, Robert Michael.

The Dana College community mourns the death on January 4 of one of its members, Dr. Melvin Boehr. Dr. Boehr, an associate professor of education, was a gentle man who cared deeply about his students, his colleagues and the College. In spite of illness during the past year, he continued to meet his classes and to participate in campus life. Survivors include his wife, Kay, of 1607 Lafayette, Blair; daughters Connie Buller '69, Blair; Shari Navarette, Omaha; and Donna, a Dana junior; and son Kenneth '76, Manhattan, Kansas. Funeral services were held in Beatrice, Nebraska, on January 8, and memorial services on the campus January 10. The family has asked that memorials be divided equally among Dana, the Mennonite Central Committee (the relief service), and the General Conference of the Mennonite Church.

*Calendar
of Events*

February 2

Women's basketball reunion, 7:30 p.m., Borup Coliseum

February 2-4

Dana Players, Shakespeare's *Romeo and Juliet*, 8 p.m., Alumni Memorial Auditorium

February 3

Fine Arts Open House for prospective students

February 5

Student recital, Kevin Nelson (voice), 7:30 p.m., Alumni Memorial Auditorium

February 7-23

Exhibit of original art belonging to Professors Luella Nielsen '42 and Sarah Penick, Parnassus

February 9

Arboretum Ceremony, 10 a.m., Alumni Memorial Auditorium

February 11

Nebraska Theatre Caravan, Shakespeare's *Twelfth Night*, 8 p.m., Alumni Memorial Auditorium

February 18

Faculty piano recital, Dr. Alan Brandes, 7:30 p.m., Alumni Memorial Auditorium

February 19

Student recital, Kevin Nelson (piano), 7:30 p.m., Alumni Memorial Auditorium

February 25-March 11

Photography exhibit, Lynn Meyer, Omaha, Parnassus

February 25

Student recital, Joanne Hansen (piano), Mary Heistand (voice), 3 p.m., Alumni Memorial Auditorium

February 26

Student recital, Jane Travnicek (voice), Elizabeth Falksen (piano), 7:30 p.m., Alumni Memorial Auditorium

March 2-3

Muscular Dystrophy Dance Marathon, Borup Coliseum

March 5

Student chamber concert, 7:30 p.m., Parnassus

March 6-8

Dana Players, *The Mayor's Marvellous Ice Cream Suit*, a children's play written and directed by John Mark Nielsen '73 (performed for area school children), Alumni Memorial Auditorium

March 12

Student recital, Sarah Bryceson and Terry Patience (voice), 7:30 p.m., Alumni Memorial Auditorium

March 16

Spring break begins at end of classes

March 26

Classes resume

March 30-April 1

Dana Players, one-act plays

April 1

Parents' Day

Home choir concert, 7:30 p.m., Alumni Memorial Auditorium

April 3

Business seminar, Dana chapter, Society for the Advancement of Management

April 8

Student recital, Lanette Monasmith (piano), 7:30 p.m., Alumni Memorial Auditorium

April 9

Student Baroque concert, 7:30 p.m., Parnassus

April 18

Inauguration of President James G. Kallas

April 20-22

Dana Players, Aristophanes' *The Frogs*, freely adapted for today by Burt Shevelove, music and lyrics by Stephen Sondheim, 8 p.m., Alumni Memorial Auditorium

April 22

Student recital, Candy Hogden and Joe Eagen (voice), 3 p.m., Alumni Memorial Auditorium

April 29

Dana band concert, 3:00 p.m., Alumni Memorial Auditorium

April 30

Student concerto recital, 7:30 p.m., Alumni Memorial Auditorium

May 3

Honors banquet, Campus Center

May 12

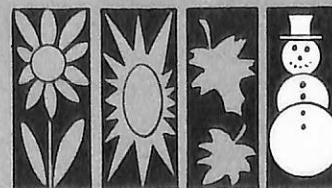
Alumni Recognition Dinner, Campus Center

May 13

Baccalaureate, 10 a.m., Borup Coliseum

Commencement, 2 p.m., Borup Coliseum

Schedule subject to change.



DANA COLLEGE
2848 College Drive
Blair, Nebraska 68008

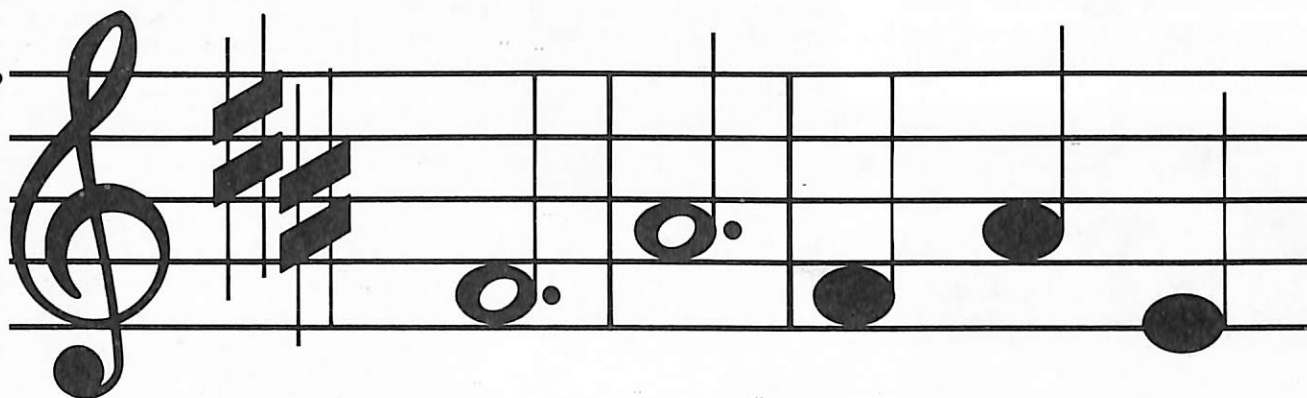
Second Class Postage
Paid at Blair, Nebraska

02335

02 44 44

DR & MRS CLIFFORD HANSON
808 NO 28TH
BLAIR NE 68008

MAKING A JOYFUL NOISE



In Concert

Thursday, March 15

First Presbyterian Church
Liberal, Kansas, 7:30 p.m.

Friday, March 16

Messiah Lutheran Church
Albuquerque, N.M., 7:30 p.m.

Sunday, March 18

St. Mark's Lutheran Church
Chula Vista, Calif., 8:30, 10:45 a.m.

Sunday, March 18

Our Saviour's Lutheran Church
San Diego, Calif., 7 p.m.

Monday, March 19

Our Saviour's Lutheran Church
Long Beach, Calif., 7:30 p.m.

Tuesday, March 20

Immanuel Lutheran Church
Fresno, Calif., 8 p.m.

Wednesday, March 21

Our Saviour's Lutheran Church
Lafayette, Calif., 7:30 p.m.

Thursday, March 22

The Presbyterian Church of Novato
Novato, Calif., 7 p.m.

Friday, March 23

Ferndale Elementary School
Ferndale, Calif., 8 p.m.

Sunday, March 25

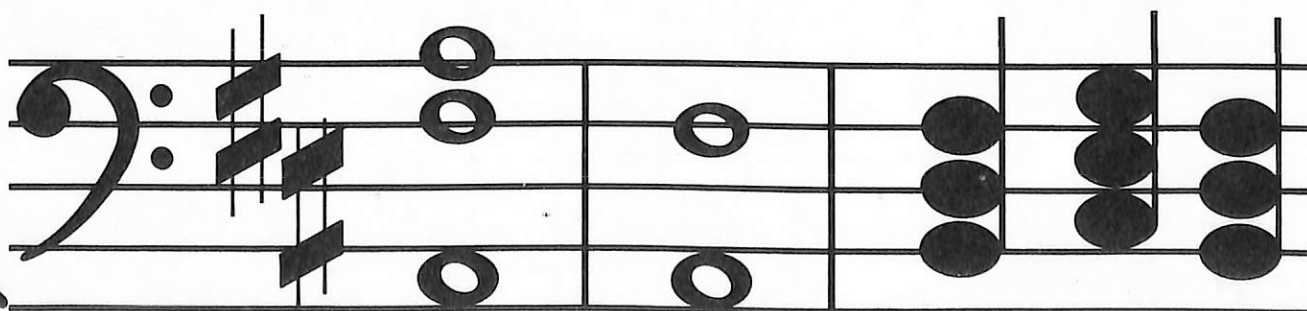
Bethesda Lutheran Church
Eugene, Oregon, 8:15 a.m.

Emmaus Lutheran Church
Eugene, Oregon, 11 a.m.

Central Lutheran Church
Portland, Oregon, 8 p.m.

Tuesday, March 27

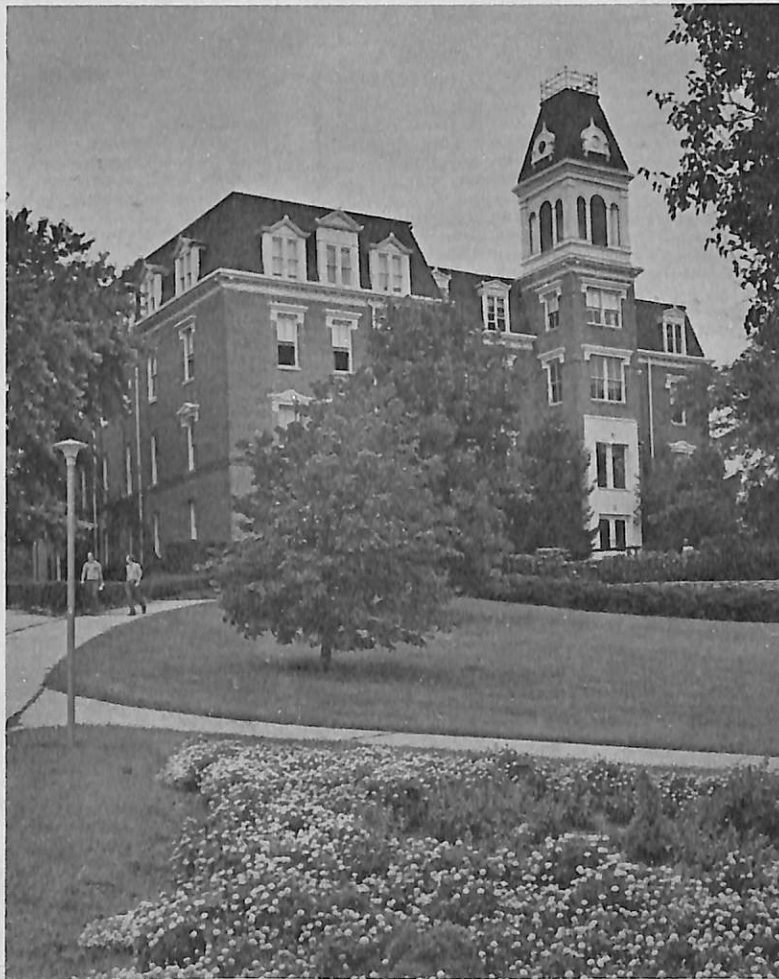
Bethel Lutheran Church
Aurora, Colorado, 8 p.m.



the Dana College Choir

REPORT

To All Investors
1978



Dana college
Blair Nebraska

Dana College is pleased to list an increasing number of memberships in the three gift clubs: the Tower Circle, the President's Society, and the Century Club. Membership is based on a gift at the particular gift club level or more during any fiscal year (June 1 - May 31). Gifts may be in cash, securities, property or gifts in kind. They may be designated or undesignated, although undesignated gifts are strongly encouraged. Married couples contributing twice the particular gift club level or more will be accorded individual memberships, or, at their option, a joint membership. Pledges will be credited toward membership in the year in which they are actually paid. All gifts are tax deductible under current regulations of the Internal Revenue Service.

TOWER CIRCLE: (Gifts of \$1,000 or more)

Mr. Arthur Anholz
Mrs. Arthur Anholz
Rev. and Mrs. John T. Beck
Mrs. Elizabeth Bramsen
Rev. and Mrs. Robert S. Collins
Mr. and Mrs. Walter Duda
Miss Margaret Fischer
Mr. and Mrs. Kenneth Hansen
Dr. and Mrs. Clifford Hanson
Mr. and Mrs. Howard Hanson
Mr. Kenneth Holm
Mrs. Kenneth Holm
Mr. Irving Jensen
Mrs. Irving Jensen
Mrs. Simon Korshoj
Mr. Gorm Larsen
Dr. and Mrs. C. C. Madsen
Mr. and Mrs. Adelbert Meyer
Mr. Harold Miller
Rev. and Mrs. Lloyd Neve
Mr. Elcar A. Nielsen
Mrs. Elcar A. Nielsen
Mr. and Mrs. Hans Nielsen
Mrs. Christine Rasmussen
Mr. Paul Strand
Mrs. Paul Strand
Mr. and Mrs. Donald Swanson
Mr. and Mrs. James Tomsen
Mr. and Mrs. Arthur Welch

NON-INDIVIDUAL MEMBERS OF THE TOWER CIRCLE:

Atonement Lutheran Ch.,
Overland Park, KS
Blair Bank
Dana Student Senate
Dens Danske Bank
Estate of Frank Baumgart
Estate of Marie Holling
Estate of Flossie Lyons
First Lutheran Ch., Blair, NE
Huntel
Kong Frederik OG Dronning
Ingrids Fond
Northern Natural Gas Co.
Otto Monsteds Fond
Our Saviour's Lutheran Ch.,
Audubon, IA
Unitel of Blair
Washington County Bank

PRESIDENT'S SOCIETY: (Gifts of \$500 to \$999)

Rev. and Mrs. Walter Behrens
Mr. and Mrs. Robert Blobaum
Mr. Merle Burmeister
Mr. William Chrisman
Mr. and Mrs. Herbert Dalleck
Lt. and Mrs. Robert Ehmen
Dr. and Mrs. Robert J. Glass
Dr. and Mrs. Erwin H. Goldenstein
Mr. and Mrs. John Helleberg, Sr.
Mr. and Mrs. Waldemar Hempler
Mrs. Soren Høj
Mr. and Mrs. Emory Hunt
Mr. and Mrs. Hugh Hunt
Mr. and Mrs. Richard Hunt
Mr. and Mrs. Robert Hunt
Mr. and Mrs. Oscar Jacobsen
Mr. and Mrs. Herbert Jeppesen
Mr. and Mrs. R. A. Knudsen
Mr. and Mrs. Edward Larsen
Mr. and Mrs. Henry Lund
Dr. and Mrs. Archie Madsen
Dr. and Mrs. Paul Neve
Mr. and Mrs. A. C. Nielsen
Miss Luella Nielsen
Mr. and Mrs. Roger Olson
Dr. and Mrs. Elmer Rasmussen
Mr. and Mrs. Kenneth Rhoades
Dr. and Mrs. Royce Ronning
Rev. and Mrs. Alton Schwandt
Mr. and Mrs. Hubert Snow
Dr. and Mrs. Ewald Sorensen
Judge and Mrs. Leonard V. B. Sutton
Rev. and Mrs. F. W. Thomson
Mr. and Mrs. Lorentz Thorgren
Mr. and Mrs. Joe Walsh
Mr. and Mrs. Norman Williams
Mr. C. Homer Wombie
Mr. and Mrs. Harold Wright
Mr. and Mrs. Warren Youngstrom

NON-INDIVIDUAL PRESIDENT'S SOCIETY MEMBERS:

Aid Association for Lutherans
Esper A. Petersen Foundation
Immanuel Lutheran Ch., Omaha, NE
Kaiser Steel Corp.
Les Sunderland Foundation
Mutual Life Ins. Co. of
New York
Scour-Bishop Co.
Sears-Roebuck Foundation
St. John's Lutheran Ch.,
Bird City, KS
St. John's Lutheran Ch.,
Eustis, NE
St. Paul's Lutheran Ch., Omaha, NE
Trinity Lutheran Ch.,
Albert Lea, MN

CENTURY CLUB: (Gifts of \$100 to \$500)

Dr. and Mrs. Lawrence Abbott
Mr. and Mrs. Henry Ahrendt
Mr. and Mrs. Paul Ahrendt
Miss Ramona Alwill
Mr. and Mrs. Warren Amole
Dr. and Mrs. Emory Anderson
Mr. Ernest Anderson
Mrs. Ernest Anderson
Mr. Harold Andersen
Mrs. Harold Andersen
Mr. Herbert A. Anderson
Mrs. Olga Anderson
Mr. and Mrs. Paul Anderson
Mr. and Mrs. Sigfred Andersen
Mr. and Mrs. William Anderson
Mrs. Elmer Aus
Dr. and Mrs. K. C. Bagby
Mr. Norman Bansen
Mrs. Peter Bansen
Mrs. Peter Bansen
Mr. and Mrs. David Bargren
Mr. and Mrs. Dennis Barnum
Mr. and Mrs. J. Conrad Bauer
Mr. John T. Beck II
Mrs. John T. Beck II
Mr. and Mrs. Marcus Beck, Sr.
Rev. and Mrs. Bruce Bergquist
Mr. and Mrs. Roger Best
Dr. Signe Betsinger
Mr. and Mrs. Lloyd Bevans
Mr. J. Fred Blanz
Mrs. J. Fred Blanz
Dr. and Mrs. John Blanz
Mrs. Don Black
Mr. and Mrs. Richard Boe
Dr. and Mrs. Melvin Boehr
Mr. and Mrs. Paul Bondo
Mr. and Mrs. Robert Borden
Mr. and Mrs. Ray Bowmaster
Mr. M. L. Boyden
Mr. and Mrs. William Bracker
Dr. Alan Brandes
Mrs. Alan Brandes
Mr. Alan Brodbeck
Mr. and Mrs. George Brodbeck, Jr.
Mr. and Mrs. Arne Bronton
Mr. and Mrs. Ralph Brown
Mr. and Mrs. George Buck
Mr. and Mrs. Robert Bumpous
Mr. and Mrs. Dan Busse
Mr. and Mrs. Dan Calstro
Mr. and Mrs. George Campbell
Rev. and Mrs. Stanley Carlsen
Mr. and Mrs. Robert Carlson
Mr. and Mrs. Richard Carter
Mr. and Mrs. John Cederberg
Mrs. Heten Chamberlin
Mr. Herbert Christensen
Mr. and Mrs. John Christensen
Miss Marion Christensen
Mr. Morris Christensen
Mrs. Morris Christensen
Miss Sigrid Christensen
Mrs. Aaron Christensen
Mr. James Clomson
Mrs. Max Coffey
Mr. David Comstock
Mr. and Mrs. Ronald Coy
Miss Linda Dalleck
Mr. and Mrs. Thomas Damrow
Rev. and Mrs. Gary Danielson
Mr. Bill Dean
Mrs. Esta Deats
Mr. John DeVasuro

Mr. and Mrs. Darrell Diben
Mr. Ray Dickson
Mrs. Ray Dickson
Miss Charlene Dirks
Mr. Lawrence Dolleck
Mr. and Mrs. Fred Donaldson
Dr. Donald P. Dreyer
Mrs. Donald P. Dreyer
Mrs. Lillian Dyhrberg
Dr. Donald Ehlers
Mr. and Mrs. Eldon Erbes
Mrs. and Mrs. Donald Fahrenkrug
Rev. and Mrs. Robert Fedde
Mr. and Mrs. Lawayne Feit
Consul Marshall Fredericks
Mrs. Marshall Fredericks
Mr. and Mrs. Virgil Fredericks
Dr. and Mrs. Carl Frost
Mr. David Fuhrman
Mrs. David Fuhrman
Mr. and Mrs. Clinton Gehring
Mr. Brent Gilbert
Mrs. Brent Gilbert
Mr. Kenneth Glover
Mrs. Kenneth Glover
Mr. and Mrs. Alan Gordon
Mr. Fred Gordon
Mrs. Fred Gordon
Mr. and Mrs. Gerry Grabill
Dr. and Mrs. Leslie Grace
Mr. and Mrs. Craig Green
Mr. and Mrs. George Grube
Mr. Melvin Haack
Mrs. Melvin Haack
Mr. and Mrs. Donald Haag
Mr. Vernald Hagebak
Mrs. Vernald Hagebak
Mr. Everett Hagedorn
Mrs. Everett Hagedorn
Mr. and Mrs. Kenneth Hankins
Miss Augusta Hansen
Dr. Edward A. Hansen
Mrs. Edward A. Hansen
Mr. Gerald Hansen
Mr. and Mrs. Hilmar Hansen
Mr. Keith Hansen
Mrs. Keith Hansen
Miss Margaret Hansen
Mr. and Mrs. Mel Hansen
Dr. and Mrs. Raymond Hansen
Mr. Raymond Hansen
Mrs. Raymond Hansen
Rev. and Mrs. Thorvald Hansen
Mr. and Mrs. Arndt Hanson
Mr. G. Donald Hanson
Dr. Roger Hanson
Mrs. Roger Hanson
Dr. Verlan Hanson
Mrs. Verlan Hanson
Rev. William J. Hanson
Mrs. William Hanson
Mr. and Mrs. John Haun
Mr. Arnold Heistand
Mrs. Arnold Heistand
Mr. and Mrs. George Helling
Mr. and Mrs. Frank Hengsvold
Mr. William Henning, Jr.
Mrs. Anna Henningsen
Dr. John Henningsen
Mr. and Mrs. Arvin Hernes
Mrs. Emma Hobelman
Mr. Don Hogzett
Mr. Henry Holling
Mrs. Henry Holling
Mr. and Mrs. Victor Hoogansen
Miss L. Kay Horton
Mr. and Mrs. Roger Howland
Judge and Mrs. Walter Huber
Mr. Emory Hunt, Jr.
Mr. and Mrs. Hugh Hunt
Mr. and Mrs. Richard Hunt
Mr. Harold Hurd
Mr. Richard Hurd
Mrs. Richard Hurd
Dr. and Mrs. David Israel
Dr. James Iversen
Mr. and Mrs. Eugene Jacoby
Mr. Alvin Jensen
Rev. Anker M. Jensen
Mrs. Anker Jensen
Mr. Darrel Jensen
Mrs. Darrel Jensen
Mr. and Mrs. Donald B. Jensen
Mrs. Donald Jensen
Mr. and Mrs. Einer Jensen
Mr. Esra Jensen

Mr. Howard C. R. Jensen
Miss Janis Jensen
Mr. Richard J. Jensen
Mrs. Richard J. Jensen
Mrs. Thekla Jensen
Mr. Paul Jeppesen
Mrs. Paul Jeppesen
Dr. Arthur Jersild
Mrs. Arthur Jersild
Mr. Geherdt Jersild
Mr. Al Jessen
Mrs. Boy Jessen
Mr. Karl Jessen
Mrs. Karl Jessen
Mr. Karl Jetter
Mrs. Karl Jetter
Mr. and Mrs. Ivan Johansen
Rev. and Mrs. Paul C. Johnson
Mr. and Mrs. J. Harry Johnson
Mr. and Mrs. Kenneth Johnson
Miss Marie Johnson
Rev. Oscar Johnson
Mrs. Oscar Johnson
Mr. Paul D. Johnson
Miss Renae Johnson
Mr. and Mrs. Charles Jorgensen
Mr. and Mrs. Donald S. Jorgensen
Mr. and Mrs. Floyd Jorgensen
Mr. Gerald Jorgensen
Mrs. Gerald Jorgensen
Rev. and Mrs. H. C. Jorgensen
Mr. and Mrs. Herbert Jorgensen
Dr. and Mrs. Richard Jorgensen
Mr. and Mrs. Stanley Jorgensen
Mr. Oscar Jorth
Dr. and Mrs. Larry Kaiser
Dr. Leo Kirchhoff
Dr. R. T. Kirkwood
Mrs. R. T. Kirkwood
Mrs. Isabel Klopp
Mr. Luther Kloth
Mrs. Luther Kloth
Mr. Herbert Knudsen
Mrs. Herbert Knudsen
Mrs. Keith Knudsen
Mr. Arnold Knudtson
Mrs. Arnold Knudtson
Mr. and Mrs. Gerald Koba
Mr. and Mrs. C. Koldenborg
Miss Gail Koldenborg
Mr. and Mrs. Brian Koltermann
Mr. and Mrs. Chris Korshoj
Mr. Robert Krogh
Mrs. Robert Krogh
Mr. Bernard Kros
Mrs. Bernard Kros
Mr. Dean Krueger
Mrs. Esther Kuhr
Mr. David Kutsch
Dr. Thomas Lange
Mrs. Thomas Lange
Mr. Daniel Langfeld, Sr.
Mrs. C. B. Larsen*
Mr. and Mrs. Dale Larsen
Rev. and Mrs. Ernest Larsen
Mr. and Mrs. Harald Larsen
Mr. Herbert Larsen
Mrs. Herbert Larsen
Mr. and Mrs. Paul Larsen
Mr. Phillip Larsen
Miss Jean Larson
Rev. Harold Laursen
Mrs. Harold Laursen
Dr. Paul Laursen
Mrs. Paul Laursen
Mrs. Orville Lawson
Mr. and Mrs. Forrest Leighton
Mr. and Mrs. Dale Lemon
Mr. Alvin Lentz
Mr. Richard Lincoln
Mr. and Mrs. Eugene Lindblad
Mr. and Mrs. J. B. Long
Mrs. Ellen Madison
Mrs. Axel Madsen
Mr. Lester Madsen
Mr. Lowell Madsen
Mrs. Lowell Madsen
Mr. O. Victor Magnusson
Mrs. O. Victor Magnusson
Mr. and Mrs. Spencer Martin
Mr. and Mrs. Raymond-Matson
Mr. and Mrs. Fred Matthias
Miss Joyce Maurer
Mr. and Mrs. Albert Motzger
Mr. and Mrs. Eugene L. Moyer
Mr. and Mrs. Bob Mitek

Miss Aline Miller
Mr. and Mrs. Deryl Miller
Mr. and Mrs. Kaj Moller
Mr. Carl Morgensen
Mrs. Laura Morgensen
Rev. and Mrs. Ray Mortensen
Mrs. Else Morton
Rev. Richard Morton
Mrs. Richard Morton
Mr. and Mrs. Charles Neal
Miss Edith Neale
Mr. and Mrs. Arno Neben
Mrs. Erlend Nelson
Mrs. Olga Nelson
Mr. and Mrs. Alton Neve
Rev. and Mrs. Aster Neve
Dr. Kaj Neve
Rev. Ried Neve
Mrs. Ried Neve
Mr. and Mrs. Andrew Nielsen
Mr. Emerald Nielsen
Dr. John Nielsen
Mrs. John Nielsen
Mr. and Mrs. Niels Nielsen
Mr. Niels P. Nielsen
Mr. Ralph Nielsen
Mr. and Mrs. Melvin Nore
Dr. and Mrs. John Northwall
Mr. and Mrs. Allan Nyegaard
Mr. Clark O'Hanlon
Mrs. Clark O'Hanlon
Mr. John O'Hanlon
Mrs. John O'Hanlon
Mr. and Mrs. Duane Ohlson
Mr. Akira Okada
Mr. and Mrs. Albert O. Olson
Mr. and Mrs. James Olson
Mr. and Mrs. Allan Olson
Dr. and Mrs. Milton Olson
Mr. Phillip Pagel
Mr. Richard Palm
Dr. and Mrs. Paul Panum
Dr. and Mrs. Carl Pedersen
Rev. and Mrs. Laurits Pedersen
Rev. and Mrs. Adolf Petersen
Mr. Clarence Petersen
Mrs. Clarence Petersen
Mr. and Mrs. Floyd Petersen
Mr. Howard Petersen
Mrs. Howard Petersen
Mr. and Mrs. Jerry Petersen
Rev. and Mrs. Immanuel Peterson
Mr. Paul Peterson
Mrs. Paul Peterson
Rev. and Mrs. Jimmie Pierce
Mr. Dennis Preston
Mrs. John Rand
Mrs. Franklin Rasmussen
Mr. Paul N. Rasmussen
Mr. Victor Rasmussen
Mrs. Victor Rasmussen
Dr. Hans Rath
Mrs. Hans Rath
Mr. and Mrs. Harley Rector
Miss Lucille Reider
Mr. Marlow Remmers
Mr. and Mrs. Frank Rezik
Mr. J. Hilton Rhoades
Mrs. J. Hilton Rhoades*
Miss Celie Rohwer
Mr. and Mrs. George Rohwer
Mr. and Mrs. Phil Rolland
Mr. and Mrs. Svend Ronlov
Dr. Leland Rosenap
Mrs. Leland Rosenap
Mr. and Mrs. Garland Runyon
Mr. and Mrs. Kelly Ryan
Mr. and Mrs. Raymond Ryder
Mr. Herman Sandberg
Mrs. Herman Sandberg
Mr. Francis Schmahl
Mrs. Francis Schmahl
Mr. Carl Schnitker
Mr. Arthur Scholz
Mr. and Mrs. Alexander Schreiber
Mr. C. C. Schroeder
Mrs. C. C. Schroeder
Mr. Erling T. Schultz
Mrs. Erling T. Schultz
Rev. and Mrs. John Schultz
Mr. and Mrs. Charles Seafus
Mr. and Mrs. Ned Shipley
Mr. and Mrs. John Showell
Mr. and Mrs. Alfred Sick
Mr. John Sides
Rev. Lauracé Siersbeck
Mr. and Mrs. Ronald Siersbeck

Dr. and Mrs. Rudy Sievers
Hon. and Mrs. Paul Simon
Mr. and Mrs. Sigvald Skaar
Mr. and Mrs. A. J. Snowbeck
Mr. and Mrs. Edward Sorensen
Mrs. Joan Sorensen
Dr. and Mrs. R. Sorensen
Mr. R. L. Sorensen
Mrs. R. L. Sorensen
Mr. and Mrs. Severin Sorensen
Rev. Andrew Staby
Mrs. Andrew Staby
Mr. and Mrs. H. Steffensen
Mr. and Mrs. Robert Stegmaier
Dr. and Mrs. Larrie Stone
Mr. Rory Sturm
Mrs. Rory Sturm
Mr. Ingvard Svarre
Mrs. Ingvard Svarre
Rev. Edwin Svendsen
Mr. and Mrs. Juli Taht
Rev. and Mrs. Irving Tenge
Mr. James Taylor
Mrs. James Taylor
Rev. J. Tennesen
Mr. Lewis Tesdahl
Mrs. Lewis Tesdahl
Mr. Kenneth Thiel
Mrs. Kenneth Thiel
Mr. Ernest Thompson
Mr. and Mrs. Howard D. Thompson
Mr. Armand Thomsen
Mrs. Armand Thomsen
Rev. and Mrs. Henry Thorberg
Mr. Patrick Tripp
Mr. Ned Tyson
Mrs. Ned Tyson
Rev. and Mrs. C. Vammen
Mr. Frank Van Steenhoven
Mrs. Frank Van Steenhoven
Mrs. Peter Vig
Mr. and Mrs. Gordon Vinton
Mr. and Mrs. Keith Vinton
Mr. and Mrs. Ralph Vinton
Mr. John Wallman
Mrs. John Wallman
Mr. Larry Wallman
Mr. Wayne Wallman
Mr. Richard Wardell
Mr. Kenneth Weaver
Dr. Raymond Weckmuller
Mrs. Raymond Weckmuller
Mr. Sophus K. Winther
Mrs. Sophus K. Winther
Mr. Phil Wittig
Mrs. Phil Wittig
Mr. and Mrs. Judson Wolf
Mr. Paul Womble
Mrs. Allan Yowell
Mr. Richard Zion
Mrs. Richard Zion
Mr. and Mrs. Alwin Zwanziger

NON-INDIVIDUAL CENTURY CLUB MEMBERS:

ALCW Omaha Conference
American Lutheran Church
Amoco Foundation, Inc.
Anonymous
Blair Feed Mill
Blair Lions Club
Blair Lumber & Grain Co.
Blair Rotary Club
Blair West Pharmacy
Bluffs Trinity Lutheran Ch.,
Fremont, NE
Bruersville Immanuel,
Cole Camp, MO
Calvary Lutheran Ch., Scottsbluff, NE
Calvary Lutheran Ch., Omaha, NE
Central Nebr. Conf. ALCW
Champion International Foundation
Computel Inc.
Concrete Equipment Company
Danish Brotherhood #51
Danish Brotherhood #161
Danish Brotherhood #325
Danish Brotherhood #343
Denver Dana Club
Denver Danes
Ekklesia Koinonias
Elkhorn Conf. Luther League
Emmaus Lutheran Ch., Women,
Kennard, NE
Equitable of Iowa
Equitable Savings and Loan
Faith Lutheran Church,
Golden, CO
Faith Lutheran Ch., Stewart, NE
Farmers National Company
Fraternal Order of Eagles
Ft. Calhoun Stone Company
Grace Lutheran Church,
Cook, NE
Hinky Dinky

Holy Shepherd Lutheran Ch.,
Lakewood, CO
Household Finance Corp.
Iowa-Minnesota District of the
Danish Brotherhood
Immanuel Lutheran Ch., Orum, NE
Immanuel Lutheran Ch.,
Rushville, NE
Immanuel Lutheran Ch.,
Glenvil, NE
Immanuel Lutheran Ch.,
Coleridge, NE
Interstate Harvestore
Lord of Love Lutheran Ch.,
Omaha, NE
Lost Island Lutheran Ch.,
Ruthven, IA
Lutheran Mutual Life Ins. Co.
Luther Memorial Church, Syracuse, NE
Lutheran Brotherhood
Lutheran Church of the Master,
Omaha, NE
Midwest Service & Supply
Mobil Foundation, Inc.
Monsanto Fund
Montgomery Ward Foundation
Mutual of Omaha
N.A.I.A. District II
Nebraska Iowa Supply
Nebraska State Savings
Northern Colorado Conf.
Our Saviour Lutheran ALCW,
Denmark, WI
Our Savior Lutheran Ch.,
Dannenberg, NE
Peace Lutheran Ch., Geneva, NE
Prince of Peace Lutheran Women,
Geneva, NE
Quaker Oats Foundation
S. E. Smith & Sons
Safeway Stores Inc.
Salem Lutheran Ch.,
St. Francis, KS
Shepherd of the Hills, ALCW,
Ft. Collins, CO
South Central Nebr. Conf.
St. John Ev. Lutheran Ch.,
Daykin, NE
St. John's Lutheran ALCW,
Mineola, IA
St. John's Lutheran Ch.,
Kensington, KS
St. Mark's Lutheran Ch.,
Aurora, CO
St. Paul's ALCW, Clatonia, NE
St. Paul's Lutheran Ch.,
Hebron, NE
St. Paul's Lutheran Ch.,
Burlington, CO
St. Paul's Lutheran Ch., Neola, IA
St. Paul's Lutheran Ch., Dewitt, NE
Tektronix Foundation
The Owen Foundation
The Tool House
Tri-State Conf. ALCW
Trinity Evang. Lutheran Ch.,
Clinton, OK
Union Pacific Corp.
Westwood Lutheran Ch.,
Shawnee Mission, KS
Zion Lutheran Ch., Amoret, MO

Regents

Miss Margaret Fischer
Mr. and Mrs. Wrennath Hansen
Mr. and Mrs. Howard C. Hanson, Jr.
Mr. and Mrs. Kenneth Holm
Mr. and Mrs. Irving Jensen
Mr. and Mrs. Ben Krantz
Dr. and Mrs. Charles Maaha
Dr. and Mrs. Archie Madsen
Mr. Harold Miller
Mr. and Mrs. Elcar Nielsen
Mr. and Mrs. Hans Nielsen
Mr. and Mrs. Jens P. Nielsen
Dr. and Mrs. Royce Renning
Rev. and Mrs. Alton Schwanndt
Mr. and Mrs. Leonard v. B. Sutton
Mr. and Mrs. Donald Swanson
Mr. and Mrs. Lorentz Thorngren
Mr. and Mrs. Richard Zion

DANISH AMERICANS

Miss Edith Andersen
Mrs. Elizabeth Andersen
Mrs. Esther Andersen
Mr. Paul Andersen
Mr. Sigfred Andersen
Mr. and Mrs. Oscar Anderson
Mr. Einer Appel
Mr. Peter Bansen
Mr. N. Berthelsen
Dr. Signe Betinger
Mrs. Helga Bohm
Mrs. Rosa Bollesan

Mr. Ludvig Boraks
Mr. Arne Bronten
Mrs. Ellen Christensen
Mrs. James A. Christensen
Mrs. Jennie Christensen
Mr. and Mrs. Morris Christensen
Mrs. Aaron Christensen
Mr. Carl J. Christofferson
Mrs. Elsie Elgaard
Mr. and Mrs. Kurt A. Erslev
Miss Mildred Forseth
Mr. Marshall Fredericks
Mr. and Mrs. Ervin Grunberg
Mr. and Mrs. Hugh Gwin
Mr. and Mrs. Everatt Hagedorn
Mrs. Anders Hansen
Miss Augusta Hansen
Mrs. Bessie Hansen
Miss Margaret Hansen
Mr. and Mrs. Mel Hansen
Mr. and Mrs. Raymond Hansen
Mrs. Anna Henningsen
Mrs. Soren Hoj
Mr. George Jacobsen
Mr. and Mrs. Oscar Jacobsen
Mr. Alvin Jensen
Mr. Alvin Jensen
Ms. Christine Jensen
Mr. Frederick Jensen
Mr. Harry Jensen
Mrs. Juliane Jensen
Mr. and Mrs. Peter Jensen
Ms. Mildred Jepsen
Mr. Karl Jetter
Mr. and Mrs. Edward Jonassen
Mr. and Mrs. Edwin Jorgensen
Mr. Ernest Jorgensen
Mr. George Jorgensen
Mr. Oscar Jorth
Mr. and Mrs. C. Koldenborg
Mr. and Mrs. Chris Korshoj
Mrs. August Krey
Mrs. Else L. Ladefoged
Mr. and Mrs. Marius Landbo
Mr. Gorm Larsen
Mr. Harald Larsen
Mr. and Mrs. Paul Larsen
Mrs. Orville Lawson
Mrs. Martha Loft
Mr. and Mrs. Henry Lund
Mrs. Ellen Madison
Ms. Anna Madsen
Mrs. Axel Madsen
Mr. Lester Madsen
Mr. and Mrs. Peter B. Marcussen
Mr. and Mrs. Raymond Matson
Mr. and Mrs. Ib Melchior
Ms. Margaret Miller
Mr. and Mrs. Kaj Moller
Mr. Jay Monberg
Miss Emmet Nelson
Mrs. Erlend Nelson
Ms. Olga Nelson
Mrs. N. Nesgaard
Mr. and Mrs. A. Nielsen
Mr. Aage E. Nielsen
Mr. and Mrs. Gorge Nielsen
Mr. Carl L. Nielsen
Mrs. Edith Nielsen
Mr. Harold Nielsen
Mr. and Mrs. Niels Nielsen
Mr. Vance Nielsen
Mr. Walter Nielsen
Mr. Wm. Anton Nielsen
Ms. Rignor Odgaard
Mr. Earl Olsen
Mrs. Chris Paulsen
Mr. Emmert Pedersen
Mr. Marius Pedersen
Mr. and Mrs. Martinus Pedersen
Mrs. Cecelia Petersen
Mr. and Mrs. Charles Petersen
Mr. George R. Petersen
Mr. and Mrs. Howard Petersen
Mrs. John Rand
Mrs. Christine Rasmussen
Miss Lucille Rehder
Mr. Svend Ronlov
Ms. Dawn Rosenvinge
Mr. Herman Sandberg
Mr. A. Simonsen
Mr. Sigvald Skaar
Mr. and Mrs. H. Snow
Mr. Martin Sorensen
Dr. and Mrs. R. Sorensen
Mr. and Mrs. R. Sorensen
Ms. Clara Sundby
Mr. and Mrs. Ingvard Svarre
Mr. C. F. Svudrup
Mrs. George Swan
Mr. Henrik Tellman
Mr. and Mrs. Lewis Tesdahl
Mrs. Lester Thompson
Mr. Oscar Thompson
Mr. Niels Toft

Mr. and Mrs. Sophus K. Winther
Mr. and Mrs. A. J. Zackman

DANISH AMERICAN ORGANIZATIONS

Danish Brotherhood #35,
Chicago, Illinois
Danish Brotherhood #51,
Ludington, Michigan
Danish Brotherhood #161,
Hardy, Nebraska
Danish Brotherhood #325,
Rockville Ctr, New York
Danish Brotherhood #343,
Waupaca, Wisconsin
Denver Danes
Iowa United Lodges Scholarship Fund

Churches & Church Organizations

ALCW Omaha Conference
American Lutheran Church, Omaha,
Nebraska
American Lutheran Church, Shelby,
Iowa
Atonement Lutheran Church,
Overland Park, Kansas
Bethany Lutheran Church, Ruskin,
Nebraska
Bethel Lutheran Church, Aurora,
Colorado
Bluffs Trinity Lutheran Church,
Fremont, Nebraska
Bruersville Immanuel Lutheran
Church, Cole Camp, Missouri
Calvary Lutheran Church, Scottsbluff,
Nebraska
Calvary Lutheran Church, Grand
Island, Nebraska
Calvary Lutheran Church, Omaha,
Nebraska
Central Nebraska ALCW Conference
Centennial Lutheran Church,
Englewood, Colorado
Ekklesia Koinonias, Dana College
Elkhorn Conference Luther League
Emmaus Lutheran Church Women,
Kennard, Nebraska
Evangelical Lutheran Church,
Mankato, Kansas
Faith Lutheran Church, Golden,
Colorado
Faith Lutheran Church, Seward,
Nebraska
First Lutheran Church, Blair,
Nebraska
Fulton Lutheran Church Women,
Moorhead, Iowa
Good Shepherd Lutheran Sunday
School, Wichita, Kansas
Grace Lutheran Church, Cook,
Nebraska
Holy Shepherd Lutheran Church,
Lakewood, Colorado
Hope Lutheran Church Women,
Ladysmith, Wisconsin
Immanuel Church of Orum, Orum,
Nebraska
Immanuel Lutheran Church, Omaha,
Nebraska
Immanuel Lutheran Church,
Coleridge, Nebraska
Immanuel Lutheran Church, Glenvil,
Nebraska
Immanuel Lutheran Church, Rushville,
Nebraska
King of Glory ALCW, Independence,
Missouri
Lord of Love Lutheran Church, Omaha,
Nebraska
Lost Island Lutheran Church, Ruthven,
Iowa
Luther Memorial Church, Syracuse,
Nebraska
Lutheran Church of the Master, Omaha,
Nebraska
Northern Colorado Conference
Northern Kansas Conference
Our Saviour Lutheran ALCW, Denmark,
Wisconsin
Our Saviour's Lutheran Church, Dannebrog
Nebraska
Our Savior's Lutheran Church, Audubon,
Iowa
Peace Lutheran Church, Plymouth, Nebraska
Peace Lutheran Church, Nowton, Kansas
Prince of Peace Lutheran Church, Geneva,
Nebraska
Prince of Peace Lutheran Women of
the Church, Geneva, Nebraska
Salem Lutheran Church, St. Francis,
Kansas
Shepherd of the Hills Lutheran Church,
Ft. Collins, Colorado
South Central Nebraska Luther League
South Central Nebraska Conference

St. John Evangelical Lutheran Church,
Daykin, Nebraska
St. John's Lutheran Church, Bird City,
Kansas
St. John's Lutheran Church, Eustis,
Nebraska
St. John's Lutheran Church, ALCW,
Kansawha, Iowa
St. John's Lutheran Church, Kensington,
Kansas
St. Mark's Lutheran Church, Aurora,
Colorado
St. Paul Lutheran Church, Byron,
Nebraska
St. Paul's Lutheran Church ALCW,
Clatonia, Nebraska
St. Paul's Lutheran Church, Hebron,
Nebraska
St. Paul's Lutheran Church, Neola, Iowa
St. Paul's Lutheran Church, Burlington,
Colorado
St. Paul's Lutheran Church, DeWitt,
Nebraska
St. Paul's Lutheran Church, Omaha,
Nebraska
Stockholm Lutheran Church, Shickley,
Nebraska
Tri-State Conference ALCW
Trinity Evangelical Lutheran Church, Clinton,
Oklahoma
Trinity Lutheran Church, Albert Lea,
Minnesota
Underwood Lutheran Church, Underwood,
Iowa
Westwood Lutheran Church, Shawnee
Mission, Kansas
Zion Lutheran Church, ALCW, Everest, Kansas
Zion Lutheran Church, Amoret, Missouri

WASHINGTON COUNTY BUSINESSES AND ORGANIZATIONS:

Advance Cleaners
Al's Alignment Service
Aluma Decor of Blair
Anderson Pharmacy
Arndt Hardware
B & C Shop
Ben Franklin Store
Bette's Gifts
Blair Pre-School
Blair Bakery
Blair Bank
Blair Carpet & Drapes
Blair Community Theater
Blair Dairy
Blair Disposal
Blair Feed Mill
Blair Florist
Blair Flour Mill
Blair Glass Company
Blair Golf Club
Blair Lions Club
Blair Lumber & Grain Co.
Blair Manufacturing Co.
Blair Meat Plant
Blair Redi Mix, Inc.
Blair Rotary Club
Blair Supply Co.
Blair Transfer
Blair Vision Clinic
Blair West Pharmacy
Blue Ribbon
Bohs Conoco Service
Burkes Fashions
C & J Tire Sales
Camden Construction
Campbell Mortuary
Carefree Travel
Carlson's Market
Central Nebraska Telephone Co.
Cheryl's Beauty Salon
Clifton Hotel
Clyde Fitch Heating & Plumbing
Computel, Inc.
Concrete Equipment Co.
Dairy Queen
Enterprise Publishing Co.
Equitable Savings & Loan
Fabric Village
Fairway Propane
Foley Oil Co.
Fraternal Order of Eagles
Ft. Calhoun Stone Co.
Gamble Store
Gilliland Painting Contractor
Good Earth Plants
Hansen Agency
Hinky Dinky
Hipner Repair Shop
Huntel
Interstate Harvestore, Inc.
J.J.'s Children's Wear
Jensen Wall Company
Julia Ann Shop
Klopp's Jewelry Gifts
Korshoj Construction Co.

Lang's OK Tire
Lystad's Inc.
Mar-Bee Salon
Midland General
Midwest Service & Supply
Miller-Rolland TV & Appliance
Modern Beauty Salon
Neb-Iowa Business Equipment
Nebraska-Iowa Supply
Nebraska State Savings
Nebraska Telephone Co.
Neef Construction
Nelson Brothers Clothiers
Northeastern Telephone
Northern Telephone
O'Hanlon & O'Hanlon
Olson & Stewart Construction
Peterson Construction
Phil Larsen Real Estate
Plum Tree Lounge
Raymond V. Ryder Co.
Richards Agency
Robert Oil & Propane
Rolland's Farm Supply
Ron's Radio & TV Service
Runyon & Long
S. E. Smith & Sons
Schaffter Sporting Goods
Schmidt Monument Co.
Skelly Service Station
Standard Oil Co.-E. T. Thompson
Stanley Brothers
Starlight Motel
Steinbaugh Marine
Stewart A. Smith & Associates
Stewarts Northside Market
Taylor Color Photography
Taylor Oil Co. Inc.
The New Topper Cafe
The Silver Razor
Thew Custom Floors
Tivoli
Tyson Elevators, Inc.
Tyson, Inc.
Union Telephone Co.
Vern's Appliance Service
Vinton Motor Co.
Wanda's Blair Maple
Washington County Mutual Ins. Co.
Washeo Feed & Supply
Washington County Bank
Washington County Motors
Williby's 68 Service

FOUNDATIONS:

Abbott Foundation
Abel Foundation
Alco Standard Foundation
Alcoa Foundation
Allied Chemical Foundation
Allstate Foundation
Amoco Foundation
Archer Daniels Midland Foundation
Asarco Foundation
Bemis Company Foundation
Borden Foundation, Inc.
Bramsen Foundation
Burlington Northern Foundation
Central Soya Foundation
Champion International
ConAgra Charitable Foundation
Continental Corporation Foundation
A. B. Dick Foundation
Deluxe Check Printers Foundation
Becton Dickinson Foundation
Honeywell Fund
International Harvester Foundation
Kimberly-Clark Foundation, Inc.
Kong Frederik og Dronning
Lueder Construction Company Foundation, Inc.
Merck Company Foundation
Mobil Foundation, Inc.
Otto Monsted's Foundation
Montgomery Ward Foundation
Nabisco Foundation
Omaha World-Herald Foundation
Owen Foundation
P-M Charitable Foundation
Paxson Foundation
Esper A. Petersen Foundation
Prudential Property & Casualty
Quaker Oats Foundation
S & H Foundation
Seay Roebuck Foundation
P. W. Skogmo Foundation
Les Sunderland Foundation
TRW Foundation
Tektronik Foundation
Union Pacific Foundation
United Brands Foundation
UPS Foundation (via ICFA)

CORPORATIONS:

Acme Mail Advertising Company
Aetna Life and Casualty

Agrio Chemical Company
Aid Association for Lutheran
Aircro
Ak-Sar-Ban
Albion National Bank
Allied Mills, Inc.
American Brands, Inc.
American Exchange Bank - Elmwood
American National Bank - Creighton
American National Bank - Sidney
American Telephone & Telegraph Corporation
American United Life Insurance Company
Arnold State Bank
Auburn State Bank
Bank of Brainerd
Bank of Clarks
Bank of Doniphan
Bank of Elgin
Bank of Hartington
Bank of Madison
Bank of Norfolk
Bank of Taylor
Barnhart Press
Mrs. Anne Batchelder (interest on stock)
Beatrice National Bank & Trust Co.
Becher Curry Company
Robert A. Braun
Briggs Pump Company, Inc.
Brinn & Jensen, Inc.
Bristol-Myers Fund
Broken Bow State Bank
Burt County State Bank - Tekamah
Butte State Bank
Carson National Bank - Auburn
Cengas
Central States Health & Life Co. of Omaha
Chap School
Chief Industries, Inc.
Citizens Bank - Bancroft
Citizens Bank & Trust Co. - Columbus
Citizens National Bank - St. Paul
City Nat'l Bank & Trust Co. - Hastings
Commercial Bank - Blue Hill
Commercial Federal Savings & Loan - Omaha
Commercial State Bank - Cedar Bluffs
Commercial State Bank - Wausa
Commonwealth Electric Company
Connecticut Mutual
Cook Paint & Varnish Co.
Curtis State Bank
Dale Electronics, Inc.
DeLay First National Bank & Trust Co. - Norfolk
Dens Danske Bank
Douglas and Lomason Company
The Duda Company
John H. Eastley, M.D.
Elanco Products Company
Electric Fixture & Supply Company
Equitable of Iowa
Fairbury State Bank
Farm Credit Banks of Omaha
Farmers Bank - Oconto
Farmers & Merchants Bank - Axtell
Farmers & Merchants Bank - Ceresco
Farmers & Merchants Bank - Milligan
Farmers & Merchants Nat'l Bank - Ashland
Farmers & Merchants Nat'l Bank - Oakland
Farmers National Company
Farmers State Bank - Avoca
Farmers State Bank - Big Springs
Farmers State Bank - Eustis
Farmers State Bank - Fairmont
Farmers State Bank - Maywood
Farmers State Bank - Silver Creek
Filley Bank
First Federal - North Platte
First Federal Savings & Loan - Dawson County
First National Bank - Atkinson
First National Bank - Beemer
First National Bank - David City
First National Bank - Friend
First National Bank - Grand Island
First National Bank - Hooper
First National Bank - Lewellen
First National Bank - Marquette
First National Bank - Minden
First National Bank - Mitchell
First National Bank - Morrill
First National Bank - O'Neill
First National Bank - Ord
First National Bank - Tekamah
First National Bank - Unadilla
First National Bank - Walthill
First National Bank - Wincor
First National Bank - York
First National Bank & Trust Co. - Columbus
First National Bank & Trust Co. - Lincoln
First National Bank & Trust Co. - North Platte
First State Bank - Fremont
First State Bank - Gothenburg
First State Bank - Hickman
First State Bank - Shelton
First West Side Bank (Omaha Bankers Ass'n)

Ford Motor Company Fund
Fruhauf Corporation Charitable Fund, Inc.
Fuchs Machinery & Supply, Inc.
Gate City Steel Corporation
Gateway Bank & Trust - Lincoln
Allied Mills, Inc.
General Foods Fund
General Motors Corporation
Geneva State Bank
Gering National Bank
Goodyear Tire & Rubber Company Fund
Graybar Electric Company, Inc.
Guarantee Mutual Life Co.
Hall County Livestock Improvement Association
John Hancock Mutual Life
Harding Glass Industries, Inc.
Hennington, Durham & Richardson, Inc.
Herman Bros., Inc.
Home Federal Savings & Loan - Grand Island
Houghton-Mifflin Co.
Household Finance Corporation
IBM Corporation
ICFA Interest
ICFA Miscellaneous
Industrial Chemical
Inland Manufacturing Company
Inter Business Machines Corporation
ITT Corporation
Jayhawk Boxes, Inc.
Jersild and Tatter
Johnson Hardware Company
Journal-Star Printing Company
Kaiser Steel Corporation
Kansas-Nebraska Natural Gas Company, Inc.
Kenworth Sales & Service
Peter Kiewit
Kinning & Reil, Inc.
KNOP-TV - North Platte
Kraft, Inc.
S. S. Kresge Company
Lexington State Bank & Trust Company
Liberty Mutual Insurance Co. Fund
Lincoln Mutual Life Insurance Co.
Lutheran Mutual Life Insurance Co.
Lutheran Brotherhood
M B Cattle Company
May Broadcasting Company (KMTV)
McIntosh, Inc.
MGIC Investment Corporation
Midwest Federal Savings & Loan - Nebraska City
Midwest Life Nebraska
Mildale Ranch Co.
Minden Exchange Bank & Trust Co.
Missouri Valley Machinery Co.
Monsanto Fund
Morton House Kitchens, Inc.
Mutual Life Insurance Company of New York
Mutual of Omaha
Nash Finch Co.
Nebraska Federal Savings & Loan Ass'n - Omaha
New York Life Insurance Co.
Norden Laboratories
North Platte State Bank
Northern Natural Gas Co.
Northwestern Bell Telephone
Occidental Savings & Loan Association - Omaha
O'Keefe Elevator Co., Inc.
Omaha Bankers Association
Omaha Cash Register
Omaha City Planning
Omaha Concrete Stone Co.
Omaha National Bank (Omaha Bankers Ass'n)
Overland National Bank - Grand Island
Owens Illinois
Peavey Company
Pender State Bank
J. C. Penney Co., Inc.
Pentz, Inc.
Peoples-Webster Co. Bank - Red Cloud
Petersburg State Bank
Peterson Mfg. Co., Inc.
Pizza Hut, Inc.
Pinkerton's, Inc.
Plattsmouth State Bank
Proctor & Gamble Fund
Prudential Insurance, Co.
Ralston Bank
R. L. Robertson
Safeway Stores, Inc.
Schuyler State Bank
Sculley-Bishop Co.
Scribner Bank
Security Mutual Life Insurance Company
Seven Valleys State Bank - Cellyway
Sidney National Bank
Simpson's, Inc.
Sioux National Bank - Harrison
Siouxland Beef Processing
Southwest Grease & Oil Company (Omaha)
Southwestern Bell
Richard E. Spelts, Jr.
Spencer State Bank
Sperry - New Holland

Sperry Rand Corp.
Standard Chemical Manufacturing Co.
Standard Motor Products
State Bank - Banker
State Bank - Cairo
State Bank - Hildreth
State Bank - Stella
State Bank - Table Rock
State Bank - Trenton
State National Bank & Trust Co. - Wayne
Sterling Drug, Inc.
Store Kraft Manufacturing Company
Tenneco, Inc.
Three-M Company
Tilden Bank
The Tool House
Travel & Transport, Inc.
Tri-County Bank - Stuart
Union Pacific Corporation
United Guaranty Residential Insurance Co.
Vecchio Tru-Art Studio
Wm. Volker & Company
Walkers, Inc.
Western Electric Fund
Western National Bank - Scottsbluff
Whitewater Ranch Corporation
Willamette Industries
Willis Cap & Gown Company
Woods Charitable Fund, Inc.
Yankee Hillbrick Mfg., Co.

PARENTS:

Mr. and Mrs. Leland Aanonson
Mr. and Mrs. Henry Ahrendt
Mr. Warren Amole
Mr. and Mrs. Harold Andersen
Mr. and Mrs. Stanley Bansen
Rev. and Mrs. Walter Behrens
Mr. and Mrs. Lloyd Bevans
Mr. and Mrs. Robert Borden
Mr. Ray Bowmaster
Mr. Robert Breseman, Sr.
Mr. and Mrs. George Brodbeck Jr.
Mr. and Mrs. Ralph Brown
Mr. and Mrs. George Buck
Mrs. Helen Chamberlin
Mr. Carl Christensen
Mr. and Mrs. Dale Christensen
Mr. and Mrs. John H. Christensen
Mr. and Mrs. Alfred Clausen
Mrs. Gwen Clover
Mr. and Mrs. Herbert Dalleck
Mr. Arthur Dolleck
Mr. and Mrs. Harry Durent
Mr. and Mrs. Ervin Ehm
Mr. and Mrs. Emil Eisenhauer
Mrs. Fern Eitman
Mr. and Mrs. Arlo Epperson
Mr. and Mrs. Eldon Erbes
Mrs. Shirley Eyer
Mr. and Mrs. Billy Filson
Mr. and Mrs. Virgil Fredericks
Mr. and Mrs. Donald Goos
Mr. and Mrs. Alan Gordon
Rev. Arthur Grorud
Mr. and Mrs. Melvin Hasek
Mr. and Mrs. Vernald Hagebak
Mr. and Mrs. George Hagen
Mrs. Richard Hall
Mrs. Mercedes Hanlon
Mr. and Mrs. Hilmar Hansen
Mr. Peter Hansen
Dr. and Mrs. Raymond Hansen
Mr. and Mrs. Arndt Hansen
Mr. and Mrs. Ralph Hayne
Mrs. James Heide
Mr. and Mrs. Arnold Heistand
Mr. and Mrs. George Helling
Mr. and Mrs. Waldemar Hempler
Mr. Norman Henriksen
Rev. Edward Hiller
Mr. and Mrs. V. Holdorf
Mr. and Mrs. Victor Hoogensen
Mr. and Mrs. Melvin Horst
Mr. and Mrs. Richard J. Jensen
Mr. and Mrs. Ronald Jensen
Mrs. Boy Jensen
Mr. and Mrs. Kenneth Johnson
Mr. and Mrs. George Keglter
Dr. and Mrs. R. Kirkwood
Mr. and Mrs. Frank Knudsen
Dr. and Mrs. Arnold Knudsen
Dr. and Mrs. W. Kuehn
Mr. and Mrs. Erwin Kuhlman
Mr. and Mrs. Lloyd Kuhn
Mr. and Mrs. Henry Larsen
Mrs. Orren Leo
Mr. and Mrs. Edward Lorenzen
Mr. and Mrs. L. Madsen
Mr. and Mrs. Fred Matthes
Mr. and Mrs. Albert Metzger
Mrs. Fredrick Miller
Mrs. Jack Moosmann
Mrs. Laura Morgensen
Mrs. E. Morton
Mr. and Mrs. Charles Neel

Mr. and Mrs. Robert Neubert
Rev. and Mrs. Lloyd Nevo
Dr. and Mrs. Milton Olson
Rev. Henry Peterson
Mr. and Mrs. Victor Rasmussen
Mr. and Mrs. Hilmer Sess
Mr. Carl Schlitker
Mrs. Arthur Schola
Dr. and Mrs. Walter Schur
Mr. and Mrs. L. Schweer
Rev. and Mrs. Ernest Serr
Mr. and Mrs. Ned Shipley
Mr. and Mrs. Alfred Sick
Mrs. Ruth L. Simon
Mr. and Mrs. William Soetmek
Dr. and Mrs. Ewald Sorensen
Mr. and Mrs. George Stahnke
Mr. and Mrs. H. Steffensen
Mr. and Mrs. Clifford Strand
Mr. and Mrs. Alvin Strohhahn
Mr. and Mrs. R. Sundermann
Mr. and Mrs. Arnold Terveen
Mr. and Mrs. Kenneth Thielen
Mr. and Mrs. Armand Thomsen
Mr. and Mrs. Johannes Vasby
Mr. and Mrs. D. Wangwick
Mr. and Mrs. Carl Whitman
Mr. and Mrs. Louis Winter
Mr. and Mrs. Judson Wolf
Mr. and Mrs. Alwin M. Zwanziger

FRIENDS:

Dr. and Mrs. Lawrence Abbott
Mrs. Walter Albert
Anonymous
Mr. and Mrs. S. Allen
Mrs. Anna Andersen
Mr. and Mrs. James Anderson
Mr. Roy Anderson
Mr. and Mrs. Arthur Antholz
Mr. E. Wayne Armer
Dr. and Mrs. K. Bagby
Mr. Terry Baily
Mr. Cecil Bair
Mr. and Mrs. Robert Blobaum
Mr. and Mrs. J. Fred Bienz
Blair Rose Society
Mr. M. L. Boyden
Mrs. Susan A. Bronczyk
Mrs. C. B. Brown
Mrs. Gail Browning
Mr. and Mrs. Rufus Buffaloe
Mr. and Mrs. L. Bussay
Mr. and Mrs. Raymond Caddock
Cedar Falls Dana Club
Mr. and Mrs. Floyd Chasa
Mrs. Max Coffey
Mrs. Jack Cohen
Dr. and Mrs. Herbert Coulter
Mr. and Mrs. Thomas Damrow
Dane Student Senate
Mr. and Mrs. Jessie Davidson
Mr. Bill Dean
Ms. Nina Defane
Denver Dana Club
Mr. Billy Derby
Mr. Earl Diedericksen
Mr. Henry Diel
Ms. Susan Dittman
Mr. Lyle Doll
Mr. Gregory Drow
Mr. and Mrs. Robert Duden
Mr. Arthur Durst
Mrs. Lillian Dyhrberg
Estate of Frank Baumgart
Estate of Marie Holling
Mr. and Mrs. Donald Fahrenkrug
Rev. Robert Fedde
Dr. A. Ferguson
Mr. Ray Fisher
Mr. and Mrs. Ed Flake
Mr. Dale Flora
Ms. Inez Flynn
Mr. John R. Foley
Mr. Ralph Freuck
Rev. John-Fritzmeier
Mr. and Mrs. Arnold Fuhlrodt
Mr. and Mrs. Timothy Garrigan
Mr. and Mrs. Clinton Gehring
Dr. and Mrs. E. Goldenstein
Dr. and Mrs. Leslie Grace
Mrs. William Grewcock
Mr. Nelson Hamblin
Mr. Donald R. Hamre
Mrs. Lester N. Hanson
Ms. Susan Hanson
Mr. and Mrs. John Haun
Mr. and Mrs. John Halleberg, Sr.
Mrs. Thyra Herzog
Ms. Ellen Hinrich
Mr. and Mrs. Fred Hinrich
Mrs. Dorothy Hobel
Mrs. Emma Hobelmann
Mr. C. A. Hoelscher
Rev. Roger Hoffman
Mr. and Mrs. Henry Holling

Ms. Helen Houston
Dr. and Mrs. C. Howard
Mr. and Mrs. Wm. Hubbard
Mr. Richard Hughes
Mr. and Mrs. Hugh Hunt
Mr. and Mrs. Richard Hunt
Mr. Emory Hunt, Jr.
Mr. and Mrs. Richard Hurd
Mr. and Mrs. Thure Jacobson
Mrs. Lillie Johansen
Mr. and Mrs. Nile Johnson
Mr. Jack Jorgensen
Mr. Jim Judt
Rev. Theo Judt
Mr. and Mrs. W. O. Kandelin
Dr. Ivan Karpisek
Mr. and Mrs. Sam Kelly
Mr. Robert Kelley
Dr. Byford Klein
Mr. and Mrs. Gerald Kobs
Dr. and Mrs. G. Kuetner
Mr. Herman Kuhr
Mr. J. Kuhr
Mr. Richard Kuhr
Mrs. and Mrs. Wayne Lambertz
Mrs. C. B. Larsen*
Mr. Alvin Lentz
Rev. Adolph Lillich
Mrs. Clarence Lindblad
Mr. and Mrs. Sam Lingo
Miss Ruth Lippincott
Dr. and Mrs. V. E. Lovell
Mr. Phil Lorentzen
Mr. Roy A. Lund
Mr. Charles Martin
Mr. Dennis Mayer
Mr. and Mrs. Robert McMillan
Mrs. Margaret McQuistan
Mr. and Mrs. Monty Mead
Mr. and Mrs. Fred Meeker
Mr. Arnold Meierdierk
Memorials to Anna Anderson
Memorials to Boy Jessen
Memorials to Paul Nyholm
Mr. and Mrs. Daryl Messenger
Mr. and Mrs. Adelbert Meyer
Mrs. Homer Miller
Mr. Mick Mines
Mr. R. Mondro
Mr. Carl Monson
Mrs. H. Morris
N.A.A.A. District II
Mrs. Jenan Nazareth
Miss Edith Neale
Mr. Harvey Neale
Mrs. Jolene R. Nelson
Mr. and Mrs. Stanley Nesheim
Mrs. Deanna Nielsen
Mr. L. G. Norma
Mr. and Mrs. Michael O'Neil
Mr. and Mrs. Henry Ohrt
Mr. George Olsen
Mrs. Rufus Olson
Miss Greta Oppe
Dr. Louis K. Otto
Mrs. Vernon Paulson
Mr. and Mrs. Ferd Pearson
Pender Jr. Womens Club
Mr. and Mrs. Giles Penstone
Mr. and Mrs. James Peters
Mr. and Mrs. Thorvald Petersen
Mrs. Walter W. Petersen
Mrs. Matilda Powley
Mrs. Lois Reber
Mrs. Lola Rahfs
Mrs. Sophie Rasmussen
Dr. and Mrs. Hans Rath
Dr. Ray Reppert
Mrs. C. Risburg
Mrs. John Rhoades
Miss Celia Rohwer
Mr. and Mrs. George Rohwer
Mr. and Mrs. Gary Russell
Mr. LeRoy Schafersman
Mr. and Mrs. Francis Schmehl
Mr. and Mrs. Jon Sedlacek
Dr. H. Neal Sievers
Dr. and Mrs. R. Sievers
Mr. Richard Sievers
Mr. James Skinner
Mrs. Genevieve Slader
Mr. Mike Smith
Mr. LeRoy Snyder
Mr. Arthur Steele
Mr. Larry Stier
Rev. Henry Stolz
Sunshine Sewing Club
Miss Alma Svogerson
Dr. Reuben T. Swanson
Mr. Dan Teggart
Mr. and Mrs. Joe Taylor
Ms. Grace Thompson
Mrs. Dora Tornkvist
Mrs. E. S. Tripp
Mr. and Mrs. Richard Veach
Mrs. Peter Vig
Mr. Dale Von Seggern

Mr. Michael Wallin
Mr. and Mrs. John Wallman
Mr. Larry Wallman
Mr. Wayne Wallman
Mr. and Mrs. Walter L. Walke
Mr. M. Wardell
Rev. Dale Watermeier
Ms. Lillian Wellner
Richard Welsh Memorial Fund
Mr. and Mrs. Clarke Wenke
Mr. and Mrs. Warren Whittaker
Mr. Joe Will
Mr. N. A. Williams
Mr. and Mrs. Norman Williams
Mr. Bill Williby
Mr. and Mrs. Philip Willnerd
Dr. and Mrs. O. H. Wingert
Mr. C. Womble
Mr. Paul Womble
Mr. Lyman Wrightson
Mr. Wm. E. Ziegler

FACULTY AND STAFF:

Mr. Mark Adams
Miss Doris Andersen
Mr. and Mrs. John Anderson
Mrs. Pearl Anderson
Mr. and Mrs. Robert Arnold
Mr. Norman Bansen
Mr. and Mrs. Dennis Baizum
Rev. and Mrs. John T. Beck
Rev. and Mrs. Bruce Bergquist
Mr. and Mrs. John Bienz
Dr. and Mrs. Melvin Boehr
Mrs. Arlene Bouslaugh
Dr. and Mrs. Alan Brandes
Mr. and Mrs. William Brockmeyer
Miss Sigrid Christensen
Mr. William Christensen
Mr. and Mrs. Arthur Deemer
Mrs. Esta Deets
Mr. and Mrs. Darrell Dibben
Ms. Nancy Dodd
Dr. and Mrs. Paul Emmerich
Dr. Herta Engelman
Mrs. Ray Furtak
Mr. and Mrs. Walter George
Dr. and Mrs. Robert Glass
Mr. and Mrs. Robert Goolsby
Mr. and Mrs. Fred Gordon
Mr. and Mrs. Craig Green
Mr. and Mrs. George Grube
Mr. and Mrs. Keith Hansen
Mr. and Mrs. Richard Hansen
Dr. and Mrs. Clifford Hanson
Dr. and Mrs. Verlan Hanson
Dr. and Mrs. Steven Harper
Miss Carol J. Hausermann
Mr. and Mrs. Milton Heinrich
Mr. and Mrs. Frank Hengeveld
Mr. and Mrs. Arvin Hernes
Mr. and Mrs. Roger Hohensee
Mr. and Mrs. Eugene Husk
Dr. and Mrs. Delvin Hutton
Mr. and Mrs. Clyde Johnson
Miss Jennifer Johnson
Miss Marie A. Johnson
Mr. Paul O. Johnson
Mr. and Mrs. Ronald Johnson
Dr. and Mrs. Richard S. Jorgensen
Mrs. Allen Leaker
Mr. and Mrs. Dale Lemon
Mr. and Mrs. Tom Leonard
Mr. and Mrs. Eugene Lindblad
Mr. and Mrs. Alis Lindstrom
Dr. and Mrs. C. C. Madsen
Mr. and Mrs. Dale Matson
Mr. and Mrs. Joe McManigal
Mr. and Mrs. Willard Meier
Mr. and Mrs. Eugene Meyer
Mr. and Mrs. Harold Moseley
Dr. and Mrs. Paul Nave
Dr. and Mrs. John Nielsen
Miss Luella Nielsen
Dr. and Mrs. John Northwall
Mr. and Mrs. James Olson
Mr. and Mrs. Roger Olson
Mr. Phillip Pegal
Mr. Richard Palm
Mr. and Mrs. Paul O. Peterson
Mr. and Mrs. Richard Poggendorf
Miss Carolyn Potter
Miss Ebba Rasmussen
Mrs. Ruth Rasmussen
Mr. and Mrs. James Scheffler
Mrs. Virginia Schelbe
Mrs. Viona Schlotfeld
Mr. George Schuter
Mr. Gary Seever
Ms. Mabel Smith
Mr. and Mrs. Joel Snell
Mr. and Mrs. A. J. Snowbeck
Mr. and Mrs. Terry Stodola
Dr. and Mrs. Lerric E. Stone
Mr. and Mrs. Milo Stork

Mr. and Mrs. Paul Strand
Mr. and Mrs. L. W. Svendgaard
Mr. and Mrs. Eugene Thomas
Rev. and Mrs. F. W. Thomsen
Mr. and Mrs. Robert Tuttle
Mr. and Mrs. Donald Warman
Dr. and Mrs. Raymond J. Weckmuller
Mrs. Viola West
Dr. and Mrs. Wise
Mr. and Mrs. Harold Wright

Alumni, Class of:

1913
Number in Class 9
Donors 1 Total \$12.00 11%
Chr Dahl

1914
Number in Class 5
Donors 3 Total \$130.00 60%
Nels Hansen
Olga West Hansen
C. A. Vammen

1915
Number in Class 15
Donors 2 Total \$85.00 13.3%
George M. Landrock
Tomina Neve Vammen

1916
Number in Class 15
Donors 2 Total \$27.00 13.3%
Phoebe Hjortsvang Gancin
Alfred Pedersen

1917
Number in Class 10
Donors 1 Total \$25.00 10%
Anna Andersen Thomsen

1918
Number in Class 26
Donors 1 Total \$25.00 4%
Anton Peterson

1919
Number in Class 8
Donors 3 Total \$115.00 37.5%
Frank Farr
H. Lyle Guyer
Esther Haals Magnussen

1920
Number in Class 8
Donors 2 Total \$150.00 25%
Aaron Jensen
Niels Nielson

1921
Number in Class 8
Donors 1 Total \$35.00 12.5%
Joseph Girtz

1922
Number in Class 12
Donors 6 Total \$362.50 50%
Marcus Beck, Sr.
Mary Hansen Justesen
Alma Madsen Petersen
Lawrence Siersbeck
Ruby Nelson Townsend
Peter J. Vammen

1923
Number in Class 9
Donors 3 Total \$350.00 33.3%
Agnes Lund Beck
Arthur Jersild
J. Tennesen

1924
Number in Class 20
Donors 5 Total \$193.50 25%
Ingrid Beck Bondo
Emma Bondo Christensen
Einer Jensen
Dean Petersen
Mina Jensen Vinther

1925
Number in Class 25
Donors 3 Total \$115.00 12%
Elmer Bondo
Agnes Beck Jensen
Ernest Thompson

1926
Number in Class 23
Donors 8 Total \$222.50 34.8%
Leora Grill Broemser
Anna Christensen
Magnus Christensen
Elliott Hanson
Christian Justesen
Mamie Jensen Larson
Laurits H. Pedersen*
Margaret Clausen Vig

1927
Number in Class 14
Donors 6 Total \$257.50 42.9%
Lona Petersen Berck
Erik Christensen
Erik Jensen
Alfred Nelsen
Arthur F. Nelson
Ell J. Vig

1928
Number in Class 37
Donors 11 Total \$552.50 29.7%
Herbert Christensen
Arthur Jensen
Jens Krogh
Emerald Nielsen
Ralph Nielsen
Rose Hansen Nielsen
Jane Noble Nora
L. Gudmund Pedersen
Einer Petersen
Lucille Hansen Rhoades*
Anker Siersbeck

1929
Number in Class 32
Donors 10 Total \$1,097.50 31.3%
Olga Simonsen Anderson
Vera Sorensen Head
Thakla Jensen
Gerhardt Jersild
Esther Johnson Madsen
Rosa Kofoid Nelsen
Eda Paulsen Panum
Ellen Bondo Pedersen
Ruth Kaldahl Pedersen
Alvina Bondo Weismann

1930
Number in Class 23
Donors 7 Total \$210.00 30.4%
James Hansen
Harold Jorgensen
John Nielsen
Martha M. Pedersen
Immanuel Peterson
Julia Nelson Walke
Mary Caspersen Youngdahl

1931
Number in Class 36
Donors 13 Total \$975.00 36.1%
Milton Christensen
Frances Koopman
Silas Larsen
C. C. Madsen
Esther Frost Magnussen
Mildred Johnson Morton
Esther Jensen Pedersen
Anna Beck Petersen
Lillie Peterson Rasmussen
J. Hilton Rhoades
Ray Romer
Claire Nelson Wilkinson
Lois Hansen Wulf

1932
Number in Class 19
Donors 4 Total \$201.50 21.1%
Ray E. Mortensen
Adolf S. Petersen
Lucille Hansen Vig
Tom Wilkinson

1933
Number in Class 28
Donors 10 Total \$510.00 35.7%
Bernice Brown Black
Margaret Petersen Breesse
Halley Brodersen
Alfred R. Jensen
Esther Sorensen Kuhr
Robert Larsen
Aleine Miller
Emil Pedersen
Elna Hofgaard Peterson
Howard Thompson

1934
Number in Class 42
Donors 11 Total \$557.50 26%
Anna Andersen
Theo and Edith Sorensen Jensen
Harvey Kuhr
Jean Larson
Richard E. Morton
Albert H. Olsen
Alvin Petersen
Marie Larsen Petersen
Ellen Danielsen Rendall
Severin Sorensen

1935
Number in Class 30
Donors 11 Total \$443.50 36%
Edward and Ruth Petersen Anderson
John Christensen
Bernhard and Ninna Schultz Engskow
Bertha Hall Hall
Alma Johnson Jensen
Lowell E. Madsen
Lilly Jorgensen Sorensen
Dagmar L. Thomson
Arndt Vig

1936
Number in Class 34
Donors 17 Total \$2,012.50 50%
Marian Peterson Anderson
Verner Carlson
Barbara Hansen
Herbert Harboe
Harold Hurd

Anker M. Jensen
Agnes Petersen Johansen
Bernice Hansen Kaldahl
Rudolph Knudsen
Edward and Inga Schultz Larsen
O. Victor Magnussen
John Sides
Andrew Staby
Irving Tange
Lorentz Thorgren
Norman Lund Van Steenhoven

1937
Number in Class 41
Donors 9 Total \$540.00 21.9%
Martha Frost
Vita Hansen Jensen
Stanley Jorgensen
Arthur Norgaard
Ruth Vig Olsen
Phyllis Rogert
Agnita Christensen Schreiber
Jean Wilson Vinton
Emilie Wahling

1938
Number in Class 59
Donors 11 Total \$700.00 18.6%
Carl Frost
Pearl Hundahl
Ivan Johansen
Dagmar Nielsen Knudsen
Herbert Larsen
Raymond M. Olsen
George Pallesen
David R. Simonsen
Eloise Morris Sperati
Chester Sutton
Marion Hanson Svendsen

1939
Number in Class 51
Donors 14 Total \$1,335.00 27.5%
Mildred Hansen Altekruze
L. Madsen Andersen
Lila Jeffers Ashley
Clarice Jensen Ays
Evelyn Sorensen Bogan
Mildred Petersen Carlsen
Eric Christensen
Edward A. Hansen
Rubena Jorgensen Hansen
Richard Lincoln
Aster Neve
Elmer M. Rasmussen
Mildred Clemons Schroeder
Martha Clemussen Staboy

1940
Number in Class 62
Donors 15 Total \$1,027.50 24.2%
Richard Boo
Frances Kronberg Carter
Leonard Eriksen
Esther Carlsen Hansen
Leona Johansen Hansen
Ralph Hendricksen
Fred Jacobsen
Helen Jacobsen
James Olsen
Clarence Paulsen
Clarence W. Petersen
Myrtle Lee Rasmussen
Victor Schmidt
Edwin Svendsen
Ferne Lantefield Wachter

1941
Number in Class 56
Donors 15 Total \$307.50 26.8%
Lois Lynga Boe
Raymond Carlsen
H. Lee Daggett
Vernie Henningsen Erickson
Frank Hengeveld
Esther Jensen Jenkins
Quentin Johnson
Russell Lund
Charles Morehouse
Paul Neve
Ann Kock Paasch
Paul O. Peterson
Willard D. Phipps
Ethan Svendsen
Dorothy Williams Yowell

1942
Number in Class 48
Donors 14 Total \$1,302.00 29%
Robert and Audrey Betker Berthelsen
Doris Land Carlson
Elsine Jepsersen Christensen
Jerold Elling
Shirley Bondo Hansen
Edward Harboe
D. D. Hoggatt
Genevieve Skeu Jensen
Edna Bondo Nance
Luella Nielsen
Grace Hansen Pearson
Alvin Ruster
E. Irene Jensen Starrett

<p>1943 Number in Class 60 Donors 14 Total \$1,005.50 23.3%</p> <p>Rhoda Hanson Daggott Gladys Jesspersen Dirksen Maynard Hansen Thorvald A. Hansen Rueben Iversen Herbert C. Jeppesen Ernest Kersgaard Ezra Larsen Delores Samuel McDevitt Alton Neve Lela Nielsen Neve Irene Johnson Schmidt Maratee Miller Shadle Kenneth Tabberson</p> <p>1944 Number in Class 51 Donors 13 Total \$1,950.00 25.5%</p> <p>Clifford Hanson William J. Hanson Gwendolyn Hopkins Hart Bernice Benson Iversen Robert and Virginia Pedersen Jensen Oscar Johnson Ole I. Larsen Anna Dige Ledet Mary Hansen Morehouse Edward H. Sorensen Arthur and Marie Nielsen Welch</p> <p>1945 Number in Class 67 Donors 16 Total \$1,360.00 23.8%</p> <p>Vera Johansen Barbeau Stanley and Mildred Rombar Carlsen Hans Carlson Donald Ehlers Ruth Nielsen Jeppesen Helen Mahlun Newmann Ejvind Nielsen Lyle and Agnes Larsen Paulsen Mildred Madsen Paulson Helen Pfeiffer LaVonne Quist Rolland Aage Schou John Schultz F. William Thomsen</p> <p>1946 Number in Class 42 Donors 2 Total \$80.00 4.7%</p> <p>Ruth Petersen Felksen Persis Pedersen Hanson</p> <p>1947 Number in Class 37 Donors 7 Total \$325.00 18.9%</p> <p>Norman Bansen Deloris Hansen Bengtson Doris Petersen Hanson Elizabeth Hansen Hungerford Grete Pedersen Krag Lois Nelson O'Shea Margaret Jensen Rasmussen</p> <p>1948 Number in Class 39 Donors 10 Total \$925.00 25.6%</p> <p>Frederick Bregelman Florence Hansen Howard Jensen, Jr. Irene Kirkegaard Jensen Dolores Jensen Johnson Lorraine Sandberg Madsen Lawrence Nelson Ried Neve John W. Nielsen Joy Larsen Wert</p> <p>1949 Number in Class 67 Donors 18 Total \$815.00 26.9%</p> <p>W. Eugene Flynn Marilyn Juul Hanson Norton Hanson Anna Hansen Huber Paul C. Johnson Carol Mengers Johnson Eileen Fleaton Jorgensen Forrest Leighton A. Violet DeGrave Madsen Archie Madsen Ivadedl Reben Donald Schou Alice Sorensen Sorensen Jean Anderson Sorensen Myrna Olsen Tostenson Marjorie Jorth Wahlgren Kenneth Weaver Eugene Weikander</p> <p>1950 Number in Class 135 Donors 18 Total \$1,105.50 13.3%</p> <p>Amy R. Andersen Doris Andersen John T. Beck Clarence David Doris Lind Fritz Roger Hanson</p>	<p>Arnold W. Jensen Paul Jeppesen Joyce Nelson Johnsen Esther Eriksen Larsen Dorcas Vammen Leighton Elisa Cruz Merkl Allan and Marilyn Neve Nyegaard Gerhard J. Nygaard Clifton Robinson, Jr. Eleanor Nielsen Schou Paul Simon</p> <p>1951 Number in Class 86 Donors 16 Total \$1,961.00 18.6%</p> <p>LaRoy Andersen Vernon L. Andersen Virginia Lippincott Beck Elsie Madison Brostrom Verlen and Heigo Jessen Hanson Donna Olsen Johnson Helen Halstead Kofoid Eileen Nelson Larsen Paul Laursen Betty Jensen Nygaard Lucy Anne Poucher Jimmy Sorensen Gladys Voetmann Stavely Joanne Merrill Varga Norman Winther</p> <p>1952 Number in Class 86 Donors 14 Total \$611.00 16.2%</p> <p>Lois Petersen Andersen John Bradley Gerhardt Mengers Robert G. Nelson Andrew C. Nielsen Donald Ofte Duane and Lillian Nielsen Ohlsen Howard Romer Eunice Clausen Scheffler Arthur Simon Juri Taht Lawrence Weare Raymond J. Weckmuller</p> <p>1953 Number in Class 105 Donors 18 Total \$582.50 17.1%</p> <p>Richard Andersen Herbert A. Anderson Gerald Borglum Vaughn Christensen Leonard and Marilyn Korshoj Jackson Paul and Marilyn Steffensen Jersild Floyd W. Jorgensen Philip Kaldahl Ruth Wegschal Mengers C. M. Pedersen Ruth Neve Petajan Floyd Petersen Alice Voetmann Romer Ellen Wray Therkelsen Mark Thomisen Sue Traux Weare</p> <p>1954 Number in Class 82 Donors 14 Total \$557.50 17.1%</p> <p>Marion Christensen Norman L. Freund Ann Harms George Esther Jorgensen Grindberg Gery Hansen Winston Hansen Howard C. R. Jensen Arne Jossen Neil Moore Arlene Sandberg Nelson LeVern S. Nielsen John Planz Arvin S. Quist Peggy Rounds Wittlinger</p> <p>1955 Number in Class 71 Donors 14 Total \$427.50 19.7%</p> <p>Angelo Sorensen Borglum Clarice Fredrickson Christensen Marion Nielsen Hansen Stanley and Mary Heinsen Hansen Marilyn Jacob Huntress James D. Iversen Roger Krusz Margaret McQuerrie McGill Donovan Olson Nancy Osborn Orwig Cora Stein Schlieferstein Erling T. Schultz Bethery Miller Simon</p> <p>1956 Number in Class 67 Donors 18 Total \$1,192.50 18.6%</p> <p>Robert Armentrout James Cleman Lynn Ferrers Kenneth L. Fohl Bonnie Jacob Jacobson Dorothy Landbo Jorgensen</p>	<p>Herbert Jorgensen Robert Krogh Betty Petersen Kruse Hilmar Krueger Dale Larsen Harold Laursen William O. Lawson Philip Pagel Jon and Dorothy Kloth Petersen Bruce Sullivan Philip M. Wittig</p> <p>1957 Number in Class 80 Donors 14 Total \$630.00 17.5%</p> <p>Beth Kruse Cecil Carole Henningsen Evert Norman Hagberg Arnette Thim Hansen Al Jessen Carol Nielsen Jorgensen David Kutsch Thomas Langenfeld Antoinette Nelson Lawson Carl Morgenson Pamela Rhoades Pedersen Elsie Jorgensen Planz Larry Stone Virginia Hansen West</p> <p>1958 Number in Class 103 Donors 18 Total \$1,170.00 17.5%</p> <p>Clarice Andersen Ingvert Appel Mary Ann Anderson Fehl Don Hansen Bill Himmler Beverly Siersbeck Hodges Eugene H. Jacoby Milton Jensen Milan Johnson Delores Peterson Jorgensen Herry Landbo Betty Schwanke Larsen Barbara Whiteside Laursen Frieda Naujokaitis Patrick Melvin Rogers D'Arlene Morton Rosenau Dorothy Wilmet Schultz Norma Nelson Stone</p> <p>1959 Number in Class 93 Donors 17 Total \$479.50 18.2%</p> <p>Ernest Anderson Glenn Blackwood Bertel Borglum Larry D. Hansen Lois Benson Huseby Richard and Karen Peterson Jensen Gloria Hanson Johnson Richard Jorgensen Gail S. Koldenberg Virginia Blankenbeckler Korshoj Ernest A. Larsen Walter Ludwigen Harlan L. Petersen Judy Wilson Rekestraw Ronald Siersbeck Donald Wahlgren</p> <p>1960 Number in Class 104 Donors 20 Total \$1,268.50 19.2%</p> <p>Karen Jensen Capel Sigrid Christensen Shirley Haahr John T. Henningsen Beverly Peterson Jensen Marie Johnson Don and Joyce Vasby Jorgensen Leo Kirchhoff Marie Hansen Langenfeld David R. Larsen Eugene Menninga Patricia Andersen Miller Duane N. Petersen Donna Byriell Rector Florence Benson Rogers Gerald Sinclair Nancy Horton Svacha Franklin Weber LARRY WRIGHT</p> <p>1961 Number in Class 121 Donors 23 Total \$1,340.00 19%</p> <p>Emory and Geraldine Christensen Andersen Sharon Crandall Anderson Harlan Bernay Roger Best Gary Danielson Ray Dickson Kenneth and Rosalind Petersen Glover Judith Rasmussen Grabill Terry Hess Ronald and Bodil Strom Johnson Luther and Doris Siersbeck Kloth Joann Hundtoft Larsen Arlyce Fuchs Nora</p>	<p>Allan Olson Jo Ann Otto Larsen Carolyn Potter Mary Vig Richard Wardell Duane Wehrbein</p> <p>1962 Number in Class 128 Donors 18 Total \$822.50 14.1%</p> <p>William Bracker David N. Comstock Carol Madsen Dickson Larence Dolleck Frank Grasso Nena Wegener Hankins Dorothy McIntosh Jensen Karl C. Koeppen Donna Layton Locher James Olsen Paul I. Petersen Phillip Petersen Ralph P. Rasmussen Lois Henningsen Rode Mary Bertelsen Ruden Samuel Stacks Barbara Boe Vierk Judith Christensen Wegner</p> <p>1963 Number in Class 145 Donors 22 Total \$672.50 15.1%</p> <p>David Barber Ruth Dreyer Bauer Kent C. Borchers Larry and Lois Hansen Bornemeier Deanna Schmidt Carr Paul Christiansen Alan Johanknecht Patricia Kiracofe Jorgensen Herbert D. Knudsen Brenda Francis Krueger Donna Berryman Lam Spencer W. Martin Kenneth and Ruth Meyer Muehl Sterling Nelson Dixie Hegedorn Petersen Ellen Knudsen Rittenhouse Larry Tantow Thomas F. Vierk Joan Vogt Wekander Nancy Becker Wittrock</p> <p>1964 Number in Class 179 Donors 33 Total \$1,397.00 18%</p> <p>Edward Anderson Gary Baker Pamela Huss Barber Linda Dalleck Carol Westermann Dickmeyer Nanette Eklund Walter and Faye Byriell Fox Janet Francis Betty Platt Grasso David G. Hanson Rebecca Roesener Holst Roger E. Howland Maude Wiass Jensen Joyce Teake Johnson Janet Peterson Jorgensen Richard S. Jorgensen Bernard Kionka Pat Stollay Koeppen Thomas Lange David S. Larsen Judith A. Svendgard Lum Janette Frandsen Martin Helen Stoddard Mordhorst Carol Grotlian Nelson Elizabeth Solevad Nielsen Milan Nora Carol Bruning Petersen Maureen Bohliken Reinking Brian and Connie Snell Rich Patricia Parrish Spurvey Robert M. Stegmaier</p> <p>1965 Number in Class 220 Donors 36 Total \$1,417.50 16.3%</p> <p>David Bargen Leota Schmitker Benson John Cederberg Norman Christensen Donald Dreyer Jacolyn Swendsen Dudley Christina Moosemann Ferguson Gerald Hansen Linda Anderson Howland David Israel Mark and Kathleen Kompke Iversen S. Michael Jensen Charles Jorgensen Gerald Jorgensen Linda Money Jorgensen Marjorie Kathman Maynard Kellerman Jerry Kirkegaard Karen Nielsen Knudsen</p>	<p>Ione Caldwell Liddicoat Gloria Hansen Logeman George and Marjorie George Matzen Sandra Andersen Mundy Peter Nelson Margie Fangmeyer Olson Jano Olson Owen Allan Reinking Roger Rogert Carolyn Dusin Smets Rodney G. Thompson Janus Thomsen Myron and Sheila McKinstry Thorberg Glenn Wechter</p> <p>1966 Number in Class 195 Donors 29 Total \$585.00 14.8%</p> <p>Ronald Anderson Mary Anderson Bargren Susan Slader Bennerotte Dixie Havick Boeck Ruth Buhl Marjorie Stansberry Danielson Jan Dudley Barbara Hegebak Hanson Donald Hoffman Kristi Planck Johnson James Jorgensen Gloria Jodin Kellerman Kenneth Kemmish Jani Johnson Larson Lowell Larson Lynn Lauritsen Larry and Susan Nystuen Legore Jane Hass Lunde Joyce Meurer Judy Johnson Mortenson Lois Vaught Olson D. R. Owen Kenneth Quirk Corinne Adams Robinson J. Schroeder Jack Seeley Roland Sommerer Suzanne Willers Totten</p> <p>1967 Number in Class 197 Donors 27 Total \$947.50 13.7%</p> <p>Rolan Bentjen Terry Boeck Paul Bondo Ralph Brockle Charles and Judith Rueter Brehm Loretta Heckathorn Calabro Thomas Christensen Marjorie Capwell Cook Fred Donaldson Barbara Holsing Felt Myron Hansen Donald Hanson Patsy Fahrenkrug Hoffman R. Kay Lee Kellner Rodney Miller Robert Morgan Gene Nelsen Paul Panum Ruth Hansen Peck Don Perukovich Marlow Remmers Ida Schmucke Smith Marcia Anthony Sommerer Edith Ballegh Weller Carol Leslie Winter Robert Zwink</p> <p>1968 Number in Class 256 Donors 48 Total \$1,422.50 17.9%</p> <p>David Aansonson Robert Aho Robert Anthony Connie Elting Bentjen Stephen Bohling Lyle Brehm Mary Eisenhauer Bretthorst Dan Busse David Carlson Bonnie Libby Christiansen Lerry Cornwell Norman Dymneson Mary Sue Petersen Edgcomb Charles Elvers Robert Hansen Timothy and Kathleen Christensen Hansen William Henning Jr. Peggy Vogel Hetrick James Holtam Charles Hubert Char Les Grap Kemmish Kenneth Koester Garlyd and Kathleen Niemeyer Kuster Kenneth Lizer Jr. L. Mark McKenzie Stuart Miller Sharon Hall Mitchell Stanley and Cheryl Paulsen Nielsen John Orwig Susan Shadle Owen</p>
--	---	--	---	---

Douglas Pohl
Connie Andersen Quirk
Paul Rasmussen
Ron and Judy Smith Strohbehn
Starla Saransen Sweda
Richard Vierk
Jeffrey and Kathy Jensen Vinton
Conrad Warner
Gary Winter
Margaret Wold
Paula Zeckman Wolf

1969
Number in Class 288
Donors 46 Total \$2,117.50 15.9%

Barbara Ann Cook Aanonson
William and Elizabeth Buck Anderson
Shirley Sullen Best
Ethelynn Johnson Busse
Glean McClannahan Coates
Sharon Ashley Fraedrich
Colleen Wilson Geiser
Kathleen Grubbe
Paula Hansen
Phyllis Lauritsen Hansen
Carol Haussermann
Annette Sorensen Holtam
Carol Hansen Hubert
Wesley Iversen
Sharon Juhler
Carolyn Asher Koester
Joan Peterson Krogh
Dean Krueger
Craig and Judith Nilsen Lindholm
Rex Mahlman
James Mayberry
Lela Hansen Miller
William and Cheryl Hall Neal
David and Mary Petersen Paul
Judy Goltner Pohl
Richard Rasmussen
Ruth Robbins
Carolyn Scholl
Neal Short
Eileen Taake Simonsen
Paul Stave
Larry Swanson
Henry Thorberg
James Tomsen
Bonnie Verduyze Vandenberg
Phillip and Paula Westfall Vasby
Susan Graff Warner
Peggy Seitz Warren
Mary Skobo Weckmuller
Spencer Wedberg
Margaret Haszard Zion

1970
Number in Class 347
Donors 31 Total \$796.13 8.9%

Ramona Alwill
Carol Lund Beaty
Ron Briggs
Gerald Bruning
Dave Busse
Vicki Keating Croft
Charles Gilmore
Janet Ritter Guthrie
Karan Bergstrom Hanson
Gail Hennings
Edith Johnson
Twila Juel
Roger and Mary Weger Knehans
Nancy Blobaum Ludwig

Carol Canoyer Miller
Peter Nessen
Janet Peck Owen
Gary and Carol Mareah Panko
Sharon Anderson Pape
James Pauley Jr.
David Renze
Paula Hale Rogers
Wilbert Sick
Robert Stern
Nina Strain
Charles Warner Jr.
Danny Watts
Douglas Witte
Richard Zion

1971
Number in Class 302
Donors 38 Total \$1,255.00 12.5%

Kathryn Hulabus Ahrendt
Everett Anderson Jr.
Dianna Ekberg Blann
Patrick Brackeen
Bonnie Bruhn
Rebecca Nielsen Bryant
Lois Neve Carter
Margaret Clark
Gloria Drake
Susan Schweer Edelman
Philip Facendola
Barbaro Krause Haeg
G. Donald Hanson
Lawrence Henning
Almeda Hurlocker
Dan Jackson
Anita Holstein Johnson
Michael Jones
Stephen Larson
Douglas Lash
Roger Lorsch
Karen Bansen Maguire
Betty Jorth Neben
Donald Nelson
James Pedersen
Gregory and Julie Berg Peters
Jimmie and Juel Neve Pierce
Lloyd Refsell
Marilyn Stahnke
Vicki Storm
Elaine Strand
Nancy Simons Wedberg
Roger Wheatley
Jon and Bonnie Hoehn Wicht
Jeanine Drake Winslow

1972
Number in Class 324
Donors 36 Total \$1,894.00 11.1%

Clarice Axland Andersen
Emily Freed Bumpous
Ronald Coy
Kathryn Mann Dugdale
Dorothy Mohr Dunham, Jr.
Twila Eitman
Russell Eppenbaugh
Linda Olson Fuhrman
Marcia Smith Gilmore
Kathleen Christensen Henning
Barbara Fudge Jackson
Janis Jensen
Loretta Jensen
Larry Knudsen
John and Patty Fredericks Lentfer

Gary McMullin
Arno Neben
Douglas Nelsen
Carl Nielsen
Coralene Larsen Page
Ruth Hansen Peterson
Madelyn Petty
Ernest Poggensee
Paul Saathoff
Gregory Schou
Luanne Hiemke Tomsen
Steven Triplett
Timothy and Janet Willson Tripp
Ruth Hansen Weaver
J. Dennis Weidler
David Winslow
Sandra Yeager
Laura Bro Zeveski
David Zion

1973
Number in Class 334
Donors 44 Total \$1,725.50 13.2%

Roseanne Petersen Bates
Alan Brodbeck
Mary Christensen Burmeister
Linda Lou Denny Carlson
Vivian Dane Cook
Marjorie Dibben
Robert and Candace Wild Ehmen
John Elling
Shirley Emmerich
Terri Frye
David Fuhrman
Leslie Hayes
Nancy Johnson
Doris Kahl
Douglas Kimm
William Kruse Jr.
Tim Kuiken
Gale Madsen
Marie Madsen
Jolene Bundt Meyer
John Mock
James Music
Russell Nelson
Jenny Nelson
Kaj Neve
Warren Nielsen II
Deb Nordlund
Akira Okada
Steven Peck
Carl Porter
Judith Walton Rasmussen
Rebecca Rossow
Richard Scheuring
Phyllis Kuhlmann Schwab
Linda Stuhr Scranton
Clarence Smith
Robert Stover
Barbara Wolf Triplett
David Warrick
Connie Andersen Weidler
Dennis Wellsandt
Susan Erbes Williams
Carol Wood

1974
Number in Class 275
Donors 29 Total \$1,238.50 10.5%

Donald Beckman
Willard Behrends
Roger Burmeister
John L. DeVasura

Dail Schote Diedrichsen
Kenneth Dunham, Jr.
Kathryn Pieper Elling
Jane Hamner
Florence Hanson Hanson
Linda Denney Harmish
L. Kay Horton
Arthur Jetter Jr.
Artes Johnson
Carol Krueger
Richard Mewhirter
Cathy Anderson Meyer
Dorothy Georgesen Miller
Laurie Byriel Nelson
Larry Rasmussen
Norlen and Lois Rathjen Rasmussen
Clark Robeson
Gloria Steffensen
Lynn Digo Stegmaier
Patrick Tripp
Martha Utach
Key Probasco Vetter
Rita Bardisley Ward
Lana Janssen Wellsandt

1975
Number in Class 241
Donors 16 Total \$276.75 6.6%

Donald Beack
Everett Baltz
Bruce Bates
Kathryn Bernston
Gayleen Walraven Broadstone
Gerald Clanton
Timothy Johnson
Ann Meissner Kreutz
Jamie Heide Kuiken
Jeffrey Meyer
Brenda Loeschke Monfils
Margaret Anne Walsh Nielsen
Beth Peterson Papsadero
Kathleen Sietsema
Gary and Kathy Paulsen Soetmelk

1976
Number in Class 225
Donors 19 Total \$772.50 8.4%

John Beck II
Steven Bernston
Giles Bronson
Kathryn Burney
Deborah Hofmann
Susan Thorson Holstein
Paul Johnson
Kent Kronberg
Debra Powell Lemons
Kathleen Morgensen Lizer
David Menz
Dennis Nelson
Janice Whalley Nielsen
Gary Rasmussen
Deborah Schou
Michael and Diane Bradley Stewart
Sharon Thompson
Edna Tierney

1977
Number in Class 195
Donors 13 Total \$681.60 6.6%

Cheryl Hinz Behrends
Ruth Nilsen Campbell
Jane Devasura
Charlene Dirks
Lora Evans

Ruth Fevold Hanson
Renas Johnson
Faye Coles Jones
Steven Kimm
Frederick Miller
Rory and Barbara Beck Sturm
Gwendy Wilson

1978
Number in Class 271
Donors 4 Total \$112.00 1.5%

Dennis Preston
Leslie Tripp
Joyce Wolf
Linda Wolf

1979
Number in Class 183
Donors 2 Total \$115.50 1%

Julie Rasmussen Beck II
Key Konz

MEMORIALS

Mrs. Anna Anderson
Mr. Clarence Anderson
Mrs. Elmer Anderson
Mrs. Otto Appel
Mrs. Ethel Bondo
Mrs. Sherman Bondo
Mr. Fred Burger
Dr. Norman Dyhrberg
Mr. S. Robert Glass
Mr. Glen Greenwood
Grandma Hansen
Mr. Merle Hayes
Mrs. Elvira Hinchey
Rev. and Mrs. Deppa Jensen
Rev. and Mrs. Christen Jeppesen
Mr. Boy Jessen
Mr. Adolph Johnson
Mr. and Mrs. Nels Johnson
Dr. Einer Juel
Dr. Alvin Kaiser
Mr. Keith Knudsen
Dr. and Mrs. C. B. Larsen
Ms. Mary Marguire
Mrs. Robert Mensing
Mr. E. V. Morton
Mr. Elmer Moss
Mr. Harvey Neist
Rev. and Mrs. Frank Nielsen
Dr. and Mrs. Paul Nyholm
Ms. Bessie Olsen
Mr. Henry Peterson
Rev. Viggo Petersen
Mr. Jess H. Reben
Mr. Franklin Rasmussen
Mrs. Lucille Rhoades
Ms. Peggy Schafer
Mr. Roy Schiel
Mrs. Carl Schnitker
Rev. A. Th. Schultz
Mrs. Sandra Porter Smith
Mr. Norwood Sonders
Mr. Anchor Sorensen
Mr. H. A. Svendsen
Mr. Maynard Tarks
Mr. Henry Volkens
Mr. Boss Weismann
Mr. Richard Welsh
Mrs. Maca West
Mrs. C. Homer Wombie

financial statement

including a profile of the dana gift income

	1976-77	1977-78
CURRENT FUNDS REVENUE:		
Educational and General Income:		
Tuition and Fees	\$1,164,752.75	\$1,154,253.36
Government Grants and Contracts	120,161.42	133,545.57
Private Gifts and Grants	299,261.82	572,611.45
	<u>1976-77</u>	<u>1977-78</u>
Regents	\$ 11,498.22	\$ 19,538.00
Faculty and Staff	10,693.41	11,420.94
Parents	6,184.00	7,922.92
Friends	19,039.05	226,905.10
Danish/Americans & Organizations	14,523.00	18,031.66
Religious Organizations	5,188.36	18,607.55
Blair Community	20,404.00	24,607.13
Business	14,878.50	21,179.50
Foundations	2,600.00	25,892.28
Alumni	46,836.00	50,447.14
The American Lutheran Church	120,616.64	120,459.23
Corporate Indirect	26,800.64	27,600.00
Endowment Income	\$ 47,083.26	\$ 54,916.57
Sale of Services	11,914.01	16,323.99
Other Sources	32,994.61	21,913.61
Total Educational and General	<u>\$1,676,167.87</u>	<u>\$1,953,564.55</u>
Auxiliary Enterprise Income	<u>602,362.47</u>	<u>575,597.95</u>
TOTAL CURRENT FUNDS INCOME	<u>\$2,278,530.34</u>	<u>\$2,529,162.50</u>
CURRENT FUNDS EXPENDITURES:		
Educational and General:		
Instructional and Related Activities	\$ 821,417.54	\$ 800,978.51
Student Services	299,391.33	297,965.26
Institutional Support	415,686.36	464,370.67
Maintenance	147,852.47	155,883.76
Total Educational and General	<u>\$1,684,347.70</u>	<u>\$1,719,198.20</u>
Student Aid	248,208.90	286,830.90
Auxiliary Enterprise Expenditures	<u>594,896.60</u>	<u>563,291.01</u>
TOTAL CURRENT FUNDS EXPENDITURES	<u>\$2,527,453.20</u>	<u>\$2,569,320.11</u>
EXCESS INCOME OVER EXPENDITURES	(\$ -248,922.86)	(\$ -40,157.61)

This year Private Gifts and Grants to the Dana College Current Fund almost doubled over the amount received last year. This was due to increased giving in every category of our constituency and a generous unrestricted bequest. This enabled the College to end fiscal year 1977-78 with expenses exceeding income by only \$40,000 compared to some \$240,000 for fiscal year 1976-77, a \$200,000 improvement.

Dana
college
 Blair Nebraska