

» DANA REVIEW ⁶⁹

Fall 1980



DANA REVIEW

Volume 37 Fall 1980 Number 1

(USPS 147-940)

A magazine for alumni and other friends of Dana College and Trinity Seminary, published four times annually. Printed by Acme Mail Advertising Co., Omaha, Nebraska, with editorial and business offices located at Dana College, 2848 College Drive, Blair, Nebraska. Second class postage paid at Blair, Nebraska 68008.

Non-discrimination Policy

Dana College admits students without regard to sex, age, race, color, religion or national origin to all the rights, privileges, programs, and activities generally made available to students at the College. It does not discriminate on the basis of sex, race, color, age, handicap or national origin in administration of its educational policies, admission policies, scholarship and loan programs, athletics, or other school-administered programs.

Campus photographs by Peter Bonde '81, Nerstrand, Minnesota; Peter Jacobson '84, Fairbury, Nebraska; Tom Jacobson '81, Fairbury, Nebraska; Mark Latenser '81, Omaha.

The cover: Mary Welp '81 of Jewell, Iowa, was crowned 1980 Homecoming Queen at a football halftime ceremony October 11. Here she and her escort, Scott Simms '81 of Nebraska City, are chauffeured around Viking Field by Dana Boosters Club President Russ Moseman '57. *Photo by Tom Jacobson '81, Fairbury, Nebraska.*

Members of the Homecoming Court were (top, from left) Mary Asmus '81, Audubon, Iowa; Sally Miller '81, Cozad, Nebraska; (bottom, from left) Amy Nichols '82, Atlantic, Iowa; and Allison Sprieck '81, Omaha. *Photos by Peter Bonde '81, Nerstrand, Minnesota.*



Friends in Christ, Friends of Dana, Greetings!

Dana College has a new symbol, a new identity mark, or, as it is sometimes called, a new logo. It is on the cover of this *Review*. You will be seeing a lot of it in the future!

We think our new logo is very attractive, expressive of our roots, indicative of our purpose, vital, alive, moving forward. Basically, it is the Danish flag, solid red background with a white cross superimposed. In many publications it will appear in red and white — Dana colors, Danish colors. There is already in that an acknowledgment of those early pioneers whose vision brought into being this college.

How appropriate that as we move toward our Centennial, the commemoration of 100 years of service, we recognize anew those immigrant settlers, newly arrived in an untamed land, some of them yet unable to speak the language of their new land, living in soddies, their own homes not yet built, with their oxcarts and overalls, hauling building materials up the slopes of the Missouri River bluffs so that a new generation raised in peace and freedom might have the opportunity of hearing the gospel



proclaimed in a collegiate setting, and leadership trained up to give sustenance and inspiration as the prairies were tilled and a continent conquered! Unafraid, looking forward, confident, Dana College thanks God for those roots as we move closer to the second century of our service!

But that new logo is not simply the Danish flag, hung limply on a standard, fluttering idly with every passing wind. Instead, it billows, it blows, like a Viking sail setting out into the Atlantic, launching one's little bark on destiny's deep sea. There is a heroic dimension of movement, a dynamic attack upon the unknown! The Danish flag, red and white, is shaped like a ship's sail, shaped like a letter "D." "D" for Dana, "D" for determination, "D" for dedication — "D" for desire to follow in the footsteps of Jesus whose cross ever precedes us, leading us across oceans to new lands, leading us across frightening frontiers of ignorance, leading us into new arenas of service.

We are trying to say many things in that new symbol, friends. We are trying to recall our roots. And we are also seeking to show our confidence in God's leading as we move forward beneath the cross of Jesus.

In Jesus' name . . .
Dr. James Kallas, President

Regents' Decisions Bring Growth

Kallas: "We're Moving Ahead"

The sound of hammers pounding, a symbol of growth, will accompany Dana College as it approaches its centennial year, 1984.

New construction — after a decade of no significant building — and a major capital campaign were the most important issues on the agenda of the fall meeting of the Board of Regents, and the decisions Board members made on those issues are "positive and forward looking," President James Kallas says. "Dana is entering a new chapter — enrollment is up, morale is high, and gift-giving has increased threefold. We're moving ahead."

One of the Board's decisions — to complete the interior of the northeast section of Borup Coliseum — will transform a large, dirt-floored storage area into two racquetball courts, a wrestling room, and training rooms for men and women. The Regents based their decision on a campus-wide survey that showed top priority need for more recreational facilities for students. Construction could start as early as the middle of January.

The Regents also authorized a feasibility study that will lead into a three-year major capital campaign ending in 1984. The campaign, the largest in Dana's history, will raise funds for Dana's endowment and for a much-needed chapel/music/theatre/fine arts facility.

The Board's third decision will add a president's home to the campus, an improvement that has been envisioned for many years because of the numerous advantages to the college community. This addition will become a reality because Regent and Mrs. Omer Reed of Phoenix, Arizona, gave land to Dana last year with the stipulation that proceeds from its sale should be used only to build a president's home on campus. Since the property is now being disposed of, the Regents reaffirmed their intent that funds from this restricted gift be used for that purpose.

Enrollment Highest Since 1972

The number of students at Dana continues to grow. With a total enrollment of 564 and a fulltime enrollment of 538, Dana this year has more students than it has had since 1972.

Fulltime enrollment has increased 7.2 percent over 1979 and 25 percent over 1978, according to Registrar Verlan Hanson '51. In making the announcement, President Kallas said that "This is a remarkable achievement in view of current economic conditions and a national decline in the college-age population. We rejoice in this sign of the continuing renewal of Dana College."

One statistic especially stands out in Hanson's analysis of this year's geographical distribution of students: 91 are from Blair and Washington County, a 77 percent increase over last year's 52 students. His report shows that students are from 23 states, with the highest number from Nebraska, followed by Iowa, Colorado, Illinois, Minnesota, and Kansas. Foreign students are from Denmark, Guatemala, Libya, Kenya, and Nigeria.

Employees Honored for Long Service

Four faculty members who have given Dana 25 years or more of service were presented watches at the annual opening dinner August 28. The four are Frank Hengeveld '41, chemistry, 25 years; Norman C. Bansen '47, English and Danish, 29 years; Paul Neve '41, music, 37 years; and Paul Peterson '41, physical education, 38 years.

More than 50 other members of the faculty, administration, and staff who have worked for the College between five and 24 years received plaques.

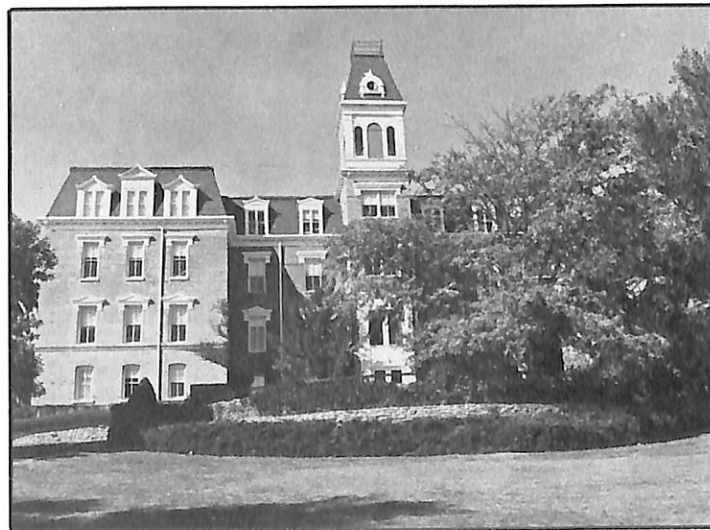
Old Main Placed on National Register

Old Main, a campus landmark, has been added to the National Register of Historic Places, the nation's list of cultural resources considered worthy of preservation.

Nebraska State Historical Preservation Officer Marvin Kivett calls the building "a fine, vernacular product of the French Second Empire style, a style not well represented by the extant nineteenth-century academic architecture in Nebraska and one which was congenial to nineteenth-century Danish tastes. It is," he says, "an important symbol of the early theological and academic life of the Danish-American community."

The central part of Old Main was completed in 1886. The north wing was added in 1893 and the south wing in 1905. Since then, except for minor changes, the exterior of the four-story red brick building has remained the same. Its features include a dark green mansard roof with gabled windows and a six-story tower crested by grillwork.

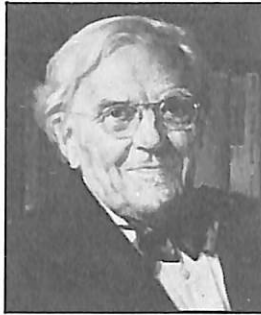
Old Main's interior was completely remodeled in the late '50s and early '60s. So far as is known, it is the oldest educational structure in Nebraska that continues to fulfill the most important of its original purposes — to serve as a classroom building.



Old Main, now listed in the National Register of Historic Places, has been a symbol of the College for more than 90 years.

Bainton Next Visiting Theologian

Dr. Roland Bainton — Luther scholar, Congregational pastor, and affiliated member of the Society of Friends — will be in residence at Dana January 12-16 as this year's third Visiting Theologian.



Born in England and educated at Whitman College and Yale University, Bainton subsequently taught at Yale from 1920 until his retirement in 1962. A biographer writes that as a Yale professor, "Bainton was famed for his preaching, his caricatures and sketches, and his addiction to bicycle riding."

During and after World War II he worked in relocating refugees with the American Friends Service Committee, representing that committee in Germany in 1948.

Bainton's many books include *Here I Stand: A Life of Martin Luther*, *Hunted Heretic: The Life and Death of Michael Servetus*, *The Age of the Reformation*, and *Christian Attitudes to War and Peace: An Historical Survey and Critical Evaluation*. Translations of his books have appeared in ten languages.

At Dana, Bainton will speak on "Luther," "Luther's Treatment of Biblical Accounts: Jonah, Abraham, Isaac and the Nativity," "Women of the Reformation," "Thomas Muentzer, Firebrand of the Reformation," and "The Church, the World, and Survival."

All of his lectures, which are free and open to the public, will be at 8 p.m. in the Dana Hall of Science Auditorium.

Three other Visiting Theologians will give two series of lectures during the second semester. On February 9-13, West German scholars Luise Schottroff of Mainz University and Wolfgang Stegemann of Heidelberg University will discuss their sociohistorical interpretation of the New Testament. On April 20-24, Dr. Gustaf Wingren of Lund University, Sweden, will speak on the general topic, "The Work of God and the Work of Man."

About Estate Planning . . .

One of the most important decisions in your lifetime is planning your estate. You must give careful thought to your ultimate goals, the needs of your family, and your responsibility as God's steward. It is also essential that you have knowledge about the law governing the disposition of your property.

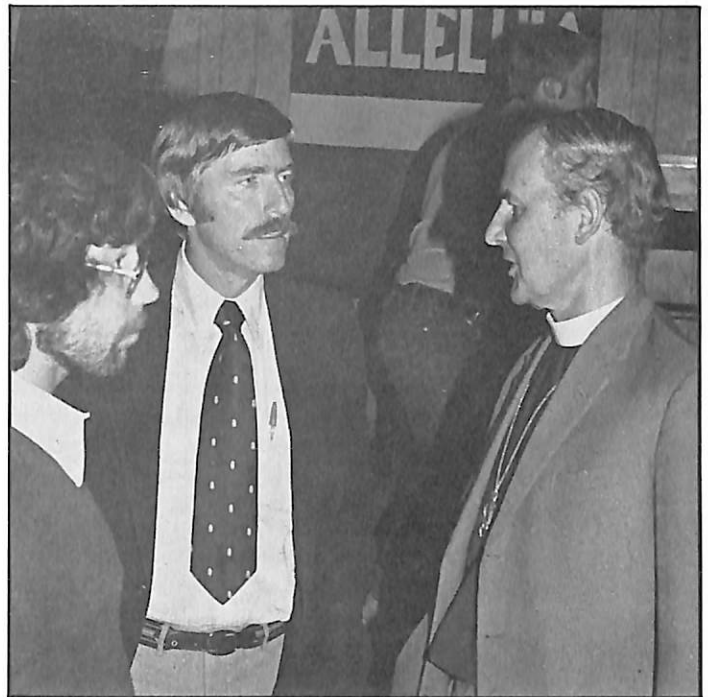
Planning your estate provides the opportunity to reflect the many blessings you have received from God — both spiritual and material — and to consider how these blessings have prospered under your care. It is also a good time to make sure that your possessions are in order and to consider providing for the continuation of God's work by means of a gift in your will.

We would like to be of service to you in this important step in your life. A consultant from Dana College is available to meet with you, at no cost or obligation, to discuss your estate plan.

For further information, please contact:



Mr. Eugene L. Meyer
Executive Director of College Relations
Dana College
Blair, Nebraska 68008
Telephone: 402/426-4101



Dr. John A. T. Robinson, Dean of the Chapel, Trinity College, Cambridge University, England, opened this year's Visiting Theologians Program September 22-26 with a series of well-attended lectures on "The Gospel of John — As If It Had Just Been Discovered." He also answered questions about his book *Honest to God* (a Liberal Arts Reading Program selection this semester) at an all-campus assembly. Here Robinson (right) visits with Mike Martin '83 (left) of Sioux City, Iowa, one of his student hosts, and Campus Pastor Bruce Bergquist. Visiting Theologian Werner Kummel of Marburg University, West Germany, lectured at Dana November 10-14 as the second speaker in this year's series.

Preachers' Workshop Features Dana Profs

A Preachers' Workshop conducted by the Rev. Alvin Rueter '42 will be held at Dana April 20-23, 1981, in connection with the lectures of Visiting Theologian Gustaf Wingren of Lund University, Sweden. Rueter, of St. Paul, Minnesota, is completing work on a Ph.D. in speech/communication at the University of Minnesota.

This will be the third annual Preachers' Workshop that Rueter has held on campus. Like the other two, it will feature presentations by Dana professors showing how insights from their disciplines illuminate the art of preaching. Presentations by Rueter will focus on "Preaching as Dialogue," showing one way to take account of the congregation in the preparation and delivery of sermons. Dana's videotape equipment will be used with some of the exercises.

In accordance with a request by pastors who attended the last workshop, a series of concurrent presentations is being planned for those who have attended previous sessions: while one group is being addressed by a Dana professor, the other will be led by Rueter.

The workshop will dovetail with Dr. Wingren's evening lectures and morning chapel talks.

The workshop has been accredited by Wartburg Theological Seminary in Dubuque, Iowa; those wishing to attend for credit may receive two credits towards a D. Min. degree, transferable to other seminaries.

For more information, write to the Rev. Alvin Rueter, 1603 Garden Avenue, St. Paul, Minnesota 55113, or call him at 612/646-3332.

An Introduction . . .



Baumgarten



Dannehl



Funk



Konik



Albus



Christensen



Fahrenkrug



Nietfeld



Frey

To Dana's New Teachers

Four fulltime and four part-time teachers and two part-time coaches are new at Dana this fall.

The new fulltime faculty members are Paul Baumgarten, instructor in business administration; Rodney Dannehl, assistant professor in sociology and social work; Jan Funk, instructor in sociology and social work; and Jadwiga Konik, instructor in French.

Baumgarten holds a bachelor's degree from Wartburg College and a master's from the University of Wisconsin, Oshkosh. He recently spent several years in Europe, where he was an executive staff manager for the U.S. Air Force.

Dannehl comes to Dana from St. Paul, Minnesota, where he taught at Concordia College. He received his A.A. degree from St. John's College, Winfield, Kansas, and his B.A. from Concordia Seminary, St. Louis, Missouri. He has three master's degrees: an M.A. in Latin from the University of Michigan, an M.A. in education from Washington University, St. Louis, and an M.S. in social work from the University of Wisconsin, Milwaukee. He has also done graduate work in sociology beyond the master's level at the University of Nebraska-Lincoln.

Mrs. Funk's B.A. and M.S.W. degrees are from the University of Nebraska-Lincoln. She has been a social worker in Omaha at the Nebraska Psychiatric Institute and the United Methodist Community Center. She has also held seminars and taught part-time at the University of Nebraska at Omaha for the past four years.

She and Dannehl are both members of the Academy of Certified Social Workers.

Mrs. Konik was born in Poland but raised in Paris, where she studied law and political science at the Sorbonne before coming to this country. Her B.A. and M.A. degrees in French literature are from the State University of New York, Buffalo. She has taught French at Canisius College, Buffalo, and Erie Community College.

The new part-time teachers are Philip Lueck, speech; Aleidine Moeller, German; Joleene Rewerts, special education; and Sandra Warman, English.

Lueck has a B.A. from Barrington College, Rhode Island; an M.A. in theology from Wheaton College, Illinois; and a second M.A. in speech communication from Northern Illinois University, DeKalb.

Dr. Moeller received her B.A. from Creighton University, Omaha; her M.A. from the University of Wisconsin, Madison; and her Ph.D. from the University of Nebraska-Lincoln.

Mrs. Rewerts is K-3 resource person and special education teacher in the Blair Community Schools. Her bachelor's and master's degrees are both from the University of Nebraska at Omaha.

To Dana's New Staff Members

New personnel in administrative offices include several alumni:

Dale Albus, a 1960 graduate, is college accountant and supervisor in the Business Office.

Vaughn Christensen, a 1953 alumnus who has been an administrator in the Hastings, Nebraska, public school system, has joined the Admissions Office as associate director of admissions.

New Admissions Counselors Jeff Fahrenkrug and Tim Nietfeld are both members of last spring's graduating class.

Iris Frey, a 1978 graduate, has joined the Office of the Dean of Students as head resident in Blair Hall.

Another alumna who has been a Dana employee for several years has been promoted. Nancy Harris Beaman '74, who has worked in the college bookstore for several years, is now the bookstore's manager.

New fulltime secretaries include 1978 graduate Jeanmarie Nielsen Barratt, secretary to Dr. Clifford Hanson, dean of the college; Linda Olson, secretary in the College Relations Office; and Tamara Weber, secretary to Dr. Bruce Bergquist, campus pastor and dean of students.

Mrs. Warman is a 1963 Dana graduate with a master's degree in English from the University of Nebraska at Omaha, where she also taught. She was an instructor at Dana from 1963 to 1967 and later worked in Parnassus as a humanities assistant.

The two new coaches are Ron Beaman, head wrestling coach, and Lois Vaught Olsen, women's basketball coach. Beaman graduated from Dana in 1974 and Mrs. Olsen in 1966.

Faculty and Staff Give \$23,000

This year's fund-raising drive for Dana among all members of the faculty, administration, staff, and professors emeriti has exceeded its goal of \$20,000.

Drive Chairman Paul Neve '41, music, reports that the drive — held a month after the start of the school year — has raised a record \$23,061 — \$19,601 in pledges and \$3,460 in Lutheran Brotherhood matching funds. Last year the drive raised \$15,269, a sum that broke previous records.

"Dana employees have a deep loyalty and commitment to the College," Neve said. "We hope that the success of this drive will set the tone for Dana's other fund-raising efforts this year."

Carillon is Kirsten Reed Memorial

Chimes began pealing over the campus this fall from the tower of Old Main as a memorial to Kirsten Reed, the daughter of Dana Regent and Mrs. Omer Reed of Scottsdale, Arizona. Miss Reed died unexpectedly in Los Angeles near the beginning of the year.

The electronic carillon was dedicated at a chapel service October 10 attended by Dr. and Mrs. Reed, daughter Kary, a Dana freshman, and son Kevin, a Dana sophomore.

At the service on the patio of Old Main, President James Kallas spoke on the appropriateness of the chimes — which remind all who hear them of the passage of time — as a memorial to Kirsten Reed, and he thanked the Reeds for directing memorial gifts to Dana.

The system is made by Schulmerich Carillons of Sellersville, Pennsylvania, which calls itself "The Bell Capital of the World." It has several modules of cast bell programs and a two-octave manual keyboard on which "Hail, Dana" was played at the close of the dedication service.

The chimes sound at quarter-hour intervals from 8 a.m. to 8 p.m. on weekdays and Saturdays, and on Sundays from noon to 8 p.m. They also play several tunes each day.



Regent and Mrs. Omer Reed and Mrs. Kallas (center) after the dedication of the Kirsten Reed Memorial Carillon.

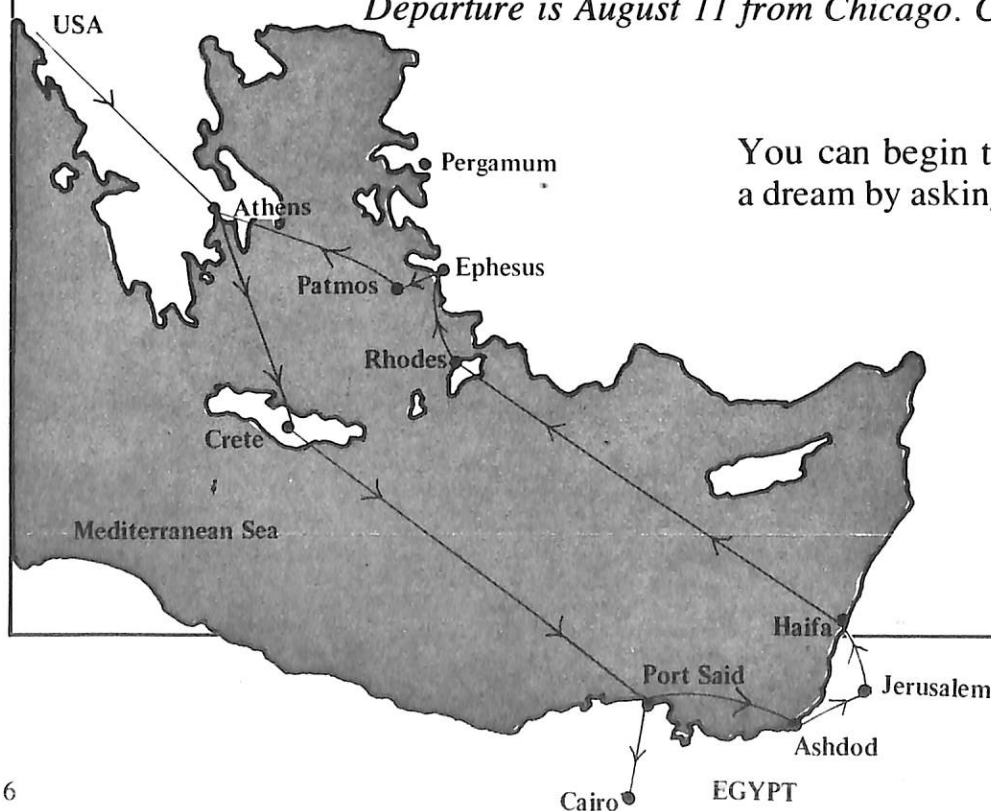
Winter will soon be here —

and that's a good time to dream

about a 12-day Mediterranean cruise

this summer with Jim and Darlean Kallas.

You'll visit THE LANDS OF JESUS, THE CITIES OF PAUL — Athens; Ephesus; the Greek isles of Patmos, Crete, and Rhodes; Cairo (and the Pyramids and the Sphinx); and the Holy Land, where you'll see everything of significance in that little land where Jesus walked. *Departure is August 11 from Chicago. College credits are available.*



You can begin to make the cruise more than a dream by asking us for a colored brochure.

Write to:

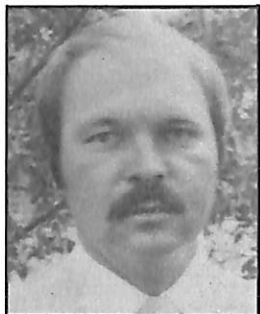
Travel '81
Alumni Office
Dana College
Blair, NE 68008

VI. Whatever Happened to Our Student Body Presidents?

These seven former student body presidents, who live in five states, have entered a variety of occupations.

1966-67: Dan Busse

Dan Busse writes that "After graduation, I spent 18 months in Blair and Omaha as an admissions counselor for Dana. I then returned to ranching and farming near Bird City, Kansas, as a partner with my father. I now own and operate a farm and continue the partnership with my father. We maintain a herd of registered Polled Hereford breeding stock, and grow wheat and corn as major crops.



"I am involved in several agricultural organizations, attend St. John's Lutheran Church at Bird City, and serve as vice president and head negotiator for our consolidated school district.

"My wife, the former Lynn Johnson '69, and I have three children — two sons, Ryan (10) and Cory (6), and a daughter, Andrea (2).

"During my time at Dana things were changing with the building program getting in full swing. Holling and the Campus Center were completed and enrollment was growing. Even the Dana Viking took on a 'new look' after put on paper by 'Widder.'

"Many things about Dana come to mind as special to me: the experiences of the classroom, the football teams, the campus congregation, and certainly the good times with friends.

"Nearly all my memories of Dana are good ones: the people, the campus, the spirit of Dana have created a lasting friendship. From a practical standpoint, the liberal arts education I gained at Dana has worked: it has helped make life more meaningful and enjoyable."

1967-68: Steve Bohling

Pastor Steve Bohling serves English Lutheran Church and St. Olaf Lutheran Church in Walnut Grove, Minnesota. From there, he writes:

"These things I remember from Dana, and prize in my memory:

—Standing in the lunch line, talking and debating with friends.

—The Christmas trees in the circular stairway in the new student center.

—Cliff Hanson's 'Christianity in the Modern World' and his pacing, Socratic lecture style; his patient searching after truth.

—How much more quiet the meals became after we moved into the cafeteria in the new Campus Center.

—Floor meetings in the dorms, an intramural team known for its losing ways, and dorm council meetings.

—Del Hutton addressing us as 'Mister' and his habit of rolling into 8 o'clock class at 7:59:30, and that Dana graduates did well in seminary exegesis classes.

—Discussion meetings for John Nielsen's 'Readings in Religion' classes, held often in their home.

—Student congregation worship services and coffee and donut fellowship after, and morning chapel the day that Art

Whitaker opened his prayer by saying 'Good Morning, Sir' to God.

—The honest wrestling with the truth we were led to do.

—The out-and-out kind heart of Elmer Rasmussen.

—Dana as a place where people got a second chance; and I remember coming back some years later to see a second chancer graduate.

—Sitting in the student center after meals to enjoy other people's company.

—The music of 'Born Free' on graduation day, and LARP and sheet change day every Thursday.

"Dana was a place that formed and shaped me. Those four years are among the best in our lives. While there the relationship with Nancy blossomed into engagement and marriage, and now there are three children.

"After leaving Dana we went to Wartburg Seminary, completed the M.Div. and STM degrees, and served parishes in St. Donatus, Iowa, and Walnut Grove.

"Dana was in those days a warm and human place. We are sure it still is."

1968-69: Carolyn Scholl

"Being student body president during the era of campus riots, protests, sit-ins and even streaking was not always an easy job." Carolyn Scholl writes. "It might have been more exciting using these strategies, but I felt it was more effective dealing with the college administration through continuing dialogue.

"I remember long talks in President Madsen's office and the respect he displayed toward student concerns. My experience working with the administration and student committees was the most rewarding part of my job and developed skills that have helped me a lot in the working world.

"I have been employed by the American Red Cross since graduating from Dana and have received a master's degree in public administration from the University of Nebraska at Omaha. I am currently assistant administrative-director for the Midwest Regional Blood Services headquartered in Omaha. We serve over 100 hospitals in Iowa, Nebraska, and Kansas, and I am proud to say that one of the area's most successful college-sponsored Bloodmobile visits is at Dana!

"I have traveled to most parts of the country as a national instructor for Red Cross staff and volunteers, teaching such topics as stress management, community and group development, program administration, and personnel administration.

"Dana provided me with a good education, including a humanities class that I wish I had on videotape, the best friends I've ever known, and a nickname that has stuck the past 15 years and at times provides a convenient alias — 'Skipper.'

"I hope the adult atmosphere that gave me and my friends an exposure to new people, ideas, and experiences will continue at Dana and that students retain a significant role in the decision-making process.

"I live at 2506 South 152 Circle in Omaha (68144)."

(continued on next page)



(from page 7)

1969-70: Glenn Schacht

Pastor Glenn Schacht writes from Montana: "During this past summer I read James Michener's novel *The Drifters*, which follows the adventures of the turmoil of the late '60s. As I read this novel I found myself reflecting upon my experience at Dana. this novel I found myself reflecting upon my experience at Dana.

"I remember my Dana years as a time that was characterized by a sense of drifting. I was drifting culturally, philosophically, vocationally, spiritually. I felt cut off from the anchors of the past, and I was not sure what direction I was headed in the future.

"I have many wonderful memories of the friendships that were formed during those years, the struggles and the good times that we shared. The most lasting memory I have of my Dana experience is that of the care I received there from my fellow students, the faculty, the administration, and the staff.

"I don't know if it is possible to compute the importance of caring in measuring the effectiveness of a college in providing a quality higher education. I do know that I will always be grateful that the Dana community cared as much about me as an individual as it did about the quality education it provided me. That has had an immeasurable influence upon my life.

"I will always be grateful to Dana for another immeasurable influence upon my life, my wife Rondalyn Wente '70. Ronni and I were married following my graduation from Dana. We moved to Columbus, Ohio, where I attended Lutheran Theological Seminary (now Trinity), and Ronni completed her degree in elementary education.

"Following graduation from seminary, we were called to serve the Saco-Hinsdale Lutheran Parish in Saco and Hinsdale, Montana, where we have enjoyed nearly six years. Adding to our joy are our three children — Heather, age 6; Jessica, age 3; and Benjamin, who was born this past St. Patrick's Day.

"Our future plans have us moving to Center City, Minnesota, where I will serve a year's residency in the C.P.E. program at the Hazelden Foundation, a treatment center for chemical dependency."

1970-71: Edward Ezekian

"Attending Dana College has meant many things to me," Edward Ezekian writes. "Among them are an excellent faculty, a beautiful campus, meaningful courses, numerous friendships, and the opportunity to develop personally.

"Most important, however, Dana offered entrance into a world previously unknown to me. Coming from Philadelphia, I found that my background was different from that of most of my fellow students. Once I overcame my negative feelings, I appreciated being part of Dana's student body.

"Many students permanently altered my views on life. Outside activities also contributed to my development. How could one ever forget Thanksgiving vacation in Lyons or Randolph — and the first time I milked a cow or drove a tractor?! I had so many exciting experiences because of Dana that listing them would be impossible.

"After graduation I was unable to find a job in social work, but my sociology major did aid in obtaining a selling job. Being successful in sales and enjoying its challenges and rewards, I



have pursued this as a career. My present position is selling computers for SPERRY-UNIVAC.

"Dana did an excellent job of preparing me for the real world, because it allowed me the freedom necessary for personal development. The student body also contributed greatly because they shared their lifestyles. I am grateful to everyone who has touched my life.

"I am looking forward to Homecoming 1981 so my wife (we were married June 21, 1980) and I can visit Dana. For me it will be a renewal of old friendships; for Bonnie it will be visiting the place I refer to so often. I sincerely hope she will experience what we call 'the Dana difference.'

"We live at 126 Penn Road in Strafford, Pennsylvania 19087."

1971-72: Arno Neben

Arno Neben writes that "Dana approached me through the same channels that it approaches many students. Various campus visits through the church, athletics, the fine arts, and former students impressed upon me that a liberal arts degree was a wise investment for the future.

"In the late '60s and early '70s concern about various social issues, the Vietnam war, and a cloudy economic outlook drove many students to abandon the belief in developing a whole person to one that specializes. I saw a campus decline in enrollment and a change in college presidency. The building program at Dana came to an end, and by the time my presidency ended, both the college and student body financial accounts were feeling the strain.

"Over the past eight years I have come to realize that one of the basic theorems of the liberal arts is true, mainly that success lies in the person, not the job. To develop a well-rounded living style based on the church, family, community, work and education was what I remember the most from Dana. Issues and the economy will change our lives and jobs, but the broad base of knowledge that Dana encouraged will hopefully outlast us all.

"After graduation I was drafted into the U.S. Army and discharged when the war ended. I am teaching senior high mathematics at Papillion. I coached four sports during the first years and am presently the owner of the local laundromat. I also assist both sides of my family with their farming operations. I belong to four professional and civic organizations as well.

"Two years ago my wife, Betty Jorth '71, and I compiled and wrote the Central District Directory of the American Lutheran Church. We live at 406 Shannon Road in Papillion, Nebraska 68046."



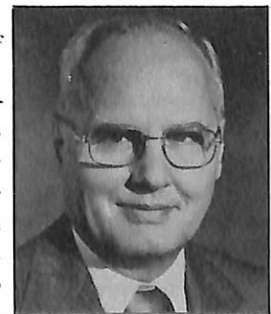
(continued on page 10)

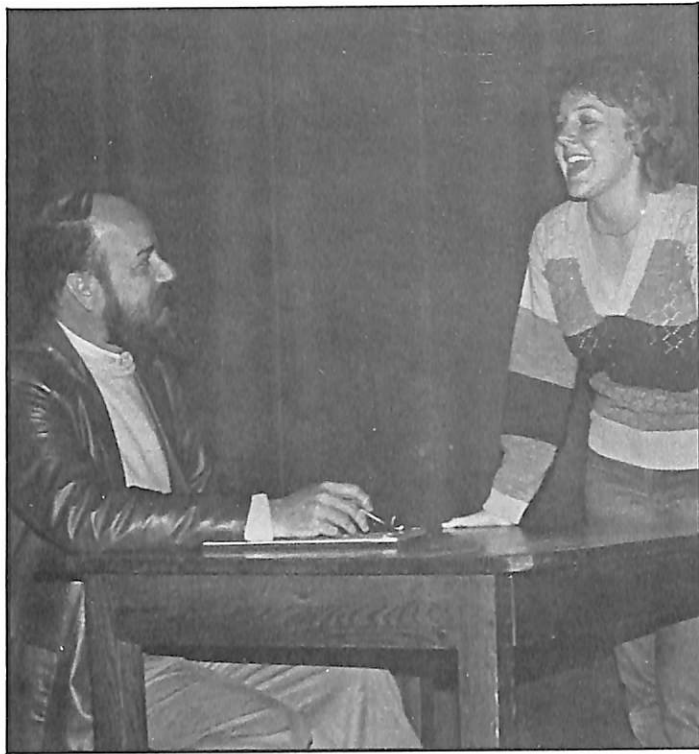
Iowa Surgeon is Regent

Dr. Robert Mandsager of Marshalltown, Iowa, is the newest member of the Dana Board of Regents.

A general surgeon, Mandsager holds a B.A. from Augustana College and an M.D. from the State University of Iowa. He was a missionary for the American Lutheran Church from 1954-64 and subsequently served on the synod's Board of World Missions from 1970-78. He has been a board member of the Iowa Foundation for Medical Care since 1967.

Mandsager has received a Meritorious Service Award from the Cameroun government and an Augustana College Alumni Award.





Homecoming 1980: Alumni Return to Dana Stage

Thirteen former members of the Dana Players joined a student cast for the October 11 Homecoming performance of Neil Simon's *The Good Doctor*, a play Simon adapted from ten stories by Chekhov. Here Jim Clemon '56 and Mary Heistand Bro '80 rehearse for "The Audition." Other alumni in the production were Patty Reed '80, Jill Wetzel '80, Tim Waggoner '77, Dennis Berkej '64, Kathy Swensen '80, Richard S. Jorgensen '64, Richard Moosmann '65, Charles Crow '74, Kevin Barratt '79, Roger Barratt '76, and Jeanmarie Nielsen Barratt '78.

Out-of-Print Books Sought

A Dana faculty member and the library need help in finding the out-of-print books listed below. If you have any of them in your personal library and are willing to donate them, please send them to Library Director Ronald D. Johnson. If you find any of the books in secondhand bookstores or at used book sales, but are not in a position to donate them to the library, please ask the seller to hold them for you until you can notify Johnson to arrange for their purchase.

The books are: Arthur Aspinall (ed.), *The Letters of King George IV, 1812-1830* (3 vol.: Cambridge, 1938)/Wilfrid Bonser (ed.), *An Anglo-Saxon and Celtic Bibliography (450-1087)* (2 vol.: California, 1957)/Andrew Browning, *Thomas Osborne, Earl of Danby and Duke of Leeds, 1632-1712* (3 vol.: Jackson, 1944-51)/*Calendar of State Papers Preserved in the Public Record Office, Domestic Series: James II, Vol. 1* (Feb.-Dec., 1685) (Her Majesty's Stationery Office, 1960)/Georges Duveau, *1848: The Making of a Revolution* (Pantheon, 1966)/Historical Manuscripts Commission (Gr. Brit.), *Report on the Manuscripts of the Late Allen George Finch, Esq., of Burley-on-the-Hill, Rutland, Vol. 1* (i.e., HMC Reports, Series 71, Vol. 1) (His Majesty's Stationery Office, 1913)/John P. Kenyon, *The Popish Plot* (St. Martin's Press, 1972)/Anthony K. Martienssen, *Queen Katherine Parr* (McGraw-Hill, 1974)/Lewis Namier, *1848: The Revolution of the Intellectuals* (Oxford, 1957)/Lacey B. Smith, *A Tudor Tragedy: The Life and Times of Catherine Howard* (Pantheon, 1961). (This list will continue in the next issue.)

Campus Notes

President James Kallas was one of five leaders of the American Lutheran Church whose names were placed in nomination for the synod's presidency at the recent convention in Minneapolis.

Over the summer HunTel Systems of Blair wired the rooms in Holling Hall, a men's dormitory, for individual telephone service at no cost to Dana. Students in Holling now have the option of placing private telephones in their rooms for direct service and personal billing by the telephone company.

Pastor Verner Carlsen '36 has given the Dana library a copy of *The Men of the Gambier Bay* by Edwin Hoyt that was published last year. The book is about the crew members and officers of the U.S.S. Gambier Bay and the Battle of Leyte Gulf, in which the ship was the only American aircraft carrier in World War II to be sunk by naval gunfire. Carlsen, who lives in Moorpark, California, was the ship's chaplain, and he is mentioned many times in the text.

Dr. Delvin Hutton, Greek and religion, prepared a 30-minute audio article this fall called "Theology of Matthew: An Overview" for the November ReSource, a cassette tape series issued by Augsburg Publishing House.

Three members of the Dana Forensics Team placed in competition against 18 other teams at a Creighton University tournament in October. Jerry Christensen '82, Harlan, Iowa, and Kathy Gerking '82, Brock, Nebraska, won third in duet acting, and Peggy Dutch '84, Omaha, was fourth in dramatic interpretation. The other teams were from public and private colleges and universities in Iowa, Missouri, Kansas, South Dakota, and Nebraska.

Work by art department faculty members Jim Olsen '62 and Milt Heinrich was included in a recent exhibit called "Patterns and Reflections: Art in the Lives of Nebraska Educators" at the Nebraska Department of Education in Lincoln. Both participated in a seminar at the show's opening on art education programs within the state.

In September, 13 students and art instructor Milt Heinrich spent a weekend in Chicago visiting the Oriental Museum, Frank Lloyd Wright's Robey House, private art galleries, the Museum of Contemporary Art, and the Art Institute.

Homecoming 1980: Class Reunions



1975: l.-r., row 1 — Kathy Paulsen Soetmelk, Shauna Spilde Clanton, Sandra Rochlitz West, Gerald Clanton; row 2 — Kathy Berntson, Diane Kniep Urdahl, Cindia Sand Baltz, Brenda Loeschke Monfils, Brian Lensch; row 3 — Naomi Westby, Jack Martin, Jean Jensen Ness, Gregory Kalal; row 4 — Michael Williams, Gary Erbes, Dwain Wulf.



1955: l.-r.—Clarice Fredricksen Christensen, Phyllis Henriksen Olsen, Jim Iversen



1950: l.-r.—John Beck, Gene Mengers, Esther Eriksen Larsen, Mary Skobo Weckmuller, Andrew Hansen.



1970: l.-r., row 1 — Joe Anderson, Karl Eric Peterson, Dave Renze, Toni Bailey Fredricksen, Carl Fredricksen; row 2 — Ramona Atwill, John Prouty, Trish Darling Jacobson, Mike Moore, Linda Knudsen Moore, Paige Yowell Peterson, Karen Lausterer Riddle, Sandy Grevlos Fink, Janet Penke Bates; row 3 — Gerald Bruning, Rod Christenson, Art Beckman, Doug Lash, Dave Busse.

(Student Body Presidents — from page 8)

1972-73: Brent Siegrist

Brent Siegrist writes from Omaha: "Looking back on my days at Dana and all the super people I got to know, I've always known that Dana prepared me well for the years after graduation. Having been a social studies instructor and coach at Platteview High School in Springfield, Nebraska, the last six years, I know that my liberal arts-based education at Dana has served me well. I also know that the experience of learning to get along with people during my four years at Dana prepared me for the day-to-day contact with the students I taught and coached (cross country, wrestling, and track).



"I retired from teaching last May after finally realizing, like most teachers, that the hours are long and the pay less than desirable. I thoroughly enjoyed teaching, and I do miss it, but it was time to move in a new direction. I am currently co-owner of Cal-Sig Enterprises in Papillion, Nebraska. My partner and I are in the business of silk-screening and custom lettering shirts, jackets and caps. Though it is too early to tell for sure, the business thus far has been successful.

"Since my Dana days, I have traveled extensively during the summer months, touring the U.S. and Europe. It was very rewarding to finally see many of the places that I had been made aware of in humanities and other classes.

"I am still single and live at 9927 Q Street #2B in Omaha (68127)."

Sports

Four Join Hall of Fame

Four former Vikings were inducted into the Athletic Hall of Fame at the October 11 Homecoming luncheon. They are A.F. Lt. Col. Roger Beck, Austin, Texas; John Laughhunn, Missouri Valley, Iowa; and Vaughn Christensen and Dale Lemon of Blair and Dana.

Beck, a 1964 graduate, is chief of the 12th Air Force Exercise Planning Team in Austin. At Dana he was all-conference quarterback for two years and playmaker for the 1962 championship team. Beck was also a basketball standout who led his team in scoring during his senior year.

Laughhunn, head football coach at Missouri Valley High School, is another 1964 graduate. One of only a few Dana athletes to earn ten letters, he lettered in football for four years and was outstanding in basketball and track. Laughhunn has also taught and coached in Pender, Nebraska, and in Atlantic and Milford, Iowa. His overall coaching record shows 70 wins, 45 losses, and one tie. His Missouri Valley track team has won the Western Iowa Conference championship four times in the past six years.

Christensen coached football, basketball, and track at Iowa and Nebraska high schools before joining the Dana staff several months ago as assistant director of admissions and assistant football coach. He is a 1953 graduate who earned nine letters, distinguishing himself especially in football and baseball. In 1953 Christensen was an all-conference guard and was named "outstanding senior player."

Lemon is only the third non-Dana athlete to be named to the Hall of Fame. He is a 1957 graduate of Nebraska Wesleyan University, where he lettered in all four major sports — football, basketball, track and baseball. He was all-conference end on the Wesleyan football team. In his 17 seasons as Dana's baseball coach, Lemon has led his teams to 81 wins and 33 losses within the NIAC. His Vikings have been conference champions six times in 11 years. Last spring the team won the NAIA District II playoffs and went to the Central NAIA Area playoffs in Jamestown, North Dakota. Lemon was also recently named NAIA District II "Baseball Coach of the Year."



Beck



Laughhunn



Christensen



Lemon



Homecoming 1980: Fun Run

More than 40 runners, many of them alumni, participated in Dana's 5000-meter Second Annual Fun Run over a hilly course at Homecoming October 11. The event was sponsored by the Dana Boosters Club.

A Fall Sports Report . . .

"Developing" best describes this fall's football, volleyball, and cross country teams.

As of this writing, the football team has had six losses and no wins, with three games to go against tough opponents. The team is young and inexperienced: over 50 percent of its members are freshmen, and only ten players are seniors. The fact that a junior varsity team (in the first Dana JV game since 1965) recently tied Midland 0-0, while the varsity squad lost to Midland 49-7 in an earlier game, promises more competitive contests in the future.

For the women's volleyball team, this was also a year of growth, with the caliber of play greatly improved over previous seasons. Only four of the 17 members are seniors, so next year's team will be a more experienced one.

Cross country, a sport Dana dropped ten years ago, was reinstated this fall. Five men reported for the team, the minimum number for varsity competition. As could be expected, the three freshmen, one sophomore, and one junior have spent the season gaining experience and have done fairly well in spite of heavy competition. They should return next fall as the strong nucleus of a more competitive, and larger, team.

Alumni Council Elects Officers

Alumni Council officers for this year are: president, Herb Knudsen '63, Cleveland, Ohio; vice-president, Roger Petersen '61, Blair; and secretary, Helen Hansen Sorenson '68, Crescent, Iowa. They were elected by fellow Council members for one-year terms.

Other Council members are Lois Lyng Boe '41 and Sharon Mardeson Nelson '61, both from Omaha; Thorvald Hansen '43 of Audubon, Iowa; and, from Blair — Ken Anderson '63, Judy Rueter Brehm '67, Susan Thorson Holstein '76, Roger Howland '64, Ivan Johansen '38, Cal Jorgensen '52, Bob Krogh '56, Roger Lorsch '71, Adrienne Simpson '71, and Barbara Wolf Triplett '73.

Illinois Celebration Has Dana Participants

In 1869 Danish immigrants in Sheffield, Illinois, established the first Danish Evangelical Lutheran congregation in the U.S.

In 1880 the congregation built St. Peter's Evangelical Lutheran Church, a white high-spired structure.

In 1956 the congregation was dissolved. Eleven years later several Sheffield residents, many of them Catholic, recognized the historic value of the building, formed the Sheffield Historical Society, purchased the church, and restored it. They established a museum across the street. In 1973 the church was added to the National Register of Historic Places. In 1974 it was visited by Queen Margrethe II of Denmark.

This fall members of the Sheffield Historical Society celebrated the church's centennial, and they invited the Danish Minister of Ecclesiastical Affairs and the Danish Consul General in Chicago and their spouses to the festivities.

And, because Dana was also founded by Danish Lutheran immigrants, Society members invited the College to send participants as their guests. Dana responded by sending two student groups, the Choir and the Folk Dancers, and six other representatives — Choir Director and Mrs. Paul Neve, President Emeritus and Mrs. C. C. Madsen, and Mr. and Mrs. Paul Strand. Strand is assistant director of development.

The Choir sang several times, indoors and out, the Dancers performed (with the visiting Danish dignitaries joining in), and Dr. Madsen and Paul Strand conducted the Sunday morning worship service, some of it in Danish, with Madsen giving the sermon, and Strand serving as deacon. The delegation returned to the campus with enthusiastic descriptions of an unusual, and wonderful, weekend.



President Emeritus Madsen and Choir members at worship service in Sheffield church. Madsen is wearing a Danish clerical ruff and robe from the 19th century. (Photo courtesy of Den Danske Pioneer)



JOBS AND PROMOTIONS

1980

GARY BELTZ is quality control manager at Analychem International in a newly created department. His address is 3605 Stephen M. White Drive, Apartment 10, San Pedro, California 90731.

GARY CISSELL has signed a one-year contract with the Saint Maur Dufosse French professional basketball team. He reported to Paris this fall for open practice sessions and has started a 60-game season. Cissell's shooting percentage ranked third nationally in his senior year at Dana.

DEBORAH SCHULTZ ENGEL is a physician's assistant in McCook, Nebraska, where her address is Wilson Trailer Court #5 (69001). In May she received a B.S. degree from the Nebraska College of Medicine.

JO ANNE ROBERTS is a third grade teacher in the Genoa, Nebraska, public school system.

MARY ROWLAND is youth coordinator in a team ministry with the pastors and principal of St. Paul's Lutheran Church and Christian Day School in Waverly, Iowa, where her address is 2200 12th Street N.W. (50677).

1979

JOYCE OSTLIE has been promoted to assistant cook at the YMCA camp in Estes Park. Her address is Box 544, YMCA, Association Camp, Colorado 80511.

1978

ANN JORGENSEN is in her last quarter of registered-nurse's training in Rochester, Minnesota. JOHN K. PETERSEN teaches physical education and athletics in the Ashland-Greenwood, Nebraska, schools. He is also assistant football coach to head coach STEVE DAEGES '79.

1976

ROBERT and KAY BRAATEN '74 BRESEMANN live in Mason City, Iowa, where Bob is assistant pastor at St. James Lutheran Church. He graduated from Wartburg Seminary, Dubuque, Iowa, in May and was ordained in Mt. Prospect, Illinois, on August 24. Their Mason City address is 814 Second Street S.E. (50401).

ALAN HANSON, after graduation from Luther-Northwestern Theological Seminary, St. Paul, Minnesota, was ordained into the ministry of the American Lutheran Church on June 22 at First Lutheran Church in Blair. He is associate pastor of All Saints Lutheran Church in Cottage Grove, Minnesota, where he and his wife, MARY HENRIKSEN, live at 8630 81st St. So. (55016).

PAUL JOHNSON lives in Fremont, Nebraska, at 942 East Fourth. He is band director at Bergan Junior-Senior High School and was recently the subject of a feature story in the *Fremont Tribune*.

JULIE MILLER is a fifth and sixth grade multi-disabilities/resource room teacher in the Shenandoah, Iowa, elementary school system.

1975

CHARLES CORBIN has been promoted by the National Cash Register Company to district manager of the Salt Lake City district.

ELSA TROMBORG, whose address is Enighedsvvej 17, DK-2920 Chl. Tlf. 01 643824, Denmark, teaches Danish literature, English and French in a Danish "Folkeskole" in a Copenhagen suburb. She writes that "In my spare time I'm involved with work and programs in the Third World. Within this framework I've been to the Sudan in Africa twice in order to work as a volunteer in the construction of chicken and vegetable farms."

1973

Captain ROBERT and CANDACE WILD EHMEN live at 112 Allison Drive in Dudley, North Carolina 28333.

STEVE SCHOU was installed as pastor of Palermo Lutheran Parish at Knife River Lutheran Church near Stanley, North Dakota, on August 10. He graduated from Wartburg Seminary, Dubuque, Iowa, in May. On July 1, 1979, he married Kathleen Ann Menapace of Saginaw, Michigan.

1972

PAUL and PAT BORCHERT ANDERSON and their three children — William (7), Matthew (5), and Stephen (2) — have moved to 2222 West 31st Street in Pueblo, Colorado 81008, where Paul serves Tabor Lutheran Church. He was ordained into the ministry of the Lutheran Church in America on June 8, after attending Luther-Northwestern Seminary in St. Paul, Minnesota.

1971

GLORIA DRAKE has been promoted to credit and administrative assistant by the Omaha Bank for Cooperatives.

DAN JACKSON is manager of the Farmers' Cooperative Association in Osceola, Iowa. He, his wife, BARBARA FUDGE '72, and their two children — Matt (4) and Molly (2) — live in Osceola at 1010 Grandview Drive (50213).

GORDON PUTNAM and his wife, Jerry, live at 1074 Lowell Drive in Oconomowoc, Wisconsin 53066. Gordon is associate pastor at Christ the King Lutheran Church in Delafield.

1970

MIKE MOORE is a psychologist at the Wilder Child Guidance Clinic in St. Paul, Minnesota, a branch of the Wilder Foundation.

RICH TAYLOR is youth coordinator for the Central District of the Lutheran Brethren in Rochester, Minnesota, where he is also pastor of Gethsemane Lutheran Brethren Church at 1624 37th Street N.W., Box 6111 (55901).

1968

ROBERT ANTHONY has been promoted to accounting manager at Oscar Mayer and Company's Perry, Wisconsin, plant.

ROBERT and TERRY BUCK LARSON live in Des Moines, Iowa, at 2701 Holcomb Avenue (50310). Several years ago he earned his Chartered Property and Casualty Underwriter designation, which was conferred in San Francisco after five years of study. In 1978 he was president of the Iowa Property and Casualty Underwriters Association. At present he is an underwriter trainer for Preferred Risk Mutual, a major insurer of churches and church-affiliated colleges and organizations. He is also working toward an MBA at Drake University. Terry is a research and training specialist for the Iowa State Association of Counties, assisting county officials in implementing home rule. In addition to drafting model ordinances, she conducts seminars for county officials throughout Iowa. She received her bachelor's degree in 1979 "with distinction" from Iowa State University. They have two sons — Mark (14) and Eric (10).

Dr. KENNETH RASMUSSEN has been named principal of Morton Elementary School in Hastings, Nebraska.

1963

GARY LEBECK, his wife, JUDY SWENSON '68, and their five children — Scott (15), Mark (11), Heidi (9), Kirk (4), and Kristin (3) — live at 1811 Sunset in Grinnell, Iowa (50112). He is a Kansas City Life representative, and she is a substitute teacher.

1956

FREDRIC YOURA is pastor of Lutheran Church of Hope in Anchorage, Alaska, where his address is 1847 W. Northern Lights Boulevard (99503).

1953

FLOYD JORGENSEN is a full professor with the University of Minnesota Extension Service in Red Lake. His wife, DOROTHY LANDBO '56, is in her third year of teaching seventh grade English.

C. I. "JERRY" LUND is pastor of Christ Lutheran Church in Monterey Park, California. His wife, MARYANN NELSON '49, is executive secretary to the president of the California Lutheran Homes Corporation. They live at 6739 N. Vista in San Gabriel, California 91775.

ADVANCED DEGREES AND CONTINUING EDUCATION

1979

Marine 2nd Lt. ALAN WINTERS has graduated from the Navy's Aviation Indoctrination School in Pensacola, Florida. Attending the school is the first step in the flight training program for naval aviators.

1975

STANLEY JOHNSON recently received a doctorate in chemistry from Texas A&M. He is a nuclear analytical chemist with Proctor and Gamble-Buckeye in Memphis, Tennessee.

LAYNE JOHNSON is completing his Ph.D. at Iowa State University in Ames and has a research position at the University of Oklahoma at Norman in the department of microbiology and botany. He and his wife, Deb, live in Norman at 1604 Sunrise Street (73071).

1974

FREDERICK BALTZ received a Master of Sacred Theology degree from Wartburg Seminary, Dubuque, Iowa, in May. He and his wife, CINDIA SAND '75, live at 201 S. High in Galena, Illinois (61036), where he is pastor of St. Matthew Lutheran Church.

WILLIAM YATES finished his residency in medicine in June, and has established a family practice clinic in Geneva, Nebraska. He lives there at 730 N. 8th (68361).

(continued on page 14)

Dear Friends and Fellow Alumni,

It's happening again this year!

The telephones are beginning to ring as Phonorama '81 starts toward higher goals than we have ever dared to set before.

Last year's \$150,000 goal was reached with room to spare — as was the \$100,000 goal of two years ago. So at the August Alumni Council meeting, goals were set for another year of challenge to growth:

1. \$200,000 in pledges and matching gifts.
2. 6,000 telephone calls to be completed (previous high last year was 3,650)
3. 40 Phonorama events to do the work! (previous high was last year with 26)

This will require a great deal of work on the part of both the Dana staff and our volunteers — friends, parents, and alumni! It's time to roll up our sleeves again and get to the task! The challenge is clear. Dana's need is great.

Phonorama '81 began this year on Sunday afternoon, October 5, when the first Dana Student Phonorama call was made from the College Development Office by Dana student John Ragan, a junior from Blair. The first Blair Alumni Phonorama was held the next evening.

This year's Phonorama is divided into two phases. In the first phase there is much calling by Dana stu-



dents, as the Student Development Committee continues to grow and to work for Dana. There are also five Phonoramas by Dana alumni in the Blair area, two Omaha nights, two Lincoln nights, and one evening of Missouri Valley, Iowa, callers.

In the second phase (26 events) we'll be calling from Fremont, Omaha, and Blair, from Albert Lea and the Twin Cities, from Council Bluffs and Cedar Falls, Iowa, from Chicago and Rockford, Illinois, from San Francisco and Los Angeles, from Racine and Milwaukee, Wisconsin, and from Denver, Colorado.

We're thankful for all of the willing volunteers that we find each year to be area chairpersons or callers. Please help when you are called!

As you read this, the first phase of Phonorama '81 will be completed. There were 14 events plus 18 two-hour periods of calling by our Dana Student Development Committee. As the *Dana Review* goes to press, our October calling is over and we are \$34,200 toward our goal with six Phonorama events completed and eight remaining in phase one. One of these events challenged the Alumni Council to make leadership gifts — and the 17 members produced \$8,500!

If you haven't been called by now — you may expect a call — perhaps from a student, a parent of a Dana student, a friend of Dana, or an alumnus.

Please be ready to put your money where your heart is — and make a generous pledge to Dana this year!

John Beck
Director, Alumni Affairs



Homecoming 1980: A Golden Reunion

A new Homecoming feature this year brought back alumni from the class of 1930 and earlier classes for a daylong Golden Reunion. Activities included reminiscences that were videotaped for Dana's archives. Reunion participants included, from the left, front row — Edna Simonsen Johnson '26, Esther Johnson Madsen '29, Emerald Nielsen '28, Olga Petersen Nielsen '28, Ben Engskow '30, Elna Hoffgaard Petersen '30, Julia K. Hansen '25, Marinus Hagedorn TS '30; back row — Severin Sorensen '29, Ruth Simonsen Allison '21, Esther Simonsen Srb '21, Harold E. Hansen '20, Niels Nielsen '20, George Landrock '15, William Goldbeck TS '28, Dagmar Kildebeck Goldbeck '25, Immanuel Petersen '30, Agnes Lund Beck '23, and Marcus Beck '22. To Niels Nielsen of Buffalo, Wyoming, the only familiar building on the campus was Old Main, for he last saw Dana in 1920. Dr. George Landrock of San Rafael, California, the oldest alumnus present, also traveled the greatest distance to attend the reunion. Pastor Hagedorn, Ankeny, Iowa, gave the sermon at the campus worship service the next morning.

(from page 13)

1960

ANDREW JENSEN received his Doctor of Ministry degree from Luther-Northwestern Seminary in St. Paul, Minnesota, in June; the major emphasis of his study was on Christian education. He and his wife, Mary, developed a new confirmation program several years ago. They and sons Joel (15) and Nathan (12) have moved from Burnsville, Minnesota, to 11830 Sylvan Street in North Hollywood, California 91606, where he is senior pastor of Emmanuel Lutheran Church. Their son Dan is a freshman at Dana. The confirmation class at Prince of Peace Lutheran Church in Burnsville, where Jensen was associate pastor, was featured in the July 20, 1980, picture section of the *Minneapolis Tribune*.

PUBLICATIONS, ACTIVITIES, HONORS AND AWARDS

1980

ANGELA ANKENBAUER was cast as Sybil in the Norton Theatre's September production of Noel Coward's *Private Lives*. An *Omaha Sun* reviewer wrote that "As the winsome and scatterbrained Sybil, Ankenbauer is impressive. Her facial expressions are always on target, and she gives her lines in a suitably silly ingenue fashion."

1978

JEANMARIE NIELSEN BARRATT has a part in the chorus of the forthcoming Opera/Omaha production of Mozart's *Così fan Tutte*. She and her husband, ROGER '76, both sing in the Nebraska Choral Arts Society.

1976

MIKE STEWART is president of the Genoa, Nebraska, Education Association. He teaches seventh grade life science and advanced biology in that town's public school system.

1973

CECILIA DHOGGE HAHN, French teacher in the Lincoln, Nebraska, school system, was co-leader this summer of a study tour of Quebec. She also attended the national convention in Toronto of the National Association of Foreign Language Teachers, where she received a Teaching Excellence

Award and scholarship. She and her husband, STEVE, live at 2910 Cedar Avenue in Lincoln (68502).

1972

ROBERT MILLER, auto mechanics teacher at the Olathe, Kansas, Vocational School in a new complex that he designed, has been named Outstanding Trade and Industrial Education Classroom Teacher of the Year by the Kansas Industrial Education Association. He is also one of 50 candidates for the National Trade and Industrial Teacher of the Year, to be presented by the American Vocational Association in New Orleans in December.

1971

Gene and JAN SCHNEIDER Young were featured in an article in the August 17, 1980, *Omaha Sunday World-Herald's Magazine of the Midlands*. Staff writer Michael Kelly described their decision to return to a rural life near Treynor, Iowa, their hometown, after living in Omaha. They have built a house near their family homesteads. Gene is assistant vice president of the Treynor State Bank.

1955

Dr. JAMES IVERSEN, professor of aerospace engineering at Iowa State University, Ames, his wife, and their two sons, will soon spend six months in Denmark, where he will do research at a technical university near Copenhagen.

1925

Pastor L. and RUTH KALDAHL '27 PEDERSEN celebrated their Golden Wedding anniversary in 1979. His ordination class was also honored that year by the Elk Horn, Iowa, congregation. A 1929 graduate of Trinity Seminary, he is fully retired, but occasionally assists at Holy Communion and weddings. They live at 10540 E. Apache #58 in Apache Junction, Arizona 85220.

1915

Dr. GEORGE LANDROCK, 326 Mission Avenue, San Rafael, California 94901, although retired, remains an active volunteer on the Marin County General Hospital Operating Project SEE to test preschool children for sight deficiencies. He lives at Aldersly, the Danish retirement home in San Rafael, and is president of the resident's association there.

MARRIAGES

1980

ELIZABETH FALKSEN and MERLE BROCKHOFF '81, August 17, in Ellendale, Minnesota. They are at Dana — she as a post-graduate student, he as a pre-seminary student majoring in humanities.

1979

Jean Hammack and RICHARD LUBBERT, August 16, in St. Paul, Nebraska. He is associate manager of a retail firm in Omaha. They live in Bellevue, Nebraska.

Janet Quackenbush and MARK OLTMAN, June 15, in DeWitt, Nebraska. He teaches at Palmyra High School; their address is 4600 Briarpark Drive, Lincoln, Nebraska.

1975

Francine Ann O'Brien and BRIAN ANDERSON, August 23, in Whittemore, Iowa. Both are lawyers. He is the newly appointed child support recovery officer for a six-county area in Iowa, and she is a law clerk for Iowa's Second Judicial District. They live in Fort Dodge.

PATRICIA ZABEL '78 and EVERETT BALTZ, August 9, in Cook, Nebraska. He attends Luther-Northwestern Seminary in St. Paul, Minnesota.

1974

Sharon Behl and JOHN BROOKS, June 1. He is the reporter for KOLN/KGIN TV (Grand Island) from the Hastings area. Their address is 1938 West D. Hastings, Nebraska 68901.

Lynette Meienburg and LARRY RASMUSSEN, August 9, in Fort Wayne, Indiana. He received his master's degree from the University of Nebraska and works for Peter Eckrich and Sons, Inc. They live at 2316 Terrace Road in Fort Wayne (46805).

BIRTHS Daughters

1977

Amy Lee, born September 8 to KIM COOPER and his wife, 2041 Front Street, Blair. Her sister Jennifer Lynn is two. Kim teaches art at North High School in Omaha, where he is also varsity tennis coach and junior varsity baseball coach.



Homecoming 1980: Queens Return

Eleven former Homecoming Queens participated in Mary Welp's coronation as 1980 Queen on October 11. From the left, they are: Barbara Wolf Triplett (who reigned in 1972), Paige Yowell Peterson (1967), Sandy Grevlos Fink (1969), Jean Wood Hundtoft (1975), Jacquelin Koehn Smith (1971), Linda Money Jorgensen (1964), Sonja Jacobsen Switzer (1960), Diane Kniep Urdahl (1974) Kimberly Shipley (1977), JoAnne Roberts (1978), and Kristi Kruse (1979).

1976

Kenna Rachel, born May 10 to GARY and Linda RASMUSSEN. Gary teaches art in the Elkhorn, Nebraska, High School.

1973

Sara Elaine, born June 21 to ARNIE and LOIS EDMONDS JENSEN, 1428 Butler, Blair.

1970

Alicia Dawn, born December 12, 1978, to SHARON NELSON Barta and her husband, 1028 Oxford Court, Charleston, Illinois 61920.

1967

Anna Christena, born February 8, adopted April 29, by LEON and ALICE PETERSEN '68 NEVE, 1544 Fulham Street, St. Paul, Minnesota 55108. She joins brothers Hans Christian (8) and Niels Peter (5).

1966

Lisa Kristine, born February 26 to John and KRISTI PLANCK Johnson, 6003 Kingsford Road, Bethesda, Maryland 20034.

BIRTHS Sons

1977

Sean Michael, born May 28 to Mike and LINDA JOHNSON Riley, Rt. 1, Lot 20, Phillips, Nebraska 68865.

1975

Andrew John, born September 5, 1979, to CAROL LARSON Moore and her husband, 3201 Sycamore Terrace, Sioux City, Iowa 51104.

1974

Aaron Mark, born February 27 to MARK and CARI ANDERSEN '73 MORGENSTERN, Hildreth, Nebraska, where Mark is pastor at St. Paul's Lutheran Church, and Cari is a resource teacher for Educational Service Unit #11.

1973

Paul Charles, born June 15 to LARRY and Yvonne ANDREWS, 9717 Spaulding, Omaha (68134).
Eric Dix, born July 31 to Dix and LINDA STUHR Scranton, Route 2, Norfolk, Nebraska 68701.

1971

Mikael John, born August 5 to JOHN and GUNA BUSS '74 MAGNUSON, 2251 Colfax, Blair. His sister Megan Jean is 17 months old.
Mitchell Roger, born November 10, 1979, to Roger and JUDY ZIMMERMAN Mathiesen, RR 1, Blair.

1970

Scott Phillip, born July 4 to STEVEN and KATHLEEN RYAN COOK, 1038 James Drive, Blair. They have two other children, Steven (5) and Stephanie (2).

David Michael, born July 6, 1979, to Ken and JANET WINKEL Vetrovec, 716 Hialeah Drive, Racine, Wisconsin 53402.

1969

Jeremy Paul, born August 14 to WADE and LOIS HANSON BOLTON, 7330 Torquay, Houston, Texas 77074.

DEATHS

1948

FRANKLIN HIGBY, 55, September 22 in Tucson, Arizona. He served parishes in McNab, Illinois, and the Oaks Mission in Oklahoma, and for many years was employed by the Arizona Welfare Department. Survivors include two daughters and a son.

1944

JOHANNE JESSEN Olsen, October 10, in Sidney, Montana. Survivors include her husband, Gerald, Box 687, Sidney (59270), daughter ELAINE Shelburne '69, 1188 Fantan, Billings, Montana 59101, and many brothers and sisters who attended Dana, among them HELGA '51, the wife of Dana Registrar VERLAN HANSON '51.

1916 and Earlier

PHOEBE HJORTSVANG Gancin, 87, July 5 in Portland, Oregon. She attended Dana as early as 1910 and 1911 and returned for her degree in 1916. Her brothers and sisters also attended Dana. She and her husband homesteaded near Gillette, Wyoming, before moving to Portland, where she was a nurse and an elementary school teacher.

ALFRED M. PEDERSEN, 85, March 17 in Des Moines, Iowa. An outstanding student athlete, he was a member of the Dana basketball team that inaugurated the fast break and lost only one game in 1913.

Gerda Strom, September 2 in Denmark, the mother of Mrs. Bodil Johnson, instructor of Danish and German at Dana. Mrs. Strom and her husband, Alfred (Gammelmosevej 297 b 2880 Bagsvae, Denmark), have opened their home to many Dana students and members of the faculty and staff.

Arthur Ranheim, May 12, Dana education professor from 1947-57. Survivors include his widow, Louise, of Waseca, Minnesota 56093.

John Helleberg, Sr., 89, July 1 in Kearney, Nebraska, founder of Helleberg and Helleberg, Architects, whose firm designed many of the buildings on the Dana campus.

Calendar Of Events

December 6

Alumni Phonorama Training Session

December 7

The Sights and Sounds of Christmas

December 7-19

Masterpieces of Christmas Art, Parnassus

December 9

Concert by Selah (Dana swing choir), 8 p.m., Alumni Memorial Auditorium

December 14

Mid-year commencement

December 18

Christmas recess begins at end of classes

January 5

Interim classes begin

January 12-16

Visiting Theologians Program, Dr. Roland Bainton, Professor Emeritus, Yale University, 8 p.m., Dana Hall of Science Auditorium

January 30

Interim ends

February 2-11

Exhibit of work by Dana students in photography Interim, Parnassus

February 9-13

Visiting Theologians Program, Dr. Luise Schottroff, Mainz University, and Dr. Wolfgang Stegemann, Heidelberg University, 8 p.m., Dana Hall of Science Auditorium

04565

13

MRS JOHN NIELSEN
RTE 2
ALBERT LEA MN 56007

Be a Dana Recruiter!

These Dana students were prospective students a year (or two or three) ago. Many of them chose Dana because alumni and friends told them about our excellent program and unique community feeling. Dana's enrollment is growing. You can help it continue to grow by telling high school students about Dana — and by telling our Admissions Office about them.



I would like to recommend the following student:

Name _____

Address _____

City _____ State _____ Zip _____

Phone (____) _____ Year in School _____

High School _____

My name _____

Comments _____

**Please return to: Admissions Office
Dana College
Blair, NE 68008**

REPORT

TO ALL INVESTORS 1980



All Gifts recorded in this report were received between June 1, 1979 and May 31, 1980, the Dana College fiscal year. Although great care has been taken in preparing this list, there may be errors or omissions. If so, we apologize. And we ask that you call any mistakes to our attention.



The leaves on the grand old trees that are sprinkled across our campus hillside have turned a golden brown. This year there is a special symbolism in that for me, for I am looking backward at a good year at Dana — and ahead to what can be a golden year of growth for our college.

As we open the 1980-1981 year, we open with exactly 539 students, about 100 more students than Dana began with in the fall of 1978. When we totaled the unrestricted gifts of this past year, we found that our gifts came to over \$490,000 — an increase of more than 300% over where we were two years ago.

This report tells some of the story of that year of growth.

Because of your generosity the Regents were able to give a bonus this last May to everyone on our payroll, from secretaries, to custodians, to professors. This on top of reducing our accumulated deficit by over \$160,000!

But, this is a new year.
Now we must do it all over again! And do it even better.

Please respond generously when you are contacted — whether it be a personal contact, a telephone call, or a letter in your mail box. For Dana continues to have great needs, for we have a great mission.

Sincerely,

James Kallas

Dr. James Kallas
President

DANA COLLEGE

Statement of Current Funds Revenues and Expenditures
for the year ended May 31, 1980

Revenue:

Tuition and Fees	\$1,461,032
Government Grants and Contracts	127,222
Private Gifts, Grants and Contracts	731,978
Endowment Income	72,679
Sales and Services of Educational Activities ...	17,691
Other Sources	73,119
Sales and Services of Auxiliary Enterprises ...	<u>816,357</u>
Total Revenues	\$3,300,078

Expenditures:

Instruction and Related Activities	\$ 928,801
Student Services	329,387
Institutional Support	531,951
Maintenance	222,949
Student Aid	364,980
Auxiliary Enterprise Expenditures	<u>778,736</u>
Total Expenditures	\$3,156,804

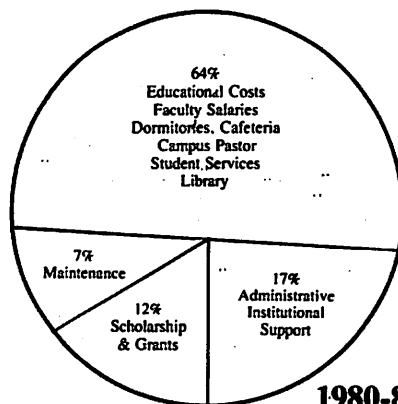
Excess Income over Expenditures \$143,274

The Dana Dollar

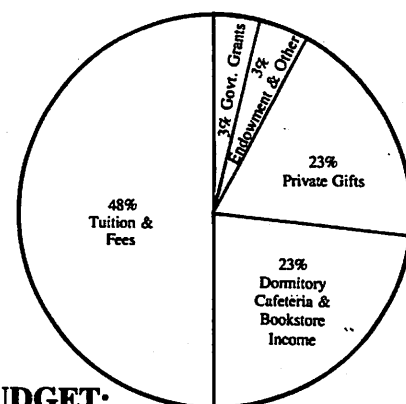
For the first time since 1975, the news of the Dana Dollar is good news! The condensed financial statement above indicates that we closed the 1979-80 fiscal year solidly in the black. And, in fact, an operating surplus has helped wipe out a portion of our accumulated operating deficit. This return to fiscal solvency is due in large measure to the incredible acceleration in giving we are experiencing. The bar graphs below illustrate that increase over the past four years.

While the past year has been a good one for Dana in terms of gift dollars received, the pie graphs at the right bring sharply into focus the need and challenge facing us in 1980-81. Your continuing support will make it possible for us to meet that challenge.

WHAT WE MUST SPEND



WHERE OUR MONEY COMES FROM



Alumni Giving

1976 - 1977	48,000
1977 - 1978	48,000
1978 - 1979	102,000
1979 - 1980	106,000

All Gifts and Subsidies

1976 - 1977	\$470,500
1977 - 1978	\$748,500
1978 - 1979	\$772,800
1979 - 1980	\$1,069,800

Unrestricted Gifts

1976 - 1977	\$136,936
1977 - 1978	\$153,523
1978 - 1979	\$382,738
1979 - 1980	\$494,128

Special Notice

Between January 1, 1979, and May 31, 1980, Dana College received more than \$61,500 in matching gifts through IMPACT, a program sponsored by the Lutheran Brotherhood Insurance Company of Minneapolis. During that same period, Dana ranked sixth among the 66 Lutheran colleges and seminaries in the amount of matching IMPACT dollars received. We extend a special thank you to Lutheran Brotherhood for instituting this program of support for Christian higher education.



The Dana College Tower Circle

The Tower Circle is a special organization of alumni and other friends whose loyalty and devotion to Dana are recognized with special gratitude. Tower Circle members are individuals or couples whose gifts totaled \$1,000 or more within the past fiscal year. These leadership gifts demonstrate a high commitment to private higher education and Dana College.

Mr. and Mrs. Arthur Antholz
Mr. and Mrs. Lloyd Bansen
Dr. and Mrs. Dennis Barber
Rev. and Mrs. John T. Beck
Dr. and Mrs. Marcus Beck
Mr. and Mrs. Daniel Berke
Mr. James Borden
Mrs. Svend Bramsen
Mr. Herbert Carlson*
Mr. and Mrs. Donald Chatelain
Dr. John Duffy
Miss Margaret Fischer
Mr. and Mrs. David Graven
Mr. and Mrs. Kenneth Hansen
Dr. and Mrs. Clifford Hanson
Mr. and Mrs. Howard Hanson

Mr. and Mrs. Kenneth Holm
Mr. and Mrs. Emory Hunt, Jr.
Mr. and Mrs. Hugh Hunt
Mr. and Mrs. Richard Hunt
Mr. and Mrs. Robert Hunt
Dr. and Mrs. James Kallas
Mr. and Mrs. Ernest Kehlbeck
Mr. Tom Kendall
Mrs. Pauline Kleven
Mr. and Mrs. Rudolph Knudsen
Mr. and Mrs. Johannes Lindholm
Dr. and Mrs. Archie Madsen
Dr. and Mrs. C. C. Madsen
Mr. and Mrs. L. K. Madsen
Dr. David Meier
Mr. and Mrs. Ib Melchior
Mr. and Mrs. Adelbert Meyer
Mr. Harold Miller
Mr. and Mrs. Richard Miller

Mr. and Mrs. John Morava
Mr. and Mrs. Wyman Nelson
Rev. and Mrs. Lloyd Neve
Mr. and Mrs. E. A. Nielsen
Mr. Niels Nielsen
Mrs. Clark O'Hanlon
Mr. and Mrs. John O'Hanlon
Mrs. Christine Rasmussen
Dr. and Mrs. Omer Reed
Mr. and Mrs. Bill Sapp
Mr. and Mrs. Holger Schultz
Mr. and Mrs. Rory Sturm
Mr. and Mrs. Donald Swanson
Mr. and Mrs. Lorentz Thorngren
Mr. and Mrs. Keith Vinton
Mr. and Mrs. Arthur Welch
Mr. and Mrs. Harold Wright
Mrs. LaVanche Wurdeman
*Deceased

The Dana College President's Society

The members of The President's Society are those alumni and other friends whose gifts totaled between \$500 and \$999 during the past fiscal year. This growing giving group has demonstrated a high personal commitment to Dana College and the cause of Christian higher education.

Mr. and Mrs. Ken Anderson
Mrs. Marian Anderson
Mr. and Mrs. William Archibald
Rev. and Mrs. Walter Behrens
Mr. and Mrs. Richard Boe
Mr. and Mrs. Paul Brostom
Mr. and Mrs. Herbert Dalleck
Miss Jane DeVasure
Dr. and Mrs. James Evensen
Dr. and Mrs. Gilbert Falcone
Mr. Ned Fleming
Mr. Earl Fries
Mr. and Mrs. Tim Garrigan
Mr. and Mrs. James Gerking
Mr. and Mrs. John Greene
Mr. and Mrs. Donald Haag
Mrs. Everett Hagedorn
Mr. and Mrs. John Helleberg, Sr.
Mr. and Mrs. Waldemar Hempler
Mrs. Caroline Hoj

Mr. and Mrs. Mick Jensen
Dr. and Mrs. Robert Jensen
Ms. Mildred Jepsen
Dr. and Mrs. Harold Jersild
Dr. and Mrs. Howard Johnson
Mr. and Mrs. J. Harry Johnson
Mr. and Mrs. Jerry Jorgensen
Mrs. Dagmar Knudsen
Mr. and Mrs. Herbert Knudsen
Mr. and Mrs. Chris Korshoj
Mr. and Mrs. Robert Krogh
Mr. and Mrs. Olaf Kroneman, Jr.
Mr. and Mrs. Garyld Kuster
Dr. Thomas Lange
Mr. and Mrs. Edward Larsen
Mr. and Mrs. Forrest Leighton
Mr. and Mrs. Alwin Lentz
Mr.* and Mrs. Luther H. Lincoln
Mrs. Ellen Madison
Mr. and Mrs. L. Madsen
Mr. and Mrs. David Massingill
Mr. and Mrs. Eugene L. Meyer
Mr. and Mrs. Richard Morton
Dr. and Mrs. Paul Neve
Rev. and Mrs. Ried Neve
Dr. and Mrs. Arnold T. Nielsen
Mr.* and Mrs. Arthur C. Nielsen, Sr.
Mr. Orville Nielsen
Mr. and Mrs. George Olson

Mr. Clarence Petersen
Mr. and Mrs. Kenneth Rhoades
Mr. and Mrs. Ludwig Rieker
Dr. and Mrs. Royce Ronning
Dr. and Mrs. Leland Rosenau
Mr. and Mrs. Paul Salchow
Mr. Martin Schroeder
Rev. and Mrs. Alton Schwandt
Mrs. Ole Slind
Mr. Leroy Snyder
Dr. and Mrs. Ewald Sorensen
Mr. Brad Taylor
Mr. Ernest Thompson
Mr. and Mrs. Frank VanSteenhoven
Mr. and Mrs. Norman Williams
Mr. and Mrs. Philip Wittig
Mr. C. Womble
*Deceased





The Dana College Century Club

The membership of The Century Club includes those persons whose gifts totaled between \$100 and \$500 during the past fiscal year. A growing group of 664 members, The Century Club provides one of the solid cornerstones on which Dana's annual fund is built. Century Club members are also future members of The President's Society and The Tower Circle.

Mr. and Mrs. William Adams
Mr. and Mrs. Henry Ahrendt
Mr. and Mrs. Paul Ahrendt
Mr. E. Lee Ahrens
Miss Ramona Alwill
Mr. and Mrs. Fred Aman
Mr. and Mrs. W. R. Amole, Jr.
Rev. Arnold Andersen
Miss Doris Andersen
Mr. and Mrs. Edward Andersen
Rev. and Mrs. Edward Andersen
Mr. and Mrs. Harold Andersen
Dr. James L. Andersen
Mr. and Mrs. Keith Andersen
Mrs. Magda Andersen
Mrs. Patricia Andersen
Mr. Sigfred Andersen
Mr. and Mrs. Ernest Anderson
Mrs. Helen Anderson
Mr. Herbert Anderson
Mr. and Mrs. Kenneth Anderson
Mr. and Mrs. Leroy Anderson
Mrs. Martin Anderson
Mrs. Olga Anderson
Mr. Ronald A. Anderson
Mr. and Mrs. Wayne Anderson
Mr. and Mrs. William Anderson
Mr. and Mrs. Wayne Anthony
Mr. and Mrs. E. Wayne Armer
Mr. and Mrs. D. J. Aune
Mrs. Elmer Aus
Mr. Carl Backes
Mr. and Mrs. Louis Baete
Dr. and Mrs. K. C. Bagby
Mr. and Mrs. Gary Baker
Mr. Merle Gene Bamesberger
Mr. Norman Bansen
Mr. and Mrs. P. H. Bansen
Mr. Craig Barber
Mr. and Mrs. David Barsness
Mrs. Ruth Bauer
Mr. and Mrs. James Beck
Mr. and Mrs. Marcus Beck, Sr.
Mrs. Nathaniel Beck
Rev. and Mrs. Walter Behrens
Mr. James Benbow
Mr. and Mrs. Rolland Bentjen
Mr. and Mrs. Herman Berg
Dr. and Mrs. Bruce Bergquist
Mr. Steven Bernson
Mr. and Mrs. N. O. Berthelsen
Rev. and Mrs. Robert Berthelsen
Dr. and Mrs. Signe Betsinger
Mr. and Mrs. J. Fred Bienz
Dr. and Mrs. John Bienz
Dr. and Mrs. Gary Biesecker
Mr. Virgil Bollesen
Dr. and Mrs. Paul Bondo
Mr. and Mrs. Lee Bonnell
Mr. Ray Bowmaster
Mr. and Mrs. William Bracker
Mr. and Mrs. Harry Brahams
Dr. and Mrs. Alan Brandes
Mr. and Mrs. Charles Brehm
Mrs. Mary Breithorst
Mr. Alan Brodbeck
Mr. and Mrs. George Brodbeck, Jr.
Mr. and Mrs. Charles Broderson
Mrs. Elaine Brostrom
Mr. and Mrs. Ralph Brown
Mr. and Mrs. Roy Brown
Mrs. Dalé Bruning
Mr. and Mrs. George Buck
Mrs. Edna Buechler
Dr. and Mrs. William Buhrow
Mr. and Mrs. Clarence Busse
Mr. and Mrs. Dan Busse
Mrs. L. Bussey
Mr. and Mrs. Dan Calabro
Mrs. Russell Cantine
Mr. and Mrs. Robert Capel
Rev. and Mrs. Stanley Carlsen
Mr. Louis Carpenter
Mrs. Deanna Carr
Mr. and Mrs. John Cederberg
Mrs. James Chapin
Mr. and Mrs. Dick Charleston
Dr. and Mrs. Dale Christensen
Rev. and Mrs. Eric Christensen
Mr. and Mrs. Ervin Christensen
Mr. and Mrs. Herbert Christensen
Mr. and Mrs. John Christensen
Mr. and Mrs. John Christensen
Miss Marion Christensen
Mr. and Mrs. Morris Christensen
Mr. and Mrs. Roy Christensen
Mr. and Mrs. Alvin Christiansen
Mr. and Mrs. James Clemon
Ms. Vivian Cline
Dr. and Mrs. James Coffey
Mrs. Max Coffey
Mr. Joseph Colby
Rev. Howard Cole
Mr. August Collis
Mr. Don Conrad
Mrs. F. Findley Cook, Jr.
Dr. and Mrs. Herman Corn
Mr. and Mrs. Richard Crake
Mr. and Mrs. Kenneth Cross
Ms. Gladys Dahms
Mr. and Mrs. Thomas Damrow
Mrs. Harold Danielsen
Rev. and Mrs. Gary Danielson
Mrs. Esta Deets
Mr. John L. DeVasure
Mr. and Mrs. Lowell DeVasure
Mr. and Mrs. Darrell Dibben
Mr. and Mrs. Ray Dickson
Mr. Henry Diel
Mr. and Mrs. Arthur Dolleck
Mr. Lawrence Dolleck
Mr. and Mrs. Fred Donaldson
Dr. and Mrs. Donald Dreyer
Mr. and Mrs. Robert Duden
Mr. Robert Duffy
Mrs. Lillian Dyhrberg
Mr. and Mrs. Lloyd Dykman
Cpt. and Mrs. Robert Ehmen
Mr. and Mrs. John Elling
Dr. and Mrs. Jack Emmons
Mr. and Mrs. Anthony Engelbrecht
Mr. and Mrs. Clifford Enger
Rev. and Mrs. B. J. Engskow
Mr. and Mrs. Eldon Erbes
Mr. and Mrs. Keith Erickson
Mr. and Mrs. Ralph Evans
Mr. and Mrs. Donald Fahrenkrug
Mr. and Mrs. David Falksen
Miss Solveig Farseth
Mr. and Mrs. Jack Faudel
Mr. and Mrs. Lawayne Feit
Rev. William Fink
Mr. and Mrs. Paul Finnman
Mrs. P. F. Fisher
Mr. and Mrs. W. Eugene Flynn
Ms. Mary Jane Ford
Mr. Arne Garde
Mrs. Chas. Gaydo
Mr. and Mrs. Clinton Gehring
Mr. and Mrs. F. J. Genz
Mr. and Mrs. Walter George
Mr. and Mrs. Brent Gilbert
Mrs. Suzanne Gilbert
Mr. and Mrs. Arthur Gilmore
Dr. Peter Glaser
Mr. and Mrs. Kenneth Glover
Dr. and Mrs. Erwin Goldenstein
Mr. and Mrs. Alan Gordon
Mr. and Mrs. Fred Gordon
Dr. and Mrs. Garry Grabill
Dr. and Mrs. Leslie Grace
Mrs. Ida Graham
Ms. Carolyn Granrud
Mr. and Mrs. John Grindberg
Mr. and Mrs. Robert Gronstal
Rev. Arthur Grorud
Mr. and Mrs. George Grube
Mr. and Mrs. Ernest Gulrud
Mr. and Mrs. E. K. Guthrie
Miss Brenda Haack
Mr. and Mrs. Melvin Haack
Miss Shirley Haahr
Mr. and Mrs. Raymond Hagberg
Mr. and Mrs. Vernald Hagebak
Mrs. John Halley
Mrs. Nena Hankins
Mrs. Mercedes Hanlon
Mrs. Alpha Hansen
Miss Augusta Hansen
Mr. and Mrs. Charles Hansen
Mr. and Mrs. Don Hansen
Dr. and Mrs. Edward Hansen
Mrs. Ella Hansen
Miss Florence Hansen
Mr. Gerald Hansen
Mr. and Mrs. Hilmer Hansen
Mr. James Hansen
Mr. and Mrs. James Hansen
Mr. and Mrs. Keith Hansen
Miss Margaret Hansen
Mr. and Mrs. Marius Hansen
Mr. and Mrs. Mel Hansen
Dr. and Mrs. Neil M. Hansen
Mr. and Mrs. Paul V. Hansen, Jr.
Dr. and Mrs. R. L. Hansen
Mr. and Mrs. Ray Hansen
Mr. Robert D. Hansen
Rev. and Mrs. Robert Hansen
Rev. and Mrs. Stanley T. Hansen
Mr. Stuart Hansen
Rev. and Mrs. Thorvald Hansen
Mr. Virgil Hansen
Mr. Winston Hansen
Mr. and Mrs. Donald Hanson
Mr. and Mrs. Garland Hanson
Dr. and Mrs. Roger Hanson
Dr. and Mrs. Verlan Hanson
Rev. and Mrs. William Hanson
Mr. and Mrs. Grenfall Harms
Mr. and Mrs. Robert Harrison
Ms. Elsie Hasti
Mr. and Mrs. John Haun
Mr. Leslie Hayes
Mr. and Mrs. Lonnie Hayne
Mrs. Lillian Healey
Mrs. Betty Heide
Mr. and Mrs. Arnold Heistand
Mr. and Mrs. Waldmar Hempler
Mr. Ralph Hendricksen
Mr. and Mrs. Frank Hengeveld
Mrs. William Henning, Jr.
Mrs. Anna Henningsen
Dr. and Mrs. John T. Henningsen
Mrs. Clarence Henrickson
Mr. and Mrs. H. G. Herber
Rev. and Mrs. David Herman
Mr. and Mrs. Arvin Hernes
Mr. and Mrs. Burnett Hernes
Mr. and Mrs. Bill Himmler
Dr. Carl Hjortsvang
Mrs. Emma Hobelman
Mr. and Mrs. Harvey Hodges
Mr. and Mrs. Donald Hogzett
Mr. and Mrs. Bruce Holmquist
Mr. and Mrs. Victor Hoogensen
Miss L. Kay Horton
Dr. and Mrs. C. D. Howard
Mr. and Mrs. Roger Howland
Judge and Mrs. Walter G. Huber
Dr. and Mrs. Hugh Hughes
Mr. and Mrs. Charles Hull
Mr. Henry Hummel
Mrs. Robert Hungerford
Mr. and Mrs. Harold Hurd
Mrs. Lois Husely
Dr. and Mrs. Delvin Hutton
Mr. and Mrs. Iver Iversen
Dr. and Mrs. James Iversen
Mr. and Mrs. Glen Jackson
Mr. and Mrs. Robert Jacobsen
Mr. Eugene Jacoby
Mr. and Mrs. Aage Jensen
Rev. and Mrs. Anker Jensen
Dr. Arnold W. Jensen
Mr. and Mrs. Darrel Jensen
Mr. and Mrs. Donald Jensen
Mr. and Mrs. E. B. Jensen
Mr. and Mrs. Ener Jensen
Mr. and Mrs. Erik Jensen
Mrs. Esther Jensen
Mr. and Mrs. Howard Jensen
Mr. and Mrs. Jack Jensen
Miss Janis Jensen
Rev. and Mrs. John Jensen
Mr. and Mrs. Norman Jensen
Mr. and Mrs. Olaf Jensen
Mr. and Mrs. Richard Jensen
Rev. and Mrs. Russell Jensen
Mrs. Thekla Jensen
Mr. and Mrs. V. O. Jensen
Mr. and Mrs. Herbert Jeppesen
Mr. and Mrs. Paul Jeppesen
Dr. and Mrs. Arthur Jersild
Mr. Gerhardt Jersild
Mr. Al Jessen
Mr. John Jessen
Mr. and Mrs. Nis Jessen
Mrs. Boy Jessen
Mr. and Mrs. Karl Jessen
Mr. and Mrs. Karl Jetter
Mr. Charles Johansen
Mr. and Mrs. Ivan Johansen
Miss Esther Johnsen
Mr. Harlan Johnsen
Rev. and Mrs. Paul Johnsen
Ms. Carol Johnson
Mr. and Mrs. Charles Johnson
Rev. and Mrs. Oscar Johnson
Mr. Paul Johnson
Mr. and Mrs. Ronald C. Johnson
Mrs. Carol Jones
Mr. and Mrs. Michael Jones
Mr. and Mrs. Don S. Jorgensen
Mr. and Mrs. Edwin Jorgensen
Mr. and Mrs. Floyd Jorgensen
Mrs. Harold Jorgensen
Mr. and Mrs. Henry Jorgensen
Mr. and Mrs. Herbert Jorgensen
Mr. and Mrs. James Jorgensen
Ms. Myldred Jorgensen
Mr. Palmer Jorgensen
Mr. and Mrs. Richard Jorgensen
Rev. and Mrs. Sidney Jorgensen
Mr. and Mrs. Stanley Jorgensen
Dr. and Mrs. Ivan Karpisek
Rev. and Mrs. Luther Keay
Mrs. Lillian Kelly
Dr. and Mrs. Harvey King
Rev. and Mrs. William King
Dr. and Mrs. Bernard Kionka
Dr. Leo Kirchoff
Rev. and Mrs. Walter Kirkgaard
Dr. and Mrs. R. T. Kirkwood
Mr. and Mrs. Lee Kittelson
Mr. and Mrs. Erhard Klein
Mrs. Isabel Klopp
Mr. and Mrs. Luther Kloth
Mr. and Mrs. Roger Knehaus
Mr. and Mrs. Gerald Kobs
Mr. and Mrs. Kenneth Koester
Miss Gail Koldenborg
Mr. and Mrs. Fred Kolterman
Mrs. Virginia Korshoj

Ms. Mary Lois Korsmeyer
Mr. and Mrs. Ben Krantz
Mr. and Mrs. Bernard Kros
Mrs. Clara Kruse
Mr. Richard Kuhr
Mr. and Mrs. Dewey Kuiken
Mr. and Mrs. Tim Kuiken
Mrs. Alice Laaker
Mr. and Mrs. Thomas Langenfeld
Mr. and Mrs. Dale Larsen
Rev. and Mrs. David Larsen
Rev. and Mrs. Ernest Larsen
Mr. and Mrs. Henry Larsen
Mr. and Mrs. Herbert Larsen
Rev. and Mrs. Homer Larsen
Mr. and Mrs. Leroy Larsen
Mr. and Mrs. Phil Larsen
Mr. and Mrs. Robert Larsen
Rev. and Mrs. Silas Larsen
Mr. Sven Larsen
Mr. and Mrs. Elmer Larson
Mr. and Mrs. Frederick Larson
Miss Jean Larson
Mr. and Mrs. Victor Lauritsen
Mr. and Mrs. Earl Laursen
Rev. and Mrs. Harold Laursen
Dr. and Mrs. Paul Laursen
Mrs. Orville Lawson
Rev. and Mrs. Wm. O. Lawson
Mr. and Mrs. Dale Lemon
Mrs. Clarence Leslie
Mr. and Mrs. J. R. Lincoln
Mr. Delos Lind
Mr. and Mrs. Eugene Lindblad
Maj. and Mrs. Roger Lippincott
Mr. Oliver Loken
Mr. and Mrs. J. B. Long
Rev. Lloyd Lorenson
Mrs. Lorraine Loucks
Miss Dorothy Lund
Miss Una Lund
Mr. and Mrs. Walter Lyche
Dr. and Mrs. Charles Maahs
Mr. and Mrs. Frank Madsen
Mr. and Mrs. L. K. Madsen
Mr. Lester Madsen
Mr. and Mrs. Lowell Madsen
Mrs. Margaret Madsen
Mrs. Ruth Madsen
Mr. John D. Magnuson
Rev. and Mrs. O. Victor Magnussen
Mrs. Betty Marsh
Mr. and Mrs. George Martens
Mr. and Mrs. Steve Martens
Mr. Harold Marthedal
Ms. Arwilla Martin
Mr. and Mrs. Ray Martin
Mr. and Mrs. David Massingill
Mr. and Mrs. Dale Matson
Mr. Loren Matthias
Dr. and Mrs. Bernard Matthias
Mr. and Mrs. Fred Matthias
Mr. Leonard Maunu
Miss Joyce Maurer
Mr. and Mrs. Max Mayfield
Ms. Carolyn McClenathan
Mr. Glen McDaniel
Mr. and Mrs. James McKay
Dr. Gary McLeod
Mr. and Mrs. Robert McNally
Mr. and Mrs. Fred Meeker
Mr. Paul Mengers
Ms. Catherine Menssen
Rev. and Mrs. Clifford Michelsen
Mr. and Mrs. Robert Milek
Miss Aleine Miller
Mr. and Mrs. Darrell Miller
Mr. and Mrs. Daryl Miller
Ms. Margaret Miller
Mr. Michael Miller
Mr. Clinton Mogen
Dr. and Mrs. William Mohlenbrock
Mr. and Mrs. Robert Monke
Mr. and Mrs. Robert Morgans
Mrs. Laura Morgensen

Ms. Bernice Morris
Rev. and Mrs. Ray Mortensen
Mrs. Else Morton
Mr. and Mrs. Alfred Mosher
Mr. and Mrs. Kenneth P. Muehl
Mr. and Mrs. Charles Neal
*Miss Edith Neale
Mr. and Mrs. Dan Nelson
Mrs. Erland Nelson
Mr. and Mrs. Harold Nelson
Mrs. Helen Nelson
Mr. Herman Nelson
Mrs. Naida Nelson
Ms. Olga Nelson
Mr. and Mrs. Ray Nelson
Rev. and Mrs. Robert Nelson
Mr. and Mrs. Roger Nelson
Mr. and Mrs. Alton Neve
Dr. Kaj A. Neve
Mr. and Mrs. Adolph Nielsen
Mr. and Mrs. Andrew Nielsen
Mrs. Borge Nielsen
Mr. and Mrs. Elliott Nielsen
Mr. and Mrs. Emerald Nielsen
Mr. and Mrs. Hans Nielsen
Mr. and Mrs. Hans T. Nielsen
Mr. and Mrs. Homer Nielsen
Mr. and Mrs. John M. Nielsen
Dr. and Mrs. John W. Nielsen
Rev. Levern Nielsen
Miss Luella Nielsen
Mr. and Mrs. Luther Nielsen
Rev. and Mrs. Clayton Niefeld
Mr. and Mrs. Victor Nilsen
Mr. and Mrs. Cleon Nixon
Mr. and Mrs. Milan Nore
Mr. and Mrs. Allan Nyegaard
Rev. and Mrs. Gerhard Nygaard
Mr. Gunner Nyholm
Mr. and Mrs. Donald Ofte
Mr. and Mrs. Duane Ohlsen
Mr. and Mrs. Harry Ohrt
Mrs. Lamont Okey
Mr. and Mrs. Albert Olsen
Mr. and Mrs. James Olsen
Rev. and Mrs. James Olsen
Mrs. Johanne Olsen
Mr. and Mrs. Allan Olson
Mr. and Mrs. Roger Olson
Mr. Phil Pagel
Mr. Clifford Paulsen
Mr. and Mrs. S. Harold Paulsen
Mr. and Mrs. Russell Pearson
Dr. and Mrs. Arthur M. Pedersen
Rev. and Mrs. Emil Pedersen
Mr. and Mrs. Enok Pedersen
Mrs. Ellen Pederson
Mr. Art Peters
Mr. and Mrs. James Peters
Rev. and Mrs. A. S. Petersen
Rev. and Mrs. Alvin Petersen
Mr. and Mrs. Charles Petersen
Mr. Dwight Petersen
Mr. Floyd Petersen
Mr. and Mrs. Howard Petersen
Rev. and Mrs. Immanuel Petersen
Mr. and Mrs. Jerry Petersen
Mr. and Mrs. Marius Petersen
Dr. and Mrs. Millard Petersen
Rev. and Mrs. Paul Petersen
Dr. and Mrs. Peter Petersen
Mr. Albert Peterson
Mr. and Mrs. Chester Peterson
Mr. David E. Peterson
Mr. Seymour Petrovsky
Miss Helen Pfeiffer
Mr. and Mrs. Eugene Pibal
Rev. and Mrs. Jimmie Pierce
Mr. and Mrs. Carl Pilegard
Mr. and Mrs. Keith Pilgren
Mr. and Mrs. Robert Plugge
Miss Lucy Anne Poucher
Mr. and Mrs. Joe Prazak
Mr. Dennis Preston
Dr. and Mrs. David Preus

Mr. and Mrs. James Prouty
Mr. and Mrs. John Prouty
Mr. and Mrs. Gerald Quirk
Mr. and Mrs. Harold Quirk
Dr. and Mrs. Arvin Quist
Rev. and Mrs. Robert Rademacher
Mr. and Mrs. R. Rasey
Mrs. Lillie Rasmussen
Miss Lois Rasmussen
Mr. Paul Rasmussen
Mr. and Mrs. Victor Rasmussen
Mr. and Mrs. Warren Rasmussen
Ms. Wilma Rasmussen
Dr. and Mrs. Hans Rath
Mr. and Mrs. Paul Rathje
Mr. and Mrs. Harley Rector
Miss Lucile Rehder
Mr. and Mrs. Frank Reisinger
Mr. and Mrs. Marlow Remmers
Mr. and Mrs. Frank Reyzlik
Mr. and Mrs. J. Hilton Rhoades
Mr. and Mrs. Brian Rich
Dr. and Mrs. Walter Rodenburg
Miss Celia Rohwer
Mr. and Mrs. George Rohwer
Mr. and Mrs. Phil Rolland
Mr. and Mrs. Svend Ronlov
Ms. Marlene Ross
Rev. and Mrs. Alvin Rueter
Mr. Garland Runyon
Mr. and Mrs. Kelly Ryan
Mr. and Mrs. Raymond Ryder
Rev. and Mrs. Ray Saathoff
Mr. and Mrs. Carl Saldin
Mr. and Mrs. Herman Sandberg
Rev. Arno Schelper
Mrs. Joan Schildt
Mr. and Mrs. Harald Schjodt
Mrs. Claire Schloenvogt
Mr. and Mrs. Francis Schmehl
Rev. and Mrs. Walter Schmidt
Mrs. Iris Schole
Mr. and Mrs. R. W. Scholt
Mrs. Agnita Schreiber
Mrs. Mildred Schroeder
Mr. D. H. Schuenemann
Mr. George Schuler
Mr. and Mrs. Erling Schultz
Mr. and Mrs. Charles Seefus
Mr. and Mrs. William Shaff
Mr. and Mrs. Gary Shelstad
Mr. and Mrs. Ned Shipley
Mr. and Mrs. John Shotwell
Mr. and Mrs. Alfred Sick
Mr. John Sides
Mr. and Mrs. A. H. Siersbeck
Rev. Lawrence Siersbeck
Mr. and Mrs. Ronald Siersbeck
Dr. H. Neal Sievers
Dr. and Mrs. Rudy Sievers
Dr. and Mrs. Jim Simmons
Congressman and Mrs. Paul Simon
Mr. A. V. Simonsen
Mr. and Mrs. S. A. Skaar
Dr. N. J. Skalabrin
Mr. and Mrs. Myron Skeen
Mr. Gale Skillstad
Mr. and Mrs. Leo Skoubo
Mrs. Jeanette Slusher
Mr. and Mrs. Elmer Smith
Mr. and Mrs. Peter Smith
Mr. and Mrs. H. L. Snow
Mr. and Mrs. A. J. Snowbeck
Mr. Harry Snyder
Mr. and Mrs. Arnold Soe
Mrs. Ethel Sondergard
Miss Sandra Sonderup
Rev. and Mrs. Arthur Sorensen
Mr. and Mrs. Edward Sorensen
Dr. and Mrs. Ewald Sorensen
Dr. and Mrs. Harold Sorensen
Mr. Harvey Sorensen
Mr. and Mrs. Jimmy Sorensen
Mrs. Joan Sorensen
Mr. and Mrs. Severin Sorensen

Mr. and Mrs. William Sorenson
Mrs. Elsie Spilker
Rev. and Mrs. Andrew Staby
Mr. and Mrs. Paul Staby
Mr. and Mrs. George Stahnke
Mrs. Gladys Stavely
Mr. and Mrs. Eldon Steffens
Mr. and Mrs. Robert Stegmaier
Dr. and Mrs. Harold Stokes
Dr. and Mrs. Larrie Stone
Mr. and Mrs. Paul Strecker
Mr. and Mrs. Warren Stricker
Mrs. Laura Sumpter
Mr. Alan Suttan
Judge and Mrs. Leonard V. B. Sutton
Mr. and Mrs. Ingvard Svarre
Rev. and Mrs. Edwin Svendsen
Mrs. Marion Svendsen
Mrs. Dagny Swanson
Mr. Donald Swanson
Mr. and Mrs. Juri Taht
Rev. Irving Tange
Rev. and Mrs. Reynold Tange
Dr. Carmac Taylor, Jr.
Mr. and Mrs. Thomas Teel
Rev. J. Harold Tennesen
Mr. and Mrs. Lewis Tesdahl
Mr. and Mrs. Eugene Thomas
Mr. and Mrs. E. T. Thompson
Mr. Ernest Thompson
Mr. and Mrs. Howard Thompson
Mr. and Mrs. Armand Thomsen
Rev. and Mrs. F. W. Thomsen
Rev. and Mrs. Mark Thomsen
Rev. and Mrs. Henry Thorberg
Mr. and Mrs. Lowell Tjon
Mr. and Mrs. Steven Triplett
Mr. and Mrs. Patrick Tripp
Mr. and Mrs. Bill Trisdale
Mr. and Mrs. Paul Ulland
Rev. and Mrs. Peter Vammen
Mr. and Mrs. Richard Vierk
Mr. and Mrs. Thomas Vierk
Mr. and Mrs. Arndt Vig
Mr. Marius Vig
Mrs. Peter Vig
Mr. and Mrs. G. Richard Vinton
Mr. and Mrs. Gordon Vinton
Mr. Ralph Vinton*
Mr. and Mrs. Robert Vinton
Mr. and Mrs. Howard Vogel
Mr. and Mrs. John T. Wallman
Mr. Larry Wallman
Mr. and Mrs. Thees Wallman
Mr. Wayne Wallman
Rev. and Mrs. Elton Walth
Mr. and Mrs. Leland Walz
Mr. and Mrs. Richard Wardell
Mr. and Mrs. Joseph Warman
Mr. Gary Warner
Mr. and Mrs. Thomas Weatherly
Mr. and Mrs. Kenneth Weaver
Mr. and Mrs. Frederick Weber
Dr. and Mrs. Ray Weckmuller
Mr.* and Mrs. Lyndon Wederquist
Mr. and Mrs. Warren Whitaker
Dr. and Mrs. Roger White
Mr. and Mrs. John Whitesell
Mrs. Florence Wilke
Mr. and Mrs. Tom Williams
Mrs. H. Willmert
Mr. and Mrs. Gary Winter
Mr. and Mrs. Louis Winter
Mr. Alan Winters
Mr. and Mrs. Judson Wolf
Mr. and Mrs. Jess Wright
Mr. Lyman Wrightson
Mr. and Mrs. Joseph Yamada
Mr. and Mrs. William Yates
Miss Patricia Zabel
Mr. Darrell Zimmerman
Mr. R. D. Zimmerman, Jr.
Dr. and Mrs. William Zimmerman
*Deceased

Alumni Contributors

One of the strongest sources of support for Dana College is her alumni. During the past two years, alumni gifts have more than doubled and the number of individual alumni contributors has grown to more than 2,000.

It has been our intention here to list all alumni who contributed during the past fiscal year. Although great care has been taken in preparing this list, there may be errors or omissions. If so, we apologize. And we ask that you call any mistakes to our attention.

CLASS OF 1914

Number in Class 6
Donors 3 Total \$102.50 50%

Nels Hansen
Olga West Hansen
C. A. Vammen

CLASS OF 1915

Number in Class 15
Donors 3 Total \$72.50 20%

H. Lyle Guyer
George Landrock
Tomina Neve Vammen

CLASS OF 1916

Number in Class 5
Donors 2 Total \$25.00 40%

Phoebe Hjortsvang Gancin

CLASS OF 1917

Number in Class 7
Donors 3 Total \$130.00 43%

Nathaniel Beck
Elmer Jensen
Anna Andersen Thomsen

CLASS OF 1918

Number in Class 7
Donors 3 Total \$70.00 43%

Ruth C. Andersen
Alfred Hansen
Albert Petersen

CLASS OF 1919

Number in Class 8
Donors 3 Total \$55.00 37.5%

Ether Magnussen
Rena Jensen Nielsen
Ansel Toft

CLASS OF 1920

Number in Class 7
Donors 3 Total \$5,150 43%

Niels M. Hansen
Aaron Jensen
Niels Nielsen

CLASS OF 1921

Number in Class 6
Donors 2 Total \$100.00 33%

Adolph Jersild
Kaj Larsen

CLASS OF 1922

Number in Class 11
Donors 7 Total \$361.50 64%

Marcus Beck, Sr.
Esther Bonnesen Burns
Mary Hansen Justesen

Alma Madsen Petersen
Lawrence Siersbeck
Ruby Nelson Townsend

CLASS OF 1923

Number in Class 9
Donors 6 Total \$475.00 67%

Agnes Lund Beck
Ruth Fogdahl Christensen
W. H. Christensen

CLASS OF 1924

Number in Class 11
Donors 8 Total \$353.00 73%

Edward Andersen, Sr.
Ingrid Beck Bondo
Emma Bondo Christensen

Agnes Bing Greenwood
Einer Jensen
Agnes Bonnesen Kelgor

CLASS OF 1925

Number in Class 16
Donors 9 Total \$605.50 56%

Elmer Bondo
Jens Caspersen
Agnes Beck Jensen

Emil Jensen
Marie Peterson Kaldahl
Ray Lund

CLASS OF 1926

Number in Class 18
Donors 12 Total \$634.00 67%

Alice Kringel Adams
Leora Grill Broemser
Anna Christensen

Magnus Christensen
Elliott Hanson
Lillian Lund Healey

CLASS OF 1927

Number in Class 16
Donors 9 Total \$1,187.00 56%

Myrtle Hurdum Chapin
Vera Sorensen Head
Esra Jensen

CLASS OF 1928

Number in Class 13
Donors 12 Total \$543.00 92%

Miriam Rosenblatt Bondo
Ruth Peterson Bradford
Elizabeth Christensen Carlsen

CLASS OF 1929

Number in Class 24
Donors 11 Total \$795.00 46%

Olga Simonsen Anderson
Thekla Jensen
Gerhardt Jersild

Mamie Jensen Larson
Bessie Robeson Morse
Rosa Kofoid Nelson
Rose Hansen Nielsen

CLASS OF 1930

Number in Class 20
Donors 13 Total \$1,927.50 65%

Arnold Andersen
Dagmar Olson Goll
Marinus Hagedorn

Mr. Edward Hansen
James Hansen
Esther Frost Magnussen

CLASS OF 1931

Number in Class 32
Donors 16 Total \$1,312.00 50%

Alpha Askov
Milton Christensen
Mable Ohlsen Coultry

K. Gilbertson
Fred Kolterman
Silas Larsen

Martha Juhl Leslie
Mildred Johnson Morton
Frances Knoopman Murdoch

CLASS OF 1932

Number in Class 13
Donors 12 Total \$543.00 92%

Elizabeth Christensen Carlsen
Victor and Dagmar Jensen Kohl
Ray E. Mortensen

CLASS OF 1933

Number in Class 23
Donors 12 Total \$717.50 52%

Anna Andersen
Carl Hjortsvang
Christian Justesen

CLASS OF 1934

Number in Class 38
Donors 16 Total \$1,105.00 42%

Alvin Carlsen
Magnus and Esther Fogdahl Cregg
David Gustafson

CLASS OF 1935

Number in Class 27
Donors 16 Total \$1,371.00 59%

Edward and Ruth Petersen Anderson
Viggo Carlsen
John Christensen

Bernhard and Ninna
Schultz Engskov
Bertha Holl Hall

Vita Hansen Jensen
Agnes Petersen Johansen
Chester Larsen

CLASS OF 1936

Number in Class 36
Donors 22 Total \$5,031.00 61%

Marian Peterson Anderson
Verner Carlsen
Roy Christensen

Barbara Hansen
Herbert Harboe
Harold Hurd

Anker M. Jensen
Bernice Hansen Kaldahl
Rudolph Knudsen

CLASS OF 1937

Number in Class 36
Donors 18 Total \$1,390.00 50%

Clarence Aus
Edith Pedersen Bertelsen
Evelyn Sorensen Bogan

Gertrude Kubie Carlberg
Viola Hansen Carlsen
Mildred Olsen Cheney

Martha Frost
Esther Magnussen Graham
Stanley Jorgensen

CLASS OF 1938

Number in Class 44
Donors 20 Total \$2,297.50 45%

John Andressen
Earl J. Fries
Ernestine McCain Hatcher

Ivan Johansen
Dagmar Nielsen Knudsen
Byron Langenfeld

CLASS OF 1939

Number in Class 43
Donors 19 Total \$1,088.21 44%

Mildred Hansen Altekruise
Lila Jeffers Ashley
Harriett Wilson Campbell

CLASS OF 1940

Number in Class 61
Donors 29 Total \$2,362.50 48%

Florence Young Anderson
Richard Boe
Frances Kronberg Carter

CLASS OF 1941

Number in Class 71
Donors 23 Total \$2,497.50 32%

Vera Mae Johansen Barbeau
Marcus R. Beck
June Madsen Bryngelson

CLASS OF 1942

Number in Class 38
Donors 6 Total \$287.50 16%

Ruth Keay Eidsvoog
Ruth Petersen Falksen
Persis Pedersen Hansen

Halley Brodersen
Frances Mortenson Danielsen
Ida Hansen Graham
Alfred R. Jensen

Alma Johnson Jensen
Robert Larsen
Aleine Miller
Emil Pedersen

CLASS OF 1943

Number in Class 43
Donors 19 Total \$1,088.21 44%

Mildred Hansen Altekruise
Lila Jeffers Ashley
Harriett Wilson Campbell

CLASS OF 1944

Number in Class 46
Donors 24 Total \$3,492.50 52%

Margaret Johansen Beck
Robert Christensen
Muriel Ditlevson Enos

Clifford Hanson
William J. Hanson
Gwendolyn Hopkins Hart

Charles Heide
Bernice Benson Iversen
Ruth Anderson Iversen

Robert and Virginia Pedersen Jensen
Oscar Johnson
Ole I. Larsen

Mary Hansen Morehouse
Johanne Jessen Olsen
Roma Sandvold Phillips

Robert Plugge
Eleanor Jensen Rathje
Edward H. Sorensen

Lois Carlsen Sorensen
Myron Sorensen
Evelyn Winther Svendsen

Arthur and Marie Nielsen Welch
Margaret Christensen Cantine
Shirley Bondo Hansen

Edward Harboe
Othilia Nelson Hauge
D. D. Hogzett

Genevieve Skau Jensen
Ramona Lackey Klingbail
David Kolb

Helen Pedersen McNichols
Edna Bondo Nance
Arnold T. Nielsen

Luella Nielsen
Grace Hansen Pearson
Mildred Peck Robeson

Alvin Rueter
Lorraine Peterson Schaeffer
Harold E. Sorensen

Irene Jensen Starrett
Nelson and Phyllis Olson Boe
Gladys Jespersen Dirksen

Ethel Hendricksen Freeburg
Homer P. Hansen
Maynard Hansen

Thorvald A. Hansen
Rueben Iversen
Herbert C. Jeppesen

Luther Keay
Ezra Larsen
Johannes Lindholm

Alton Neve
Leta Nielsen Neve
Kathleen Cornell Olson

Francis Robinson Rahlf's
Vernon Robeson
Maralee Miller Shadle

Lydia Nielsen Stave
Dorothy Kvol's Thomas
Margaret Christensen Cantine

Shirley Bondo Hansen
Edward Harboe
Othilia Nelson Hauge

D. D. Hogzett
Genevieve Skau Jensen
Ramona Lackey Klingbail

David Kolb
Helen Pedersen McNichols
Edna Bondo Nance

Arnold T. Nielsen
Luella Nielsen
Grace Hansen Pearson

Mildred Peck Robeson
Alvin Rueter
Lorraine Peterson Schaeffer

Harold E. Sorensen
Irene Jensen Starrett
Nelson and Phyllis Olson Boe

Gladys Jespersen Dirksen
Ethel Hendricksen Freeburg
Homer P. Hansen

Maynard Hansen
Thorvald A. Hansen
Rueben Iversen

Herbert C. Jeppesen
Luther Keay
Ezra Larsen

Johannes Lindholm
Alton Neve
Leta Nielsen Neve

Kathleen Cornell Olson
Francis Robinson Rahlf's
Vernon Robeson

Maralee Miller Shadle
Lydia Nielsen Stave
Dorothy Kvol's Thomas

Herbert Larsen
Stanley Larsen
Earl Laursen
Heleen Nielsen

Jules Nielsen
Raymond M. Olsen
Robert Paap
George Pallesen

Myrtle Lee Rasmussen
David R. Simonsen
Harry Sorensen
Chester Sutton

Marion Hanson Svendsen
Mildred Hansen Altekruise
Lila Jeffers Ashley

Harriett Wilson Campbell
Mildred Petersen Carlsen
Eric and Elaine

Jespersen Christensen
Herluf and Vashiti
Magnussen Christensen

Ruth Christensen
Ethel Jensen Glarborg
Edward A. Hansen

Rubena Jorgensen Hansen
Esther Jensen Jenkins
Levi Jensen

Adolph Kloth
Elmer M. Rasmussen
Mildred Clemens Schroeder

Martha Rasmussen Staby
Thelma Andressen Tellefsen
Marian Peterson Anderson

Verner Carlsen
Roy Christensen
Barbara Hansen

Herbert Harboe
Harold Hurd
Anker M. Jensen

Bernice Hansen Kaldahl
Rudolph Knudsen
Mary Jensen Langenfeld

Edward and Inga Schultz Larsen
Ellen Houwred Larsen
Luther Lincoln

Dorothy Brann Malmin
Gladys Hansen Nichols
Dora Paulsen Nelson

John Sides
Andrew Staby
Irving Tange

Lorentz Thomgren
Norma Lund Van Steenhoven
Clarence Aus

Edith Pedersen Bertelsen
Evelyn Sorensen Bogan
Gertrude Kubie Carlberg

Viola Hansen Carlsen
Mildred Olsen Cheney
Martha Frost

Esther Magnussen Graham
Stanley Jorgensen
Helen Pedersen Lincoln

Arthur Norgaard
Irene Andersen Olsen
Ruth Vig Olsen

Katherine Neldeberg Pearson
John Poucher
Phyllis Rogert

Agnita Christensen Schreiber
Shirley Larson Spicknall
Clarence Aus

Edith Pedersen Bertelsen
Evelyn Sorensen Bogan
Gertrude Kubie Carlberg

Viola Hansen Carlsen
Mildred Olsen Cheney
Martha Frost

Esther Magnussen Graham
Stanley Jorgensen
Helen Pedersen Lincoln

Arthur Norgaard
Irene Andersen Olsen
Ruth Vig Olsen

Katherine Neldeberg Pearson
John Poucher
Phyllis Rogert

Agnita Christensen Schreiber
Shirley Larson Spicknall
Clarence Aus

Edith Pedersen Bertelsen
Evelyn Sorensen Bogan
Gertrude Kubie Carlberg

Viola Hansen Carlsen
Mildred Olsen Cheney
Martha Frost

Esther Magnussen Graham
Stanley Jorgensen
Helen Pedersen Lincoln

Arthur Norgaard
Irene Andersen Olsen
Ruth Vig Olsen

Katherine Neldeberg Pearson
John Poucher
Phyllis Rogert

Agnita Christensen Schreiber
Shirley Larson Spicknall
Clarence Aus

Edith Pedersen Bertelsen
Evelyn Sorensen Bogan
Gertrude Kubie Carlberg

Viola Hansen Carlsen
Mildred Olsen Cheney
Martha Frost

Esther Magnussen Graham
Stanley Jorgensen
Helen Pedersen Lincoln

Herbert Larsen
Stanley Larsen
Earl Laursen
Heleen Nielsen

Jules Nielsen
Raymond M. Olsen
Robert Paap
George Pallesen

Myrtle Lee Rasmussen
David R. Simonsen
Harry Sorensen
Chester Sutton

Marion Hanson Svendsen
Mildred Hansen Altekruise
Lila Jeffers Ashley

Harriett Wilson Campbell
Mildred Petersen Carlsen
Eric and Elaine

Jespersen Christensen
Herluf and Vashiti
Magnussen Christensen

Ruth Christensen
Ethel Jensen Glarborg
Edward A. Hansen

Rubena Jorgensen Hansen
Esther Jensen Jenkins
Levi Jensen

Adolph Kloth
Elmer M. Rasmussen
Mildred Clemens Schroeder

Martha Rasmussen Staby
Thelma Andressen Tellefsen
Marian Peterson Anderson

Verner Carlsen
Roy Christensen
Barbara Hansen

Herbert Harboe
Harold Hurd
Anker M. Jensen

Bernice Hansen Kaldahl
Rudolph Knudsen
Mary Jensen Langenfeld

Edward and Inga Schultz Larsen
Ellen Houwred Larsen
Luther Lincoln

Dorothy Brann Malmin
Gladys Hansen Nichols
Dora Paulsen Nelson

John Sides
Andrew Staby
Irving Tange

Lorentz Thomgren
Norma Lund Van Steenhoven
Clarence Aus

Edith Pedersen Bertelsen
Evelyn Sorensen Bogan
Gertrude Kubie Carlberg

Viola Hansen Carlsen
Mildred Olsen Cheney
Martha Frost

Esther Magnussen Graham
Stanley Jorgensen
Helen Pedersen Lincoln

Arthur Norgaard
Irene Andersen Olsen
Ruth Vig Olsen

Katherine Neldeberg Pearson
John Poucher
Phyllis Rogert

Agnita Christensen Schreiber
Shirley Larson Spicknall
Clarence Aus

Edith Pedersen Bertelsen
Evelyn Sorensen Bogan
Gertrude Kubie Carlberg

Viola Hansen Carlsen
Mildred Olsen Cheney
Martha Frost

Esther Magnussen Graham
Stanley Jorgensen
Helen Pedersen Lincoln

Arthur Norgaard
Irene Andersen Olsen
Ruth Vig Olsen

Katherine Neldeberg Pearson
John Poucher
Phyllis Rogert

Agnita Christensen Schreiber
Shirley Larson Spicknall
Clarence Aus

Edith Pedersen Bertelsen
Evelyn Sorensen Bogan
Gertrude Kubie Carlberg

Viola Hansen Carlsen
Mildred Olsen Cheney
Martha Frost

Esther Magnussen Graham
Stanley Jorgensen
Helen Pedersen Lincoln

Arthur Norgaard
Irene Andersen Olsen
Ruth Vig Olsen

Katherine Neldeberg Pearson
John Poucher
Phyllis Rogert

Agnita Christensen Schreiber
Shirley Larson Spicknall
Clarence Aus

Edith Pedersen Bertelsen
Evelyn Sorensen Bogan
Gertrude Kubie Carlberg

Viola Hansen Carlsen
Mildred Olsen Cheney
Martha Frost

Esther Magnussen Graham
Stanley Jorgensen
Helen Pedersen Lincoln

CLASS OF 1947

Number in Class 35
 Donors 11 Total \$602.50 31%
 Norman Bansen
 Deloris Larsen Cecil
 Dorothy Grantlund DeVasure
 Doris Petersen Hanson
 Elizabeth Hansen Hungerford
 Greta Pedersen Krag
 Lois Nelson O'Shea
 Raymond M. Paulsen
 Margaret Jensen Rasmussen
 Lorraine Nelsen Schacht
 Alfred Tan Creti

CLASS OF 1948

Number in Class 36
 Donors 15 Total \$2,183.50 42%
 Rena May Thompson Cerbin
 Allison Hansen
 Florence Hansen
 Hugh Hughes
 Nis and Irene Kirkegaard Jessen
 Dolores Jensen Johnson
 Lorraine Sandberg Madsen
 Marilyn Guyer McCormick
 Lawrence Nelsen
 John W. Nielsen
 Ewald Sorensen
 Reynold H. Tange
 Knud Warschauer
 Joy Larsen Wert

CLASS OF 1949

Number in Class 66
 Donors 41 Total \$4,278.71 62%
 Maynard Andersen
 Irene Jensen Balch
 Virgil Bollesen
 Niels Carlsen
 W. Eugene Flynn
 Marilyn Juul Hanson
 Nortan Hanson
 Gerald Hatt
 Albert Hjortshoj
 Emmeline Fredericksen Hoar
 Anna Hansen Huber
 Marjorie Nelson Jensen
 Paul C. Johnson
 Ray Johnson
 Carol Mengers Johnson
 Willard Johnson
 Sidney and Eileen Fleeton Jorgensen
 Phillip Larsen
 Forrest and Dorcus
 Vammen Leighton
 Ester Hertz Lundgren
 A. Violet DeGrave Madsen
 Archie Madsen
 Dean and Betty Schmidt Madsen
 Elaine Neve Nielsen
 L. M. Nielsen
 Raymond Nielsen
 Ivadell Raben
 Grace Borglum Reed
 Rhoda Iversen Schjodt
 Donald Schou
 Paul Simon
 Alice Sorensen
 Arthur Sorensen
 Joan Anderson Sorensen
 Myrna Olson Tostenon
 Marjorie Jorth Wahlgren
 Kenneth Weaver
 Eugene Wekander

CLASS OF 1950

Number in Class 116
 Donors 41 Total \$3,655.00 35%
 Amy R. Andersen
 Doris Andersen
 John T. Beck
 Erwin Christensen
 James H. Coffey
 Antony R. DaCruz
 Lowell DeVasure
 Jack C. Emmons
 Pauline Clausen Friend
 Doris Lind Fritz
 Andrew C. Hansen
 Charles Hansen
 Robert Hansen
 Roger Hanson
 Janet Jacobsen Hoegh
 Arnold W. Jensen
 Frederik and Janice Nygaard Jensen
 Paul Jeppesen
 Harold Jersild
 Joyce Nelson Johnson
 Esther Eriksen Larsen
 Eunice Carlsen Larsen
 Delos Lind
 Harriet Mortensen Lipe
 Paul Mengers
 Elisa DaCruz Merkl
 Lyle R. Morgensen
 Allan and Marilyn Neve Nygaard
 Gerhard J. Nygaard
 Earl M. Pace
 Howard Petersen
 Ruth Solevad Petersen
 Donald Poh
 Clifton Robinson, Jr.
 Eleanor Nielsen Schou

Melvin Suhr
 William Wesin
 R. D. Zimmerman, Jr.

CLASS OF 1951

Number in Class 94
 Donors 36 Total \$3,240.00 38%
 Vernon L. Andersen
 Virginia Lippincott Beck
 Gladys Lincoln Bergeen
 Elaine Madison Brostrom
 Harry Conklin
 Charles Doidge
 Charles Eastlund
 Lois Girtz Halley
 Ella Erlandsen Hansen
 Gordon Hansen
 Marie Nelson Hansen
 Opal Bollesen Hansen
 Virgil Hansen
 Verlan and Helga Jessen Hanson
 Lyle Jacobsen
 Marjorie Rosvold Jacobsen
 Donna Olsen Johnson
 Carol Winther Kimpfbeck
 Robert Kloth
 Helen Halstead Kofoid
 Eileen Nelsen Larsen
 Paul Laursen
 Viola Harboe Madsen
 Ardis Gramps Mengers
 Carl H. Nielsen
 Betty Jensen Nygaard
 Lucy Anne Poucher
 Ruth Larsen Randall
 Warren Rasmussen
 Betty Clausen Rhodes
 Jimmy Sorensen
 Gladys Voetmann Stavely
 Augie Stricker
 Joanne Merrill Varga
 Norman Winther

CLASS OF 1952

Number in Class 86
 Donors 27 Total \$1,727.50 31%
 Lois Petersen Andersen
 Jack Christensen
 Jarhes Hansen
 Neil Hansen
 P. V. Hansen, Jr.
 Robert Hansen
 Sara Ann Hansen Houser
 May Skobo Jackson
 Bruce Jensen
 Mary Madsen Jensen
 Norman F. Jensen
 Calvin Jorgensen
 Lloyd Lorensen
 Gerhardt Mengers
 John Mickelson
 Robert G. Nelson
 Andrew C. Nielsen
 Donald Olffe
 Duane and Lillian Nielsen Ohlsen
 Lois Rasmussen
 Mildred Siersbeck Rasmussen
 Arthur Simon
 Leonard Sorensen
 Robert Sorensen
 Juri Taht
 Dorene Larsen Westergard

CLASS OF 1953

Number in Class 89
 Donors 31 Total \$2,197.50 35%
 Richard Andersen
 Herbert A. Anderson
 Kenneth Anderson
 Lloyd Bansen
 Gerald Borglum
 Dale Christensen
 Vaughn Christensen
 Robert Coffey
 Norma Nielsen Hansen
 Leonard and Marilyn
 Korshoj Jackson
 Doris Bartel Jensen
 Dorothy Petersen Jepsen
 Paul and Marilyn Steffensen Jersild
 Floyd W. Jorgensen
 Philip Kaldahl
 Joyce Hayek King
 Walter J. Kirkegaard
 Wilbur and Alice Schultz Layman
 Delores Burnet Lorensen
 Margaret Christiansen Madsen
 Ruth Wagschal Mengers
 Boyd Nelson
 Carl M. Pedersen
 Floyd Petersen
 Conrad Sorensen
 Joan Petersen Stricker
 Mark Thomsen
 Lola Petersen Wiese

CLASS OF 1954

Number in Class 77
 Donors 30 Total \$2,140.00 39%
 Dorothy Hansen Anderson
 Mary Justesen Brostrom
 John and Myra Vig Christensen
 Marion Christensen
 Joan Nelson Coffey
 Edward Nelskildsen

Norman L. Freund
 Joyce Hansen Galvin
 Ann Hams George
 Esither Jorgensen Grindberg
 Margaret Erickson Hafar
 Daniel C. Hansen
 Winston Hansen
 Howard C. R. Jensen
 Russell P. Jensen
 William D. King
 Peter Mathiasen
 Neil Moore
 Arlene Sandberg Nelson
 Orman Nelson
 LeVern S. Nielsen
 Marilyn Young Nielsen
 Kenneth Ostergaard
 Arvin S. Quist
 Beata Hauge Sorensen
 Ralph Spear
 Roma Geisler Staudenbaur
 Marjorie Baxter Tuveson
 Peggy Rounds Wittlinger

CLASS OF 1955

Number in Class 68
 Donors 19 Total \$862.50 28%
 Angela Sorensen Borglum
 Paul Brostrom
 Clarice Fredrickson Christensen
 Neil W. Christensen
 LaVerne Chandler Hackett
 Stanley and Mary Heinssen Hansen
 Pat Lippincott Hunsche
 Marilyn Jacob Huntress
 James D. Iversen
 Margaret McQuarrie McGill
 Phyllis Henniksen Olsen
 Donovan Olson
 Nancy Osborn Orwig
 Lloyd Pedersen
 Cora Schieferstein
 Erling T. Schultz
 Doris Jacob Senica
 Bethany Miller Simon

CLASS OF 1956

Number in Class 100
 Donors 28 Total \$2,932.50 28%
 Ann Jessen Bansen
 James Clemon
 Kenneth L. Fehl
 Raymond Hagberg
 Janice Aye Hatt
 Mary Speck Heinrichs
 Dorothy Landbo Jorgensen
 Herbert Jorgensen
 Patricia Madsen Kloth
 Robert Krogh
 Hilmar Krueger
 Dale Larsen
 Harold Laursen
 William O. Lawson
 Elna Nielsen Mathiasen
 Rees and Edna Skobo McFarlane
 James Nelson
 Sigrid Nelson
 Gunnar Nyholm
 Phillip Pagel
 Elaine Bondo Rennerfeldt
 Ronald Stricklett
 M. Ruth Kirkegaard Svith
 John and Beverly Kruty Williams
 Philip M. Wittig
 Fredric Youa

CLASS OF 1957

Number in Class 78
 Donors 22 Total \$887.00 28%
 LeRoy Anderson
 Helen Jensen Carnes
 Beth Kruse Cecil
 John Christensen
 Carole Henningsen Evert
 Sharon Maher Feller
 Frank and Nancy Bellows Gabby
 Arnette Thim Hansen
 Virginia Jorgensen Jensen
 Al Jessen
 Carol Nielsen Jorgensen
 Thomas Langenfeld
 Antoinette Nelson Lawson
 Elsie Lund Moreau
 Russell Moseman
 Marilyn Ward Nichols
 Pamela Rhoades Pedersen
 Marilyn Wolsmann Rasmussen
 Harvey Sorensen
 Darol Valder
 Virginia Hansen West

CLASS OF 1958

Number in Class 88
 Donors 31 Total \$1,912.50 35%
 James L. Andersen
 Arliss Peterson Anderson
 Helen Videbeck Anderson
 Carlie Lynn Cole Edwards
 Mary Ann Anderson Fehl
 Don Hansen
 Carlene Petersen Heiser
 Bill Himmler
 Beverly Siersbeck Hodges
 Eugene H. Jacoby
 Milton Jensen

Milan Johnson
 Dolores Peterson Jorgensen
 John Klug
 Betty Schwanke Larsen
 Barbara Whiteside Laursen
 Shirley Alme Madsen
 Gayle Schmidt Moseman
 Phyllis Benson Nielsen
 Marvyn and Audrey Eriksen Olson
 Frieda Naujokaitis Patrick
 Raymon Pedersen
 Jan Philby
 James P. Rasmussen
 Melvin Rogers
 D'Arlene Morton Rosenuau
 Dorothy Willmet Schultz
 Peter Smith
 Virgene Schmidt Stricklett
 Janice Moen Youra

CLASS OF 1959

Number in Class 84
 Donors 27 Total \$1,195.00 32%
 Ernest Anderson
 Glenn Blackwood
 John Blatter
 Bartel Borglum
 Thomas Ehlers
 Larry D. Hansen
 James Heiser
 Lois Bentson Huseby
 Richard and Karen Peterson Jensen
 Gloria Hanson Johnson
 Caroline Pedersen Jones
 Richard Jorgensen
 Sharon Kinder
 Gail S. Koldenborg
 Virginia Blankenbecker Korshoj
 Mary Jo Andrews Kubie
 Ernest A. Larsen
 Walter Ludwigsen
 Roger L. Madsen
 Ruth Madsen
 Harlan L. Petersen
 Myril Schultz
 Ronald Siersbeck
 Nina Yauch Spear
 Shirley Chandler Valder
 Donald Wahlgren

CLASS OF 1960

Number in Class 112
 Donors 37 Total \$1,792.50 33%
 Evelyne Anderson
 Kareh Jensen Cappel
 Paul H. Christensen
 Sigrid Christensen
 Jacob Grasmick
 Shirley Haahr
 John T. Henningsen
 Beverly Peterson Jensen
 Marie A. Johnson
 Don and Joyce Vasby Jorgensen
 Leo Kirchoff
 Carl Kohlmeier
 George Landbo
 Marie Hansen Langenfeld
 David R. Larsen
 Stanley Larsen
 Gerald Martin
 Eugene Menninga
 Darrell Mertens
 Leroy Pedersen
 Duane N. Petersen
 Noel D. Petersen
 Mark Petrusson
 Ronald Raschke
 Lyle E. Rasmussen
 Donna J. Byriell Rector
 Florence Benson Rogers
 Gerald Sinclair
 Janet Langenfeld Smith
 James C. Sorensen
 Carol J. Peterson Stolen
 Milo Strozensky
 Nancy K. Horton Svacha
 Franklin Weber
 Edward Wittig
 Larry Wright

CLASS OF 1961

Number in Class 111
 Donors 39 Total \$2,987.61 35%
 Gloria Jensen Anderson
 Sharol Crandall Anderson
 Kathryn Lubkeman Christensen
 Myrvin Christopherson
 Gary R. Danielson
 Ray Dickson
 Albert Girtz
 Kenneth and Rosalind
 Peterson Glover
 Judith Rasmussen Grabill
 Norma Parde Heeren
 Bill Johnson
 Marilyn Olson Johnson
 Ronald Johnson
 Lutfar and Doris Siersbeck Kloth
 JoAnn Hundtoft Larsen
 Jerry and Shirley Nielsen Lincoln
 Lowell Madsen
 Sally A. McMahon
 Lois Justesen Miller
 Duape Neitzel

Elliott and Juane Skow Nielsen
 Arlyce Fuchs Nore
 Allan Olson
 Jo Ann Larsen Otto
 Carol Johnson Petrusson
 Carolyn Potter
 Paul D. Rasmussen
 Margaret Nielsen Rodenburg
 Vera Sappenfeld
 Joan Swanson Schildt
 Mary Adams Teten
 Mary Vig
 Richard Wardell
 Duane L. Wehrbein
 Gerald Wehrbein

CLASS OF 1962

Number in Class 121
 Donors 48 Total \$2,631.00 40%
 Frederick Adkins III
 Ralph Anderson, Jr.
 Wayne Anthony
 William Archibald
 William Bracker
 Charles Brodersen
 Linda Buchfink
 Hans C. Christensen
 Ivan Christiansen
 David W. Comstock
 Carol Madsen Dickson
 Lawrence Dolleck
 Frank Grasso
 Joyce Mann Grauerholz
 Janice Hiller Gronstal
 Nena Wegener Hankins
 Ralph P. Hansen
 Ellen Larsen Hanson
 Lonnie Hayne
 E. Hemmingsen
 Dorothy McIntosh Jensen
 Kenneth A. Jensen
 Joanne Thorgren Johnson
 Waldo M. Junker
 Phillip Larsen
 Vance C. Larsen
 Don Lindell
 Donna Layton Locher
 Darrell Menninga
 James Olsen
 Lois Jensen Pedersen
 Cariene Benson Petersen
 Paul I. Petersen
 Peter L. Petersen
 Philip Petersen
 Ralph P. Rasmussen
 Charles Reeg
 Lois Henningsen Rode
 Walter W. Rodenburg
 Mary Bertelsen Ruden
 Ellen Jorgensen Schloenvogt
 Samuel Stacks
 Barbara Schulte Stuthait
 Barbara Boe Vierk
 Judith Christiansen Wagner
 Larry West

CLASS OF 1963

Number in Class 146
 Donors 50 Total \$1,872.50 34%
 Raymon Anderson
 Ruth Dreyer Bauer
 Gary L. Biesecker
 Kent C. Borchers
 Larry and Lois Hansen Bornemeier
 Jerry and Barbara Griffiths Campbell
 Mary Clausen Canman
 Deanna Schmidt Carr
 Ronald and Julie
 Sanderson Christensen
 Robert Erickson
 Karen Flood Fulton
 Gerald and Judy Hanson Gustafson
 Gary Hanson
 Judith Johnson Harder
 Franklin Henningsen
 L. Kay McGill Henderson
 Jean Gebhart Jensen
 Judy Magnussen Jensen
 Herbert D. Knudsen
 Brenda Francis Krueger
 Donna Berryman Lam
 Ruth Henningsen Larsen
 Sandra Jensen Larsen
 Roger H. Lippincott
 Mary Sue Hansen Madsen
 Spencer W. Martin
 Joan Nielsen Mast
 Vernon and Carol Kenze Mathiesen
 Judith Mayland Morris
 Kenneth and Ruth Meyer Muehl
 Sterling Nelson
 Ronald A. Nielsen
 Dixie Hagedorn Petersen
 Marc L. Petersen
 Ruby Hansen Petersen
 Shirley Thompson Petersen
 Burnell Pohlman
 Ellen Knudsen Rittenhouse
 Larry Tantow
 Marjorie Behrens Thiemann
 Thomas F. Vierk
 Karen Hanna Waddingham
 Joan Vogt Wekander

Hans Willadsen
CLASS OF 1964
Number in Class 171
Donors 53 Total \$3,107.50 31%
Edward Anderson
Mary Lay Baehler
Linda Ocker Daniels
Mabel Wehrli Dargins
Carol Westermann Dickmeyer
Harriet Putnam Dobson
Robert and Ellen Peterson Dunnell
Walter and Faye Byriel Fox
Olga Anderson Frahm
Janet Francis
Linda J. Gehrig
Betty Platt Grasso
Robert D. Hansen
David G. Hanson
Gloria Pedersen Hayne
Rebecca Roessner Holst
Roger E. Howland
Byron L. Jensen
Maude Wiese Jensen
Robert J. Jensen
Howard L. Johnson
Joyce Taake Johnson
Janet Peterson Jorgensen
Barbara Larsen Joy
Bernard Kionka
Donald and Janine Kroegen Lacy
Thomas Lange
David S. Larsen
John E. Laughhunn
Judith Svendgaard Lum
Janette Frandsen Martin
James McKay
Nancy Annis Nelson
Elizabeth Solevad Nielsen
Katherine Toft Nielsen
Milan Nore
Bryce Olson
Philip Panum
Carol Bruning Petersen
Ruan Skaar Pohlman
Robert Rademacher
Sidney Larsen Rames
Gary and Lynne Rasmussen
Brian and Connie Snell Rich
Robert M. Stegmaier
Sonja Jacobsen Switzer
Barry and Sharon Olsen Tuttle
Leland Walz
CLASS OF 1965
Number in Class 211
Donors 66 Total \$3,751.00 31%
JoAnne Johnson Adkins III
Jess Alton
Duane Anderson
Judith Jensen Archibald
Leota Schnitker Benson
Vivian Christensen Biesecker
Steve P. Bolton
Diane Gunderson Bro
John Brodersen
John Cederberg
Norman Christiansen
Paul and Norma Rummel Dirks
Donald P. Dreyer
Jacolyn Dudley
Jean Eisenhauer
Dennis Eitmann
Cecilia Stice Erickson
Christina Moosmann Ferguson
Milbern and Kathryn Olsen Goetz
Ronald Halverson
Gerald Hansen
James L. Hansen
Janice Kaldahl Haskell
James and Linda Berge Helms
Clarice Smith Herold
Linda Anderson Howland
Mark and Kathleen Kempke Iversen
Sharon Messer Jensen
Charles Jorgensen
Jerry Jorgensen
Linda Money Jorgensen
Marjorie Kathmann
Jerry Kirkegaard
Karen Nielsen Knudsen
Sara Andersen Larson
Ione Caldwell Liddicoat
Steven Luschen
Ronald L. Mattison
Warren Miller
Richard P. Moosmann
John Muehl
Sandra Andersen Mundy
Vivian Jenkins Nelsen
Clayton Nierfeld
Lgis Vaught Olsen
Muriel Olsen
Margie Fangmeyer Olson
Jane Olsen Owen
Clifford Paulsen
David and Nancie
Brockmeyer Peterson
Roger Rogert
Karen Borkus Schoening
Holger and Cheryl Donahoo Schultz
John Seburg
Carolyn Dusin Smela

Clifford Staben
Susan Suverkrubbe
Rodney G. Thompson
Janus Z. Thomsen
Jane Jensen Warman
CLASS OF 1966
Number in Class 186
Donors 54 Total \$1,520.00 29%
Ronald Anderson
Dennis Barker
Gary Bates
James Beck
Susan Slader Bennetotte
Harold O. Berry
Dixie Havick Boeck
Ruth Buhl
Helen Leland Danielson
Marjorie Standberry Danielson
Larry D. Engdahl
David Falksen
Kathleen McKenna Graff
Gloria Hanson Halverson
Barbara Hagebak Hanson
Ilona Moosmann Hatch
Lester L. Haussler
Donald Hoffman
Timothy Jensen
Kristi Planck Johnson
James Jorgensen
Jeannine Frohling Jorgensen
Joan Jorgensen
Kenneth L. Kemmish
Harriet Larson
Jani Johnson Larson
Jerome Larson
Lowell D. Larson
Lynn Lauritsen
Larry and Susan Nystuen Legore
Jane Hass Lunde
Joyce Maurer
George Nelsen
Merry Havick Nilan
Dallas Opfer
LeMar Osterholm
D. R. Owen
Richard Peterson
Kenneth H. Quirk
Douglas Renken
Corinne Adams Robinson
Wilma Brauer Roenfeldt
Jack Seeley
Roberta Middleton Smith
Roland Sommerer
Doris Larson Tomlinson
Barbara Martin Toth
Suzanne Willers Totten
Merry Favaro Walker
Raymond and Linda Hazen Ward
Cy Warman
Julie Larsen Wickens
CLASS OF 1967
Number in Class 182
Donors 54 Total \$2,122.50 30%
Larry and Shirley Paus Anderson
David Barsness
Vicki Yowell Beck
Carol Ehnen Behrends
Rolan Bentjen
Terry Boeck
Paul Bondo
Charles and Judith Rueter Brehm
Tim and Lucille Vasby Brown
Loretta Heckathorn Calabro
John Cate
Robert Christensen
Thomas C. Christensen
Roger Clark
LeRoy E. Deveaux
Fred Donaldson
Barbara Holsing Feit
Gail Frazier
Claudette Bakken Gilbert
Gordan Grotian
Lois Behrendt Grover
Myron Hansen
Donald E. Hanson
Janice Miller Hinds
Patsy Fahrenkrug Hoffman
James Jacobsen
Dennis Jeppesen
Charles Johansen
Sandra Gill Johnson
Harry Junker
R. Kay Lee Kellner
David Kjeldgaard
Keith Limbo
Carl Magnusson
Rodney G. Miller
Robert Morgan
Gene Nelsen
Leon Neve
Mary Larsen Niederle
Ruth Hansen Peck
Don Perekovich
Gerald Quirk
Marlow Remmers
Ida Schmuecker Smith
Marcia Anthony Sommerer
Dixie Pederson Soullis
Marilyn Harder Thompson

Wally and Linda
Cleveland Welander
Carol Leslie Winter
Robert Zwick
CLASS OF 1968
Number in Class 256
Donors 82 Total \$3,226.00 32%
Paul Ahrendt
Robert Anthony
Dianne Seim Barker
Keith Benson
Connie Elting Bentjen
Stephen D. Bohling
Lyle D. Brehm
Mary Eisenhauer Brethorst
Dan Busse
David Carlson
Marilyn Stutheit Chedester
Bonnie Libby Christiansen
Kay Bowers Clark
Julia Sears Cook
Velma Smith Cooper
Larry P. Cornwell
Norman H. Dynneson
Mary Sue Petersen Edgecomb
Charles H. Elvers
Loretta Garcia-Robert
Clark Gilbert
Charles Guptill
Randle Hall
Gary and Sherrill Molash Hansen
Richard D. Hansen
Robert D. Hansen
Timothy and Kathryn
Christensen Hansen
William Henning, Jr.
Peggy Vogel Hetrick
James G. Holtam
Charles Hubert
Shirley A. Iversen
Keith Johansen
Kirk A. Johnson
Joyce Lyngard Jorgensen
Char Les Grap Kemmish
Earl Knudsen
Gary Knudsen
Kenneth Koester
Joel Kolterman
Maxine Kostopulos
Garlyd and Kathleen
Niemeyer Kuster
Mary Rasey Lake
Carolyn Madsen Larson
Karen Larson
Norma Jordan Lippincott
L. Mark McKenzie
Roger Moller
Phyllis Taylor Mortensen
Alice Petersen Neve
Stanley and Cheryl Paulsen Nielsen
John Orwig
Erma Peterson
Douglas Pohl
Connie Andersen Quirk
Tamara Lykke Quirk
Kenneth S. Rasmussen
Paul N. Rasmussen
Leland Rogge
Douglas Rossbach
LeRoy Schafersman
Charles and Maxine Lubkeman Scott
Gary Shelstad
Jeanette Wallman Stusher
Steven Sorensen
Helen Hansen Sorensen
Cathrine Madsen Stone
Ron and Judy Smith Strothbehn
Starla Sorensen Sweda
Alan Thomas
Jayne Petersen Tschirren
Richard J. Vick
Charles Wiebke
Gary Winter
Paula Zackman Wolf
Julianna Spilker Zwick
CLASS OF 1969
Number in Class 264
Donors 80 Total \$2,766.50 30%
Allan and Fran Pedersen Anderson
William and Betsy Buck Anderson
James Bane
Cheryl Lehman Bates
Barbara Knowlton Brundige
Connie Boehr Buller
Ethelynn Johnson Busse
David and Eileen Rendall Carlson
James L. Christiansen
Rocky S. Christopher
Linda Akers Dow
Sherry Beales Forrest
Sharon Ashley Fraedrich
Colleen Wilson Geiser
Lois Geith
Tim Grinbergs
Kathleen Grubbe
Karen Nelson Hansen
Paula Hansen
Phyllis Lauritsen Hansen
Marlyns Hanson
Miriam McLaughlin Haseltine
Carol Haussemann

Joel Hermann
Annette Sorensen Holtam
Donald Hooper
Carol Hansen Hubert
Ellen Andersen Hutton
Kathleen Zwanziger Hutton
Jacquelyn Anshem Ingalls
James and Julianne Nielsen Jensen
Sharon Juhler
Mabel Kastrup
Dennis Keefer
Carolyn Asher Koester
Rita Sandvold Kohlscheen
John Korzilius
Joan Peterson Krogh
Robert Kuehner
Gail Bruning Lockhard
Scott McGowen
Steven Miller
W. James Mortensen
Gwen Rutter Opfer
David and Mary Petersen Paul
Gail Young Peters
Lynn Norgaard Petersen
David Peterson
Judy Gollner Pohl
Roger Reutlinger
Alfred Rode
Lynelle Marbach Ruppert
Jeff Santoki
Norma Wilkins Schafersman
Carolyn Scholl
Linda Anderson Schroeder
Paul Seavey
Rick Shearer
Elaine Olsen Shelburne
Gary Shuck
Eileen Taake Simonsen
William Spetman
Paul A. Staby
Patricia Welander Svacina
Vesta Krafft Thompson
Henry Thorberg
Edward Vahle
Phil and Paula Westfall Vasby
Peggy Seitz Warren
Spencer Wedberg
Marlene Kaldahl Wilson
Linda Filson Woodbury
Roger Zieg
Margaret Haszard Zion
CLASS OF 1970
Number in Class 325
Donors 89 Total \$2,062.50 27%
Ramona Alwill
Jim Andersen
Joseph Anderson
Nancy Munn Anderson
Joseph Ball
Craig Barber
Janet Penke Bates
Carol Lund Beaty
Arthur Beckman
Ron Briggs
Eric Christensen
Rodney Christenson
Steve and Kathleen Ryan Cook
Vicki Keating Croft
Donald Ehlers
Christine Zwanziger Faust
Carol Hansen Fickenscher
Sandra Grevlos Fink
Charles Gilmore
Marcia Hansen Golden
Janet Guthrie
Karen Bergstrom Hanson
Robert Haszard
Gail Hennings
Robert Hess
Ronald and Rikki Forney Hulsebus
Rodney Hutton
Ron P. Hutton
Lois Jacobsen
Ruthann Knoell Jacobsen
Margaret Jensen
Wayne and Susan Davis Jensen
Edith Johnson
Richard Johnson
Ronald C. Johnson
Daniel Kleinpaste
Roger and Mary Weger Knehan
Candice Peterson Korzilius
Jarilyn Uecker Kolterman
Mark Langenfeld
Ruth Jacobsen Leitel
Nancy Blobaum Ludwig
Ruby Masters
Albert Maul
Carol Canoyer Miller
Marilyn Hansen Moller
Michael and Linda Knudsen Moore
Karen Anderson Morland
David Musick
Steven and Pamela Peterson Neet
James Nelson
Peter Nessen
Christina Anderson Olson
Kenneth Olson
Gary and Carolyn Maresh Panko
Sharon Anderson Pape

Sandra Pedersen
Gerald Petersen
David E. Renze
Karen Lausterer Riddle
Paula Rogers
Glenn and Rondalyn Wente Schacht
Linda Wacek Schmitz
Gary Schoening
Darlene Schwarzkopf
Mary Stubbendick Seavey
Wilbert Sick
Elizabeth Hall Sitoski
Scott Smith
Margaret Stanley
Robert Stern
Nina Strain
Sherida Nohrenberg Vahle
Janet Winkel Vetrovic
James Vorderstrasse
Robert Walsh, Jr.
Charles Warner, Jr.
Danny Watts
Douglas Witte
Jane Butler Zieg
Richard Zion
CLASS OF 1971
Number in Class 294
Donors 78 Total \$2,569.50 27%
Kathryn Hulsebus Ahrendt
Larry Anderson
Sarah Hansen Anderson
Betty Holdorf Beckman
Don Brantz
Bonnie Bruhn
Rebecca Nielsen Bryant
Sherri Busse
Maurice Byers
Louis H. Carpenter
Deborah Davis Cecrle
Diane Schmidt Christenson
Margaret Clark
Mary Darling
Gloria Drake
Charles Eastlund
Susan Schweer Edelman
Kay Kinseth Ehlers
Edward Ezekiel
Philip Facendola
Larry Forristall
Dennis Gethmann
Christine Rueter Gilmore
Ralph Glock
Philip Gotsch
Ann Borges Grindbergs
John and Dorothy Paulsen Grosser
Barbara Krause Haag
Ruth Hall
Merlyn Hansen
Lawrence Henning
Ruby Toiman Hermeier
Richard Isham
Dan Jackson
Anita Holstein Johnson
Bruce Johnson
Michael Jones
Robert King
Douglas Lash
John Leitel
Roger Lorsch
John Magnuson
Karen Bansen Maguire
Helen Martens
James McKinley
Opal Mintken
Mary Powell Mohr
Donald Nelson
Donna Goetz Nelson
Dianna Lauritzen Olson
Joycelyn Jensen Peters
John and Ellen Erickson Petersen
David Peterson
Jimmie and Juel Neve Pierce
Lloyd Refsell
Stephen Rendall
Vicki Hoogensen Rushenberg
William and Judith Renken Shaff
Jean Brehm Shelstad
Adrienne Peterson Simpson
Dorothy Drensen Sorensen
John Sorenson
Marilyn Stahrke
Elaine Strand
Paul Toole
Nancy Simons Wedberg
Gloria Paulsen Weinman
Roger Wheatley
Jon and Bonnie Hoehn Wicht
Marian Menking Wilkins
John Willadsen
Jeanine Drake Winslow
Janice Schneider Young
CLASS OF 1972
Number in Class 319
Donors 64 Total \$1,724.00 20%
John Aase
Clarice Axland Andersen
Ellen Tilley Andersen
Rodney Appel
Richard Barbour
Wayne Bell
Emily Freed Bumpous

Roger and Carolyn Dumke Carlson
 Louise Peterson Classon
 David Dalleck
 Kathryn Mann Dugdale
 Dorothy Mohn Dunham
 Twila Eitman
 Kathy Madsen Forristal
 Nancy Jensen Gardner
 Nancy Smith Gilmore
 Vicki Wilkerson Glock
 Beverly Walters Gotsch
 Carol King Hansen
 Ruth Heim
 Kathleen Christensen Henning
 Dennis Hennings
 Lynn Hiemke
 Candace Holstein
 Barbara Fudge Jackson
 Janis Jensen
 Loretta Jensen
 Connie Krull Johnson
 Janice Madsen Johnson
 Rodney Kastrop
 Deborah Jensen Katt
 Leone Gabel Knowles
 Kurt Knudsen
 Dennis Kuhr
 Richard Larson
 Janice Stork Lippincott
 Kirk McLaughlin
 Gary McMullin
 Kathryn Mohn
 Donald Munn
 Richard and Phyllis Anderson Nash
 Douglas Nelsen
 Carl Nielsen
 Elaine Bringewatt Olson
 Ruth Hansen Peterson
 Ernest Poggensee
 Mary Sims Reed
 Paul Saathoff
 Gregory Schou
 William Sorenson
 Phyllis Hanson Stafford
 Robert and Karen Link Stoll
 Terry Thomas
 Carol Thompson
 Steven Triplett
 Steve Turner
 Kathryn Ryan Vandenberg
 J. Dennis Weidler
 Jim Weinman
 Peggy Schilling Williams
 David Winslow
 Laura Bro Zeveski

CLASS OF 1973
 Number in Class 322
 Donors 81 Total \$2,396.88 25%

Eileen Boone Aase
 Larry Andrews
 Roseanne Petersen Bates
 Karen Hammock Bostwick
 Alan Brodbeck
 Mary Christensen Burmeister
 Linda Denny Carlson
 Roberta Watson Chilcote
 Evelyn Clark
 Vivian Dane Cook
 Sharon Hansen Davis
 Debra Hansen Duda
 Robert and Candy Wild Ehmen
 John Elling
 Joel and Joyce Spencer Eskelsen
 Karla Shultz Ethier
 Deb Nordlund Feldman

Stephen Fraedrich
 Bonnie Knowlton Grams
 Carol Madsen Gruner
 Brenda Haack
 Stephen Hardiman
 Leslie Hayes
 Theresa Jacoby
 Leonard and Patricia Gran Jensen
 Gale Johnson
 Nancy Johnson
 Susan Krause Johnson
 Doris Kahl
 Douglas Kimm
 Thomas King
 William Kruse, Jr.
 Tim Kuiken
 Donna Jensen Lacy
 Thomas Lauritsen
 Gale Madsen
 Earl Mahan
 Betty Edwards Marsh
 Jerry McCauley
 Roger Meints
 Jolene Bundt Meyer
 Annette Minderman
 John Mock
 Cynthia Homes Musick
 James Musick
 Dean Ness
 Kaj Neve
 John Nielsen
 Warren Nielsen
 Mark Olson
 Steven Peck
 William Pikor
 Carl Porter
 Judith Walton Rasmussen
 Rebecca Rossow
 Karen Ruby
 Jenny Nelson Rudberg
 Deborah Sams
 Richard Scheuring
 Karen Schutt
 Phyllis Kuhlmann Schwab
 Linda Stuhr Scranton
 Elsie Sebberson
 June Fossler Seitz
 Charles Smith
 Clarence Smith
 Lorna Monson Sternberg
 Laurie Christopher Swaney
 Ann Conrad Therkelsen
 Nadine Rogers Tipperly
 Barbara Wolf Triplett
 Thomas Van Steenhoven
 Connie Andersen Weidler
 Carol Schmidt Willadsen
 Susan Erbes Williams
 Duane Winston
 Carol Wood
 Eldon Wulf

CLASS OF 1974
 Number in Class 234
 Donors 63 Total \$2,479.38 27%

M. Gene Barnesberger
 Steven Barratt
 Marsha Hempler Batt
 Ronald and Nancy Harris Beaman
 Alan and Patricia Hansen Boozik
 Meta Brandes
 John Brooks
 J. Steve Buller
 Roger Burmeister
 Kristine Maschman Coffey
 Linda Nilsen Cohn

Charles Crow, Jr.
 Don Davis
 John DeVasure
 Dail Scholl Diedrichsen
 Kenneth Dunham, Jr.
 Kathryn Pieper Elling
 Gracia Fox Gilling
 Lana Strait Gray
 Jane Hammer
 Eric Hansen
 Florence Hansen
 Linda Denney Hamish
 Mary Kay Petersen Hennings
 Miriam Hiller
 L. Kay Horton
 Dorothy Vorthman Ivers
 Arthur Jetter
 J. Edward Johnson
 Greta Jones
 Carol Krueger
 Stanley Lassegard
 Ricki Sogge Lauritsen
 William Luxford
 Guna Buss Magnuson
 Peggy Biggin McGlynn
 Cathy Anderson Meyer
 Dona Neary
 Rachael Neve
 Dianne Nicolaisen
 Dawn Carper Nielsen
 Thomas Nielsen
 Lucinda Prewitt
 Glenna Rasmussen
 Larry Rasmussen
 Norlan and Lois Rathjen Rasmussen
 Jeanette Renander Rhyan
 John Roberts
 Kathleen Rongish
 Daryl Rustad
 Gloria Steffensen
 Lynn Dige Stegmaier
 Geneva Suhr
 Patrick Tripp
 Kay Probasco Vetter
 Rita Bardsley Ward
 Gary Warner
 Roger Williams
 William Yates
 Diane Gunia Zeller

CLASS OF 1975
 Number in Class 209
 Donors 41 Total \$876.50 20%

Bruce Bates
 James Benbow
 Kathryn Berntson
 Mercedes Ahrens Carkuff
 Ruby Holmes Christofferson
 Robert Coffey
 Susan Zabel Dryburgh
 Gary Erbes
 Judy Farwell
 Patricia Fitch
 Randy Furstenau
 Randall Gibbs
 Katherine Gross
 Mark Gruner
 Paul Haack
 Rita Hiemke Hale
 Mary Hurley
 Terry Jobman
 Becky Gran Johnson
 Layne Johnson
 Roger and Marilyn Muff Kastrop
 Katherine King
 Jamie Heide Kuiken

William Lindahl
 Gary and Diane Larsen Madsen
 Eileen Jorgensen Mattox
 Jeffrey Meyer
 Carol Miller
 Brenda Loeschke Monfils
 Jean Jensen Ness
 Margaret Anne Walsh Nielsen
 Beth Peterson Pappasadero
 Carl Rasmussen
 Gary and Kathy Paulsen Soetmelk
 Kathleen Tyner Swanson
 Diane Knip Urdahl
 Jean Knudsen Van Steenhoven
 Naomi Westby

CLASS OF 1976
 Number in Class 188
 Donors 42 Total \$1,019.00 22%

John Beck II
 Steven Berntson
 Giles F. Bronson
 Lance Carlson
 Tari Therkelsen Choiniere
 James Duda
 Roxanne Kruse Hamann
 Alan and Mary Henriksen Hanson
 Mark Heistand
 Karen Sietsma Heitmann
 Deborah Hofmann
 Jeffrey Hogden
 Susan Thorson Holstein
 Paul and Jean Wood Hundroft
 Ronald D. Johnson
 Mark Jones
 Robert Jones
 Kristine Krohn
 Kent Kronberg
 Debra Powell Lemons
 Dennis Nelson
 Jane Nielsen
 Patricia Meier Nielsen
 Lynda Nygaard
 Judith Larsen Pedersen
 William Plymale
 Lance Poldberg
 Gary Rasmussen
 Beth Rosenquist
 Joy Lyn Christensen Sanford
 Deborah Schou
 Pamela Pipher Shumake
 Mary Staby
 Michael and Diane Bradley Stewart
 Michael Urdahl
 Thomas and Kristin Grorud Walker
 David West
 Debra Wilson

CLASS OF 1977
 Number in Class 168
 Donors 26 Total \$1,688.45 15%

Patricia Andersen
 William Bollinger
 Ruth Nilsen Campbell
 Jane DeVasure
 Charlene Dirks
 Kevin Fleming
 Beth Gabelhouse
 Stuart Hansen
 Ruth Fevold Hanson
 John Hibbing
 Renae Johnson
 Faye Coles Jones
 Curtis Maschman
 Leif Neve
 Lori Nielsen
 Paul Oestmann

Gale Olson
 Wanda Peltonen
 Joy Rethwisch
 Sondra Schjodt
 Shirley Steffens
 Barbara Beck Sturm
 Mark Tiby
 Timothy Waggoner
 Gwendy Wilson
 Arnold Yound

CLASS OF 1978
 Number in Class 229
 Donors 29 Total \$1,052.50 13%

John Andresen
 Reva Ronnfeldt Bylund
 Michael Choiniere
 Steven Christensen
 Kim Cooper
 Lisa Damrow
 James Davidheiser
 Eugene Dollen
 Dennis Downard
 Douglas Fecht
 Marilyn Gengenbach
 Connie Gerl
 Suzanne Gilbert
 Jerry Haas
 Anne Nielsen Hibbing
 Gregory and Bambi Rettig Iken
 John Klegler
 Dennis Lee
 Carolyn Robinson Oestmann
 Roxanne Paul
 Monique Bentzinger Poldberg
 Dennis Preston
 John Romer
 Sandra Sonderup
 Janis Boyce Waggoner
 Kerilyn Whyte
 Pat Zabel
 Kim Mathews Zentmire

CLASS OF 1979
 Number in Class 191
 Donors 18 Total \$853.50 9%

Karen Barter
 Julie Rasmussen Beck
 Karla Bergstraesser
 Mark Christensen
 Earleen Feldman
 Cynthia Gunderson
 Priscilla Hall
 Eula Irby
 June Krueger
 Richard Lund
 Lanette Monasmith
 Terry Pronko Plymale
 Lisa Raper
 Richard Rostan
 Kimberly Shipley
 Cynthia Unger
 Alan Winters
 Steven Zentmire

CLASS OF 1980
 Number in Class 178
 Donors 1 1%

Rory Sturm

CLASS OF 1981
 Number in Class 160
 Donors 2 Total \$20.00

Kay Bernel
 Janet Nelson Diggins

STUDENTS
 Joseph Cmkovich
 Mark Hohneke
 Elizabeth Wooley

Dana Faculty, Staff and Regents

The Dana faculty, staff and regents are perhaps closest to the heartbeat of the College. And each year our annual fund begins by offering this group the opportunity of leading the way by setting giving standards for the year. Participation in giving by this group has grown steadily through the years, and last year virtually everyone responded with a gift to the annual fund.

Faculty and Staff

Miss Doris Andersen
 Mr. and Mrs. John Andersen
 Mr. and Mrs. Robert Arnold
 Mr. Norman Bansen
 Rev. and Mrs. John Beck
 Dr. and Mrs. Bruce Bergquist
 Dr. and Mrs. John Bienz
 Mrs. Arlene Bouslaugh
 Dr. and Mrs. Alan Brandes
 Mr. and Mrs. Vernon Christiansen
 Dana Women's Club
 Mr. and Mrs. Arthur Deemer
 Mrs. Esta Deets
 Mr. and Mrs. Darrell Dibben
 Dr. Herta Engelman
 Mr. and Mrs. Ray Furtak
 Mr. and Mrs. Walter George
 Mr. and Mrs. Robert Goolsby
 Mr. and Mrs. Fred Gordon
 Mr. and Mrs. George Grube
 Mr. and Mrs. Wes Gunderson
 Mr. and Mrs. Keith Hansen

Mr. and Mrs. Richard Hansen
 Ms. Sue Hansen
 Dr. and Mrs. Clifford Hanson
 Dr. and Mrs. Verlan Hanson
 Mr. and Mrs. Steve Harper
 Miss Carol Hausserman
 Mr. and Mrs. Milton Heinrich
 Mr. and Mrs. Frank Hengeveld
 Mr. and Mrs. Arvin Hernes
 Rev. and Mrs. Delvin Hutton
 Mr. and Mrs. Clyde Johnson
 Mr. Paul D. Johnson
 Mr. and Mrs. Ronald Johnson
 Mr. and Mrs. Ronald C. Johnson
 Mr. and Mrs. Mike Jones
 Mr. and Mrs. Richard Jorgensen
 Dr. and Mrs. James Kallas
 Mr. and Mrs. Richard Kubie
 Mrs. Allen Laaker
 Mr. and Mrs. Dale Lemon
 Mr. and Mrs. Eugene Lindblad
 Mr. and Mrs. Alis Lindstrom

Dr. and Mrs. C. C. Madsen
 Mrs. Joan Masters
 Mr. and Mrs. Dale Matson
 Mr. and Mrs. Bernard Mathies
 Mr. and Mrs. Joe McManigal
 Mr. and Mrs. Willard Meier
 Mr. and Mrs. Eugene Meyer
 Dr. and Mrs. Paul Neve
 Dr. and Mrs. John W. Nielsen
 Dr. and Mrs. John W. Nielsen
 Miss Luella Nielsen
 Mr. and Mrs. James Olsen
 Mr. and Mrs. Roger Olson
 Mr. Phillip Pagel
 Mr. and Mrs. Les Peterson
 Mr. and Mrs. Paul O. Peterson
 Mr. and Mrs. Eugene Pibal
 Mr. and Mrs. Richard Poggendorf
 Miss Carolyn Potter
 Miss Ebba Rasmussen
 Mrs. Ruth Rasmussen
 Mr. and Mrs. Keith Saville

Mrs. Virginia Scheibe
 Mrs. Viona Schlotfeld
 Mr. George Schuler
 Mrs. Mable Smith
 Miss Sandra Sonderup
 Mr. and Mrs. Steven Sorensen
 Dr. and Mrs. Larrie Stone
 Mr. and Mrs. Milo Stork
 Mr. and Mrs. Paul Strand
 Dr. and Mrs. L. Svendgaard
 Mr. and Mrs. Eugene Thomas
 Rev. and Mrs. F. W. Thomsen
 Mr. and Mrs. Robert Tuttle
 Mr. and Mrs. Donald Warman
 Dr. and Mrs. Raymond Weckmuller
 Mrs. Viola West
 Mr. and Mrs. Tom Wieseler
 Dr. and Mrs. Thomas Williams
 Dr. Wayne Wise
 Mr. and Mrs. Harold Wright

Regents
 Rev. and Mrs. Richard Andersen

Rev. Howard Cole
 Mr. and Mrs. Loyd Dykman
 Dr. and Mrs. James Evensen
 Miss Margaret Fischer
 Mr. and Mrs. David Graven
 Mr. and Mrs. Kenneth Hansen
 Mr. and Mrs. Howard Hanson
 Mr. and Mrs. Kenneth Holm
 Mr. and Mrs. Richard Hunt
 Mr. and Mrs. L. Svendgaard
 Mr. and Mrs. Johannes Lindholm
 Rev. and Mrs. Charles Maahs
 Dr. and Mrs. Archie Madsen
 Mr. Harold Miller
 Mr. and Mrs. Elcar Nielsen
 Rev. and Mrs. James Olsen
 Dr. and Mrs. Omer Reed
 Dr. and Mrs. Royce Ronning
 Rev. and Mrs. Alton Schwandt
 Congressman and Mrs. Paul Simon
 Mr. and Mrs. Lorentz Thomgren

Other Contributors

Dana's support is broad-based and we are grateful to a variety of individuals and groups for including Dana in their annual charitable giving plans. Listed here are the names of parents, Danish American individuals and organizations, foundations, corporations, Washington County individuals and businesses, and a host of other friends who have made significant gifts to Dana during the past fiscal year.

It should be noted that individuals whose gifts during the 1979-80 fiscal year amounted to \$100 or more are not included in the following list but rather are recognized as members of The Tower Circle, The President's Society or The Century Club.

Danish Americans

Mrs. Elizabeth Andersen
Mr. and Mrs. Fred Andersen
Mr. Iver Andersen
Mrs. Lillian Andersen
Mr. and Mrs. Everett G. Anderson
Mr. and Mrs. James Anderson
Mr. Einer Appel
Mrs. G. Axelsen
Mr. and Mrs. Viggo Berthelsen
Mrs. Dagmar Bligh
Mrs. Helga Bohn
Mrs. Rose Bolleson
Mr. Ludvig Boraks
Miss Anna Christensen
Mr. Arnold Christensen
Mr. Harry Christensen
Mrs. Harry Christensen
Mr. James A. Christensen
Mr. Jens Christensen
Mrs. Aaron Christiansen
Mr. Carl J. Christoffersen
Mr. and Mrs. Einar Danielsen
Mrs. Adah Dyer
Mr. Otto Ehlers
Mrs. Elsie Elgaard
Mr. and Mrs. Edward J. Engstrom
Mrs. Kingo Erlandsen
Mr. and Mrs. Kurt A. Erslev
Estate of Johan Hansen
Estate of Marie Holling
Mr. Ezra Fogdall
Miss Mildred Forseth
Mr. Donald Frost
Mr. Paul Gade
Mr. and Mrs. Ervin Grunberg
Mr. and Mrs. Hugh Gwin
Mrs. Anders-Hansen
Mr. Arthur Hansen
Ms. Helen Hansen
Mrs. Henry Hansen
Mr. John Hansen
Mr. and Mrs. Raymond Hansen
Mrs. Emma Hanson
Mr. Hal Hasselbalch
Mr. and Mrs. Charles Henningsen
Ms. Elizabeth Hermann
Mrs. Lillian Hoffman
Mrs. Harold Holm
Mr. Peter Glen Holmen
Mr. George Jacobson
Mr. Peter Jacobson
Ms. Christine Jensen
Mrs. Etta Jensen
Mr. and Mrs. Peter Jensen
Mr. and Mrs. Hans C. Jeppesen, Jr.
Mr. James Jepsen
Mr. Aage Johnson
Mr. Joseph Johnson
Mrs. Lillian Johnson
Mr. and Mrs. Edward Jonassen
Mr. George Jorgensen
Mr. and Mrs. Robert Jorgensen
Ms. Ruth Jorgensen
Mr. and Mrs. C. Koldenborg
Mrs. August Krey
Mrs. J. Krogh
Mr. and Mrs. John T. Lang
Mr. Albert Larsen
Mr. Louis Larsen
Ms. Olga Larsen
Mrs. Sophie Larsen
Mr. Harold Laursen
Mrs. Martha Loft
Ms. Anna Madsen
Mrs. Axel Madsen
Mr. Ejnar Madsen
Mrs. Marie Madsen
Mr. and Mrs. Peter B. Marcussen
Memorials to Harold Holm
Memorials to H. Jorgensen
Mr. Holger Mortensen
Mr. Frank Nelsen
Miss Emma Nelson
Mr. and Mrs. Russell Nelson
Mr. William Nelson
Mrs. N. Nesgaard
Mr. Aage E. Nielsen
Mr. and Mrs. Carl W. Nielsen
Mrs. Floyd Nielsen
Mrs. Mayme Nielsen
Mrs. Mildred Nielsen

Mr. Wm. Anton Nielsen
Mr. and Mrs. John Nissen
Mr. Jens Nyholm
Mr. and Mrs. Don W. Olsen
Mrs. Ella Olsen
Mr. and Mrs. Levi Olsen
Mr. and Mrs. Peter Orum
Mrs. Chris Paulsen
Mr. Emmert Pedersen
Mr. Marius Pedersen
Mrs. Cecilia Petersen
Miss Donna Jean Petersen
Mr. George R. Petersen
Mrs. John Rand
Mr. Junior Rasmussen
Mr. and Mrs. Howard Rathe
Mr. M. Rolstad
Ms. Dawn Rosenvinge
Mr. Lester Schleufer
Mr. Nis H. Skau
Mrs. Harry Sorensen
Mr. and Mrs. Martin Sorenson
Mr. Poul V. Steffensen
Ms. Clare Sundby
Mrs. George Swan
Mr. Henrik Teilmann
Mrs. Lester Thompson
Mr. Oscar Thompson
Mr. Harold Wilhelmson
Parents
Mr. and Mrs. Leland Aanonson
Mr. and Mrs. Arto Alwill
Rev. Ivan Amman, Sr.
Mr. and Mrs. Elmer Anderson
Mr. and Mrs. Albert Andresen
Mr. Harold Asmus
Mr. and Mrs. Charles Bane
Mr. and Mrs. Stanley Bansen
Mr. Eugene Bargman
Mr. and Mrs. Howard Beaman
Mrs. Mary Anne Beltz
Mr. and Mrs. Glenn Bernston
Mr. and Mrs. Lloyd Bevans
Mr. and Mrs. Richard Bittner
Mr. and Mrs. William Blain
Mr. and Mrs. E. Gilbert Bliss
Mr. and Mrs. Bernard Blome
Mrs. Bernita Boehmer
Mr. and Mrs. Earl Bonde
Mrs. Ervin Bondo
Mr. and Mrs. Robert Borden
Mrs. Shirley Boyce
Mr. and Mrs. Chas Brodersen
Mr. and Mrs. Rex Buchanan
Mr. and Mrs. Leo Butler
Mr. Carl Cederberg
Mr. Clifford Christensen
Mr. and Mrs. Dale Christensen
Mr. and Mrs. John Christensen
Mr. and Mrs. Alfred Clausen
Mrs. Gwen Clever
Mrs. Hattie Collins
Mrs. Mary Colpitts
Mr. and Mrs. Donald Comfort
Mr. and Mrs. Henry Coonce
Mr. and Mrs. Harold Crawford
Mr. and Mrs. Donald Cutler
Mr. and Mrs. Ken Danahy
Mr. and Mrs. Owen Darrington
Mrs. Don Davie
Mr. and Mrs. John Derry
Mr. and Mrs. L. Dillender
Mr. and Mrs. Max Downard
Mr. and Mrs. Roscoe Dutton
Mr. and Mrs. Don Eagen
Mr. and Mrs. Ervin Ehm
Mr. and Mrs. Emil Eisenhauer
Mrs. Fern Eitman
Mr. and Mrs. Arto Epperson
Mrs. Shirley Eyer
Mr. Elmer Falksen
Mrs. Willa Farris
Mr. and Mrs. Phillip Fett
Mr. and Mrs. Ray Francis
Mr. and Mrs. Virgil Fredricks
Mr. and Mrs. Norman Frey
Mr. and Mrs. Niels Friis-Hansen
Mr. and Mrs. Joseph Gerit
Mr. William Gibson, Jr.
Mr. and Mrs. Donald Goos
Mr. and Mrs. Geo Hagen
Mr. and Mrs. Ronald Hagen

Mr. and Mrs. Gary Hansen
Mr. Peter Hansen
Mrs. Marie E. Harris
Mr. and Mrs. Ralph Hayne
Mr. and Mrs. George Helling
Mr. and Mrs. Clarey Henricksen
Mr. and Mrs. David Henrickson
Rev. Edward Hiller
Mr. and Mrs. Richard Hineline
Mr. and Mrs. Dean Hoffart
Mr. and Mrs. Ralph C. Hohneke
Mr. and Mrs. A. Holdorf
Mr. and Mrs. V. Holdorf
Mr. and Mrs. Harold Holtam
Mr. and Mrs. Martin Homes
Mr. and Mrs. Harold Hooper
Mrs. Marvin Hoppe
Mr. and Mrs. Earl Hult
Mrs. Dania Hundtoft
Mr. and Mrs. Eugene Husk
Mrs. Elmer Ihrig
Mr. and Mrs. Charles Irby
Mr. and Mrs. George Isham
Rev. and Mrs. Kenneth Jacobson
Mr. and Mrs. Edwin Jipp
Mr. and Mrs. Kenneth Johnson
Rev. Laurel O. Johnson
Rev. and Mrs. Oscar Johnson
Mr. and Mrs. Quentin Johnson
Mr. and Mrs. William Jordan
Mr. and Mrs. T. Jorgensen
Mr. and Mrs. George Keger
Mr. and Mrs. Raymond Kenne
Rev. Paul Kenyon
Mrs. Lyle Ketchum
Mr. William King
Mr. Lyle Knuth
Mr. and Mrs. Ronald Knutson
Mrs. Margaret A. Kotovsky
Mr. and Mrs. Erwin Kuhlman
Mr. and Mrs. Lloyd Kuhr
Mr. and Mrs. Don Langren
Mrs. Elaine Larsen
Mr. and Mrs. A. D. Laughlin
Mrs. Orren Lee
Mr. and Mrs. Donald Lippincott
Mr. and Mrs. Gilbert Loeber
Mr. and Mrs. Edward Lorenzen
Mr. and Mrs. Carl E. Lund
Mrs. Walter Mangold
Mr. and Mrs. Harry Martin
Mr. E. M. McKinley
Mr. and Mrs. Don McMahlil
Mr. William McMullin
Mr. and Mrs. Monte Mead
Mr. and Mrs. Albert Metzger
Rev. and Mrs. Kurt Meuschke
Rev. A. Meyer
Mr. and Mrs. Robert Mitchell
Mr. and Mrs. Francis G. Morrison
Mr. and Mrs. Richard Mueiting
Mr. and Mrs. Francis Murtaugh
Mr. and Mrs. Emil Nash
Rev. and Mrs. Darrel Nelson
Mr. and Mrs. Walter R. Nelson
Mr. and Mrs. Edward Nessen
Mr. and Mrs. Robert Neubert
Mr. and Mrs. Fletcher Nichols
Mr. and Mrs. Delbert Nielsen
Mrs. Edith Nielsen
Mrs. John Nielsen
Mrs. S. Nielsen
Mr. and Mrs. Don Northrup
Dr. and Mrs. John Northwall
Mr. and Mrs. R. E. Olsen
Mr. and Mrs. Vern Olson
Mr. Martin Osterloh, Sr.
Mr. and Mrs. Dale L. Palmer
Mr. and Mrs. Cecil Peck
Mr. and Mrs. Leroy Pedersen
Mr. and Mrs. William Petersen
Mr. and Mrs. Harold Peterson
Rev. Henry Peterson
Mr. and Mrs. Lynn Petersop
Mr. and Mrs. Richard E. Peterson
Mr. and Mrs. Roger Peterson
Mr. and Mrs. E. Planck
Mr. and Mrs. Arthur Pohl
Mrs. Vivian Polberg
Mr. and Mrs. Donald Powell
Mr. and Mrs. A. Prouty
Mr. and Mrs. Phillip Rabstjnek

Mr. and Mrs. Harvey Rasmussen
Mr. and Mrs. Maynard Rasmussen
Mr. and Mrs. Roland Rasmussen
Mr. and Mrs. Darrell Rath
Rev. Walter Rath
Rev. Orville Reeg
Mr. and Mrs. Alvin Remmers
Mrs. Virginia Ricks
Mr. and Mrs. Richard Robeson
Rev. Arnold Roesener
Mr. and Mrs. Emmett Rogert
Mr. and Mrs. Howard Romer
Mr. and Mrs. H. Ronnenkamp
Mr. and Mrs. Russell Ronnfeldt
Mr. and Mrs. John A. Rowland
Mr. and Mrs. Theo Schlange
Rev. and Mrs. W. Schmidt
Dr. and Mrs. Walter Schur
Rev. and Mrs. Ernest Serr
Mr. and Mrs. Harold Shaff
Col. and Mrs. John D. Sharp
Mr. and Mrs. Leland Siffing
Mr. and Mrs. Carson Simpson
Mr. Clarence Smith
Mr. and Mrs. Howard C. Speck
Mrs. Maude Spong
Mr. and Mrs. H. Steffensen
Mr. and Mrs. Ron Stellyes
Mr. and Mrs. Walter Stern
Mr. and Mrs. Paul Strecker
Mr. and Mrs. Alvin Strohhahn
Mr. and Mrs. Robert Stuhr
Rev. Obed Sunde
Mr. and Mrs. R. Sundermann
Mr. and Mrs. Clyde E. Taggart
Mr. and Mrs. Arnold Teevenc
Mr. and Mrs. Verner Thomsen
Mr. and Mrs. Richard Thormahlen
Mr. and Mrs. Melvin Timm
Mr. and Mrs. Glenn Todd
Mrs. Douglas Toepel
Mr. and Mrs. Darold Townsend
Mr. and Mrs. Max Tyler
Mr. and Mrs. Everett Van Cleave
Mr. and Mrs. James Vohs
Mr. and Mrs. Herbert Von Hollen
Mr. and Mrs. Eldon Wellsandt
Mr. and Mrs. Willis E. Welp
Mr. Norbert West
Mr. and Mrs. Lester Wulf
Mrs. Ernest Young
Mr. and Mrs. L. T. Zell
Mr. and Mrs. Alwin M. Zwanziger

Friends

Dr. and Mrs. Lawrence Abbott
Mr. and Mrs. Mark Adams
Adams Public Schools
Mr. Lawrence Adkins
Mrs. Walter Albert
Dr. M. W. Aldridge
Rev. Douglas Alken
Ms. Ruth A. Allison
Mr. Alfred Andersen
Mrs. Anna Andersen
Ms. Barb Andersen
Mr. and Mrs. Francis Andersen
Ms. Frieda Andersen
Ms. Ruth E. Andersen
Mrs. Duane Anderson
Mrs. James Anderson
Ms. Janet Anderson
Mr. Roy Anderson
Anderson Reunion
Miss Denise Andreasen
Mr. and Mrs. Robert Arenz
Rev. Larry Arganbright
Mr. and Mrs. Koreen Askeland
Rev. Armand Asper*
Mrs. James Atkinson
Mr. and Mrs. Dexter Babcock, Jr.
Miss Gail Baird
Mr. and Mrs. Buck Banger
Mr. Dean Barnett
Ms. Mary Barter
Mr. Noah Bass
Mr. and Mrs. Richard Baughman
Dr. and Mrs. Ralph Beasom
Rev. and Mrs. Robert Beckstrand
Mr. and Mrs. Clarence Bellefeuille
Mr. and Mrs. Earl Bennett
Rev. Elwin Bergstrasser

Mr. and Mrs. Dennis Berke
Ms. Karen Bernhardtson
Ms. Freida Bernthal
Mr. and Mrs. Donald Best
Ms. Gail W. Bevington
Mr. and Mrs. Richard Biggs
Mr. and Mrs. Richard Bird
Mrs. Myrtle Birdzell
Mrs. Eunice Blackwell
Mrs. Kathy Blake
Mr. and Mrs. Phillips Bobier
Mrs. Melvin Boehr
Ms. Isabelle Boldt
Mrs. Cal Bonnavier
Ms. Katherine Bozell
Ms. Ruth Borsheim
Dicey Lee Brewer
Mr. and Mrs. Ted Bridwell
Rev. Harold Brokering
Ms. Loriesa Brokering
Ms. Susan Bronczyk
Ms. Linda Brown
Mr. and Mrs. Harry Buckholz
Mr. and Mrs. Rufus Buffaloe
Rev. John Bunge
Mrs. Eleonra Burroughs
Mr. and Mrs. Stuart Burt
Mr. and Mrs. Jon Butler
Mr. and Mrs. Ernest Button
Ms. Mary Byers
Mrs. Raymond Caddock
Mr. Milton Campbell
Mr. and Mrs. M. C. Carl
Mrs. Ida Carter
Ms. Sarah Casey
Ms. Elaine Chamberlain
Mr. Virgil Chamberlin
Ms. Amanda Christensen
Mr. and Mrs. H. E. Christensen
Mr. Paul M. Christensen
Mr. and Mrs. Ronald Christensen
Mrs. Ronald Christensen
Dr. and Mrs. Keith Christiansen
Dr. and Mrs. C. E. Chynoweth
Ms. Nellie Cina
Mrs. Jack Cohen
Mr. Richard Collins
Mr. and Mrs. Clifford Condit
Mr. and Mrs. Dennis Conner
Mrs. Maxine Coons
Mr. and Mrs. Harry Cooper
Mrs. Wilma Cooper
Ms. Carlene Cording
Mr. and Mrs. Edwin Cording
Dr. Michael Couch
Dr. Herbert Coulter
Mr. Howell Cox
Mrs. Shirley Crom
Mr. and Mrs. Jim Cross
Mr. and Mrs. M. R. Crutchfield
Ms. Adeline Dahle
Mr. and Mrs. S. W. Davidsen
Mrs. James B. Dawson
Ms. Viola Demarce
Dr. Albert Dempsey
Ms. Cathrine Densmore
Mr. and Mrs. Jerome Deschler
Mr. and Mrs. Harvey Dettmer
Mr. and Mrs. Woodrow Dickson
Ms. Alice Diedrichsen
Mrs. Laurence Dillard
Mr. and Mrs. S. D. Ditchey
Lt. and Mrs. Richard Diver
Mr. Joseph Dodd, Jr.
Mr. Bill Dollen
Mr. C. A. Donaldson
Mr. and Mrs. Carl Drach
Ms. Thelma Dulle
Mr. and Mrs. Carleton Draper
Mr. and Mrs. Daniel Drees
Mrs. Loretta Drees
Rev. William Dreesen
Mr. and Mrs. Greg Drew
Mr. Robert O. Duffy
Ms. Yvonne A. Durst
Mr. and Mrs. Otis Earle
Mr. and Mrs. Joseph P. Egger, Jr.
Mr. and Mrs. Vance Ehrle
Elk Horn - Kimball School
Mrs. I. H. Elmquist
Rev. and Mrs. Oscar Engebretson
Mr. and Mrs. Gerry Eppenbach

Mr. and Mrs. W. C. Erickson
Estate of Ralph Anderson
Estate of Frank Baumgart
Estate of F. E. Hansen
Estate of H. Nelson
Estate of Flora Osterbuh
Mr. Richard H. Evans, Jr.
Ms. Sheila Exstrom
Mr. Paul Falck
Mr. and Mrs. Jerold Fardal
Rev. Robert Fedde
Mr. and Mrs. Charles Ferguson
Mr. Edward C. Fish
Mr. and Mrs. Philip Fisher
Mrs. Irene Fitz
Mr. and Mrs. Elwyn Fitzke
Mr. and Mrs. Ward Fitzke
Rev. Luther Flugstad
Mr. and Mrs. John Fortin
Mr. Kermith O. Foss
Mrs. Wesley Foss
Ms. Margaret Fosse
Ms. Martha Fox
Rev. Kenneth Franzen
Mr. Gordon G. French
Mr. Ralph Freuck
Rev. and Mrs. John Fritzmeier
Mrs. Orpha Froblom
Mrs. Clara Froker
Mr. F. A. Frydenlund
Mrs. Virgil Frye
Mr. and Mrs. Arnold Fuhlrodt
Rev. and Mrs. Robert Furreboe
Mr. Maynard Gabrielson
Mrs. Kathryn Gamble
Mr. and Mrs. Curtis E. Gard
Ms. Nadine Gay
Dr. and Mrs. Richard Gentry
Mr. Charles George
Ms. Thelma Gifford
Mr. and Mrs. Raymond Ginerich
Ms. Kathleen Gitzinger
Rev. I. Gjellstad
Mr. Jeff Goldenstein
Mr. Math Gollit
Mr. and Mrs. Murrell Graham
Ms. Frieda Grauerholz
Ms. Beatrice Gregerson
Mrs. William Griewcock
Mr. and Mrs. Tom Grosserode
Mr. and Mrs. Floyd Grout
Mrs. Ella Gudmandsen
Ms. Eva Guenzi
Mr. James Guzak
Ms. Beatrice Hansen
Mr. and Mrs. Carlyle Hansen
Miss LaVonne Hansen
Ms. Lora Hansen
Mr. and Mrs. Noel L. Hansen
Rev. Robert Hansen
Ms. Virginia Hansen
Ms. Salina D. Hamtelmann
Rev. Frederick Harms
Mr. and Mrs. Wade Harty
Mr. Fred Hasenohr
Ms. Ruth Hawkinson
Ms. Marcell Hay
Rev. E. W. Haygeman
Mr. and Mrs. Robert Heckler
Mr. K. Henriksen
Mr. David Hernes
Mr. Richard Herzog
Mrs. Thyra Herzog
Mr. and Mrs. Jack H. Higgins
Mr. and Mrs. Arthur Hildebrand
Mr. Dale Hillman
Mrs. R. Hobson
Rev. Erich A. Hoefler
Mr. Andrew Hoefler
Mr. C. A. Hoelscher
Mr. Willy Hofeling
Mr. and Mrs. Lester Hoffman
Rev. Roger Hoffman
Ms. Trudy Hohensee
Mrs. Anton Hohn
Ms. Clara Holliday
Mr. and Mrs. Fred Holmquist
Mr. and Mrs. Everett Holstein
Mr. and Mrs. John Holtey
Mr. and Mrs. Tom Horney
Mr. and Mrs. Jack Hose
Mr. and Mrs. Russell Hounshell
Mr. and Mrs. Wm. Hubbard
Mr. and Mrs. Al Huber
Mr. Richard Hughes
Mr. Carl Humiston
Mr. and Mrs. Al Hummel
Mr. and Mrs. Lee Huntington
Mrs. Noelyn Isom
Mr. Alfred Iversen
Mr. Harold Jacobson
Rev. Vernon Januske
Mrs. Carla James

Mr. Guy Jarvis
Dr. and Mrs. Richard Jaworski
Mr. and Mrs. Brandon Jenison
Mr. John T. Jensen
Ms. Charlotte Jester
Ms. Linnell Joe
Ms. Lillian Johansen
Mr. Scott Johns
Mrs. Carol Johnson
Mr. and Mrs. Donald Johnson
Ms. Doris Johnson
Ms. Edna S. Johnson
Mr. and Mrs. Elmer Johnson
Mrs. J. K. Johnson
Ms. Linda Johnson
Dr. and Mrs. Niel Johnson
Mrs. Troy Johnson
Mrs. Josephine Johnstad
Ms. Helena Jorgensen
Mr. Jack Jorgensen
Mr. Jim Judt
Mr. and Mrs. Donald Jungmeyer
Rev. William Jurgens
Rev. Phil Kammerlohr
Mr. Chuck Kelley
Mr. and Mrs. John Kelly
Mr. Allen Kelsay
Mr. and Mrs. Randall P. Kempf
Mr. and Mrs. Carl Kempin
Mr. W. Kendall
Ms. Martha Kidd
Mr. Gary Kindler
Dr. Byford Klein
Ms. Jane O. Kleine
Mr. William Klingler
Mr. Bruce Klitzky
Mr. Norman Kneschik
Mr. and Mrs. J. Frank Knight
Mr. and Mrs. Melvin Knoell
Ms. Olga J. Knudson
Mr. and Mrs. J. Marvin Knutsen
Dr. and Mrs. Joseph Knutson
Mrs. Lyle Kohler
Mr. and Mrs. David Kolenda
Mrs. Herbert Kolterman
Mr. and Mrs. Alfred Konovalsky
Ms. Lillian Kotlar
Mr. Norman Kruger
Rev. George Krumrey
Mr. and Mrs. Adolph Kruse
Dr. and Mrs. G. Kuether
Mr. J. Kuhr
Mrs. Minnie Kuhr
Mr. Wayne Laban
Mr. and Mrs. Martin Lähm
Mrs. Everett Lamb
Dr. Ian Lamont
Mr. Dennis Langer
Mr. and Mrs. Fred Largens
Ms. Eila M. Larsen
Mrs. Frank Larsen
Ms. Palma A. Larson
Mr. Dean Laune
Mr. and Mrs. August Leacter
Ms. Emily Leighty
Rev. James Leistikow
Mrs. Doris Lenert
Mr. Ralph E. Leslie
Mr. and Mrs. Clinton Lester
Mr. Robert Lewis II
Dr. Herman Lew
Mr. and Mrs. Lyle Lewis
Mr. and Mrs. Norman Likes
Rev. Adolph Lillich
Ms. Gertrude Lindau
Mrs. Clarence Lindblad
Mrs. Vera Lindholm
Mr. Sam Lingo
Miss Ruth Lippincott
Mr. Willard Lobitz
Mr. Jack Lockwood
Ms. Augusta Loeb
Rev. Palmer Loken
Mrs. Earl Long
Mr. Phil Lorentzen
Mrs. Carol Lorenz
Ms. Agnes Loveland
Mr. John Lowry
Miss Lona Lund
Rev. Gerald Lundby
Mr. Phil Lustgraaf
Mr. and Mrs. Ron Mackey
Mrs. S. J. Maginnis
Mrs. Olive M. Maillet
Mr. Pat Mallette
Ms. Mildred Malmquist
Ms. Helen Manfred
Mr. Joe Mannino
Mr. Albert J. Marcus
Rev. Kenneth Marquardt
Mr. Howard Marshall
Mr. Charles Martin
Mr. and Mrs. Max Martin

Mrs. Trudy Martin
Mr. and Mrs. Larry Mason
Mr. and Mrs. Jeffrey May
Ms. Norma May
Mr. and Mrs. Paul McDevitt
Mr. and Mrs. Bernard L. McIntosh
Ms. Marion McMahill
Mr. and Mrs. Robert McMillan
Mr. and Mrs. Scott McPherson
Memorials to Mel Boehr
Memorials to Kirsten Reed
Rev. Wayne Mesecher, Sr.
Miss Elizabeth Mestad
Ms. Myrna Metcalf
Mr. Arthur Miller
Mr. Fred H. Miller
Mrs. Homer Miller
Mr. and Mrs. John P. Miller
Mr. and Mrs. Leslie Miller
Rev. and Mrs. Lyle Miller
Mrs. Naomi Misfeldt
Ms. Ines Mitchell
Ms. Jan Mobilebust
Mr. Emil Moerer
Rev. Eugene Moll
Mr. Luther Monke
Mr. Carl Monson
Ms. Elizabeth Moodie
Dr. Paul Mooring
Mrs. Alda S. Morisawa
Mr. and Mrs. Ansel S. Mortneit
Mr. and Mrs. William B. Moss
Ms. Dorothy Moudy
Rev. G. Muedeking
Mr. Iron Mueller
Mr. and Mrs. Arthur Mumm
Mr. and Mrs. Robert Murphy
Ms. Margaret Mushrush
Ms. Gertrude Musier
Mrs. George Neale
Dr. and Mrs. Desmond Neff
Ms. Augusta Nelson
Mrs. Pauline Nelson
Mr. and Mrs. Stanley Nesheim
Mr. and Mrs. Victor Neuffer
Ms. Meta Newell
Ms. Marie Newmeyer
Ms. Dorothy Newton
Mrs. DeAnna Nielsen
Ms. Ethel Nielsen
Mrs. Lillie Nielsen
Mr. N. C. Nielsen
Mr. and Mrs. Paul Nockels
Ms. Madelon Norton
Mr. and Mrs. William F. O'Hara
Rev. and Mrs. Arthur Odden
Mr. Peder Olsen
Dr. Edward A. Olson
Ms. Gladys P. Olson
Ms. Jean Olson
Rev. Oscar Olson
Mrs. Rufus Olson
Ms. Shirley Olson
Mr. and Mrs. Theodore Olson
Mr. Wilbur E. Olson
Mrs. Vera M. Oltmann
Miss Greta Oppe
Dr. and Mrs. Taylor Osten
Mr. and Mrs. Gerald Otte
Mrs. Jeannette Palazzolo
Mr. and Mrs. Robert W. Parish
Mr. and Mrs. George Parson
Mr. George Parsons
Mr. and Mrs. Rex Paschke
Dr. R. W. Passmore
Ms. Cathy Patrick
Mr. Paul O. Pauley
Mr. Larry Pavel
Mr. and Mrs. B. R. Pearce
Ms. Pam Persing
Mr. and Mrs. James Peters
Mr. Carl Petersen
Mr. Clarence Petersen, Jr.
Mrs. Lucille Petersen
Mr. Walter Petersen
Mr. Clarence M. Peterson
Ms. Emily H. Peterson
Mr. and Mrs. John Peterson
Mr. and Mrs. R. W. Peterson
Mrs. Ruth Peterson
Mr. Larry Pfister
Mr. Owen Picton
Mrs. Sheila Pille
Mr. W. A. Pinkham, Jr.
Mrs. Norma Plumb
Ms. Lillian Podwinski
Mr. and Mrs. Jerry Poff
Portal to the Plains Board
Miss Carol Preissner
Ms. Marilyn Preus
Mr. and Mrs. Richard Prince
Rev. and Mrs. J. N. Quello
Mrs. Harold Rabass

Mrs. Lois Raber
Mr. and Mrs. Heye Rademacher
Ms. Lillie Rasmussen
Mrs. Sophie Rasmussen
Mrs. George Rathmann
Mr. W. T. Reckmeyer
Mr. and Mrs. Bob Redding
Rev. Emit Reinking
Rev. Frank Reisinger III
Mr. and Mrs. A. Rembold
Mr. and Mrs. Harold Rembold
Miss Frances Remington
Mr. Harlan F. Rengstorff
Miss Marie Repeck
Mrs. John Rhoades
Mr. A. C. Ridland
Mr. Herbert Ring
Mrs. C. Risburg
Mrs. B. O. Robinson
Ms. Jennie W. Robinson
Mr. Roland E. Robison
Mr. Joe Rodecap
Ms. Ella Rodeman
Miss Linda Roed
Mr. Bob Roh
Mrs. A. Rohrbough
Miss Helen Rohwer
Mrs. Louis Rolfs
Ms. Caroline Ronnei
Ms. Virginia Rostvold
Ms. Anne Marie Rowan
Mr. and Mrs. Richard Rudisill
Rev. Arlyn Saathoff
Mr. and Mrs. Gerald A. Sand
Ms. Frances Scheel
Dr. and Mrs. Russell Schlattman II
Mr. John V. Schleif
Mr. Herman Schmidt
Rev. Ludwig Scholl
Mr. and Mrs. Norman Schroll
Mr. and Mrs. Donald Schuler
Mr. Orval Schulte
Mr. and Mrs. Vernis Schultz
Mr. and Mrs. C. W. Schulze, Jr.
Mr. and Mrs. S. William Schumacher
Ms. Ann Schumann
Miss Carolyn Schurr
Mr. and Mrs. Marx Scott
Lt. and Mrs. Robert J. Scott
Mrs. Harold Seaman
Mr. Glen Seeba
Mr. and Mrs. Frank Seelhoff
Mrs. Esther Seidel
Rev. and Mrs. Martin Seybold
Mrs. Ethel Shafer
Ms. Lois Sherman
Mr. Robert Shoup
Mr. and Mrs. William Shupe
Mr. Tom Sick
Dr. Fred F. Simmons, Jr.
Dr. and Mrs. Jim Simmons
Mr. Bob Simpson
Mrs. Florence Skagg
Mr. Stan Skaug
Mr. and Mrs. Charles D. Skotman
Mr. Clarence Smecker
Ms. Carol Smith
Mr. Cleo Smith
Mrs. Henry Smith
Mr. Joel Snell
Mrs. Hazel E. Snesrud
Mr. and Mrs. James A. Sogge
Mr. and Mrs. Larry Sorensen
Mr. Ronald Sorensen
Mr. and Mrs. William Sornborger
Rev. and Mrs. Kurt A. Sortland
Mr. Allan Spanjer
Mr. and Mrs. John Sphatt
Ms. Luella E. Spiser
Mr. James Spitzenberger
Mrs. Doris Spletzerber
Mr. Phil Stahla
Stanley Bros.
Mr. and Mrs. M. E. Stavig
Mr. Arthur Steele
Ms. Julia B. Steien
Mr. Harold Steyer
Mrs. Ralph Steyer
Mrs. Ruth Stiles
Mr. and Mrs. Bill Stillman
Mr. Robert Silvers
Mr. Earl Stokes
Rev. Henry Stolz
Mrs. Hilda Strauch
Mr. and Mrs. Laverne Strege
Dr. and Mrs. David Sutherland
Ms. Alma Svogerson
Mr. Larry Swanson
Ms. Marlene Swanson
Mr. T. Swanson
Mrs. Thelma Taggart
Mrs. Warren E. Taggart
Mr. and Mrs. Ron Taglauer

Ms. Martha Tallman
Mrs. Anna Tammen
Mrs. Gertrude G. Taylor
Mr. and Mrs. Joe Taylor
Ms. Shirley Templin
Mrs. Donald Teten
Mrs. Lillian Thielemann
Ms. Grace Thompson
Mr. and Mrs. Merrill Thompson
Mr. Jacob Thomsen
Mr. and Mrs. Lars Thorsen
Rev. Steven Tjarks
Ms. Dora Tomkvist
Ms. Virginia Townsend
Mrs. E. S. Tripp
Mr. and Mrs. Roy Trout, Jr.
Ms. Alice Trybus
Mr. and Mrs. Donald L. Tubbs
Mr. Arnold Tweden
Rev. and Mrs. Glen Vanderkloot
Mr. Dan Vaughan
Rev. Eugene Vetter
Ms. Darlene Vick
Mr. Dale VonSeggern
Mr. C. B. Wade
Mr. and Mrs. R. A. Wahlstrom
Ms. Kris Wakelin
Mr. and Mrs. Herman Waltner
Rev. and Mrs. Milton Walls, Jr.
Rev. and Mrs. Ronald Walter
Mr. and Mrs. Walter L. Walteke
Ms. Thelma Wandlow
Mr. and Mrs. John Wangberg
Ms. Martha Wangberg
Mr. M. Wardell
Mr. and Mrs. Walter O. Wasser
Mr. and Mrs. James Wasson
Rev. Dale Watermeier
Mr. D. R. Watkins
Dr. and Mrs. G. Marshall Webster
Mr. and Mrs. Orville Wee
Ms. Carolyn Welsh
Mr. and Mrs. Harold Wenzel
Ms. Priscilla Westberg
Mr. and Mrs. Arnold Weuwe
Dr. and Mrs. Harry Whyte
Mr. David Wile
Mr. and Mrs. August Will
Rev. Vincent Will
Mr. A. D. Williams
Mr. and Mrs. Darwin Wilson
Dr. Sam Winkelmann
Ms. Cheryl Wipperling
Ms. Mindy Wipperling
Mr. Gerard Wireman
Mr. and Mrs. DeJef Witt
Mr. and Mrs. Waldo Wolf
Mr. and Mrs. Hugo Wolf
Rev. Howard Wolfgram
Mr. and Mrs. Don Woodley
Ms. Margaret Wright
Ms. Kathryn Wykoff
Mr. Peter A. Yeager
Mrs. Bernard Youngmark
Ms. Marcella Zalowdek
Dr. and Mrs. Donald Ziehm
*Deceased

Foundations:
Tower Circle Level:
Bransen Foundation
Pillsbury Company Foundation
President's Society Level:
Champion International Foundation
Mobil Foundation, Inc.
Montgomery Ward Foundation
Sears Roebuck Foundation
Century Club Level:
Amoco Foundation Incorporated
Arthur Young Foundation
Bank of America Foundation
Exxon Education Foundation
INA Foundation
Tektronix Foundation
The Owen Foundation
TRW Foundation
Union Oil Company of California
Foundation
United Brands Foundation
Other Gifts:
Alcoa Foundation
Asarco Foundation
Foundation for Insurance Education
Hartford Insurance Foundation
International Harvester
Kimberly-Clark Foundation Inc.
Minnesota Mining Company
Phillips Petroleum Foundation
Prudential Property and Casualty
Corporations:
Tower Circle Level:
Getty Refining and Mfg.
Lutheran Brotherhood

Nat'l Assoc. for the Exchange of Industrial Resources
Northern Foundation - Omaha
Omaha World-Herald Foundation - Omaha
Standard Blue
Standard Oil of Ohio
Western Electric
President's Society Level:
Acme Mail Advco
American Telephone and Telegraph - New York
International Business Machines Corporation
Monsanto Fund
Century Club Level:
Agrico Chemical Company
Air Products and Chemicals
Baird, Holm, McEachen, Pedersen, Hamann, Haggart Law Offices
Bancroft-Whitney Company
Central Telephone and Utilities
Equitable of Iowa
Honeywell Corporation
International Harvester - Chicago
J C Penney Company, Inc. - New York
Lutheran Mutual Insurance Company
Mammel, Olson, Schropp, Horn and Swartzbaugh, Inc.
Massachusetts Mutual Insurance
Mutual Life Insurance Company of Nebraska
Mutual of Omaha - Omaha
National American Insurance Company
Northern Natural Gas
Northwestern Bell Telephone - Omaha
Scouler-Bishop Company
Southwestern Bell
Sperry Rand Corporation - New York
Stow Dental Group
Union Pacific Foundation - New York
Other Gifts:
Abel Foundation - Lincoln
Aetna Life and Casualty
Aid Assoc. for Lutherans
Aircro, Inc. - Montvale
Ak-Sar-Ben - Omaha
Albion National Bank - Albion
Allied Chemical Foundation - Morristown
Allied Mills, Inc. - Chicago
Allstate Foundation - Shawnee Mission
American Brands, Inc. - New York
American Home Products
American National Bank - Creighton
American National Bank - Sidney
Arcadia State Bank
Arizona Dental Health
Arnold State Bank
Auburn State Bank
Bancroft-Whitney Company
Bank of Bertrand
Bank of Brainard
Bank of Brule
Bank of Burwell
Bank of Clarks
Bank of Elgin
Bank of Gering
Bank of Hartington
Bank of Lindsay
Bank of Madison
Bank of Norfolk
Bank of Overton
Bank of Taylor
Bankers Life of Nebraska - Lincoln
Bay State Foundation - Scottsbluff
Briggs Pump Company - Omaha
Brinn & Jensen Company - Omaha
Bristol-Myers Fund - New York
Bruning State Bank
Brunswick Foundation, Inc. - Skokie
Buckwall-Alco Stores, Inc. - Abilene
Burlington Northern Foundation - St. Paul
Burt County State Bank - Tekamah
Butte State Bank
Caterpillar Tractor Company
Cedar Rapids State Bank
Cengas/Minnegasco - Lincoln
Central Bank - Central City
Chief Industries, Inc. - Grand Island

Citizens State Bank - Arapahoe
Citizens State Bank - St. Paul
City National Bank - Hastings
Coca-Cola Company - Houston
Commercial Bank - Blue Hill
Commercial Federal Savings - Omaha
Commercial State Bank - Hoskins
Commercial State Bank - Wausa
Commonwealth Electric Co. - Lincoln
ConAgra Charitable - Omaha
Continental Corporation - New York
Cook Paint & Varnish Co. - Kansas City
Delay First National - Norfolk
Deluxe Check Printers - St. Paul
Duckwall-Alco Stores, Inc. - Abilene
Dr. and Mrs. John H. Easley - Grand Island
Elanco Products Company - Omaha
Ericson State Bank
Fairbury State Bank
Farm Credit Banks of Omaha
Farmers Bank - Oconto
Farmers and Merchants Bank - Axtell
Farmers and Merchants Bank - Ceresco
Farmers and Merchants National Bank - Ashland
Farmers State Bank - Big Springs
Farmers State Bank - Douglas
Farmers State Bank - Eustis
Farmers State Bank - Humphrey
Farmers State Bank - Maywood
Farmland Industries, Inc. - Kansas City
Filley Bank
Firestone Tire and Rubber
First Federal Savings - North Platte
First National Bank - Aurora
First National Bank - Beemer
First National Bank - Emerson
First National Bank - Friend
First National Bank - Grand Island
First National Bank - Hayes Center
First National Bank - Lincoln
First National Bank - Marquette
First National Bank - Minden
First National Bank - Mitchell
First National Bank - North Platte
First National Bank - O'Neill
First National Bank - Tekamah
First National Bank - Wayne
First National Bank - Wilcox
First State Bank - Atkinson
First State Bank - Fremont
First State Bank - Gothenburg
First State Bank - Hickman
First State Bank - Loomis
First State Bank - Scottsbluff
First State Bank - Shelton
Ford Motor Company Fund
Fruehauf Corporation - Omaha
Fuchs Machinery & Supply, Inc. - Omaha
Gate City Steel - Omaha
Gateway Bank & Trust Company - Lincoln
General Foods Fund, Inc. - White Plains
General Motors Corporation - Detroit
General Telephone Company - Columbus
Geneva State Bank
Genoa National Bank
Genuine Parts Company - Omaha
Gooch Milling & Elevator Co. - Lincoln
Goodyear Tire & Rubber Co. - Akron
Gould Incorporated
Grace Foundation, Inc. - New York
Gresham State Bank
Graybar Electric Company, Inc. - New York
Guide Rock State Bank
Hall County Livestock - Grand Island
Harding Glass Ind., Inc. - Kansas City
Herman Bros., Inc. - Omaha
Holmquist Grain and Lumber
Houghton-Mifflin Co. - Boston
ICFA-Miscellaneous - New York
International Business - Armonk
International Telephone - New York
Isaacs Travel Service
Jayhawk Boxes, Inc.
Jefferson County Bank - Daykin

John Hancock Mutual - Boston
Johnson Hardware Co. - Omaha
Johnson Wax Fund
Journal-Star Printing Co. - Lincoln
K-Mart Corporation - Troy
Kala Music
Kinning & Reil, Inc. - Norfolk
Knop TV - North Platte
Kraft Inc. - Glenview
Landen Foundation - Omaha
Leska Corporation
Lexington State Bank
Liberty Mutual Insurance - Boston
Lincoln Equipment Co.
Lincoln Mutual Life
Lincoln Steel Division
Lisco State Bank
Lueder Construction - Omaha
Mayer Broadcasting Co. (KMTV) - Omaha
Max I. Walker Cleaners - Omaha
Mr. and Mrs. J. Paul McIntosh - Norfolk
Merck Company Foundation - Rahway
Meyer-Ceco Foundation - Chicago
Midwest Federal Savings - Nebraska City
Minden Exchange
Missouri Valley Machinery Co. - Omaha
Mortgage Guaranty - Milwaukee
Morton House Kitchens, Inc. - Nebraska City
Nash Foundation - Minneapolis
National Bank of Neligh
Nebraska Security Bank - Deshler
New York Life Insurance Co.
Norden Laboratories - Lincoln
North Platte State Bank
Northwestern National Bank - Norfolk
O'Keefe Elevator Company, Inc. - Omaha
O'Neill National Bank
Occidental Savings & Loan - Omaha
Ole Evinrude Foundation - Lincoln
Omaha Bankers Association - Omaha
Owens Corning
Pacific Resources Incorporated
Paxton-Mitchell Company - Omaha
Peavey Company - Minneapolis
Pender State Bank
Petersburg State Bank
Petersen Manufacturing - DeWitt
Philadelphia National Bank
Piper, Jafray & Hopwood - Omaha
Potter State Bank
Printco
Procter and Gamble Fund - Cincinnati
Prudential Insurance Co. - Newark
Ralston Bank
Reynold, Simmons and Nelson
R. J. Reynolds Industries, Inc. - Winston-Salem
Sapp Bros.
Schuyler State Bank
Scottsbluff National Bank
Scribner Bank
Security Mutual Life - Lincoln
Security National Bank - Laurel
Seven Valleys State Bank - Callaway
Sidney National Bank
Siegelman and Van Deren
Skinner Macaroni Company - Omaha
P. W. Skogmo Foundation - Minneapolis
Spencer State Bank
Sperry & Hutchinson - New York
Standard Chemical - Omaha
Standard Motor Products, Inc. - New York
State Bank of Benkelman
State Bank of Cairo
State Bank of Firth
State Bank of Hildreth
State Bank of Jansen
State Bank of Palmer
State Bank of Stella
State Bank of Trenton
State National Bank - Wayne
Stead-Warner Alekrite Sales - Omaha
Sterling Drug, Inc. - New York

Store Kraft Manufacturing Co. - Beatrice
Sutton State Bank
Tandy Corporation - Fort Worth
Tenneco Foundation - Houston
Texas Gulf Incorporated
Thayer County Bank - Hebron
Three-M Company - St. Paul
Tilden Bank
Touche Ross and Company
Tri-County Bank - Stuart
TRW Foundation - Cleveland
United Guaranty Residential - Greensboro
UPS Foundation - Greenwich
Wm. Volker & Company - Omaha
Willamette Industries
Willis Cap and Gown Co. - Omaha
Winside State Bank
Woods Charitable Fund, Inc. - Lincoln
WOWT/Chronicle - Omaha
Yankee Hill Brick Mfg. Co. - Lincoln
Washington County Businesses and Organizations:
Tower Circle Level:
Blair Bank
HunTel
O'Hanlon and O'Hanlon
Unitel of Blair
Vinton Motor Co.
Washington County Bank
Harold Wright Company
President's Society Level:
Enterprise Publishing Company
Equitable Savings and Loan
Hansen Agency
Bob Krogh Insurance
Taylor Oil Company, Inc.
Century Club Level:
Anderson Pharmacy
B & C Shop
Blair Feed Mill
Blair Florist
Blair Glass
Blair Redi Mix, Inc.
Blair Rotary Club
Blair Transfer
Blair West
C & J Tire Sales
Campbell Funeral Home
Coast to Coast Store
Computel Inc.
Concrete Equipment Company
Fairway Propane
Fl. Calhoun Stone Company
Gamble Store
Hinky Dinky
Interstate Harvestore
Jensen Well Company
Kealy & Hamilton
Leroy Larsen Realty
Phil Larsen Real Estate
Miller-Rolland TV and App.
Nebraska Iowa Supply
Nebraska Petroleum Inc.
Nebraska State Savings
Pizza Hut
Raymond Ryder Co.
Runyon and Long
Schmidt Monument Company
S. E. Smith and Sons
Stewart A. Smith Assoc.
Thompson Oil Company
Washington County Mutual Insurance Co.
Woodhouse Ford
Other Gifts:
Advance Cleaners
Amdt Hardware
Amies House of Bottles
B-Line Motel
Gary Baker, Insurance
Blair Bakery
Blair Dippy Donuts
Blair Flour Mill
Blair Golf Club
Blair House
Blair Meat Plant
Blair Supply Company
Bud's Welding Repair
Carefree Travel
Carlson's Market

Carries Paint and Decor
Cheryls Beauty Salon
Clyde Fitch Heating and Plumbing
Country Cheese Corner
Dairy Queen
Ed Jipp Construction Company
Fabric Village
Foley Oil Company
Genuine Auto Supply
Godfathers Pizza
Good Earth Plants
Hain-Flynn Post 154
Harold's Liquors
Harris Shoe Store
Hayes Electric
Hermis Liquor
Clark Jensen Nursery
Jim's CB Radio
Nile Johnson, Atty.
Julie Ann Shop
Kellys Fashions
Klopps Jewelry and Gifts
Lifeco, Inc.
Lorenes Ceramics
Mac's Food Center
Mar Bee Salon
Martin and Vacca
Medicine Chest Discount
Clarence Mock, Atty.
Modern Beauty Salon
Montgomery Ward
Nebraska-Iowa Business Equipment
Nelson Bros. Clothiers
Olies Tavern
Olson and Stewart Const.
Pearson and Associates
Peterson Construction
Plum Tree Lounge
Pounds Printing Co.
Production Credit Assoc.
Radio Shack
Richards Agency
Robert Oil Propane
Ron's Radio and TV Service
Rosterman Mobil Home Park
Scheffler Sporting Goods
Shuster Implement
Siewers Funeral Home
Starlight Motel
Ted's Barber Shop
The New Topper Cafe
The Silver Razor
Thew Custom Floors
Tripp's Super Service
Tyson, Inc.
Verns Appliance Service
Wanda's Blair Maple
Washco Feed Supply
Water King
Williby's 66 Service
Danish American Organizations:
Century Club Level:
Danish American Society, Inc., Elmsford, NY
Danish Brotherhood #51, Ludington, MI
Danish Brotherhood #161, Hardy, NE
Danish Brotherhood #227, Ypsilanti, MI
Danish Brotherhood #325, Bayside, NY
Danish Brotherhood #343, Waupaca, WI
Denver Danes
General Committee of Eastern Lodges of Danish Brotherhood, Warwick, RI
Iowa-Minnesota District
Other Gifts:
Danish Brotherhood #35, Chicago Heights, IL
Danish Brotherhood #126, Los Angeles, CA
Danish Brotherhood #172, Wallingford, PA
Danish Brotherhood #206, Blair, NE
Danish Sisterhood #15, Milwaukee, WI
Danish Sisterhood #75, Enumclaw, WA
Danner Flour of Dannebrog



The Dana College Honor Roll of Churches

Dana College is a College of the Church — born out of Trinity Seminary and dedicated to the mission of preparing men and women for leadership roles in the Church and the world. Throughout her 100-year history, Dana has depended heavily on the Church for both financial support and prospective students. And the Church has responded to meet those needs.

To recognize and encourage the continuation of this kind of support, a special Dana College Honor Roll of Churches has been created. Each congregation making a gift of \$100 or more during the fiscal year is named to the Honor Roll of Churches and receives a beautiful plaque bearing that designation. Then, in succeeding years as additional gifts of \$100 or more annually are received, the honor roll congregation is given a year-marker for display on the original plaque.

The following congregations have become members of the Dana College Honor Roll of Churches:

- American Lutheran Church, Adams, NE
American Lutheran Church, Belleville, KS
American Lutheran Church, Denver, CO
American Lutheran Church, Gothenburg, NE
American Lutheran Church, Grand Junction, CO
American Lutheran Church, Lincoln, NE
American Lutheran Church, Minneapolis, MN
American Lutheran Church, Omaha, NE
American Lutheran Church,
Smith Center, KS
Atonement Lutheran Church, Boulder, CO
Atonement Lutheran Church, Overland Park, KS
Bethany Lutheran Church, Elkhorn, NE
Bethany Lutheran Church, Minden, NE
Bethany Lutheran Church, Ruskin, NE
Bethany Lutheran Church, Tulsa, OK
Bethlehem Lutheran Church, Davey, NE
Bluffs Trinity Lutheran Church, Fremont, NE
Brauersville Immanuel Lutheran Church,
Cole Camp, MO
Calvary Lutheran Church, Omaha, NE
Calvary Lutheran Church, Scottsbluff, NE
Christ Lutheran Church, Omaha, NE
Christ Lutheran Church, Pickrell, NE
Christ Lutheran Church, Stover, MO
Christ the Servant, Norfolk, NE
Faith Lutheran Church, Golden, CO
Faith Lutheran Church, Seward, NE
Faith Lutheran Church, Talmage, NE
First English Lutheran Church, Kimball, NE
First Lutheran Church, Avoca, NE
First Lutheran Church, Blair, NE
First Lutheran Church, LaCrosse, KS
Golgotha Lutheran Church, Chicago, IL
Grace Lutheran Church, Cook, NE
Grace Lutheran Church, Hebron, NE
Holy Shepherd Lutheran Church, Lakewood, CO
Hope Lutheran Church, Burr, NE
Hope Lutheran Church, Rush Center, KS
Hope Lutheran Church, Smithfield, NE
Immanuel Lutheran Church, Albion, NE
Immanuel Lutheran Church, Bethune, CO
Immanuel Lutheran Church, Chadron, NE
Immanuel Lutheran Church, Coleridge, NE
Immanuel Lutheran Church, Glenvil, NE
Immanuel Lutheran Church, Lodgepole, NE
Immanuel Lutheran Church, Omaha, NE
Immanuel Lutheran Church, Rushville, NE
King of Glory Lutheran Church, Loveland, CO
La Jolla Presbyterian Church, La Jolla, CA
Lord of Love Lutheran Church, Belton, MO
Luther Memorial Church, Syracuse, NE
Lutheran Church of Hope, Broomfield, CO
Lutheran Church of Our Redeemer, Ft. Morgan, CO
Lutheran Church of the Master, Lakewood, CO
Lutheran Church of the Master, Omaha, NE
Martin Luther Church, Auburn, NE
Montclair Lutheran Church, Denver, CO
Mountain View Lutheran Church, Thornton, CO
Nazareth Lutheran Church, Cedar Falls, IA
Olivet Lutheran Church, Inglewood, CA
Our Savior Lutheran Church, Buffalo, MO
Our Savior Lutheran Church, Greeley, CO
Our Savior Lutheran Church, Plainview, NE
Our Savior's Lutheran Church, Dannebrog, NE
Our Savior's Lutheran Church, Norway, KS
Our Saviour Lutheran Church, Audubon, IA
Our Saviours Lutheran Church, Lincoln, NE
Peace American Lutheran Church, Bessie, OK
Peace American Lutheran Church, Sterling, CO
Peace Lutheran Church, Alma, NE
Peace Lutheran Church, Deshler, NE
Peace Lutheran Church, Plymouth, NE
Pella Lutheran Church, Omaha, NE
Pella Lutheran Church, Sidney, MT
Prince of Peace Lutheran Church, Geneva, NE
Ruskin Heights Lutheran Church, Kansas City, MO
Salem Lutheran Church, Lenexa, KS
Salem Lutheran Church, Superior, NE
Shepherd of the Hills, Ft. Collins, CO
Sheridan Lutheran Church, Lincoln, NE
St. John American Lutheran Church, Beatrice, NE
St. John Evang. Lutheran Church, Daykin, NE
St. John Lutheran Church, Athol, KS
St. John's Lutheran Church, Bird City, KS
St. John's Lutheran Church, Eustis, NE
St. John's Lutheran Church, Kensington, KS
St. John's Lutheran Church, Windsor, CO
St. Mark's Lutheran Church, Aurora, CO
St. Mark's Lutheran Church, Olathe, KS
St. Mark's Lutheran Church, St. Paul, NE
St. Paul Lutheran Church, Gilead, NE
St. Paul Lutheran Church, Hildreth, NE
St. Paul Lutheran Church, Nevada, MO
St. Paul Lutheran Church, Palmer, KS
St. Paul's Evang. Lutheran Church,
Cole Camp, MO
St. Paul's Lutheran Church, Auburn, NE
St. Paul's Lutheran Church, Burlington, CO
St. Paul's Lutheran Church, DeWitt, NE
St. Paul's Lutheran Church, Neola, IA
St. Paul's Lutheran Church, Oklahoma City, OK
St. Paul's Lutheran Church, Omaha, NE
St. Paul's Lutheran Church, Republican City, NE
St. Paul's Lutheran Church, Tescott, KS
St. Peters Lutheran Church, Byron, NE
Trinity Evang. Lutheran Church, Clinton, OK
Trinity Lutheran Church, Albert Lea, MN
Trinity Lutheran Church, Bruning, NE
Trinity Lutheran Church, DeWitt, NE
Trinity Lutheran Church, Ellsworth, IA
Trinity Lutheran Church, Fowler, CO
Trinity Lutheran Church, Ft. Collins, CO
Trinity Lutheran Church, Hartington, NE
Trinity Lutheran Church, Newman Grove, NE
Trinity Lutheran Church, Russellville, MO
Underwood Lutheran Church, Underwood, IA
United Emmanuel Lutheran Church, Russell, KS
United Lutheran Church, Hampton, NE
United Lutheran Church, Laurel, NE
Westwood Lutheran Church, Shawnee Mission, KS
Zion American Lutheran Church, Loveland, CO
Zion Lutheran Church, Carleton, NE
Zion Lutheran Church, Creighton, NE
Zion Lutheran Church, Everest, KS
Zion Lutheran Church, Johnson, NE
Zion Lutheran Church, Phillipsburg, KS

OTHER CONGREGATIONS AND CHURCH ORGANIZATIONS

Dana's support from the Church is not limited to those listed as members of the Honor Roll of Churches. The congregations and organizations listed below have also provided financial support for Dana during this past year. We are thankful for the love, prayers and good wishes which these gifts represent.

- | | | |
|---|---|--|
| <p>Abiding Savior Lutheran Church,
Independence, MO</p> <p>American Lutheran Church, Fairbury, NE
American Lutheran Church Women,
Sioux City, IA</p> <p>Avondale Lutheran Church, Denver, CO</p> <p>Bethel American Lutheran Church,
Windsor, CO</p> <p>Bethlehem Lutheran Church, Brush, CO</p> <p>Calvary Lutheran Church, Grand Island, NE</p> <p>Centennial Lutheran Church, Englewood, CO</p> <p>Central District ALCW, Omaha, NE</p> <p>Central District, American Lutheran Church,
Omaha, NE</p> <p>Central Missouri Conference ALCW</p> <p>Ebenezer Lutheran Church, McCabe, MT</p> <p>Ekklesia Koinonias, Dana College</p> <p>Elk Horn Conference ALCW</p> <p>Emmanuel Lutheran Church, Stuttgart, KS</p> <p>Emmanuel Lutheran Church Women,
Beatrice, NE</p> <p>Evangelical Lutheran Church, Mankato, KS</p> <p>Faith Circle Lutheran Church, Eustis, NE</p> <p>Faith Lutheran Church, Eaton, CO</p> <p>Faith Lutheran Church, Maskell, NE</p> <p>Faith Lutheran Church, Oberlin, KS</p> <p>Faith Lutheran Church, Security, CO</p> <p>First Evang. Lutheran Church, Dayton, OH</p> | <p>First Lutheran Church, Dorrance, KS</p> <p>First Lutheran Church, Eaton, CO</p> <p>First Lutheran Church, Kearney, NE</p> <p>Good Shepherd Lutheran Church, Hastings, NE</p> <p>Grace Lutheran Church, Lexington, NE</p> <p>Holy Cross Lutheran Church, Beatrice, NE</p> <p>Holy Spirit Lutheran Church, Littleton, CO</p> <p>Immanuel Lutheran Church, Cushing, OK</p> <p>Immanuel Lutheran Church, Orum, NE</p> <p>Immanuel Lutheran Women, Wilson, KS</p> <p>Iowa District Am. Lutheran Church Women</p> <p>King of Glory Lutheran Church,
Independence, MO</p> <p>Luck Lutheran Church, Luck, WI</p> <p>Messiah Lutheran Church Women, Aurora, NE</p> <p>Morningside Lutheran Church, Sioux City, IA</p> <p>Mt. Olive Evang. Lutheran Church,
Santa Monica, CA</p> <p>Northern Colorado Conference</p> <p>Our Redeemer Lutheran Church, Ness City, KS</p> <p>Our Savior Lutheran Church, McCook, NE</p> <p>Our Savior's Lutheran Church, Brewster, KS</p> <p>Overland Park Lutheran Church,
Overland Park, KS</p> <p>Peace Lutheran Church Women,
St. Francis, KS</p> <p>Pella Lutheran Church, Selma, CA</p> <p>Prince of Peace Lutheran Church,
Burnsville, MN</p> | <p>Prince of Peace Lutheran Church, Denver, CO</p> <p>Prince of Peace Lutheran Church, Omaha, NE</p> <p>Prince of Peace Lutheran Church, Phoenix, AZ</p> <p>Prince of Peace Lutheran Church,
Ponca City, OK</p> <p>South Central Brotherhood, Hebron, NE</p> <p>St. James Lutheran Church, Humboldt, NE</p> <p>St. John's Lutheran Church, Nezperce, ID</p> <p>St. John's Lutheran Church, Randolph, NE</p> <p>St. John's Lutheran Church Women,
Kanawha, IA</p> <p>St. Olaf Lutheran Church, Austin, MN</p> <p>St. Paul American Lutheran Church,
Herington, KS</p> <p>St. Paul Lutheran Church, Galatia, KS</p> <p>St. Petri Church, Story City, IA</p> <p>Triangle Cluster of Churches, Malmo, NE</p> <p>Trinity Lutheran Church, Otis, KS</p> <p>Trinity Lutheran Church, Waupaca, WI</p> <p>Upper Wolf Lutheran Church, Robinson, KS</p> <p>Zion Lutheran Church, Albion, NE</p> <p>Zion Lutheran Church, Amoret, MO</p> <p>Zion Lutheran Church, Benkleman, NE</p> <p>Zion Lutheran Church, Limon, CO</p> <p>Zion Lutheran Church, Pickrell, NE</p> <p>Zion Lutheran Church Women,
Clay Center, NE</p> |
|---|---|--|

Memorials

Each year Dana College receives a considerable number of gifts given to honor the memory of friends and relatives. Those remembered by memorial gifts during the past year include:

- | | | | |
|--|---|--|--|
| <p>Mrs. Joe Allen</p> <p>Louise Antholz</p> <p>Alvin Bensen</p> <p>Dr. Mel Boehr</p> <p>Bondo Memorial Fund</p> <p>Ella Borgmann</p> <p>Mrs. Harry Braack</p> <p>Wilbur Bruning</p> <p>Leonard Bussey</p> <p>Mrs. Irene Campbell</p> <p>Mr. Raymond Carlsen</p> <p>Rev. M. G. Christensen</p> <p>Mrs. Anna Danker</p> <p>Mr. Andrew Dunn</p> <p>Rev. Karl Fullgrab</p> <p>Ernest Gebers</p> <p>Jim Grandsell</p> <p>Everett Hagedorn</p> <p>Mrs. L. W. Halvorson</p> <p>Mr. Hilmer Hansen</p> <p>Mr. Ray Hansen</p> <p>Kathy Hedegaard</p> | <p>Mr. Levi Henriksen</p> <p>Mr. Harold Holm</p> <p>Ethel Holscher</p> <p>Deppe Jensen</p> <p>Mr. and Mrs. F. A. D. Jensen</p> <p>Mr. Frants Jensen</p> <p>Fredy and Leona Jensen</p> <p>Rev. and Mrs. C. Jeppesen</p> <p>Emil Johnson</p> <p>James Johnson</p> <p>Mrs. F. Jorgensen</p> <p>Rev. Harold Jorgensen</p> <p>Mr. Oscar Jorth</p> <p>Mr. Joe Karen</p> <p>C. Kaven</p> <p>Sine Kirkegaard</p> <p>C. S. Kloth</p> <p>Mark Kloth</p> <p>Mr. Simon Korshoj</p> <p>Mr. Alvin Kruse</p> <p>Alan Kutsch</p> <p>Anne Marie Kutsch</p> | <p>Sophie Larsen</p> <p>Sophie Lentfer</p> <p>Mrs. Elvira Lichty</p> <p>Stinus Loft</p> <p>Rose Luther</p> <p>Anna Moerer</p> <p>Mr. David Munroe</p> <p>Lois Mussman</p> <p>Erland Nelson</p> <p>Miss Agnes Nielsen</p> <p>Rev. and Mrs. Frank Nielsen</p> <p>Mr. Niels P. J. Nielsen</p> <p>Waldo B. Nielsen</p> <p>Dr. and Mrs. Paul Nyholm</p> <p>Mr. Ivan Olsen</p> <p>Mrs. Dorothy Parmelee</p> <p>Christina Pedersen</p> <p>G. Pedersen</p> <p>Laura Pedersen</p> <p>Hannah Peters</p> <p>Mrs. Barbara Petersen</p> <p>Mr. Henry Petersen</p> | <p>Mrs. Ingrid Petersen</p> <p>Kirsten Reed</p> <p>Oscar Riensche</p> <p>Mrs. Pat Salchow</p> <p>Emil Schroeder</p> <p>Mildred Selt</p> <p>Mr. G. Shau</p> <p>Mr. Dan Sigler</p> <p>Mr. and Mrs. Einer Solevad</p> <p>Anchor Sorensen</p> <p>Mrs. Melvin Stolz</p> <p>Connie Sutton</p> <p>Dr. Ethan Svendsen</p> <p>Mr. and Mrs. Charles Von Fummetti</p> <p>Clarence Vig</p> <p>Einer Vig</p> <p>Eli Vig</p> <p>Mr. Ralph Vinton</p> <p>Mr. and Mrs. Charles Von Fummetti</p> <p>Mr. Bill Witterhn</p> <p>Hazel Womble</p> |
|--|---|--|--|



NO POSTAGE
NECESSARY
IF MAILED
IN THE
UNITED STATES

BUSINESS REPLY MAIL

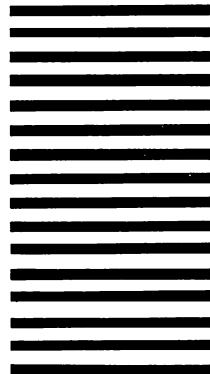
FIRST CLASS PERMIT

NO. 22

BLAIR, NEBRASKA

POSTAGE WILL BE PAID BY ADDRESSEE

Annual Fund
Dana College
Blair, Nebraska 68008



My (Our) gift to the Dana College Annual Fund is \$ _____

Entire gift enclosed. OR, Initial payment of \$ _____ is enclosed. The balance is to be paid on _____ or Monthly Bimonthly Semi-Annually.

Name/Maiden Name _____ Class _____

Street address _____

City _____ State _____ Zip _____

CHECK ONE Alumnus Faculty-Staff Parent Regent Danish-American Friend of Dana Washington County Appeal Other

Consider a membership in a
DANA COLLEGE GIVING CLUB



Tower Circle
gifts of \$1,000 or more



President's Society
gifts of \$500 - \$999



Century Club
gifts of \$100 - \$499

CORPORATE MATCHING GIFT PROGRAM

Enclose your company's completed matching gift form to increase your support of the Dana Annual Fund.

PLEASE SEND ME INFORMATION ON:

Gift Annuities Life Insurance Charitable Trust
 Wills Memorials _____

All gifts received prior to May 31 will be credited to this year's Annual Fund.

Use this space for News for the REVIEW:

I recommend these prospective students to Dana's Admissions Office:

Name _____ Address _____ H.S. Class _____

Name _____ Address _____ H.S. Class _____

THANK YOU FOR YOUR SUPPORT

Thank You!