

# DANA REVIEW

Winter 1981



# DANA REVIEW

Volume 37 Winter 1981 Number 2

(USPS 147-940)

*A magazine for alumni and other friends of Dana College and Trinity Seminary, published four times annually. Printed by Acme Mail Advertising Co., Omaha, Nebraska, with editorial and business offices located at Dana College, 2848 College Drive, Blair, Nebraska. Second class postage paid at Blair, Nebraska 68008.*

## Non-discrimination Policy

*Dana College admits students without regard to sex, age, race, color, religion or national origin to all the rights, privileges, programs, and activities generally made available to students at the College. It does not discriminate on the basis of sex, race, color, age, handicap or national origin in administration of its educational policies, admission policies, scholarship and loan programs, athletics, or other school-administered programs.*

**Campus photographs by Peter Bonde '81, Nerstrand, Minnesota; Tom Jacobson '81, Fairbury, Nebraska; Mark Latenser '82, Omaha.**

**The cover:** Eight of Dana's 35 Folk Dancers perform "The Hatter," a Danish dance, in a pastoral setting — the park behind Argo and Elk Horn Halls. The students are (men, from the left) Merle Brockhoff '81, Weeping Water, Nebraska; Richard Andersen '81, Harlan, Iowa; Curt Fett '82, Sioux City, Iowa; Mike Von Hollen '83, Wichita, Kansas; (women, clockwise from top right) Julie Johnson '81, Shell Knob, Missouri; Lori Neve '82, Blair; Shelly Peterson '83, Omaha; and Kathy Gerking '82, Brock, Nebraska.

Brockhoff, the group's co-director (with post-graduate student Cheryl Lustgraaf '80), joined the Dancers three years ago. He dances, he says, "because it's good exercise and fun." Members practice twice a week.

The Dancers, who wear authentic costumes of the Danish provinces, performed during the first semester in Sheffield, Illinois; Onawa, Iowa; and Kansas City, Missouri; and at an ethnic festival in Omaha. Their second semester schedule includes performances on March 7 and 8 in Denver, Colorado, and some on the choir tour, where they'll dance at high schools in several of the towns where the choir is scheduled to sing. *Photograph by Mark Latenser '82, Omaha.*

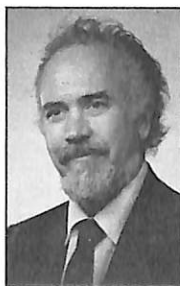
## County Appeal Exceeds Goal

The annual fall Washington County Appeal for Dana has set a new record by passing its goal of \$60,000 (a record last year) to reach \$65,000.

Blair residents Tim Garrigan of Unitel and Brent Gilbert of the Hansen Agency have served as co-chairmen for the past two years.

## Friends in Christ, Friends of Dana, Greetings!

What an exciting time to be on the campus of Dana College! The sound of hammers in the air! Construction crews will soon be at work completing Borup Coliseum, transforming that unfinished dirt floor area into a fine addition to our recreational facilities. We will be adding two racquetball courts, a new locker room, training rooms for men and women, and a wrestling area. This will be a superb addition to our recreational opportunities.



But, friends in Christ, there is more here than meets the eye! The racquetball courts are not the most significant thing — something far more important is taking place. Don't misunderstand! I am not saying that this new facility is insignificant or unimportant. On the contrary, it is! It is or we would not build it. We need those outlets and those recreational opportunities. Our young people require and deserve additional avenues of outlet and this will serve them ably. But what I am trying to say is that, as important as those courts are, there is something even

more important than the actual fact of construction, and that is the symbolism and significance of that construction! The sound of hammers in the air. Dana on the move again. Hammers in the air, the drumbeat of an institution on the move! This is a new day at Dana. After a decade of decline, of belt-tightening, of chagrin and discouragement often bordering on despair, after several years when the feeling had become widespread that Dana was dying, we are seeing a new day! Dana is on the move. Today two racquetball courts, tomorrow a chapel, the next day a fine arts complex!

No longer talk of closing down, gone the resignation to retrenchment, finished that frustrating feeling of failure stalking on the horizon! There is the sound of hammers in the air, the drumbeat of an institution alive, sailing into the future with confidence, with a reckless enthusiasm born of the knowledge that we are people of the King whose cross conquers continents, dissolves deficits, and renews hope from age to age.

In Jesus' name . . .  
Dr. James Kallas, President

## 'A Place and a Concept'

# Parnassus Celebrates Tenth Year

*Parnassus, the center of Dana's unique humanities program, observed its tenth anniversary this fall with a retrospective art exhibit and Homecoming activities. At the Homecoming luncheon October 11, Dr. John W. Nielsen '47, humanities director, described those ten years to returning alumni. For those who weren't present, this is what he said:*

Parnassus is both a place and a concept. As a place it provides a forum for speakers, a gallery for art exhibits, a chamber for musical groups, a center for study, and a location for human encounter. As a concept it expresses the conviction that involvement is as important as information, that facility is as crucial as fact.

In the first sense, it has been a train of noted individuals — Paul Engel, Sophus Keith Winther, John Neihardt, Margaret Chase Smith, Joseph Langland, Ruth Thone, Edna Hong, Neil Simonsen, Thomas Enckell, Pamela Heston.

It has seen the exhibit of works by artists — renowned and aspiring — Paul Granlund, who has shown in the Venice Biennale; Stephen Polchert, world-recognized ceramicist whose works appear in most modern texts; Mary Jo Horning, who has exhibited at the Smithsonian and whose work hangs in the home of the vice president of the United States; John Zielinski, photographer for *Life* magazine; Jerry Horning, developer of double-wall ceramics; Tom Bartek, graphic artist whose works are handled by national galleries — and many, many others — 39 of them are included in the Parnassus Retrospective and most of them are donating their works to the collection.

Parnassus has been a place for students to study, review, and relax, and for faculty to interact with them.

As a concept it has surrounded students and faculty with good art, music, and ideas. It has provided the impetus for attendance at operas, ballets, theatres, lectures, and symphonies, as well as arranging excursions to Minneapolis, Denver, Kansas City, and Chicago. It has insisted that that which has been learned in English and speech courses be applied in subsequent academic work, and it has initiated remedial workshops for those who are deficient.

So significant has the concept been that colleges and universities throughout the U.S. have made inquiries about it. They have been as far flung as the University of Michigan, the University of Massachusetts, the University of Minnesota, the University of Texas, the University of Arizona, and the University of Southern California.

At this time I want to recognize a number of people:

C. Arthur Christensen, who was dean when the concept was presented and who caught the vision.

The teaching faculty, who have performed admirably as a team.

The Parnassus staff, who have worked ceaselessly.

The Parnassus student volunteers, who donate 1000 hours of service to Dana each year by manning Parnassus not only from 8 to 5 Mondays through Fridays, but also on Monday and Thursday nights and Sunday afternoons.

These I salute.

Finally, I would like to conclude with the words of John A.



Nielsen

T. Robinson, Biblical scholar and author of *Honest to God*, who when he was shown Parnassus late in his recent weeklong visit to the campus (as a Visiting Theologian), said: "Why wasn't I shown this place sooner?"

We invite you to visit Parnassus.

## 39 Show Work in Retrospective

Artists and photographers who have shown their work in Parnassus over the past decade participated in a retrospective exhibit this fall that was remarkable for its scope, variety, and depth.

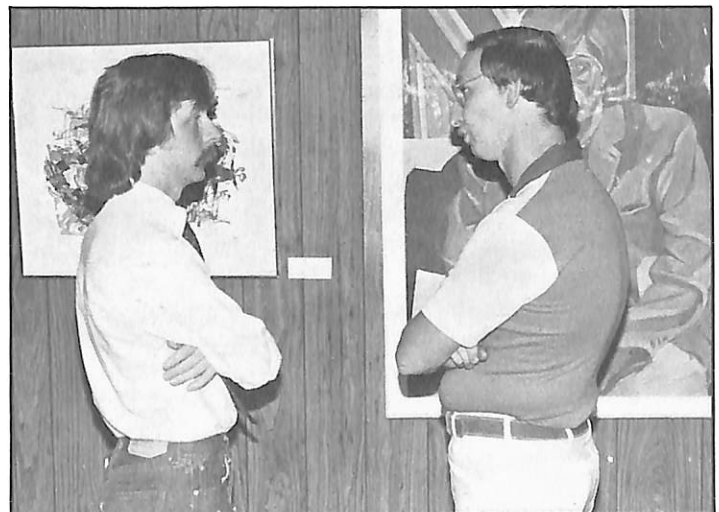
Omahans represented in the exhibit were Larry Andrews '73, Tom Bartek, Marie Christian (who has taught painting at Dana), James Denney, Jerry Horning, Mary Jo Horning, Ruth Latenser, Lynn Meyer, Paul Otero '76, Stephen Polchert, and Isabel Threlkeld.

Blair participants were Kim Cooper '78, Eric George (a Dana art student), Milt Heinrich (of the Dana art faculty), Linda Money Jorgensen '65, Jayne Botos Kolterman '66, Marcile Kolterman, Elizabeth Solevad Nielsen '64, James Olsen '62 (another member of the art faculty), Ryle Smith '73, Larrie Stone '57 (of the Dana biology faculty), F. W. Thomsen '45 (professor emeritus of art), and Harold Wright.

Others were Richard Brink '60, Hastings, Nebraska; John Christensen '54, Taft, California; Marion Christensen '54, Davenport, Iowa; James Coffey '50, Fargo, North Dakota; Sally Daley (a former member of the Dana music faculty), Evanston, Illinois; Donald Dynneson '66 and Richard Wiegmann, both of Seward, Nebraska; Paul Granlund, St. Peter, Minnesota; Drew Sorenson '74, Davenport, Iowa; Robert Therien and Millie Traeder, both of Fremont, Nebraska; John Thomsen '68, New York City; and John Zielinski, Kalona, Iowa.

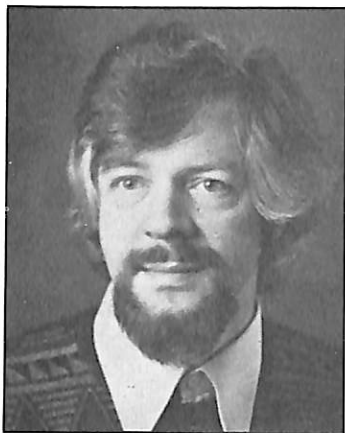
Works exhibited posthumously were by Thelma Christensen, Kansas City; Frank Jespersen '54, New York City; and Thomas Marker, Cleveland, Ohio.

Many of the artists have donated the work they exhibited to the Parnassus Collection.



At the retrospective exhibit in Parnassus: Artists Ryle Smith '73 (left, in front of print by art instructor Milt Heinrich) and Heinrich (in front of portrait by Smith).

## Co-Workers Are February Visiting Theologians



Stegemann



Schottroff

Two West German professors, Dr. Luise Schottroff of the University of Mainz and Dr. Wolfgang Stegemann of the University of Heidelberg, will discuss their sociohistorical interpretation of the New Testament as Dana's next Visiting Theologians. Their series of five free public lectures is set for February 9-13 at 8 o'clock each evening in the Dana Hall of Science Auditorium.

Both have worked together in theological and historical research for several years, and they are the co-authors of *Jesus von Nazareth: Hoffnung der Armen* (Stuttgart, 1978) and co-editors of the two-volume *Der Gott der kleinen Leute* (Munich, 1979).

Schottroff, who is professor of New Testament at Mainz, has studied theology at the Universities of Bonn, Goettingen, and Mainz. Among her publications is one in English: "Non-violence and the Love of One's Enemies," in *Essays on the Love Commandment* (Philadelphia, 1978).

At Dana she will speak on "Women as Followers of Jesus in the Time of the New Testament" (February 9), "The Liberation from the Dominion of Sin According to the Epistle to the Romans" (February 11), and "God's Goodness and Human Solidarity: An Interpretation of Matthew 20: 1-16" (February 12).

Stegemann, who is pastor and assistant professor at Heidelberg, also studied there. He earlier served as a pastor in the Church of Baden and taught at the University of Mainz. A publication in English is on "From Palestine to Rome: The Social Process in Early Christianity" in *Concilium: Christianity and the Bourgeoisie* (New York, 1979).

At Dana Stegemann will lecture on "The Failure of the Messianic Coalition: Socio-historical Aspects of the Jewish-Christian Conflict According to Luke-Acts" (February 10) and "The Blessing of the Children: Interpretation of Mark 10:13-16 in the Context of the Roman Society" (February 13).

The concluding series in this year's program will be given April 20-24 by Dr. Gustaf Wingren of Sweden's Lund University. Professor Wingren, who has served as president of Societas Ethica (a society of teachers of ethics in European universities), will speak on "The Work of God and the Work of Man." His individual lectures will be on "The Creation of God and the Life of Man," "The Gifts of God and the Environment of Man," "The Law of God and the Life of Society," "The Judgment of God and the Guilt of Man," and "The Victory of Christ and the Freedom of Man."

### Former Visiting Theologian In Reagan's Inauguration

The Rev. Donn Moomaw, Visiting Theologian at Dana last February and pastor since 1964 of Bel Air Presbyterian Church in Los Angeles, gave the invocation and benediction at President Ronald Reagan's inauguration.

The Reagans have attended Bel Air Presbyterian Church for 20 years. When Reagan was governor of California, Moomaw served a term on the state's Board of Education.

### Maier to Give Staley Series

Author Paul Maier, professor of ancient history at Western Michigan University and campus chaplain there to Lutheran students, will give a lecture series at Dana March 2-4 as this year's Staley Foundation Distinguished Christian Scholar.



His general topic will be "New Light on the Old Story: Fresh Evidence from History and Archaeology on Jesus and the Birth of Christianity." He will speak on "Myth or History at Bethlehem?" on March 2; "The Politics Behind the Crucifixion," March 3; and "The Empty Tomb as History," March 4. The first two lectures will be in the Dana Hall of Science Auditorium, and the third in Alumni Memorial Auditorium. All are set for 8 p.m.

Maier's books include *A Man Spoke, A World Listened* — the biography of his late father, Dr. Walter Maier, founding speaker of *The Lutheran Hour*; *Pontius Pilate*, a historical novel; *First Christmas*, a documentary on the Nativity, and *First Easter*, a companion volume on the Resurrection; and *First Christians: Pentecost and the Spread of Christianity*.

Maier holds an M.A. from Harvard University and a B.D. from Concordia Seminary (St. Louis). As a Fulbright Scholar, he studied at the University of Heidelberg, West Germany, and the University of Basel, Switzerland, where he received a Ph.D. *summa cum laude* in 1957.

The Staley Program, which is supported and funded by the Thomas F. Staley Foundation of Delray Beach, Florida, was established by Mr. and Mrs. Thomas F. Staley of New York in memory of their parents, Dr. and Mrs. Thomas F. Staley and Judge and Mrs. H. H. Haynes.

Athens, Crete, Port Said, Cairo, Ashdod, Jerusalem, Haifa, Rhodes, Ephesus, Patmos . . . Visit these ancient places this summer on a Mediterranean cruise with Jim and Darlean Kallas, leaving from Chicago August 11. Profits on sales go into Dana's operating budget. For more information, write to Travel '81, Alumni Office, Dana College, Blair, Nebraska 68008.

# Student Body President: "The Things We Learn Here Are Important"

Student body president Mogens Knudsen, a junior from Herning, Denmark, was one of 180 college and university students selected from 1400 applicants to attend the Business Tomorrow VI conference on "Public Policy and Private Enterprise" November 23-25 in New York City.



The conference was sponsored by the Foundation for Student Communication, Inc., a student-run, non-profit organization dedicated to improving communication between students and businessmen.

Speakers included executives from Dow Chemical, Ford Motors, and Koppers Company, Inc.; Henry Kissinger; William Sullivan, former ambassador to Iran and Laos; and Juanita Kreps, former Secretary of Commerce.

Knudsen returned from the conference full of impressions that, he says, he is "still trying to sort out."

Much of what he heard disturbs him: that many executives expect electronics engineers to solve all of this country's problems; that they believe this country needs more engineers but fewer college graduates; that the liberal arts are all right for the wealthy, but not for others — even though they also believe that changes in technology will create shorter work weeks; that there was little concern for improving the quality of life through the liberal arts.

Knudsen hopes that the future will be different from the one described at the conference. "Materialism shouldn't be the only measure of wealth," he says. "It's important to look at the quality of life, and the liberal arts are important there. We shouldn't sacrifice everything to productivity.

"The mission of Dana graduates should be that there is something else in life — the things we learn here are really needed if we are to be a human society.

"I'm glad I've been taught these values at Dana."

## Area Majors Added In Computer Science

Because of the growing importance of computers in business and society, the Dana faculty at its December 2 business meeting voted to add area majors in business-computer science, economics-computer science, and accounting-computer science to the academic curriculum. The new majors will be offered for the first time next fall, at the beginning of the 1981-82 school year.

This decision expands the basic offerings in computer science that Dana has taught in the past. Courses in the subject will include Fundamentals of Computer Science, Computer Language I (BASIC), Accounting Information Systems, Precalculus Mathematics, Computer Language II (FORTRAN), Computer Language III (COBOL), Digital Electronics, and Research in Computer Science.

A minor in computer science will support programs in business, accounting, economics, and mathematics.

## Regent Promotes Dana on TV

Dana Regent Hank Bauer of the San Diego Chargers has prepared a 30-second television commercial for the College that was aired in November and December by Omaha's KETV and in December by KMEG in Sioux City, Iowa.

Bauer is a graduate of a small Lutheran college and a former student of President James Kallas. He made the commercial at no cost to Dana.

KETV was chosen for the initial showings because it broadcasts the Chargers' games. Plans to air the commercial elsewhere are being made. Watch your screen — it might be shown in your area!



Bauer, #37 of the San Diego Chargers, promotes Dana with TV commercial.

## Johnson Mourned

Members of the Dana community were saddened by the death of maintenance superintendent Clyde Johnson on December 27, 1980.

Johnson, the victim of a heart attack, had been at Dana since 1962. A veteran of World War II, he was the first volunteer from Washington County, and as an army lieutenant, fought in the invasion of Normandy and four other campaigns, was wounded in action in France, and received many medals.

Survivors include his wife, Harriet, of 1626 Wilbur in Blair.

President James Kallas delivered the eulogy at Johnson's funeral, held at Blair's First Methodist Church on December 31, and President Emeritus C. C. Madsen spoke at a campus memorial service on January 7. Both men praised Johnson's concern for Dana and his staff; his dedication to the college community — as evidenced by the beauty of the campus and the long hours he devoted to maintaining it; and his readiness to help others.

He will be missed.



---

## Winthers Visit Dana

---

### Books and Letters Are Most Recent Gift

Dr. and Mrs. Sophus Keith Winther, friends of Dana, returned to the campus this fall for a visit. Professor Emeritus of English at the University of Washington, Winther and his parents and brothers emigrated from Denmark when he was a child, and the family settled near Weeping Water, Nebraska. He has written three novels about the Danish immigrant experience — *Take All to Nebraska*, *Mortgage Your Heart*, and *This Passion Never Dies*.

A few days before their campus visit, Winther received the Western Literature Association's annual award in St. Louis, Missouri. Several years ago the Nebraska Library Association gave him its Mari Sandoz Award, and in 1976 Dana planted a cottonwood tree in his honor.

While at Dana, he lectured on "A Definition of the Novel."

Several years ago, Winther gave Dana his private library. This generosity was followed more recently by another gift of approximately 500 volumes, a collection that he had earlier given to a nephew, Eric Winther, a lawyer who had been interested in writing. When the nephew died tragically of cancer, Winther decided to give the collection to the Dana library.

At an interview during his campus visit, Winther said that the reason for his decision "goes back 11 years, when we first visited the campus after receiving an invitation from Professor Norman Bansen. We felt so much at home here then and during subsequent visits that this seemed like the right place. I could have given the books to Indiana University, where Eric's father (Oscar Osburn Winther) was a professor for many years, but I thought it more appropriate to have them at a college with a Danish heritage. I'm happy to think that all of my reading material will eventually be here."

### O'Neill Home Restorers Get Help from Winthers

Winther, who wrote the first book on the plays of Eugene O'Neill, and his wife recently returned to the late dramatist's former California home, Tao House, where they had often visited O'Neill and his third wife, Carlotta, in the '30s and early '40s. The house, which now belongs to the federal government, is being restored as a museum.

O'Neill called Winther his best friend, and he and Carlotta wrote to the Winthers often. The Winthers have donated 100 of these letters to the museum.

They were also able to give the restorers valuable assistance by identifying furniture and other articles, mostly Oriental, that had been in the house (which the O'Neills sold during World War II when they could no longer find the staff to care for it and its grounds). The restorers, the Winthers said, were delighted with an unexpected contribution: pencil sketches of the rooms, showing furniture arrangement, that Mrs. Winther had made on Tao House stationery during one of their visits.



Dr. and Mrs. Winther by Dana library display of his books.

### New Winther Novel Has Nebraska Setting

Winther recently completed the manuscript of another novel, *Nobody Home*, that he is sending to publishers.

Set in Nebraska in the Weeping Water-Elmwood area, the work deals, he said, with a contemporary problem that has implications not only for the quality of life in this state, but in the world — that of family farms being replaced by large corporate farm management.

People on family farms practice neighborliness and know how to plant and protect the land, Winther said. He fears that impersonal corporations will overproduce the land for quick returns and will then abandon the depleted soil.

Across the state, he said, one can see abandoned houses on what were once family farms, and there's "nobody home."



### The Sights and Sounds of Christmas

In spite of a severe ice storm, this year's Sights and Sounds of Christmas brought more than 2000 visitors to the campus — evidence that the day is becoming a major area event. Here Dana Choir member Peter Jacobson '84 of Fairbury, Nebraska, participates in the candlelighting ceremony at the close of the Sounds of Christmas concert.

## Alumnus Has Fun On Omaha Stage

Stan Lassegard '74 bought a season ticket to the Omaha Community Playhouse three years ago, but before the season ended, he had moved from the audience to the stage.

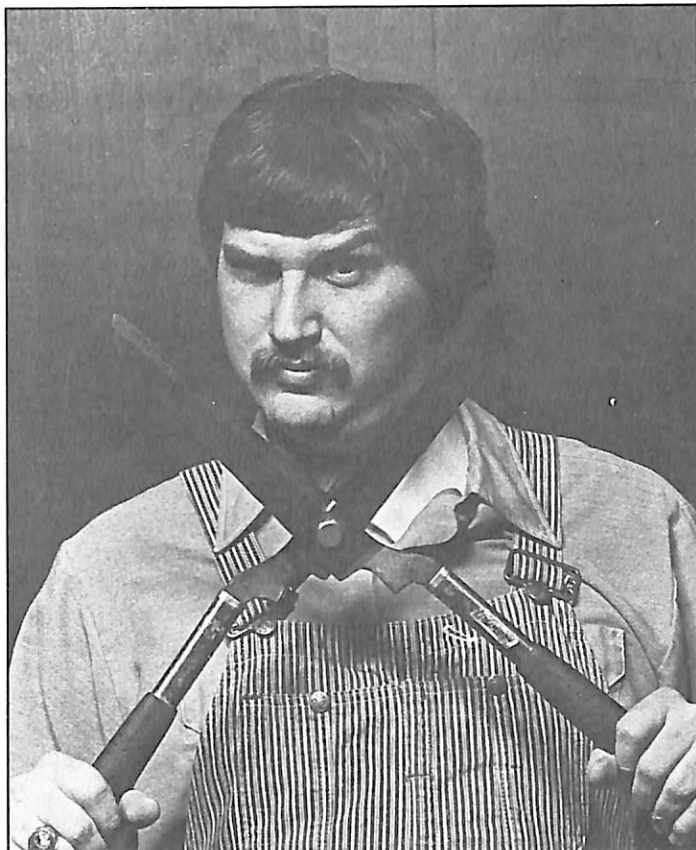
"I was excited by what I saw the first time I attended a play there," he says, "so I auditioned for the musical *How to Succeed in Business Without Really Trying* and was cast in the ensemble."

A social service worker for the State Regional Office for Foster Care Children in Omaha, Lassegard wasn't completely new to the stage when he auditioned. He'd been active in the Blair Community Theatre, and before that, at Dana, he'd appeared in several variety shows and two student-directed plays, *The Ransom of Red Chief* and *Look Back in Anger*.

His first successful Omaha audition encouraged him to try out for more Playhouse productions, and by now he has acted in seven others (six of them musicals) and in the summer of 1979 traveled with one, *The Robber Bridegroom*, to Bulgaria for performances at the International Amateur Theatre Festival. There the play, a musical based on a story by Eudora Welty that the Playhouse had produced in Omaha, was given an enthusiastic reception and rave reviews.

The Playhouse was invited by the North American affiliate of the International Amateur Theatre Association to represent it in Bulgaria, Lassegard says, because it and its director, Charles Jones, "have excellent reputations, and *The Robber Bridegroom* is a piece of Americana."

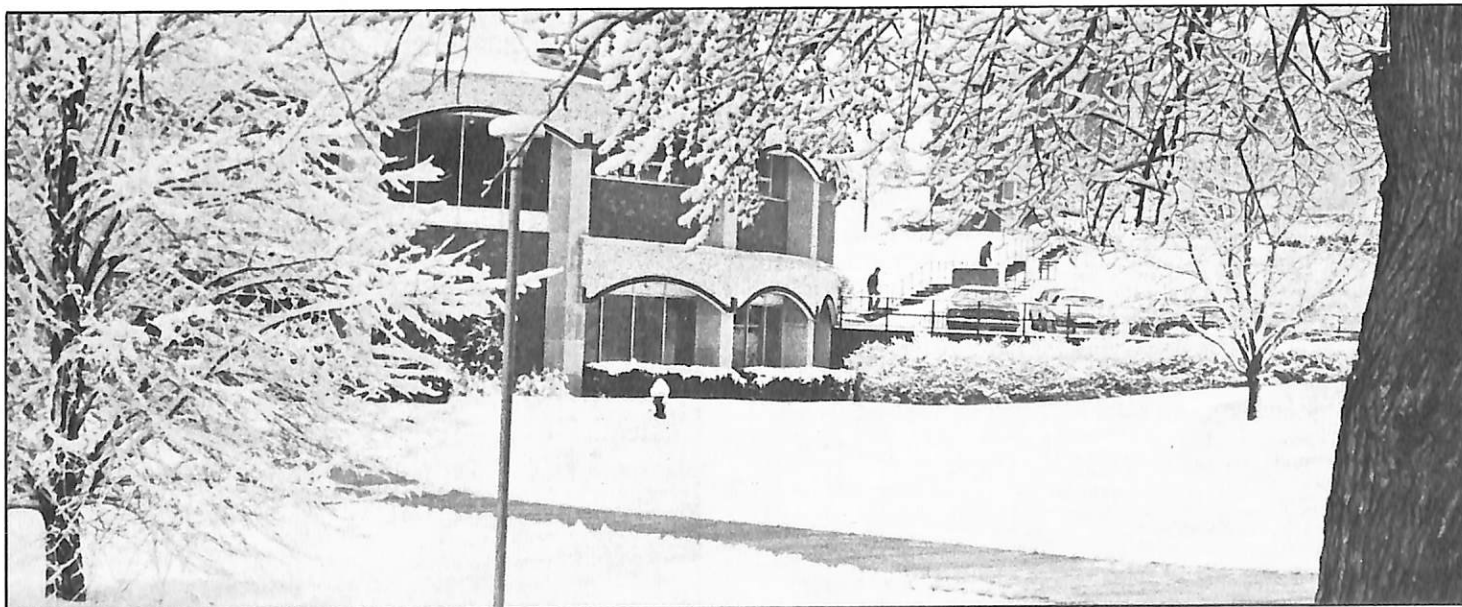
Lassegard has also appeared in *Kismet* (as the Bangle Man), musical productions of Dickens' *A Christmas Carol* (an Omaha *World-Herald* reviewer called Lassegard's performance as "Scrooge's amiable nephew . . . memorable"), *Something's Afoot* (directed by Richard Michaels of New York), *The Shadow Box* (as the Interviewer in "a superb cast," he was an "implacable, deep-voiced authority figure," the *World-Herald* wrote), and *My Fair Lady* (in which he "had a nice comic cameo as the Hungarian Zoltan Karpathy" — again the *World-Herald*).



Lassegard as Flint, the Careless Caretaker, in the Omaha Community Playhouse production of *Something's Afoot*. (Photo permission by John McIntyre, photographer, and the Omaha Community Playhouse.)

Lassegard's favorite role has been Flint, the Careless Caretaker, in *Something's Afoot*. That play, a murder mystery-musical comedy, was "a perfect package and a new experience for most people," he says.

Playhouse audiences will undoubtedly see him again soon. "Being able to step into a role and become another person at the end of the day keeps me sane," he says, "and I'm going to continue auditioning for Playhouse shows I'd like to be in."



## A Weather Report —

Some readers might think that this scene would make a more appropriate cover for our winter issue, rather than the one of the Folk Dancers taken on an obviously balmy day. As Dana alumni know, however, eastern Nebraska weather changes rapidly, and a snowstorm like this one was followed a few days later by temperatures in the '60s, when the cover photo was taken.

## Instructor Creates Campus Sculpture

*This article describes only one of the many activities of Dana art instructor Milt Heinrich. A member of the Nebraska Shared Arts Team, he works with children and teachers in small-town and rural schools; he is at present writing the K-9 art curriculum for the State Department of Education; and he recently completed several other commissions, including a large wall relief and the design of liturgical vestments.*

An outdoor sculpture created this past summer by art instructor Milt Heinrich is the beginning of what he and others hope will become a sculpture garden at Dana.

Commissioned by the faculty with income from the most recent Faculty Follies (a popular campus event staged every four years), Heinrich looked for a confined area where, he says, "a modest-sized piece would be in scale."

The site he chose — the patio at the entrance to the Dana Hall of Science Auditorium — also suggested the subject of the metal sculpture, a black and yellow piece that faces east, looking over Blair and the Missouri River valley.

Heinrich describes the work as "an elaborate form of my favorite third grade drawing — the sun rising over the hills. It's a drawing many children do that seems to grow out of an intrinsic human experience."

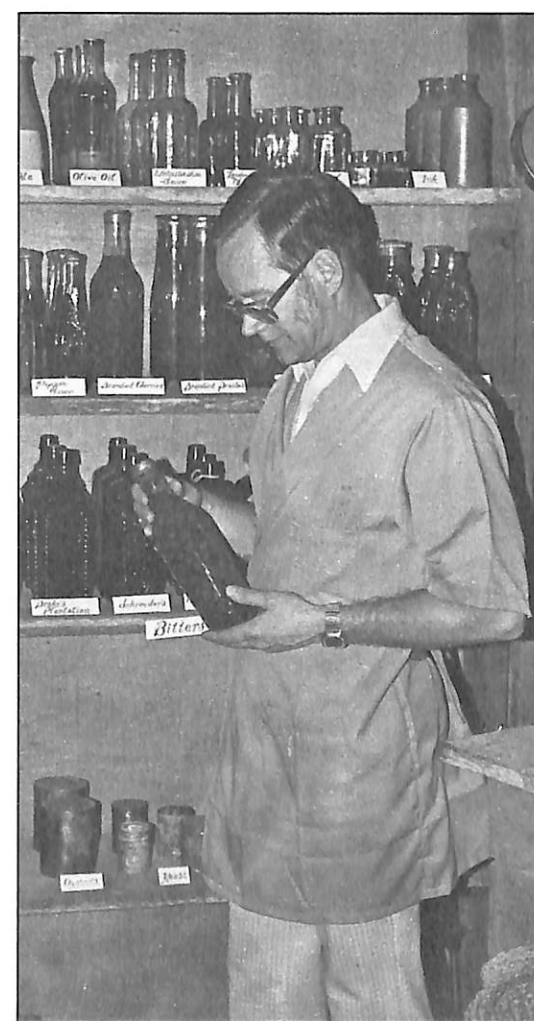
The sculpture is, he says, "also a response to the valley. As the sun rises on one side of the valley, the sculpture responds to it on the other side. It's a mirror, but it's also more than a mirror because it interacts with the sun. It casts shadows, and as the elements change, it changes. It's different on sunny and cloudy days, and when it snows, the snow catches on the horizontal lines as it does in the fields below."

And, Heinrich says, the work is also a cubist landscape, "because it deals with an interaction of planes and lines that create generalized, abstracted geometric forms. The way farmers have cut the fields in the valley falls in line with that. Cubists see the world in planes, and the fields as we look across them from the Dana hill look like a Cubist painting."

Helping him with the piece were Mark Jorgensen, a senior art student who worked with its construction, and Jerry Yandell '79 of Kennard, Nebraska, who did most of the welding, all at no charge. Schmidt Monument of Blair poured the footing, again at no charge.

Heinrich is also developing a collection of framed student art for public areas in campus buildings. But, he says, "as we start to give more visual emphasis to the inside of our buildings, I hope that we can do the same for the outside." He'd like to see other pieces on the patio outside the Science Hall, and there are more potential sculpture garden sites on campus, he says.

"Outdoor sculpture can humanize an institution. Dana has a strong tradition of planting trees and shrubs, which have sculptural qualities — but their growth is the work of God. To put the thumbprint of humanity on campus, we need more art."



## Professor Stabilizes Historic Foodstuffs

On April 1, 1865, the Steamboat Bertrand, 161 feet long and 32 feet wide at the beam, and loaded with supplies for a general store in Montana Territory, sank in the Missouri River near DeSoto Landing south of Blair.

In 1968 its site was located on the DeSoto National Wildlife Refuge. Excavation of the Bertrand's cargo the next year revealed much about the life and needs of Montana settlers and miners.

Of particular interest — and a source of surprise over the quantity, condition, and variety — were the many foodstuffs on board. In spite of burial in sand, mud, and water for more than 100 years, they could still be identified. Many showed no signs of age at all. And the variety was astonishing, ranging from canned peaches to nuts, coffee, pickles, oysters, and butter.

The cargo was removed and catalogued. Many of the foodstuffs were recorked, and cans were stored in plastic bags. A structure built to house the cargo included a small museum that displayed some of the items.

Ten years later, as preparations began for a larger museum at the Refuge, Dr. Larrie Stone '57, professor of biology at Dana, was asked by the U.S. Fish and Wildlife Service and the National Park Service to try to better preserve the foodstuffs, some of which were beginning to deteriorate.

He spent the first summer assessing the condition of the goods. Last summer he removed mold and bacteria from them, sterilized them with either dry heat or filtration, and recorked them. Because he didn't know what micro-organisms he was working with, he wore a mask and often used a sterile hood.

There were surprises for him too. "The butter still looked like butter," he says. "And there were cans of sugar (that had dissolved) with vials of lemon extract for instant lemonade. Some of the containers were beautiful, especially the hand-blown jars with branded peaches and cherries."

Stone completed his contract by the end of last summer, and all of the stabilized items are now in cold, dry storage.

The story of the Bertrand's foodstuffs hasn't ended, however. Working with the contents of some of the containers has entered a second phase, one that "we're doing on our own," Stone says.

With Stone as her adviser, Dana student Sue Mowry, a biology and medical technology major from Council Bluffs, is trying to identify the micro-organisms growing in the foodstuffs and the conditions under which they survive. Her study will form the basis of her senior research project in biology.

"Sue might find some surprising organisms," Stone says. "I think that her work is the most interesting part of the entire project."

### Photos:

Top — Heinrich with sunrise sculpture.

Left — Senior Sue Mowry and Stone study bacteria cultures from century-old foodstuffs.

Right — Stone with some of the Bertrand's cargo.

## Alumni Bike Across Country

An 85-day bicycle odyssey across the U.S. by Lance '76 and Monique Bentzinger '78 Poldberg this summer started June 23 from Reedsport, Oregon, and ended September 16 — 4,206 miles away on Capitol Hill in Washington, D.C., the last of the many hills they had climbed.

Newspaper clippings and a television interview in Harrisburg, Illinois, chronicled their feat as they followed the Bike-centennial Trans-America Trail (established in 1976), with occasional detours to visit relatives and friends.

Lance, who had just graduated from Pacific Seminary in Berkeley, California, and Monique, an elementary school teacher, were inspired to make the trip by Dana alumnus Dennis Preston '78, who had biked from Blair to Maine and back several years before. This time Preston, a student at Wartburg Seminary in Dubuque, Iowa, took a day off from his summer job as a backpacking counselor at Sky Ranch, a Lutheran camp in Colorado, to ride with the Poldbergs.

The couple also saw other Dana friends at the beginning and end of the trip and along the way. Jerry and Joyce Olsen '58 Gilbert of Eugene, Oregon, started them on their journey. They saw Mary Staby '76 in Breckenridge, Colorado; Howard '78 and Alice Kulzer in Indianola, Iowa; and many friends in Blair and at Dana. Lanette Monasmith '79 and her parents housed them one night in Burlington, Colorado. Former Dana Choir



Dana was on the Poldbergs' cross-country route.

tour hosts J. H. and Mary Beth McCuiston and family in Fowler, Colorado, and Keith and Cinda Dankenbring in St. Francis, Kansas, were their hosts again, and the parents of Gary Erbes '75 kept them in Greenfield, Iowa. When they reached Washington, they met with Congressman Paul Simon '49 and Ray '49 and Nancy Johnsen.

The Poldbergs report these statistics: Carrying 35-40 pounds of camping gear, they averaged 55 miles a day, and in spite of eating an average of 5,000 calories daily, they both lost weight. They climbed 30 mountain passes, summits, and divides, crossing the Continental Divide nine times. Their highest point was Hoosier Pass near Breckenridge, Colorado, but, surprisingly, they found that "the Appalachian Mountains were harder to ride than the Rockies."

"The people we met along the way were wonderful," Monique writes. "We didn't have one bad experience." Several strangers put them up overnight, including "The Cookie Lady" in Afton, Virginia, who "opens her home to all bikers, giving them food, a place to stay and an interested ear. All she wants is a postcard that you made it to your destination."

The Poldbergs and their bicycles returned to California by plane in time for Lance's ordination. During the trip he had received — at the Sinclair, Wyoming, post office via general delivery — an official letter of call to serve as pastor of Calvary Lutheran Church in Morro Bay. Their home address there is 2455 Ironwood (93442).

Biking remains in their future. "This was our last long trip," they say, "but certainly not our last one."

## About Estate Planning . . .

"How large does my estate have to be before I need a will?" That is a question often asked of me. *Everyone* needs a will to make certain that after death his or her wishes are granted regarding the property it took a lifetime to acquire.

Did you know that without a will, the law of the state in which you live determines who will receive your property? You may wish to leave all of your property to your spouse. However, if you have children and you have no will, then it is likely that only one-third of your estate will go to your surviving spouse.

Also, a will can:

- . . . make special provision for a member of your family or for a treasured item from your estate because of its sentimental value.

- . . . nominate guardians for your minor children.

- . . . designate the administrators of your estate.

- . . . make provisions for a favorite charitable organization.

- . . . prevent the state from eventually getting your estate should there be no other immediate family members.



With a will, not only can these and more problems be avoided, but your estate and beneficiaries will benefit from your careful and thoughtful planning. I would be most happy to discuss with you the particular problems you have with your estate. Just give me a call at 402/426-4101, ext. 230.

Mr. Eugene L. Meyer  
Executive Director of College Relations  
Dana College  
Blair, Nebraska 68008

## OOOPS!

We're sorry we missed these alumni in our "Report to All Investors 1980" that was inserted in the fall *Dana Review*:

**Tower Circle**  
Mr. and Mrs. Irving Jensen

**Class of 1951**  
Rev. LeRoy Andersen

**President's Society**  
Dr. and Mrs. Elmer Rasmussen

**Class of 1945**  
John Schultz

**Century Club**  
Rev. and Mrs. John A. Schultz

**Class of 1939**  
Elmer Rasmussen

**Class of 1965**  
Jennie D. Nelson

**Class of 1938**  
Myrtle Lee Rasmussen



## Winterfest Court

Annette Laune '82 of Ashland, Nebraska, and Tom Taggart '81 of Scranton, Iowa, were named Queen and King at Dana's annual Winterfest December 13. Here they are flanked on both sides by members of their court, who were (from left) juniors Elizabeth Miller, Blair; Craig Shaffer, Woodbine, Iowa; Carol Olsen, Atlantic, Iowa; Jerry Christensen, Harlan, Iowa; senior Mary Welp, Jewell, Iowa; and juniors Scott Rasmussen, Blair; Kathy Gerking, Brock, Nebraska; and Paul Meeker, Dubuque, Iowa.

# Campus Notes

Dr. Wayne Wise, professor emeritus of music at Dana, has been studying the techniques of film scoring, recording, and composing in various styles of music with some of Hollywood's best-known composers and arrangers, among them Nelson Riddle, Henry Mancini, Billy Byers, and Sammy Nestico. He talked about his experiences at a November Parnassus event.

Parnassus Volunteers and Alpha Psi Omega, the drama society, sponsored Dana's first "Haunted Fine Arts Center" in Alumni Memorial Auditorium at Halloween and brought in \$335 for new stereo equipment in Parnassus. Co-chairmen were Kathy Gerking '82 of Brock, Nebraska, and Merle Brockhoff '81 of Weeping Water, Nebraska.

Professor Norman C. Bansen '47, English and Danish, gave a lecture on Dr. Sophus Keith Winther to the Omaha Danish-American Club in October. In appreciation for this and other earlier lectures by Bansen, the club presented a \$50 check to Dana. The gift will be used to purchase *The Harvard Encyclopedia of American Ethnic Groups*, a new publication, for the library.

The Santa Lucia Choir, organized and directed by Dr. Paul Neve '41, music; Lela Nielsen Neve '43, director of The Sights and Sounds of Christmas; and Ann Harms George '54, assistant director of public relations, appeared on Joni Baillion's "Conversations" on Omaha's KMTV December 2.

Dr. Tom Williams, music, was an adjudicator at the Iowa State Marching Band Contest in Pella, Iowa, in October.

Dr. Alan Brandes, music, was recently a judge for the state convention of the Nebraska Music Teachers Association and for auditions sponsored by Morning Musicale in Omaha.

Dana's Forensics Team continues to do well at area meets. At a Midland College tournament in December, the team competed with 14 other colleges and universities to win third place in the Sweepstakes, bettered only by Kansas State and the University of Nebraska-Lincoln.

At the most recent meeting of the Greater Omaha English Association, Dr. John W. Nielsen '47, religion and humanities, spoke on "Integrating the Humanities in the English Program" and Milt Heinrich, art, and another member of the Nebraska Shared Arts Team discussed "A Creative Approach to Language through Story Telling and the Visual Arts."

Inducted into the Dana chapter of Alpha Chi, the national honor society, in November were Laura Anderson '81, Tekamah, Nebraska; Kathy Gerking '82, Brock, Nebraska; Scott Grorud '82, Great Falls, Montana; Julie Johnson '81, Shell Knob, Missouri; Mogens Knudsen '82, Herning, Denmark; Joni Laue '82, Paullina, Iowa; Jan Maystrick '82, Springfield, Nebraska; Tony Render '82, Missouri Valley, Iowa; DiAnn Rohwer '82, Creighton, Nebraska; Kayla Walsh '82, Ashland, Nebraska; and Elizabeth Wooley '81, Colorado Springs, Colorado.

# Sports

## A Winter Sports Report . . .

**Men's and women's basketball.** As of this writing, the men's and women's basketball seasons are just getting underway. In most cases, game scores have been close, and consequently, play has been exciting. Paul Peterson '41 is again coach of the men's team; Lois Vaught Olsen '66 is the new coach of the women's team.

**Wrestling.** Coach Ron Beaman '74 reports that Dana's dual meet record by the middle of December stands at 2-4 against extremely tough competition — "an encouraging record, considering that our wrestling team has 11 freshmen and three sophomores," he says. "This team is marked by enthusiasm and a will to win and improve, and these wrestlers form the base for what looks like a resurgence of wrestling at Dana." Beaman and admissions counselors are already recruiting for next year's team.

We'll have complete reports on all three seasons in the spring *Review*.

## Out-of-Print Books Sought — II

As indicated in the fall issue of the *Review*, a faculty member needs help in obtaining certain out-of-print books for the Dana library. Below is a continuation of the list.

If you have any of these books in your personal library and are willing to donate them, please send them to Library Director Ronald D. Johnson. If you find any of them in second-hand bookstores or at used-book sales, but are not in a position to donate them to the library, please ask the seller to hold them for you until you can notify Johnson, so that he can arrange for their purchase.

The books are: *Cambridge Economic History of Europe*, Vol. VI (*Industrial Revolutions and After*), Pt. 2 only (Cambridge, 1965)/George Kitson Clark, *The Making of Victorian England* (Harvard, 1962)/Godfrey Davies (ed.), *Bibliography of British History: The Stuart Period, 1603-1714*, 1st ed. (Clarendon, 1928)/Hillard Kallas and Sylvie Nickels (eds.), *Finland: Creation and Construction* (Praeger, 1968)/E. Lipson, *The Economic History of England*, Vol. II only (*The Age of Mercantilism*) (Barnes & Noble, 1961)/Piers Mackesy, *The War for America, 1775-1783* (Harvard, 1964)/Richard Marius, *Luther* (Lippincott, 1974)/Antonio Marongiu, *Medieval Parliaments: A Comparative Study* (Barnes & Noble, 1968)/Guillaume Mollat, *The Popes at Avignon, 1305-1378* (Nelson, 1963)/John Wuorinen, *Scandinavia* (Prentice-Hall, 1965).

### Dear Friends and Fellow Alumni,

Perhaps you were among those Dana friends and alumni who attended that first Homecoming luncheon in 1978 after Dana's president, Dr. James Kallas, arrived. I believe that was when he first spoke to the larger Dana family about his hopes and dreams for Dana.

If you were there, you will surely remember how he struck fire in loyal hearts as he vividly spoke not only of Dana's troubled present, but of a "bright and shining future" which he said surely lay ahead.

He struck the fire of faith in those who heard, and time has already begun to prove that his prediction was much more than whistling in the dark.

Dana's count of fulltime students had dipped to under 400 during the second semester of the 1978-79 school year. The opening count this fall was 538 fulltime students. Next year's prospects for further growth already look good.

Though there is still a pressing need for even more support from friends and alumni, gift giving for our operational expenses at Dana has more than tripled. And we are beginning, God willing, a decade not only of Centennial celebrations, but also of strong growth as we enter our second hundred years of Christian service as a college of the church.

The first hundred years show that there were "spurts" of growth in certain decades.



The century's first ten years was such a decade. Dana began the century with 98 students and closed it in 1910 with 184. Buildings were built and central heating and electricity came. A board sidewalk was even built between the college and the town.

The Rev. R. E. Morton's decade as president (1944-1956) was another such period. There were 85 students when he arrived toward the end of the war and 342 when he completed his term. Again there were campus improvements and a building was built — and there was much work leading toward North Central accreditation.

The decade of the Clifford C. Madsen presidency was another growth period. Student enrollment nearly tripled from 331 in the fall of 1956 to 920 in 1969. The whole face of the land on which the campus stands changed as more buildings were built, nearly one each year of his presidency.

We are poised again for a decade of growth. Dr. Kallas is right. Dana has a "bright and shining future." And through the recent support of a feasibility study preparatory to a capital fund drive, the Board of Regents is laying the foundation for making the '80s truly another decade of growth for Dana, both in quality of education and in facilities.

But for those of us who love Dana and share views about life and the faith for which Dana stands, this decade must be a decade of sacrificial giving and support. There are great years ahead! Dana truly has a "bright and shining future."

John Beck  
Director, Alumni Affairs



## JOBS AND PROMOTIONS

1980

KATHY APPEL is a high school English teacher in Odebolt, Iowa, where her address is 520 W. Sixth Street (51458).

DAN ARNOLD is a management trainee for Stanley Steamer International in Perrysburg, Ohio.

BARBARA BOCK teaches special education at Park Elementary School in Omaha.

JOLENE DARRINGTON is a fourth grade teacher at Tri-Center School in Neola, Iowa.

KRISTENE KRUSE is an account manager at Burroughs Corporation in Council Bluffs, Iowa.

STEVE LAUNE works at Mutual of Omaha as an underwriter.

PAUL MADSEN is director of Christian education and youth ministry at St. Paul's Lutheran Church in Grand Island, Nebraska.

JUDY TJADEN teaches kindergarten in Vernal, Utah.

JANE TRAVNICEK is a credit reporter for Dun and Bradstreet in Omaha.

DORENE VON RENTZELL is a psychiatric attendant at Richard Young Memorial Hospital in Omaha.

1979

MARY HUDSON is payroll supervisor for Airlite Plastics Company in Council Bluffs, Iowa.

CHERYL TESLOW is a free-lance court reporter for Nebraska's Lancaster County.

1978

PAULA CHRISTENSEN works for the Kahler Hotel in Rochester, Minnesota, as manager in the housekeeping department and teaches quantity food production and management part-time at Rochester Community College.

TANA CHRISTENSEN is a teller at Farmers and Merchants Bank in Orfordville, Wisconsin.

NANCY HANSEN, who lives at 4019 Aurora Drive in Omaha (68134), is a marketing assistant at Immanuel Village, a retirement home.

STEVEN HOFFART works in Omaha for ENCOR (Eastern Nebraska Community Office of Retardation).

CONNIE JONES lives in Alta, Iowa, and is an artist at The Mills Agency.

GWEN RASMUSSEN teaches high school in Dunlap, Iowa.

1976

JANET WALTH Andersen is laboratory supervisor at Howard County Hospital in St. Paul, Nebraska, where her address is Route 2, Box 93 (68873).

First Lieutenant GILES BRONSON is with the U.S. Army in Darmstadt, West Germany. His address is TSO 531 USMCAD, APO New York 09175.

STAN HICKS, who lives in Marysville, Ohio, is a special investigator for Prosecutor Union Company.

JULIE MILLER is a sixth grade learning disabilities teacher in Shenandoah, Iowa.

1975

DEBRA HOWERTON Gibbons of Bettendorf, Iowa, is a layout and paste-up artist for an ad agency.

## Graduate Publishes

Dr. Marvin K. Harris '68, associate professor of entomology at Texas A & M University, is the editor of a recently published book entitled *Biology and Breeding for Resistance to Arthropods and Pathogens in Agricultural Plants*. He has dedicated the book to three scientists, among them Dr. Larrie Stone '57, professor of biology at Dana.

Harris, in sending President James Kallas a complimentary copy for the Dana library, wrote that "Dana is blessed with a host of fine teachers, and I was privileged to be taught by many of them. Their dedication to their profession and their patience and perseverance provide me with fond memories as well as a solid educational foundation which wasn't completely appreciated until some time after graduation — a reservoir still drawn upon today."

1968

LARRY HUBBARD is an instructor in the Estudio Internacional Sampere in Madrid, Spain, where he teaches courses in business correspondence, translation, commercial English, and English as a foreign language.

1967

GERALD QUIRK has been transferred to London to work as employee relations manager for Mobil Chemical Europe. Before the London assignment, he was manager of personnel services at Mobil Research and Development Corporation in Princeton, New Jersey. He and his wife, the former TAMARA LYKKE '68, have two children.

1960

EVELYNE GARVEY ANDERSON writes that "I was 90 years old on my last birthday. Am busy taking oil painting lessons for recreation and a new hobby." She lives at 121 Fairview Drive in South Sioux City, Nebraska 68776.

1948

KNUD WARSCHAUER's address is P.O. Box 79025, Houston, Texas 77079. He would like to receive copies of all *Dana Reviews* dating back to 1948.

1946

GRACE KLINGBERG Plude lives in Racine, Wisconsin 53405, at 3932 Spring Street.

## ADVANCED DEGREES AND CONTINUING EDUCATION

1980

JANE MUNDSCHEK is studying physical therapy at the Mayo Clinic in Rochester, Minnesota.

1979

STACEY GOODRICH is a student at the University of Nebraska Medical Center in Omaha.

1978

LAURA ESQUIVEL has received a master's degree in education at New York University-Newport.

1977

WILLIAM DAVIES is attending law school in Cleveland, Ohio.

1976

JACQUELYN THOMPSON received a master's degree in learning disabilities this summer from Morningside College in Sioux City, Iowa.

1975

RANA CHAPMAN has received a master's degree in learning disabilities from the University of Nebraska at Omaha.

DWIGHT MCCARTNEY of Miller's Jewelry, 1518 Cole Street, Enumclaw, California, has been awarded the title of Registered Jeweler by the American Gem Society. He is one of only 1600 retail merchants in the U.S. and Canada to qualify for this title.

1974

MIRIAM HILLER writes that "I'm at the Lutheran Bible Institute of Seattle as a fulltime student this quarter."

NINA NEVE works in the Office of Historian in the Bureau of Public Affairs in Washington, D.C.

GARY SOETMELK is manager of the True Value Store in Avoca, Iowa.

1974

DONALD HEURING II teaches at Vermilion Middle School in Vermilion, Ohio. He and his wife, Marsha, and their two children live at Route 1, Box 218 C1, Butler Road, in Wakeman, Ohio 44889.

JIM JENKINS of North Minneapolis is a sales representative for *Insight* magazine.

The Rev. TIM KENYON serves Bethany Lutheran Church in Leland, Illinois (60531). He graduated from Wartburg Seminary in Dubuque, Iowa, in May.

TIMOTHY LOCKEN of Worthing, South Dakota, is a sales manager at K-W Manufacturing Company.

ROSANN PETERSEN Gettis and her husband, Tim, live in Dinky Creek, California 93617, where their address is Box 100, Space 296.

1973

BOB and CANDY EHMEN are now living at 112 Allison Drive in Dudley, North Carolina 28333, where Bob is stationed at Seymour-Johnson AFB.

MARYLEA SCHWENN teaches kindergarten and first grade at Sunnysdale School in Council Bluffs, Iowa.

1972

RONALD COY is with Home Builders Association in Ames, Iowa.

DENNIS and MARY KAY PETERSEN '74 HENNING and their daughter Jennifer live at 1440 N. William in Fremont, Nebraska 68025. Mary Kay is the new children's choir director for First Lutheran Church and gives private piano and voice lessons. She is also the director of "The Sunshine Kids."

MARK and SUSAN MILLER MUSICK live at 3821 North 17th Street in Lincoln, Nebraska 68521. Mark is out of the service and is a contract administrator for Brunswick Corporation. He flies with the Air National Guard.

SANDRA YEAGER works in the printing and graphics department at Kirkwood Community College in Cedar Rapids, Iowa. Her address is 1039 Rainbow Boulevard, Hiawatha, Iowa 52233.

1971

GREGORY HAYES is manager of employee relations at the Celanese Corporation in New York. Dr. DENNIS SCHMIDT is pastor and organist/choirmaster at St. John's Episcopal Cathedral, 318 Silver, SW, in Albuquerque, New Mexico 87102.

1970

TERESA DETTERER has been promoted to major in the U.S. Army Nurse Corps, the U.S. Army Reserve. Her address is 209-10 41st Avenue, Apartment 45, Bayside, New York 11361.

The last installment on former student body presidents will appear in the spring *Review*.

## Small World Department . . .

—When Pastor Clayton Nietfeld '65 was a Dana junior studying for the ministry, he received the Rev. Paul Rasmussen [Trinity '33] Scholarship, established by Rasmussen's widow, Mrs. Lillie Rasmussen, shortly after her husband's death. Recipient and benefactor met for the first time in July on the Holy Land cruise led by President James Kallas. Nietfeld, whose son Tim '80 is a Dana admissions counselor, serves Grace Lutheran Church in Englewood, California. Mrs. Rasmussen lives in Ann Arbor, Michigan.

—Susan Zabel Drybaugh '75, a speech pathologist in Philadelphia, writes that "A year or two ago, I was followed home by Ed Ezekian '71 [of Stratford, Pennsylvania], who had spotted the Dana bumper sticker on my car. We had a long conversation about Dana people — a nice chance for me to relive those wonderful days."

*Editor's note: Have you come across alumni and friends of Dana in unexpected places? Please tell me about it. "Small World" will appear in the Review intermittently, as I hear from you. Ann Harms George '54*



Mrs. Rasmussen and Nietfeld at Athens airport.

BECKY BUCK-Leaman and her husband, Jeff, are in graduate school at Syracuse University, New York, where she is taking child and family studies. They also run a youth hostel in Syracuse, and she has a graduate assistantship teaching at a cooperative nursery school.

MARILYN ROBERTS is studying for a master's degree in business administration at the University of Maryland.

1972

RICHARD SCHRODER, who has a master's degree in health education, works in the hospital training and development department at St. Joseph Hospital in Omaha.

1966

KENNETH KEMMISH, finance director at Jennie Edmundson Hospital in Council Bluffs, Iowa, has been named a Fellow of the Hospital Financial Management Association after successfully completing an eight-hour examination.

1961

SHIRLEY NIELSEN LINCOLN received a master of arts degree in education with specialist credentials in reading and early childhood education from St. Mary's College in California on May 25, 1980. She is director of Holy Cross Christian Preschool, a school of the American Lutheran Church. She started the school in 1972. Shirley and her husband, JERRY '61, live at 3575 Tupelo Drive in Walnut Creek, California, with their two children, Cindy and Dave.

## PUBLICATIONS, ACTIVITIES, HONORS AND AWARDS

1976

DENNIS NELSON of 435 Simms Avenue in Council Bluffs, Iowa 51501, is a member of the Iowa Citizen/Labor Energy Coalition.

BEULAH RENKEN is president-elect of the Butler County, Nebraska, Teachers Association. She has taught in the Linwood school system for five years.

1975

GARY MADSEN of Omaha has been elected an associate member of EXSI Scientific Research Society.

The Rev. MIKE WILLIAMS is a member of the Board of the Muscatine, Iowa, Lutheran Homes.

1973

CYNTHIA HOMES MUSICK has been chosen president-elect of the Wyoming Association of Teachers of English. She was elected at their convention in Jackson, Wyoming, where she pre-

sented a workshop dealing with methods of teaching frontier literature. She was also honored when one of her composition students received a National Council of Teachers of English Achievement Award in Writing; only one other student in Wyoming received this national honor.

ROBERT SHAFF is president of the South Dakota Employment Counselors Association. In September he attended the World Seminar on Employment Counseling in Ottawa, Canada. His address is 415 North French, Sioux Falls, South Dakota 57103.

1949

U.S. Congressman PAUL SIMON has been re-elected by Illinois' 24th District.

1947

BETTY HANSEN Hungerford of Milwaukie, Oregon, visited Israel with a church group in October.

1936

MARIAN PETERSON Anderson, 134 College View Drive, Swannanoa, North Carolina 28778, writes that "My husband and I flew to California in March and saw former student DOROTHY JENSEN Baller in San Diego. We spent September in Austria, Switzerland, Italy, Spain and Portugal. It was our first visit to the Alhambra, which I had learned about at Dana so many years ago. In May we plan to go to Denmark to see relatives not seen since 1935 on that famous choir tour!"

1930

The Rev. J. M. LARSEN, Rawson St., P.O. Box 169 in Kingscote, K.I., S.A. 5223, Australia, has written the following note to Dana President Emeritus CLIFFORD C. MADSEN T'34: "Please present to the President and Board of Directors of Dana College my most sincere congratulations and best wishes for the 1980 October Felicitations [Homecoming's Golden Reunion]. By the Grace of God at Dana College and Trinity Seminary, I received the training which enabled me to serve people in the Danish, Oriza (India), German, and English languages. May God continue to bless Dana College."

## MARRIAGES

1980

Patty Bergstrom and MATT VOLK, June 28, 1980, in Funk, Nebraska.

SUSAN STOREY and Joseph Koziel, November 3, 1979. They live on RR 1, Buffalo Road, in Galien, Michigan 49113.

1978

CHERYL HEMKEN and Randy Hoke, September 27, 1980, in Fort Collins, Colorado.

Patty Jones and DAVID DEMANT, August 9, 1980.

1977

MELISSA VAKSHALL and Louis Notarangelo, August 9, 1980. They live in Stamford, Connecticut 06902, on 20 Wardwell Street.

1976

CAROL HARMES '79 and JIM LARSON, October 4, 1980, at Offutt Air Force Base, Omaha. She works with R.L.D.S. Social Services, and he is assistant personnel director at Eaton Corporation in Shenandoah, Iowa.

BRENDA KAROLICK '79 and RANDALL EPERSON, June 16, 1979.

CANDACE WILLIAMS and Brian Lahl, June 6, 1976.

1975

Amy Brotherton and DAVE STICKROD, August 10, 1980, in Wall Lake, Iowa. They live in Blair at 867 North 11th Street.

Joanne Ellwood and DAVE HICKMAN, June 28, 1980.

Jane Meyer and GENE LAURITSEN, September 6, 1980. Their address is 300 N. Willow Street in Effingham, Illinois 62401.

Carol Ott and WALTER SCHACHT, October 17, 1980, in Lincoln, Nebraska. They met in the Central African Republic when both were in the Peace Corps. He is a research assistant in range management at the University of Nebraska-Lincoln.

1973

JACQUELIN WARD and Mike Plews, October 11, 1980.

1970

Lorraine Ott and JAMES BREHM, November 25, 1978, in Henderson, Nebraska. Their address is RFD #1, Brock, Nebraska 68320.

## BIRTHS Sons

1979

Isaac Anton, born August 1, 1980, to ROGER and GAYA WENZ '78 ELLINGSON, 4922 Grant Street in Omaha (68104).

1977

Michael Alan, born August 18, 1980, to CYNTHIA BORKHUS Riegelman and her husband.

1976

Nathan John Martin and Daniel Jessie Immanuel, born September 21, 1979, to JOHN and LOIS JENSEN '73 JACOBSEN.

Matthew Alan, born July 11, 1980, to BRIAN and DIANE KNUDSEN LENSCH of Omaha. Diane is an administrative assistant with the Eastern Nebraska Community Office of Retardation.

Eric Brennon, born September 18, 1980, to DWIGHT TANGE and his wife.

1975

Jonathan, born October 7, 1980, to BIANCA CURTIS Carlo and her husband.

Paul Robert, born June 15, 1980, to JEFF and CATHY ANDERSON '74 MEYER of Osmund, Nebraska.

1973

Paul, born April 30, 1979, to LINDA DENNY Carlson and her husband.

Braden Allen, born November 9, 1980, to BONNIE KNOWLTON Grams and her husband. Their address is RR 1, Box 60, Fairfield, Nebraska 68938.

Jeffree Scott, born June 7, 1979, to CARIN CHRISTENSEN Pitts and her husband. They live in Lima, Ohio.

James Robert, born July 24, 1980, to ROBERT MAWHINEY and his wife. They live in Nebraska City, Nebraska.

1972

Daniel Allen, born January 20, 1980, to Roger and CAROL KING Hansen, RR 3, Audubon, Iowa 50025.

Erin Lyle, born January 12, 1979, to Lyle and AMY PESTAL Hayek, RFD 2, Box 96, Friend, Nebraska 68359.

Daniel, born October 18, 1980, to Estes and KATHY HANSEN Lawton.

Timothy John, born March 21, 1980, to JOHN and SANDEE FUGATE '73 RIECKEN, 2212 Tanglewood, Fort Collins, Colorado 80525. He has two sisters — Candee, 9, and Holly, 7.

Blaine Drake, born October 20, 1979, to DAVID and JEANINE DRAKE '71 WINSLOW, P.O. Box 35, Osceola, Nebraska 68651, where David is part owner of and comptroller for Ruzicka Brothers Implements, Inc.

1971

Adam James, born June 26, 1980, to JEROME GODSON and his wife. They live in Duncomb, Iowa.

1969

Kwen Arik, born May 10, 1980, to DAVID and Karleen PETERSON, RSHS Box 410, Redfield, South Dakota 57469. David, who is director of the Department of Oral Medicine at Redfield State Hospital and Schools, is listed in *Outstanding Young Men of America* for 1980.

Colin Edward, born October 13, 1980, to NEAL and Linda SHORT, 738 S. Highland, Arlington Heights, Illinois 60005.

## BIRTHS Daughters

1979

Crystal Victoria, born January 4, 1980, to DEBORAH KOLBEZEN Long and her husband, 9074 W. Center Avenue, Lakewood, Colorado 80226.

Sarah Ann and Laura Elizabeth, born January 30, 1980, to TOM and AMY SCHAEFER '80 PLINER of Omaha.

Jamie Lee, born November 3, 1979, to LARRY and LEISHA HANSEN '80 TIMM. They live in Gretna, Nebraska.

1978

Jennifer Lynn, born June 22, 1980, to ARLON DEUPREE and his wife. Their address is 3318 Avenue G in Council Bluffs, Iowa 51501.

Sara Joy, born July 4, 1979, to LAURA COFFEY Nylander and her husband, in Moorhead, Minnesota.

1977

Alison Leigh, born November 12, 1980, to DAN and Teresa HULT, 71 Country Club Road, Ralston, Nebraska 68127.

Kirstin Campbell, born November 2, 1980, to TERRY and CAROLYN CAMPBELL PRICE, 1306 N. 48th Avenue #204 in Omaha (68132).

1976

Megan Lynn, born October 13, 1979, to CAROL ROZUM Harris and her husband. Son Eric was born June 2, 1978.

Amy Elizabeth, born July 19, 1980, to JEFFREY and PATRICIA HANSEN '75 LUCE. They live in Omaha.

Eve Melissa, born March 12, 1980, to Terry and SHERYL FETT '76 Petekavich.

1975

Emily, born May 10, 1979, to WAYNE and Lucinda GOOS of 9521 Emmet, Omaha (68134).

Jennifer Danielle, born September 21, 1980, to ED and JILLIAN SORICK '76 GRUBE.

1974

Sarah Ann, born October 25, 1980, to Howard and MARSHA HEMPLEY Batt, 1910 Garfield, Laramie, Wyoming 82070.

Sarah Ann, born May 29, 1980, to ARTHUR and Jennifer JETTER of 215 North 153rd Circle in Omaha (68154). Arthur writes that "The American College, Bryn Mawr, Pennsylvania, awarded me the designation of Chartered Life Underwriter on September 30, conferred after completing a five-year study program."

Stacia Lee, born April 7, 1980, to Guy and CONNIE WIESE Brock of 6705 N. 24th Street in Omaha (68112). She has one brother, Shawn Michael, 2½.

1973

Kristin, born February 14, 1980, to DAVID and JULIE HANSEN JONES, 1016 S. 218th, Elkhorn, Nebraska 68022. David is assistant principal at Elkhorn High School, and Julie is an elementary school teacher.

Katharine Anne, born September 10, 1980, to DENNIS and LANA JANSSEN '74 WELLSANDT of Kiron, Iowa 51448.

1972

Christa Renae, born September 1, 1980, to CARL and MARGARET WALSH '75 NIELSEN of Garland, Texas.

Carie Elizabeth, born June 21, 1980, to Donald and JEAN ASHEIM Taylor.

1971

Ashley Aline, born June 4, 1980, to EVERETT and PHYLLIS NASH '72 ANDERSON, 2311 South Lemon, Sioux City, Iowa 51106.

Erin Elizabeth, born September 22, 1980, to LARRY ANDERSON and his wife. They live in Omaha at 14627 Weir Street (68137).

Carrie Elizabeth, born September 3, 1980, to LAWRENCE and KATHLEEN CHRISTENSEN '72 HENNING, 2612 S. 16th St. Terrace, Leavenworth, Kansas 66048.

Ame Lyn, born June 28, 1980, to DANE MEUSCHKE and his wife, of Fort Wayne, Indiana.

Jenny Lynn, born November 3, 1979, to RICHARD and DELORES HAUGE '74 NOELDNER, Box 528, Teller, Alaska 99778. She joins brother Jason, 4. Richard is pastor of the Lutheran church in Teller, an Eskimo village.

1970

Amy Anne, born June 26, 1979, to DARLENE PROBST Bogdanoff and her husband. They live at 240 N. 7th Street H in Montedella, California 90640.

1968

Toni, born in April, to PAUL "BUDDA" and KATHY HULSEBUS '71 AHRENDT, 940 Old Cheney Road in Lincoln, Nebraska 68512. Her brother and sisters are Travis, 9. Tami, 8. Traci, 4, and Teri, 2.

Ashley, born November 12, 1980, to Dana voice instructor Lucinda Sloan and her husband, Dana.

## DEATHS

1944

LOIS CARLSEN SORENSEN, December 12, 1980, of cancer. Survivors include her husband, Dr. HAROLD SORENSEN '42 of 3614 Tamarack Lane, Eau Claire, Wisconsin 54701.

1936

LUTHER (ABE) LINCOLN, June 27, 1980, of leukemia, in Walnut Creek, California. He served for many years on the boards of the American Lutheran Church and the United Evangelical Lutheran Church before the merger. He was elected to the California State Legislature in 1949 and served as speaker of the Assembly from 1954 to 1959. He is survived by his wife, the former HELEN PEDERSEN '37, of 1648 Siskiyou Drive in Walnut Creek (94598) and sons JERRY '61, MICHAEL '63, Gregory and daughter Susan, brothers RICHARD '39, CHESTER '45, and Kermit, and sisters Helen and ELAINE '51.

# Calendar Of Events

February 9-13

Visiting Theologians Program, Dr. Luise Schottroff, Mainz University, and Dr. Wolfgang Stegemann, Heidelberg University, West Germany, 8 p.m., Dana Hall of Science Auditorium.

March 1

Student recital, Scott Grorud (piano) and Monte Scheele (voice), 7:30 p.m., Alumni Memorial Auditorium

March 2-4

Staley Foundation Distinguished Christian Scholar lecture series, Dr. Paul Maier, 8 p.m., Dana Hall of Science Auditorium  
March 2-3, Alumni Memorial Auditorium  
March 4

March 12-14

Dana Players, Euripides' *Hippolytus*, 8 p.m., Alumni Memorial Auditorium

March 14

Dana Open Chess Tournament, 8:30 a.m.-11 p.m., Pioneer Memorial 318

March 20-28

Choir tour

March 20

Spring break begins at end of classes

March 30

Classes resume

April 5

Home Choir concert, 3:30 p.m., Alumni Memorial Auditorium

April 9

Student recital, Karen Flynn (piano), 8 p.m., Alumni Memorial Auditorium

April 17

Good Friday — no classes

April 19

Easter sunrise service

April 20-23

Preachers Workshop (see Fall 1980 *Review*)

April 20-24

Visiting Theologians Program, Dr. Gustaf Wingren, Lund University, Sweden, 8 p.m., Dana Hall of Science Auditorium

April 26-30

Barid tour

May 3

Home Band concert, 3 p.m., Alumni Memorial Auditorium

May 4

Organ recital, 7:30 p.m., Argo Hall

May 7

Honors Banquet

May 8-9

Student-directed one-act plays, 8 p.m., Alumni Memorial Auditorium

May 11

Student piano concerto recital, 7:30 p.m., Alumni Memorial Auditorium

May 16

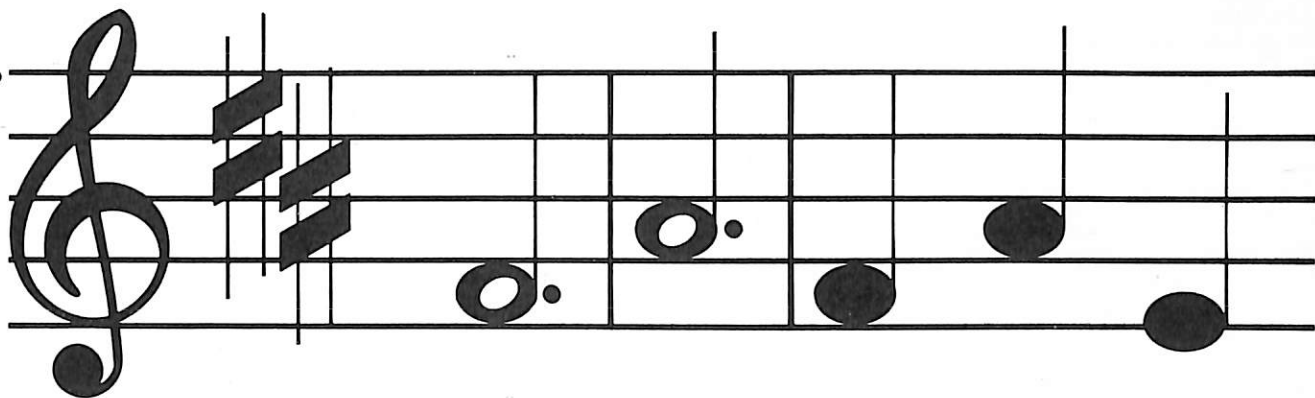
Alumni Council meeting  
Alumni Recognition dinner, Campus Center

May 17

Baccalaureate, 10 a.m., Borup Coliseum  
Commencement, 2 p.m., Borup Coliseum

*Schedule subject to change.*

# MAKING A JOYFUL NOISE



**Friday, March 20**  
Our Savior's Lutheran Church  
Jackson, Minnesota

**Saturday, March 21**  
Open

**Sunday, March 22**  
Morning services  
First Lutheran Church  
Albert Lea, Minnesota

Evening  
St. Olaf Lutheran Church  
Austin, Minnesota

## In Concert

**Monday, March 23**  
Trinity Lutheran Church  
Waupaca, Wisconsin

**Tuesday, March 24**  
Orfordville Lutheran Church  
Orfordville, Wisconsin

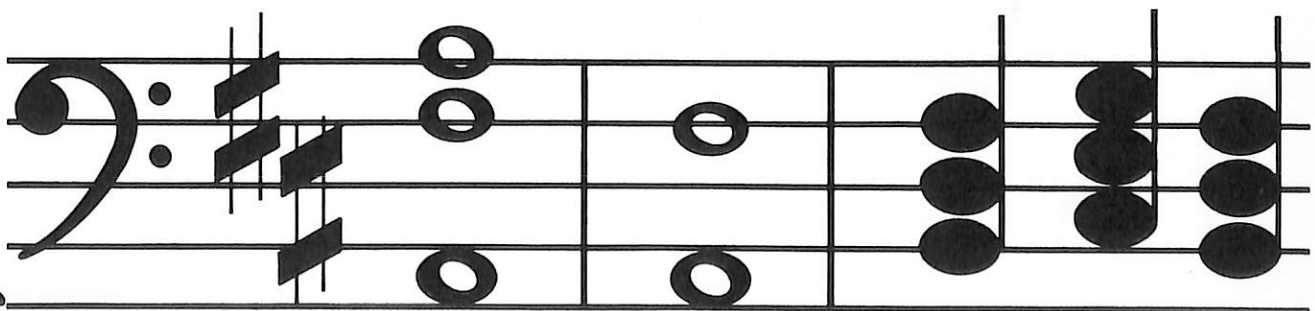
**Wednesday, March 25**  
St. John Lutheran Church  
Mendota, Illinois

**Thursday, March 26**  
St. Peter Lutheran Church  
Dubuque, Iowa

**Friday, March 27**  
Zion Lutheran Church  
Davenport, Iowa

**Saturday, March 28**  
Open

**Sunday, March 29**  
Morning services  
Bethesda Lutheran Church  
Ames, Iowa



# the Dana College Choir