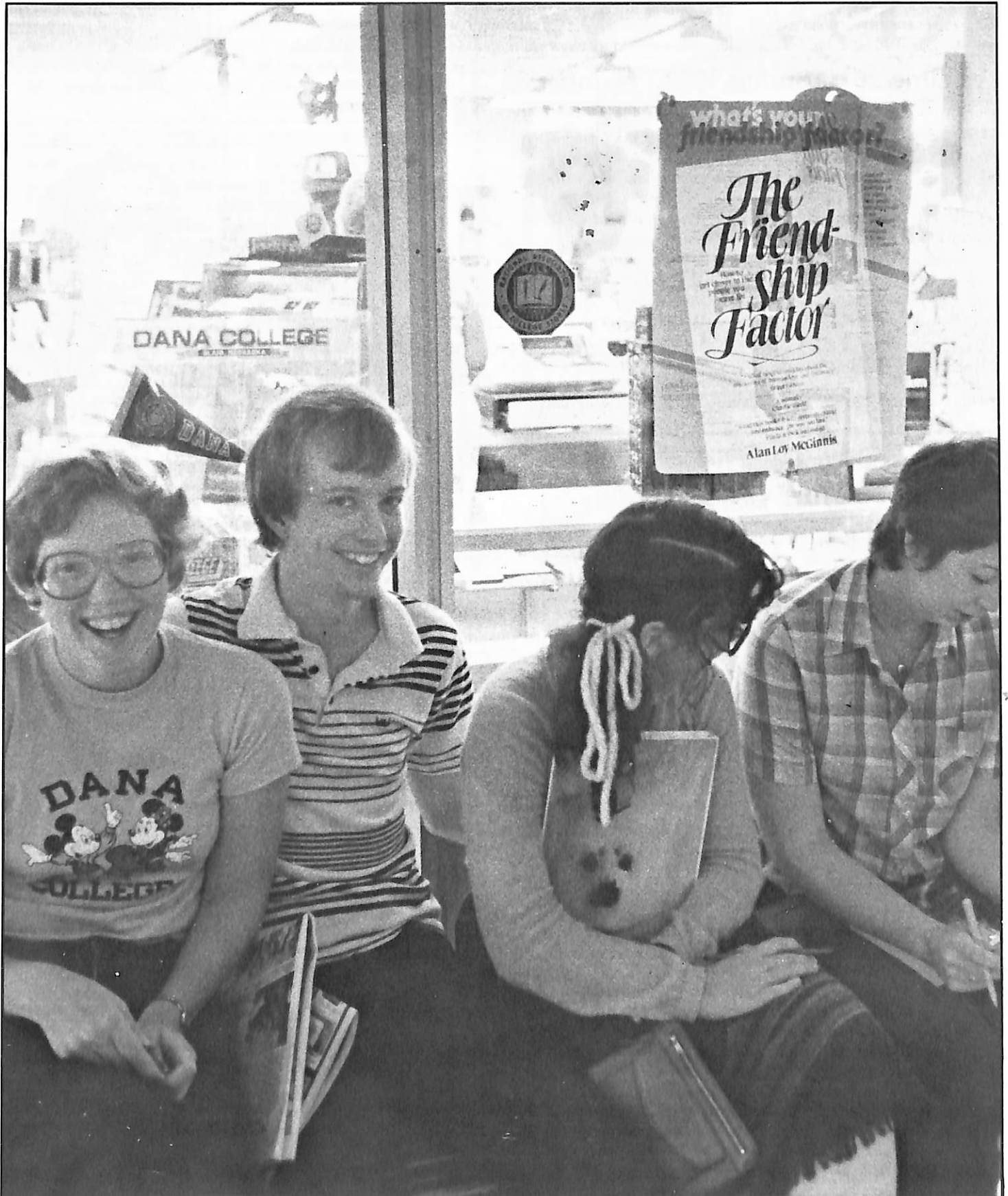


# DANA REVIEW

Spring 1982



# DANA REVIEW

Volume 38 Spring 1982 Number 3

(USPS 147-940)

*A magazine for alumni and other friends of Dana College and Trinity Seminary, published four times annually. Printed by Acme Mail Advertising Co., Omaha, Nebraska, with editorial and business offices located at Dana College, 2848 College Drive, Blair, Nebraska. Second class postage paid at Blair, Nebraska 68008.*

## Non-discrimination Policy

*Dana College admits students without regard to sex, age, race, color, religion or national origin to all the rights, privileges, programs, and activities generally made available to students at the College. It does not discriminate on the basis of sex, race, color, age, handicap or national origin in administration of its educational policies, admission policies, scholarship and loan programs, athletics, or other school-administered programs.*

## Friends in Christ, Greetings!

"Seeing is believing" we say, but we shouldn't. It is not true. Believing is seeing. It is faith that puts things into focus. More than that. Without trust, confidence, solid belief, there is blindness.

At the end of John 6, Peter, when asked if he and the other disciples would also abandon Jesus, answered, "We have believed and have come to know that you are the Holy One of God." The order of words is important. They "believed" first and they "have come to know." Faith puts things into focus. Only the claimed of Jesus, the cleansed and committed, only they see, only they are able to comprehend the fullness of life God has laid before them.

In that same sixth chapter of John, Jesus performs two astounding miracles. He walks on the water, stilling the storm; and He multiplies the loaves and fishes, feeding a multitude. And after providing bread in abundance, 12 baskets left over, He says, "I am the bread of life." Staggering claim! Staggering! It is by Him that we live, Him alone! So staggering that the audience insists, "Show us a sign" — give them some substantiation for the staggering claim. A sign? A sign! Where were they when the storm was stilled and the seas conquered and the 5,000 fed? A sign! Two signs had already taken place. And they had seen nothing. Unbelief is blinding. Believing is seeing.

Pilate stands before Jesus, threatening and abusive. "Do you not know that I have power over you? Power to crucify you or power to let you go free?" "No, Pilate," answers the gaunt Nazarene, "You have no power over me lest it were given then from above. . . ." To the eyes of the world, in Pilate's own eyes, Jesus is on trial, helpless, the powers of this age holding dominion. Jesus helpless,



## To Call Centennial Fund, Dial . . .

Dana's Centennial Fund now has its own phone number, and those wishing to call Centennial Fund director John Beck or assistant directors Dennis Hoch and Demetrios Kallas should dial 426-9700. The area code is 402.

Those wishing to call Eugene Meyer, executive director of college relations, or Sharon Gordon, director of special projects, should call 426-4101 (the college switchboard) and ask for extension 230. Paul Strand, assistant director of development, can also be reached through the switchboard number. His extension is 259.

**The cover:** When George Gardner, a photographer from Hillsdale, New York, visited the campus recently, he came across this happy combination in the Campus Center of students, a bookstore poster, and Dana mementos. The friends are (from left): Joy DeWall '85, Spencer, Iowa; John Rosnik '85, Parker, Colorado; Christina Chesher '85, Loveland, Colorado; and Marla Dunn '84, Boca Raton, Florida.

You can help us tell prospective students about Dana by giving our Admissions Office their names and addresses. There's a coupon on page 15 for that purpose. Thanks.

**Campus photographs by Mark Amman '84, Peter Jacobson '84, Dan Moore '85, Donnalee Prillaman '82. Back cover by Prof. Jim Olsen '62.**

Pilate in command. So it seems to unbelief. But things are not what they seem. God is in control. "No, Pilate, you have no power over me. . . ."

Judas, villified for two millenia for his treachery, was an evil man. But we can magnify and distort his influence, making him so large we mistakenly conclude Jesus was helpless in his hands. Not so. Things are not what they seem. Even here, as elsewhere, as always, Jesus is in control, master of His destiny, controller of all things. John the Apostle, who believed and had come to know, was later able to write reminding us in John 13 that Judas moved not a muscle until Jesus told him, "What you are going to do, do quickly." Only then did Judas go out, and it was night.

The eye of faith perceives that the ultimate authority on our fallen planet, our lonely earth pockmarked by hate and war hurtling around the sun, is not Pilate, nor Judas, nor Red China nor Russia. We are not victims of a mechanistic malignancy which pulverizes into powder our vain hopes and unfulfilled dreams. God Himself controls all things.

Often battered, even oftener bored, the bleakness and sterility of the yawning calendar pages bleak and barren, punctuated by depression, unrelieved, tainted by despair. How easy to conclude that death and disappointment are the end answers. We say goodbye at a graveside. We bury our hopes. Things so often seem so hopeless. But things are not what they seem. Faith puts things into focus. We believe and we have come to know that He is the Holy One of God. That His empty tomb is large enough to hold all our problems. That His empty cross looms large as a banner pointing the way to the fullness of life.

This is the excitement, the explosiveness of Easter, which splitt the stream of time.

In Jesus' name . . .

Dr. James Kallas, President

# Commencement Weekend: Seniors, Three Alumni Honored

Ninety-one seniors will receive bachelor's degrees at Commencement ceremonies scheduled for 2 p.m. in Borup Coliseum on Sunday, May 16, and alumnus Mark Thomsen will be given an honorary doctor of divinity degree. The Baccalaureate service is set for 10 that morning.

Two other alumni — Bonnie Hagedorn Jensen and the Rev. Lawrence Siersbeck — are this year's Distinguished Alumni. They and members of the senior class will be guests of the Alumni Association the evening before Commencement at the Association's annual Recognition Dinner. Several seniors will receive Campus Service Awards at the dinner; their identity will be revealed at that time.

Reservations for the 6:30 p.m. dinner should be made through the Alumni Affairs Office by May 10.



Honorary degree recipient Mark Thomsen (left); Distinguished Alumni Bonnie Jensen and Lawrence Siersbeck; Commencement speaker Governor Charles Thone.

## About Our Honorary Degree Recipient . . .

**Mark W. Thomsen** received his B.A. from Dana in 1953 and his B.D. from Trinity Seminary in 1956. He was ordained in June of 1957, the same year in which he received his Th.M. from Princeton Theological Seminary. He earned his Ph.D. in 1971 from Garrett Theological Seminary and Northwestern University.

Thomsen became director of the American Lutheran Church's Division for World Mission and Inter-Church Cooperation in 1981. He was associate professor of missions and world religions at Luther-Northwestern Theological Seminaries in 1980-81 and guest lecturer in management of ministry and global missions at Wartburg Theological Seminary in 1979.

He was pastor of St. Peter Lutheran Church in Dubuque, Iowa, from 1972-79.

Thomsen taught at Dana during two periods — from 1967-72 as associate professor of philosophy and religion, and from 1949-53 as a student instructor in mathematics and physics.

Between those periods he was a missionary in Nigeria — in 1953 as principal of the Lutheran Pastors' School in Lamurde, and from 1959-66 as vice principal of academic affairs and a faculty member at the Theological College of Northern Nigeria.

He was Lutheran campus pastor at the University of Northern Iowa in 1966-67.

His professional affiliations include service as vice-president of the ALC's Iowa District Executive Committee, dean of the Dubuque Conference, and coordinator of the continuing education group for Dubuque pastors.

His articles have appeared in *Dialog*, *Religion in Life*, *Lutheran Quarterly*, *Islamic Review*, and the *ALC World Mission Review*.

In 1978 Thomsen was inducted into Dana's Athletic Hall of Fame.

## And Our Distinguished Alumni

**Bonnie Hagedorn Jensen** became executive director of American Lutheran Church Women in 1981. Before moving to Minneapolis, where that organization has its headquarters, she was a licensed lay pastor for four years at St. Peter Lutheran Church in Dubuque, Iowa.

She and her husband, Dick '56, who was recently named director and speaker of Lutheran Vespers, were missionaries to Ethiopia from 1961 to 1965. In 1965 they and their three children returned to Dana, where Dick taught in the religion department. She had attended Dana as a freshman in 1956-57, and in 1967 she resumed her studies, receiving her bachelor's degree in 1970. Later that year the Jensens moved to Dubuque, Iowa. She enrolled at Wartburg Theological Seminary in 1976 and received her master of divinity degree in 1980.

In accepting the nomination, Mrs. Jensen writes: "For the first 20 years of married life I really lived out the supportive role of being Dick's wife. Most of what I did was related to that:

*(continued on page 4)*

## Nebraska Governor Speaks At Commencement Ceremony

Governor Charles Thone of Nebraska is this year's Commencement speaker. Thone was elected governor in 1978; before that, he served for eight years in the U.S. House of Representatives. He has a law degree from the University of Nebraska.

The recipient of Dana's annual College-Community Service Award will be announced at the ceremony.

Honorary degree recipient Mark Thomsen will give the Baccalaureate sermon. Several pastors who are fathers of graduating seniors will participate in the service.

**Centennial Fund Progress Report (as of March 17): Gifts and pledges to the three-year drive stand at \$2,278,806 — more than one-third of the \$6 million goal.**

## Trinity Seminary Commemorated

A special ceremony took place at a dinner on February 8 during the campus visit of Dr. Fred W. Meuser, president of Trinity Lutheran Seminary in Columbus, Ohio.

Meuser, at Dana as a Visiting Theologian, had earlier told Eugene Meyer, executive director of college relations, that committee members selecting a name for the seminary he heads (which formed several years ago as a result of a merger of two seminaries, one ALC, the other LCA) chose "Trinity" even after they learned of the Trinity Seminary that had been in Blair for many years. They could honor the past, they decided, by restoring the name to the church.

At the dinner Meuser, as a representative of the "new" Trinity, was presented with several memorabilia of the "old" Trinity: a reproduction of an early photograph of the central section of Old Main, framed with a brief history of Trinity Seminary; and two antique dishes decorated with the words "Dana College and Trinity Seminary." (The dishes were found several years ago in the basement of Old Main; others are in the Dana archives.)

The dinner was attended by members of the faculty and staff (including Trinity Seminary alumni who are employed at Dana), Trinity alumni living in Blair, and spouses.

This text accompanied the photograph of Old Main:

*Trinity Seminary was founded in 1884 in Blair, Nebraska, by Danish Lutheran immigrants. Classes were taught in the home of Pastor A. M. Andersen, Trinity's first president, until the central section of what is now called "Old Main" was built in 1886 on a hill overlooking the Missouri River valley. A north wing was added in 1893 and a south wing in 1905.*

*In 1899 Elk Horn College, a Danish folk high school and college in Elk Horn, Iowa, merged with Trinity Seminary, and in 1903 the name of the new institution became "Dana College and Trinity Seminary."*

*When the school's Pioneer Memorial building was completed in 1948, Trinity moved from Old Main to the third floor of the new facility, but continued to use a chapel in Old Main's north wing.*

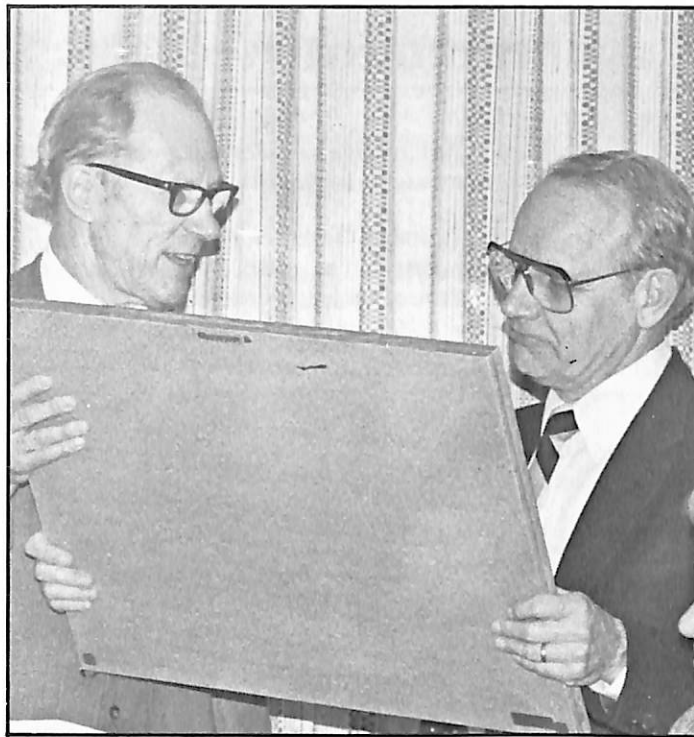
*Dana College and Trinity Seminary belonged to the United Danish Evangelical Lutheran Church, a small synod with congregations across the United States. It changed its name in 1944 to "United Evangelical Lutheran Church." In 1960 the UELC merged with the American Lutheran Church and the Evangelical Lutheran Church to form The American Lutheran Church.*

*In preparation for this merger, Trinity's faculty and students moved to Wartburg Seminary in Dubuque, Iowa, in 1956. Its library and archives went with them. Both institutions merged officially in 1960. Dana College, a four-year liberal arts school, remained in Blair as a senior college of The American Lutheran Church.*

*Trinity Seminary alumni continue to serve the church. They are pastors, missionaries, chaplains, and seminary and college professors, administrators, and deans. At least two have been bishops, and another is director of the ALC's Division for World Mission and Inter-Church Cooperation. Alumni gather periodically at Dana for special Trinity reunions.*

*In Blair, Old Main — the landmark and focal point of the 250-acre campus — reminds Dana College of its origins. As "an important symbol of the early theological and academic life of the Danish-American community," it was placed in 1980 on the National Register of Historic Places.*

*Presented to Trinity Lutheran Seminary, Columbus, Ohio, by Dana College, Blair, Nebraska, on February 8, 1982.*



*Dr. Clifford T. Hanson (left), dean of the college and a 1944 Trinity Seminary graduate, presents Visiting Theologian Meuser with a photograph of Old Main. Trinity alumnus F. W. Thomsen '45, professor emeritus of art, gave the invocation at the dinner.*

**(Distinguished Alumni — from page 3)**

entertaining students, being active in the academic communities and our local congregations where we lived. It is difficult to know how to 'recognize' those kinds of services and that certainly isn't why the committee has chosen me as 'distinguished.'

"However, I have a deep concern that we find ways to do so. There are tens of thousands of gifted church women like myself who have kept things going behind the scenes. I would hope that in recognizing me as a leader of such women, there might be some way of appropriately acknowledging their contributions to the life of our church and communities. I am convinced that such women have their own unique and special perspective to bring to leadership positions, to the decision-making process, and to theological reflection in the church. We can no longer afford to live without that gift!

"Professionally, my achievements have to be, in large measure, the work I did in the congregation of St. Peter's in Dubuque. To move out of a 'supportive' life-style into leadership was a significant challenge. To become a leader as a woman in a profession that had, until 1970, been reserved for men, took lots of courage. (Being 'run off' the maternity wards because I looked neither like a husband or pastor was a routine experience.) I could not have done it without the fantastic support of the people of St. Peter and Mark Thomsen [see story on honorary doctorate], my colleague and supervisor."

**Pastor Lawrence Siersbeck**, who graduated from Dana Academy 60 years ago — in 1922 — was ordained in 1928 after attending the University of Nebraska, Trinity Seminary, and Mt. Airy Lutheran Seminary in Philadelphia. He served Dana College as its president from 1938 to 1944, during the difficult years of the Depression and World War II.

Siersbeck later was pastor at Our Savior's Lutheran Church in Council Bluffs, Iowa, and at St. Mary's Lutheran Church in

## Help Us Honor Alumni

If you'd like to submit a nomination for a Distinguished Alumnus or Alumna to be honored in 1983, please send your nominee's name, biographical information, and comments on why you believe he or she should be recognized, to our Alumni Affairs Office.

The awards are given annually to alumni who, in the opinion of the Alumni Council's selection committee, have made significant contributions to their professions, their communities, and/or their church. Recipients must be able to attend the Recognition Dinner, held the evening before Commencement, to receive the award.

Dana first honored Distinguished Alumni in 1972. Since then, the following (in alphabetical order) have been recognized: James L. Andersen '58, M. Stanley Bach '37, John Beck '50, Kathleen Anderson Bliese '62, James Clemon '56, Antony DaCruz '50, Joseph Girtz '21, Edward A. Hansen '39, Florence M. Hansen '48, Helen Margaret Jacobsen '40, Lyle Jacobsen '51, P. C. Jensen '16, T. I. Jensen '34, Arthur Jersild '23, Philip Kaldahl '53.

Leo Kirchoff '60, Paul Laursen '51, Archie Madsen '49, C. C. Madsen '31, Lorraine Sandberg Madsen '48, Charles Morehouse '41, Richard E. Morton '34, A. Craig Nielsen '52, Luella K. Nielsen '42, Paul C. Nyholm (former faculty member), Don Ofte '52, Arvin Quist '54, Elmer Rasmussen '39, Merrill Reeh '28, Margaret Nielsen Rodenburg '61, Art Simon '52, Paul Simon '49, Juri Taht '52, F. W. Thomsen '45, C. A. Vammen '14, and Rodney Wead '57.

Kenosha, Wisconsin. Since 1968 he has been St. Mary's visitation pastor and a supply pastor for various churches.

One of those nominating him writes that "His years of interest in Dana and our church as a sincere, dedicated, devoted pastor-servant of God are evidenced by his many services to the church."

Those services have indeed been many. As a pastor in the former United Evangelical Lutheran Church, he was the synod's secretary for 12 years and editor of the youth section of *The Ansgar Lutheran* and of the Luther League's *Christmas Chimes*. He was a member of the synodical Inter-Church Relations Committee and one of 27 members of a committee that worked from 1949 to 1960 to bring about the merger of the former American Lutheran Church, the Evangelical Lutheran Church, and the UELC.

In 1959, at Dana's Diamond Jubilee Commencement, Pastor Siersbeck became the first to receive an honorary degree, a doctorate of humane letters, from the College. He was cited for his presidency of Dana, his work toward the formation of the American Lutheran Church, and his literary activities.

Approximately a year ago he was named "Kenosha Person of the Year." A full-page newspaper article on his selection called him "one of the most loved and respected men in the Kenosha-Racine area."

Pastor Siersbeck and his late wife, the former Cornelia Johnson '26, had three daughters — twins Marilyn and Mildred, and Sylvia. They and many of their children have attended Dana.

## Most Common Alumni Names? "Hansen" Leads Top 10

By Paul D. Johnson '76

*The author, a former Dana admissions counselor who is band director at Bergan Junior-Senior High School in Fremont, Nebraska, suggests a disclaimer to this story in case of error. "I did double check these figures," he writes, "but I just did this for fun. Someone might argue something — who knows?" Johnson's middle name, by the way, is "Dana." His parents are alumni Oscar '44 and Delores Jensen '48 Johnson.*

If ever you have been smitten with a cold or the flu and been confined to bed all day, you know how boring it can become. However, Dana alumni have an excellent source of diversion in the recently published *Alumni Directory*. There are many facts to be researched from this booklet, and I decided to look for the most common name found among Dana alumni. When it became apparent that Johnson wasn't No. 1, I decided to dig a little deeper and discover Dana's Top 10.

My research simply involved counting the number of times a name appeared. I wasn't sick long enough to take into account maiden names and other extenuating circumstances. For example, my mother — who's been a Johnson ever since I can remember — was also included among the Jensens.

In order to satisfy my curiosity, I came up with two Top 10 lists. It's kind of like having the AP and UPI ratings in collegiate sports. The first list consists of specific names, while the second list takes name variations into account.

Although Dana's student body has diversified greatly in recent years, it probably comes as no surprise that the entire list consists of names ending in "sen" or "son." If your name is not currently on the list and you're still single, there is something you can do: if you're female, all you have to do is marry someone with a name that's listed; if you're male, you can marry a gal with any name you want, but then you have to have a lot of kids and send them all to Dana when they're of age!

Here then are Dana's Top 10 names:

	No. of Listings
1. Hansen	222
2. Jensen	185
3. Petersen	151
4. Christensen (tie)	136
5. Nielsen (tie)	136
6. Johnson	127
7. Larsen	107
8. Anderson	104
9. Andersen	96
10. Nelson	88

	No. of Listings
1. Hansen, Hanson	280
2. Petersen, Peterson, Pedersen, Pederson	271
3. Anderson, Andersen	200
4. Jensen, Jenson	191
5. Christensen, Christenson, Christiansen, Christianson, Christesen	166
6. Larsen, Larson	153
7. Johnson, Johnsen (tie)	136
8. Nielsen (tie)	136
9. Nelson, Nelsen	102
10. Olson, Olsen, Olsson, Olesen, Oleson	87

## Students Named to Honor Society

Fifteen juniors and seniors were inducted into Alpha Chi, the national honor society, on February 25.

To qualify for Alpha Chi membership, students must be juniors or seniors who rank in the upper tenth of their class with a grade point average of at least 8 (the highest possible grade is 9) for a minimum of three semesters at Dana. Nominees must be approved by the faculty.

Dr. Bernard Matthies, professor of education and psychology, is adviser to the Dana chapter.

The new Alpha Chi members are: Paul Behrens '83 (Kensett, Iowa), Anita Dettmer '83 (Kensington, Kansas), Julie Elliott '83 (Minden, Iowa), Danette Johns '82 (Cook, Nebraska), Andrew Johnson '83 (Cedar Falls, Iowa), Carol Larson '83 (Hazard, Nebraska), Debra Olson '83 (Red Oak, Iowa), Shari Sorensen Pash '82 (Omaha), Thomas Quale '83 (Fort Collins, Colorado), Cynthia Sayer '83 (Cambridge, Nebraska), Robert Schmoll '83 (Las Vegas, Nevada), Jeanette Seburg '83 (Blair), Mickey Tanner '82 (Contoocook, New Hampshire), Chauncey Wilkins '83 (Blair), and Wayne Winter '83 (Boyden, Iowa).

Alpha Chi members elevated from junior to senior status at the induction ceremony were seniors Kathy Gerking (Brock, Nebraska), Scott Grorud (Great Falls, Montana), Jan Maystrick (Springfield, Nebraska), Anthony Render (Missouri Valley, Iowa), and DiAnn Rohwer Friis-Hansen (Creighton, Nebraska).



## Students Choose Officers

Dana students have elected these four as their student government officers for next year: Bob Schmoll '83, president (center, seated); Peggy Dutch '84, vice-president (right); Lynne Moline '83, secretary (left); and Andy Johnson '83, treasurer (standing). Schmoll, who has been vice-president this year, is a business administration and German major from Las Vegas, Nevada. Omahan Peggy Dutch is an elementary education major, Lynne Moline of Manson, Iowa, is a music major, and Andy Johnson of Cedar Falls, Iowa, is a humanities major.

## New Campus Regulations Affect Visitor Parking

In order to create a safer and more orderly campus, the administration has introduced new parking regulations for Dana Drive, the road that goes past Mickelsen Hall, Borup Coliseum, and Rasmussen Hall and between the Campus Center and Holling Hall. These changes also affect parking for visitors, as follows:

1. A "Visitor Parking Only" zone, for parallel parking from 7:30 a.m. to 11:30 p.m., has been established on the outer-campus (south and west) side of the Drive. Exceptions are the area in front of Borup Coliseum, areas in front of sidewalks and driveways, and an area near the northeast corner of Holling Hall that is reserved for parking by members of the faculty and staff. Parking is not permitted on this outer-campus side between 11:30 p.m. and 7:30 a.m.

2. A "No Parking-Tow Away" zone has been established on the inner-campus (north and east) side of the Drive. Vehicles parked there will be ticketed or towed away at the owner's expense.

Areas for visitors' cars continue to be available in the parking lots east of Borup Coliseum, north of Alumni Memorial Auditorium, and east of Pioneer Memorial. These have not changed.

Because campus parking problems are a mutual college-city concern, the Blair Police Department is assisting Dana in enforcing the new regulations.

### Remember This Date — May 15, 1982

This is the date when the charter members of the DANA BUILDERS, our new heritage organization, will be honored at a luncheon in the Campus Center. We are in the process of compiling a list of those who qualify for charter membership. There are five ways in which you can join our group:

1. Include Dana College in your will.
2. Create a charitable trust with Dana College as a beneficiary.
3. Purchase a gift annuity through Dana College.
4. Make a gift of property with life estate reserved.
5. Name Dana College the beneficiary of an insurance policy.

When we started planning this event, we were eager to learn how many persons would qualify for charter membership this first year. We are very pleased to have heard from over 100 persons who have had Dana in their thoughts and have already set up one of these agreements.

Only a short time is left before we have the names of the charter members engraved for the DANA BUILDERS plaque, so if you have not yet written to tell us that you would like to be included in the group of charter members, please do so.

If you have a question about your membership in the BUILDERS, please give me a call. I will be very happy to assist you in any way I can.



Eugene L. Meyer  
Executive Director  
of College Relations  
Dana College  
Blair, NE 68008  
Tel: 402/426-4101, ext. 230



## Play Has All-Woman Cast

The Dana Players produced Garcia Lorca's *House of Bernarda Alba* March 11-13. Members of the all-woman cast included (from left): Diane Heistand '84 (Woodbine, Iowa); Laurie Hendrix '84 (Omaha); Emily Benjamin '85, standing (Gilmore City, Iowa); Peggy Dutch '84 (Omaha); Connie Frahm '82 (Stuart, Nebraska); Kathy Gerking '82, standing (Brock, Nebraska); Laura Gregory '85 (Ord, Nebraska); and Kristi Swensen '83 (Omaha).

## Californian Joins Board of Regents

Mr. William Henry Gibbs of San Diego has been appointed to the Board of Regents, President James Kallas has announced.

Gibbs, who has been instrumental in the development of San Diego's Montgomery Field, founded Gibbs Flying Service in 1937. Bank Air, Inc., Gibbs Lease-Air, Inc., and Gibbs Flite Center, Inc. are subsidiary corporations.

He has served as director of Kiwanis, the YMCA, and the Red Cross, and on the San Diego Evening College Citizens Council, the International Aerospace Hall of Fame, and the Advisory Board of the Salvation Army.

Of Gibbs's appointment, President Kallas said, "We are grateful that a man with the stature of Bill Gibbs has agreed to serve on our Board. He is a man of high principles and keen business acumen. We are confident that his contribution to the destiny of Dana will be significant."

## Seminars on Finances Praised

As a public service the College Relations Office has sponsored a series of four seminars over the past few months, two on changes in tax laws brought about by the Economic Recovery Tax Act of 1981, one on other changes in tax laws affecting estate planning, and one on financial planning.

Speakers included Clyde Bunten of Raymond Ryder, an accounting firm in Blair; Professor Gil Ragan of Dana's business administration and accounting department; Curt Maschmann '77, an attorney in Humboldt, Nebraska; and Lana Flagtwet, an account executive with Merrill Lynch Pierce Fenner & Smith in Lincoln.

(continued on page 8)

## Choir Director Announces European Concert Schedule

**Alumni and Friends** — Are you traveling in Europe in late May or June? If you are, why not include a performance by the Dana Choir in your itinerary? Director Paul Neve '41 tells us that the choir's concert schedule is as follows:

- May 30 — Wilten, Austria (near Innsbruck): concert at Parrkirche
- May 31 — Dinkelsbuhl, West Germany: concert at Heiliggeist Church
- June 5 — West Berlin: concert at Kaiser Wilhelm Church
- June 7 — Nakskov, Denmark: concert at St. Nikolai Church
- June 8 — Copenhagen: concert at Holmens Church (Choir members will stay at the YMCA in Copenhagen.)
- June 9 — Slagelse, Denmark: concert at St. Mikkel's Church
- June 10 — Herning, Denmark: concert at Herning Church
- June 11 — Vejle, Denmark: concert at Sct. Nicolai Church
- June 12 — Viborg, Denmark: concert at Gymnastik Højskolen

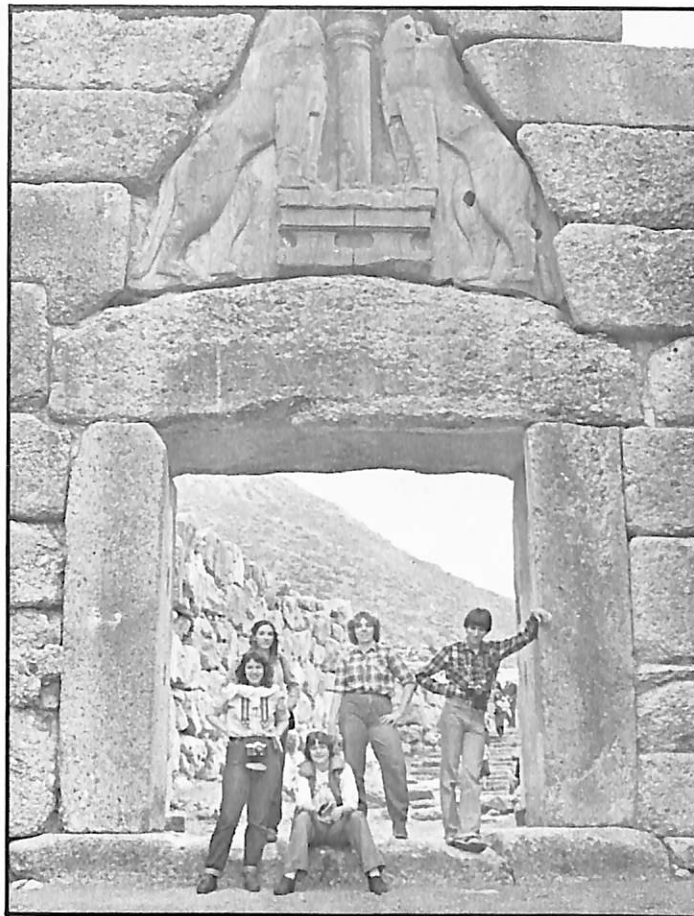
Choir members, Paul and Lela Neve, and members of the faculty and staff who are traveling with the group are looking forward to seeing you — and alumni and friends who live in Europe — at one of these concerts.

## Alumnus Says Thanks

John Andresen '78, who is in his middler year at Luther-Northwestern Seminaries in St. Paul, Minnesota, has written to President Kallas, asking him to "share with the faculty my appreciation for four very fine years at Dana."

After quoting a seminary professor's comment that "Dana has the reputation of turning out top-notch seminary students," Andresen writes: "It wasn't the education that I received that was so great; it was the experience of learning to live. You can get an education anywhere; it takes very special men and women to teach someone how to live. The faculty at Dana instilled in me a desire and an excitement about learning. But, they also taught me what it was like to be a person. I don't know how they did it, but they did."

"One of the things I've heard a lot about in contemporary society is 'expressing your feelings.' This usually means complaining about something. Well, I don't want to complain. I wish to say thank you to the faculty and staff for four great years. My prayers are with you as you lead Dana into the next hundred years."



### From An Interim Album —

*Mycenae was on the itinerary of Professor John W. Nielsen's Interim class, "Aeschylus to Zeno: Glimpses into Greek Culture." Among the 21 participants were (from left), in front, juniors Jann Buckley (Omaha) and Sheryl Kester (Widefield, Colorado), and behind them, juniors Ellen Wilderson (Montrose, Colorado) and Carol Radke (Russell, Kansas), and alumnus Doug Lemon '81 (Blair).*

(Seminars — from page 7)

After attending several of the seminars, a Blair resident expressed appreciation for the series in this letter to the editor of Blair's *Pilot-Tribune*:

"Dana again deserves a big Thank You for the things they do for the people of the area.

"Their recent meetings on 'Changes in Tax Laws' and 'Estate Planning' have been very well presented with qualified and interesting speakers.

"I'm looking forward to the next meeting on financial planning.

"Dana — you are a great asset to Blair, and we appreciate it."

## Scholarships/Grants Are Guaranteed In Face of Uncertain Federal Funds

Dana has introduced a new program that guarantees in advance the dollar amount of scholarships or grants a student will receive for the coming year, regardless of how much the federal government might reduce student financial aid.

Called "The Dana College Scholarship/Grant Guarantee Program," the new plan "lets a student know in advance exactly what his or her scholarship/grant amounts and tuition and fees will be for the school year," Lee Johnson, director of admissions, said. He stressed the fact that "the uncertainty of federal funding will not affect those figures. Dana will *guarantee* the student's scholarship and grant awards even if federal funding for them is withdrawn."

Johnson said that every student and prospective student eligible for financial aid at Dana (about 80 percent of this year's students qualify) is also eligible for the Scholarship/Grant Guarantee Program.

Students and parents can obtain a brochure describing the program and application procedures by writing to Johnson.

## Early Response Is Important For IMPACT's Matching Funds

IMPACT, the Lutheran Brotherhood's fund-matching program for gifts to Lutheran schools, has indeed made an impact on Dana's fund drives this year and for the past several years.

John Beck, director of Dana's Centennial Fund, has received a letter from Lutheran Brotherhood with this reminder: "Our quarterly deadlines for receiving your IMPACT applications in 1982 will be the 15th of March, June, September and December. Applications dated and received *within* the quarter and *before* the deadline, will be matched *within* quarter; those received *up to six weeks* after the deadline will be matched in the *following quarter*; those received *after six weeks* will be *ineligible for matching.*"

"IMPACT has grown spectacularly," Beck says. "We also want to remind Lutheran Brotherhood members who are contributors to Dana to send their gifts and IMPACT applications in the earlier part of the calendar year. The company tells us that it might not be able to match fully all eligible gifts in any given year. Responding early in the calendar year will help Lutheran Brotherhood match all of your gifts."

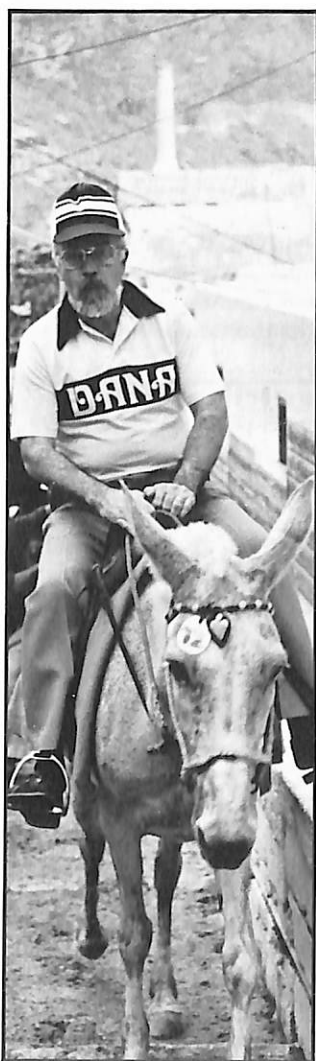
# THE LANDS OF JESUS, THE CITIES OF PAUL!

## Departing July 11, 1982, from Chicago

2 Berth Cabins, From \$2899

### A VACATION WITH A PURPOSE!!

Here is your opportunity for a travel adventure of a lifetime, the climax of Christian learning! Join Dr. and Mrs. James Kallas, the first family of Dana, on a visit to the Middle East!



Cruise, from **Athens**, across the Aegean, visiting such exciting places as **Istanbul**, Turkey, and **Ephesus** and **Pergamum**, also in western Turkey (two of the "seven cities" of the Book of Revelation). The cruise ship also stops at **Philippi** in northern Greece — the first place Paul ever preached the gospel in Europe! And one after another of the Greek islands, such as **Patmos** (where Revelation was written) and **Crete** and **Santorini** and **Rhodes** and **Cyprus**! A magnificent vacation even if that were all there were to it. But there is more . . .

. . . after the cruise, a full week in the Holy Land! Every significant sight and site of the Life of Jesus, the hallowed land where our faith began, will be seen! **Jerusalem** and **Jericho**, **Bethlehem** and the **Dead Sea**, **Nazareth**, **Capernaum**, the **Sea of Galilee**, the **Garden of Gethsemane**, the **Via Dolorosa**, **Masada**, **Bethany**. Nothing will be overlooked. All of those places engraved on the Christian memory will be seen!



Over two full weeks in those Aegean lands where Jesus was born and the gospel preached! Every evening an exciting lecture by Dr. Kallas! And, bonus on bonus, remember that all profits on sales through Dana College go right back into the operating budget of the school! Here is your opportunity for an outstanding adventure, helping Dana at the same time! Truly, **A VACATION WITH A PURPOSE!**

Write to: Travel '82, Alumni Office, Dana College, Blair, NE 68008

# Sports

## A Season's Roundup . . .

### Men's Basketball

The men's basketball team brought its eight-win, 18-loss season to a thrilling finale with a 64-63 victory over Midland, completing a two-game sweep over the Warriors this year. Another season's highlight was stopping NIAC champion Hastings in overtime, 83-82. The Vikings finished the conference race tied with Nebraska Wesleyan for fourth on a 4-6 record. Paul Peterson '41 is coach.

Dana's players were outscored by their opponents 2,074 to 1,730 in 26 games. That averages out at 79.8 to 66.5 per game. In field goal percentage, the opponents were 50.2 percent to Dana's 43.8 percent. Dana had the better free throw percentage, making 68 percent to the foe's 66 percent. The opponents outrebounded the usually shorter Vikings 39.2 to 34.7 per game.

Dana had four players averaging better than 12.2 points per game. Leader Pat Kenealy, a senior from Minden, Iowa, averaged 14.5 points per game while hitting 47.3 percent of his shots. Transfer Cory Curran, an Omaha sophomore who became eligible in January, averaged 12.8 in 17 games. Junior Randy Hagedorn of West Point, Nebraska (also a transfer), scored at a 12.4 clip while having the best accuracy of a starter, 47.4 percent. Senior point guard Terry Kelly of Mendota, Illinois, averaged 12.2 points per game.

Kenealy was the team's leading rebounder. He grabbed 227 for an average of 8.7 per game. Hagedorn had 183 rebounds for an average of 7.3. No one else could average more than 3.4. Senior Mark Page of Council Bluffs, Iowa, the sixth man on Dana's team, had the best field goal accuracy. He hit an even 50 percent. Page also hit 79.3 percent of his free throws to lead the team, and Hagedorn was close behind at 78.6 percent.

### Women's Basketball

Members of the women's basketball team finished their season at 9-14, compiling their best record in recent years. With only two seniors graduating, Coach Kathy Foley feels that next year's outlook is quite good.

Seniors Kerry Garrels and Connie Kennedy contributed much to this year's team. Kerry Garrels of Mt. Pleasant, Iowa, led the team offensively, averaging 14.9 points per game, and Connie Kennedy of Wahoo, Nebraska, led in rebounding, averaging seven rebounds per game.

Juniors also contributed much to the Lady Vikings' success. Omahan Felicia Collins led in assists (3.3) and in steals (2.5). Jeanie Watts of Blair helped the offensive side with consistent shooting from the field and a 76 percent average from the free throw line. Sheila Hinds, a junior from South Sioux City, Nebraska, led the team in shooting averages. She put in 37 percent

## Name An Athlete To the Hall of Fame

Alumni — Remember cheering at games for outstanding athletes when you were a student? If they meet the criteria below, they can be considered for admission to Dana's Athletic Hall of Fame — but first they have to be nominated.

You can help honor them by submitting their names with a brief comment on each nominee to the Alumni Affairs Office by June 1. An Alumni Board committee will review nominations this summer, and the awards will be given at the 1982 Homecoming luncheon on October 23.

To be eligible for consideration, candidates must have earned a varsity letter in one or more intercollegiate sports at Dana or have made exceptional contributions in time or talent toward improving the College's athletic programs. They should also have distinguished themselves in such ways as to bring great honor to themselves, their professions, or the College, and they must be removed from varsity athletic participation for at least 15 years.

Alumni already named to the Hall of Fame are (in alphabetical order): Roger Beck '64, Joanne Gochenour Bracker '66, Vaughn Christensen '53, Bill Davis '59, Marion Hudson '56, Harold Hurd '36, E. Merton Jensen '35, Robert Jenson (basketball scorekeeper for many years), Stanley M. Jensen '35, Kenneth Kemmish '66, John Laughhunn '64, Paul Laursen '51, Dale Lemon (a Dana coach), Neil Moore '54, Russ Moseman '57, Rufus Olson (former Dana coach), Paul Peterson '41, Jan Philby '58, Clifton Robinson '50, Arthur Sorensen '49, and Mark Thomsen '53.

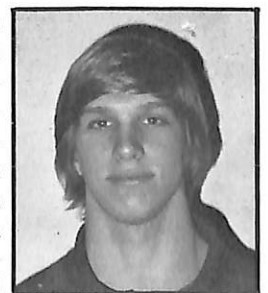
from the field, contributing to her 13-point average, and 78 percent from the free throw line. At one point in the season, Hinds put in 32 in a row from the charity stripe.

Underclassmen also contributed greatly to this year's play, and many saw varsity action. Sophomore Donna Cornell of Hastings, Nebraska, and freshman Kim Pfannkuch of Manning, Iowa, produced percentages of 68 and 67 respectively from the free throw line.

The team as a whole produced many new school records, and its members are looking for an even more productive season next year. Team averages included 60 percent from the free throw line, 44.5 rebounding, and 63.39 points per game.

### Wrestling

Three Dana wrestlers and Coach Ron Beaman '74 traveled early in March to Pacific University, Forest Grove, Oregon, for the NAIA's national tournament. Bill Bussey, a freshman 167-pounder from Glenwood, Iowa, Don Joseph, a junior 177-pounder from Arvada, Colorado, and Jim Krueger, a sophomore 190-pounder from Denmark, Wisconsin, qualified for and participated in the national meet.



Bill Bussey

Beaman reports that Krueger and Joseph lost first-round matches, but Bussey made his way into the final eight before being defeated by the wrestler who had beaten the number one seed. Bussey then had to wrestle the number one seed in the wrestle backs and was bumped out of the All-American status of placing in the top eight in the country.

"Bussey completed the season with a 23-3 record against some extremely tough competition," Beaman says. "Had he been in another bracket, he probably could have been an All-American as a freshman."

Bussey's teammates have named him Dana's wrestler of the year.

Beaman says that Joseph and Krueger had to wrestle two of the top seeds at the NAIA meet, but "they showed that they have good futures if they continue their hard work."

Another wrestler, junior Curt Berkland of Omaha, statistically qualified for the national tournament, but chose to by-pass this year's meet to concentrate on his studies and wait for next year's competition.

The wrestling team has continued to improve and has had to wrestle against the traditional heavyweights of college wrestling in this area. Dana will be stronger next year, Beaman says, but the competition will have to escalate because two more area colleges (Midland and Nebraska Wesleyan) have dropped competi-

tion in the sport. Dana is now the only private college — and one of only five colleges in the state — with intercollegiate wrestling. The others are the University of Nebraska at Omaha, the University of Nebraska-Lincoln, Kearney State, and Chadron State.

Beaman is vigorously recruiting to help complement the returning squad and to improve next year's team.

## Indoor Track

Coach Ron C. Johnson '70 reports that 15 men and women went out for indoor track this season.

In NIAC competition Theresa Rew, a sophomore from Council Bluffs, Iowa, placed third in the high jump, and in NAIA competition, freshman Mike Clark of Blair came in fifth in the 600-yard run.

Both athletes "just missed" qualifying for the nationals, Johnson says.

# Campus Notes

Dana is one of 12 colleges in this country recommended to Danish students by the Danish Experiment in International Living, which has its headquarters in Copenhagen. A representative of the organization visited the campus last summer.

An article called "Faith as Trial" by Campus Pastor Bruce Bergquist appeared in the February 19 issue of *The Lutheran Standard*. Bergquist has also participated in the production of new tapes for Lutheran Tape Ministry, Inc. He is one of the speakers on devotional tapes for teens.

Library Director Ron Johnson '61 recently made presentations on library use of the microcomputer in West Point and Fremont, Nebraska, at area in-service meetings for teachers.

More than 200 high school students attended the annual convention of the National Association of Students of German, the Nebraska chapter, at Dana on February 12 and 13. The 32 members of Dana's German Club and German instructor Bodil Strom '61 Johnson were hosts.

Dr. John W. Nielsen '48, religion and humanities, spoke at the Chicago Dana Club's annual meeting on February 21.

Dr. Alan Brandes, music, was an adjudicator for the Omaha Symphony's Young Artist Competition on February 13.

Members of the Dana family helped Professor Emeritus Lydia Herrmann celebrate her 80th birthday at a coffee on January 28.

Forty high school juniors and seniors attended a Christian Scholars Day at Dana on February 20. They were nominated at Dana's invitation by Central District congregations of the American Lutheran Church.

Senior Bob Schmoll of Las Vegas, Nevada, was among students from 30 colleges and universities in six states who participated in Forensics Regional Qualifiers at Mankato, Minnesota, on March 6. He came in fifth in after-dinner speaking and was named second alternate to national competition.

Voice instructor Sandra Polhemus was soprano soloist with the Nebraska Choral Arts Society on February 6 and 7 at concerts in Omaha and Lincoln.

Christian singer David Meece gave a concert here in February. Speakers in February and March included Dr. Joe Seger, nationally known biblical archaeologist; Dr. and Mrs. Richard Gentry of Blair, who gave an illustrated lecture on their recent trip to China; and U.S. Representative Philip Crane of Illinois.

John Mark-Nielsen '73, English, gave a paper on March 5 in Lincoln at a conference of the English Graduate Student Association.

Dana was host on February 27 to the Nebraska Intercollegiate Forensics Association. Approximately 140 students from 11 Nebraska colleges and universities participated. Three Dana students won recognition: Peggy Dutch '84 (Omaha) placed first in dramatic interpretation; Jennifer Jensen '82 (Audubon, Iowa) reached the finals in prose interpretation; and Bob Schmoll was third in after-dinner speaking.

Folklorist Roger Welsch, a former member of the Dana faculty who now teaches at the University of Nebraska-Lincoln, was a guest on PBS's *Dick Cavett Show* on February 18.

## ELDERHOSTEL Comes to Campus

ELDERHOSTEL, a national not-for-profit educational program for older adults, will be held here for the first time this summer, from June 6-12.

The program's popularity can be measured by its growth: from a start in 1975 at five New Hampshire colleges, it has expanded to 496 participating schools in all 50 states, Canada, the Scandinavian countries, and Great Britain.

The liberal arts and science courses are taught on a noncredit basis, and there are no tests or homework. The \$150 fee for a one-week program is all-inclusive.

The national organization defines its "flexible guideline" for participants as being "60 years of age or older or the spouse of an elder." "Whether you finished grade school or earned a Ph.D.," ELDERHOSTEL says, "if you have an adventuresome spirit, you're perfect for ELDERHOSTEL." Last year over 37,000 people enrolled in the program.

Dana will offer three courses, scheduled so that participants can attend all of them:

**Aging Around the World** — This is a sociological review of aging in America and in other societies, with a look at the life cycle within the U.S. and its related prospects and problems. Taught by Prof. Rodney Dannehl.

**Human Creativity** — There is no reason why aging should diminish your capacity for creativity! Using the text *Creativity, Step by Step* (DeBond) as a basis, learn to discover and improve your creative powers. Taught by Prof. Frank Hengeveld '41.

**Walt Whitman: Poet of Youth in Old Age** — Read and enjoy the major works of this great American poet. Drawing from *Leaves of Grass*, the class will view Whitman's creative best from youth to old age. Taught by Dr. Bruce Bergquist, campus pastor.

Participants will stay in the Elk Horn Hall Conference-Retreat Center and have their meals in the Campus Center. Dave Martin, dean of students, is Dana's ELDERHOSTEL coordinator.

Because registration has already started on the national level, readers who are interested in participating either at Dana or else-



### Faculty Follies Strikes Again

*Faculty Follies* — that once-in-a-lifetime event for students (because it is staged only once every four years) — played to an enthusiastic audience on February 27. Here singing a quartet from *Rigoletto* are (from left) Professors Jim Olsen '62 (art) and Del Hutton (Greek and religion), Iris Frey '78 (head resident and assistant to the dean of students), and Dennis Hoch '76 (assistant director of the Centennial Fund).

where are advised to write soon for this summer's catalog to: ELDERHOSTEL, 100 Boylston Street, Suite 200, Boston, MA 02116 (telephone — 617/426-8056).

The catalog lists courses offered at all member institutions and includes registration forms. Those who would like to be placed on the mailing list for future catalogs should write to the same address.

Registration for Dana's program must be made through ELDERHOSTEL's Boston office.

### Dear Friends and Fellow Alumni,

This month the office directory sign in Pioneer Memorial was changed to tell visitors that the DANA CENTENNIAL FUND office is in Room 211.

The Centennial Fund office is a busy office. Area campaigns are planned, records kept, letters prepared and mailed and countless other tasks performed. And the job is getting done.

The faculty and staff at Dana have pledged \$148,000 over the next three years to the Dana Centennial Fund. The Blair community total has reached nearly \$900,000 over the same period and continues to grow. As of March 17 the overall Centennial Fund total had reached \$2,278,000 toward our \$6,000,000 goal.

It is true that this still leaves a long way to go, but good things are happening. Since our November launching we



have added \$800,000 to the total. We are reaching out to businesses and friends, parents and alumni, asking everyone to 'think big' for Dana and to consider very seriously what they can do to make her 100th birthday the best ever!

Whether the volunteer asks in person as a part of an area campaign or by telephone in a Centennial Fund Phonorama, the results are strong and encouraging. People are multiplying their pledges to Dana. This is happening because we all want to do our best for Dana and we are carefully thinking through our three-year pledges.

When you are asked to make your pledge to the Centennial Fund, give some serious thought about what you can do over the next three years and then do your share! Give until you feel good!

Next fall we will carry our campaign out of the Blair-Omaha area and span the land from San Francisco to Detroit with major area campaigns.

It's not too early for you to begin seriously considering just what your three-year pledge will be. If you have already made that generous pledge, Thank You!

John Beck  
Director, Alumni Affairs/Development

# Meet Your Alumni Board Candidates . . .



*Kenneth Anderson*



*Philip Larsen*



*Jane Olson Owen*



*Bradley Schweer*



*Helen Hansen Sorenson*

A ballot on page 15 lists the names of five candidates nominated for positions on the Alumni Board. Here's some information about each of them:

Incumbent **Kenneth Anderson '63** is agency manager in Omaha of Bankers Life of Iowa and president of the Omaha Chapter of Chartered Life Underwriters. After graduation he worked for a year as a Dana admissions counselor and then attended Boston University. He received his M.S. in public relations from there and then returned to Dana, serving as alumni director and associate director of development for three years. A Blair resident, he is in his third year as national Phonorama chairman.

**Philip Larsen '49** of Blair is a building contractor with his own real estate firm. He has been a church council member at Blair's First Lutheran Church, a member of the board of directors of Nebraska's Educational Service Unit #3, and a member of the Metro Tech Community College board of governors. He has served on the Good Shepherd Lutheran Home board of directors since 1980. Daughter Diane is a 1975 Dana graduate.

**Jane Olson Owen '65** of Omaha is a board member of the Methodist Hospital Auxiliary and the Rockbrook Community

Club. She is also a volunteer at Methodist Hospital and a Sunday School teacher at Lutheran Church of the Master. She taught in the elementary grades for the Omaha Public Schools and District 66 until the birth of her two children, and has done graduate work at the University of Nebraska at Omaha. She is married to Dr. D. R. Owen '66.

Omaha attorney **Bradley Schweer '74** is a partner in the law firm of McClellan and Schweer. He received his juris doctorate in 1977 from Creighton University's School of Law. Last year he served as president of the Nebraska Chapter of the Cystic Fibrosis Foundation, and in 1980 was a member of the board of directors of the Combined Health Agencies Drive. His wife, Patricia (Hewett), is a 1975 Dana graduate.

Incumbent **Helen Hansen Sorenson '68** of Crescent, Iowa, is director of respiratory therapy at Missouri Valley's Community Memorial Hospital. She attended the California College for Respiratory Therapy and became a certified respiratory therapy technician after passing the national boards. She is an active PTA member as well, and has served as Alumni Board secretary for the past two years. Her husband, William, is a 1972 Dana graduate.



## JOBS AND PROMOTIONS

**1981**

**KAREN HARRIS** teaches two classes of high school French and a sixth grade class in Ida Grove, Iowa.

**1979**

**KAREN BARTER**, 115 E. Brookdale Pl., Fullerton, California 92632, is project accountant for the costuming department at Disneyland. She writes that "I'm mainly concerned with Tokyo Disneyland and EPCOT Center, which is near Walt Disney World. EPCOT stands for Experimental Prototype Community of Tomorrow. It is to open October 1, 1982. EPCOT has two sections — Futureworld, which will give us a look at futuristic ideas and World Showcase, which is to promote peace among countries. Parts of different countries will be brought together at EPCOT, and it will probably take a week to go through each section!"

**1977**

**CURTIS MASCHMAN** became a full partner on January 1, 1982, in the Humboldt, Nebraska, law firm of Kotouc, Kotouc, Fankhauser and Maschman.

**1972**

**JON and BRENDA HAACK '73 FOSSE** live at 2601 Douglas in Anchorage, Alaska 99503. He is a commercial fisherman.

**1970**

**ROD E. CHRISTENSON** has been assigned new duties as product training manager in the marketing division of the home office of the American Family Insurance Group in Madison, Wisconsin. He and his wife, **DIANE (SCHMIDT '71)**, and their son live in Marshall, Wisconsin, at 5809 Wagon Lane.

**1968**

**RICHARD VIERK**, a tax manager with Touche Ross and Company, has been transferred to the Lincoln, Nebraska, office of the international accounting and consulting firm. In Lincoln he works with **JOHN CEDERBERG '65**, a senior tax partner at Touche Ross. Vierk is a member of the financial institutions and construction/real estate national industry groups of Touche Ross and is a frequent speaker and author in those areas.

**1966**

**MARY BEYER Rickerd** is organist and secretary for St. Mark's Episcopal Church in Moscow, Idaho. Her husband, Jim, is a forester with the Idaho Department of Lands. They have three children — John 13, Carin 12, and Kristin 10.

**1965**

**STEVEN BOLTON** has been named assistant vice-president, marketing support division, for Mutual of Omaha and its life insurance affiliate, United of Omaha, in Omaha.

**1961**

**LUTHER KLOTH** has been promoted to associate professor with tenure in the department of physical therapy at Marquette University in Milwaukee, Wisconsin. He was assistant professor in physical therapy at the Medical College of Wisconsin prior to 1975, when he joined the Marquette faculty. He and his wife, **DORIS (SIERSBECK)**, and children Eric, Dana, and Diane live in Wauwatosa, Wisconsin.

**1957**

**MARILYN WARD Nichols** teaches English as a second language in the Tucson, Arizona, Unified School District.

**1956**

**RAYMOND and NELLIE FAYE LARSEN '58 HAGBERG** returned to Tanzania on January 29, 1982, for another two-year term under the Lutheran Church in America. Ray serves several congregations near Babati. Their address is P.O. Box 124, Babati, Tanzania, East Africa.

Dr. **RICHARD JENSEN**, professor at Luther Theological Seminary, St. Paul, Minnesota, will become the new Lutheran Vespers director and speaker in June. Lutheran Vespers is a radio ministry of the American Lutheran Church.

## ADVANCED DEGREES AND CONTINUING EDUCATION

1980

DEB DOUBEK has been accepted into the School of Medicine at the University of Kansas, Kansas City, Kansas. Her studies begin on August 24. She has been attending Kansas State University in Manhattan as a special student and is working at the Wamego, Kansas, Hospital. She is president of Alpha Epsilon Delta, an honorary pre-medical and pre-dental fraternity at Kansas State University.

## Calendar Of Events

April 25-May 16

Watercolors, Tom Norwood, Parnassus

April 29-30, May 1

Dana Players, student-directed one-act plays, 8 p.m., Alumni Memorial Auditorium

May 2

Dana Band, spring concert, 3 p.m., Alumni Memorial Auditorium

May 3

Student concerto recital, 7:30 p.m., Alumni Memorial Auditorium

May 4

Senior recital, Melinda Jensen, 8 p.m., Alumni Memorial Auditorium

May 5

Opera Scenes, voice students, 7:30 p.m., Alumni Memorial Auditorium

May 6

Honors banquet

May 7

Senior recital, Amy Nichols, 8 p.m., Alumni Memorial Auditorium

May 10

Senior talent show, 7:30 p.m., Alumni Memorial Auditorium

May 15

Dana Builders luncheon, Campus Center Recognition dinner, 6:30 p.m., Campus Center

May 16

Baccalaureate, 10 a.m., Borup Coliseum Commencement, 2 p.m., Borup Coliseum

June 7-July 16

Six-week summer session

July 19-August 6

Three-week post session

Schedule subject to change.

1976

ROGER BARRETT, 562 S. 26th Avenue, Omaha (68105), is studying anthropology at the University of Nebraska at Omaha. He works for ENCOR.

1972

GEORGE K. CHRISTENSEN has received an MBA from Central Missouri State University. He is a senior auditor with the Inspector General, Department of Energy, in Las Vegas, Nevada.

## PUBLICATIONS, ACTIVITIES, HONORS AND AWARDS

1980

PAUL MADSEN, director of the Christian Education Ministry at St. Paul's Lutheran Church in Grand Island, Nebraska, was recently named "Outstanding Religious Leader" by the Grand Island Jaycees.

1969

The Corning, Iowa, girls basketball team, coached by JERRY LARSEN, had a season record of 19-2 and competed in the state tournament.

1965

LINDA MONEY JORGENSEN was second-place winner in a recent Nebraska art teachers' art competition in Lincoln.

1959

ROGER L. MADSEN was named "Iowa Counselor of the Year" in 1981 by the Iowa Association of Admission Counselors.

1953

Concordia Publishing House, St. Louis, has recently issued three books by Dr. RICHARD ANDERSEN, pastor of Our Saviour's Lutheran Church in Long Beach, California. One is a guidebook for board and committee chairpersons entitled *The Positive Power of Christian Partnership* and another is a devotional workbook for members of such boards and committees. The third, named *A Little Library of Inspiration*, is a devotional book for Sunday School teachers. Concordia has published 20 books by Andersen. He is the only pastor of the American Lutheran Church to contribute to Concordia Pulpit, an annual collection of Missouri Synod sermons.

1947

The Rev. RAYMOND PAULSEN, after serving as mayor of Brush, Colorado, for eight years, stepped down from that office in January. A retired pastor and nursing home administrator in Brush, Paulsen is chairperson of the local drug abuse committee, a member of the Morgan County United Fund Board, and a director of First National Bank.

## MARRIAGES

1981

MARY ASMUS and BRUCE BARKLEY, May 30, 1981, in Audubon, Iowa.

RUTH BEHRENS and JERRY SCHMIDT, June 7, 1981, in Kensett, Iowa.

PAM BRAMER and Wes Andersen of Kennard, Nebraska, March 20, 1982, at Bethlehem Lutheran Church in Jacksonville, Iowa.

JONI LAUE '82 and GREG MANSKE, November 20, 1981. They live in Fulton, New York, at Eastlake Apartments #C-3.

1980

BARBARA KALAL and Robert M. Hawkins, July 28, 1981. He is a professional musician and Detroit school teacher; she has been promoted from teller to NOW (checking) account coordinator for First Federal Savings and Loan Association of Dearborn. Their address is 4256 Jonathon, Dearborn, Michigan 48126.

1979

BARBARA BRANSON and Jerry Garza, Jr., June 26, 1981. They live at 103 Corto Drive in Norfolk, Nebraska 68701. She was recently promoted from revenue agent to journeyman agent with the Internal Revenue Service in Norfolk.

BARBARA CRAWFORD and Doug Barth, February 6, 1982. Their address is Box 102, Utica, Nebraska 68456.

1954

DONNA MOREE OLSEN and DANIEL C. HANSEN, January 2, 1982, at Gethsemane Lutheran Church in Racine, Wisconsin. They live at 930 Cypress Drive in Vista, California 92083. He is senior pastor of First Lutheran Church in Vista.

## BIRTHS Sons

1979

Matthew Nicholas, born October 31, 1981, to STEVE and Sue DAEGES, 504 Cordes Drive, Papillion, Nebraska.

1977

Jeffrey James, born November 30, 1981, to TERRY and CAROLYN CAMPBELL PRICE, 4543 N. 60th Avenue, Omaha (68104). His mother works in youth and family services at the Iowa Department of Social Services in Council Bluffs, Iowa. Jeffrey's sister, Kristin, is 1.

1976

Carl James, born January 23, 1982, to JIM and DEBRA HANSEN '73 DUDA. He joins sisters Lucy and Molly. His parents make stained glass. They are working on a window for Bethany Lutheran Church in Elkhorn, Nebraska, called "Christ with the Children" that will include the faces of Carl, Lucy, and Molly. A feature article about Jim and Deb (by Roving Reporter Tom Allan) appeared in the *Omaha World-Herald* on the day of Carl's birth.

Stephen Alexander, born November 7, 1981, to LOYD and Marie NEVE.

1975

Daniel Allen, born February 9, 1982, to Richard and VICKI KLATT Riggs.

Michael Douglas, born June 21, 1981, to Doug and KATHY TYNER Swanson.

1974

Brandon William, born January 22, 1982, to JON and MARLENE POLSON '73 UTECH. His father teaches speech, drama, and debate at Lyons High School in Lyons, Kansas, and his mother is a legal secretary for Bush and Bush Attorneys at Law in Sterling.

1973

Jared Robert, born December 31, 1981, to ROBERT and CANDACE WILD EHMEN of Goldsboro, North Carolina. His brother, Joshua, is 2.

1972

Jeffrey David, born January 2, 1982, to DENNIS and MARY KAY PETERSEN '74 HENNINGS. He joins a sister, Jennifer Lynne, 3.

Timothy James, born August 12, 1981, to LAURA BRO ZEVESKI and her husband. They live at 14355 Schiller Road in Houston, Texas 77082.

**BIRTHS**  
**Daughters**

1975

Marit Elizabeth, born January 21, 1982, to MARK and CARYL CHRISTENSEN GRORUD, 2201 E. Cuming, Fremont, Nebraska 68025. Her father is associate pastor at First Lutheran Church in Fremont, and her mother is a registered nurse in a pediatrician's office.

1974

Heidi Lynn, born February 6, 1982, to WILLARD and CHERYL HEINZ '77 BEHREND.

Christal Lynn, born April 13, 1981, to GRACIE FOX GILLMING and her husband.

Nicole Renae, born January 5, 1982, to TIM and Vicki KENYON, 225 Lundy Lane, Leland, Illinois 60531. Her father was recently elected to the board of directors of Pleasant View Luther Home in Ottawa, Illinois.

1973

Jennifer Marie, born December 5, 1981, to DOUGLAS and Kerry KIMM, RR 1, Norway, Iowa 52318. Her father has recently been promoted to claims supervisor for Iowa National Mutual Insurance Company.

1972

Blair Susanne, born December 20, 1981, to LAURENCE and VIRGENE RIPPE '75 RASMUSSEN. Her brother, Alex, is 3.

1971

Jennifer Ann, born February 26, 1982, to Jim and VICKI RADFORD Hester of Plymouth, Minnesota. She joins sister Katie, 3.

1965

Sarah Denise, born August 4, 1981, to CARL and Lonnie Kay MACKIE. They also have a daughter Elizabeth 18, and sons Michael 14 and Matthew 11. Carl is service manager for Interstate Harvestore in Blair.

**DEATHS**

1942

DAVID KOLB, February 7, 1982, in Omaha. Survivors include his widow, THELMA (HANSEN '41), 2207 Country Club Avenue, Omaha (68104), and son, PAUL '73, 823 N. 25th Avenue, Blair.

1933

The Rev. EMIL A. "SCHMAALTZ" PEDERSEN, 75, T'36, of heart failure, January 12, 1982, in Racine, Wisconsin. He spent ten years here as a student at the academy, college, and seminary. After ordination he served parishes in Wolbach, Nebraska; Farmington, Minnesota; Fresno, California; Calgary, Alberta, Canada; Chicago; and Elroy and Clinton, Wisconsin. He retired in 1972 and served as interim pastor in parishes in the Southern Wisconsin District until 1980. Survivors include his widow, ESTHER (JENSEN

'31), 5810 Lincoln Village Dr., Racine (53406), and a son, Paul, of Chicago.

1918

JAMES LUND T'18, September 15, 1981, in Stockton, California. He served congregations in Waupaca, Wisconsin; Kenmare, North Dakota; Neola, Iowa; Blair; and Troy and Manistee, Minnesota. Lund served as interim professor at Trinity Seminary in 1929-30, and edited the UELC's *Christmas Chimes* and *Home Altar*. Survivors include his widow, Elida, 6131 Gettysburg Apt. 42, Stockton (95207), daughter MARIANNE Brunk '49, 1433 N. El Terraza, Whittier, California 90603, and son James.

Hjalmar Bertelsen, 84, December 30, 1981. Publisher and editor of *Den Danske Pioneer* for many years, he was a good friend of Dana and a member of our Centennial Fund's National Executive Committee. He was named Knight of Dannebrog by the late King Frederick of Denmark.

**ALUMNI BALLOT**

There are two boxes by each name so that both husband and wife can vote if they are alumni. Please circle the number voting — 1 2 — and return your ballot by May 24. Information about the candidates appears on page 13.

**VOTE FOR FIVE**

- |  |   |
|--|---|
| <input type="checkbox"/> <input type="checkbox"/> Kenneth Anderson '63 | <input type="checkbox"/> <input type="checkbox"/> Bradley Schweer '74       |
| <input type="checkbox"/> <input type="checkbox"/> Philip Larsen '49    | <input type="checkbox"/> <input type="checkbox"/> Helen Hansen Sorenson '68 |
| <input type="checkbox"/> <input type="checkbox"/> Jane Olson Owen '65  | <input type="checkbox"/> <input type="checkbox"/> _____                     |

Mail to: Alumni Affairs Office, Dana College, Blair, NE 68008

**I would like to recommend the following students:**

Name _____	Name _____
Street Address _____	Street Address _____
City _____ State _____ Zip _____	City _____ State _____ Zip _____
Phone ( ) _____ Year in school _____	Phone ( ) _____ Year in school _____
High School _____	High School _____
My name is _____	My name is _____
Comments _____	Comments _____

Please mail to: **The Admissions Office**  
**Dana College**  
**Blair, NE 68008**

Thank you.

DANA COLLEGE  
2848 College Drive  
Blair, Nebraska 68008

Second Class Postage  
Paid at Blair, Nebraska

13262

99 78 78

MRS SUSAN HETTINGER  
2518 ORCHARD PL  
FT COLLINS CO 80524

Second class postage rates have more than doubled in recent months. If you're receiving more than one *Dana Review*, please list the names under which you're receiving copies, check the name we should continue to use, and return this coupon to the College Relations Office, Attn: Laurie Harper, Dana College, Blair, NE 68008. Thank you.

Names: \_\_\_\_\_  
\_\_\_\_\_  
\_\_\_\_\_

