

DANA REVIEW

105

Fall 1982



DANA REVIEW

Volume 39 Fall 1982 Number 1

(USPS 147-940)

Campus photographs by Mark Amman '84, Heidi Faudel '83, Peter Jacobson '84, Scott Lucey '86, Lynne Moline '83, Larrie Stone '57, Kriss and McCallum.

North Central Association Continues Accreditation

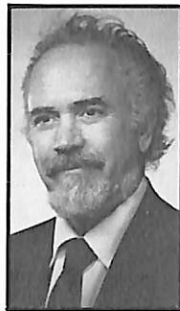
The North Central Association of Colleges and Secondary Schools notified Dana this summer that it had voted to continue the College's accreditation at the bachelor's degree level for another ten years.

Member institutions of the North Central Association are examined at least once every ten years, and many are evaluated at more frequent intervals. Dana's next examination will take place in 1991-92.

The action of the North Central Board was based on materials that Dana provided through an intensive self-study and the recommendation of a visiting team of examiners that spent a week on the campus last spring interviewing members of the faculty, staff, and student body.

Greetings, Friends in Christ!

What an exciting time to be at Dana! A few months ago, during the summer, since the last issue of our *Review*, we received official word that our accreditation had been renewed, extended for the maximum time available, ten more years! We were examined by our peers and praised for our programs! Marvelous! And not only has the academic scene been looked at and approved. The landscape as well, the contours of the College itself, are being dramatically altered!



Our campus, our beautiful campus, already one of the loveliest small college sites in the country, is now being completed! Our Centennial Fund drive has been so successful to date that we are now able to step out on phase 1, the first part of the completion of our physical facilities. Step one, the building of a brand new theater where drama and music programs can be put on. This has been sorely lacking. Our band had no place to practice, the choir no place to sing, the aspiring actors no stage to play on! AMA, ancient Alumni Memorial Auditorium, was inadequate, even dangerous.

And so plans were drawn up during the summer to build a replacement, to provide a new drama/music building. But, then, during the course of the summer, like a bolt out of the blue, like a churning thunderstorm of frenetic activity suddenly searing the Nebraska sky, a new development! The Peter Kiewit Foundation called us up and said they had a quarter of a million dollars for us! Marvelous, we thought! Now we will definitely have enough to break ground and move ahead on our new drama/music building. Step one was assured!

But not so! Kiewit told us the money they would give would not be for the new building, but for the restoration of Old Main, the rebuilding and total renovation of that magnificent crown of our campus. That was supposed to be stage two, further down the road — after a year of rest we would tackle that project! But now Kiewit said, "Here is a quarter of a million dollars — but to get that money, you must begin work on Old Main by next July 1!" In less than ten months we've got to have that project underway too, raising an additional quarter of a million on our own to match their grant, or we lose it!

What a challenge! We all feel like one-armed jugglers! All those balls in the air! So many things to do! Intense excitement as the faculty and staff rise to the challenge!

There is a joyous and exhilarating sense of excitement throbbing through our campus, for which we thank God!

The blueprints and architectural drawings for the new drama/music building were completed, only weeks ago. Architectural drawings for the renovation of Old Main are now being prepared. All at once we're working in both directions — step one and step two, the new building, the repairing of the old building, flow together.

Then, at the height of this fever pitch of intense activity, we were stunned, staggered, our breath taken away.

We knew it would happen. We knew it would have to happen. We had commissioned a demolition firm to do it. We set a date when they would begin. But when it happened, we were exposed, naked, unprepared. That lovely lady, faded and failing, was no more. Wounded by the loss of the west wall, even a dignified fall was denied her. She just plain fell, so defenseless and alone, no one to help her. The bricks that once reverberated to the roars of baskets being made in a Midland-Dana game, which had heard for half a century chapel sermons and graduation addresses, those bricks were pushed and bulldozed, heaped high as rubble and then hauled off in a truck, abandoned in a dump. Eyes were wet. We knew it would happen, yet it was a surprise and a hurt.

AMA is no more. She is gone.

It was a parable we saw. A lesson of life. A farmer cannot plant unless he plows. Before a harvest, the ripping of the soil, laying bare the bosom of the earth. On the surface of the cesspool the lotus blossom blooms. Out of ruin, renewal. Out of hurt, hope. After Good Friday, Easter. The place of the skull followed by the hallelujahs of resurrection.

AMA is gone, new ivy walls go up. Time may claim them too, but yet another throng will rise up to sing that song, that affirmation of confidence, assured by a triumphant Lord, that under His leadership there is never room for despair, only praise.

It was a parable we saw. A lesson of life. AMA is gone, but the new is unfolding, the finest is yet to come.

Are you weak and heavy laden? Burdened with a load of care? The same Lord who looks after the bricks and mortar of faded, falling buildings and raises high new edifices in His name, giving new hope to a reborn school, that same Lord will give substance and form to your future too. That is His promise, "Lo, I am with you always . . ."

In Jesus' name . . .

Dr. James Kallas, President

Two Foundations Give Challenge Grants For Old Main and Performing Arts Center

The Kiewit Foundation: \$250,000

The Peter Kiewit Foundation of Omaha has given Dana a \$250,000 challenge grant for the restoration and remodeling of Old Main.

President Kallas describes the grant as "a major gift that will help restore a historic campus landmark and symbol of Dana."

Old Main, which dates from 1886, is on the National Register of Historic Places. So far as is known, it is the oldest educational structure in the state that has always been a classroom building.

The Kiewit grant stipulates that it continue as a classroom facility. The one-to-one challenge also requires expenditure of at least \$500,000 for remodeling and restoration. (Estimated total cost of the project is \$750,000.) The challenge will be met with contributions to the Centennial Fund.

The grant also stipulates that work on Old Main start no later than July 1, 1983. Architects in the Omaha office of the Leo A. Daly Company have already met with Kallas and other Dana officials to discuss the project.

Old Main's interior was remodeled in the late 1950s, when rooms were enlarged and steel beams installed to reinforce floors. At that time little was done with the exterior. The National Register designation was based on the building's exterior, and renovation will not alter its appearance. The architects and Dana representatives have discussed plans with a member of the Nebraska State Historical Society's Preservation Office.

Centennial Fund Halfway to Goal

Dana's Centennial Fund, less than a year after its launching, has received over \$3,686,445 (as of Oct. 22), more than half its \$6 million goal. Many of these gifts and pledges have come from Omaha, Blair, and Washington County.

Local support for the drive has been strong, with contributions from Blair and Washington County amounting to more than \$1 million. In announcing these results, President Kallas expressed his gratitude for "such an outpouring of local support."

John Beck '50, Centennial Fund director, says that the drive was extended this fall to Fremont and Lincoln, Nebraska; Racine, Wisconsin; Denver, Des Moines, and Chicago. It ends in 1984, Dana's centennial year.

The cover: A model of the new performing arts center (see story on page 6) was displayed in the Campus Center on September 7 after opening convocation. Here discussing the plans are Harold Andersen, president of the *Omaha World-Herald* and convocation speaker, President James Kallas, Peter Jacobsen '83 (Fairbury, Nebraska), and Kristie Hansen '83 (Rockford, Illinois). Andersen is a national co-chairman of Dana's Centennial Fund. *Photo by Kriss and McCallum, Omaha.*

The Kresge Foundation: \$200,000

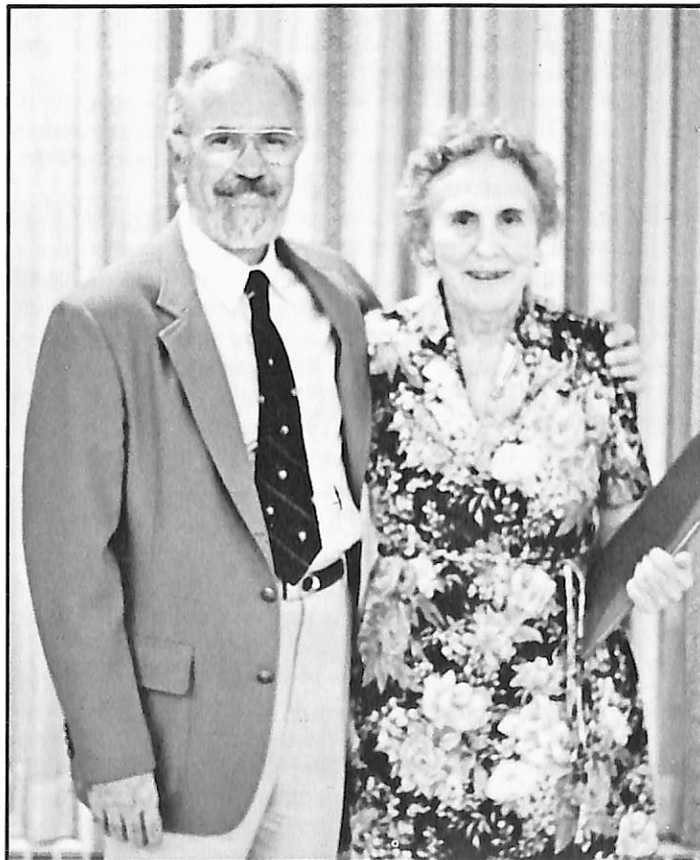
The Kresge Foundation of Troy, Michigan, has issued Dana a \$200,000 challenge grant for construction of the performing arts center.

All Kresge Foundation grants are made on a challenge basis, and most recipients have already raised some money toward their project when a grant is made. The Foundation then joins in with a challenge to the organization to raise the remaining funds needed to complete the project.

The \$200,000 grant to Dana follows this pattern — some of the funds needed for the performing arts center have been raised, and the Kresge grant challenges Dana to raise the remaining funds to insure its completion.

Cost of the performing arts center has been estimated at \$1.8 million. In announcing the award last August, President Kallas said that \$1.1 million for the building had been raised through the Centennial Fund at the time of the Kresge decision. Dana must now raise an additional \$500,000.

"We accept the Kresge Foundation's challenge with thanks and enthusiasm," Kallas said, "and I'm confident we'll meet it."



Retiring Regent Is Honored

Omaha attorney Margaret Fischer was named a regent emerita at the College's annual opening dinner for faculty and staff on September 2. She served on the Board of Regents for 18 years and was vice-chairman for part of that time. At the dinner President Kallas thanked her for her leadership and commitment to Dana.

Introducing Our New Faculty and Staff . . .

Six faculty members, three full-time and three part-time, are new at Dana this year. Seven staff members are also new.

The full-time faculty members are Tom Brosnihan, whose appointment as head basketball coach and assistant professor of physical education was announced in the summer *Review*; Charles Marcy, instructor in economics; and Thomas Richardson, assistant professor of chemistry.

Brosnihan's B.A. and M.S. degrees are from Creighton University in Omaha. He has had an outstanding career as head basketball coach at Creighton Prep and as assistant basketball coach at Creighton University. He has also taught at both schools.

Marcy received his M.A. from Hanover College in Indiana and his M.B.A. from Xavier University, Cincinnati. At Xavier he was a graduate assistant in economics.

Richardson has a B.A. from Northeastern University in Boston and a Ph.D. from New Mexico State University. He has been a postdoctoral fellow at Kansas State University and New Mexico State and has several publications. He comes to Dana from Kansas Wesleyan, where he taught for four years.

The three part-time faculty members are Diana Brown, instructor in French; Roger Corbin, instructor in geography; and Sister Mary McAuley, visiting professor of history.

Mrs. Brown, who has studied in Argentina, France, and Spain, has a B.A. from Wayland Baptist College and an M.A. from California State University at Domingues Hills. She is an experienced teacher of English, French, and Spanish.

Corbin received his B.G.E. and M.S. from the University of Nebraska at Omaha. He has several publications and experience in urban planning and research. Corbin has also made presentations to the Nebraska Academy of Science.

Sister McAuley, who has taught on the college level for more than 15 years, has been an academic dean and chairman of a history department. She has presented papers at the Missouri Valley Historical Conference and the Northern Great Plains Conference and has participated in many other conferences, workshops and research projects. She received her B.S. degree from the College of St. Mary, Omaha, her M.A. from Marquette University, Milwaukee, and her Ph.D. from the University of Notre Dame.



<i>Brosnihan</i>	<i>Brown</i>	<i>Calvert</i>
<i>Corbin</i>	<i>Hernes</i>	<i>Marcy</i>
<i>McAuley</i>	<i>Richardson</i>	<i>Urdahl</i>

The appointment of Mike Urdahl '76 as dean of students was also announced in the last *Review*. He was a Dana admissions counselor before joining the staff of the Blair Bank several years ago.

New on Urdahl's staff are Michael Calvert, assistant to the dean of students and a head resident, and Mrs. Betty Hernes, the college nurse. Two members of the Dana community, Kathy Foley and George Schuler, have taken on additional responsibilities as head residents.

Schuler has also been named assistant to the director of the humanities program.

Sharon Messer Jensen '65 is a new library assistant. Nancy Horeis has joined the College Relations staff as a secretary working with the Centennial Fund.

Dana's custodial staff has two new members. David Brown is custodial supervisor and Nancy Haneline is a part-time custodian.

About the Dana Builders . . .

History is being made at Dana — but with it comes some mixed emotions. On the one hand, great things are happening with the construction of our new performing arts center finally under way. On the other hand, that event meant the demolition of our old Alumni Memorial Auditorium, and we were sorry to see it go. It had served us well since 1928. But AMA left us a legacy. During Homecoming weekend we opened the cornerstone; though the contents were in poor condition, we found memorabilia from the 1920's, placed there many years ago by our students to enlighten future generations. Those people on campus at that time — and some of you may have been among them — left us a part of themselves and gave us a flavor of life at Dana nearly 54 years ago.

This reminds me of what each of us has the power to do in our own wills. Each of us has possessions that we can give during our lifetime or by will at the time of our death.

We can truly be Dana's cornerstone of the future.

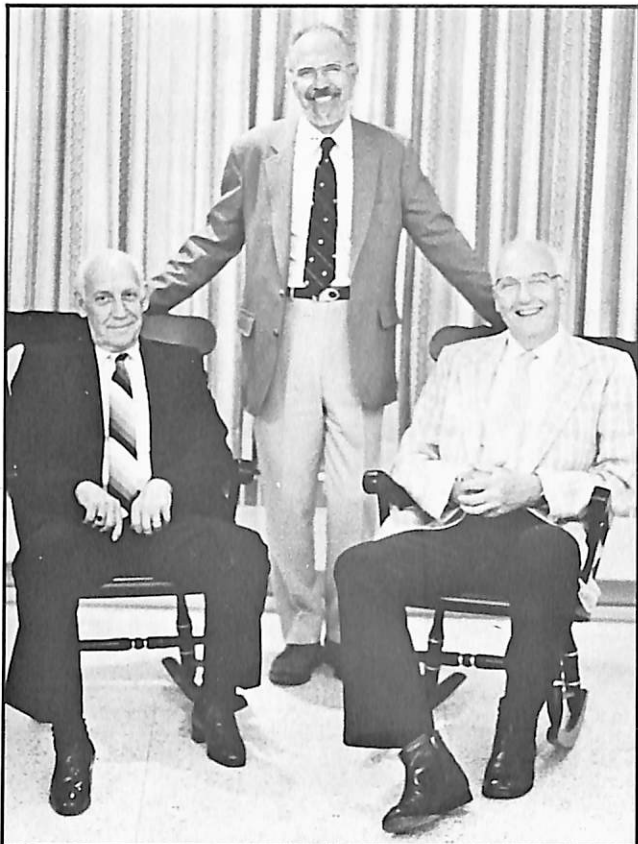
Because of our new Heritage organization, the DANA COLLEGE BUILDERS, those persons who during their lifetimes have the foresight to remember Dana in their estate plans can be honored. Next spring we will be holding our second annual BUILDERS meeting to honor those who have told us this year that Dana is in their estate plans. If you've included Dana in your estate plans, or if you have some questions about doing so, I invite you to fill in the coupon on page 19 and return it to me.



Eugene L. Meyer
Executive Director
of College Relations
Dana College
Blair, NE 68008

Tel: 402/426-4101, ext. 230

Well-Known Teachers "Semi-Retire"



Peterson (left) and Hengeveld "try out" rocking chairs presented by President Kallas (standing).

This school year has been significant for two faculty members who are known to hundreds of alumni — Paul Peterson, professor of physical education and director of athletics, and Frank Hengeveld, associate professor of chemistry.

Both have changed their status from full-time to part-time, and as a symbol of their semi-retirement, they were given Dana rocking chairs at the September 2 annual dinner for faculty, staff and spouses.

The rocking chairs haven't gotten them, though — both men are on campus every day!

Peterson has taught at Dana for 40 years and Hengeveld for 28. Both are members of Dana's 1941 graduating class.

Accumulated Deficit Ends

President Kallas had an important announcement to make to members of the faculty, staff, and their spouses at the annual opening dinner September 2: Not only had Dana closed its fiscal year in the black for the third year in a row, but it had also been able to wipe out its accumulated deficit.

The College had projected a \$53,000 deficit for the past fiscal year, Kallas said: Instead, the year ended with \$110,000 in the black, and Dana thus was able to pay off the rest of an accumulated deficit that in May 1979 had amounted to almost \$400,000. The remainder was placed in Dana's endowment and in funds for the new performing arts center, Kallas said.

Read and Niebuhr Lecture As Visiting Theologians

Dr. David H. C. Read and Dr. Richard R. Niebuhr will visit the campus next semester as Visiting Theologians.

Read, pastor of Madison Avenue Presbyterian Church in New York City, will lecture on "What Religion for Today?" on February 13-15. Scottish-born Read has studied at Daniel Stewart's College, the University of Edinburgh and New College, and at the Universities of Strasbourg, Paris, and Marburg. Before assuming his present position in 1956, Read was also chaplain to Her Majesty the Queen in Scotland.

He is also this year's Staley Foundation Lecturer.

Niebuhr, Hollis Professor of Divinity at Harvard University Divinity School, speaks on "Patterns of Theology" April 10-12. Born in Chicago, he holds degrees from Harvard, Union Theological Seminary, and Yale. He has also been a Fulbright Research Scholar at the University of Heidelberg.

The free public lectures will be given in the Dana Hall of Science Auditorium. The schedule for both series is as follows: Sunday, 8 p.m.; Monday, 10 a.m. (chapel), 3 p.m. and 8 p.m.; Tuesday, 9 a.m.

Preaching as Dialogue Is Workshop's Focus

The Rev. Alvin Rueter '42 announced plans last summer for a fifth Preachers' Workshop at Dana.

He has scheduled the "Preaching as Dialogue" workshop for April 11-14, to coincide with the campus lectures of Visiting Theologian Richard Niebuhr. Last spring's lectures, held when Visiting Theologian Martin E. Marty was at Dana, brought 33 pastors from eight states to the campus, Rueter said.

In response to requests by workshop participants, Rueter also conducts a second level for those who have attended before. On this level, he explained, participants reinforce the principles of "preaching as dialogue" and spend more time practicing them than is possible on the first level.

Rueter is currently working on his Ph.D. dissertation in the speech/communication department at the University of Minnesota, doing studies in the persuasion of a hostile audience. He is also a private speech coach for pastors and business executives.

For further information on the Preachers' Workshop, either call Rueter at 612/646-3332 or write him at 1603 Garden Avenue, St. Paul, Minnesota 55113.

Marty: "Bravo"

The following appeared as a boxed item in Martin E. Marty's *Context: A commentary on the interaction of religion and culture*, August 1 & 15, 1982: "This spring I visited Dana College in Blair, Nebraska [as a Visiting Theologian], a rebounding Lutheran school near my birthplace. It was a sentimental return for some lectures. While there, I picked up a nice line from an alumni magazine in the guest room. President James Kallas corralled pianist and comedian Steve Allen to be a member of the Dana Board of Regents. Asked by a professor there why he chose to help a liberal arts college and, at that, a small Christian one, Allen popped, 'Because I'm a small Christian.' Then he went on: 'I'm here to encourage learning, reason, and a respect for learning in any way I can.' Bravo."

“It’s Really Happening . . .” Profs Describe Performing Arts Center

“It gives us a performing space that stimulates the imagination and provides the facilities to bring dreams to reality,” theatre director Sieghard Krueger says.

And Professor Paul Neve '41 says that “It will certainly satisfy the needs of the music department, which have been urgent for many years.”

Krueger and Neve are excited about plans for the performing arts center. Both are members of the two departments that will have their facilities and offices in the new structure. They and departmental colleagues have been working with the Omaha architectural firm of Bahr Vermeer and Haecker in developing the plans.

Neve says that the music area will have a large choral recital hall with a pipe organ, and band director Tom Williams reports that the band room will hold a 70-member band. There will also be ample space for practice rooms.

According to Krueger, alumnus Fred Lange '67, president of Theatre Concepts in Minneapolis, was a consultant in designing the 500-seat theatre, which has a thrust stage.

Construction starts next spring. In the meantime, with AMA gone, the music department has moved pianos and an organ to a large room in Borup Coliseum, chapel and church services are being held in the Dana Hall of Science Auditorium, and theatre classes are meeting in room 318 of Pioneer Memorial, a large area that has been, at various times, the chapel, a classroom, and the periodicals room before the C.A. Dana-LIFE Library was built.

The Dana Players' fall production of *The Diary of Anne Frank* was staged in room 318, and it was an appropriate attic setting for that particular play, the audience discovered.

Everyone welcomes the temporary inconvenience. “We’ve been promised this building for so long,” Krueger says, “that it’s hard to believe it’s really happening.”

Last Event in AMA Opens 99th Academic Year



AMA's last audience hears President James Kallas declare the opening of Dana's 99th academic year.

“The demolition of Alumni Memorial Auditorium and its replacement by a new performing arts center is a symbol of the vitality and renewal of Dana College,” Harold Andersen, president of the *Omaha World-Herald*, said in his address at opening convocation September 7.

The convocation marked a beginning and an end — the start of Dana's 99th academic year and the last event in AMA.

Andersen is a national co-chairman of the Centennial Fund. He has been instrumental in the success of the drive, President Kallas said.

Dr. James Fritschel, professor of music and choir director at Wartburg College, was given an honorary degree as a doctor of fine arts at the convocation. He was cited as “the guiding force behind the choral music program at Wartburg” and as an outstanding teacher, composer and conductor who has received more than a dozen major commissions for choral compositions, including works for major American choral societies.

Kallas announced that Fritschel had composed a work for the Dana Choir, “I Wait for the Lord,” in honor of the College.

Student government officers were installed at the convocation. In his response, student body president Bob Schmoll, a senior from Las Vegas, urged students to become involved in academic and extracurricular activities. “We can be the cornerstone of the next 100 years,” he said.

Dean's List students and freshmen recipients of Regents and Academic Scholarships were announced, and new faculty members were introduced.

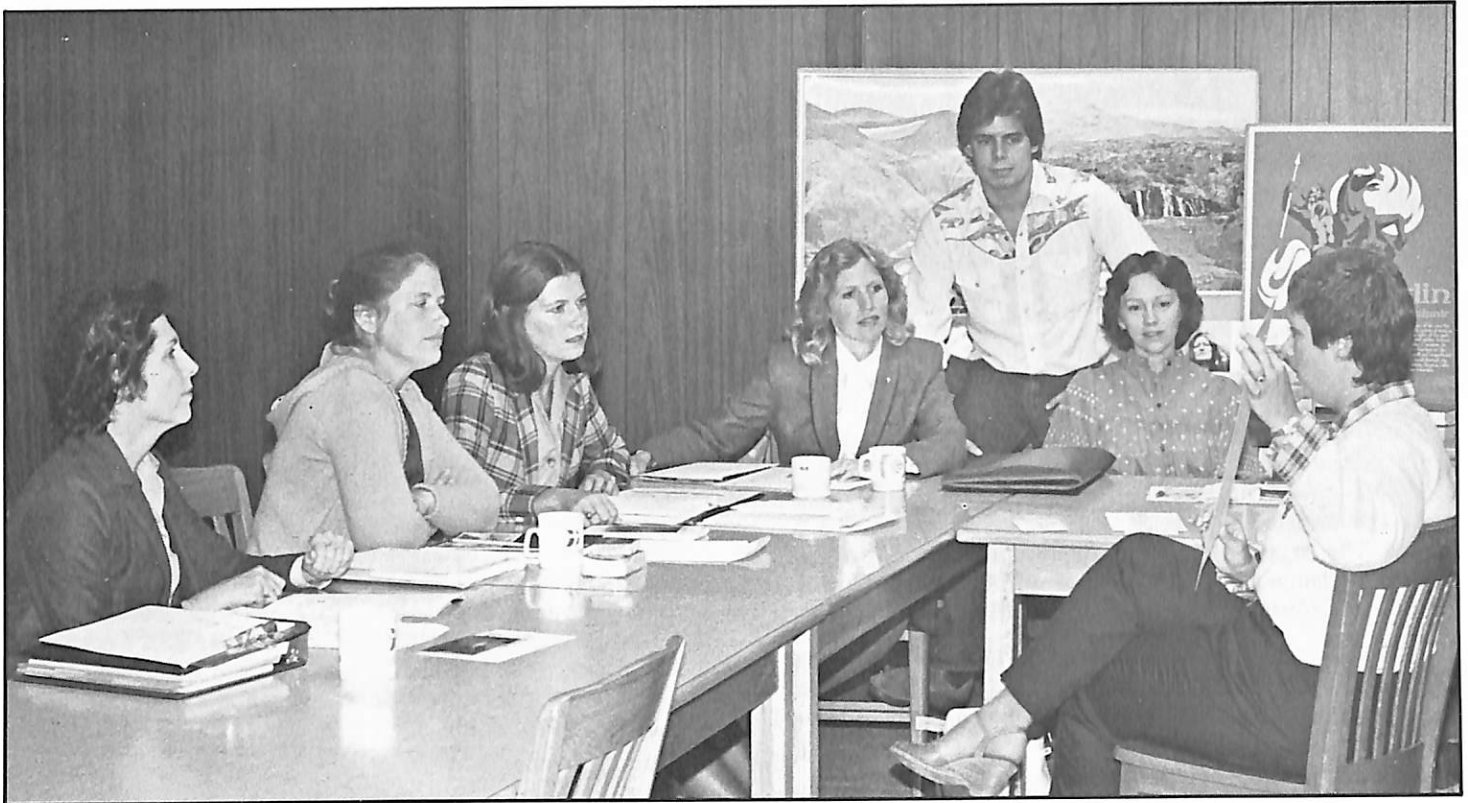
The convocation ended outside of AMA with a departure ceremony that Kallas called a “bittersweet moment.” (This ceremony is described on page 9.)



Choir's European Tour a Success

Visiting Denmark was a highlight of this summer's choir tour. The group sang in Copenhagen, Nakskov, Slagelse, Viborg, Herning, and Vejle (photo was taken in Vejle church). A reviewer for the Herning Folkeblad commented on the choir members' “wonderfully familiar names” such as “Bro, Jensen, and Olsen,” and praised the group's professionalism and “high quality and deep, serious choir work.”

New Admissions Program Employs Alumnae



Admissions counselors Judy Csejthey '81 (right) and Ted Hanlon '81 helped conduct training sessions for new part-time counselors (from left) Meta Brandes, Terri Petersen, Karen Maguire, Diane Christenson, and Mary Henriksen.

After an intensive three-day training period on campus, five alumnae in five states have started to work for Dana as part-time admissions counselors.

Meta Brandes '74 (Blair), Diane Schmidt Christenson '71 (Marshall, Wisconsin), Mary Henriksen '76 (Cottage Grove, Minnesota), Karen Bansen Maguire '71 (Lisle, Illinois), and Terri Johnson Petersen '63 (Marion, Iowa) are visiting high schools, churches, parents, and alumni in their areas. Meta Brandes is also the group's coordinator. Each position is one-fifth time.

"College admissions is becoming more and more competitive," Admissions Director Lee Johnson says, "and we've found that we haven't been able to maintain as close a contact as we should with prospective students in these areas, both because of travel costs and the amount of time involved. We hope these alumnae will be able to develop and maintain those contacts."

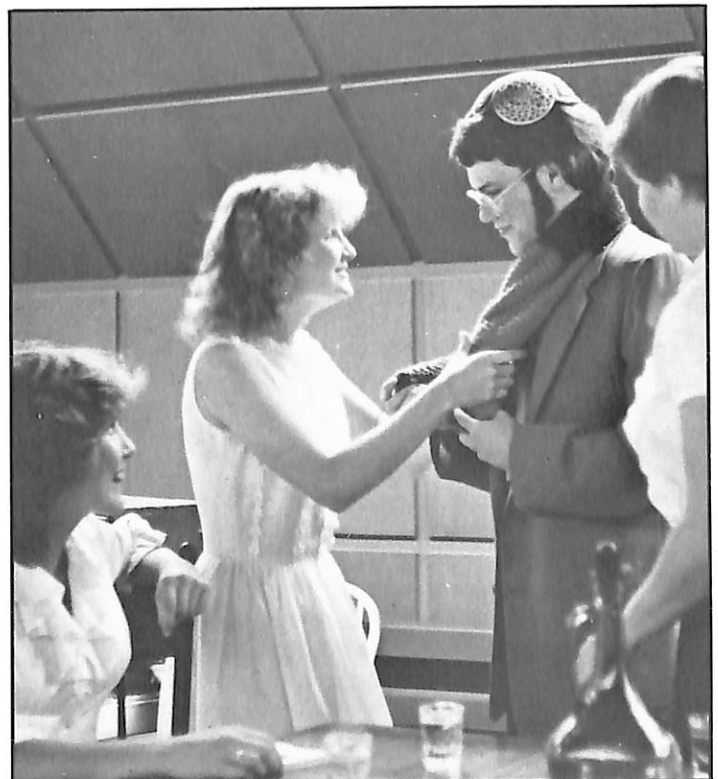
According to Johnson, the areas were selected because they have high concentrations of Lutherans and alumni. "They're former Dana areas," he says, "that used to send students. We're trying to re-establish some ties that are very important to us."

If this pilot project is successful, Johnson says, other areas — such as the West Coast and Maine — will be added. He invites graduates who might be interested in such positions to write to him.

An Invitation . . .

Our celebration of the holiday season begins December 5 with "Sights and Sounds of Christmas."

We invite you to join us in this festive occasion. For a schedule and smorgasbord reservations, write or call the Public Relations Office (402/426-4101, ext. 127).



Diary Is Fall Play

Trudie Garwood '86 (left), Peggy Dutch '84, Tom Quale '83, and Jean King '83 were cast as the four members of the Frank Family — Margot, Anne, and Mr. and Mrs. Frank — in the Dana Players' October production of *The Diary of Anne Frank*.

Alumni Memorial Auditorium Remembered . . .

It's not a building that many have been sentimental about. But now Alumni Memorial Auditorium has come down, and it's time for sentiment.

When AMA was built in 1927-28, some thought it would last 100 years. "Perhaps our great-grandchildren will be present when the cornerstone is opened, let us say in 2027, and transferred to the site of a new cornerstone that shall meet the needs of that day," a student wrote in the *Hermes*.

But unstable subsoil conditions — suspected but not verified until recently —, soft brick, a roof that insisted on leaking in spite of incessant repairs, and a pressing need for better music and drama facilities brought AMA down. "That day" arrived early.

A new men's dormitory (now Elk Horn Hall) was just being completed in 1926 when the Alumni Association launched a fund-raising drive for a new gymnasium. Contributions came in from alumni, Blair businesses and residents, the church and friends. The largest gift, and one that was an impetus for the rest of the campaign, was a pledge of \$15,000 from Lawrence Thomsen of Cody, Wyoming.

Thomsen had attended Dana only during the winter session of 1926-27. But in his pledge letter he wrote, "O how I got to love Dana. I cannot explain the influence it had on me the short time I was there."

Thomsen was at the festive dedication ceremony on February 21, 1928, a Homecoming weekend. Marcus Beck '23 (he and Martin Kirkegaard were co-directors of the fund-raising committee) introduced the speakers. The cornerstone box was put in place and sealed by Dr. N. C. Carlsen, president of the United Danish Evangelical Lutheran Church.

(Many years later Carlsen's funeral was held in AMA because the building was the only one in Blair that could accommodate the many who came to honor him.)

Mound "Surcharges" Performing Arts Center Construction Site

A mountain of dirt 20 feet high now stands where Alumni Memorial Auditorium once stood.

Devices within it that measure compaction will tell the contractor when conditions are ready for construction of the performing arts center, business manager Keith Hansen said.

The huge mound will compress the subsoil, whose instability was responsible for AMA's structural problems. The technique, Hansen said, is called "surcharging." Dirt for the mound, taken from an area above Viking Field, will be moved back next spring when construction starts on the new building.

Low bidder at \$99,930.40 for demolition of AMA and for site preparation was the Fucinaro Excavating Company, Inc., of Omaha. The contractor also removed and relocated old storm and sanitary sewers and excavated the site to a depth of 12 feet before building the mound.

Some of AMA's bricks and the concrete block identifying the building as "Alumni Memorial" were salvaged for the College.

AMA wasn't beautiful, but it housed memories. For most of its lifetime, it was Dana's all-purpose building, and for 54 years every student, every staff member, and every teacher either attended events there or was a part of them.

How many have played basketball in AMA? Or cheered the team? How many received their degrees there? Attended Homecoming banquets? Spoke in chapel? Prayed there?

How many have performed in plays on AMA's stage? Given their first recitals? Sung in the choir or played in the band?

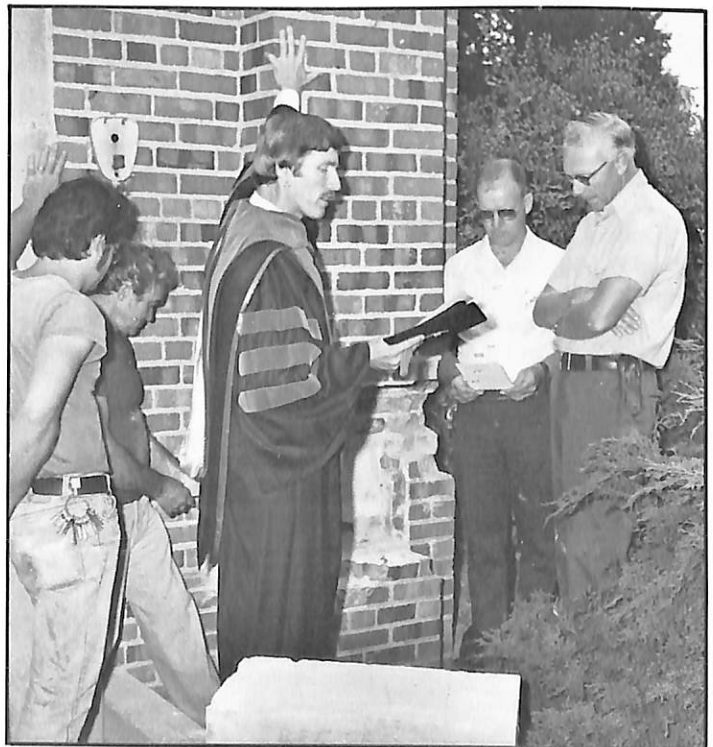
Everyone has his or her own memories.

How many remember the visit of Crown Prince Frederik and Crown Princess Ingrid of Denmark in 1939? The future king spoke in AMA. How many remember concerts by opera star Lauritz Melchior? Or the evening in 1975 after his death when his son Ib, his friend Karl Laufkotter, *Washington Post* music critic Paul Hume, and Danish ballad singer Birgitte Grimstad met in AMA to reminisce before a large audience about the "Great Dane" and to celebrate his life?

How many have attended events in AMA that have moved them to laughter or to tears? Memories.

It was Birgitte Grimstad, by the way, who praised AMA's acoustics two years ago when she returned to Dana. Last spring cellist David Low agreed. Its acoustics, he said, ranked with those in New York City's Carnegie Hall and a Chicago auditorium where he had played.

Good acoustics, 54 years of service, and memories. At Dana we're celebrating our new performing arts center. But we're also mourning — just a little — Alumni Memorial Auditorium. — Ann Harms '54 George, editor



Campus Pastor Bruce Bergquist reads "Litany of Departure" outside of AMA. Maintenance staff members (from left) Dan Anderson, Eugene Thomas, Dale Matson (superintendent, buildings and grounds), and Willard Meier removed the cornerstone. Its contents, unfortunately, were in poor condition. Photo by Kriss and McCallum, Omaha.



AMA Falls

Only the northeast corner of AMA remains as alumni Ray Weckmuller '52, professor of education, and Clifford Hanson '44, dean of the college, witness (most certainly with mixed feelings) the building's rapid demolition.

Dear Friends and Fellow Alumni,

It's hard to say goodbye — even when it's for the best.

On Tuesday, September 7, the Dana family said goodbye to Alumni Memorial Auditorium and it was not as easy to do as some people had predicted. There was even a tear or two.

For nearly all of Dana's living alumni had something to do with that building during or after their student years. They played basketball there, or went to chapel, or acted on its stage, or attended a church convention, or came to a banquet, or came to a party, or practiced voice or piano or organ — or did something else!

But it touched the lives of us all.

Some good words were said over the building, because for all of the complaints of recent years, it had served us well. But problems in the earth caused the foundation to settle and it came into use for purposes beyond its capacity, so now it will be replaced by a new building, designed to meet the new needs of a new time.

The campus chaplain, Bruce Bergquist, wrote a litany for the "Service of Departure" from the building. It was read after the removal of the cornerstone.

Read it quietly, with a prayer that the new building may serve God's purposes here as the old one did:



Litany of Departure:

P/ Eternal Father, we take our leave of this earthly shelter with gratitude for the countless memories that echo within these walls.

C/ O give thanks to the Lord for all His gracious blessings.

P/ For the athletic contests, the strain and the toil, the times of heartbreaking loss and the times of exuberant victory,

C/ O give thanks to the Lord for the blessings of health and vigor.

P/ For the long hours of instrumental and vocal rehearsal, and for the beauty of the finished performances,

C/ O give thanks to the Lord for music and song.

P/ For the emotional impact of the drama, for the wholesome laughter of comedy, for the hours of learning and labor to prepare the theatrical production,

C/ O give thanks to the Lord for poetry and drama.

P/ For the enjoyment of social pleasures, for dances and talent shows, for pep rallies and Faculty Follies,

C/ O give thanks to the Lord for fun and for fellowship.

P/ For uses of the Church in worship and convention, for the quiet times of prayer, the proclamation of the Word, and the partaking of the Sacrament,

C/ O give thanks to the Lord for all His gracious blessings.

P/ Eternal Father, we take our leave of this earthly shelter. Though time now claims these walls, we will treasure the memories they have contained.

C/ With gratitude for the past, we leave this special place, and offer it up to you, O Lord.

P/ As we move to the future, may we rededicate ourselves to glorify You in all our doings, and may we be a part of that throng that continues to rise up in praise of Your Name.

C/ O give thanks unto the Lord, for He is good, and His mercy endures forever. Amen.

John Beck

Director, Alumni Affairs/Development

Alumnus Returns for Poetry Reading in Winther Series

Poet Steve Hahn '73 returned to the campus September 30 as a participant in the Winther Lecture Series.

Hahn read and commented on his poems, which have appeared in the *Prairie Schooner*, *Kansas Quarterly*, *Berkeley Poetry Review*, *Kentucky Poetry Review*, *Midwest Poetry Review*, and other magazines. His work is also included in the 1981 edition of the *Anthology of Magazine Verse & Yearbook of American Poetry*.

The Winther Series was established several years ago by Dr. Sophus Keith Winther of Seattle, Washington, a friend of Dana and author of a trilogy of novels about Danish immigrants in Nebraska.

Hahn writes poetry, he said, to "give order" to his experiences. He wrote his first poems at Dana, where he majored in English, but started to write seriously in 1979.

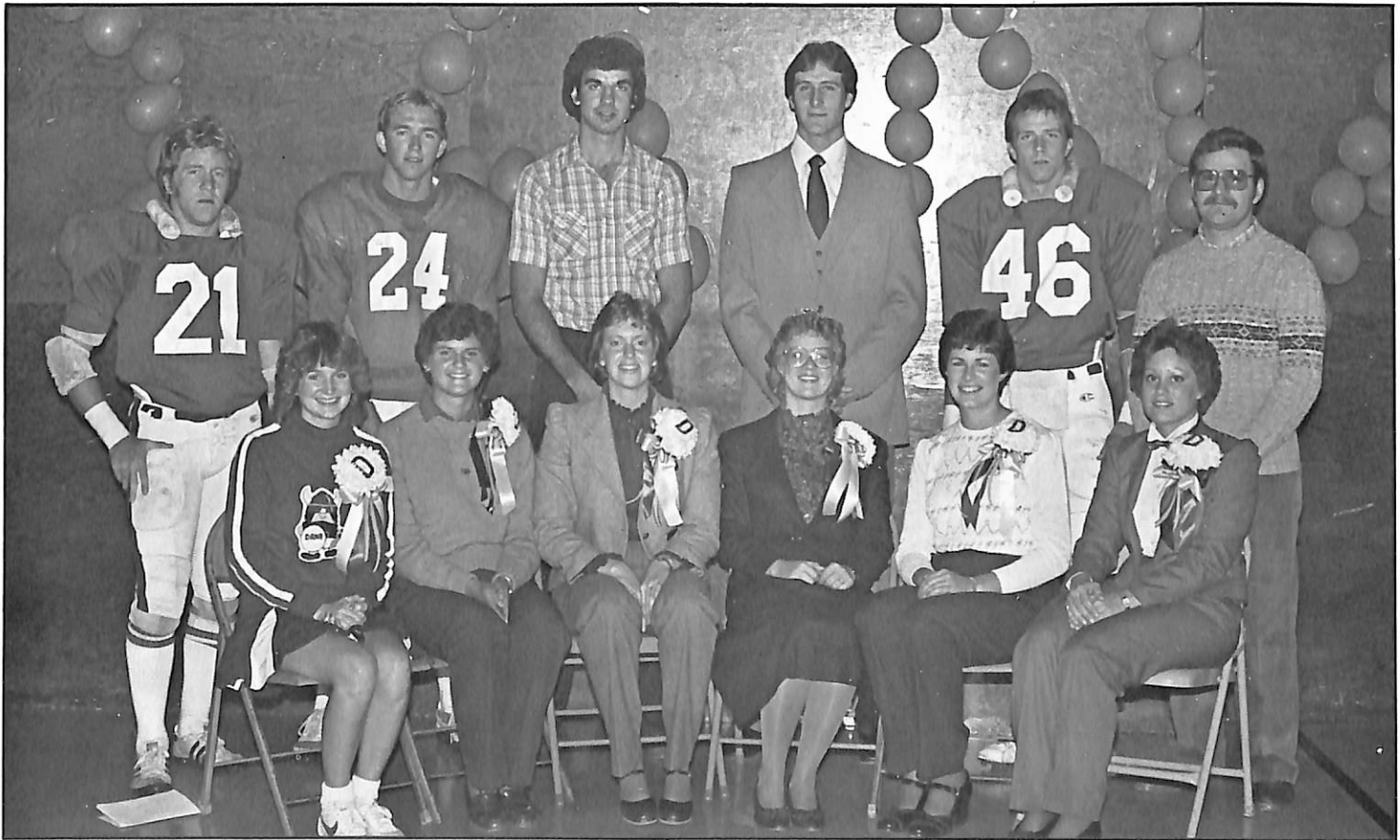
After graduation he worked as a land surveyor in Blair and attended graduate school at the University of Nebraska-Lincoln. He has been a technical writer at UNL for the past three years.

Hahn gave a similar reading in November at Northwest Community College in Powell, Wyoming.

His wife, the former Sis Dhooge '73, accompanied him on his Dana visit. A French teacher in the Lincoln Public Schools, she received a scholarship last summer from the American Association of Teachers of French for a month's study at the Faculté of the University of Avignon. Steve joined her there for subsequent travel in France and Germany.



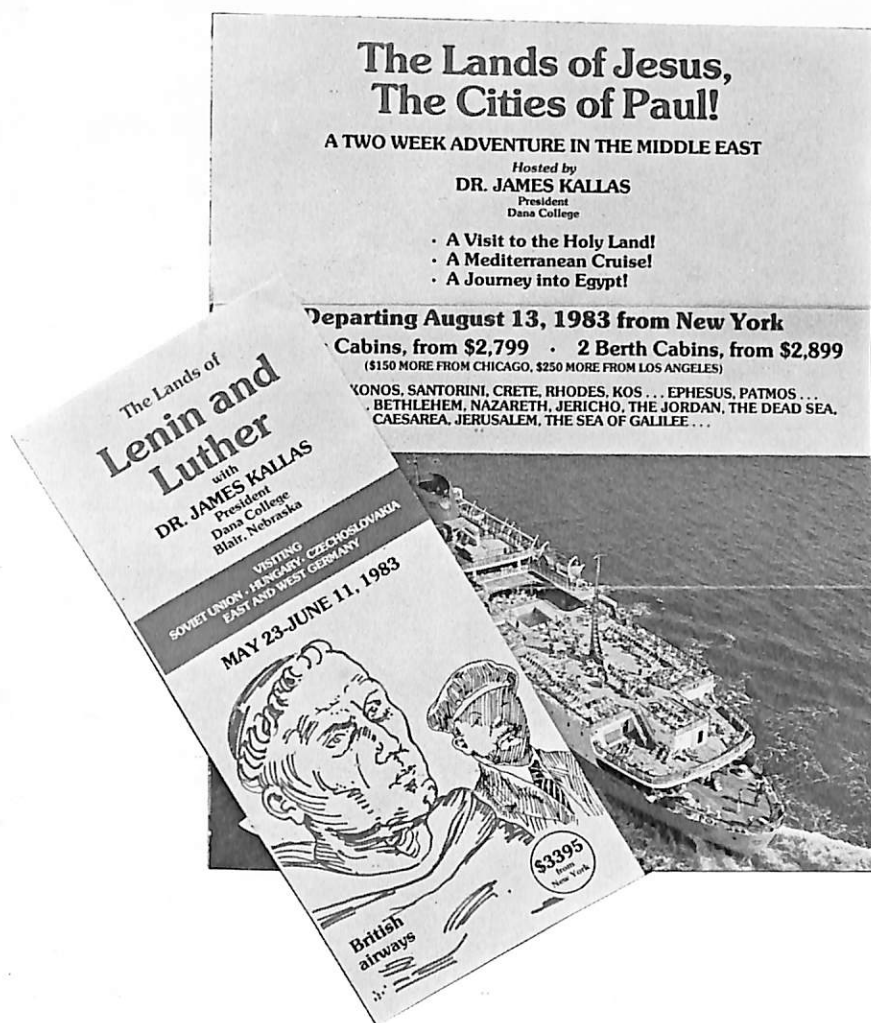
Sis and Steve Hahn.



Homecoming 1982

This year's Homecoming king and queen were Bob Schmoll '83 (last on right) and Jill Christensen '83 (second from left), daughter of alumni Vaughn '53 and Clarice Fredrickson '55 Christensen. This photo of this year's royalty and last year's king and queen was taken shortly before the pregame coronation ceremony — from left, seated, are Peggy Dutch '84, Kris Iske '83, Amy Nichols '82 (last year's Homecoming queen), Julie Elliott '83, Lynne Moline '83; standing, Kurt Amen '83, Chris Specht '84, Randy Hagedorn '83, Pat Kenealy '82 (last year's Homecoming king), and Rex Peterson '84.

ANNOUNCING SUMMER TOURS HOSTED BY PRESIDENT KALLAS



THE LANDS OF JESUS, THE CITIES OF PAUL August 13-26

A tour that includes a five-day Aegean cruise departing from Athens and stopping at Mykonos, Crete, Santorini, Kos, Rhodes, Patmos, and Ephesus; travel in Egypt that spotlights the Nile, the Pyramids and the Sphinx; and an exciting visit to the Holy Land that features all of the sites associated with the life and ministry of Jesus.

THE LANDS OF LENIN AND LUTHER May 23 - June 11

A celebration of the 500th anniversary of Martin Luther's birth with visits to the Wartburg, Wittenberg, Erfurt, and Eisenach, all in East Germany, combined with an opportunity to see Moscow, Leningrad, Budapest, Prague, and East and West Berlin.

All profits on both tours generated by sales through Dana go directly into the College's operating budget. The brochures pictured above give complete descriptions of both trips. For copies, write to: Dr. James Kallas, Dana Tours, Dana College, Blair, NE 68008.

Homecoming 1982: Class Reunions — '57, '72, '77



1957, from left — *Larrie Stone, Joan Warren Hanson, Toni Nelson Lawson, Gaylen Hafar, Marilyn Ward Nichols, Tom Langenfeld.* Not pictured — *Russ Moseman, Sharlene Lauritzen Rosenthal.*



1977, from left — row 1, *Lori Nielsen, Gwendy Wilson Ridgway, Charlene Dirks, Shirley Steffens, Dan Henderson, Julle Ellison Wood, Kit Kelley;* row 2, *Renae Johnson, Stephen Lefeber, Jane DeVasure, Joy Rethwisch Smith, Janis Miller.*



1972, from left — *Carol King Hansen, Marianne Bartlett Woodard, Nancy Jensen Gardner, Janis Jensen, Debra Bellows, Diane Darrington Sorenson, Patty Fredricks Lentfer, John Tharalson, Carrie Dumke Carlson, Jan Willson Tripp, Tim Tripp, Mark and Sue Miller Musick, Roger Carlson, Barry Scheske, Don Enstad, Debbie Jensen Katt, Ron Coy, Russ Eppenbaugh, Steve Turner, J. Dennis Weidler, Bob Bair, Paul Saathoff, Kathy Ryan VanDenBerg, Pat Anderson Holton, Laurence Rasmussen, Barb Fudge Jackson, Phil Tegeler, Joyce Jensen McEntaffer, Nancy Gill Tegeler, Dave Waite, Gary McMullin.*



Homecoming 1982

Golden Reunion: Left, seated — Ralph Hendricksen '40, Edith Sorensen '34 Jensen, Bertha Andersen '34, Lilly Jorgensen '34 Sorensen, Marie Larsen '34 Petersen, Esther Johnson '29 Madsen, Ninna Schultz '33 Engskow; standing — Marcus Beck '23, T. I. Jensen '34, James Hansen '30, Severin Sorensen '34, Adolph Petersen '32, Cliff Madsen '31, Alvin Petersen '34.

Campus Notes

Voice instructor Sandra Polhemus was a cast member of the Omaha Community Playhouse's recent production of *Fascinating Rhythms*, a tribute to Ira and George Gershwin.

The first seven weeks of the school year brought several speakers and performing groups to the campus. Among them were the Omaha Magic Theatre for two workshops and a performance; Pastor Jerry Folk of the ALC's Task Force on Peace and Justice for a series of talks on nuclear disarmament; Dr. Ralph Moellering for a lecture on "Lebanon: Sons of Abraham in Conflict"; artist Reinhold Marxhausen for a program called "Do You See What I See"; the SAC Brass Quintet for a concert; Steve Hahn '73 for a reading and commentary on his poems; Dr. Kristi Planck Johnson '66 for a lecture on "Immigrant Education in Scandinavia: 1948-81"; and a NASA representative for two talks on the space shuttle program.

John Mark Nielsen '73, English, presented a paper entitled "Dialogues to Essays — A Strategy for Teaching Expository Writing" at the International Reading Association's Tenth Plains Regional Conference in Omaha October 2.

The Dana Folk Dancers performed at the Norske Hostefest on October 22 and 23 in Minot, North Dakota.

Books being read in the Liberal Arts Reading Program (LARP) for the first semester are: *All the Strange Hours* by Loren Eiseley, *The Little Flowers of St. Francis*, *The Power and the Glory* by Graham Greene, and *Narcissus and Goldmund* by Hermann Hesse.

Professor Emerita Lydia Herrmann has given the College a Japanese yew. It has been planted near the southeast entrance of Pioneer Memorial.

Eugene Meyer, executive director of college relations, gave a talk entitled "Relationships with Our Constituencies" at the Sixth Annual American Lutheran Church Conference for Deferred Giving Officers in Minneapolis in September.

George Grube, biology, was thanked for his help and cooperation in the credits of the NETCHE film "Prairie: Our Natural Heritage," shown several times in September on Nebraska Educational Television.

A sale of old drama artifacts housed in Alumni Memorial Auditorium netted more than \$185 for the students' fund for the new performing arts center. The event was sponsored by the Dana Players, Alpha Psi, and the Dana Choir.

Coach Tom Brosnihan was inducted into Creighton Prep's Hall of Fame on October 26.

Don Warman, history, is on half-sabbatical this year with a Regents' Faculty Appreciation Award.

Members of the faculty and staff contributed favorite works for a recent Parnassus exhibit called "Art in Dana Homes." The exhibit included sculpture, paintings in various media, original graphic art, constructions, photography, weaving, pastels, and stoneware by such artists as Giacometti, Hiroshige, Picasso, Fredericks, Granlund, Munch, Moore, Chagall, Roualt, and Manet. Alumni and faculty artists were also well represented — among them, F. W. Thomsen '45, John Thomsen '68, Larrie Stone '57, Richard Brink '60, Milton Heinrich, James Olsen '62, Elmer Petersen '54, Stephen Danchimah '68, Lydia Herrmann, Paul Judson '82, and Ann Weckmuller '77.

Sports

Fall Sports Update . . .

At this writing on November 1, Dana's football, volleyball, and cross-country seasons were still underway.

The football team has won two games and lost six. These figures, however, don't reveal the exciting games the Vikings have played. At the Homecoming game against Doane, for example, Doane made 29 points in the first half but none in the second, while Dana scored 12 points. It was in that game that Dana's Chris Specht '84 made an 83-yard punt, a record for Viking Field.

The volleyball team is tied with Midland for fifth place in the conference. Thanks to a new offense, more individual games are being played well, and the team has been making competitors go to four or five games in three-out-of-five matches. The quality of conference volleyball is very high, with a member team ranked second in the nation.

In cross-country, Brad Welp '84, Bill Schlange '84, and Mary-Grace Colburn '86 have been standouts. Welp has been individual first-place winner in three triangular meets.

Two Enter Athletic Hall of Fame



Huston



Quirk

Ron Huston '59 of Omaha and Gerry Quirk '67 of East Windsor, New Jersey, were inducted into Dana's Athletic Hall of Fame at the October 23 Homecoming luncheon.

Huston is assistant principal and activity and athletic director at Westside Community Schools in Omaha. He has been president of the Great Plains Association of College Admissions Counselors and is president of the Nebraska Athletic Directors Association.

As a Dana student he lettered for four years in basketball and baseball. Athletic Director Paul Peterson remembers him as "a skillful guard in basketball and one of Dana's best shortstops." Huston helped establish baseball as a strong sport at Dana, Peterson said.

Quirk is manager of employee relations for Mobil Chemical Europe. He recently returned to this country from a 14-month assignment in London.

At Dana he lettered for four years in football and baseball. Coach Dale Lemon reports that Quirk holds the Dana record for highest batting average for right-fielders — .358, was one of the College's best defensive outfielders, and helped Dana to a tri-state championship. Peterson calls him a "sparkplug who led his teams with enthusiasm."



At Homecoming game — Don Joseph '84 (Arvada, Colo.) strips ball from Doane quarterback with help coming from Grant Christensen '86 (Harlan, Iowa).

DeBuhr Named Baseball All-American

Dale DeBuhr '82 is Dana's first All-American baseball player. His selection was announced in an NAIA news release this summer. That organization selects 15 players for its first team, and DeBuhr was one of two catchers chosen.

There have been other recent NAIA honors as well: In 1981 freshman John Schnaible made the second team, and pitcher Scott Simms '81 was named an academic All-American. These three honors are significant for Dana because it is one of the smallest schools in the more than 500-member organization.

Coach Dale Lemon reports that DeBuhr hit an outstanding .467 in 1982 and led the team in 12 offensive categories. In addition to average he had 63 hits, 52 runs, 47 RBI's, 15 doubles, and 103 total bases in 134 at-bats in 41 games. He was not only Dana's most valuable player, Lemon says, but was also NAIA District 11's outstanding player. His slugging average was .769, and he was never thrown out in 14 base-stealing attempts. His three-year career batting average was .412.

The same NAIA release announced that Dana ranked ninth in the nation in team batting average. The Vikings hit a record .336 with 387 hits in 1,152 at-bats. That average, and DeBuhr, had a lot to do with the excellent season record of 28 wins and 13 losses, a record that qualifies for the "best ever" for Dana, Lemon said.

Attention, all Dana athletes —

past and present,
men and women

Mark your calendars for

COACH PETE DAY
Saturday, April 9, 1983

Honor the man who has been "our coach" for 41 years
Attend Dana's largest reunion of athletes

Watch the winter Review for details. If you have questions, write to: Box 1181, Dana College, Blair, NE 68008.



Homecoming 1982

1935 European Choir Reunion: Alumni from ten states (California, Kentucky, West Virginia, South Dakota, Iowa, North Carolina, Colorado, Louisiana, Wisconsin, and Nebraska) returned to Dana for this reunion. Joining them were their former director, Dr. Gunnar Malmin and his wife, Dorothy Brann '36 Malmin. Here at the home of Ivan '38 and Agnes Petersen '35 Johansen are (from left) — Mrs. Malmin, Dr. Malmin, Verner Carlsen '36, Mildred Petersen '39 Carlsen, Anker Jensen '36, Franklin Jorgensen '38, Eloise Morris '38 Sperati, Ellen Rasmussen '35 Knudsen, Irene Jensen '42 Starrett, Earl Fries '38, Marian Peterson '36 Anderson, Emory Petersen '38, Ernestine McCain '38 Reusch, Rudolph Knudsen '36, Agnes Johansen, Aleine Miller '33, Ivan Johansen, and Elna Jensen '39 Steen. Directed by Dr. Malmin, the group sang at the Homecoming luncheon.



JOBS AND PROMOTIONS

1982

SCOTT BUCHANAN teaches science for grades 7-12 in Genoa, Nebraska.
 DAVE CLIFFORD is an algebra teacher and assists in coaching freshman football and baseball at Creighton Prep in Omaha.
 PEGGY COONCE teaches special education at Fremont, Nebraska, High School. She is also assistant coach for girls basketball and volleyball.
 TIM COOPER teaches physical education and history and coaches football and basketball at Rock County High School in Bassett, Nebraska.
 KATHY FRITZ teaches kindergarten and is responsible for the school's resource room in Storm Lake, Iowa.
 LANETTE GARDNER is a mathematics teacher and coach for girls basketball and volleyball in Farnam, Nebraska.
 KAREN HARRIS teaches English and French in Battle Creek, Iowa.
 JANE HEINRICH is a half-time kindergarten teacher in Washington, Nebraska.
 PAULINE JOHNSON is a Montessori teacher in the Millard, Nebraska, public schools.
 SANDRA JOHNSON is an elementary school teacher in Fort Calhoun, Nebraska.
 STEVE JOHNSON teaches sixth grade in Arlington, Nebraska.

ELLEN HAMANN KEENAN teaches grades four through six in District 41, Elkhorn, Nebraska.
 KAYLA WALSH LAUNE teaches special education in the secondary school resource room in Gretna, Nebraska.
 SUZANNE LAZZARO is Christian education director at First United Presbyterian Church in Council Bluffs, Iowa. She lives at 807 N. 36th, Apt. 25, in Council Bluffs (51501).
 MIKE MILLER teaches social studies and coaches football and track in Cedar Bluffs, Nebraska.
 AMY NICHOLS is youth minister at Nazareth Lutheran Church in Cedar Falls, Iowa.
 TAMI NORTHRUP teaches in the Schleswig, Iowa, elementary school.
 JANELLE RAY is a fifth and sixth grade teacher in Uehling, Nebraska.
 CRAIG SHAFFER teaches fourth grade in Aurora, Nebraska.
 JUDY YUSTEN teaches grades K-4 in District 49, Albion, Nebraska.
 STEVE ZABEL is a general accountant at Cox and Kopsa in Henderson, Nebraska.

1981

RHONDA WELLSANDT teaches at Howard Elementary School in Fremont, Nebraska.

1979

MICHAEL BRADY is director of recruitment at the University of Dayton School of Law.

1978

TERRY BROWNFIELD has been promoted to budget analyst for the Pacemaker Corporation in Omaha. He is also a CPA.
 NANCY HANSEN is the parish worker at Salem Lutheran Church in Fremont, Nebraska.
 CRAIG SCHADE has been promoted to general manager of Chuck E. Cheese's Pizza Time Theatre in Monroeville, Pennsylvania.

1977

MARK TIBY has been named girls basketball coach at East Des Moines High School.

1976

GARY P. RASMUSSEN began employment in January 1982 as a systems engineer with USLIFE Systems in Lincoln, Nebraska. The firm provides data processing support for several life insurance companies under the USLIFE corporate banner. Gary, his wife Linda, and their 2½-year-old daughter Kenna live in Waverly, Nebraska.

DEBORAH ANN HOFMANN-Tims writes that "My husband, Sonny, and I opened a dental office in Purcell, Oklahoma, this year." They live at 1940 D Fillmore Avenue in Norman, Oklahoma 73069.

1975

TIM JOHNSEN is associate pastor at Christ Lutheran Church in West Covina, California. He finished his training at Wartburg Seminary last May, was ordained June 13, and was installed July 18. He and his wife, Pam, live at 580 S. Fernwood B-5 in West Covina (91791).

1973

Rick and LAVON BOHLING Gray have been assigned to Torrejon Air Force Base in Madrid, Spain. Their address is PSC Box 5581, APO New York 09283.

NOTE: Because the *Alumni Directory* published in the spring of 1981 gives addresses, *Destiny* items include addresses only when alumni have moved.

If you don't have a directory, or have misplaced yours, you can obtain a copy by writing to Dana's Alumni Affairs Office. Please enclose \$1 for postage and handling.



Homecoming 1982

1942 Trinity Seminary Reunion: From left — Jerrold Elling, Emery Petersen, Carl Wildrick, Eric Christensen, Adolph Kloth, Ed Hansen, Leo Andersen.

1971

JEROME GODSON is pastor of Zion Lutheran Church in rural Hudson, Iowa.

1969

PATRICIA WELANDER Svacina and her husband, Bob, have moved from Houston to Clive, Iowa, where they live at 9831 Clark Street (50031). Bob is an area sales representative for Cutler-Hammer Motor Controls, a division of Eaton Corporation.

1968

STAN NIELSEN was installed as pastor of United Lutheran Church in Shelby, Iowa, on April 25, 1982.

GARY SHELSTAD has been elected assistant vice-president, foreign operations and military sales, for United of Omaha, principal life insurance affiliate of Mutual of Omaha in Omaha.

RICHARD VIERK has been admitted as a principal of Touche Ross & Co., a public accounting and consulting firm. He is in that company's Lincoln, Nebraska, office.

1960

EVERETT JOHNSON has served as executive secretary of the Iowa High School Music Association since 1978.

NOEL PETERSEN is pastor of Calvary Lutheran Church, 2941 N. 80th Street, in Omaha.

1952

A. CRAIG NIELSEN, 760 Morris Way, Sacramento, California 95825, is vice-president of planning and marketing, Federal Intermediate Credit Bank of Sacramento. His wife, Jackie, died in September 1981 of Lou Gehrig's Disease. Daughters Suzy, 16, and Amy, 15, are in high school.

DON OFTE is assistant manager for operations at the Department of Energy's Albuquerque Operations Office.

“Delectably Danish” — — New Cookbook Includes Contributions from Dana

Delectably Danish — Recipes and Reflections, a cookbook published this summer by Penfield Press in Iowa City, includes a brief history of Dana as well as color photographs of “Sights and Sounds of Christmas” and several recipes from the College.

The book is by Julie Jensen McDonald, an Iowan with roots in the Harlan-Elk Horn-Kimballton area. In addition to recipes, it has articles about several Danish communities in this country, among them Elk Horn-Kimballton; Racine, Wisconsin; and Solvang, California.

Among its time-tested recipes (contributors' favorites) are some for *frikadeller*, *rullepolse*, *leverpostej*, roast pork with apples and prunes, *rugbrod* (rye bread), *aebelskiver*, *kringle*, and *smorrebrod* (open-faced sandwich) combinations.

The softbound book is available locally from the Dana Bookstore and the Blair Bookstore, and nationally from B. Dalton Booksellers.

ADVANCED DEGREES AND CONTINUING EDUCATION

1982

KERRY GARRELS has a graduate assistantship for graduate work in physical education at Murray State College in Murray, Kentucky.

1981

RICHARD D. ANDERSEN received his MBA in July from the University of South Dakota in Vermillion.

DOUG LEMON is working on a Ph.D. in biochemistry at Rice University in Houston, Texas. He has been given a fellowship. His Houston address is 5407 San Jacinto, Apt. 2 (77004).

1980

JANE MUNDSCHEK received a certificate from the Mayo Foundation School of Health-Related Sciences, Physical Therapy Program, in May. The two-year program prepared her to be a registered physical therapist. The Mayo School of Health-Related Sciences is part of the Division of Education of the Mayo Foundation and uses the facilities of the Mayo Clinic.

DALE PASH has received a graduate assistantship from Kearney State College. He is a graduate student and graduate assistant coach in the department of physical education.

1979

PAUL AJUOGA is a graduate student in psychology at Northwest Missouri State University.

LANETTE MONASMITH, 1799 S. College Avenue A-5, Fort Collins, Colorado 80525, recently received her master's degree in music education with emphasis on the Kodaly Method from Holy Names College in Oakland, California. In July she taught a two-week summer course on the method to graduate students at Indiana State University. This fall she started a new job as vocal music teacher at two elementary schools (grades 1-6) in Loveland, Colorado.

1977

LORI NIELSEN is working toward a master's degree in English at Iowa State University, Ames. She has received a teaching assistantship and a Premium for Academic Excellence (PACE) Award to attend graduate school.

1974

FREDERICK BALZ has begun doctoral studies in New Testament at the University of Iowa. Through a unique arrangement with his parish in Galena, Illinois, he continues to be pastor there as well.

RACHAEL NEVE is a post-doctoral fellow at Children's Hospital Medical Center in Boston, where she is doing research on the molecular genetics of Down's Syndrome. She lives at 12C Pickett Street in Beverly, Massachusetts 01915.

1970

SUSAN DAVIS JENSEN recently received her master's degree in administration supervision from Nova University, Fort Lauderdale, Florida. She is a primary specialist in the Lee County school system; husband WAYNE is a special education teacher in Lee County. Son Jeff is 14 and daughter Jayne is 12.

1969

MARVIN LARSON received an M.S. in elementary education from Wayne State on August 6, 1982.

1966

SUSAN RODENBURG Jansen has received a Leland Forrest Scholarship at Drake University Law School, where she is a first-year student. The scholarships are awarded to entering law students with outstanding academic records and top scores on the law school admission test.

1963

BRENDA FRANCIS Krueger received an M.A. in elementary education in August from Northwest Missouri State University.

PUBLICATIONS, ACTIVITIES, HONORS AND AWARDS

1979

ANNETTE GRORUD Peterson and her husband, Greg, have a new address: 708 S. Lake Avenue, Sioux Falls, South Dakota 57104.

1978

An article titled "Demographic Advertising Analysis and Marginal Status: A Preliminary Study" by GERALD WALLACE, Gary Dean, and Joel Snell (the latter two are former Dana faculty members) was published in the Winter 1981 issue of *Psychology: A Quarterly Journal of Human Behavior*. Jerry, an army lieutenant, is executive officer of an Air Defense Battery at Fort Bliss, Texas. He and his wife, Terry, live at 3515 Truman Avenue in El Paso (79930).

1976

DENNIS NELSON spoke in favor of a total ban on commercial whaling at a Greenpeace rally in Chicago in July and for an immediate U.S.-Soviet nuclear weapons freeze at an interfaith peace rally in August in Wheaton, Illinois. He lives in Wheaton at 537 West Evergreen Street (60187).

1975

An article by MARK GRORUD, "It's good news: God bridges the gaps," appeared in the October 1, 1982, *Lutheran Standard*. He is associate pastor at First Lutheran Church in Fremont, Nebraska.

1974

STAN LASSEGARD was in the cast of *Fascinating Rhythms*, a recent production of the Omaha Community Playhouse.

1968

RICHARD and KAREN NELSON '69 HANSEN were named winners in August of the 1982 "Young Cooperator" award by the Central States division of Mid-America Dairymen Inc. The program recognizes leadership in young dairy farmers. Richard is vice-chairman of Region IV of the Mid-America Dairymen Inc.'s Central States division and a former president of the region's Young Cooperators.

1963

Air Force Major ROGER LIPPINCOTT has been named the Pacific Command Division's "Air Traffic Control Manager of the Year" at Clark Air Base in the Philippines. He was selected in competition for professional skill, duty performance, and conduct.

1960

MELBA JUNKER Waggoner writes that "My husband and I have lived in the Philippines for 11 years and Okinawa, Japan, for four years. He is presently on leave for two years from his job as a middle school principal in the Department of Defense Dependent Schools for the children of military families living overseas. He is now working on a doctorate in curriculum and instruction at Michigan State University. We will be living here in East Lansing, Michigan (48823), at 6103 Carriage Hill Drive until June 1983. We have four children ages 12, 12, 13, and 13½ . . . two natural-born sons and two adopted Philippine-American daughters."

1949

U.S. Congressman PAUL SIMON's most recent book is titled *The Once and Future Democrats*. He mentions Dana in his chapter on "Culture and Religion."

1940

RICHARD and LOIS LYNNGE '41 BOE have retired, he as sales representative for Triangle School Service of Sioux Falls, and she as principal of Edison Elementary School in Omaha. They have moved from Omaha to Bella Vista, Arkansas, where their address is 24 Haslingden Lane (72712). The Boes were featured in an *Omaha World-Herald* story last May when both made holes-in-one while playing golf together at Maple Village Golf Course.

1939

ADOLPH (T'42) and LUCILLE NEVE '40 KLOTH are on a one-to-two year-long tour of the North American continent. Their postal service address is c/o T.O.M.A., Box 2010, Sparks, Nevada 89431.

1922

The Rev. and Mrs. VILHELM BECK were honored on June 2, 1982, by St. Ansgar Lutheran Church in Montreal, Canada, on the 60th anniversary of his ordination and their 60th wedding anniversary. Both are 93. Mrs. Beck was dean of women and taught Danish at Dana from 1917 to 1922. Pastor Beck is a 1922 graduate of Trinity Seminary.

1919

RENA JENSEN Nielsen has moved to 50 Hope Drive in Bella Vista, Arkansas 72712.

MARRIAGES

1982

COLLEEN DUTCH and SCOTT RASMUSSEN, May 29, 1982, in Omaha. Colleen teaches sixth grade at St. James Elementary School, and Scott attends Creighton University Law School. They live at 2009 California in Omaha (68102).

LISA HANSON and PAUL MADSEN '80, July 17, 1982, in Blair. They live in Grand Island at 1524 Coventry Lane #101 (68801).

AMY HOLMQUIST and TONY JONES, September 4, 1982, in Omaha. She is working on a master's degree at the University of Nebraska at Omaha, and he is a management trainee for Nash Finch Company.

1981

KIM RASMUSSEN '83 and FRAN PIERCE, August 21, 1982, in Council Bluffs, Iowa. He is an art director in Omaha.

1979

KAREN BARTER and Peter Perry, May 8, 1982. They live in Berkeley, California, where he attends the Pacific School of Religion. Letters should be addressed c/o Pacific School of Religion, 1798 Scenic Avenue (94709).

1978

IRIS FREY and Rodney Marvin Doolittle, September 18, 1982, in Lyons, Nebraska.

1977

JOY RETHWISCH and Rick Smith, June 12, 1982. She completed a learning disabilities endorsement from Wayne State College in December 1981. They live in Allen, Nebraska 68710.

BONNIE SAND and Dr. Richard Whittier, November 28, 1981, in Audubon, Iowa. They live at 219 E Street in Central City, Nebraska 68826, where she hopes to continue her work in research and he is starting a private practice in internal medicine.

Alumna Lectures

Dr. Kristi Planck '66 Johnson of Bethesda, Maryland, lectured at Dana on October 12 on "Immigrant Education in Scandinavia: 1948-81." She was in Nebraska to give a paper on the same subject at a European Studies Conference sponsored by the University of Nebraska at Omaha.

Her translation of Danish author H. C. Branner's novel, *The Story About Borge*, has been published by Twayne. She is also a former White House speechwriter.

Her husband, John, is a computer systems analyst for Sperry Univac. Daughter Lisa is two.

1976

Linda Gay Sulgrove and GILES BRONSON, January 16, 1982, in Spokane, Washington. He received his M.A. in counseling psychology with emphasis in family and youth counseling from Gonzaga University in Spokane, Washington, in May. He is a first lieutenant (U.S. Army Reserve) serving as executive officer with Co A, 321st Engineer Battalion (Combat) in Wallace, Idaho. Their address is East 974 13th Avenue, Spokane (99202). Both are program assistants with SACS, Inc.

Patti Jo Schwaninger and ROBERT A. JONES, August 28, 1982, in Hallam, Nebraska. He is a bond supervisor for Aid Insurance Services in Lincoln.

1973

Leone Ohnoutka and ALAN BRODBECK, May 15, 1982, in Neligh, Nebraska. He is attorney for Antelope County and is with McNally & Brodbeck, Lawyers.

1969

NANCY HANSON Nicholson and Peter Mahr, December 12, 1981, in Denver, Colorado. They live at 8764 W. Floyd Avenue in Lakewood, Colorado 80227. She is a research technologist at the Lung Biochemistry Laboratory, National Jewish Hospital in Denver; he is an internal auditor for Jefferson County Schools in Lakewood.

BIRTHS

1980

Justin Andrew, born April 23, 1982, to TIM and Cheryl COFFEY. Grandparents are BOB '53 and JOAN NELSON '54 COFFEY.

1979

Bret Michael, born August 4, 1982, to MARK and Janet OLTMAN, 4840 Ginny Avenue, Lincoln, Nebraska 68516.

1978

Andrew Michael, born May 27, 1982, to DENNIS and Licia DOWNARD, 14806 Drexel, Omaha (68137).

Katie Jo, born July 5, 1982, to LEE and Cathy KNUDSON, 1056 Fairview Drive, Blair.

Alexandria Mercedes, born April 27, 1982, to Dan and ALLISON WILLADSEN Meyer. Allison works in the Nebraska Department of Economic Development as coordinator of the Nebraska Community Improvement Committee.

1978 Graduate Is Teacher of the Year

"Destiny's Deep Sea" often reports on alumni who have been named "Teacher of the Year." We're always happy to learn of such honors because they reflect on the quality of our programs as well as on the individuals singled out for recognition.

Roxanne Schwandt Schacht, a 1978 graduate, received this honor last spring, and we'd like to add a few details about her selection and achievements.

A fellow faculty member on his nomination form called Roxanne "a true professional in her field . . . who has made a definite impression on the hearts of the parents in Frazer." Another wrote that she "has developed a superior P.E. and music program . . . over the past three years. She works well with students and faculty . . . and always has a ready smile and cheerful greeting." And a third wrote that "Her worth should need no comment as it is self-evident."

She was also presented an Indian Star Blanket by Chief Blount of the Assiniboin Tribe in recognition of her work with the children of the tribe.

At Frazer Roxanne taught physical education and music for kindergarten and all six elementary grades, taught junior and senior high school chorus, and coached the junior high girls' basketball team, which last year had 11 wins and two losses. In music her 1982 girls' triple trio received a superior in the district music contest.

In spite of these responsibilities, she found time for leading roles in two dinner theatre productions in Glasgow, where she and husband Mike '77 lived.

They moved this summer to Bozeman, Montana, where Mike is studying computer engineering at Montana State University and Roxanne teaches in the Galleton-Gateway School system.



Kyle Bolton, born January 7, 1982, to Glenn and KIM MATHEWS Miller, 8 Parkside, Blair.

Lindsey Renae, born June 30, 1982, to LUKE and SHELLI MEYERHOLZ '80 NORTHWALL. Grandparents are Prof. and Mrs. Darrell Dibben and Dr. and Mrs. John Northwall. (Northwall is a former faculty member and administrator.) Luke has been promoted to manager in the tax department of Arthur Young & Company, an international public accounting firm.

Tiffany Ann, born May 10, 1982, to Joe and CINDY PETERSON Scheuring, RR, Defiance, Iowa 51527.

Jessica Lee, born January 4, 1982, to KIRK and JANEL MILLER '79 TYLER, 329 S.E. Thornton, Des Moines, Iowa 50315.

Justin Taylor, born March 11, 1982, to BRUCE and Jeanie WINTER.

1977

Brandon Lee, born April 16, 1982, to Mike and LINDA RILEY Johnson, Rt. 1, Box 59F, Phillips, Nebraska 68865. He joins brother Sean.

Jordan Reese, born July 16, 1982, to ARNOLD and Jan YOUNG, 703 Spring Lane, East Stroudsburg, Pennsylvania 18301.

1976

Patrick Nelson, born January 29, 1982, to TOM and NANCY FONDA BOCK. He has two brothers — Luke, 10, and Brock, 9.

Margaret (Maggie), born December 14, 1981, adopted December 18 by KENT and ELLEN FAUSTMANN '74 DAY.

Christopher Robert, born January 8, 1982, to KEVIN and DEBRA HANSEN '83 HARRIS.

Elizabeth Anne, born June 13, 1982, to Steve and LAURIE BARBER Holben.

Roddy Jonathan, born February 12, 1982, to RODDY and HANNELORE SANDER JASA.

Marc Douglas, born May 29, 1982, to Douglas and DEBBIE POWELL Lemons, 7704 E. Kettle Court, Englewood, Colorado 80112.

1975

Kyle Joe, born April 17, 1982, to Steve and PATTI SMITH Fitch.

Megan Anne, born April 4, 1982, to MARK and CAROL MADSEN '73 GRUNER. Sister Bethany is 4.

Justin Mark, born February 10, 1982, to BRIAN and DIANE KNUDSEN '76 LENSCH. Brother Matt is 2.

Andrew Carl, born August 3, 1981, to CARL L. M. RASMUSSEN and his wife.

Carrie Beth, born June 5, 1982, to DAVE and Amy STICKROD.

Christopher John, born August 21, 1982, to MICHAEL and Amy WILLIAMS. Mike is now pastor of Hope Lutheran Church in Burr, Nebraska.

Melissa Ann, born February 24, 1982, to DWAIN and Diane WULF. Her father is a CPA in Omaha.

1974

Martha Marie, born June 13, 1982, to John and DAIL SCHOLE Diedrichsen. Daughter Ellen Kristine is 3.

John Andrew, born February 5, 1982, adopted by DON and SHARON HANSEN '73 DAVIS, 1947 Providence Avenue, Springfield, Ohio 45503.

Stacey Lynne, born October 11, 1981, to JIM and Roxanne HESTER. Jim is general manager of the Perkins Restaurant on Highway 70, Blue Springs, Missouri.

Lindsey Catherine, born April 27, 1982, to Garry and NANCY CARLSON Johnson. Nancy is a grants analyst with the Minnesota Pollution Control Agency, Water Quality Division, and her husband is an accountant with Control Data Corporation.

Amber Louise, born January 19, 1982, to WILLIAM and DIANE WILLIAMSON '76 LUXFORD. Diane has passed her NCIDQ (National Council for Interior Design Qualification) examination, which allows her to have professional member status in ASID (American Society of Interior Designers). She has specialized in mirrors and stained glass facets of interiors at Omaha Mirror & Glass Art for six years.

Amy Marie, born April 23, 1982, to RICK and Judy MEWHIRTER. She joins sister Stacie and brother Michael.

1973

Isaac Richard, born August 26, 1981, to ROBERTA WATSON Chilcote and her husband.

Jorie Lynn, born March 5, 1982, to JOEL and JOYCE SPENCER ESKELSEN, Box 533, Big Piney, Wyoming 83113. She joins sisters Jodi, 8, and Jenny, 4. Joel recently received his M.S. in education from Wayne State.

Matthew Robert, born July 5, 1982, to ARNIE and LOIS EDMONDS JENSEN. Sister Sara is 2.

Stephen Ray, born April 6, 1981, to TERRY and PEGGY SASS '74 MINER.

Mitchell Ryan, born June 7, 1982, to Dix and LINDA STUHR Scranton.

1972

Jill Kathleen, born March 13, 1982, to Randy and KATHLEEN SIMPSON Henderson. Brother Jeffrey is 4.

Laura Elizabeth, born May 31, 1982, to Forbes and JAN MADSEN Johnson.

Jill Michele, born November 9, 1981, to RODNEY and Nancy KASTRUP.

Seth Charles, born July 1, 1982, to CHARLES and Denise KNIGHT, 4806 N.W. 83rd Terrace, Kansas City, Missouri 64151. He joins sister Andrea, 4. His father has been promoted to district market manager for Curtis Industries.

Jacob John, born May 24, 1982, to JOHN and PATTY FREDRICKS LENTFER, Box 81, RR 1, Bruning, Nebraska 68322.

David Ryan, born May 1, 1982, to David and AVALENA HANSLIP MacFarlane, 917 Spruce, Council Bluffs, Iowa 51501. Brother Toby is 8.

Amy Margo, born May 25, 1982, to DONALD and ROSEMARY MORTENSEN '74 MATTHIESSEN. She has two brothers, George and Robert. Don is pastor of St. Peter Lutheran Church in Gresham, Nebraska; their home address is Rt. 1, Box 3, Gresham (68367).

Talia Lynne, born August 17, 1981, to Jack and PEGGY GUTHRIE Maurice, 3706 N. 93rd Street, Omaha (68134). Peggy is a registered nurse with the Omaha-Douglas County Health Department and currently is coordinator of the High Blood Pressure Control Program. Her husband is a musician in the U.S. Air Force and a member of the SAC Brass Quintet that performed at Dana October 4.

Christen Marie, born May 5, 1982, adopted June 4, by ARNO and BETTY JORTH '71 NEBEN. Arno is employed by Cadence Corporation, Perfect School Plans Division; Betty is a reading consultant with the Ralston, Nebraska, Public Schools.

1971

Peter Joseph, born April 11, 1982, to Donald and BARBARA KRAUSE Haag, 2205 Wilson Avenue, Leavenworth, Kansas 66048. He joins sister Marcella, 12, and brothers Eric, 4, and Michael, 2.

Jeanne Marie, born February 15, 1982, to JAMES and Nancy PEDERSEN. Brother Joshua is 5.

Carl Erwin, adopted at five months by PAUL and Kathy REFSELL. He joins a brother, Eric.

Adam Gregory, born April 16, 1982, to GREG and Connie WITTE.

1970

Timothy Alan, born May 16, 1982, to DONALD and Judy ANDERSON, Box 184, Clarks Grove, Minnesota 56016. His brother, Patrick Donald, is 2.

Trisha Jo, born August 25, 1982, to JIM and Lorraine BREHM, RFD 1, Brock, Nebraska 68448. She joins 20-month-old twins Bradley and Leslie.

David Lee, born April 29, 1981, to Bob and JANETTE ANDERSON Brown.

Karin Lynn, April 21, 1982, to ROD and DIANE SCHMIDT '71 CHRISTENSON, 5869 Wagon Lane, Marshall, Wisconsin 53559. Brother Craig is 4. Rod was promoted in May to director of planning and development for American Family Insurance, whose home office is in Madison.

Peter Gregory, born April 2, 1982, to PAUL GREGORY and KATHIE BUSS '71 HAERTLING, 98 Knollwood, Manchester, Connecticut 06040. His sisters are Amanda, 7, and Elizabeth, 4. Greg has been promoted to analyst in Aetna Life and Casualty's home office in Hartford.

Rachel Marian, born May 19, 1982, to CLARK and Christine JENSEN. Sister Abigail Brooke is 4.

1965

Rebecca Ann, born February 10, 1982, to LARRY and Peggy SLATER. She joins a sister, Heather Lynn, 7.

Audrey Mae, born June 18, 1982, to Bob Arnold, director of student financial aid at Dana, and his wife, Jayne.

DEATHS

1975

TRICIA GROAT, August 3, 1982, of cancer.

1941

CHARLES MOREHOUSE, 68, June 15, 1982. A Dana Distinguished Alumnus and a guidance counselor at Kimball County, Nebraska, High School, he died in Chicago while on a trip. Survivors include his wife, JANE (HANSEN '44), 601 S. Howard, Box 418, in Kimball (69145).

1924

EDWARD W. ANDERSEN, May 28, 1982, in Glendale, California. Survivors include his wife, RUTH (STAUGAARD '24), 644 W. Ivy Street, in Glendale (91204).

Please include me as a member of the Dana College Builders. I have included Dana in my estate plans through:

- | | | |
|---|---|---|
| <input type="checkbox"/> A bequest in my will | <input type="checkbox"/> A charitable remainder trust | <input type="checkbox"/> Life insurance |
| <input type="checkbox"/> A gift annuity | <input type="checkbox"/> A life estate | <input type="checkbox"/> Other |

I am also interested in learning more about estate planning.

Please have a staff member call me for an appointment.

Please send me more information about:

- | | |
|---|---|
| <input type="checkbox"/> tax law changes | <input type="checkbox"/> information needed for my attorney |
| <input type="checkbox"/> things to consider in making my estate plans | |

NAME _____

STREET ADDRESS _____

CITY _____ STATE _____ ZIP _____ TELEPHONE _____

For additional information or assistance, please write or call: (402) 426-4101

Eugene L. Meyer
Executive Director of College Relations
Dana College, Blair, Nebraska 68008

Sharon J. Gordon
Director of Special Projects
Dana College, Blair, Nebraska 68008

Successful graduates who tell high school students about Dana are effective recruiters. If you know prospective Dana students, please tell them about us — and tell us about them. Thanks — you'll be helping Dana grow.

I would like to recommend the following students:

Name _____

Name _____

Address _____

Address _____

City _____ State _____ Zip _____

City _____ State _____ Zip _____

Phone (____) _____ Year in School (1982-83) _____

Phone (____) _____ Year in School (1982-83) _____

High School _____

High School _____

Comments _____

Comments _____

**Please return to: Admissions Office
Dana College
Blair, NE 68008**

My Name _____

DANA COLLEGE
2848 College Drive
Blair, Nebraska 68008

Second Class Postage
Paid at Blair, Nebraska

04573

994200

MISS LUELLE NIELSEN
2351 COLLEGE DR
APT
BLAIR NE 68008

Introducing
The
Dana Centennial
Plate

By Bing & Grondahl Porcelain of Copenhagen



To commemorate the 100th anniversary of the founding of Dana College, Bing & Grondahl has created a special Dana Centennial Plate. Made of the finest porcelain, the 10½-inch plate is crafted in deep cobalt blue with a distinctive white lattice design framing the center. The plate is decorated in 24-karat gold and features a sketch of Old Main encircled by the dates 1884-1984; the College's official motto, Veritas Vincit; and the new Dana logo. Production is limited to 2,000 pieces, and each plate comes gift-boxed and pierced for hanging.

Although the Dana Centennial will not be celebrated until the 1983-84 academic year, the Centennial Plate is available now at the special pre-celebration price of \$75 plus \$3 for postage and handling. (Nebraska residents must also add \$2.63 State tax.) The price will increase to \$100 on June 1, 1983.

Make checks payable and address orders to:

The Dana Centennial Plate

P.O. Box 1198, Dana College, Blair, Nebraska 68008



DanaCollege

REPORT TO ALL INVESTORS

Fall, 1982

While this Report to Investors is intended to be a report on the College's financial condition through the 1981-1982 fiscal year and not a Dana Centennial Fund report, it is necessary to briefly inform you of the Fund's progress.

All money received through the Centennial Fund during fiscal 1981-1982 was used for College operations or added to the endowment or building funds.

The total cash and pledges received by the Centennial Fund between June 1, 1981, and May 31, 1982, was \$2,768,825. By October 1, 1982, that total had increased to \$3,628,494.

A more complete report will be carried in the next issue of the Centennial Fund Newsletter.

All gifts recorded in this report were received between June 1, 1981, and May 31, 1982, the Dana College fiscal year. Although great care has been taken in preparing this list, there may be errors or omissions. If so, we apologize. And we ask that you call any mistakes to our attention.



Blair, Nebraska 68008
Telephone 402 426-4101

Fall 1982

Friends in Christ, Friends of Dana, Greetings!

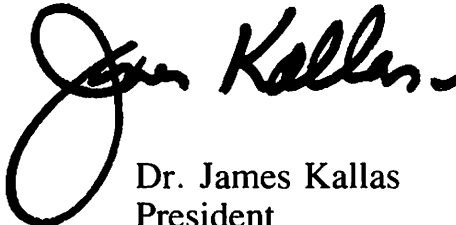
It is a pleasure to tell you in this annual "Report To All Investors" that the just-concluded fiscal year, the one covered in this report, was undoubtedly the greatest year in Dana College's financial history! For the first time ever Dana College received over one million dollars in actual cash from its friends and alumni! We were able to pay off, to wipe out, the accumulated deficit which had built up in recent years. Dana College is once more solidly back in the black! In addition, we have also been able to transfer \$207,685 into our Building Fund for the brand new Performing Arts Center, now already underway! And finally, we have also received over \$110,000 in cash which has been set aside and earmarked for the construction of our new chapel later on in our building drive!

To all of you, friends, alumni, parents, to all of you who love Dana and have supported her so generously, we repeat our heartfelt thanks for the magnificent year you have just made possible! We have climbed the mountain.

We have climbed the mountain and now we have to climb it all over again. Every fiscal year ended means, of course, a new one begun. Our task now is to maintain the momentum which we have built up. Pledges made now have to be redeemed. New challenges laid in front of us have to be met. The Kiewit Foundation in Omaha recently put in front of us a challenge grant of \$250,000. In order to receive the \$250,000 from them, we must raise between now and next July a like sum above and beyond our usual income. When one has waded into the arena in the cause of Christ, there is never any time for rest.

We dare to ask your continuing help because we, like you, are convinced that Dana College is an outpost of evangelism, a servant of Jesus, an instrument of the church worthy of your continuing help.

Sincerely,



Dr. James Kallas
President

DANA COLLEGE

*Statement of Current Funds Revenues and Expenditures
for the year ended May 31, 1982*

Revenues:

Tuition and Fees	\$2,007,131
Government Grants and Contracts	149,731
Private Gifts, Grants and Contracts	882,095
Endowment Income	115,982
Sales and Services of Educational Activities .	17,743
Other Sources	101,135
Sales and Service of Auxiliary Enterprises ..	962,724
Total Revenues	\$4,236,541

Expenditures:

Instruction and Related Activities	\$1,164,002
Student Services	430,895
Institutional Support	789,502
Maintenance	271,760
Student Aid	575,041
Auxiliary Enterprise Expenditures	866,962
Total Expenditures	\$4,098,162

NET OPERATING SURPLUS \$138,379

Summary of Gift Giving

Alumni Giving

1977 - 78	\$48,000
1978 - 79	\$102,000
1979 - 80	\$106,000
1980 - 81	\$136,063
1981 - 82	\$142,126

All Gifts and Subsidies

1977 - 78	\$748,500
1978 - 79	\$772,800
1979 - 80	\$1,069,800
1980 - 81	\$1,243,994
1981 - 82	\$1,732,989

Unrestricted Gifts

1977 - 78	\$153,523
1978 - 79	\$382,738
1979 - 80	\$494,128
1980 - 81	\$523,483
1981 - 82	\$804,248

Special Notice

Dana College received more than \$51,500 in matching gifts through IMPACT, a program sponsored by Lutheran Brotherhood Insurance Company of Minneapolis during the 1981-82 fiscal year. We extend a special thank you to Lutheran Brotherhood for instituting this program of support of Christian higher education.

ALUMNI CONTRIBUTORS

One of the strongest sources of support for Dana College is her alumni. It has been our intention here to list all alumni who contributed during the past fiscal year. Although great care has been taken in preparing this list, there may be errors or omissions. If so, we apologize, and we ask that you call any mistakes to our attention.

CLASS OF 1914

Nels Hansen

CLASS OF 1915

Frank Farr
H. Lyle Guyer
George Landrock

CLASS OF 1916

Alfred Pedersen

CLASS OF 1919

Esther Magnussen
Rena Jensen Nielsen
Ansel Toft

CLASS OF 1920

Niels Hansen
Aaron Jensen
Niels Nielsen

CLASS OF 1921

Joseph Girtz

CLASS OF 1922

Marcus Beck, Sr.
Esther Bonnesen Burns
Mary Hansen Justesen
Alma Madsen Petersen
Lawrence Siersbeck

CLASS OF 1923

Esther Simonsen Srb

CLASS OF 1924

Ruth Simonsen Allison
Edward* and Ruth Staugaard Andersen, Sr.
Ingrid Beck Bondo
Emma Bondo Christensen
Einer Jensen
Agnes Bonnesen Kelgor
Miina Jensen Vinther

CLASS OF 1925

Ruth Moore Blanchard
Elmer Bondo
Jens Caspersen
Agnes Beck Jensen
Emil Jensen
Marie Peterson Kaldahl
Hedvig Nyholm
Lars Pedersen
Ernest Thompson

CLASS OF 1926

Alice Kringel Adams
J. S. Andersen
Leora Grill Broemser
Anna Christensen
Magnus Christensen
Elliott Hanson
Esther Vedsted Jacobson
Edna S. Johnson
Christian Justesen
Mamie Jensen Larson
Rosa Kofoid Nelsen

CLASS OF 1927

Lena Petersen Berck
Esra Jensen
Una Lund
Alfred Nelsen
Orville Nielsen
Ruth Kaldahl Pedersen
Olivia Jensen Soe
Margaret Clausen Vig
Julia Nelson Walke

CLASS OF 1928

Herbert Christensen
Jens Krogh
Emerald Nielsen
Ralph Nielsen
Jane Noble Nore
Merrill Reeh
Jens Thomsen
Mary Caspersen Youngdahl

CLASS OF 1929

Olga Simonsen Anderson
Emma Petersen Jorgensen
Esther Johnson Madsen
Esther Frost Magnussen
Eda Paulsen Panum
H. Irving Petersen
Lillie Peterson Rasmussen
Gudmund Rundstrom
Claire Nelson Wilkinson

CLASS OF 1930

Ruth Fogdahl Christensen
Dagmar Olson Goll
Marinus Hagedorn
Edward Hansen
James Hansen
Henry Jensen
Sena Hundtoft Joslin
Martha Marie Pedersen
Immanuel and Elna Hofgaard Petersen
Holger Schultz
Arnold Soe
Lucille Hanson Vig

CLASS OF 1931

Milton Christensen
Mable Ohlsen Coultry
Alfa Hanson Junker
Fred Kolterman
Silas Larsen
Martha Juhl Leslie
C. C. Madsen
Philip Magnussen
Mildred Johnson Morton
Anna Beck Olsen
Millard Petersen
J. Hilton Rhoades
Ray Romer
Lois Hansen Wulf

CLASS OF 1932

Elmer Anderson
Miriam Rosenbladt Bondo
Ruth Peterson Bradford
Elizabeth Christensen Carlsen
Ray Mortensen
Adolf Petersen
Ellen Danielsen Rendall
Alice Gissell Rundstrom
Dagmar Thomsen
Tom Wilkinson

CLASS OF 1933

Anna Andersen
Paul Bondo
Margaret Petersen Breese
Halley Brodersen
Frances Mortenson Danielsen
Alfred Jensen
Robert Larsen
Ateine Miller
Oscar Peterson
Howard Thompson

CLASS OF 1934

Alvin Carlsen
Magnus and Esther Fogdahl Cryberg
David Gustafson
Lydia Hansen
Theo and Edith Sorensen Jensen
Harvey Kuhr
Jean Larson
Richard Morton
Winifred Nikolaisen Nelson
Alvin Petersen
Marie Larsen Petersen
George Robertson
Severin Sorensen

CLASS OF 1935

Edward and Ruth Petersen Andersen
Viggo Carlsen
Ninna Schultz Engskow
Stanley Jensen
Vita Hansen Jensen
Agnes Petersen Johansen
Chester Larsen
Lowell Madsen
O. Victor Magnussen
Grace Olsson Skiles
Lilly Jorgensen Sorensen
Dolliver Thogerson
Grace Thompson
Arndt Vig

CLASS OF 1936

Marian Peterson Anderson
Verner Carlsen
Roy Christensen
Margaret Johnson Donat
Barbara Hansen
Herbert Harboe
Harold Hurd
Anker Jensen
Bernice Hansen Kaldahl
Rudolph Knudsen
Edward and Inga Schultz Larsen
Ellen Houtwed Larsen
Mary Jensen Langenfeld
Gladys Hansen Nichols

John Sides
Andrew Staby
Irving Tange
Lorentz Thorgren
Norma Lund Van Steenhoven

CLASS OF 1937

Clarice Jensen Aus
Stanley Bach
Edith Pedersen Bertelsen
Evelyn Sorensen Bogan
Gertrude Kubie Carlberg
Viola Hansen Carlsen
Mildred Olsen Cheney
Laurice Delaurant
Martha Frost
Esther Magnussen Graham
Milton Johnson
Stanley Jorgensen
Eva Bach Putnam Keyes
Helen Pedersen Lincoln
Esther Haals Magnussen
Arthur Norgaard
Irene Andersen Olsen
John Poucher
Agnita Christensen Schreiber
S. Milton Thomsen

CLASS OF 1938

Earl Fries
Ivan Johansen
Dagmar Nielsen Knudsen
Byron Langenfeld
Elizabeth Aagaard Larsen
Herbert Larsen
Stanley Larsen
Helen Nielsen
Raymond Olsen
Robert Paap
George Pallesen
Emery Petersen
Myrtle Lee Rasmussen
Eloise Morris Sperati
David Simonsen
Marion Hansen Svendsen

CLASS OF 1939

Mildred Hansen Altekruze
L. Madsen Andersen
Lila Jeffers Ashley
John and Ruth Jenkins Bruse
Mildred Petersen Carlsen
Eric and Elaine Jespersen Christensen
Herluf and Vashti Magnussen Christensen
Ethel Jensen Glarborg
Edward Hansen
Rubena Jorgensen Hansen
Esther Jensen Jenkins
Levi Jensen
Adolph Kloth
Aster Neve
Andrew Pechacek
Carol Oleson Petersen
Elmer Rasmussen
Mildred Clemens Schroeder
Martha Rasmussen Staby

CLASS OF 1940

Florence Young Anderson
Richard Boe
Frances Kronberg Carter
Marguerite Rathmann Dixon
Leonard Eriksen
Esther Carlsen Hansen
Leona Johansen Hansen
Rubert Hemphill
Ralph Hendricksen
Fred Jacobsen
Helen Jacobsen
Lucille Neve Kloth
Marie Mikkelsen Larsen
Howard Nielsen
Ione Christensen Nielsen
Delwyn Olson
Clarence Paulsen
Clarence Petersen
Victor Schmidt
Jesse Smith
Robert Taylor
Edith Carlsen Vierk

CLASS OF 1941

Lois Lyngje Boe
Everett Christiansen
Bertha Andersen Cooper
Vernie Henningsen Erickson
Gerda Hansen Erikson
Earl Glarborg
Frank Hengeveld
Iver Iversen

Evelyn Jessen Kelso
L. Malvern Larsen
Victor Lauritsen
Dorothy Lund
Charles Morehouse*
Paul Neve
Homer Nielsen
Ann Kock Paasch
Esther Jensen Pedersen
Paul O. Peterson
Willard Phipps
Albert and Enid Jorgensen Raffaele
Enoch and Gena Madsen Rasmussen
Hillerup Rasmussen
Gale Skillstad

CLASS OF 1942

Raymond Andersen
Robert and Audrey Betker Berthelsen
Margaret Christensen Cantine
Shirley Bondo Hansen
Edward Harboe
Ophelia Nielsen Hauge
Genevieve Skau Jensen
Helen Pedersen McNichols
Arnold Nielsen
Luella Nielsen
Grace Hansen Pearson
Eulella Schjodt Petersen
Robert Petersen
Harold Sorensen

CLASS OF 1943

Nelson and Phyllis Olson Boe
Gladys Jespersen Dirksen
Thorvald Hansen
Rueben Iversen
Gilbert Jensen
Herbert Jeppesen
Norman Johnson
Luther Keay
Ernest Kersgaard
Ezra Larsen
Alton Neve
Lela Nielsen Neve
Dolores Samuel McDevitt
Kathleen Cornell Olson
Dora Nelson Paulsen
Francis Robinson Rahfs
Irene Johnson Schmidt
Maralee Miller Shadle
Lydia Nielsen Stave
Kenneth Tabberson

CLASS OF 1944

Margaret Johansen Beck
Robert Christensen
Gladys Dige
Allan Hansen
Clifford Hanson
William Hanson
Bernice Benson Iversen
Ruth Anderson Iversen
Robert and Virginia Pedersen Jensen
Oscar Johnson
Doris Petersen Krohn
Anna Dige Ledet
Mary Hansen Morehouse
Jeannette Olsen
Roma Sandvold Phillips
Robert Plugge
Eleanor Jensen Rathje
Edward Sorensen
Arthur and Marie Nielsen Welch

CLASS OF 1945

Vera Mae Johansen Barbeau
Marcus Beck
Stanley and Mildred Romer Carlsen
Hans Carlson
Mildred Madsen Christensen
Donald Ehlers
Nola Johnson Eskelsen
Gladys Lyngje Hughes
Ruth Nielsen Jeppesen
Lloyd Johansen
Helen Mahlun Neumann
Lloyd Neve
Ejvind Nielsen
Clifford Paulsen
Lyle and Agnes Larsen Paulsen
Ellenora Jensen Plugge
LaVonne Quist Rolland
Harry Snyder
F. William Thomsen

CLASS OF 1946

Herdis Hertz Dodds
Ruth Petersen Falksen
Persis Pedersen Hanson

Jean Clausen Johansen
Betty Korshoj Megruc
Mildred Staby Nelson

CLASS OF 1947

N. Ann Lage Andersen
Norman Hansen
Deloris Hansen Bengtson
Tom Blanchard
Ethan Hansen
Doris Petersen Hanson
Mildred Hansen Johnson
Greta Pedersen Krag
Gene Megruc
Raymond Paulsen
Lorraine Nelsen Schacht
Alfred Tan Cretu
Myrna Olsen Tostenson

CLASS OF 1948

Frederick Bengelman
Allison Hansen
Florence Hansen
Roger Hansen
Isabel Jacobsen Hoegh
Hugh Hughes
Dolores Jensen Johnson
Lorraine Sandberg Madsen
Marilyn Guyer McCormick
Glen and Helen Tange Neve
Ried Neve
John Nielsen
Ewald Sorensen
Reynold Tange
Joy Wert

CLASS OF 1949

Maynard Andersen
Irene Jensen Balch
Virgil Bollesen
Niels Carlsen
Marilyn Juul Hanson
Norlan Hanson
Emmeline Fredericksen Hoar
Anna Hansen Huber
Paul Johnson
Ray Johnson
Carol Mengers Fleeton
Sidney and Eileen Fleeton Jorgensen
Philip Larsen
Forrest and Dorcus Vammen Leighton
Esther Hertz Lundgren
A. Violet Degrave Madsen
Archie Madsen
Dean and Betty Schmidt Madsen
Norris Michelson
Anna Hansen Nelson
Elaine Neve Nielsen
Arthur Sorensen
Bernice Nissen Sullivan
Eugene Wekander

CLASS OF 1950

Amy Andersen
Doris Andersen
Virgil Anderson
John Beck
Pauline Clausen Friend
Doris Lind Fritz
Ione Jespersen Guyer
Andrew Hansen
Roger Haason
Mildred Guyer Hill
Arnold Jensen
Paul Jeppesen
Edwin Jipp
Joyce Nelson Johnson
Thorkild Kastrop
Arnold Larsen
Esther Eriksen Larsen
Delos Lind
Harriet Mortensen Lipe
Paul Mengers
Elisa DaCruz Merkl
Lyle Morgensen
Allan and Marilyn Neve Nyegaard
Gerhard Nygaard
Earl Pace
Anna Poh
Paul Simon
Melvin Suhr
William Wesin

CLASS OF 1951

Vernon Andersen
LaVaille Jensen Anderson
Virginia Lippincott Beck
Gladys Lincoln Berggren
Erna Peterson Berthelsen
Elaine Madison Brostrom

Ellen Jensen Drew
Marilyn Siersbeck Erling
Letha Sorensen Grutzik
Lee Guyer
Lois Girtz Hailey
Marie Nelson Hansen
Verlan and Helga Jessen Hanson
Allen Holm
Sam Kachichian
Robert Kloth
Helen Halstead Kofoid
Eileen Nelsen Larsen
Paul Laursen
Dorothy Mae Peterson Lorensen
Viola Harboe Madsen
Ardis Gramps Mengers
Marilyn Nelson Meyer
Betty Jensen Nygaard
Willis Olson
Lucy Anne Poucher
Warren Rasmussen
Gladys Voetmann Stavely
Norman Winther

CLASS OF 1952

Dudley Allen
Lois Petersen Andersen
Robert Berthelsen
Margaret Hansen Brown
Denece McBride Hansen
P. V. Hansen, Jr.
Delores Nielsen Ingram
May Skobo Jackson
Norman Jensen
Phyllis Kloster Krumrey
Marcia Hansen Larson
John Lassen
Robert Lorensen
Robert Nelson
Andrew Nielsen
Dusane and Lillian Nielsen Ohlsen
Lois Rasmussen
Mildred Siersbeck Rasmussen
Carl Schattauer
Arthur Simon
Paul Skovland
Harry Sorensen
Robert Sorensen
Juri Taht
Lloyd Urbanek
Raymond Weckmueller
Dorene Larsen Westergard

CLASS OF 1953

Richard Andersen
Herbert Anderson
Lloyd Bansen
Gerald Borglum
Vaughn Christensen
Leonard and Marilyn Korshoj Jackson
Paul and Marilyn Steffensen Jersild
Floyd Jorgensen
Joyce Hayek King
Dorothy Lauritsen Larsen
Wilbur and Alice Schultz Layman
Margaret Christiansen Madsen
Carl Pedersen
Roger Smith
Shirley Hansen Sorensen
Mark Thomsen
G. Timpa
Jean Nielsen Urbanek
Yvonne Hansen Vorthman
Lola Petersen Wiese

CLASS OF 1954

Mary Justesen Brostrom
John and Myra Vig Christensen
Marion Christensen
Edward Eskildsen
Edith Skobo Faye
Norman Freund
Joyce Hansen Galvin
Ann Harms George
Lois Hansen Greene
Esther Jorgensen Grindberg
Margaret Erickson Hafar
Daniel and Donna Moree Olsen Hansen
Winston Hansen
Howard Jensen
Russell Jensen
William King
Patricia Madsen Kloth
Janet Enger Lang
Neil Moore
Arlene Sandberg Nelson
Levern Nielsen
Arvin Quist
Gordon Sick
Beata Hauge Sorensen
Marjorie Baxter Tuveson

CLASS OF 1955

Jack and Mary Ann Bain Allen
Angela Sorensen Borglum
Paul Brostrom
Clarice Fredrickson Christensen
Neil W. Christensen
Lois Samuels Fellows
LaVerne Chandler Hackett
Pat Lippincott Hunsche

Marilyn Jacob Huntress
James Iversen
Paul Jahnke
Arthur Jersild
Roger Kruse
Nancy Fleming Lassen
Kathleen Nielsen Leistad
Phyllis Bollesen Ringler Matthews
Margaret McQuarrie McGill
Harold Nelson
Phyllis Henriksen Olsen
Donovan Olson
Lloyd Pedersen
Erling Schultz
Bethany Miller Simon

CLASS OF 1956

Patricia Baker Bansemmer
Ann Jessen Bansen
Kenneth Fehl
Raymond Hagberg
Mary Speck Heinrichs
Richard Jensen
Betty Placek Johnson
Herbert Jorgensen
Mary Jacobsen Klopp
Betty Petersen Kruse
Robert Krogh
Harold Laursen
William Lawson
John Lodi
Duane Lubkeman
Rees and Edna Skobo McFarlane
Sigrid Nelson
Phillip Pagel
Marie Hooks Perry
Jon and Dorothy Kloth Petersen
Henry Rosenthal, Jr.
Ronald Stricklett
M. Ruth Kirkegaard Svinth
Barbara Peterson Ward
John and Beverly Kruty Williams
Philip Wittig

CLASS OF 1957

Leroy Anderson
Helen Jensen Carnes
Beth Kruse Cecil
John Christensen
Carol Nielsen Jorgensen
Thomas Langenfeld
Antoinette Nelson Lawson
Joann Rostis McDonnell
Marilyn Ward Nichols
Larry Pedersen
Pamela Rhoades Pedersen
Marilyn Wolsmann Rasmussen
Sharlene Lauritzen Rosenthal, Jr.
Larrie Stone
Darol Valder
Virginia Hansen West

CLASS OF 1958

Arliss Peterson Anderson
Clarice Andersen
Mary Ann Anderson
Ingvert Appel
David Bidstrup
Emilie Laursen Farrens
Jean Coffey Gay
Joyce Olsen Gilbert
Franklin Hansen
Bill Himmler
Beverly Siersbeck Hodges
Eugene Jacoby
Milton Jensen
Milan Johnson
Delores Peterson Jorgensen
Barbara Whiteside Laursen
Carol Olsen Lodi
Shirley Alme Madsen
Marvyn and Audrey Erickson Olson
Robert Ostergaard
Raymon Pedersen
Darvid Quist
Melvin Rogers
Dorothy Willment Schultz
Melvin Sick
Peter Smith
Norma Nelson Stone
Virgene Schmidt Stricklett
Joan Coffey Tarrell

CLASS OF 1959

Bertha Andersen
Ernest Anderson
Betty Christensen Bidstrup
John Blatter
Thomas Ehlers
Larry Hansen
Lois Benson Huseby
Richard and Karen Peterson Jensen
Gloria Hanson Johnson
Caroline Pedersen Jones
Richard Jorgensen
Gail Koldenborg
Mary Jo Andrews Kubie
Ernest Larsen
Jeanette Petersen Lubkeman
Roger Madsen
Ruth Madsen

Patricia Andersen Miller
Myril Schultz
Ronald Siersbeck
Shirley Chandler Valder

CLASS OF 1960

Evelyne Anderson
Karen Jensen Capel
Paul H. Christensen
Vernon Flesner
Shirley Haahr
John T. Henningsen
JoAnne West Hess
Andrew Jensen
Beverly Peterson Jensen
Don and Joyce Vasby Jorgensen
Leo Kirchhoff
George Landbo
Marie Hansen Langenfeld
David R. Larsen
Darrel Mertens
Patricia Petersen Miller
LeRoy Pedersen
Noel D. Petersen
Lyle E. Rasmussen
Donna Byriel Rector
Florence Benson Rogers
Janet Langenfeld Smith
James C. Sorensen
Nancy Horton Svacha
Larry Wright

CLASS OF 1961

Emory and Geraldine Christensen Anderson
Sharol Crandall Anderson
Harlen C. Barney
Carlotta Barry
Kathryn Lubkeman Christensen
Ray Dickson
Albert Girtz
Kenneth and Rosalind Peterson Glover
Judith Rasmussen Grabill
Norma Parde Heeren
Ronald and Bodil Strom Johnson
Luther and Doris Siersbeck Kloth
Anna Pohlmann Landbo
Joan Hundtoft Larsen
Jerry and Shirley Nielsen Lincoln
Lowell Madsen
Allan Olson
Paul and Lois Lorenzen Olson
Roger Petersen
Carolyn Potter
Phyllis Bondo Shavlik
Mary Adams Teten

CLASS OF 1962

Ralph and Judith Bruce Anderson
Wayne Anthony
Arthur and Kathleen Anderson Bliese
Norman Bock
Dean and Karen Martin Brockhoff
David Comstock
Carol Madsen Dickson
Diane Lippincott Fischer
Janice Hiller Gronstal
Nena Wegener Hankins
Ellen Larsen Hanson
Lonnie Hayne
Eldon Hemmingsen
Kenneth Jensen
Dorothy McIntosh Jensen
Roger Klopp
Darrell Menninga
James Olson
Herbert Panko
Lois Jensen Pedersen
Carlene Benson Petersen
Paul I. Petersen
Charles Reeg
Lois Honningsen Rode
Mary Bertelsen Ruden
Ellen Jorgensen Schloenvogt
Judith Christiansen Wagner
Lloyd Wright Jr.

CLASS OF 1963

Kenneth Anderson
Mary Folkerts Anthony
Ruth Dreyer Bauer
Dorothy Schultz Bock
Kent Borchers
Patricia Burnett Buckley
Jerry and Barbara Griffiths Campbell
Mary Clausen Canman
Deanna Schmidt Carr
Gary Hanson
Judith Johnson Harder
Maynard Hedegaard
James and Beverly Weldon Hess
J. Kent Howard
Alan Johanknecht
Patricia Kiracofe Jorgensen
Terry Kloster
Donna Berryman Lam
Beverly Namen Larsen
Roger Lippincott
Mary Sue Hansen Madsen
Ray Madsen
Spencer Martin
Vernon and Carol Krenze Mathiesen

Kenneth and Ruth Meyer Muehl
Everitt and Theresa Johnson Petersen
Marc Petersen
Ruby Hansen Petersen
Burnell Pohlman
Larry Tantow
John Tarrell
Marjorie Behrens Thiemann
Susan Ringhand Vines
Karen Hanna Waddingham
Eugene and Vallory Peterson Wallman
Joan Vogt Wekander
Hans Willadsen
Nancy Becker Wittrock

CLASS OF 1964

Edward Anderson
Gary Baker
Linda Dalleck
Mabel Wehrli Dargin
Harriet Putnam Dobson
Robert and Ellen Peterson Dunell
Walter and Faye Byriel Fox
Janet Francis
Linda Gehrig
David Hanson
Paul Hanson
Gloria Pedersen Hayne
Joyce Taake Johnson
Eileen Thompson Jordan
Janet Peterson Jorgensen
Richard Jorgensen
Bernard Kionka
Donald and Janine Kroeger Lacy
Thomas Lange
David Larsen
John Laughhunn
Judith Svendgaard Lum
Janette Frandsen Martin
Larry Mason
Elizabeth Solevad Nielsen
Philip Panum
Carol Bruning Petersen
Ruan Skaar Pohlman
Sidney Larsen Rames
Brian and Connie Snell Rich
Sonja Jacobsen Switzer
Barry and Sharon Olsen Tuttle
Leland Walz

CLASS OF 1965

Ernest and Marilyn Andersen Abariotes
David Bargren
John Cederberg
Paul and Norma Rummel Dirks
Donald Dreyer
Jacolyn Dudley
Jean Eisenhauer
Milton Foster
George Hagen
Francis Haviland
Clarice Smith Herold
Carol Holmquist
Mark and Kathleen Kempke Iversen
Sharon Messer Jensen
Charles Jorgensen
Jerry Jorgensen
Linda Money Jorgensen
Marjorie Kathmann
Jerry Kirkegaard
Sara Andersen Larson
Ione Caldwell Liddicoat
Steven Luschen
Marvin Mann
Ronald Mattison
Richard Moosmann
Sandra Andersen Mundy
Jennie Nelson
Margie Fangmeyer Olson
Clifford Paulsen
Leslie Pedersen
David and Nancie Brockmeyer Peterson
Mary Nielsen Roberts
Holger and Cheryl Donahoo Schultz
Carolyn Dusin Smela
Bernice Van Peursen Spark
Trudy Keller Stave
Janus Thomsen
Jane Jensen Warman

CLASS OF 1966

Phyllis Seburg Ahlers
Ronald Anderson
Mary Anderson Bargren
Dennis Barker
James Beck
Harold Berry
Donald Bruning
Ruth Buhl
Alyce Johnson Christensen
Marvel Christensen
Helen Leland Danielson
Phyllis Fitch
Jon Hallquist
Donald Hoffman
Beverly Namen Jensen
Kristi Planck Johnson
James Jorgensen
Wayne Josephson
Kenneth Kemmish
Jon and Joan Vaught Kjoller

Richard Kubie
Harriet Larson
Jani Larson
Jerome Larson
Larry and Susan Nystuen Legore
Anne Bentsen Nielsen
Lois Vaught Olsen
Dallas Opfer
Everett Petersen
Mary Beyer Rickerd
Corinne Adams Robinson
Wilma Brauer Roenfeldt
Stephen Sit
Roberta Middleton Smith
Wayne and Naomi Petersen Theye
David Thogerson
Doris Larson Tomlinson
Suzanne Willers Totten
Bernhard Vaaler
Clyda Carter Wallace
Walter Willmert

CLASS OF 1967

Vicki Yowell Beck
Rolan Bentjen
Connie Pittman Bischoff
Paul Bondo
Leon Bragg
Charles and Judith Rueter Brehm
Tim and Lucille Vasby Brown
Loretta Heckathorn Calabro
John Cate
Robert Christensen
Marjorie Capwell Cook
Roger Daggett
F. Paul Doerder
Fred Donaldson
Roger Eitzmann
Ellen Carlsen Elicek
Barbara Holsing Feit
Gail Frazier
Lois Behrendt Grover
James Gullickson
Cheryl Hanson Hatquist
Janice Miller Hinds
Patsy Fahrenkrug Hoffman
Charles Johansen
R. Kay Lee Kellner
Bradley Larson
Danny Lincoln
Gene Nelsen
Don Perokovich
Gerald Quirk
Ida Schmucker Smith
David Solevad
Dixie Pedersen Soulis
James Wardrip
Wally and Linda Cleveland Welander
Joan Hendricksen Willmert

CLASS OF 1968

David Aanonson
Paul Ahrendt
Robert Anthony
Dianne Seim Barker
Connie Elting Bentjen
Lyle Brehm
Mary Eisenhauer Brethorst
Eileen Rendall Carlson
Julia Sears Cook
Velma Smith Cooper
Ruth Norstedt Croft
Norman Dymneson
Mary Sue Petersen Edgecomb
Charles Elvers
Phoebe Schauer Fritson
Richard Hansen
Timothy and Kathlyn Christensen Hansen
Marvin Harris
James Holtam
Paul Jensen
Joyce Lyngard Jorgensen
Char Les Grap Kemmish
Marie Krysl
Carolyn Madsen Larson
Norma Jordan Lippincott
John Paopao
Ivan Paulsen
Richard Petersen
Robert Powers
Tamara Lykke Quirk
Paul Rasmussen
Charles and Maxine Lubkeman Scott
Jeanette Wallman Slusher
Steve Sorensen
Helen Hansen Sorensen
Cathrine Madsen Stone
Ron and Judy Smith Strohhahn
Rebecca Lyche Vaaler
Richard Vierk
Gary Winter
Paula Zackman Wolf

CLASS OF 1969

Barbara Cook Aanonson
William and Elizabeth Buck Anderson
James Bane
Paul Bischoff
Lois Hanson Bolton
Connie Boehr Buller
Gene Carlsson

Suzanne Holloway Chambers
 Rocky Christopher
 Linda Akers Dow
 Sherry Beales Forrest
 Barbara Gerdes Fife
 Colleen Wilson Geiser
 Karen Nelson Hansen
 Phyllis Lauritsen Hansen
 Hazel Harris
 Miriam McLaughlin Haseltine
 Annette Sorensen Holiam
 Ellen Andersen Hutton
 Jacquelyn Arshem Ingalls
 Wesley Iversen
 Kenneth Jacob
 Sharon Juhler
 Mabel Kastrop
 Joan Peterson Krogh
 John Korzilius
 Ramona Hinze Laubscher
 Ken Luce
 Ruth Jensen Lukawski
 Nancy Hanson Mahr
 Shirley McAllister
 Lawrence McGinn
 William and Cheryl Hall Neal
 Gwen Rutter Opler
 David and Mary Petersen Paul
 Brent Peterson
 Richard Rasmussen
 Carolyn Scholl
 Rick Shearer
 Eileen Taake Simonsen
 Paul Staby
 Shirley Albers Stubbendick
 Edward Vahle
 Phillip and Paula Westfall Vasy
 Mary Skobo Weckmuller
 Spencer Wedberg
 Margaret Haszard Zion

CLASS OF 1970

Craig Barber
 Sharon Nelson Barta
 Janet Penke Bates
 Twyla Drummond Biggs
 Eric Christensen
 Steven and Kathleen Ryan Cook
 Vicki Keating Croft
 Christine Zwanziger Faust
 Sandra Grevlos Fink
 Joseph Fryman
 Joyce Freeman
 Alice Christensen Garvin
 Douglas Hansen
 Karen Bergstrom Hanson
 Robert Haszard
 Ron P. Hutton
 Bonnie Hagedorn Jensen
 Lizbeth Ahrens Jensen
 Ronald C. Johnson
 Naomi J. Kenyon
 Candice Peterson Korzilius
 Mark Langenfeld
 Nancy Blobaum Ludwig
 Albert E. Maul
 David Musick
 Peter M. Nessen
 Dale A. Oestmann
 James Pauley Jr.
 Patricia Bro Paulsen
 Sandra Pedersen
 Paige Yowell Peterson
 David E. Renze
 Charles and Julie Thorson Rohlfing
 Linda Wacek Schmitz
 Wilbert C. Sick
 Barbara Lauritsen Sievers
 Michael Spetman
 Margaret Stanley
 Nina Strain
 Sherida Nohrenberg Vahle
 Janet Winkel Vetrovec
 James A. Vorderstrasse
 Charles Warner, Jr.
 Richard Zion

CLASS OF 1971

Kathryn Hulsebus Ahrendt
 Arlene Christensen Blair
 Patrick Bracken
 Mary Briggs
 Claudia Harris Brunick
 Rebecca Nielsen Bryant
 Maurice Byers
 Betty Byrnes
 Deborah Davis Ceerle
 Janet Gauger Chadwick
 Peter Christensen
 Charles Eastlund III
 Chris and Karen Evensen Eastlund
 Susan Schweer Edelman
 Edward G. Ezekian
 Robert C. Geibert
 Dennis Gethmann
 Jerome Godson
 John and Dorothy Paulsen Groesser
 Roger Hoffman
 Carroll Hornbuckle
 Judith Duke Hovinga
 Dan Jackson

Michael Jones
 Roger Kaldahl
 Robert E. King
 Roger Lorsch
 Karen Bansen Maguire
 Larry D. Mai
 James McKinley
 Donald A. Nelson
 Gregory and Julie Berg Peters
 Joycelyn Jensen Peters
 David F. Peterson
 Jimmie and Juel Neve Pierce
 Gordon Putnam
 Lloyd P. Refsell
 William and Judith Renken Shaff
 Elaine Strand
 Paul Toole
 Robert Vergamini
 David T. Wallman
 Nancy Simons Wedberg
 Gloria Paulsen Weinman
 Jon and Bonnie Hoehn Wicht
 Jeanine Drake Winslow
 Trudy Meyer Witt
 Greg E. Witte

CLASS OF 1972

Clarice Axland Andersen
 Richard Barbour
 Terry Beltz
 Emily Freed Bumpous
 Roger and Carolyn Dumke Carlson
 Eileen Pedersen Cash
 Louise Peterson Classon
 Charlotte Thomsen Christensen
 Martha Dayton DiBlasi
 Kathryn Mann Dugdale
 Connie Derry Dvorak
 Twila Eitman
 Cheryl Grap Gardner
 Dennis Hennings
 Barbara Fudge Jackson
 Janis Jensen
 Loretta Jensen
 Connie Krull Johnson
 Janice Madsen Johnson
 Rodney Kastrop
 Deborah Jensen Katt
 Leone Gabel Knowles
 Janice Stork Lippincott
 Kathryn Mohn
 Donald Mumm
 Mark and Susan Miller Musick
 Carl Nielsen
 Elaine Bringewatt Olson
 Coralene Larsen Page
 Ruth Hansen Peterson
 Ernest Poggensee
 Susan Angehl Rasmussen
 Paul Saathoff
 Gregory Schou
 William Sorenson
 Lynnette Schmidt Spetman
 G. Cleo Tupper Smith
 Robert and Karen Link Stoll
 Carol Thompson
 Bette Wolf Triplett
 James Uchtman
 Kathryn Ryan Vandenberg
 Jim Weinman
 David Winslow
 Sandra Yeager
 Laura Bro Zeveski

CLASS OF 1973

Stacy Allen
 Gregory and Denise Tapelt Andersen
 Lora Rouse Blankenbeckler
 Karen Hammock Bostwick
 Alan Brodbeck
 Vivian Dane Cook
 Sharon Hansen Davis
 Susan Dountas
 Debra Hansen Duda
 Robert and Candy Wild Ehmen
 Joel and Joyce Spencer Eskelsen
 Deb Nordlund Feldman
 Cheryl Harris Fleming
 Lavon Bohling Gray
 Carol Madsen Gruner
 Steve and Cecilia Dhooge Hahn
 Susan Filarski Hansen
 Leslie Hayes
 Steven Hengeveld
 Gale Johnson
 Nancy Johnson
 Doris Kahl
 Douglas Kimm
 Thomas King
 Tim Kuiken
 Donna Jenssen Lacy
 Gale Madsen
 Jolene Bundt Meyer
 Terry Miner
 Cynthia Homes Musick
 Russell Nelsen
 John Nielsen
 Warren Nielsen II
 Mark Olson
 Ann McCormick Patterson
 Steven Peck
 William Pikor

Carin Christensen Pitts
 Carol Porter
 Jane Hendrick Prochaska
 James Prouty
 Karen Kraft Ruby
 Deborah Sams
 Richard Scheuring
 Phyllis Kuhlmann Schwab
 Linda Stuhr Scranton
 June Fossler Seitz
 Clarence Smith
 Shirley Stadler
 Brenda Alton Stirtz
 Nadeen Rogers Tippery
 Tom VanSteenhoven
 Dennis Wellsandt
 Peggy Schilling Williams
 Susan Erbes Williams
 Burt Winchell
 Duane Winston

CLASS OF 1974

Mary Saucke Anders
 Vyrdel Bebenssee Basye
 Ronald and Nancy Harris Beaman
 Willard Behrends
 Kathryn Braaten Bresemann
 Janet Sailer Browning
 J. Steve Buller
 Linda Nilsen Cohn
 Don Davis
 Dail Schole Diedrichsen
 Robert Dillender
 James Gardner
 Lana Strait Gray
 D. Florence Hanson
 Mary Kay Petersen Hennings
 Dorothy Vorthman Ivers
 Arthur Jetter, Jr.
 Tim Kenyon
 Linda McNichols
 Cathy Anderson Meyer
 Dorothy Georgesen Miller
 Peggy Sass Miner
 Rachael Neve
 Dianne Nicolaisen
 Dawn Carper Nielsen
 Thomas Nielsen
 Martin Osterloh
 Allyn Remmers
 Larry Rasmussen
 Norlan and Lois Rathjen Rasmussen
 Lynda Salsness Renschler
 Jeanette Renander Rhyan
 Deloris Nielsen Ross
 Gloria Steffensen
 Gary Warner
 Lana Janssen Wellsandt
 Roger Williams
 Michael and Kristin Lenocho Zimmerman

CLASS OF 1975

Donald Baack
 Everett Baltz
 James Benbow
 Kathryn Bernston
 Timothy Brown
 Phyllis Byriell Christofferson
 Susan Zabel Dryburgh
 Gary Erbes
 Patricia Smith Fitch
 Mark Gruner
 Paul Haack
 Karen Jensen Howard
 Mary Hurley
 Becky Gran Johnson
 Layne Johnson
 Roger and Marilyn Muff Kastrop
 Jamie Heide Kuiken
 David Larson
 Jack Martin
 Jeffrey Meyer
 Jennifer Meyer
 Carol Miller
 Margaret Anne Walsh Nielsen
 Beth Peterson Papasadero
 Carol Holmstedt Prouty
 Carl Rasmussen
 Vickie Klatt Riggs
 Walter Schacht
 Gary and Kathy Paulsen Soetmelt
 David Stickrod
 Diane Kriep Urdahl
 Jean Knudsen VanSteenhoven
 Richard Waite
 Pat Duffy Winchell

CLASS OF 1976

John Beck II
 Steven Bertson
 Robert Bresemann
 Giles Bronson
 Lance Carlson
 James Duda
 Daniel Dye
 Roxanne Kruse Hamann
 Mark Heistand
 Dennis Hoch
 Susan Thorson Holstein
 Paul and Jean Wood Hundtöfi
 Paul Johnson

Steven Larson
 Kristine Krohn McCormick
 Jane Nielsen
 Patricia Meier Nielsen
 Linda Nygaard
 William Plymale
 Lance Poldberg
 Beth Rosenquist
 Mary Staby
 Michael and Diane Bradley Stewart
 Deborah Hofmann Tims
 Michael Urdahl

CLASS OF 1977

Patricia Wachter Andersen
 Cheryl Hinz Behrends
 Sondra Schjodt Buell
 Ruth Nilsen Campbell
 Charlene Dirks
 Elizabeth Petersen Erbes
 Timson Garrett
 Kathleen Fleming Gray
 David Hall
 Stuart Hansen
 John Hibbing
 Faye Coles Jones
 Kit Kelley
 Steven Kimm
 Curtis Maschman
 Marilyn McAllister
 Jane Radloff
 Linda Johnson Riley
 Bonnie Sand-Whitter
 Shirley Steffens
 Barbara Beck Sturm
 Mark Tiby
 Timothy Waggoner

CLASS OF 1978

Pat Zabel Baltz
 Reva Ronnfeldt Bylund
 Bruce Camblin
 Kim Cooper
 Iris Frey Doolittle
 Jerry Haas
 Rhonda Oelrichs Hall
 Ann Nielsen Hibbing
 Paul Hilgenkamp
 Dennis Lee
 Allison Willadsen Meyer
 Kimberly Mathews Miller
 Monique Bentzinger Poldberg
 Dennis Preston
 Gwen Rasmussen
 Joan Richardson
 Debra Petersen Schjodt
 Sandra Sonderup
 Scott Thayer
 Leslie Tripp
 Janis Boyce Waggoner

CLASS OF 1979

Barbara Crawford Barth
 Julie Rasmussen Beck
 Mark Christensen
 Barbara Branson Garza
 Cynthia Gunderson
 Teresa Lee Haas
 Richard Lund
 Mark Oltman
 Karen Barter Perry
 Terry Pronko Plymale
 Eula Jean Irby Proctor
 Bruce Range
 Kimberly Shipley
 Jane Krueger Smith
 Cynthia Unger

CLASS OF 1980

Barbara Bock
 Debra Doubek
 Cynthia Josephson
 Susan Storey Koziel
 Cheryl Lustgraaf
 Timothy Nietfeld
 Joanne Roberts
 Jerry Schmidt
 Janelle Siffring
 Rory Sturm
 Kathy Appel Taggart

CLASS OF 1981

Sharon Boerma
 Judy Csejthey
 Dawn Diffey
 Christi Mulinix Hilgenkamp
 Douglas Lemon
 Delberta Nielsen
 Ruth Behrends Schmidt
 Paulette Strecker
 Thomas Taggart
 Rhonda Joy Wellsandt

CLASS OF 1982

Jane Heinrich
 Sandra Gill Johnson
 Paul Judson

*Deceased

CURRENT STUDENTS AND STUDENT ORGANIZATIONS:

Mark Bauer
 Marcene Carstensen
 Dana Student Body
 Ekklesia Koinonias
 Sarah Hansen
 Beth Rosenquist
 Stephanie Wiemer
 Pernille Wolthers

DANA FACULTY, STAFF AND REGENTS

The Dana faculty, staff and regents are perhaps closest to the heartbeat of the College. And each year our annual fund begins by offering this group the opportunity of leading the way by setting giving standards for the year. Participation in giving by this group has grown steadily through the years, and last year virtually everyone responded with a gift to the annual fund.

FACULTY AND STAFF:

Mr. and Mrs. Ernest Abariotes
Mr. and Mrs. Charles Akes
Miss Doris Andersen
Mr. and Mrs. Dan Anderson
Mrs. Pearl Andersen
Mr. and Mrs. Robert Arnold
Mr. and Mrs. Donald Baack
Mr. Norman Bansen
Mr. and Mrs. Paul Baumgarten
Mr. and Mrs. Ronald Beaman
Rev. and Mrs. John T. Beck
Dr. and Mrs. Bruce Bergquist
Dr. and Mrs. John Bienz
Mrs. Arlene Bouslaugh
Dr. and Mrs. Alan Brandes
Mr. and Mrs. Steve Buller
Mr. and Mrs. Frank Chenaillé
Mr. and Mrs. Vaughn Christensen
Mr. and Mrs. Vernon Christiansen
Miss Judy Csejhey
Dana Women's Club
Mr. and Mrs. Arthur Deemer
Mrs. Esta Deets
Mr. and Mrs. Darrell Dibben
Mrs. Iris Frey Doolittle
Dr. Herta Engelman

Mr. and Mrs. Dale Funk
Mr. and Mrs. Ray Furtak
Mr. and Mrs. Walter George
Mr. and Mrs. Robert Goolsby
Mr. and Mrs. Fred Gordon
Mr. and Mrs. George Grube
Mr. and Mrs. Wes Gunderson
Mr. and Mrs. Keith Hansen
Mr. and Mrs. Lee Hansen
Mr. and Mrs. Richard Hansen
Dr. and Mrs. Clifford Hanson
Dr. and Mrs. Verlan Hanson
Mr. and Mrs. Steve Harper
Mr. and Mrs. Milton Heinrich
Mr. and Mrs. Frank Hengeveld
Mr. and Mrs. Arvin Hemes
Miss Lydia Herrmann
Mr. and Mrs. Dennis Hoch
Mr. and Mrs. Roger Hohensee
Mr. and Mrs. Bruce Holmquist
Mr. and Mrs. Eugene Husk
Rev. and Mrs. Delvin Hutton
Mr. and Mrs. Lee Johnson
Mr. and Mrs. Ronald C. Johnson
Mr. and Mrs. Ronald D. Johnson
Mr. and Mrs. Michael Jones
Dr. and Mrs. Richard Jorgensen

Dr. and Mrs. James Kallas
Mr. and Mrs. Walter Konik
Mr. and Mrs. Richard Kubie
Mr. and Mrs. Ben Krantz
Mr. and Mrs. Sieghard Krueger
Mrs. Allen Laaker
Mr. and Mrs. Dale Lemon
Mr. and Mrs. Eugene Lindblad
Ms. Vonlea Lindstrom
Mr. Philip Lueck
Dr. and Mrs. C. C. Madsen
Dr. and Mrs. David Martin
Mrs. Joan Masters
Mr. and Mrs. Dale Matson
Dr. and Mrs. Bernard Matthias
Mr. and Mrs. Dale McAllister
Mr. and Mrs. Joe McManigal
Mr. and Mrs. Howard McManigal
Mr. and Mrs. Willard Meier
Mr. and Mrs. Eugene Meyer
Mr. and Mrs. Glenn Miller
Dr. and Mrs. Paul Neve
Mr. and Mrs. John M. Nielsen
Dr. and Mrs. John W. Nielsen
Miss Luella Nielsen
Mr. Timothy Nietfeld
Mr. and Mrs. James Olsen

Mr. and Mrs. Robert Olson
Mr. and Mrs. Roger Olson
Mr. Phillip Pagel
Mr. and Mrs. Paul O. Peterson
Mr. and Mrs. Eugene Pibal
Ms. Sandra Polhemus
Miss Carolyn Potter
Mr. and Mrs. Gilbert Ragan
Miss Ebba Rasmussen
Dr. and Mrs. Elmer Rasmussen
Mrs. Ruth Rasmussen
Mrs. Virginia Scheibe
Mrs. Viona Schlotfeld
Mr. and Mrs. Jerry Schmidt
Mr. George Schuler
Mrs. Mabel Smith
Mr. and Mrs. A. J. Snowbeck
Miss Sandra Sonderup
Mr. and Mrs. Steven Sorensen
Rev. and Mrs. Andrew Staby
Mr. and Mrs. Terry Stodola
Dr. and Mrs. Larric Stone
Mr. and Mrs. Milo Stork
Mr. and Mrs. Paul Strand
Mr. and Mrs. Eugene Thomas
Rev. and Mrs. F. W. Thomsen
Mr. and Mrs. Chuck Tuttle

Mr. and Mrs. Robert Tuttle
Mr. and Mrs. Donald Warman
Mrs. Tamara Weber
Mr. and Mrs. Daniel Webster
Dr. and Mrs. Raymond Weckmuller
Mr. and Mrs. Tom Wieseler
Dr. and Mrs. Tom Williams
Dr. and Mrs. Wayne Wise
Mr. and Mrs. Harold Wright

REGENTS:

Mr. Steve Allen
Rev. and Mrs. Richard Andersen
Dr. and Mrs. Harry Brahams
Rev. and Mrs. Howard Cole
Dr. and Mrs. Loyd Dykman
Mr. and Mrs. James Evensen
Mr. and Mrs. Howard Hanson, Jr.
Mr. Richard Hunt
Mr. Irving Jensen
Rev. and Mrs. Charles Maahs
Dr. and Mrs. Archie Madsen
Dr. and Mrs. Robert Mandsager
Mr. Harold Miller
Dr. and Mrs. Omer Reed
Dr. and Mrs. Royce Ronning
Rev. and Mrs. Alton Schwandt
Mr. and Mrs. Lorentz Thorngren

OTHER CONTRIBUTORS

Dana's support is broad-based and we are grateful to a variety of individuals and groups for including Dana in their annual charitable giving plans. Listed here are the names of parents, Danish American individuals and organizations, foundations, corporations, Washington County individuals and businesses, and a host of other friends who have made significant gifts to Dana during the past fiscal year.

DANISH AMERICANS

Mrs. Lillian Andersen
Mrs. Magda Andersen
Mr. Sigfred Andersen
Mr. and Mrs. James Anderson
Mr. and Mrs. Oscar Anderson
Mr. and Mrs. Raymond Andreassen
Mr. Peer E. Backgaard
Mr. Peter Bansen
Mrs. Wayne Beck
Mr. and Mrs. Viggo Berthelsen
Mrs. Helga Bohn
Mrs. Rose Bolleson
Miss Anna Christensen
Ms. Freda M. Christensen
Mr. Harry Christensen
Mrs. Harry Christensen
Mr. James A. Christensen
Mr. Jens Christensen
Mr. and Mrs. Morris Christensen
Dr. Paul M. Christensen
Mr. and Mrs. George Christiansen
Mr. Carl J. Christophersen
Mr. Fred Christopherson
Mrs. Gerda Dybvad
Mr. and Mrs. Ole Ebbesen
Mr. Otto Ehlers
Mrs. Elsie Elgaard
Mrs. Helga Erlandsen
Mr. William Esbeck
Estate of Christine Mickelsen
Mrs. P. F. Fisher
Miss Mildred Forseth
Mr. Donald Frost
Mr. Paul Gade
Mr. and Mrs. Mark B. Garff
Mr. and Mrs. Hugh Gwin
Mrs. Everett Hagedom
Mrs. Anders Hansen
Miss Augusta Hansen
Mrs. Carrie Hansen
Mr. Earl Hansen
Mr. and Mrs. Franklin Hansen
Ms. Helen Hansen
Mr. and Mrs. Kaj Hansen
Miss Margaret Hansen
Mr. and Mrs. Mel Hansen
Mr. and Mrs. Raymond Hansen
Mr. Hal Hasselbalch
Mr. Alfred Hedegaard
Mrs. Carolyn S. Holding
Mr. Ray Henning
Mr. Clarence Henriksen
Mrs. Ruth Herman
Mrs. Lillian Hoffman
Mrs. Caroline Hoj
Mrs. Henry Ibsen
Mr. and Mrs. Robert Ibsen
Mr. George Jacobsen

Mr. and Mrs. Warren Jacobsen
Mr. and Mrs. Aage Jensen
Ms. Christine Jensen
Mr. Colin Jensen
Miss Elna Jensen
Mr. Erik Jensen
Rev. John Jensen
Mrs. Peter Jensen
Mrs. Mildred Jepsen
Mr. and Mrs. Karl Jessen
Mr. Karl Jetter
Mr. Aage Johnson
Mr. Charles Johnson
Mr. Clifford Johnson
Mrs. Lillian Johnson
Mr. Edwin Jorgensen
Mr. George Jorgensen
Ms. Helena Jorgensen
Mr. and Mrs. Henry Jorgensen
Mr. and Mrs. Ernest Kehlbeck
Mr. and Mrs. Emil Kellmann
Rev. Olin Knudsen
Mr. and Mrs. C. Koldenborg
Mr. and Mrs. Marius Landbo
Mr. and Mrs. John T. Lang
Mr. Albert Larsen
Mr. Oluf Larsen
Mr. and Mrs. Paul Larsen
Mr. Sven Larsen
Mr. and Mrs. John Lauritzen
Mrs. Orville Lawson
Mrs. Oscar Lawson
Mrs. C. H. Linquist
Mrs. Ellen Madison
Ms. Anna Madsen
Mrs. Marie Madsen
Mr. and Mrs. Peter B. Marcussen
Mr. Earl Miller
Ms. Margaret Miller
Dr. E. Trier Morch
Mr. and Mrs. Harry Mortensen
Mr. Holger Mortensen
Ms. Carrie Nelsen
Mrs. Aetha Nelson
Miss Emma Nelson
Mr. Harry Nelson
Ms. Naida R. Nelson
Ms. Olga Nelson
Mrs. N. Nesgaard
Mr. Aage E. Nielsen
Mr. and Mrs. Borge Nielsen
Mr. and Mrs. Carl W. Nielsen
Mr. M. Nielsen
Mrs. Mayme Nielsen
Mrs. Mildred Nielsen
Mr. and Mrs. Niels Nielsen
Mr. Vance Nielsen
Ms. Vita Nielsen
Mr. and Mrs. John Nissen

Mrs. Elmer Norgaard
Mr. Jens Nyholm
Mrs. Ella Olsen
Mr. and Mrs. Levi Olsen
Mr. and Mrs. Harold Olson
Mr. and Mrs. Richard Palte
Mrs. Chris Paulsen
Mr. and Mrs. Anton Pedersen
Mr. Emmert Pedersen
Mr. and Mrs. Enok Pedersen
Mr. Robert Pedersen
Mr. Clement Pedersen
Mrs. Cecilia Petersen
Mr. and Mrs. Charles Petersen
Miss Donna Jean Petersen
Mr. George R. Petersen
Mrs. Howrd T. Petersen
Mrs. Johanna C. Petersen
Mr. and Mrs. Loren Petersen
Mr. and Mrs. Woodrow Petersen
Mr. Andrew Peterson
Mr. and Mrs. Chester Peterson
Ms. Emily H. Peterson
Mr. and Mrs. Carl Pilegard
Mrs. Lois Raber
Mrs. John Rand
Mr. and Mrs. Chris Rasmussen
Mrs. Christine Rasmussen
Mr. and Mrs. Niels Rasmussen
Mrs. Wilma Rasmussen
Miss Lucile Rehder
Mr. M. Rolstad
Ms. Dawn Rosenvinge
Mr. Herman Sandberg
Mr. and Mrs. John Savage
Dr. Fredrik Schlotz
Mr. Lester Schleufer
Mr. M. E. Seyller
Mr. A. Simonsen
Mr. and Mrs. S. A. Skaar
Mr. Myron Skeen
Mr. and Mrs. Axel Skelbeck
Mr. and Mrs. Leo Skoubo
Mrs. Ethel Sondergard
Mr. and Mrs. R. Sorensen
Mr. and Mrs. Martin Sorensen
Rev. and Mrs. Morris A. Sorensen, Jr.
Mr. Poul V. Steffensen
Mr. and Mrs. Robert Storms
Mrs. A. R. Sumpter
Mrs. Clare Sundby
Mrs. Dagny Swanson
Mr. and Mrs. Lewis Tesdahl
Mr. and Mrs. George Thompson
Mr. and Mrs. Lester Thompson
Mr. Oscar Thompson
Dr. Marie Tucker
Mrs. Peter Vig
Mr. and Mrs. Peter Weber

Mr. Harold Wilhelmson
Mr. and Mrs. Sophus K. Wintner

PARENTS

Mr. and Mrs. Leland Aanonson
Mr. William Adams
Mr. and Mrs. Henry Ahrendt
Mr. and Mrs. Arlo Alwill
Rev. Ivan Amman, Sr.
Mr. Warren Amole
Mr. and Mrs. Harold Andersen
Mr. and Mrs. Albert Andresen
Mr. and Mrs. Kermit Andrews
Mr. and Mrs. Charles Bane
Mr. and Mrs. Stanley Bansen
Rev. and Mrs. Walter Behrens
Mrs. Mary Anne Beltz
Mr. and Mrs. Norris Bemasek
Mr. and Mrs. Glenn Bernston
Mr. and Mrs. Donald Best
Mr. and Mrs. Lloyd Bevans
Mrs. Virginia Biffar
Mr. and Mrs. Earl Bonde
Mrs. Ervin Bondo
Mr. and Mrs. Robert Borden
Mr. Ray Bowmaster
Mr. and Mrs. Ervin Brockhoff
Mr. and Mrs. Ralph Brown, Sr.
Mr. and Mrs. Roy Brown
Mr. and Mrs. Leo Butler
Mr. and Mrs. Belmont Byriel
Mr. and Mrs. Jerry Carlson
Mr. and Mrs. Carl Cederberg
Mr. Carl Christensen
Mr. and Mrs. Dale Christensen
Mr. and Mrs. Ervin Christensen
Mr. Martin Christensen
Mr. and Mrs. Alvin Christiansen
Mr. and Mrs. Elmer Clanton
Mr. and Mrs. Alfred Clausen
Mr. and Mrs. James Cleaver
Mrs. Gwen Clever
Mr. and Mrs. Bobby Cotton
Rev. and Mrs. Herbert Dalteck
Rev. Thomas Damrow
Mr. and Mrs. Ken Danaby
Mr. and Mrs. John Derry
Mr. and Mrs. Jay Deyoung
Mrs. Marjorie Doksansky
Mr. Arthur Dolleck
Mr. and Mrs. Elbra Donaldson
Mrs. Fem Eitman
Mr. and Mrs. Eldon Erbes
Mr. Eric Erickson
Mrs. Shirley Eyer
Mr. and Mrs. Donald Fahrrenkrug
Mrs. Elmer Falksen
Mr. and Mrs. Jack Faudel

Mrs. Kathern Feekin
Mr. and Mrs. Phillip Fett
Mr. and Mrs. Edward Formanek
Mr. and Mrs. Ray Francis
Mr. and Mrs. Virgil Fredricks
Mr. and Mrs. Norman Frey
Mr. and Mrs. Earl Frisk
Mr. and Mrs. Theodore Gemeinhart
Mr. and Mrs. James D. Gerking
Mr. and Mrs. Donald Goos
Mr. Alan Gordon
Mr. and Mrs. Wayne Gregory
Mr. and Mrs. Melvin Haack
Mr. and Mrs. Vernald Hagebak
Mr. and Mrs. Gerald Hahn
Mrs. Mercedes Hanlon
Mr. and Mrs. Clifford Hansen
Mr. and Mrs. Jerry Hansen
Mr. Peter Hansen
Mr. and Mrs. Garland Hanson
Mr. and Mrs. Edward Harris
Mr. and Mrs. Ned Hayes
Mr. and Mrs. Ralph Hayne
Mrs. James Heide
Mr. and Mrs. George Helling
Mr. and Mrs. Waldemar Hempler
Mrs. Anna Henningsen
Mr. and Mrs. Clarye Henriksen
Mr. and Mrs. David Henriksen
Ch. and Mrs. Sheldon Hermanson
Mr. and Mrs. James Herrold
Mr. and Mrs. Dean Hoffart
Mr. and Mrs. V. Holdorf
Mr. and Mrs. Robert Holz
Mr. and Mrs. Martin Homes
Mr. and Mrs. Victor Hoogensen
Mrs. Harold Hooper
Mr. and Mrs. Melvin Horst
Mrs. Dania Hundtoft
Mr. and Mrs. Charles Irbay
Mrs. Esther Jensen
Mr. and Mrs. Richard Jensen
Mr. and Mrs. Stanley Jensen
Mrs. Boy Jessen
Mr. Merie Johns
Mr. and Mrs. Kenneth Johnson
Mr. and Mrs. Quentin Johnson
Mr. and Mrs. Merle Jordening
Mr. and Mrs. T. Jorgensen
Mr. and Mrs. M. R. Judson
Mr. Frank Kasik
Mr. and Mrs. George Kegler
Mr. Robert King
Mrs. Evelyn Kionka
Dr. and Mrs. R. Kirkwood
Mr. and Mrs. Donald Kreuzian
Mrs. Clara Kruse
Dr. and Mrs. W. Kuehn
Mr. and Mrs. Erwin Kuhlman

Mr. and Mrs. Lloyd Kuhr
Mr. and Mrs. Dewey Kuiken
Mr. and Mrs. Loren Kuper
Mr. and Mrs. Frederick Larson
Mrs. Orren Lee
Mr. and Mrs. Donald Lippincott
Mr. and Mrs. Gilbert Loeber
Mr. and Mrs. Edward Lorenzen
Mr. and Mrs. Carl E. Lund
Mr. and Mrs. Phil Lustgraaf
Mr. and Mrs. Walter Lyche
Mr. and Mrs. L. Madsen
Mr. and Mrs. Ray Martin
Mr. and Mrs. Monte Mead
Mr. and Mrs. Fred Mecker
Mr. and Mrs. Albert Metzger
Rev. and Mrs. Metzer Meyer
Mrs. Ilona Moosmann
Mrs. E. Morton
Mr. and Mrs. Francis Murtaugh
Mr. and Mrs. Russell Musick
Mr. and Mrs. Charles Neal
Mrs. Mary L. Neal
Mr. and Mrs. Dan Nelson
Mr. and Mrs. Louis Nelson
Mr. and Mrs. Ray Nelson
Mr. and Mrs. Walter R. Nelson
Mr. and Mrs. Robert Neubert
Mr. and Mrs. Fletcher Nichols
Mr. and Mrs. Adolph Nielsen
Mr. and Mrs. Delbert Nielsen
Mr. and Mrs. Elmer Nielsen
Mrs. S. Nielsen
Mr. and Mrs. Robert Nixon
Mr. and Mrs. Peter Nohrenberg
Mr. and Mrs. Don Northrup
Mrs. L. M. Nyegaard
Mr. and Mrs. Bernard O'Dell
Mr. and Mrs. Vern Olson
Mr. and Mrs. Dale L. Palmer
Mr. and Mrs. LeRoy Pedersen
Mr. and Mrs. Martin Pedersen
Mr. and Mrs. Gene Persing
Mr. and Mrs. William Petersen
Rev. Henry Peterson
Mr. and Mrs. E. Planck
Mrs. Vivian Poldberg
Mr. and Mrs. Martin Potter
Mrs. Harold Quirk
Mr. and Mrs. Edgar Rannels
Mr. and Mrs. R. Rasey
Mr. and Mrs. Harvey Rasmussen
Mr. and Mrs. Maynard Rasmussen
Mr. and Mrs. Darrell Rath
Rev. Orville Reeg
Mr. and Mrs. Alvin Remmers
Mr. and Mrs. Richard Robeson
Mr. and Mrs. Howard Romer
Mr. and Mrs. H. Ronnenkamp
Mr. and Mrs. Russell Ronfeldt
Mr. and Mrs. John A. Rowland
Dr. and Mrs. M. Eugene Rudd
Rev. Ray Saathoff
Mr. and Mrs. Theo Schlange
Rev. and Mrs. W. Schmidt
Mrs. Arthur Schole
Dr. and Mrs. Walter Schur
Mr. and Mrs. L. Schweer
Mr. and Mrs. Harold Shaff
Mr. and Mrs. Don Skadeland
Mr. and Mrs. Elmer Smith
Mr. and Mrs. William Soetmelk
Mr. and Mrs. Howard C. Speck
Mrs. Maude Spong
Mr. and Mrs. George Stahnke
Mr. and Mrs. H. Steffensen
Mr. and Mrs. Walter Stern
Dr. and Mrs. Harold Stokes
Mr. and Mrs. Paul H. Strecker
Mr. and Mrs. Roger Stricklett
Mr. and Mrs. Alvin Strohhorn
Mr. and Mrs. Irving Stubbendick
Mr. and Mrs. Arnold Terveen
Mr. and Mrs. Armand Thomsen
Mrs. Verner Thomsen
Mr. and Mrs. Richard Thormahlen
Mr. and Mrs. Warren Townsend
Mr. and Mrs. Max Tyler
Mr. and Mrs. Herbert Von Hollen
Mr. and Mrs. Raymond Waite
Mr. Donald Ward
Mr. and Mrs. Donald Watts
Mr. and Mrs. Hans Weddum
Mr. and Mrs. Ehrhard Weinman
Mr. and Mrs. Eldon Weinsandt
Mr. Norbert West
Mr. and Mrs. Dean Wilkerson
Mrs. H. Willmert
Mr. and Mrs. Louis Winter
Mr. and Mrs. Ernest Witte
Mr. and Mrs. Judson Wolf
Mr. and Mrs. Richard G. Wood
Mr. and Mrs. L. T. Zell
Mr. and Mrs. William Zimmerman
Mr. and Mrs. Alwin M. Zwaniger

Mr. and Mrs. Edward Andersen
Mrs. Margaret M. Andersen
Ms. Alice Anderson
Mrs. Henning C. Anderson
Mr. and Mrs. John Anderson
Ms. Mary Anderson
Mr. and Mrs. Roy Anderson
Mr. and Mrs. Westen H. Anderson
Miss Denise Andreassen
Anonymous
Mr. and Mrs. Arthur Antholz
Dr. and Mrs. Robert Apostol
Rev. Larry Arganbright
Mr. E. Wayne Armer
Ms. Marie Arndt
Mr. and Mrs. William Ashley
Mr. Robert Ausenhus
Mr. Elmer Bachenberg
Dr. and Mrs. K. Bagby
Miss Gail Baird
Rev. Donald Balster
Mrs. Loretta Bard
Mr. Dean Barnett
Mr. and Mrs. Leslie Bartleet
Ms. Eugenia S. Bauer
Ms. Viola Baugatz
Rev. J. Baumgartner
Dr. and Mrs. Ralph Beasom
Ms. Louise Beckwith
Mr. and Mrs. Robert Belcher
Ms. Emma Bell
Mr. and Mrs. Clarence Bellefeuille
Ms. Connie Benda
Mr. and Mrs. Lavern Bennett
Mrs. Carolyn Benson
Mr. and Mrs. Herman Berg
Mr. and Mrs. Sherman Berg
Mr. and Mrs. Dennis Berke
Mrs. Karen Bernhardtson
Mr. and Mrs. J. Fred Bienz
Dr. and Mrs. R. James Bills
Mr. and Mrs. Richard Bird
Mrs. Myrtle Birdzell
Mr. and Mrs. Frank Bitter
Mr. and Mrs. Robert Blobaum
Ms. Dorothy Blume
Mrs. Melvin Boehr
Mr. and Mrs. Fred Boettcher
Ms. Katherine Boozell
Mr. John Bordogna
Mr. Paul Borge
Mrs. Elizabeth Bramsen
Rev. Dale Brand
Rev. Gregory Brandvold
Mr. Robert Braun
Mrs. Dorothy Bredow
Mr. William Brockman
Ms. Susan A. Bronczyk
Mr. and Mrs. Ted Brueckner
Mr. Fred Brunk
Ms. Marianne Brunk
Mrs. Mary Lou Brunk
Mr. Mark Buell
Mr. and Mrs. Rufus Buffalo
Mr. Harry Bulon
Mr. and Mrs. Burkland
Mr. and Mrs. Stuart Burt
Mrs. L. Bussey
Ms. Dorothy Butterfield
Mr. Jack Button
Ms. Mary S. Byers
Ms. Marcia Cain
D. Capel
Mr. and Mrs. Tom Capel
Ms. Ellen E. Carver
Ms. Dorothy M. Cathers
Mr. and Mrs. John P. Cermak
Mrs. Ronald Christensen
Mr. W. H. Christensen
Dr. and Mrs. Keith Christensen
Mr. and Mrs. Marshall Christiansen
Mr. Burt Christopherson
Ms. Nellie Cina
Mr. E. L. Cline
Mrs. Max Coffey
Mr. and Mrs. Harry Cooper
Ms. Darlene Cording
Mr. and Mrs. David Cording
Dr. and Mrs. Herman Corn
Dr. and Mrs. Herbert Coulter
Mrs. Sara Da Cruz
Miss Carol Danielson
Mr. W. K. Danielson
Rev. E. Danitschek
Mr. Gordon W. Davidson
Ms. Lois Day
Mr. Bill Dean
Mr. and Mrs. Cliff Defreese
Ms. Viola Demarce
Mrs. Laurence Dillard
Maj. William B. Duputon
Mr. and Mrs. Harvey Dettmer
Miss Susan Diedrichsen
Mr. Albert Dittmer
Mrs. Beryl Dixon
Ms. Lois Lincoln Donaldson
Mr. and Mrs. Godfrey Dorn
Ms. Thelma Dralle
Mrs. Loretta Drees
Rev. William Dressen
Mr. and Mrs. Gregory Drew

Mr. and Mrs. Clyde Duff, Jr.
Ms. Bertha Dupont
Ms. Ann Dusaitko
Mr. Earl Duvall
Ms. Connie Dvorak
Dr. and Mrs. Philip Dybvig
Mrs. Lillian Dyrhberg
Dr. and Mrs. John H. Easley
Mr. and Mrs. Clayton Emmert
Mr. Donald Engdahl
Mr. and Mrs. Anthony Engelbrecht
Mr. and Mrs. Edward J. Engstrom
Mr. and Mrs. Keith Erickson
Estate of Frank Baumgart
Estate of Carl Larsen
Estate of Edith Neale
Estate of A. C. Nielsen
Estate of Soren Sorensen
Estate of C. Womble
Mr. and Mrs. Ralph Evans
Ms. Kathryn Farseth
Ms. Violet H. Finch
Rev. Wilbur Fischer
Mr. Joseph Flaa
Rev. Luther Flugstad
Harland and Loretta Fogle
Mr. and Mrs. Robert Ford
Mr. and Mrs. John Ford
Mrs. Wesley Foss
Mr. Roger Fossberg
Rev. Kenneth Franzen
Rev. and Mrs. John Fritzeimer
Mrs. Virgil Frye
Mr. and Mrs. Arnold Fuhlrodt
Mrs. C. S. Fynboe
Mr. Michael Galanos
Mr. and Mrs. Roger Gardner
Mr. and Mrs. Timothy Garrigan
Mrs. Charles Gaydou
Mr. Lou Gehlsen
Mr. and Mrs. Clinton Gehring
Mr. George Geislar
Ms. Hortense Geislar
Dr. and Mrs. Richard Gentry
Mr. Kent Gerking
Ms. Frieda Gerking
Mr. and Mrs. Brent Gilbert
Ms. Hertha Gjerloff-Olson
Dr. and Mrs. E. Goldenstein
Mr. Lars Granath
Ms. Carolyn Granrud
Mr. and Mrs. Carl Greubs
Mrs. William Grewcock
Rev. Stanley D. Grotegut
Mr. and Mrs. J. A. Gueldner
Mr. and Mrs. Ernest Gulsrud
Mrs. Alpha Hansen
Ms. Antonia Hansen
Ms. Beatrice Hansen
Miss Lavonne Hansen
Ms. Lora Hansen
Mr. Luther Hansen
Mr. and Mrs. Noel Hansen
Mr. Richard Hansen
Mr. Stanley Hansen
Ms. Florence Hanson
Mr. Harland Hanson
Ms. Dorothy Harris
Mr. Walter Hartwig
Ms. Gloria Hahr
Mr. Fred Hasenohr
Mr. and Mrs. John Haun
Mrs. C. J. Hausermann
Ms. Marceil Hay
Mr. and Mrs. Alfred Heckel
Mr. Lloyd Hedlund
Ms. Ruth W. Heim
Dr. George Hering
Rev. and Mrs. David Herman
Mr. and Mrs. Alfred Hernes
Mr. and Mrs. Burnett Hernes
Mr. David Hernes
Mr. Richard Herzog
Ms. Florence Hildeen
Ms. Alice Hiller
Ms. Nadine Hills
Mr. Andrew Hoefler
Ms. Lula Hohensee
Ms. Trudy Hohensee
Ms. Margaret Holm
Mr. Ray Holm
Mr. and Mrs. Everett Holstein
Rev. and Mrs. John Holt
Ms. Inez C. Holt
Mr. Alfred Holz
Mr. and Mrs. William O. Hopper, Jr.
Rev. and Mrs. Jack Hose
Rev. Harris Hostager
Mr. and Mrs. Russell Hounshell
Mr. and Mrs. William Hubbard
Ms. Ethel Huff
Mr. Richard Hughes
Ms. Eleanor Hull
Ms. Betty Hultman
Mr. and Mrs. Emory Hunt, Jr.
Mr. and Mrs. Hugh Hunt
Mrs. Lynnette Hunt
Mr. and Mrs. Robert Hunt
Dr. Howard B. Hunt
Mr. Marvin Isvik
Mr. and Mrs. M. L. Iverson

Mr. Pete Iwen
Mrs. Dorothy Jacobsen
Mr. and Mrs. Robert Jacobsen
Mr. Guy Jarvis
Mr. and Mrs. Leonard Jasa
Mr. Lyle R. Jaspersen
Mr. and Mrs. Brandon Jenison
Mrs. Loretta G. Jensen
Mr. and Mrs. S. Michael Jensen
Mr. Stanley Jensen
Ms. Lillian Jibben
Mrs. Lillie Johansen
Mr. Alvin Johnson
Mr. Arthur Johnson
Mr. David E. Johnson
Mrs. Edith H. Johnson
Mr. and Mrs. Elmer Johnson
Mr. and Mrs. Ervin Johnson
Mr. Hans W. Johnson
Mr. and Mrs. J. Harry Johnson
Mrs. Lois M. Johnson
Dr. and Mrs. Niel Johnson
Ms. Ora P. Johnson
Ms. Rachel E. Johnson
Mr. and Mrs. Robert Johnson
Mr. Robert Johnson, Jr.
Mr. Wallace Johnson
Mr. Wilford Johnson
Mr. Rodney D. Jones
Mr. and Mrs. Donald Jorgensen
Mr. and Mrs. Reuben Joss
Mr. and Mrs. Donald Jungmeyer
Dr. and Mrs. Ivan Karpisek
Ms. Mildred Kath
Rev. James Kautz
Mr. and Mrs. John Kelly
Mr. Allen Kelsay
Mr. and Mrs. Frank C. Kennedy
Mr. and Mrs. D. C. Kierfland
Mr. Howard Killion
Mr. and Mrs. Leslie Kinsel
Mr. and Mrs. K. Kirchhoff
Mr. Ed Kirchner
Dr. Oliver M. Kirkeby
Dr. Byford Klein
Mr. and Mrs. Erhard Klein
Mrs. Pauline Kleven
Mr. Bruce Klitzky
Mrs. Wilma Kniekamp
Mrs. T. L. Knudsen
Mr. and Mrs. Gerald Kobs
Mr. and Mrs. David Kolenda
Mr. Walter Konigsbrugge
Mr. and Mrs. Frank Korshoj
Ms. Mary L. Korsmeyer
Ms. Donna Kozak
Rev. David Kramer
Ms. Naoma E. Krause
Mr. Kenneth Krauth
Mr. and Mrs. Bernard Kros
Larry and Sheryl Kruse
Mrs. Waldo Kruse
Dr. and Mrs. G. Kuether
Mr. and Mrs. Melvin Kuhlengel
Mr. Herman Kuhr
J. Merton and Bonnie Kuhr
Mrs. Minnie Kuhr
Mr. Richard Kumpf
Dr. and Mrs. Wayne Labart
Mr. and Mrs. Nick Lalich
Mrs. Everett Lamb
Mr. and Mrs. Wayne Lambert
Mr. R. M. Lamp
Mr. and Mrs. Henry Lang, Jr.
Mr. and Mrs. Fred Largent
Ms. Ella M. Larsen
Mr. Kermit D. Larson
Mr. Gary Larson
Mr. and Mrs. Adrian Lee
Mr. Paul Lee
Mr. Edgar L. Leissner
Mr. Alvin Lentz
Dr. and Mrs. Richard Leong
Mr. Robert Lewis II
Mr. and Mrs. Paul Lienemann
Mr. and Mrs. Norman Likes
Rev. Adolph Lillich
Mr. and Mrs. Leo Lindahl
Mrs. Clarence Lindblad
Ms. Gertrude Lindau
Mrs. Doris Lindberg
Mr. Sam Lingo
Mr. Gordon Lobnitz
Mr. Jack Lockwood
Mr. and Mrs. Richard Loges
Mr. Oliver Loken
Rev. Palmer Loken
Mr. and Mrs. L. H. Lommen
Mr. Phil Lorentzen
Mr. and Mrs. Robert Lovgren
Miss Lona Lund
Mr. B. F. Lundt
Rev. Dennis Maake
Mr. and Mrs. Robert Macholan
Mr. and Mrs. Earl S. Magnuson
Mr. W. O. Mains
Mr. and Mrs. Daniel Manning
Mr. Albert J. Marcus
Mr. and Mrs. D. N. Marquardt
M. Lucille Maringe
Mr. and Mrs. Alfred Marron

Mr. Howard Marshall
Mr. Harold Marthedal
Mrs. Helen Martin
Mr. and Mrs. Harold Matney
Mr. and Mrs. Wilson Matthews
Mr. Loren Mathias
Ms. Helen Matuschak
Ms. Johanna Maxon
Mr. and Mrs. Jeffrey May
Mr. and Mrs. Robert McMillan
Mr. Glen McDaniel
Mr. Robert McKay
Mr. and Mrs. Robert McNally
Dr. and Mrs. Charles McLaughlin
Mr. and Mrs. Robert McNeil
Ms. Sally McNeil
Mr. and Mrs. George Meade
Mrs. Francis Melia
Mr. Ralph Mencke
Ms. Catherine Messen
Frances Meriwether
Mr. and Mrs. Darold Merkel
Rev. Wayne Mesecher, Sr.
Mr. and Mrs. Adelbert Meyer
P. J. Meyer
Mr. Gregory Miller
Mr. Earl Miller
Mr. and Mrs. John P. Miller
Mr. Michael Miller
Mr. Rudy Miller
Mr. Mick Mines
Mr. Clinton Mogen
Ms. Viola Mohr
Mr. Frank Molzer
Mr. Bruce Monke
Ms. Betty Montgomery
Ms. Elizabeth Moodie
Mr. and Mrs. John Morava
Mr. and Mrs. John H. Morris
Ms. Arlene Mortvedt
Mr. and Mrs. Alfred Mosher
Ms. Dorothy Moudy
Mr. Keith Munneke
Mr. Harold Munson
Ms. Margaret Mushrush
E. R. Myers
Ms. Josephine Myers
Mrs. Celeste C. Nasman
Ms. Augusta Nelson
Mr. Donald Nelson
Mr. and Mrs. E. B. Nelson
Ms. Irene Nelson
Mr. and Mrs. James Nelson
Mr. and Mrs. Leonard E. Nelson
Rev. and Mrs. Paul Nelson
Rev. Paul C. Nelson
Mr. and Mrs. Stanley Nesheim
Pat Niebaum
Louis Nielsen Trust
Nancy Lee Nimick
Mrs. Mary Norberg
Ms. Madelon Norton
Dr. and Mrs. Loui Novak
Mr. and Mrs. Harry Ohrt
Rev. Orville L. Olson
Ms. Gladys P. Olson
Mrs. Rufus Olson
Mr. Ivan Onnen
Mr. Victor Ormstrup
Mr. and Mrs. Harold Ortmeyer
Mr. and Mrs. Gerald Otte
Mrs. Jeannette Palazzolo
Mr. Ralph Parisot
Mr. and Mrs. Giles Penstone
Mr. Art Peters
Ms. Ethel Peters
Ms. Inez Petersen
Mr. Art Petersen
Mr. and Mrs. Walter Petersen
Mr. and Mrs. Albert Peterson
Rev. Deane Peterson
Ms. Ethel Peterson
Mr. Harold Peterson
Mrs. Ruth Peterson
Mr. Seymour Petrovsky
Mr. and Mrs. Dieter Petz
Mr. and Mrs. Keith Pilgren
Ms. Mildred M. Pletsch
Mr. Dale Pleyo
Mrs. Irvin Porth
Mr. David Preus
Mr. and Mrs. W. J. Prieue
Ms. Charlotte Pugh
Dr. and Mrs. Robert Pulliam, Jr.
Mrs. Harold Quaselt
Mr. and Mrs. Harold Rabbass
Mr. and Mrs. Heye Rademacher
Mrs. Doris Radloff
Mr. and Mrs. Donald Range
Sister Mary Rapparat
Mr. Leroy Rasmussen
Mrs. Sophie Rasmussen
Mr. Wallace Rasmussen
Mr. and Mrs. Arthur Rath
Dr. and Mrs. Hans Rath
Mr. Wilbur Rath
Mr. and Mrs. Lee Reents
Rev. Emil Reinking
Rev. and Mrs. Frank Reisinger III
Mr. and Mrs. A. Rembold
Mr. and Mrs. Harold Rembold

FRIENDS:

Mr. and Mrs. George Acker
Ms. Cheryl Adkins
Rev. Douglas Allen
Mr. Andrew Andersen

Mr. Harlan F. Rengstrof
Miss Marie Repsick
Mr. and Mrs. James Rhode
Rev. Derald Rice
Mr. and Mrs. Charles Riggs
Mr. Mike Riggs
Mrs. C. Risburg
Mr. and Mrs. Kenneth Rhoades
Mrs. George Rischmueller
Mr. Roland E. Robinson
Mr. Gerald C. Rockne
Mr. Joe Rodecap
Rev. Robert F. Rodewald
Mr. and Mrs. Geo. Rogers
Dr. and Mrs. Wm. E. Rogers
Mr. Bob Roh
Mr. and Mrs. Bernard Rohrig
Miss Helen Rohwer
Ms. Caroline Ronnei
Mr. John Rooney
Ms. Gertrude Rosenbohm
Ms. Louise Rosenthal
Lt. Col. John Ross
Ms. Virginia Rostvold
Rev. Martin Runze
Mr. and Mrs. Dennis Rutledge
R. A. Ryerson
Rev. Arlyn Saathoff
Rev. and Mrs. Oliver Salberg
Mr. Paul Salchow
Mr. Colin Sandell
Mr. and Mrs. Dean Sapp
Mr. and Mrs. William D. Sapp
Mr. Harry Sass
Mr. and Mrs. Louis Scarpino
Rev. and Mrs. Robert Schaff
Ms. Frances Scheel
Rev. Arno Schelper
Mr. and Mrs. Leroy Schafersman
Mr. Giles Schildt
Mr. and Mrs. Francis Schmehl
Mr. Herman Schmidt
Rev. Walter Schmidt
Rev. Charles Schmitz
Mr. D. H. Schuenemann
Ms. Helen Schultz
Ms. Mary Schulz
Ms. Martha Schuster
Mr. Tom Seanson
Mr. and Mrs. Jon Sedlacek
Mrs. Esther Seidel
Rev. and Mrs. Martin Seybold
Col. Richard Sherrard
Mr. and Mrs. Bertrand Sherwin
Astrid G. Shirley
Mr. Robert Shoup
Mr. Myron D. Sieckmeyer
Dr. H. Neal Sievers
Mr. and Mrs. Rudy Sievers
Mr. and Mrs. Randolph Sigurdson
Mr. Bob Simpson
Mrs. Genevieve Slader
Mr. and Mrs. Clark Smith
Mr. Cleveland Smith
Mrs. Henry Smith
Mr. Wayne Smith
Mr. Joel Snell
Mr. and Mrs. Hubert Snow
Mr. Leroy Snyder
Mr. Martin Snyder
Mr. Harold Soderlund
Mr. and Mrs. Gene Solomon
Miss Sonya Sorensen
Rev. and Mrs. Kurt A. Sortland
Mr. Allan Spanjer
Mr. Richard Speltis, Jr.
Mr. and Mrs. John Sphatt
Mr. and Mrs. Carl Spidle
Ms. Luella E. Spiser
Mr. and Mrs. Don Springer
L. W. Steber
Mr. Arthur Steele
Mr. Ron Steen
Mr. and Mrs. Eldon Steffens
Mr. and Mrs. John C. Steward
Mr. and Mrs. Ralph Steyer
Mrs. Ruth Stiles
T. M. Stollard
Rev. and Mrs. Henry Stolz
Mr. and Mrs. George Stoney
Ms. Vivian Stortenbecker
Rev. Norman Stubbendick
Mr. Alan Suttien
Honorable and Mrs. Leonard Sutton
Mr. and Mrs. Donald Swanson
Mr. and Mrs. Lee Roy Swanson
Mrs. Mary Jane Swanson
Mr. T. Swanson
Ms. Marguerite Switzer
Mr. and Mrs. Harry Taft
Mr. and Mrs. Elvin Ternus
Ms. Martha Tallman
Mrs. Anna Tammen
Mr. John Thies
Mr. Jacob Thomsen
Ms. Mabel Thor
Mr. and Mrs. Marvin Thor
Mr. and Mrs. Ernest Thorager
Mr. and Mrs. Lars Thorsen
Rev. Steven Tjarks
Mr. and Mrs. Donald Tomas

Mr. Carl Torkelson
Ms. Dora Tomkvist
Von Townsend
Ms. Alice Trybus
Mr. and Mrs. Donald Tubbs
Mr. Arnold Tweden
Ms. Audrey Tweeton
Mr. and Mrs. Paul Ulland
Mr. Dennis Vaag
Rev. Stephen Vander Tuig
Mr. Norman E. Velander
Dr. and Mrs. Don Vetter
Mr. and Mrs. Gordon E. Vinton
Mr. and Mrs. Keith Vinton
Mr. and Mrs. Robert Vinton
Mr. Joseph Vocke
Dr. Frank Vykouk
Mrs. Nellora Walker
Mr. and Mrs. John Wallman
Mr. Larry Wallman
Mr. Wayne Wallman
Mr. and Mrs. Walter Waltke
Mr. David Wardell
Mr. M. Wardell
Mr. Damon Weber
Mrs. Judy Wederquist
Ms. Ella Welch
L. M. Wells
Mr. and Mrs. John Westmoreland
Mr. Harold Weyhrich
Mr. and Mrs. John Whitesell
Mr. Thomas Wight
Mrs. Florence Wilke
Mr. Donald Wilkinson
Mr. and Mrs. Frank Williams
Mr. Mark Williams
Mr. and Mrs. Norman Williams
Mr. Paul Williamson
Mr. Paul Winden
Dr. and Mrs. O. H. Wingert
Mr. and Mrs. Carl Woyke
Mr. and Mrs. Virgil Wrich
Ms. Lydia Wrightson
Mr. and Mrs. Lyman Wrightson
Mrs. T. J. Wurdeman
Mrs. W. A. Youngstrom
Mr. Darrell Zimmerman
Rev. Tim Zingale

FOUNDATIONS:

Amoco Foundation, Inc.
Arthur Young Foundation
Asarco Foundation
Bank of America Foundation
Bransen Foundation
Champion International Foundation
CNA Foundation
Exxon Education Foundation
General Electric Foundation
Hartford Insurance Foundation
INA Foundation
InterNorth Foundation
Kidder Peabody Foundation
Kimberly-Clark Foundation Inc.
Medtronic Foundation
Mobil Foundation, Inc.
Montgomery Ward Foundation
Motorola Foundation
National Komiteens Foundation
Phillips Petroleum Foundation
Pillsbury Company Foundation
Sears Roebuck Foundation
Thomas F. Staley Foundation
Tektronix Foundation
United Brands Foundation
Willco Foundation

* CORPORATIONS

Abbott Foundation, Alliance
Abel Foundation, Lincoln
Aetna Life and Casualty
Agrico Chemical Company
Aid Association for Lutherans
Ak-Sar-Ben, Omaha
Albion National Bank
Allied Chemical
Allied Foundation, Morrilstown
American Brands, Inc., New York
American Can Company
American Home Products
American National Bank, Creighton
American Telephone and Telegraph
Armo Insurance Group
Aurora State Bank
Baird Holm McEachen Pedersen
Hamann and Haggart
Bank of Bertrand
Bank of Brainard
Bank of Brule
Bank of Elgin
Bank of Hartington
Bank of Madison
Bank of Norfolk
Bank of Taylor
Bankers Life Company
Beatrice Foods
Becton, Dickinson and Company.
Rutherford

Bemis Company Foundation,
Minneapolis
Bethany Home
Boeing Company
Bridges Investment Counsel, Inc.
Briggs Pump Company, Omaha
Broken Bow State Bank
Brunswick Foundation Inc., Skokie
Burlington Northern Foundation, St. Paul
Burt County State Bank, Tekamah
Butte State Bank
Cambridge State Bank
Carson National Bank, Auburn
Cengas/Minnegasco, Lincoln
Central Soya Foundation, Fort Wayne
Central States Health, Omaha
Central Telephone and Utilities
Chief Industries Inc., Grand Island
Citizens Bank & Trust Company,
St. Paul
Citizens State Bank, Arapahoe
Citizens State Bank, Decatur
Commercial State Bank, Wausa
Commonwealth Electric Company,
Lincoln
ConAgra Charitable, Omaha
Connecticut Mutual Life, Hartford
Cook Paint & Varnish Company,
Kansas City
Curtis State Bank
Dalton State Bank
Dart and Kraft
Delay First National, Norfolk
Deluxe Check Printers, St. Paul
Digital Equipment Corporation
Duckwall-Alco Stores, Inc., Abilene
Elanco Products Company, Omaha
Electric Fixture & Supply Company,
Omaha
Equitable of Iowa
Farm Credit Banks of Omaha
Farmers & Merchants Bank, Axtell
Farmers & Merchants National Bank,
Ashland
Farmers Bank of Clatonia
Farmers Bank, Oconto
Farmers State Bank, Big Springs
Farmers State Bank, Eustis
Farmers State Bank, Maywood
Farmland Industries, Inc.,
Kansas City
Farnam Bank
Fillley Bank
Fillmore County Bank, Geneva
Firemans Fund Insurance
First National Bank, Atkinson
First National Bank, Aurora
First National Bank, Bancroft
First National Bank, Beemer
First National Bank, Friend
First National Bank, Hayes Center
First National Bank of Hooper
First National Bank, Marquette
First National Bank, Mitchell
First National Bank, North Platte
First National Bank, O'Neill
First National Bank, Omaha
First National Bank, Tekamah
First National Bank, Walthill
First National Bank, Wilcox
First National Bank, Wisner
First State Bank, Fremont
First State Bank, Gothenburg
First State Bank, Loomis
First State Bank, Shelton
FMC Corporation
Ford Motor Company Fund, Dearborn
Fremont Laundry
Gateway Bank and Trust Company,
Lincoln
General Foods Fund, Inc.,
White Plains
General Motors Corporation, Detroit
General Telephone Company, Columbus
Geneva State Bank
Genoa National Bank
Getty Refining and Manufacturing
Goodyear Tire and Rubber Company,
Akron
Grace Foundation, Inc., New York
Graybar Electric Company, Inc.,
New York
Guarantee Mutual Life Company,
Omaha
Hall County Livestock, Grand Island
Harding Glass Industries, Inc.,
Kansas City
Harlan County Bank, Alma
Henningson, Durham, and Richardson,
Omaha
Herman Brothers Inc., Omaha
Home Federal Savings, Grand Island
Honeywell Fund
Houghton-Mifflin Company, Boston
Hughes Aircraft
ICFA-Miscellaneous, New York
Industrial Chemical, Omaha
International Business, Armonk
International Business
Machines Corporation
International Harvester

International Telephone, New York
J. C. Penney Company, Inc.
Jayhawk Boxes, Inc., Fremont
John Day Company, Omaha
Johnson Hardware Company, Omaha
Johnson Wax Fund, Inc.
Journal-Star Printing Co., Lincoln
K-Mart Corporation
Kansas-Nebraska Natural, Hastings
Kellogg
Peter Kiewit Foundation Endowment
Fund, Omaha
KNOP-TV, North Platte
Kraft Inc., Glenview
Landen Foundation, Omaha
Lexington State Bank
Lincoln Health Centers
Lincoln Mutual Life
Lutheran Brotherhood
Marrell State Bank
Max I. Walker Cleaners, Omaha
McDonald State Bank,
North Platte
Merck Company Foundation, Rahway
Midwest Groundcovers
Milldale Ranch Company,
North Platte
Minden Exchange
Minnesota Mining Company
Missouri Valley Machinery Company,
Omaha
Monsanto Fund
Mortgage Guaranty, Milwaukee
Morton House Kitchens, Inc.,
Nebraska City
Mutual Life Insurance Company of
New York
Mutual of Omaha
Nacir Industrial Resources
NCR Corporation
Nabisco Brands Inc., East Hanover
Nash Finch Company, Minneapolis
Nebraska Security Bank, Deshler
New York Life Foundation, New York
Norden Laboratories, Lincoln
North Platte State Bank
Northern States Power Company
Northwestern Bell Telephone
Northwestern Mutual Life
Northwestern National Bank
O'Keefe Elevator Company, Inc., Omaha
Ole Evinrude Foundation, Lincoln
Omaha Bankers Association, Omaha
Omaha World Herald
Parsows
Paxton-Mitchell Company, Omaha
Peavey Company, Minneapolis
Pender State Bank
Pentzien, Inc., Omaha
Peoples State Bank, Wobach
Peoples-Webster County Bank,
Red Cloud
Petersen Manufacturing, DeWitt
Phillips Petroleum Foundation,
Bartlesville
Potter State Bank
Printco
Procter and Gamble Fund, Cincinnati
Prudential Insurance Company
Quivey Bay State Foundation,
Scottsbluff
R-Line Foods
R. J. Reynolds Industries, Inc.,
Winston-Salem
Ralston Bank
Ravenna Bank
Rockwell International
Saga Food Service
Scottsbluff National Bank
Scribner Bank
Security Life Insurance
Security Mutual Life, Lincoln
Security National Bank
Seven Valleys State Bank, Callaway
Sherman County Bank, Loup City
Sidney National Bank
P. W. Skogmo Foundation, Minneapolis
Southwest Forest
Southwest Petro-Chem, Inc., Omaha
Spencer State Bank
Sperry and Hutchinson, New York
Sperry Rand Corporation
St. Paul Insurance Company
Stamford Bank
Standard Oil of Omaha
State Bank of Alexandria
State Bank of Benkelman
State Bank of Cairo
State Bank of Dubois
State Bank of Firth
State Bank of Jansen
State Bank of Hildreth
State Bank of Stella
State Bank of Table Rock
State Bank of Trenton
State National Bank, Wayne
Sterling Drug, Inc., New York
Steward-Warner Alomite Sales, Omaha
Store Kraft Manufacturing Company,
Beatrice
Stromsburg Bank

Sutton State Bank
Tandy Corporation
Tenneco Inc.
Texasgulf, Inc.
Thayer County Bank, Hebron
Trane Company
Tri-County Bank, Stuart
TRW Foundation, Cleveland
Uehling State Bank
Union Bank and Trust Company,
Lincoln
Union Pacific Corporation
United Technology
UPS Foundation, Greenwich
Valero Manufacturing Company
Washington National Insurance Company
Wausau Insurance
Wessco Graphics
Western Electric
Whitewater Ranch Corporation,
Gandy
Willamette Industries
Willis Cap and Gown Company,
Omaha
Woods Charitable Fund, Inc., Lincoln
WOWT Chronicle, Omaha
Yankee Hill Brick Manufacturing
Company, Lincoln

WASHINGTON COUNTY BUSINESSES AND ORGANIZATIONS

B & B Enterprises
B & C Shop
B & K Carpet
Barr Pharmacy
Blair Bank
Blair Feed Mill
Blair Glass Company
Blair Lions Club
Blair Maple
Blair Rose Society
Blair Transfer
Blair Vision Clinic
J. L. Brock Builders
Campbell Funeral Home
Candy's Closet
Carefree Travel
Cengas
Computel
Concrete Equipment Company
Enterprise Publishing
Fairway Propane
Fort Calhoun Stone Company
Genuine Auto Supply
Godfathers Pizza
Hansen Agency
Hayes Electric
HunTel
Investers Diversified
Jensen Well Company, Inc.
Kirk Surveying
Phil Larsen Company
Loyals Foodland
Mid America Computer Corporation
Miller-Rolland TV and Appliance
Nebraska-Iowa Supply
Nebraska State Savings
O'Hanlon Law Firm
Olson Skelly Station
Petersen Construction
Pizza Hut
Pounds Printing Company
Production Credit Assoc.
Rivett Lumber
S & S Pumping Service
S & S Stores of Blair
Scheffler Sporting Goods
Schmidt Monument Co.
Stewart A. Smith and Assoc.
Taylor Oil Company, Inc.
Unitel
Vinton Motor Company
Washco Feed and Supply
Washington County Bank
Washington County Mutual
Insurance Co.
Harold G. Wright Company

DANISH ORGANIZATIONS:

Danish Brotherhood 14
Danish Brotherhood 34
Danish Brotherhood 64
Danish Brotherhood 84
Danish Brotherhood 92
Danish Brotherhood 161
Danish Brotherhood 164
Danish Brotherhood 206
Danish Brotherhood 227
Danish Brotherhood 343
Danish Sisterhood 6
Danish Sisterhood 125
Dania Dagmar
Danish American Club of Omaha
Iowa-Minnesota District
Scandinavian Club

HONOR ROLL OF CHURCHES

Abiding Savior Lutheran Church, Independence, MO
 American Lutheran Church, Ashland, NE
 American Lutheran Church, Smith Center, KS
 American Lutheran Church, Denver, CO
 American Lutheran Church, Belleville, KS
 American Lutheran Church, Grand Junction, CO
 American Lutheran Church, Omaha, NE
 American Lutheran Church, Gothenburg, NE
 American Lutheran Church, Minneapolis, MN
 American Lutheran Church, Lincoln, NE
 American Lutheran Church, Adams, NE
 Ascension Lutheran Church, Colorado Springs, CO
 Atonement Lutheran Church, Boulder, CO
 Atonement Lutheran Church, Overland Park, KS
 Bethany Lutheran Church, Elkhorn, NE
 Bethany Lutheran Church, Ord, NE
 Bethany Lutheran Church, Ruskin, NE
 Bethany Lutheran Church, Tulsa, OK
 Bethlehem Lutheran Church, Minden, NE
 Bethlehem Lutheran Church, Brush, CO
 Bethlehem Lutheran Church, Davey, NE
 Bluffs Trinity Lutheran Church, Fremont, NE
 Calvary Lutheran Church, Scottsbluff, NE
 Calvary Lutheran Church, Omaha, NE
 Calvary Lutheran Church, Grand Island, NE
 Christ Lutheran Church, Omaha, NE
 Christ Lutheran Church, Stover, MO
 Christ Lutheran Church, Pickrell, NE
 Christ the Servant Lutheran Church, Norfolk, NE
 Emmanuel Lutheran Church, Goodland, KS
 Emmaus Lutheran Church, Kennard, NE
 Faith Lutheran Church, Golden, CO
 Faith Lutheran Church, Seward, NE
 Faith Lutheran Church, Talmage, NE
 Faith Lutheran Church, Security, CO
 First Lutheran Church, Blair, NE
 First Lutheran Church, Avoca, NE
 First Lutheran Church, Fremont, NE
 First English Lutheran Church, Kimball, NE
 First Lutheran Church, LaCrosse, KS
 Golgotha Lutheran Church, Chicago, IL

Good Shepherd Lutheran Church, Hastings, NE
 Grace Lutheran Church, Cook, NE
 Grace Lutheran Church, Hebron, NE
 Holy Cross Lutheran Church, Beatrice, NE
 Holy Shepherd Lutheran Church, Lakewood, CO
 Holy Spirit Lutheran Church, Littleton, CO
 Hope Lutheran Church, Smithfield, NE
 Hope Lutheran Church, Burr, NE
 Hope Lutheran Church, Rush Center, KS
 Immanuel Lutheran Church, Lodgepole, NE
 Immanuel Lutheran Church, Omaha, NE
 Immanuel Lutheran Church, Glenvil, NE
 Immanuel Lutheran Church, Rushville, NE
 Immanuel Lutheran Church, Coleridge, NE
 Immanuel Lutheran Church, Chadron, NE
 Immanuel Lutheran Church, Brauersville, MO
 Immanuel Lutheran Church, Bethune, CO
 Immanuel-Zion Lutheran Church, Albion, NE
 King of Glory Lutheran Church, Loveland, CO
 LaJolla Presbyterian Church, LaJolla, CA
 Lord of Love Lutheran Church, Omaha, NE
 Lord of Love Lutheran Church, Belton, MO
 Luck Lutheran Church, Luck, WI
 Luther Memorial Church, Syracuse, NE
 Lutheran Church of the Cross, Evergreen, CO
 Lutheran Church of the Redeemer, Ft. Morgan, CO
 Lutheran Church of Hope, Broomfield, CO
 Lutheran Church of the Master, Lakewood, CO
 Lutheran Church of the Master, Omaha, NE
 Lutheran Church of the Resurrection, Racine, WI
 Martin Luther Church, Auburn, NE
 Montclair Lutheran Church, Denver, CO
 Mountain View Lutheran Church, Thornton, CO
 Nazareth Lutheran Church, Cedar Falls, IA
 Olivet Lutheran Church, Inglewood, CA
 Our Savior Lutheran Church, Colorado Springs, CO
 Our Savior Lutheran Church, Plainview, NE
 Our Savior Lutheran Church, Greeley, CO
 Our Savior Lutheran Church, Norway, KS

Our Savior Lutheran Church, Dannebrog, NE
 Our Savior Lutheran Church, Buffalo, MO
 Our Saviour Lutheran Church, Audubon, IA
 Our Saviour Lutheran Church, Sioux City, IA
 Our Saviour Lutheran Church, Lincoln, NE
 Peace Lutheran Church, Edmond, OK
 Peace Lutheran Church, Plymouth, NE
 Peace Lutheran Church, Alma, NE
 Peace Lutheran Church, St. Francis, KS
 Peace Lutheran Church, Deshler, NE
 Peace American Lutheran Church, Sterling, CO
 Peace American Lutheran Church, Bessie, OK
 Peace Evangelical Lutheran Church, Akron, CO
 Pella Lutheran Church, Omaha, NE
 Pella Lutheran Church, Sidney, MT
 Prince of Peace Lutheran Church, Geneva, NE
 Prince of Peace Lutheran Church, Omaha, NE
 Ruskin Heights Lutheran Church, Kansas City, MO
 Salem Lutheran Church, St. Francis, KS
 Salem Lutheran Church, Superior, NE
 Salem Lutheran Church, Lenexa, KS
 Shepherd of the Hills, Ft. Collins, CO
 Sheridan Lutheran Church, Lincoln, NE
 St. James Lutheran Church, Humboldt, IA
 St. John American Lutheran Church, Beatrice, NE
 St. John Evangelical Lutheran Church, Daykin, NE
 St. John Lutheran Church, Bird City, KS
 St. John Lutheran Church, Athol, KS
 St. John Lutheran Church, Windsor, CO
 St. John Lutheran Church, Randolph, NE
 St. John Lutheran Church, Kensington, KS
 St. John Lutheran Church, Eustis, NE
 St. Mark Lutheran Church, Aurora, CO
 St. Mark Lutheran Church, Olathe, KS
 St. Mark Lutheran Church, St. Paul, NE
 St. Paul Evang. Lutheran Church, Cole Camp, MO
 St. Paul Lutheran Church, Sidney, MT
 St. Paul Lutheran Church, Byron, NE
 St. Paul Lutheran Church, Palmer, KS

St. Paul Lutheran Church, Gilead, NE
 St. Paul Lutheran Church, Auburn, NE
 St. Paul Lutheran Church, Nevada, MO
 St. Paul Lutheran Church, Oklahoma City, OK
 St. Paul Lutheran Church, Burlington, CO
 St. Paul Lutheran Church, Tescoit, KS
 St. Paul Lutheran Church, Neola, IA
 St. Paul Lutheran Church, Omaha, NE
 St. Paul Lutheran Church, Republican City, NE
 St. Paul Lutheran Church, DeWitt, NE
 St. Paul Lutheran Church, Hildreth, NE
 St. Peter Lutheran Church, Byron, NE
 St. Peter Lutheran Church, Luck, WI
 Trinity Lutheran Church, Albert Lea, MN
 Trinity Lutheran Church, Ellsworth, IA
 Trinity Lutheran Church, Russellville, MO
 Trinity Lutheran Church, Newman Grove, NE
 Trinity Lutheran Church, Ft. Collins, CO
 Trinity Lutheran Church, Fowler, CO
 Trinity Lutheran Church, DeWitt, NE
 Trinity Lutheran Church, Hartington, NE
 Trinity Lutheran Church, Bruning, NE
 Trinity Evangelical Lutheran Church, Clinton, OK
 Underwood Lutheran Church, Underwood, IA
 United Emmanuel Lutheran Church, Russell, KS
 United Lutheran Church, Hampton, NE
 United Lutheran Church, Laurel, NE
 Westwood Lutheran Church, Shawnee Mission, KS
 Zion American Lutheran Church, Loveland, CO
 Zion American Lutheran Church, Benkleman, NE
 Zion Lutheran Church, Pickrell, NE
 Zion Lutheran Church, Amoret, MO
 Zion Lutheran Church, Johnson, NE
 Zion Lutheran Church, Creighton, NE
 Zion Lutheran Church, Clay Center, NE
 Zion Lutheran Church, Phillipsburg, KS
 Zion Lutheran Church, Franklin, NE
 Zion Lutheran Church, Carleton, NE
 Zion Lutheran Church, Everett, KS

MEMORIALS

Each year Dana College receives a considerable number of gifts given to honor the memory of friends and relatives. Those remembered by memorial gifts during the past year include:

Rev. and Mrs. I. M. Andersen
 Alice Anderson
 Agnes Beck
 Ron Bees
 Richard Bird
 Laurits and Karen Bondo
 Anna Bracon
 Jeanne Bruning
 Marie Brunke
 Dr. and Mrs. Frank Edwards, Jr.
 B. J. Engskow
 Elmer Falksen
 Carl W. Fredricksen
 Anders Hansen
 C. X. Hansen
 Ray Hansen
 Mrs. Serena Hansen
 Mrs. T. M. Hansen
 Arndt Hanson
 C. W. Hanson
 Gladys Hernes
 Ervin Hesselgesser
 Dr. Boyd Horst
 Clarence Jensen
 Mrs. P. C. Jensen
 Rev. and Mrs. Christen Jeppesen
 Verne Johnson
 Marguerite Kathmann
 Herman Kuhr
 Dorothy Lawson
 E. Clark Lippincott
 Selma Madsen
 Mrs. B. C. Mann
 Jim McKay
 Leroy Meyers
 Emil Moerer
 Everett Morgan
 Mr. and Mrs. Carl Nelson
 George Neve
 Christian M. Nielsen
 Rev. and Mrs. Frank Nielsen
 Niels Nielsen
 Waldo Nielsen
 Rev. Emil Pedersen
 Waldo Petersen
 Mr. and Mrs. Allen Petersen
 Ellis Petersen
 Elsie Petersen
 Mrs. Hans Petersen
 Howard Petersen
 Ella Peterson
 Harold Quirk
 Kirsten Reed
 Don Ring
 Lillie Rogers
 Mr. and Mrs. Dyke Sandell
 Helen Schaff
 Marge Seim
 Fred and Anna Siefker
 Anker Siersbeck
 "Buck" Sorensen
 Mrs. Harold Sorensen
 Bill Steyer
 Baby Stodola
 Edward Swanson
 Mark Taft
 Ingeborg Jensen Taylor
 Helen Terkelsen
 Verner Thomsen
 Clem Vig
 Mrs. Eli Vig
 A. Worthmann
 Boas Weismann
 Fred Weiners

OTHER CHURCHES AND ORGANIZATIONS

American Lutheran Church, Belmond, IA
 American Lutheran Church, Cozad, NE
 Avondale Lutheran Church, Denver, CO
 Bethesda Lutheran Church, Eugene, OR
 Bethlehem Lutheran Church, Longmont, CO
 Centinela Valley Conference, Los Angeles, CA
 Central District ALCW
 Council Bluffs Ministerial Association
 Colorado Springs ALCW
 Cross of Glory Lutheran Church, Denver, CO

Faith Lutheran Church, Eaton, CO
 First Lutheran Church, Algona, IA
 First Lutheran Church, Vista, CA
 Kansas City Conference
 King of Glory Lutheran Church, Independence, MO
 Lost Island Lutheran Church, Ruthven, IA
 Luther Evangelism Rally, Altoona, WI
 Lutheran Youth Encounter, Minneapolis, MN
 Nazareth Lutheran Church, Kenmore, ND
 Northeast Nebraska Conference ALCW

Northern Kansas Conference
 Our Savior's Lutheran Church, Council Bluffs, IA
 Peace Lutheran Church, Arapahoe, NE
 Peace Lutheran Church, Newton, KS
 Southeast Conference ALCW
 So. Wisconsin District of the ALC
 Soldier Lutheran Church, Soldier, IA
 Southwest Kansas Conference ALCW
 St. John's Lutheran Church, Pittsburg, KS
 St. John's Lutheran Church, Kanawha, IA
 St. John's Lutheran Church, Boyden, IA

St. Paul Lutheran Church, Treynor, IA
 St. Paul's Lutheran Church, Millard, NE
 State Line Lutheran Church, Wymore, NE
 Trinity Lutheran Church, Eau Claire, WI
 Trinity Lutheran Church, Mason City, IA
 Trinity Lutheran Church, Stover, MO
 Upper Wolf Lutheran Church, Robinson, KS
 Westside Methodist, Oakland, NE
 Zion Lutheran Centennial Comm., Elgin, IL
 Zion Lutheran Church, Rich Hill, MO

