

# DANA REVIEW

Fall 1983



Celebrating Our Centennial . . .

# DANA REVIEW

Volume 40

Fall 1983

Number 1

(USPS 147-940)

*A magazine for alumni and other friends of Dana College and Trinity Seminary, published four times annually. Printed by Acme Mail Advertising Co., Omaha, Nebraska, with editorial and business offices located at Dana College, 2848 College Drive, Blair, Nebraska. Second class postage paid at Blair, Nebraska 68008.*

**Photographs by Mark Amman '84 and Peter Jacobson '84.**

## **Non-discrimination Policy**

*Dana College admits students without regard to sex, age, race, color, religion or national origin to all the rights, privileges, programs, and activities generally made available to students at the College. It does not discriminate on the basis of sex, race, color, age, handicap or national origin in administration of its educational policies, admission policies, scholarship and loan programs, athletics, or other school-administered programs.*

**About the cover** — John '50 and Ginny Lippincott '51 Beck led the October 30 Centennial procession from First Lutheran to the campus in a horse-drawn carriage like those used in the last century by A. M. Andersen and other Danish pioneer pastors in traveling to the rural congregations they served. (See article on Andersen, page 8.)

Beck, Dana's director of development, is the great-grandson of Marcus Beck, one of the founders of Trinity Seminary, Dana's mother institution. Beck's maternal grandfather was an early Trinity graduate.

The Danish pastor's ruff Beck is wearing is authentic, but his beard isn't. The ruff, borrowed from the Dana archives, belonged to Pastor R. K. Jensen, the father of the late Mrs. J. P. Nielsen. The beard was created by Dana senior Peggy Dutch. On the day of the procession Ginny Beck wore a duster coat made in the last century by the mother of Agnes Petersen Johansen '35.

Clark Jenson, a member of First Lutheran, provided the horse and carriage. *Photo by Mark Amman*

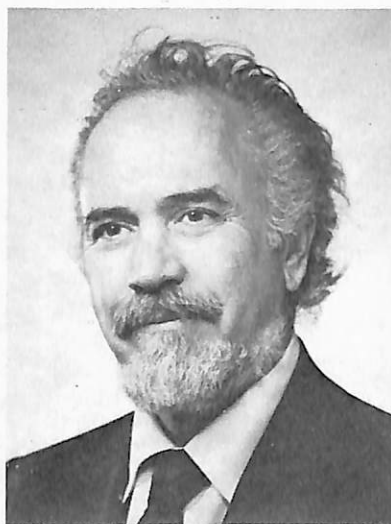
## **Greetings, Friends in Christ!**

During this our Centennial Year Celebration I have had many opportunities to see our Centennial film, *The Dana Difference*. We show it at alumni banquets, student recruiting evenings, fund-raising events, etc. It is a fine film of professional quality and well done. The film sketches out cleanly and impressively where we came from, what we are doing, and what we strive to become.

Included are photos of the founders, those who brought the school into being a century ago, along with statements of their original purposes. Also included are pictures of our present students and faculty, along with statements of what Dana means to them. And then the film closes with a summary of the hopes and dreams we hold high for our second century.

As I said, I have had opportunity now to see the film many times, over and over again: One would think that a kind of fatigue might set in! A mental weariness, an "I've seen it all before" kind of boredom! And, I must confess, there are a few moments now and then when I do find myself napping — especially during those parts where I hear my own voice coming back at me out of the film!

But, friends in Christ, there comes a brief section — no more than four or five minutes long — when, no matter how



many times I have seen it before, I find myself leaning forward, excited with anticipation, moved with emotion. There is a section in that film that is powerful, touching, tenderly evocative, stirring in its impact. The photos of the founders . . . that parade of patriarchs, that procession of pioneers who first created Dana. There they march across the celluloid. Stern-looking men. Bearded, some with clerical collars, most of them middle-aged, all of them with that hardened look that comes from weather-beaten farmer faces looking across untamed prairies. One sits, watching the faces, in an attitude of awe and admira-

tion, knowing that we are witnesses to extraordinary courage and vision.

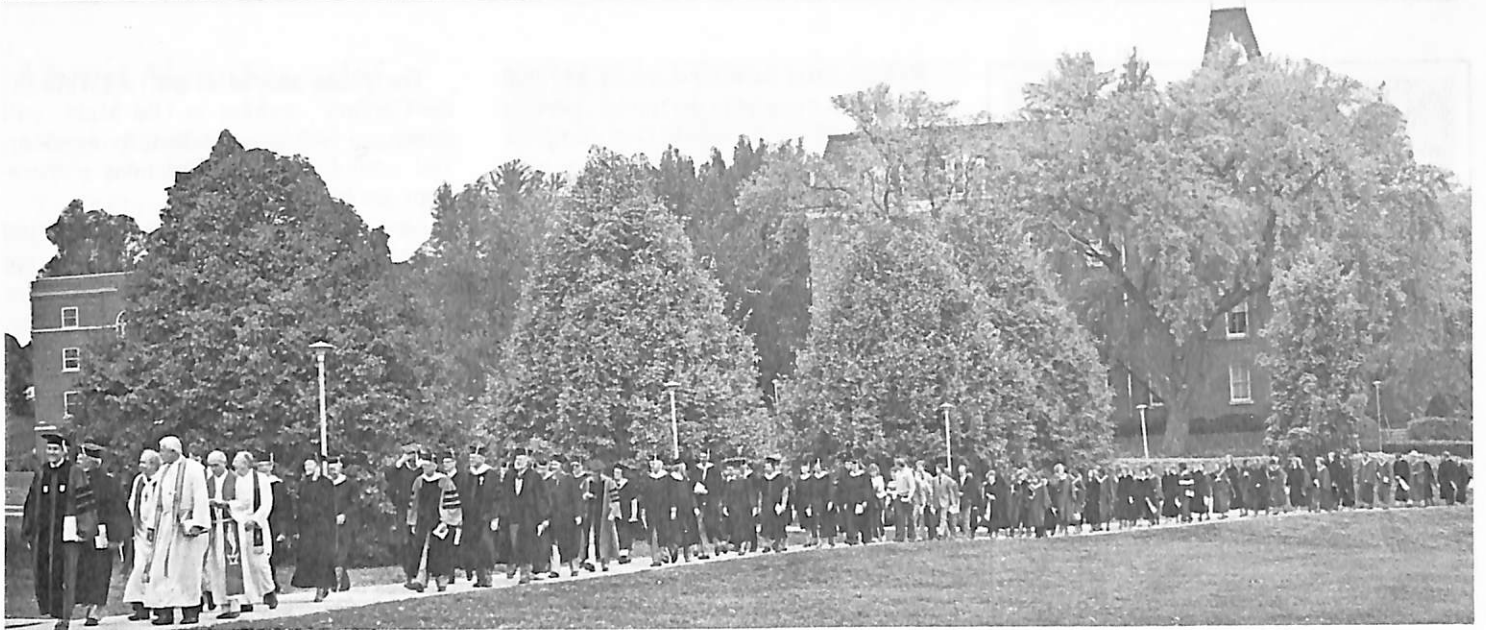
These were the people who launched Dana, who began a college, a hundred years ago, in an unknown land. The film reminds us that most of them were beyond college age, their studies ended, some of them still unable to speak the language of the new land, many of them still living in little soddies on the Nebraska plains with no money and no social status, not men of means, and yet there they were building a college. Building a college so that yet unborn generations of young people would have the opportunity to get a Christ-centered education and thus be fully prepared for the perilous opportunities of an unfolding continent.

These early founders knew that education was more than facts and figures. Education, to be the enlightening life-changing force it could be, had to be infused with moral and spiritual values, it had to be grounded in the cross and resurrection — the love and the power — of our Lord Jesus Christ!

That is what moved them to sacrifice for this school — they had the dream of a place where lives could be touched for Jesus. And, friends in Christ, on the eve of the second century of service, that Dana dream is very much alive today.

In Jesus' name,

Dr. James Kallas, President



*One Hundred Years of Making a Difference . . .*

## Centennial Celebration Begins

Dana College and First Lutheran Church in Blair co-celebrated the opening of their centennial years October 30 at two morning services at First Lutheran and a 2 p.m. service at Dana. Both were founded in 1884 by Pastor A. M. Andersen, a Danish pioneer.

Dr. David Preus, presiding bishop of the American Lutheran Church (ALC), spoke at all three services.

Bishop Wayne Weissenbuehler of the ALC's Central District and Dana President James Kallas brought greetings at the campus service, Kallas saying that "Dana has always been a child of the church," and Weissenbuehler that "We love you, we support you, we are proud of you."

Preus quoted Martin Luther, whose 500th birthday Lutherans are celebrating this year: "When the schools prosper, then all is well and the church flourishes, provided the teaching is pure./ Young students are the seed and source of the church. And when we die, from whence come others to take our places, if not from the schools?/ For the sake of the church, then, we must establish and maintain Christian schools; for God upholds the church through the schools, and the schools uphold the church."

"That which called Dana College into being and that sustains it," Preus said, "is that it is a school of the church, an arm of the church. Dana is not 'related to' the church, but is an arm of the church, needed even today as it was 100 years ago."

Preus called A. M. Andersen "a pastor with a passion, one of those people who devoted their lives to the building of the

church and its educational arms."

"Dana," he said, "has excellent facilities that are getting better all the time, but — more important — it is a school of the church with people its prime commodity. God bless Dana College as it launches into its second century."

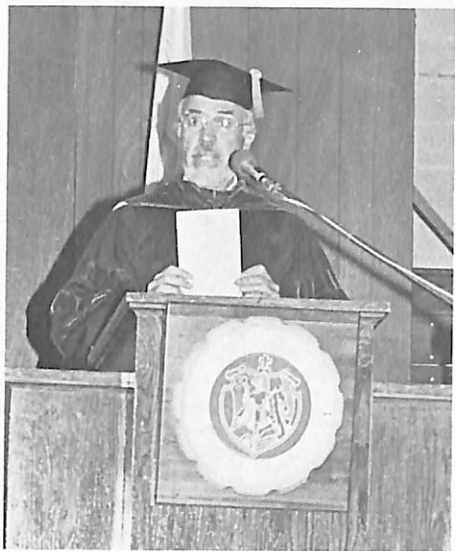
President Kallas gave Preus, Weissenbuehler, and First Lutheran Church, represented by Pastor Carl Schattauer '52, Dana Hundred awards. Mr. Lars Granath

of Norfolk, Nebraska, general agent for Aid Association for Lutherans (AAL), presented Kallas with a \$25,000 check for the college as a 100th anniversary present from AAL.

The combined choirs of First Lutheran and Dana, under the direction of Prof. Paul Neve '41, sang at the service. A reception in the E. C. Hunt Campus Center followed the ceremony.

*Pausing on College Drive where the faculty joined the procession: from left, Pastor Carl Schattauer '52, First Lutheran Church; Dr. C. C. Madsen '31, president emeritus of Dana; Dr. David Preus, presiding bishop of the American Lutheran Church; President Kallas; and Bishop Wayne Weissenbuehler of the ALC's Central District.*





## A Century of Classes

At opening convocation September 6 — **President Kallas:** "... with enthusiasm for the future and appreciation for the past, we open the present, Dana's 100th year." ... **Student Body President Chris Specht '84** to fellow students: "Our accomplishments this year can begin Dana on its second hundred years of service to its students." ... **Dr. William Christensen, author of Saga of the Tower, the history of Dana's first 75 years, to freshmen:** "You have chosen well in coming to Dana. Take advantage of all Dana has to offer, and let the spirit of Dana become a part of your spirit."

## College Launches New Scholarships

A completely new scholarship program offers four levels of financial assistance ranging from \$12,000 to \$3,200 to high school seniors with ACT composite scores of at least 30, 26, 22, and 20. The scholarships will be given over four years of study at Dana.

Admissions Director Dennis Barnum describes the scholarships as "a fresh and exciting approach to our student financial aid program."

"Our purpose," he said, "is to elevate and further enhance the level of scholarship and academic integrity at Dana. For students, we seek to encourage achievement in academics by providing generous scholarships to recognize attained excellence."

The four scholarship levels and criteria for awarding them are:

### Presidential Scholarships at \$12,000

— Students must be in the top five percent of their graduating class and have an ACT of 30/SAT of 1260 (or above) *or* be a National Merit Finalist. Recipients must maintain an annual grade point average of 8/A, with 9 the highest possible grade on the stanine scale.

### Regents Scholarships at \$8,000

— Students must be in the top ten percent of their graduating class and have an ACT of 26/SAT of 1050 (or above) *or* be a National Merit Semi-Finalist. To renew the scholarship, recipients must maintain an annual grade point average of 7.5/A.

### Academic Scholarships at \$4,000

— Students must be in the top 33-1/3 percent of their high school graduating class and have an ACT of 22/SAT of 900 (or above). To renew the scholarship, recipients must maintain an annual grade point average of 6/B.

### Achievement Scholarships at \$3,200

— Students must be in the top 40 percent of their high school graduating class and have an ACT of 20/SAT of 840 (or above). To renew the scholarship, recipients must maintain an annual grade point average of 5.5/B.

For further information about the scholarships, call Barnum collect at 426-4101, ext. 311, or mail the coupon on page 14 to him.

## Magazines Select "Sights and Sounds"

Articles in the December 1983 issues of *Better Homes and Gardens*, *Travel Holiday*, and the Cornhusker Motor Club's *Home and Away* include "Sights and Sounds of Christmas" as one of this country's outstanding Christmas festivals.

Because this is Dana's Centennial Year of Celebration, two special events have been added to the full schedule of traditional activities. A highlight will be the appearance of guest soloist Donna Petersen of the San Francisco Opera and the Lyric Opera of Chicago. She will sing at the 3:45 p.m. "Sounds of Christmas" concert, which includes performances by the Dana Band and Choir.

Miss Petersen is the daughter of Alma Madsen Petersen '22 and the late Pastor Spencer Petersen '21. A mezzo soprano, she has appeared as guest soloist with Zubin Mehta and the Los Angeles Philharmonic and with Seiji Ozawa and Joseph Krips and the San Francisco Symphony.

The other special event, a "Turn-of-the-Century" exhibit in Old Main, will recreate a Nebraska kitchen, living room, and school room as Christmas preparations are being made.

New and returning visitors will also find traditional favorites — among them the noon and evening smorgasbord; Christmas rooms featuring the customs, decorations, and foods of Denmark, France, and Germany; instructions in making Danish Christmas ornaments; "Storytime"; the Santa Lucia ceremony; "Another Starry Night" — two one-act Christmas plays; "Songs of the Season" — an informal recital by music students and faculty; an art exhibit by art students; and performances by the Dana Folk Dancers.

New this year are "An International Christmas" with samples of foods and traditions from around the world presented by Dana's foreign students, and "Feliz Navidad," a Spanish Christmas presented by students taking Spanish.

## Danish Museum Seeks Director

The Board of the Danish Immigrant Museum seeks a director to assume a major role in developing and operating the new facility on a 20-acre site in Elk Horn/Kimballton, Iowa. The museum's focus is collection, preservation, and interpretive exhibition of Danish immigrant material culture in North America.

Strong administrative and acute public relations skills, fund-raising experience and ability, and curatorial skills are required. Candidates should have a background in Northern European ethnography/history and American cultural history. This is an exceptional opportunity for an individual capable of planning a museum and its program.

The salary will range from \$18,000 to \$22,000 with additional fringe benefits. The closing date for applications is January 15, 1984.

Send statement of interest, resume and academic transcript, and the names, addresses, and telephone numbers of three references to Donald K. Watkins, Department of Germanic Languages and Literatures, University of Kansas, Lawrence, Kansas 66045.

The Danish Immigrant Museum is an Equal Opportunity/Affirmative Action employer.

## About New Faculty . . .

Three full-time and four part-time teachers joined the faculty this fall.

The full-time professors are Norman Cobb, assistant professor of social work and sociology; Dr. Michael Doyle, associate professor of economics; and Dr. William Mayson, assistant professor of music.

Cobb is completing work on a doctor of social welfare degree at the University of California, Berkeley. He is at the dissertation stage. Cobb has a B.A. in mathematics from Texas Tech University, an M. Div. from St. Paul School of Theology, and an M.S. in social work from the University of Texas at Arlington.

A United Methodist minister with an extensive background in counseling, he has taught at the University of California, Berkeley. He and his wife, Catheleen Jordan, have two children. They have moved to Blair from Albany, California.

Doyle's Ph.D. and M.S. are from the University of Nebraska-Lincoln. His B.S. is from Iowa State University. He has taught at the University of Nebraska for seven years. His research background includes agricultural economics and the effects of economics on college students.

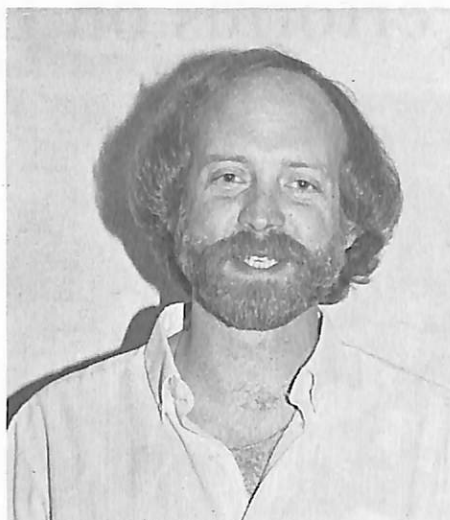
Mayson's D.M.A. is from Ohio State University. He received both his bachelor of music and master of music education degrees from Oberlin Conservatory. He has more than ten years of performing experience on the tuba and six years of experience in directing bands. He has taught at Ohio State University, where in 1981 he was named the School of Music's Outstanding Brass Department Teaching Associate.

Dr. Mayson has also served as assistant director and music director for the Aaron Copland Music and Arts Program. He and his wife, Lin, have moved to Blair from Bainbridge, Ohio.

The four new part-time faculty members are Mr. Bruce Belzowski, Mrs. Marilyn Ehline, Mrs. Sylvia Fen, and Mrs. Catheleen Jordan.

Belzowski, part-time instructor in English and humanities, has an M.A. in English literature-theater from the University of Michigan, Ann Arbor. His B.A. in English literature is from the University of California, Berkeley. He has taught at Creighton University's Lifelong Learning Center.

Mrs. Fen, part-time instructor in German, has an M.A. in German literature



Norman Cobb



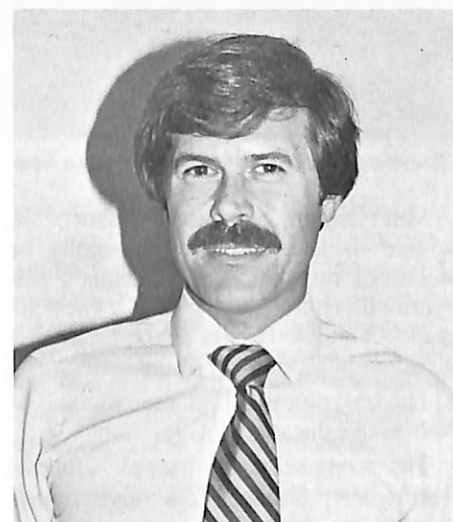
William Mayson

from the University of Nebraska-Lincoln and a B.A. in English literature from George Washington University. She has also taught at Doane College.

Mrs. Ehline and Mrs. Jordan are part-time instructors in sociology and social work.

Mrs. Ehline's master of social work degree is from the University of Nebraska at Omaha. Her B.A. in social work is from Gustavus Adolphus College. She has taught at Creighton University and has had 14 years of experience in many areas of social work, including child welfare, mental health, alcoholism, aging, marriage and family counseling, and psychotherapy.

Mrs. Jordan's M.S. in social work is from the University of Texas at Arlington. Her B.A. is from the University of Houston. She is completing her dissertation for a doctor of social welfare degree at the University of California, Berkeley. She has also taught at that university's School of Social Welfare and has been a counselor, primarily in child and family welfare.



Michael Doyle

## New Assignments . . .

Several faculty members assumed new responsibilities this fall.

Prof. Arvin Hernes, associate professor of physics, is computer coordinator. Prof. Don Warman, assistant professor of history and political science, is also teaching fundamentals of computer science. Mrs. Diana Brown, part-time instructor in French, also teaches Spanish. And Dr. Paul Neve '41 became chairman of the music department.

## Promotions, Tenure . . .

President Kallas announced the promotion of two faculty members and the granting of tenure to another at opening convocation September 6.

Don Baack '75 was promoted to assistant professor of business administration, and John Mark Nielsen '73 to assistant professor of English. Sieghard Krueger, assistant professor of speech and theater, was given tenure.

## And Service

Receiving watches at the September 1 opening dinner in recognition of 25 years as Dana employees were Luella Nielsen '42, English; Phil Pagel '56, public relations; and Dr. Ray Weckmuller '52, education.

# Art Professor Performs on ETV Series



*"Strawberry Square II" — Heinrich joins in a Japanese street festival. His wife, Jane '82, is in the background.*

Milt Heinrich, assistant professor of art, is one of several artists appearing on Nebraska Instructional Television's new "Strawberry Square II: Take Time" for grades 3 and 4. He has also been closely involved in production of the series.

The program was first aired this fall on Nebraska Educational Television.

The one-semester series follows "Strawberry Square I," a yearlong production for children in kindergarten and first and second grades. Created in 1981, it is now being shown in ten states. It was produced for the Nebraska State Department of Education in response, Heinrich said, to requests by elementary school teachers for help in teaching the arts.

"Strawberry Square I" is based on music as the center of life, Heinrich said. The second series expands that concept to the arts as the center of life, with all of the arts being explored within the program's context. Children interacting with the artists is a vital part of each program.

The success of the first "Strawberry Square" series made funding available for the second level, Heinrich said. The second half of "Strawberry Square II" will be produced this spring, and he will again be involved.

Heinrich said that he was first asked to serve as a consultant to the program's writers. Then about a year ago the producers decided to cast artists instead of professional actors, and he was commissioned to do a relief mural of found

objects, similar to his mural in Blair's Huntel building, on the show.

"At times work was very intensive," he said. A 15-minute show took 32 hours to produce — 16 for rehearsals and 16 for shooting — all in the evening.

Also appearing as extras are his children, Amy and Chris, and his wife, Jane '82, a first-grade teacher at Blair's North

School. Their participation "has changed my family's view of television," he said.

Dana art students also went along on his evening trips to Lincoln, and they too appear as extras.

"Art doesn't happen only in the classroom," Heinrich said. "I wanted to include our students in a real-life situation for artists. If you're an art educator, you have to find ways to support the arts, and I wanted our students to see that."

"I'm not an actor, and I had to sing and dance and do other things that were personally threatening. I wanted our students to understand that for the sake of arts advocacy, you do these types of things."

"I also wanted our commercial art majors to see set designers at work — to see that there's more to commercial art than paste-up and advertising, and that what we do in the classroom can also apply to what professionals were doing for the production."

Heinrich participated in Strawberry II workshops this fall at elementary schools in Omaha, Fremont, Columbus, Auburn, Beatrice, and Milford.

Other artists appearing in the series include Nebraska State Poet William Kloefkorn, dancer Sandy Christoffersen, deaf mime Ricky Smith, and the Nebraska Theater Caravan.

## President Leads Swim Across Suez Canal



*"We made it!"*

No records were broken, but a Kallas-led swim across the Suez Canal last August was nevertheless a memorable part of the president's annual Holy Land tour.

Swimming with Kallas (second from right) were five prospective Dana students: (from the left) Californians Bill and John Peterson, Lonnie and Lester

Hilkemeier, and Dennis Mohling, all from Colorado.

Bill and John were tour guests of their grandmother, Christine Kloth Peterson, the sister of Pastor Adolph Kloth '39.

Next summer Kallas's Holy Land tour (departing August 3) starts with a visit to Oberammergau for the Passion Play. Write him at Dana for details.

## About Institutional Advancement

### Development

by Dennis Barnum,  
Executive Director for  
Institutional Advancement

*This past summer the development and admissions functions at Dana were reorganized into a new Institutional Advancement Division. The new executive director for institutional advancement is Dennis Barnum, a former Dana administrator who returned to the campus in June. Barnum has administrative responsibility for development, including fund-raising, planned giving, alumni affairs, and admissions, including student financial aid. This column on institutional advancement with his byline will be a regular feature of the Dana Review.*

The mission of Dana College is to provide students with a personalized education of excellence for careers and for a full life in a caring Christian campus community.

Dana is supported in its mission by students and their parents who identify with Dana and the opportunities available for quality Christian education. Indeed, at a time when many private colleges are experiencing drastic declines in enrollment from a shrinking student pool (and some are even closing their doors), Dana is pleased to report a slight increase in the number of new students enrolled for the 1983 fall semester. Overall enrollment is down about five percent due in part to an unusually large senior class that graduated last May.

Dana alumni and friends are supporting the college at record levels. Dana Centennial Fund campaign commitments (at this writing) have passed \$4,700,000 toward our campaign goal of \$6,000,000. This represents over 78 percent achievement with about one year to go in our Centennial drive.

John Beck, former associate director of development and director of alumni affairs, has been promoted to the position of director of development. Beck has

major responsibility for directing Dana's fund-raising programs, including the \$6 million Centennial Fund.

Sharon Gordon, who has been with the college in several capacities during the past 12 years, has been promoted to the position of director of planned giving and director of alumni affairs. Mrs. Gordon is a certified fund-raising executive with the National Society of Fund-Raising Executives and a graduate of the University of Nebraska-Lincoln.

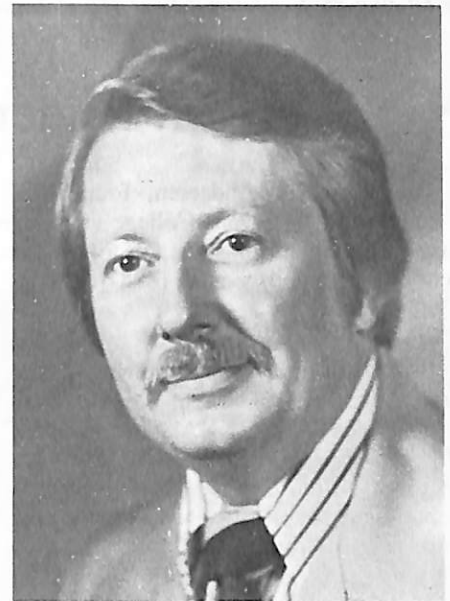
Robert Schmoll and Tamara Weber have been named development associates, and they will be working with geographic area campaigns and the church phase of the Dana Centennial Fund campaign.

Our church campaign is now under way throughout the entire Central District of the American Lutheran Church. The goal is \$1 million in "Faith Commitments" over three years. We hope that the 267 congregations of the Central District will respond with great generosity from the blessings that have been theirs.

The Dana Planned Giving Program is receiving heavy emphasis. The Builders Club has now grown to 140 members. From these friends of Dana we have expectancies of about \$2 million. We currently know of nine estates that are pending, from which Dana will receive gifts. Members of our development staff are receiving both formal and informal training in planned giving, so that Dana will be in a better position to serve planned giving donors.

Dana area campaigns continue to produce new friends and funds. Since launching our Centennial Fund drive in November 1981, 19 area campaigns have been conducted. Over the next year we plan to conduct 12 to 15 additional campaigns in other geographical locations.

Persons who have not yet made campaign commitments will be called during our Phonoramas. Dana alumni and friends will also receive selective direct mail appeals to consider gifts to Dana.



A new project now being planned is our alumni/student recruitment program, whereby alumni in selected geographic areas will host receptions for prospective students and alumni. Dana admissions staff members would conduct a brief program and field questions. We plan to launch this program this winter with a pilot program in five to ten areas.

Dana is enjoying great success in her Centennial Fund drive because alumni and friends believe in the mission of the college and respond to the challenge of supporting Dana in successfully pursuing her mission. Everyone involved is excited about being a part of the campaign.

The three-year \$6 million Centennial Fund will provide for a new performing arts center, the complete interior renovation of Old Main and exterior restoration, a new permanent chapel, additional endowment, and operational support.

As we enter the final year of this Centennial Fund campaign, we urge you to continue your generous support (or if you have not begun, to join with us) in assuring that Dana College will meet and exceed our \$6 million goal — and continue to thrive and flourish in the years to come.



During the Centennial Year of Celebration, these center spread pages will feature old photographs and stories about Dana's past.

## A. M. Andersen: Pioneer Pastor, First President

Pastor A. M. Andersen, founder of Trinity Seminary, Dana College's mother institution, lived long enough to see the school he established in 1884 reach its 57th year.

Born in Denmark in 1847, Andersen died in California in 1941 when he was 94. One of seven children of a pious farm couple, as a young man Andersen learned the weaver's trade. After fulfilling his required military service, he decided to become a pastor, a decision his father opposed so strongly that he disinherited his son.

Andersen entered a folk high school in Denmark and took lessons from his home pastor, who, Andersen wrote in his later years, "advised me to go to America to be educated among my countrymen there."

He arrived in Wisconsin in the spring of 1872, worked on a farm over the summer, and that fall went to Minneapolis to attend Augsburg Theological Seminary, which at that time was supported by Norwegian and Danish Lutheran congregations in this country.

In 1874 Andersen spent the summer in Two Rivers, Minnesota, teaching school and "preaching Danish to the settlers on Sunday," he wrote.

How did he come to Nebraska? He recalled that "At about the close of that vacation came an urgent wish from Rev. H. Hansen, who had been sent to Nebraska in the spring to survey the mission field among Danes in that state, for help. Officers of the church wrote and asked me to come back to the Seminary to pass examinations for the ministry in view of being ordained and sent to Nebraska as assistant to Rev. Hansen. It was in October, 1874. After visiting families in Omaha and several Danish settlements in eastern Nebraska, we went to Dannebrog, Nebr., where a congregation had been organized. A meeting was called, I preached, and in a business meeting after the service I was called to be its first local pastor. I accepted.

"From Dannebrog we went to Grand Island, where we had a meeting in a private house in the evening. Next day we went to a settlement in Hamilton County."

It was on this trip that the farm wagon Hansen and Andersen had hired became

stuck in the Platte River. Their driver unhitched the two horses and rode one to a nearby farm for help while the two pastors, stranded in the river, "sat in the wagon, shivering in the strong November north-west gale" until help came — the farmer with a span of oxen and an iron cable. The farmer's wife "had a good meal ready for us," Andersen wrote, "and we soon forgot our adversities."



Andersen

In Hamilton County they "had a fine meeting in a sod school house," because there were no churches. Again, he was called to serve "one Sunday a month," and he accepted.

Eventually, he had three more mission points — three in Howard County, six, eight, and 15 miles from Dannebrog, one in Seward County 100 miles away, and another in Nuckolls County 120 miles from Dannebrog.

Andersen traveled with a horse and buggy. When his mare died, he borrowed a mule from a friend. Because he couldn't serve all of those places on Sundays, "those farthest off had to be satisfied with weekday services, and that they were."

In 1875 Andersen married — "No use to say that our means were small," he recalled. He and his wife eventually had seven children. After about one and one-

half years in the Nebraska mission field, he was called by a congregation in Racine, Wisconsin. He stayed there for three and one-half years, and then accepted a call back to Nebraska, this time to the eastern part of the state — to Washington and Burt Counties.

"My work there," he wrote, "led to the beginning of a mission in Blair. And in 1883 we had a house built and moved there." (The house, much remodeled, still stands at 2104 Park. It is owned by the Otto Staves.)

Andersen served several other congregations as well — including those at Argo, Fremont, and Kennard. In 1884 he journeyed to Denmark on church matters. Then in September that year, at the church in Argo, the Danish Evangelical Lutheran Church Association in America was organized, and "that led to the beginning of our school, Trinity Seminary," he wrote.

"I was elected to start it, and it was begun in our house with a few students. In the course of two years funds were collected and a building erected on the hill west of Blair, that city contributing \$3,000 towards it. The cost of it was \$7,000. It was dedicated October 21, 1886."

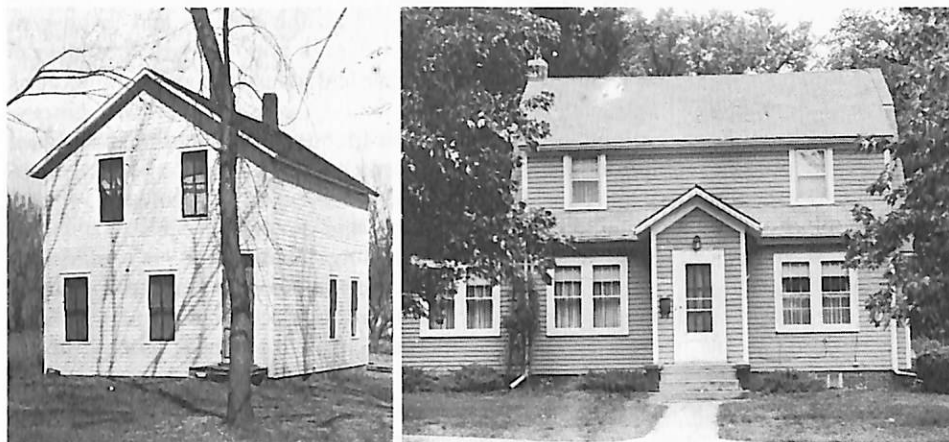
In 1884 and 1885 students not only attended classes in Andersen's home, but also lived and ate there. After the central section of what we now call "Old Main" was completed, the Andersens lived in a first-floor apartment in the new building, and the students — all male — lived in dormitory rooms on the third and fourth floors. Mrs. Andersen continued to cook for the students for several years until they formed a boarding club and hired their own kitchen manager.

In addition to his teaching and administrative duties, Andersen continued to serve four congregations. He was also a member of Blair's first Board of Education.

In 1889 he accepted a call to Hampton, Nebraska, to a congregation he had served earlier. After five years there he returned to Trinity Seminary to teach theology. In 1896 he went to South Dakota to serve congregations at Viborg, Spring Valley, and Gayville. He and his family returned to Blair once more in 1902 when he was



The Andersen house at 2104 Park where classes were first held in 1884, and the house today. It is now the residence of Otto and Lydia Nielsen '43 Stave.



named editor of the church publication, *Danskeren*. From that year to 1909 he was a board member of the school he founded. The Andersens remained in Blair until 1922, when they moved to Beresford, South Dakota. He served a congregation there, and then in 1935 moved to Glendale, California.

What kind of a man was A.M. Andersen? About his father who had disinherited him, he later said that he thought his father had been sincere in doing what he thought he should, "so I loved him all the same, and I don't doubt but that he also loved me."

Dr. William Christensen in his history of Dana, *Saga of the Tower* (1959), writes that Andersen's daughter-in-law, Mrs. R. C. Andersen, "recalls that when he arose he always straightened himself up to

his full height, pushing his shoulders back." He was "very temperate in all things, once refusing a second helping of one of his favorite dishes with the words, 'Surely I could easily eat another plate full, but I believe I have had adequate food for this meal.'"

Andersen was a deeply religious person, Christensen writes, who "read

widely in different subjects and had a keen interest in politics."

In his later years his pioneering work among Danish-Americans was recognized by the king of Denmark with the Golden Cross of the Royal Order of the Knights of Dannebrog. And in 1938 Trinity Seminary, the school he had founded 54 years earlier, presented him with an honorary doctorate.

## 1899 Merger Brought Changes

In 1899 college classes and coeds entered the scene at Trinity Seminary.

Because there were few public high schools, academy classes were introduced when Trinity Seminary moved into Old Main in 1886. A preseminary course offered nontheological subjects from the beginning, and special summer classes for women started in 1891.

But it was in 1899-1900, when a co-educational Danish folk high school/college in Elk Horn, Iowa, merged with Trinity Seminary, that a four-year college course became part of the curriculum.

Under the leadership of its president, Pastor Kristian Anker, Elk Horn College enlarged its normal (teacher training) course and business department in 1890. Four years later it added a collegiate (liberal arts) department "to satisfy the urgent needs among our countrymen for a more practical and liberal education." These three departments were transferred to Blair, and Anker came with them as president of the merged institutions.

A three-story dormitory to house women was built close to the northwest corner of Old Main. The third and fourth floors of Old Main continued to be the men's dormitory.

Finding a name for the school took several years. The 1900-01 catalog calls it "Blair College and Trinity Theological Seminary," the 1902-03 catalog, "Trinity College and Theological Seminary," and,

finally, the 1903-04 catalog, "Dana College and Trinity Seminary."

There were eight departments of study: the seminary, a four-year seminary prepa-

*(continued on page 10)*

Can anyone identify the students and their teacher in this 1911 photo of an American literature class? (The building in the foreground is the women's dormitory that was razed in the 1920s. Students called it "Puella Town" — "puella" is Latin for "girl." Old Main is in the background.)



(Merger, from page 9)

ratory school, the academy, a Danish "Højskolen" (high school), music, normal, and commercial departments, and the college. In 1900-01 the entire student body numbered only 96.

Because the school's faculty was small, professors found themselves teaching in several departments — an English teacher, for example, might teach English and American literature and composition in the college department, business correspondence in the commercial department, and methods of teaching English in the normal department.

What were the early college courses like? According to the 1900-01 catalog (the "Second Annual Catalog" of the school and the first one in the Dana library archives), two courses of study were offered to the liberal arts student: a

"Classical Course" and a "Science Course." There were no electives and no majors as we know them today.

The influence of the European system of higher education at the time, with its emphasis on the classics and languages, was evident in both courses. Freshmen in the classical course, for example, took Latin and Greek literature and history, Danish literary history and composition, German, American literature and composition, mathematics, zoology, church history, and elocution (public speaking). Subheadings under these catalog listings name the works to be read in each course.

Among other required classes were mental science, political economy, ethics, astronomy, geometry, trigonometry, geology, and sociology.

The science course differed only in that Greek was not required, and there was a

heavy concentration on mathematics and the various sciences.

Nevertheless, students today looking through this early catalog would be able to identify with much of the course work, because they're still reading Shakespeare, Milton, Browning, Emerson, and Hawthorne, taking Danish and German, learning about Greek and Roman history and reading *The Iliad* and *The Aeneid* (but in English translation) in humanities, and studying zoology and English history.

If yesterday's students could sit in on classes today, however, they'd find that the content of courses with familiar titles had changed — consider, for example, what has happened in the sciences and sociology since the turn of the century. And certainly some courses, such as broadcast journalism and computer science, would astonish them.

## Dear Friends,

\$4,712,993.

### The number looks good!

As of early October the Dana College Centennial Fund had reached 79 percent of its \$6,000,000 goal in cash, pledges and gifts of stock. Put another way, 81 percent of the \$5,000,000 needed for operating and capital purposes has been pledged or given and 64 percent of Dana's \$1,000,000 endowment goal has been reached.

### The goals of the campaign are being achieved!

The **operation budget** of the college was subsidized by \$600,000 in 1981-82 and by \$700,000 in 1982-83. This vital money is "invisible" scholarship/financial aid to each and every student, for it helps to make up the difference between the actual cost of education and what students pay. This 1983-84 year will require another \$700,000.

Students and faculty are excited over the progress of Dana's new **Performing Arts Center**. The exterior walls and roof are nearly completed — and the contractors will finish the interior work during the winter months. Perhaps we will move in before the end of the school year!

The news about the renovation of **Old Main** is equally exciting. The objectives are a restored exterior and renovated interior areas so that Old Main can continue as our principal classroom building. And that work is to begin this



academic year.

And we all look forward to the day when **chapel** plans will be complete and we will be financially ready to build a **chapel** at Dana.

While our **endowment** goal is not fully achieved, we can already meet students on campus who are recipients of some of the endowed scholarships established since the Centennial Fund appeal began two years ago.

### But we have hard work left to do!

Rising construction and renovation costs mean that our real need is for about

\$6,750,000 campaign appeal dollars in order to complete our objectives in a first-class manner. And that means we must receive nearly \$2,000,000 these next nine months!

As we look ahead to the last year of the campaign, much remains to be done to meet that need. Our appeal to the church has begun and the initial response has been positive and generous. Area campaigns are under way in southeastern Wisconsin and Nebraska. Next winter and spring will take area campaigns to California, Oregon, Washington, and Arizona.

There are foundations yet to be contacted and telephone calls and personal visits to friends and alumni yet to be made.

Dinners, launching events and speeches to be done, plans to be made, invitations to be sent, records to be kept!

Our team here — President James Kallas, Dennis Barnum, Sharon Gordon, Bob Schmoll, Tamara Weber, Laurie Harper, Linda Olsen, Nancy Horeis and I — look forward with enthusiasm to the last year of the Dana Centennial Fund appeal and to its successful completion.

And we are particularly thankful that we don't have to do it alone here — for you are a part of the team, too, and we continue to need your help, your gifts, and your prayers.

Sincerely,

Rev. John T. Beck

Director of Development

## First "Dana Hundred" Awards Presented

The college is recognizing approximately 100 special friends as members of the "Dana Hundred" throughout the Centennial Year of Celebration. Individuals, couples, and organizations so honored for their commitment to Dana are being given framed Centennial plates.

The awards have already been pre-

sented on four occasions — at the annual campus dinner for faculty and staff September 1, at opening convocation September 6, at the Homecoming luncheon October 29, and at the opening of the Year of Celebration October 30. Recipients are pictured below with President James Kallas.



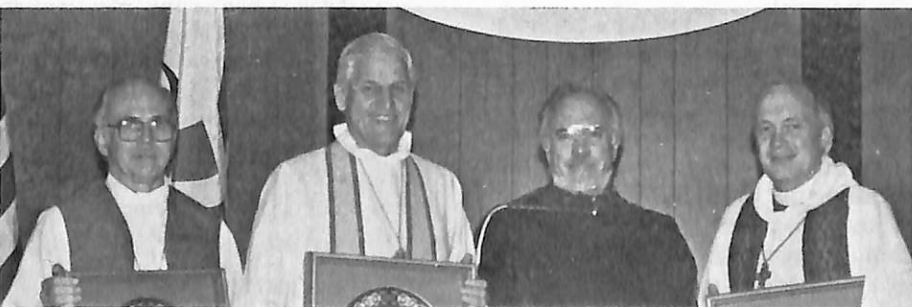
September 1 (from left) — A. J. Snowbeck, Sigrid Christensen '60, Bernice Snowbeck, Marie Johnson '60, Lorraine Peterson, Don Swanson, Pat Swanson, Harold Miller, Bee Krantz.



September 6 (from left) — Harry Snyder '45, Ken Rhoades, William Christensen, Mayor M. Stanley Jensen for the City of Blair, Linda King. Not pictured — Virginia Korshoj '59.



October 29 (from left) — Ken Anderson '63, Marcus Beck '23, Karen Nielsen Knudsen '65, Herb Knudsen '63, Joan Petersen Krogh '69, Robert Krogh '56.



October 30 (from left) — Pastor Carl Schattauer '52 for First Lutheran Church; Dr. David Preus, presiding bishop of the American Lutheran Church; and Bishop Wayne Weissenbuehler of the ALC's Central District.

## Practicing Theory: Applying Christian Faith In Dana's Classrooms

*The Articles of Incorporation of Dana College state that "... higher education shall be given in harmony with the Christian faith as taught in the American Lutheran Church." Teaching "in harmony with the Christian faith" has been an objective of this school, a reason for its existence, for 100 years.*

*But how does this theoretical goal become actual practice? How is the Christian faith applied in the classroom, in the laboratory, in sports?*

*A Faculty Theological Development program last spring looked for answers. The program, supported by a grant from the ALC's Division for College and University Services, involved faculty members who talked about ways in which they articulate their Christian faith to their students. Comments by Dr. Ray Weckmuller '52, one of the participants, follow. Those by several other faculty members will appear in later issues.*

### I. Teacher Education and the Lutheran College

by Ray Weckmuller,  
Professor of Education

It is particularly appropriate for Lutheran schools to offer teacher education because historically the Lutheran church has placed great importance on the education of children. Martin Luther played a significant role in establishing state responsibility for the education of youth. In writing about the relationships between religious and secular education, Luther said that "Human reason teaches only the hand and the feet of man; God alone teaches the heart." He also encouraged teachers to learn to relate to their students, telling them (in words that sound peculiar today) that "Since we are teaching children, we must learn to 'prattle' with them."

There is another reason why teacher education is a most appropriate area for emphasis at Christian colleges and universities. Students who attend these schools often want to serve others, and there is an important congruency between those qualities that characterize mature Christians and those that characterize effective teachers.

A central factor in this congruency is compassion. Arthur Jersild, the eminent psychologist (and a Dana alumnus),

(continued on page 12)

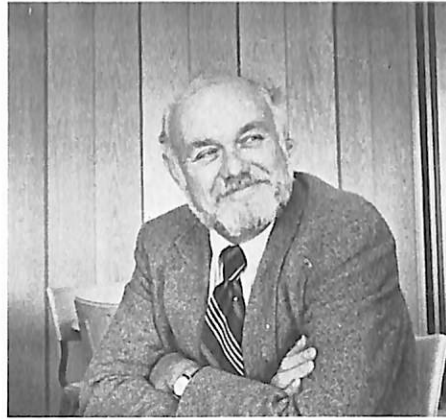
(Practicing Theory, from page 11)

describes compassion as "the ultimate and most meaningful embodiment of emotional maturity." To be a compassionate person requires great strength, for we must allow ourselves to feel emotion. It is only when we are free to weep, to be angry, to feel and show love that we will be able to understand what others are feeling. Jesus wept, he allowed himself anger, he demonstrated the ultimate in love.

Genuine compassion, however, is not soft, overly sentimental, or permissive. Certainly compassion often involves tenderness, but it also often requires a considerable degree of toughness. Teachers, doctors, nurses, pastors, parents and many others must, on a daily basis, use the concept of "tough love." I've had trouble for years with Matthew 18:20-22 because it doesn't square with what I think I know about true compassion. While it is good to forgive a person 70 times 70, it is not good for the person being forgiven. For the sake of the individual, it is best to try to stop him or her after one or two offenses.

Viktor Frankl points out in his *Man's Search for Meaning* [a book read last year in Dana's Liberal Arts Reading Program] the importance of people assuming responsibility for their own actions. To deprive

others of the opportunity to grow into this sense of responsibility because of our own misguided sense of doing for others may, in the long run, be the ultimate in cruelty. It is easy for Christians to fall into the trap of creating dependency in those who desperately need better from us.



Weckmuller: "There is an important congruency between those qualities that characterize mature Christians and those that characterize effective teachers."

What I have just described is certainly not a license to rationalize the lazy or unloving treatment of others. Every student we work with is precious in the eyes of God, and therefore must be

precious in our eyes as well — so precious that we will not retard his or her development by putting undue emphasis on seeing how popular or loved we can be as teachers. It is crucial that we love, and if we receive it back, that's great. If we don't — who said teaching would be easy?

There's another issue I'd like to comment on. Occasionally a teacher education student will tell me it's unfortunate that law and professional ethics prevent public school teachers from witnessing for their Lord in the classroom. By witnessing they mean, of course, preaching. My response is that no code of ethics, no law, prevents teachers from preaching eloquent sermons. Being the first to arrive in the morning and last to leave at night can be a sermon. Being the most accepting, most fair, most creative, and above all, most truly compassionate teacher in the building can speak volumes. Such a teacher might not build a crystal cathedral, but his or her sermon will be at least as effective in changing people's lives.

*Dr. Weckmuller is president of the Nebraska Council on Teacher Education. In 1982 Dana students named him Professor of the Year.*

## Deaths

**Martha Juhl Leslie '31** died May 16 of a heart attack. She was a member of the 1929 choir, the first Dana choir to tour Denmark. Survivors include her husband, Clarence, 3391 Hawthorne, Eugene, Oregon 97402, and daughter Carol Belue, 11 Dover, Golf, Illinois 60029.

Members of the Dana community mourned the death this summer of **Ben Krantz**, 69, a member of the Dana Board of Regents for 20 years. Krantz died August 17 after an illness of two months. He had had heart problems for the past five years.

Krantz spent 43 years as superintendent of four Nebraska school districts, including the Blair District from 1957 to 1979. After his retirement, the Blair High School athletic complex was named Ben Krantz Stadium.

Survivors include his son, Dr. Brent Krantz, and his wife, Bernice, who assists in Dana's humanities program.

**Michael Kirk**, who would have been a senior this year, died unexpectedly at his home August 24. Memorial services were held at Dana September 9.

Kirk was president-elect of the Dana chapter of the Society for the Advancement of Management (SAM). He was vice-president of the D-Club and on the Dean's List. The cause of his death has not been determined. He had been hauling sand in a wheelbarrow to a beach area at his parents' home at Riverside Lakes near Waterloo, Nebraska, when he suddenly collapsed.

Kirk was engaged to Dana classmate Kristine Hester.

At the memorial service Prof. Don Baack, business administration, spoke of Mike's "quiet but confident manner." He "seemed to have a smile for everyone," Baack said. "He was a hard worker in the classroom, and toward everything in his life that was important, including his athletic career and his business major. Mike and Kris were responsible for many of SAM's tours and events over the past two years.

"... Mike had all of the qualities that make an effective leader — common sense, courtesy, empathy, friendliness, confidence, communication skills, and a sense of direction.

"He also had all of the qualities that make for a good person. But maybe the thing I liked most about Mike was his ability to laugh. Even though he was a hard worker, he didn't take himself or the things around him so seriously that he couldn't enjoy life. And that was probably the reason he was so popular with his classmates. He will be sorely missed by all.

"As Pastor John Northwall said at Mike's funeral, his passing reminds us that we are all mortal. That there are no guarantees in life. And that is what makes time so precious. Today I think it would be well to thank Almighty God for the time, and the friends that we have, and to thank God for the life of Michael H. Kirk."

Survivors include his parents, Mr. and Mrs. Jack Kirk, two sisters, a grandmother, and his fiancée.

## Football: Senior Leads Punting

At the time of this writing, senior Chris Specht was the nation's leading punter among NAIA Division II schools. He ranks fourth among all schools in the NCAA and NAIA. Final results will be reported in the next issue.

Specht's achievement was a bright spot in an otherwise disappointing season that stands at 1-7 with one game still to be played.

Jim Krueger, a junior, has been Dana's leading defensive player, and seniors Specht, Don Joseph, and Rex Peterson have formed the nucleus of this year's team.

## Volleyball: "Season Positive"

"A very positive season with good volleyball played by a young team" is the way Coach Carol Haussermann '69 describes this fall's results.

The six starters included one senior, two sophomores, and three freshmen, Miss Haussermann said. Sophomore Jeanne Stoeckinger was named to the all-conference team.

The team finished fifth at the November 1 conference tournament at Concordia College in Seward.

With only one senior graduating, Coach Haussermann is looking forward to a highly competitive season next fall.



Hall of Famers (from left) Nelson, Clements, and Welander.

## Three Join Hall of Fame

Wilbur Clements '50, Robert Nelson '52, and Wally Welander '66 were inducted into the college's Athletic Hall of Fame at the Homecoming luncheon October 29.

Clements and Nelson were basketball teammates during the 1949-50 championship season.

Clements, a Blair High School teacher and coach, played basketball at Dana for four years and baseball for two. Paul Peterson '41, Dana's director of athletics, remembers him as "an outstanding defensive basketball player who was always dependable and knowledgeable."

Nelson, who graduated from Trinity Seminary in 1955, is pastor at Peace Lutheran Church in Sterling. At Dana he played basketball for four years, baseball

for two years, and football for one year. Peterson describes him as "an excellent athlete who provided the necessary spark and skill to a good basketball team." He was an all-conference player for two years.

A high school teacher, athletic director, and coach in Charter Oak, Iowa, Welander lettered in basketball and baseball for four years. In 1966 he was named catcher on the all-district baseball team.

In 1979 Welander was selected Boyer Valley Coach of the Year.

*For alumni kitchens at Christmas: Recipes and Reminiscence*, a 200-page Centennial cookbook by the Dana Women's Club. Order from Nancy Beaman, Dana College Bookstore; enclose \$9 plus \$1 for postage and handling. Nebraska residents add 36¢ sales tax.

## Destiny's Deep Sea

### '80s

**Jan Buckley '83** teaches English and social studies at the Tekamah-Herman high school in Tekamah . . . **Scott Christensen '83** married **Linda Nouss '84** August 5. He is a teacher and coach at Fort Calhoun High School and Washington County Elementary School . . . **Julie Elliott '83** teaches fourth grade at the Treynor (Iowa) elementary school . . . **Sarah Hansen '83** married Martin Jacobs June 11. He is pastor at Holy Cross Lutheran Church in Omaha; she is a first-year law student at Creighton University . . . **Steve Harper '83** is an accountant at the Omaha firm of O'Donnell, Ficenec, Wills and Ferdig . . . **Jean King '83** teaches English and speech at Tekamah-Herman High School . . . **Linda Lemon '83** is a newscaster for KWTQ Radio in Springfield,

Missouri, where her address is 2120 S. Ingram, Mill Road #434 (65804) . . . **Robert Mortenson '83** married Sheryl Kirsch June 25. They live in Spencer, Iowa, at 219 East Fourth Street . . . **Joe Price '83** is newspaper editor of the *Ord* (Nebraska) *Quiz* . . . **Karen Reuter '83** and George Bovard were married June 10 . . . **Monty Scheele '83** married Julie Ann Oswald May 28. He is studying at the University of Nebraska Medical Center Department of Anatomy. Their Omaha address is 10686 Hamilton Plaza, Apt. #820 (68114) . . . **Jill Vohs '83** is a second year medical technology student at the University of Nebraska Medical Center . . . **Jean Watts '83** is a second grade teacher in the Clearwater public school . . . **Duane Barrier '82** married Paulette Dolan July 2 . . . **Eric Beck '82** and **Heidi Faudel '83** were married August 20 . . . **Alan Cue '82** teaches upper

elementary school and science in the Winnebago, Minnesota, school system . . . **Kathy Fritz '82** and **Richard Dale Andersen '81** were married June 18. They live in Omaha . . . **Kerry Garrels '82** received her M.A. in physical education in July from Murray State University, where she teaches and is head women's volleyball coach. She lives at Murray Manor Apts. #B-8 in Murray, Kentucky 42071 . . . **Kathy Gerking '82** is attending Wartburg Seminary in Dubuque, Iowa, after serving for a year in Minneapolis as a Phillips Neighborhood Lutheran Volunteer. She worked at a center for abused and neglected children and in a resource center on hunger and justice issues. She also taught English as a second language to adult Hmong refugees. Last July she attended a Kirchentag in Dresden, East Germany. Her Dubuque address is 333 Wartburg Place (52001).



## Royalty Named

Seniors *Joanne Jorgenson* and *Chris Specht* were this year's Homecoming queen and king. Members of their court were *Jill Harskamp*, *Diane Heistand*, *Kristine Hester*, *Ann Klein*, *James Krueger*, *Rex Peterson*, *Tim Rongstad*, and *Lawrence White*.

... **Tony '82** and **Amy Holmquist '82** Jones live in Omaha at 11206 "R" Plaza, Apt. 9 (68137). She teaches at Millard North High School, and he is a sales representative for the Wm. Wrigley Jr. Company . . . . **Paul '82** and **Nancy Anderson '81 Judson** are living in Denver, where Paul, a middle student at Wartburg Seminary, is attending the Denver House of Studies . . . . **Mickey Tanner '82** is staff artist for Schweser's Department Stores of Nebraska . . . . **Kimberly Bessire '81** married Ronald Riggle August 6. They are computer programmers at Mutual of Omaha . . . . **Merle '81** and **Elizabeth Falkens '80 Brockhoff** are living at 420½ North Pearl Street in Richland Center, Wisconsin 53581, where he is an intern pastor . . . . **Doug Lemon '81** married Pam Paulsen July 1. He is working toward a degree in biochemistry at Rice University. They live at 5005 Richmond in Houston, Texas 77056 . . . . **Shellie Smith '81** teaches first and second grades and music from kindergarten through eighth grade at Cross Lutheran Church in Omaha. She also directs two Cross Lutheran choirs . . . . **Steve Albertson '80** has joined the staff of KEFM Radio, Omaha, as continuity-production director . . . . **Barbara Bock '80** received her master of science degree in August in special education-teaching the emotionally disturbed . . . . **Julie Ann McMahill '80** married Daniel McCoy August 19. Julie works at Big Bear Equipment and attends graduate school at the University of Nebraska at Omaha . . . . Austin Elijah was born July 23 to **Alan '80** and **Jacquelynn Payne '81 Pedersen**, 2915 25th Street, Columbus, Nebraska 68601.

## '70s

**Kay Konz '79** received her specialist in education degree in school psychology from the University of Iowa in July. A school psychologist with the Loess Hills Area Education Agency, she lives at 1300 East 10th

Street, Apt. 31A in Atlantic, Iowa 50022 . . . . Nicholas Ray was born to Nathan and **Naomi Erickson '79** Harbert December 2, 1982. Naomi works part-time for Topographic Engineering Company; their address is 3845 NW 14th, Oklahoma City, Oklahoma 73107 . . . . **Sue Neve Hettinger '78** and her husband, Charles, have moved to 7460 N. Dakin #308 in Denver (80221). She is secretary to a construction company in Lakewood, Colorado . . . . **Becky Masoner '78** married Jonathan McCain August 13. They live in Joplin, Missouri 64801 (Route 4, Box 174), where he farms and she is a learning disabilities teacher . . . . **Jeanmarie Nielsen '78** is a part-time voice instructor at the University of Nebraska at Omaha. She also teaches as a graduate assistant at the University of Nebraska-Lincoln, where she is working on her D.M.A. . . . . **John Petersen '78** teaches elementary physical education in Gordon. He is also a high school coach . . . . **Sandra Barnum '80** and **John Romer '78** were married this summer. They live in Plano, Texas, where he works for Intercom, Inc. . . . . Emily Marissa was born July 27 to **Bruce '78** and **Jeanie Winter**, 1771 Hickory Hill, Eagen, Minnesota 55122. Brother Justin is almost 2 . . . . **James Jenkins '77** received his master of social work degree from the University of Minnesota's graduate school in June. He is a senior social worker in Minneapolis . . . . **Steven Kimm '77** married Debbie Ream October 9, 1982. They live at 423 Norwick Road S.W. in Cedar Rapids, Iowa 52404 . . . . **Jane Matthies '77** has been promoted to administrative facility assistant of the Millard facility at First Westside Bank. She recently attended the National School of Retail Banking at the University of Oklahoma . . . . **Paula Waggener Makar '77** and her husband, John, are the parents of Laura Christine, born May 2. They live at 11475 Settlers Drive in Parker, Colorado . . . . Erica Ann was born to **John '76** and **Julie Rasmussen '79 Beck** September 15. She joins sister Dana Lynn, 2½. The Becks live in Thornton, Colorado . . . . Kirstine Marie Henriksen Hanson was born June 14 to **Pastor Alan Hanson '76** and **Mary Henriksen '76**. Sister Maren is 2 . . . . **Dennis Hoch '76** is director of development, a new position, for the Self-Help Foundation in Waverly, Iowa. Self-Help is a non-profit organization providing self-help to fight hunger in underdeveloped nations. Its focus is on the production of light-weight, one-cylinder tractors for use on small farms . . . . **Laurie Barber Holben '76** teaches sixth grade at the Treynor (Iowa) elementary school . . . . **Liz Miller '82** and **Paul Johnson '76** were married September 11. He is the instrumental band director at Fremont Bergan High School . . . . Jonathan Daniel was born April 22 to **Jeff '76** and **Vicky Peterson '75 Lower** . . . . Benjamin Adam was born May 22 to **Gary '76** and **Elizabeth Petersen '77 Erbes**, 224 Bryn Brae, Waterloo, Iowa 50701. Gary was recently doctor-in-residence in Vinton, Iowa . . . . **Susan Zabel Dryburgh '75** is a speech-language therapist for the Montgomery County (Pennsylvania) Intermediate Unit. She lives at 740 Tannery Drive in Wayne, Pennsylvania 19087 . . . . **Charles Corbin '75** and his wife, Mary, are the parents of Joseph Charles, born April 23 . . . . **Kathy Sietsema '75** is a special education-resource teacher at East Butler Public School in Brainard, Nebraska . . . . **Susan Walth '75** and Rob Allen Ruff were married May 22. Both are students at Luther-Northwestern Theological Seminary. They are interns this year in suburban Denver . . . . **Gene Bamesberger '74**, 329 E. 11th, Denver (80203) has been appointed director of special education for the Denver Children's Home . . . . Megan Leigh was born July 24 to **Don '74** and **Sharon Hansen '73 Davis**, Route 1, Box 130, Elk Creek, Nebraska 68348. Don is sales representative for Huskerland Harvestore Co. . . . . **Gerald Scott '73** is the new elementary and junior high principal at

## SCHOLARSHIPS

The scholarships listed below are described on page 4. To receive further information, please complete the coupon and mail it to Mr. Dennis Barnum, Admissions Office, Dana College, Blair, NE 68008.

I THINK I QUALIFY FOR THE SCHOLARSHIP INDICATED BELOW, PLEASE SEND ME MORE DETAILS. (mark one):

**Presidential Scholarship**  
**\$12,000 over 4 years**

Qualifications: be in top 5% of graduating class with ACT of 30 or above/SAT of 1260 or be national merit finalist.

**Regents Scholarship**  
**\$8,000 over 4 years**

Qualifications: be in top 10% of graduating class with ACT of 26 or above/SAT of 1050 or be national merit semi-finalist.

**Academic Scholarship**  
**\$4,000 over 4 years**

Qualifications: be in top 33% of graduating class with ACT of 22 or above/SAT of 900.

**Achievement Scholarship**  
**\$3,200 over 4 years**

Qualifications: be in top 40% of graduating class with ACT composite of 20 or above/SAT of 840.

NAME \_\_\_\_\_

ADDRESS \_\_\_\_\_

PHONE (\_\_\_\_\_) \_\_\_\_\_

HIGH SCHOOL \_\_\_\_\_ GRADUATION YEAR 19 \_\_\_\_\_

INTERESTED IN THESE ACADEMIC AREAS: \_\_\_\_\_

Thornton Public School, Thornton, Iowa 50479 . . . . **Scott Heller '72** is head football coach at Adams Central High School in Hastings. He also teaches social studies, assists with junior high wrestling, and is the athletic director . . . . **Madelyn Petty '72** has received a master of public administration degree through Drake University's continuous graduation program. She is a systems analyst for Comptroller Data Processing for the State of Iowa . . . . **Larry Anderson '71** has been promoted to assistant manager in the United Production area of Computer Data Services at Mutual of Omaha. He and his wife, Jeanne, and their two children, Mark (6) and Erin (3), live at 15845 Leavenworth in Omaha (68118) . . . . Zachary Raymond was born September 30 to **James E. '70** and **Lora Lutzmann '72 Black**. Brother Andrew is 13 . . . . **John '71** and **Janis Sorensen '72 Christensen** are the parents of Anders Steen, born March 1. He has two brothers — Erik (4) and Dana (2). John teaches speech pathology at the University of Nebraska at Omaha . . . . **Pastor Philip Gotsch '71** now lives in St. Paul, Minnesota 55108, at 1570 Eustis #130 . . . . **Eric Johnson '71** is co-owner of Iowa Construction Reports, ICR Printing, in Cedar Rapids, Iowa. He and his partner were featured in a story titled "Starting Your Own Business" in the July 1983 issue of *Better Homes and Gardens* . . . . **Rodney Jean Miller '71** completed her M.A. in English in May at Fort Hays University, Kansas . . . . **Linda Rogers '70** teaches second grade in Tekamah.

**'60s** **Ruth Jensen Lukawski '69** lives at 6092 Whitefriars Way in Rockford, Illinois 61109 . . . . **Connie Elting Bentjen '68** teaches kindergarten in the Albion, Nebraska, public schools . . . . **Ralph Breckle '67**, Rt. 3, Box 434, Chatsworth, Georgia 30705, became a "Certified Ending Hunger Briefer" this year. His recent activities in the Hunger Project include being a ride leader of the Florida Leg of the Coast-to-Coast Bike Marathon to Washington and New York to end hunger (1982) and serving this year as S.E. Regional Coordinator for the "Ending Hunger High School Briefing" tract and as a rider on the Second Annual Georgia Lung Trek . . . . **Joanne Bracker '66**, women's basketball coach at Midland College, has been named to Midland's Athletic Hall of Fame . . . . **Larry Slater '65** has been made purchasing coordinator at the Corporate Office Services Department of Economy Fire and Casualty Company in Freeport, Illinois . . . . **Dixie Hagedorn Petersen '63** was named 1983 Reading Teacher of the Year in April by the Wichita (Kansas) Council of the International Reading Association. She is a special reading teacher, Chapter 1, at Sim Elementary School. Nominated by her fellow staff members, she was cited for her "enthusiasm . . . room decor . . . small group teaching experiences . . . individualized instruction . . . constant work on new methods to motivate her students . . . and excellent rapport with her classes." . . . . **Joyce Hansen Christensen '60** became principal of Omaha's South High School on August 1, the only woman high school principal in the Omaha Public School District. She was formerly principal at Bryan Junior High School . . . . **Jerry Schlott '60** has been promoted to vice president of finance for Goodmans Furniture and Office Systems in Council Bluffs.

**'50s** **Sandra Thomsen Van Cleave '59** and her husband, John, own the Ben Franklin Store in Middleton, Wisconsin 53562 . . . . **Rodney Wead '56** became executive director of United Methodist Community Centers (Wesley House and Woodson Center) on

June 20. He returned to a position he left nearly ten years ago. Since leaving Omaha, he has been associate executive director of the Community Renewal Society in Chicago. His work there included developing support networks among about 20 community organizations and helping them form food, housing, and other consumer cooperatives. He also founded Illinois' first community-owned radio station, WSSD. He has a master's degree in urban studies from Roosevelt University and a doctorate in sociology from Union Graduate School of Experimenting Colleges in Cincinnati . . . . **John C. Sorensen '53** works for Martin Marietta Aerospace

in Denver, where he is supervisor of technical publications, word processing, editorial, and production activities . . . . **Ruth Larsen Randall '51** has been appointed Commissioner of Education for the State of Minnesota by Governor Perpich . . . . **Allan Nyegaard '50** is principal of Danebo Elementary School in Eugene, Oregon. He and the school were featured in the June issue of *American Dane* (reprinted from the Eugene *Register-Guard*). Thanks to Nyegaard, the Danish language, food, customs, fashions, crafts, folklore, and immigrant history were part of the school's curriculum last spring.

## About Financial and Estate Planning

### Taxes

by Sharon Gordon

Director of Planned Giving

Each year as the end of the year approaches, excitement grows as we enter the Holiday season. It's an exciting time — a time for sharing and a time for giving. At this time of year most people are looking ahead to January 1 and are trying to get all their financial affairs in order before 1984 arrives. Effective planning at this time will eliminate the need to pay more than your share of income taxes. Most of us are familiar with the annual chore of filing income tax returns, but not many of us are versed in the various taxes our estate will have to pay.

Here in the Planned Giving Office we study various ways of saving taxes. We deal mostly with charitable giving, and advise people on how to give some of their money to their favorite charities, yet retain its income for the rest of their lives; how to give away a piece of property, yet keep on using it as long as they may wish; and how to pass certain assets



on to family members without having their estate burdened with an excessive amount of estate tax.

If you would like to know more about year-end planning, please write for our booklet, "December Giving." If you would like to know more about the taxes due your estate, we can help with that, too.

I am interested in: "December Giving" booklet \_\_\_\_\_

Wills \_\_\_\_\_

Annuities \_\_\_\_\_

Estate Planning \_\_\_\_\_

Name \_\_\_\_\_

Address \_\_\_\_\_

City/State \_\_\_\_\_ Zip \_\_\_\_\_

**Please return to:** Sharon Gordon, Director of Planned Giving,  
Dana College, Blair, NE 68008

DANA COLLEGE  
2848 College Drive  
Blair, Nebraska 68008

Second Class Postage  
Paid at Blair, Nebraska  
And Additional Mailing Offices

08280 040000 8163736347

DR AND MRS NIEL JOHNSON  
15804 KIGER CIRCLE  
INDEPENDENCE MO 64055

# The Dana Centennial Plate



Made especially  
for Dana College  
by Bing & Grondahl  
Porcelain of Copenhagen

The eleven inch plate  
is crafted in cobalt blue  
and decorated in 14 karat gold

Each plate is pierced for  
hanging and comes attractively giftboxed

Plates are now  
available at the  
special pre-centennial  
price of \$75. each

Add \$3. to each order  
for postage and handling;  
Nebraska residents must also  
add \$3.00 for State sales tax

Selling price of the Dana  
Centennial Plate will increase  
to \$100 each on January 1, 1984.  
Order now and save.

The limited edition Dana Centennial Plate is available now, please address all inquiries and orders to the Public Relations Office, Dana College, Blair, Nebraska 68008. Checks should be made payable to the Dana Centennial Plate.

1884 1984

# The Dana College Centennial Fund NEWSLETTER

Volume 1, Number 3

November 1983

Blair, Nebraska

## FUND'S THIRD YEAR BEGINS AT \$4.8 MILLION

Dana's \$6 million Centennial Fund, launched in November 1981, entered its third and final year this November 1 with \$4,838,642 received in gifts and pledges.

That amount has come from large gifts from individuals, organizations, and foundations, from alumni and friends called in Phonoramas, and from area drives. You'll find reports on these and other Centennial Fund activities in this Newsletter.

Evidence of the drive's success is already visible on campus. Construction of the performing arts center is well underway, with walls up and girders in place. The building will be enclosed by winter so that interior work can proceed.

The next step? Bids are being let on the restoration of Old Main's exterior and remodeling of its interior. Phase I, exterior work, starts next spring.

## AAL GIVES COLLEGE \$25,000 BIRTHDAY GIFT

Mr. Lars Granath, Norfolk, Nebr., general agent for Aid Association for Lutherans (AAL), presented Dana with a \$25,000 check from AAL at the college's October 30 opening of its Centennial year.

Calling Dana "a keeper of Scandinavian culture," Granath congratulated the college on its "long and distinguished history of serving the church and society" and on its "tradition of excellence in education."



Ekklesia Koinonias (Church of Fellowship), Dana's student congregation, was one of the first Central District congregations to respond to the District-wide Centennial Fund appeal. Senior Pam Larsen (left), Council president, reported a high degree of student commitment and enthusiasm in making the \$3,400 three-year pledge. Other Council officers pictured with Miss Larsen are (from left) Barbara Anderson, Todd Morgan, and Karen Brockhoff.

## CENTRAL DISTRICT SETS \$1 MILLION GOAL

Dana's Centennial Fund drive in the Central District of the American Lutheran Church is well on the way to its goal of \$1 million.

Organized in early 1983, the District-wide group of volunteers is being led by honorary co-chairpersons Dr. Erwin Frischel, Dr. C. C. Madsen, Dr. Archie Madsen, and Bishop Wayne Weissenbuehler of the Central District. The Rev. Robert Schaff, pastor at Omaha's Lutheran Church of the Master, is general chairman and volunteer leader.

On September 25 congregations throughout the Central District observed Dana Sunday in conjunction with the drive. In a taped message to all congregations, Bishop Weissenbuehler asked members to "pray for Dana and its ministry in higher education," to "make a generous contribution to the Centennial campaign," and "to challenge the college-bound to strongly consider Dana for their college education."

By the end of October pledges totaling \$161,262.50 had been received from five congregations, according to John Beck, Dana's director of development. With activity in all of the District's 17 conferences, volunteer leaders expect all participating churches to have made three-year commitments by late January, Beck said.



## RECENT GIFTS . . .

Large gifts have helped the Centennial Fund grow. Some of those received this past year include:

- \$20,000 from the estate of Niels Nedergaard
- \$46,732 from the Lutheran Brotherhood's IMPACT
- \$25,000 from Peter Kiewit Sons'
- \$5,000 from the Hitchcock Foundation
- \$50,000 (an anonymous gift)
- \$25,000 from Aid Association for Lutherans

Pledges have also increased the total. They include:

- \$30,000 from Ak-Sar-Ben
- \$36,000 from Union Pacific
- \$10,000 from the Egmont Foundation (Denmark)
- \$49,540 from the U.S. Department of Energy (for Old Main)
- \$25,000 Lutheran Brotherhood Endowment Challenge Grant
- \$15,000 from Commonwealth Electric
- \$25,000 from Valmont Industries

## BUILDERS' MEMBERSHIP CONTINUES TO GROW

The call for membership in the Dana College Builders went out in the spring of 1982, and the response was gratifying. The first annual meeting in May that year honored 100 new charter members.

Because estate planning is a time-consuming process and not to be done in haste, and because several persons expressed a wish to be included in the charter membership list, we extended the charter membership period up to and including the second meeting date on May 14, 1983. At this time we closed the charter membership at 137 members. Since then, three regular members have been added for a total of 140.

The next meeting of the Dana College Builders will be held May 12, 1984. The luncheon meeting will be held in conjunction with Commencement weekend, and members are invited to participate in all the weekend activities.



Restoration of Old Main's exterior will be more than cosmetic. The part of the building in urgent need of repair is the west side of the south wing, where this crack runs from the first floor to the fourth. Work starts early next spring. Bricks will also be repointed, windows and roof repaired, and the main entrance remodeled to be more consistent with Old Main's French Second Empire architecture. The building was placed on the National Register of Historic Places in 1980.

## ENERGY GRANT APPROVED FOR WORK ON OLD MAIN

The U.S. Department of Energy has approved a \$49,540 grant to offset expenses in renovating and remodeling Old Main. The proposal was prepared by Keith Hansen, Dana's business manager.

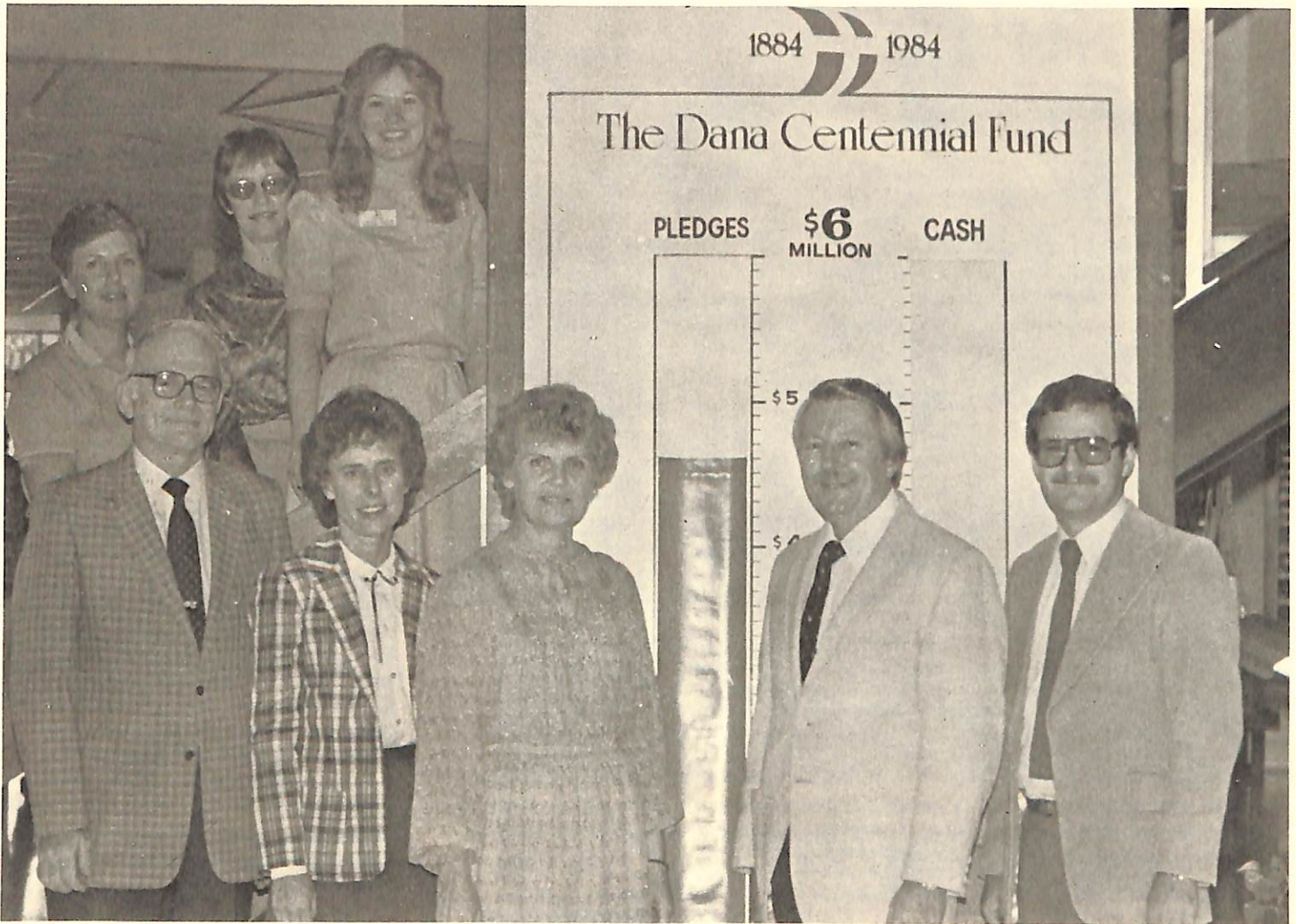
Old Main, which is on the National Register of Historic Places, is Dana's oldest building. Its central section dates to 1886. Plans call for improving the building's energy efficiency when it is restored and remodeled.

## LB ISSUES CHALLENGE

Dana has received a \$25,000 Endowment Challenge Matching Grant from Lutheran Brotherhood. To receive this \$25,000, the college must receive \$50,000 in gifts to the Endowment.

Lutheran Brotherhood members should note that its 1983 calendar year for matching gifts closes December 15. Dana must receive matching IMPACT gift forms before that date to receive this year's match. **In 1984 the minimum eligible IMPACT gift amount will increase from \$10 to \$25.** Over the past year Dana has received \$46,732 in IMPACT gifts.

## NEW MEMBERS JOIN CENTENNIAL FUND STAFF



Meet our Centennial Fund staff: clockwise — Bob Schmoll, development associate; Dennis Barnum, director of institutional advancement; Tamara Weber, development associate; Sharon Gordon, director of planned giving and director of alumni affairs; John Beck, director of development; and secretaries Linda Olson, Nancy Horeis, and Laurie Harper.

Several administrative changes in the Centennial Fund staff took place last August when Eugene Meyer, executive director of college relations, was named executive director of Lutheran Health Services in Omaha.

Dennis Barnum, who had recently returned to Dana as director of admissions, was given the additional title of executive director for institutional advancement. He continues as director of admissions, but with the added responsibility for coordinating development: fund raising, planned giving, and alumni programs. Barnum successfully served in similar positions at Missouri Valley College and

Waldorf College.

John Beck, associate director of development and director of alumni affairs since 1975, was promoted to director of development, replacing Meyer in that role. Beck has major responsibility in directing Dana's fund-raising programs, including the Centennial Fund.

Sharon Gordon, who has been associated with the college relations department in several capacities over the past 12 years, was promoted to director of planned giving and director of alumni affairs. She is working under the director of development in expanding Dana's planned giving programs and servicing the Alumni

Association. Mrs. Gordon is a certified fund-raising executive with the National Society of Fund-Raising Executives.

Joining the staff as development associates for the Centennial Fund are Bob Schmoll and Tamara Weber. Schmoll, a 1983 Dana graduate, was student body president last year, and in that position was strongly involved in the student government's Centennial Fund drive. Mrs. Weber, who formerly worked in the office of the dean of students, has been an active member of American Lutheran Church Women and knows the Central District especially well.

## AREA DRIVES HAVE STRONG LEADERSHIP



### PHONORAMA RAISES \$103,000

Dana's 1982-83 Phonorama was held last February and March, with 18 calling events taking place in Fremont, Blair, and Grand Island; in Madison, Milwaukee, and Racine; and in Minneapolis, Los Angeles, and Chicago. Altogether \$103,000 was pledged. Callers included (clockwise) Blair alumni Verlan Hanson, Judy Brehm, Ruth Schmidt, and Jennifer Jensen.

This past year has seen the completion of many area campaigns, and their success is due to the energy and involvement of many alumni and friends. Here's a brief report on what's been happening:

The general campaign in **Fremont, Nebr.**, has finished strongly and a total of \$45,772 was received in cash and pledges. Harry Snyder, Robert Hansen, Jerry Haas, Paul Johnson, Mark Grorud, and Tim Waggoner served as leaders.

The **Des Moines** campaign has also been completed with \$33,771 in cash and pledges received. Campaign leadership was provided by Earl Fries, Arnold Nielsen, Marinus Hagedorn, James Iversen, and Stan Carlsen.

Our **Colorado** campaigns have reached the \$90,018 mark. Chairpersons for Colorado were Lorraine and Archie Madsen, Bernie Kionka, Brian Rich, Marge Kathmann, Ray Paulsen, Harold Laursen, and James Olsen.

The **Beatrice, Nebr.**, leadership

— Alton Schwandt, Mr. and Mrs. Tom Damrow, Kenneth Jacobson, Mr. and Mrs. Maynard Kellerman, and Mr. and Mrs. Thees Wallman — report \$23,105.

Erv and Pearl Goldenstein and Tom and Marilyn Allan were honorary co-chairpersons in **Lincoln, Nebr.**, with volunteer leaders Ken Hansen, Phil Wittig, Linda King, Rich Vierk, John Cederberg, and Dagmar Knudsen. The campaign total was \$43,294.

In **Cedar Falls, Iowa**, Homer and Eunice Larsen, Jerry and Erna Jorgensen, Ed and Inga Larsen, Russ and Margaret Cantine, Gary and Liz Erbes, Oscar and Dody Johnson, and Amy Nichols Jensen provided leadership in a campaign launched March 8. Gifts and pledges totaled \$19,292.

Two **Minnesota** campaigns were launched in early April — in Albert Lea on April 4 and in the Twin Cities on April 6. **Albert Lea** leaders were Mr. and Mrs. Alton Neve, Rev. and Mrs. Cliff Paulsen, and Rev. and Mrs. Fred Jacobsen. Albert Lea gifts totaled \$19,663.

In the **Twin Cities** the leadership council was composed of Kathy Gerking, Ken and Rosie Glover, Bob and Janice Hansen, Ella Hansen, Aster and Ruth Neve, Paul and Lois Olsen, Al and Beulah Rueter, Bob and Lynn Stegmaier, and Gene and Vallory Wallman. Lowell and Lillian Madsen coordinated calls in Luck, Wisc., and travelled to the Minneapolis launching. Pledges and cash totalled \$70,881.

Our **Chicago** campaign was launched April 21. The leadership council members were Herb and Alice Dalleck, Ernie and Sharol Anderson, Carol Johnson, Karen Maquire, Susan Williams, and Ron Anderson. With some work yet to be done, the Chicago total has reached \$56,390.

The **Audubon-Elk Horn, Iowa**, area leadership consisted of Brian Andersen, Walter and Ellen Behrens, Carol Hansen, Mrs. Einer Juel, Herbert and Regina Larsen, L. K. and Lenora Madsen, Ralph and Rita Nielsen, Stanley and Cheryl Nielsen, Victor and Irene Schmidt, and Edward and Elna Steen. The area campaign produced \$27,354 in cash and pledges.

These area drives have added **\$429,474** to our campaign totals.

## CAMPAIGN STARTS IN S.E. WISCONSIN

Dana's Southeastern Wisconsin area campaign (Racine/Kenosha/Milwaukee) is underway after a November 8 launching.

Volunteer leaders for this major area campaign are Dr. Lawrence Siersbeck, Byron and Mary Langenfeld, Mary Jane Canman, Robert and Joan Coffey, P. V. and Greta Hansen, Betty Heide, Hans Hermansen, Mrs. Harold Holm, Bob Ibsen, Paul Behrens, Leota Benson, Roger Clark, Luther and Doris Kloth, and Marjorie Tuveson.

During the remainder of the 1983-84 year three area campaigns are slated for Nebraska, and others are being planned for California, Arizona, Oregon, and Washington.