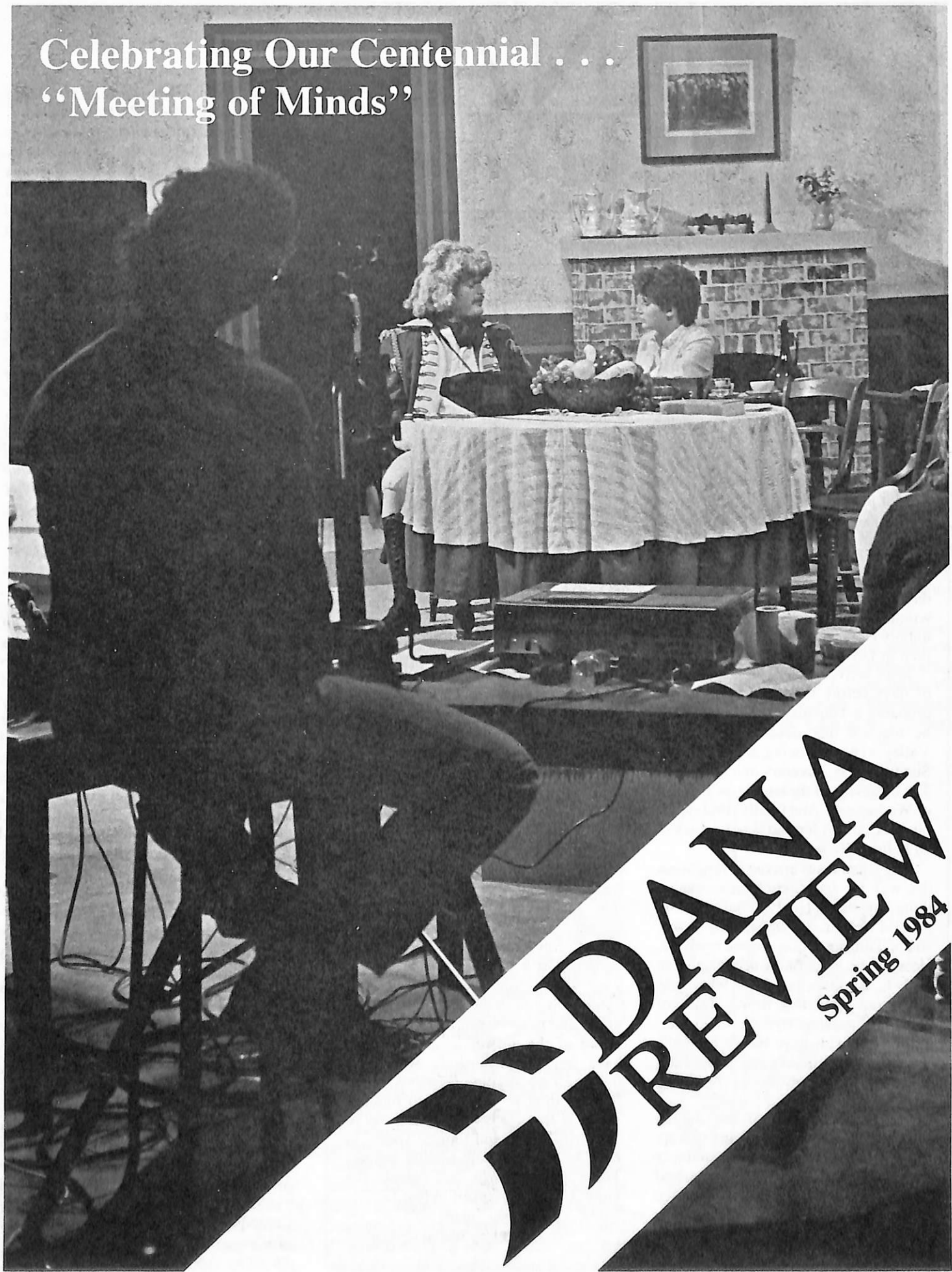


Celebrating Our Centennial . . .
"Meeting of Minds"



DANA
REVIEW
Spring 1984

DANA REVIEW

Volume 40

Spring 1984

Number 3

(USPS 147-940)

Greetings, Friends in Christ!

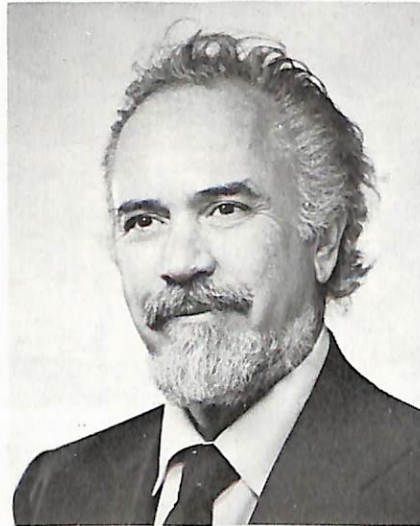
Today, as I write this, it is Ash Wednesday, the beginning of Lent, the first of the forty days which lead to the death of Jesus. We begin the journey to Jerusalem, the walk down the Via Dolorosa, the Avenue of Sorrows, which ends when the cross embraces Him unto death with its unfeeling wooden arms.

That journey to Jerusalem runs from north to south, the hills of Galilee and the Sea of Tiberias, through the Great Rift Valley, the Dead Sea basin, the lowest place on the face of the earth, through Jericho, and then on up the winding slopes to Jerusalem itself, the unholy Holy City of the Prophets where men of God met their fate.

Jesus arrived at Jericho just a matter of days before that final Day. It was probably a Thursday or a Friday when he reached that oasis in the Jordan Valley. The following Sunday, Palm Sunday it was, His entry into Jerusalem. The cleansing of the temple on Tuesday or Wednesday. And finally, Friday, the crucifixion. So Jericho is but a week or so before His death.

And when Jesus arrived in Jericho on the way to Jerusalem, a remarkable thing happened. He was confronted by a blind beggar, Bartimaeus by name, son of Timaeus, sitting by the roadside. Hearing the noise of the accompanying crowd, Bartimaeus asked what was going on. Told that it was Jesus of Nazareth passing by, he cried out, "Son of David, have mercy on me!" And Jesus, hearing the cry, paused and — on the way to His death — bestowed sight on a blind beggar.

We read so often of the mighty miracles of Jesus — His ability to walk on the water, still the storms, multiply the bread, heal the sick, raise the dead — that this story, but one more, often goes unnoted. But it should not, for it speaks loudly of the love of our Lord.



On the way to the cross, the center of history, the event which split the stream of time, He paused to help a blind beggar. Whether one is Christian or not, we date our letters "1984." One thousand nine hundred and eighty-four years ago Jesus lived and died — that is the division of history, the watershed of the calendar, the pivotal point of the ages. And that crucial event, the cross, the center of the ages, had to be pushed back, postponed, held in abeyance, so that Jesus could speak to a blind beggar.

Are you worn and heavy laden, burdened by a load of care, questioning your worth, asking yourself of your value? Do you in that moment of self-doubt and near-despair ask yourself — afraid of the answer — whether you have any significance or worth? In those self-questioning moments, cease looking in at self and look to Jericho. There is Jesus' answer. On the way to the cross, He found time to speak, to heal, to minister unto a blind beggar. There are none who live outside His view. Comfort yourself in that fact.

In Jesus' name,
Dr. James Kallas, President

A magazine for alumni and other friends of Dana College and Trinity Seminary, published four times annually. Printed by Acme Mail Advertising Co., Omaha, Nebraska, with editorial and business offices located at Dana College, 2848 College Drive, Blair, Nebraska. Second class postage paid at Blair, Nebraska 68008.

Non-discrimination Policy

Dana College admits students without regard to sex, age, race, color, religion or national origin to all the rights, privileges, programs, and activities generally made available to students at the College. It does not discriminate on the basis of sex, race, color, age, handicap or national origin in administration of its educational policies, admission policies, scholarship and loan programs, athletics, or other school-administered programs.

Campus photographs by James Fishbaugh '87, Kevin Hernes '85, Nathan Kramer '87, Tim Matz '87.

About the cover — With the approval of Regent Steve Allen, two Interim classes brought several historic figures to life on February 3 and 4 in public performances of "Meeting of Minds" episodes inspired by entertainer Allen's PBS series. Allen gave Dana videotapes of his programs, and students in a "Meeting of Minds" class studied them and then chose their own characters, none of whom were in Allen's series, for two episodes. Prof. Richard Jorgensen '64, who taught the course, said that doing research on characters, writing a script from the research and then performing it "brings things alive. The students get a greater feel for the characters, and a greater appreciation of the kinds of lives they led and the things they accomplished." Helping with make-up, costumes, sound, lighting, and videotaping were students in another class, "The View from Behind the Scenes," taught by Prof. Sieghard Krueger. Portrayed in one episode were Aristophanes, Anne Bradstreet, and Catherine de Medici. In the other were Frederick the Great, Madame Marie Curie, and Henry David Thoreau. On the cover — Frederick the Great (Don Joseph '84) and Moderator Mary Franzen '85 converse while being videotaped. The project was part of Dana's Centennial celebration. (For photographs of both groups, see page 6.)
Photo by Tim Matz '87

“It Began in April 1981 . . . ”

Centennial Fund at \$5.5 Million

by John Beck '50
Director of Development

The objective was \$6 million.

The goal was to prepare Dana College for another hundred years — Endowment . . . Renovation . . . Building . . . Operation of the College.

It began in April 1981 with the feasibility study. Then consultation dinners were held all over the U.S. until mid-summer. Dana's president, development staff, and Consultant Howard Braren were at work full blast.

And major gifts subscribed by the time of the “Gala” launching event with Steve Allen in Omaha totaled nearly \$1.5 million. Dana's own staff and faculty accounted for \$150,000 of that — ten percent!

Now it is March 1984, three years later. We are in the midst of the celebration of our centennial year. Area campaigns have been completed in and around Blair, Omaha, Lincoln, Nebraska City, Grand Island, Beatrice, Denver, Colorado Springs, Chicago, Racine, Milwaukee, the Twin Cities, Albert Lea, Des Moines, Cedar Falls, Council Bluffs, Missouri Valley, Audubon-Elk Horn, and other places about the country.

We are in the process of campaigns in San Diego, San Francisco, Los Angeles, Seattle, Portland, and Eugene. A few other midwestern areas are planned for May or June.

Gifts have come from alumni, friends, parents, students, regents, faculty and staff, businesses, churches, corporations, foundations, and from nearly every direction imaginable. We are thankful.

Now it is March 1984, and Dana's bills have been paid these last three years. Further, a beautiful performing arts center will be in use next fall and dedicated then. The restoration of the exterior of Old Main is about to begin — the renovation of the interior will be done next summer. And there is also the promise of a place of worship, a chapel, to be built later.

Now it is March 1984. Our pledges and matching gifts total approximately \$5,525,000. We are thankful for that, too.

But now comes the hard part. Most of the very large apples have been picked from the tree. The last dollars are the hardest!

To those who ask, I say — “We need your help right now — at the end — more than ever!”

Our objective is to complete the appeal — to reach the goal — by July 1984. Between now and then we will be continuing to work with as many as we can through telephone calls, personal visits, mail, and area campaigns.

Now it is March 1984, and we have passed \$5.5 million. By July 1984 — \$6 million. That is the goal — and we at Dana are confident that you will help us reach it!

Work Starts on Old Main

Restoration and remodeling of Old Main, the \$750,000 second phase of the college's Centennial Fund building program, started in April with work on the exterior. The Leo A. Daly Company of Omaha is the architect, and the John Erickson Construction Company of Blair is the contractor.

According to Keith Hansen, Dana's business manager, work on the classroom structure will be done in two stages, with the first — exterior restoration — completed by the end of August at a cost of about \$250,000. Interior remodeling will be done the following summer at a cost of \$500,000.

Exterior work will include re-roofing, repairing bricks, stabilizing the foundation, making windows more energy efficient, and improving the front entrance. Interior work will include rebuilding the staircase, installing an elevator, improving classroom space, improving the electrical system, and installing a new heating system.

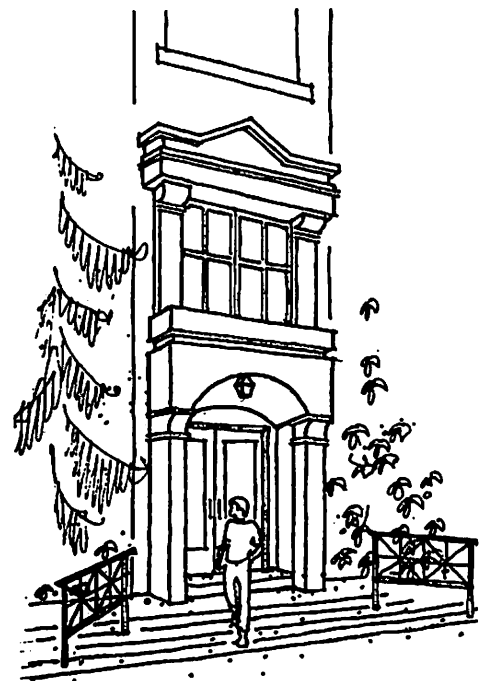
Old Main, whose architectural style is French Second Empire, is on the National Register of Historic Places on the basis of its exterior. Care is being taken by the architect, with the assistance of the Preservation Office of the Nebraska State Historical Society, to retain and enhance its original features. An exterior staircase leading to a main entrance on the second floor was removed about 25 years ago, and since then white vertical siding has marked

the first floor entrance and second-floor windows. The new entrance (see drawing) will be in better harmony with the style of the building.

A generous gift from alumnus Niels P. Nielsen '20 of Buffalo, Wyoming, will pay for remodeling the entrance. Nielsen has given his gift in memory of Jens Dixen, pioneer lay evangelist in the United Danish Evangelical Lutheran Church, and the area will be dedicated to Dixen's memory.

Dana has received several other gifts specifically for the project. The largest is a \$250,000 challenge grant from the Peter Kiewit Foundation. Others include a grant for \$49,540 from the U.S. Department of Energy and one for \$7,500 from the Burlington Northern Foundation.

The other grants come from Denmark, the home of Dana's immigrant founders. They are from the Building Preservation Fund, the Hafnia Hand in Hand Insurance Company, the Denmark Bicentennial Committee, and the Egmont H. Petersens Foundation.



Proposed new entrance for Old Main.

Commencement 1984 Plans Are Announced

Ninety-two seniors will receive their bachelor's degrees Sunday, May 13, at 2 p.m. Commencement exercises in Borup Coliseum. That morning at a 10 o'clock Baccalaureate service, Bishop Dennis Anderson of the Nebraska Synod of the Lutheran Church in America will give the sermon. The Commencement speaker will be Dr. Del Weber, chancellor of the University of Nebraska at Omaha.

Six individuals will be recognized during Commencement weekend for their contributions to their church and society — two as recipients of honorary doctorates at Commencement, and four as Distinguished Alumni at the Alumni Association's annual Recognition Dinner honoring seniors on Saturday, May 12. (The 6:30 p.m. dinner in the E.C. Hunt Campus Center is \$6.50 per person; reservations are due by May 10.)

Honorary Degree Recipients

Those receiving honorary doctorates are Pastor H. Walter Fruehling, president of Martin Luther Home Society, Inc., Beatrice, Nebraska, and Dr. Arthur R. Huseboe, professor of English and chairman of the humanities division at Augustana College, Sioux Falls, South Dakota. Each will be named a doctor of humane letters.

Pastor Fruehling joined the Martin Luther Home staff in 1970 as a part-time social service supervisor while serving as a part-time pastor in Beatrice. He later became acting superintendent and then executive director. He had earlier served congregations in Colorado, Texas, and Kansas, and was chaplain at the State Mental Hospital of Texas Lutheran Social Service.

His B.A. is from Midland College and his B.D. and M.Div. are from Wartburg Seminary. He is also a Master Social Worker (Worden School of Social Science), a licensed Nursing Home Administrator (State of Nebraska), and a Nursing Home Preceptor (Nebraska Department of Health).

Under his leadership, Martin Luther Home has expanded from its 146-bed campus to serve an additional 145 beds in 19 residential settings for a total of 291 beds, the largest such facility in the American Lutheran Church.

Dr. Huseboe, an Augustana graduate, has taught at his alma mater since 1961. Described as a "committed teacher-



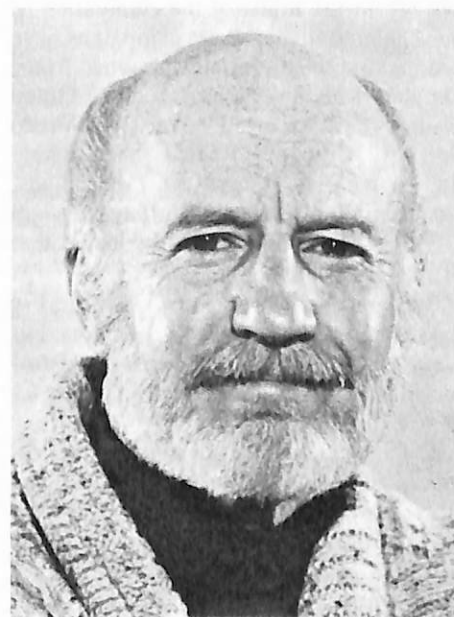
Fruehling



Huseboe



Nielsen



Petersen

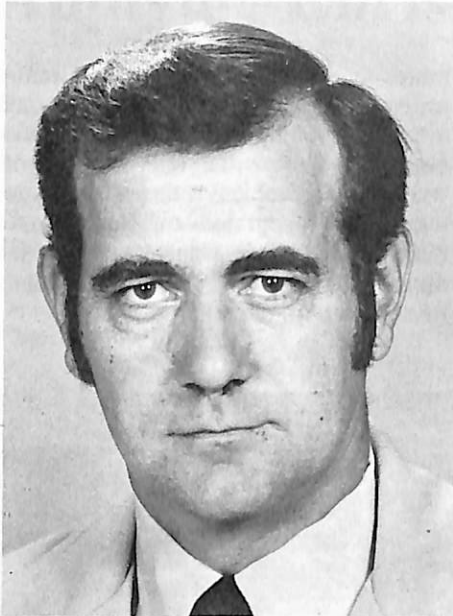
scholar who also demonstrates constantly his belief in Christian higher education," he is an excellent teacher and productive scholar. His publications include more than 80 articles, essays, poems, and books. He has also written more than two dozen grant proposals, including several for major grants from the National Endowment for the Arts and the National Endowment for the Humanities.

His M.A. is from the University of South Dakota, and his Ph.D. is from Indiana University.

Huseboe is also a co-founder of the Center for Western Studies, the Archaeological Society of South Dakota, the Dakotah Corral of Westerners International, the Nordland Fest, and the Nordland Heritage Foundation.

Distinguished Alumni

This year's Distinguished Alumni are: Dr. Marvin K. Harris '68, professor of entomology, Texas A&M University; Dr. Arnold T. Nielsen '42, assistant clinical professor, Department of Family Practice,



Harris



Randall

University of Iowa College of Medicine, and director of medical education at Iowa Lutheran Hospital, Des Moines; Elmer P. Petersen, '54, a self-employed sculptor who lives in Onalaska, Wisconsin; and Dr. Ruth E. (Larsen) Randall '51, Minnesota Commissioner of Education.

Dr. Harris attended Cornell University after graduating from Dana. He received his Ph.D. in 1972 and began teaching at Texas A&M that year.

His professional activities are many and varied. He is an officer and editorial board

member of entomological journals, the author of a book on host plant resistance, the author and co-author of more than 50 refereed journal papers, and the organizer of many conferences, symposia, and workshops. He is also chairman of the Publications Council of the Entomological Society of America.

Since 1972 Harris has received research grants in excess of \$500,000 from government and other agencies. In 1980 he was an invited guest of the Ministry of Agriculture of Poland, where he discussed agricultural problems and presented papers. He has also been a U.S. representative to an international conference in Sweden.

Dr. Nielsen attended the University of Nebraska College of Medicine after graduating from Dana. He received his M.D. in 1945.

From 1946-48 he was an Air Force medical officer with the rank of captain. For the next 25 years he had a general practice in Ankeny, Iowa, and then in 1973 became assistant medical director for Blue Cross-Blue Shield of Iowa. He assumed his present positions at Iowa Lutheran Hospital and the University of Iowa in 1975.

Nielsen has been a member of Iowa Lutheran's medical staff since 1948; in 1961 he was the hospital's chief of staff. He is a Diplomate of the Board of Family Practice.

He has been president of Dana's Alumni Association and has helped with two fundraising drives — one for the Dana Hall of Science, the other for the current Centennial Fund as a member of the National Alumni Committee. His wife, Elaine (Neve), is a 1949 Dana graduate; their daughter, Rebecca Bryant, is a 1971 graduate.

Elmer Petersen attended the University of Wisconsin-Madison after graduating from Dana. He received an M.S. in applied art in 1956 and, after teaching for several years, a master of fine arts degree in 1961.

He has taught art at Jamestown College (1957-59), Bemidji State College (1961-62), Dana (1962-63), Wittenberg University (1969-72), and Texas Lutheran (1963-67; 1972-78), where he was art department and division chairman.

His recent commissions include a 13-foot welded Cor-Ten steel sculpture of

Martin Luther for Texas Lutheran College; another of Cor-Ten called "La Crosse Players," a group of life-size Indian figures at Harborview Plaza, La Crosse, Wisconsin; "Family," an eight-foot-high cast bronze piece for the Gunderson Clinic in La Crosse; and "Master and Disciple" for Lutheran Church of the Master in Edina, Minnesota. He has also created playground sculpture, most recently for Pertzsch Elementary School in Onalaska.

His work is also in several private collections, including those of publisher John Cowles and of "Peanuts" creator Charles Schulz.

Dr. Randall attended Dana as a freshman and sophomore and then taught in the elementary grades in Iowa and Omaha until 1964. She completed her B.S. at the University of Omaha in 1961 and received her M.S. in elementary school administration in 1968 and Ed. Spec. in educational administration in 1972, both from the University of Nebraska at Omaha. She received her Ed.D. in educational administration in 1976 from the University of Nebraska-Lincoln.

Between 1967 and 1975 she was an elementary school principal and assistant principal at the Horace Mann Ninth Grade Center in the Omaha Public Schools. Then in 1978 she became assistant superintendent of personnel in Rosemount, Minnesota. In 1981 she became deputy superintendent of schools in Rosemount, and later that year, superintendent of schools. In 1983 Minnesota Governor Perpich appointed her State Commissioner of Education.

She has been interviewed on numerous television and radio programs regarding current issues in education and has given more than 150 speeches on education to various groups. Last year she and four other educators went to China, where they spoke to elementary, middle, secondary, and university students.

Presenters for the Distinguished Alumni Awards will be Dr. Larrie Stone '57, professor of biology at Dana, for Dr. Harris; Prof. Frank Hengeveld '41, chemistry, for Dr. Nielsen; the Rev. F.W. Thomsen '45, Dana professor emeritus of art, for Elmer Petersen; and Florence M. Hansen '48, director of the Social Work Department at the University of Nebraska Hospital, Omaha, for Dr. Randall.

Plays, Concerts, Opera, Ballet . . .

Humanities Trips Promote the Arts

Twenty-five excursions sponsored by the humanities program this year have given students an opportunity to visit a major art exhibit and to attend plays, symphony concerts, opera productions, and ballet performances. Members of the faculty and staff have joined them for many of these events.

Most of the trips have been to Omaha — for seven concerts by the Omaha Symphony and one by the St. Louis Symphony, three Opera/Omaha productions (*Aida*, *Tales of Hoffmann*, and *Don Giovanni*), four performances by the Omaha Ballet, road show productions of *Amadeus* and *Evita*, a performance of Bach's Mass in B Minor by the Nebraska Sinfonia and Wartburg College Choir, a performance by the Hungarian State Folk Ensemble, and three Tuesday Musical concerts to hear Sherrill Milnes, Rudolf Serkin, and the English Chamber Orchestra. One trip was to Wayne, Nebraska, to hear the Mannheim Steamroller (a group that draws on several musical traditions), and two were to Chicago to see the Vatican Exhibit at the Art Institute.

According to Richard Schuler, assistant to humanities director John W. Nielsen '48, an average of 20 to 25 students have attended each event. Favorites this year have been the ballet and opera, with 30 to 35 at each performance. The fact that a large group from Dana attends every Opera/Omaha production was noted in a February 9, 1984, *Omaha World-Herald* feature story on out-of-towners who regularly attend performances.

"Our humanities program has sponsored these trips for many years," Schuler said. "We're fortunate to be so close to a city that has such an active cultural life."

The humanities program tries to keep student ticket costs between \$3 and \$5, Schuler said, and often subsidizes tickets up to \$1.50 each. In most cases the program gets special student rates from the sponsoring organizations. It buys 30 season tickets each for Opera/Omaha, the Omaha Ballet, and Omaha Symphony, and orders additional tickets as needed for students and members of the faculty and staff.

This year Tuesday Musical received a special grant and was able to offer free tickets to area colleges and universities,

Schuler said. He has learned that Dana is the only school that has used all of its tickets.

Except for the Chicago trips, the humanities budget has also provided free transportation to all events, Schuler said.

He noted that few incoming freshmen have ever attended an opera, a ballet, or a symphony concert. Freshmen and sopho-

mores in humanities, a general education program, are required to attend one such event each semester, he said. Many, however, attend more than one, and students who have completed their humanities requirement continue to sign up for tickets, developing what members of the humanities program hope will be a lifelong involvement in the arts.



Meeting of Minds

Students recreating historic figures for the "Meeting of Minds" Interim (see page 2) were — from left (February 3, top photo) Ron Rodenburg '86 (*Aristophanes*), Terri Pedersen '85 (*Catherine de Medici*), Moderator Dixie Lee Tripp '84, and Sharon Helwick '87 (*Anne Bradstreet*); (February 4, bottom photo) Don Joseph '84 (*Frederick the Great*), Moderator Mary Franzen '85, Kristine Swank '86 (*Madame Marie Curie*), and Tom Meyer '87 (*Henry David Thoreau*).

Practicing Theory:

Applying Christian Faith in Dana's Classrooms

This article continues the series on Dana's objective of "teaching in harmony with the Christian faith." The series has been based on presentations by three faculty members at a Faculty Theological Development program held last spring. The program was supported by a grant from the Division for College and University Services of the American Lutheran Church.

III. Art and the Lutheran College

by Milt Heinrich
Assistant Professor of Art

We often think of schools disseminating information in an oral tradition. We learn facts and figures, tie them together into a cohesive picture, and thus learn to appreciate the humanities, the sciences, the social sciences, and the like. This is one method of schooling, and often it is the only practical way to teach. But some subjects offer an alternative, "hands on" approach to learning. Playing an instrument, developing skills through a physical education program, doing laboratory experiments, painting a picture — these are all examples of learning by doing.

This is the kind of learning that takes place in our studio art classes. A visitor to the classroom will find some students arriving early and others staying late. There are few lectures, but much activity.



Heinrich: "Working on creative projects offers time for reflection and a lot of discussion. . . ."

Working on creative projects offers time for reflection and a lot of discussion, and teaching can become a one-on-one counseling situation.

No matter what subject instructors teach, they teach who and what they are, and what they believe in. Within the arts, teaching becomes reciprocal as students and instructors struggle for common aesthetic goals. A favorite professor of mine once said, "I am just a guide helping you climb the mountain of ignorance." Sometimes I may be the guide, but often the path is only partially charted. Into the center of this interaction must come one's personal beliefs.

At Dana, religious convictions can be easily expressed. Within a college of the church, a teacher has the opportunity, if not the obligation, to weave the ethics and attitudes of a religious life into the fiber of course offerings. In the art department we try to provide the time and atmosphere that allow for a sharing of opinions. Because students are making important decisions at this time in their lives, and parents are not often around to give advice, teachers can in some ways become their surrogates.

If a teacher becomes a surrogate parent, then the class becomes a surrogate family with group responsibilities and interactions. For example, in our ceramics class everyone shares in making clay, firing the kiln, and cleaning up. Recently the class had a spaghetti dinner at the home of one of our married students. All of the students contributed plates, bowls, and cups of their handmade pottery. Everyone pitched in to make the dinner and set the table.

As the meal began, and without any pretense, the students asked if I would give the blessing. It was a special moment. Good food, the aesthetics of our own handiwork, and a table prayer made the arts not just a subject but a way of life, a life woven within the church.

As this Dana family of artists moves on, we hope that the skills they develop in classes will have practical applications for them within and outside the church. There have been many times in history when to be an artist meant to work within and for the church. Today that is seldom the case. As we develop church leaders, we know that some will have artistic talents. We

hope their professional skills will be recognized, appreciated, and used by the congregations they join.

Prof. Heinrich, at Dana since 1975, has taken the arts to elementary school teachers and children across Nebraska through workshops sponsored by the Nebraska Department of Education. He has been involved in the production of Nebraska Instructional Television's "Strawberry Square II: Take Time," a series broadcast for the first time last fall on NETV. He is also developing the fine arts faculty for the "Nebraska Commission on Excellence in Education," a coalition of Nebraska school districts that offers a summer program for gifted and talented high school juniors and seniors. Heinrich's art includes a large relief mural of found objects commissioned by HunTel in Blair.

Madsens Celebrate Golden Anniversary



The Dana family invites all alumni and other friends to join in celebrating the Golden Wedding anniversary of President Emeritus and Mrs. Cliff Madsen on Sunday, June 10, 1984. Please join us for refreshments and fellowship at any time between 2 and 5 p.m. that Sunday in the main dining room of the E. C. Hunt Campus Center here at Dana. The Madsens sincerely request that there be no gifts.



Stories and photographs from Dana's past are being featured on these center spread pages during the Centennial Year of Celebration.

“Christ in Temple” History Discovered

“A beautiful copy of ‘Jesus in the Temple’ now hangs in our chapel,” the October 1, 1927, *Hermes* reports. “It was painted and given by A. Emil Rasmussen of Boston. . . the whole picture measures about six feet by eight. The subject is Jesus at twelve years in the temple, ‘sitting in the midst of the doctors, both hearing them and asking them questions.’ (Luke 2:46)”

This large oil painting, familiar to many generations of Danians, continues to be a part of the campus scene. Remaining in the Old Main chapel until the building was remodeled in the late 1950s, today it hangs on a landing in Pioneer Memorial. Two lines at the lower left corner identify it as a “Copy from Hoffmann Dresden/Alfred Emil Rasmussen 1914.”

Who was Hoffmann? An entry in *The Saurus of the Arts* (Albert E. Wier, 1943) identifies him as a German painter (1824-1911) who studied in Germany at the Duesseldorf Academy and spent several years in Italy. “His works,” the entry says, “include ‘Christ in the Temple’ . . . ; he was especially praised for his religious painting.” According to *Index to Reproductions of European Paintings* (Isabel Stevenson Monro and Kate M. Monro, 1956), “Christ in the Temple” belongs to Dresden’s Gemaeldegalerie, having survived World War II and the heavy bombing of that city.

Who was Alfred Emil Rasmussen? He did not attend Dana, but his daughter Ruth taught here in 1929-30; in the *Hermes* article announcing her appointment he is called “Isadore” Rasmussen. Ruth Rasmussen married another Dana faculty member, Arthur Nelson ’27. They live in St. Cloud, Minnesota.

Mrs. Nelson writes: “I am happy to give you some information about the painting ‘Christ in the Temple’ given by my father to Dana College in 1927. My father, Alfred Emil Isiduro Rasmussen, was born in Odense, Denmark, June 22, 1882, and died in Needham, Massachusetts, December 31, 1975. He and his older brother, Rasmus Christian Panduro Rasmussen (father of Pastor Paul G. Rasmussen [D’26, T’33]), emigrated

from Denmark to Boston, Massachusetts, in 1904. The brothers were usually referred to by their friends as Panduro and Isiduro. These Spanish-sounding names stem from their great-grandfather, Isiduro Panduro, who was one of the Spanish soldiers sent to Denmark, most of them to Jutland, I believe, during the Napoleonic Wars in the early 1800s. When the Spaniards were recalled, Isiduro Panduro had to stay behind after an accident when a horse threw him as he was crossing a bridge. He never returned to Spain and was employed and married in Jutland. My father’s mother was Gregersine Isiduro Panduro, and a number of her descendants have one of the names.

“My father was born in Odense and was baptized in St. Knud’s Cathedral. He was the fourth child in the family, and his father ran a successful painting and decorating business. Strongly influenced by the Indremissions [Inner Mission] movement, he became a lay preacher and was known as Indremissionaer Martin Rasmussen. He moved to Svendborg, and here my father was confirmed. Following confirmation, at the age of 14, as was the custom, Alfred was apprenticed to a painter and decorator in Kolding for four years with the stipulation that he was also to be allowed to go to art school evenings. There followed, as was common, several years as ‘journeyman,’ primarily in Germany. He also worked in or visited other European countries. He and some friends were about to go on a ‘walking trip’ to Italy and Greece, with a goal of also going to Egypt. He returned to Denmark to see his family and while there was persuaded by his brother Rasmus to go to America instead. Work was hard to find in Denmark at that time and the prospects in the U.S. held high hope for these two adventurers. A close friend of the family from Odense days lived in Boston. Both Rasmus and Alfred, cabinet maker and painter and decorator by trade, were able to find work and were married to the girls to whom they had been engaged in Denmark. The brothers spent their lifetimes living in Boston or the immediate vicinity.

“Bethany (Bethania) Church in Boston, always affiliated with the UELC with

headquarters at Blair, was organized shortly before the turn of the century and by 1907 erected a church building. My father planned and painted the decorations and painted the altar picture after Plockhorst’s depiction of the angels’ appearance to the shepherds in the fields. . . .

“Work in the building trades usually slowed down in the winter months, at least in the painting and decorating business, and it was then that my father could paint and also make and carve his own furniture. He painted a number of pictures for altars, primarily for churches in the UELC synod. His professional painting and decorating was in churches, theaters, and banks. I recall his painting ‘Christ in the Temple.’ . . .

“I personally was interested in Dana College for years and would like to have attended that school. When that was not possible I was happy to have the opportunity to go there to teach after I had been

At Centennial Time: “The Gathering”

by Dr. Edward A. Hansen

Dr. Hansen, former bishop of the ALC’s Southwest Minnesota District, is coordinator for “The Gathering.” He graduated from Dana in 1939 and from Trinity Seminary in 1942.

It was a century ago, in September 1884, that a group of Danish Lutheran pastors and lay people assembled at Argo, Nebraska, in St. John’s Lutheran Church. Earlier, these immigrants had belonged to a church body known as the Norwegian-Danish Conference, but now they felt the need to minister to their Danish countrymen in an independent church body. At Argo they adopted a constitution, and called their new organization “The Danish Lutheran Church Association in America.” Later, in 1896, this “Blair Church” united with another Danish group, the “North Church,” in Minneapolis, to form the United (Danish) Evangelical Lutheran Church.

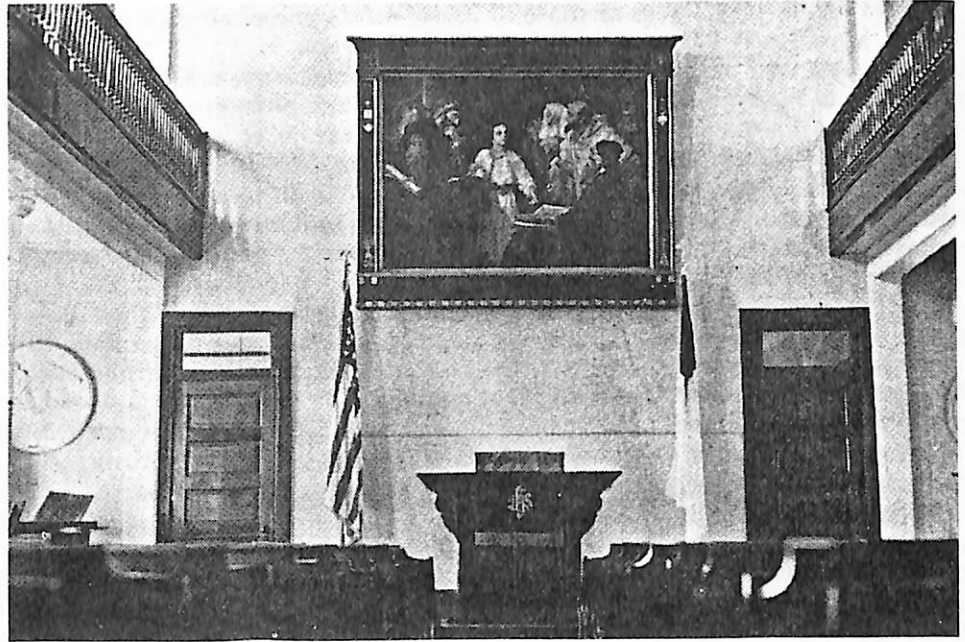
There were several new beginnings in 1884. Not only did that year mark the



"Christ in the Temple" in former Old Main chapel.

to graduate school. I taught history there in 1929-30 and also was dean of women. Arthur Nelson, my husband, taught chemistry and physics there that year and we were married in 1934. I can say with confidence that it was I who encouraged my father to give the painting to Dana College.

"Following his retirement my father had the leisure to join art clubs and was awarded a number of prizes. He was in excellent health, was very active all his life and made and carved furniture, repaired antiques and even made some Irish harps. He was a master craftsman in several areas. After a bout with pneumonia in early 1975 he became less active but continued to paint even at Thanksgiving time before he died late that December."



opening of Trinity Seminary in the home of the Rev. A. M. Andersen, its founder and first faculty member, but also the establishment of First Lutheran Church in Blair. Rev. A. M. Andersen also pastored this church. He must have been an exceedingly able and busy man, inasmuch as he was also elected secretary of the newly founded church body.

Thus while Trinity Seminary (and its subsequent sister institution, Dana College) can celebrate its centennial this year, along with First Lutheran Church of Blair, it is fitting that the church body of which both are a part should take note of these beginnings 100 years ago.

The UELC never grew to become one of the larger bodies of ethnic-based Lutherans in America. Even if these people had found it possible to unite in one church with the other, Grundtvigian-oriented, Danish Church in America, they would have been a minority among the Lutheran groupings. When The American Lutheran Church was organized in 1960, the UELC was the smallest of the four bodies which today are included in that church.

Nevertheless, the UELC was a church with a pulsating life of its own. Through the years, men and women from this

church body have made worthwhile contributions to the life of North America, both in its spiritual and political life.

In successive years, pastors and lay delegates from the churches forming the UELC gathered annually in convention. Because the synod was small, conventions could be held in various communities where there were member congregations — places as widespread as Elk Horn and Cedar Falls, Iowa; Racine, Wisconsin; Fresno, California; and Westbrook, Maine. This contributed to a broad acquaintanceship, not only between members, but of members with other communities where their church was at work. We who belonged to the UELC developed a sense of being an extended family. Members looked forward eagerly to the annual "gathering of the clan," not only to transact the church's business, but to renew ties of fellowship with other pilgrims on the journey toward heaven. We heard the gospel preached by those who were acknowledged leaders in our midst, and we sang the hymns which were a lively part of our Danish heritage.

In 1960 the UELC held a final convention in Minneapolis to close out its separate life, just prior to joining with sisters and

brothers of German and Norwegian background churches in a constituting convention to form The American Lutheran Church. This action was taken joyfully and steadfastly. After all, we had often sung in one of our hymns,

*"Hast to the plow thou put thy hand,
Let not thy spirit waver."*

Our corporate life had spanned three-quarters of a century. Now our work would be done better in company with others of like mind and purpose. We had put our hands to the plow. Our spirits did not waver.

Today another quarter of a century has nearly run its course, and we have been glad to have our partnership in ministry with fellow Christians on this continent. In our time the spectrum of American Lutheranism is much broader; our ethnic antecedents are no longer only those who came from Northern Europe. It must be noted, however, that UELC people still wince when they hear some speaker reciting the ingredients of the Lutheran melting pot — Swedes, Norwegians, and Germans — and omitting the Danes! We know that, even if we were not a large group, we had a heritage of our own. We considered ourselves something other than

an appendage to one of the larger nationality groups. But, while we have our memories, we do not indulge only in looking back. We have put our hand to the plow. As inheritors of the UELC tradition, we press forward to a more inclusive Church, being planned for as early as 1988.

Meanwhile, in 1984 — our centennial year — a reunion is scheduled of those UELC people who used to gather each year for a synod convention. It will be held on the campus of the college which our pioneers built — Dana College. Since it is not an official convention, with church business to transact, it will be known simply as "The Gathering." The dates are June 29-July 1, 1984. After two dozen years, those who assemble will have grayer heads and slower steps. But the early surge of registrations (already from 17 states, Canada, and Japan) shows that people are eager to come together one more time — to sing the old hymns and clasp the hands of old friends once again.

In their best moments, UELC members, like John Wesley, saw the world as their parish. They sent missionaries overseas — to Africa, Colombia, South America, India, and Japan. We had a special feeling for our missionaries. We kept track of them, and prayed for the advance of the gospel through them. Thus it is appropriate that the opening session of "The Gathering" will be a "Mission Evening." The missionaries will be there, present and former — as many as can come — seated on the platform by the flags of the nations where today there are young churches which still welcome fellow workers from America in their ministry of the Lord Jesus Christ. Featured speaker for this evening will be Dr. Mark Thomsen (D'53, T'56), former UELC missionary to Nigeria, now director of the Division for World Mission and Inter-Church Cooperation for the ALC.

In addition to abundant time for coffee-drinking and visiting and getting reacquainted, a "proceSSIONal of the saints" is planned, to remind the participants that the church is composed not only of heroes of the past, but also of present-day redeemed sinners, whether clergy or laity.

During a festive banquet, a duo of well-known former UELCers, Dick and Bonnie (Hagedorn) Jensen, will give a dialogue presentation. Dr. Richard Jensen (D'56, T'59) is known to radio and TV audiences as the preacher on "Lutheran Vespers," which he also directs. His wife, Bonnie D'70, is executive director of American

Lutheran Church Women.

Preaching at the closing Sunday afternoon service will be the Rev. Homer Larsen (D'45, T'48), pastor of Nazareth Lutheran Church, Cedar Falls, Iowa. Widely known as a radio preacher and evangelist, he will conclude "The Gathering" with a gospel message in the old UELC tradition.

*"Brothers and sisters, we now must depart,
Follow we Jesus with gladness of heart,
Each in his lawful vocation."*

Nostalgia? Yes. But even more, "The Gathering" will be a call to church members to unwavering commitment to love and serve Jesus Christ in today's world.

You are invited! Write "The Gathering," Box 1198, Dana College, Blair, NE 68008 for details and registration information.

100th Birthday Fete Set for October 5-7

All Dana and Trinity alumni and other friends are invited to celebrate Dana's 100th birthday during Homecoming weekend, October 5-7, 1984. A variety of events is being planned around the general theme, "Days of Old Dana."

Headlining the weekend celebration will be the official opening of the new Performing Arts Center. All alumni who have been involved with Dana theater productions over the years are especially invited to return for a first-ever reunion. Other reunions scheduled include the classes of '79, '74, '59, '54, a cluster reunion for the classes of '63, '64, and '65, and a Golden Reunion for those from the class of 1934 and earlier classes. Former presidents of Dana and Trinity have also been invited to participate.

The Centennial history of Dana College and Trinity Seminary, *A Place Called Dana* by Dr. Peter L. Petersen '62, will be introduced at Homecoming weekend. Author Petersen will be present for an autograph party at breakfast Saturday morning.

One of the major events of the weekend will be a salute to Dr. Paul Neve '41. Dr. Neve, who has directed the Dana Choir for the past 41 years, will retire from fulltime service to the college at the close of this academic year. Choir members who have sung with him are invited to return and participate in this special salute. The traditional Homecoming reunion choir will sing several selections on Saturday

evening as part of the opening of the Performing Arts Center. More details will be available later from the Public Relations Office.

Watch the mail for further announcements, but reserve the dates — October 5-7 — for Dana's 100th birthday party.

Award Honors Former Teacher

Prof. Frank '41 and Helen Hengeveld have established the Dr. S. Milton Thomsen Chemistry Research Prize as a tribute to the former Dana chemistry professor. The award will usually be given annually for the best undergraduate research in chemistry at Dana. It will come from interest on the Hengevelds' contribution to the college's endowment fund.

Dr. Thomsen was dean of men and head of Dana's chemistry department from 1930 to 1943. The next year he was a visiting professor of physics at the University of Nebraska in Lincoln. Then, from 1944-72, when he retired, he was a research chemist at the RCA Laboratories in New Jersey.

At RCA his patents included a chemical treatment of glass to eliminate reflections, aluminizing of cathode ray tubes, standardization of polarographic methods, and development of the phosphors and photoconductors that coat the inside face of color television tubes.

Thomsen received his B.Ed. from Wisconsin State Teachers College and his M.S. in chemistry and Ph.D. in inorganic and analytic chemistry from the University of Wisconsin. He lives in Pennington, New Jersey.



Thomsen

About Institutional Advancement Student Financial Aid

by Dennis Barnum
Executive Director for
Institutional Advancement*

Dana is affordable!

The purpose of the Dana student financial aid program is to provide financial resources to students who, without such resources, would be unable to attend Dana College. Also, we seek to encourage students to achieve excellence in academics, athletics, and the arts by providing scholarships and grants to recognize achieved excellence in these areas.

* * * * *

The Dana College Scholarship/Grant Guarantee Program, originated by Dana, *guarantees* the dollar amount of scholarships or grants a student will receive. The net cost of tuition and fees is also guaranteed. This means that students know in advance exactly what their costs will be for the coming year at Dana. The uncertainty of federal funding will not affect that figure. Every student receiving financial aid at Dana is eligible for this program.

Student loans and part-time jobs are also available. Dana participates in the National Direct Student Loan, Guaranteed Student Loan, Parent Loan for Undergraduate Students, and College Work-Study Programs (NDSL loan funds of \$150,000 are available at Dana for the 1984-85 academic year.) Substantial opportunities are available for part-time employment, with over 50 percent of Dana's students working on campus and many others working part-time in the Blair community.

The following four scholarships are based *entirely* on a student's academic accomplishments. If these qualifications are met, a student will be awarded the scholarship for which he/she qualifies. That scholarship will be part of the student's Scholarship/Grant Guarantee.

Presidential Scholarship **\$12,000 over 4 years**

Qualifications: be in top 5% of graduating class with ACT of 30 or above/SAT of 1260 or be national merit finalist. An 8.0/A GPA is required to renew this scholarship.



Regents Scholarship **\$8,000 over 4 years**

Qualifications: be in top 10% of graduating class with ACT of 26 or above/SAT of 1050 or be national merit semi-finalist. A 7.5/A GPA is required to renew this scholarship.

Academic Scholarship **\$4,000 over 4 years**

Qualifications: be in top 33% of graduating class with ACT of 22 or above/SAT of 900. A 6.0/B GPA is required to renew this scholarship.

Achievement Scholarship **\$3,200 over 4 years**

Qualifications: be in top 40% of graduating class with ACT composite of 20 or above/SAT of 840. A 5.5/B GPA is required to renew this scholarship.

What about church matching grants? Dana will match any congregational grant up to \$500 per year per student. Because the grants must often be coordinated with federal and other assistance programs, *the college must be notified of the congregational grant prior to the time the student receives a financial aid award.* These grants are part of the student's Scholarship/Grant Guarantee.

As part of Dana's Scholarship/Grant Guarantee Program, Dana also offers

grants-in-aid in such areas as varsity athletics, vocal and instrumental music, drama, art, and several other areas.

What about *price*, the cost to students and their families for a Dana education? The important, exciting, basic fact is, *Dana is affordable!*

First, everything of value comes at a price, and the benefits of a Dana education last a lifetime.

Second, the basic cost of a year at Dana is substantially lower than at most comparable private colleges and is very competitive with costs at other Nebraska and Iowa private colleges. Within the American Lutheran Church college system, Dana will be the second lowest in cost in the entire ALC for 1984-85!

Third, our student financial aid program makes Dana even more affordable. More than 85 percent of all students enrolled receive some form of financial assistance. Even middle-income families (\$30,000 to \$45,000 annual income) can receive some form of financial assistance from Dana.

Fourth, Dana's exciting new scholarship program offers four levels of assistance ranging from \$3,200 to \$12,000 over four years of study at Dana to students who meet certain achievement criteria.

Finally, Dana is competitive, not only with other private colleges, but also with public colleges and universities. The point is that the *net* cost of a Dana education might be no greater than the *net* cost of attending a public institution.

Many important personal benefits for students are available at Dana — a personalized education of excellence, quality campus life, a Christian environment, *and affordability.*

How does a student apply for admission and financial aid and take advantage of Dana's Scholarship/Grant Guarantee Program? Simply by writing to the Dana College Office of Admissions, Blair, NE 68008, or by calling us at area code 402/426-4101.

Dana College is affordable!

NOTE: *The next issue will discuss Dana's alumni affairs program.*

**Institutional Advancement includes admissions, student financial aid, alumni affairs, development, and planned giving.*



Witte Ordained, Installed As Campus Pastor

Alumnus Greg Witte '71 was ordained and installed as campus pastor on March 4 at a service held in Doctors Auditorium of the Dana Hall of Science. Participants included (from left) Dr. Clifford T. Hanson (D'41, T'44), dean of the college; the Rev. John Beck (D'50, T'55), director of development; the Rev. Carl Schattauer (T'52), First Lutheran Church, Blair; Dr. John Northwall, clergy dean of the Omaha Conference of the ALC's Central District; President Kallas; Dr. Delvin Hutton, professor of Greek and religion; Dr. William Weiblen, former president of Wartburg Theological Seminary; Witte; and Dr. John W. Nielsen (D'48, T'53), professor of religion.

Alumni Candidates

Five candidates are on the Alumni Board ballot this spring. Herbert B. Larsen '38, Kimballton, Iowa, is a new candidate. The remaining four — Laurie Barber Holben '76 of Council Bluffs and Roger Howland '64, Paul Hundtoft '76, and Lois Edmonds Jensen '73, all of Blair — are incumbents.

Herbert Larsen, who farms, is an enthusiastic Vikings fan who attends most home games. He has also assisted with the Centennial Fund drive in his area. Laurie Holben teaches sixth grade in Treynor, Iowa. Roger Howland is a partner and manager of the tire department for Nebraska-Iowa Supply. Paul Hundtoft is a junior high art teacher at Westside Community Schools in Omaha, and Lois Jensen teaches physical education and health at Omaha's Arbor Heights Junior High School. A ballot is on page 14.

Sports

Basketball

This year's records for the Vikings and Lady Vikings (each 1-9 in conference play) reveal disappointing seasons, but Coaches Tom Brosnihan and Kathy Foley see bright signs for the future.

Both seasons had similarities — the teams were competitive and in many games came within range of winning.

Brosnihan says that the men's team played the toughest schedule in Dana basketball history, with many opponents in Division I and II. Six competitors made it to post-season tournaments.

Freshmen and sophomores formed the nucleus of the Vikings, Brosnihan reports. Ed Kaspar was the only senior starter. Top prospect Steve Olson, a junior, was out most of the season because of injury. Sophomore Jon Hayes was leading scorer and rebounder. Freshman Todd Hinkle was among state leaders in free-throw percentages.

Coach Foley reports that the Lady Vikings had no senior players this year. Top and returning players are freshman Joyce Broekemeier, sophomores Ronda Fritz and Merri Clements, and juniors Cindy Kalbfleisch and Kim Pfannkuch.

Wrestling

The wrestling team finished the season with a 5-5 dual meet record. Coach Ron Beaman '74 says that next year's prospects look very good against always strong

competition. Dana is the only private college in Nebraska that has wrestling. Therefore most of its competition is against private schools in Iowa and South Dakota and state schools in Nebraska, Missouri, and Kansas.

This year's team, Beaman says, was very young, with six of the ten weight classes manned by freshmen. The only senior was Curt Berkland, who finished the season with a 13-4-1 record. Other standouts were sophomore Tim Weltzin,

15-11, and juniors Fred White, 13-7, and Bill Bussey, 21-3.

The season was highlighted with two wrestlers — Weltzin and Bussey — qualifying for the NAIA National Wrestling Tournament at Central Oklahoma University in Edmond, Oklahoma. Weltzin at 190 pounds lost a heartbreaking match 7-6 in the last seconds to the tenth seed from Mayville State, North Dakota. Bussey at 177 pounds lost to the fifth seed from the University of Wisconsin, River Falls.

Dana Vikings Basketball Camps

Basketball coaches Tom Brosnihan and Kathy Foley will again direct boys' and girls' basketball camps this summer. The program will have outstanding coaches and players working with young cagers, helping them learn the game — from grade school to high school to college — properly. There will be videotape analysis and review of each youngster's performance, and each will be given a camp t-shirt.

Dates: June 8-10 (Boys' Varsity Team Camp)	June 22-24 (Girls' High School Team Camp)
June 10-14 (Boys' Individual Camp)	July 13-15 (Girls' High School Team Camp)
June 15-17 (Boys' Frosh-Soph Team Camp)	July 16-20 (Girls' Grade School Ind. Camp)

Cost: \$150 (\$30 deposit with registration form)

Parents' Name _____

Camper's Name _____

Address _____ City _____ State _____ ZIP _____

Telephone _____ Camper's Age (by June 1, 1984) _____ Boy _____ Girl _____

Please include deposit check and mail to Tom Brosnihan, Dana College, Blair, NE 68008.

Dr. John Bienz, English, gave a paper on "Images and Ceremonial in *The Temple*: George Herbert's Solution to a Reformation Controversy" on March 10 at the Central Renaissance Conference at the University of Nebraska-Lincoln.

Don Baack '75, business administration, gave two papers at the Southwest Division-Academy of Management meeting in San Antonio, Texas, on February 29 and March 1. One was on "A Conceptual Framework for Studies of Centralization," and the other on "Small College Management: The Watchword Is Survival."

Sophomore Jeff Langholz has been named to the National Board of Directors of the Coalition of Private University Students (COPUS). He is the only underclassman on the board. Members met at the end of January in Washington, D.C. Speakers they heard included U.S. Rep. Paul Simon '49, chairman of the House Subcommittee on Postsecondary Education; House Speaker Tip O'Neill, Senate Majority Leader Howard Baker, and Vice President George Bush.

Students **Pam Pekarek '86**, **Deb Dill '85**, and **Kyle Elliott '87** were judges at a science fair on March 1 at Loganview High School in Hooper, Nebraska.

LARP (Liberal Arts Reading Program) books being read during the second semester are: *Five Stories* by Willa Cather,

Johnny Got His Gun by Dalton Trumbo, *The Prince* by Machiavelli, and *1984* by George Orwell.

Jan Funk, social work and sociology, gave a workshop on stress January 20 in Shelby, Iowa, for the Sunshine Circle of the United Lutheran Church.

John Mark Nielsen '73, English, who is teaching in Denmark this year on a Fulbright grant, has also been named a consultant to the Danish National Museum to assist the museum in preparing an emigration exhibit, "The Dream of America," that will be shown in Scandinavia and the United States.

This semester Dana's **Forensics Team** entered five tournaments. The team came in first at one held at the University of South Dakota, Vermillion, and placed in three others.

Students qualifying for the American Forensics Association's National Individual Events Tournament were Peggy Dutch in four events (after-dinner speaking, poetry interpretation, and two dramatic duos — one with sister Kelley '86, the other with Lesa Bishop '87), Dixie Lee Tripp '84 in three events (oratory, poetry interpretation, and after-dinner speaking), Lesa Bishop in two events (prose and dramatic duo), and Kelley Dutch in one event (dramatic duo).



Students Elect New Officers

Elected to head student government next year are: from left, standing — **Jon Bansen '85**, president, and **Jon Pedersen '86**, vice-president; seated — **Michelle Blas '85**, treasurer, and **Stephanie Meyer '86**, secretary.

Destiny's Deep Sea

'80s **J. Kerry Boltinghouse '83** of Fort Worth, Texas, has been promoted to assistant chief flight instructor for American Flyers Corp. . . . **Curt Fett '82** works in Sioux City, Iowa, as a financial advisor for MONY and as an agent for Fett-Lane Insurance Associates. He is also a member of a Christian singing group, the Good Life Singers. He writes that his father, Phil, died November 21 after a three-month illness. He was a partner in the Fett-Lane agency. Curt lives at 1516 Collins in Sioux City (51103). . . . Jacob Carl was born January 20, 1984, to **Peter '81** and **Julie Johnson '81 Bonde**, 3209 Diamond Eight Terrace, St. Anthony, Minnesota 55421. . . . **Tom Taggart '81** has passed his CPA examination and has been named tax senior at Arthur Young & Co. in Omaha. . . . **Tom Kendall '80** married Ellen Kjos of Oslo, Norway, on August 13, 1983. A student at Wartburg Theological Seminary, Tom is currently an intern pastor at Redeemer Lutheran Church in Rowland Heights, California. His wife is a Ph.D. candidate in Old Testament at Claremont Graduate School. They live at 1520 S. Jellick, Rowland Heights, California 91748. . . . **Ralph Oestmann '80** and Kelly Hanson were married December 31, 1983, in David City, Nebraska. He is field office manager for Peter Kiewit

Sons' in Wiapahu, Hawaii. They live in Mililani. . . . Greg and **Annette Grorud '80 Peterson** announce the birth of Tracy Lynn on February 21, 1984.

'70s **Mark Christensen '79**, son of **John '54** and **Myra Vig Christensen '54**, is studying medieval history at the University of Notre Dame in South Bend, Indiana. He has received a full tuition scholarship in the master's/doctoral program. . . . **Kim Neve '79** has completed work for his Ph.D. in biological science. He is now a postdoctoral researcher in molecular pharmacology at the University of Pennsylvania School of Medicine. His address is 4222 Spruce Street in Philadelphia (19104). . . . David James was born October 16, 1983, to Darold and **Diana Christensen '78 Merkel**. He joins Christopher, 6. Diana is a practicing attorney in Norfolk, Nebraska; her husband is an electrical contractor. They live in Norfolk at 205 South Pine (68701). . . . **Dennis Preston '78** was ordained on March 31 into the ministry of the American Lutheran Church. The service took place at Wartburg Seminary in Dubuque, Iowa. He will serve two churches in South Dakota — Naples Lutheran in Naples, and Our Savior's Lutheran in Henry. His address is R.R. 1, Box 58,

Vienna, South Dakota 57271. . . . Timothy Peter was born February 29, 1984, to **Sande Peterson '78 Rodemeyer** and her husband, Brian. Sister Abby Kaylee is 2. Sande is a part-time teacher at Sutherland Community School in Iowa. They live in Everly. . . . **Jane DeVasure '77** married Keith Siebrandt on October 8, 1983. She works at the University of Nebraska Medical Center in Omaha, and he works for Blue Cross-Blue Shield. . . . **David G. Hanen '77** has been elected president of the Saint Joseph Hospital's Credit Union in Omaha. . . . **Dr. John R. Hibbing '77**, an assistant professor of political science at the University of Nebraska-Lincoln, has been awarded one of 50 North Atlantic Treaty Organization (NATO) postdoctoral fellowships. He will study at the University of Essex in England. . . . Joshua David, the first child of **Pastor David '77** and **Ruth Toso '78 Johnsen**, was born several months ago in Madagascar, where his parents are missionaries. His grandparents, **Pastor Paul '49** and **Joyce Nelson '50 Johnsen** of Huntington Beach, California, and Pastor Erwin and Alice Toso of Madagascar, attended his baptismal ceremony in the Malagasy Lutheran Church near the ALC mission in Fort Dauphin. . . . **Pastor Paul Demant '75** has accepted a call to serve Immanuel Lutheran Church.

Houston Alumni Meet



Knud Warschauer '48 (seated, right), writes from Houston about an alumni gathering he organized there last October. Meeting at the home of Erland '64 and Clara Birney '64 Estes (top left and center) for a picnic and an evening of reminiscing were Donna Berryman Lam '63 (top right), Warschauer, and his friend Glenna Huitron.

Easton (5955 S. Elm Avenue, Fresno, California 93706). It is his second call. . . . **Jean Alexander '75 Burbridge** is the resource room teacher for grades 1-12 in Treynor, Iowa. . . . **Doug and Kathy Tyner '75 Swanson** announce the birth of Nicole Christine on October 5, 1983. They are living this year in California at 350 S. Madison #218 in Pasadena (91101). Their permanent address is 1560 Merrett, Idaho Falls, Idaho 83401. . . . "Come and Help Us," an article by **Fred Baltz '74** about the start of an ALC mission congregation in East Dubuque, Illinois, appeared in the January 20, 1984, issue of *The Lutheran Standard*. . . . **Mike '74** and **Kris Lenoch '74 Zimmerman** live at 2838 Valley Drive in Sioux City, Iowa 51103. . . . **Larry Andrews '73** was incorrectly reported in the last issue as having received his M.S. in special education. His degree is in secondary education. He teaches art at Omaha's Central High School. . . . **Alan Brodbeck '73** has been named a county judge for Nebraska's 15th Judicial District by Governor Kerrey. Brodbeck has been Antelope County attorney since January 1977 and has also been in private practice. He is a member of the board of directors of the Nebraska County Attorneys' Association and a past president of that organization. . . . **Cecilia Dhooge Hahn '73** is one of 43 Nebraska teachers selected as winners of the 1983-

84 Cooper Foundation Awards for excellence in innovative teaching and learning projects. She teaches French in the Lincoln school system. . . . **Doug Larson '73** recently received his M.B.A. from the University of Nebraska at Omaha. He has also been made a member of the honor society, Beta Gamma Sigma, for his scholastic achievements. . . . **Judy Krysl '72** is a freelance portrait artist in Atkinson, Nebraska (P.O. Box 87, 68713). . . . **Janice Stork Lippincott '72**, Blair, is one of three winners in the second Nebraska's Outstanding Teacher Contest, sponsored by the *Omaha World-Herald* and the American Association of University Women. The contest was held in conjunction with the state's Teacher Recognition Day March 6. Selection was made by judges based on letters of nomination by former students and/or their parents. Mrs. Lippincott now owns Janice's Wedding World in Blair. . . . **Abigail Hubbard '71** received her Ph.D. last December in higher education administration from the University of Nebraska-Lincoln. She and her husband, Jan Craig Goering, live in Ponca City, Oklahoma 74601, at 2201 N. 14th Street #C4. He is an accountant with Conoco. . . . Micah Frederik was born July 7, 1983, to **Pastor John '71** and **Ruth Jacobsen '70 Leitel**. He joins Ann 9, Mary 7, and Adam 3. . . . Photography by **John Prouty '70** was recently exhibited in Omaha at the art studio of Catherine Ferguson. He is a partner of Wessco Graphics.

'60s **Sherri Beales '69 Forrest** and her husband, Charles, adopted twin boys — Kevin Daniel and Eric Andrew — on February 4, 1983. They were born on January 1, 1983. Brother Ryan is 10. The Forrests live in Omaha at 2311 N. 50th Avenue. . . . Trond Trygve was born January 15, 1984, to **David '69** and **Karleen Peterson, R.S.H.S. Box 410, Redfield, South Dakota 57469**. His brother Kwen Arik is 3½. David is director of the Department of Dentistry at Redfield State Hospital and School, and the 1984 president of the Association of Institutional Dentists, an international professional organization. He and his wife served in 1981-82 as World Brotherhood Exchange-World Missionary Prayer League associate volunteers in Cameroon, Africa, where he was missionary dentist at Ngaoundere. In 1983 David received the Certificate of Recognition for Volunteer Service in a Foreign Country by the Council on International Relations of the American Dental Association. That year he also received the Presidential Award from the South Dakota Dental Association and was elected to a three-year term as a member of the Mission Council

of World Mission Prayer League, a Lutheran missionary society. David writes that "Although not a graduate of Dana, my one year has kept Dana in my heart." . . . Twins Todd Robert and Chad Edward were born January 16, 1984, to Robert and **Patricia Welander '69 Svacina**. Brother Travis is 6½. They live at 9831 Clark in Des Moines 50322. . . . **Gary Shelstad '68** has been named second vice president, military sales, for United of Omaha, principal life insurance affiliate of Mutual of Omaha. . . . **Carol Gard '65** has been appointed development associate at Lake Forest College in Lake Forest, Illinois. She will be responsible for research within the college's development office. . . . **John Laughhunn '64** was one of two Missouri Valley, Iowa, high school coaches named 1983 Regional Coach of the Year. He received the award for the excellence of his Class 3-A boys' track program which, the *Valley Times-News* reported, "has been one of the most successful programs at Missouri Valley during Laughhunn's tenure as head coach, and it shows no signs of letting up." (Laughhunn is a member of Dana's Athletic Hall of Fame.)

'50s **Richard Jensen '59**, adviser and associate professor of elementary education at Western Oregon State College, spent six weeks in February and March teaching in Lima, Peru. He taught adolescent psychology and human growth and development for a new off-campus master's degree program developed by WOSC-OSU in Lima. He was the first professor from Western to participate in the program. . . . **Clifford Sorensen '59** has been promoted to local sales manager of KOLN/KGIN-TV in Lincoln, Nebraska. . . . **Tom '57** and **Marie Hansen '60 Langenfeld** adopted Katie Marie of El Salvador on April 9, 1983, at the age of 5 months. She joined sister Heather, 6, also adopted from El Salvador in 1978, and Steve, 19, adopted in this country in 1964. Tom and Marie celebrated their 25th wedding anniversary last October 25. Tom is director of Corporate Communications for Dayton-Hudson Corp. in Minneapolis. Their new address is 5929 Grimes Ave. So., Edina, Minnesota 55424. . . . **Dr. Rodney Wead '57** is the author of *The Neighborhood Cooperative*, published by the General Board of Global Ministries, The United Methodist Church. Designed especially for grass roots organizations, community organizers, and religious institutions, the book outlines the impact consumer cooperatives have on low income communities. It also shows ways organizers can create cooperatives in a step-by-step approach. Wead is executive director of the United Methodist Community Centers in Omaha, directing programs at Wesley House, Woodson Center, and Clair Community Center. . . . Concern expressed by **Pastor Richard Andersen '53** has sparked a resolution by the ALC that asks the Soviet Union to release Raoul Wallenberg immediately or, if he is dead, to "provide authenticated detail of his death." A Swedish diplomat, Wallenberg is credited with saving the lives of 100,000 Hungarian Jews during the final years of WWII. He was arrested in 1944 in Budapest when the Soviet Union drove Nazi forces from that city. . . . The March 2, 1984, issue of *The Lutheran Standard* features an interview with **Dr. Mark Thomsen '53** on church repression in Ethiopia. Thomsen, director of the ALC's Division for World Mission and Inter-Church Cooperation, had just returned from Addis Ababa. He had planned to attend the general assembly of the Ethiopian Evangelical Church Mekane Yesus, which was cancelled by the military Marxist government of Ethiopia. . . . Greta Hansen, the wife of **Paul V. Hansen '52**, has been selected Person of the Year in Kenosha, Wisconsin, for her service with the local soup kitchen. Their daughter Karen is a Dana junior.

Alumni Board Ballot

There are two boxes by each name so that both husband and wife can vote if they are alumni. Please circle the number voting — 1 2 — and return your ballot by May 25.

Vote for Five

- | | |
|--|---|
| <input type="checkbox"/> <input type="checkbox"/> Laurie Barber Holben '76 | <input type="checkbox"/> <input type="checkbox"/> Lois Edmonds Jensen '73 |
| <input type="checkbox"/> <input type="checkbox"/> Roger Howland '64 | <input type="checkbox"/> <input type="checkbox"/> Herbert B. Larsen '38 |
| <input type="checkbox"/> <input type="checkbox"/> Paul Hundtoft '76 | <input type="checkbox"/> <input type="checkbox"/> _____ |

Mail to: Alumni Affairs Office, Dana College, Blair, NE 68008

'40s

Forrest "Red" Leighton '49 was the subject of a feature story, "To Know Him Is to See Red," in the February 6, 1984, issue of the *Columbia* (Missouri) *Daily Tribune*. With the exception of a few days, the article said, he "has worn a red string tie and red socks for more than 30 years." . . . **Gladys Lynge Hughes '45** has been named one of ten top educators in Louisiana. In 1982 she was the only high school teacher in the state to receive the Educator of Distinction Award. She has also served as president of the Speech Teachers of Greater New Orleans Area and currently holds the office of first vice president in a national speech organization. She is the author of a play and a book on speech tournaments. . . . **Ezra Larsen '43**, physicist with the National Bureau of Standards, has received the Department of Commerce Bronze Medal for superior federal service. . . . **Howard Frank Nielsen '40** is a retired pastor of the United Methodist Church.

'30s

George Rockwell '38 has retired from the U.S. Department of Agriculture in Washington, D.C., after 42 years of federal service. . . . **Pastor John Christensen '35** has been honored by Ludington, Michigan, as its 1983 Citizen of the Year. An editorial in the January 12, 1984, issue of the *Ludington Daily News* noted that "For 45 years Rev. John has been a part of Ludington. His visits to the hospital and medical care facilities have been as faithful as humanly possible. He was, and is, probably better known in the hospital than any doctor. Despite being 77, he continues a rigorous pace and conducts numerous funerals and weddings each year — as well as his daily visits to the hospital."

DEATHS

Elizabeth Nielsen Pedersen '64 died of cancer on December 24, 1983. She had been working as a respiratory therapist at Lester Cox Memorial Hospital in Springfield, Missouri. She is survived by her husband, **Michael '66**, and four daughters, Michelle, Heather, Ana, and Laura, all of 1917 S. Westwood in Springfield (65807). . . . **Helen "Tutti" Mahlum Neumann '45** died on January 6, 1984, in Albert Lea, Minnesota. Survivors include her daughter Carol and mother, Esther, who lives in Albert Lea at the Good Samaritan Center.

About Financial and Estate Planning . . .

How long has it been since you looked at your will? As you know, your will is a living document that reflects the way you feel about the division of your property upon your death. And, since circumstances change in your life, you should review your will on the average of every two to three years. It's a simple process — you just take out the copy of your will that you keep in your desk drawer and read it over. Many times you will find that your life has remained fairly stable and you don't want to make any changes at this time. Other times you will read with astonishment! Perhaps you planned to leave your grandmother's antique pendant to your cousin, who passed away three years ago. Or perhaps you mentioned your first three grandchildren, but not Numbers 4, 5, or 6 since they were not born at the time.

You probably have the *original* copy of your will and also a photocopy. Do not break the seal on the envelope that holds the original. That one should remain sealed until your death, unless, of course, you plan to change the contents. When you review your will you should read the photocopy.

About this time of year I am busy getting ready for the annual DANA COLLEGE BUILDERS luncheon. The date this year is May 12. We are planning to gather in the Presidents Room of the E. C. Hunt Campus Center to hear some words of knowledge and



inspiration about estate planning. If you have recently included Dana in your estate plans, please let me know soon so that I can have your name engraved on the Builders plaque in time for the luncheon.

If you need any assistance in planning your estate, please write or call me.

Mrs. Sharon Gordon
 Director of Planned Giving
 Dana College
 Blair, NE 68008
 Tel: 402/426-9700

"THE GATHERING" RESERVATION FORM

Complete this form and return it together with your payment of \$10 per person (registration fee) to: "The Gathering," Box 1198, Dana College, Blair, Nebraska 68008. Telephone reservations will be accepted at 402 426-4101 ex. 127.

NAME/S _____
(list by name each individual for whom reservations are made)

STREET ADDRESS _____

CITY _____ STATE _____ ZIP _____

Please reserve _____ dormitory rooms for _____ persons. We understand we are to provide all of our own linens including sheets, pillow cases, blankets and towels. We expect to arrive on _____ and will stay through _____
(date and time)

The cost of \$7.00 per room per night is due when you arrive. Meals will be available in the dining room from Friday evening through noon on Sunday. Advance reservations are required for the Saturday evening Buffet and Program — \$6.50 per person. Please reserve _____ tickets. I have display materials for the UELC exhibit and will send them in advance _____ or bring them with me in June _____.

DANA COLLEGE
2848 College Drive
Blair, Nebraska 68008

Second Class Postage
Paid at Blair, Nebraska
And Additional Mailing Offices

08280 040000 8163736347

DR AND MRS NIEL JOHNSON
15804 KIGER CIRCLE
INDEPENDENCE MO 64055

You Are Invited to



"The Gathering"

A Reunion of Friends and Members of the Former
UNITED EVANGELICAL LUTHERAN CHURCH

JUNE 29 - JULY 1, 1984

on the campus of Dana College, Blair, Nebraska

**INSPIRATIONAL SPEAKERS • SPECIAL MUSIC •
INFORMAL REUNIONS • COMFORTABLE ON-
CAMPUS ACCOMMODATIONS • COFFEE HOURS
• DISPLAYS OF UELC MEMORABILIA • CELE-
BRATING THE CENTENNIAL OF TRINITY, DANA
AND FIRST LUTHERAN CHURCH OF BLAIR.**

**For information and reservations write or call The Public Relations Office,
Dana College, Blair, Nebraska 68008 • 402-426-4101**

A decorative border with intricate floral and scrollwork patterns in a light blue color, framing the entire page.

Dana Centennial Gifts



A special-issue collectible
from Bing & Grondahl
Porcelain of Copenhagen

Available only from Dana College,
offered on the occasion of
the College's Centennial

The 11-inch plate is
made of the finest
Danish porcelain

Crafted in cobalt blue
with a distinctive
white lattice border

Decorated in
24 karat gold

Production limited
to 2,000 pieces

Pierced for hanging

Individually giftboxed



The Dana Centennial Plate

\$100⁰⁰ each

Nebraska residents add \$3.50 sales tax. On all mail orders add \$3.50 per plate for postage and insurance.

Centennial Plate Miniature

A smaller version of the official Dana Centennial Plate has also been created especially for us by Bing & Grondahl. The miniature is 4 inches in diameter and features the same sketch of Old Main crafted in brick-red on white porcelain. Each miniature is pierced for hanging and comes individually giftboxed bearing the seals of Dana College and Bing & Grondahl.

\$10⁰⁰ each

Nebraska residents add 40¢ sales tax. For mail orders to all locations, add \$1.50 for postage and insurance.

A Place Called Dana

The Centennial History of Trinity Seminary and Dana College
By Peter L. Petersen

In a book filled with photographs, facts and anecdotes, Dr. Peter Petersen traces the 100-year history and development of Trinity Seminary and Dana College. This hardcover volume will be available after September 1, 1984. Publication is made possible through a grant from Aid Association for Lutherans of Appleton, Wisconsin. Pre-publication orders are now being accepted.

\$12⁹⁵ each

Nebraska residents add 52¢ sales tax. For mail orders to all locations add \$1.50 for postage and insurance.

ORDER FORM — DANA CENTENNIAL ITEMS

Please send the following Dana Centennial items to this address:

NAME _____

STREET _____

CITY _____ STATE _____ ZIP _____

DANA CENTENNIAL PLATE

\$100 each plus tax and postage

Quantity _____

A PLACE CALLED DANA

The Centennial History of
Trinity Seminary and Dana College

\$12.95 each plus tax and postage.

Orders will be filled after September 1, 1984.

Quantity _____

CENTENNIAL PLATE MINIATURE

\$10 each plus tax and postage

Quantity _____

RECIPIES AND REMINISCENCE

A Dana Centennial Cookbook

\$9 each plus tax and postage.

Enclose separate check made payable to
Dana Women's Club Cookbook.

Quantity _____

For all items other than the Women's Club Cookbook, make checks payable to Dana College.

Address all orders to the Public Relations Office, Dana College, Blair, Nebraska 68008.

Telephone orders to 402-426-4101 ex. 127.

Recipes and Reminiscence

A Dana Centennial Cookbook prepared by
the Dana Women's Club

This 200-page indexed volume contains a variety of Danish and American recipes along with other favorites submitted by members of the Dana Women's Club. Also included are photographs and reminiscences about events related to food at Dana over the past 100 years.

\$9⁰⁰ each

Nebraska residents add 36¢ state sales tax. For mail orders to all locations add \$1.00 for postage and handling. **Please enclose separate check made payable to Dana Women's Club Cookbook.**