

Celebrating Our Centennial . . .



**DANA**  
**REVIEW**  
Fall 1984

# DANA REVIEW

Volume 41

Fall 1984

Number 1

(USPS 147-940)

**About the cover**—This photo shows two results of the successful Centennial Fund drive. A scaffold-free Old Main, facelift completed, is reflected in the multi-windowed front entrance of the new Performing Arts Center. *Photo by Nathan Kramer '87*

*A magazine for alumni and other friends of Dana College and Trinity Seminary, published four times annually. Printed by Acme Mail Advertising Co., Omaha, Nebraska, with editorial and business offices located at Dana College, 2848 College Drive, Blair, Nebraska. Second class postage paid at Blair, Nebraska 68008.*

## Non-discrimination Policy

*Dana College admits students without regard to sex, age, race, color, religion or national origin to all the rights, privileges, programs, and activities generally made available to students at the College. It does not discriminate on the basis of sex, race, color, age, handicap or national origin in administration of its educational policies, admission policies, scholarship and loan programs, athletics, or other school-administered programs.*

**Campus photographs by Tim Matz '87 and Nathan Kramer '87.**

## Greetings, Friends in Christ!

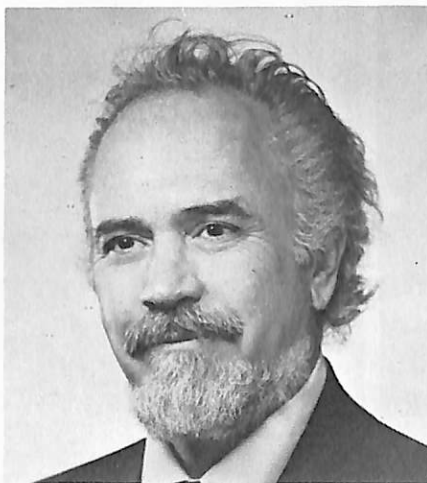
September, October, the time of the harvest. The fruits of the field fill the barn. The labor begun in the spring, at its apex in August, is in. The fruits of the field fill the barn.

And then rest. The softness of winter white holds us home, a time of leisure after the toil of the heated summers. The cycle of life.

And it is like that at Dana too. There are two who labored through the heated summers, whose lifelong efforts bore fruit in the lives of our young people. Between them they had more than 80 years of selfless service to this school. Beginning back in the days of Franklin Delano Roosevelt and World War II, that history of commitment continued through the Korean conflict, Viet Nam, through the times of Truman and Ike, Kennedy, Johnson, Nixon and Ford. Generation after generation of Dana students learned from them and learned to love them. The harvest of the lives of these teachers is the commitment of the students they led. And now the time of rest. Retirement for Paul Neve and Paul Peterson. A time of leisure after lives of labor.

Dana is made of people like Paul Peterson, like Paul Neve. Men and women who came to work and stayed to work some more, sleeves rolled up, undemanding, willing to be used wherever the need. The heartbeat of Dana is the consecration of those who serve and support, people like Paul Neve and Paul Peterson.

Coach Pete moved from full-time to



part-time a year or so ago before retiring in full this past year. In his last year of work, when he was with us only part-time, his students of old, hearing that their teacher and coach and friend was soon stepping down, had an evening for him. From Maine to California, Omaha, Cedar Rapids, Lincoln, Chicago and San Francisco, they came. No program. Just talk. The talk of men who will not wear emotion openly, who joke and tease lest it be seen that they loved another man. But it was seen, and we with moist eyes rejoiced with Coach Pete, the fruits of the field filled the barn. His labors had yielded the hearts of those once young who had earlier studied under him and now came simply to sit with him and in their silence say thank you, our lives are better, Pete, because we know you.

Paul Neve did not go from full-time to part-time and then to retirement. For this Paul, a different pattern. One day

last spring, full-time, this fall no more. As I write this it is October 3. Three nights from now, Homecoming Weekend of our Centennial Year, Friday, October 6—over when you read this—Paul, Paul Neve, will have his night. That night a program, "A Salute to Paul Neve." The ambassador from Denmark, where Paul three times took his choirs, will be here. And the choir members and music majors of over four decades will be coming from across the land to listen as it is announced that a recital-rehearsal room in our new Performing Arts Center will be called "The Neve Room." Speeches will be made, many words said. But words are fragile little bands, and they tremble, aware that their sense falls short of the emotion and gratitude they carry. But Paul will know that his labor of a life on this campus dedicated to Jesus has borne fruit.

They will be missed as the softness of winter white calls them from the field to retirement.

But the cycle begins again. Spring will come. In the last line of the song the two Pauls sang for over 40 years, we say, "Thy spirit live, another throng Rise up and sing our song."

The rich heritage of Dana is that throng which came and labored. Thank God for Paul Peterson and Paul Neve. The glorious future of Dana College, dedicated to Jesus, is that we dare to assume, to expect, another throng to come and sing their song.

In Jesus' name,  
Dr. James Kallas, President

Coming December 2: "The Sights and Sounds of Christmas."

For information and smorgasbord reservations, call 402/426-4101, ext. 127.

# Centennial Fund Reaches Goal

**\$6,000,000.** The Centennial Fund has reached, and passed, its goal.

President James Kallas announced the successful completion of the three-year drive October 26 to Centennial Fund leaders at a campus dinner. The actual amount raised in gifts and pledges, Kallas said, is \$6,025,809.

The drive has had many highlights, starting with its launching on November 7, 1981. Centennial Fund leaders met on campus that day for a National Leadership Conference; at a dinner that evening attended by 780 guests, Kallas revealed that the Fund had already reached \$1.5 million, one-fourth of its goal. The drive was well under way.

Thirteen months later, on December 4, 1982, participants in the Second Centennial Fund Leadership Conference witnessed the ground-breaking ceremony for the Performing Arts Center. After the ceremony they heard Kallas report that the Fund had grown to \$3,831,000.

In April 1983, representatives from the ALC's Central District met at Dana to plan the Centennial Fund drive within District congregations. At that meeting Kallas announced that the drive had reached \$4,441,000.

And so it went, on to more than \$6 million.

The drive succeeded because so many volunteers helped the Dana staff in so many ways. Before the launching they helped with consultation dinners and visited prospective donors. After the launching they helped as the campaign spread in widening circles—Blair and Washington County, Omaha and Council Bluffs, Nebraska, Iowa, Wisconsin and Minnesota, Colorado, Illinois, as far as California and Oregon and New York City. There were more dinners, Phonoramas and personal solicitations, and the Central District campaign. Grants were applied for and received.

Today results of the drive are already visible on the campus, with the completion of the Performing Arts Center, dedicated September 4 at the opening of Dana's 101st academic year, and the restoration of the exterior of Old Main. Remodeling of its interior starts late next spring. And in the not-too-distant future, plans will be announced for the construction of a chapel, the third project.

In announcing the completion of the drive, President Kallas said that "The entire Dana community extends its profoundest and most sincere thanks to those hundreds of people who participated in our Dana Centennial Fund effort! We are exhilarated by the results and simultaneously humbled by them.

"When we launched our exploratory efforts four years ago, about one year before the drive itself began, we did so with fear and trembling, not sure what kind of response such an ambitious project would receive. We should not have hesi-

tated! The response from the outset was affirmative and enthusiastic!

"For the next 100 years, generation after generation of Dana College students will be directly benefited by the open-handed, warmhearted support of all those who prayed and pledged and prayed some more! The first fruits of their sacrificial giving are already being seen in our magnificent new Performing Arts Center. Again, thanks to all of you for launching Dana's second century of service so successfully!"

## Danish Ambassador Brings Surprises

Homecoming this year was also Dana's 100th birthday party, and the Saturday evening program, the salute to Paul Neve (story on page 5), held three surprises for the audience of over 500. Two were brought by Danish Ambassador Eigil Jorgensen, an honored guest, and one by President Kallas.

During the program Jorgensen called Kallas to the lectern, where Jorgensen bestowed on Kallas the Order of Knight of Dannebrog, by action of Her Majesty Queen Margrethe II of Denmark. The honor was given in recognition of Kallas's contributions to Danish-American understanding.

Jorgensen also read a message of greetings and congratulations to Dana from Queen Margrethe on the occasion of its centennial. (See page 4.) She has a deep interest in the college, Jorgensen said. The queen received an honorary doctorate from Dana when she and her husband, Prince Henrik, visited the campus in May 1976.

Earlier in the evening Kallas read a telegram from Victor Borge, pianist and comedian. "Having recently celebrated my 75th birthday," Borge wrote, "I offer my heartiest congratulations to Dana on its 100th. In hope and trust that Dana's future birthdays will continue happily 25 years ahead of mine. Victor Borge"

Borge, who was born and raised in Denmark, has assisted Dana in its Centennial Fund drive. He also gave a benefit concert on the campus in September 1976.

At a reception following the program,

Ambassador Jorgensen and President Kallas cut Dana's birthday cake, which was aglow with 100 candles.





Message to DANA COLLEGE on the occasion  
of the centenary celebrations, October 6th, 1984

On this rare and happy occasion I would like to extend to you my heartfelt congratulations.

A century has passed since Dana College was founded by men and women who had a vision in common: that their children should receive a sound education.

An education that would teach the young students the same values which their parents had been taught during their own upbringing in their old country, Denmark.

An education which would enable their daughters and sons to become skillful and dedicated citizens in their new country, the United States of America.

A century has passed. But while necessary changes and adaptations have been undertaken at Dana College, you have maintained your proud and appealing traditions.

Bonds of loyalty and devotion exist between Dana College and Denmark. Prince Henrik and I keep in vivid memory the welcome we received at Dana College when we were here to celebrate with you the bicentennial of the United States.

Tonight we would like to share in your rejoicing. May your work prosper for generations to come.

As read by the Danish Ambassador to the United States  
Mr. Eigil Jørgensen.

Our heartfelt thanks to all of you, cherished friends in our Dana family, who honored us so graciously with your festivities for us on our Golden Wedding anniversary last June 10. We are grateful to President Kallas for proposing the celebration and especially to Phil Pagel for his characteristic meticulous attention to the many details involved in making the day such a gala event.

Thirty-eight of our 50 years together in marriage and ministry have been blessed by our close association with our Dana family. Your loyalty, your generosity, the warmth of your Christian fellowship have made them golden years for us. We thank God who, through you, has so abundantly enriched us. Thank you, one and all. May God continue to bless you!—  
**Esther and Cliff Madsen**

## Dinner Honors College

The Newcomen Society of the United States honored Dana on the occasion of its centennial as "one of Nebraska's premier liberal arts colleges" September 25 at the Red Lion Inn in Omaha.

The Society is a non-profit, educational corporation founded in 1923 for the study and recognition of American business and the society it serves. The organization is named for Thomas Newcomen, the British pioneer who invented the first practical atmospheric steam engine in 1712.

President Kallas was the guest of honor and speaker. Edwin J. Faulkner, honorary chairman of the board and executive counsel, Woodmen Accident and Life Company, Lincoln, presided. Harold Andersen, president of the *Omaha World-Herald* and national co-chairman of the college's Centennial Fund, introduced Dr. Kallas.

Approximately 140 attended the dinner.

## Annual Fund Targets Scholar Support Program

With the Centennial Fund successfully completed, Dana returns this year to an annual drive. The drive, for the "Dana Scholar Support Program," will raise gift income for scholarships and financial aid for capable but needy students, for library acquisitions, and for enhancement of the academic program. The goal is \$200,000.

Dennis Barnum, executive director for institutional advancement, said that he and members of his development staff "plan to build on the momentum generated by the Centennial Fund, which has had an overwhelmingly enthusiastic response."

The major thrust of the Centennial Fund, Barnum said, was for contributions "to complete our campus with the construction of a Performing Arts Center, renovation of Old Main, and construction of a chapel. Now we're directing attention to other vital needs of the college that have been postponed for the past three years."

Fund-raising for the Scholar Support Program will include a faculty-staff appeal, area campaigns in Blair-Washington County and Omaha-Council Bluffs, and Phonorama calls to alumni and friends who have completed their gift commitments.

Area chairmen named to head campaigns are Prof. Roger Olson, the faculty-staff drive; Richard Hansen, Hansen Agency, the Blair-Washington County drive; and Ken Anderson '63, the Omaha drive.

Several alumni and friends, combining their commitments to the Scholar Support Program, have created a \$41,000 challenge fund.

If the Program reaches or exceeds its \$200,000 goal, this group will add another \$41,000 to the drive.

**Dana accepts the challenge!**

## Truman Exhibit Here

"Harry Truman: A Centennial Remembrance," an exhibit about the life and presidency of Harry S. Truman, will be on display in the C. A. Dana-LIFE Library from November 26 to December 15.

A touring exhibit of Mid-America Arts Alliance, the Harry S. Truman Library Institute and the Nebraska Arts Council, "A Centennial Remembrance" is a collection of photographs, documents, cartoons and other graphics that illustrate the issues and events—both public and private—that shaped the life of this significant American.

## Nielsens, 1929 Choir Give College Pianos

Two new pianos have been given to Dana for the Performing Arts Center. One, a seven-foot Baldwin grand piano for recitals and concerts in the theater, is a gift from the late Mr. and Mrs. Emerald Nielsen of Minden, Nebraska. The other, a Baldwin-Howard baby grand for the choir rehearsal-recital room (the Neve Room), is a gift from members of the 1929 Choir, the first Dana choir to travel to Denmark. Both instruments have special stories:

— Descendants of Olga (Petersen '28) and Emerald '28 Nielsen gathered on campus September 10 for the dedication of the grand piano. The Nielsens' gift was announced in the winter 1984 *Dana Review*. Since then both have passed away. Members of the family were guests at a dinner and an all-Chopin recital on the new piano in the theater of the Performing Arts Center. Dr. Alan Brandes of the music faculty was the pianist. Denise Nielsen, a Minden high school student and a Nielsen granddaughter, played two selections at the dedication.

— Members of the 1929 Denmark Choir, about 40 altogether including chaperones, have kept in touch over the years, thanks in large part to the efforts of choir president Orville Nielsen '29. (Orville and Emerald were brothers.) The group has had several reunions on campus, and for quite a few years its members have talked about giving a gift to Dana to honor their choir director, Prof. Waldo B. Nielsen. The new baby grand, therefore, has been given in his memory. (Nielsen wrote the melody of "Hail Dana" to Magnus Christensen's lyrics.)

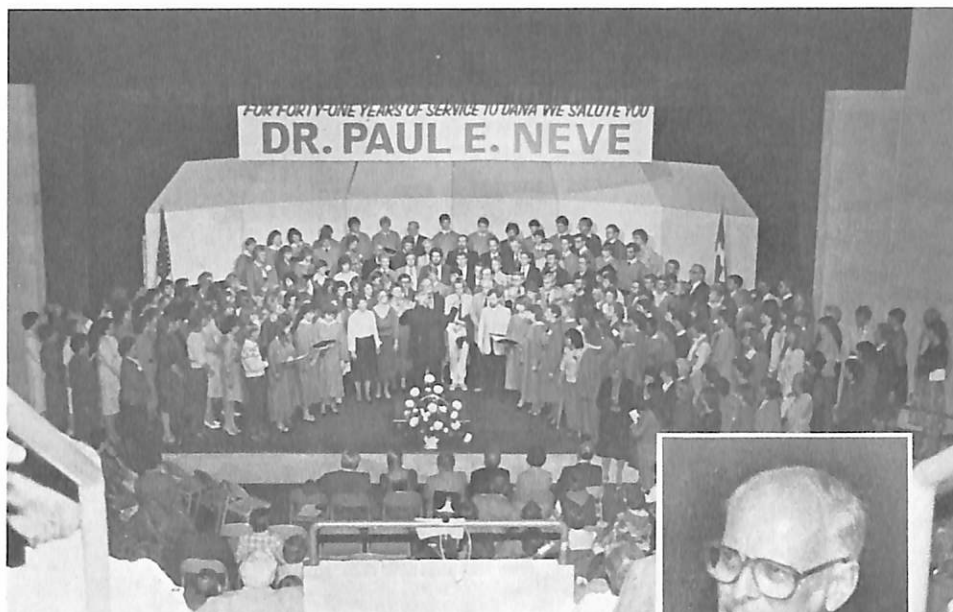
## Landscaping Plants From Illinois Friends

The Performing Arts Center was landscaped this fall through the generosity of Mr. and Mrs. Peter Orum, friends of Dana and owners of Midwest Groundcovers in St. Charles, Illinois.

The nurseries are known as "The Groundcover Specialists."

The Orums, who are Danish-American, donated more than 625 plants in eight varieties for the project. The plants were specified by Bahr Vermeer and Haecker, the building's architects.

The Orums have also given plants to Dana in the past.



*At the Neve Salute: The reunion choir; inset—Dr. Neve responds.*

## Neve Honored at Homecoming

Colleagues, alumni, students, and friends honored Dr. Paul Neve '41, professor emeritus of music, at a Homecoming salute October 6.

Neve recently retired after 41 years of service to Dana as music professor and choir director.

Five of his students—Juri Taht '52, Karen Jensen Capel '60, Marjorie Kathmann '65, Paul Johnson '76, and Kari Jo Molzer '85—paid him tribute.

President Kallas announced that the choir rehearsal-recital room in the Performing Arts Center had been named the "Neve Room" in honor of Dr. and Mrs. (Lela Nielsen '43) Neve, and that alumni, colleagues, and friends had established a Neve Scholarship for music students.

Two hundred and fifty choir members, past and present, crowded the stage of the theater in the Performing Arts Center at the close of the program to sing under Neve's direction as a reunion choir. The program was the first major public event in the new building.

Danish Ambassador Eigil Jorgensen spoke at the program (see "Ambassador Brings Surprises"). Mrs. Jorgensen, Danish Consul General K. W. Rasmussen, Chicago, and Mr. and Mrs. Kenneth Holm, Omaha, also attended as honored

guests. Holm is Honorary Consul for Denmark.

A reception honoring Dr. and Mrs. Neve followed the program.

It has been very rewarding for the past 41 years for me to have had the opportunity to work together with many of you alumni both in the classroom and in choir. These were memorable years for me, and you so vividly brought this into focus when you came back into my life as it happened during this past Homecoming.

It was so enjoyable to visit with so many of you when you returned to the campus during the past week. I was very moved when I read your letters in which you expressed your thoughts of love and respect. And you made your contributions to the Paul Neve Scholarship Fund.

Please accept my most sincere thanks for your messages and gifts and for what you have come to mean to me through the many associations we have had together during these years. I know I also express the wishes of my wife, Lela, when I include her in expressing our thanks.—Paul Neve



### Bread for the World Founder Returns to Campus

*The Rev. Arthur Simon '52, co-founder and director of Bread for the World, a Christian Citizens' Movement, spoke at Dana October 15 on American public policy and world hunger. At the close of the evening President Emeritus C. C. Madsen '31 made two presentations to Simon. One, a check for \$1,391 for Bread for the World, was one-half the offering taken at "The Gathering," the reunion of former members of the United Evangelical Lutheran Church held on campus this summer. Participants voted to give half to Dana, and the other half to Bread for the World. Madsen also presented Simon with a Dana Hundred Award. In making the presentation, Madsen said that Simon, "by his lifestyle and accomplishments, represents what Dana wants to be all about—he truly represents the basic objectives and mission of Dana College."*

### "Integrated Arts" Help Senior's Summer Jobs

A non-paying internship in Omaha this summer for senior art education major Stacy Crossland was rewarding nevertheless.

Stacy, whose home is in Sioux City, Iowa, worked as an intern at Joslyn Art Museum in June and July. Then in August she was a paid employee for the Nebraska Theatre Caravan, a program of the Omaha Community Playhouse.

Both assignments helped her discover how Dana's approach to the liberal arts fits into arts education, because she needed to know about art, art history, science, classroom teaching, and the humanities. In addition to her classes at Dana, she's gained experience as a lab assistant in the art department and as a tutor for both the sciences and the humanities.

At Joslyn she wrote instructional programs for elementary school teachers and their classes to use when they visit the museum—one a children's workbook on the Pueblo Indians and their artifacts for the "Artistart" program, one a self-guided thematic tour by animals in pictures, and one a comprehensive, docent-led architectural tour of the building itself, looking



Stacy Crossland

at design elements including grates and floor decorations.

The Nebraska Theatre Caravan was preparing tour productions of *St. George and the Dragon* and *Cyrano de Bergerac*—the first for elementary schools, the second for high schools. Stacy's assignment was to develop teaching guides that would be sent to teachers before performances to help them make the plays applicable to classroom experiences.

### Dana Hundred Awards

The presentation of Dana Hundred Awards continues as part of the college's Centennial celebration, with many given at "The Gathering," opening convocation, and Homecoming. These special friends of Dana are the most recent recipients:

Dr. Signe Betsinger, Howard Braren, Dr. Myrvin Christopherson '61, Robert Duden, Dr. Erwin and Pearl Goldenstein, Dr. Edward '39 and Shirley (Bondo '42) Hansen, Robert D. '64 and Janice Hansen, Irving and Elizabeth Jensen, Bonny (Hagedorn '70) and Dr. Richard '56 Jensen, Dr. T. I. '34 and Edith (Sorensen '34) Jensen, Pastor Paul C. '49 and C. Joyce (Nelson '50) Johnsen, Joseph Langland,

Pastor Homer '45 and Eunice (Carlsen '60) Larsen, Dorcus (Vammen '50) and Forrest (Red) '49 Leighton, Dr. C. C. '31 and Esther (Johnson '29) Madsen, Dr. Paul '41 and Lela (Nielsen '43) Neve, Dr. Peter '62 and Shirley (Thompson '63) Petersen, Paul '41 and Ruth (Hansen '72) Peterson, Pastor Lawrence Siersbeck '22, Pastor Art Simon '52, Milly and Cecil Slocum, Jim Taylor, Pastor F. W. '45 and Orpa Thomsen, Dr. Mark '53 and Mary Lou Thomsen, and Harold and Dorothy Wright.

To introduce elementary school children—who would see *St. George and the Dragon*—to the Middle Ages, Stacy's suggestions included turning the classroom into guilds and exploring the source of belief in dragons.

"All of this was related to what I've learned at Dana," Stacy says. "Education means a lot more once you've had the experience. Dr. Milt Heinrich's integrated arts approach in his classes put my experiences at Joslyn and with the Nebraska Theatre Caravan into context."

The Joslyn staff was so impressed with Stacy's work that she's there again, only this time in a salaried position with the museum's Saturday morning "Artistart" program. Now Stacy teaches art history to elementary school children, giving them slide lectures and gallery visits, and creating "hands-on" experiences.

Stacy says she's discovered that she really enjoys working with children, something she hadn't known before. After graduation she'd like to teach for awhile, she says, and then become involved in art education that "can affect art programs on a broader basis."

## New Faculty Members

Eight teachers joined the faculty this fall—five full-time and three part-time. The full-time members are:

**Dr. Sybille Rejda Bartels, assistant professor of German.** Dr. Bartels was a part-time instructor in German at Dana during the second semester last year. She has also been a part-time instructor at the University of Nebraska-Lincoln (UNL) and at Nanzan University in Nagoya, Japan. Her B.A., M.A., and Ph.D. degrees are from UNL. She was born and raised in Berlin.

**Carol Green, instructor in business administration.** Mrs. Green's B.A. in economics is from the College of William and Mary, and her M.B.A. is from Creighton University. She is working on her Ph.D. at UNL. She has taught business management in Omaha at Metro Tech Community College as a full-time faculty member and has also worked as a field representative for Ford Motor Company.

**Dr. Richard Palmer, assistant professor of music.** Dr. Palmer comes to Dana from Texas, where he was choral director at the University of Texas at El Paso. His D.M.A. and M.M. degrees are from the University of Illinois. His B.F.A.E. is from Wayne State College. Palmer's responsibilities at Dana, in addition to teaching, include directing the choir and giving private voice lessons.

**Richard Potter, assistant professor of social work and sociology.** Potter received his B.A. in sociology from Carroll College and his M.S.W. from Tulane University. He has been in private practice in West Bend, Wisconsin, where he has also served as chief psychiatric social worker for the county's department of social services. He has also been a juvenile court worker.

**Dan Travaille, athletic director and assistant professor of physical education.** Travaille's B.S. in health, physical education, and recreation is from Morningside College, and his M.P.E. is from Idaho State University. He has also done work beyond his master's in educational administration. He has been owner and

manager of the Athletic Club of Southern Idaho in Twin Falls, and athletic director and chairman of the division of health, physical education, and recreation at College of the Mainland in Texas City.

The part-time faculty members are:

**Jolynn Oliver '84, part-time assistant instructor in Danish.** As a Dana student she taught Danish for adult evening classes at Creighton University and summer classes for the language camp at Concordia College in Moorhead, Minnesota.

**Dr. Ruth Sather, part-time instructor in sociology.** Dr. Sather is a psychotherapist in private practice in Omaha and has been an out-patient therapist in Omaha at Immanuel Medical Center and a community worker and consultant to the Omaha Boys Club. Her B.S. in sociology is from UNL, her M.S.W. is from the University of Nebraska at Omaha, and her Ph.D. is from UNL.

**Ryle Smith '73, part-time instructor in commercial art.** Smith, who works at Bozell and Jacobs, an Omaha advertising agency, received his M.F.A. from UNL.

## Professor Returns From Year in Denmark

John Mark Nielsen '73, assistant professor of English, has returned to the campus after a year of teaching and research in Denmark on a Fulbright Fellowship. While there, he was asked to be a consultant to the Danish National Museum, Copenhagen, in the preparation of its exhibit on Danish emigration to the U.S. called "The Dream of America."

He also wrote the concluding essay, "In Pursuit of a Dream," for the exhibit catalog, took part in a Danish television program on emigration to the U.S., and wrote a feature essay for a Danish national newspaper.

Nielsen said that by the end of the summer more than 100,000 people had visited the exhibit, which includes materials from Dana. It closed in Copenhagen in October and opens next year in Aarhus, Denmark, before being moved to Stockholm, Sweden.



## Backstage at Homecoming

Former Dana theater directors Rod Whitaker (top right) and Dennis Henneman (lower right) returned to the campus for a Homecoming reunion of former speech and theater students. Also returning was Fred Lange '67 (center), founder of International Theatre Concepts and consultant for Dana's new theater. With them are Professors Sieg Krueger (top left), theater director, and Darrell Dibben, speech. Whitaker is a writer who uses the pseudonyms "Nicholas Seare" and "Trevanian." His most recent best-selling novel is *The Summer of Katya*. Henneman is theater coordinator at Youngstown (Ohio) State University.



## Threepenny Opera

The grand opening of the Performing Arts Center October 25-28 featured performances of *The Threepenny Opera* by Bertolt Brecht and Kurt Weill. Area residents were also invited to audition. Here Dan Stewart, guest director and choreographer, rehearses with—from left, Jean (Wood '76) Hundtoft (Blair), Heidi Winkle '85 (LaGrande, Oregon), Brett Foster '87 (Creston, Iowa), Nadine Sorensen '87 (Audubon, Iowa), and Mary Neuman (Omaha). The grand opening events were made possible through a grant from Aid Association for Lutherans of Appleton, Wisconsin. The winter Review will feature photographs of the new facility.



Stories and photographs from Dana's past are being featured on these center spread pages during the Centennial Year of Celebration.

## Early Basketball Was Rough and Tumble

Low ceilings, courts in swimming pools, and coaches who sometimes joined the action—Dana's basketball teams in pre-World War I years played under conditions unknown to today's Vikings. Some of those conditions are described in a letter Paulus Falck '17 wrote to Einar Vig '26 in 1934.\*

Falck played basketball his first and third years at Dana, in 1913-14 and 1915-16. He writes that the 1912-13 team was probably "the first to gain newspaper recognition by Omaha papers and was generally termed the Dana College Flying Five." He also notes that in those early days coaches weren't confined to the sidelines. Charles Gaydou, Dana accounting teacher and basketball coach, "would also play at times . . . when we had an especially tough opponent."

The teams played under the auspices of Dana's Athletic Association. Early catalogs say that the association was "chartered by the Faculty to play tennis, base ball, hoop ball, basket ball and such other games as shall prove of benefit to the

*\*In the P. S. Vig Papers at the Nebraska State Historical Society, Lincoln.*



Dana's "Flying Five": from left—James Lund, unidentified, Thanning Andersen?, Charles Gaydou, P. C. Paulsen?, Silas Andersen, Ted Lund.

members of the association."

Commenting that "first experiences generally stick the most vividly in the memory," Falck describes games he played as a forward his first year at Dana.

One was against the Tekamah (Nebraska) High School team. He writes: "This game I remember particularly because the coach at Tekamah dared Gaydou to bring his boys up, because they had won all high school games for that season and thought they could give us a pretty good run. Well, we had things pretty much our way, even if they had their own referee and a slippery floor that we were not used to—that was part of their strategy. I remember distinctly that at the end of the first half, we had them so bested that Tekamah's coach asked Gaydou if he cared if he played the second half, and Gaydou told him that he could put in the whole faculty if he wanted to. The second half was about the same as the first; our teamwork clicked too well. As near as I recall the score, it was 50-some to theirs early in the teens."

Dana's home court was in a wooden gym completed in 1902 on a site east of the present Elk Horn Hall. Believed to have the largest floor of any gym in the state

when it was built, the structure was at first a source of pride. The 1913-14 catalog describes it as a "good modern accommodation," but by 1920 the alumni publication mentions the need for a new gym. In spite of whatever inadequacies the old gym might have had, however, it was better than others the team found itself playing in.

Falck recalls two games played with Wayne State Normal, one at Dana and the other at Wayne. "I think we won both of them," he writes. "The one at Wayne was terribly close. It seems to me we had a margin of one point only. We were considerably handicapped in this game, as the gym was in the basement of one of their buildings, had a very low ceiling and besides this, it had two pillars in the center of the floor, and the Wayne boys had a knack of ducking behind those pesky pillars when they had possession of the ball, so that we were obliged to look out for pillars and players."

Bellevue College south of Omaha was also on the schedule. "Two games, unless I am greatly mistaken," Falck writes. "I recall the one on their floor quite vividly, for they had a freak of a gym. It was a swimming pool or part of a swimming pool with a roof over it. At least I remember those concrete walls, for my shoulders suffered considerably from the contact with them. This was one of the roughest games I have ever played in. I remember we were behind in the first half and that Gaydou took my place in the second half and that we finally nosed them out by a couple of points after he got in. I also remember that Bud Lowe got into a scrap with one of Bellevue's players for ramming him into the concrete wall and that they swapped several good punches before the referee interfered."

Basketball was discontinued during World War I, "when everything was more or less set aside." Like many of his classmates, Falck served in the army—in France. He returned to the campus in 1919 to teach history and coach basketball. When did the rules change? Whether as a coach he was also allowed to join his players when the going got tough, he doesn't say.



# “The Gathering” Is Centennial Highlight

“The Gathering” brought more UELC people together than could be found at a synod convention during the 64 years in which such gatherings were held from 1896-1960. An enthusiastic throng of some 500 people came to Blair from their homes in 22 states and two Canadian provinces to renew old acquaintances and celebrate memories.

Among those present was a granddaughter of the Rev. A. M. Andersen, regarded as the founding pastor of the synod which later became the United Evangelical Lutheran Church: Mrs. Arne (Joan) Sorensen, from Minneapolis. A greeting was read from the oldest living pastor of the UELC, the Rev. Vilhelm Beck, 96, of Montreal. The record for the oldest pastor present was probably held by the Rev. Peter Vammen, 92, who now lives in Blair.

Numerous former leaders of the UELC were represented at “The Gathering” by their children or grandchildren. Nineteen missionaries who have served under the UELC banner in foreign fields were present and were introduced during the opening session.

Of the UELC officers at the time of merger in 1960, the late President William Larsen was represented by his wife, Inga, of Cedar Falls, Iowa. Vice-president Joe Girtz and Secretary Lawrence Siersbeck were present from California and Wisconsin, respectively. Three former presidents of Dana—L. Siersbeck, R. E. Morton, and C. C. Madsen, along with Trinity Seminary professor and dean Theodor I. Jensen—all participated in the program of the weekend of June 29-July 1.

Two UELC pastors who climaxed their clergy careers as bishops of the American Lutheran Church were recognized—Archie Madsen and the undersigned.

Danish was the language of the UELC in its earliest years. Few Danish conversations were heard at “The Gathering” in 1984, but some did recall hymns from Denmark which seemed to sum up what it was all about. There was gratitude for the past:

*“Thanks to God who us hath given  
grace abundant through the years . . .”*  
There was awareness of our transitoriness:

*“Each generation  
comes and soon passes,  
time carries all its sons away.  
Never is silent  
Heaven’s clear praise-song,  
as joyful pilgrims walk with God.”*

Last, but not least, there was hope for the future:

*“Friends of Jesus, him believing,  
never part for the final time.”*

Paul Jersild, son of the late UELC President Hans Jersild, wrote in the *Lutheran Standard*: “For most of us, the gathering at Dana College in Blair, Nebraska, was a powerful experience. We were recovering

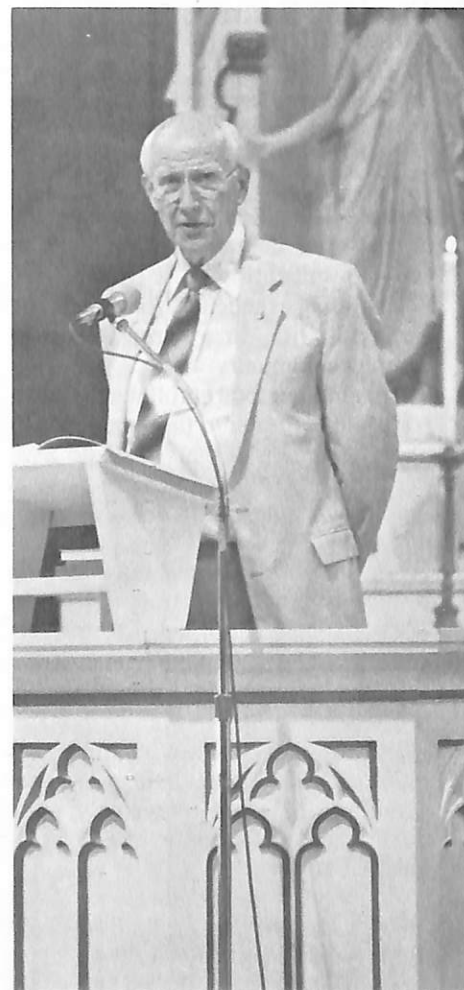
our church family in which we had been nurtured. We were returning to our spiritual roots . . . Even as we celebrated our roots by focusing on the little corner of the world in which our history had transpired, we recognized the larger world for which we are responsible. Small size and large vision go well together.”

Dana’s President Jim Kallas spoke for all of us who attended: “The event was a superb idea.”

The idea for “The Gathering” originated with Phil Pagel, Dana’s director of public relations. To him go many thanks for implementing it so well.—**Edward A. Hansen**



Participants look at UELC memorabilia in the library.



“Gathering” coordinator Edward A. Hansen. (The pulpit and altar were given to Dana several years ago by Nazareth Lutheran Church in Beresford, South Dakota, a former UELC congregation.)



## Historians at Homecoming

Dana historians Peter Petersen '62 (right) and William Christensen discuss an old photograph in Petersen's just-published *A Place Called Dana: The Centennial History of Trinity Seminary and Dana College*. Christensen wrote *Saga of the Tower: A History of Dana College and Trinity Seminary for the school's 75th anniversary*.

## Biology Professor Visits Galapagos

Prof. George Grube and his wife, Marian, visited the Galapagos Islands this summer. Studying and photographing the wildlife on the Galapagos has been a "longtime dream," he said.

An associate professor of biology, Grube directs Dana's environmental studies program. He has written an ornithology book, laboratory manuals, and 30 journal articles.

He gave a program about the trip at an October meeting of the Audubon Society of Omaha.

## About Institutional Advancement

### Student Recruitment

by Dennis Barnum  
Executive Director for  
Institutional Advancement\*

We say again what we have said before—Dana has a noble mission, a crystal-clear central purpose. It is to provide students with a personalized education of excellence, for careers and for a full life, in a caring Christian campus community.

This fall our total enrollment is down somewhat (similar to the experience of most of Nebraska's private colleges), but the calibre of our new students is up! Our admissions staff is pleased to announce that the average ACT composite score for our new students is up over two full points from last year. Forty-five percent of our new students came in with one of our top three scholarships. This compares with 28 percent last year.

Dana's campus life continues to improve. Dormitory living is better managed and more enjoyable, library usage is up significantly, chapel attendance is strong.

For your sons and daughters, dear alumni friends, surely you want for them what Dana offered you—a personalized education of excellence, for careers and for a full life, in a caring Christian campus community.

To your son or daughter, we say:



Invest your college years at Dana. Because Dana is . . . a faculty committed to your personal and intellectual growth, to your development as a whole person . . . quality academic programs that prepare you for careers and life goals . . . a Christian campus community that provides understanding and support and encourages you to make new friends, examine your faith, articulate your understanding of it, and integrate it into all of life . . . an education that recognizes the ethical considerations of the decisions you will learn to make.

At Dana, we aspire to provide you an education that prepares you not just for jobs, but for living. We strive to have you learn how to learn, so that you can go right on learning during an entire

lifetime . . . to write and speak . . . to think and solve problems . . . to adapt to changing environment and opportunities . . . to interact with people . . . to meet new challenges . . . to act rather than react.

So what is important to *you*? Outstanding academic reputation? Quality academic programs? Excellent job placement rates? First-class facilities? Good location? The right size for personal attention? All of the above?

Well, Dana has it all!

And Dana has one of the most beautiful college campuses in the country with 250 acres of rolling hills overlooking the Missouri River and 14 major buildings, including our new Performing Arts Center, a totally modern facility for our programs in music and theatre.

And finally, most students and their parents discover that Dana is quite *affordable*. Although the cost for a year at Dana is substantially lower than at most comparable liberal arts colleges, it may still require a significant investment on your part. To assist you, we offer scholarships and other financial aid in direct proportion to your ability and need.

Your college years should be stimulating, exciting, and enjoyable. In fact, they should be the best years of your life. Why not spend them at Dana . . . where the best begins.

*\*Institutional Advancement includes admissions, alumni affairs, development, and planned giving.*

## Promotions, New Assignments

**Faculty:** Ruth Rasmussen, former acting library director, has been named library director. Sharon (Messer '65) Jensen, former part-time library assistant, is now assistant librarian, a full-time position.

Janice Funk has been promoted from instructor to assistant professor of social work and sociology, and Dr. Milton Heinrich, from assistant professor to associate professor of art.

Kathy Foley is a full-time instructor in physical education and head coach for women's basketball, softball, and volleyball. Last year she was a head resident, an assistant to the dean of students, and a part-time physical education instructor.

**Admissions:** Mike Jones '71 has been promoted from assistant director to associate director of admissions. Todd Enfield '84 is a new admissions counselor, responsible for southern Nebraska, Kansas, and Colorado. Judy Carmichael, former secretary in the student financial aid office, is now an admissions secretary.

**Development:** Sharon Gordon, who

has led the alumni and planned giving programs, assumed direction of the development program July 1. She is a certified member of the National Society of Fund-Raising Executives.

Robert Schmoll '83 has been named director of alumni affairs. This past year he was a development associate in the Centennial Fund, and he continues as a development associate. Tamara Weber, also a development associate, coordinates the college's relationships with the congregations of the church. Connie Strang has joined the staff as a secretary.

**Student Services:** Bob Arnold, former assistant director of admissions and director of student financial aid, became director of student services June 1. In this new position he is responsible for the duties previously associated with the traditional position of dean of students. He continues to administer student financial aid.

Working as assistants to Arnold are Jim Svoboda and Joyce Lee. Both are also head residents. Svoboda, who joined the Dana staff last year, is responsible for managing the residence halls; he also handles the intramurals program. Miss Lee, a new employee, is a trained coun-

selor who most recently worked at Iowa Western Community College as supervisor and laboratory director for freshmen students in child development. She has overall responsibility for Blair and Mickelsen Halls, two of the women's residences, under Svoboda.

**Others:** Barbara Lippincott has moved from the business office to become switchboard operator. Carleen Andersen works part-time in the bookstore. Janice Schlange '84 assists Coach Foley and handles sports information for the public relations office. Kitty Wooley '81 is secretary to Dr. Clifford Hanson '44, dean of the college.

## Alumni Help Wanted

Interested in introducing prospective students to Dana by serving as a local host or hostess for an Alumni Admission Event? Or in sharing your career experiences with students at an on-campus Alumni Career Education Evening on March 5?

If you'd like to participate in either program, please get in touch with our Alumni Affairs Office for details.

## Sports

*At the time Review copy was sent to the printer, the football and volleyball teams had played only half their schedules. The winter issue will have recaps of both seasons.*

### Five Enter Hall of Fame

The newest members of Dana's Athletic Hall of Fame are the Rev. Wesley Anderson, deceased; Tom Langenfeld '57, Edina, Minnesota; Dean Madsen '49, LaMoille, Illinois; Brent Peterson '69, Valentine, Nebraska; and Phil Vasby '69, Cambridge, Wisconsin. The five were inducted into the Hall of Fame at the October 6 Homecoming luncheon.

**Anderson** was a member of Dana's first football team, organized in 1926. An article in the *Hermes*, the campus newspaper, the following year described him as a "valuable man at tackle" who "turned in a real fight for every game." He was captain of the 1928 team and a member of the 1930 team that won the conference championship. He was also in the first group of football players to receive foot-



*Athletic Hall of Famers: from left—Vasby, Peterson, Mrs. Anderson (who accepted the award for her late husband), Langenfeld, and Madsen.*

ball letters. Anderson also played basketball at Dana.

A 1936 graduate of Trinity Seminary, Anderson served congregations in Kimballton, Iowa; Kenmare, North Dakota; Coulter, Iowa; Rutland and Humboldt, Iowa; Morgan and Evan, Minnesota; and Viroqua, Wisconsin.

His wife, Olga (Simonsen '29), accepted the award at the luncheon.

**Langenfeld** was, and still is, a high jumper. At Dana he lettered in track all four years, was team captain his senior year, and won two conference championships. He never failed to place in any meet he competed in during his college career.

After graduation and after working as a reporter for the *Omaha World-Herald*, he moved to Minneapolis to become manager of corporate communications for the Pillsbury Company, and then business editor for the *Minneapolis Tribune*. Since 1969 he has been director of public relations for the Dayton Hudson Corporation.

Langenfeld has continued to high jump—first in open AAU competition until he turned 30. At 40 he began jumping in Masters Competition, winning eight national championships and three North American championships. He has represented the U.S. in three world championship meets, and won the bronze medal at the 1983 meet in Puerto Rico.

He has held three national records for the age categories of 41, 42, and 43. He set a national indoor championship record

which stood for seven years, and in nine years of competition in the Masters high jump, he has never failed to place.

Altogether he has jumped in 25 national and international meets, and in these competitions has won 14 first places and six second places.

**Madsen** is superintendent of schools in LaMoille, Illinois. He enrolled at Dana in 1942 and then served with the Navy Air Corps during World War II for almost four years as a radio man and tailgunner in a dive bomber.

He then returned to Dana to complete his degree. Lettering in football, basketball, baseball, and track, Madsen was named an Honor Athlete and also received a college letter blanket for his participation in all sports. A *Hermes* writer described him as "packed full of dynamite" on the football field.

While still in the service, Madsen received an offer to play baseball with the St. Louis Browns, but he declined, feeling that he could contribute more by working with young people.

After graduating from Dana he taught and coached football at Decatur, Nebraska, for three years, and his team was consistently on the *Omaha World-Herald's* list of top ten in its class. During this time he also played semi-pro football, baseball, and basketball. He became superintendent of schools in Herman, Nebraska, in 1952, and in 1956 joined the LaMoille school system. His M.E. is from the University of Nebraska, and he has done further work at

Northwestern University and Northern Illinois University.

**Peterson** and **Vasby** were football and basketball teammates.

A defensive halfback and offensive split end, **Peterson** lettered in football for four years and in basketball and baseball for three. He was the football team's defensive captain for two years and co-captain in 1968. He was also a baseball co-captain. For his accomplishments in these sports, he was named an Honor Athlete and also was given a senior D-Club blanket.

Honors won during his football career include being named to the Lutheran Brotherhood's All-Lutheran Team, the Tri-State All-Conference Team, and the NAIA's District 11 All-Star Team. The *Omaha World-Herald*, in naming him "Star of the Week" for his play in a 1966 game against Concordia College, Seward, praised his "hustling secondary work and cool-headed punting."

Peterson received his degree in physical therapy from the University of Nebraska Medical Center and a degree in hospital administration from the University of Minnesota. He is administrator of Cherry County Hospital in Valentine, Nebraska. His father, Coach Paul Peterson '41, professor emeritus, is also a Hall of Fame member.

**Vasby** set a Dana record for the pole vault that still stands. His name appears in many *Hermes* accounts of Viking football games: "Phil Vasby intercepted a pass on the Warrior 30 for one last Viking chance," "Dana scored on a Vasby field goal from 28 yards out, and added a touchdown easily in the fourth period on a Vasby pass to Gerry Quirk," "Vasby took over the helm . . . and did a good job," and "on offense Phil Vasby kicked two magnificent field goals: one from the 42 and the other from 31 yards out."

He received a D-Club blanket his senior year and was given the Coach Rufus Olson Trophy for his achievements in Dana sports.

A former teacher and coach in Paddock Lake, Wisconsin, and in Blair, Vasby is with Vasby Farms, Inc., in Cambridge, Wisconsin.

The five were given pendants of Thor's Hammer, symbol of Dana's Hall of Fame.

## Royalty at Homecoming

*Iowa seniors Marty Rogers (Neola) and Ann Klein (Dunlap)—the first two in the second row, left—were Homecoming king and queen. Members of their court, all seniors, were—from left, seated—Kari Jo Molzer (Papillion, Nebraska) and Michelle Blaas (Rockwell City, Iowa); row 2—Jodie Barrett (Denver, Colorado), Deb Dill (Milford, Nebraska), and Jon Bansen (Yamhill, Oregon); row 3—Marty Stessman (Dunlap, Iowa), Lawrence White (Omaha), and Jim Krueger (Denmark, Wisconsin).*



At the August 30 opening dinner for faculty, staff, and spouses, **Prof. Gilbert Ragan**, economics and business administration, was given a watch for 25 years of service to the college. Also at the dinner, **Prof. Luella Nielsen '42**, English, was made an honorary member of Alpha Chi, the national honor society. **Prof. Bernard Matthies**, adviser to the Nebraska Beta chapter of Alpha Chi at Dana, in making the presentation said that it was "in recognition of and gratitude for her many years of devoted service to Alpha Chi and Dana." The chapter has given only one other honorary membership—in 1974, to **Dr. Elmer Rasmussen '39**, founder of the Dana chapter.

Guest lecturers during the seven weeks of the fall semester included **Dr. Thorkild Bjornvig**, Danish poet, and **Dr. James Burtness**, professor of systematic theology at Luther Northwestern Seminary, St. Paul, Minnesota. Bjornvig's book *The Pact* is about his friendship with Isak Dinesen (Baroness Karen Blixen). The title of his lecture was "Who Am I? The Story of Isak Dinesen's Identity." He also read his own poetry, in English translation and in Danish, for a Parnassus event. Burtness was at Dana as a Staley Foundation Distinguished Christian Scholar Lecturer. The general theme of his four lectures was "Making and Living with Difficult Decisions: Christian Faith and Ethical Responsibility."

A flagpole dedicated to the memory of **Michael Kirk**, a Dana senior who died in August 1983, stands outside of Borup Coliseum. It was given by his senior classmates and the Student Senate.

Two alumni and a friend have given art to the college. **Dr. Arnold '42 and Elaine (Neve '49) Nielsen** have added to the Parnassus Collection with sculpture and original prints by such artists as Dali, Rouault, Buffet, and Chabrier. Dana friend **Lou Grubb** is lending the college four Dali prints that will be given later on a permanent basis.

Books being read in the **Liberal Arts Reading Program (LARP)** this semester are Rolvaag's *Giants in the Earth*, Arthur Miller's *Death of a Salesman*, Sinclair Lewis's *Elmer Gantry*, and John Steinbeck's *The Pearl* and *The Red Pony*.

Art exhibits in Parnassus this semester include mixed media sculpture by **Lin Nelson-Mayson**; an alumni show by **William Bracker '62** (ceramics and sculpture), **Ryle Smith '73** (drawings and

paintings), and **Larrie Stone '57** (photography); a traveling photography exhibit titled "And They Call Us a Problem?: The Immigrant Child 1890-1930," from the American Museum of Immigration, Statue of Liberty National Monument; and "Masterpieces of Christmas Art."

**Sharon Gordon**, development, served on the faculty of the eighth annual American Lutheran Church Foundation Conference held in Minneapolis in September.

Copies of **Dana's 1984-85 calendar** with color photographs of Old Main by **Jim Petersen '78** are available through the

Office of Public Relations.

Omahan **Kenneth B. Holm**, friend of Dana, former Regent, and Honorary Consul for Denmark, received the Order of Knight of Dannebrog May 23. He is senior partner of the law firm Baird, Holm, McEachen, Pedersen, Hamann & Strasheim.

**Mary Jo (Andrews '59) Kubie**, Dana's Career Information Center, was guest speaker at a genealogical and historical conference last August in Crete, Nebraska.

## Triplets a Dana First



*Two-week-old triplets Tom, Ted, and Tim with brothers Davy and Toby.*

She writes: "Our triplets were born July 5—three weeks early. They are fraternal—not identical . . . .

"We were shocked when the doctor told us we were going to have triplets. I cried for three days after being told. I couldn't believe it.

". . . . A lot of state newspapers carried my picture with the triplets because of their large birth weights. They broke a lot of weight records. Their combined weight was 21 lbs., 9½ ozs.

"In August, I went back to work at Rue School where I teach music. The kids I teach think I'm a 'Star.' My wonderful mother watches my children while my husband and I work. I don't know what I would do without her.

"Having three babies at once is very expensive. We feel very lucky to have our baby formula furnished by the Cogley Medical Arts Center. If we had to buy it, the formula would cost over \$200 a month.

"We are presently using Pampers disposable diapers on our babies. One evening when we came home from work we found 36 boxes of Pampers in our back yard left by the Pampers Company. What a neat surprise! I had been using cloth diapers and will go back to using them after the disposable diapers run out. Our babies run through 90 diapers in two-and-one half days and if we were to use Pampers for a month that would cost us over \$100.

"We dress the babies alike right now. We received around sixty (times three) matching outfits in various sizes ranging from newborn to size 2 from

*(continued on page 14)*

Thomas Christopher (at 6 lbs., 12 ozs.), Timothy Daniel (7 lbs., 15½ ozs.), and Ted Allen (6 lbs., 14½ ozs.)—born this summer to Avalena (Hanslip '72) and David Macfarlane of Council Bluffs, Iowa—are believed to be the first triplets born to a Dana alumna or alumnus.

Their mother somehow found time to answer the *Review's* request for a description of life with triplets. (The Macfarlanes also have two older sons—Davy, 2, and Toby, 10.)

(Triplets, from page 13)

friends and relatives. We had to hang double rods in their closet to accommodate their 180 outfits. Besides a closet full of clothes, we have three bassinets, three cribs, three walkers, three swings, three strollers, three infant seats, and three car seats. At Christmas time we'll add three high chairs. Our house looks like a jungle of baby equipment.

"The babies usually wake up at 3 a.m. for a bottle of milk. If one wakes up to be fed, we wake up the other two and feed them also. We have had three nights so far when we have gotten a

whole night's rest because no one woke up for a bottle.

"My husband helps me a lot. He does all the grocery shopping, runs errands, helps clean the house, and helps with the babies. We get up at 6 a.m. and go non-stop until 10 p.m. We feed babies, burp them, change diapers, make 18 bottles each day, do laundry, give baths, hold babies when they cry, plus clean house, fix dinner, do dishes, help with homework, keep our two-year-old busy and much more.

"We do manage to have a little fun too. We take the babies out at least once

every weekend on a family outing. We have had the babies out shopping at malls several times. We always have to have at least one helper with us because we have four strollers to push. The babies attract a lot of attention. People gather around them in large crowds. It's fun to answer questions about them.

"We feel very special to be blessed with five beautiful healthy boys. They are worth all the work we put in and then some."

The Macfarlanes' Council Bluffs address is 917 Spruce Street (51501).

## Destiny's Deep Sea

### '80s

**Delores Aden '84** and **Michael Hopkins** were married July 21 . . . **Dave Dibben '84** works for the Federal Land Bank of Omaha in the management information services department. He is responsible for the writing of computer programs in the Federal Land Bank Association . . . **Jeff Ellis '84** and **Sandra Ohrt '86** were married August 25 . . . **Joyce Hagedorn '84** and **Warren Ortmeier** were married June 16. She teaches and he works at Ortmeier's Seed Feed and Produce in West Point, Nebraska, where they live . . . **Tim Koca '84** and **Susan Aken** were married June 9. He is an elementary physical education teacher in the Papillion-La Vista (Nebraska) Public Schools . . . **Karen Kreutzian '84** teaches German and English at Cedar Catholic High School in Hartington, Nebraska . . . **Dixie Lee Tripp '84** is a graduate student in communication and forensics at the University of Nebraska at Omaha, where she is a graduate assistant . . . **June Weber '84** and **Sheldon Smith '83** were married August 18 . . . **Brenda Mayberry '83** works at Computel, Inc., in Blair . . . **Tera Nohrenberg '83** and **Ted Hansen '84** were married June 8 on the terrace of Dana's Old Main. Officiating at the ceremony was Ted's father, **Pastor Stanley T. Hansen '55**, of George, Iowa. The couple is living in Ames, where Ted is a graduate student at Iowa State University . . . **Susan Ostrem '84** and **Mike Martin '83** were married August 24. They are living in Dana's Omaha Village while she completes her student teaching. Mike is assisting at a Lutheran church in Sioux City, Iowa. They will return to St. Paul, Minnesota, the second semester, and Mike will continue his studies at Luther Northwestern Seminary . . . **Joni Loy** was born to **Jerry '82** and **Jenny Christensen July 19** . . . **Curtis Fett '82** of Fett-Lane Insurance Agency, Sioux City, Iowa, qualified as a MONY field underwriter in July . . . **Connie Frahm '82** teaches sophomore English and speech at Schuyler (Nebraska) Central High School . . . **Liz (Miller) '82** and **Paul '76 Johnson** are the parents of **Nathan**, born July 21 . . . **Paul '82** and **Nancy (Anderson) '81 Judson** announce the birth of their son, **Noah Evan**, on September 5. On September 9 they moved to Flanagan, Illinois, where Paul is serving his internship at St. John's Lutheran Church. Their address is P.O. Box 652, Flanagan (61740) . . . **Kip Tyler '80** graduated from Luther Northwestern Seminary on May 27. At commencement exercises he was awarded the G. M. Bruce Prize in New Testament Studies for a paper submitted in senior competition. He accepted a call from Bluffs Trinity

Lutheran Church near Fremont, Nebraska, and was ordained at Zion Lutheran Church in Creighton, Nebraska. He was installed at Bluffs Trinity by Dr. John Northwall, dean of the Omaha Conference of the ALC's Central District and a former Dana professor and administrator. Kip and his wife, **Sherri (Sandoz) '83** live at R.R. 1, Fremont, Nebraska 68025.

**Club Notes:** On August 19 the Denver Dana Club hosted a get-together for alumni, prospective students, returning students, and new students from the Denver area. Thanks for your involvement, alumni and friends!

### '70s

Linda Jane was born to **Teresa (Lee) '79** and **Jerry '78 Haas** September 24 . . . **Eula (Irby) '79** and **Victor Proctor** announce the birth of **Sarah Jean** in Fallon, Montana 59326 . . . **Sue Ronnenkamp '79** received her master's degree in hospital administration from the University of Minnesota in June and is now doing an administrative fellowship at Methodist Hospital in St. Louis Park, Minnesota. Her address is 5236 Park Avenue South in Minneapolis (55417) . . . **Heather Amelia** was born February 4 to **Paul '78** and **Christi (Mulinix) '81 Hilgenkamp** . . . **Todd '78** and **Jolene Roecker** are the parents of **Christopher Bernard**, born April 18. He joins sisters **Katie 5½**, **Kelly 3**, and **Kami, 18 months** . . . **Lesley Ann** was born to **Bill and Joyce (Wulf) '78** Snide July 2. Her mother is an elementary school teacher, and her father is a dairy farmer . . . **Linda Wulf '78** received her master's degree in education from the University of Nebraska at Omaha on August 18. She teaches in the Millard (Nebraska) public schools . . . **Dr. Gary '75** and **Elizabeth (Peterson) '77 Erbes** live in Harlan, Iowa, at 1003 16th Street (51537). Gary joined the Harlan Doctors Clinic in July as a family physician . . . Born to **Rebecca (Lensch) '77 Kaufmann** and **Dr. Paul Kaufmann**, a daughter, **Oriana Kathryn**, June 21 in Ames, Iowa. Sister **Kiley Jae** is 5½. Rebecca received her M.A. in English from Iowa State University where her husband is an assistant professor in the speech communication department. She started an advanced degree in the professional studies department at ISU this fall, studying counseling and art therapy. The Kaufmanns' address is 807 Douglas, Ames (50010) . . . **Curtis Maschman '77** and **Anne Brusnahan** were married June 1. He is an

attorney in Humboldt, Nebraska . . . **Jane Matthies '77** married **Thomas Goding** May 5. He is vice-president of the Federal Land Bank Association of Lincoln, Nebraska. They live in Lincoln at 2915 Londonshire Court (68516) . . . **Marsha (Kahlandt) '77** and **David Ruwe** announce the birth of a daughter, **Tracie**, on April 10 . . . **Roy Wuchter '77** has been transferred and promoted to vice-president of operations for Junior Achievement of New Orleans. Roy and Cece's new address is 2905 Cambridge Drive, LaPlace, Louisiana 70068 . . . **Daniel Dye '76** has been promoted to Pampers Disposable Planner with Procter and Gamble Company of Cincinnati, Ohio. He writes that he, **Diana**, and **Ian** live at 495 Boots Lane in Loveland, Ohio 45140 . . . **Dennis Nelson '76** writes that he testified at a public hearing against a new north-south tollway through DuPage County, Illinois, that "would cause severe and irreparable environmental damage to the Morton Arboretum, an internationally famous outdoor plant museum and education center." His address is 537 West Evergreen Street in Wheaton, Illinois 60187 . . . **Don '75** and **Pam Baack** have moved to 2709 Illinois in Joplin, Missouri 64801. Don teaches at Missouri Southern . . . **Michael Phillip** was born to **Craig '74** and **Mary Parkinson** on June 17. Craig, who received his master's in physical education from the University of South Dakota, teaches social studies and physical education and is head football and basketball coach at Akron-Westfield High School in Akron, Iowa . . . **Marilyn Roberts '74** Stewart is a financial analyst for General Electric in Rockville, Maryland. She and her husband, **John**, were married in June 1982. She received her master's degree in business administration from the University of Maryland in 1982. They live at 8663 Geren Road in Silver Spring, Maryland 20901 . . . **David Jones '73** recently became principal of the Ashland (Nebraska) High School. He is working on a doctorate in administration at the University of Nebraska-Lincoln. He and his wife, **Julie (Hansen) '73** have two children—**Kristin 4** and **Brian 1** . . . **Emilie Marie** was born August 29, 1983, to **Pastor Mark '74** and **Carl (Andersen) '73 Morgenstern**. Sister **Gretchen** is 9

**Did you know**—that alumnus **Christian K. Nelson** invented the Eskimo Pie in Onawa, Iowa, 64 years ago? Nelson, 91, lives in retirement in California.

and brother Aaron is 4 . . . **Gerald Scott '73** is elementary principal at Rembrandt-Sioux Rapids, Iowa. He and his wife, **Carol (Thompson '73)**, and their daughter Wendy live in Rembrandt, Iowa 50576, Box 44 . . . **Lisa Diane** was born to **Louise (Peterson '72)** and Darwin Classon of Sandwich, Illinois, on July 12. She has two brothers—Paul 7 and David 5 . . . **Kathleen (Homeier '70)** Jefferson lives in Omaha at 4612 Larimore Avenue (68104). She has been active in human and civil rights organizations in Omaha, Kansas City, and Des Moines; at present she is caring for her husband, who is ill . . . **Robert Stern '70** and his wife announce the birth of daughter Kelly Colleen on May 29. They live at 1 Willow Drive in St. Augustine, Florida 32084.

**'60s** **Carolyn Scholl '69**, 8073 Cobblestone Road, Des Moines, Iowa 50322, is executive director of the Central Iowa Chapter of the American Red Cross headquartered in Des Moines. She has purchased a farm near Anita, Iowa, and with the help of relatives and friends has planted almost 900 apple trees . . . **Pastor Robert D. Hansen '68** has been called to organize an American Lutheran Church mission parish in Yankton, South Dakota. He and his wife, Suzanne, and their three children have moved to 1002 Mulberry Street in Yankton . . . **Pastor Stan Nielsen '68** of Shelby, Iowa, is the photographer for a book of poems by Shelby resident Edna Pike. The book's title is *The Picture and the Pen*; it captures the experiences of small-town residents . . . **Dr. Ken Rasmussen '68** was recently named superintendent of schools for Bennington, Nebraska . . . **Fred Lange '67** has founded International Theatre Concepts in Osseo, Minnesota. The company produces his "Theatre Crafter," a modular theater and studio performance facility Lange has designed as a proscenium theater. Requiring no tools for assembly, the system can fit almost any space . . . **Dr. Kristi Planck '66** Johnson, an instructor at the University of Maryland, has received an award from the American-Scandinavian Foundation for postdoctoral research on immigrant education in Denmark since 1981 at the Royal Danish School of Educational Studies . . . In August **Dr. Peter L. Petersen '62**, professor of history at West Texas State University, conducted a session at an international conference at the University of Wisconsin, Madison, on Scandinavian immigration settlements and acculturation. He was the only American professor sharing information during a session on the intellectual dimension of Scandinavian immigration. His presentation, "Trinity Seminary and Dana College: Danish Inner Mission Movement in America and Higher Education," included material from *A Place Called Dana*, his centennial history of the college and Trinity Seminary.

**'50s** **Phil Pagel '56** has been appointed by Nebraska Governor Bob Kerrey to serve on the state's Affirmative Action Committee . . . **Jon '56** and **Dorothy (Kloth '56) Petersen** have moved to 1120 Crow Lane in Mt. Vernon, Washington 98273. Jon is director of Pastoral Care and Social Services at Skagit Valley Hospital in Mt. Vernon, the first full-time chaplain. He was chaplain and then director of Psychiatric Day Hospital at Lutheran General Hospital in Park Ridge, Illinois, for almost ten years. Dorothy writes that her mother, Martha Kloth, the widow of C. Scriver Kloth T'30, is living at Josephine Sunset Home, 9901-272nd Place N.W. in Stanwood, Washington 98282 . . . **Dr. Richard Andersen '53** traveled to Budapest this summer to learn more about Raoul Wallenberg, the Swedish diplomat who rescued more than 100,000 Hungarian Jews during World War II before being captured by the Soviet Army. The fate of Wallenberg is unknown. A description of Ander-

## About Financial and Estate Planning

This past summer Congress passed the Tax Reform Act of 1984. Planned giving officers around the country are studying this document to determine how it will affect their constituents who have made estate gifts to their institutions. I am happy to report that, while the tax bill is a large 900-page document, I can find very little that will force changes in the known estate plans that include Dana College.

Congress left intact the scale of unified estate and gift tax credits from the Federal Estate Tax as outlined in the Economic Recovery Tax Act of 1981. They are:

For deaths occurring in 1984 . . . . .	\$325,000
For deaths occurring in 1985 . . . . .	\$400,000
For deaths occurring in 1986 . . . . .	\$500,000
For deaths in 1987 and thereafter . . . . .	\$600,000

Although these exemptions remain in effect, Congress did change the rate that estates would be taxed over and above the credit. The 50 percent ceiling as established in the 1981 act will not take effect now until 1988.

Congress did not make any changes in the various ways to decrease an estate during one's lifetime. These remain:



1. 100 percent marital deduction
2. Maximum of \$10,000 gift per person per year to individuals
3. Gifts to recognized charities

If you have any questions regarding your estate and the taxes that will be imposed on it, please give me a call. If I can't answer your question, I will refer you to someone who will be able to do so.

Sharon J. Gordon  
Director of Planned Giving  
402/426-9700

sen's experiences appeared in the September 7, 1984, issue of the *Lutheran Standard* . . . **Dr. Paul Jersild '53**, formerly dean of the seminary and professor of ethics at Wartburg Theological Seminary, is now dean of academic affairs and professor of theology and ethics at Lutheran Theological Seminary (LCA) in Columbia, South Carolina. He and his wife, **Marilyn (Steffensen '53)**, live in Columbia at 4206 N. Main Street (29203) . . . **Don Ofte '52** has been named principal deputy to the Assistant Secretary for Defense Programs, U.S. Department of Energy, Washington, D.C. In this position he helps direct the country's research and development, testing, and production programs for nuclear weapons. Defense Programs also coordinates the nuclear safeguards, security programs, and international activities related to nuclear technology and materials . . . **John Beck '50** is associate pastor at First Lutheran Church in Fremont, Nebraska. He was formerly director of development at Dana.

**'40s** **Dr. Archie '49** and **Lorraine (Sandberg '48) Madsen** have moved to Blair, where their address is 399 East Baronage (68808) . . . **Pastor Homer Larsen '45**, Cedar Falls, Iowa, gave the invocation for the opening session of the Republican National Convention in Dallas . . . **Lorraine (Peterson '42)** and Bill Schaeffer report that they "spent the month of May enjoying the sights, people, and food in Denmark, Norway, and Sweden."

**'20s** **Julia (Nelson '27)** Walke has given the Dana library a book of poems, *Colored Yarn*, she has published; the gift is in memory of her aunt, Mrs. P. S. Vig. Mrs. Walke, whose husband died in 1983, lives in Elkader, Iowa, at 908 N. Main (52043). She writes that "I belong to several poetry groups and have had poems published in the Iowa Poetry Association's annual publication, *Lyrical Iowa*, the Iowa Poetry Day Association's *Brochure of Poems*, the North American Mentor Association's quarterly *North American Mentor Magazine*, *The P.E.O. Record* and others."

**Deaths** **Samuel Inkodokubo '74**, Port Harcourt, Nigeria, died May 20 . . . **Dorothy M. Jensen '62**, a retired elementary school teacher, died June 18 in Denison, Iowa . . . **John Blatter '59** died July 21 in Blair of a heart attack. He had taught at Westbrook Junior High in District 66, Omaha, coached track and football there, and was a coordinator for a gifted and talented program . . . **Marilyn (Hansen '52)** Dove, a registered nurse, died August 31 in Superior, Nebraska . . . **Emerald Nielsen '28** of Minden, Nebraska, died August 16. He was preceded in death by his wife, **Olga (Petersen '28)** on April 28, 1984 . . . **Ruth Olson**, wife of the late Rufus Olson, former Dana coach, died July 30. Survivors include daughters **Patricia '62 Kubie**, Blair, and **Marilynn '61 Johnson**, Lebanon, Oregon.

DANA COLLEGE  
2848 College Drive  
Blair, Nebraska 68008

Second Class Postage  
Paid at Blair, Nebraska  
And Additional Mailing Offices

04573

994200

MISS LUELLE NIELSEN  
RR 2 BOX 220  
ALBERT LEA MN 56007

## *A Place Called Dana*

The Centennial History  
of Trinity Seminary and Dana College

By Peter L. Petersen

Now, at the conclusion of Dana's Centennial Year of Celebration, we are pleased to announce the availability of A PLACE CALLED DANA, the Centennial history of Dana College and Trinity Seminary as written by Dr. Peter L. Petersen.

In this scholarly yet warmly human history, Petersen reaches back into the immigrant experience to describe the founding of Trinity, Elk Horn College, and eventually Dana. Written in a lucid style and generously illustrated with lively anecdotes and photographs, the book is bound to evoke nostalgia among the many alumni and friends of Trinity and Dana. But, it is also an enlightening analysis of one of the most universal and fundamentally important aspects of American history—the ongoing struggle between the inexorable process of assimilation and the desire of some immigrants and their descendants to preserve at least a portion of their ethnic heritage.

The author, Dr. Peter Petersen of West Texas State University, is a 1962 graduate of Dana. He received an M.A. in history from the University of South Dakota and a Ph.D. from the University of Iowa. He has written more than sixty articles, essays and book chapters for scholarly publications and is currently assisting in the preparation of a biography of Russell Lee, one of the giants of American documentary photography.

This handsome hardbound volume is available by mail at a cost of \$15 plus \$1.50 for postage and handling. Nebraska residents add 52¢ State tax. The book is also on sale in the Dana Bookstore and the Dana Public Relations Office. Address all inquiries to: Dana Public Relations Office, Dana College, Blair, Nebraska 68008.

Please send me \_\_\_\_\_ copies of A PLACE CALLED DANA at \$15 plus postage and handling as applicable.

NAME \_\_\_\_\_

STREET \_\_\_\_\_

CITY \_\_\_\_\_

STATE \_\_\_\_\_ ZIP \_\_\_\_\_

## TRAVEL OPPORTUNITIES

with

Dana President Dr. James Kallas

### “Sublime Scandinavia”

August 16-30, 1985

Here is an opportunity to spend fifteen relaxing days in Sublime Scandinavia . . . overnight in deluxe hotels in Stockholm, Karlstad, Oslo, Gol, Balestrand, Bergen, Odense and Copenhagen . . . President Kallas, a veteran traveler, will add interest to the journey with his comments . . . one comprehensive fee (\$2899 from New York) covers all expenses including meals, transportation, sightseeing, hotels and transfers.

### “The Lands of Jesus . . . The Cities of Paul”

Departing July 19 from New York

You are invited to spend two of the most exciting weeks of your life looking at and learning about “The Lands of Jesus . . . The Cities of Paul” with Dana President Dr. James Kallas. In addition to being an exciting travel adventure, this tour is a vacation with a purpose, an educational-spiritual time of stimulation and growth. Dr. Kallas, an eminent Bible scholar, will lecture each evening on the historical and theological significance of the places visited. Nothing of Biblical importance will be excluded. Again, an all-inclusive fee covers all expenses (\$2799 from New York).

For free brochure and detailed tour information, return this coupon to Dennis Barnum, Executive Director for Institutional Advancement, Dana College, Blair, Nebraska 68008.

Please send me detailed information on

\_\_\_\_\_ “Sublime Scandinavia”

\_\_\_\_\_ “The Lands of Jesus . . . The Cities of Paul”

NAME \_\_\_\_\_

STREET \_\_\_\_\_

CITY \_\_\_\_\_

STATE \_\_\_\_\_ ZIP \_\_\_\_\_