

# CRADANA REVIEW

Winter 1985

---

# DANA REVIEW

---

Volume 41

Winter 1985

Number 2

---

**About the cover**—Old Main on a December night, with one of Dana's antique lamps from Copenhagen adding to the brilliance. Two of the lamps have been moved to the front of Old Main to enhance the new patio, and the third has been placed in storage. For safety reasons, brighter lights have been placed along the sidewalk between Old Main and Pioneer Memorial. (Note Old Main's new entrance.) *Photo by Tim Matz '87*

#### **Non-discrimination Policy**

*Dana College admits students without regard to sex, age, race, color, religion or national origin to all the rights, privileges, programs, and activities generally made available to students at the College. It does not discriminate on the basis of sex, race, color, age, handicap or national origin in administration of its educational policies, admission policies, scholarship and loan programs, athletics, or other school-administered programs.*

Campus photographs by Ann Leistad '87 and Tim Matz '87.

*"The DANA REVIEW (USPS 147-940) is published four times annually for distribution to alumni and friends of Dana College and Trinity Seminary by Dana College, 2848 College Drive, Blair, NE 68008. Second-class postage paid at Blair, NE, and additional mailing offices. POSTMASTER: Send address changes to DANA COLLEGE, 2848 College Drive, Blair, NE 68008."*

---

Dear friends,

We have received a number of letters in response to the letter that was sent by Dr. Clifford Madsen and me a few weeks ago. Some of them offered their continued support; some of them indicated puzzlement; and some of them expressed anger over the termination of Dr. Kallas's presidency. It is understandable that some of you are puzzled and that some are angry. We hope that statements made elsewhere in this issue will alleviate some of your uneasiness. Whatever your question may be regarding the action of the Board of Regents, Dana College remains committed to its mission, goals, and objectives to be a college of the church, seeking to integrate learning and faith for its students. We believe that this task is an important one. We are living in a society where life tends to be compartmentalized. There tends to be a kind of separation of people's Christian faith from their education, occupation, recreation, and social life. Though these forces in our society are powerful, we at Dana believe that life should be integrated. Ultimately life is one, and the various aspects in life need to be brought together with one's faith at the center. We believe that a church-related liberal arts college has a special opportunity to help students aim at this kind of integration. Dana joins with other like-minded institutions in this effort.

We ask you alumni and friends to continue your support of the College. The support that you have given for the Centennial appeal has already left its mark on the campus in the form of our new Performing Arts Center and the restoration of the exterior of Old Main. We hope that soon it will be reflected in the renovation of the interior of that stately building which we expect will serve the students of the next century as it has served the students of the past. We ask not just for financial support but for your prayers and also for words of encouragement to prospective Dana students.

We look to the future with hope, and let us join in affirming Dana now, more than ever.

Dr. Clifford T. Hanson  
Chief Operating Officer  
and Dean of the College

# Kallas's Presidency, Termination Reviewed

The Dana Board of Regents terminated the contract of Dr. James Kallas as president of the College during a special meeting held on the campus on December 15, 1984. The vote was unanimous and the termination was effective immediately.

The Regents declined to give specific reasons for their action and, as a result, numerous rumors and speculations have arisen. This report is intended to give you the facts, insofar as they are available, concerning Dr. Kallas's administration and termination.

Kallas, 56, became Dana's 13th president in the fall of 1978. He came to Dana from California Lutheran College where he had been a member of the teaching faculty for 17 years. When he assumed the presidency, Dana's enrollment was 473 and the College was faced with an accumulated operating deficit of \$245,325.

In the fall of 1979, at the end of his first year in office, President Kallas made two exciting announcements — first, enrollment had increased by 16.5 percent and second, unrestricted gift income had doubled.

In his message to alumni and friends in the fall issue of the *Dana Review*, Kallas said: "Dana has passed the test of adversity. . . When we had our backs to the wall our alumni and friends responded magnificently. But now, compared to a year ago, we stand in a position of relative prosperity. And prosperity too, like adversity, poses a test, a trial. People often rally during difficult times and pass the test of adversity as we did one year ago. But then, in more prosperous times, complacency, relaxation, a resting on the oars — and we fail the test of prosperity."

One of the major signs of "prosperity" came in the spring of 1980 when Dr. Kallas announced the receipt of a gift of land valued at \$240,000 from Dana Regent and Mrs. Omer Reed of Arizona. The Reeds, friends of Dr. and Mrs. Kallas for more than 20 years, earmarked their gift for constructing a president's residence on the campus. In accepting the gift on behalf of the College, Kallas called attention to the impressive philanthropic history of the Reeds, indicating that this was but the most recent in a continuing series of extraordinarily generous gifts they had made over the years to schools such as Dana.

In the fall of 1980, Dr. Kallas opened the academic year with these words: "Dana is entering a new chapter. . . enrollment is up, morale is high and gift-giving has increased

threefold. We're moving ahead." Also in the fall of 1980 the Regents approved plans to complete the interior of the northeast section of Borup Coliseum, authorized a feasibility study which eventually led to the launching of a \$6 million Centennial Fund campaign, and reaffirmed their intent to use the gift of Dr. and Mrs. Reed to construct a president's residence on the campus.

Growth continued and when classes began in September of 1981, figures showed an approximate five percent increase in enrollment. Even more impressive was the report on gift-giving. President Kallas reported that giving by alumni, friends, congregations of the American Lutheran Church and residents of the Blair-Washington County area had quadrupled in the previous 36 months. With increased funds available, the College purchased a new PDP-44 computer to improve its computer science program and reduced the accumulated operating deficit to approximately \$100,000. Also in the fall of 1981 the College formally dedicated Wurdeman Pavilion — a new recreation area in Borup Coliseum. Perhaps the most significant event in the fall of 1981 was the launching of the Dana Centennial Fund — a three-year program to raise \$6 million for a new performing arts center, renovation of Old Main, a permanent chapel, strengthening the operating budget, and improving the endowment.

President Kallas made another important announcement at the opening of the 1982 year when he told members of the faculty that Dana had closed its fiscal year in the black for the third year in a row and had wiped out the total accumulated operating deficit. Also in the fall of 1982, Alumni Memorial Auditorium was demolished, a ground-breaking was held for the new performing arts center, and a contract for construction of that new facility was awarded.

## A Letter to the National Endowment for the Humanities

*In December William J. Bennett, chairman of the National Endowment for the Humanities, released a document titled "To Reclaim a Legacy: A Report on the Humanities in Higher Education." Many newspaper and magazine columnists have commented on the report. The following is a letter to Bennett from Prof. James T. Olsen '62, assistant professor of art and chairman of Dana's humanities division.*

On December 3, 1982, Dr. Kallas announced that Mr. and Mrs. Howard Hanson, longtime residents of Blair, had given title to their home north of Blair to Dana College. Kallas said: "We are humbled by and grateful for this extraordinarily generous act and while I am not at liberty to disclose all the details I am free to say that this arrangement whereby Dana College receives title to their home and acreage is partial gift and partial purchase with the gift portion exceeding \$500,000." He concluded his statement by saying, "The college foresees using the residence as a home for the college president in the years ahead while simultaneously developing some of the surrounding acreage as equestrian trails for college students."

When the Hanson property was acquired (November 7, 1982), the Executive Committee of the Board of Regents also gave Dr. Kallas an option to eventually purchase the property at an attractive price. The option, not mentioned in the statement Kallas wrote to announce the Hanson gift and apparently not communicated to the full membership of the Board, was revised in specific detail by the Executive Committee in February of 1984.

At approximately the same time as President Kallas announced the acquisition of the Hanson property, he warned faculty and staff members of impending budgetary difficulties. Some of the faculty-staff, as well as residents of the local area, began to speculate as to whether or not the purchase portion (estimated at \$400,000) of the Hanson property may have worsened the College's budgetary problems. Kallas, in a written statement to the faculty on February 8, 1983, said: "No, such is not the case. The obtention of the property is an excellent opportunity, to the financial advantage of the college, an action which will strengthen our position. The purchase part

*(continued on page 7)*

Dear Mr. Bennett:

It is reassuring to know that prominent voices such as yours are being raised to draw attention to the lamentable condition of the humanities in American education. Your report, "To Reclaim a Legacy," is a strong call for a return to equilibrium. We have witnessed such emphasis on technical and vocational training during the last

*(continued on page 11)*

# Alumni in the News

Several alumni have figured recently in national and regional news. Here's a rundown:

— **Paul Simon '49** of Illinois, five-term member of the U.S. House of Representatives, has been elected to the U.S. Senate in a close race against incumbent Charles Percy. Described by *Newsweek* in its post-election issue as "a popular and progressive downstate Democrat," Simon attended Dana as a sophomore and junior before leaving at the age of 19 to purchase the *Troy* (Illinois) *Tribune*.

Dennis Farney of the *Wall Street Journal's* Washington bureau wrote last spring that Simon has "a reputation as one of the most authentic, and thoughtful, members of the House." Simon told Farney that he decided to run for the Senate because he's a generalist. "In the compartmentalized House," Farney wrote, "it is hard to speak out on, say, Central America, if your committee is Education and Labor. 'But in the Senate,' he [Simon] says, 'I'll be able to speak on anything I like.' "

— Another alumnus (like Simon, a former student body president) has just entered politics. Republican **Brent Siegrist '74**, who teaches political science at the Missouri Valley (Iowa) high school, has been elected to the Iowa House of Representatives, also in a close election. Siegrist, a Council Bluffs resident, has

been active in the National Education Association. He currently serves as president of the Missouri Valley Education Association.

Interviewed by the Council Bluffs *Nonpareil* when he announced his candidacy last May, Siegrist said that "I feel I have a thorough knowledge of the procedures of state government, and the ability to work with the different types of people I will encounter in this job."

— **Dennis Hoch '76**, director of development for the Self Help Foundation in Waverly, Iowa, attended the 1984 Presidential World without Hunger Awards Luncheon last October at the Kennedy Center in Washington, D.C. Several celebrities and many representatives from government and private voluntary organizations were at the ceremony.

Self Help is a non-profit organization dedicated to lessening world hunger by assisting small farmers worldwide to become self-sufficient in meeting their communities' food needs. The program is designed to make a long-term effect on the world hunger problem, with its efforts focused on teaching the skills needed for manufacturing, operating, and maintaining farm equipment suitable to a region.

"Even though Self Help didn't receive the award at the luncheon," Hoch said, "the Foundation is receiving much national and

international attention."

— **Vivian Jenkins Nelsen '65**, administrative director of the University of Minnesota's Hubert H. Humphrey Institute of Public Affairs, was selected as one of eight "people to watch" this year by *Minneapolis-St. Paul* magazine. A feature story in the October issue described the eight (all of them under 40) as "people of the present, but also of the future—which is precisely why they qualify as people to watch."

The article called her a "gifted administrator" with "a special commitment to issues affecting the poor, minorities and women." She also heads the Minnesota Academic Excellence Foundation.

— **Alice Petersen Neve '68**, another Twin Cities resident, is children's specialist for the St. Paul Public Library. She has developed a "Raising Readers" program that was the subject of a feature story in the October 9 *St. Paul Pioneer Press*.

Interviewer Ann Baker quoted Mrs. Neve: "Parents are the major influence in a child's development as a reader. . . . How well a child learns to read has less to do with intelligence or teaching than with language experience at home. Those who do well have been exposed to books and conversation. . . . It's important to make reading fun. Show the child you enjoy reading."



At the Kennedy Center luncheon: Hoch (right) and Self Help Executive Director Ray Howland (second from left) with Jeff Bridges and Dennis Weaver.

Senator Simon



Senator Simon, a Dana Centennial Scholar, will speak Thursday, April 11, at 8 p.m. in the Dana Hall of Science Auditorium.

The Raising Readers program includes workshops for parents and talks for library staff members. With funding from B. Dalton Booksellers and The Friends of the St. Paul Public Library, she has also written a leaflet with guidelines for parents on reading aloud to their children. B. Dalton is circulating the leaflet nationally.

— **Phil Pagel '56**, director of public relations at Dana, has accepted an invitation to become a member of the President's Committee on Employment of the Handicapped. The goal of the Committee is to achieve equal employment opportunity for handicapped workers and to advance their useful employment. Those named to the Committee must be involved, either nationally or internationally, in the affairs of the disabled.

Pagel was recently appointed by Nebraska Governor Bob Kerrey to the state's Affirmative Action Committee. He is also a special consultant to the American Lutheran Church for ministry with the handicapped and a member of the ALC's Central District Task Force on Aging and the Handicapped.

### At "Sights and Sounds"

*A new event at "Sights and Sounds of Christmas" this year was "An Elizabethan Christmas" with a new student group, Pro Musica, and this trio consisting of vocalist Ann Esbeck '86 (Elk Horn, Iowa) and flutists Meri Jo Meier '87 (Sioux Falls, South Dakota) and Brenda Meyer '87 (Omaha). Featured at the smorgasbord was a table of imported cheeses provided by the Danish Cheese Association. Here Brigitte Riegels Doucet of the Danish Cheese Association, Hillside, Illinois, offers a sample to Santa Lucia bride Ruth Nielsen '85 (Orfordville, Wisconsin). Again this year attendance topped 5,000.*



## Interim Has Multiple Choices

Interim is the time between semesters when students can be business and accounting interns, travel to Europe with a professor, conduct an independent study, engage in extended student teaching, or stay on campus for a challenging class.

Again this year students had multiple choices for the month, with some selecting a four-week course and others a couple of two-week courses.

Sixteen of them chose to go on a "Viking Adventure" with Prof. John W. Nielsen '47 to learn about the life, culture, and influence of the Vikings as the Vikings moved from Scandinavia to various parts of Europe. Daily journals and books are part of the students' baggage.

Others have chosen classes based at Dana but involving experiences away from the campus. Those in "Tour 'N Tell" taught by Prof. Shirley McAllister '69 are exploring cultural opportunities in the area. Each student is also working on a field project based on a hidden historical treasure or little-known cultural attraction in his or her own home area.

Students in "The Great Plains Experience" taught by Prof. John Mark Nielsen '73 are being introduced to the literature and history of the Plains. They're also gaining a feel for the lives of earlier peoples in the area by visiting sites related to reading assignments, by hiking, and by

preparing and eating the traditional foods of those peoples.

Students in "Survival Education" have been using the Cauble Creek area near the campus and DeSoto National Wildlife Refuge to learn basic survival techniques from Prof. Carol Haussermann '69.

And others, after a week's baseball practice at Dana, have traveled to Florida with Coach Dale Lemon to attend a baseball camp.

The other Interim courses are: "Conversational German," "Sport in American Culture," "Beginning Danish—Language and Culture," "Experience in Human Services," "Field Experience in Recreation," "Tagore of India," "Poetry of Protest," "Convincing Writing," "History of Music," "Officiating in Football and Basketball," "Dana College Art Theatre," "Agricultural Economics," "Bulls and Bears," "Diet/Exercise/Nutrition—Facts and Fads," "Arts and Crafts for the Non-Artist," "Computer Integrated Calculus Studies," "The American Revolution," "Change: Causes and Effects,"

"Nature's Orderliness: A Study of the Periodic Table," "Hawthorne's Ambivalent Allegories," "Emily Dickinson's World," "Art and Life in Renaissance Florence," "Freehand Drawing," "Differential Equations," "Thirty-Five Millimeter Photography," and "The Computer Revolution."



## Drive Is Underway For Scholar Support

The Scholar Support Program, this year's annual appeal, is well on the way to reaching its \$200,000 goal. Sharon Gordon, assistant director of development, reports that as of January 17, \$102,498 had been raised.

Mrs. Gordon gave the following timetable for the various parts of the appeal still to be conducted:

Late January: Faculty-staff drive.

January 29-February 18: Phonoramas, with the first in Cedar Falls, Iowa, and the last in Loveland, Colorado. Phonoramas will be held between these dates in Blair, Lincoln, Fremont, Omaha, and Chicago.

March: Washington County Appeal.

## Theatre Program Has Full Schedule

February, March, and April will each bring a theatre production to the stage of the Performing Arts Center.

The first, on February 7-9, is Lope de Vega's *The Sheep Well*, a play from the Spanish Renaissance produced by students enrolled in a January Interim class called "The Dana College Art Theatre." The objective of the course, taught by Profs. Sieghard Krueger and Darrell Dibben, is to produce a major classical play with students carrying out all phases of the production.

Then on March 19 the Nebraska Theatre Caravan, the touring company of the Omaha Community Playhouse, will perform the musical *Candide*. This adaptation from Voltaire has music by Leonard Bernstein, with lyrics by Richard Wilbur and additional lyrics by John LaTouche and Stephen Sondheim.

The Caravan will also perform *The Dragon and Saint George* for elementary school audiences that morning and afternoon.

The next month, on April 25-27, the Dana Players will present Moliere's *The Miser*.

*The Sheep Well*, *Candide*, and *The Miser* all start at 8 p.m. Tickets can be purchased at the door.

## Chicago Dana Club Assists Admissions

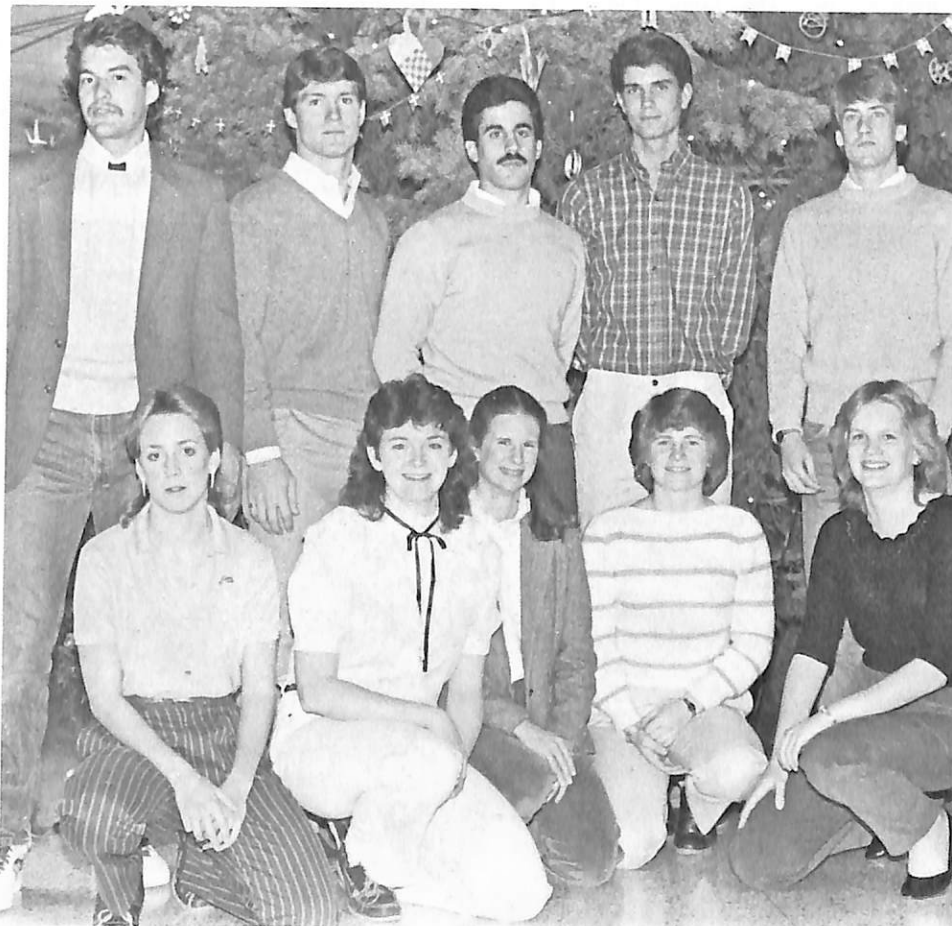
The fall *Review* reported on an August get-together hosted by the Denver Dana Club for alumni and new, prospective, and returning students.

Members of the Chicago Dana Club are also involved in admissions activities. In response to their request, and with their help with arrangements and financial support, ten women students, Prof. Jim Olsen '62, and Vaughn Christensen '53, assistant director of admissions, traveled by college van to Chicago on Friday, November 9.

Friday night they stayed at United Lutheran Church, Oak Park, and the next day they visited the Chicago Art Institute and the Museum of Science and Industry. That evening they met their host families at United Lutheran. On Sunday morning teams of two students each visited congregations of the American Lutheran Church to talk to youth groups about Christian higher education and Dana.

Christensen reported that the weekend was very successful. As a result, he said, the group returned to Dana Sunday night with the names of 89 students who asked for more information about the college.

The participating Dana students were: Sonya Anderson '87 (Bolingbrook, Illinois), Lisa Barnum '86 (Forest City, Iowa), Karla Bidstrup '87 (Racine, Wisconsin), Julie Gilbert '88 (Eugene, Oregon), Lisa Hayne '88 (Stoughton, Wisconsin), JoAnne Joerz '86 (Omaha), Brenda Meyer '87 (Omaha), Elizabeth Oribiletti '88 (Kenosha, Wisconsin), Lisbet Thome '88 (Chicago), and Rhonda Tietgen '88 (Blair).



## Winterfest Royalty

Members of this year's Winterfest royalty were: row 1—Jeanne Stoeckinger (Omaha), Winterfest Queen Dita Dau (Yutan, Nebraska), Cheri Smith (Council Bluffs), Sonya Johnsen (Huntington Beach, California), and Jill Jorgensen (Poy Sippi, Wisconsin); row 2—King Jeff Langholz (Creston, Iowa), Marty Stessman (Dunlap, Iowa), Mike Reggio (Council Bluffs), Kurt Grefe (Washta, Iowa), and Craig Swenson (Richfield, Minnesota).

(Kallas, from page 3)

is covered by a restricted gift [the gift from Dr. and Mrs. Omer Reed announced in the spring of 1980], money which could not be used for any other purpose, plus the equity in the Mezoff house. [The college purchased the home of former president Dr. Earl Mezoff when he left in 1978.] The money from these two sources, with interest, is adequate to cover the purchase part." In the same letter Kallas went on to emphasize: "The holdings obtained include not only the home but also approximately 100 acres of land which at the discretion of the Board, could later be sold and the proceeds of such would not be restricted — a real advantage to the college. Also, this is a burnout job. Presidents do not last. When I step aside the college will have an outstanding residence, able to aid in luring a more capable person than I to take over the reins — another real advantage to the college."

The acquisition of the Hanson property was not received with enthusiasm by most faculty, staff, students, and residents of the local area. There were questions raised about the appropriateness of a small college of the church, faced with problems of declining enrollments and continuing budgetary concerns, investing in a piece of property of this magnitude solely for a residence for the president.

The 1983-84 year also saw Dr. Kallas's leadership ability and credibility eroding among faculty, staff and students. Questions concerning short-term problems faced by the institution remained unanswered, long-range planning was deferred, serious problems with personnel developed as the result of drastic revisions in internal employment policies, and individual disputes between the president and staff members led to open and often hostile exchanges.

By September of 1984, near the end of Dana's Centennial Year of Celebration and as the Centennial Fund approached its \$6 million goal, Dr. Kallas's capacity to lead had diminished to its lowest level. At this point he exercised the option given him by the Executive Committee of the Board and purchased the Hanson property for \$225,060. To assist Kallas in the purchase of the property, the Executive Committee awarded him a \$25,000 annual increase in salary retroactive to 1983. The balance of the mortgage was to be carried by Dana College at eight percent interest. The Executive Committee also agreed that the College would continue paying the cost of

maintenance and upkeep of the property.

Although there are some conflicting reports, it appears the entire Board of Regents was not informed of the Executive Committee's action extending the purchase option to Dr. Kallas until the sale was an accomplished fact. It also appears the full Board was not informed of the Executive Committee's action of September 1984. Neither was the Dana community informed, but instead learned of the transaction only because it was a matter of public record.

Then, in response to even greater controversy, the entire Board of Regents during its regular fall meeting on November 2, 1984, issued this statement: "In November of 1982, at the height of the miraculous recovery at Dana, the Executive Committee of the Board of Regents sought to express its appreciation and assure the continued services of Dr. Kallas by offering him an option to buy the Hanson property at an attractive price. When the option was exercised by Dr. Kallas, the purpose and procedure were misinterpreted and it appeared that Dana's image had suffered. . ." At the same meeting the Board voted to suspend the powers of the Executive Committee.

As a result, Dr. Kallas offered to return the title, annul the transaction and help restore confidence in the Board and administration of the College. The Board accepted Kallas's offer to reverse the transaction "with gratitude, understanding the personal sacrifice that he has made to relieve pressure on Dana." The Board affirmed the correctness of the original sale but expressed regret over the misunderstanding and misinterpretation it caused.

Because so much of the Board's time during the November 2 meeting was devoted to discussion surrounding the

house action, it was announced that another meeting would be held on December 15 to deal primarily with budget plans for 1985-86.

When the Board met on December 15, some six weeks later, the property had not yet been returned to the College. At that meeting, with ten Regents present, the Board went immediately into executive session. Late in the morning it was announced that by unanimous vote Dr. Kallas's contract had been terminated. The Regents also announced that Dr. Clifford Hanson, academic dean, would serve as chief operating officer until an interim president could be named early in 1985.

A committee to establish the process for a full presidential search was created, and the Board also requested the American Lutheran Church to conduct a review of the College's financial situation and general operation. The next meeting was scheduled for January 18-19, 1985.

As this issue of the *Review* goes to press, an examining team from ALC headquarters has completed the preliminary review of the College's operations. The next meeting of the Board has been postponed until February 1985.

Dr. Kallas has not been available for comment since the Board action of December 15 and as of this writing, January 16, 1985, the property has not yet been returned to the College.

## Professor Shares "Country Christmas"

*Many faculty members entertain students in their homes at various times of the year. One evening before the holidays Prof. Shirley McAllister '69, education and psychology, invited her students to a "Country Christmas" party with her and her husband at their farm home near Craig, Nebraska. Here Prof. McAllister tells freshman Kay Rasmussen of Blair about McAllister Christmas traditions. This is the second year that the McAllisters have invited students to their home for a Christmas party, and the evening is well on its way to becoming another family tradition. Prof. McAllister says.*



# Performing Arts Center: "You Have Every Right to Be Proud"

The Performing Arts Center has been open now for a semester, and a variety of programs have put it to full use—recitals, the Salute to Paul Neve, performances of *The Threepenny Opera*, concerts by the Dana Wind Ensemble and the Nebraska Sinfonia, and "Sights and Sounds of Christmas" activities. This testing period has demonstrated that the building is exactly what Dana has needed.

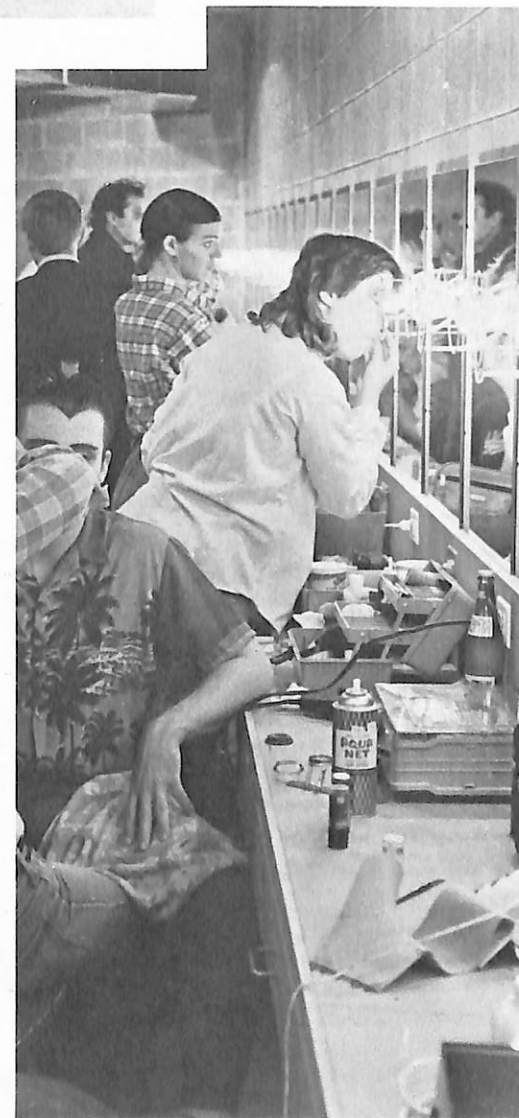
Dr. Dennis Henneman, former theatre director at Dana, toured the building at Homecoming. He later sent a letter with his impressions to Business Manager Keith Hansen: "I must write to tell you how pleased I was with the success of your efforts to procure an excellent performing arts facility. As you probably remember, I spent several years researching and analyzing performing arts complexes in the U.S. and Canada. In that process, I did detailed studies of over 100 such facilities.

"In light of all of this research, I must say that the performing arts complex meets the needs of Dana College far better than most of the complexes I researched. As you know, performing arts complexes are not inexpensive to build. One of the most disturbing discoveries that I made during my research was that most of the institutions needlessly wasted money by designing nonfunctional or inadequately functional space. This is definitely not true in your case. I really believe that you are successful in getting top value for your dollar.

"It appears to me that you have created for yourself a \$3 million-plus facility at a cost of around \$2 million. For this, you are to be commended. . . .

"You have every right to be proud of your new facility. Extend my congratulations to all who were involved in this program for a job well done."

*The photographs on these two pages show music and theatre students using some of the areas in the new building. Pictured clockwise, from top left: view from the northwest; in the lobby; in the control booth; a piano lesson with Dr. Alan Brandes; the makeup area; a wind ensemble rehearsal with Dr. William Mayson; and a choir rehearsal with Dr. Richard Palmer. (Photos by Tim Matz '87)*



## Areas Named

The fall *Review* announced that the choir rehearsal-recital room in the Performing Arts Center had been named the "Neve Room." Since then three other areas in the building have also been named:

- The backstage green room-lounge area—the "Laaker Room," in honor of Campus Hostess Alice Laaker and her late husband, Allen, for their support of the performing arts.

- The theatre—the "Lauritzen Theatre," in tribute to the families of John and Bruce Lauritzen, Omaha, for their significant support of the college's Centennial Fund.

- The music classroom—the "Youngstrom Room," in memory of Walter A. Youngstrom. Youngstrom's widow and son Warren have been generous supporters of Dana and the Performing Arts Center. Warren Youngstrom is president of Acme Printing and Mail Advertising, Omaha.

## My Experiences at Dana College

*Lisa Hayne of Stoughton, Wisconsin, wrote this essay for her freshman composition class. Prof. John Mark Nielsen '73 asked his students to blend past, present, and future tenses in the assignment. Lisa's essay is one that readers of the Review, especially alumni, should enjoy.*

Part of me was packed in our car trunk; I was leaving for Dana College, carrying on a family tradition. I had heard a lot about Dana since it was the college that both of my parents, as well as my aunts, uncles, and cousins, attended. I had been on the campus many times, but it was not until I visited the fall of my senior year in high school that I decided to attend Dana. I was really impressed with the friendliness of the students and the close-knit atmosphere on campus. When I thought about college life, the classes did not really enter into my mind. I was worried more about making friends and how I could handle living away from home. As we pulled out of the driveway, the car loaded with my belongings, I felt a twinge of nervousness, but also a surge of excitement as I looked ahead to going off to college.

The first few days on campus were hectic. They were filled with freshman orientation meetings, registration, and of course, getting to know new classmates. I enjoyed meeting new people and thought it was great when everyone said "Hi" wherever I walked. During my free time I could be found walking through the guys' dorms and drinking water at the Dragon's Head. I had never functioned on so little sleep in my life, but I did not want to miss out on any of the action. One evening the campus organizations held "Rush Night." All of the students were given a chance to learn about and sign up for the different organizations on campus. I got excited and signed up for all the groups that even slightly interested me. I really wanted to become involved!

It has been two months since I left home. The time has gone by very quickly. I am a different person than the excited girl who signed up for all those organizations that first week of school. I have become more realistic. Now I

realize that college is not just fun with friends. My free time is no longer spent entirely in guys' dorms or at the Dragon's Head. Now I can usually be found in my room or at the library during my free hours. Of the many organizations I signed up for, I am actively involved in band, choir, and a small vocal ensemble. I feel that these are enough to keep me interested in school without interfering with my classes.



Lisa Hayne

Like the expectations I had in coming to Dana, I also have expectations for the future. I want to continue building on the friendships I established the first week of school, while constantly meeting new friends. I hope to graduate from Dana not only educated in my major field, whatever that may be, but also prepared to face life as a well-rounded person. In the future, I plan on getting married and finding a career that I am happy with. I think that my experiences at Dana will help me make these dreams realities.

Part of me is still packed in our car trunk wondering what college life will bring. Another part of me is sitting up typing this paper. Still a different part of me is hoping and dreaming about the future. This mixture of the past, present, and future is an important factor in determining who I am and what my life at Dana and beyond will be like.

## AAL Grant Received

Dana has received an \$8,000 grant from Aid Association for Lutherans, Appleton, Wisconsin, to update the audiovisual presentation used by the Admissions Office. The grant is part of AAL's affirmation of higher education program.

## Dana Hundred Awards

Issues of the *Review* during the Centennial Year of Celebration have listed recipients of Dana Hundred Awards, framed Centennial plates presented at various occasions on- and off-campus to special friends of the college. The following received the award toward the close of the Centennial year:

Tom Allan, Harold Andersen, Arthur Antholz, Victor Borge, the Emory Hunt family, the Robert Hunt family, Dr. Niel Johnson, Dr. and Mrs. Bruce Kresge, Lutheran Brotherhood, Queen Margrethe II of Denmark, Dr. and Mrs. Earl Mezzoff, Vivian Jenkins Nelsen '65, Hugo Petersen, Paul Simon '49, Mr. and Mrs. Randolph Sorensen, and Mrs. LaVanche Wurdeman.

## Lecture Series Examines Christianity/Marriage

"On Being Christian and Married in Our Society" will be the subject of a Staley Foundation Christian Scholar Lecture Series at Dana April 14-16. The guest speaker is Dr. Elizabeth Achtemeier, visiting professor of homiletics and New Testament at Union Theological Seminary in Virginia.

Dr. Achtemeier is the author of seven books, including *The Committed Marriage* (Westminster Press, 1976), *The Feminine Crisis in Christian Faith* (Abingdon Press, 1965), *Creative Preaching* (Abingdon, 1980), and *Preaching as Theology and Art* (Abingdon, 1984). She and her husband, Paul, are the co-authors of three books, one of them *The Old Testament Roots of Our Faith* (Abingdon, 1962; reissued by Fortress Press, 1979).

An ordained Presbyterian minister, she received her B.A. from Stanford University, her M.Div. from Union Theological Seminary in New York, and her Ph.D. from Columbia University. She has also done post-graduate work at Heidelberg and Basel Universities.

Dr. Achtemeier will speak in Doctors Auditorium of the Dana Hall of Science on April 14 at 8 p.m., April 15 at 3 p.m. and 8 p.m., and April 16 at 9 a.m.

## Freshmen List Alumni Parents

Brothers Mitch, Skip, and Jay Jensen, sons of Keith Jensen '56, Irene, South Dakota, are among this year's freshmen with alumni parents. According to information freshmen have given the Public Relations Office, the others are:

Kristen Archibald, daughter of William '62 and Judy (Jensen '65) Archibald, Redwood City, California;

Tammy Bunten, daughter of Clyde Bunten '62, Blair;

Gretchen Christensen, daughter of John '54 and Myra (Vig '54) Christensen, Taft, California;

Julie Gilbert, daughter of Joyce (Olsen '58) Gilbert, Eugene, Oregon;

Richard Harris, son of Marvin Harris '68, College Station, Texas;

Lisa Hayne, daughter of Lonnie '62 and Gloria (Pedersen '64) Hayne, Stoughton, Wisconsin;

Tom Kruse, son of Warren '56 and Sandra (Lamb '57) Kruse, Council Bluffs, Iowa;

Andrew Madsen, son of Margaret (Christensen '53) Madsen, Cypress, California;

Rene Rodenburg, daughter of Bill '62 and Margaret (Nielsen '61) Rodenburg, Centerville, Ohio;

Kay Schjodt, daughter of Rhoda (Iversen '49) Schjodt, Blair;

Phil Suhr, son of Melvin Suhr '50, Red Oak, Iowa;

Bernie Vaaler, son of Bernhard '66 and Rebecca (Lyche '68) Vaaler, Ontario, California.



*These freshmen are among the 15 who have alumni parents. From the left, they are—Andrew Madsen, Mitch Jensen, Skip Jensen, Gretchen Christensen, Jay Jensen, Tom Kruse, Kay Schjodt, Phil Suhr, and Richard Harris.*

(National Endowment, from page 3)

quarter century that the liberal arts and the humanities have been forced into a defensive posture if not full-scale retreat. The permissiveness toward academic standards that has accompanied this trend is further cause for alarm. But at last there appears to be a glimmer of light at the end of the tunnel as national attention is being increasingly focused on the need for a restoration of excellence in our educational institutions. The report of the National Commission on Excellence in Education entitled "A Nation at Risk" has dramatized the need for higher standards in our schools, and there is evidence that academic achievement is again becoming fashionable among the present student generation. A national mood that is supportive of excellence in

education will hopefully be conducive to a renewed commitment to the humanities. "To Reclaim a Legacy" raises a number of crucial issues, and the reaction it has generated is encouraging to all of us who support a central role for the humanities in education.

This report has occasioned particular interest at Dana College, since it upholds and reinforces our traditional position on the liberal arts and the humanities. During the past two decades when many schools were opting for "garage sale" or "cafeteria-style" general education requirements or educational philosophies founded on intellectual relativism, we have resisted the pressures to eviscerate our humanities requirements. We have dared to swim against the current by maintaining our narrowly defined general education requirements. Over the years our faculty and administration have supported a core of content-based humanities courses as an essential element of our general education program. Perhaps there is also a vestigial remnant of the Danish stubbornness of our pioneer founders that has stiffened our resolve, but for whatever reasons, we have persisted in our conviction that the humanities and the liberal arts are crucially important to a value-based education.

We point with pride to our three-semester sequence of courses in the humanities entitled "The Heritage of Western Man" that all our students must complete as a part of our general education requirement. This twelve-credit hour program is team taught on a historical format and includes art, history, literature, music, religion, and philosophy, with an emphasis on integration. The survey texts used in these courses are augmented by an extensive list of readings, including works by Homer, Virgil, Dante, Shakespeare, Goethe, Voltaire, Paine, Shaw, and Faulkner. In addition to the three lecture sessions per week for each course, there are seminars devoted to the study of language and culture, ethnic heritage, and historical, cultural, and creative topics. Attendance at a variety of cultural events such as concerts, recitals, poetry readings, art exhibits, plays, ballets, and operas is also required, providing an encounter dimension that supplements the academic component. Most of these events are at Dana or in nearby Omaha, but the humanities program has also sponsored trips to Chicago, Minneapolis, Kansas City, and St. Louis to view art exhibits and attend concerts and plays.

*(continued on page 12)*

**Prof. John Mark Nielsen '73**, English, spoke at Lincoln's public library October 30 on "Brawling Cities and Blossoming Prairies: The Experiences of Danish Immigrants in the Nebraska Novels of Kristian Ostergaard." His talk was one of six in a Scandinavian Heritage Lecture Series sponsored by the Nebraska Literary Heritage Association.

These seniors have been named to the 1985 edition of *Who's Who Among Students in American Universities and Colleges*: Barbara Lynn Anderson (Tekamah, Nebraska), Jon Bansen (Yamhill, Oregon), Stacy Crossland (Sioux City, Iowa), Chere Fox-O'Reilly (Turin, Iowa), Sonja Hansen (Mondamin, Iowa), Irene Inman (Blair), Ann Klein (Dunlap, Iowa), Julie Frisk Pedersen (Missouri Valley, Iowa), Terri Pedersen (Waterloo, Nebraska), Paul Snow (South Gate, California), Michael Soe (Papillion, Nebraska), Marty Stessman (Dunlap, Iowa), James Walck (Sanborn, New York), and Heidi Winkle (LaGrande, Oregon).

---

(National Endowment, from page 11)

"To Reclaim a Legacy" is critical of institutions that relegate the teaching of general education humanities courses to graduate assistants or adjunct, part-time faculty. At Dana this is not the case, and in fact some of our most experienced and most effective teachers are involved in the "Heritage of Western Man" program. In the last four years two of the teaching team members of these courses have been honored by our students as "Teachers of the Year."

Dana's commitment to the humanities is not limited to the courses cited above. Students are required to select two courses from our religion curriculum, and all of them participate in our Liberal Arts Reading Program. One semester of LARP is required for each year at Dana. Therefore, approximately half of our student body and virtually our entire faculty participate in this program every semester. A slate of four or five books is read every semester, and participants meet once a week in small mixed groups to discuss the assigned reading. Since this program was adopted nearly thirty years ago, our campus community has been exposed to a diverse variety of literature including the classics, history, drama, theology, world literature, philosophy, science and even

**Prof. Milton Heinrich**, art, is co-author of *A Framework for Teaching Visual Arts in the Primary School*, published by the Nebraska Department of Education. The curriculum guide, its pages brightened by color reproductions of art by Nebraska school children, is the first in a series. Much of the art is by former students of Linda Money Jorgensen '65, K-3 art instructor in the Blair Community Schools. The other author is Sheila Brown, fine arts consultant for the Nebraska Department of Education.

Poet and former Dana faculty member **Joseph Langland** returned to the campus in November to give two poetry readings—one of his own work, the other of Robert Frost's, with personal reminiscences about Frost.

**Nancy Harris Beaman '74**, Dana's bookstore manager, was elected a trustee of the Mid-States Association of College Stores at the organization's fall meeting in Lincoln, Nebraska. She was also appointed chairman of the Association's Assistance

science fiction. This program insures a breadth of educational experience and also a sense of community at Dana. "The Heritage of Western Man" and LARP courses are common denominators that leave an indelible imprint on all our graduates.

Our students and former students demonstrate the impact of the humanities curriculum by their actions. It is especially gratifying to us that business administration, accounting, pre-medicine and education majors are among the most knowledgeable and enthusiastic participants in college-sponsored cultural excursions to San Francisco, Philadelphia, New York City, Washington, D.C., and Europe.

While we are proud of our past performance as a liberal arts college with a commitment to the humanities, we are also mindful of the need to shore up certain vulnerable areas of our curriculum. Your advocacy is a source of encouragement to us and a reminder of the need to remain vigilant in support of the humanities.

Sincerely yours,

James T. Olsen  
Chairman, Humanities Division  
and Assistant Professor, Art

Committee. MSACS has 104 college bookstore members in Nebraska, Iowa, Kansas, and Missouri.

**Prof. Sieg Krueger**, speech and theatre, is secretary of the American Lutheran Church's Christian Faith and Liberal Arts Study Group, which met this fall in Minneapolis.

**Prof. John W. Nielsen '48**, humanities and religion, gave a reading of his recent poetry, called "A Scant Summer's Harvest," in Parnassus on November 18.

Books scheduled for the second semester's **Liberal Arts Reading Program** (LARP) are: *A Sand County Almanac*, Aldo Leopold; *Native Son*, Richard Wright; *Night*, Elie Wiesel; and *The Good Earth*, Pearl Buck.

**Faculty and staff members** from Nebraska's three Lutheran colleges—Dana, Midland, and Concordia—held their annual fellowship gathering at Dana November 2. As a Centennial gift, the Midland and Concordia group gave Dana a painting by Robert Therien, a member of Midland's art faculty. It will be displayed in the Performing Arts Center.

**Sister M. Reparata Hopp** of the Benedictine Convent in Missouri spoke at Dana November 8 on her study of Kaj Munk, Danish pastor and playwright who was killed by the Nazis during the occupation of Denmark. Sister Reparata has studied Danish for five years with the help of former Danish instructor Bodil Strom Johnson '61 and books from the Dana library. Her ability in Danish has grown to the point that she corresponded with Munk's widow and then visited her this summer. Sister Reparata's great uncle, Lars Kjaer, attended Trinity Seminary in the last century.

A concert on November 19 by the **Nebraska Sinfonia**, the chamber orchestra of the Omaha Symphony, was one of this fall's grand opening events for the Performing Arts Center. In recognition of Dana's heritage, Conductor Bruce Hangen included works by Scandinavian composers Edvard Grieg and Carl Nielsen. The concert was sponsored by the Nebraska Arts Council, Omaha National Bank/Blair, Dana's student body and Special Events Committee, and the Associates of the American-Scandinavian Foundation, Dana-Blair Chapter.

Reports on the men's and women's basketball seasons will appear in the spring Review.

## Football

The football team under first-year head coach Mike Calvert showed marked improvement this season. The Vikings posted a 3-6 mark, though they were in position to have increased the win margin to 6. Several tough opponents were surprised by the strength of this year's squad, as the Vikings came within a touchdown or less of various teams.

Dana tied with Midland in the conference by upsetting the Warriors on their own field. The team showed a stronger conference race than it had in several years by defeating Midland and by losing in extremely close contests to Doane, Nebraska Wesleyan, and Concordia. Outstate rivalries seemed to be the ones to beat in 1984, with the Vikings soundly defeating Dakota Wesleyan and Dakota State.

Pleased with his team's performance, Calvert looks forward to next fall. Although the squad will lose some excellent seniors, it has many quality underclassmen, and Calvert feels that with another good recruiting year, the Vikings could have an excellent chance to excel in the conference race.

Many players were nominated to the NIAC's all-conference team and the NAI's District 11 team. Three seniors made the conference's first team: Greg Weaver, tight end (Portage, Indiana); Lawrence White, wide receiver (Omaha); and Jim Krueger, line backer (Denmark, Wisconsin).

Five other seniors made the second team: Dean Friedel, offensive lineman (Nisland, South Dakota); Steve Kissel, center (Limon, Colorado); Kevin Albert, defensive lineman (Hillrose, Colorado); Marty Stessman, defensive lineman (Dunlap, Iowa); and Dave Ross, defensive back (Winnebago, Nebraska).

Six Vikings made conference honorable mention: Pete Fromm '85, running back

(Defiance, Iowa); Tim Olson '86, offensive lineman (Lee's Summit, Missouri); Alan Pogue '88, quarterback (Stromsburg, Nebraska); Jeff Searcy '88, running back (Madison, Indiana); Ken Sliva '88, offensive lineman (Columbus, Nebraska); Bruce Stewart '88, wide receiver (St. Louis, Missouri); Fred White '85, offensive lineman (Rexford, Montana); Grant Christensen '86, defensive lineman (Harlan, Iowa); Scott Cortese '85, linebacker (Ralston, Nebraska); Bill Bussey '85, linebacker (Glenwood, Iowa); Mike Stessman '86, defensive back (Dunlap, Iowa); Bob Bolton '88, defensive back (Sioux City, Iowa); and Rob O'Donahue '86, defensive back (Kennewick, Washington).

White and Krueger were also all-district selections. Receiving all-district honorable mentions were Weaver, Friedel, Kissel, Pogue, Fromm, Albert, Ross, Bolton, and O'Donahue.—**Janice Schlange '84**

## Volleyball

The 1984 women's volleyball team compiled one of the best records in recent years. Though only reaching the 5-14 mark, the Lady Vikings were more competitive in the conference race than they have possibly been before. Many of the matches went to the deciding fifth game, and with all of the squad returning, first-year head

coach Kathy Foley looks for a good season next year.

For the first time in many years, a Dana volleyball team defeated two conference foes and played even ball with the others. "We had a pretty successful year, especially since team members were so young," commented Foley. "If we can keep all the girls and the enthusiasm they had this year, we will be very successful."

The squad relied on upperclasswomen Jeanne Stoeckinger '86 (Omaha), Kim Pfannkuch '85 (Manning, Iowa), Sue Kallman '86 (Bellevue, Nebraska), and Sandra Ellis '86 (Westboro, Missouri) to show leadership and to help the freshman and sophomore players. "We were a bit apprehensive at the beginning of the year with such a young squad, but with the help of some of the more experienced players, we were able to develop into some excellent players," said Coach Foley.

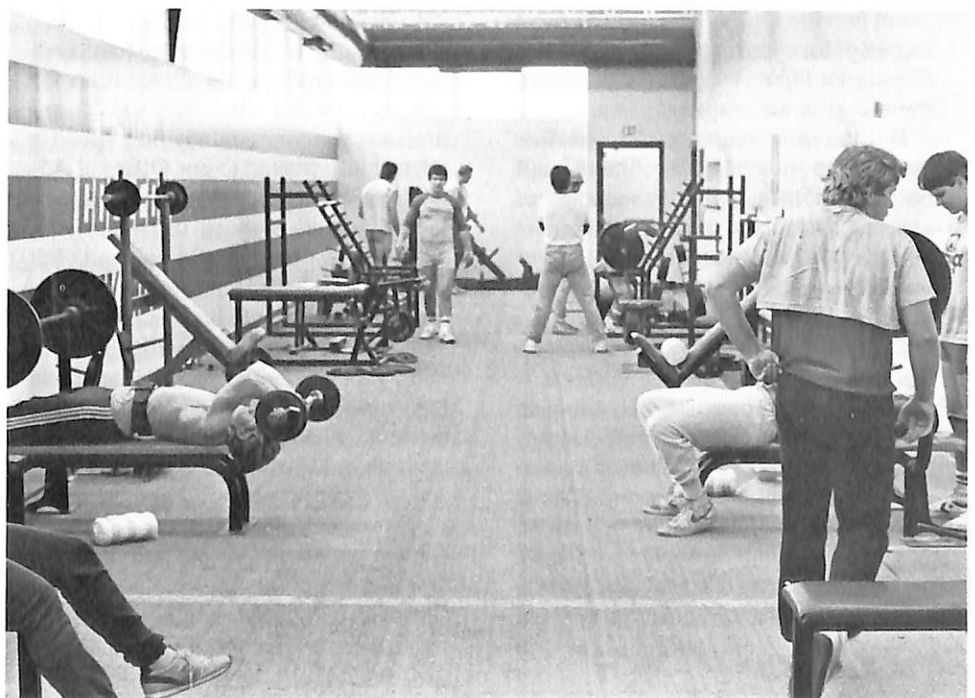
Pfannkuch, a 5'8" hitter who played the off-side position, placed on the all-conference team for her all-around ability as a volleyball player. She was listed on the all-district stats for her serve reception percentage and her serving and hitting percentages.

Amy Nissen '88 (Albion, Nebraska) was selected for the conference's honorable mention team. She was Dana's leading hitter and was rated in the all-district stats for ace hits and blocks.—**Janice Schlange '84**

(continued on page 14)

## Boosters Buy Equipment

Thanks to the Dana Boosters, the weight room in Borup Coliseum's Wurdeman Pavilion has \$5400-worth of new equipment. Boosters president Jerry Petersen of Blair says that the organization raised funds through the Homecoming Fun Run and a banquet last spring that featured former DePauw University coach Ray Meyer as speaker. The Boosters have also built a new press box for Viking Field.



(Sports, from page 13)

## Wrestling

Coach Ron Beaman '74 calls this year's wrestling team a talented one. He reports that in early season wrestling Dana placed four wrestlers in the Kearney State Open and beat Westmar College for the first time in Dana history.

The 23-21 win over Westmar was a milestone, Beaman says, because the LeMars, Iowa, school "has been a perennial small college power the last 20 years."

Wins at Westmar came from Rick Rosen '87, 118 lbs. (Clyde, Ohio); Doug Birdsell '87, 142 lbs. (Sioux City, Iowa); Bill Bussey '85, 177 lbs. (Glenwood, Iowa); Tim Weltzin '86, 190 lbs. (Marshalltown, Iowa); and Fred White '85, heavyweight (Rexford, Montana).

Rosen, Birdsell, Bussey, and White also placed at the Kearney Open.

## Former History Prof Speaks on Truman

Dr. Niel Johnson, archivist at the Truman Library and former Dana history professor, gave two talks at Dana on January 10 relating to the touring exhibit, "Harry S. Truman: A Centennial Reimembrance," on display in the college library.

One was a gallery talk, the other a lecture on "The Human Truman."

## About Institutional Advancement

### Alumni Affairs

by Dennis Barnum

Executive Director for  
Institutional Advancement\*

Earlier in this column we have said that Dana College and her alumni truly share a relationship that is essentially one of mutual responsibility—a relationship born out of love and caring—each for the other.

There have been few times in Dana's history more important than *now*, when this relationship must provide the strength for Dana's bold move into the second century of her service.

On other occasions we have said that one of the most important and fundamental ways by which alumni can accept their responsibility to Dana is to provide financial support—gifts given with generosity from the blessings that have been theirs. We are grateful for *all* your previous gifts, especially most recently for your support of Dana's Centennial Fund. We pray for your continuing gifts and support.

*Dana's most important immediate need* is to increase enrollment, not only to retain a higher percentage of entering students to graduate four years hence, but also to recruit a larger number of quality students to matriculate in the first place.

You will recall from our last column that the calibre of our new students is rising! The average ACT composite score for our fall 1984 new students was up over two full points from last year. And 45 percent of our new students came in with one of our top three scholarships. This compared with 28 percent last year. The message here is *enhanced* academic excellence at Dana College!



The most significant thing Dana's alumni and friends can do at this time is to encourage good students to consider Dana College for an education of excellence and a solid preparation for careers and for life. We would appreciate your communicating specific referral information to our Office of Admissions for appropriate follow-through. (See the back cover of this issue.)

Preparing your children and the children of your friends for satisfying careers is and should be Dana's primary objective, but students will also find many other activities to stimulate their interests and help them to grow—music, theatre, athletics, forensics, student government, journalism, broadcasting, and presentations by visiting dignitaries, performers, and scholars.

Most important, life at Dana becomes more meaningful because we are a Christian campus community. Students sense it in the freshness and vitality of

their classes. They experience it through the way faculty members respond to their questions and needs. They feel it in the warmth and caring of other students and staff members.

Although the cost for a year at Dana is substantially lower than at most comparable liberal arts colleges, it may still require a significant investment. To assist your children and other Dana students we offer scholarships and other financial aid in direct proportion to their ability and need.

Because words alone cannot totally convey the spirit of a college, we urge you to bring your high school-age children to visit us, and to experience for themselves the difference that is Dana. You all are welcome here anytime, of course, but to receive the full benefit of your visit, we recommend that you come at a time when classes are in session. While your children are here, they'll attend classes, tour the campus with a student host, meet with faculty and staff members, and stay overnight in one of the residence halls, all at no cost.

If your children would prefer, one of our counselors will gladly talk with them at home or at their school. Just write or call collect—Dana College, Office of Admissions, Blair, Nebraska 68008; area code 402/426-4101.

In the meantime, we invite all alumni and friends to join with us in continuing as goodwill ambassadors for the college, serving Dana by upholding her integrity and reputation.

*\*Institutional Advancement includes admissions, alumni affairs, development, and planned giving.*

**'80s** Cheri Nelson '85 and Michael Mahoney were married September 15, 1984, in Atlantic, Iowa. She works at Communications Data in Harlan, Iowa. . . . **Jeff DeYoung '84** is sports editor for the *Nebraska City News Press*. . . . **Peter Jacobson '84** is a law student at the University of Nebraska-Lincoln. . . . **Carol Olsen '82** and **Todd Swenson '82** were married June 9, 1984. They live at 6401 Pleasant Avenue S.#8 in Richfield, Minnesota 55423.

**'70s** Steven Dale Christensen '78 married Suzann Duerfeldt August 4, 1984, in Shenandoah, Iowa. He is a territory manager for John Day Company in Omaha. . . . Meredith Hypatia was born July 9, 1984, to **Allison (Willadsen '78)** and Dan Meyer. Sister Alexandria is 2½. Allison writes that they have built a new home south of Lincoln; their address is R.R. 1, Roca, Nebraska 68430. Dan works for McBride and Associates of Lincoln as an association manager, lobbying for several small organizations. . . . **Sondra (Schjodt '77)** Buell teaches first grade at Hamlow Elementary School in Waverly, Nebraska. . . . William and **Mary (Schur '77)** Giguere announce the birth of Matthew last July. They live at 166 School Street in Northridge, Massachusetts 01534. . . . **David Hanen '77** has joined the Memorial Hospital of Dodge County, Nebraska, as its new director of general accounting. . . . **Tim Waggoner '77** has been admitted as a first-year student at Pittsburgh Theological Seminary in Pittsburgh, Pennsylvania. He is a former drama teacher at Fremont (Nebraska) High School. . . . **Ellen (Larson '76)** Frey is home visitor/teacher for the Albion, Nebraska, Head Start Program. . . . Ken and **Sue (Thorson '76)** Holstein announce the birth of Krista Kay, born December 2, 1984. They live at 245 Courtvue in Blair. **Jim Benbow '75** and his wife, Lynn, announce the birth of Sarah Jean. Jim, who has an M.S.W., works at the Veterans' Medical Center in Seattle. . . . **Jean (Alexander '75)** Burbridge is a special education teacher for the Missouri Valley and West Harrison School Districts in Iowa. . . . **Susan (Zabel '75)** Dryburgh, a speech-language pathologist, has been awarded a mini-grant of approximately \$500 to produce a video tape and write a procedure manual for implementing oral language programs for elementary learning disabled students. The grant is from the Montgomery County Intermediate Unit, where she is employed. She and her husband, Joseph, live at 740 Tannery Drive in Wayne, Pennsylvania 19087. . . . **Paul Haack '75** has been promoted to district business manager for Gilbert Industrial/Peter Kiewit Sons'. Paul, Sandy, and their two children live at 732 Bedford Court West in Hurst, Texas 76053. . . . **Jill (Anderson '75)** and **Stan Johnson '75**, 2804 Prairie View, Ponca City, Oklahoma 74604, announce the birth of Ben Allen on November 6, 1984. Sister Andrea is 3. . . . **Kay Horton '74** lives in Hill City, South Dakota 57745, where her address is HC, Box 70. . . . **Roberta (Watson '73)** Chilcote and her husband, Dick, have a second son—Jonas Robert, born July 24, 1984. Brother Isaac is 3. They live in Twin Falls, Idaho. . . . Allison Elizabeth was born to **Cindy (Homes '73)** and **Dave Musick '70** on October 20, 1984. . . . **David Kuehn '72** has been named national sales manager at KMTV, Channel 3 in Omaha. He joined KMTV from KETV, Omaha, where he was an account executive. His eight years of broadcast experience include account executive and local sales manager positions in Omaha at WOWT. . . . **Greg Witte '71** was installed as pastor of Augustana Lutheran Church (LCA) in Sioux City, Iowa, on November 18, 1984. He was most recently Dana's campus pastor.

## About Financial and Estate Planning

You've probably read during the last few months that Dana has completed a monumental task—it has succeeded in raising over \$6 million in cash and pledges from its alumni and friends in the largest-ever capital campaign attempted by the college.

In addition to the \$6 million, however, Dana received other gifts, many of which can't be measured or counted today. For along with the capital fundraising program, Dana also initiated a deferred giving program to encourage others to contribute to the college through their estates. The response was overwhelming, and to date over 160 persons have indicated that they have remembered the college in this way. This represents a reserve of several million dollars that Dana can rely upon—to be received at a future date.

The program represented a feasible alternative to contributing cash to the campaign today. Many persons who did not have ready cash remembered the college through their estates. Some contributed both cash and estate gifts. I salute all 160 persons who have already completed their estate plans, and urge others who are in the process, or are



thinking of including the college in their estate plans, to accomplish the task.

If you would like more information about a particular estate problem, or the procedure for mentioning the college through your will, please give me a call.

Sharon J. Gordon  
Director of Planned Giving  
402/426-9700

**'60s** **James Holtam '68** received his M.S. in education from Wayne State College in December. . . . Mark Alan was born to **Paul Bondo '67** and Gail on July 2, 1984. He joins brother Eric and sister Kristin. Paul is a research chemist at the South Bend (Indiana) Medical Foundation. . . . **Gary Hiemke '66** works for IBM in Austin, Texas. He lives at 1109 Wayne Drive in Round Rock (78664). . . . **Craig "Tim" Carlin '65** has joined the Harry A. Koch Co., an Omaha insurance agency, as director of field operations.

**'50s** **Robert Ostergaard '58** has accepted a call to become senior pastor of Our Savior's Lutheran Church in Montevideo, Minnesota, effective February 1, 1985. . . . **Marion Hudson '56** and his wife, Ella, had lead roles in a December 16 performance of Menotti's *Amahl and the Night Visitors*, presented by the music department of Pilgrim Baptist Church, Omaha, at the University of Nebraska at Omaha. Dana senior Michael Dryver, minister of music at Pilgrim Baptist, was music conductor and general director.

**'40s** Paintings by **Alton Larsen '42**, Orum, Nebraska, were featured in a recent one-man show at the Walker Art Gallery at Kearney State College, Kearney, Nebraska. Two of his paintings are part of the Nebraska Art Collection at Kearney State.

## Deaths

**Keith Carmichael '72** died October 30 in Blair of cancer. Survivors include his parents, his wife Sandra, three children, his brother, and his sister **Yvonne (Carmichael '60)** French. . . . **Howard E. Christensen '60** died December 16 in Omaha after a long bout with cancer. He was secretary-treasurer of the Danish Brotherhood in America. Survivors include his wife, **Joyce (Hansen '60)**, two daughters and a son, a sister, and brother **Paul '60**. . . . **Dr. Gene Hamaker**, who taught history at Dana from 1956 to 1958, died last October in Kearney, Nebraska. He taught at Kearney State College.

## Parnassus Exhibits

These exhibits are scheduled for Parnassus during the second semester: February 3-15, photographs by students in the 35mm photography Interim class; February 17-March 8, Nebraska College Student Art Exhibit, sponsored by the Nebraska Art Teachers' Association; March 10-29, "Prairie Images," photographs of Nebraska with accompanying quotations from Nebraska authors, courtesy of the *Omaha World-Herald*; and April 28-May 14, art by Dana students.

DANA COLLEGE  
2848 College Drive  
Blair, Nebraska 68008

Second Class Postage  
Paid at Blair, Nebraska  
And Additional Mailing Offices

02352  
DR & MRS VERLAN HANSON  
1112 HIGHLAND DR

BLAIR

NE 68008

## Why Students Choose Dana

"Liberal arts," "community feeling," "Christian atmosphere," "beautiful campus," "cost," "good academic program," "small," "low student-faculty ratio," "caring professors," "highly recommended"—these are the answers Dana students give when they're asked why they've chosen Dana for their college education.

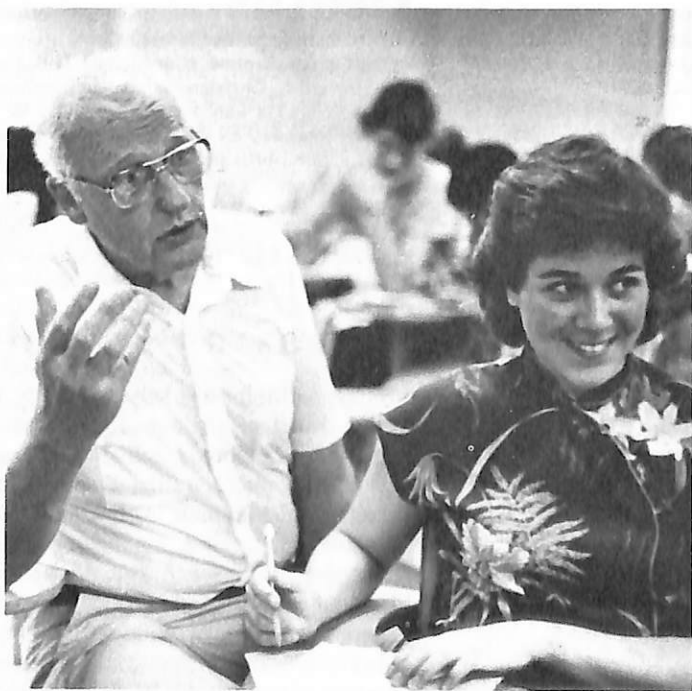
If you know prospective students who are looking for these qualities in a college, tell them about Dana. And please let us know about them.

-----

### I would like to recommend the following students:

Name \_\_\_\_\_  
Address \_\_\_\_\_  
City \_\_\_\_\_ State \_\_\_\_\_ Zip \_\_\_\_\_  
Phone ( ) \_\_\_\_\_ Year in School (1984-85) \_\_\_\_\_  
High School \_\_\_\_\_

Name \_\_\_\_\_  
Address \_\_\_\_\_  
City \_\_\_\_\_ State \_\_\_\_\_ Zip \_\_\_\_\_  
Phone ( ) \_\_\_\_\_ Year in School (1984-85) \_\_\_\_\_  
High School \_\_\_\_\_



Name \_\_\_\_\_  
Address \_\_\_\_\_  
City \_\_\_\_\_ State \_\_\_\_\_ Zip \_\_\_\_\_  
Phone ( ) \_\_\_\_\_ Year in School (1984-85) \_\_\_\_\_  
High School \_\_\_\_\_

Comments

My name \_\_\_\_\_

Please return to: Admissions Office  
Dana College  
Blair, NE 68008



Dana College

---

---

**A SPECIAL  
ANNOUNCEMENT FOR  
ALUMNI AND  
OTHER FRIENDS OF DANA**

---

---



February 15, 1985

Dear Alumni and Friends of Dana,

Just as this issue of the DANA REVIEW was about to be placed in the mail, we received the very good news that Dr. E.D. Farwell, former president of our sister school, Luther College in Decorah, Iowa, has been named interim president at Dana. We expect Dr. Farwell to assume his duties here on or about March 1 but we wanted to share the good news with you just as quickly as possible. This special insert seemed the best way to do it.

Dr. Farwell is a graduate of Michigan State College, the University of California at Berkeley and Pacific Lutheran Theological Seminary. He served as president of Luther from 1963 until his retirement in 1982. Prior to that he was academic dean at California Lutheran College and served a parish in Andrew, Iowa. Throughout his tenure as president of Luther he was active in numerous local, state and national organizations including the Iowa Association of Private Colleges, Norwegian-American Historical Association, North Central Association Commission on Colleges and Universities, National Association of Independent Colleges and Universities, Institute of European Studies and the Lutheran World Federation. He is the recipient of four honorary doctorates and has been knighted by the Kings of Norway and Sweden. Since his retirement he has served as a consultant to the Division of College and University Services of the American Lutheran Church, the Iowa College Foundation, the McElroy Trust Fellowship Program and is currently completing a study of Lutheran Theological Education. Dr. Farwell is 65 years old, married and the father of four children.

All of us at Dana are eagerly looking forward to Dr. Farwell's arrival here, confident that his administrative abilities and understanding of the mission of Dana College will move us forward. Together we can build on the success he has already achieved as a 19-year veteran college president.

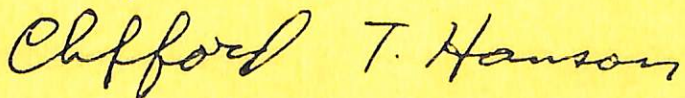
My earlier letter to you was co-signed by our President Emeritus, Dr. C.C.Madsen. You will notice that Dr. Madsen's signature is absent from this letter and I am sorry to tell you that he is currently hospitalized, recovering from a stroke. We are optimistic about his progress and invite you to remember Dr. Madsen and his family in your prayers. Cards and letters may be addressed to him at 2519 College Drive, Blair, Nebraska 68008.

I also want to take this opportunity to invite you to join us on campus on Thursday, April 11, as we welcome home our distinguished alumnus Senator Paul Simon of Illinois. He will be the guest of honor at a dinner on campus that evening and deliver a public address in the Lauritzen Theatre of the recently completed Dana Performing Arts Center. If you can join us for dinner please make your reservations by calling the Dana Public Relations Office, 402 426-4101 ex 127, before April 8. This special event will also give you an opportunity to meet President and Mrs. Farwell.

Finally, I want to thank you for the many letters and telephone calls we have received since my January letter to you. Many have expressed support, for which we are grateful. Others have indicated concern over the action taken by the Board of Regents. I sincerely hope the report on page 3 of this issue of the REVIEW will answer many of those concerns.

In closing, I want to assure you again that Dana remains committed to providing a quality educational experience in harmony with the Christian faith. As we move ahead we need your continued goodwill and generous financial support.

Sincerely,



CLIFFORD T. HANSON  
Chief Operating Officer