

DANA REVIEW

Dana Fund approaches goal

By October 23, the Dana Fund had received \$1,976,292.19 in gifts and pledges. That amount represents 84.4 percent of the two-year drive's \$2.34 million goal. The campaign ends on May 31, 1988.

In addition to Phonoramas at Dana and elsewhere, fund-raising dinners—with President Christopherson as the featured speaker—have been held across the country. Local alumni and friends have given invaluable assistance with these area campaigns by contacting others and by participating in the dinner programs.

At a dinner in Minneapolis-St. Paul last May, alumnus Robert D. Hansen '64, chief executive officer of Hansen Engine Corp., made the following remarks in support of the Dana Fund: "Myrv and other friends of Dana:

"Two words, two concepts stand out in my mind this evening—education and investment. What links them this evening is their relevance for Dana, for us and for the future.

"Of course, we all know an education is not given, it is earned. And, what is education, really? Is not education the process by which we make two profound discoveries? The first is the unlimited capabilities and value of a single human being, and the second is the awareness of how totally dependent we are on others for learning, for progress, even life itself?

"If we do not discover how precious we are as an expression of God, Himself, and if we do not recognize that God intended us for each other, we are less than ignorant, we are fools.

"I am grateful to Dana, its founders and faithful staff and faculty and financial supporters for creating the conditions and circumstances of my undergraduate education. I am grateful too, to the many students who were my friends and classmates. Dana reinforced and helped nurture the Christian faith within me so that I might grow as a person through sunshine and storm. I received a good education at Dana.

"But for Dana to grow and prosper into the next century, she needs our investment. Investment, that is a

(continued on page 2)

Enrollment shows 6% increase

Enrollment this fall continues an upward trend that started a year ago. The number of students, full-time and part-time, registered in September totaled 493, a more-than six percent increase over last year's enrollment, Registrar Verlan Hanson '51 said. First semester enrollment a year ago stood at 464.

Dana's year-old Weekend College also shows growth: 57 students enrolled this fall compared to 43 in 1986.

The student body continues to be geographically diverse, with students from 22 states (led by Nebraska and Iowa), Japan, Denmark, Namibia, Ethiopia, Italy, Nigeria and Tanzania. »

Students win top scholarships

Five Dana seniors received Congressional Teacher Scholarships this summer.

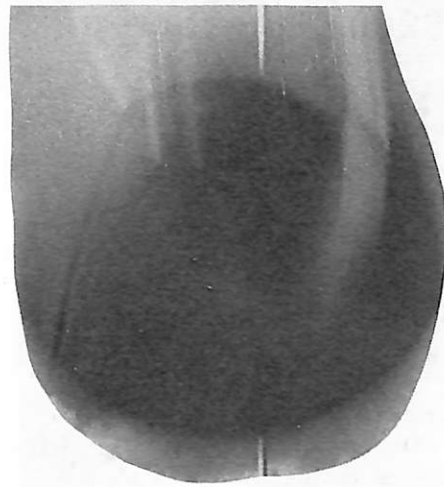
The prestigious scholarships are retroactive to the 1986-87 academic year.

Fifteen of the federal scholarships, which range in value up to \$5,000, were allotted to students attending private and public colleges and universities in Nebraska.

"We're proud that one-third of the state's recipients are Dana students," Kitty Wooley '81, director of financial aid, said.

The five, all Nebraskans, are Catherine Bachelor of Valentine (majoring in mathematics and computer science for secondary teaching), Kay (Schjodt) Dickinson of Blair (majoring in music education for elementary and secondary education), Janet Skinner of Arlington (majoring in elementary education with a concentration in special education), Jeanine Tharp of Lincoln (majoring in physical education for elementary and secondary education) and Amy Thomas of Omaha (majoring in elementary education, English and humanities).

Recipients are expected to teach for two years for each year they receive the scholarship. »

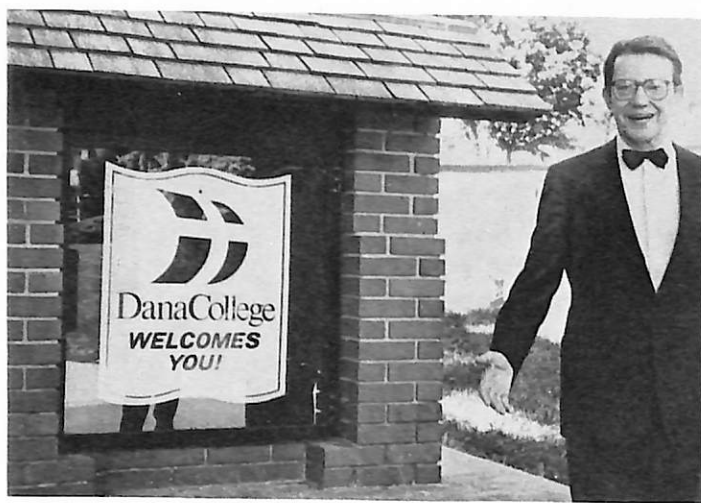


Go Vikings!

The conference championship for the volleyball team and national ranking for the football team: This fall has been an exciting time for Dana athletics. Here Viking wide receiver Bruce Stewart '88 of St. Louis takes a practice catch. For the full story on this year's winning teams, see page 8.

THIS ISSUE

- Estate gift exceeds \$200,000 2
- "Your future's so bright..." 3
- Tower of Four Winds completed 4
- Social work program wins accreditation 4
- Alumni, friends invited to Christmas Sights and Sounds . . 4
- Japanese visit to study English 5
- Art students help conserve Calder stabile at Crown Center 5
- Student Services head is interviewed 6
- Alumni directory is on schedule 9
- Homecoming royalty are elected 10
- Neves visit alumna in Zimbabwe 11



Alumnus and Presidential candidate Paul Simon '49 took time out from a full campaign schedule for a campus visit on Sunday, June 14. He met with local campaign workers, alumni and friends at a coffee in his honor in the E.C. Hunt Campus Center.

"The DANA REVIEW (USPS 147-940) is published four times annually for distribution to alumni and friends of Dana College and Trinity Seminary by Dana College, 2848 College Drive, Blair, NE 68008. Second-class postage paid at Blair, NE, and additional mailing offices. POSTMASTER: Send address changes to DANA COLLEGE, 2848 College Drive, Blair, NE 68008."

Non-discrimination policy

Dana College admits students without regard to sex, age, race, color, religion or national origin to all the rights, privileges, programs, and activities generally made available to students at the College. It does not discriminate on the basis of sex, race, color, age, handicap or national origin in administration of its educational policies, admission policies, scholarship and loan programs, athletics, or other school-administered programs.

Ann (Harms '54) George, Editor/Director, Alumni Affairs

Pre-Med student wins recognition

Dana junior Mie Thao, a pre-medical student from Beatrice, is one of two Nebraska women chosen to receive 1987-88 Rose Lute Scholarships from the Priors Club of Nebraska.

Last spring Thao was also selected by the University of Nebraska Medical Center to participate in its Minority Health Career Summer Program, known as the "Physicians' Shadow" program.

Thao followed doctors on their rounds, attended an introductory anatomy class on the health professional school level and participated in several skills development workshops and review courses. She received awards as the student who improved the most in chemistry and English during the program.

Thao was the second Dana pre-med minority student chosen for the program. Ken Mitchell of Bolingbrook, Illinois, a senior this year, was a physicians' shadow the summer of 1986. »

Kiewit Foundation gives challenge grant

A \$100,000 challenge grant to Dana from the Peter Kiewit Foundation is to be used over a four-year period for student financial aid.

President Christopherson described the grant as "one of the most important challenge gifts Dana has received in recent years."

"Aside from the generous funding," he said, "the grant provides evidence that one of the greatest private foundations of its kind in the Midwest sees the need to support independent colleges like Dana." »

College receives \$200,000 estate gift

President Christopherson announced on October 14 the receipt of a gift totaling more than \$200,000 from the estate of Mrs. Wilhelmina Agnes Antholz of rural Johnson, Nebraska.

A member of the congregation of Martin Luther Church, Mrs. Antholz left a portion of her estate to Dana as the only college of the American Lutheran Church in the Central District, Christopherson said.

Mrs. Antholz was preceded in death by her husband, Dick F. Antholz.

Christopherson said that the gift will be used for scholarship and financial aid support to Dana students. "It helps give Dana new strength and makes us grateful for our many friends like Mrs. Antholz who believe in Dana and her mission in Christian higher education," he said. »

(Dana Fund, from page 1)

special word. In fact, is it not a misnomer? Ought it not be a reinvestment? Are we not like the farmer who can only sow from a previous harvest?

"And, to reinvest is never to repay. It is to celebrate, but not as a prosperous survivor, a rousing speaker, or a middle-aged warrior, wise in the way of the world.

"To invest, to reinvest, in Dana, is to remember what she is and who we are. To look at you this evening, Myrv, is to remember much about both Dana and your student life on the campus—your preaching before the autumn bonfire on the first evening of the new school year with the cross as a sacred silhouette. Yes, we remember your participation in sports, your ever entertaining manner, rich in mischief and humor, your impressive scholarship drawn late from the night hours, or rather early morning hours, where I would discover you holed up in the laundry room or some other lonely corner far from the crowd, exhausted but undaunted, doing battle with Kirkegaard and a hundred demons intent upon diverting your determination to capture something of value and meaning from a book or paper.

"To endorse Dana, to endorse you and your program for Dana, Myrv, is to become a partner in her future. It is, therefore, more than a timely or worthy opportunity, more than a duty or obligation, it is a precious privilege, sanctified by what Dana seeks as well as what she attains.

"May therefore the true treasure of Dana always be her people—and may the Christ-enlightened life of a single person ever be the measure of her greatness." »

From the President

Dear Alumni and Friends,

Effective on January 1, 1988, Dana will become a part of a new church, the Evangelical Lutheran Church in America. In our area we will be most closely affiliated with the Nebraska Synod of the ELCA. This gives me much cause for joy. Dana will become a part of a system of 29 colleges of the ELCA. These 29 colleges provide instruction and occasion growth in learning and in faith for over 50,000 students from throughout our nation and many other countries.

At the synod level we will be partners in higher education ministry with Midland Lutheran College at Fremont. Together we will work to increase our services to students from churches of the Nebraska Synod while continuing to reach out to alumni and friends in communities throughout America.

We will each continue to enjoy a portion of our funding from the supporting church. For Dana approximately three percent of our total operating budget comes from the church. The rest must come from tuition, fees, charges for services, and gifts from alumni, individual and corporate friends, and individual congregations of the church. We are fortunate to receive generous support from alumni and friends. Such gifts helped Dana achieve a balanced budget last year and eliminate any accumulated deficits. I cannot thank alumni too much for their generosity. We will continue to depend on these gifts this year and beyond. They help remind us of our important work as an extension of the church in mission.

One of the missions which we have been privileged to carry out this year is an expanded service to international students. This year we are privileged to have studying at Dana students from Japan, Denmark, Namibia, Ethiopia, Italy, Nigeria and Tanzania. What a contribution they make to our campus by bringing face-to-face experience with the rich cultures and lifestyles of other countries. What an opportunity our students gain by being able to live and learn about people of other countries in the world.

This is the second year that we have been able to host students from Namibia in cooperation with the Lutheran World Ministries program. I believe there are 29 Namibian students at Lutheran colleges this year, and three are at Dana. Maria Amakali, Helen Ochs and Klemens Namwira all come from different parts of Namibia.

All are Christians and have come to the United States because they would have no opportunity to receive a college education in their native country. Indeed, all are victims of apartheid and suffer the loss of human and political rights that we take for granted. Black people such as Maria, Helen and Klemens are not free in their homeland to move about their country, let alone have access to decent housing, health care, jobs, education, even worship.

I am convinced that Dana must continue to reach out to students from foreign lands. I hope you know that your prayers and your financial gifts help us to offer this service to these special friends, many of whom have little to contribute to the cost of their education. With assistance from Lutheran World Ministries, selected students from Namibia receive transport to Dana and help with some miscellaneous expenses. The cost of tuition, fees, room and board, is borne by Dana College. I am grateful that there are colleges of the Church like Dana eager to host students from Namibia and other lands where educational opportunity is scarce or nonexistent. I am grateful that some individuals and churches have made special gifts to Dana to help us support this aspect of our mission.

One of my goals as president is to assure that Dana reaches out to offer a quality liberal arts Christian college experience to persons of color and diverse ethnic backgrounds in this country and abroad. I am convinced that Dana provides a uniquely personalized community ambience for persons of difference to feel accepted and stimulated to growth in learning and in faith.

Won't you join me in helping us to continue this ministry. Your invitations for them to visit your homes and churches if you live near Blair, your financial gifts, and your prayers and suggestions for how we can better serve to stimulate world peace and understanding through education and community are most needed and appreciated. There must never cease to be places of learning that welcome persons of difference with little or no regard for status, influence, or ability to pay. Thank you for helping Dana be a mission outreach college.

Myrv F. Christopherson
President

Sunglasses part of successful ad campaign

Dana has it made with the shades

This article from Tom Allan's "Nebraska Byways" column in the September 20 edition of the Sunday World-Herald is reprinted with permission of the Omaha World-Herald.

The Dana College Vikings, from President Myrvin F. Christopherson to the newest freshman to at least 1,800 prospective students, are wearing sunglasses with red school-color frames bearing the school's logo.

It's all part of a unique promotion: "At Dana, your future's so bright, you'll need sunglasses." The campaign aims at providing greater identity to the four-year liberal arts college in Blair.

The campaign also includes whimsical commercials on Blair cable television and "Dana Banana Republic" blurbs on Omaha's KQKQ radio, aimed at teen-agers.

Phil Pagel, Dana's vice president for college relations, has a ready answer when asked why a college with a rich Danish heritage has adopted a "banana republic" tie.

"It's part of our identity campaign," Pagel said. "For years too many have pronounced our name Dane-a. It's actually Dana, as in banana."

Pagel said the campaign is the result of two surveys, one taken by the college a year ago and the other taken more recently by Omaha advertising agency Ellis/McMahon.

"Both showed that while parents, pastors and congregations of our affiliated Lutheran churches knew all about Dana, by and large Dana was not immediately recognized as a viable college by high school-age youth. They had no perception, positively or negatively, about Dana and what it represents. That told us all our previous promotions had not been geared to the student-age market. So we engaged Ellis/McMahon to do something about it."

Christopherson said that while the lenses of his Dana dark glasses are not rosy, they should be.

"The campaign has exceeded all expectations," he said.

The college prepared 30,000 "Dana Quiz" pamphlets for mailing to prospective students. In the quiz, prospects are asked three questions:

"What is Dana?"

A: Jack Lord's sidekick on "Hawaii Five-O."

B: A four-year liberal arts college with a 100-year tradition of excellence.

"Where is Dana?"

A: Perched precariously on the rim of a long overdue volcano 350 nautical miles due east of American Samoa.

B: Blair, Neb. (20 miles north of Omaha.)

"Why should I care?"

A: I am a tireless seeker of knowledge and leave no stone unturned in my quest for universal truth.

B: Because I'll get a free gift and an unending stream of fascinating promotional literature about Dana if I return this postcard.

Regardless of the score, each prospect gets a free gift, the Dana sunglasses, by returning the card bearing his or her name, address and high school.

Standing room only

"Within the first ten days of our first 15,000 mailing we had 1,800 respond. That's exceptional. We had to reorder sunglasses," Christopherson said. "We offered to provide sunglasses for all our students attending the opening convocation. For the first time in years, we had standing room only."

Pagel said the next step is personal recruiting of the prospects and sending promotional materials including "Dana Banana Republic" newsletters.

Meanwhile the radio ads stress the identity theme with such blurbs as "Where's the Dana Banana Republic? Just 20 miles north of Omaha as the carp swims" or the "crow flies."

The television commercials have such gimmicks as Dana's World-Herald All-State College quarterback Alan Pogue throwing a touchdown pass and then turning to face the camera wearing his Dana sunglasses.

But, Christopherson stressed, there's no gimmick in the promotion. "It is a fact. There is a warm glow on the horizon. It is also a challenge for me, our faculty and staff."

In an age when many small, private liberal arts colleges are fighting to survive, Christopherson lists these Dana pluses:

■ A precarious financial position was reversed and finished in the black last year.



■ After raising \$6 million in 1984-85 for a new Madsen Performing Arts Center, Old Main renovation and an endowment fund increase, another \$1.8 million has been raised as part of a \$2.3 million campaign to end May 31, 1988.

■ A seven percent increase in fall enrollment, and the hiring of Kathleen O'Connor as vice president for academic affairs and Jim Fullerton as director of an expanded recreational services program.

■ For the first time in years, the football team under Coach Leo McKillip is rated 15th in Division II of the National Association of Inter-collegiate Athletics. »

Shades for Dana's bright future; clockwise, from top left: President Christopherson; Randy Hollowell '90 from Parker, Colorado; Lori McMullen '91 from Dunning, Nebraska; and Tara Wassmann '91 from Gillette, Wyoming. Photo by Tom Allan, Omaha World-Herald



The Tower of the Four Winds in Black Elk-Neihardt Park at the top of College Drive was dedicated on June 27. Ceremony participants included F.W. Thomsen '45, professor emeritus of art (pictured). Inspired by John W. Neihardt's *Black Elk Speaks*, Thomsen proposed the creation of the area, now a part of the Blair park system, and designed the mosaic for the tower. Among other participants were former Nebraska governor Robert Kerrey, President Christopherson '61 and Dr. Mark Thomsen '53, director for World Mission and Inter-Church Cooperation of the American Lutheran Church.

New school year brings personnel changes

The start of an academic year always brings personnel changes, with new employees joining the faculty and staff, and with others who have worked at Dana for several years taking on new titles and responsibilities.

Administration and staff

■ **Vice president for academic affairs.** Dr. Kathleen O'Connor, vice president for academic affairs and dean of the college, comes to Dana from Pacific Lutheran University, where she was chair of the department of sociology and associate professor of sociology.

She received her BA from Stanford University and her MA and PhD from Washington University.

Last spring O'Connor was on sabbatical leave at California Lutheran University, serving as administrative intern to the vice president for academic affairs.

■ **Development.** A new director heads the Development Office, and two employees have title changes.

The director is Paul Ditlevson, a graduate of Ottawa University. He was Ottawa's director of annual and deferred giving before becoming a sales and marketing consultant in Oklahoma.

John Beck '50, former director of development, has been named director of church relations and planned giving, and Michael Jones '71, former development associate, is now associate director of development.

■ **Campus Pastor.** The Rev. Linda Walz, the college's new campus pastor, received her BA from the University of Colorado, Boulder, and her master's from Harvard Divinity School. She is currently working toward her S.T.M. from Wartburg Theological Seminary.

She has been a chaplain at Wartburg College, an intern chaplain at Massachusetts Eye and Ear Infirmary and vicar for students in the Lutheran Campus Ministry at Harvard.

Walz was ordained in Denver, her hometown, on August 23 and installed as campus pastor on October 22.

■ **Student Services.** In Student Services, Eric Holey, who came to Dana last year as residence hall director, is now assistant dean of student services, and Jim Fullerton, a new employee, is part-time director of recreational services.

Fullerton has a bachelor's degree in journalism with an advertising emphasis from the University of Nebraska-Lincoln and a master's degree in public administration with an emphasis on outdoor recreation from the University of Nebraska at Omaha.

He has worked with Wilderness Ventures, an adventure travel camp for teenagers based in Jackson Hole, Wyoming, and the Nantahala Outdoor Center in North Carolina, which offers whitewater instruction and trips. He has also been outdoor venture center

manager at the University of Nebraska at Omaha.

Fullerton is experienced in snow and ice climbing, mountaineering, caving and backpacking and has taken the Snow Climbing Course at the International School of Mountaineering in Switzerland. Other international experiences include climbing and caving in southwest England, serving as a deputy leader of an Andes mountaineering expedition in Ecuador and taking a 20-day trek around Annapurna, Nepal.

■ **Admissions.** In the Admissions Office, Michele Smith and Ronda Fritz '87 are new counselors, and counselor Meta Brandes '74 has been given a new part-time assignment.

Smith is a graduate of Creighton University; last year she worked for admissions at the University of Nebraska at Omaha. Her territory includes the eastern United States, northeastern and northwestern Nebraska and several Omaha high schools.

Fritz's territory includes North and South Dakota. She also recruits student athletes.

Responsibility for Dana's Weekend College, now in its second year, has been given to the Admissions Office, and admissions counselor Brandes has been named coordinator for this program. As an admissions counselor, her territory now includes southern Nebraska, Missouri, Oklahoma and Kansas.

■ **Others.** Four others have also joined the Dana staff: Karla Andersen is computer operator and tester with the Title III program; Kevin Harrison '86 is library circulation desk assistant; Carol Sudduth is secretary to the athletic department; and LeAnn Lierman is a member of custodial services.

Faculty

A library director and two full-time and several part-time faculty members are also new.

■ **Library.** Ruth Rasmussen has returned to Dana as library director. She has a master's degree in library science from the University of Iowa and was most recently head of the Nebraska Psychiatric Institute Branch of the McGoogan Library of Medicine in Omaha.

■ **English.** Dr. Kathleen Collins has joined the English department as an assistant professor. She received her BA from the University of South Dakota and her MA and PhD from the University of North Dakota. Collins has taught at North Dakota State University and the University of North Dakota.

■ **Education.** Dr. Kay Ferguson, assistant professor of teacher education and psychology, has a BA from Parsons College, an MA from the University of Iowa and a PhD from the University of Nebraska-Lincoln, where she has taught. She has also been coordinator of federal programs for the Nebraska State Department of

Education.

■ **Danish.** Jeannette Landsvig, a recent graduate of Ribe Teachers' College in Denmark, teaches Danish as a part-time instructor. She is the third Ribe graduate to teach Danish at Dana in a program started in 1985-86.

■ **Part-time.** Other part-time instructors are Lisa Montag-Siegel, English; Harris Payne, geography; Tom Curry, accounting; Jon Appleget, science; and Dr. Tim Jensen '66, computer science. »

Social work program wins accreditation

This fall the college's social work program received full accreditation by the Council for Social Work Education in Washington, D.C.

What does accreditation mean for Dana's social work majors and graduates?

Jan Potter, assistant professor of social work and sociology, reports that *majors can now be given advanced standing in most graduate schools of social work.*

"A degree from an accredited program is also an advantage in finding a job," she said. She added that a recently passed Nebraska law requires graduation from an accredited program if a social worker wants to be licensed.

Potter, who has worked for several years on obtaining accreditation for Dana's program, said that accreditation would be retroactive to the year when the Council for Social Work Education accepted the program for candidacy status.

Others who helped present Dana's case for accreditation were Richard Potter, assistant professor of social work and sociology; Ruth Sather, part-time instructor in sociology; and Dr. Kathleen O'Connor, vice president for academic affairs. »

Pagel is named to PR committee for Immigrant Museum

In preparation for launching its international building fund drive, the Danish Immigrant Museum in Elk Horn, Iowa, has organized a committee of volunteers to advise and oversee the public relations efforts of the campaign.

Made up of experienced individuals from various media and aspects of public relations work, the committee will plan releases to newspapers, special interest publications, radio and television. Special events as well as appearances by campaign leaders and Museum supporters will also be coordinated through this committee.

Committee members are Phil Pagel '56, Dana's vice-president for institutional advancement; Poul Dalby Andersen, publisher and editor of *Bien*, the Danish-American newspaper

published in Los Angeles; Ray Christensen, radio personality at WCCO, Minneapolis; and Chris Stefensen, editor of *Den Danske Pioneer*, the Danish-American newspaper published in Chicago.

Special honorary consultant to the committee is Minister Counselor Bent Skou, head of information at the Royal Danish Embassy in Washington, D.C. »

Xmas Sights, Sounds set for December 6

The holiday season at Dana starts again this year with "The Sights and Sounds of Christmas" on Sunday, December 6, and friends and alumni are invited.

The festive day opens at 10 a.m. with a worship service in Borup Coliseum and closes at 7 p.m. with "Merry Old Carolers" who will lead visitors in a sing-along of favorite songs around the Christmas tree in the E. C. Hunt Campus Center.

The Christmas smorgasbord, with noon and evening servings, continues to be a popular part of the day.

The day itself, in fact, offers visitors a smorgasbord of programs—the Santa Lucia ceremony; Danish, German, French and Spanish Christmas rooms (Julestuen, Christkindlmarkt, Noel en France and Navidad en Espana); Scandinavian dances by the Dana Folk Dancers; a play—"The Business of Good Government"; Storytime; "Let's Make It Danish"; International Carols for Voice, Harpsichord and Organ by Jeanmarie Nielsen '78 and Dr. Alan Brandes; "An Elizabethan Christmas" by New Day; and a concert, "The Sounds of Christmas," by the Dana Band and Choir.

Exhibits include "Masterpieces of Christmas Art and the Angels of Christmas" and art by Dana students. The Melchior and Heritage Rooms will be open, and the Bookstore will sell a variety of Scandinavian and other gifts.

Several thousand visitors are expected.

For information about smorgasbord reservations, call the Public Relations Office—(402)426-7216—between 8 a.m. and 4:30 p.m. Monday through Friday. This is the only telephone number authorized to receive and confirm reservations. »



Students calling alumni and friends this fall had, by October 29, raised \$20,070. The Student Phonorama leader is Brenda (Potter) Conrad, a junior from St. Paul, Nebraska. Among those making calls have been freshman Eric Votaw of Lawrence, Kansas, and junior Lisa Overlie of Sioux Center, Iowa. If you haven't already been called, please seriously consider your gift to the college when your telephone rings.

5

CAMPUS NOTES

Opening Convocation on September 3 observed the start of Dana's 104th academic year. Dr. Kathleen O'Connor, vice president for academic affairs and dean of the college, gave the address. President Christopherson '61 and Patrick Welch, this year's student body president, also spoke.

Dr. Bernard Matthies, professor of education and psychology, and **Dr. Larrie Stone '57**, professor of biology, were given watches in recognition of their 25 years of service to Dana at the college's August 27 opening dinner for faculty, staff and spouses.

President Christopherson has been named by the board of the ELCA Publishing House to serve on the ten-member Advisory Committee for the ELCA's church periodical, *The Lutheran*.

Selections for the **Liberal Arts Reading Program** this semester include the American Constitution, "Narrative of the Life of an American Slave" by Frederick Douglass, "The Handmaid's Tale" by Margaret Atwood and "The Visit" by Friedrich Duerrenmatt.

Dr. Kathleen O'Connor, vice president for academic affairs, has been selected to serve as a committee member for the Nebraska Identification Program of the American Council of Education, which seeks to advance talented women in academic administration. The Council's Office of Women in Higher Education started the National Identification Program for the Advancement of Women in Higher Education Administration in 1977.

Eight students are attending Dana this fall with the assistance of "**Rural Intervention**," a Lutheran Brotherhood program started a year ago as a pilot program in Nebraska. Funded by Dana and Lutheran Brotherhood, the program offers courses at no charge to farmers—men and women—who are in danger of losing their farms and who want to make practical career changes. Lutheran Brotherhood and several Lutheran colleges in other states are also offering the program this year.

"Love Days," a poem by **JoAnn Hohensee**, a member of the library staff and a part-time student, was published in the October issue of *Scope*, the magazine for women of the American Lutheran Church. The poem describes the quilting done by women of Blair's First Lutheran Church for Lutheran World Relief.

A **Fall Academic Recognition Dinner** on September 22 honored scholarship recipients and Dean's List students.

Bob Schmoll '83, Title III coordinator at Dana, and **President Christopherson** presented a program on strengthening liberal arts in small colleges at the National Title III Workshop on October 20 in Washington, D.C.

Dana junior **Mark Olsen** won good reviews for his role in Neil Simon's "Biloxi Blues" this fall at Omaha's Upstairs Dinner Theater. He's the son of Dana art professor Jim '61 and Lois (Vaught '66) Olsen.

Ruth Rasmussen, library director, has been elected secretary-treasurer of the College and University Section of the Nebraska Library Association. She was also appointed chair of the Association's publicity committee.

Exhibits in **Parnassus** for the first semester featured "The Crossing of the Roads," art by Professor Emeritus F.W. Thomsen '45 based on John G. Neihardt's "Black Elk Speaks"; work by alumni artists Larry Andrews '73 of Omaha and Myron Hansen '67 of Treasure Island, Florida; "Women at Work in Nebraska: 1880-1940," a photography exhibit sponsored by the Nebraska Committee for the Humanities; and reproductions of masterpieces of Christmas art.

Professor Richard Potter, social work, conducted a stress workshop in Fremont on October 20 for the Nebraska Department of Social Services.

Approximately 200 parents and other relatives of Dana students attended **Parents' Day** on Saturday, October 24. Activities included a program called "Surviving College as a Parent," a buffet brunch, football (a Dana victory over Nebraska Wesleyan), an open house at the Christopherson home and a Casino Night sponsored by the college's Alcohol Awareness Task Force.

Japanese visit campus to study English

A lumna Michi Enya '84, a study-abroad consultant in Tokyo, visited Dana this summer accompanied by six Japanese students.

The students came to Dana to learn English. They were taught by Dr. Sybille Bartels, assistant professor of German, who helped them develop their English listening comprehension and conversational skills.

Bartels lived in Japan for almost two years and is acquainted with Japanese customs and the language.

The students and Michi were also invited to the homes of several members of the faculty and staff.

In an interview that appeared in Blair's August 3 edition of the *Pilot-Tribune*, Michi Enya told news editor Mark Thiessen that she believed she had made the right decision in choosing Dana for her education, because "the friendliness of the Midwestern people" had helped her learn.

Two of the students who came with her—twins Koji and Yoichi Nakamura—enrolled as Dana freshmen this fall. ☺



Adviser, alumna assist international students

With an increase this fall in the number of international students, Dr. Sybille Bartels, assistant professor of German, has been appointed their adviser.

In addition, Peggy Sorensen '84 is volunteering 15 hours a week in the college's Counseling Center as a liaison between international students and the campus community.

Sorensen, who has an M.A. in social work, recently returned from a Peace Corps assignment in Thailand.

Among her concerns in working with international students will be arranging off-campus housing for them over holidays. ☺

Students conserve Calder stable

This fall art conservator Mayda Goodberry of Omaha invited Dana art students to help her work on Alexander Calder's "Shiva," a stibale at the Crown Center in Kansas City. Laurie Christensen and Nathan Kramer, who worked for Goodberry this summer, are shown making repairs on the stibale's orange finish; Goodberry and six other students (Kyle Lackman, Yvette Deshazer, Napawan Harold, Debbie Niedzielski, Ben Probasco and Joe Abbott) later spent a weekend waxing the work. Goodberry frequently hires Dana students to assist her. (An article in the Summer 1985 Review reported on students who worked for Mayberry to conserve a rare tipi cover.)

“When we do things well for the students, we’re significantly increasing their chances of staying.”

About Student Services . . .

An interview with Dan Travaille

President Christopherson, in announcing the college's enrollment increase this fall, credited Student Services for its role in improving retention.

That, indeed, has been the goal of Dan Travaille, dean of student services. Convinced that improving student services would also improve retention, Travaille—who became dean in 1985—has been developing a more effective program with broader responsibilities.

Travaille came to Dana in the fall of 1984 as the college's athletic director. When the dean of students resigned the next spring, then-President Elwin Farwell asked Travaille to take over the position.

“At that time personnel in Student Services consisted of the dean, a half-time hall director, a half-time campus nurse, and a half-time administrative assistant who also worked for the campus pastor.

Under Travaille Student Services has grown to four full-time and three half-time employees. The full-time staff members are Travaille, Assistant Dean Eric Holey, and Residence Hall Directors/Counselors Sue Schaeffer and Wendy Nilson. Half-time members are Jim Fullerton, director of recreational services, campus nurse Betty Hernes, and administrative assistant Phyllis McManigal, who continues to assist the campus pastor.

Twenty students—two assistant hall directors and 18 resident assistants—also work with the residence hall program.

With growth has come improved retention. Dana's average freshman retention rate for the previous four years (from 1980 to 1984) was 52 percent. The freshman retention rate last year increased to 62 percent, and this year to 71 percent.

In this interview with Review editor Ann George, Travaille talks about Student Services, its areas of responsibility and its goals.

What areas does Student Services cover?

We're currently responsible for residence hall life and commuting students, counseling and student development, health services, recreational services, student activities and freshman orientation, including orientation classes. In addition, we're thinking about developing a special leadership program.

Last year you and Eric Holey said that your goal was “to make Dana's residence life program the best one in Nebraska.” Are you reaching that goal?

Yes, I hope we are. We want to create a different atmosphere for residence life, to make each residence hall a life-learning environment rather than just a place to sleep. A student should be able to relax, socialize, study there.

We're also supplementing the educational process through special educational and social programs in our residence halls. For example, we've organized study groups for humanities and several other classes and have had students with special skills share them with others. We've had programs on time management, developing relationships, and sexual awareness. All of these are part of the educational process.

We've also reorganized our residence halls. Rather than having students serve as hall directors, as they did for many years, we have two full-time professionals who have the knowledge, experience and time to focus on training our student resident assistants—our RAs—who are assigned to individual floors.

We've improved the RA selection process, and we give those students initial and on-going training in working with others.

This is the first year Dana has had an organized counseling and student development program, isn't it? How does it work?

We've built a new counseling center on the first floor of Mickelsen Hall, so students know there's a definite place to go if they have problems. The center is open 40 hours a week.

Wendy Nilson and Sue Schaeffer, our principal counselors, divide their time equally between residence hall responsibilities and counseling. They're assisted by Eric Holey and Linda Walz, our campus pastor.

The college also signed a contract this fall with Immanuel Medical Center in Omaha so that we can have board-certified counselors on campus twice a week to assist us if there are any serious problems.

How does our Health Services operate?

Betty Hernes, our campus nurse, is available for what she calls “first aid” care. The college also has a contract with a Blair physician, Dr. L. I. Grace, who comes to the campus if a student can't go to the Blair Clinic.

The Recreational Services Program is new this year. Can you tell me something about it?

This program is one way to answer students' complaints that “there's nothing to do” on the weekends. Much of the emphasis is on outdoor activities, and this semester Jim Fullerton has planned weekend trips that include rock climbing in South Dakota, cross-country skiing at a Minnesota lodge and backpacking at Indian Cave State Park in southeast Nebraska.

The program introduces students to new places and gives them new experiences. It gets them actively involved. Jim's also formed an outings club called the “Dana College Viking Ventures.”

We've also made arrangements with Midland College, which doesn't have a recreational program, to announce our weekend trips on their campus so that their students can participate. This is a good area for cooperation between the two colleges.

Jim comes to us with a wealth of experience in outdoor recreation. He and his wife are relatively new in Blair, and having him available just when we needed a recreation director was a matter of luck. He's the right person who appeared at the right time, and he's looking forward to designing and building our program.

Jim is also in charge of our intramurals and community recreation programs.

Members of the Student Services staff also work with student activities, don't they? What do you see as the role of student government at Dana? And what kinds of activities has the Student Activities Board planned this year?

Eric Holey is the staff member who works most closely with student organizations. He also advises the Student Senate and the Student Activities Board, known as “SAB.”

We believe student government should be closely involved in the life of the college, and it should be an active voice on behalf of our student body.

The purpose of the Student Senate and SAB, as well as of other campus

organizations, should be to get students involved in doing things for themselves, giving them experience and responsibility in planning activities and serving on committees.

Eric, who is in his second year here, is also developing a Leadership Effectiveness and Development Program, called “LEAD,” for Senate members and other students. Plans for LEAD include holding workshops on developing leadership potential and responsibility.

He's also helping SAB improve budget control, with a better overview of what they're doing.

This semester SAB is sponsoring 60 nights of activities—and those activities are in addition to residence hall programs and concerts, games, lectures and plays sponsored by other campus organizations and departments.

One of our long-range goals is to create a “student activities” transcript that graduates can present to prospective employers along with their academic transcript. The activities transcript wouldn't just list organizations a student has belonged to, but would describe his or her responsibilities and achievements in those organizations. An SAB director, for example, manages a budget of up to \$15,000-\$20,000 and learns how to work with students and members of the faculty and staff. This is valuable experience that a prospective employer should know about.

Is Student Services also involved in freshman orientation? I know that your office plans many of the opening week activities, but are you also responsible for freshman orientation classes?

Yes, our taking on responsibility for the freshman orientation course is another experiment. We're calling the course “College Success.”

Previously orientation was a non-credit course with five or six classes that freshmen attended at the beginning of their first semester, and that was all.

When I inherited responsibility for orientation last year, I stated my belief that improving retention was a year-long process. Students leave college for a variety of reasons, of course, but most leave because they fail academically or in relationships—or because they just can't cope. And so they react by leaving.

This fall we're trying to improve on the program we started last year, with the goal of presenting well-organized, properly directed classes that can have a direct impact on retention.

Because it's important that students learn to assume responsibility for themselves and their lives, we've planned orientation classes that focus



Introducing the people who work with Student Services (from left): seated—Campus Pastor Linda Walt, who also counsels students; Phyllis McManigal, administrative assistant; Wendy Nilson and Sue Schaeffer, residence hall directors/counselors; standing—Eric Holey, assistant dean of students; Dan Travaillie, dean of students; and Jim Fullerton, director of recreational services. Not pictured—Campus Nurse Betty Hernes

on developing reading, writing and test-taking skills, and on time management, values clarification and developing and maintaining personal relationships.

The classes also introduce freshmen to campus support services such as the library and the Teaching Learning Center, and to those who can help them—our counselors, people in the Teaching Learning Center and academic advisers—if they're having trouble in a particular area.

We also try to help our freshmen decide why they're in college and to identify career goals.

Because the scope of orientation has broadened, it's now a required one-credit course that meets once a week throughout the semester.

How do you feel about your job? Our students?

I love the job. I can't think of anything else I'd rather do or any place I'd rather be. I undertook it with no idea as to what it would involve. The year before I came to Dana as athletic director I was in graduate school studying school administration with plans to become a high school principal. I agreed to become dean of student services because I thought my education and past experiences would fit well in the job.

What I saw in the position was an opportunity to make some improvements. I enjoy challenges and have always sought them out.

I've also had a great deal of freedom here to try things, and that's given me and our staff members a chance to look for creative solutions.

What I continue to like about this job is that it deals with services.

As for our students, I have very good feelings about them. This year's student body seems to be especially interested and excited to be here.

At the beginning of this interview, I quoted you and Eric as saying that you wanted to make our residence hall program the best in the state. You seem to have the same objective for the entire student services program at Dana.

That's what we're trying to do. But how can we know if we're accomplishing our goals? I think the most concrete way to find out is to look at retention. When we do things well for the students, we're significantly increasing their chances of staying.

Our retention is improving, but we want to make it even better. Our ultimate goal is to get it over 90 percent. That's probably a few years down the road, but I think it is attainable, provided we continue to focus our attention on meeting the needs of our students. After all, they are the reason we're here. ☺

Wanted: Addresses for "lost" alumni

The alumni whose names appear below have recently become "lost"—i.e., their summer Reviews or Homecoming brochures have been returned to the college by the postal service without forwarding addresses.

The Alumni Office would appreciate learning of the addresses of any of the following:

1927—Lena (Petersen) Berck;
1938—Raymond M. Olsen.

1954—Mary (Justesen) Brostrom,
Myrl (Hansen) Herro; **1955**—Paul
Brostrom; **1958**—Jack Carstensen.

1962—Linda Buchfink; **1964**—Nancy
(Annis) Nelson; **1968**—Keith Benson;
1969—Sandra (Johnson) Aanonson,
Paul Blair, Richard Bro, Gail (Young)
Peters, Joseph Stippich.

1970—James Andersen, Diane
(Burmeister) Bro, Carol (Hansen)
Fickenscher; **1971**—Patrick Carlson,
Arvid Goettsche, Joellen Henry;
1972—Clarice (Axland) Andersen,
Janis (Sorensen) Christensen, Daniel
Finnman; **1973**—Stephen Fraedrich,

Lavon (Bohling) Gray, Hazel Hartje,
Cheryl (Christiansen) Heman, Karla
Shultz; **1974**—Joan (Dittmer) Hall,
Lisa Petersen; **1975**—Gayleen
(Walraven) Broadstone, Debra (Howerton)
Gibbons; **1976**—Malcolm Adams,
Jeana Ortiz; **1977**—Michael Herbert,
Mary Jo Holverson, Stephen Larson;
1978—Debra Jenner-Billington, Aimee
Lou Jensen, Susan (Adams)
Kirkegaard, Danyal Ozyaydin, Thomas
Sample; **1979**—Richard Coenen.

1980—Nancy (Hoyt) Anderson;
1982—Carol Dickinson, Laurel Feller,
Grace (Williams) Getz, Ricky Knutson;
1983—Keith Brothers; **1984**—Dan
Allen, Tamela Bash; **1985**—Karl Her-
manson, Loyla (Miller) Renfeld, Mark
Schaeffer, Mary Ann Vaughan;
1986—Joel Barratt, Bennie Ferrell,
Schuyler Goering, Daniel Olsen;
1987—Roger Scott Clark, Jim Farley,
Brett Foster, Mark Lawrence, Colleen
Petruconis, Tye Wichert. ☺



Coach Will Baird, Dana Boosters president Bob Coffey and President Christopherson at Homecoming luncheon, where the Boosters were inducted into Dana's Athletic Hall of Fame. See story below.

Football, volleyball— Victories highlight seasons

The Vikings are having a tremendous season in both men's and women's athletics.

The men's football team (as of October 29) was ranked eighth in the nation in the National Association of Intercollegiate Athletics' Division II, with a season record so far of 6-1 and 2-1 in the Nebraska Intercollegiate Athletic Conference.

The Vikings' only loss to date was to Concordia College, 31-21 on October 3.

While the Vikings are having their best season on record, not all the news has been good. Senior quarterback and All-American candidate Alan Pogue of Stromsburg, Nebraska, suffered a deep thigh bruise during the Concordia game, causing him to miss the next game. He saw only limited action during the Nebraska Wesleyan game, but is expected to be at full speed for the Midland/Dana match-up October 31.

As of October 29, the Vikings led the NIAC in passing offense and total team offense.

Four team members lead the charts in the NIAC. Bryan Muschall, a sophomore running back from Council Bluffs, is ranked first in individual rushing with 191 carries for 1,064 yards. Alan Pogue is also ranked first in individual passing with 67 completions out of 131 attempts for a total of 1,077 yards, 13 touchdowns and just interception. What's remarkable is that Pogue continues to lead the charts after having missed nearly two full games!

Other players receiving recognition include senior punter Patrick Welch of Hickman, Nebraska, who also leads the conference with 33 punts for 1,342 yards. Steve Krieg, senior defensive back from Roland, Iowa, leads the charts with seven interceptions. In the last four out of five games, Krieg has intercepted a pass late in the game that would have beat Dana had it been completed.

Bob Bolton, a senior running back from Sioux City, is ranked second in the conference with seven punt returns for 137 yards.

In the NAIA's Division II, Bryan Muschall is the nation's leading rusher, and in the NAIA's District 11, Mark Haverman, a junior line-backer from Carroll, Iowa, has been named Defensive Player of the Week.

Clearly Dana's football program has made a dramatic turnaround. Despite how the season ends, congratulations are certainly in order for the players and the entire coaching staff headed by Leo McKillip.

Lady Vikings win conference championship

This fall the Lady Vikings are having an excellent season of their own.

The volleyball team clinched its first-ever NIAC championship title by defeating Midland College, 15-10, 15-13, 12-15, 15-11. The win brings the Lady Vikings' season record to 30-10 and 8-2 in conference play.

The team will almost assuredly receive an invitation to the district playoffs which begin November 3.

Last season the Lady Vikings finished 16-20 and just four years ago won only four games all season.

According to head coach Kathy Foley, this year's team is one of the best she can remember. "Several times

this season," said Foley, "our team rose to the occasion to beat the favored teams.

"That was the case again against Midland. This is really a deserving bunch of women who fought hard all season to get where they are."

Foley attributes this year's successful season to strong leadership from the seniors on the team as well as talented freshmen.

"The seniors on our team have gained a lot of experience in the trenches these last few years when the going was very tough. They really led the way for us this year, and our freshmen gave us the depth we needed to keep up with a lot of other teams."

— by Burke Petersen

Boosters enter Hall of Fame

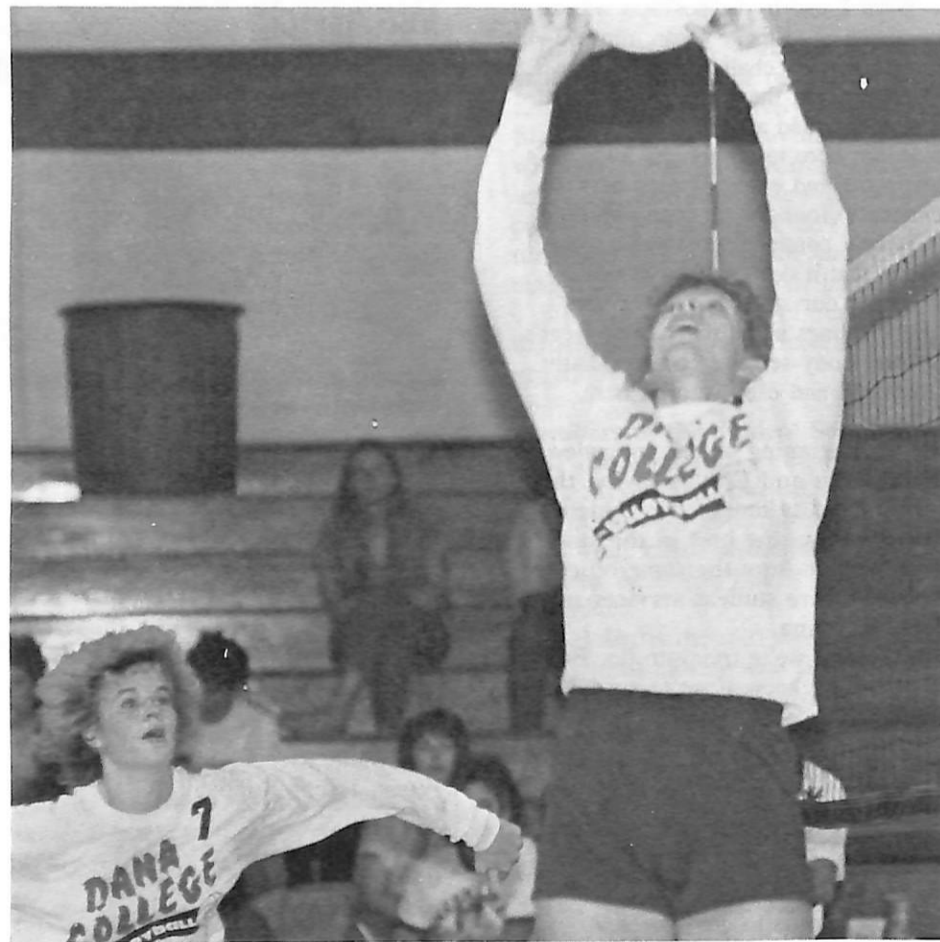
The Dana Boosters organization was inducted into the college's Athletic Hall of Fame at the October 11 Homecoming luncheon.

Head basketball coach Will Baird made the presentation to Boosters president Bob Coffey '75. Coffey was given an engraved Viking helmet that will be passed on to each succeeding president.

In his presentation Baird noted that recent projects by the Boosters have included assisting in grading and reseeding the football field, purchasing new goal posts and building dugouts at Peterson Field.

The organization has also recently purchased equipment for the weight room, a blocking sled and sideline coats for the football team, uniforms for the wrestling team, and a VCR, television set, tripod and camera for the athletic department.

Boosters membership is nationwide, and anyone interested in helping Dana athletics is invited to join. For information, write to Dale Albus at Dana.



Lady Vikings on the way to another victory: Shari Bohling (#7), a junior from Table Rock, Nebraska; and Laurie Christensen, a senior from Omaha.

Homecoming golf, Fun Run results:

Sixteen golfers participated in this year's Homecoming tournament. Alan Cue '83 came in first, Julie Hansen (the daughter of Business Manager Keith Hansen), second, and Steve Appel '84, third.

Alumni and students winning in Fun Run categories were:

■ Two-mile run—first male, Bob Coffey '75 (in a tie with a non-alumnus); first female, Liz (Miller '82) Johnson.

■ Five-mile run—first male Dana student, Chris Christensen '91; first male alumnus 35 and under—Dan Dibben '84; first male alumnus 36 and over—Gary Kubik '62.

BOOK REVIEW

Christian Faith and Public Policy: No Grounds for Divorce

by Arthur Simon '52

Wm. B. Eerdmans Publishing Co., 1987

Reviewed by Dr. Clifford T. Hanson '44,
Professor Emeritus of Philosophy

Christian Faith and Public Policy: No Grounds for Divorce" by Arthur Simon, executive director of Bread for the World, addresses the question of the relation of Christian faith to one's political responsibilities.

Simon states unequivocally that Christian faith has relevance for all aspects of life including political life. He supports the ideal of separation of church and state but reminds the reader that that expression as such is not included in the U.S. Constitution.

He says, "We have institutional separation, but also functional interaction between church and state."

He points out that separation of church and state does not imply separation of religion from life. He is insistent that persons committed to God in faith are responsible to God for all aspects of life, including their political involvement.

Simon's defense of the claim that Christian faith and public policy should not be divorced is grounded in basic Christian teaching, yet he does speak to the issue from his special situation as executive director of Bread for the World, and many of his illustrations of the need for Christians to become involved in public policy decisions are taken from the problem of world hunger.

He came to be associated with Bread for the World while he was serving as a Lutheran pastor on the Lower East Side of New York. Recognizing that direct assistance to the hungry poor is an appropriate response to the Gospel, he also was convinced that it was not enough and that many more things could be done if the federal government contributed more.

On the basis of these convictions, he joined with others to found Bread for the World, an international Christian citizens' movement designed to alleviate hunger in the world. The focus of Bread for the World has been to form a Christian citizens' network to influence legislation to aid the hungry.

Simon points out that private aid and government action are often mutually supportive. He uses as an illustration the efforts of people in the United States to respond to the hunger

problem resulting from the famine in Africa in the mid-1980s. In this instance the government furnished the

Book documents women's roles in ALC, UELC

From Our Mothers' Arms: A History of Women in the American Lutheran Church" by L. DeAne Lagerquist is a book that should especially interest readers with ties to the former United Evangelical Lutheran Church.

The softbound publication includes photographs of and references to

women's organizations affiliated with Blair's First Lutheran Church and other UELC congregations.

Many of the women pictured and referred to are Dana alumnae and former members of the faculty and staff.

The book, published this year by Augsburg Publishing House, was prepared under the auspices of American Lutheran Church Women and the ALC's Board of Publication. »

Announcing a new book to renew all your old friendships.



The 1988 Alumni Directory

Our 1988 alumni directory, that will include all living alumni, will soon be in production. The book will list each person alphabetically, by class year and by current geographic location.

Each member's home and business addresses and telephone numbers will also be recorded.

You'll be receiving a biographical information packet soon, so be sure to complete and return it promptly along with your order for a softbound or hardbound copy - and get back in touch with those old friends.

DanaCollege

food and the freight, and private agencies took care of the distribution.

Simon warns, however, that in supporting certain public policy positions Christians may make mistakes. They may think that a certain policy will have certain results and be completely mistaken.

Christians, he says, start from certain revealed principles. These are obvious goods. From these, moral principles are derived by human effort. Then seeking to implement the ideals expressed in the moral principles, a group of Christians will take certain public policy positions.

Though the ideals may be good, there are chances for mistakes in developing public policy. Christian groups in their enthusiasm may support public policies that are counterproductive with reference to some worthy goal that they wish to see realized.

Some individuals may even claim that their position with reference to a public policy has been directly revealed to them by God. Simon has an interesting quotation from Abraham Lincoln

below one of his chapter titles that makes obvious the point he is making. The quotation is in the form of a question to clergymen who told him how to prosecute the war. It reads, "Isn't it strange that God has given you directly the answer—while he's given me the assignment?"

Simon in this context points out how Christian groups need to take great care in developing a public policy position, but once they have taken the position they should work diligently for its implementation without castigating those who may be supporting other approaches to a given problem.

Simon deals with two very important issues for Christians: "What responsibility do we have for the hungry of the world?" and "How should Christians on the basis of their faith relate to the political order?"

These are important questions, and Simon's experience on the Lower East Side with hunger and his close association with his brother Paul, U.S. Senator from Illinois, fit him well to deal with both subjects.

His book is a sober, yet effective, challenge to the Christian world to take its social responsibility seriously. »

Alumni questionnaires set for January mailing

Last spring the Dana Review announced plans for the publication of a new alumni directory. Since then a contract has been signed with Carleton Graphics, a firm that specializes in producing directories for colleges and universities.

Production is on schedule, and questionnaires will be sent to alumni via third class mail at the end of January.

If a husband and wife have both attended Dana, each should receive a questionnaire to fill out. Any alumnus or alumna who hasn't received a questionnaire by the third week of February is asked to notify Dana's Alumni Office.

Some of the information requested by the questionnaire won't be included in the published directory. This information will, however, help Dana correct and improve its alumni records.

The publication should be ready for mailing by September 1988. »



Seniors Amy Nissen of Albion, Nebraska, and Steve Krieg of Roland, Iowa, reigned as this year's Homecoming queen and king. Members of their court were seniors Rebecca Cole, Houston, Minnesota; Gail Bray, Bancroft, Nebraska; Joyce Broekemeier, West Point, Nebraska; Patti Stevenson, Albion, Nebraska; Bob Bolton, Sioux City, Iowa; Dan Dougherty, Dunlap, Iowa; Alan Pogue, Stromsburg, Nebraska; and Bruce Stewart, St. Louis.

Coming 1988 attractions— Family Weekend, Homecoming dates announced

Several hundred alumni returned to the campus in July and October for special weekends.

The college's first "Family Weekend" on July 3-5 shows promise of becoming a popular Dana tradition. Participants, enthusiastic about the program, said that they were already looking forward to next summer.

And Homecoming on October 9-11, a fall tradition since the 1920s, highlighted reunions, special activities and football and volleyball victories.

Both weekends are already on next year's schedule, and alumni are invited to circle these dates on their calendars:

- July 1-3, Dana Family Weekend
- October 7-9, Homecoming (celebrating the 75th anniversary of the founding of the Dana Choir)

Later Dana Reviews will report on plans for both weekends as they develop. »

Aebleskiver, anyone?

Tracy '89 and Marty '88 Mastin, sister and brother from Woodland Park, Colorado, show off their Danish culinary skills at Homecoming breakfast.

Mesa luncheon planned for January

Arizona alumni and friends—snowbirds and residents—are invited to the third annual Dana gathering planned for Saturday noon, January 16, in Mesa.

Dana Regent Jim Olsen '40 invites alumni and friends to attend the 12 noon soup and salad luncheon at Ashford's Restaurant, located at the Arizona Golf Resort, 425 South Power Road (Power Road and Broadway).

Attendance at last year's gathering was excellent, Olsen said, and many alumni are already making plans to attend this year's event.

The next day President Christopherson will speak at worship services at St. Peter's Lutheran Church in Mesa.

For luncheon reservations, write or call Olsen at 120 E. 22nd St., Loveland, Colorado 80537 (303-663-1027), and after January 1, at Orangewood Shadows, 3165 East University Dr., #7, in Mesa 85203 (602-924-3253). »



Copenhagen church has Dana connections

When the American Lutheran Church's International Church of Copenhagen celebrated its twenty-fifth anniversary this summer, greetings from Dana were a part of the service.

Those greetings from President Christopherson '61 were read by a classmate, congregation president Emory Anderson, who works in Copenhagen with the International Council for the Exploration of the Seas.

Ties with Dana go back to the beginning of the congregation. It was established by Pastor Bill Hanson '44, who was guest speaker at the June 28 celebration. Pastors Adolph Kloth '39 and Verner Carlsen '36 followed Hanson, and over the years other Dana alumni have been members.

Florence Hansen '48 of Omaha, a summer visitor to Copenhagen, was at the service.

Even with the formation of the Evangelical Lutheran Church in America, the congregation's ties with Dana will continue: Mark Thomsen '53, director of the ALC's Division for World Mission and Inter-Church Cooperation, has been elected head of the new ELCA's Division for Global Mission, and in that position he will have overall responsibility for the congregation. »

Lutherans plan to reverse trend in higher education

A new program run by the American Lutheran Church, but developed jointly with the Lutheran Church in America, may play a vital part in reversing a 15-year trend in higher education.

Students have been less inclined in recent years to seek careers as professors partly because of few openings in the field. The stable size of higher education in the past decade has meant fewer positions available to new graduates.

Recent studies show that numbers of faculty hired in the growth years of the '60s and '70s will retire in the next five to 15 years. This program, Lutheran College Data Link (LCDL), will help encourage and prepare the brightest and best graduates of Lutheran colleges and universities to fill those positions.

"The good news is that there will be more and more teaching jobs, and our program will help people connect with those positions," said Steve Griffith, project director for LCDL, operated from the offices of the ALC's Division for College and University Services.

The program is sponsored in part by a grant from AAL, a fraternal benefit society in Appleton, Wisconsin.

Lutheran College Data Link is a program combining two current services with a new service, forming a comprehensive program to help people in all stages of their teaching careers.

"Colleges are people. Lutheran College Data Link is ministry with the people of those colleges, involving them at different points in their careers," Griffith said.

Future Faculty Network

The newest segment of this program is the Future Faculty Network for career entry level. The idea is to identify and support Lutheran college graduates in post-graduate education, encouraging their commitment to a Lutheran college teaching career. Contact is maintained with the students in graduate school through network teams that include Lutheran faculty, students and persons involved with campus ministry.

When students near the end of their graduate studies, they are encouraged to apply for teaching vacancies at the 29 colleges and universities related to the ALC and LCA.

Lutheran College Referral Service

The Lutheran College Referral Service, in operation for more than 20 years, now will be under the umbrella of the LCDL program. It serves people at the second stage of their careers by helping faculty who seek a change in position to connect with openings in other Lutheran colleges.

Retired Resource Roster

The third part of the program is the Retired Resource Roster which helps connect colleges that need to fill limited, short-term appointments with retired faculty who want to continue sharing their expertise and experience.

Each of these three parts of LCDL will have a computerized file with information on hundreds of people of all religions, races, ages and nationalities who want to be or are part of Lutheran higher education.

"These three pieces form part of a continuing partnership the Lutheran church has with its colleges and universities. These institutions are extensions of the church's ministry and the faculty members are an important part of that ministry," Griffith said. "This program reflects the Lutheran church's historic commitment to excellence in higher education and continued concern for those who serve the church through teaching."

For more information about these programs, write to Steve Griffith, Special Projects Assistant, Lutheran College Data Link, Division for College and University Services, The American Lutheran Church, 422 South Fifth Street, Minneapolis, MN 55415. *From the Office of Communication, The American Lutheran Church* »

DESTINY'S DEEP SEA

'80s Sonja Anderson '87 is the learning disabilities resource teacher for grades K-8 in Utica, IL, Public School District 135. Her address is 541 Eleventh St. #2, LaSalle, IL 61301. . . Karen Jensen '87 teaches English, speech and drama at Bennington, NE, High School. . . Robert Kuhl '87 married Lisa Ostrem '88 on August 8. They live in Blair. . . Laurie Manes '87 teaches in the special education/resource room and the learning disabilities area at Crete, NE, Elementary School. . . Meri Jo Meier '87 and Mike Soe '85 were married on June 6. Mike is a second-year medical student at the University of Nebraska Medical Center in Omaha; he is employed by the U.S. Air Force through its health professions scholarship program. Meri Jo is a cytogenetic technologist in the Medical Center's Human Genetics Laboratory. They live at 15022 Wycliffe Dr. #26 in Omaha (68154). . . Roger '87 and Shannon (Haley '89) Nelson announce the birth of Joshua Adam on September 15. They live in Tacoma, WA, at 2430 S. 96th St. (98444). . . Rob O'Donahue '87 is program director and membership coordinator at the Columbia Basin Racquet Club in Richland, WA. . . Julie Schroeder '87 is a unit caseworker/social worker at Bethany Home, a residential facility in Moline, IL. . . Kim (Norris '87) and Monte '85 Town were married on June 14, 1986. He is assistant manager at the Half-Price Store in Hastings, NE. . . Christine Wietecha '87 works in Omaha at Applied Communications, Inc. . . Shariane Hann '86 married Paul McLellan of Denver on August 1. He is a graduate student at the University of Kentucky, and she works for a temporary help agency. They live at 385 Redding Rd. #128 in Lexington, KY 40502. . . Katherine Pahre '86 is field director for the Swift Water Girl Scout Council in Manchester, NH. She is in charge of recruiting, training and supervising adult Girl Scout volunteers in southwestern New Hampshire and southeastern Vermont. Her address is 325 Merrill St., Manchester, NH 03103. . . Randy Playle '86 works in the loan accounting department at the Texas State Bank; he also teaches night courses in accounting at South Texas Vo-Tech. His address is 4712 N. 12 #60, McAllen, TX 78502. . . Mark Dickinson '85 and Kay Schjodt '88 married on July 11. Mark is director of transportation and grounds at the Blair Community Schools, and Kay is a Dana senior. . . Kevin Hernes '85 is food service manager at Northwestern College in Orange City, IA. His address is RR Box 27, Hospers, IA 51238. . . Paul and Julie (Frisk '85) Pedersen and daughter Lorelei Ann, 2, live at 3427D Thompson Circle, Schofield Barracks, HI 96786. . . Todd '84 and Lori Enfield announce the birth of Kaja Lee on July 25. Todd is merchandise controller at Richman Gordman's Half-Price Store in Omaha

. . . Randy Hagedorn '84 is coordinator of Big Brothers/Big Sisters of Northeast Nebraska. He continues as assistant basketball coach at Northeast Community College and as part-time physical education teacher at District 37 School, Norfolk. He also referees football and basketball. . . Peter Jacobson '84 is an intern at Trinity Lutheran Church in Sibley, IA, where his address is 417½ Poplar Drive (51249). . . Randa Rodenburg '84 and Tom Quale '83 married on May 30. They are living at 12381 Cedar Rd. #3 in Cleveland Heights, OH 44106. Randa is a graduate student in molecular biology at Case Western Reserve University. Tom is writing his Ph.D. dissertation in English from the University of Wisconsin at Madison. . . Scott Rogers '84 has joined the Peters Law Firm in Council Bluffs. He received his law degree in May from Creighton Law School and has been admitted to the Iowa Bar and to practice in federal court. His specialties are probate, bankruptcy and real-estate proceedings. . . June (Weber '84) and Sheldon Smith '84 are the parents of Jillian Day, born August 13. Sheldon is a products manager for Rhone-Poulenc, a pharmaceutical supply company. They live at 421 Morningside Crescent, Dollard Des Ormeaux, in Quebec, Canada H9G/1J9. . . Leanne Danahy '83 married Mark Buland on July 18. Their address is 21622 Marguerite Parkway, Mission Viejo, CA 92691. . . Sheryl Kester '83, who graduated in May from Wartburg Seminary, was ordained on July 26. She serves St. Peter Lutheran Church in Bassett, NE, where her address is Box 474 (68714). . . Troy Knutson '83 received a doctorate of pharmacy degree from the University of Nebraska Medical Center in May. . . Dave Clifford '82 married Catherine Rockwell of Chicago on August 1. She is a sales supervisor for the Chicago Tribune, and he plans to teach in the Chicago area. He has taught at Creighton Prep in Omaha for the past five years. . . Curt Fett '82, an independent insurance agent, has opened the Curt Fett Insurance Agency in Sioux City, IA. He specializes in life and health insurance and various investments. He recently qualified as a member of the Million Dollar Round Table. . . Karla Hernes '82 married Greg Broman on July 18. She is a programmer-analyst with Mid-America Computer Corporation in Blair; he is director of services for the Marriott Hotel in Omaha. They live in Blair at 804 N. 28th Ave., Apt. 3. . . Jennifer Jensen '82 is teleprospecting manager of Intellisell of Nebraska in Omaha. . . Nathan Andrew was born to Tony '82 and Amy (Holmquist '82) Jones on May 22. They live at 15621 N Circle in Omaha (68135). . . Mimi (Kotovskiy '82) and John Dorhauer announce the birth of Adam Joshua on July 16, 1986. He joins brother John Jacob. The Dorhauers live in Webster Groves, MO 63119, at 475 E. Lockwood. . . Joni (Laue '82) and Greg Manske '81 have moved to W. Burlington, IA 52655, where their address is RR 4 Box 211C. They relocated several times when Greg was a business manager for Peter

Kiewit Sons' Construction, living in New York, New Mexico, Washington and California before settling down in Iowa last November. Greg is now business manager for the Great River Area Education Agency. Joni was a psychiatric counselor in New York and a police officer/counselor in a New Mexico high school. She's now a part-time counselor for chemically dependent adolescents. They have two children — Megan, 2½, and Mark, 1. . . Joe Eagen '80 and Nancy Hansen '78 were married on October 10. They are living in Omaha. . . Sheri Johns '80 of Omaha entered her two horses in the Nebraska State Fair's Arabian Show; one, Serzana, was named Grand Champion Purebred Western Pleasure AOTR, and Sabra—Serzana's "baby"—won first place in her class. . . Heidi Larson '80 works at a wilderness camp in Blackwater Forest, FL, for emotionally handicapped children. She is responsible for eight to eleven girls who live (for 24 hours a day, five days a week) in tents they've built from trees. Her address is E-MA-CHAMEE, Rt. 1 Box 178B, Milton, FL 32570. . . Dr. Carol Weckmuller '80 has joined the Blair (NE) Clinic as a family physician.

'70s Craig Schade '78 is a limited partner in the Fresno Dairy Queen Ltd. franchise. He is an owner/operator in Selma, CA. . . Jane (Radloff '77) Johnson, husband Wayne and daughter Elizabeth Louise (born August 19, 1986), live at 402 West Monroe in Mt. Pleasant, IA 52641. Jane is a senior business analyst with Motorola. . . Tim Waggoner '77 was ordained in July and is an associate pastor at First Presbyterian Church of Irwin, PA. He and Janis (Boyce '78) live in Irwin at

1114 Pennsylvania Ave. (15642). . . Alan Hanson '76 and Mary Henriksen '76 and children Maren and Kirstine have moved to Syracuse, NE, where Alan serves Luther Memorial Lutheran Church. Their Syracuse address is 1130 Mohawk St. (68446). . . Jonna (Anderson '76) and Carl '73 Willadsen and their three children—ages 4, 3, and 1—live at 1220 E. 10th St. in Sedalia, MO 65301. They are in partnership with Carl's brother, John '71, and his wife, Carol (Schmidt '73). Together they own Little Bit of Everything, a catalog returns and factory direct merchandise store. Jonna, who has taught the learning disabled, is also a volunteer. . . Michael '75 and Lorraine (Carlson '73) Knudson and children Joanne, 14, Roy 12, and Carl, 10, have moved to 109 Kings Road in Plymouth Meeting, PA 19462. . . Walter Schacht '75, who received his Ph.D. in range science from Utah State University in June, is a range animal science specialist conducting research in animal production in South Africa. His address is: U.S.A.I.D., P.O. Box 333, Maseru 100, Lesotho, South Africa. . . David Stickrod '75 is the new middle school principal and activities director at the Eldora-New Providence, IA, School District. He is working on his doctorate at Iowa State University. . . Dwain Wulf '75 and his wife announce the birth of Jonathan Dwain on June 1. They live in Omaha at 3306 S. 119th (68144). . . Rebekah (Becky Buck '74) Lambrix and her husband, John, announce the birth of Brittan Elizabeth on October 1. They live at 17 North Terrace in Rochester, NY 14617. Rebekah is a third-grade teacher, and her husband is a counselor/therapist with Family Services of Rochester, Inc.

(continued on page 12)

News from Africa . . .

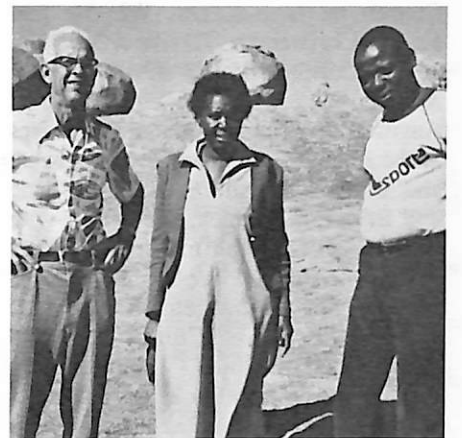
Missionaries Lloyd '45 and Muriel Neve, currently in Africa, recently visited alumna Bokang (Phasoana '74) Gwebu, her husband, Thando, and their three children—ages four, six and eleven—in Zimbabwe.

The Neves report that Bokang and her husband both teach at the Bulawayo branch of the University of Zimbabwe—Bokang in the department of education, and Thando in geography. They met in the U.S. at Kent State University, where both were graduate students.

Their address is Dr. and Mrs. Thando Gwebu, 46 Ullswater Drive, Montrose, Morningside, Bulawayo, Zimbabwe.

The Neves also learned that Bokang's brother, Koketso '72, teaches at Matasbe College in Francistown, Botswana; his wife is a nurse. They also have three children.

After reading the article about Dana student Maria Amakali in last spring's Review, the Neves also visited her uncle and aunt, Dr. Naftal and Maria Hamata and their children in Ovamboland, Namibia. ☺



A Dana reunion in Zimbabwe—Bokang (Phasoano '74) Gwebu with her husband, Thando, and Lloyd Neve '45 on the hill where Cecil Rhodes is buried in Matopos National Park.

Moving?

Street _____
City _____
State _____ Zip _____
Telephone(____) _____

08280
Dr. and Mrs. Niel Johnson
15804 Kiger Circle
Independence, MO 64055

Please return with address label.

Address correction requested.



(Destiny, from page 11)

Lane Plugge '74 is now assistant superintendent for curriculum and instruction in the Grand Island, NE, Public School . . . **Jon '74** and **Marlene (Polson '73) Utech** have adopted Bret Joseph, born June 8. He joins Brandon, 5. They live at 813 S. Grand in Lyons, KS 67554 . . . **Tom Lauritsen '73**, Omaha, is an attorney with Andersen, Berkshire, Lauritsen & Brower, a new partnership . . . **Dr. Kaj Neve '73**, 552 Riverside Dr., 4B, New York, NY 10027, married Yvonne Over, a Broadway actress and singer, on November 21, 1986. . . **Gerald Scott '73** has been appointed superintendent of schools at Twin Rivers, Bode, IA. . . **Lora (Lunzmann '72) Black**, 371 N. 33rd, Lincoln, NE 68503, recently finished a project with the Nebraska Educational Television production of "The Trial of Standing Bear," scheduled for national viewing later this year or the beginning of 1988. She was a background artist for all of the courtroom scenes. "It was fun going back in time to 1879," she writes. Lora and her baby Rachel were also in ABC's "Amerika" as townspeople extras listening to the speakers in the gazebo after the parade. "The cameraman took a close-up of Rachel sleeping away," Lora reports. Husband **Chip '70** is a program specialist for the State Department on Aging. The Blacks' other children are Andrew, 17, and Zachary, 4. . . **David Kuehn '72** has been promoted to general sales manager of Omaha's KMTV. He has also been elected to the board of directors of the Omaha Federation of Advertising. . . **John Clark '71** has been named assistant vice-president and regional manager, individual insurance services division, for Mutual of Omaha . . . **Lawrence Henning '71** was ordained at Wartburg Seminary on August 23 and is now pastor at Messiah Lutheran Church in Twin Lakes, WI. He and **Kathy (Christensen '72)** live at 3691 87th St. in Burlington, WI 53105. . . **Craig Moran '71** married Irmeli Peltola on August 22 in Iisalmi, Finland. He teaches at the Lutheran seminary in Hong Kong and is associate editor of Ching Feng and Bridge magazines; she serves with the Finnish Lutheran missions in Hong Kong, where their address is 15C Estorial Heights, Bel Air Gardens, Shatin, N.T. Craig, who speaks Chinese, has led seven tours of China. . . **John Nelson '71** fills a new position as art instructor at Hillcrest Elementary School in Brookings, SD.

'60s **Karen (Nelson '69) Hansen** of Ruskin, NE, has been elected vice-president of the women's group of the Nebraska Synod of the new Evangelical Lutheran Church in America . . . **Sharon (Dyneson '69) Shields** has been appointed supervisor of the Crawford County, IA, jailers. Formerly a child and family social worker for the county's Department of Human Services, she has helped organize the county's child abuse council. . . **Connie (Andersen '68) Quirk** has been named librarian for the Middle School in Brookings, SD. . . **Dorothy Williams '67** of Tekamah, NE, has retired after 38 years of teaching in Burt

County. . . **Duane '65** and **Gloria (Jensen '61) Anderson** live in Moulton, IA 52572, at 201 E. 4th St. Duane, who was ordained at the Iowa Annual Conference of United Methodist Churches on June 7, serves the United Methodist Church in Moulton. Gloria received the faculty award for academic excellence when she graduated from Kendall College, Evanston, IL, in May. She was also recognized in a recent issue of Better Homes and Gardens as one of 100 outstanding women in America. . . This spring Blair, NE, high school students voted math teacher **Chuck Jorgensen '65** their first "Teacher of the Year." Criteria included dedication, knowledge of subject and time spent with students . . . **Sterling Nelson '63** is a pastor/developer of a new church in Montgomery, AL, that officially organized as a congregation on October 18. He and his wife, Pat, live at 2301 Walbash Dr. in Montgomery (36116). . . **Leo Kirchoff '60** reports that his Fulbright Senior

Scholar contract to teach and do research at Chancellor College Zomba, Molawi, has been extended for another year.

'50s **Fritz Murrell '59** has been promoted to assistant superintendent for personnel services with the Tempe Union High School District in Tempe, AZ. He and his wife live at 11046 South Tomah St., Phoenix "Ahwatukee," AZ 85044. . . **Richard Jensen '56**, director of the ALC's Lutheran Vespers Media Ministries in Minneapolis, is the author of "The Crucified Ruler: Sermons for Lent and Easter (Cycle B, Gospel Texts)," published by C.S.S. Publishing Company, Lima, OH. The 17 sermons are based on the Gospel texts for the Common, Lutheran and Roman Catholic lectionaries. . . **Maxine (Jorgensen '53) Broderius** of Hector, MN, has been elected to the new ELCA's Regional Center for Mission—Region III Council (Minnesota, North and South Dakota) as a lay representative from Southwest

Minnesota Synod. She was previously a member of the National ALC's Church Council. . . **Paul '51** and **Gail Laursen** are spending the year in West Germany, where Paul is on sabbatical leave from Nebraska Wesleyan University. He is teaching at the University of Maryland's Munich campus.

'40s **Ole Larsen '44** and his wife announce the marriage of their daughter, Judith Marie, to John Dodson on February 14 in Portland, OR. Ole officiated at the ceremony.

Deaths **Marty Dugan '87**, in a one-car accident near Greeley, NE, on July 13. He attended Dana his freshman year. . . **Harold Nelson '55**, of a heart attack on July 11. Survivors include his wife, **Anna (Hansen '49)**, 4513 35th Ave. Court NW, Gig Harbor, WA 98335. . . **Pastor Luther Mortimer Nielsen '49 T'52**, of cancer on August 3. He served Good Hope Lutheran Church in Detroit from 1967 until his retirement a year ago because of illness. After ordination he served a congregation in Clifton, IL; in 1956 he joined the U.S. Army Air Force and was a chaplain until 1967. Survivors include his wife, **Marilyn (Young '54)**, 8104 Appoline, Detroit, MI 48228. . . **Sheridan Svendsen '42**, on February 2. He is survived by his wife, Evelyn, 323 7th St. N.W., Puyallup, WA 98371. Brothers Alvin, Ethan and Edwin preceded him in death. . . **Dorothy Lund '41**, on August 3 in San Diego. She was the daughter of N. T. Lund, an early Dana student and professor. Survivors include brothers **Ray '25**, 758 S. 16th, Parkview Manor, Blair, and **Russell '41**, 1627 Farnam St., Harlan, IA 51537, and sisters **Una '27**, 581 S. Orange Grove, Los Angeles, CA 90036, **Norma '36** Van Steenhoven, 20 Quarry Hill Road, Killingworth, CT 06417, and **Lona, Crowell Home, Blair. . . John Poucher '37**, of cancer on May 30. Survivors include his wife, Helen, P.O. Box 1767, Alturas, CA 96101. . . **Elliott Hansen '26**, on August 26, in Shandon, CA. He was the son of former Dana president and professor C.X. Hansen. Survivors include brothers **Winston '30**, 7880 Dutch Lane, Payette, ID 83661, and **Harold**, 1822 Park, Blair, and sister **Lois Wulf '31**, 440 N. 23rd, Blair. Memorials to Dana are suggested.

ALUMNI IN THE NEWS

■ **District Judge Darvid Quist '58** of Blair was recently one of four finalists under consideration for Chief Justice of the Nebraska Supreme Court. Governor Kay Orr appointed another finalist, a current member of the Court, to the position.

■ **Mark Thomsen '53** has been elected executive director of the Division for Global Mission, one of 11 divisions in the new Evangelical Lutheran Church in America.

■ **Herb Knudsen '63** of Bay Village, Ohio, has formed a company called "Natural Fibers Corporation" in Keith County, Nebraska, to commercialize milkweed floss. It will be grown as an alternative crop.

The Keith County News on September 14 reported that Knudsen, a Dana regent and former patent attorney with Standard Oil, had purchased 11,000 pounds of milkweed floss previously owned by Standard Oil.

The principal use being considered for the floss is as insulation material for clothing. One pound of floss is the equivalent of two pounds of down and three pounds of synthetic fiber, the newspaper said.

■ **Dr. Dennis Schmidt '71**, organist-choirmaster and pastor at The Cathedral Church of St. John in Albuquerque, New Mexico, has published "An Organist's Guide for The Hymnal 1982."

In presenting a copy to the Dana library, he wrote: "As a 1971 alumnus of Dana College, I would like to present a copy of my first book to the library, in gratitude for what Dana has meant to me."

Describing his book as "a resource for organists to accompany the new hymnal of the Episcopal church," Schmidt commented that "Many of the tunes will be found in hymnals of other denominations as well (including 'The Lutheran Book of Worship'), so I hope it may be useful to organists

who come in contact with the Dana library."

"An Organist's Guide" is published by The Church Hymnal Corporation, New York.

■ **Lawrence White '85**, a former Dana wide receiver, signed an agreement on September 22 to play on the strike team of the Chicago Bears.

White was named all-conference and all-district his senior year at Dana.

A U.S. West operations technician with his own free-lance advertising business, White also plays for Omaha's semipro River City Raiders. The Raiders are in the Mid-America Football League.

A few days before signing the agreement with the Bears, White was featured in an Omaha World-Herald article, "Why Do They Risk It? After Hours, Businessmen Play Semipro Football," by reporter Jerry Fricke.

In the story Raiders owner and head coach Gordie Zealand describes White, the team's co-captain, as "a born leader and an athlete with tremendous football skills."

■ "Where Were You?," a poem **Janice Schlange '83** submitted to a national writers' competition when she was a Dana senior, has been rewritten for country music singer Reba McEntyre. As "One Promise Too Late," the song has become a hit single.

In July the MCA release stood at No. 5 on the American Country Countdown.

Schlange gave up publishing rights when she entered the competition, but MCA has sent her a check and two 45 rpm records of the song. "Technically, it's the idea they're paying me for," she said. ♪

Mildred Morton

Members of the Dana community were saddened to learn of the death on August 12 of **Mildred (Johnson '31) Morton**, the wife of **Dr. Richard E. Morton '32, T'44**, former president of Dana College and Trinity Seminary, at her home in Lodi, CA. She is survived by her husband (546 W. Tokay St., Lodi 95240), daughter **D'Arlene '58** Rosenau and sons Richard and Robert. The family has suggested memorials to Dana.