

- College receives Eisenhower Funding, NEH grant ..... 2
- Desert Storm affects campus, alumni ..... 4
- Four Vikings win honors as Academic All-Americans .... 7
- Alumnus receives Presidential End Hunger Award ..... 9
- Homecoming is October 4-6 ... 10

# DANA REVIEW

## Christophersons attend White House dinner honoring Queen Margrethe II of Denmark

President and Mrs. Myrvin F. Christopherson were guests of President and Mrs. George Bush on February 20 at the White House. The occasion was a state dinner in honor of Queen Margrethe II and Prince Henrik of Denmark.

The Christophersons, representing Dana, were among 130 guests invited to honor the Danish queen.

Although the Queen and Prince have visited the U.S. on several occasions, including a 1976 trip to Dana where Queen Margrethe delivered the Commencement address and received an honorary doctorate, this was the royal couple's first official state visit.

Activities surrounding the event began that morning with a reception on the White House lawn complete with flags, bands, military units and remarks by President Bush and the Queen.

"As we were being ushered from the White House out onto the lawn," Christopherson said, "I couldn't help but think how privileged we were to be included. Then, when President Bush noted that Denmark enjoys the distinction of being the country with which the U.S. has had the longest uninterrupted diplomatic relations, I took renewed pride in my Danish heritage.

"In a brief personal visit with the Queen," Christopherson continued, "she recalled with fondness her visit to Nebraska and Dana. She sent her warmest greetings to the entire Dana community and urged the continuation of cultural and educational exchanges between our campus and Denmark."

The highlight of the Christophersons' visit came that evening when they returned to the White House for the black-tie state dinner.

They were met at the door by uniformed military escorts and presented to Queen Margrethe, President Bush, Prince Henrik and Mrs. Bush.

"Queen Margrethe wore a beautiful red velvet gown and diamond tiara and looked every inch a queen," Anne Christopherson said. "And President and Mrs. Bush were perfect examples of diplomacy and hospitality, making each of us feel genuinely welcome and at ease."



*At the White House: clockwise, the Christophersons at the morning reception that welcomed Queen Margrethe; actors Don Johnson and Melanie Griffith, President Bush and Dr. Christopherson; at the dinner—a reporter, Queen Margrethe and Dr. Christopherson.*



Guests were seated at tables of ten. "The tables were magnificent," Anne Christopherson said. "There were flowers everywhere."

She said she was surprised to find herself seated with President Bush and Queen Margrethe.

There were toasts from the President and Queen. In her toast the Queen praised Bush for his grace under pressure.

After-dinner entertainment featured mezzo soprano Frederica von Stade, who dedicated her next-to-last song as a "thank you" to the Bushes. She

ended her program with "The Star Spangled Banner." Guests spent the rest of the evening dancing.

When asked what impressed her most about the evening, Anne Christopherson commented on the care and attention to detail that was obvious in the way the event was planned and carried out. "Not even the smallest detail was left to chance," she said.

President Christopherson, the only college president at the event, said he



was especially pleased that such a diverse group had been gathered to pay tribute to a relatively small country like Denmark. "And it was a particular thrill for me to have the opportunity to meet and visit informally with people like Walter Cronkite, James Baker and Marlin Fitzwater," he said. ☺

**"I was grateful that the White House recognized Dana as a fitting representative of Danes in America . . ."**

*"The DANA REVIEW (USPS 147-940) is published four times annually for distribution to alumni and friends of Dana College and Trinity Seminary by Dana College, 2848 College Drive, Blair, NE 68008. Third-class postage paid at Blair, NE, and additional mailing offices. POSTMASTER: Send address changes to DANA COLLEGE, 2848 College Drive, Blair, NE 68008."*

#### **Non-discrimination policy**

*Dana College admits students without regard to sex, age, race, color, religion or national origin to all the rights, privileges, programs, and activities generally made available to students at the College. It does not discriminate on the basis of sex, race, color, age, handicap or national origin in administration of its educational policies, admission policies, scholarship and loan programs, athletics, or other school-administered programs.*

Ann (Harms '54) George, Editor/Director, Alumni Affairs

Campus photographs by Lisa Welch '94

#### **Eisenhower Funding assists summer programs for math, science teachers**

The college has been selected to receive Eisenhower Funding for two summer programs that will strengthen the teaching of mathematics and science in Nebraska schools.

Of 16 projects submitted for funding, only five were accepted by the review panel. Two of those were Dana's.

Both proposals were prepared by Dr. Bernard Matthies and Dr. Kay Ferguson, members of the college's Education Department. They will also be project directors for the two programs.

The first program, "Teaching Enhancement Aimed at Mathematics and Science II" (TEAMS), will be held at Dana from June 10-14. This is the second year for the program, which was very successful last year.

It has several objectives: to design and use hands-on manipulative curricular packages for math and science instruction, to enhance teaching and presentation skills and to prepare in-service training packages.

Funding will be available for the participation of 72 elementary school teachers.

The second program, "The 1991 Nebraska Conference for the Improvement of Mathematics and Science Education," will be held on August 14-15 at Holiday Inn-Central in Omaha.

Its goals are to aid the integration of mathematics into science classes and

science into math classes and to improve articulation between grades.

Although the main focus will be on grades K-8, teachers at all grade levels can participate.

Nebraska teachers who are interested in participating in either program should write to Dr. Ferguson or Dr. Matthies. They will also be sending information to school administrators across the state. »

#### **College receives NEH challenge grant**

Dana is one of 36 colleges and universities to receive challenge grants this year from the National Endowment for the Humanities.

Terms of the \$150,000 challenge require the college to raise three dollars in matching funds for every federal dollar, for a total of \$450,000 in new contributions.

The challenge grant, together with the funds Dana raises to qualify for it (\$600,000 in all), will help support construction of the new classroom building that will include facilities for the humanities program.

The proposal was prepared by Bob Schmoll '83, assistant to the president, and members of the faculty and staff.

"This challenge grant will allow us to construct superior facilities to support our unique humanities and general education program," President Christopherson said in announcing the grant.

"It is but one more affirmation by outside educational reviewers and agencies that Dana is a leader in liberal arts education with a special strength in the humanities."

Gifts received between December 1, 1989, and July 31, 1994, can be used toward the challenge. Donors must restrict them for the replacement of Old Main. A signed letter of intent and acknowledgement should accompany each gift of \$1,000 or more. Gifts under \$1,000 must be accompanied by a challenge pledge card signed by the donor.

Additional information on the kinds of gifts that can apply to the challenge, as well as sample letters and pledge cards, are available from Dana's Development Office. »

#### **President named to state's NEFA**

President Christopherson has been appointed to the Board for the Nebraska Educational Facilities Authority (NEFA). NEFA is a state-wide, quasi-public corporation authorized to issue tax-exempt revenue bonds for higher education projects.

Then-Governor Kay Orr appointed Christopherson in December; Governor Ben Nelson continued the appointment. Persons with qualifications in higher education, finance and building development are selected as board members. »

## **From the President**

**A**n opportunity of a lifetime." These words have been used again and again by friends to describe our recent visit to the White House. On February 20 Anne and I were invited by President and Mrs. Bush to the official welcoming ceremony and state dinner for Her Majesty Queen Margrethe II and His Highness Prince Henrik of Denmark.

It was a thrill to be included with 130 of America's most famous from government, business, entertainment, the arts and sports. Few would not count it a privilege to meet the Danish Royalty, President and Mrs. Bush, Walter Cronkite, Colin Powell, Secretary of State Baker, pitcher Nolan Ryan, quarterback Jeff Hostetler, and countless more whose names and faces are often in the news.

The greatest thrill of all for me was that my wife, Anne, was selected to dine at the table of President Bush and the Queen. Spouses were separated and I was seated with the U.S. Ambassador to Denmark, Keith Brown; Mrs. (Nancy) Sununu; the Chairman of 3M Company, Allen Jacobson; and several other prominent persons, but it pleased me greatly that the first lady of Dana was selected to dine with the Queen and President Bush. Second, I was grateful that the White House recognized Dana as a fitting representative of Danes in America and that we were honored by being the only college president and first lady invited. President Bush remarked that Denmark enjoys the oldest uninterrupted diplomatic relationship with the United States of any nation and that the love affair between Denmark and America continues.

I was reminded that we have a great heritage to uphold. Her Majesty Queen Margrethe II spoke fondly of her visit to Dana in 1976 when she was awarded an honorary doctorate at Commencement. She asked to be remembered to "the entire Dana community." When I introduced myself to President Bush he was quick to acknowledge, "I know about Dana College." Whether these were only gracious gestures, it was a joy to know that "for a minute" Dana was recognized. Dana alumnus and Regent Senator Paul Simon of Illinois and his wife Jeanne hosted Anne and me for lunch at the U.S. Senate Dining Room and showed us where the Queen would be received that same afternoon by the Senate Foreign Relations Committee on which Paul serves. He made a point of visiting with her about Dana, too, so we were very well represented on this historic visit.

We couldn't help but remember that President and Mrs. Madsen had been invited to Washington during their

term in the Dana presidency and that Dr. Madsen would have been proud that Dana was once more invited. His death this winter brought tears to so many in the Dana family as we remembered the magnificent example of Christian leadership he brought to Dana. He was president during my years at Dana and I loved him dearly. He and Esther have been an inspiration and guide to Anne and me during our brief years here. I pray that his zeal for the Christian dimension of our mission in higher education will never wane or lose focus.

Within two weeks Dana lost two great education visionaries, both Danish Americans, who would have been proud that Dana was recognized with the White House invitation. Two weeks before Dr. Madsen's funeral we gathered for the funeral of Dana's gifted artist and educator, the Rev. F.W. (Bill) Thomsen. He was my counselor and friend, and like so many Dana alumni, he stood for the best in the Dana tradition of teachers who molded Dana into a community where faith and learning exist side by side. They join other Dana greats who have recently passed away: Alice Laaker, longtime campus hostess and dean of women; Lydia Herrmann, professor emerita of business education; Regents Irving F. Jensen of Sioux City and Harold Miller of Council Bluffs and Omaha; and Virginia Korshoj, friend and alumna of Blair. All have died in the last several months, but their legacy lives on in the faculty and staff, Regents, friends, alumni and students who continue to value this place called Dana where faith and learning meet.

When I get disappointed because I cannot yet announce the start of the Old Main replacement classroom and chapel building because we lack the million and a half dollar naming gift that will make it possible for us to begin, I think of the courage of the people like those just mentioned who had to exercise patience again and again during difficult times in our nation and for Dana College. But, through their faithfulness and the love of a gracious God, Dana was blessed with the support of generous friends. And, I am confident that we will continue to be blessed.

Thank God for a rich history of dedicated teachers and leaders who have created and served Dana College. Thank God, too, for a future filled with the promise of lasting peace.

Myrvin F. Christopherson  
President

## COMMENCEMENT WEEKEND

### John Lauritzen to receive honorary doctorate

**J**ohn R. Lauritzen, chairman of the board of First National Bank of Omaha, will receive a doctor of laws degree, honoris causa, at Commencement ceremonies on Sunday, May 19. He will be this year's only recipient of an honorary degree.

Lauritzen also serves as either chairman or president of several other banks and corporations in Iowa and Nebraska, among them the Washington County Bank in Blair and the Burt County Bank in Tekamah.

He is well known in banking. At the age of 29 he became the youngest bank president in the U.S. when he purchased the Emerson State Bank in Iowa. Proceeds came from the sale of his house (\$14,000), plus the sale of 26 acres of land for their future dream house outside of Omaha (\$3,000, which came from a gift to his wife from her grandfather), plus borrowed funds of \$17,000 from a commercial lender. Total cost of this first bank was \$34,000.

This was the start of the Lauritzen Corporation, a large, multi-bank holding company and a principal owner of First National Bank of Omaha, a multi-billion-dollar organization doing business throughout the U.S. As a principal owner, Lauritzen organized many new banks such as First Westside and First Westroads in Omaha, and First National Bank in Elm Creek, Nebraska.

He has also been an innovator of numerous products for the banking industry, including the introduction of "First Charge Card" in 1953. This pioneer effort produced bank credit cards that are now known as Visa and MasterCard. Through its early involvement and significant promotion of credit cards, First National has become one of the dozen largest issuers of Visa and MasterCards in the U.S.

Lauritzen is also a leader in the Omaha community. He is serving or has served on many boards, such as the Hattie B. Monroe Home, the Strategic Air Command, Creighton University, Joslyn Art Museum, the



John R. Lauritzen

Red Cross, the Omaha Community Playhouse, Lions Club, the Omaha Chamber of Commerce, Ducks Unlimited, Nebraska Bankers and other organizations. He has also served as drive chairman for the American Cancer Society and United Appeal.

His philanthropy, recognized throughout Nebraska, has also benefited Dana. Personally, and through his banks, especially First National Bank and the Washington County Bank, Lauritzen has been a generous supporter of both the Centennial Fund and the current ADD program. The theatre in the Madsen Fine Arts Center is named the "Lauritzen Theatre" in tribute to the Lauritzen family.

Lauritzen and his son, Bruce, president of First National Bank of Omaha and the Lauritzen Corporation, have also been named "Great Danes of Dana." This honor recognizes outstanding leaders of Danish descent who have distinguished themselves in their professions. ➤

### Recognition dinner honors seniors, alumni

**N**orman C. Bansen '47 and Peter L. Petersen '62—both outstanding teachers and former student body presidents—are this year's Distinguished Alumni. They will be honored at the college's traditional Recognition Dinner on Saturday, May 18.

The dinner also honors graduating seniors and welcomes them as Dana's newest alumni. The identity of seniors receiving Campus Service Awards will be announced at the dinner.

Parents, friends and alumni are invited to attend. Reservations at \$8 per person can be made through the Alumni Office (402-426-7235). The dinner begins at 6:30 p.m. in the E.C. Hunt Campus Center.

**Norman C. Bansen.** Bansen taught at Dana from 1953-86, when he retired and was named Professor Emeritus of English and Danish. The year before, students made him their "Professor of the Year."



Norman C. Bansen

He now divides his time between Blair and his hometown of Ferndale, California.

Bansen entered Dana as a freshman in 1939. His studies were interrupted by World War II. From 1942-46 he served in the U.S. Army's Medical Administrative Corps in the U.S. and India; promotions took him from private to captain.

After the war he returned to Dana and received his B.A. in 1947. He remained on campus for the next two years as director of public relations and executive secretary of the Alumni Association.

Bansen left Dana for graduate work at the University of Minnesota, receiving his M.A. in English in 1953. He spent the fall semester of 1949 studying at the University of Copenhagen and later did additional graduate work at the University of California, Berkeley, in the summers of 1954-56 and during a sabbatical year, 1960-61.

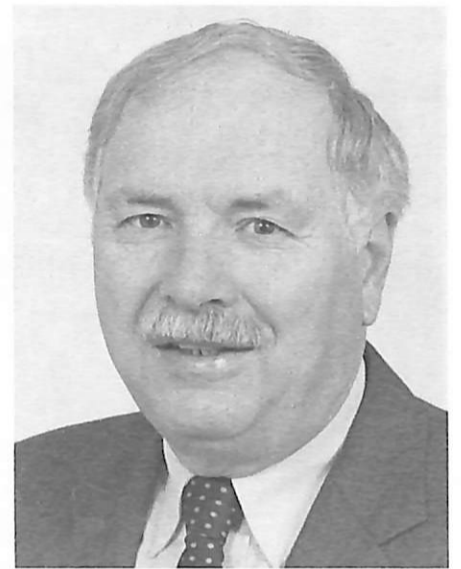
In the spring semester of 1964 Bansen was a visiting professor of Scandinavian literature at the University of California, Berkeley.

He has published articles in Scandinavian Review, The Bridge, and Dansk Nytaar; his translations of Danish poetry have appeared in Midwest Review. He has also presented lectures and papers at the Universities of Nebraska, North Dakota and Washington.

Bansen was president of the Dana Chapter of the American-Scandinavian Foundation from 1954-77 and a member of the board of directors of the Danish Immigrant Museum from 1982-89.

In 1970 King Frederick IX of Denmark named him a Knight of Dannebrog in recognition to his many contributions to the furtherance of Danish culture in the U.S. In 1982 Luther College presented him with a doctor of humanities degree, honoris causa.

Asked about his favorite memories of Dana, Bansen writes, "Freedom of thought and expression is part of the Dana experience for faculty and students alike. There is a friendliness and concern for humanity that is admirable. Both as a student and



Peter L. Petersen

faculty member I have treasured friendships with people from most states and from nations around the world. Dana is a place where all the world meets."

**Peter L. Petersen.** Petersen, a historian, has taught at West Texas State University (WTSU) since 1967. He became a full professor there in 1977.

He received his M.A. in 1963 from the University of South Dakota, and his Ph.D. in 1971 from the University of Iowa.

As the author of "A Place Called Dana," the centennial history of Dana and Trinity Seminary, Petersen knows the college well. Published in 1984, the book has had many favorable reviews.

Petersen has received recognition and awards for his teaching, his publications, and his work in documentary photography and films.

Most recently, in 1990, the Minnie Stevens Piper Foundation named him one of the ten outstanding college professors in Texas.

His students and colleagues at WTSU have also recognized his teaching abilities: in 1988 WTSU's Alumni Association gave him its annual University Excellence Award; in 1985 and 1980 the WTSU student government named him "Faculty Member of the Year"; in 1982 the university administration gave him a Faculty Excellence Award; in 1976, 1982, 1983, 1987, and 1988 the Scribes Chapter of Mortar Board selected him as one of five "Outstanding Faculty Members"; and in 1977 members of the Baptist Student Union voted him "Favorite Professor." He was also the first member of the WTSU faculty to receive a stipend from the special fund established in 1988 to reward excellence in teaching.

Petersen has also written a book titled "The Danes in America." In addition, he has published more than 25 articles and 50 book and film reviews in scholarly journals.

He has also been involved with documentary photography and films. In 1979 he was a consultant for a series

(Continued on page 5)

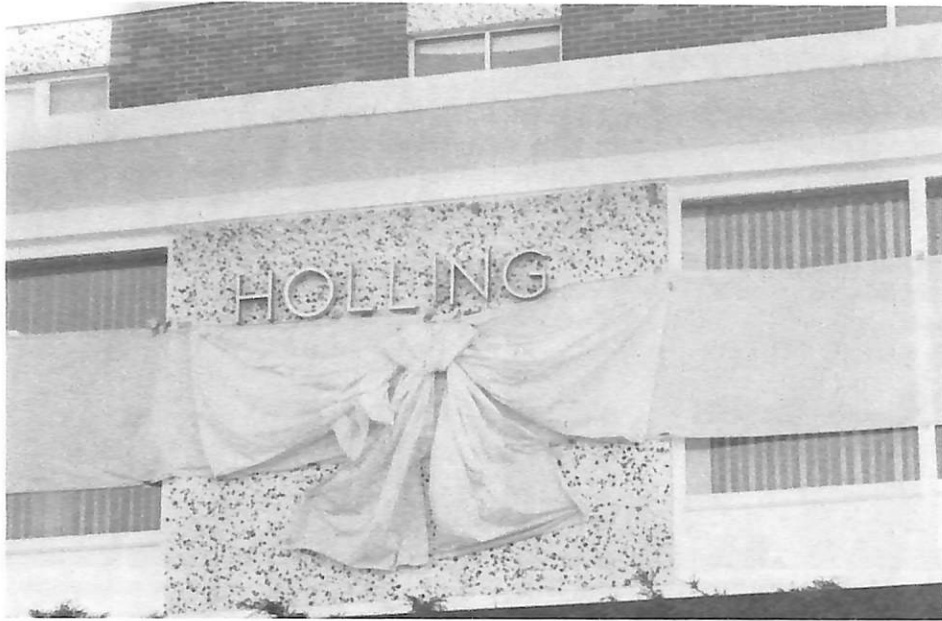
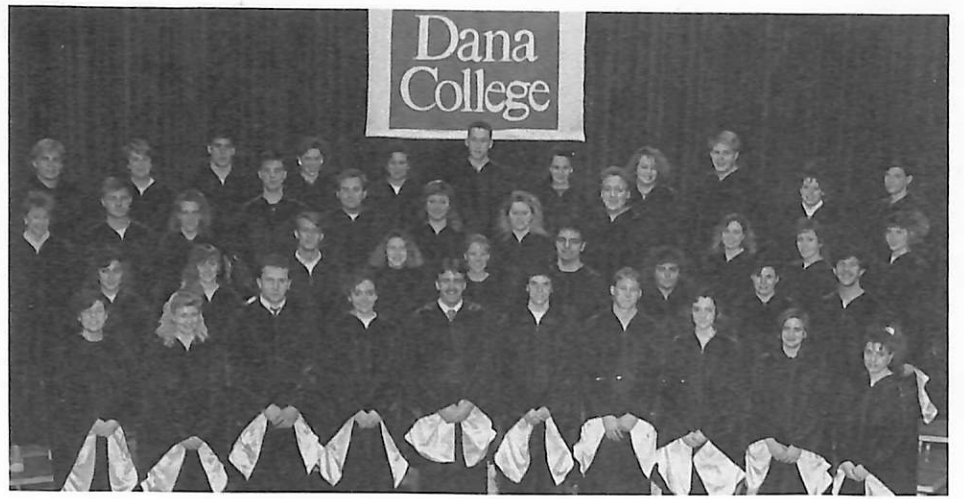
### Schedule

#### Saturday, May 18

Noon Luncheon celebrating the tenth anniversary of the Dana Builders  
6:30 p.m. Recognition Dinner honoring graduating seniors, Campus Service Award recipients, Distinguished Alumni; \$8 per person; please make reservations by May 13 through the Alumni Office

#### Sunday, May 19

10:00 a.m. Baccalaureate service; speaker, the Rev. Linda Walz, Campus Pastor  
1:15 p.m. Commencement



Students living in Holling Hall wanted to show their support for the troops in Operation Desert Storm, so they contributed to the purchase of this large yellow ribbon.

## Operation Desert Storm: Gulf War affects campus, alumni

President Bush's announcement on February 27 that Kuwait had been freed and that a cease-fire was to begin within a few hours was greeted by students, faculty and staff with the kind of joy and relief that comes from having friends and relatives participating in Operation Desert Storm.

Desert Shield was already under way when the academic year opened. Soon after classes started, a campus support and discussion group began meeting over the noon hour on Tuesdays. Prayers were offered at chapel services. And students organized letter-writing sessions and sent banners with messages from the Dana community to military personnel in the Gulf.

One of the recipients was Christopher Nielsen '92, a PFC in an Army supply unit. Another was 1990 graduate Spec. Michael Davenport, a member of the Army's 172nd Transportation Co. Both were called to active duty with their units last fall when Desert Shield started.

More than students were affected by the Gulf War. Business instructor Fran Mallory has a daughter, Judy, who is a first lieutenant in an Army medical support group sent to the Middle East. And Barbara Moore, administrative assistant in Student Services, has a son, Aaron, who is a Marine corporal in the Persian Gulf.

The college has also learned that three alumni—Marine Capt. Robert Leach '77, Navy Lt. Dan Kalal '85 and Air Force Capt. Tom Kammerer '83—are pilots who flew sorties during Operation Desert Storm. Kammerer flies a Wild Weasel.

And Mark Hensley, the husband of Cherie (Esbeck '78), is stationed at a Navy hospital in the Gulf.

This list of alumni participants is obviously incomplete. If readers know of others, please let Review editor Ann George know about them. They'll be mentioned in the next issue. »

## ADDing it up: Commitment, loyalty important to success

By March 1, the cash portion of "ADD" (Accelerating Dana's Development), the college's capital campaign, had received over \$9.25 million in gifts and pledges.

Director of Development Paul Ditlevson thanks contributors for their support and participation in Dana's future. "My staff members and I continue to be impressed by the degree of commitment to Dana we find when we meet with alumni and friends," he said. "It's this kind of interest and loyalty that will ensure ADD's success."

The results of ADD already apparent on campus include the art addition to the Madsen Fine Arts Center, landscaping, new lighting throughout the campus for safety, and improved parking lots and signage. Other results not so apparent, but essential, include major roof repairs and residence hall improvements.

All of these were included in Phase I of the drive. Phase II focuses on construction of a building to replace classrooms and faculty offices lost when Old Main burned. The building will also feature a chapel and facilities for the humanities and communication programs.

At their fall meeting members of the Board of Regents directed the administration to call for bids and to begin construction when gifts and pledges had reached 75 percent of the projected cost of \$4.7 million. Ditlevson said that ADD is within \$1.5 million of meeting those conditions.

Dinner events for ADD are being held this semester in Norfolk, Nebraska, and Washington, D.C. Other alumni and friends are being contacted through personal visits and telephone calls. »

## Deferred gifts grow

As the new year began, President Christopherson announced that the total of deferred gift expectancies for the period of the ADD campaign had reached \$10,021,429, greatly exceeding the \$7,500,000 goal set at the beginning of ADD.

Christopherson pointed out that most of these dollars are slated for future endowment use as they are received through the years ahead. These deferred gifts will come through wills, trusts, gift annuities, life insurance policies and other planned gifts.

Christopherson added, "We still have set no new goal for estate gifts, because our need calls for us to simply do all that we can do!

"Schools like Dana, with no tax support and very limited subsidy from the church, are under immense pressure both to constantly increase gift income and to greatly raise the size of the endowment fund. The present value of our endowment fund is only about \$2.2 million. We need to

increase that to \$20 million as rapidly as possible. This will happen through estate gifts and cash donations."

He concluded, "We need everyone's help and involvement to do that! Both large and small estate gifts are welcome. I would hope that all of Dana's alumni and friends would designate a planned gift for Dana College."

The Dana College Builders is the organization formed to honor those who have remembered Dana in their estate plans.

The Rev. John Beck '50, director of planned giving, expects that the number of Dana College Builders will continue to increase and that expectancies will continue to grow substantially.

Alumni and friends of Dana who have included Dana in estate plans, but have not informed the college, or persons interested in doing so, are urged to contact Beck at (402) 426-7234, or to write to the Office of Planned Giving at Dana. »

## New building will have Commemorative Wall, naming opportunities

We invite alumni and friends who receive this issue of the Review through the mails to study a special enclosure titled "An Invitation to Remembrance."

It announces plans for a Commemorative Wall in the new chapel-classroom-faculty office building that will list those who have given \$5,000 or more to the ADD campaign.

It also announces opportunities to name a part of the building in honor of a family member or members. These honorees will also be listed on the Commemorative Wall.

Members of our Development staff are already discussing naming opportunities with several families that have Dana roots. If you haven't been contacted and would like to learn more about these plans, please write or call Paul Ditlevson, director of development, or any other Development Office staff member, at (402) 426-7333. »

## Dana Choir to sing in Nebraska and Colorado

From May 20-26 members of the Dana College Choir, under the direction of Dr. Richard Palmer, will be on tour in Nebraska and Colorado. They will give the following evening concerts:

May 20—Lincoln at Our Saviour's Lutheran Church  
May 21—Beatrice at St. John Lutheran  
May 22—Deshler at Peace Lutheran  
May 23—McCook at Our Savior's Lutheran  
May 24—Loveland at Zion Lutheran

On Sunday morning, May 26, they will sing in Denver at Advent Lutheran.

## CAMPUS NOTES

**Dr. Kathleen O'Connor**, vice president for academic affairs, has been selected for training and service as a consultant-evaluator for the North Central Association. After being trained, she will be assigned once or twice a year as a member of accreditation teams doing site visits for other North Central Association colleges and universities.

On February 21 Dr. O'Connor spoke on "Creating Strength Through Diversity" at a Conference on Cultural Diversity at the University of Nebraska-Lincoln. Namibian student Helen Ochs '91, residence hall director Darryl Shelton and French and Spanish instructor Diana Brown also represented Dana at the conference.

Two January Interim classes took students and other interested participants out of the U.S. One group, led by French and Spanish instructor **Diana Brown** and **Muriel Neve**, visited Panama to learn what it means to live at a crossroads from north to south, from east to west, and from the first world to the third. The other group, led by **Jim Olsen '62**, humanities director and art professor, studied the classical world in Rome, Florence, Ravenna and Venice, Italy; Dubrovnik and Split, Yugoslavia; Athens, Delphi, Epidaurus and Mycenae, Greece; and Istanbul, Turkey.

**Jeanmarie Nielsen '78**, vocal music and humanities instructor, has been invited to present her recital of 20th century American art songs at Nebraska Wesleyan University and Peru State, Doane, Union and Midland Colleges. Her first recital was on February 17 at Doane.

**Prof. Arvin Hernes**, associate professor of physics, and **Bob Schmoll '83**, assistant to the president and director of computer services and information management, have had their paper, "A L.A.N. for Administrative Purposes," accepted for presentation at the Small College Computer Symposium in April in Minnesota.

**Lori Moseman** is serving as a part-time education instructor while Dr. Dorothy Olson is on sabbatical during Interim and the second semester. A graduate of Midland Lutheran College, Moseman received her master's degree from the University of Nebraska at Omaha. She is working on her Ed.D. at the University of Nebraska-Lincoln. She has taught at Kearney State College and serves as coordinator of the U.S. Office of Education Grant "Project Parents in Partnership."

A review by **Dr. John Mark Nielsen '73** of Jean and Edith Matteson's book, "Blossoms of the Prairie: The History of Danish Lutheran Churches in Nebraska," appears in the Fall/Winter issue of the Journal of American Ethnic History, published by the Immigration History Society. Nielsen is assistant professor of English at Dana.

Twenty-two Dana juniors and seniors have been named to this year's edition of "Who's Who Among Students in American Universities and Colleges." They are juniors Jennifer Barabas (Ft. Calhoun, NE), Claudia Brown (Omaha), Karen Clements (Blair), Sean Dalton (Lincoln), Scott Gray (Omaha), Joel Morgan (Hay Springs, NE), Melissa Reinikainen (Marshfield, WI), Debra Schramper (Exira, IA) and Peter Svendgard (Blair), and seniors Timothy Barner (Blair), Cami Christensen (Harlan, IA), Nancy Dierks (Blair), Audrey Gowen (Beatrice, NE), Julie Howland (Omaha), Christa Johnson (Little Falls, MN), Deborah Keller (Wilber, NE), Gregory McBride (Wheat Ridge, CO), Janet Mitchell (Dunlap, IA), Julie Mitchell (Dunlap, IA), Thomas Morrow (Longmont, CO), Mark Rothfusz (Atlantic, IA) and Kristin Wass (Loveland, CO).

Second semester exhibits in **Parnassus**, the center of Dana's Humanities Program, include "Discovering the Abstract: Prints from the Permanent Collection" (January 28-March 1), "The Photograph: Documents of Family Heritage" (March 3-22) and "Eternal Horizon: Landscapes from the Sheldon Memorial Art Gallery" (April 2-26). The concluding exhibit for the semester will feature the work of Dana art students. That show opens April 29 and closes May 20.

**Dr. Richard Palmer**, head of the Department of Music, has been elected to a two-year term as president of the Nebraska Choral Directors' Association.

On December 6 Palmer conducted a Choral Clinic at O'Neill (NE) High School. He led over 150 junior and senior high school students in the day's workshop, which focused on vocal music fundamentals.

On February 4 Palmer was the guest conductor for the 31st annual Northwest Iowa Choral Festival at Dordt College.

**Dr. Ahmad Al-Absy**, associate professor of biology, presented a paper titled "Analysis of Factors That Cause Curvilinearity in the Body-scale Relationship of Fish" at the December 3-5 Midwest Fish and Wildlife Conference in St. Paul, Minnesota.

On November 14 communication instructor **Mike Moriarty** gave an invited presentation on a Civil War panel entitled "Rice C. Bull: A Soldier's Experience at Chancellorsville" for the Omaha Genealogical Society. Civil War reenacting is one of Moriarty's hobbies.

A "Careers in Business Conference" sponsored by the **Admissions Office** brought 70 high school students, teachers, and parents to Dana on November 15. The conference gave students insights into international business customs and ethics. It also gave them an opportunity to talk to members of the Dana faculty about career opportunities in such fields as accounting and economics.



**Liberal Arts Reading Program (LARP)** selections for the second semester include Harriet Beecher Stowe's "Uncle Tom's Cabin," Martin Luther King's "Letter from Birmingham Jail," Sophus Keith Winther's "Take All to Nebraska" and Louise Erdrich's "Love Medicine."

The **Education Department** sponsored a TEAMS (Teaching Enhancement Aimed at Math and Science) Institute workshop on the campus on November 16 for middle school and junior high school math and science teachers.

**Dr. Milt Heinrich**, professor of art, recently served on the Nebraska Arts Council Grant Review Committee.

**Dr. Dale Simmons** and **Dr. Delvin Hutton**, both members of the religion faculty, attended the annual meeting of the American Academy of Religion/Society of Biblical Literature in New Orleans November 17-20.

**Fran Mallory**, instructor in business administration, presented a paper titled "Why Rural Hospitals Close: A Tale of Five Cities" at a November 8 meeting of the Nebraska Economics and Business Association in Columbus, Nebraska. She co-authored the paper with Dr. Keith W. Turner of the University of Nebraska at Omaha.

On November 12-13 **Shirley McAllister '69**, assistant professor of education and psychology, attended the sixth annual Learning Disorders Conference at the Harvard Graduate School of Education in Cambridge, Massachusetts.

**Jan Potter**, assistant professor of social work, has been elected to the Executive Board of the Nebraska Chapter of the National Association of Social Workers. She also serves as secretary.

On February 6 Potter gave a talk on "Emotional Needs of Children and Families" at Luther Memorial Lutheran Church in Omaha. ❧

*Art students and faculty members are enjoying their new home—the art addition to the Madsen Fine Arts Center dedicated at Homecoming. Thirty students—16 of them freshmen—are majoring in art, commercial art or art education. Many students not majoring in art also take art and photography classes. This photo shows the painting studio.*

*(Distinguished Alumni, from page 3)* on Depression era photography broadcast on the NBC-TV "Today Show." He was also a consultant for the prize-winning documentary, "Photographer: Russell Lee"; for an eight-hour television series about Amarillo; and for a multimedia production about the Texas Panhandle. He also appears on screen and was a consulting historian for the Texas Parks Board film, "Sentimental Journey: The CCC in Texas," which was released in 1987.

Petersen has also been active in his church and community. He was congregational president of St. Paul Lutheran Church and University Center in Canyon from 1986-90 and is the Lutheran representative to the board of the United Campus Ministry at WTSU. He served as chair of the board of directors of the Canyon Meals on Wheels from 1982-88 and was president of the "Friends" of the University Library in 1989-90.

He is also a member of the board of directors of the Danish Immigrant Museum and of the Panhandle-Plains Historical Society. In addition, he serves on the editorial boards of The Annals of Iowa and The Bridge.

Petersen notes that he was inducted into the Nebraska Beta Chapter of Alpha Chi when he was a student at Dana. His involvement with that national honor scholarship society continues: he has been the sponsor of the Texas Zeta Chapter since 1980 and has also served as vice president and program chair and as president of Region I (which includes New Mexico and most of Texas) of Alpha Chi.

About his Dana memories, he writes: "I have so many that it is hard to select just one. But above all, I think, is meeting and courting Shirley Thompson, my wife for the past 28 years. Even though it is more than 30 years ago, I can still vividly recall our first encounter in the cafeteria line outside what is now Argo Hall."

He and Shirley '63 have two sons, Eric Thomas and Brant Allen. ❧

## Music instructor plays in Nebraska Brass

Michael Anderson, director of instrumental music at Dana, is a member of Nebraska Brass, an ensemble of five players that is becoming well known in the area.

The group, which started three years ago, is the only professional brass ensemble in Nebraska that offers a regular subscription concert series; it gives six concerts every year in Omaha and Lincoln and also plays

Christmas concerts in both cities.

Omaha World-Herald staff writer Kyle MacMillan wrote about Nebraska Brass in a story headlined "Nebraska Brass Makes Joyful Noise" that appeared on the front page of the Entertainment section of the Sunday, December 16, edition.

In the article Anderson told MacMillan, "Eventually we want to do some recording, we want to be able to commission original works, maybe enter some nationwide contests and maybe do touring a little wider than the Nebraska area."

The ensemble has been selected for the Nebraska Arts Council's touring program for 1991-92. Eight concerts have been booked across the state.

Of the four other members of Nebraska Brass, three play in the Strategic Air Command Band and the fourth teaches instrumental music at Union College and Nebraska Wesleyan University.

Those interested in having the Nebraska Brass perform in their communities can write to Anderson at Dana or call him at (402) 426-7314. »

■ Robert Freetz, U.S. Consul to Denmark, spent December 6 on campus. He met with students interested in taking the foreign service exam and gave talks on "U.S. and Scandinavian Relations" and "Europe—1992: Changing Political Relations and What They May Mean for the U.S."

■ "Writers Project," a new campus organization, sponsored a **Writers Conference** on February 14 and 15 that brought seven outstanding poets—one Irishman and six Americans—to Dana to read and talk about their work. The Irishman, Desmond Egon, has been called one of Ireland's greatest modern poets. The other poets were Ron Block, Robert Coleman, Celia Daniels, Jan Huesgen, Cynthia Pederson and Michael Sundermeier.

■ The speaker for this year's **Staley Foundation Distinguished Christian Scholar Lecture Series** was Dr. Patricia Beattie Jung, visiting associate professor of social ethics at Wartburg Theological Seminary. The three-lecture series was held February 25-28. Dr. Jung spoke on ways to determine whether a war is justified, on homosexuality and on heterosexism. »

## Elderhostels planned

Alumni, grandparents of students and other friends of the college are invited to participate in Dana's Elderhostel program.

The next two Elderhostels are set for June 2-8 and November 17-23.

The June session is offering the following non-credit classes:

■ **Jerusalem: City of Abraham's Children**, taught by Dr. Delvin Hutton. Hutton says that Jerusalem, traditionally known as "City of Peace," "is as much an idea as a place." Through lectures and slide presentations, he will explore the significance of Jerusalem for Jews, Christians and Moslems.

■ **A Piece of the Action**, taught by Jeanmarie Nielsen '78. Prof. Nielsen has planned an experimental course that will focus on the major aspects of musical theatre, song and dance, staging and make-up. "No previous stage experience is required!" she says.

■ **Sherlock Holmes—Fiction and Film**, taught by Drs. Ben and Kathy Collins. Participants will compare selected Sherlock Holmes stories and films based on those stories to determine whether the filmmakers have been faithful to the works. There will be a brief background lecture and much discussion, according to this husband-wife team.

Dr. Ruth Sather, Elderhostel director at Dana, reports that the programs continue to attract enthusiastic participants from across the country.

For further information on the June and November Elderhostels, or to have your name added to the mailing list for future Elderhostels, write to Dr. Sather at Dana. »

## An invitation to Mayfest

Mayfest is on Saturday, May 4, and alumni, parents and friends are invited to enjoy the festival setting.

Four groups—the Dana-Midland Jazz Ensemble, the Nebraska Jazz Orchestra, a high school band and a Caribbean jazz group—will play on the Old Main patio.

"Bring a blanket and enjoy the day," student organizers say.

Other entertainment includes a juggler, a mime, a magician and sketch and silhouette artists. Student artists will also have an outdoor exhibit.

The free art and music activities begin at 12 noon and end at 5 p.m. Sponsors are the Student Activities Board (SAB) and Dana's Music Department.

A pig roast follows from 5 to 6 p.m., with the pigs donated by SAB and the Alumni Council. The roast is free to students; there will be a charge for others. »

## Speakers offer variety, challenge

The academic year always brings a variety of speakers to the campus. Here are five highlights of the past several months:

■ **"Modern Medical Procedures and Ethical Implications,"** held on November 10, was a Dana-sponsored symposium that focused on how scientific technology affects modern medical advances and ethical issues. Three alumni were among the participants: Dr. Rachael Neve '74, associate professor of psychobiology at the University of California at Irvine, spoke on "Genetic Research: Where Have We Been and Where Are We Going?" Dr. Paul Panum '67, medical director of the Eugene (Oregon) Clinic and a lecturer on biomedical ethics and the law, spoke on "How Biomedical Technology Meets Human Values." The Rev. Kenneth Jensen '62, chaplain at Blair's Good Shepherd Home, was a panelist.

■ On November 12-13 Fred Baltz '74, pastor of St. Matthew Lutheran Church in Galena, Illinois, gave a lecture series on **"The Mystery and Message of the Beloved Disciple: An Encounter with the Fourth Gospel."**



Eighty student scholars, accompanied by their parents, came from high schools in seven states to participate in Dana's Presidential Scholarship Competition on Saturday, February 9. Sixteen seniors also auditioned for the Lauritz Melchior Memorial Voice Competition the same day. A Presidential Scholarship make-up day the following Thursday for those who couldn't participate Saturday brought an additional 16 seniors and their parents to the campus.

## SPORTS

### Women's basketball: Season score is 12-14

With 12 wins and 14 losses, the Lady Vikings played their second best season ever, Coach Kathy Foley reports. Their conference record was 2-8.

Junior Katherine Corbitt of Bertrand, Nebraska, won All-Conference and All-District honors, and senior Kim Farmer of Omaha made Honorable Mention on the All-Conference roster.

Both were record-setters. Corbitt tied the national NAIA record for three-point field goals in a game; she also tied Dana's record for points in a game. Farmer broke the school record for steals in a career.

With only two players graduating this spring—Farmer and Lori McMullen of Dunning, Nebraska—Foley says that although the team needs height, "we have a strong base for next year." »

### Men's basketball: Season score is 3-27

The Vikings closed a disappointing basketball season with three wins and 27 losses overall and with no wins and ten losses in conference play.

Coach Will Baird reports that Jeff Miller, a senior from Aurora, Illinois, broke the individual game record for most assists with 13 against Bellevue College in January 17.

Two players won honors. Patrick Sanders, a junior who is also from Aurora, was named All-Conference. He also received All-District Honorable Mention. Dave Samson, a senior from Valley, Nebraska, won All-Conference Honorable Mention. »

### Wrestlers win 12-7; five go to Nationals

Dana's wrestling team completed the year with a 12-7 dual season record. The team was ranked 20th in the NAIA wrestling poll taken before the NAIA Wrestling Nationals.

Coach Ron Beaman '74 said he was pleased with the team's progress during the year. The season was highlighted when the team beat NCAA Division I teams Chicago State and Valparaiso University, and NCAA Division II Northeast Missouri State.

Dana had four individual champions at the Tri-State Conference meet. The first-place medal winners were: 118#—Cory Peatrowsky '94 (West Point, NE), 167# Phil Warner '93 (Omaha), 177# Steve Mathis '92 (Leavenworth, KS) and HWT Jered Foggin '94 (Washington, WV).

Other conference placers were: third—126# Mike Ewalt '94 (Louisburg,

KS), second—134# Scott Stickler '94 (Clarinda, IA), second—142# Marc Ferrin '91 (Wichita, KS), third—150# Derek Spear '92 (Hartland, MN), fourth—158# John Rhodes '94 (Weeping Water, NE) and second—190# Dave Lewis '94 (Cosmos, MN).

This year five wrestlers, the most ever for Dana, qualified for the NAIA Wrestling Nationals held at the beginning of March in Butte, Montana.

They qualified by placing in a qualifying tournament or by winning at least two-thirds of their season matches. Wrestlers representing Dana at Nationals were 142# Troy Greder '93 (Fremont, NE) and Stickler, Warner, Mathis and Foggin.

Beaman is looking forward to an even stronger season next year. The team will lose only one senior, Marc Ferrin, and will return a strong core of freshmen and sophomores, he said. »

### Four athletes named Academic All-Americans

Four Vikings—three football players and a wrestler—have been named NAIA Division II Academic All-Americans. Division II includes more than 250 schools across the country.

The three scholar-athletes on the football team are center Timothy Barner '91, a mathematics major from Blair; running back Sean Dalton '92, a biology and Spanish major from Lincoln; and offensive guard Joseph Ellis '92, a marketing and business communication major from Omaha.

Dana's scholar-athlete wrestler is Steve Mathis '92, an accounting and finance major from Leavenworth, Kansas. He had the highest GPA of the four NAIA Division II wrestlers who qualified this year as Academic All-Americans. Selections were announced at the 1991 Wrestling Nationals in Butte, Montana.

To be eligible for Academic All-American honors, a student must have a grade point average of at least 3.5 out of a possible 4, and be a junior or senior. In addition, to receive the honor a wrestler must qualify for Nationals during his wrestling career, and a football player must be a team starter and have successfully completed at least one year at the nominating institution. »

### Football players make All-Conference roster

Four football players have been named to the NIAC's All-Conference First Team. Lineman Kyle Knapp '91 (Madison, NE) and wide receiver Corey Mitchell '92 (Indianapolis, IN) won places on the offensive team, and punter Troy Buss '91 (Logan, IA) and lineman Russ Wilcox '91 (Norfolk, NE) represented Dana on the defensive team.

Knapp played consistently well along the offensive line throughout the season. Mitchell led the Vikings with 53 catches for 667 yards and four touchdowns.

Buss, who played this year in the offensive backfield, punted 34 times for 1,310 yards and a 38.5 average. Several NFL teams have asked for films of Buss in action. Wilcox tied with Mike Allen '93 (Miami, FL) for 72 unassisted tackles, a team high. He also had 42 assisted tackles.

Six Vikings made the NIAC's All-Conference Second Team: offensive players James Anderson '91 (Omaha), Ryan Barr '94 (Clarinda, IA), Sean Dalton '92 (Lincoln, NE) and Brent Leefer '93 (Omaha), and defensive players Allen and Joe Musgrow '93 (Kansas City, MO).

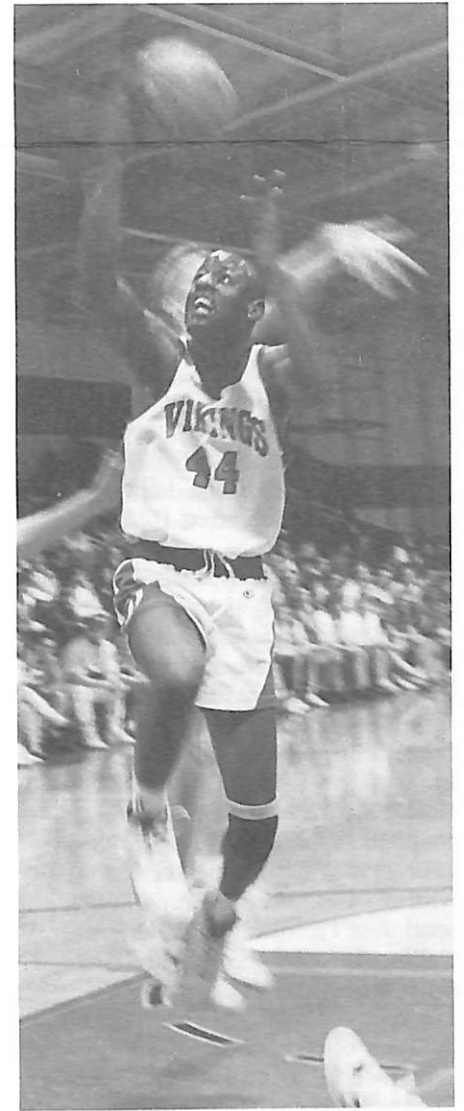
Eight more received NIAC Honorable Mention: Tim Barner '91 (Blair), Joe Ellis '92 (Omaha), Jeremy Hill '92 (Kanawha, IA), Kurt James '91 (El Cajon, CA), Adam Lippincott '93 (Blair), Victor Lyon '91 (Madison, NE), Mike Maxwell '91 (Beloit, KS), and Bruce Thomas '92 (Lake Park, GA). »

### Former Vikings honored

On January 4, former Vikings Marty Rogers '85 and Harold McKercher '52 were among the first inductees named to the Tri-Center (IA) High School Hall of Fame. Tri-Center is attended by students from Neola, Minden and Persia.

As Tri-Center basketball coach from 1959 to 1967, McKercher and his teams compiled 104 wins and 58 losses. McKercher continues to teach at Tri-Center.

Rogers, now in his second season as head coach of Blair's Lady Bears, graduated from Tri-Center in 1981. He is the seventh highest basketball career scorer in the school's history and was named Western Iowa All-Conference his senior year. His Blair team won Nebraska's Class B championship last year and played in the state tournament again this February. »



**Fast action:** Lady Vikings Jennifer Edelman (#24) and Kim Farmer (#10) and Viking Ed (Terry) Breckenridge give spectators some exciting play.

## Campus mourns deaths of C.C. Madsen, F.W. Thomsen, Alice Laaker

President Emeritus C. Clifford Madsen, Professor Emeritus of Art F.W. Thomsen, and Campus Hostess Emerita Alice Laaker have been respected and loved by generations of Danians. And all three, in their own unique ways, have had a profound influence on students they taught, worked with, or counseled.

For these reasons, sorrow over their recent deaths has been mixed with a celebration of their long and rich lives.

### C. Clifford Madsen

Dr. Madsen died in Blair on January 25 after a period of failing health. He was 82.

During his 16 years as president, from 1956-71, Dana received full accreditation by the North Central Association, experienced its highest enrollment and completed an ambitious program of campus expansion which saw ten buildings and more than 100 acres added to the campus.

In 1986 he and his wife, Esther, were recognized for their lifetime of service to the church and Dana when the college's new Madsen Fine Arts Center was named in their honor.

Born in Luck, Wisconsin, Dr. Madsen came to Dana as a student in 1927 and earned his B.A. from the University of Minnesota in 1931. He received his B.D. from Trinity Seminary in 1934 and his doctor of theology degree from Central Baptist Theological Seminary in 1949. He did additional graduate work at Garrett Biblical Institute.

He married Esther Johnson, a Dana graduate, in 1934.

Dr. Madsen was ordained into the ministry of the former United Evangelical Lutheran Church and served as pastor of Our Savior Lutheran Church (now Westwood Lutheran) in Kansas City, Kansas, from 1934-42, when he became a chaplain in the U.S. Navy, serving until 1946. His wartime service was with the U.S. Marine Corps in the southwest Pacific and southern California. After the war he remained active as a naval reserve officer, ashore and afloat, until he retired with the rank of captain.

In 1946 he returned to Dana and Trinity to teach Christianity and practical theology.

In 1956 he was elected the 11th president of Dana College and served in that position until he retired in 1971. After retirement he and Esther remained active members of the Dana community.



C. Clifford Madsen

Dr. Madsen received many honors, among them the Cross of the Knight Order of Dannebrog, conferred by King Frederik IX of Denmark, an honorary doctor of divinity degree by Midland College and the distinction of being named the first and only president emeritus by the Dana Board of Regents.

In 1972 he was named a Distinguished Alumnus of Dana College.

On January 28, a few days after his funeral, the Nebraska Legislature adopted a resolution that paid tribute to his service to Dana and higher education. The resolution was introduced by Senator Bud Robinson, a 1950 Dana graduate, and by Senator Lowell Johnson.

Dr. Madsen's survivors include his wife, who lives in Blair at 805 N. 22nd, Apt. 2F; daughter Carole Dickson '62 and son Lowell '61; brothers Lowell '35 and Lester and sisters Violet Hansen and Laura Sumpter.

The family has asked that memorials be designated for Dana's Madsen Grant-in-Aid Endowed Scholarship Fund, which will assist students who are preparing for Christian social work and who plan to graduate from Dana.

### F.W. "Bill" Thomsen

Prof. Thomsen, 84, died on January 6, Epiphany Sunday, at his home in Blair.

In recognition of his 35 years as an art teacher at Dana, the college named the Thomsen Gallery, a part of the new art addition, in his honor at Homecoming last fall.

Prof. Thomsen first came to Dana in 1935 as a graduate of the Cleveland Art Institute. He taught art here for two years.

He received his B.A. from St. Olaf College in 1942 and resumed teaching art at Dana that fall when he returned to the campus to attend Trinity Seminary. After receiving his B.D. in 1945, he became pastor of Bethesda Lutheran Church at Moorhead, Iowa,



F. W. "Bill" Thomsen

which he served until 1955. During those years he continued to teach art, driving to the campus several times a week.

In 1955 he became a fulltime member of the faculty; he also served as dean of men in the late '50s and early '60s. He received his Master of Fine Arts degree in 1968.

Prof. Thomsen was named Professor Emeritus of Art when he retired in 1975. He and his wife, Orpa, continued to participate in campus activities.

He was named a Distinguished Alumnus of Dana College in 1978.

Over the years Prof. Thomsen became well known for his mosaics that grace the interior and exterior walls of churches, hospitals and other institutions throughout the Midwest. One of his mosaics is on the college's C.A. Dana Hall of Science. Among his other notable works are "The Morning Star," a mosaic mural for the Good Samaritan Society in Sioux Falls, South Dakota, and "The Good Shepherd" mosaic and stained glass window, "The Light of the World," at St. Luke's Medical Center in Sioux City, Iowa.

He also worked with oils and pastels, and most recently developed religious symbols based on the book "Black Elk Speaks," by Dr. John G. Neihardt. Prof. Thomsen's last major work is the Tower of the Winds in Black Elk-Neihardt Park west of the Dana campus. This concept grew out of many meetings with Neihardt, the late poet laureate of Nebraska.

His survivors include his wife, Orpa, of 2966 College Drive, Blair; sons John '68 and Paul '65; and brother Harry '26 and sister Margaret Mortensen.

Gifts in memory of Prof. Thomsen have been designated for the Thomsen Gallery.



Alice Laaker

### Alice Laaker

The fall Review announced the death of Mrs. Laaker, former dean of women and campus hostess, on November 13, and promised additional information in the next issue.

Mrs. Laaker became dean of women at Dana in 1961, but even before that she and her husband, Allen, had befriended Dana students when they gave programs at the Crowell Home, where she and Allen were superintendents.

When the Laakers moved to the campus, they lived in the apartment in Mickelson Hall and were houseparents to hundreds of Dana students. After Allen died in 1972, Alice became resident hostess in Dana's Elk Horn Hall Conference-Retreat Center. When she retired in 1985, she was named "Campus Hostess Emerita." Even after retirement, however, she continued to help with many campus events.

She was a friend and confidant to many students, including those from other countries. Michi Enya '84 of Tokyo, on learning of Alice's death, wrote, "I am very, very sad and sorry. I loved Mama Laaker very much."

The Laakers' contributions to campus life were recognized several years ago when the green room behind the stage in the new Madsen Fine Arts Center was named the Laaker Room.

Alice's survivors include daughter Sandra Risser and son David.

Memorials given to Dana have been designated for the Alice Laaker Scholarship Fund. »

## Three Blair residents are also mourned

Members of the Dana community mourned the deaths this winter of Blair residents Virginia Korshoj, Marcus Beck and Walter Huber. Two were alumni and the other a former faculty member. All had close and enduring ties to the college.

### Marcus Beck

Marcus Beck '21 died on December 30 in Blair. He was the grandson of Marcus Beck, a founder of Trinity Seminary and treasurer of the first Board of Trustees. Over the years Mr. Beck served as president of the Alumni Association, as co-chair of the drive that raised funds to build Alumni Memorial Auditorium and as a Dana Trustee. In the mid-1920s he taught at Dana as a part-time instructor of commercial subjects. Survivors include sons John '50, Dana's director of church relations and planned giving, and Marcus '45 of Columbia, Missouri; and grandchildren John '76, Eric '82 and Barbara Medina '77. He was preceded in death by his wife, Agnes (Lund '23), and daughter Patty (Beck '56) Salchow.

### Virginia Korshoj

Virginia Korshoj '59 died on January 29 in Blair. She was a former member of the Dana Alumni Council, and she and her late husband, Simon, were good friends of Dana. Simon Korshoj owned Korshoj Construction Company, and that firm and its successors have been the contractors for all construction on campus since the late 1950s.

### Walter Huber

Walter Huber, who taught at Dana in 1945-46, died on February 25 in Blair. A lawyer, he became District Court Judge of the Sixth Judicial District of Nebraska in 1972. As an adult he worked with the Boy Scouts and received the Silver Beaver Scout Award from the Mid-America Council for his many contributions. He was also a member of the executive board of the Nebraska State Historical society from 1981-90 and was chairman of the board and society for two of those years. Survivors include his wife, Anna '49, of Blair. »

## Prof. emerita's estate helps endowment grow

Dana has received a significant contribution to its endowment fund from the estate of Lydia Herrmann, professor emerita of business education, who died on July 16, 1990, in Blair.

Miss Herrmann, who taught at Dana from 1946-69, will be remembered by her former students as a tiny woman with an indomitable spirit.

Paul Ditlevson, director of development, called the gift "a fine representation of her love for Dana College." »

## Ordinations are Dana family affairs

The recent ordinations of two alumni, Kathy Gerking '82 and Milton Jensen '58, were attended by many family members and friends with Dana connections.

### Kathy Gerking

Kathy Gerking was ordained on Sunday, November 4, at St. Paul Lutheran Church in Auburn (Hickory Grove). She has been called to serve Nazareth Lutheran Church in Cambridge, Iowa.

The presiding pastor at her ordination was Wayne Josephson '66, interim pastor at St. Paul, and the assisting pastor was Juel (Neve '71) Pierce. Kathy's father-in-law, the Rev. Oscar Johnson D'44 T'47, presented the stole, and brother-in-law Paul Johnson '76 was the organist. Her aunt, Kathleen (Gerking '67) Parker was the choir director.

Other Danians in attendance (some sang in the choir) included husband Andy Johnson '83 and daughter Anna; Dody (Jensen '48) Johnson; Liz (Miller '82) Johnson; the Rev. Jim Pierce '71; Danette Johns '82; Paulette (Strecker '81) Orr; Lorraine (Sandberg '48) Madsen; the Rev. Ried Neve D'48 T'51 and Eunice (Peterson '47) Neve; Jim Borden '80 and his wife, the Rev. Barbara Kopperud; Rhonda Wellsandt '81; Ruth Mirtz '81; Allyn Remmers '74; and Dr. Delvin Hutton of the Dana faculty and his wife, Trudy '85 Hutton.

### Milton Jensen

The two pastor sons of Milton and Beverly (Peterson '60) Jensen assisted in Milton's November 10 ordination at Westwood Lutheran Church in Shawnee Mission, Kansas.

Son David '81 is pastor at Westwood Lutheran, and son Mark '85 is pastor at Grace Lutheran Church in Lincoln, Nebraska. Also attending the ordination were their wives—Amy (Nichols '82), who is married to Dave, and Karla (Jensen '88), who is married to Mark.

John Jensen, another son, and Amy provided special music for the ordination and for Milt's installation at Bluffs Trinity Lutheran Church outside of Fremont, Nebraska, on January 6. John is a graduate student at the University of Connecticut. »

## Presidential End Hunger Awards—Art Simon honored for Lifetime Achievement

The Rev. Art Simon '52, founder and president of Bread for the World, has received the 1990 Presidential End Hunger Award for Lifetime Achievement.

Presidential End Hunger Awards are sponsored by the Agency for International Development (A.I.D.). They are given annually to honor American citizens and institutions that have made significant contributions to overcoming world hunger.

Recipients are selected by the President from a list of nominees submitted by A.I.D.

The category of Lifetime

Achievement recognizes an American who has dedicated his or her life to the elimination of world hunger.

Simon received the Lifetime Achievement Award on October 16, World Hunger Day, at a ceremony in the Executive Office Building. It was presented by A.I.D. administrator Ronald Roskens.

Simon founded Bread for the World in 1974 and has led it ever since. He recently announced his resignation.

Last spring Dana awarded him an honorary degree as a doctor of humane letters. He was named a Distinguished Alumnus in 1980. »

## Alumnus finds another Dana—in Newark, New Jersey!

Pastor John Leitel '71 of Almont, North Dakota, recently read John T. Cunningham's book "Newark" (written in 1966 for the city's 300th anniversary) and made an interesting discovery. John writes:

"How many people know that there was once a Dana College at Newark, New Jersey? I assume the name was pronounced DAY-na but don't really know for sure.

"The institution had its birth in 1908 as the New Jersey Law School. In 1927 the law school opened a pre-legal department which three years later was named Dana College. The name was in honor of the late John Cotton Dana, who had died in 1929 after

a distinguished career as Newark's city librarian.

"In 1933 Dana College absorbed both the New Jersey Law School and the Seth Boyden School of Business, which had begun operations in 1929. The newly merged institution established classes in a former brewery.

"Two years later, in 1935, Dana College merged with the University of Newark. The former contributed its building, the latter its more prestigious-sounding name.

"Thus it can be seen that the Newark Dana had an actual life of just five years—a lot less than our own Dana but still an interesting coincidence." »

## FROM THE ALUMNI PRESIDENT

### "Though time thy walls may claim"

This line from "Hail Dana" seemed especially poignant when a blazing fire destroyed our Old Main some two and one half years ago. These words have come back to me now as I reflect on the recent deaths of Alice Laaker, F.W. Thomsen, and C.C. Madsen. With Christ as its foundation and its people as its "walls," Dana is a sound structure. Certainly these three saints were among Dana's most sturdy, and we mourn our loss. Though their talents and gifts were uniquely different, they did have two things in common: a deep and abiding faith in Jesus Christ, and a compassionate devotion to Dana College and its students.

As I reminisce on my experiences with these three, I can't help but think of how fortunate we alumni are to have rubbed shoulders with people of this caliber. Dana has had, and continues

to have, a way of attracting the brightest and the best—women and men who love God and love God's creation. Who is it at Dana that made a difference in your life? Whose insights and challenges broadened and enlightened your outlook on life? Who left their mark on you?

This past weekend, Liz and I got together with three couples, all close friends, all Dana alumni. All are making significant contributions to their churches and communities; all are fun to be with. Like so many Danians, there's a little bit of Alice, a little bit of Bill, and a little bit of C.C. in all of them. Yes, we have indeed been blessed. May we, in turn, be a blessing to others and to Dana College as well.

"THY SPIRIT LIVE,  
ANOTHER THROG  
RISE UP AND SING OUR SONG."

Paul Johnson '76  
President, Alumni Association





## December visitors enjoy "Sights and Sounds"

More than 5,000 visitors celebrated the start of the Christmas season at "Sights and Sounds of Christmas" on December 2. Here some of them enjoy the festive Christmas smorgasbord.

## Homecoming 1991— Dates, reunions announced

Homecoming next fall is set for October 4-6. Once again, the weekend will be full of activities. Get in touch with friends and start making plans now to return to the campus.

About 500 alumni and their husbands and wives attended Homecoming last fall, and we're looking forward to matching or exceeding that number next October.

Plans are being made for the following class reunions: on Friday evening—1941, 1951 and 1966, and on Saturday noon—1971, 1976, 1981 and 1986.

Members of these classes will receive a mailing this spring and another in the summer with news about their reunions and classmates.

Alumni who were freshmen during the 1941-42 academic year are also having a reunion. Dr. Lloyd Neve '45 is working with the Alumni Office in making these plans.

Members of other classes, teams or campus organizations who would like to hold a reunion and help plan it should get in touch with Ann George, director of alumni affairs, as soon as possible.

Two post-game events on Saturday are being planned so that alumni can get together with friends from other classes as well as classmates: a President's Reception for alumni in the E.C. Hunt Campus Center and an All-Alumni Dinner.

There will be areas at the reception where alumni can gather according to the decade they attended Dana. Seating at the dinner will also be by decade. The traditional Choir reunion will be a part of the dinner.

The summer Review will include more information about these and other plans for the weekend. »

## Five nominated for Alumni Council

Five alumni are on the slate of candidates for three-year terms on the Alumni Council. They are:

■ Andrew Johnson '83 of Cambridge, Iowa. He is an attorney in Des Moines.

■ Carol King '84 of Omaha. She is controller for Valley Products Corporation in Valley.

■ Kathy (Nielsen '53) Leistad of Elk Horn, Iowa. Activity assistant at Salem Lutheran Homes, she has served two one-year terms on the Alumni Council as a member at large, an appointed position.

■ Arno Neben '72 of Millard. He teaches mathematics and computer science in the Millard Public Schools.

■ Scott Rasmussen '82 of Omaha. An Omaha attorney, he has completed his first three-year term on the Council and has served as its vice president for the past two years. »

## Alumni survey helps accreditation self-study

In February a random sampling of 700 graduates received questionnaires from President Christopherson asking them to evaluate Dana and the education they received here.

Their responses will help Dana prepare for its upcoming accreditation review by the North Central Association of Colleges and Secondary Schools. (North Central reviews member schools every ten years.)

If you received a questionnaire and have already returned it, we thank you.

And if you haven't yet returned it—there's still time. Please take the 20 minutes or so needed to fill it out and send it to Dana by April 22, using the self-addressed, pre-stamped envelope that was enclosed.

Our thanks to everyone who responded. Your help is invaluable. »

## Graduates share career experiences

Five alumni talked about their careers and gave job-seeking advice to students at an Alumni Career Panel on February 21.

Participating in the 11 a.m. panel were Steve Albertsen '80, production and music director, KEFM, Omaha; Bruce Bro '80, owner of Bro Business Center, Harlan, Iowa; Roger Howland '64, president and general manager, Country Tire Inc., Blair; Irene Inman '85, customer service inquiry manager, Abbott Bank Card Services, Omaha; and Rod Thompson '65, vice president and consultant, Mammel Schropp Swartzbaugh Engler & Jones, Omaha.

They continued their dialogue with students over lunch and also spoke to several classes taught by members of the business faculty. »

## Dana Club news

**Central Iowa Dana Club.** Twenty-six alumni and friends met for dinner on January 7 at a Des Moines cafeteria. They then adjourned to the Grand View College campus where they formed a Dana cheering section at the Dana-Grand View men's basketball game.

**Greater Twin Cities Dana Club.** On November 28 the club sponsored an evening for prospective students and their parents at the home of Phil '62 and Sandra '63 Larsen. Dana Admissions Counselor Amy Langemeier also attended the event. »

## Alumni, friends enjoy Arizona gathering

Fifty-nine alumni and friends of the college in the Phoenix area—snowbirds and residents—attended this year's Dana Luncheon at the Arizona Golf Resort in Mesa on Saturday, January 26.

Joining them were President Myrvin '61 and Anne Christopherson, former President Richard E. Morton D'31 T'34 of Lodi, California, and Phil Pagel '56, vice president for institutional advancement at Dana.

The Rev. Jim Olsen D'37 T'49 of Loveland, Colorado, and a member of the Dana Regents, organized the luncheon.

He reported that the oldest alumni at the luncheon were the Rev. L. Gudmund D'25 T'29 and Ruth (Kaldahl '27) Pedersen of Mesa.

The program included a talk by President Christopherson, who gave a special tribute to the late President Emeritus C.C. Madsen D'31 T'34.

Music was also a part of the program: Karen (Jensen '60) Capel of Council Bluffs, Iowa, sang; she was accompanied by Dana classmate Carol Petersen of Mesa. Paul Finnman of

Loveland, Colorado, the father of Dan Finnman '72, played the piano, and the Rev. Arden Dorn '63 of Phoenix played the concertina.

President Christopherson later spoke at four services at Our Savior's Lutheran Church in Mesa.

Annual Arizona luncheons have been held since 1986. "Again, everyone enjoyed the luncheon and fellowship and want this event to continue," Regent Olsen said. "One will be planned again in 1992; watch for the announcement in the Dana Review." »

## Like to start a Dana Club?

A Dana Club is forming in Kansas City and another in Washington, D.C., is being reactivated.

Would you like to have a Dana Club in your area? If you'd like to help form one, write or call Ann George in the Alumni Office (402-426-7235). She can tell you if there are enough alumni and friends in your area to warrant starting a club.

The Alumni Office provides support services, including taking care of mailings. »

## Architecture subject of seminar in Denmark

The Danish Cultural Institute of Copenhagen is offering a seminar on modern and contemporary Danish architecture from August 22-31, 1991.

The traveling seminar begins and ends in Copenhagen. Although its emphasis will be on architecture of the 1970s and '80s, the seminar will also study several earlier classical modern buildings and historical structures.

For information on this and other seminars, write to Det Danske Kulturinstitut, Kulturvet 2, DK-1175 Kobenhavn K, Denmark. »

## Alumni Council Ballot

Five alumni have been nominated for three-year terms on the Alumni Council. There are two boxes by each name so that husband and wife can vote if they are both alumni. Please circle the number voting 1 2 and return your ballot to the Alumni Office by May 31.

### Vote for five

Andrew Johnson '83  
  Carol King '84  
  Kathy (Nielsen '53) Leistad

Arno Neben '72  
  Scott Rasmussen '82

Return to: Alumni Office  
 Dana College  
 2848 College Drive  
 Blair, NE 68008

## We're looking for lost alumni...

**T**o alumni: We're beginning to make plans for a new alumni directory that will be published in late 1992 or early 1993.

As a first step toward publication, we're trying to find current addresses of "lost" alumni. (An alumnus/alumna is anyone who has attended Dana for one or more semesters.)

If you have an address for any of those listed below, please send it to us using the coupon on this page. The list will continue in the next Review. Thanks. *Ann (Harms '54) George, Alumni Director*

**1990**—Maya Kirkegaard, Jeff Nielsen.

**1989**—Sandy McGill, Andy Morrison.

**1988**—Mary Bojanski, Melissa Brachle, Garrett Engle, Carl Fuller, Alan Gibbs, Carrie Martens, Chris Martinez, John Mosley, Elizabeth Oribiletti, Gary Price, Jeff Seavey, Alan Sheppard, Tina Smith, Darrell Tribble.

**1987**—Joel Alchin, Lesa Bishop, Patrick Brennan, Renea Bullock, Tom Calvert, Roger Clark, Jeffery Davis, Kyle Elliott, Steven Goins, Sharon Helwick, Donnie James, Dale Johnson, Peggy (Maier) Knudtson, Mark Lawrence, Chris Maier, Henry Meyers, Colleen Petruconis, Franklena Phillips, Larry Schlauderaff, Helen Schneider, Sheila Sims, James Strange, Marc Tassone, Tye Wichert.

**1986**—Donald Alderson, Barbara Anderson, Cindy Bohlender, Roy Chamberlain, Kevin Culjat, Lisa Delange, Bennie Ferrell, Douglas Frenz, John Glock, Schuyler Goering, Kevin Hunwardsen, Terri Hurst, Hanne Jensen, Timothy Kinart, Terrie Kozeal, Jeff Millard, Kirk Mortensen, Daniel Olsen, Steven Reddick, Amy Simpson, Holly Specht, Dana Tucker, Lance Weber, Karen Westphal, Kevin Wichtendahl, Keith Williams, Mike Winslow.

**1985**—Tammy Barnes, Randy Bulow, Ron Czajkowski, Michael Germar, Janice Green, Robert Howell, Mark Jackson, Alan Kennedy, Danielle (Shoemaker) Killinger, Jon Kohout, Carmen Larson, Elayne Manke, Elynor Maunu, Sheila McKimpson, Robert Mitchell, Julie Nelson, Robert

Norton, John Olsen, Steven Olson, John Oyler, Christopher Pack, Jon Petersen, Sonya Putnam, Susan Putnam, Kenneth Reimer, Russell Reiter, Stacey Richards, Anthony Schaeffer, Mark Schaeffer, Arto Sinkkonen, John Sklenar, David Stumphy, Mary Vaughan, Howard Washington.

**1984**—Dan Allen, Michael Anderson, Cameron Askew, Wade Ballinger, Sherry (Berry) Ballinger, Mark Bissen, Carl Calvert, Mike Campbell, Sue Coe-Kieny, Sue Comer, Margaret (Dutch) Fuehrer, Todd Hansen, Beverly Harper, Laurie Hendrix, Ruth Janssen, Marianne Jespersen, Kenneth Jordening, Linda Keenan, Anna Klosterman, Ronald Kyser, Kirsten Lady, Lawrence Lazzaro, Tim Martenson, Martha Metzger, Thomas Norby, Chris Peterson, Michael Pietzmeier, Billie Schartow, John Storey, Annette Turco.

**1983**—Nancy Anderson, Jim Atkins, Cynthia Barry, Joseph Beaulieu, Lynn Beecham, Roy Boston, Keith Brothers, Gwen Cohrs, Kevin Duffy, Terry Dunning, Leslieanne Fehring, Julie Ann Gangwish, Gaye Gordon, Todd Hayes, Douglas Hoppens, Nancy Jessen, Jon Kroon, Sandra Kult, Michael Larson (father-David), Mike Larson (father-Donald), Wayne Leikam, Michael Leikam, James Lonnevik, Martha Lougee, Thomas Martin, Darrell Peterson, Traci (Schlueter) Powers, Melanie Rath, Mark Richardson.

**1982**—Karen Aksland, Mohamed Alfaakhiri, Paul Brock, David Clifford, Michael Coppock, Renae (Rasmussen) Denkelberger, Carol Dickinson, Jill Esbeck, Kerry Garrels, Dean Garrison, Michael Geisinger, Grace (Williams) Getz, Robert Gurnett, Theodor Haertling, Elizabeth Laursen, Janet Perry, Lynn Petersen, Eric Rogers, Sheldon Roth, Janet Saathoff, Robert Samuels, Laura Schweppe, Paul Tent, Russell Tripp, Virgil Watson, Ginger Wolf.

**1981**—Terry Anderson, John Clare, Scott Eggemeyer, Mark Estey, Jodi Fielder, Kathy Hansen, Lori Hansen, Gwendolyn Hayes, John Humphrey,

Pamela Jorgenson, Kathaleen Landon, Jeffrey Madsen, Rex Morrison, David Rasmussen, Leona Samuelson, Debra Sandager, Nancy Schmitz, Lori Thomsen, Andrew Tkacs, Joseph Waters, Evajean Wilson.

**1980**—Collins Akudolu, Nancy (Hoyt) Anderson, Timothy Andrews, Daniel Arnold, Ruth Bedke, Terry Bohnenkamp, Chris Bohs, Denise Braun, Jan Brodersen, John Davie, Lori Galloro, Mary Beth Hansen, Michael Henriksen, Jane Hensley, Larry Imes, Evon Jessepe, Darwin Kloster, Martin Monson, David Pfankuch, Terri Queck, Sally Sheets, Louis Sloger, Melissa (Minchin) Stacchini, John Stockton, Scott Taylor, Michelle Taylor, Bruce VanSickle, Kevin Wirth.

**1979**—Richard Coenen, Joyce (Ostlie) Cook, Connie Dodd, Earleen Feldman, Susan Fleischman, Peter Foder, James Godbolt, Tamice Gordon, Janet Hansen, Mary (Erickson) Hanson, Kathleen (McCallan) Hawk, Michael Herberg, Lee (Bowers) Incontro, Joel Jacobsen, Cheryl Johnson, Eloise Jones, Kyle Kasik, Deborah Kilbegen, Michael

Kokoruz, David Lefeber, Cynthia Leinweber, Deborah Long, James McMurtry, Vickie Miller, Edward Ohmott, Godwin Onwuelezi, Patrick Osborne, Connie (Dodd) Rasmussen, Kerry Rattinger, James Rizik, Curtis Schoech, Kenneth Schutt, Dary Shorter, Michael Suntala, Rachel Thoson, Doak Wegner, Janet White, Glen Wooley, Danny Yandell.

**1978**—W. Allred, Elvin Andersen, Dennis Bendinger, Mary Culton, Patrick Durkin, David Duval, Kathleen Eccleston, Preston Eledu, Evelyn Fenske, Linda Gerwick, Thomas Gurnett, Dawn Highby, Christian Jensen, Aimee Jensen, Sue Johnsen, Della Kelso, Susan (Adams) Kirkegaard, Steven Koepsell, Susan Kranz, Wendy Larson, David Lund, Alisa Mathews, Richard McLain, Larry McMahan, Jane Morgan, Felix Okafor, Rosanne Paul, John Petersen, Keith Petersen, Clayton Pfeuffer, Roger Piersma, Donna Reque, Joan Richardson, Wayne Robertson, Susan Smith, Cindy Sweetman, Scott Thayer, Mary Theresa Ann (Walsh) Wertzberger, Roger Wigg, Michael Winslow, Mark Woodman. »

## ALUMNI IN THE NEWS

■ The Voices of Omaha, directed by Michael Dryver '84, gave two performances of Handel's Messiah on November 18 at Omaha's Orpheum Theatre to standing room only crowds. The more-than 200 voices were accompanied by a 25-piece orchestra; Dr. Alan Brandes, professor of music at Dana, was at the keyboard.

■ This past fall the Nebraska Professional Counselors Association named Karen (Flynn '84) Gengenbach one of three "Outstanding Newcomers to the Counseling Profession." She is a counselor in the Blair Public Schools.

■ Dale "Bud" Pash '79 won the 1990 NASCAR Point Championship at Park Jefferson International Speedway in Sioux City, IA. He also finished eleventh over all in the 14-race Busch All-Star Tour Series. The very best drivers from the Midwest compete in this series, which visits five states. Pash's other awards include Most Popular Driver and Best Appearing Crew.

■ Marilyn Musick '76, who recently became organist and choir director at St. Luke's Episcopal Church in Kearney, NE, was the subject of an Associated Press feature story in the December 25 Omaha World-Herald. Former director of music at St. Mark's on the Campus in Lincoln, NE, she will soon receive her doctorate of musical arts degree with a concentration in organ performance from the University of Nebraska-Lincoln.

■ Everett Baltz '75 of North Platte, NE, was featured in the same section of the December 25 Omaha World-Herald as Marilyn Musick. The AP release reported on his new "you-pick" fruit and vegetable farm ten miles southeast of North Platte, some of which he plows with a three-horse team of Percheron draft horses. The article said that Baltz had dreamed for many years of a "living off the land" lifestyle.

■ Dr. Donald A.F. Nelson '71 was selected as the Iowa Academy of Family Physicians Educator of the Year at the Academy's 42nd Annual Meeting and Scientific Assembly on November 3 in Des Moines. Nelson was cited for his work in the Cedar Rapids Residency Program, where, the citation said, "he is widely admired and respected for his keen intellect and enthusiasm for teaching." The citation noted that as director of the ob-gyn curriculum in the residency program, Nelson had shown "interest and expertise in teaching (that) extend beyond obstetrics and gynecology and include the use of computers in medicine." Nelson has been a presenter for the Academy Summer Seminar meeting in Okoboji and is a local instructor of neonatal resuscitation. He is also a national authority on computers in medicine and recently was asked to serve on a Health and Human Services Workshop Conference on health care information standards.

■ Dr. Rodney Wead '57 has been named "Man of the Year" by Omaha's Fifties and Sixties Club. Club members are 1950s and 1960s graduates of Omaha-area high schools. Wead is also a Dana Regent.

■ The Rev. Arne Jessen '54 is one of nine chaplains, and one of four ELCA pastors, appointed to the newly established Biomedical Ethics Task Force of the College of Chaplains. Jessen is executive director of the College of Chaplains, the certifying and professional organization for hospital chaplains of all denominations.

■ U.S. Senator Paul Simon '49 of Illinois, a member of the Dana Board of Regents, was the key speaker at a February 15 dinner benefiting the Omaha Literary Council. The event was planned by former Dana Regent Howard Buffett, President Christopher and the Omaha Literacy Council. »

## Alumni search

To the Alumni Office, Dana College, 2848 College Drive, Blair, NE 68008:

The most recent address I have for \_\_\_\_\_ is—

\_\_\_\_\_

\_\_\_\_\_

\_\_\_\_\_

\_\_\_\_\_

Signed \_\_\_\_\_

DANA COLLEGE  
2848 College Drive  
Blair, Nebraska 68008

ADDRESS CORRECTION REQUESTED

Moving?

Street \_\_\_\_\_

City \_\_\_\_\_

State \_\_\_\_\_ Zip \_\_\_\_\_

Telephone(\_\_\_\_) \_\_\_\_\_

Please return with address label.

08280  
Dr. and Mrs. Niel M. Johnson  
15804 Kiger Circle  
Independence, MO 64055

Non-Profit Org.  
U.S. Postage  
PAID  
DANA COLLEGE

**DANA**  
**REVIEW**

## DESTINY'S DEEP SEA

**'90s** In November **Kirsten Christopherson '90** earned the Zertifikat Deutsch in Germany, following her participation last summer in Dana's Nebraska-Haus internship at Bad Segeberg and two months of intensive language study at the Goethe Institute in Hamburg. . . . **Lori Humphrey '90** works for Gary Troutman & Associates in Omaha. The firm offers labor relations, personnel and management consulting services. . . . **Lydia Kerns '90** is a social worker for Lutheran Social Services of Iowa in Council Bluffs. . . . **Todd '90** and **Angela (Johnson '89) Kollbaum** have moved to Elk Point, SD, where Todd is a nursing home administrator. Their address is RR 1 Box 195 (57025). . . . **Klemens Namwira '90**, P.O. Box 939, Rundu, Namibia 9000, teaches 11th and 12th grade English at Rundu Secondary School. . . . **Paul Powner '90** is a customer service specialist for Massachusetts Mutual Life in Englewood, CO, where he lives at 6687 E. Orchard Pl. (80111).

**'80s** **Rene Hurley '89** married Forrest Gochenour on September 30, 1989. They've bought a house and acreage near Missouri Valley, IA, where their address is RR 1 Box 55 (51555). Rene works at First National Bank in Omaha. . . . **Yuji Ikeda '89** is a stage manager for Tokyo's Disneyland. . . . **Carin Mayr '89** writes that she has been on physical therapy rotations for 12 weeks in Colorado Springs and Memphis, TN. She graduates from the Physical Therapy School of the University of Osteopathic Medicine and Health Sciences in Des Moines on May 24. . . . **Brian Betts '88**, 1114 W. 82nd St., Bloomington, MN 55420, is attending Northwestern College of Chiropractic in Bloomington. He started in January 1989 and will graduate in April 1992. . . . **Laurie (Haniszewski '88) Christensen** works in Omaha for Paula & Friends, an advertising agency/production company that provides advertising, marketing and communications services. . . . **Tom Meyer '88** and Sue Sheffer were married on Dec. 30. They live in Waukesha, WI, at 18835 Emerald Dr. (53186). . . . **Phil '88** and **Jill (Smith '87) Morrison** live at 6 Willow Drove #3 in Bloomington, IL 61701. Phil teaches world history and economics and coaches basketball at Deer Creek High School in Macinaw; he also coaches football at Illinois Wesleyan. Jill teaches special education K-3 at LeRoy Elementary School in LeRoy. Daughter Brittany is 2. . . . **Anthony Nunez '88** and his wife, Kim, announce the birth of Anthony Jr., "A.J.," on Jan. 29. They live in Missouri Valley, IA, at 219 N. 2nd St. (51555). Anthony teaches junior high

science in Yutan, NE. . . . **Shawn Reagle-Kros '88** is an independent contractor working as a counselor/therapist for the Family Learning Center in South Bend, IN. She and her husband, Frank, live in South Bend at 1233 White Oak Dr. (46617). . . . **Laurie (Nielsen '87)** and **Joel '86 Barratt** live in Omaha at 6209 Pacific (68106). Joel has been promoted to senior art director at Rollheiser, Holland, Kahler Associates, Inc. (RHK), an advertising and public relations agency, and Laurie is purchasing agent and assistant office manager for Automated Concepts. . . . **Dean and Loyla (Miller '85) Renfeld**, 1620 26th St., Sioux City, IA 51104, announce the birth of Kristen Elizabeth on Nov. 27. She joins brother Derek, who is 2 1/2. Loyla teaches kindergarten in Sioux City and Dean works at IBP in Dakota City, NE. . . . **Tim '84** and **Penny (Hineline '82) Johnson** are the parents of Jennifer Anne, born on Feb. 19. Brother Brian Lee is 3. The Johnsons live at 947 N. 26th Ave. in Blair. . . . **Carol King '84** of Omaha recently passed her C.P.A. examination. . . . **Kathy (Klover '84)** and **Keith '84 Uhlinger** have moved to Sidney, NE. Keith teaches English and biology and coaches at St. Patrick High School, and Kathy is a family therapist with Lutheran Family Services. They live at 1247 Newton (69162). . . . **James '84** and **Lynn (Ricks '83) Walck**, 8 Maple St., Medina, NY 14103, announce the birth of Ann Elizabeth on Nov. 17. Brother John Andrew is almost 3. . . . **Kathy (Fritz '82)** and **Richard '81 Andersen** live in the Milwaukee suburb of Germantown, WI 53022, at W 171 N 10667 Aspen Lane. Richard is a reimbursement analyst at St. Mary's Hospital in Milwaukee, and Kathy is a special education pre-school handicapped teacher in Germantown. . . . **Karla (Hernes '82)** and Greg Broman, 2438 Fontenelle Blvd., Blair, announce the birth of Daniel Gregory on Jan. 31. He is the first grandchild of Prof. Arvin and former Campus Nurse Betty Hernes. . . . On Dec. 1 **Curt Fett '82** became a district representative with Lutheran Brotherhood in the Sioux City, IA, agency. He markets and sells Lutheran Brotherhood insurance and investment products and is receiving experience in training new district representatives while working toward a position in management. . . . **Paul Meeker '82** is now associate pastor at Our Saviour's Lutheran Church in Bremerton, WA. He lives in Bremerton at 2721 Marine Drive (98312). . . . **Judy Csejthey '81** is working in equine management at Ponca Farms. She lives at 14900 1/2 N. 47th St. in Omaha (68152).

**'70s** **Marilyn (Gengenbach '78)** and Ray Warren, 37079 Elm St., Newark, CA 94560, announce the birth of their first child, Christopher Floyd, on July 24. . . . **Kent '76** and **Ellen (Faustmann '74) Day** and their two children, Garrett and Maggie, are spending 1991 in Australia, where Kent is participating in a teacher exchange program. Their address is 4 Lindsay St., Hamilton, New South Wales, Australia 2303. . . .

**Ken Ideus '76** and his wife, Katherine, live in Anchorage, AK 99507, at 9110 King David Dr. Ken is working toward his doctorate in education. . . . Interior designer **Diane (Williamson '76) Luxford** has opened her own design studio, D-Lux Interiors, in Omaha. In 1989 she chaired the American Society of Interior Designers' Omaha Symphony Showhouse. She received the ASID presidential citation for distinguished service in 1988 and 1989. . . . **Kristine (Krohn '76) McCormick**, who teaches in Julesburg, CO, has been elected to the Colorado Council of Social Studies. . . . **Dennis Nelson '76** writes that he recently "submitted testimony to the Department of Energy about national energy strategy which refuted five pro-nuclear myths, and provided policy recommendations to promote energy efficiency and renewable resources, require utility least-cost energy planning, combat global climatic warming, eliminate imported oil, and prevent acid rain." He is the alternative energy resource person with the Nuclear Energy Information Service in Evanston, IL. He lives at 537 W. Evergreen St. in Wheaton, IL 60187. . . . **Kathy and Pat Tripp '74**, P.O. Box 324, Blair, announce the adoption of Alissa Leigh. She was born on Oct. 2, 1990, and arrived at their home on Oct. 4. . . . **Barry Anderson '73** has been named marketing and promotions manager for University Television at the University of Nebraska at Omaha, for KVNO Radio and for the Knowledge Network. He is responsible for all on-air promotions, public relations, underwriting and fund-raising activities. . . . **Kathleen and Richard Barbour '72** announce the birth of their third son, Matthew, on Oct. 22. He joins Bret, who is almost 5, and Grant, who is 2. The Barbours live in Fremont, OH (43420), at 511 Elizabeth St. . . . **Sharon (Hansen '72) Davis** is working toward a master's degree in social work at the University of Nebraska at Omaha. She has received a scholarship from UNO to be applied toward a specialization in gerontology.

**'60s** **Dr. Don Bruning '66** has been named director of reserves reporting and control in the drilling and production division of Phillips Petroleum Company in Bartlesville, OK. He was formerly director of partnership development in Phillips' North America division of exploration and production in Houston.

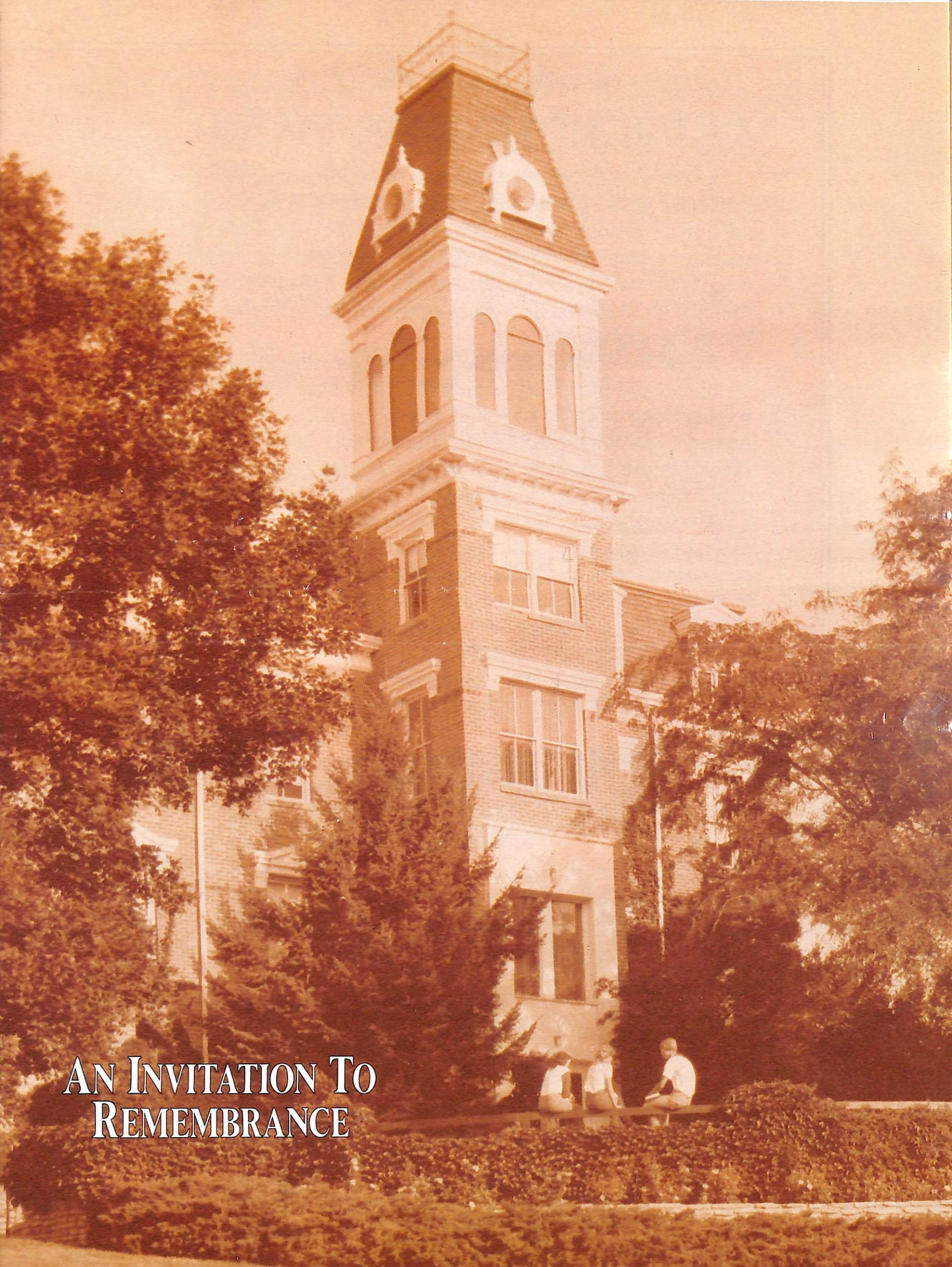
**Deaths** **Susan Suverkrubbe '65** on Feb. 20 in Omaha. She was a medical technician at Immanuel Medical Center. Survivors include her mother, Phyllis Suverkrubbe of Blair. . . . **Edna Whitmore '64** of Woodbine, IA, on Dec. 27. She was a retired teacher who taught in the Woodbine schools for many years. . . . **Tom Leehy '62** on Nov. 16 in Omaha after a lengthy illness. He was a teacher and coach. Survivors include his wife, Linda, and seven children. . . . **Evelyne Anderson '60** in Sacramento, CA, on Dec. 21. She was 100 years old. She retired from teaching in 1977 and then tutored Vietnamese immigrant families. . . . **Dr. Orman Nelson '54** of Jefferson, IA, on

Dec. 11. He served in the U.S. Army during WW II and was part owner of a livestock trucking business before enrolling at Dana. After completing his medical studies at the University of Iowa, he attended the Still College of Osteopathic Medicine in Des Moines. He had practiced in Jefferson as an osteopathic physician and surgeon since 1970. He was also a Fellow in the American Academy of Family Physicians. Survivors include his wife, Helen. . . . **The Rev. Jerrold Elling T'42** of Ladysmith, WI, on Jan. 1. He served parishes in Montana, Illinois, Colorado, Alberta Canada, Minnesota and Indiana. Survivors include his wife, Helen, 407 Summit Ave. West in Ladysmith (54848); sons John '73 and Jerrold II and daughter Jurene Luth. Burial was at the Farmington, MN, Lutheran Church cemetery, which is on part of the farm where he spent his early life. . . . **The Rev. Marinus Hagedorn T'30** in Des Moines, IA, on Jan. 1. He served congregations in Iowa, Nebraska and Michigan, and was director of Chaplaincy for Lutheran Social Services of Michigan for ten years. His last parish was Highland Park Lutheran Church in Des Moines, after which he was chaplain at Bethany Manor in Story City, IA. In 1984 the Iowa Health Care Association named him Clergy of the Year; in 1986 Dana made him a Distinguished Alumnus. Survivors include a daughter and son. . . . **Petra (Westh) Mortensen**, 102, in Alliance, NE, on Feb. 16. She attended Dana within a few years after the school became coeducational. Survivors include four daughters and one son.

### Freshman dies in car accident

The Dana community was saddened to learn of the death of freshman Brian Homeyer in a car accident on Saturday, February 9, south of Nebraska City.

Homeyer was the son of Mr. and Mrs. William Homeyer of Nebraska City. He had planned to major in accounting.



AN INVITATION TO  
REMEMBRANCE

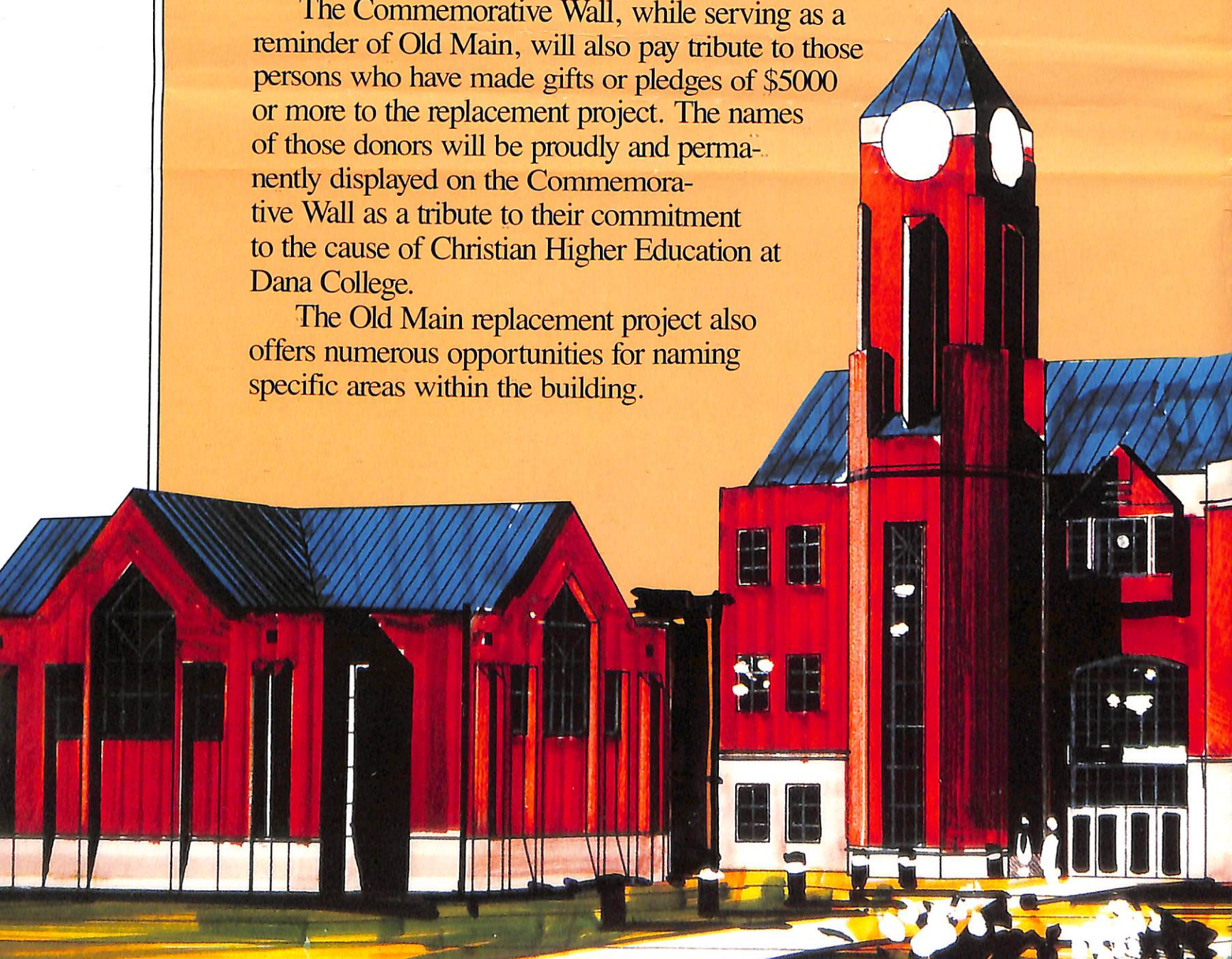
## THE OLD MAIN COMMEMORATIVE WALL

One of the distinguishing features of the Old Main replacement facility is the Old Main Commemorative Wall. Located in the lobby area which adjoins the chapel and the classroom facilities, the Wall is designed to visually commemorate that historic old building which graced the Dana campus for over one-hundred years. Bricks and other materials salvaged from the Old Main fire may be incorporated into the design and construction of this special area.

Just as the original Old Main was made possible through the sacrificial giving of Dana friends and alumni of another time, the Old Main replacement is being brought into being through the generosity of twentieth-century Dana alumni and friends. The names of many of those donors are familiar, others are totally new, but all have joined in meeting the challenge of providing an outstanding educational facility to replace Old Main.

The Commemorative Wall, while serving as a reminder of Old Main, will also pay tribute to those persons who have made gifts or pledges of \$5000 or more to the replacement project. The names of those donors will be proudly and permanently displayed on the Commemorative Wall as a tribute to their commitment to the cause of Christian Higher Education at Dana College.

The Old Main replacement project also offers numerous opportunities for naming specific areas within the building.



# FAMILY TRIBUTES AND NAMING OPPORTUNITIES

Financial support for Dana College is, for many, a family affair. Whether your family's association goes back several generations or just a few years, the names of those whose leadership and support have made it possible for Dana to grow and prosper can now be permanently preserved in our history through a variety of family tribute gifts.

Included in Phase II of the Old Main replacement project, a chapel-office-classroom complex, are a variety of facilities and special-use areas which can be named in memory of or in tribute to individuals or families.

Each naming gift will be recognized with an appropriate plaque in the facility to be named containing the name(s) of the person or family being honored and the name(s) of the donor(s). Additionally, the name(s) of honoree(s) will be added to the Old Main Commemorative Wall.

## AREAS AVAILABLE FOR NAMING IN THE OLD MAIN REPLACEMENT INCLUDE:

Classroom-Office Portion of the Building  
\$1,500,000

Chapel  
\$500,000

Communication Department Complex  
\$300,000

Business Department Complex  
\$250,000

Parnassus, (Humanities Resource Center)  
\$200,000

Lecture Hall, Special Classrooms, Laboratories  
Entrance Lobby or Chapel Organ  
\$75,000 - \$150,000

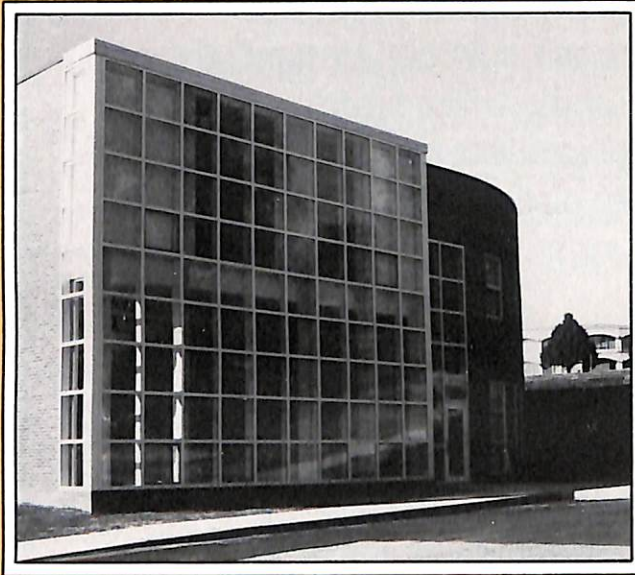
Departments of Teacher Education, Business,  
Foreign Languages,  
Social Work/Multi-Cultural, History-Religion  
\$60,000 each

Individual Classrooms, Faculty Offices and  
Seminar Rooms  
\$15,000 - \$50,000

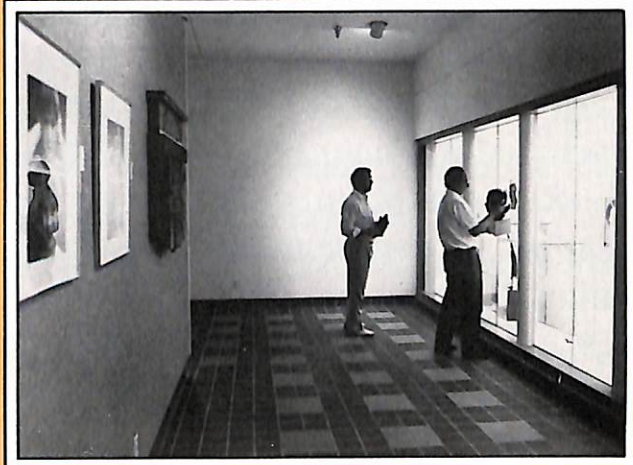


# THE OLD MAIN REPLACEMENT PROJECT

## A NEW ERA BEGINS WITH THE COMPLETION OF PHASE I



The first phase of the Old Main replacement project, an addition to the Madsen Fine Arts Center to house the departments of art, commercial art and photography, was completed in the fall of 1990. The addition contains classrooms, offices, studios, and a gallery.



One of the facilities located in the art addition is a gallery area named in tribute to Dana Professor Emeritus F.W. Thomsen.

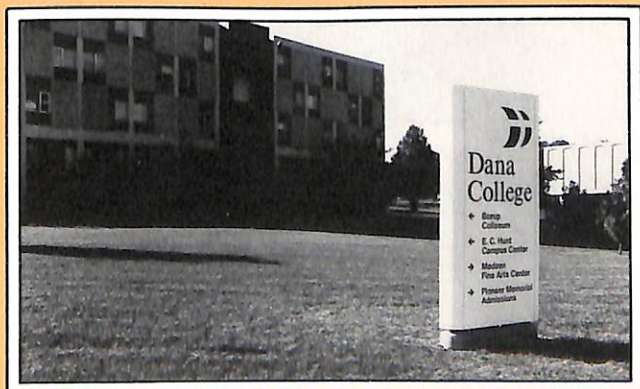


Dr. Milton Heinrich (right), chairman of the Dana Art Department, examines work with students in one of the new art classrooms.



A grant from the Gilbert and Martha Hitchcock Foundation of Omaha provided a new photographic darkroom-studio in the art addition.

By September 1, 1990, new and expanded facilities for the departments of art, commercial art and photography had been provided in an addition to the existing Madsen Fine Arts Center. However, Phase I of the Old Main replacement project also included completion of such important projects as clean up from the fire, relocation of classrooms and offices, replacement of equipment and supplies, development of a campus master plan, paving several parking lots on campus, roof repairs/replacements to five campus buildings; improvement of campus security lighting, installation of directional signs, architectural drawings for phases one and two of the replacement project and balanced annual operating budgets.



Two new campus directional signs were added as part of the first phase of the Old Main replacement project.