

ANA REVIEW

Fall 1992, Volume 49, Number 1

The campus has a theme this year, and that theme is "Celebrate Dana."

During the first days of the school year faculty, staff and students wore colorful, confetti-speckled "Celebrate Dana" buttons.

The celebration began at the August 19 opening dinner for faculty, staff and spouses.

Cause for celebration

At the dinner President Christopherson said that Dana indeed had much to celebrate at the start of the academic year:

- Completion of another year with a balanced budget.
- Reaccreditation by North Central, the National Council for the Accreditation of Teacher Education and the Council on Social Work Education.
- A highly successful fund-raising drive now entering its final year.
- The start of construction on the Old Main replacement building.
- Many campus improvements made during the summer, among them new electrical wiring and an integrated fire alarm system in Argo Hall; the resurfacing of Campus Drive; a new outdoor basketball court; emergency lighting for the library, Pioneer Memorial and science hall; remodeling in Pioneer Memorial; improvements in residence halls (repainting, window blinds, new lighting, security viewing devices in doors, etc.); refinishing and repainting the Borup Coliseum playing floor; a new irrigation system for the baseball field; and new computer/study rooms in the residence halls and library.

"It's the people"

"Celebrate Dana" was also the theme at the August 26 opening convocation, where President Christopherson declared the start of the school's 109th academic year.



The ceremony included the installation of student government officers and senators.

In her response, student body president Trasy Sparr said, "I can put my finger on what makes Dana so right for me—it's the people."

"Celebrate Dana" events for faculty and staff will continue throughout the year.

They include campus coffees for all employees—faculty and staff—at 10 a.m. every Thursday morning.

"Heart of Dana" awards

As a continuing part of "Celebrate Dana," an employee will be named recipient of a "Heart of Dana" Award at the last coffee each month, with President Christopherson presenting the award.

The new award was created to recognize Dana employees for outstanding achievements in their field or for significant contributions to the college.

Nominations come from their peers, and the selections are made by the President's Administrative Staff Council.

Hernes, Bouslaugh first honorees

The first two recipients were Prof. Arvin Hernes for the month of September, and Arlene Bouslaugh for October.

Hernes, associate professor of physics, was cited by Christopherson for "his invaluable service throughout the year in setting up sound systems and for 'troubleshooting' anything electrical or electronic, always volunteering his free time to do so."

Hernes often attends the event for which he provides assistance, Christopherson said, "which speaks well of his sense of responsibility to his work."

Christopherson added that "nobody shows more compassion for the Dana family of students, faculty and staff or better reflects Dana's mission as a center of learning in a community of faith."

Arlene Bouslaugh, a member of the custodial staff for 24 years, "picked up after students and staff first in the residence halls and more recently in the Madsen Fine Arts Center," Christopherson said.

He noted that she started at Dana in Holling Hall, "with all the males breaking her in on what it feels like to have 300 sons. She put on Christmas parties for all of the boys, baking and cooking two weeks in advance and paying for it out of her own pocket."

"She has great pride in seeing to it that 'her building' (the Madsen Fine Arts Center) is ready and in good condition for the numerous events that are scheduled there each week," Christopherson said. "She returns at late hours or comes in early to be sure everything is in

Continued on page 2

“It’s up!” “It’s up!” Those are words heard often in the Dana community these days. Fall enrollment is up by 14 percent in head count and nine percent in full-time equivalent students. That is good news, especially when most area colleges of our type are just holding their own or have experienced a slight decline in numbers. Gratefully, our new and returning students generate a

It’s up’

contagious enthusiasm throughout the campus.

We began the fall semester under an upbeat theme. Our Public Relations Office prepared buttons with the Dana logo and the words “Celebrate Dana,” and these buttons were given at the opening dinner to all Dana faculty and staff and to all students attending the opening convocation. Judging by their responses, we do indeed have much to celebrate. We are enjoying a mighty good start.

We just celebrated one of the most upbeat Homecomings in recent years. It was a joy to watch the faces of returning alumni as they scanned the new classroom building and found the walls completed to the third floor, the tower and peaks beginning to form and the outer brick lending color. Students, employees and visitors all beamed when the south wall was completed, forming the peak of the roof. Now the building is beginning to “take shape.” The tower is about

The DANA REVIEW (USPS 147-940) is published four times annually for distribution to alumni and friends of Dana College and Trinity Seminary by Dana College, 2848 College Drive, Blair, NE 68008. Third-class postage paid at Blair, NE, and additional mailing offices. POSTMASTER: Send address changes to DANA COLLEGE, 2848 College Drive, Blair, NE 68008.

Non-discrimination policy

Dana College admits students without regard to sex, age, race, color, religion or national origin to all the rights, privileges, programs, and activities generally made available to students at the College. It does not discriminate on the basis of sex, race, color, age, handicap or national origin in administration of its educational policies, admission policies, scholarship and loan programs, athletics, or other school-administered programs.

Ann (Harms '54) George
Editor/Director, Alumni Affairs

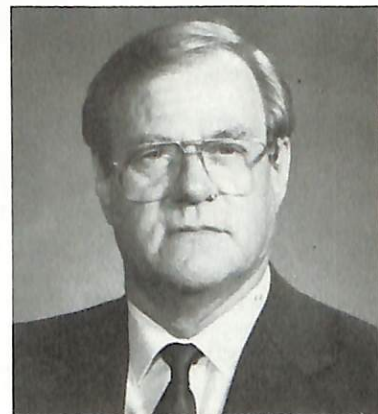
Campus photographs by Lisa Welch '94

FROM THE PRESIDENT

FROM THE PRESIDENT

PRESIDENT

PRESIDENT



halfway up to its eventual height of 89 feet, and the chapel has yet to be added to the south end of the building but should begin any day now when the scaffolding can be removed from the south wall of the classroom building.

Yes, it’s up and it’s cause for celebration! The long-awaited building will soon be a reality, ready for occupancy next fall. A \$427,000 gift from the late Margaret and Therkild Nielsen Estate, arranged by trustee Victor Lauritsen, was received with gratitude by the Dana Board of Regents, who approved naming the chapel “Trinity Chapel” in honor of Trinity Seminary that was founded on the Dana campus and was here until it moved to Dubuque, Iowa, in 1956 and merged with Wartburg Theological Seminary in 1960. What a wonderful gift, one that will assure that Dana will once more have a central worship space and, this time, one that is accessible to all people. We celebrate this wonderful gift and the generous stewardship of a couple who loved their church and their church college. We thank God for this act of love.

Homecoming 1992 reminded us all that we have so much to celebrate in the achievements and gifts of service of Dana alumni and friends who have been touched by this community of faith and learning. We give thanks for them and their enabling prayers, gifts, and voices of encouragement. Such support has enabled us to offer excellent instruction and programs to all we serve. Visitors and educational reviewers who examine Dana seem always to leave deeply impressed by the quality of education provided here.

We give thanks for the people who have chosen to study here. This fall we welcomed to this center of learning a rich microcosm

of people from 14 other countries and 28 states. We are an inclusive community, one that prepares students to live in community with people from diverse ethnic, racial and national origins. May we have the courage, the vision and the will to continue to develop and witness to that rich community.

We have been blessed again this year. We are “up” because of the dedicated service and support of so many. Thank you for the part you have played!

Myrvin F. Christopherson
President

Celebration, from page 1

order and continues to go out of her way to make Dana a more pleasant and attractive place.”

Hernes and Bouslaugh each received a framed certificate and a watch with the Heart of Dana logo.

The various “Celebrate Dana” activities are being supported by a grant from Aid Association for Lutherans of Appleton, Wisconsin.

The number of full-time and part-time students enrolled at Dana this semester is 572, compared to 501 last fall.

Dana officials credit this 14 percent increase to improved retention and a growing number of non-traditional students.

Enrollment computed by full-time equivalent is 509.88 compared to 467.875 one year ago, a 9 percent increase.

Again this year, students represent many states. Although most are from Nebraska and Iowa, others come from Arizona, California,

Enrollment up 14%

Colorado, Connecticut, Florida, Hawaii, Idaho, Illinois, Kansas, Michigan, Minnesota, Missouri, Nevada, New Mexico, New York, North Dakota, Ohio, Oklahoma, Oregon, South Dakota, Tennessee, Texas, Washington, West Virginia, Wisconsin, and Wyoming.

Twenty-nine students are from other countries: Australia, Bangladesh, Canada, Denmark, Ethiopia, F.S. Micronesia, Germany, Indonesia, Japan, Namibia, Nepal, Norway, Saudi Arabia and Sweden.

New faculty, staff join college community

Twenty-two new full-time and part-time employees, some of them alumni, joined the faculty and staff this fall. Several other employees have new assignments.

Faculty

Academic Support Services. *Lori Nielsen '77*, coordinator. Nielsen received her M.A. in English from Iowa State University. She was previously an English instructor and director of the writing program at the Des Moines Area Community College in Ankeny, Iowa.

Art. *Starla Stensaas*, assistant professor of graphic arts and photography. Stensaas comes to Dana from the art department at Western Oregon State College, where she was assistant professor of graphic design and foundation design. Her B.A. and M.A. degrees

Continued on page 4

Building on schedule: Chapel to be named "Trinity"

The 89-foot tower is rising, the three-story high walls are up and the massive roof beams are in place.

In other words, construction of the Old Main replacement building is on schedule.

Also rising are the walls of the chapel, which joins the building at the southeast corner. It will be the first "free-standing" chapel in the college's history.

The chapel was the subject of a significant decision by members of the Board of Regents when they met October 9.

"Trinity Chapel"

The Regents voted to name it "Trinity Chapel" in honor of Trinity Seminary, which preceded the college in Blair. Trinity Seminary shared the campus with the college until 1956. That year the seminary moved to Dubuque, Iowa, and the campus of Wartburg Theological Seminary; in 1960 Trinity merged with Wartburg Seminary.

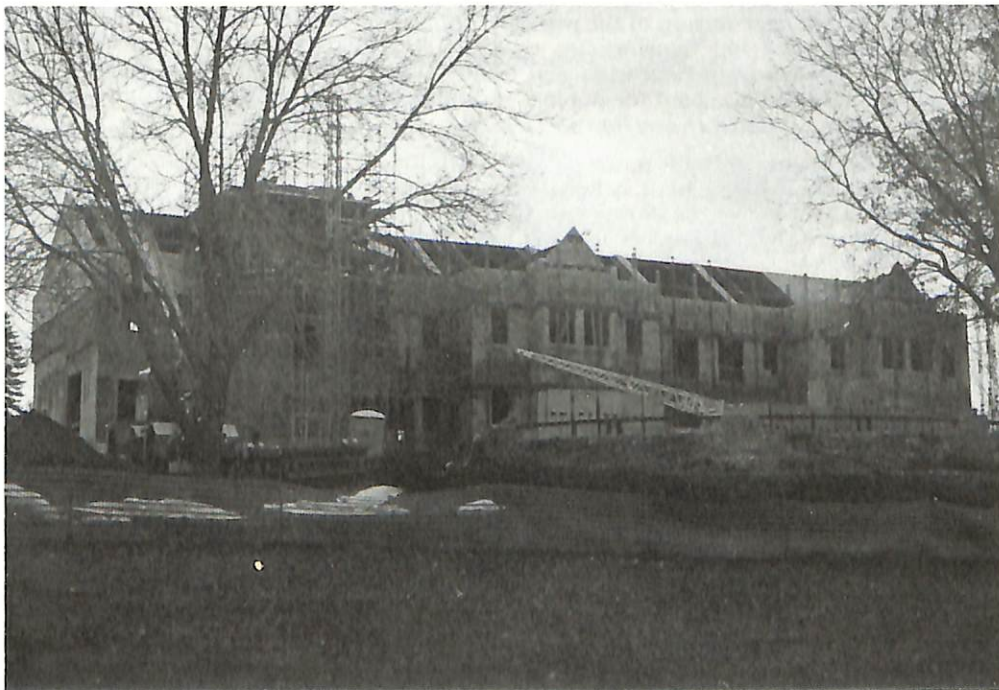
Estate gift for chapel

Funding for construction of the chapel has been made possible by a gift of \$427,000 from the estate of the late Margaret and Therkild Nielsen of Detroit, Michigan.

President Christopherson, in announcing the gift and plans for the chapel, also thanked Victor Lauritsen '41 of Birmingham, Michigan, executor of the Nielsen Estate, for his work in making the gift possible.

Christopherson explained that the Nielsen Estate had contributed to the college for many years, with the condition that \$20,000 per year would go to specified programs until the funds were depleted.

Thanks to prudent investments, however, the estate grew. "Now those funds will make it possible for Dana to have its first 'real' chapel," Christopherson said. "And we have Victor Lauritsen to thank for making this transfer possible."



Scaffolding surrounds the tower of the "new Old Main." At the time of this photo, work had just started on the chapel; the mound of soil on the left marks its approximate location.

■ **President and Mrs. Christopherson** and other educators from the Evangelical Lutheran Church of America visited Russia and Czechoslovakia for two weeks this summer. The visit was sponsored by the Lutheran Educational Conference of North America (LECNA).

■ The Dana Piano Duo of **Dr. Alan Brandes** and **Clare (Anderson '67) Cowing** played on the KIWR-FM program "Music in the Afternoon" on June 19.

■ **Diana Brown**, assistant professor of French and Spanish, participated in the International Conference on Spanish and Portuguese Literature in Cancun, Mexico, August 8-11. The conference was attended by scholars from all over the world, as well as by several well-known authors. Brown chaired the sessions on Latin American literature; she also chaired the committee accepting papers for presentation at the conference.

■ This past summer **Jan Potter**, associate professor of social work, gave presentations on Michael Dorris's novel, *Yellow Raft in Blue Water*, to groups at the Fremont, Columbus, Grand Island and Beatrice libraries. Her lectures were funded by a grant to the Columbus library by the Nebraska Committee on the Humanities. The intent of the series was to build bridges of understanding by comparing the experiences of European immigrants with those of current racial and ethnic minorities in this country.

■ **Starla Stensaas**, assistant professor of graphic arts and photography, presented a paper this summer at the annual meeting of the American Society for Aesthetics, Rocky Mountain Division, in Santa Fe. A longer version of the paper, "The Transformed and Transforming Image in the Shift from Print to Digital Culture," has been accepted for publication in the *Analecta Husserliana*.

■ **Sieg Krueger**, assistant professor of speech and theatre director, has been granted a leave of absence during this academic year to teach English at the Chonbuk National University in Chonju, Korea.

■ **Dr. Delvin Hutton**, professor of Greek and religion, is on sabbatical leave during the fall semester. He is a visiting scholar at Pacific Lutheran Theological Seminary in Berkeley, California, where he is conducting research; he also teaches a class in the New Testament.

■ On September 16 several participants in the international convention of the Opera Guild, held this year in Omaha, visited the **Lauritz Melchior Memorial Room** in the C.A. Dana-LIFE Library. The visit was arranged by Carol Domina, vice president of Opera/Omaha and a part-time sociology instructor at Dana.

■ Dana has been awarded two grants by **Aid Association for Lutherans** of

Appleton, Wisconsin: one to underwrite the cost of developing and reproducing a new campus map, and the other to help with the cost of the various "Celebrate Dana" events and activities scheduled throughout the year.

■ The college has received a \$1,000 grant from the **Danish American Language Foundation** of Chicago to help support the work being done in the college Archives.

■ **Dr. Richard Palmer**, choir director and associate professor of music, has been selected as this year's guest conductor of the annual Alabama American Choral Directors' Association Collegiate Honor Choir. The select festival chorus, consisting of the finest

CAMPUS NOTES

New faculty, staff from page 3

are from Eastern Illinois University, and her M.F.A. is from the University of Wisconsin-Milwaukee.

Foreign Languages. *Birgitte Andreassen*, visiting part-time instructor in Danish. She has a teaching certificate from the Staatsseminarium in Ribe, Denmark. *Sylvia Maenner*, part-time instructor in Spanish. She has a B.A. from Southwest University in Texas and a B.S. from the University of Nebraska at Omaha.

Liberal Arts. *Jeanmarie A. Nielsen '78*, coordinator of the Center for the Liberal Arts: The Forum (the former Parnassus). Nielsen was previously a humanities and vocal music instructor (see Music below).

Music. *Jeanmarie Nielsen*, also adjunct professor of music. *Judy Collicott*, Choir accompanist (see also Career Services below).

Psychology. *Norjhan Govan*, part-time instructor. Govan's B.A. and master of theology degrees are from Boston University. She has been an adjunct professor in Omaha at College of St. Mary, University of Nebraska at Omaha and Metropolitan Community College, and an adviser and counselor at Metro Tech. She is also Dana's new director of multi-

singers at Alabama universities, will perform at the Association's Southern Division Convention in Birmingham. The dates of the event are January 7-9. Palmer was recently named to a three-year term as president of the Nebraska Choral Directors' Association.

■ **Birth announcements** made frequent appearances in fall editions of the weekly *Campus Bulletin*: Daughter Grace Ruby was born September 2 to Dr. John Lyden, assistant professor of religion, and his wife, Liz Ruby; twin daughters Megan and Kathleen were born September 12 to communication instructor Mike Moriarty and his wife, Barb; son Jason was born to counselor David Hoppe and his wife, Teri; and son Nathan David was born October 22 to Jill Clark, assistant to the registrar, and her husband, David.

■ **NOVA**, the 20-voice women's ensemble of the college's Music Department directed by Jeanmarie Nielsen '78, performed the Santa Lucia ceremony on October 28 at a "Celebrate Denmark" event sponsored by Metropolitan Community College. NOVA will also be featured December 11 at the Scandinavian Christmas festivities at Omaha's Western Heritage Museum.

cultural education (see Student Services below).

Religion. *Dr. Lloyd Neve D'45 T'47*. Neve is substituting this semester for Dr. Delvin Hutton, who is on sabbatical leave. Neve's M.A. and Ph.D. are from Union Theological Seminary in New York City.

Social Work. *Franklin Jenson '68*, part-time instructor in social work. Jenson is chief probation officer for the Probation Administration of the State of Nebraska. He has an M.S. from the University of Nebraska at Omaha.

Theater. *Susan Guthrie*, part-time theater director. Guthrie's B.A. and M.A. degrees are from the University of Missouri-Kansas City. She comes to Dana from the Alabama Shakespeare Festival, where she was vocal coach. (Theater director Sieg Krueger has taken a year's leave to teach in Korea.) *Karl Hermanson '85*, theater arts assistant.

Staff

Admissions. Admissions counselors *Maureen Denning*, *Stephanie Gates* and *Dan Prichard*. All are 1992 graduates—Denning of Briar Cliff, Sioux City, Iowa; Gates of Nebraska Wesleyan University, Lincoln; and Prichard of the University of Nebraska

Continued on page 11

Speakers include Auschwitz survivor, Gorbachev adviser

Guest speakers at special events in September and October included:

■ Cheryl Crazy Bull, vice president of administration and director of institutional relations of Sinte Gieska University, Rosebud, South Dakota, on September 29. She spoke on "Tribal Life in Contemporary Society."

■ Leon Fettman of Omaha, a native of Hungary who survived the Auschwitz death camp during the Holocaust, on October 1. A retired cantor at Temple Israel, Fettman spoke on "Why Hate and Evil Exist."

■ Pavel Palazchenko, assistant to former U.S.S.R. President Mikhail Gorbachev, on Sunday evening, October 18, and Monday morning, October 19. Among those attending the October 19 session were students and teachers from area high schools. Palazchenko has been an interpreter for and adviser to both Gorbachev and Edward Shevardnadze and has participated in all U.S.-Soviet summits since 1985. He is currently adviser to Gorbachev, who heads the Gorbachev Foundation in Moscow. He visited the U.S. under the auspices of LECNA, the Lutheran Educational Conference of North America.

■ Harvey Phillips, a world-renowned tubist, on October 21 at a faculty colloquium on "Career Motivation for Students of the 1990s." Phillips is a composer, Distinguished Professor of Music at Indiana University, and executive editor of *The Instrumentalist* magazine. His appearance was made possible in part by a grant from United Musical Instruments, U.S.A., Inc.

■ Dr. Hans Raun Iversen, a Grundtvig scholar at the University of Copenhagen, and Dr. Paul Holmer, Yale University Professor Emeritus and a Kierkegaard scholar, at a symposium on October 22 on "Becoming a Christian in a Non-Christian Age" from the points of view of Grundtvig and Kierkegaard.

■ Paul Hamer, an illustrated talk on the "First Around the World Air Race," on October 27. Hamer, an Omaha resident, and his partner placed fifth in the race.

Members of our Admissions staff have been on the telephone and on the road since September, recruiting students for the coming academic year.

If you'd like to have one of them get in touch with a son or daughter who is a high school junior or senior, please write to Admissions Director John Schueth. (Include your student's name, address, telephone number, year in school and name of high school. Admissions also welcomes the names of younger students.)

The energetic members of the Admissions staff have the following wide-ranging and diverse assignments:

Introducing our Admissions staff...

John Schueth, Admissions director. *Special assignment*—international students.

Meta Brandes, assistant director of Admissions and Weekend College coordinator. Adult recruitment and transfer students. *Special assignment*—church relations.

Shaine Rasmussen, assistant director of Admissions. *Geographic area*—Iowa, south of Highway 30; southeast Nebraska; Omaha private schools; all of North Dakota. *Special assignment*—alumni children.

Maureen Denning, counselor. *Geographic area*—Iowa, north of Highway 30; all of Minnesota and Wisconsin; all states east of the Mississippi River except Illinois. *Special assignment*—prospective student telemarketing.

Stephanie Gates, counselor. *Geographic area*—northern Nebraska; all of South Dakota and Colorado. *Special assignment*—assisting church relations.

Dan Prichard, counselor. *Geographic area*—western and central Nebraska; all of Wyoming; all states west of the Mississippi River not assigned to other counselors. *Special assignment*—Diplomats (student tour guides).

Steve Kissel '86, part-time counselor. *Geographic area*—Omaha Public Schools; all of Kansas and Illinois.



Admissions staff members (from left): Shaine Rasmussen, Maureen Denning, Meta Brandes, Dan Prichard, Stephanie Gates, John Schueth. Not pictured: Steve Kissel.

For many years the area at Dana called "Parnassus" was the center of the humanities program. It provided space for lectures, recitals and exhibits and was a meeting place for faculty and students.

A new general education program adopted by the faculty this fall brings all of the college's disciplines together for a stronger and broader liberal arts experience. The program also calls for a center where students and faculty can share information from their respective areas.

Parnassus therefore has been renamed "The Center for the Liberal Arts: The Forum" and given an important role in the general education program.

Jeanmarie A. Nielsen '78, director of the Center for the Liberal Arts, said that The Forum continues many of the same functions as Parnassus.

"But instead of having a center only for the humanities, The Forum supports every program on campus, from science and business to athletics and the fine arts," she said.

"It's now a center for the liberal arts and the student portfolio center, but it also continues as a

meeting place, a gallery and resource room, and the ticket reservation office for college-sponsored trips to off-campus activities such as concerts in Omaha and Lincoln."

Before classes start next fall, The Center for the Liberal Arts: The Forum will move from Pioneer Memorial to its own specially designed area on the first floor of the new Old Main replacement building.

There it will continue many of the functions started by Parnassus and familiar to so many alumni. But it will also embrace *all* liberal arts learning.

'Parnassus' now 'The Forum' — supports new general ed program

Former Hum students: The college's Humanities Department has student files from 1987 to the present. If you'd like your file mailed to you, please send \$2.50 in stamps or by check to cover the average cost of postage.

These files won't be kept after May 1993, when the department will be preparing for a move into the new building.

Spanish language students rank high in national exams

Last spring 15 students in Professor Diana Brown's first-year, second-semester Spanish class took part in the norming administration of the Educational Testing Service's new DANTES test for Beginning Spanish II.

How well did they do?

This fall ETS notified Brown that Dana students had ranked second from the top, outscoring students at 45 other public and private colleges and universities across the country.

Brown's upper level Spanish students also ranked high on a national ETS-based exam they took last spring, with all of them scoring in the upper 80s and 90s. Those students, she said, were Claudia Brown '92, Sean Dalton '92, Keri Haas '95, Lisa LeMaster '93, Melissa Reinikainen '92, Amy Roberts '93, Janelle Stolen '94 and Phillip Warner '93.

Brown described participation by Dana students in both tests as "a welcome opportunity to compare our Spanish language program with programs at other colleges and universities."

She said that ETS chose Dana as one of 47 schools to participate in the norming procedure for Beginning Spanish II because it "fit" the criteria ETS had established.

She explained that ETS designed the DANTES (Defense Activity for Non-Traditional Education Support) exam to establish testing standards for Spanish II. DANTES exams are approved by the American Council on Education.

In the future, colleges and universities can use the Spanish II test as a final exam that represents the highest standards for the teaching of Spanish, Brown said. They can also administer it to students who would like to test out of a course.

CAMPUS NOTES

Omaha congregation helps Namibian student

Lutheran Church of the Master in Omaha continues to be a special friend of Dana.

Late this summer Pastor Robert Schaff asked President Christopherson if he knew of any international students who needed financial assistance.

Dana continues to sponsor students from Namibia, and so Christopherson told Schaff of a Namibian student who wanted to attend Dana but who needed financial help.

Within a few days, the college received a \$4,000 check from Lutheran Church of the Master, and within a week, the student arrived at Dana.

"I'm grateful to Pastor Schaff and the members of Lutheran Church of the Master," Christopherson said.

"They recognized a need and responded. Because of their generous assistance, another leader of the new free nation of Namibia is being created at Dana College.

"We thank God for this special gift."

We celebrate the blessings bestowed on us...!

by Michael Jones '71
Director of Development

It has been over four years since we lost Old Main to a fire. That venerable structure is gone now, but it continues to conjure up many good memories for those of us who had the experience of being associated with it. Whether we remember it from the '20s or the '80s, it does have a special place in our hearts. The loss of Old Main really was like the loss of a loved one. Words cannot really express what Old Main meant. It was like losing one's home—a place that took care of us, helped us, sheltered us, educated us—and much, much more.

The response from Dana's alumni and friends to replace Old Main has been tremendous. From this response we have been able to begin construction on what will be a very appropriate replacement that will become, as Old Main was, an education landmark in Nebraska. As I look out my window I can see concrete blocks being laid for the third level of the academic wing and the foundation of the tower. By next summer the building should be ready for occupancy, and it is exciting to watch the progress and anticipate its completion.

What does this mean for Dana College? It means that we will no longer have classes meeting in basements and that our faculty will have appropriate places to teach and converse with their students in an educational environment. It means that we will have a place to worship in the central part of the campus, accessible to everyone.

We truly are blessed with alumni and friends who believe in our sense of mission and have responded to a very special need. The Old Main replacement project has helped Dana College elevate itself in many different ways. It has helped us evaluate our total needs, not only bricks and mortar, but also our students' needs. All of what we do at Dana College is for our students. We want to provide a variety of opportunities for them to learn about themselves and others and to become who and what they want to become.

To date we have been very successful in our fund-raising efforts for the replacement project and our other "ADD" goals. One reason for that success is the response of alumni and friends to the Old Main Commemorative Wall Challenge.

What is the Old Main Commemorative Wall? Housed in the new building, it will list individuals, couples, families, corporations, foundations, and churches that have responded to a challenge from Dana to help in a significant way to meet the needs of the college at a special time in our history.

Since November 1990 we have been inviting everyone we visit with to consider a pledge of \$5,000 for "ADD," with contributions to Dana possible over a five-year period. Such a pledge will add their names to the Commemorative Wall. Since a Lutheran Brotherhood IMPACT match or a company match can be included as a part of one's pledge, many are realizing that this type of commitment is possible. As I write this, 342 entries—the names of individuals, couples, families and organizations—will be listed on the Old Main Commemorative Wall. Our goal is to see more than 500 listed before the dedication, which is scheduled for the first weekend of October 1993, Homecoming Weekend.

We invite those who would like to participate in the Old Main Commemorative Wall Challenge to make their pledges as soon as possible.

A return card is part of a special Commemorative Wall insert in this issue for those who would like to receive more information about this giving opportunity.

We are also recognizing those on the Old Main Commemorative Wall in the Dana Family History/Commemorative Wall Album. This album will give a brief history of each person, couple, or family listed on the Wall. Plans are being made to build the Commemorative Wall this coming summer.

We continue to celebrate the blessings that have been bestowed upon us here at Dana College. We invite all of our alumni and friends to come and visit as we build toward a brighter and greater future.

New scholarships include Heritage Award for alumni offspring

Mark Anderson, director of Financial Aid, has announced the establishment of three new scholarship programs for the 1993-94 academic year.

One will be of special interest to alumni, another to immediate family members of current students, and the third, to residents of Washington County, the college's home county:

■ \$1,000 Heritage Awards will be given to students with a parent who attended Dana full time for at least one semester.

■ \$500 Dana Family Awards will be given to students who have more than one family member attending Dana at the same time. Students must be from the same immediate family, and each family member must be enrolled on a full-time basis for either member to receive funds. For the purpose of this scholarship, "immediate family" is defined as husband/wife; brother/sister; parent/child. In-laws are not eligible.

■ Washington County Grants, with awards ranging from \$500 to \$1,000, will be available to permanent residents of Washington County who are enrolled at Dana as full-time students. Recipients must live on campus, either in a residence hall or Omaha Village.

In making the announcement, Anderson said, "We believe that these awards will give us a definite boost in the ability to attract and retain students. For many, the cost of attending college is becoming more and more of a financial strain on families.

"Federal and state grant funding will, at best, remain steady in the coming year or so, and as a result colleges are finding it necessary to increase the level of scholarship support.

"While the scholarships are not large by themselves, they will be one more source that many students will be able to benefit from."

Anderson said that the college reserves the right to limit the number of scholarships awarded to a single student, and that those receiving tuition remission or full tuition scholarships are not eligible for the three described above.

For information about these or any other types of financial aid, call the Admissions Office at (402) 426-7222 or the Financial Aid Office at (402) 426-7226.

Lutheran Brotherhood offers challenge grant

In September Dana received the first payment of a \$122,900 challenge grant from Lutheran Brotherhood in support of the college's chaplaincy program. Lutheran Brotherhood agent Paul Johnson '76 (right) presented the check to President Christopherson '61 (center) and Michael Jones '71, director of development. Lutheran Brotherhood will match gifts to the college, dollar for dollar, that are designated for the chaplaincy program. The five-year challenge extends through June 30, 1996.



Dana Women craft quilt, wallhanging as fund-raisers

A Dana quilt and bargello wallhanging created by members of the Dana Women's Club were displayed for the first time at Homecoming.

Both are prizes in a year-long raffle that the Club is sponsoring as a fund-raising effort.

The Club hopes to raise \$5,000 through the sale of \$1 raffle tickets. Proceeds will be used to provide a kitchen in the Old Main replacement building.

The queen-size quilt has a cream background with deep-red appliques of pieced woven hearts and the Dana logo in each corner.

The idea for the quilt and raffle came from Ginny (Lippincott '51) Beck, but she credits many others for their involvement.

"The help we've received has

been tremendous," she said. "We especially could not have accomplished this project without Lorraine Peterson, who did so much work in cutting and piecing the quilt."

Other members of the Dana Women's Club and women at First Lutheran Church also helped with the quilting.

The quilted Copenhagen blue bargello wallhanging, which is approximately 4 x 6 feet, was designed and made by Janice Lippincott '72.

Two drawings for the raffle will take place at Homecoming next fall; ticket purchasers do not have to attend the drawing to win.

The winner of the first drawing will be given a choice of the quilt or wallhanging.

Raffle tickets at \$1 each will be available through Homecoming 1993 at campus and local events.

They can also be purchased from Women's Club members or through the mail by writing to Dana

Women's Club President Sandra Wigdahl, Box #1198, Dana College, Blair, NE 68008.

Those buying tickets through the mail should include their names, complete address and telephone number, together with a check made out to the Dana Women's Club.

To receive a raffle receipt, please also enclose a self-addressed, stamped envelope.

Beatrice church honors former Regent Schwandt

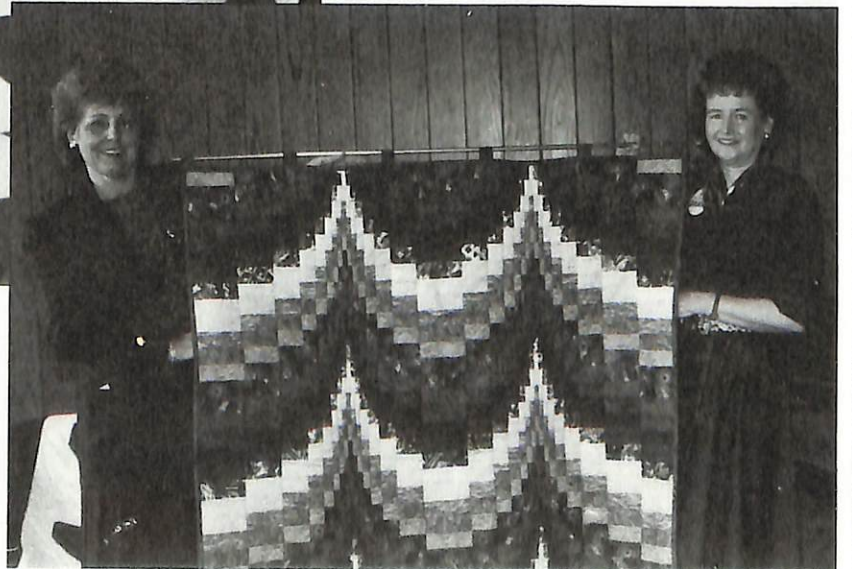
On October 25 members of St. John Lutheran Church in Beatrice, Nebraska, honored the Rev. and Mrs. Alton W. Schwandt at Sunday worship services and an afternoon reception on the occasion of Pastor Schwandt's retirement.

Schwandt, who became senior pastor at St. John in 1969, was a member of the Dana Board of Regents for 12 years. He has also been active in numerous community and denominational organizations.

The Schwandts are the parents of Roxanne Schwandt-Lichte '78 and Julie (Schwandt '84) Bansen.



The Dana quilt (displayed by quilters Ginny Beck, Lorraine Peterson and Janice Lippincott) and bargello wallhanging (inset).



SPORTS
SPORTS SPORTS
SPORTS
SPORTS SPORTS

SPORTS
SPORTS
SPORTS
SPORTS
SPORTS
SPORTS
SPORTS
SPORTS

Stories by Paul Clark,
Sports Information Director

Vikings disappointed with 2-8 record

Close, but not quite.

That summation accurately describes Dana's football fortunes in 1992. The Vikings compiled a 2-8 record on the year, going 0-6 in Nebraska-Iowa Athletic Conference (NIAC) play. While the numbers indicate the Red-and-White were a poor football team, Coach Leo McKillip said that wasn't necessarily the case.

"This is by far the best football team I've seen in our league that ended up with a losing record," McKillip said. "That doesn't take away from the fact that we are very disappointed with how the season turned out and disappointed that we fell far short of what we thought were realistic goals coming into the year."

Wins were few for the Vikings in '92, but exciting competitive games were not. Dana held second half leads in its first four NIAC contests, but saw victories slip away against Midland (33-38), Doane (33-48), Nebraska Wesleyan (20-31) and Concordia-Seward (25-27). Northwestern (0-21) and Hastings (22-28) also pinned conference defeats on the Vikings.

In non-conference play, Dana lost to powerful Dakota Wesleyan (7-21), and fell to another perennial power, Peru State (13-20). The Vikings did post two impressive wins in non-conference play, routing Mayville State in the second game of the

year, 54-18, and beating Teikyo Westmar in the season finale, 32-19.

Individually, senior wide receiver Brent Leefers (Omaha) and senior quarterback Mike Carubba (Hamilton, Ontario, Canada) shone the brightest for Dana. Leefers set eight new receiving records for the Vikings, including most receptions in a season and career, and most receiving yards in a season, career and game. Carubba passed for over 2,300 yards and fired 21 touchdown passes while compiling a sparkling quarterback rating of 118.0.

Two seniors led the way for the Dana defense. Safety Courtney Ross (Springfield, Mo.) had a team-high five interceptions, while the Vikings' other safety, Michael Allen (Miami, Fla.), led the team in tackles for a second straight year with 115 stops.

McKillip said the Viking program is oh-so-close to getting back to the lofty level it reached in the late 1980s, when McKillip skippered the Vikes to four straight winning seasons.

"We feel our personnel level is very close to those great teams we had a few years back," McKillip said. "What we need now is to develop the self-confidence and winning attitude that is so important to be successful. I'm confident we can do that next season and get Dana football back where it belongs."

Volleyball team reaches district playoffs

The volleyball season had a predictable mix of ups and downs and highs and lows, but coach Kathy Foley says the campaign stands as a success in her eyes.

Dana finished the year with a 23-24 record and a 2-10 mark in the brutal Nebraska-Iowa Athletic Conference, which had three teams ranked in the nation's Top 25 in NAIA all season. Along the way, the Viking spikers captured two invitational tournament championships and defeated conference rivals Midland Lutheran, Nebraska Wesleyan and Concordia.

"It was first off, a very enjoyable year for me as a coach," Foley said. "This group is a fine collection of

student-athletes that have given us everything we could ask for. We were a young team with no seniors, so I can't help but be confident about the future."

Dana's invitational wins came at College of St. Mary and also at McPherson College. Dana posted wins over District 11 foes Bellevue and College of St. Mary, and advanced to the NAIA District 11 playoffs, falling to Doane in a first-round match.

"It was great to get back to the playoffs with such a young group," Foley said. "We played to the level of our competition a lot this year, which hurt us against some lesser teams, but also allowed us to give some very good teams a run for their money. We need to mature a little bit and be able to play at that peak level no matter who the opposition is. That will be one of our main objectives in the '93 season."

Junior middle hitter Shelli Wiebelhaus (Neligh, Nebr.) and sophomore setter Katie Krueger (Iowa Falls, Iowa) earned All-NIAC first team honors, while freshman outside hitter Stephenie Wilson (Cedar Rapids, Iowa) was honorable mention All-NIAC. Wiebelhaus was also first team All-District 11, while Krueger and Wilson both earned honorable mention in District 11.

Soccer club has winning record

The club sport of soccer was enjoyed by 29 Dana students this fall. The co-ed team had a 10-7-1 overall record, and posted a 5-1 record against other club teams from Nebraska-Iowa Athletic Conference schools.

Gerson Katoko (Rundu, Namibia) was the top scorer with 29 goals and six assists. Juan Cruz (Port Isabel, Texas) had 16 goals and 10 assists, and Rob Tague (Omaha) had three goals and a team-high 25 assists. Julio Cruz (Port Isabel) and Shawn Suhr (Fremont, Nebr.) were Dana's top goalies. Cruz had 113 saves on 142 shots-on-goal, while Suhr stopped 107 of 127 shots-on-goal. Shad Beam (Ft. Dodge, Iowa) also manned the goal for Dana, with 95 saves on 111 shots-on-goal.

'S eeds of division'

Church Divided: Lutheranism Among the Danish Immigrants. By Thorvald Hansen. (Des Moines, Iowa: Grand View College, 1992. iix + 161pp. Forward by Martin E. Marty. Paper, \$14.00)

Reviewed by Dr. Peter L. Petersen '62

In no small part, Dana and its long-time sister institution, Trinity Seminary, owe their early existence to divisions among Danish Immigrant Lutherans in the United States. Although several writers have touched on various aspects of the religious struggles which eventually split the Danes, Thorvald Hansen is the first modern scholar to devote an entire book to the subject. Hansen believes late 19th century Danish emigrants brought the seeds of division with them in their "religious and cultural baggage," but it was the American environment which allowed these seeds to sprout, grow, and ultimately consume much of the theological energy of Danish church leaders.

At the heart of the dispute was something called "Grundtvigianism." N.F.S. Grundtvig (born 1783), a Danish theologian, hymn writer, and "father" of the folk school movement, came to believe that the covenant of Baptism or the Apostle's Creed took precedence over the Bible as the word of God. Opposing this view was an element of Danish Lutheranism known as the Inner Mission whose highly pietistic adherents argued for the primacy of Scripture. Despite their divergent views, Grundtvigians and Inner Mission supporters were able to coexist within the broad confines of the Church of Denmark. Why they were unable to do so in the United States is the question Hansen seeks to answer in this book.

While acknowledging the importance of theological issues, Hansen doubts whether they alone were sufficient to bring about the schism. He finds many other contributing factors, including the intensely competitive American religious climate, the popular perception of the Grundtvigians as "Happy Danes" and the Inner Mission as "Holy Danes," and the often inflammatory role of certain periodicals. Many leaders of German and Norwegian Lutherans in the United States saw Grundtvigianism as "heresy" and warned Danish immigrants about affiliating with it, a view which certainly contributed to the decision of the founders of Trinity and Dana to seek a course independent from the existing Danish Church in America. Finally, Hansen points to the inability or unwillingness of certain leaders to compromise. One such individual was P.S. Vig who played a major role in the 1894 schism and led Trinity Seminary for much of the next quarter century. Vig was strong-willed, but so too were many of his opponents, especially F.L. Grundtvig, son of the great Danish churchman. Hansen's description of the clash between Vig and the younger Grundtvig is one of the strongest parts of his book.

Anyone interested in the history of Danish Lutheranism in the United States will benefit from reading this well-documented, balanced account of the issues which, after years of debate, finally divided the Danes into two church bodies, a division which lasted until the creation of the Evangelical Lutheran Church in 1987.

Church Divided is available at bookstores at Dana or Grand View College in Des Moines. Mail orders can be sent to the Dana College Bookstore, Blair, NE 68008. Add \$1.50 for postage and handling.

Reviewer Peter L. Petersen is professor of history at West Texas State University and the author of *A Place Called Dana: The Centennial History of Trinity Seminary and Dana College*. In July he and Dana Professor John Mark Nielsen '73 presented a paper on P.S. Vig at the Marcus Lee Hansen Immigration Conference held at Aalborg, Denmark.

'A cross oceans, across time'— The Danish-American connection

Danish Emigration to the U.S.A. Birgit Flemming Larsen and Henning Bender, eds.; Karen Veien, trans. (Aalborg, Denmark: Danes Worldwide Archives, 1992. 246 pp. Cloth, \$16.50)

Reviewed by Prof. Em. Norman C. Bansen '47

A striking cover design is an inviting entry into *Danish Emigration to the U.S.A.*, a book that is an overview and a scattered sampling of the emigrant to immigrant experience of 300,000 Danes who chose this country for a new home. Published in Denmark in 1992 by the Danes Worldwide Archives that this year can celebrate a sixtieth anniversary, it features essays by 17 contributors from both Denmark and the United States, with Dana College capably represented by two alumni scholars, Paul L. Petersen '61, professor of history, West Texas State University, Canyon, and John Mark Nielsen '73, associate professor of English, Dana College, who here collaborate on two essays as well as a Danish-American bibliography.

A number of the Danish writers have visited the Dana campus to make use of both the library and the archives in their research. Grand View College and The Danish Immigrant Museum have also been sources for both essay material and many of the excellent illustrations.

Those who experienced the gradual fading of the Danish language from the settlements will be impressed by "The Spoken Danish Language in the U.S.—From Interaction to Recollection" by Iver Kjaer and Mogens Baumann Larsen with its fascinating examples of mixing and switching elements of American English. Kristian Ostergaard, pastor and author, claimed that "It is one of our spiritual goals to use our mother tongue and pass it on to our children," while Peter S. Vig, pastor and author, maintained that "it is our desire...to be as little Danish as possible and to become as American as we can." These opposing views characterized one of the differences between the two Danish Lutheran synods, the AELC and the UELC, yet both groups at almost the same time shifted from Danish to English in their services. Might not the both/and, rather than the either/or, approach have been more culturally enriching, one wonders.

"Peter Sorensen Vig—Danish-American Historian" by Danians Petersen and Nielsen is an informative and lucid study of the man credited by Danish Professor Erik Helmer Pedersen as having done "more than any other person to preserve the historical inheritance of Danish immigrants." The authors of this essay conclude that Trinity-Dana Professor Vig's "contributions to Danish-American history are truly remarkable."

June Sampson's inspiring essay on "The Danish Immigrant Museum—An International Cultural Center" points the reader to the future. While work moves ahead in the archives at the colleges in Blair and Des Moines, the current construction of Phase I of the Museum in Iowa's Elk Horn-Kimballton area indicates a deep interest among the descendants of the pioneers in collecting, preserving, studying and interpreting the artifacts and traditions of the early settlers as well as of more recent immigrants. Sampson is well-known and appreciated for her devoted work as director of the Museum, the slogan of which is "Across Oceans, Across Time."

Among other essay topics included are literature, books and libraries, art in churches, an analysis of letters, and accounts of several typical settlements. This impressive volume should certainly stimulate additional research and publication on both sides of the Atlantic.

Danish Emigration to the U.S.A. can be purchased from the Dana College Bookstore, Dana College, Blair, NE 68008. Add \$2 to the price above for postage and handling.

Reviewer Norman C. Bansen is Professor Emeritus of English and Danish at Dana.

Remembering Dana in the '30s...

Two alumnae and the son of a former faculty member have written letters describing life at Dana in the '30s.

They wrote in response to an invitation in last winter's *Review* that followed an article about Mrs. Erland Nelson and her husband's presidency during the Depression years.

As they remember Dana's "Low Cost Plan," the college bus, services in the old chapel and fun with friends, they create a vivid picture of the campus as it was 60 years ago.

Here are excerpts from their letters: **Gertrude Kubie Carlberg '33 of Fremont, Nebraska:** "...those Depression years in the 'thirties' had an impact on many of us. I will never forget when the banks closed. I felt so sorry for my parents—they had no money.

"...President Nelson made it possible for students to pay their college costs with farm and garden produce and livestock. He introduced a 'Low Cost Plan' that increased the enrollment during the Depression. This really 'hit home,' making a great impression on me as I was one who came under this category. When my parents were informed of this plan they went to the College to make the necessary arrangements. The butchered hogs we furnished were allowed two to three cents per Cwt. above the market price, thus paying my tuition. I worked for my board and room. My girl friend and I ate many \$.10 a can soup lunches.

"Those were the 'Good Old Days' as the saying goes—when I think people were happier than now."

Ruth Hansen Jensen Weaver '38 and '72, Herman, Nebraska: "The year 1934-35 at Dana was my first time away from home. I stayed at the Girls' Dorm, going home some weekends. Home was only ten miles north at Herman. I was blessed with a very nice roommate, Marie (Kofoid) Jensen from McNabb, Illinois. Our room had the number 209. When our friends wanted us to come to the entrance door, they would ring the doorbell two rings—then pause—three rings—pause—three rings—pause—and one ring, which was meant for my roommate. Hers rang most of the time. My ring was 2-3-3 without the one ring. When the last one didn't ring, it was for me!

"A former Washington County school superintendent, Mabel J. Marsh, and later a neighbor lady, told my father she thought I ought to go on to college. She asked a Mr. Bartlett to interview me. He came and I was accepted.

"Our government had programs during those Depression years. FERA helped college students. The college was to have jobs for us to do and the

government paid the college. Four of us were chosen and we each could earn \$120. Our room, board, and tuition for that year was \$244. We washed windows, painted and varnished woodwork, cleaned up in the kitchen, and we had fun scraping gum off the floors. Our group included Dora (Nelson) Paulsen, Bernadine Ott and Lillie Smith Dean.

"To pay for the rest of my tuition, my father had a road overseer's job. He did repairs on the dirt country road. He floated or dragged the road two miles north and two miles south of his farm. He used four mules to pull the 'drag.' Sometimes he gave me a dollar a week for spending money.

"My roommate's boy friend, Wilfred Jensen, ran the college bus. He would take students to Blair and back for a small fee, maybe \$.10.

"The first day she came from Illinois, he picked her up at the bus stop. He thought, 'She is for me.' They were married one year later.

"You should have seen our gym suits. They had black tops with sleeves and full bloomer type bottoms reaching to the knees.

"Miss Wind was our dorm mother. Once, we got the idea (for awhile) of calling our friends by tapping their room call numbers on the radiator pipes. Miss Wind soon put a stop to that. I think I was the one who got caught.

"After my one year at Dana I taught in two country schools in Washington County—Hewett, now R17, and Fontanelle, now a home. My beginning wage was \$50 a month. Fifteen dollars went for board and room. I walked a mile and half to school. I did my own janitor work. . . .

"Then I married and for the next 17 years I had my family of five children.

"In 1957 after three years of drought and another depression, when seven schools needed teachers, I applied and was hired because I knew how to teach reading with phonics.

"Because I had to get an emergency certificate, I had to attend college to renew my certificate. I attended night classes one night a week at Dana. . . . For 16 years I took night classes and summer courses and graduated in 1972 with a B.A. degree.

"I'm so grateful and thankful to Dana for giving me the opportunity for a rich life. I taught rural schools in Washington, Holt, and Boyd Counties for a total of 29 years. I've now been retired 11 years."

Dr. R.L. Bartley, Springfield, Missouri: "My father taught at Dana College during the so-called Great Depression years—1930 to 1935 or 1936. Thus, I attended school in Blair (public) during those years. . . .

We lived in a small house just up the

hill from what then was the President's home, across the road north from the 'Old Main' Administration Building. As I recall, a family by the name of Lund lived next door to the east. . . .

"It was with much sadness that I learned a year or two ago that the old Administration Building had burned down. I recall many times attending (even at my young age) chapel services in the old chapel—with the curved balcony railing, the balcony overlooking the podium in front. My Dad gave presentations there a few times, and also sang (even tho he was on the faculty) with the Dana College A Cappella Choir directed by Gunnar Malmin in that chapel. That was probably one of my initial exposures to 'good' music, and which resulted in my deep appreciation for music for these many years."

New faculty, staff from page 4

at Kearney. **Steve Kissel '86**, half-time admissions counselor. Kissel also continues at Dana as head softball coach and assistant football coach. **Shaine Rasmussen**, assistant director of admissions, a promotion. **Judy (Zimmerman '71) Mathiesen**, receptionist.

Campus Ministry. **Michael Ostrom**, campus pastor. Ostrom was installed as campus pastor on Friday, October 9. The Rev. Richard Jessen, bishop of the ELCA's Nebraska Synod, presided. Ostrom has a bachelor's degree in social work from the University of Nebraska at Omaha and a master of divinity degree from Lutheran School of Theology, Chicago. He has served as associate pastor at Our Saviour Lutheran Church in Arlington Heights, Illinois.

Career Services. **Judy Collicott**, part-time assistant (see also Music above).

Development. **Michael Jones '71**, director of development, a promotion. **Duey Heffelfinger '88**, director of annual giving, a promotion. **Ruth Henneman**, assistant director of development. A graduate of the University of South Dakota, Henneman has been special assistant to South Dakota Governor Mickelson as director of Constituent Services.

Financial Aid. **Amy Swain Lyons**, part-time financial aid counselor. Lyons, who has a B.A. from the University of Iowa, is a 1991 graduate of Creighton University Law School.

Maintenance. **Joseph Gossett**.

Public Relations. **Paul Clark**, part-time sports information director. Clark received his undergraduate degree with a major in broadcast journalism from Iowa State University. He is also sports editor for the *Blair Enterprise* and *Pilot-Tribune* newspapers.

Student Services. **Nurjban Govan**, part-time director of multicultural education (see Psychology above). **David Hoppe**, part-time campus counselor. Hoppe has a B.A. from Upper Iowa University and a master's degree in human relations with emphasis on counseling from the University of Oklahoma. **Kevin Schaudt**, director of residence life. Schaudt has a B.S. from Eastern Michigan University and an M.A. from Central Michigan. He comes to Dana from Southern Illinois University, where he was hall director for a residence hall with 800 students. **Dan Bane '91**, hall director and director of international student affairs.

ALUMNI IN THE NEWS
 ALUMNI IN THE NEWS
 ALUMNI IN THE NEWS
 ALUMNI IN THE NEWS
 ALUMNI IN THE NEWS

Homecoming— golf, fun run results

Golf. The Homecoming golf tournament continues to grow in popularity, with 66 golfers—alumni and friends—playing at the Blair Country Club Saturday morning, October 9.

Winners of the nine-hole round were: Steve Appel '84, first; Gary McMullin '72, second; and Tim Johnson '84, third. Scott Wagner '90 had the lowest score.

The tournament was organized by Duey Heffelfinger '88, director of annual giving at Dana.

Fun Run. Forty runners took part in the Fun Run the same morning—30 in the five-mile event and ten in the two-mile.

Alumni and student winners in the five-mile were Dan Dibben '84, first male alumnus; Robert Hess '70, first male alumnus 40 or over; and Phillip Warner '93, first male Dana student.

In the two-mile run, a non-alumnus was the first male to cross the finish line. Dana student Cathy Shaw '93 was the first female to finish.

The Fun Run was organized by Dale Albus and sponsored by the Dana Boosters.



New Day friends in Colorado (from left)—Mark and Kay (Schjodt) Dickinson, Paul and Jayne (Stein) Jensen, Lisa (Hayne) Swenson, Julie Williamson, Duey Heffelfinger.

For these New Dayers, the music and friendships continue

For three summers during the mid-to-late '80s, students in "New Day," a select group of Dana Choir members, toured the Midwest and Colorado, giving concerts at youth camps and churches.

From such experiences came several marriages and lasting friendships.

These New Day alumni—as many as can—get together often during the school year and for occasional summer reunions.

And between these events they share their news through "New Day News," published by New Day member Duey Heffelfinger '88.

The newsletter has a limited circulation: Heffelfinger mails it to Rebecca Brabec '89, Mark '85 and Kay (Schjodt '88) Dickinson, Teri (Kraft '87) and Scott '85 Doksansky, Kelvin Grasz '87, Barbara (Anderson '85) and Bob Hamel, John '88 and Miriam (Petersen '81) Hollingsworth, Paul '89 and Jayne (Stein '89) Jensen, Jim '89 and Bonnie (Fendrick '88) Jordan, Steve Meister '88, Karyn (Hillesland '89) and Larry '89 Overbeck, Tim '84 and Kris Rongstad, Lisa (Hayne '88) and Craig '86 Swenson, Ann (Burgard '88) and Jim Thieman, Julie Williamson '85 and Choir Director Richard Palmer and his wife, Leslie.

The group's first summer reunion was two years ago at the Lutheran Bible Camp at Iowa's Lake Okoboji. They had spent several days working and performing there on one of their tours.

This past July the New Dayers in the accompanying photo and their families held their second summer reunion at a condo in Colorado, where they had stayed on one of their tours.

Besides sightseeing and having fun together, they rehearsed and then performed for a Sunday worship service at a local Lutheran church.

What's next? They had such a good time in Colorado that they're already beginning to talk about returning to the Lutheran camp at Lake Okoboji next summer for their third reunion.

Michael Stewart '76, who teaches junior high science in Aurora, Nebraska, was one of five primary staff members who developed and conducted a day camp program in July called "Summer Orientation About Rivers" (S.O.A.R.). An educational project of Prairie/Plains Resource Institute of Aurora, the program taught third through sixth graders about the Platte River and other natural settings in Hamilton County, including tallgrass prairies. A feature story about the program appeared in the July 15 *Aurora News-Register*.

Barbara (Wolf '73) Triplett, Mark Jones '76 and Joe Heimann, the three teachers in the Ft. Calhoun, Nebraska, Community Schools named by their students to the second edition of *Who's Who Among American Teachers*, all have Dana connections. Triplett, who teaches on the elementary level, and Jones, who teaches high school instrumental music, are Dana graduates. Heimann, who teaches social studies for grades 7-11, is the husband of Kitty Heimann, Admissions Office manager at Dana. The three were nominated by Ft. Calhoun students listed in *Who's Who Among American High School Students* or the *National Dean's List*. Students were asked to nominate teachers who had made a difference in their lives by helping shape their values, inspiring interest in a subject or challenging them to strive for excellence.

Don Aanonson '74 of Hampton, Iowa, has been named the 1992 Sales Agronomist of the Year by Pioneer Hi-Bred International, Inc. The award is presented annually to the Pioneer agronomist with the greatest achievements in agronomic programs, support of environmental and conservation tillage education, communications and contribution to sales growth. Aanonson, who has been at Pioneer for 13 years, serves farmers and Pioneer sales representatives in north-central Iowa as an area agronomist. In addition to his bachelor's degree in biology from Dana, he has a bachelor's in agricultural education from Iowa State University and a master's in agricultural education/agronomy.

This past spring **Dawn (Carper '74) Nielsen**, who teaches senior high English in the Blair Community Schools, was named by Blair senior Lynn Carmichael,

a 1992 U.S. Presidential Scholar, as the teacher who has had the greatest impact on his academic accomplishments. The Presidential Scholars program recognizes student achievement in academics and the arts.

Paul Kolb '73, who has taught in the Blair Community Schools for 20 years, was this year's recipient of the Blair Optimist Club's "Achievement in Education Award." For the past ten years Blair High students have listed Kolb as one of their "top ten" teachers.

Candy Holstein '71 and her husband, Curt, who have a Merry Maid franchise in Moreno Valley, California, are this year's recipients of the Dallen Peterson Founder's Award, the top award given by the Merry Maid founder.

Susan (Shadle '68) Jaderstrom, who teaches computer skills and techniques at Santa Rosa Junior College's Petaluma Center in Petaluma, California, was featured in a story in the July 13 Petaluma Argus Courier that described her as a "computer wizard." She has co-written five books for high schools on computer applications. Her sixth and most recent book is a 573-page volume, *The Complete Office Handbook*, that teaches efficient ways to combine manual tasks with office computer technology. Jaderstrom is the daughter of Maralee (Miller '43) and Harry Shadle. Her father taught business at Dana from September 1938 to June 1942.

ALUMNI IN THE NEWS
ALUMNI IN THE NEWS
ALUMNI IN THE NEWS
ALUMNI IN THE NEWS

Summer baseball... Blair champions have alumni, student coaches

This summer three alumni and a Dana student helped coach winning youth baseball teams in Blair:

- A Little League team coached by Steve Cook '70, Tim Brown '67 and non-alumnus George Hall won the state championship and then went on to the national playoffs in Indianapolis.

- An American Legion Midget team coached by Dan Petersen '87 and Pete Svendgard '93 won the state championship.

Cooperation brings new playing field

Construction of a railroad overpass on Blair's 19th Street has given Dana a new football/soccer practice field.

The contractor needed soil to elevate the tracks, and so over the summer the company removed dirt from the hill to the west of Viking Field (behind the press box), creating a level playing field. The college will seed the area next spring.

Bob Schmoll '83, vice president for business affairs, said that Dana was also paid for the dirt.



Homecoming royalty

Seniors Jennifer Edelman, a special education major from Merna, Nebraska, and Kalani Simpson, a communication major from Naalehu, Hawaii, reigned over Homecoming. Members of their court were Craig Barsness (Sandstone, MN), Mike Carubba (Hamilton, Ontario, Canada), Jennifer Davenport (Omaha), Manuel Johnson (Chicago), Carol Mueller (Seward, NE), Maija Nielsen (Omaha), Kelly Ryan (Blair) and Cathy Shaw (Omaha).

'90s Carrie Baird '92 is a resource room special education teacher in the Victorville, California, Elementary Schools. . . . **Lois Behrens '92** teaches 9-12 English, coaches the speech team and directs plays at Platteview High School in Springfield, Nebraska. She lives in LaVista. . . . This summer **Claudia Brown '92** passed the *Certificado de Espanol*, given by the Universidad de Madrid, Spain. She scored a 9 on the literary criticism portion of the exam, a grade achieved by only a few students. While in Europe she also visited relatives in Paris, France. . . . **Connie Christensen '92** is an administrative assistant for Project Resolve at Goodwill Industries in Fremont, Nebraska. . . . **Merid Eshete '92**, St. Paul, Minnesota, is a merchandising manager for Wilson Corporation. . . . **Scott Gray '92**, Omaha, is a trainee at Union Pacific. . . . **Jeremy Hill '92** and Denise Lenning were married June 27. Jeremy is a consumer lending specialist at Firststar Bank in Des Moines, Iowa; Denise is working on a master's degree in public administration and law at Drake University. . . . **Lori Johnson '92** teaches third grade and is the volleyball coach in Shelby, Iowa. . . . **Kristen (Skelton '92)** and **Jeff '91 Miller** live in Missouri Valley, Iowa. Jeff is assistant manager at Footlocker at Omaha's Southroads Shopping Center. . . . **Melissa**

Reinikainen '92, Omaha, announces the June 10 birth of Allie Jane. . . . **Patrick Sanders '92**, an advertising representative at the *Omaha World-Herald*, recently developed two special advertising supplements for the *World-Herald*, one titled "Hispanic Heritage" and the other, "Back-to-School in Southeast Omaha and Bellevue." His responsibilities included hiring the writers, selling ads and determining the story content for both publications. . . . **Ginny Ward '92** is a feature writer and reporter for the *Evening Sentinel* in Shenandoah, Iowa. . . . **Troy Buss '91** and **Sharon Weis '94** were married August 15. Troy farms with his father and brother in Harrison County, Iowa, and he and Sharon live in Modale. Sharon is attending Iowa Western Community College. . . . **Tara (Wassman '91)** Gaver teaches high school English and Spanish in Tekamah, Nebraska. . . . **Audrey Gowen '91** is the volunteer coordinator for the Nebraska AIDS Project in Omaha. . . . **Chris Heinrich '91** worked as an intern this past summer in the Washington, D.C., office of U.S. Senator **Paul Simon '49**. Heinrich is a second-year law student at the University of Nebraska-Lincoln. . . . **Kyle Knapp '91** and **Karen Froker '91** were married August 29 in Exira, Iowa. They live in Norfolk, Nebraska; Kyle works at Otto Knapp Jr. Transportation in Madison. . . . **Thom Morrow '91** is a morning announcer at KOKL-AM Radio in Okmulgee, Oklahoma. . . . **Troy Novak '91**, Omaha, is a management trainee at IBP in Council Bluffs. . . . **Amy (Mayberry '91)** and **Marty '85 Rogers**, Blair, announce the September 25 birth of Marshall Brandon. . . . **Kim Soderberg '91** teaches Spanish at Roncalli High School in Omaha. . . . **Russ Wilcox '91** and his wife, Kim, live in Yankton, South Dakota, where Russ is a loan officer at Valley State Bank. . . . **Shelley Carter '90 Hanssen** graduated from Teachers College, Columbia University, in May 1991 with a degree in student affairs administration. She is assistant director of residential life/director of housing at Marymount Manhattan College. She is also working on another master's program, this one in medieval studies at Fordham University. . . . **Randy Hollowell '90** is a graduate student in the English Department at Miami University in Oxford, Ohio. His main area of

emphasis is multi-media/interactive video. He also works for Miami's news bureau. A feature story by Hollowell was published as the cover article in the summer issue of *Miamian*, the university's quarterly magazine. . . . **Tracy and Steve King '90**, Elkhorn, Nebraska, announce the October 1 birth of son Derek. . . . **Lara Jean McBride '90**, Denver, Colorado, works in city dispatch for Northwest Transport, Inc.; she is studying oboe privately. . . . **Deb Niedzielski '90** teaches Spanish at Crete (Nebraska) Junior-Senior High School. . . . Elle Christiane was born March 21 to Stephanie and **Mark Weber '90**, Dawson, Minnesota. Mark is lab supervisor for Ag Processing (AGP) in Dawson.

'80s In May **Timothy Hanssen '89** graduated from the Jewish Theological Seminary in New York City with an MA in Jewish Studies. He entered a master's program in philosophy at City University of New York this fall. Tim also works as a research associate and archivist at the Jewish Theological Seminary. . . . **Jerrold Lawrence '89** and **Jackie Schultz**, a hall director at Dana in 1986-87, were married August 8. They live in Omaha, where Jerrod is assistant manager for ITT Financial, and Jackie is a leasing consultant for Peterson Properties. . . . **Jeanine (Tharp '88)** and **Allan Lytton of Minneola, Kansas**, announce the July 10 birth of daughter Ciarra Corinne. She joins sister Jocelyn, 18 months. Jeanine is a part-time church secretary and volleyball coach for the Minneola School District. . . . **Matthew Douglass** was born September 9 to Nancy and **Michael Sich '88** of Aurora, Colorado. He joins brother Brandon. . . . **Laurie (Nielsen '87) Barratt** is a second-year graduate student at Georgetown University. . . . **Andrew Jacob** was born May 18 to Robert and **Vicki (Pedersen '87) Dunkle** of Blair. He joins brother Matthew (3). . . . **Dr. Paul '86 and Rebecca (Cole '88) Christensen** are living in Minneapolis. Paul has a three-year residency, specializing in emergency medicine, at Hennepin County General Hospital. . . . **Shariane Hann '86** and **Dave Finch** were married October 19, 1991. They live in Mesa, Arizona, where Shariane is an assistant warranty administrator at a Ford dealership, and Dave is a maintenance supervisor for an apartment complex. Dave has two children, Jennifer (9) and Dustin (8). . . . **Jolene and Marty Hugg '86**, Hastings, Nebraska, announce the September 23 birth of Kiley Marie. Brother Bradley is 4 1/2. . . . **Jeff DeYoung '84** has a new job as managing editor of the *Daily Freeman-Journal* in Webster City, Iowa. . . . **Peter Jacobson '84** recently became associate pastor at Grace Evangelical Lutheran Church in Lincoln, Nebraska. . . . **Carol King '84**, controller at Valley Products Corporation in Valley, Nebraska, has been promoted to vice president. . . . **Eric and Debbie (Cleaver '84) Rider**, Logan, Iowa, announce the June 28 birth of Ian James. . . . **Keith '84 and Kathi (Klover '84) Uhlinger** have moved from Sidney, Nebraska, to Moses Lake, Washington, where Keith teaches English and coaches seventh grade football at Chief Moses Junior High School. . . . **Heidi (Faudel '83) and Eric '82 Beck**, 29 Palms, California, are the parents of Maria Elise, born July 20. Brother John Louis is 3. . . . **Brad Best '83** became high school principal this fall in Creighton, Nebraska. He previously served as assistant principal at the Elkhorn (Nebraska) Middle School. . . . In August **Michael Martin '83** was named campus chaplain at Suomi College in Hancock, Michigan. He also teaches Old and New Testament, an ethical decision-making class and a world

Continued on page 16

DESTINY'S DEEP SEA
DESTINY'S DEEP SEA
DESTINY'S DEEP SEA
DESTINY'S DEEP SEA
DESTINY'S DEEP SEA

Nineteen alumni serve on 1992-93 Council

Five alumni representing the 1940s, '60s and '80s have been elected to three-year terms on the Alumni Council: Paul Larsen '48, Fremont; Eunice (Petersen '49) Neve, Omaha; Bonnie (Nelson '65) Jensen, Blair; Jerry Christensen '82, Blair; and Kevin Johnson '83, Omaha. (Johnson enters his second term on the Council, and Larsen and Jensen have been members-at-large. Neve was appointed last year to complete the unexpired term of a member who resigned for personal reasons.)

Three graduates, one each from the '50s, '80s and '90s, have been appointed to one-year terms as members-at-large: Milton Jensen '58, Fremont; Jennifer Jensen '82, Omaha; and Anita Woodward '91, Omaha.

At their spring meeting Council members elected the following officers to second one-year terms: president, Scott Rasmussen '82, Omaha; vice president, Kevin Johnson '83; and secretary, Kathy (Nielsen '55) Leistad, Elk Horn, Iowa.

Others serving on the Council for the 1992-93 academic year are: immediate past president, Paul Johnson '76, Fremont; Steve Appel '84, Blair; Linda (Anderson '65) Howland, Blair; Andrew Johnson '83, Cambridge, Iowa; Carol King '84, Omaha; Arno Neben '72, Papillion, Nebraska; Tom Nielsen '59, Omaha; Judi (Larsen '76) Pedersen, Blair; and Carlene (Benson '62) Petersen, Omaha.

Christmas shopping at the Dana Bookstore



Order Form

Walnut round or square clock with Dana seal laser-engraved on face (*round clock pictured*). Uses AA battery. **\$37.00**

Burgundy or black pen with "Dana College" lettered in gold. **\$7.95**

Dana Christmas ornament—silver/gray ball with red Dana logo (*pictured*). **\$4.50**

Dana College watch with red logo on face. Brown leather strap. Men's and women's styles. **\$49.95**

Little King youth sweatsuit. Hooded sweatshirt with pouch pocket and red sweatpants (*pictured*). Sizes 12 mos., 2, 4, 6. **\$20.00**

Gray turtleneck sweatshirt with Dana on collar and seal full chest design (*pictured*). Sizes S, M, L, XL, XXL. **\$29.50**

Graphic also available in long-sleeve gray T-shirt. M, L, XL. **\$16.50**

Description	Color	Size	Quantity	Price	Total Price

Send to:
Dana College Bookstore
Dana College
Blair, NE 68008
 (402) 426-7254

Merchandise Total
 5% tax — NE residents
 Shipping (see chart)
TOTAL

Shipping and handling

Please add appropriate charge for merchandise total.
 Up to \$10..... Add \$2.00
 \$10.01-\$20..... Add \$2.50
 Over \$20..... Add \$3.50
 Please allow 2 to 4 weeks for delivery

SHIP TO: (Please print)

NAME _____

ADDRESS _____

CITY _____ STATE _____

ZIP _____ PHONE _____

Check or money order enclosed Charge: MasterCard Visa
 (Make check out to Dana College Bookstore)

Required for charge orders only

Account number _____

Expiration date _____ Signature _____

The Dana College Bookstore appreciates your support. We are here to serve all students, alumni, parents and friends. If you are interested in other items we carry, please call or write for information. Your comments are always appreciated.



Destiny, from page 14

religions class. His wife, **Susan (Ostrem '84)**, will remain in Pennsylvania until the end of 1992; she is a sales assistant at a brokerage firm. . . . **Michael Von Hollen '83** is a student at Wartburg Theological Seminary. . . . **Ginger (Wolf '82)** Craig of Cozad, Nebraska, is a legal secretary at Berreckman-Berreckman, P.C. She and her husband, Wade, have three children. . . . **Kerry Garrels '82** is health promotion services director at the Burlington (Iowa) Y.W.C.A. . . . **Wilbur Holz '82** became pastor of Bethel Lutheran Church in Gracettinger, Iowa, last May. He writes, "I am excited about being closer to Dana and friends from there." In April he and his wife, Deb, will become the parents of twins. They'll join daughter Sarah. . . . Matthew Leonard was born August 25 to Mike and **Brenda (Narjes '82)** Olsufka of St. Paul, Nebraska. Sister Katie is 2½. . . . Tamra and **John Ragan '82**, Beardsley, Minnesota, announce the June 12 birth of daughter Margaret. Son Philip is 2. John recently became chaplain/counselor at Tekakwitha Adolescent Treatment Facility in Sisseton, South Dakota. Tamra teaches music at Beardsley-Valley Schools. . . . **Bret Reuter '82** is a student at St. John's Seminary in Collegeville, Minnesota. . . . **Todd Swenson '82** is senior claims representative for Republic Insurance Group, and **Carol (Olsen '82)** is financial aid director at Medical Institute of Minnesota. They and daughter Anna Katherine live in Bloomington. . . . **Virgil Watson '82** works for Equilibria in Omaha as a counselor for alcoholism and drug addiction. . . . **Marian (Warman '81)** and Victor Doicin, Blair, announce the October 15 birth of Elizabeth Aurelia. . . . **Ted Hanlon '81** and Lisa Tracy married April 12. Other Dana alumni participating in the ceremony were best man David Jensen '81, soloist Amy (Nichols '82) Jensen and usher Curtis Fett '82. Ted and Lisa live at 2324 W. 51st Terrace in Westwood, Kansas. Ted works at Worldspan Inc.; Lisa is an environmental scientist with the U.S. Environmental Protection Agency. . . . **Miriam (Petersen '81)** and **John '88 Hollingsworth**, Blair, announce the August 6 birth of Melanie Rae. . . . Mary Elizabeth was born September 9, 1991, to **Mogens '81** and **Sally (Miller '81) Knudsen**. She joins Katie (7½), Birgitte (2½) and John (6). The Knudsens live in Lexington, Nebraska, where Mogens and his brother-in-law own and operate Sav-alot

Discount Foods. . . . **Karla Schutt-Schulze '81** is the sign language interpreter for the Fremont, Nebraska, Public School System. She is also director of public service at KHUB-KFMT Radio in Fremont. She lives in Fremont with her two daughters, Emily (5) and Miranda (4). . . . **Mary Bro '80** has been named executive vice president of sales and marketing of Intellisell, Omaha. . . . This summer **Terry Dutton '80** became a loan officer and assistant vice president at the Washington County Bank in Blair. . . . **Beth (Jorgensen '80)** and Steve Heng announce the June 8 birth of Sarah Elizabeth. She joins sister Katie (4½) and brother Garrett (2½). The Hengs' new address is 2424 N. 24th St., Sheboygan, Wisconsin 53083. . . . **Wyleen (Jorgensen '80)** and Alan Johnston, Box 22, Chillicothe, Iowa 52548, announce the May 15 birth of Kayleen Anna. She joins brother Wayne (2). . . . **Mary Rowland '80** is pastor at Mt. Zion Lutheran Church in Wauwatosa, Wisconsin.

'70s **David Hanen '77** has been named vice president of fiscal services at Memorial Hospital of Dodge County in Fremont, Nebraska. He has been with the hospital for eight years as director of financial services. . . . Hillary Anne was born April 22 to **Ruth (Fevold '77)** and Dave Hanson of Gowrie, Iowa. Ruth teaches second grade in the Fort Dodge Community Schools and Dave farms. . . . **Julia (Hartje '77)** Hensley, McClelland, Iowa, is administrative secretary-Media Services, at Loess Hills Area Education Agency. . . . **Michael Herbert '77**, Ambler, Pennsylvania, is a high school coach and health and physical education teacher. He and his wife, Deborah Lynn, have four children. . . . **Mark Gruner '75**, who graduated last spring from Wartburg Theological Seminary, was ordained July 19. He has accepted a call to Christ Lutheran Church in Eureka, Kansas. Mark and **Carol (Madsen '73)** have two daughters, Bethany (14) and Megan (10). . . . Sharon and **John Brooks '74**, Hastings, Nebraska, announce the September 9 birth of Matthew Eugene. . . . **Katie (Pieper '74) Elling**, Ladysmith, Wisconsin, is teaching Spanish at Mt. Senario College in Ladysmith. She spent seven weeks at Mexico's Puebla University this past summer taking classes in Spanish grammar and conversation. Husband **John '73** is head of the graphic arts department at Flambeau Litho. . . . **Nancy**

(**Simons '71**) Wedberg received her master's degree in counseling from the University of Nebraska at Omaha in May. She has a new job as an elementary school counselor in District 66, Omaha.

'60s **Keith Limbo '67** is president of Babcock Underwriters, Inc., in Omaha. He owns and manages several wholesale insurance brokerage operations. He and his wife, Marcia, have five children.

'50s **Dr. Rod Wead '57**, a social service worker in Omaha for many years and a faculty member at Creighton University and the University of Nebraska at Omaha, has moved to Columbus, Ohio, where he teaches sociology at Ohio State University and works for Neighborhood Services. Neighborhood Services is financed jointly by the City of Columbus and Ohio State. . . . **Wes Jespersen '55**, Council Bluffs, Iowa, in a reminiscence about his two years at Dana, recalls his job as student manager for athletics and of rooming at the home of Coach Paul and Ruth Peterson his second year. He writes: "I have a lot of fond memories... of those exciting times." . . . **Don Ofte '52** has been selected by United Engineers & Constructors (a Raytheon Company) as its vice president for Government Services for Western Operations. He is responsible for government services and will execute projects through UE&C's western regional office in Denver.

'40s The congregation of Christ Lutheran Church in Aptos, California, has named **Niels Carlsen D'49 T'56** "Pastor Emeritus." . . . **Emmelinn (Hoar '49)** Fredericksen writes, "We left Massachusetts on July 30 after selling our 12-room home of 27 years. We bought a seven-room Cape Cod home on .6 acres in lovely Tawse, Maine, just 8.2 miles from our two lakefront summer cottages. My husband, Gerald, retired a second time after leaving his business on May 31. We are slowly getting settled and will really enjoy being back in our home territory after being away 42 years! Maine is beautiful, we love it, and welcome any alums coming to the Portland area." . . . Dana Professor Emeritus **Paul '41** and **Ruth (Hansen '44 '72) Peterson** of Portland, Oregon, celebrated their 50th wedding anniversary on October 3.

DANA COLLEGE
2848 College Drive
Blair, Nebraska 68008

ADDRESS CORRECTION REQUESTED

Moving?

Street _____

City _____

State _____ Zip _____

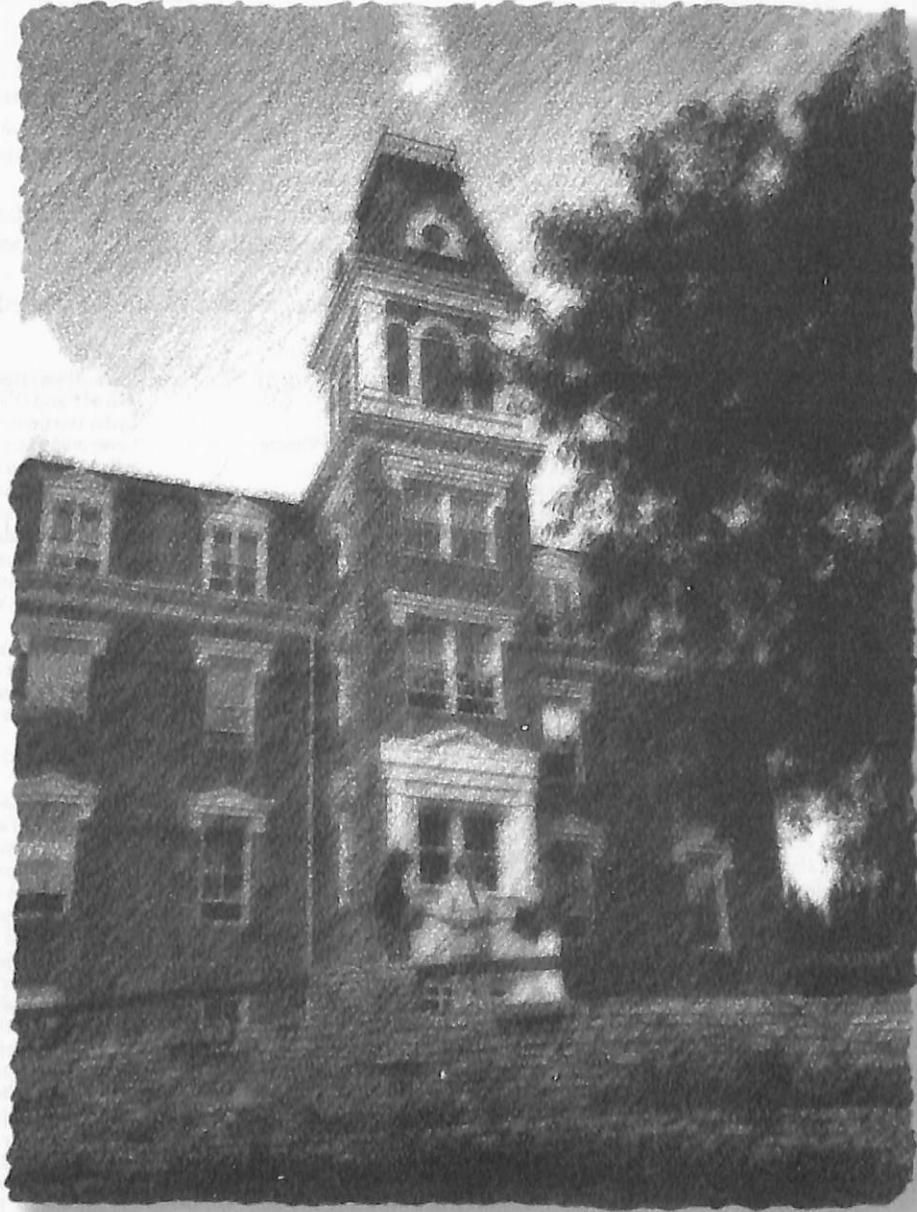
Telephone(____) _____

Please return with address label.

Non-Profit Org.
U.S. Postage
PAID
DANA COLLEGE



AN INVITATION TO REMEMBRANCE




DanaCollege



THE OLD MAIN COMMEMORATIVE WALL

One of the special features of the Old Main replacement building at Dana will be the Old Main Commemorative Wall. Designed to commemorate Old Main, which burned in 1988, the Wall will list the names of those persons, corporations and foundations that have made gifts of at least \$5,000 to the "ADD" (Accelerating Dana's Development) campaign.

Additionally, a "Dana Family Album," containing brief historical accounts of the relationship to Dana of those whose names appear on the Wall, will be prominently displayed in the Old Main replacement building.

To add your name (or that of a loved one) to the Old Main Commemorative Wall and ensure your family's place in the "Dana Family Album," just complete the attached card and return it to the Dana Development Office. A member of our staff will be in touch with you.

As of November 1992, the following will be listed on the Old Main Commemorative Wall: (Please inform the Development Office if you find errors in this list).

Aid Association for Lutherans
 American Cyanamid Company
 American Lutheran Church, Gothenburg, NE
 Harold and Marian Andersen
 Ingvard M. and Ella Bertelsen Andersen
 L.M. and Charlotte (Richter) Andersen
 Ruth (Staugaard) Andersen*
 Ernest and Sharol (Crandall) Anderson
 Ralph and Judith (Bruce) Anderson, Jr.
 William and Dorothy Anderson
 Arthur and Helene Antholz
 Steven and Deanna (Nielsen) Appel
 Aquila Energy
 William and Judith (Jensen) Archibald
 Charles and Carole Bagby
 Anne M. Bansen
 Lloyd and Ann (Jessen) Bansen
 Peter H.* and Anne M. Bansen Family
 John and Virginia (Lippincott) Beck
 Marcus* and Agnes (Lund)* Beck Family
 Glenn and Verona Berntson Family
 Sena Bertelsen*
 Robert and Erna (Petersen) Berthelsen
 Bethesda Lutheran Church Foundation
 Robert and Lois Blobaum
 Bonnie (Deepe) Boccitto
 John and Carol (Plettner) Bogacz
 Ervin F.* and Palma K.* Bondo
 Alan and Patricia (Hansen) Boozikee
 Victor and Sanna Borge
 Howard and Ruth Braren
 Charles and Judith (Rueter) Brehm
 Leanne (Danahy) Buland
 Fred and Elsie Burkland
 Calvary Lutheran Church, Omaha, NE
 Louis Carpenter
 John S. Chambers*
 John O. Chatt
 Herbert Christensen
 Sigrid Christensen and Marie Johnson
 In honor of Aaron* and Alice* Christiansen
 Fred and Inger* Christopherson
 Myrvin F. and Anne C. Christopherson
 Class of 1991
 Class of 1992
 James and Belva Joy Coffey
 Max* and Dora Coffey Family
 Robert and Joan (Nelson) Coffey
 ConAgra, Inc.
 Herbert* and Becky Dalleck
 Dana Athletic Boosters

Dana Women's Club
 DBR Partnership
 Delbert J. Detmer*
 F. Lowell and Dorothy (Granlund) DeVasure
 Dow Corning Corporation
 Joe and Susan (Zabel) Dryburgh
 Jean Eisenhauer
 Jeffrey and Sandra (Ohrt) Ellis
 Enron Foundation
 Eriksen Construction Company, Inc.
 Evangelical Lutheran Church in America
 Expeditors International of Washington, Inc.
 David and Marilyn Falksen
 Elwin and Helen Farwell
 First Lutheran Church, Blair, NE
 First Lutheran Church, Fremont, NE
 First National Bank of Omaha
 Margaret Fischer*
 Edith Fox*
 Earl Fries
 Carl and Evelyn Frost
 Gardner Foundation
 German-American Society
 Dennis and Debra Gethmann
 William and Barbara Gibbs
 Gilbert M. and Martha H. Hitchcock Foundation
 Erwin and Pearl Goldenstein
 Good Shepherd Lutheran Church, Wichita, KS
 Nelson and Linda Gorman
 Fred J. and Sharon J. Gordon
 William and Bobbie Gordon
 David* and Sally Graven
 Great Plains Communications, Inc.
 Mark and Caryl (Christensen) Grorud
 Arthur Dale Gustason*
 Everett* and Kathryn Hagedorn
 Bill and Maree Hansen
 Edward and Shirley (Bondo) Hansen Family
 Florence M. Hansen
 Richard and Ann Hansen
 Robert and Janice Hansen
 Steve Hansen
 Arndt* and Clara* Hanson Family
 Clifford and Florence (Hanson) Hanson
 Roger and Marilyn (Juul) Hanson
 William and Doris (Petersen) Hanson
 Steve and Laurie Harper
 Howard Hawks
 Norma (Parde) Heeren
 Milt and Jane Heinrich
 Frank and Helen Hengeveld

Viola (Hess) Henningsen*
 Alfred* and Gladys* Hernes Family
 Lydia Herrmann*
 Lynn and Mary Jean Hiemke
 Jeffrey Hogden and Terry Wilson
 Donald and Pauline Hogzett
 Richard and Gloria Holm
 Roger and Linda (Anderson) Howland
 Abigail Hubbard and Jan Goering
 John C. and Pamela Hundahl
 Paul and Jean (Wood) Hundtoft
 Lynnette Hunt
 Emory and Edna Hunt
 Hugh and Jane Hunt
 Richard and Janyce Hunt
 HunTel Systems, Inc.
 Isco, Inc.
 The J.M. Smucker Company
 Aaron Jensen*
 Genevieve (Skau) Jensen
 H.P. Jensen* Family
 Irving* and Elizabeth Jensen
 Irving F. Jensen Co., Inc.
 Merton Jensen Family
 Milton and Beverly (Peterson) Jensen Family
 Richard A. and Bonnie (Hagedorn) Jensen
 Paul and Ada Jeppesen
 Mildred Jepsen*
 Robert and Malinda (Wallman) Jepsen
 Gerhardt and Harriette Jersild
 Harold and Dolores Jersild
 John P.* and Dora (Sinamark)* Johnsen
 Marvin and Alice Johnsen
 Paul C. and C. Joyce (Nelson) Johnsen
 Ray and Nancy Johnsen
 Johnson & Johnson
 Andrew Johnson and Kathy Gerking
 Ed and Candy Johnson
 John and Kristi (Planck) Johnson
 Kevin C. and Kari Jo (Molzer) Johnson
 Layne M. and Deborah Johnson
 Leonard A. Johnson*
 Milan and Gloria (Hanson) Johnson
 Oscar and Dody (Jensen) Johnson
 Paul and Liz (Miller) Johnson
 Michael and Faye (Coles) Jones
 Don and Joyce (Vasby) Jorgensen
 Floyd and Dorothy (Landbo) Jorgensen
 Ann M. Jorgensen
 Herbert and Carol (Nielsen) Jorgensen
 Stanley and Ethel Jorgensen

Rodney and Nancy Kastrup
 Ernest and Irene Kehlbeck
 Kellogg Company
 Herman A. Kirchhoff*
 Leo Kirchhoff
 In memory of Michael Kirk*
 Luther C. and Doris (Siersbeck) Kloth
 Dagmar (Nielsen) Knudsen
 Rudolph and Ellen (Rasmussen) Knudsen
 Simon* and Virginia* Korshoj
 Kountze Memorial Lutheran Church, Omaha, NE
 Robert and Joan (Petersen) Krogh
 Bernard J. and Catherine C. Kros
 Timothy and Jamie (Heide) Kuiken
 Nick and Rosella Lalich
 William and Barbara Lane
 David and Bernice Larsen
 Edward* and Inga (Schultz) Larsen
 Herbert and Regina Larsen
 Oluf* and Lillie (Bondo)* Larsen
 Robert Larsen
 Richard and Carol (Madsen) Larson
 Douglas and Susan Lash
 Victor E. and Margaret Lauritsen
 John and Libby Lauritzen
 Paul and Gail Laursen
 Forrest and Dorcas (Vammen) Leighton
 John and Kathleen (Nielsen) Leistad
 Lincoln Health Care Foundation
 In memory of Luther "Abe" Lincoln*
 Tom and Janice Lippincott
 Roger Lorsch
 N.T.* and Marie* Lund
 Lutheran Brotherhood
 Lutheran Brotherhood Branch #8113
 Lutheran Brotherhood Branch #8543
 Lutheran Brotherhood Branch #8706
 Lutheran Church of the Master, Omaha, NE
 MacArthur Foundation
 Ellen Madison*
 Archie* and Lorraine (Sandberg) Madsen
 C. Clifford* and Esther (Johnson) Madsen
 Gary and Diane (Larsen) Madsen
 Leonard K. and Lenora J. Madsen
 O. Victor and Esther (Frost) Magnussen
 Robert and Dorothy Mandsager
 Adolph and Esther* Marking Family
 Larry and Mary Mason
 Bernard and Mary Matthies
 Fred and Carol Matthies
 W. Leo and Patsy McKillip
 James McKinley
 Barbara (Beck) and Donald Meduna
 Mid-America Computer Corporation
 Robert and Blanche Milek
 Julie Miller*
 Margaret A. and Aleine S. Miller
 Mobil Foundation, Inc.
 Morrison Knudsen Corporation
 Richard and Mildred (Johnson) * Morton
 Jane Mundschenk
 William Mundschenk Family
 Dana and Maureen Munson
 Mark and Susan (Miller) Musick
 Russell Musick Family

Mutual of Omaha Insurance Company
 National Endowment for the Humanities
 Arno and Betty (Jorth) Neben
 Nebraska Independent College Foundation
 Nebraska Synod ELCA
 Arthur F.* and Ruth (Rasmussen) Nelson
 Donald and Mary Anne Nelson
 Erland* and Naida* Nelson Family
 Viola Nesheim*
 A.V.* and Dora* Neve Family
 Alton and Marjorie Neve
 Aster and Ruth Neve
 Leif Neve and Bonnie Lutz
 Lloyd and Muriel Neve
 Paul and Lela (Nielsen)* Neve
 Rachael Neve
 Ried and Eunice (Petersen) Neve
 Arnold and Elaine (Neve) Nielsen
 Elcar and Lillian Nielsen
 Homer and Ione (Christensen) Nielsen
 Luella K. Nielsen
 Margaret* and Therkild* Nielsen
 Martha Nielsen
 Niels Nielsen*
 Pauline Nielsen*
 Ruth Herman Nielsen
 No Frills Supermarket, Inc.
 Allan and Marilyn (Neve) Nyegaard
 Donald and Ollie Mae O'Connor
 Kathleen O'Connor
 John and Paula O'Hanlon
 James and Verna Olsen
 Allan and Margie (Fangmeyer) Olson
 Roger and Dorothy Olson
 The Omaha World-Herald
 Phillip Pagel
 E. Gordon and Anne Pahre
 Francis M. (Stub) and Ruth (Duffy) Pearson
 Paul and Lilly Pedersen
 Peter Kiewit Foundation
 Peter Kiewit Sons', Inc.
 Alma and Donna Petersen
 Elsie (Nielsen) Petersen*
 Everitt and Terri (Johnson) Petersen
 Immanuel and Elna (Hofgaard)* Petersen
 Marc and Carlene (Benson) Petersen
 Marius Petersen*
 N.C. Petersen* Family
 Ellen Ann Qualsett
 Gerald and Tamara (Lykke) Quirk
 Ruth Larsen Randall
 Christine Rasmussen
 Elise Rasmussen*
 J. Evan Rasmussen*
 Johannes and Clara Rasmussen
 Ruth Rasmussen
 Scott and Colleen (Dutch) Rasmussen
 Jurgen and Fannie Remmers
 Marlow Remmers
 J. Hilton* and Fern Rhoades
 Kenneth and Virginia Rhoades
 C.N. Jr. (Bud) and Janice Robinson
 Rocky Mountain Synod ELCA
 Alvin and Beulah (Nielsen) Rueter
 In memory of Stephan R. Sams*

Dean and Rose Sapp
 Ray and Lenora Sapp
 William and Lucille Sapp
 The Walter and Lorraine (Nelsen) Schacht Family
 William and Lorraine (Peterson) Schaeffer
 Jerry and Ruth (Behrens) Schmidt
 Robert and Judy Schmoll
 Carolyn Scholl
 Mark and Judy Schreffler
 Phil Schreffler
 Clemens* and Mildred (Thomsen) Schroeder
 Erling and Dorothy (Willmert) Schultz
 Myril and Iva Lou Schultz
 Alton and Mary Schwandt
 Brian Serr
 Gary and Jean (Brehm) Shelstad
 Lawrence Siersbeck*
 Paul and Jeanne Simon
 Chuck and Gigi (Garrett) Smith
 Peter and Janet (Langenfeld) Smith
 A.J. and Bernice* Snowbeck
 Harry and Shirley (Hansen) Sorensen
 Severin and Lilly (Jorgensen) Sorensen
 St. John Lutheran Church, Beatrice, NE
 Andrew and Martha (Rasmussen) Staby
 Paul and Jigger Staby
 Larrie and Norma (Nelson) Stone
 Paul* and Lil* Strand
 Willis and Janet Strauss
 Augie and Joan (Peterson) Stricker
 Marion (Hanson) Svendsen
 Donald and Patricia Swanson
 Tom and Kathy (Appel) Taggart
 Juri and Carmen Taht
 Wayne and Joan Tanderup
 Irving* and Joan Tange
 James and Lida Rae Taylor
 Howard and Helen Thompson
 Rodney and Marilyn (Harder) Thompson
 Paul and Darlene Toole
 Patrick and Kathy Tripp
 Union Pacific Foundation
 UPS Foundation
 Michael Urdahl
 UtiliCorp Foundation
 Valmont Industries, Inc.
 Johannes and Dagmar Vasby
 Philip and Paula (Westfall) Vasby
 Richard and Karen Vierk
 David and Barbara Vopnford
 David and Rose Wallman
 Washington County Bank
 Ray Weckmuller* Family
 Richard Whittier and Bonnie Sand-Whittier
 Glen and Lola (Petersen) Wiese
 Harold Willey*
 Wayne and Ruth Wise
 Philip and Karan Wittig
 Bob and Louise Woodhouse
 Jess and Patricia Wright
 Gene and Barbara Wulf

* Deceased



FAMILY TRIBUTES AND NAMING OPPORTUNITIES

A growing number of families have chosen to honor and preserve their family's name at Dana by naming specific areas in the Old Main replacement building. Naming opportunities range from offices, classrooms and departments to the entire building.

Family tribute gifts and other named areas will be appropriately marked with plaques that will recognize the person or family being honored and those who have made the gift. The name of the person or family honored in this way will also appear on the Old Main Commemorative Wall.

If you are interested in receiving more information about how your family might be honored in this way, please return the attached postage-paid return card. A member of the Dana Development staff will be in touch. If it is more convenient, please call the Development Office directly at 402-426-7333.

As of November 1992, the following families are participating in the Tribute program:

The Peter H. and Anne M. Bansen Family
The Marcus and Agnes (Lund) Beck Family
The Max and Dora Coffey Family
The F. Lowell and Dorothy DeVasure Family
The Gardner Foundation
The Rev. and Mrs. H.P. Jensen Family
The Irving and Elizabeth Jensen Family
John P. and Dora (Sinamark) Family
Leonard A. Johnson
The Oscar and Dody Johnson Family
Simon and Virginia Korshoj
Oluf and Lillie Bondo Larsen, sponsored by Ruth Larsen Randall
Victor E. and Margaret Lauritsen
The William Mundschenk Family
The Russell Musick Family
The Rev. A.V. and Mrs. Dora Neve Family
Margaret and Therkild Nielsen
N.C. Petersen, sponsored by the Vasby Family
Ellen Ann and Harold Qualsett
Jurgen and Fannie Remmers
The J. Hilton Rhoades Family
Paul and Lil Strand

"THY SPIRIT LIVE, ANOTHER THRONG RISE UP AND SING OUR SONG"

FROM "HAIL DANA"



_____ YES, I/We am/are interested in the possibility of being included on the Old Main Commemorative Wall. Please contact us with additional information.

Name _____

Address _____

City _____ State _____ ZIP _____

Telephone _____



NO POSTAGE
NECESSARY
IF MAILED
IN THE
UNITED STATES

BUSINESS REPLY MAIL

FIRST CLASS

PERMIT NO. 2

BLAIR, NEBRASKA

POSTAGE WILL BE PAID BY ADDRESSEE

DEVELOPMENT OFFICE
DANA COLLEGE
2848 COLLEGE DR
BLAIR NE 68008-9906

