

DANA REVIEW

Winter 1992, Volume 48, Number 2

A faculty-staff drive this fall launched "Completing the Challenge," a two-year, \$6 million extension of the college's ADD ("Accelerating Dana's Development") campaign.

Members of the faculty and staff,

Faculty, staff meet the "Challenge"

including professors emeriti and several retired staff members, were also the first to be asked to contribute to ADD when it started three years ago. Their response, then and now, reveals their commitment to Dana.

In the fall of 1988 they pledged \$131,250, an average of \$43,750 per year over the three years of the first phase of ADD. This fall they gave "Completing the Challenge" an even stronger start by pledging to contribute \$117,000 over two years, an average of \$58,500 a year.

Their realization of the significance of their contributions was reflected in the comments of Dr. Larrie Stone '57, professor of biology, who spoke at the faculty-staff dinner. "It is very important," he told his colleagues, "to show the other communities that provide us with their financial support that we believe in our institution and the mission she pursues."

ADD Director Mike Jones '71 called the results of the faculty-staff drive "a significant increase on an annual basis from three years ago—and the response at that time was also a tremendous one."

Jones noted that more than 20 members of the faculty and staff, among them retired staff and emeriti, have given at levels that qualify them for listing on the Commemorative Wall. "We appreciate these gifts—and all of the others as well," he said.

Many of the contributions for the successful three-year ADD drive that raised \$10.65 million have come through fund-raising dinners held across the country and through annual Phonoramas conducted by student and alumni callers.

Few, if any, dinners are being planned for the two-year "Completing the Challenge," Jones said. Instead, members of the Development staff are seeking gifts through one-on-one contacts.

Phonoramas by students and alumni, however, continue to be an important part of the two-year extension. Paul Ditlevson, director of development, called the student Phonorama held this fall "a major success in helping with the Kiewit Foundation challenge that was announced in the Winter 1990 *Dana Review*."

This spring alumni and students will be calling all alumni about

participating in ADD. Those who haven't yet participated are encouraged to respond to help Dana "complete the challenge."

Last fall's *Review* explained that the campaign had been extended for two years to complete the new building, help pay current operating expenses, increase the endowment, generate new scholarships and develop new programs for students and faculty.

By the end of January, Jones reported, Dana had received \$12,141,032 in cash and pledges toward its five-year goal of \$16.65 million (this amount combines the goals of the three-year drive and its two-year extension).

"If we can continue our efforts at the same pace as the last three years, we are confident our goal can be reached," Jones said.

Commemorative Wall: List continues to grow

An insert in the fall *Review* gave the names of alumni and friends that will be listed on the Commemorative Wall in the new building that replaces Old Main.

The Wall will recognize those who have demonstrated their commitment to Dana by contributing \$5,000 or more through gifts, pledges and matching gifts to our ADD ("Accelerating Dana's Development") and "Completing the Challenge" fund-raising drives.

The list continues to grow, with the following new additions as of January 20 (* indicates that the person is deceased):

(Continued on page 3)

THIS ISSUE

4 Construction plans: Regent's gift makes "Parnassus wing" a reality

5 English professor turns surveyor for Israeli dig; Dana joins project's consortium

8 Matthies becomes acting vice president for academic affairs

13 Get out your calendars: Homecoming is October 9-11; KDCV.FM celebrates 20th year

I recently read *Fortune* magazine's 1992 feature on "America's Most Admired Corporations." The ranking of 307 companies and 32 industry groups from the Fortune 500 asks 8,000 senior executives, directors and analysts to rate the ten largest companies in their own industry on eight attributes of reputation.

Merck Pharmaceuticals and Rubber-

undergone almost constant review by outside agencies for selected programs of the college. Happily, this fall we learned from the prestigious Council on Social Work Education that Dana had received full affirmation of our status with that body. We were delighted to hear the review team rave about the quality of people, such as Professors

or "Who do we aspire to be?" and "Are we achieving our goals?" The visitors are also interested in knowing if we are fiscally responsible and are providing our students with services and facilities which enable us to carry out our goals and educational objectives.

I am convinced that in most respects we are, but I also must

“We

stand for something”

FROM THE PRESIDENT

maid ranked number one and number two overall again this year, followed by Wal-Mart Stores, Liz Claiborne, Levi Strauss Associates, etc. The attributes on which they were judged were quality of management, quality of products or services, innovativeness, long-term investment value, financial soundness, ability to attract, develop and keep talented people, responsibility to the community and the environment, and wise use of corporate assets.

It occurred to me that if over 4,000 colleges and universities in America might be ranked by people in the educational industry, there is little likelihood that little Dana College would achieve a place in the top ten. We simply are not well enough known nationally. Hence, it would be difficult for an obscure, Nebraska liberal arts college of the church to rank high in any listing of top schools. Yet, those of us who know Dana know the special strengths we bring to higher education for the students we serve.

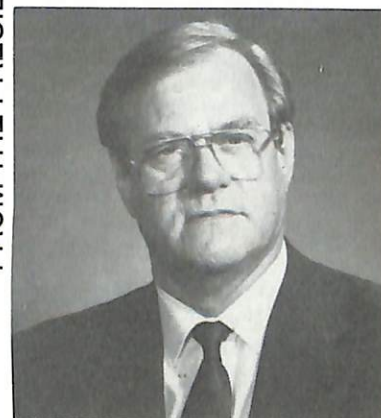
These past two years we have

FROM THE PRESIDENT

FROM THE

PRESIDENT

FROM THE PRESIDENT



Jan and Richard Potter, and the program that they had observed here.

Also this fall we underwent accreditation review by a visiting team from NCATE (National Council for the Accreditation of Teacher Education). Again, we were delighted when the visitors representing the top teacher education accrediting body left sharing informal accolades for our outstanding teacher education program and informing us that we had met all 18 criteria for accreditation. We have yet to learn the decision of the accrediting body, which doesn't meet until this spring to review the report of the site visitors, but we have every reason to believe that the report will result in reaccreditation, and we thank Dr. Bernie Matthies and our Education faculty for a job well done.

The next major accreditation reviews will take place this spring when the Nebraska State Association will review our teacher education program. Also, our major regional accrediting body, the North Center Association, will review Dana's Self Study, visit the campus in April, and make a recommendation regarding our reaccreditation as a degree-granting institution.

As we undergo these reviews, we are reminded that we, too, must meet the standards of our industry, the educational industry. Increasingly, we are being asked to demonstrate that we have worthy educational goals and that we have in place a plan and a dedication to realize those goals and objectives.

At times like these we ask fundamental questions. "Who are we?"

acknowledge that there are other issues which accrediting bodies rarely praise that are even more fundamental than some of those which may enable us to achieve the "most admired" list.

For example, when we say, as we do, that we seek "to help students find meaning and purpose in their lives by examining the Christian faith, articulating their understanding of it, and integrating this understanding into all of life," we must ask how we are doing on this standard as well. And we must face the lonely prospect that perhaps smaller and smaller numbers throughout this country give two twits about such a goal. Yet, if we are to be faithful to our mission and reason for being, that must be central to what we count as important as an educational institution, even though it may not be popular or translate into "most admired" reviews.

I came here five and a half years ago convinced that quality, intimate, liberal arts colleges of the church like Dana are desperately needed in this day and age, that they provide a most important alternative to a vast array of public and private institutions, most of them very fine

The DANA REVIEW (USPS 147-940) is published four times annually for distribution to alumni and friends of Dana College and Trinity Seminary by Dana College, 2848 College Drive, Blair, NE 68008. Third-class postage paid at Blair, NE, and additional mailing offices. POSTMASTER: Send address changes to DANA COLLEGE, 2848 College Drive, Blair, NE 68008.

Non-discrimination policy

Dana College admits students without regard to sex, age, race, color, religion or national origin to all the rights, privileges, programs, and activities generally made available to students at the College. It does not discriminate on the basis of sex, race, color, age, handicap or national origin in administration of its educational policies, admission policies, scholarship and loan programs, athletics, or other school-administered programs.

Ann (Harms '54) George,
Editor/Director, Alumni Affairs

Campus photographs by Lisa Welch '94

colleges and universities, all of whom seek to achieve excellence and to graduate students better prepared to live and to assume important roles in business, industry and the professions.

Recently the Dana faculty passed unanimously a new general education program for students, effective next fall. I believe it is an outstanding, even a visionary, general education program.

First, it calls for requiring baseline competencies in mathematics, in writing and speaking, and in modern or classical languages or a computer language, which will assure that Dana graduates leave with "skills for living in a global and technological community."

Second, it also provides for a freshman-year foundation course and a senior capstone course as well as requirements in wellness, religion, and the Liberal Arts Experience—if you will, an enhanced Liberal Arts Reading Program, which will ensure that every Dana student continues to have a shared liberal arts experience.

The senior experience will call for every student "to explore the Christian faith and values of liberal learning as they integrate with the student's own major area of study."

Finally, there will also be a requirement of 15 distributive hours selected from four areas of study: Human Culture, Human Scientific Inquiry, Human Development and Organizations, and Aesthetic Expression. This distributive requirement is designed to challenge and expand every student to become conversant

However, I am convinced that we must not become enslaved alone to what will make us most admired by the public at large, even the prospective student population, but that we stand for something which we believe will help to shape a community of learning and faith here at Dana College and in the world that awaits our graduates when they "launch their little barks on destiny's deep sea."

We thank all of you whose prayers and encouragement give us the vision and the courage to stand for something and by your gifts and your service will continue to enable us to offer what we hope will be admired and attractive as an educational experience and will also make some small difference in the world.

I pray, too, that what we do here will give glory to the God who was and who is and who is to come and without whom Dana College would not be.

I mention these things because as we celebrate the beginning of construction of the long-awaited Old Main replacement classroom, office and chapel building—for which we still need additional support to be able to complete—we must not lose sight of the fact that we are not here to provide excellent facilities or to build monuments to ourselves, but to facilitate and occasion an extraordinary community of faith and learning.

Myrvin F. Christopherson
President

FROM THE PRESIDENT FROM THE PRESIDENT FROM THE PRESIDENT

with and appreciative of diverse areas of study.

It was a joy to see the faculty wrestle with and adopt this program after more than three years of study, and I thank Dr. John Mark Nielsen, who led the General Education Committee in developing this program, and his committee of faculty leaders.

I offer this summary of the general education curriculum to indicate that Dana takes very seriously the program of study that we offer to every student, and we aim at occasioning learning and developmental growth of every person in this community. It's not clear to me whether efforts such as these as well as some of our student services efforts to develop the whole person will merit any recognition as one of America's most admired colleges.

Commemorative Wall

(Continued from page 1)

L.M. and Charlotte (Richter) Andersen

Anonymous

Anonymous

Anonymous

Anonymous

Anonymous

Louis Carpenter

Sigrd Christensen and Marie Johnson

Joe and Susan (Zabel) Dryburgh

Carl and Evelyn Frost

Arndt* and Clara* Hanson Family

William and Doris (Petersen) Hanson

Howard Hawks

Milt and Jane Heinrich

Alfred* and Gladys* Hernes Family

Lynn and Mary Jean Hiemke

Milton and

Beverly (Peterson) Jensen Family

Paul and Ada Jeppesen

Ed and Candy Johnson

Edward and Inga (Schultz) Larsen

O. Victor and Esther (Frost) Magnussen

Fred and Carol Matthies

Erland* and Naida Nelson Family

James and Verna Olsen

Francis and Ruth (Duffy) Pearson

Loren and Miriam Petersen

Harold* and Ellen Qualset

J. Hilton and Fern Rhoades

Alvin and Beulah (Nielsen) Rueter

In Memory of Stephan R. Sams*

Marion (Hanson) Svendsen

Washington County Bank

Alumni and friends who would like to participate in this program are invited to write or call our Development Office (402-426-7333).

Interim class produces G.B. Shaw's *Misalliance*

Carolyn Rutherford, managing director of the Nebraska Theatre Caravan, the professional arm of the Omaha Community Playhouse, was guest director for an Interim production on January 30-31 and February 1 of George Bernard Shaw's *Misalliance*. Pictured are Rutherford (center, row 1) with members of the cast: front—Dana Holz '95 (Alliance, Nebr.); from left, row 1—Steve Lewis '94 (Blair) and Jennifer Newman '95 (Imperial, Nebr.); row 2—Kim Zulfer '95



(Omaha) and Dana Theatre Director Sieg Krueger; row 3—Stan Shaw '94 (Omaha), Matthew Leaf '95 (Essex, Iowa), Marcus Albers '95 (Blair) and Jon Bohlken '94 (Auburn, Nebr.).

In Parnassus: Art by Heinrich; Age of the Cathedral

The spring schedule for Parnassus, the center of our humanities program, features two exhibits—one showing recent work by art professor Milt Heinrich, the other exploring life in the Middle Ages as it was centered around the cathedral.

The first exhibit, on display through March 13, includes paintings, sculpture and collages Heinrich created during his first semester sabbatical. Heinrich is a well-known area artist.

The second exhibit, titled "The Age of the Cathedral," will open March 23 and close May 15.

Parnassus assistant Nathan Kramer '89 said that "The Age of the Cathedral" will include examples of cathedral architecture, brass rubbings, stained glass windows made by Dana art education students, and musical and other events as well as films related to the period.

Special activities will include a demonstration of how stained glass windows are made and another of bell casting, using the college's sculpture foundry. Students and exhibit visitors will also be able to make their own rubbings from an effigy created by a sculpture class.

An important part of the Parnassus exhibit, Kramer said, will be a miniature room with a 15-foot facade of a Gothic cathedral at one end. Inside will be a rose window, the brass rubbings and the effigy for making rubbings.

Civil War buffs— Can you find these volumes?

The C.A. Dana-LIFE Library has all but two of the 111 volumes in Series I of *War of the Rebellion: A Compilation of the Official Records of the Union and Confederate Armies* (Washington, D.C.: GPO, 1881-1901).

The two books lacking in Series I are Vol. XII, Pt. III (publ. 1885) and Vol. XXXIX, Part III (publ. 1892).

Anyone locating one or both of these volumes for donation to, or authorized purchased for, the library is asked first to write or call Library Director Ruth Rasmussen (402) 426-7301.

When work begins this spring on the replacement building for Old Main, the Parnassus wing will be a part of that construction after all.

The fall *Review* reported that members of the Board of Regents had decided at their October meeting to authorize construction, but to have only the footings poured for the Parnassus wing, the chapel and the communication lecture hall.

Now, thanks to a \$200,000 gift from Regent Ellen Ann Qualsett, work on the Parnassus wing won't have to wait for a second stage of construction.

Mrs. Qualsett's gift is in honor of her late husband, Harold.

A 1937 Dana graduate, Harold became a teacher and then a banker. After his death Mrs. Qualsett succeeded him as president of First National Bank of Schuyler, Nebraska.

"The Qualsett gift is an outstanding tribute to Harold," President Christopherson said. "I am delighted that Mrs. Qualsett had the vision to contribute in this way. Harold combined the best traits of teacher and successful banker in his dealing with people, and he spent some of his formative years at Dana College."

Parnassus has been the center of Dana's Humanities Program for more than 20 years. Housed in Pioneer Memorial in the former library reading room, it has been a place where students come to study and relax—and where they, together with faculty, staff and visitors, meet informally for recitals, lectures and art exhibits.

When construction is completed, Parnassus "alumni" will find the new area in a large wing on the west side of the building. Christopherson described it as "the focal point of the new building."

The move to a new home will "see expansion of the Parnassus concept to support all of the liberal arts," he said. The area, a humanities resource center, will also have multi-media equipment and be an inviting learning center for students, faculty and visitors alike.

"So the tradition of Parnassus as a focal point and central gathering place," Christopherson noted, "will continue at Dana."

Building plans: Regent's gift ensures completion of Parnassus wing

Getting ready for "Sights and Sounds"



Snow and ice storms in November complicated preparations for our annual "Sights and Sounds of Christmas" on December 8. Here Custodial Supervisor Dave Brown (left) and Ted Bansen '89 use a propane heater to thaw a Christmas tree for the E.C. Hunt Campus Center. Donated by Gene and Edie Solomon of Blair, the tree was decorated with traditional Danish ornaments. By December 8 temperatures were mild, and the day once again drew several thousand visitors to the campus.

Mary Jo (Andrews '59) Kubie, director of career services, reports in her annual teacher placement summary that student teachers in 1990-91 who have sought teaching positions "have been very successful in obtaining them."

Kubie found that 91 percent (22 of 24) of last year's student teachers who were preparing to

Teacher placement: Graduates find jobs

become elementary, special education or secondary teachers (and who had completed their degree requirements by October 31, 1991) are now either teaching or have jobs related to their majors. Dana's percentages continue to be above the national data for education graduates.

Of those who had prepared to teach in elementary schools, 100 percent (13 of 13) are teaching or have jobs in education. Four of the 13 also had special education endorsements; three now teach special education and one teaches a regular elementary class.

Of those who had prepared to teach in secondary schools, 78 percent (7 of 9) are teaching or have jobs related to their majors. Six of the nine actively sought, and now have, full-time teaching positions. The other three did not seek full-time teaching positions, and two of them have jobs not related to their majors. The third is a graduate student in counseling; she taught summer school for the Omaha Public Schools and is included in the 78 percent.

The majority of new teachers are located at schools in Nebraska (including five in the Omaha Public School system), and the others are teaching in Iowa, Colorado, California and Kansas.

Courses offered during the January Interim again gave students an opportunity to earn college credit through travel or through practicums, internships and extended student teaching.

Students led by Spanish instructor Diana Brown traveled to Argentina and Brazil to compare the cultures, languages and arts of a Spanish-speaking country with a Portuguese one.

Other students gained practical experience in their majors. Some chose practicums in social work or worked as volunteers at social service agencies. Others selected internships in art, graphic art, accounting, business, biology, medical technology, pharmacy, physical therapy and communication. And still others did extended student teaching, worked as teacher assistants in elementary, secondary, or special education or participated in supervised student teaching in special education.

Students remaining on campus participated in such courses as "Human Genetics and Society," "Introduction to Biochemistry," "Environmental Science," "Business Applications Software," "Consumer Finance," "Entrepreneurship," "Fundamentals of Broadcasting," "Communication Disorders in Children," "C Programming," "An

Students use Interim to travel, work, study

Introduction to Writing Film and Television Criticism," "European Classics," "Oriental Classics," "The Civil Rights Movement," "The Early Roman Empire," "Religion and Science Fiction," "Diet/Exercise/Nutrition—Facts and Fads," "Women in the Bible," "Music Appreciation," "Introduction to Exceptional Children" and "Art Theatre."

H.O.P.E. sponsors gospel music fest, lecture & exhibit on Great Plains black women

"H.O.P.E." (Helping Our People Expand), a campus organization that supports culturally diverse programs and service, sponsored three events in late November.

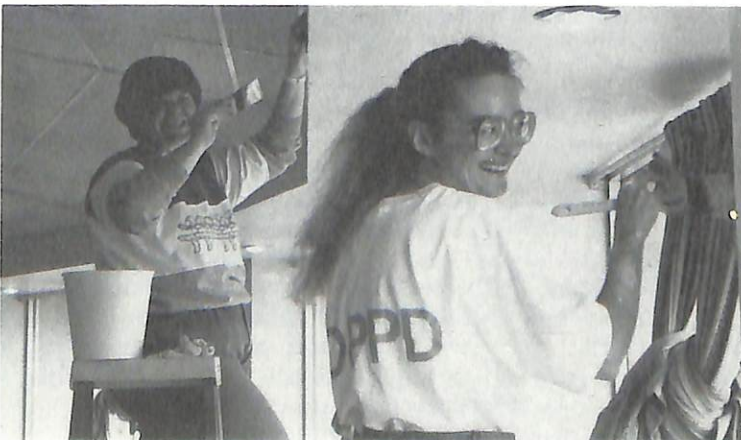
A Gospel Music Fest featured several soloists and vocal ensembles and the Chancel Choir of Salem Baptist Church in Omaha. Participants included Dana student Carole Jeanpierre '95 and her mother, Nola, and Lorraine Beck '90.

"Black Women of the Great Plains" was the title of a photography exhibit and lecture focusing on the history and contributions of black women living on the Great Plains after the Civil War and into the early twentieth century. The lecture was by Bertha Calloway, director of the Great Plains Black Museum in Omaha, which also provided the exhibit.

CAMPUS NOTES
NOTES CAMPUS

Faculty, staff volunteers paint main dining room

Students returned to the campus after Thanksgiving to find a freshly painted main dining room. Sandy Sonderup '78 (left), business office assistant for student accounts, and Kim (Mathews '78) Miller, assistant to the registrar, were among the many faculty and staff volunteers who teamed up to paint the large area on Wednesday, November 27.



After spending seven weeks on Bali last summer, Dana social work professors Jan and Richard Potter are eager to return.

They're planning to lead two tours there this summer, one for students from May 21 through June 4 for college credit, the other for mental health professionals, friends

Discover Bali with the Potters

and alumni, from June 5-19.

Here are five sample days from the June 5-19 tour (the itinerary for the May 21-June 4 tour varies slightly):

Monday, June 8. Walk through the ancient sculptured rice terraces and tropical rain forest to the beautiful Sayan Gorge, passing on the way back through the nearby artist's village of Penestanan, where there will be free time to explore the batik, beading and painting studios. In the late afternoon visit the house compound of Darsa, a Balinese artist and school teacher,

for a family style banquet. During the meal Darsa will explain Balinese customs and be available for questions and answers.

Tuesday, June 9. Visit a balian with Wayan Budhiasa. Balian are Balinese healers that function for the Balinese in much the same way as western psychotherapists do in our culture. Budi was Professor Fred Eiseman's Balinese resource for his definitive books on Balinese culture. He is a fascinating resource who has lived in America and understands the role of psychology in Western culture. In the evening eat in Cafe Wayan, whose beautiful setting and delicious menu is famous throughout Bali. After dinner attend a Mahabharata dance.

Thursday, June 11. Early morning Barong dance performance in Batubulan. This fascinating dance recreates the Balinese version of the battle of good and evil. Late morning visit to Anom, the renowned performer and mask maker featured in the National Geographic PBS television special. Afternoon free to explore Ubud, Bali's artist and dance community

that features many fascinating shops and quaint restaurants.

Sunday, June 14. Morning free. Late afternoon visit to the home of Ngura for an early dinner. Ngura's large family welcomes the group to his home with home-cooked food and a small gamelan orchestra for entertainment. Evening performance of the Women's Gamelan. This is one of Bali's most delightful music and dance productions.

Wednesday, June 17. A 90-minute ride by coach and a 20-minute boat ride to the nearby island of Pulau Menjangan. This wildlife preserve and national park is surrounded by a spectacular coral reef. The group will take a picnic and

(Continued on page 8)

CAMPUS NOTES

NOTES

NOTES



Members of both touring groups will stay at two hotels. They'll spend most nights at Melati Cottages (pictured) in Ubud, an artists' center. Named for the fragrant flowering bushes surrounding it, the hotel, which has a swimming pool, is located in the rice paddies in the hills on the edge of town. They'll also spend two or three nights at Avitga Bungalows, a beach hotel on the northern coast.

CAMPUS NOTES | With the Potters

(Continued from page 7)

CAMPUS NOTE
NOTES
NOTES

NOTES
NOTES
NOTES

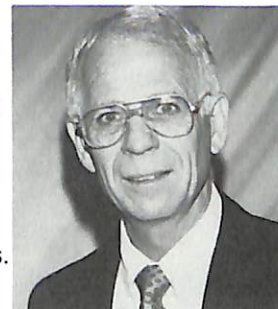
spend the day snorkeling and relaxing on this tiny tropical island. It is listed as one of the top three snorkeling locations in the world.

Thursday, June 18. Early morning departure for Ubud. En route visit Git Git Waterfall, Bali's largest waterfall, and stop briefly at Bali's oldest shrines, located on the banks of beautiful Bedugal Lake. Stop at the Candi Kuning spice and produce market, an exciting kaleidoscope of bounty from Bali.

Both tours are very reasonably priced. For detailed information, write or call Professors Jan or Richard Potter at Dana (402) 426-7238 or at home (402) 426-5257.

Staff changes announced

Dr. Bernard Matthies, professor of psychology and education, has been appointed acting vice president for academic affairs. He replaces **Dr. Kathleen O'Connor**, who



has been named dean of the University of Wisconsin Center-Sheboygan County.

Campus Pastor Linda Walz has accepted a call to become associate pastor at Lord of Love Lutheran Church in Omaha. **The Rev. Douglas Kings** has been appointed interim campus pastor. He most recently served in Omaha at Kountze Memorial and Bethel Lutheran Churches.

Jill Clark, former admissions receptionist, has been named assistant to the registrar. She replaces **Kim (Mathews '78) Miller**, who has moved to High Point, North Carolina, with her husband, Glenn, and two sons. **Kathy Larsen**, who recently moved to Blair from Detroit, is the new admissions receptionist.

Steve Meister '88 has joined the admissions staff as a counselor. He replaces **Terry Murrell**, who resigned to accept a position in Omaha.

Farwells honored

Luther College in Decorah, Iowa, has named a new residence hall after Dr. Elwin D. Farwell, president emeritus at Luther. Farwell has also served as president at Dana. A lounge in the new building has been named in honor of his wife, Helen.

Farwell came to Dana as interim or acting president in March 1985 and served through June 1986, when Dr. Myrvin F. Christopherson became president. In recognition of Farwell's accomplishments while here, the Board of Regents added him to the college's list of presidents.



Jan and Richard Potter on a garland-bedecked water buffalo. Its flute-playing owner is a farmer.

New lab honors S. Milton Thomsen; additional instrumentation enhances chemistry, biology instruction

Thanks to recent gifts from alumni and friends, our Science Department has a new chemistry instrument laboratory as well as additional instrumentation, some new and some donated, for lab work in chemistry and biology.

Through a generous contribution by I. Mildred (Thomsen '39) Schroeder and her late husband, Clemens Schroeder, the laboratory has been named the "S. Milton Thomsen Chemistry Instrument Laboratory," in honor of Mrs. Schroeder's brother.

Dr. Thomsen taught chemistry and physics at Dana from 1930-43. Then, from 1944-72, when he retired, he was a research chemist at RCA Laboratories in New Jersey.

His patents there included aluminizing of cathode ray tubes and the development of phosphors and photoconductors that coat the inside face of color television tubes.

The lab has been built in Room 410 of the Dana Hall of Science. Remodeling the room allowed the Chemistry Department to bring together its gas chromatograph, infrared and ultra-violet spectrophotometers, high-pressure liquid chromatograph (HPLC) and electronic analytical balances into a single laboratory.

Purchase of the HPLC, infrared spectrophotometer and balances was made possible by contributions from alumni and friends who either work in, or are interested in, the

sciences. (An item in "Campus Notes" of the last *Review* was in error in reporting that electron microscopes had recently been purchased.)

The Biology Department has used some of the contributions from alumni and friends to purchase 12 student monocular light microscopes, four binocular light microscopes and a JVC video system with phase contrast microscope.

The Biology Department has also received a substantial amount of used laboratory equipment from Holy Name Hospital in Teaneck, New Jersey, through the efforts of the hospital's laboratory manager, Deborah Johnson, and her husband, Dr. Layne Johnson '75. The equipment includes a Sorval RC-3 refrigerated centrifuge, two table-top centrifuges, a water bath, a vortex mixer and other assorted items.

Prof. Emeritus Frank Hengeveld '41 and his wife, Helen, transported all of this equipment (a full pick-up load) from New Jersey on their return trip from the East Coast this past summer.

Dr. Bernie Matthies, acting vice president for academic affairs, was one of three presenters at a January workshop in San Francisco sponsored by the National Council for the Accreditation of Teacher Education (NCATE). The workshop helped colleges and universities prepare their institutional reports and plan successful campus visits by NCATE teams. It was attended by representatives from approximately 125 colleges and universities.

On November 9 French and Spanish instructor **Diana Brown** gave a workshop at Nebraska Wesleyan University on El Greco, Velazquez, Murillo and Goya.

An article titled "Going the Distance: Succeeding with Matching Gifts at a Small Liberal Arts College" by **Paul Ditlevson**, director of development, was the lead article in the Fall 1991 issue of *Matching Gift Notes* published by CASE (Council for the Advancement and Support of Education).

Dr. Richard Palmer, choir director and associate professor of music,

was the guest director on November 11 for the 1991 Northwest Iowa Choirs Festival in Remsen, Iowa. Choirs from seven Iowa high schools participated in the festival. Palmer was also the guest director for the Homesteader Conference Annual Choral Festival in Sterling, Nebraska, on November 26. Choirs from five Nebraska high schools participated.

Palmer attended the annual convention of the Nebraska Music Educators Association, held November 21-23 at the University of Nebraska at Kearney. At the convention he also convened a meeting of the Nebraska Choral Directors Association as an adjunct session.

On November 25 the **Dana Choir** and **New Day**, under the direction of Palmer, performed in an evening concert at St. Stephen the Martyr

Catholic Church in Omaha. The performance was part of a week-long musical celebration inaugurating the new church.

LARP (Liberal Arts Reading Program) selections for the second semester are: Harriet Jacobs' *Incidents in the Life of a Slave Girl* (1861), an African-American autobiography that describes a woman's struggle for freedom from persecution; Arthur Miller's *The Crucible* (1952), a play dramatizing the 1692 Salem witch trials; David Grossmann's *The Yellow Wind* (1988), an examination by an Israeli novelist of the lives of Palestinians in the occupied territories; and Tony Hillerman's *A Thief of Time* (1988), a novel of intrigue that involves the ancient burial grounds of the Anasazi Indians on a Navajo reservation. The general theme of LARP for the semester is "Quest for Justice."

CAMPUS NOTES

NOTES

NOTES

NOTES

Former president's wife recalls Dana in 1930s

In 1929 the stock market crashed. The Depression years of the 1930s soon followed. Those were challenging times for everyone, including college presidents.

Erland Nelson, head of the college's commercial department, became Dana's acting president in 1929, only two months before the Crash. In 1931 he became its ninth president and served to 1936.

Nelson met the challenges Dana faced in those perilous times in several innovative ways. He persuaded delegates at a convention of the United Evangelical Lutheran Church (Dana's founding synod) to authorize purchase of a farm that would employ students and provide food for the dining hall (the 103-acre farm adjoined the campus; one building still stands on Hansen Drive). He and H. Skov Nielsen, a member of the college's Board of Education, bought a gas station east of the campus (the "Dana College Cooperative Oil Company") that also employed students. He increased enrollment by launching a bus service for commuting students who lived north of Blair. He made it possible for students to pay their college costs with farm and garden produce and livestock. And he introduced a "Low Cost Plan" that increased enrollment during the depths of the Depression.

His widow, Naida Nelson of Lima, Ohio, remembers those times well. During a recent visit by Mike Jones '71 of our Development Office, she recalled the time her husband obtained sorghum from a Blair farmer, and "there was sorghum on everything for a whole year in the dining hall." She also remembered

"always cooking and baking for many drop-ins" at their home.

Today Mrs. Nelson, 95, lives with daughter Isabelle (a child during her father's presidency) and son-in-law William Wittig. Wittig is pastor of St. Matthew Lutheran Church in



Mike Jones of Dana's Development staff recently visited Naida Nelson, widow of Erland Nelson, Dana's ninth president, in her Lima, Ohio, home. They are standing in front of a large Danish flag.

Lima. Erland Nelson went on to become professor of educational psychology at Newberry College, South Carolina; president of Carthage College, Illinois, for six years; and professor of psychology and philosophy at the University of South Carolina.

Many colleges closed their doors during the Depression. Nelson's vigor and creativity, together with the support of his family, helped bring Dana safely through those difficult years.

(Editor's note: We invite alumni from the '30s who participated in any of the ventures mentioned in this article to send their reminiscences to the Review.)

CAMPUS NOTES

Twenty-four juniors and seniors have been named to this year's edition of *Who's Who Among Students in American Universities and Colleges*. They are: Shana Creger (Kilkenny, Minnesota); Stephen Mathis (Leavenworth, Kansas); Christine Voss (Somonauk, Illinois); Kevin Wass (Loveland, Colorado); Iowans Ann Gibbs (Greenfield), Jeremy Hill (Kanawha), Trasy Sparr (Red Oak); Nebraskans Kelli Crannell (Tekamah), Shirley Hansen (Oakland), Leticia O'Brien (Lexington), Daylene Perrino (Papillion), Matthew Plowman (Ponca), Dixie Whitlow (Genoa), Sheila Young (Plainview); Lois Behrens, Connie Christensen, JoAnne Hohensee, Cindy Kempcke, Sheryl Shuster (all from Blair); and Ken Brown, Joe Ellis, Carmen Kinsley, Maija Nielsen and Shawn Winters (all from Omaha).

In November several members of the faculty and staff attended professional meetings: **Prof. Gene Lindblad**, associate professor of chemistry, the Midwest Regional American Chemical Society, in Omaha; **Dr. John Lyden**, assistant professor of religion, and **Dr. Del Hutton**, professor of Greek and religion, the annual meeting of the American Academy of Religion and the Society of Biblical Literature, in Kansas City, Missouri; **Mike Moriarty**, instructor of communication and television station manager, an NEB-SAT workshop at Nebraska Education Television headquarters in Lincoln; **Leesa Dzuris**, director of Mickelsen Hall and director for international student affairs, a conference of the National Association of Foreign Student Affairs, in Boulder, Colorado.

Women's basketball ranks 15th nationally

This is turning out to be a season of highlights for our women's basketball team:

■ As of January 25, the team ranked 15th in NAIA Division II, the highest ever for a Dana women's team.

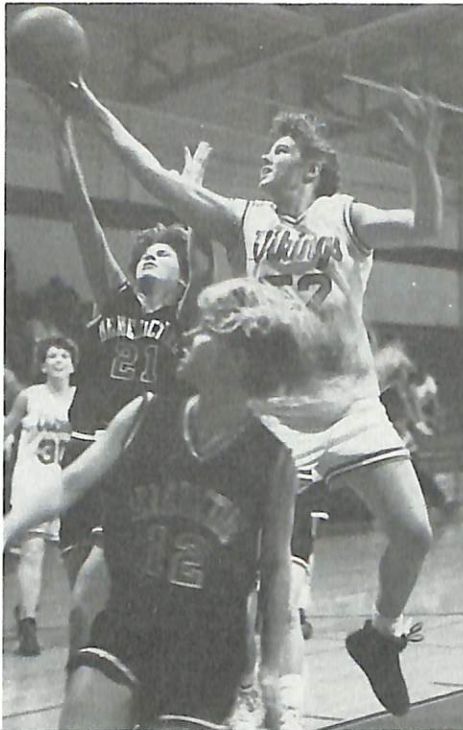
■ In mid-January Katie Corbitt, a senior from Bertrand, Nebraska, was named NAIA Division II National Player of the Week.

■ Corbitt and Jennifer Edelman, a junior from Merna, Nebraska, are among NAIA Division II leaders in several categories. As of January 23, Corbitt ranked seventh nationally in scoring with 355 points in 15 games, a 23.67 per game average. After 15 games Edelman ranked tenth both in field goal percentage and in rebounding. She hit 91 of 151 shots for 60.3 percent and had 191 caroms, a 12.73 per game average.

■ On January 8 Corbitt set a Dana career scoring record of 1,209, breaking the old record of 1,208 established by Ronda Fritz '87.

■ Five of the top starters are Dean's List students.

By January 25, with a month of games remaining, the women's record was 12-6 overall and 1-4 in tough conference play.



In action at a home game: Viking Marcy Schwarten '95 of Emerson, Nebraska.

Two football players are All-America Scholars

Football players Sean Dalton '92 and Jeremy Hill '93 have been named NAIA Division II All-America Scholars.

Dalton, a biology and Spanish major, has a 3.59 grade point average. Even though he missed part of the season with an injury, the Lincoln, Nebraska, running back was Dana's leading rusher.

Defensive lineman Hill, a finance and marketing major from Kanawha, Iowa, has a 3.54 grade point average.

Two other players, Corey Mitchell '92 and Manuel Johnson '93, won honorable mention in NAIA Division II listings. Mitchell is from Indianapolis, and Johnson is from Chicago.

The fall *Review* reported on conference and other post-season honors.

SPORTS
SPORTS SPORTS SPORTS
SPORTS SPORTS
SPORTS SPORTS
SPORTS
SPORTS

Men's basketball update...

By January 25, a little more than midway through their season, members of the men's basketball team were at 4-17 overall, and 0-4 in the NIAC.

Players showed what they could do in a 72-65 upset win January 25 over non-conference Peru State.

The spring *Review* will report on the full season.

Four wrestlers qualify for national competition

With another month of wrestling to go as this story is being written, four Vikings have already qualified for the NAIA Wrestling Nationals set for March 5-7 at Fort Hays College, Kansas.

The four are 142# Troy Greder, a junior from Fremont, Nebraska; 167# Marty Killion, a freshman from Council Bluffs, Iowa; 177# Steve Mathis, a senior from Leavenworth, Kansas; and 134# Scott Stickler, a sophomore from Clarinda, Iowa.

To date injuries to almost half the 23 wrestlers have plagued the season. Several have required surgery, but they are recovering well.

New directory planned— Alumni questionnaires will be mailed soon

Every alumnus and alumna for whom we have a current address will soon receive an important alumni directory questionnaire in the mail.

The questionnaires are being sent to give alumni an opportunity to be listed accurately in the upcoming new *Dana College Alumni Directory*.

Please be sure to complete and return your directory questionnaire as soon as possible!

Once received, your information will be edited and processed by our publisher, Harris Publishing Co., Inc. Over 7,600 of our alumni will be included in this impressive new directory.

If you don't return your questionnaire, there's a possibility you could be inadvertently omitted. So don't take a chance—watch for your questionnaire and remember to return it promptly.



ALUMNI IN THE NEWS
ALUMNI IN THE NEWS
ALUMNI IN THE NEWS

Homecoming 1992 set for October 9-11

Mark your calendars—Homecoming 1992 is set for October 9-11. The Alumni Office is sponsoring reunions for the Classes of 1987, 1982, 1977, 1972, 1967, 1952 and 1942. Invitations to all of these reunions will be sent this spring.

“Radio Days”

A special reunion is also being planned. Because KDCV.FM, our radio station, is 20 years old this year, Professor Darrell Dibben and the Alumni Office are making plans for a reunion of former students who have worked at the station. An invitation to the reunion, which we're calling “Radio Days,” will go out this spring—if you don't receive an invitation by May, please get in touch with Professor Dibben.

Members of other classes or groups who would like to help plan a reunion are invited to write or call Ann George, director of alumni affairs.

Graduates discuss health professions

Six graduates returned to the campus Tuesday evening, November 19, to tell students about opportunities in the health careers of medicine, pharmacy, physical therapy, nursing and cytogenetic research.

Participants in the panel, which was sponsored by the Science Department and Ars Medica, a campus organization of students interested in the health professions, were Paul Christensen '86, a fourth-year medical student at the University of Nebraska Medical Center (UNMC) College of Medicine, Omaha; Paul Jensen '89, third-year pharmacy student at UNMC College of Pharmacy; Gail (Bray) '88) McCorkindale, physical therapist at Methodist Hospital, Omaha; Mark Rosenthal '83, R.N., instructor in continuing education at Clarkson Hospital, Omaha; Meri Jo (Meier) '87) Soe, cytogenetic technician at UNMC; and Dr. Mike Soe '85, resident in radiology at University Hospital, UNMC.

Howard Speck '84, who sang in the Dana Choir, is a member of Soli Deo Gloria Cantorum, Nebraska's professional choral group. The group will give concerts on March 19 and 22 in the Joslyn Art Museum's Storz Fountain Court.

Soli Deo Gloria Cantorum is directed by Almeda Berkey and accompanied by Jackson Berkey, who is also a member of Mannheim Steamroller.

Speck, choir director at Westminster Presbyterian Church in Omaha, is in his third season with the group, which is becoming known nationally and internationally.

Nebraska Secretary of State Allen Beermann has invited the Cantorum to participate this summer in a cultural exchange with the People's Republic of China, Speck said.

The group has made two CD cassettes that are on sale nationwide; it has also made a cassette

that is available in Germany.

Speck said that the Joslyn concert program, called “From Columbus and Beyond,” will feature music that Columbus might have heard, including African chants and Chinese folk songs. The March 19

Alumnus sings in Cantorum

concert begins at 8 p.m., and the one on March 22, at 2 p.m.

Tickets are available through the Cantorum Foundation (402-341-2599).

Speck said that Soli Deo Gloria Cantorum will also give three concerts this spring outside of Omaha: in Kansas City, Missouri, on March 7; in Beloit, Kansas, on March 8; and in Norfolk, Nebraska, on April 26.

Filipino alumna visits campus after 43 years

Aida Limjoco-Forster, who came to the U.S. from the Philippines in 1947 to attend Dana, returned to the campus last fall for Homecoming and her 1951 class reunion. It was her first visit since leaving in 1948.

A writer and theatre director who lives in New York City, she re-established contact with the college last year through a Dana friend, U.S. Senator Paul Simon '49.

After her year at Dana she returned to the Philippines and received a B.A. in English literature from Assumption College in Manila. She later received training in the theatre at the Neighborhood Playhouse School of the Theatre, where Martha Graham was one of her instructors.

Limjoco-Forster's recent activities include forming two New York theatre companies. She launched one, the Wordplay Ensemble Theatre, to give son Jack (she has two sons and a daughter) and his college friends "a place," she writes,

"to develop their skills as actors, directors and playwrights." Jack, an arts major, and his friends are recent Bennington graduates. The other group, the Bahay-bahayan Repertory Company, is a Philippine company that has produced plays she has written and directed, with original music, sets and costumes by Filipino artists living in the New York area.

Her earlier theatre credits are many



Aida Limjoco-Forster

and varied. They include doing costume and scene design for the Philippine Ballet Theatre, founding and directing the Woodstock (New York) Theatre Ensemble, serving as an acting instructor for the Boston

Opera Company's International School and directing a Filipino play for an arts festival sponsored by the Alliance for Asian American Artists.

In making arrangements with Alumni Director Ann (Harms '54) George to attend her class reunion, she wrote, "My Dana College

experience, though brief, was rich in friendships, and I hope to renew old ties and revisit old haunts, if any of these remain!"

She was indeed able to renew those old ties and revisit old haunts, and her Homecoming included reunions with many Dana friends, including Senator Simon and Prof. Emeritus Norman C. Bansen '47, and a campus tour with Prof. Emerita Luella Nielsen '42.

Now, looking back at her visit here, she writes that her weekend included "some of the most enjoyable times I have ever had. The memories shall warm me for a long time."

THE NEWS
ALUMNI IN THE NEWS
ALUMNI IN THE NEWS
ALUMNI IN THE NEWS

Dr. Donald Baack '75, assistant professor of business at Pittsburg State University, Kansas, has been elected program chair-elect for the Southwest Academy of Management. Through the process of automatic succession he will become president of the Academy after three years of service as an officer in the organization. The Southwest Academy has over 300 individual members from more than 100 colleges and universities in at least 15 states. It is one of five regional Academies. Members are mostly college and university management professors, along with several practicing managers from the southwestern U.S.

Plans by interior designer **Diane (Williamson '76) Luxford** for renovating and enlarging a small kitchen in a 60-year-old house were featured in the Home section of the January 26 *Omaha World-Herald*. The Omaha resident, owner of D-lux Interiors, is a member of the Nebraska/Iowa Chapter of the American Society of Interior Designers (ASID). Among her numerous awards are the ASID's Distinguished Service Award in 1988 and '89. In 1991 she was design chair for the annual festive fund-raiser at the Omaha Community Playhouse.

Alumni entrepreneurs meet with Interim class

In conjunction with Prof. Dave Miller's Interim class on entrepreneurship, five alumni entrepreneurs came to the campus on January 16 to tell members of the class and other interested students about their experiences in setting up their own businesses.

The five were Bob Coffey '75, president of Copy Direct, Inc., a Blair company that specializes in copywriting, design, and production services for organizations that market their products or services by direct response advertising; Lee Horeis '61, president of Today's Temporary, Lincoln, Nebraska; Diane (Williamson) Luxford '76, interior designer and owner of D-lux Interiors, Omaha; Chuck Smith '73, chief operating officer and general manager of Technical Management, Inc., Lincoln, a data processing software and service bureau; and Kim Vornbrock-Erwin '86, co-owner with her husband of Blair Motor Coach and an associate

broker with N.P. Dodge, an Omaha real estate company.

The event was sponsored by the Offices of Career Services and Alumni Affairs.

Langland publishes new volume of poetry

Poet Joseph Langland, a member of our English faculty in 1941-42 and founder of *The Sower*, Dana's literary magazine, has published a new volume of poetry titled *Selected Poems* (University of Massachusetts Press, Amherst, 1991).

The book is a selection of 65 poems from 40 years of Langland's work. His poetry has won prizes, has appeared in over 80 anthologies and texts and has often been presented in readings and on National Public Radio. His work has also been set to music by Morton Gould, Robert Stern, Elliott Schwartz and others.

ALUMNI IN THE NEWS

An Organist's Guide to Resources for "The Hymnal 1982," Volume Two, compiled by **Dr. Dennis Schmidt '71**, has recently been published by The Church Hymnal Corporation. A continuation of the listings of Volume One, the guide contains organ settings, free accompaniments, descants, chorale concertos and organ-with-instrument settings contained in *The Hymnal 1982* of the Episcopal Church. Many of the hymn tunes, however, are also in hymnals of other denominations. Both volumes can be ordered through music stores. Schmidt is director of chapel music, organist, and faculty member at St. Paul's School in Concord, New Hampshire.

Charles Rohlving '70, high school counselor in Elkhorn, Nebraska, has received the Seasoned Counselor Award from the Nebraska Association of Counseling and Development. Only one award is given each year. The person nominating him, a fellow Elkhorn High counselor, said, "I think he's made significant contributions in the area and is certainly deserving" of the award. Rohlving has been a high school counselor at Elkhorn since 1977.

Joyce (Hansen '60) Christensen, principal of South High School in Omaha, was the subject of a "Sun Up Interview" by Robert McMorris in the January 25 edition of the *Omaha World-Herald*. When Christensen was appointed principal nine years ago, the Omaha Public Schools had not had a woman senior high school principal since 1950. "There's something about South Omaha," Christensen told McMorris. "There's a warmth and closeness that's special. We're family: the students, staff, parents, community leaders. They're great motivators. This is an exciting job, a fun job."

Elaine (Madison '51) Brostrom retired at the end of December as director of public affairs at Gustavus Adolphus College, a position she held since 1978. In a feature story about her retirement in the *Mankato* (Minnesota) *Free Press*,

reporter Mark Fischenich wrote: "Whether it was the King of Sweden, a Nobel prize-winning scientist, or a rank-and-file member of the class of '56, Elaine Brostrom's goal was essentially the same: People coming to Gustavus should feel uncommon hospitality."

'90s Jeffrey '93 and Karla (Knudson '93) Wiegrefe, Minot, North Dakota, are the parents of Nathan Wilhelm, born November 9, 1991. . . . **Julie Andrews-Mantz '91** is a taxpayer service representative for the Internal Revenue Service in Omaha. . . . **Nicole Brownell '91**, Blair, is attending classes in sports therapy and athletic training at the University of Nebraska at Omaha. She also works part time with Eric Bottjen, physical therapist for Dana's sports program. . . . **Shelley Edwards '91** is a child site director for the YMCA in Denver, Colorado. She is also working toward a master's degree in social work. . . . **Frank Esfahani '91** is a computer operator for Sitel in Omaha. . . . **Marc Ferrin '91**, Omaha, is an assistant wrestling coach at Dana; he also works for West Telemarketing. . . . **Jeff Gillio '91**, Denver, Colorado, is an environmental chemist and equipment operator at Vista Laboratories, Inc., in Broomfield. . . . **Chrissy Ivers '91**, Council Bluffs, Iowa, works for Utell International in Omaha as an airlines systems specialist. . . . **Christa Johnson '91** is a pharmacist's assistant in Richmond, Indiana. . . . **Coleen Lennemann '91**, Omaha, is an advertising sales representative in the classified advertising department of the *Omaha World-Herald*. . . . **Shawn Lorenzen '91** is a registered representative for First Investors Corporation in Omaha. . . .

which prints high school and college sports programs. . . . **Kelly Barnum '90** has been accepted as a Peace Corps Volunteer for Costa Rica. She will be involved with small enterprise development, giving technical assistance at the work place to individuals or small groups. Assistance can include simple bookkeeping, double entry computerized accounting, inventory control, marketing and pricing and application of general management skills. . . . **Angela Trask '90** is a preschool teacher at the Lady Bug Child Care Center in Chaska, Minnesota.

'80s Darlene (Christensen '89) and Bill Bowman, Omaha, announce the November 8, 1991, birth of Benjamin Cody, their first child. . . . **Griff Dunlop '89** is a social worker in Omaha at The Ambassador, a long-term health care facility. . . . **Patti Dunlop '89**, Omaha, is director of social services at Gentry Care South, a long-term health care facility in Council Bluffs, IA. . . . **Melanie Pedersen '88** and Tim Simpson were married May 25, 1991. They live in Coralville, Iowa. . . . **Michelle Weaver '88** and Michael Dean Ballard, both of Converse, Texas, were married December 28, 1991. Michelle is completing her master's degree in occupational therapy at Texas Women's University in Houston; Michael is an R.N. at a private psychiatric hospital. . . . **Karla Bidstrup '86** and Mark Spencer were married March 9, 1991, in Racine, Wisconsin. Karla received her master's degree in social work in May from the University of Kansas. She is a psychotherapist at Southeastern Wisconsin Medical and Social Services of Racine. She and Mark live in Racine at 1813 Blake (53404). . . . **Jon Ann (Evans '86) Niemeier**, Omaha, received her master's degree in special education-learning disabilities from the University of Nebraska at Omaha in December. Son Michael Evan was born July 24, 1991; he joins sister Jessica Jon, 2 1/2.

Jon is a sales associate at Younkers Westroads. . . . **Kimberly Vornbrock-Erwin '86** is a real estate agent with N.P. Dodge in Omaha. She and her husband, Rick, also own Blair Motor Coach, a company that sells used cars, in Blair. . . . **Katherine (Bowersox '85) Tucker** has been promoted to music director of KESY AM/FM (104.5 FM) in Omaha. She has worked for KESY, a station with a light adult contemporary format, for almost four years. . . . **Peggy Sorensen '84** and **Ming Guang Chen** were married September 14, 1991. He attended Dana's English Language Institute during the 1989-90 academic year. They live in Omaha. . . . **Linda (Stern '83) and Terry Houghton**, Rockford, Illinois, announce the November 5, 1991, birth of Courtney Lynn. . . . **Signe Amalie** was born to **Pernille Wolthers '83**, Duedaenget 14, 2791 Dragor, Denmark, in January 1991. . . .

Andrew William was born January 9 to **Laurel (Biffar '82) and Bill Method** of Decatur, Nebraska. Sister Jessica Ann is 2 1/2. . . . **Tim Nietfeld '80** has received an R.N. degree from Clarkson School of Nursing in Omaha. . . . **JoAnne Roberts '80** and Stephen Morton were married October 12, 1991. They live in Norfolk, Nebraska. . . . **John Skilbred '80** writes, "I have returned to school after a ten-year absence as a broadcast journalism major at the University of Alaska-Fairbanks. My wife, Julie, and I are living in a cabin and working at Fairbanks

DESTINY'S DEEP SEA
DESTINY'S DEEP SEA
DESTINY'S DEEP SEA
DESTINY'S DEEP SEA
DESTINY'S DEEP SEA

Jeffrey Miller '91 is a manager trainee for a company called "Footlocker" in Aurora, Illinois. . . . **Deb (Keller '91) and Corey '92 Mitchell**, Bakersfield, California, announce the November 27, 1991, birth of Derek Keller Mitchell. Deb is a high school social studies teacher and volleyball coach. . . . **Mary Oetter '91**, Blair, is a social worker at Friendship House in Omaha. . . . **Alan Pogue '91** is attending graduate school at the University of Nebraska at Kearney. . . . **Tina Reimer '91** is an account representative in Rockford, Illinois, for Marco Publishing,

(Continued on page 16)

'80s (Continued from page 15)

Memorial Hospital. We were married in July 1990 and are expecting our first baby this June. Dana was a great experience for me! Greetings to: Howard Kulzer, Arne Anderson, Bruce Bro, Tom Henriksen, John Nielsen and Paul Neve."

'70s Della Turvold Newlin '79, Harlan, Iowa, received her master's degree in elementary education from the University of Northern Iowa on August 2, 1991. Her graduate paper, titled "Computer Assisted Review: A Classroom Trial," was based on a study done with a group of fifth grade social studies students. She is a fifth grade teacher in the Harlan Community Schools. . . . **Wendy (Lauer '79)** and Jon Sawyer, Ft. Collins, Colorado, announce the February 3, 1991, birth of Megan Corinne. Her sister Lauren is 2 1/2 . . . **Jim Siverts '79** and his wife announce the January 18 birth of daughter Katie. They live in St. Louis, Missouri. . . . **Luke Northwall '78** has joined Darst & Associates, an Omaha certified public accounting firm, as business financial management and tax consultant . . . **Gerald Wallace '78**, a former U.S. Army intelligence officer, is a graduate assistant in the history department at Wayne State College, Wayne, Nebraska. . . . **Marine Capt. Robert Leach '77** has received the Air Medal for meritorious achievement as a pilot while flying combat missions in support of Operation Desert Storm. . . . **Michael Schacht '77** has been named agricultural loan officer for United Nebraska Bank in Ogallala, Nebraska. He and his wife, Heidi, have a baby daughter, Hayley. . . . **Steve Callaghan '76** and Donna Remaly were married November 2, 1991, in Blair. Both are teachers at Blair Junior-Senior High School. . . . **Mary Henriksen '76**, Syracuse, Nebraska, has been accepted into graduate school at the School of Library and Information Management, Emporia State University, Kansas, in its Nebraska program. The program started last September in Lincoln, Nebraska. She was also chosen as a federal Library Student Trainee for the Army Corps

of Engineers Library in Omaha and began work there in December. . . . **Susan (Zabel '75)** and Joe Dryburgh, Wayne, Pennsylvania, announce the December 21, 1991, birth of Lauren Elizabeth. Sue writes that Lauren "joins her brothers, Joseph 3rd (Jay), almost 6, and John, 2 1/2, in adding much happiness to our lives." . . . **Dennis Gethmann '71** is president of the Financial Services Division and chief financial officer of Marquette Partners, Minneapolis, and a principal of the company. He was formerly partner and senior vice president of Financial Services of The Center Companies. . . . **Gary Panko '70**, pastor of New Life Lutheran Church in Norwalk, Iowa, received his doctor of ministry degree on February 2 from the Lutheran School of Theology, Chicago. The three-year degree program combines academic study, on-the-job activities and the writing of a paper. The title of Panko's paper was "In Search of the Pig in the Python—Ministry to Baby Boomers."

'60s Wayne Sittler '67 received a master of public administration degree last August from Shippensburg University, Pennsylvania. . . . **John Cederberg '65**, a CPA, is a member of the Executive Council and treasurer of the Nebraska Chamber of Commerce and Industry for 1992.

Deaths **Dr. Richard Wendt '70**, Woodbine, Iowa, on January 4, in a one-car accident near Woodbine. After graduating from Dana he taught high school science and biology. He subsequently attended Creighton University School of Dentistry and then established a dental practice in Woodbine. Survivors include his wife, Connie, two sons and two daughters. . . . **Victor Schmidt '40**, Audubon, Iowa, on November 23, 1991. He was a retired farmer. Survivors include his wife, Irene (Johnson '41), of Audubon, Iowa; son Jerry '80, Blair; daughter Lynnette (Schmidt '72) Spetman, Harlan, Iowa; and Wendell, Atlantic, Iowa. . . . **Marie (Kofoid '38) Jensen**, on February 8, 1990, in Lancaster,

California. She is survived by sons Steven, Lawrence, Edward and Rodney. She was preceded in death by her husband Wilfred '37. . . . **John Gebuhr '36** on October 1, 1991, in Indianapolis, Indiana. He was director of the physical plant at Indiana University-Purdue University for 16 years until he retired in 1981. Then-Governor Otis Bowen

DESTINY'S DEEP SEA

appointed him to the Indiana Boiler and Pressure Board; he was also a former Midwest regional vice chairman of Physical Plant Administrators. Gebuhr was previously a professional consulting engineer for 27 years for Brown Engineering in Des Moines, Iowa, and chairman of that city's Urban Renewal Board and Zoning Commission. He also served in the U.S. Navy as a lieutenant commander. He and his father, John Gebuhr, were instrumental in the construction of Dana's Elk Horn Hall and Argo Hall. Survivors include his wife, Mary Lou Welschmeyer Gebuhr, sons Charles '70 of Indianapolis and John '71 of Omaha, and daughter Ann. . . . **1924 and earlier: Harold E. Hansen**, 89, on November 23, 1991, in Blair. Until his retirement in 1976, he was a traveling auditor for the Union Pacific Railroad. Hansen was the son of C.X. Hansen, former Dana president and faculty member. Survivors include his wife, Julia; his sister, Lois Wulf '31; and his brother, Winston '54.

Friends: **Clemens Schroeder**, the husband of I. Mildred (Thomsen '39) Schroeder of Whitefish Bay, Wisconsin. He died on December 2, 1991 . . . **Arthur "Pops" Merrill**, 80, in York, Nebraska. He presided over Dana's dining hall as its chef in the late 1930s and early '40s. Survivors include his wife, Belle.

DANA COLLEGE
2848 College Drive
Blair, Nebraska 68008

ADDRESS CORRECTION REQUESTED

Moving?

Street _____

City _____

State _____ Zip _____

Telephone(____) _____

Please return with address label.

Non-Profit Org.
U.S. Postage
PAID
DANA COLLEGE

