

---

# Dana Review

---

Winter 1994

Volume 50

Number 2

---





## What's Happening at Dana:

*On the cover -*  
 "The Sights and Sounds of Christmas," Dana's annual Christmas gift to area residents, again brought an estimated 3,000 visitors to the campus for a wide variety of festive activities, among them the traditional Santa Lucia ceremony. Students participating in the ceremony included (center) Santa Lucia bride Heather Austin '94 (Fremont, Nebr.), (front from left) Holly Halsell '96 (Ft. Calhoun, Nebr.) and Gretchen Last '95 (Sioux City, Ia.), and (back from left) Kristin Hansen '97 (Ruskin, Nebr.) and Kim Zulfer '95 (Omaha).  
*Photo by Monica Pauk '97*

**PAGE 4** **A**rt professor: "Doing the Commemorative Wall was therapy for me"

**PAGE 5** **T**here's still time to add name to Wall

**PAGE 7** **L**ast year's student teachers find jobs

**PAGE 10** **S**tudent production commemorates rescue of Danish Jews during WWII

**PAGE 11** **F**ounder's great-great granddaughter is Dana freshman

**PAGE 13** **O**ld-timers' baseball game and reunion set for April 24

**PAGE 15** **A**lumni help admissions in a variety of ways

**PAGE 17** **H**omecoming weekend will be September 30, October 1 and 2

**Editor:**  
Ann  
(Harms '54)  
George

**Design and layout:**  
Starla Stensaas  
Teonne Clark '95

**Sports Information Director:**  
Paul Clark

**Campus photography:**  
Lisa Welch '94

The DANA REVIEW is published four times annually for distribution to alumni and friends of Dana College and Trinity Seminary by Dana College, 2848 College Drive, Blair, NE 68008. Third-class postage paid at Blair, NE, and additional mailing offices. POSTMASTER: Send address changes to DANA COLLEGE, 2848 College Drive, Blair, NE 68008.

### *Non-discrimination policy*

Dana College admits students without regard to sex, age, race, color, religion or national origin to all the rights, privileges, programs, and activities generally made available to students at the College. It does not discriminate on the basis of sex, race, color, age, handicap or national origin in administration of its educational policies, admission policies, scholarship and loan programs, athletics, or other school-administered programs.

# Contributors to new Dana Scholars Fund are directly affecting students' lives

Director of Development Michael Jones reports that response to the college's new Dana Scholars Fund, a two-year, \$3 million drive, has been very positive. "It's great that alumni and friends who helped us reach our goal in our ADD campaign also realize that Dana needs money for student financial aid," he said.

"People who give are really making a difference in the lives of our students. Their gifts will also help Dana attract more students and encourage those who are now enrolled to remain through graduation."

New or increased gifts will be matched through a special challenge, he said.

Jones '71 explained that those making two-year pledges or contributions can (1) contribute to the general Scholars Fund, (2) help provide annual support to one or more students, or (3) establish a named scholarship.

He added that where possible, donors at the \$2,500, two-year level who choose the second alternative to help provide annual support to a student—will receive an individual profile of the student.

The college will also attempt to establish personal contact between student and donor.

Several supporters have recently established new scholarships, the third alternative:

○ Lutheran Church of the Master, Omaha, has established the Myrvin and Anne Christopherson Scholarship Fund in recognition of the Christophersons' leadership at Dana.

○ Alumni and friends have initiated a scholarship honoring

Leo and Patsy McKillip. Dr. McKillip recently retired as head football coach and athletic director. The scholarship will be awarded, beginning in the 1994-95 academic year, to one or more returning athletes, men and women, who are also good students. The scholarship was announced on November 14 at the fall athletic banquet.

○ A family member has established the Emil and Laura Lorsch Scholarship in tribute to the Blair couple. It will be awarded annually to a student in good academic standing.

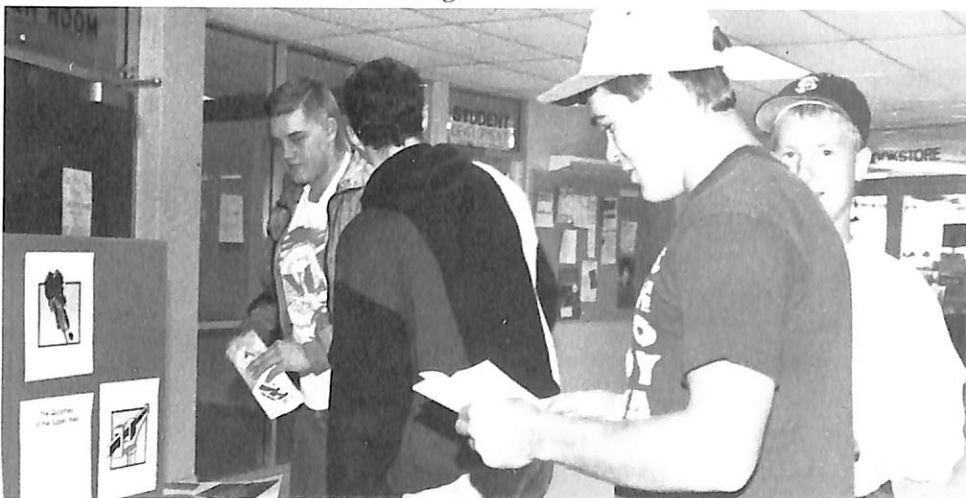
○ Members of the Schou family have initiated the Schou Scholarship, a full-tuition scholarship that will be given annually, preferably to a National Merit Scholarship finalist or semi-finalist entering Dana as a freshman. It will be renewable each succeeding

year if the student maintains a 3.5 grade point average.

○ Dana staff members Bob '83 and Judy Schmoll have established the Schmoll Scholarship. It will be awarded annually to a non-traditional student who is a single parent with financial need and a grade point average of 3.0 or more.

○ A scholarship established by Edward D. Jones/Kirk and Debra Hutton will be awarded annually to one or two students from Washington County, Nebraska. Students must be in good standing and demonstrate financial need.

Jones invites alumni and friends to participate in the Dana Scholars Fund with a two-year pledge. For additional information write to him at Dana or call him at (402) 426-7333.



## **Campus Health Fair promotes wellness**

*Learning about wellness at a November 9 Health Fair in the E.C. Hunt Campus Center are (from left) freshmen Keal Held, Ryan Lieb, and Matt Bachman, all from Leigh, Nebraska, and junior Richard Wright from Hamilton, New York. Among the exhibits and demonstrations: healthy snacks by the County Extension Office, fire prevention, and personal training and equipment demonstrations by a physical therapist. That evening the physical therapist gave a talk on "Cumulative Trauma—Reducing the Risk." The fair was sponsored by Dana's Health Services and Office of Residence Life.*

# Heinrich says creation of Commemorative Wall helped him recover from loss of Old Main

The Old Main Commemorative Wall in the new Dana Classroom Center has an especially personal meaning for art professor Milt Heinrich, who created the work.

The Art Department he heads had occupied the top floor of Old Main. When the 102-year-old structure burned on August 25, 1988, the department lost art work, slides, books, equipment, supplies, studios, and office space.

In the fall of 1990, after sharing space in the Madsen Fine Arts Center with the Music and Theater Departments for two years, members of the art faculty and their students moved into the Fine Arts Center's new wing, designed especially for the Art Department.

But the new facility didn't completely end Heinrich's sense of loss.

"Although I didn't expect it when I started working on the Commemorative Wall," he says, "doing the Wall was therapy for me because it brought me a resolution to the Old Main fire.

"Sometimes artists use their artwork for therapy. I'm reminded of an artist whose child was born ill, and he drew the child week by week in its stages of illness. The child slowly got better, and the father's last drawing in the series was of the child with its mother. The drawing was a celebration.

"The Commemorative Wall turned out to be my celebration."

Heinrich came up with two proposals when he was asked to submit a design. The Wall, he was told, had a duo purpose: to commemorate Old Main and to recognize donors who had given \$5,000

or more to the ADD campaign. He describes the design selected by the college administration as the one that was "the least abstract, the most straightforward."

Other relief sculptures by Heinrich are prominent features of several buildings in Omaha. Among them are two on the exterior of the Omaha Community Playhouse and an interior relief on the south wall of Eppley Airfield.

As he did with the Eppley sculpture (an abstract overview of the Missouri River valley), Heinrich used clay in creating the Wall. A modeled relief of Old Main is the central feature of the panel, which measures 8.5 x 18.5 feet. On both sides, inscribed in clay, are the names of donors, close to 500 entries.

Using a few simple tools, student assistant Karl Hermanson '94 inscribed the names of donors

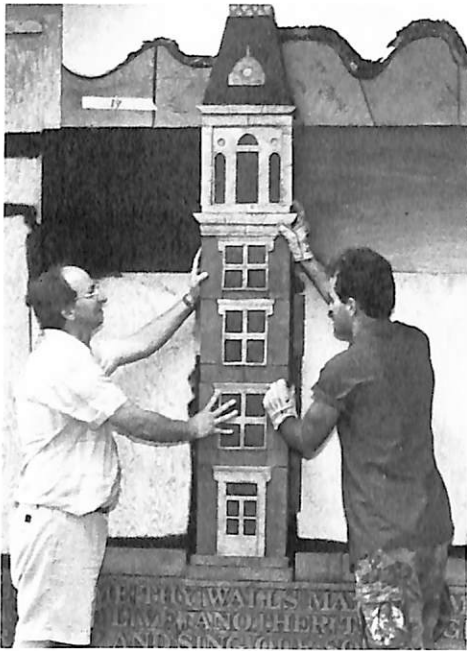
on individual pieces of clay, a task Heinrich describes as "the most labor-intensive part of the project" and "cuneiform revisited."

Because the 500 or so entries contain about 2,500 words, Heinrich says, "we had to find a method of producing them that would be economical for the space. The names are an integral part of the overall design. They provide texture, and all of them are the same size and part of the same unit, indicating that each gift is important."

Heinrich and Hermanson spent most of the summer creating and then mounting the sculpture on the wall facing the entrance to Trinity Chapel. They completed it just in time. "It was pretty much done two hours before the faculty/staff opening dinner, when everyone toured the new building," Heinrich says.



Art professor Milt Heinrich (left) and project assistant Karl Hermanson '94 prepare the clay model of Old Main for installation as the central feature of the Commemorative Wall.



*Assembling the Commemorative Wall: Heinrich (left) and Hermanson position the Old Main tower.*

## ***There's still time to add name to wall***

**I**n his design for the Old Main Commemorative Wall, Heinrich was asked to reserve a small, unfinished area for the names of donors who, within a limited period of time after the Wall was completed, pledge to contribute \$5,000 or more.

Director of Development Michael Jones '71 reports that this remaining space is rapidly filling up, but that a few slots remain. "The response to the Wall challenge has been remarkable," he said. "It truly is a fitting way to remember Old Main, participate in a special program, and help Dana College." Interested readers should call Jones at (402) 426-7333 as soon as possible.

# International students have studied here for more than 100 years

**A**lthough their numbers these past few years have been greater than ever, students from other countries have attended Dana for more than 100 years.

Young men from Denmark—mostly immigrants—were among Trinity Seminary's first students. Our first woman student from Denmark, however, was probably Helga Andersen of Copenhagen. She took a commercial course of study in 1899-1900, the year this school became coeducational.

Our first student from Japan was Hajimi Inadomi, who studied here from 1911 to 1914. He became a pastor in the Japanese Lutheran Church and returned to the campus several times to visit and lecture. When the Dana Choir toured Japan in 1969, Inadomi's widow presented flowers to Director Paul Neve '41 at the end of a concert in Tokyo.

Several former international students are on the college's roster of Distinguished Alumni.

Antony DaCruz, who came here from Portugal, is one of them. He and his sister, now Maria Elisa Merkl, both graduated from Dana in 1950; they are probably the only Portuguese students ever to attend Dana. Their father taught languages here. Antony DaCruz was director of Kodak Argentina

in 1973 when he was kidnapped by a political leftist group, the first American to be kidnapped in that country. Eastman Kodak paid \$1.5 million for his ransom before he was released unharmed. He is now principal of DaCruz & Associates in Rochester, New York.

Another Distinguished Alumnus who came to Dana as an international student is Juri Taht, an accomplished cellist from Estonia. A 1952 graduate, he played in the Don Shirley Trio for many years, in chamber orchestras, and for Broadway musicals. Taht is now chief of the Estonian Service for Voice of America in Washington, D.C.

Identifying our first Canadian student is difficult because of the former UELC's ties with Danish Lutheran congregations in Canada. Over the years many Canadians have attended Dana. One of them is Distinguished Alumnus Vern Simonsen. A 1953 graduate, he is a justice of the Court of Queen's Bench, The Law Courts, in Winnipeg, Manitoba.

Students from African countries have attended Dana since the early 1960s. The first was Ndewirwa Kitomari of Tanzania, who graduated in 1964. Now a deputy governor of the Bank of Tanzania in Dar es Salaam, he, too, is a Distinguished Dana Alumnus.

# Archives continue quest for materials

In August 1896 two Danish Lutheran synods merged to form the United Danish Evangelical Lutheran Church in America (UDELIC, eventually to be known as the UELC).

It was this merger that led to the establishment of Dana as a coeducational college in Blair.

One of the merging synods, the Danish Evangelical Lutheran Church of North America, called the "North Church," supported a coeducational folk high school/college in Elk Horn, Iowa. The other, the Danish Evangelical Lutheran Church Association in America, or the "Blair Church," supported Trinity Theological Seminary in Blair.

Three years after the 1896 merger, the coeducational college in Elk Horn was transferred to Blair, and in 1903, it was named "Dana," a poetic word for "Denmark."

In anticipation of the centennial year of the merger, the college invites alumni, friends, and their families with connections to the UELC or its predecessors to send materials to the Dana Archives pertaining to any of the synods; to Elk Horn College, Dana College, and Trinity Seminary; or to the immigrant experience. These can include, for example, letters, documents, diaries, records, books, photographs, and jubilee books of congregations.

Through the foresight of the UELC and its archivist, the late P.C. Jensen D'13 T'16, members of the Hansen-Mengers family, and many other alumni and friends, the college's Archives already have an excellent start.

A document titled "The Ideals and Aims of Dana College Historical Society," given to the Archives by Severin '34 and Lilly (Jorgensen '25) Sorensen of Nebraska City, shows that an awareness of the need to collect such documents already existed 60 years ago.

"The founders of Dana College Historical Society," the document begins, "are convinced that it is the duty of each...group that constitutes an element of the American nation...to preserve and to contribute as a heritage to future American civilization the records of its early and yet distinct history.

"As students of Dana College, however, we propose, through our society, to interest ourselves, as collectors of historical data, primarily in that aspect...which has direct bearing upon the life of the Danish immigrant population of the United States of America."

It continues: "With the advisory guidance of Prof. Swansen and the promise of wholehearted support from President Erland

Nelson, the society intends in the nearest future, to drill and send out over America, a 'host,'—more peaceful than the one which swept so irresistibly over England in the days of the Viking Invasions. The booty sought by the young Dana Students will be, not gold and silver of ancient abbeys and cathedrals, but only such old material as may throw light upon the founding of churches, schools, and societies; ...it may invade old farm-houses to search in dusty cobweb-covered attics of those homes as are yet in possession of Danish immigrants or their descendants for such old written or printed treasure,—secular or ecclesiastical—as may reveal to us and to future ages how the peaceful invaders of the Nineteenth Century thought, felt and acted."

Dana continues to seek the kinds of "old treasure" students sought in the early 1930s. Materials should be addressed to the Dana Archives, C.A. Dana-LIFE Library, Dana College, Blair, NE 68008.

## *Search seeks information on Oaks Mission teacher*

Dr. Ruth Herman Nielsen, a friend of Dana and a volunteer who is helping develop the college's Archives, would like to hear from readers who have information about Nana Nielsen, an early teacher at the Oaks, Oklahoma, Indian Mission. (Like Dana and Trinity Seminary, the mission was supported by the

former United Evangelical Lutheran Church.)

Dr. Nielsen is interested in information about Nana Nielsen's years at Oaks and in memorabilia related to her.

Information can be sent to the Dana College Archives, C.A. Dana-LIFE Library, Dana College, Blair, NE 68008.

## ***Career Services reports on teacher placement***

**E**ighteen of Dana's 1993 graduates were student teachers last year, and 15 of them completed their degree requirements by August 31.

All 15 are now teaching, have jobs related to their majors, or are graduate students, Director of Career Services Mary Jo (Andrews '59) Kubie reports.

Her statistics show that seven of the 15 were student teachers in elementary schools, and that all of them actively sought teaching positions. Five are now full-time teachers and two are full-time professional instructional aides. Therefore 100 percent either are teaching or have jobs related to education.

The remaining eight were student teachers in secondary schools, and six of them actively sought and found teaching positions. The other two are in graduate school. Therefore 100 percent are either teaching or continuing their studies in their majors.

In her report Kubie noted that "shortages continue to be concentrated in areas of special education, bilingual education, English as a second language, Spanish, physics and chemistry," and that "the most competitive fields, with regard to employment, continue to be social studies, physical education, elementary education and health education."

She also noted that "there is a balanced supply and demand for the following fields: mathematics, biology, general science, French, German, music, language arts (English/speech combination)," and "some surplus in English only, business, and art."

## ***January Interim gives students opportunities for travel, internships, in-depth study***

**J**anuary Interim is that interlude in the academic year when students can select a class for in-depth study, gain experience through an internship, or expand horizons through travel. Two groups went to Europe:

○ Twelve students who are studying German, accompanied by Dr. Sybille Bartels, associate professor of German, spent most of their time in Germany in a class called "Meet United Germany." Bartels, a native of Berlin, planned the trip to help students improve their German language and intercultural communication skills by visiting historic sites, attending daily classes, and meeting with families. Their travels took them to Munich (with excursions to the king's castles and Salzburg, Austria), Berlin (also to Potsdam and Wittenberg), and Bad Segeberg. They also visited Ribe and Copenhagen, Denmark.

○ Twelve students in an interdisciplinary class called "The Great Cathedrals of Europe and England," led by the husband-wife team of Music Department faculty members Michael Anderson and Jeanmarie Nielsen '78, toured Great Britain, France, Germany, and Austria. Their itinerary included cathedrals in Salisbury, Paris, Rheims, Cologne, Munich, and Salzburg.

Other students who wanted on-the-job training in their majors were interns in accounting,

business, Spanish, graphic design, biology, environmental science, physical therapy, and communication. The Interim also gave future elementary and secondary education teachers an opportunity for extended student teaching or supervised teaching in special education. In addition, social work majors gained work experience by participating in practicums at social service agencies.

The selection of courses for those remaining on campus (although several involved field trips) included "Glaze Experimentation for Potters," "Human Genetics and Society," "Ichthyology," "Business Applications Software," "Ethics in Human Relations," "Consumer Finance," "Contemporary Trends in African Development," "Introduction to Biochemistry," "Tune in 'Yesterday,'" "Assembly Language and Computer Organizations," "Elementary Danish I," "Elementary School Observations," "American Popular Culture," "Understanding Film," "Oriental Classics," "World War II," "The American Revolution," "Diet/Exercise/Nutrition—Facts and Fads," "Communication Disorders in Children," "Seminar in the History of Mathematics," "Music Appreciation," "Biblical Archaeology," "Introduction to Exceptional Children," and "Make-up for the Stage."

In October *Sandy Sonderup '78*, Business Office assistant/student accounts, received the college's "Heart of Dana" award. *Carla Andersen*, administrative assistant in Computer Services, was the recipient in November. *Meta Brandes '74*, assistant director of Admissions and Weekend College coordinator, received the award in December.

Two 30-minute television programs of Christmas music, one by the *Dana College Chorale*, and the other by *New Day*, were broadcast throughout the Christmas season by Cox Cable Omaha, Inc. Both groups are directed by *Dr. Richard Palmer*, professor of music. On November 30 Palmer was guest conductor of the Millard North/South Honor Choir, a select ensemble of more than 160 high school students. The performance included movements from Mozart's *Requiem*.

The Dana campus is now "tobacco free," with signs on entrance doors to buildings declaring that fact. Last year the tobacco-free policy included designated areas for smoking, but this year there are no designated areas. Students are permitted to smoke in their residence hall rooms, but not in hallways, lounges, or restrooms. Members of the faculty and staff are not permitted to smoke in their offices. "Tobacco free" includes smokeless tobacco.

The National Council of Teachers of English has appointed *Dr. John Mark Nielsen '73*, professor of English, as a regional judge for the NCTE Achievement Awards in Writing. Nielsen and Professor Rudolf Jensen of Grand View College have been appointed assistant editors for the Danish American Heritage Society. The two are assisting Editor Egon Bodtker in publishing *The Bridge*, a historic journal, and the society's newsletter.

Jean Giraudoux' *The Madwoman of Chaillot*, the fall play, was performed five times, from October 27-31, in Dana's Black Box Theater in the Madsen Fine Arts Center. The production was directed by *Dr. Paul Schneider*, associate professor of English and director of theater.

On November 4-7 Dana and Midland Lutheran College co-hosted the annual meeting of the *ELCA Student Personnel Deans*. Representatives from about 20 of the 29 ELCA schools attended the meeting. The theme of this year's conference was "What does it mean to be a college of the church?"

This fall many members of the Dana community worked as volunteers. Members of the *volleyball team* painted several offices in Pioneer Memorial. One Saturday morning *students, members of the faculty and staff, and several of their children*—27 in all—worked at the Washington County Recycling Center, continuing Dana's participation in this community-wide effort. And on another Saturday, the *men's basketball team* helped members of the Blair Memorial Community Hospital Auxiliary clean up after the Auxiliary's large, two-day rummage sale.

*Prof. Carol Haussermann '69*, assistant professor of physical education and chair of the Faculty Senate, was Dana's representative for the "Salute to Education" at the Ak-sar-ben Coronation Ball on October 16 in Omaha. Outstanding professors from each of the Nebraska and Iowa colleges and universities that receive scholarships from the Ak-sar-ben Scholarship Foundation were honored. The annual ball is a benefit for the foundation.

*Dr. Sybille Bartels*, associate professor of German, chaired a session on "Unified Germany" at the European Studies Conference held in Omaha on October 14-16. The conference is an annual multi-disciplinary gathering of educators in the social sciences and the humanities from across the U.S. and Europe. On October 29 at the fall conference of the Nebraska Foreign Language Association, Bartels participated in a panel discussion, "What really happens to language students after graduation?" Other members of Dana's Department of Languages also attended that conference, which was held in Lincoln: *Diana Brown* (Spanish and French), *Johanne Hass* (Danish), and *Frances Hendrickson* (Spanish).

On October 21 the Admissions Office held a *Guidance Counselor Professional Workshop* on the campus. Eighteen high school counselors from the Blair/Omaha area attended. Two workshops were directed by members of the Nebraska Department of Education's

Division of Rehabilitation Services. Student ambassadors gave campus tours. *John Schueth*, director of admissions, reported that "many counselors had not been on Dana's campus, and they had nothing but positive remarks to say about the Dana community and the Dana Classroom Center."

*Dr. John Lyden* and *Dr. Delvin Hutton* of the Religion Department attended the annual meetings of the American Academy of Religion and the Society of Biblical Literature in Washington, D.C., from November 20-23. Lyden presented a paper in the AAR section on the Study of Judaism titled "Hermann Cohen's Legacy to God-Language in Jewish and Christian Thought."

On November 18 *Dr. Alan Brandes*, professor of music, presented "A Tracker Organ: Demonstration and Program" for the Private Music Instructors of Omaha at Hanscom Park United Methodist Church. On December 12 the Dana Piano Duo, composed of Brandes and *Clare (Anderson '67) Cowing*, gave a concert in Pierce, Nebraska. The concert was sponsored in part by the Nebraska Arts Council.

A December 2 festival of gospel music sponsored by the campus organization, *H.O.P.E.* (Helping Our People Expand), featured gospel choirs from several Omaha churches.

*Starla Stensaas*, assistant professor of graphic design and photography, was one of two artists whose work was shown on December 6-22 in an exhibit called "Reading Images: Eccentric Books" at the Atkinson Gallery, Santa Barbara City College, California.

*President Christopherson* has been elected chair of the Nebraska Independent College Foundation. NICF solicits support from the business community, private foundations, and individuals on behalf of independent higher education in Nebraska. He has also been elected to the chairmanship of Planned Giving Services, which is made up of member institutions of the Nebraska Synod of the Evangelical Lutheran Church. In addition, he has been re-elected chair of the Nebraska Educational Finance Authority (formerly the Nebraska Educational Facilities Authority).

# Shopping at the Dana Bookstore



Red or navy crewneck sweatshirt with white graphic. Jansport. Sizes M,L,XL,XXL \$36.95



Gray crewneck sweatshirt with navy graphic accented with green and tan. Gear. Sizes M,L,XL. \$31  
(Graphic also available in gray hooded sweatshirt. Sizes L,XL. \$42.50)  
(Also available in gray T-shirt. Sizes M,L,XL,XXL. \$16)



Child's two-piece sweatsuit in red and gray. Little King. Sizes 12m,18m,2,4,6,8 \$23

*The Dana College Bookstore appreciates your support. We are here to serve all students, alumni, parents and friends. If you are interested in other items we carry, please call or write for information. Your comments are always appreciated.*

## Order Form *(quantities limited)*

Description	Color	Size	Quantity	Price	Total Price

Send to:  
**Dana College Bookstore**  
**Dana College**  
**Blair, NE 68008**  
 (402) 426-7254

Merchandise Total

5 1/2% tax - NE residents

Shipping

\$4.00

TOTAL

Please allow 2 to 4 weeks for delivery

SHIP TO: (Please print)

NAME \_\_\_\_\_

ADDRESS \_\_\_\_\_

CITY \_\_\_\_\_ STATE \_\_\_\_\_ ZIP \_\_\_\_\_

PHONE \_\_\_\_\_

Check or money order enclosed      Charge:  MasterCard    Visa  
*(Make check out to Dana College Bookstore)*       Discover

Required for charge orders only:

Account number \_\_\_\_\_

Expiration date \_\_\_\_\_ Signature \_\_\_\_\_

# WWII rescue of Danish Jews: Student production describes tragic episode born of intolerance

By Jeremy Rademacher '97

Dana College's Danish roots were remembered again this fall with the production of the play *Gilleleje 43*, performed by the Dana Theater Department.

October 1993 marked the fiftieth anniversary of the rescue of the Danish Jews during the Nazi occupation of Denmark in World War II. The play was part of a commemorative program held the evening of October 24 at the Jewish Community Center in Omaha. An exhibit displayed that evening was prepared by the National Museum of Denmark; it is at Dana this February.

The cast of Dana students also gave several performances on campus, including one in the new Trinity Chapel, another for eighth grade students from Elkhorn, Nebraska, and another as part of the Sunday worship service at Elk Horn Lutheran Church in Elk Horn, Iowa.

The story of the rescue of the Danish Jews is a well-known one. In late September 1943, word leaked out to the Jews of Denmark that they were in imminent danger of a round-up by the Gestapo. Despite curfews, German patrols on land and sea, and threats of punishment, non-Jewish Danes helped over 7,300 of the 7,800 Jewish Danes to escape. When the round-up came during Jewish New Year, October 1-2, 1943, most of the Jews were already in hiding in coastal towns, awaiting arrangements for passage to Sweden. The people of Gilleleje, a small fishing village some 40 miles north of Copenhagen, succeeded in getting close to 1,300 of these Jews to safety by the end of October that year.

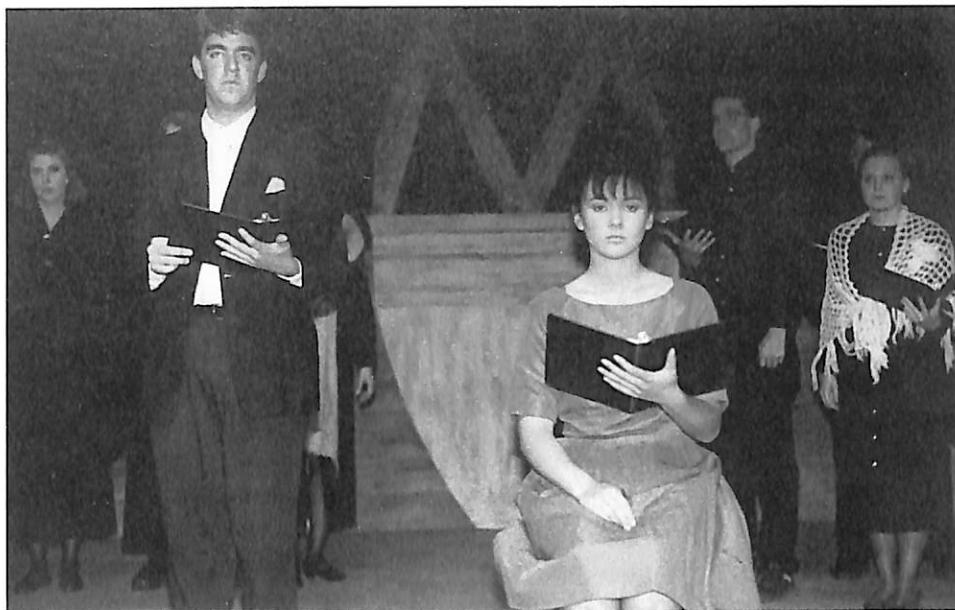


Photo by Jennifer Johnson '96; used with permission of Hermes.

Among *Gilleleje '43* cast members were (front) Tim Marsden '97 (Red Oak, Iowa) and Kim Weir '97 (O'Neill, Nebr.) and (back, from left) J. Lynn Asher '97 (Yutan, Nebr.), Jeff Rademacher '96 (Neudorf, Sask., Canada), and Dana Holz '95 (Alliance, Nebr.).

Unfortunately, not all could escape. On the night of October 6, about 80 Jews hiding in the attic of a Gilleleje church were betrayed, captured, and deported. *Gilleleje 43* records their story.

The play was the brain-child of Bente Milton, a young schoolteacher in Gilleleje, who, in 1990, noticed an increasing number of racial incidents toward residents from Turkey and other places in southern Europe. Finn Abrahamowitz, a well-known author and educator who was among the escapees in 1943, was chosen to write the play. He focused on the betrayal and deportation of the 80 Jews, suggesting that the selfishness that led to the betrayal of these Danes is in all people, and that what begins as seemingly harmless events can have tragic consequences.

The original play opened on August 1, 1991, in the actual church in Gilleleje where the Jews

hid. Leo Goldberger, who was also among those that escaped and who participated in the international conference on the rescue held at Dana three years ago, later translated the play to English. He also spoke at the October 24 program in Omaha.

The Dana production of the play, the first in America, was adapted for readers' theater and directed by Dawn (Carper '74) Nielsen. Dana senior Karl Hermanson designed and built the portable set which was modeled after the Gilleleje church.

After the cast's performance at the Jewish Community Center, Dana Holz '95, who played a young schoolteacher, was approached by a member of the Jewish community who told her that if a Christian woman could play a Jewish woman so effectively, the people of these two religions are gaining a better understanding of one another.

# Freshman traces roots to college's founder

by Denise Daubendiek '96

“What I’ve been told is that my great-great grandfather started the school in his house as a seminary. He taught, and his wife cooked for the

students,” explains Laura Meldrum, a freshman, about her ancestral ties to Dana.

Meldrum is from Emmaus, Pennsylvania, and her great-great

grandfather, the Rev. A.M. Andersen, is credited as the founder of Trinity Seminary, Dana’s mother institution.

Meldrum’s father is an economist and her mother is busy caring for two younger sisters and a brother, she says.

Meldrum was undecided on her major when she began this fall. She is now focusing on biology, religion, and philosophy. On campus she is involved with the German Club and the International Student Organization.

A new challenge for Meldrum is the study of Danish. “I wanted to try something different. I have Danish relatives and this is a great opportunity.”

Meldrum began seriously considering Dana by accident. When she mentioned an interest in the Midwest, her grandmother, alumna Joan (Andersen '49) Sorensen, urged her to look into Dana. “I think I was recruited harder because I’m from the East Coast,” Meldrum says. “I was really impressed by Dana’s faculty and their interest in me personally.”

Before arriving in August, Meldrum had seen the campus only once, as a participant in the Presidential Scholarship Competition.

Her high school was much larger than Dana. “I had 450-500 in my graduating class. I enjoy the smaller school and different atmosphere. People are more open and friendly here and the people of Blair are welcoming.”

And as she was when she was recruited, Meldrum continues to be impressed by Dana’s professors.



Freshman Laura Meldrum is a direct descendant of Dana’s founder, the Rev. A.M. Andersen, whose portrait she holds. She stands in front of the college’s traditional Danish Christmas tree in the Campus Center, an appropriate background because she’s interested in her Danish heritage.

# Mid-season men's/women's basketball/wrestling--more wins, new records, and eyeing the nationals

by Paul Clark, Sports Information Director

## Men's Basketball

Dana took a 7-7 overall record into the holiday break this season, including a 0-1 record in Nebraska-Iowa Athletic Conference (NIAC) play. Viking Head Coach Dave Jensen is in his first full season and second year overall after taking over the Dana men's program at the break last year and coaching in the final 21 games of a 6-27 year. With its seven wins, Dana had already surpassed the win total in each of the past two seasons by the time the holidays rolled around.

The Vikings posted a 4-2 record at Borup Coliseum in the pre-Christmas portion of their schedule. Dana also placed second in the Metro State Thanksgiving Classic in Denver, Colorado. Dana beat the host school, an NCAA Division II program, and then fell in the championship game by one point to Embry-Riddle (Florida).

The Vikings' only NIAC game was a 15-point loss at Nebraska Wesleyan on December 1.

Through 14 games, Tony Collins '95 (Omaha) led Dana in scoring, averaging 18.3 points per game. Also averaging in double figures were Rob Coursey '95 of Papillion, Nebraska (16.6), Shawn Fasbender '97 of Omaha (11.8), Jason Jackson '95 of Clarinda, Iowa (10.4), and Chris Tignor '96 of

Independence, Missouri (10.1). Tignor averaged 7.3 rebounds per game through Dana's first 14 outings, while Fasbender averaged 6.7 rebounds per game.

## Women's Basketball

Record-setting performances highlighted the first half of the Dana women's basketball season, which ended with the Vikings taking a 3-8 record into the Christmas break. Dana Head Coach Kathy Foley is in her thirteenth season at the helm of the women's program and her first as Dana's athletic director.

Heidi Grappendorf '95 (Chariton, Ia.) scored 42 points against Dakota Wesleyan on December 7 to set a new Dana single-game scoring record. The old mark, 41, was set by Cathy Shaw '93 last season. Karla Meyer '97 (Orchard, Nebr.) established a new single-game rebounding record when she hauled down 21 boards in a Viking win over York. The old record of 20 was shared by Heidi Larson '80 and Bonnie Lowe '92.

The Vikings lost their first five games of the season, won three straight, and then dropped three in a row going into the holiday hiatus. Dana played its last four games in December without Grappendorf, who sustained a stress fracture in her foot after averaging 26.1 points in seven games. She was expected back in the Dana line-up sometime in January.

## Wrestling

Dana has two wrestlers who have already qualified for the NAIA national tournament in March. Iowa freshmen Chad Caskey (Carson) and Andy Hensley (Massena), both newcomers to the Viking program this winter, earned national tournament bids by placing in the top four at the Fort Hays State (Kansas) Invitational on December 4.

Caskey, who wrestles at 126 pounds, had Dana's best individual record at the Christmas break at 13-5. Hensley, a 158-pounder, was 9-5 on the year at that point. Danny Mattern '95 of Augusta, Kansas (8-5), and Scott Stickler '94 of Clarinda, Iowa (6-4), also had strong Decembers for Head Coach Ron Beaman '74. Stickler was ranked fifth nationally at 142 points in a pre-season edition of *USA Wrestling* magazine.

The Vikings wrestled in just one dual before the holiday break, falling to NCAA Division II Central Missouri State, 23-22.

## Volleyball

Volleyball standout Stacy Haas '97 of Dubuque, Iowa, has been named to the All-American third team of the National Association of Intercollegiate Athletics (NAIA). She is the first member of a Dana volleyball team to win All-American recognition.



*Photo by Paul Clark.*

*Vikings Rob Coursey and Chris Tignor in action against Peru State College.*

## *Baseball alumni: Join teammates for reunion game*

**B**aseball alumni are invited to return to the campus for the third annual "Old-Timers" game, planned for Sunday afternoon, April 24, at Dana's Paul Peterson Field.

Former players who haven't received an invitation and registration form and who would like to participate can write or call Coach Dale Lemon at Dana (402-426-7292).

A \$50 donation accompanying the registration form will pay for the expenses of the day, the game, a post-game steak (or other choice) dinner, and a choice of a souvenir T-shirt or a fitted cap with the Dana "D" on the front. (The registration form lists both choices. Delivery time for the cap is ten weeks, so orders should be placed early.)

Alumni can also purchase their old jerseys (if they are available) for an additional \$25. Lemon said that he still has the white uniforms of the '70s and early '80s, and the gray uniforms from 1986 through 1992. "The jerseys, probably used by two or three different generations, will be made available to the first one who returns the registration form and donation," he said.

○ *Jill (Jorgensen '86) Hennick*, a certified nursing assistant at Crowell Home in Blair, has been named its "Caregiver of the Year." She was honored on November 3 at a breakfast in Omaha sponsored by the Omaha Alzheimer's Association. She joined the Crowell Home staff last March after working for the Internal Revenue Service for almost seven years. An article about her selection in the November 15 *Blair Pilot-Tribune* reported, "When asked about the dramatic job change, she

answered, 'Being a CNA is more my nature.'" The article also

quoted Crowell Home Director of Nursing Barb Dunlop, who said that Hennick was chosen "for her particular ability to work with special needs residents and her exceptional caring attitude."



Alumni  
in the  
News

○ *Brian Serr '81*, law professor at Baylor University, is teaching American constitutional law for six months at Vytautas Magnus University in Kaunas, Lithuania. He is there as a Fulbright Scholar. Serr and Kathy Ann George, an assistant district attorney for Midland County, Texas, were married on November 13. She accompanied him to Lithuania.

○ The Blair Jaycees have named *Terry Dutton '80* Blair's Outstanding Young Individual and their candidate for the Nebraska Jaycees' Outstanding Young Nebraskan Award. Dutton came to Blair in 1992 as assistant vice president and department manager of the equipment finance division at Washington County Bank. He is chair of Blair's Business Improvement District Board and is involved in church and community activities, including scouting and sports.

○ *Bob Bair '72*, a teacher at Blair High School, received the 1993 Distinguished Adviser Award from the Nebraska High School Press Association at its annual convention in October. Bair teaches English and handles all newspaper and yearbook assignments at the school.

○ Nebraska Public Radio Network announcer *Lora (Lunzmann '72) Black* of Lincoln read five stories from Nebraska author Bess Streeter Aldrich's book, *Journey Into Christmas*, over all NPRN stations during the weeks of December 13 and 20.

○ *Bonnie (Hagedorn) Jensen '70* has been named program director for Papua New Guinea and the South Pacific and director for planning and evaluation in the Division for Global Mission of the ELCA. She served as the ELCA's director for Global Mission Education from 1988-93

and as executive director of American Lutheran Church Women from 1981-87. A graduate of Wartburg Theological Seminary, Jensen was ordained this past December 19 at a worship service in her home congregation, Bethlehem Lutheran Church, in Royal, Iowa.

## Alumni Association VP: "Dana is as fine as ever"

From the Alumni Council:

*"I am as sentimental as ever about Dana College"*



I am writing this in the midst of the holiday season. According to tradition, people reflect during this period on the blessings they have received during the year about to end. I would like to share with you some things about blessings my family has received this year that are directly related to Dana College.

I am not into nostalgia. I always prefer something new to something old. I have never understood the popularity of antiques. The worst reason I can think of to do anything is that it has always been done a certain way. I seldom reminisce. However, contrary to my character in every other respect, I am positively sentimental about Dana College. My secret belief is that all of us think that Dana was at its peak during the time we were students here. I know I feel that way. Could

new teachers really be as good as the ones who enlightened us? Each time I would hear of the retirement of a faculty member or a change in the curriculum, the sadness would set in. The year I returned for Homecoming and I saw more new faces than old ones was the worst year of all. Something happened this year that has changed my perceptions about this place, and I don't resent the changes here any more. This year my daughter became a student at Dana College.

In the course of this past year (I include in this time the period of "the search" for the right college) I have learned to appreciate the talent and dedication of outstanding new faculty members. I have been fortunate in that my daughter has shared with me her perceptions and experiences concerning courses that were not offered when I was a student. I have learned that Dana College today is as fine a school as ever it was. I am as sentimental as ever about Dana College.

*Carol King '84*  
Vice President  
Alumni Association

# *Admissions director: Alumni referrals important because they give students "first hand testimony" about Dana*

*"The best referrals we receive for our new entering class come from our alumni, current students, and faculty and staff."*

Five freshmen from Leigh, Nebraska, are at Dana this year, and one of the reasons is that Tim Barner '92, their assistant football coach and a math teacher, spoke highly of his Dana experience. Barner's role in recruiting for Dana is a striking example of how alumni can help our Admissions program.

Enrollment this fall was the highest it's been since 1972, and alumni assistance will help insure continuing growth. Here are several other examples of recent alumni involvement:

○ Kansas high school teacher and coach Marty Stessman '86 and his wife, Charleen (Steffen '87), brought several of Marty's students to Dana for a campus visit.

○ Mike Martin '83, campus pastor and a religion instructor at Suomi College, a junior college of the ELCA in Hancock, Michigan, asked for Admissions materials to show Suomi sophomores.

○ Dr. Steve Larson '76 of Marquette, Michigan, asked for materials about Dana for a Lutheran College Night sponsored by the church he and his wife, Gayle (Akland '79), attend; he also offered to represent Dana at the event.

○ Lara Jean McBride '90 of Denver, Colorado, helped Admissions Counselor Dan Bane '91 at a Lutheran College Fair in Denver.

○ Aster Neve D'37 T'44, a retired pastor living in St. Paul, Minnesota, has displayed Dana materials in the church he attends; he has also given information about the college to high school students he thinks would do well here.

○ Michi Enya '84, who lives in Tokyo, has been calling prospective

students in Japan, using names provided by Admissions.

○ Members of the Alumni Council have served on interview teams with faculty, staff, and students for the college's annual Presidential Scholarship Competitions.

Admissions Director John Schueth, in describing alumni involvement, said that "by far the best referrals we receive each year for the new entering class come from our alumni, current students, and faculty and staff.

"A high percentage of those students enroll at Dana, not only because we get the referrals, but also because the students are given first-hand testimony of personal experiences at Dana. The value of that testimony is immeasurable."

Schueth listed several other ways in which alumni have helped, and can continue to help:

○ By hosting an Admissions-sponsored event in their homes for prospective students and their parents.

○ By bringing church and other youth groups to the campus.

○ By displaying Dana materials not only in churches, but also in offices and schools.

○ By telling prospective students about Dana and giving Admissions their names and addresses.

○ And by writing notes to local high school students when alumni learn that they are considering, or have been accepted by, Dana.

Schueth, who said that his office is more than willing to supply promotional materials, encourages alumni to consider ways in which they can assist Admissions— and then to get in touch with him.

## '90s

○ **John Arensberg '93** and **Sheryl Shuster '92** were married on October 2. They live in Fremont, Nebraska. John, who works in West Point, is in sales at Yarger Jewelry and is supervisor/manager for Leisure Lawn. Sheryl is the accountant for Drs. Kolbeck and Nabity OB-GYN in Omaha.

○ **Craig Barsness '93** is recreation supervisor at Omaha Home for Boys.

○ **Amy Christensen '93** is a data entry clerk in the accounting department at First National Bank of Omaha.

○ **Jennifer Davenport '93** is an accountant at Software City, Omaha.

○ **Brent Leefers '93** is a salesperson at The Buckle in Omaha's Oak View Mall.

○ **Kurt '92** and **Patti (Tonmiges '91) James** live in Columbus, Nebraska. Patti works at Minnesota

Corn Processors as a waste treatment lab technician; Kurt is sports writer for the *Columbus*

*Telegram* and a typesetter/graphic artist at a print shop.

○ **Lisa Mellgren-Svendgard '92** is a caseworker at Goodwill Industries in Omaha.

○ **Daylene Perrino '92** teaches seventh grade reading at Papillion, Nebraska, Junior High School.

○ **Siri Vollan '92** teaches ninth and tenth grade Spanish in Bismarck, North Dakota (not South Dakota as reported in the fall *Review*).

○ **Heidi Blaas '91** teaches third and fourth grade resource and self-contained students at Washington Elementary in Council Bluffs.

○ **Cami Christensen '91** is executive assistant at Western Skies Golf Club in Gilbert, Arizona.

○ **Thom Morrow '91** and Heather Hansen were married on October 2. They live in Okmulgee, Oklahoma, where Thom is program director at KOKL Radio.

○ **Mike Davenport '90** and Kim Estes were married on September 25 in Omaha. He is a district supervisor for the *Omaha World-Herald*; she is a senior claims examiner at Mutual of Omaha.

○ **Lisa Hansen '90** and Gordon Frank were married on August 14 in Jacksonville, Iowa. She is a resource teacher at Longfellow Elementary in Council Bluffs; he is an engineering aide with the Omaha

Public Power District at its Ft. Calhoun Nuclear Station. They live in Omaha.

○ **Diana Jones '90** has married Air Force Sergeant David Thomas of New York. She teaches AAC math, English, and career awareness classes to orthopedically impaired students at Northwest High School in Omaha.

## '80s

○ **Ted '89** and **Margie (Miller '87) Bansen** of Blair announce the June 26 birth of Ellen Claire. Her brother, Thomas Michael, is three.

○ **Becca Brabec '89**, who received her master's degree in social work a year ago, is in Ogden, Utah, as a maternal child health social worker for a prenatal clinic during the day and as a therapist for a sexual abuse treatment center in the evening. She writes that her jobs are "challenging and refreshing."

○ **Jodi (Mast '89)** and Jim Peters of Danbury, Iowa, are the parents of Jay Niels, born on November 23.

○ **Trudy Williams '88** has been hired as a librarian by the Washington, D.C., Public Library.

○ **David Iversen '86** has been promoted to assistant professor II—librarian at Rider College in Lawrenceville, New Jersey.

○ **Katherine (Pahre '86)** and David Coe announce the February 1993 birth of Karl Gordon. Katherine writes: "We have just returned to the U.S. after two years of work and travel in beautiful New Zealand. David is now working at the VA Hospital in West Haven, Connecticut."

○ **Jon '85** and **Julianne (Schwandt '84) Bansen** of Monmouth, Oregon, announce the birth of Allison Paige on October 6. Allison joins brother Ross (4) and sister Christine (2).

○ **Karen Brockhoff '85** and Ron Schweitzer were married on October 9 in Avoca, Nebraska. The Rev. Michael Martin '83 performed the ceremony. They live in Elmwood, Nebraska, where Karen is operations manager at the Elmwood bank. Ron works for a concrete company in Lincoln.

○ **Karla Larsen '85** has accepted a position as manager of the alteration department at Tilly, a ladies' specialty shop in Regency Fashion Court in Omaha.

○ **Ruth Nielsen '85** was consecrated on July 11 as a deaconess of the Lutheran Deaconess Association. She has accepted a call to Hope Lutheran Church in Cleveland Heights, Ohio, where she began her work on December 5. In the last four years she completed a two-year degree in

sign language interpreting, began her deaconess formation by studying theology for one year at Valparaiso University, and completed her deaconess formation with a yearlong internship at Bread of Life Lutheran Church for the Deaf in Minneapolis.

○ **Julie (Williamson '85)** and Rod Hill live in Keota, Iowa, where Julie teaches K-12 vocal music, and Rod teaches fifth and sixth grade social studies.

○ Debbie and **Jeff DeYoung '84** are the parents of a daughter, Rachel Ellen, born on October 17. She was welcomed by her brother, Joshua (2). The DeYongs recently moved to Atlantic, Iowa, where Jeff has accepted a position as managing editor of the *News-Telegraph*, Atlantic's daily newspaper.

○ **Kristine Hester '84** and Stephen Mrsny were married on September 11 in Omaha. She is an operations manager with Cardmaster Publishing Corporation, and he is employed by the Omaha Rubber Stamp Company.

○ **Kevin '83** and **Kari Jo (Molzer '85) Johnson** of Omaha announce the November 5 birth of Kurtis Clifford. He joins sisters Kirsten (5) and Kaitlin (2 1/2). ○ This fall **Scott Buchanan '82** became principal of Cedar Bluffs, Nebraska, High School.

○ **Mark Friis-Hansen '82** has been appointed general manager of the Howard Johnson Lodge & Suites—Council Bluffs. He was most recently assistant general manager at the Radisson Redick Tower Hotel in Omaha.

○ **Melinda (McCord '82)** and **Mitch '81 Jensen**, York, Nebraska, have adopted Benjamin Daniel, born July 16, 1993, in Ho Chi Minh City, Viet Nam. He arrived in Omaha on November 27. The Jensens write that "big sister Emily is four years old and is thrilled about having a baby brother." Mitch works for Nebraska Public Power District as an environmental specialist.

○ **Lori (Neve '82)** and Terry Jones, Texarkana, Texas, announce the November 19 birth of Robert Paul. Brother Andrew is four.

○ Pam and **Doug Lemon '81**, Los Alamos, New Mexico, are the parents of Mitchell Kramer, born November 19. He joins brothers Christopher (5) and Ryan (3).

○ **Barbara (Kalal '80)** and Bob Hawkins, Plymouth, Michigan, announce the August 21 birth of their third son, Scott Benjamin. He joins David (7) and Marten (3). Barbara works part time at Michigan National Bank in Plymouth.

Destiny's  
Deep  
Sea

## '70s

○ Matthew Raymond was born to *Marilyn (Gengenbach '78)* and Raymond Warren on September 25. He joins brother Christopher (3). The Warrens live in Newark, California.

○ *Ken Jasa '78*, who farms near St. Edward, Nebraska, has joined the Nebraska Farm Bureau Federation staff as a district director of field services.

○ *Terry Wiseth '78* writes, "This past spring I was hired as a full-time instructor in biology at Northland Community College in Thief River Falls, Minnesota. The previous six years I taught in the math department at Northland. This new job fulfills a lifelong dream of teaching biology at the college level. I also am the defensive coordinator for the football team and head baseball coach. My wife, Darlene, and I have five children—Stephanie (13), Steven (10), Stacey (8), Sallie (5), and Spencer (2). During the summer I work as a hail adjuster for agricultural crops."

○ *Dennis Gethmann '71* has been appointed to the new position of chief financial officer with Dial REIT Inc., an Omaha-based real estate investment trust. The company owns or has equity interest in more than 25 enclosed malls and neighborhood shopping centers in ten states, mostly in the Midwest.

## '60s

○ *Dennis Sellon '69* has been appointed head football coach at Blair High School. He served as assistant coach for 23 years under Mike Lehl, who resigned at the close of the 1993 season. Sellon teaches junior and senior high physical education and has been head coach of the boys' track team for many years.

## '50s

○ *Milt '58 and Beverly (Peterson '60) Jensen* moved to Pocahontas, Iowa, in January 1993. Milt is pastor at St. Peter Lutheran Church there. He previously served Bluffs Trinity Lutheran Church near Fremont, Nebraska.

## Deaths

○ *Joyce Klabenes '80* of Clearwater, Nebraska, on October 17. She was a retired teacher. Survivors include her husband, Don, and three sons.

○ *Keith Rode '74* on November 5 in San Diego, California. He earlier taught in Iowa at the Woodward-Granger Community Schools (1974-77) and Forest City Community Schools (1977-82), where he was active in his church and community.

After moving to California, he taught at Oceanside and also worked for the Pinto Horse Association. At the time of his death, he worked for the U.S. Postal Service. Survivors include two brothers.

○ *Maude Jensen '64* on November 12 in Blair. A retired elementary school teacher, she was 94. Survivors include sons M. Stanley, former Blair mayor, and John; and daughter, Dorothy Rupert.

○ *Kenneth Anderson '63* of Grand Rapids, Michigan, on December 5. At the time of his death he was agency manager of the Principal Financial Group in Grand Rapids. He and his family lived in Blair until 1988, when he was transferred to Grand Rapids. He was an admissions counselor at Dana from 1963-64, received his master's degree from Boston University in 1966, and then returned to Dana, first as associate director of development from 1966-68, and then as director of development and church relations from 1968-69. In 1970 he began working for Mutual of New York and in 1973 became manager of the Omaha office of Principal Financial Group. In the 1980s he was a member of the Board of Directors of the Alumni Association and served as president of the Alumni Association from 1982-84. His funeral service was held at First United Methodist Church in Blair; burial was at the Blair Cemetery. Survivors include his wife, Loretta; sons, Jeffrey, William, and Michael; daughter, Katherine; mother, Elizabeth; and brothers, Duane '65 and Donald '69. The family has suggested memorials to Dana.

○ *Joseph Greene '53* of White Lake, Michigan, on October 29. He was a research chemist at Witco Corporation in New Hudson, Michigan. Survivors include his wife, Lois (Hansen '54).

○ *Beulah (Nielsen '44) Rueter* of Falcon Heights, Minnesota, on December 8. She was co-producer and co-host of the internationally syndicated religious music radio program, "Sing for Joy," with her husband, Dr. Alvin Rueter '42, who survives her. Other survivors include daughters, Judith Brehm '67 and Christine Gilmore '71; sons, John and Theodore; sister, Anita Stephens '40, and brother, Ejler.

○ *Dagny (Nielsen '33) Swanson* of St. Paul, Minnesota, on August 15. She was a retired secretary for the legislative department of the State of Minnesota. Her father was H. Skov Nielsen, an early Dana student who taught at Dana from 1939-53. Survivors include her daughter, Susan Griffith.

○ **Before 1918:** *Harriett (Nielsen) Scott* on October 3 in Elk Horn, Iowa. She was 95. Survivors include two sons and a daughter and two sisters, one of them Elvira Mumm '33.

## Friends

○ *Carrie (Sinamark) Jersild* on November 17, at the age of 103. She had been a resident at St. Luke's Lutheran Home in North Canton, Ohio, since 1988. A graduate of the American Conservatory of Music, before her marriage she taught music at Dana and directed the Dana choir (called the "Choral Union") from 1918-23. It was under her direction that the choir began its traditional spring concert tour. She was preceded in death by her husband, the Rev. Dr. Hans C. Jersild T'24, who was president of the United Evangelical Lutheran Church from 1951-56. Survivors include two sons, Harold '50 and Paul '53, and two daughters, Marian Lott and Joann Spiegel '57.

○ *Lona Lund* on October 22 in Blair. She was a daughter of N.T. Lund, who taught at Dana from 1905-15. Survivors include a brother, Ray '25, and a sister, Norma Van Steenhoven '36.

## Homecoming dates, reunions

**A**lumni: Mark your calendars—Homecoming 1994 is set for September 30 and October 1 and 2.

These classes will have reunions: 1944, 1954, 1969, 1974, 1979, 1984, 1989. A DOCS (Dana Organization of Commuting Students) reunion might also be held.

Members of other classes, groups, or organizations who would like to have a reunion (and help with planning it) should get in touch with Ann George, director of alumni affairs, at Dana. They are urged to do so soon, since on- and off-campus space for reunions is limited.

# Planned giving director describes ways alumni, friends can become Builders

Dear Dana Alumni and Friends,

Recently I ran into the parents of a former student at Dana who told me they were making a significant gift to the College "because professors had taken a special interest" in their daughter and "had cared for her." Hearing such comments reminded me of the reasons I enjoy Dana so much—the caring and available professors, the very special friendships (including my wife's) and the Christian and liberal arts experience. Knowing that students still have these experiences is why I enjoy being a part of the Dana community and what makes my work in planned giving rewarding. Furthermore, knowing that there are many, many other alumni and friends who have also had wonderful experiences at Dana reminds me that Dana is a very special place.

Dana can only continue to be that special place with the support of those of us who hold it near and dear to our hearts. With annual budgets of several million dollars and with the increasing

financial needs of students, Dana needs your support.

And with a small endowment of less than \$3.5 million, Dana needs your assistance in your future planning as well.

The Dana Builders are special friends who assist the college by making a provision for Dana in their estate plans. Many Builders make such provision by leaving Dana a percentage of their estate or a specific gift in their wills.

But there are many other ways to leave something for Dana in an estate plan.

One way is to make Dana the beneficiary or partial beneficiary of an insurance policy or retirement account. There are also tax and income benefits to establishing an irrevocable gift annuity with the College or an irrevocable charitable trust for Dana.

Dana Builders have also let us know of their plans to include the College in their estate, and that too is important. Letting us know of your plans is important because the Builders serve as encouragement

for others to also make such provisions in their estate plan. It is also important to the College as we plan for the future of our institution. And it is important to be able to tell prospective donors and foundations when we



approach them for gifts that Dana has financial support in the future to build its endowment and secure its future. Finally, it is an opportunity for Dana to say thank you to those who have made provisions for its

future.

I invite you to consider how you might assist Dana in continuing to provide a distinctive education for students for many, many years to come through your estate. If you have any questions about how to make an estate gift to Dana or if you have already done so but haven't told us about it, please write—or call me at 1-800-444-DANA (1-800-444-3262).

Duey Heffelfinger  
Director of Planned Giving

## *Phil Pagel is named to new position*

Phillip Pagel '56, vice president for institutional advancement since 1985, has been named assistant to the President on a part-time basis. Continuing health problems were cited as the reason for the change.

Pagel has served Dana in

several administrative capacities for 35 years. In his new position he will oversee the production of several college publications, write grants, and assist President Christopherson with special projects, among them Danish relations and campus accessibility

issues under the American Disabilities Act.

In announcing Pagel's new assignment to the campus community, President Christopherson thanked him "for his many years of competent, creative, and devoted service."

I am very optimistic about the future of Dana. I believe that we are developing one of America's fine liberal arts colleges. If we can maintain focus as a quality, liberal arts college of the church, I am confident that God will continue to bless us.

During my 25 years as a professor and administrator in some of America's great public universities, I rarely included God or the church in my discussions with

colleagues about the university. I certainly did not hear

administrators or governing board members calling upon the Lord to guide and direct our educational mission. That is deemed

inappropriate in the public sector.

How different it is here at Dana College and how grateful I am for the freedom to express that difference. Dana has been richly blessed with record enrollment increases and with qualitative growth in faculty, staff, academic programs and improvements in physical plant and grounds.

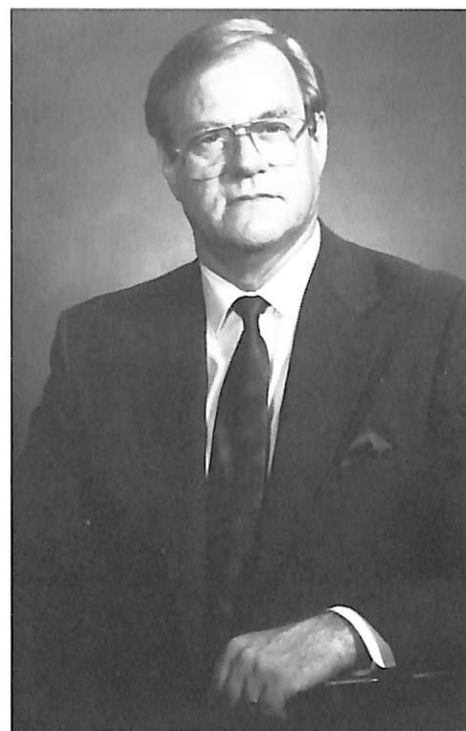
I am absolutely convinced that our many blessings are gifts from God. I can't direct the thanks to the Nebraska Legislature or to Congress except as we are beneficiaries of selected financial aid and other programs that do benefit our students and, hence, Dana College. Instead, our thanks go to God and those who have chosen to remember Dana in their annual giving and in their estate plans. I am reminded of the words of the late Dana president, C.C. Madsen, who said, "our future is as bright as the promises of God."

After the dedication of our new building this fall, I often heard alumni or friends conclude, "Now you are pretty well set, aren't you?"

I found myself responding, "Well, yes, in one sense that is true." However, much remains to be done, including renovation of other buildings on campus. High on the list are Pioneer Memorial, the Campus Center, Borup Coliseum, some features of the Science Hall, and improvements in all of the residence halls and Omaha Village. Add to that the need for constant strengthening of endowment and of academic program support, and it is clear that we still have a lot of work to do.

In some respects, the biggest challenges are yet to come, and go beyond improvements to buildings and grounds. Our most compelling challenge is, "Can we provide the necessary scholarships, grants, and aid to shape the Dana student body?" No single one of us who came to Dana College ever paid the full bill. The tuition, fees, and room and board charges that we paid were always in some measure underwritten by the church and by the sacrifices of the faculty and staff who dedicated their lives in service to Dana College and her students. While church support to Dana has dramatically declined over the decades, without gifts from our church and from alumni and friends Dana could not reach out to our students from approximately 30 states and 15 international communities. Make no mistake about it, few Dana students would be able to attend without the generous support of those who have cared about this community.

Some people believe that the solution to the future of places like Dana is to find a single benefactor like Omaha's Warren Buffett, the richest person in America. "Can't you get Warren to help?" they say. You can be sure that I will never give up hope that persons like Buffett who have been blessed with such great wealth may recognize what a profound difference they could make if they were to benefit a

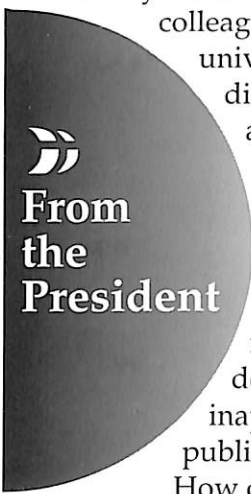


small dynamic community of learning like Dana. However, it was true 110 years ago, and it is true today, that our daily survival and assurance are provided by those faithful alumni and friends, most of modest means, who believe as I do that Dana is vitally important to the future of this world.

As we enter into another phase of Dana's development, the challenge is awesome. Can we convince our friends to continue to give to Dana sacrificially and in increased amounts each year and through their estate plans to make it possible for students to attend Dana? I pray that you will respond enthusiastically when we call to invite you to help Dana students by participating in the Dana Scholars Fund. We need your continued support.

May the Lord bring blessings in abundance to you and yours and to our beloved Dana College in 1994 and beyond. Thanks be to God for His marvelous gifts.

Myryn F. Christopherson  
President



## What's New?

Alumni: Share your recent news with friends and classmates through "Destiny's Deep Sea."  
Please return to: Dana Review, Dana College, 2848 College Drive, Blair, NE 68008.

New Job

Promotion

Award, Honor

Marriage

New Baby

Other

Destiny's  
Deep  
Sea

Name \_\_\_\_\_

Spouse's name \_\_\_\_\_

Address \_\_\_\_\_

City, State, Zip \_\_\_\_\_

My/Our news:

DANA COLLEGE  
2848 College Drive  
Blair, Nebraska 68008

Non-Profit Org.  
U.S. Postage  
PAID  
DANA COLLEGE

ADDRESS CORRECTION REQUESTED

### Moving?

Street \_\_\_\_\_

City \_\_\_\_\_

State \_\_\_\_\_ Zip \_\_\_\_\_

Telephone (\_\_\_\_) \_\_\_\_\_

29876

Dr and Mrs Richard Palmer  
1038 N 28th Ave

Blair, NE 68008

Please return with address label.

