

# DANA REVIEW



Fall 2002

Volume 59, No. 1

**Work on the Borup Coliseum  
Expansion begins. Read the  
full story on page 14.**

*An alumni publication of Dana College*

# Who Should Be Our Role Models?



President Myrvin F. Christopherson

I'm on a campaign to promote as role models ordinary people who model extraordinarily uplifting behaviors. Parents, teachers, friends, ordinary people who are extraordinary in the way they use their talents to inspire and support others are the ones I want to hold up as role models.

Mass media often promote as role models the brightest, most talented, best looking, and most successful. Some of them are not very desirable models of behavior or service to others. TV commercials rarely tout average achievers.

Even colleges and universities seldom lift up the performance of those who finish in the middle of the pack, and they tend to measure their own performance in terms of their ranking on standards chosen to highlight the biggest and best. Hence, factors such as size of endowment (the bigger the better), number of students who graduated in the top 10 percent of their high school class (the higher the better), and the percentage of alumni who make gifts to their school (the more the better) are judged most important.

From a values perspective, I think we'd be better off if we celebrated institutions that enable students to excel in learning, service and integrity; standards admittedly more difficult to measure. For example, I like the emphasis our cross country coach, Jay Birmingham, gives to "personal best" among his runners. More important than winning a race or beating an opponent is "improvement against your own previous best time."

Dana is a moderately selective college, and we seek students prepared to handle a challenging curriculum, but I like to see emphasis placed upon learning and service, not alone on measures that tend to

honor only the brightest and best.

The NAIA, the national athletics association of which Dana is a member, is promoting a "Champions of Character" theme. The character tenants they are promoting and Dana is subscribing to include respect, integrity, responsibility, servant leadership and sportsmanship. I serve on the Council of Presidents for that group and have been delighted with this emphasis.

Bruce Brown, a successful coach and teacher from the state of Washington, has become the lead spokesperson for the theme. Speaking to our athletes and coaches, he said his role model as a champion of character is a blind junior high student he taught. This boy overcame the odds of blindness to become a true "athlete," disciplined in practice, eager to receive coaching, unselfish in his support for teammates and respectful of opponents.

At Dana we see evidence of such "role models" every day, and I believe we should and do seek to provide an environment that occasions each student to grow in performance and in character, academically and in participation outside the classroom as well. Some of them perform at high levels while having to overcome significant challenges.

This past Homecoming, many of us enjoyed the outstanding piano performance of Dana alumna, Iris (Frey '78) Doolittle, who has excelled as a piano instructor, composer and performer despite a crippling stroke that requires her to play challenging compositions with only one hand.

Among current students, I hold up Brian Martin. Brian was in a life-threatening accident when his car left the road in his attempt to miss a deer. He was in a coma for months, and still battles the

odds to return to full mobility. Thanks to good care and loving support of family and friends, Brian is back on campus helping with the wrestling program. He is determined to compete once again. What a role model he is for us who had doubts that he would ever again be a college student, let alone a wrestler. The recipient of three As and two Bs at midterm, he says, "I won't stop until they're all As."

Iris and Brian are just two examples of Dana students past and present that fit my ideal of a role model. Both strive for their personal best, developing their gifts when many in their circumstances would have given up.

Of course, we have countless students with a range of abilities and gifts who beat the odds to achieve personal bests and who rise above peers in the character they model. I'm delighted that Dana's Christian mission and reason for being compels us to be a learning community that not only celebrates those who come with everything going for them but also countless others who are willing to keep improving upon the gifts God has given them. That's the kind of community I prize, and I trust alumni and friends will support with their prayers and gifts. It is not the kind of community that every learning institution chooses to be, or can be.



Ashley Dickinson, Christian Swenson and Stephanie Lynes at the Homecoming game

The Dana Review is published four times annually for distribution to alumni and friends of Dana College and Trinity Seminary by Dana College, 2848 College Drive, Blair, NE 68008. Third-class postage paid at Blair, NE, and additional mailing offices. Postmaster: Send address changes to Dana College, 2848 College Drive, Blair, NE 68008-1099.

Dana College admits students without regard to sex, age, race, color, or religion or national origin to all rights, privileges, programs and activities generally made available to students at the college. It does not discriminate on the basis of sex, race, color, handicap or national origin in administration of its educational policies, admission policies, scholarship and loan programs, athletics or other school-administered programs.

Phone: 1-800-444-3262  
Published by the College Relations Office  
402-426-7216

www.dana.edu

## TABLE OF CONTENTS

HOMECOMING	4
<i>Six full pages of events, news and happenings</i>	
GROUND BREAKING	14
<i>Dana starts work on Borup Coliseum expansion</i>	
LEGACY	15
<i>Complete list of names to be honored on the Legacy Wall</i>	
PROFILE	20
<i>Nothing stops this alumna from her music</i>	
ATHLETICS	24
<i>Mid-season reports and winter sports previews</i>	
DIGEST	27
<i>What's been happening in the lives of current students and faculty</i>	
DESTINY	28
<i>Marriages, babies, awards and more</i>	



Volksmarchers during Homecoming

## DANA REVIEW

*An alumni publication  
of Dana College*

Fall 2002                      Volume 59, No. 1

SENIOR EDITOR  
*Carrie L. (Larkins '94) Reed*

EDITOR  
*Sarah Cavanah*

CONTRIBUTORS  
*Kristen Gay, Jay Birmingham, Julie (Thorson) Rohlffing '70, Brandie Carlson '06, Wendy Grasz, Dr. Milt Heinrich, Carolyn Potter, Dr. John Mark Nielsen '73, Toni Ahrendt '02, Anne Christopherson*

COVER PHOTOGRAPHY  
*Carrie Reed*

# Pastor, Psychiatrist Honored as Distinguished Alumni



**Rev. George Demant and Dr. William R. Yates, 2002 Dana Distinguished Alumni**

A psychiatry professor striving to cure drug addicts and a Lutheran minister devoted to sheltering the elderly were awarded Dana's highest alumni award in October.

The Rev. George Demant (D '50 T '53) and Dr. William R. Yates ('74) were chosen to receive for the Dana Distinguished Alumnus Award for their achievements since attending Dana College.

## The Rev. George Demant

In the mid-1960s, a woman from a neighboring parish came to Demant. She had an idea to create a place to "take care of the old Lutherans," but her own pastor was not interested.

Demant took the idea to a meeting of

the Lutheran churches in Humboldt County, Calif. Everyone thought it was a great idea, and thought the best plan was to "just let George do it."

So Demant went from chair of the Idea Committee, to chair of the Fundraising Committee, and on to chair of the Building Committee. Under his direction, St. Luke's Manor became a 38-bed convalescent hospital, with Demant as Chairman of the Board.

But the board couldn't find an administrator who would work for the salary they could offer. Demant read a book on hospital administration, took the state licensing test and filled the job himself.

It would be a position he would hold for 20 years, through St. Luke's growth and its related challenges. Today, St. Luke's has 100 beds, 78 rent-subsidized apartments and 12 luxury apartments for the elderly.

Not bad for a farm boy from Wisconsin who never thought he would pursue a higher education. Demant entered Dana in 1946 after feeling God's call to enter the ministry. While at Dana, he studied sociology with minors in English and Christianity, and met his future wife Elna Marie Nielsen '50. He paid for his education by working in Dana's kitchen and in maintenance, but his main income came from being the campus barber. For 50 cents, he would cut the hair of any man on campus. He entered Trinity Seminary — at the time also located in Blair — in 1950 and was ordained in 1953.

Rev. Demant said he feels his time at Dana influenced how he would approach ministry in the future. "I found that although I had been born and raised in the 'Holy Church,' there were other ways of life that were acceptable to living in God's kingdom," he said.

## Dr. William R. Yates

Dr. William Yates remembers spending quite a bit of his time during his years at Dana in the chemistry lab. But who knew then how far that time in the lab would take this Geneva, Neb., native?

Now a professor and chairman of the Department of Psychiatry at the University of Oklahoma College of Medicine-Tulsa, Yates earned his M.D. from the University of Nebraska College of Medicine in 1977 and earned an M.S. in preventive medicine from the University of Iowa in 1986.

He went on to teach at the University of Iowa and then moved to Tulsa in 1997. He has been named to the Best Doctors in America directory for three straight years, and was honored with the Outstanding OU Psychiatry Faculty Resident Teaching Award in 1999.

Yates has also led a remarkable career in terms of research and leadership. His interests in psychiatry in primary care populations; alcohol, drug, nicotine and anabolic steroid abuse; and epidemiology and health services research have been prominent in his research studies and in his more than 200 scientific manuscripts, abstracts and chapters, authored or co-authored by him. Yates also served as president of the Association of Medicine and Psychiatry for the 1999-2000 year.

Yates graduated magna cum laude in chemistry from Dana in 1974. He was a varsity golf letterman from 1971-73. He was also a member of the Pre-Med Club, Alpha Chi Honor Society, and played football, basketball and softball for Rasmussen Third Floor in intramurals. He currently is a member of Joy Lutheran Church in Tulsa, where he sings with the 'Joy'ful Mens Choir.

# AGAIN

## 2002

## Basketball, Wrestling Greats Inducted to Hall of Fame

A former wrestler known for never giving up and a former girls' basketball player known for her pioneering spirit were inducted into the Dana Athletic Hall of Fame in October.

Trent Gutschenritter '87 and Donna (Layton) '62 Locher were chosen for their outstanding contributions to Viking Athletics.

### Trent Gutschenritter

At the end of his senior season, Viking wrestler Trent Gutschenritter earned a sixth place finish at NAIA Nationals. But had he wrestled in any other weight class in any other year, Gutschenritter probably would have placed even higher.

At the time, the NAIA was considered the best wrestling division outside of the NCAA Division I, and Gutschenritter's weight class, 150 pounds, is still considered by many to be the toughest. Gutschenritter also received All-American honors that year.

"Trent improved every year and had 30 wins as a senior," said Ron Beaman, Gutschenritter's coach at Dana. He qualified for the national tournament three times, and went on to share his love for wrestling as a high school official from 1990-97.

Beaman still remembers the perseverance and commitment Gutschenritter showed at his final national tournament. "Trent took the hard way, winning five straight and avenging a first round loss in the process," Beaman said.

Gutschenritter earned a degree from Dana in business/computer science. He has worked for First Data

Resources for 10 years, and has received the company's Fat Cat Award, the most prestigious honor available.

Gutschenritter and his wife, Tina, live in Pacific Junction, Iowa, where they raise four children, Katelyn, 11; Steve, 9; Sydney, 6; and Sara, 5.

### Donna (Layton) Locher

Donna (Layton) Locher was clearly the dominant player during an era of great success for Dana in "girls' basketball," a distant cousin of the women's basketball played today. Dana played in an amateur league (Midwest AAU League), sponsored by packing plants, hospitals and other entities. Her entire career is not documented, but she scored at least 1,023 points during her four years of competition. The former Twin Rivers High (Livermore, Iowa) stand-out played on three Dana teams invited to the AAU National Tournament in St. Joseph, Mo.

Although she preceded the development of full-court basketball for women, she was no less a great player in her time than those players of today. Her skills and accomplishments brought positive attention and exposure for Dana, which is generally considered to be the first college in Nebraska with a women's (or girls') basketball team.

Locher earned a degree in English from Dana in 1962. She is married to Fred Locher, and they live in Clayton, Calif., near San Francisco. She and her husband enjoy sailing in San Francisco Bay and Donna continues her education, including attending workshops on photography.



Trent Gutschenritter, with Athletic Director Mark Clements, at the induction



Coach Allen Friesen startles the crowd at the induction ceremony. No casualties reported.

# Class Acts

Venerable Vikings

# HOME

Homecoming



Venerable Vikings: Front row (from left), Lillian (Nielsen '52) Ohlsen, Marilyn (Grill '52) Christensen, Marilyn (Larsen '55) Hansen, Sara Hansen-Walter '52, DeNée (McBride '52) Hansen, Delores (Nielsen '52) Ingram, May (Skobo '52) Jackson, Norman Bansen '47 (seated); second row, Mary (Skobo '69) Weckmuller, Ninna (Schultz '33) Engskow, Lilly (Jorgensen '35) Sorensen, Erna (Petersen '51) Berthelsen, Helga (Jessen '51) Hanson, Lois (Petersen '52) Anderson; third row, Elna (Nielsen '50) Demant, Bob E. Berthelsen '52, Elmer Petersen '54, Bob O. Berthelsen '42; fourth row, Inga (Schultz '36) Larsen, Art Simon '52, Roger Hanson '50, Duane Ohlsen '52, Melius Bollesen D '52 T '56, Leonard Christensen '52; fifth row, Marilyn (Nelson '52) Meyer, George Demant D '50 T '53, Lloyd Bansen '53, Phil Christensen '52, Bob Hansen '52; sixth row, Severin Sorensen '34, Jerry Jorgensen '47, Edwin Hansen D '52 T '57, Robert Jager '52, Carl Schattauer T '52; seventh row, Paul Neve '41, Verlan Hanson '51, Paul Laursen '51, Alvin Svendsen '52

## Class of 1967



Front row (from left), Don Perekovich, Marlow Remmers; middle row, Cheryl (Hanson) Hallquist, Judy (Rueter) Brehm, Patsy (Fahrenkrug) Hoffman, Paul Ahrendt; back row, Charlie Brehm, Joan (Hendriksen) Willmert, Vernyce (Andersen) Schmidt, Harry Junker

## Class of 1952



Front row (from left), Marilyn (Larsen) Nelson, Marilyn (Grill) Christensen, DeNée (McBride) Hansen, Lillian (Nielsen) Ohlsen, Sara Hansen-Walter, Delores (Nielsen) Ingram, Dorene (Larsen) Westergard; second row, Melius Bollesen, Art Simon, Al Svendsen, Lois (Petersen) Andersen, Phil Christensen, May (Skobo) Jackson, Dudley Allen; back row, Bob Berthelsen, Duane Ohlsen, Lloyd Bansen, Leonard Christensen, Jerry Jorgensen, Carl Schattauer, Robert Jager, Richard Jorgensen, Bob Hansen

# AGAIN

2002

## Class of 1962



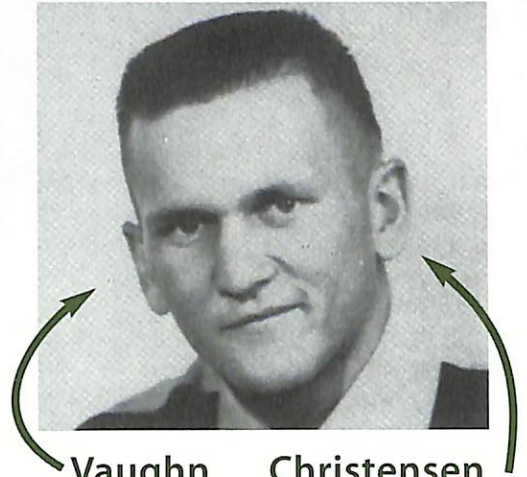
Front row (from left): Eldon Hemmingsen, Stan Cupp, Carol (Larsen) Cupp, Jo (Nielsen) Kubik, Gary Kubik, Verner Hundtofte; back row, Ken Jensen, Don Lindell, Karl Koeppen, Lonnie Hayne, Wally Junker, Pete Petersen

## Class of 1972



Front row (from left): Nancy (Jensen) Gardner, Janis (Jensen) Gaule, Patty (Fredricks) Lentfer, Pat (Anderson) Holton, Deb (Jensen) Katt, Debra (Bellows) Ebke, Betty (Holdorf) Beckman; back row, Gary Gray, John Lentfer, Greg Schou, Steven Turner, Arno Neben, Paul G. Saathoff, Russ Eppenbaugh, Roger Harl

## The Boast *with* the Most?



**Vaughn Christensen '53**, has boldly promised that next year's 1953 class reunion will have the largest attendance of all time. He is personally challenging all his classmates to live up to his boast. He hasn't said what he's challenging them with, but all members of the Class of '53 can send suggestions as to what Vaughn should do if the class does break the 50-year reunion record to:

Dana College Relations  
2848 College Drive  
Blair, NE 68008  
scavanah@fs1.dana.edu

## Class of 1987



Clockwise from top left: Marna Bogan, Lisa (Kampstra) Ruettimann, Kelvin Grasz and Tracy (Erickson) Heffelfinger

# Grand Tour

# HOME

## Homecoming



The Grand Tour, this year's special Homecoming event, was a smashing success, with about 90 people taking a whirlwind tour of Europe without leaving Blair. Travelers visited four distinctly themed houses and sampled four distinct refreshment offerings.

The Grand Tour will not be offered next year, but a new event is in the works. (Hint: Cross Germany and October.)

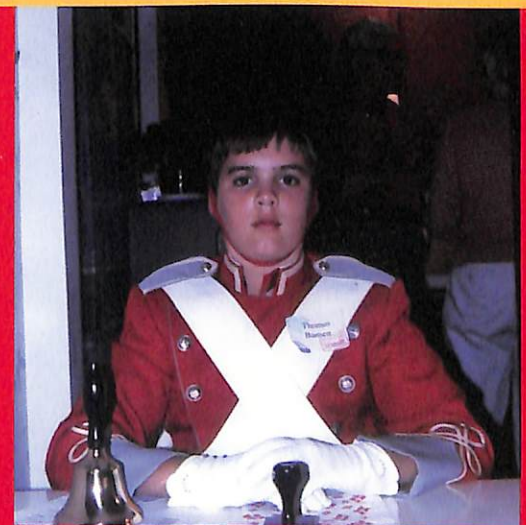
At left, Andy '61 and Susan (Jorgensen '59) Andersen welcome travelers to Italy (Prof. Jim '61 and Sue Olsen's). Visitors here feasted on fresh bruschetta and spumoni.



In Germany (Prof. Emeritus Delvin and Trudy Hutton's, above) guests could partake of German beer or delicious cider. Lederhosen-clad figures were also on the scene, but we'll never tell who.



In Merry Old England (Nathan Krämer '89 and Amy Barlow's home) prime ministers looked down on the festivities as travelers munched on fish 'n' chips, or had a spot of tea with crumpets (or both). Although a map of the Tube was available, no punk rockers or *Trainspotters* were in attendance.



A dapper young man named Thomas (son of Ted '89 and Margie (Miller '89) Bansen) guarded the gate to Denmark (Bob '56 and Joan '56 Krogh's). If one obtained entry, Danish coffee, kringle and smørrebrød were plentiful.

# AGAIN

2002

# Homecoming Scenes



Walkers enjoy a beautiful fall day on the annual Volksmarch around campus.



Alumni, students, faculty and staff gather for a special worship service on Sunday morning.



Mark Dickinson '85, Duey Heffelfinger '88 and Kelvin Grasz '87 perform at the Alumni Revue. The annual event showcases the performing talents of all willing alumni. This year's performers were almost all from the '80s.



Old and new members of the Dana's singing family prepare to perform together at the Traditional Choir Reunion. Stories of snowbound winter tours were also shared.

Michael Brunkhorst, 4; Matthew Brunkhorst, 5; Keirsten Lindelof, 5; and Holly Banark, 4; cheer their moms, Cathy (Shaw '93) Brunkhorst, Jennifer (Edelman '93) Lindelof, and Theresa (Hutfless '93) Banark at the annual alumni basketball game.



## Ed & Shirley Hansen *Eyewitnesses to History*

**E**d D '39 T '42 and Shirley (Bondo '42) Hansen arrived in New York City in 1948 to help start a Bible college.

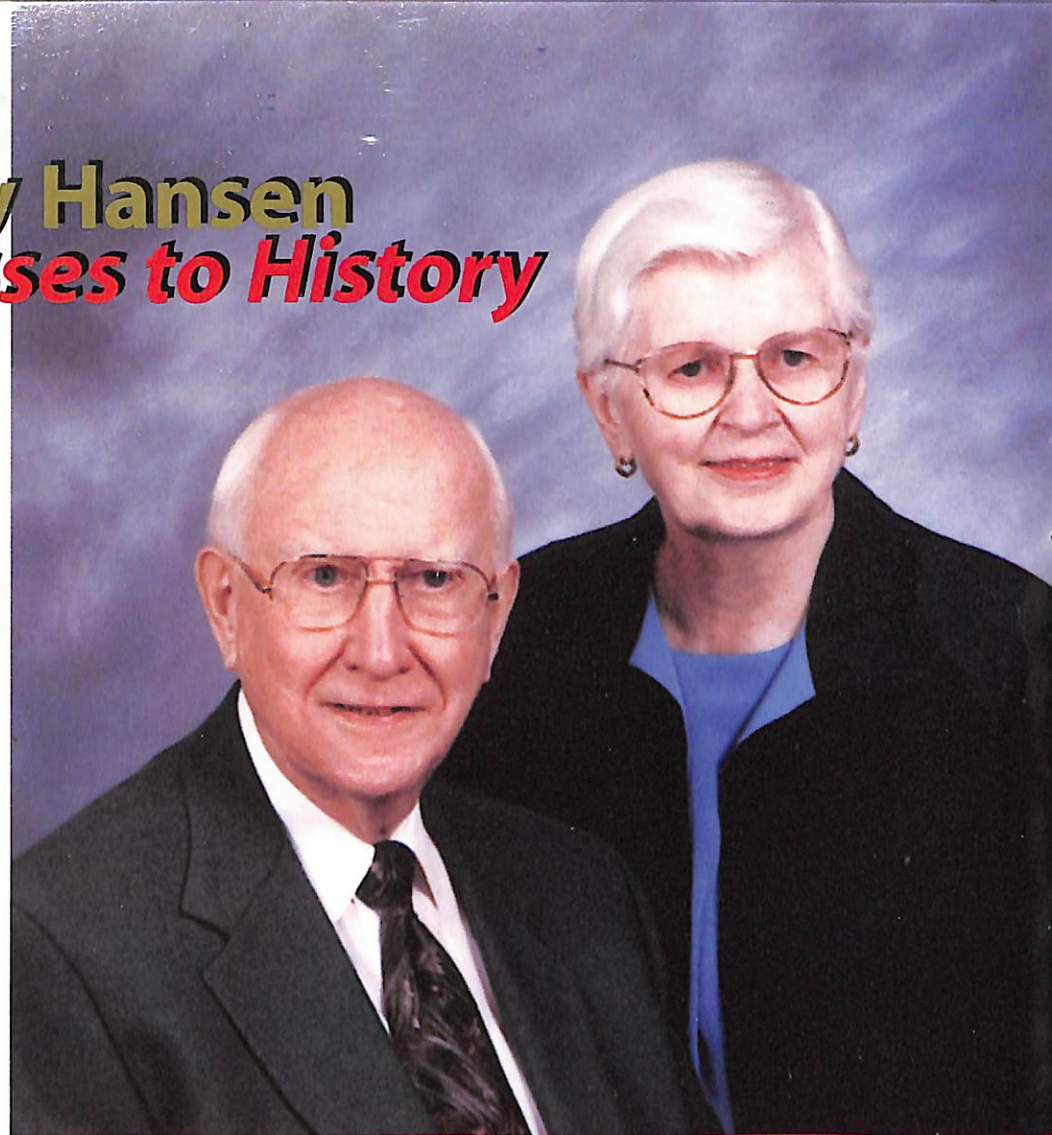
The college's facilities consisted of a basement and some kindergarten-level chairs and a table. There was just one student and two professors, and the whole idea of a Bible school was a little foreign to Lutherans in general and the Hansens in particular. Plus the Midwest-bred Hansens were more than a little foreign in Lower Manhattan. The appointment was for a year.

"It was a very inauspicious beginning," Ed said.

But by the time the Hansens left eight years later, Lutheran Bible Institute had flourished and moved out of the basement to a facility in Teaneck, N.J. New York City and the Hansens were no longer strangers.

For many people, the Hansens' New York experience would be a life test, a moment of truth that would determine the path they would take throughout life. But for the Hansens, those kinds of situations have been their path through life. Every twist and turn has placed the Hansens directly in the path of American Lutheran history, when they had always intended to be spectators. The strangest twist comes late in the story.

Ed and Shirley met at Dana during the last days of the Great Depression. Ed took a basic liberal arts course, getting involved with music and drama and "whatever other mischief there was." He was part of a male quartet popular enough to tour to Lutheran churches on both coasts and many places in between. Shirley attended Dana for a year, leaving to pursue a



**Rev. Ed and Shirley Hansen; Opposite page: Ed reads from his own book while Shirley helps to catalog names collected from Danish Brotherhood records in the Danish Immigrant Archive.**

nursing degree in her home state of Minnesota.

The couple married after Ed graduated from Trinity Seminary in 1942, and were called to Immanuel Evangelical Lutheran Church in Minneapolis. They stayed there for five years before leaving for New York. Along the way, Shirley worked in nursing. She wanted to be with patients, but often her skills and talents were put to use supervising other nurses.

When the Hansens returned to Minnesota in 1956, instead of coming back to a peaceful home, they found the church in ferment. From his parish in Hutchinson, Ed saw his own United Evangelical Lutheran Church, the American (German) Lutheran Church and the Evangelical (Norwegian) Lutheran Church come together to

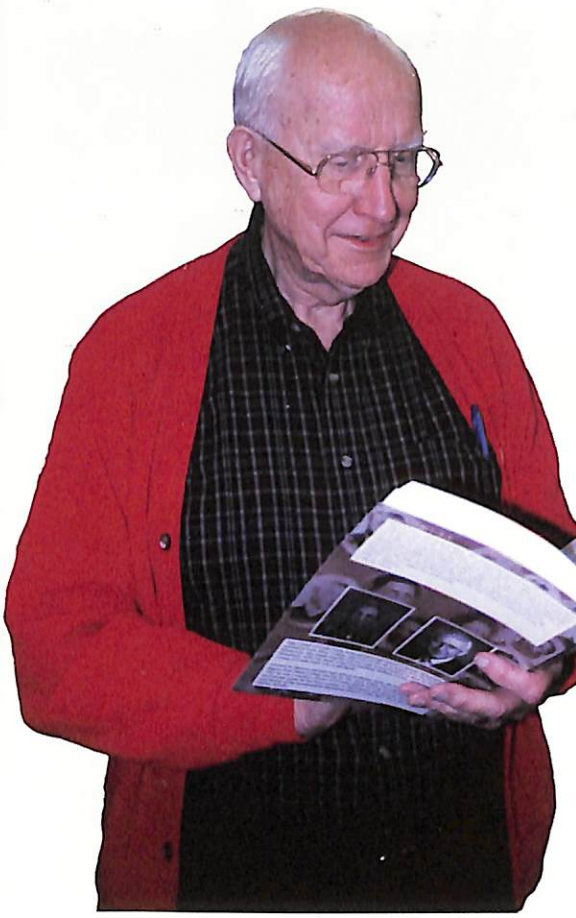
form the American Lutheran Church.

"We thought we were just spectators," Ed said of the process, "They divided Minnesota into three districts and I found myself elected president of ours."

Becoming president (later called bishop) of the Southwestern Minnesota District meant another move, this time to Willmar, Minn. Ed was elected to three six-year terms, allowing the Hansens to stay in one place for 18 years.

After 38 years of service to the church and nursing, it was time to retire — almost. Golden Valley Lutheran College in Minneapolis needed to fill a vacancy in Biblical studies. The Hansens heeded the call and returned to Minneapolis, where they live today.

It wasn't the sort of life that led to monetary riches, but it let the Hansens



His fluency came from a drama production of a Kaj Munk play put on by Trinity and Dana students entirely in Danish. The play earned such rave reviews, cities such as Omaha, Des Moines and Chicago asked the students to perform.

Ed has used this skill to translate a book on the early history of the Danish Lutheran Church (part of *Danes in America*, available from Lur Publications), originally written by a pastor. He also presents papers on the contributions and history of Danish Lutherans in America.

Through it all, the Hansens have calmly worked through all of life's twists with acceptance. They did the same with perhaps the strangest one of all. After years of being servants of humanity, the Hansens became wealthy overnight. A relative, who had been financially savvy, left them \$500,000 in his will.

The Hansens first thoughts weren't of new cars or luxury cruises.

"We thought, 'What will we ever do with \$500,000?'" Ed said. "We decided the best answer was to give it away."

They decided which organizations had been meaningful in their lives and divided the money among them.

"We've always loved Dana," Shirley said. "It was just a natural choice. We're thankful for the education we got. It's amazing to think of what we received for \$300 a year."

The Hansens generous gift to Dana will be divided between the endowment, the Danish archives and scholarships — the latter something particularly symbolic for Ed, who was almost dismissed from Dana for not paying a bill of \$50. His father, who at the time owned a machine shop, scoured helped pay for Ed's education by scouring around for scrap metal to sell to the U.S. government, at that time gearing up for war.

be witnesses to history, as well as friends to many.

History and friendships happen to be Ed and Shirley's passions. They try to come to as many Dana Homecomings as possible to see old friends, and volunteer to work in the Danish Immigrant Archives (located in the C.A. Dana-LIFE Library) twice a year, mainly for the camaraderie they experience.

Shirley works on the massive project of cataloging the thousands of names the archive inherited from the Danish Brotherhood, an insurance organization. Ed sticks more to translating Danish literature to English, a skill he owes to his days as a student at Dana.

Both Ed and Shirley's grandparents were Danish immigrants. Ed's parents could read, write and speak Danish, but it was not something they passed on to him.

"At home, when my parents wanted to keep secrets from me they spoke in Danish," he said.

At Dana, he had the option of studying German or Danish. "I heard the German instructor was very strict," he said. He took Danish.

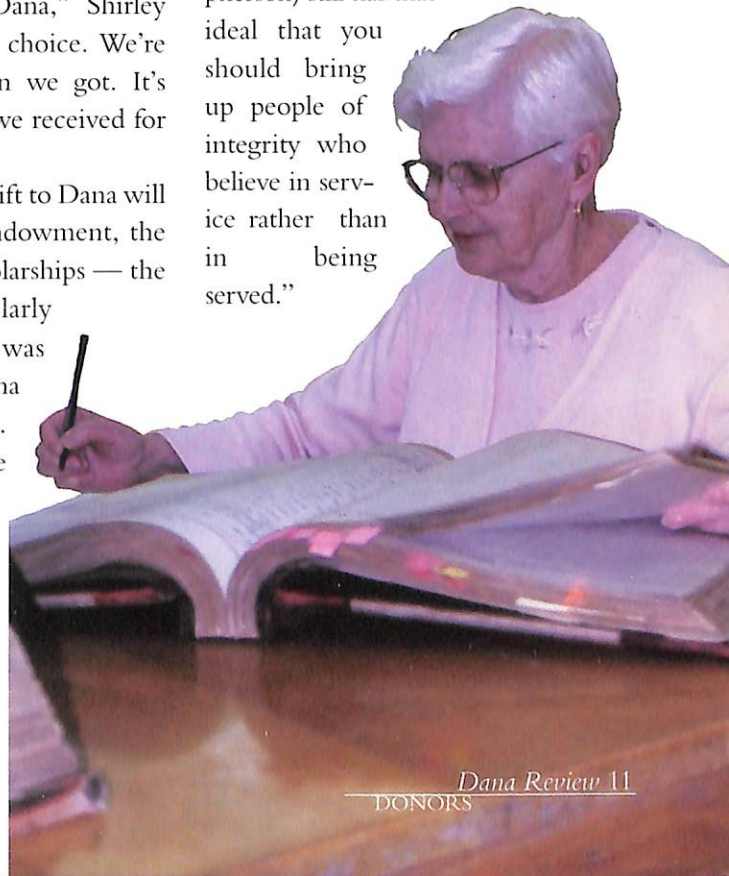
**Ed and Shirley are two of Dana's shining lights. They've given their lives in service to their Lord, their church and their community. They love their Danish heritage and Dana and share generously of their time, talents and any wealth that they have. Most of all, they love people and show kindness to all of God's children.**

**—Dr. Myrvin Christopherson  
Dana College president**

"We are very grateful for Ed and Shirley's friendship and for this generous gift, which will ultimately benefit Dana students for years to come," said Jim Jorgensen, Director of Planned Giving. "Estate gifts are vitally important for Dana's future and I encourage others to follow Ed and Shirley's fine example of conscientious stewardship."

The Hansens said they hope their gift will allow more students to experience the education, in both academics and life, that Dana has offered so many for so long.

"Dana helped us to become more firm and certain in our own Christian faith," Ed said. "The president (Dr. Myrvin Christopherson) still has that ideal that you should bring up people of integrity who believe in service rather than in being served."



# Lights, Camera *Dana!*

**Dana wasn't just a movie location, one alumnus took center stage**

**J**erry Green '94 is a football coach, not a movie star. But the Fort Calhoun (Neb.) High coach has done what many aspiring actors have not: spoken lines in a motion picture.

Green's chance came with the filming of "Full Ride," a feature film shot almost entirely on Dana's campus. Shot more than a year ago, the movie premiered on the WB television network on Aug. 28.

The movie's producers first approached Green as a supplier for an opening shot they needed of a high school game.

"They needed a place to do their filming," he said. "They also needed our (football) equipment and uniforms, and I'm the one who knows where that stuff is."

But when an actor set to play a coach scouting the game didn't show, Green was asked if he wanted to fill in.

"It was a spur-of-the-moment type deal," Green said. "But it was probably something I'll never have the chance to do again."

The shoot took around five hours for just 10 minutes of finished film, but

Green said it was well worth the time and effort, even the teasing he took from other teachers and students at Fort Calhoun. Green had just two lines, but was the first character to speak in the movie.

"Full Ride," was produced by Omaha-based Oberon Entertainment, with a production staff boasting some of Nebraska's finest film-makers. Many of Dana's students and coaches also helped with the filming.

Dana was chosen as the main setting of the film for its beautiful campus and sports facilities. The city of Blair was also used for its clean, small-town atmosphere, according to Robert Schmoll, Dana's executive vice president and chief financial officer.

To celebrate "Full Ride's" premiere, Dana hosted a watch party for about 80 students and community members in the E.C. Hunt Campus Center. Director Mark Hoeger and local actors watched along with the students at the party. A news crew from the Omaha Fox affiliate also came and interviewed a few students.

"Full Ride" is based on an original



**Several Dana buildings and facilities were used in the filming, including the Margre Henningson Durham Center (above) which doubled as a children's hospital, and the new practice fields (below).**

story by former Cornhusker football player George Mills. It follows the journey of an athletically talented, but misdirected, teen-age boy who is recruited to play football in a Nebraska all-star bowl game. His teammates, coaches and a strong-willed young woman change the direction of his life. A love story develops between the film's two stars, Meredith Monroe ("Minority Report," "Dawson's Creek") and Riley Smith ("Eight Legged Freaks," "Raising Dad").

"Full Ride" has also been sold to several foreign markets, including STARZ-Asia, British Sky Broadcasting and HBO-Poland.

Dana College Director of Marketing Carrie (Larkins '94) Reed was excited about the exposure the film will give to Dana College. "We are always looking for ways to let area students know that a traditional, liberal-arts college experience is available to them just 30 miles from Omaha. We hope that area high school students who see our beautiful campus in 'Full Ride' will then make the short trip to come see it in person," Reed said.



# Students Give Time Get a Better Life in Return

The Dana difference starts early — sometimes at 8 a.m. on a Saturday.

That's when Dana's freshmen, many of them not even completely unpacked, headed out to perform community service in Blair.

The community service efforts were held as a part of new student orientation at the Washington County Recycling Center, in different homes of the elderly through the Eastern Nebraska Office on Aging and on campus. Although not mandatory, it was encouraged that Dana's 145 new students participate. Numbers were also boosted by the participation of upperclassmen involved in the orientation and athletics.

"We wanted to do this while students are settling in," said Chris Jebesen, dean of students. "We want to set it in their minds that they can do [community service] later on."

Blocking off an entire morning during the very busy time for incoming freshmen was just the start of a year-long effort to not only get Dana students to participate in service activities, but to get them to take the initiative in planning and leading community efforts.

Volunteering in the community has always been something Dana has encouraged students to do. But with increasing demands on students' time — including studying, jobs and participation in extracurricular groups such as athletics and drama — community service is no longer viewed as merely a "good act."

"It's in the college's interest to make service opportunities more readily avail-

able," Jebesen said. "They might open the door to something students wouldn't explore on their own. Students may find something that causes them to rethink what they want to do with their lives."

Campus Pastor Andrea Ng'weshemi said he believes service is vital to the educational experience Dana commits to by being a faith-based school. Ng'weshemi believes a part of his ministry is to help students discover their talents so they can share them with others.

"We're training them," Ng'weshemi said. "We're growing them for future life in the larger society as responsible citizens.

The integration of service learning within campus ministry promotes both the active faith and the discovery of one's faith through action."

Ng'weshemi said he hopes to build strong service learning and outreach programs that will allow students to go out into the community and area congregations. "The congregation doesn't have to be Lutheran," he said. "It is anyone who will invite us."

Although Dana is a Lutheran school and almost one-third of its students identify themselves as Lutheran, Ng'weshemi down-

plays doctrinal differences in the Christian faith in order to focus on creating a Christian community.

Once that Christian community is present, part of the learning experience is to take it beyond the confines of the campus. "We develop this community by participating," Ng'weshemi said. At first, the focus was to establish a strong ministry foundation on campus. Now that Ng'weshemi feels students have more of a sense of ownership in the religious life of the campus, it's time to spread the community they've developed.

"We prepare students for service so they know that when they do something they do not need a dollar to feel good," Ng'weshemi said.

It's a lesson that Chris Jebesen said is a vital part of Dana's mission.

"I'd like to get us to the point where students will leave Dana knowing that service learning was part of the education," he said. "Service is a part of who they are. It's a part of their life when they leave this place."

One of the biggest challenges is finding meaty service opportunities where students can feel they accomplished something besides padding their resumes. Jebesen said he hopes groups will start to see Dana as a talent pool for volunteer efforts, ready to serve when called.

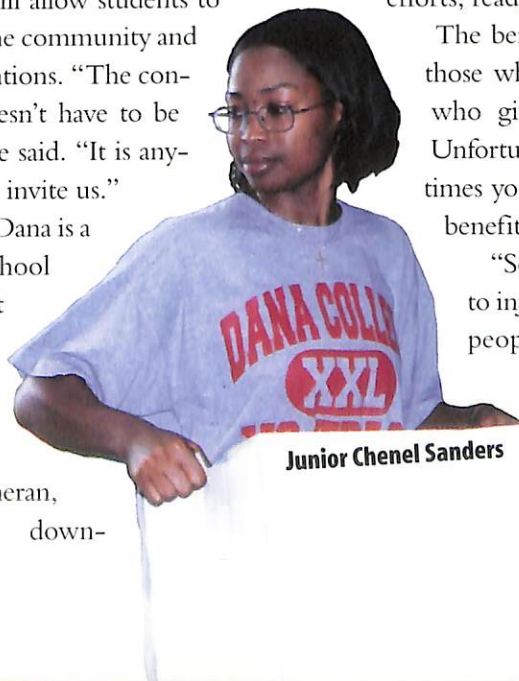
The benefits are mutual for both those who receive help and those who give it, Ng'weshemi said. Unfortunately, he believes sometimes youth are not aware of these benefits when they reach college.

"Sometimes it's a hard lesson to inject into the head of young people," Ng'weshemi said.

"But we go ahead and do it anyway, because we believe it is a good thing for them."



Senior Maureen Gubbels



Junior Chenel Sanders

# It's Not Dirt *It's a Dream*

**I**t was just a shovelful of dirt, not exactly the stuff symbols are made of. But to Dr. Myrvin Christopherson, that lowly dirt symbolized a 40-year struggle to make Borup Coliseum the best it can be.

On Aug. 27, Christopherson, president of Dana College, and the rest of the Dana family held the official groundbreaking for a \$5-million expansion project of Borup, home to Viking Athletics.

When completed, the expansion will add two practice courts, one competition court, classrooms, offices and a walking track to Borup's existing competition court, indoor swimming pool, newly remodeled weight room, athletic offices and classrooms.

Dana's 13 athletic teams and the intramural program, altogether involving more than 65 percent of Dana students, use the facility, as well as the rest of the Dana community. Dana is committed to providing opportunities for students to learn to become community leaders, and supporting Viking athletics is a major way of providing those opportunities, Christopherson said.

"This expansion is sorely needed to serve the multiple number of athletic teams we have," he said. "We hope to have this project completed in one year so our scholar athletes will have use of

the facility in 2003."

Christopherson's relationship with Borup Coliseum has been a long one. When the facility was initially being planned in 1960, administrators had decided to not include a pool within the facility. Christopherson, the Dana student body president at the time, wasn't satisfied with the choice. He organized and led a student-based drive to raise money for the inclusion of a pool. The effort was successful, and Borup Coliseum became a first-rate athletic facility.

In the early '60s, though, Dana had just six athletic teams (the golf team consisted of three players). As Dana grew and interest in athletics increased, Borup became a tight fit. So Christopherson returned to the past and started raising funds once again for Borup.

An initial phase of remodeling was completed in the spring of 2001. Students have already enjoyed using the "new" old Borup, but are looking forward to an all-new addition.

"The changes in Borup will help bring more school spirit to the Vikings," said Dana senior Toni Ahrendt of Lincoln. "I believe a burst of energy will enter every student when they see an expanded Borup. I also think that it will help to draw in more students, those who play or enjoy sports of all kinds."

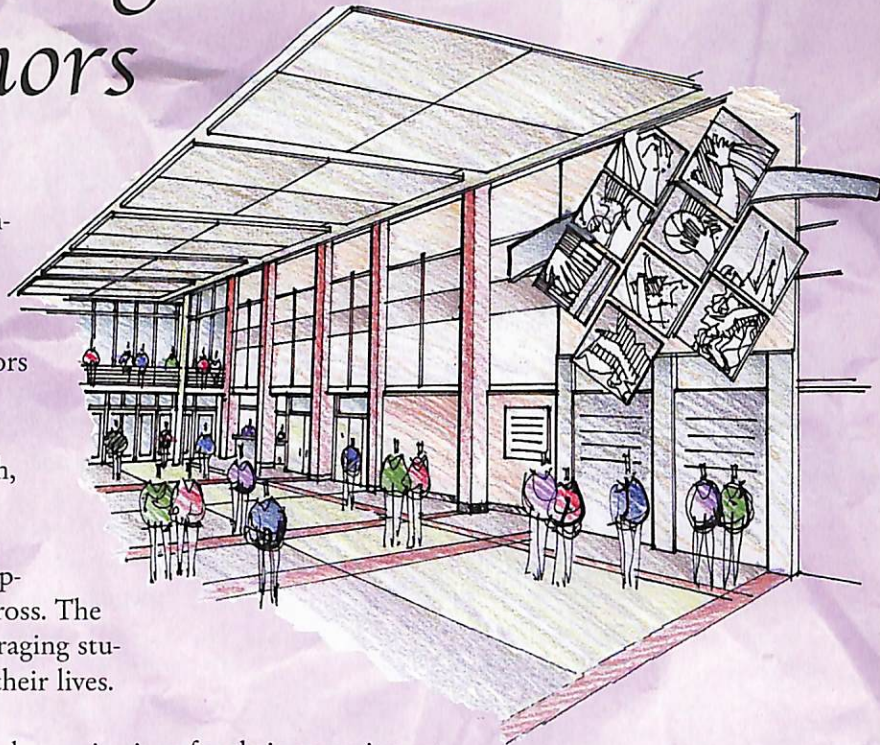
**Construction on the Expansion is well underway, with plans to finish by next summer.**



# Legacy Wall Recognizes Campaign Donors

The Legacy Wall – to be located in the new lobby of Borup Coliseum – will recognize those who have contributed \$5,000 or more to Dana's Legacy Campaign. The Legacy Wall will include a dramatic sculpture of burnished and polished metal panels suspended above a listing of the names of major donors to the Legacy Campaign.

The wall's sculpture, designed by Dr. Milton Heinrich, professor of art at Dana, will demonstrate students' hands in action – writing an essay, shooting a basket, playing music, working at a computer, creating a sculpture, serving a volleyball and carrying a ceremonial cross. The sculpture is symbolic of Dana's great legacy in encouraging students and graduates to lead and serve in all facets of their lives.



Dana College is grateful to the following individuals and organizations for their commitment to the Legacy Campaign. In recognition of their generous gifts and pledges, Dana will feature their names on the Legacy Wall. For more information on giving to Dana College, please call the Office of Institutional Advancement at (402) 426-7333.

3M Community Affairs  
 AG-BAG International LTD  
 Paul and Kathryn Ahrendt  
 Aid Association for Lutherans  
 American Home Products Corporation  
 American Lutheran Church,  
 Gothenburg, Neb.  
 Amoco Foundation, Inc.  
 Andrew and Susan Andersen  
 Bertha Andersen  
 Clarice Andersen\*  
 Harold and Marian Andersen  
 Rev. Dr. Richard and Lois Andersen  
 Dorothy and William\* Anderson  
 Ernest and Sharol Anderson  
 Herbert Anderson  
 Loretta Anderson  
 Ralph and Judith Anderson  
 Dr. Ronald and Susan Anderson  
 Helene and Arthur\* Antholz  
 Steven and Deanna Appel  
 Kristen Archibald  
 William and Judith Archibald  
 AT&T/Lucent Technologies Foundation  
 Dr. Charles and Carole Bagby  
 Gary\* and Debbie Baker

Lloyd and Ann Bansen  
 Timothy and Andrea Barber  
 Bruce and Mary Barkley  
 Harlen "Lee" and Norma Barney  
 Steven M. Barratt  
 Duane and Paulette Barrier  
 Dr. Sybille Bartels  
 Allan and Nadine Beck  
 Rev. John and Ginny Beck  
 Paul and Julie Behrens  
 Bemis Company Foundation  
 Deloris and Rev. Earl Bengtson  
 Dr. Ruth and Duane Benson  
 Daniel and Dorothea Berke Family  
 Glenn and Verona Berntson Family  
 Ethel Bertelsen\*  
 Bicycle Ride Across Nebraska  
 Dr. Gary and Vivian Biesecker  
 Blair Eyecare Center  
 Blair Kiwanis Club  
 Blair Rotary Club  
 Blair West Pharmacy  
 Robert and Lois Blobaum  
 Barbara Bock  
 Dr. Curtis and Robin Boeck  
 Carol and John Bogacz

John and Grace Bohannon  
 Velma Bohs  
 Mark and Erika Bondo  
 William Bracker Family  
 Howard and Ruth Braren  
 Charles and Judith Brehm  
 Bruce and Mary Bro  
 Douglas and Glenda Bro  
 Alan and Karen Brodbeck  
 Elaine and C. Milton Brostrom  
 Forrest and Betty Brown  
 Dr. Donald and Patricia Bruning  
 Burlington Northern Santa Fe  
 Foundation  
 Karen Capel  
 Cargill, Incorporated  
 Mazelle Carlsen  
 Louis Carpenter  
 Case Corporation  
 Beth and Edward Cecil  
 Champion International Corporation  
 John Chatt\*  
 Michael and Tari Choiniere  
 Dr. Dale and Arlene Christensen  
 Elaine Christensen  
 Herbert Christensen\*

Vaughn and Clarice Christensen  
 Rodney and Diane Christenson  
 Dr. Myrvin and Anne Christopherson  
 Gary and Teresa Cissell  
 Dora Coffey  
 Dr. James and Belva Joy Coffey  
 Robert and R. Kristine Coffey  
 Robert and Joan Coffey  
 Commercial Federal  
 Comprehensive Dental Care of Blair  
 ConAgra Foundation, Inc.  
 Cooper Foundation  
 Harold and Merriam\* Cooperman  
 Elsie Curley  
 Esther Damkroger\*  
 Dana Athletic Boosters Club  
 Dana College Class of 1997  
 Dana College Class of 1998  
 Dana College Class of 1999  
 Dana College Class of 2000  
 Dana College Class of 2001  
 Dana College Class of 2002  
 Dana College Student Senate 1997  
 Dana College Student Senate 1998  
 Dana College Student Senate 1999  
 Dana College Student Senate 2000  
 Dana College Student Senate 2001  
 Dana College Student Senate 2002  
 Dana Women's Club  
 Gladys Danahy  
 Danish Ministry of Education  
 Desoto Engineering  
 Daniel and Merri Dibben  
 Darrell and Marjorie Dibben  
 Sid and Hazel Dillon  
 Fredric and Lois Donaldson  
 Dr. Howard and Mary Dooley  
 Ruth Drake  
 Dr. Donald and Myra Jo\* Dreyer  
 Jan and Marilyn Dudley  
 Rupert Dunklau Foundation  
 Durham Foundation  
 Alfred G.\* and Esther\* Eggerling  
 Jean Eisenhauer  
 Ernst & Young Foundation  
 Evangelical Lutheran Church in America  
 Carole and Clyde Evert  
 David and Marilyn Falksen  
 Dr. Kay and Charles Ferguson  
 Marianne K. Festersen  
 First Lutheran Church, Blair, Nebraska  
 First Lutheran Church,  
 Fremont, Nebraska  
 First Lutheran Church,  
 Oakland, Nebraska

First National Bank of Omaha  
 First National Educational Foundation  
 Lowell and Marolyn Formo  
 Dr. Paul and Patricia Formo  
 Foundation for Educational Funding, Inc.  
 Agnes Fraser\*  
 Freedom Forum Foundation  
 Earl and LaVena Fries  
 David and Linda Fuhrman  
 Gardner Foundation  
 German-American Society  
 Dennis and Debra Gethmann  
 William Gibbs  
 Rev. Albert and Gloria\* Girtz  
 Global One  
 Dagmar and Kermit\* Goll  
 Fred and Sharon Gordon  
 Great Plains Communications Inc.  
 Judy and Gerald Gustafson  
 Andrew "Butch" and Ruby Hansen  
 Elmer and Charlotte Hansen  
 Ethan and Patricia Hansen  
 Ethel Hansen  
 Greta and Dr. Paul V.\* Hansen  
 Lauretta Hansen\*  
 Leonard and Evelyn Hansen  
 Margaret Hansen\*  
 Ray and Inger Hansen  
 Family  
 Rev. Robert and Betty  
 Hansen  
 Thomas Hansen  
 Dr. Clifford\* and D. Florence\*  
 Hanson  
 Gary and Elizabeth Hanson  
 Rev. Norlan and Alice Hanson  
 Dr. Roger and Marilyn Hanson  
 Dr. Verlan and Helga Hanson  
 Rev. William and Doris Hanson  
 Keith and Carol Hartvigsen  
 Loren and Diane Havekost  
 Hawks Foundation  
 Maynard and Lise Hedegaard  
 Duey and Tracy Heffelfinger  
 Charles and Kathryn Heide  
 Robert Heim\*  
 A. Robert and Alta\* Hemmingson  
 Arvin and Betty Hernes  
 Susan and Charles Hettinger  
 Lynn and Mary Jean Hiemke  
 Paul and Christi Hilgenkamp  
 Todd and Kim Hinkle  
 Gilbert M. & Martha H. Hitchcock  
 Foundation  
 Pauline and Donald\* Hogzett

Knud Hojgaards Foundation  
 Berneice Hopper  
 Gunnar Horn\*  
 Roger and Linda Howland  
 Anna Huber\*  
 Ron and Rikki Hulsebus  
 Paul and Jean Hundtoft  
 Daniel and Mary Beth Hunt  
 Hugh and Jane Hunt  
 Richard and Janyce Hunt  
 HunTel Systems  
 Kirk and Debra Hutton  
 Phyllis\* and Gordon  
 Ingwersen  
 Chris and Sarah Jebesen  
 Dr. Arnold and  
 Marianne Jensen



Rev. David and Amy Jensen  
 Edith Jensen\*  
 Genevieve Jensen  
 Irving and Tigger Jensen  
 Jennifer Jensen  
 Joan and Roland Jensen  
 Marnie Jensen and Kenneth Bogus  
 Paul and Lizabeth Jensen  
 Richard and Anna Jensen  
 Rev. Dr. Richard and Rev. Bonnie Jensen

Russell and Esther Jensen  
 Stanley Jensen  
 Dr. Timothy and Sharon Jensen  
 Ada and Paul\* Jeppesen  
 Robert and Malinda Jepsen  
 Dr. Paul and Marilyn Jersild  
 Rev. Dr. Paul and Joyce Johnsen  
 Roger and Barbara Johnsen  
 Elmer\* and Emma\* Johnson  
 Everett and June Johnson Family



Jim and Linda Jorgensen  
 Dr. Gregory and Kathryn Kalal  
 Thomas Kalchik\*  
 Dr. Rodney and Nancy Kastrop  
 Drs. Nicole and David Kaufman  
 Irene and Ernest\* Kehlbeck  
 Kellogg's Corporate Citizenship Fund  
 Cynthia and Bruce Kempeke  
 Patrick and Shari Kenealy  
 Kiewit Companies Foundation  
 Kiewit Foundation  
 Peter Kiewit Foundation  
 Dale and Janice Kimes  
 Robert and Judith King  
 Dr. Leo Kirchhoff  
 Jerry and Peggy Kirkegaard  
 Walter and Sandra Kirkegaard  
 Ndewirwa and Eunice Kitomari  
 Luther and Doris Kloth  
 Karen and Roger\* Knoell  
 Herbert and Karen Knudsen  
 Rudolph Knudsen\*  
 Karl and Patricia Koeppen  
 Gail Koldenborg\*  
 Virginia Korshoj\*  
 Kountze Memorial Lutheran Church  
 Consul Lowell and Marilyn Kramme  
 Naoma Krause\*  
 Jeffrey Kress and  
 Holly Petersen-Kress  
 Robert and Joan Krogh  
 Timothy and Jamie Kuiken  
 Nick and Rosella Lalic  
 Dr. Thomas and Ginny Lange  
 Herbert and Regina\* Larsen  
 Philip and Florence Larsen  
 Priscilla Larsen  
 Robert Larsen\*  
 Scott and Anna Larsen  
 Douglas and Marilyn Larson  
 Jerome and Carolyn Larson  
 Douglas and Susan Lash  
 John-Henry Lassen  
 John and Jill Laughhunn  
 Victor and Margaret Lauritsen  
 Lauritzen Corporation  
 The John R. and Elizabeth D. Lauritzen  
 Foundation  
 Libby and John\* Lauritzen  
 Dr. Paul and Gail Laursen  
 Irma Lawson\*  
 Maren Lawson\*  
 Forrest and Dorcas Leighton  
 Kathleen and John Leistad  
 Dale and Jane Lemon

Kevin and Kari Jo Johnson  
 Milan and Gloria Johnson  
 Rev. Oscar and Dolores Johnson  
 Paul and Elizabeth Johnson  
 Michael and Dr. Faye Jones  
 Alice Jorgensen  
 Ann Jorgensen  
 Don and Joyce Jorgensen  
 Floyd and Dorothy Jorgensen  
 Herbert and Carol Jorgensen

Keith and Marcia Limbo  
 Lincoln Health Care Foundation  
 Jerry and Shirley Lincoln  
 Eugene and Nancy Lindblad  
 Harriet and Merle Lipe  
 Tom and Janice Lippincott  
 Clara and Clifford\* Loft  
 Roger Lorsch  
 Rev. Clarence and Maryann Lund  
 Lutheran Brotherhood  
 Lutheran Brotherhood Research Corp.  
 Lutheran Church of the Master,  
 Omaha, Nebraska  
 James and Dawn Lynes  
 John and Beth Lyons  
 Robert and Helen Macholan  
 Dr. Gary and Diane Madsen  
 Leonard and Lenora Madsen  
 Lorraine Madsen\*  
 Arne Marking  
 Kelly and Russell Martinson  
 Larry and Mary Mason  
 Fred and Carol Matthies  
 Joyce Maurer  
 JoAnn and John McDonnell  
 Dr. Leo and Patsy\* McKillip  
 James McKinley  
 David and Kathy McKinnis  
 Medtronic Foundation  
 Drs. Barbara and Donald Meduna  
 Rev. Paul and Lorie Meeker  
 Darrell and Christine Mertens  
 MidAmerican Energy  
 Judy and Richard\* Miller  
 Mobil Foundation Inc.  
 Brian Moerer and Vicky Donaldson  
 Neil and Shirley Moore  
 Drs. Arthur and Esther Mork  
 Joanne Morrow  
 Robert Morton  
 Jane Mundschenk  
 Dana Munson  
 Mark and Susan Musick  
 Edna Nance\*  
 William and Cheryl Neal  
 Nebraska Community Foundation  
 Nebraska Independent College  
 Foundation  
 Nebraska Synod ELCA  
 Nebraska-Iowa Supply  
 Anna "Toots" Nelson\*  
 Drs. Donald and Mary Anne Nelson  
 Rev. Dr. Robert and Arlene Nelson  
 Ruth Nelson\*  
 Alton and Marjorie Neve

Leif Neve and Bonnie Lutz  
Rev. Dr. Lloyd and Muriel Neve  
Dr. Rachael Neve  
Rev. Ried and Eunice Neve  
NHELP Marketing  
Elcar and Norma Nielsen  
Homer and Ione\* Nielsen  
James and Darlene Nielsen  
Janice and A. Craig\* Nielsen  
Dr. John and Elizabeth Nielsen  
Dr. John Mark and Dawn Nielsen  
Rev. LeVern and Marilyn Nielsen  
Martha Nielsen  
Dr. Ruth Herman Nielsen  
Rev. Clayton and Lila Nietfeld  
Jane Nore\*  
Allan and Marlyn\* Nyegaard  
Rev. Dr. G. Kathleen O'Connor  
Duane and Lillian Ohlsen  
Arlyce and Charles Olsen  
Allan Olson  
Barry and Diane Olson  
Bryce and Carole Olson  
Roger and Dr. Dorothy Olson  
Omaha Community Foundation  
Omaha World-Herald Foundation  
Gordon and Anne Leslie Pahre  
Ivan and Patricia Paulsen  
Francis "Stub" and Ruth Pearson  
Dr. Arthur and Mary Pedersen  
Eivind and Dorothy Pedersen  
Rev. Jon and Sonya Pedersen  
Lois and Leroy\* Pedersen  
Martin and Sharon Pedersen  
Leslie and Kelly Pederson  
Alma Petersen  
Rev. Emery and Carol Petersen  
Floyd and Marilyn Petersen  
Marc and Carlene Petersen  
Roger and Pamela Petersen Family  
Brent and Paige Peterson  
David and Dorothy Peterson  
Marc and Ruth Peterson  
Ruth Peterson  
Steven and Janice Peterson  
Richard and Jan Potter  
Principal Financial Group Foundation Inc.  
Gerald and Tamara Quirk  
David Ragan  
David and Emily Rasmussen  
Ebba Rasmussen\*  
Phyllis Rasmussen  
Steven Rasmussen  
Wallace and Grace\* Rasmussen  
Anna Rasmussen-Rasmusson

RDG Schutte Wilscam Birge Inc.  
Donna and Harley Rector  
Lucile Rehder  
Theodor and Dorothy Repsholdt  
Kenneth and Virginia Rhoades  
Mark and Betty Rhoades  
Rev. George Robertson\*  
Clifton "Bud" and Janice Robinson  
Drs. Walter and Margaret Rodenburg  
D'Arlene and Dr. Leland Rosenau  
Richard and Peggy Anne Rostan  
Paul and Ethel Saathoff  
Bonnie Sand Whittier and  
Dr. Richard Whittier  
Dean and Rose Marie Sapp  
Lee Sapp Leasing, Inc.  
William and Lucille Sapp  
Lorraine and Walter\* Schacht  
Rev. Carl and Alice Schattauer  
Gertrude Schmehl\*  
Irene Schmidt  
Jerry and Ruth Schmidt  
Robert and Judy Schmol  
Eugene Schobel  
Deborah Schou  
Gregory Schou  
Mildred Schroeder\*  
Beth and Rev. John\* Schultz  
Erling and Dorothy Schultz  
Myril and Iva Lou Schultz  
Rev. Alton and Mary Schwandt  
Suzanne and Walter Scott Foundation  
Brian and Kathy Serr  
Servicemaster Company  
Dr. H. Neal Sievers  
Sen. Paul and Patti Simon  
James and Mary Siverts  
Gale and Ramelia Skillstad  
Hubert and Ruth Snow  
Sodexo Campus Services, Inc.  
David and Sandra Solberg  
Dr. Stanley and Dagny Sollie  
Rev. Arthur and Joan Sorensen  
Rev. Harry and Shirley Sorensen  
Jimmy and Esther Sorensen  
Robert M. Stegmaier  
Sean Stokely and Dr. Brian Magruder  
Robert H. Storz Foundation  
Augie and Joan Stricker  
Sunderland Foundation  
Marion Svendsen  
Todd and Carol Swenson  
Thomas and Kathleen Taggart  
Ruth and Reynold\* Tange  
James\* and Lida "Rae"\* Taylor

Ernest Thompson\*  
Rodney and Marilyn Thompson  
Ann and Emerson Towey  
Leslie and Marilyn Tripp  
Patrick and Kathy Tripp  
Shina Turner  
Two Rivers State Bank  
Rev. Kip and Sherri Tyler  
Mitsunobu and Evelyn Uchida  
Susan and Ross Udey  
United Parcel Service  
Michael Urdahl and  
Tammy Moerer-Urdahl  
Edward and Sherida Vahle  
Valley Products Corporation  
Valmont Industries, Inc.  
Dagmar Vasby  
Richard and Karen Vierk  
Dr. Brian and Gilda Viets  
Ferne Wachter\*  
Scott and Kerri Walker  
David and Rose Wallman  
Jane and Joseph Warman  
Washington County, Nebraska  
Washington County Bank  
Dr. Carol Weckmuller  
Mary Weckmuller  
Vita Weckmuller\*  
The Weitz Company, Inc.  
Rev. Eugene and Joan Wekander  
Lola and Glen Wiese  
Harold and Audrey Wilhelmssen  
The Williams Companies, Inc.  
Craig and Ellen Wilwerding  
Johan and Brenda Windmuller  
Ruth Wise  
Philip and Karan Wittig  
Woodhouse Ford  
Woodmen of the World/  
Assured Life Association  
Wright Investments, Inc.  
Lloyd and Joan Wright  
Gene and Barbara Wulf  
Dr. William and Sonja Yates  
Lydia Young  
Dixie and Dan Ziegler  
Darrell Zimmerman  
\*Deceased

*Names can still be added to the Legacy Wall. Company matching and Lutheran Brotherhood and Aid Association for Lutherans matching count as part of your commitment for the Legacy Wall.*

## Dana's FBI Scholarship

Dana recently had a visit from the FBI, but these feds just wanted to help.

Dana was chosen as one of seven to receive a \$2,500 scholarship from the Former Agents of the FBI Foundation's J. Edgar Hoover Memorial Scholarship Program. Dana alumnus Dwight J. Ayers '69, a member of the Society of Former Special Agents of the FBI, selected Dana's criminal justice program as the recipient.

In recognition of J. Edgar Hoover's pursuit of excellence in educational standards for the FBI, former agents and friends donated funds to establish a perpetual scholarship in his name. Each year, one member of the society from each of its seven national regions is selected at random to choose a college or university to receive the award.

Initially, the individual scholarship awards were for \$1,000, but in 1990 they were increased to \$2,500. The awards are designated for the institution's general scholarship fund, with an expressed preference for the law enforcement curriculum.



Present at the awarding of the scholarship (and hats) were (from left) Jack N. Williams, Nebraska Chapter chairman of the Society of Former Special Agents of the FBI; Dwight Ayers '69, J. Edgar Hoover Scholarship Selector for the society; Dr. Myrvin Christopherson, Dana College president; Beverly (Raybould '68) Ayers; Peter J. Wacks, vice president of the North Central Region for the society; Anne Christopherson, Dana College special projects director; and Michael Jones '71, Dana College vice president for institutional advancement.

## Nearly 400 gather in Omaha for conference on Danish-North American Relations Since World War II

A crowd of 392 registered participants more than doubled the attendance expectations at a conference on Danish-North American Relations Since World War II and created enthusiasm for another meeting soon.

"It's clear that we need to be thinking of planning the next conference ... and there's pressure to schedule one in three years," said Dr. John Mark Nielsen '73, planning committee chairman and Dana College professor of English. Nielsen said the planning committee is considering a follow-up conference to take advantage of momentum established in October in Omaha.

The Omaha conference attracted people from 28 states, Washington DC, Canada, Sweden and 20 from Denmark. Conference sessions examined the economic, social and cultural factors that motivated immigrations, the laws relating to immigration and the experiences of

those who immigrated. The conference also explored how immigrant communities, international travel, business and study contribute to relations between Denmark, the United States and Canada.

Bo Lidegaard, a Danish historian and member of the Danish Foreign Service, Edward P. Gallagher, President of the American Scandinavian Foundation and Edward E. Elson, the U.S. ambassador to Denmark from 1993-98, delivered key addresses. Tours were made to the Danish Immigrant Museum in Elk Horn, Iowa, and to the Danish Immigrant Archive at Dana.

The Omaha meetings were a follow-up to a 1992 conference sponsored by the Danish Emigration Archives in Aalborg, Denmark. Nielsen said that if another conference were held in the United States in 2005 it would coincide with the 200th



Alvina (Larson '48) Hjortsvang talks to Clark S. Larsen, Ohio State professor, at a conference banquet.

anniversary of the birth of Danish storyteller Hans Christian Andersen.

The conference was sponsored by Dana College, The Danish Immigrant Archive at Dana, the Danish American Heritage Society, The Danish Immigrant Museum in Elk Horn, Iowa, and Grand View College in Des Moines, Iowa.

# She Can Play that Song With One Hand to Her Side

Her e-mail address says it all, "idoomuch."

This play on Iris (Frey '78) Doolittle's name also illustrates her philosophy of life. She is not one to let the world pass her by. The mother of two beautiful girls, Iris teaches piano lessons at her home in Madison, Neb., and plays piano with the Columbus Jazz Orchestra and the High Tops. She is one of the leaders of the adult choir and organist at her church. Her upbeat attitude is contagious.

Iris did not let a stroke she suffered at the young age of 28 paralyze her spirit, even though it restricted use of the right side of her body.

"I'm a lot more laid back now than I was before the stroke," Iris said. "The important thing now is just waking up every day, getting up out of bed and getting dressed in some manner. The stroke made me think about what was important, and the rest I just let go."

Friendship, family and music are what Iris prioritized as important.

"When Iris suffered her stroke in May of 1985, I was planning my July wedding, and in spite of a

long road to recovery facing her, she was

determined to be at my wedding," said

Jeanmarie Nielsen

'78, college roommate and friend.

"On July 6, 1985, there she was.

Two other life-

long friends, Paula Christensen '78 and Becky (Masoner '78) McCain, were there also, and the four of us were never so pleased to be together as we were on that day."

Iris continued her determined path to recovery. She started teaching piano lessons again less than a year after the stroke. In 1988, Iris and her husband Rodney decided to start a family against the advice of doctors. Laura was born in 1989 and Lonna in 1992.

Music has been a driving force in Iris's life since she was a little girl, and that love of music did not diminish after the stroke. "Music is just important, always has been, always will be," she said. "It just seems to lighten the load of every day.

"Music helps everything," Iris said. "I can still go to the piano and pound when I am angry or to play the latest thing my girls want to hear."

As a student at Dana, Iris majored in music while being "in almost anything that had choir written on it." She was as active as a Dana student as she is as an adult, participating in drama, Student Senate, French Club, working in the Dragon's Head, serving on several committees and teaching

piano lessons in the community

in addition to her on-campus involvement in

music.

music.



Iris (Frey '78) Doolittle performed at the Alumni Revue during Homecoming.

The stroke did not change Iris's love of music or her desire to perform, just the way she does it. Now she seeks out pieces written for or adaptable to the left hand only.

"Iris had always been gifted in playing the piano with fluid expression," Jeanmarie said. "Now, playing with her left hand only, she still plays with that lovely, lyric fluidity that is her strength and signature sound."

Iris returned to Dana at Homecoming in October to participate in the Alumni Revue, something she has done each year since the Revue was introduced five years ago. "It gives me something to play for," Iris said. "It's always fun to get the applause."

She performed two pieces on piano, both solely with her left hand.

"I just want to show people that stroke does not have to be something that wipes you off the face of the earth," Iris said. "You can still do so many things. You just have to think of new ways to do it."

"Iris is made of faith, the support of and love for her family and a resilient, unshakable self-confidence, and I am honored to call her my friend," Jeanmarie said.





# Band Tour

The first thing that comes to Professor Bill Hall's mind when he thinks of the Dana Concert Band's most recent tour is the Fox Theater in McCook.

Built in 1927 to house both Vaudeville acts and motion pictures, the building had a feel that's hard to find these days.

"It was just a wonderful place to play," Hall, the band's conductor, said. "The band sounded really nice in there."

It's one of the experiences Dana College Concert Band members enjoyed on their recent tour through western Nebraska and into Colorado.

Among the other highlights were being part of an artist's series in Golden, Colo., playing in picturesque Estes Park, Colo., to a large holiday-weekend crowd, and performing as the first concert in Summer Arts Program at a lead-

ing YMCA camp. And students also took time to sightsee at the Garden of the Gods, the Air Force Academy, Six Flags and Coors Field.

"The students were just abuzz," Hall said of one particularly well-attended concert. "The students were wearing their red band shirts, and people would stop the students and ask about the concert and talk to them so enthusiastically."

The band tours in even-numbered years as both a reward to the student-performers and as a way of showing off Dana's talent. Only about one-quarter of the band are music majors, meaning the experience could be a last chance to play with a large group for many. For 2004, Hall said he's leaning toward touring to Chicago, with stops in Minnesota and Wisconsin.

Of course, the tours are musical

gravy. The main meat of Dana's concert schedule occurs on campus and in surrounding communities. The band plays four annual events each year, a fall concert (held Oct. 20), a winter concert (March 9), a spring concert (May 8) and at Sights and Sounds of Christmas (Dec. 7 and 8). This year, the band will also give a special concert April 13 at the Joslyn Art Museum in Omaha. The program will include the debut performance of Prof. Hall's new American band arrangement of "Parthia for Band" by Franz Krommer.

The piece, originally written in 1825 and never before published, was done as part of Hall's doctoral dissertation. It is a three-movement concert work written by one of the most important composers of the time. Krommer was the last court chamber music composer for the Austrian Empire and held great influence over his peers.

The continuing excellence of the band reflects Dana's mission of teaching students actively and broadly, said Dr. Myrvin Christopherson, Dana College president.

"We are proud of our student musicians," he said. "At Dana, we encourage the development of the whole person, and the Concert Band reflects this. The majority of the members major in a variety of academic areas such as business, education, social work and science. What they all share is a love of music that we hope will be with them for a lifetime."

The 2002-03 Dana College Concert Band at their fall concert, Oct. 20



# Dana Roots Run Deep for New Board Members

Two Dana alumni have joined the college's Board of Regents, Robert Coffey and Rod Christenson.

Robert Coffey graduated from Dana College with honors in 1975.

After a brief stint as a teacher, he began a career in marketing and advertising. For more than 18 years he has been self-employed as a marketing and advertising writer, designer and consultant for such companies as Physicians Mutual Insurance Company, MasterGrip Golf, Ameritrade and others.

Coffey came to Dana as part of a family tradition, becoming the sixth alumnus from his family. While attending Dana he earned varsity letters in three sports and served on the Student Senate, campus radio station, newspaper and creative writing anthology (*Sover*) staffs.

He currently lives in Blair, where he

has maintained his close ties to the college, serving on the Alumni Council and as president of the Dana Boosters.

Coffey also serves on boards for the Blair Area Community Foundation, Christian Growth Fund of First Lutheran Church, Blair Public Library Foundation and the Mid America Direct Marketing Association.

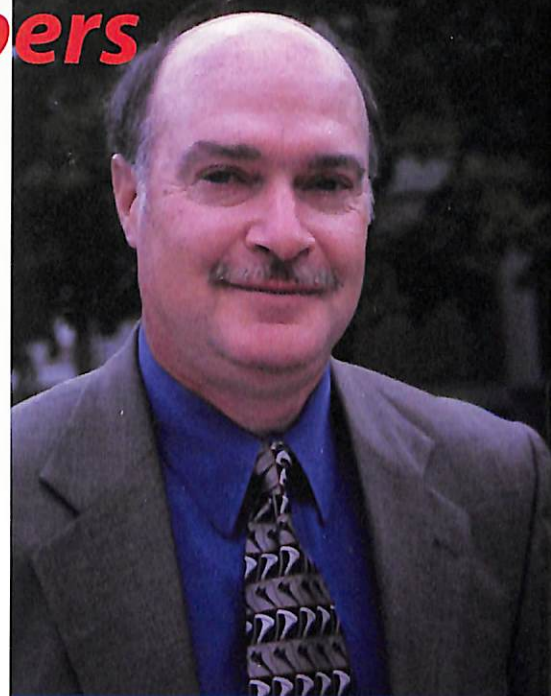
Rod Christenson '70 graduated from Craig (Neb.) High School in 1966. He came to Dana to study physical education and mathematics, and went on to earn his master's degree in educational administration from the University of Nebraska-Omaha.

Christenson was a high school and college teacher and coach for four years before joining Dana College as director of financial aid. He coached Dana's first women's softball team and resurrected the women's basketball team after it had been inactive for many years. He also served as an assistant football coach under Gary Sievers.

After leaving Dana, Christenson worked for IBM as an account representative. Since then he has been the chief information officer for two Fortune 500 companies, American Family Insurance and Manpower International. He is currently president of Mid American Computer Corp., part of the HunTel System Group, in Blair.

Christenson and his wife, Diane (Schmidt '71), have two children. His son, Craig, graduated from Nebraska Wesleyan in 2000 and is currently an assistant golf professional at Indian Wells Country Club in Palm Springs, Calif. His daughter, Karin, is a junior at Nebraska Wesleyan, majoring in elementary education.

Dr. Myrvin Christopherson, Dana College president, said Dana's two new board members will enable the college to have solid representation



Robert Coffey '75

from Washington County. Both have rich family ties to Dana, a devotion to higher education, and a rich experience in business.

"I can't imagine finding two more competent Regents," Christopherson said. "Both have teaching and coaching or officiating experience and have worked effectively with young people. Rod has had large, medium, and small business management experience as well as successful sales experience, and now manages MACC, one of Blair's largest employers. Bob developed his own company into a premier marketing and advertising force, serving companies large and small. They will hit the ground running to help move Dana to a new level of excellence and service. Blair and Dana are fortunate to have these two local business leaders as Dana Regents."

The Dana Board of Regents is elected to set the strategic direction and policy of the college, set goals and long-range plans, ensure financial solvency and provide tools to the administration to enable the administration to manage the institution.



Rod Christenson '70

# Four Retire from Board of Regents

Four members of Dana College's Board of Regents recently retired from their posts.

The retirees were Dr. Paul H. Laursen, Thomas Lippincott, Rev. Carl F. Schattauer and Dr. Rodney Wead. All of the former members served for 12 years.

The Dana Board of Regents is elected to set the strategic direction and policy of Dana, set goals and long-range plans, insure financial solvency and provide tools to the administration to enable the administration to manage the institution.

"This group of board members have been a joy to work with," said Dr. Myrvin F. Christopherson, president of Dana College. "They love Dana. They have exercised good judgment, and have been willing to take risks to assure that Dana grows in quality of services, facilities, and people. We shall miss them. Happily, they have all been voted emeritus status by their colleagues so they will continue to serve Dana in an advisory capacity as they are able for many years to come."

## Dr. Paul H. Laursen

Dr. Paul H. Laursen had been the chairman of the board since October 1999.



A 1951 graduate of Dana, Laursen went on to earn a Ph.D. in organic chemistry from Oregon State University in 1961, after serving three years in the U.S. Army Signal Corps (1951-53). When Laursen

joined Dana's board in 1990, he was a professor of chemistry at Nebraska Wesleyan University.

Laursen's other achievements include serving as provost of Nebraska Wesleyan University (1978-87) and president of the Nebraska Academy of Sciences (1970-71), and earning the Dana College Distinguished Alumnus Award in 1975.

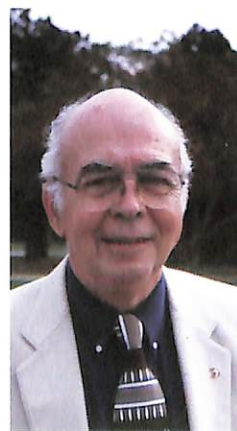
## Thomas Lippincott



Thomas Lippincott is a 1955 graduate of Blair High School. Lippincott went on to become owner and president of Nebraska Iowa Supply and Kopper Kettle Inc.

Lippincott's other achievements include serving as president of the Nebraska Petroleum Marketers Association, the Omaha Oilmen's Club and First Lutheran Church. He is also a former member of the Blair Kiwanis Club and the Blair Chamber of Commerce Board.

## Rev. Carl F. Schattauer



The Rev. Carl F. Schattauer of Omaha, and formerly of Blair, served as secretary of the board since February 1999.

A 1952 graduate of Trinity Seminary, formerly located

on Dana's campus, Schattauer went on to serve as senior pastor at First Lutheran Church in Blair and assistant to the bishop of the Nebraska Synod of the ELCA.

Schattauer's other achievements include serving as chairman of the Lutheran Social Services of Iowa (1974-80) and president of the Kiwanis Club of Ames, Iowa (1974-75) and of Youth Shelter Services (1977-1981).

## Dr. Rodney Wead



Dr. Rodney Wead, president/CEO of Grace Hill Neighborhood Services, was a 1957 graduate of Dana.

Wead went on to earn a Ph.D. in sociology from Union Graduate School of Experimenting Colleges in Cincinnati. He has also served as an assistant professor and associate professor at the University of Nebraska-Omaha and Creighton University, respectively.

Wead's other achievements include serving as executive director of the United Methodist Community Centers Inc., in Omaha, Neb. (1968-74, 1983-91), and associate executive director of the Community Renewal Society of Chicago (1974-83). He was awarded Man of the Year by the Native Omahans for 1990-91, the Malcolm X Award in 1991, the Omaha Public School Black Caucus Award in 1991 and the Urban League Guild Award in 1987. He also received the Dana College Distinguished Alumnus Award in 1974.

# Alumni Take First

Homecoming 2002 was a special day, as homecomings often are. For nine recent Dana graduates, however, the day included plenty of sweat and smiles. For the first time in the history of Dana cross country, a team of alums defeated a very good Dana College men's team, 28-31.

While a sizeable crowd watched, Ben Sandy '98 strode to victory in the men's 8,000-meter race, smashing the course record of 25:56 by running a snappy 25:44. Sandy is currently stationed at Fort Riley, Kan., and is slated to leave the Army in two months.

Leading for most of the race and placing second was recent grad Scott



The winning alumni team included (standing, from left), Ben Sandy '98, Kevin Ronnenkamp '99, Jason Brindle '01, Marc Bierbaum '02, (kneeling, from left) Scott Stanley '01, John Tripp '02 and Justin Christensen '01.

Stanley '01, who ran 25:48. John Tripp '02, who is completing his student teaching and serves as assistant coach for the Dana cross country team, placed fourth. Jason Brindle '01, now a social studies teacher at Blair Otte Middle School placed ninth. Marc Bierbaum '02, now teaching art in Omaha, completed the alumni scoring in 14th. Justin Christensen '01 was 15th, and former football player and track man, Kevin Ronnenkamp '99 was 28th.

The alumni won a total of 10 All-America awards while Dana students and claimed conference titles 12 times.

Dana's only national champion, Angie (Sparacino '98) Sandy, placed second in the women's 5,000-meter race, with a personal best of 19:40. Now teaching school in Manhattan, Kan., Angie has just resumed serious training.

Another alumna, Melissa (Bliemeister '00) Walsh, ran the course in a solid time of 26:52. It was her first-ever cross country race.

Numerous other alumni joined the spectators around Viking Field to watch the combined women's and men's races. Briar Cliff University and Morningside College also fielded teams.

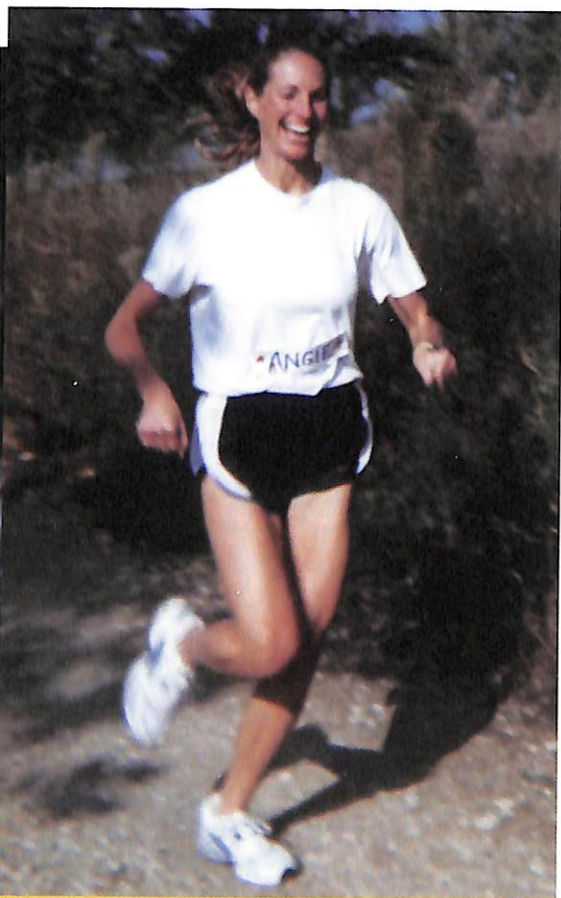
Following the awards, the current Dana teams and alumni enjoyed a cookout at Black Elk-Neihardt Park. Former runners who claimed they

lacked the conditioning to race were excitedly discussing the possibility of joining the fun next year.

## Calling All Vikings

If you played intercollegiate sports during your college career, coached or worked with NAIA athletes, the NAIA is looking for you. The National Association of Intercollegiate Athletics is searching for alumni of the association, and you can sign up on their web site at [www.naia.org](http://www.naia.org). In addition to accessing sports information on the site, NAIA alums can receive the most up-to-date information on NAIA championships, review NAIA history and preview current NAIA initiatives.

The NAIA is piloting a program placing emphasis on character and reclaiming the true spirit of the game. The initiative, called Champions of Character, is grounded in five core values: respect, integrity, responsibility, servant leadership and sportsmanship. Through its tradition of using sports informally as a vehicle of character development, the NAIA supports awareness, education and community involvement to promote character and integrity in sport at every level.



Former national champion Angie (Sparacino '98) Sandy back running at Homecoming.

# Mid-Season Reviews

## Pre-Season Previews

### Women's Soccer

The Lady Vikings were 10-2 overall and 6-1 in the GPAC Conference heading into the last half of their season. Dana went on a 6-0 run in conference until they met a strong Hastings team on Oct. 8. Hastings, ranked fourth regionally, gave Dana their second loss of the season. In the season opener, University of Mary (ranked 18th nationally) gave the Vikings their first loss. Junior Tanya Dugan (St. Paul, Neb.) was leading the way offensively for the Vikings with 33 points on 11 goals and 11 assists. Junior Julie Miller (Omaha) was right behind Dugan with 30 points on 12 goals and 6 assists. Sophomore goalkeeper Melissa Respeliers (Council Bluffs, Iowa) has been outstanding between the pipes this season, allowing 11 goals in 12 games.

### Men's Soccer

The Vikings finished their season on a strong note, beating Briar Cliff and finishing up 2-13. It has been a year of overcoming adversity for the Vikings. With only six players returning from last year's roster, Coach Shad Beam had his work cut out for him. The Vikings got their first win against Ottawa University, after three tough losses. Injuries have plagued the Vikings all season, the hardest being the loss of three starters, Jason Schwabauer, BJ Jensen, and Brent Lorkovic.

### Volleyball

The Lady Vikings have been playing hard all season and finally got what they deserved at mid-season — a win. Dana's victim was St. Ambrose, who was hosting the St. Ambrose Invitational. The match was decided in four games (16-30, 32-30, 30-28, 30-22). The Vikings were 0-8 in conference play and 1-11 overall at mid-season. Senior Erin Williams is

leading Dana with 63 kills on the season, averaging 2.33 kills per game. Mili Monis is averaging 6.52 set assists per game this season for 176 total. Dana's defense has come up big during conference play with 300 total digs compared to their opponents 130 digs.

### Football

The Vikings opened their season with a game against Carleton and came out victorious. The following three games had different outcomes, with Dana facing very tough opponents, including the Homecoming game against Hastings. Luke Smith is leading the Dana defense with 32.5 tackles (solo and assisted). There was a mid-season quarterback change for the Vikings, as freshman Dan Irwin replaced Chuck Wright for the starting job. Wright and Irwin have mostly shared playing time in later games.

### Cross Country

The Vikings have had four meets, two of which have been on home turf. Derek Fey has led the Vikings in every race this year, running the fastest time ever by a Viking at the Pioneers Park course in Lincoln. Fey went on to medal at the Nebraska Invitational, finishing 13th out of 321 runners. At the annual Homecoming Invitational, Fey was on the heels of two alumni All-Americans, finishing first for Dana and recording the second-fastest collegiate time ever. On the women's team, Dana's number one runner, senior Stephanie Collins, suffered an asthma attack and failed to finish at the Minnesota Invitational. Collins finished first for Dana, third overall, running a personal best on the difficult Dana course at the annual Homecoming Invitational. That race qualified Collins for her third All-American Scholar Athlete award.

### Wrestling

Look for the Viking wrestling team to continue the success they have had in previous years. Junior Wynn Fangmeier heads the class of returning starters for the 2002-2003 season. Fangmeier was a Central Regional champion in 2001 and Central Region runner-up in 2002. Sophomores Brian Tsutsumi, Leister Bowling, juniors Nick Schmitt, Brian Welte, and senior Art Castillo all were 2002 National Qualifiers. The incoming class proves to be exciting, but keep your eyes open for three key newcomers, freshman Ruben Leyba from Moriarty, N.M., freshman Rob Casto from Coldwater, Mich., and sophomore transfer DeMarcus Moore from Neosho Community College.

### Men's Basketball

The Vikings kicked off the season on Nov. 6 at Bellevue, with a strong core of returning players from last year's squad. Although the Vikings have 10 players returning, seven of them are sophomores. They are a very young team, but vastly improved. Derek Hack is beginning his senior season after surpassing the 1,000-point mark and finishing last year with 1,064 points. The GPAC is one of the best conferences for NAIA basketball, and the Vikings expect to be in the mix all season.

### Women's Basketball

The women's team returns eight players from last year's roster. There are several newcomers expected to make an impact this season. Beth Pearson, a freshman recruit, hails from Westboro, Mo., and will see playing time right away. The women will face a tough conference schedule as the GPAC has produced three national champions in as many years.

# Dana Welcomes New Faculty Members

*Seven new educators join dedicated teaching staff. Here are some quick facts:*

Dr. Iain Anderson is a new assistant professor of history. Anderson earned his bachelor's in history from Loughborough University in England, his master's from the University of Evansville in Indiana and his doctorate from Indiana University. Before coming to Dana, he served as a visiting assistant professor in the history department at the University of Nebraska-Omaha.

Patricia Duncan is a new adjunct instructor of English. Duncan earned her bachelor's in mathematics and English at Buena Vista University in Storm Lake, Iowa, and her master's in English and special education from the University of South Dakota. She has been an owner/consultant of Achievement Plus in Elkhorn and a faculty member at Morningside College in Sioux City, Iowa.

Trine Feuerborn will be rejoining the Dana faculty as an instructor of Danish. Prof. Feuerborn earned her Danish equivalent to a bachelor's degree in education from Ribe State College of Education in Ribe, Denmark. She spent last year in Denmark, but taught at Dana for the previous two years.

Toni Godley is a new instructor of communication. Godley earned her bachelor's and master's in communication from the University of Nebraska-Omaha. In the past she has served as a training development specialist at West Corporation and as an adjunct instructor at the University of Nebraska-Omaha.

Dr. Scott Hermanson is a new assistant professor of English. Hermanson earned his bachelor's in communication studies from Northwest-

ern University in Chicago, and his master's and doctorate in English from the University of Cincinnati. Previously, he was a lecturer in the English department at the University of Illinois-Chicago.

Dr. Karen Murch-Shafer is a new assistant professor of biology. Murch-Shafer earned her bachelor's and master's in biology from the University of Nebraska-Lincoln and her doctorate from the University of Wyoming. Before coming to Dana, she served as assistant professor of biology at Buena Vista University in Storm Lake, Iowa.

Jo Peterson is a new assistant professor of social work. Peterson earned her bachelor's and master's from the University of Nebraska-Omaha. She has previously worked as a youth services director at Region 6 Behavioral Healthcare in Omaha.

## Trinity Chapel to Get Stained Glass

*Board of Regents spouses help raise funds for windows*

Trinity Chapel will be more colorful thanks to the spouses of the Dana Board of Regents.

Stained glass windows depicting a Trinity theme will be installed in the upper, circular portion of the center window and two side windows in the chapel. The spouses have undertaken several projects to help pay for these new beautifications.

Two Omaha-area artists, Jeff Schmitz and Jesse Keenan, have combined efforts to design and install the windows. The center window representing creation will be the first installed early in 2003.

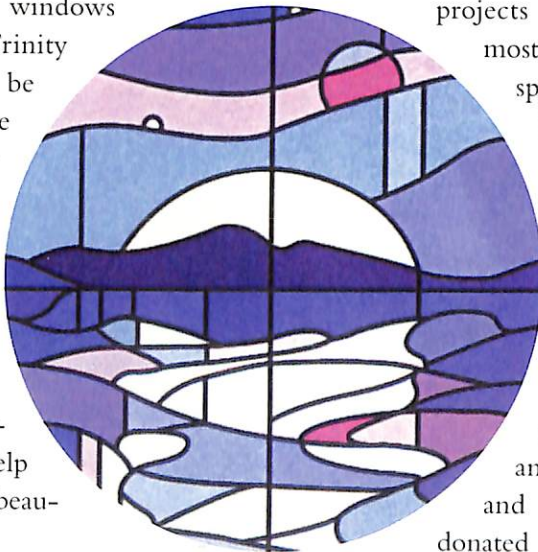
"Some donations have already been received and others are welcome," said

Anne Christopherson, Dana special projects director. "I am

most grateful that the spouses of Dana Regents have stepped forward to help with the fund-raising."

The spouses will be selling collectors' plates that have been provided by an anonymous donor and a collection of donated North American

modern fine art prints to help raise funds. More information on the sales will be available early in 2003 on Dana's web site, [www.dana.edu](http://www.dana.edu), including information and images of specific prints for sale.



## AlumniTravel

The Inside Passage, Ketchikan, Juneau, Sitka, Skagway, Denali National Park, Anchorage, Fairbanks — you have heard about these places and now you can go there with other Dana alumni. Learn about Alaska through lectures by naturalists, discover glaciers spilling icebergs into deep fjords and enjoy the ever-changing and vast scenery. All this and more await Dana alumni in late June to early July. Contact the Alumni Office (800) 444-DANA, option 4, or Kathy (Wollenhaupt '63) Shaw for information: [KatiDid63@aol.com](mailto:KatiDid63@aol.com)

Other Dana alumni trips planned include a London Theater event, February 18-23, 2003, and New England fall foliage viewing in '03. A trip to Brazil in June '04 is planned with a cultural/historical focus. Humanities aficionados may want to consider going to Europe with John W. Nielsen '47 in the summer of '04. Contact the Alumni Office for more information.

# Art, Drama and Traveling Pastors

A showing of 25 of **Sisse Brimberg's** photographs was on display in The Forum in the Margre Henningson Durham Center on Dana's campus. Brimberg has been a photographer with National Geographic since 1976. Her work has appeared in more than 30 articles, ranging from documenting the life of Hans Christian Andersen to her cover story chronicling the Viking culture. Brimberg has been honored by the National Press Photographers Association with "Picture Story of the Year" for her reporting on migrant workers.

Dana is also proud to be the site for an exhibit on the **Life and Art of Hans Christian Andersen**. The exhibit is on loan from the Odense City Museum in Denmark and is located in the Madsen Fine Arts Center on Dana's campus. The exhibit seeks to help people gain a greater understanding of Andersen's life as one of the world's best-known and most-prolifically translated authors. He is especially remembered for the many beautiful fairy tales he wrote. The exhibit will be on display through the Sights and Sounds of Christmas, Dec. 8.

Taking a cue from Dana's commitment to hands-on learning and community service, **Dr. Barbara Zimmerman's** child psychology class is performing 15 hours of service-learning at Blair preschools and the new Head Start program as part of the class requirement. "It lets students see how we can apply what they've learned about kids to real kids, and it helps sometimes understaffed schools do the things they've always wanted to do, but didn't have enough hands to accomplish," Zimmerman said.

Overall excellence puts **Dana College** high in *U.S. News and World Report's* most recent ranking of the nation's colleges and universities. College officials say Dana's commitment to personalized attention for students sets the institution apart from similar schools. Dana was list-

ed in the second tier of Midwestern comprehensive colleges that offer bachelor's degrees, meaning the school placed in the Top 60. The ranking is determined by compiling academic and institutional data and comparing it to similar colleges. The results are published each year in *U.S. News and World Report* and are the most prominent of higher education rankings.

Dana College Professor of Music **Dr. Richard Palmer** made his debut as artistic director of Omaha's Clarion Chamber Chorale at their Oct. 20 concert, opening the new season. Palmer, also director of the acclaimed Dana College Chorale, took over for the recently retired Stan Schmidt, whom Palmer served under as associate conductor.

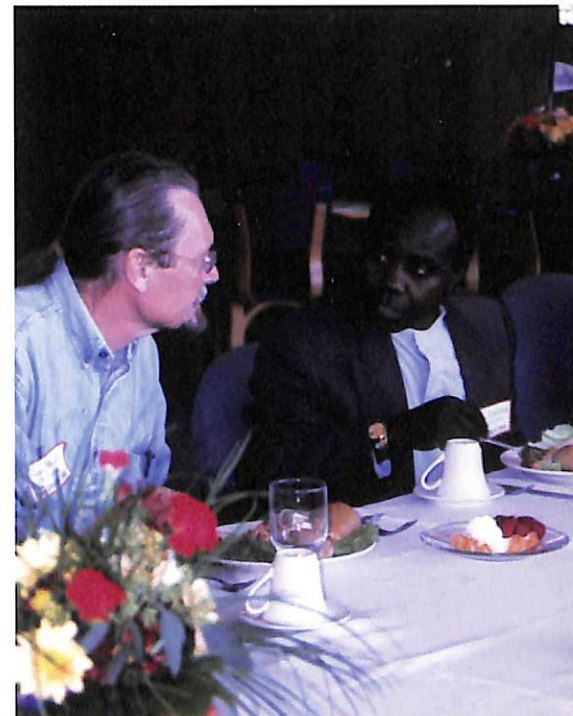
Two Dana College seniors were elected Dana College Homecoming King and Queen, Oct. 4. At a special coronation ceremony Friday night, it was announced that senior **Wynn Fangmeier** of Hebron, Neb. was elected king, and senior **Erin Sorensen** of Grand Island, Neb. was elected queen. The rest of the Homecoming Court included **Erik Hoffman, Kjaer Kirkegaard, David Abbott, Cheston Field, Erin Williams, Toni Ahrendt, Petey Sparacino** and **Natalie Hornig**.

**Dana College's drama program** continued its focus on modern American playwrights by performing Lanford Wilson's "Book of Days," Sept. 26-29. **Paul Schneider**, chair of the English department and director of theater, said he believes Wilson is one of the great American writers. "Wilson has written great plays that have gone on to be monumentally ignored," he said.

**Buz Wehrman, Tom Nielsen** and **Sharon Jensen** from the Dana Library attended the SIRSI Midwest Users Group (SMUG) in Bellevue on July 19.

At this conference, Wehrman and Nielsen co-presented a session titled "New ways to old questions: SIRSI reports and collection assessment" to a standing room only crowd.

Dana College music faculty members performed a recital of music for soprano, trumpet and organ on Sept. 29, at Sinai Lutheran Church in Fremont, Neb. This recital featured **Jeanmarie Nielsen, Michael Anderson** and **Claire Bushong**.



**Walt Wangerin** looked up from his bed in an Alexandria, Minn., hospital room and said, "This trip is too important for me to stop now." So despite injuries that required surgery, the Lutheran Vespers radio show host made his scheduled appearance Sept. 24 at Dana. The stop was part of Wangerin's nine-week Lutheran Vespers OutSpoken bike tour across the Upper Midwest. The tour took a tragic turn Sept. 9, when Wangerin was injured when a pannier came loose and lodged in his bicycle's back tire, throwing him to the ground just outside Alexandria. Shown above visiting with Campus Pastor Andrea Ng'weshemi.

# Destiny's Deep Sea

## 2000s

Teri Ahrendt '02 is currently working at West Telecommunications in Omaha.

Curtis Braden '02 was married to Angela Weinman on Aug. 17. Curt is an assistant general manager for 24-Hour Fitness in Omaha.

John Brummer '02 teaching in the St. Edward (Neb.) school system. John has taken on the role as instructor in all of the school's science classes in grades 7-12.

Jason Dannelly '02 married Michelle Svoboda on June 15. He is working full-time for Waitt Media in Grand Island, Neb., and is also running niafootball.net, a football web site dedicated to small college football in the United States.

Melanie Hinze '02 and Andrew Lyons '01 were married July 11 in Las Vegas. Andrew is employed by State Farm Insurance in Omaha.

Kelly Kuiken '02 was married to Matt Giltner on June 22. Kelly is a substitute teacher in Omaha area schools. They are currently living in Gretna, Neb.

Adam Martin '02 is a new K-12 vocal music instructor, assistant track coach, and show choir director in Meadow Grove, Neb. He currently lives in Tilden, Neb.

Justin Christensen '01 married Natalie Flynn '02 on June 15. Justin is employed in the loan department at First Nebraska Educators Credit Union in Omaha. Natalie attends College of St. Mary, where she studies nursing and runs cross country.

Megan Cosgrove '01 and Curtis Isaacson '02 were married June 22. Megan teaches art and Spanish at Omaha Christian Academy and Curtis is the vocal music teacher at Northwest High

in Omaha.

Teresa Harrison '01 was married to Troy Scott on July 27. Teresa is a Superior High School special education teacher. The couple lives in Superior, Neb.

Lindsay Joslin '01 and Josh Benoit were married July 13 in Blair. Lindsay joined Fort Calhoun (Neb.) Community Schools as the K-4 special education teacher. Aside from her teaching duties, she will also serve as assistant coach for junior high volleyball. The couple reside in Blair.

William Dennis Potts '01 has recently earned a promotion to manager of product cost and invoicing at Hormel Foods of Rochelle, Ill.

Jennifer Schaaf '01 was married Aug. 17 to Travis Tougaw. They are both attending graduate school at University of Nebraska-Omaha. She is pursuing her master's degree in social work.

Jessica Clark '00 is attending the University of Nebraska-Omaha's School of Social Work master's program. She is continuing to work at Developmental Services of Nebraska Inc.

Brian Jones '00 and Lori Argotsinger were married July 9 in Estes Park, Colo. Brian works at Discount Windows Inc. in Denver.

Richard Martell Jr. '00 was married to Celeste Johnson '01 on June 22. Richard is currently employed as a school teacher in Broward County, Fla. Celeste works as a substitute teacher. The couple lives in Fort Lauderdale, Fla.

Gina Ronk '00 and Kip Johnson were married June 29 in Omaha. Gina teaches sixth grade in the Omaha parochial school system.

## 1990s

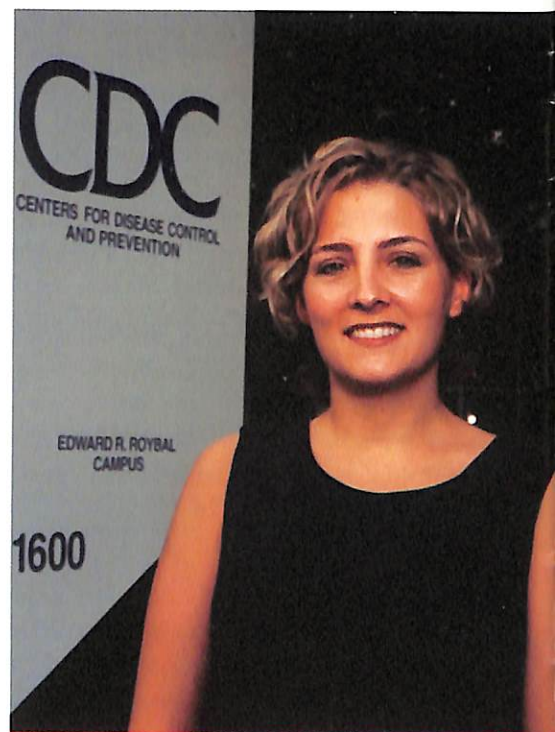
Ryan Barrett '99 and Tracie Sittner were married July 27. Ryan is a member of the Nebraska National Guard

and is a self-employed contractor with Barrett Construction.

Kristi (Conkling '99) Dayoob has been accepted into a position at Richard Young Outpatient Center in the Department of Psychopharmacology Research Center in Omaha.

Daniel '99 and Jennifer (Williams '00) Formo have moved to Madison, Wis., where Dan is working for Mid America Computer Corp. out of the home. Jennifer is looking for employment in the Madison Metropolitan School District. She will likely be substitute teaching this year.

Liza Moberg '99 was recently featured in an article in the *Omaha World-Herald* about a knitting club she started at



**Tiffany Menard '99 won an ATPM/CDC Trainee Award based on the dedication, integrity and energy shown through her work at the Centers for Disease Control & Prevention. She is currently working as a public health researcher at the Center for Collaborative Health Outcomes & Policy at the Michigan Public Health Institute in Okemos, Mich.**

Omaha North High. Liza is also a German teacher at North High.

**Rob Wheeler '99** is pursuing a degree in pharmacy. Rob has been on a one-month rotation schedule in Aurora, Neb. He will graduate in May 2003.

**D. Matt Worley '99** is in his third year in Master of Fine Arts at the American Conservatory Theater in San Francisco, Calif. He was featured in promotional materials for the theater.

**Matt Anderson '98** was married to Lori Quick on July 20. Matt and Lori is working toward a Ph.D. in bio-organic chemistry at Washington University in St. Louis.

**Todd Ashby '98** was promoted to account executive at Envoy, a full-service marketing, advertising, public relations and interactive firm. Todd joined Envoy in 2001 as an account coordinator.

**Amy Benedict '98** was married to Mark Olson on Sept. 28. Amy is a grant evaluator and technologist for Iowa Western Community College.

**Julie Holmes '98** was married to Brian Bruning on Sept. 7, in Pilger, Neb. Julie is currently a special education teacher for West Point (Neb.) Public Schools.

**Taffy (Forsen '98) Jones** is now teaching at Herman (Neb.) Elementary, which is also the elementary school she attended. Taffy lives in Blair with her husband, Luke, and son, Treyton. She taught special education for three years in Fort Calhoun, Neb.

**Eric R. Krystof '98** is senior software engineer at Oriental Trading Company in Omaha.

**Dan Olsen '98** is teaching screenwriting for film at Fullerton College in Fullerton, Calif.

**Derek Otte '98** was married to Cassandra Zehner on June 15. Derek is employed by Marta Railroad Services of Gillette, Wyo. They now live in Gillette.

**Ben Sandy '98** competed in the 25th Lincoln Half-Marathon. Ben placed fourth overall in the half-marathon with a clocking of 1 hour, 9 minutes, 55 seconds.

**Stephanie Carlson-Pruch '97** currently teaches elementary art at Castelar Academy in Omaha. She is working toward her English as a second language endorsement at Creighton University in Omaha. Stephanie has two J. Doe statues on permanent display in Omaha.

**Sara Hildreth '97** graduated in June from Trinity Lutheran Seminary in Columbus, Ohio. Sara is now a pastor at Immanuel Lutheran Church in Madison, Neb.

**Heather (Olsen '97) McCain** has been promoted to art director at Swanson Russell Associates in Omaha. She joined SRA in 1999.

**Sandy Smith '97** married Lance Watkins on June 29. They reside in Due West, S.C. She has taken a ninth grade English teaching position at Abbeville High School (S.C.).

**Shannon '96 and Mary (Hennings '96) LeFave** have become parents of a son, Aidan Joshua, who was born July 17. He is welcomed home by big brother, William, 3. The family lives in Deshler, Neb., where Mary is a stay-at-home mom and Shannon teaches science at Deshler Public School.

Dan and **Angie (Heise '95) Knudsen** are the parents of a daughter, Holli Marie, who was born June 14, 2001.

Daniel and **Nichole (Jaskiewicz '94) Rogert** of Waterloo, Neb., announce the birth of Madisyn Rachel on July 19. She weighed 7 pounds, 8 ounces. The couple also has a son, Tyler Reed, 3.

**Cory Sornson '94** competed in a national music competition in Nashville on Sept. 7. There were approximately 50 individuals who made it to the finals.

**Tory J. Steffen '94** received a master's degree in social work in May from the University of Nebraska at Omaha. Tory will be a therapist at Visinet, Inc. in Omaha.

Amy and **John Arensberg '93** have a new daughter, Taylor Dawn, born April 14, 2001.

**Amy (Barta '93) Becker** teaches junior high English in Fort Calhoun. Amy was chosen as a part of an elite group of teachers across the country to participate

in "Teaching Shakespeare 2002."

Amos and **Carol (Mueller '93) Gray** have a new child, Joshua Jeremiah, who was born Jan. 11, 2001. Carol is national director of "Kid-Ability!" a child abuse prevention program for Girls Incorporated of Omaha.

**Pam Shelton '93** has been hired as director of financial aid at Clarkson College in Omaha. She had been serving as assistant director of admissions at Dana.

Wade and **Becky (Johnson '92) Davenport** had a baby boy, Joshua James, born June 18. He weighed 8 pounds 3 ounces and was 21.5 inches long.

**Keely Gibbs '92** married Chris Bovais on July 5, in their hometown of Gresham, Ore. They now reside in Lorton, Va.

**Dan Adkins '91** was featured in a large article in the *Beatrice* (Neb.) *Daily Sun* summarizing his new-found passion of piano tuning.

**Lori Ohms '91** married Kevin Bayne on June 19, on the beach of Anaeo, Omalu Bay on the Big Island of Hawaii. Lori is an installation and training representative for Mid America Computer Corporation in Blair. They reside in Omaha.

**Gina (Rodan '90) Birdsall** is a new teacher at West Harrison (Iowa) Public Schools. She is the English and communications instructor and also advisor for the Speech Club. Before coming to West Harrison, Gina spent 12 years teaching 7-12 language arts at Manning (Iowa) Community Schools. Her family includes husband Craig, daughter Kayla, and son Tyler.

**Shannon Longwell '90** was promoted to ATM operations manager for First National Bank of Omaha

## 1980s

Steve Meister '88 graduated from the Family Medicine Residency Program at Naval Hospital, Camp Pendleton and is now finishing his Navy obligation as a staff family physician in Guam. Steve writes that his wife Karen and children (Noah, 4 and Sydney, 2) have adapted

well. Karen is teaching at the only Lutheran Church in Guam. They look forward to 2004 when they will be returning to the Midwest.

Carl Jennings '87 was featured in the *The Omaha World-Herald* about his hopes to improve Peony Park in Omaha.

Faith (Smith '87) Senff is the new resource teacher for fifth through eighth grades at Shelton (Neb.) Public School.

Jolynn (Oliver '84) Tonsfeldt is serving in a one-year position as an instructor of education at Northwestern College in Sioux City, Iowa. She taught English and German for 13 years at Le Mars (Iowa) Community High School and spent the last three years as a 4-H and youth development specialist in the Plymouth County (Iowa) Extension Office.

## 1970s

Paul D. Johnson '76 was elected president of the Fremont (Neb.) Area Community Foundation. Paul is a certified financial planner for Thrivent Financial for Lutherans.

Steven M. Barratt '74 was recently selected as a voting delegate for the National Rural Letter Carrier Association's Annual Convention in Portland, Maine, and appointed assistant state steward for the Iowa Rural Letter Carrier Association. Steven also is the mayor of the city of Kirkman, Iowa, and Board President of Regional Water Inc., a rural



Several women from the class of 1974 went on a Western Caribbean cruise together in February to celebrate their 50th birthdays and more than 30 years of friendship. Dana alumni on the cruise included (from left) Dave Waite '72, Harriet (Thorsen '74) Waite, Patty (Houston '74) Gaski, Maggie (Tjon '74) Pfeiffer, Marti (Utech '74) Leishman, Tom Lauritsen '73 and Ricki (Sogge '74) Lauritsen.

water district in southwest Iowa.

Charles Crow '74 retired after 28 years of teaching at Meridian (Neb.) High School. He also recently retired from the United States Air Force National Guard after 23 years of service.

Brent Siegrist '74 is currently serving his second term as the speaker of the Iowa House of Representatives. Brent taught high school government for 18 years, received Dana's Distinguished Alumnus Award in 2000 and is now manager of special projects for Valley Corp. of Bettendorf, Iowa. He is also pursuing a master's degree in public administration at Iowa State University. He lives in Iowa with his wife, Valerie, and two children.

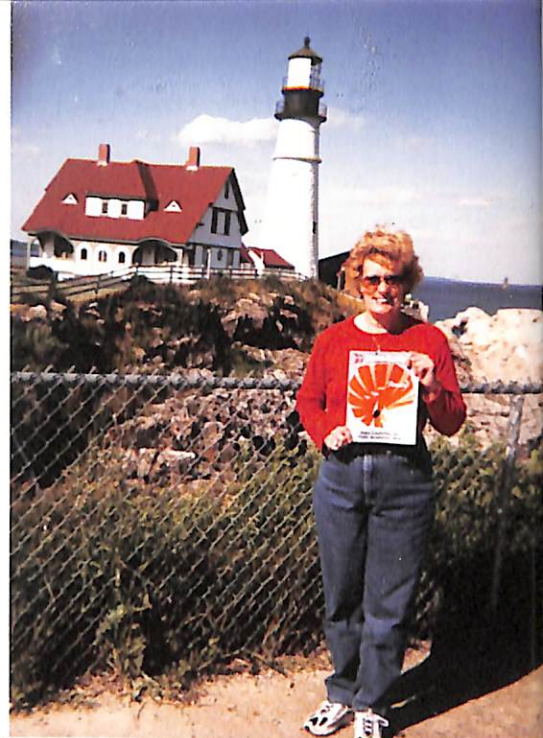
Russ Finken '73 is currently the principal at Glenwood (Iowa) Middle School. Russ is also taking classes to earn his specialist degree from University of Nebraska-Omaha. Russ hopes to become a personnel director at a larger school district or a school district superintendent. He plans to finish his degree in the spring of 2003.

## 1960s

Brent Peterson '69 was awarded the Nebraska Hospital Association's "Excellence in Service" award in October. The award recognizes the outstanding contribution of one Nebraska hospital executive who is active in state and national hospital initiatives, demonstrates leadership within his or her hospital and contributes to the advancement of high quality, efficient and effective health care services in his or her community. Brent serves as CEO of Cherry County Hospital in Valentine, Neb.

Ralph Breckle '67 and wife, April, bicycled some 250 miles over five days from Hopkinsville, Kent., to Red Clay State Historical Park. The couple did this to symbolically apologize for the U.S. government's treatment of the Cherokee Nation during the 1,000-mile march on the Trail of Tears.

Phyllis (Ehmen) Deunk '63 was named postmaster of Hallam, Neb. She was the postmaster in Douglas, Neb., for two years before her position in Hallam.



Karen (Nelson '69) Hansen traveled to Portland Head Light in Cape Elizabeth, Maine, during July.

## 1950s

Elsie-May (Lund '57) Moreau received her master's degree from Saint Joseph's College in Maine in 2001.

Rev. Arthur Simon '52 was presented with the Wittenberg Award from The Luther Institute, an inter-Lutheran center in Washington, DC, dedicated to fostering education and research on social, educational and ethical issues in the public sphere. Arthur is a pastor and founder of Bread for the World, a Christian Citi-



Dana friends went on a cruise to the Western Caribbean last April. Dana alums and friends included: Jerry '49 and Maryann (Nelson '49) Lund, Nancy Johnsen, C. Joyce (Nelson '50) and Paul '49 Johnsen, Paul '53 and Marilyn (Steffensen '53) Jersild, Ray Johnsen '49, and Carl '54 and M. Jane (Petersen '55) Nelson.

zens Movement, and won Dana's Distinguished Alumnus Award in 1980.

## 1940s

Dr. Alvin Rueter '42 was awarded the 2002 Metro Lutheran Gold Pen Award for his weekly radio broadcast, "Sing For Joy!"

## Deaths

Mark Rosenthal '83 died Sept. 15, at age 41. He is survived by sons, Benjamin and Jackson; partner Dean E. Pierce; father and step-mother, Henry '56 and Dianne; mother, Sharlene (Lauritzen '57); a brother; many aunts, uncles and cousins.

David Hiller '73 died at the age of 57 on May 31. He married Lana Goon in 1970. David retired from the Nebraska Furniture Mart after 28 years. He worked for Dial America for six years, and was working for TPG Telemanagement Services. He was a member of King of Kings Lutheran Church in Omaha. He is survived by wife, Lana; three children, James, Mark and Daniel; three grandsons, and one granddaughter; two sisters; nephews; and nieces.

Rosie (Hayes '60) Schulke, a former teacher and coach who was the first woman to join the Nebraska Coaches Association, died July 13 of colon cancer. She was 65. Rosie taught and coached volleyball at Ponca High School from 1957-1973. She was also a member of the Nebraska Women's Amateur Golf Association and Fremont Golf Club. Survivors include husband Jon '57, sons Sarr, Jan and Saylor; daughter Joni Hegy; mother Fern Frangenberg; a brother; a sister; and seven grandchildren.

Robert Plugge '44 died Oct. 2 at the age of 79. Survivors include his wife Ellenora (Jensen '43), sons and daughters-in-law, Roger '66 and Julie, Rick '77 and Patty; daughter Rita Engleken, Randy and Michele, seven grandchildren, and four great-grandchildren.

Viggo I. Carlsen '35 died Aug. 9 at age 89. Viggo was a public school teacher for 42 years. He is survived by his son and daughter-in-law, David and Lois Carlsen; two daughters, Ellen (Carlsen '67) Ellick and Norma (Carlsen

'69) Glodas; three brothers, Verner D '36 T '39, Niels D '49 T '56, and Stanley D '45 T '47; sister Eunice (Carlsen '47) Larsen; five grandchildren; two great-grandchildren; three brothers, the Rev. Verner Carlsen, Rev. Niels Carlsen, and Stanley Carlsen; and a sister, Eunice (Carlsen '60) Larsen.

Erma Sentman '33 died Sept. 16, following a stroke at the age of 90. Erma received her teaching certificate from Dana and taught for two years before marrying Leonard Sentman. The couple farmed for more than 50 years. Erma was an active member of the North Liberty First United Methodist Church where she was involved with WSCE, UMW, the Whip-poor-will club and 4-H. Survivors include two daughters, Beverly Joan and Mary Ellen Campbell; five grandsons, and five great-grandchildren.

William Thomas Wilkinson Sr. '32 died June 29, at the age of 93. He was married for 61 years to Claire (Nelson) Wilkinson. Survivors include daughters, Susan Clifford and Shirley Seng; son, Tom Wilkinson; nine grandchildren; five great-granddaughters; a sister, Alice Schafer, and many nieces and nephews.

Lillie (Petersen '29) Rasmussen died July 7. Lillie taught school in one-room rural school houses in North Dakota while attending college. In 1934 she married Pastor Paul G. Rasmussen and together they served parishes. After her husband's death in 1959, Lillie returned to school teaching. Lillie was an active member of Lutheran Church Women, and she also visited churches and missions in India and Palestine. After retirement, she moved to Ann Arbor, Mich., where she lived for 16 years. She is survived by two brothers, George Petersen '40 and Paul Petersen; a son, Paul Rasmussen; three granddaughters; and five great-grandchildren.

## Announcements

The annual Arizona Alumni Luncheon will be held Saturday, Feb. 22, 2003, at The Pavilion at the Arizona Golf Resort in Scottsdale, Ariz. The luncheon will begin at 11:30 a.m. For more information, contact Anne Christopherson (402) 426-7248 or achristo@fs1.dana.edu.

If you have news you'd like to share, send your information (and photos if you have them) to:

Destiny's Deep Sea  
Dana Review  
2848 College Drive  
Blair, NE 68008

Please indicate if you'd like any materials returned.

### Dana College Accreditation Visit

Dana College is seeking comments from the public about the college in preparation for its periodic evaluation by its regional accrediting agency. The college will undergo a comprehensive evaluation visit March 3-5, 2003, by a team representing the Higher Learning Commission of the North Central Association of Colleges and Schools. Dana College has been accredited by the commission since 1958. The team will review the institution's ongoing ability to meet the commission's criteria for accreditation and general institutional requirements.

The public is invited to submit comments regarding the college to:

Public Comment on Dana College  
Higher Learning Commission  
North Central Association of  
Colleges and Schools  
30 North LaSalle Street, Suite 2400  
Chicago, IL 60602

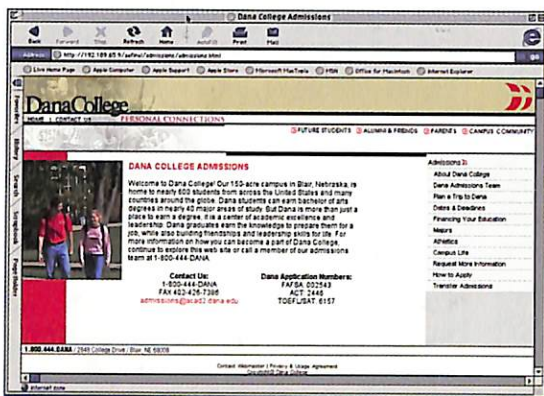
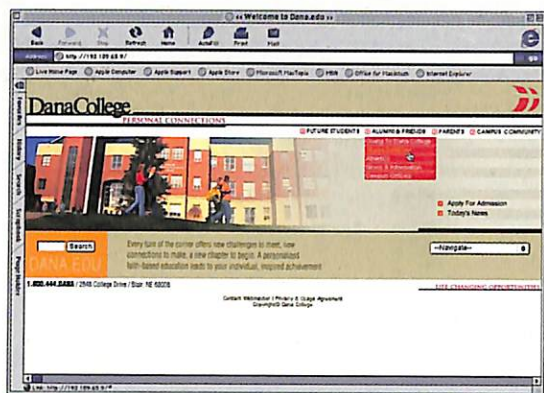
Comments must address substantive matters related to the quality of the institution or its academic programs. Comments must be in writing and signed; comments cannot be treated as confidential.

All comments must be received by February 3, 2003.

# Visit the new www.dana.edu!

New features include:

- News page updated daily with all the latest Dana happenings
- Live web cam lets you watch as the Borup Coliseum Expansion is built!
- Fresh, updated design
- Improved navigation to make it easier to find what you're looking for
- Special rollover menus on every page for alumni and parents
- Athletic scores updated daily to keep you informed about Viking Athletics




## Yuletide Cheer

Visit [www.dana.edu](http://www.dana.edu) to shop for great Dana gifts at the Bookstore, and register for the smorgasbord at Sights & Sounds of Christmas (Dec. 7 & 8) without calling or buying a stamp!

"We want our site to be a way for people off campus to feel like they are an active part of the Dana community. We're also going to make keeping the site current a major priority."

— Carrie Reed  
Dana College Director of  
College Relations and Marketing

 DANA REVIEW  
2848 College Drive  
Blair, NE 68008

RETURN SERVICE REQUESTED

Non-Profit Org.  
U.S. Postage  
PAID  
DANA  
COLLEGE

\*\*\*\*\*ECRL0T\*\*C001  
04566  
DR & MRS JOHN W NIELSEN  
2044 GRANT ST  
BLAIR NE 68008-1824

