

Winter 2007 ~ Volume 64, No.1

DANA REVIEW



An Alumni Publication of Dana College

- DANA'S STRATEGIC PLAN
- ALUMNI MILITARY SERVICE
- THE WALLS OF ARGO
- DISTINGUISHED ALUMNI AWARD
- OUTSTANDING YOUNG ALUMNI AWARD



1884-2009 125TH ANNIVERSARY OF DANA COLLEGE

A PILGRIMAGE THROUGH THE LAND OF MARTIN LUTHER



Celebrate the 125th anniversary of Dana College with a pilgrimage through the land of Luther, Sept. 16-26, 2008. This 10-day adventure will be led by Rev. Dean Bard, past interim vice president for institutional advancement at Dana and former director of the ELCA Wittenberg Center.

The tour will explore the 16th century Reformation led by Dr. Martin Luther and other developments in Germany during the past 500 years that shaped our world today.

“Modern church life, including our commitments to higher education and social ministry, is grounded in this history,” Bard said.

The trip will begin with two days in Berlin, including visits to the Pergamon Museum, Kaiser Wilhelm Memorial Church, Brandenburg Gate, Reichstag, Berlin Wall, Bonhoeffer House and other sites.

Travelers will spend four nights in historic Wittenberg with day trips to Leipzig (home of Bach and the Peaceful Revolution), Eisleben (Luther’s hometown), Erfurt and Buchenwald.

While in Wittenberg, the group will participate in events that will open the Reformation Decade. The Reformation Decade marks the 10 years between Luther’s arrival in 1508 and his posting of the 95 Theses in 1517. ELCA Presiding Bishop Mark Hanson, who also serves as president of the Lutheran World Federation, will be the featured speaker.

Tours in Wittenberg will include the City Church, where Luther preached thousands of times, and the Castle Church, where he posted his 95 Theses, sparking the Reformation. The group is scheduled to attend worship at the Castle Church on Sunday morning.

The trip will conclude with stops in Eisenach and Marburg.

Cost per person is \$2070, based on double occupancy, and does not include airfare. The additional cost for a single room is \$385. A group airfare, estimated at \$1100, will be available to participants, or they are free to make their own airline arrangements. Prices include transportation in a four-star motorcoach, guided city tours in Berlin, Torgau, Leipzig, Wittenberg, Eisleben, Erfurt, Buchenwald and Marburg; entrance fees, breakfast daily, one lunch and seven dinners,

An initial nonrefundable deposit of \$400 is due at the time of registration. Full payment is due before July 8, 2008. Tour costs are payable by check made out to “Dana College” and sent to Carrie Reed, Director of College Relations and Marketing, Dana College, 2848 College Drive, Blair, NE 68008.

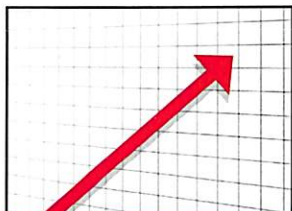
Space is limited and early bookings are very important, so you are encouraged to sign up for this special pilgrimage early.

The Dana trip will be combined with a group from Kountze Memorial Lutheran Church in Omaha, which will be celebrating its 150th anniversary.

For more information and a complete itinerary, visit www.dana.edu/wittenberg or call Reed at 402-426-7385.

DANA REVIEW

Table of Contents



DANA'S STRATEGIC PLAN 13

Dana by Design: Setting a 21st Century Course



ALUMNI MILITARY SERVICE 14



THE WALLS OF ARGO 15

Residence Hall Closes After 87 Years



DISTINGUISHED ALUMNI AWARD 16

Presented to UNO Chancellor John Christensen



OUTSTANDING YOUNG ALUMNA 18

Presented to Minneapolis Native Maria Roesler

ALSO INSIDE the WINTER '07 ISSUE

Campus Digest	4-12
Athletics	20-21
Charitable Giving	22-23
A Brief History	24-25
Destiny's Deep Sea	27-31
125th Anniversary Pilgrimage	2, 23

The *Dana Review* is published three times annually for distribution to alumni and friends of Dana College and Trinity Seminary by Dana College, 2848 College Drive, Blair, NE 68008. Third-class postage paid at Blair, NE, and additional mailing offices. **Postmaster:** Send address changes to Dana College, 2848 College Drive, Blair, NE 68008.

Phone: 1-800-444-3262

Published by the College Relations Office:
(402) 426-7216

Senior Editor: *Carrie L. (Larkins '94) Reed*

Art Director: *Steven E. Hughes*

Contributors:

Ann (Harms '54) George

Shad Beam '94

Jeremy J. Bouman

Cover Art: *Steven E. Hughes*



CAMPUS DIGEST

The Latest News from the Dana College Community

Criminal justice professor Dr. Scott Sasse published a textbook with two colleagues entitled "Criminal Justice in England and the United States." The text compares and contrasts values, laws, crime rates, and other factors that exist between the two countries. It assesses the history, structure and operation of these two criminal justice systems as well as examines how policies are made and implemented. Jones and Bartlett published the book.

Richard Potter of the Social Work Department gave a presentation entitled "Becoming an Elder: The Culmination of Spiritual Development" at the "Aging with Passion and Purpose" conference at the University of Nebraska-Omaha Oct. 21-22. The conference was a collaborative effort of UNO's Gerontology and Social Work schools and several community agencies.

Dr. John Mark '73 and Dawn (Carper '73) Nielsen gave a presentation, "Voices from the New Land," sponsored by the Nebraska Committee for the Humanities at the Minden Opera House in Minden, Neb., on Sept. 30. In October, John Mark was in Washington, D.C., fulfilling his duties as a member of the India Peer Review Committee of the Council for Independent Exchange of Scholars, making recommendations on the selection of Fulbright scholars to India, the Middle East and North Africa.

The Social Work Department has received news that the department's Bachelor's of Social Work accreditation has been officially re-affirmed by the Council on Social Work Education for the maximum eight-year term (with no conditions or interim reports required).

Megan Hunt '08 was a countess with the Ak-Sar-Ben court this fall. She is an intercultural communication and German major from Blair, Neb.

Greg Wilmes '08 of Creighton, Neb., received a 2007 Post-Graduate Scholarship from the Nebraska Chapter of the National Football Hall of Fame. The scholarship is valued at \$1000. Wilmes plans to pursue a master's degree in secondary education upon graduating from Dana.

On Oct 2-3, three Dana professors and five students attended the 2007 Nobel Conference held at Gustavus Adolphus College in St. Peter, Minn. This year's topic was "Heating Up the Energy Debate." Speakers dealt with the possibilities for future sources of energy and their environmental consequences. Faculty attending were Dr. Tammy Clark, assistant professor of chemistry, Dr. Carla Delucchi, professor of biology, and Dr. Mark Sand, professor of mathematics and physics. Students attending were Kevin Bane (Oakland, Iowa), Ross Milam (Omaha, Neb.), Tony Palmer (Dennison, Ohio), Patrick Revard (Fremont, Neb.), and Beth Richmond (Chariton, Iowa).

Eight Dana Social Work students and Professors Jo Peterson, Richard Potter, and Jan Potter attended the Annual Conference of the National Association of Social Workers, Nebraska Chapter, on Oct. 5. The students attending the Omaha conference were Keith Block (Sioux Falls, S.D.), Heidi DeGodt (Creighton, Neb.), Marcos Martinez (Las Vegas, N.M.), Brooke McCabe (Plainview, Neb.), Pablo Montoya (Las Vegas, N.M.), Amy Nichol (Des Moines, Iowa), Danielle Schmersal (Lincoln, Neb.), and Randi Toft (Tekamah, Neb.). Schmersal is completing her first semester senior practicum as an intern at the NASW Office in Lincoln. Jan Potter served as emcee for the conference awards luncheon.

Dr. Paul Schneider, professor of English, was elected to the Board of the Omaha Theater Arts Guild (TAG) for a three-year term. He currently heads up the Theater Services Committee. Also on the Board are Dana graduates Allison (Botkin '02) Wissman and Emily Neve '04.



Dana College organ student Shane Krepp (Omaha, Neb.) performed at the Orpheum Theater in Omaha on Oct. 28 as part of a presentation of the River City Theatre Organ Society.

Jan Potter, professor of social work and sociology, presented an in-service training session for the Omaha Child Saving Institute and community professionals on Sept. 6. Entitled "Ethics in Social Work," the presentation explored challenging ethical issues in social work practice and their relationship to the National Association of Social Work Code of Ethics, as well as state regulations.

The 2007 Homecoming Royalty were Trenton Albers (Davenport, Neb.), Joy Augustine (Omaha, Neb.), Rachel Beacom (Omaha, Neb.), Lindy Bohlmann (Denison, Iowa), Jessica Chizek (Omaha, Neb.), Jill Connot (Valentine, Neb.), Sean Curtis (Cheyenne, Wyo.), Wade Jordan (Coulee City, Wash.), Jared Kitzelman (Fremont, Neb.), Terrance Mclean (San Antonio, Texas), Amy Nichol (Des Moines, Iowa), Julie Pinkelman (Fremont, Neb.), and Kirk Schjodt (Blair, Neb.). Albers and Bohlmann were crowned Homecoming King and Queen by their peers.

Rebecca (Brabec '89) Vande Hei, MSW, LCSW, of San Clemente, Calif., was on campus, Sept. 11 – 13, speaking in social work classes and volunteering in the social work department. With experience in medical social work, working with addicted and at-risk single mothers, and psychotherapy, Becca brought a range of expertise.

Dr. Peggy Holloway, associate professor of music, was invited to serve as a guest columnist for the Nebraska Music Educators Association. Her article "Making Connections-A Case for Transdisciplinarity" appeared in the August edition of the NMEA Journal.

NEW BUZZ IN BIOLOGY DEPARTMENT



A grant for outreach from a Dana alumna has brought an insect home to Dana College biology department.

Senior biology and German major Joseph "Tony" Palmer of Dennison, Ohio, who plans to attend graduate school in entomology (the study of insects), first brought the idea of an observation beehive back to biology professor Dr. Karen Murch-Shafer this summer. Members of the Science Club were asked to think about ways to create more outreach to elementary schools with something unique. When Palmer accompanied Dana alumnus Ted Bansen '89 to purchase a set-up for beehives on his own farm, Palmer knew he found what the biology department had been looking for.

The observation beehive is a vertical glass case which can rotate 360 degrees. Palmer estimates 2,000-3,000 bees make their home there. It can be found on the first floor of the Dana Hall of Science. A small tube connects the hive to a south window where the bees can exit to collect pollen.

Palmer had to research the project before Murch-Shafer would buy into the idea. Safety was a key concern. Palmer had to research the range of African killer bees and help determine a location where it would be safe, yet accessible. Honey bees forage away from the hive, creating no increase of bees on campus.

The hive was purchased and installed over the summer with the help of a grant from biology graduate Jane Mundschenk '80. "We have been able to do so many very cool things with her support and that of others," Murch-Shafer said.

The biology department has been involved in outreach for several years, taking professors and students to Blair Public Schools and the Omaha Children's Museum, as well as taking a Science Fair on the road. Dana also hosts a Science Day Camp for elementary students.

"The hive provides us with lots of possibilities," Murch-Shafer said. "You learn a lot from observing bees and observation is what science is about."

Palmer finds the beehive not only educational, but also therapeutic. "If I'm having a tough day, I come to watch the bees," he said. "I like to think of bees like a dog or cat. They are furry. They lap up honey with their tongues."

BOUMAN NAMED VP FOR ADVANCEMENT



Jeremy Bouman has been named Vice President for Institutional Advancement at Dana College. In his new position, Bouman leads the college's fundraising, alumni relations and college relations efforts. He began his duties Sept. 4.

Bouman, who comes to Dana from the Evangelical Lutheran Church in America Foundation, has a background in planned giving, fundraising and communication. In his role as Regional Gift Planner for the Delaware-Maryland Synod, his chief responsibilities were educating individuals and congregations on planned giving vehicles.

Previously, Bouman was Director of Resource Development and Communications for Lutheran Social Services of Metropolitan New York where he was responsible for all aspects of the agency's fund-raising initiatives and communications. He was the first Director of Development and Communications in the agency's 100+ year history. He also has professional experience in the telecom industry.

Dana College President Janet Philipp said, "We are pleased that Jeremy Bouman has joined our team. His fundraising

experience and leadership will help to propel Dana into a new future. He has proven to be an effective leader and will play a vital role in helping us meet our strategic goals.”

“Dana College has always been on my radar as a Midwestern liberal arts gem with a strong Lutheran affiliation,” Bouman said. “I’m honored to join President Philipp and the Dana team in ushering in a new era of advancement while building on the successes and strong foundation of support. I’m anxious to get to know all the Dana alumni and friends who are so faithful to our mission.”

Bouman holds a bachelor’s degree in communications-journalism from Susquehanna University in Selinsgrove, Pa. He and his wife, Sarah, have an infant daughter, Sophia.

DANA ENROLLMENT UP FOR 2007-08



Dana College has seen an increase in enrollment for the 2007-08 academic year with 635 students studying on the hill this fall.

The biggest jump for the four-year college in Blair, Neb., is in its incoming students (left). A total of

185 freshmen are on campus this fall, an increase of more than 27 percent over last year’s incoming class. Transfer student enrollment is also up 60 percent from a year ago.

Growth hasn’t just been with larger incoming numbers. Dana’s retention rates also have improved five percent over last year. The introduction of Dana’s MP3 (Maximum Peak Performance Program) for all freshman students assists them in the transition from high school to college.

“We are pleased to see positive enrollment numbers this fall,” said Dr. Janet Philipp, president of Dana College. “Our entire campus community worked hard this past year to connect with prospective students who would be a good fit at Dana.”

Dana College leaders say its growth can be attributed to several factors.

New majors in musical theater and sport management added last fall have attracted new students. New students are also attracted to Dana’s recognized science programs. In recent years, 89 percent of Dana’s biology and chemistry graduates who have applied to professional school programs, in such areas as medical, pharmaceutical and physical therapy, have been accepted.

A suite-style residence hall opened for upperclassmen in 2006 and is filled to capacity with a waiting list for the second year. Mickelsen Hall has been remodeled into a suite-like environment for female students, giving yet another housing option.

DANA RANKS IN TOP TIER IN U.S. NEWS & WORLD REPORT

Dana College in Blair, Neb., earned a spot in the “Top Tier” of the “Best Baccalaureate Colleges - Midwest” in the 2008 edition of “America’s Best Colleges” by U.S. News & World Report.

Although she does not place a lot of weight on the importance of such rankings, Dana College President Janet Philipp says she is proud that Dana College has earned a rank among the best in the Midwest. Dana’s rank of 48th is the highest in recent memory.

“Dana is pleased to earn this recognition,” Philipp said. “This ranking is a significant indicator of the quality and value of the educational experience for students enrolled at Dana College.”

The schools ranked in the “Best Baccalaureate Colleges” list focus on undergraduate education and offer a range of degree programs—in the liberal arts, which account for fewer than half of their bachelor’s degrees, and in professional fields such as business, nursing, and education. There are 320 baccalaureate colleges, within four regions: North, South, Midwest, and West.

The Midwest region includes Nebraska, North Dakota, South Dakota, Kansas, Minnesota, Iowa, Missouri, Wisconsin, Illinois, Michigan, Indiana and Ohio.

Using a proprietary methodology, the annual U.S. News & World Report rankings represent the most comprehensive look at how schools stack up based on a set of 15 widely accepted indicators of excellence, and help consumers evaluate and compare data compiled from more than 1,400 accredited four-year schools.

A complete summary of the methodology used to rank each school can be found online at www.usnews.com/colleges.

DANA COLLEGE JOINS INDEPENDENT 529 PLAN

Future students at Dana College in Blair, Neb., are now able to lock in today’s tuition rates.

Independent 529 Plan, which has 269 member colleges and universities, was launched in 2003 in a cooperative effort by a national group of private colleges and universities to help families manage the rising cost of higher education. Under the program, individuals can purchase tuition certificates for future redemption at any of the participating private colleges and universities, now including Dana College.

“A college education is an investment in the future. The Independent 529 Plan offers a way for parents to save now for the future investment in their child’s college education. Dana College is pleased to join with other colleges in this effort,” said Dr. Janet Philipp, president of Dana College.

“This plan is an innovative way for parents to provide for their children’s future education at less than today’s cost,” added Nancy Farmer, president and chief executive officer of Independent 529 Plan



"In return for parents prepaying college costs, member colleges accept the investment risk and protect parents from future tuition increases," Farmer said. "Tuition purchased today is guaranteed to satisfy costs at the time the child enrolls. So, a parent who purchases a half year of tuition today will receive a half year of tuition when the child later redeems the tuition certificate at a member college. This is true regardless of how much tuition rises or what happens in the investment markets," she said.

"In fact, families will pay slightly less than current tuition because each of our participating schools discounts the tuition certificates by at least one-half of one percent per year."

Dana College brings to four the number of Nebraska colleges and universities that are members of Independent 529 Plan. The others are Concordia University, Creighton University and Doane College.

Nationally, a few of the 269 institutions participating in Independent 529 Plan include Stanford University, Princeton University, Massachusetts Institute of Technology, Johns Hopkins University, the University of Notre Dame, Washington University in St. Louis, Carnegie-Mellon University, Wake Forest University and the University of Chicago.

Independent 529 Plan is run by the nonprofit Tuition Plan Consortium and administered by TIAA-CREF Tuition Financing Inc. Funds saved can be used at any of the participating colleges and universities nationwide. Benefits are free of federal income tax, and the plan charges no enrollment or maintenance fees. For more information about Independent 529, call (toll free) 888-718-7878 or visit www.independent529plan.org.

FIRST-OF-ITS-KIND COLLEGE CONSUMER INFORMATION WEB SITE DEBUTS; DANA COLLEGE IS INCLUDED

Potential college students and their parents have gained a new and distinctive resource for exploring and comparing private colleges and universities. U-CAN, the University & College Accountability Network, is the first national consumer information resource created and provided directly to students and parents by colleges and universities themselves. Over 600 private colleges and universities, including Dana College, have signed on to participate in the initiative.

"Dana College felt it was important to be a part of this initiative," said Dana College President Janet Philipp. "This is a great resource for prospective students and their families to compare key statistics on a level playing field. It is also a way to not only report cut-and-dry statistics, but also have the opportunity to express what makes Dana special."

The college profiles provide a unique mix of 42 quantitative elements, narrative descriptions, and 25 hyperlinks to campus web sites.

The U-CAN consumer information initiative is designed to give, in a common format, prospective students and their families concise, Web-based consumer-friendly information on individual private colleges and universities. U-CAN

consists of hundreds of institutional profiles that contain comparable data and targeted links to the institution's Web site for information on specific aspects of the institution. The profiles are displayed in a common template that National Association of Independent Colleges and Universities (NAICU) developed.

Through focus groups conducted in cities across the nation, prospective students and parents from all backgrounds identified the information they most need to make an informed college choice. Their comments shaped the format and content of the U-CAN site. U-CAN is totally free both to users and to the colleges and universities that choose to participate.

U-CAN profiles also include information identified by policy-makers as important for institutional accountability. Congress and the U.S. Department of Education have called for comparable, concise, relevant, and easily accessible information to help the public better evaluate and choose colleges.

The in-depth information included in the college and university profiles covers admissions, enrollment, academics, student demographics, graduation rates, most common fields of study, transfer of credit policy, accreditation, faculty information, class size, tuition and fee trends, price of attendance, financial aid, campus housing, student life, and campus safety. U-CAN will give consumers easy access to information on average loans at graduation, undergraduate class-size breakdown, and net tuition for hundreds of colleges. This information, which comes from the U.S. Department of Education's IPEDS survey and the Common Data Set, is often difficult for consumers to find and decipher.

The institutional profiles also are highly "clickable." Twenty-five targeted hyperlinks take students to specific pages of an institution's Web site. The links and narrative descriptions complement the profile's statistical data, and provide an opportunity to see what makes each college or university unique.

The site (www.ucan-network.org) went live in late September. U-CAN will continue to grow and improve as institutions work to enhance their profiles and NAICU responds to feedback from the public.

NAICU serves as the unified national voice of independent higher education. With nearly 1,000 member institutions and associations nationwide, NAICU reflects the diversity of private, nonprofit higher education in the United States. NAICU members enroll 85 percent of all students attending private institutions. They include traditional liberal arts colleges, major research universities, church- and faith-related institutions, historically black colleges, Hispanic-serving institutions, single-sex colleges, art institutions, two-year colleges, and schools of law, medicine, engineering, business, and other professions.

DANA SENIOR SPENDS SEMESTER ABROAD

As most returning college students loaded their cars for a drive back to campus this fall, Dana College senior Kendra Johnson hopped a plane instead—to Berlin, Germany.

Johnson, an international studies and German major, is spending the fall semester studying at Freie Universitat in

Berlin in their European studies program.

She chose this semester-long excursion, in part, to hone in on a career path. "When you go somewhere where you don't know anyone or the language, you have to discover more about who you are," she said.

Johnson earned a scholarship to cover the cost of the program and is living with a host family in Berlin. Her German language class is held for three hours each morning and the content courses, which are taught in English, are two and half hour blocks about history and culture. No classes are held on Fridays and instead the classes often will go on excursions.

A walking tour of the city brought the experience in perspective for Johnson. "The tour reminded me that this same city I'm trying to get around and live in is the same city with all the history I have spent so much time studying. It's a continual battle to connect these two images of Berlin in my mind," she said.

Johnson has sent periodic messages which are posted on the Dana College web site at www.dana.edu/kendra.

INTERNATIONAL FIGURE SPEAKS AT DANA



Dr. Afif Safieh, the head of the Palestine Liberation Organization Mission to the United States, offered his perspective on the Arab-Israeli conflict in a lecture to an overflow crowd, Nov. 2, in Trinity Chapel on the Dana campus. The event was hosted by Dana's Nebraskans for Peace organization.

Safieh, whose talk was titled "Justice: The Critical Element for Lasting Peace in the Holy Land," is one of the leading diplomats of Palestine, having represented the Palestinian state in the United Kingdom, the Netherlands and now the United States, where he was appointed in 2005 to his post at the PLO Mission in Washington, D.C. The mission serves as the Palestinian embassy in the United States.

Among his other notable appointments, Safieh served from 1978 to 1981 as a staff member in the office of Yasser Arafat, former chairman of the Palestine Liberation Organization, in Beirut, Lebanon. He also participated in the 1988 historic meetings in Stockholm that paved the way for the U.S. recognition of the PLO.

A native of Jerusalem, Safieh holds graduate and post-graduate degrees in international relations and political science.

MICKELSEN REMODELING COMPLETE



Living choices for Dana College students have expanded this fall with the completion of the remodeling of Mickelsen Hall. The hall, built in 1960, has been under renovation since December 2006, morphing blocks of three rooms into four-person units, featuring two bedrooms with a common room between them.

"We still have our own space, but also a space where we can all hang out that isn't in our personal area," said junior Racine Wood, one of the residents in the remodeled hall. "It was a different option where the four of us could all room together."

The Mickelsen remodeling complements the introduction of suite-style apartments, featuring four bedrooms, two bathrooms, a living room and kitchenette, that were opened to Dana upperclassmen last fall. Most residents of the suite-style apartments have a modified meal plan.

"I like the dorm feel that Mickelsen still has," Wood said. "You can still walk down the hall and hang out with friends. Plus we don't have to cook."

Mickelsen Hall has been converted from co-ed to a women-only hall, based partially on the closing of long-time all-women's Argo Hall. Efforts were made to duplicate some of the benefits students found in Argo. Included on each floor of Mickelsen are laundry facilities, a kitchenette and computer work station.

On first floor, the large lounge has been transformed into a one-stop shop of student services. Campus Security, Campus Nurse and Campus Counseling have all been moved to Mickelsen Hall. Also included in the remodeling is a large conference room.

"We wanted to consolidate these services and bring them closer to the students to better meet their needs," said Bob Schmoll, executive vice president and chief financial officer at Dana.

The hall can house 86 students.

DANISH STUDENTS GET TASTE OF AMERICAN CULTURE

Twenty-seven students from Vejle, Denmark, got a taste of college life during a week-long stay at Dana College this fall.

The students from Vejle Handelsskole, a business school in Denmark, attended classes and extracurricular events, ate in the college cafeteria and lived in the residence halls as part of "American Perspectives: An Immersion Program for Vejle Business School Students."

The experience also included off-campus excursions to Omaha's Henry Doorly Zoo, the Omaha Symphony and the Danish Immigrant Museum in Elk Horn, Iowa, and tours of Kelly Ryan Equipment Company and Mid-America Computer Corporation. Some of the students requested a trip to Wal-Mart as part of their American experience.



"It's been really fun being here," said Lene Løvbjerg Smidstrup, one of the Vejle students. "We enjoyed participating in the classes and the trips outside of Dana."

"We learn from each other," said Joergen Moeller, one of the instructors accompanying the group.

This is the third time Dana College has hosted several dozen students from Vejle Handelsskole. Dana College has enjoyed a long relationship with the school with students from each country visiting the other's campus. The Dana College Chorale was hosted by the school in Vejle on last summer's Viking Tour.

As part of their trip to the United States, the Danish students also made stops in Chicago and New York City.

HEINRICH UNVEILS WALL RELIEF



Dr. Milt Heinrich, professor of art, recently completed a commissioned wall relief for new executive offices of the Omaha World-Herald newspaper. The 7'x12' mixed media wall relief entitled "Free Press, Free People" is a multifaceted chronicle of this statewide newspaper.

The title of the work comes from the logo of the paper itself

and speaks of the serious responsibility and privilege of our first amendment rights. The slogan emblazoned on the mural is further represented by "artifact" newspaper articles printed on stainless steel in the center of the mural. The articles include the 9/11 incidents and a report of a case in which the World-Herald itself won a U.S. Supreme Court decision concerning a freedom of speech issue.

Other photos on steel chronicle the history and current state of the World-Herald offices, reporting staff, printing operation and method of distribution.

WILL VOLUNTEER FOR PIZZA



Mitch Sick's official job is Internet Services Manager for HunTel.net. The 1994 graduate of Dana College also holds an honorary position for his alma mater, Internet consultant.

In the 10 years Sick has worked for HunTel, he has been a frequent volunteer and source of support for Dana's

Computer Services staff.

Most recently, Sick has been instrumental in getting a firewall up and running at Dana College. A firewall is simply a program or hardware device that filters the information coming through the Internet connection into a private network.

"Universities are a magnet for hackers," Sick said. "It became critical to have a firewall on a system such as Dana's when the big viruses came out."

Sick consulted with Dana on the type of firewall system to purchase and came up to campus on his own time to assist with its installation. Recently, he helped modify the firewall to allow Dana employees convenient access to the network to enable them to work from home.

His payment for all this? "They buy me pizza," Sick said.

"He enjoys sharing his knowledge," said Duey Heffelfinger, chief information officer for Dana College. "It's been a really good relationship. HunTel has been a fantastic partner over the years with telephone service, cable TV and internet."

The relationship between Dana and HunTel runs deeper than Sick's volunteer efforts alone. Another Dana alumnus, Mike Storjohann '98, now IT Director for HunTel.net, has also worked closely with Dana through the years.

As HunTel upgrades its cable TV system, the company will soon provide Dana College with a new cable TV channel with a digital connection. The college also has a couple of closed circuit channels created with the assistance of HunTel.

The company also provides Dana College a unique service

called bandwidth shaping, a way to prioritize Internet traffic. It helps in blocking viruses and prevents large downloads from bogging down the system.

"HunTel has always been very supportive of what we do," Heffelfinger said. "We are lucky to be a part of such an important partnership that will continue for years to come."

GOD'S MISSION TO HEART AND WORLD, II

A gathering of friends of the United Evangelical Lutheran Church in America [UELC] will be held at Dana College June 13-15, 2008. The theme of this gathering will be an extension of the 2007 program.

The focus of the worship services, patterned after "Mission Meetings" in the UELC, will be on the human heart and the call to repentance; the call to be disciples in God's world and the global outreach of our mission. The preachers will be: Parish Ministry Associate Barbara Laursen of Kearney, Neb.; Rev. Dr. Mary Jensen, Prince of Peace Lutheran Church in Lincoln, Neb., and Dr. Mark Thomsen, retired Executive Director of ELCA Global Mission, Shorewood, Wis. Rev. Bonnie Jensen will be in charge of worship life for the event.

Two sessions will explore the Indre Mission [Inner Mission] movement as it took shape in Denmark and became a shaping power in the life of the early congregations in the UELC in North America. Dr. John W. Nielsen and Dr. Timothy Jensen, both of Blair, Neb., will lead these discussions. Archival information on the history of the UELC will also be on display.

All friends of the UELC and Dana College are cordially invited to this event!

FUN RUN

A love of running has inspired Dana College senior Julie Pinkelman to stage a fundraiser for the Blair Crisis Center.

Pinkelman has noticed that there is not a fundraising running event held in Washington County in the spring. She saw that gap as a perfect opportunity to join the Blair community and the Dana College campus in an event for all ages. Awards will be presented to male and female runners in the following age groups: 12 and under, 13-18, 19-29, 30-49, 50-69, 70 and older.

"I want everyone to enjoy it," Pinkelman said. "It is a perfect time for folks to start getting outside."

"Hopefully it can carry on year after year after I graduate," Pinkelman said.

The two or five mile run/walk, planned for Saturday, April 26, will begin and end on the Dana campus. Pinkelman notes, however, that the final end of the route will not include the Dana hill.

All monies raised will benefit the Blair Crisis Center, a fitting charity since April is Sexual Harassment Awareness Month.

Pinkelman is a business major at Dana who has emphases in marketing and management. "I hope I can find a job organizing things like this," she said.

For more information or to sign up to participate in the event, contact Pinkelman at jpinkelm@dana.edu or by phone at (402) 719-5293 or visit www.dana.edu/run.

NEW BOARD MEMBERS



Mike Mahlendorf, a lifelong Nebraskan, graduated from Peru State College in 1971 with a bachelor's degree in education.

Mahlendorf has spent the majority of his professional career in the banking industry, serving as president of both Sibley (Iowa) State Bank and of Washington County Bank in Blair, Neb. For the past three years, he has served as senior vice president of First National Nebraska Inc. in Omaha.

During the 15 years he worked at the Washington County Bank, Mahlendorf was also very involved in the Blair community, serving as chairman of the board of Memorial Community Hospital, and serving on boards for Gateway Development Corporation, the Blair Area Community Foundation, and the Blair Area Chamber of Commerce.

"Dana College is really good for Nebraska and Blair. It is a valuable institution. The students they turn are assets to the organizations they go to work for," Mahlendorf said. "I'm honored and humbled to be selected. I look forward to being on the Board."

Mahlendorf and his wife, Donna, have three children, Jenny, Emily and Brian.



Steve Peterson is a native Californian who has spent the majority of his life in Nebraska. He graduated from Dana College in 1983 with a double major in accounting and business administration. He has also successfully completed the Uniform Certified Public Accountant's Examination.

Peterson has worked for the Omaha World-Herald companies his entire professional career, beginning in the summer of 1983 upon his graduation from Dana. He has held a variety of financial and administrative positions within the company. Currently, Peterson is president of World Real Estate Management, LLC, where he manages numerous construction projects for the company, including the \$3 million remodeling of the newspaper in Stockton, Calif., and the Omaha World-Herald's \$125 million Freedom Center production plant.

"I feel strongly that serving on the Board of Regents is just one of the ways I can give back to Dana as my experiences at Dana have served me well both personally and professionally," Peterson said. "The opportunity to help



ensure future Dana grads have the same positive experiences is a challenge worth undertaking.”

Peterson has been married to fellow Dana alumna Pastor Jan (Butts '83) for 24 years. They have two daughters, Sara and Allison.

“Mike and Steve both bring first-rate business experience to the table,” said Dana College President Janet Philipp. “Mike has the unique background of living and working in Blair for many years and more recently working throughout the United States in the banking industry. Steve has worked his entire career with the Omaha World-Herald Company. Their local roots and diverse business experiences will contribute immensely to the Dana Board of Regents.”

EMERITI PROFESSORS

Four longtime Dana College professors were bestowed the honor of professor emeritus at commencement last May. Combined service to Dana College by these four was 124 years. For three of the four, their service continues in a part-time capacity this year.

Following are excerpts from the citations read during commencement. Dr. John Mark Nielsen, professor of English, made the presentations to Professor Carol Haussermann and Dr. Sybille Bartels. Fellow art colleague Dr. Milt Heinrich read the citation for Professor Jim Olsen and Diana Brown, associate professor of languages, gave the award to Dr. Kay Ferguson.

Carol J. Haussermann – 38 years



“Carol Haussermann came to Dana College from Republican City, Nebraska, entering as a first year student in 1965 and graduating in 1969 with a Bachelors of Science degree and Teacher Certification. Dana’s faculty and administration, and particularly Coach Paul Peterson, the beloved “Coach Pete,” recognized in her an unusual degree of leadership

and dedication, the perfect person to assist Dana College as it sought to provide opportunities for young women to participate in collegiate sports. She began teaching that same year, even as she pursued a Masters Degree from the University of Northern Colorado, which she received in 1971.

“From the very first years, Professor Haussermann has been a leader; indeed she was one of the pioneers of women’s athletics in the region. In addition to carrying a full teaching load, she coached and developed the women’s athletic program.

“Her leadership has been clear in the Physical Education Department where she served as chair of the department and as evidenced by the many program reviews she has written for accreditation purposes. She developed the curriculum for two areas of concentration for the physical education major, athletic training and sports management.

“Professor Haussermann has also been a leader in professional organizations, serving on the National Council of the National

Association of Intercollegiate Athletics.

“Her leadership has manifested itself in faculty governance as well. Professor Haussermann has been elected to the Dana College Faculty Senate every year she has been eligible since receiving tenure in 1979, almost 30 years ago.

“Professor Haussermann has a justly deserved reputation for rigor in the classroom. She believes passionately that students studying Physical Education must be held to the highest standards, and she has expected this of her students, earning a reputation of being tough, maybe even feared, but always fair.”

Sybille Bartels – 24 years



“Dr. Sybille Bartels began teaching at Dana College in the autumn of 1983, after completing and receiving the degree of Doctor of Philosophy in Modern Languages and Literature from the University of Nebraska-Lincoln that same year. A native of Berlin, Germany, she grew up in a divided city and knew first hand the tensions of the Cold War.

“Dr. Bartels has been a campus and community leader in encouraging students to complete a part of their education abroad, and she has led numerous study trips to Europe. This also led her to initiate and collaborate in developing an International Studies major at Dana College. She also served as the lead coordinator on the Dana campus for ESL and community immersion programs for students from Namibia, China, and Japan, and she has been the International Student Advisor during her tenure.

“Dr. Bartels has played a key role in faculty governance and assisted the administration as an advocate for students. In addition to serving as chair of the Department of Languages and International Studies, since 2001 she has been Associate Dean for Student Success. She has chaired or served on numerous committees over the past twenty-four years and served as Chair of the Faculty Senate on three different occasions.

“Dr. Bartels has been a leader in professional organizations. A member of the American Association of Teachers of German, the American Council for the Teaching of Foreign Languages, and the Nebraska International Languages Association, she also currently is serving as president of Nebraska Association of Teachers of German. In addition, since receiving her Ph.D. in 1983, she has served as an examiner for the prestigious Goethe Institute and as a member of the National Screening Committee for United States Fulbright Program.

“A gifted teacher, Dr. Bartels has been the recipient of

numerous awards, including the Outstanding Nebraska German Teacher, the Burlington Northern Award for Excellence in Teaching, and she was chosen by the German Academic Exchange Service to participate in a select group of American educators studying in Germany.

“Dr. Bartels method of teaching reflects the consummate hostess that she is. Those who have had an opportunity to dine or attend a party at her home know that she delights in setting a wonderful table. The real joy for her comes, I believe, in the conversation, both spirited and reflective, that occurs around the table or coffee table. Whether one has participated in a class here on campus or traveled with her on one of her many interim trips, she sets a table of ideas and experiences, and one is the richer for having partaken of the feast.”

James T. Olsen - 41 years



“James T. Olsen has taught art and art history at Dana for 41 years, and joins the ranks of only a handful of faculty who have served the college for such an extraordinary length of time.

“Jim is an outstanding teacher. He sets a high bar, which sometimes frustrates his students. Often when they think they are finished with a drawing he lets them know they have only just begun. He doesn’t give in. By the time students reach his expectations they usually are very proud of their accomplishments.

“He is a faculty leader. Jim moves issues forward in a thoughtful manner, often looking at many sides of an issue. He will present and advocate for tough decisions often through dry humor and a sparkle of personality. He is able to help groups gain consensus.

“Jim has one major fault. It is his humility. It should be known that beyond teaching Jim is a scholar and an accomplished artist in his own right. Jim is:

- A 3-time Fulbright Scholar
- An illustrator for an archeological excavation in Bethesda, Israel.
- And an excellent bronze sculptor with works in the Nebraska State Capitol building as well as more recently at the Omaha Community Playhouse.

“On a personal note, in the 32 years that I have worked with Jim and officed next door to him he has never raised his voice to me. He should have, but never did and I appreciate that. He is the consummate professional who has been known to say, ‘You can follow a bear into the woods, but never a tuna.’”

Dr. Kay Ferguson – 20 years



Professor Diana Brown spoke highly of her colleague and friend Dr. Kay Ferguson at Dana’s commencement: “I’m not sure how long it will take for someone else to be able to fill the shoes that Kay Ferguson has worn for 20 years. The students of Dana College have benefited so much from a such a first-class

lady who dedicated so much to all of her students always, always putting her students first. I have seen her day after day when no one else is there except she and I trying to talk to the students because somehow something didn’t go right in school or personally.

“Furthermore, Dr. Ferguson is one of the professors that was able to bring in grant after grant after grant. She is also recognized by all of the school districts as the one lady who can place her outstanding students from the secondary education program.

“Dr. Kay asked me to give tribute to the faculty and staff of Dana College. She and her colleagues have enjoyed a shared vision and similar philosophy implemented in the teaching and learning environment, an environment that engaged students in active learning, pursuit of new knowledge and commitment to make contributions back to society. A special tribute is also extended to her students, the many teachers/educators who have participated in the teacher education program and have made a strong, positive impact on school districts and universities across the nation. For example, Oliver, a physical education major who now holds a doctorate, is the superintendent of a large school district in Oregon. And Tony, also a physical education major and completing his doctorate, is the assistant principal at Westside High School in Omaha, a school district that is widely recognized as a national model. And Theresa, an English major who designed and modeled for alternative education that is being replicated across the nation. Dr. Kay is proud of the accomplishments and successes of the teacher education program, the Dana family and our graduates.”

In a professor of the year nomination written by then President Myrvin Christopherson in 2000, he wrote, “Dr. Ferguson has helped achieve a national reputation in the use of technology to stimulate learning in children... Her TREK (Technology Resources Exciting Kids) Institute, emphasizing the use of emerging technology in the teaching of children of all ages, has brought hundreds of children and master teachers from throughout the nation to the Dana campus. She is the recipient of several Eisenhower Foundation grants, and her work has also won the support of NASA, Jet Propulsion Lab, NSF, U.S. West and several others... Dr. Ferguson loves teaching, learning and her students.”

Ferguson was honored by Dana students by being named Professor of the Year twice, in 1989 and 1998. She also received the Golden Apple Award for Educational Excellence in 1994.



DANA'S STRATEGIC PLAN

Dana by Design: Setting a 21st Century Course

A year ago, the Dana College Board of Regents approved a five-year strategic plan, "Dana by Design: Setting a 21st Century Course." The plan outlines goals and plans for sustaining the college financially, providing a quality education program that attracts students and prepares them for the marketplace, and offering a student-centered environment that intentionally engages each student.

The *Dana Review* sat down with President Janet Philipp to discuss the strategic plan and how the college has progressed toward the goals of the plan. "Every staff and faculty member of the Dana College community has worked to accomplish or move Dana forward in some aspect of the plan," Philipp said.

DR: In the strategic plan, the college's mission, vision and core values were examined. It was noted that "The college will recommit to its Lutheran heritage where faith and reason are held equally important." How has this process begun?

Philipp: Often people ask how we relate to the Lutheran Church. As a College of the Church, Dana's Board of Regents and bylaws are subject to the approval of our Corporation. The Corporation consists of the delegates to the ELCA Churchwide Assembly which gathers each biennium to conduct the business of the Church. The Assembly is led by Presiding Bishop Mark Hanson, who you will recall was the speaker at the February convocation.

At each assembly, I am privileged to provide a written report and to present the Dana Board of Regents for election or reelection to their positions. Luther College, Wartburg College, and St. Olaf College have the Churchwide Assembly as their corporation as well.

This fall a task force has been formed to study our Lutheran identity and our capacity to educate and form students in the faith and for the world. In addition to offering excellent education, ELCA colleges prominently feature the Lutheran teaching on vocation which explores ones' gifts in service to the neighbor and care for creation in the various callings

God has given us. The task force will explore how we relate these aspects of being a college of the ELCA to the student experience and our identity as a College of the Church. Members include regents, community, and/or alumni, faculty, staff and students. The task force recommendations will help define the position description for the new campus ministry position.

DR: Perhaps the central goal of the strategic plan is to "secure our financial future" through enrollment, retention, new revenue sources and fundraising. How do these numbers look this year?

Philipp: We have seen an increase in enrollment this fall with 635 students. The biggest jump is in incoming students. A total of 185 freshmen are on campus this fall, an increase of more than 26 percent over last year's incoming class. Transfer student enrollment is also up 60 percent from a year ago. Growth hasn't just been with larger incoming numbers. Our retention rates also have improved five percent over last year as have ACT scores of incoming students. Campus visits by prospective students are also up this fall. This is not an easy task. It requires a concerted effort by the entire campus community.

To support continued increases in recruitment, enrollment and overall recognition of Dana College, Dana has contracted with a firm, STAMATS, to redesign the web site and assist the college in marketing and image building of the College.

This fall, task forces were formed to explore new sources of revenue such as online programs and graduate programs. In June, a group of faculty and administrative staff visited with faculty and staff of two other colleges to learn about their online programming and other outreach efforts. This summer 13 courses were delivered on-line. We expect to continue the discussion more broadly on campus but we know that our first priority is to increase the enrollment in the traditional, on-campus programs.

Continued on p.26





ALUMNI MILITARY SERVICE

“I have been here since February 2007 and will be here until February 2008. I look forward to coming home to be with my wife, Lelia, and looking forward to the Dana class of 1978, 30-year reunion.”

Jim Betts '78

Several Dana College alumni are serving in the military. Many are currently stationed, or have served in the wars in Iraq or Afghanistan. One of these is Jim Betts '78. If you know of any Dana alumni who are stationed overseas, please invite them to submit their story in their own words. Stories of other soldiers will appear in future issues of the *Dana Review*.



Betts writes: “I would have to be the oldest Dana alumnus overseas right now at 51 years old from the Dana class of 1978. At present, I’m contracted to the U.S. Army to gather intel and do forensic examinations of IED evidence. Other than that, I can’t say much more than that...”

“I have been here since February 2007 and will be here until February 2008. I look forward to coming home to be with my wife, Lelia, and looking forward to the Dana class of 1978, 30-year reunion.”

“I would love to hear from some of my old classmates (james.betts1@us.army.mil). I will probably be contacting a few of my classmates when I get back as I’ll be unemployed! LOL.”

His story appeared in an *Omaha World-Herald* article, “Soldier’s bomb death motivates man to act” by C. David Kotok (April 8, 2007). It is excerpted below, with permission.

Jim Betts read the account of yet another Nebraska soldier killed by a roadside bomb. He knew he could no longer play it safe, and he might make a difference in Iraq.

For the past decade, Betts, a forensic technician, had been involved in every Lincoln murder investigation... But to

follow his heart, Betts put a family’s sorrow over the death of a Nebraska National Guard soldier above the job he loved and the woman he recently married.

He left for Iraq in late February.

Betts had been considering a one-year job with Harding Security Associates under a contract with the military. The company was looking for forensic experts to join a team working on ways to neutralize roadside bombs, the insidious improvised explosive devices (IEDs) responsible for most military casualties in Iraq.

Aches, discomfort and separation provoked some doubts as he trained for the Iraqi mission.

“Whenever I got tired, whenever my 50-year-old feet ached because I was trying to keep up with 20-something Marines, or when sitting by myself in my corporate apartment on New Year’s Eve feeling sorry for myself, all I had to do was pull out the paper to help me remember why I’m doing this.”

Betts works with Task Force Troy, part of the \$3.5 billion effort to find methods to defeat IEDs. The task force is made up of U.S. soldiers, Marines, sailors and airmen, along with British and Australian soldiers.

Experts from civilian agencies and private contractors are included, creating an opening for Betts’ special skills.

During his career in Lincoln, Betts received special training from the FBI and Secret Service in verifying documents and markings, photography and crime scene diagramming.

Both Betts and his wife said there was a sense of following a calling because Betts’ father fought in World War II and his brothers served in the military.

“The real heroes,” Betts said, “are the soldiers and Marines searching the dangerous Iraqi streets beyond the base for roadside bombs.”

If these walls
could talk,
people would
be scared!

Who needs
organized socials?
They were here
every night!

THE WALLS OF ARGO

Residence Hall Closes After 87 Years

The walls of Argo Hall hold many stories. Following Homecoming 2007, the walls of Argo now tell some of the stories of its former residents. Homecoming attendees had a chance to say farewell to their old dorm by taking tours and leaving their mark in permanent marker on the walls.


One of the oldest buildings on the Dana College campus was closed this fall. Argo Hall, built in 1923 and a longtime all-female residence hall, is now quiet. Engineers advised that due to required code upgrades in the building and infrastructure concerns, it would be cost prohibitive and unsafe to renovate Argo Hall. It will be razed in the next few years.

The remodeling of Mickelsen Hall took into account some of the features that were so attractive to Argo residents over the years. A large community lounge is on each floor featuring a wood floor and French doors.

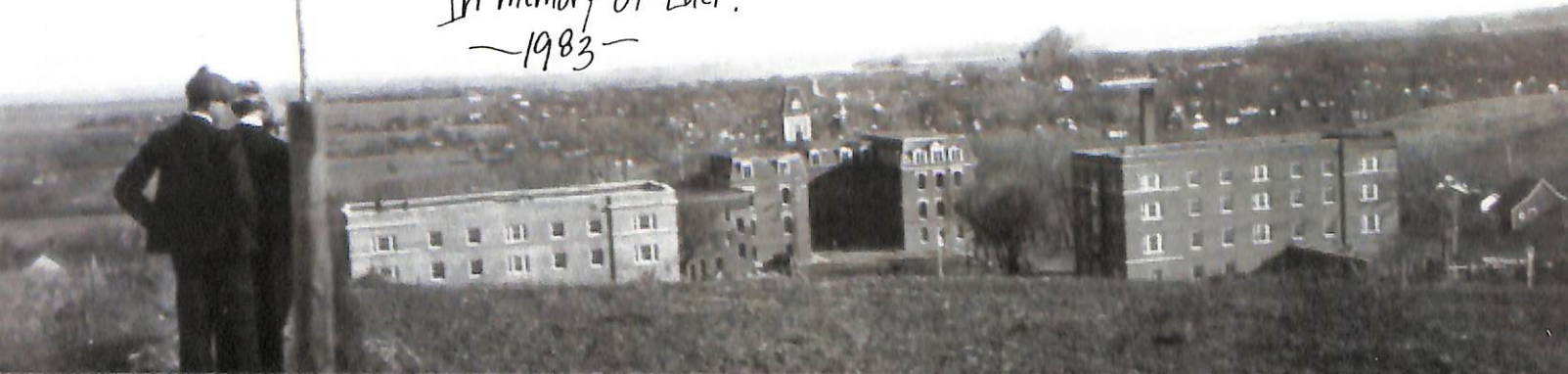
The markings on this page exhibit just a few of the memories noted on the walls of Argo this October.



Tiffany
Elznic
broke this
heater -- Spring '98



Life at Dana College
we KNOW was mighty fine!
As we moved to our future
Our lives became entwined!
In memory of Luci!
-1983-





DISTINGUISHED ALUMNI AWARD

Presented to UNO Chancellor John Christensen

University of Nebraska-Omaha Chancellor John Christensen, a 1971 graduate of Dana College, was named Distinguished Alumnus of Dana College during Homecoming festivities. He began his academic career at UNO as an instructor in 1978 and moved up the ranks to a faculty member, department chair and then dean of the College of Education until he was appointed Vice Chancellor for Academic and Student Affairs in 2003.

Christensen served as interim chancellor at UNO for eight months until the position became permanent last May.

While a candidate for the chancellor position, Christensen was described by a colleague as a "proven leader at every level of the university."

In accepting the Distinguished Alumnus award, Christensen described Dana College as "the place which helped me find my way in life."

Darrell Dibben, professor emeritus of communication,

presented Christensen with the award. It was a class taught by Dibben, "Speech and Handicapped Children," during January 1971 that turned Christensen on to special education and speech pathology.

"By the conclusion of the class, I knew this was an area of study I would pursue," Christensen said.

Christensen's insight is well recognized and sought after. He has been published in several journals, made presentations at dozens of conferences and symposia and served on boards and committees within his community and his workplace.

A speech communications and drama major at Dana, Christensen also participated in wrestling and track.

He and his wife, Janis (Sorensen '72) Christensen, met while students at Dana. They have three sons, Erik, Dana and Anders. Jan is a curriculum specialist at Omaha North High School.





JOHN E. CHRISTENSEN

Acceptance Speech given October 12, 2007

Good evening and it is great to be back on the Dana campus. Please know how honored I am to receive this recognition from my undergraduate institution, and the place which helped me find my way in life.

Heartfelt thanks to President Philipp, members of the governing board, and the selection committee for this wonderful honor. I'm proud as well as humbled to be in the company of those accomplished Vikings who have previously received this honor. This has been an extraordinary week for me and my family with my investiture as Chancellor of UNO, our annual fall convocation, and tonight's very special recognition. Tonight is made all the more special because I was the first in my extended family to have the privilege to attend college, and as the grandson of Danish immigrants, Dana was of course the first and only option, and I'm thankful for the opportunity. Although my parents and grandparents are no longer with us, they share in tonight's honor.

Since being contacted, I have reflected on life some forty odd years ago when I first stepped foot on campus. This journey down memory lane brought forward a rush of emotions and recollections that are for the most part very positive. As I suspect is often the case, shouldas, wouldas, and couldas are inherent to the process, but thankfully, they have faded with time.

Actually, my only regret is that I didn't make better use of my time while at Dana. For me, youth and wisdom were often strangers. Albeit I certainly was not a poster boy for scholarship, I graduated a changed person having acquired a broad grounding in liberal arts and communications, which paid enormous dividends as I continued my education.

Dana College provided me with many incredible gifts. The most important of those gifts was meeting and marrying Jan Sorensen, class of '72. She has been my best friend and partner for more than 35 years. Unlike me, Jan used her time at Dana well! As a math teacher, and now curriculum specialist and Director of the Engineering and Mathematics Magnate at Omaha North High School, she has devoted her entire professional career to serving inner city children and youth, by helping them find self-worth, confidence and hope for the future. She not only changed the lives of countless students; she changed mine, and I will forever be indebted to Dana for bringing us together. My father-in-law Anker Sorensen, a 30's Dana College graduate, would take great joy in tonight's celebration and the value Dana has added to the lives of our respective families.

My time on campus also afforded me the opportunity to forge friendships that have transcended Dana days and will last a lifetime. Necessarily these relationships have changed over time, but the stuff of those friendships is alive and well, and as meaningful as ever. I'm indebted for this gift as well.

In addition to Jan and lifelong friends, Dana truly helped me discover my direction in life. Long story short, during my senior year I enrolled in an intersession course concerning persons with special needs. I'm not sure of my motivations at the time, but by the conclusion of the class, I knew this was

an area of study I would pursue. Frankly, I hadn't given any thought to continuing my education until this experience, and I guess it is fair to say the rest is history.

During a visit to Dana's website recently, I was struck by the slogan at the top of every web page which says, "We're with you all the way." This has special meaning for me, as my advisor in Speech and Drama, Darrell Dibben, lived by those words during my time at Dana and influenced me in ways I can only appreciate now that age and wisdom are no longer strangers. Darrell, you have been a role model for my teaching and mentoring, and have influenced my life in ways you can never realize. Clearly, you possessed the patience of Job, and for that, I'm deeply appreciative. What many of you may not recall is Darrell had jet-black hair prior to my matriculation! Darrell, thank you for standing by me "all the way."

During my investiture, I quoted Danish philosopher theologian Soren Kierkegaard when he declared, "Life can only be understood backwards; but it must be lived forwards." I believe this to be particularly true in education; however, it is becoming more difficult to realize.

Higher education, both public and private, is facing extraordinary challenges at this point in history. Expectations, demographics, globalization, clarity of mission, vision, and values, and shrinking resources will test the commitment, determination, and creativity of all educational organizations large and small. I know you have recently experienced many of these and other challenges, as has UNO.

President Philipp and I have had the opportunity to visit in the recent past about such challenges as well as living and looking forward in the near and long term future, and in my opinion, Dana College is in very capable hands. I commend you on your choice in leadership, and want you to know UNO stands ready to partner with Dana wherever and whenever it benefits students and the collective greater good.

In my almost 30 years in higher education, I believe the factors basic to institutional viability and success for places like Dana and UNO, will include being student-focused, accountable, strategic, collaborative, and available to continuous change. I'm reminded daily that this is easily said, difficult to actualize, but worthy of our careful consideration and best efforts.

I will close with a quote from William Herzog Thompson, former dean of Arts and Sciences at UNO. "Let us fix our eyes upon the greatness of the university, as you have it day by day. Let us fall in love with her; and when we see her rise in beauty and spendor, be reminded that this greatness was won by...courage with knowledge...Let us then not only be responsive in her time of need, but let us also gather around in the happiness of her prosperity to enjoy her finest hours."

I trust that Dana's finest hours are in the future, as this institution continues to be a source of opportunity for students like us. As you live forward, don't forget the great traditions and legacy of academic excellence that has defined this very special place and its people.

Let me simply say thank you for the gifts and recognition, and god speed.



OUTSTANDING YOUNG ALUMNI AWARD

Presented to Minneapolis Native Maria Roesler

Minneapolis native Maria Roesler received Outstanding Young Alumna honors from Dana College during Homecoming weekend.

Roesler has a distinguished record of service in her short professional career.

The 2005 Dana College graduate is a project coordinator in the Dominican Republic and Haiti for ProLiteracy Worldwide, a nonprofit international literacy organization. One of her greatest achievements has been to create a network between the eight Dominican organizations supported by ProLiteracy Worldwide in the Dominican Republic. The alliance, which reaches around 8,000 people, focuses on HIV/AIDS prevention and will start to provide literacy classes.

Roesler's connection to the Dominican Republic and her route to her future job began as a student at Dana. Maria studied abroad during her junior year as a volunteer for a literacy program called Project ABC. The program promotes literacy in bateyes, communities of mostly Haitian immigrants to the Dominican Republic. Project ABC is supported by ProLiteracy Worldwide, Maria's current employer.

In fact, ProLiteracy Worldwide approached Maria upon graduation from Dana to fill the position of coordinator in the Dominican Republic. At that time, she decided to join Beyond Borders, a nonprofit Christian organization that assists the poor with literacy programs, education reform, and crisis support in Haiti, to live in Haiti and learn the Haitian Creole language and culture.

When she reached the end of her learning position with Beyond Borders, Roesler was contacted by ProLiteracy again and this time she accepted.

Social work professor Jan Potter presented the award to

Roesler. She described Roesler as having "amazing intellectual curiosity" and "immense compassion."

"She manages to combine the head and the heart in an amazing way," Potter said.

While at Dana, Roesler was both involved and honored. She graduated summa cum laude as a Morton Scholar with a major in Spanish. She was active in Young Democrats, H.O.P.E. (Helping Our People Expand), and the Social Awareness Organization. She served on a committee for the Liberal Arts Reading Program (LARP) and was on the planning committee for the 2005 Cultural Fair. She was also a member of Alpha Mu Gamma, the national foreign language honor society.

In accepting the award, Roesler praised her academic experience at Dana College, especially the cross-cultural requirements of the Morton Scholars honors program and (LARP). "If it wasn't for the education I received at Dana, I would not be able to do what I am doing now."

ATHLETIC HALL OF FAME

Three alumni were inducted into the Dana Athletic Hall of Fame at Homecoming. Criteria for induction includes earning a varsity letter in at least one intercollegiate sport while a student at Dana or making exceptional contributions in time or talent toward improving the college's athletic programs.

Roger Howland



Council Bluffs, Iowa, native Roger Howland, now of Blair, Neb., was honored for both his outstanding career as a Dana College wrestler and his devotion as a Dana College athletic booster.

Howland, a 1964 graduate of Dana, was inducted in the Dana College Athletic



Hall of Fame as the Vikings' first-ever four-year letterman in wrestling as a member of the college's first wrestling team. He was a two-time winner of the Tri-State Conference wrestling tournament and was undefeated in 1962.

Along with Herb Knudsen '63 and Ernie Abariotes '65, Howland served as a student coach to help establish the wrestling program at Dana.

He was a member of the D-Club and the Society for the Advancement of Management. As secretary of the D-Club, he was honored to present Jesse Owens with an honorary membership in the Viking D-Club.

Since then, the Blair businessman has remained involved with Dana athletics and has been one of the most active and generous supporters of the Dana wrestling program. He is also a strong member of the Viking Booster Club.

Abariotes, still a good friend of Howland's and a current volunteer assistant coach of Dana wrestling, presented the award. "Roger has always supported Dana wrestling," Abariotes said. "When called upon, he has always been there for us."

"You can't go through life with a catcher's mitt on both hands," Howland said. "You have to be able to throw back, and that's what we've tried to do."

In 2005, Howland was inducted into the Dana College Wrestling Hall of Fame. He and his wife, Linda (Anderson '65), were honored at the 2005 commencement with the College-Community Service Award, Dana's highest nonacademic honor. They have two sons, Nathan and Eric.

Ben Sandy

Dana College Athletic Hall of Fame inductee Ben Sandy is perhaps the most decorated male runner in Viking history. Sandy was inducted into the Hall as part of the college's Homecoming festivities.

Sandy came to Dana College from Newcastle, Wyo., in 1994 as part of a freshman class brought in to begin the resumption of the Dana cross country and track programs. Sandy was a leader in this effort, qualifying for the NAIA Nationals in the marathon as a freshman.

His success only escalated from there as Sandy captured a combined 10 Nebraska-Iowa Athletic Conference titles in cross country, indoor and outdoor track. He was a two-time All-American in cross country, placing 27th twice, a two-time NAIA Track All-American with fourth place and third place finishes at Nationals in the marathon and a four-time NAIA Academic All-American.

Sandy holds Dana College indoor track records in the 1500 meters (4:05.44), 3000 meters (8:32.94) and two-mile run (9:28.84) and was a member of the record-breaking distance medley team (10:10.06). He also holds outdoor records in the 10,000 meters (31:20.78) and marathon (2:24:54).

"The success I attained at Dana is reflected in our team's success," Sandy said upon receiving the award. "Our team,

men and women, were a tight, cohesive family. We all worked hard to meet our team's goals and in this process I just happened to reach some of mine."

The 1996 Dana men's cross country team shocked the nation with a fourth place finish at the NAIA National Meet. At the time, it was the highest final national ranking by any Dana athletic team in school history.

The 1999 Dana graduate is married to fellow Dana running star and Hall of Fame inductee Angela (Sparacino '99) Sandy. They both are currently training to qualify for the Olympic Marathon Trials. The Sandys live in Bellevue, Neb., where Ben works for the U.S. Air Force.



Angela Sandy

Angela (Sparacino) Sandy holds a title that can she can never lose – Dana College's first National Champion. The Houston, Texas, native was inducted into Dana College's Athletic Hall of Fame as part of the college's Homecoming festivities.

The three-time NAIA All-American captured the NAIA National Championship in the marathon as a junior in 1997 and returned to Nationals the following year to garner All-American honors again with a third-place finish.

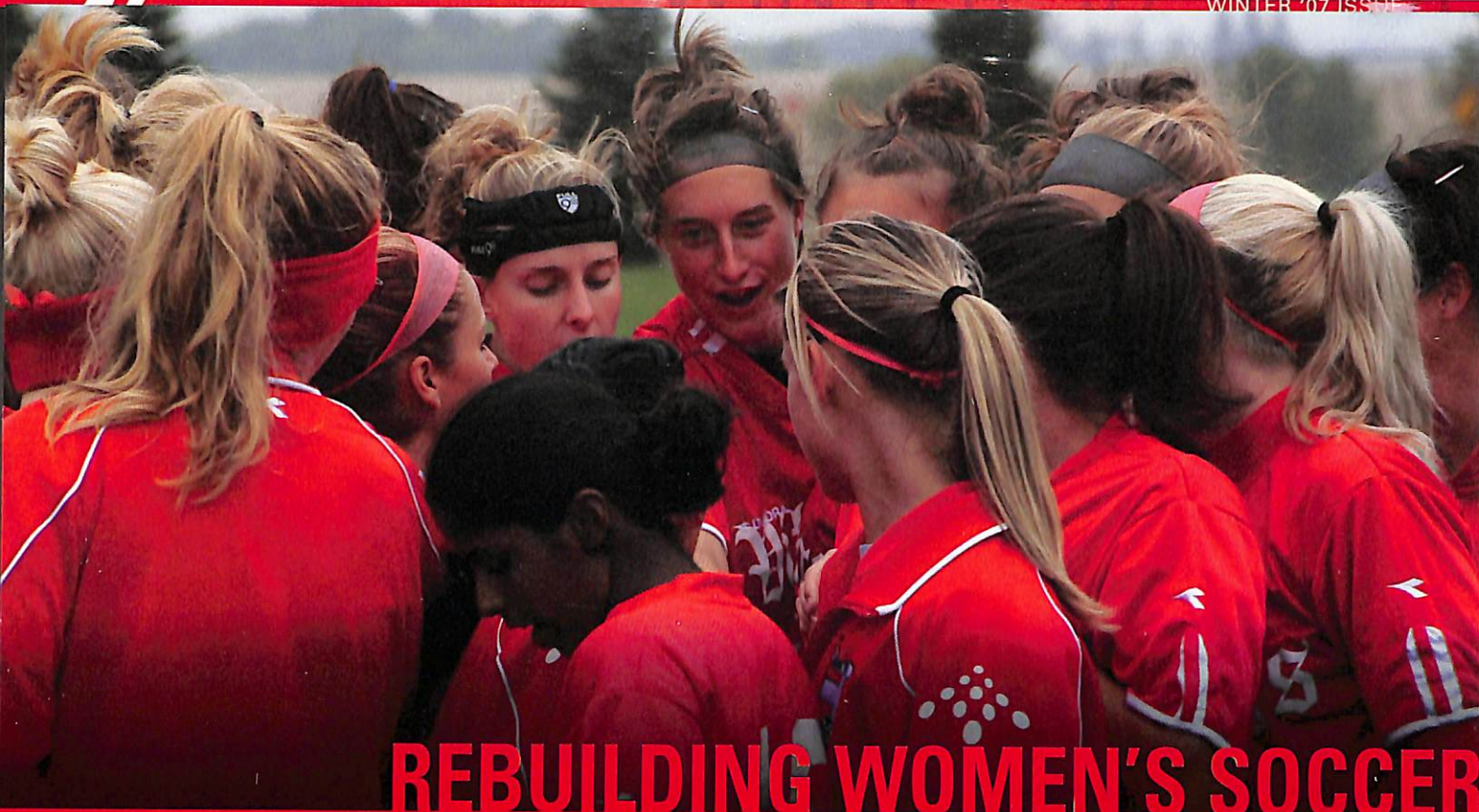
Sandy's national championship was a run-away and a shocker. Running in her first full marathon ever, she took the lead about 19 miles into the race and ended up beating her nearest challenger by over two minutes.

"Dana gave me a chance," Sandy said. "I was never a national championship caliber runner in high school."

Sandy emphasized the teamwork behind the individual honor in accepting the honor of being inducted in Dana's Athletic Hall of Fame. "I remember finishing the last mile of the NAIA National marathon I won in 1997. This memory stands out the most because I was encouraged and supported by my Dana teammates all the way to the finish line. Clearly, this memory holds the most merit for me because when I was at Dana, I was on a team that functioned as a family. Everything we did, we did as a team," she said. "Winning the marathon was not only an individual success, but a win for the team. Being able to stand on the awards podium with two of my Dana teammates was the most rewarding. Our entire team was successful and there for each other." (In 1997, fellow Dana runners Anna Hovde and Amanda Buttry also earned All-American honors in the marathon.)

Sandy also qualified for Nationals in cross country and was a three-time NAIA Academic All-American.





REBUILDING WOMEN'S SOCCER

Coach Beam Takes On the Revitalization of the Women's Soccer Program

Six years ago the Dana College women's soccer team was at the top of the Great Plains Athletic Conference. The Vikings finished 2001 season with the GPAC championship, a 23-1 record, and one game shy of a national tournament berth. The program slipped from the upper tier of the conference to the bottom third over the next few years with two coaching changes and a decline in numbers.

The program hit rock bottom during the 2005 season when the team finished 3-13-1 and had only 13 healthy players by season's end. Last spring, Athletic Director Bill Danenhauer was looking for a new face to rebuild the program. He did not have to look very far. In April, Danenhauer announced Dana's head men's soccer coach, Shad Beam, would also take over coaching duties of the women's soccer program while remaining the head coach of the men's team and sports information director.

"Coach Beam has a history of bringing quality student-athletes to Dana," said Danenhauer. "We think he is the perfect person to pick this program up and return it to a very successful level."

Beam had taken over a men's program in 2002 that was in shambles and led them to an 11-8 record and a regional semifinal berth in 2006. The coach had built his program on the foundation of commitment, hard work, and teamwork. He planned to instill the same plan in the women's program.

"I told the women when I took over that if they believed in each other and worked hard we would be successful," said Beam. "Success comes from determination and hard work by not only the players, but also the coaches."

Beam surrounded himself with local coaching expertise

in Mario Zuniga and Jason Thurman. Zuniga is the state of Nebraska Girl's Coach of the Year for 2007. He was the former Director of Coaching for the Toro Soccer club. Thurman was a goalkeeper at Midwestern State and Nebraska Wesleyan, before becoming the Nebraska Wesleyan Prairie Wolves' keeper coach.

Walking into a program with only 13 players returning for the next season, there was a lot of work for the new coach. Beam made sure the current players bought into his belief in hard work and goal setting. He encouraged the incoming recruiting class by reminding them it was possible to win and do it right away. He would be proven right in less than six months.

Several questions faced the coaching staff as the season began. How would the returning players and newcomers gel? What would the team chemistry be like? Could the team turn their fortunes around?

"I expected us to win. I also expected hard work out of all of us. That and great coaching," said Jessica Niemeier (FR, Omaha, Neb.).

The season started off rough for the Vikings as they faced the top three teams in the GPAC, two NCAA Division II teams, and the College of St. Mary. Dana dropped all six of those games. The only high scoring loss was the 5-2 loss at Colorado State-Pueblo. The Vikings proved their mental toughness with wins over Avila University and William Penn University.

"I think everything 'gelled' together toward the middle of the season," said Stephanie Schoby (SO, Blair, Neb.). "We got along great in the beginning, but we were still learning about



each other. We came together when we needed to and stayed together throughout the season.”

The start of the conference season was frustrating for the Vikings as they lost a pair of 2-1 games to Midland and Hastings and a 2-0 game to defending GPAC champions Morningside. At that point in the season Dana was 4-6 and 1-3 in conference play.

“We sat down with the women and talked about our results,” said Beam. “We had outplayed some teams, but not gotten the win. I told them things would come to us if we continued to work hard. Karma would work on our side....and it did.” The Vikings then grabbed seven straight wins and finished the regular season with an 11-7 record. Dana was rated fourth in the NAIA Region III poll and hosted a first round playoff game against Doane. Kara Fox (JR, Omaha, Neb.) advanced the Vikings to the regional semifinals against Morningside College with the game’s only goal.

“We all had the same overall goal,” said Schoby. “That was to make it farther than we did the past few seasons....one step at a time.”

The Vikings scored the opening goal of the regional semifinal match-up in the first 12 seconds. Niemeier (FR, Omaha, Neb.) scored the fastest goal in the history of Dana College women’s soccer. The Mustangs came back and scored three straight goals, before Dana answered back. Although the Vikings would fall 4-2, Dana fans and the rest of the GPAC were served notice that Dana College was back.

“Our team really gelled in the first round regional tournament against Doane,” said Fox. “Everyone worked really hard and supported one another. That win was the most special one of the season.”

Heather Fischer (SR, Gretna, Neb.), Emily Wisch (SR, Lincoln, Neb.), and Fox were named NAIA Scholar-Athletes. Danielle Mendoza (SR, Council Bluffs, Iowa), Aimee Kersigo (FR, Omaha, Neb.), and Michelle Mullen (FR, Omaha, Neb.) earned Second Team All-Conference honors. Sheila Mullen (FR, Omaha, Neb.) and Ashley Armstrong (SO, Castle Rock, Colo.) were named to the Honorable Mention team.

In the 2007 season, Dana had 21 players on its roster (15 of them either freshmen or sophomores), the most since 2001, and finished with a 12-8 overall record, the best since 2002. The Vikings finished in fourth place in the GPAC with an 8-4 record, not bad for a team that was picked to finish ninth in the preseason GPAC coaches’ poll.

Dana graduates three seniors from this year’s team and will only have three seniors on the roster next fall.

“I only see it improving with each new year, as long as the players and coaching staff are willing to give 110 percent to everything they do on and off the field,” said Mandy Overall (SO, Las Vegas, Nev.).

Discussions about a run at the conference title and the national tournament have not come up yet for next season, but a quiet confidence hangs over the coach, the team, and their fans.

DANA ATHLETICS TIES RECORD WITH 17 SCHOLAR-ATHLETES

Dana College is proud to announce that 17 student-athletes have earned NAIA Scholar-Athlete honors for the fall 2007 sports season. NAIA Scholar-Athlete must be juniors or seniors, total a 3.5 or higher grade point average, and be a member of the varsity team.

This number ties the school record of Scholar-Athletes in the fall season, set in 2006. The football team led all programs with eight Scholar-Athletes and was followed by women’s soccer with three members.

Dana College proudly recognizes its 17 NAIA Scholar-Athletes and their majors: Jennifer Anderson (SR, Lincoln, NE), Cross Country, Psychology; Eric Bane (SR, Oakland, IA), Cross Country, Chemistry / Biology; Greg Elsberry (JR, Omaha, NE), Football, Business Communications; Heather Fischer (SR, Gretna, NE), Soccer, Biology; Kara Fox (JR, Omaha, NE), Soccer, Accounting; Tabitha Kabala (SR, Davenport, IA), Cross Country, Biology; Trevor Ketelsen (JR, Bloomfield, NE), Football, Business Administration; Kevin Lorkovic (SR, Council Bluffs, IA), Soccer, Business Administration; Kiel Montgomery (JR, Indianola, IA), Soccer, International Studies/German; Kyle Peterson (SR, Blair, NE), Football, Elementary Education; Kira Presler (SR, Omaha, NE), Volleyball Elementary/Special Education; Clayton Timm (JR, Treynor, IA), Football, Business Administration; Chris Vacek (JR, Omaha, NE), Football, Physical Education; Nate Weathers (JR, Omaha, NE), Football, Education; Greg Wilmes (SR, Hastings, NE), Football, Secondary Math Education; Emily Wisch (SR, Lincoln, NE), Soccer, Special Education.

LOGSDON COMPETES AT NATIONALS



Cory Logsdon (SO, Fort Calhoun, Neb.) posted a time of 26:10.4 and finished 89th on the men’s side of the 2007 NAIA Cross Country National Championships Nov. 17 in Kenosha, Wis.

“I ran close to my target time,” said Logsdon. “We were close to the time I wanted, but it was a very tough course. I know what I have to do to earn All-American status for next year.”

The sophomore also qualified for the NAIA Nationals in the marathon last year and hopes to accomplish that task again this season.





CHARITABLE GIVING

Which Options Work Best for You?

By Jeremy J. Bouman, Vice President for Institutional Advancement

At a recent Dana After Hours gathering in Omaha, I was speaking with an alum who expressed her desire to support Dana with a financial contribution but was unsure of how best to make the gift. "There are so many ways to give, so many tax implications to consider, it's all very confusing. How should I make my gift?"

We talked about her financial and philanthropic goals, her resources, her family, and several other critical factors. I could tell that making this gift would be a joyful, enriching experience for her once she was comfortable that she had made a well informed decision.

What made sense for her may not make sense for you. Everyone's situation is unique and requires some thought, discussion and planning. Our role as advancement professionals is to listen, offer insight, and keep the process from becoming daunting or confusing.

As the end of the year approaches and you are making decisions about your own charitable giving, here are some options that will allow you to not only give, but also save. Please know that this information is not intended as legal advice.

Remember: The tax laws intentionally encourage charitable giving. If you make charitable gifts by December 31st and itemize, you can significantly reduce your income taxes for 2007.

Gifts of Cash

The easiest way to garner a charitable deduction for 2007 and support Dana is by simply writing a check. If your envelope is postmarked by Dec. 31, your gift will qualify as a 2007 gift even if it is not received by the college until the first week of 2008.

If you are a Thrivent member, you are eligible for matching funds. Check with your employer to see if there is a gift-matching program you can take advantage of.

Gifts of Securities

Appreciated securities make a fantastic gift. Giving long-term appreciated stock offers you a two-fold tax savings. First, you avoid paying any capital gains tax on the increase in value of your stock. In addition, you receive a tax deduction for the full fair market value of the stock on the date of the gift. In order to preserve tax advantages, make sure you transfer the physical securities or gift the stock certificate rather than

giving the proceeds of a sale.

If you have stock losses (depreciated securities), generally you should not contribute the stock, but sell it yourself to realize the extent of the loss for tax purposes. You can then contribute the cash and take a charitable tax deduction.

A charitable contribution of mutual fund shares can provide the same tax advantages as a gift of appreciated stock. It's a more complex transfer process, so it is recommended that you start the process well before Dec. 31.

Gifts of Life Insurance

If you own a life insurance policy that is no longer needed, it could be the perfect gift vehicle for a 2007 year-end charitable gift. You can contribute a life insurance policy to Dana College as the owner of the policy or simply the beneficiary. It's easy to contribute a life insurance policy – just check with your life insurance agent for details on which forms to complete.

Gifts of Real Estate

If you have owned your home, a vacation home, acreage, or a farm for many years, a charitable gift of that real estate can be especially tax-advantageous. The property may have so appreciated in value over the years that its sale would result in a sizeable capital gains tax. If given to Dana College instead, you avoid the capital gains tax and also realize a charitable deduction for the full fair market value of the real estate.

Another option is to transfer a home or farm to Dana College now and continue to use the property for life. Through such an arrangement, you will be entitled to a current income tax deduction for a portion of the fair market value of the property. Due to the complexities involved, we encourage you to contact the Dana College Advancement Office to discuss any gifts of real estate.

Individual Retirement Accounts

Time is running out to make an IRA Charitable Rollover Gift - the last day is Dec. 31, 2007. If you're at least 70 ½, this tax legislation allows you to give ministries up to \$100,000 directly from your IRA without triggering federal income taxes. This gift will also satisfy the rules for required minimum distributions for the year. The gifts must be made outright. Contact the Dana College Advancement Office for more details and for the letter to send your IRA policy administrator to take advantage of this giving opportunity.



Life Income Gifts – a gift that pays you

A Charitable Gift Annuity is a gift with cash or securities given in return for fixed annuity payments for life, with payments based on the size of the gift and your age. You may also receive a two-life annuity for yourself and a loved one. A portion of the gift annuity payments are received tax-free.

A gift annuity also provides you with a charitable income tax deduction in the year you make the gift. In addition, a gift annuity may give you the ability to reduce capital gains tax if you make the gift with appreciated securities. At the time of your death, your annuity is distributed to Dana College.

You may also make a Deferred Charitable Gift Annuity that allows you to receive your payments at a future date that you select (you will still receive the charitable income tax deduction in the year you make the gift). This is best suited for people who want to make a gift, but do not need the annuity payments immediately.

Annuity rates start at around 6 percent for a 65-year-old and can go over 11 percent for people over 90. Contact the Dana College Advancement Office to have a Charitable Gift Annuity illustration sent to you to give you an idea of what your tax deduction would be as well as your annuity payment percentage and amount.

Charitable Remainder Trusts can be funded by cash, securities

and, in some cases, even real estate. The two most common trust arrangements are called a “unitrust” or an “annuity trust.” With a unitrust, you and/or your spouse (or another beneficiary) receive a fixed percentage of the fair market value of the assets in the trust annually. The income received will vary from year to year, based upon how the trust’s investments perform.

With an annuity trust, you and/or your spouse (or another beneficiary) receive a fixed amount from the trust each year. This amount is agreed upon when you create the trust. It stays constant no matter what happens with the stock market or interest rates.

Bequests

While you’re considering your 2007 income tax savings, this may also be a good time to consider long-term tax savings. Federal estate taxes can still take a sizeable portion of one’s estate at the time of death. We hope you will consider a charitable bequest in your will to benefit Dana College while you save estate tax dollars at the same time. Different types of bequests include a fixed amount, a specific property, residuary, and contingent. Become a Dana Builder in the process!

As you can see, there are many different ways to support Dana College, your church and other charities through thoughtful planning. We are here to help you in this process and thank you for your continued commitment and support of Dana College.

ANNOUNCING THE FIRST EVENT OF THE 125TH ANNIVERSARY OF DANA COLLEGE 1884-2009

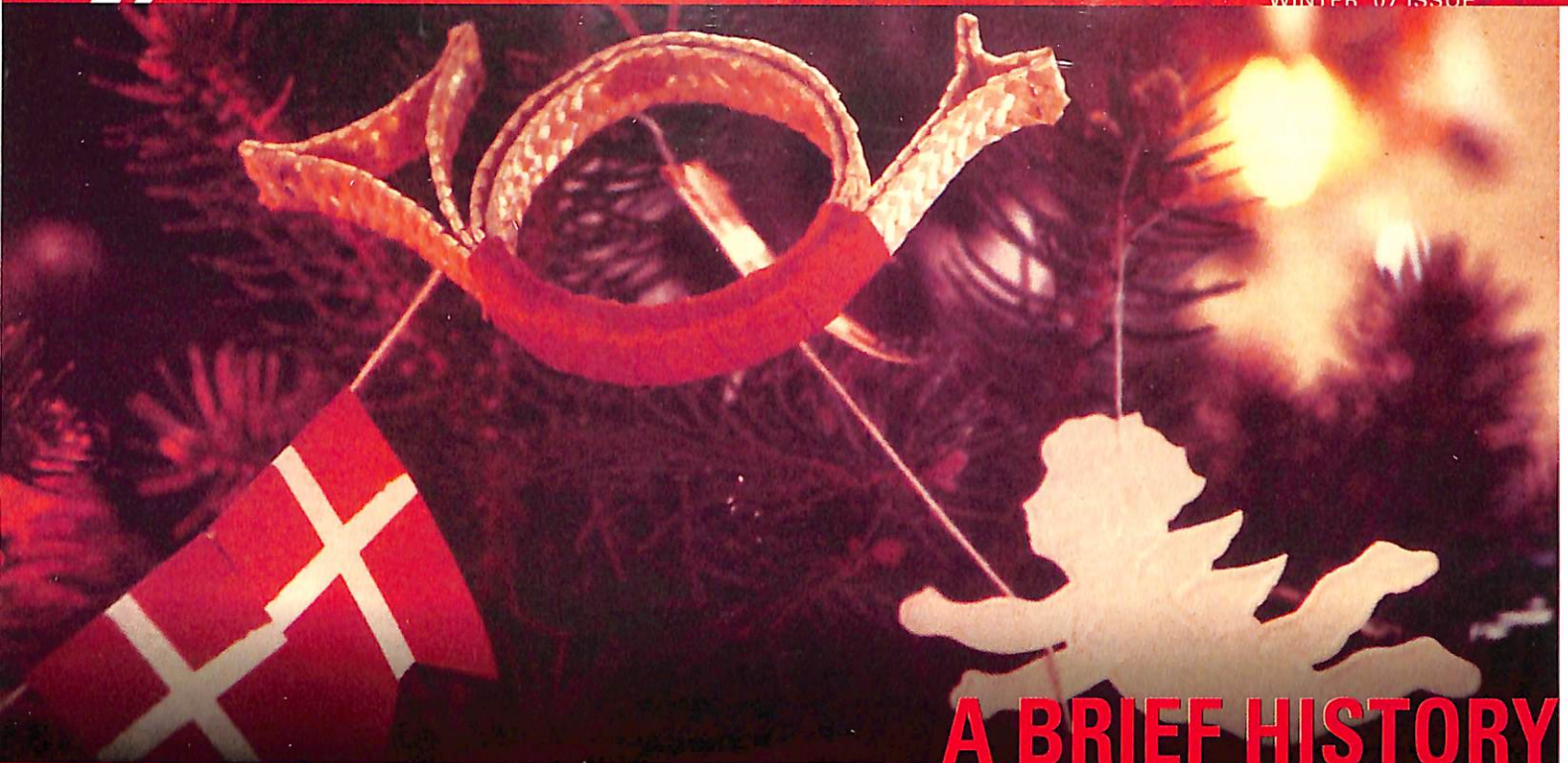
**A PILGRIMAGE THROUGH THE LAND OF MARTIN LUTHER
SEPTEMBER, 2008**



Dana’s heritage of church-related higher education is traced to the university town of Wittenberg, Germany. In 1508, Dr. Martin Luther arrived in Wittenberg as an Augustinian monk. Ten years later, that same monk, now theologian and university professor, would walk a short mile from the monastery to the Castle Church with his 95 Theses and change the world. Join the celebration! Walk the “Luther Mile” and participate in local events that launch the “Luther Decade” in Wittenberg. Dana College will celebrate 125 years and Wittenberg celebrates 500 years! Our ten day program takes us beyond Wittenberg to connect with 500 years of German religious and cultural history that shaped our modern world. Sites include: Berlin, with emphasis on Bonhoeffer and resistance to the Nazis; Leipzig, home of J. S. Bach and the “Peaceful Revolution” of 1989; Eisleben, site of Luther’s birth and death; Eisenach, and the Wartburg Castle; Erfurt, where Luther became a monk and was ordained. Learn about our heritage from experts all along the way. Relive events that shaped how we live, teach and learn today. This pilgrimage is planned with the resources of the ELCA Wittenberg Center. The tour leader, the Rev. Dean Bard, was the Founding Director of the Wittenberg Center in 1999 and also served as Vice President for Institutional Advancement at Dana.

Costs: \$2,070 per person, double occupancy
 \$385 single room supplement
 The cost of the flight to and from Germany (Group air fare from Omaha estimated at \$1100)

For more information or to express an interest in the trip, please contact: Carrie Reed, Director of College Relations and Marketing; Phone: (402) 426.7385 E-mail: creed@dana.edu



A BRIEF HISTORY of The Sights & Sounds of Christmas

A December 3, 1973, clipping in the college archive from Blair's *Pilot-Tribune* announces that "The sounds and sights of Christmas, many of them with a distinct Danish flavor, will be offered to the public during the annual Christmas Open House at Dana on Sunday, December 9."

It's apparent from the clipping that the college had been inviting the public to earlier Christmas programs, to its "Christmas Open House." These programs featured concerts by the Dana Choir and Concert Band; they also featured, at various times over the years, a Santa Lucia ceremony, the Dana Folk Dancers, "Let's Make It Danish," pastries from Denmark and trees decorated with Danish ornaments.

In 1973 Phil Pagel '56, then director of public relations, decided to put many of these together into a one-day package – "First and foremost," he says in looking back, "as a Christmas gift to the area, and secondly to showcase our student talent and emphasize our Danish/German heritage" – and The Sights and Sounds of Christmas was launched.

The *Pilot-Tribune* article describes the events planned for the day, many of which subsequently became repeated favorites: Storytime, a Santa Lucia ceremony, performances by the Dana Folk Dancers, a "Sounds of Christmas" concert by the Dana Choir and Concert Band, an exhibit of Christmas art, and displays of the college's antique candlesticks, Danish Christmas stamps, and Bing and Grondahl and Royal Copenhagen Christmas plates. In addition, the Bookstore would have a "Denmark Corner" featuring gift items from Denmark and other Scandinavian countries.

Visitors would also see a variety of Christmas trees, the article promised, including three "decorated with Danish ornaments," one of them in the Campus Center.

By 1973 a tall Christmas tree with Danish ornaments in the Campus Center was already a tradition at Dana, and it

remained one for several decades, as well as an attraction at Sights and Sounds, until the Center was remodeled to accommodate a passenger elevator.

After the 1973 inauguration of Sights and Sounds, word spread. By 1975 attendance was estimated at 2,000. A Scandinavian smorgasbord that served 775 participants that year subsequently became a major feature of the day, with a lavish spread and several noon and late afternoon settings.

Events were added to the schedule over the next decades. Additions in the 1970s included a Festival Worship Service that continues to open the day, plays with Christmas themes, and Danish, German and French Christmas rooms featuring the holiday customs, decorations, cookies and pastries of those countries. (A Spanish Christmas room was a later addition.) "Let's Make It Danish," which had been a popular event before 1973, was reintroduced and remains popular today.

In 1977 Sights and Sounds attendance was estimated at 3,000, with 1,200 visitors enjoying the smorgasbord. Five years later, in 1982, an estimated 5,000 attended from 14 states.

The Sights and Sounds of Christmas had become a major event. Contributing to its success were the many students and members of the faculty and staff and their families who helped plan the activities, baked and decorated, and then participated throughout the day.

By 1983 Sights and Sounds had grown to the point that the December issue of *Better Homes and Gardens* named it one of the major Christmas festivals in the U.S.

A few years later, in 1991, an article in the December issue of *Midwest Living* titled "A Christmasy Nebraska Campus," reported that "Last year, more than 4,500 visitors flocked to the campus." It advised readers to make their smorgasbord reservations early.



Visitors came, and continue to come, by car and bus, on tours sponsored by travel agencies, banks and senior centers. Notable visitors in 1995 were the Danish ambassador to the U.S., Knud-Erik Tygesen and his wife, Ulla, and U.S. Congressman Doug Bereuter of Nebraska's First District and his wife, Louise.

"Sights and Sounds was never intended to be a money-maker for the college," Pagel says. "It just took off and grew into a major tourist attraction."

The schedule continues to evolve, and there's always variety. In addition to repeated favorites – the "Sounds of Christmas" concert remains a centerpiece – recent programs have included a Viking encampment in 2004 and a Hans Christian Andersen re-enactor in 2005. Art students have exhibited and sold their work. There's been a Christmas Marketplace with guest vendors. And area quilters, china painters, weavers and lacemakers have either displayed their work or given demonstrations.

In recent years "Showcase" concert choirs from area high schools and other area and campus vocal and instrumental groups also have performed. And this year, when Sights and Sounds was held on December 2, musical theater alumni returned "to present," a Dana news release said, "Broadway's take on the holiday in song and dance."

The first Sunday in December became the traditional day for Sights and Sounds of Christmas soon after its launching. Repeat visitors have said that they look forward to the day – for them, they say, attending Sights and Sounds is the way they like to begin the holiday season.

(This article was based on information in the college archive - newspaper clippings and printed Sights and Sounds programs - and from Phil Pagel.)

Dr. John W. Nielsen
~The Christmas Storyteller



DANA'S STRATEGIC PLAN

Continued from p.13

DR: How about fundraising?

Philipp: It is no secret that colleges and universities rely upon private gifts and grants to support the operating fund of the institution as well as to support scholarships, programs and building projects. Slightly less than 15 percent of Dana's total budget comes from private gifts and grants, which is a tremendous challenge each year. In order to attain that goal, the Annual Fund was established this past year after many years of its absence. While we continue to focus on fundraising goals in all areas, we must put greater effort into cultivating and getting acquainted with alumni. One of those efforts is the new "Dana After Hours" program in Omaha. Vice President for Institutional Advancement Jeremy Bouman arrived in September, and we look forward to his leadership in the area of development.

DR: What are you doing to deepen the student-centered environment on campus?

Philipp: Students of today are members of Generation Y. They are connected technologically, they are career minded, and they are confident; they believe they can do it all. We must be mindful of this highly motivated generation of students and find ways to engage them in the student-centered environment of Dana College. Suite style living is becoming the norm for these students. The suite style apartments launched a year ago feature capability for up-to-date technology, a common living area with four bedrooms and two bathrooms. All rooms are filled and there is a waiting list.

The remodeling of Mickelsen Hall into a suite-like environment for women is another effort to meet the needs of students. In remodeling, a block of three rooms were transformed into a suite for four students instead of six. In addition, kitchenette and lounge areas were created as well as laundry facilities on each floor.

The lower level of the building was renovated to house security, health services and counseling services. This creates a unique environment for students with these services housed in their residence hall.

In cooperation with the Blair YMCA, beginning last year all students have a membership at the Y. This has been a popular service addition for our students and reports from the YMCA director suggest it has been good for them as well.

MP3 (maximum peak performance program) is being retooled to reflect the assessment at the end of last year. This program was started last year to assist students in the transition from high school to college. It is paired with freshmen sections of LARP as students become acquainted with the rigorous reading requirements in college.

Viking Athletic Council and Student Life Advisory Council have both been mechanisms for more student involvement and engagement. Expect to see some new things from these groups including a Dana mascot. Junior varsity programs were added in football and women's basketball to engage student athletes and prepare them for varsity play

DR: How is support of employees as valued members of the campus community a part of the strategic plan?

Philipp: The Staff Council hosted a number of events this summer for both staff and faculty, including an outing to the Omaha Beef indoor football game in June, an Omaha Royals game in July, and a number of noon hour picnics.

Another recommendation is to showcase and highlight significant performance by faculty and staff. The opening convocation this fall featured Dr. John Lyden who was interviewed for the History Channel documentary: "Star Wars: The Legacy Revealed." The program was broadcast initially on May 31, 2007 and is now available on DVD. A recent *Dana Review* featured the publications and scholarship of Dana faculty.

DR: I know one of the goals of the strategic plan is to expand Dana's relationship to the community. What specific objectives are being pursued at this point?

Philipp: The town-gown relationship is important to Dana and we appreciate the support we receive from businesses, civic clubs and individuals. With a payroll of approximately \$6 million, as well as the goods and services purchased by the college and students, there is no question that Dana is a vital part of the local economy. We are continually looking for ways to expand our relationship with the local community, including involvement in local programs and activities. For example, Dana sends a representative to the Washington County Leadership Development program each year.

Dr. Kate Joeckel, chair of the communication department, is a member of the Blair Chamber of Commerce. Area historical society members and members of the community visited the traveling Alexander Hamilton exhibit on campus this fall. German and chemistry are being offered as college level courses with Dana designation at the Blair High School this year. Dana also has representation on several civic boards.

And, finally, a few other updates:

The board chairs, presidents, and academic deans of Dana College and Midland Lutheran College met twice this summer. Joint initiatives include a completed report of technology capacity of each institution, collaborative work between the offices of Student Activities, and a proposal to fund assessment activities at both institutions. There have been ongoing discussions about select academic areas as well. This fall each Board of Regents approved a statement agreeing to explore and develop, "The most effective use of the resources of these two colleges for Higher Education in the Lutheran Tradition in this geographical area." The intent is, and always will be, to honor the autonomy and culture of each institution as they have been throughout their histories.

And finally, Dana College was recently listed in the top tier of Best Baccalaureate Colleges – Midwest in the annual US News and World Report. This the first time in memory that Dana has been listed this high. There are many variables that are considered, many of them subjective, but we are pleased to garner this rating.

Marcy Fergola '07 is corporate events coordinator at the Holiday Inn in Mason City, Iowa, where she lives.

Greg Hill '07 is working for CCS Presentation Systems in Omaha as a salesman/project manager. He lives in Springfield, Neb.

Kelli Ober '07 and **Brian Martin '05** were married Sept. 22, 2007, in Lynch, Neb. The couple lives in Blair.

Callie Arnold '06 is a kindergarten teacher in the Blair (Neb.) Public Schools. She lives in Omaha.



PHOTO ABOVE **Scott Taylor '06** and **Katrina Woldseth '06** were married July 29, 2007, in Puyallup, Wash. Other Dana alumni who were part of the wedding party were **Ben Henderson '06**, **Krista (Hein) Walter '06** and **Lindsay Stigge '06**. Scott is pursuing his masters of science in physician assistant studies at LeMoyne College. Katrina recently graduated from Syracuse University's S.I. Newhouse School of Public Communications with a master's of science in new media.



PHOTO ABOVE **Bernardo Cueto '06** and Heather Horstman were married June 9, 2007, in LaCrosse, Wis. **JD Hall '05** was best man. The couple lives in Grand Forks, N.D.

Aniela Metro '06 married Andrew Nelson on July 14, 2007, in Hot Springs, S.D. The couple lives in Knoxville, Tenn.

Brandon Lombardo '06 is a financial advisor for Renaissance Financial in Omaha. He is a registered representative of Securian Financial Services.

Marshall Marquardt '06 is a fitness manager at 24-Hour Fitness in Papillion, Neb., and is currently competing in Highland Games Competitions.

Tyler Mohr '06 and **Ashley Sorensen '05** were married June 9, 2007, in Blair, Neb. Tyler works at Dana as coordinator of athletic business affairs/hall director and is pursuing his master's in student life administration. Ashley is pursuing her PhD in biology at the University of Nebraska Medical Center.

Tracie Ruwe '06 and **Chris Johnson '05** were married July 7, 2007, in Blair, Neb. Tracie is a teacher with Blair Community Schools. Chris is a web designer for Leopard Inc. in Omaha.

Jana Salmon '06 and **Bobby Andrews '05** were married Oct. 27, 2007, in Aurora, Neb. Jana is employed in Omaha as a community support specialist for The Friendship Program. Bobby is employed at First State in Omaha.

Lindsay Stigge '06 and **Travis Powers '06** were married Oct. 20, 2007, in Omaha. Lindsay teaches sixth grade at Indian Hill Elementary in Omaha. Travis is an operations manager for Enterprise Rent-A-Car in Omaha where the couple lives.

Christina Ulmer '06 has moved to Ridgeland, Wis., where she has bought a house and teaches middle school special education in the Prairie Farm School District.

Jennifer (Muell '05) Harder has been promoted to assistant cashier at Washington County Bank in Blair. She and her husband, Chad '04, make their home in Minden, Iowa.

Molly Jackson '05 married **George Willing '04** on July 7, 2007, in Tekamah, Neb. The couple lives in Blair.

Clinton Peterson '05 married Brooke Anderson on June 16, 2007, in Craig, Neb. The couple lives in Omaha where Clint is employed at Orizon CPAs.

Tyler Bliemeister '04 and Amy Behrns were married July 14, 2007, in Omaha, Neb. Tyler is currently employed at Aureus Medical as an account manager.

Abigail Erpelding '04 received her master's of social work from the University of Nebraska-Omaha in December 2006. She is employed by Methodist Hospital in Omaha.

Jennifer Gochenour '04 and Shawn Kelly were married Oct. 6, 2007, in Missouri Valley, Iowa. Jennifer is a certified pharmacy technician at Alegent Health Community Memorial Hospital in Missouri Valley.

Carrie Whitehead '04 is currently working for Milo Belle Consultants, LLC as a corporate support consultant. She lives in Sioux Falls, S.D.



PHOTO LEFT **Natalie Hornig '03** and Francis Origanti were married June 8, 2007, in Omaha, Neb., where they now live.



William Mathis '03 is studying in the master's in library and information science program at Denver University.

Jeremy Stoll '03 and Erin Joeckel were married Oct. 12, 2007, in Omaha, Neb. Jeremy is a language arts teacher at Westside Middle School in Omaha.

Sarah (Zehnder '03) Toll is pursuing a master's degree in library and information science at Emporia State University. She is working as a librarian for the Lindsborg (Kan.) Middle School. She lives in Lindsborg with her husband, Matt.

Brian Anderson '02 teaches art and coaches soccer at Burke High School in Omaha. He lives in Omaha with his wife, Molly.

Renee Boman '02 and **Kevin Stull '01** were married July 7, 2007, in Columbus, Neb. Renee is a foster care specialist at Nova. Kevin is a branch manager at US Bank. The couple lives in Council Bluffs, Iowa.

Tyler Cooper '02 and Jodi Collicott were married July 28, 2007, in Blair, Neb.

Kylie (Knobbe '02) Dirkschneider is a K-2 special education teacher in the Blair (Neb.) Public Schools.

Dan Hansen '02 and **Jenni Holmes '03** were married June 16, 2007, in Shenandoah, Iowa. Jenni is currently employed as an accounting and human resource specialist at Browns Shoe Fit Company general offices in Shenandoah. Dan is a claims statistical coordinator at National Indemnity Company.

Allison (Botkin '02) Wissman received the Best Supporting Actress in a Musical award at the annual Omaha Theater Arts Guild Awards for her role as Rita La Porta in "Lucky Stiff" at the Bellevue Little Theater.

Kelly Arth '01 and William (Clint) Deerson were married Aug. 25, 2007, in Las Vegas. Kelly is employed at the University of Nebraska Medical Center in emergency medicine. The couple lives in Omaha.

William '01 and Jessica (Schwenn '02) Potts had a son, Quinn William, on May 9, 2007. He weighed 8 pounds, 6 ounces and was 20 3/4 inches long. He joins a sister, Brynn, 4. Jess'e is a stay-at-home mom and Bill is currently employed as a cost accounting manager at Hormel Foods in Osceola, Iowa. The family lives in Indianola, Iowa.

Kristen Nakasone '00 received a master's in business administration from the University of Phoenix in June. He lives in Mililani, Hawaii.

Christina Nutter '00 married Justin Stade in Fredericksburg, Texas, on Sept. 9, 2007. She retired from her position as associate director at Ebert Ranch Camp and is looking forward to pursuing new dreams. The couple lives in El Paso, Texas.

Michelle Schriver '00 and Josh McDonald were married July 7, 2007, in Dannebrog, Neb. Michelle works in animal care at Schering Plough Pharmaceuticals in Omaha. The couple lives and farms in Rockville.

Deena (Knapp '99) Bisig, community studies instructor at Clark College in Vancouver, Wash., received the 2007 Gen. George C. Marshall Public Leadership Award. The award is presented to a Clark County resident 35 or younger who has earned a four-year college degree and has demonstrated leadership and public service.

PHOTO BELOW Dana and **Tara (Furstenau '99) Bly** are the parents of a daughter, Trista Addison, who as born June 27, 2006. She joins a sister, Tessa, age 3. The family lives in Laurel, Neb.



PHOTO ABOVE **Shane Koepke '99** graduated from Wartburg Theological Seminary in May and was ordained as a pastor of the Evangelical Lutheran Church in American on July 1. He has accepted a call with two churches in St. Donatus and LaMotte, Iowa. In attendance at his ordination were (from left) Sarah Voorhees (former Dana admissions counselor), **Justin Wiese '03**, **Lindsay (Bruning '99) Paulson** with daughter Kailey, **Shane Koepke '99**, **Janelle (Kahl '99) Koepke** and son Brecken.

Adam and **Melanie (Lubbers '99) Pryor** are the parents of five children, including triplets who were born in February. The family lives and farms west of Woodbine, Iowa.

Kevin Ronnenkamp '99 graduated in May with a PharmD from Creighton University and currently works as a registered pharmacist with Walgreens in Omaha, Neb. His wife,



Kristin (Hansen '97) is an executive assistant manager with Walgreens and currently works in Bellevue, Neb.



PHOTO ABOVE **Dan Olsen '98** and Theresa Moya were married July 7, 2007, in Laguna Beach, Calif. Dana alumni in attendance at the wedding included: back row, **Mark Olsen '90, Matt Worley '99, Roger Howland '64, Ernie Abariotes '65**; front row, **Joyce (Olsen '58) Gilbert, Roger Petersen '61, Kristin (Olsen '93) Koubsky, Jan (Willson '72) Mullahey, Dan Olsen '98, Theresa (Moya) Olsen, Linda (Anderson '65) Howland, Lois (Vaught '66) Olsen, Marilyn (Andersen '65) Abariotes**; and kneeling, **Jim Olsen '62**. The couple lives in Placentia, Calif.

Kyle Anderson '97 and Melissa Katskee were married Sept. 22, 2007, in Omaha. Kyle is an operations manager at the Omaha Performing Arts Society. The couple lives in Omaha.

Mary (Bruns '97) Eckberg transferred from Edwards Air Force Base in California to Nellis Air Force Base in Nevada this summer. She and her husband, Jason, reside in "fabulous" Las Vegas in their first home with a new puppy, Mary writes.

Diane (Crawford '97) McDonald is working as a physician's assistant in Internal Medicine in Denver, Colo., where she lives with her husband, Tiger, and two children, Ashley Lanae, 3, and Carson Jalen, 2. "All of us are staying active," she writes, "enjoying the Colorado outdoors."

Curt and **Meadow (Rouse '97) Scott** had a baby boy, Beckett Michael, on June 16, 2007. He weighed 7 pounds, 2 ounces and was 20 inches long. He joins a brother, McCoy Thomas, age 2. Meadow joined Riggins and Associates Counseling Services in Fremont in January. The family lives in Blair.

Jason Jackson '96 and Abbey Hughes were married Sept. 8, 2007, in Minnea polis, Minn. Jason is a teacher at McMillan Junior High in Omaha and a basketball coach at Ralston (Neb.) High School. The couple lives in Omaha.

Holly (Halsell '96) Jones is working as youth choir director at United Lutheran Church in Bella Vista, Ark. She and her husband, Rich, have a son, Noah Zander, who was born June 15, 2006.



PHOTO ABOVE **Shannon '96** and **Mary (Hennings '96) LeFave** announce the adoption of their fifth son, Jordan Karl. Jordan was born on Sept. 17, 2006, and came home with the LeFaves on Sept. 19, 2006. Finally on Aug. 23, 2007, Jordan became an official LeFave. He has four brothers, William, 8; Aidan, 5; Shane, 3; and Tregan, 1. The family lives in Hebron, Neb.

Mark and **Jennifer (Nelson '95) Stoj** of Omaha had a son, Zachary Antoni, on Dec. 11, 2006.

Mike Maxwell '93 is the operations manager for Lowe's Home Improvement in Rochester, Minn. His wife, **Stacey (Harris '94)** works in the Department of Anesthesiology at Mayo Clinic in Rochester. They live in Kasson, Minn., with their two children, CheyAnne, 12, and Dalton, 4.

Patrick Cronin '92 has been appointed to the position of manager of operations at the Omaha Public Power District Fort Calhoun Station. He began his career with OPPD in 1985. He lives in Fremont.

Merid Eshete '92 has accepted a new position as senior vice president and chief audit executive with Meta Financial Group. Prior to that, he was a director of financial institution services at Jefferson Wells. Merid lives in Eden Prairie, Minn., with his wife, Elsa, and daughter, Sara.



PHOTO LEFT **Troy '91** and **Nicki (Tobin '96) Carmichael** are the parents of a daughter, Kaiden McKinley, who was born Feb. 20, 2007. She joins a brother, Dillon Thomas, who is 2 years old.

Patty (Tonniges '91) Pagel is divisional quality manager for Archer Daniels Midland. She and her husband, Gary, are the parents of three children, Haley, 9, Taylor, 5 and Kolby, 2. The family lives in Decatur, Ill.

Karla (Njus '91) Remmers is employed in the indirect lending department at SAC Federal Credit Union in Omaha.

Kevin Meyer '88 is the new senior pastor at Mount Calvary Lutheran Church in Boulder, Colo. **Kristin (Wass '91)** is teaching pre-kindergarten at Sacred Heart of Jesus Early Learning Center in Boulder. Kristin writes: "Our son, Asher, age 7, has enjoyed two visits to Dana this year; one to see Uncle **Kevin Wass '93** get the Young Alumnus of the Year



Award and one to visit Papa Gene and Grandma Susie Meyer. He thinks he might like to be a Viking someday!"

Jeff Hansen '87 is the new pastor at Trinity Lutheran Church in Arlington, S.D. He and his wife, **Cindy (Lorenzen '84)** began their ministry at Trinity in August. They had previously served at Salem Lutheran Church in Center, S.D., for 16 years.



PHOTO ABOVE **Delana (Heffelfinger '86) Heidrich** of Bonanza, Ore., visited many struggling artists and craftspersons in Nicaragua this past summer and encourages Dana alumni to support small-scale artists around the world.

Kristine (McKay '84) Cardoza is a subrogation claim representative for State Farm Insurance in Murfreesboro, Tenn.

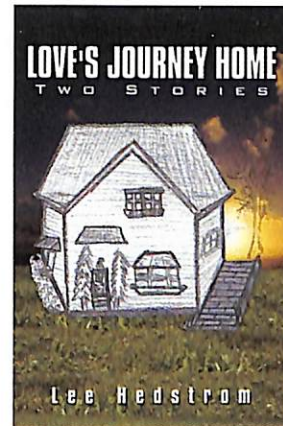
Robertson Implement in South Sioux City, Neb., was recognized in the Sioux City Journal for more than 60 years in business. It is co-owned by **Rick Robertson '83** and his father, Gene. The business was started by Rick's grandfather, Ray.

Mogens Knudsen '81 opened the Holdrege (Neb.) Market Place grocery store in Holdrege (Neb.) in August. He also owns the Plum Creek Market in Lexington, a convenience store in Johnson Lake and a grocery store in Kansas.

Dr. Shirley Steffens '77 began a four-year commitment this fall on the Missouri State Council for Exceptional Children (CEC) Executive Board as vice president and will continue on to president-elect, president and past-president in subsequent years. As vice president, she is in charge of the annual state awards to be presented at the state conference in March 2008. Dr. Steffens is an associate professor in special education at Northwest Missouri State University in Maryville, Mo., where she is the coordinator of special education programs and teaches undergraduate and graduate courses.

Janet (Sailer '74) Harcourt recently began a new job as supervisor in the state of Missouri's Teacher Certification Department. She is also the director and part-owner of Show Me Yoga Center in Jefferson City, Mo., where she lives with her husband, James, and daughter, Emmie, 16.

Mark Warner '74 was featured in an article titled, "Wednesday Afternoon With... An Insurance Man and His Harley," in the Logan (Iowa) Herald-Observer. Warner started his independent insurance agency in Logan in 1976.



PHOTOLEFT **Lee Hedstrom's '73** third book, "Love's Journey Home" was published in late October. His other two books are "The Church at the Edge of Time" and "A Life of Communion." He lives in Robbinsdale, Minn.

Ryle Smith's '73 independent film "Harker" was recently nominated for "Best Horror Film" at "The International Terror Film Festival 2007" in Philadelphia, Pa. The film

written and directed by Smith, features **Kevin Barratt '79** and **Brent Noel '85** with original musical score by **Barry Anderson '73**. Smith lives in Omaha.

Elaine (Bringewatt '72) Olson of Minneapolis, Minn., received her master's of divinity degree from United Theological Seminary in May and her certification in spiritual direction from the College of St. Catherine in December 2006.

After 37 years of working with Vietnam vets, **Jon Christensen '68** has accepted a position with the VA's Vet Center program, working with retiring OIF and OEF veterans and their families as well as the aging Vietnam veteran population. He writes: "I'm also recently remarried to an angel, and ride my Harley to work every day. Life can't get better than this!" He lives in Franklin, Wis.

Judy Olsen '67 of Kalispell, Mt., is currently teaching fourth grade and has been in education for 34 years.

Philip '65 and Ruby (Bushnell '66) Dynneson have a small vegetable and flower garden in the Flathead Valley of Montana. They sell garden items at Bigfork Farmer's Market and provide flowers for weddings upon request.

Dr. Robert Rademacher '64 has retired from active ministry as an ELCA pastor after 39 years, the last nine at Emmaus and Immanuel Lutheran Churches in Kennard and Orum, Neb. He and his wife, **Darlene (Haecker '67)** have moved to Lincoln, Neb.

Kay and Joan (Neill '60) Kollmorgen were selected as 2007 Independence Day Marshals in Humboldt, Iowa.

Rodney Wead '57 of St. Louis, Mo., was inducted into the Omaha Hall of Fame on Aug. 2, 2007.

DEATHS

Betty L. (Thomas) Christo '70 of Nashville, Neb., died Oct. 13, 2007, at the age of 84. She taught school at District 35 in Burt County, Hooper School in Dodge County, Longcreek School and kindergarten at Nashville School, both in Washington County. Survivors include a daughter and a son.

Robert C. Kumm '64 of North Platte, Neb., died Oct. 21, 2007, at the age of 65. He joined the U.S. Army in 1962 and was honorably discharged in 1965. He was employed by the University of Nebraska Extension Service, North Platte



Plumbing and Heating and as a pipe fitter for the Union Pacific Railroad until his retirement in 2002. Survivors include his wife, Barbara; three daughters, a son and four grandchildren.

Phyllis J. Rasmussen '64 died Aug. 29, 2007, in the Washington D.C. area at the age of 65. She worked at the Dana College Library from 1968-1972, then moved on to the Library of Congress, specializing in the Scandinavian and Germanic areas. Survivors include three brothers, David '66, Richard '69 and Gary '76.

Susan M. (Ringhand '63) Vines of Riverton, Wyo., died Sept. 15, 2007, at the age of 66 after a 12-year battle with cancer. Survivors include her husband, Ron, and two children.

Richard Hagedorn '62 of Yucca Valley, Calif., died July 20, 2007, of cancer at the age of 67. He was a funeral director for 31 years. After retirement, he became an accomplished quilter at his wife Loreli's quilt shop. Survivors include his wife, Loreli (Burgdorf '62), a son, two daughters, seven grandchildren and one great-granddaughter.

Janice (Nipko '60) Elliott of Menomonee Falls, Wis., died June 1, 2006, of cancer. She is survived by her husband, Keith '60, daughter Dawn (Elliott '87) Sanders, two sons and seven grandchildren.

Ellen (Olesen '55) Mendenhall of Pittsburg, Kan., died July 8, 2007 at the age of 75. She was an elementary teacher for the South Sioux City, Wahoo and Lincoln school systems and also worked as a paraprofessional in Pittsburg. Survivors include her husband, Terry; two sons, and a sister.

Rev. Charles L. Kaldahl '52 died July 9, 2007, in Port Townsend, Wash., at the age of 77 of prostate cancer. He was a substitute night minister and an assistant pastor at St. Mark Lutheran Church and at First United Lutheran Church in San Francisco. He later directed St. Timothy's Healing Community Inc. in San Francisco as well as a cancer support group at Sisters of Mercy Convent in Burlingame, Calif. He retired in 2001. Survivors include his wife, Jean, a son, brother Philip '53, sister Janice (Kaldahl '65) Haskell and sister-in-law Joyce (Arnold '59) Kaldahl.

Rev. Robert G. Nelson D'52 T'55 of Loveland, Colo., died Oct. 7, 2007, at the age of 78. He served as a U.S. Air Force chaplain from 1955-1961 and then entered the Lutheran parish ministry, serving churches in Lincoln, Neb., Fort

Collins, Colo., Sioux City, Iowa, Sterling Colo., and Colorado Springs, Colo. He retired in 1996. Survivors include his wife, Arlene (Sandberg '54), a son, three daughters, and a sister Shirley (Nelson '59) Eckholm.

Helen (Halstead '51) Kofoid of Cortez, Colo, died Oct. 1, 2007, at the age of 77. She participated in the choir all four years while she was at Dana. She earned a masters degree in education from the University of Nebraska-Lincoln. Survivors include her husband, Charles, and three children.

Jeanette (Christensen '51) Nixon of Los Angeles, Calif., died Aug. 3, 2007, at the age of 79. In 1951, she moved from Nebraska to Inglewood, Calif., to fill a position as church secretary at Olivet Lutheran Church where she worked for 10 years. Survivors include brothers Vaughn Christensen '53 and Ward Christensen '62, two children and three grandchildren.

Jack Kitterman '50 of Mesa, Ariz., died Aug. 24, 2007. His wife, Nancy, writes: "He spoke highly of Dana, the education he received, and the many friends he made while getting his education on the GI bill from your institution. Thank you for your help in making his life so rich."

Margaret (Berg '45) Barkley of Yankton, S.D., died Sept. 24, 2007, at the age of 83. Among survivors are five children, including Jean Ann Barkley '79, Bruce '81 and wife Mary (Asmus '81) Barkley.

Alton Neve '43 of Albert Lea, Minn., died Oct. 8, 2007, at the age of 87. He had taught English in Mable, Minn., and had been a teacher and principal in Emmons, Minn. He was an accountant at Wilson & Co for 30 years. Survivors include his wife, Marjorie; three daughters including Andrea Neve '81; three brothers: Dr. Paul Neve '41, the Rev. Lloyd Neve D '45 T '47, and the Rev. Ried Neve D'48 T '51.

Ernest Duus '39 of Ruthven, Iowa, died July 6, 2007, at the age of 91. He farmed west of Graettinger, Iowa, until retiring in 1968. He moved to Emmetsburg, Iowa, and developed and managed Green Acres Mobil Manor. Survivors include his wife, Violet, and three children.

James P. Jacobsen '38 died Sept. 7, 2007, in St. Paul, Neb., at the age of 92. Survivors include a son and daughter-in-law, Jimmy '67 and Ruthie (Knoell '70) Jacobsen of St. Paul, a daughter and a sister. He operated the mortuary in Dannebrog, Neb., and later also funeral homes in St. Paul and Wolbach.

Willard A. Richardson...

died Sept. 22, 2007, at the age of 95. Richardson joined Henningson Engineering Company (which later became HDR) in 1936 after graduating with a degree in electrical engineering from Iowa State University. Richardson and Charles W. Durham (the "D" in HDR) purchased the company from founder Henning H. Henningson in 1950 when the firm became known as Henningson, Durham & Richardson, Inc. Richardson retired from Henningson, Durham & Richardson, Inc. in 1977.

At Dana he established the Leitha K. and Willard A. Richardson Professorship in the Liberal Arts that is presented annually to a faculty member for distinguished performance in the classroom and in service. Professors selected receive a course release and a stipend. The first professorship was awarded to Dr. John Mark Nielsen in 1998-99.

Richardson received an honorary doctorate of business from Dana in 2000.

His wife, Leitha, died November 21, 2007

Survivors include two daughters, six grandchildren and 12 great-grandchildren.

DANA REVIEW

Upcoming Events

ALUMNI EVENTS:

January 26, 2008: Family Fun Day at Dana Basketball

For more information, contact Julie Rohlfing, Alumni Affairs, 402-426-7235.

February 23, 2008: Annual Arizona Luncheon

For more information, contact Chrystal LeGrand, 402-426-7208.

October 3-5, 2008: Homecoming

For more information, contact Julie Rohlfing, Alumni Affairs, 402-426-7235.

CAMPUS EVENTS:

April 25-27, 2008: Presidents Circle Weekend

For more information, contact Chrystal LeGrand, 402-426-7208.

May 4, 2008: Dana College Chorale at Trinity Episcopal Cathedral, Omaha

May 10-11, 2008: Dana College Chorale Home Concert, 2:00 p.m.

 **DANA REVIEW**

2848 College Drive
Blair, NE 68008

Return Service Requested

Non-Profit Org.
U.S. Postage
PAID
DANA COLLEGE