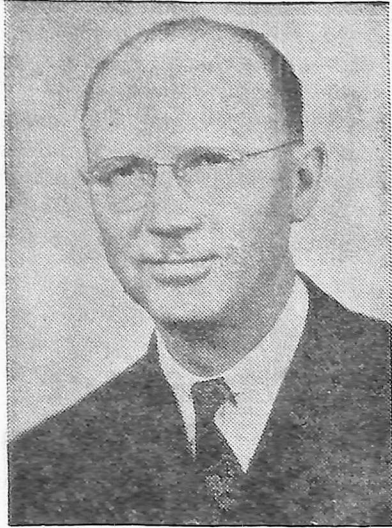


Spiritual Emphasis Week, Febr. 5-12

L.B.I. Faculty Member Leads Bible Study

(AT)—Bringing the Rev. A. R. Petersen to our campus, Spiritual Emphasis Week at Dana will begin on Sunday, February 5, and last through the following Sunday, February 12. Classes will be rearranged during the week in order that an hour's chapel period of Bible study can be held each morning. Evening services will begin at 7:30 p.m. in the Pioneer Memorial Auditorium.



Rev. A. R. Petersen

Joe Andersen and Wife Injured in Holiday Crash

(VH)—Joe Andersen, Trinity Seminary junior, and his wife were seriously injured in an automobile accident on Christmas Day about 4 p.m., while traveling to Blair after holding services in Staplehurst, where Joe has been serving as student pastor. Mrs. Andersen was driving when they collided with another car as they reached the top of a hill. Their two children were not hurt.

Joe suffered a compound fracture of the hip, and will have his leg in a cast for a couple of months. Mrs. Andersen's injuries were not quite so serious. They were both taken to the hospital in York, Nebr. Joe, however, is now in the Veterans' Hospital in Lincoln.

It's That Week

—By Gerhardt Mengers

Well, here it is! The week that all of us have been dreading, and yet looking forward to for the whole last semester. It is the time when the past studies are reviewed, and our future plans made or altered. In short, this is an important week for all of us. The results of these tests will in many cases determine the future of the rest of our lives.

Everyone seems to realize its deep significance. Everywhere someone is studying for this test or getting in his last few minutes of cramming before entering the room to "face the challenge." The dorms have taken on an aspect of a mortuary. Everywhere is silence. Most of the doors have been covered with signs, "Do not disturb, Please." The school's electricity bill has been growing by leaps and bounds. In almost every room someone is burning the midnight oil.

By this time some of the tests have been taken, and it is not too hard to observe on the faces of the students just what kind of a job they have done, or thought they have done, on the last test. Some are slowly walking back to the dorms, their faces practically dragging on the ground, and others dance along as cheerful as can be. And then, there is the usual discussion.

"What was the answer to the question on . . . ?"

"It was . . . And what was the answer to . . . ?"

I think that the following parody (with the possible exception of the last verse) portrays the typical room:

Tests

'Twas the night before tests,
And all through the dorm
Not a creature was stirring,
Not even a worm.

The men of the dorm
Sat late by their beds,
While visions of failures
Whirled in their heads.

But Paul in his nightgown,
And me in my cap,
Had just settled down
For a short morning's nap—

When all of a sudden
There rose such a dinging,
I jumped out of bed
To shut off the ringing.

The test came so quickly
My head was still groggy,
But I sat by my desk
And answered so foggy.

One week, and the grades—
Oh my, how I wondered—
My test grade just floored me.
How'd I get a hundred?



THE MESSENGER FROM DANA

Volume XXXI

Dana College, Blair, Nebraska, Friday, January 20, 1950

Number 6

Rasmussen Serves on State Education Advisory Committee

(DL)—Elmer M. Rasmussen, Dana College Dean, was recently appointed as a member of an advisory committee in cooperation with the State Department of Education. Chosen because of his previous background in education at Dana College and at the University of Nebraska, Dean Rasmussen will serve on the Committee of Evaluation and Research. Various committees have been appointed for unifying the program. "The State Department of Education, teacher training colleges, and leading educators in the state are working together to improve education in the different areas," said Mr. Rasmussen.

Author-Linguist Impressed by Visit to Danish Classes

Miss Ingeborg Stemann was a visitor on Dana's campus Monday, January 9. Eighteen years ago in Copenhagen, Miss Stemann started a course on the Danish language, literature, and culture, and has taught the course ever since. Her classes have been composed of students from all over the world. Her purpose in visiting the United States is to establish contacts with former students.

Miss Stemann used to teach Danish in the universities in Poland. She speaks Polish, Russian, Chinese and various other languages.

While Miss Stemann was visiting at Dana, she attended two of the Danish classes and was very impressed with the type of instruction.

Language Professor Expected Home Soon

(DO)—Professor daCruz underwent an operation at the Blair Hospital during the Christmas recess and was transferred to a hospital in Omaha after complications set in. The Rev. Morck, missionary from Colombia, is now teaching the Spanish class, Bruno Timpa is teaching the German class, and Miss Falk has taken over the French class in Professor daCruz's absence. President Morton said that Mr. daCruz is doing well and might come home this week. He himself composed the final examinations which are being given by his substitutes.

Lilac Time Committee Heads Chosen

Plans are being made for the annual "Lilac Time" week-end which will be held in May. Esther Erickson, Denver, Colo., and Bob Hansen, Grenville, Mich., have been elected as chairmen by the W.A.A. and "D" Club, who jointly sponsor this social event.

Student Traffic Court to Tackle Campus Parking Problem

Student Body Votes to Withdraw from Nat'l Student Assoc.

Dana's membership in the National Student Association died a quiet death at last week's Student Body meeting when a resolution to withdraw passed virtually unopposed. The withdrawal was based on a recommendation of the Student Council. Chief cause for the action seems to be the little value in the small college membership considering the annual dues. The resolution, however, stipulated that the Student Body continue to send an observer to each annual NSA congress meeting. The Body also voted that the \$200 raised for the \$10,000 athletic area by the corn-gathering project be allocated in particular to the building of a track. Elections were made to the traffic court.

Dana Band Presents First Concert of Year Last Sunday

The Dana College Band, under the direction of Prof. Paul Neve, presented their first full concert of the year on last Sunday afternoon in the College Auditorium. Approximately 150 persons attended the concert.

The band consists of thirty students who play a wide range of instruments, enabling the organization to choose from a broad scope of musical literature. The nine selections of the concert ranged from recognized classical compositions such as Wagner's Prelude to Die Meistersingers to modernistic compositions such as Carleton Colby's Headlines, a rhapsody depicting musically such incidents as might appear in the print of today's newspapers.

Other highlights of the program included a number of popular marches, such as Sonsa's Stars and Stripes Forever, and Fillmore's His Honor, Strauss' Perpetual Mobile, a humorous number in which every instrument has a solo, was a unique selection on the program.

In addition to such concerts the band has presented a half hour program on Dana's regular Wednesday afternoon radio broadcast, and the playing by the band has become an integral feature of sports events on the Hill.

Dana Choir to Tour 3 Midwest States In March

(RN)—The Dana College a cappella choir will go on its annual spring tour March 2-12. The choir, composed of 46 voices, plans to travel through the states of Iowa, Minnesota, and Wisconsin.

The program for this year consists of number by Bach, Palestrina, and several modern American composers.

(RW)—At a meeting of the student body Thursday, Jan. 19, steps were taken to solve the parking situation on our campus. A traffic court composed of five members was elected. The duties of this court will be the formation of rules, in cooperation with the administration, for parking, and the enforcement of fines on offenders of these rules. Fines leveled against these violators will be placed in a student body fund. The members of this court include Cal. Jorgensen, Delos Lind, Joyce Williams, Bud Robinson and Willis Olsen.

Prexy Jim Hansen pointed out that the double and triple parking often found in front of the boiler house presented a real problem. In the event of a fire in Old Main this parking would make the south side of the building very difficult to reach with fire fighting equipment, it was also noted that it is often difficult for delivery trucks to operate in this area because of the parking.

A police department appointed by the student council to enforce the laws was also announced at the meeting. Ray (Garbone) Christensen was appointed chief of the campus "flat feet" with John Lassen and Russ Eckert as his able assistants. Custodian Gay Carlsen will also have power to give out the traffic court "Invitations."

Students Lead in Discussing 'Morals' Next Sunday

(AS)—"Morals" will be the topic for the third in a series of Sunday afternoon discussions Jan. 22 at 2:30 in the Men's Reception room.

Students leading this discussion are Lois Girtz of Albert Lea, Minn., Joan Petersen of Portland, Me., LeRoy Andersen of Racine, Wis., and Bud Robinson of Blair. Coach Petersen will be the moderator.

The purpose of the discussion groups is to stimulate student thinking on vital issues.

The first discussion was on "Communism." Last Sunday Sam Reynolds, member of the Citizens' Committee for the adoption of the Hoover Commission report, spoke to the group and answered questions.

ACTIVITIES CALENDAR

Jan. 21—Basketball, Norfolk, there.

Jan. 22—2:30 p.m., Discussion: "Morals," Men's Reception room; 8:00 p.m., Movie: "Sickle or Cross," Auditorium.

Jan. 25—Basketball, Westmar, there.

Jan. 28—Basketball, Nebraska Central, here.

Jan. 31—Basketball, Fairbury, there.

Feb. 4—Basketball, Luther, there.

Feb. 5-12—Spiritual Emphasis Week.

HERMES

THE MESSENGER FROM DANA

Published every third week during the college year, except holiday and examination periods, by the student body of Dana College and Trinity Theological Seminary, Blair, Nebraska.

Subscription rate \$2.00 a year, in advance.

Entered as second class matter November 10, 1920, at Blair, Nebraska, under the act of March 3, 1879.

Editor-in-chief.....Paul A. Jeppesen
Associate Editor.....Peter L. Thorslev
Editor Emeritus.....L. Mortimer Nielsen
Sports Editor.....Norman F. Jensen
Business Manager.....Arlo K. Andersen
Assistant Business Manager.....Warren L. Rasmussen
Circulation Manager.....Gerhard J. Nygaard
Layout.....James L. Hansen
Photographers.....John H. Faltys, William K. Peterson
Typists.....Delores A. Nielsen, Ruth Neve

COLUMNISTS

Jack Christensen, Elva Jensen, Paul E. Mengers, L. M. Nielsen, John Sorensen.

FEATURES

Gerhardt E. Mengers, Melvin C. Suhr.

REPORTERS

Lloyd Eansen, Jeanette Christensen, Frank Clausen, Linwood Fredericksen, Verlan Hanson, Pauline Jorth, Dorothy Larsen, Roy F. Mumm, Joyce Nelson, Marilyn Nelson, Ruth Neve, Donald Ofte, Ann Thomsen.

Danaville.....Albert Rasmussen Seminary.....Ried Neve

SPORTS STAFF

Dudley Collier, Jack Kitterman, Paul Laursen, Jimmy Sorensen, John Beck, Margaret Christensen.

Public Relations Advisor.....Homer Nielsen

That Same Tune Again

Just why did the Student Body vote to discontinue our membership in the N.S.A.? The N.S.A. is a dead issue, admittedly, but a summary post mortem may profit the living if not the dead.

The first reason given by the Student Council was that the organization "seemed to have communistic tendencies." The other reason (and in our estimation a more valid one) was that a college as small as ours can gain little benefit from such a large national organization.

Aside from the merits of these arguments, we think a third might have been added. It is generally agreed that we never get anything more out of a project than we are willing to put into it. Could it be that the Student Council and Body in general lacked the initiative to make an effort to take an interest in its activities?

If this is a valid reason, even though it may be inevitable to a degree in a small church school such as ours, we should be honest enough with ourselves to admit it and make an effort to correct this general apathy toward current issues in the world about us.

Announcements concerning the next Sunday afternoon discussions will be found elsewhere in this issue. This is a good project—let's support it actively. The attendance has been good, but with the beginning of a new semester, let's make it better.

And if we might make a suggestion, we think it would be well to keep the topics specific enough to stimulate interest and discussion, and whenever possible to keep the topic directed toward events and trends outside of the college, so the meetings may remain true to their purpose of broadening our interests in the outside world.

With this issue our "heads-up" Sports Editor, Norman Jensen, concludes his work with *Hermes* this school year. He has been able and efficient in his work, and his services are to be commended. Good luck in your work at home, Norm, and hurry back.

When you scan this "rag" take half a minute to look over the ads and whenever possible patronize these business concerns. They help us and they would like to serve you! So, keep *Hermes* advertisers in first place in your mind.

Letters to the Editor

To the Editor:

A trend has been building up over a long period of time which we believe is discouraging scholarship on the campus. There are increasing instances of the library being closed to students when there does not seem to be reason enough to warrant it. Occasions have arisen in the past when the library has been closed because of a meeting which affected only a small percentage of students. But scholarship has been emphasized as a great need in the life of a student, a statement with which we are in complete agreement.

On other college and university campuses the practice of closing the library at the slightest provocation is not carried out, but it is available for the use of students from early morning until late at night whether there be five or fifty students using its facilities. We believe that the library hours are limited enough without further limitations being placed on them. And we believe that we speak for a good many students on the campus who are serious about their work.

Some Students.

Potpourri from the Library

The emphasis this year is on strengthening the reference collection in the various fields, and quite a number of books have already been placed on the shelves. A seven volume set called *LANDS AND PEOPLE* gives much sought information on the life and habits of the people of the world. The books contain many black and white, as well as colored, illustrations. A set of five called *NATURE LIBRARY* gives one access to material on birds, trees, butterflies and all types of flowers. There are six volumes of the *Living Biographies* series: *RELIGIOUS LEADERS*, *AMERICAN STATESMEN*, *FAMOUS NOVELISTS*, *GREAT COMPOSERS*, *GREAT PHILOSOPHERS*, and *FAMOUS MEN*. There are four volumes of the series *WHO'S WHO IN LATIN AMERICA*, dealing with people of Mexico, Brazil, Bolivia, Chile and Peru and Central America and Panama.

Where would you go for some ready, authentic information? Why, of course, to the new one volume encyclopedias—which are the latest editions and the best in their fields: *LINCOLN LIBRARY OF ESSENTIAL INFORMATION* and *COLUMBIA ENCYCLOPEDIA IN ONE VOLUME*.

Didn't you ever wonder where the saying "pay through the nose" originated? You can find out on page 177 in Stimpson's *A BOOK ABOUT A THOUSAND THINGS*.

You have heard of the terms "gangle shanks" and "half-pint" used in referring to people. Berrey and Van der Bark's book *AMERICAN THESAURUS OF SLANG* tells you about these on page 161. The book has many interesting words and phrases for you.

John Kieran's *INFORMATION PLEASE ALMANAC*, 1950, came in just the other day, and it contains information on vacation travel, World Series statistics, United Nations, and whatever you wish.

The other day several of you wished to find the list containing the names of the Roman Popes. Now if you had looked on pages 1176-1178 in Langer's *ENCYCLOPEDIA OF WORLD HISTORY* you would have had no trouble.

By the way, have you checked the derivation of your first name in Loughhead's *DICTIONARY OF GIVEN NAMES*? The unabridged dictionaries will give you some information along that line, too.

After exams, students may want some information on how to give a party. Wilson's *NEW ETIQUETTE* will give you what you want.

Where is Popocatepetl located? See the new Webster's *GEOGRAPHICAL DICTIONARY*.

By the way, did you know that HERMES is listed in the 1949 Ayer's DIRECTORY OF NEWSPAPERS AND PERIODICALS, page 567? That reference volume has much statistical information. See if you can find your hometown paper listed.

Do you know the motto, nickname, flower, bird, and song of your state, and when your state entered the Union? *BOOK OF THE STATES, 1948-1949* will tell you this and much additional information about the state from which you come.

Did you have to write a paper on Hinduism? Lewis and Browne's *WORLD'S GREAT SCRIPTURES* will give you much information on this topic.

Ever dip into the book *REDDER'S ENCYCLOPEDIA*? It has many odd facts, and curios, many slogans and phrases, historical information, plots of books, information on writers, and other related facts.

Finally, the copy of the 1950 *SOUTH AMERICAN HANDBOOK* arrived. Now you can find out if Sao Paula, Brazil, is the place to go to make your fortune.

Haven't you often wondered from where the term "pi" comes? James and James *MATHEMATICAL DICTIONARY* will tell you.

Open letter to the Student Body:

Now that a new year has arrived, we begin to look back over 1949 and take stock of just what has happened, and also what hasn't happened. In the eyes of some, we as a student body may have accomplished much, and in the eyes of others we have accomplished little or nothing. Many of us have had many pleasant experiences to recall and others have had some experiences that are not quite so pleasant. At any rate, a new year has arrived and it is up to us to make it one of the best and most pleasant years in our life. We must analyze and criticize the mistakes we have made during the past year and then correct them.

Your student council is anxious to serve you in any way that they can and we would appreciate any ideas, projects, criticisms or what have you, that will help to make this second semester one that we will all remember and appreciate. At the same time, we wish to express a hearty "thanks" to the student body for the cooperation and support given us during the first semester, and also a "special thanks" for those who have put in those long, extra hours on the various committees.

And so we say "Happy New Year" and let's make this new year, one that really counts both for Dana and for ourselves.

Student Body Pres.
James R. Hansen

STUDENT SPOTLIGHT

Ellen Takes Those Temperatures

ELVA JENSEN

If you have ever been ill here on the campus this year, you have undoubtedly become acquainted with our school nurse. And our student spotlight this week is shining on that same school nurse, and also president of the dorm council, Ellen C. Jensen.

Ellen is a junior at Dana and also spent her sophomore year here. She is majoring in zoology and psychology, which with her nursing experience she hopes will someday qualify her to take charge of a children's home which is what she has always wanted to do.

She was born in Junction City, Oregon, on November 8, 1914, but her home is now in Brush, Colorado. And it was from the nursing school of the St. Anthony Hospital in Denver, Colorado, that she graduated.

Upon graduation she hopes to go into the field of counseling.

Doing the Impossible

—LeRoy Andersen

The Kingdom of God is coming! Just as sure as any kingdom has come to the face of the earth in the past, so also will Christ's Kingdom come. There are some that dread the coming of that kingdom, some who anxiously await it, but there are millions that are indifferent towards its coming. **We cannot afford to be indifferent!** The urgency of belonging to that kingdom is greater today than ever before. This urgency is a challenge to the youth of the world. But we often feel in our youth that Christianity is an impossible philosophy to follow and submit to.

When Christ was here on earth he continually brought man face to face with the impossible. He laid upon men commands which were utterly contrary to the flesh and human understanding. How impossible and unreasonable to demand that human nature love its enemies, turn the other cheek, rejoice in suffering and persecution, and on through the whole list of impossibilities! What was all this for but to bring men face to face with themselves and with their need of His grace to do these very impossibles. Christ said, "If any man will come after me, let him deny himself, and take up his cross, and follow me." We complain that we are unable to do this. **But our trouble is not with our inability but with our unwillingness.**

Spiritual Emphasis Week, coming soon, will afford us the opportunity of coming face to face with ourselves and of realizing the need of Christ in our lives to do the "impossibles" that He demands. The approach that Rev. A. R. Petersen will use, from the morning Bible studies to the evening sermons, should be one of uniqueness, for he is a former lawyer. During that week, in our evening prayer meetings and also in our private prayers, let us ask for and then seek to receive, the power from the Lord to do the impossible.

Views of the News

—Jack Christensen

Recently our economic system has been under attack from all quarters. Most of the attack comes from people who do not have a basic concept of what our economic system is, and are quite willing to change it to another economic system of which they still do not have a basic understanding. They think of capitalism and socialism and don't go any further.

Our economy is basically a free market economy. What is a free market economy? It is one under which the individual is free, within his means and ability, to become self-employed, a job-maker, or a job-seeker. This provides a tremendous amount of choice. It is one under which the instruments of production are privately owned by millions of individuals, and the consumer ultimately governs and directs production. It is one under which the expectation of profit directs both the worker and capital. It is one under which scarcity reflects itself in rising prices, which in turn lures additional manpower and resources into the areas where wages are best and profit anticipations are strongest, thereby overcoming scarcities. It is a system under which, when coupled with effective antitrust legislation, the march of science inevitably translates itself into ever greater output per manhour and a higher and richer standard of living for all the people. Under this system, we have some 4 million separate business establishments, each of them anxious to survive and most of them anxious to grow. Each of these establishments are willing and anxious to try new methods and new products. We have 4 million centers of initiative and enterprise. Could a planning commission of Washington bureaucrats do as good a job? It seems inconceivable that any one person or any commission could have the brains to run such a complex economic system as ours without making numerous and serious mistakes.

Nat'l Executive Committee Meet 'Most Successful in N.S.A. History'

Madison, Wis.—The recently-concluded meeting of the national executive committee meeting of the U.S. National Student Association was the 'most successful in NSA history,' according to the president, Robert A. Kelly.

The executive committee passed resolutions on student rights, Federal scholarships, human relations, heard a report on a discrimination case during the August NSA Congress, and laid plans for the 1950 Congress, which will be held at the University of Michigan.

On student rights, the executive committee condemned a loyalty oath being taken by Naval Reserve Officer Training Corps students at Harvard and the University of North Carolina.

Although NSA is on record as supporting loyalty oaths where they are necessary for U.S. security, the committee said the NROTC oath was 'too sweeping' and 'not restricted to the needs of national security.' The Harvard oath also includes a clause that stipulates that NROTC students 'inform' on other students who participate in the activities of groups on the Attorney General's list of subversive organizations, besides not participating themselves.

The executive committee also supported proposals for Federal scholarships in higher education made by the American Council on Education, and added that racial and religious inquiries should not be made in the scholarship plan. The ACE proposal is expected to reach the 81st Congress through the Truman administration.

Following up the investigation of the Lombardi case, involving discrimination against a Negro in an eating place during the August NSA Congress, the NEC praised the work of a University of Illinois committee which successfully eliminated the discriminatory situation.

On international affairs, the executive committee moved to send a full delegation to the 1950 World Student Congress, which will be sponsored by the International Union of Students, of which the NSA is not a member. The partisan nature of communist-dominated IUS was deplored by the NEC.

The University of Michigan

Sem Students' Wives Attend First in Lecture Series

The wives of Trinity Seminary students met together on Monday evening, Jan. 9, to hear a lecture by Dr. C. C. Madsen on the "Symbols of the Church." This was the first of a series of meetings that will be held by this group. At these meetings various ones of the seminary professors and their wives will lecture on topics which would be of interest and help to the future pastor's wife.

It is also planned that wives of pre-seminary students will be invited to the meetings in the future.

was chosen as the site for the 1950 Congress by a vote of 18-6 over the University of Minnesota. The Congress will begin Aug. 24, and last eight days.

The executive committee passed a double-edged program on campus discrimination, which will call for publishing facts on what various schools are doing to solve their particular discriminatory problems, and also compile a nation-wide survey of the discrimination situation on American campuses for presentation to the 1950 Congress.

ADVANCE CLEANERS (COLLEGE AGENT)

Wayne Hansen Room 400
Free Pick-up and Delivery

Let Me Be Hostess
To You

YOUNG'S CAFE

GUYER and HANSEN

Real Estate

Loans

Insurance

P. V. Hansen

H. Lyle Guyer

WASHINGTON COUNTY MOTORS

Chrysler and Plymouth Dealer

Phone 432 Wrecker Service

Rabbass Studios

PHOTOS THAT PLEASE

AMATEUR SUPPLIES COMPLETE LINE OF FRAMES

Kolterman's Ben Franklin Store

5c to \$1 Merchandise

Come here for year round school needs

Our 39th Anniversary Year

Sports Editor Norm Jensen Resigns; His Successor Named

James L. "Chintz" Hansen, sophomore from Kenmare, N. Dak., has been appointed HERMES Sports Editor to succeed the present editor Norman Jensen, Buellton, Calif., who is leaving second semester for a few months work in business at his home. "Jens," a biology major, has worked ably for HERMES for a year and a half, being Assistant Sports Editor last year. Regarding his plans, he and MacArthur are famous for the statement, "I shall return!"

"Chintz" who up to now has held the position of layout will shift to his new position effective Jan. 23.

SAMSON REXALL DRUG STORE

Prompt Service on Prescriptions

Brown's McDonald's

Clothing and Shoes For Entire Family

WASHINGTON COUNTY BANK

Blair, Nebraska
Member Federal Deposit Insurance Corp.

SCHEFFLER HARNESS COMPANY

Quality Shoe Repairing Prompt Service

Danaville News

---Al Rasmussen

During the holiday season 2 and a half pounds and has grown 2 more inches. Sharon's father says, "she is behaving herself very well," and that "Sharon has more long black hair than her father."

The tragedy occurred on Christmas day when the Joe Andersons were involved in a serious auto accident. Danaville friends and neighbors hope that they will soon be with us again.

Danians Entertain at Youth Banquet in Fremont

(DL)—Musical numbers by Dana College students were featured at a banquet at the First Lutheran Church in Fremont, Jan. 12. Paul Jersild, violinist, played "Csardas" and "An Old Refrain." Singing a number of selections were a men's quartette, composed of Don Poh, Al Nygaard, Jim Sorensen, and Lloyd Bansen. Accompanying the Dana students to the banquet which was given for the young people and their parents was Homer Nielsen, Public Relations Director.

Books School Supplies Gifts

LPH BOOK SHOP
200 S. Fifth St.

PRINTING PUBLISHING - BINDING -

LUTHERAN PUBLISHING HOUSE

BETTE'S GIFT and JEWELRY STORE

The Dana Students' Jewelry Headquarters
Watch Repair Ph. Red 550

BUY and SAVE

\$6.95 OFF

On Any Fur Collar Wool Plaid Jacket

Prices also reduced on

Corduroy Jackets and Sports Shirts

Nelson Bros. Clothiers

Home of Quality Names

HOME THEATRE

CONTINUOUS SHOW
SUN. STARTS 3 P.M.

2-SHOWS EVENING'S

SAT. MATINEE, 2:30 P.M.

Fri., Sat., Jan. 20, 21

ROY ROGERS - TRIGGER *Grand Canyon TRAIL*

Sun., Mon., Jan. 22, 23

WILLIAM POWELL Mark STEVENS Betty DRANE *DANCING IN THE DARK*

Tue., Jan. 24, 1 Day Only

WILLIAM DENOX DENNIS O'KEEFE *COVER UP*

Wed., Thurs., Jan. 25, 26

Home of the Brave
JAMES EDWARDS DOUGLAS DICK LLOYD BRIDGES

Fri., Sat., Jan. 27, 28

CHALLENGE TO LASSIE
EDMUND GWENN DONALD CRISP *in TECHNICOLOR*

Sun., Mon., Jan. 29, 30

GENE KELLY - FRANK SINATRA BETTY GARRETT *On the Town*

Tues., Jan. 31, 1 Day Only

PICTURE THAT REVEALS TREASON - NATRED VIOLENCE!
THE RED MENACE

Wed., Thurs., Feb. 1, 2

Portrait of Jennie
DAVID O. SELZNICK

Fri., Sat., Feb. 3, 4

ROBERT MITCHELL *THE RED PONY*
STEINBECK'S GREAT STORY!

Sun., Mon., Feb. 5, 6

RONALD REAGAN VIRGINIA MAYO *The Girl From Jones Beach*

Tues., Feb. 7, 1 Day Only

BRIAN DONLEVY ELLA RAINES CHARLES COBURN HELEN WALKER *IMPACT*

Wed., Thurs., Feb. 8, 9

WANDA HENDRIX MACDONALD CAREY *Song of Surrender*
CLAUDE RAIN

CANDY-SHOP

Bauer's Chocolates

Crane's Candies

Bar Candy

Fresh Popcorn

EVERY YEAR

since its first year, Lutheran Brotherhood has shown a steady and consistent growth. It has always operated on the sound foundation of the time-tested legal reserve plan, based on the American Experience Table of Mortality. Lutheran Brotherhood is purely mutual—it belongs wholly to its policy owners.

Lutheran Brotherhood

LEGAL RESERVE LIFE INSURANCE FOR LUTHERANS

MINNEAPOLIS 2,

Herman L. Ekern, President

MINNESOTA

BUILD YOUR ESTATE NOW!

YOUR FUTURE STARTS TODAY