



Percy Grainger, pianist, will appear in concert tonight at 8:30 p. m.

## Enrollment Climbs to 224

With 224 full time students and seven part time students now enrolled, second semester enrollment stands at 231. The freshman class is the largest with 90 students, the sophomores have 57, the juniors have 31 and the seniors have 44.

The total enrollment last semester was 242 full time students. There has been a loss of 14 students at the close of the semester. They are: Lloyd Bansen, Phyllis Bolleson, Jack Christensen, Rodney Gilchrist, Gerald Johnson, Carol Levenson, Gordon Mausing, Nancy Ohlsson, Rhoda Petrusson, Glenn Rueter, Lois Samuels, Thomas Van Hon Carroll Petersen and David Volden. As yet, Janet Justesen and Floyd Jorgensen have not re-enrolled but are expected to do so. During the course of the first semester, 11 students dropped out.

The new students are Dudley Allen, Robert Baker, Lynn Farnens, James Nelson, Marie Louise Petersen, John Stark, Allen Tambling, Charles Andersen and Raymond Hagberg.

There may be a few other students, but it is indefinite as yet, because they have not completed their registration.

## Girls Open House To Be Saturday

Open house will be held Saturday in the girls' dormitory following a program in the gym at 7:30 p.m. The program will feature a leap year fashion parade representing the various types of Dana men.

At 10 p.m. lunch will be served in the reception room. Baby pictures of some of the Dana students will be used for a picture guessing contest. Ten cents will be charged for each guess, and prizes will go to the winners. The money will be used for the dormitory project of raising 50 dollars for the Colombia mission in South America.

## Freshmen Hold Class Election

At a freshman class meeting, held Thursday, Jan. 24, during chapel period, Dr. C. C. Madsen was elected and accepted the position of freshman class advisor.

Also at this meeting Marion Nielsen was chosen as class secretary to replace Lois Samuels who resigned when she left Dana at the end of the first semester.

The freshmen also named Tom Christensen as representative to the student council. He will serve on the council for the second semester.

# The Hermes

## Messenger from Dana

Dana College, Blair, Nebraska

Volume XXXIII

January 31, 1952

Number 15

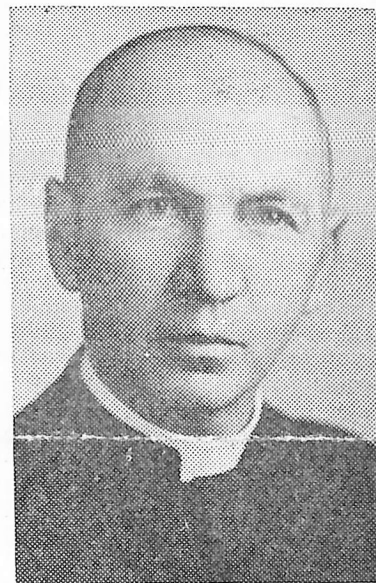
## Mission Field Experiences Qualify Girtz As Speaker

Known for his mastery of the art of story telling, especially about the mission field in India, Rev. Joseph Girtz is well liked wherever he travels to attend Bible camps and conferences.

Born at Fresno, Calif., in 1896, Rev. Girtz attended Dana college and Luther seminary, St. Paul, Minn. Following his ordination in 1924, he went to India where he served in the Santal mission until 1939.

His experiences in India gave him a wide background to speak on the topic "God's World-Our Mission" which is the central theme of Spiritual Emphasis days. Also at the present time he is the UELC director of Lutheran World Action, thus giving him a complete understanding of the needs of the world and the unlimited possibilities that are open to those who desire to serve Christ.

In 1939 he returned to the states and served the church at Luck, Wis. He was called in 1942 to Albert Lea, Minn. and has been there since. In 1943 he was elected president of the Minnesota district, and in 1944 to the Regional Home Mission board. At the synodical convention in 1950 Rev. Girtz was elected the vice-president of the UELC. (Bob Sorenson)



Rev. J. M. Girtz

## News Flashes

Traveling to Emerson, Nebr., on Feb. 6, the Dana a cappella choir will present a concert in the community auditorium. Mr. Carl Nielsen, former Dana student now teaching at Emerson, completed the arrangements.

At a meeting held last Monday, the senior class elected Anona Anderson as secretary to replace Clarice Sommers who resigned.

The Dana college board of education met this week to review senior seminary students in preparation for ordination. Also this week the executive committee of the board of trustees of Dana college met to complete routine business and consultation.

Pre-seminary students met last Sunday to elect a new president and vice-president for their organization. Those elected were Anton Kirkegaard, president, and Norman Freund, vice-president.

The election was necessitated because of the resignations of Walter Kirkegaard and Harry Sorenson as president and vice-president, respectively.

Seminary student-faculty discussion was held Jan. 28 with Prof. Paul Nyholm leading the discussion.

## Cast Announced For 'The Mikado'

Gilbert and Sullivan's musical, "The Mikado", will be presented by the junior class at 8:30 p.m., Feb. 13, in the college auditorium.

Members of all classes are included in the cast of the Gilbert and Sullivan musical. Principal characters are: The Mikado of Japan, Paul Johnsen; Nanki-Poo, his son, Rodney Knudsen; Ko-Ko, Lord High Executioner of Titipu, Don Olsen; Pooch-Bah, Lord High Everything Else, Ray Weckmuller; Pish-Tush, a Noble Lord, John Bendorf; the three sisters, Yum-Yum, Joyce Petersen; Pitti-Sing, Esther Lank; Peep-Bo, Marilyn Jacob; and Katisha, Kathy Nielsen.

The chorus of school girls, nobles, guards and coolies is composed of Lois Petersen, May Skobo, Shirley Anderson, Marlene (Continued on page 4)

## Sower Contract Signed by Editor

Last week the **Sower**, Dana literary magazine, accepted a contract for publication of the 1952 edition with the Lutheran Publishing house of Blair. With this contract completed, the **Sower** staff will begin sifting through the material which has been received and complete plans for publication. The staff anticipates several changes in the format of the **Sower** this year, and urges students to enter material for its pages as soon as possible.

Another member has been added to the staff, Ann Harms.

Prof. Joseph Langland of the University of Wyoming is again offering an award, this year in the form of a book, to the writer of the best prose contribution and another for the best poem in this year's **Sower**. Each year he has offered awards to the best writers in the hope that these awards will stimulate creative writing at Dana.

## Honor Roll Announced

Honor roll students for the first semester were announced Tuesday and are as follows: Beata Hauge, Arvin Quist, Robert Sorenson, Marilyn Steffensen, 3.00; Margie Poh, 2.94; Bruce Jensen, 2.88; Anne Harms, Linwood Fredericksen, Robert A. Hansen, Howard Jensen, Ruth Pedersen, 2.82; Kathleen Nielsen, Marion Nielsen, 2.80.

Donovan Olsen, 2.75; Marian Anderson, 2.73; Lois Hansen, 2.71; Paul Jersild, 2.70; Lois Petersen, Mark Thomsen, 2.68; Dale Christensen, 2.64; Joan Barron, 2.60; Thomas Christensen 2.59; Harvey Jorgensen, 2.57; Elaine Hansen, 2.53; Elva Jensen, 2.50; Paul Jahnke, 2.44; Harold Mc Kercher, 2.41.

Duane Ohlsen, 2.39; Donna Moree, 2.38; Robert Jager, Peter Mathiasen, 2.36; Myrtle Fleming, 2.35; Joseph Greene, Paul V. Hansen, Rosamund Jorgensen, James Nielsen, Mary Weaver, 2.33; James Iversen, Richard I. Jensen, 2.25.

## Around the Globe

England is preparing to go on a new program of austerity in the coming months. Tightening their belts even more than before, the English will have less food, cars and a reduced program of socialized medicine. Britons see their life blood draining away and are willing to make any attempt to stop it.

Hope is seen for resolution of the problems centering around the Suez canal. The Egyptians have indicated they are willing to negotiate. International control of the areas seems to be in the offing.

No progress seems evident in the Korean truce talks. Discussion on all topics is stalemated at present. The fighting still goes on with fierce outbreaks occurring here and there along the line.

## Those Potato Chip Devils

Frank Jespersen

The night air shopped in my coat and bought up its share of space inside. I headed for the dining hall. The rumblings from my stomach told me I was hungry; otherwise I never would have known it and probably would have died quietly a few days later. As I pushed into the dining hall, I had visions of a tempting porkchop surrounded with mounds of potatoes and gravy. The savage lust for a hearty meal swelled in my insides, and I raced for a table. They were filling up fast! I lunged for a vacant chair — but missed!

Finally I managed to pull half a chair up to the table and sat down. I stared hungrily at the mass of bowls on the white tablecloth. Then I saw it! My eyeballs froze in their sockets! My throat twisted three ways and headed for my stomach! My face turned a bright green! As I raced out the door I could still see them, thousands of them, swirling around like a snowstorm, thousands, literally millions of brown, broken, brittle, battered potato chips! The words drummed in my head, Oh, No! Oh, No! Not again, not again!

That night I couldn't sleep. I peered into the blackness of the room and saw the grinning faces of little green men with arms full of potato chips marching toward me. I burrowed my way under the covers. What is this, I said to myself, National Potato Chip week?

The trumpets blasted, the big purple curtains parted, and in walked the king.

(To be concluded in the next issue)

During the Spiritual Emphasis days the class schedule will be altered as follows:

Monday—11:20 classes cancelled; 10:20 classes meet at 11:20.

Tuesday—1:10 classes cancelled; 10:20 classes meet at 1:10.

Wednesday—2:10 classes cancelled; 10:20 classes meet at 2:10.

GIVE *Voluntarily* TO

# MARCH OF DIMES

JANUARY 2-31

For

## PATIENT CARE RESEARCH EDUCATION

## Read Before You Sign

Recently several petitions were circulated upon the campus. Regardless of what one thinks of these petitions, let us hope that all those who were approached did actually read the petitions before their decision to sign or not to sign was made. So often questionable petitions are willingly signed without a careful reading of them or the opposite, many good petitions are not signed because people would not read them and then think they are doing the most intelligent thing by not signing.

An illustration of this is the experiment attempted by the Madison **Capital Times** where they tried to get signers for a copy of the Declaration of Independence on street corners and in public places with completely negative results. Most people did not carefully read it or even recognize it and refused to sign.

People have a habit of not trusting those who are strangers to them which, of course, is good. But many also have a habit of trusting supposed friends, who can get them to sign almost anything, even without reading. It is quite possible that if a petition of some length, requiring careful reading, were to be circulated on this campus with a clause toward the end stating, "I, the undersigned, hereby pledge my wholehearted support to the Russian Communist party," many would sign.

Anyone who claims to be an intelligent, successful human being ought to heed this advice when signing his name to anything—**READ IT.** Then sign if you think it worthy.

## Ernest Thoughts

Taking note of an article on campus improvement printed in the first issue this year, I read that a bench was planned for around the Old Elm and a sidewalk to run from the north door of the men's dorm to the road below. I wonder? Well, we can keep our fingers crossed until spring.

I repeat again a comment made before. The new cabinet in P.M. by the offices looks fine, but where is the calendar?

Several weeks ago the student council discussed the problems of dating upon the campus. It seems that the men are hiding in their cell rooms and not dating the women.

I wonder if the answer lies in an article I read recently by a Harvard professor who described college girls as listless, pessimistic, confused and obsessed by a fear of the future (enough to drive any man away). He titled the article "Have College Women Let Us Down?" Could be?

Also the other day I came across a poll taken by some college where one student said, "... too many people become teachers because it affords the easiest escape from reality."

B.H. days.

Member

Associated Collegiate Press

Published weekly during the college year, except holiday and examination periods, by the student body of Dana College and Trinity Theological Seminary, Blair, Nebraska.

Subscription rate \$2.50 a year, in advance.

Reentered as second class matter September 20, 1951, at Blair, Nebraska, under act of March 3, 1879.

Editor-in-chief ..... Bob Hemmingson  
Associate Editors

News ..... Sylvia Stiersbeck  
Make-up ..... Jim Nielsen  
Sports ..... John Christensen  
Editorial assistant ..... Alvin Svendsen  
Business manager ..... Craig Nielsen  
Advertising manager ..... Phil Kaldahl  
Circulation manager ..... Charles Kaldahl  
Faculty advisor ..... Miss Viola Thiel  
Staff typist ..... Claire Ann Heise

This issue —

Reporters: Bob Sorenson, Mary Ann Bain, Ann Harms, Beata Hauge, Gay Nygaard.

Features: Vern Svendsen, Frank Jespersen.

Make-up: Marion Nielsen, Bette Miller, Beata Hauge, Neil Christensen.

Sports: Miervyn Nelson, Donovan Olson, LeMoyné Nelson, Margaret Christiansen, Vaughn Christensen.

Kenneth H. Christensen, Tom Nelson.

## Campus Calendar

Jan. 31 — Percy Grainger concert, auditorium, 8:30 p.m.

Feb. 1 — Basketball game, Midland — here

Feb. 2 — Girls' dorm open house, program in gym, 7:30 p.m.

Feb. 3 - 6 — Spiritual Emphasis days, P.M. chapel — Sunday, 8 p.m.; Monday, Tuesday, 9:50 a.m. and 7:30 p.m.; Wednesday, 9:50 a.m.

Feb. 8 — Basketball game, Concordia — there

Feb. 9 — Basketball game, Sterling — here

Prayer is the thing of importance as we enter these Spiritual Emphasis days. Without prayer these meetings will fail and will be of no avail. Prepare to receive a power you perhaps have never felt before—the power that can come from the preaching of God's Word. Prepare through prayer.

## Discipline Yourselves for Life

Vern Svendsen

Ortega, in his **Revolt of the Masses**, says, "The world which surrounds the new man from his birth does not compel him to limit himself in any fashion." Too long we have tried to get along without discipline. It doesn't work.

We here at Dana College are young; we have a life to live. Are we going to live it for ourselves, or for Christ? Without discipline we have a tendency to live only for ourselves, for to live for Christ is to be denied of our own world ways.

Denial is a challenge, which brings out our true character. Denial is a guidance, pointing a way from our own ways to the realities of life. To be denied is to be educated, to make us grow up and realize that we don't live only for ourselves.

Did you ever ask yourself, "I'm a young college student, why can't I have fun now?" Perhaps it's because our souls are getting lean. Perhaps it's to remind us that we have to reckon with a God who will not always let us have our own way. God is trying to tell us, that if we are to be men in this life, stern discipline is necessary.

Undoubtedly with discipline comes tears, angers, discouragements and joys; but when the day of reckoning comes, we shall thank God for the voice from the wilderness, discipline. It would be wise for us to think upon these things as we approach Spiritual Emphasis days.

# Chris' Comments

John Christensen

Several students on campus have mentioned the fact that there is no wrestling team here. To the fan watching TV it is quite obvious that the professional grunts and groaners hardly represent the sport. There is little doubt that much value can be obtained from this style of wrestling. However, if one is to talk to a person who participated in high school or college wrestling, that person would be quick to site several advantages of the sport.

First of all, wrestling is an individual sport where one competes against opponents of his own size. Often a person, in a large high school or in college, finds that he lacks the necessary physical capacities to be a member of a football or basketball squad. In collegiate wrestling there are eight weight divisions, thus a wrestler seldom meets a foe more than ten pounds heavier than himself. This aspect gives wrestling a more equal chance to all participating to land a berth on the squad.

Second, wrestling is character building. A wrestler soon learns to depend on himself when in a match, he has no team mates to help him out. Self discipline in training is also brought out in wrestling; the wrestler who takes it easy in practice won't win many matches. A final point along these lines is that wrestling gives a person an insight to his abilities.

Wrestling is also advantageous in physical fitness, developing self-confidence and many other ways. Since there is some show of interest in this sport it seems that possibly a further investigation by either the coaching staff or the faculty athletic committee would prove profitable. It might be added that a number of small schools find this sport particularly advantageous as the expenses are low whether the sport is held on an intercollegiate or intramural level.

## WAA to Hold Tournament

Joyce Hayek, former vice president of the WAA, has succeeded Nancy Ohlsson as president of the organization. Nancy, who was elected last spring, leaves Dana to transfer to Michigan State in March and so resigned her post.

At a meeting last week the constitution was revised. The big problem of revising the point system was also tackled. Regular meetings have been scheduled for the first Thursday of every month. A welcoming service has been set up for new members for next

(Continued on page 4)



## Dana-Midland Feud Continues Friday

The traditional Dana-Midland feud continues tomorrow night at the Dana gymnasium. The host team for the game has already lost one contest with the visitors by a 60-53 score. It may be the best team that Midland has had for many years that they are bringing over to vie with the Dana Vikings.

Dana will be short the services during this game of the able center Harold McKercher. The game should be a good one for Dana wishes to receive revenge for the last three defeats which have been suffered in the Dana-Midland series.

Thus far in the Nebraska College conference season Midland stands with a record of three defeats and one win. Midland's record for the season is five wins and seven defeats having lost recently to Doane, Hastings and Kearney.

### Intramural

### Team Standings

	W	L
Scrounges	5	0
Fakers	4	1
Skirts	4	1
Harold's Club	3	1
Abekatte	4	2
Quien Sabe	3	2
Troopers	2	3
Bachelors	2	3
Holy Rollers	1	3
Harlem Earth Pacers	1	4
Eight Balls	0	5
Has Beens	0	5

Compliments of

## BLUE GOOSE

Blair's Leading Food Store

**Dr. D. R. Ehlers**  
DENTIST

62 W. Lincoln Phone 208  
Clinic Building

**BETTE'S**  
Gift and Jewelry  
The Dana Students' Jewelry  
Headquarters  
Watch Repair Phone 550

# Buena Vista Tops Dana 55-43, Freshmen Star

Playing high-spirited ball all through the first quarter and then falling off the pace somewhat in the last 30 minutes, the Dana Vikings went down to defeat at the hands of Buena Vista 55-43 here Tuesday evening.

Buena Vista stepped out to an early lead at the quarter stop. Playing the whole quarter, the freshman five displayed a powerful offensive and good all-around agility.

With three minutes gone in the second period, the visitors regained the lead 18-17 and from then on were never headed. The veterans started seeing action as the Beavers rolled to a 31-23 margin at halftime.

The third quarter saw both

squads matching each other, and at the three-quarters mark it was 41-35 against the Vikings.

Substitutions were frequent in the last ten minutes as Dana desperately sought to overcome an eight point lead. Midway through the period, the score stood 53-38 for Buena Vista. The freshmen then started rallying but fell short.

M. Johnson of the visitors led the point-makers with two points on eight field goals and four free throws. Vordyn Nelson dumped five field goals and one free throw for Dana. Behind him were Dick Erickson and Gunnar Nyholm with eight counters apiece.

## Vikings Defeated By Luther, 69-55

Luther college at Wahoo, playing on its home floor, had little difficulty in defeating Dana, as our local Vikings had another cold night, being defeated 69-55. Luther, playing without a man taller than six feet, started fast and was never seriously threatened. Smooth working plays set up easy shots for Luther throughout the game. After trailing 21-12 in the first quarter, Coach Paul Peterson sent in an all freshman lineup, but this did not seem to help much. Harris Jorgensen scored well during his appearance late in the second quarter. Dana still trailed by 13 points at the half.

Bob Nelson hit two quick baskets at the start of the second half, but this was followed by a number of backward decisions by one of the referees. Dana then went into a brief defense lapse while Luther built up leads as high as 17 points. The best Dana could do was to pull up to a 51-44 deficit before they fell into another defensive lapse with Luther pulling far ahead. Luther stalled successfully and took only set shots during the last six minutes.

Harold McKercher, out of action with a sprained ankle, was sadly missed by Dana, although both Harris Jorgensen and Bob Nelson turned in fine jobs in brief appearances at post positions. High scorers for Dana were Bob Nelson and Ken Christensen. Don Machacek paced Luther with 23 points.

Statistics	fg.	ft.	pts.	pf.
Christensen, K.	3	5-6	11	3
Milbrant	1	1-1	3	5
Erickson	0	1-1	1	0
Nyholm	2	1-4	5	4
Nelson, V.	3	1-3	3	5
Lorenson	1	1-3	3	5
Christensen, T.	3	0-2	6	3
Nelson, B.	3	5-7	11	4
Jorgensen	3	1-1	7	5

57%

### Player Averages

Player	fg.	pct.
Nelson, B.	52-125	.411
McKercher	33-105	.314
Lorenson	34-89	.382
Milbrant	12-43	.279
Nyholm	14-45	.311
Morrow	21-48	.437
Christensen, T.	10-30	.333
Nelson, V.	22-54	.407
Christensen, K.	14-60	.233
Erickson	18-54	.333
Jorgensen	2-2	1.000
Total	232-664	.349

## Intramural Box Score

### Skirts vs Abekatte:

This was a mild upset as the Abekatte dropped the Skirts 21-19. Tom Nelson paved the way again with a blistering 13 points while the best for the Skirts was Vale Peters' seven points.

### Bachelors vs. Eight Balls:

Scoring was the keynote in this contest. Alvin Hansen's high of 2 points did not quite overcome the 48-26 victory margin of the Bachelors. The main reason for the score were Vaughn Christensen and Paul Jorgensen who each had 17 points.

### Harlem Earth Pacers vs. Has Beens:

The Has Beens continue to live up to their title as they lost 19-16 to the Earth Pacers. Russ Nelson had six points for the losers and Carl Nelson had eight for the winners.

High scorers in the intramural league are as follows:

Al Hansen, 55; Tom Nelson, 45; Neil Hansen, 38; Paul Jorgensen, 38; Neil Moore, 37; Bob N. Hansen, 28; Dick L. Jensen, 28; Neil Christensen, 26; Bill Hansen, 26; Jon Nuland, 25; Erling Schultz, 25; Vern Svendsen, 25.

LeMoyne Nelson

## New Post Created

Jim Nielsen, former make-up editor of the **Hermes**, has been named managing editor of the paper. As part of this new set-up Jim will manage the sports page with present sports editor, John Christensen, retiring at his own request to the writing of a weekly sports column. Jim's new post will still include work on page make-up and headline composition.

## 'The Mikado' Cast

(Continued from page 1)

Kempf, Ruth Wagschal, Esther Lank, Sonja Grill, Marilyn Spanton, Margie Poh, Donna Moree, Rosamund Jorgensen, Dale Larsen, Fred Reinke, Paul Jersild, John Lassen, Stanley Petersen, Carl Pedersen, Gaylen Hafer, Paul Hansen, Carl Nelson, Melius Bollesen, and Glen Christoffersen.

Omaha Central's school orchestra, directed by Noyes N. Bartholomew, will accompany the singers.

Plans are also being made for an afternoon matinee, Feb. 13, for the Washington county school children.

## WAA Tournament

(Continued from page 3)

year. Plans for a double elimination tournament were also made to wind up the basketball season.

The executive committee is interested in making this club an active one. Members with three absences from meetings or scheduled games will be dropped from the club.

## Samson Rexall Drug Store

Prompt Service on  
**PRESCRIPTIONS**

**Moore Pharmacy**  
Modern Prescription  
Pharmacy  
**BLAIR, NEBRASKA**

Compliments of  
**WOLFF**  
Furniture Store  
Phone, Black 45

Let Me Be Hostess  
To You

## Young's Cafe

**R. E. Vinton & Sons**  
Chevrolet Co.

Chevrolet — Oldsmobile  
Sales and Service

You're Always Welcome at  
**KLOPP'S Jewelry**  
and Gift Store  
QUALITY GIFTS  
EXPERT WATCH REPAIR

**Merle's Flower Shop**  
CORSAGES — BOUQUETS  
Florist Telegraph Delivery  
Phone 47

## Burke's Fashions

Fine Selection of Ladies' and  
Children's Ready-to-Wear Na-  
tionally Advertised

## Ove T. Anderson & Company

Blair, Nebraska  
BONDED ABSTRACTORS — REAL ESTATE — INSURANCE  
James Anderson A. Clarence Vig

**SCHEFFLER**  
Sporting Goods  
Quality Shoe Repairing  
Prompt Service

**Washington County  
Bank**  
Blair, Nebraska  
Member Federal Deposit  
Insurance Corp.

**Advance Cleaners**  
(COLLEGE AGENT)  
Free Pick-up and Delivery  
Niel Hansen Room 410

**Nielsen Jewelry**  
Diamond — Watches  
Jewelry  
Guaranteed Watch Repair

**Zemunski and Sons**  
2204 South 2nd St.  
Omaha, Nebraska

**J. M. McDonald Co.**  
**McDonald's**

# Home Theatre

Sat.—Sun. Matinee 2:30  
Two shows each evening; first  
show beginning at 7:30.

FRI. & SAT. — Feb. 1 & 2

**SMUGGLER'S ISLAND** COLOR BY  
TECHNICOLOR  
JEFF CHANDLER-EVELYN KEYES

SUN. & MON. — FEBR. 3 & 4

**BING CROSBY in**  
**HERE COMES THE GROOM**  
with WENDY SUTHER

TUES., FEB. 5 BARGAIN NIGHT

**WILLIAM HOLDEN GLENN FORD**  
**CLAIRE TREVOR** **TEXAS**

WED. & THURS., FEB. 6 & 7

**"The MAGIC FACE"**  
with ADLER and KNIGHT

**Guyer and Hansen**  
REAL ESTATE  
Loans Insurance

LOW  
NET COST . . .  
life insurance is issued  
to Lutheran Men,  
Women, and Children  
ages from birth to 65,  
The members of Lu-  
theran Brotherhood  
OWN the society, and  
they ALONE receive  
the earnings, There  
are NO stockholders.

# Lutheran Brotherhood

Legal Reserve Life Insurance for Lutherans  
MINNEAPOLIS 2 CARL F. GRANRUD, President MINNESOTA

Build Your  
Estate Now!

Your Future  
Starts Today

Phone 333

**CHRISTENSEN LUMBER COMPANY**

It's Good If It's From Us

**BLAIR HOME LAUNDRY**

Free Pick Up and Delivery

PHONE 115

606 W. Nebr. St.