

Snow Carnival
Tonight

The Hermes

Sioux Falls
Tomorrow

Six New Officers Installed By LSA

Installation of the Lutheran Student Association officers for the coming year took place Tuesday evening, January 31, in a candle-light service led by Dick Jensen, National L S A vice-president.

Officers installed were: John Petersen, President; Vern Flesner, vice-president; Carol Madsen, Secretary; John Henningsen, Treasurer; Dorothy Willmert, L. S. Action Chairman; and Pat Anderson, Social Chairman. In addition to these officers, Nadine Johnson was re-elected Deputation chairman.

Dick Jensen also gave a brief talk thanking the old officers for their work as well as setting the sights for the new officers on a goal of successful L S A work for the coming year.

Procurement Team Pays Second Visit



Kraince

Pictured above is Major F. R. Kraince, Marine Officer/Procurement Officer for this area, who will be on the Dana College campus from 9 a.m. to 4:30 p.m. on Thursday.

Accompanied by a Marine Sergeant, a Navy Medical Officer, and a Navy Chief, the Major will discuss the several Marine officer programs available to eligible college students.

Students interested in obtaining commissioned rank in the Marine Corps after graduation from college are encouraged to contact the team while they are on campus.

Information and literature may be obtained either from the Dean's office or the college librarian prior to the team's visit. If they so desire, students may write directly to the Marine Officer/Procurement Office, Room 420, US Court House, 811 Grand Avenue, Kansas City, Missouri, for complete details.

Dana College

Vol. XXXVII

Blair, Nebraska, Feb. 3, 1956

No. 15

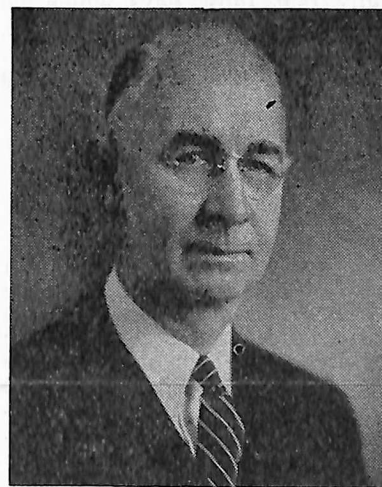
Spiritual Emphasis Days Begin Sunday Morning

Pastor Clarence J. Carlsen of St. Olaf's Lutheran Church in Minneapolis will be guest speaker for the coming Spiritual Emphasis Days which are scheduled to begin Sunday, February 5, and will continue until Wednesday, February 8. This is the second series of Spiritual Emphasis Days held this year.

"Truth in the Inward Being" is the topic Pastor Carlsen will use in his first message which will be given at both services Sunday morning in First Lutheran Church. His other topics are: "He Came Anyway," Sunday evening; "Great Little People", Monday morning; "Spiritual Chain Reaction", Monday evening; "The Cross in Fear and Tension", Tuesday morning; "Youth With Faith", Tuesday evening; "The Megaphones of God", Wednesday morning; and, "The Commonplace of Christ", Wednesday evening. The Dana College Choir will sing at the Tuesday and Wednesday evening services.

Student Services First

All the meetings, excluding the Sunday morning ones, will be in Pioneer Memorial Chapel. Times for the meetings are: Sunday evening, 8:00, weekday evenings, 7:30; weekday mornings, 9:50. Each evening service will be preceded by a student-run preparatory prayer service in Pioneer Memorial, room 210. The service on Sunday evening be-



Carlsen

gins at 7:40 while the weekday evening meetings will start at 7:10.

In a letter to Dr. C. C. Madsen, Pastor Carlsen states "I have had the privilege in the past of working together with several of your congregations and I look forward to fellowship with you and your people in Blair... May the Lord richly bless His Word to us as we meet in Dana and Trinity February 5-8, 1956."

Translated Halesby

Pastor Carlsen is a graduate of Augsburg College and Theological Seminary as well as of the University of Minnesota. He is perhaps best known for his work as translator of the Halesby books. He is expected to arrive sometime Saturday.

News Notes

Three still-life pictures painted by Mrs. Laurence Dillard of Blair are being displayed on the east wall of the library. These paintings represent some of the first work of Mrs. Dillard who is a student in the college art department.

John Petersen and Dorothy Willmert, LSA president and L.S. Action Chairman respectively, have been chosen as delegates to an LSA conference which will be held in Lincoln the weekend of February 10. As many as possible of the other LSA officers also plan to attend.

Ward Takes-Over Hermes Chores

Managing editor Marilyn Ward has replaced Tom Langenfeld as acting editor in temporary Hermes reorganization set up Monday.

Other staff positions remain unchanged.

'Guys and Dolls Is Carnival Theme

"Guys and Dolls," Dana's third annual show carnival, sponsored by the W.A.A. will be held this evening at 6:30 in the dining hall. The play is based on Samuel Goldwyn's movie production by the same title and will feature Hack Philby, Nancy Iversen, Phil Pagel, and Norma Nelson in leading roles. Joyce Arnold will narrate and Russ Moseman will be one of the soloists.

Climaxing the evening banquet and program will be the coronation of the Sport King and Queen. Candidates for King are Norman Madsen, Jan Philby, and Larrie Stone. Vying for the title of queen are Audrey Eriksen, Bonnie Petersen, and Edna Skobo.

The decorations committee has revealed that part of the dining hall will be transformed into a street scene. Twelve girls will wait tables, with Mrs. Frank Hengeveld as dining room hostess.

Bonnie Petersen and Norma Nelson are in charge of preparations for "Guys and Dolls." Committee members are Edna Skobo, decorations; Nancy Iversen, program; Millie Laursen, food; Carol Larsen, publicity; Lavonne Petersen, clean-up; Joyce Arnold, royalty; and Shirley Alme, tickets.

No admission will be charged for students with meal tickets. Tickets for others are one dollar.

Debaters Meet Top Teams At Midland

Dana debaters, Peter Smith and Paul Kaldahl, failed to win much in the way of arguments in the Midland speech tourney last weekend, but the pair managed to finish ahead of nine other teams in the final point standings. Twenty-six teams from Iowa, North and South Dakota, Kansas, Illinois, Minnesota and Nebraska participated.

In six debates against teams from St. Olaf, Creighton, Kearney State, the University of Nebraska and two outfits from Emporia, Dana's representatives scored 35 points, averaging just less than 6 of a possible 10 points per contest.

Three of the six teams encountered by Kaldahl and Smith reached the semi-final round, and none of the six teams which they met compiled lower final point totals.

Dana dropped one point decisions to teams from the University of Nebraska and St. Olaf.

Campus Calendar

Friday, Feb. 3

WAA Snow Carnival. Dining hall, 6:30 P.M.

Saturday, Feb. 4

Basketball. Sioux Falls. Here.

Sunday-Wednesday, Feb. 5-8
Spiritual Emphasis Days .

Prayer Best Way to Prepare For Spiritual Emphasis Days

This coming week is a week of spiritual emphasis. Our attention will be directed toward the spiritual values and truths in life in a special way.

We do many things in life whether we care to do them or not. Often times we must act in certain ways, and although we know we should, we do not always feel like it at the time. We are not always "in the mood." Spiritual emphasis days are scheduled for the days just ahead. They will come to pass, no matter what mood we are in. What will we get out of them? That depends upon how we prepare for them. Through proper preparation we will derive the most benefit from these meetings.

Prayer Powerful

As has been pointed out to us, prayer is the best means of spiritual preparation. Prayer is not merely supplication, a means of asking for things, although this is important. "Have no anxiety about anything, but in everything by prayer and supplication let your requests be made known to God," The Bible teaches (Phil. 4:6) prayer is also a relationship and a communion with God. Through prayer we can praise and worship God, and thank Him for his mercy.

Through prayer we come closest to knowing God. It is a means of becoming acquainted with him. Prayer makes an intellectually believed in deity a personal reality. It is the difference between knowing of a certain person's existence and knowing the person himself, personally. That is why the prayer of a righteous man has great power in its effects. It has a great power on the life of that righteous man. His relationship with God through prayer is a force for good in his life and living. But his prayer for others will also be of great benefit, because through his example and the force of God his life will influence others.

Prayer Secret

Prayer is the secret of a righteous man. He is righteous, not of himself, but through Christ, and prayer supplies him with a power of a life lived with God. The power of prayer is such that when a Christian cultivates its practice it asserts a great influence. To the degree that a man in his prayer relationship with God lets himself be influenced by divine guidance, to that degree will his life be free of petty malice and deceit.

In the Bible it is written, "My house shall be called a house of prayer for all the nations." (Mark 11:17). I think this is because in the house of God we come before Him and praise Him for His goodness and mercy, to present to Him our needs, which He is already aware of, and to confess our sins and receive pardon and release from our sin. All these

are parts or functions of prayer, which is a communion or relationship with God. Therefore it can truly be said that the house of God is a house of prayer. This thought should influence us whenever we enter the church, which is the house of God. We know that prayer changes things; therefore let us prepare prayerfully that those days which lie ahead, spiritual emphasis days, may be days of meaning for us.

Barbara Peterson

Farm Question Reviewed; Misconceptions Are Revealed

A very great deal has been said about the "plight of the farmer." Undoubtedly much more will be said as this election year advances. The opponents of the Eisenhower administration and the Secretary of Agriculture, Ezra T. Benson, have been putting the heat on lately.

Bensen Blunders

The recent blunder by Benson just gave them that much more fuel for their stove. So much has been written about the farm problem that I wonder if there is anyone who can altogether sift fact from fiction; and if this election year runs true to form, more attempts will be made to use the farm problem for political ends than will be made to understand it.

What we need is an unbiased, scientific study of the farmer and his relation to our society and economy. Certainly all elements of agriculture cannot be lumped under the one heading of just "farmer." Many and probably most farms are family situations. There are a few with more of the dimensions of a corporation. Surely they do not create quite the same problems or give exactly the same contributions to our society.

How much of the surplus problem comes from the few big-time operation farmers, and how much from the family type farm? Which group receives the greater benefit from price supports, and does the group which receives the greater benefit really need it?

The recent low prices on many farm products and low incomes

Razor Industry Is Worried By Fad

A new group has been formed in the Men's Dorm for the sole purpose of beard growing. The group consists exclusively of men residing on the fourth floor. An organizational meeting will be held soon in order to formulate a few rules. Details may possibly be announced later.

Perhaps the beard growing enthusiasts have read the article "The Woman in the Gray Flannel Suit" which appears in the January 15, 1956 issue of the New York Times Magazine. In this article, a psychiatrist claims that today men are becoming more and more feminine, and that the feminization of men started when men began to shave off their beards.

We laud the noble efforts of these courageous youths who have determined to stem the tide and restore masculinity to men!

(Or are they practicing for the eventual celebration of Days of Old Dana?) May the beards grow long and thick!

The Hermes



Vol. XXXVII

No. 15

Published weekly during the college year, except holiday and examination periods, by the student body of Dana College Blair, Nebraska.

Subscription rate \$2.50 a year, in advance.

Reentered as second class matter September 12, 1953, at Blair, Nebraska, under act of March 3, 1879.

Editor-in-chief Marilyn Ward

Editorial Advisor Tom Langenfeld

Associate editors

News Margaret Meyer

Feature Barbara Petersen

Sports Milan Johnson

Assist. Sports Jim Andersen

Copy Ann Lindholm

Cartoon Joan Allen

Business Manager Pete Smith

Circulation Manager Edna Skobo

Advertising Manager Pat Olson

Editor Emeritus Jim Clemon

Faculty Advisor A. Gordon Ferguson

Reporters on this issue: Dave Larsen and Arnette Thim.

the farmer. But, there is no guaranteed minimum wage for the farmer.

It seems that in a complex economic situation as ours is, continued low income for farmers cannot help but have its effect on the economy.

There certainly is a "farm problem." It concerns the many misconceptions so many people have about the farmer, and the searching for his proper role in the economy of the nation.

Advance Cleaners

(College Agent)

Free Pick-up and Delivery

RAY PETERSEN Room 210

Dr. D. R. Ehlers

DENTIST

Phone 3325

Clinic Building

Samson Rexall

DRUG STORE

PRESCRIPTIONS

QUESTION: Where do you Danians always meet to eat?

ANSWER: LACY'S CAFE!

Sioux Falls Cagers Visit Red and White Tomorrow

Dana's cagers will swing back into action tomorrow night when they entertain Sioux Falls College in the Gym. The Vikes will be trying to boost their win-loss percentage back over 50 at the expense of the South Dakota school. Dana has dropped its last two contests, leaving them with a six and six mark.

In their two year rivalry the two teams have split four games each coming out on top at home.

Dana stopped Sioux Falls here last year, 73-69, but dropped the return engagement, 81-92.

Vikettes Tour to Offut AFB Next

Next Tuesday Dana's femine hoopsters travel to Offut Air Base to do battle with the Offut women's team. The Vikettes have six returning players.

Back from last year's squad which finished second in the conference race, are Audrey Ericksen, Geraldine Adams, Nancy Iversen, Arliss Petersen, LaVonne Petersen and Bonita Petersen.

In Intramurals

The Vikingettes edged the Worms and the Scumbags upset the Hornets in Intramural action Tuesday.

Team	Wins	Losses	Pct.
Milt's Maniacs	4	0	1.000
Firehouse Five	4	1	.800
Vikingettes	4	1	.800
George's Rackers	3	2	.500
Scumbags	2	2	.500
Worms	2	3	.400
Kool Kats	2	3	.400
Hornets	1	2	.333
Seminary	0	3	.000
Furbared Five	0	4	.000

Scumbags Battle Fubars In Prelim

Saturday at 6:15 p.m., as a prelim for the varsity tussle with Sioux Falls, the Scumbags and the Furbared Five will present a grudge match in three acts. The two teams, which have until recently been waging a neck and neck race in the intramural league—for last place, will meet for the first time this season.

Betting odds as **The Hermes** goes to press favor the Scumbags, 5 to 2, but a spokesman for the Furbared Five expressed confidence that "our record will remain unmarred."

Nielsen Jewelry

Diamonds — Watches
Jewelry
Guaranteed Watch Repair

WASHINGTON COUNTY BANK

Blair, Nebraska
"Bank With A Smile"
Member F.D.I.C.

Cage Schedule

HOME	
Feb. 4	Sioux Falls
Feb. 11	Concordia
Feb. 20	Luther
Feb. 27	Tarkio
AWAY	
Feb. 15	Westmar
Feb. 18	Sioux Falls

LACY'S CAFE
SHORT ORDERS
DINNERS
BEVERAGES
A Good Place For Danians to Meet and Eat

Guyer and Hansen

REAL ESTATE
Loans Insurance

Meet Ray at
NELSON BROS. CLOTHIERS
Blair's Finest Men's Store

R. E. Vinton & Sons
Your Headquarters for Complete
AUTOMOTIVE
SALES—SERVICE

Compliments of
BLUE GOOSE
Blair's Leading Food Store

Lee's Pharmacy
YOUR PRESCRIPTION
SPECIALIST

LITTLE MAN ON CAMPUS

by Dick Bibler



"HEY, BOLIVAR! - I'VE FOUND ANOTHER SPECIMEN!"

WELCOME HOMECOMERS

FROM THE

TOPPER CAFE

Where we feature 5c coffee
and homemade rolls

DRIVE IN SERVICE
303 West Washington

RABBASS STUDIOS

PHOTOS THAT PLEASE

AMATEUR SUPPLIES COMPLETE LINE OF FRAMES

KOLTERMAN'S Ben Franklin Store

5c to \$1 Merchandise

Come Here for Year Round School Needs

American Women Become Statistics

There's quite a gap between the ideal campus beauty queen and the average American woman, as statistics depict her.

So it seems, at least, to Jerra Lynne Tyler, this year's Helen of Troy at the University of Southern California.

For when Jerra Lynne matched her own dimensions against those reported by Henry Dreyfuss, one of the nation's foremost industrial-designers, in his best-selling book, **Designing for People**, she found that she was far from "average."

The Dreyfuss typical figure, which was developed after years of research and which serves as the model for the scores of products he designs, is five feet, three inches tall, and has a 39-inch hip spread, a 35-inch bust and a 29-inch waist.

Compared with her, Jerra Lynne towers to five feet, six inches, and measures 36 inches in the hips, 36 in the bust and 25 in the waist. A junior at USC and a major in business administration, she admits that she's not one bit envious of this mythical average woman Designer Dreyfuss has conjured up and christened "Josephine."

In the course of his research, which involved the collaboration of ear doctors, neurologists, psychologists and opticians, Dreyfuss found that three and eight-tenths per cent of American women are left-handed, two-tenths of one per cent are color blind, four and one-half per cent are hard of hearing and 56.4 per cent wear glasses.

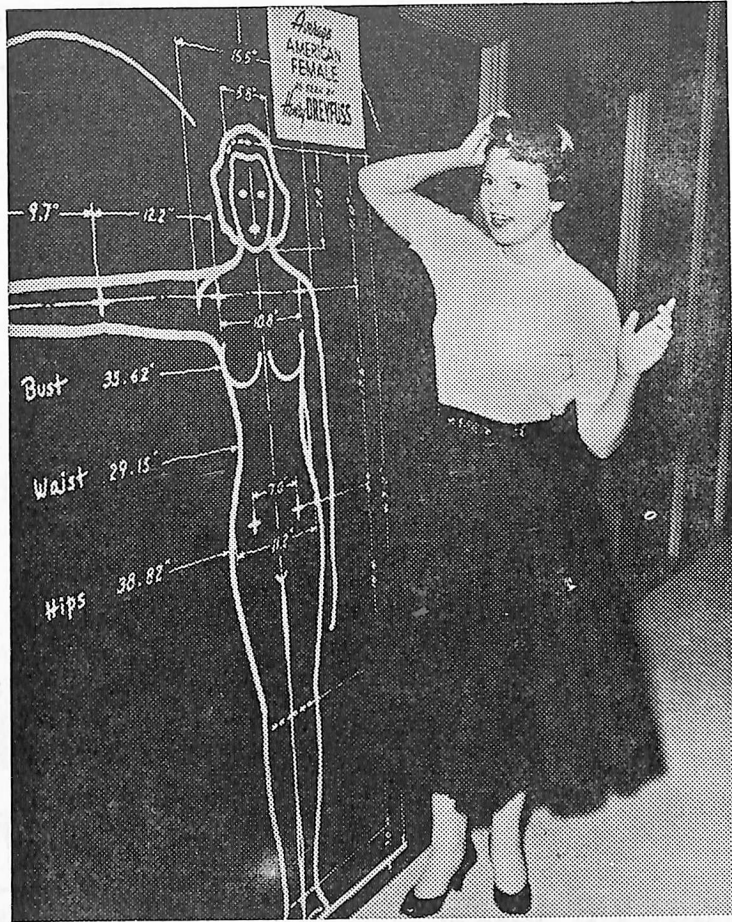
(What we'd really like to see would be some statistics on the average American campus queen.)

Students Abroad Top 9,000 Mark

(ACP)—A survey by the Institute of International Education in New York reveals that over 9,000 U.S. students studied abroad during 1954-55.

Initial reports set the exact figure at 9,262. The American citizens studied in 47 foreign countries and political areas. The survey was limited to students having both U.S. citizenship and permanent residence in the United States.

Almost 59 per cent of the group was enrolled in European schools. Fifteen per cent were in Mexico and 14.8 per cent in Canada. Four countries reported over 1,000 U.S. citizens in their institutions of higher learning. They were: Mexico, 1,395; Canada, 1,374; Italy, 1,084; and the United Kingdom, 1,009.



Jerra Lynne Tyler, typical campus beauty queen, compares her dimensions with those of the "average" American woman, as depicted by Henry Dreyfuss, famous industrial designer, in his book, "Designing for People." Jerra Lynne, who's this year's Helen of Troy at the University of Southern California, predicts that Designer Dreyfuss' "average" would win no beauty contests.

Snooping Around Other Campuse

Girls, Please Note

Chamblee, Ga.—(ACP)— **The Technician**, published by students at the Southern Technical Institute, recently took a scientific view of the female of the species. It printed this description of a woman as seen through the eyes of a chemist:

Symbol. WO.

Accepted Atomic Weight: 120 lbs.

Physical Properties: Boils at nothing and freezes at any minute; melts when properly treated; very bitter if not well used.

Occurrence: Found wherever man exists.

Chemical Properties: Possesses great affinity for gold, silver, platinum and precious stones. Violent reaction if left alone. Able to absorb a great amount of food matter. Turns green when placed beside a better-looking specimen.

Uses: Highly ornamental; useful as a tonic in acceleration of low spirits, and an equalizer of the distribution of wealth. Is probably the most effective income-reducing agent known.

Caution: Highly explosive in inexperienced hands.

The Male Strikes Back

Philadelphia, Pa.—(ACP)—Codes made headlines at Paducah Junior College when 10 of them appeared on the campus in blue jeans and shorts. The men objected, so 20 women paraded in this fashion the next day, the **Pennsylvania News** reports.

But the males had their revenge. Next day the entire male student body attended class in skirts and blouses.

(This is revenge?)

YOUNG'S CAFE

Where Danians

Always Meet

Students Save At

DESOTO STORE

4 Miles South—Highway 73

GAS

Reg.—25.9c

Ethel—27.9c

Bulk Oil—15c Quart

Permanent Anti-Freeze, \$1.94 Gal.

LACY'S CAFE

Short Orders

Dinners

Beverages

Phone Stewart's Pharmacy

Filling Prescriptions Is the Most Important Part of Our Business



BUD JENSEN

Skelly Service Station

Blair, Nebraska

Phone 3333

CHRISTENSEN LUMBER COMPANY

It's Good if It's from Us

J. M. McDONALD CO.



Department Store