

The Hermes

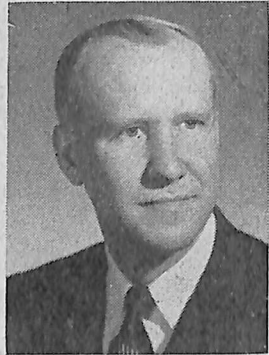
Dana College

Vol. XXXVIII Blair, Nebraska, Sept. 28, 1956 Number 3

Spiritual Emphasis Theme Features Bible Questions

"Questions and Answers from the Bible" is the title of the series of sermons to be delivered by The Rev. Edward A. Hansen during Spiritual Emphasis Days, Sept. 30-Oct. 3. The speaker is the pastor of Main Street Lutheran Church, Hutchinson, Minnesota.

Pastor Hansen will open Spiritual Emphasis Days by speak-



Rev. Edward Hansen

News Notes

A dictionary was recently donated to each of the dormitories by the library. The dictionaries and the set of encyclopedias which are in each dormitory are beginnings of the dormitory libraries which it is hoped will be established in the future.

Choir Officers Named

Recently elected choir officers are Robert Ostergaard, president; Nadine Johnson, secretary; and Librarians Joyce Arnold and Audrey Eriksen.

The Dana College Young Republican and Young Democrat clubs both held organizational meetings this week. New members were acquainted with the purposes of the clubs and plans for the current year were discussed. A monthly joint meeting of both groups is planned.

Home Ec. Officers Elected Recently

Officers of the Home Economics club were elected at a meeting held Monday. Doris Madsen was chosen vice-president and Nellie Faye Hagberg secretary-treasurer. Club president Pat Baron was elected before school closed last spring.

ing at First Lutheran Church in Blair during the 8:45 and 11:00 A.M. services Sunday. His topic will be, "The Holy Spirit's Unanswerable Question." The Sunday evening service will be held in Pioneer Memorial chapel at 8:00. "Where Can You Find God?", based on Job 23:3, is the theme of the evening meditation.

Monday's Question

The question for the chapel service Monday morning will be, "Is Anything Too Hard for the Lord?", with Gen. 18:14 as the text. Monday evening's service will have as its theme, "Is It Right with Your Heart?", based on II Kings 10:15.

Psalms 119:9 will be the text for Tuesday morning's topic, "How Can a Young Man Keep His Way Pure?" Tuesday evening's theme, "Who Is Like You, a People Saved by the Lord?", will have as its text Deut. 33:29.

Thoughts Wednesday morning will center around the theme, "Why Are You Anxious?", with Matt. 6:28 as the basis. Wednesday evening the concluding service of the fall Spiritual Emphasis Days will be held. "What Is That In Your Hand?", Ex. 4:2, will be the topic.

Classes Omitted

One class period will be omitted each day in order to lengthen the chapel services Monday, Tuesday, and Wednesday mornings. Morning chapel will open at the regular 9:50. Week-day evening services will begin at 7:30 in Pioneer Memorial chapel, and the Sunday evening meditation will open at 8:00. Special music will be featured at most of the services.

Wall Lamps Given By Faculty Women

Two wall lamps were presented to the Girls' Dormitory by the project committee of the Faculty Women's Club. The lamps are of wrought iron with charcoal gray shades. They are to be used in the ground floor reception room, and will be installed as soon as the final decision is made on furniture for the room.

Paul Simon Named As LSA Conference Main Speaker

Paul Simon will be the main speaker at the LSA regional conference which will be held on campus Friday through Sunday, October 5-7.

Mr. Simon, a Dana graduate, is from Troy, Illinois. He is a member of the Illinois state legislature and an active Missouri synod Lutheran layman.

"This Nation Under God" will be the theme of the regional conference. The theme was also used at the Big Ashram held on the campus of Gettysburg College, Gettysburg, Pennsylvania, in August.

Climaxing the weekend's activities will be a service at First Lutheran Church sponsored by Dana's LSA. The Rev. William Larsen, UELC president, will speak and music will be by the Dana A Cappella choir under the direction of Prof. Paul Neve.

Prayer Meetings To Precede Services

Students are reminded of the preparatory prayer services which are scheduled to be held in connection with the coming Spiritual Emphasis Days.

These student-led prayer services will begin twenty minutes before each evening meeting throughout the series. They will not be held before the morning meetings, however.

Under the direction of student council religious director Jim Rasmussen, the student-led meetings will be held in Pioneer Memorial room 212.

Student Body Votes For Sower Editor

Voting will take place today for the editor of the 1957 SOWER and for the two members of the judicial committee.

The SOWER editor must be of at least junior standing and have attended Dana for one year or more. Members of the judicial committee must be of at least sophomore standing and may not be members of the student council.

Dorothy Willmert and Harry Landbo have been nominated for SOWER editor. Nominees for the judicial committee are Duane Spong, Rodney Wead, Robert Ostergaard, and Ernest Larsen.

Girls Dorm Planning Big-Little Sister Tea

Ninety-six invitations were sent out to campus girls to attend the annual Big Sister-Little Sister tea, according to chairman Betty Christensen. The tea will be held in the ladies' reception room in the Girls' Dormitory at 3 o'clock Sunday afternoon. Big Sisters are expected to call for their Little Sisters.

Speech Instructor Works With KMTV

"Adventures in Life," a series of Sunday school programs, will be presented over KMTV, Channel 3, Omaha, beginning Thursday, Sept. 30 at 8:30 p.m.

Produced and directed by Norman Williams, the series includes "A World Is Made" which deals with the creation, and "The Coming of Death" which concerns the fall of Adam and Eve.

Mrs. Elaine Watt, Dana speech instructor, will appear on the program by supplying the voice and action of Neezer, the puppet. Others who will appear include Miss Jean Kelly as a Sunday School teacher.

This new Sunday school series is sponsored by the National Lutheran Council Pastors' Association of Omaha and Council Bluffs in cooperation with the Omaha Council of Churches.

Final Registration Figures Released

Final registration figures which were released this week set the total student enrollment at 246. This is three more than had been listed earlier.

Of this number, twenty-one are seniors, forty-eight are juniors, sixty-two are sophomores, and 106 are freshmen. Nine others remain unclassified.

Campus Calendar

Friday, Sept. 28
Freshman Bean Court.

Saturday, Sept. 29
Football. Sterling here.

Sunday, Sept. 30
Big Sister-Little Sister tea.

Sun., Sept. 30-Wed., Oct. 3
Spiritual Emphasis Days.

Say, Pa, How 'Bout Going To Carrie Courts Cornelius As The Football Game Tonight Reverse Night Jitters End

Even if your only interest these days concerns the World Series warfare, you're liable to find yourself being swept off to the gridiron to view another type of battle.

For from the moment the starting whistle is sounded, the band tunes up, and the crowd becomes only a massive roar, you're a part of this indefinable zany world of football.

When you find yourself in such surroundings, it's best to know nothing of the game—for they've probably changed the rules since you knew them anyway.

Find A Seat

First of all find yourself a seat several rows up so that you're sure to disturb nearly the whole bleacher section until you finally get yourself settled.

After you're well wrapped up in your blanket and your banner is secured right at eye level of the boisterous man behind you, ask your neighbor, three seats away, "who's playing anyway?"

When you're convinced that no one around you knows anything about either team, holler for the program boy who just went by two minutes ago. Then as you finally get all your change back from that knuckle-headed sales-boy, unfold your program and sit on it carefully so that you don't ruin your already thread-bare raccoon coat.

Wait Patiently?

Then wait, not so patiently—amid your squirming and wiggling search for that tobacco pouch—for some action.

Finally the game starts and the field becomes the scene for a grim battle. The teams eye each other like bulldogs greeting the postman and, after only a few plays, you're convinced that "this isn't the way we used to

Good Intentions Are Going, Going---Gone

Anyone who's been in the library during the day lately will recognize the truth of these words which appear in the Chadron Teachers College publication **The Eagle**:

"Already the attendance in the library is beginning to dwindle. Apparently most of the good intentions are turning into lost causes. Don't give up yet—the worst is yet to come."

Although Dana's library attendance hasn't fallen so remarkably during the evening (Continued on page 4)

do it when I was a kid. Why when I used to quarterback . . ."

But before you go home in a huff, Pa, why not stay and give the cheerleaders a lift. Add your voice to the cheering crowd. Dana can use you! And how!

Er, uh, do you 'pose??? Oh, gosh, I just don't know how to say it. Let's try again. May I—could I—do you s'pose—? Oh, mom—what do I say now? You never told me what to do in a case like this.

Do I take him by the hand

Spiritual Emphasis Days Begin . . . Lift Your Eyes To The Lord

I will lift up mine eyes unto the hills: From whence shall my help come? My help comes from the Lord who made heaven and earth. Psalm 121:1-2.

Next Sunday Spiritual Emphasis Days start on Dana Campus. During these days we all have the opportunity to come and worship and learn more of our Lord, our Helper. Do you see any need to come?

College presents many problems of all kinds to the students, freshmen and upperclassmen alike. Problems concerned with studies, roommates, your spiritual life, and many other things.

You are the only one who knows what your own problems or worries are. And our Lord is the One who can best help you solve them. He is every ready and waiting, wanting you to ask for His guidance and direction in all things.

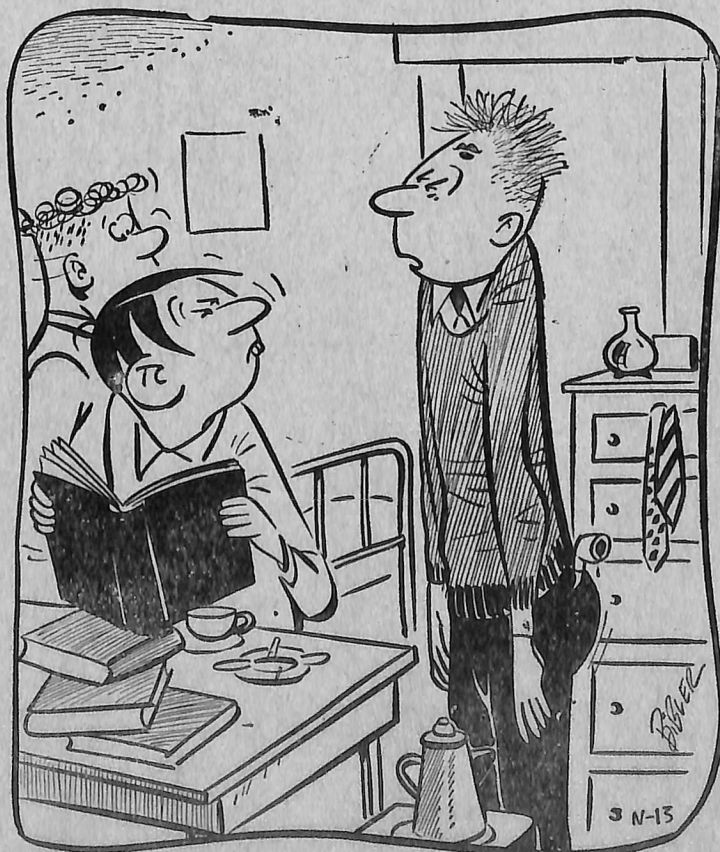
He once said and now is saying to you, "Come unto me, ye that labor and are heavy laden and I will give you rest."

These coming Spiritual Emphasis Days offer a perfect opportunity to do so. Don't let this opportunity slip by .

Carol Madsen

LITTLE MAN ON CAMPUS

by Dick Bibler



"NICE BLIND DATE — LITTLE TOO TALL THOUGH."

and look tenderly into his eye-balls and say, "May I have the honor of your company?" Naw, that's too corny. I just can't say that.

How 'bout "Say, big boy, how about a little ole date tonight?" Nope, that just isn't my style either. Perhaps I'd be better off if I didn't ask anyone; but all the other girls did, and I don't want to be a queer duck.

What to do

And if I do ask a boy, what do we do? I hate to pick up a fellow. And, how do I know if he likes to go to shows or on a picnic? Oh for a car!!

The biggest worry is money—you know, that green stuff. I wonder what we could do on 35 cents. Not much, I bet.

Well, like I say, ol' chap, I just don't think I'll ask anyone. Oh, me, what will I do. Time will tell.

Oh boy! There's Cornelius College! I wonder if he's dated yet. There's only one way to find out. Here goes everything.

"Cornelius!" (Ugh, that name, but he's a boy.) "Cornelius! Wait a minute. Whew, are you a hard person to catch. I've been wanting to talk to you. I've been meaning to ask you"—(here goes; I might as well get it over with) —"are you busy Saturday night? No? Good! Would you like to go to the show with me or some- (Continued on page 4)

The Hermes



Vol. XXXVIII No. 3

Published weekly during the college year, except holiday and examination periods, by the student body of Dana College Blair, Nebraska.

Subscription rate \$2.50 a year, in advance.

Reentered as second class matter September 12, 1953, at Blair, Nebraska, under act of March 3, 1879.

Editor-in-chief Marilyn Ward

Editorial Advisor Tom Langenfeld

Associate Editors

News Margaret Meyer

Feature Joan Coffey

Copy D'Arlene Morton

Sports Milt Jensen

Business Manager Pete Smith

Subscription Manager Mary Jo Andrews

Circulation Manager Tom Nielsen

Advertising Manager Pat Olson

Faculty Advisor A. Gordon Ferguson

Reporter: Karen Jensen

Reporters: Karen Jensen, Alice Nelson,

Lynn Cole, Pat Baron.

Vikings Play Kansans Here Tomorrow Night

Tomorrow night at 8 p.m. Dana will entertain a 30 man squad from Sterling College.

The Warriors, operating out of Sterling, Kansas, have lost only one man from their 1955 starting lineup. That lineup won five of seven games.

Dana lost to the Warriors, 26-0, at Sterling last year.

Top Sterling offensive threat is halfback Curt Bennett who led Warrior ball carries with a 4.76 YPC last season. He also made 34 first downs and passed for seven TD's.

Joe Bayer, a 200 pound senior tackle, heads a Warrior forward wall which averages about 190 pounds.

Sterling dropped its opener with Northwestern Oklahoma, 25-0.

With the exception of Tarkio the Sterling eleven will represent the smallest student body of any football foe Dana faces this fall. Sterling has an enrollment of 290.

Scrubs Take Lead As Intramurals Begin

Results of last Saturday's intramural football games placed the Scrubs in top position of the league. Total scores gave the Scrubs 26, their opponents the Annelidas 6 and the Homo Sapiens 28 compared to Barty's Booglers 7.

The next games are scheduled for Saturday, Sept. 29, when Barty's Booglers will play the Annelidas at 2:30 and the Sooners will vie with the Homo Sapiens at 3:30. Games scheduled for Sunday, September 30, list the Scrubs vs. Homo Sapiens and Sooners vs. Annelidas.

Team Standings	W	L
Scrubs	2	0
Homo Sapiens	1	0
Sooners	0	1
Annelidas	0	1
Barty's Booglers	0	1

Phone
Stewart's Pharmacy
Filling Prescriptions Is the Most Important Part of Our Business

R. E. Vinton & Sons
Your Headquarters for Complete
AUTOMOTIVE
SALES—SERVICE

Samson Rexall
DRUG STORE
PRESCRIPTIONS

Dana Miscues, Wayne TDs Give Staters 31-7 Win

Wayne State took the ball away from Dana seven times during their 31-7 triumph over the Vikings here last Thursday.

Wayne Staters recovered four Dana fumbles and intercepted three Dana passes. Three times Wayne was given the ball in Vike territory as Dana fumbled on first down plays.

But when the Vikes weren't fumbling or having passes intercepted they showed signs of a potentially potent attack.

Early in the contest freshman back Bill Chrisman sparkled on several carries.

Later, with frosh Dick Brink calling the signals, Jan and Hack Philby flashed some quick gains.

Early in the third period Jan scored on a 23 yard slant. Hack kicked the point, cutting the Wayne lead to 19-7. The visitors led at the half, 13-0.

Dana picked up 11 first downs to 14 for Wayne and led the invaders in passing yardage.

Dana defense had been polished

during the week, committing fewer miscues than the Viking offense. Ron Petrick and Marv Olsen turned in outstanding performances in the Dana defensive wall.

Dana blocked two Wayne extra point tries.

- | | |
|-------------------|----------------------|
| Annelidas | Harold Holm |
| Larry Hansen | Paul Christensen |
| Richard Jensen | Howie Christensen |
| Howard Lyons | Bob Jensen |
| Ernie Larsen | Clark Christopherson |
| Stan Larsen | Barty's Booglers |
| Myril Schultz | Barty Borglum |
| John Henningsen | Duane Petersen |
| Dale Jensen | Don Joern |
| Homo Sapiens | Everett Johnson |
| Ernest Anderson | Mark Petrusson |
| Bob Ostergaard | Ed Wittig |
| Noel Petersen | Karl Hansen |
| Jim Andersen | Lyle Rasmussen |
| Duane Lubkemann | Sooners |
| Richard Jorgensen | John Hollenbach |
| Isaac Jenkins | Rod Wead |
| Tom Nielsen | Lee Ramage |
| Scrubs | Dick Poore |
| Bill Davis | Bill Himmler |
| Ron Huston | Carmen Craig |
| | Ski Smith |

BUD JENSEN

Skelly Service Station

Blair, Nebraska



RABBASS STUDIOS

PHOTOS THAT PLEASE

AMATEUR SUPPLIES COMPLETE LINE OF FRAMES

Nebraska's Most Colorful Rink
FREMONT ROLLER RINK
Public Skating 8:00-10:30 (Tuesday, Friday, Saturday and Sunday)
Matinees 2:00-4:00 (Saturday and Sunday)
Private Parties on Monday, Wednesday and Thursday. (Hours Arranged) Are excellent for raising money.

RECOMMENDED BY DANIAN'S . . .

LACY'S CAFE

J. M. McDONALD CO.



Department Store

ASSURANCE of

FINE VALUE



found only in

ORANGE

BLOSSOM

KLOPP'S
JEWELRY & GIFTS
S & H GREEN STAMPS

Magazine Display Readers Digest Feature Continued Stages Contest

As a continuation of the display of bound collections of nineteenth century magazines, the library is featuring this week "Scribner's Monthly," an illustrated magazine which was published in 1875.

An interesting history of William and Mary college, the second oldest of American colleges, is recorded in the first fifteen pages of the collection. Pictures of the school as it looked before the fire of 1859 are included in the description.

One of the most fascinating articles in the magazine is entitled, "The Curiosities of Longevity." A number of photographs of original portraits add interest to the write-up. The reader sees the Countess of Desmond as she looked at the age of one hundred forty-five; a portrait of Henry Jenkins, aged one hundred sixty-nine; and John Rovin and his wife Sarah, aged one hundred seventy-two and one hundred sixty-four years, respectively. Read the article and learn to what factors the venerable people attributed their length of years!

Turn to page one hundred forty-five for pictures and a description of Egypt. "The Tour of the Nile" is the name of the composition.

Students interested in art will enjoy the many Japanese prints which begin on page one hundred seventy-seven. Animals are often used to portray human characteristics.

Furnishings and decorations are depicted in words and pictures beginning on page four hundred eighty-eight and again on page eight hundred nine. Look at page eight hundred twelve for interior decorating ideas!

Near the end of the volume is an article about the Astor family of New York. Compare that with the biographies we find in our magazines today.

More old and rare magazines are to be found in the first tier of the library stacks.

Reader's Digest Offers \$41,000 In Prizes in Contest for College Students and Teachers

The Reader's Digest is offering \$41,000 in cash and scholarships as prizes in an October contest open only to college students and faculty members in the United States.

First prize is \$5,000 in cash with another \$5,000 to the scholarship fund of the winner's college. Second prize is \$1,000 cash with an equal amount to the school's scholarship fund. There are ten \$500 cash prizes with an equal amount to scholarship funds.

There will be 100 prizes of \$10 in book credit from local college book stores. The best entry from each college will receive an additional \$10 in book credit.

On blanks available at college book stores, entrants simply list in order the six articles which they consider the most interesting in the October issue of Reader's Digest. Those with listings closest to the results of a survey of Digest readers will receive the prizes.

Entries must be postmarked before midnight of October 25 and addressed to the Reader's Digest Contest, Box 4, Great Neck, L. I., New York. Entries will be judged by O. E. McIntyre, Inc.

The October issue of the magazine includes an article by Howard Whitman urging contributions to scholarship funds in lieu of flowers at funerals and an account of the success of the Fund for the Advancement of Education's program for admitting brighter boys and girls to college two years earlier.

GOOD INTENTIONS (Continued from page 2)

hours, daytime attendance appears to be making up for it. It is nice to study in the library with only four or five others there though!

Seriously, figures show that the average attendance is dropping at the rate of twenty students per week. Think what would happen if this continued!

Actually, though, there'll come a time when students will once again pour through the doors. As **The Eagle** said, "There is always a record breaking attendance (1) at the beginning of the year, (2) at the beginning of the second semester (when everyone is feeling guilty about the first semester), and (3) when final exam time rolls around and everyone suddenly remembers that they are on the verge of flunking."

Wouldn't it be different (and encouraging) if a new record could be set for this time of the year?!

CARRIE COURTS CORNELIUS

(Continued from page 2)

thing? Goody! (Just like that, it's over and I didn't feel a thing. Maybe I should try this more often!)

So go the worries and headaches of Carrie Coed about Saturday night's reverse dating on the Dana Campus.

Carrie and Cornelius had heaps of fun! Hope you did, too!

LPH BOOKSHOP

Bibles — Books — Supplies

Phone 2233

Phone 3333

CHRISTENSEN LUMBER COMPANY

It's Good if It's from Us

KOLTERMAN'S Ben Franklin Store

5c to \$1 Merchandise

Come Here for Year Round School Needs

BLAIR APPLIANCE CO.

STEINBAUGH & HANSEN

TELEVISION AND APPLIANCES

Phone 3676

SHOP BLAIR

Meet Ray at
**NELSON BROS.
CLOTHIERS**
Blair's Finest Men's Store

WASHINGTON COUNTY BANK

Blair, Nebraska

"Bank With A Smile"

Member F.D.I.C.

No Beer Served
YOUNG'S CAFE
Meals, Lunches
Short Orders

You Are Cordially Invited

To Visit The

BLAIR BOWLING LANES
Mr. and Mrs. Joseph Kudera
Proprietors

Compliments of

BLUE GOOSE

Blair's Leading Food Store

~~Blair's Finest Men's Store~~
NIELSEN JEWELRY

Watches — Jewelry

Guaranteed Watch Repair

A Welcome from Your
Blair Dentists

Dr. Edward Eagleton

Dr. Edwin Jipp

Dr. Milton Olsen