

# The Hermes

Dana College

Volume XLI Blair, Nebr., Sept. 7, 1959 Number 1

## Social Director Announces Plans For First Week

Busy days are ahead for the students and faculty this week. Mixed in with unpacking, meeting new people and registering will be an array of social activities.

Social Director Lois Lorenzen requests that you "Come hungry!" Tuesday night at 8:00 for a Watermelon Feed. Dress comfortably and bring your appetite—there will be lots of watermelon waiting.

Wednesday evening offers a campfire and song fest at 9:00. Early evening hours will be consumed by Freshmen meetings with their advisors.

September 10th is a dress-up occasion held in the Gym. Wear your Sunday best as this is the Faculty Reception, and it is aimed to entertain you.

Upperclassmen talent will be displayed at 8:30 p.m. Friday in their annual show. Chairman Ellen Andrews requests that you

## New Dietician Iowa State Grad

Two changes have been made in the College staff.

Mrs. Blain Carey has been appointed dietician to fill the vacancy created by the illness and resignation of Miss Margaret Hansen.

Mrs. Carey is a native of Elliot, Iowa, and has a Bachelor of Science in Home Economics Degree from Iowa State College in Cedar Falls.

Mrs. R. A. Hunt has also been appointed. She will be Manager of the Canteen and Bookstore.

Mrs. Hunt, who now lives in Blair, replaces another Blairite, Mrs. Floyd Hinz.

## Game at Tarkio Opens New Season

- Sept. 18 Tarkio (there)
- Sept. 26 Peru (here)
- Oct. 3 Nebraska Wesleyan (there)
- Oct. 10 Concordia (Homecoming here)
- Oct. 17 Chadron (here)
- Oct. 24 Doane (there)
- Oct. 30 Kearney (there)
- Nov. 7 Hastings (here)

come ready for a trip into "Never, Never Land." Variety acts for entertainment—don't miss them.

"... with a right and left grand and a do-si-do..." You'll hear those words Saturday at 8:00 as Fred Ehlers, well-known caller throughout Nebraska and Iowa, treats you to a square dance. If you've never danced before, come and learn, he's an expert teacher. Just hop on down to the tennis courts and at least join him for a free bottle of pop.

## FRESHMEN— Pictures Scheduled Tuesday-Thursday

Freshmen pictures will be taken at Rabbass Studio anytime during the day from September 8-11. The Yearbook staff and the News Service stress that you must have your picture taken during this time. Just walk in, give your name to Mr. Rabbass and pose—no pain involved, because you've already paid for it.

## EXPECT 198 NEW STUDENTS 42 FROM OTHER COLLEGES

Dana is growing! Take a look at the enrollment statistics below and draw your own conclusions.

The figures, recently released by the Business Office, show that 198 new students are expected. Of this 198, 42 are transferring from other colleges, and seven attended Dana before but have not attended for a year or more.

With 120 new men students and 78 women, the ratio for this group is 1.5 men to one woman.

Eighteen states and two foreign countries are represented. The states and their number of representatives are as follows:

Nebraska .....	85
Iowa .....	52
Wisconsin .....	15
Montana .....	7
Minnesota .....	7
Illinois .....	7
California .....	4
New York .....	4
Kansas .....	3
Colorado .....	2
N. Dakota .....	2
Maine .....	2

States represented by one each are:

Arizona, Louisiana, Utah, Massachusetts, South Dakota, and Oregon.

One student has come from the Canal Zone and one student from Canada, for their college educations.

## Refsell Studies At Minnesota

Professor Lloyd Refsell, chairman of the Philosophy and Greek departments, has completed a seminar on problems concerning religion and morals, held at the University of Minnesota.

## College Flag Will Appear At Homecoming

For the first time in the 75-year history of Dana, we have an official college flag. The announcement was made recently by President Madsen and Development Director, Mr. Bo Weismann.

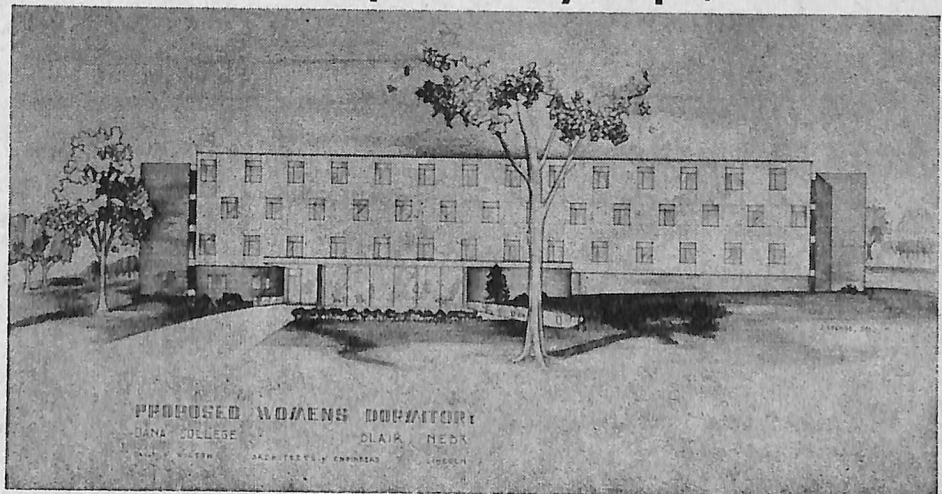
The new flag measures four by six feet and is made of a new fabric called Nylanin—a blend of Nylon and Linen to give long wear. Both sides feature the Viking seal applied in red on white.

Plans are to use the flag for the first time during the Diamond Jubilee Homecoming celebration. It is hoped that the flagpole, donated by the senior class of 1958, will be erected by that time.

## Ferguson Works On Language Degree

Mr. A. Gordon Ferguson, chairman of the language department has been studying under a Regents Graduate Scholarship at the University of Nebraska during the summer months. He is working on his doctorate.

## Contract Awarded to Korshoj With Completion By Sept., 1960



The new Women's Residence Hall on the Dana Campus will be built by the Korshoj Construction Company, Inc., of Blair. Their low bid of \$399,334 includes general construction, plumbing and heating, electrical and mechanical work.

If plans go according to schedule, equipment should be moved into the construction area and actual work begun during these first weeks of school. Completion date is set for 334 days from the time of construction or approximately September 1, 1960.

Dr. Madsen points out that the contracts must be approved by the Federal Housing and Home Finance Agency in Chicago. It is anticipated that this approval will come without delay.

# WELCOME

## -From Dana's President

I count it a high privilege to express this greeting of welcome on behalf of my co-workers on the faculty and staff to each one of you as you come to Dana's campus to share the adventure of a new school year. Each September for seventy-five years a new group of students and eager former students have ascended Dana's majestic hill to face the challenge and seek the inspiration of an education in the spiritual climate of a Christian campus.

"Surrounded then as we are by these serried ranks of witnesses, let us strip off everything that hinders us, as well as the sin which dogs our feet, and let us run the race that we have to run with patience, our eyes fixed on Jesus, the Source and the Goal of our faith . . . Think constantly of Him . . ., and you will not lose your purpose or your courage."

—Hebrews 12:1-3 (Phillips)

We who are returning are gratified at the marks of Dana's progress evident on the campus and in the classrooms. You will be surrounded throughout the year by building and expansion activities as Dana continues to expand her facilities and her mission. We hope you will bear patiently the inconveniences and the crowding which are part of our "growing pains"—and we hope you will rejoice with us that they are necessary. We welcome you with the prayer that this year may be abundantly rich for you in academic accomplishment, wholesome fellowship and maturing dedication to that which is true and beautiful and good.

—C. C. Madsen

## -From Blair's Mayor

In the name of the residents of the City of Blair, and as its Mayor, may I extend to you my congratulations for having chosen Dana as the home of your educational development and growth. I am certain you will be happy with your selection if this is your first year and if you are a returning student, I am more than ever pleased that you wanted to return to Dana and the City of Blair. We shall try to supply you with your needs and will appreciate your letting us know our shortcomings.

Dana is growing and so is Blair and with that growth comes some pains. We try to apply the proper medication in time but our diagnosis is not always correct and consultation can usually find the answer we need. The City Council meets the first and third Tuesdays of each month at 7:30 P.M. We'll be pleased to have you visit us anytime. Please consider Blair your hometown during your months here.

Don E. Schettler, Mayor

### THIS IS YOUR COLLEGE—

## Are You Aware Of Its Main Attraction?

"Dana College, Blair, Nebraska." How familiar these words are to the students who are gathering here this fall. Each time someone asked what school they planned to attend, those words have come as the only answer.

Why come to Dana? Perhaps you've chosen it because of your church affiliation. Or maybe because Mom and Dad were both Danians. Still it might have been your desire to be a Viking football player, a member of the College choir or because your friend was coming here.

Regardless of your reason, you have come to a school where Christian thoughts progress to the accomplishment of Christian deeds.

High atop one of our Campus hills is a rugged cross. Constructed by students, it stands behind the College. It isn't a finished cross—sanded and varnished—but one that is uneven and crude.

The beauty of this cross is found in its imperfection. We, as beginners in a new way of life are also imperfect. Like the cross, our value is increased by our association with Christ.

Visit the cross! Admire its simplicity! Be thankful that it is a part of YOUR Dana College at Blair, Nebraska.

## Teachers Study In Illinois, New York, Nebraska

Mrs. Othilia Hauge, Dean of Women, has been studying at Chicago Lutheran Seminary in Maywood, Illinois.

Mr. Paul Neve, music department chairman, has studied most of the summer at Union Theological Seminary in New York City where he has been finishing work on his doctorate thesis. His special area of interest is in the field of church music.

Mr. P. V. Hansen, Jr., head of the chemistry department, attended a seminar in science and has done extensive work at the University of Nebraska.

## Improvements On Campus Bring New Life

Driving on Campus roads during the winter months this year will be easier due to the resurfacing which has been done.

The Canteen has been enlarged considerably and additional storage space for the Book Store has been provided on the first floor of Old Main. On second and third, there are 10 beautifully decorated classrooms including two large rehearsal rooms for Band and Choir. This space was formerly occupied by a Chapel and balcony.

The Kitchen and Dining Hall boast the most noticeable changes. The installation of the new cafeteria line and all new kitchen equipment will make food preparation easier and more efficient.

The Dining Room itself has been redecorated in brown, white, and aqua, with new light fixtures, chairs, tables, and brightly colored drapes.

## Miss Mac Has Hawaiian Holiday

Miss Elja McCullough, head of the elementary education department at Dana, and seventeen other teachers from various parts of Nebraska have returned from a two-week holiday in Hawaii. Of outstanding interest for these teachers was their visit to Pearl Harbor to see where the 1941 attack on the American Fleet took place.

The tour, which could be taken as a college credit course, is an annual affair. Miss McCullough was guide for a similar group of teachers a year ago when they made a tour of the European countries.

# The Hermes



Vol. XLI

No. 1

Published weekly during the college year, except holiday and examination periods, by the student body of Dana College, Blair, Nebraska.

Subscription rate \$2.50 a year, in advance.

Reentered as second class matter September 12, 1953, at Blair, Nebraska, under act of March 3, 1879.

### EDITORIAL STAFF:

Editor-in-Chief ..... Ellen Andrews  
Associate Editor ..... Al Girtz  
News Editor ..... Vance Larsen  
Features Editor ..... Doris Stiersbeck  
Sports Editor ..... Leo Kirchoff  
Women's Sports Ed. .... Karen Jensen

### MANAGERS:

Business ..... Andy Jensen  
Subscription ..... Marilyn Olson  
Circulation ..... Paul Olson  
Local Advertising ..... Andy Jensen  
National Advertising ..... Dick Carr

### FACULTY ADVISOR:

A. Gordon Ferguson

### PUBLISHER:

Lutheran Publishing House, Blair

### DEDICATED:

## To Philip Space

"To dear old Philip  
We dedicate this space.  
To Philip who?  
Why, to Philip Space."

There are times when you have too much news and then there are times like these. Not enough news can make an editor age beyond her years.

I owe a big "Thank you!" to Phil Pagel, director of Dana's News Service, for letting me use his stories and pictures wherever possible.

You see, because Mr. Ferguson and I decided you would like to have a HERMES greet you when you arrived on Campus, we've been busy. There were stories to gather and write, ads to sell, copy to type and proofs to read. Not unusual? Well no, they all come with a newspaper, but generally your staff isn't between Maine and California when you're doing all of them.

As this column is being written to "Philip Space," two stories are beginning to unfold and one advertiser has given me his copy. Each one is too big for this space. So, you'll read yesterday's news next week.

Remember Freshmen, we're glad to have new reporters. If you're interested in writing, typing or proofreading stories, drop by the HERMES office, just inside the Boys' Dormitory. We'll be waiting for you.

—Ellen Andrews

# SCHEDULE OF CLASSES

First Semester, 1959-60

DANA COLLEGE, BLAIR, NEBRASKA

Per	Dept. No.	Subject — Recitation, Lecture	Cred	Days	Room	Instructor	Laboratory Info Sec., Per., Days
1	Biol 105	General Biology, Sec. 1	5	M W F	OM304	Ransbottom	Sec. 1, Per 5-6 MW Sec. 2, Per 3-4 TT Sec. 3, Per 5-6 TT
8:00 to 8:50	BE 113	Beginning Typewriting	2	T T	OM201	Herrmann	MWF Per. 1
	BE 213	Advanced Typewriting	2	M W	OM201	Herrmann	
	BA 101	Introductory Accounting, Sec. 1	3	M W F	OM202	Coon	
	BA 201	Fundamentals of Economics	3	M W F	OM203	Ragan	
	Chem 205	Organic Chemistry	5	M W F	OM401	Hansen	Sec. 1, Per. 5-8 MW Sec. 2, Per. 5-8 TT
	Ed 301	Princ. & Meth. Secondary Education	3	MTWT	PM210	Weckmuller	
	Hist 107	Modern Civilization, Sec. 1	3	M W F	OM208	D. J. Tweton	
	Hlth 105	Personal & Community Health	2	M W	OM212	Peterson	
	Math 105	College Algebra	3	M W F	OM105	Tiaht	
	PE 215	Sports Activities	2	T T	OM303	Zimmerman	
	PE 303	PE for Elementary Grades	2	M W	OM303	Zimmerman	
	Phys 303	Electricity & Magnetism	3	M W F	OM102	A. Tveten	
	PreEng 111	Engineering Drawing	2	T T	OM400	Thomsen	
	Rel 121	Life & Lit. of New Testament, Sec. 1	2	T T	OM304	Hoeger	
	Rel 221	History of Christian Church	2	T T	PM317	Refsell	
	Soc 303	Minority Groups	3	M W F	PM315	Smith	
	Soc 311	Introduction to Social Work	2	T T	PM315	Smith	
	Span 201	Intermediate Spanish	3	M W F	PM314	Ferguson	
<hr/>							
2	Biol 405	Mammalian Physiology	5	M W F	OM303	Ransbottom	Per 5-7 MW
9:00	BA 101	Introductory Accounting, Sec. 2	3	M W F	OM202	Coon	
to	BA 425	History of Economic Thought	3	M W F	OM203	Ragan	
9:50	Chem 101	General Chemistry	5	M WTF	OM401	Hansen	Sec. 1, Per. 3-4, TT Sec. 2, Per. 5-6 TT Arr. 1 hr.
	Ed 261	Psychology of Adolescence	3	M WT	PM210	Weckmuller	
	Eng 101	English Composition, Sec. 1	3	M W F	PM212	Bansen	
	Eng 101	English Composition, Sec. 2	3	M W F	PM317	Engelman	
	Eng 101	English Composition, Sec. 3	3	M W F	OM304	L. Nielsen	
	Fr 101	Elementary French	4	M WTF	PM314	Ferguson	
	Geog 303	World Geography	3	M W F	PM207	D. J. Tweton	
	Grk 207	Elementary Greek	4	M WTF	PM316	Refsell	
	Hum 101-401	Liberal Arts Reading	1/2	T		Staff	
	Math 100	Basic Mathematics, Sec. 1	3	M W F	OM105	Tiaht	
	Mus 105	Harmony & Ear Training	3	M W F	OM211	Wise	
	Orient 101	Orientation, Sec. 4	1	T	PM212	Rasmussen	
	PE 101	PE Activities (W), Sec. 1	1	M W	Gym	Zimmerman	
	PE 151	PE Activities (M), Sec. 1	1	TF	Gym	Zimmerman	
	PE 211	Basketball Theory	2	M W	OM212	Peterson	
	Soc 203	Introduction to Sociology	3	M W F	PM315	Smith	
<hr/>							
10:00 to 10:20	Chapel			MTW F	Gym		
<hr/>							
3	Art 401	Aesthetics	3	T T	OM400	Thomsen	
10:30	Biol 203	Genetics	4	T TF	OM303	Ransbottom	Per 5-6 TT
to	BA 411	Corporation Finance	3	M W F	OM203	Coon	
11:20	Chem 301	Quantitative Analysis	5	M W F	OM401	Hansen	Arr. 8 hrs.
	Ed 101	Human Growth & Development I, Sec. 1	3	M W F	OM208	Poston	
	Ed 203	Psychology of Learning	3	MTWT	PM210	Weckmuller	
	Eng 101A	English Composition	3	MTWTF	PM212	L. Nielsen	
	Eng 101	English Composition, Sec. 4	3	M W F	PM317	Falk	
	Eng 407	Survey of World Literature	3	T T	PM316	Bansen	1 hr. 8:50 Th
	Germ 101	Elementary German	4	M WTF	PM314	Ferguson	
	Hist 403	16th Century Europe	3	M W F	PM207	D. J. Tweton	
	Math 100	Basic Mathematics, Sec. 2	3	M W F	OM105	A. Tveten	
	PE 101	PE Activities (W), Sec. 2	1	M W	Gym	Zimmerman	
	PE 151	PE Activities (M), Sec. 2	1	T T	Gym	Zimmerman	
	PE 409	Problems of Coaching	2	T T	OM105	Peterson	
	Psych 251	General Psychology	3	M W F	OM304	Refsell	
	Psych 403	Psychology of Religion	2	T T	PM315	Rasmussen	
	Rel 121	Life & Lit. of New Testament, Sec. 3	2	T T	PM317	Hauge	
	Spch 111	Fundamentals of Speech, Sec. 2	2	T T	PM207	Siemers	
	Spch 331	Speech Techniques for Teachers	3	M W F	PM315	Siemers	
	PS 217	State & Municipal Government	3	M W F	OM202	Ragan	

4 11:30 to 12:20	Biol 105	General Biology, Sec. 2	5	M W F	OM304	Ransbottom	Sec. 1, Per 5-6 Sec. 2, Per 3-4 Sec. 3, Per 5-6	MW TT TT
	BA 301	Money & Banking	3	M W F	OM203	Ragan		
	BE 219	Business English	3	M W F	OM202	Herrmann		
	Ed 121	Introduction to Education, Sec. 1	3	M W F	PM210	McCullough		
	Ed 439	Teaching of English	2	T T	PM316	L. Nielsen	Arr. 1 hr.	
	Ed 4--	Teaching of Major	2	T T	PM210	Weckmuller	Arr. 1 hr.	
	Eng 405	Contemporary Literature	3	T T	PM315	Engelman	Arr. 1 hr.	
	Germ 201	Intermediate German	3	M W F	PM314	Ferguson		
	Hlth 401	Kinesiology	4	M W F	OM105	Peterson	Arr. 1 hr lab.	
	Math 201	Calculus I	4	M WTF	OM102	Tiaht		
	Mus 119	Music Appreciation	2	T T	OM208	Wise		
	PE 101	PE Activities (W), Sec. 3	1	T T	Gym	Zimmerman		
	PE 151	PE Activities (M), Sec. 3	1	M W	Gym	Zimmerman		
	Rel 321	Life and Lit. of Old Testament	2	T T	OM304	Hoeger		
	Soc 331	Cultural Anthropology	3	M W F	PM315	Smith		
	Spch 321	Play Production	3	M W F	PM207	Siemers		
5 12:30 to 1:20	BA 211	Intermediate Accounting	3	M W F	OM202	Coon		
	Dan 201	Intermediate Danish	3	M W F	PM316	Bansen		
	Eng 203	Survey of English Literature	3	M W F	PM317	Engelman		
	Hlth 105	Personal & Community Health, Sec. 2	2	T T	OM105	Peterson		
	Hist 107	Modern Civilization, Sec. 2	3	M W F	OM304	D. J. Tweton		
	Rel 121	Life & Lit. of New Testament, Sec. 4	2	T T	PM317	Hauge		
	Rel 121	Life & Lit. of New Testament, Sec. 2	2	T T	OM304	Hoeger		
	Spch 111	Fundamentals of Speech, Sec. 3	2	T T	PM207	Siemers		
6 1:30 to 2:20	Art 101	Freehand Drawing and Painting	2-3	M W F	OM400	Thomsen		
	Art 105	Public School Drawing	2	T T	OM400	G. Nielsen		
	BA 311	Marketing	3	M W F	OM203	Ragan		
	BE 211	Advanced Dictation	3	MTWTF	OM202	Herrmann		
	Ed 121	Introduction to Education, Sec. 2	3	M W F	PM210	McCullough		
	Eng 101	English Composition, Sec. 6	3	M W F	PM317	Engelman		
	Eng 201	Advanced Composition	3	M W F	PM212	Bansen		
	Hist 205	U. S. History to 1789	3	M W F	PM207	D. J. Tweton		
	Math 301	Theory of Equations	3	M W F	OM105	Tiaht		
	PE 201	PE Activities (W), Sec. 1	1	T T	Gym	Zimmerman		
	PE 251	PE Activities (M), Sec. 1	1	M W	Gym	Zimmerman		
	Phil 201	Introduction to Philosophy	3	M W F	PM316	Refsell		
	PreEng 112	Descriptive Geometry	2	M W	OM102	A. Tveten		
	Orient 101	Orientation, Sec. 1	1	T	PM212	Rasmussen		
	Orient 101	Orientation, Sec. 3	1	W	OM208	Rasmussen		
	Orient 101	Orientation, Sec. 5	1	T	PM212	Rasmussen		
	Rel 411	Christianity in Modern World	2	T T	OM304	Hoeger		
	Soc 101	Introduction to Social Science	3	M W F	PM314	Smith		
	Spch 111	Fundamentals of Speech, Sec. 1	2	M W	OM303	Siemers		
	Spch 111	Fundamentals of Speech, Sec. 4	2	T T	PM207	Siemers		
7 2:30 to 3:20	Art 201	Advanced Drawing & Painting	2-3	M W F	OM400	Thomsen		
	BA 471	Auditing	3	M W F	OM203	Coon		
	BE 111	Shorthand Theory	4	MTWTF	OM202	Herrmann		
	Ed 111	Child Literature	2	T T	PM210	McCullough		
	Ed 317	Teaching Elementary Subjects I	3	M W F	PM210	McCullough		
	Eng 205	Survey of American Literature	3	M W F	PM317	L. Nielsen		
	Grk 407	Seminar in Greek Studies	3	T T	PM316	Refsell	Arr. 1 hr.	
	Mus 207	Harmony & Ear Training	3	M W F	OM208	Wise		
	Orient 101	Orientation, Sec. 2	1	T	PM212	Rasmussen		
	PE 201	PE Activities (W), Sec. 2	1	M W	Gym	Zimmerman		
	PE 251	PE Activities (M), Sec. 2	1	T T	Gym	Zimmerman		
	Phys 201	Physics I	5	M WTF	OM102	A. Tveten	Arr. 3 hr. lab	
	Psych 303	History of Psychology	3	M W F	PM315	Rasmussen		
8 3:30 to 4:20	Mus 111	Band	½	M W F	OM208	Wise		
	Mus 403	Counterpoint	2	T T	OM308	Neve		
	Spch 205-305	Debate	1-3	T T	PM315	Siemers		
9 4:30 to 5:20	Mus 109	A Capella Choir	½	MTWTF	OM208	Neve		

## Special Classes Can Be Arranged

To Be Arranged  
or On Demand

Biol 412 .....	Problems in Biology .....	1-2	Ransbottom
BA 451 .....	Senior Topics .....	1-2-3	Coon
Ed 207 .....	Supervised Teaching .....	3-5	McCullough
Ed 407 .....	Supervised Teaching .....	5	Weckmuller
Hist 405 .....	Individual Reading .....	1-3	D. J. Tweton
PE 105-205 .....	Limited PE .....	1	Zimmerman
PE 403 .....	Research in PE .....	2	Peterson
Psych 410 .....	Problems in Psychology .....	1	Rasmussen
Rel 407 .....	Fundamentals of Parish Work .....	2	Hauge
Soc 499 .....	Research Essay .....	1-4	Smith
Spch 112 .....	Voice & Diction .....	3	Siemers
	Organ, Voice, Instrumental, Piano Lessons .....		Neve, Slocum, Wise

### Dana Eligible For Eppley Scholarships

As a member of the Nebraska Independent College Foundation, Dana is now eligible to share in a grant made by the Eugene Eppley Foundation, Inc., of Omaha. This grant will enable the college to award two new scholarships to incoming students in the amount of \$500.00 each.

According to the terms of the scholarship, the student may continue to receive a grant of \$500.00 for each of his four years if he keeps a high level of achievement in college work.

In addition to setting up two \$500.00 a year scholarships for the next four years, the Eppley Foundation is awarding a matching \$500.00 a year to the college to help defray the expenses of educating each student.

Eligibility for the Eppley Scholarship comes if you are from the Omaha area, needy, and of outstanding academic ability.

### Folk Dancers at Peony July 28

The Dana Folk Dancers appeared at Peony Park, July 28, representing us as the Omaha Symphony dedicated their concert to our Diamond Jubilee Anniversary.

### DRIVING?

Make that next tankful worth more by using your **FREE** coupon book from **Gold Bond Stamps**.

Any purchase brings you 50 extra **Gold Bond** stamps for your **coupon-of-the-month**.

They're waiting for you at

### EARL'S CHAMPLIN SERVICE

One Block East of Junction 73-30

Stop . . .

At The

### BLAIR DRIVE-IN

for

- Sweden Creme
- Soft Drinks
- Hamburgers
- Cheeseburgers
- Pizzaburgers
- Footlongs
- Beef Steak Sandwich
- Fish Sandwich
- French Fries
- Orange and Lemon Slush

### BLAIR DRIVE-IN

(On road to Omaha)

### GREETINGS

Students and Faculty

from

### RABBASS STUDIO

Films — Flashbulbs

# WELCOME

Dana Students and Teachers

Courtesy of

## BLAIR CLOTHING CO.

Mazie and Kenny

- Levi's
  - Continental Style Slacks
  - Sport Shirts

## J. M. McDONALD CO.

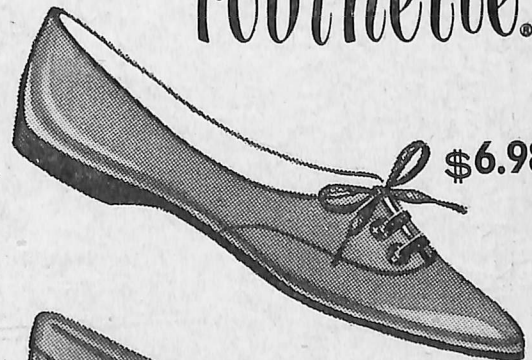


Department Store

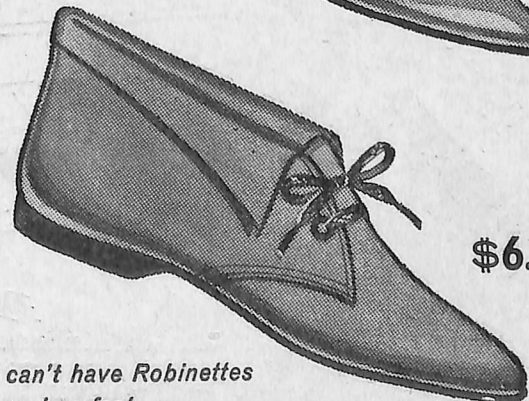
## HARRIS SHOES

"Newest in College Shoes"

by  
*robinette.*



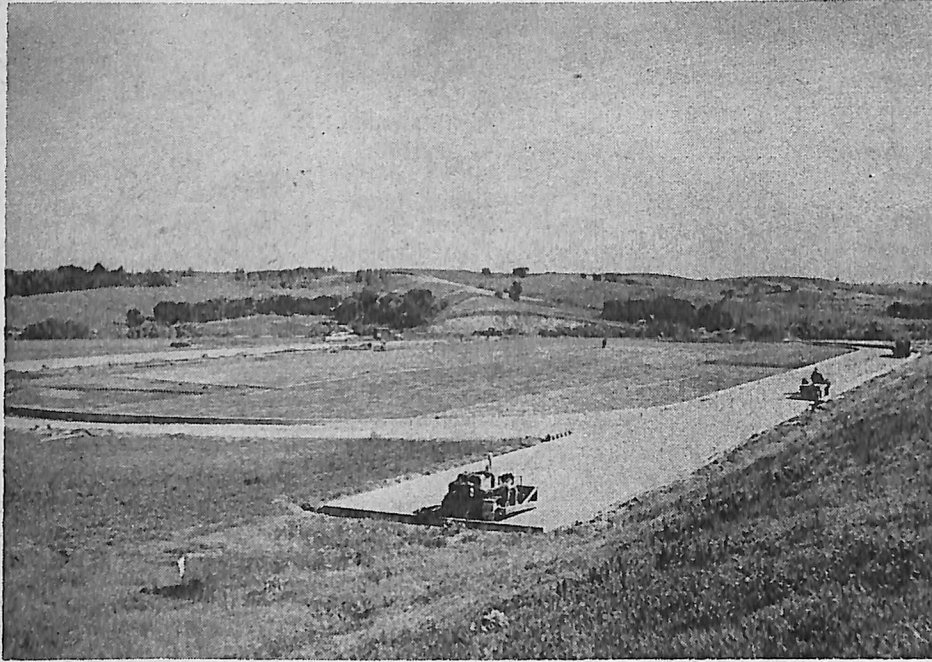
\$6.98



\$6.98

*If I can't have Robinettes  
I'll go barefoot.*

# New Field Should Be Ready For New Coach



Field During Construction

The first Viking home game of the 1959 football season has been scheduled for Saturday, September 26 on the new field located in the recently developed Campus addition. The sodding of the playing area has been completed

and now must be allowed to settle for approximately four to six weeks. If all goes well, the new field should be in excellent shape for the Viking opener late in September.

Due to the fact that lights

cannot be installed this year, all home games have been scheduled for Saturday afternoon. Eventually stadium type seating will be used in the new area, but until that time, temporary bleachers will be erected.

Land  
Sodded,  
Cement  
Poured,  
Gravel  
In Place,  
Now Time  
Decides.



Darrell Zimmerman, of Farmington, Minn., has been named head football and track coach.

He will replace Bruce Roloff who resigned to continue graduate study.

Zimmerman is a former South Dakota State athlete. He was football and track coach at Farmington High School for four years.

The new coach inherits second division squads in both sports, but he will start work with a new football field and track and possibly the largest football squad in Dana's history.

## LITTLE MAN ON CAMPUS



"NO YOU CAN'T TAKE ENGLISH AS FULFILLMENT OF YOUR 'FOREIGN LANGUAGE' REQUIREMENT."

## KOLTERMAN'S Ben Franklin Store

5c to \$1 Merchandise

Come Here for Year Round School Needs

Welcome to Blair

Dana Students and Teachers

We'll be happy to have you come in and browse when you are downtown

And for any gift occasion we can offer you the finest choice in this area

Watches  
Diamonds  
Silver  
China

Costume Jewelry  
Danish Gifts  
Leather Goods

**KLOPP'S**  
Jewelry and Gifts

Free Gift and Mail Wrapping

S & H Green stamps