

The Hermes

Dana College

Vol. XLI

Blair, Nebraska, October 9, 1959

No. 5

Joslyn Art Exhibit Parallels Jubilee

In connection with Dana's Diamond Jubilee an outstanding exhibition of recent works by three Danish printmakers is on display at the Joslyn Art Museum until October 25. It is being circulated nationally by the Smithsonian Institution Traveling Exhibition Service after an eminently successful first presentation at the 1958 Venice Biennale. This American tour is sponsored by the Danish Embassy in Washington.

The three artists represented—Povl Christensen, Sigurd Vasegaard and Palle Nielsen—belong to a group which emerged in Denmark during World War II when the increased production of illustrated books opened up a new field for artists working in "realistic" styles. After the war this group expanded and persisted in what might be loosely termed "realism," though it depends more upon imagination and

inventiveness than upon accuracy to real life.

Technically excellent, the prints include woodcuts, aquatints, metalcuts, etchings, engravings, linocuts and collages, all characterized by a vivid expressionism. Many are illustrations for books or poems, but the subjects are dramatic, dynamic visions of contemporary human existence. Included among others, are selections from a modern version of the ancient legend of Orpheus and Eurydice, conceived entirely in pictorial form without any accompanying text; and illustrations for recent editions of Hans Andersen's fairy tales.

Since their international acclaim during the Venice Biennale, many examples of the work of these three artists have entered leading collections such as that of the Museum of Modern Art in New York.

IN CHARGE OF HOUSE OR DORM DECORATIONS FOR HOMECOMING?

If so, take note. The Diamond Jubilee Committee has announced that a \$50 prize will be awarded to the house or dormitory having the best decorations for the Ju-

bilee.

Therefore, you should plan your Homecoming decorations wisely in order to save money either by elaborating upon your present idea or using some of the same materials for both occasions.

Hans Christian Andersen's Lamp Need Wonder No More—

OLD GAS LIGHTS FROM COPENHAGEN WILL JOIN OLD MAIN IN OBSERVING DANA'S NEXT 75 YEARS

More than a hundred years ago—on December 4th of 1857—the streets of Copenhagen were lighted by gas for the first time. The old oil lamps that had served since street lighting was first established in the Danish capital in 1680 were to go. For Hans Christian Andersen, walking the streets that night, the scene was the inspiration for the fairy tale "Godfather's Picture Book."

In this tale the old oil lamp speaks about his then up-to-date successors and wonders "how many years they'll shine, and what they will light up."

The great Danish teller of fairy tales had the old lamp prophesy that even the gas lamps, then considered the last word in lighting, would be replaced. "People are certain to find a better light than gas. I've heard a student say that there's a possibility they may someday burn sea water!" But the kindly old

oil lamp had good wishes for the new: "May you and your successors experience and be able to relate such wonderful things as we can."

This spring it was learned at Dana that Copenhagen was replacing most of the historic gas lamps with electric fixtures. A letter inquiring about securing some of the lamps for Dana was sent to Copenhagen. Mayor Ingvar Dahl replied, "The municipality will be glad to present the college with four of the old lamps and beg you to consider this as a greeting from Copenhagen to Dana College on its 75th anniversary."

This week as the lamps arrived on College Hill, Andersen's fairy tale was recalled once more. The old oil lamp need wonder no longer what some of his successors will light. Four of them will shine on young American students discussing the problems

Ambassadors To And From Denmark Are Visitors For Weekend Festivities

Dr. C. C. Madsen has announced that His Excellency, the American Ambassador to Denmark, Val Peterson, will be the featured speaker at the Saturday evening program of the Dana Diamond Jubilee Homecoming celebration.

The Diamond Jubilee Homecoming festivities will begin on Friday evening, October 9 with the Coronation of the 1959 Queen. Saturday from 8:30 to 10:30 A.M. will be open house on the campus for all visitors. In connection with this, coffee will be served in the Library where Mr. William Christensen, author of SAGA OF THE TOWER, will be on hand to autograph copies of his forthcoming book. The annual parade will begin at 12:00 noon, followed by the Homecoming football game against Concordia College at the new Athletic Field on the campus. Game time is 1:30 P.M. Following the alumni banquet at 6:30 that evening, Ambassador Peterson will deliver the featured address.

The Homecoming activities will close on Sunday morning, with a formal worship service at First Lutheran Church in Blair. Pastor Norlan Hansen of Denver, Colorado will be the guest speaker.

Peterson, former Governor of the state of Nebraska, has returned to this country for a brief vacation from his duties as Ambassador. He plans to stay in Nebraska for several weeks and will make several public appearances in addition to the scheduled appearance at Dana.

Count Kield Gustav Knuth-Winterfeldt, Danish Ambassador to the United States, is visiting the Dana Campus in connection with the Diamond Jubilee Homecoming celebration.

His Excellency, Count Knuth-Winterfeldt, has been in this country as the Danish Ambassador for slightly over a year. He was appointed in the fall of 1958 and succeeded Henrik Kauffmann. This will be his first visit to the Omaha area as the official Ambassador from Denmark.

During his weekend stay, he will be the guest of the Consul General in Omaha, Mr. Frank V. Lawson. According to Mr. Lawson, the Count will arrive at Omaha Municipal Airport on Friday afternoon, October 9. Saturday he will spend most of the day on the Dana campus and will speak at the Homecoming program that evening. He is expected to view the recently opened exhibition of "Three Danish Printmakers" at the Joslyn Art Museum on Sunday afternoon, October 11. He will return to Washington sometime on Monday.

Welcome Alumni To The "New" DANA

Copenhagen all gas lighting will, in the course of about a year, have been replaced by electric lighting. However, a number of gas lamps are to remain in the old districts, but altered to electric lighting."

In carrying out Operation Fairy Tale the problem of transportation of the lamps and heavy lamp posts was solved by the Swedish-American Line. The shipment was carried free of charge on the Motorship "Carls-holm" sailing from Copenhagen to Chicago via the St. Lawrence Seaway.

It is planned to have at least two of the lamps in place in the Hans Christian Andersen Grove north of Old Main by October 10 when Ambassador to Denmark Val Peterson and Ambassador from Denmark Count Kield Knuth-Winterfeldt will visit the Blair campus.

BRAVO FOR MANY—

Homecoming Committee Does Job Well, Deserves Credit

To the members of the 1959-60 Homecoming Committee:

The Student Council would like to take this opportunity now to thank each one of you on behalf of the entire student body for the work you are doing to make this Homecoming one to be remembered. We realize the going is often rough, especially with Homecoming so early and so many other activities taking place early in the year; but we want to express to you our gratitude and offer both our moral and physical support for this, our Diamond Jubilee Homecoming. Many thanks!

Sincerely,
Student Council Secretary
Donna Byriel

Rushing, Regretting, Replacing The Three R's Of Homecoming

This is written that you might know how one member of the Homecoming Committee spends Saturday of the festivities. After reading it you might say, "oh, they're just being sarcastic." Strike the thought from your mind—it happened to me last year. These were my thoughts:

"Six o'clock, do I have to get up now? I didn't get to bed until two. Oh, that's right we have to build that platform down in the gym for the Queen.

"Boy these blocks are heavy, I should have been a boy. Funeral grass? Good grief, I forgot all about something to cover this thing up with. Better check on that.

"You loaned it to the freshman class for their float? Okay, I'll get it from them. Yes, I'll bring it back to the cemetery Sunday afternoon.

"11 o'clock, better eat. Let's see, parade, oh yes, I promised to take my brother and family down there.

"Sure are a lot of nice floats. Our class project looks good. It should, after working on it all night.

"Football game? Who are we playing? Here we go again. Boy, am I tired! Heavens, I better not forget to pick up my date's flower. YEA!! What do you mean sit down, didn't we make a touchdown. Oh, it was the other team, pardon me!

"Better check the gym to see if everything is taken care of. Lights, mike, piano light, chairs, platform. Looks pretty good.

"Oh hi! Yes, I'll be ready about 6:15. Good grief, it's 5:30 and I didn't pick up his boutonniere. He'll just have to grin and bear it.

"Gee the tables look nice. Music! Better turn on the phonograph. Lead the table prayer? O.K. Turn the music off. —Praise God from . . . —turn it back on.

"At last this program is ready to start. I sure hope nobody talks too long. Where is that soloist? She's on next. Here she comes. Whew! Well that went pretty well; now the speaker and . . . What do you mean you have to leave? You have to catch a train? But who will emcee. Me?!! Well, I guess I'll have to.

"That darn mike is buzzing again, well I'll just have to crawl across the stage and turn it down.

"Here I am. Gee, those people look surprised to see me. Dr. Madsen looks like he has just seen a ghost. Guess they didn't expect to see a woman substitute emcee. Oh well, neither did I.

"Let's see: introduce the choir, go down and sing in the choir, introduce the choir reunion, and then sing a solo. Guess I wasn't kidding when I said, 'Here I am.'

"Who's that guy without a flower? Oh, my date.

"Fiddlesticks! All of this good food and I'm not even hungry. I've got to stay awake, or the poor boy will never take me out again.

"Thanks again for a lovely evening. Church tomorrow? O.K. About 10:30.

"It's now 2:30 a.m. and I have to get up at 9, go to church, tear all that junk down in the gym, take the funeral grass back, return those extension cords . . .

"I wish that poem would quit running through my mind—
'And miles to go before I sleep
And miles to go before I sleep.'"

Karen Jensen
Program Chairman of the 1958 Homecoming

Christensen to Be At Coffee Autographing 'Saga of the Tower'

The Dana College History will soon be available in book form. The gathering of information and the composing of the history was done by one man—Bill Christensen. Like C. X. Hansen, he received his higher education at Midland College. He was graduated with a Bachelor of Arts Degree in 1953 and received his Master's Degree in history from the University of Nebraska in 1955.

The Jubilee Committee conceived the idea of having the history written and last year presented the idea to Bill at International Night. After inquiring from various sources as to the possibility of such an undertaking, in January, 1959, he began actual work on what he thought would be a two-month job. However, the manuscript was not completed until the last of July.

One advantage of doing a history of Dana over any other college is that the synodical headquarters are here and several personal references could be obtained from residents around Blair, dating back to the earliest period in Dana's history. These personal references contributed a considerable portion of the book. One regrettable circumstance was that some of the historical records were in Danish and they required translation.

Some of the sources used were old copies of the *Hermes*, *The Ansgar Lutheran*, College catalogues, the *Alumni Quarterly*, *Synodical yearbooks*, and earlier brief histories written on Dana College.

The price of the book will be \$3 which, incidentally, will not cover its actual cost. The remaining expense has been defrayed by the Lutheran Brotherhood Life Insurance Company of Minneapolis. The history will be available for purchase at Homecoming during which there will be a coffee party where Mr. Christensen will be autographing copies of his book.

Compliments of

BLUE GOOSE

Blair's Leading Food Store

RABBASS STUDIO Portraits

Cameras, Films, Supplies

Telephone 3292

1745 Washington Street

Blair, Nebraska

The Hermes



Vol. XLI

No. 5

Published weekly during the college year, except holiday and examination periods, by the student body of Dana College, Blair, Nebraska.

Subscription rate \$2.50 a year, in advance.

Reentered as second class matter September 12, 1953, at Blair, Nebraska, under act of March 3, 1879.

EDITORIAL STAFF:

Editor-in-Chief Ellen Andrews
Associate Editor Al Girtz
News Editor Vance Larsen
News Staff: Carol Larsen, Margaret Erpelding, Margaret Nielsen, Ken Jensen, Arlyce Fuchs, Lonnie Hayne, Nena Wegener, Judy Maland, Joan Rathe, Geraldine Christensen

Features Editor Doris Siersbeck
Features Staff: Carol Larsen, Stan Cupp, Terry Hess, Linda Buchfink, David Ihrig, Jim Ihrig, Bud Petersen, June Santage, Melba Junker, Shirley Nielsen, Carol Jo Peterson.

Sports Editor Leo Kirchhoff
Sports Staff: Gary Kubik, John Templeton.

Women's Sports Ed. Karen Jensen
Photography Staff: Gary Brockelsby

Exchange Editors: Anne Bentsen, Karen Flood
Proofreaders: Arla Jean Siems, Janet Francis

MANAGERS:

Business Andy Jensen
Assistant Business Allen Johnson
Subscription Marilynn Olson
Circulation Paul Olson
Local Advertising Andy Jensen
National Advertising Dick Carr

FACULTY ADVISOR:
A. Gordon Ferguson

PUBLISHER:
Lutheran Publishing House, Blair

Samson Rexall

DRUG STORE



This Sunday Evening

Make It

LACY'S CAFE

Meyer Bloch, Director
THE ASTRONOMY CLUB

240 Rivington Street
New York 2, N. Y.

Wesleyan Moves In Early Minutes Dana Slowed Until Second Half

Saturday evening the Dana College Vikings were again set back as they were defeated 25 to 7 by the Nebraska Wesleyan Plainsmen at Lincoln. It was another case of being beat in the first half. Although Dana scored their touchdown in the first period they played a very good second half limiting Wesleyan to only one touchdown.

With eight minutes gone in the first period Wesleyan already had a 13 to 0 edge over Dana. Wesleyan's first score came seconds after the game began as the Plainsmen scored on the first play from scrimmage. The play included a pass from quarterback Lonnie Johnson to halfback Merle Faubel who went 72 yards for the touchdown. The placement was good and made the score 7 to 0.

Wesleyan's second touchdown followed a recovery of a Dana fumble on Dana's 32 yard line. Three plays following the fumble Dean Sell went around right end for 26 yards and a TD after a beautiful reverse play.

Dana's touchdown was set up when quarterback Larry Morrow

passed 54 yards to Stan Cupp on Wesleyan's 25 yard line. A fifteen yard penalty against the plainsmen put the ball on the ten yard line. On fourth down Stan Cupp pushed his way over the double yard marker and scored with 30 seconds left in the first quarter. The extra point was kicked by Mel Mueller and the score read 13 to 7 at the end of the quarter.

With five minutes gone in the second quarter the Plainsmen again struck paydirt when Dean Sell scampered 70 yards down the side lines. The rest of the second quarter was played on even terms as the half ended 19 to 7.

At the start of the second half the Dana Vikings seemed to be out for revenge and showed the good sized crowd that Dana was not out of the game. Cupp took the ball on the second half kickoff and went fifteen yards to Dana's 30 yard line. Combination of plays by Cupp and McCoy resulted in 40 yards gained on the ground and four first downs. The drive ended on Wesleyan's 30 yard line. Wes-

D Club Plans Campus Clean-up Wilson Foundation Coffee Hour October 15

With Ron Raschke presiding, the D Club met Wednesday and made plans for a campus clean-up in preparation for the November Diamond Jubilee Days.

Discussion centered on refreshment selling at the home football games.

Also under consideration by the group is a track clinic featuring Wes Santee when he visits Dana's campus.

leyan took over when the ball was lost on downs, and marched on the ground to Dana's 17 yard line where they were set back by a 15 yard penalty. Two plays later Johnson again connected on a 33 yard pass play to Faubel to make the score 25 to 7.

The fourth quarter saw a rough and tumble ball game which was typical of the entire ball game. The playing field being wet from a heavy dew made the ball difficult to handle which resulted in many fumbles and incomplete passes. The game was a rough one with 177 yards in penalties being assessed with Wesleyan receiving 110 penalty yards.

Score by Quarters:

Wesleyan	13	6	6	0
Dana	7	0	0	0

Dana Wesleyan

Yds gained rushing	98	225
Yds gained passing	63	115
Yds lost rushing	13	19
Yds lost passing	0	31
Yds lost by penalties	67	110
Net yds rushing	85	206
Net yds passing	63	74
Total net yds.	148	280
Number of first downs	7	9

If you have an over-all average of 7.5 or a 6.5 average with 3.0 or above in a major in the liberal arts area, the Woodrow Wilson Foundation invites you to a pie ala mode and coffee refreshment hour in the Dining Hall on October 15, Wednesday, at 3:20. At this time you will be given information on the \$1500 plus tuition fellowship applicable to any U. S. or Canada College.

The program is planned to offset the critical shortage of qualified college teachers by encouraging college seniors of outstanding ability to enter the field.

To this end the Wilson Foundation annually awards 1000 fellowships for first-year graduate study at any university of the recipients choice in the United States or Canada. Woodrow Wilson Fellowships carry a stipend of \$1500, plus full tuition and fees, and, in the case of married Fellows, a dependency allowance for wives and children. The program is open to college graduates in the natural and social sciences and in the humanities. Both men and women are eligible, and there is no limit on the age of the candidate or the number of years he may have been out of college. Those who receive awards are not asked to commit themselves to college teaching, but merely to "seriously consider" it as a possible career.

The Woodrow Wilson Foundation does not accept applications directly from students. Candi-

(Continued on page 6)

**AS YOU PLAN
YOUR FUTURE—**

Let

LIFE INSURANCE
Be Your Foundation
For Financial Security

"An Old Line Company - - - It Does Make a Difference"

LUTHERAN MUTUAL LIFE INSURANCE COMPANY

HOME OFFICE — WAVERLY, IOWA

HUSKER BOWL

1 mile south on Hiway 30

Sandwiches — Seafoods — Chicken — Steaks

OPEN BOWLING:

Mon-Thur: 1-7 p.m., 11-?

Fri. 1-8 p.m., 10-?

Sat. -Sun.: All Day and Evening

We have the most modern bowling facilities found anywhere.

Phone 3333

Christensen Lumber and Supply Company

It's Good if It's from Us

COIN-OPERATED LAUNDRY

Open 24 Hours Daily

20c wash

10c—10 min. Dry

Located four blocks South of Blinker Light

KIRCHHOFF'S KORNER

By Leo Kirchhoff

Welcome back alumni. Hope your stay on Dana's campus will be an enjoyable one. Featured footballers this week are Roger Petersen, Raymond Anderson, Stanley Erlandsen, and Richard Justice.

Roger Petersen, a junior from Botna, Iowa, has lettered one year at Dana at end position and is playing end again after starting the season as third string quarterback.

In high school Roger participated in basketball, baseball, track, and football and was a member of Future Farmers of America and boys' chorus. He played one year at quarterback position and was elected captain of the football team his senior year.

Last week Roger received recognition as offensive lineman of the week in the game against Peru. Saturday night in the game against Wesleyan he recovered a fumble and also broke through to spill Wesleyan's ball carriers several times.

Three Frosh Honored

Raymond Anderson, a freshman from Albion, Nebr., graduated from Newman Grove High School where he was active in football, basketball, track and dramatics. He served as sophomore class vice-president and president of his junior and senior classes. He also served as president of the athletic club his senior year. His junior year he was given the memorial athletic award.

Ray graduated salutatorian of his class and was recipient of the Church College Scholarship. He also received first alternate on the Nebraska regents examination.

At Dana Ray plays defensive end and his vocational plans are to be a veterinarian.

From Chicago comes freshman Stanley Erlandsen. Stan graduated from Hirsch High School where he presided over the junior choir, was a fire marshall and captain of the freshman and sophomore football team.

Stanley plays end and was chosen defensive lineman of the week for his action against Peru last week.

A freshman from Manilla, Iowa, Richard Justice played four years of football in high school as either guard or halfback. A two-year football letterman, he also participated in basketball, baseball, track and band.

Richard plays halfback on the Dana team and plans on majoring in physical education.

New Athletic Field, Dormitory Begin Dana's Bold Development

The building of the new athletic field and the women's dorm is the start of a bold development plan for Dana. To make this dream a reality will take money and the determination of many people. Although you may not know it, you, the student, can be of great help in this project.

Surely sometime during your stay here on campus, there will be instilled in you a sense of responsibility and loyalty toward and a desire to help Dana. This desire can be fulfilled by telling others about Dana. Contact high school graduates and friends in-

side and outside of your town and church. But don't confine your story to young people, tell the older persons about Dana. They may feel that they would like to give a gift to its development or to tell someone else about Dana and its ideals.

After you leave here, you can continue to promote Dana and perhaps help with a financial gift. Remember, students only pay half of the actual cost of their education. The other half is paid by the church and gifts from alumni and other friends of Dana.

Lonnie Hayne

Concordia Is First Threat On New Field

Concordia will be the first threat to the Vikings on their new football field. Smashed last week by Peru, the Bulldogs will seek to avenge their 46-0 routing.

Dana, beat 53-0 by the Peru team, is evenly matched with Concordia in respect to their fourteen returning lettermen.

The Seward team passed Dana 26 to 12 last year and the Vikings will be reaching for a Homecoming victory.

Game time is 1:30.

Home Theatre

SHOWTIME 7:30 every night
Sat. and Sun. Matinee, 2:30
2 shows every Fri. and Sat. Nite

Double Feature Thurs.-Fri.-Sat.

Oct. 8-9-10

"THE YOUNG LAND"

plus

"JUKE BOX RHYTHM"

Sun.-Mon.-Tues.-Wed.

Oct. 11-12-13-14

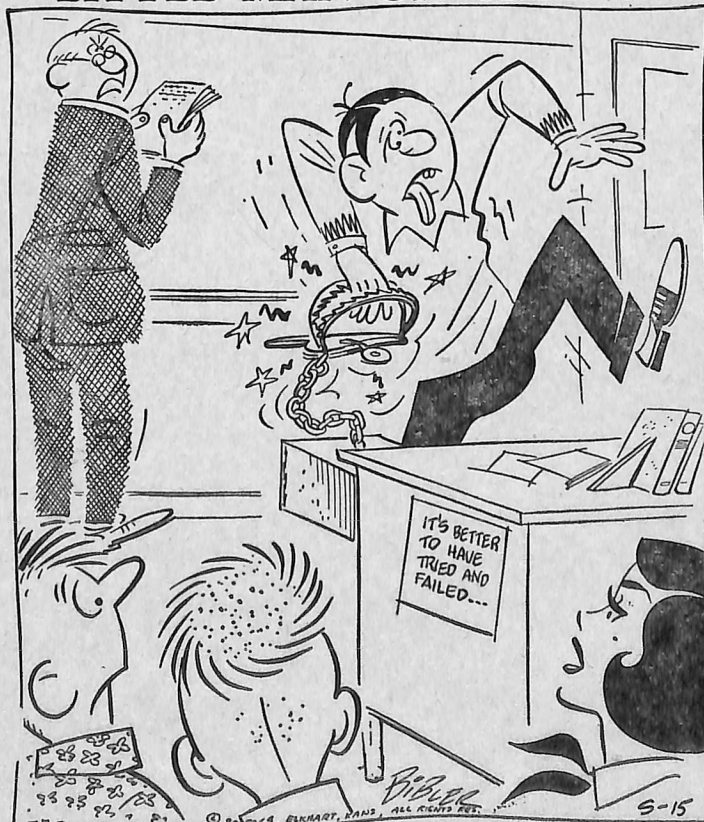
"THE HORSE SOLDIERS"

Thurs.-Fri.-Sat.

Oct. 15-16-17

"BLUE DENIM"

LITTLE MAN ON CAMPUS



"NO, NO THAT'S NOT MY CHALK DRAWER!—THAT'S WHERE I KEEP MY TEST PAPERS!"

Powerful Rams Undefeated In Two Intramurals

The power packed team of the Rams came through with another win last Sunday afternoon to make it two wins in a row. The Rams, beating the Eagles 30 to 12, are undefeated in intramural football.

Scoring the touchdowns for the Rams were Mark Petrusson, Ike Jenkins, Luther Kloth, and Lee Barney who made two TDs. Eagle scoring was done by Duane Petersen and Myrvin Christopher.

The second game was called due to lack of players for the Bears, and the Lions won by forfeit.

In the final game of the afternoon it was the Giants against the Cardinals who battled it out through the rain to wind up in a 12 to 12 tie.

For the Cardinals it was Larry West who scored both touchdowns. Scoring for the Giants was done by Tom Frank and Verner Hundtoft.

The Standings are as follows for two games:

	Won	Lost
Rams	2	0
Eagles	1	1
Lions	1	1
Cardinals	0	1
Giants	0	1
Bears	0	2

Next Sunday will see the undefeated Rams against the Bears at 1:30 p.m.; the Eagles against the Cardinals at 2:30 p.m.; and the Cardinals against the Lions at 3:30 p.m.

Ask About Our
"BONUS PLAN"

**NELSON BROS.
CLOTHIERS**

Quality Clothes, Priced Right

For the Bestest and the Mostest
try

Ted's Dari-Creme
East Washington

Washington Co. Bank

Blair, Nebraska
"Bank With A Smile"
Member F.D.I.C.

Advance Cleaners



See Gary Danielsen Room 312

IF IT'S NOT
ELECTRIC
IT'S
OBSOLETE



Smith-Corona
ELECTRIC
PORTABLE

- Guaranteed Watch Repair on the premises
- Typewriter repairs
- Typewriter rentals

SPECIAL: Sheaffer Cartridge Pen with ink,

Regularly \$3.44
Now Only 75¢

Bette's Gifts & Jewelry

Send The
Bulldogs
To The
Doghouse

Lutheran Group Is Searching For New Hymn Texts

The commission on hymnology of the Lutheran Society for Worship, Music and the Arts, in order to further the composition of contemporary hymns, announces a competition for the writing of new hymn texts. The hymn texts submitted will be judged by a committee appointed from the commissions on theology, hymnology and literature. One or more of the hymns selected will be used at the third annual conference.

Each text, signed with a **nom de plume** or motto, and with the same inscription on the outside of a sealed envelope containing the author's name and address, must be sent to J. Earl Lee, Chairman of the commission on hymnology, Augustana College, Sioux Falls, So. Dak., not later than January 1, 1960. The hymn texts which are selected will be copyrighted by the Lutheran Society for Worship, Music and the Arts. Please enclose a stamped, self-addressed envelope.

The hymn texts submitted should be appropriate to Cantate Sunday (Fourth Sunday after Easter) using as a basis the Propers (Introit, Graduals and Lections) for the Day as they appear in the **Service Book and Hymnal** (page 91) and in the **Lutheran Hymnal** (page 70).

ONE Magazine Offers Prizes of \$100, \$60, and \$40 In Story Contest

Prizes totaling \$200 will be awarded in a short-story contest announced this month by ONE magazine, inter-Lutheran youth monthly. The contest will close Nov. 30, 1959. The best story entered will win a \$100 award, second prize is \$60, and third is \$40.

Stories entered must deal with some theme involving youth and pertaining to the Christian faith and life. Manuscripts should run between 1500 and 3000 words. Entries must be original and not previously published.

Entry blanks and additional information have been sent to all Lutheran college English departments.

Let's go skating
FREMONT ROLLER RINK
Tues., Fri., Sat.—Public
Sat. and Sun. Mat.—2-4
Sun., Mon., Wed., Thurs.—
Private Parties

Danforth Foundation OFFERS FELLOWSHIPS TO FUTURE COLLEGE TEACHERS

The Danforth Foundation, an educational foundation located in St. Louis, Missouri, invites applications for the ninth class (1960) of Danforth Graduate Fellows from college senior men and recent graduates who are preparing themselves for a career of college teaching, and are planning to enter graduate school in September, 1960, for their first year of graduate study. The Foundation welcomes applicants from the areas of Natural and Biological Sciences, Social Sciences, Humanities and all fields of specialization to be found in the undergraduate college.

900 Fulbright Scholarship Awards Offered

Less than two months remain to apply for some 900 Fulbright scholarships for study or research in 28 countries the Institute of International Education reminded prospective applicants today. Applications are being accepted until November 1.

Recipients of Fulbright awards for study in Europe, Latin America, and the Asia-Pacific area will receive tuition, maintenance and round-trip travel.

General eligibility requirements for the awards are: 1) U. S. citizenship at time of application; 2) a bachelor's degree or its equivalent by 1960; 3) knowledge of the language of the host country; and 4) good health. A demonstrated capacity for independent study and a good academic record are also necessary. Preference is given to applicants under 35 years of age who have not previously lived or studied abroad.

Requests for application forms must be postmarked before October 15.

President C. C. Madsen has named Dr. E. M. Rasmussen as the Liaison Officer to nominate to the Danforth Foundation two or not to exceed three candidates for these 1960 fellowships. These appointments are fundamentally "a relationship of encouragement" throughout the years of graduate study, carrying a promise of financial aid within prescribed conditions as there may be need. The maximum annual grant for single Fellows is \$1500 plus tuition and fees charged to all graduate students; for married Fellows, \$2000 plus tuition and fees charged to all graduate students with an additional stipend of \$500 for each child. **Students with or without financial need are invited to apply.** A Danforth Fellow is allowed to carry other scholarship appointments, such as Rhodes, Fulbright, Woodrow Wilson, Marshall, etc., concurrently with his Danforth Fellowship, and applicants for these appointments are cordially invited to apply at the same time for a Danforth Fellowship. If a man received the Danforth Appointment, together with Rhodes Scholarship, Fulbright Scholarship, or Woodrow Wilson Fellowship, he becomes a Danforth Fellow without stipend, until these other relationships are completed.

All Danforth Fellows will participate in the annual Danforth Foundation Conference on Teaching, to be held at Camp Minnawana in Michigan next September, 1960.

The qualifications of the candidates as listed in the announcement from the Foundation are: men of outstanding academic ability, personality congenial to the classroom, and integrity and character, including serious inquiry within the Christian tradition.

All applicants, including the recommendations, must be completed by January 31, 1960. Any student wishing further information should get in touch with Dr. Rasmussen.

Jim Stokes
DX Service



KOLTERMAN'S Ben Franklin Store
5c to \$1 Merchandise
Come Here for Year Round School Needs

Homecoming Activities Fill Entire Weekend Beginning Friday

Friday, October 9, 1959

Coronation Ceremony and Homecoming Program
Alumni Auditorium, 7:30 p.m.

"Kaffebord" in the College Dining Room

Saturday, October 10, 1959

Open House, 8:30 to 10:30 p.m.

Homecoming Parade, 12:00 p.m.

Football Game, 1:30 p.m.

Banquet and Program, 6:30 and 8:30 p.m.

Address by His Excellency Val Peterson, American Ambassador to Denmark

"Kaffebord" in the College Dining Room

Sunday, October 11, 1959

Homecoming Worship Service, First Lutheran Church,
11:00 a.m., Pastor Norlan Hansen, Denver, Colorado

Poetry Contest Closes Nov. 5

The National Poetry Association announces its Annual Competition. The closing date for the submission of manuscripts by College Students is November Fifth.

Any Student attending either junior or senior college is eligible to submit his verse. There is no limitation as to form or theme. Shorter works are preferred by the Board of Judges, because of space limitations.

Each poem must be typed or printed on a separate sheet, and must bear the name and home address of the student, as well as the name of the college attended.

There are no fees or charges for acceptance or submission of verse. All work will be judged on merit alone. Manuscripts should be sent to the offices of the National Poetry Association, 3210 Selby Avenue, Los Angeles 34, Calif.

Lutheran Brotherhood

Legal Reserve Life Insurance

Walter H. Nielsen Ph. 2410

LEE'S PHARMACY

PRESCRIPTION SPECIALISTS

Phone 3700

Dedicated: To Adaline

I write this word
To a friend of mine
I was forced to do it
So, — "To Adaline—"

It seems that the editorial voice of this paper speaks only when the space allows. Actually, its probably a worthwhile thing, for I may have inherited my ways from my Grandfather who said, "It doesn't take me long to tell all I know."

These days are busy and moments "to ourselves" are forgotten as we join classmates to work on floats and to see that the 1959 Homecoming is the best to ever greet our Alumni.

Myrv has done a terrific job of supervising the Homecoming committee. It's a big job, especially when all eyes are upon you because it's **your** college's 75th anniversary and **you** are trying to get their attention even more.

As you sit at the football game Saturday afternoon, be aware of the beautiful view. As Dr. Madsen mentioned earlier this year, if we can't sell people on an interest in football we should at least have a sellout because of

Try the TOPPER CAFE

for

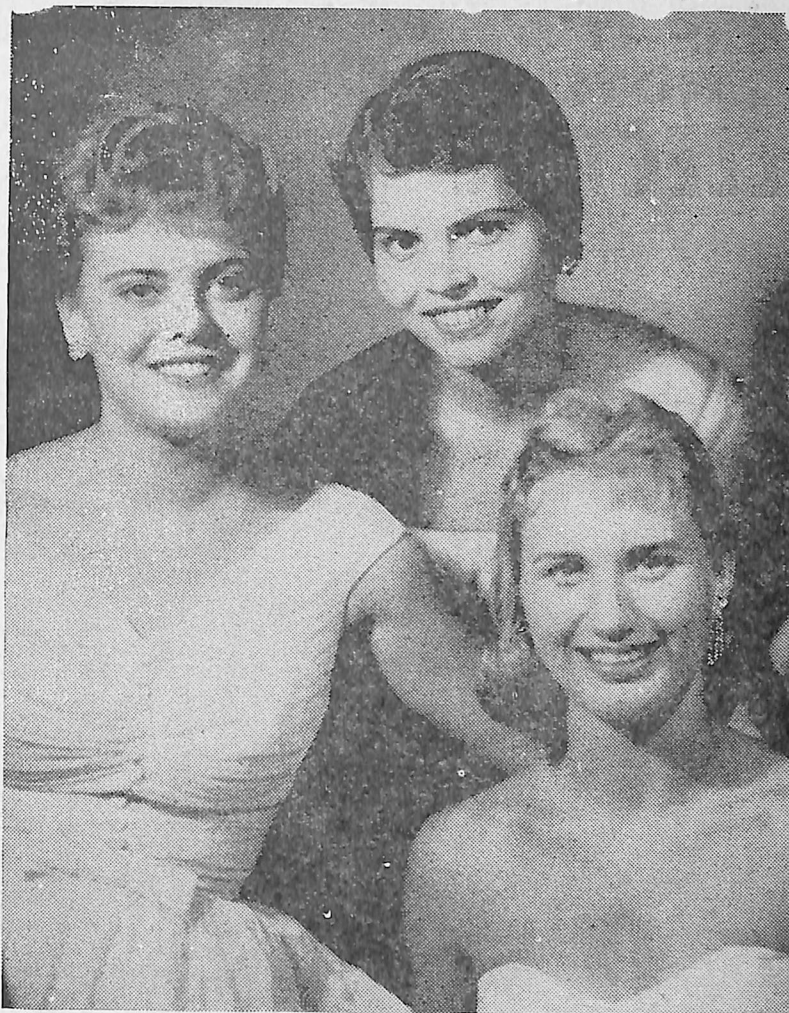
Snacks — Short orders — Meals
Fountain drinks

J. M. McDONALD CO.



Department Store

WHO IS THE 1959 QUEEN?



Pictured above are Carol Larsen, Sharon Mardesen and Miriam Petersen. One will be crowned Friday night at the 7:30 coronation services.

Anderson Is Chosen Twice

Captain Emory Anderson and freshman tackle Mel Mueller were named as defensive linemen standouts against Nebraska Wesleyan University Saturday evening. The point system showed that the two linemen were tied with the same amount of tackles.

Tom Leehy received defensive back of the week for the third consecutive week. Offensive lineman of the week went to Emory Anderson. Freshman fullback Jerry McCoy received offensive back honors.

the beautiful view.

Few schools can boast of a new field which overlooks a town, a large countryside and the Missouri River.

And, as you sit there, be reminded of the tons of dirt which rested there before you. Reshaping this area has been a tremendous project in preparation for a tremendous Dana.

Help Dana grow by enjoying her land, her Homecoming. When you get a chance visit the Cross and thank God for giving us Dana and for giving Dana 75 years of spiritually guided educational growth.

—Ellen Andrews

REAL ESTATE

GUYER and HANSEN

Loans

Insurance

Come in and Browse
In our LPH Bookshop

Lutheran Publishing House

138 No. 17th St. Blair, Nebr.

WILSON FOUNDATION (Continued from page 3)

dates for the award must be nominated by a faculty member.

Winners of the award are selected through screenings of the applications and personal interviews by regional selection committees, made up of faculty members from the regions' universities and colleges.

The closing date for nominations for the academic year 1960-1961 is October 31, 1959.