



# HERMES



THE DANA MESSENGER

Vol. XLIII

Blair, Nebr., Feb. 1, 1962

No. 14

## College Literary Publication Proposes April 6 Deadline 'Sower' Includes Prose, Poetry, Art and Music

Deadline for submissions to the **Sower** has been set for April 6, according to the editor, Vance Larsen.

The **Sower** is an anthology of poetry and prose written by students. Art and music are also included. The work of editing this anthology is done by a student editorial board under the direction of a faculty advisor who this year is Professor Norman C. Bansen.

To submit works to the editor, one does not have to be in advanced composition or creative writing. A well-written article telling of a physics or chemistry experiment is equally acceptable.

Several awards are to be given again for the best selections. The Joseph Langland Award will be awarded for the best prose and the best poetry selections. The Hal Evans Cole Award will be given to the best work either in art or music.

### Translation Award Begins

A new award, the Kaj Munk Memorial Award for the best translation of either poetry or prose from any foreign language, is to be initiated this year.

Members of the **Sower** staff are Tom Lange, Gary Lebeck and Judy Mayland, associate editors; Nena Wegener, business manager; Wayne Petersen, art editor; and Arden Dorn, music editor.

Several of these people will visit the English and language classes in the near future to give more details concerning submissions to the **Sower**.

## Snowbeck Chosen New S.A.M. Head

Election of officers was the main order of business at the last Monday S.A.M. meeting. The organization of business-minded students chose Dave Snowbeck as president; Dean Henriksen, vice-president; and Harriet Putnam, secretary-treasurer.

The group also discussed plans to raise money. Some of the suggestions presented were the sponsoring of a movie at the Home Theater, a book project similar to that of last year and income tax service for the public. However, no definite plans were made.

Selections for committee chairmen were not announced. Committee heads will be selected in the near future.

## LSA Body Plans Promotion of Cells

Promotion of the cell groups for next semester will be the subject of the LSA meeting February 6. Clayton Nietfeld will conduct a typical unrehearsed meeting of the "prayer" group he heads. Leaders of several other groups will briefly explain the functioning of their groups.

During the weeks immediately following the meeting, the leaders of the various existing or projected cells will be available to speak to persons interested in taking part in the second semester program. Regular cell group meetings will resume February 20.

## Students Journey To Sioux Falls

Journeying to Sioux Falls this Friday will be several Dana students who will present a talent show for the students of Sioux Falls College.

Bill Archibald will emcee the half-hour program of combo music, solos, readings and various other talent productions. Joan Nielsen is serving as co-ordinator for the show.

## Political Science Club Book Sale Nets \$200

Approximately two hundred dollars composed the receipts from the recent book sale held by the Political Science Club.

According to Roger Jacob, president of the organization, \$100 of the money will be used to purchase political science and governmental books for the Dana College Library.

## Dr. Rasmussen Reveals Statistics on Enrollment Population Drops 85 Second Semester

Recent enrollment figures released by Dr. Elmer M. Rasmussen, Dana Registrar, reveals that the total enrollment for second semester is 475 as compared with 423 at the beginning of the second semester last year.

The 1961-62 school year commenced with an enrollment of 535. Eighty-five students dropped and 25 new students enrolled. This represents an 11% decrease as compared to the normal decrease figure of 5%.

Reasons for dropping were varied. Sixteen students completed their programs; thirty-two discontinued college because of failing grades; sixteen transferred to other colleges to pursue their education; eleven desired to work; three men joined the armed forces; two women were married and three students left because of illness.

## From the ALC- Material On Communism Is Lutheran-Oriented

A program of publishing Lutheran-oriented materials to help educate members of the American Lutheran Church on Communism has been announced by the ALC's Commission on Research and Social Action. Dr. Carl Reuss, commission director, has prepared a booklet entitled "Communism's Challenge to America and American Churches" which will be ready for circulation late this month. Another resource will be a reprint of a series of four articles on Communism written last summer for **The Lutheran Standard** by the Rev. Herbert G. Loddigs, teacher at Lutheran Bible Institute in Minneapolis.

The publications are designed to stimulate study and to promote discussion, but are not to be regarded as official positions of the ALC. In addition, the church body has counseled care in the evaluation methods used by anti-Communist groups and suggested that established organizations within ALC congregations devote study time to "Communist ideology and methods and our own Christian and democratic heritage."

Dr. Fredric C. Schwarz, Australian leader of a group known as the Christian Anti-Communism Crusade, was present at a recent meeting of the commission to discuss some of the problems involved. The Schwarz crusade conducts anti-Communism schools in communities under local sponsors.

Twenty-two new students joined the Dana family for second semester studies.

### War Affects Past Enrollment

Thirty years ago, when the nation had just entered world War II, enrollment nosedived as many students donned uniforms. It was a time of crisis for the college. Attendance had been as high as 160 in 1939-40 and then dropped to 85 as the war commenced. This was the lowest it had been since World War I.

Even though the war posed many problems the college was determined to continue. There was talk of closing down for a period, but nothing came of it.

After the war, returning veterans boosted the enrollment once again. In 1947-48 the enrollment was up to 411 taxing campus housing facilities to the utmost. Since then enrollment figures have continued to mount.

## Social-Hour Spots Professor Bansen

Continuing in the line of quality programs presented for the two previous social hours, the Student-Faculty Social Hour on Sunday, February 4, will feature Professor Norman Bansen, who will illustrate his program with slides that he has taken about the Virgin Islands.

Having visited the island several times, his information will be both first-hand and authoritative.

As in the former social hours, the 2:30 meeting will be followed by refreshments.

# HERMES

Volume XLIII Number 14

Published weekly during the college year, except holiday and examination periods, by the student body of Dana College, Blair, Nebraska.

Publisher: Augsburg Publishing House, 138 North Seventeenth Street, Blair, Nebraska.



Subscription rate \$2.50 a year, in advance.

Second class postage paid at Blair, Nebraska.

Editor-in-Chief.....Kenneth A. Jensen

Associate Editor.....Liz Nielsen

Assistant Editors

News .....Bob Rademacher  
Sports.....Barry Tuttle  
Features.....George Nelsen

Business Manager

.....Eldon (Al) Hemmingsen

Advertising Manager.....Bill Archibald

Assistant.....Larry Bornemeier

Circulation..... Paul Christiansen

Writing Staff:

News:  
Ralph Rasmussen Jane Olson  
Paul Dirks Pamela Huss  
Pat Stolley

Sports:

Linda Layton Bob Steffensen  
Chuck Jorgensen

Features:

Linda Knudsen Tom Lange  
Dennis Shaw Dan Knudsen

Make-Up Staff:

Copy Editors:  
Brenda Francis Ellen Peterson  
Phyllis Rasmussen Dave Hanson

Heads: Doris Klooz

Typists:

Pat Burnett Bev Gravesen

Faculty Advisor.....Miss Luella Nielsen

Printer.....Augsburg Publishing House

Editorial . . .

## Dana Social Fraternities--- Are They So Necessary?

For some time there has been a good deal of undercover discussion regarding the proposed introduction of local social fraternities. This fraternity system would cover all housing for men students on campus and would grant membership to off-campus students as well. Each house (or dormitory floor) would have quotas for membership based on the following approximate proportions: six seniors, six juniors, eight sophomores and ten freshmen for a total of thirty. A system of rushing would be instituted in connection with election of new members to each group. Within the fraternity itself a group of officers would be elected to run the organization. The counselor system would be retained to some extent. The counselors would work for the dean of men and in general perform their present duties; however, they would receive an hourly wage.

### Groups Introduced as 'Social Fraternities'

So much for the mechanics of the system. Let us now look at the effect this would have on the campus. These groups have been introduced under the guise of "social fraternities." This then indicates that their main function is to increase social intercourse at Dana. It is, I think, rather obvious to anyone who will take the time to look that we sorely need to do something about our decaying social system. It is also my considered opinion, however, that the introduction of "social fraternities" constitutes one of the most singularly unimaginative and inadequate ideas to come along in quite some time. Are we expected to believe that our social ills can be cured simply by the organization of a more rigid class structure? Must we accept this thing without an equitable hearing? What about those who want no part in fraternities? Are they to be forced into the mold of the conformist? I am sure the discerning student will agree with me that to answer these questions positively would amount to the surrendering of his freedom of choice.

It is true that our social system leaves something to be desired; however, very obvious attempts to correct this condition are being made, namely the Sunday coffee hour and other projects still being planned. Let me suggest that we make use of the existing organizations and planned activities before we get too excited about buying jackets with Greek letters on them. Naive indeed is the person who thinks our problems will be solved by more organization.

There are still other questions to be answered. What constitutes a "smoker" or "social function?" Will there be extra expense for the students? What about discipline? These and many other new and uncalled-for problems will arise with the introduction of fraternities.

### Prediction of Future Effects

Might I suggest that those of you who do care about Dana and want to see her grow in stature consider the facts and then draw your own conclusions. Remember these points:

Our social ills can only be cured by your participation in all activities on campus and not by the introduction of some new cure-all.

Needless sectionalism and larger cliques will develop, at least more obvious ones than we now have.

You will be forced into a preconceived social mold where the individual is out of place.

Finally, the person who comes to college to get an education will find that at Dana our value judgments have shifted from the academic to the social plane. The social fraternity system is as out of place on our campus as a monarchy would be in America.

G. Nelsen

## Ken's Comments

Hats off to the Viking Armada of the basketball courts. After the five game winning streak, fans are jubilant and rumors have it that the boys will stretch it to seven this weekend in South Dakota. All students who enjoy vacations, social outings and excellent basketball will be heading north in hopes of seeing the quintet become a stronger conference crown.

**A CAMPUS ILLUSTRATED** news release flashed past the desk this week. I was surprised to read the facts that 83% of the men and 74% of the women on campuses such as ours consume alcoholic beverages. The reason I mention this is because many students protest the situation of the problem on our campus when actually things aren't as black as they may appear. I also read an editorial in Westmar's campus publication where it seems that they could stand a little temperance also. So when you stumble over a bottle in the parking lot, remember things could be worse. However, this doesn't mean that we should be lax on this universal problem.

Did you know that 125 years ago last Friday, Michigan became our 26th State? At the rate we are progressing, in another 125 years the moon (or a part of it) may be our 51st.

In a past KOMMENTS I mentioned a magazine article about how science may soon create life in a test tube. Last Sunday's HERALD contained the views of a physical scientist's proof for the existence of God with the second law of thermodynamics.

This is just another reason a student on a Christian campus should take the opportunity to grasp all the scientific knowledge that he can absorb if he is to recognize the stress that can be put upon modern day "superstitions" of what to or not to believe.

## THE PAST, MY FUTURE?

The past is ashes  
In the fire of time.  
What, no reincarnation?  
Then why is the past  
My future?  
Why is my future  
My past?  
I am tired of looking back  
To see what will happen.  
I am tired of looking ahead  
To see what has happened.  
Change your present now,  
Enjoy your future later.

—D. K.

Great scholars never graduate in a hurry, they do it in degrees.

## HUSKER BOWL

1 mile South on Hiway 30

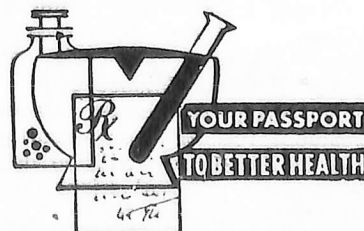
Malts — Sandwiches — Seafoods — Chicken — Steaks

OPEN BOWLING:

Monday - Friday—1-7 p.m., 11 p.m. - ?  
Saturday-Sunday—All Day and Evening

We have the most modern bowling facilities found anywhere.  
College kids always welcome

## Samson Rexall DRUG STORE



## Rathmann Drive Inn

—BROASTED CHICKEN—  
STEAKS

FOUNTAIN SERVICE  
SANDWICHES — MALTS

Orders To Go Phone 426-2929

Call Ken Muehl  
Room 412 South Dorm  
For Laundry and Dry Cleaning

## Blair Laundry

We finish blouses—skirts—  
shirts—pants

# 'The 48' Have Stories to Tell; Just Ask Them—They'll Talk

From the Nebraska oil fields to the performance for Sergeant Crumb at the Air Force Academy, from plain to mountain, from disappointment to satisfaction, and from moments of glee to momentary sadness, the Dana choir roamed its way along the path plotted for the thirty-seventh annual tour. There were times when they painfully felt the need for a trained understudy when one soloist developed throat trouble, and there were times when the choir felt the pleasure of knowing a number was well done. These were all part of the life of the "forty-eight."

However, one can not look back without recalling the passion that some of the members possessed for good reading at the library. (Anyone interested in an explanation is urged to contact Dennis Berke.) Nor can one forget the frustration that Professor Neve handed Gary Ramsey, Bob Steffensen, and Hans Christensen as he dealt a wicked hand in cards while the Greyhound raced along the bumpy roads.

Sue Ringhand was shocked. She, jokingly, remembering the trials of the last tour in Denmark, said she wondered if her host for the night would speak English. She soon got her answer, NO! Believe it or not, they spoke only German and "low" German at that!

Sonja Jacobsen drew the Ace in the laugh department when she raced up the road to meet the bus ahead of her male competitors at Smithfield, Nebraska. But alas, by the time Mike (the driver) stopped the bus, the "Olympic athlete" was bypassed and the second place males slid into the choice front seats.

Has anyone ever experienced the thrill of walking into the wrong "jöhn"? Well, Bonnie Nelson and Chuck Jorgensen did just that—and in the same night, too! Both flashed complementary shades of red.

As stories must end, so must this. However, many a tale lies in the hearts of each of the "forty eight."

## Grapplers Squeak By Midland Males

Last Thursday night, January 25, the Dana College wrestling team won another match as it continues toward an undefeated season. The team edged Midland, 14-13, in a conference meet.

Dana, hurt by the loss of several grapplers because of low grades, did not record a pin, but had to settle for four decisions and a draw to get by their opponents. Midland scored on a pin, two decisions, and a draw.

For Dana, Larry Mason decisioned Allen Hansen, 4-0, 123; Roger Howland decisioned Mike Horacek, 4-3, 137; Herb Knudsen got by Gary Perrin, 5-1, 167; and Lowell Larson decisioned Ben Stindt, 13-4, 177. For Midland, Bob Williams decisioned Jim Sonksen, 2-0, 130; Russel Andersen decisioned Ron Thorngren, 4-0, 147; and Carl Brobst pinned Sterling Nelsen, heavyweight. The one draw was between Ernie Abariotes and Jim Dukeshier, 2-2, 157.

## Dana Co-eds Try; Lose 57-28, 52-36

Last week saw the Vikingettes thumped in two games. The Dana Co-eds dropped a game with Commercial Extension of Omaha, 57-28, and were upset by the Roth Royals, 52-36.

Linda Laursen led the Vikingettes with 20 points in the disappointing struggle against Commercial while Donna Layton was the pace setter in the Roth contest with 18 tallies.

Tonight, the team will tangle with the powerful Omaha Wright sextet on the Viking court. The Wrights have skimmed Commercial and hold first place in the A.A.U. league.

## INTRAMURAL SCOREBOARD

BASKETBALL		
STANDINGS:		
	W.	L.
Nooners	6	1
Karters	6	1
Ants	5	2
Floaters	5	2
Raiders	3	4
Road Runners	3	4
Stompers	2	5
Watusi's	1	6
Dukes	1	7

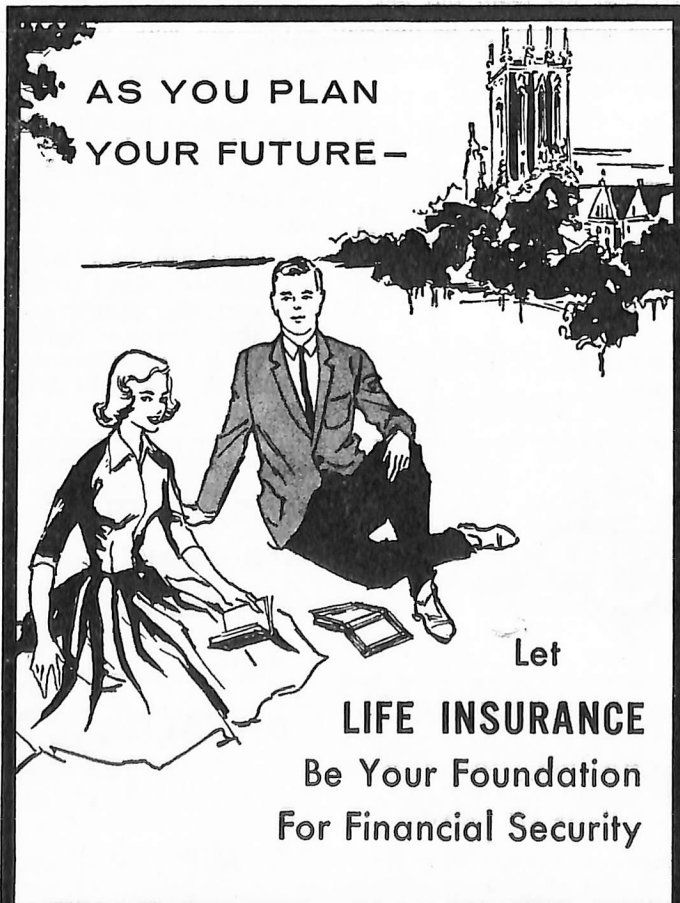
SCORES:	
Nooners (32)	Karters (26)
Ants (49)	Floaters (41)
Road Runners (49)	Stompers (46)
Nooners (63)	Dukes (28)
Raiders (35)	Watusi's (28)
Road Runners (64)	Ants (42)
Floaters (46)	Dukes (27)
Stompers (45)	Raiders (39)

LEADING SCORERS:	
Olson (N)	14.2
Bohlken (F)	11.8
Peterson (A)	10.6
Rich (A)	10.3
Kellerman (S)	9.2
Nielsen (D)	8.8
Leehy (N)	8.8
Cupp (N)	8.6
Mueller (RR)	8.3
Templeton (N)	8.3

VOLLEYBALL	
FINAL STANDINGS	
Unmentionables	5 0
Lucky Strikes	4 1
Dead Beats	3 2
Optimistic 7	2 3
Bondo Beats	1 4
Rockin Robins	0 5

SCORES:	
Dead Beats (2)—Rockin Robins	(0)
Unmentionables (2) — Optimistic 7	(0)
Lucky Strikes (2)—Bondo Beats	(0)
( )	games won

**AS YOU PLAN  
YOUR FUTURE—**



Let

**LIFE INSURANCE  
Be Your Foundation  
For Financial Security**

"An Old Line Company - - - It Does Make a Difference"

**LUTHERAN MUTUAL LIFE INSURANCE COMPANY**

HOME OFFICE — WAVERLY, IOWA

### RABBASS STUDIO Portraits

Cameras, Films, Supplies

Telephone 426-3292

1745 Washington Street

Blair, Nebraska

Prices Are LOWER at  
**TED'S FINA STATION**  
No Finer Gas than Fina  
Ted Kutsch—East End Wash. St.

Make Your Next  
Snack Stop  
**LACY'S CAFE**  
Open 6 a.m. — 12 p.m.

### KOLTERMAN'S Ben Franklin Store

5c to \$1 Merchandise

Come Here for Year Round School Needs

# Vikings Take Off and Fly While Bombing Westmar 94-74 Win Added Toward Crown

## Dana Battles with Tigers; Captures a Victory, 101-69 Cagers Looking Good on Offense and Defense

Filled with a real desire to win, the Dana College Vikings took the floor last Friday evening against the Westmar College Eagles. Their desire paid off in dividends. The Westmar squad went down to its first defeat in Tri-State Conference play, Dana winning handily 94-74.

The first 15 minutes of play saw a fairly close game. Dana jumped off to a four point lead and was never fronted, but the gap was never wide until the last five minutes before the intermission. Then the Vikings really started clicking and pulled to a 17-point margin as the whistle blew—48-31.

During the second half the Vikings continued to dominate play as Coach Clements substituted frequently, giving the starting five a rest for the game against Doane the following evening.

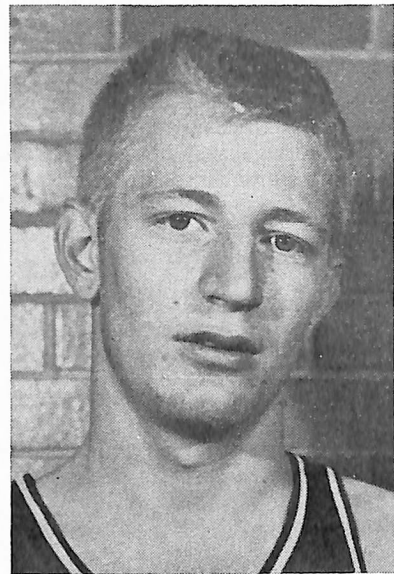
Gary Sebbert, in addition to playing an outstanding floor game, both on offense and defense, hit his high total for the year—32 points.

Dana now stands 4-2 in the Tri-State Conference and has a chance for the Conference crown should rival Midland College of Fremont, Nebraska, drop a contest prior to the next meeting with the Vikings.

Next Friday and Saturday will see Coach Wilbur Clements' crew journeying to Yankton and Sioux Falls, South Dakota. Dana has previously conquered these two Conference teams this year.

	F.G.	F.T.	T.	Pts
West	3	6-8	12	
Hanson	1	2-2	4	
Lebeck	1	1-2	3	
Sebbert	13	6-6	32	
Laughhunn	0	2-2	2	
Erickson	7	1-2	15	
Bro	1	1-1	3	
Grasso	4	7-14	15	
Winscot	3	2-2	8	

### Player of the Week--



Receiving the honor of being the Outstanding Player of the Week for this week is Bob Erickson. Bob hails from Kankakee, Illinois, and is a Junior. The 6-3 stalwart has consistently produced outstanding basketball throughout the season for the Vikings and is especially impressive under pressure.

"Erick's" specialty seems to be under the boards where his tip-in shot and outstanding rebounding ability characterize his playing. Bob has exceptional jumping ability and uses this to great advantage in gaining the ball off the opponents' backboard.

Teaming these skills with a great desire to play makes Bob Erickson an outstanding basketball player and a tremendous asset to Dana's overall cage success.

Viking cagers slashed the Doane College Tigers of Crete, Nebraska, last Saturday night by the overwhelming score of 101 to 79 in a non-conference battle.

Dana was never in danger of losing its lead and led from the first quarter until the final buzzer. The win placed Dana with a fine 9-4 win-loss record for the 61-62 cage campaign.

Doane was obviously outclassed both on offense and defense by the Red and White. Dana dominated the backboards with Gary Sebbert and Bob Erickson grabbing the majority of the returns. Doane had considerable trouble in getting the ball under the basket and the fine Dana defense confined them to shooting from the outside.

Gary Sebbert turned in his usual field goal splurge as he registered 26 points; Gary was followed in the scoring by Bud West, who notched 19 points, along with a fine floor game. Hustling Frank Grasso and Gary Lebeck turned in an outstanding floor game for Coach Clements' crew. Both added their fine ball handling techniques to pad the margin of victory.

Norm Wallace of the Tigers posed the only scoring threat as he laced 26 counters and garnered a large portion of the rebounds that his team did get.

For Dana the victory set their winning streak at five consecutive games.

	F.G.	F.T.	T.	Pts
West	8	3	19	
Sebbert	12	2	26	
Grasso	5	1	11	
Erickson	7	0	14	
Winscot	2	1	5	
Wallman	1	2	4	
Laughhunn	1	1	3	
Muehl	3	1	7	
Rogert	1	0	2	
Hanson	1	0	2	
Lebeck	3	2	8	

### Red-White Cagers Northward Bound For Weekend Fun

Tomorrow and Saturday will find the Vikings traveling to South Dakota for two Conference encounters with the Yankton College Greyhounds and the Sioux Falls College Braves.

Dana has conquered both ball clubs this year to help boost their conference hopes. On the other hand, both Dakota teams have shown improvement since meeting Dana, with near victories over tough Midland College.


Coach Wilbur Clements' traveling squad will have to rely on the same consistent playing tactics and fine shooting that have been their trademark throughout the season. Clements will undoubtedly use his fine bench depth to great advantage in attempting to down these two teams.

If Dana can tuck away these two ball games and notch a victory over the Warriors of Midland, their hopes of gaining their first Tri-State Conference crown in basketball will be brightened even more.

**HOME THEATER**  
**SHOWTIME—7:30 Every Night**  
 Sat. Matinee—1:30  
 Sun. Matinee—2:30

**NOW SHOWING**  
 Now showing until Sat., Feb. 3  
**"THE COMANCHEROS"**  
 Sun., Feb. 4 - Thurs. Feb. 8  
**"THE HUSTLER"**  
 Fri., Feb. 9 - Wed., Feb. 14  
**"BABES IN TOYLAND"**  
 Late Show Fri., Feb. 9  
**"REBEL WITHOUT A CAUSE"**  
 —Show Starts at 10:30—

**Blair Florists and Greenhouses**  
 Growing With Blair  
**"SAY IT WITH FLOWERS"**  
 Flowers For All Occasions



**Skelly Service Station**

**BUD JENSEN**  
 Blair, Nebraska

---

**LEE'S PHARMACY**  
**PRESCRIPTION SPECIALISTS**  
 Phone 426-3700

**For your Dry Cleaning and Laundry needs see—**  
**Ken Muehl—Room 412 South Dorm—**  
 or John Andreasen, Jr.  
**Advance Cleaners**  
 We operate our own new modern plant  
 Same day service in emergencies

**Dine At Cope's Cafe**

---

**Miller—Rolland**  
 Radio — TV  
 Furniture — Appliances  
 We Carry A Full Line of  
 G. E. Appliances  
 We Repair Auto Radios  
 226 So. 13th Ph. 426-3777