



# HERMES



THE DANA MESSENGER

Volume XLIV

Blair, Nebr., December 6, 1962

Number 10

## Theatre Produces Dana Tanganyikans Honor Homeland

"John Brown's Body," an epic poem by Stephen Vincent Benét, is being produced by the Omaha Playhouse Studio Theatre, December 7-9.

This poem is "a large and yet profoundly intimate narrative of the Civil War, told in a poetic diction and imagery that are magnificently American."

Nine actors instead of the usual three will enact this poem with unique staging devices. Adding to the production is a 16-voice a cappella chorus that "sometimes chants phrases, sometimes sings songs that conjure up . . . the mood of the 1860's."

Curtain time is at 8:30 p.m. on December 7 and 8 and 7:30 p.m. on the 9th. Tickets are available at the box office; adults \$2 and students \$1.

Ned Kitomari, Elimweka Mshiu and John Lawuo, Dana's Tanganyikan students, will journey to Midland College this Sunday to celebrate, with fellow Tanganyikans and friends, the Anniversary-Republic Day of Tanganyika.

Speakers for the occasion are Mr. Richard Juma, a Tanganyikan student at Midland and Mr. Raymond Hagberg, a former Dana student and missionary to Tanganyika.

This celebration is not only to commemorate Tanganyika's independence day of one year ago, but is also to celebrate Tanganyika's becoming a republic in the British Commonwealth of Nations.

The program which begins at 2:30 will be held in the library building on Midland campus.

## Vocal Department Presents 'Amahl and the Night Visitors'

Opening the 1962 Christmas season, the Dana College Choir will present as their annual concert, "Amahl and the Night Visitors," a special Christmas opera by Gian-Carlo Menotti.

The concert will be presented on Sunday and Monday evenings, December 9 and 10 at 8 p.m. in Alumni Memorial Auditorium. There is no admission charge.

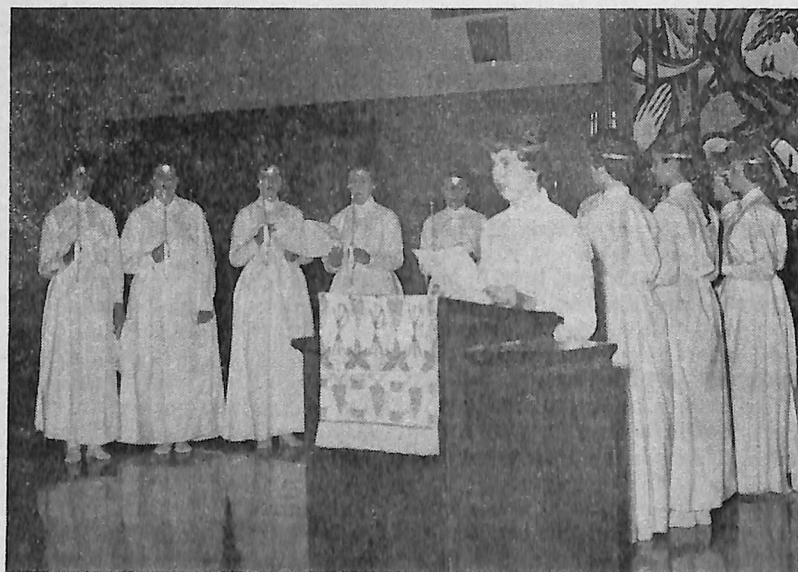
"Amahl" is the story of a crippled shepherd and his mother, an impoverished widow, living somewhere in the world. On their way to Bethlehem, the Three Wise Men accidentally stop at the poor home of Amahl and his mother. Under the cover of darkness, the mother steals some of the gold intended for the Christ Child in Bethlehem.

With great tenderness the Wise Men then explain to her who this newborn child is and how much He wants the love of every human being. Both Amahl and his mother are touched by their words and so return the gold. As a special gift to the new born King, Amahl impulsively hands the Three Kings his wooden crutch—his most prized possession. In doing so, he is immediately cured of his lameness.

Playing the part of Amahl is Jean Gebhart and the mother is played by Judy Johnson. Jack Hill, Gary Ramsay and Charles Jorgensen play the parts of the three Wise Men: Kasper, Melchior and Balthazar, respectively. Karl Petersen is the page for the Wise Men. Accompanists are Marlene Toff and Kay Glasnapp.

Directing the presentation is Mrs. Mildred Slocum and Arden Dorn is serving as assistant director. Professor Sieghard Krueger of the drama department is in charge of the staging.

In addition to the "Amahl," a newly formed women's chorus, known as the Kronborg Singers, will present several traditional Christmas numbers. The Dana Choir will also sing several well-known Christmas favorites, and the combined voices of the choir and the Kronborg Singers will round out the evening with the "Hallelujah Chorus" from Handel's *The Messiah*.



Above is last year's Santa Lucia ceremony

## Santa Lucia Tradition Continues

Becoming a tradition on the Dana campus is the celebration of Santa Lucia Day. This "ceremony with light" will be held during the regular chapel period on Wednesday, December 12, at 10 a.m. in Alumni Memorial. This is the third year that the Danians have observed Santa Lucia Day with this special observance.

Miss Birthe Korshoj will be the Santa Lucia bride and the bridesmaids are Liz Nielsen, Linda Ocker, Judy Jensen, Linda Money, Sidney Larson, Bonnie Nelson, Mary Jane Clausen, Kay Glasnapp, Kay McGill, Judy M. Johnson, Judy Swensen, Beverly Gravesen, Roxanne Marquette and Jean Gebhart.

Miss Gurli Christiansen is assisting the girls with the Danish and Mr. Arden Dorn is production director. Sidney Larson will give the background story of the celebration. Each girl will be carrying a candle and the bride will carry four candles on her head.

## LSA Prepares For Christmas

Advent and the Christmas season will be the subject of the LSA program on December 11.

The LSA has also planned a series of Advent meditations. For the first week these were a series of prepared meditations; they have already been distributed. Meditations for the second, third and fourth weeks will be written by the students.

## Items of Interest

Professor Norman Bansen spoke at the November 24th banquet of the Chicago Dana Club.

The *Silly Woman*, a play by Lope de Vega, will be presented at Yankton College on December 6 and 7. The poster on the Pioneer Memorial bulletin board gives full details.

The Flensted-Jensen Danish Gym Team which initiated Borup Coliseum with a performance last May is planning another tour of the United States in the fall of 1963.

Niels Bohr, a famous Danish physicist, died in Copenhagen on November 18. Bohr was recognized as the world's greatest scientist after the death of Albert Einstein with whom Bohr collaborated in laying the foundations of the quantum theory.

Bohr is also credited with being the first to bring news of uranium fission to the United States.

## This Week In Chapel

- STUDENT CHAPEL ONLY
- Thursday, December 6—Herb Knudsen
  - Monday, December 10—Melvin Edelblute
  - Thursday, December 13—Jim Carpenter
  - Monday, December 17—Elimweka Mshiu
  - Thursday, December 20—Jerry Jorgensen.

# HERMES

Vol. XLIV No. 10

Published weekly during the college year, except holiday and examination periods, by the student body of Dana College, Blair, Nebraska.

Publisher: Augsburg Publishing House, 138 North Seventeenth Street, Blair, Nebraska.



Subscription rate \$2.50 a year, in advance.  
Second class postage paid at Blair, Nebraska.

Editor . . . . . Bob Rademacher  
Associate Editor . . . . . Phyllis Rasmussen  
Assistant Editors  
Sports . . . . . Chuck Jorgensen  
Features . . . . . Linda Knudsen  
Business Manager . . . . . Dean Henriksen  
Advertising Manager . . . . . Larry Bornemeier  
Circulation Manager . . . . . Paul Christiansen  
Assistant . . . . . Weston Crawford  
Columnists . . . . . Tom Lange, Barry Tuttle,  
Robert Hansen, Wayne Nielsen  
Writing and Reporting Staff  
News: Pam Huss, Charles Crow, Janet Krugman, Mike Sink  
Sports: Dave Barber, Jerry Jorgensen, Kent Des Jardien  
Features: Karen Flesvig, Bonnie Nelson  
Make-Up Staff  
Proofreaders: Ellen Peterson, Marilyn Michel, Judy G. Johnson, Lyla Winterburn  
Typists: Bev Gravesen, Janet Probst, Sara Andersen, Judy Hall  
Head Writer: Ken Jacobsen  
Filer: Larry Weiss  
Faculty Adviser . . . . . Miss Luella K. Nielsen

## Triple-Semester Plan For Dana? Would It Work?

Everyone would like to avoid those grueling days between Christmas vacation and the semester break which are devoted mainly to reviewing or cramming for exams. Now, there may be a way to do this.

In recent years, some colleges and universities have been experimenting with the use of triple semesters. There are now two types of tri-semester plans. The first divides the year into three equal sections. The second plan has two 14-week semesters, divided by a third six-week semester running from the end of Christmas vacation to February 15.

During the two 14-week periods, the students would take four courses. For the six-week period the students would concentrate on one course, for which they would receive a full year's credit.

**Borrowing is not much better than begging. —Lessing**

This system would eliminate the burden of carrying five courses and would permit the student to concentrate more on each subject.

Anyone who has tried to study for tests in two difficult and vastly different courses on the same day can see the advantages in concentrating on only one course for six weeks. The tri-semester plan would not mean getting by with less work. It would mean, perhaps, less confusion as the student would not have to study five or six subjects all at once.

Other schools have tried one of the tri-semester plans and seem to like them. **One of these plans may well be worth considering for use here at Dana.**

### By Way of Bob

"And behold there was light." And a lot of it too!! The "new" gas lamps which replace the "old" ones are really an improvement. At least one can tell where the sidewalk ends and the grass begins. Perhaps the gas line's being filled with something other than gas was a "blessing in disguise!"

**Last Friday's performance of Gregg Smith singers will remain a highlight of this school year. Dana was really fortunate in being able to have them appear on our campus. And really, the people responsible for the Lyceum programs are to be congratulated for scheduling the performance on a weekend night instead of on a night just before Liberal Arts Reading. The large attendance at Friday's program can attest to the value in "planned" scheduling.**

The Dana College cagers began their season with a loss to Sterling College in the Doane Invitational last Friday evening. The Dana representation at this game was quite poor and this can be accredited to two factors: the musical performance on the same evening and also the lack of publicity of the invitational. No where on campus could one find a poster giving the schedule of games for the invitational; consequently, few people knew just what was going on.

**Many a wreck is caused by an empty train of thought.**

## Is Christ Lost in Pre-Holiday Rush?

What would Christ have done if He had known how much commotion His birth would cause? He probably would have found some other way of making his appearance.

**Thanksgiving is not even celebrated properly any more. Instead one hears Christmas carols when one should be hearing "Praise God From Whom All Blessings Flow." What is lacking in the American way of life that we need this phony dramatic material a whole month in advance to prepare us for Christmas?**

Instead of friendly shopping for gifts which we know others will enjoy, Christmas shopping has become an erratic mass of Road Runners beeping from one counter to another. The object is to see how many gifts one can get, not the quality and sentiment involved. A child is no longer satisfied with one gift and he doesn't bother to open his first gift as he is waiting for the rest of them.

The child is looked on as a somewhat symbolic thing on which one showers extra love and affection over this period of time. Perhaps if some of this "extraneous" were spread over a year's time not so many children would be unhappy.

The holy music which is so traditional at Christmas becomes a blasting noise from the loud speakers at shopping centers. It becomes a trite sound which one finds boring by the time His birthday arrives. Perhaps Americans could somehow refrain from taking so much away from the simple beauty of His birth and allow at least "Silent Night" to be sung in a silent manner.

What has happened to the family get togethers, when mother and daughter are able to work side by side in the kitchen preparing Christmas goodies, or the father and son finding the tree and decorating it for the timely season? Instead one finds the bakery or the nearby grocery store swamped with "Christmas goody" orders and the downtown department store sending out "silver" trees.

As Christmas Eve arrives . . .  
"The presents are thrown 'neath the tree with a flaire,  
And the children are told to get up when they dare."

## Men, Are You In Fashion? 'Playboy' Gives Latest Trends

Men! Are you in fashion this year, or should we say, are your clothes in fashion? Nowadays, not only the women worry about clothing style trends, but men attempt to dress in style too.

Robert L. Green, the fashion director of **Playboy** magazine, offers some fashion tips to men for fall and winter. So, lend an ear.

This fall, styles in campus wear are dominated by the classic Ivy silhouette from Maine to California.

Some trends promise to make a splash on a nationwide scale. Navy blue, along with olive, will be setting the understated color tones in suits and slacks, headgear and outer wear, with low-key grays and browns in their accustomed complementary roles. Making its merry appearance in all these shades, the three-piece suit-jacket, trousers and match-

ing vest has quickly become an impeccably correct campus uniform.

From a material viewpoint, in suit, slack and sport-coat fabrics, worsteds, flannel, wool blends, even cashmere and mohair will prevail.

Topping off the campus wardrobe in every college quarter—for the man with a head for hatwear—will be a nationwide line of smart university hats with welt edge, center crease, narrow brim and tapered crown in rich brown or olive felt; a heady assortment of tweeds, corduroys and tyrolean velours for jauntier wear; and shape-holding, collapsible rain hat storable in the coat pocket.

Exact wardrobes will vary with individual tastes and different localities. Now, fellas, you can't say you don't know what is fashionable **this** year.

### HOME THEATRE

Showtime — 7:30 Every Night  
Sat. Matinee — 1:30  
Sun. Matinee — 2:30

Thurs.-Wed. Dec. 6-12  
"THE MUSIC MAN"  
In technicolor

Thurs.-Sat. Dec. 13-15  
"THE FAR COUNTRY"  
Starring James Stewart and Ruth Roman

### LEE'S PHARMACY

PRESCRIPTION SPECIALISTS

Phone 426-3700

Make Your Next  
Snack Stop

LACY'S CAFE

Open 6 a.m.—12 p.m.

### BLAIR MARINA

Sandwiches — Sea Foods — Chicken  
Char-Broiled Steaks

## Proficiency Test Results Evaluated

The Junior English Proficiency Test, composed of a grammar test and writing test, was recently taken by the Junior class; it is a requirement for those earning a degree at Dana. The writing test is made to measure the student's ability to choose and organize words for clear and effective presentation of ideas.

The grammar test measures the student's knowledge in the areas of punctuation, verb usage and similar areas. Juniors with a weak English background are required to improve it before receiving the degree.

On the writing test, the 33rd percentile on national college sophomore norms was used as the lowest acceptable rank; this was also used for the grammar test. Twelve of the 94 students scored below this level on the writing test, of whom four also scored too low on the grammar test. In addition, seven others scored too low on the grammar test. Some of these who were just below the line on one test, but were high on the other test, were passed as acceptable, leaving a total of sixteen, or about 17% who will have extra work to do in order to reach the acceptable level.

Comparing the achievement of the Dana students, about 31% were in the top tenth in one or both of the two tests. In the writing test, 34% were in the top tenth on national norms, 37% in the top quarter, 65% in the top half and 91% in the top three quarters.

In the grammar test, about 20% were in the top tenth on national norms, 45% in the top quarter, 70% in the top half and 93% in the top three quarters. While these are sophomore norms, junior norms would differ little from them and have therefore not been made separately.

Dr. Elmer Rasmussen  
Dean of Students

Good examples are very convincing teachers. Shakespeare.

### Blair Laundry

Drop your bundles, shirts, blouses and pants off at 2142 Nebr. St., to be finished or wash and dry.

Phone 426-3645

## Nyholm Writes Danish-American Church History

**A Study in Immigration History: The Americanization of the Danish Lutheran Churches in America**, a book written by Dr. Paul C. Nyholm, professor of church history at Wartburg Seminary and former professor at Dana, will be published in early 1963. The book should be of value not only to those who are interested in church history, but also to sociologists as it is the first detailed study of how the Americanization process has affected immigrant churches.

The study shows the effect of the Americanization process upon the organizational development and outreach of the two major Danish synods, the training of their pastors, the intricate language problems, the schools, the press, the congregational life, the relationship to other churches and the participation in American political, social and cultural life. The historical account covers over a century up to 1962.

The book is being printed by Augsburg Publishing House but is being published by the Institute for Danish Church History of the University of Copenhagen. A very limited number of copies will be offered for sale in America at a price of \$7.50; however, the book will be sent postpaid at a price of \$6.50 to those whose orders are received by the Dana College Book Store before the book goes to press on December 20.

## Drama Club Holds Initial Meeting

The first meeting of the Dana Drama Club was held on December 3. Election of officers was the chief item of business: Helmut Schaetzle, president; Richard Moosmann, vice-president; Jane Jensen, secretary; Carol Pedersen, treasurer and Dan Aten, historian.

It was decided that this organization should not simply include those interested in dramatics, but all interested in any phase of speech.

Professor Sieghard Krueger is the advisor for the group.

The next meeting is Tuesday, December 18, in Old Main 212 at 8 p.m. The meeting is open to anyone interested in working and learning about the many phases of speech and theatre arts.

## College Poetry Anthology Accepts Talley's Poem

**Of Colour**, a poem by Ben Talley, a Dana freshman, was accepted for publication in the Annual Anthology of College Poetry. The anthology is a compilation of the finest poetry written by the college men and women of America, representing every section of the country. Selections were made from thousands of poems submitted.

While this is not Ben's first publication, it is the biggest of his career. Ben has had other material published in his high school paper and also in *Hermes*.

A limited edition of the anthology is being printed, and copies are available for one dollar to students, teachers and libraries only. If interested, send one dollar to the National Poetry Association, 3210 Selby Avenue, Los Angeles, California, as soon as possible since the anthology is being published in the spring.

### Of Colour

Unless we beckon Him, to adopt and take us in,  
Black is black and white is white,  
what cause is this to blunder in the night?

To judge the texture of his skin  
would level our throne and disgrace our kin.

We've divorced our Father through the years,  
the creator of our eyes and ears,

by painting black darker, white purer.  
This evil artistry left us without a cure.

Whether His son be white or black,  
in men He judges not their back.

Unless we beckon Him, to adopt and take us in,  
we shall remain among the dead.  
Just think—it's only in your head!

Ben Talley

## Lest You Forget

Thursday, December 6—Hermes meeting, 6:30, BC.

Friday, December 7—Basketball: Nebraska Wesleyan, BC. 7 p.m.

Saturday, December 8—Basketball: Concordia, BC.

Blair High Basketball, BC. Nebraska Association of Church Colleges, 10 a.m., Nebraska Wesleyan.

Sunday, December 9—Christmas Concert "Amahl and the Night Visitors," 8 p.m., AMA.

Monday, December 10—Christmas Concert: "Amahl and the Night Visitors," 8 p.m. AMA.

Tuesday, December 11—LSA, canteen, 7-8 p.m.

Wednesday, December 12—College Intramural Sports, 7-10 p.m. BC.

Thursday, December 13—Wrestling, Concordia, BC. "Holly Daze"—Christmas Banquet and program: 5:30-7:15, Banquet, DH, 7:30, program, AMA.

## New York College Tries Reading Plan

Hartwick College, a Lutheran college in Oneonta, New York, has announced its current "Book of the Semester"—a plan similar to Dana's Liberal Arts Reading Program.

"The book of the semester plan is sponsored to encourage students, faculty and friends of the college to read at the same time a work of intelligent and entertaining quality, so that widespread discussion can take place on the ideas presented."

Selected as this semester's book at Hartwick is **The Man of the Renaissance**. It deals with the lives of four men of the sixteenth century: Savonarola, Machiavelli, Castiglione and Aretino.

Earlier works chosen as "Book of the Semester" included William Golding's **Lord of the Flies** and Dostoyevsky's **The Double**.

ANDERSON DRUGS

A Full Line of Cosmetics

Dine At Cope's Cafe

KOLTERMAN'S Ben Franklin Store

5¢ to \$1 Merchandise

Come Here for Year Round School Needs

## Football and Cross-Country Viking Lettermen Announced

Athletic Director Coach "Pete" Peterson announced this week the names of the football and cross-country participants who received letters this year. Those receiving letters in football are

Anderson, Ronald  
Barnes, Lynn  
Beck, Roger  
Beck, Ron  
Bondo, Mark  
Classen, Tim  
Erlandsen, Stan  
Evans, Richard  
Hansen, James  
Houston, Richard  
Jensen, Byron  
Jorgensen, Charles  
Kellerman, Maynard  
Lange, Tom  
Larson, Lowell  
Laughhunn, John

Lippincott, Roger  
Mitchell, Gregory  
Nielsen, Daloy  
Nilmeier, Jim  
Olson, Bryce  
Osterholm, LeMar  
Pedersen, Mike  
Petersen, Everitt  
Peterson, Brian  
Peterson, Carter  
Quirk, Kenneth  
Reinking, Allan  
Rydell, Tuck  
Stegmaier, Robert  
Templeton, John  
Frank, Tom

Cross-country lettermen for the 1962 season are Tim Jensen, Ron Hough, Bob Dunnell, Gary Hiemke and Mike Stafford.

## Science Fellowship Applications Open

As one means of promoting the progress of science, The National Science Foundation plans to award about 3,000 graduate fellowships for the 1963-64 academic year.

The fellowships will be based on academic records, recommendations of the applicant's ability and examination scores.

Fellowships are to be awarded in the fields of mathematical, physical, medical, biological and engineering sciences; anthropology, psychology, geography, economics (excluding business administration) sociology and the history of philosophy of science.

These fellowships are open to all college seniors, graduate and postdoctoral students, and others with equivalent training and experience.

All applicants must be citizens of the United States, and are required to take the Graduate Record Examination which will be given on January 19, 1963, at designated centers throughout the United States.

For further information and application materials write to the National Academy of Sciences—National Research Council, 2101 Constitutional Avenue, N. W. Washington 25, D. C. or see the appropriate department head here at Dana.

The deadline for receipt of application for regular postdoctoral fellowships is December 17, 1962 and for graduate fellowships, January 4, 1963.

## Library Receives Interesting Books

Interesting books in the fields of religion and political science have been purchased by the Dana College Library.

Richard W. Solberg has written **God and Caesar in East Germany**, the conflicts of church and state in the country since 1845. "This is a graphic study of Communism in E. Germany and the subtleties of Communist aggression against individual freedom of thought."

Solberg's purpose is "to draw back the curtain and to make clear to our eyes the manner of witness that has been born for fifteen years by men and women seeking to fulfill in Marxist land, the Christian's responsibility both to God and Casear."

**Strange Sects and Curious Cults** by Marcus Bach is a trip into the byways OF RELIGIOUS FAITHS. The book is divided into three sections: the sex sects, such as Baalism and Voodooism; the conscience cults, as the Penitents and Oxford groups; and the search for utopia, as the Doukhobars.

Every man must educate himself. His books and teacher are but helps; the work is his.

**Blair Cab Company**

426-2500

## Wesleyan and Concordia Challenge Dana Vikings

Dana will probably face its toughest opponent in its home opener against Nebraska Wesleyan tomorrow night. Wesleyan was rated 16th in the nation in a pre-season poll of small college basketball teams. They romped over Kansas Wesleyan in their first game and should provide quite a show for the Viking fans.

On Saturday night Concordia College of Seward, Nebraska, will invade the Viking court for the first conference game of the year for both teams. Although Concordia lost their starting five of last year, they are spearheaded by Al Buck, a 6' 9" transfer from the University of Nebraska.

Coach Clements feels that Concordia will be one of the toughest teams in the conference this year. He also says that the boys are anxious to get into the new gym which he hopes will provide incentive for a winning year.

## Sioux City Tromps INTRAMURAL Vikingettes, 67-30 SCOREBOARD

In the first game of the season, the Dana College Vikingettes were defeated by the Sioux City All-American Girls' Team, 67-30.

The girls from Sioux City, who placed fourth in the National AAU tournament last year never trailed, and they led at halftime, 33-16.

Linda Laursen led all Dana scorers with 12 points. However, All American Norma Schwartz of Sioux City was top scorer of the game with 22 points. Following Linda in scoring for the Vikingettes were Lois Vaught, 9; Donna Berryman, 3 and Kay Glasnapp, Luanna Petersen and Lyla Winterburn with 2 points each.

Inaugurating their 1962-63 season in this way, the Dana team did not do as badly as the score indicates. The girls were out-clasped in height, experience and playmaking.

### INTRAMURAL BASKETBALL

#### Standings:

	W.	L.	TP.	OP.
Floater's	2	0	123	85
Carters	2	0	106	67
Quickies	2	0	83	69
Watusi's	1	0	45	43
Stompers	1	0	55	45
Raiders I	1	1	88	75
Road Runners	1	1	92	109
M 80's	0	2	87	114
Dukes	0	2	83	92
Panthers	0	2	71	88
Raiders II	0	2	57	104

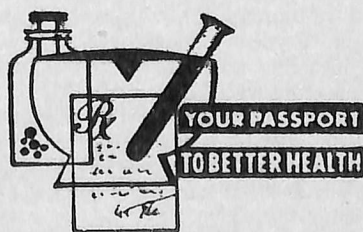
#### Leading Scorers:

Wallman (Raiders I)	43
Thorberg (Floater's)	36
Nilmeier (M 80's)	32
Ericksen (Floater's)	31
Volkman (Floater's)	31
Nielsen (Road Runners)	28
Gipson (Dukes)	27
Stone (Panthers)	23
Kellerman (Road Runners)	22
Kirkegaard (Raiders I)	21

#### Scores:

Watusi's (45)—Raiders I (43)
Floater's (59)—M 80's (42)
Quickies (43)—Panthers (41)
Road Runners (49)—Dukes (45)
Carters (63)—Raiders II (29)
Stompers (55)—M 80's (45)
Raiders I (45)—Panthers (30)
Floater's (64)—Road Runners (43)
Quickies (41)—Raiders II (28)
Carters (43)—Dukes (38)

## Samson Rexall DRUG STORE



## HUSKER BOWL

1 mile South on Hiway 30

Malts — Sandwiches — Seafoods — Chicken — Steaks

### OPEN BOWLING:

Monday-Saturday—1-7 p.m.

30¢ a line, shoes included

We have the most modern bowling facilities found anywhere. College kids always welcome