

# THE DANA MESSENGER

Vol. XLIV

Blair, Nebr., February 21, 1963

Number 17

## Dave Israel Named Dana Science Hall Vice-President by Regional LSAA Open House Sun.

David Israel, a junior from Pittsburg, Pennsylvania, was elected vice-president of the Midwest Region of the Lutheran Student Association of America at the Midwinter Conference on Saturday. Besides the normal duties of the vice-presidency, Dave will also edit the regional newspaper.

Ron Nielsen and Tim Jensen were elected by the Dana representation to be the official delegates to the conference from Dana. Pastor Nielsen was elected as one of the advisors to the Midwest Region.

Main speaker for the two-day affair held at the Lutheran Student Center at the University of Nebraska in Lincoln was the Rev. Albert Dillemath, traveling secretary of the Division of College and University Work for the Midwest Region of the NLC. He spoke on the theme "The Word, World and the Sacrament."

Dana had the largest representation with fifteen other students besides those mentioned above. They were Elaine Hancock, Dee Petersen, Kathy Olsen, Jim Carpenter, Sue Radloff, Kathy Nielsen, Becky Roesener, Audrey Hemingway, Pat Heist, Duane Hansen, Don and Ruth Dreyer, Walter Wilmert, Jeff Asfor and Gary Hanson, Dana LSA President.

Open house will be held at the Dana Hall of Science on Sunday afternoon, February 24, from 2-5 p.m. Members of the science department, faculty and students, will be present to answer questions about the equipment and its usage, and the members of the Science Club are to be official hosts.

Coffee will be served in the first floor lobby near the Doctors' Auditorium during the Open House. The activities are open to anyone who desires to come—students, faculty and the general public.

## Eichhorst Speaks at Chi Rho Tonight

Professor Jack Eichhorst will speak to the Chi Rho club at their regular meeting Thursday evening at 8:00 in Pioneer Memorial 207. His topic is "What Our Pastor Has Studied."

He will discuss the meaning of such seminary courses as homiletics, exegesis, practical theology and systematics.

Business at the meeting will include ratifying of the constitution, electing a new secretary and deciding upon a trip to a seminary this spring.

## Peace Corps Test Set for March 1

Dana students planning to apply for Peace Corps service beginning this summer can take advantage of a special on-campus administration of the Peace Corps Placement Test to be given on Saturday, March 1. The test, which will begin at 8:30 a.m., will be held in Pioneer Memorial 318.

Mr. Emmerich, Peace Corps Liaison Officer for the College, urges students who are interested to take the test now. March 1 is the only day that the test will be administered on the campus during this academic year.

To qualify for the test, a prospective applicant should bring a completed Peace Corps Volunteer Questionnaire to the test site if he has not previously sub-

mitted one. Questionnaires are available from Mr. Emmerich, and students wishing to take the test or to secure further information may contact him in Pioneer Memorial 307.

The Peace Corps Placement Test, as the name implies, is non-competitive and is used primarily in the placement of successful trainees, rather than as a selection device.

The Peace Corps will be inviting thousands of applicants to train this summer for over one hundred projects in fields of education, community development and agriculture. Students with prior study in Spanish and French are urged to apply, although a foreign language is not a prerequisite.

## 'Humanism' Theme For Student Conference

Called to Be Human in a Dehumanizing World is the theme for the American Lutheran Church Student Conference this year, which will be held here at Dana, March 29-31. The theme is a provocative one, lending itself very well to a great many items for discussion and expressing much of the hope and emptiness known in the world today.

Speaking on questions of humanism will be Dr. John Bachman, head of the drama department at Union Theological Seminary in New York and a leading light in the field of religious drama; William Stringfellow, perhaps the most heard lay voice in the Protestant Church of America and Jackie Robinson, former Brooklyn Dodgers star.

Seventeen ALC colleges will be represented at the convention which will bring about 200 students to Dana. The students of Dana are invited to attend the three main lectures of the ALC conference; however, to take part in the discussion groups, the students must register for the conference and pay the three-dollars fee.

Commenting on the up-coming conference, Student Body President Herb Knudsen, stated that "this conference is a magnificent opportunity for our students to meet other students from all of our sister ALC colleges and to hear three of the great men in America today."

## 'The Christian ...' Topic for LSA

Speaking on "The Christian in the Field of Science" will be Dr. Marie Tucker at the LSA meeting at 7:00 p.m. on Tuesday, February 26 in the Doctors' Hall Auditorium.

Mr. Ray Weckmuller is also scheduled to speak. His topic is "The Christian in the Field of Education."

## Cast Selected for Spring Production

Members of the tentative cast for the spring play, *The Crucible*, by Arthur Miller was released last week by play director, Professor Sieghard Krueger. Rev. Parris... Helmut Schaezle Betty Parris... Grace Ann Rowoldt Tituba... Carol Pedersen Abigail Williams... Judy Barnes Susanna Walcott... Barbara Larsen Mrs. Ann Putnam

.....Loretta Heckathorn Thomas Putnam... Gary Johnson Mercy Lewis... Carolyn Scott Mary Warren... JoAnn Urie John Proctor... Richard Moosmann Rebecca Nurse... Vaudine Weber Giles Corey... Gerald Jorgensen Rev. John Hale... Dennis Berkeje Elizabeth Proctor... Jane Jensen Francis Nurse... David Falksen Ezekiel Cheever... Ben Talley Marshal Herrick... Duane Meister Judge Hawthorne... Daniel Aten Deputy Gov. Danforth .....Richard Jorgensen Sarah Good... Grace Hane Hopkins... David Israel Production nights are March 23 and 24, 1963.

## Lest You Forget

Thursday, February 21—Chi Rho, 8:00-9:30, PM 207. Science Club, 7-9 p.m., DHA.

Friday, February 22—Basketball at Concordia, Wrestling, Wayne, 7:30 p.m., there.

Saturday, February 23—Basketball at Nebraska Wesleyan.

Sunday, February 24—Open House, Dana Hall of Science, 2-5 p.m.

Monday, February 25—Home Ec. Club, 7:30-8:30 p.m., MH. College Intramural Sports, 7-10 p.m., BC.

Tuesday, February 26—LSA, 7-8 p.m., DHA.

Wednesday, February 27—High School BB Tournament, BC. Ash Wednesday.

Thursday, February 28—High School BB Tournament, BC.

## NOTICE

Friday, February 22, 5 p.m. is the last opportunity to turn in the HERMES questionnaire distributed with last week's issue.

# Steadfastness, Courage Are Symbols of First President

When America's first crisis came, real leadership was needed. George Washington was this leader. As a resourceful general, he led our untrained troops against the British and when it came to survival of a new government, he was a wise statesman.

George Washington's personal traits transcend national boundaries. He never despaired or lost hope. Even when conflict was bitter, he remained a figure of dignity and serene moral courage. Perhaps this was because he was convinced of the rightness of the American cause and its inevitable victory.

It was his spirit of steadfastness and courage that reigned in the country's soul, which endeared him to all his countrymen. He would not waste his time on quarreling. Instead, much of his energy was used to rouse the people to effort and sacrifice. It was George Washington who wrote, "Our cause is noble. It is the cause of mankind."

After the independence, George Washington realized that Americans must balance freedom with authority. When the people realized this, whom did they choose? George Washington—a man filled with devotion to the cause of the United States. A general and statesman who was the honored first President of the United States and whose birthday we celebrate tomorrow—George Washington.



K. L. F.

## Letters to the Editor . . .

### Let's Be Consistent

I feel that as a student body we owe a word of thanks to our maintenance department for their concern. They have a very sincere desire that we as students keep the grass green. As I walked across the campus Monday morning, I saw maintenance men literally running toward the area in front of Mickelsen Mall. This was so we, as students, could have a reminder that car tires are very detrimental to grass.

The grass between Mickelsen and Old Main must be of a very poor quality, for last spring, all during the summer and certainly this past fall, the grass by the old units has been capable of standing the pressure of tires. It would appear that the grass between the sidewalk and the road by the old units is meant for a parking lot and not looks, for one doesn't see men running to inform car owners that park there from time to time that they hurt the grass. It is also notable by the tracks that many have found reasons to drive cars parallel with the front of these units.

I ask of the maintenance, was there just cause or damage done Monday that warnings or even tickets be given when once during a school year a few fellows pull a practical joke? Would it not be of more value and a sign of some thinking on the part of maintenance if they showed concern for grass areas that are regularly used as driveways and parking lots?

### On Morality—

I saw the movie *Strangers When We Meet*. According to the article in last week's *Hermes*, I'm next to a pagan for seeing it. The inference of an anti-Christian attitude for attending the movie is implied. I'm wondering where the author, without qualification, got the idea he could judge me, others, or the movie itself.

The society within which man lives is not as rosy and pure as the author would desire it. If man denies existence or refuses to look at the problems of infidelity or frigidity as in the movie, that man certainly lives in a void.

The author states such is not in the good taste of Christians. This is ridiculous. What does being a good Christian have to do with watching a movie? The man who attends such a film is no less a Christian than the man who does not. To me, the man who familiarizes himself with moral issues is more a Christian than the man who avoids the issue. The man who evades or avoids moral issues indicates to me he has no faith in his ability for coping with that issue.

In conclusion, the person who believes an open blouse or a suggestive bedroom scene indecent, and probably thinks procreation of the human species sinful, had better reexamine himself.

—Neil Ericksen

## Editorial . . .

### Emergency! 20 Cars 'Illegally' Parked

Boy, isn't it dead around here? Why doesn't someone do something exciting—like a good practical joke or prank? Well, someone did, but the repercussions were something to behold!!

On Monday morning, the students were greeted by a strange sight in front of Mickelsen Hall—there neatly parked in a straight line were about 20 cars stretching from the east sidewalk of the oval to the west sidewalk. Some students were quite surprised to find that their cars had mysteriously moved themselves from the parking lot to their place in this lineup of cars.

The whole prank was looked upon by most students as real fun; however, some others didn't see the whole event in that vein. At 7:30 a.m., maintenance trucks and tractors could be seen rushing to the scene as if there were a great emergency. Well, there was!! There were 20 cars illegally parked!! One by one each of the autos and their drivers was given a parking ticket.

When surveying the damage done, one finds that the sidewalks became a little muddy, a few tufts of grass were pulled out and a little grass was firmly pressed. Comparing this "damage" with that often done by the same crew who were so eager to give the fines when they drive

their trucks and tractors all over the lawn, tearing up grass and making sidewalks muddy, it seems a little ridiculous that they should become so upset over a little prank.

Granted, the maintenance crew is authorized to ticket vehicles that are illegally parked on campus, but let's be consistent. The kitchen staff often has to park on the other end of the parking lot because their "reserved" spot is full of student cars.

Recalling an incident that happened last year, one would logically conclude that the professor who found his car in the hall of Old Main should also have been fined for "illegal parking," especially when one considers that the owners of the cars found on the lawn Monday morning did not drive them there, nor did the professor park his car in Old Main.

If the eager Dana "policemen" were always as prompt in getting things done as they were in finding the owners of the illegally parked cars on Monday morning, things that really need to be done on campus would be done within a matter of hours. Of course, those other more urgent matters don't bring in the revenue that this incident probably will.

A college can become awfully dead without a few practical jokes, but if no more stunts are pulled in the future, you'll know why!!

B. R.

## This Week In Chapel

- Friday, February 22—Mr. Neve
- Monday, February 25—Mr. Weckmuller
- Tuesday, February 26—Mr. Neve
- Wednesday, February 27—Dr. Madsen
- Friday, March 1—Rev. Becker

Prices Are LOWER at  
**TED'S FINA STATION**  
 No Finer Gas than Fina  
 Ted Kutsch—East End Wash. St.

**Samson Rexall**  
**DRUG STORE**

YOUR PASSPORT TO BETTER HEALTH

# HERMES

Vol. XLIV Number 17

Published weekly during the college year, except holiday and examination periods, by the student body of Dana College, Blair, Nebraska.

Publisher: Augsburg Publishing House, 138 North Seventeenth Street, Blair, Nebraska.



Subscription rate \$2.50 a year, in advance. Second class postage paid at Blair, Nebraska.

- Editor . . . . . Bob Rademacher
- Associate Editor . . . . . Linda Knudsen
- Assistant Editors
- Sports . . . . . Wayne Nielsen
- Business Manager . . . . . Dean Henriksen
- Advertising Manager . . . . . Larry Bornemeier
- Circulation Manager . . . . . Paul Christiansen
- Assistant . . . . . Weston Crawford
- Columnists: Tom Lange, Robert D. Hansen
- Writing and Reporting Staff
- News: Pamela Huss, Janet Krugman, Mike Sink
- Sports: Dave Barber, Jerry Jorgensen
- Features: Karen Flesvig, Bonnie Nelson, Dale Jensen
- Make-Up Staff
- Proofreaders: Ellen Peterson, Marilyn Michel, Judy G. Johnson, Lyla Winterburn, Sara Andersen, Judy Hall, Earland Estes
- Typists: Bev Gravesen, Janet Probst, Larry Weiss, Vaudine Weber
- Headwriters: Ken Jacobsen, Barbara Riggs
- Faculty Adviser . . Miss Luella K. Nielsen

## Parking Regulations Clarified by Dean

While most students do not need an explanation of disciplinary actions from my office, it is always willingly given when needed. A number seem to desire it now, so here it is.

1. There is on the part of some of the students on our campus a tendency to consider parking tickets as a joke or a "piece of paper" to be disregarded. Disregarding the parking tickets in this case would give them encouragement in this attitude, which is detrimental to sound self-discipline.

2. Cars left in relatively unprotected places should be locked by their owners as an ordinary precaution. This includes the parking areas on the campus at night. Disregarding the parking tickets in this case would not encourage students to take ordinary precautions with their cars. Locked cars would not be moved; more serious things could have happened to them.

3. A large proportion of the cars did not have stickers on the windshield—some even after five and a half months! These persons have no real complaint.

4. For those unable to pay the fines, or those unwilling to assume the normal responsibility indicated in point two above, the Dean of Students has offered to pay the fine. Should those who disturbed the cars be discovered, they will pay the fines and the owners will have their payments refunded. The parking ticket will be honored.

5. Because some of the students are thoughtless and believe it is all right to disobey regulations if they can do it without being caught, there is still a parking problem on campus. This will be taken care of as soon as possible.

Elmer M. Rasmussen  
Dean of Students

### Quality Printing

## Augsburg Publishing House

138 No. 17th St. Blair, Nebr.

## HOME THEATRE

Showtime — 7:30 Every Night

Sat. Matinee — 1:30

Sun. Matinee — 2:30

Wed.-Sat. Feb. 20-23

LOBO

Sun.-Wed. Feb. 24-27

Frank Sinatra in  
THE MANCHURIAN  
CANDIDATE

Thur.-Sat. Feb. 28—March 2  
HELL IS FOR HEROES

## Council Clips

By Tom Lange

Attendance at the movie **Strangers When We Meet** was approximately 300 students and faculty. Due to this large response another movie **From Here to Eternity** will be ordered for a campus showing.

**Rich Jorgensen reported that about 70% of the student body voted in the last election for Homecoming Committee chairmen and student representatives for the Faculty-Student Senate.**

Council members who are in Alpha Chi will work as coordinators between the two groups in an effort to organize a Student Tutorship Society.

**The second semester budgets were presented to the Council and approved to be brought before the student body for a vote.**

This year's senior class representative will look into the possibility of working with the Class of 1961 concerning a class gift.

It was decided that Dean Skogman should present at the student body meeting the idea that Dana students help with the Blair Red Cross campaign.

## From the ALC ALC Drafts Fund Raising Program

Minneapolis was the meeting place for the fund raising leaders of The American Lutheran Church this week, Tuesday through Thursday. They were drafting a program for increasing church contributions.

These leaders included church officials, district presidents, stewardship chairmen and staff specialists. One of the guest speakers was Dr. Kenneth G. Lutterman, Professor of Sociology at St. Olaf College, Northfield, Minnesota.

Budget goals for 1963 total \$22,125,000. These include American and world missions, education, charities and other departments. The sum includes more than \$2 million as a first installment on an extensive college and seminary expansion program.

The ALC's 15 colleges have catalogued capital investment totaling more than \$100 million in the next decade. Spokesmen for the educational institutions see the solution to their needs in large subsidies through church contributions and the use of borrowed funds.

In order to partially meet this need, the church has established an investment loan fund in which church members throughout the country will be asked to lend money at standard rates of interest.

## 'Sower' Wants Your Original Material

**Sower**, an anthology of original poetry, prose, art, music and translations written by Dana students, is published annually by the English Department.

Students interested in contributing to this year's publication should turn in typewritten copies in duplicate to Terry Johnson, Box 120, Campus Mail.

The first deadline is March 1. The staff asks that as much material as possible be turned in by that date. For late material there is a second deadline of March 15.

Several awards in various fields are again being given this year.

# DID YOU KNOW?

College age men can  
have \$10,000 of  
permanent insurance  
for less than 50¢ a  
day through  
Lutheran Brotherhood



LIFE AND HEALTH INSURANCE FOR LUTHERANS  
701 Second Avenue South • Minneapolis 2, Minn.

Norbert J. Prasser Agency  
Harold D. Olson, representative  
130 East 15th  
Fremont, Nebraska  
Phone: 721-5347

For your Dry Cleaning and Laundry needs, Professional Dry  
Cleaning and Coin-type Cleaning. Next to Nelson Bros. Clothiers.

## ADVANCE CLEANERS

We operate our own new modern plant  
Same day service in emergencies

## Concordia, Wesleyan Draw Viking Season To A Close

Dana plays its last two basketball games this weekend. On Friday the Vikings go to Seward, Nebraska, for their last game with Concordia.

The Bulldogs from Concordia still have a chance for the Tri-State Conference crown. They have lost three conference games and need to win all three remaining games against Dana, Northwestern and Westmar.

Their outstanding performer is Al Buuck who is one of the Conference's best players this year.

On Saturday the Vikings play their last game of the 1962-63 season against Nebraska Wesleyan. Wesleyan is trying for a berth in the small college division N. C. A. A. tournament. They have lost only three games this year and were recently beaten by Omaha University. With loss to O. U., they will have to emphasize scoring in their remaining games.

## Vikings Sparkle in Triumph Over Buena Vista Beavers

After losing a close game Friday, Dana was raring to go to a 84-80 victory over Buena Vista. It was a blazing game all the way with both teams shooting 73% from the foul line in addition to excellent outshooting.

Earl Dick, senior and 6'5" center was the major offense for Buena Vista. The Viking defense seemed to have no problem holding him to a measly 10 points.

As both teams started the game it seemed to be a mere exchange of buckets the first half and at intermission time the score stood 37-34, the Vikings leading. In the second half the score became a see-saw battle. While the crowds were screaming at the tops of their lungs,

"Go, Dana, Go," the Vikings returned the needed buckets to send Buena Vista home with a scorching 84-80 defeat.

Point and Hansen led the losers scoring 24 and 22 points respectively. The top scorers for Dana were Ken Kemmish and Bob Erickson with 25 and 21 points respectively.

	FG	FT	F	TP's
Lebeck . . .	3	0-0	0	6
Beck . . . .	6	0-1	2	12
Peterson, M.	6	3-4	4	15
Erickson . .	7	7-9	4	21
Welander . .	0	0-1	1	0
Fluckey . . .	2	1-1	0	5
Kemmish . . .	6	13-17	2	25
<b>Total</b>	<b>30</b>	<b>24-33</b>	<b>13</b>	<b>84</b>

## Faithful Five Fall to Mighty Midland As Desperate Scoring Rally Fails

It was the Midland Warriors coming out on the long end at Midland Friday night by a score of 68-65.

The game seemed to be quite defensive as the first quarter score read 15-14 Dana. The Warriors trying valiantly were unable to overcome this one point margin by half-time and the intermission showed Dana 30, Midland 29.

After the half-time rest the Warriors took off on a 22 point scoring spree that sent them ahead of the Vikings by 8 points, 51-43. The Vikings were desperately fighting back in the final quarter with the "Little General" Kemmish and his teammates trying to pull everything along toward a Dana victory. Dana then put on a last burst in scoring which fell short by 3 and the Warriors host a victory 68-65.

In the scoring columns it was Vickery who pumped in 28 points for Midland. Ericksen and Kemmish were the Vikings' big guns with 23 and 19 points respectively.

	FG	FT	F	TP's
Lebeck . . . .	2	0-0	5	4
Beck . . . . .	3	3-3	1	9
Peterson, M.	0	2-5	5	2
Laughhunn	1	0-1	1	2
Erickson . . .	10	3-3	3	23
Hansen . . . .	1	0-0	2	2
Fluckey . . . .	1	2-3	2	4
Vasby . . . . .	0	0-0	2	0
Kemmish . . . .	8	3-5	3	19
<b>Total</b>	<b>26</b>	<b>13-20</b>	<b>24</b>	<b>65</b>

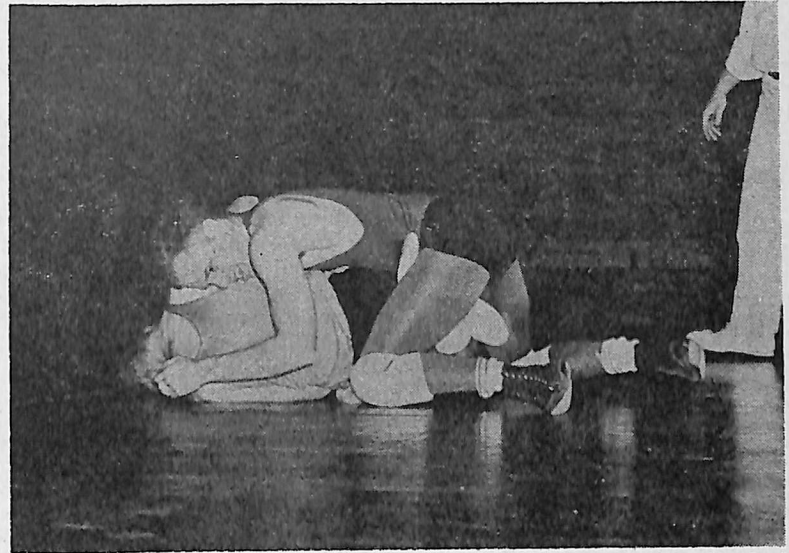
Make Your Next

Snack Stop

LACY'S CAFE

Open 6 a.m.—12 p.m.

## Dana Grapplers Squash Midland Warriors 28-4



Larry Mason decisions John Patram of Midland, 3-0 in last Wednesday's match here at Dana.

A week ago Wednesday, a large crowd of Dana wrestling fans saw the Viking squad thoroughly trounce arch-rival Midland 24-8. Pins by heavy weight Marcus Hanson, player-coach Herb Knudsen and Lowell Larson paced the Dana squad. Only two of the eight Dana wrestlers were defeated—Ron Hough was pinned with one second remaining and Roger Howland equaled his opponent's points but lost on riding time.

Weight classes and individual results were as follows:

- 123 Larry Mason decisioned John Patram (M), 3-0
- 130 Ron Hough pinned by Bob Williams (M)
- 137 Roger Howland defeated by Mike Horacek (M), riding time
- 147 Herb Knudsen pinned Ron Westerholt (M)
- 157 Ernie Abariotes decisioned Jim Dukeshier (M), 2-1
- 167 Cliff Staben decisioned Lary Ludvigsen (M), 6-3
- 177 Lowell Larson pinned George Cejka (M)
- Heavy weight Marcus Hanson pinned Mike Mikos (M)

