



HERMES



THE DANA MESSENGER

Vcl. XLVII

Blair, Nebraska, November 19, 1965

Number 11

Christmas Present Drive Begins Soon

December 6 will see the kick-off of the underprivileged Children's Christmas Drive for Washington County. The Student Council has decided to participate in this drive and will give \$250 to it.

Together with this money it is proposed that the student body, faculty members, and various clubs will raise an equal amount toward the purchase of clothing and toys for the children. These articles will be turned over to the Washington County Welfare Agency for distribution.

The counselors of each floor will collect the money which must be given to them by December 10. The Student Council will then contribute the articles to the county by the seventeenth.



See the grass.
See the cow walk.
See the grass die.
See page 3 for the story.

'Boy' To Be Given At LL Convention

Boy a short sociological drama will be presented by the Dana Drama Department at the Central District's Luther League Convention over Thanksgiving vacation.

Mr. Dibben will direct the play. He has previously directed *The Man Who Came to Dinner* and *Finnian's Rainbow*.

Mr. Dibben said, "Boy is essentially a search for identity."

Cy Warmanen and Jan Murphy are the two actors in the drama. They were recently seen in *Of Mice and Men*.

Jan Dudley is the producer and Roland Bentjen is the technical director of this drama.

Boy will be presented at the Denver Hilton Hotel in Colorado Saturday, November 27, at 11 a.m.

The District requested that Dana present a drama at the Convention and is paying the expenses of the Dana thespians.

Boy was written by Malcom Boyd. Tuesday, November 30. Boy will be presented in Chapel.

Social Security Aid To Benefit Students

Thousands of students have failed to enroll for the new Social Security "student benefit" which Congress put on the books three months ago.

The benefit ranges from \$22 to \$102 a month and is retroactive to last January 1.

Those eligible must be full-time students who have a parent who retired, died or became disabled after working long enough under Social Security to rate monthly benefits. The student must also be between the ages of 18 through 21, but he will be able to receive benefits till he is 22.

The amount the student receives depends on the parent's basic monthly benefit—which in turn is determined by average earnings under Social Security.

The Social Security Department says that in the future such payments will be automatic. However, if you are now 18 or older such benefit payments aren't automatic. You or your parent must apply at the Social Security office.

Board of Regents Debate Improvements On Campus

To the average Dana student the Board of Regents means a group of strange men roaming the campus, better food in the cafeteria, and perhaps the inconvenience of being pushed temporarily aside in the business and administration offices. To the administration and faculty it means a time for good behavior, tensions, and chaos. Amid all of this confusion somehow the Board of Regents manages to escape the campus without the general campus really knowing who they are and what they were here for in the first place.

The Board of Regents is the legislative branch of a college. It is through them that a college receives the OK for buildings and grounds, budget and finance, and procedures for education. At Dana it consists of 18 men of the Lutheran faith who are elected through the church. These men come from all backgrounds of life and who all have their own fulltime occupation away from the campus.

This year when the Board of Regents met November 8 and 9, two major issues were discussed. The first was the coming program of the American Lutheran Church. This will include a campaign to raise special funds for buildings and facilities. To help start the program, each college is

asked to give \$3,000 for expenses and the assistance of two full time helpers. If the program is successful, Dana's investment should bring her between \$1-2 million.

The other major topic consisted of looking into the new bill passed by Congress on Aid to Education. Little is really known about the bill and what will apply from it to Dana. The Board of Regents is trying to find all that it can so that Dana can receive full benefit from it. A delegate is being sent to Kansas City where the bill will be explained by federal officials for this purpose.

Other problems looked into were the new dorm and campus center which are being built. One of the basic problems here is getting the dorm filled so that there will be money to help pay for it. Also along the line of buildings were ideas for a new library and research center and a new auditorium and fine arts building. At this time no plans were made for a new chapel because of the urgent need of other buildings.

Besides the possibility of raising tuition and board charges, nothing else was discussed. The Board will meet again in March.

Tour Middle East During Summer

A two-week tour of the Middle East under the sponsorship of Dr. Allen Hauck, Associate Professor of Christianity and Philosophy at Midland College, will leave New York on June 9, 1966.

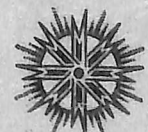
Among the high points of the tour will be visits to Rome, Egypt, Lebanon, Israel, Jordan, and Greece.

Total expense, including air transportation, hotel accommodations and all sightseeing costs, will be \$875 from New York.

Interested persons can contact Dr. Hauck, 1640 North Monroe Street, Fremont, Nebraska for further information.

Chapel Schedule

Nov. 22	Pastor Eric Christensen, Omaha
Nov. 23	Pastor Edward Eskildsen, Missionary to Japan
Nov. 24	Pastor John Nielsen
Nov. 29	Mr. Hutton
Nov. 30	Dramatic Sketch: "Boy"
Dec. 1	Pastor William Thomser
Dec. 3	Pastor Harold Laurser Kennard, Nebraska



HERMES

Volume XLVII

Number 11

Affiliated with National College Press Service
Published weekly during the academic year, except holiday and examination periods, by the student body of Dana College, Blair, Nebr. Printed at Enterprise Publishing Company. Second class postage paid at Blair, Nebr. Subscriptions \$2.50 a year in advance.

Editor

Robert Boldig

L.A.B. SPEAKS OUT . . .

Dana Students Will Play Santa Claus For Blair

Vacation time has finally come around and to many of us this is the beginning of the holiday season. To many others this begins a time of disappointment and sorrow.

Dana has decided to launch a drive to give underprivileged children in Washington County a Christmas holiday that they will never forget. This drive gives every student a chance to participate in an act that will be greatly appreciated by individuals not as fortunate as yourselves.

Too many times we tend to lose sight of the fact that there might be a world around us that isn't able to have checks coming from home every month or have the privilege of going home to a real Christmas.

These children are just like all other children at Christmas. They believe that Santa Claus will visit them, because they know that Santa never forgets anyone. Dana students this year, have the chance to make sure that these children are not forgotten.

Harold Berry has been appointed chairman of the drive with the help of Dorm council, AWS and Hermes. The money will be collected through the counselors because it is felt they have a more personal contact with their fellow students.

The drive will also extend itself to all Dana organizations. It is hoped they will show their spirit as in past functions.

Student Council has given \$250.00 as a challenge to the student body to match this amount. We feel that the students will do more than match it, and will far exceed the figure.

So now it is up to you, the student body, to decide if Santa will stop at all homes in Washington County on Christmas Eve. One of Santa's workers told us that we don't have to worry because the Dana Students could be counted on.

Reality In Burge Music

by Wayne Josephson

In the sciences, in the philosophies and in all the arts except music, we have placed 19th Century piety and morality on the reference shelf with the high-button shoe, the flapper and the tin-lizzie.

The dissonant chords of Mr. David Burge's "Second Piano Sonata" set me and the audience on edge. The rapid transitions of mode and the contrapuntal melodies of Berio and Dallapiccola increased our agitation.

Mozart and Rachmaninoff somewhat restored us to the peaceful valleys and the friendly villages which we are so used to in music. God is in his heaven and the world is alright.

Somehow the "Sonata" wouldn't let us remain in the 19th Century. It brought us face to face with the 20th Century and its dissonant nations, its rapidly changing modes and its several melodies which all clamor to be heard.

The reality of this century is that if there is a God, he has to be in man. Regardless of that fact, the world is not alright.

Mr. Burge is more than a translator. He is an artist. He lived the music he played for us. As he gave life to the "Sonata", we had to take note of the "message" of it, even if we didn't agree with it.

In this sense Mr. Burge was a prophet, calling us forth from our 19th Century piety into the reality of the 20th Century.

Letter To The Editor Are Programs At Dana Interesting?

The parking situation is getting out of hand on the Dana Campus.

Why is there favoritism in the way of ticket giving in the area next to the canteen. One person can park there without getting tickets, while another person will get one. If there is "no parking," why are tickets only given to students and not to faculty members? Do you think this is being fair to the students?

Why are on-campus students allowed to park in areas designated for commuters and faculty members? Tickets are given to commuters who park on the grass by the tennis courts and in the drive in front of Dana Hall of Science. The students wouldn't have to park here if the lots were kept clear of students who are not designated to park in these lots.

There is ample room for on-campus students to park next to Borup. We would appreciate the parking situation being cleared up, and better enforcement of all parking regulations, with no favoritism or exceptions.

George K. Christensen

Joel K. Herman

Gary Hansen

Vaden Paulsen

"Do you think Dana's student government is vigorous enough in initiating programs of interest to the student body? What suggestions would you make?"

I think the student government has done a very good job this year although there is a definite need for more week-end activities. They might consider starting TGIF dances. A tape of songs could be made and played at the dances. This would eliminate the problem of records and be inexpensive.

Julienne Harms

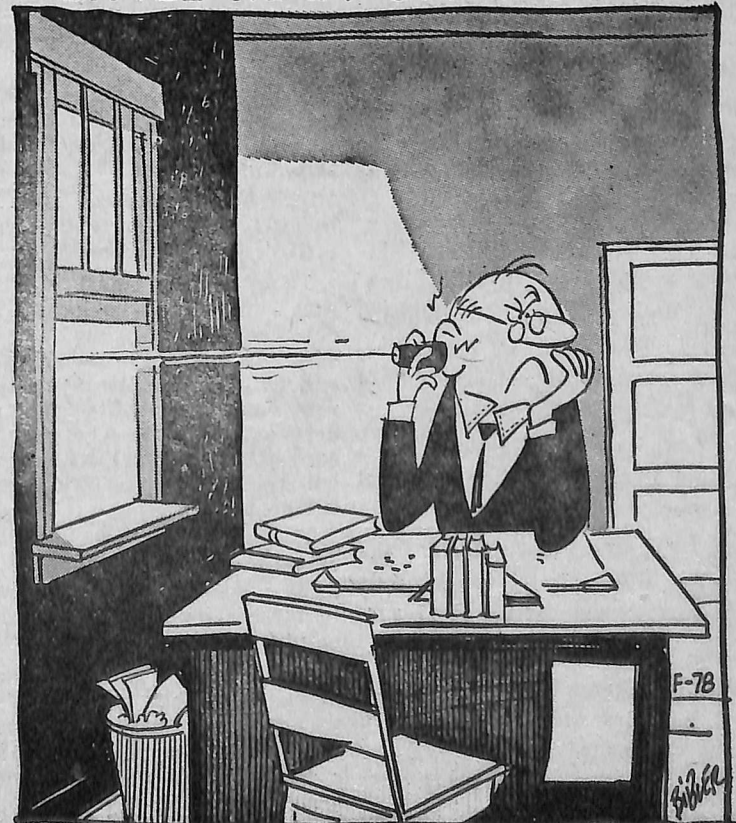
Dana's student government and various other organizations have initiated successful programs of interest to satisfy the students. They need to continue promoting these activities in order to maintain a happy medium.

Alvina Chow

Dana's student government seems to be fairly vigorous in initiating programs of interest to the student body. It seems that most of the programs that needed to be initiated were initiated.

Cynthia Orcutt

LITTLE MAN ON CAMPUS



"I SAID, BECAUSE TH' BOARD OF TRUSTEES HAS CHARGED ME WITH TH' RESPONSIBILITY TO CUT OPERATIONAL EXPENSES."

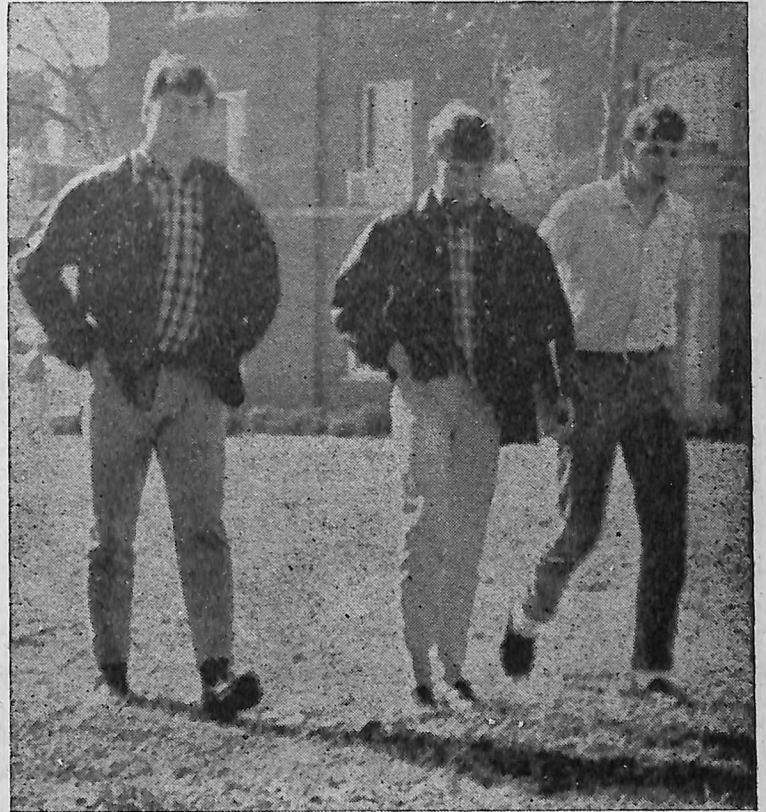
Old Doc Madsen Has A Farm, EI EI OO And On His Farm He Has Some Cows, EI EI OO



Here a cow



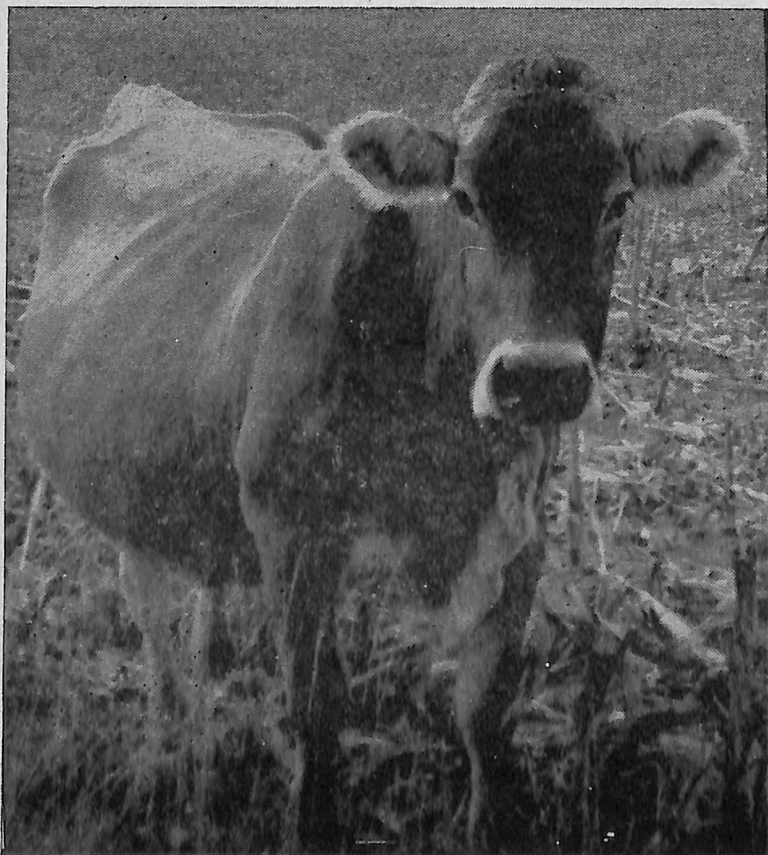
Everywhere students
EI EI OO



Do you mean to tell us sidewalks are for people?



There a student



If you had as much to carry as I do, you wouldn't use sidewalks either.



Pardon me, but could you tell me what a sidewalk is?

**SAMSON'S
Rexall Drugs**

At Your Service
Ph. 426-2300 Blair, Nebr.

Aten's DX Service

The Service You Like
14th & Washington

Starting December 6th---

Don't Miss Your Chance To

Bring Christmas to Blair

Give Your Donations To

YOUR COUNSELORS

Before December 10th

Intramurals Team Continues Winning

Tuesday night found the Hinus on 4th Mickelsen refusing to relinquish their winning streak. Once again led by the superior volleyball ability of Carol Hausermann, they were able to defeat 2nd Mickelsen in two games.

The highlight of the evening was the game between 2nd Argo and 4th Argo. After winning one game each, they battled the third game out with the score tied at 15. With the excellent serving ability of Mary Petersen, the All Stars finally bowed down to defeat.

The Argo-Go Girls were lacking in numerous areas when challenged by the undefeated Playgirls of 3rd Mickelsen. Key players for the Playgirls were Gleeann McClannahan, Mary Peterson, Linda Arthun, Karen Lienemann, and Donna Heuke.

Next week may determine who the volleyball champions will be. It will depend on whether or not the Argo-Go Girls or the Playgirls are able to defeat the strong Hinus octet.

Volleyball Standings	W	L
Hinus	3	0
Playgirls	3	0
Argo-Go Girls	1	2
Unmentionables	1	2
No Teamers	1	2
All Stars	0	3

Final Grid Results

Team Standings	W	L
1 Floaters	9	0
2 Off Campus	8	1
4 Playboys	7	2
4 Prime-Mates	7	2
5 Fardquards	5	4
6 Raiders	5	4
7 Bubs	4	5
8 C.A.'s	4	5
9 Grinders	2	7
10 Pussycats	2	7
11 Scavengers	1	8
12 Golden Boys	0	9

Leading Scorers	Team	T.D.'s
1. Jan Murphy,	Bubs	16
2. Bill Weigel,	Floaters	13
3. Dan Brunning,	Floaters	12
4. Leland Sprinkle,	Floaters	11
5. Don Perkeovich,	Prime-Mates	7
6. Dallas Opfer,	Raiders	7
7. Roger Moller,	Playboys	7
8. Gary Hansen,	Off Campus	7

Girls, Girls, Girls Are Hard To Find

*Wanted: Single girls of a marriageable age. Australian men out number their women 122 to one. The Australian government is airlifting a hundred girls a month into the arms of its lonely men. Any interested girls may apply by writing to the Australian Embassy, Washington D. C.

Hobby Hut

1728 Washington St.
SLOT RACING
 Hobbies & Crafts
 Rent Cars & Controls

Anderson Drugs

for a complete line of
FINE GIFTS

Have you looked a your feet lately?
 Others do!

Lloyd's Shoes

8722 Countryside Village
 OMAHA, NEBR.

NEXT PLEASE

Jim's Barber Shop

THE STUDENT'S BARBER

Chuck Jewell, Manager

Hours: Mon. - Sat. 8 A.M. - 6 P.M.

Friday 8 A.M. - 8 P.M.

Harold D. Olson
 FREMONT, NEBRASKA
 Representing
 LUTHERAN BROTHERHOOD
 130 E. 15th

E. T. THOMPSON
 Blair Texaco

Towing Service — Minor Repairs
 426-3115 14th & Washington

SPORTING EQUIPMENT
 Is Yours At
SCHEFFLER
 SPORTING GOODS

GET THE WORD

About A
 Student Checking Account
 At
 Washington Co. Bank

STEINBAUGH
 Furniture and
 Appliances
 COLORED TV

Eat at
Cape's
 Fine Food

KOLTERMAN'S
Ben Franklin
 STORE
 For the Student's Needs

Duffey's Market

We Give Green Stamps
STUDENTS WELCOME

Blair Florists and Greenhouses
 Growing With Blair
 "SAY IT WITH FLOWERS"
 Flowers For All Occasions

Bud Jensen

Skelly Service

Gas, Oil, Minor Repairs

Rabbass Studio Portraits

CAMERAS, FILMS, SUPPLIES
 Telephone 426-3292

1745 Washington Street

Blair, Nebr.