



# HERMES



THE DANA MESSENGER

Vol. XLVII

Blair, Nebraska, March 18, 1966

Number 20

## 'Freshmen A-GoGo' In AMA Tonight

Tonight in our own A. M. A. the freshmen will rock out with "Freshmen A-Go-Go", a swinging show packed with everything from a-go-go girls to playboys. The action begins at 8 o'clock.

Among the frosh participating are Joel Herman, Carol Bothwell and Karen Nelson with vocal selections.

Sally Andrews, Barb Yiannkis, Dave Busse and Dave Kelly also will contribute vocally in a hoot-enanny style.

Those "favorite" Humanities 105 Friday discussion groups will be given a special freshmen touch.

Scatman and Boy Blunder will be on hand for the excitement as will Dana's answer to the Smothers Brothers.

A dixieland group from Dana's band and a combo made up of Les Remmers, Jim Mortensen, and Gale Olsen will be instrumental additions to the show.

A special feature of the evening will be Cindy Orcutt's return. She will be assisted in an original skit by the world infamous physician, Dr. Carol J. Hansen.

## Retreat To Hills For Fun and Study

During the week-end of March 26-28 a retreat for Dana students will be held at Circle R Camp. The theme will be based around the film, "The Sexual Revolution." Arrangements have been made for Dr. Vernon Strepke, who is a teacher of practical theology at Central Seminary in Fremont, Nebraska, to be the discussion leader. Dr. Strepke was on the Trinity Seminary staff when the Seminary was affiliated with Dana College. While at Dana he organized the marriage and family course.

Students who wish to attend may make reservations with Joan Hendrickson or use a reservation form on the Pioneer Memorial bulletin board. The registration fee is four dollars. The retreat will start Friday night, March 26, at six thirty and students will return to campus by nine thirty Sunday morning, March 28.



'A Peanut Hit You Where?' (Review on page 2.)

## Dana Band Begins Board of Regents Begin Three-Day Tour Annual Spring Conclave

The thirty-eight member Dana band will start a three-day tour on Monday, March 21. The band will perform in Oakland, Pender, Randolph, Coleridge, Plainview, Stanton and West Point, Nebraska. In the past, the band tour has been an annual affair, but the program was stopped. This year the idea of having an annual tour is being started again.

Under the direction of Dr. Wayne Wise, the band will perform such numbers as "Brighton Beach March" and Haydn's "St. Anthony Divertments."

Featured soloists will include Bob Whitney on the vibra harp playing "Tenderly" and a George Gershwin medley; "Night Soliloquy", a flute solo by Miss Sally Sheirer; and John Orwig on the baritone horn, playing "La Mandolinata."

A trombone quartet, consisting of Jack Martin, Weslef Iversen, David Faulksen and Jim Amundsen, will play a chorale from a suite for four trombones by P. G. Clapp.

The president and student director of the band is Barbara Riggs.

Once again this week-end Dana College will host the Board of Regents campus meeting. The meetings will be continuous Monday through Tuesday afternoon and will be held in the Seminar Room, Borup Coliseum. The Student Council will be in charge of the program for the meetings and also will present a panel discussion to the Board to familiarize them with campus life and the activities and attitudes of the student body.

The agenda of the program is of prime importance as several decisions must be made concerning next year's college program and also decisions concerning long-range planning. The Board must approve the faculty and staff appointments for next term. There have been additions made in the math and business administration departments. The Board must also act on administrative proposals for preliminary studies looking toward a "learning resources center." This building would not only include the Library, but also would provide study area facilities, facilities for the instruction in and use of audio-visual aids, and equipment for reading and processing microfilm.

Decisions must be made concerning long-range building pro-

grams, location of buildings, completion dates, etc. Also a preliminary draft of the 1967 budget will be considered.

The main topic will be the nominations for incumbents to replace the Board members whose terms expire this year, if they are not re-elected. Five members' terms expire this term. The elections will be held by the Dana College Corporation during the convention of The American Lutheran Church this fall in Minneapolis.

## History Club Film Is Cannes Winner

Another in the History Club's foreign film series will be presented for Dana students on March 20 in Doctor's Auditorium.

"Hiroshima Mon Amour" is a truly foreign film in the respect that the leading actor is Japanese and the leading actress is French. The film will have scenes from both Japan and France.

"Hiroshima Mon Amour" was produced in France in 1959 and in 1960 it won the Cannes Film Festival award.

There will be two showings for Dana students, one at 6 p.m. and the other at 8 p.m. Admission tickets are 50c.

## HERMES

Volume XLVII

Number 20

Affiliated with National College Press Service

Published weekly during the academic year, except holiday and examination periods, by the student body of Dana College, Blair, Nebr. Printed at Enterprise Publishing Company. Second class postage paid at Blair, Nebr. Subscriptions \$2.50 a year in advance.

Editor

Robert Boldig

## Stamp Act To Be Replayed

With spring right around the corner, many students' fancies and thoughts turn to other things besides college. But before the students become too involved elsewhere, they should realize that they have a chance to become involved in something that will bring them benefits in both spring and fall.

The public relations office is spearheading a drive for stamps to use the proceeds derived from them towards the purchase of items for the new student union. All students are urged to participate because the more stamps collected, the more facilities that will be made to the students.

One fact that most students have failed to realize is that they are urged to give any stamps they might have because even a small amount of one kind could result in the purchase of items that are hardly ever thought of but are still necessary, such as cards or checkers.

We even stand the chance of being able to have a pool table or piano if enough of one kind of stamps can be collected. Many of us would be surprised how easily this could be done if we just decided that we were going to participate.

With the new union almost a reality it would be a shame to see it not be used to its full potential.

We have been all guilty of complaining that we don't have this or that. Now we have the chance to make sure that this is no longer the case.

Already the fraternities have pledged their support of the project, so it seems only natural that the rest of the campus should show that they too are willing.

So instead of just talking about what we could have or should have, why don't we do our part to ensure that the opening of the new union is going to be a success, and a place that we can be proud of.

## Melodrama Brings Smiles

"Only an Orphan Girl" again displayed the versatility of Dana's theatrical department. The Thespians, directed by Mr. Dibben and supported by the ingenious tech crew, did an excellent job of presenting a change of pace. Audience participation by throwing peanuts and booing the villain contributed greatly to the success of this melodrama.

Only two seasoned veterans appeared in the cast. Jan Murphy, the villain, ad libbed his way into another memorable character: "Gadzooks! It's snowing peanuts!" What more can be said about this wonderfully versatile and skilled actor. Vaudine Weber, as the villain's friendly, love-sick wife, showed an excellent command of the stage. Vaudine is a most talented actress and will be a great loss to Dana next year.

The best performance of the production was given by Norma Wilkins, as Nellie, the orphan girl. She did very well for her first Dana appearance: it will be interesting to see her in future plays. The clean-cut farm lad, played by Chester Sutton, was heroically done.

Bob Messer, as Amos Appleby, the neighbor holding the mortgage shows great promise. His performance along with those of Jennifer Sutton, Kay Ringhand, and Joel Hermann are indications of continuing theatrical excellence at Dana.

The production was greatly enhanced by the lavish scenery designed and built by Jim Beck. He, too, will be a loss to the players next year. Carol Johnson's imaginative cycloramic painting supplemented the set. Further support was given by the "scintillating and tuneful Musical Investiture" composed and arranged by that glittering Denny Danitschek. The charming Judy Rueter and he performed the music at the piano.

Audience participation was led by Cy Warmanen and the quartet. They sponsored the community singing and initiated peanut throwing. Bouncer Bob Hanson regrettably bounced only one rowdy person during the three performances. Host Gene DeVaux would have done well to charge Dr. Madsen an extra ten dollars, since much coke and peanuts were consumed.

—PAUL DOERDER

## New Fraternities Should Spruce Up Campus Life

As many people on the campus know, the first step in the formation of local fraternities or societies has been taken. As of now there are two that have been organized—Kappa Chi Lambda and Delta Sigma Omega.

The first to be organized was Delta Sigma Omega. It was founded primarily "to promote social life for Dana men," as their President, Myron Hansen, said.

So far their biggest event has been a Rush Party held for charter members and prospective members during the first part of the semester. They have promoted school spirit as can be evidenced by their attendance at basketball games as a group.

They will take in new members, with the exception of freshmen, at the beginning of each semester. There is no limit to the number of members.

The seventeen members of the group are led by Hansen, Vice-President Don Perkovich and Secretary-Treasurer Lyle Brehm.

Organized soon after was Kappa Chi Lambda, the larger of the two with twenty-eight charter members. The primary purpose of this group is "to unite its members through social activity, professional interests, and constructive service for the welfare of the fraternity and Dana College."

The group has had no social functions as yet, but has been doing work for the benefit of the

school. The majority of its members did a large portion of the work for building and tearing down the Winterfest Dance.

Those of you who attended the last Dana-Midland basketball game will also remember the scoring of the first two points for Dana as a climax of Kappa Chi's "Dribble to Victory." This was a completion of the twenty-five mile basketball dribble from Midland's campus to Borup, in the time of three hours and fifteen minutes.

Led by President Dan Busse, Vice-President Gary Shuck, Secretary-Treasurer Ken Lizer, Social Chairman Jim Ellis, and Sergeant-at-Arms Dave Kelly, future projects include renovating of the old folding chairs for the Maintenance Department, and fixing the track for the track team.

They plan to sponsor activities for the entire student body, and later this spring to have a private party for their dates and themselves. Membership will be open to all men in the fall semester, but the membership will be open only to a number equal to 5% of the entire student body enrollment.

It might be well to add that both Kappa Chi Lambda and Delta Sigma Omega support the Stamp Drive for the Center, and ask all students to aid by saving all Green Stamps and Gold Bond Stamps.

## Maintenance Dept. States Complaints

The problems of the maintenance department of Dana College? If we could remember all of the problems we could remember the solutions for at least half of them, and then it wouldn't take us long to solve the other half," said Bob Mortensen.

One of the biggest problems at the present time concerns the heating facilities. The changing weather at springtime gives just as big a problem, when it comes to heating a building, as unusually cold weather.

"If trucks and carts don't hurt the grass, what can I do?" This has been a common complaint of the students lately. "If we didn't have to go on the grass with our equipment we wouldn't," said Mr. Mortensen. "You don't see any body on a Honda picking up paper cups and other litter strewn around the grounds." Have you students taken a close look at

some of the equipment that they use when they drive on the grass. The scooter that is allowed on the grass has extra wide tires that do not cut the ground. The large tractor that is used for mowing purposes has special "turf treader" tires on it. Let's face it students, people have to do their job.

Campus improvement is another facet of the maintenance departments' daily duties. At the present time their big project is the construction of a seminar room on the fourth floor of Pioneer Memorial. Also, when time permits, they are kept pretty busy making small repairs on AMA.

This is just a small sample of the problems faced by the department which has a dual job on campus. First it must keep grounds and buildings in repair, and secondly, the maintenance staff members are teachers. Yes teachers; they set an example for every student on campus to follow.

## Fourteen Lettermen Lead Diamondmen

Fourteen returning lettermen head the Dana baseball team this season.

Coach Dale Lemon expects that the only position not staffed by a letterman will be shortstop.

All returning three-year lettermen are seniors. They are outfielders Ken Kemmish and Marlow Remmers, pitcher Jim Jorgensen, and catcher Wally We-lander.

Second-year lettermen returning are senior pitcher Bob Pratt and juniors outfielder Gerry Quirk, thirdbaseman Tim Brown and secondbaseman Don Per-ekovich.

Returning players who have won only one letter are senior firstbaseman Harold Berry, junior catcher Jerry Voll, and sophomores secondbaseman Ken Luce, firstbaseman Ron Bernier, and pitchers Keith Benson and Roger Moller.

Termed "outstanding newcomers" by Lemon are Denny Saint Clair, a pitcher who transferred from a junior college; Francis Cemer, a freshman pitcher; Brent Peterson, a freshman infielder, and Roger Johnson, an outfielder and third baseman who transferred from a junior college.

## Argo-Go Girls Stay On Top of League

Girls' intramural action Wednesday night found the miths downing 2nd Argo by a forfeit.

Although 3rd Mickelsen was eager and anxious to play, the Unmentionables failed to show for the scheduled game.

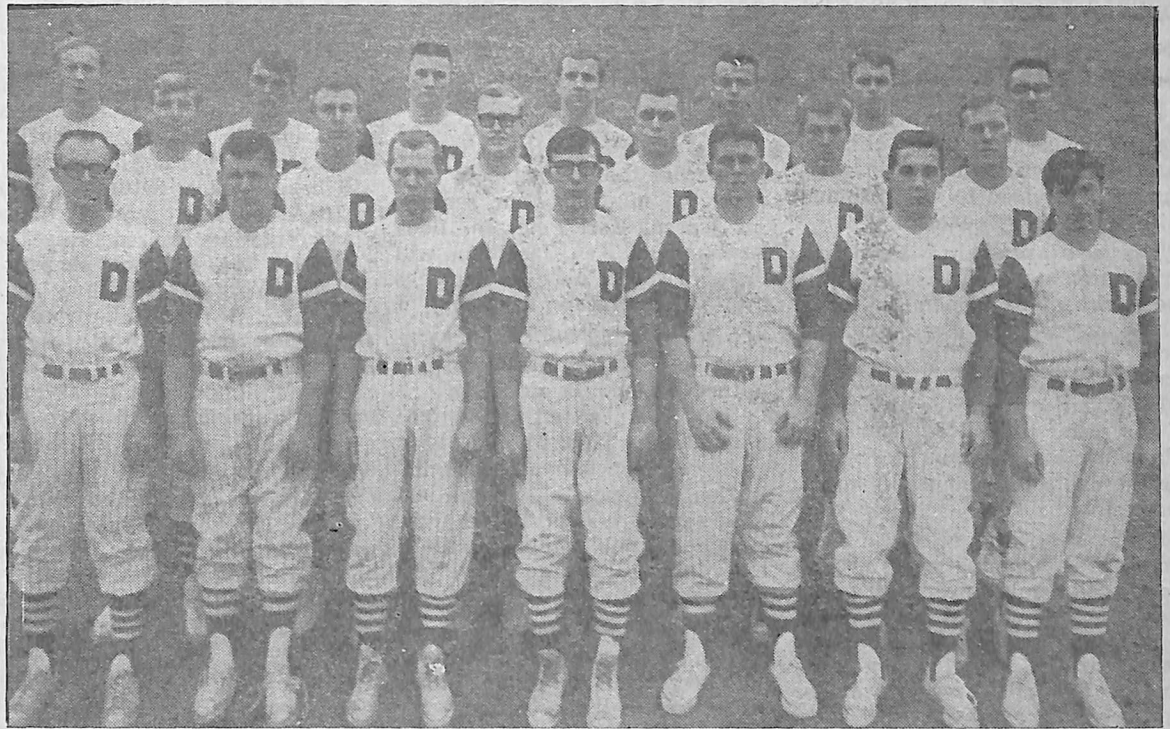
The highlight of the evening was the game between 2nd Mickelsen and 4th Argo. After an overtime play, the No Teamers finally managed to squeak by the All Stars by a final score of 22-20. Madeline Horn's shot in the last few seconds was responsible for the victory. The balanced scoring of Char Les Grapp and Dorothy Olson was the reason their team was able to reluctantly bow to defeat.

In the final game of the evening the Argo-Go Girls battled against the Hinus to maintain their winning streak. The final score was 25-23. Luanne Hummel was high scorer for the night with a total of 15 points.

Next week will be the last night of basketball activities.

### Team Standings

	W	L
Argo-Go Girls	4	0
Miths	3	1
All Stars	2	2
No Teamers	2	2
Hinus	1	3
Unmentionables	0	4



1966 Dana College Baseball Team

## Veterans To Now Get Education Aid

The Veterans's readjustment benefits act of 1966, PL 89-358 can help you obtain education or training to fit yourself for a chosen career or better employment opportunities in civilian life. If you qualify, payments may be made for periods on and after June 1, 1966. The veterans administration will be glad to help you select a goal.

### Who is Eligible?

A veteran who has served continuously on active duty for a period of at least 181 days, any part of which was after January 31, 1955, and who was discharged or released under conditions other than dishonorable.

A veteran who served less than 181 days may be eligible if he was discharged or released because of service-connected disability. A person who is in service if he has served on active duty for at least two years.

The service period of 181 days does not include periods when the veteran was assigned to a civilian school by the armed forces for a full-time course, or service at one of the service academies, or any period of reserve active duty for training. Persons who enlisted in the army or air national guard, or as a reservist, under the reserve program, with 4 months or more of active duty for training required and subsequent transfer to the standby reserve, are not eligible based on this service.

(Cont. on page 4)

## Dana '66 Baseball Schedule

April 2		Creighton	12:30 P.M.
April 7	at	Wesleyan	1:00 P.M.
April 12		St. Cloud Teachers	12:00 P.M.
April 16		Concordia	12:30 P.M.
April 23		Midland	12:30 P.M.
April 27	at	Morningside	1:00 P.M.
April 30	at	Westmar	12:30 P.M.
May 6		Northwestern	1:30 P.M.
May 10	at	Yankton	1:30 P.M.
May 12-13	at	Wesleyan	1:30 P.M.

All Games will be Doubleheaders

## State Table Tennis Tournery Is Coming

The Nebraska State Open Table Tennis Tournament will be held on: Saturday, April 2, 1966 at:

Benson Community Center, 6008 Military Avenue.

Competition will be held in the following divisions:

- Mens Class A Singles
- Mens Class B Singles
- Womens Class A Singles
- Mens Doubles
- Mixed Doubles
- Sr. Boys Singles (18 and Under)
- Jr. Girls Singles (16 and Under)
- Jr. Boys Singles (15 and Under)
- Midget Boys Singles (12 and Under)
- Boys Doubles

Entry blanks are available at the following Community Centers:

Benson, Florence and Kellom; and at Room 621 Interim City Hall

Junior play starts at 1:00 P.M. Adults at 5:30 P.M.

Entry deadline is Friday, April 1st.

**SPORTING EQUIPMENT**  
Is Yours At  
**SCHEFFLER SPORTING GOODS**

**Ted's Fina Station**

Also  
**GOOD YEAR TIRES**

**GET THE WORD**

About A  
Student Checking Account  
At  
**Washington Co. Bank**

**KOLTERMAN'S Ben Franklin STORE**  
For the Student's Needs

**Harold D. Olson**  
130 E. 15th  
FREMONT, NEBRASKA  
Representing  
**LUTHERAN BROTHERHOOD**

## Council Changes Initiation; Considers Dues Changes

One of the Student Council's major concerns is the changes that have been instituted in what has been referred to as Freshman Initiation in past years.

The new program, Freshman Orientation, will be largely in the hands of a six-member committee composed of two students from each of the three upper classes. This committee will correlate their activities with those of the social committee and the administration in order to orient new students to campus life more completely.

It has been decided to charge for all the remaining social events "to avoid bankruptcy." A proposal to raise student body dues to 15 per student per semester was recently rejected by the Student Council. Any raise in dues must be approved by both the Student Council and the administration.

Kappa Lambda Chi and Delta Sigma Omega, the two male societies on campus, have submitted constitutions to council, seeking official recognition as campus organizations. Recognition will give them access to campus facilities and the right to schedule activities on the college calendar. The council has three alternatives: complete approval; complete disapproval; or approval with stipulations and/or regulations. A committee is now scrutinizing the constitutions and the potential situations stemming from approval or disapproval.

This year the student council has received an invitation to present a program to the Board of

## Public Relations to Put Dana On Map

Public relations—a most provocative position, yet the finer points are often lost under this colorful title. Phil Pagel, former Dana graduate and now our P. R. man, presents and represents Dana in every party that the college is interested in. Though securing news releases is a major source of communication, he also plans and directs all student tours, special events, faculty speaking engagements in the community, receptions, and on and on. . . An accomplishment worth noting is that no other school in Nebraska has had as many feature stories—excluding sports articles—in the Omaha World Herald as has Dana. Is this Phil's work? It certainly is! Shaking up business isn't really necessary—rather it is being aware and understanding the college activities, and building good

relations with these media.

Regents meeting. About twenty members of the student body will attend the meeting. Four seniors, Tim Jensen, Karl Petersen, Ilona Mossman and Ken Jacobsen, will present a report along the lines of a "philosophical retrospect" of their four years at Dana.

Student Council has provided for the Council President to be salaried from council funds. The salary will be \$100. The provision has been submitted to the administration in hopes that it will add to the sum as is done in the case of campus publications editors. This salary will not go into effect until next year.

"Right now the council's major problem is communication with both the student body and the administration. All too often, the Student Council operates in a virtual vacuum. We are very eager to receive any and all suggestions concerning the matters we have handled or should handle," stated Student Body president Tim Jensen.

### EDUCATIONAL ASSISTANCE FOR VETERANS AND SERVICEMEN

(Cont. from page 3)

Schools?

You may pursue a course at a college, vocational, business, high school, or correspondence school. The course must be approved. Under certain circumstances, a college course pursued in a foreign country may be approved. How Much Education?

The limit is 36 months. This would cover 4 school years of 9 months each for a veteran who served on active duty for at least 3 years after January 31, 1955. If you served less than 3 years, you may receive one full month of educational assistance allowance for each month or part of a month you served on active duty on or after February 1, 1955. If you have previously received any VA educational benefits based on your own service or as a war orphan the 36-month period of eligibility for educational assistance under the veterans readjustment benefits act of 1966 may be reduced.

Time Limit.

VA may not provide training after 8 years from the time of your last discharge or release from active duty if your discharge is on or after June 1, 1966. The time limit for a veteran whose service ended before June 1, 1966, is May 31, 1974.

## Parable Initiates Spiritual Emphasis

"Encounter with Life" will be "a presentation of how Christ meets man in the modern world." A 22 minute film, "The Parable," will begin at 8:00 Saturday night in DHA and will present Clown Christ entering a circus ring on a donkey. This film was shown at the New York Worlds Fair and proved to be quite provocative and controversial. Directly after the film, David Brown, youth director for TALC, will speak and lead in discussion. Mr. Brown will also speak for the EKKLESIA Koininias congregation.

A service of modern liturgy Sunday. The service is scheduled will begin at 7:30 p.m. in AMA between showings of the History Club film so that there will be no conflict. This will end the Student Council sponsored weekend "Encounter with Life" program.

## Danish Bishop Was A Campus Visitor

The Bishop of the Ribe diocese in Denmark was at Dana College March 10.

Thursday afternoon twenty-five students and faculty members met for an informal session with Bishop H. Dons-Christensen and his wife. For an hour the Bishop and his wife told of the structure of the state church in Denmark and about the Lutheran Church's social work.

The state religion in Denmark is Lutheranism. A state church means that church members pay a church tax to the government and the government then pays half of the building expenses of the church and also part of the pastors and church officials salaries. The government also has a Minister of Religion. The country has nine dioceses, and

Mr. Dons-Christensen is bishop of the southwest diocese.

He told the group of the Niculus Parish in Copenhagen. Niculus Parish is an intercity parish in Copenhagen which ministers to the frustrated and depressed of this city of a million. Pastors volunteer their time to staff the parish. Many probable suicides call the Niculus Parish, the homeless wanderers come to services at the Parish. The unique fact about Niculus Parish, the Bishop said, is that no records are kept, so no one has to fear of becoming a psychological case study or a statistic.

The Bishop and his wife are on an eight-week tour for several reasons. One was to be present for the 300th anniversary of the Lutheran Church in the Virgin Islands. Another purpose was to visit the several Danish churches for immigrants in Canada. And also in reply to several invitations to be present at Lutheran church conventions in Minnesota and to visit congregations of Danish background in the Mid-west.

**Bud Jensen**

### Skelly Service

Gas, Oil, Minor Repairs

### STEINBAUGH

Furniture and Appliances  
COLORED TV

### Duffey's Market

We Give Green Stamps  
STUDENTS WELCOME

### Hobby Hut

1728 Washington St.  
SLOT RACING  
Hobbies & Crafts  
Rent Cars & Controls

### Anderson Drugs

for a complete line of  
FINE GIFTS

### Aten's DX Service

The Service You Like  
14th & Washington

Have you looked at your feet lately? Others do!

### Lloyd's Shoes

8722 Countryside Village  
OMAHA, NEBR.

Eat at  
**Cope's**  
Fine Food

### Rabbass Studio Portraits

CAMERAS, FILMS, SUPPLIES  
Telephone 426-3292

1745 Washington Street

Blair, Nebr.