

# Carolyn Scholl Chosen President In Friday Election



Carolyn Scholl Student Body President-Elect.

## Carolyn Scholl 3rd Girl President In Dana History

Carolyn Scholl is a twenty year old junior from Anita, Iowa majoring in Social Science with a minor in English.

Carolyn has been an active member of Student Government this year. She is floor leader on Third Floor Argo and has served as President of Women Dorm Council.

Carolyn has worked on the "Hermes" this year. She is also actively involved in drama at Dana. She is presently a member of the touring play "Good Friday".

She ran on a four point platform which is as follows:

(1) A policy of "Sig Bohling". This will be an attempt to carry the major legislation of this year through to completion next year. The Student Court System and Board of Publications are two systems Carolyn would like to see in working effect.

(2) Off-Campus housing for Women Students. Carolyn feels that

there are enough girls living in the units plus the increased enrollment for next year to ensure the 90% capacity the government requires. At any rate the Students should have a voice in the matter of campus housing.

(3) The establishment of Student representatives at the Board of Regents meetings. Carolyn feels that it would be beneficial for both students and the board to have a means of communication and exchange. This representation is being tried for by other ALC Colleges.

(4) The creation of a national interest at Dana College by encouraging political campaigning this fall for the national elections. Dana needs to look beyond its own confines and prepare for the world we are being educated to join.

As in any student government administration the help of all Students is needed to make it a success. Carolyn expressed her belief in the ability of Dana Students to accept this challenge with this phrase from her campaign speech.

"The students at Dana aren't apathetic, but instead dormant." Skipper hopes to captain her ship through a successful year next year.

### Peace Corpsmen Home From Kenya To Visit Dana

Two Peace Corps volunteers who have recently returned from Kenya, Africa, will be on the Dana campus April 17-19. They will offer information and give the Peace Corps test to those who are interested in this kind of service overseas.

The volunteers are John and Elena Sutinen, who were graduated from San Francisco State College in 1964. They were in Kenya two years and learned to speak Swahili fluently.

John's work was to teach how to run co-operatives and credit unions for the Kenya ministry of co-operatives. He also coached basketball and volleyball for the local schools. Elena taught home economics and business administration for a marketing co-operative.

The Sutinen's will be available at the Campus Center, and may be invited to visit classes on Thursday or Friday. If you want to find out more about the Peace Corps before the volunteers arrive, contact Prof. Nelson Williams, PM 316 A.

### "Good Friday" First Tour Play

Dana's first touring play "Good Friday" has begun its two week tour of Iowa, Wisconsin, Minnesota and Illinois.

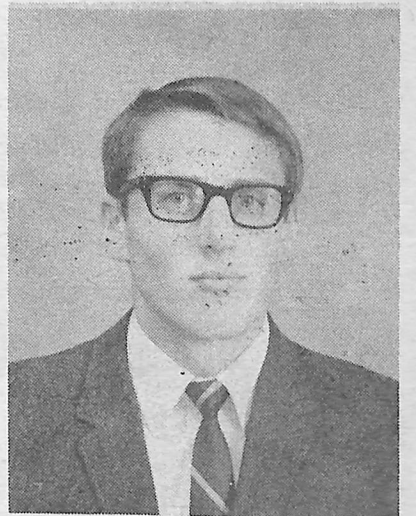
To heighten the emotional impact of the presentation, music has been composed by Dr. Alan Brandes. There are six songs with which the play is diversified.

Production in "Good Friday" is unique in that scenery is not used. Instead, the play is being blocked in a way that can be adjusted to various church chancels.

Mr. Henneman believes this to be one of the strongest casts he has worked with. He has double-cast each role to cut down on the number of performances each cast gives in one day.

## 1968-69 Officers

Roger Zieg, a twenty-one year old Junior from Marshall, Minnesota was elected Student Body Vice-President. He is a philosophy major and is presently president of the Campus Congregation. This position has given him a cabinet position on the 1967-68 Student Council.



Roger Zieg

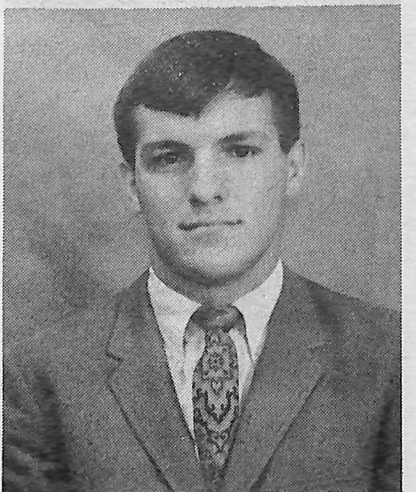
Rog feels his cabinet position will enable him to help the president in his responsibilities next year.



Lynn Johnson

Lynn Johnson, a junior from Pomona, California was elected Secretary of student council for next year. Lynn is a Sociology major but has special interest in the theater.

Lynn recently won the Miss Winterfest title where she did an excerpt from "My Fair Lady".



Max Boustead

Max Bousted is a Junior Social Science major, from Underwood, Iowa. Max is a member of Kappa Chi Lambda fraternity. He has lettered in football and is a member of D Club. Max is currently Intramural director for Student Council.



# HERMES

THE DANA MESSENGER

Volume XLIX

April 6, 1968

Number 15

## Agnes Moorehead Appears On Special Events Program

Agnes Moorehead will present an adaptation of her one-woman show, "The Fabulous Redhead" on Campus Sunday, April 21 at 8 p.m. in A.M.A. The program includes excerpts from the theatre and comments on her life in the entertainment field. The presentation is free to Dana students and staff.

During her illustrious career she has achieved stardom in every entertainment medium -- radio, television, motion pictures and the legitimate stage and received five Academy Award nominations.

Her TV credits include many guest roles and an Emmy Award in 1967 for her role of Endora in "Bewitched."

Her first New York stage appearances were in "Marco's Millions," "Scarlet Pages," and "All The King's Men." She was one of radio's most active performers and was heard on thousands of programs including "March of Time," where she was the voice of some 40 people. Miss Moorehead's first stunning performance of "Sorry, Wrong Number" was on "Suspense" in 1943. After repeating the drama over 20 times on radio, she recorded the play in an album.

AGNES MOOREHEAD made her screen debut in "Citizen Kane," in 1941, followed by the "Magnificent Amberson," which brought her the New York Critics Award for Best Actress of the Year and her first Academy Award nomination. Her other "Oscar" nominations were for "Johnny Belinda," "Mrs. Parkington," "All That Heaven Allows" and "Hush, Hush, Sweet Charlotte."



Agnes Moorehead, star of Stage, Screen and Television's "Bewitched".

### MARINE OFFICER

A United States Marine Corps Officer Selection Team will visit the Dana College campus on April 8 from 10 a.m. to 4 p.m. Captain Bruce McKenna, Officer Selection Officer from Des Moines, will be interviewing in the Campus Center.

### CHAPEL SCHEDULE

April 9 Dr. C. Umhau Wolf  
Spiritual Emphasis Speaker

April 10 Dr. Andre Pieters  
Methodist from Brussels,  
Belgium

# HERMES

Volume XLIX

Number 15

Published weekly during the college year, except holiday and examination periods by the student body of Dana College, Blair, Nebraska.  
 Publisher: Enterprise Publishing Co., Blair, Nebraska.  
 Subscription rate, \$5.00 per year.

Editor . . . . . Richard Vierk  
 Business Manager . . . . . Eriks Steinbach  
 Circulation Managers . . . . . Margaret Haszard, Barb Wheatley  
 Cartoonist . . . . . Bob Siebert  
 Sports Editor . . . . . L. Edgell  
 Faculty Advisor . . . . . Mr. Nelson Williams  
 Staff Members: . . . . . Charles Gilmore, Bob Geibert, Margaret Wold, Kay Ringhand, Mary Beth Rasey, Chris Zwanziger, Linda Arthun, Juel Neve, Carolyn Scholl, Don Nelson, Maggie Voss, Gordon Putnam and Marilyn Hansen.

REPRESENTED FOR NATIONAL ADVERTISING BY  
**National Educational Advertising Services**  
 A DIVISION OF  
 READER'S DIGEST SALES & SERVICES, INC.  
 860 Lexington Ave., New York, N. Y. 10017

## LETTER TO THE EDITOR

I was not especially surprised by the article by Karen Nelson, because Middle Class morality has always focused on respectability. Ever since the Industrial Revolution, I suppose, these people have felt guilty of their plutonic usurpation of social status; and their trite morality is a crazy attempt at rationalization.

But Freud and I think your true feelings crept out when you suggested your list of sites for clandestine meetings. These people seem to have a propensity to turn affection into sly obscenity.

There is never any time when a kiss as a manifestation of true affection is not proper. In the words of Freud himself, "At the root of all emotions is a kiss. Without kisses there would be no kissing." "And life without kissing," in the words of R. Van Bur-en, "would be (ach) phooey!"

I can't appreciate your inclination to make smut of all this. Under what guilt complex are you laboring that you won't let me kiss my wife when and where I want to?

Dylan Thomas was right when he said that today "refined" women prefer to make love "blindfolded." Rather, I suppose, like a mare when she has to be bred.

Why Dylan first met this kind of American woman he could only say to her, "I am not fond of you, madam. You have a cold, hard Salem bitch look about you. Are you lesbian by chance?"

Perhaps, "mature" madam, God loves lovers, too.

Curse my vivid imagination, but I can see one of these women at her wedding ceremony when the pastor tells the groom that he can kiss the bride, and they have to run out behind the barn to do it.

But I have hope, and I feel that in a thousand years the kiss will still survive; and no amount of abuse from young college fillies or other ill-read literates who want to bury it under a mound of refuse and sly obscenity will ever completely desecrate it.

Signed--

A Clincher



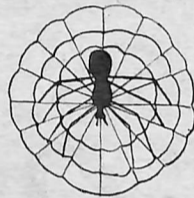
Kappa Theta Phi officers are: front row left to right-Sue Cole, Paula Westfall, Eileen Taake, and Madeline Horn; back row, left to right, Lyn Marbach and Fran Petersen.

## Dana's First Sorority Called Kappa Theta Phi

Several weeks ago a few students were discussing the possibility of starting a sorority since there are already two successfully established fraternities on campus. They saw the need for one to unite the girls in a service and social organization. Five of the girls decided to look into the situation, and found the administration and the student council very cooperative. Through the help of the faculty advisor, Miss Penick, they succeeded in founding Dana's first local sorority, Kappa

Theta Phi. There are 28 charter members.

The officers were elected at the last meeting and are as follows: President, Eileen Takke; Vice-President, Paula Westfall; Secretary, Lyn Marbach; Treasurer, Fran Pedersen. Those holding appointed offices are: Social Chairman, Betsy Buck; Chaplain, Lynr Johnson; Parliamentarian, Nancy Munn; Historian, Sharon Peterson. Representatives to enter Greek Council are Barb Ohlsen and Cathie Meyer.



## The Spyder Speaks

By Bob Siebert

Well, lots of yucks on campus last week. Nothing like a little malicious damage to give the college a good name. But I guess that's all past.

During last semester some people (including myself) were complaining about Kiva being opened infrequently and the Campus Center being a place for visitors and not for students, so for one whole week there was much interest aroused and I believe a committee was appointed to meet with administration about the center. Unfortunately this, like everything else, was a waste of time and effort on everyone's part. Nothing happened. And whose fault is this? Everyone's, including me. To keep interest alive on anything, you have to keep pounding home your ideas every chance you get until they're passed or positively dropped. I guess we blew our chance this year.

So what am I trying to say? Something along the lines that we need positive leadership of the student body next year if any ideas of improvement are to be carried out. This must start with whoever is to be president and lead on down through the V. P., Secretary and treasurer. In your own mind which candidates will be strong leaders (not just based on campaign promises but on character and on action taken by them in other involvements).

I'm afraid that some people will be influenced by the fact that one candidate is female and the other male. But that can't be helped anymore than those people who vote for a person cause he combs his hair over his forehead or speaks with a cute accent. Hopefully that isn't a large group on campus and 90% can vote with a level headed approach.

Good luck to all the candidates (and especially to the ones I voted for.)

Next Hermes I hope to have some research finished on ideas of sexual freedom on the campus as compared with other campuses. If any of you have any ideas or thoughts on this subject please drop me a note through campus mail by the end of vacation.

### INTRAMURALS

Double elimination intramural volleyball will start sometime next week. Look for announcement on bulletin boards

## Wartburg Castle Singers Present Campus Concert

WAVERLY (IOWA) -- A musical editorial by Wartburg College's Castle Singers will be presented in Blair, Nebraska, April 26.

Curtain time for the performance will be 7:30 p.m. in Alumni Memorial Auditorium at Dana College. Tickets may be purchased at the door or through the mail; Pat Bracken, Box 118, Single admission prices are \$1.00 for adults and \$.50 for students.

On its first tour since 1960, the Castle Singers will leave Waverly April 19 and do 10 performances in 9 days in Iowa, Minnesota, South Dakota and Nebraska.

The production, written and produced by Dr. James E. Fritschel, Singers director, is called "Tell It Like It Is" and deals with the general problem of communication with special emphasis on "the generation gap."

The editorial employs nearly every art form--folk music or music composed in the folk style, the printed word, dance and the cinema.

The Singers are composed of 33

Wartburg students who are versatile performers. In order to get into the organization, they must be able to dance, act and play an instrument as well as sing.

An original musical, "What's the Meaning of This?," was written for them, and it has been staged at the Tyrone Guthrie Theatre in Minneapolis and at the National Lutheran League conventions in Seattle and Dallas; the Singers have sold more than 8,000 records of that musical drama; they have done eight spring musicals at the college, ranging from "Pajama Game" to "Once Upon A Mattress;" and they are much in demand by conventions, having performed before the national Lutheran League and the Southern Wisconsin Lutheran League (this summer they will be at the national American Lutheran Church Men convention in Soux Falls, S. D.)

Dr. Fritschel formed the present Singers three years ago, and since then it has become one of the most popular collegiate groups of its kind.

The Singers' repertoire ranges from the Broadway musical to such off-beat pieces as the medieval liturgical drama, "Herod," which was performed at Wartburg shortly before Christmas, 1967.

## McCarthy Speaks In Nebraska

Dana students are planning to attend a speech by Senator Eugene McCarthy, Democratic candidate for President, to be given at Lincoln on Wednesday, April 10. A sign up sheet for the rally is posted in the Campus Center.

Several students and professors attended a McCarthy speech in Omaha on Tuesday, April 2. That evening they watched the McCarthy victory in the Wisconsin primary while doing campaign work at the home of Prof. Nelson Williams.

In April, more than a hundred out-of-state students are to come to this area to campaign for McCarthy. The Dana group will be their hosts, and will prepare lists of all registered Democrats in nearby counties for this campaign. Anyone who wants to help can contact Douglas Hansen, Dana student co-chairman of the McCarthy committee.

## S. A. M. Is Host To Omaha Banker

On March 28, Marvin Werve, President of Omaha National Bank, was S. A. M.'s speaker.

Mr. Werve is a member of the National Alliance of Businessmen which is designed to find jobs for the hard core in fifty large U.S. cities. Mr. Werve explained how the representatives from each city organized to obtain a large job bank so the unemployed may come to them to be fitted with and trained for a job. The company trains the person and is reimbursed for the training cost by the Government.

Mr. Werve stated that he feels this program should remove minorities from welfare and restore their self-respect. He added that their biggest problem is getting people to come for a job in the beginning.

A calendar of coming events was announced. They are as follows: April 17 - SAM Seminar  
 April 25 - Northwestern Bell Tel. Co.

April 18 - S. A. M. will be sponsor for farmers and businessmen to discuss the Nebraska tax system.  
 TENTATIVE - Falstaff Brewery

# SPORTS

## Viking Track Results

### Dana vs. Omaha

April 2, Dana lost a track meet today to Omaha U. in cold, drizzling weather by the score of 88-53. An example of the influence of the weather was evident in the pole vault as only one vaulter, Mark McMillan of Dana made opening height of 11 feet. As was the case at Tarkio last week the field events were the Dana strong point. Dana took first in the pole vault, first, second and third in the broad jump, and first and second in the shot put.

### Eight Wrestlers Awarded Letters

The 1967-68 wrestling lettermen have been announced by Coach Simpson. Firstyear lettermen are: Lee Voss, Larry Foristal, John Christenson, Ron Johnson, Roger Wheatley and Bob Buss. Ron Briggs received his second letter and Tom Bisbee has lettered for the third year.

### Kappa Chi's Clean Campus

The Kappa Chi Lambda Pledge Class will take part in a Campus Clean-Up Saturday, April 6. They will begin at 8:00 a.m., and will work until the whole campus is cleaned up. This is part of their initiation duties before becoming full members of the fraternity.

### Car Buffs do it!



### English Leather

For men who want to be where the action is. Very racy. Very masculine. ALL-PURPOSE LOTION. \$2.50, \$4.00, \$6.50. From the complete array of ENGLISH LEATHER men's toiletries.

A PRODUCT OF MEM COMPANY, INC., NORTHVALE, N. J. 07047

### Coupon

## Q.T.'s

2 Free Pepsi's with 1 Large Pizza  
1 Free Pepsi with 1 Small Pizza

Good April 6-11

### Coupon

#### Pole Vault

1st-McMillan, Dana, 13'

#### Broad Jump

1st-Neal, Dana, 20'7 1/2"  
2nd-Johnson, Dana, 19'9 3/4"  
3rd-Watts, Dana, 19'9 1/2"

#### Shot Put

1st-Magnuson, Dana, 43'6 3/4"  
2nd-Lawhead, Dana, 37'11 1/2"

#### High Jump

1st-Gubi, O. U., 5'10"  
2nd-McMillan, Dana, 5'8"  
3rd-Beatty, Dana, 5'6"  
Knehans, Dana, 5'6"

#### Mile

1st-Carey, O. U., 4:32.6  
2nd-Koester, Dana, 4:33.4  
3rd-Korzilius, Dana, 4:44.1

#### 440 Yd. Dash

1st-Glasgow, O. U., 51.5  
2nd-Rasmussen, Dana, 52.2  
3rd-Brantz, O. U., 52.8

#### 120 H H

1st-Hansen, Dana, 16.2  
2nd-Wardrobe, O. U. 16.4  
3rd-Gubi, O. U., 16.6

#### 880 Yd. Dash

1st-Sweeney, O. U., 2:02  
2nd-Gehringer, O. U., 2:05.6  
3rd-Knehans, Dana, 2:07.6

#### 220 Yd. Dash

1st-Comfort, O. U., 23.1  
2nd-Kurz, O. U., 23.3  
3rd-Bryan, Dana, 23.4

#### Javelin

1st-BeVirt, Dana, 143'4 1/2"  
2nd-Gubi, O. U., 142'11"  
3rd-Wallace, Dana, 142'4 1/2"

#### Triple Jump

1st-Nelson, O. U., 42' 3/4"  
2nd-Gubi, O. U., 41'11"  
3rd-Neal, Dana, 41'3"

#### 30 I H

1st-Wardrobe, O. U., 4217  
2nd-McMahon, O. U., 43.8  
3rd-Hansen, Dana, 46

#### Discus

1st-Penke, O. U., 126'6 1/2"  
2nd-Ducharme, O. U., 114'2"  
3rd-Magnuson, Dana, 112'11 1/2"

#### Mile

1st-Carey, O. U., 10:33.6  
2nd-Dickson, Dana, 10:43.3  
3rd-Korzilius, Dana, 10:45.2

#### Mile Relay

1st-O. U., 3:39.2  
2nd-Dana

### Sports Schedule

Dana vs. J. F. K. at home, Wed., April 10, at 3:45  
Midland Relays at Fremont, Wednesday, April 17.

#### VIKING BASEBALL

Dana vs. Northwestern, Sat, April 6, at Vets field 12:30  
Dana vs. St. Cloud, Tues., April 9, at Vets field, 1:00  
Both Double Headers.

### Dana Loses Double Header

March 28, Dana's baseball team got off to a slow start this season, losing two close ones today to Doane by the scores 3-2 and 3-2. Wind played some part in the decisions as four runs came on homers over the short right field fence.

In the first game the Vikings had no errors but couldn't get to Doane pitcher, Guida, who struck out at least 1 Viking per inning and walked only 1 man during the game. Dana's runs came on a home run in the fourth by Haugen and a run in the seventh when Bernier hit a triple and Dietrich drove him in with a single.

Doane's runs all came on home runs as Green hit one over the right field fence with a man on base in the third and Vopat hit a home run in the sixth. The losing pitcher in the first game was Benson.

The Vikings also played errorless ball in the second game but again couldn't come up with the hits. It looked like the second game might be one for Dana as the lead-off man, Moore, got on base on an error, stole second and was driven in by a double by Bernier. After that the Vikings couldn't combine the hitting as they left eight men on base.

Doane's scores came on a home run in the fifth by Channel, a walk followed by a triple in the seventh and the winning run on a wild pitch. The losing pitcher in the second game was St. Clair.

### Intramural Standings

It's all over. Intramural basketball ended last week and the pre season experts choice of the Primates to win the A league was a good bet. The winner of the B league with an undefeated season was the Fardquards.

#### FINAL STANDINGS

A League	1. Primates	16- 2
	2. Off Campus	15- 3
	3. Raiders	14- 4
	4. Mad Mooners	13- 5
	5. Fardquards	12- 6
	6. AMF's	6-12
	7. Grinders	6-12
	8. Married	4-14
	9. Valhallas	3-15
	10. CA's	1-17

#### B League

	1. Fardquards	13- 0
	2. Ducks	12- 1
	3. Nads	11- 2
	4. Dyaks	11- 2
	5. Mad Mooners	7- 6
	6. Raiders	5- 8
	7. Off Campus	4- 9
	8. Amaralladaces	4- 9
	9. AMF's	4- 9
	10. Primates	3-10
	11. Scavengers	2-11
	12. Grinders	1-12
	13. Married	0-13

### LITTLE MAN ON CAMPUS



"OH, HI THERE, PROFESSOR SNARE - ARE YOU GOING TO COVER ANYTHING IMPORTANT IN CLASS TODAY?"

### Dana vs. Tarkio

March 25. The Viking track team lost a close one down in Missouri today against Tarkio College 70-74. Field events and sprints seemed to be the strong area for Dana as we took first and third in the Shot put, first, second and third in the discus, first and second in the pole vault, first and second in the 100 yard dash and first and third in the 220 yard dash. We also took first in the 120 yard high hurdles. Tarkio won both team relays and also took first in the 440, 880, mile run and 2 mile run.

	1ST	2ND	3RD
JAVELIN	Goldsmith-T 172' 9"	Wallace-D 142' 11"	Martin-D 126' 2"
BD JUMP	Devlin-T 20'8"	Neal-D 20'4 1/2"	Watts-D 20'2"
SHOT PUT	Magnuson-D 40' 5"	Magin-T 36' 3"	Martin-D 35' 2"
HI JUMP	Staab-T-tie- 5' 4"	Hansen-D-tie- 5' 4"	Knehans-D 5' 4"
DISCUS	Magnuson-D 118' 8"	Johnson-D 111' 5"	Bryan-D 108' 3 1/2"
T. JUMP	Staab -T 41' 3"	Wylie-T 41' 2"	Neal-D 40' 11"
P. VAULT	McMillan-D 12' 6"	Vasby-D 12' 6"	Devlin-T 12' 0"
440 RELAY	Tarkio 45.5	Dana 45.6	
MILE	Shields-T 4:34.6	Korzilius-D 4:36.5	Koester-D 4:40.1
440	Ewing-T 51.3	Rasmussen-D 51.7	Kania-T -
100	Hooper-D 10.2	Bryan-D 10.3	Wylie-T -
120 H. H.	Hanson-D 16.1	Freehauf-T 16.4	
880	Shields-T 2:05.3	Moyle-T 2:05.7	Boustead-D 2:08
220	Bryan-D 22.1	McDonald-T 22.8	Hooper-D 22.8
330 I H	Freehauf-T 41.6	Wylie-T 43.4	Hanson-D 44.5
2 MILE	Buchanan-T 10:11	Dickson-D 11:36	Korzilius- 11:36
MILE RELAY	Tarkio 3:33.2	Dana 3:40.3	

# BOWLING

Pizza 85c---\$1.55

Chicken Basket \$1.00

ANYTHING TO GO

Monday Thru Friday 2 to 6 p.m. 3 Lines \$1.00  
Saturday and Sunday 40c Per Line

**Husker Bowl** Hiway  
30 West

Phone No. 426-2600

# Student Editors Chosen For Next Year



Student editors Barb Gerdes (Danian) and Margaret Hazard (Hermes) prepare to assume their new positions.



Lynn Edgell

Lynn Edgell, a Junior from Minneapolis, Minnesota, will edit the "Sower" next year. Lynn is an English Major and feels the "Sower" is a logical job for him to accept. He has had experience on the "Sower" this year and was Sports Editor for the "Hermes".

editor with Miss Gerdes next year. Lonnie has worked on the annual this year and was co-editor of her high school annual.

Lonnie feels the year book offers her a challenge. A year book to her reflects the image of the college campus. She feels photography in a yearbook is of utmost importance and she would like to see increased emphasis on this area.

Margaret Hazard a Junior accounting major from Anita, Iowa will be the "Hermes" editor next year. She has had three years of "Hermes" experience and previous high school work on the newspaper and yearbook. Margaret said "I hope to continue to make the "Hermes" a worthwhile publication that represents the students of Dana."

Last Thursday Student Council approved the Board of Publications selections for Student Editors next year. Barb Gerdes and Lonnie Hengeveld will be co-editors of the Danian; Margaret Hazard will be "Hermes" editor; and Lynn Edgell will edit the "Sower".

Barb Gerdes, a junior from Auburn, Nebraska, plans to teach on the secondary level after graduation. She has had previous high school experience and has worked on the "Danian" for the last three years.

Barb hopes to put out an organized annual which will be an outline of activities at Dana. "I want people to be able to look at the annual many times in the future and recall all of the happy events at Dana."

Lonnie Hengeveld, a freshman from Blair, Nebraska, will be co-

## College Master Policyholder OF THE WEEK

Ivan Paulsen Senior from Montclair, California is majoring in Biology. He is an active member of Delta Sigma Omega fraternity. Ivan has participated in intramurals and this year his team, The Primates, took the intramural Basketball Championship.



John C. Emery  
General Agent  
Fidelity Union Life Insurance Co.  
7000 Dodge Street  
Omaha, Nebraska 68132



Dana Check Book Covers  
And 50 Free  
Personalized Checks  
WITH NEW ACCOUNTS  
Washington  
County Bank

Lang and Trotter  
FURNITURE & APPLIANCE  
For The Student Needs  
Radio and Record Player Repair

## RABBASS STUDIO

- FAST PHOTO PROCESSING
  - CAMERA EQUIPMENT
- In The Heart Of Downtown Blair

Colonial Corner  
17th & Washington

Open 7 A.M. to 10 P.M.

Dine in a Colonial Atmosphere

LEE'S  
Pharmacy

Prescription  
Specialists  
Ph. 426-3700

KOLTERMAN'S  
BEN FRANKLIN  
STORE  
For The Students' Needs  
Blair, Nebraska 68008

TRY A  
Blair Bank  
P.A.Y.C. ACCOUNT

ANDERSON  
DRUGS  
And  
HOLIDAY  
HOUSE  
Gifts and  
Student Needs

MONEY-FOR-LIVING

# but why AAL?

Why not AAL? It's the largest fraternal life insurance society in America—and it's operated for Lutherans, by Lutherans. You want better reasons? It's good sense to have a plan for your financial future. Money for living, money for emergencies and education, money for retirement and for dependents. It pays to begin your life insurance program early—while you are insurable, while rates are lower—and to stay with it. AAL's professional life underwriters are known for their extra personal service. And members participate in fraternal benevolence grants to Lutheran institutions and causes. Find out why membership in AAL is such a practical way for promising young Lutherans to begin sound life insurance programs.

AID ASSOCIATION FOR LUTHERANS • APPLETON, WISCONSIN  
Largest Fraternal Life Insurance Society in America



GENERAL AGENT  
Paul R. Rohrke, FIC  
Box 381  
Norfolk, Nebraska 68701

Miller-Rolland  
TV-Furniture  
Appliances  
Your GE-Zenith-Magnovox  
Dealer

For Complete Furniture Needs  
"Big City Selection With  
Country Convenience"  
1526 Wash. St., Blair, Nebr.

B & C Shop  
Ladies Ready-To-Wear  
Fabric for your every  
Sewing Need

Sapp's  
Blair's  
Ford Center  
Hiway 30 at Rt. 133  
One Mile West of Blair  
Phone 426-4126

Advance  
Cleaners  
Modern Plant to Serve You  
For On-Campus Service Contact  
STEVE BOHLING  
406 E. Rasmussen Hall

# FREE 15 Gals. of Gas

Register For Our Weekly Drawing  
(Exclusively for Dana Students)

Winners Rick Isham Mar. 24  
Last Week Denny Sinclair Mar. 31

## Try Our Automatic Car Wash

# 25¢

Waxing Also 25¢  
Friendly Service



## North Star Service

Ron Jenkins, Manager  
Intersection Hiway 30 & 73