



HERMES

THE DANA MESSENGER



Volume LI

September 26, 1969

Number II

Million Dollar Library Opens



Hermes reporter Mary Todd was the first student to enter the new library when it opened last Friday at 8:00 a.m.

On Friday, September 19th, at 8:00 a.m., Dana's "new addition" was finally opened.

The new library is certainly a great improvement over the older department in Pioneer Memorial. It has more modernized facilities to offer the student body.

The stack and study area is dispersed, making it easier to concentrate. The bookshelves are arranged to isolate study areas into groups of twenty or thirty people. In this way, the student need not be bothered by outside distractions.

On both floors, study carrels for individual students are located around the outside of the rooms. There are also four large carrels reserved for the faculty on the upper floor.

Among the library's many different rooms are several typing rooms, a smoking room, and two beautiful lounges filled with sofas and overstuffed chairs. There are also two group study rooms available for use by small groups.

With the new library come some new services. In the circulating book section, a new system has been devised to keep books from being misplaced. Each bookshelf is equipped with an empty shelf of a different color. While browsing through the books, if a student happens to pull one from the shelf and forgets its place, he can just place it on the empty shelf. In this way, the librarians can keep the books in order and not have to constantly reshuffle them.

Another practice that will be put into use is the checking of any briefcases, parcels, or books of all the faculty and students before leaving the library. In this way the librarians can be assured that all books taken from the building, have been legitimately checked out at the desk.

The audio-visual department, under the supervision of Mr. John Northwall, is located in the basement of the new library. This department is in charge of all

tape recorders, phonographs, film and movie projectors, overhead and opaque projectors, large maps, and movie screens.

The money for the million dollar structure was contributed in part by Charles A. Dana, the government and the LIFE program. Although the Rare Book Collection, the Archives, and the current periodicals are not in yet, the library had in its possession, 61,370 books, as of May 30, 1969, according to Head Librarian, Ronald D. Johnson. The library, along with the annex, is to be dedicated on October 26, 1969, as part of Dana Homecoming festivities.

The new library can be visited anytime Monday through Thursday from 7:45 a.m. to 10:00 p.m., Friday from 7:45 a.m. to 9:00 p.m., Saturday from 8:00 a.m. to 4:00 p.m. and Sunday from 6:00 p.m. to 9:30 p.m.

Dana's "Sony" Look

This summer the Dana College closed-circuit television department in connection with the Nebraska Educational Television Council for Higher Education purchased several pieces of new Sony television equipment.

Included in this new equipment are such things as: a portable television camera which is so mobile it may be taken apart to fit into a suitcase, a portable video tape recorder with a built-in portable television monitor and a battery-operated camera and recorder system which is so light it can be carried on a shoulder strap. This equipment is being used under the direction of Mr. Diben and the Speech Department. It has already found several uses. The battery-operated camera has been used by Ekklesia Koinonias to film life on Dana Campus. It has been used by the athletic department for filming the football games and for aiding professors in teaching both art and music courses.

LIFE Photographs Activities At Dana

Recently, a photographer working for the LIFE program has been taking pictures of Dana's students and campus. The pictures will be made into a promotional film for LIFE to be shown at the Campus Center one day in the near future.

LIFE, Lutheran Ingathering For Education, had its beginning in the early 1960's with the American Lutheran Church merger. It was agreed, at that time, that any left over money from church budgets should be donated to American Lutheran Church supported colleges across the nation. As it turned out, there were shortages in church budgets instead of the expected surpluses; and colleges were getting no money. Consequently, the ALC initiated a drive three years ago in 1967 with its goal set at twenty million dollars. To date, American Lutheran Churches and campus churches throughout the nation have given pledges in excess of eighteen million dollars. The drive was to end with the fiscal year in 1969, but plans are being made to continue the program.

The receipts are divided among ALC colleges all over the country according to a predetermined formula. One of the two major donors for our new library was the LIFE program. The donations are used only for buildings, such as libraries, classrooms, and other learning facilities. It is, therefore, a non-profit organization. The only ones to profit are thousands of college students all across the land.

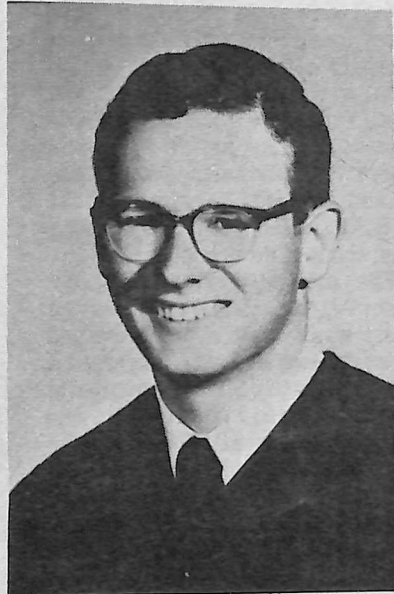


Tonight at 8:00 P.M. the "Friends of Distinction" will be appearing in concert at Borup Coliseum. Admission is \$1.50 for all Dana students. I. D.'s will be required. All faculty and administrative personnel are welcome.

Additions To Faculty

Dana has four new faces in her classrooms this year. They are: Miss Carol J. Hausserman, assistant instructor in Physical Education; Mr. Neil Johnson, assistant Professor of History; Mr. William M. Mitchell, Instructor in Mathematics; and Mr. Joel C. Snell, instructor in Sociology.

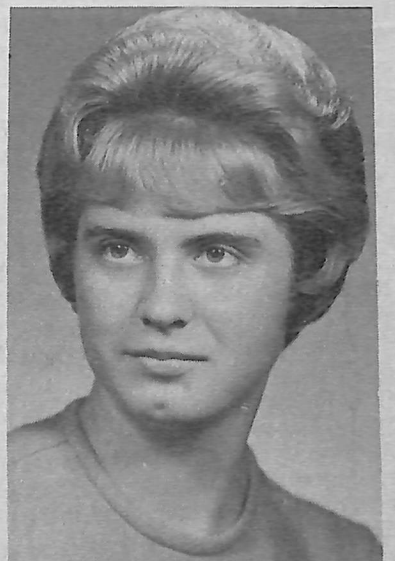
Miss Hausserman is a 1969 graduate of Dana College and replaced Mrs. Joan Smith. Miss Hausserman will be an instructor in the Women's Physical Education Department. Mr. Snell is a graduate of U. N. O. and replaced Miss Roberta McGonagle in the Sociology Department. Mr. Johnson is a graduate of Augustana College in Rock Island, Illinois and the University of Iowa. He replaced Mr. Nelson Williams in the History Department. Mr. Mitchell graduated from Maryville College, Tennessee and the University of Tennessee. He is a new addition to the college's Math Department.



WM. M. MITCHELL



NIEL M. JOHNSON



CAROL HAUSSERMANN



JOEL SNELL

Chapel Schedule

- September 30 - Encounter Film, "Run"
- October 1 - Liturgical Happening
- October 3 - Pastor Arden Dorn, Kennard, Nebraska
- October 7 - Film (?)
- October 8 - To be Announced
- October 10 - Lutheran Faculty Conference, special Chapel

Because of the portability of this new equipment it will be used in many situations where the older, heavier equipment was impractical.

Published fortnightly during the college year, except holiday and examination periods by the student body of Dana College, Blair, Nebraska.

Publisher: Enterprise Publishing Co., Blair, Nebraska
Subscription rate, \$5.00 per year.

Co-Editors Roger Wheatley, Dick Zion
Business Manager Larry Borkhus
Circulation Manager Rondalyn Wente
Photographers Marv Richardson, Ivan Schlichting
John Hansen

Sports Editor Mark Olsen
Greek Reporters Jeff Beatty, Peggy Guthrie,
Jim Scopac, Judy Zimmerman

Staff Ramona Alwill, Karen Bansen, Wayne Bell,
Karen Blum, Marianne Claire, Nancy Davison,
Carrie Dumke, Gloria Drake, Steve Hahn, Bob
Haszard, Glenda Holsing, Katie Hines, Sue Jor-
gensen, Diane Jundt, Kay Kinseth, Chuck Knight,
Susan Kruse, Linda Larsen, Pam Larsen, Karol
Madsen, Gale Madsen, Terry Madsen, Kathy
McCormick, Debbie Pederson, Judy Potter,
Glen Schacht, Mary Beth Simms, Mary Todd,
Barb Wheatley.

Faculty Advisor Luella Nielsen

Represented for National Advertising By
NATIONAL EDUCATIONAL ADVERTISING SERVICES
A Division Of

Reader's Digest Sales & Services, Inc.
880 Lexington Ave., New York, N. Y. 10017

Editorially Speaking

Dana, being a small college, sometimes can't afford the very best and most expensive big name entertainment. This year we have been very fortunate in having several acts play in the Dragon's Head. Because of the nominal entrance fee involved (one red nothing) one might get the idea that this entertainment was less than professional. Such is hardly the case.

Last Friday and Saturday night Danny Cox sang and philosophized in the Head. The reactions to Mr. Cox were varied, but those who were fortunate enough or tenacious enough to spend some time with Danny were very impressed. Besides being a very good performer, he is very sensitive to life and nature. The man has much potential and will go a long way in the music world.

The point of this whole dissertation is that the free entertainment in the Dragon's Head is fantastic and all the people involved in getting the acts to Dana deserve a large amount of praise. If the remaining shows are one-half as good as Danny Cox, Dana is in for a great year as far as entertainment.

ALL FOR DANA

By Karen Blum

Dana College has apparently reached the pep club generation this year. Upon recovering from shock, the president reported that enthusiasm and interest are greater this year than they ever have been. Among many planned activities, the pep club hopes to participate in the Homecoming projects and will initiate a fund-raising program soon. The girls, sponsored by Miss Kundl, will be active with cheers and skits at games and pep rallies. Instead of a definite uniform, the girls plan to wear red and white and carry small pom-poms as the club ensignia. They have organized committees for the making and posting of pep signs and their activities. The officers of the club, Karen Blum, president, Elaine Bringewatt, vice-president, and Dee-Dee Sherman, secretary, have hopes that the outlook remains as good as it has begun, and reminds the girls that membership is still open.

THE DEAN'S VIEW

In a *Hermes* interview last Tuesday, Dean of Students, Erling Rasmussen was much impressed by the spirit, attitude, and co-operation thus far shown by Dana students.

Dean Rasmussen stated that yearly problems such as student parking, registration, and general co-operation from students had all progressed remarkably well in the first few weeks of school.

As stated by the Dean, "This is a real great bunch of students." Let's keep it up!

Interfaith Council

Dana College will be one of seven Iowa and Nebraska campuses to participate in the Inter-faith, Inter-collegiate Campus Conference to be held the weekend of October 31 on the Creighton University campus.

Dr. Robert Z. Apostol, associate professor of philosophy at Creighton, has encouraged Protestant, Catholic and Jewish students from the various campuses in making plans for the Conference. He feels that "youth today have a passionate concern for the problems of the present human situation. They are not indifferent. What appears to be restlessness is rooted in an idealism which reflects a social consciousness."

The Conference will provide an opportunity for students to examine and discuss the ways that religion relates to and can help solve social problems. It "will help the students translate faith and religion into appropriate action to resolve problems which will challenge them for years to come."

Cooperating colleges are Bellevue College, Creighton University, Dana College, Midland College, Nebraska Wesleyan University, the College of St. Mary, and the University of Nebraska at Omaha and Lincoln.

Doctor Dana Bust Now In Library

Now that the library is open, many of you will be going there to study or to relax during the day. The next time you walk in the door stop to look at the bust of Dr. Charles Dana, the Connecticut philanthropist whose donations made building the library possible.

This striking likeness of Dr. Dana was made by Dana's own James Olsen, art instructor. Last winter, Dr. Madsen asked Mr. Olsen about the possibility of making a bust for the new library. As a model for the work, a collection of more than twelve photos was used. Mr. Olsen remarked that this was not the most ideal method to use as some of the pictures were 10 or 15 years old.

The first step of the project was the molding of the proposed figures in clay. This represents about one-fourth of the total amount of work. When the clay was satisfactorily molded, a piece mold was made. This was a negative form which was used for the final casting. The interior of the mold was coated with about one-eighth of an inch of wax applied with a small brush.

The wax shell was filled with a mixture of sand and plaster. A small styrofoam funnel was inserted in the top of the form. The top, as it now stands, is really the neck of the bust. In addition to the funnel, two long rods were inserted on either side of it. Five or six nails were also implanted randomly in the wax form. At this time the whole figure is encased with the same sand and plaster used to fill the wax.

For the next five days the mold was fired in the campus foundry at temperatures of from 750 degrees to 800 degrees F. The whole form was inverted so that the melted wax could run out through the tunnel leaving a narrow passage into which the bronze could be poured. The nails which were placed in the wax now hold the interior form stationary.

The mold was sunk into a sand pit and filled with molten bronze and allowed to cool for two to three hours. At the end of this time the bronze still has a temperature of 500 degrees. When the bust was thoroughly cooled the outer shell of plaster was removed and the nails were withdrawn. Then the surface was cleaned and colored. The finished bust is in darkened bronze and weighs only about eight pounds.

The method used to make the bust and its exact replica is the "lost wax" method. This method is so exact that even a fingerprint on the clay model will eventually be transformed into bronze.

Dr. Madsen will be taking the duplicate to Connecticut later this month where it will either be kept by Dana himself or placed in the C. A. Dana Foundation Headquarters.

S.A.M. Briefs

The first meeting of the Society for the Advancement of Management (S.A.M.) will be held October 1 in the Blue Room in the Campus Center. A dinner hour is scheduled for 6:00 P.M. for regular lunch ticket holders. Off campus residents are urged to come at 7:00 for the meeting and a film by Anhauser-Busch Co., "The House that Faith Built". The film will cover the success story of the company which has been in operation for 150 years.

A tour is scheduled for October 9.

All interested students are welcome.

Insight . . .

By Chuck Knight

This is the annual stay-on-campus - on - weekends - campaign, but don't turn off yet. There are several good reasons why you should stay on campus on weekends.

The financial approach. You have probably already paid your room and board for the year. For each weekend you spend at home, you forfeit about ten dollars of this sum. Not to mention the added cost of staying at home or elsewhere. If you go home every weekend, you forfeit about \$180.00, plus your "at home" expenses and transportation costs. If you drive your own car, you trust it during the week to our Blair Bear Terror Squad.

The social approach. Your circle of friends is limited. You never get heavy with the stay-on-campus group. You do get heavy with your hometown group. You're probably a big swinger with the high school group. If that's your idea of college life, that's up to you.

The loyalty approach. If you are a suit-caser, I suggest that you look "loyalty" up in your *Funk & Wagnalls*. It comes shortly after "louse".

DANA FELLOWSHIP

Inquiries about the Danforth Graduate Fellowships, to be awarded in March, 1970, are invited, according to Prof. Donald G. Warman, PM 316 B, the local campus representative.

The Fellowships, offered by the Danforth Foundation of St. Louis, Missouri, are open to men and women who are seniors or recent graduates of accredited colleges in the United States, who have serious interest in college teaching as a career, and who plan to study for a Ph.D. in a field common to the undergraduate college. Applicants may be single or married, must be less than thirty years of age at the time of application, and may not have undertaken any graduate or professional study beyond the baccalaureate.

Approximately 120 Fellowships will be awarded in March, 1970. Candidates must be nominated by Liaison Officers of their undergraduate institutions by November 1, 1969. The Foundation does not accept direct applications for the Fellowships.

Danforth Graduate Fellows are eligible for four years of financial assistance, with a maximum annual living stipend of \$2400 for single Fellows and \$2950 for married Fellows, plus tuition and fees. Dependency allowances are available. Financial need is not a consideration.

Danforth Fellows may hold certain other fellowships such as Ford, Fulbright, National Science, Rhodes, etc. concurrently and will be Danforth Fellows without stipend until the other awards lapse. Danforth Fellows also may be designated Woodrow Wilson Fellows.

The Danforth Foundation, created by the late Mr. and Mrs. William H. Danforth in 1927, is a philanthropy concerned primarily with people and values. Over the years the work of the Foundation, while oriented toward these concerns, has taken varied forms depending upon changing circumstances and the presence of promising opportunities for constructive action.

As both an operating and a grant-making agency the Foundation makes grants to schools, colleges, universities and other public and private agencies, and also administers programs of its own designed to reflect its central emphases.

Now that you've been condemned, you justifiably counter with, "What's there to do on campus on the weekend?" This question is not hard to answer.

Our social committee is doing a great job, if you stop complaining and take part in their activities. Danny Cox was probably the finest entertainment on our campus in many years, and we didn't even fill the Dragon's Head. At 4:00 p.m. on Saturday afternoon there were thirty-seven student cars on campus. Too busy for top-notch free entertainment.

Many of the stay-on-campus group have a heavy time just doing whatever's right for them in the Tail. Some even enjoy just being with other people. "How do you do it?" is an important question in a college education. No two people think exactly the same. If you think, someone else will. Exchanging ideas is heavy stuff.

If you're still with this, give the week-end a chance. But don't wait for it to come to you, go out and arrest it. Get with the people. It will be great. Two days and two nights of great fun and happiness. For only ten dollars.

STUDENT COUNCIL DEBATES B.N.E.

Student Council, in its first meeting of the year, moved to suspend a prior motion and charge for this fall's big name entertainment, "The Friends of Distinction."

A motion passed on April 4, 1968, reads, "Chuck (Scott) moved that we accept the one dollar dues raise following the stipulation of the Administration that if big name entertainment is offered, it be offered free of charge to the Student Body."

Jim Pierce moved to nullify that motion and allow the Student Activities Board to charge for the "Friends." After lengthy debate this motion was defeated.

Brant Godfrey moved that the 1968 motion be suspended and the S.A.B. be allowed to charge for this performance only. The motion met some opposition but passed because the charge had been set before the question came before the Council.

Mike Jones, S.A.B. director, said he decided to set a charge for the "Friends" after a conversation with Mr. Snowbeck, school business manager. Jones explained that Mr. Snowbeck was concerned primarily with the money going for entertainment, not stipulating that it be big name.

Mike's reason for charging was that, due to the budget, it was not feasible to have free big name entertainment and continue to have free entertainment in the Dragon's Head.

Opposition to Mike's action came because the 1968 motion specifically stated that the money was to be for free big name entertainment. Chuck Gilmore said he felt that the students would protest since they had already paid to see the "Friends" free and were being charged again.

During the debate the question arose, should big name entertainment be scheduled at all? Dave Renze suggested a poll be taken whether to include big name entertainment in future budgets. The Council then tabled the question until the results of the poll could be determined.

Limited Number Of
Danny Cox's
1st Album
\$5.00
Contact
Mike Jones

SPORTS

New Competition

Last Monday at the Cornhusker Hotel in Lincoln it was announced that a new athletic conference would be started. The conference is for church schools in the state of Nebraska. Dana college will be a member of this new conference. Other schools in the new conference will be Doane, Midland, Hastings, Concordia, and Nebraska Wesleyan.

Three schools asked for "Dual blessing", which means that they wish to participate in two conferences. Dana asked for this blessing, and the request was accepted. Dana will be able to participate in both the Tri-State Conference and the Nebraska Conference at the same time. By doing this Dana will be able to win two conference championships in one sport.

This new conference may start competition this year on basketball, but will not alter the already determined schedule.

Cross Country

Dana's first cross country meet will be at the University of Nebraska at Omaha this afternoon.

Student coach Ron C. Johnson will take the following men: David Basel, Robert Hess, Doug Larson, Arden Rakosky, Roger Vaad, and Tom Wilhelm.

Viking Caravan

Join the caravan to Westmar this Saturday, Sept. 27, and help our Vikings defeat the Westmar Eagles.

Student Activities Board will sponsor part of the cost. \$2.00 will be given to all drivers who have a full car. The riders are expected to pay the rest of the cost to the drivers.

Departure for Westmar is at 5:30 P.M. Saturday. Students should gather outside the Center at that time.

Drivers sign up for the caravan on the Student Center bulletin boards.

There will also be a caravan to the Concordia game next Saturday, Oct. 4.

J.V.'s Downed

In a game that was decided in the first three minutes, Dana lost its first J. V. game. The J. V. team, led by freshman quarterback Mike Brady lost the game 14-0 to Doane.

Both of Doane's touchdowns were set up by Dana fumbles. Dana was plagued by these fumbles and dropped passes all day.

From the time the second Doane touchdown was scored the game turned into a strictly defensive game. The second quarter was a quarter that was completely dominated by the two competent defenses. Dana's offense got rolling in the second half. Quarter-back Brady went to the air and found Jim Clark, his favorite receiver. In spite of the loss, the players didn't feel they were beat by Doane they felt they beat themselves.

NOTICE

A Student Body meeting has been called to vote on the proposed Student Body Budget for the first semester. The meeting is to take place in the Linden Room at 1:15 p.m. on Wednesday, October 1 (during free period).

Bake Sale

Tired of "regular" food? Well, start saving your "change". Because on Wednesday, October 1st, 1969, the P.E.M. Club is going to sponsor a Bake Sale. All "homemade goodies" will be sold in the concourse of the Center, at 1:00 p.m. See ya there!

INTRAMURALS

F. D. R. Married	6
Saints Married	42
Saints Married	18
Saints Grinders	48
Saints Grinders	12
Saints Grinders	18
F. D. R. Grinders	18
F. D. R. Grinders	24
Raiders Primates	12
Raiders Primates	36
2 East (Mikes Bikes) Primates	32
2 East (Mikes Bikes) Primates	36
2 East (Mikes Bikes) Off Campus	18
2 East (Mikes Bikes) Off Campus	30
Raiders Off Campus	18
Raiders Off Campus	48
Elkhorn N. Y. P. L.	42
Elkhorn N. Y. P. L.	0
Elkhorn Ducks	14
Elkhorn Ducks	0
Valhalla Ducks	0
Valhalla Ducks	26
N. Y. P. L. Valhalla	24
N. Y. P. L. Valhalla	18
Dyaks Mooners	18
Dyaks Mooners	19
Dyaks Fardquards	30
Dyaks Fardquards	0

STANDINGS

CAPITOL DIVISION

1. Married 2-0
2. Grinders 2-0
3. Saints 0-2
4. F. D. R. 0-2

CENTURY DIVISION

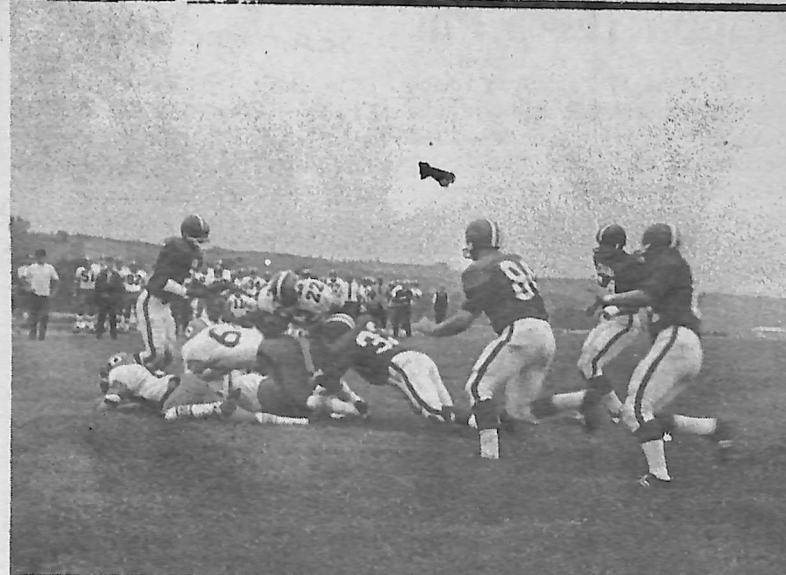
1. Primates 2-0
2. Off Campus 2-0
3. Raiders 0-2
4. 2 East 0-2 (Mikes Bikes)

CENTRAL DIVISION

1. Mooners 1-0
2. Dyaks 1-1
3. Fardquards 0-1

COASTAL DIVISION

1. Elkhorn 2-0
2. Valhalla 1-1
3. N. Y. P. L. 1-1
4. Ducks 0-2



Dana's overworked defense stops Doane's Sallier in the 41-0 defeat.

Owls, Tigers Chew Tough Vikings

Jerry Kramer, a noted lineman for the Greenbay Packers once said, "We never lose a game, the time just runs out." This was the case with the Dana College Vikings last Saturday against Tarkio.

After taking a humiliating defeat by Doane, Dana came back to play a game which saw them produce half as many touchdowns in one game as they produced all last season.

Dana and Tarkio played an almost even first quarter. The only scoring came from Ki Harvey. Harvey was the biggest thorn in Dana's side all night. He scored two touchdowns and was the key man in sustaining the drives in the other two.

The second quarter was all Dana's. The Vikings broke into the scoring column on an end run by Greg Hayes. The two point conversion on a jump pass from quarter-back Kirk McLaughlin to Jim Copp was good.

Dana's second touchdown was set up by an interception by the Viking's Rick Brandt. The Vikings drove down and scored on a fine hurdling exception by half-back Hayes. The one point conversion was good. Dana went into the locker room with a well earned 15-7 lead.

The 3rd quarter wasn't as impressive for the Vikes as the second quarter. Thanks to fumbles and interceptions Dana's lead fell quickly. After being stopped by a tough defensive stand by the Vik-

Football Schedule

Sept. 13-Doane 2:00 p.m. here
 Sept. 20-Tarkio 7:30 p.m. there
 Sept. 27-Westmar* 7:30 p.m. there
 Oct. 4-Concordia* 2:00 p.m. there
 Oct. 11-Nebraska Wesleyan here
 Oct. 18-Midland* 2:00 p.m. here
 Oct. 25-Sioux Falls* 2:00 p.m. here
 Nov. 1-Yankton* 2:00 p.m. there
 Nov. 8-Northwestern* 2:00 p.m. here

*Indicates Tri-State Conference Games. All home games are played on Viking Field beginning at 2:00 p.m.

ANDERSON

DRUGS
 And
 HOLIDAY
 HOUSE
 Gifts and
 Student Needs

ings, Tarkio came back on a ball control drive and scored on a pass from the Dana 20 yd. line. The extra point was no good.

At the beginning of the fourth quarter Tarkio's Gene Richardson recovered a fumble and ran 20 yards for a touchdown.

The only other scoring came with four seconds left. Greg Hayes again jaunted over for the touchdown. The try for the two point conversion was no good.

The previous week the Vikings couldn't do anything right. Doane, who had won 29 games in a row, showed Dana why. The Tigers had everything going for them; a reputation, experience and a line that out-weighted Dana's by 50 lbs. Doane completely dominated the first half, but in the second half Dana showed a good defense and sometimes a rambling offense. But when all was over Dana was just #30, a victim of the tremendous Tiger attack, 41-0.

At Tarkio, and in the second half of the Doane game, Dana showed many Viking fans what it was like to be on the side of a team that has the possibilities of being a winner. Maybe in the next game the time won't run out.

GAMBLE STORE

- * HARDWARE
- * SPORTING GOODS
- * HOUSEWARES
- * AUTOMOTIVE SUPPLIES



Nielsen's Shoes

Washington Street

Lang and Trotter

FURNITURE & APPLIANCE

For The Student Needs

Radio and Record Player Repair

SAFEGUARD YOUR CASH. HAVE RECORDS.

CHECKS

VALID RECEIPTS

FAST PAYMENTS

SAVE STEPS

MAKE DEPOSITS BY MAIL

WASHINGTON COUNTY BANK

Compliments Of

Korshoj Construction Co., Inc.

COMPLIMENTS OF

Blair Telephone Co

Free Personalized Checks With New Accounts

Blair Bank

Scheffler Sporting Goods

1647 Washington

Bette's of Blair

For your school work:
 Typewriters and adders
 For your pleasure:
 Panasonic - radios, tape recorders and TV's.

Miller-Rolland TV-Furniture Appliances

Your GE-Zenith-Magnovox Dealer

Largest Selection of Stereo Tapes, L.P. Records in Blair

1526 Wash. St., Blair, Nebr.

CHRISTIAN NEWS Free For All Students

CHRISTIAN NEWS New Haven, Mo. 63068

Please send me your paper free of charge for eight months.

Name _____
 Address _____
 City _____ State _____ Zip _____
 College _____

CHRISTIAN NEWS is an independent, conservative newspaper dedicated to Biblical Christianity, the highest standards of scholarship and unmanaged news.

Kappa Theta Phi

By Judy Zimmerman

The Theta Phi's enjoyed a successful Rush Night and are now planning a getting-acquainted tea to be held September 29th for all girls who expressed their interest in the sorority. The next pledge class will be second semester, and will consist of about 14 girls. Any girl who did not sign up Rush Night, but who is interested should contact President Jean Brehm or any Kappa Theta Phi.

We have recently learned that our adopted daughter, Maria Abadia de Kima of Brazil, has received a good job and has been dropped from the Christian Children's Fund register. The sorority has been assigned a new daughter, Nilva Alves Rabelo, an eleven year-old Brazilian with whom we should soon be getting acquainted.

Top-secret plans are now in the making for another prize-winning Homecoming display (Freshmen note that the talented Kappa Theta Phi's won first place last year!). Make plans to be around and support your team Homecoming and every weekend!

Tau Gamma Rho

By Peg Guthrie

Caramel apples were the words Monday, September 22, as Tau Gamma Rho completed its first caramel apple sale. The sale included the campusing of all the dorms and was termed very successful with the selling of about 400 apples.

Many interested girls inquired about Tau Gamma Rho on Rush Night. As pledging draws nearer and applications are being received, the sorority has planned several functions. These include informal gatherings, a popcorn party, and a formal tea. Those girls who showed interest will be notified through the campus mail of the time and place of these events.

Other business included the announcement of the theme for Homecoming and the setting up of committees for the Sorority's display.

SEA Helps GOCA

The Dana Chapter of the SEA (Student Education Association) held its first meeting of the semester on Thursday, September 18, in Pioneer Memorial.

Guest speakers from GOCA (Greater Omaha Community Action) Tutorial Service were Mrs. Dela Bonner and Mr. Wilkenson Harper. They are interested in recruiting help from any college students interested in helping children who are having difficulties in a particular subject. Mr. Harper explained that the subjects most often taught are Mathematics, Reading, English, and History.

The program will be set up according to the student-teacher's schedule and transportation will be provided. Notices will be sent through campus mail concerning the program and a table will be set up in the center for those interested to sign up.

The members of the SEA executive committee attended a Leadership Conference on September 21 at Midland College. The fall conference of the state-wide chapters will be held at Peru College on November 15.

Any student who has an interest in the department of education should think about joining SEA. As Dr. Melvin Boehr, the sponsor, has indicated, "The organization is very happy for the relatively large membership sign-up. This indicates that many Dana students are vitally interested in education."

Fraternity Is

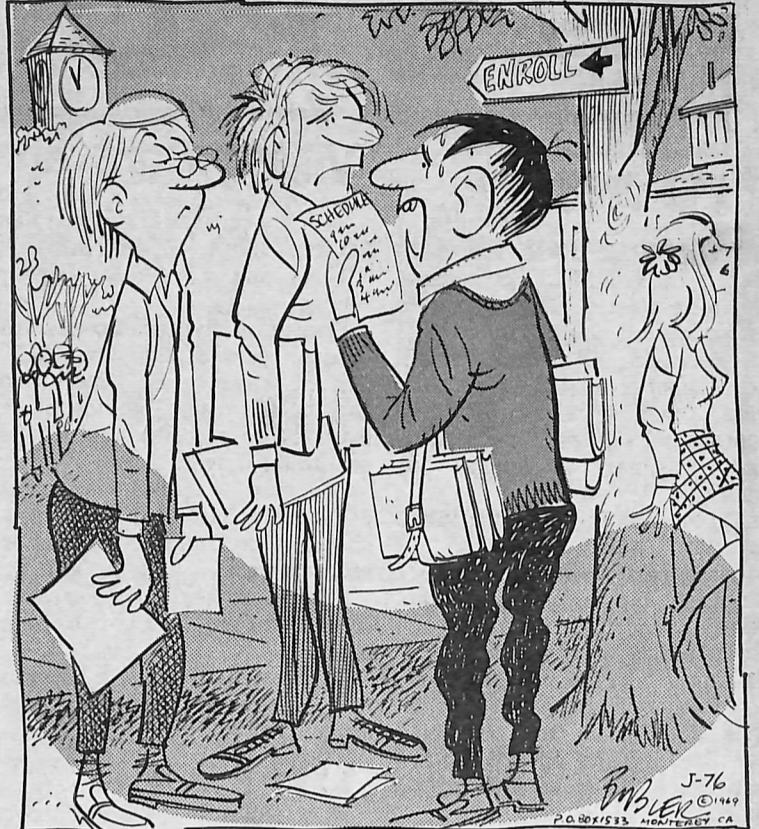
By Jim Scopac

Fraternity is a group of men joined together by a common interest, for fellowship . . . people with the same beliefs and interests. This is what has brought the Dana College men together to form Delta Sigma Omega. We are 18 men from all parts of the country, and different walks of life brought together for a brotherhood of cheerful service to one another and those around us. Even though the basis of Delta Sigma Omega is social brotherhood we feel that in order to exist, working for the student body, the faculty and administration must be an integral part of our existence.

Delta Sigma Omega does for Dana . . . In the past we have been a part of Dana. We entered a float for the Nebraska Centennial, we sponsored a dance and we will try to do it once again. The men of Delta Sigma Omega sponsored a float for Homecoming 68. We have also tried to be an example on campus by upholding rules of the campus. With the help of Dana we will try to open new doors to benefit both Dana and Delta Sigma Omega.

We are now ending our fourth year of existence and entering our fifth and most progressive year. Delta Sigma Omega has now taken the largest pledge class in its history. We feel that with this pledge class we will have a more closely knit brotherhood of men dedicated to help the men and women of Dana College and the men of Delta Sigma Omega. Help us to help Dana.

LITTLE MAN ON CAMPUS



"HOW DO THEY EXPECT US TO EVER GET AN EDUCATION IF WE HAVE TO SPEND ALL OUR TIME GOING TO CLASS."

LEARN TO FLY Flightland Airport

15 Minutes On The High Road To Omaha
For Further Information Contact:

Prof. George

SAVE  **SAVE**

"X-tra Kick" Food Special

Your Choice

ONLY 9¢

With Each \$3.00 Gas Purchase

FREE CAR WASH

With Each \$5 Gasoline Purchase

Automatic & Self Service East Wash. St., Blair

Tissue Gum 6 Pak Cookies

PLAY IT SMART

Spacious parking—
drive-in window
1822 Washington

Equitable
SAVINGS & LOAN ASSN.

THE BIG . . . 

KOLTERMAN'S
BEN FRANKLIN
STORE

For The Students' Needs
Blair, Nebraska 68008

P. V. HANSEN
REALTOR

INSURANCE OF
ALL KINDS

Ph. 426-2244
BLAIR, NEBRASKA



Eat In Or Carry Out
Snappy Service
Comfortable Inside Eating

Hamburger 22¢
French Fries 20¢
Soft Drinks 10¢-15¢-25¢
Shakes & Malts 30¢

- Hours -
S. M. T. W. & T.
11 to 11
Fri. & Sat. 11 to 12

Lil' Duffer
Highway 30 at 10th Street

SAPP'S
BLAIR'S
FORD CENTER
Hiway 30 at Rt. 133
One Mile West of Blair
Phone 426-4126

RABBASS STUDIO

● FAST PHOTO PROCESSING
● CAMERA EQUIPMENT
In The Heart Of Downtown Blair

Reg. \$2.19

Secret Spray Deodorant

"Twin Pak" **88¢**
(Two in pkg.)

CREST Toothpaste

Family Size **59¢**
Reg. \$1.05

Gillette Super Stainless Steel Blades

5 Pak **39¢**
Reg. 79¢

You Can Do Better At

**Medicine Chest
Discount Center**

BLAIR