

HERMES

VOL. LIX, ISSUE I

Dana College, Blair, Nebraska

September 15, 1978

Dana announces new faculty

The biggest news around campus is about the addition of our new president, Dr. James Kallas. He has been Professor of Religion at California Lutheran College, is a member of Phi Beta Kappa and a graduate of St. Olaf College, Luther Seminary, Alliance Francaise of Paris and the University of Southern California.

Dr. Janet Weller, assistant professor of speech and theatre and director of theatre, comes to Dana from the University of Wisconsin-Madison, where she received her Ph.D in 1975.

While at Madison she directed Apple Corps. Theatre Ltd., a semi-pro company for ten years, and organized and directed the Lutheran Campus Players, whose productions have included several musical reviews and chancel dramas that she has written, translated, or adapted. She has an M.A. (1967) from the University of North Carolina at Chapel Hill and a B.A. from Valparaiso University, Indiana.

Dr. Thomas G. Williams, associate professor of music

and chairman of the music department, has taught at Arkansas State University, Jonesboro, Arkansas, since 1966. He was associate professor of music and coordinator of music education.

Dr. Williams holds a D.A. Music (1972) from the University of Mississippi; an M.M.E. (1963) from Drake University, Des Moines; and a B.M.E. (1972) from the University of Nebraska-Lincoln.

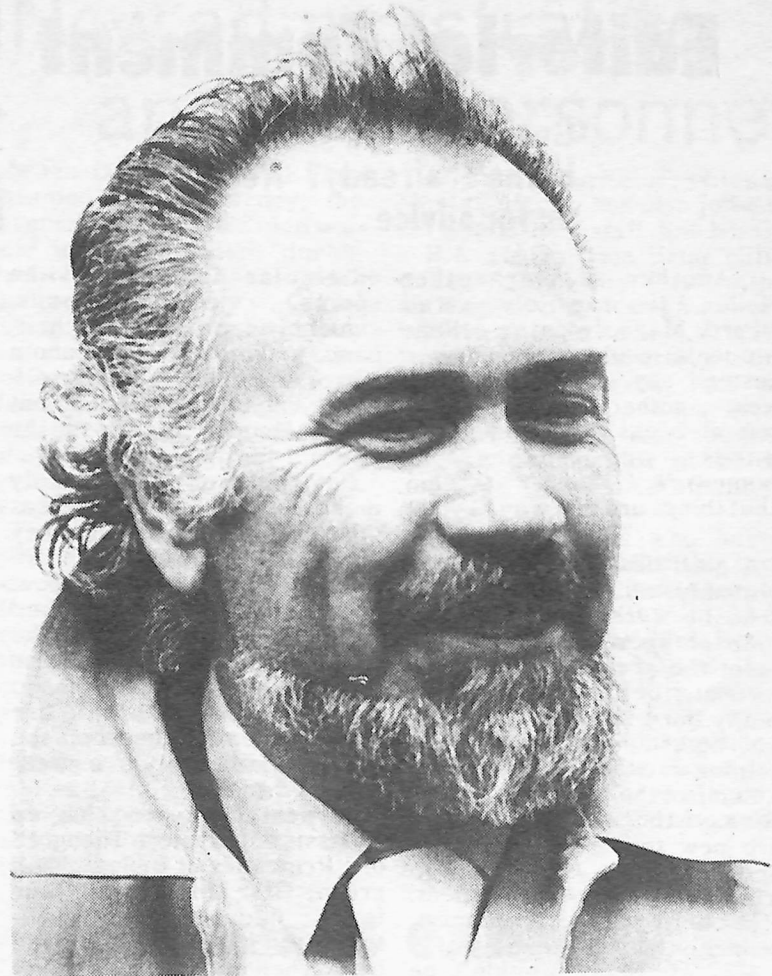
Ms. Betty J. Bullock, instructor of sociology, has been a professional research associate at the Creighton Institute for Business, Law and Social Research in Omaha. She was a project manager for a grant to study the possible link between learning disabilities and juvenile delinquency.

She is a Ph. D. candidate at the University of Kansas, Lawrence. Her M.A. (1973) is from the University of Kansas and her B.A. in 1970 from the Baker University in Baldwin City, Kansas.

Two new faculty members have joined the department of business administration: Mr. Elwin Lee Ahrens, assistant professor of business administration; and Mr. Eugene R. Pibal, assistant professor of business administration and accounting. Mr. Ahrens comes to Dana from Bellevue College, where he was an assistant professor of business. He received his B.S. in 1975 from the University of Nebraska at Lincoln, and is presently working on his M.B.A. He received his M.S. from the University of North Dakota, in Grand Forks.

Mr. Pibal has an ABD status in the Ph. D. program in business at the University of Nebraska-Lincoln and holds an M.B.A. (1965) and a B.S.B.A. (1964) from the University of Denver.

Mr. John Mark Nielsen, a part-time instructor, has been named the coordinator of Dana's teaching Learning Center, which helps students develop study and writing skills. A Dana graduate, he has an M.A. from Creighton University



President James G. Kallas

God's doors

He is a very busy man. He comes from California. He has been teaching religion classes at California Lutheran College. He is now here at Dana. He is our new President.

The election of Dr. James G. Kallas completes a year-long search to fill the office Dr. Mezzoff left. Dr. Kallas was selected out of 200 presidential candidates. This means that Dr. Kallas will become the 13th president of Dana College.

Kallas, a first generation Greek immigrant born in Chicago, comes to Dana with dreams and plans for a new future for the college. Having served in many countries around the world, Dr. Kallas hopes to generate a program whereby Dana College would be visited by great world Christian Leaders. "This would be a great thing for Dana."

Dr. Kallas indicated that his decision to come to Dana was very difficult. "I did not want to give up the classroom teaching... But now I hope to meet this new challenge." As he said, "God opened some doors, and closed others."

During his collegiate career he was awarded 12 letters in football, track and baseball. He has had experience as a professional football player for the former Chicago Cardinals and the Chicago Bears.

He has also won recognition as a lecturer and author. His works have appeared in Christianity Today, Journal of Biblical Literature and the Lutheran Standard. In addition he has also written six major books.

During the past ten summers he has conducted Christian Educational tours to the Holy Land and the lands of the Reformation.

Having come from immigrant stock, Dr. Kallas feels that that is one part of life that many young people today miss. He played on a softball team where there were many different nationalities. It was quite an experience, so he indicates.

This new position as a college president is also a new experience. This first year will be spent in learning the job. "This is going to be an exciting new challenge for me and my family..."

But for a man who has taught in the french Camerons, Dana is just one more challenge to master.

He is a man of ideas and dreams. He plans new programs for Dana. As our new President he is wished all the best.



President Kallas and Dr. Robert Glass lead Dana's Opening Convocation.

Opening convocation enlightening

Another year, another convocation n'est pas? There is a speaker, a bunch of students stand up and get recognized, and the choir, sweating under their robes, sings an inspirational number.

This year was special. We, the students of Dana met our new President. All reactions were overwhelmingly favorable. An energetic man, an eloquent man, his message, simply put, spoke to us.

Dr. Kallas used Corinthians; Paul's concern letters for a struggling Christian community, to point out our individuality. How unique, and yet how dependent we are on each other. Ideally we will put each watchless gift to work in harmony—a group united in their love for Dana

Then, of course, selected students were duly recognized for certain achievements; those involved in student senate and student govern-

ments, Dean's List students, Regent's Scholars, and all students who received scholarships from either ALC Central District or Western Iowa District.

The choir sang an inspirational number, sweating but proud under their robes.

September 8th dawned brightly on a new day and the opening of Dana's 94th academic year. Every sign seems to point with confidence to a good year, not just another one.

Art exhibit and sale in Parnassus

An exhibit and sale of original Oriental art by Marson Ltd. of Baltimore, Maryland, is scheduled for Parnassus on Wednesday, September 20, from 10:30 to 5 p.m.

Marson Ltd. specializes in exhibiting for sale in colleges, universities, and museums a collection of Oriental art of approximately 500 pieces from Japan, China, Indian, Tibet, Nepal and Thailand.

The oldest prints date back to the 18th and 19th centuries and include Chinese woodcuts, Indian miniature paintings and manuscripts, and work by such artists as Hiroshiga, Kun-

cyoshi, and Kunisada. The modern pieces consist of a large group of original woodcuts, etchings, lithographs, serigraphs and mezzotints by such artists as Saito, Azechi, Mori, Katsuda, and Maki.

A Marson representative will be available to answer questions about the work, artists, and the various graphic techniques used. Prints are shown in open portfolios in an informal atmosphere and the visitor is invited to browse. The price range is wide.

Editorial Comment Historical films to be shown

Got those "study-blahs" already? Read on for advice...

"Another day, another dollar." It's a quote we've all heard. Maybe we (the college students) could reverse it and instead say, "Another school year - another load of classes, a ton of books, and pages and pages and pages of homework." Doesn't it seem that things are this way to you?

A good deal of the time we probably all feel this way. School is work - especially this time of year. Everyone just spent the greatest summer of their life (or close to it) and it's really hard to think "school." The high temperatures aren't helping us either.

Some of the freshmen, might not have this feeling - yet. They are new to the college scene and everything is so exciting. You can't really blame them. But believe us freshmen, sooner or later it will hit you!

But we really wouldn't be giving school a fair chance if all we told our parents when we go home is: "School is hard labor." Think about the extra-

curricular activities like sports, religious groups, student organizations, choir, band, and more. Or how about the events SAB sponsors - movies, dances, entertainment in the Head or games in the Tail?

But perhaps what really makes school, in fact makes this school, is the people. They are one of those Dana differences you've all heard about and probably been asked about. It's just not the students, either; it's also the faculty, administration and maintenance. Sure, there are bad eggs, but on the whole the Dana community is a well-balanced group.

So next time you pick up "Classics of Western Thought" or "Principles of Biology" and groan, first think about your fellow students and be thankful for the friends you've made here. Then maybe with a sunny thought in your head - studying will become less of a task.

Julie McMahill

A ten-episode documentary film, "How Should We Then Live?," will begin September 17 at 6:00 p.m. in DHA. Written and narrated by Dr. Francis Schaeffer, the films trace the rise and decline of Western thought and culture.

The films, plus a companion volume with the same title, are the crowning work of forty years of study by the Swiss-based American theologian and philosopher. Shot in some 100 locations in 12 countries, the project took two years to complete at a cost of \$1.1 million.

With twenty published works, Schaeffer is known for his intellectual defense of Christianity and adherence to the necessity of Biblical absolutes. With this latest work, he hopes to present a viable alternative to humanism and, hopefully, to turn this present culture around and bring on a New Reformation.

Each of the 30-minute films focuses on a major historical age, beginning with the Fall of Rome up to the present day which he calls, The Age of Personal Peace and Affluence. In the final film, he reviews the last two decades and concludes that man's only hope is a return to Truth as revealed in Jesus Christ through the Scriptures.

This film is being sponsored by E. K., the Student Activities board, and the Humanities Dept. A humanities credit sign-up sheet will be available in the back following the film. There will be time for discussion of the film following the presentation.

9-17 *The Roman Age* -- Rome collapsed because it was built on man and his limited ideas alone. Early Christians survived the catacombs and the Coliseum by building their lives on a solid concept of God's truth and existence.

9-24 *The Middle Ages* -- The simple devout church in the Acts of the Apostles was tragically corrupted by political power and materialism. Dr. Schaeffer traces the subtle turning from the ways of God to the ways of man.

Student Senate report

The Student Senate agreed Wednesday night to allocate funding for a Student Directory. Student Body President, Stacie Goodrich, proposed an ad hoc position on the Executive Board be created, this position being Student Directory Chairman.

In years past there has been a student directory containing photographs, names and addresses of the individuals attending Dana. This list includes the faculty.

The present success of the Student Directory '78-'79 depends upon this year's student body. Look for the sale of directories close to Homecoming weekend. The approximate cost will be \$1.00 to \$1.25 a piece.

Anyone wishing to aid in the construction of this year's directory should contact Sheri John at Ext. 331. Any help would hasten publication and be greatly appreciated.

Campus Highlights

Lynn Wederquist of the Blair Bank and Blair attorney John O'Hanlon will again serve as co-chairmen of the 1978 Dana College Washington County Appeal, according to Eugene Meyer, executive director of college relations at Dana.

..Dr. Tom Williams will serve this year as the Nebraska President of the National Association of Jazz Educators. He will also serve as the Middle-Western Divisional Coordinator (which includes seven states) for this organization.

Approximately 2,000 visitors used Dana's facilities this summer for conventions, conferences, and retreats.

The groups, 13 in all, include the Central District Convention of the American Lutheran Church (ALC), a Catholic School Sisters Retreat, the Nebraska Bar Association, two Engaged Encounter Groups, a Norris Hale Coaching Camp, and a family retreat by Westminster Presbyterian Church of Lincoln, Nebraska.

Others are a Disciplined Order of Christ Retreat, a Methodist Marriage Encounter Group, a Central District Encounter School, the Nebraska Student Councils, a U.S. Cheerleaders Camp, and an ALC Leadership Seminar.

Dr. Delvin Hutton was a visiting professor of religion at UNO this summer, where he taught introduction to the New Testament.

Homecoming Weekend is coming up sooner than you think! October 6-8 is the date set for the annual event. Some of the activities will include: Dana vs Doane Football game, dance, parade, balloon races, bonfire, coronation of the queen and much more. More details in next issue of the *Hermes*.

The Dana Chess Club is issuing an invitation again this year to area residents of any age to join members in chess at 7:15 every Thursday evening. Players will meet in the cafeteria on the second floor of the Campus Center. Club sponsor Bruce Bergquist, asks that players bring their own boards and sets if at all possible.

Rush night annual affair

Involvement in campus activities is a key educational factor to both freshmen and returning Dana students. Rush Night, an annual sign-up event, will take place Monday, September 18th from seven to nine p.m. in the Campus Center.

Rush Night provides those students with a chance to join attending Rush Night will find the organizations of their clubs that agree with their choice. Tables representing interests and ambitions.

The *Hermes* is a bi-monthly publication put out by the students of Dana during the school year, except holidays and final exams week. Opinions expressed are those of the staff and not necessarily those of the administration, faculty, or remaining students of Dana.

Letters to the editor are welcomed, but they must be signed by the individual in order to be printed. Names will be withheld upon request. Letters should be sent to Box 1269, Dana College, Blair, Nebraska, 68008.

Publisher: Enterprise Publishing Company, Blair, Nebraska
Subscription rate: \$5.00 per year.

Editor: Julie A. McMahill
Staff: Anne Brose, Mary Erickson, Priscilla Hall, Ellen Hammon, Tom Harm, Guy Hartsook, Dan Jensen, Sheri John, Suzanne Lazzaro, Denise Mueting, Kathy Swensen, Kim Townsend.
Advisor: Don Warmen



Paris Kallas and Kirby Lewis wed in Black Elk - Neihardt park.

Kallas wedding symbol of union with college

Black Elk-Neihardt Park was the setting at 5 p.m. Saturday, September 2, for the wedding of Paris Kallas, the daughter of Dr. and Mrs. James G. Kallas, and Kirby Lewis, the son of Mr. and Mrs. Lyle Lewis of St. Paul, Minnesota.

In an earlier letter to wedding guests the Kallas family said that "For us, this is more than simply the marriage of our oldest daughter. In our minds, it has come to be a symbol of the union of the Kallas family to the Dana family. Not only will Paris and Kirby become one. But it is our prayer that this will be but the first step in an ever-enriching union between our entire family and you

people, the vibrant heartbeat of Dana College."

The ceremony, conducted by Dr. Kallas, incorporated the traditional service of the American Lutheran Church with several Greek wedding traditions, rich in symbolism, from the bride's ethnic heritage, and poetry read by friends of the bride and groom.

A reception and candlelight dinner in the Campus Center followed the ceremony. Guests included members of both families, friends of the bride and groom, and members of the Dana community.

The bride is a law student at the University of Puget Sound, Tacoma, Washington, and the groom is a sculptor who is both working and studying in the Tacoma area.

Alumni Association elects officers

Bob Krogh, a Blair businessman and a 1956 graduate of Dana, has been elected president of the College's Alumni Association. Of his election, Alumni Affairs Director John Beck says that "Dana and the Alumni Association are very fortunate to have Bob Krogh as its 1978-79 alumni president. Bob's experience, integrity and loyalty to our College make him an exceptionally well-qualified leader."



New Alumni President, Bob Krogh.

Krogh succeeds Sharon Mardeson Nelson, a 1961 graduate as president. Mrs. Nelson, of Omaha, now serves as past president and as a member of the Association's Board of Directors.

Other officers include Blairite Judy Rueter Brehm '67, secretary, and Herbert Knudsen '63, Bay Village, Ohio, vice-president.

Six of the 12 board members are also from Blair: Calvin Jorgensen '52, Stanley Lassegard '74, Homer Nielsen

'41, Roger Petersen '61, Adrienne Simpson '71 and Barbara Wolf Triplett '73.

Other members are Lois Lynge Boe '41, Omaha; the Rev. Thorvald Hansen '43, Audubon, Iowa; David Snowbeck '63, Wheaton, Illinois; Gloria Paulsen Weinman '71, Alliance, Nebraska, and Philip Wittig '56, Lincoln, Nebraska.

When are you open?

Are you irritated and confused when you make two or three trips to the bookstore to find it closed? One day in utter starvation I ran up to the cafeteria at 7:00 p.m. for supper to find the doors shut. My stomach growled even more when it realized the snack bar was closed, also. In a search to find what allotted times during the week one may talk to professors and advisors, study in learning areas, dorm visitations and eating hours, an investigation was taken.

If one day by chance you need to talk to your advisor, before you make that journey to that third floor office, consult the information and switchboard office. This office is open from 8:00 a.m. to 11:00 p.m. daily. These workers will give an adequate supply of information or refernece to any concern you might have. However don't ask them where the Blair information center is.

If you need a book from either the bookstore, the library or maybe a humanities reference from Parnassus, their hours are as follows: the bookstore is open Monday-Friday from 10:30 a.m. to 3:30 p.m. and is also suggesting a few hours on Saturdays to be available for business; the library hours run 8:00 a.m. to 11:00 p.m. Monday-Thursday

for early days and late night studiers. Remember we all have to party once in awhile so the library will close at 5:00 p.m. Fridays. On the weekends it will open at 9:00 a.m. and close at 4:00 Saturdays, while on Sundays will open at 3:00 p.m. and close at 10:00 p.m. Too much party on Friday night means church Sunday morning. On Monday thru Friday, Parnassus is open

from 8:00 a.m. to 5:00 p.m., Sunday: 2:00 p.m. - 4:00 p.m.; Monday and Thursday: 7:00 p.m. - 9:00 p.m. and a week before exams will be open every evening.

The Dana College administrative office hours for the 1978-79 school year are from 8:00 a.m. to 12 noon and from 1 to 4:30 p.m., Monday-Friday. The admissions office is also open on Saturdays from 8:00 a.m. to 12 noon and at other times upon request. Professors' offices have conveniently posted on their doors both class and office hours along with home phone numbers.

For some, the important hours are the eating and visiting the opposite sex's dorms. For those people the cafeteria in order to supply three meals a day and two meals on Sundays is open 7:30 a.m. to 8:30 a.m., 11:45 a.m. to 12:45 p.m., 5:45 p.m. to 6:30 p.m., Monday - Friday. On weekends it is open 8:00 a.m. to 8:30 a.m., 12:00 p.m. to 12:30 p.m. and 5:00 p.m. to 5:30 p.m. except for Sunday morning when we all have to fast disappointedly or not from Saga foods. In comparison to the previous year, longer intervisitation hours are in effect from 7:00 p.m. to 2:00 a.m. on Friday, 2:00 p.m. to 2:00 a.m. Saturdays and 2:00 p.m. to 12:00 a.m. Sundays. Weekday hours are from 7:00 p.m. to 12:00 a.m.

Now after reading this you will have no problem adjusting to a locked bookstore or cafeteria door. You might even want to cut out this collected piece of information for referral, until the times become perfectly memorable. Next time you won't be the one asking "When are you open?"

by Denise Mueting

Sorority speaks

Social Chairman, Jean Irby, presented a check for \$5,366 to the Muscular Dystrophy Association during it's annual marathon on KMTV. The money was raised in the 1978 Dance Marathon held last March here at Dana. Again, thanks to all who participated in the marathon!

The first KOI meeting of the 78-79 school year was held last Sunday in Blair lounge. All actives were present. Topics discussed included finances, future activities and Rush Night.

Anyone interested in being a pledge in the Autumn 1978 class should look for our booth on RUSH NIGHT. The table will have scrapbooks, pictures and a constitution available for inspection. An informal tea will be held later that week.

Also, COMING SOON...watch for a KOI SLAVE DAY...details to come...

Staff positions available

The *Hermes* has three staff vacancies which need to be filled. The jobs are: associate editor, sports editor and business manager. If anyone is interested, please contact Julie McMahill at Ext. 236.

Bible reading

(This column will have daily readings starting with our next issue).

Starting with the next issue, the *Hermes* will contain daily Bible reading.

- Sept. 16, Ezek. 22:23-31
- Sept. 18, Amos, 2:6-11
- Sept. 20, Amos 4:1-6
- Sept. 22, Amos 5:10-15
- Sept. 24, Amos 5:18-24
- Sept. 26, Obad. 1-9
- Sept. 28, Zach. 5:1-4

New administrative and staff personnel

When Dr. James G. Kallas assumed the presidency, the responsibilities of two men who held interim positions during the 1977-78 school year changed. Dr. Robert J. Glass, acting president, returned to his position as dean of the college, and Dr. Clifford Hanson, acting dean of the college, became associate dean of the college on an interim basis for the first semester.

Two members of the admissions staff have been given new assignments within that office: Bob Arnold, formerly assistant director of admissions and an admissions counselor, has been named assistant director of admissions and director of financial aide, and Richard Poggendorf, former admissions counselor, is now an assistant director of admissions.

A new counselor, Liesa Montag-Siegel, has also joined the admissions staff. She holds a B.A. (1972) from Briar cliff College, Sioux City, Iowa, with an English major and a minor in German, and an M.A. (1978) from the University of Nebraska at Omaha, with a major in English and a minor in drama. She has taught English composition at UNO and Iowa Western Community College.

New secretaries who have joined the Dana staff within the past few weeks include Sharon (Mrs. William) Jay in the business office, Pat (Mrs. Bob) Goodwin in the office of the dean of students, Kim (Mrs. Steven) Zentmire in the registrar and business office, Diane (Mrs. Owen) Picton in the library and Karyn Hagen, nighttime switchboard operator.

Parnassus exhibits

Dr. John W. Nielsen, has announced that first-semester exhibits in Parnassus Room will include "The Brotherhood of Man" by photographer John Zielinski.

It will open in Parnassus this Sunday, September 10, with a reception planned from 2 to 4 p.m. Zielinski, who will visit the campus later during the exhibit, has had work appear in many national publications. His books include *The Amish: A Pioneer Heritage*, *Portrait of Iowa*, *Mesquakie: And Proud of It*, and *Indians*. Zielinski is at present completing a series of three limited edition books—*These are My People*, *Children: Hope of Tomorrow*, and *Woman: In Search of Eve*— under the major title of *Brotherhood of Man*. The exhibit closes on September 29.

All are Dana alumni:

Richard Brink, who teaches painting at Hastings College; sculptor Donald Dynneson of the art department at Concordia College, Seward; & painter Ryle Smith who recently received his M.F.A. from the University of Nebraska-Lincoln.

A display of postage stamps with subjects related to the humanities scheduled for October 23-November 10 will be followed by an exhibit of ceramics and weavings by Omaha artists Jerry & Mary Jo Horning from November 12 through December 1.

"The Art of Christmas—The Tree, the Creche, the Print and the Book" will open December 3, the day of Dana's annual Christmas Open House, and will continue through December 16.

FREE

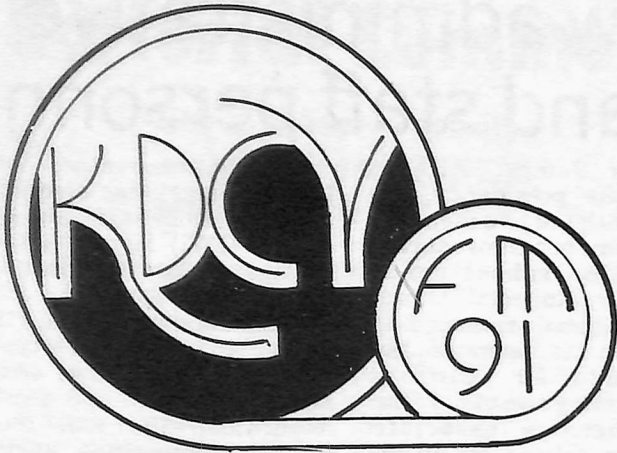
CATALOG of COLLEGIATE RESEARCH

Over 10,000 listings! All subjects. Send NOW for this FREE catalog. (offer expires Dec. 31, 1978)

Send to: COLLEGIATE RESEARCH
P.O. Box 84396, Los Angeles, CA. 90073



Student, faculty and family enjoy a picnic held during the first week of school.



Music, campus news, and special events are being broadcast Monday through Saturday on KDCV - FM (91.1), Dana's own student-operated radio station. Listen and hear for yourself what KDCV has to offer!

Hermes announces contest

The *Hermes* is challenging all talented and creative artists of the Dana Community and beyond to a contest.

What we want is a new mast for our headline. We still will keep the name *Hermes* but the mast needs a face-lift. The award-winning mast and its owner will receive a grand prize of \$10.00. If you have any questions, contact any of the *Hermes* staff. Entries must be turned in no later than 8:00 a.m. on Tuesday, October 10th. Send your signed entry to the *Hermes* via Campus Mail. The new mast will be revealed in the October 13 issue.

Ekklesia Koinonias calendar

Friday, 9-15:
10:00 a.m. Chapel, Mr. Dennis Barnum, director of admissions
Sunday, 9-17:
10:30 a.m. Worship service, sermon--"The Parable of the Good Employer," Pastor Bruce Bergquist
Monday, 9-18:
10:00 a.m. Chapel, Tom Kendall, a junior from Omaha
Wednesday, 9-20:
10:00 a.m. Chapel, President, James G. Kallas
Friday, 9-22:
10:00 a.m. Chapel, Mr. Gene Lindblad.
All-campus picnic, Wilson Island.

Nurses' notes STRESS

(This column is written by the campus nurse Bruce Sorenson and will be a regular feature)

What is stress? It's pressure from the outside that can make you feel tense inside. Some stress is part of daily life, but too much stress and its symptoms are common problems. Stress and how you handle it affects your health and happiness.

One of the main causes of stress is change, especially a sudden or disagreeable change. Too much or too drastic changes often result in harmful tension. Excessive tension can result in anxiety and depression.

Anxiety is that worried "uptight" feeling. It's a vague fear that something unpleasant or bad is going to happen; even if there's no real threat. The most common signs of anxiety are nervousness, trembling, dizziness, pounding heart, inability to relax, abnormal eating habits, and trouble breathing. Everyone has a certain amount of anxiety, but prolonged anxiety can lead to ulcers, high blood pressure, and an inability to enjoy life and the world.

Another result of tension is depression, that "sad and blue" feeling. It's a feeling of sadness or disappointment that leads to apathy and withdrawal for no specific reason. The most common signs of depression are fatigue, an

inability to concentrate, restlessness, lack of interest in food, sex, studies, and life in general feelings of worthlessness and hopelessness. Prolonged depression may cause such physical symptoms as headache, or weight loss, or may lead to drug or alcohol abuse. Some depression is normal, but prolonged depression is a serious problem.

You can do a lot to keep tensions within reasonable limits. Talk it over, exercise regularly, plan your work, take breaks, learn to relax, be realistic, and avoid stress!

If stress and its effects get out of hand, it's time to get help. It's not a sign of weakness or self-indulgence to get professional help--IT'S SMART! The campus pastor, or a clergy from your own religion is a key helping person. Your school advisor, the Dean or Assistant Dean of Students, or the School Nurse are concerned, informed people experienced in helping others solve problems. The local Mental Health Clinic or the F.A.C.E.S organization are excellent sources of aide and advice with the cost being based on your ability to pay.

So don't let stress get you down and keep you out, be optimistic!

Women's volleyball starts soon

The beginning of another school year marks the beginning of lots of things on the Dana campus. One of these is the beginning of another volleyball season for 20 of our female athletes. This season will be the first year of conference play for the Dana women. A strong group of returning starters have been complemented by a skilled and enthusiastic group of incoming freshmen. Probably the hardest task for coach Carol Hausserman and assistants Dick Johnson and Teresa Lee will be choosing the traveling team which consists of only 12 players.

Members of the team include returnees, Karen Allison, Patty Cleary, Mary Erickson, Teresa Michelsen, Chris Mulinex, Eva Riley, JoAnn Roberts and Lynae VanderWill. Beginning their first season here at Dana are Laurel Biffar, Peggy Coonce, Linda Dennis, Naomi Erickson, Lynette Gardener, Jean Hammack, Denise Honebern, Cathy Landon, Bert Nielsen, Peggy Lee, Jackie Payne & Kayla Walsh.

It's hard to say how the season will end this year, but it looks like it'll be another record-breaking year.

The first home game is September 25.

Intramurals underway

With the beginning of the 1978-1979 academic year the intramural programs are beginning to unfold. This year co-directors Roger Knowlton and Joann Roberts are looking forward to a fine year and encourage everyone's participation in all aspects of the intramural activities.

Sign-up sheets for intramural flag football are now being posted and the schedules will be out at the end of the week with the season beginning on September 18th. Any questions concerning flag football can be directed towards Bruce Zimmerman at Ext. 256. Bruce will be running this program and will appreciate help in the officiating of the games. All officials will be paid.

Activities, included in this year's intramurals are league play in flag football, basketball, volleyball and bowling. Tournament play will be in tennis, golf, softball, one on one basketball, free throw contests and swimming and diving competition.

Roger and Joann are busily preparing for this year's intramurals, participation and cooperation will be greatly appreciated. Roger emphasized the fact that the number one objective of this year's program is FUN.

Anyone interested in helping should contact Roger at Ext. 338 or Joann at Ext. 137.

The directors and the rest of the intramural staff wish the best of luck to you and your team.

Soccer off and kicking

Soccer practice began this week at Dana. Approximately 15 participants have been preparing for the first game, September 23 at Concordia College.

Soccer is not a Varsity sport at Dana but the club is growing. Uniforms have been purchased and Captain Skip Brown is setting up potential games against UNO, Nebraska Wesleyan and Creighton.

"We want to gain experience for possible participation in a league this spring," explains Skip.

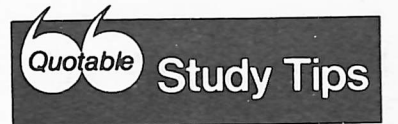
Increasing interest in soccer has been exhibited since the club's formation. Anyone interested in participation may attend practices at 6:15 on the practice field every week night.

Teacher tests coming

THE TESTS ARE COMING! Students completing teacher preparation programs and advanced degree candidates may take the National Teacher Examinations on any of the stated test dates: November 11, 1978, February 17, 1979, July 21, 1979.

On each full day of testing, registrants may take the common examinations, and/or, an area examination. Prospective registrants should contact the school systems in which they seek employment. Further information can be obtained by writing to:

National Teacher Examinations
Box 911
Educational Testing Service
Princeton, New Jersey 08541
by Guy Hartsook



from aap student service

"See as MUCH as you can
Learn from WHAT you See
Read WITH an intent to Learn
Study WHERE you can Read
Understand HOW to Study
Know WHEN you Understand
(Read the above from top to bottom, then from bottom to top.)

Lyle Tussing
"Study and Succeed"
John Wiley

By writing down what the instructor says in lectures you are helping yourself to be an active listener. You are also being realistic about the nature of human memory. Human beings quickly forget most of what they hear, no matter how much they would like to be able to remember.

-Walter/Siebert
"Student Success"
Holt Reinhart Winston

Football season

Dana met Missouri Western in their first game of the season last Saturday. The game, held in St. Joseph, Mo., had a final score of 42-20, with Dana suffering numerous injuries and the loss.

The first quarter featured two Mo Western touchdowns, on their first two drives. Dana was held to no first downs on their first two drives but a fumble by Mo Western, recovered by Jay Hartong gave Dana some momentum.

Quarterback Doug Meggison led the Vikings to three first downs with major carries by Tom Harm and an 11 yd. Pass reception by Rick Rostan. Unfortunately, an incomplete pass was intercepted by a Mo Western defender and once again Dana lost possession of the ball.

By halftime the score was 21-0, Mo Western on top. Passing yardage seemed to be their offensive advantage. Dana's Tom Harm had 51 yds. rushing in nine attempts and defensively Russ Hawley lead the Vikings with five tackles in the first half.

Second half proved better for Dana offensively. Meggison passes to Rostan and Webster mowed the Vikes to first & goal. Rich carried for Dana's first touchdown of the game. Lemon's kick was good. Two more touchdowns followed in the fourth quarter received by Nelson. A two point conversion failed but a Lemon kick proved good later leaving Dana with 20 points.

begins

Point returns accounted for two more of Mo Western touchdowns. Their tough offense provided them 42 points final.

Outstanding Dana defensive players included: Kevin Carlin and Russ Hawley seven - unassisted tackles; Jay Paist and Steve Daeges six unassisted tackles. quarterback sacks were performed by Jay Paist, Kim Townsend and Kevin Carlin.

Final stats: Total First Downs - Dana 19, Mo Western 17; Net yards gained rushing - Dana 90; Mo Western 200; Number Passes completed - Dana 15; Mo Western 8; Net yards gained passing - Dana 182; Mo Western 173; Total offense yardage - Dana 272 - Mo Western 373; Punting average yards - Dana, 35.1 - Mo Western, 37.0; Total yards penalized - Dana 35 - Mo Western 146.

Do you have something you'd like in the *Hermes*?

Contact:
Julie McMahon
at Ext. 236