



herald

The Messenger of Dana College

Volume LXI

March 12, 1982

Issue 7

New Parking Policy Announced

Chris Mead

At the January and February meetings of the Student Life Committee a new parking policy was developed. The administration will be putting this policy into effect as of Sunday March 28, 1982.

The new policy for Dana Drive includes the establishment of three new parking zones. The north and east sides of Dana Drive will be "No Parking - Two Away" zones. The only vehicles which would be allowed to park on the inner campus side of the street are regular delivery trucks which must put their warning flashers on. On the south and west sides of Dana Drive "Visitor Parking Only" zones will be created. And a Faculty/Staff parking area will be established near the northeast corner of Holling, on the west side of the drive.



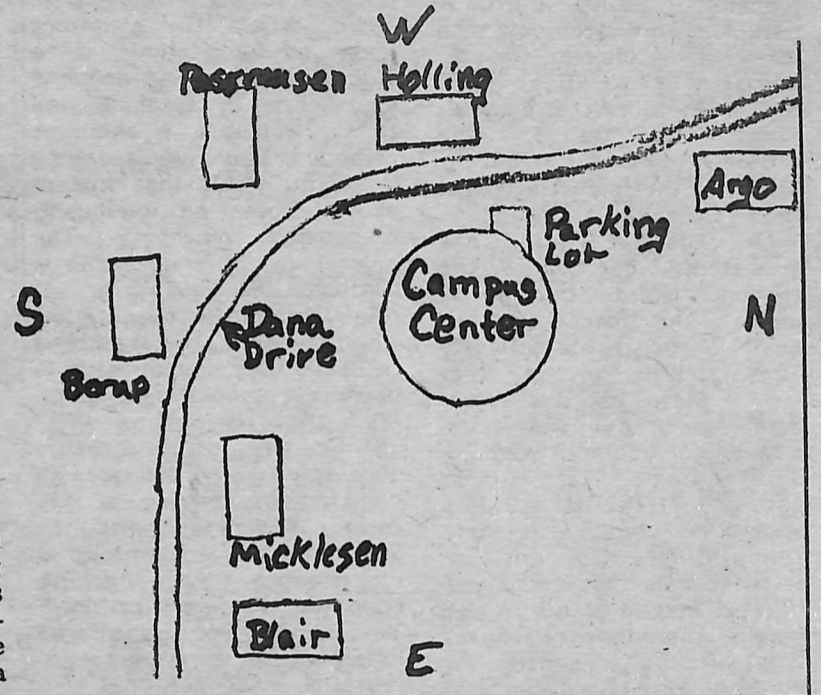
Photo by Rick Danforth
Visitor parking on Dana only and will be permitted only between 7:30 a.m. and 11:30 a.m. Any improperly parked or unauthorized vehicles will be ticketed by the city police. This

will act a greater deterrent to off campus visitors who were not subject to on campus ticketing.

The Campus Center parking lot will be a tow away zone for all improperly parked vehicles and for those not bearing a special permit.

For cars bearing Dana parking permits, the first violation will result in a minimum \$5.00 fine. The second violation will cost at least \$10.00. The third and all subsequent violations will be cause of towing at the owners expense.

Dean Dave Martin stressed that these changes are only the first in a series of steps which will be taken to resolve parking problems. These first steps needed to be taken immediately to relieve the hazardous conditions on Dana Drive.



Peace To be Discussed

Ellen Stokebrand

A symposium on Peace will be occupying the minds of many students and faculty members April 4th through the 7th, which are the first three days during Holy Week. This symposium, which is funded by Special Events, has as its purpose, to raise issues about Peace and Security.

The Peace Fair, which will be held in the Linden Room will have speakers and displays on the Peace issues. On Monday, April 5th, Herman Diers of Wartburg College will be speaking about the nuclear issues. Tuesday, April 6th will feature Frank Cordaro of Des

Moines, Iowa. Cordaro has spent years working with the poor and demonstrating for peace. In 1980, he and others were involved in an Act of Civil Disobedience at SAC in Omaha, where they changed the wording of a sign from "Peace is our profession" to "War is our profession."

Weston Webb of Grand Island will be speaking to the symposium on Wednesday, April 7th. Webb has been on the National Friends Service Committee and has done a lot of traveling in Latin America. The film Ground Zero at Bangor, which explores the emotional debate between advocates of disarmaments

and proponents of military superiority, will be shown Sunday, April 4th at 9 a.m. There will also be a prayer vigil on Wednesday, April 7th, for International Peace. This continuous prayer will be held all day and has been initiated with the cooperation of the Blair Churches.

A symposium, technically, is a conference to discuss opinions and ideas. The Coordinators of this Peace Symposium are counting on student body participation, so they may wrestle with all aspects of the peace issue and to become aware of all sides of the issue. All students who are interested in the Peace issue are encouraged to attend.

Summer Elderhostel Offered

Ann George
Public Relations

A session of ELDERHOSTEL, a national not-for-profit educational program for older adults, will be held here this summer from June 6-12. The session marks our entry into the program.

ELDERHOSTEL's popularity can be measured by its growth: from a start in 1975 at five New Hampshire colleges, it has expanded to 496 participating schools in all 50 states, Canada, the Scandinavian countries and Great Britain.

The liberal arts and science courses are taught on a non-credit basis and there are no tests or homework. The organization defines its "flexible guideline" for participants as being "60 years of

elder." Last year over 37,000 people enrolled in the nationwide program.

The program will offer three courses, scheduled so that participants can attend all of them. They are: "Aging Around the World" taught by Prof. Rodney Dannehl; "Human Creativity" taught by Prof. Frank Hengeveld; and "Walt Whitman: Poet of Youth in Old Age" taught by Dr. Bruce Bergquist, Dana's campus pastor.

Participants will stay in the Elk Horn Hall Conference-Retreat Center and have their meals in the Campus Center. Dave Martin, dean of students, is the ELDERHOSTEL coordinator.

The \$150 fee for the one-week

age or older or the spouse of an program is all-inclusive. Martin says that the program will also accept up to five commuting participants. Their \$50 fee will cover classes and noon meals.

Because registration has already started on the national level, those who are interested in participating fulltime either here or elsewhere are advised to write soon for this summer's catalog to: ELDERHOSTEL, 100 Boylston Street, Suite 200, Boston, MA 02116 (telephone: 617-426-8056). The catalog includes registration forms.

Registration for fulltime participation must be made through ELDERHOSTEL's Boston office. Those wishing to commute, however, can write directly to Dean Dave Martin.

An Omaha woman was charged with manslaughter Tuesday and held on \$50,000 bond in connection with the death of a two year-old boy left in her care.

The Lincoln Journal reported that the woman slapped the boy for wetting his pants, knocking him across the room in her home. The boy's head struck the edge of a sink leaving a large knot on his

forehead. The woman took the child to University Hospital where he was dead on arrival. The autopsy indicted that the probable cause of death was internal head injuries, including swelling of the brain. Acting Douglas County Coroner James Keenan said the boy's body was covered with bruises, his left leg broken, the boy's mouth was bloody and several teeth broken.

World News

Denise Giese

When the weather gets cold, crooks seem to stay indoors.

According to the Omaha World Herald, there has been 55% fewer robberies in January 1982 than the same time last year. The reason for this the police feel is because January's mean temperature was 17 degrees lower this year than last.

For example: A robber

planning a purse snatch or strong-arm robbery "preys on a target of opportunity," said an Omaha police captain. He might have to be forced to stand on a street corner for a long period of time waiting for the right victim. With the weather so cold, fewer people are out making him wait a long time. They soon give up and go indoors.



Only Seven Days Until Spring Break

Because this is a Christian College

Lawrence R. Lazzaro

Although I agree with Tom Quale's stance on the alcohol policy, I do not agree with his reasons for that stance and appreciate his allowing me to respond to his editorial published on page two of the February 19th issue of the HERMES.

Yes, Dana College is a 'college of the church' as well as a college dedicated to the teaching of the liberal arts. A pamphlet produced by The American Lutheran Church, Division of College and University Services entitled, 'Life in Relationship: The Colleges and the Church' discusses the liberal arts and the Lutheran tradition: 'The Lutheran tradition has consistently encouraged the vigorous examination of all ideas. The liberal arts are basic to such examinations. They free a person from narrow biases and intellectual dependence by developing powers of judgment and understanding. These arts cultivate intellectual attitudes and habits of investigation, speculation, coherent expression, and discourse. These flourish best in places of free inquiry where there is a shared language, mutual concern for other persons and disciplines, and an openness to dialogue and debate. The church college provides such a context.'

Let us assume that responsible drinking is not 'un-Christian.' Since alcohol is a part of our society, it is the job of the college to allow students to examine its uses as mentioned in the above quotation. That quote also states that such investigations 'flourish best in places of free inquiry. It seems strange to me that those pamphlets were distributed to the prospective students on campus for last month's Christian Scholar's Weekend to help them understand the Church-College relationship, despite the fact that this college doesn't even agree with some of the things mentioned in the pamphlet.

I mentioned earlier that responsible drinking isn't un-Christian, assuming that being 'Christian' is leading the type of life that Christ lead. 'Responsible' is the key word here. Unfortunately, the pre-alcohol policy drinking was far from responsible. So, to stop vandalism and loud, disruptive

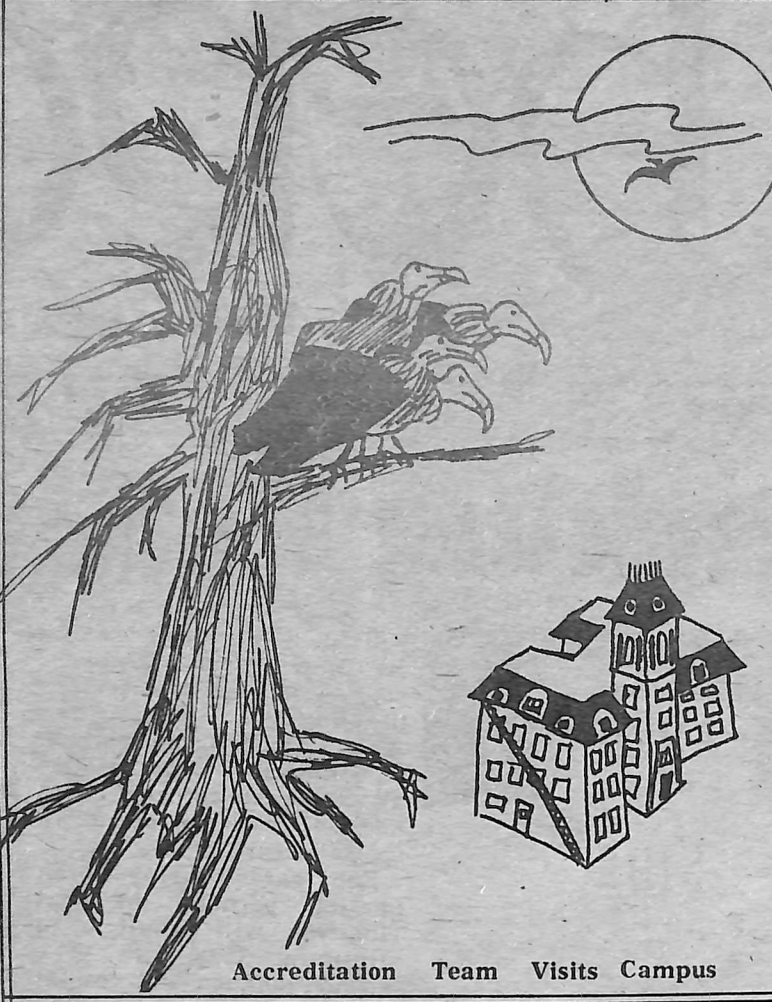
parties, the administration eliminated what they saw as the problem, alcohol. Wrong! Booze does not rip off doors, break windows and throw bottles, people do. The administration should have cracked down on the vandals and/or the irresponsible drinkers.

If a beginning swimmer coughed up some water and Coach Lemon pulled him out of the water and forbid him to swim, would the swimmer learn how to swim? If a student teacher had one bad experience in teaching and Dr.s Olson and Weckmuller removed from the teaching program, would that student ever become an intelligent, responsible teacher? The answer to these questions is obvious. Why hasn't the administration figured out that when students are not allowed to drink they cannot learn to become responsible drinkers. Isn't that obvious as well?

Since the administration eliminated a problem with drinking by barring alcohol from our campus, will they eliminate a problem in a classroom by barring education from our campus? Yes, it's facetious, but it's an extension of the same principle.

Granted, it is considerably easier for the administration to sit back and say, 'NO DRINKING!' That way they don't have to deal with the problem, but is Dana accomplishing its duties as a liberal arts college of the American Lutheran Church? We should open our doors to such problems in an attempt to solve them, rather than turn our backs on them, leaving them for someone else to solve. We can't live in a bubble and expect to spread the Word of God, to a society that we close out of our churches and schools.

It is not too late. Just like anything else, this policy can be changed if enough students express their opinions. Write a letter or start a petition! For once, Dana students do something to change an injustice. Stand up for what you believe in. There is nothing wrong with disagreeing with the present system. If you are called a radical, just realize what good company you're in: Luther, Galileo, Darwin, Marx, Tolstoy, Dostoevsky, Lenin, Jesus



Accreditation Team Visits Campus

Dana Drive Taboo

Thomas Quale

Word has come down from on high and the message reads "Thou shalt not park on Dana Drive." Several weeks ago the students were informed of the new parking policy to be implemented on campus. I am not against parking policies *per se* - we need a parking policy. We cannot have people parking wherever their heart desires. But the administration should think hard about what the future will bring and how they will handle it.

Even now, without declaring Dana Drive off limits to student parking, Dana's parking facilities are sadly lacking. Anyone can see this whenever there is any large campus event such as Homecoming, the Sights and Sounds of Christmas or a visiting theologian. Such occasions never seem complete without that familiar line of cars parked on both sides of the street in front of Mickelsen so that traffic is forced to be a one-way trickle. As long as Dana continues in its fine tradition of being a tourist trap and until it has larger and more adequate parking facilities this scene of car-choked streets will continue.

Dana is growing-one has only to count noses to see the truth of that-and every year Dana plans to grow bigger and bigger. As Dana grows so, obviously, will its enrollment and so, obviously, will the number of cars on campus. Provision has to be made for these projected newcomers and their vehicles. You can't shrug and say "God will provide." God doesn't come equipped with an asphalt truck. Everyone must realize that more cars are coming and there isn't enough space for everyone now. Where are you going to put them? Tell us to get off Dana Drive but give us some place else to park our cars!

Dean Hanson Grades Grades

Dean Clifford Hanson

My thoughts on grades may lead you to believe that I am against sin and for motherhood. --Well, I guess I am.

In academic circles there has been and there continues to be discussion regarding the significance of grades. Grades are necessary to determine if a person fulfills requirements for a degree. Also they are needed to maintain standards for entrance into certain programs of study, such as teacher education. Systems that colleges use for conferring honors such as naming persons to the Dean's List, determining which students should graduate with distinction, and awarding scholarships depend on grades.

On the other side voices continue to be raised claiming grades are overemphasized. People will argue that students figure out ways to pass tests without getting a good grasp of the material. They get passing grades by cramming for examinations, by memorizing independent facts without understanding them in context.

In other words they get passing grades but fail to get a good education.

Though attempts have been made at colleges to deemphasize or even eliminate grades, the experiments do not work. Grades obviously function for institutions to determine the achievement of students. For the students they function as feedback to help them evaluate their progress. Even conscientious students need tests and grades on those tests as secondary motivation to spur them on to fulfill their primary goal of getting a good education. In spite of these proper uses of grades it is still possible, as some objectors affirm, for students to get passing grades by studying very little and then cramming for examinations. If the goal of getting a good education can be consistently borne in mind by students, then they will be motivated to schedule time carefully and study systematically. Test grades will not then be looked upon as the only concern, but rather as indicators of progress toward the goal of significant self-development.

Next issue:

A letter to our beloved President Reagan

HERMES is published biweekly by the students of Dana College.

Editor-in-Chief	Christi C. Mead
Associate Editors	
News	Lisa A. Galvin
Editorials	Thomas Quale
Features	Ellen J. Stokebrand
Sports	Janice K. Schlange
Arts	Lawrence R. Lazzaro
Head Photographer	Rick Danforth
Business Manager	Donnalee Prillaman
Advisor	Luella K. Nielsen

The HERMES encourages its readers (students, faculty, administration, and staff) to respond to subjects dealt with in this publication as well as subjects that the writer feels are worthwhile.

Due to lack of space, please limit all letters to 200 words or less. Letters intended for publication must be signed. The HERMES reserves the right to edit any materials before publication although HERMES policy requires the edited version to be returned to the writer for his approval.

Please send all letters through campus mail to Chris Mead or place them in the HERMES Squawk Box in the Campus Center.

We look forward to your comments and/or concerns.

Editorials and Letters to the Editor do not necessarily express the opinions of the HERMES staff, Dana College and its employees, the Dana College Board of Regents or the student body.

Letters to the Editor

Dear Editor,

I am a lonely prisoner in the Southern Ohio Correctional Facility for men, and I have nobody to correspond with but my Mother. I hope that by your printing this letter, someone will be kind enough to write me.

Friendship is a wonderful thing. I only hope someone will give me a chance to be their friend. I am 28 years old. I will

welcome any and all letters and I will be honest and answer any questions anyone might ask me. Thank you for reading this. Please put your name and address on the inside of the envelopes if you will.

P.S. Please Write.

Yours Truly,
Adrian Hanni
Box 45699 *136-055
Lucasville, Ohio 45699

February 20th the Student Activities Board and *Ekklesia Koinonias* jointly sponsored a concert by David Meece. Those people who served on the concert committee put forth a multitude of hours preparing for this concert. It was rather disappointing to realize that Dana students were the minority in the audience.

After the poor attendance at that concert, I hope that the next time any one of you starts

to complain that there is nothing to do on campus, maybe you should look at the events that have occurred that you never bothered to check out.

My main point is the lack of student support to the efforts of student body-sponsored activities. We've paid for it, why not partake of it?

Tera Nohrenburg

Mrs. Kallas Promotes Progress



Photo from P.R. File President and Mrs. Kallas with constituents.

Chris Mead

What would a woman who has lived in such places as Paris, Los Angeles, and Africa find to do in Blair, Nebraska? When asked this question Darlene Kallas, wife of Dana president James Kallas, smiled and said that it all depends on your perspective. "A lot of people ask me about life in Blair. To someone in Paris the midwest is an exotic place.

In answer to questions about how she spends her time in a small town Mrs. Kallas said that she wished she had time to find out what small town life is like but that their extensive speaking schedule simply doesn't allow her to become involved in many community events.

"Life here is like life in a hotel," Mrs. Kallas said. She also said that she would like to become more involved in everyday campus life and take some classes. "I'd like to raise plants."

Mrs. Kallas has some very definite ideas about ways in which she would like to see Dana grow. One of these is a program where a group or individual would sponsor a student. The sponsor would pay tuition and other costs normally covered by scholarships but this program would give the sponsor more contact with the students they're trying to help.

She is also looking forward to the construction of the new on-campus presidential housing. The presidents house, she

feels, should be a place where friends and family of Dana students can drop in and visit. She should also like to have a place in the house to display students art work. Mrs. Kallas already has a start on such a collection. She has purchased art work from several Dana students. "I like to buy art work when I can meet the artist and pay him myself," she said.

The Kallas home is full of many curious and unusual works of art, some done by members of her family and others collected on their travels. Mrs. Kallas was quick to point out paintings and sculpture created by her daughters and son-in-law. She is also very proud of a chess set which her son had carved.

Mrs. Kallas sees events rather than objects when she looks around her house. The end table in the corner is the steamer trunk her grandfather brought when he immigrated from Germany. The giant pillows on the floor were a gift from a friend in the Congo. The painting on the wall is a contribution made to an underground art movement in South Africa.

Many of the people who are giving large sums of money to the Centennial Fund have never been to Dana. They're giving money to an ideal, Mrs. Kallas said they believe in the ideals of a Christian education. They believe that Dana is realizing that ideal and they want to see that continue. Mrs. Kallas has spent a great deal of time working for the ideal of Christian education. The time spent away from home is exhausting but Mrs. Kallas is very proud of Dana's recent growth. "You have to believe in what you're doing."

Social Issues Interest Students

There is something new on campus! The Social Awareness Organization is now meeting on Thursday evenings at 7:00 PM in the Business Lounge of Old Main.

The group began with Social Work and Sociology majors who wanted a vehicle for dealing with their concerns. It quickly became apparent that there is a base of concern about social issues on campus, and that this interest transcends the boundaries of vocations and majors. Thus, the group is organizing itself to include everyone on campus who wishes to learn about and perhaps to act upon a wide variety of social issues - from the cutting of Basic Educational Opportunity Grants to minority voting rights.

Over 20 students attended the organizational meeting, during which the group decided to begin work in sub-groups on the following concerns:

1. BEOG's: How will students be affected by cuts? What are our options? What action can be taken?
2. THE VOTING RIGHTS ACT: What is involved? How can we help to insure its extension?
3. FOOD AND HUNGER: What is the extent of the

problem here in Nebraska? Can we come up with some creative ways to address the problem of production and distribution locally?

4. SERVICE PROJECTS: Students plan to organize efforts to get concrete aid (such as food and clothing) to victims of poverty.

5. DANA'S SOCIAL WORK PROGRAM: Students are interested in building the program and in looking into the issue of accreditation.

6. FIELD TRIPS AND SPEAKERS: The group plans to arrange field trips to visit special programs and agencies. In addition, efforts will be made to bring speakers to Dana to discuss contemporary issues.

The students agreed upon chairpersons for each of the concern listed. The job of providing refreshments for meetings will be rotated. The following officers were elected to coordinate efforts:

President, Larry Lazzaro; Vice President, Evonne Foust; Sec. Treas., Marla Dunn

We are hopeful that this group may provide a needed forum for the discussion of current social issues. All students as well as faculty members are invited to participate.

Ministry Teams Accomplish Much

Susan Ostrem

Do you have this conception that Son Light, Now and Forever and SLEC the Dana ministry teams, are a bunch of Holy Rollers and Bible thumpers? That they are out to convert the entire Masses? Unfortunately many students on campus have this thought.

Being on one of the teams does not mean you have to run around acting like Oral Roberts or blessing everyone in the the name of Billy Graham. What the members do is meet once a week and work on skits, songs and share ideas that they might have for future bookings. Like any club or organization there are the fun, goof around times but there are also the serious and meaningful ones. It is a group where students can come together to learn and grow in their faith.

When going out on a booking the teams have several options to offer the churches. They can go for a whole weekend and work with the youth groups, spend a day with the youth, or even do an entire worship service. They cater to the church's wishes. Working with the youth can be a challenge. Sometimes a portion of the skits and songs will be just for fun, having the kids be able to laugh at themselves and each other. But there are serious ones that are tied in along with

them. These help the youth to be able to sit back and maybe think to themselves, "Hey, I never thought of Christianity like that before." Through this procedure, the teenagers do not feel like they are getting it shoved down their throats, and it is more volunteer learning bases. The same thing is true for the team members themselves. If they are not careful, more times than not, they discover that they have also grown along with the kids.

In the Sunday worship services and concerts at the nursing homes, the teams follow a general format. Again, they use skits and songs besides hymns, to produce a warm and meaningful message in which they want to get across to the congregation. To add to the worship service, guitars, pianos, recorders, flutes and carabas are used.

The teams also do not limit themselves to the Blair-Omaha area. Just within this year, they have gone to Iowa and South Dakota besides places in Nebraska.

So next time you see a sign up in the information window posted for the different Dana Ministry teams, don't think, "Gosh, not those thumpers again!" You can stop and say to yourself, "Hey, they are a great group after all and are really accomplishing a lot."



FOOD CRISIS IN POLAND

FOOD DELIVERY GUARANTEED TO THE NEEDIEST PEOPLE

\$12 buys one 23 lb. food package

PLEASE SEND YOUR TAX-DEDUCTIBLE DONATION TODAY!

CARE FOOD FOR POLAND

3600 Broadway Kansas City, MO 64111



Volunteers Lighten Load

Brenda Krula

Have you ever wondered about the people at Parnassus who give you Hum tests to review, take your money for excursions, or give you answers to any questions you have? Student volunteers have been a part of Parnassus for about eight years out of the twelve years it has been in existence. Originally, Parnassus was run solely by the lady assistants. However, as the Humanities program grew, Parnassus became a busy place. The Parnassus assistants were constantly running to answer the phone, issuing tests to Hum students for review, setting up the exhibits, and taking care of all their other responsibilities. Dr. Nielsen realized how busy the Parnassus ladies were. He asked for students to volunteer to help with some of the duties of Parnassus. The student response was excellent. A system was devised that permitted volunteers to help with some of the duties of Parnassus. They attend to various duties that help lighten the load for the Parnassus ladies.

The tasks of a Parnassus Volunteer involves taking money from students for excursion tickets, attending to

the sign up sheets at events, correcting the objective section of Hum tests, and answering their questions. This relieves some of the burden placed on the Parnassus ladies and Dr. Nielsen. Of course, during the slow periods, Parnassus volunteers can study.

The Parnassus volunteers are lead by coordinators who are responsible for getting student volunteers. The coordinators are also responsible for rearranging the pieces of furniture in Parnassus for special events. They are also in charge of special projects sponsored by Parnassus such as the Haunted House which was held on campus last year. This project raised the money to buy a new stereo system that is now in Parnassus.

Parnassus volunteers are always ready to pitch in and help to keep Parnassus running smoothly. The volunteers appreciate the relaxed atmosphere for study and feel that Parnassus is a special place worthy of their time.

Parnassus is open to everyone (not just Hum students!) for study from 8-5 week days, 7-9 on Monday and Thursday nights, Sunday afternoons from 2-4, and two evenings before a Hum test.



Photo by Rick Danforth Leanne Danahy at the Parnassus desk.

"Pete" Finishes 40 Years

Peterson Retires From Coaching

Janice Schlange

Coach Paul (Pete) Peterson has officially announced his retirement from coaching. The announcement came before the final game of the 1981-82 basketball season. Though retiring from coaching, Peterson will continue in his position as Athletic Director and Chairman of the Department of Physical Education.

Paul Peterson came to Dana in the fall of 1942 to coach football and basketball. He did no classroom teaching at the time he first became a part of Dana College. In 1942 a women's basketball program was begun and it ran until 1968, when it was discontinued until its revival in 1976. Coach Pete noted that he was extremely pleased with the upswing in women's athletics at Dana. "It pleases me to see girls involved in athletics - its Great!" says Peterson, "and they have improved tremendously in the last few years."

When asked what stuck most in his mind about being at Dana, Pete cited the academic advancements in the fields of physical education and health. He said that having a whole curriculum of majors including health, physical education and recreation, and coaching endorsements in major high school sports at a school of this size is quite unusual. "It's particularly satisfying when the State finds the departments acceptable and our philosophies approved. It is a credit to the students as well as the teachers and coaches," said Coach Peter-

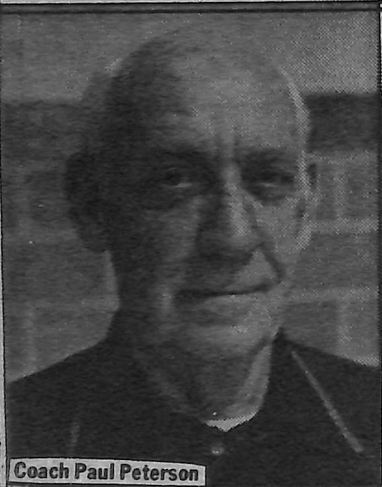
"Dana students represent Dana as Dana should be represented. I have a high degree of respect for the young men and ladies who are here and those who have been here, for they have always represented Dana well. This is the philosophy of the whole department and I hope it will continue though I won't be coaching." He stated that the

players from Dana have many positive attributes to give any team. The teams, according to Pete, may not always win but they always play to win and never give up. "It is a quality that says a lot for the players as well as a lot for Dana."

Coach Pete was named as the NAIA Coach of the Year for the 1979-80 basketball season to top off his last winning season at the helm of men's basketball. "The credit for that award does not belong to me," said Pete, "the credit goes to the team. What they achieved made it possible, I give all the credit to that group of players." Peterson noted that that particular team, as with any team at Dana, functioned under various handicaps. He said that not only being a small school that does not have the chance at some athletes that larger universities do, but also the fact that Dana's philosophy is that academics always take precedence over athletics. Pete feels that this is a good policy though it may mean that Dana athletes will always have to work that much harder to be recognized as above average athletes.

Coach Peterson also commended the Administration and the Board of Regents for their acceptance of athletics and their help in providing Dana with their athletic facilities. Pete feels that with the improvements being added every year that Dana has the facilities to rival any of the other schools in the conference. They may not be that expensive or as new as some of the others but they meet the needs of the programs we have.

Though Coach Paul Peterson will be retiring from the coaching profession at Dana College, we will continue to see him around campus. Pete said in closing, "I've been here 40 years and I'll be here another 40 if they'll have me."



Coach Paul Peterson

There are a total of twelve varsity level sports at Dana and this seems remarkable for a small school. Coach Pete gives the credit for this success to the students as he said,



The final Viking varsity to be coached by Paul Peterson.

Vikings Win The Close Ones

Jeff DeYoung

The Dana Vikings closed out their 1981-82 season winning two of their last four games. Also, the Vikings benefitted from a forfeit by Buena Vista, a team that had earlier beaten the Vikes. Buena Vista was forced to forfeit most of their games because they used an ineligible player. Thus, the Vikings ended the season at 8-18, 4-6 in the NIAC, good for a 4th place tie with Nebraska Wesleyan.

Against Concordia at home, the Vikings were trying to avenge an earlier loss up at Seward. However, things did not go the Vikings' way. After keeping the game relatively close most of the way, the Vikes could not contain the Bulldogs and lost by the score of 89-73.

On February 13 the Vikings hosted a highly touted Hastings ballclub, undefeated in conference action. Three Dana seniors were playing their final home game: Terry Kelly, Pat Kenealy, and Mark Page. The Vikes started out as if they might run away with it, but Hastings, behind hot-shooting senior Mark Hiatt, took the lead and led 43-39 at halftime. The Broncos started out strong in the second half but the Vikings were up to the challenge. Behind Kelly and Robert Mitchell they seized the lead up until the last minute and a half when the Broncos grabbed a one point lead. Tom Kammerer, who had just entered the game, was fouled and had a one-and-one situation with one second remaining. He coolly sank the first shot, sending the game into overtime. The Vikings won the game in OT when Randy Hagedorn hit two free throws with 1:14 remaining. The final score: Dana 83, Hastings 82. Terry Kelly led the Vikes in scoring with 19 points, followed by Hagedorn with 17, Mitchell 16, Curran 14, Kenealy 8, Kammerer 5 and Page 4. Mark Hiatt had 38 to pace Hastings.

The Vikings sailed into Lincoln to do battle with the Nebraska Wesleyan Plain-

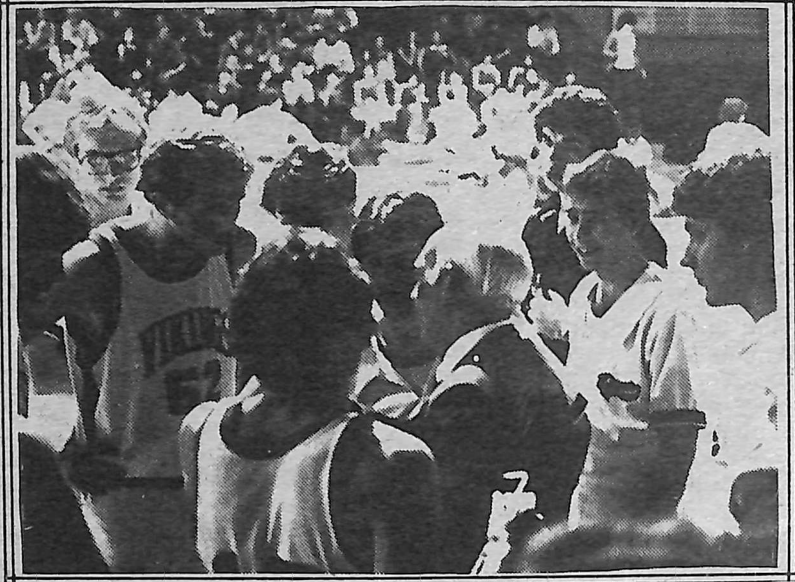
smen. However, the Plainsmen were ready and defeated Dana 76-68. Dana could never get untracked as their usually good outside shooting deserted them. Pat Kenealy had 17 points to lead Dana. Mark Page pumped in 14 off the bench, followed by Kelly and Curran with 12 each, Hagedorn with 11 and Kammerer tallied 2. Clark Rosenlof led Wesleyan with 20 points.

The final game of the season marked the last appearance in a Dana uniform for seniors Terry Kelly, Pat Kenealy and

Hagedorn led Dana with 17 points, Kenealy totaled 15, Kelly and Curran had 12 each, Kammerer tallied 6 and Page added 2. Baldwin led Midland with 15 and York added 10.

Post season honors were accorded to Terry Kelly and Pat Kenealy when they were named to the roster for the District 11 All-Star game March 15 in Kearney. Kenealy was also named second team All-District and Kelly received honorable mention.

Season statistics show Kenealy as the leading scorer



Coach Pete details strategy during a time out.

Mark Page. Also, it was the final game for Coach Paul Peterson, who was stepping down as head coach after 40 years. The game was played in Fremont against the Midland Warriors. The Vikings had a little difficulty getting out of the blocks and trailed by four at half-time. They found their second wind in the second half and led for most of the half. Midland tied the game and had a chance to win it but Davy York missed a shot and Tory

Baldwin fouled Kelly just as the buzzer sounded. Kelly stepped to the charity stripe and hit the first free throw to win the game for the Vikings in a game few will ever forget.

with a 14.5 points per game average. Curran averaged 12.8, Hagedorn 12.4, Kelly 12.2, Page 5.5, Kammerer 5.4, Mitchell 3.8, Herrold 2.3 and Koca 1.8. Scoring averages were unavailable for Jensen, Kirk, Jansen and Sklenar. Kenealy and Hagedorn both were among district leaders in rebounding with 8.7 and 7.3, respectively. Page shot 79.3 percent from the line for the season, followed by Hagedorn with 78.6 percent, Kelly 77.4 percent and Kammerer with 77.7 percent. As a team the Vikes shot 43.8 percent from the field and 68.0 percent from the line. They also averaged 34.7 rebounds a game and 66.5 points a contest.

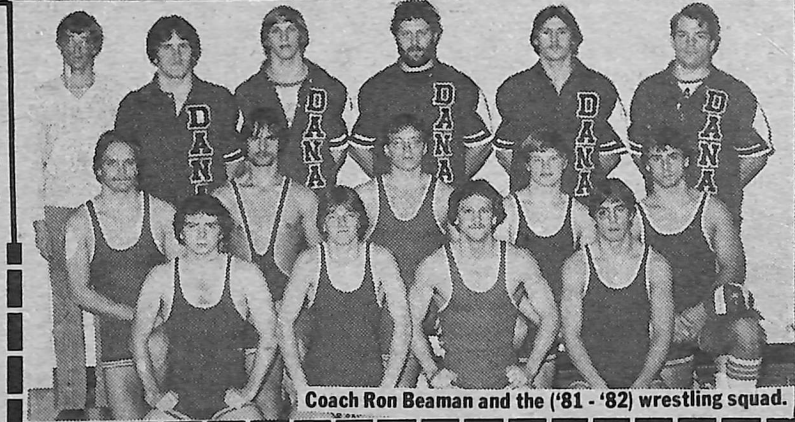
Wrestlers Deserve Support

Keith Uhlinger

Being an exwrestler myself I would be very curious to find out how many people on this campus have any idea what wrestlers go through to represent them.

They practice hard for 1 1/2 to 2 hours everyday, then many continue working after practice to build up their endurance. On top of this, many have to cut back on what they eat in order to make a certain weight. In addition to all this, wrestling at someone else's school with no support from your home school, is quite a psychological bummer.

However, even with these drawbacks, the Dana Wrestling Squad has been on a steady rise for the last two years. The 1979-80 season saw a squad of six wrestlers and one duel meet win. The 1980-81 season showed some improvement with a team of 15 wrestlers and 2 wins. This present season produced a squad of 20 wrestlers and a



Coach Ron Beaman and the '81-'82 wrestling squad.

great improvement in the team record as it jumped to 8-8.

This season saw the emergence of some outstanding individuals. Bill Bussey, a freshman from Iowa, was quite outstanding this season. He finished 20-1 including first place victories in two tournaments and a 2nd place in another. Jim Krueger, a sophomore from Wisconsin had some trouble getting started this year but came on very strong at the end. Jim finished 13-7 which includes a 1st place finish at Districts. Along with Bussey and Krueger Don Joseph and Curt Berkland, both transfer students, qualified for the National Tournament.

Along with these four, there

was a great deal of talent among the rest of the team. Bob Wiseman ('83) and Fred White ('84) helped provide the leadership to keep the team going. Other wrestlers include Brad Carter, Tim Harms, Russ Heller, James Hood, Pat Jellum, Kris Lausterer, Tony Schaeffer, and Brian Tuthill.

As a fellow athlete, I feel that these young men deserve some recognition. As a fellow student and friend, I demand they be given the respect they have earned. If this article sounds a little biased towards the wrestlers, that is because it is. I just want people to realize that this is a sport that demands a great deal from the athlete and gives very little in return.

Lady Vikings Complete Best Season On Record

Janice Schlange

After playing what proved to be a tough Interim schedule the Lady Vikings were looking for a win and this showed up when they met the Peru State Wildcats the first of February. The Lady Vikings did not look like they were going to be the victors however, as they were down by five at half time. The Wildcats had come out to avenge their previous loss and were extremely successful in their fast break offense. Felicia Collins ('83) helped to keep the Lady Vikes in the game with five steals, three of which came in the last three minutes of the first half. The second half belonged completely to the Lady Vikings as they came out with eight unanswered points. The Vikings eliminated the turnovers that had plagued them in the first half to hold on and win the contest 57-49. Kerry Garrels ('82) took charge of getting the ball for the Lady Vikings in this half by grabbing four steals from the Wildcats. Junior Felicia Collins threw in five assists to her teammates to also aid the offensive charge. Kerry Garrels and Sheila Hinds ('83) came up with 12 points a piece to lead the Lady Vikes, as Hinds also captured 10 rebounds followed closely by Collins with 9.

Parents' Night became the setting for the next Lady Viking contest. Coach Kathy Foley had invited each of the player's parents to the game without letting the members know about it. The surprise worked just great, unfortunately the game did not. The Tarkio Owls proved to be a bit too much for the Lady Vikings on this particular night as they defeated the Vikes by a score of 66 to 57. Though the score was not to the advantage of the Lady Vikings, many things went well for the Dana squad. Juniors seemed to go all out during this game as Sheila Hinds put in 12 points and pulled down 10 rebounds. Teammate Felicia Collins added eight points of her own, grabbed 9 rebounds, had 5 assists and 4 steals. Senior, Kerry Garrels was the only other Lady Viking in double figures as she put in 12 points from the field.

The Lady Viking's next game proved to be the most

disappointing of the season. The Vikes traveled to Seward, Nebraska to take on the Bulldogs from Concordia Teacher's College. The Lady Vikings could not put anything together in the first half as the Bulldogs' defense would not even allow the Lady Vikes to set up their offense. After a lengthy half time talk, Coach Foley's Lady Vikings came out in the second half like an entirely different team. Though the Lady Vikings scored 39 points in the second half it was not quite enough to combat the Bulldogs as Dana dropped the contest 68-59. Sheila Hinds ('83) pumped in 23 points to lead all scorers as teammate Kerry Garrels ('82) added 13. Sophomore Lori Vogt lead in the rebounding category as she pulled down 10 and Sheila Hinds helped out with 9 of her own.

The next game for the Lady Vikings was against the always tough Midland Warriorettes. The Lady Vikes held their own for the majority of game, being only down by eleven at half time. Coach Foley had worked up a special defense to guard against the Warriorette's high scorer, Kari Kramme. The defense worked extremely well for the Lady Vikes under the command of Junior, Sheila Hinds, whose main responsibility of the night was to make sure Kramme did not get the ball inside on the Midland's offense. Hinds held Kramme scoreless in the first half and Dana's defense allowed her only eight points for the night; way below her average of 17. Stopping Kramme did not shut the Warriorettes off completely however, as they came on strong in the second half and defeated the Lady Vikings by a score of 100-62. Senior Kerry Garrels lead the Vikes with 24 points as Connie Kennedy ('82) and Sheila Hinds ('83) were next with 9 points apiece. Dana had trouble getting inside on the taller Midland team to rebound, though Hinds and Felicia Collins ('83) pulled down 6 rebounds each and Kennedy grabbed 5. Collins played a strong offensive game also, for although not scoring many points, she passed for a game high 9 assists.

Though the Lady Vikings produced a new school record for most points scored in a game they were not the victors of their next contest as they were defeated by the College of Saint Mary Flames. Once again the Vikings squad was plagued by a poor first half as the Flames left ahead in the first minutes of the game and remained that way throughout the first half. Dana came back in the second half playing excellent defense and effectively playing their fast break offense. Though tying the game in the last few minutes, untimely fouls called against the Lady Vikings put the Flames to the free throw line a few too many times. These costly freethrows helped to put the Flames back in the lead where they remained to defeat the Lady Vikings 93-82.

Three Lady Vikings reached double figures in the scoring department at College of Saint Mary. Felicia Collins ('83) lead off the scoring with 20, as fellow junior teammate Sheila Hinds added 16 and Donna



Photo by Donnalee Prillaman

Felicia Collins ('83) scrambles for a loose ball as Donna Cornell ('84) and Kerry Garrels ('82) move in to help.

members went to the boards, both offensively and defensively as Cornell grabbed 10, Garrels 9, Jeanie Watts ('83) 8, Collins and senior Connie Kennedy each pulled down 7. Scoring was equally as even

as they traveled to Lincoln to take on the Lady Pioneers of Nebraska Wesleyan University. The game started out slowly as neither team scored for the first three minutes of the game. Wesleyan broke the ice first though the Lady Vikings came right back with a bucket of their own. The whole contest became a see-saw battle though the Lady Pioneers seemed to always have the upper hand. The Lady Vikings put on a surge with 10 minutes left in the game but it was not quite enough as the Vikes dropped the contest by a score of 76-64. Juniors Sheila Hinds and Felicia Collins produced a double figures night as they put in 20 and 10 respectively. Assists were lead by Collins with 6 as senior teammate, Kerry Garrels added 3. Felicia also pulled down 11 rebounds, as did senior center, Connie Kennedy, as Donna Cornell ('84) grabbed 8 and Jeanie Watts ('83) took hold of 7. The Lady Vikings stole the ball from the Lady Pioneers 8 times with Cornell taking 3, Collins and Garrels grabbing 2 each as Lori Vogt ('84) also took hold on one.

Wesleyan was the last game for seniors Kerry Garrels and Connie Kennedy, who played a major role in the Lady Viking's much improved 9-14 season.

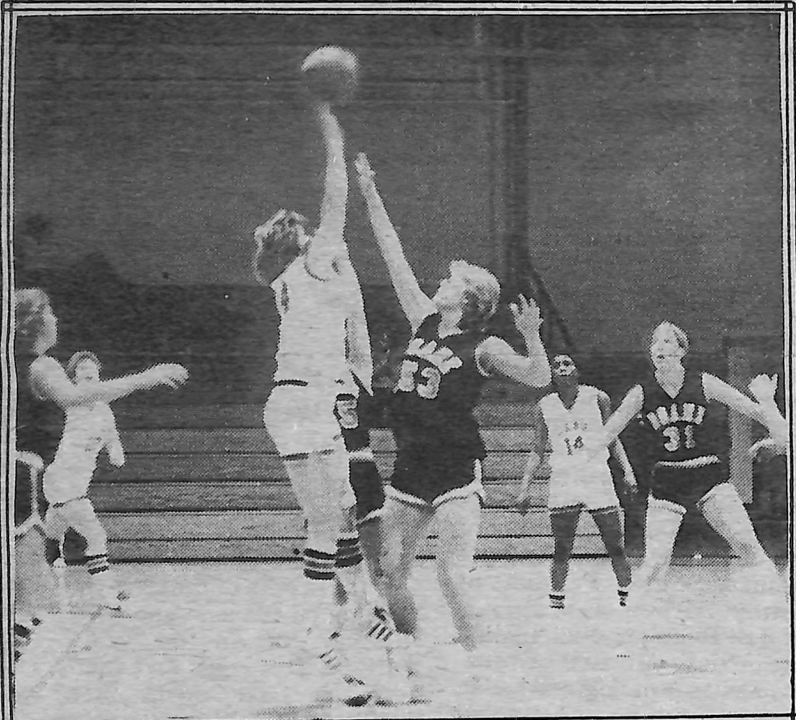


Photo by Donnalee Prillaman

Senior center, Connie Kennedy, goes up for two in her last game played in Borup.

Cornell ('84) put in 18. Cornell also headed up the rebounding category as she grabbed a game high 16, as Jill Christensen ('83) helped out pulling down 7. Guard Felicia Collins, went to the boards as easily as she went to the basket as she took away 8 rebounds of her own against C.S.M. defenders.

Following these three road games, the Lady Vikings were ready to play in front of their home crowd and play they did as they defeated the Doane Tigers 71-64. The Lady Vikings played perhaps their best game of the season on this night for they played a full 40 minutes of basket ball without a let-up. Play was even among all of the Lady Vikings in each category. This included both offensive and defensive ends of the court. The Doane Tigers may have been looking for an easy victory but this was not to be as the Lady Viking bench proved to be as tough on the floor as the starters had been. Using a fast break offense when possible and changing offenses whenever needed kept the Tigers guessing. Felicia Collins ('83) and senior Kerry Garrels ('82) produced 5 assists each as Donna Cornell ('84) added 4. All of the team

as Hinds put in 17, Garrels 15, Collins and Cornell 10, Watts 9, and Kennedy added 8. This win avenged an earlier two point loss to the Tigers and proved to be quite a way to finish out the season in front of the home crowd.

After playing so well against Doane, the Lady Vikings had a tough time against the Lady Broncos from Hastings. They could not seem to get anything together like it had been in the previous game and the Lady Vikes never seriously threatened. Hastings utilized their inside height to break the Viking defense as they racked up 75 points against Dana. Kerry Garrels ('82) and Felicia Collins ('83) were the only Lady Vikings to break into double figures as they scored 12 and 10 points respectively. Collins also aided her teammates with 8 steals and she, Patti Ritterling ('82) and Garrels added 2 assists apiece to their fellow Lady Vikings. Freshmen Peggy Buchannan and Kim Pfannkuch came off the bench to do the job on the boards as they led in that category with 6 and 5 rebounds, respectively.

Friday, February 19th found the Lady Vikings bound for the last game of the '81-'82 season

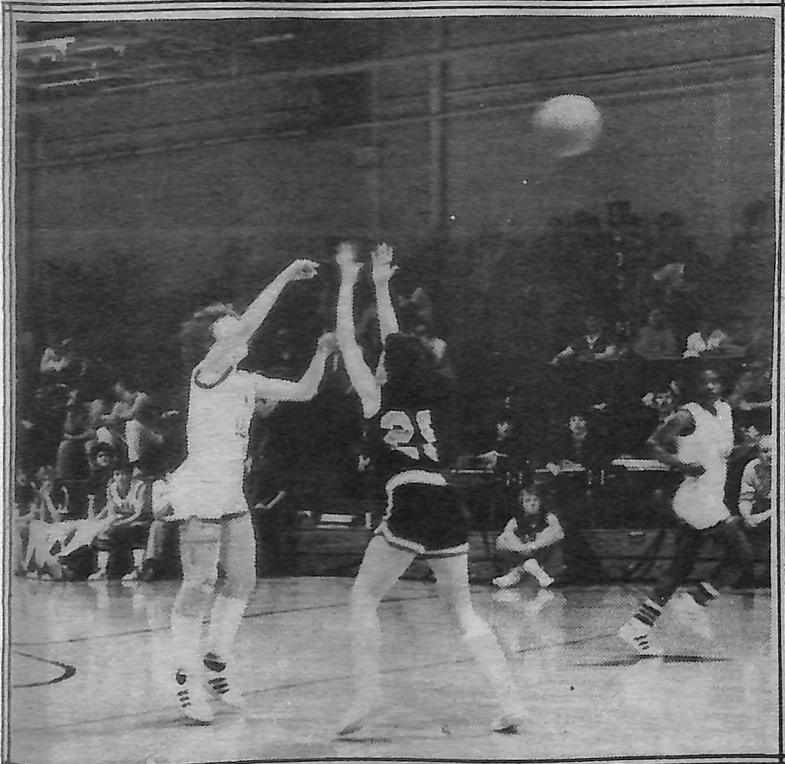


Photo by Donnalee Prillaman

Kerry Garrels ('82) passes off to break the Doane Tiger's press.



Felicia Collins ('82) models the new Women's Softball Uniform

"Bernarda Alba" Runs Until Saturday



Photo by Donnalee Prillaman

In rehearsal...from left to right Kathy Gerking, Laurie Hendrix, Connie Frahm, Kristi Swensen and Peggy Dutch.

Lawrence R. Lazzaro

Federico Garcia Lorca's 1936 drama, *The House of Bernarda Alba*, opened last night in AMA. It will run tonight and tomorrow night at 8:00 p.m. Tickets cost \$3 for adults and \$2 for students (of course Dana students and faculty get in free.)

The plot revolves around a family in Spain. After the death of her husband, Bernarda decrees that her five daughters shall carry out the traditional eight years of mourning. They are not allowed to come and go freely; they are locked into the house and required to work on their hope chests. The daughters bicker over a young man who has come for the eldest daughter, for her

after the youngest daughter because of her beauty. In the role of Bernarda Alba is Connie Frahm, with Laura Gregory playing Maria Josefa, Bernarda's mother. The five daughters are played by Kathy Gerking as Augustias, Diane Heistand as Magdalena, Laurie Hendrix as Amelia, Peggy Dutch as Martirio, and Kristi Swensen as Adela. Emily Benjamin will play the maid while Linda Lemon plays La Poncia. Other members of the cast include Chizuru Komatsu as Prudentia, Tammy Barnes as a beggar and Jan Buckley, Becky Ellis, Julie Frisk, Marlene Kreuztian, Kelley Messing and Linda Stern as mourners.

money, but at the same time is

Director, Mr. Sieghard Krueger, chose the play for two reasons: 1) It is important to cover all types of theater at a college, and it was a good opportunity to present a Spanish piece; 2) The play is



Photo by Donnalee Prillaman

Linda Lemon plays LaPoncia



Photo by Donnalee Prillaman

The tension builds between Kathy Gerking, Linda Lemon and Connie Frahm.

allegorical, dealing with Fascist Spain, "It's polemic, He's making a statement with it."

The House of Bernarda Alba deals with the daughters' drive to create new life, a need that is unfulfilled. Bernarda tries to stifle that new and maintain the present. She fights against all things that are youthful and virile. Lorca is, perhaps, pointing out how the government can be oppressive like Bernarda.

A political activist, as well as a playwright Lorca was shot

shortly after *Bernarda Alba* was completed, therefore there was a portion of the play that remained unpolished. The biggest problem is that the characters are not consistent. This makes both directing and acting in *Bernarda Alba* difficult, as the actresses are required to interpret the immediate meaning of the line, rather than see in terms of the whole character. But, despite its rough edges, *Bernarda Alba* is described by Krueger as, 'Fantastically powerful. A really meaningful theater piece.'

Students Build 'Alba' Costumes

Lawrence R. Lazzaro

In the depths of the decaying building on the east end of our campus known as AMA, Marlene Kreuztian and Cindy Lorenzen have spent more than thirty hours a piece

sewing (the correct term is 'building') costumes for this week's production of *The House of Bernarda Alba*. With about \$300 worth of polyester and cotton, four or five patterns in different sizes, and several needles for their sewing machines, the two seamstresses have created over twenty costumes. 'We've modified the patterns quite a bit,' Marlene said. 'We only got a few different sizes.' They also changed the neckline and other aspects of the designs including sleeves and skirts.

The play, *Bernarda Alba*, presents a definite costume-design problem. Almost the entire cast is in mourning throughout the play and must wear dark colors. This makes it difficult to distinguish between like characters,' commented Krueger. 'We dealt with this problem by having different designs and using dark blues as well as different textures of material.'

Marlene explained that they decided to build the costumes themselves, rather than rent them from a costume house because they will fit better, the director has direct control on what they look like, and it is good to 'do-it-self' in educational theater. When asked if she would do it again, Marlene responded in her usual cheerful way, 'Sure, why not?' as she continued to sew on the black material, with the tunes of Sweet 98, and Craig Shaffer sawing plywood (for the set) in the background.

'I've got to be really careful with this one,' Marlene giggled. 'It's mine!' She will be seen on stage as a mourner.



Photo by Donnalee Prillaman

Kristi Swensen rehearses in a costume built by Marlene Kreuztian and Cindy Lorenzen.

THE IN LAWS

Coming Soon

PETER FALK

PG (PARENTS STRONGLY CAUTIONED) TECHNICOLOUR

ALAN ARKIN

"Chariots of Fire"

is being shown in Omaha.

FCA Group Rates

For tickets call

Mike Harris

Zonderman Family

Bookstore 391-1900.

Reduced ticket prices

for five or more people

\$2.50

SOWER DEADLINES MARCH 19!

Please submit three copies of all prose, poetry and translations to Box 481. Place your name on only one copy. You may also submit photography and other original art work.