

Dana Bursts Into The International Scene

News, Page 7

Season Previews of Spring Athletics

Sports, Page 5

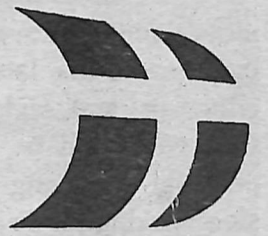
DSPAC Gears Up For Two New Productions

Entertainment, Page 4



Hermes

Dana's Messenger



Dana College, Blair, NE

Volume 69, No. 3

March 15, 1989

Keck Voted Student Body President

by Andrew Madsen

For the first time at Dana, an all-female executive staff has been elected to oversee the conduction of the student senate. The results of the March 3 election of officers for the 1990 staff indicated that in each of the four executive offices the victors were Dana senior women scheduled to graduate in the spring of '90.

Catherine Keck captured a plurality in a three-way contest for president and will become the first female voted into the office in Dana's history. Keck, a social work major from Ashland, will succede Dana's first black president, James Cloyd, an '89 Omaha commercial art major.

In closely contested races, Shelley Carter prevailed as the vice presidential winner while

Paige Kosboth was elected as secretary. Carolyn Lauer ran unopposed for the position of treasurer.

Less than half of the students eligible to vote cast ballots in an election best characterized as inconsistent. Due to constitutional provisions, no restrictions were in place to prevent candidates for office from loitering at the polling place during election day.

Additionally, no numerical data pertaining to the vote count is available to the student body (or to the Hermes, for that matter) on account of constitutional bi-law 781-K.

Bi-law 781-K mandates, in short, that "the numerical election results... (will be) open to the candidates... (and) not the public." A representative of the Hermes will be introducing a motion at an upcoming senate

meeting to attempt to initiate the revision, in the opinion of this editor, of this undemocratic and unnecessary clause.

A similar motion was presented to the senate for consideration by outgoing president Cloyd at the March 8 meeting. This was, however, voted down by the senators.

Little is known of the agenda espoused by the incoming officers to the executive staff aside from their experience in senate affairs. Keck served as the vice president for much of the past year and both Carter and Kosboth have years of service in the senate between them. Lauer's performance as treasurer and as senator prior to this year have earned her many accolades during her tenure in that office.

Keck conceded that "alot of revisions need to be made"



Kathy Keck will become the first female president in recent history, replacing James Cloyd, the first black student body president. Photo courtesy of Public Relations.

with regard to outdated constitutional bi-laws such as 781-K. The president-elect hinted that changes in some areas of the constitution would be a priority during her presidency.

The new officers and their specific views regarding the discharge of their responsibilities and their outlook on campus issues will be explored with greater detail in the April edition of the Hermes.

First Winterfest Celebration Held in Dana's Campus Center

by Carter Hansen

Dana College hosted the first annual Winterfest celebration on Saturday, March 4, in the upper Campus Center. Total attendance for the event was approximated at 250 students. Dance music was provided by a professional DJ out of Omaha.

Each organization at Dana was asked to nominate one male and one female student of junior or senior standing for the Winterfest Court.

The nominees were then thinned down to five male and five female finalists. The student body then voted on these finalists.

The male members of the court were Grant Matthies, Chris Hough, Yuji Ikeda, Todd Kollbaum and Randy Hollowell. The female members were Patty Dunlop, Cathy Keck, Angie Johnson, Carolyn Lauer and Kellee Siemers.

The king and queen were announced at the dance. Angie Johnson was named

Winterfest's Queen and Todd Kollbaum was given the title "King of Winterfest." The pair, an out-of-court duo as well, made a very cute couple.

Patty Tonniges, involved in coordinating the event, said she was very pleased with the way this first Winterfest worked out. The dance this year was semi-formal, but it is hoped that in the future it will become a completely formal event. Tonniges hopes that the success of this first Winterfest will mark the beginning of a new, proud tradition.



Todd Kollbaum and Angie Johnson dancing as King and Queen of Winterfest. Photo courtesy of Grant Matthies.

Education Begins With Individuals

by Peter A. Sierant

It seems that there are a lot of concerns over the education at Dana lately in the editorials and rightfully so. College should be a time of personal searching and decision making. It is a time of transition in regard to establishing a set of values and standards.

I congratulate Kim Soderberg and Thom Morrow for their interest in getting the full benefit of an education. It is good to bring into the open the attitudes and feelings one formulates after experiencing formal education.

Granted, there are problems with any system, and it is more apparent at such a small college. Yet, this is all I hear: problems. I don't hear anyone offering solutions.

The pursuit of knowledge and awareness is a murky,

bottomless pit where one can get caught in traps and pitfalls. Yet, if you avoid them, or try to make excuses, then the objective of education is skirted.

My point here is in re-

sponse to the term *lackadaisical* so aptly coined by Morrow. The students and faculty do not seem to be challenging each other enough. This school does seem to be leaning toward aca-

democratic mediocrity.

What seems to amaze me is that the challenge doesn't have to start with the school. An institution is made up of people. And as people we are individuals and we have the power of making rational decisions.

So let us assume that

when we make a decision that it is a reflection on each of us as distinct entities. One of the concerns in receiving an education is what it means to you personally. Don't listen to TV or magazines. Decide within yourself what the power of education means. How do you obtain it? What will it do for you.

Education as a word itself does not just mean *system*. To educate means to develop knowledge, skill, or character. And it is only through personal challenge can this be accomplished.

Education does not end with college. It ends in a formal sense, but the attitude you develop at college in terms of personal challenge will more than likely carry over to your career. If, for example, you just want to have a good time and do a mediocre job then you should think about the ramifications. This reflects on your work ethic in regard to a career and the value you place on striving for excellence.

We are not here to get a piece of paper that says we have done all the requirements. I don't know, but for some people this document shows all the trials and tribulations that is associated with challenge, hard work, and a new perspective on life in a broad, metaphysical sense. It is a symbol of trying to reach new heights. Not just to *get by*.

As an individual one must make a choice. Challenge yourself first. This is the crucial factor in defining education internally. Only when one can make a meticulous, step-by-step decision in terms of growth and maturation will it be rubbed off onto the people you come in contact with. If you are at least making an attempt to better your educational outlook, it can not be detrimental. Sure, it will be hard. It will be frustrating. And, at times, you will be wrong.

Learning is not just a point A to B process. Success should be defined in the individual's mind. It really depends on how hard you really want to work for it. Sure, go ahead and do simple, meager work. Those who go beyond what is the "norm" will find that they are the benefactors of an education.

When the Notes Hit the Fan

by Ann By

Everything is fine. Just fine.

Spring has delivered its early warning signals. Green sprouts are popping through the brown layer left to us by the winter cold. The air has somehow become easier to breath. Everything is fine.

The snow is gone and now all the litter and garbage that the white stuff concealed is in full view, which makes it that much easier to pick up. Everything is fine.

Dana College is busy preparing for the upcoming, and well deserved, break. Students and faculty alike eagerly await the chance to frolic in this wonderful springtime weather, always remembering safety first. Everything is fine.

Away from campus, Bush still sits in the White House and God knows where Danforth is. Last heard Salmon Rushdie is still breathing, and the boys of spring are oilin' up their mitts. Everything is fine.

There is still a hole in the ozone layer. Acid rain forms tiny toxic puddles, and Greenpeace bought some new boats.

Everything is fine.

And so we come to the end of this issues' installment of the column. Everything is fine, just fine.



Rhetoric Rehashed?

by Quinn A. Sebesta

Now that the elections for student senate are over, it is time to reflect on the aspects of the campaign. While I extend congratulations to all the candidates for their tenacity and diligence, I question the means of choosing these candidates.

It all started out rather innocently, but it soon took a turn for the worse. An open forum was held in the dining hall to discuss the qualifications of the candidates. Since most people are favorable towards dinner, this seemed an ideal time to swap facts. What happened was something quite different.

The forum began with questions like "What do you feel qualifies you for this position?" The answers to these questions were laced with

rhetoric which made the truth translucent.

Hold it! I thought this was college, not training for bureaucrats. College is a place to escape the world for as long as possible, and maybe even pick up a text every now and then.

While all the candidates mentioned some very good points, their answers were tarnished with some sort of rhetorical comment that nullified any truthful responses. Part of this can be blamed on the attempt to formalize the proceedings.

While formality can be good, it was detrimental to both the candidates and the student body. If I really desired formality and rhetoric, I could have popped in my video tape of Dan Rather and election night '88.



Home of
the Vikings

The Hermes is written and edited by students of Dana College. Content of the paper is developed independently of the student government, the faculty, and administration, and does not reflect the policies of those groups.

The Hermes is published semi-monthly during the academic year with the exception of holidays and breaks.

The Hermes welcomes letters to the editor expressing all original points of view. It is our policy to only print those letters which include the author's name, address, and telephone number. We will respect all requests to have names omitted at time of publishing. The editorial staff reserves the right to edit letters containing false, misleading, or inappropriate material. We reserve the right to reject letters for publication. Opinions expressed in The Hermes are not necessarily those of the editors, college, or the college community. Submissions must be received by February 22, 1989.

Address submissions to The Hermes, Box 769, Dana College, Blair, NE 68008.

Editor-in-Chief: Carter Hansen
Managing Editor: Christopher Heinrich
Sports Editor: Randy Hollowell
Features Editor: Michele Smith
Copy Editor: Andrew Madsen
Business Manager: Keri Kuhr
Photography: Grant Matthies
Andrew Madsen
Advisors: Joyce Gissler
Dr. John Mark Nielsen

Staff: Chris Voss, Peter J. Sierant, Matt Allen, Kevin White, Gina Roden, Kim Farmer, Coleen Lennemann, Quinn Sebesta, Dawne Preston, Keri Kuhr

Dana Learns About Namibia From Visiting Students

by Michele Smith

Through the 1988-1989 Staley lecture series, Dana students have become more aware of the situation our students from Namibia must face in their daily lives.

Namibia has been in a struggle for its independence for more than 100 years. In 1919 Namibia was mandated to South Africa to help them gain their independence. But

South Africa further oppressed them instead of helping them. In 1966 the United Nations ordered South Africa out of Namibia.

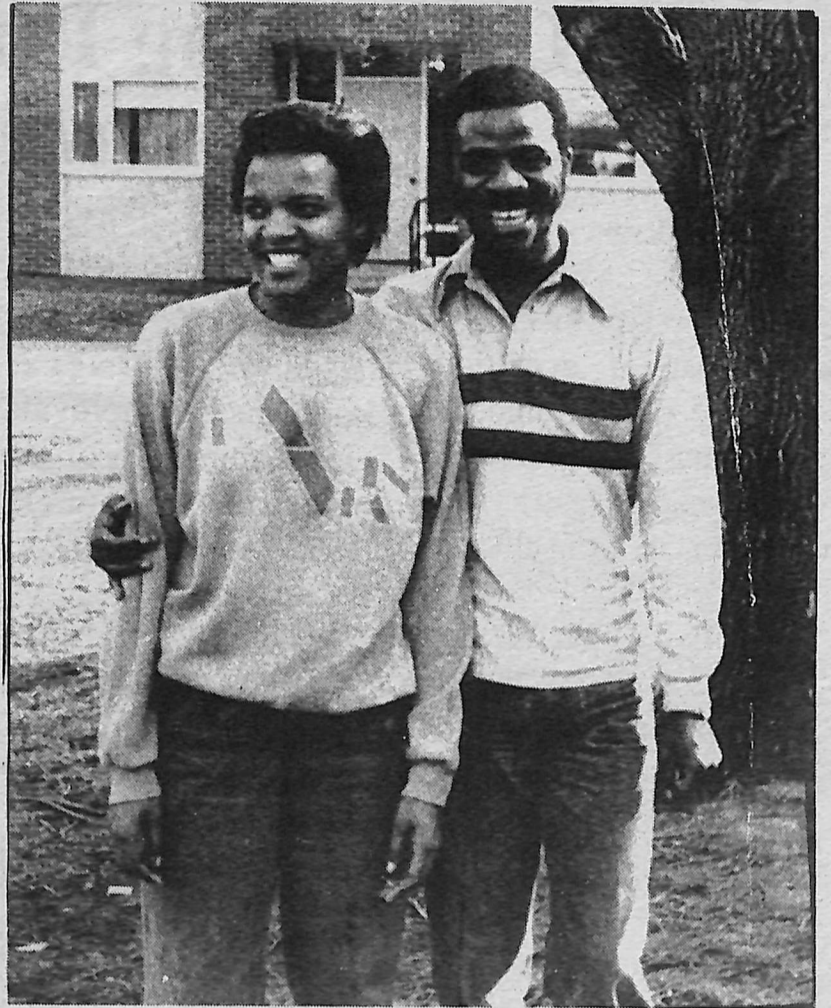
SWAPO (South Africa Peoples Organization) was created to lead Namibia in their fight for independence. In 1978 the United Nations passed Resolution 435 to help get independence. Today in 1989, Namibia still is not free.

I'm sure I was not the only one who was unaware of

this. The Staley lectures, I felt helped to inform the community about the fight for freedom in Namibia.

I think the situation was best understood by listening to the students speak. They have had to live through this hardship all of their lives. They should be able to explain it best.

Now that our community is aware of the problem, we must try to help Namibia by showing our support.



Namibian students, Helen Ochs and Klemmens Nawira, enjoy the unseasonal weather last week. Photo by Carter Hansen

Bloodmobile Coming For March 30th Drive

by Michele Smith

The American Red Cross Bloodmobile from Omaha will be on campus March 30. Any healthy person 17 or older who weighs at least 110 pounds can give a pint of blood. Volunteers are needed to reach the goal of 120 people.

Last year the goal of

120 people was far surpassed. There were many first-time donors who participated last year.

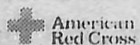
The blood that you donate is taken to a laboratory and separated into 3 parts: red cells, platelets, and plasma. Your blood could be used to help 3 different people in need.

The red cells restore a patient's blood volume and its oxygen-carrying capability. The platelets are needed to help control bleeding.

The plasma is needed by patients suffering from burns, shock, or bleeding abnormalities.

Now that you have the information about giving blood, why don't you and a friend go and give blood.

THANK YOU FOR CARING GIVE BLOOD



Spring Elderhostel Offered By Dana College Faculty

by Coleen Lennemann

On March 12-18, Dana will again be hosting those involved in the Elderhostel program.

Elderhostel is a national program specifically created for adults 60 years of age and older. While on campus, Elderhostel participants will live in Elk Horn Hall, the college's conference and retreat center.

Dr. Ruth Sather, coordinator of the program, says she is expecting a group of 22-

23 participants. This group is smaller than usual.

Dr. Sather said that having a small group is beneficial because "people get closer and there is more sharing" in both the classrooms and the dorm.

Courses to be offered as part of the Elderhostel include:

"Danes in America-An Immigrant Experience" will be taught by Dr. John Mark Nielsen, "A Piece of the Action" presented by Ms. Jean-

marie Nielsen, and Professor Emeritus Frank Hengeveld will be teaching "Are You Creative? Yes You Are!"

Dr. Sather says they are preparing for a "really interesting week."

Make a contribution to life after death.

Dana Students Help With Book-A-Thon

Press Release

This semester, Dana students have been conducting a Book-A-Thon, a special fundraising effort to benefit the C.A. Dana-Life Library. Students have been calling parents of current Dana students to ask for the financial support needed to purchase up-to-date books

for the library.

Students have already raised approximately \$3,000 for new book acquisitions. Those who are participating in the Book-A-Thon are Kelli Crannell, Kim Gosch, Jim Jordan, Deb Keller, Coleen Lennemann, Connie Trout, and Anita Woodward.

writers
artists
photographers

Enter your original works in
The Sower

Dana's literary and artistic publication

MAIL SUBMISSIONS TO PEG CRANNELL
VIA CAMPUS MAIL- DEADLINE MARCH 28TH

awards given for excellence in poetry, prose and the arts

THE AMERICAN HEART ASSOCIATION MEMORIAL PROGRAM



WERE FIGHTING FOR YOUR LIFE

American Heart Association



This space provided as a public service.

DSPAC Showing Initiative and Drive

Two Student-directed plays scheduled for Spring

by Peter A. Sierant

Already in its second year of operation, DSPAC (Dana Students Performing Arts Committee) is well along in its way of establishing itself as a productive organization.

Two separate productions are scheduled for performance after the spring break.

"La Ronde" is being directed by Mark Mathia and performed on April 25 and 27 in the Dragon's Head, which will provide "a more intimate feeling, a dinner theatre atmosphere," according to Mathia.

And for added variety, Kelly Nass will be putting together a story theatre piece adapted for

the stage entitled "The Fall of Freddy the Leaf" by Leo Biscalia. This play "attempts to help children deal with the issue of death and has safety and environmental issues," Nass said. Nass will produce the play sometime in late April in the chapel.

These two productions are examples of what the DSPAC is trying to accomplish with its young constitution.

"We are trying to get the students and community more involved in theatre by (exploring) new avenues and experimenting with different things," Mathia explained.

"La Ronde" is an adapted one-act comedy dealing with human sexuality.



Mark Mathia will direct a comedy about human sexuality called "La Ronde." Photo by Carter Hansen.

"I don't want people to be offended by it...but I (do) want people to look into their own sexuality, and deal with the second face, that side of man one does not see," emphasized Mathia.

Though Nass is putting on a children's play, she believes that "it presents a challenge...the whole play goes beyond just a

simple message. It is fantasy-oriented, but (it) will be enjoyable for adults and is very playful."

With these two productions, DSPAC is off to a running start. As a student-run organization, the broad and new possibilities it opens up can give the college a new and positive outlook for the performing arts.



Kelly Nass will present "The Fall of Freddy the Leaf" in late April. Photo by Carter Hansen.

The Hermes Corner Review

Dangerous Liaisons Deserving of Seven Oscar Nominations

by Carter Hansen

This silver-screen spectacle is gorgeously sensual yet intellectually stimulating. It fully deserves the seven Oscar nominations it received, including a Best Actress nomination for Glenn Close. She plays a thoroughly wicked seductress caught in an interesting variation of the conventional love triangle. Her "rival," played by Michelle Pfeiffer, is her exact opposite, a devoutly religious and proper lady. The maverick is played by the brooding John Malkovich, who is as much a scoundrel at the beginning of the flick as is Close's despoiler.

Richly sensual costuming and cinematography perfectly capture the lavish decadence of pre-revolutionary France, the setting of the film. However, this display is so breathtaking that it distracts from the thoughtful manipulation of key images and phrases. The movie uses these images to explore the discrepancy between appearance and reality. This fascination with appearance is especially evident in the inter-relationships of the three main characters.

The complexity and range in each character probably helped attract nominations for Close and Pfeiffer. The concentration on image and symbol

sometimes slowed the pace and the plot resolution was disappointing. Despite its emotional impact, partly due to the superb visual composition, the climax left lots of loose ends and didn't seem to logically conclude the sequence of events it followed.

Although the film has shortcomings, the mistake was that the project was perhaps too ambitious, not because it fails in execution. The acting, direction, cinematography and script were all superb, making it one of the year's most intriguing films. ***



R.E.M. Green World Tour Rocks Omaha

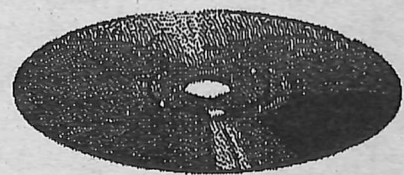
by Christopher Heinrich

R.E.M. rocked the Omaha Civic Arena last Friday, March 10 with the Green World Tour. The band from Athens, Georgia, is beginning their tour in the Midwest with Omaha as one of their first stops. "Pop Song '89" immediately brought the crowd to their feet as Micheal Stipe et. al. pranced onto stage.

They quickly moved into their older tunes, though, with outstanding versions of "Hyena," "Begin the Begin," and "It's the End of the World (as We Know It)." And for

the ninth time ever, R.E.M. performed the poetic "Perfect Circle."

Cuts off of Green included "World Leader Pretend," "Orange Crush," and, according to Micheal Stipe himself, the stupidist song in the universe, "Stand." R.E.M. jammed for two hours including three oncore performances. This could be the concert of the year for a truly unique group. ****



(Rated on 4-point scale)

Vikings Anxious to Open New Baseball Season

by Kevin White

An improved pitching staff is the key to a successful 1989 baseball season, according to Dana Viking head coach Dale Lemon.

The Vikings had their problems on the mound in 1988 and as a result Lemon suffered through his worst year in his 25 seasons coaching Dana baseball. This year, however, the pitching corps should be stronger.

Returning pitchers include senior Mike Kraft and juniors Mike Warsop and Russ Miller. Miller had a pretty consistent season in relief last year and will be slated for the same duty this year. Junior college

transfer Mike Boudle, who played for Dana in the 1987 season, will also challenge for a slot in the rotation.

Freshmen pitchers who should contribute to the squad include Shawn Winters, Mike Ciminski, and Jeff Kress.

Junior catcher Mark Clements and sophomore outfielder Troy Carmichael head up a group of seven returning position players. Boudle will likely spend time in the outfield when he's not on the mound.

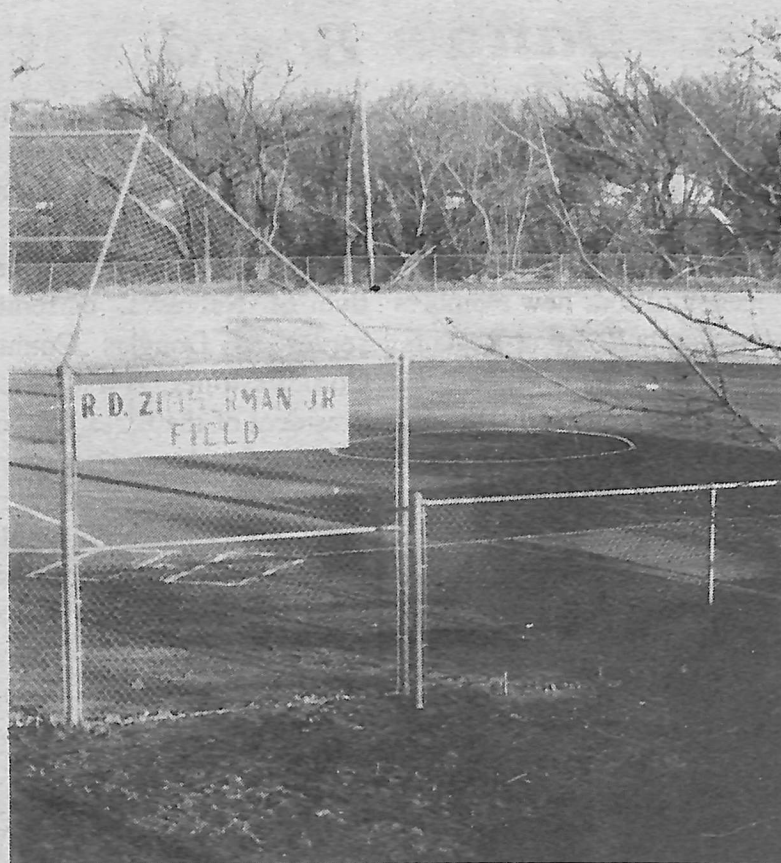
Clements batted .284 and Carmichael .351 last year. Boudle hit .335 at Iowa Central Community College in Fort Dodge last season. Junior Cory Wilson will compete for one of

the remaining pitching slots.

Completing the roster for Coach Lemon are: senior Dave Hartman; sophomores Dave Fosdick, Doug Hartman, Dean Norris, and James Anderson; freshmen Kory Crippen, Mike Haller, Dallas Schnack, Pete Svendgard, Pat Dougherty, Troy Gourdin and Len Stessman.

The Vikings' first games were scheduled for March 11 against Graceland College at home. Those games were postponed due to the wet field. The Vikes will go into action March 16 in Alva, Oklahoma, when they will face Northwestern Oklahoma State University.

Play Ball!



Zimmerman field, after a cold, lonely off-season, is freshly chalked and ready for action. photo by Andrew Madsen.

Dana Hosts Athletic Day For Area H.S. Students

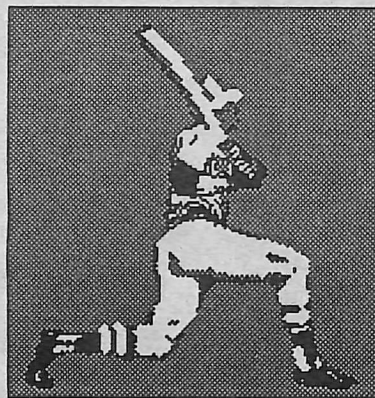
Press Release

Dana College hosted an Athletic Day on Monday, March 13, for men and women high school athletes from the surrounding area. The day was designed to give student athletes the chance to visit Dana's campus and learn more about the college's educational and athletic opportunities.

The day began with registration until 9:30 a.m.,

followed by a brief session with the president of Dana College, Dr. Myrvin Christopherson. Later in the morning, students met with the different coaches from mens' and womens' athletics. They also received information on procedures for gaining admission and financial aid.

The visiting students and parents were later the guests of the college for an Athletic Day luncheon, held from noon until 1 p.m. in the



Once, Twice, Three Times Conference Champs ?

by Kim Farmer

For the past two years, the womens' softball team have been conference champions. Last year the Lady Vikings captured the conference title with a 12-0 record. The team went on to the district playoffs, but lost to both Peru and Wayne States.

This year, coach Steve Kissel has an even bigger goal

for the team. "Not only do I want this team to become conference champs again, but also I would like to see us in the top two or three in Districts."

The women begin their season with a very competitive schedule. On March 15 they play host to Kearney State. Kearney is ranked 5th in the nation in the pre-season poll. During spring break the Lady

Vikings will travel to Salina, Kansas, for a game and then it's on to Oklahoma for a tournament. Most of the teams that will be competing there are currently rated in the National Top 20 Poll.

The Lady Vikings have eight returning players. They include senior pitcher Joan Scherbring, plus juniors Shari Bohling, Nancy Brich and J.C.

transfer Lori Musich.

The sophomores are Lori Scott, Tina Reimer, Janet Mitchell, Nicole Brownell, Cami Christensen and Lisa Campbell. Katie Corbitt, Melissa Lehan, Michelle Severson, Daylene Perrino and Christy Wawrzyniak make up the freshman bunch. Freshman Krista Carpenter will be forced to red-shirt this year due to a knee injury.

The Conference meet will once again be held at Midland and the District meet will be a weekend affair at Kearney State.

Head coach Craig Swenson and his assistant Bill Zanton are anxious for this season to begin because they are not sure how this team will fair. The Vikings will have to replace three of the top four players from last season.

Returners include juniors Quinn Sebesta, Randy Hollowell, and sophomore Jared Olson. A lot of pressure also lies with the newcomers. Especially with freshman Steve Mathis who will probably start the season at the number one spot.

Other first year players include freshmen Christian Nielsen, Tom Lannin, Merid Eshete, and senior Greg Diehl.

Some matches have yet to be scheduled, but the scheduling should be finalized in the coming weeks. All home matches will be played at the Dana courts and Blair High School. Weekday matches will begin around 3:00, while Saturday matches will usually have a starting time of 10:00 a.m.

Viking Racketeers Swinging Again

by Randall Hollowell

The Dana tennis season has begun, even though the weather isn't being very cooperative. In fact, the first practice needed to be held indoors in Omaha. Regular practices are now being held at the Dana courts.

The season was to begin on March 11, but the Concordia match had to be rescheduled for March 15 in Seward. The Vikings then take a break until April 6 when they must travel to Fremont to take on the Warriors of Midland College.

Four New Regents Elected to Serve on Dana's Board

by Coleen Lennemann

Dr. Myrvin Christopherson, President of Dana College, has announced the election of four new members to the Dana Board of Regents.

The new members are Marc Petersen and Howard Buffet, both Omaha businessmen, Ms. Marily Larkowski of Grand Island, and Ms. Ellen Qualsett of Schuyler.

Marc Petersen, a 1963 Dana graduate, currently serves as President of PSI Inc. of Omaha, a subsidiary of UtiliCorp United of Kansas City.

After graduating from Dana with a B.S. in Business Administration, Petersen became a management trainee with Peoples Natural Gas Company of Omaha. He was

named Vice President of that company in 1985 and remained with the firm until it was purchased by UtiliCorp.

Howard Buffet, a native of Nebraska, currently serves as Douglas County Commissioner, First Vice President of the Essex Corporation in Omaha, and is responsible for the family's 406 acre farm. Buffet has been highly active in the Omaha community in civic and commercial arenas. In 1988 he was selected as the Outstanding Young Omahan by the Omaha Jaycees.

Marilyn Larkowski of Grand Island is President of the Women of the ELCA (Evangelical Lutheran Church of America) and was also Vice President of the former Lu-

theran Church Women, both of the Nebraska Synod. Ms. Larkowski is a graduate from the University of Nebraska-Lincoln and works as a substitute teacher in the Grand Island School System.

Ellen Qualsett, President of the First National Bank of Schuyler, is also a University of Nebraska-Lincoln graduate. She is a former public school teacher in Tekamah and St. Paul and has been an experimental chemist with Shell Oil Company in California.

Four present members of the Dana Board of Regents have been re-elected. They include: Mr. Roger Christensen, Dr. Roger Mandsager, Mr. Donald Swanson, and Dr. Elwin Farwell, former Interim President of Dana College.

Riedy Named Outstanding Student Scholar-Athlete

Dana Wire Service

Robert Riedy, a senior at Dana College from Grand Island, has been named as a National Association of Intercollegiate Athletics Scholar-Athlete in wrestling. The award is annually given to the most outstanding student athletes in various sports. Riedy is the only Nebraska college student in NAIA Division II to receive the honor this year.

Student-athletes eligible for the award must compete in at least two-thirds of his college's matches, be a national wrestling championship qualifier, and maintain a 3.0 grade point average.

A Business Administra-

tion major, Riedy is a four-year wrestler for Dana in the 142-pound weight class who finished this season with a 23-7-1 record.

Riedy was elected by his teammates as the squad's "Outstanding Wrestler" during both the 1987-88 and 1988-89 seasons and he served as the team's co-captain during that period.

According to Head Wrestling coach Ron Beaman, Riedy "has been the type of wrestler who has shown improvement each year he has been here."

Beaman added that Riedy "has been a hard worker and a team leader and has always demonstrated a winning attitude about our team."

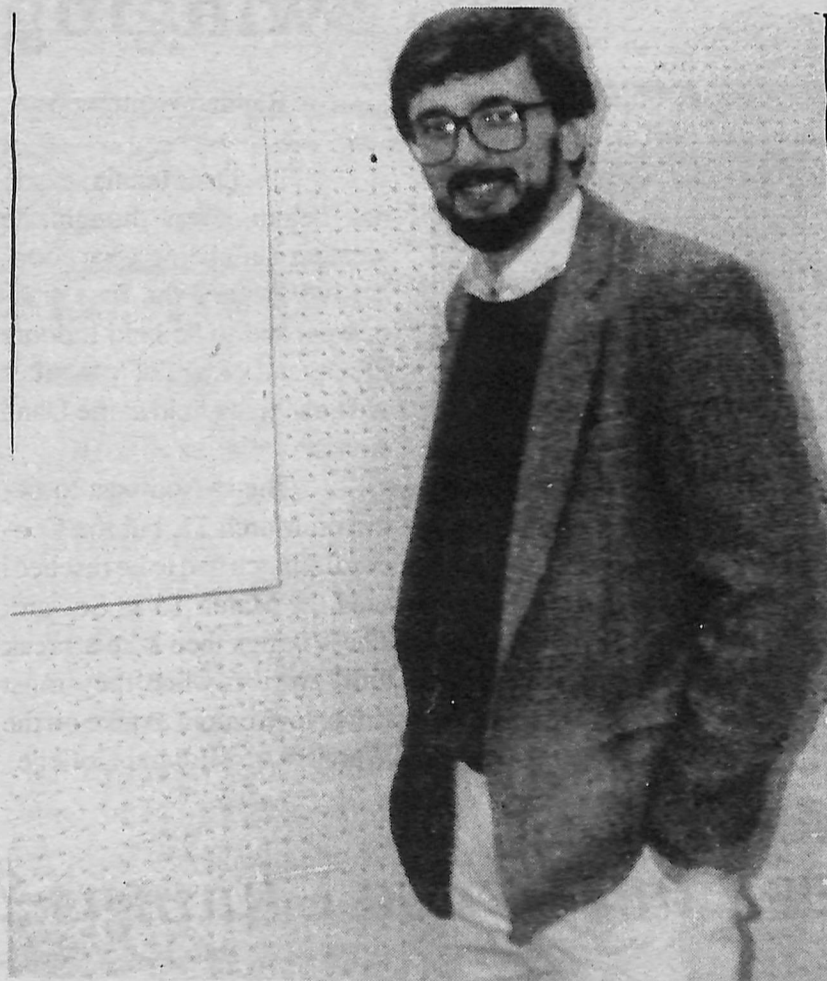
John Mark Nielsen Awarded Doctorate

by Carter Hansen

Dana English professor John Mark Nielsen has officially been awarded his Ph.D. from the University of Nebraska. The announcement came late in December, a perfectly timed stocking-stuffer. Nielsen's dissertation was a translation from Danish of Kristian Ostergaard's novel *A Merchant's House*. The English translation included a critical introduction and notes prepared by professor Nielsen.

Kristian Ostergaard was a Danish immigrant writer, teacher and pastor. Writing in his native language, he published five novels, and several histories and collections of poetry. Since this pioneer wrote in Danish, Dr. Nielsen is doing some pioneering too. Good English translations of immigrant literature work are scarce, so professor Nielsen is quickly becoming an authority on the subject, combining precise literary and historical scholarship with a rare fluency in Danish.

Four of Ostergaard's novels are set in Nebraska, three of which focus on a Danish immigrant family and their experiences after arriving in Omaha. Ostergaard relates the



John Mark Nielsen stands near the new display in Parnassus sponsored by the Nebraska Committee for the Humanities. Photo by Carter Hansen

history of the family from their immigration in the early 1870's, through pioneering efforts in central Nebraska, and finally the founding of Danish-American communities on the prairie.

A Merchant's House, published in 1909, is the first book of the trilogy. It is arguably Ostergaard's most intellectual novel, showing the influ-

ence of a crucial debate confronting Denmark at that time. The debate involved conflict between those who wanted to preserve folk culture and ethnic identity, and those who felt religion and culture only stood in the way of progress in the modern world. This same problem has confronted every technologically developing culture, and it is still expressed today.

Ethnic Study Shows Danes Outnumbered by Germans in Nebraska

by Christopher Heinrich

Contrary to popular belief, the Germans outnumber the Danes here in Nebraska, according to a guest speaker. Over 50 students and faculty packed into Parnassus to hear Dr. Leubke of the University of Nebraska-Lincoln present the first in a series of lectures collectively entitled "Places of Origin: Cities and Towns European Immigrants Left Behind, 1845-1914."

During the lecture in Parnassus, Leubke focused on "German Settlement in Nebraska," which is also the subject of his doctoral dissertation. Leubke said that the study of Nebraska's German ethnicity is important because approximately 22% of Nebraskans come from families boasting of German ancestry.

Germans flooded into the United States at the same time that Nebraska was first opened to settlement. The Kansas-Nebraska Act of 1854 attracted many Germans to the

prairieland, which was geographically similar in many ways to their native land.

Despite the Danish influence in the Dana community, Leubke pointed out the fact that pure German ancestors outnumber the Danes 3 to 1. "Pioneer Women of the Plain" was the second presentation of the series on February 27 and the Czech-Americans were the focus of the third lecture on Tuesday, March 7, at 7:30 pm in Parnassus.

Dr. John Mark Nielsen's discussion of Danish immigrants on March 13 was the final presentation of the "Places of Origin" series.



Silver Razor
Blair plaza
426-4824

Hair care for the whole family

Perms - Coloring
Styling - Regular cuts

Opportunities for International Studies at Dana

"Let's Do Europe"

By Chris Voss

During this year, about 50,000 American students plan to or have studied in foreign countries. Sure, this sounds like alot, but not compared to the 350,000 foreign students that will or have studied in America in this same year. Many educators would like to see more American students study in a foreign country. With international relations as they are today, the experience of study abroad could be the final step students of today need to take.

Dr. Sybille Bartels is Program Director at Dana for study abroad. Her office is located in Rasmussen Hall 205 West. In her office, there is an unlimited amount of information for interested students.

Additional information can be obtained in the International Studies lounge

across the hall from Dr. Bartels' office in 204.

There are many different programs, including those for an interim, summer, semester, or even a full year.

There are programs to teach English in such places as Japan, China, and Africa. Some study abroad programs are included as a requirement for completing a major in a foreign language.

"I would really like to see a study abroad experience included in each students' undergrad program," Bartels commented.

This semester Dana had three students study abroad: Shelley Carter was in Paris, Matt Allen in London, and Mark Olsen is presently studying in London. Any of these students will tell you, if asked, that the experience has something for everyone.

Dana Faculty Judge Annual Melchior Voice Competition

Dana Wire Service

Competition will be held on Saturday, April 1, for the prestigious Lauritz Melchior Award. Area high school students are vying for awards ranging from \$2400 to \$6000 in tuition costs over four years.

Dr. Mark Madsen, coordinator of Voice and Opera Studies at the University of Missouri-St. Louis, will be the featured guest artist and clinician. Every student will receive his personal instruction in a vocal workshop.

The main event of the day is the competition judged by Dr. Richard Palmer, head of the Music Department and conductor of the Dana Choir and "New Day" singers, Jeanmarie Nielsen, a member of Dana Music Faculty, and Everett Johnson, Executive Secre-

tary of the Iowa High School Music Association.

Students must recite from memory two musical pieces for the awards competition. The finalists will be featured in an evening competitive recital at which three performers will be chosen for the three coveted awards.

The Lauritz Melchior Voice Competition is held every year in memory of the great Danish heldontenor. Melchior performed on campus several times and formed a special relationship with Dana. After his death in 1973, Dana was chosen as the resting place for the permanent Lauritz Melchior Collection.

A special room in the C.A. Dana-LIFE Library now houses the Melchior tapes, photographs, press clippings, and other records of the famous Danish performer.



Dr. Sybille Bartels, director of Dana's study abroad program and professor of German, in her Ramussen office. Photo by Carter Hansen.

Dana Bursts Into Global Education

by Christopher Heinrich

Dana delved into the international scene with the recent addition of an international communications major. A joint effort between the communications and language departments cleared the way for the new program.

German professor Dr. Bartels stated that "the objective of the international communications major is to develop an understanding of other cultures." This major leaves open many career options such as journalism, the Peace Corp, and teaching, among others.

A variety of courses are required for the major including cultural diversity, major religions, and the communication core. Also required is a major in a foreign language in conjunction with one year of study in a second foreign language.

The possible foreign language majors are German or Spanish. French and Danish can be studied as a secondary foreign language.

Bartels stressed the importance of study abroad as a way to better understand other cultures. "There are some really exciting programs; over 2,000 study abroad and total immersion programs are available to Dana students."

In addition to European travel during interim, Dana students will soon have the option to work overseas for an internship. Interested students should check out the foreign studies lab in 205 E. Rasmussen for more detailed information.

CIEE Offers Free Advice

Press Release

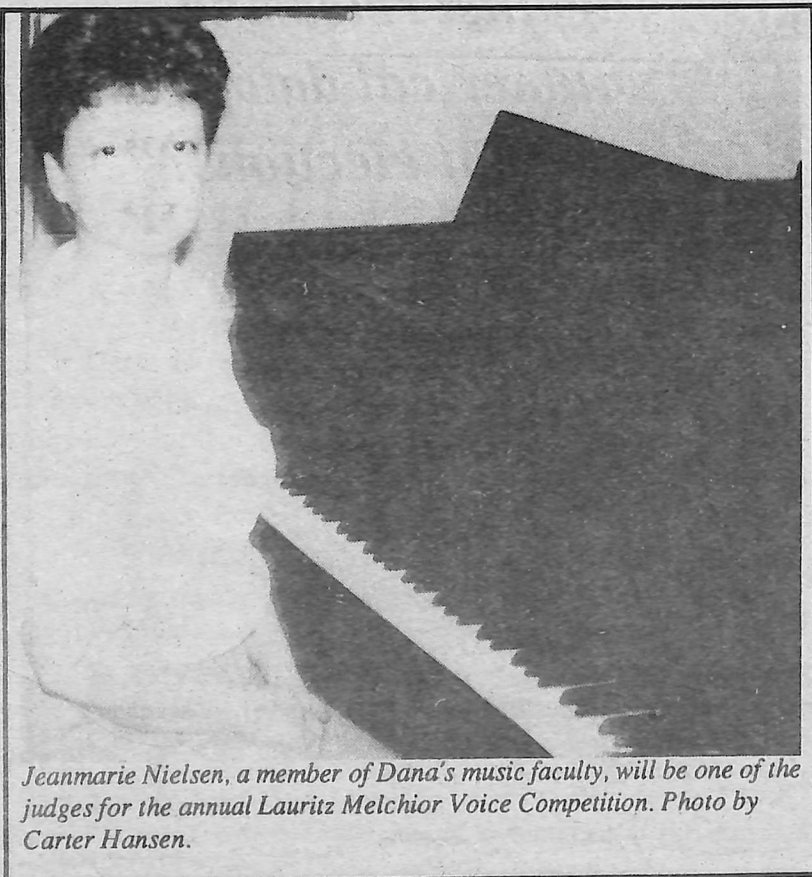
Students interested in traveling abroad should take note of this offer. The Council on International Educational Exchange (CIEE), the largest student travel organization, is offering the Student Travel Catalog free of charge.

The 1989 edition features information on special air fares, rail passes, low-cost accommodations, publications, insurance travel gear, and passports. Descriptions of special programs for study, employment,

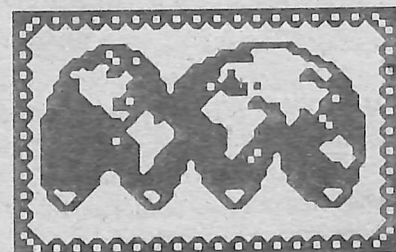
or volunteer work are also included.

An application for the International Student I.D. Card is found in the catalog. This card allows students to take advantage of special student privileges, discounts, and travel benefits.

The 1989 Student Travel Catalog is available from CIEE, Dept. 16, 205 E. 42nd St., New York, NY 10017. There is a \$1 fee for postage and handling. (It is not really free, after all, is it?)



Jeanmarie Nielsen, a member of Dana's music faculty, will be one of the judges for the annual Lauritz Melchior Voice Competition. Photo by Carter Hansen.



International Student Profile: Christian Nielsen of Denmark

by Gina Roden

Planning to return to Denmark in June, Christian Nielsen is pleased that he had the opportunity to attend Dana for a year. "I like having a small campus and appreciate getting a chance to know the faculty," he explained.

What influenced Nielsen's decision to come to Dana was his mother. She went here in 1965 and told him that it would be a good experience living among young Americans. With the help of Phil Pagel and Mary Docken, Nielsen's plan to leave Denmark for one year was made possible.

Comparing the educational systems of Denmark and the U.S., Nielsen said only nine years of education are required in Denmark. Upon completion of high school, students have the option to go to a university, find a job or work in an apprenticeship.

Nielsen described Denmark's philosophy of education as "something for everyone." It makes no difference what skills or talents a person

has because their educational system has something to offer every individual.

Another difference between the educational systems is that Danish students don't have an honor roll or a dean's List. Because the U.S. greatly emphasizes honoring students who do well academically, Nielsen feels that "admiring people (for good grades) doesn't take you anywhere. You should be more concerned about the goals you want to reach."

Economics, general chemistry, calculus, wellness and LARP are the classes 19-year-old Nielsen chose for his last semester at Dana. He really enjoys chemistry and calculus due to their importance in his future goal of becoming a chemical engineer.

When Nielsen returns to Denmark, he will go to school for five years to complete his chemical engineering degree. He said this field requires a lot of education and money in attempting to get the world in balance again.

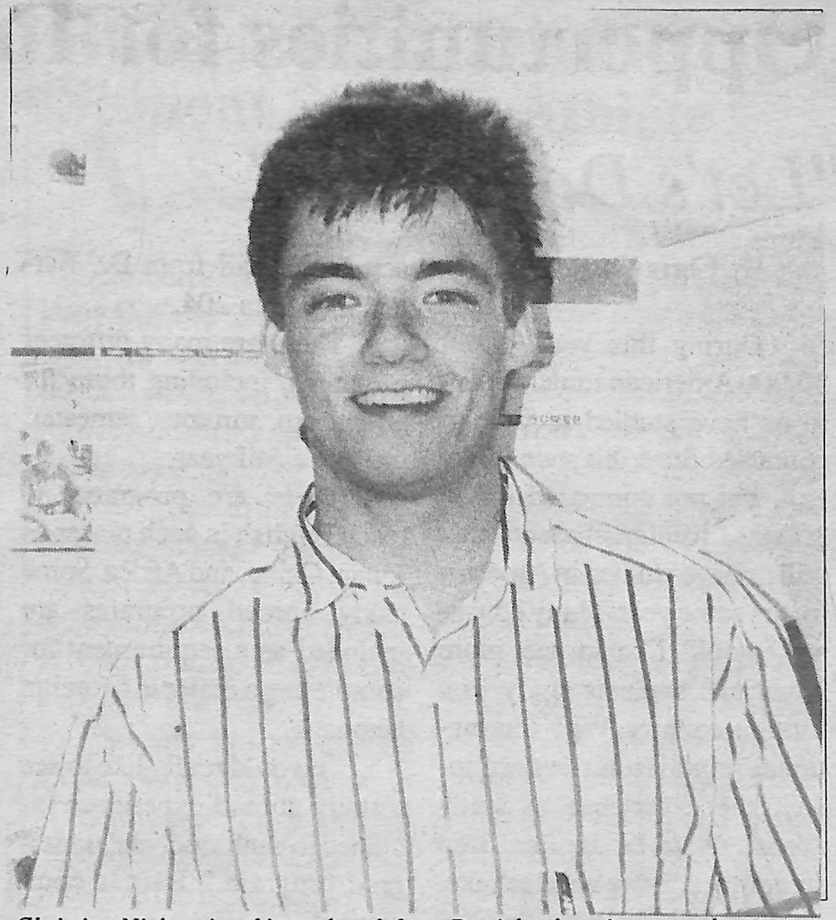
Describing the pros and

cons of living in the U.S., Nielsen stated that "the young American way of living is not much different than Denmark." However, he did add that Danish teenagers act more like adults than American teenagers. Nielsen also discussed his dislike of how much competition is emphasized in the American way of life.

Another aspect of Denmark Nielsen described was social welfare. He said that students don't have to pay for their education until they attend a university. Rather than paying tuition, the Danes are charged only for their textbooks.

The Danes don't pay hospital bills and single parents with children and the unemployed are supported financially by the government. All of these expenses are paid for by the extremely high taxes citizens pay.

One of the things Nielsen mentioned about their financial situation is that it has decreased the social status. In other words, most of the people in Denmark have an average



Christian Nielsen is taking a break from Danish education to study at Dana before returning to complete his degree in Chemical Engineering. Photo by Careter Hansen.

income. There are very few rich and very few poor.

Nielsen's advice to Dana students is to look at other countries from various viewpoints and form your own opinions about them. He feels that Americans tend to look only at the good or the bad points of a country and never merge the two together.

A final thing Nielsen said he appreciates about the United

States is the variety of television channels. In Denmark there is only one national television station. Also, commercials are just being introduced in the Danish media.

Besides sleeping in his spare time, Nielsen likes to watch "Jeopardy" and play racquetball. As for what his favorite food is, Nielsen simply described himself as a "steak-o-maniac."



What do you think of the prohibition against releasing numerical data from student elections?"



MARVYN PETERSON, a Florida sophomore: "I think it's unfair to the students. They're the ones who voted and they should have the right to know the results in terms of numbers, not just who won and who lost."



DAN HANSON, a sophomore from Des Plaines, Illinois: "It's stupid! I'd be interested in seeing just how close the races were."



RICHARD "AIR" VENTRY, an Omaha freshman: "They should reveal the results so (that) each student will know how the candidates compared with each other."

Hughell Resigns from AFM

Press Release

Randy Hughell, Dana's Food Service Director, has resigned his post, effective Friday March 10. This continues the tradition of temporary occupancy which has developed since the decision to replace the old Saga Food Service with American Food Management. Since the switch, Dana has had a new Food Service Director each year.

Hughell is leaving to assume a position as manager of the Old Country Buffet in

Omaha. He held this same position at the Buffet before joining the staff at Dana. After one year of service at Dana with AFM, he chose to return to his former post in Omaha.

Kathy Buckner will assume the duties of Food Service Director for the remainder of the year. She has had several years of experience in food service management at Belhaven College in Jackson, Mississippi; the Ozanam Home for Boys, Kansas City, Missouri; and Kansas Wesleyan College, Salina, Kansas.



Chilcare or elderly noninfirmary care. Full time live in position available with families in Boston area. Includes room and board, insurance, automobile, and \$150-\$300 per week

Call or Write: The Helping Hand 25 West Street
Beverly Farms, Mass. 01915 1-800-356-3422