



# HERMES



Volume 71, No. 21

May 10, 1991

## Around The Mountain Here They Come

By Sara E. Olson  
Hermes Feature Editor

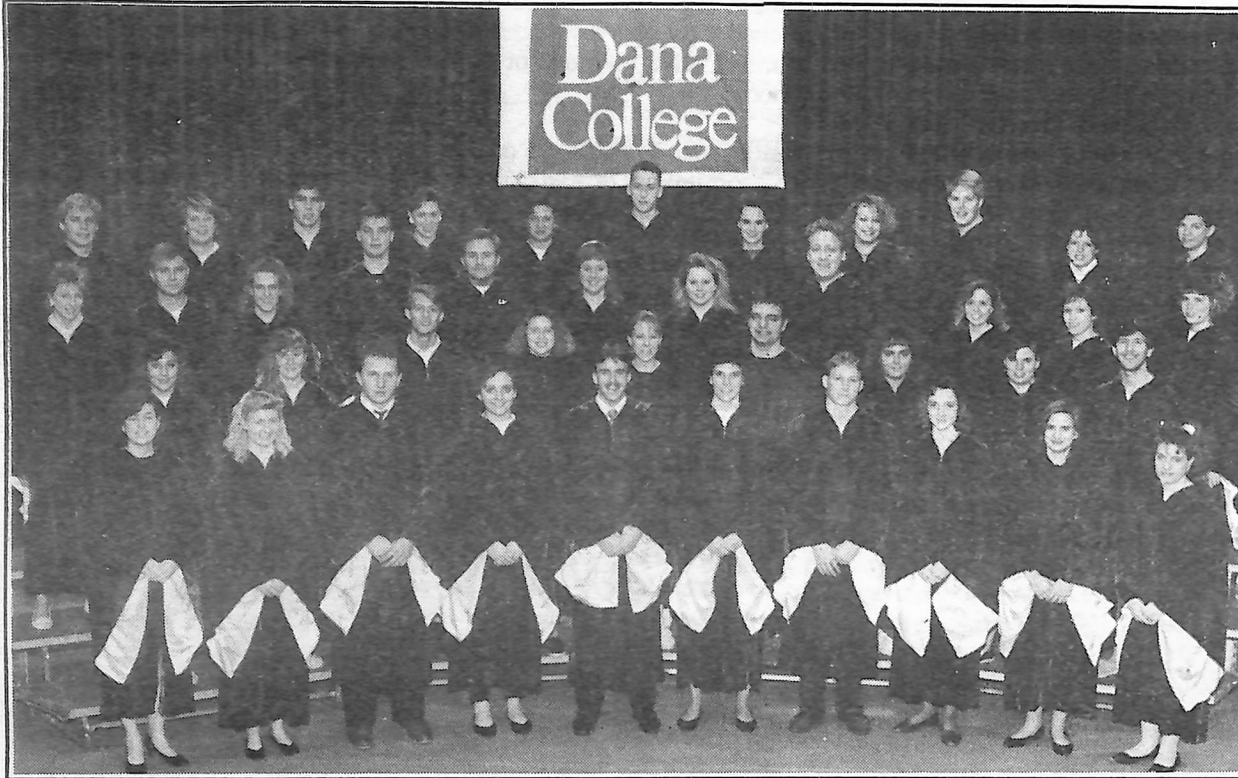
On Monday, May 20, the Dana College Choir, under the direction of Dr. Richard Palmer will be departing for a six-day tour.

"I am anxious," said Palmer, who seems to be ready to hit the road. He, along with the 40 choir members and accompanist Reverend Linda Walz, will entertain nine times at different schools and churches throughout Nebraska and Colorado. Some of the Nebraska and Colorado towns include Lincoln, Firth, Beatrice, Deshler, McCook and Loveland and Denver.

A touring period is important for performing college groups for many reasons. "I feel a tour is essential," explained Palmer, "when an individual sings during a performance, he can reap many benefits. It is the only way to understand the human elements of making music."

"A tour," according to Dr. Palmer, "can activate special fronts. The first front is growing experiences. It gives the group a chance to get away from campus and meet new people. It also gives the choir an opportunity to create lasting bonds among the members. The second front gives the group a chance to reach performance quality, it shows the choir what it can do.

The last front is a college-wide front. A tour provides a positive public im-



The Dana College Touring Choir

age for a private, Lutheran college. In fact, it is essential. A tour enables the choir members to show people who may never get to the campus, a small part of what goes on, and that is an important element—the first impression of Dana."

Within the choir, there is a select group of students who make up the

group the "New Day". This select group of 14 choir members was founded by Dr. Palmer. They specialize in concert performances in churches and schools throughout the Midwest. During the tour they will mainly be performing during the intermission. They perform their theme song arranged by Palmer entitled, "New Day",

along with others from Knut Nystedt and Johann Sebastian Bach.

Palmer is Associate Professor of Music, Director of Choral Activities and Head of the Department of Music at Dana. While he fulfills duties in Music Education and the Voice Studio, Palmer is very active as a composer and arranger of choral music.

## Shakespearean Plays With A Twist

By Dixie Whitlow  
Hermes Sports Editor

Dr. Kathy Collins' Shakespeare class delighted the audience, Wednesday night in the Lauritzen Theatre with their production of several scenes from some of Shakespeare's most well known plays. Several sonnets were also read and sung.

The night began with the narrators, Pete Svendgard and Lisa Campbell, outlining the night's presentation. Joel Morgan then took the stage playing the role of Hamlet for Hamlet Prince of Denmark. Dressed in a black leather jacket, he cited one of Shakespeare's most famous soliloquies, "To be or not to be..." Later Kristi Olsen, playing Ophelia, joined him. The two actors did a wonderful job playing off of each other's talent.

Tara Wassmann and Olsen each quoted well-known sonnets. Kristin Wass, with the accompaniment of Campbell sang "Take, O Take Those Lips Away" arranged by Roger Quilter.

Rob Walters dramatized the prologue to "The Life of King Henry V," and was an active participant in a sword fight with Thom Morrow. The audience thoroughly enjoyed the



A Midsummer Night's Dream: Tara Wassmann, Rob Walters, Thom Morrow, Joetta Pitt, Kristin Wass, Kristi Olsen.

sword fight. Both actors allowed their own personalities to come through, bringing a new dimension to this aspect of a Shakespearean play.

The group of Morrow, Walters, Wassmann, and Wass portrayed a scene from "King Henry the IV."

Simple props were used as Morrow showed much acting ability.

Joetta Pitt delivered a monologue from "Romeo and Juliet" in which Juliet is waiting for the return of her nurse. The nurse is asking Romeo if he still loves Juliet and intends to marry

her. The speech shows her undying love for Romeo.

The highlight of the whole show was a scene from Shakespeare's light-hearted comedy "A Midsummer Night's Dream." The entire class participated in this hilarious scene in which

the commoners who do not know how to act are performing a play for the nobles. Wass plays a very silly "Man in the Moon" while her counterparts play a lion (Olsen) and a wall (Wassmann). Morrow and Walters play lovers who ended up killing themselves. Morrow was very memorable as the woman character he portrayed. It was an excellent night of entertainment and the class should be congratulated for all of their hard work.

## Waste Not, Want Not

By Cheryl Gibbs

It is estimated that each year 27 million acres of tropical rain forests are destroyed. That's an area the size of Ohio, and translates to 74,000 acres per day, 3000 acres per hour, and 50 acres per minute. This should be a concern for all of us. By the year 2000, it is expected that 80 percent of our rain forests may be gone.

The magnificent Central American rain forest is being cut down, burned, and poisoned by herbicide to create grazing land. The beef that is raised there is made into fast food hamburgers, hot dogs, tacos, and pet food. Ironically, the more beef raised in this area, the less is being consumed by the natives. More and more cattle are being raised, leaving behind more destruction.

Most of the fast food restaurants in the United States claim that they serve only "U.S. domestic" beef. However, once the beef is shipped in from Central America and inspected U. S. D. A., it is considered domestic. Thus, most of the more than 150,000 metric tons of beef we import each year from Central America is sold as "domestic" meat.

Grazing is only one of the most common ways of destroying the rain forests. There are many other methods that are being used to ruin hundreds of thousands of acres of rain forests per year. We could help slow down this process by supporting the purchase of our own beef for use in fast food restaurants.

NEWS & FEATURES

# Schmoll Offered New Position

By Press Release

Dr. Myrvin Christopherson, President of Dana College, announced Tuesday the retirement of Keith Hansen, Vice President of Business Affairs, effective September 1. Hansen has held that position for 21 years. As the Vice President for Business Affairs, Hansen was responsible for the business affairs of the institution and its auxiliary enterprises including building and grounds, food service, and the Dana Bookstore. Christopherson also announced that

during last weekend's Board of Regents meeting, the Board unanimously approved the appointment of Bob Schmoll, Director of Computer Services and Information Management and Assistant to the President, as Hansen's replacement.

Schmoll received his B.A. from Dana in 1983 after which he became Dana's Director of Alumni Affairs. In 1985, Schmoll was appointed to the position of Annual Fund Director in the Development Office.

In 1986, Schmoll assumed the position of Director of Computer Services and Information Management. In that role he was responsible for

the development of management and maintenance of the computing resources for the entire college. He was also responsible for creating, developing and installing an integrated software network for both the academic and administrative divisions of the institution.

Schmoll later accepted the additional responsibilities of Assistant to the President which included work with institutional budgeting, governmental grant writing, and strategic planning for the institution.

Schmoll will assume the position of Vice President of Business Affairs beginning Sept. 1.

ROD STEWART - *Vagabond Heart* Twenty years and 18 discs later, "Rod the Mod" is showing no signs of getting older or even slowing down. In fact, *Vagabond Heart* is proof that, like good wine, good music just gets better with age.

Diversity is the word for Stewart's latest outing, arguably the best musical effort he's ever produced. Featuring every instrument from bagpipes (on first single, "Rhythm Of My Heart") to violin (on his version of the Stylistics' "You Are Everything") to saxophone (on several numbers), there's an impressive mixture here to satisfy any music fan.

Stewart does an excellent job on a variety of covers for this disc, including Robbie Robertson's bittersweet "Broken Arrow" and Van Morrison's "Have I Told You Lately." The ever-youthful Rod has also enlisted the services of some impressive vocal accompaniment, too, teaming up with Tina Turner on "It Takes Two," already a hit in England. "The Motown Song" features background vocals (fittingly) by The Temptations, as well as guest guitar work by Steve Lukather.

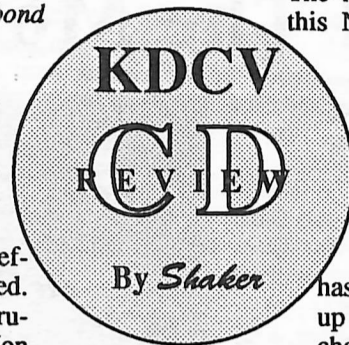
It's easy to see that Stewart had a fun time in making this disc, as even the slower numbers display a noticeable upbeat atmosphere. Destined to do extremely well into the summer, *Vagabond Heart* is undoubtedly one of the

musical highlights of 1991. Totally enjoyable throughout. FIREHOUSE

The heat is on. Even though this North Carolina quartet released their self-titled debut last fall, only now have they begun to catch on nationwide. Much of this initial success is due to their flaming first single, "Don't Treat Me Bad," which has been doing a rapid burn up the album-rock and pop charts.

Featuring hard n' heavy-hitting tracks like "Oughta Be A Law" and "Lover's Lane," Firehouse is an exceptional collection of killer songs, making this one of the most impressive hard rock debuts in years. Groove tracks like the anthemic "Rock On The Radio" and down n' dirty "Shake & Tumble" are hardly what you'd expect from such a young band. Lead vocalist C.J. Snare proves he can sing with the big boys, displaying an above-average range, while sticksman Michael Foster lays down a solid foundation with cannon-fire drumming.

Expect to see the powerhouse ballad "Love Of A Lifetime" as the second single, as the band jumps from the Slaughter tour to opening arenas for Cinderella and David Lee Roth. With such solid songwriting, look for Firehouse to be the next BIG thing in rock n' roll. This one sizzles all the way from start to finish.



## Care and Share News

Mickelsen Hall May 1, 1991—damages totaled \$50 for writing in the bathroom stalls on 3rd floor, broken light covers on 4th west stairwell, and a mess on 3rd east stairwell ceiling. Receiving \$14.47.

Argo Hall April 22, 1991—damages totaled \$32 for two light covers on 4th floor. Receiving \$14.33.

Blair Hall April 23, 1991—damages totaled \$150 for two holes in the wall on 4th and 2nd floor. Receiving \$12.97.

Holling Hall April 29, 1991—damages totaled \$128 for the front door glass and toilet paper holder on 4th south. Receiving 13.59.



Party On At Mayfest Jennifer McCoy, Jon Rademacher, heather Austin and Lisa Welsh

**Next Fall**  
when you come  
to register, be prepared to  
be photographed!  
The nerd book and yearbook  
pictures will be taken  
at the same time!

DTV is now broadcasting on channel 17!  
(Is that better?)

### Calendar of Events (for the week of May 10 - 16)

Exhibit in Parnassus: The Prologue Screen Prints by Ronald King 1967 from Geoffrey Chaucer's "Canterbury Tales" May 6 - May 17

Friday	Saturday	Sunday	Monday	Tuesday	Wednesday	Thursday
<b>Last Day Of Classes!</b>	<b>YO! Study Hard!</b>	7: p.m. Worship service in Chapel, PM 318	<b>DEAD DAY!</b>	<b>Final Exams Begin!</b>	11 a.m. Chapel, Pastor Linda Walz; PM 318	3 p.m. Farewell Coffee Hour, Blue Room

**Have a very, VERY, GROOVY summer!**

# Dana Nine End Season

By Carrie Larkins  
Hermes Staff Writer

Even though the weather finally cooperated, the sun wasn't shining on the Viking baseball team on Thursday, May 2, as they lost a double header to the Doane Tigers on the road.

Tim Heun opened the contest pitching the first four innings of the losing cause. Heun gave up four hits and six walks while striking out three. Chris Ulven came in as relief pitcher giving up two hits and two walks. Emerson Sliva ended the game by coming in the final inning to strike out two batters. The game ended 8-3, Doane.

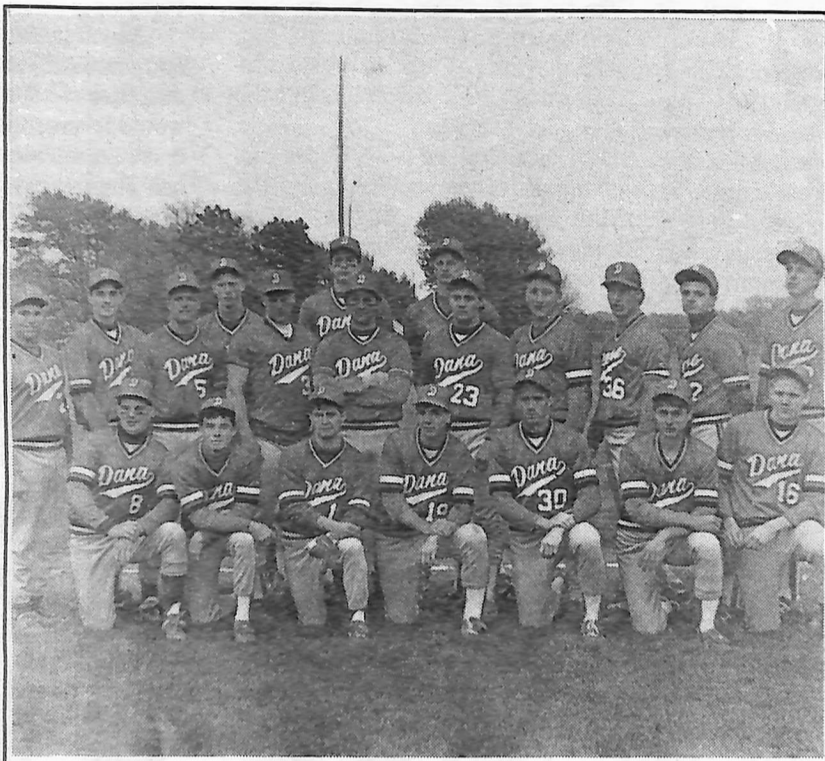
The second game was no better for the Dana Nine. Offensively, the Vikings never really got started, connecting on only seven hits in 27 at bats. Jon Bohlken was credited with the loss giving up three hits and five walks from the mound.

The Dana Nine came out with fire in their eyes on Monday, May 6,

ready to meet the Midland Warriors. Shawn Winters scored two home runs out of four at bats and Troy Carmichael went one of three adding another homer. Jeff Kress pitched all seven innings en route to victory, striking out six while giving up three hits and eight walks. The game ended with Dana on top,

a home run. Carmichael and Gregg Yanta added two base hits each and Winters slammed a triple. Winters was on the mound for the Vikings giving up five hits, one walk and striking out four. The Nine cruised to a 4-2 victory.

Tuesday, May 7, Doane and Dana met again, this time at Petersen Field.



Team Picture: The Dana Baseball Team poses for an old fashioned snapshot.

Photo by Doug Piper

The Nine's hopes for revenge were soon vanquished by the Tigers as they were soundly defeated 10-2 and 6-2. The pitching staff got a work out in the first game with Joel Jorgensen, Heun, Sliva, and Bohlken all seeing action at the mound.

The second game followed in the footsteps of the first. The Nine connected on only five hits in 26 at bats. Pitchers Craig Barsness and Ulven saw almost equal time at the mound in the losing effort.

Carmichael led the Nine at the plate sporting a .392 season average. Winters was close behind with a .374. Kress led the pitching staff winning four and losing five games this season, with a ERA of 5.13 after pitching 59 2/3 innings.

# Recreation Center Benefits Community and Dana

By Sara E. Olson  
Hermes Feature Editor

You have seen them. Sometimes they seem to have taken over the campus, other times there appears to be only a few of them. Who are these people, and why are they here?

They are the community, and for one reason of probably several, they have come to use the facilities that Dana has to offer.

Dana provides a service to the community, both the campus community and the community of Blair, by allowing the people to use the facilities that have here for an annual fee. Faculty and staff along with their families may use the facilities free of charge.

The community recreation program was instituted three years ago and is headed by Carol Hausserman. "It was started because Dana has one of the few recreational facilities within a 20 mile radius," said Hausserman.

"There are many benefits to the community recreation program," said Hausserman. "It provides a great num-

tial to spark growth throughout other areas of the campus. "The recreation program gets people from Blair up to the campus, and for now, that may be the only reason they come up here. But, once these people start to feel comfortable here they might decide to come to a play, or a music production or even possibly take a course," said the program director.

"Community recreation may seem to be a flawless program, but it does have some minor problems," said Hausserman. "When a facility is used for more than one purpose," expressed Hausserman, "there will always be a problem. Borup is probably one of the most heavily used buildings on the campus, and that includes all the classes held there, along with the sports teams, student usage, swimming lessons and community use." Another problem that is being faced, according to Hausserman is that the students think that this is their building and their building alone. Sometimes we do have to share and there is an adequate amount of space that can be shared if everyone

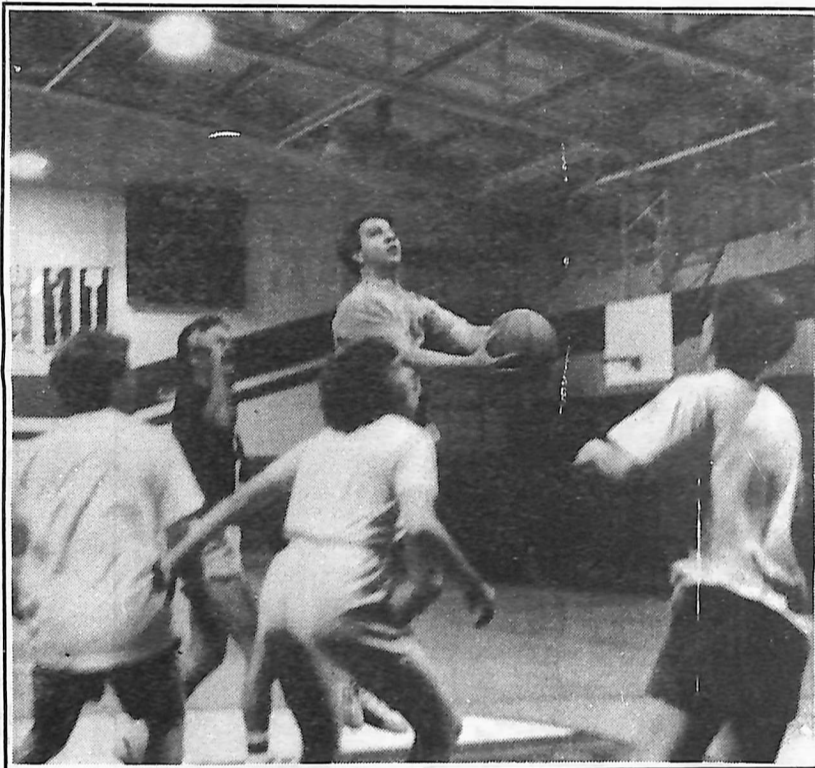


Photo by Doug Piper

Working Out: Members of the community gather for a game of basketball

# Viking Softball Finishes Second In District

By Dave Samson  
Hermes Sports Writer

The softball team finished second in the NAIA District Championship, falling twice to rival St. Mary 0-1, 0-8.

The team started a polar afternoon with a win over Peru State 12-2. The game was locked at twos until the fifth inning when the Vikings clubbed through the cycle of 10 batters. Janet Mitchell made it look easy with an RBI single scoring Katie Corbitt. Sheryl Shuster came up next and added a base hit RBI and Michelle Wheatley rounded out the cycle with a double, scoring Mitchell and Shuster.

From then on it was over except the

shouting, and the focus turned on the Viking pain in the side of St. Mary's. The game was a defensive battle, locked at zero until the bottom of the seventh when St. Mary's scored on a two out rally.

The loss seemed to carry over to Peru State II. The team went through three pitchers in two innings and found themselves down 0-5 after three innings of play. When you think it's over you look up to find the explosion of the Dana offense. One minute it's 0-5, a half inning later it's 8-5. Dana came out on top again in the end, 14-8.

The Vikings returned the next morning to take on St. Marys in the District finals, but fell into a hole they couldn't seem to get out of,

ending the season with a 0-8 loss.

Three members finished in the .400 club, that being an overly impressive year from Janet Mitchell at .436, Michelle Mundt at .419, and Nicki Brownell finished at .401. Michelle Wheatley finished with a .394 and Katie Corbitt concluded a fine year at .377.

Mitchell led with 36 RBIs while Michelle Wheatley added 30. The team was only caught stealing five times this season out of 69 attempts, never convicted. Corbitt led that category with 33 of 36 stolen bases.

Dana finished second this season, but for those that watched the St. Marys game, they would agree that in the category of class and pride as a team, Dana was National Champion.

By Dave Samson  
Hermes Sports Writer

The entire starting nine of the softball team was included in the post season honors. The entire infield, including two pitchers and the catcher were named to the 1991 All Conference team.

This squad includes Lori Scott, Katie Corbitt, Janet Mitchell, Michelle Mundt, Shelly Dhondt, Nicki Brownell, and outfielders Tina Reimer, and Michelle Wheatley. Amy Christensen, Sheryl Shuster, and Carol Mueller were named to the Honorable Mention or second team list.

Tina Reimer, Janet Mitchell, Katie



Dana Golf Team: Stan Shaw, Marc Ferrin, Paul Schwartz, Doug Piper, and Mike Johnson. Ken Brown not pictured.

ber of extended hours that the pool is open for student use. Before the community recreation program started, there were not enough departmental funds to staff the building, to properly supervise it and to hire lifeguards to keep it open many hours during the week. In the past the building was only open on Sundays and two nights a week. Now it is open every night, during the lunch hour for lap swimming and all day on Saturdays and Sundays."

Another benefit that directly benefits the students is the large number of work-study jobs that community recreation provides. "There are currently 18 students that are employed through Borup as either building supervisors or as lifeguards," said Hausserman.

Community recreation not only benefits Borup and the staff that is employed there, but it has the potential to benefit the entire campus. Corbitt, Lori Scott, Nicki Brownell, and Shelly Dhondt were crowned first team All-District. Second team All-District included Michelle Wheatley, Michelle Mundt, and Sheryl Shuster. Kim Sloan, Amy Christensen, and Carol Mueller were named All-District Honorable Mention.

would compromise.

The continuous benefit of community recreation is the money that is received from the membership fees. There has been one stationary bike and a new deck was put around the pool. These are benefits that the students can continuously take advantage of due to the community and their involvement with this school.

"A couple of the goals for the future of community recreation would be to maintain the level of membership that it is at now. There are approximately 200 adult members and 150 youth who are involved. Another goal is to increase the quality of the facilities and to improve some of the equipment," said Hausserman.

Community recreation is total community-Blair and campus. Let's work together to make it a great program.



## OPINION &amp; COMMENTARY

## End Of The Year Statement

By Joel R. Morgan  
Hermes Editor-in-Chief

Community, coming together, working side by side. These are all terms that have been used by students and faculty this year to characterize what they believe needs to happen on this campus. This is a great objective and I know that lines of communication have been opened by the Hermes and other student-faculty organizations, but it is not going to continue if we sit back and hope that the ball keeps moving.

I have seen some of this responsibility being taken on by students and it brings more hope than I even anticipated at the beginning of this semester. When the lip sync was held on Friday, the place was packed with students supporting each other and having a good time. On Wednesday, nearly 100 people turned out for An Elizabethan Evening put on by students. This may not seem like much, but only five people turned out for the choir event held the same evening. This kind of support is exactly the beginning to a Dana that means more to us than school.

This support needs to be extended to all the sporting events, other theater productions and music events.

If this begins to occur, the snowball effect takes over and the college is a community again. Each individual part of a larger whole—taking pride in each department's achievements or winning season. In my mind this is a large part of what college is about—learning to live as a productive, supportive citizen of a community—not an individual going against the crowd. When this process happens, boundary lines begin to disappear and any person can feel that they belong to the community.

This is idealistic, I know, and I'm not saying that students should support everything just because it's Dana. However, if we cannot be proud to go here then maybe we shouldn't go here. When there are problems, we need to fix them—not because we want to have things go our way, but because we would like to be able to say we graduated from a school where we had a chance and we left our mark.

I've said the same thing many times before and I'm sure it's not the end of my call to action, but if you see a problem—find out what is going on and get involved. We are the ones that can make the difference between a closed Dana and a thriving Dana. Think about it.



Photo by Lisa Welch

Carnival Fun: *The Mayfest Clown provides laughter to members of the community.*

### Sand Volleyball Tournament

Monday, May 13

3 Men and 3 Women

See Chris Voss or Doug Piper

TODAY if want to play.

Take a Study Break and Enjoy!

## The Arts Come Together in "Amalgamation"

By Carrie Larkins  
Hermes Staff Writer

According to Webster's Dictionary, amalgamate means "to mix or come together; to blend; to unite". An outstanding display of the arts came together in the Upper Foyer of the Madsen Fine Arts Center on Wednesday, May 1. Students' musical and visual masterpieces were applauded in this first presentation of "Amalgamation".

The idea for this exhibition came about as a suggestion by students Greg McBride and Jeff Tebbe. Professors Milt Henrich and Micheal Anderson quickly agreed that there needed to be more collaboration between the art and music departments. The stage was set. An art exhibit would be part of the

semester's regular chamber music concert.

The evening began with the Dana College Chamber Players, consisting of Martha Olson, Ann Gibbs, Roxane Fenton, Dixie Whitlow, and Amy Barta, performing a traditional repertoire of classical music. Through a series of duets, trios, and quintets, the talents of each instrumentalist were amplified. This was the last concert of the year for the chamber players and consequently the final performance of senior flutist, Olson, with the group. Olson, a music education major, has performed with the group for five years.

The Dana College Brass Ensemble, comprised of Michael Anderson, Pat Mallory, Heather Austin, Steve Lemon, and Kevin Wass, began the

second portion of the concert with a much different flair. Strains from "Just a Closer Walk With Thee" drifted from the elevator shaft. Much to the audience's delight, the traditional religious ballad surprisingly changed to jazz when the group came into sight. The rest of the concert continued in a similar fast paced jovial manner. Solos were prominent within the pieces to show off the outstanding abilities of each member.

"Amalgamation" was an excellent combination of the arts. A larger audience was in attendance than would be present at a music concert or art exhibit alone. Those who only had interest in one area of art were simultaneously able to view both sides of the coin.

## Letters to the Editor

Dear Editor:

Care and Share notices are out again, and damages have been assessed. This letter pertains to the vague and inconsistent policy of assessing damages. This policy, as applied to Blair Hall, is unfair and discriminates against the men of the dormitory. Let me explain. In the first semester, the men's third floor was damaged with two holes, also two fire extinguishers were allegedly tampered with. The men's third floor was held responsible for all this damage by having their total Care and Share money taken away. No individual was held responsible for the damage.

Damage was done to the dormitory the second semester also. But this time, it occurred on the second and fourth floors which are women's floors in the coed dorm. Again, no individual was charged for the damage. But this semester, Care and Share officials assessed an equal amount of money reduction of each student's Care and Share. This policy conflicts with the first semester policy. When the men in the dorm have damage on their floor, they must directly pay for it. But when there is damage to the women's floor, the men have to help pay for it. That's not fair in my book.

This problem was discussed at a Care and Share meeting earlier this year. Two students, Merid Eshete and I, recommended to Darryl Shelton, Pat Mallory, and Dan Travaille to stay with the original policy of assessing the damage payments from the floor it occurred on, instead of fining the whole dorm. No other students opposed this opinion.

Unless the Care and Share amounts are reassessed, the men of Blair Hall are being discriminated against. It's only fair to stay consistent with policy.

Troubled Blair Resident,  
Stephen J. Mathis

Dear Editor:

I would like to take this moment to thank the many members of the faculty, staff, and especially the students, for their many words of encouragement during this difficult period. I have enjoyed teaching at Dana and desired very much to remain with you. Unfortunately, that will not be possible. Nevertheless, I want you to know I will remember many of you fondly and I am sure that some of you will be especially difficult to forget. I wish you all the best.

Sincerely,  
Dale H. Simmons

The Hermes Editors  
would like to thank all  
the staff members.  
Have a great  
SUMMER  
and see you in the  
Fall.

## HERMES

Hermes is written and published by students of the Dana College Communication-Print Media Department on Fridays during the fall and spring academic year. Content of the paper is developed independently of the student government, faculty, and administration, and does not reflect the policies of those groups. Opinions expressed in Hermes are not necessarily those of the editors, college or the college community.

Hermes welcomes letters to the editor expressing all original points of view. Hermes reserves the right to edit all letters according to space availability. All letters must include the author's name and address. Under certain circumstances Hermes may respect requests to have names omitted at time of publishing.

Readers are encouraged to submit story ideas and comments by phoning (402) 426-7328, or via Box 416, Dana College, Blair, NE 68008. The office is located in room 111 North Holling Hall. Submissions must be received by noon Wednesday to be printed in the weekly issue.

Editor-in-Chief: Joel R. Morgan  
Copy Editor: Chris Voss  
Photographic Editor: Doug Piper  
Feature Editor: Sara Olson  
Sports Editor: Dixie Whitlow  
News Editor: Kurt James  
Cartoonist: Matt Plowman  
Reporters: Dave Samson, Coleen Lennemann, Curt Thomas, Sheila M. Young, Shad Beam, Annette Wacha, Jon Rademacher  
Advisers: Dr. John M. Nielsen, Joan Bucy

Think of the six women  
closest to you.

Now guess  
which one will be raped  
this year.

One out of six college women will be sexually assaulted this year. But you can change the odds of it happening. Simply by trying to avoid situations that leave you or your friends vulnerable.

For starters, follow security measures. Don't prop residence hall doors open. Walk with a friend after dark. And be aware that date rape is a major problem on college campuses. With many of these rapes involving drinking.

Then share these facts with six of your friends. And maybe none of them will become another statistic.

NO SHOW!!