



# HERMES

The weekly student newspaper of Dana College, Blair, Nebraska

Volume 72, Number 11

January 31, 1992

## Preparing For The Next Wave Of Computing On Campus

by Brian L. Hawkins

No one can debate that the 1980s were characterized by rapid technological change, but the jury is not yet completely in as to the direct benefits that these technology innovations have had on teaching, learning and instruction. The influx of desktop technology into higher education has occurred in a remarkably short time, placing intense pressures on our organizational structures to meet the demands arising from this so called "computer revolution".

The advent of the microcomputer changed the manner in which scholars worked: desktop computers offered very affordable and easy to use information technology to both professors and departments that had not heretofore been users of these tools. This new technology has more than tripled the number of computer users on the average campus, and probably increased it many times more than that on our more computer intensive campuses.

In the 1980s, computing was a major component and relatively high priority for most campuses. Institutions allocated large sums to

build new computing infrastructures to serve students and faculty. Many colleges endorsed specific campus policies articulating goals for computing in the curriculum. Others attempted to position themselves as "leaders" in their particular market segment, seeking to appeal to both potential students and faculty.

Curiously, computing--and technology in general--is seldom mentioned as a major concern characterizing campus planning for the 1990s. Rather, issues such as faculty recruitment, capitalization, financial aid, college costs, and program quality are the major issues that seem to dominate today's discussions among people in and around higher education. These same issues also seem to dominate the focus of current capital campaigns. While computing is not on this list, it should be recognized that information technology is embedded in a number of these issues, such as start-up costs, faculty recruitment, etc.

During the past decade, campuses have made significant finan-

cial commitments to computing. However, all too often these investments and commitments have been in the form of one time expenditures on capital acquisition. Microcomputers have not been viewed as capitalized assets needing replacement or renewal.

This issue of capital replacement of equipment is one of the most serious facing academic computing on virtually every campus in the country. If one considers all lifecycle costs (including security, software, software upgrades and hardware upgrades), not simply replacement of the hardware itself, the magnitude of the problem looms even larger.

During the 1980s, many campuses became painfully aware of the problems associated with deferred maintenance of the physical plants on our campuses. A close inspection of our campus classrooms and laboratories revealed a crumbling infrastructure.

In the 1980s, campuses finally began to set aside significant amounts of capital and operating expenses to address these pressing

maintenance needs. The 1990s is calling for a similar commitment to the electronic infrastructure if the missions of the university are to be served.

Institutions must maintain a careful balance between getting too far ahead of the pack and not keeping up with the changes in technology as fast as vendors come out with new and more sophisticated and powerful hardware. Staff and faculty are unwilling to undergo significant retraining every two or three years as these technologies change.

A campus must limit the technology it supports. It must carefully gauge the change of technology and decide its own pace for hardware and software replacement within the parameters unique to that institution.

The past decade has provided us with only a small preview of the changes that may affect our campuses in the 1980s as this electronic community enlarges and new information resources become available.

### Campus "Crisis" Issues of the '90's

- Program Quality
- Deferred Maintenance of campus buildings
- Faculty recruitment and retention
- Salaries for faculty & staff
- Library inflation
- Undergraduate financial aid
- Graduate student stipends
- Health insurance premiums
- Capitalizing the campus infrastructure
- Guaranteeing diversity
- Start-up costs for faculty

Brian L. Hawkins is vice president for computing and information services and associate provost for academic planning at Brown University. This article was borrowed from Change Jan/Feb 1991.

## From Athletic Director To Dean

by Pete Svendgard

Staff Writer

Dan Travaille, Dana's Dean of Student Services, says with a smile, that the most challenging aspect of his job is "maintaining my sanity". Travaille has been the Dean of Student Services at Dana since the fall of 1985. He actually came here in the fall of 1984, to serve as athletic director and instructor of physical education.

In the fall of 1985, Dr. Farewell, President of Dana, asked Travaille to fill the position in student services. "When I started, the student services staff consisted of only three employees." Since then that department has grown considerably. Travaille has added a complete staff of professional hall directors and has also accommodated Dana with a counseling center.

Before coming to Dana, Travaille had just finished a year of graduate school to certify himself as a secondary education administrator. He served as the principal of a junior high school for one semester, then came to Dana the following fall.

Prior to entering graduate school, he owned an athletic club in Twin

**"Dana needs to find a niche among colleges and that will help our enrollment."**

□ Dan Travaille

Falls, Idaho.

In his eight years at Dana, Travaille can recognize many changes. "Dana has reached a level of stability since the fall of 1984. In 1985 there were only 390 full time students, and many people had doubts about the future of the school.

"The quality of students has also improved. A significant difference

can be detected in the overall attitude, and the students have a much greater interest in learning and education."

Travaille believes that in order for Dana to reach new levels of success, a larger enrollment is necessary. "Lack of financial stability hurts us (Dana), and the heart of the matter is enrollment," stated Travaille. "Dana needs to find a niche among colleges and that will help our enrollment."

Travaille has many different hobbies. He enjoys running, racquetball and reading. Among his favorite pasttimes are travelling with his wife and snow skiing.

"Trying not to take things personally is a big challenge in this job. But, when I meet with other deans from different schools, I realize that similar problems are occurring at all colleges," stated Travaille. "One thing that I want everyone to know is that I enjoy what I am doing. If I didn't, I wouldn't stay with it."

## WINTERFEST

February 3 - 8

### Calendar of Events

Tuesday

"Caricature Artist" Wayne Sealy will be in the Linden Room of the Campus Center from 6-9 p.m.

Wednesday

"Ice Skating" at Hitchcock Park in Omaha. Anyone interested in going must sign up TODAY in the CC. Free transportation provided--meet in CC at 6:30 p.m. Will arrive back at approximately 10:30 p.m. SAB will pay for the skates (\$1.75) and each individual will need to pay the admission price of \$1.

Thursday

"Twister Tournament" 7:30 p.m. Advertising will be posted.

Friday

Movies in DHA. Times and titles will be advertised today.

Saturday

"Winterfest Dance" from 9 p.m. - 1 a.m. at Blair Firehall.

## Competition To Bring Students to Dana

by Cara Lucas and  
Carrie L. Larkins

On Saturday, Feb. 8, the Dana campus will host approximately 130 perspective students from several different states. These students will be competing in the fourth annual Presidential Scholarship and Melchoir Voice Competitions.

All visiting students will be competing either academically or musically.

Most students attending the academic competition will be here by invitation. To compete they must meet one of the following criteria: minimum composite ACT score of 25, minimum combined SAT score of 970 or a minimum grade point average of 3.25 on a 4 point scale.

The main emphasis of the day

will be the presidential interviews conducted by both Dana faculty and current students. The students will be asked a series of questions about themselves and their plans for the future. These interviews along with essays to be written by the students, determine their eligibility for the presidential scholarship.

Voice auditions will serve the same purpose for the Melchoir awards

Students will have the opportunity to audition for other scholarships in such areas as art, theatre and instrumental music.

Throughout the day, the competing students will have a chance to tour the campus and residence halls and will have the opportunity to meet current students.

Sessions will be offered on finan-

cial aid and student affairs for visiting parents.

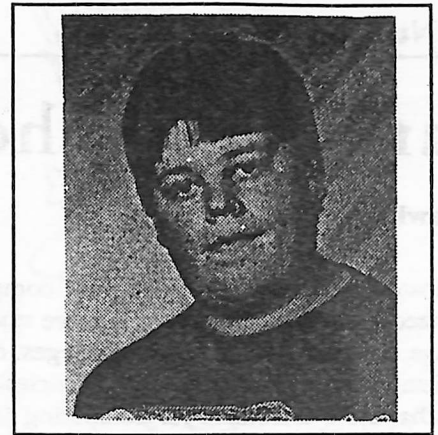
John Schueth, Director of Admissions, and Cathy Keck, an admissions counselor, said they expect a large turnout and hope that the day is successful.

"It is the current students that we hope will put a good foot forward for this day and not feel as if they are being put aside," Keck said.

"A great deal of current students are involved in this day's activities and we would welcome any student who wishes to volunteer to do so," said Schueth.

The day will conclude with a presidential address and awards presentation by President Myrvin Christopherson. Following the presentations there will be a presidential reception.

## SPOTLIGHT



Matthew T. Leaf

**BEST KNOWN FOR:** "Everything I do generally gets a lot of attention, especially the things I do wrong!"

**FAVORITE ARTIST:** Leonardo da Vinci

**FAVORITE ALBUM:** No particular favorites

**PET PEEVE:** People with no sense of humor, "especially people who don't like my elephant jokes!"

**FAVORITE QUOTE:** "Be yourself - no one can tell you you're doing it wrong!"

**ETC...** Matt is a freshman Social Sciences major from Essex, IA. He is involved in concert band and theater, is a Parnassus volunteer and is a BIG Kansas City Royals fan.



## 'Shining Through'

Press Release

"Shining Through," a romantic adventure set in World War II and starring Michael Douglas and Melanie Griffith, opens nationwide today.

Griffith stars as Linda Voss, a secretary from Queens, N. Y., who volunteers for a mission within Nazi Germany.

Douglas stars as Ed Leland, the OSS boss who sends Linda into Germany and then risks his life to rescue her.

"Shining Through" was filmed on locations throughout Germany, with production beginning just two days before the country celebrated its official reunification on Oct. 3, 1990.

This movie is based on the best-selling novel by Susan Isaacs. The film is present by Twentieth Century Fox in association with Peter V. Miller Investment Corp.

## Welcome New Students!

- Kaleb Asfaha
- Shawn Berg
- Scott Bloemker
- Elizabeth Brooks
- Chad Caskey
- Shahin Chowdhury
- Jamel Cooks
- Rob Coursey
- DeJuan Cribbs
- Neil Drews
- Rochelle Dufresne
- Kristine Jesse
- Camilla Larsson
- Sarah Martin
- Dale Mattern
- Daniel Nugent
- Hanne Sorensen
- Kevin Westring

## Mom says: In the bucket Teri!

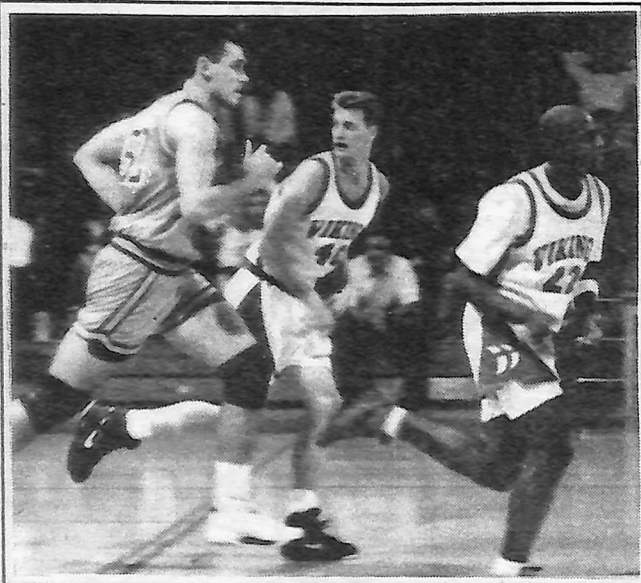
### Calendar of Events

for the week of January 31 - February 6

Exhibit in Parnassus: A Sabbatical Rhetrospective Exhibit by Dr. Milt Heinrich

Friday	Saturday	Sunday	Monday	Tuesday	Wednesday	Thursday
10 a.m. Chapel, Rev. Frank Cordero, Logan, Iowa PM 318 7:30 p.m. Theater production, "Misalliance" 7:30 p.m. Women's basketball at Northwestern	11 a.m. Wrestling at Northwestern College 7:30 p.m. Men's basketball at Midland College	1 p.m. Community Rec opens 1:30 p.m. Women's basketball, Panhandle State at Bertrand High School 7 p.m. Sunday evening worship in the chapel	10 a.m. Chapel, Rev. Doug Kings, Interim Campus pastor; PM 318 7:30 p.m. Men's basketball at Mt Marty College, Yankton, S.D.	9 a.m. Faculty business meeting, Blue Room 7:30 p.m. Women's basketball, Midland College at Dana	10 a.m. Chapel, PM 318 6 p.m. Wrestling Dual, Storm Lake, Iowa 7:30 p.m. Men's basketball, Nebraska Wesleyan University at Dana	10 a.m. Faculty coffee
<b>Winterfest activities this week!</b>						

# A Blast From The Past An Interim Sports Wrap-up



Dana's Shawn Winters and Larry Walters

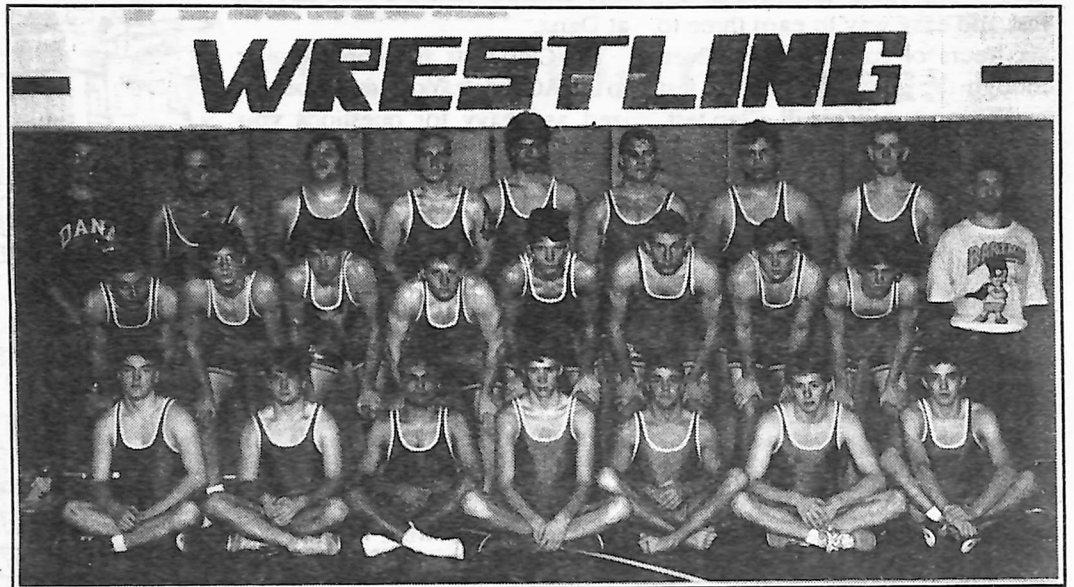
Sara Olson

## Corbitt Named National Player of-the-Week

Katie Corbitt was named national player of-the-week for the NAIA Division II women's basketball.

Corbitt, a 5'5" senior guard from Bertrand, Nebr., fired in 115 points in four games last week for the Lady Vikings.

A career milestone was included in Corbitt's basketball week, as she became our all-time leading scorer, passing Ronda Fritz (1982-86).



Dana wrestlers in pre-season group photo.

Lisa Welch

## Walters Was Named Player of-the-Week

Larry Walters was named the NAIA District II men's basketball player of the week on Jan. 23.

Walters is a 6'1" junior center from Aurora, Ill., currently ranks fifth nationally in Division II scoring. He scored 435 points through 16 games, a 27.19 per game average.



Enterprise photo

Stacey Byers defends against an inbounds pass in a 94-73 win over Dakota Wesleyan

## Lady Vikings Climb Up to #15

Dana has climbed as high as #15 in the NAIA Division II Women's basketball ratings this month.

The Lady Vikings were previously # 21 and # 25 in Division II hoop ratings.

Katie Corbitt along with Jennifer Edleman rank high in individual statistics.

Corbitt was ranked fourth nationally in Division II scoring, with a 26-point average through 12 games.

Edelman is among the national leaders in a pair of categories. She was fifth in the nation in field goal percentage, hitting 75-of-119 shots for 63% through a dozen games. She was 11th in Division II in rebounding, averaging 12.58 rebounds a game.

## Wrestlers Qualify For Nationals

by Sara Olson and Enterprise staff writer

During interim, the matmen of Dana moved its dual meet record to 4-1 with a convincing 39-10 win over Teikyo Westmar at Borup.

Marty Killion scored a 7-5 decision over Teikyo Westmar's Daryl Meyer, who had upset the Dana junior in the Dana invitational. Meyer went on to claim the 167-pound championship in the Dana meet, and he was also named the tournament's most outstanding wrestler.

Winning by fall for Dana were Louie Navarro at 126 pounds, Phil

Warner at 177 and Kyle Lindehof at heavyweight.

The Dana wrestling team placed third at the Simpson Invitational on Saturday Jan. 25. The team placed seven of the nine weight classes that they filled. Place winners are Scott Stickler (134), Troy Greder (142), John Rhodes (158), Matt Mentink (167), Steve Mathis (177), Phil Warner (190), and Lindelof (HWT)

Greder and Mathis join Stickler and Killion in qualifying for the NAIA wrestling nationals.

## Dragon's Head Weekly Specials

Mon. - Fri. 8 a.m.-3:30 p.m. and 7 p.m.-9 p.m.

- Monday  
Healthy spinach salad with golden dressing
- Tuesday  
Quiche Lorraine with melon slices
- Wednesday  
Brunswick stew with sippets
- Thursday  
Uptown black bean soup & rice with hot rolls
- Friday  
Stir fry with rice & soy sauce
- Chili served everyday◦

## David Kaufmann

of Praiseworks Ministries, Inc.

will perform

February 26 • 9 p.m.

in MFAC

Free Admission

sponsored by SAB

### CLASSIFIEDS

Advertise in *Hermes*. Only \$2.50 for the first 30 words and .05 for each additional word. Call 402-426-7328, or write *Hermes*, Box 1086, Dana College, Blair, Nebraska 68008

*Hermes* Staff needs writers. If you are interested drop a line in campus mail, box 1086 to Sara and Dixie.



# Ever Get Somebody Totally Wasted?

# Clep Testing

## Just another way out

by Teri Thiele  
Editorialist

Clep testing offers students a cheap, fast and easy way to earn three to six hours of college credit. Even though the sound of another test makes most students ill, Clep testing is relatively painless.

For only \$45 the registrar will order you a test. Most of the time the tests are readily available in the registrar's office and all you have to do is schedule a convenient time to take it.

The general education tests are the most popular: English composition, math, life/natural science, history, social science and humanities (not valid at Dana). Thirty other tests are also available.

Students are eligible for three to six hours, again, for only \$45. What a bargain compared to the regular price of hours at Dana!

Each test has two parts. Students must complete each part, but are only scored on what they need. A good example would be the science test. Part I is life science, part II is physical science. If the student only needs three hours of life science, they still will have to complete both parts of the test, but will only be scored on the life science portion. All general education tests are worth a maximum of six hours and work like this example.

A grade of pass or fail is awarded. Students must pass with a "C" or better. A passing grade will not affect your GPA, it is only entered as Px. A failing grade means try

again later or take the class offered at Dana.

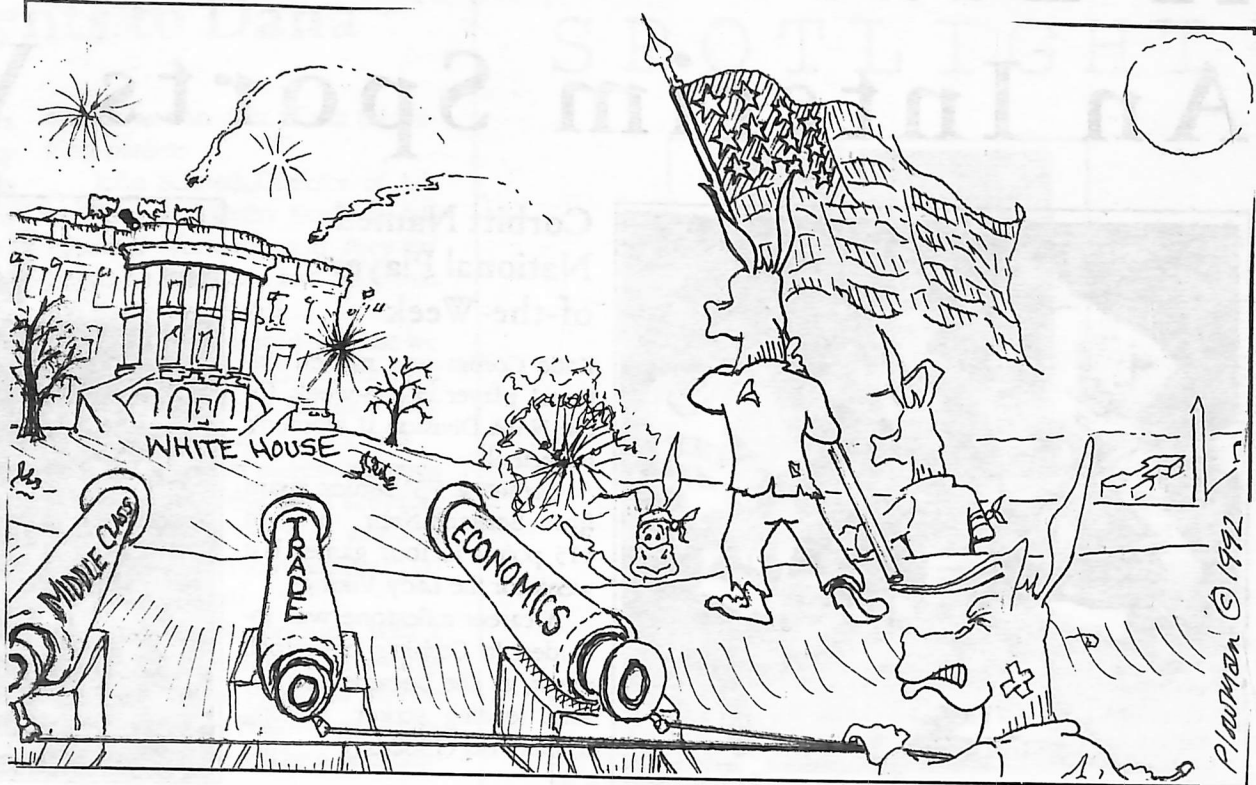
The Clep tests are scored similar to the ACT tests. You are not penalized as heavy for questions you don't answer as questions you do answer wrong. So be careful! If you don't know an answer, eliminate the poorest answers and narrow your choices down to only two, then guess or leave it blank and come back to it later. The statistics are in your favor of guessing the right answer.

Still not convinced another test is the ticket out of class time? Or maybe you haven't seen a math book since you were a junior in high school. The library has a sample test book for the Clep tests. Each sample test has 25 questions and the answers.

An easy way to study is to copy the few pages of the sample test you are going to take (don't forget to copy the answers) and study at home or in your room. Read over the questions and understand how the test is devised. Although there are only 25 sample questions, the format of the real test is the same. The real test is about 45-50 questions per part.

Now all you have to do is schedule a time to take the test. Each test lasts 90 minutes. Yes, it will take the entire 90 minutes, don't plan to rush. The test is then mailed to Clep for scoring. Your results are returned to you and the college usu-

## Politoons By Plowman



NOVEMBER!

*Guess Your Blood Pressure and Pulse!*

Thurs., Feb. 6  
12:30 -1 p.m.  
Campus Center  
Prize for closest guess!!

ally within two weeks.

Don't get excited when you can't decipher the codes, call the registrar and she will cross-reference your score with the Dana standards. Dana enters your hours onto your transcripts for no extra charge. It's over. You have added hours to your transcript and now you can take a class that applies to your major, saving a semester's worth of time and money.

## Polluting Our Future

by Stan Shaw

Recently I did a research paper in my physical science class on the ozone layer. Now, I'm no rocket scientist, nor do I plan to be, but this research got me thinking about the future of the world and just how much longer life on this planet is going to exist.

I have a lot of questions for everyone. Not a quiz or a pass/fail exam, just some questions to motivate your mind, if that is possible. I don't know, maybe you are beyond help, or maybe I am beyond help. Either way, one of us needs help, and it is probably you. Of course you are probably saying to yourself, "Oh great, another fool out to save the world." If so, great, if not, give me a little longer.

When I look at people in today's society, I see people out to make a quick buck, live their life to the fullest without being killed, and people who could really care less about nature. I remember when I was a kid I loved to climb trees. I know I was the only one. I had to be. Nobody else in the world loved to climb trees as much as I did.

When I was young I believe I was an environmentalist. I was part of KETHCUP when I was a kid: Kids Eventually Throwing Hell Cause U Polluted. This is a group I made up from that one commercial I would see every Saturday morning during cartoons. You've seen it. The one where the kid is walking on the rocks by the lighthouse and he is worried because he is afraid there won't be enough natural re-

sources for his generation. I hated that commercial then, but now I understand where he is coming from.

This world has been through a lot. Think of all the problems that man has caused himself just because of his egotistic stupidity. Look at all the oil fields that are being burnt in the mideast because of Saddam Hussein. Not only that but look at all the current oil spills we have had in the seas. What are we trying to do? I know for sure that the smoke in the atmosphere is not going to make the world a better place to breathe and the oil in the seas definitely isn't going to make the fish swim any faster. There have been many, many more disasters in the past and we need to learn how to prevent them.

At least once a week I hear someone say that we are our future. I get so sick of hearing that. The problem is I know it is true and I don't really care to hear it. There aren't many young people out there that care about what is going to happen in the future. A lot of people just want to drink beer and make babies. Don't get me wrong, that's fun, too, but in order for our kids to be able to have the same privileges we have, we've got to make sure that they will have the opportunity. So I'm not going to tell you what to do—I'm going to tell you what I hate to hear. "We are our children's future. We just might be able to do something."

## Public Pulse

### NEW KDCV FORMAT...

This week *Hermes* asked members of the student body: **KDCV has recently programmed a standardized format. Each day, Monday through Friday, follows the same schedule. What is your opinion of this format and how will it affect your listening to KDCV?**

"I think this new schedule will attract more listeners. I tend to listen to KDCV in the evening, while doing my homework. I really like the time frame for alternative music. This is when I do most of my undistracted listening."

Anne Swisher, Social Work '95, Atlantic, Ia.

"Sorry, but I haven't had a chance to listen, but I'll make sure I make the time from now on. Sounds pretty pleasant, though and I will let you know my opinion after I hear it."

Theresa Huftless, Psychology '93, Omaha, Ne.

"Because I am a broadcasting major, I am glad to see that they have a format that is so well put together. I do disagree with the 5-8 rock & roll slot. Everybody on this campus does not like to hear rock & roll. The way that it will affect KDCV, is that they will lose their minorities."

Anonymous

## HERMES

*Hermes* is written and published by students of the Dana College Communication--Print Media Department on Fridays during the fall and spring academic year. Content of the paper is developed independently of the student government, faculty, and administration, and does not reflect the policies of those groups. Opinions expressed in *Hermes* are not necessarily those of the editors, college or the college community.

*Hermes* welcomes letters to the editor expressing all original points of view. *Hermes* reserves the right to edit all letters according to space availability. All letters must include the author's name and address. Under certain circumstances *Hermes* may respect requests to have names omitted at time of publishing.

Readers are encouraged to submit story ideas and comments by phoning (402) 426-7328, or via Box 1086, Dana College, Blair, NE 68008. The office is located in room 111 North Holling Hall. Submissions must be received by noon Wednesday to be printed in the weekly issue.

Co-Editors: Sara E. Olson  
Dixie Whitlow

Copy Editor: Carrie L. Larkins

Photographic Editor: Sara E. Olson

Sports Editor: Cara Lucas

News Editor: Mary Vorthmann

Cartoonist: Matt Plowman

Reporters and Editorialists:

Kurt James, Steven Bertram, Deborah Andersen, Mark Wiederin, Vera Todorova, Angela K. Sturm, Janelle Stolen, Leasa Stark, Trasy Sparr, Stan D. Shaw, Jonelle Ray, Curt Thomas, Shad A. Beam, Kari Fjelstad, Donna Jezierski, Ilpo Kavara, Patrick Mallory, Louie Navarro, Shawn Osbahr, Jon Rademacher, and Bradley P. Volcek  
Advisers: Dr. John M. Nielsen, Joan Bucy