



# HERMES



The weekly newspaper of Dana College, Blair, Nebraska

Volume 73, Number 20

March 5, 1993

## Existing buildings will be remodeled

By Becky Baumker  
Page Editor

Classroom and office space will be remodeled in all campus buildings after the new replacement building opens, according to Dana President Myrvin Christopherson.

Christopherson said he is not sure how the space will be rearranged. It depends on many things.

First, all assignments to the new building have not been made. This is being done by Dr. Bernie Matthies and will be completed in the next four to six weeks.

How space will be allocated will also depend on if Rasmussen Hall is reopened as a residence hall. Space on third floor Pioneer Memorial may need to be allocated to offices currently located in Rasmussen.

Christopherson said he does not want to use Pioneer Memorial as strictly an administrative building.

"I would like to still use some of the classrooms in this building," he said. "Otherwise the administration would be completely isolated from the students. We need that student traffic going through the building."

Pioneer Memorial will not stay the same, however. Christopherson said he would like to make some much needed changes

— " —  
*We need that student traffic going through the building.*

— Myrvin Christopherson —

in the building.

"All the administrative offices need expansion. Everyone is looking at gaining needed space," he said. "Also this building needs some remodeling. We need to make the building handicapped accessible which includes installing elevators."

Christopherson said other remodeling is necessary to make the building more energy efficient. New heat and air conditioning needs to be installed

along with new windows.

Christopherson said it is possible the college may bring in an architect to help decide how to remodel the buildings. He said one architect has already looked at the Campus Center and recommended several changes for better space utilization.

It is possible another or the same architect will do the same for Pioneer Memorial once college leaders decide to remodel.

Aside from possible remodeling in the Campus Center, Pioneer Memorial and Rasmussen Hall, Christopherson said the college is also looking at Elkhorn Hall.

He said the college must decide what to do with the building. If it is to be used as a guest house, extensive remodeling must be done.

"Right now we're concentrating on finishing the new building," Christopherson said. "After that then we will decide what to do with the other buildings based on how much money we will have."



Kris Plack

Denise Daubendiek and Carrie Larkins hug Snoopy at Mall of America as the Hermes staff took some time off during "The Best of the Midwest" media conference in Minneapolis last weekend.

## Change proposed in intervisitation policy

By Carrie L. Larkins  
Editor in Chief

"This proposal puts the power of making moral decisions, which affect their lives, back in the hands of the students," said Amy Barta, chairperson of the Student Policy Committee of Student Senate. Her committee has recently undertaken a proposal regarding the change in visitation policies in the residence halls.

Several weeks ago Barta was approached by a student who had recently been written up for breaking the intervisitation policy. The violation prompted the student to propose alternatives to the policy.

The two proposals, 24-hour open visitation or open visitation on weekends and extended hours through the week, were presented to Campus Life Committee by the Student Policy Committee. Campus Life is a body made up of faculty, staff and students.

According to Barta, Campus Life chose to pursue the option of

24-hour open visitation. Members of the opposite sex still must have an escort between the hours of 11 p.m. and 11 a.m. "By and large, the committee was warm to the idea and oblivious to the living conditions in the dorms," Barta said.

By the request of the Campus Life Committee a petition drive was conducted to determine if this was a policy the students as a whole wanted to change. A petition signing table was set up in the Campus Center from Feb. 19 until Feb. 24. The petition drive will continue until the Campus Life Committee meets Tuesday.

Out of the 259 students who signed a petition, 249 voted for the proposal of 24-hour open visitation, seven days a week. Barta brought the statistics to Student Senate last week and received their approval for the policy change.

The approval of senate and the statistics from the petition will be presented to the Campus Life Committee Tuesday. If the proposal is approved by vote, it will go on to President Christopherson's office.

## Students and staff help in county recycling effort

By Becky Baumker  
Page Editor

Approximately 20 staff, faculty members and students will man the Blair Recycling Center tomorrow. These people are volunteering their time and energy to run the center.

The Blair Recycling Center has been in operation for two years. During its first year of operation 272 tons of recyclable materials were collected, according to Mark Anderson, Director of Financial Aid and a frequent volunteer at the center.

Both Anderson and Anne Christophersen have been involved with the center. These two individuals decided to see if others from the Dana community would also like to help at the center.

"We thought putting the word

out on the Dana campus would heighten the awareness of the center and recycling in general," Anderson said. "We also thought it would be nice for Dana to show support for the county recycling program."

The center collects glass, plastic, newspapers, aluminum and tin.

The center serves as the collecting point for recyclable materials for the entire county. Other cities collect their recyclable materials and then bring them into Blair.

The volunteers collect recyclable materials from Blair residents and sort the material.

The center will open at 8 a.m. and close at 12 p.m. Anyone wishing to help may show up at the center. Collection will take place regardless of the weather.

The center is located a quarter

of a mile past McDonald's on Highway 30 heading east toward Iowa. Take the first gravel road to the right after McDonald's. This road will take you to the recycling center.

For further information contact Mark Anderson at extension 7226.

### THIS WEEK

KDCV reviews  
Enuff Znuuff, pg. 2

Dana softball expects  
winning season, pg. 2

Viking basketball teams  
close out season, pg. 3

Lemon looks forward to  
1993 season, pg. 3

# What's new on



by Jeff Rademacher

After two melancholy releases which didn't help the band, Enuff Znuuff has put out an impressive CD entitled *Animals With Human Intelligence*.

The Chicago based threesome (Donnie Vie, vocals and guitar; Chip Znuuff, bass and backing vocals; and Derek Frigo, guitars. Drummer Vic Foxx left to join Vince Neil's new band) kept the moody and dark melodies from their previous release, *Strength*

(1991) and added some catchy guitar riffs to make *Animals With Human Intelligence* a strong showing.

It hits you in the face from the beginning with the lead off single "Superstitious."

The first half of the CD features grinding hypnotic music with a deep metal sound. "Black Rain" is a heavy groove-laden song and "Master of Pain" is the most intense track on the disc. Even the power ballad "Right by

Your Side" does nothing to hinder the guitars of Vie and Frigo.

It does slow down with the second ballad "Innocence," a tune detailing a father's loss of his daughter to "some special boy" and the real world. It then rips into "One Step Closer to You," one of the tracks with commercial radio written all over it.

"The Love Train" gives the listener a great guitar hook, a fast beat, and something to move to. Following this is "Mary Ann Lost Her Baby," the highlight of the collection. This track focuses on a subject most musicians have refused to touch: abortion.

The song offers no support for either side of the issue but tells the feelings of a young woman

after she has had the operation. "Sitting in a room/Waiting there/They call your name/Into another room/Where they tell you there's no pain/Well you might not feel it now/You're just simplifying things/Got out of hand somehow/It's gone, yeah, it's gone."

*Animals With Human Intelligence* was mixed by Nigel Green (who has worked with Def Leppard) and co-produced (along with Vie and Znuuff) by Phil Bananno and Ritche Zito (Cheap Trick, The Cult).

The skilled contributions of the aforementioned as well as the maturing in the band's songwriting is grossly evident on this disc. If it receives a fair listen *Animals With Human In-*

telligence should do well in promoting Enuff Znuuff to a higher plateau of musical recognition.

### Rating Scale

- 0- trash; garbage
- 1- future \$1.99 bargain bin material
- 2- worth a second listen but not much more
- 3- alright; I can handle it
- 4- p.d.g.; might be a hit; gotta tell my mom
- 5- stupendous! Most excellent!

Enuff Znuuff's *Animals With Human Intelligence* rates a 4.

KDCV, 91 FM, is beginning to play "Superstitious" in its regular rotation this week.

## NEWS AND INFORMATION

**Presentation on nutrition and health planned**  
A presentation on how to eat properly and healthy in college will take place Tuesday at 7 p.m. in the Linden Room.

**Schmoll named recipient of Heart of Dana Award**  
Bob Schmoll, vice president for business affairs, was named the recipient of February's "Heart of Dana Award" last week during the College's Campus Coffee.

The Heart of Dana award is a special monthly award presented to individual employees in recognition of special achievements in their field and/or contributions to Dana College. These individuals have been nominated by their peers and approved by members of the President's Administrative Staff Council.

Schmoll received a framed certificate and a watch designed with the Heart of Dana logo.

**Applications due for intramural basketball**  
Applications are due today for men's and women's intramural 5-on-5 basketball.

Competition will begin on Sunday and end on April 18. For information contact Amy Brown at extension 7563 or Kyle Lindelof at extension 7520.

**Make your own video or mini-movie on Tuesday**  
Want to fly like Superman in a mini-movie or look like a music video star? Thanks to Student Activities Board and Fun Flicks, totally interactive video from the Kramer Agency of Grand Rapids, Mich., you can become a star, a legend in your own mind.

Fun Flicks will be set up in the Linden Room from 11 a.m. to 5 p.m. on Tuesday. You can make a lip sync music video or a mini-movie in which you can fly, water ski, walk in space, be in an old western gunfight, ride a motorcycle or many other things.

The finished tape will be yours to keep.

### Sower searching for entires

Literary works, musical compositions and art work entries are now being accepted for the 1993 publication of the *Sower*.

The deadline for literary works and musical compositions is March 22. Please send these entries to Ann Gibbs, campus mail Box 186.

Art entries are to be dropped off in MFAC 103, Beth Swenson's office. The art deadline is March 31. For more information contact Dr. John Mark Nielsen, Ann Gibbs or Meredith Dickerson.

## Softball season begins

By Sara Butcher  
Reporter

This Saturday in Wichita, Kansas, the Vikings softball team will be competing in their first tournament of the 1993 season. The Vikings will be playing Kansas Wesleyan, Kansas Newman, and Sterling College.

Even with tough competition, Coach Kissel does not appear the least bit nervous. "Although our team is very young this year, we do have a lot of talent." Kissel is looking for leadership in pitcher Carol Mueller, a senior from Seward.

Conference championships, District finals, and

Nationals are not unrealistic goals for this year's squad. The original number of twenty four athletes has been cut down to a travelling roster of eighteen.

With mostly juniors and freshman making up the team, the possibility of many returning

players for next year is high.

For the fans that want to watch a real softball game and can't make it to Kansas this weekend, they can catch the Lady Vikings in action March 23, when they host their first home game against Concordia College.



Kalani Simpson

Karri Roberts, third base, stands wready and aiting for the ball to come her way. Season play begins tomorrow.

.....

**Dragon's Head**  
**Daily Specials for**  
**week of**  
**March 8 -12**

**Monday: Pork**  
**tenderloin and**  
**french fries**

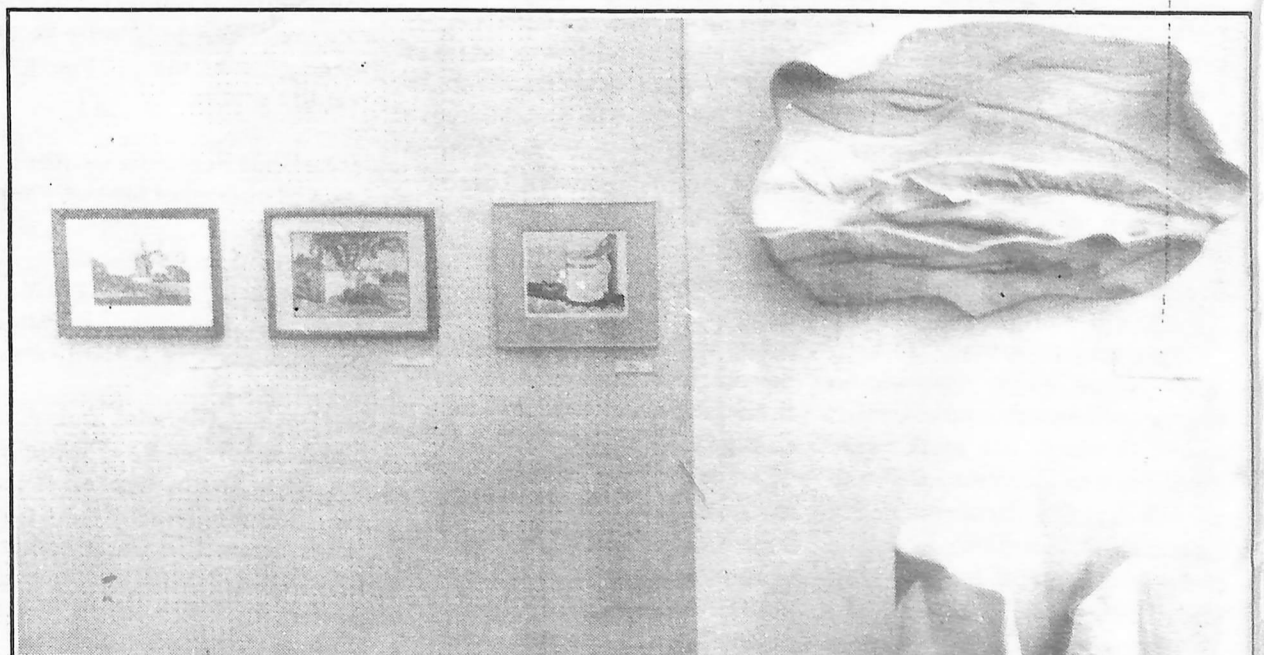
**Tuesday:**  
**Creamed chicken**  
**and noodles with**  
**biscuits**

**Wednesday:**  
**Shepard's Pie**

**Thursday:**  
**Chicken salad**  
**sandwich with**  
**chips**

**Friday: Spaghetti**  
**with small salad**

.....



The new gallery exhibit featured in the Forum is entitled "Impact: the Art of Nebraska Women." The Forum is sponsoring an excursion March 9-14 to the Lied Center to see "Les Miserables."

Kris Flack



Bobby Novotny



Matt Mentink

## Novotny and Mentink end wrestling careers

In last week's issue of the *Hermes*, an article was included on the senior members of the Dana wrestling team. According to Coach Ron Beaman there are two more wrestlers who may be concluding their Dana careers.

Bobby Novotny plans to graduate early from Dana. For three years Novotny has been one of the team's best wrestlers. This year, percentage-wise, he was among the top five performers in wins and losses, Beaman said.

Novotny won the open tournament (Dana's only first place) at the Drake Duals in Des Moines in January and was runner-up at conference.

Injuries kept Novotny out of the early season, but when he came back, he wrestled well, according to Beaman. Novotny shared the 150 lb. spot with Shawn Bluml and Jeff Belgum this season.

In addition to his successes on the mat, which included a second place finish at the Nebraska State High School Tournament and two winning seasons at Dana, Novotny has worked hard in the classroom to become a top Dana student. He is currently

taking 22 credit hours so that he can graduate early.

Matt Mentink has had a good second half of the season, splitting his time at 167 lb. and 177 lb. Mentink is one of the school's top wrestlers and a very hard worker, Beaman said.

When he didn't qualify for Nationals, Mentink continued to work hard in the wrestling room serving as a wrestling partner for the other men.

Mentink may be back to wrestle for the 1993-94 wrestling season; but if chronic injuries persist, he may be a coaching assistant. If Mentink is unable to wrestle, Beaman said he looks forward to his help on the side of the mat.

The Dana wrestling team left Tuesday for the 21-hour drive to Butte, Mont., and the 1993 NAIA Wrestling Nationals. Beaman is the chairman of the qualifying standards committee which reviewed all of the wrestlers records Wednesday to check for eligibility. Thursday included seeding meetings, weigh-ins and a banquet. The wrestling begins this morning and concludes tomorrow night.

## Lemon is optimistic about season

By Jeff Rademacher  
Reporter

When it comes to making predictions about the upcoming Dana Vikings baseball season, head coach Dale Lemon declines to venture beyond the present.

"As far as predictions are concerned I just can't do that. I don't want to and I have no way of figuring it out.

"But I'm optimistic because we've got some new freshmen and transfers which I'm sure are going to help us out."

A lot rests on Lemon's heartening view and the shoulders of this year's squad. Last year was the team's worst season with 30 losses and a last-place finish in the conference.

While he's counting on the returning veterans for leadership, he sees good contributions ahead from the team's first-year players: there are 13 rookies in the lineup.

"I took 12 of these guys to Florida over interim (to the Bucky Dent School of Baseball) and they can play ball. We may have as many as four freshmen in the starting lineup and one or two transfers, so there's not many positions left for returning people.

"Some of those freshmen I think are going to be alright. They'll make a big difference."

The rookies will be filling some holes in the starting roster but Lemon states one element that could decide whether the team wins or loses will be the pitching.

## Talented seniors end Dana careers with consecutive winning seasons

By Carrie L. Larkins  
Editor in Chief

The Dana Lady Vikings ended their season Wednesday night with a 54-71 loss to Peru State in the NAIA Division 11 District Championship.

Two main factors contributed to the loss according to Coach Kathy Foley. "We had too many turnovers while we were playing good defense and when things weren't going well offensively we made mental defensive mistakes."

## Men end transitional season 6-27

By Robert Boyd  
Sports Reporter

The men's basketball team ended the season with a 6-27 record.

Dave Jensen took over the reins midseason but found himself with a team which eventually lost 20 games in a row. Jensen played a lot of younger players to finish out the season.

Sophomore guard Tony Collins led the team in scoring with 683 points, averaging 21.3 per game.

He was also the team's top rebounder with 189, or 5.9 a game. Collins also finished with 73 assists and 60 steals.

Seniors Andy Dotson and John Arensberg ended their careers with the Vikings this season.

Dotson was the Vikings' three-point specialist. He drilled 57 of them this season. Dotson averaged 8.8 points and dished out 82 assists.

Arensberg was one of the three players who averaged in double

Dana had 25 turnovers in the contest and shot only 37.5 percent from the field.

"I still feel we were as good as Peru. We played fairly good defense but we couldn't get the ball to go in when we needed it to," Foley said.

Saturday the women defeated Concordia, 60-55, in the first round of playoff action at Seward.

"Concordia was a good win for us. It was a team we obviously had struggled with," Foley said.

Concordia defeated Dana in two previous meetings this season.

"We had a good season," Foley said. "We had to face a lot of adversity losing Jen Edelman. Melanie Hild did an admirable job trying to replace her. We had to make adjustments again when she returned."

Foley was satisfied with her Vikings 15-13 record. "The seniors have made a tremendous impact on our program. They've set the standards for the future," Foley said.

This year's seniors hold records in all categories. They close out the 1992-93 season with a 5-7 record in conference play.

figures in scoring with 10 points a game. He finished second in rebounding with 135 boards.

Junior forward, Larry Walters, last year's top scorer, was injured most of the season. Although he only played in 14 games, Walters continued his hot shooting. He averaged 14 points and 7.6 rebounds.

The core of young players that Jensen worked with will get a lot

of playing time if they return next year. Freshman guard Nick Prosocki started in 23 games for the Vikings and averaged 6.7 points.

Sophomore Rob Coursey played outstanding by scoring 9.3 points a game and dishing out a team high 83 assists.

Sophomore Lee Byrd started 14 games and averaged seven

### What's Happening This Week? March 5-11

**F**RIDAY  
10 a.m. Chapel, PM 318

**S**ATURDAY  
Kansas Wesleyan Softball Tourney at Wichita  
1 p.m. Baseball at Graceland  
8 p.m. Game Night, sponsored by Campus Ministry

**S**UNDAY  
11 a.m. Worship service in the chapel, PM 318  
1 p.m. Baseball at Graceland

**M**ONDAY  
10 a.m. Chapel, PM 318

**T**UESDAY  
7 p.m. "Learn how to eat properly," Linden Room

**W**EDNESDAY  
10 a.m. Chapel, PM 318

**T**HURSDAY  
9 a.m.-3 p.m. Bloodmobile, Argo Hall  
10 a.m. Forum Event

"It's (the season outcome) going to bank on pitching quite a lot. Pitching is so much of the game. Even though we might be pretty good defensively and offensively we don't have all we need for pitching.

"We might score 12 (runs) but if the other guys score 13, it's probably a pitching problem. I don't think the defense will be that bad. It could be a struggle but we hope they'll do it. Our returning pitchers will be much better."

Overall it will be an interesting season of baseball. Lemon already knows the team will be hitting better and playing well defensively but "whether one of both of those are enough to carry us to more victories... I don't know."

# Harshness of winter increased by poor snow removal at Dana

By Carrie L. Larkins  
Editor in Chief

Are you tired of winter? Does the idea of putting on another turtle-neck, sweater and a pair of hiking boots make you cringe? You have every reason to feel this way.

Dana has been snow-covered for 61 straight days. That means that sometime after Christmas when we weren't even on campus, the dead grass attempted to peek through the white stuff on at least one occasion.

The most snow in nine years has been dumped in eastern Nebraska.

The snow itself doesn't bother me much. I'm a kid at heart who loves to play in the first snow of the year, and I'm out there catching the last snowflake of winter on the tip of my tongue.

The snow removal, or lack thereof, is what angers me. The town of Blair must be the worst community in the state in terms of snow removal. Several Sunday afternoons when I was returning to campus from a weekend at home (south of Lincoln), the only poor roads I ran into were within the Blair city limits.

Highway 30 is driveable after

a heavy snow; not clear but driveable. This driveability comes from heavy traffic, not superior snow blading skills.

The city of Blair owns one truck and two graders for snow removal. A Blair Street Department spokesman informed me that they reach all of the city streets. Apparently they don't consider Nebraska Street leading to Dana College to be within the city limits.

The snow removal by Dana maintenance is no better. Dana's

## EDITORIAL

parking policy was modified in recent years to assist in better snow removal. Cars cannot be parked along the street overnight, not even on weekends. As I stumbled over a ridge of snow left between tire tracks on my way to Rasmussen Hall, I wondered why the policy was changed.

I know of several people who fell on the slick sidewalks on campus during February. Dr. John Mark Nielsen suffered a broken ankle earlier in the winter because of it. These falls didn't occur at six or seven in the morning before the maintenance staff

had a chance to salt. The falls all happened late in the morning or early in the afternoon.

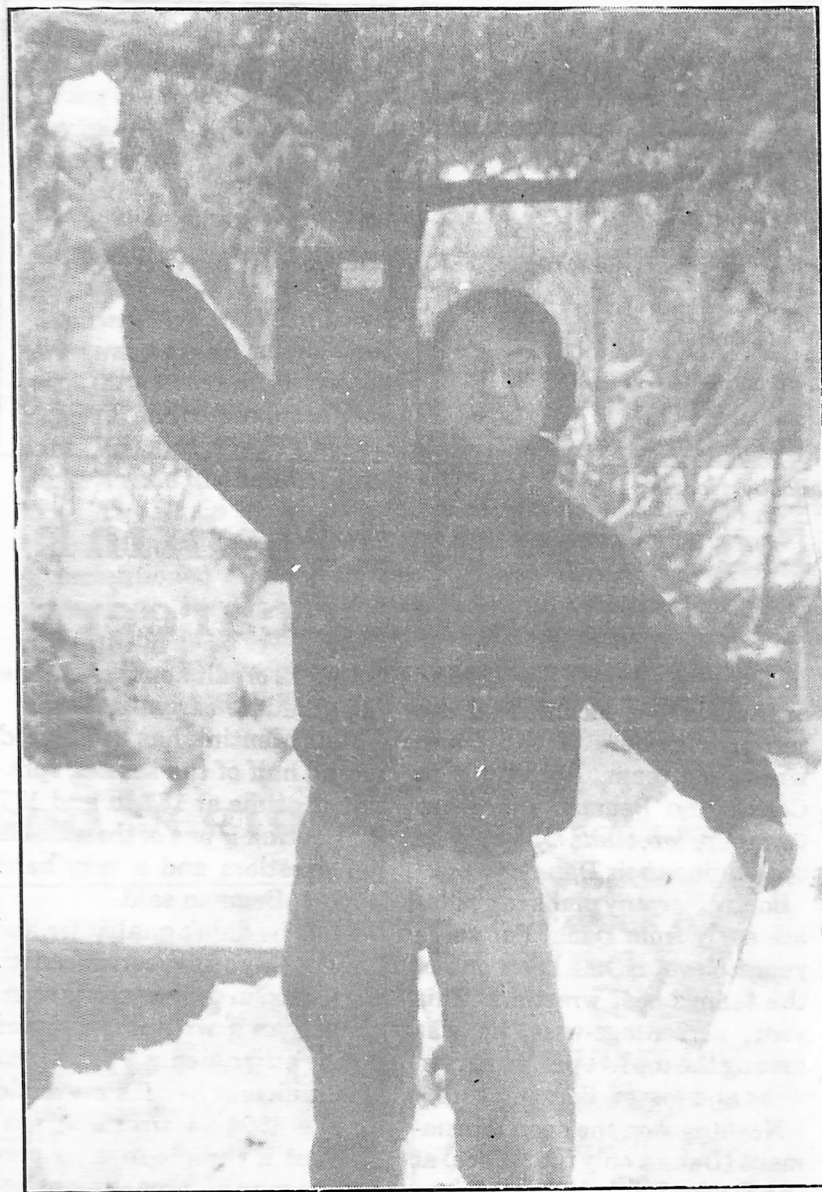
Usually the steps of all the buildings are salted. A truck and blade scrapes the top few inches off most of the sidewalks. If visitors are coming to campus, the building they are going to is completely clean and dry.

What about the students, the people that make this college survive? The areas in front of the residence halls are rarely shoveled, yet salted. The sidewalks to the students' parking lot are always snow packed.

I realize snow removal is not the only responsibility of the maintenance staff. With a small staff, their time is pressed further. Campus snow removal should, however, receive priority. Slick sidewalks are an immediate concern of everyone on campus, students and faculty alike.

When the snow is removed, the danger is removed with it. If it is left to melt away on its own, every evening and morning it creates a new danger. If my tuition must be raised for campus upkeep, I would like to see this upkeep happen.

Good news! Only 15 days until spring.



Kris Flack

Louie Navarro makes the best of a snowy situation outside of Pioneer Memorial.

# Will the snow ever end?

By Shawn Osbahr  
Editorialist

In the Midwest weather disturbances have accumulated more snowfall this year than over the last several years combined. I am at the point where the sight of snow makes me ill.

As spring approaches and warm temperatures enable me to go sockless without catching a cold, everyone in the United States will find themselves knee-deep in snow. This is not the kind of snow created by Mother Nature. This is a kind of snow that only a crafty presidential candidate could have created.

In the '92 election, voters were snowed by Bill Clinton and the snow is still falling. In fact we should have been in a political snow advisory since the '92 campaign began.

President Clinton has only been in office a little over a month now and already several campaign promises have been broken or rearranged to convince you that they never existed.

One of the most obvious and substantial promises was his pledge that taxes on the middle class would not increase to pay for his new programs. This is not only a broken promise but an

outright lie.

The worst thing about lying is that one lie usually leads to another and creates a snowball effect. This was the first flake to fall in an avalanche of lies, fraud and deception. Now that the budget deficit is larger than the Bush administration calculated, more sacrifices must be made, i.e. taxing the middle class.

The fact of the matter is that Clinton and his campaign team estimated the actual budget deficit at a higher amount than the actual figures turned out to be. More snow!

## EDITORIAL

Moving on to more lies, I mean promise alterations, Clinton was supposed to focus like a laser beam on the economy. Since when did gays in the military play a vital role in this nation's economic conditions?

I also thought that we were supposed to receive fleeing Haitians with open arms. Sorry, better turn those boats around.

Early in the Democratic primary, Clinton strongly opposed any new energy or gas taxes. The snowball has taken shape and is beginning to roll. By the way, what ever happened to his job

program that was to be introduced on Inauguration Day? The snowball is at full speed.

When I listen to the news and read the newspapers, all I see are the high numbers of those who support Clinton's economic plan. Where do they get these people to poll? I can't find them. I'm sure there are a lot of people who support the fact that he is at least trying something. But what they do not realize is that his something will fail.

Do you really believe that an increase in taxes and spending is what this country needs? It has been proven time and time again throughout history that it does not work. What in the world makes anyone think that it will work this time, especially since we are slowly coming out of a recession?

I can no longer be satisfied with sitting back and "giving him a chance." Something has to be done. I think that our only hope is gridlock. For once we may be able to thank congressional gridlock for something.

It appears that not only will the Republicans oppose most of the economic plan, but Clinton's fellow Democrats will produce enough heat to extinguish most of what many of us fear in Clinton's package.



## LOOK AT THOSE MUSCLES!!!

Happy Birthday,  
Dixie!!  
--from the entire gang



# HERMES



Editor in chief: Carrie L. Larkins  
Copy Editor: Denise Daubendiek  
Page Editors: Kris Flack, Becky Baumker  
Art Editor: Matt Plowman  
Photographic Editor: Kris Flack  
Business Manager: Trasy Sparr  
Advisors: Dr. John M. Nielsen, Joan Bucy

Hermes is written and published by students of the Dana College Communication-Print Media Department on Fridays during the fall and spring academic year. Content of the paper is developed independently of the student government, faculty and administration and does not reflect the policies of those groups. Opinions expressed in Hermes are not necessarily those of the editors, college or the college community.

Hermes welcomes letters to the editor expressing all original points of view. Hermes reserves the right to edit all letters according to space availability. All letters must include the author's name and address. Under certain circumstances Hermes may respect requests to have names omitted at time of publishing.

Readers are encouraged to submit story ideas and comments by calling (402) 426-7328, or via Dana College, Box 1086, Blair, NE 68008. Submissions must be received by 5 p.m. Wednesday to be printed in the weekly issue.