

The

**DANIAN**

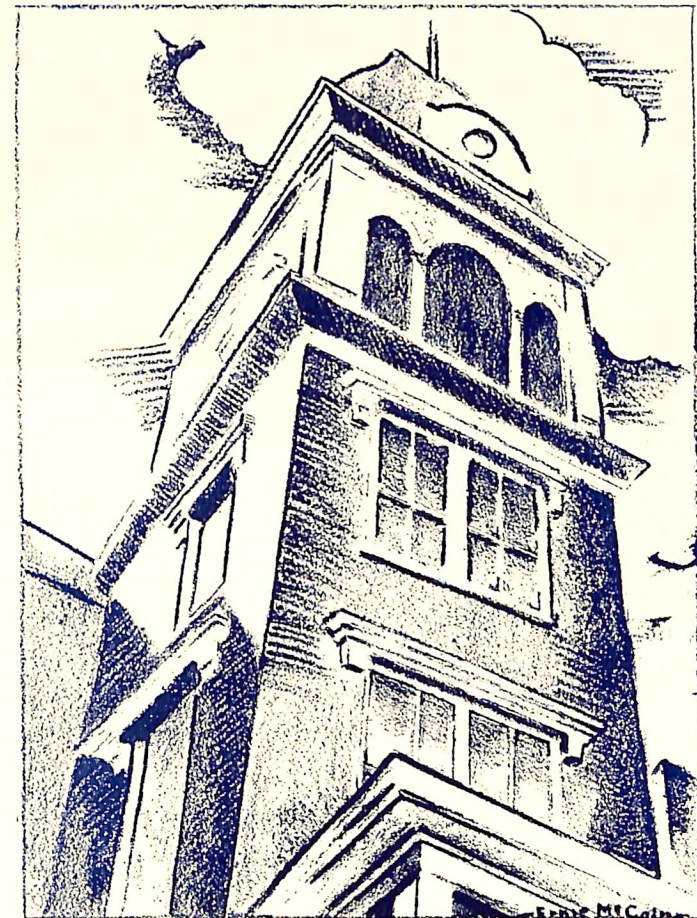
**1936**

THE  
1936  
DANIAN

TO COMMEMORATE  
THE FIFTIETH YEAR OF  
THE DANA TOWER

PUBLISHED BY THE  
CLASS OF 1936

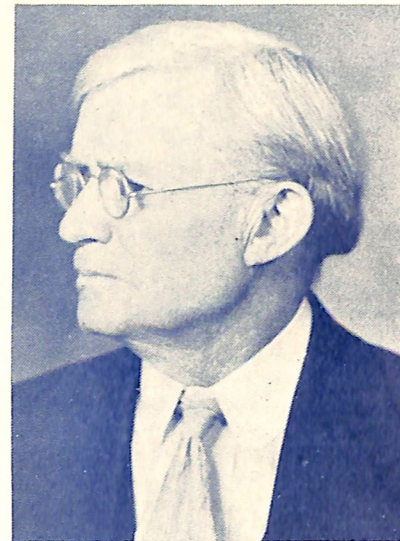
DANA COLLEGE  
TRINITY SEMINARY



1886      OLD MAIN      1936

# DEDICATION

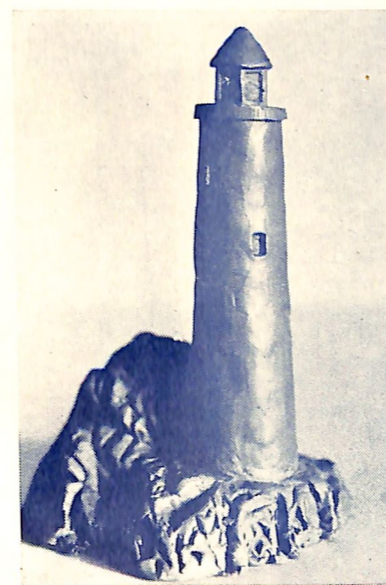
To one, who for forty years has been a friendly, faithful and patient teacher; who has been a guiding influence in the promotion of scholarship and the highest ideals at Dana College during this first half century of its existence, we, the Seniors of 1936, affectionately dedicate this annual.



*Dr. C. X. Hansen*



# ADMINISTRATION

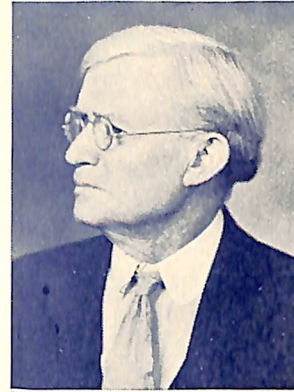




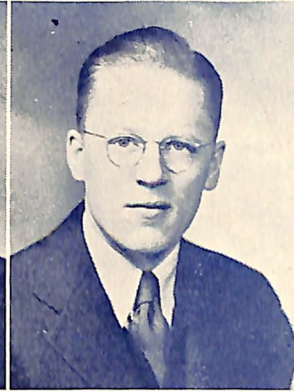
*ERLAND NELSON, President  
Dana College*



*J. P. NIELSEN, President  
Trinity Seminary*



*C. X. Hansen*



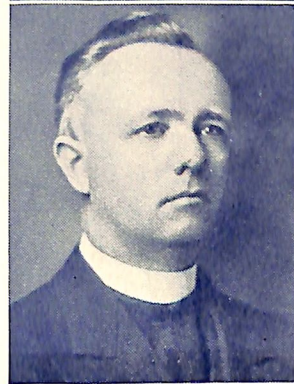
*S. M. Thomsen*



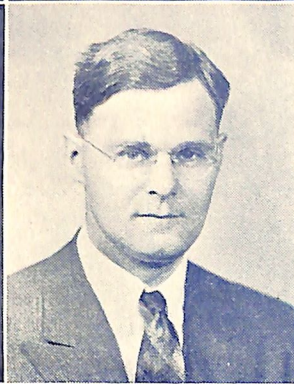
*Caroline Johnson*



*A. C. Wind*



*C. B. Larsen*

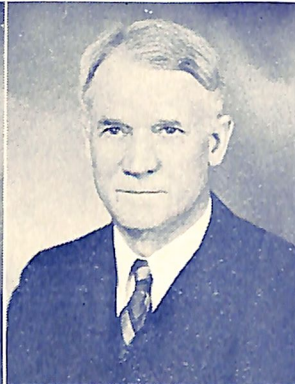


*Paul Nyholm*

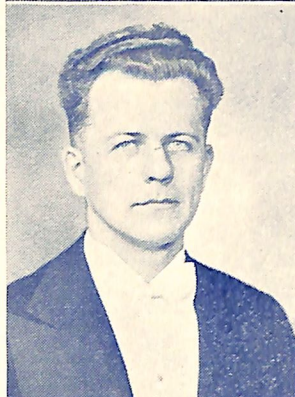
*H. G. Swansen*



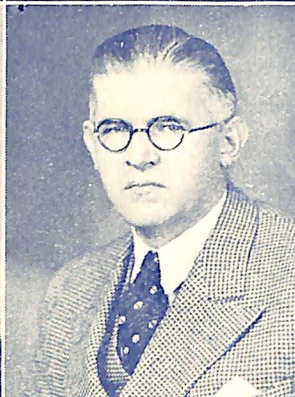
*G. H. Hartwig*



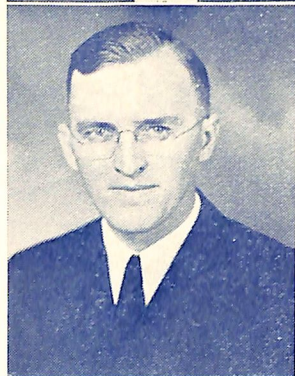
*G. J. Malmin*



*C. S. Fynboe*



*L. H. Lyndrup*



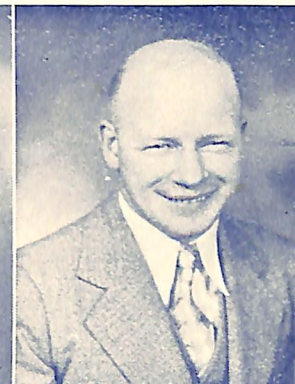
*William Thompsen*



*Dorothea Jensen*



*Rufus Olson*



*D. Brann Malmin*



*J. C. Brown*



# SENIORS

Though much is taken,  
 much abides; and though  
 We are not now that  
 strength which in old days  
 Moved earth and heaven,  
 that which we are, we are;  
 One equal temper of heroic  
 hearts,  
 Made weak by time and  
 fate, but strong in will  
 To strive, to seek, to find,  
 and not to yield.  
 —Tennyson.

Mrs. W. Selby  
 Instructor



Jean Larson  
 Instructor



Wesley Andersen  
 Instructor



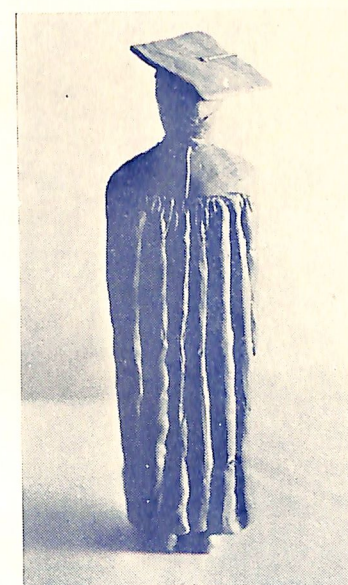
Arthur Mehrens  
 Instructor

M. Goldbeck  
 Custodian

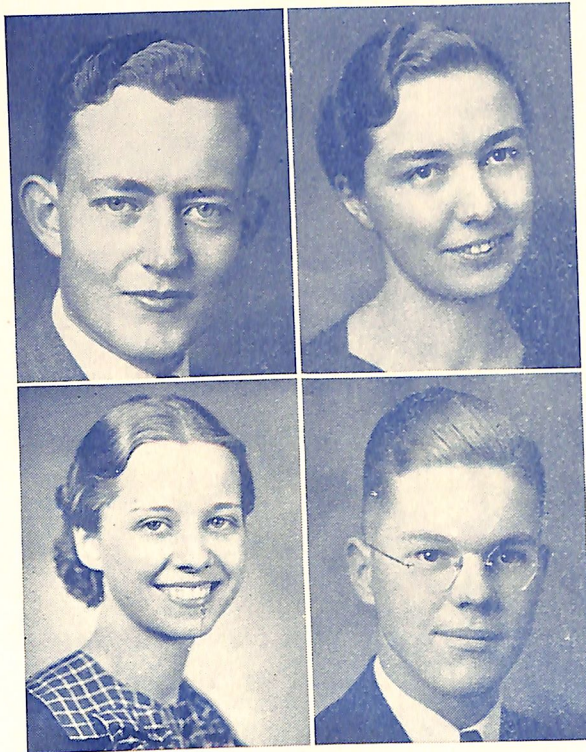


Carol Larsen  
 R.N.

Paul Hansen, Secretary  
 Merrill Truax, Chef  
 Mrs. Truax, Matron







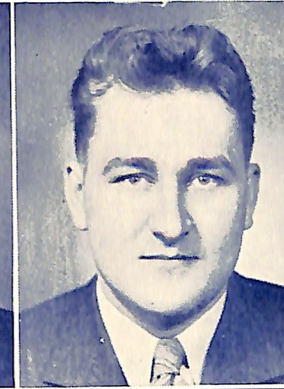
OFFICERS

- VERNER CARLSEN, President ✓  
History
- RUTH JOHNSEN, Vice-President ✓  
Music
- INGA SCHULTZ, Secretary ✓  
English
- ANKER JENSEN, Treasurer ✓  
English

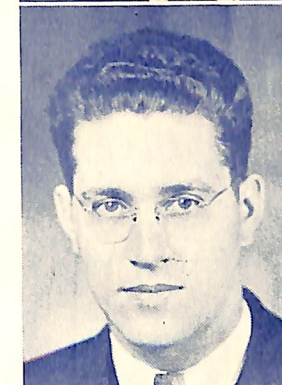
Wesley Andersen  
Trinity



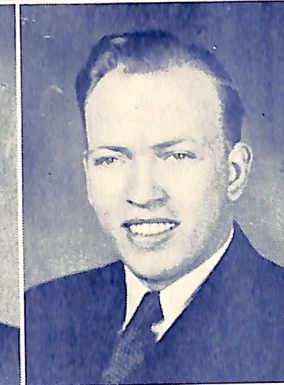
Ervin Bondo  
Trinity



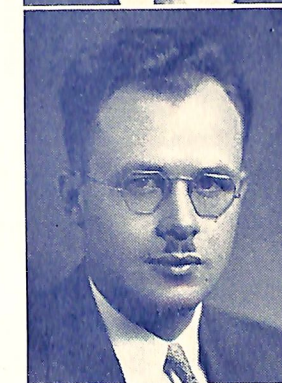
William Larsen  
Trinity



Ingward Olsen  
Trinity



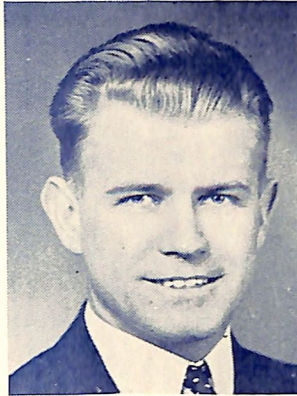
Alvin Petersen  
Trinity



Emil Pedersen  
Trinity

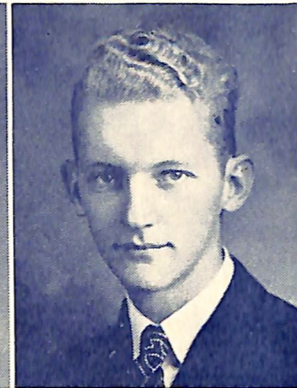


George Robertson  
Trinity



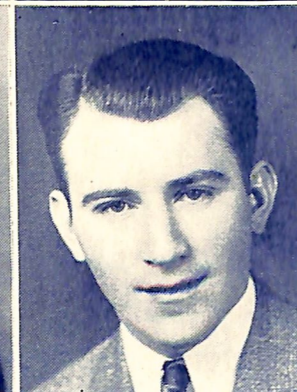
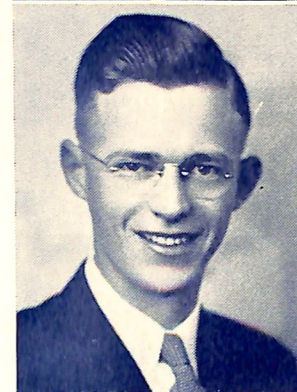
Johan Peterson  
Trinity

Rudolph Knudsen  
History



Andrew Staby  
Mathematics

Arne Voetmann  
English

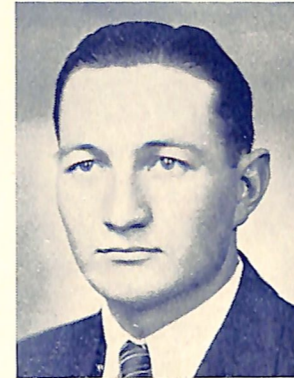


Edward Larsen  
Chemistry

Harold Hurd  
English

Jack Sides  
Chemistry

Walden George  
English



Irving Tange  
History

Margaret Johnson  
Commerce



Marian Peterson  
History

Bernadean Otto  
Teacher Training



Laurentze Rasmussen  
Teacher Training



*Dora Nelson*  
Teacher Training



*Nellie Rose Wilkins*  
Teacher Training

*William Andersen*  
Commerce



*Edward Steen*  
Commerce

*Elaine Brandt*  
Teacher Training



*Elna Jensen*  
Commerce

*Erma Nielsen*  
Commerce



*Gladys Hansen*  
Commerce

*Margery Nelson*  
Commerce



*June Jorgensen*  
Commerce

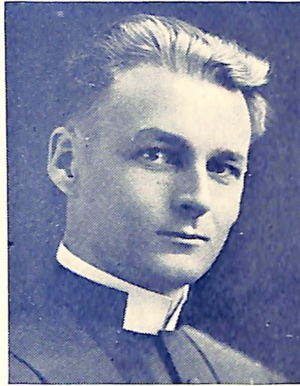


*Augie Pedersen*  
Commerce

*Ruth Pagh*  
Teacher Training



## Senior Activities



*Rev. Laurits Pedersen*  
Baccalaureate speaker



*Rev. Paul Nyholm*  
Commencement speaker

## THE PILLARS OF SOCIETY

BY HENRIK IBSEN

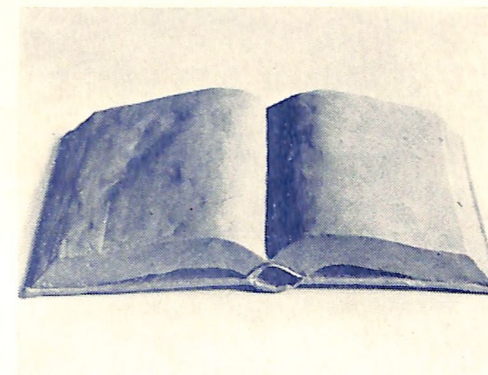
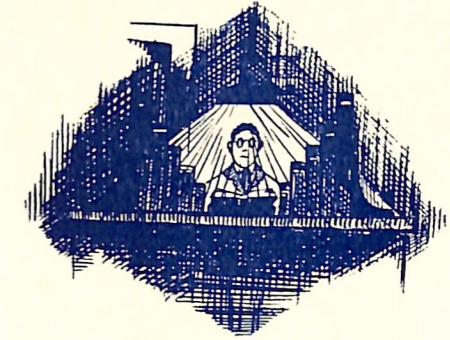
DIRECTED BY J. C. BROWN

Presented May 29, 1936

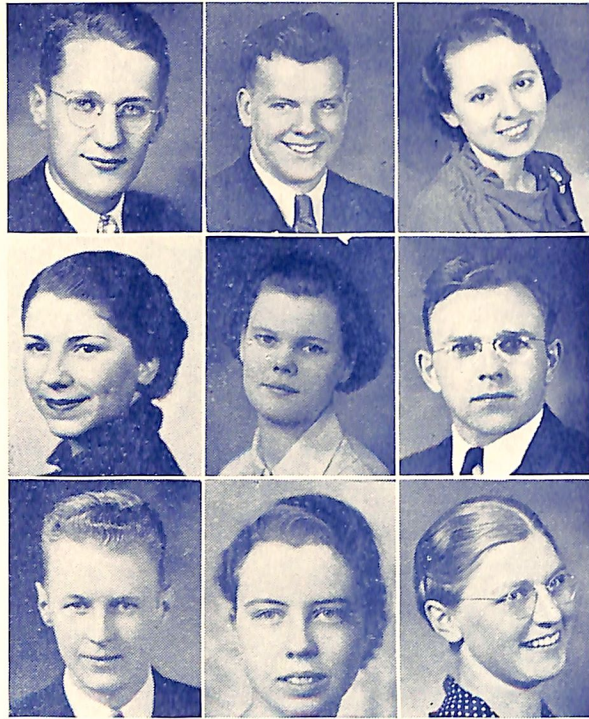
### CAST

Consul Bernick . . . . .	Edward Hansen	Rummel . . . . .	Eric Christensen
Mrs. Bernick . . . . .	Margaret Johnson	Vigeland . . . . .	Irving Tange
Olaf . . . . .	Ezra Larsen	Sandstad . . . . .	Arne Voetmann
Miss Bernick (Martha) . . . . .	Margery Nelson	Krap . . . . .	Carl Gebuhr
Johan Tonnesen . . . . .	Verner Carlsen	Aune . . . . .	Carl Wildrick
Miss Hessel (Lona) . . . . .	Ruth Johnsen	Mrs. Rummel . . . . .	Eleanor Petersen
Hilmar Tonnesen . . . . .	Rudolph Knudsen	Mrs. Holt . . . . .	Irene Glasnapp
Rector Rorlund . . . . .	Anker Jensen	Mrs. Lynge . . . . .	Rubena Jorgensen
Dina Dorf . . . . .	Carol Oleson		

## UNDERCLASSES

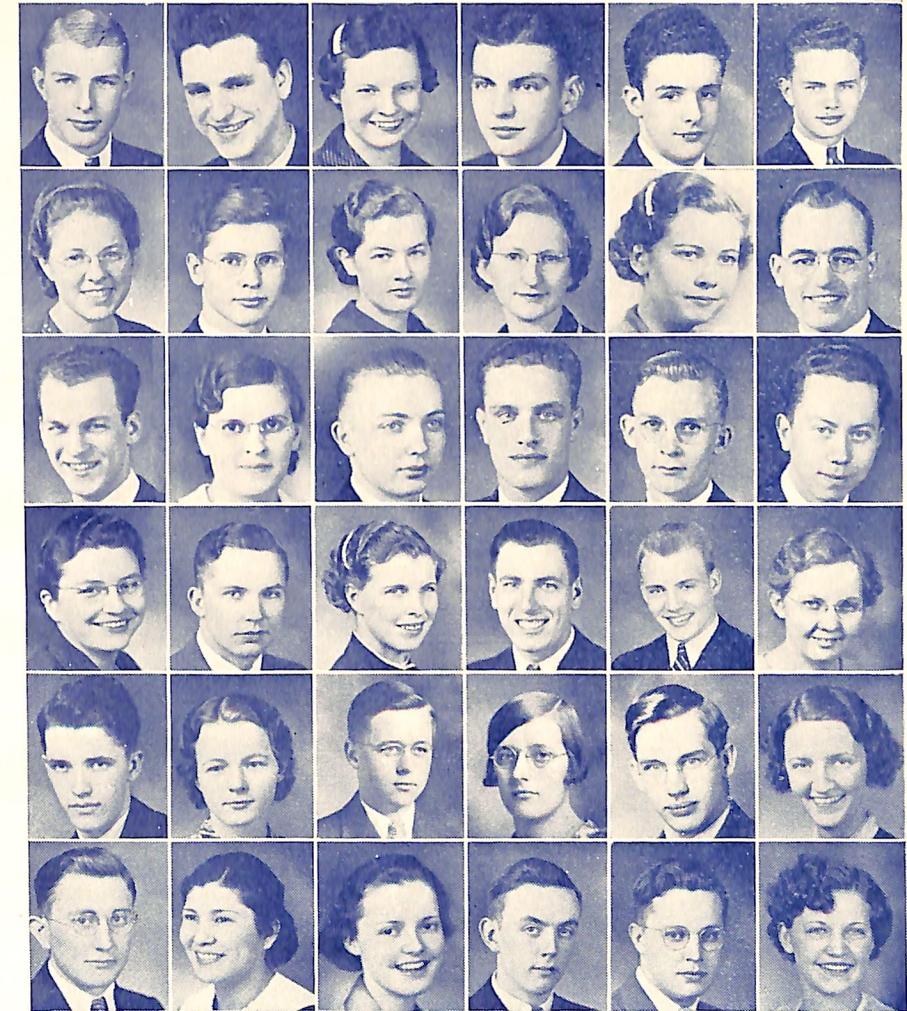


## JUNIORS



Top row: Stanley Bach, Laurice DeLaurant, Shirley Larson. Second row: Ernestine McCain, Katherine Neldeberg, Einer Olsen. Third row: Harold Qualsett, Ellen Rasmussen, Ruth Vig.

## SOPHOMORES



Top row: Monroe Bixler, George Brill, Berdette Erickson, Earl Fries, Carl Gebuhr, Edwin Haals. Second row: Marian Hanson, Theodore Hansen, Elva Hewett, Lila Jeffers, Irene Jensen, Ivan Johansen. Third row: Franklin Jorgensen, Rubena Jorgensen, Rodney Juhl, Stanley Larsen, Earl Laursen, Paul Mehrens. Fourth row: Eloise Morris, Robert Morrow, Lucille Neve, Marvin Nygaard, Raymond Olsen, Ruth Pagh. Fifth row: Lewis Patrick, Eleanor Petersen, Emery Petersen, Amy Rasmussen, Walter Rasmussen, Kathryn Sas. Sixth row: David Simonsen, Lillian Smith, Lela Sondergaard, Neil Sutton, Carl Wildrick, Doris Sigler.

## FRESHMEN



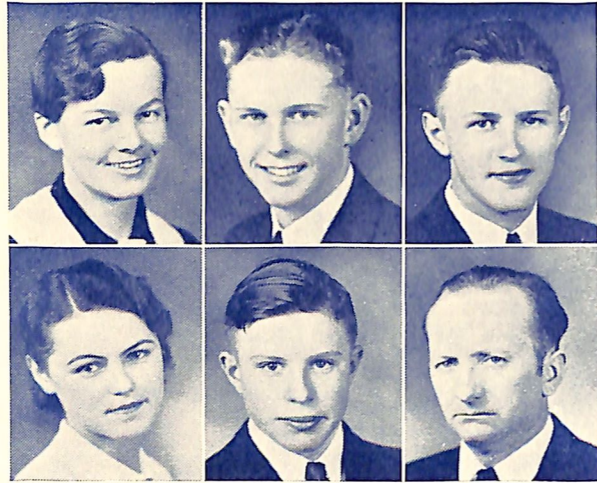
Top row: Beulah Beard, Marjorie Boyer, Edwin Bro, Marian Butterfield, Eric Christensen, Martha Craig. Second row: Mark Davis, Norman Dyhrberg, Margaret Flynn, Rita Foley, Erika Freudendahl, Irene Glasnapp. Third row: Irene Halstead, Dorothy Hancock, Edward Hansen, Leland Hansen, Mildred Hansen, Ralph Hendricksen. Fourth row: Evelyn Hofling, Ellen Houtwed, Rhoda Iden, Adelaide Jensen, Clarice Jensen, Ethel Jensen. Fifth row: Inger Jensen, Levi Jensen, Ella Juul, Adolph Kloth, Evelyn Larsen, Lillian Larsen. Sixth row: Sherwood Laustsen, Richard Lincoln, Esther Magnussen, Maxine Martins, Joyce McLeod, Howard Mickelsen.

## FRESHMEN



Top row: Marie Mikkelsen, Robert Mortenson, Eleanor Mumm, Aster Neve, Florence Neve, Una Nielsen. Second row: Carol Oleson, Irvin Olsen, Andrew Pechacek, Eldridge Petersen, Evelyn Petersen, Julius Peterson. Third row: John Poucher, Elmer Rasmussen, Irene Rasmussen, Martha Rasmussen, Anna L. Rosenberg, Dagny Rosenberg. Fourth row: Steve Sadlon, Lily Sandbeck, Marjorie Seltz, Inga Siersbeck, Agnes Simonsen, Quinton Simonsen. Fifth row: June Smith, Marjorie Smith, Evelyn Sorensen, Ethan Svendsen, Harold Thayer, Mildred Thomsen. Sixth row: Paul Tyson, Louise Warren, Leone Watson, Jean Wilson, Marjorie Y'Deen.

## WINTER STUDENTS



Top row: Christine Anderson, Harry Rasmussen, Victor Schmidt. Second row: Vivian Sorensen, Warren Von Essen, Alfred Petersen, B.A. (graduate student).



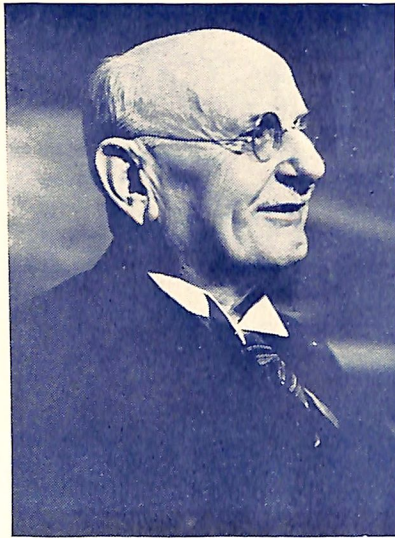
## SEMINARY



Clarence Jensen (Middler), Erhardt Nielsen (Junior), Dolliver Thogersen (Junior).

## ACTIVITIES





*DR. GEISMAR*

Trinity Seminary's distinguished guest of the year, Dr. Eduard Geismar, University of Copenhagen, honored the Dana campus with his two-day visit. The Doctor—outstanding scholar of Søren Kierkegaard—stopped off while on a tour of American universities and seminaries as lecturer on the life and work of the Danish philosopher. Thank you, Dr. Geismar; it was a great honor and privilege for us.

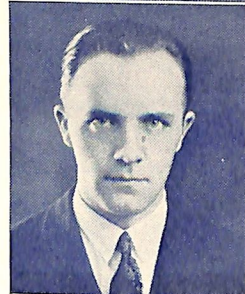
*REV. KARL J. WILHELMSSEN*

Rev. Karl J. Wilhelmsen, pastor of Gethsemane Church, Racine, Wisconsin, stirred many students with his popular messages during the '36 Bible Week.



*REV. LAWRENCE SIERSBECK*

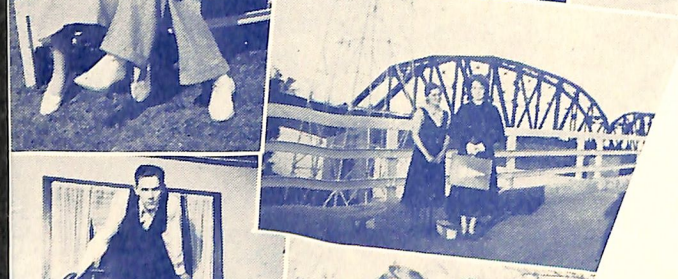
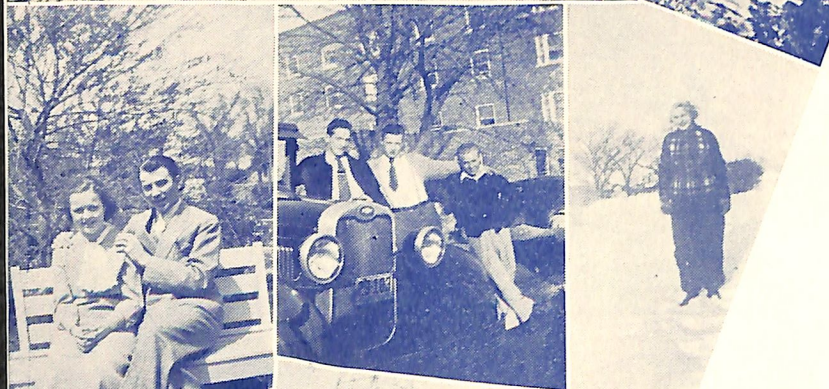
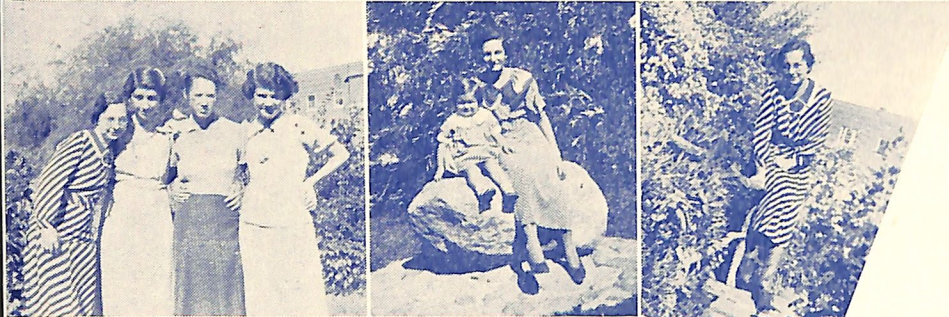
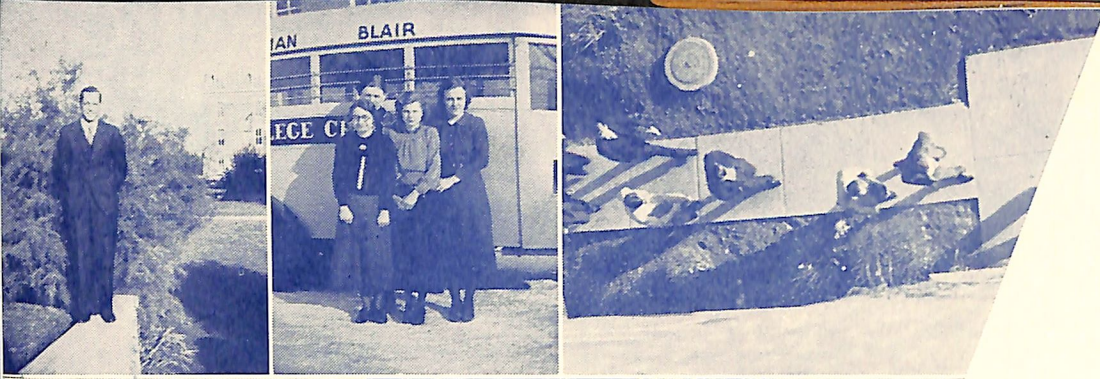
The position of honor as guest speaker at the Homecoming Banquet went to the Rev. Lawrence Siersbeck of St. Paul's Lutheran Church, Atlantic, Iowa.



- ❖ Ah! The quiet home life—and Coach Olson lived happily ever after.
- ❖ Fynboe gives service with a smile.
- ❖ Sorry, Qually! Got your baby picture in here by mistake.
- ❖ I say there, Bill, you can't work with that call of the wild below.
- ❖ Tsk! Tsk! Ivan, the food is merely incidental.
- ❖ N.B. Lower left hand corner—Winter Sports at Dana.





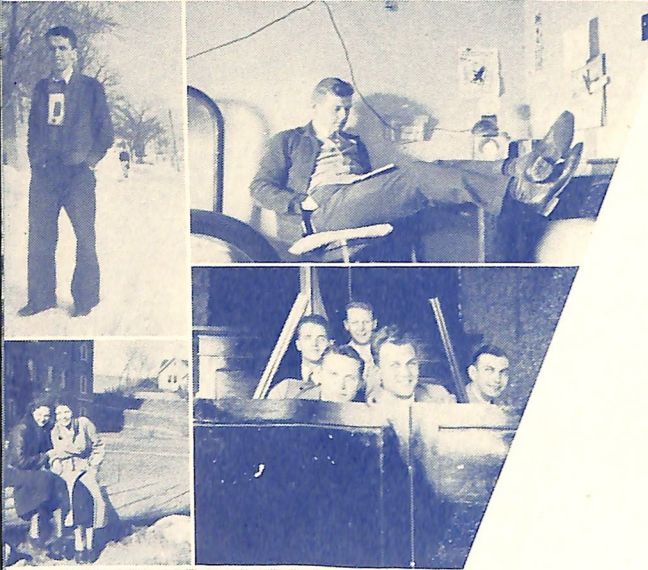
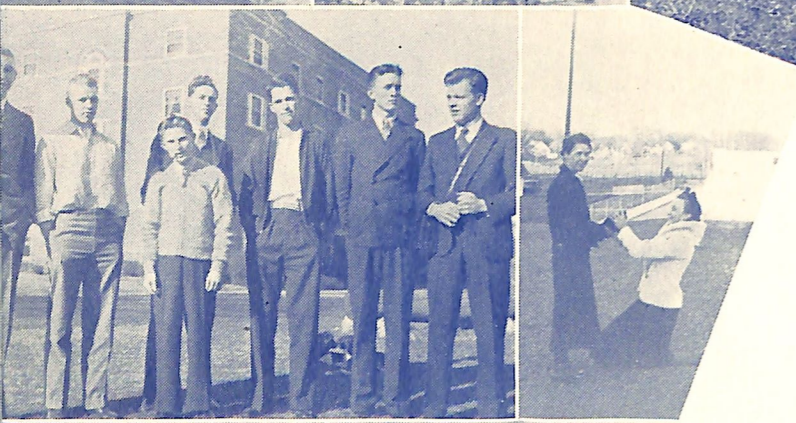


- ❖ The A Cappella Ladies' Aid. Pardon us, merely posing for a picture?
- ❖ Look out below, for the water comes down and around. Wouldn't you be tempted to?
- ❖ Zebra trainers and Laurentze.
- ❖ Are you engaged, Eddie?
- ❖ Oh, Baby! Isn't Maxine just too sweet for a snowball target!
- ❖ Going to Modale, June?
- ❖ Home, James, I'm all petered out.

- ❖ Smilin' thru—just waiting for the right man to come along.
- ❖ Buck, Buck, how many elbows up?
- ❖ Our southern gal pullin' the gents.
- ❖ Pete and Wes putting on the pal act.
- ❖ "Ho-hum, this tedious job of living," says Johan, and settles down.
- ❖ And so we packed up our knitting and went abroad.

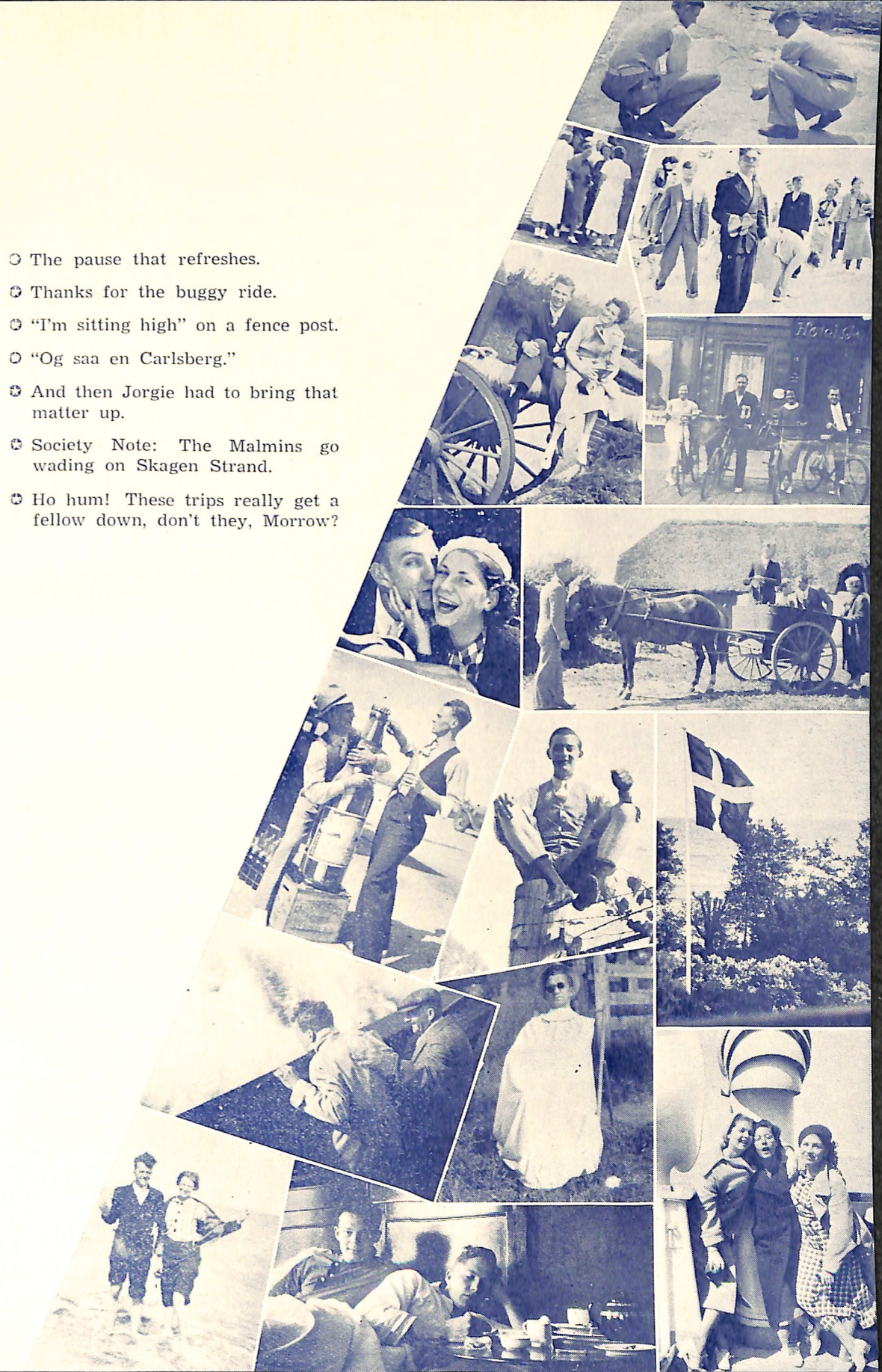






- ☉ Oh, Ruthie!—"and the mermaid sits combing her golden hair."
- ☉ Ole's car—second best at the auto tilt on Cauble Creek bridge last fall.
- ☉ Even enough at the bottom, Shadow. Why the dip in the skyline?
- ☉ Not convincing, Svendsen, lacks lounging robe and slippers.
- ☉ Jorgie and his gang at København—looking for the "ten thousand Swedes that came through the weeds."
- ☉ We know Rip's injured innocence—the well known arson and mayhem troupe. Pallesen used to smile, too, before he became editor of the *Hermes*.

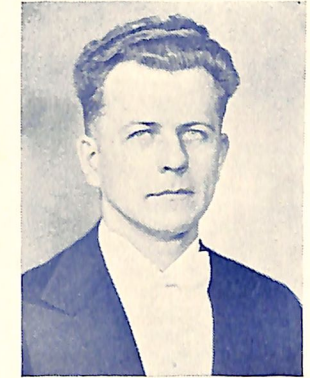
- ☉ The pause that refreshes.
- ☉ Thanks for the buggy ride.
- ☉ "I'm sitting high" on a fence post.
- ☉ "Og saa en Carlsberg."
- ☉ And then Jorgie had to bring that matter up.
- ☉ Society Note: The Malmins go wading on Skagen Strand.
- ☉ Ho hum! These trips really get a fellow down, don't they, Morrow?



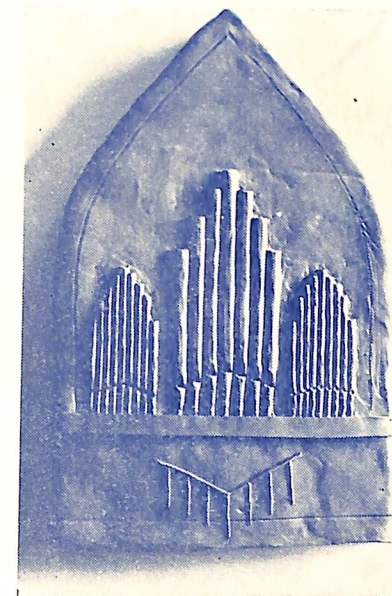


- ⊛ Lounging under the racing boat of the Norwegian crown prince should justify a look of sophistication.
- ⊛ All set for an Oslo sightseeing tour in a Norwegian wagon.
- ⊛ Ruth Bryan Owen, American ambassador to Denmark.
- ⊛ The arm of the law reaches out for the Right Honorable Mr. Earl James Fries.
- ⊛ All aboard!

# MUSIC



GUNNAR J. MALMIN  
Head of Music Dep't



# DANA A CAPPELLA CHOIR

## Membership for 1935-36

First Soprano  
 DOROTHY BRANN MALMIN  
 KATHRYN SAS  
 SHIRLEY LARSON  
 EVELYN PETERSEN  
 ELEANOR PETERSEN  
 LILY SMITH  
 BERDETTE ERICKSEN  
 ELAINE BRANDT  
 LAURENTZE RASMUSSEN  
 MAXINE MARTINS

Second Soprano  
 IRENE JENSEN  
 ERNESTINE McCAIN  
 LUCILLE NEVE  
 JUNE SMITH  
 BEULAH GOLDBECK  
 LILY SANDBECK  
 RUTH JENKINS  
 IRENE GLASNAPP  
 RUBENA JORGENSEN  
 DOROTHY HANCOCK

First Alto  
 ELLEN RASMUSSEN  
 ELOISE MORRIS  
 LELA SONDERGAARD  
 INGER JENSEN  
 DAGNY ROSENBERG  
 ESTHER MAGNUSSEN  
 MARTHA RASMUSSEN  
 CLARICE JENSEN  
 MARJORIE BOYER

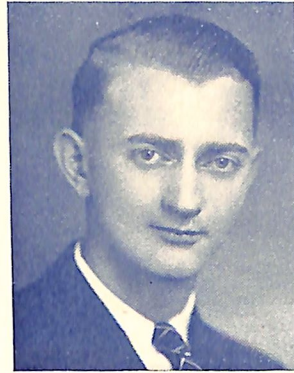
FLORENCE NEVE  
 MARGARET JOHNSON  
 IRENE RASMUSSEN  
 EVELYN SORENSEN

Second Alto  
 JEAN LARSON  
 RUTH PAGH  
 JOYCE McLEOD  
 ANNA L. ROSENBERG  
 JUNE JORGENSEN  
 MARTHA CRAIG  
 MARION BUTTERFIELD

First Tenor  
 RUDOLPH KNUDSEN  
 IVAN JOHANSEN  
 PAUL TYSON

Second Tenor  
 HAROLD QUALSETT  
 RODNEY JUHL  
 EARL LAURSEN  
 LEVI JENSEN  
 JULIUS PETERSON

First Bass  
 FRANKLIN JORGENSEN  
 ROBERT MORROW  
 EMIL WAHLING  
 PAUL MEHRENS  
 EINER OLSEN  
 ANDREW STABY  
 CARL GEBUHR  
 HAROLD THAYER



RUDOLPH KNUDSEN  
*President*

EDWARD BRO  
 HOWARD MIKKELSEN  
 SHERWOOD LAUSTEN

Second Bass  
 ANKER JENSEN  
 EMERY PETERSEN  
 EDWARD HANSEN  
 IRVIN OLSEN  
 ETHAN SVENDSEN  
 LELAND HANSEN  
 WALDEN GEORGE  
 ASTER NEVE



## Itinerary 1936

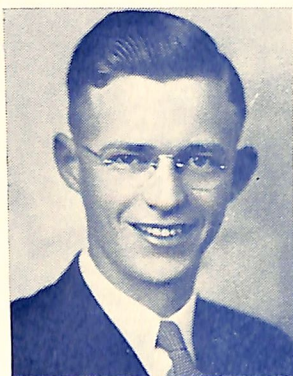
ORUM, NEBRASKA  
 MISSOURI VALLEY, IOWA  
 WOODBINE, IOWA  
 OMAHA, NEBRASKA  
 BOOMER, IOWA  
 KIMBALLTON, IOWA  
 ATLANTIC, IOWA  
 BLAIR, NEBRASKA  
 STAPLEHURST, NEBRASKA  
 CORDOVA, NEBRASKA  
 FAIRBURY, NEBRASKA  
 HEBRON COLLEGE  
 ABDAL, NEBRASKA

RED CLOUD, NEBRASKA  
 AXTELL, NEBRASKA  
 MINDEN, NEBRASKA  
 HASTINGS COLLEGE  
 HASTINGS HOSPITAL  
 DANNEBROG, NEBRASKA  
 CENTRAL COLLEGE  
 HAMPTON, NEBRASKA  
 YORK HOSPITAL  
 CONCORDIA COLLEGE  
 LINCOLN, NEBRASKA  
 TEKAMAH, NEBRASKA

## Summer Itinerary

NORTH PLATTE, NEBRASKA  
 BRUSH, COLORADO  
 DENVER, COLORADO  
 HANNA, WYOMING  
 ROCK SPRINGS, WYOMING  
 SALT LAKE CITY, UTAH  
 RICHFIELD, UTAH  
 KANAB, UTAH  
 LOS ANGELES, CALIFORNIA  
 SAN DIEGO, CALIFORNIA  
 PASADENA, CALIFORNIA  
 SOLVANG, CALIFORNIA  
 SELMA, CALIFORNIA  
 FRESNO, CALIFORNIA  
 OAKLAND, CALIFORNIA  
 PETALUMA, CALIFORNIA  
 FERNDALE, CALIFORNIA

EUGENE, OREGON  
 JUNCTION CITY, OREGON  
 PORTLAND, OREGON  
 TACOMA, WASHINGTON  
 SEATTLE, WASHINGTON  
 VANCOUVER, BRITISH COLUMBIA  
 WILBUR, WASHINGTON  
 SAND POINT, IDAHO  
 KALISPELL, MONTANA  
 MALTA, MONTANA  
 CULBERTSON, MONTANA  
 SIDNEY, MONTANA  
 WESTBY, MONTANA  
 KENMARE, NORTH DAKOTA  
 MINOT, NORTH DAKOTA  
 LUVERNE, NORTH DAKOTA  
 TYLER, MINNESOTA



ARNE VOETMANN  
*President*

## Denmark Choir

Members Who Went Abroad

DOROTHY JENSEN  
ALEINE MILLER  
VICTORIA MADSEN  
EVELYN CHRISTENSEN  
GRETCHEN GAMMEL

*Tenor*

RUDOLPH KNUDSEN  
IVAN JOHANSEN  
ARNE VOETMANN  
HAROLD QUALSETT

*Bass*

ANKER JENSEN  
EMIL WAHLING  
FRANKLIN JORGENSEN  
ROBERT MORROW  
ALFRED JENSEN  
EARL FRIES  
EMERY PETERSEN  
NORVAL HARTSOCK  
VERNER CARLSEN

*Soprano*

DOROTHY BRANN MALMIN  
MARIAN PETERSON  
AGNES PETERSEN  
MILDRED PETERSEN  
KATHRYN SAS  
ELNA JENSEN  
IRENE JENSEN  
ERNESTINE McCAIN

*Alto*

ELOISE MORRIS  
ELLEN RASMUSSEN



## ATHLETICS



*Coach Rufus Olson*



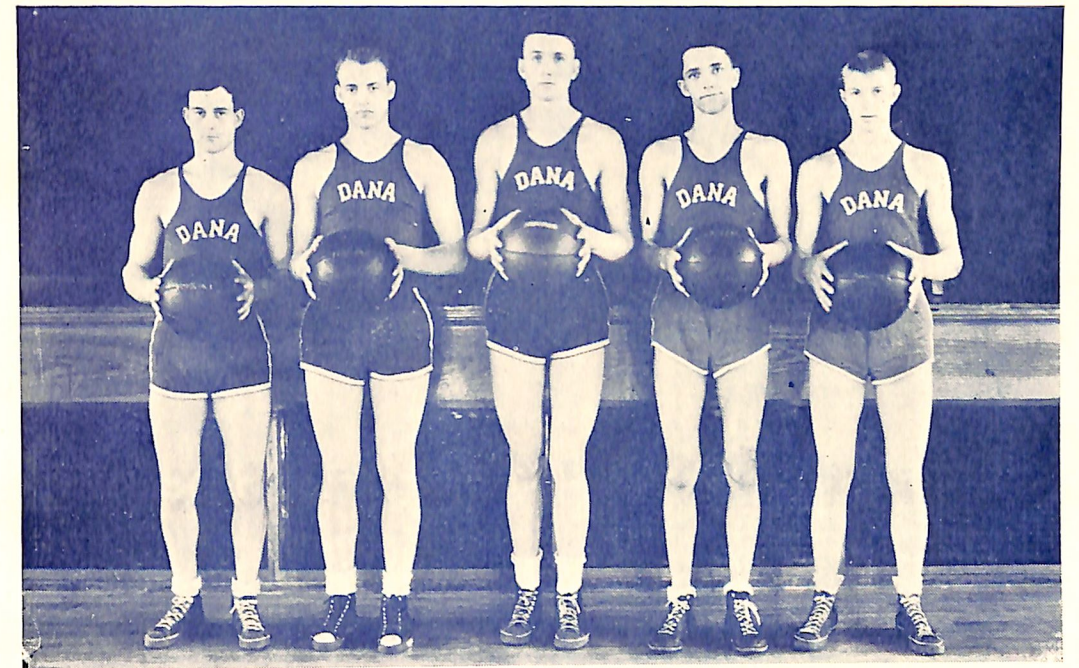
FOOTBALL



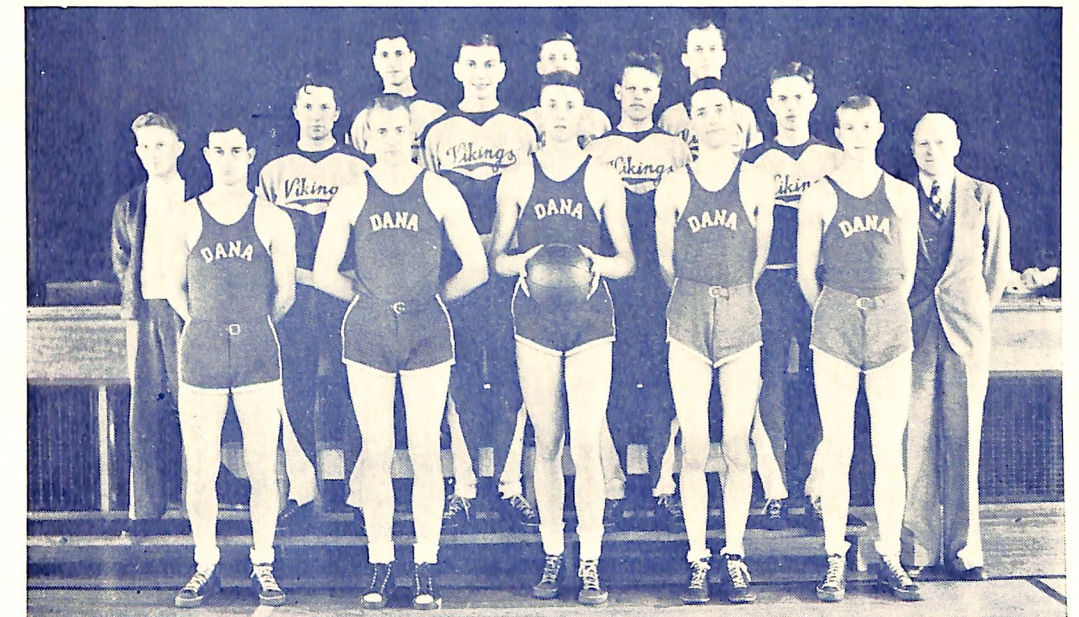
LETTERMEN: Harold Hurd, Eugene Gollehon, Stanley Larsen, Ethan Svendsen, Raymond Olsen, Ivan Johansen, William Langley, Aster Neve, Walden George, Kenneth Beard, Robert Mortensen, John Bruse, Carl Wildrick, Harold Madsen, Stanley Bach, Laurice DeLaurant, Monroe Bixler, Robert Reese, Harold Thayer, Irving Tange, Norman Dyhrberg, Jack Sides, Lawrence Nelson.  
 NUMERALS AWARDED: Eldridge Petersen, Dick Lincoln, Adolph Kloth, Levi Jensen, Melville Cox, Howard Mickelsen, William Andersen.  
 MANAGER'S AWARD: Lewis Patrick.



BASKET BALL



LETTERMEN: Harold Hurd, Lewis Patrick, Raymond Olsen, Monroe Bixler, Clyde Jewell, Robert Morrow, Earl Fries, Dick Lincoln, Edwin Haals.  
 MANAGER'S LETTER: Steve Sadlon.



*BASKET BALL RESULTS*

Dana . . . . . 53	Omaha B.C. . . . . 26
Dana . . . . . 40	Concordia . . . . . 17
Dana . . . . . 43	Clarinda . . . . . 16
Dana . . . . . 18	Midland . . . . . 38
Dana . . . . . 23	Hebron . . . . . 26
Dana . . . . . 26	Western Union 44
Dana . . . . . 27	Nebr. B. . . . . 36
Dana . . . . . 33	Luther . . . . . 19
Dana . . . . . 48	Omaha B.C. . . . . 32
Dana . . . . . 29	Trinity . . . . . 34
Dana . . . . . 40	York . . . . . 30
Dana . . . . . 35	Hebron . . . . . 33
Dana . . . . . 30	York . . . . . 44
Dana . . . . . 24	Nebr. B. . . . . 36
Dana . . . . . 65	Nebr. Central . 14
Dana . . . . . 41	Luther . . . . . 33
Dana . . . . . 13	Midland . . . . . 25
Dana . . . . . 53	Concordia . . . . . 22
Dana . . . . . 33	Grand View . . . 26

*FOOTBALL RESULTS*

Dana . . . . . 0	Western Union 7
Dana . . . . . 7	Doane . . . . . 40
Dana . . . . . 45	Nebr. Central . 6
Dana . . . . . 6	Concordia . . . 20
Dana . . . . . 0	York . . . . . 25
Dana . . . . . 0	Trinity . . . . . 0
Dana . . . . . 0	Hebron . . . . . 13



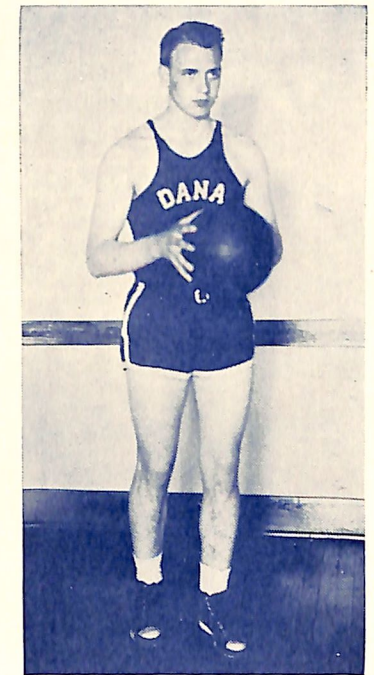
**INTRAMURAL  
BASKET BALL  
CHAMPIONS**

Ethan Svendsen, Robert Mortensen,  
Wesley Andersen, Adolph Kloth,  
Harold Thayer, John Bruce



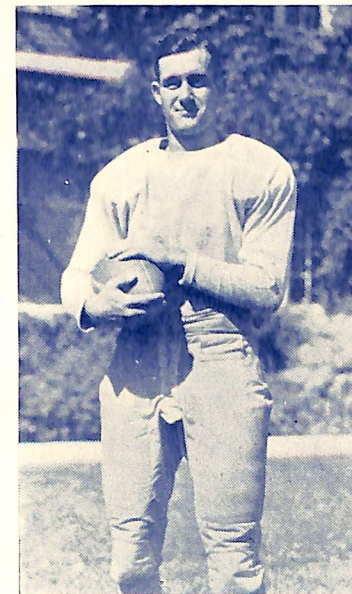
*HONOR ATHLETE*

Ray Olsen, Racine sophomore, walked off with top honors in '36 athletics—being awarded the golden "D" for outstanding work in Dana's two major sports. Ole held down left end on the Viking grid machine in his first year of varsity football. At center and forward on the Dana quintet Ray was one of the big guns on defense and offense.



*HAROLD HURD*

Just the last tribute to Dana's only senior two-sport star—hats off—we say. For four years Harold Hurd has galloped across the stripes under the Scarlet and White. There he carved his niche in Dana's athletic "Hall of Fame." On the court, too, Hurd made his spurs by lettering four consecutive years. On both '36 teams—Captain was his name.





## DEBATE



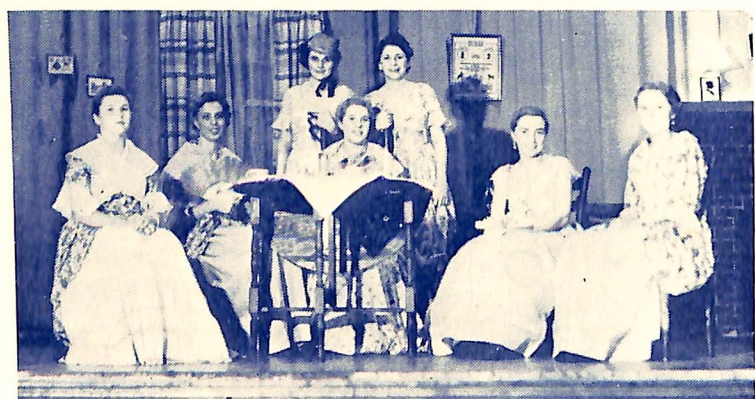
Standing: ANKER JENSEN, WALDEN GEORGE, GEORGE COWGER, COACH ARTHUR MEHRENS. Seated: ERIC CHRISTENSEN, RUDOLPH KNUDSEN.

### "A DISH OF CHINA TEA"

By ELIZABETH NEFF

SPONSORED BY THE HISTORY CLUB

Presented December 16, 1935



## THE DANIAN STAFF

EDITOR-IN-CHIEF

ANKER JENSEN

ASSOCIATE EDITOR

ERVIN BONDO

BUSINESS MANAGER

ARNE VOETMANN

ADVERTISING MANAGER

VERNER CARLSEN

ASSISTANTS

EDWARD LARSEN  
WALDEN GEORGE

CIRCULATION MANAGER

RUDOLPH KNUDSEN

PHOTOGRAPHERS

SKOGLUND STUDIO, LAURICE DELAURANT

ENGRAVERS

STATE JOURNAL ENGRAVING CO.

PUBLISHERS

DANISH LUTHERAN PUBL. HOUSE

## ACKNOWLEDGEMENT

We are deeply and gratefully indebted to Professor Thompsen and his art students—Paul Mehrens, Ernestine McCain, and Stanley Bach—for their valuable artistic contributions to the *Danian* in the form of drawings, clay models, and linoleum blocks. On behalf of the Staff the editor wishes to express his warm appreciation for their generous assistance.

*Editor.*



**IRVINE PARK  
SHOES**



Exclusive Shoe Store For Men  
and Boys

Up-to-Date Shoe Repairing Equipment

**BRENHOLDT HANSEN**

**PHILLIPS SERVICE  
STATION**

Blair, Nebraska

**OSCAR HOLMES BAKERY**

FINE PASTRIES

CANDIES and CIGARS



MAINTOP      WHITE LOAF      BLAIR MAID

**BLAIR FLOUR MILL**

Established 1869

P. C. SORENSEN — H. F. SORENSEN

Manufacturers of

**FLOUR, MEAL, GRAHAM, and  
MILL FEEDS**

Phone White 223

Blair, Nebraska

**DANA COLLEGE**

BLAIR, NEBRASKA

ERLAND NELSON, PRESIDENT

A Liberal Arts College of the Lutheran Church

COMMERCE — TEACHER TRAINING

PRE-MEDICAL — PRE-LAW — PRE-ENGINEERING

AGRICULTURE

and

OTHER SHORT COURSES

Write for Catalog

ASK FOR

**Early Dawn  
Milk**

You Can Be Sure . . . .

**EARLY DAWN MILK IS FRESH MILK** as it is produced, bottled and delivered to your doorstep within just a few short hours, **pure, fresh, sweet, natural milk**, as nature intended it, nothing taken from it and nothing added to it—just pure, wholesome milk.

Early Dawn Dairy is managed by one of Dana's own alumni, a booster for Dana always.

LESLIE B. THOMPSON, Prop.

# W. J. Rodgers

*The Blair Florist*

CUT FLOWERS FOR ALL  
OCCASIONS

Phone 69

Blair



## Dr. W. F. Hemphill

DENTIST

Home Theatre Bldg.

Office Phone 8

## Dr. Norman Rathmann

OPTOMETRIST

Comfortable Vision Is Indispensable  
to the Student

Phone 298

## Dr. Edwin T. Jipp

DENTIST

Office Garrison Building

Expert Fitting  
on  
Trusses  
Supporters  
Elastic  
Hosiery  
Braces, etc.

Physicians'  
Nurses'  
Hospital  
and  
Sickroom  
Supplies

First Aid  
Supplies  
For the  
Home, Office,  
Auto, and  
Industrial  
Plant

**SEILER SURGICAL CO., Inc.**

MEDICAL ARTS BLDG.

111 SO. 16TH ST.

OMAHA

## KOLTERMAN STORES

5c and 10c — 25c to \$1

COME HERE FOR YOUR NEEDS IN  
THE 5 and 10c LINE

Our Twenty-Fifth Anniversary This Year

## ART'S COFFEE SHOP

ICE CREAM AND SHORT ORDERS

CANDY — CIGARETTES

A Good Place to Eat

## Washington County Bank

BLAIR, NEBRASKA

Member of Federal Reserve System

Member Federal Deposit Insurance  
Corporation

## STEWART PHARMACY

PRESCRIPTION FILLING IS OUR  
SPECIALTY

Phone 87

Blair, Nebraska

## We Boost For Dana

Students Welcome

## McCOMB'S BARBER SHOP

First Door North of Post Office

Call at

Danish Luth. Publ. House

For

BIBLES, BOOKS, and SCHOOL SUPPLIES  
OF ALL KINDS

See

## THE EAT SHOP

For

CANDY ICE CREAM

MALTED MILKS

Dana Students Always Welcome

— Try Us —

Special For Dana Students

ALL OIL PERMANENT WAVE \$1

Any Style You Desire. All the Curls You  
Want. Croquinole or Spiral

Fashion Center Beauty Parlor

Phone 47

DO YOUR DRUG SHOPPING AT  
**BLAIR DRUG CO.**

JOHN H. CHRISTENSEN

FOUNTAIN SERVICE OF ALL KINDS

IF IT COMES FROM  
**LARSON BROS. MARKET**

IT MUST BE GOOD!

**GROCERIES, MEATS, and VEGETABLES**

Phone 22

We Deliver

Blair, Nebraska

**ADVANCE CLEANERS**

**CLEANERS — DYERS — TAILORS  
HATTERS**

Work in Before Noon May Be Had the  
Following Day

HAROLD QUALSETT

College Agent

Phone 29

**J. D. GARRISON**  
**CLOTHING, SHOES, GENTS' FURNISHINGS**

72 West Washington Street

Blair, Nebraska

**BLUE GOOSE STORE**

**GROCERIES and MEATS**

"The Store of Values"

Phone 26

— MEET ME AT MOSE —

For a

Soda or Lunch

We Serve

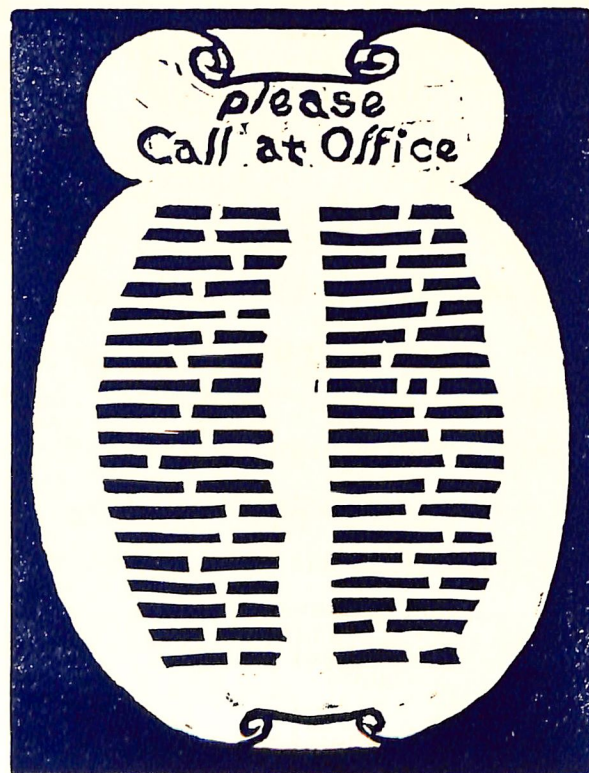
— Mose Ice Cream —

— Delicious and Wholesome —

"Insista on the Besta"

**Mose Confectionery**

MABEL and MARIE MOSE, Proprietors



# Ministerial Gowns

Made to Order

Strictly Hand-Tailored of Selected Practical Materials

Correct Style — Perfect Fit — Moderate Prices

To See and Compare Will Convince You. Ask For References

**SUITS, TOPCOATS and OVERCOATS**

of All-Wool Goods From Tailors' Wholesale Woolen House in Thousands  
of Different Patterns to Satisfy Every Particular Taste

All Guaranteed to Fit

Cost No More Than Ready Made

WE MAKE LADIES' SUITS AND COATS

Make Cronstrom's Tailor Shop Your Headquarters For All Your Tailoring

— Costs No More —

**J. CRONSTROM, TAILOR**

310 West Washington St., Blair, Nebraska

Phone 97

## Photo-Engravers for the 1936 Danian

A Complete Service for High School  
and College Annuals

**State Journal Printing Co.**

Printing

Lithographing

Engraving

LINCOLN, NEBRASKA



**BENDORF FUNERAL  
HOME**

**CHRIS K. BENDORF**

**LICENSED UNDERTAKING**

And

**FUNERAL DIRECTOR**

**AMBULANCE SERVICE**

Phone 40

Blair, Nebraska

**H. B. MILES COMPANY**

**WHOLESALE COAL & COKE**

Terminal Bldg., Lincoln, Nebraska

**QUALITY — SERVICE — SATISFACTION**

**KRAFT CHEESE**

**DANISH PIONEER BUTTER**

**MIRACLE WHIP SALAD DRESSING**

Distributed by

**Thomsen-Slater Butter Co.**

Omaha

**N. T. LUND & CO.**

BLAIR, NEBRASKA

**REAL ESTATE, INSURANCE**

and

**LOANS**

**BLAIR BARBER SHOP**

Located in Hinchman Building

West Main Street

Blair, Nebraska

**MAX BAIN, Proprietor**

**SHELL-SUPER-SERVICE**

“Service With a Smile”

PHONE 128

BLAIR, NEBRASKA

**CARROLL'S GROCERY**

**EVERYTHING IN FANCY FOODS**

Phone 73

**THE ARNDT HARDWARE**

The Fifty-Year Concern Can Give

**THE BEST OF SERVICE**

**DRIVE A NEW CHEVROLET**

**THE ONLY COMPLETE LOW PRICED CAR**

**Vinton Evans Chevrolet Co.**



**VISITORS**

**STUDENTS**

**FACULTY**

Are Welcome at

**Lunch Room**

South of Campus

**ANNA JENSEN**

SOAPS  
DISINFECTANTS  
SANITARY SUPPLIES  
CHEMICALS

**Omaha Compound Co.**  
Chemical Compounders

**Schmoller & Mueller Piano  
Company**

NEBRASKA'S OLDEST AND LARGEST  
MUSIC AND HOME APPLIANCE  
HOUSE IN THE MIDDLE  
WEST

Established 1859

Main Office and Sales Rooms  
1514-16-18 Dodge Street, Omaha, Nebraska

Branch Stores Located at  
Sioux City and Council Bluffs, Iowa  
Lincoln, Grand Island and Scottsbluff, Nebr.



**A WORD OF APPRECIATION**

We wish to express our appreciation for the privilege of taking all the Senior Photographs for the Class of 1936 and will keep those negatives on file, and give you our Special Prices all the year round.

**Skoglund Studio**

2nd Floor Securities Bldg.  
16th and Farnam Sts.  
Omaha, Nebraska Phone JA 1375

# Omaha Potato Market

OMAHA'S LARGEST RETAIL FOOD MARKET

COMPLETE STOCKS OF FRUITS — VEGETABLES — GROCERIES

Carload Buyers of Potatoes  
Apples — Canned Goods — Sugar — Flour — Salt

We Solicit Your Business

Mail Orders Given Careful and Prompt Attention

## Anthony and Bly Meat Market

“NEBRASKA'S BEST BABY BEEF”

724 No. 16th

S. W. Cor. 16th Burt

HA 1166-1167

## *Legal Reserve Life Insurance For Lutherans*

FROM BIRTH TO AGE SIXTY

A Good Field For College Men

# Lutheran Mutual Aid Society

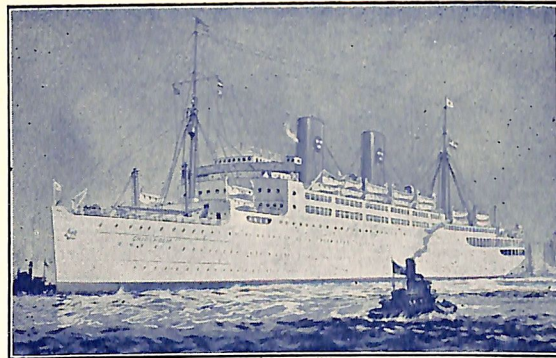
WAVERLY, IOWA

# TO DENMARK

(via Gothenburg)

## On the White Motorliners

True  
Scandinavian  
Service



Enjoy  
Scandinavian  
Surroundings

### KUNGSHOLM — GRIPSHOLM and Turbin Liner DROTTNINGHOLM

◆

Spacious cabins, luxurious public rooms, unsurpassed Scandinavian cuisine and service, makes the crossing continuous delight and a memorable experience

◆

Free forwarding from Gothenburg to following Danish points:

**Copenhagen, Odense, Aalborg, Aarhus, Esbjerg,  
Frederikshavn, Sonderborg**

Prompt connections to all parts of Denmark; six hours to Copenhagen by rail, three hours to Frederikshavn by direct Motorship "Kronprinsessen Ingrid."

Further information from agents or

## Swedish American Line

181 N. Michigan Ave.

CHICAGO, ILL.