



†  
FOR  
GOD  
AND  
COUNTRY



THE DANIAN  
1943



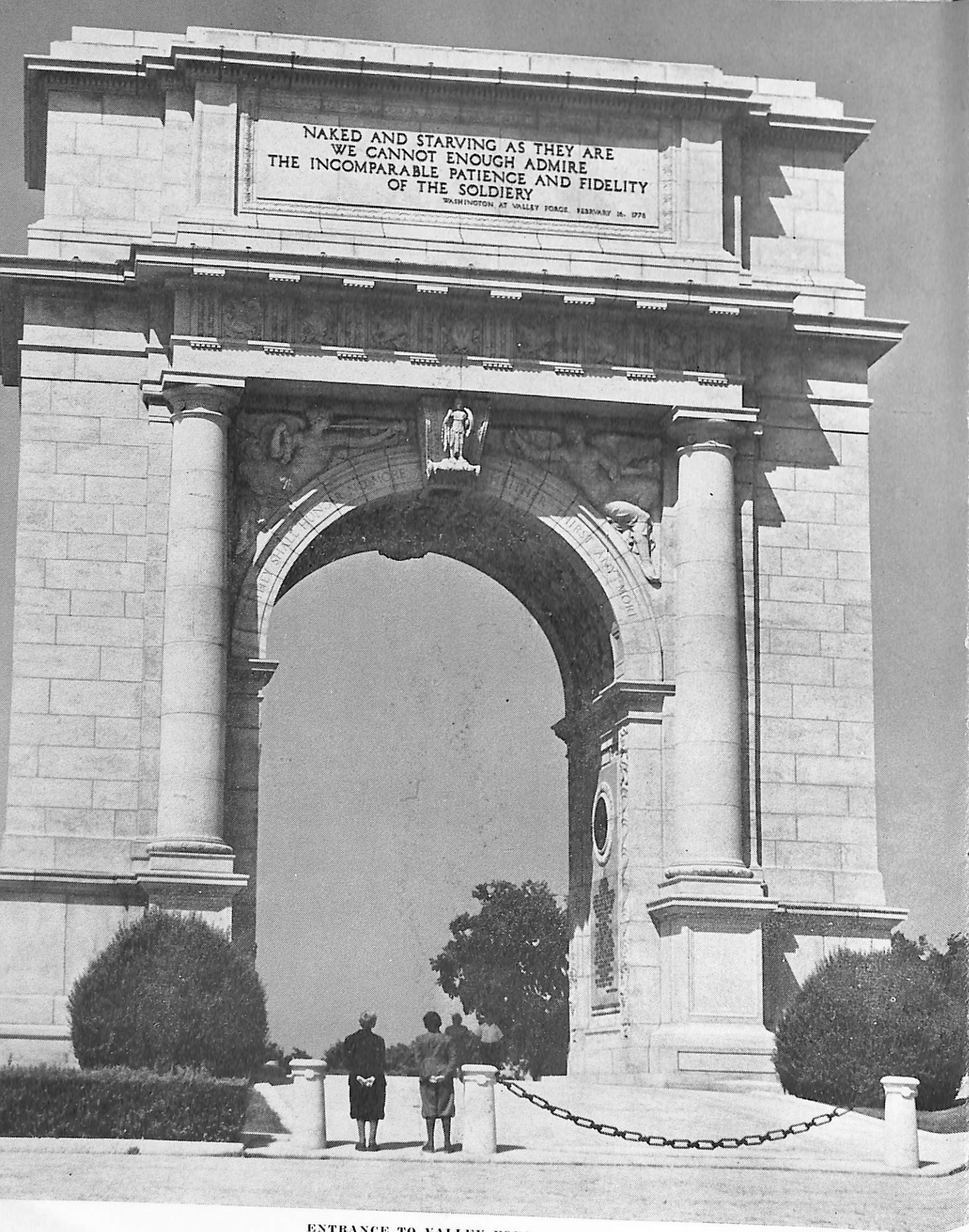
THE DANA COLLEGE STUDENT BODY ANNUAL

*The Danian*

1942-43 A YEAR OF *Challenge*







ENTRANCE TO VALLEY FORGE

## Dedication

To the many Dana Service Sons, in the extended battle fields of this war-sick world, we who have remained at home solemnly dedicate this, the '42-'43 Danian.

It would be trite for us, who remain comfortably at Dana, to expound upon your great task, many deeds of valor, and the innumerable hardships which you must incur. However, this small tribute, we hope, will in some little way give you an inkling of the gratitude which we hold for you.

We are, so to speak, in your hands, but we are confident that you will not let us down. Just as you were faithful to Dana and her principles, we know, in like manner you will be devoted to our Country and its cause.

- |                        |                        |                      |                     |
|------------------------|------------------------|----------------------|---------------------|
| Harold Andersen        | William Goldbeck       | William Langley      | George P. Petersen  |
| Joe E. Andersen        | Miss Lyla Guyer        | Curtis Larsen        | Kermit Petersen     |
| Milton Andersen        | Edwin L. Haals         | Kenneth Larsen       | Lars G. Petersen    |
| Ray Andersen           | Harold Hancock         | P. C. Larsen         | Marvin Petersen     |
| Raymond Andersen       | Arthur Hansen          | Robert Larsen        | James C. Peterson   |
| Norman Bansen          | Don Hansen             | Otto Larson          | Edwin Petrusson     |
| Don Bellows            | Elliott Hansen         | Thomas Larson        | Bob Plugge          |
| John Bentley           | Elmer F. Hansen        | Vic Lauritsen        | Howard Poulsen      |
| Bob Berthelsen         | Ernest Hansen          | Sherwood Laustsen    | John Poucher        |
| John Bruse             | Morris Hansen          | Charles Lazure       | Harold Qualsett     |
| J. H. Campbell         | Bob Hemphill           | John Lazure          | Walter B. Rasmussen |
| Ray C. Carlsen         | Bob Hogzett            | Joe E. Lindholm      | Ted Repsholdt       |
| Verner N. Carlsen      | Harold Hughes          | John Link            | Einer Romer         |
| A. C. Christiansen     | Dan Iversen            | Ray Lund             | H. Shadle           |
| A. E. Christiansen     | Iver Iversen           | Russell Lund         | Gale P. Skillstad   |
| C. Arthur Christiansen | Arthur Jensen          | C. Clifford Madsen   | James Sommers       |
| Carl Christensen       | Clarence Jensen        | Karl Matthiesen, Jr. | Ewald Sorensen      |
| Donald Christensen     | Chester Jensen         | Howard Mickelsen     | Anchor Sorensen     |
| Herluf W. Christensen  | Harlan Jensen          | Henry Mikkelsen      | Edward Steen        |
| Jack A. Christensen    | Hugh Hughes            | Lawrence Nelsen      | Kenneth Tabbersen   |
| John C. Christensen    | Howard Jensen          | LeRoy Nelsen         | Alfred TanCreti     |
| Myron Christensen      | Robert Jensen          | Glenn Neve           | Irving Tange        |
| Robert Christensen     | Stanley Jensen         | Homer Nielsen        | Reynold Tange       |
| Roy Christensen        | Stanley Jensen (Blair) | Leonard Nielsen      | Robert Taylor       |
| Marshall Compton       | H. C. Jeppesen         | Luther M. Nielsen    | Ray Thomsen         |
| Harland Danielsen      | Lloyd Johansen         | Wesley Nielsen       | Paul Thorslev       |
| Gifford Dixon, Jr.     | V. T. Johnson          | Tom Ninegar          | Paul Tyson          |
| George Engelke         | Sidney Jorgensen       | Etlar Olsen          | Richard Videbeck    |
| Eldon Farrens          | Noah Jorth             | Rufus Olson          | Clarence Vig        |
| Ed Feer                | Aaron Jorth            | Clifford Paulsen     | Clemens Vig         |
| Carl Fleischman        | Luther B. Keay         | LeRoy H. Paulsen     | L. Einar Vig        |
| Richard Flynn          | Cloyd Kitt             | Raymond Paulsen      | Victor Vig          |
| Earl Fries             | Johannes Kjoller       | Lauritz Pedersen     | Keith Vinton        |
| Carl Frost             | Miss Grace Klingberg   | A. S. Petersen       | Emil Wahling        |
| Tom Frost              | Kenneth Lang           | Clarence Petersen    | Arthur Welch        |
| Earl Glarborg          | Joseph Langland        |                      | Robert Wildrick     |

### DANA RESERVISTS SUBJECT TO CALL

- |            |                 |             |
|------------|-----------------|-------------|
| Alton Neve | Lowell Devasure | Gene Megrue |
|            | Arthur Pedersen |             |

Undoubtedly some names are missing from the above list; if so, it was not intentional.



## Forward

In the midst of a great war and all its complications, the small college is faced with a grave crisis—a CHALLENGE. Governmental demands on manpower have caused a noticeable drain on both faculty and student-body.

Dana College too, is confronted with this present CHALLENGE—thus we have attempted to portray the 1942-43 school year as a year of CHALLENGE. As a Christian College, we are bound solely to "God and Country." Our cover, portraying the emblematic cross and also the star, is intended to portray this truth. We are bound to our government as being a "power ordained of God" and to God—the Supreme Authority.

With these forces at hand, Dana College has continued to thrive and accepted 1942-43—a year of CHALLENGE.

## Faculty



The school year 1942-43 will in all probability live in our memories longer than most school years. It will be known as the year in which the greatest mobilization of manpower in the history of mankind took place. It will also be remembered as the year of the drafting of freshmen and sophomores for the armed forces, the enlisted reserves, government contracts with colleges and the enjoyable visits of our former students in the uniform of airmen, marines, sailors and soldiers on the college campus.

This has been a year in which Dana has been active on two fronts in a very special sense. Our School has been represented on every major battlefield throughout the world, in the South Seas, North Africa, the Aleutian Islands and the Philippines. But Dana has also been active on the home front. The faculty members and students have carried on, in spite of the prevailing confusion in civilian life, preparing men and women for leadership. The U.S. Commissioner

of Education John W. Studebaker is responsible for this timely statement that 'from the classrooms of our colleges must come an army of youth to lead us in the days ahead'.

This year will soon be a memory, but before it becomes so, let us make the following lines our prayer:

Heavenly Father, who hast graciously blessed our School through the adversities of the past by raising up faithful men and women to support the cause of Christian leadership, withhold not that blessing this day. Grant us more faith, greater vision and a more faithful desire to serve a world in need of Christmen on all fronts. We make this humble petition in the name of Jesus Christ, who liveth and reigneth with Thee and the Holy Ghost, ever One God, world without end. Amen.

Laurence Piersbeck



Faculty



DR. S. M. THOMSEN  
Chemistry  
Physics  
Mathematics  
Dean of Men

PROF. H. A. EURDE  
Commerce



MR. PAUL PETERSON  
Physical Education  
Director of Athletics

MISS ANNA C. WIND  
Biology  
Dean of Women



MRS. K. M. LUDVIGSEN  
Typing  
Shorthand

PROF. DANIEL BRYAN  
English



MR. P. V. HANSEN  
Bursar  
Shorthand

MISS SENA BERTELSEN  
Librarian

Faculty



MISS CAROLINE JOHNSON  
German  
Latin

MISS MILDRED BRANNON  
Music  
Math



DR. H. F. SWANSEN  
History

PROF. H. SKOV NIELSEN  
Danish



PROF. ELMER RASMUSSEN  
Psychology  
Education

MRS. WINIFRED SELBY  
Art



MISS GRACE KLINGBERG  
School Nurse

MR. ARTHUR MERRIL  
Chef



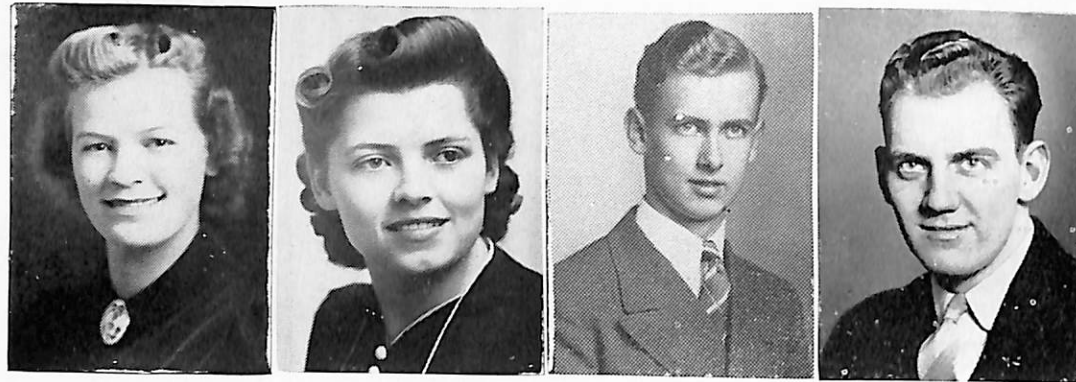
MR. MARIUS GOLDBECK  
Custodian

MR. GEORGE BUCK  
Asst. Chef



# Classes

## Seniors



HELEN R. ANDERSEN

LELA NIELSEN

ALTON NEVE

MILTON PETERSON

## Senior Class History

On September, 1939, sixty-seven freshmen found their way to Dana. After these timid freshmen completed their psychology tests they began to acquaint themselves with the administration building, the library, the dormitories and campus. By the last part of October the freshmen had acquired a dignity that qualified them to serve the upper classmen at the homecoming banquet. May hurried around and the freshmen began to realize that many would not come back.

However, almost half of the class came back. This was the first year students registered for military conscription. The National Luther League convention was held in February with the L.S.A. National Advisor, Rev. Schiotz, as main speaker. Another noted visitor on the campus that year was Inadomi, the Japanese educator.

The Junior year found twelve of the original class back to Dana. It was hard to come back knowing that "C.X." was absent, however, one of his own students came to take his place. Visitors on the campus that year were Ebba Trampe from Evanston, Minnesota, and Rev. Joseph Girtz, who was guest speaker for Spiritual Emphasis week.

It was on December 7, 1941, that United States entered the war. Due to this condition, many of the boys were taken into service. Four students came back to graduate. The seniors of 1943 are ready to begin life. The future does not look promising, but by God's grace, they will win the battle.

## Juniors

EVA RUTH ANDERSON  
LOWELL DE VASURE



HUGH HUGHES  
GENE MEGRUE



JEANETTE OLSEN  
OSCAR JOHNSON (2nd Sem.)



ARTHUR L. WELCH  
MARIE NIELSEN WELCH

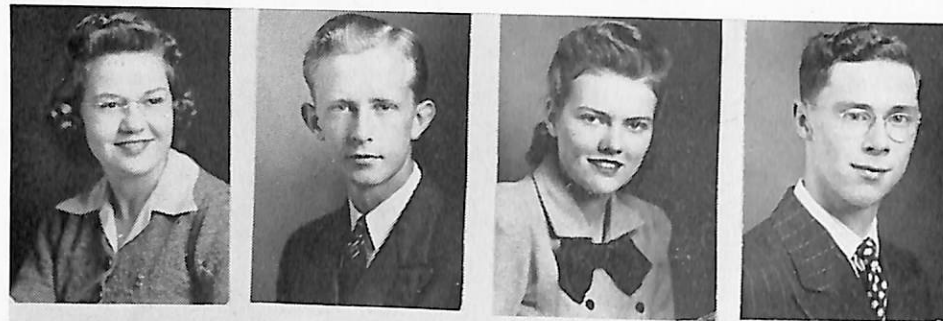


REV. JOHN PATON (2nd Sem.)

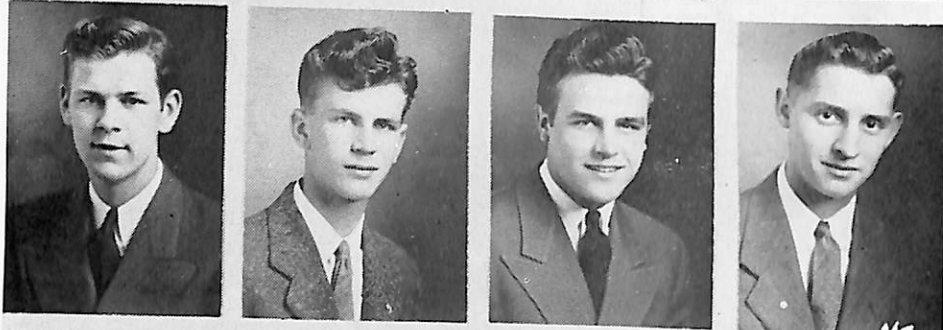




*Sophomores*



VIRGINIA CAMPBELL  
STANLEY CARLSEN  
KAYE DIRGO  
KERMIT HANSEN



WILLIAM J. HANSEN  
RONALD JENSEN  
LLOYD JOHANSEN  
CURTIS JORTH



LLOYD NEVE  
CHARLOTTE OLSON  
JUNE OLSEN  
ARTHUR PEDERSEN



MILDRED ROMER  
CLARICE SOMMERS  
EWALD SORENSEN  
HOWARD JENSEN



ESTHER L. SEYBOLD  
GLENN NEVE  
DON CHRISTENSEN  
LEONA JENSEN

*Freshmen*

ELEANOR ANDERSEN  
IRENE ANDERSEN  
MILTON ANDERSON  
NORMA BENSON



CLAUDINE BLANKENSHIP  
CATHERINE BRODERSEN  
VELDA BRUMBAUGH  
ARTHUR C. CHRISTIANSEN



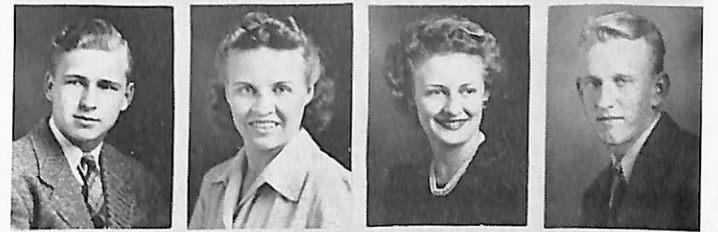
JEAN CLAUSEN  
DONALD FARRENS  
DOROTHY FLEISCHMAN  
TOM FROST



OWEN GRAMPS  
EMILIE C. GREGERSEN  
ARTHUR HANSEN  
FRANCES MAE HANSEN



GLENN HANSEN  
MARJORIE HANSEN  
NORMA HANSEN  
RAYMOND HANSEN



HERDIS HERTZ  
JESSE JANSEN  
ARLENE M. JENSEN  
ELLEN JENSEN



MARY JENSEN  
DAGNY JESSEN  
ARLINE JOHNSON  
ETHEL JOHNSON

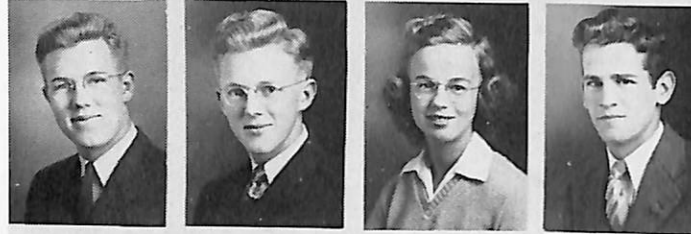






----- Freshmen -----

WILLARD JOHNSON  
EVELYN JORGENSEN  
RUTH KEAY  
BETTY KORSHOJ



HOMER A. LARSEN  
LAVERNE LARSEN  
GWENDOLYN LINDHOLM  
DEAN MADSEN



EARL H. MADSEN  
RUE E. MATZEN  
GWENIVIERE MATZEN  
ANN McQUARRIE



LAVERNE C. MORGENSEN  
LILY NIELSEN  
WILMA PENNY  
DORIS PETERSEN



HOWARD PETERSEN  
PERSIS PEDERSEN  
RUTH E. PETERSEN  
RUTH G. PETERSEN



HELEN O. PHELPS  
DONALD D. SCHOU  
BETTY SHERWOOD  
MILDRED STABY



RICHARD VIDEBECK  
KENNETH D. WEAVER  
BETTY J. YOUNG  
LYDIA LARSEN



Camera-Shy

HUGH GALLUP, Senior  
MORTIMER NIELSEN, freshman  
HANNAH NELSON, freshman (2nd Sem.)  
IRMA CHRISTENSEN, freshman (2nd Sem.)  
GEORGE GLARBORG, freshman (2nd Sem.)  
JOHN LAZURE, freshman  
CHARLES LAZURE, sophomore  
PAUL JOHNSON, freshman

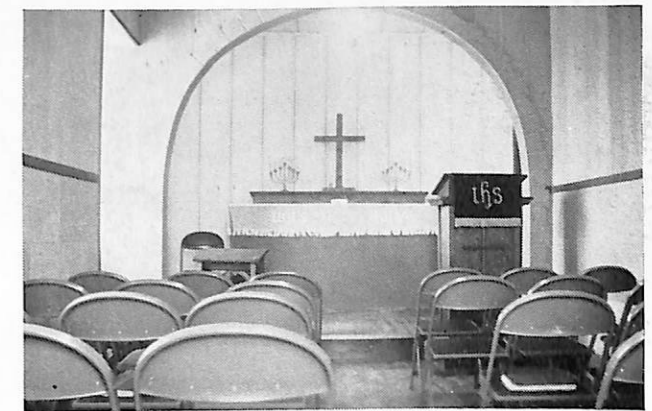
ARDIS VAMMEN

DONNABETH PETERSON

----- Trinity Seminary -----

A forcible **CHALLENGE** is tendered the theological student in time of war. Students are enjoined to fill vacancies of ministers who have accepted chaplaincies.

A **CHALLENGE** is presented to the seminary itself. Because of government conscription and other war factors, a small group of juniors is at the school at present and may be comparatively small for "The duration."



Trinity Chapel



----- *Seminary Faculty* -----



DR. J. P. NIELSEN.

DR. C. B. LARSEN

PROF. PAUL NYHOLM

*Greetings*

To those students who, during this year and last year, have gone from our halls into the armed service of our country; to the pastors who are serving as chaplains and in the service centers; and to the two classes of '43, Trinity Theological Seminary extends cordial and fraternal greetings in the Master's Name.

May we remind you of two statements from Holy Writ: "The eyes of the Lord run to and fro throughout the whole earth, to show Himself strong in the behalf of them whose heart is perfect toward Him." "We know that to them that love God all things work together for good."

Therefore, meet life and its problems in His Name.

*J. P. Nielsen*

----- *Seminary Student Body* -----

*Seniors*



THORVALD HANSEN  
New Charge—Avoca, Ia.



GILBERT JENSEN  
New Charge—Kenmare, N.D.



EINER OLSEN  
New Charge—Beresford, S.D.



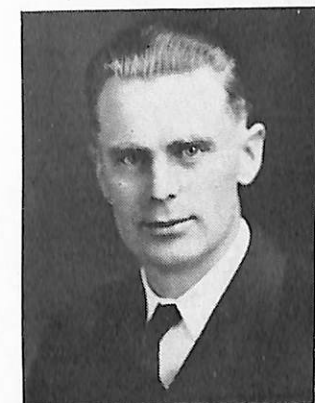
HARRY PETERSEN  
Applicant for Chaplaincy



CLARENCE PAULSEN  
New Charge—Neola, Ia.



EMERY PETERSEN  
New Charge—Rolfe, Ia.

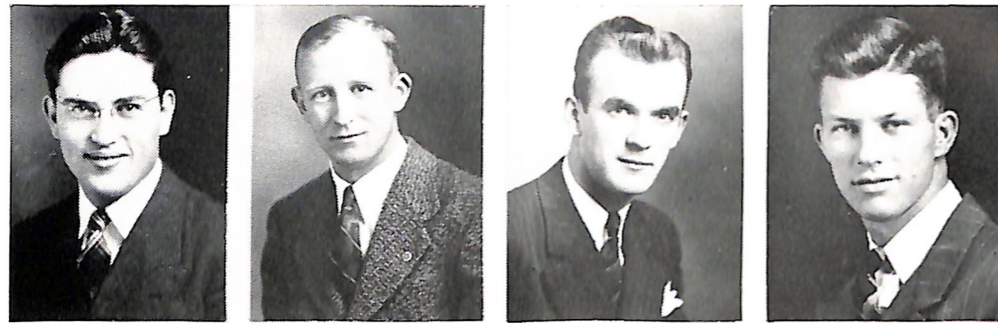


ARCHIE MORCK  
New Charge—St. John, N.B.



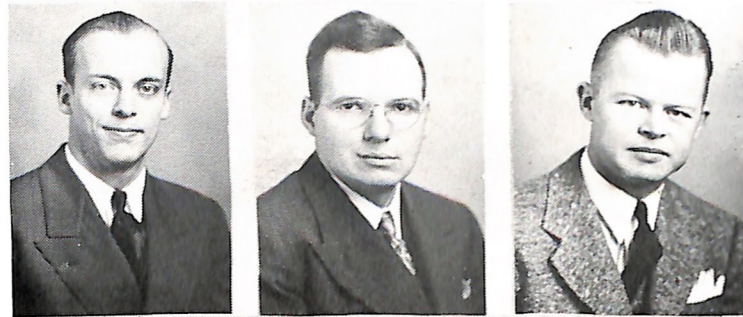
ARNFELD MORCK  
New Charge  
South American Mission





*Midders*

LEONARD ANDERSEN  
HANS CARLSEN  
ALLAN D. HANSEN  
CLIFFORD HANSON



ASTER NEVE  
KENNETH PETERSEN  
EDWIN SVENDSEN

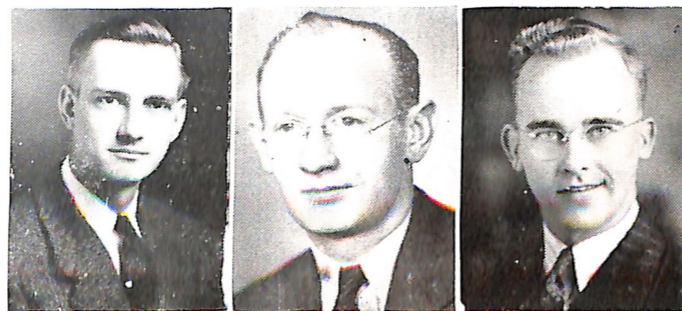
*T. T. S. S. A.*

The students of Trinity Seminary since the fall of 1941 have organized themselves into the Trinity Theological Seminary Students Association. During the school year of 1942-43 the organization has had the following officers: Gilbert Jensen, president; Kenneth Petersen, vice-president; John Schultz, secretary; Leonard Andersen, treasurer; and Lyle Paulsen, corresponding secretary.

It is, of course, not the aim of the seminary students to center their student life around the formal machinery of this organization. The prime purpose of the seminary is to prepare men for the ministry. Each student is constantly reminded of this goal; nevertheless, there are externals which need to be attended to. This year the best example of such activities is the remodelling of the seminary classroom. The students took off their black suits and donned their overalls, each doing his part toward this project. In this venture many secondary vocations were exhibited such as electricians, masons, carpenters, painters, iconoclasts, etc. All in all, it must be said that the effort effected an improvement.

*Juniors*

JOHN SHULTZ  
WILLIAM THOMPSON  
LYLE PAULSEN



*Devotional Life*

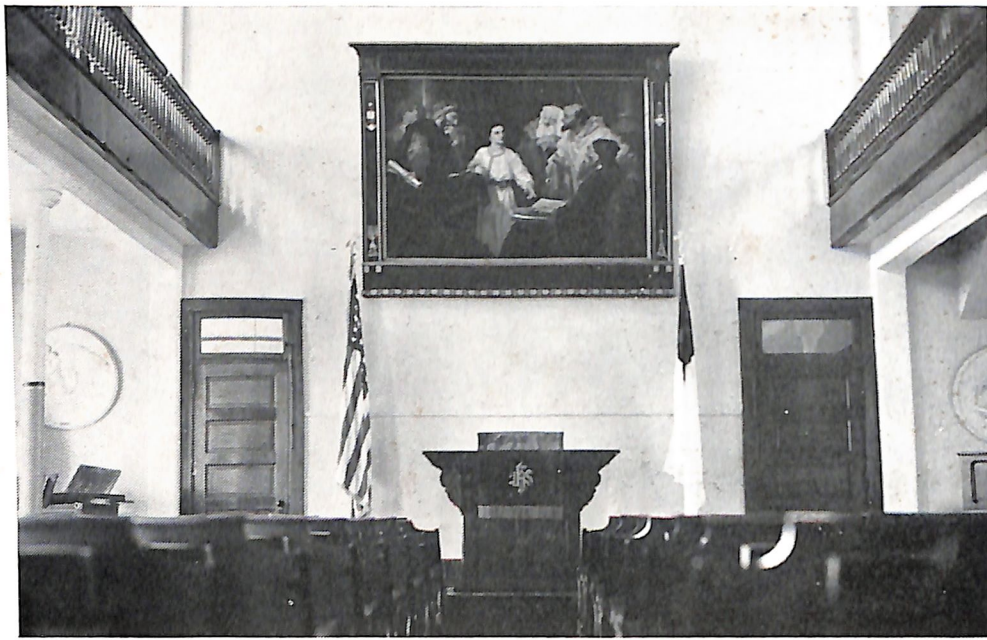
In the spiritual phase of a students life, a mighty CHALLENGE enters in, regardless of time of peace or war.

However, in the course of war, crises appear which tend to prove or disprove the student in his relation to God.

The student has been challenged to "Think on these things."

Matthew 18, 20: For where two or three are gathered together in my name, there am I in the midst of them.





## ----- College Chapel -----

*I must be about my Father's Business.* Yet, all day long, even all year long, the student is chasing after his own business. College machinery whirls to this tune; quite frequently no one is aware that there is any music in life—everything is drowned by the clamor of man seeking prestige, position, and portions sufficient for his "well-being." The kingdom of outward matters is pursued with the best hours, the prime bits of attention, and it commands the powers of best efforts.

*I must be about my Father's Business.* This was His theme in the temple, it was the reply to His disciples, friends and enemies—It is this He is speaking to His Dana children.

*I must be about my Father's Business,* and to show you young men and women the whole truth about life's greatest matter—your relationship to God. Not with physical voice has Christ spoken this to us; but we have seen Jesus in our little Dana temple, and we have heard Him through His servants. The will of the Father and His eternal covenant with man has been revealed to us. Not as the world in its vain reasoning and foolish deceits has Christ's voice come to us—nay, rather He has shown us God as our loving Father who cares most sorely for us, who demands only the trust and confidence of our poor hearts in return.

We have seen the stern Jesus as He points us to the text of life where all solutions are contained; but He has reminded us that the light of the Spirit must shine upon these pages of truth. The strict Jesus has reminded us that we must present our total selves as a living sacrifice, that we must daily bear a cross of life. But we have seen also the living, loving, sacrificing Jesus who bears the weight of our cross, who points us to the golden goal, who will aid us even into this glorious haven which He and the Father have prepared unto the greatest fulness of all life.

## ----- Spiritual Emphasis Week -----



REV. THEO. I. JENSEN

Spiritual Emphasis Week also suffered the Curtailment of war-time economy this year. The streamlined system, which called for a shortening of the second semester, made necessary the limitation of the morning Bible presentations to a twenty minute period and the combining of the evening services with the evangelistic services of the local church.

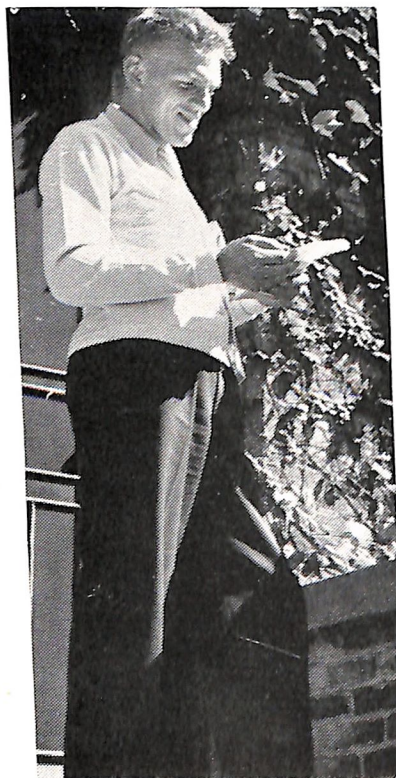
The Rev. Theodore I. Jensen, the speaker at these meetings, was no stranger to the campus. His father, the Rev. J. P. Jensen, was president of the school in the years 1904-1908, and these years found the youthful Theodore romping about the grounds and making friends with the students in the dormitory. Later he returned for theological studies and graduated from Trinity Seminary in 1933. Since that time he has held pastorates in Farmington, Minnesota, Des Moines, Iowa, and, for the last two years, has served Our Saviour's Lutheran Church at Audubon, Iowa.

Presenting the Fatherhood of God as portrayed in the parable of the Prodigal Son, the speaker presented the following subjects: "Sonship with God," "The Wandering Boy", and "The Way Back". These were presented at the morning devotionals. In the evening, at the First Lutheran Church, "Sin and its Remedy", "What Is Jesus to You?", and "That You May Win" were the themes for the evangelistic messages. At the Sunday morning and an afternoon service "Letting Jesus Serve Us", and "Honoring the Creature rather than the Creator" were the topics.

Mild mannered, the speaker proved to be endowed with native abilities of a pedagogue, presenting his subject matter clearly and logically. Because of his unassuming attitude, he was a confidant of a number of students who shared their problems with him. His emphasis on God's fatherhood bespoke the quiet confidence of one living in its truth.



## Luther League



GILBERT FJELLMAN  
National President, L.S.A.

Presided over by Presidents Ewald Sorensen, Lloyd Johansen, Curtis Jorth, and Oscar Johnson, the Dana Luther League again called the residents of the campus together for its weekly evening devotional during the school year 1942-43. The year's activities were not more spectacular than those of other years, but a sober atmosphere prevailed as the clouds of war cast their shadows of destruction and death across the world. So in the midst of the round of duties, a candlelight service was presented at the local church in favor of the men in the service of the country, and a farewell party for a group of men, who were called from their academic pursuits to participate in the world's struggle, was held in the gymnasium.

Unique among the regular meetings of the Luther League was the all-musical program in the gym; a meeting at which the Rev. George Bernard of Trinity Lutheran Church, Omaha, spoke on the home-life of Martin Luther, vividly presenting "Lord Kate"; and Bill Thomsen's lecture on "Christ-centered Art."

In its relation to the Lutheran Students Association, Dana found itself more closely knit, by the election of Edwin Svendsen to the Regional presidency and the Rev. P. Nyholm to the office of an advisor of the region. Dana was also visited by Miss Betty Garton, L.S.A. advisor; Gilbert Fjellman, national president; and the Rev. Fredrick Schoitz.

The Luther League has been one of the greatest means of creating a healthy Christian unity among the students. Encouraging was the fact that a large percentage of the students attend the weekly meetings regularly.

From the former students, now in the service, letters were received, expressing gratitude for the Christian message received on the Dana campus, and indicating the value of the quiet work of the Luther League.

## Fellowship Meetings

In former years, Dana students have expressed the desire to have some type of informal group to meet together and discuss or share various spiritual problems and experiences. This year, through the work of Ewald Sorensen, religious director in the student council, a group met every Saturday evening for an hour of fellowship of various topics. Meetings were introduced by different students, after which an informal discussion was in force. The interest shown by the students in this project is a promising sign.

## First Lutheran Church



Rev. Harold Jorgensen

"Heaven and earth shall pass away, but my words shall not pass away" (Matthew 24:35). While this eventful school year of 1942-43 has to this moment not witnessed the passing away of heaven and earth, it has seen some mighty shakings of the earth, of which the students of Dana College and Trinity Seminary are daily becoming more and more aware. A number of your classmates have left for army camps and naval bases, and more will be going. The future is distressingly uncertain as we humans are able to judge in the matter. The dread possibility of death confronts many young people today. Therefore one

cannot get himself to serve up empty platitudes. But God's word, contrary to the sophisticated opinion of many who disgraced the terrible twenties and lay beaten under the material and spiritual drouth of the thirties, is more than platitudes, and the repetition of it is to the believer not irksome, but life-giving. The word of the Lord shall not pass away. His word of rebuke and admonition to sinners, His word of grace and mercy to the sin-burdened and penitent, His word of promise to all who trust Him, these stand as the guarantee that there is not only help to be had in dark and troublesome days, that something better can be expected when morning dawns on God's tomorrow.

The tremors of the struggling world shake not only the lives of individuals at Dana and Trinity, but these institutions are themselves threatened. And yet there seems to be emerging out of the uncertainty a determination to safeguard what we have in our schools. Therefore out of the stress of these days our schools will be placed on an ever firmer foundation, nay let us say, on the only firm foundation that any institution on earth can have, the eternal word of God.

This year the college church has enjoyed a fellowship with the students not matched in many a year. As we have observed the lives and the unfolding abilities of the students on the campus and in our church, we have come to the conclusion that Dana College and Trinity Seminary are the biggest and most important missions our Church has. It warms our heart that our young men and women of positive Christian faith are enthusiastic about our schools. We want them to be that, and we are happy that they are.

There has sometimes been some mild controversy among us as to whether or not Dana should be a Bible school. Why, of course it should, a Bible school in the sense that science, philosophy and the fine arts are taught in an atmosphere of reverence for Christian truth and life, and by men and women of living Christian faith. There is a Christian science, philosophy and fine arts, and we have these when they are interpreted in the light of Christian truth and employed for Christian purposes. Therefore we are happy when we find a spirit of reverence and a manifest worship of the triune God among our students, for it indicates that Christian education and Christian preaching are bearing fruit.

"Change and decay in all around I see,  
Oh, thou who changest not, abide with me"

Harold C. Jorgensen



# Homecoming

"Dana Surrendered" was the theme of the 1942 Homecoming banquet on Saturday evening, November 7. The program brought out clearly that only a Dana surrendered to Christ has a reason for existence.

Letters from Norman Bansen, Paul Larsen, and Reynold Tange, alumni in the armed services of our country, composed a part of the program. These letters showed that a Christ-centered life has what it takes to face realities with a hope that stretches beyond the vicissitudes of time.

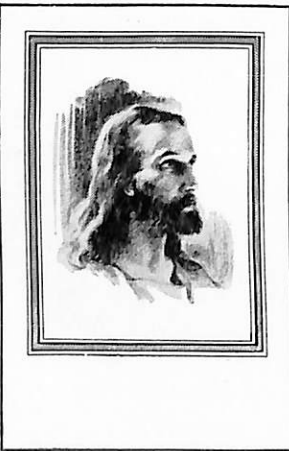
Likewise, Rev. Erhardt Nielsen of Jacksonville, Iowa, presented a challenge to a Dana which professed to be Christ-centered to surrender itself more fully to Christ so that the individual student might live a life that is consistent with such an attitude of surrender.

On the evening of Friday, November 6, the Viking football team came through with a victory of 7-0 over Concordia. On Saturday afternoon the Dana College Dramatics Club presented a play entitled "Death Takes a Bribe".

A joint Sunday morning service of the college and local church was the final event of the Homecoming activities. Again Rev. Erhardt Nielsen brought the message, and Rev. Harold Jorgensen of the local church led the liturgical service.



Rev. Erhardt Nielsen



*For me to live is Christ*

**BANQUET PROGRAM**

**DANA SURRENDERED?**

Toastmaster—William Thomsen

Prayer.....Dr. J. P. Nielsen

Welcome .....Milton Peterson

Mixed Quartette

Vocal Solos .....Clarice Sommers

"Christ-Centered Education".....

.....President Lawrence Siersbeck

Piano Solo.....Miss Mildred Brannon

Letters from { Norman Bansen

Our " { Paul Larsen

Service Men { Reynold Tange

Male Chorus

"A Dana Surrendered to Christ".....

..... Rev. Erhardt Nielsen

# Music

Music is still "in the air" at Dana despite the tremendous CHALLENGE. Musical organizations, along with all else, were small, but the desire for musical expression did not leave the individual. Miss Mildred Brannon accepted the CHALLENGE this year in taking over the duties of music director. The choir, being necessarily small, continued throughout the year. An active string ensemble continued to function until their ranks were thinned out by loss of students. Several other small musical groups made appearances.

Regardless of all obstacles, music still remains within the hearts of the students.



MISS MILDRED BRANNON  
Music Director





## *A Capella Choir*

Dana has become well-known for its A Capella choir, the leading musical organization of the school. It has made a name for itself in all parts of the United States and has made successful tours of Denmark.

Miss Mildred Brannon assumed the duties of music director at Dana this year. Miss Brannon acquired her musical education at Illinois and Indiana Universities.

Due to the war, the customary spring tours have been cancelled for the duration and in the place of these small week-end trips were made. On April 11th, the choir presented three concerts in Omaha and Council Bluffs. Concerts were given in the Immanuel Deaconess Institute Chapel, the Pella Lutheran Church, Omaha, and Our Savior's Lutheran Church, Council Bluffs.

During the school year, the group has appeared on many occasions, featuring its home concert which was given on May 2, as a climax to the Luther League Rally day. At Christmas time, the traditional "Messiah" was presented in part, aided by additional volunteers from the community. The Dana Choir also presented a short group of numbers in connection with this concert.

The Dana College Choir is unique in the fact that it presents only spiritual music which it exploits to the depths of harmony and rythm in order to produce the finest effect. As is perhaps new to many, this "finest effect" cannot be attained by any ensemble of instruments or group of singers accompanied in any way by instrumental tones. It is only the human voice that can with its flexibility create "perfect harmony". This is what our choir strives to do. The aesthetic effect of the singing and its influence and spiritual message depends greatly upon this fineness of workmanship. Dana's choir continues to live up to its high standards.



## *Dana College String Ensemble*

Since first organized in 1937, the Dana College String Ensemble has come to be one of the most active musical organizations on the campus. The enthusiasm of its members and the wholehearted responsiveness of the audiences has marked this year's activities as truly successful. Members of the ensemble are here given the opportunity to study and play many fine string ensemble scores. "Listening pleasure" has been evident from hearers at each appearance.

Under the able leadership of Miss Mildred Brannon, musical director of Dana College, the ensemble has furnished music for several campus festivities, such as the Homecoming banquet, the Christmas program, the spring festival, the pastoral conference, and similar occasions. The college Luther League, as well as local church groups, has also enjoyed the ensemble music at various times.

The ensemble had a variety of numbers in their repertoire. Some of the pieces they have presented were: Andante from the Fifth Symphony by P. T. Tschaikowsky; Minuet from "Berenice" by Handel; Traumerei-Romanze by Schumann; Tambourin by Gossee; Intermezzo-Nocturno by Mendelssohn; Suite from "Iphigenia in Aulos" by Gluck. They have also played choral works by Palestrina and Bach.

The members of the ensemble were as follows: Violinists, Arthur Christiansen of Troy, New York, and Gwendolyn Lindholm of Audubon, Iowa; Bass Violist, LaVern Larsen of Waupaca, Wisconsin; Cellist, Eleanor Andersen of Audubon, Iowa; Pianist, Esther Seybold of Columbus, Nebraska; Director and viola player, Mildred Brannon; Viola players, Owen Gramps of Oneona, New York, and Tom Frost of Portland, Oregon.





## Messiah Chorus

Combining with the Dana Choir again this year, a group of singers from the various churches of Blair took part in the traditional presentation of the Christmas portion of Handel's oratorio, "The Messiah," in the Dana Gymnasium on the evening of December 6, 1942. After the Choir had sung a group of five Christmas anthems, the chorus and soloists, accompanied by Miss Mildred Brannon at the organ and Miss Agnes Larsen at the piano, presented Part I of "The Messiah", closing with the most famous of the choruses of this oratorio, the "Hallelujah" chorus. The soloists—Clarice Sommers, soprano; Charlotte Olsen, contralto; Stanley Carlsen, tenor; and Tom Frost, baritone;—were especially commended by the large audience for their sympathetic rendition of the various solo parts.

"The Messiah" was first produced in Dublin in 1742, when its composer, at 57, was already famous for his operas and for his skill as an organist. It was one of his first compositions in this form, having been composed in the prodigiously short time of twenty-four days, to the libretto by Charles Jennens, and the fact that he revised the musical score many times after its initial performance shows that he considered it worthy of his special attention. It was a success at its first performance, where the Royalty present, realizing the true greatness of both the words and the music, established a precedent followed even today, by standing while the "Hallelujah" chorus was sung. After Handel's death, which occurred only ten days after he had produced this oratorio for a special Lenten service in England, others took note of its great possibilities, and in 1789 Mozart composed the orchestral score which is now used as the accompaniment.

Although there have been many oratorios and cantatas composed to the texts of the Christmas message, and although "The Messiah" treats of the Passiontide and Easter scriptures as well as of those for Christmas, still it remains the most popular of large Christmas choral works, and its annual presentation never fails to be a source of inspiration to its audiences.

## Athletics

In the realm of sports a big CHALLENGE was present at Dana in 1942-43. War demands on manpower caused a scarcity of men within the student body.

A new athletic director was elected this year, Mr. Paul Peterson. Coach Peterson is a former Dana student who starred on both the gridiron and on the basketball floor.

Although the Vikings were not carrying the winning honors this year, their caliber of competition was to be commended.

Intramural athletics were given much stress by Coach Peterson, in keeping with a government suggestion to provide a rigid physical education program—a movement which was present in all American colleges this year, realizing the need for healthier American students.



COACH PAUL PETERSON





## ----- Football -----

Despite the "miteness" of the football squad in size and weight, the team in no measure lacked the fight and spirit of a successful team.

Although the backfield was one of the lightest in Dana's history, this handicap was overcome by speed, and the team went on to make a fairly good showing.

Opening the season against Omaha University, the Vikings made a surprise showing by holding the Indians to six points until the last five minutes of play when the university boys ran over the tired Dana squad, making the final score 18-2.

Playing their traditional rivals, Concordia, twice, the Vikings split, losing the first 12-0 and winning the final, Homecoming game, 7-0.

Probably the best game of the season was the Fairbury contest in which a midget Dana team lost to the powerful Fairbury juggernaut 6-0. Fairbury had been undefeated in two years of play and in the first half they completely outplayed the Dana squad but in the second half the tables were turned and Dana controlled the ball most of the time.

In commenting on the season as a whole we might mention the remark of Fairbury's coach after the Dana game, when he said that the Dana game was "the season's toughest." This remark characterizes the type of ball played by the squad—they were small but they were tough.



## ----- Basketball -----

Viking basketball season was opened with high hopes. The team was figured to be one of the best in recent years. Almost every player on the squad had played high school basketball, some making exceptionally good names for themselves in that line.

However, if one regards only the won-lost column, the season was not one that would cause great rejoicing.

The boys played hard, fast basketball and did at times look like a "fast company" ball club. Other times they appeared ragged and weak.

The acme of the team's perfection was reached in the game against Creighton frosh played in the Omaha City Auditorium. The game was tied up until the last three minutes of play when, with a burst of speed which only a team of superior reserves can produce, Creighton dumped in six points to win.

As in former years, the main difficulty with the squad was the lack of returning varsity men. Hence the task of "breaking in" a whole new set of players. Any coach will affirm that it is difficult to have a successful season with a squad consisting of players not used to playing together—and experience is always a good teacher.



## ----- Football -----

Despite the "miteness" of the football squad in size and weight, the team in no measure lacked the fight and spirit of a successful team.

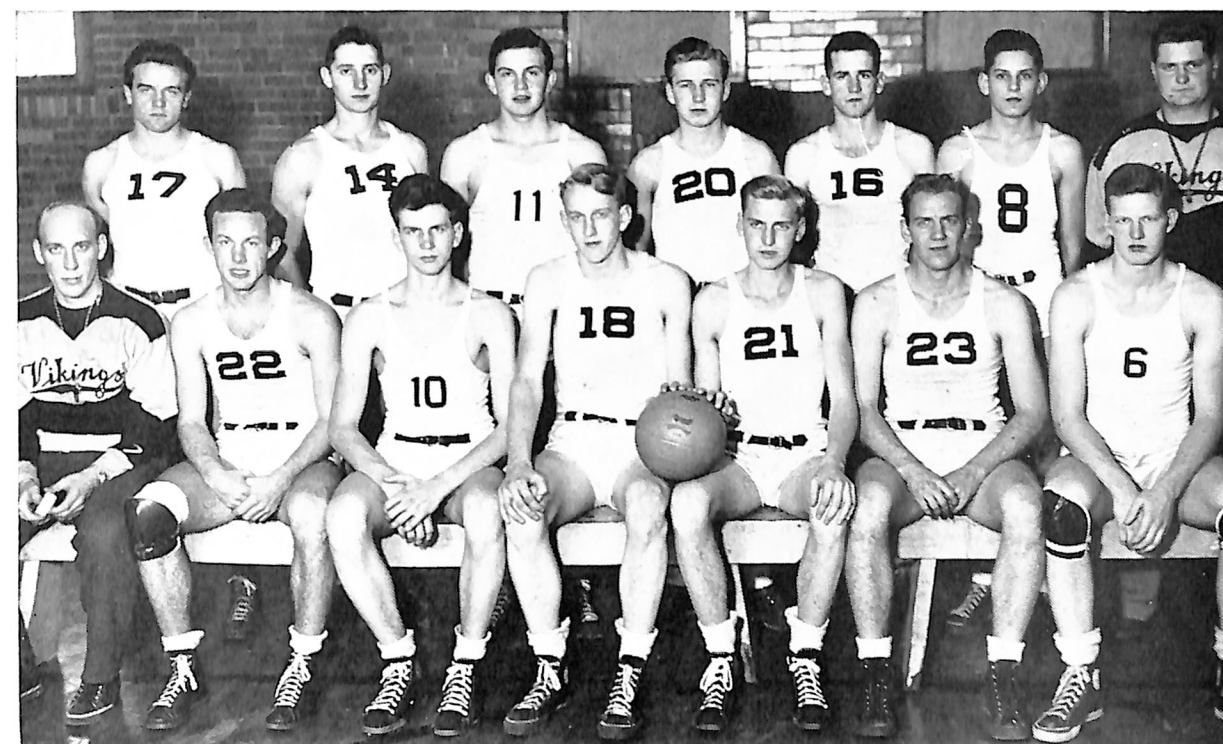
Although the backfield was one of the lightest in Dana's history, this handicap was overcome by speed, and the team went on to make a fairly good showing.

Opening the season against Omaha University, the Vikings made a surprise showing by holding the Indians to six points until the last five minutes of play when the university boys ran over the tired Dana squad, making the final score 18-2.

Playing their traditional rivals, Concordia, twice, the Vikings split, losing the first 12-0 and winning the final, Homecoming game, 7-0.

Probably the best game of the season was the Fairbury contest in which a midget Dana team lost to the powerful Fairbury juggernaut 6-0. Fairbury had been undefeated in two years of play and in the first half they completely outplayed the Dana squad but in the second half the tables were turned and Dana controlled the ball most of the time.

In commenting on the season as a whole we might mention the remark of Fairbury's coach after the Dana game, when he said that the Dana game was "the season's toughest." This remark characterizes the type of ball played by the squad—they were small but they were tough.



## ----- Basketball -----

Viking basketball season was opened with high hopes. The team was figured to be one of the best in recent years. Almost every player on the squad had played high school basketball, some making exceptionally good names for themselves in that line.

However, if one regards only the won-lost column, the season was not one that would cause great rejoicing.

The boys played hard, fast basketball and did at times look like a "fast company" ball club. Other times they appeared ragged and weak.

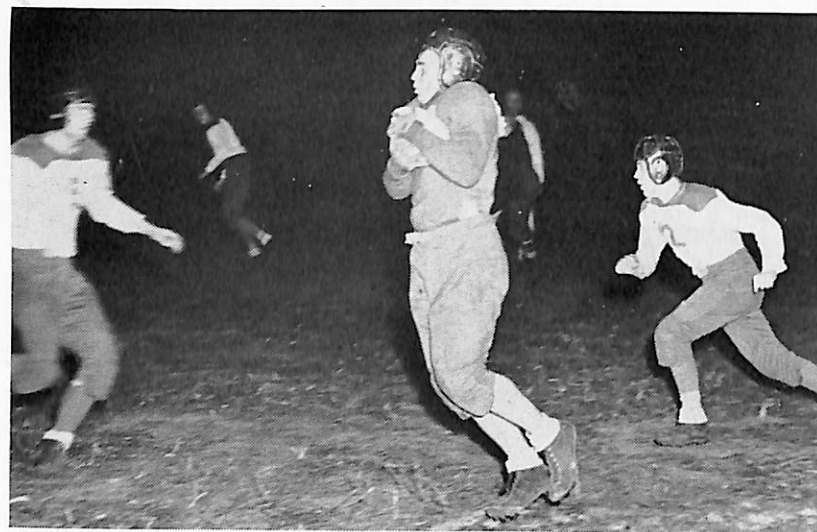
The acme of the team's perfection was reached in the game against Creighton frosh played in the Omaha City Auditorium. The game was tied up until the last three minutes of play when, with a burst of speed which only a team of superior reserves can produce, Creighton dumped in six points to win.

As in former years, the main difficulty with the squad was the lack of returning varsity men. Hence the task of "breaking in" a whole new set of players. Any coach will affirm that it is difficult to have a successful season with a squad consisting of players not used to playing together—and experience is always a good teacher.

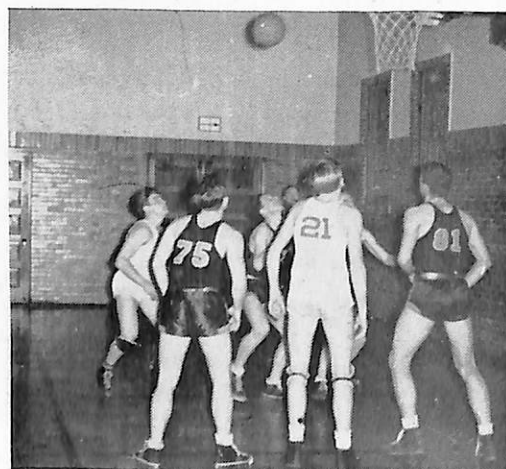


## Sports Action Shots

DANA vs. FAIRBURY  
Left to right: Bill Hanson on the ground; Tom Frost, tackler; Fairbury man; Gene Megrue; Dean Madsen.



DANA vs. FAIRBURY  
Pass Interception. Howard Jensen, with ball; Dean Madsen, left; Bill Hanson, right.



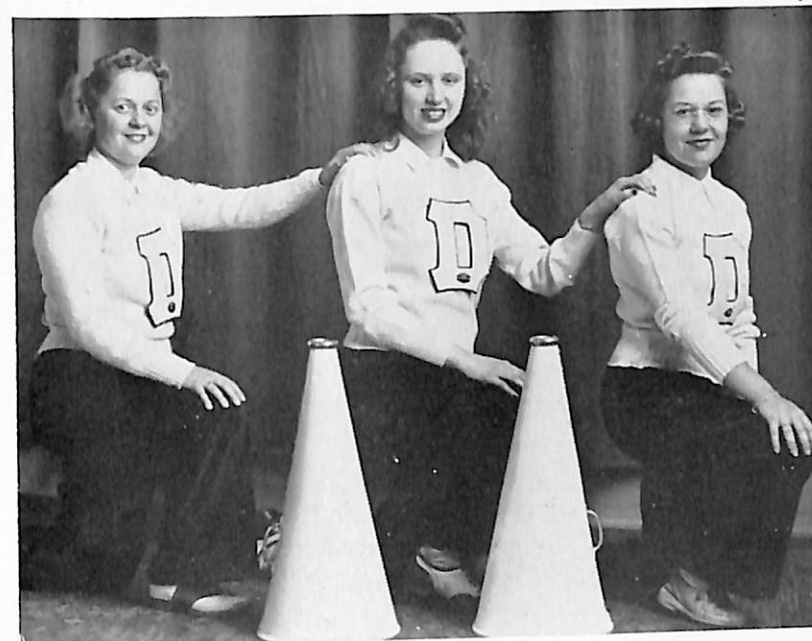
DANA vs. MIDLAND  
Dana Men: No. 21, Art Hansen; extreme left, Lloyd Johansen.



DANA vs. MIDLAND  
Dana men: Jumping for ball, Gene Megrue; No. 14, Curt Jorth.

## Cheer Leaders

Two freshmen and one sophomore led the Dana cheering section this year in fine fashion. At every sports occasion these three girls were ready to pitch in and yell whether the victory prospects were good or bad. Donnabeth Peterson hails from Falmouth, Maine, where she lived all her life. The other girls are from Blair, teamed together as cheer leaders in high school. Betty Young is a Freshman while Virginia Campbell is the only Sophomore in the trio.



From left to right: Donnabeth Peterson, Betty Young, and Virginia Campbell

The Dana cheer leaders were instrumental in developing outstanding enthusiasm among the students. A major part of the yells had their origin in these girls' ideas. "Ginny," Betty, and "Toddy" all showed themselves to be among the best leaders of Dana cheering in recent years. Their former experience in high schools was put to the best of use in performing their task throughout the year.

## Pep Band

Headed during most of the first semester by Owen Gramps, bass player, with a lot of music within him, the Dana pep band upheld its traditionally recognized distinction of being the noisiest group on the campus. Their presence at any event could be both heard and felt and did much to keep up the spirits of Danaites regardless of whether the happenings on field and court were progressing toward or away from victory. Any athletic happening on the campus this year was all that was necessary for the pep band to put in its appearance, which was generally appreciated.

The second semester found the pep band rather sparse in its numbers, students leaving school continually. With the help of a couple cow-bells, a couple horns, and dozens of good vocal chords, the student body managed to keep the athletic spirit in high gear.



Pep Band in Action on Cold, Blistery Night



## *Intramural Sports*

Boys' Intramural sports again held the center of the winter and spring sports stage, taking second place only to varsity basketball. Basketball, volleyball, and softball tournaments provided the opportunity for participation by those who would ordinarily be the spectators in varsity sports.

Intramural basketball had its main difficulty in the constantly shifting personnel of the teams caused by the claim of the Selective Service. But there were always enough players around to make an interesting enough tournament. Five teams were formed, the Udelians or Seminarrians, the Gobs, the Buck Privates, the Army-Navy All-Stars, and the Cadets. The final standings found the Buck Privates, who had Howard Petersen, Don Schou, Kenneth Weaver, Kermit Hansen, Don Christensen, Dean Madsen, and D. V. Bryan as its members, tied for first place with the Gobs, composed of Stan Carlsen, Ewald Sorensen, Glenn Neve, Lloyd Neve, Alton Neve, Bill Hanson, Homer Larsen, and Ronald Jensen. In the playoff the Buck Privates squeezed out their win in an exciting over-time, 33-27, to close the season with nine wins and four losses.

Don Schou, Sleepy Eye, Minn., was high point man among the teams with 103 points. Unusual happenings: the Gobs playing with four men once when two men unwittingly went out for one substitute; four Neves playing at once—the three on the Gobs and Aster Neve for the Udelians.

Throughout the year, the Physical Education classes were presented with a rigid program. During the time when the intramural tournaments weren't in progress the classes resorted to such things as calisthenics in the gym and an obstacle course outside on the Dana grounds.

The obstacle course has proved to be a popular "pastime" in the physical education courses throughout the nations. This has been a result of governmental suggestion to provide physical training which would better prepare the student for the armed services.



## *W. A. A.*

Dana "D's" this year will be exhibited by girls from Oregon to Maine. Over thirty girls, freshmen, sophomores, and juniors, participated in the various sports connected with the W.A.A. program.

The organization got under way in the beginning of the year with the election of officers, with the results as follows: Donnabeth Petersen, president; Virginia Campbell, vice-president; and Jeannette Olsen, secretary. Miss Wind, the dean of women, was the advisor and Paul Petersen, Dana's new coach, was the director of the organization.

During the season a great deal of ability was discovered and developed. The outstanding quality of good sportsmanship was especially noted among the girls as they fought for victories.

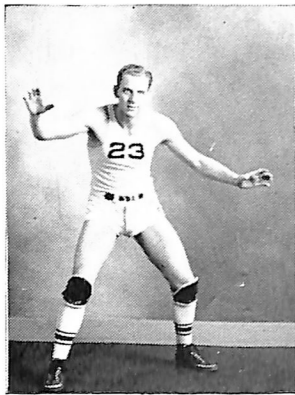
The round of sports began with the ping-pong and tennis tournaments, followed by basketball, which proved to be the favorite sport of all, and was followed by the student body with much interest. Girls were seen hopping around with crutches because of sprained ankles as the result of their un-failing enthusiasm when playing this game.

Other sports engaged in during the year were volleyball, kittenball, shuffleboard, and badminton.

In order to receive a letter, a total of ninety points had to be acquired. Points were given for the participation of each sport, and additional points were given for becoming victor of some sport or being a member of a winning team. Hiking was also a requirement for an award. Two two-mile, two five-mile, and two ten-mile hikes were the accomplishments of each girl who received their "D".



## "D" Club

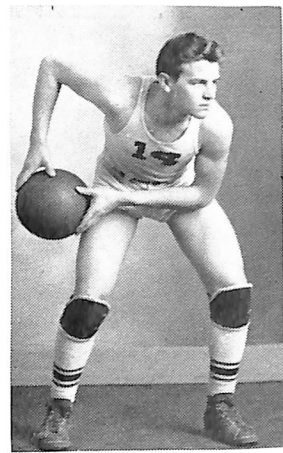


MILTON PETERSON  
Four-year Letter Winner

New Dana athletes got their first taste of "D" club activities in March when they were first initiated into the organization. Some of the boys were seen with long bamboo poles, fishing for goldfish in the upper lily pond. Others were on their knees conscientiously scrubbing the sidewalk between the girls' dorm and the "Ad" building. Other activities took place which further gave the boys a right to admission to the club. The initiation backfired to a certain extent however, when afterwards a free-for-all snowball battle took place.

Following the initiation, a banquet took place at which the athletic letters were awarded.

Elected to the position of honorary football captain this year was Howard Jensen, from Blair, Nebraska. "Howie" was a powerhouse fullback for two years and was noted for his dogged determinism and his ability to determine the course of the opponents' plays. "Howie" is in the Army Air Corps now, attending the St. Louis University. "Howie" was not only a football star, but he was considered quite a Math and Chemistry "shark."



LLOYD JOHANSEN  
Honorary Basketball  
Captain

Honorary athlete and honorary basketball captain was Lloyd Johansen from Latimer, Iowa. Lloyd has been a mainstay on the basketball team for the last two years and has been one of the hardest fighters Dana has seen on the basketball floor for some time. He was leading scorer for the "42-43" season and was outstanding as an all-around ball player, and an exceptional ball handler. "Jo" is no slow poke on the gridiron either, having developed into a tough end during his two years at Dana. "Jo" is now in the army, stationed at Ft. Warren, Wyo.

Winner of the D-club blanket this year was Milton Peterson, the only four-year athlete in the club this year. "Bud" has been a regular center on the football team during his four years at the school and has held first team positions on the basketball teams. In his senior year, "Bud" was president of the Student Body.



HOWARD JENSEN  
Honorary Football  
Captain

Lettermen this year were: Dean Madsen, LaVerne Morgensen, Howard Petersen, Donald Schou, Dick Videbeck, Lowell Devasure, Gene Megrue, Hugh Hughes, Tom Frost, Art Hansen, Glenn Hansen, Ray Hansen, Art Pedersen, Howard Jensen, Lloyd Johansen, Curtis Jorth, Ronald Jensen, Bill Hanson, and Milton Peterson.

## Army-Navy-Reserve

In time of war the Government wisely realizes the great value of the continuance of college education. In the interests of present conditions and those which will prevail after the war, the government has provided for programs in which various young men can continue some of their education before being called to the colors.

Several Dana students were able to continue their education at the school this year, in spite of the war. Students enlisted in the Reserve Corps of the Army, Navy, and the Army Air Corps. These particular plans were designed by the Army and Navy to prepare the men for officer training, and for further education after being called.

Charles Lazure, John Lazure, and Howard Jensen, all of Blair, Nebraska, were enlisted in the Reserve Air Corps of the Army. They were the first ones to be called into service. On February 20, 1943, they were sent to preliminary training at Jefferson Barracks, Missouri. Milton Andersen left for the Air Corps March 1st.

The Army Reserve enlistees were Don Christensen, Ruskin, Nebraska; Thomas Frost, Portland, Oregon; Arthur Hansen, Portland, Maine; Hugh Hughes, Decatur, Nebraska; Lloyd Johansen, Coulter, Iowa; Glenn Neve, Ringsted, Iowa; Mortimer Nielsen, Racine, Wisconsin; and Arthur Welch, Tekamah, Nebraska. These men were sent to the Reception Center at Fort Dodge, Des Moines, Iowa, during the middle of March. From there they were transferred to army camps in different parts of the United States. After this group of men left, a noticeable gap was left in the student body and it took quite a while to get used to the absence of their faces around the campus.

The men enlisted in the Naval Reserve have yet to be called into the service. Frank Lowell Devasure of Tekamah, Nebraska, and Arthur M. Pedersen of Blair, Nebraska, were enrolled in the V-1 class of the Naval Reserve. Those enlisted in the V-7 class of the Naval Reserve were Alton V. Neve of Sleepy Eye, Minnesota, and Gene G. Megrue of Tekamah, Nebraska.

No special courses were outlined for men in the Army Reserve Corps. Mathematics and physics, along with physical training, were required subjects for the men in the Naval Reserve Corps.

Men called to service during the year other than the Reserves were C. Arthur Christiansen, Troy, N. Y.; and Richard Videbeck, Brooklyn, N. Y.



## ----- Scandinavian Foundation -----

The Dana College Chapter of the American Scandinavian Foundation, organized in 1941, has as its aim the promotion of cultural relations between the United States and the Scandinavian countries.

The first meeting was held September 25 in the reception room of the Ladies' Dormitory, and the officers for the following year were elected, namely: Dr. H. F. Swansen, president; Ronald Jensen, vice-president; Helen Rebecca Anderson, secretary; and Harry Petersen, treasurer.

Swedish Vice-Consul spoke at a banquet of the ASF, held November 20, 1942, in the dining hall. He spoke on "Sweden as a Neutral" and mentioned four points, the commercial, political, national, and social positions of Sweden at the present time. He believed it would be possible for Sweden to maintain her neutrality.

On March 6, 1943, a social meeting was held. The program included a number by the girls' sextette and a discussion on "Denmark After the War," led by Harry Petersen. After the discussion refreshments were served.

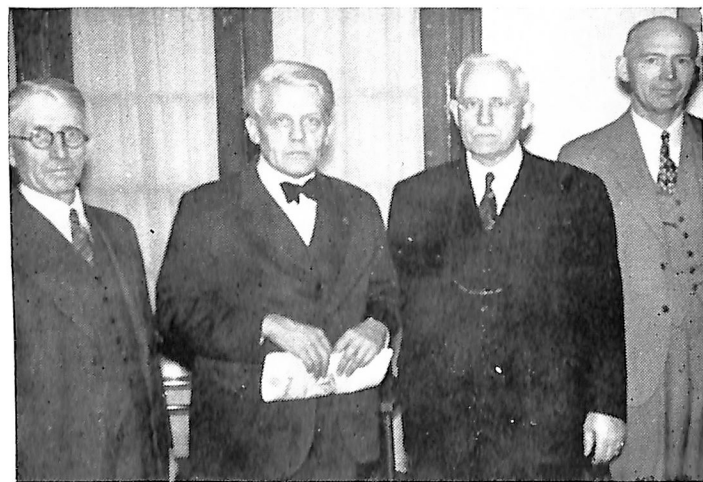
The spring feature of the Dana College Chapter, was the visit paid to us by Ella Rølvaag, daughter of O. E. Rølvaag, author of *Giants in the Earth*. Miss Rølvaag is connected with the Norwegian Department at Luther College, Decorah, Iowa. The meeting was held April 9, 1943, and Miss Rølvaag's topic was in connection with her father and her memories of him.

H. Skov Nielsen, Blair, Nebraska, presented the Chapter with seven bound volumes of the *American Scandinavian Review*. Other copies of the *Review* were bound by the Chapter.

Christmas Møller, former minister of finance in now-occupied Denmark, visited the Dana campus November 25, 1942. He delivered an address, Danish and some English, in the Dana College chapel. President Siersbeck presided at the meeting, and Mildred Romer furnished a vocal solo, "Bøn for Danmark."

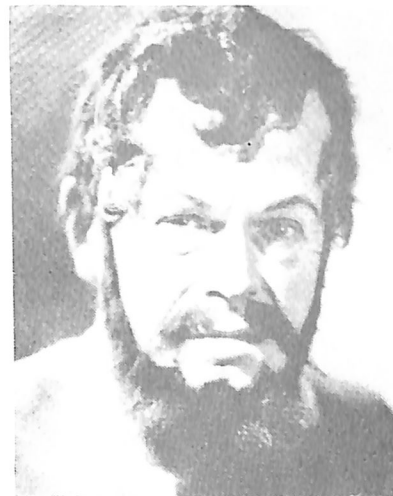
As expected, April 9, 1940, was the main theme in Mr. Møller's address. April 9, 1940, is the date of the invasion of Denmark by Nazi troops. He told of the severe conditions which now exist in Denmark. There is absolutely no coffee available, so the Danish folk can no longer have their "Eftermiddagskaffe."

Mr. Møller is at present the leader of the Free Denmark movement in London. When he was in Denmark he was known as an outstanding party man, but since April 9, he has championed the cause of Denmark. Being in very close connection with the English Government, he is doing much for the furtherance of the Danish cause. He traveled under the auspices of the American-Denmark Association on his lecture tour.



Left to right: Dr. J. P. Nielsen, Christmas Møller, Dr. N. C. Carlsson, and Rev. P. C. Jensen

## ----- Lyceum -----



CHARLES LUM

Entertainment in its highest and best form has been the goal and achievement of Dana, in sponsoring the Lyceum series.

The school year, 1942-43, has seen two performances by famous persons: Charles Lum, famed Shakespearian actor, and the world-renowned Sykora trio of string artists.

America's foremost Shakespearian actor Charles Lum, with his "Excerpts from the Classics," brilliantly rendered here as everywhere, held his audience spellbound during the performance.

Impersonations of "Hamlet," "Jacques," "King Lear," "Richard III," "Cassius," "Macbeth," and "Shylock," highlighted his choices of Shakespearean character.

Mr. Lum has been touring the country doing acting and directing for many years, having appeared on the stage with such prominent actors and actresses as Ethel Barrymore, William Courtney, Henrietta Crossman, and Kyrle Bellow. Mrs. Henry Wallace, wife of the vice-president, once said of a Lum performance:

**"Your audience at the Mayflower enjoyed your radiant impersonations of Shakespeare's characters. Personally, I think that such talent and ability as is yours should be seen by all lovers of good literature and good acting."**

The Sykora trio consisted of three outstanding musicians. The leader, Frank Sykora, violin-cellist, received his education at the conservatory in Kiev, Russia, and was a conductor at the Music Drama Theatre for two years while there.

Mr. Bella Martay, violinist, studied in Budapest, Czechoslovakia, and Germany.

The accompanist, Lawrence F. Beste, studied under men such as Rudolph Ganz, Wesley La Violette and Louis Gruenberg.

The performance here, thrilled students and faculty. The audience was pleased with the variations and beautiful tone quality of the trio and also the charming personalities of the members of the trio.





## ----- Student Council -----

During the second semester of the school year 1941-42, the student body voted to try a new experiment in the form of a Student Council. This year, 1942-43, the first official Dana College Student Council was in force, consisting of five students from Dana and Trinity Seminary. Each member of the council represented one particular phase of student activities, and his task was to be for the furtherance of that cause.

The purpose of this body was to provide a means for a closer cooperation between the student body and the administration and faculty. The council was to be an instrument through which various organizations could convey their opinions and desires to the faculty and administration. The Student Council's first year in existence proved quite satisfactory and its function is expected to be of great importance in future years.

Represented in the council were five departments, namely: music, social, athletics, religion and literary. Offices were filled by student ballot. Director of musical activities was Leonard Andersen, Trinity Seminary, who in his four years at Dana was active in choir, male chorus and other musical organizations. Social director was Allan D. Hansen, Trinity Seminary, who was instrumental in promoting various campus and social events throughout the year. Gene Megrue filled the position of athletic director. Gene has been active in varsity sports during his three years at Dana. Head of the literary department was Stanley Carlsen, who for a time was sports editor of the *HERMES* and also edited the *DANIAN*. Ewald Sorensen filled the office of religious director the first semester. Ewald was president of the Luther League for one term—is a pre-sem student. Einer Olsen, Trinity Seminary, was religious director the last semester after Ewald Sorensen was called to the army.



## ----- History Club -----

The Dana College History Club under the leadership of Dr. H. F. Swansen has contributed to a well-rounded student life. It has for its purpose the fostering of an interest in the study of history and international relations. Dr. Swansen, who is also the founder of the organization, takes a great interest in the work and directs its activities enthusiastically.

Dr. J. P. Nielsen addressed the first meeting of the group on October 18, on "Shintoism in Japan." With his experiences as a missionary in Japan, Dr. Nielsen was able to show clearly the influence of Shintoism on the national life of Japan of today.

As an annual feature of the observance of Christmas at Dana, the History Club presented a play "The Music Box". Members of the cast were Lloyd Neve, Ronald Jensen, Curtis Jorth, Eva Ruth Anderson, Herdis Hertz, Homer Larsen, Jeanette Olsen, and Esther Seybold. Also on the program were vocal solos by Clarice Sommers and a musical reading by Ruth Keay. A mixed quartette composed of Mildred Staby, Eleanor Andersen, Stanley Carlsen, and Ewald Sorensen sang a group of songs; numbers by the String Ensemble completed the program.

In addition to these activities the club purchased and presented to the library, books for the use of the history department.





## Dramatics Club

Under the direction of Daniel V. Bryan, English instructor, the Dana Dramatics Club continued to function again this year as in former years. In spite of being handicapped this year by a loss of students to the armed services, the organization held out through the year and performed occasionally on the stage.

Officers for the first semester were Richard Videbeck, president, and E. Ruth Anderson, secretary-treasurer. With the leaving of Richard Videbeck at the end of the first semester, Kermit Hansen was elected president for the second semester.

"Death Takes a Bribe" presented during Homecoming was a story of Death—(Owen Gramps) waiting a few minutes while Grundle (Ronald Jensen) changed his will, leaving his money to be used in support of his granddaughter (Catherine Brodersen), instead of a monument erected in his honor. Supporting members of the cast were Kermit Hansen, Willard Johnson and Claudine Blankenship.

And who can forget the "Waacky" party at which the Dramatics Club presented a negro version of "Death Takes a Bribe." The changing of dialect and some wording turned the play into a roaring comedy.

The club hoped to present a mystery play, "Drums of Death," at "Lilac Time"; but because of scarcity of actors and the lack of time, which always is present at the end of a school year, the production was called off.

The members of the Dramatics club have felt a great deal of satisfaction over the progress during the year, the club meetings, and the preparation for the productions.

## Letters from Service Men

### A Former Hermes Editor



Norman Bansen

Dear Danians:

Is the conquering Truth that Dana proclaims, is the Faith that inspired the laying of a cornerstone on a Nebraska hillside six decades ago strong enough to prevent defeat during the difficult years that lie ahead?

A corporal in the air corps writes, "... we'll have to go back and build up Dana." These are the words of a veteran of the naval battle of Midway: "Would I like to be at Dana again now and start all over!" Yes, we want Dana to be a "going concern" when we come back! The student body must dwindle to a fraction of its present size to reach the proportions of the Dana of the 80's. Less students will not mean defeat; a lack of Faith will. Where there is true Christian Faith there is no room for pessimism, no excuse for defeat.

As I write this, our train is speeding through the night along the Pacific shoreline. We no longer watch the breakers in the pale starlight as we did before this became the ocean of the ironic name. Shades are drawn in compliance with blackout regulations. One can forego the pleasure of watching grey-white breakers in the night, but there must be no "blackout of the arts," for a world in which men discard an artistic and spiritual heritage for a mess of cold materialistic pottage would be unbearable.

I feel that Dana, with her staunch Christian ideals, her wholesome community life, her emphasis on a liberal arts education, and her old world cultural background, is unique and must not be permitted to close even temporarily. Those who sneer at the mention of culture haven't heard the soaring notes of **Den Store Hvide Flok** nor the thunder of **Kongernes Konge** on an organ in a dimly lighted camp chapel—the artist a refugee buddy from Germany. We have a tendency to dismiss such intangible things simply because they won't fit into carefully defined pigeonholes.

Is this being foolishly sentimental over a mere drop in the American educational bucket? Remember that Wellesley was of no unposing proportions when one Mei-ling Soong left its halls some years ago, but today charming Madame Chiang Kai-Shek wields a more powerful influence in the direction of a just peace than any graduate of much-heralded large institutions.

I thank Dana for giving me an appreciation of life when the way "may run through sunny meadows" and for pointing the way

to a faith for strength "through lands of gloom and shadow." And what more should one ask of a college?

I like to think of THE DANIAN as a symbol of a Dana that will carry on. Despite difficulties you decided to continue the publication of the annual. Thanks for this encouragement!

With greetings to the entire "family,"

Norman Bansen,  
Second Lieutenant,  
Medical Administrative Corps.

### A Former English Prof.



Joseph Langland

Camp Wolters, Texas  
Headquarters,  
56th Inf. Tng. Bn.

March 15, 1943

Readers of the **Danian**,

For any member of the Armed Services of the United States there is a unique pleasure in contributing, even a letter, to a civilian activity of which he was once a part. It is the satisfaction of being joined to a normal civilian experience and seeing the soul of a school he knew re-express itself in a natural record despite an abnormal time. I feel that way about Dana and the **Danian**.

What I want to share with you is the clean remembrance of a lot of group activities: intramural sports, The **Sower**, the folk songs and plays we learned together, a warm argument over **Hermes**, all the jokes and seriousness of classes, the quietness of daily chapel, and the more unrestrained "sings" in the college park. All of that along with friendly gossip of likes and dislikes, when added up at the end of the year, combined to make the experience of Dana an intensely human lesson in good living.

And what I want to say most of all is that this is a time for the men and women who are great enough to meet it. Go to the top of your hill and teach your mind and soul to match the handiwork of the valley before you. Surely not less than one hundred times I have stood on that hilltop in the deep hours of white winter nights, at the full flood of noon, and innumerable spring mornings singing the hymn I hold before all others, "My God, How Wonderful Thou Art."

A cordial "Hello" to faculty, students, and all those men and women of Dana in the service of our country throughout the world.

Sincerely,  
Lt. Joseph T. Langland.



## Letters from Service Men

### The First Wave From Dana



Lyla Guyer

The Bronx, New York  
March 30, 1943

Dear Readers of the Danian:  
Vain person that I am, I cannot resist an opportunity to see my name in print, so I will write you a few words of greeting even though I realize (and you will too) that my literary talents are definitely limited.

Believe me, it's an honor to represent Dana for the women, and more specifically for the Navy.

My training at Dana is now being applied in the service of Uncle Sam and it's really a grand and glorious feeling to know that one can be of assistance in this emergency. I know that every Dana alumnus feels this same way. We may be scattered far and near, but we often think of Dana, the grand times we had, and the friends we made while there.

Greetings and best wishes to you all from a lady "gob".

Sincerely,

Lyla Guyer.

### A Former Chem. Lab. Assist.



Ewald Sorensen

March 19, 1943

Dear Readers of Danian:

It's a real pleasure to be able to speak to you like this. Having left Dana just a few weeks ago, the memories of school are still very fresh in my mind: the classrooms, the buzzing of conversation in the dining hall, the choir practicing in the chapel,

Luther League, prayer meetings in the dorm, and dozens of other activities. Of course, I can't forget the informal spontaneous discussions that spring up so easily among Dana students. What a pleasure it was to visit friends in the next room or across the hall in the dorm, and start a friendly discussion. Almost every time we would drift to spiritual things and perhaps end up with a quiet devotion, each one adding his prayer. These are the things that have stuck out in my mind since I've entered the service. The friendship and Christian fellowship which I enjoyed at Dana has made a deep mark on me as I'm sure it has on every student who has attended school there.

I am very fortunate in being stationed in a city where one of our churches is located.

The church here is without a pastor at present and is served by seminary students from Trinity. They serve as a kind of lifeline to Dana for me, so I don't feel like I'm too far away from the old "Alma Mater". I hope it won't be too long before we'll all be able to gather at Dana again for a big homecoming. I'm sure that's the desire of every Dana student and alumnus, especially those of us who are in the service.

A recent Dana student,  
Cpl. Ewald Sorensen,  
Army Radio School,  
Kansas City, Missouri.

### A Chicagoan



Paul Larsen

Dear Danaites and  
Friends of Dana:

I'm so glad I have an opportunity at this time to write a letter which will reach so many of you. As many of you know, I attended Dana last year as a Freshman and at every chance I like to tell how fortunate I was in attend-

ing. I shall always remember Dana and the wonderful inspiration it has been and is to me. I'm sure all who have attended Dana feel the same way toward her.

I'm stationed at present, in Modesto, California, waiting to be shipped to overseas duty—that is, duty in a general hospital. I like the medical work very much for I feel it gives me such a wonderful chance to speak to the suffering and wounded about our Savior and Comforter Jesus Christ!

I have already seen so many cases of men who were in action overseas—telling how they can't help but believe in a God, now—even though they never did before. It's so true, isn't it? When we are troubled or sick, then we go to our Father in Heaven. But let us remember, God may not give us that chance. God doesn't always wait for us. So let us, soldiers, sailors, students, everyone, take Jesus now as our real, personal Savior, our only Hope!

I want to give a special greeting to all of my old friends of "41-42". Many of you are in the service also. Good luck to you all in whatever you are doing. May we all meet again soon in a grand reunion on Dana Hill!

Greetings to all the Dana faculty. Dana students and friends have a warm feeling in their hearts for you.

For Victory—through Christ.

Sincerely,

Cpl. Paul C. Larsen,  
77th General Hosp.  
Modesto, California.



Back row, left to right: Curt Jorth, Jeannette Olsen, Laverne Morgensen, Don Schou, Prof. D. V. Bryan, Homer Larsen, Gil Jensen, Alton Neve, Don Christensen, and Dagny Jessen.  
Front row: Ronald Jensen, Becky Andersen, Donnabeth Peterson, Bill Hanson, Eva Ruth Anderson, Lloyd Neve, Glenn Neve, and Gwendolyn Lindholm.

## The Hermes

Due to increasing costs, and shortages in essential materials, the HERMES this year was published only once every three weeks. With sophomore Lloyd Neve, Sleepy Eye, Minnesota, as Editor, HERMES passed through several woeful experiences in delivering its regular messages to alumni and students. Outstanding among difficulties was the lack of trained writers, the scarcity being chiefly due to the smallness of the student body.

With the Draft constantly claiming members of our staff, the various positions have been filled and refilled by a number of students. Bill Hanson, sophomore from Chicago, served as Associate Editor, while the sports Editorship was handed back and forth between Glenn Neve and Stan Carlsen; artist Persis Pedersen contributed linoleum block cartoons; Donnabeth Peterson was a faithful worker with her Monday night typing; Don Christensen managed our financial deals as Business Manager, and Homer Larson worked as Circulation Manager.



LLOYD NEVE  
Hermes Editor

Ronnie Jensen collected alumni news and Lyle Paulsen kept us posted on Seminary doings. Alton Neve, Gil Jensen, Gwen Lindholm, Dagny Jessen, Don Schou, Eva Ruth Anderson, Jeannette Olsen, Lydia Larsen, and Ruth Keay acted as reporters.



## "The Sower" and Dana College Writing Club

*Dulce et decorum est pro patria mori; resurgam.*

Among the casualties of the war must be numbered the Creative Writing Club of Dana College. Its already scanty ranks were thinned by calls to the service, and the members who were left were oppressed by the burden of work required by the accelerated program. Since there was neither the possibility of accumulating a sufficient variety of works from which to choose, nor time sufficient for the "labor limae" required for preparing a few pieces for publication, the project of a second issue of THE SOWER was abandoned for this year.

It should not, however, be said that the undertaking this year was an unqualified failure. A stanza from Browning is pertinent here:

"For thence,—a paradox  
Which comforts while it mocks,—  
Shall life succeed in that it seems to fail:  
What I aspired to be,  
And was not, comforts me:  
A brute I might have been, but would not  
sink i' the scale."

To be sure, there is no visible token of success; but it is not in the nature of success always to be embodied in visible tokens. The work done this year was largely experimental in nature. The creative impulse requires discipline to become articulate; before there can be effective expression, a suitable medium of expression must be found. This process of orientation, as it may be called, involves training of the critical faculty as much as the creative; through well applied criticism of notable works of literature, much may be learned of the process of their creation; and study of that nature, along with actual writing, constituted much of the club's work this year.

A note of praise is due to the hard working "faithful few": Gilbert Jensen was the enterprising president of the organization; Dagny Jessen, the secretary; other contributing members were Ronald Jensen, Arthur Hansen, Curtis Jorth, and Mortimer Nielsen. Upon these and a few others will devolve the responsibility of keeping alive the aspirations of the organization, for it is they who have a sense of its true worth. In their laps lies the future of the club and its publication, through them it will have its rebirth in happier days. Optimism is justified, for where the creative urge is present, it gives no rest until it finds expression.

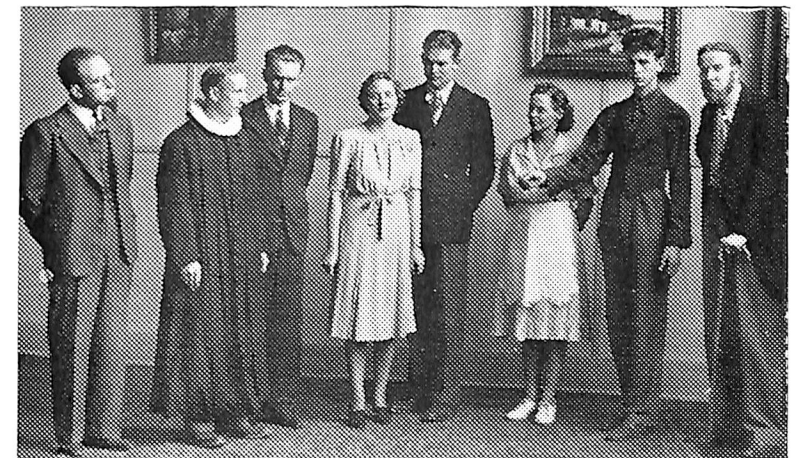
## Peace Oratory Contest

The annual peace oratorical contest, under the sponsorship of the history club was held again this year in our college chapel, on January 29. Two prizes were extended as in former years, by the National Luther League. The three contestants were LaVerne Larsen from Milwaukee, Wisconsin, who presented the topic "Nations Bow Before the World"; Lloyd Neve, Sleepy Eye, Minnesota, whose subject was "The Foundations of a Lasting Peace"; and Curtis Jorth, Spencer, Iowa, whose topic was "America's Specific Peace Role."

Centering his theme around a world union of nations, LaVerne Larsen won the first prize of ten dollars. During the second week in March, LaVerne presented his peace-plan at the state oratorical contest held at Wesleyan College, Lincoln, Nebraska, bringing home second honors with a diligently-prepared, well-presented oration. LaVerne is a freshman this year and he is a pre-theological student.

## The Danish Play "Ordet"

Danish Drama was presented by Dana and Trinity students during the summer of 1942. Under the auspices of the Danish Department, Kaj Munk's famous Drama ORDET was presented by the Dana actors. The play was under the directorship of Professor Paul Nyholm and performances were given in a tour through the Middle West. The play was exceptionally well-performed and the Danish language was used with almost perfection. Several



E. Olsen, H. Carlsen, A. Morek, E. Bondo, N. Bansen, K. Larsen, R. Jensen  
E. Hansen

Scandinavian-American educators made favorable comments as to the production. Professor Carl E. W. L. Dahlstrom of the University of Michigan commented:

"I was especially struck by the ensemble effect of the performance. All were capable of maintaining their roles, not just one or two as we so often observe in amateur performances."

### DRAMATIS PERSONAE

|                                  |                                   |
|----------------------------------|-----------------------------------|
| Mikkel Borgen, den Ældste Søn    | Norman Bansen, Ferndale, Calif.   |
| Inger, hans Kone                 | Edna Bondo, Farmington, Minn.     |
| Gamle Mikkel Borgen, Gaardejeren | Edward Hansen, Minneapolis, Minn. |
| Johannes Borgen, cand. theol.    | Ronald Jensen, Spencer, Ia.       |
| Pastor Bandul Sognets Præst      | Hans Carlsen, Berkeley, Calif.    |
| Doktor Houen, Gaardens Læge      | Einar Olsen, Culbertson, Mont.    |
| Anders Borgen, Ugøft Søn         | Archie Morek, Dickson, Alberta    |
| Maren, Ingers Datter             | En lille Pige                     |
| Kathinka, Tjenestepige           | Florence D. Hanson, Chicago, Ill. |
|                                  | Katherine Larsen, Laurel, Nebr.   |

The players performed in Omaha, Nebraska; Kimballton, Iowa; Des Moines, Iowa; Cedar Falls, Iowa; Hampton, Iowa; Chicago, Illinois; Racine, Wisconsin; Askov, Minnesota; Minneapolis, Minnesota; Evan, Minnesota; Viborg, South Dakota; Ringsted, Iowa.



# ART DEPARTMENT

WE SOMETIMES WONDER at the importance of the arts. This is especially true in our age of pragmatism wherein all things are measured by their usefulness. It may often be difficult to find a practical reason for art in the form of literature, music or the visual arts, but do they not have a place in God's creation?

It seems that the universe itself is an artistic production. Artists often deal with its glory in sound and color. Beauty is a part of reality. It is hard to define, as is truth. But the poet senses in his being a harmony with the handiwork of God. A faint reflection of God's glorious creation may well be believed to shine through those sensitive to it.

It may be a sad mistake to minimize the value of art in our present crisis. To the Christian, creation speaks under all circumstances. If the artist can capture some of this glory in any form and pass it on to fellow men, the effort has been worthwhile. Or if the artist can capture some mood in our world crisis and clarify it for others, his activity has been worthwhile.

Part of our aim in teaching art is to bring to life in the students consciousness the place of art as a means of expressing Christian thought.

## First Aid Class

During the present crisis of war and human suffering, the need for laymen, educated in the art of first aid to the sick and wounded is brought forth as a very important task. Following the desire to have an active part in the war effort, a first aid course was established this year at Dana. The group of students met for two hours a week over a period of ten weeks, after which a Red Cross certificate was presented to the students completing the course. Directing the course at Dana was Mrs. Walter Huber, R.N., who took charge of similar groups throughout Washington County.

If one were to observe one of these classes, one would probably find students scattered about the classroom, some applying splinters to fractured limbs, others bandaging wounds and abrasions. Or they would be sprawled all over the floor, practicing the art of artificial respiration. It would be a comical sight to be sure, but the students in the class worked in all seriousness.

One of the main purposes of a group of this sort is to train laymen in first aid so that they could take charge of situations of emergency such as bombings, floods, fires, or accidents, thereby lowering the possibility of shock and panic.

## Scrap-Iron Drive

In the late fall of 1943, a nation-wide scrap-iron drive was held—Dana students were ready to contribute to the cause with their time and muscles. Three different drives were held, in all of which the Dana students took part, touring the countryside for all possible bits of iron.

On the biggest day of the affair, approximately thirty Dana men donned their overalls, tossed their books on the shelf, and mustered up several thousand pounds of iron—one would think the men had been magnetized for the occasion.

The big day began at the Blair city hall, where the men split up into pairs—each group being assigned to a truck. The job was done very systematically; every trucker was assigned definite places where he was to go, so there would be no duplication of routes. When the day was over the men returned to their abode on the hill, satisfied after an important job, well done.

It was a healthy experience to observe the united cooperation of Washington County business men; professional men; farmers; high-school students; and college students. Moments such as these tend to prove that the Dana students have not been entirely separated from the world of war, but have used their opportunities for the help of the country.



Scrap-collectors ready to work



Hard at it





## The Barnyard Artists

One of the lesser known extra-curricular activities of the men of the campus has been an art course under the pseudo-professor — Allan D. Hansen.

This enterprising seminary middler, who had more brains than money, one day noticed that the Washington County AAA graineries were blushing a woody pink before the blustery autumn winds. Having located the county supervisor, he entered a bid and was awarded the contract to paint some seventy storage graineries. John Schultz's care and trailer were acquired by the simple expediency of offering him work.

It was a happy arrangement. The government got its work done in spite of the labor shortage; Allan no longer jingled only keys; his enthusiastic, hard-working apprentices were not only allowed to understudy a master in his (alfalfa) field, but were well paid for the privilege.

We who saw only the goings and coming of these earnest rapid-fire daubers can testify to the fact that if the men had smeared as much paint on the graineries as they had on themselves, they had performed adequately.

The greater part of the work was done by Allan D. Hansen, Lloyd Neve, William Hanson, John Schultz, and Owen Gramps, along with the occasional help of other college and seminary students.

## Coal Shovelers, Carpenters, Etc.

This year, Dana students tried to do all in their power to help meet the needs of manpower in civilian industry and business. We found this year, that among our ranks we had coal-shovelers, painters, carpenters, ditch-diggers, clerks, auctioneers, and what have you.

Throughout the fall and winter months, Harry Petersen managed to keep the Christensen Lumber Co. well supplied with coal shovelers. It was very interesting around six p.m. every day, to try to recognize the four or five black-faced workmen plodding up the hill. Then when the black smudge was removed from their fair skins, we stood open-mouthed, seeing they weren't the men we presumed them to be.

Others found work in the grocery stores much to their liking. Two men kept themselves busy, building a solid bank in front of Dr. Nielsen's lawn.



Time Out!

During the fall, several tried their hand at corn-picking. One student was a clerk for a farm auctioneer. During the big flood (possibly the biggest flood the Missouri river has known), some of the men helped to patrol the dikes. All in all it was a busy year for both students and community.



Painters: Neve, Hanson, Neve, Hansen

## Days of Our Year

- Sept. 8 Our year opened with Lt. Chaplain Adolph Petersen's address on "The Rugged Road to Victory."
- Sept. 11 This day featured the annual "Get Acquainted Party" where we became acquainted with our new students and faculty members.
- Sept. 16 First Luther League meeting which featured Seminarian John Schultz speaking on "Christian Suffering."
- Sept. 18 Day centered around school politics. "Bud" Peterson elected 1942-43 Student Body Prexy and Glenn Neve elected as year's DANIAN editor.
- Sept. 25 This day featured two "firsts"; the first issue of HERMES under the editorship of Lloyd Neve, and the first meeting of the ASF in which Dr. Swansen was chosen president for our year.
- Sept. 29 Omaha U beats Dana 18-2 in opening football game.
- Sept. 30 Lloyd Johansen elected president of Luther League.
- Oct. 1 Local Brotherhood is host to Student Body.
- Oct. 3 Coach Paul Peterson married to Miss Ruth Hansen at First Lutheran Church, Blair.
- Oct. 16 Vikings whipped by Concordia 12-0 at Seward.
- Oct. 18 Alton Neve elected History Club president at first 1942-43 meeting.
- Oct. 22 Fairbury noses out Vikings in thriller, 7-0.
- Oct. 26 Sykora String Trio appeared as Lyceum number.
- Nov. 6,7,8, Homecoming, our days were brightened by many familiar faces. Rev. Erhardt Nielsen was featured as main speaker. Vikings defeated Concordia, 7-0.
- Nov. 22 Miss Mildred Brannon presents piano recital in college chapel.
- Nov. 26 Accelerated Thanksgiving vacation.
- Nov. 28 "Wacky party" held in the gym.



## Days of Our Year

- Dec. 2 Shakespearian actor, Charles Lum, appeared as Lyceum number.
- Dec. 6 Annual presentation of Handel's Messiah by a chorus consisting of students and town people.
- Dec. 12 First basketball game, Norfolk 29, Dana 26.
- Dec. 15 Luther League Christmas Party.
- Dec. 16 History Club play "Music Box".
- Dec. 18 Christmas vacation.
- Jan. 6 Curt Jorth succeeds Johansen as Luther League president.
- Jan. 16 Our days stretched as "cramming" for semester tests begins.
- Jan. 29 LaVerne Larsen triumphs in History Club sponsored Peace Oratorical Contest.
- Jan. 30 Dana drops "close one" to Creighton Prep. 32-25.
- Feb. 23-25 Iowa-Nebraska pastors confer on campus.
- Feb. 26 Farewell party for enlisted Reserves.
- Mar. 10-14 Rev. Theo. I. Jensen guest speaker for Spiritual Emphasis Week.
- Mar. 15 Enlisted Reserves called into active duty.
- Apr. 9 Miss Ella Rølvaag of Luther College, spoke on "My Father as I Knew Him."
- Apr. 11 Choir travels to Omaha and Council Bluffs to present Sunday concerts.
- Apr. 27 Students travel to Fremont for "All School Skating Party."
- May 1-2 May festival featuring sports events, folk dancing, music, Luther League Rally Day, and choir's home concert on Sunday evening, May 2.
- May 4 Miss Kathleen Miller of Omaha entertained us with her singing.
- May 9 Rev. A. V. Neve, Sleepy Eye, Minnesota, brings baccalaureate message to Seniors.
- May 14 Commencement exercises with Dr. C. A. Mellby of St. Olaf as main speaker.



Hepeats deluxe . . . . . Before the feast . . . . . Find it, Art?  
 Not this way at 11:30 p.m. . . . . "Stagettes" party . . . . . How about a horse? . . . . . Gramps!  
 The straight and narrow . . . . . Rev. E. Pedersen . . . . . Soups-on . . . . . Claudine . . . . . A-new slant  
 Some dolls . . . . . Tea for two . . . . . T.T.S.S.A. president  
 "D" club . . . . . Sing America . . . . . Roommatse





Ummm! . . . . . Christmas Bachelors . . . . . "Thum" party, eh kid?  
 Did they get your goat? . . . . . Look at the girls . . . . . The rock that stands . . . . . Transportation problem  
 Old Faithful . . . . . Did she? . . . . . Snug?  
 Sunday afternoon . . . . . Bones! . . . . . The bare facts  
 Racine "Roughies" . . . . . Sophies . . . . . Football aftermath

The thinker . . . . . The great outdoors . . . . . Were loyal to you III  
 Some o' da mob . . . . . Classical pose . . . . . Earl the squirrel . . . . . Ghosts of Danians past  
 Gone, not forgotten . . . . . Dana's Who's Who . . . . . My, Sliv, what . . . . . "Lille Hans" . . . . . Bull session  
 Biology and German . . . . . J & J . . . . . Sunday Literature class . . . . . Study hour . . . . . Little Caesar

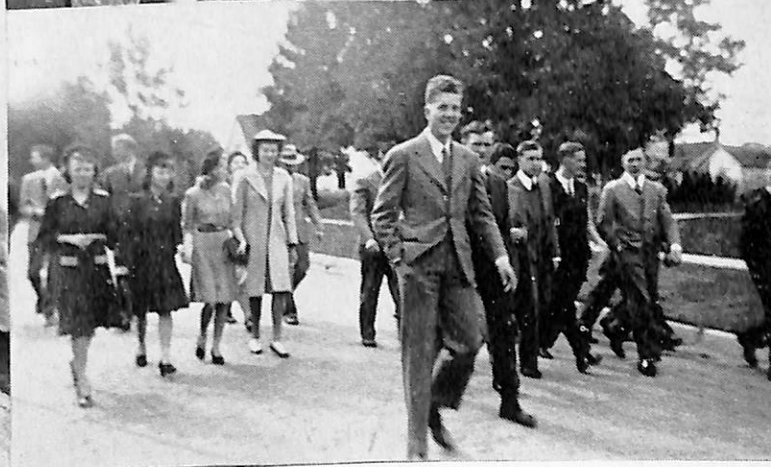
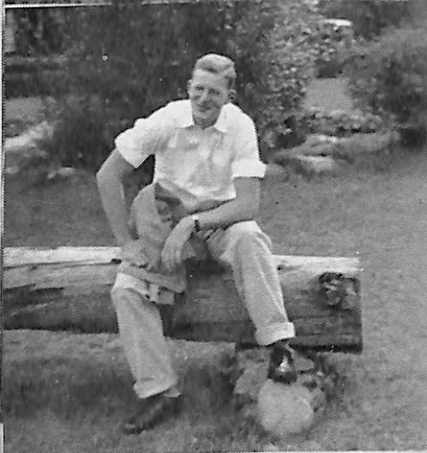




Orals? . . . . . He used to be 4-F . . . . . Bonsour Monsier  
 Oo-lala! . . . . . He's up in the air . . . . . Three men in bed . . . . . What'll you have?  
 . . . . . La Belle Filles . . . . . Small, dark, and handsome  
 Little Ann Ungen . . . . . B.D.M.O.C. . . . . Community sing  
 Labor aristocracy . . . . . The great and small of It . . . . . Editor's partner

Dagny and Arlene . . . . . Umm, girls! . . . . . It ain't natural  
 Nebraska isn't sorry . . . . . Capitalistic slaves . . . . . Four-of-five girls are pretty  
 Homa' La'sen . . . . . Basic training . . . . . Interesting?  
 He's a corporal now . . . . . Biology lab . . . . . Where's Art and Kermit?





Thirsty, Morty? . . . . . Favorite bench . . . . . Top-o'-the-world  
 Kinda "Frosty" . . . . . Dandelions?  
 Now, smile . . . . . This, at Dana? . . . . . "Sems," plus scenic beauty  
 Puddin', catsup, and coffee . . . . . Dansk sekstet

Persis and "Lid" . . . . . Good fishin'? . . . . . Romeos  
 Oh, Allah! Oh, Allah! . . . . . Who won? . . . . . DiJa' fall, Millie?  
 Three Musketeers . . . . . Betty and "Toddy" . . . . .  
 Montana Farmer . . . . .  
 Roommates, violinists . . . . . New socks, Rod? . . . . . All dressed up for church



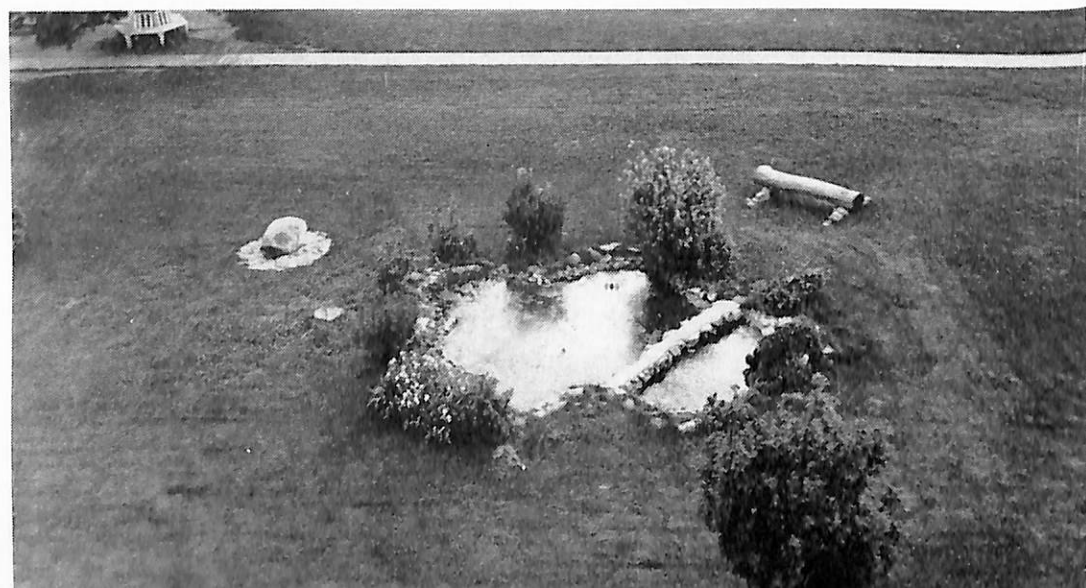


*Dana Beauty Spots*

*Rocks,  
Water, Scrubs  
on  
Lower Campus*



*Upper  
Campus  
Beauty*



*Looking  
Down  
on the  
Pool  
From  
"Ad"  
Building*

BEST WISHES  
from  
**THE BLAIR BRIDGE**  
on  
U. S. Highway No. 30  
The Lincoln Highway

Compliments of  
333

Compliments of  
**OSCAR  
HOLMES  
BAKERY**

**Omaha Compound Co.**  
Chemical Compounders

SOAPS                      SANITARY SUPPLIES  
CHEMICALS                DISINFECTANTS

**Washington County Bank**  
BLAIR, NEBRASKA

IT PAYS TO LOOK WELL  
See Your Barber More Often  
**Lewellen Barber Shop**

# EAT SHOP

**BLAIR DRUG CO.**  
John H. Christensen  
FOUNTAIN SERVICE OF ALL KINDS

## ROBINSON CAFE

Blair's Finest Eating Place  
DANA STUDENTS WELCOME  
"Good food—ask anybody"

**Omaha Potato Market**  
"Omaha's Oldest and Largest Independent  
Complete Food Market"

CARLOAD BUYERS OF:  
Seed Potatoes                Soaps  
Apples                         Canned Goods  
Flour                            Cooking Potatoes  
Other Commodities

Located on Corner of 16th and Burt

**Washington Co. Hatchery**  
ONE STOP POULTRY SERVICE  
Blair, Nebraska

MR. AND MRS. E. A. DONALDSON      W. H. OMARA  
Manager                                      Owner

**O'Hanlon Insurance Agency**  
All Lines of Insurance  
PHONE 64                                      Blair, Nebraska



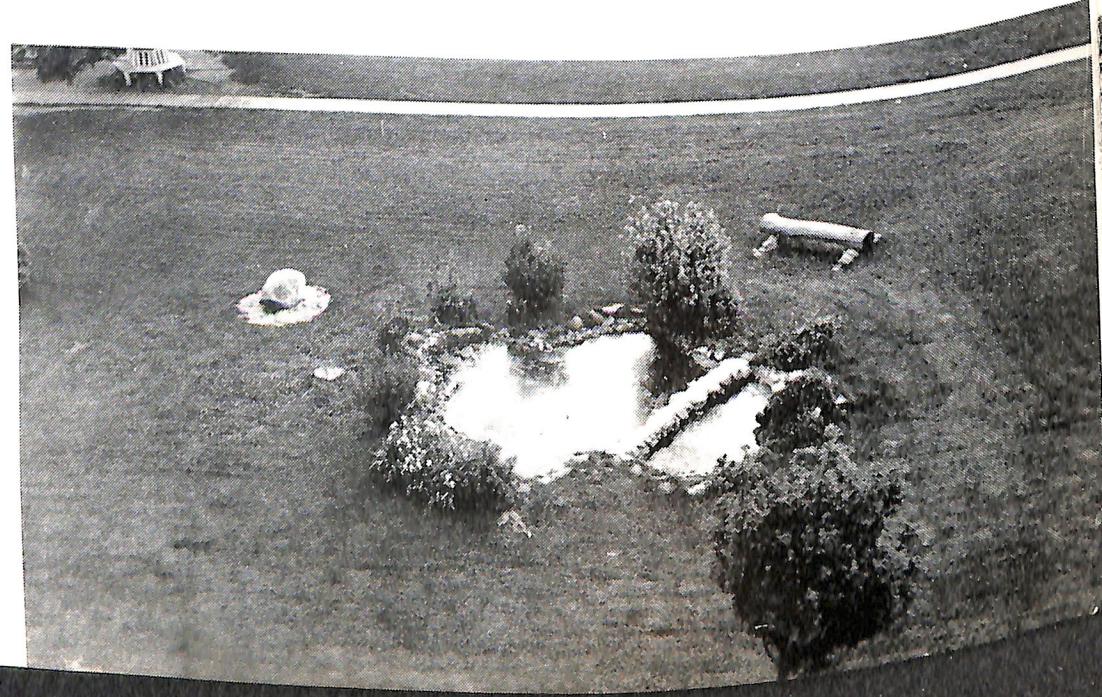


*Dana Beauty Spots*

*Rocks,  
Water, Scrubs  
on  
Lower Campus*



*Upper  
Campus  
Beauty*



*Looking  
Down  
on the  
Pool  
From  
"Ad"  
Building*

BEST WISHES  
from  
**THE BLAIR BRIDGE**  
on  
U. S. Highway No. 30  
The Lincoln Highway

Compliments of  
333

Compliments of  
**OSCAR  
HOLMES  
BAKERY**

**Omaha Compound Co.**  
Chemical Compounders  
SOAPS                      SANITARY SUPPLIES  
CHEMICALS                DISINFECTANTS

**Washington County Bank**  
BLAIR, NEBRASKA

IT PAYS TO LOOK WELL  
See Your Barber More Often  
**Lewellen Barber Shop**

**EAT SHOP**

**BLAIR DRUG CO.**  
John H. Christensen  
FOUNTAIN SERVICE OF ALL KINDS

**ROBINSON CAFE**

Blair's Finest Eating Place  
DANA STUDENTS WELCOME  
"Good food—ask anybody"

**Omaha Potato Market**  
"Omaha's Oldest and Largest Independent  
Complete Food Market"

CARLOAD BUYERS OF:  
Seed Potatoes                      Soaps  
Apples                                Canned Goods  
Flour                                    Cooking Potatoes  
Other Commodities

Located on Corner of 16th and Burt

**Washington Co. Hatchery**  
**ONE STOP POULTRY SERVICE**  
Blair, Nebraska

MR. AND MRS. E. A. DONALDSON                      W. H. OMARA  
Manager    Owner

**O'Hanlon Insurance Agency**  
All Lines of Insurance  
PHONE 64                                      Blair, Nebraska

*Remember to  
the cut 20¢  
and all the  
we've had to  
hard as ever  
have done  
America  
Nov. 8, 1917  
- Lulu*



## THE B & C SHOP

Smart Apparel for Women

RUTH BURR      FRANCES CLEMMER

Compliments of

Mr. and Mrs. Chris K. Bendorf

## N. T. Lund and Co.

Blair, Nebraska

REAL ESTATE - LOANS - INSURANCE

## Ministerial Gowns

Made to Order

Strictly Hand-Tailored of Selected  
Practical Materials

CORRECT STYLE      PERFECT FIT  
MODERATE PRICES

SUITS, TOPCOATS, and OVERCOATS

All Guaranteed to Fit  
Cost No More than Ready-Made

**J. CRONSTROM, TAILOR**

316 West Washington Street

Blair, Nebraska

PHONE 97

## GAYDOU HATCHERY & POULTRY FARM

U.S. Approved Hatchery

Home of "Gaydou's Special White"

LEGHORNS

Compliments of

**DR. EHLERS**

## BLAIR FEED MILL

"Feed for every need"

PHONE 98

Blair, Nebr.

Kolterman's New

## BEN FRANKLIN STORE

ALMOST EVERYTHING FOR  
COLLEGE STUDENTS

5c — 10c — \$1.00

## DR. EDWIN T. JIPP

Dentist

Office in Garrison Building

## VON LANKEN SHOPPE

Ladies' Hats, Dresses  
Blouses and Skirts  
Children and Infants Apparel  
GIFT GOODS

## HOLMQUIST GRAIN & LUMBER CO.

"57 YEARS OF SERVICE"

Phone 57

Blair

Compliments of

**Texaco Service Station**

Blair, Nebraska

AL ENGER, Manager



## Dana College and Trinity Theological Seminary

CONGRATULATE

the Staff of the DANIAN

Compliments of

## BLAIR TELEPHONE

Blair, Nebraska

## Gregersen Drug Store

The Rexall Store

Blair, Nebraska

## Rounds Super Service

WASHING

LUBRICATION

Mobil Products

Tire Service

Blair, Nebraska

## DR. NORMAN RATHMANN

SPECIALIZING IN EYE CARE

Completely equipped for  
Psycho-physiological eye work

## The Pilot Tribune

Reed O'Hanlon, Jr., Editor  
Alfred O. Sick, Owner

Now serving its fourth generation of readers

SEE US FOR ANY

BUILDING OR FUEL SERVICE

**Blair Lumber & Coal Co.**

PHONE NO. 4

THE PROGRESS

of your alma mater is recorded

in **HERMES**

SUBSCRIBE NOW FOR 1943-44

## GOLDEN JUBILEE FIFTY YEARS OF SERVICE 1893-1943



When you leave Blair, send your orders to us for,

BIBLES  
PLAQUES

BOOKS  
TESTAMENTS

GREETING CARDS  
AWARDS

Write for quotations on printing.

Bids cheerfully furnished.

THANKS FOR YOUR PATRONAGE DURING THE SCHOOL YEAR OF 1942-43

## LUTHERAN PUBLISHING HOUSE

BLAIR, NEBRASKA



Compliments of

**John S. Gebuhr**  
General Agent, Council Bluffs, Iowa

Lutheran Brotherhood Legal Reserve Life Insurance for Lutherans

**The Stewart Pharmacy**

J. HAROLD STEWART, Mgr.

Prescription Filling Our Specialty  
Complete Stock of Drugs and Sundries

Blair, Nebraska

PHONE 87

*Nonpareil* **PHOTO-ENGRAVING Co.**

2801 W. BRDWAY • COUNCIL BLUFFS

Commercial Publications  
and  
Quality work for School

**Blair Dairy**

PASTEURIZED MILK AND CREAM

"STILLICIOUS" CHOCOLATE MILK

Cottage Cheese: PHONE 351

Butter

**The Arndt Hardware**

Carries everything for the Home and Farm

PAINTS AND OILS A SPECIALTY

**Young's Cafe and Annex**

A Homelike Place to Eat

BUY—

**MOBIL PRODUCTS**

Neb.-Iowa Oil Company

Wholesale Distributors

BLAIR

NEBR.

**Wear Clean Clothes**

PHONE

ADVANCE CLEANERS

29

ERNIE BOHS, Proprietor

We Deliver

**Blair Transfer Company**

DAILY SERVICE TO OMAHA

Gilfred Garner, Owner

**Wolff's Market**

ICE CREAM

Choice Meats

Groceries

School Supplies

*Thanks to the Students and Faculty  
Of Dana For Their Patronage*

**RABBASS STUDIO**

V . . . . . BUY BONDS AND STAMPS . . . . . V

**GOING BY BUS?**



See Your Agent for Tips  
that Improve Trips

Avoid heavy crowds and have  
a better trip by traveling in  
midweek instead of week-ends.  
See your bus agent—in ad-  
vance. Buy tickets early.  
Travel light and be on time  
—it's a patriotic duty!

**CHICAGO & NORTH WESTERN STAGES  
INTERSTATE TRANSIT LINES**

DEPOT ADDRESS: COOKE'S STORE

PHONE: BLACK 13

OUR ADVERTISERS DESERVE A NOTE OF  
THANKS. WITHOUT THEIR COOPERATION,  
THIS PUBLICATION WOULD BE IMPOSSIBLE





# *The Danian Staff*

Editor-in-chief ..... Stanley Carlsen  
Associate editor ..... William Hanson  
Advertising Manager ..... Earl Madsen  
Circulation Manager ..... Eva Ruth Anderson  
Solicitors ..... E. R. Anderson, Virginia Campbell,  
Donnabeth Peterson, Kenneth Weaver  
Photographers ..... Oscar Johnson, Harold Rabbass  
Snapshot section ..... Persis Pedersen, Eleanor Andersen  
Advisor ..... Elmer Rasmussen  
Contributors ..... Lloyd Neve, Alton Neve, Clifford Hanson, Doris Petersen,  
Lela Nielsen, Becky Anderson, John Schultz, William Thompsen, Prof.  
Daniel Bryan, Miss Mildred Brannon, Curtis Jorth, Ronald Jensen, Gil-  
bert Jensen, Arthur Pedersen

Special credit must be given to Glenn Neve, who was editor until the second semester. In behalf of the DANIAN staff, we wish to thank all those who had a part in the making of this book.